

Annual report : 1938 / Wallasey Cottage Hospital.

Contributors

Wallasey Cottage Hospital (Wallasey, England)

Publication/Creation

Wallasey : [publisher not identified], 1938

Persistent URL

<https://wellcomecollection.org/works/m7bde3xt>

License and attribution

This work has been identified as being free of known restrictions under copyright law, including all related and neighbouring rights and is being made available under the Creative Commons, Public Domain Mark.

You can copy, modify, distribute and perform the work, even for commercial purposes, without asking permission.



Wellcome Collection
183 Euston Road
London NW1 2BE UK
T +44 (0)20 7611 8722
E library@wellcomecollection.org
<https://wellcomecollection.org>

Charwell

Library

WALLASEY COTTAGE
HOSPITAL.



SEVENTY-THIRD ANNUAL
REPORT,
1938.

Willmer Bros. & Co., Ltd., Printers, 47 Borough Road, Wallasey.

ackd 2.
22.4.39

WELLCOME
LIBRARY
Ann Rep
WX28
.B65
W19W19
1938



22502978392

WALLASEY COTTAGE HOSPITAL

A RECORD YEAR

NEED FOR GREATER
SUPPORT

APPEAL AT ANNUAL MEETING

24th FEBRUARY 1939

THE UNIVERSITY OF CHICAGO

PHYSICS DEPARTMENT

RESEARCH REPORT

NO. 100

BY J. J. KATZ

1955

WALLASEY COTTAGE HOSPITAL.

SPEECH OF CHAIRMAN : MR. ALBERT WHITESIDE

You have now heard the various Reports read dealing with the activities of this Hospital during 1938. In the year under review our Hospital has passed through a very busy period and the medical and surgical work performed has advanced considerably both in volume and in scope—in fact it has been a *record* year as you may have gathered from the Reports just submitted to you.

The capacity of the Hospital has been severely taxed at various times, and I feel it can justly be said that we have had a year of useful service to the sick and suffering. The constantly increasing calls upon the Hospital for accommodation have brought the contemplated extension of our premises into the forefront, and the Committee are now seriously considering the best method of meeting the additional demands upon the Hospital's resources. It is hoped that during the present year we shall be able to complete an extension

of the ward accommodation—moderate in size—as in view of the frequent developments and improvements which are taking place in the planning and construction of hospital accommodation, we must be careful to arrange our plans so that they will prove suitable for as long a period as possible, bearing in mind the ever changing conditions which are going on in these days of progress. The latest A.R.P. Memoranda issued by the Ministry of Health also indicate that due regard will have to be paid to methods of safety against attack to be adopted in existing Hospital buildings and also when planning new hospitals and extensions.

Any extension of our Hospital naturally brings up the important question of financing such a Scheme as that contemplated. This year there has been a slight—almost microscopic—increase in the amount received from our Annual Subscribers, for which we are most grateful, but I hope that as soon as the public learn of our intention to extend, they will feel a real responsibility towards their local Hospital and enrol themselves as Subscribers. All residents in our district ought to take a pride in the welfare of our Hospital and support it financially.

This is the 73rd year of the existence of the Wallasey Cottage Hospital which was founded by two public spirited gentlemen in 1866—Dr. William Bell and Mr. C. C. Chambres. I have just had the privilege and pleasure of perusing the first Annual Report of the Wallasey Cottage Hospital, which consisted of two wards, one for men and one for women, each containing two beds. The admissions to the Hospital during the first year were only 22 ! Contrast this figure with the number of in-patients dealt with by our Hospital in 1938, viz. : 616, plus the number of out-patient attendances last year of 1,688, and you will realise how the splendid work of caring for the sick has developed from such a small beginning.

The excellent service given by the Hospital justifies the Committee in appealing for a substantial increase in the number of Annual Subscribers to our Funds, and we earnestly invite offers from the ladies and gentlemen of our extended Borough to proffer their services to the Wallasey Cottage Hospital especially in the matter of gathering additional subscriptions and donations. We badly need the assistance of addi-

tional helpers. Remember ! it is better to help a hospital from the outside than to have to be helped when inside the hospital ! Let the possession of good health be a sound reason for an individual to resolve to assist a hospital which has a mission to restore the sick and suffering to good health.

To the ladies who do such valuable work in collecting funds for our Hospital we are greatly indebted, but we wish to vitalise our collecting efforts by the medium of additional workers—both ladies and gentlemen. In Hospital work there is ample opportunity for the young people of to-day to make their contribution to the service of their less fortunate fellow creatures. Any friends who are willing to assist should send their names to the Hon. Secretary.

I take this opportunity of expressing my thanks and appreciation to my colleagues on the Committees for their good work in a very busy year, and particularly for the kindly co-operation and assistance given to me since I was appointed to the Chairmanship in March last.



INVITATION TO VIEW THE HOSPITAL

There are many persons in Wallasey and district who have never had an opportunity of inspecting the Wallasey Cottage Hospital and have little idea of the service it renders. If there be any who are interested and would like to avail themselves of the opportunity, —especially those who, by their voluntary service and financial help have done so much to assist in its maintenance—a cordial invitation is hereby extended, and suitable arrangements for their visit will be made upon application to the matron or the Hon. Secretary.

THE HISTORY OF THE CITY OF BOSTON

FROM THE FIRST SETTLEMENT TO THE PRESENT TIME
BY NATHANIEL BENTLEY
VOLUME I
PUBLISHED BY J. B. BENTLEY, 10 NASSAU ST. N.Y.
1857

LIST OF OFFICERS.

Chairman :
ALBERT WHITESIDE.

Hon. Secretary :
J. M. LIDDELL, J.P.
Wellington Buildings,
Liverpool.

Hon. Solicitor :
ARTHUR J. WARDLE,
3 Brunswick Street,
Liverpool.

Vice-Chairman :
Rev. CANON A. S. ROSCAMP, M.A.

Hon. Treasurer :
J. F. W. DIXON,
Martins Bank Ltd.,
Victoria Street Branch,
Liverpool.

Hon. Auditors :
DAWSON GRAVES & Co.,
51 North John Street,
Liverpool.

Hon. Consulting Physician :
L. CUNNINGHAM, M.A., M.B., B.C. (Cantab), M.R.C.S. (Eng.),
M.R.C.P. (Lond.).

Hon. Consulting Surgeons :
ROBERT KENNON, M.B., Ch.B. (L'pool), M.R.C.S. (Eng.), M.D. (L'pool),
F.R.C.S. (Eng.).
C. ALEX WELLS, M.B., Ch.B. (L'pool), L.R.C.P. (Lond.), M.R.C.S.
(Eng.), F.R.C.S. (Eng.).

Hon. Consulting Aurist :
P. W. LEATHART, B.A., M.B., B.C. (Cantab), M.R.C.S. (Eng.),
L.R.C.P. (Lond.).

Hon. Consulting Gynaecologist :
ARTHUR A. GEMMELL, M.C., T.D., M.A., M.D. (Cambs.), F.R.C.S.
(Edin.), F.C.O.G.
C. McINTOSH MARSHALL, M.B., Ch.B. (N.Z.) F.R.C.S. (Eng.)

Hon. Surgeon X-Ray Department :
P. H. WHITAKER, M.B., Ch.B. (Hons. L'pool), L.R.C.P. (Lond.),
M.R.C.S. (Eng.), D.M.R.E. (L'pool).

Hon. Ophthalmic Surgeon :
W. DUNLOP HAMILTON, M.B., Ch.B. (Belfast), D.O.M.S. (Lond.).

Hon. Pathologist :
C. S. ANDERSON, M.B., Ch.B. (L'pool), M.D. (L'pool).

Hon. Dental Surgeon :
HERBERT BROWN, L.R.C.P., L.R.C.S., L.R.F.P.S., G.R.A.S., L.D.S.
Univ., L'pool.

Hon. Medical Officers :
J. M. ANDERSON, M.B., Ch.B. (Glas.).
RANKIN G. WALKER, M.C., F.R.C.S., L.R.C.P. (Edin.), L.R.F.P.S. (Glas.).
JOHN WILLIAMS, B.A., M.B., Ch.B. (L'pool).
ALFRED T. ASHCROFT, M.B., Ch.B. (L'pool).
J. FORREST BELL, M.R.C.S. (Eng.), L.R.C.P. (Lond.).
IAIN McINTYRE MacALISTER, M.B., Ch.B. (Edin.).
C. H. STEWART-HESS M.B., Ch.B. (L'pool), M.D. (L'pool), M.R.C.P. (Lond.).

Hon. Consulting Architect :
T. T. REES, J.P., F.R.I.B.A., F.S.I.

Hon. Masseur :
E. A. ELLISON, 23 Meadowside.

Matron :
Miss AGNES KIRKBRIDE.

Committee :

<i>To retire in 1940.</i>	<i>To retire in 1941.</i>	<i>To retire in 1942.</i>
MR. R. FODEN.	MR. J. F. W. DIXON.	DR. J. M. ANDERSON.
MR. A. F. TEARE, B.COM.	MR. J. GILL.	MR. W. J. FAIRCLOUGH.
DR. RANKIN G. WALKER.	MR. H. KINGHAM.	MR. A. WHITESIDE.
DR. J. WILLIAMS.	MR. J. M. LIDDELL.	MR. G. J. SWANWICK.
MR. J. ALLCORN.	REV. CANON ROSCAMP	MR. J. ARMITAGE JONES.
	MR. W. K. FINDLAY.	

Authorised Collector of Subscriptions :
LIVERPOOL COUNCIL OF SOCIAL SERVICE (Incorporated),
14 Castle Street, Liverpool, 2.

WALLASEY COTTAGE HOSPITAL.

73rd Annual Report, 1938.

The Committee have pleasure in submitting their Report for the year 1938, the 73rd in the life of the Hospital.

The equipment of the Hospital has been brought up to date by the installation of new sterilisers, an improved gas and oxygen apparatus and hot and cold water supply in every private ward. In order to centralize the clerical work, one of the rooms has been converted into an office and a Lady Clerk appointed and, to meet growing needs, an internal telephone system has been installed.

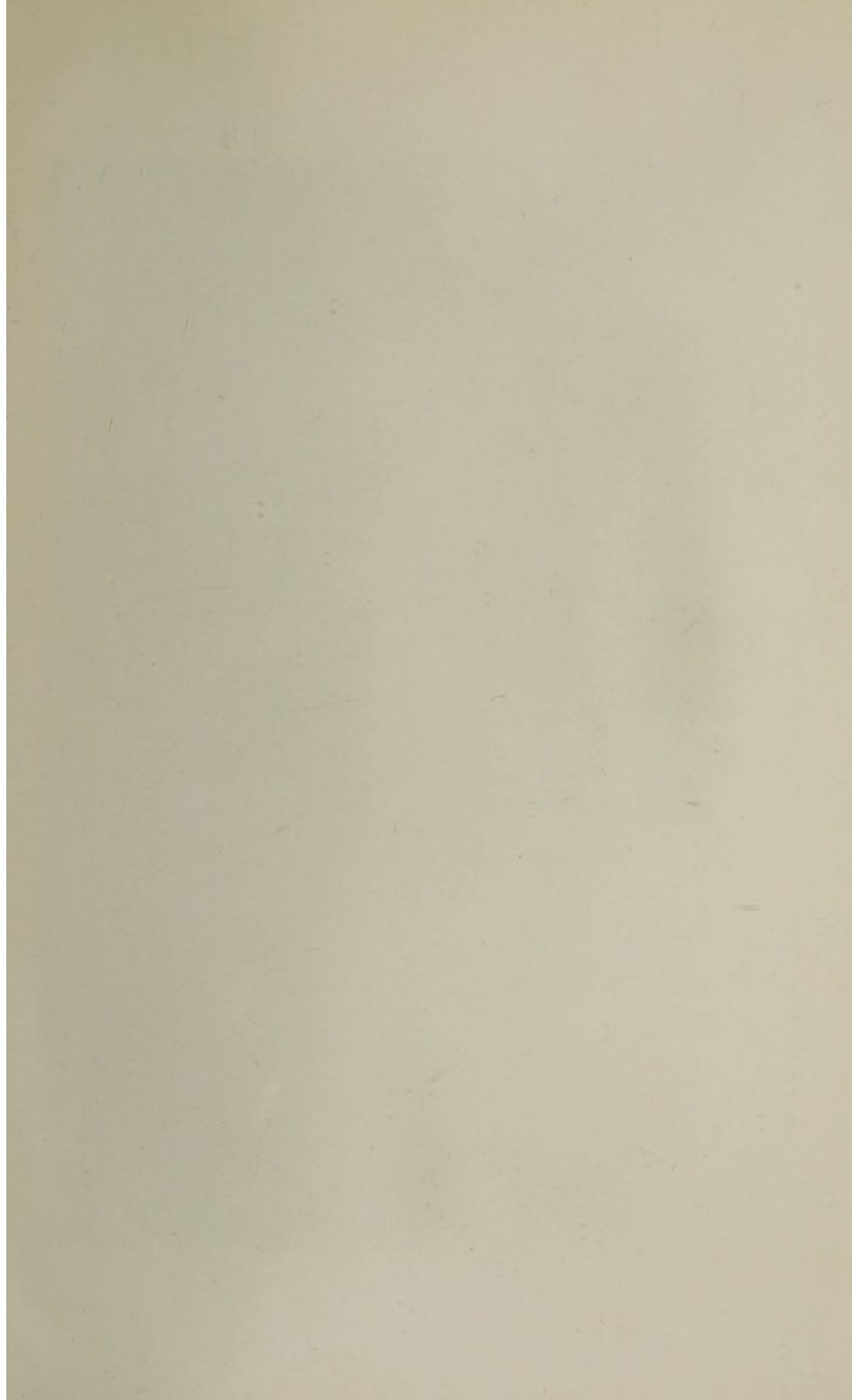
The medical and surgical demands on the Hospital continuing to increase, the need for additional accommodation becomes more pressing, and the Committee are now considering plans for an appropriate extension which it is hoped will be inaugurated this year.

The exterior of the Hospital has been repainted and considerable internal redecoration effected.

Negotiations with those responsible for Air Raid Precautions are taking place in regard to the safeguarding of the Hospital and the rendering of service in a National emergency, and arrangements have been made for the Nursing Staff to attend an anti-gas course.

The furnishing of the Nurses' Home has been completed and the Home is now not only entirely occupied but is proving to be a valuable acquisition.

While the Committee feel that, at the moment, the finances of the Hospital are in a satisfactory position, they are much concerned with the continuous decline in the number of Subscribers and now make a strong appeal for more widely spread help in that direction. Moreover, expenses show a consistent increase and the additional facilities placed at the service of the public are not producing a corresponding increase in income. The voluntary system, admirable in every way, is now being severely tested financially and can only be maintained by generous support. In this respect the local Hospitals are fortunate in having the Merseyside Hospitals Council to watch over their interests.





VIEW FROM THE SOUTH.

The Committee have again to extend their best thanks to their loyal Subscribers and Donors and to their friends, The Wallasey Village Festival, Hospital Sunday Fund, New Brighton Amateur Operatic Society, Guild of Undergraduates, Wallasey Hospital Ball Committee, St. Nicholas' Golfers' Service, Wallasey Lady Bowlers' Charity Handicap, The Chrysanthemums, Harold Challenge Cup and the Wallasey Ladies' Bowling Association for their enthusiastic and continued support which is highly appreciated.

Our grateful thanks are also due to the Lady Organisers and Collectors for their devoted assistance to the Hospital, to the kind friends who generously contributed eggs during the Hospital's Egg Week and to all those (including many ex-patients) who helped to make the Matron's Pound Day a notable success.

Dr. Apsimon having removed to the South, has resigned from the Medical Staff and Dr. Geoffrey R. Hawkes has been appointed to take his place. During the year the following additions have been made to the Honorary Consulting Staff, viz. :—

Mr. C. McIntosh Marshall, as Hon. Consulting Gynaecologist, and Mr. C. S. Anderson, as Hon. Pathologist.

We regret that, after a valued service as Hon. Consulting Dental Surgeon, extending over thirty-three years, Mr. Arthur Capper has tendered his resignation owing to his removal from Wallasey. Our warm thanks are due to him. Mr. Allan C. Capper, having received a public appointment, has resigned his position on the Hospital Staff, and a successor will shortly be selected.

After a long and distinguished service to the Hospital, Mr. W. Duncan Taylor resigned the Chairmanship and Mr. Albert Whiteside was appointed to take his place, Canon Roscamp succeeding Mr. Whiteside as Vice-Chairman. Mr. W. K. Findlay and Mr. James Allcorn have been co-opted as Members of the General Committee. The following Members retire from the Committee, viz. :—

Dr. J. M. Anderson,	Mr. A. Whiteside,
Mr. W. J. Fairclough,	Mr. G. J. Swanwick,
Dr. W. P. Ringland,	Mr. J. Armitage Jones.

and (with the exception of Dr. Ringland) offer themselves for re-election.

Your Committee again tender to the Honorary Consulting Staff, the Medical Staff, the Matron and Nursing Staff and to Messrs. Dawson, Graves & Co., the Hon. Auditors, the Hon. Consulting Architect Mr. T. Taliesin Rees and our Hon. Solicitor Mr. Arthur Wardle, very cordial appreciation of their valued services during the year.

MEDICAL REPORT.

Another year of progress has to be recorded both in the Private and General Wards. The figures are as follows :—

<i>Private Wards</i>				<i>General Wards</i>			
	1938	1937			1938	1937	
Men	64	59	Men	134	116		
Women	117	81	Women	247	220		
Children	20	7	Children	34	45		
<hr/>				<hr/>			
Total	201	147	Total	415	381		
				201	147		
				<hr/>	<hr/>		
				616	528		
				<hr/>	<hr/>		
Surgical Cases	475	384		
Medical Cases	141	144		
				<hr/>	<hr/>		
				616	528		
				<hr/>	<hr/>		
No. of Operations	475	316		

OUT-PATIENTS.

No. of Out-Patients		No. of Operations	10
Attendances ..	1688	Attendances of Masseur	43
No. of Out-Patients	924		

There has also been an increase in the days in Hospital from 9,344 to 10,881.

The increase in the number of surgical cases is striking. Surgical cases have usually to be attended to without delay and beds have to be found for them. The medical cases are admitted when beds are available for them. In 1936, we admitted 206 medical cases, last year we had 144 and this year we could only take 141. This all goes to show that more beds are required now, especially in the General Wards. As the district grows, the scarcity of beds becomes more apparent.

The Medical Staff wish to express their appreciation to the Matron and her Nursing Staff for their efficient services during the year.

J. M. ANDERSON, M.B., Ch.B.

X-RAYS.

There has again been an increase in the work of the X-Ray Department during the past year.

A total of 808 cases have been examined. These have been made up as follows :—

Gastro-intestinal examinations	162
Chest	137
Kidneys	98
Pregnancies	16
General	395

The apparatus has worked satisfactorily, and there have been no changes in the working of the department.

P. H. WHITAKER.

DENTAL TOTALS FOR 1938.

Consultations	50
Ext. Injections	79
„ Gas	70
„ Ether	17
„ Evipan	2
					<hr/> 218

REPORT OF THE EYE DEPARTMENT.

I beg to submit the report for this department for the year ending 1938. The following is a list of the Eye Diseases, etc. :—

Hypermetropia	40	Entropion	2
Hypermetropic astig.	40	Keratitis, phlyc.	6
Myopia	37	„ ulcerative	7
Myopic astigmatism	20	Dacryocystitis	1
Mixed astigmatism	7	Conjunctivitis	6
Right Converg. Squint	3	Optic atrophy	2
Left „	2	Chalazia	16
Alternating „	2	Choroiditis	12
Cataracts, senile	14	Retinitis	2
„ secondary	3	Venous thrombosis	3
Iritis	3	Tobacco amblyopia	1
Corneal opacities	4	Old Attendances	449
		Total	<hr/> 684

The operations for in-patients numbered 22.

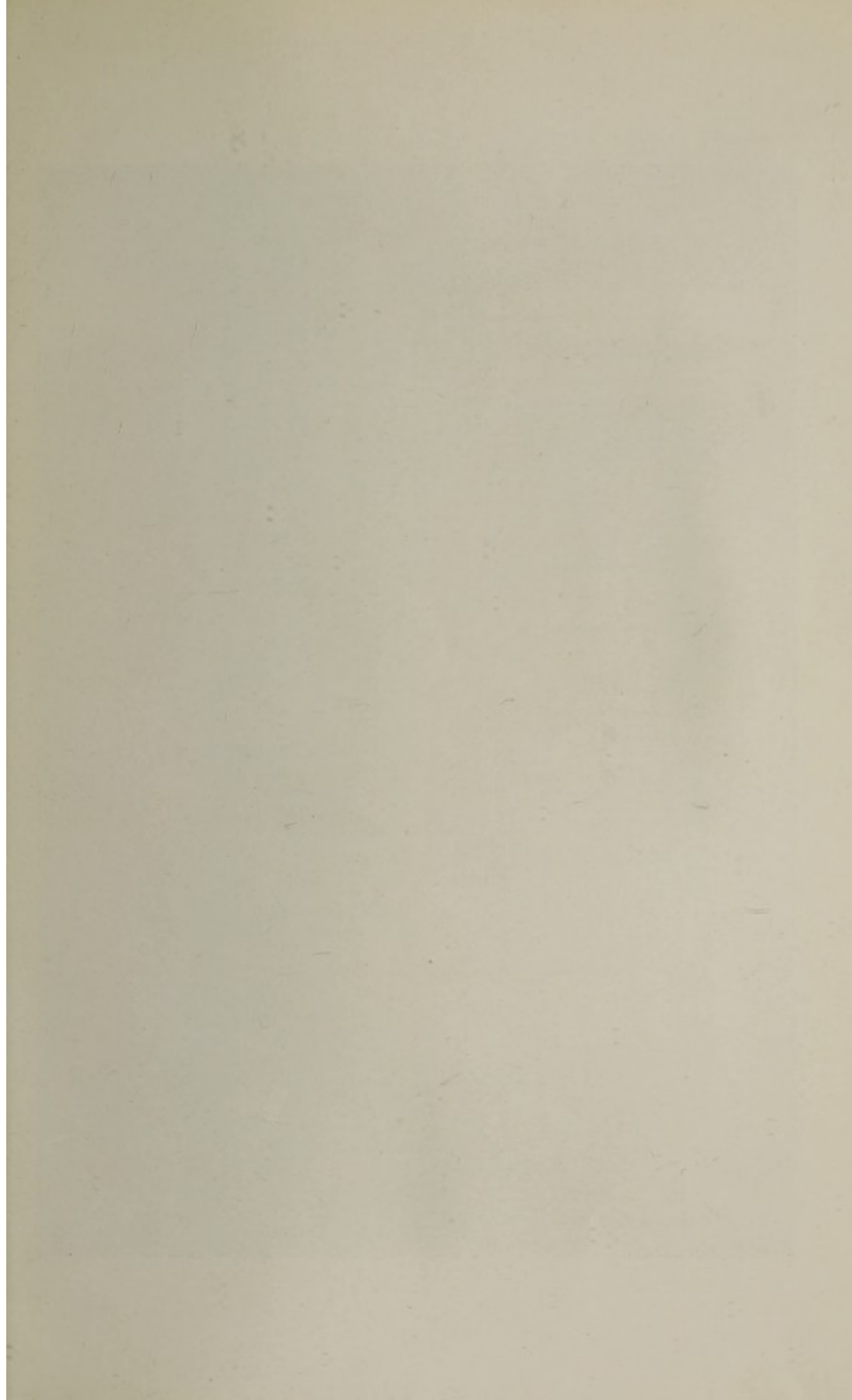
Removal of Lacrimal Sac	2	Squint—operatoin	1
Extraction of Cataract	7	Enucleaton of eye	1
Needling	4	Mules' Operation	1
Trephining	1	Paracentesis	1
Dilation of Duct	1		
Iridectomy	2	Total	<hr/> 22
Observation	1		

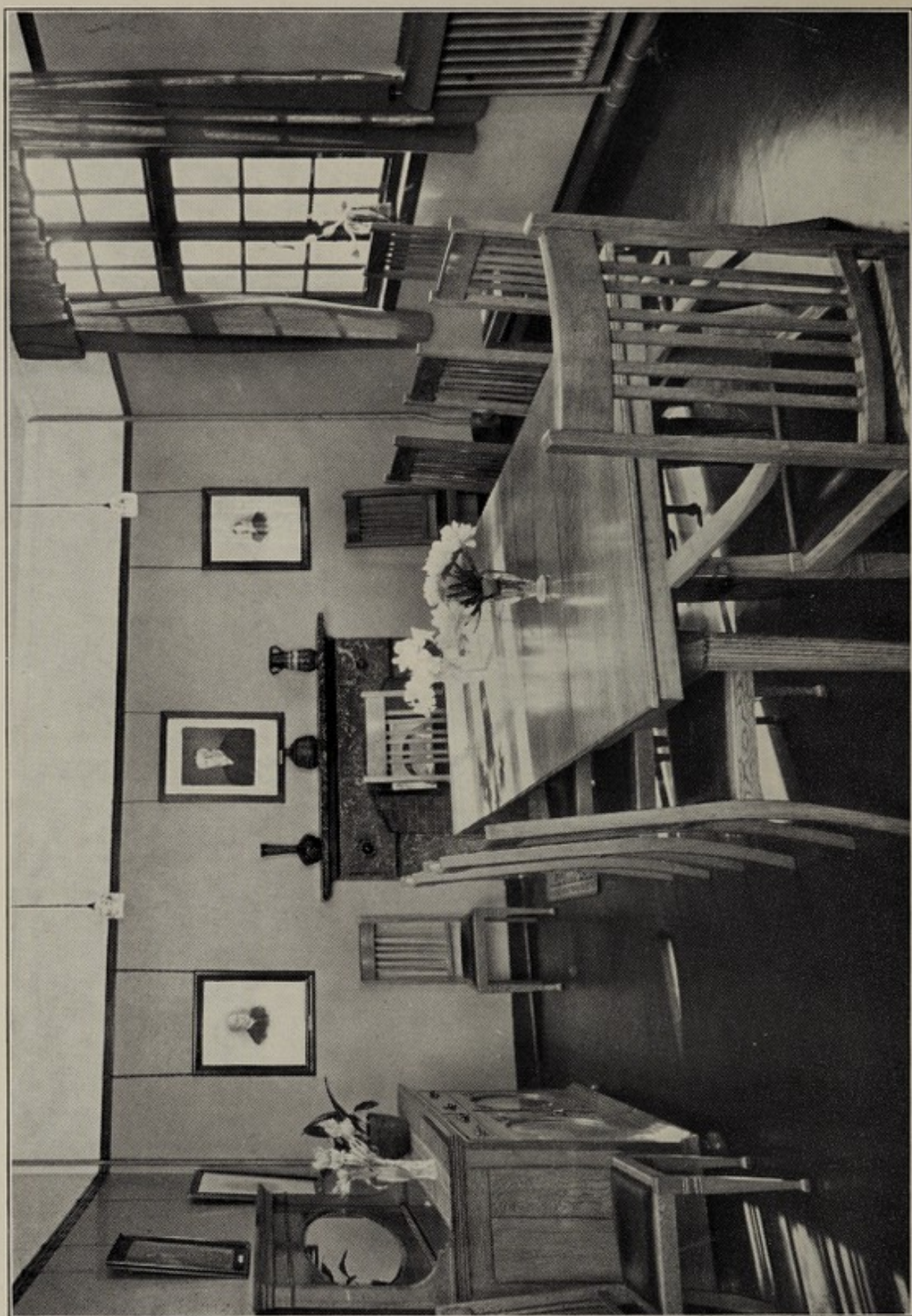
I greatly appreciate the help of Matron and the Nursing Staff ; also that of Mr. Harris, our Honorary Registrar.

W. Dunlop Hamilton.

Surgical Cases.

	Total.	Cured.	Re- lieved.	Not Re- lieved.	Died.	Remain- ing.
Abscess	7	7	-	-	-	-
" Pelvis	1	1	-	-	-	-
" Knee	1	1	-	-	-	-
" Cerv. Adenitis	2	2	-	-	-	-
" Appendix	1	1	-	-	-	-
" Chin	1	1	-	-	-	-
" Thigh	1	1	-	-	-	-
" Axilla	7	7	-	-	-	-
Amputation of Leg	1	-	-	-	1	-
Adenitis	1	1	-	-	-	-
Adenoma Thyroid	1	1	-	-	-	-
Appendicitis	93	93	-	-	-	-
Anal Fissure	3	3	-	-	-	-
Bursitis prepatellar	2	2	-	-	-	-
Burns	3	3	-	-	-	-
Ex. Cataract	7	7	-	-	-	-
Calculus Salivary	1	1	-	-	-	-
Cerebral Thrombosis	4	1	1	-	2	-
Carbuncle Insc.	3	3	-	-	-	-
Circumcision	3	3	-	-	-	-
Carcinoma Breast	12	9	2	-	1	-
" Bronchial	2	-	2	-	-	-
" Bowel	3	-	1	-	2	-
" Larynx	1	-	-	1	-	-
" Lung	1	-	-	1	-	-
" Rectum	1	-	-	-	1	-
" Stomach	2	-	-	1	-	-
" Uterus	2	-	-	1	1	-
" Vertebrae	1	-	-	1	-	-
Cirrhosis of Liver	1	1	-	-	-	-
Cellulitis	1	1	-	-	-	-
" Foot	2	2	-	-	-	-
" Neck	1	1	-	-	-	-
Cholecystitis	14	13	-	-	-	1
Colostomy	3	-	2	-	1	-
Cyst Bartholin	1	1	-	-	-	-
" Deblal	1	1	-	-	-	-
" Dermoid	2	2	-	-	-	-
" Ovarian	6	6	-	-	-	-
" Pilonidal	1	1	-	-	-	-
" Thyroid	3	3	-	-	-	-
Cystitis	1	1	-	-	-	-
Cystoscopy	16	16	-	-	-	-
Cystotomy	2	1	-	-	-	1
Colporrhaphy	12	12	-	-	-	-
Cdpo-perineorrhaphy	1	1	-	-	-	-
Dilatation of Stomach	1	1	-	-	-	-
Dilatation and Curettage	13	13	-	-	-	-
Enlarged Tonsils	18	18	-	-	-	-
Explor. Jaw	1	1	-	-	-	-
Empyema	1	-	-	-	1	-
Extirpation Tear Sac	2	2	-	-	-	-
Evac. Uterus	1	1	-	-	-	-
Ethmoiditis	1	1	-	-	-	-
Foreign Body in Knee	1	1	-	-	-	-
Fistula Anal	1	1	-	-	-	-
Fibroid (Uterus)	4	4	-	-	-	-
" Bronchus	2	2	-	-	-	-
Fracture Humerus	1	-	1	-	-	-
" Leg	6	3	-	-	1	2
" Pelvis	1	1	-	-	-	-
Furunculosis	1	1	-	-	-	-
Gall Bladder drainage	1	1	-	-	-	-
Ganglion	1	1	-	-	-	-
Gland Neck	12	12	-	-	-	-
" Groin	1	1	-	-	-	-
Gastric Ulcer	2	2	-	-	-	-
Gastrectomy	5	4	1	-	-	-
Gastroenterostomy	3	3	-	-	-	-
Glaucoma	1	1	-	-	-	-
Hallux Rigidus	1	1	-	-	-	-
Haemorrhoids	13	13	-	-	-	-
Heart Block	1	1	-	-	-	-
Haematoma thigh	1	1	-	-	-	-





NURSES' DINING ROOM.

	Total.	Cured.	Re- lieved.	Not re- lieved.	Remain- ing
Hæmatocolpos	1	1	-	-	-
Hernia	9	8	-	-	1
" Femoral	1	1	-	-	-
" Inguinal	5	5	-	-	-
" Direct	1	1	-	-	-
" Recurrent	1	1	-	-	-
" Strangulated	2	1	-	-	1
Hysterectomy	12	12	-	-	-
Hypopyon	1	1	-	-	-
Hydronephrosis	2	1	-	-	1
Ileitis	1	1	-	-	-
Ireductomy	2	2	-	-	-
Incomplete Abortion	2	2	-	-	-
Intestinal Obstruction	5	3	1	1	-
Insertion Radium	9	6	3	-	-
Keratitis	2	2	-	-	-
Lipoma	2	3	-	-	-
Laparotomy	5	3	1	-	1
Maxillary Anterus	1	1	-	-	-
Mastoiditis	15	13	-	-	1
Milis Operation	1	1	-	-	-
Needling	4	4	-	-	-
Nephrectomy	1	1	-	-	-
Orchotomy	1	1	-	-	-
Observation	6	4	2	-	-
Oesophageal Obstruction	1	1	-	-	-
Paracentesis	1	1	-	-	-
Papilloma Vulva	1	1	-	-	-
" Bladder	1	1	-	-	-
Polypus Nasal	3	3	-	-	-
" Rectal	1	1	-	-	-
" Uterus	1	1	-	-	-
Prostatectomy	3	3	-	-	-
Pyloroplasty	1	1	-	-	-
Pylolithotomy	1	1	-	-	-
Recovery Op.	5	5	-	-	-
Ruptured Quadriceps	1	1	-	-	-
Suprapubic Custot	3	3	-	-	-
Semilunar Cartilage Rem.	1	1	-	-	-
Submucous Resection	10	10	-	-	-
Suturing Tendon	1	1	-	-	-
Squint	1	1	-	-	-
Thyroidectomy	1	1	-	-	-
Tracheotomy	1	1	-	-	-
Tumour Breast	1	1	-	-	-
" Thyroid	1	1	-	-	-
" Spine	1	1	-	-	-
T.B. Bladder	1	1	-	-	-
" Auxilliary Glands	2	2	-	-	-
" Breast	1	1	-	-	-
Varicocele	3	3	-	-	-
Whitlow	1	1	-	-	-

Medical Cases.

Anaemia	5	2	1	-	-	2
Asthma	3	-	2	-	-	1
Arthritis	1	-	1	-	-	-
Bronchitis	2	2	-	-	-	-
Cerebral Haemorrhage	4	-	-	-	4	-
Colitis	4	2	2	-	-	-
Chorea	1	1	-	-	-	-
Concussion	2	2	-	-	-	-
Cystitis	1	1	-	-	-	-
Disseminated Sclerosis	2	-	1	-	1	-
Diabetic Gangrene	2	2	-	-	-	-
Duodenal Ulcer	3	2	-	-	-	1
" Perf.	1	-	-	-	-	-
Encephalitis	1	1	-	-	-	-
Embolism Retinal	1	1	-	-	-	-
Gastro Enteritis	1	1	-	-	-	-
Gastritis	3	3	-	-	-	-
Glandular Fever	1	1	-	-	-	-
Hyperpiesia	2	2	-	-	-	-
Hydranois	1	1	-	-	-	-
Hemiplegia	1	1	-	-	-	-

	Total.	Cured.	Re- lieved.	Not Re- lieved.	Died.	Remain- ing.
Haematemesis	3	3	-	-	-	-
Influenza	5	1	-	-	-	4
Hypopyon	1	1	-	-	-	-
Investigation	30	30	-	-	-	-
Keratosis	2	2	-	-	-	-
Mennorrhagia	3	2	-	-	-	1
Meningitis	2	-	-	-	2	-
Miscarriage	1	1	-	-	-	-
Myocarditis	3	2	1	-	-	-
Neurasthenia	3	1	2	-	-	-
Nephritis	2	1	1	-	-	-
Otitis Media	1	1	-	-	-	-
Pyelitis	4	4	-	-	-	-
Pleurisy	3	2	-	-	-	1
Pleural Effusion	3	-	3	-	-	-
Paralysis of Bowel	1	-	1	-	-	-
Pneumonia	18	8	-	1	7	2
Pulmonary Congestion	1	1	-	-	-	-
Pneumothorax	1	1	-	-	-	-
Phthisis	1	1	-	-	-	-
Quinsy	1	1	-	-	-	-
Phlebitis	1	1	-	-	-	-
Rheumatism	3	2	-	-	1	-
Salpingitis	1	1	-	-	-	-
Spinal puncture	1	1	-	-	-	-
Septaemia	2	2	-	-	-	-
Tonsillitis	1	1	-	-	-	-
Typhoid Fever	1	-	1	-	-	-

Operations.

	Total.
Asthma	1
Abcess Pelvis	1
" Axilla	4
" Auricular	1
" Chin	1
" Drainage	2
" Knee	1
" Rectal	1
" Scalp	1
" Thigh	1
Amputation of Breast	11
Anal Fissure	3
Appendicectomy	92
Bronchoscopy	1
Cellulitis	1
Cholecystectomy	12
Cholecystostomy	1
Colostomy	3
Cervical Adenitis	1
Carcinoma Bronchial	1
" Stomach	1
Cyst Thyroid	4
Cystoscopy	11
Cystotomy	2
Circumcision	3
Diathermy	3
Duodenal Ulcer	1
" Perforated	1
Drainage of Gall Bladder	1
Excision Prepatellar Bursa	2
" Cyst	4
" Adenoma	2
" Glands	1
" Gastric Ulcer	1
" Foreign Body in Knee	1
" Kidney	1
" Lipoma	3
" Semilunar Cartilage	1
Tonsils and Adenoids	18
Empyema	1
Extirpation Tear Sac	1
Ex. Cataract	7
Ethmoidectomy	1

Operations.—Continued.

	Total
Evac. Uterus	1
Evisceration Eye	1
Fistula in Ano.	1
Fibroad (Uterus)	1
Gastroenterostomy	3
Gastrectomy	4
Gland Neck	4
" Groin	1
Glaucoma	1
Gastric Ulcer Perforated	1
Haemorrhoids	11
Hernia Inguinal	16
" Femoral	1
" Strangulated	4
Haematoma Thigh	1
Insertion Radium	9
Intestinal Obstruction	1
Ileitis	1
Iridectomy	2
Laparotomy	4
Mastoidectomy	14
Nephro-uretectomy	1
Nephrectomy	3
Neurectomy	1
Necrolysis	4
Oesophageal Obstruction	1
Orchotomy	1
Papilloma Colon	1
Paracentesis	1
Polypus Nasal	1
" Rectal	1
Prostatectomy	3
Pylolithotomy	1
Repair Tendon	1
Scraping	9
Squint	1
Salivary Calculus	2
Suprapubic Cystotomy	2
Submucous Resection	8
Stone in Kidney	1
Tracheotomy	1
Thyroidectomy	2
T.B. Auxilliary Gland	1
Varicocele	2
Whitlow	1

Diseases of Women.

	Total	Cured
Bartholin Cyst	1	1
Colpo-perenorrhaphy	1	1
Colporrhaphy	12	12
Dilatation and Curettage	13	13
Hysterectomy	12	12
Ovarian Cyst	6	6
Ovariectomy	1	1
Salpingo-oophorectomy	1	1
Haematocolpos	1	1
Incomplete Abortion	2	2
Ventrofixation	1	1
Ex. P.V.	1	1
Pyloroplasty	1	1
	53	53

EXCERPTS FROM THE MEMORANDUM OF ASSOCIATION

of the

WALLASEY COTTAGE HOSPITAL.

1. The name of the Company (hereinafter called the "Hospital") is "THE WALLASEY COTTAGE HOSPITAL."
3. (2) To provide, maintain and manage a hospital or hospitals for the reception and relief of the sick and disabled poor and for the treatment of patients suffering from injuries, diseases or ailments whether medical or surgical and any such other accommodation as may seem expedient for the treatment, care and relief of any such patients.
- (3) To carry on the work of a General Hospital or Clinic for the sick and injured.
- (4) To provide, maintain and manage Dispensaries, Infirmarys, Convalescent and Nursing Homes and Out-patients and other Departments in connection with any such hospital as aforesaid.
- (13) To obtain collect and receive money and funds by way of contributions, donations, subscriptions, legacies, grants or any other lawful method and to accept and receive gifts of property of any description (whether subject to any special trusts or not) for or towards the objects of the Hospital or any of them.

EXCERPTS FROM THE ARTICLES OF ASSOCIATION

of the

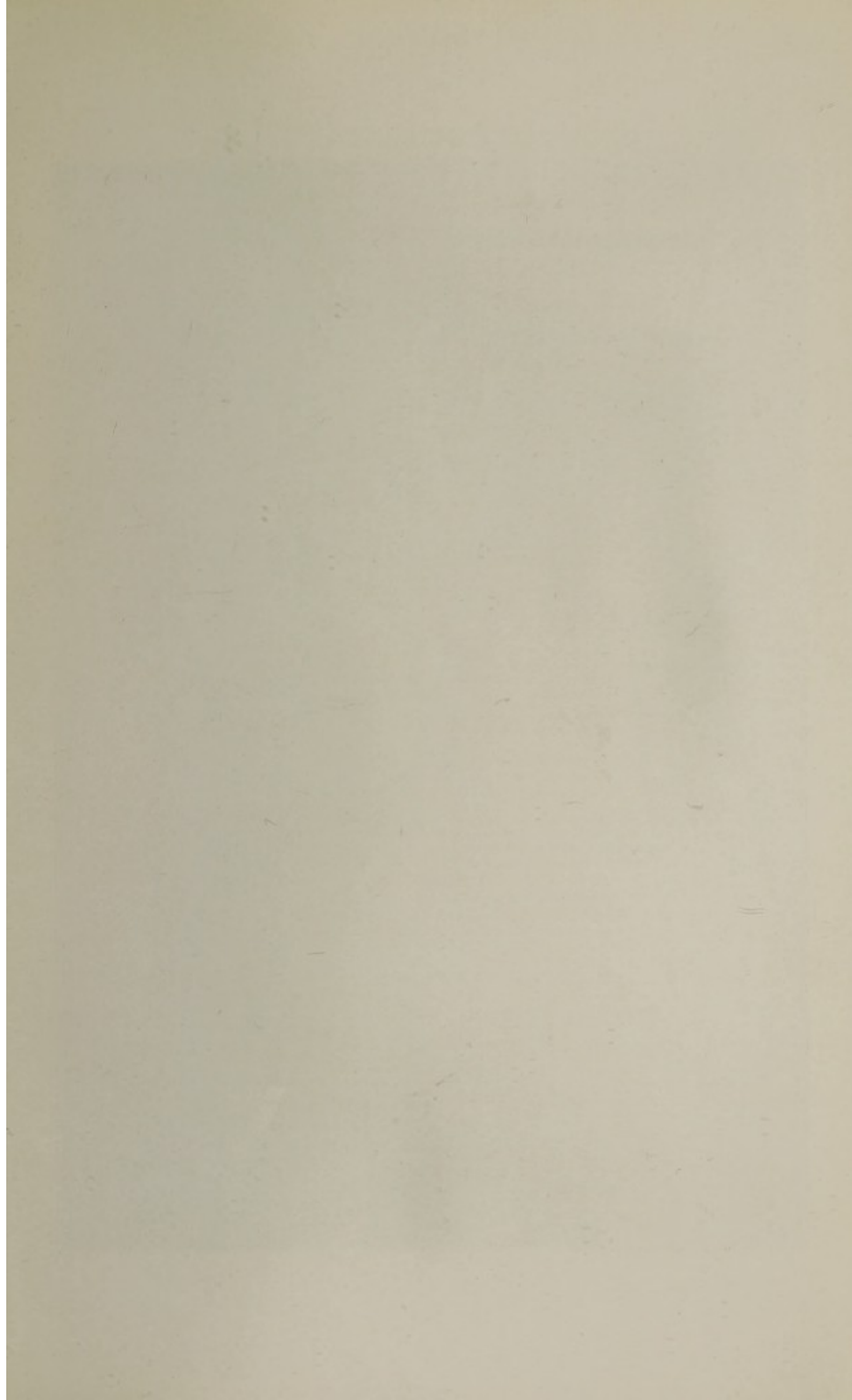
WALLASEY COTTAGE HOSPITAL.

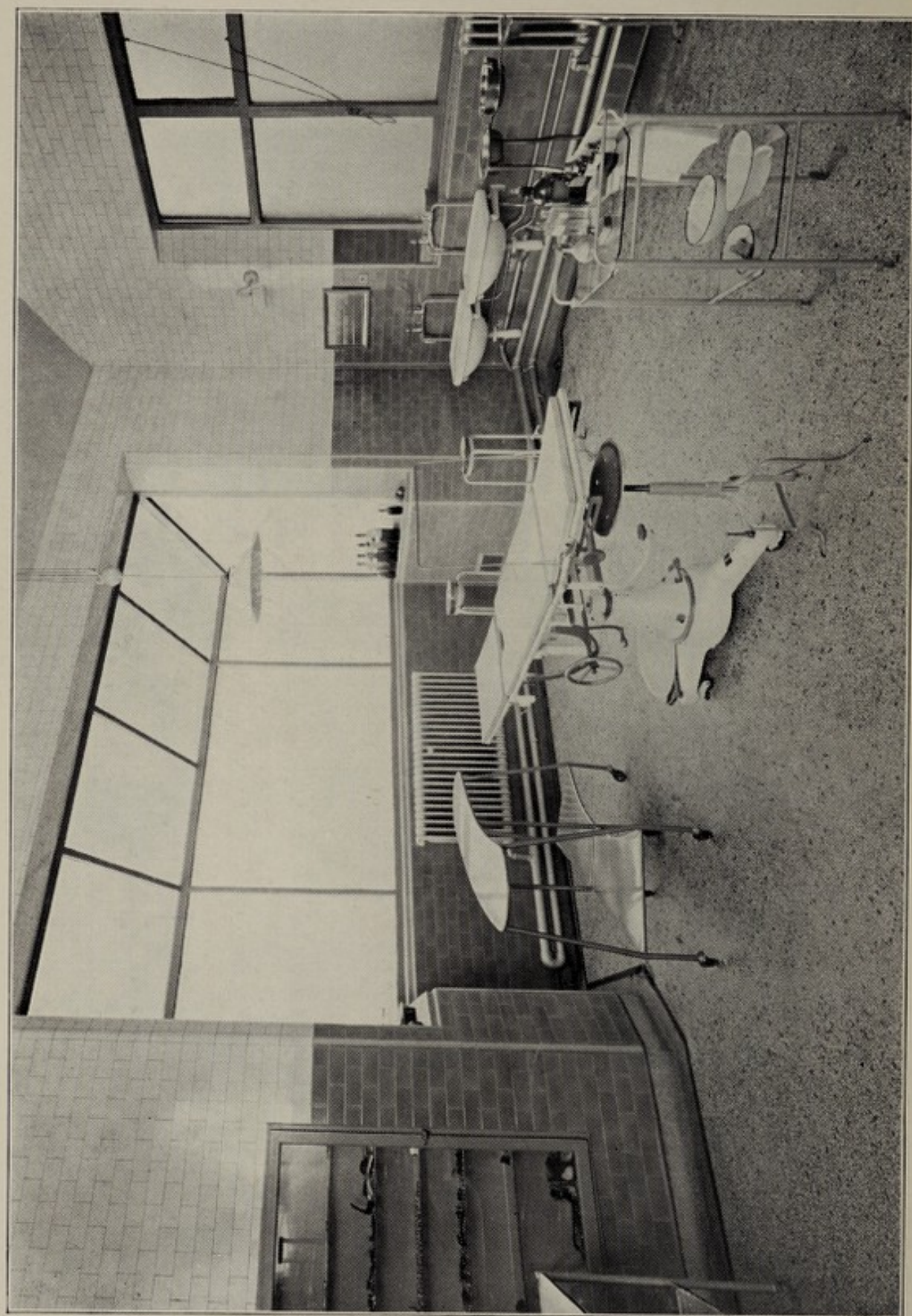
6. Any person who shall contribute not less than one guinea annually to the funds of the Hospital by way of subscription and any person eligible under Article 30 hereof, shall be eligible if willing to become an Annual Member. Any such person whether he shall become a member or not shall have the right to attend at all annual special and general meetings of the Hospital but shall not have the right to vote at such meetings unless he shall become an annual member or is a person nominated as an associated member under Article 30.
7. An Annual Member shall cease to be a member at the end of the year if the annual subscription payable by him for such year and also for the last preceding year shall both be in arrear.
8. Annual subscriptions shall be treated as becoming due in advance on the 1st January in each year.
11. Annual General Meetings shall be held in the month of February in each year at such place as aforesaid.
13. Seven clear days notice at least specifying the day, place and hour of any General Meeting and of the general nature of the business to be transacted shall be sent to every member entitled to receive the same, or given by advertisement in one or more newspapers circulating in Wallasey and in one Liverpool daily newspaper, but the accidental omission or failure to give any such notice to or the non-receipt of any such notice by any of the members shall not invalidate the proceedings at any General Meeting.
21. Proper Minutes shall be kept of all proceedings.
22. The general management of the Hospital from year to year shall be entrusted to a Committee which shall consist of the executive officers mentioned in Article 29 and not more than 21 gentlemen to be composed of annual members whose subscriptions for the previous year shall have been paid. At every Annual General Meeting one-third of the said 21 gentlemen shall retire from office.
25. The Committee shall hold regular meetings at stated intervals at least quarterly and unless otherwise determined by the Hospital in General Meeting the quorum at a Meeting of the Committee shall be three.
27. The Committee may exercise all such powers and do all such acts and things as may be exercised or done by the Hospital and are not by Statute or by these Articles expressly directed or required to be exercised or done by the Hospital in General Meeting subject nevertheless to any statute and to any provisions of these Articles and to such regulations being not inconsistent with such provisions as may be prescribed by the Hospital in General Meeting.
29. (1) The Committee shall annually as soon as convenient after the Annual General Meeting appoint from amongst the members of the Hospital (subject only as hereinafter expressly provided).

Four Honorary Executive Officers, namely :—

- (1) Chairman.
- (2) Vice-Chairman.
- (3) Treasurer.
- (4) Secretary.

who shall respectively remain in office until their successors have been appointed and who shall *ex-officio* be members of all Committees and Sub-Committees.





OPERATING THEATRE.

- (2) Sub-Committees may be appointed for special purposes by the Committee. Persons who are not members of the Hospital but who have special technical qualifications may be appointed members of a Sub-Committee provided that not less than two-thirds of the members of any Sub-Committee shall at all times be members of the Hospital.

32. The Committee shall have power to appoint Honorary Medical Officers.

34. The Honorary Medical Staff shall keep a register in which shall be entered the names of patients treated at the Hospital. This register shall be produced at the Committee Meetings and before the Annual Meeting the Medical Officers shall send to the Honorary Secretary a report of the cases which have been under their care during the previous year.

41. The Annual Members shall have the privilege of recommending poor persons as patients; and although the hospital shall be open to all suitable cases, preference in admission shall be given to such recommendations should the number of patients in the wards, or circumstances generally, make a selection necessary.

43. No patients shall be admitted whose circumstances are such as to enable them to pay for their treatment, except upon payment of such weekly sum as may be fixed by the Committee and all patients shall be expected to contribute as they may be able, to the funds of the Hospital. Patients receiving compensation for accidents or any patients receiving money benefits under the National Insurance Acts, 1911, or any subsequent or amending Act, shall make such payments as the Committee may require.

All persons applying for treatment at this Hospital will be required to state whether they are insured persons or not.

Insured persons with small ailments will not be treated at this Hospital, but in cases of accidents which are not serious "First Aid" will be rendered and the Patient thereafter referred for further treatment to his Panel Doctor.

44. No patient shall remain in the Hospital for more than one month without the special permission of the Medical Officers and not more than three months without the permission of the Committee. No woman advanced in pregnancy shall be admitted (except in cases of severe accident or emergency) nor any person of notoriously bad character or suffering from venereal disease nor any person suspected to have an infectious or contagious disease, or lunatic affection, or delirium tremens, nor any cases of advanced phthisis nor any believed to be incurable, or in a dying state (except in cases of severe accident) nor children under 12 months old but this shall not prevent the Hospital receiving cases for which the Minister of Health may desire accommodation and treatment.

47. Assistance shall be afforded at the Hospital to persons suffering from minor casualties, in the department specially provided for Out-patients. A charge to cover the cost of surgical dressings shall be made in all cases where such out-patients are able to pay therefor.

53. The Committee shall cause true and proper accounts to be kept shewing in detail the receipts and expenditure of the Hospital and the whole of its property credits and liabilities.

VISITORS TO PATIENTS.

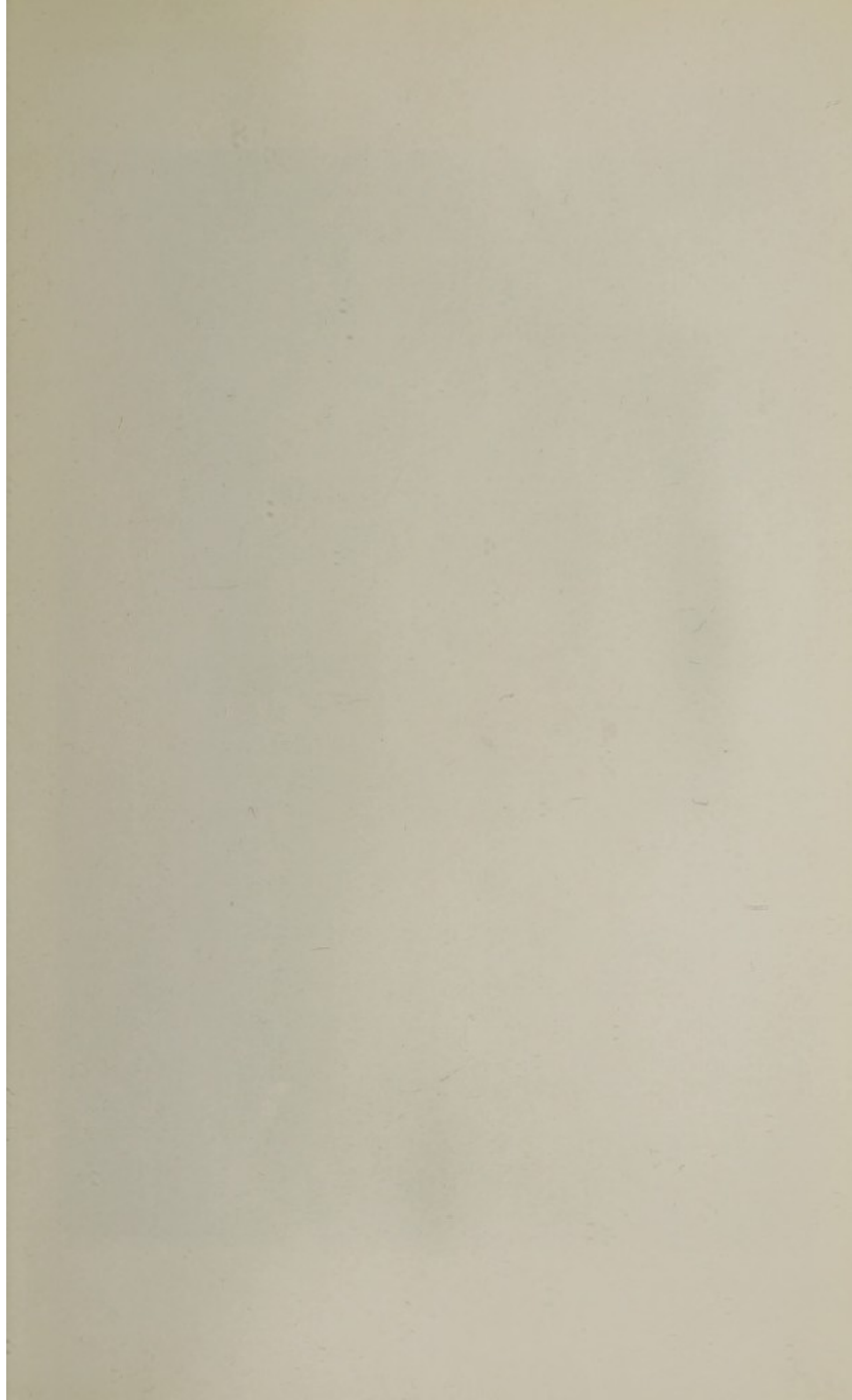
I. Friends of such patients as are in fit condition to receive visitors shall be allowed to visit them on Sundays and Wednesdays, in each week, between the hours of two and four in the afternoon, except that in cases where it is essential that any particular Ward should be kept quiet, the Matron is empowered to refuse admission to such Ward, and in no case shall more than two visitors to each patient be admitted at the same time.

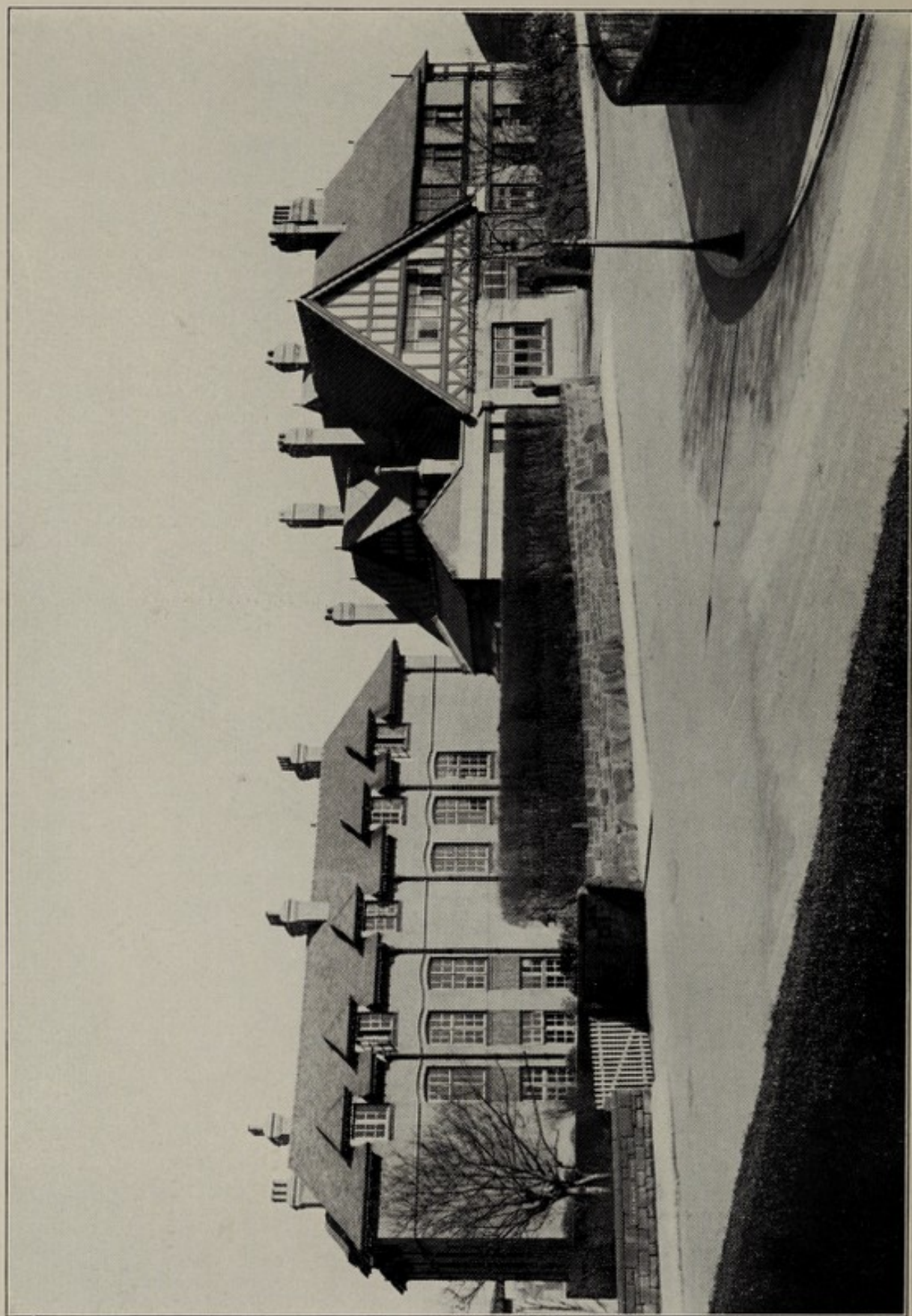
II. Visits to patients outside the hours above-mentioned can only be allowed in cases where special permission has been obtained from one of the Medical Officers and the Matron.

III. Friends of patients are not permitted to remain in the Wards during the visits of the Medical Officers.

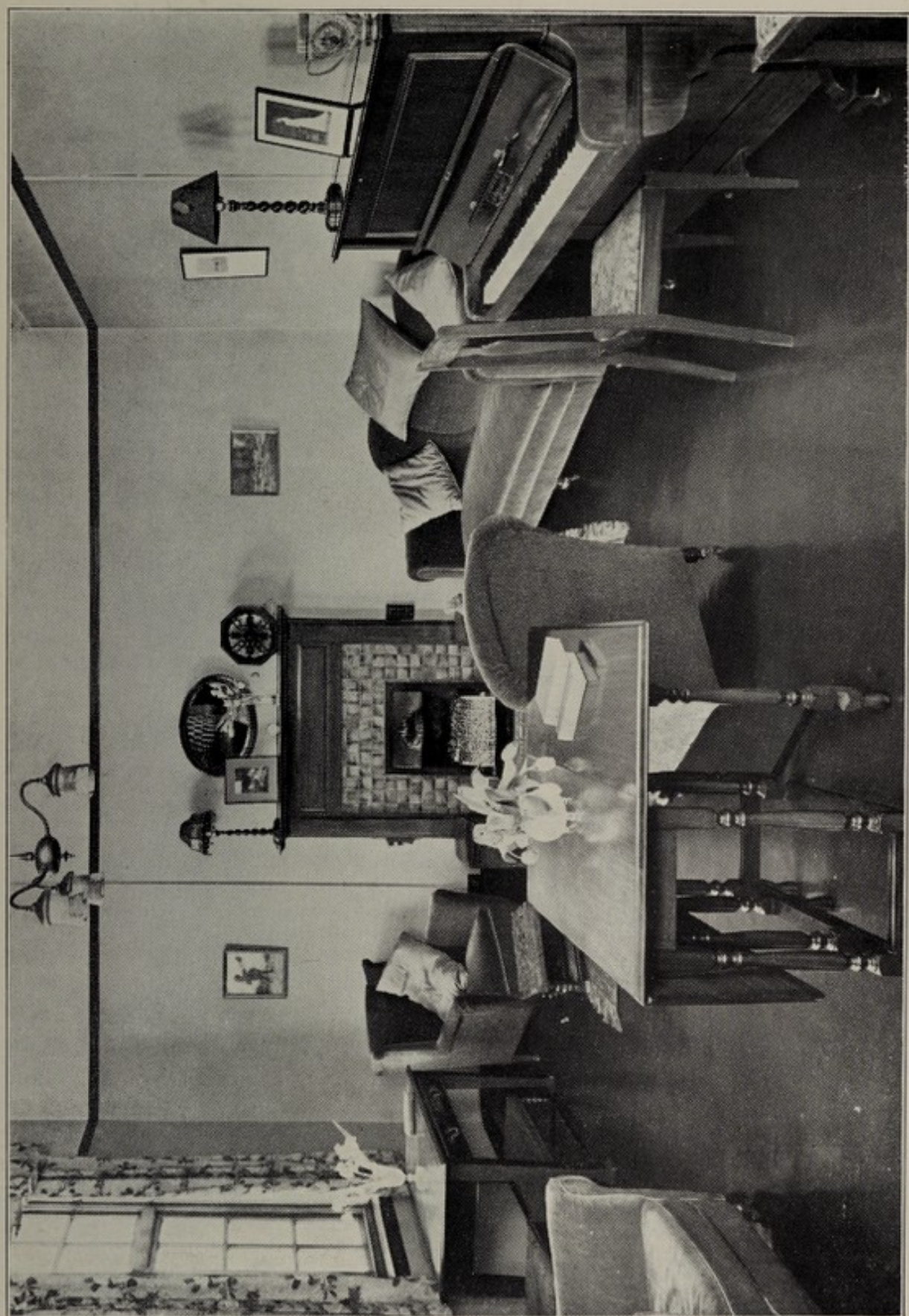
List of Subscribers 1938.

	£	s.	d.
Adams, Edwin, 30 Sandymount Drive, Wallasey	1	1	0
Allcorn, J., 68 Earliston Road, Wallasey	1	1	0
Anderson, A. M., 249 Wallasey Village, Wallasey	1	1	0
Anderson, Dr. J. M., "Lockerdale," Leasowe Road, Wallasey	1	1	0
Anderson, Dr. C. S., 2c Huskisson Street, Liverpool	1	1	0
Andrews, J. T., Oakleigh, Byfield, Rugby	0	15	6
Arrowsmith, A. C. R., Cheriton, West Kirby	1	1	0
Baker, F. G., Pound Hill, West Kingston, Nr. Chippenham	1	1	0
Bale, Stewart, Ardhalow, Upton	2	2	0
Berwick, Mrs. L., 4 Sandringham Drive, Wallasey	1	0	0
Blackshaw, H., Councillor, 36 Warren Drive, Wallasey	0	10	6
Boardman, Mrs. A. E., Hoylake Hotel, West Kirby	2	2	0
Bourne, Mrs. J., 16 Dovedale Road, Wallasey	0	10	6
Bridger, Mrs. J., Rayrigg, Sea Road, Wallasey	1	1	0
Brownfield, Mrs. A. C., 1 Seafeld Drive, Wallasey	1	1	0
Buxton, Ernest, A., 37 Mount Road, Wallasey	1	1	0
Caine, E. W., 13 Landsdowne Road, Wallasey	1	1	0
Capper, A., 27 Grove Road, Wallasey	1	1	0
Clarke, F. W., 2 Warren Drive, Wallasey	1	1	0
Coffee, The Misses, 4 Mayfield Road, Wallasey	1	1	0
Cohen, H. L., 53 Brighton Street, Wallasey	1	1	0
Cook, Mr. and Mrs. F. J., 14 Treforris Road, Wallasey	1	1	0
Cowan, F. S., Bracklyn, Groveland Road, Wallasey	1	1	0
Crooke, W. J., 104 Brighton Street, Wallasey	0	10	6
Cundle, F., 255 Wallasey Village, Wallasey	1	1	0
Davies, P. G., J.P., Hotel Victoria, New Brighton	1	1	0
Davis, W. Benyon, 5 Oldfield Road, Wallasey	1	1	0
Day, George V., 41 Warren Drive, Wallasey	5	5	0
Deacon, Mrs. Stuart, 1 Dudley Road, Wallasey	2	2	0
Dixon, J. F. W., 35 Dovedale Road, Wallasey	1	1	0
Dowler, Mrs. A., 136 Grove Road, Wallasey	1	0	0
Dunn, J. Robertson, J.P., Haughton Hall, Tarporley	1	1	0
Elkes, H. H., 15 Beresford Road, Wallasey	1	1	9
Elkin, Miss E. M., 6 Rolleston Drive, Wallasey	1	1	0
Fairclough, W. J., 41 Sandymount Drive, Wallasey	2	2	0
Findlay, W. K., "Kilry," Warren Drive, Wallasey	1	1	0
Fisher, Capt. James, 6 Broxton Road, Wallasey	1	1	0
Galway, S. J., 4 Mosslands Drive, Wallasey	1	1	0
Gill, Jas. L., Councillor, "Ednasdale," Leasowe Road, Wallasey	1	1	0
Gleadell, Miss, I. 16 Atherton Street, New Brighton	0	10	0
Green, C., Beresford, Beresford Road, Wallasey	1	1	0
Green, Mrs. C., Beresford, Beresford Road, Wallasey	1	1	0
Green, C. O., 97 Grove Road, Wallasey	1	1	0
Green, Mrs. M., 28 Lyndhurst Road, Wallasey	1	1	0
Hall, Mrs. E., 78 Marlowe Road, Wallasey	1	1	0
Hannay, A. and C., 14 Chapel Street, Liverpool	1	1	0
Harris, Stephen, 13 Newlands Drive, Wallasey	1	1	0
Harrop, Mrs. E., 1 Westminster Road, Wallasey	1	1	0
Harvey, J., 22 Warren Drive, Wallasey	1	1	0
Helm, F. W., 39 Wallasey Road, Wallasey	1	1	0
Henderson, Miss D., 410 Portland Court, Wellington Road, Wallasey	1	1	0
Hewitt, George T., 19 Kingsway, Wallasey	1	1	0
Hill, George A., "Rockside," St. Hilary Drive, Wallasey	1	1	0
Holt, The Misses A. and M. A., 6 West View, Rowson Street, Wallasey	0	5	0
Hood, E., 88 Mount Pleasant Road, Wallasey	1	1	0
Horobin, A. C., 22 Beaufort Drive, Wallasey	0	10	6
Humphreys, T. W. H., 25 Groveland Road, Wallasey	1	1	0
Johnston, Miss A. D., 34 Stoneby Drive, Wallasey	2	0	0
Johnston, Miss J. A., 34 Stoneby Drive, Wallasey	2	0	0
Jones, Miss A. E., Norlands, Mount Road, Wallasey	1	0	0
Jones, J. Armitage, Tree Tops, Warren Drive, Wallasey	2	2	0
Jones, Mrs. O. S., 25 Lymington Road, Wallasey	1	1	0
Joynson, Mrs. A., 4 Gerard Road, Wallasey	1	1	0
Kenworthy, Mrs. F. E., 11 Gordon Road, Wallasey	1	1	0
Kingham, H., 3 Victoria Road, Wallasey (1937 & 1938)	2	2	0
Kitchen, F. M., 21 Seafeld Drive, Wallasey	1	1	0
Knowles, R. J., 16 Princesway, Wallasey	1	1	0
Leeson, Mrs. J. A., 15 Langdale Road, Wallasey	1	1	0
Lenton, Mrs. E. M., 7 Groveland Road, Wallasey	1	1	0
Liddell, J. M., J.P., 9 Gerard Avenue, Wallasey	1	1	0
Liverpool Clerks' Association, 19 James Street, Liverpool	1	1	0
Longmore, James, Linkside, Warren Drive, Wallasey	1	0	0
Lowden, R. W., J.P., 9 Elm Park Road, Wallasey	1	1	0
Mallett, F., 5 Sidney Avenue, Hamilton Road, New Brighton	1	1	0
Marshall, Miss M. F., Windsorton, Charlton Kings, Cheltenham	0	10	6

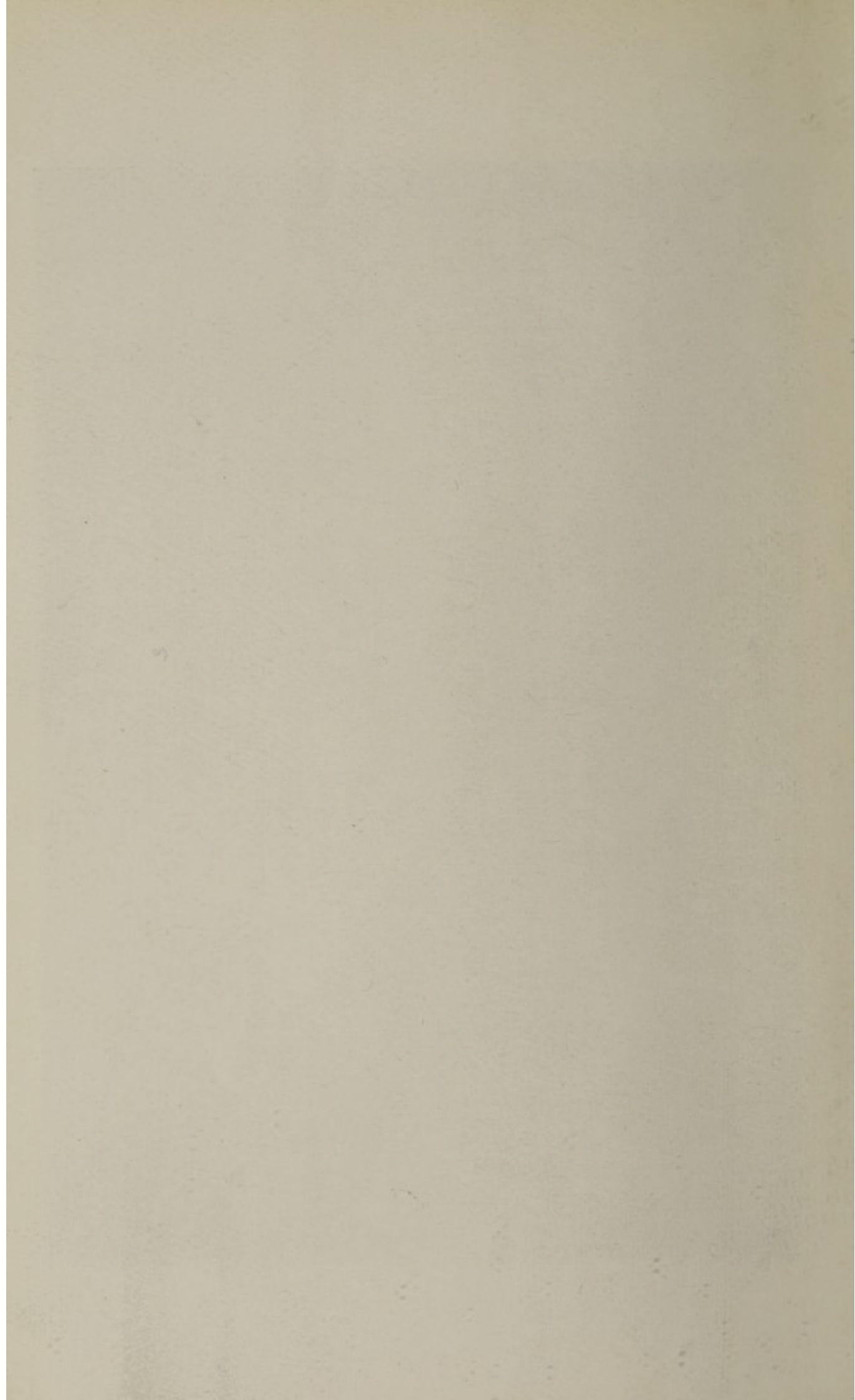




VIEW OF WEST FRONT.



NURSES' SITTING ROOM.



	£	s.	d.
Martin, Frank R., Breckenridge, Breck Road, Wallasey	10	0	0
Mason, Andrew, 41 Seafield Drive, Wallasey	1	1	0
Mogridge, R., 5 Bromley Road, Wallasey	1	1	0
Moore, F. A., The Dunes, Stanley Road, Hoylake, Cheshire	1	1	0
Moore, Mr. and Mrs. H., 21 Seafield Drive, Wallasey	1	1	0
Moreton, Miss A. S., 57 Mount Road, Wallasey	1	1	0
Munn, Miss, M.A., Tigh-na-Mara, New Brighton	1	1	0
McCaig, Norman, 33 Dovedale Road, Wallasey	1	1	0
McDonald, Frank, 18 Seafield Drive, Wallasey	1	1	0
McDonald, Mrs. 18 Seafield Drive, Wallasey	1	1	0
Ney, Thomas, Denecourt, Broadway Avenue, Wallasey	1	1	0
Nixon, Mrs. M. A., 8 Parkway, Wallasey	1	0	0
Parkin, Alma, J.P., "Akira," Warren Drive, Wallasey	1	1	0
Peers, Miss E. J., 19 Cumberland Road, Wallasey	1	1	0
Peers, G. H. Institute, St. George's Road, Wallasey	1	1	0
Petrie, Mrs., M. Glencairn, Vyner Road, Wallasey	1	1	0
Pride, Miss E. S., 18 Elm Park Road, Wallasey	1	1	0
Read, Mrs. J. F., Watermillloch House, Ullswater	2	2	0
Reynolds, David, "Brynawel," Lymington Road, Wallasey	2	2	0
Rigby, W. R., "Trigo," Baskervyle Road, Wallasey	1	1	0
Ringland, Dr. W. P., Woodcroft, Broadwood, Heswall (1937 & 1938)	2	2	0
Roberts, S. J., Flackwell Heath Golf Club, High Wycombe, Bucks.	1	1	0
Roberts, Miss J., 143 St. George's Road, Wallasey	1	0	0
Royal Liver Friendly Society, Liverpool	2	2	0
Royden, E. B., J.P., "Hill Bark," Frankby, Wirral	1	1	0
Samuel, F. A., 24 Elm Park Road, Wallasey	1	1	0
Sandie, Mrs. C., Raby Grange, Raby Mere, Wirral	1	1	0
Scott, J. S., 61 Warren Drive, Wallasey	1	1	0
Sharp, Mrs. M., Palmerston House, 89, Rullerton Road, Wallasey	1	1	0
Siddall, Mr., 27 Ennerdale Road, Wallasey	1	1	0
Simpson, T. C. 19 Radley Road, Wallasey	1	1	0
Smeatham, W. E., Bankfield, Zetland Road, Wallasey	1	1	0
Sturgeon, G. P., 43 Glen Park Road, Wallasey	1	1	0
Swanwick, G. J., 24 Beresford Road, Wallasey	2	2	0
Swanwick, Mrs., 24 Beresford Road, Wallasey	1	1	0
Summerfield, A. B., 45 Waterpark Road, Wallasey	0	5	0
Taylor, W. Duncan, J.P., 8 Beresford Road, Wallasey	2	2	0
Taylor, Mrs. S. E., 72 Broadway Avenue, Wallasey	0	10	6
Teare, A. F., B.Com., "Andreas," Breck Road, Wallasey	1	1	0
Threlfall, J. T., 74 Earliston Road, Wallasey	0	10	6
Vyner, Clare G., Studley Royal, Ripon	5	0	0
United Temperance Lodge, Seabank Road, Wallasey	2	2	0
Walker, Dr. Rankin G., 11 Mount Road, Wallasey	1	1	0
Wallasey Golf Club, Wallasey	2	2	0
Warner, Sir L. A. P., J.P., Yew Tree, Poplar Road, Oxtion	1	1	0
Webster, Mrs. E., 83 Wallasey Village, Wallasey	1	1	0
White, Arthur, 23 South Drive, Upton	1	1	0
White, Rev. Canon G. D., M.A., Wallasey, Kirkby Lonsdale, Carnforth.....	1	1	0
Whiteside, A., 18 Marlowe Road, Wallasey	2	2	0
Wild, Mrs. H. E., St. Hilary, Wallasey (1937 & 1938)	10	0	0
Williams, Dr. J., Longstone Lodge, Somerville, Wallasey	1	0	0
Windsor, Mrs. M. E., (Sen.), 1 Grange Cottages, Grove Road, Wallasey	1	1	0

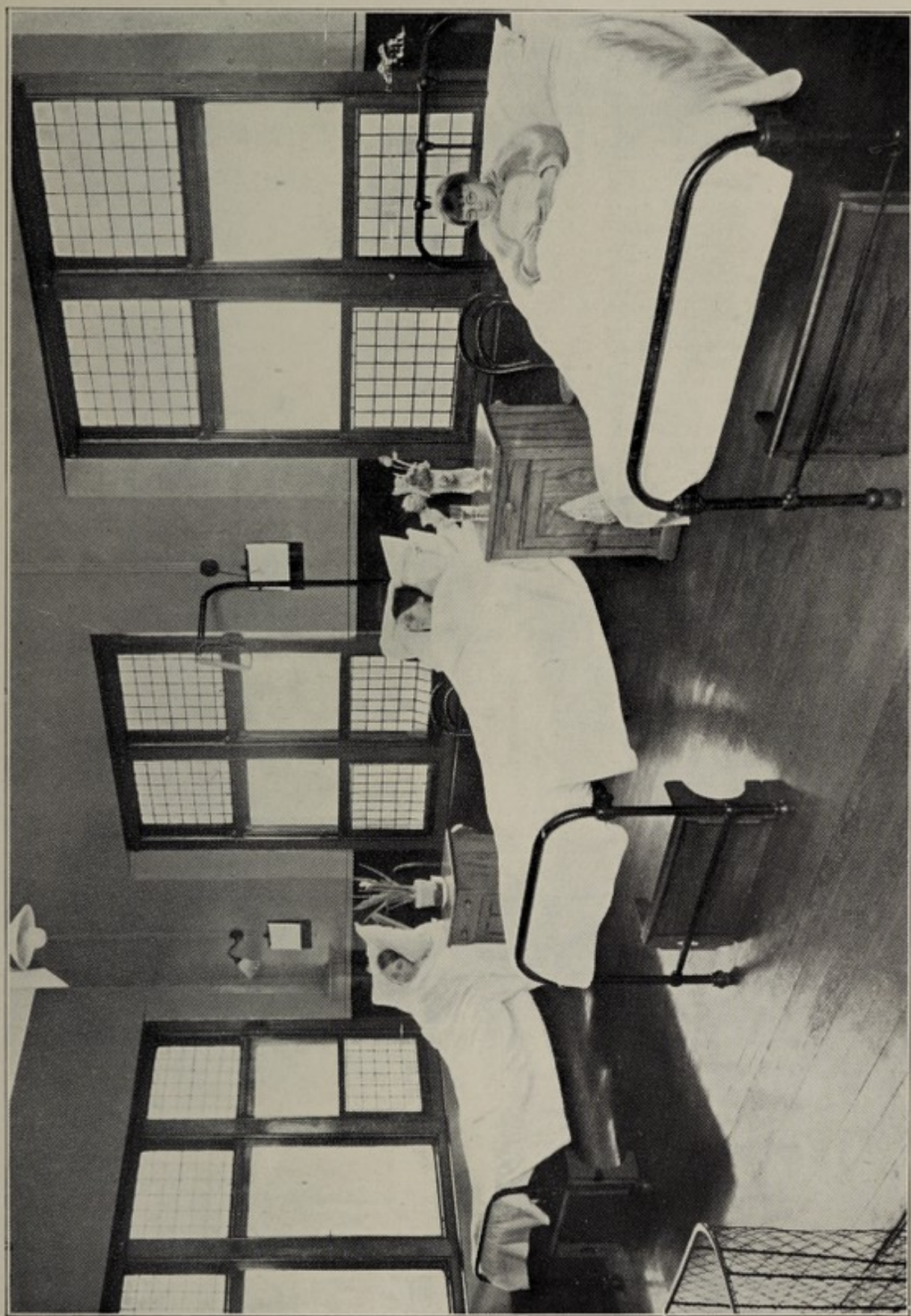
£170 12 0

Donations, 1938.

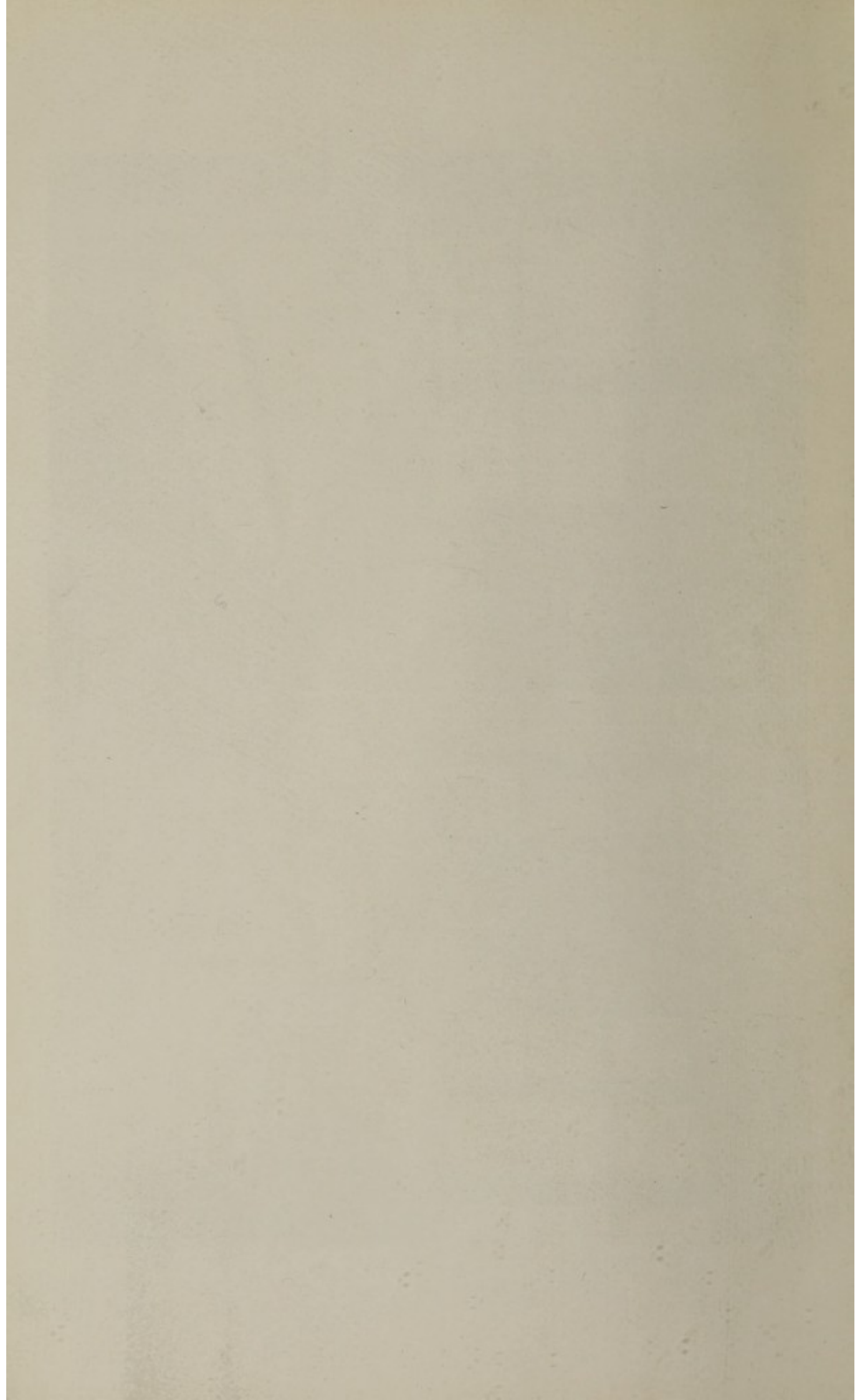
	£	s.	d.
Anon.	1	1	0
Bridge Circle N. Main	2	0	0
Camm, F., Esq.	1	1	0
Central Whist Circle	1	1	0
Christmas Day Football Collection (Harold Charity Cup)	7	0	0
Daily Mirror Coupons	2	9	5
Daily Sketch Coupons	0	2	7
T. Dowell, Esq.	1	1	0
P. Edwards, Esq.	1	0	0
Entertainment O.K. Club	2	2	0
Everton Football Club—Practice Matches	2	0	0
Mr. Francis	1	0	0
Gracie Fields Fund—"Fairy Soap Babies"	0	15	7
Grand Whist Circle	10	0	0
J. Griffith, Esq.	1	1	0
Grove Ladies Golf Club	3	0	0
Harold Challenge Football Match	17	15	6
Harrison Park Ladies. Bowling Club	3	3	0
Hospital Savings Association	2	0	0
Mr. Howarth	1	1	0
D. J. Jones, Esq.	1	1	0
J. Latta Jones, Esq.	2	2	0
Mrs. Kenyon	10	0	0
Liverpool Council of Social Service, Inc.	5	0	0
A. E. McGuire	1	0	0
Matron's Pound Day	57	18	10
New Brighton A.F.C.—Practice Matches	9	0	0
G. H. Peers Bowling Club	4	0	0
Proceeds 4th Hospital Ball (Wallasey)	39	14	1
Proceeds Matron's Whist Drive	55	0	0
Miss Reynolds	0	4	0
St. Nicholas Church (Golfers' Service)	36	0	0
Seacombe Methodist Church	5	16	5
Treasure Hunt—"Sunday Pictorial" (per Mayor of Wallasey)	3	11	0
G. F. Truswell, Esq.	10	10	0
Wallasey District Ladies' Bowling Club	13	0	0
Warren Club Hospital Bowling Main	16	0	0
J. Wood, Esq.	1	0	0
	£331	11	5

Collecting Boxes, 1938.

Twenty Row Inn	8	16	3
Warren Club	8	2	1
Boot Inn	0	8	7
Lighthouse Inn	8	17	11
Bun Pennies—Mr. Clarke	1	0	0
Old Manor Club	1	0	19
Hospital—Hall	5	17	6
Surgery	3	14	0
Stairs	0	11	10
	10	3	4
G. & R. Wallis—Carol Singing	1	6	0
	£39	15	0



FEMALE WARD.



Christmas Donations 1938.

Miss Dufton.	Mr. Roberts.	Mrs. Furness.
Mr. Harold Sparks.	Mrs. Midgley.	Mrs. Lenton.
Mrs. A. Guy.	Mrs. Cousins.	Mr. Alex. Browne.
Mr. H. Dodgson.	J. Bellis & Sons.	Mr. V. A. S. Beanland.
Mrs. Les Caudey.	Mrs. M. H. Capper.	Mrs. Openshaw.
Mr. Spratt.	Dr. H. F. Williams.	Mr. Graham Duffey.
Mrs. Petrie.	Mrs. Freeman.	Mrs. Currie.
Mrs. Fryer.	Mr. Tyson.	Mr. Wilson.
Mrs. E. Webster.	Miss Owens.	Miss Austin.
Mrs. M. W. Tarrant.	Mrs. Sheppick.	Mr. Hamer.
Mrs. Jackson, Marlowe Rd.	Mrs. Swanwick.	Mr. A. E. Mountseer.
Mr. W. E. Francis.	Mr. J. Healey.	Mr. McCaig.
Mr. J. H. Whitburn.	Mr. J. A. Poole.	Mrs. Rowlands.
Mr. Rowlands.	Miss Rowlands.	Mr. de Leeuw.
Mr. F. Smith.	Mrs. Jackson, Rugby Road.	Mr. & Mrs. Sleath.
Mr. & Mrs. Kennedy.	Miss J. Hill.	Mrs. Armstrong.
Mr. Greenwood.	Miss Cohen.	Mrs. Sherlock.
Mrs. Allen.	Miss Hall.	Mr. Winstanley.
Mr. E. J. Andrews.	Miss S. E. Coffee.	Mr. H. Blackburn.
Mr. F. W. Reece.	Mrs. Ellis.	Mr. W. O. Band.
Mrs. Winterburn.	Mrs. Winterburn, Junior.	Mrs. Barker.
Mrs. Reeves.	Miss Norman.	Mrs. Jones.
Mr. & Mrs. D. Joynson.	Mrs. Dean.	The Mayor.
Mr. C. A. Neal.	Mr. Diment.	Mr. Bain.
Mrs. Walker.	Mr. & Mrs. Cooil & Son.	Mrs. Joynson.
Mr. & Mrs. Bell.	Mr. Jack.	Mr. T. O. Outhwaite.
Mr. & Mrs. G. Bell.	Mr. Clugston.	Mr. Keehoe.
Mr. Williams.	Mr. Greasley.	Mrs. Hulse.
Mrs. Howie.	Mrs. Morrison.	Miss Cox.
Mr. J. W. Murray.	Mrs. & Miss Margaret Bridger.	Mr. W. Duncan Taylor.
	Miss Bunney.	

Christmas Gifts.

Mr. & Mrs. Mather	Tray of Raisins.
Evans, Lescher & Webb	Fancy Goods.
Mrs. Roughsedge	Bed Jacket.
Miss A. Johnston	Box Apples.
Mrs. E. M. Clayton	Cake.
Mr. Young	Box Oranges and Potatoes.
Mr. Empsell	Box Oranges.
Mr. Dobson	Turkey.
Mr. Lavin	Turkey.
Cearns & Brown	Turkey.

Gifts throughout the year.

Mr. Hocking	Daily Mornor & Echo through the year.
Home Pride Mills	Vegetables.
Harvest Festivals	Fruit, Flowers, Vegetables, Eggs, etc.
St. Nicholas Church	" "
Wallasey Village Presbyterian	" "
Wallasey Village P.S.A.	" "
St. Hilary's Church	" "
Claremount Wesleyan Church	" "
Mrs. Lane	Hot Water Bottle Covers.
Mr. Lough	Barrell of Apples & Box Oranges.
Mrs. Mogridge	Brass Box.
Miss Pugh	Back Rest.
Miss E. J. Peers	Theatre Stockings, Bed Linen.
Paul Bros.	Potatoes.
Mrs. Stevenson	Potatoes.
Miss Seeley	Cushion.
Mr. Thackray	Wheel Chair.
United Temperance Lodge	Flowers.
Manor Road Wesleyan Church	Flowers.

EGG WEEK and POUND DAY.—Matron is most grateful to all who contributed so generously to the above.

THE HALL PANELS.

Contributions by the Efforts of

- THE QUEEN'S PICTURE HOUSE, 1919—1920.
- THE CRYSTALS, 1916-23.
- THE ASSEMBLY ROOMS, 1920-24.
- WALLASEY VILLAGE FESTIVAL, ANNUALLY SINCE 1923.
- THE BEVERLEY CLUB.
- NEW BRIGHTON AMATEUR OPERATIC SOCIETY,
ANNUALLY SINCE 1922.
- WALLASEY CARNIVAL, ANNUALLY.
- WALLASEY HORSE SHOW COMMITTEE.
- THE LYRICS, ANNUALLY SINCE 1924.
- THE "HAROLD" CHARITY CUP FOOTBALL COMPETITION,
ANNUALLY.
- WALLASEY BOROUGH AMATEUR BOWLING ASSOCIA-
TION, 1926-27-28-29.
- G. H. PEERS INSTITUTE BOWLING TOURNAMENT,
ANNUALLY SINCE 1924.
- THE CHRYSANTHEMUMS, ANNUALLY.
- ST. NICHOLAS CHURCH GOLFERS' SERVICE, ANNUALLY
(Canon A. S. Roscamp).
- GUILD OF UNDERGRADUATES LIVERPOOL UNIVERSITY,
ANNUALLY.
- THE HOSPITAL SATURDAY FUND, ANNUALLY.
- THE ALEXANDRA ROSE DAY, ANNUALLY.
- THE HOSPITAL SUNDAY FUND, ANNUALLY.
- THE EVERTON FOOTBALL CLUB, ANNUALLY.
- NEW BRIGHTON ASSOCIATION FOOTBALL CLUB,
ANNUALLY.
- WALLASEY LADIES' BOWLERS CHARITY HANDICAP,
ANNUALLY.
- WALLASEY AMATEUR DRAMATIC SOCIETY.
- GRAND WHIST CIRCLE OF NEW BRIGHTON.

List of those who have given or bequeathed sums of £10 and
Upwards to the Hospital Funds :—

R. C. de Grey Vyner.
(Site).
The Duke of Westminster.
Lady Cust.
Robert Barber.
Miss E. C. Barton.
H. A. Barton.
Wm. Bell.
Mrs. F. H. Blackburne.
Miss Bouch.
Thos. Bouch.
T. W. Bouch.
W. S. Briggs.
Mrs. Brooks.
S. M. Bulley.
Miss Butterworth.
Miss Catterall.
Miss M. Catterall.
Mrs. Crewe Chambres.
Crewe Chambres.
A. D. Chambres.
H. C. Chambres.
Wm. Chambres.
J. Clark.
A. R. Cox.
G. V. Day.
A. E. Dobson.
H. Dodgson.
R. A. Eskrigge.
Mrs. Hall.
J. Mahler.
Miss O. Atherton.
F. C. Baines.
Miss Blackburne.
Mrs. Earp.
Mrs. Elam.
Mrs. Huguenin.
Mrs. Kerferd.
Mr. J. Parr.
C. E. F. Hall.
J. L. C. Hamilton.
E. Green.
E. H. Harrison.
Mrs. F. J. Harrison.
Mrs. Bertha Cannell.
Wm. Ducker.
Mrs. Kenion.
James E. Thompson.

F. J. Harrison.
Heath Harrison.
James Harrison.
Miss J. Herron.
W. Holland.
E. Houghton.
W. T. Jacob.
R. M. Jones.
A. C. Kent.
H. Kingham.
W. J. Lamport.
J. Lear.
J. Leslie.
F. D. Lowndes.
R. Lowndes.
F. T. Maddock.
Mrs. Mahler.
H. Mahler.
H. O. Marshall.
W. B. Marshall.
Robert McGeoch.
F. A. Meyer.
Capt. Molyneux.
Thos. Monk.
R. E. L. Naylor.
James G. Nicholson.
Stewart Bale.
Miss Rimmer.
Exors. of the late
J. F. Quayle.
T. W. Robinson.
Miss E. A. Stephens.
Mrs. Teesdale.
Mrs. Vickers.
Thos. Woolfall.
R. Davies.
Mrs. F. North.
F. North.
Mrs. Mary Parker.
A. C. Douglass.
Mrs. Mahler.
G. H. Peers.
Mrs. Penny.
Mrs. Pickering.
Mrs. Emily Lloyd.
J. C. Nicholson.
James Henry Stevens
(per Lloyds' Bank).

R. W. Preston.
Mrs. Price.
J. Pride.
J. F. Read.
W. Fletcher Rogers.
Miss Ada Smith.
Anthony Smith.
James Smith.
Samuel Smith.
W. Streddar.
Miss Stringer.
E. J. Thornewill.
Miss R. M. Tipton.
C. P. Titherley.
J. Turmeau.
J. D. Tyson.
Mrs. Wagstaff.
R. B. Watson.
Herbert E. Wild.
Rev. A. M. Wood.
Geo. Duncan.
J. Parkinson.
T. Jones.
R. Watkin.
E. Sanders.
J. Williams.
Wm. Johnston.
R. Thornton.
Mrs. A. M. Steel.
J. Temple.
Miss L. M. Nash.
Exors. of the late
Lewis Allen.
Robert Watkin Memorial.
Florence Gregory.
V. A. S. Beanland.
C. J. Swanwick.
R. J. Knowles.
Miss M. Fairclough.
Dr. W. Blair Bell.
F. R. Martin.
R. S. S. Donning.
Mr. & Mrs. A. R. Murdoch.
Thomas Dowell.
Mrs. Lily Mahler.
Mrs. Catherine Williams.
G. F. Truswell.
Jas. Hy. Stevens
(per Lloyd's Bank).
James E. Thompson.
Mrs. Kenion.

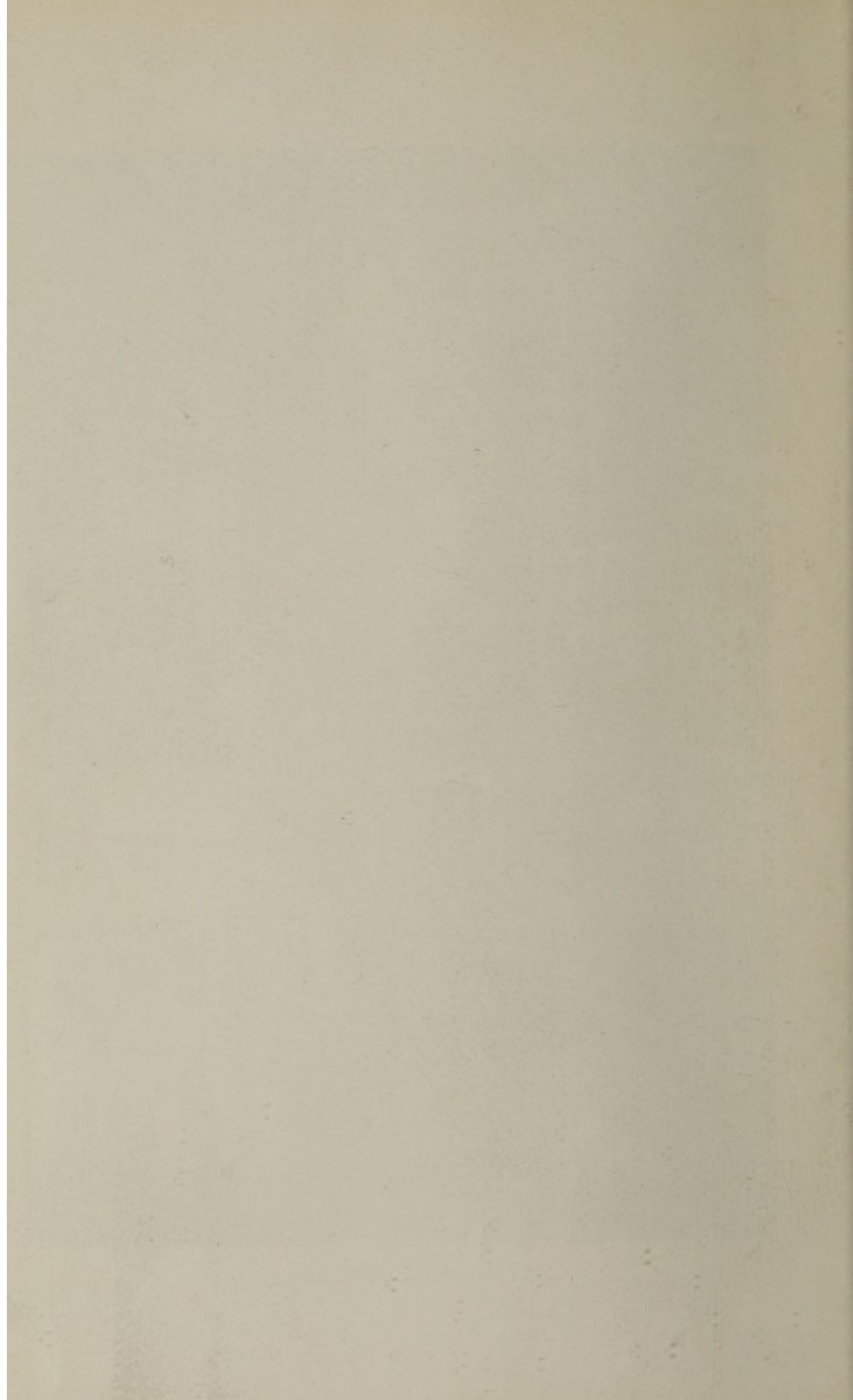
LADIES' COLLECTING COMMITTEE.

							£	s.	d.
Mrs. Cousins	5	9	3
Mrs. Dobson		15	9
Mrs. N. Gill	3	1	0
Mrs. Davidson	2	10	2
Miss A. L. Healey	7	1	10
Miss B. M. Healey	4	3	11
Miss W. P. Jones	3	14	7
Mrs. E. M. Lenton	18	14	1
Miss Linton	12	2	3
Miss Marshall	4	2	9
Mrs. Massey	24	18	6
Miss B. O'Loughlin	8	17	6
Mrs. Pavey	1	10	0
Miss C. H. H. Perkins	2	9	1
Miss Rodger		19	4
Mrs. Roscamp	8	9	2
Miss Smith	1	6	7
Mrs. Thompson	1	16	0
Miss Vaughan	11	8	8
Miss E. Whitby	5	1	6

£128 11 11



OPHTHALMIC SURGERY.



Sums Received from the Wallasey Ladies' Collecting Committee.

Collected by Mrs. COUSINS, 66 Broadway Av.

PRINCES WAY.		£	s.	d.
No.				
20—Mrs. Hewitt		0	2	0
28—Mrs. Haire		0	2	6
38—Mrs. Jack		0	2	6
40—Mrs. Holmes		0	2	6
11—Mr. Stubbs		0	5	0
15—Miss Browne		0	2	6
17—Mrs. Cornall		0	2	6
21—Mrs. Stevenson		0	2	0
23—Mrs. Owen		0	2	6
31—Mrs. Cottrell		0	4	0
Small Amounts		0	8	6½
		£1	16	6½

BROADWAY AVENUE.		£	s.	d.
No.				
4—Mrs. Michael		0	2	0
12—Mrs. Dilworth		0	5	0
14—Mrs. Beardall		0	2	6
18—Mrs. Hall		0	2	6
26—Mrs. Ward		0	5	0
40—Mrs. McGeoch		0	4	7
42—Mrs. Boniface & Mrs. Doyle		0	4	6
44—Mrs. Cliffe		0	2	6
48—Mrs. Jones		0	2	6
52—Mrs. Foxley		0	2	6
54—Mrs. Longster		0	4	0
58—Mrs. Garnett Walker		0	2	6
60—Mrs. Molyneux		0	2	6
62—Mrs. Howard		0	2	6
64—Mrs. Rowlands		0	2	6
66—Mrs. Cousins		0	5	0
68—Mrs. Beynon		0	5	0
70—Mrs. Harvey		0	2	0
76—Mrs. Randall		0	2	0
78—Mrs. Hannaford		0	2	6
Small Amounts		0	8	7
		£3	12	8

Collected by Mrs. DOBSON, 11 The Leas.

THE LEAS.		£	s.	d.
No.				
4—Miss Harrison		0	2	6
8—Mrs. Jones		0	2	0
9—Mrs. Thomas		0	2	6
9—Mrs. Broster		0	2	6
11—Mrs. Dobson		0	2	6
Small Amounts		0	3	9
		£0	15	9

Collected by Mrs. GILL, 5 Torrington Rd.

WALLASEY ROAD.		£	s.	d.
Mrs. Pritchard		0	4	0
Mrs. Taylor		0	2	0
Mrs. Boothman		0	2	6
Mr. Grosvenor		0	2	6
Mrs. Smith		0	2	0
Miss England		0	2	6
Mr. Thomas		0	2	6
Mrs. Tippler		0	2	6
Mrs. Bleley		0	2	6
		£1	3	0

LISCARD ROAD.		£	s.	d.
Mr. Homes		0	2	6

HERTFORD DRIVE.		£	s.	d.
"Ivanhoe," Mrs. Coolan		0	5	0
Mrs. Wildgoose, The Boot Inn		0	2	6
Mr. A. Richmond, 9 Caroline Place,				
Devonshire Road, Birkenhead		0	2	6
Customs		0	3	9

RULLERTON ROAD.		£	s.	d.
No.				
80—Mrs. Britton		0	2	0

TORRINGTON ROAD.		£	s.	d.
5—Mrs. Gill		0	2	6
43—Miss Clatk		0	2	6
		£0	5	0

PALMERSTON ROAD.		£	s.	d.
3—Mrs. Kenrick		0	2	6
Mrs. Jaques		0	2	6
		£0	5	0

Anonymous		0	5	0
Small Amounts		0	4	9
Total		£3	1	0

Collected by Mrs. DAVIDSON,
9 Arlington Road.

Mrs. Davidson, 9 Arlington Rd.		0	2	6
--------------------------------	--	---	---	---

BARMOUTH ROAD.		£	s.	d.
No.				
3—Mrs. Crawshaw		0	2	6
23—Mrs. Eddleston		0	2	6
12—Mrs. Winfield		0	2	6
Small Amounts		0	11	9
		£0	19	3

BANGOR ROAD.		£	s.	d.
No.				
4—Mrs. Slawson		0	2	0
8—Mrs. Jagger		0	2	6
Small Amounts		0	3	2
		£0	7	8

ASBURY ROAD.		£	s.	d.
3—Mrs. Taylor		0	2	6
9—Mrs. Haygarth		0	2	6
Mrs. Fannell		0	2	0
24—Mrs. Randell		0	2	0
Small Amounts		0	1	9½
		£0	10	9½

BAYSWATER ROAD.		£	s.	d.
No.				
31—Mrs. Harris		0	2	6
33—Mrs. Gellion		0	2	0
Small Amounts		0	5	5½
		£0	9	11½

Total £2 10 2

Collected by Miss A. L. HEALEY,
11 Seafield Drive.

MOUNT ROAD.

No.	£	s.	d.
1a—	0	12	6
3—Miss Wigfield	0	2	6
7—Mr. Teare	0	5	0
9—	0	12	6
11—	0	12	6
14—	0	12	6
20—	0	12	6
29—Mrs. Jones	0	5	0
32—Mrs. Lloyd	0	12	6
41—	0	12	6
56—Mrs. Lord	0	12	6
63—Mrs. Bunding	0	12	6
66—Mrs. Whittlemore	0	12	6
68a—Mrs. Ward Platt	0	4	0
67—Mr. & Mrs. Fleming	0	5	0
69—Mrs. & Misses Williams	0	10	0
73—Mrs. Raws	0	2	6
75—Mr. M. S. Anderson	0	12	6
115—Mrs. Large	0	12	6
117—	0	12	6
Small Amounts	0	15	11
	£4	2	5

MOUNT PLEASANT ROAD.

62—Mr. & Miss Mitchell	0	10	0
92—Mrs. Mann	0	12	0
94—"M.W."	0	12	0
102—	0	12	6
110—	0	12	6
Small Amounts	0	5	11
	£1	4	11

GLEN PARK ROAD.

27—Mrs. Watkin	0	10	0
----------------	---	----	---

HOSE SIDE ROAD.

7—	0	2	6
15—	0	3	0
Small Amounts	0	9	0
	£0	14	6

DOVEDALE ROAD.

22—Miss E. M. Redish	0	2	6
Mr. C. S. Redish	0	2	6
Mr. H. R. Redish	0	2	6
	£0	7	6

A "Friend," Gordon Road	0	2	6
-------------------------	---	---	---

Total.....£7 1 10

Collected by Miss B. M. Healey,
11 Seafield Drive.

SANDYMOUNT DRIVE

2—Mrs. J. R. Joynson	0	10	0
16—	0	2	0
24—Mrs. Cain	0	2	0
26—	0	2	0
28—	0	2	6
34—Mrs. Aldrich	0	2	0
36—Mrs. Philpin	0	2	6
29—	0	2	0
35—Mr. Holdsworth	0	2	6
Small Amounts	0	11	0
Mrs. Wilkinson, 7 Bromley Rd.	0	2	6
	£2	1	0

SEAFIELD DRIVE.

No.	£	s.	d.
6—Mrs. Mills	0	5	0
16—Mrs. James	0	12	6
24—Mrs. Kitchen	0	12	6
36—Miss Varley	0	5	0
9—Mrs. Hamilton	0	12	6
11—Misses Healey	0	12	6
11—Miss Rodger	0	12	6
23—Mrs. Hyde	0	12	0
33—	0	12	0
37—Mrs. Gibbs	0	5	0
39—	0	12	0
Small Amounts	0	6	11
Mrs. Hulme, The Cairn, North Dr.	0	2	6
	£2	2	11
	£4	3	11

Collected by Miss Wilma P. Jones,
"Lodore," Groveland Avenue.

SHELTON ROAD.

No.	£	s.	d.
4—Miss Paris	0	2	6
Small Amounts	0	1	6
	£0	4	0

TILSTON ROAD.

7—Mrs. Fisher	0	2	6
Small Amounts	0	5	6
	£0	8	0

MALPAS GROVE.

Small Amounts	0	2	8
---------------	---	---	---

OLDFIELD ROAD..

13—	0	2	6
Small Amounts	0	4	11
	£0	7	5

MEDDOWCROFT ROAD.

10—Mrs. McMaster	0	2	6
11—Mr. & Mrs. A. B. Archer	0	5	0
17—Mrs. Bannatyne	0	2	6
Small Amounts	0	4	6
	£0	14	6

MALPAS ROAD.

7—Mrs. S. J. Edwards	0	2	6
8—	0	12	0
29—Mrs. J. W. Tyrer	0	2	6
20—	0	12	0
46—Mrs. Bryant	0	2	6
50—Mrs. R. P. Cullen	0	2	6
57—Mrs. Daniel	0	12	6
Small Amounts	0	11	6
	£1	8	0
Mrs. Jones, 46 Willoughby Road..	0	5	0
Miss W. P. Jones, "Lodore," Groveland Avenue	0	5	0
	£3	14	7

Collected by Mrs. E. M. Lenton,
7 Groveland Road.

LEASOWE ROAD.

	£	s.	d.
X.Y.Z.	0	2	6
Mrs. Webster, Briarwood	0	2	6
Mrs. Wearing, Ingledene	0	2	0
Mrs. Webster, Homeroft	0	2	0
211—	0	2	6
257—	0	2	0
333—	0	2	0
357—	0	2	0
469—Mrs. Thomas	0	2	6
497—Mrs. Sheldon	0	2	6
513—Mrs. Murphy	0	2	6
Small Amounts	0	18	0

£2 3 0

LEASOWESIDE.

7—Mrs. Peacock	0	2	6
10—Mrs. Buchanan	0	2	6
Small Amounts	0	3	8

£0 8 8

GARDENSIDE.

Corner (2)	0	2	0
Small Amounts	0	0	8

£0 2 8

MEADOWSIDE.

9—	0	2	6
Small Amounts	0	9	7

£0 12 1

CASTLEWAY.

Small Amounts	0	1	2
---------------	---	---	---

WAKEFIELD DRIVE.

Small Amounts	0	4	5
---------------	---	---	---

GROVELAND AVENUE.

1—Mrs. Wilkinson	0	2	6
2—Mrs. Cowan	0	4	0
Mrs. Lawrenson, "Iona"	0	2	6

£0 9 0

STANLEY AVENUE.

12—Mrs. Kenrick	0	10	0
22—Mrs. Steven	0	2	6
24—Mrs. Edmondson	0	2	6
28—Mrs. Hughes	0	2	6
32—Mrs. Brizell	0	2	0
Mrs. Harwood, "Dunleith"	0	2	0
Mrs. Seales, "The Bungalow"	0	2	6
9—	0	2	6
3—Mrs. Lloyd	0	5	0
17—	0	2	0
27—	0	2	0
31—Mrs. Walster	0	2	6
39—Mrs. Jenkins	0	2	6
Small Amounts	0	4	10

£2 5 4

GREEN LANE.

Mrs. Bibby, "Woodlands"	0	2	6
Mrs. Raws	0	5	0
Mrs. Walker	0	2	6
Sandfield House	0	2	6
Mrs. Johnson, "Greenville"	0	3	6
Mrs. Darragh	0	2	6
Mrs. Sparks, "Greenlea"	0	2	6
Mrs. Sutton, "Duneside"	0	2	6
Small Amounts	0	4	9

£1 8 3

	£	s.	d.
Mrs. Hardy, 87 Wellington Rd.	0	10	0
Mrs. Anderson, Thors Way, Caldby	0	5	0
Mrs. Simpson, 52 Sandy Lane	0	2	6
Mrs. Wilkinson, Prestwich, Manchester	0	2	6
Mrs. Edge, Wallasey	0	1	0
Donation from Mrs. Watkins, Liverpool	9	18	6
	£18	14	1

Collected by Miss L. Linton,
64 Queensway.

CLAREMOUNT ROAD.

No.	£	s.	d.
10—Mrs. Buchan	0	2	6
30—Mrs. Greenwood	0	5	0
31—Mrs. Marrow	0	2	6
32—Mrs. Jones	0	2	6
34—Mrs. Barr	0	2	0
37—Mrs. Madge	0	2	6
39—Mrs. Gillmore	0	2	0
42—Mr. James Malley	1	1	0
43—Mrs. Beckett	0	2	6
44—Mrs. Butler	0	2	6
45—Mrs. Davies	0	2	6
52—Mrs. Mattison	0	2	6
54—Miss Peers	0	2	6
55—Mrs. E. V. Davies	0	2	0
57—Mrs. Taylor	0	2	0
60—Mrs. Norris	0	2	6
68—Miss Baker	0	2	6
71—Anon.	0	2	6
72—Mrs. France	0	5	0
73—Mrs. Bullough	0	5	0
77—Mrs. Broadbent	0	5	0
79—Mrs. Singleton	0	2	6
80—Mrs. Simons	0	2	0
81—Mrs. Spence	0	5	0
97—Mrs. Putt	0	5	0
103—Mrs. Curtis	0	2	6
107—Mrs. Cook	0	5	0
116—Mr. Butler	0	2	0
Mrs. Waterworth, "Eversleigh"	0	5	0
Mrs. Les Caudey, "Gorsebrae"	0	5	0
Misses Johnson, "The Haven"	0	10	0
Miss Rushton, "The Nook"	0	2	6
Miss Blundell, "Westholm"	0	2	6
Small Amounts	0	19	3

£7 7 3

WIRRAL MOUNT.

9—Mrs. H. E. O'Neill	1	1	0
Small Amounts	0	1	7½

£1 2 7

CLAREWAY.

4—Mrs. Lancaster	0	2	0
Small Amounts	0	1	7

£0 3 7

PROSPECT VALE.

26—Mrs. Pye	0	2	6
28—Mrs. Jackson	0	2	0
49—Mrs. Nodder	0	2	6
51—Mrs. Marsh	0	2	0
66—Miss French	0	2	0
Small Amounts	0	9	7

£1 0 7

ST. JOHN'S ROAD.		£	s.	d.
No.				
3—	Mr. Jas. Hamilton	0	5	0
15—	Miss Jones	0	2	0
22—	Mrs. Geo. Jones	0	5	0
24—	Mrs. McGrath	0	5	0
25—	Mrs. Fleming	0	2	6
	Small Amounts	0	0	3
		£0	19	9

SEA ROAD.		£	s.	d.
10—	Mrs. Proctor	0	2	0
	Mrs. Reynolds, "Incewood"	0	5	0
	Mrs. Holt, "Westways"	0	2	6
16—	Mr. Stuart Edwards	0	2	6
		£0	12	0

Erbistock & Zenobia, Grove Rd.	0	2	0
Miss Williams, k5 Mayfield Rd.	0	5	0
Mrs. J. Thomson-Smith,			
5 Arlington Road	0	5	0
Mrs. Moody, Wallasey Village	0	2	0
Mrs. Williams, 25 Rosclare Drive	0	2	6

Total £12 2 3

Collected by Miss K. C. MARSHALL,
1 Leasowe Avenue.

MARLWOOD AVENUE.		£	s.	d.
17—	Mrs. Williams	0	2	6
	Small Amounts	0	7	5
		0	9	11

BEECHWOOD AVENUE.		£	s.	d.
2—	Mrs. Travers	0	5	0
8—	Mrs. D. Joynson	0	5	0
	Miss Joynson	0	5	0
24—	Mrs. Freeman	0	5	0
26—	Mrs. H. Joynson	0	5	0
17—	Mrs. Shelton	0	5	0
	Small Amounts	0	5	1½
		£1	15	1½

PROBYN ROAD.		£	s.	d.
	Small Amounts	0	3	1½

PONSONBY ROAD.		£	s.	d.
2—	Mrs. Hollingwood	0	2	6
10—	Mr. Davy	0	2	6
1—	Mrs. Tiffany	0	2	6
	Small Amounts	0	2	5
		£0	9	11

BURDETT ROAD.		£	s.	d.
	Small Amounts	0	0	10½

SOUTHCROFT ROAD.		£	s.	d.
16—	Mrs. Edwards	0	3	0
26—	Mrs. McDougall	0	2	6
3—	Mrs. Irwin	0	2	6
	Small Amounts	0	6	6½
		£0	14	6½

MOORCROFT ROAD.		£	s.	d.
4—	Mr. & Mrs. Castling	0	3	0
	Small Amounts	0	4	3
		£0	7	3

Mrs. Appleton, 90 The Village	0	2	0
	£4	2	9

Collected by Mrs. MASSEY, School Lane,
Wallasey.

No.		£	s.	d.
	Small Amounts	0	10	4

MALVERN ROAD.		£	s.	d.
1—		0	2	6
2—	Mr. Forsyth	0	2	6
43—	Mrs. Smith	0	3	6
	Small Amounts	0	5	10
		£0	14	4

LEASOWE ROAD.		£	s.	d.
26—	Mrs. R. D. Jones	0	2	0
	Small Amounts	0	6	3
		£0	8	3

LYCETT ROAD.		£	s.	d.
19—		0	2	6
29—	Mrs. Hiller	0	2	6
	Small Amounts	0	5	10
		£0	10	10

BRECKSIDE AVENUE.		£	s.	d.
1—		0	2	6
	Small Amounts	0	0	8
		£0	3	2

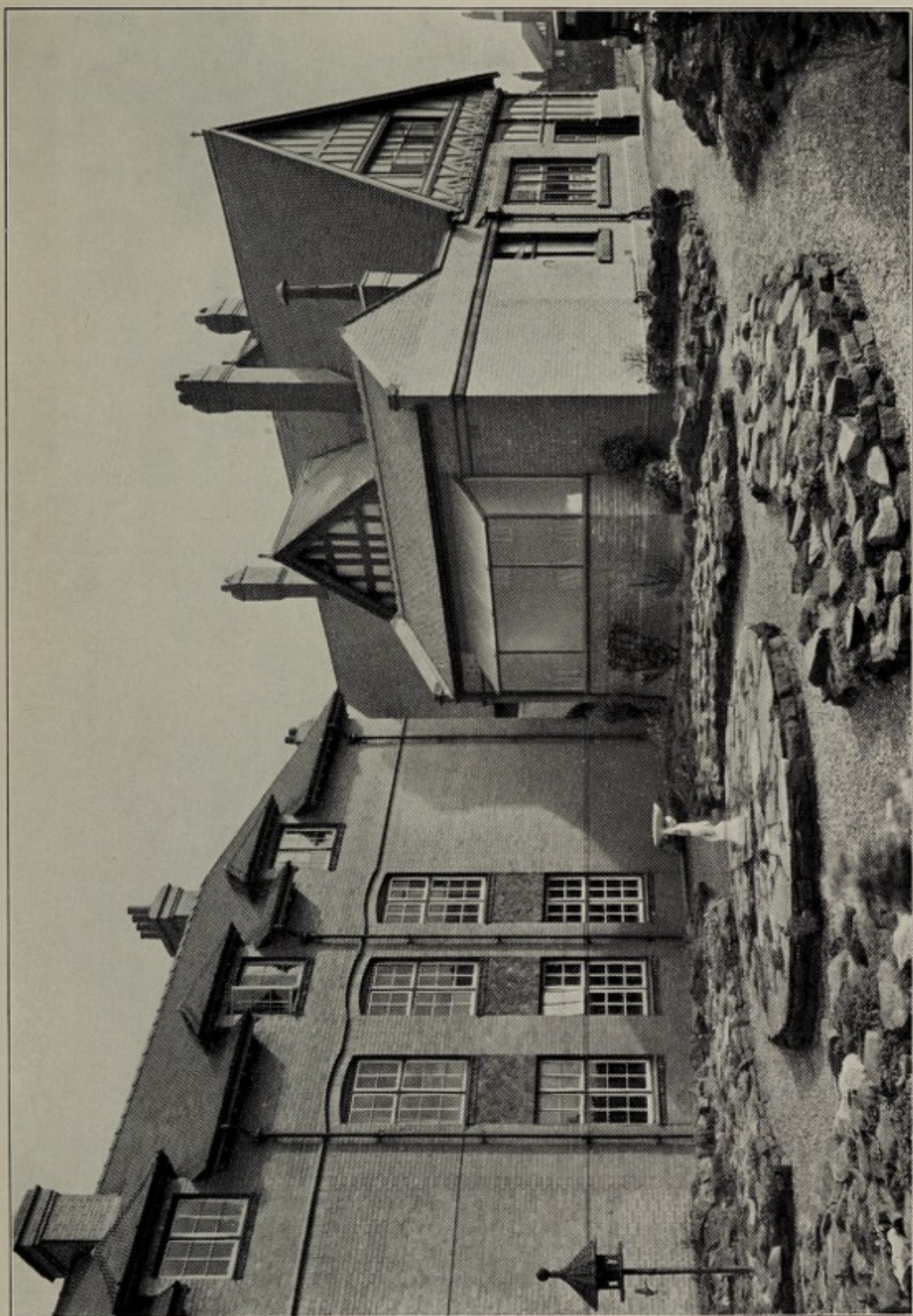
WALLACRE ROAD.		£	s.	d.
	Small Amounts	0	3	6

CLARE CRESCENT.		£	s.	d.
4—	Mrs. W. Jones	0	10	6
5—		0	2	6
	Small Amounts	0	8	0
		£1	1	0

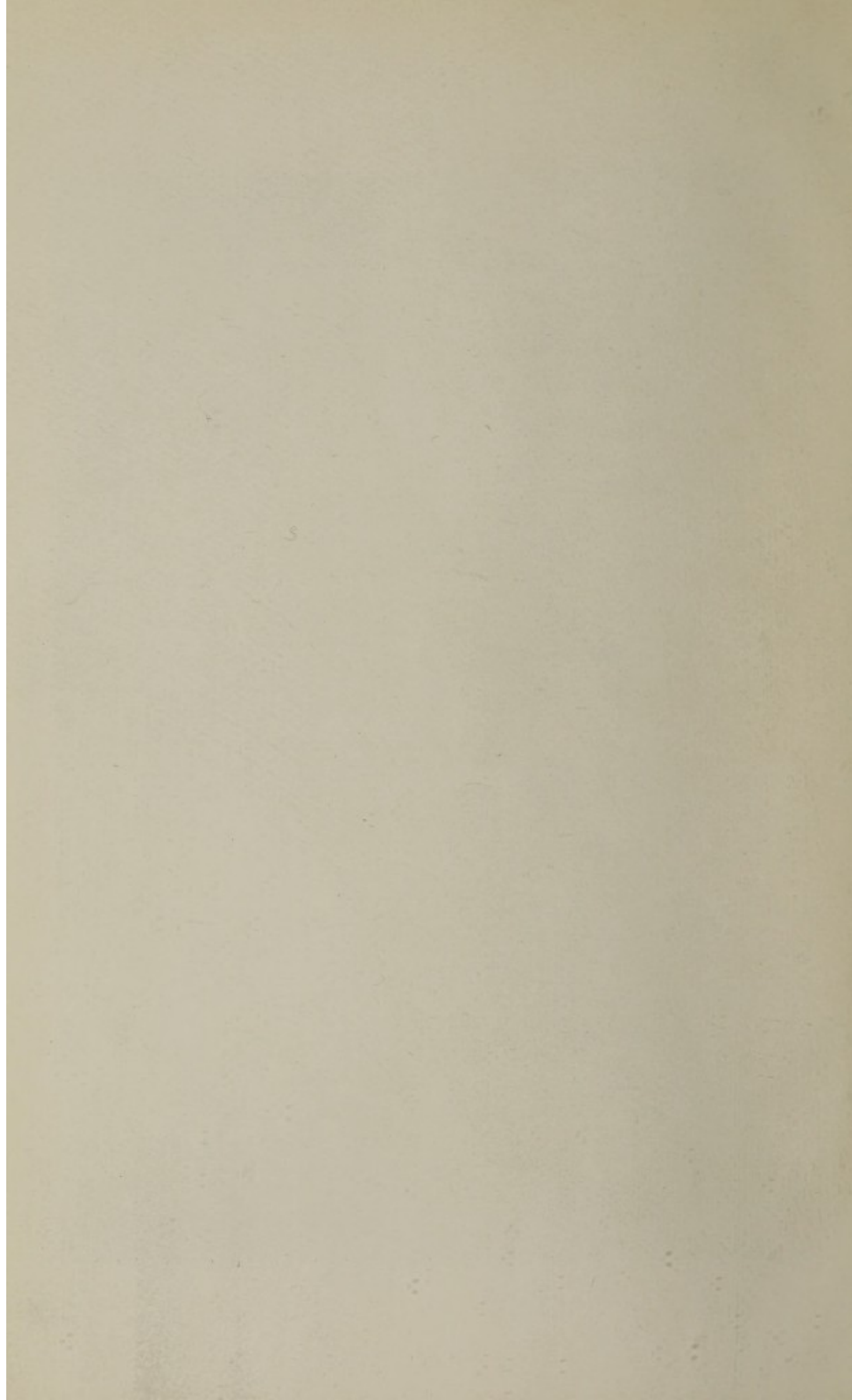
BEAUFORT DRIVE.		£	s.	d.
11—	Mrs. Rawlinson	0	2	0
17—		0	2	0
18—	Mrs. Tarrant	0	2	6
24—		0	2	0
28—	Mrs. Colvin	0	2	6
31—		0	2	0
36—	Mrs. Gill	0	5	0
	Small Amounts	0	3	9
		£1	1	9

HILLSIDE ROAD.		£	s.	d.
1—		0	2	0
6—		0	2	6
9—	Mrs. Brennan	0	5	0
10—		0	5	0
23—		0	2	0
	Small Amounts	0	2	11
		£0	19	5

ST. GEORGE'S ROAD.		£	s.	d.
No.				
2—		0	2	0
4—	Mr. Hilton	0	2	6
6—	Mrs. Hamer	0	2	6
32—		0	2	6
48—	Mrs. Hughes	0	2	6
50—	Mrs. Woods	0	10	0
94—		0	2	0
96—	Mrs. Knowles	0	2	6
98—	Mrs. Jones	0	2	6
137—	Mrs. Miller	0	2	6
153—	Mrs. Robinson	0	2	6
	Small Amounts	0	13	3
		£2	7	3



GARDEN—NORTH-WEST CORNER.



BROADWAY.

No.	£	s.	d.
10—Miss Wharton	0	2	6
Small Amounts	0	1	2
	£0	3	8

THE VILLAGE.

34—	0	2	6
36—	0	2	6
Small Amounts	0	2	0
	£0	7	0

PERRIN ROAD.

10	0	2	6
----------	---	---	---

UPPINGHAM ROAD.

1—	0	2	6
5—	0	2	0
8—Mrs. Harbottle	0	2	6
17—Mrs. Smart	0	2	6
Small Amounts	0	8	4
	£0	17	10

BEVERLEY ROAD.

1—Mrs. Igoe	0	3	0
25—	0	2	6
Small Amounts	0	3	9
	£0	9	3

THE OVAL.

1—Mrs. Campbell	0	2	6
9—Mrs. Wolfe	0	2	6
14—	0	2	6
15—Mrs. Love	0	2	6
Small Amounts	0	4	6
	£0	14	6

ROSLARE DRIVE.

Small Amounts	0	8	1
---------------------	---	---	---

WHARFEDALE ROAD.

Small Amounts	0	3	10
---------------------	---	---	----

AYSGARTH ROAD.

Small Amounts	0	9	10
---------------------	---	---	----

LORETTO ROAD.

11—	0	2	0
14—Mrs. Clarke	0	2	6
Small Amounts	0	3	11
	£0	8	5

RUGBY ROAD.

Small Amounts	0	2	6
---------------------	---	---	---

HARROW ROAD.

3—	0	2	6
29—	0	2	6
Small Amounts	0	3	10
	£0	8	10

WINCHESTER DRIVE.

15—	0	2	6
16—	0	2	6
37—	0	2	0
38—	0	2	0
55—	0	2	0
Small Amounts	0	5	11
	£0	16	11

SHREWSBURY ROAD.

4—Mrs. Hill	0	2	6
-------------------	---	---	---

WILLOUGHBY ROAD.

No.	£	s.	d.
51—	0	2	0
Small Amounts	0	11	3
	£0	13	3

MONMOUTH ROAD.

41—	0	2	0
Small Amounts	0	14	4
	£0	16	4

DAWLISH ROAD.

Small Amounts	0	10	9
---------------------	---	----	---

KINNAIRD ROAD.

Small Amounts	0	4	3
---------------------	---	---	---

CASTLE ROAD.

Small Amounts	0	5	10
---------------------	---	---	----

TURRET ROAD.

Small Amounts	0	5	6
---------------------	---	---	---

HARVEY ROAD.

Small Amounts	0	5	7
---------------------	---	---	---

BRECK ROAD.

Small Amounts	0	3	7½
---------------------	---	---	----

BRAUNTON ROAD.

Small Amounts	0	2	3
---------------------	---	---	---

DERBY ROAD.

Small Amounts	0	1	7
---------------------	---	---	---

SEATON ROAD.

Small Amounts	0	2	1
---------------------	---	---	---

WESTBOURNE ROAD.

Small Amounts	0	4	8
---------------------	---	---	---

KINGSWAY.

17—Mrs. Band	0	2	0
26—Mrs. Barkley	0	2	0
59—	0	2	0
Small Amounts	0	8	0
	£0	14	0

RULLERTON ROAD.

15—	0	2	0
30—	0	2	0
36—	0	2	6
50—	0	2	6
76—	0	2	6
81—	0	2	6
98—	0	2	6
Small Amounts	0	9	11
	£1	6	5

TORRINGTON ROAD.

15—	0	2	6
19—	0	2	6
22—	0	2	6
23—Miss G. Jones	0	2	6
Small Amounts	0	5	9
	£0	15	9

MARLOWE ROAD.

10—	0	2	6
21—	0	2	6
41—	0	2	0
68—	0	5	0
78—Nurse Williams	0	2	6
Small amounts	0	11	0
	£1	5	7

THORNCLIFFE ROAD.			
No.	£	s.	d.
28—Mrs. E. Austin	0	2	6
Small Amounts	0	3	8

STOURCLIFFE ROAD.			
Small Amounts	0	5	1

ERIC ROAD.			
Small Amounts	0	3	0½

NEW BRIGHTON.			
Mr. Duncan, Albion Street	0	10	6

WINDSOR STREET.			
23—Mr. Edwards (box)	1	11	5

RICHMOND STREET.			
5—Mrs. Jones (box)	0	5	0

BROCKLEY AVENUE.			
9—Mrs. Vivis (box)	0	4	4

£24 18 6

Collected by Miss B. O'LOUGHLIN.

Mrs. Huddleston, 2 Vyner Rd.	0	10	6
------------------------------	---	----	---

BROADWAY AVENUE.			
Mrs. Ward	0	5	0
Mrs. Michael	0	2	0

BROADWAY.			
Mrs. Spriggins	0	5	0

CLAREMOUNT ROAD.			
Miss Hutton	0	5	0
Mr. Petty	0	2	6
Mrs. Warren	0	5	0
Mrs. Morris	0	2	6
Mrs. Walker	0	2	6

£0 17 6

ST. HILARY DRIVE.			
Mrs. Bell	0	5	0
Mrs. Roberts	0	5	0
Mrs. Newman-Jones	0	2	6
Miss Raymond	0	5	0
Mrs. Jackson	0	5	0

£1 2 6

LEASOWE ROAD.			
Mr. B. Dean	0	5	0
Mr. H. Dean	0	10	0
Mrs. Crawford	0	5	0
Mrs. Sutton	0	2	6

£1 2 6

MARLOWE ROAD.			
Mrs. Chadwick	0	10	6
Mrs. Jackson	0	2	6
Mrs. Whiteside	0	5	0

£0 18 0

BRECK ROAD.			
Mr. Hopps	0	5	0

CLARE CRESCENT.			
Mrs. Morton	0	2	6
Mrs. Foster	0	2	6
Mrs. Shaw	0	2	6
Mrs. Jones	0	2	6

£0 10 0

SEDBERGH ROAD.			
Mrs. Jackson	0	2	6
Mrs. Robison	0	2	6

HILLSIDE ROAD.			
Mr. Braithwaite	0	10	6
Mrs. Sleath	0	2	6

£0 13 0

UPPINGHAM ROAD.			
No.	£	s.	d.
Mrs. Ellbeck	0	2	6
Mr. Bentley	0	2	6

BELVIDERE ROAD.			
Mrs. Wood	0	2	6
Mrs. Rebecca	0	2	6
Miss Walker	0	2	6

£0 7 6

Miss Keen, School Lane	0	4	0
Mrs. Walker, Thorndale	0	2	6
Mrs. Dibben, 13 Colville	0	5	0
Mrs. Fleet 42 Stonehouse	0	2	6
Mrs. King 25 Newland Drive	0	5	0
Mrs. Montgomery, 15 Wallacre Rd.	0	2	6
Steve	0	2	6
Mr. Grindley, Mill Lane	0	5	0

£1 9 0

£8 17 6

Collected by Mrs. PAVEY,
72 Mount Pleasant Road.

BIDSTON AVENUE.			
2—Miss Mason	0	2	0
4—Mrs. Sharpe	0	5	0
8—Mrs. J. Wood	0	5	0
18—Mrs. Grundy	0	2	6
9—Mrs. Williams	0	2	6
Small Amounts	0	1	3

£0 18 3

LEASOWE AVENUE.			
7—Mrs. Kirk	0	2	0
Small Amounts	0	3	1½

£0 5 1

MORETON GROVE.			
2—Mrs. Snaith	0	2	6
Small Amounts	0	1	8

£0 4 2

Mrs. Pavey, 72 Mt. Pleasant Rd.	0	2	6
---------------------------------	---	---	---

£1 10 0

Collected by Miss C. H. H. PERKINS,
15 Mayfield Road.

STUDLEY ROAD.			
No.	£	s.	d.
9—Mrs. Bates	0	5	0
10—Mrs. Smith	0	2	0
12—Mrs. Peers	0	2	6
14—Mrs. Yates	0	2	0
16—Mrs. Barnes	0	2	6
18—Mrs. Ridge	0	2	6
20—Mrs. Thirkell	0	2	6
25—Mrs. McKinley	0	2	6
26—Mrs. Gibbs	0	5	0
27—Mrs. Meredith	0	2	0
29—Mrs. Clark	0	3	6
31—Mrs. Taff	0	2	6
32—Mrs. Lodge	0	2	6
Small Amounts	0	1	1

£1 18 1

SANDY LANE.

No.	£	s.	d.
1—Mrs. Peters	0	2	6
27—Mrs. Scaif	0	2	6
32—Mrs. Morton	0	2	0
Small Amounts	0	4	0
	0	11	0
	£2	9	1

Collected by Miss L. H. RODGER,
11 Seafeld Drive.

SUNNINGDALE ROAD.

4—	0	10	0
16—	0	2	0
18—	0	2	0
Small Amounts	0	5	4
	£0	19	4

Collected by Mrs. ROSCAMP,
St. Nicholas Vicarage.

GROVELAND ROAD.

1—Mr. & Mrs. Armstrong	0	10	0
3—Miss H. B. Roberts	0	5	0
7—Mrs. Lenton	0	2	6
13—Mrs. Livsey	1	0	0
15—Mrs. Richmond	0	2	6
17—Mrs. Dean	0	2	6
21—The Misses Newton	0	5	0
23—Mrs. Pennington	0	2	6
25—Mrs. Humphreys	0	2	6
2—Mrs. Green	0	2	6
8—V. A. S. Beanland, Esq.	1	1	0
10—Mrs. Ireland	0	2	6
12—Mrs. Sumner	0	5	0
14—Mrs. Howard	0	3	0
16—Mrs. Jefferies	0	2	0
18—Mrs. Crowther	0	5	0
20—Mrs. Roca	0	5	0
22—Mrs. Roscamp	0	5	0
The Rev. F. Ll. Edwards, Kington Magna Rectory, Dorset	1	1	0
Small Amounts	0	2	0
	£6	6	6

REGENT ROAD.

1—Mrs. Marshall	0	2	6
5—Mrs. Gray	0	2	6
9—Mrs. Lee	0	2	6
11—The Misses Irving	0	2	6
13—Mrs. Galley	0	5	0
19—Mrs. Dawson	0	2	6
27—E. Russell, Esq.	0	5	0
4—Mrs. Storrer	0	2	6
6—Mrs. Evans	0	3	6
10—Mrs. Harold	0	2	0
12—Mrs. Price	0	2	6
18—Mrs. Evans	0	2	6
20—Mrs. Webster	0	2	0
22—Mrs. Briscoll	2	0	0
28—Mrs. Rouse	0	2	6
Small Amounts	0	0	8
	£2	2	8
Total	£8	9	2

Collected by Miss SMITH, 91 Grove Road.

LYMINGTON ROAD.

No.	£	s.	d.
3—	0	2	8
7—L. Blythe	0	5	0
33—	0	2	6
64—	0	2	6
Small Amounts	0	13	11
	£1	6	7

Collected by Mrs. THOMPSON,
13 Wyndham Road.

MOSSLANDS DRIVE.

4—Mrs. Galway	0	2	6
7—Mrs. Jones	0	2	6
9—Mrs. Rogers	0	2	6
Small Amounts	0	6	10
	£0	14	4

GAINSBOROUGH ROAD.

1—Mr. Westmorland	0	2	6
Small Amounts	0	1	2
	£0	3	6

WEATHERLEY AVENUE.

Small Amounts	0	5	6
---------------------	---	---	---

KEIGHLEY AVENUE.

Small Amounts	0	2	0
---------------------	---	---	---

BURTON AVENUE.

Small Amounts	0	4	9
Anon. and Small Amounts	0	5	9

Total

£1 16 0

Collected by Miss VAUGHAN,
11 Sedbergh Road.

BERESFORD ROAD.

6—Miss Spiller	0	5	0
Miss C. M. Spiller	0	2	6
18—Mrs. Hinde	0	5	0
13—Miss Wilson	0	5	0
15—Mr. Elks	1	0	0
	£1	17	6

HAMLET ROAD.

1—Mrs. Wright	0	2	6
11—Mrs. E. B. Daniel	0	2	6
15—Mrs. Trainer	0	5	0
12—Mrs. Holland Owens	0	5	0
16—Misses Sloss	0	5	0
Small Amounts	0	2	6
	£1	2	6

LYNDHURST ROAD.

1—Mrs. Haughton	0	10	0
3—Mrs. Utiger	0	5	0
19—Mrs. Whitburn	0	10	5
29—Mrs. C. Roberts	0	5	0
31—Mrs. Pask	0	5	0
33—Mrs. Spratt	0	5	0
43—Miss Metcalf	0	5	0
10—Mrs. W. T. Walker	0	5	0
22—Mrs. Kelly	0	5	0
24—Mrs. Trenbath	0	5	0
32—Mrs. Davis	0	10	0
48—Mrs. Owen	0	10	0
Small Amounts	0	0	2

£4 0 8

ROLLESTON DRIVE.

No.	£	s.	d.
3—Mr. P. Willis	0	5	0
7—.....	0	2	6
15—Mrs. Williamson	0	5	0
19—Mrs. H. Watts	0	2	6
25—Mrs. Wright	0	3	6
33—Mrs. Spratt	0	5	0
43—Mrs. Foulkes	0	2	0
4—Mrs. S. Banks	0	5	0
12—Mrs. Williams	0	10	0
	£2	0	6

TREFORRIS ROAD.

3—.....	0	2	0
Mr. & Mrs. Stephenson	0	10	0
Small Amounts	0	1	0
	£0	13	0

BROADWAY AVENUE.

5—J. H. Whitfield	0	5	0
7—.....	0	2	6
13—Mrs. Mees	0	2	6
17—Miss Thomas	0	2	6
27—.....	0	2	0
43—E. J. W.	0	5	0
53—Mrs. Boothman	0	5	0
59—Miss Kinester	0	2	0
61—Mrs. Phillips	0	2	6
Anon. & Small Amounts	0	5	0
	£1	14	0
Anon.	0	0	6
Total	£11	8	8

Collected by Miss EDITH WHITBY,
13 Ennerdale Road.

No.	£	s.	d.
Misses Swinnerton, Prenton	1	0	0
Miss Hewitt, Kingsway	0	12	0
Mrs. Windel, Ennerdale Road	0	12	6
Miss Windel ..	0	10	0
Mrs. Edwards, Greasby Road	0	10	6
Mrs. Southwell, Ladywood Road ..	0	6	0
Mrs. Clarke, Radley Road	0	5	0
Mrs. Dix, Coniston Avenue	0	5	0
Mrs. Lee, Longford Road	0	5	0
Mrs. Cusson, Stoney Hey Road ..	0	2	6
Mrs. Keir, Broadway Avenue	0	2	6
Mrs. Smith, Monk Road	0	2	6
Miss E. Whitby	0	8	0
	£5	1	6

Income and Expenditure Account for the Year to 31st December, 1938.

ON BEHALF OF THE COMMITTEE—
A. WHITESIDE, *Chairman*,
J. F. W. DIXON, *Hon. Treasurer*.

STAFF AND TRAINEES	109	ASST
--------------------	-----	------

REPORT OF THE AUDITORS TO THE MEMBERS OF THE WALLASEY COTTAGE HOSPITAL.

We have audited the Balance Sheet of the Wallasey Cottage Hospital as shown set forth and have obtained all the information and explanations we have required.

The Balance Sheet as at the 31st December 1922, and the Statement of Receipts and Payments for the year ending 31st December 1922, and the Statement of Buildings and Equipment referred to Buildings erected, purchased or improved since 31st December, 1922.

Subject to the foregoing remarks, we are of opinion that the Balance Sheet is a true and correct statement of the financial position of the Hospital, and is in accordance with the best of our information and the explanations given to us as shown by the Books.

ON BEHALF OF THE COMMITTEE—
A. WHITESIDE, *Chairman*,
J. F. W. DIXON, *Hon. Treasurer*,
DAWSON, GRAVES & CO.,
Chartered Accountants,
LIVERPOOL, 21st February, 1928.

ANNUAL SUBSCRIPTION AND DONATION FORM.

To the Treasurer,

WALLASEY COTTAGE HOSPITAL,
WALLASEY.

Date.....19

Enclosed please find a.....for £.....which is sent you as
{an annual subscription in aid of the funds of the Wallasey Cottage Hospital.
a donation.

* Please strike out words which do not apply.

SignedPrefix

Address

FORM OF BEQUEST.

I bequeath to the Treasurer for the time being of the WALLASEY COTTAGE HOSPITAL, WALLASEY, the sum ofpounds (Free of Duty) to be applied by the Committee for the time being of the said Hospital to the general purposes of the Institution ; and for this Legacy the receipt of such Treasurer shall be a sufficient discharge.

Endowment for a Bed	£500
Endowment for a Cot	£400

Bequests may be arranged through Insurance Companies by means of Annual Premiums.

WALLASEY COTTAGE HOSPITAL, CHESHIRE.

BANKERS' ORDER FORM.

To

Bankers

Branch

Please pay to Martins Bank, Limited, Wallasey Branch, for credit of the account of the Wallasey Cottage Hospital, the sum of.....
and continue to pay this amount yearly, without application, on the.....
day of....., until further notice.

Signature

Address

£ : :

ANNUAL SUBSCRIPTION AND DONATION FORM

To the Treasurer,

WALLASEY COTTAGE HOSPITAL,

WALLASEY.

Date: _____

Enclosed please find a _____ for £ _____ which is sent you as
 { an annual subscription in aid of the funds of the Wallasey Cottage Hospital,
 a donation.

* Please return this form to the Treasurer.

Signature

Address

FORM OF REQUEST

I request the Treasurer for the time being of the WALLASEY COTTAGE
 HOSPITAL, WALLASEY, the sum of _____ pounds (£) of
 (any) to be applied by the Committee for the time being of the said Hospital
 to the general purposes of the Institution; and for this I enclose the receipt of
 such Treasurer shall be a sufficient discharge.

£1000
 £500

Endowment for a Bed
 Endowment for a Cot

Requests may be arranged through Insurance Companies by means of
 Annual Payments.

WALLASEY COTTAGE HOSPITAL, CHESHIRE.

BANKERS' ORDER FORM

Please pay to Messrs Bank, Bankers, Wallasey Branch, for credit of the
 account of the Wallasey Cottage Hospital, the sum of _____
 and continue to pay the account yearly without application on the
 day of _____, until further notice.

Signature

Address

