

Annual report of the Board of Management : 1946.

Contributors

Royal National Hospital for Consumption and Diseases of the Chest.

Publication/Creation

[London?] : [publisher not identified], 1946

Persistent URL

<https://wellcomecollection.org/works/u2su744t>

License and attribution

This work has been identified as being free of known restrictions under copyright law, including all related and neighbouring rights and is being made available under the Creative Commons, Public Domain Mark.

You can copy, modify, distribute and perform the work, even for commercial purposes, without asking permission.



Wellcome Collection
183 Euston Road
London NW1 2BE UK
T +44 (0)20 7611 8722
E library@wellcomecollection.org
<https://wellcomecollection.org>

L131R110
REPORT 1947.

THE ROYAL
NATIONAL HOSPITAL
FOR
DISEASES OF THE CHEST,
VENTNOR,
ISLE OF WIGHT.

FOUNDED FOR THE RECEPTION OF PATIENTS OF BOTH SEXES
FROM ALL PARTS OF THE KINGDOM IRRESPECTIVE
OF RELIGIOUS DISTINCTIONS.

REGISTERED OFFICE :
18 BUCKINGHAM STREET, STRAND,
LONDON, W.C. 2.

Accounts for the Year ending December 31st, 1946.

REVISED FORM OF BEQUEST.

THE Benevolent are earnestly solicited to assist this Hospital by Will. The following Revised FORM OF BEQUEST is respectfully recommended :—

*“ I give and bequeath to the President and Governors of THE ROYAL NATIONAL HOSPITAL FOR DISEASES OF THE CHEST Ventnor Isle of Wight the sum of £**

free of duty for the purposes of that Hospital And I direct that the said sum shall be administered by the Governing Body or Management Committee of the Hospital as a capital fund separate from the general funds of the Hospital And as from the appointed day under the National Health Service Act shall be applicable by the Hospital Management Committee for any purpose other than the general maintenance of the Hospital at the Committee's discretion.”

N.B.—Devises of Land and Bequests of Money charged on Land are now made valid by the Mortmain and Charitable Uses Act, 1891.

* The sum to be expressed in words at length.

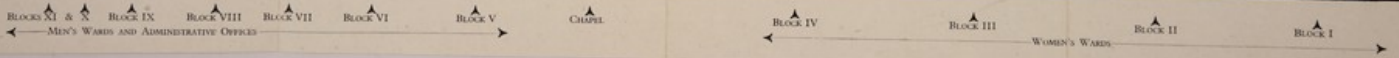
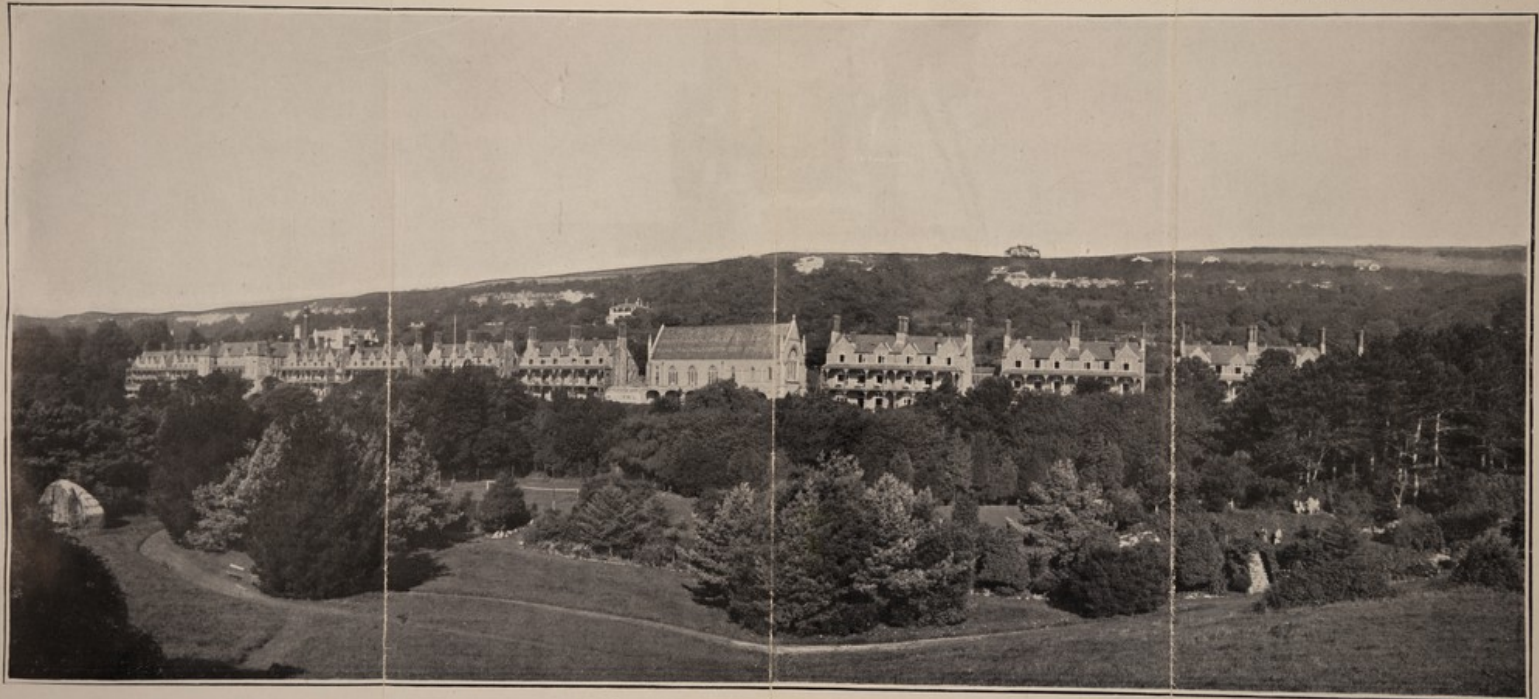


22501044027

(ELEVEN HOUSES, THE CHAPEL OF ST. LUKE AND GARDENS.)

THE ROYAL NATIONAL HOSPITAL FOR DISEASES OF THE CHEST.

Blocks I to IV, V to VIII and IX to XI have now been joined and form three main Blocks.





Aerial view showing Grounds, and Downs forming protection from North.



Another view reproduced by kind permission of Aerofilms Ltd.

The Royal National Hospital

FOR

DISEASES OF THE CHEST,

SITUATE IN THE UNDERCLIFF, NEAR VENTNOR,

ISLE OF WIGHT.

Incorporated by Royal Charter in 1885.

*Founded by DR. ARTHUR HILL HASSALL in 1867 for the
reception of Patients of both sexes from all parts of the
Kingdom, irrespective of Religious Distinctions.*

SEVENTY-FIFTH

REPORT OF THE BOARD OF MANAGEMENT

WITH

MEDICAL REPORT AND AUDITED ACCOUNTS

for the year ending 31st December, 1946.

REGISTERED OFFICE:

18 BUCKINGHAM STREET, STRAND, LONDON, W.C.2

WELLCOME
LIBRARY

Ann Rec

WF28

.BE5

V46

1946

2

CONTENTS.

	PAGE
Form of Bequest, see inside of Wrapper.	
Patrons, President and Vice-Presidents	3
List of the Executive	4
Members of the Visiting Committee	5
Honorary Medical Staff	6
Medical Report	7
Report of the Board of Management	13
Statistical Tables	20
Statements of Income and Expenditure, 1946	22
Balance Sheet, 1946	28
Statements of Frederick and Hamilton Trust Funds	30
Statistical Tables	31
Supplemental Royal Charter	32
Minutes of the General Meeting	35

Patrons.

HIS MAJESTY THE KING.

HER MAJESTY THE QUEEN.

HER MAJESTY THE QUEEN MARY.

THE MARCHIONESS OF CARISBROOKE, G.B.E.

LADY LOUIS MOUNTBATTEN.

President.

THE RIGHT HON. LORD EBBISHAM, G.B.E.

Vice-Presidents.

The Right Hon. The Earl of Derby, K.G.	Lt.-Col. E. H. Leaf.
The Right Hon. Grace, Viscountess Brentford.	Major-General The Right Hon. Lord Mottistone. C.B., C.M.G D.S.O.
The Lady Charlotte W.-Fitzwilliam.	F. C. Nunn, Esq.
The Rt. Rev. W. L. Anderson, D.D. (The Lord Bishop of Ports- mouth).	Cuthbert Burgoyne, Esq.

The Board of Management.

President.

THE RT. HON. LORD EBBISHAM, G.B.E.

Chairman.

COLONEL EDWARD H. LEAF.

ROBERT H. ARMSTRONG, Esq.,
M.B., C.M.

P. B. ATKINSON, Esq., M.R.C.S.,
L.R.C.P.

GERVASE BAILEY, Esq.,
F.R.I.B.A.

E. H. BOLAND, Esq., O.B.E.,
F.R.C.P.

CUTHBERT BURGOYNE, Esq.

JOHN F. BURGOYNE, Esq.

A. HOPE GOSSE, Esq., M.D.,
F.R.C.P.

F. C. HANNA, Esq., F.C.A.

FRANK H. HARGROVE, Esq.

HENRY HARRIS, Esq.

THE HON. LANCELOT WILLIAM
JOYNSON-HICKS.

MISS C. HUE.

Hon. Treasurer.

C. P. NETHERTON, Esq.

J. L. LIVINGSTONE, Esq., M.D.,
F.R.C.P.

GEOFFREY MARSHALL, Esq.,
O.B.E., M.D., F.R.C.P.

F. C. NUNN, Esq.

ARTHUR G. PHEAR, Esq., C.B.,
M.D., F.R.C.P.

H. E. SYMES-THOMPSON, Esq.,
M.D., M.R.C.P.

C. PRICE THOMAS, Esq.,
F.R.C.S.

W. J. THOMPSON, Esq.

STEPHEN H. TWINING, Esq.

H. L. TWIGGE, Esq.

J. WHILLIER, Esq.

THE HON. SIR FREDERICK W.
YOUNG.

Honorary Solicitors—MESSRS. HARGROVE & CO.

Honorary Auditor.

SIR W. HARRY PEAT, K.B.E., of the firm of Messrs. PEAT, MARWICK,
MITCHELL & Co.

Fellow of the Institute of Chartered Accountants,
11, Ironmonger Lane, E.C. 2.

Secretary.

JOSEPH FISHBURN, Esq.

Steward.

IVOR B. WARHAM, Esq.

Bankers.

WESTMINSTER BANK, LTD.,

St. James's Square, S.W.1.

MIDLAND BANK, LTD., Ventnor, Isle of Wight.

The Visiting Committee at Ventnor***Chairman.**

H. L. TWIGGE, Esq.

SIR GODFREY BARING, BART.	C. P. NETHERTON, Esq.
W. H. HARVEY, Esq.	H. HARRIS, Esq.
MISS C. HUE.	J. WHILLIER, Esq.
DR. P. B. ATKINSON.	Mrs. E. C. COOPER.

* The Chairman, Deputy Chairman and Treasurer are members,
ex officio, of all Committees.

At the Hospital, Ventnor, I. of W.**Medical Superintendent.**

DR. A. K. MILLER, M.R.C.S., M.R.C.P.

Assistant Medical Superintendent.DR. E. F. LAIDLAW, M.B., B.CHIR.
and two Assistant Resident Medical Officers.**Matron.**

MISS A. TAYLOR.

Chaplain.

THE REV. J. B. ALLEN, M.C.

Honorary Medical Staff.

Physicians in London.

ARTHUR G. PHEAR, C.B., M.D., F.R.C.P.
 H. E. SYMES-THOMPSON, M.D., M.R.C.P.
 A. HOPE GOSSE, M.D., F.R.C.P.
 GEOFFREY MARSHALL, O.B.E., M.D., F.R.C.P.
 J. L. LIVINGSTONE, M.D., F.R.C.P.
 E. R. BOLAND, O.B.E., F.R.C.P.

Thoracic Surgeon in London.

C. PRICE THOMAS, F.R.C.S.

Thoracic Surgeon in the Isle of Wight.

NOEL F. ADENEY, F.R.C.S.

Surgeon in the Isle of Wight.

F. WILSON HARLOW, M.B., B.S., F.R.C.S.

Laryngologist in London.

FRANK C. ORMEROD, M.D., F.R.C.S.

Laryngologist in the Isle of Wight.

J. A. SEYMOUR JONES, F.R.C.S.

Consulting Radiologist.

L. G. BLAIR, M.R.C.S., L.R.C.P., D.M.R.E.

Consulting Anaesthetist.

I. W. MAGILL, M.B., B.Ch., B.A.O.

MEDICAL REPORT, 1946.

Treatment has been continued on the same lines as in previous years. Insistence is laid on the importance of sanatorium regime with its strict adherence to adequate rest, whether ancillary methods of treatment were used or not.

Total number discharged	434
Patients died (2 non-tuberculous)	15
Treatment uncompleted	7
Patients discharged or leaving against advice	13
Patients transferred to other hospitals or sanatoria	62
Patients discharged not suffering from pulmonary tuberculosis	6
Patients discharged who were in the hospital less than 10 days	11
Number of completed cases of pulmonary tuberculosis	335

CLASSIFICATION OF ALL CASES ON DISCHARGE.

Quiescent	253	Fit for their ordinary work... ..	208
Improved	61	Fit for restricted work	80
Stationary	13	Unfit for work	47
Worse	8		
	335		335

Gained weight	258
Lost weight	71
Unchanged	6
	335

Sputum T.B. + on admission 174
Sputum T.B. + on discharge 34

T.B.+ on admission.	T.B.+ on discharge.	%
"A"
"B1" 54	2	.
"B2" 106	19	.
"B3" 14	13	.

**RESULTS OF TREATMENT CLASSIFIED ACCORDING TO STAGE
ON ADMISSION.**

Group.	Cases.	Result.	Discharged as Fit for			
			Ordinary Work.	Light Work.	No Work.	
" A "	134	Improved ...	131	104	21	6
		Stationary ...	1	—	—	1
		Worse ...	2	—	—	2
		Died ...	—	—	—	—
" B1 "	67	Improved ...	62	51	9	2
		Stationary ...	4	—	—	4
		Worse ...	1	—	—	1
		Died ...	—	—	—	—
"B2"	172	Improved ...	148	53	50	45
		Stationary ...	18	—	1	17
		Worse ...	3	—	—	3
		Died ...	3	—	—	3
"B3"	37	Improved ...	6	—	—	6
		Stationary ...	6	—	—	6
		Worse ...	15	—	—	15
		Died ...	10	—	—	10

1 death from sarcoidosis and one suicide not included in this report.

TREATMENT.

129 patients were treated by sanatorium routine only without any ancillary treatment or collapse therapy.

**CLASSIFICATION OF CONDITION ON ADMISSION AND RESULT
OF TREATMENT.**

Group.	Cases.	Quiescent.	Improved.	Stationary.	Worse.	Died.
"A"	71	64	4	1	1	1
"B1"	14	11	3	—	—	—
"B2"	31	15	13	3	—	—
"B3"	13	—	3	2	5	3
	<hr/> 129 <hr/>					

6 cases were suffering from pleurisy without any apparent parenchymatous lesion.

ARTIFICIAL PNEUMOTHORAX.

This was attempted in 211 cases and was successful in 145.

The results according to degrees of collapse on discharge were classified :—

Unsuccessful (including abandoned)	...	66
Partial collapse	12
Complete or selective collapse (unilateral)		83
" " (bilateral)		33

PARTIAL A.Ps.—16 cases, four of whom were admitted with a partial A.P.

- 3 were T.B. Neg. on admission and remained so throughout.
- 7 were T.B. Pos. on admission and T.B. Neg. on discharge.
- 3 were T.B. Pos. on admission and discharge.
- 3 patients died.

In 11 cases an attempt was made to divide the adhesions. In one case a supplementary phrenic crush was carried out and one T.B. Pos. case was transferred for thoracoplasty.

UNILATERAL A.Ps.

One hundred and thirty one cases, 48 of whom were admitted with a complete A.P.

- 47 were T.B. Neg. on admission and discharge.
- 67 were T.B. Pos. on admission and T.B. Neg. on discharge.
- 16 were T.B. Pos. on discharge.

Two patients were admitted with a thoracoplasty on one side and a complete A.P. on the other side, successfully maintained.

Seven were T.B. Pos. on transfer for thoracoplasty.

Four were T.B. Neg. on transfer for thoracoplasty.

(All these cases had a complete A.P. on the better side.)

BILATERAL A.Ps.

Seven were admitted with bilateral A.Ps. while 31 had one or both A.Ps. induced in hospital. Of these 31 nineteen had both A.Ps. induced here and 12 had one A.P. induced in the hospital.

8 were T.B. Neg. on admission and discharge.

17 were T.B. Pos. on admission and T.B. Neg. on discharge.

13 were T.B. Pos. on discharge, of whom 4 died and 3 were transferred for thoracoplasty after A.P. had been abandoned on the worse side, and with a complete A.P. on the better side.

In 25 of these cases both A.Ps. were regarded as complete collapses, while 9 cases had one side abandoned and 4 cases had both sides abandoned.

Of the 31 cases induced at the Royal National Hospital, 29 required division of adhesions on one or both sides.

ALL A.P. CASES WERE CLASSIFIED ON DISCHARGE :—

Cases.	Result.	Work.	Light Work.	No Work.	
184	Improved ...	161	99	33	29
	Stationary ...	9	—	—	9
	Worse ...	7	—	—	7
	Died ...	7	—	—	7

One case, admitted for division of adhesions only, not included in results.

COMPLICATIONS OCCURRING IN ALL A.P. CASES :—

Empyema	3
Spontaneous pneumothorax	4
Obliterative pleurisy	2

DIVISION OF ADHESIONS.

Thoracoscopy without division of adhesions was carried out 9 times, and division of adhesions was carried out 142 times.

Seven patients required 2 operations and two 3 operations. In addition 4 patients had adhesions divided on each side, and two patients had adhesions divided twice on one side and once on the other.

The following complications occurred :—

Haemothorax	4
Empyema	7

DIAPHRAGMATIC PARALYSIS.

Fifteen were admitted with this operation already carried out and 35 cases were performed at the Royal National Hospital.

In 17 of these it was in addition to a pneumothorax (the results of these are included under the heading of pneumothorax cases).

In addition, this operation had been carried out on both sides in one case, before admission.

The results of the 35 cases operated on here were :—

T.B. Pos. on admission ...	23
T.B. Pos. on discharge ...	14 (4 transferred for thoracoplasty, one for further surgical treatment and 5 died.)

CLASSIFICATION ON DISCHARGE :—

Cases.	Result.		Work.	Light Work.	No Work.
34	Improved ...	22	12	2	8
	Stationary ...	4	—	—	4
	Worse ...	6	—	—	6
	Died ...	2	—	—	2

Two cases who were in hospital only ten days, for operation only, not included in results.

PNEUMOPERITONEUM.

Four cases were admitted with pneumoperitoneum already induced and 14 inductions were carried out in this hospital.

2 were T.B. Neg. on admission and discharge.

16 were T.B. Pos. on admission and 8 were T.B. Pos. on discharge.

In 13 cases the pneumoperitoneum was abandoned as not being helpful.

It will be seen that this form of treatment was largely used on rather advanced cases, which probably accounts for the less successful results than reported elsewhere.

THORACOPLASTY.

This operation was started again on December 17th but as none of these cases have been discharged from hospital it is not possible to give any results.

Forty cases were transferred for thoracoplasty to other hospitals. Twenty-six were re-admitted following thoracoplasty, after having been transferred for this operation.

Cases.	Result.	Work.	Light Work.	No Work.		
26	Improved ...	24	3	13	8	T.B. Pos. before operation 18 T.B. Pos. after operation 6 (4 of these were transferred for further surgical treatment.)
	Stationary ...	2	—	1	1	
	Worse ...	—	—	—	—	
	Died ...	—	—	—	—	

COMPLICATIONS OR OTHER DISEASES OCCURRING IN ALL CASES
OF PULMONARY TUBERCULOSIS.

TUBERCULOUS.				NON-TUBERCULOUS.			
Peritonitis	2	Bronchiectasis	1
Bronchitis	3	Spondylitis deformans	1
Enteritis	1	Diabetes	2
Meningitis	1				
Laryngitis	15				
Lupus of face	1				
Obliterative pleurisy	2				
Ischio-rectal abscess	1				
Haemo-pneumothorax	4				
Miliary disease	1				
Wound infection	1				
Pleurisy	10				
T.B. gland of neck	2				
T.B. kidney	1				
T.B. spine	2				
Empyema	13				
Spontaneous pneumothorax	4				
Bronchial fistula	1				
Amyloid disease	1				
Psoas abscess	1				
Cold abscess of rib	1				

PATIENTS FOUND TO BE SUFFERING FROM OTHER DISEASES.

Malaria	1
Osteomyelitis	1
Asthma	1
Schoenlein's disease	1
Carcinoma of lung	1

OPERATIONS CARRIED OUT DURING YEAR.

Internal pneumolysis	157
Thoracoscopy	20
Phrenic nerve crush	58
Bronchoscopy	4
Laparotomy	1
Appendicectomy	1
Cystoscopy	1
Excision, cyst of back	1
Excision, ganglion	1
Thoracoplasty	2

X-RAYS TAKEN DURING THE YEAR.

Total 4,618.

Including :—

Staff (chest)	203
Out patients (chest)	118
Tomograms	88
Bone	18
Bronchogram	3
Barium meal	1

THE SEVENTY-FIFTH ANNUAL REPORT OF THE BOARD OF MANAGEMENT

Presented to the Annual Meeting of Governors on
19th November, 1947.

The Right Honourable LORD EBBISHAM, G.B.E.,
in the Chair.

It is the pleasant duty of the Board to record that their Majesties the King and Queen, and Her Majesty Queen Mary, continue to give their gracious patronage to the Hospital.

National Health Service.

The National Health Service Bill having received the Royal Assent, has been placed on the Statute Book as from the 6th November, 1946, as the National Health Service Act 1946. The "Appointed Day" for the taking over of Hospitals has been deferred from the 1st April, 1948, to the 5th July, 1948.

The Minister of Health will, under the provisions of the Act, be advised by a Central Council of Experts. He will delegate many of his powers regarding the Hospital Service to Regional Hospital Boards, and Management Committees of non-teaching Hospitals which will be appointed by the Regional Boards. Those Boards will be responsible for the planning and the provision of Hospital Services. Management Committees will be responsible to those Boards for the day-to-day control and management of their Hospitals. Thus the distant control of Hospitals by a regional body, at one time feared, has been removed.

Since any future gifts may be made to a Hospital for special purposes, such gifts to be administered by the Management Committee for the benefit of that Hospital, it is hoped that fresh encouragement will be given to those who during the past two years have decided not to support or make gifts to the Hospital, to alter their decision. It must be emphasized, however, that future gifts must be for special purposes and not for the general purposes of the Hospital. The Service itself will derive much of its vitality and its humanity from the extent to which the Governors and Subscribers continue to give both their interest and support.

Voluntary Gifts.

There has been a small reduction of £223 in the amounts received during 1946 as compared with the previous year. However, the total at £4,829 is £86 more than received in 1944. The Board desire to express their grateful thanks to those who continue to support the Hospital and particularly to acknowledge the following contributions :—

	£	s.	d.
Trustees of Prison Charities	500	0	0
Earl of Northampton's Charity	300	0	0
Prudential Assurance Co. Ltd.	210	0	0
Westminster Bank Ltd.	210	0	0
Liverpool Victoria Friendly Society	105	0	0
Benevolent & Orphan Fund of the National Union of Teachers	100	16	0
Turquand, Youngs, McAuliffe & Co.	100	0	0
Union-Castle Mail Steamship Co. Ltd.	60	10	0
" B.E."	52	10	0
Southern Railway Company Ltd.	52	10	0
" Alexandra Day " Committee	50	0	0
Bernhard Baron Charitable Trust	50	0	0
Delmar Charitable Trust	50	0	0
Rubery Owen & Co. Ltd.	50	0	0
London & North Eastern Railway Co. Ltd.	47	5	0
Leonard B. Park, Esq.	42	0	0
Worshipful Company of Haberdashers	35	0	0

	£	s.	d.
Civil Service Sanatorium Society	26	5	0
Ministry of Labour Benevolent Fund	26	5	0
Pearl Assurance Co. Ltd.	26	5	0
John Player & Sons Employees' Benevolent Fund	23	12	6
Lloyds Health Insurance Approved Society ...	21	0	0
Lever Brothers & Unilever Limited	21	0	0
Philip Lyle, Esq.	21	0	0
Thomas Marshall & Son Ltd.	21	0	0
N. M. Rothschild & Sons	21	0	0
Stewart & Lloyds Ltd.	21	0	0
Sir Harold A. Wernher's Charitable Trust ...	21	0	0
The Robert William Edwards Trust	21	0	0
Worshipful Company of Drapers	20	0	0
Miss Rosie Newman	20	0	0

Finance.

With a daily average of 230 occupied beds out of a total of 231 available, the cost per patient per week rose from £3 14s. 2d. in 1945 to £4 7s. 10d. in 1946. Almost the whole of this increase is due to revised Rates of Salaries for Nurses under the Rushcliffe Scales and by the adoption from July, 1946, of the National Joint Council Rates for Other Staff of the Hospital.

Notwithstanding the fact that in May, 1946, the maintenance charges payable by Public Authorities were increased from 63/- to 77/- per week, excess of expenditure over income at the 31st December, 1946, amounted to £1,063 17s. 6d. In accordance with the instructions of the King Edward's Hospital Fund relating to the treatment of Free Legacies this excess of expenditure over income has been offset by the appropriation of a like amount out of legacies received during the year amounting to £3,325 9s. 0d.

Capital Expenditure on the purchase for the Night Nurses of "Tanglewood" (with orchard and extensive grounds), the furnishing of same, the provision of a new electric passenger lift and additional lavatory and store room accommodation

for Wards W, X & Y, the purchase of a mechanical plough for the kitchen gardens, and sundry new items of equipment for the Hospital, amounted to £8,017 1s. 0d. This is the highest figure for any one year since 1924. As will be seen from the Balance Sheet, the Lands, Buildings & Equipment Fund is over expended to the extent of £5,755 9s. 6d. Final settlement of expenditure in connection with the Lift Construction work has been made during the current year. It will be necessary at the close of 1947 to make a permanent transfer from General Fund to Lands, Buildings & Equipment Fund of an amount by which the latter Fund may then be over expended.

Consideration has had to be given to the capital expenditure in 1946 and further capital expenditure and some heavy items of renewals and repairs being incurred this year owing to the impossibility of having the work done during the War. An approach was therefore made last February to the Ministry of Health as to whether it would make a grant to the Hospital, or whether certain investments for the General Purposes of the Hospital, which had accrued since 1939 out of income, should be sold. In reply the Board was advised that its accrued investments should be used to meet the financial needs of the Hospital before assistance could be provided from Government funds. Accordingly £9,226 0s. 11d. of the General Purposes investments have been sold for £10,088 11s. 2d.

Maintenance Fees.

During the current year the Board has been compelled to notify all Public Authorities that the rate of maintenance fees payable by them were to be increased from 77/- to 94/6 per week with effect from 1st March, 1947. The weekly charge for Private Patients nominated by Letters of Recommendation remains unchanged at two guineas.

The considerable increase in the Public Authorities' rate was made necessary by further increases in the Rushcliffe Scales of Salaries for Nurses and the institution of a Service Allowance for nurses engaged in pulmonary tuberculosis. There was also a further increase in the weekly rate of pay for other staff under the National Joint Council Rates. These latter rates have been increased still further since the decision was made to advance the rate of maintenance fees to Public Authorities.

Buildings.

The Matron and night nursing staff occupied their quarters in "Tanglewood" on the 24th August, 1946. The benefit derived by the acquisition of this property is beyond question and has fully justified the Board's decision to purchase. The orchard and grounds included with the property have provided extra supplies of fruit and vegetables to the Hospital.

The new Electric Passenger Lift was taken over in October, 1946, and the extra lavatory accommodation for Wards W, X & Y was ready in the early part of this year.

A Bus Shelter for the use of staff and visitors to the Hospital has been erected at the Main Gate opposite the Lodge. This was brought into use in April of this year.

The Kitchen on Ward B has been enlarged, and improvements made, during March/April of this year.

The work of re-building the Hospital's sewage outfall to the sea, which had been badly disturbed by the explosion of an enemy mine and depth charge practices off the coast, was completed by the end of July last.

Honorary Medical Staff.

It was with very great regret that the Board learned last year of the death of Mr. A. Tudor Edwards. His fame as a Thoracic Surgeon was unequalled. He had given most valuable services to the Hospital, having been one of its Honorary Surgeons from July, 1926. He had also been a member of the Board of Management from March, 1927.

To fill the vacancy left by his death the Board had much pleasure in appointing last November Mr. Noel F. Adeney, F.R.C.S., to be the Hospital's Thoracic Surgeon in the Isle of Wight.

The Board has also had pleasure in appointing Mr. J. A. Seymour Jones, F.R.C.S., to be Laryngologist in the Isle of Wight.

Executive.

Mr. J. Whillier, Mr. C. P. Netherton and Miss C. L. Hue, all residents in Ventnor and members of the Visiting Committee, were elected Members of the Board of Management in May of this year. The election of these three new members strengthens the liaison between the Board and the Visiting Committee.

Owing to pressure of business Mr. F. C. Hanna, F.C.A., tendered his resignation in June of the office of Honorary Treasurer. The Board accepted the resignation with very great regret and placed on record their appreciation of Mr. Hanna's valuable services to the Hospital during his term of office.

Mr. C. P. Netherton was elected Honorary Treasurer to fill the vacancy.

The following members of the Board who retire by rotation, being eligible, offer themselves for re-election, viz. : Colonel E. H. Leaf, Mr. Frank H. Hargrove, Sir Fredk. W. Young, Dr. Geoffrey Marshall, Dr. J. L. Livingstone, Mr. H. Harris.

Staff.

Dr. L. R. J. Rinkel, B.A., M.R.C.S., L.R.C.P., Assistant Medical Superintendent, resigned and left the service of the Hospital on the 28th February, 1947, having obtained an appointment as Medical Superintendent of Nayland Sanatorium, near Colchester.

Dr. E. F. Laidlaw, M.B., B.Chir., has been appointed Assistant Medical Superintendent. He took up his duties on the 12th April last.

Since the last Annual General Meeting the Hospital has had allocated to it 26 Displaced Persons, thus relieving the serious shortage of domestic staff which existed both on the Wards and in the Dining Hall.

In concluding their Report the Board desire to place on record their sincere thanks to all members of the staff for their continued devotion to the service of the Hospital during the past year. Thanks are due particularly to the nursing staff whose work, in spite of a serious shortage of numbers, enables the Hospital to function to maximum capacity.

AVERAGE NUMBER OF BEDS—OCCUPIED AND UNOCCUPIED
AND
COMPARATIVE STATEMENT OF COST PER PATIENT PER WEEK
UNDER MAIN ACCOUNTS YEARS 1938-1946.

	1938	1939	1940	1941	1942	1943	1944	1945	1946
EMS Beds withdrawn 30th Nov., 1944									
Unoccupied, T.B. ...	4	43.4	48.5	36.3	13	6.75	6	4	1
" EMS. ...	—	94.3	119.6	127.1	129	127.25	127	—	—
Occupied, TB & EMS	164	170.3	188.9	196.6	216	227	228	229	230
Total Beds ...	168	308	357	360	358	361	361	231	231
Provisions ...	£ s. d. — 17 5	£ s. d. — 18 8	£ s. d. 1 2 0	£ s. d. — 18 9	£ s. d. — 17 5	£ s. d. — 17 5	£ s. d. — 17 11	£ s. d. — 18 8	£ s. d. — 18 9
Surgery & Dispensary	— 2 9	— 2 9	— 3 0	— 5 0	— 2 1	— 2 9	— 2 5	— 2 8	— 3 5
Domestic	— 9 10	— 11 9	— 14 1	— 12 11	— 10 8	— 11 6	— 12 5	— 12 9	— 15 11
Salaries & Wages	1 5 1	1 5 10	1 8 5	1 9 11	1 4 5	1 5 7	1 6 4	1 7 9	1 15 8
Miscellaneous	— 3 0	— 3 10	— 4 4	— 4 4	— 2 4	— 2 9	— 2 8	— 2 5	— 3 2
Administration	— 5 6	— 5 6	— 3 9	— 3 0	— 2 3	— 2 2	— 2 7	— 2 4	— 2 4
Establishment	— 6 8	— 4 7	— 5 8	— 7 9	— 4 1	— 4 3	— 4 6	— 4 5	— 5 9
Finance	— 3 1	— 3 1	— 3 6	— 2 9	— 2 6	— 2 4	— 2 4	— 2 4	— 2 3
Kitchen Gardens.....	—	—	—	—	—	— 9	— 10	— 10	— 7
	£ 3 13 4	3 16 0	4 4 9	4 4 5	3 5 9	3 9 6	3 12 0	3 14 2	4 7 10

COMPARATIVE STATEMENT OF ORDINARY INCOME—YEARS 1938-1946.

YEAR	1938	1939	1940	1941	1942	1943	1944	1945	1946
Subscriptions	£ 3654	£ 3253	£ 2731	£ 2042	£ 2813	£ 3794	£ 3105	£ 3090	£ 2968
Donations	2459	1390	1286	1280	1395	1429	1541	1763	1683
Other V. Gifts	463	186	60	—	54	86	92	99	98
Hospital S. Fund.....	100	110	110	—	—	—	5	100	80
Private Patients Fees	9252	7669	4885	1663	2795	2490	2026	2244	2682
Public Authorities „	8448	15493	19843	25269	28706	30195	31190	33090	38278
Other Sources	332	698	731	514	190	850	734	657	579
Other Receipts.....	271	202	196	202	227	73	84	157	170
Invested Property ...	3121	3004	3129	3178	3286	3301	3358	3403	3432
State Grant—Nursing	—	—	—	—	—	300	249	594	1603
£	28100	32005	32971	34148	39466	42518	42384	45197	51573

NOTE:—Contributions amounting to £22,555 7s. 4d. towards the cost of Casualty Services 1939-44, previously held in Suspense Account have been taken to the Balance Sheet through the Income and Expenditure Account for 1945, but are not included above.

FOR THE YEAR ENDING 31ST DECEMBER, 1946.

Cr.

EXPENDITURE.

	£	s.	d.	£	s.	d.	£	s.	d.
ORDINARY.									
I. PROVISIONS :—									
1. Meat				1,780	1	10			
2. Fish				1,233	0	5			
3. Poultry				92	10	9			
4. Rabbits				5	15	10			
5. Butter and Margarine				299	15	5			
6. Cheese... ..				102	2	5			
7. Bacon and Lard				536	19	0			
8. Sausages				511	8	7			
9. Eggs				161	13	1			
10. Milk				3,007	19	2			
11. Bread and Flour				547	12	6			
12. Oatmeal				83	7	5			
13. Tea				274	13	7			
14. Coffee and Cocoa				57	1	9			
15. Sugars... ..				126	19	9			
16. Jams, etc.				213	13	11			
17. Rice, Sago, etc.				29	17	5			
18. Biscuits, Cake, etc.				173	17	6			
19. Groceries (Sundries)				508	13	4			
20. Vegetables and Fruit				1,347	5	6			
21. Malt Liquors				105	9	7			
22. Aerated Waters and Ice				47	6	5			
							11,247	5	2
II. SURGERY AND DISPENSARY :—									
1. Drugs, Chemicals, Disinfectants, etc.				554	0	0			
2. Dressings, Bandages, etc.				103	17	6			
3. Instruments and Appliances				948	12	4			
4. Wines and Spirits				6	18	0			
5. Salaries—Dispensing Staff				287	14	9			
6. Sundries	145	1	3						
Medical Library	13	18	4						
				158	19	7			
							2,060	2	2
III. DOMESTIC :—									
1. Renewals and Repairs to Furniture, Bedding, Crockery, etc.									
Furniture	838	8	2						
Bedding and Linen	811	19	5						
Hardware, Crockery, etc.	366	19	10						
				2,017	7	5			
2. Laundry				1,936	4	9			
3. Cleaning and Chandlery				240	0	0			
4. Water				275	3	0			
5. Fuel and Lighting :—									
Steam Coal	2,964	2	6						
House Coal	584	15	5						
Gas	395	14	0						
Electricity	455	5	8						
Oil, Wood, etc.	5	11	3						
				4,405	8	10			
6. Uniforms				258	2	5			
7. Sundries	234	9	5						
Entertainments	175	10	1						
				409	19	6			
							9,542	5	11
Carried forward							£22,849	13	3

Dr. **INCOME AND EXPENDITURE ACCOUNT**

	£	s.	d.	£	s.	d.
Brought forward ...				51,573	13	1
EXTRAORDINARY.						
Hospital Shop				52	16	7
				<hr/>		
				EXTRAORDINARY INCOME ...	52	16
				<hr/>		
				TOTAL INCOME	...	51,626
						9
Transfer from Legacies Account ...						1,063
						17
				<hr/>		
				£52,690	7	...

£52,690 7

RECEIPTS.

LEGACIES

Received during the Year	£	s.
	3,325	9
	<hr/>	

FOR THE YEAR ENDING 31ST DECEMBER, 1946.

Cr.

	£	s.	d.	£	s.	d.	£	s.	d.
Brought forward							22,849	13	3
V. SALARIES AND WAGES (Maintenance):—									
1. Medical				2,374	7	5			
2. Nursing				6,484	15	9			
3. Other Officers and Employees:—									
Other Officers (Chaplain, Steward, Clerks)	2,145	16	11						
Mechanics	971	9	0						
Porters	4,450	11	6						
Domestics	4,503	8	8						
				12,071	6	1			
4. Pensions				448	15	0			
							21,379	4	3
MISCELLANEOUS:—									
1. Printing, Stationery, Postages, etc.				596	9	1			
2. Advertisements				83	10	5			
3. Insurance of Buildings, Equipment, etc.				285	15	3			
4. Garden and Grounds				692	7	0			
5. Sundries:—									
Chapel Expenses	11	16	0						
Miscellaneous Travelling Expenses	23	19	1						
Petty Expenses	199	9	2						
				235	4	3			
							1,893	6	0
I. ADMINISTRATION:—									
1. Salaries				842	11	0			
2. Pensions				360	0	0			
3. Printing, Stationery, Postages, etc.				48	19	9			
4. Advertisements				7	1	0			
5. Law Charges				—					
6. Auditor's and Accountancy Fees...				—					
7. Sundries:—									
Annual Meeting	32	14	6						
Travelling Expenses	36	2	8						
Petty Expenses	88	14	7				157	11	9
							1,416	3	6
II. ESTABLISHMENT:—									
Renewals and Repairs to Buildings and Plant.									
Renewals and Repairs				2,281	12	11			
Annual Cleaning and Painting ...				1,143	0	2			
							3,424	13	1
III. FINANCE:—									
1. Interest				1	4	7			
2. Appeals				—					
3. Rent				449	15	0			
4. Rates and Taxes				893	14	6			
							1,344	14	1
ORDINARY EXPENDITURE							52,307	14	2
EXTRAORDINARY.									
Donations to Other Institutions				2	2	0			
Pig Farm and Kitchen Gardens				380	11	0			
EXTRAORDINARY EXPENDITURE							382	13	0
TOTAL EXPENDITURE							52,690	7	2
ACCOUNT.									
DISBURSEMENTS.									
Amount transferred to Income & Expenditure Account ...				1,063	17	6			
Transfer to Capital Account—Lands, Buildings and Equip- ment Fund				2,261	11	6			
							£3,325	9	0

WORKS DEPARTMENT ACCOUNT.

							£	s.	c.
1.	Salaries and Wages	2,945	7	
2.	Materials consumed	1,239	2	
Total Expenditure ...							£4,184	9	

Net Expenditure charged to Hospital	£4,184	9
-------------------------------------	-----	-----	--------	---

FOR THE YEAR ENDING 31ST DECEMBER, 1946.

ALLOCATED.

		£	s.	d.
Income and Expenditure Account :—				
Surgical and Dispensary Instruments and Appliances	...		—	
Domestic. Renewals and Repairs to Furniture, etc.	710	4	0
Establishment. Renewals and Repairs	2,331	5	7
Annual Cleaning and Painting	1,143	0	2
Total charged to Income and Expenditure Account	£4,184	9	9

BALANCE

At 31st Decemb

	£	s.	d.	£	s.	d.	£	s.	
1. SUNDRY CREDITORS :—									
General Fund				2,494	5	2			
Suspense Account: Provision for contingencies				1,500	0	0			
							3,994	5	
2. LOANS TO HOSPITAL :—									
Lands, Buildings and Equipment Fund :—									
Loan from General Fund				4,785	17	11			
" Endowment of Beds Fund				843	11	1			
" Nurses' Home Endowment Fund				126	0	6			
							5,755	9	
3. CAPITAL ACCOUNTS :—									
(a) Hospital Endowments :—									
Endowment of Beds as per last A/cs.				22,567	8	6			
Endowment of Nurses' Home as per last Accounts				1,818	16	2			
Sir F. Eley, Bart., Subscription Fund				300	0	0			
(b) Special Funds :—									
<i>Frederick</i> Fund				5,384	0	11			
<i>Hamilton</i> Fund				12,467	15	11			
Recreation Room Fund				717	19	4			
							18,569	16	2
(c) Lands, Buildings and Equipment Fund :—									
Balance as per last Accounts				53,145	11	3			
Add: Transfer from Legacies Account				2,261	11	6			
							55,407	2	9
(d) General Fund :—									
Balance as per last Accounts				95,159	7	4			
							193,822	10	
4. UNEXPENDED INCOME, BALANCE OF SPECIAL FUNDS :—									
<i>Frederick</i> and <i>Hamilton</i> Funds				454	12	8			
<i>Bray & Mathison</i> Charity				63	17	2			
							518	9	

£204,090 15

REPO

I have audited the above Balance Sheet and have obtained all the information and explanation correct view of the state of the Hospital's affairs according to the best of my information and belief the regulations of the revised uniform system, as modified by the instructions of the following.

11, IRONMONGER LANE, LONDON, E.C.2.
10th September, 1947.

SHEET.

1946.

	£	s.	d.	£	s.	d.	£	s.	d.
1. CASH IN BANK AND IN HAND :—									
On Account of :—									
(a) Hospital Endowments :—									
Endowment of Beds Fund						—			
Nurses' Home Endowment Fund ...						—			
(b) Special Funds						269	6	4	
(c) Lands, Buildings, and Equipment Fund						—			
(d) General Fund						224	14	0	
									494 0 4
2. STOCKS OF STORES IN HAND (As certified by an Official of the Hospital)									5,020 0 8
3. SUNDRY DEBTORS :—									
General Fund						7,419	11	7	
Special Funds						249	3	6	
									7,668 15 1
4. INTERNAL LOANS :—									
Loan to Lands, Buildings, and Equipment Fund :—									
General Fund						4,785	17	11	
Endowment of Beds Fund						843	11	1	
Nurses' Home Endowment Fund ...						126	0	6	
									5,755 9 6
5. INVESTMENTS :—									
			Valuation per						
			Brokers at						
			31st. Dec., 1946.			Cost of Investments.			
			£ s. d.			£ s. d.			
(a) Hospital Endowments :—									
Endowment of Beds	24,010	9	11	21,723	17	5			
Endowment of Nurses' Home	1,765	8	11	1,692	15	8			
Sir F. Eley, Bart., Sub- scription Fund	345	0	0	300	0	0			
							23,716	13	1
(b) Special Funds :—									
Frederick Fund	6,050	2	1	5,384	0	11			
Hamilton Fund	13,702	4	6	12,467	15	11			
							17,851	16	10
(c) Lands, Building, and Equipment Fund	2,460	0	0				2,146	5	0
(d) General Fund	71,367	11	1				81,703	8	4
									125,418 3 3
			£119,700 16 6						
6. LANDS, BUILDINGS, AND EQUIPMENT OF THE HOSPITAL :—									
Expenditure from 1st January, 1913, to the 31st December, 1945						50,999	6	3	
Add Additions, less Sale, since						8,017	1	0	
									59,016 7 3
7. RECREATION ROOM :—									
Expenditure as per last Accounts									717 19 4
									<u>£204,090 15 5</u>

NOTE.—The cost of the following property is not included in the Balance Sheet, viz :—
The Site, Buildings, Furniture and Appliances of the Hospital acquired prior to 1st January, 1913.

E AUDITOR.

ve required. In my opinion such Balance Sheet is properly drawn up so as to exhibit a true and
anations given me, and as shown by the books of the Hospital. To the best of my knowledge and
ard's Hospital Fund relating to the treatment of Free Legacies, dated December, 1940, have been

W. H. PEAT, *Chartered Accountant.*
Honorary Auditor.

STATEMENT OF THE FREDERICK AND HAMILTON FUNDS FOR THE YEAR ENDED
31ST DECEMBER, 1946.

Dr.

Cr.

	£	s.	d.		£	s.	d.
THE FREDERICK FUND.							
To Balance brought forward from 1945	496	16	11	By Relief granted to 3 patients (3 women)	578 5 7
„ Dividend on £355 Conversion 3½% Loan	12	8	6	„ Adjustment for 1945 to actual Costs	- 18 10
„ „ on £5,099 19s. 8d. Savings 3% Bonds 1965/75	80	6	6				
„ Return of Income Tax	72	13	6				
	£1,033	17	1	„ Balance at 31st December, 1946	454 12 8
	<u>£1,033 17 1</u>						<u>£1,033 17 1</u>
THE HAMILTON FUND.							
„ Dividend on £12,386 3s. 10d. Savings 3% Bonds 1965/75	195	1	8				
„ Return of Income Tax	176	10	0				
	£1,033	17	1				
	<u>£1,033 17 1</u>						

Examined with the Books and Vouchers and found in accordance therewith.

11, Ironmonger Lane,
London E.C.2,

W. H. PEAT, *Chartered Accountant*,
Honorary Auditor.

10th September, 1947.

STATISTICAL TABLES.

(As required by the Metropolitan Hospital-Sunday Fund).

ROYAL NATIONAL HOSPITAL FOR DISEASES OF THE CHEST,
VENTNOR, I.O.W. STATISTICS FOR YEAR TO 31ST DECEMBER, 1946,
COMPARED WITH THE PREVIOUS YEAR.

I. In-PATIENTS.

(a) NUMBER OF BEDS AND IN-PATIENTS.

	Numbers in 1946.	Numbers in previous year.
(1) Total number of available Beds on 31st Dec. ...	231	231
(2) Average number of available Beds during the year	231	231
(3) Average number of Patients resident daily through- out the year	230	229
(4) Number of In-Patients in the Hospital at beginning of year	224	220
(5) Number of In-Patients admitted during year ...	460	462
(6) Number of In-Patients in the Hospital at the end of the year	231	224
(7) Average number of days each Patient was resident	185	182
(8) Number of Patients admitted and discharged during the year who were resident for (i) only 1 day,	(i) —	—
(ii) 2 or 3 days	(ii) 4	—

(b) ANNUAL EXPENDITURE ON IN-PATIENTS, APART FROM THAT ON OUT-PATIENTS; AVERAGE COST OF EACH IN-PATIENT PER WEEK AND AVERAGE COST OF EACH IN-PATIENT.

	1946.			Previous year.		
	Expenditure on In-Patients (Pounds only).	Average cost of each In-Patient per week.	Average total cost of each In-Patient.	Average cost of each In-Patient per week.	Average total cost of each In-Patient.	
(1) Provisions	11,247	0 18 9	24 16 6 $\frac{3}{4}$	0 18 7 $\frac{3}{4}$	24 6 2 $\frac{3}{4}$	
(2) Surgery and Dis- pensary	2,060	0 3 5 $\frac{1}{4}$	4 10 11 $\frac{1}{4}$	0 2 7 $\frac{3}{4}$	3 8 11 $\frac{3}{4}$	
(3) Domestic	9,542	0 15 11	21 1 3 $\frac{1}{4}$	0 12 1 $\frac{1}{4}$	15 15 6 $\frac{1}{2}$	
(4) Salaries and Wages (Maintenance) ...	21,379	1 15 7 $\frac{3}{4}$	47 3 10 $\frac{1}{2}$	1 7 8 $\frac{1}{2}$	36 2 5 $\frac{3}{4}$	
(5) Miscellaneous ...	1,893	0 3 2	4 3 7	0 2 4 $\frac{3}{4}$	3 2 9 $\frac{1}{2}$	
(6) Administration ...	1,416	0 2 4 $\frac{1}{4}$	3 2 6 $\frac{1}{4}$	0 2 4	3 0 10 $\frac{1}{2}$	
(7) Statistical Cost Establishment Re- newals and Re- pairs	47,537	3 19 3 $\frac{1}{4}$	104 18 9	3 5 10	85 16 10 $\frac{3}{4}$	
(8) Finance	3,425	0 5 8 $\frac{1}{2}$	7 11 2 $\frac{3}{4}$	0 4 4 $\frac{1}{2}$	5 13 10 $\frac{1}{2}$	
	1,345	0 2 3	2 19 4 $\frac{1}{2}$	0 2 4	3 0 9 $\frac{3}{4}$	
Total Cost ...	52,307	4 7 2 $\frac{3}{4}$	115 9 4 $\frac{1}{4}$	3 12 6 $\frac{1}{2}$	94 11 7	

SUPPLEMENTAL CHARTER GRANTED TO THE HOSPITAL
UNDER DATE 28th OCTOBER, 1944.

GEORGE the SIXTH, by the Grace of God, of Great Britain, Ireland and the British Dominions beyond the Seas King, Defender of the Faith, Emperor of India.

To all to whom these Presents shall come, Greeting !

WHEREAS under or by virtue of a certain Charter or Letters Patent bearing date at Westminster the 20th day of January in the forty-eighth year of the Reign of Queen Victoria, after reciting that a Hospital had been established at Ventnor in the Isle of Wight for the reception of Patients from all parts of the United Kingdom irrespective of religious distinctions suffering from Consumption and other Diseases of the Chest, a Corporation consisting of a President and Governors was founded and consisted by the name or style of "The President and Governors of the Royal National Hospital for Consumption and Diseases of the Chest on the Separate Principle" with perpetual succession by that name and a Common Seal for the purpose of maintaining and carrying on or extending the work and objects of the Hospital and divers provisions were made in the said Charter relating to the qualifications of the Governors and the election by them of a President and the members of the Board of Management of the said Hospital who (subject and without prejudice to the provisions of the said Charter and to the By-Laws of the Hospital for the time being in force) are by the said Charter given the entire management direction and superintendence of the affairs and property of the said Hospital and full authority to deal with all other matters relating to the said Hospital :

AND WHEREAS the said Board of Management has presented an humble Petition to Us supplicating Us to grant Our Royal Charter altering the name or style of the said Corporation from "The President and Governors of the Royal National Hospital for Consumption and Diseases of the Chest on the Separate Principle" to "The President and Governors of the Royal National Hospital for Diseases of the Chest,

Ventnor" and in support of such supplication the Petitioners alleged as follows :—

1. (a) That when the Hospital was originally designed in 1867 it was considered that it would be advantageous for each of the patients to have a separate room, and that the original buildings, and the additions thereto, were constructed with this object in view.

(b) That in 1939, in view of an Order from the Ministry of Health that 130 beds should be kept available for the Emergency Medical Service, it became necessary to put two patients into one room.

(c) That it has been found in many cases that the patients prefer sharing a room with someone else and the Medical Committee of the Board of Management, of which Committee ARTHUR G. PHEAR, Esquire, C.B., M.D., F.R.C.P., is the Chairman, are satisfied that the size and ventilation of the rooms in question is amply sufficient for two patients, and that from the point of view of their treatment it is no advantage that they should occupy separate rooms.

(d) That as extra accommodation in the Hospital means increased benefit to the general public it is accordingly desired that, for the future, the practice should be continued of putting two patients in each of the rooms the Medical Superintendent of the Hospital considers adequate for the purpose.

(e) And that as the retention of the words "on the Separate Principle" in the title of the Hospital would in that case be misleading it is desirable that such words should be omitted.

2. That when the Charter was granted in 1885 the word "Consumption" was in general use as the name of the disease for the treatment of which the Hospital was established but that owing to more enlightened views as to the nature of the disease, and recent advances in the methods and results of treatment the word consumption is now an inaccurate description of the disease and liable to cause unjustifiable alarm to prospective patients and that for these reasons it is desirable to omit it from the title of the Hospital :

Now, KNOW YE that We, taking the premises into Our Royal consideration, of Our especial grace, certain knowledge and mere motion, have granted, constituted and appointed, and by these Presents, for Us, our Heirs and Successors, do grant constitute and appoint in manner following that is to say :—

1. That, notwithstanding anything in the Charter of the forty-

eighth year of the reign of Queen Victoria founding and constituting the Corporation by the name and style of "The President and Governors of the Royal National Hospital for Consumption and Diseases of the Chest on the Separate Principle" the said Corporation may henceforth be known by the name and style of "The President and Governors of the Royal National Hospital for Diseases of the Chest, Ventnor."

2. And We do hereby, for Us, Our Heirs and Successors, grant and declare that these Our Letters Patent, or the enrolment or exemplification thereof, shall be in all things valid and effectual in law according to the true intent and meaning of the same, and shall be construed and adjudged in the most favourable and beneficial sense for the best advantage of the said Hospital, as well in Our Courts as elsewhere, notwithstanding any recital, misrecital, uncertainty or imperfection in these Our Letters Patent.

IN WITNESS whereof WE have caused these Letters to be made Patent.

WITNESS Ourselves at Westminster the twenty-eighth day of October in the eighth year of Our Reign.

BY WARRANT under The King s Sign Manual.



NAPIER.

THE SEVENTY-FIFTH ANNUAL GENERAL MEETING
OF THE GOVERNORS OF THE
ROYAL NATIONAL HOSPITAL FOR DISEASES OF THE CHEST, VENTNOR,

was held at the

London Office, 18, Buckingham Street, Strand, W.C.2,

at 2.45 p.m. on Wednesday, 19th November, 1947, when the President

The Right Honourable LORD EBBISHAM, G.B.E.

was in the Chair.

The Secretary read the notice convening the Meeting which had been published in "*The Times*," "*The Daily Telegraph*," and "*The Isle of Wight County Press*."

The minutes of the previous meeting held on the 23rd October, 1946, which had been circulated, were confirmed.

Before moving the Resolution for the adoption of the Report and Audited Statement of Accounts the President referred to the loss sustained by the Hospital by the death on the 7th November, of Major-General The Right Hon. Lord Mottistone, C.B., C.M.G., D.S.O., who had been a Member of the Board of Management from 1899 to 1935 and a Vice-President of the Hospital from June 1920. On behalf of all present the President desired that an expression of their profound sympathy be sent to the family.

In moving that the Report of the Board of Management and the Audited Statement of Accounts for the Year ended 31st December, 1946, be received, adopted and circulated amongst the Governors, Subscribers and Friends of the Hospital, the President said:—

"Before formally proposing the Resolution there are one or two observations I wish to make.

While the accounts are for the year ended 31st December, 1946, the Report of the Board of Management deals with matters up to September of this year. The thanks of the Governors are due to the Board for the very able manner in which they continue to manage the affairs of the Hospital. Such management is rendered more difficult now with increased running costs, due to continually advancing salaries and wages, heavy expenditure on repairs and renewals deferred during the war years, and on Capital Account to bring the Hospital up-to-date. It is the policy of the Board that, as far as supplies of equipment will permit, the Hospital be maintained, and transferred to the Minister of Health on the "appointed day," in a thoroughly efficient condition.

The employment of Displaced Persons from Europe has not only relieved to a considerable extent the shortage of resident domestics, but has also lightened much work which has been carried out by the nursing staff. The Board have quite rightly included in their Report a special reference to the work of the nursing staff which enables the Hospital to function to maximum capacity. I am sure it is the wish of all that at this Annual General Meeting I should express thanks to the nursing staff for their splendid work.

The Medical Report shows a continuance of that excellent work for which the Hospital is renowned. The resumption of thoracic surgery at Ventnor towards the close of last year is most satisfactory. While operations now take place fortnightly it would be possible to increase these to weekly if more nursing staff could be obtained.

I now put the Proposition to the Meeting."

The Motion was seconded by COLONEL E. H. LEAF and carried unanimously.

It was proposed by COLONEL E. H. LEAF, seconded by SIR FREDK. W. YOUNG and carried unanimously that MR. C. P. NETHERTON be elected Honorary Treasurer until the next Annual General Meeting.

It was proposed by Mr. H. L. TWIGGE, seconded by MR. C. P. NETHERTON and carried unanimously that the following members of the Board of Management, who retire by rotation, be re-elected, viz:— COLONEL E. H. LEAF, MR. FRANK H. HARGROVE, THE HON. SIR FREDERICK W. YOUNG, DR. GEOFFREY MARSHALL, DR. J. L. LIVINGSTONE and MR. HENRY HARRIS.

It was proposed by SIR FREDK. W. YOUNG, seconded by MR. H. L. TWIGGE and carried unanimously that SIR W. HARRY PEAT, K.B.E. of the Firm of MESSRS. PEAT, MARWICK, MITCHELL & Co., London, Fellow of the Institute of Chartered Accountants, be re-elected Honorary Auditor until the next Annual General Meeting, and that a very hearty vote of thanks be accorded to him for his services to the Hospital. The proposer desired to record that SIR W. HARRY PEAT has now given his services to the Hospital in an honorary capacity for a period of ten years.

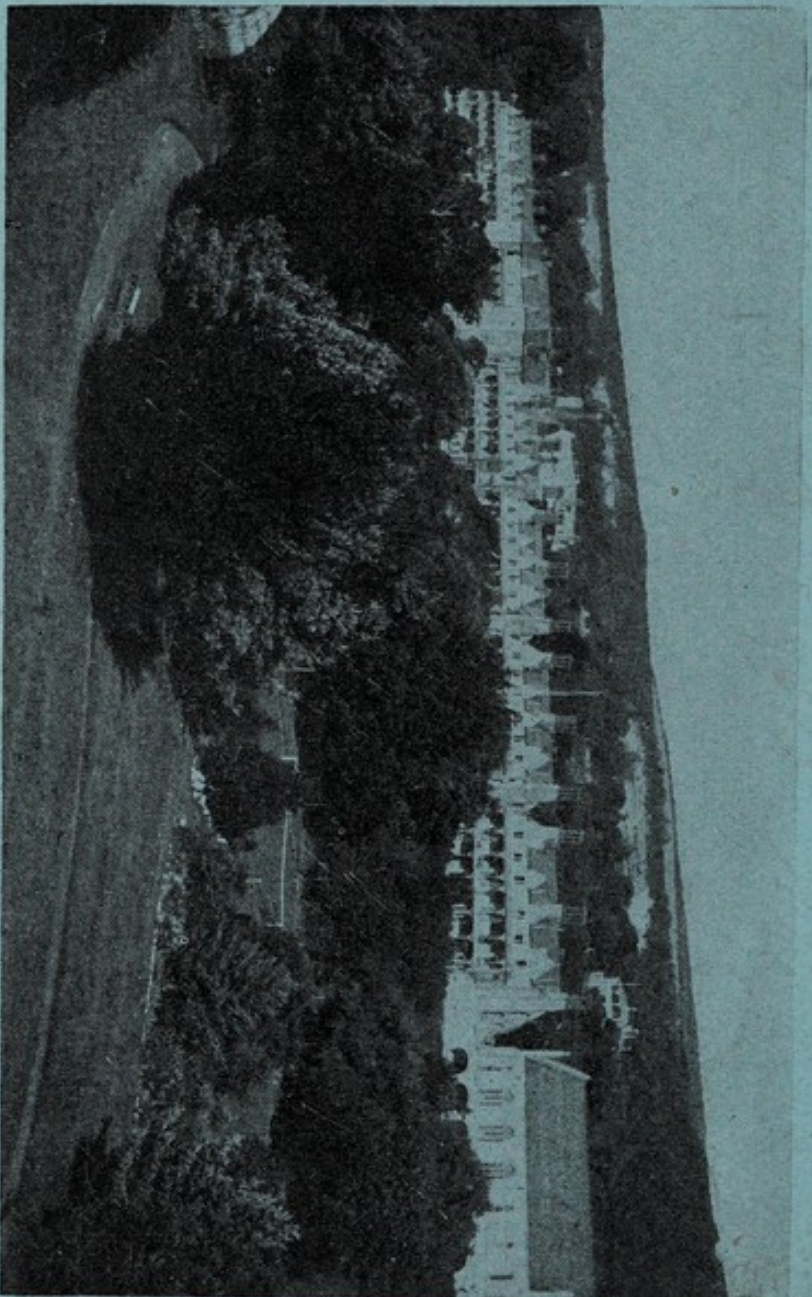
It was proposed by MR. C. P. NETHERTON, seconded by MR. H. L. TWIGGE and carried unanimously that an expression of very grateful thanks be accorded to the Honorary Medical and Surgical Staff for their services to the Hospital.

It was proposed by SIR FREDK. W. YOUNG, seconded by Dr. A. G. PHEAR and carried unanimously that the very sincere thanks of the Governors be tendered to COLONEL E. H. LEAF for his great services to the Hospital during the past eighteen years as Chairman of the Board of Management. In making the proposal SIR FREDK. YOUNG referred to the close contact COLONEL LEAF had maintained with the actual working of the Hospital by frequent visits to Ventnor and he spoke of the great benefactions the Hospital has received over many years from COLONEL LEAF and members of his family.

The proceedings terminated with a vote of thanks to LORD EBBISHAM for his kindness in presiding at the meeting.

MCCorquodale & Co., Limited, Printers, London and Newton.

THE ROYAL NATIONAL HOSPITAL FOR DISEASES OF THE CHEST, VENTNOR.



The Hospital accommodates 231 Patients.

Bed-rooms, Sitting-rooms, Balconies, and Verandahs face the South and overlook the Sea.