

Annual report of the Board of Management : 1945.

Contributors

Royal National Hospital for Consumption and Diseases of the Chest.

Publication/Creation

[London?] : [publisher not identified], 1945

Persistent URL

<https://wellcomecollection.org/works/wxcet543>

License and attribution

This work has been identified as being free of known restrictions under copyright law, including all related and neighbouring rights and is being made available under the Creative Commons, Public Domain Mark.

You can copy, modify, distribute and perform the work, even for commercial purposes, without asking permission.



Wellcome Collection
183 Euston Road
London NW1 2BE UK
T +44 (0)20 7611 8722
E library@wellcomecollection.org
<https://wellcomecollection.org>

REPORT 1946.

THE ROYAL
NATIONAL HOSPITAL
FOR
DISEASES OF THE CHEST,
VENTNOR,
ISLE OF WIGHT.

FOUNDED FOR THE RECEPTION OF PATIENTS OF BOTH SEXES
FROM ALL PARTS OF THE KINGDOM IRRESPECTIVE
OF RELIGIOUS DISTINCTIONS.

REGISTERED OFFICE:
18 BUCKINGHAM STREET, STRAND,
LONDON, W.C. 2.

Accounts for the Year ending December 31st, 1945.

FORM OF BEQUEST.

THE Benevolent are earnestly solicited to assist this Hospital by Will. The following FORM OF BEQUEST is respectfully recommended :—

*“ I bequeath to the President and Governors of THE ROYAL NATIONAL HOSPITAL FOR DISEASES OF THE CHEST, Ventnor, Undercliff, Isle of Wight, the sum of £**

free of duty, to be applied in and towards carrying on the charitable objects of the Institution ; and I direct that the receipt of the Treasurer for the time being shall be a sufficient discharge to my executors for the same.”

N.B.—Devises of Land and Bequests of Money charged on Land are now made valid by the Mortmain and Charitable Uses Act, 1891.

* The sum to be expressed in words at length.

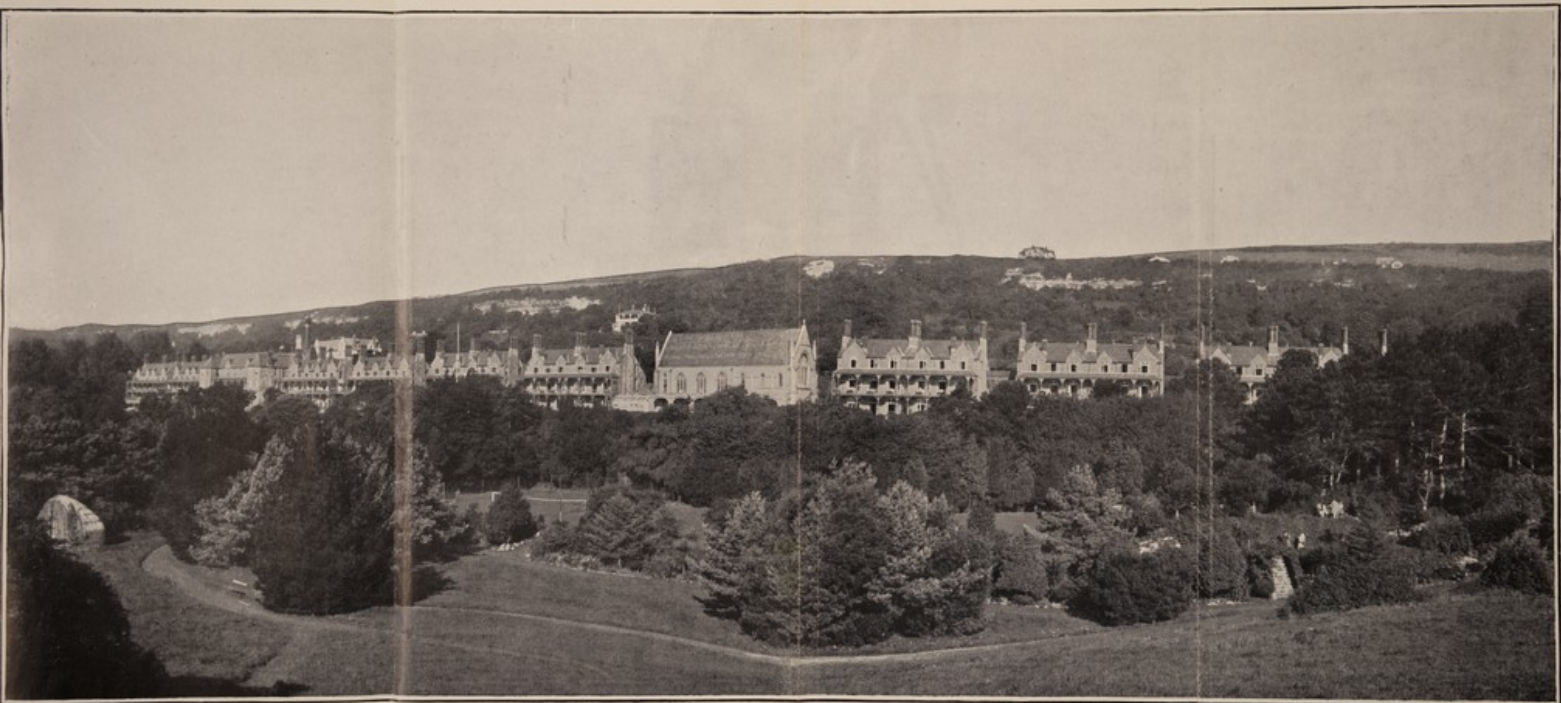


22501043983

THE ROYAL NATIONAL HOSPITAL FOR DISEASES OF THE CHEST.

Blocks I to IV, V to VIII and IX to XI have now been joined and form three main Blocks.

(ELEVEN HOUSES, THE CHAPEL OF ST. LUKE AND GARDENS.)



Blocks XI & X Block IX Block VIII Block VII Block VI Block V CHAPEL Block IV Block III WOMEN'S WARDS Block II Block I

← MEN'S WARDS AND ADMINISTRATIVE OFFICES →



Aerial view showing Grounds, and Downs forming protection from North.



Another view reproduced by kind permission of Aerofilms Ltd.

Privileges

OF

Governors and Subscribers.

The following revised Rates of Subscriptions came into force on the 19th March, 1903, but Subscribers and Donors previous to that date will continue to receive Letters on the old scale :—

- £5 5 0** ANNUAL SUBSCRIPTION constitutes a Governor with ONE Letter of Recommendation ANNUALLY.
- £10 10 0** DONATION constitutes a Governor for ONE year with ONE Letter of Recommendation.
- £52 10 0** DONATION (either paid in one sum or within 3 years) constitutes a Life Governor with one Letter of Recommendation annually.
- £52 10 0** ANNUAL SUBSCRIPTION or
£525 DONATION entitles the Governor to the privilege of a Presentation Bed, i.e., of having always one Patient in the Hospital.
- £1000** DONATION entitles the Donor to the Right of Presentation to one Bed (to be *named* if desired after the Donor, or "*In Memoriam*," in perpetuity), the Donor also having power to bequeath the Right of Presentation to any one person whom he or she may appoint.

Executors or Trustees having discretion to select the charitable Institution to be benefited are entitled to nominate one of their number to receive the privileges such person would have been entitled to if the actual donor of the contribution.

The Royal National Hospital

FOR

DISEASES OF THE CHEST,

SITUATE IN THE UNDERCLIFF, NEAR VENTNOR,

ISLE OF WIGHT.

Incorporated by Royal Charter in 1885.

*Founded by DR. ARTHUR HILL HASSALL in 1867 for the
reception of Patients of both sexes from all parts of the
Kingdom, irrespective of Religious Distinctions.*

SEVENTY-FOURTH

REPORT OF THE BOARD OF MANAGEMENT

WITH

MEDICAL REPORT AND AUDITED ACCOUNTS

for the year ending 31st December, 1945.

REGISTERED OFFICE:

18 BUCKINGHAM STREET, STRAND, LONDON, W.C.2

WELLCOME

LIBRARY

Ann Rep

WF28

-1365

V46

1945

2

CONTENTS.

	PAGE
Form of Bequest, see inside of Wrapper.	
Privileges of Governors and Subscribers	
Patrons, President and Vice-Presidents	3
List of the Executive	4
Members of the Visiting Committee	5
Honorary Medical Staff	6
Medical Report	7
Report of the Board of Management	12
Statistical Tables	35
Statements of Income and Expenditure, 1945	26
Balance Sheet, 1945	32
Statements of Frederick and Hamilton Trust Funds	34
Statistical Tables	35
Supplemental Royal Charter	36
Minutes of the General Meeting	39

Patrons.

HIS MAJESTY THE KING.

HER MAJESTY THE QUEEN.

HER MAJESTY THE QUEEN MARY.

THE MARCHIONESS OF CARISBROOKE, G.B.E.

LADY LOUIS MOUNTBATTEN.

President.

THE RIGHT HON. LORD EBBISHAM, G.B.E.

Vice-Presidents.

The Most Hon. The Marquess of Salisbury, K.G., G.C.V.O., C.B.	The Rt. Rev. W. L. Anderson, D.D. (The Lord Bishop of Portsmouth).
The Right Hon. The Earl of Derby, K.G.	Lt.-Col. E. H. Leaf.
The Right Hon. Grace, Viscountess Brentford.	Major-General The Right Hon. Lord Mottistone C.B., C.M.G D.S.O.
The Lady Charlotte W.-Fitzwilliam.	F. C. Nunn, Esq.
	Cuthbert Burgoyne, Esq.

The Board of Management.

President.

THE RT. HON. LORD EBBISHAM, G.B.E.

Chairman.

COLONEL EDWARD H. LEAF.

ROBERT H. ARMSTRONG, Esq.,
M.B., C.M.

P. B. ATKINSON, Esq., M.R.C.S.,
L.R.C.P.

GERVASE BAILEY, Esq.,
F.R.I.B.A.

E. H. BOLAND, Esq., O.B.E.,
F.R.C.P.

CUTHBERT BURGOYNE, Esq.

JOHN F. BURGOYNE, Esq.

A. TUDOR EDWARDS, Esq.,
M.D., F.R.C.S.

A. HOPE GOSSE, Esq., M.D.,
F.R.C.P.

FRANK H. HARGROVE, Esq.

HENRY HARRIS, Esq.

THE HON. LANCELOT WILLIAM
JOYNSON-HICKS.

Hon. Treasurer.

F. C. HANNA, Esq., *F.C.A.*

J. L. LIVINGSTONE, Esq., M.D.,
F.R.C.P.

GEOFFREY MARSHALL, Esq.,
O.B.E., M.D., F.R.C.P.

F. C. NUNN, Esq.

ARTHUR G. PHEAR, Esq., C.B.,
M.D., F.R.C.P.

H. E. SYMES-THOMPSON, Esq.,
M.D., M.R.C.P.

C. PRICE THOMAS, Esq.,
F.R.C.S.

W. J. THOMPSON, Esq.

STEPHEN H. TWINING, Esq.

H. L. TWIGGE, Esq.

THE HON. SIR FREDERICK W.
YOUNG.

Honorary Solicitors—MESSRS. HARGROVE & CO.

Honorary Auditor.

SIR W. HARRY PEAT, K.B.E., of the firm of Messrs. PEAT, MARWICK
MITCHELL & Co.

Fellow of the Institute of Chartered Accountants,
11, Ironmonger Lane, E.C. 2.

Secretary.

JOSEPH FISHBURN, Esq.

Steward.

IVOR B. WARHAM, Esq.

Bankers.

WESTMINSTER BANK, LTD.,

St. James's Square, S.W.1.

MIDLAND BANK, LTD., Ventnor, Isle of Wight.

The Visiting Committee at Ventnor***Chairman.**

H. L. TWIGGE, Esq.

SIR GODFREY BARING, BART.

W. H. HARVEY, Esq.

MISS C. HUE.

Dr. P. B. ATKINSON.

C. P. NETHERTON, Esq.

H. HARRIS, Esq.

J. WHILLIER, Esq.

Mrs. E. C. COOPER.

* The Chairman, Deputy Chairman and Treasurer are members,
ex officio, of all Committees.

At the Hospital, Ventnor, I. of W.**Medical Superintendent.**

Dr. A. K. MILLER, M.R.C.S., M.R.C.P.

Assistant Medical Superintendent.

Dr. L. R. J. RINKEL, B.A., M.R.C.S., L.R.C.P.

and an Assistant Resident Medical Officer.

Matron.

Miss A. TAYLOR.

Chaplain.

THE REV. L. A. D. WOODLAND.

Honorary Medical Staff.

Physicians in London.

ARTHUR G. PHEAR, C.B., M.D., F.R.C.P.
 H. E. SYMES-THOMPSON, M.D., M.R.C.P.
 A. HOPE GOSSE, M.D., F.R.C.P.
 GEOFFREY MARSHALL, O.B.E., M.D., F.R.C.P.
 J. L. LIVINGSTONE, M.D., F.R.C.P.
 E. R. BOLAND, O.B.E., F.R.C.P.

Surgeons in London.

A. TUDOR EDWARDS, M.D., F.R.C.S.,
 C. P. THOMAS, F.R.C.S.

Surgeon in the Isle of Wight.

F. WILSON HARLOW, M.B., B.S., F.R.C.S.

Laryngologist in London.

FRANK C. ORMEROD, M.D., F.R.C.S.

Consulting Radiologist.

L. G. BLAIR, M.R.C.S., L.R.C.P., D.M.R.E.

Consulting Anaesthetist.

I. W. MAGILL, M.B., B.Ch., B.A.O.

Anaesthetist.

R. MACHRAY, M.B., B.S., M.R.C.S.

MEDICAL REPORT, 1945.

Treatment has been continued on the same lines as in previous years. Insistence is laid on the importance of sanatorium regime with its strict adherence to adequate rest, whether ancillary methods of treatment were used or not.

Total number discharged	452
Patients died	7
Patients discharged or leaving against advice	12
Patients transferred to other hospitals or sanatoria	54
Patients discharged not suffering from pulmonary tuberculosis	9
Patients discharged who were in the hospital less than 10 days	25
Number of completed cases of pulmonary tuberculosis	352

CLASSIFICATION OF ALL CASES ON DISCHARGE.

Quiescent	288	Fit for their ordinary work...	236
Improved	56	Fit for restricted work	76
Stationary	6	Unfit for work	40
Worse	2		
			352		352
				Gained weight	277
				Lost weight	71
				Unchanged	4
					352

Sputum T.B. + on admission 157

* Sputum T.B. + on discharge 28

* (17 of these were transferred for thoracoplasty).

T.B.+ on admission.	T.B.+ on discharge.	%
"B1" 50	8	16.0
"B2" 80	39	48.7
"B3" 26	19	73.0

RESULTS OF TREATMENT CLASSIFIED ACCORDING TO STAGE
ON ADMISSION.

Group.	Cases.	Result.	Discharged as Fit for			
			Ordinary Work.	Light Work.	No Work.	
"A"	175	Improved ...	172	141	24	7
		Stationary ...	3	—	1	2
		Worse ...	—	—	—	—
		Died ...	—	—	—	—
"B1"	201	Improved ...	185	91	51	43
		Stationary ...	13	—	—	13
		Worse ...	3	—	—	3
		Died ...	—	—	—	—
"B2"	14	Improved ...	8	6	—	2
		Stationary ...	4	—	—	4
		Worse ...	—	—	—	—
		Died ...	2	—	—	2
"B3"	16	Improved ...	3	—	1	2
		Stationary ...	3	—	—	3
		Worse ...	5	—	—	5
		Died ...	5	—	—	5

TREATMENT.

161 patients were treated by sanatorium routine only without any ancillary treatment or collapse therapy.

CLASSIFICATION OF CONDITION ON ADMISSION AND RESULT OF TREATMENT.

Group.	Cases.	Quiescent.	Improved.	Stationary.	Worse.	Died.
"A"	105	90	12	3	—	—
"B1"	12	7	4	1	—	—
"B2"	33	—	30	3	—	—
"B3"	11	—	6	4	1	—
	<u>161</u>					

13 cases were suffering from pleurisy without any apparent parenchymatous lesion.

ARTIFICIAL PNEUMOTHORAX.

This was attempted in 207 cases and was successful in 147.

The results according to degrees of collapse on discharge were classified :—

Unsuccessful (including abandoned) ...	61
Partial collapse	10
Complete or selective collapse ...	137

PARTIAL A.Ps.—10 cases, two of whom were admitted with a partial A.P.

5 were T.B. Neg. on admission and remained so throughout.

5 were T.B. Pos. on admission and T.B. Neg. on discharge.

In all cases an attempt was made to divide the adhesions. In two cases a supplementary phrenic crush was done.

COMPLETE A.Ps.—111 cases.

T.B. Neg. on admission and discharge 45

T.B. Pos. on admission and T.B. Neg. on discharge ... 59

In addition 7 cases had a complete A.P. on their better side preparatory to a thoracoplasty on the worse side. All 5 were T.B. Pos. on transfer for thoracoplasty.

BILATERAL A.Ps.—Total 26.

Three were admitted with bilateral A.Ps. while 23 had one or both A.Ps. induced in hospital.

T.B. Neg. on admission and discharge 5

T.B. Pos. on admission and Neg. on discharge 21

Two cases were T.B. Pos. on discharge, of which one died and one was transferred for colonization.

In 21 of these cases both A.Ps. were regarded as complete collapses, in 5 one or both sides had an incomplete collapse. Of the 23 cases induced at the Royal National Hospital, 20 required division of adhesions on one or both sides.

All A.P. cases were classified on discharge :—

Cases.	Result.	Work.	Light Work.	No Work.
147	Improved ... 141	99	27	15
	Stationary ... 1	—	—	1
	Worse ... 2	—	—	2
	Died ... 3	—	—	3

Complications occurring in all A.P. cases :—

Persistent fluid	1
Haemothorax after refill	6
Empyema	6
Spontaneous pneumothorax	2

DIVISION OF ADHESIONS.

Thoracoscopy without division of adhesions was carried out 28 times, and division of adhesions was carried out 168 times. Ten patients required 2 operations and one 3 operations. In addition 5 patients had adhesions divided on each side.

The following complications occurred :—

Obliterative pleurisy	1
Haemothorax	6
Empyema	6

(5 of the 6 cases of empyema were due to the bursting of a tension cavity).

DIAPHRAGMATIC PARALYSIS.

This was undertaken in 46 cases, in 14 of which it was additional to a pneumothorax. (The results of these are included under the heading of pneumothorax cases).

of these cases

31 were T.B. Pos. on admission.

12 were T.B. Pos. on discharge.

CLASSIFICATION ON DISCHARGE.

Cases.	Result.	Work.	Light Work.	No Work.
47	Improved ...	37	19	5
	Stationary ...	2	—	2
	Worse ...	3	—	3
	Died ...	4	—	4

THORACOPLASTY.

Owing to the War, no cases were operated on at the hospital. 24 cases were transferred for operation to other hospitals. 11 cases were re-admitted following thoracoplasty, after having been transferred for this operation.

All of these were successful.

Cases.	Result.	Work.	Light Work.	No Work.		
11	Improved ...	9	3	4	2	T.B. Pos. before operation 10
	Stationary ...	1	—	—	1	T.B. Pos. after operation 3
	Worse ...	—	—	—	—	
	Died ...	1	—	—	1	

OLEOTHORAX.

Oleothorax was undertaken in one case, for obliteration of an artificial pneumothorax, and proved successful in maintaining an adequate collapse.

PNEUMOPERITONEUM.

This was carried out in 12 cases.

3 were T.B. Neg. on admission and T.B. Neg. on discharge.

9 were T.B. Pos. on admission and 5 were T.B. Pos. on discharge.

(of whom 2 died and in one case the pneumoperitoneum was abandoned as not being helpful).

It will be seen that this form of treatment was largely used on rather advanced cases, which probably accounts for the less successful results than reported elsewhere.

One of these patients died with tuberculous peritonitis. It was not possible to determine at the postmortem whether the pneumoperitoneum was responsible for the peritonitis.

COMPLICATIONS OR OTHER DISEASES OCCURRING IN ALL CASES OF PULMONARY TUBERCULOSIS.

TUBERCULOUS.				NON-TUBERCULOUS.			
Pleurisy	19	Diabetes mellitus	7
Empyema	19	Auricular fibrillation	1
Spontaneous				Congenital heart			
		pneumothorax	4			disease	1
Haemoptysis	4				
Laryngitis	15				
Peritonitis	1				
Ischio-rectal abscess	1				
Cervical adenitis	2				
Meningitis	1				

PATIENTS FOUND TO BE SUFFERING FROM OTHER DISEASES.

Bronchiectasis	3
Asthma	1
Epididymitis	1
Bone abscess	1
Enteritis	2
Atypical pneumonia	3
Unresolved pneumonia	1
Anxiety neurosis	1
Carcinoma	1

THE SEVENTY-FOURTH ANNUAL REPORT OF THE BOARD OF MANAGEMENT

Presented to the Annual Meeting of Governors on
Wednesday, 23rd October, 1946.

Colonel E. H. LEAF, Vice-President
in the Chair.

The Board desires gratefully to acknowledge the continuance of the gracious patronage of their Majesties the King and Queen, and Her Majesty Queen Mary.

Subscribers.

Notwithstanding the Government's avowed intention to nationalise Hospitals, supporters continue to maintain their interest in the Hospital. Subscriptions and donations at £4853 is higher by £207 than the figure for 1944 and compares most favourably with the average for the preceding six years of £4326. While most warmly thanking supporters generally the Board desire to acknowledge particularly the following contributions :—

	£	s.	d.
Trustees of Prison Charities	500	0	0
Earl of Northampton's Charity	300	0	0
The late A. J. Mack, Esq.	250	0	0
Prudential Assurance Co. Ltd.	210	0	0
Westminster Bank Ltd.	210	0	0
Liverpool Victoria Friendly Society	105	0	0
Benevolent & Orphan Fund of the National Union of Teachers	100	16	0
Worshipful Company of Clothworkers	100	0	0
Bernhard Baron Charitable Trust	100	0	0
"Alexandra Day" Committee	60	0	0
"B.E."	52	10	0
Southern Railway Company Ltd.	52	10	0
John Lewis Partnership Ltd.	52	10	0

	£	s.	d.
Harrod's Benevolent Fund	52	10	0
Union-Castle Mail Steamship Co. Ltd.	50	0	0
Rubery Owen & Co. Ltd.	50	0	0
Delmar Charitable Trust	50	0	0
A. Frost Esq.	48	10	0
London & North Eastern Railway Co. Ltd.	47	5	0
Leonard R. Park, Esq.	35	17	6
Worshipful Company of Haberdashers	35	0	0
Pearl Assurance Co. Ltd.	26	5	0
Civil Service Sanatorium Society	26	5	0
John Player & Sons Employees' Benevolent Fund	23	12	6
Lloyds Health Insurance Approved Society	21	0	0
Lever Brothers & Unilever Limited	21	0	0
Philip Lyle, Esq.	21	0	0
Thomas Marshall & Son Ltd.	21	0	0
Stewart & Lloyds Ltd.	21	0	0
Sir Harold A. Wernher's Charitable Trust	21	0	0
The Robert William Edwards Trust	21	0	0
Worshipful Company of Goldsmiths	20	0	0
Worshipful Company of Drapers	20	0	0
Miss Rosie Newman	20	0	0

Finance.

The daily average number of occupied beds during 1945 has reached the record figure of 229 out of a total of 231 beds available. The cost per patient per week has risen from £3 12s. 1d. for 1944 to £3 14s. 2d. The actual increase on account of Provisions, Surgery & Dispensary, Domestic, and Salaries and Wages amounts to 2s. 9d. but this is off-set by a reduction of 7d. under Miscellaneous and Administration charges. The net increase is therefore 2s. 2d. per patient per week and of this no less than 1s. 5d. is due to increased salaries and wages for nurses and domestics.

The actual excess of income over expenditure for the year amounts to £1108 0s. 9d. This has been increased to £23,663 8s. 1d. by the adjustment of the sum hitherto held in Suspense Account, being payments received from the Ministry of Health towards the cost of Casualty Service 1939 to 1944

under the Government's Emergency Medical Scheme. With this adjustment the average Excess of Income over Expenditure for each year 1939 to 1945 is £1423 11s. 7d.

The Board has still to bear in mind heavy expenses to be faced for repairs and renewals to buildings, which have accumulated in the War years, as well as furniture, bedding and linen, and hardware, crockery, etc.

Buildings.

Towards the close of 1945 constructional work commenced in connection with the installation of a new electric passenger lift and the provision of additional lavatories and store room accommodation between Blocks X and XI to serve Wards W, X and Y. The work is now nearing completion and will provide a long-needed improvement.

Unfortunately early in the current year heavy gales on the coast completely destroyed the Hospital's sewage outfall to the sea. Reconstruction work on the sewer is now in hand and is likely to prove expensive.

The Nurses' Home, built in 1922, was then sufficient to accommodate such nurses as were necessary for a total of 160 beds, of which an average of 135 only were occupied daily. The present bed strength of 231, with an average daily occupancy of 229, demands an increased number of nurses. Consequently the Nurses' Home has been over-crowded and the overflow has been accommodated above the main administrative block in accommodation normally reserved for resident domestics. Recently a neighbouring property known as "Tanglewood," with orchard and extensive grounds, having come into the market, the Board authorised its purchase to provide additional accommodation and increase the productive capacity of the Hospital's estate.

Wages.

Added to these expenses, prospective and actual, the Hospital has been faced, since the beginning of this year, with the necessity of making very substantial increases in wages under the Recommendations of the National Joint Council for Staff of Hospitals, and further increases in Salaries to nurses have also come into force under Revised Rushcliffe Scales.

Maintenance Fees.

In these circumstances the Board was compelled reluctantly to notify all Public Authorities, who hitherto have paid considerably less than the actual cost per patient per week, that effective from the 1st May, 1946 maintenance charges for their patients would be increased from 63s. to 77s. per week. The weekly charge for private patients who are nominated by Letters of Recommendation is being maintained at two guineas.

Investments.

Towards the close of last year the Board appointed a Sub-Committee to examine the investments of the Hospital and effect a re-adjustment therein, with particular reference to the amount of dated as compared with undated stock held. This was in the proportion of 25·75% dated stock to 74·25% undated stock. Certain securities were sold and re-investments made with the result that the figures as regards dated and undated stock are now 51·63% and 48·37% respectively.

Honorary Medical Staff.

In March 1946 the Board had much pleasure in appointing Dr. E. R. Boland, O.B.E., F.R.C.P., to be one of the Hospital's Physicians in London. At the same time Dr. L. G. Blair, M.R.C.S., L.R.C.P., D.M.R.E., was confirmed as Consulting Radiologist.

Executive.

Dr. E. R. Boland, O.B.E., F.R.C.P., has been elected a member of the Board of Management.

The following members of the Board who retire by rotation, being eligible, offer themselves for re-election, namely :—
Dr. R. H. Armstrong, M.B., C.M., Dr. P. B. Atkinson, M.R.C.S., L.R.C.P., Cuthbert Burgoyne Esq., A. Hope Gosse Esq., M.D., F.R.C.P., The Hon. L. W. Joynson-Hicks, M.P., F. C. Nunn Esq., and H. E. Symes-Thompson Esq., M.D., F.R.C.P.

Visiting Committee.

Mrs. E. C. Cooper was elected a member of the Committee in October, 1945.

Staff.

The Board has been pleased, on the recommendation of its Medical Committee, to renew the appointment of Dr. L. R. J. Rinkel, B.A., M.R.C.S., L.R.C.P., as Assistant Medical Superintendent for a further period of three years from the 15th June, 1946.

Mr. L. N. Keen, the Steward, left the service of the Hospital in December. He was succeeded on the 1st January, 1946 by Mr. I. B. Warham.

In October, 1945 Mr. Joseph Fishburn, the Acting Secretary, was confirmed as Secretary of the Hospital.

The Board of Management desire to take this opportunity of expressing their sincere thanks to each member of the Staff for his or her devotion to duty and to the welfare and happiness of the patients during the past year.

AVERAGE OCCUPIED AND UNOCCUPIED BEDS.

	1938	1939	1940	1941	1942	1943	1944	1945
Unoccupied, T.B. ...	4	43.4	48.5	36.3	13	6.75	6	4
" EMS ...	—	94.3	119.6	127.1	129	127.25	127	—
Occupied, TB & EMS	164	170.3	188.9	196.6	216	227	228	229
Total Beds...	168	308	357	360	358	361	361	231
	£	£	£	£	£	£	£	£
Subscriptions	3654	3253	2731	2042	2813	3794	3105	3090
Donations	2459	1390	1286	1280	1395	1429	1541	1763
Other V. Gifts	463	186	60	—	54	86	92	99
Hospital S. Fund.....	100	110	110	—	—	—	5	100
Private Patients	9252	7669	4885	1663	2795	2490	2026	2244
Public Authorities ...	8448	15493	19843	25269	28706	30195	31190	33090
Other Sources	332	698	731	514	190	850	734	657
Other Receipts.....	271	202	196	202	227	73	84	157
Invested Property ...	3121	3004	3129	3178	3286	3301	3358	3403
State Grant—Nursing	—	—	—	—	—	300	249	594
£	28100	32005	32971	34148	39466	42518	42384	45197

NOTE :—£22,555 7s. 4d. interim contributions towards cost of Casualty Services 1939/44, previously held in Suspense Account has been taken to the Balance Sheet through the Income and Expenditure Account for 1945, but not included above.

	1938	1939	1940	1941	1942	1943	1944	1945
£ s. d.	3 13 4	3 16 0	4 4 9	4 4 5	3 5 9	3 9 6	3 12 1	£ s. d. 3 14 3
AVERAGE TOTAL COST PER PATIENT PER WEEK.								
EXPENDITURE.								

Daily Average Occupied Beds	164	170·3	188·9	196·6	216	227	228	229
Year	1938	1939	1940	1941	1942	1943	1944	1945
			DOMESTIC.					
1. Repairs and Renewals— Furniture, Bed- ding, etc.			s. d. 14 1					
2. Laundry								
3. Cleaning and Chandlery				s. d. 12 11				
4. Water							s. d. 12 5	s. d. 12 9
5. Fuel, etc.								
Steam Coal								
House Coal								
Gas		s. d. 11 9						
Electricity						s. d. 11 6		
Oil, Wood, etc.								
6. Uniforms					s. d. 10 8			
7. Sundries								
Entertainments	s. d. 9 10							
COST PER PATIENT PER WEEK.								

Daily Average Occupied Beds ...	164	170·3	188·9	196·6	216	227	228	229
Year ...	1938	1939	1940	1941	1942	1943	1944	1945
MISCELLANEOUS.								
1. Printing								
Stationery								
Postage								
Telephones			s. d. 4 4	s. d. 4 4				
2. Advertisements								
3. Insurance								
4. Garden & Grounds		s. d. 3 10						
5. Sundries—								
Chapel								
Travelling	s. d. 3 0							
Petty								
COST PER PATIENT PER WEEK.								
					s. d. 2 4	s. d. 2 9	s. d. 2 8	s. d. 2 5

Daily Average Occupied Beds ...	164	170.3	188.9	196.6	216	227	228	229
Year ...	1938	1939	1940	1941	1942	1943	1944	1945
			ADMINISTRATION.					
1. Salaries	s. d. 5 6	s. d. 5 6						
2. Pensions								
3. Printing Stationery Postage			s. d. 3 9					
4. Advertisements								
5. Law Charges								
6. Auditor's Fee								
7. Sundries				s. d. 3 0				
Annual Meeting					s. d. 2 3	s. d. 2 2	s. d. 2 7	s. d. 2 4
Travelling								
Petty								
COST PER PATIENT PER WEEK.								

Daily Average Occupied Beds ...	164	170-3	188-9	196-6	216	227	228	229
Year ...	1938	1939	1940	1941	1942	1943	1944	1945
	ESTABLISHMENT							
Repairs and Renewals	s. d. 6 8			s. d. 7 9				
Annual Cleaning and Painting		s. d. 4 7	s. d. 5 8		s. d. 4 1	s. d. 4 3	s. d. 4 6	s. d. 4 5
	COST PER PATIENT PER WEEK.							

FOR THE YEAR ENDING 31ST DECEMBER, 1945.

Cr.

EXPENDITURE.

	£	s.	d.	£	s.	d.	£	s.	d.
ORDINARY.									
I. PROVISIONS :—									
1. Meat				1,695	11	7			
2. Fish				1,042	16	1			
3. Poultry				143	8	9			
4. Rabbits				4	10	9			
5. Butter and Margarine				286	16	5			
6. Cheese... ..				108	3	10			
7. Bacon and Lard				521	19	4			
8. Sausages				491	5	1			
9. Eggs				314	0	1			
10. Milk				2,858	1	10			
11. Bread and Flour				528	8	0			
12. Oatmeal				63	2	6			
13. Tea				250	19	0			
14. Coffee and Cocoa				65	18	0			
15. Sugars... ..				134	6	5			
16. Jams, etc.				204	16	1			
17. Rice, Sago, etc.				36	1	8			
18. Biscuits, Cake, etc.				87	16	10			
19. Groceries (Sundries)				679	1	1			
20. Vegetables and Fruit				1,461	17	3			
21. Malt Liquors				116	1	6			
22. Aerated Waters and Ice				39	12	7			
							11,134	14	8
II. SURGERY AND DISPENSARY :—									
1. Drugs, Chemicals, Disinfectants, etc.				460	15	6			
2. Dressings, Bandages, etc.				117	7	3			
3. Instruments and Appliances				719	0	8			
4. Wines and Spirits				3	17	3			
5. Salaries—Dispensing Staff				204	18	0			
6. Sundries	61	15	5						
Medical Library	12	7	6						
							74	2	11
							1,580	1	7
III. DOMESTIC :—									
1. Renewals and Repairs to Furniture, Bedding, Crockery, etc.									
Furniture	485	11	9						
Bedding and Linen	433	8	11						
Hardware, Crockery, etc.	161	15	0						
							1,080	15	8
2. Laundry							1,867	13	8
3. Cleaning and Chandlery							178	5	4
4. Water							180	18	7
5. Fuel and Lighting :—									
Steam Coal	2,813	10	2						
House Coal	536	8	0						
Gas	318	4	0						
Electricity	335	18	10						
Oil, Wood, etc.	3	17	1						
							4,007	18	1
6. Uniforms							185	4	0
7. Sundries	76	14	3						
Entertainments	49	8	1						
							126	2	4
							7,626	17	8
Carried forward							£20,341	13	11

Dr. INCOME AND EXPENDITURE ACCOUNT

	£	s.	d.	£	s.	d.	£	s.	d.
Brought forward ...							67,752	8	
EXTRAORDINARY.									
Hospital Shop							114	14	
							<hr/>		
TOTAL INCOME...							67,867	3	

£67,867 3

RECEIPTS.

LEGACIES

Received during the Year							£	s.	d.
							8,357	17	

FOR THE YEAR ENDING 31ST DECEMBER, 1945.

Cr.

	£	s.	d.	£	s.	d.	£	s.	d.
Brought forward							20,341	13	11
IV. SALARIES AND WAGES (Maintenance):—									
1. Medical				2,174	0	7			
2. Nursing				4,868	14	2			
3. Other Officers and Employees:—									
Other Officers (Chaplain, Steward, Clerks)	2,081	5	5						
Mechanics	556	16	0						
Porters	931	7	3						
Domestics	5,163	1	2						
				8,732	9	10			
4. Pensions				770	0	6			
							16,545	5	1
V. MISCELLANEOUS:—									
1. Printing, Stationery, Postages, etc.				359	3	10			
2. Advertisements				71	15	8			
3. Insurance of Buildings, Equipment, etc.				189	1	11			
4. Garden and Grounds				580	11	9			
5. Sundries:—									
Chapel Expenses	4	11	8						
Miscellaneous Travelling Expenses	27	7	8						
Petty Expenses	205	4	4						
				237	3	8			
							1,437	16	10
VI. ADMINISTRATION:—									
1. Salaries				812	10	0			
2. Pensions				360	0	0			
3. Printing, Stationery, Postages, etc.				80	18	1			
4. Advertisements				5	5	0			
5. Law Charges				—					
6. Auditor's and Accountancy Fees...				—					
7. Sundries:—									
Annual Meeting	24	6	0						
Travelling Expenses	44	12	4						
Petty Expenses	66	18	0						
				135	16	4			
							1,394	9	5
VII. ESTABLISHMENT:—									
Renewals and Repairs to Buildings and Plant.									
Renewals and Repairs				1,837	8	2			
Annual Cleaning and Painting ...				770	5	5			
							2,607	13	7
VIII. FINANCE:—									
1. Interest				—					
2. Appeals				—					
3. Rent				626	0	0			
4. Rates and Taxes				766	16	0			
							1,392	16	0
							43,719	14	10
ORDINARY EXPENDITURE									
EXTRAORDINARY.									
Donations to Other Institutions				2	2	0			
Pig Farm and Kitchen Gardens				481	18	2			
							484	0	2
EXTRAORDINARY EXPENDITURE									
							44,203	15	0
TOTAL EXPENDITURE									
Excess of Income over Expenditure for the Year...							23,663	8	1
							67,867	3	1
ACCOUNT.									
							£	s.	d.
DISBURSEMENTS.									
By Transfer to Capital Account:—									
General Fund							8,357	17	8

WORKS DEPARTMENT ACCOUNT.

							£	s.
1.	Salaries and Wages	2,203	13
2.	Board, Uniforms, and other Allowances to Staff					—
3.	Materials consumed	778	15
4.	Fuel, Power, Light and Water			—
5.	Renewals and Repairs to Tools, Machinery, Plant and Buildings		—
6.	Insurance of Machinery, Plant and Buildings					—
7.	Sundries		—
8.	Rent and Rates		—
	Total Expenditure	£2,982	9
	<i>Less Receipts (if any)</i>		—
	Net Expenditure charged to Hospital				£2,982	9

FOR THE YEAR ENDING 31ST DECEMBER, 1945.

ALLOCATED.

	£	s.	d.
Income and Expenditure Account :—			
Surgical and Dispensary Instruments and Appliances	...	—	
Domestic. Renewals and Repairs to Furniture, etc.	...	368	7 11
Laundry	—	
Establishment. Renewals and Repairs	1,843	15 9
Annual Cleaning	770	5 5

Total charged to Income and Expenditure Account	£2,982	9 1
Balance Sheet :—Land, Buildings and Equipment of the Hospital : for Improvements, Extensions, and Additions			
		—	

Net Total	£2,981	9 1

BALANCE*At 31st December,***Dr.**

	£	s.	d.	£	s.	d.	£	s.	d.
1. SUNDRY CREDITORS :—									
General Fund				2,328	19	2			
Suspense Account: Provision for contingencies				1,500	0	0			
				<hr/>					3,828 19 2
2. LOANS TO HOSPITAL :—									
3. CAPITAL ACCOUNTS :—									
(a) Hospital Endowments :—									
Endowment of Beds as per last A/cs. ...	21,486	10	1						
Add Profit on Re-Investment ...	1,080	18	5						
	<hr/>						22,567	8	6
Endowment of Nurses' Home as per last Accounts	1,626	0	0						
Add Profit on Re-Investment ...	192	16	2						
	<hr/>						1,818	16	2
Sir F. Eley, Bart., Subscription Fund ...							300	0	0
(b) Special Funds :—									
Frederick Fund as per last Account	3,450	9	0						
Add Profit on Re-Investment	1,933	11	11						
	<hr/>						5,384	0	11
Hamilton Fund as per last Account	16,781	13	0						
Less Loss on Re-Investment	4,313	17	1						
	<hr/>						12,467	15	11
Recreation Room Fund				717	19	4			
	<hr/>						18,569	16	2
(c) Lands, Buildings, and Equipment Fund :—									
Balance as per last Accounts	5,3045	11	3						
Add Transfer from General Fund ...	100	0	0						
	<hr/>						53,145	11	3
(d) General Fund :—									
Balance as per last Accounts	64,026	12	4						
Add Transfer from Legacies Account	8,357	17	8						
,, Excess of Income over Expenditure (includes £22,555 7s. 4d. towards cost of Casualty Services E.M.S. 1939/44)	23,663	8	1						
Less Loss on Re-Investment	788	10	9						
,, Transfer to Land, Buildings and Equipment Fund	100	0	0						
	<hr/>						888	10	9
							95,159	7	4
							<hr/>		
							191,560	19	5
4. UNEXPENDED INCOME, BALANCE OF SPECIAL FUNDS :— *									
Frederick and Hamilton Funds				496	16	11			
Bray & Mathison Charity				58	9	6			
				<hr/>					555 6 5
							<hr/>		
							£195,945	5	0

REPORT

I have audited the above Balance Sheet and have obtained all the information and explanation receivable under the Government Emergency Hospital Scheme; subject thereto in my opinion see Hospital's affairs according to the best of my information and the explanations given me, and the revised uniform system, as modified by the instructions of the King Edward's Hospital For

11, IRONMONGER LANE, LONDON, E.C.2.

11th July, 1946.

SHEET.

1945.

Cr.

	£	s.	d.	£	s.	d.	£	s.	d.
1. CASH IN BANK AND IN HAND :—									
On Account of :—									
(a) Hospital Endowments :—									
Endowment of Beds Fund ...	843	11	1						
Nurses' Home Endowment Fund ...	126	0	6						
						969	11	7	
(b) Special Funds						446	5	11	
(c) Lands, Building and Equipment Fund									
(d) General Fund						7,685	6	1	
									9,101 3 7
2. STOCKS OF STORES IN HAND (As certified by the Officials of the Hospital)									5,031 2 10
3. SUNDRY DEBTORS :—									
General Fund						4,568	9	3	
Special Funds						109	0	6	
									4,677 9 9
4. INTERNAL LOANS :—									—
5. INVESTMENTS :—									
			Valuation per						
			Brokers at						
			31st Dec., 1945.			Cost of Investments.			
			£	s.	d.	£	s.	d.	
(a) Hospital Endowments :—									
Endowment of Beds	22,037	19	8	21,723	17	5			
Endowment of Nurses' Home	1,670	11	10	1,692	15	8			
Sir F. Eley, Bart., Sub- scription Fund ...	318	0	0	300	0	0			
									23,716 13 1
(b) Special Funds :—									
Frederick Fund...	5,565	10	8	5,384	0	11			
Hamilton Fund...	12,602	19	0	12,467	15	11			
									17,851 16 10
(c) Lands, Buildings and Equipment Fund	2,350	0	0			2,146	5	0	
(d) General Fund ...	66,549	12	7			81,703	8	4	
									125,418 3 3
	£111,094	13	9						
6. LANDS, BUILDINGS, AND EQUIPMENT OF THE HOSPITAL :—									
Expenditure from 1st January, 1913, to the 31st December, 1944						50,899	6	3	
Add Additions since						100	0	0	
									50,999 6 3
7. RECREATION ROOM :—									
Expenditure as per last Accounts									717 19 4
									£195,945 5 0

NOTE.—The cost of the following property is not included in the Balance Sheet, viz:—
The Site, Buildings, Furniture and Appliances of the Hospital acquired prior to 1st January, 1913.

THE AUDITOR.

I have required. No settlement has been reached with the Ministry of Health as to the amount the Balance Sheet is properly drawn up so as to exhibit a true and correct view of the state of the Hospital as shown by the books of the Hospital. To the best of my knowledge and belief the regulations of the Ministry relating to the treatment of Free Legacies, dated December, 1940, have been followed.

W. H. PEAT *Chartered Accountant.*
Honorary Auditor.

STATEMENT OF THE FREDERICK AND HAMILTON FUNDS FOR THE YEAR ENDED
31ST DECEMBER, 1945.

Dr.

Cr.

THE FREDERICK FUND.		£	s.	d.			£	s.	d.
To Balance brought forward from 1944	...	503	10	8					
By Dividend on £1,204 16s. 4d. Bank of England Stock	...				By Relief granted to 8 patients (2 men and 6 women)	...	622	11	2
By " on £355 Conversion Loan	...	72	5	10	By Adjustment for 1944 to actual Costs	...	34	2	5
By " on £384 18s. 9d. Local Loan 3%	...	12	8	6					
By " Return of Income Tax	...	11	10	8					
	...	72	5	8					
THE HAMILTON FUND.									
By Dividend on £250 East Indian Railway Annuity, Class "B"	...	195	11	0					
By " on £275 Scinde, Punjab, and Delhi Railway Annuity, Class "B"	...	249	3	4					
By " Return of Income Tax	...	36	14	10	By Balance at 31st December, 1945	...	496	16	11
							£1,153	10	6

Examined with the Books and Vouchers and found in accordance therewith.

11, Ironmonger Lane,
London E.C.2,

11th July, 1946.

W. H. PEAT Chartered Accountant,
Honorary Auditor.

STATISTICAL TABLES.

(As required by the Metropolitan Hospital-Sunday Fund).

ROYAL NATIONAL HOSPITAL FOR DISEASES OF THE CHEST,
VENTNOR, I.O.W. STATISTICS FOR YEAR TO 31ST DECEMBER, 1945.
COMPARED WITH THE PREVIOUS YEAR.

1. In-PATIENTS.

(a) NUMBER OF BEDS AND IN-PATIENTS.

	Numbers in 1945.	Numbers in previous year.
(1) Total number of available Beds on 31st Dec. ...	231	231
(2) Average number of available Beds during the year ...	231	231
(3) Average number of Patients resident daily throughout the year ...	229	228
(4) Number of In-Patients in the Hospital at beginning of year ...	220	215
(5) Number of In-Patients admitted during year ...	462	453
(6) Number of In-Patients in the Hospital at the end of the year ...	224	220
(7) Average number of days each Patient was resident ...	182	185
(8) Number of Patients admitted and discharged during the year who were resident for (i) only 1 day,	(i) —	1
(ii) 2 or 3 days ...	(ii) —	3

(b) ANNUAL EXPENDITURE ON IN-PATIENTS, APART FROM THAT ON OUT-PATIENTS ; AVERAGE COST OF EACH IN-PATIENT PER WEEK AND AVERAGE COST OF EACH IN-PATIENT.

	1945.			Previous year.		
	Expenditure on In-Patients (Pounds only).	Average cost of each In-Patient per week.	Average total cost of each In-Patient.	Average cost of each In-Patient per week.	Average total cost of each In-Patient.	
(1) Provisions ...	11,135	0 18 7½	24 6 2½	0 17 10	23 14 7½	
(2) Surgery and Dispensary ...	1,580	0 2 7½	3 8 11½	0 2 5	3 4 3½	
(3) Domestic ...	7,227	0 12 1¼	15 15 6½	0 12 4½	16 9 4	
(4) Salaries and Wages (Maintenance) ...	16,545	1 7 8½	36 2 5¾	1 6 2	34 16 5½	
(5) Miscellaneous ...	1,438	0 2 4¾	3 2 9½	0 2 8	3 10 11¼	
(6) Administration ...	1,394	0 2 4	3 0 10½	0 2 7½	3 10 2	
(7) Establishment Renewals and Repairs ...	39,319	3 5 10	85 16 10¾	3 4 1	85 5 10	
(8) Finance ...	2,608	0 4 4½	5 13 10½	0 4 5½	5 18 6¾	
	1,393	0 2 4	3 0 9¾	0 2 3¾	3 1 11½	
Total Cost ...	43,320	3 12 6½	94 11 7	3 10 10¼	94 6 4¼	

SUPPLEMENTAL CHARTER GRANTED TO THE HOSPITAL
UNDER DATE 28th OCTOBER, 1944.

GEORGE the SIXTH, by the Grace of God, of Great Britain, Ireland and the British Dominions beyond the Seas King, Defender of the Faith, Emperor of India.

To all to whom these Presents shall come, Greeting !

WHEREAS under or by virtue of a certain Charter or Letters Patent bearing date at Westminster the 20th day of January in the forty-eighth year of the Reign of Queen Victoria, after reciting that a Hospital had been established at Ventnor in the Isle of Wight for the reception of Patients from all parts of the United Kingdom irrespective of religious distinctions suffering from Consumption and other Diseases of the Chest, a Corporation consisting of a President and Governors was founded and consisted by the name or style of "The President and Governors of the Royal National Hospital for Consumption and Diseases of the Chest on the Separate Principle" with perpetual succession by that name and a Common Seal for the purpose of maintaining and carrying on or extending the work and objects of the Hospital and divers provisions were made in the said Charter relating to the qualifications of the Governors and the election by them of a President and the members of the Board of Management of the said Hospital who (subject and without prejudice to the provisions of the said Charter and to the By-Laws of the Hospital for the time being in force) are by the said Charter given the entire management direction and superintendence of the affairs and property of the said Hospital and full authority to deal with all other matters relating to the said Hospital :

AND WHEREAS the said Board of Management has presented an humble Petition to Us supplicating Us to grant Our Royal Charter altering the name or style of the said Corporation from "The President and Governors of the Royal National Hospital for Consumption and Diseases of the Chest on the Separate Principle" to "The President and Governors of the Royal National Hospital for Diseases of the Chest,

Ventnor" and in support of such supplication the Petitioners alleged as follows :—

1. (a) That when the Hospital was originally designed in 1867 it was considered that it would be advantageous for each of the patients to have a separate room, and that the original buildings, and the additions thereto, were constructed with this object in view.

(b) That in 1939, in view of an Order from the Ministry of Health that 130 beds should be kept available for the Emergency Medical Service, it became necessary to put two patients into one room.

(c) That it has been found in many cases that the patients prefer sharing a room with someone else and the Medical Committee of the Board of Management, of which Committee ARTHUR G. PHEAR, Esquire, C.B., M.D., F.R.C.P., is the Chairman, are satisfied that the size and ventilation of the rooms in question is amply sufficient for two patients, and that from the point of view of their treatment it is no advantage that they should occupy separate rooms.

(d) That as extra accommodation in the Hospital means increased benefit to the general public it is accordingly desired that, for the future, the practice should be continued of putting two patients in each of the rooms the Medical Superintendent of the Hospital considers adequate for the purpose.

(e) And that as the retention of the words "on the Separate Principle" in the title of the Hospital would in that case be misleading it is desirable that such words should be omitted.

2. That when the Charter was granted in 1885 the word "Consumption" was in general use as the name of the disease for the treatment of which the Hospital was established but that owing to more enlightened views as to the nature of the disease, and recent advances in the methods and results of treatment the word consumption is now an inaccurate description of the disease and liable to cause unjustifiable alarm to prospective patients and that for these reasons it is desirable to omit it from the title of the Hospital :

Now, KNOW YE that We, taking the premises into Our Royal consideration, of Our especial grace, certain knowledge and mere motion, have granted, constituted and appointed, and by these Presents, for Us, our Heirs and Successors, do grant constitute and appoint in manner following that is to say :—

1. That, notwithstanding anything in the Charter of the forty-

eighth year of the reign of Queen Victoria founding and constituting the Corporation by the name and style of "The President and Governors of the Royal National Hospital for Consumption and Diseases of the Chest on the Separate Principle" the said Corporation may henceforth be known by the name and style of "The President and Governors of the Royal National Hospital for Diseases of the Chest, Ventnor."

2. And We do hereby, for Us, Our Heirs and Successors, grant and declare that these Our Letters Patent, or the enrolment or exemplification thereof, shall be in all things valid and effectual in law according to the true intent and meaning of the same, and shall be construed and adjudged in the most favourable and beneficial sense for the best advantage of the said Hospital, as well in Our Courts as elsewhere, notwithstanding any recital, misrecital, uncertainty or imperfection in these Our Letters Patent.

IN WITNESS whereof WE have caused these Letters to be made Patent.

WITNESS Ourself at Westminster the twenty-eighth day of October in the eighth year of Our Reign.

BY WARRANT under The King s Sign Manual.



NAPIER.

THE SEVENTY-FOURTH ANNUAL GENERAL MEETING
 OF THE GOVERNORS OF THE
 ROYAL NATIONAL HOSPITAL FOR DISEASES OF THE CHEST, VENTNOR,
 was held at the
 London Office, 18, Buckingham Street, Strand, W.C.2,
 at 3.30 p.m. on Wednesday, 23rd October, 1946, when
Colonel E. H. LEAF, Vice-President
 was in the Chair.

The Secretary read the notice convening the Meeting which was published in "*The Times*," "*The Daily Telegraph*," and "*The Isle of Wight County Press*."

The minutes of the previous meeting dated the 31st October, 1945, which had been circulated, were confirmed.

In moving that the Report of the Board of Management and the Audited Statement of Accounts for the year ended 31st December, 1945, be received, adopted and circulated amongst the Governors, Subscribers and Friends of the Hospital, Colonel Leaf said :—

" Before formally proposing this I have to advise the meeting that the President, Lord Ebbisham, had intended being present this afternoon but has been unavoidably delayed at the House of Lords.

I should like to comment on the National Health Service Bill which is now before Parliament. Like all Voluntary Hospitals, we are much concerned, naturally, about the future, but the British Hospitals Association is doing its utmost both inside and outside Parliament to convince the Government that Hospitals ought to retain their individuality and be allowed to exercise a certain degree of control over their affairs—particularly in the matter of their Endowment Funds. Whatever arrangements are adopted finally we must keep in mind the fact that their object is for the benefit of the patients.

I now put the Proposition to the Meeting."

The Motion was seconded by MR. CUTHBERT BURGOYNE and carried unanimously.

It was proposed by MR. CUTHBERT BURGOYNE, seconded by MR. GERVAASE BAILEY and carried unanimously that MR. F. C. HANNA, F.C.A. be elected Honorary Treasurer until the next Annual General Meeting.

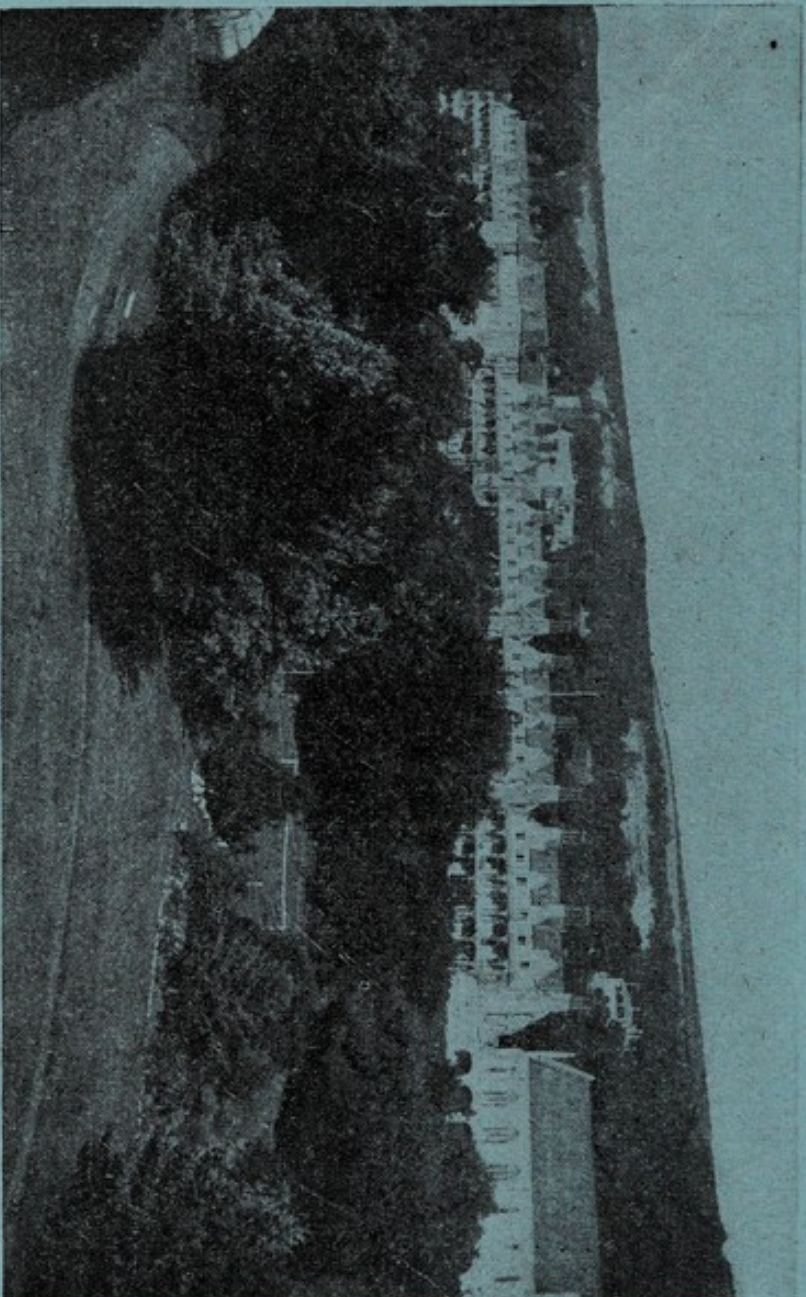
It was proposed by MR. JOHN BURGOYNE, seconded by DR. A. G. PHEAR and carried unanimously that the following members of the Board of Management, who retire by rotation, be re-called, viz :—DR. R. H. ARMSTRONG, DR. P. B. ATKINSON, MR. CUTHBERT BURGOYNE, DR. A. HOPE GOSSE, The Hon. L. W. JOYNSON-HICKS, M.P., MR. F. C. NUNN and MR. H. E. SYMES-THOMPSON.

It was proposed by MR. FRANK HARGROVE and seconded by MR. CUTHBERT BURGOYNE that SIR W. HARRY PEAT, K.B.E. of the Firm of MESSRS. PEAT, MARWICK, MITCHELL & Co., London, Fellow of the Institute of Chartered Accountants, be re-elected Honorary Auditor until the next Annual General Meeting. The proposer asked that with this Resolution an expression of very grateful thanks be accorded to SIR W. HARRY PEAT for his services to the Hospital. The proposition was then put to the meeting and carried unanimously.

It was proposed by MR. CUTHBERT BURGOYNE, seconded by MR. JOHN BURGOYNE and carried unanimously that a vote of thanks be accorded to the Honorary Medical and Surgical Staff for their services to the Hospital ; also to record an expression of sincere thanks to each member of the staff at Ventnor for his or her devotion to duty and to the welfare and happiness of the patients during the past year.

A hearty vote of thanks to COLONEL LEAF for presiding concluded the meeting.

THE ROYAL NATIONAL HOSPITAL FOR DISEASES OF THE CHEST, VENTNOR.



The Hospital accommodates 231 Patients.

Bed-rooms, Sitting-rooms, Balconies, and Verandahs face the South and overlook the Sea.