

Annual report of the Board of Management : 1944.

Contributors

Royal National Hospital for Consumption and Diseases of the Chest.

Publication/Creation

[London?] : [publisher not identified], 1944

Persistent URL

<https://wellcomecollection.org/works/u252y2y>

License and attribution

This work has been identified as being free of known restrictions under copyright law, including all related and neighbouring rights and is being made available under the Creative Commons, Public Domain Mark.

You can copy, modify, distribute and perform the work, even for commercial purposes, without asking permission.



Wellcome Collection
183 Euston Road
London NW1 2BE UK
T +44 (0)20 7611 8722
E library@wellcomecollection.org
<https://wellcomecollection.org>

REPORT 1945.

HEALTH
- 8 DEC 1945
CR. 67

LIBRARY

THE ROYAL
NATIONAL HOSPITAL
FOR
DISEASES OF THE CHEST,
VENTNOR,
ISLE OF WIGHT.

FOUNDED FOR THE RECEPTION OF PATIENTS OF BOTH SEXES
FROM ALL PARTS OF THE KINGDOM IRRESPECTIVE
OF RELIGIOUS DISTINCTIONS.

OFFICES :
18 BUCKINGHAM STREET, STRAND,
LONDON, W.C. 2.

Accounts for the Year ending December 31st, 1944.

FORM OF BEQUEST.

THE Benevolent are earnestly solicited to assist this Hospital by Will. The following FORM OF BEQUEST is respectfully recommended :—

*“ I bequeath to the President and Governors of THE ROYAL NATIONAL HOSPITAL FOR DISEASES OF THE CHEST, Ventnor, Undercliff, Isle of Wight, the sum of £**

free of duty, to be applied in and towards carrying on the charitable objects of the Institution ; and I direct that the receipt of the Treasurer for the time being shall be a sufficient discharge to my executors for the same.”

N.B.—Devises of Land and Bequests of Money charged on Land are now made valid by the Mortmain and Charitable Uses Act, 1891.

* The sum to be expressed in words at length.

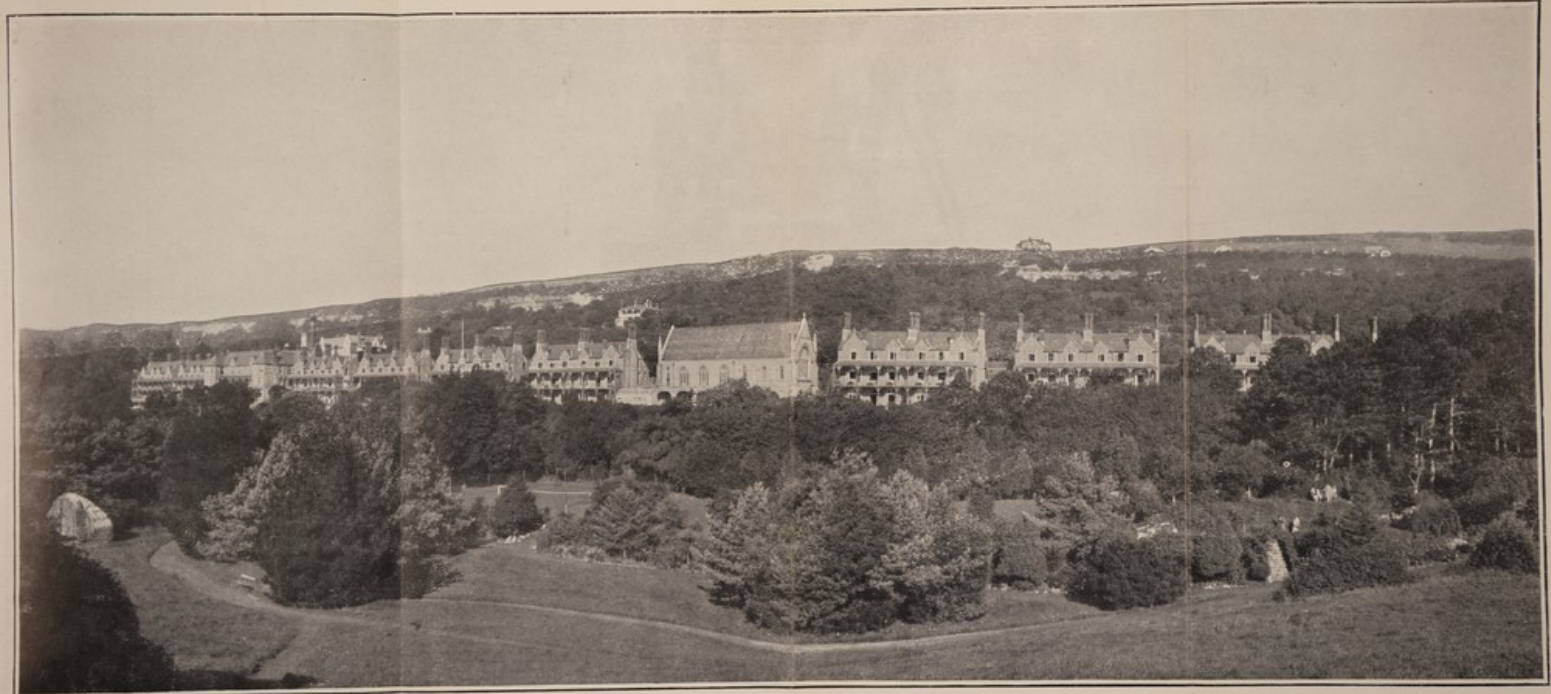


22501043947

(ELEVEN HOUSES, THE CHAPEL OF ST. LUKE AND GARDENS.)

THE ROYAL NATIONAL HOSPITAL FOR DISEASES OF THE CHEST.

Blocks I to IV, V to VIII and IX to XI have now been joined and form three main Blocks.



BLOCKS XI & X BLOCK IX BLOCK VIII BLOCK VII BLOCK VI BLOCK V CHAPEL BLOCK IV BLOCK III WOMEN'S WARDS BLOCK II BLOCK I

← MEN'S WARDS AND ADMINISTRATIVE OFFICES →



Aerial view showing Grounds, and Downs forming protection from North.



Another view reproduced by kind permission of Aerofilms Ltd.

SPECIAL APPEAL.

The Board appeal to all their supporters to consider if they can give the Hospital a Deed of Covenant for their annual subscription and thus substantially increase their very welcome support without any added cost to themselves.

This appeal is addressed especially to the large number of Companies who so regularly support the Hospital in the increasing work with which it is engaged in the treatment of Tuberculosis.

Subscriptions made to Charity by Companies, as far as the Board is aware, cannot be allowed as an expense, unless their employees derive a benefit from such subscription, thus reducing the Companies' liability for income tax. Payments made to Charity during the course of the year's trading of a Company would certainly appear to reduce the Company's profit, but this is misleading because the accounts, as prepared for purposes of tax liability, would have to add back such payments to the profit figure, thus making the Company liable for the same tax as if the Charity payments had never been made.

Therefore a Company stands to lose nothing by entering into a Covenant with this Hospital. The tax liability will be exactly the same whether or not a Covenant is given. On the other hand, by entering into a Covenant with this Hospital, very substantial benefit can be obtained by the Hospital represented by the tax which it can reclaim.

It is freely accepted that the Government's proposal for a National Health Service cannot be carried through without the active co-operation of the very large number of Voluntary Hospitals throughout the country. In order that this Hospital may maintain its voluntary status and play its part fully in the proposed Service, increased support from those who believe in the Voluntary Hospital Scheme is essential.

The Board of Management therefore earnestly hopes that this matter may be given very serious consideration by those to whom it is addressed.

Deed of Covenant forms and any further information may be obtained from the Acting Secretary, Royal National Hospital Ventnor, I. of W.

- E. H. LEAF,

Chairman of the Board of Management.

Digitized by the Internet Archive
in 2019 with funding from
Wellcome Library

Privileges

OF

Governors and Subscribers.

The following revised Rates of Subscriptions came into force on the 19th March, 1903, but Subscribers and Donors previous to that date will continue to receive Letters on the old scale :—

- £5 5 0** ANNUAL SUBSCRIPTION constitutes a Governor with ONE Letter of Recommendation ANNUALLY.
- £10 10 0** DONATION constitutes a Governor for ONE year with ONE Letter of Recommendation.
- £52 10 0** DONATION (either paid in one sum or within 3 years) constitutes a Life Governor with one Letter of Recommendation annually.
- £52 10 0** ANNUAL SUBSCRIPTION or
- £525** DONATION entitles the Governor to the privilege of a Presentation Bed, i.e., of having always one Patient in the Hospital.
- £1000** DONATION entitles the Donor to the Right of Presentation to one Bed (to be *named* if desired after the Donor, or "*In Memoriam*," in perpetuity), the Donor also having power to bequeath the Right of Presentation to any one person whom he or she may appoint.

Executors or Trustees having discretion to select the charitable Institution to be benefited are entitled to nominate one of their number to receive the privileges such person would have been entitled to if the actual donor of the contribution.

The Royal National Hospital

FOR

DISEASES OF THE CHEST,

SITUATE IN THE UNDERCLIFF, NEAR VENTNOR,

ISLE OF WIGHT.

Incorporated by Royal Charter in 1885.

*Founded by DR. ARTHUR HILL HASSALL in 1867 for the
reception of Patients of both sexes from all parts of the
Kingdom, irrespective of Religious Distinctions.*

SEVENTY-THIRD

REPORT OF THE BOARD OF MANAGEMENT

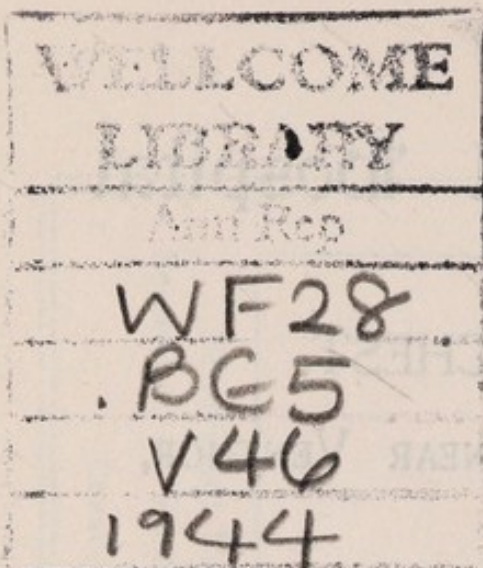
WITH

MEDICAL REPORT AND AUDITED ACCOUNTS

for the year ending 31st December, 1944.

OFFICES:

18 BUCKINGHAM STREET, STRAND, LONDON, W.C.2



CONTENTS.

| | PAGE |
|---|------|
| Form of Bequest, see inside of Wrapper. | |
| Special Appeal | |
| Privileges of Governors and Subscribers | 3 |
| List of the Executive | 4 |
| Members of the Visiting Committee | 5 |
| Honorary Medical Staff | 6 |
| Medical Report | 7 |
| Report of the Board of Management | 10 |
| Statistical Tables | 17 |
| Statements of Income and Expenditure, 1943 | 26 |
| Balance Sheet, 1944 | 32 |
| Statements of Frederick and Hamilton Trust Funds | 34 |
| Statistical Tables | 35 |
| Supplemental Royal Charter | 36 |
| Minutes of the General Meeting | 39 |

Patrons.

HIS MAJESTY THE KING.

HER MAJESTY THE QUEEN.

HER MAJESTY THE QUEEN MARY.

THE MARCHIONESS OF CARISBROOKE, G.B.E.

LADY LOUIS MOUNTBATTEN.

President.

THE RIGHT HON. LORD EBBISHAM, G.B.E.

Vice-Presidents.

The Most Hon. The Marquess of
Salisbury, K.G., G.C.V.O., C.B.

The Rt. Rev. W. L. Anderson, D.D.
(The Lord Bishop of Ports-
mouth).

The Right Hon. The Earl of Derby,
K.G.

Lt.-Col. E. H. Leaf.

The Right Hon. Grace, Viscountess
Brentford.

Major-General The Right Hon.
Lord Mottistone, C.B., C.M.G.
D.S.O.

The Lady Charlotte W.-Fitzwilliam.

F. C. Nunn, Esq.

Cuthbert Burgoyne, Esq.

The Board of Management.

President.

THE RT. HON. LORD EBBISHAM, G.B.E.

Chairman.

COLONEL EDWARD H. LEAF.

Hon. Treasurer.

F. C. HANNA, Esq.

ROBERT H. ARMSTRONG, Esq.,
M.B., C.M.

P. B. ATKINSON, Esq., M.R.C.S.,
L.R.C.P.

CUTHBERT BURGOYNE, Esq.

JOHN F. BURGOYNE, Esq.

A. TUDOR EDWARDS, Esq.,
M.D., F.R.C.S.

A. HOPE GOSSE, Esq., M.D.,
F.R.C.P.

FRANK H. HARGROVE, Esq.

HENRY HARRIS, Esq.

THE HON. LANCELOT WILLIAM
JOYNSON-HICKS.

J. L. LIVINGSTONE, M.D.,
F.R.C.P.

GEOFFREY MARSHALL, Esq.,
O.B.E., M.D., F.R.C.P.

F. C. NUNN, Esq.

ARTHUR G. PHEAR, Esq., C.B.,
M.D., F.R.C.P.

H. E. SYMES-THOMPSON, Esq.,
M.D., M.R.C.P.

C. PRICE THOMAS, Esq.,
F.R.C.S.

W. J. THOMPSON, Esq.

STEPHEN H. TWINING, Esq.

H. L. TWIGGE, Esq. (1941).

THE HON. SIR FREDERICK W.
YOUNG.

GERVASE BAILEY, Esq.,
F.R.I.B.A.

Honorary Solicitors—MESSRS. HARGROVE & CO.

Honorary Auditor.

SIR W. HARRY PEAT, K.B.E., of the firm of Messrs. PEAT, MARWICK
MITCHELL & Co.

Fellow of the Institute of Chartered Accountants,
11, Ironmonger Lane, E.C. 2.

Secretary.

JOSEPH FISHBURN, Esq.

Bankers.

WESTMINSTER BANK, LTD.,

St. James's Square, S.W.1.

MIDLAND BANK, LTD., Ventnor, Isle of Wight.

The Visiting Committee at Ventnor*

Chairman.

HENRY HARRIS, Esq.

SIR GODFREY BARING, BART.

C. P. NETHERTON, Esq.

W. H. HARVEY, Esq.

H. L. TWIGGE, Esq.

Miss C. HUE.

J. WHILLIER, Esq.

* The Chairman, Deputy Chairman and Treasurer are members,
ex officio, of all Committees.

At the Hospital, Ventnor, I. of W.

Medical Superintendent.

DR. A. K. MILLER, M.R.C.S., M.R.C.P.

Assistant Medical Superintendent.

DR. L. R. J. RINKEL, B.A., M.R.C.S., L.R.C.P.

and an Assistant Resident Medical Officer.

Matron.

Miss A. TAYLOR.

Chaplain.

THE REV. L. A. D. WOODLAND.

Honorary Medical Staff.

Consulting Radiologist.

L. G. BLAIR, M.R.C.S., L.R.C.P., D.M.R.E.

Physicians in London.

ARTHUR G. PHEAR, C.B., M.D., F.R.C.P.

H. E. SYMES-THOMPSON, M.D., M.R.C.P.

A. HOPE GOSSE, M.D., F.R.C.P.

GEOFFREY MARSHALL, O.B.E., M.D., F.R.C.P.

J. L. LIVINGSTONE, M.D., F.R.C.P.

Surgeons in London.

A. TUDOR EDWARDS, M.D., F.R.C.S.,

C. P. THOMAS, F.R.C.S.

Surgeon in the Isle of Wight.

F. WILSON HARLOW, M.B., B.S., F.R.C.S.

Laryngologist in London.

FRANK C. ORMEROD, M.D., F.R.C.S.

Laryngologist in the Isle of Wight.

NORMAN W. MACKEITH, M.B., B.S. (LOND.), B.Sc., D.L.O.

Consulting Anaesthetist.

I. W. MAGILL, M.B., B.Ch., B.A.O.

Anaesthetist.

R. MACHRAY, M.B., B.S., M.R.C.S.

MEDICAL REPORT, 1944.

During the year, 453 patients were admitted to the Hospital: 352 patients completed their course of treatment, and this report is based on these 352 patients.

| | | | | | | |
|--|-----|-----|-----|-----|------|-------|
| Total number discharged | ... | ... | ... | ... | 430 | |
| Patients died | ... | ... | ... | ... | 18 | |
| Patients dismissed or leaving against advice | ... | ... | ... | ... | 10 | } 430 |
| Patients transferred to other Hospitals :— | | | | | | |
| For thoracoplasty | ... | ... | ... | 19 | } 33 | |
| For advanced disease | ... | ... | ... | 9 | | |
| For colonisation | ... | ... | ... | 1 | | |
| For surgical intervention | ... | ... | ... | 1 | | |
| At own request | ... | ... | ... | 1 | | |
| At request of Ministry of Pensions | ... | ... | ... | 1 | | |
| Non-tuberculous empyema | ... | ... | ... | 1 | | |
| Patients admitted for minor thoracic surgery only | ... | ... | ... | 27 | | |
| Patients discharged as not suffering from pulmonary tuberculosis | ... | ... | ... | 5 | | |
| Patients in Hospital less than 10 days | ... | ... | ... | 3 | | |
| Patients who completed course of treatment | ... | ... | ... | 352 | | |

There has been no alteration in the methods of treatment used: the importance of adequate rest is fully realised, even in those cases treated by collapse therapy.

CLASSIFICATION OF ALL CASES ON DISCHARGE.

| | | | | | | |
|------------|-----|-----|-----|-------------------------|-----|-----|
| Quiescent | ... | ... | 250 | Fit for ordinary work | ... | 258 |
| Improved | ... | ... | 80 | Fit for restricted work | ... | 45 |
| Stationary | ... | ... | 15 | Unfit | ... | 49 |
| Worse | ... | ... | 7 | | | |
| | | | 352 | | | 352 |

| | | | |
|---------------|-----|-----|-----|
| Gained weight | ... | ... | 248 |
| Lost weight | ... | ... | 93 |
| Unchanged | ... | ... | 11 |
| | | | 352 |

Sputum T.B. + on admission 201
Sputum T.B. + on discharge 57

| T.B.+ on admission. | | T.B.+ on discharge. | | % |
|------------------------|-----|------------------------|----|------|
| "B1" | 31 | | 0 | 0 |
| "B2" | 127 | | 27 | 21 |
| "B3" | 43 | | 30 | 69.6 |

RESULTS OF TREATMENT CLASSIFIED ACCORDING TO STAGE ON ADMISSION.

| Group. | Cases. | Result. | | | Discharged as Fit for | | |
|--------|--------|------------|-----|-----|-----------------------|-------------|----------|
| | | | | | Ordinary Work. | Light Work. | No Work. |
| " A " | 143 | Improved | ... | 141 | — | — | — |
| | | Stationary | ... | 2 | 136 | 5 | 2 |
| | | Worse | ... | — | — | — | — |
| | | Died | ... | — | — | — | — |
| " B1 " | 43 | Improved | ... | 42 | — | — | — |
| | | Stationary | ... | 1 | 39 | 2 | 2 |
| | | Worse | ... | — | — | — | — |
| | | Died | ... | — | — | — | — |
| "B2" | 148 | Improved | ... | 131 | 81 | 31 | 30 |
| | | Stationary | ... | 10 | — | — | — |
| | | Worse | ... | 1 | — | — | — |
| | | Died | ... | 6 | — | — | — |
| "B3" | 36 | Improved | ... | 14 | 2 | 7 | 15 |
| | | Stationary | ... | 4 | — | — | — |
| | | Worse | ... | 6 | — | — | — |
| | | Died | ... | 12 | — | — | — |

TREATMENT.

141 patients were treated by rest and graduated exercise without any other treatment.

CLASSIFICATION OF CONDITION ON ADMISSION AND RESULT OF TREATMENT.

| Group. | Cases. | Quiescent. | Improved. | Stationary. | Worse. | Died. |
|--------|--------|------------|-----------|-------------|--------|-------|
| "A" | 91 | 75 | 14 | 2 | — | — |
| "B1" | 14 | 14 | — | — | — | — |
| "B2" | 28 | 18 | 9 | 1 | — | — |
| "B3" | 8 | — | 3 | 1 | — | 4 |
| | 141 | | | | | |

ARTIFICIAL PNEUMOTHORAX.

This was attempted in 208 cases. Those in whom no free pleural space could be found, and those whose pneumothorax was abandoned shortly after induction have been grouped together as unsuccessful.

| | |
|------------------------------------|-----|
| Unsuccessful | 55 |
| Partial collapse | 27 |
| Complete or selective collapse ... | 126 |
| T.B.+ before induction | 100 |
| T.B.+ on discharge | 15 |

In the 15 T.B.+ on discharge the sputum in 8 cases appeared to come from the contralateral side.

24 of the above cases were admitted with a pneumothorax already established. In 10 cases operation was undertaken to improve the collapse.

Bilateral artificial pneumothorax was undertaken in 27 cases, and these were classified on discharge.

| | |
|-----------------------------------|----|
| Both complete or selective | 13 |
| One selective, one partial | 9 |
| Both partial | 5 |
| Sputum T.B.+ before induction ... | 27 |
| Sputum T.B.+ on discharge | 3 |
| Died | 2 |

All A P. cases were classified on discharge :—

| Cases. | Result. | Work. | Light Work. | No Work. |
|--------|------------------|-------|-------------|----------|
| 153 | Improved ... 141 | 98 | 30 | 19 |
| | Stationary ... 5 | — | — | — |
| | Worse ... 1 | — | — | — |
| | Died ... 6 | — | — | — |

The following complications occurred :—

| | |
|---------------------------------|---|
| Persistent fluid | 3 |
| Tuberculous empyema | 6 |
| Spontaneous pneumothorax | 4 |

DIVISION OF ADHESIONS.

159 operations were carried out; thoracoscopy was performed 33 times.

The following complications occurred :—

| | |
|------------------------------|---|
| Tuberculous empyema | 7 |
| Obliterative pleurisy | 1 |
| Persistent fluid | 1 |
| Haemothorax | 5 |

DIAPHRAGMATIC PARALYSIS.

This was undertaken in 50 cases, in 29 of which it was additional to a pneumothorax. (The results of these 29 cases are included under the heading of A.P. cases.)

In the remaining 21 cases

16 were T.B.+ on admission.

7 were T.B.+ on discharge.

CLASSIFICATION ON DISCHARGE.

| Cases. | Result. | Work. | Light Work. | No Work. |
|--------|------------------|-------|-------------|----------|
| 21 | Improved ... 15 | 12 | 4 | 4 |
| | Stationary ... 4 | — | — | — |
| | Worse ... 1 | — | — | — |
| | Died ... 1 | — | — | — |

THORACOPLASTY.

No thoracoplastic operations were carried out at the hospital owing to the War. It is hoped to start operating again shortly.

19 cases were transferred to other hospitals for thoracoplasty and 10 were discharged, having been re-admitted after operation.

| Cases. | Result. | Work. | Light Work. | |
|--------|------------------|-------|-------------|-------------------------------|
| 10 | Improved ... 9 | 8 | 1 | T.B.+ before operation ... 10 |
| | Stationary ... 0 | | | T.B.+ after operation ... 1 |
| | Worse ... 1 | | | |

PNEUMOPERITONEUM.

This was used in a number of cases during the year; one only was discharged. This case had a patent cavity on admission despite a pneumothorax, with division of adhesions and a phrenic crush done elsewhere. The pneumoperitoneum allowed closure of the cavity, the sputum becoming negative. The results of this procedure and the indications for it are being investigated.

GOLD.

Little use is made of this type of therapy and it was used in only 3 cases, one of whom had had a course started before admission. 2 showed improvement to which the gold may have contributed. 2 were T.B.+ on admission and were so on discharge.

COMPLICATIONS OR OTHER DISEASES OCCURRING IN ALL CASES OF PULMONARY TUBERCULOSIS, NOT ALREADY REPORTED.

| TUBERCULOUS. | | | | NON-TUBERCULOUS. | | | |
|----------------------------|-----|-----|----|----------------------------|-----|-----|---|
| Enteritis ... | ... | ... | 3 | Urethral fistula ... | ... | ... | 1 |
| Peritonitis ... | ... | ... | 1 | Auricular fibrillation ... | ... | ... | 1 |
| Amyloid disease ... | ... | ... | 1 | Petit mal ... | ... | ... | 1 |
| Tuberculous dactylitis ... | ... | ... | 1 | Measles ... | ... | ... | 1 |
| Cervical adenitis ... | ... | ... | 1 | Acute appendicitis ... | ... | ... | 1 |
| Meningitis ... | ... | ... | 2 | Diabetes mellitus ... | ... | ... | 6 |
| Ischio-rectal abscess ... | ... | ... | 2 | Asthma ... | ... | ... | 1 |
| Laryngitis ... | ... | ... | 12 | | | | |
| Acute miliary tuberculosis | | | 1 | | | | |

PATIENTS FOUND TO BE SUFFERING FROM OTHER DISEASES.

| | | | | |
|--|-----|-----|-----|---|
| Empyema ... | ... | ... | ... | 1 |
| Congenital cystic disease of kidneys ... | ... | ... | ... | 1 |
| Atypical pneumonia ... | ... | ... | ... | 1 |
| Residual lung abscess ... | ... | ... | ... | 1 |
| Post-pneumonic fibrosis ... | ... | ... | ... | 1 |

THE SEVENTY-THIRD ANNUAL REPORT OF THE BOARD OF MANAGEMENT

Presented to the Annual Meeting of Governors on

WEDNESDAY, 31st October, 1945.

The Right Honourable LORD EBBISHAM, G.B.E.
in the Chair.

It gives the Board great satisfaction to record the continuance of the gracious patronage of Their Majesties the King and Queen and Her Majesty Queen Mary.

In spite of an appreciable reduction in the number of subscribers, due to Wartime conditions and increased taxation, the total subscriptions received in 1944 compares favourably with previous years of the War. This is due almost entirely to an increase in the number of Deeds of Covenant signed by subscribers, whereby the Hospital is able to recover from the Income Tax Authorities the tax paid by such subscribers on their annual subscriptions. In this connection the Board is issuing once again the Special Appeal to Companies which regularly support the Hospital. There has been some response to the first appeal but it is felt that many Companies, hitherto reluctant, may now see their way to sign a Deed of Covenant.

While thanking all supporters most warmly the Board wish particularly to acknowledge the following gifts :—

| | | | | £ | s. | d. |
|---|-----|-----|-----|-----|----|----|
| Trustees of Prison Charities | ... | ... | ... | 500 | 0 | 0 |
| Earl of Northampton's Charity | ... | ... | ... | 300 | 0 | 0 |
| The late J. W. S. Burmester, Esq. | ... | ... | ... | 250 | 0 | 0 |
| Prudential Assurance Co., Ltd. | ... | ... | ... | 210 | 0 | 0 |
| Westminster Bank Ltd. | ... | ... | ... | 210 | 0 | 0 |
| Harrod's Benevolent Fund | ... | ... | ... | 105 | 0 | 0 |
| Liverpool Victoria Friendly Society | ... | ... | ... | 105 | 0 | 0 |
| Benevolent & Orphan Fund of the National Union of Teachers | ... | ... | ... | 100 | 16 | 0 |
| Bernhard Baron Charitable Trust | ... | ... | ... | 100 | 0 | 0 |
| "Alexandra Day" Committee | ... | ... | ... | 90 | 0 | 0 |
| "B. E." | ... | ... | ... | 52 | 10 | 0 |
| Southern Railway Co., Ltd. | ... | ... | ... | 52 | 10 | 0 |
| Union Castle Mail Steamship Co., Ltd. | ... | ... | ... | 52 | 7 | 0 |
| Rubery Owen & Co., Ltd. | ... | ... | ... | 50 | 0 | 0 |
| Worshipful Company of Grocers | ... | ... | ... | 50 | 0 | 0 |
| Delmar Charitable Trust | ... | ... | ... | 50 | 0 | 0 |
| London & North Eastern Railway Co., Ltd. | ... | ... | ... | 47 | 5 | 0 |
| Worshipful Company of Haberdashers | ... | ... | ... | 35 | 0 | 0 |
| Pearl Assurance Co., Ltd. | ... | ... | ... | 26 | 5 | 0 |
| Civil Service Sanatorium Society | ... | ... | ... | 26 | 5 | 0 |
| Lloyds Health Insurance Approved Society | ... | ... | ... | 21 | 0 | 0 |
| Lever Brothers & Unilever Limited | ... | ... | ... | 21 | 0 | 0 |
| Philip Lyle, Esq. | ... | ... | ... | 21 | 0 | 0 |
| Thomas Marshall and Son, Ltd. | ... | ... | ... | 21 | 0 | 0 |
| Stewart & Lloyds, Ltd. | ... | ... | ... | 21 | 0 | 0 |
| Berman's Charitable Trust | ... | ... | ... | 21 | 0 | 0 |
| Worshipful Company of Goldsmiths | ... | ... | ... | 20 | 0 | 0 |
| Worshipful Company of Drapers | ... | ... | ... | 20 | 0 | 0 |
| Miss Rosie Newman | ... | ... | ... | 20 | 0 | 0 |

Notwithstanding the exercise of the utmost economy the cost per patient per week has risen in the past three years from £3 5s. 9d. in 1942 to £3 9s 6d. in 1943 and £3 12s. 1d. in 1944. In January a further increase in wages was sanctioned to the Hospital's skilled workmen, porters and garden-hands. It has now been deemed advisable to accept payment of the Hetherington Scale of Wages for Cooks and Domestic. Heavy expenses face the Board for repairs and renewals to Buildings, Furniture, Bedding and Linen, and Hardware, Crockery, etc. In these circumstances the Board resolved that with effect from the 1st April last maintenance fees payable by Public Authorities should be increased from 59/- to 63/- per week.

As from the 1st December last the Hospital, under the instructions of the Minister of Health, was withdrawn from the Government Emergency Hospital Scheme—the Minister expressing appreciation of the co-operation and assistance afforded by the Hospital.

Accounts for 1944.

Expenditure has exceeded Income by £268 18s. 9d. but this has been adjusted by appropriating a like sum from the Legacies Account.

Total expenditure has increased by £1,700. This is due to the cost of replacing the Fish Fryer and the Electric Batteries for the lighting system, increased cost of Coal and increases in Salaries and Wages, particularly Nurses and Porters. There is also an increase in the cost of Provisions due to the extra Bacon, Cheese and Jam ration sanctioned by the Ministry of Food.

No settlement has been reached with the Ministry of Health as to the amount receivable under the Government Emergency Hospital Scheme; interim payments received amounting to £26,278 5s. 6d. (Net) have been retained in Suspense Account.

Vice-Presidents.

Mr Cuthbert Burgoyne and the Right Reverend W. L. Anderson, the Lord Bishop of Portsmouth, have been appointed Vice-Presidents, the former in November, 1944, and the latter in April last.

Honorary Architect.

Mr Gervase Bailey, F.R.I.B.A., has been appointed Honorary Architect to the Hospital.

Improvements—Blocks X & X1.

Plans and Specifications have been prepared for a new Electric Passenger Lift between Blocks X and XI to serve Wards W, X and Y, which will include additional Lavatories and Store Room accommodation.

Executive.

The Board regrets to report the death in November of R. L. Rawlinson, Esq., Ch.B., who joined the Board of Management in 1934.

Mr. J. Whillier, who joined the Board in 1942, resigned in July, 1944.

The Board has welcomed with much pleasure Mr. F. C. Hanna, who was elected a Member in March, 1944. He has since taken over the duties of Honorary Treasurer, to which office he was elected in November. The Board desire to place on record their sincere thanks to Mr. Cuthbert Burgoyne for acting as Deputy Treasurer from November, 1944, to April, 1945.

Mr. Gervase Bailey, F.R.I.B.A., Honorary Architect, has been elected a Member of the Board of Management.

The following Members of the Board who retire by ballot, being eligible, offer themselves for re-election, namely :—John Burgoyne, Esq., A. Tudor Edwards, Esq., Dr. A. G. Phear, C. Price Thomas, Esq., W. J. Thompson, Esq., S. H. Twining, Esq., and H. L. Twigge, Esq.

Visiting Committee.

Mr. J. Whillier resigned in July, 1944, but was re-elected a Member in December.

Mr. W. H. Harvey was elected a Member of the Committee in December.

Honorary Medical Staff.

Since its last Report the Board has learnt with much regret of the death of the following Members of the Honorary Medical Staff :—

The Rt. Hon. Lord Dawson of Penn, M.D., B.Sc., F.R.C.P.,
Honorary Consulting Physician since 1921.

Sir Humphrey D. Rolleston, Bt., K.C.B., M.D., F.R.C.P.,
Honorary Consulting Physician since 1922.

R. L. Rawlinson, Esq., Ch.B.,
Honorary Consulting Radiologist since 1934.

In December, Dr. L. G. Blair, M.R.C.S., L.R.C.P.,
D.M.R.E., was appointed acting Honorary Consulting Radiologist.

Staff.

It is with very sincere regret that the Board have learnt of the death on the 2nd June last of Dr. G. Oliver Hempson, M.R.C.S., L.R.C.P., D.P.H. He was Medical Superintendent of the Hospital from June, 1927, to June, 1942. In expressing to Mrs. Hempson deep sympathy in her loss the Board has placed on record its appreciation of the loyal and devoted service Dr. Hempson gave to the Hospital. It has been resolved to set apart one Bed in the Hospital in perpetuity to be named "The Dr. G. Oliver Hempson Bed" with the Right of Presentation to that Bed by Mrs. Hempson during her life, subject to the Rules of the Hospital.

Miss E. White, Matron, left the service of the Hospital in November, 1944. She was succeeded in January by Miss A. Taylor.

Now that the European war has concluded the Board desires to express its heartfelt gratitude to all members of the staff for having shown such unremitting loyalty and maintained their high standard of work under most difficult and trying conditions. The result of this is that the Hospital has successfully weathered the storm of six years of war, and stands higher in the medical and public esteem than at any time in its 76 years of national service.

AVERAGE OCCUPIED AND UNOCCUPIED BEDS.

| | 1938 | 1939 | 1940 | 1941 | 1942 | 1943 | 1944 |
|--------------------------|---------|-------|-------|-------|-------|--------|-------|
| Unoccupied, T.B. | 4 | 43.4 | 48.5 | 36.3 | 13 | 6.75 | 6 |
| " EMS | — | 94.3 | 119.6 | 127.1 | 129 | 127.25 | 127 |
| Occupied, TB & EMS | 164 | 170.3 | 188.9 | 196.6 | 216 | 227 | 228 |
| Total Beds... | 168 | 308 | 357 | 360 | 358 | 361 | 361 |
| | £ | £ | £ | £ | £ | £ | £ |
| Subscriptions | 3654 | 3253 | 2731 | 2042 | 2813 | 3794 | 3105 |
| Donations | 2459 | 1390 | 1286 | 1280 | 1395 | 1429 | 1541 |
| Other V. Gifts | 463 | 186 | 60 | — | 54 | 86 | 92 |
| Hospital S. Fund | 100 | 110 | 110 | — | — | — | 5 |
| Private Patients | 9252 | 7669 | 4885 | 1663 | 2795 | 2490 | 2026 |
| Public Authorities | 8448 | 15493 | 19843 | 25269 | 28706 | 30195 | 31190 |
| Other Sources | 332 | 698 | 731 | 514 | 190 | 850 | 734 |
| Other Receipts | 271 | 202 | 196 | 202 | 227 | 73 | 84 |
| Invested Property | 3121 | 3004 | 3129 | 3178 | 3286 | 3301 | 3358 |
| State Grant—Nursing ... | — | — | — | — | — | 300 | 249 |
| | £ 28100 | 32005 | 32971 | 34148 | 39466 | 42518 | 42384 |

ORDINARY INCOME.

EXPENDITURE.

NOTE :—No settlement has been reached with the Ministry of Health as to the amount receivable under the Government Emergency Hospital Scheme ; interim contributions from the Ministry totalling £26,278 5s. 6d. have not been included.

| | 1938 | 1939 | 1940 | 1941 | 1942 | 1943 | 1944 |
|--------------------------------|-------------|------------|------------|------------|------------|-------------|------|
| | | | | | | | |
| AVERAGE TOTAL COST PER PATIENT | | | | | | | |
| £3 13s. 4d. | £3 16s. 0d. | £4 4s. 9d. | £4 4s. 5d. | £3 5s. 9d. | £3 9s. 6d. | £3 12s. 1d. | |

| Daily Average Occupied Beds | | 164 | 170·3 | 188·9 | 196·6 | 216 | 227 | 228 |
|---------------------------------------|----------------------------|---------------|---------------|------------|---------------|---------------|---------------|----------------|
| Year | ... | 1938 | 1939 | 1940 | 1941 | 1942 | 1943 | 1944 |
| 1. Meat | COST PER PATIENT PER WEEK. | | | | | | | |
| 2. Fish | | | | | | | | |
| 3. Poultry | | | | | | | | |
| 4. Rabbits | | | | | | | | |
| 5. Butter | | | | | | | | |
| 6. Cheese | | | | | | | | |
| 7. Bacon and Lard | | | | | | | | |
| 8. Sausages | | | | | | | | |
| 9. Eggs | | | | | | | | |
| 10. Milk | | | | £1 2s. 0d. | | | | |
| 11. Bread and Flour | | | | | | | | |
| 12. Oatmeal | | | | | | | | |
| 13. Tea | | | | | | | | |
| 14. Coffee | | | | | | | | |
| 15. Sugar | | | | | | | | |
| 16. Jams | | | | | | | | |
| 17. Rice, Sago | | | s. d. 18 8 | | s. d. 18 9 | | | |
| 18. Biscuits and Cake | | | | | | | | |
| 19. Groceries, Sundries | | | | | | | | |
| 20. Vegetables & Fruit | | | | | | | | |
| 21. Malt Liquors | | s. d. 17 5 | | | | s. d. 17 5 | s. d. 17 5 | s. d. 17 11 |
| 22. Aerated Waters | | | | | | | | |

| Daily Average Occupied Beds | | 164 | 170·3 | 188·9 | 196·6 | 216 | 227 | 228 |
|---------------------------------------|-----|--------------|--------------|--------------|--------------|--------------|--------------|--------------|
| Year | ... | 1938 | 1939 | 1940 | 1941 | 1942 | 1943 | 1944 |
| 1. Drugs, etc. | | | | | | | | |
| 2. Dressings, etc. | | | | | | | | |
| 3. Instruments and Appliances | | | | | | | | |
| 4. Wines and Spirits | | | | | | | | |
| 5. Dispenser's Salary | | | | | | | | |
| 6. Sundries | | | | | | | | |
| Med. Library | | | | | | | | |
| COST PER PATIENT PER WEEK. | | | | | | | | |
| | | s. d. 2 9 | s. d. 2 9 | s. d. 3 0 | s. d. 5 0 | s. d. 2 1 | s. d. 2 9 | s. d. 2 5 |

| Daily Average Occupied Beds | | 164 | 170·3 | 188·9 | 196·6 | 216 | 227 | 228 |
|---------------------------------------|--|-----------------------------------|-------------------|------------------|-------------------|------------------|------------------|------------------|
| Year | | 1938 | 1939 | 1940 | 1941 | 1942 | 1943 | 1944 |
| COST PER PATIENT PER WEEK. | | SALARIES AND WAGES (MAINTENANCE). | | | | | | |
| 1. Medical | | | | | £ s. d. 1 9 11 | | | |
| 2. Nursing | | | | | | | | |
| 3. Other Officers | | | | | | | | |
| Mechanics | | | | | | | | |
| Porters | | | | | | | | |
| Domestics | | | | | | | | |
| 4. Pensions | | | | | | | | |
| | | £ s. d. 1 5 1 | £ s. d. 1 5 10 | £ s. d. 1 8 5 | | £ s. d. 1 4 5 | £ s. d. 1 5 7 | £ s. d. 1 6 4 |
| | | 1938 | 1939 | 1940 | 1941 | 1942 | 1943 | 1944 |
| | | 104 | 130·3 | 123·0 | 194·8 | 519 | 531 | 554 |

| Daily Average Occupied Beds | | 164 | 170·3 | 188·9 | 196·6 | 216 | 227 | 228 |
|---------------------------------------|--|--------------|--------------|--------------|-----------------|--------------|--------------|--------------|
| Year | | 1938 | 1939 | 1940 | 1941 | 1942 | 1943 | 1944 |
| Repairs and Renewals | | | | | | | | |
| Annual Cleaning and Painting | | | | | | | | |
| COST PER PATIENT PER WEEK. | | | | | | | | |
| | | s. d. 6 8 | s. d. 4 7 | s. d. 5 8 | s. d. 7 9 | s. d. 4 1 | s. d. 4 3 | s. d. 4 6 |
| | | | | | ESTABLISHMENT . | | | |

| Daily Average Occupied Beds | | 164 | 170-3 | 188-9 | 196-6 | 216 | 227 | 228 |
|--|--|--------------|--------------|--------------|--------------|--------------|--------------|--------------|
| Year | | 1938 | 1939 | 1940 | 1941 | 1942 | 1943 | 1944 |
| 1. Interest 2. Appeals 3. Rent 4. Rates and Taxes | | | | | FINANCE. | | | |
| | | s. d. 3 1 | s. d. 3 1 | s. d. 3 6 | s. d. 2 9 | s. d. 2 6 | s. d. 2 4 | s. d. 2 4 |
| | | | | | | | | |
| | | | | | | | | |
| COST PER PATIENT PER WEEK. | | | | | | | | |

INCOME AND EXPENDITURE ACCOUNT

£ s.

| | | | | |
|-----------------|-----|-----|-----|-----|
| Carried forward | ... | ... | ... | ... |
|-----------------|-----|-----|-----|-----|

FOR THE YEAR ENDING 31ST DECEMBER, 1944.

Cr.

EXPENDITURE.

| | £ | s. | d. | £ | s. | d. | £ | s. | d. |
|---|-------|----|----|-------|----|----|---------|----|----|
| ORDINARY. | | | | | | | | | |
| I. PROVISIONS :— | | | | | | | | | |
| 1. Meat | | | | 1,479 | 0 | 0 | | | |
| 2. Fish | | | | 811 | 15 | 7 | | | |
| 3. Poultry | | | | 132 | 4 | 3 | | | |
| 4. Rabbits | | | | 3 | 16 | 0 | | | |
| 5. Butter and Margarine | | | | 279 | 4 | 7 | | | |
| 6. Cheese... .. | | | | 117 | 0 | 0 | | | |
| 7. Bacon and Lard | | | | 713 | 10 | 3 | | | |
| 8. Sausages | | | | 511 | 11 | 11 | | | |
| 9. Eggs | | | | 331 | 3 | 7 | | | |
| 10. Milk | | | | 2,811 | 3 | 6 | | | |
| 11. Bread and Flour | | | | 477 | 19 | 7 | | | |
| 12. Oatmeal | | | | 57 | 11 | 9 | | | |
| 13. Tea | | | | 246 | 4 | 9 | | | |
| 14. Coffee and Cocoa | | | | 67 | 1 | 0 | | | |
| 15. Sugars... .. | | | | 131 | 9 | 0 | | | |
| 16. Jams, etc. | | | | 243 | 14 | 2 | | | |
| 17. Rice, Sago, etc. | | | | 63 | 0 | 7 | | | |
| 18. Biscuits, Cake, etc. | | | | 79 | 2 | 6 | | | |
| 19. Groceries (Sundries) | | | | 607 | 0 | 11 | | | |
| 20. Vegetables and Fruit | | | | 1,278 | 18 | 2 | | | |
| 21. Malt Liquors | | | | 150 | 0 | 6 | | | |
| 22. Aerated Waters and Ice | | | | 38 | 19 | 10 | | | |
| | | | | | | | 10,631 | 12 | 5 |
| II. SURGERY AND DISPENSARY :— | | | | | | | | | |
| 1. Drugs, Chemicals, Disinfectants, etc. | | | | 499 | 10 | 11 | | | |
| 2. Dressings, Bandages, etc. | | | | 43 | 9 | 7 | | | |
| 3. Instruments and Appliances | | | | 608 | 17 | 2 | | | |
| 4. Wines and Spirits | | | | 5 | 14 | 3 | | | |
| 5. Salaries—Dispensing Staff | | | | 201 | 13 | 6 | | | |
| 6. Sundries | 64 | 4 | 10 | | | | | | |
| Medical Library | 16 | 14 | 8 | | | | | | |
| | | | | 80 | 19 | 6 | | | |
| | | | | | | | 1,440 | 4 | 11 |
| III. DOMESTIC :— | | | | | | | | | |
| 1. Renewals and Repairs to Furniture, Bedding, Crockery, etc. | | | | | | | | | |
| Furniture | 630 | 12 | 7 | | | | | | |
| Bedding and Linen | 547 | 4 | 5 | | | | | | |
| Hardware, Crockery, etc. | 156 | 18 | 11 | | | | | | |
| | | | | 1,334 | 15 | 11 | | | |
| 2. Laundry | | | | 1,815 | 4 | 8 | | | |
| 3. Cleaning and Chandlery | | | | 143 | 15 | 1 | | | |
| 4. Water | | | | 165 | 3 | 0 | | | |
| 5. Fuel and Lighting :— | | | | | | | | | |
| Steam Coal | 2,533 | 18 | 10 | | | | | | |
| House Coal | 422 | 3 | 11 | | | | | | |
| Gas | 340 | 8 | 0 | | | | | | |
| Electricity | 275 | 15 | 3 | | | | | | |
| Oil, Wood, etc. | 5 | 19 | 7 | | | | | | |
| | | | | 3,578 | 5 | 7 | | | |
| 6. Uniforms | | | | 101 | 9 | 5 | | | |
| 7. Sundries | 154 | 7 | 0 | | | | | | |
| Entertainments | 83 | 12 | 11 | | | | | | |
| | | | | 237 | 19 | 11 | | | |
| | | | | | | | 7,376 | 13 | 7 |
| Carried forward | | | | | | | £19,448 | 10 | 11 |

Dr.

INCOME AND EXPENDITURE ACCOUNT

| | £ | s. | d. |
|--|---------|----|----|
| Brought forward ... | 42,383 | 9 | |
| EXTRAORDINARY. | | | |
| Hospital Shop ... | 84 | 13 | 7 |
| EXTRAORDINARY INCOME ... | 84 | 13 | |
| TOTAL INCOME ... | £42,468 | 3 | |
| TRANSFER from Legacies Account (Subject to any amount receivable under Government Emergency Hospital Scheme) ... | 268 | 18 | |
| | £42,737 | 2 | |
| RECEIPTS. | | | |
| Received during the Year ... | 2,160 | 17 | |

FOR THE YEAR ENDING 31ST DECEMBER, 1944.

Cr.

| | £ | s. | d. | £ | s. | d. | £ | s. | d. |
|---|-------|----|----|-------|----|----|--------|----|----|
| Brought forward | | | | | | | 19,448 | 10 | 11 |
| IV. SALARIES AND WAGES (Maintenance):— | | | | | | | | | |
| 1. Medical | | | | 2,108 | 4 | 7 | | | |
| 2. Nursing | | | | 4,322 | 18 | 5 | | | |
| 3. Other Officers and Employees:— | | | | | | | | | |
| Other Officers (Chaplain, Steward, | | | | | | | | | |
| Clerks) | 1,943 | 10 | 6 | | | | | | |
| Mechanics | 485 | 9 | 0 | | | | | | |
| Porters | 1,004 | 17 | 5 | | | | | | |
| Domestics | 4,437 | 10 | 2 | | | | | | |
| | | | | 7,871 | 7 | 1 | | | |
| 4. Pensions | | | | 1,298 | 15 | 0 | | | |
| | | | | | | | 15,601 | 5 | 1 |
| V MISCELLANEOUS:— | | | | | | | | | |
| 1. Printing, Stationery, Postages, etc. | | | | 500 | 7 | 3 | | | |
| 2. Advertisements | | | | 47 | 3 | 0 | | | |
| 3. Insurance of Buildings, Equipment, | | | | | | | | | |
| etc. | | | | 251 | 10 | 4 | | | |
| 4. Garden and Grounds | | | | 562 | 10 | 2 | | | |
| 5. Sundries:— | | | | | | | | | |
| Chapel Expenses | 18 | 17 | 10 | | | | | | |
| Miscellaneous Travelling Expenses | 7 | 1 | 2 | | | | | | |
| Petty Expenses | 202 | 11 | 11 | | | | | | |
| | | | | 228 | 10 | 11 | | | |
| | | | | | | | 1,590 | 1 | 8 |
| VI. ADMINISTRATION:— | | | | | | | | | |
| 1. Salaries | | | | 800 | 0 | 0 | | | |
| 2. Pensions | | | | 360 | 0 | 0 | | | |
| 3. Printing, Stationery, Postages, etc. | | | | 136 | 11 | 10 | | | |
| 4. Advertisements | | | | 17 | 17 | 0 | | | |
| 5. Law Charges | | | | 72 | 13 | 6 | | | |
| 6. Auditor's and Accountancy Fees... | | | | 26 | 5 | 0 | | | |
| 7. Sundries:— | | | | | | | | | |
| Annual Meeting | 48 | 11 | 6 | | | | | | |
| Travelling Expenses | 40 | 8 | 5 | | | | | | |
| Petty Expenses | 69 | 6 | 1 | 158 | 6 | 0 | | | |
| | | | | | | | 1,571 | 13 | 4 |
| VII. ESTABLISHMENT:— | | | | | | | | | |
| Renewals and Repairs to Buildings and Plant. | | | | | | | | | |
| Renewals and Repairs | | | | 1,957 | 0 | 1 | | | |
| Annual Cleaning and Painting ... | | | | 698 | 18 | 3 | | | |
| | | | | | | | 2,655 | 18 | 4 |
| VIII. FINANCE:— | | | | | | | | | |
| 1. Interest | | | | | | | | | |
| 2. Appeals | | | | | | | | | |
| 3. Rent | | | | 626 | 0 | 0 | | | |
| Rates and Taxes | | | | 762 | 5 | 3 | | | |
| | | | | | | | 1,388 | 5 | 3 |
| ORDINARY EXPENDITURE | | | | | | | 42,255 | 14 | 7 |
| EXTRAORDINARY. | | | | | | | | | |
| Donations to Other Institutions | | | | 2 | 2 | 0 | | | |
| Pig Farm and Kitchen Gardens | | | | 479 | 5 | 8 | | | |
| EXTRAORDINARY EXPENDITURE | | | | | | | 481 | 7 | 8 |
| TOTAL EXPENDITURE | | | | | | | 42,737 | 2 | 3 |
| ACCOUNT. | | | | | | | £ | s. | d. |
| DISBURSEMENTS. | | | | | | | | | |
| By Amount transferred to Income and Expenditure Account | | | | | | | | | |
| (subject to any amount receivable under Government | | | | | | | | | |
| Emergency Hospital Scheme) | | | | | | | 268 | 18 | 9 |
| „ Transfers to Capital Account:— | | | | | | | | | |
| Lands, Buildings and Equipment Fund | | | | | | | 969 | 8 | 5 |
| General Fund | | | | | | | 922 | 10 | 4 |
| | | | | | | | 2,160 | 17 | 6 |

WORKS DEPARTMENT ACCOUNT.

| | | | | | | | £ | s. |
|----|---|-----|-----|-----|-----|-----|--------|----|
| 1. | Salaries and Wages | ... | ... | ... | ... | ... | 1,881 | 1 |
| 2. | Board, Uniforms, and other Allowances to Staff | ... | ... | | | | — | |
| 3. | Materials consumed | ... | ... | ... | ... | ... | 832 | 6 |
| 4. | Fuel, Power, Light and Water | ... | ... | ... | ... | | — | |
| 5. | Renewals and Repairs to Tools, Machinery, Plant and Buildings | ... | ... | ... | ... | ... | — | |
| 6. | Insurance of Machinery, Plant and Buildings | ... | ... | | | | — | |
| 7. | Sundries | ... | ... | ... | ... | ... | — | |
| 8. | Rent and Rates | ... | ... | ... | ... | ... | — | |
| | Total Expenditure | ... | ... | ... | ... | ... | £2,713 | 7 |
| | Less Receipts (if any) | ... | ... | ... | ... | ... | — | |
| | Net Expenditure charged to Hospital | ... | ... | ... | ... | ... | £2,713 | 7 |

FOR THE YEAR ENDING 31ST DECEMBER, 1944.

ALLOCATED.

| | | £ | s. | d. |
|--|--------|--------|----|----|
| Income and Expenditure Account :— | | | | |
| Surgical and Dispensary Instruments and Appliances | ... | — | | |
| Domestic. Renewals and Repairs to Furniture, etc. | ... | 245 | 19 | 3 |
| Laundry | | — | | |
| Establishment. Renewals and Repairs | | 1,768 | 9 | 7 |
| Annual Cleaning | | 698 | 18 | 3 |
| Total charged to Income and Expenditure Account | | £2,713 | 7 | 1 |
| Balance Sheet :—Land, Buildings and Equipment of the Hospital : for Improvements, Extensions, and Additions | | | | |
| | | | | — |

| | | | | | | | | |
|-----------|-----|-----|-----|-----|-----|--------|---|---|
| Net Total | ... | ... | ... | ... | ... | £2,713 | 7 | 1 |
|-----------|-----|-----|-----|-----|-----|--------|---|---|

BALANCE**Dr.***At 31st December*

| 1. SUNDRY CREDITORS :— | £ | s. | d. | £ | s. | d. | £ | s. | d. |
|--|--------|----|----|--------|----|----|----------|----|----|
| General Fund | | | | 2,234 | 18 | 9 | | | |
| Suspense Account : Government Emergency Hospital Scheme | | | | 26,278 | 5 | 6 | | | |
| | | | | | | | 28,513 | 4 | |
| 2. LOANS TO HOSPITAL :— | | | | | | | | | |
| 3. CAPITAL ACCOUNTS :— | | | | | | | | | |
| (a) Hospital Endowments :— | | | | | | | | | |
| Endowment of Beds as per last A/cs. ... | 21,159 | 6 | 6 | | | | | | |
| Profit on redemption of Investments ... | 327 | 3 | 7 | | | | | | |
| | | | | 21,486 | 10 | 1 | | | |
| Endowment of Nurses' Home as per last Accounts | 1,626 | 0 | 0 | | | | | | |
| Sir F. Eley, Bart., Subscription Fund ... | 300 | 0 | 0 | | | | 23,412 | 10 | 1 |
| (b) Special Funds :— | | | | | | | | | |
| Frederick Fund | 3,450 | 9 | 0 | | | | | | |
| Hamilton Fund | 16,781 | 13 | 0 | | | | | | |
| Recreation Room Fund | 717 | 19 | 4 | | | | 20,950 | 1 | 4 |
| (c) Lands, Buildings, and Equipment Fund :— | | | | | | | | | |
| Balance as per last Accounts | 52,076 | 2 | 10 | | | | | | |
| Add Transfer from Legacies Account ... | 969 | 8 | 5 | | | | 53,045 | 11 | 3 |
| (d) General Fund (subject to Amount receivable under Government Emergency Medical Scheme) :— | | | | | | | | | |
| Balance as per last Accounts | 63,029 | 6 | 6 | | | | | | |
| Add Profit on Sale of Investments ... | 74 | 15 | 6 | | | | | | |
| „ Transfer from Legacies Account ... | 922 | 10 | 4 | | | | 64,026 | 12 | 4 |
| | | | | | | | | | |
| | | | | | | | 161,434 | 15 | |
| 4. UNEXPENDED INCOME, BALANCE OF SPECIAL FUNDS :— | | | | | | | | | |
| Frederick and Hamilton Funds | | | | 503 | 10 | 8 | | | |
| Bray & Mathison Charity | | | | 53 | 1 | 10 | | | |
| | | | | | | | 556 | 12 | |
| | | | | | | | | | |
| | | | | | | | £190,504 | 11 | |

REPORT OF THE AUDITOR.

I have audited the above Balance Sheet and have obtained all the information and explanations I have required. No settlement has been reached with the Ministry of Health as to the amount receivable under the Government Emergency Hospital Scheme; interim contributions from the Ministry totalling £26,278 5s. 6d. (Net) have been retained in Suspense Account; subject thereto, such Balance Sheet is in my opinion properly drawn up so as to exhibit a true and correct view of the state of the Hospital's affairs according to the best of my information and explanations given me, and as shown by the books of the Hospital. To the best of my knowledge and belief the regulations of the revised uniform system, as modified by the instructions of King Edward's Hospital Fund relating to the treatment of Free Legacies, dated December, 1940, have been followed.

11, IRONMONGER LANE,
LONDON, E.C.2.
14th June, 1945.

W. H. PEAT,
Chartered Accountant.
Honorary Auditor.

SHEET.

1944.

Cr.

| | £ | s. | d. | £ | s. | d. | £ | s. | d. |
|---|------------------|----|----|----------------------|----|-------|--------|----|---------------|
| 1. CASH IN BANK AND IN HAND :— | | | | | | | | | |
| On Account of :— | | | | | | | | | |
| (a) Hospital Endowments :— | | | | | | | | | |
| Endowment of Beds Fund ... | 838 | 4 | 9 | | | | | | |
| Nurses' Home Endowment Fund ... | 126 | 0 | 6 | | | | | | |
| | | | | | | 964 | 5 | 3 | |
| (b) Special Funds ... | | | | | | 443 | 18 | 6 | |
| (c) General Fund ... | | | | | | 2,850 | 18 | 11 | |
| | | | | | | | | | 4,259 2 8 |
| 2. STOCKS OF STORES IN HAND (As certified by the Officials of the Hospital) ... | | | | | | | | | 5,308 14 11 |
| 3. SUNDRY DEBTORS :— | | | | | | | | | |
| General Fund ... | | | | | | 7,109 | 3 | 8 | |
| Special Funds ... | | | | | | 112 | 14 | 0 | |
| | | | | | | | | | 7,221 17 8 |
| 4. INTERNAL LOANS :— | | | | | | | | | |
| 5. INVESTMENTS :— | | | | | | | | | |
| | Valuation per | | | Cost of Investments. | | | | | |
| | Brokers at | | | | | | | | |
| | 31st Dec., 1944. | | | | | | | | |
| | £ | s. | d. | £ | s. | d. | £ | s. | d. |
| (a) Hospital Endowments :— | | | | | | | | | |
| Endowment of Beds | 21,512 | 1 | 8 | 20,648 | 5 | 4 | | | |
| Endowment of Nurses' Home ... | 1,849 | 8 | 0 | 1,499 | 19 | 6 | | | |
| Sir F. Eley, Bart., Subscription Fund ... | 318 | 0 | 0 | 300 | 0 | 0 | | | |
| | | | | | | | 22,448 | 4 | 10 |
| (b) Special Funds :— | | | | | | | | | |
| Frederick Fund... | 5,360 | 10 | 9 | 3,450 | 9 | 0 | | | |
| Hamilton Fund... | 12,525 | 0 | 0 | 16,781 | 13 | 0 | | | |
| | | | | | | | 20,232 | 2 | 0 |
| (c) Lands, Buildings and Equipment Fund | 2,450 | 0 | 0 | | | | 2,146 | 5 | 0 |
| (d) General Fund ... | 62,633 | 17 | 8 | | | | 77,270 | 19 | 1 |
| | | | | | | | | | 122,097 10 11 |
| | £106,648 | 18 | 1 | | | | | | |
| 6. LANDS, BUILDINGS, AND EQUIPMENT OF THE HOSPITAL :— | | | | | | | | | |
| Expenditure from 1st January, 1913, to the 31st December, 1944 ... | | | | | | | | | 50,899 6 3 |
| 7. RECREATION ROOM :— | | | | | | | | | |
| Expenditure as per last Accounts ... | | | | | | | | | 717 19 4 |
| | | | | | | | | | £190,504 11 9 |

NOTE.—The cost of the following property is not included in the Balance Sheet, viz :—
 The Site, Buildings, Furniture and Appliances of the Hospital acquired prior to 1st January, 1913.

Cr.

STATISTICAL TABLES.

(As required by the Metropolitan Hospital-Sunday Fund).

ROYAL NATIONAL HOSPITAL FOR DISEASES OF THE CHEST,
VENTNOR. STATISTICS FOR YEAR TO 31ST DECEMBER, 1944,
COMPARED WITH THE PREVIOUS YEAR.

1. In-PATIENTS.

(a) NUMBER OF BEDS AND IN-PATIENTS.

| | Numbers in 1944. | Numbers in previous year. |
|---|------------------------|---------------------------------|
| (1) Total number of available Beds on 31st Dec. ... | 231 | 231 |
| (2) Average number of available Beds during the year ... | 231 | 231 |
| (3) Average number of Patients resident daily through- out the year ... | 228 | 227 |
| (4) Number of In-Patients in the Hospital at beginning of year ... | 215 | 212 |
| (5) Number of In-Patients admitted during year ... | 453 | 402 |
| (6) Number of In-Patients in the Hospital at the end of the year ... | 220 | 215 |
| (7) Average number of days each Patient was resident ... | 185 | 205 |
| (8) Number of Patients admitted and discharged during the year who were resident for (i) only 1 day, (i) 1 | 1 | 1 |
| (ii) 2 or 3 days ... (ii) 3 | 3 | 1 |

(b) ANNUAL EXPENDITURE ON IN-PATIENTS, APART FROM
THAT ON OUT-PATIENTS ; AVERAGE COST OF EACH IN-PATIENT
PER WEEK AND AVERAGE COST OF EACH IN-PATIENT.

| | 1944. | | | Previous year. | | |
|--|---|--|---|--|---|--|
| | Expendi- ture on In- Patients (Pounds only). | Average cost of each In- Patient per week. | Average total cost of each In-Patient. | Average cost of each In- Patient per week. | Average total cost of each In-Patient. | |
| (1) Provisions ... | 10,632 | 0 17 10 | 23 14 7½ | 0 17 4¾ | 25 16 2 | |
| (2) Surgery and Dis- pensary ... | 1,440 | 0 2 5 | 3 4 3¼ | 0 2 8½ | 4 0 9½ | |
| (3) Domestic ... | 7,377 | 0 12 4½ | 16 9 4 | 0 11 5¼ | 16 19 7 | |
| (4) Salaries and Wages (Maintenance) ... | 15,601 | 1 6 2 | 34 16 5½ | 1 5 6 | 37 16 9½ | |
| (5) Miscellaneous ... | 1,590 | 0 2 8 | 3 10 11¾ | 0 2 8½ | 4 0 9½ | |
| (6) Administration ... | 1,572 | 0 2 7½ | 3 10 2 | 0 2 1¼ | 3 3 8½ | |
| Statistical Cost | 38,212 | 3 4 1 | 85 5 10 | 3 1 10¾ | 91 17 10 | |
| (7) Establishment Re- newals and Re- pairs ... | 2,656 | 0 4 5½ | 5 18 6¾ | 0 4 3 | 6 6 5½ | |
| (8) Finance ... | 1,388 | 0 2 3¼ | 3 1 11½ | 0 2 4 | 3 9 6¾ | |
| Total Cost ... | 42,256 | 3 10 10¼ | 94 6 4¼ | 3 8 5¾ | 101 13 10½ | |

SUPPLEMENTAL CHARTER GRANTED TO THE HOSPITAL UNDER DATE 28th OCTOBER, 1944.

GEORGE the SIXTH, by the Grace of God, of Great Britain, Ireland and the British Dominions beyond the Seas King, Defender of the Faith, Emperor of India.

To all to whom these Presents shall come, Greeting !

WHEREAS under or by virtue of a certain Charter or Letters Patent bearing date at Westminster the 20th day of January in the forty-eighth year of the Reign of Queen Victoria, after reciting that a Hospital had been established at Ventnor in the Isle of Wight for the reception of Patients from all parts of the United Kingdom irrespective of religious distinctions suffering from Consumption and other Diseases of the Chest, a Corporation consisting of a President and Governors was founded and consisted by the name or style of "The President and Governors of the Royal National Hospital for Consumption and Diseases of the Chest on the Separate Principle" with perpetual succession by that name and a Common Seal for the purpose of maintaining and carrying on or extending the work and objects of the Hospital and divers provisions were made in the said Charter relating to the qualifications of the Governors and the election by them of a President and the members of the Board of Management of the said Hospital who (subject and without prejudice to the provisions of the said Charter and to the By-Laws of the Hospital for the time being in force) are by the said Charter given the entire management direction and superintendence of the affairs and property of the said Hospital and full authority to deal with all other matters relating to the said Hospital :

AND WHEREAS the said Board of Management has presented an humble Petition to Us supplicating Us to grant Our Royal Charter altering the name or style of the said Corporation from "The President and Governors of the Royal National Hospital for Consumption and Diseases of the Chest on the Separate Principle" to "The President and Governors of the Royal National Hospital for Diseases of the Chest,

Ventnor " and in support of such supplication the Petitioners alleged as follows :—

1. (a) That when the Hospital was originally designed in 1867 it was considered that it would be advantageous for each of the patients to have a separate room, and that the original buildings, and the additions thereto, were constructed with this object in view.

(b) That in 1939, in view of an Order from the Ministry of Health that 130 beds should be kept available for the Emergency Medical Service, it became necessary to put two patients into one room.

(c) That it has been found in many cases that the patients prefer sharing a room with someone else and the Medical Committee of the Board of Management, of which Committee ARTHUR G. PHEAR, Esquire, C.B., M.D., F.R.C.P., is the Chairman, are satisfied that the size and ventilation of the rooms in question is amply sufficient for two patients, and that from the point of view of their treatment it is no advantage that they should occupy separate rooms.

(d) That as extra accommodation in the Hospital means increased benefit to the general public it is accordingly desired that, for the future, the practice should be continued of putting two patients in each of the rooms the Medical Superintendent of the Hospital considers adequate for the purpose.

(e) And that as the retention of the words "on the Separate Principle" in the title of the Hospital would in that case be misleading it is desirable that such words should be omitted.

2. That when the Charter was granted in 1885 the word "Consumption" was in general use as the name of the disease for the treatment of which the Hospital was established but that owing to more enlightened views as to the nature of the disease, and recent advances in the methods and results of treatment the word consumption is now an inaccurate description of the disease and liable to cause unjustifiable alarm to prospective patients and that for these reasons it is desirable to omit it from the title of the Hospital :

Now, KNOW YE that We, taking the premises into Our Royal consideration, of Our especial grace, certain knowledge and mere motion, have granted, constituted and appointed, and by these Presents, for Us, our Heirs and Successors, do grant constitute and appoint in manner following that is to say :—

1. That, notwithstanding anything in the Charter of the forty-

eighth year of the reign of Queen Victoria founding and constituting the Corporation by the name and style of "The President and Governors of the Royal National Hospital for Consumption and Diseases of the Chest on the Separate Principle" the said Corporation may henceforth be known by the name and style of "The President and Governors of the Royal National Hospital for Diseases of the Chest, Ventnor."

2. And We do hereby, for Us, Our Heirs and Successors, grant and declare that these Our Letters Patent, or the enrolment or exemplification thereof, shall be in all things valid and effectual in law according to the true intent and meaning of the same, and shall be construed and adjudged in the most favourable and beneficial sense for the best advantage of the said Hospital, as well in Our Courts as elsewhere, notwithstanding any recital, misrecital, uncertainty or imperfection in these Our Letters Patent.

IN WITNESS whereof WE have caused these Letters to be made Patent.

WITNESS Ourself at Westminster the twenty-eighth day of October in the eighth year of Our Reign.

BY WARRANT under The King's Sign Manual.



NAPIER.

THE SEVENTY-THIRD ANNUAL GENERAL MEETING
OF THE GOVERNORS OF THE
ROYAL NATIONAL HOSPITAL FOR DISEASES OF THE CHEST, VENTNOR,
was held at the
London Office, 18, Buckingham Street, Strand, W.C.2,
at 2.30 p.m. on Wednesday, 31st October, 1945, when the President,
The Right Honourable LORD EBBISHAM, G.B.E.
was in the Chair.

The Secretary read the notice convening the Meeting which was published in "*The Times*," "*The Daily Telegraph*," "*The Isle of Wight County Press*," and "*The Isle of Wight Mercury*."

The minutes of the previous meeting dated the 15th November, 1944, which had been circulated, were confirmed.

In moving that the Report of the Board of Management and the Audited Statement of Accounts for the year ended 31st December, 1944, be received, adopted and circulated amongst the Governors, Subscribers and Friends of the Hospital, the President said :—

" Since the preparation of the Report of the Board of Management which is now before you, the Most Honourable The Marchioness of Carisbrooke, G.B.E. has been graciously pleased to accept an invitation that was extended to her to become a Patron of the Hospital. This is a matter for considerable satisfaction, continuing as it does, the long association of that family with the Hospital. I refer, of course, to the late Her Royal Highness the Princess Beatrice who was a Patron of the Hospital from 1887 until the time of her death.

The Income and Expenditure Account for 1944 shows a deficit of £268 18s. 9d. but this has been adjusted by appropriating a like sum from the Legacies Account in accordance with the Regulations of the Revised Uniform System of Accounts, as modified by the instructions of King Edward's Hospital Fund relating to the treatment of Free Legacies.

Since the close of last year the continued increased cost of labour by the adoption of the Hetherington Scale of Wages for Domestics, and this in turn necessitating a general revision in the wages of porters and other male staff, has made it necessary for the Board of Management to increase the rate of maintenance fees charged to Public Authorities. It is pleasing to observe that the rate for Private Patients remains unchanged. The rates charged for the maintenance of patients is still well below the actual cost per patient per week but it is hoped that the increase that has been made will save the accounts for 1945 from showing a heavy deficit.

You will remember that when addressing you last year I spoke of the urgent need among other things of an electric passenger lift between Blocks X and XI to serve Wards WX and Y. Application has been made to the relative Ministry for permission to carry out the constructional work required in this connection and it is hoped that a licence to build will be forthcoming in the immediate future so that the work may be put in hand.

The waiting list of patients, particularly female, for admission to the Hospital is considerable, involving a delay of three to four months from the date of acceptance for treatment to the actual date of a vacant bed becoming available. In fact so heavy is the demand for accommodation at the Hospital that for the past few months the Medical Superintendent has been compelled to close the women's waiting list.

The Medical Report shows that the year 1944 was one of increased activity.

I observe from the Agenda that you are to be asked during the course of this meeting to express a vote of thanks to the Honorary Medical and Surgical Staff for their services to the Hospital. I feel that on my own and on your behalf I must congratulate the Medical Superintendent and his Medical Officers at Ventnor for the excellent work they have done for the Hospital. That work has been carried on with a depleted medical staff and at the same time treating more patients than ever before in the history of the Hospital.

It is also proper, and I am sure your wish, that I should express to the Nursing and Lay Staff at Ventnor the keen appreciation of the Governors at the excellent manner in which, by the happy co-operation of all notwithstanding shortage of staff, the high reputation and good work of the Hospital has been advanced."

The Motion was seconded by COLONEL E. H. LEAF and carried unanimously.

It was proposed by MR. CUTHBERT BURGOYNE, seconded by MR. F. H. HARGROVE and carried unanimously that MR. F. C. HANNA be elected Honorary Treasurer until the next Annual General Meeting.

It was proposed by MR. F. H. HARGROVE, seconded by DR. A. HOPE GOSSE and carried unanimously that the following members of the Board of Management, who retire by ballot, be re-elected, viz :—MR. JOHN BURGOYNE, MR. A. TUDOR EDWARDS, DR. A. G. PHEAR, MR. C. PRICE THOMAS, MR. W. J. THOMPSON, MR. S. H. TWINING and MR. H. L. TWIGGE.

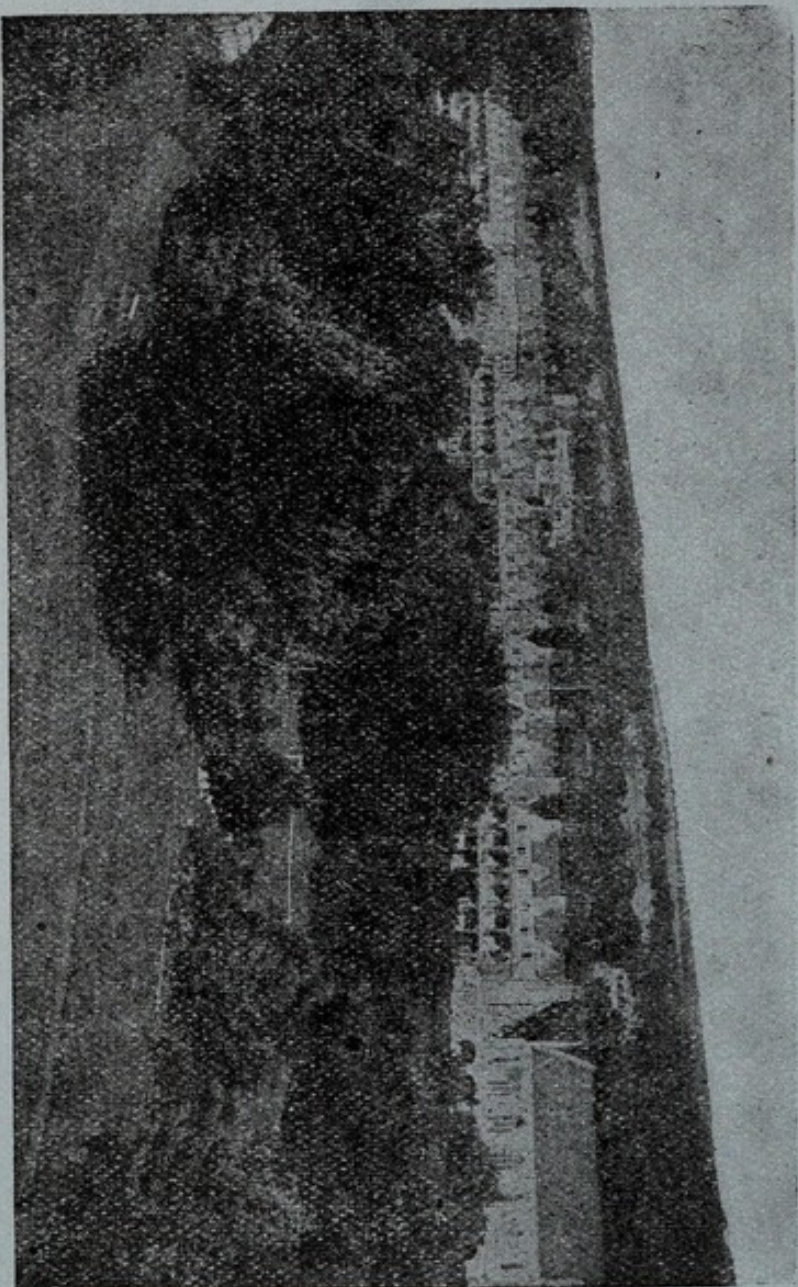
It was proposed by MR. CUTHBERT BURGOYNE, seconded by MR. JOHN BURGOYNE and carried unanimously that SIR W. HARRY PEAT, K.B.E., of the firm of MESSRS. PEAT, MARWICK, MITCHELL & Co., London, Fellow of the Institute of Chartered Accountants, be re-elected Honorary Auditor until the next Annual General Meeting. In passing this Motion it was also Resolved that a very hearty vote of thanks be accorded to SIR W. HARRY PEAT for his services to the Hospital.

In a short eulogy MR. W. J. THOMPSON proposed that a vote of thanks be accorded to the Honorary Medical and Surgical Staff for their services to the Hospital. This was seconded by COLONEL E. H. LEAF and carried unanimously.

The proceedings terminated with a vote of thanks to LORD EBBISHAM for his kindness in presiding at the Meeting.

MCCorquodale & Co., Limited, Printers, London and Newton.

THE ROYAL NATIONAL HOSPITAL FOR DISEASES OF THE CHEST, VENTNOR.



The Hospital accommodates 231 Patients.

Bed-rooms, Sitting-rooms, Balconies, and Verandahs face the South and overlook the Sea.