

## **Annual report of the Board of Management : 1943.**

### **Contributors**

Royal National Hospital for Consumption and Diseases of the Chest.

### **Publication/Creation**

[London?] : [publisher not identified], 1943

### **Persistent URL**

<https://wellcomecollection.org/works/vqgwpmpc>

### **License and attribution**

This work has been identified as being free of known restrictions under copyright law, including all related and neighbouring rights and is being made available under the Creative Commons, Public Domain Mark.

You can copy, modify, distribute and perform the work, even for commercial purposes, without asking permission.



Wellcome Collection  
183 Euston Road  
London NW1 2BE UK  
T +44 (0)20 7611 8722  
E [library@wellcomecollection.org](mailto:library@wellcomecollection.org)  
<https://wellcomecollection.org>

REPORT 1944. *Library*

*HEALTH  
C.R. 9 JAN 1944*

THE ROYAL  
NATIONAL HOSPITAL  
FOR  
DISEASES OF THE CHEST,  
VENTNOR,  
ISLE OF WIGHT.

*LIBRARY*

---

FOUNDED FOR THE RECEPTION OF PATIENTS OF BOTH SEXES  
FROM ALL PARTS OF THE KINGDOM IRRESPECTIVE  
OF RELIGIOUS DISTINCTIONS.

---

OFFICES :  
18 BUCKINGHAM STREET, STRAND,  
LONDON, W.C. 2.

*Report for the Year ending December 31st, 1943.*



## FORM OF BEQUEST.

---

THE Benevolent are earnestly solicited to assist this Hospital by Will. The following FORM OF BEQUEST is respectfully recommended :—

*“I bequeath to the President and Governors of THE ROYAL NATIONAL HOSPITAL FOR DISEASES OF THE CHEST, Ventnor, Undercliff, Isle of Wight, the sum of £\**

*free of duty, to be applied in and towards carrying on the charitable objects of the Institution ; and I direct that the receipt of the Treasurer for the time being shall be a sufficient discharge to my executors for the same.”*

---

N.B.—Devises of Land and Bequests of Money charged on Land are now made valid by the Mortmain and Charitable Uses Act, 1891.

---

\* The sum to be expressed in words at length.



22501044134



## *SPECIAL APPEAL.*

The Board appeal to all their supporters to consider if they can give the Hospital a Deed of Covenant for their annual subscription and thus substantially increase their very welcome support without any added cost to themselves.

This appeal is addressed especially to the large number of Companies who so regularly support the Hospital in the increasing work with which it is engaged in the treatment of Tuberculosis.

Subscriptions made to Charity by Companies, as far as the Board is aware, cannot be allowed as an expense, unless their employees derive a benefit from such subscription, thus reducing the Companies' liability for income tax. Payments made to Charity during the course of the year's trading of a Company would certainly appear to reduce the Company's profit, but this is misleading because the accounts, as prepared for purposes of tax liability, would have to add back such payments to the profit figure, thus making the Company liable for the same tax as if the Charity payments had never been made.

Therefore a Company stands to lose nothing by entering into a Covenant with this Hospital. The tax liability will be exactly the same whether or not a Covenant is given. On the other hand, by entering into a Covenant with this Hospital, very substantial benefit can be obtained by the Hospital represented by the tax which it can reclaim.

It is freely accepted that the Government's proposal for a National Health Service cannot be carried through without the active co-operation of the very large number of Voluntary Hospitals throughout the country. In order that this Hospital may maintain its voluntary status and play its part fully in the proposed Service, increased support from those who believe in the Voluntary Hospital Scheme is essential.

The Board of Management therefore earnestly hopes that this matter may be given very serious consideration by those to whom it is addressed.

Deed of Covenant forms and any further information may be obtained from the Acting Secretary, Royal National Hospital, Ventnor, I. of W.

E. H. LEAF,

*Chairman of the Board of Management.*

WELLCOME  
LIBRARY

*Ann Rep*

WF28

.B65

V46

1943



# The Royal National Hospital

FOR

DISEASES OF THE CHEST,

SITUATE IN THE UNDERCLIFF, NEAR VENTNOR,

ISLE OF WIGHT.

*Incorporated by Royal Charter in 1885.*

*Founded by DR. ARTHUR HILL HASSALL in 1867 for the  
reception of Patients of both sexes from all parts of the  
Kingdom, irrespective of Religious Distinctions.*

---

SEVENTY-SECOND

REPORT OF THE BOARD OF MANAGEMENT

AND

MEDICAL REPORT

*For the year ending 31st December, 1943.*

---

OFFICES:

18 BUCKINGHAM STREET, STRAND, LONDON, W.C.2

## CONTENTS.

---

	PAGE
Form of Bequest, see inside of Wrapper.	
Special Appeal      ...      ...      ...      ...      ...      ...      ...	
Patrons, President, Vice-Presidents, and Patronesses      ...      ...	3
List of the Executive      ...      ...      ...      ...      ...      ...      ...	4
Members of the Visiting Committee      ...      ...      ...      ...      ...	5
Honorary Medical Staff      ...      ...      ...      ...      ...      ...      ...	6
Medical Report      ...      ...      ...      ...      ...      ...      ...	7
Report of the Board of Management      ...      ...      ...      ...      ...	11
Statistical Tables      ...      ...      ...      ...      ...      ...      ...	15
Statements of Income and Expenditure, 1943      ...      ...      ...      ...	24
Balance Sheet, 1943      ...      ...      ...      ...      ...      ...      ...	30
Statements of Frederick and Hamilton Trust Funds      ...      ...      ...	32
Minutes of the General Meeting      ...      ...      ...      ...      ...      ...	32
Supplemental Royal Charter      ...      ...      ...      ...      ...      ...	33



## Patrons.

HIS MAJESTY THE KING.

---

HER MAJESTY THE QUEEN.

HER MAJESTY THE QUEEN MARY.

---

H.R.H. THE PRINCESS BEATRICE (Governor of the Isle of Wight).

LADY LOUIS MOUNTBATTEN.

## President.

THE RIGHT HON. LORD EBBISHAM, G.B.E.

## Vice-Presidents.

The Most Hon. The Marquess of Salisbury, K.G., G.C.V.O., C.B.	S. Harold Hargrove, Esq. .
The Right Hon. The Earl of Derby, K.G.	Lt.-Col. E. H. Leaf.
The Right Hon. Grace, Viscountess Brentford.	Major-General The Right Hon. Lord Mottistone, C.B., C.M.G D.S.O.
The Lady Charlotte W.-Fitzwilliam.	F. C. Nunn, Esq.



## The Board of Management.

(as at the 31st December, 1943.)

### President.

THE RT. HON. LORD EBBISHAM, G.B.E.

### Chairman.

COLONEL EDWARD H. LEAF.

### Hon. Treasurer.

CUTHBERT BURGOYNE, Esq.

ROBERT H. ARMSTRONG, Esq.,  
M.B., C.M.

GEOFFREY MARSHALL, Esq.  
O.B.E., M.D., F.R.C.P.

P. B. ATKINSON, Esq., M.R.C.S.,  
L.R.C.P.

F. C. NUNN, Esq.

JOHN F. BURGOYNE, Esq.

ARTHUR G. PHEAR, Esq., C.B.  
M.D., F.R.C.P.

A. TUDOR EDWARDS, Esq.,  
M.D., F.R.C.S.

R. L. RAWLINSON, Esq., Ch.B.

REV. W. FORSTER HAIRE (1941)

H. E. SYMES-THOMPSON, Esq.  
M.D., M.R.C.P.

A. HOPE GOSSE, Esq., M.D.,  
F.R.C.P.

C. PRICE THOMAS, Esq.  
F.R.C.S.

S. HAROLD HARGROVE, Esq.

W. J. THOMPSON, Esq.

FRANK H. HARGROVE, Esq.

STEPHEN H. TWINING, Esq.

HENRY HARRIS, Esq.

H. L. TWIGGE, Esq. (1941).

THE HON. LANCELOT WILLIAM  
JOYNSON-HICKS.

J. WHILLIER, Esq. (1942).

THE HON. SIR FREDERICK W.  
YOUNG.

**Honorary Solicitors—MESSRS. HARGROVE & CO.**

### Honorary Auditor.

SIR W. HARRY PEAT, K.B.E., of the firm of Messrs. PEAT, MARWELL &  
MITCHELL & Co.

Fellow of the Institute of Chartered Accountants,  
11, Ironmonger Lane, E.C. 2.

### Acting Secretary.

JOSEPH FISHBURN, Esq.

**Bankers.**

WESTMINSTER BANK, LTD.,

St. James's Square, S.W.1.

LLOYDS BANK, LTD., Ventnor, Isle of Wight.

**The Visiting Committee at Ventnor\***

(as at the 31st December, 1943).

**Chairman.**

HENRY HARRIS, Esq.

SIR GODFREY BARING, BART.

MISS C. HUE.

REV. W. FORSTER HAIRE.

H. L. TWIGGE, Esq.

J. WHILLIER, Esq.

C. P. NETHERTON, Esq.

\* The Chairman, Deputy Chairman and Treasurer are members,  
*ex officio*, of all Committees.

**At the Hospital, Ventnor, I. of W.****Medical Superintendent.**

DR. A. K. MILLER, M.R.C.S., M.R.C.P.

**Assistant Medical Superintendent.**

DR. L. R. J. RINKEL, B.A., M.R.C.S., L.R.C.P.  
and an Assistant Resident Medical Officer.

**Matron.**

MISS E. WHITE.

**Chaplain.**

THE REV. L. A. D. WOODLAND.



## Honorary Medical Staff.

### Consulting Physicians.

The RT. HON. LORD DAWSON OF PENN, M.D., B.Sc., F.R.C.P. (1921).  
SIR HUMPHRY D. ROLLESTON, Bt., K.C.B., M.D., F.R.C.P. (1922).

### Consulting Radiologist.

R. L. RAWLINSON, Ch.B.

### Physicians in London.

ARTHUR G. PHEAR, C.B., M.D., F.R.C.P.  
H. E. SYMES-THOMPSON, M.D., M.R.C.P.  
A. HOPE GOSSE, M.D., F.R.C.P.  
GEOFFREY MARSHALL, O.B.E., M.D., F.R.C.P.  
J. L. LIVINGSTONE, M.D., F.R.C.P.

### Surgeons in London.

A. TUDOR EDWARDS, M.D., F.R.C.S.,  
C. P. THOMAS, F.R.C.S.

### Surgeon in the Isle of Wight.

F. WILSON HARLOW, M.B., B.S., F.R.C.S.

### Laryngologist in London.

FRANK C. ORMEROD, M.D., F.R.C.S.

### Laryngologist in the Isle of Wight.

NORMAN W. MacKEITH, M.B., B.S. (LOND.), B.Sc., D.L.O.

### Consulting Anaesthetist.

I. W. MAGILL, M.B., B.Ch., B.A.O.

### Anaesthetist.

R. MACHRAY, M.B., B.S., M.R.C.S.



## MEDICAL REPORT, 1943.

Treatment has been continued on the same lines as in previous years. Insistence is laid on the importance of sanatorium regime with its strict adherence to adequate rest, whether ancillary methods of treatment were used or not.

Total number discharged	...	...	...	...	351
Patients discharged or leaving against advice...	...	...	...	...	11
Patients transferred to other Hospitals or Sanatoria...	...	...	...	...	21
Patients discharged not suffering from Pulmonary Tuberculosis	...	...	...	...	9
Patients discharged who were in the Hospital less than 10 days	...	...	...	...	3
Number of completed cases of Pulmonary Tuberculosis	...	...	...	...	307

### CLASSIFICATION OF ALL CASES ON DISCHARGE.

Quiescent	...	...	187	Fit for their ordinary work	...	181
Improved	...	...	69	Fit for restricted work	...	64
Stationary	...	...	21			
Worse	...	...	19			
Died	...	...	11	Gained weight	...	240
				Lost weight	...	60
				Unchanged	...	7

Sputum T.B. on admission 111

Sputum T.B. on discharge 45

19 of these were transferred for thoracoplasty.

### RESULTS OF TREATMENT CLASSIFIED ACCORDING TO STAGE ON ADMISSION.

Group.	Cases.	Result.	Discharged as Fit for		
			Ordinary Work.	Light Work.	No Work.
"A"	149	Improved	...	146	—
		Stationary	...	3	119
		Worse	...	—	19
		Died	...	—	11
"B1"	52	Improved	...	51	—
		Stationary	...	1	26
		Worse	...	—	14
		Died	...	—	12
"B2"	104	Improved	...	88	36
		Stationary	...	11	26
		Worse	...	3	42
		Died	...	2	—
"B3"	47	Improved	...	16	—
		Stationary	...	6	4
		Worse	...	16	—
		Died	...	9	43



## TREATMENT.

178 patients were treated by sanatorium routine only without any ancillary treatment or collapse therapy.

## CLASSIFICATION OF CONDITION ON ADMISSION AND RESULT OF TREATMENT.

Group.	Cases.	Quiescent.	Died.	T.B. Neg.
"A"	99	89	—	99
"B1"	14	11	—	14
"B2"	43	11	—	28
"B3"	22	2	2	4

17 cases were suffering from pleurisy without any apparent parenchymatous lesion.

## ARTIFICIAL PNEUMOTHORAX.

This was attempted in 164 cases, and was successful in 139.

The results according to degrees of collapse on discharge were classified :—

Unsuccessful	...	...	...	25
Partial collapse	...	...	...	26
Complete or selective collapse	...	...	...	113

The sputum of these cases in which a pneumothorax was obtained was :—

T.B. pos. before induction	...	...	88
T.B. pos. on discharge	...	...	20

Division of adhesions was carried out or attempted in 156 cases.

18 cases were admitted with a pneumothorax already established. In 7 cases operation was undertaken to improve the collapse.

The results of these on discharge were classified :—

Partial collapse	...	...	...	8
Complete collapse	...	...	...	10
Sputum T.B. pos. on admission	...	...	...	2
Sputum T.B. pos. on discharge	...	...	...	1

Bilateral pneumothorax was undertaken in 14 cases, and on discharge these were classified :—

Both complete or selective	...	...	8
One selective and one partial	...	...	3
Both partial	...	...	1
Sputum pos. before induction	...	...	14
Sputum pos. on discharge	...	...	2
Died	...	...	2

In one case, one side was abandoned, the other maintained.

All A P. cases were classified on discharge :—

Cases.	Result.	Work.	Light Work.	No Work.
137	Improved ... 121	57	33	47
	Stationary ... 6	—	—	—
	Worse ... 6	—	—	—
	Died ... 4	—	—	—

Complications occurring in all A.P. cases :—

Persistent fluid ...	...	3
Hæmothorax after refill ...	...	2
Empyema ...	...	2
Spontaneous pneumothorax ...	...	3

#### DIVISION OF ADHESIONS.

156 operations were carried out on 145 patients, including 11 cases of bilateral pneumothorax.

The following complications occurred :—

Tuberculous Empyema ...	...	7
Obliterative pleurisy ...	...	1
Hæmothorax ...	...	5

#### DIAPHRAGMATIC PARALYSIS.

This was undertaken in 29 cases, in 3 of which it was additional to a pneumothorax, and in one to an extrapleural pneumothorax. (The results of these are included under the heading of pneumothorax cases).

Of these cases 17 were T.B. pos. on admission.  
7 were T.B. pos. on discharge.

#### CLASSIFICATION ON DISCHARGE.

Cases.	Result.	Work.	Light Work.	No Work.
32	Improved ... 19	11	2	12
	Stationary ... 3	—	—	—
	Worse ... 2	—	—	—
	Died ... 1	—	—	—



### THORACOPLASTY.

Owing to the War, no cases were operated on at the Hospital. 21 cases were transferred for operation to other hospitals. 3 cases were re-admitted following thoracoplasty, who had been transferred for this operation.

All these were successful.

Cases.	Result.	Work.	
3	Improved ... 3	3	T.B. pos. before operation ... 3
			T.B. pos. after operation ... 0

### EXTRAPLEURAL PNEUMOTHORAX.

One case was discharged with an extrapleural A.P., fit for work.

### OLEOTHORAX.

Oleothorax was undertaken in 3 cases, all for obliteration of an artificial pneumothorax. One case was successful, in one obliteration proceeded, in one case a sterile pyopneumothorax resulted and the oil was removed; the A.P. was subsequently maintained.

### COMPLICATIONS OR OTHER DISEASES OCCURRING IN ALL CASES OF PULMONARY TUBERCULOSIS.

TUBERCULOUS.				NON-TUBERCULOUS.			
Pleurisy ...	...	...	4	Empyema ...	...	...	1
Empyema ...	...	...		Appendicitis ...	...	...	1
Spontaneous pneumothorax			1	Diabetes mellitus ...	...	...	2
Hæmoptysis ...	...	...	1	Epilepsy ...	...	...	1
T.B. Laryngitis ...	...	...	6				
Peritonitis ...	...	...	1				
Ischio-rectal abscess	...	...	2				
Cervical Adenitis ...	...	...	1				

### PATIENTS FOUND TO BE SUFFERING FROM OTHER DISEASES.

Carcinoma of bronchus	...	...	3
Abscess of lung ...	...	...	1
Bronchiectasis ...	...	...	1
Bronchitis ...	...	...	1
Asthma ...	...	...	1



# THE SEVENTY-SECOND ANNUAL REPORT OF THE BOARD OF MANAGEMENT

*For the Year ending 31st December, 1943*

Presented to the Annual Meeting of Governors on

Wednesday, 15th November, 1944.

The Right Honourable LORD EBBISHAM, G.B.E.  
in the Chair.

---

It is with great pleasure that the Board reports the continuance of the gracious patronage of Their Majesties the King and Queen and of Her Majesty Queen Mary.

We have been honoured during the year under review by Lady Louis Mountbatten agreeing to become one of our Patrons. This she did in August 1943, when opening a most successful Fete at the Hospital arranged by the Patients in aid of the Royal National Lifeboat Institution and the St. John Ambulance Brigade. A Donation of £30 was made to each from the proceeds of the Fete.

The Board desire to draw attention to the Special Appeal attached to this Report.

## **Finance.**

Excluding the amount shown in the Accounts as applicable to previous years, receipts from subscriptions and donations show a return to the 1939 level. The Board consider this to be very satisfactory.

The substantial increase in receipts from " Other Sources " is due to many more necessitous patients having been admitted



to the benefits of the Frederick & Hamilton Funds than for some years past. This has caused some reduction in receipts from "Private Patients." There has, however, once again been an increase in the daily average number of beds occupied throughout the year—hence the increase in total receipts against the headings "Private Patients," "Public Authorities," and "Other Sources."

Maintenance Fees charged for private patients remain at 42/- per week. with one Letter of Recommendation for each eight weeks of treatment. The Fees for Public Authorities' patients remain at 59/- per week.

Nothing has been included under Income in 1943 for the Hospital's services in reserving for the Government 130 beds under the Emergency Medical Scheme. A sum of £33,902 16s. 0d. remains in Suspense Account in the Balance Sheet, being interim payments received from the Ministry of Health for the period 4th September, 1939, to 31st October, 1941, since when no further payments have been received, and the amount is subject to future adjustment.

Under Extraordinary Expenditure there is a loss of £436 18s. 11d. on account of Pig Farm and Kitchen Gardens. This was due to :—

(a) The decision to credit vegetables and fruit supplied to the Hospital at local Island rates instead of Covent Garden prices as hitherto.

(b) The re-arrangement of labour charges as between two departments, to conform more correctly with existing conditions.

(c) To a necessary reduction in the number of pigs bred.



### **Hospital, Shortening of Title.**

In accordance with the Resolution passed unanimously at the Annual Meeting of Governors held on the 6th March, application has been made to the Privy Council for the granting of a Supplemental Charter.

### **National Health Service.**

The Government's proposals for a National Health Service, issued since the close of 1943, have been considered. The Board have Resolved unanimously to support the steps that have been and are being taken by the Association of Special Hospitals and the British Hospitals Association in the interest of Voluntary Hospitals.

### **Visiting Committee.**

Miss C. Hue was elected a Member of the Visiting Committee in March, 1943. This is the first occasion on which a lady has served on this Committee.

### **Board of Management.**

Dr. J. Fairley, who joined the Board in February, 1942, resigned in January, 1943.

### **Honorary Medical and Surgical Staff.**

The Board desire to record their thanks to the Honorary Medical and Surgical Staff for their work on behalf of the Hospital, and in particular to F. Wilson Harlow, Esq., F.R.C.S., for his invaluable services and advice given to the Hospital's Medical Staff in dealing with special cases resulting from enemy action.

### **Staff.**

Dr. L. R. J. Rinkel was appointed Assistant Medical Superintendent and took up his duties at the Hospital on the 17th June, 1943.



During the year the Hospital lost the services of a valuable member of its staff by the death in March of Mr. T. J. Channell. He was the Steward's Clerk and had served in that Department for almost 22 years.

The Board take this opportunity of thanking the Acting Secretary and other members of the staff at Ventnor for their continued excellent work during the past year. Thanks are also due to the Matron for her success in maintaining the Nursing and Domestic services of the Hospital during a period of great difficulty.

Finally, the Board desire to place on record their very real appreciation of the voluntary nursing services, rendered to the Hospital with great efficiency by the ladies of the Ventnor Detachment of the Red Cross, in connection with the Hospital's activities under the Government's Emergency Medical Scheme.













Daily Average Occupied Beds				164	170·3	188·9	196·6	216	227
Year	...	...	...	1938	1939	1940	1941	1942	1943
1. Medical 2. Nursing 3. Other Officers Mechanics Porters Domestic 4. Pensions				SALARIES AND WAGES (MAINTENANCE).     COST PER PATIENT PER WEEK.					
				£ s. d. 1 5 1	£ s. d. 1 5 10	£ s. d. 1 8 5	£ s. d. 1 9 11	£ s. d. 1 4 5	£ s. d. 1 5 7





Daily Average Occupied Beds				194	1903	1889	1966	216	227
Year	...	...	...	1938	1939	1940	1941	1942	1943
COST PER PATIENT PER WEEK.				s. d. 5 6	s. d. 5 6	ADMINIS TRATION.			
				s. d. 3 9					
				s. d. 3 0					
				s. d. 2 3					
				s. d. 2 3					
				s. d. 2 2					



Daily Average Occupied Beds			164	170-3	188-9	196-6	216	227
Year	...	...	1938	1939	1940	1941	1942	1943
Repairs and Renewals Annual Cleaning and Painting			ESTABLISHMENT .					
			s. d. 6 8			s. d. 7 9		
					s. d. 5 8			
				s. d. 4 7			s. d. 4 1	s. d. 4 3
COST PER PATIENT PER WEEK.								





## ORDINARY.

£	s.	d.	£	s.	d.	£
---	----	----	---	----	----	---

1. Subscriptions, Donations, etc. :—

Annual Subscriptions (includes £696 10s. 0d.

Annual Subscriptions (includes 2000 P&S. Bd. applicable to previous years)...	...	3,793	17	5
--	-----	-------	----	---

Donations ...	...	...	...	...	1,417	17	6
---------------	-----	-----	-----	-----	-------	----	---

Donations ...	...	...	...	...	1,117	17	3
Box Collections ...	...	...	...	...	11	8	4

Box Collections	... ..
Gifts in kind	... ..

Other Voluntary Gifts :—

" Alexandra Rose Day " (Ventnor) ...	85	12	6
--------------------------------------	----	----	---

5,308 15 9

## 2. Central Funds :—

Hospital Sunday Fund	...	...	...
----------------------	-----	-----	-----

5,308

## 1. Contributions on Account of Services to Patients—

(a) From Patients and their Societies :—

Patients	...	...	...	...	...	2,490	.9	0
----------	-----	-----	-----	-----	-----	-------	----	---

Patients	...	...	...	...	...	850	3	2
Other Sources	...	...	...	...	...	...	...	...

(b) From Public Authorities ...	...	...
---------------------------------	-----	-----

2. Fees :—

Nurses' and Student Nurses' Fees ...

Nurses and Student Nurses Fees	...	...	...	...
Other Fees	...	...	...	...

### 3. Other Receipts :—

Sale of Reports	...	...	...	...
-----------------	-----	-----	-----	-----

Capitation Fees	...	...	...	...	30	14	8
-----------------	-----	-----	-----	-----	----	----	---

Fees for Medical Reports	...	...	6	6	0
--------------------------	-----	-----	---	---	---

Fees for X-ray Reports ...	...	...	36	7	6
----------------------------	-----	-----	----	---	---

73 8 2

33,609

VESTED PROPERTY :—

Interests, Dividends, etc.	...	...
----------------------------	-----	-----

Interests, Dividends, etc.	...	...
Rents	... ..	...

Interest on Deposit Account	...	...
-----------------------------	-----	-----

Interest on Deposit Accounts: 71 100

3,249 6 4

245	6	4
31	7	0

19 19 5

3.300

## IV. State Grant towards Rushcliffe Scale of

Salaries for Nurses	...	...	...
---------------------	-----	-----	-----

300

ORDINARY INCOME	...	...	42,518
-----------------	-----	-----	--------

Carried forward ... ..

£42,518

FOR THE YEAR ENDING 31ST DECEMBER, 1943.

Cr.

*EXPENDITURE.*

	£	s.	d.	£	s.	d.	£	s.	d.
<b>ORDINARY.</b>									
<b>I. PROVISIONS :—</b>									
1. Meat ... ..	1,499	6	5						
2. Fish ... ..	1,000	0	11						
3. Poultry ... ..	107	3	0						
4. Rabbits ... ..	13	12	0						
5. Butter and Margarine ... ..	273	18	2						
6. Cheese... ..	168	13	0						
7. Bacon and Lard ... ..	537	14	8						
8. Sausages ... ..	512	5	9						
9. Eggs ... ..	282	12	3						
10. Milk ... ..	2,766	4	0						
11. Bread and Flour ... ..	462	14	4						
12. Oatmeal ... ..	57	19	5						
13. Tea ... ..	252	3	4						
14. Coffee and Cocoa ... ..	73	13	11						
15. Sugars... ..	99	15	1						
16. Jams, etc. ... ..	147	15	9						
17. Rice, Sago, etc. ... ..	67	9	0						
18. Biscuits, Cake, etc. ... ..	81	8	1						
19. Groceries (Sundries) ... ..	659	0	11						
20. Vegetables and Fruit ... ..	1,065	12	5						
21. Malt Liquors ... ..	122	7	9						
22. Aerated Waters and Ice ... ..	46	4	10						
							10,297	15	0
<b>II. SURGERY AND DISPENSARY :—</b>									
1. Drugs, Chemicals, Disinfectants, etc.	488	16	6						
2. Dressings, Bandages, etc. ... ..	113	15	4						
3. Instruments and Appliances ... ..	742	13	0						
4. Wines and Spirits ... ..	2	6	9						
5. Salaries—Dispensing Staff ... ..	192	7	2						
6. Sundries ... ..	61	12	4						
Medical Library ... ..	10	7	2						
							71	19	6
							1,611	18	3
<b>III. DOMESTIC :—</b>									
1. Renewals and Repairs to Furniture, Bedding, Crockery, etc. ... ..									
Furniture ... ..	347	5	5						
Bedding and Linen ... ..	415	1	9						
Hardware, Crockery, etc. ... ..	384	19	6						
							1,147	6	8
2. Laundry ... ..							1,715	10	11
3. Cleaning and Chandlery ... ..							142	12	5
4. Water ... ..							140	0	0
5. Fuel and Lighting :—									
Steam Coal ... ..	2,357	16	5						
House Coal ... ..	416	14	6						
Gas ... ..	264	2	9						
Electricity ... ..	261	8	4						
Oil, Wood, etc. ... ..	20	18	4						
							3,321	0	4
6. Uniforms ... ..							116	6	2
7. Sundries ... ..	46	1	6						
Entertainments ... ..	145	17	7						
							191	19	1
							6,774	15	7
Carried forward ... ..							£18,684	8	10



Dr.

## INCOME AND EXPENDITURE ACCOUNT

	£	s.	d.	£	s.	d.	£	s.
Brought forward ...							42,518	13
EXTRAORDINARY.								
Pig Farm and Kitchen Gardens ...	...	...						
Transfer from Hospital Shop ...	...	...		57	1	11		
				EXTRAORDINARY INCOME	...		57	1
				TOTAL INCOME	...	...	£42,575	14

£42,575 14

## RECEIPTS.

## LEGACY

	£	s.
Received during the Year ...	456	7

	£	s.	d.	£	s.	d.	£	s.	d.
Brought forward ... .. .							18,684	8	10
V. SALARIES AND WAGES (Maintenance) :—									
1. Medical ... .. .				2,197	12	3			
2. Nursing ... .. .				4,005	6	10			
3. Other Officers and Employees :—									
Other Officers (Chaplain, Steward,									
Clerks) ... .. .	1,951	11	0						
Mechanics ... .. .	571	8	11						
Porters ... .. .	874	14	9						
Domestics ... .. .	4,215	16	9						
				7,613	11	5			
4. Pensions ... .. .				1,281	10	0			
							15,098	0	6
MISCELLANEOUS :—									
1. Printing, Stationery, Postages, etc.				489	3	4			
2. Advertisements ... .. .				119	14	3			
3. Insurance of Buildings, Equipment,									
etc. ... .. .				264	10	6			
4. Garden and Grounds ... .. .				523	16	9			
5. Sundries :—									
Chapel Expenses ... .. .	7	18	3						
Miscellaneous Travelling Expenses	9	0	0						
Petty Expenses ... .. .	198	3	9						
				215	2	0			
							1,612	6	10
I. ADMINISTRATION :—									
1. Salaries ... .. .				607	16	0			
2. Pensions ... .. .				360	0	0			
3. Printing, Stationery, Postages, etc.				10	7	9			
4. Advertisements ... .. .				34	17	6			
5. Law Charges ... .. .				6	16	0			
6. Auditor's and Accountancy Fees...				129	0	9			
7. Sundries :—									
Annual Meeting ... .. .									
Travelling Expenses ... .. .	60	17	5						
Petty Expenses ... .. .	61	6	7	122	4	0			
							1,271	2	0
II. ESTABLISHMENT :—									
Renewals and Repairs to Buildings and Plant.									
Renewals and Repairs ... .. .				1,876	18	6			
Annual Cleaning and Painting ...				646	5	5			
							2,523	3	11
III. FINANCE :—									
1. Interest ... .. .									
2. Appeals ... .. .									
3. Rent ... .. .				626	0	0			
Rates and Taxes ... .. .				762	4	3			
							1,388	4	3
ORDINARY EXPENDITURE ... .. .							40,577	6	4
XTRAORDINARY.									
Donations to Other Institutions ... .. .				2	2	0			
Pig Farm and Kitchen Gardens ... .. .				436	18	11			
EXTRAORDINARY EXPENDITURE ... .. .							439	0	11
TOTAL EXPENDITURE ... .. .							41,016	7	3
EXCESS OF INCOME OVER EXPENDITURE FOR THE YEAR ... .. .							1,559	7	8
subject to amount receivable under Government Emergency Hospital Scheme (if any)							£42,575	14	11
ACCOUNT.									
DISBURSEMENTS.									
y Transfer to Land, Buildings and Equipment Fund ...							£	s.	d.
							456	7	5



## WORKS DEPARTMENT ACCOUNT.

							£	s.
1.	Salaries and Wages	...	...	...	...	...	1,860	13
2.	Board, Uniforms, and other Allowances to Staff	...	...				—	
3.	Materials consumed	...	...	...	...	...	324	2
4.	Fuel, Power, Light and Water	...	...	...	...		—	
5.	Renewals and Repairs to Tools, Machinery, Plant and Buildings	...	...	...	...	...	—	
6.	Insurance of Machinery, Plant and Buildings	...	...				—	
7.	Sundries	...	...	...	...	...	—	
8.	Rent and Rates	...	...	...	...	...	—	
Total Expenditure ...							£2,184	15
<i>Less Receipts (if any)</i> ...							—	

Net Expenditure charged to Hospital ... .. £2,184 15

## FOR THE YEAR ENDING 31ST DECEMBER, 1943.

## ALLOCATED.

		£	s.	d.
Income and Expenditure Account :—				
Surgical and Dispensary Instruments and Appliances	...		—	
Domestic. Renewals and Repairs to Furniture, etc.	...	193	19	0
Laundry	... ..		—	
Establishment. Renewals and Repairs	... ..	1,344	11	5
Annual Cleaning	... ..	646	5	5
<hr/>				
Total charged to Income and Expenditure Account	... ..	£2,184	15	10
Balance Sheet :—Land, Buildings and Equipment of the Hospital : for Improvements, Extensions, and Additions				
			—	
<hr/>				
Net Total	... ..	£2,184	15	10
				<hr/>



**BALANCE****Dr.***At 31st December,*

1. SUNDRY CREDITORS :—					£	s.	d.	£	s.	d.	£	s.	d.
General Fund								2,336	17	5			
Suspense Account: on a/c E.M.S., 1939/41								33,902	16	0			
											36,239	13	5
2. LOANS TO HOSPITAL :—													
Lands, Buildings, and Equipment Fund :—													
Loan from General Fund											969	8	5
3. CAPITAL ACCOUNTS :—													
(a) Hospital Endowments :—													
Endowment of Beds as per last A/cs.					21,166	9	2						
Nett Loss on Redemption of Investments					7	8	2						
								21,159	6	6			
Endowment of Nurses' Home as per last Accounts					1,626	0	0				22,785	6	6
(b) Special Funds :—													
Frederick Fund					3,450	9	0						
Hamilton Fund					16,781	13	0						
Recreation Room Fund					717	19	4				20,950	1	4
(c) Lands, Buildings, and Equipment Fund :—													
Balance as per last Accounts					51,619	15	5						
Add Transfer from Legacies Account					456	7	5				52,076	2	10
(d) General Fund (subject to Amount receivable under Government Emergency Medical Scheme) :—													
Balance as per last Accounts					61,469	18	10						
Add Excess of Income over Expenditure					1,559	7	8				63,029	6	6
											158,840	17	2
4. UNEXPENDED INCOME, BALANCE OF SPECIAL FUNDS :—													
Frederick and Hamilton Funds								587	9	10			
Bray & Mathison Charity								47	14	2			
											635	4	0
											£196,685	3	0

I have audited the above Balance Sheet and have obtained all the information and explanations I have required. Interim contributions totalling £33,902 16s. 0d. have been received under the Government Emergency Hospital Scheme in respect of the period from 4th September, 1939, to 31st October, 1941, but the actual amount receivable has not yet been determined. Subject to the foregoing remark, such Balance Sheet is in my opinion properly drawn up so as to exhibit a true and correct view of the state of the Hospital's affairs according to the best of my information and the explanations given me and as shown by the books of the Hospital. To the best of my knowledge and belief the regulations of the revised uniform system as modified by the instructions of King Edward's Hospital Fund relating to the treatment of Free Legacies dated December, 1940, have been followed.

11, IRONMONGER LANE,  
LONDON, E.C.2.  
8th May, 1944.

W. H. PEAT,  
Chartered Accountant.  
Honorary Auditor.

**SHEET.**

1943.

**Cr.**

	£	s.	d.	£	s.	d.	£	s.	d.
1. CASH IN BANK AND IN HAND :—									
On Account of :—									
(a) Hospital Endowments :—									
Endowment of Beds Fund ...	838	4	9						
Nurses' Home Endowment Fund ...	126	0	6						
				964	5	3			
(b) Special Funds ...				518	19	7			
(c) General Fund ...				5,408	8	5			
							6,891	13	3
2. STOCKS OF STORES IN HAND (As certified by the Officials of the Hospital) ...							5,462	17	6
3. SUNDRY DEBTORS :—									
General Fund ...				7,702	0	0			
Special Funds ...				116	4	5			
							7,818	4	5
4. INTERNAL LOANS :—									
Loan to Lands, Buildings, and Equipment Fund :—									
General Fund ...							969	8	5
5. INVESTMENTS :—									
				Valuation per					
				Brokers at					
				31st Dec., 1943.	Cost of Investments.				
	£	s.	d.	£	s.	d.	£	s.	d.
(a) Hospital Endowments :—									
Endowment of Beds ...	21,274	15	11	20,321	1	9			
Endowment of Nurses' Home... ..	1,826	8	7	1,499	19	6			
							21,821	1	3
(b) Special Funds :—									
Frederick Fund... ..	5,138	5	4	3,450	9	0			
Hamilton Fund... ..	12,250	0	0	16,781	13	0			
							20,232	2	0
(c) Lands, Buildings and Equipment Fund ...	2,410	0	0				2,146	5	0
(d) General Fund ...	58,124	14	8				79,726	5	7
									123,925 13 10
	£101,024	4	6						
6. LANDS, BUILDINGS, AND EQUIPMENT OF THE HOSPITAL :—									
Expenditure from 1st January, 1913, to the 31st December, 1943 ...							50,899	6	3
7. RECREATION ROOM :—									
Expenditure as per last Accounts ...							717	19	4
									£196,685 3 0

NOTE.—The cost of the following property is not included in the Balance Sheet, viz :—  
The Site, Buildings, Furniture and Appliances of the Hospital acquired prior to 1st January, 1913.







THE SEVENTY-SECOND ANNUAL GENERAL MEETING  
OF THE GOVERNORS OF THE  
ROYAL NATIONAL HOSPITAL FOR DISEASES OF THE CHEST, VENTNOR,  
was held at the  
London Office, 18, Buckingham Street, Strand, W.C.2,  
at 2.30 p.m., on Wednesday, 15th November, 1944, when the President,  
*The Right Honourable LORD EBBISHAM, G.B.E.*  
was in the Chair.

---

The Acting Secretary read the notice convening the Meeting which had been published in *The Times*, *The Daily Telegraph*, *The Isle of Wight County Press*, and *The Isle of Wight Mercury*.

The minutes of the previous meeting dated the 6th March, 1944, which had been circulated, were confirmed.

Before moving the resolution for the adoption of the Report and Audited Statement of Accounts the President referred to the deep sense of loss sustained by the Hospital by the death of Her Royal Highness Princess Beatrice, Governor of the Isle of Wight. He recalled that she had been a Patron of the Hospital since 1887, and was always keenly interested in its work. As recently as January and March of this year she put forward the names of two patients for admission. He then read a letter of condolence which he had addressed on behalf of the Hospital to The Most Honourable The Marquis of Carisbrooke, G.C.B., G.C.V.O., and a reply that he had received.

At the request of the President the Meeting stood in silence as a mark of respect to her late Royal Highness.

In moving that the Report of the Board of Management and the Audited Statement of Accounts for the year ended 31st December, 1943, be received, adopted and circulated amongst the Governors, Subscribers and Friends of the Hospital, the President said :—

“ I have to refer with very great regret to the great loss sustained by the Hospital through the death on the 10th August of Mr. S. Harold Hargrove, whose family have been connected with the Hospital's Board of Management since January, 1872, and have been our Honorary Solicitors since 1889. Mr. Hargrove was a member of the Board of Management from February, 1913, until his death, and had been a Vice-President since 1922. I am sure all present will desire that an expression of their profound sympathy be sent to the family.

“ It is also with regret that I refer to the death on the 5th September of the Rev. W. Forster Haire, who was elected an Honorary Governor of the Hospital and joined the Board of Management in 1941.



"I now turn to the Accounts for 1943. The Audited Statement and the graphs which accompany the Board's Report are most satisfactory. There has been an increase in cost per patient per week from £3 5s. 9d. in 1942 to £3 8s. 9d. Nevertheless, the figure for 1943 is well below the 1938/1941 costs. The slight increase over 1942 is due almost entirely to Salaries & Wages, replacement of Linen and increased cost of Coal. Notwithstanding the increase in costs, Income has exceeded Expenditure by £1,559 7s. 8d., which is very satisfactory.

"I must, however, issue a word of caution. As soon as possible after the cessation of hostilities the Hospital Buildings and Roofs will require a lot of attention and this is likely to involve the Hospital in considerable expenditure. Also there is an urgent need for an Electric Passenger Lift between Blocks 10 and 11 to serve Wards W, X, and Y, and a new and enlarged Laboratory is required, the existing building being insufficient for present needs. With the abandonment of treatment on the separate principle and the consequent increased number of patients the Hospital will be able to treat, urgent-consideration will need to be given to enlarging the Nurses' Home.

"Regarding the Government's Proposal for a National Health Service, the interests of this Hospital are in the capable hands of the British Hospitals' Association, which is conducting a publicity campaign to educate the public as to the true position of Voluntary Hospitals under the Government's Proposals. A Memorandum, based on replies received from Voluntary Hospitals to a questionnaire, has been submitted by the Association to the Minister of Health and will form a basis for further discussions with the Minister.

"I would like to commend to all interested in the Hospital the Special Appeal which accompanies the Report. A number of our Subscribers have signed Deeds of Covenant in favour of the Hospital and to them we are indeed grateful. If those who have not, will realise the considerable benefit they can bestow on the Hospital without extra cost or trouble to themselves I am sure we can look forward to a much needed increase in total subscriptions to help meet heavy charges to be incurred in the near future.

"Once again the Medical Report is excellent showing a year of most useful work in the treatment of Tuberculosis. The Medical and Nursing Staff are to be congratulated on the very efficient manner in which during last year, they dealt with Air Raid Casualties on several occasions. This work was carried out in connection with the Hospital's reservation of beds under the Government's Emergency Medical Scheme and does not figure in the Medical Report.

"It will be recalled that at the last Annual General Meeting it was resolved that application be made to His Majesty's Privy Council for a Supplemental Charter to shorten the title of the Hospital to "The Royal National Hospital for Diseases of the Chest." Intimation has now been received that His Majesty The King has been graciously pleased to approve the Grant of the Supplemental Charter, and Letters Patent issued under the Great Seal have been received."



COLONEL LEAF, in supporting the Motion, said :—

“ I would like to associate myself with the remarks of the President as to the great loss the Hospital has sustained by the death of Mr. S. Harold Hargrove. He was most regular in his attendance at meetings of the Board, especially during the troublesome times we have experienced here in the past five years. His advice and judgment on all matters pertaining to the welfare of the Hospital, which he always had very much at heart, were of inestimable value. Personally, I deeply mourn the passing of one who has so wholeheartedly supported and guided me during my 16 years as Chairman of the Board of Management.

“ I should like to take this opportunity to thank the Members of the Visiting Committee who have given up so much of their time in the interests of the Hospital.”

MR. JOHN BURGOYNE seconded the Motion which was then carried unanimously.

It was proposed by MR. JOHN BURGOYNE, seconded by COLONEL LEAF and carried unanimously that MR. F. C. HANNA be elected Honorary Treasurer until the next Annual General Meeting. The Proposer read a letter from MR. HANNA saying he would not be able to undertake the duties for a few months. It was therefore resolved unanimously to accept the offer of MR. CUTHBERT BURGOYNE to act as his Deputy, and to extend to him very sincere thanks for his past services as Honorary Treasurer during a most difficult period.

It was proposed by DR. A. G. PHEAR, seconded by MR. JOHN BURGOYNE and carried unanimously that the following Members of the Board of Management, who retire by ballot, be re-elected, namely :— COL. E. H. LEAF, MR. FRANK H. HARGROVE, SIR FREDK. W. YOUNG, DR. GEOFFREY MARSHALL, DR. J. L. LIVINGSTONE and MR. HENRY HARRIS.

It was proposed by SIR FREDK. W. YOUNG, seconded by MR. FRANK H. HARGROVE and carried unanimously that SIR W. HARRY PEAT, K.B.E., of the firm of Messrs. Peat, Marwick, Mitchell & Co., London, Fellow of the Institute of Chartered Accountants, be re-elected Honorary Auditor until the next Annual General Meeting, and that a very hearty vote of thanks be accorded to him for his services to the Hospital.

It was proposed by MR. FRANK H. HARGROVE, seconded by SIR FREDK. W. YOUNG and carried unanimously that a vote of thanks be accorded to the Honorary Medical and Surgical Staff for their services to the Hospital.

It was proposed by COLONEL LEAF, seconded by SIR FREDK. W. YOUNG and carried unanimously that MR. CUTHBERT BURGOYNE be elected a Vice-President of the Hospital.

It was proposed by SIR FREDK. W. YOUNG, seconded by LORD EBBISHAM and carried unanimously that a very hearty vote of thanks be accorded to COLONEL LEAF for his outstanding services to the Hospital, especially during 16 years as Chairman of the Board of Management, the last five years of which have been performed in most difficult circumstances.

The proceedings terminated with a vote of thanks to LORD EBBISHAM for his kindness in presiding at the meeting.



## SUPPLEMENTAL CHARTER GRANTED TO THE HOSPITAL UNDER DATE 28th OCTOBER, 1944.

---

GEORGE the SIXTH, by the Grace of God, of Great Britain, Ireland and the British Dominions beyond the Seas King, Defender of the Faith, Emperor of India.

To all to whom these Presents shall come, Greeting !

WHEREAS under or by virtue of a certain Charter or Letters Patent bearing date at Westminster the 20th day of January in the forty-eighth year of the Reign of Queen Victoria, after reciting that a Hospital had been established at Ventnor in the Isle of Wight for the reception of Patients from all parts of the United Kingdom irrespective of religious distinctions suffering from Consumption and other Diseases of the Chest, a Corporation consisting of a President and Governors was founded and consisted by the name or style of "The President and Governors of the Royal National Hospital for Consumption and Diseases of the Chest on the Separate Principle" with perpetual succession by that name and a Common Seal for the purpose of maintaining and carrying on or extending the work and objects of the Hospital and divers provisions were made in the said Charter relating to the qualifications of the Governors and the election by them of a President and the members of the Board of Management of the said Hospital who (subject and without prejudice to the provisions of the said Charter and to the By-Laws of the Hospital for the time being in force) are by the said Charter given the entire management direction and superintendence of the affairs and property of the said Hospital and full authority to deal with all other matters relating to the said Hospital :

AND WHEREAS the said Board of Management has presented an humble Petition to Us supplicating Us to grant Our Royal Charter altering the name or style of the said Corporation from "The President and Governors of the Royal National Hospital for Consumption and Diseases of the Chest on the Separate Principle" to "The President and Governors of the Royal National Hospital for Diseases of the Chest,



Ventnor " and in support of such supplication the Petitioners alleged as follows :—

1. (a) That when the Hospital was originally designed in 1867 it was considered that it would be advantageous for each of the patients to have a separate room, and that the original buildings, and the additions thereto, were constructed with this object in view.

(b) That in 1939, in view of an Order from the Ministry of Health that 130 beds should be kept available for the Emergency Medical Service, it became necessary to put two patients into one room.

(c) That it has been found in many cases that the patients prefer sharing a room with someone else and the Medical Committee of the Board of Management, of which Committee ARTHUR G. PHEAR, Esquire, C.B., M.D., F.R.C.P., is the Chairman, are satisfied that the size and ventilation of the rooms in question is amply sufficient for two patients, and that from the point of view of their treatment it is no advantage that they should occupy separate rooms.

(d) That as extra accommodation in the Hospital means increased benefit to the general public it is accordingly desired that, for the future, the practice should be continued of putting two patients in each of the rooms the Medical Superintendent of the Hospital considers adequate for the purpose.

(e) And that as the retention of the words "on the Separate Principle" in the title of the Hospital would in that case be misleading it is desirable that such words should be omitted.

2. That when the Charter was granted in 1885 the word "Consumption" was in general use as the name of the disease for the treatment of which the Hospital was established but that owing to more enlightened views as to the nature of the disease, and recent advances in the methods and results of treatment the word consumption is now an inaccurate description of the disease and liable to cause unjustifiable alarm to prospective patients and that for these reasons it is desirable to omit it from the title of the Hospital :

Now, KNOW YE that We, taking the premises into Our Royal consideration, of Our especial grace, certain knowledge and mere motion, have granted, constituted and appointed, and by these Presents, for Us, our Heirs and Successors, do grant constitute and appoint in manner following that is to say :—

1. That, notwithstanding anything in the Charter of the forty-



eighth year of the reign of Queen Victoria founding and constituting the Corporation by the name and style of "The President and Governors of the Royal National Hospital for Consumption and Diseases of the Chest on the Separate Principle" the said Corporation may henceforth be known by the name and style of "The President and Governors of the Royal National Hospital for Diseases of the Chest, Ventnor."

2. And We do hereby, for Us, Our Heirs and Successors, grant and declare that these Our Letters Patent, or the enrolment or exemplification thereof, shall be in all things valid and effectual in law according to the true intent and meaning of the same, and shall be construed and adjudged in the most favourable and beneficial sense for the best advantage of the said Hospital, as well in Our Courts as elsewhere, notwithstanding any recital, misrecital, uncertainty or imperfection in these Our Letters Patent.

IN WITNESS whereof WE have caused these Letters to be made Patent.

WITNESS Ourselves at Westminster the twenty-eighth day of October in the eighth year of Our Reign.

BY WARRANT under The King's Sign Manual.

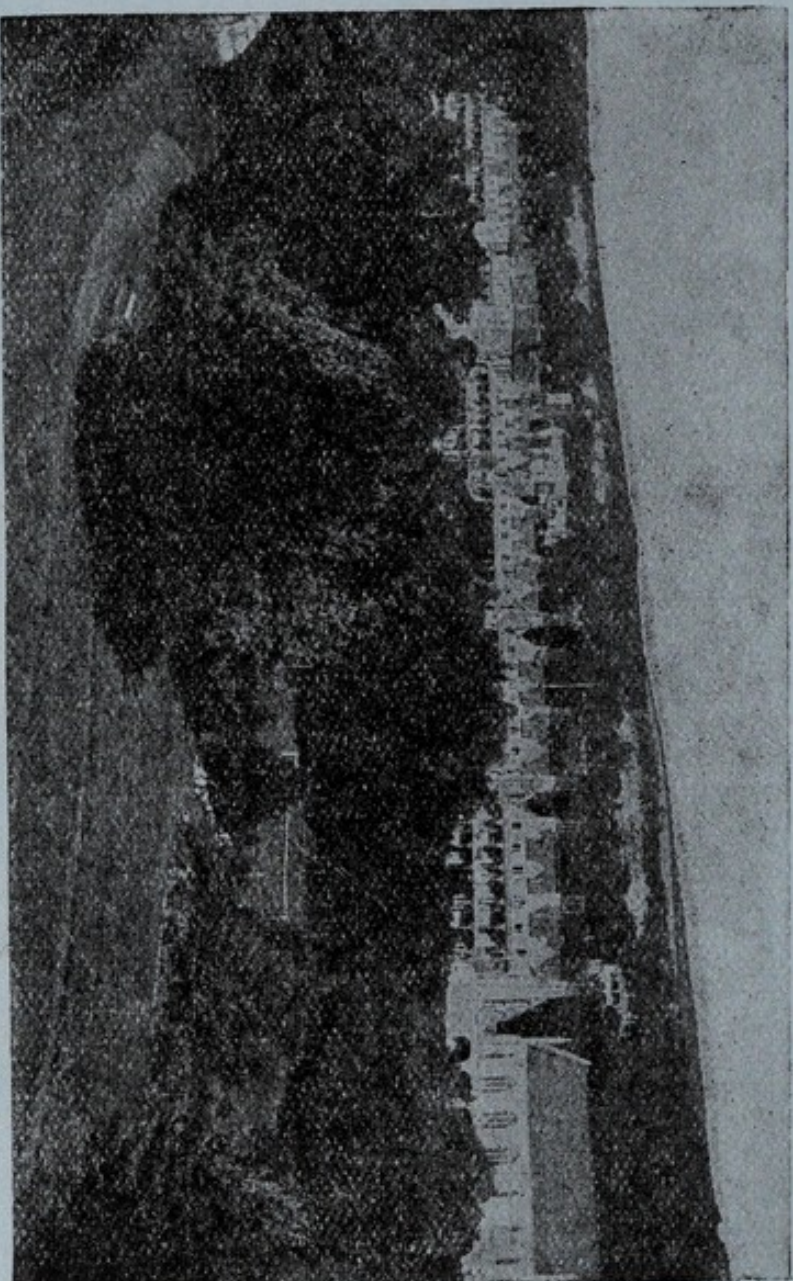


NAPIER.





THE ROYAL NATIONAL HOSPITAL FOR DISEASES OF THE CHEST, VENTNOR.



The Hospital accommodates 231 Patients.

Bed-rooms, Sitting-rooms, Balconies and Verandahs face the South and overlook the Sea.