

## **Report : 1934 / Royal Sea Bathing Hospital.**

### **Contributors**

Royal Sea Bathing Hospital (Margate, England)

### **Publication/Creation**

London : [publisher not identified], 1934

### **Persistent URL**

<https://wellcomecollection.org/works/utryxtbx>

### **License and attribution**

This work has been identified as being free of known restrictions under copyright law, including all related and neighbouring rights and is being made available under the Creative Commons, Public Domain Mark.

You can copy, modify, distribute and perform the work, even for commercial purposes, without asking permission.



Wellcome Collection  
183 Euston Road  
London NW1 2BE UK  
T +44 (0)20 7611 8722  
E [library@wellcomecollection.org](mailto:library@wellcomecollection.org)  
<https://wellcomecollection.org>

*Drawn*  
*Cent.*

Q. B.  
MIN. OF HEALTH  
16 APR 1935  
E3

# ROYAL SEA-BATHING HOSPITAL

LIBRARY

(FOUNDED AT MARGATE 1791)

LIBRARY

*Patron:*  
HIS MAJESTY THE KING

*Vice-Patrons:*  
H.R.H. F.M. THE DUKE OF CONNAUGHT, K.G.  
HIS GRACE THE ARCHBISHOP OF CANTERBURY



REPORT  
LIST OF GOVERNORS, ETC.  
1934

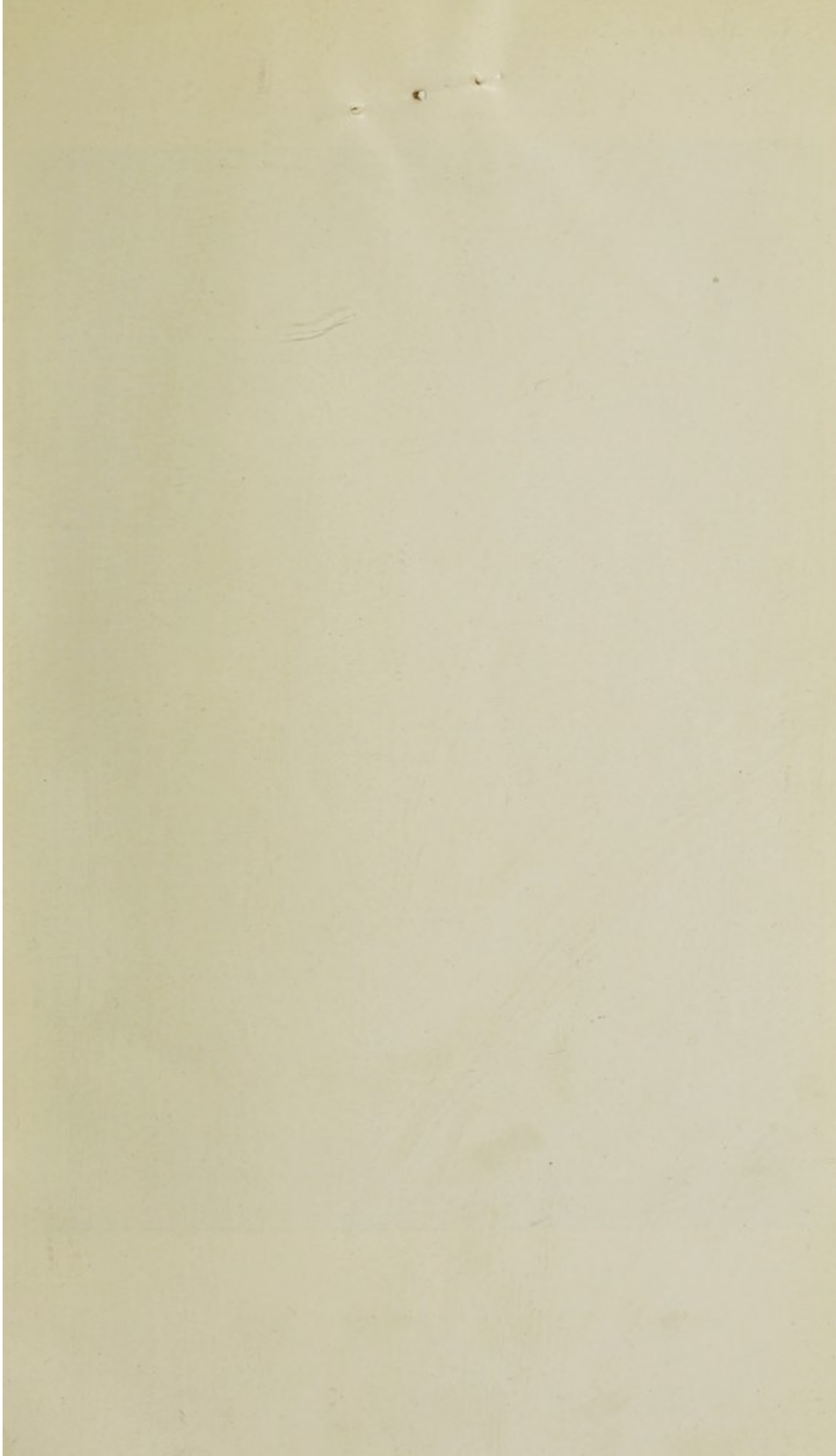
*Offices:*  
WATERGATE HOUSE, 15 YORK BUILDINGS, ADELPHI, LONDON, W.C.2

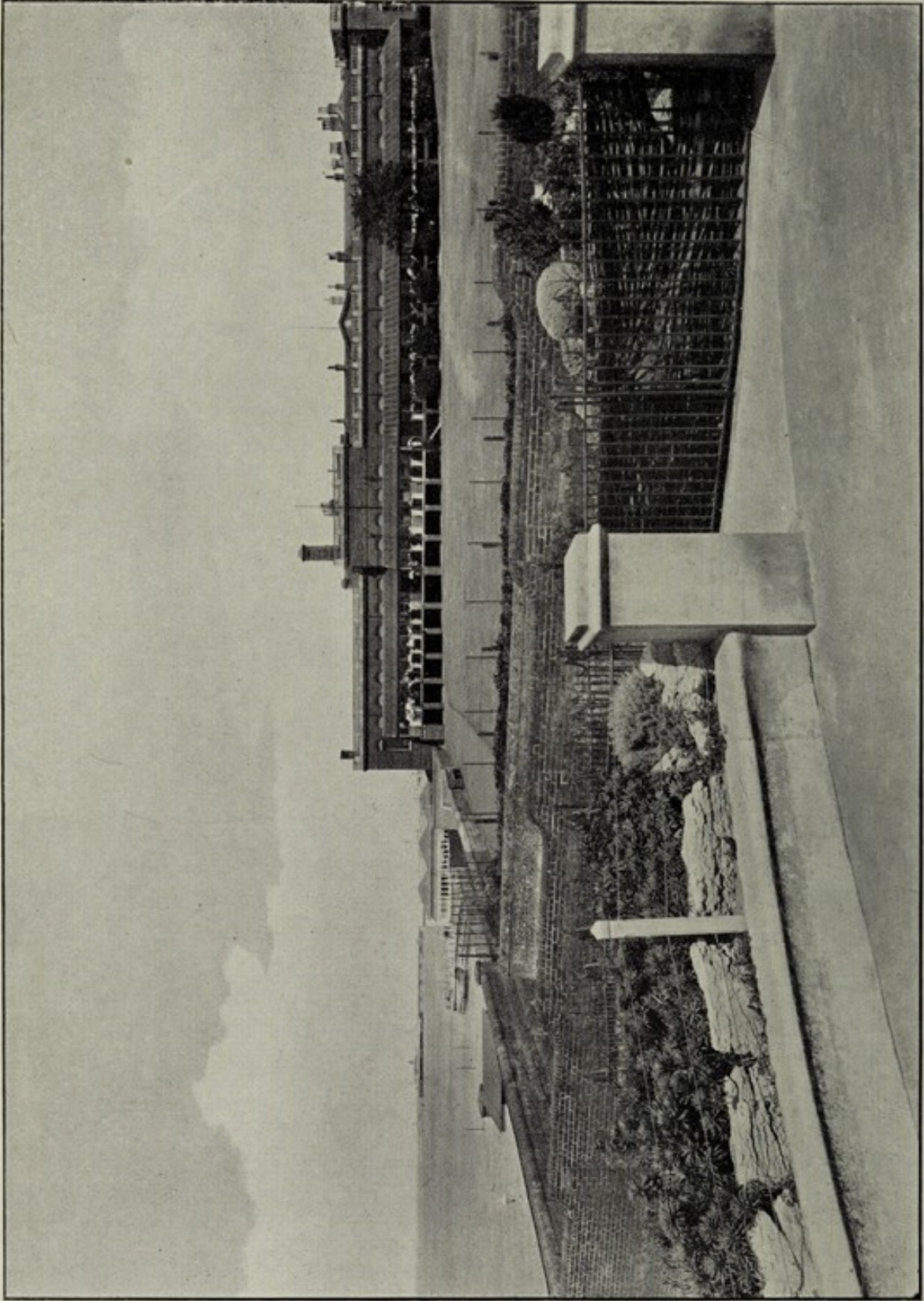
*added  
m 16*

WELCOME
LIBRARY
Ann Rep
WX28
.B25
M32R88
1934

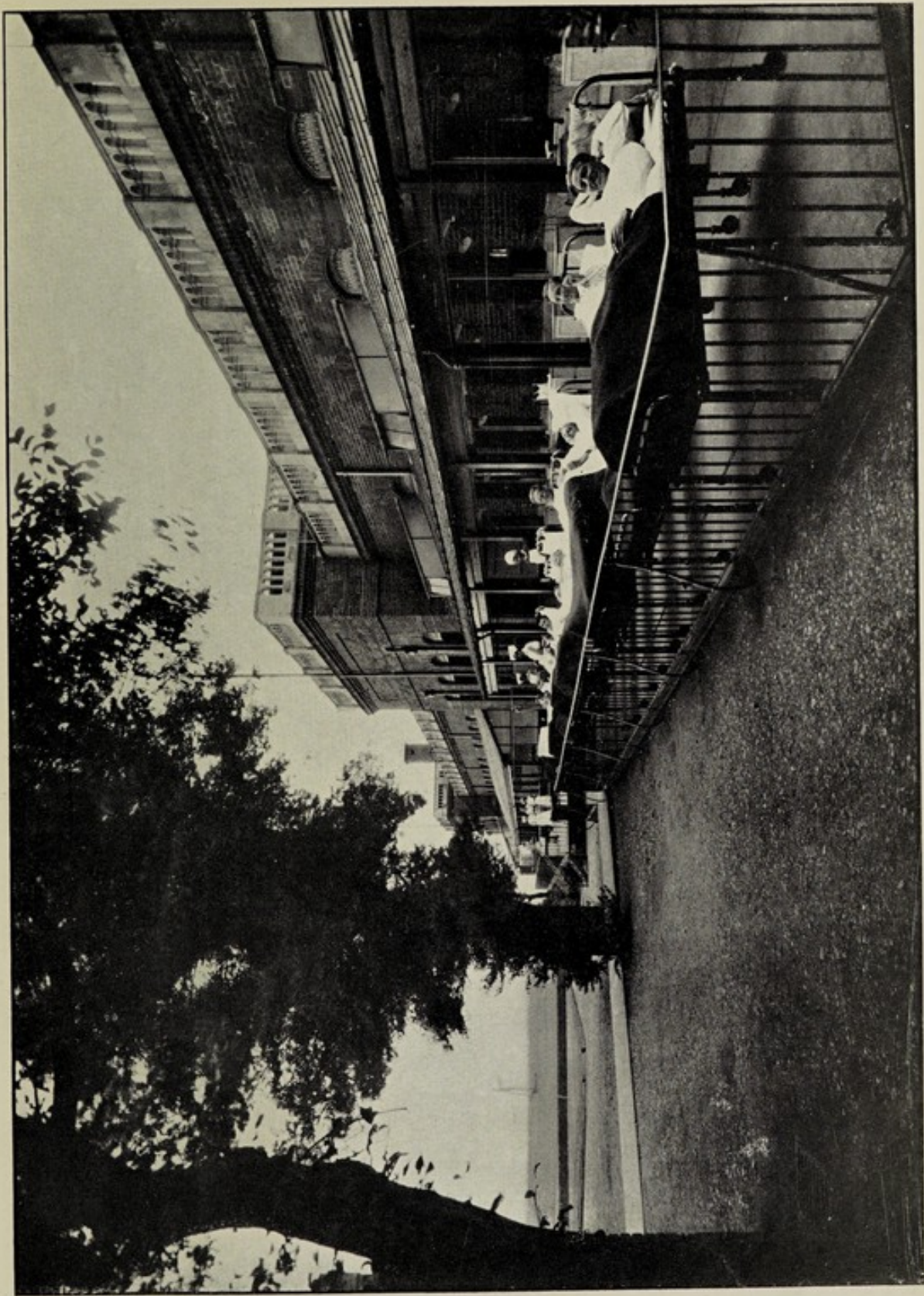


22501606811

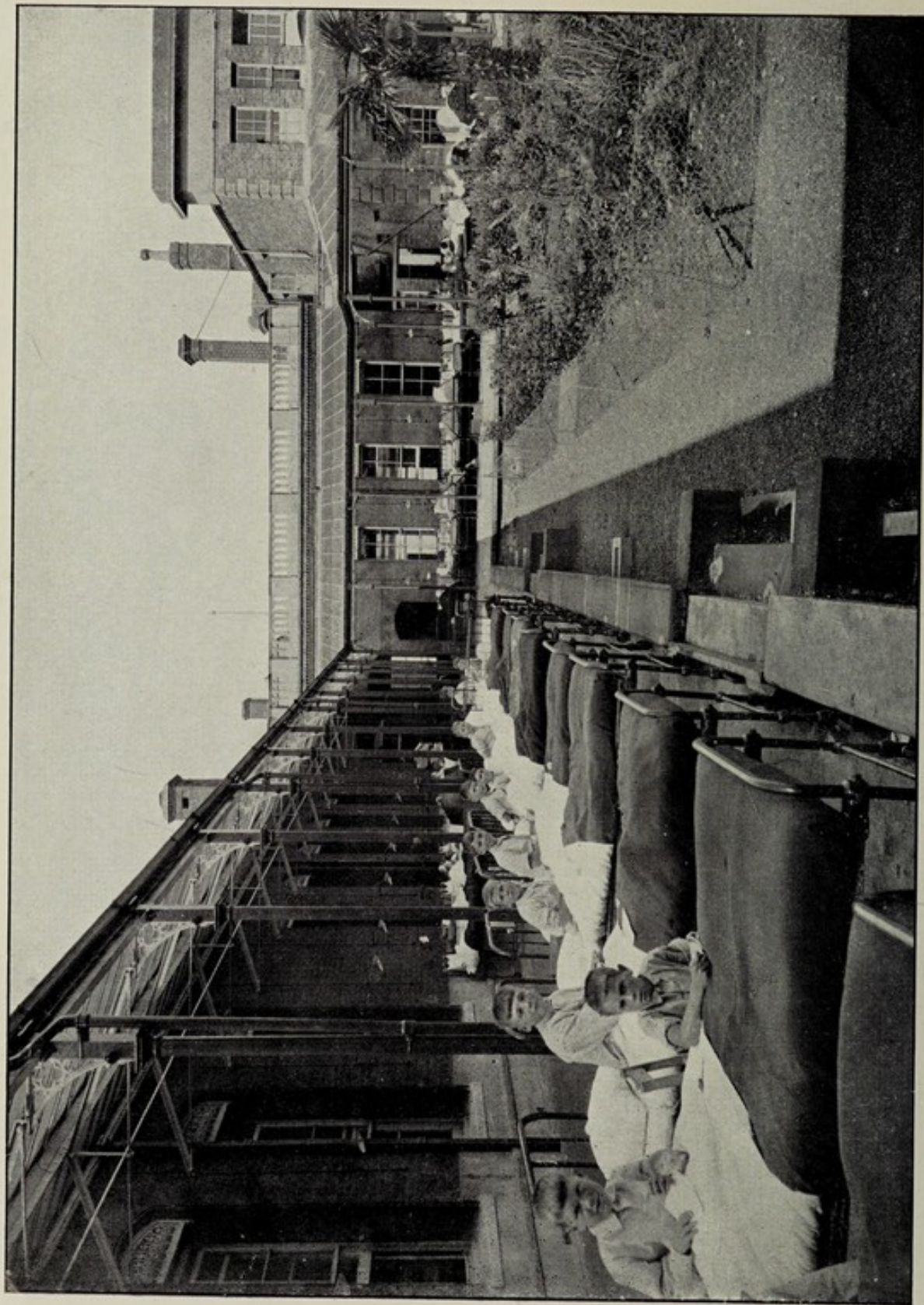




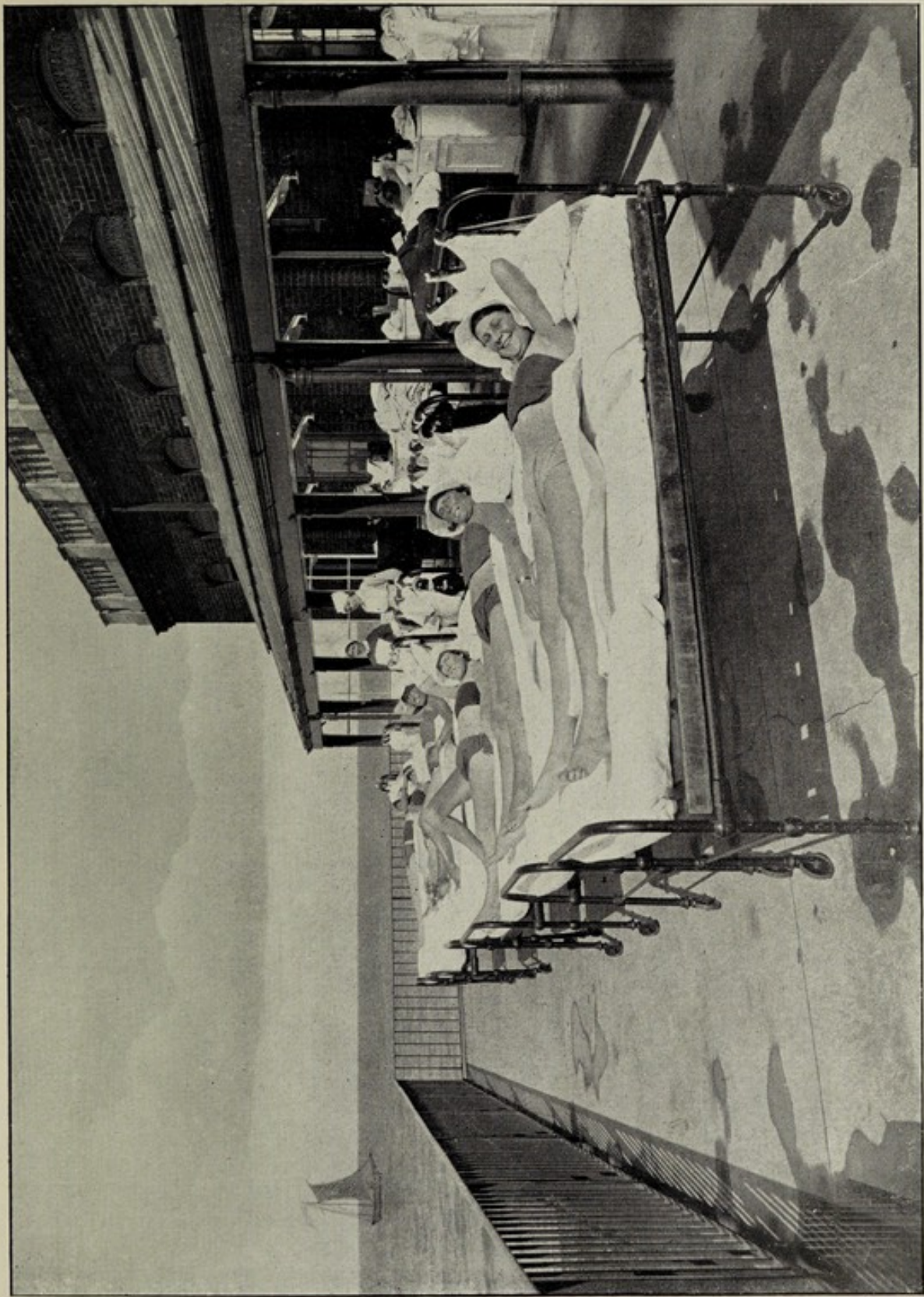
THE MEN'S GREEN AND WILSON BLOCK



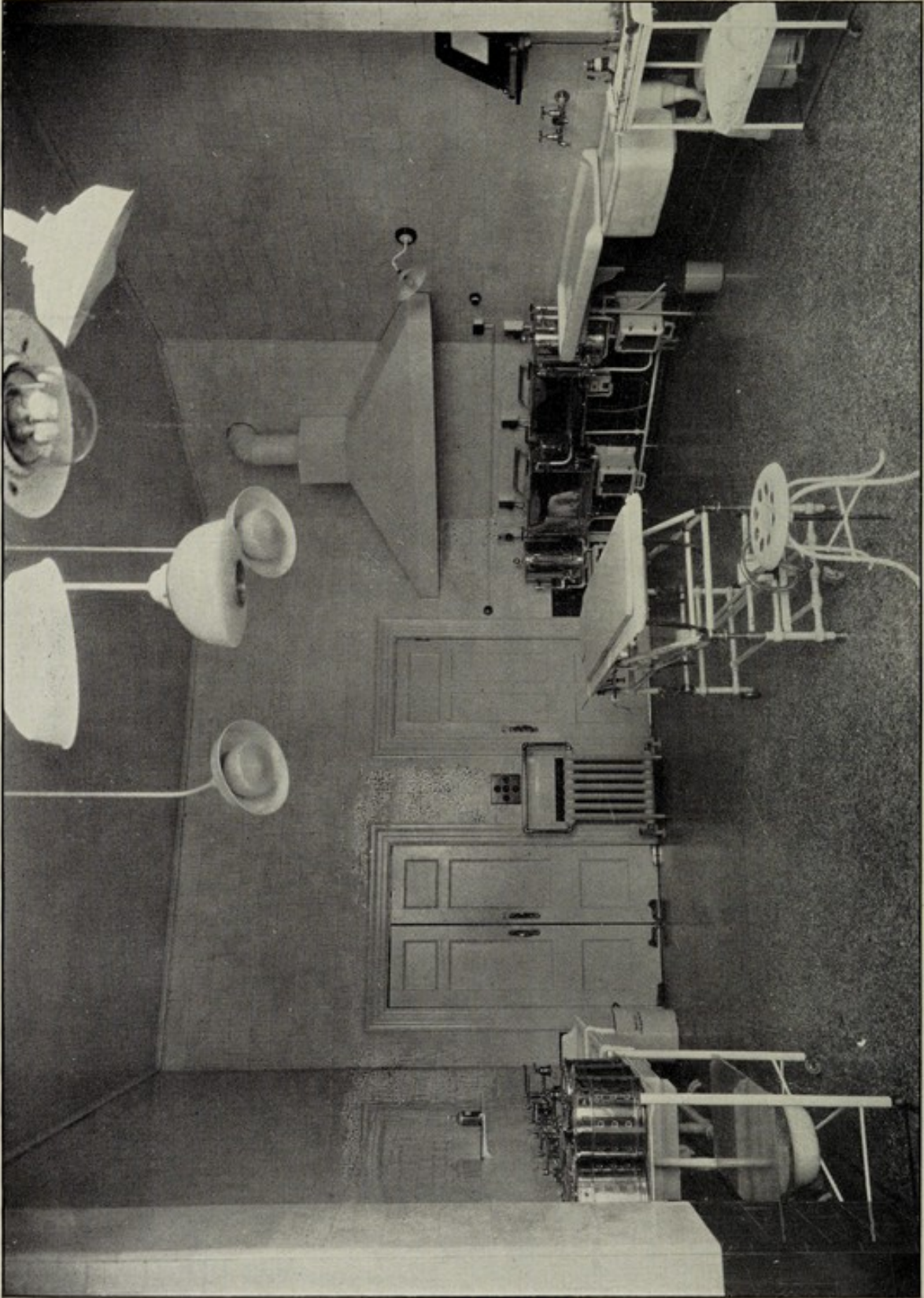
MAUD WARD—The West Verandah



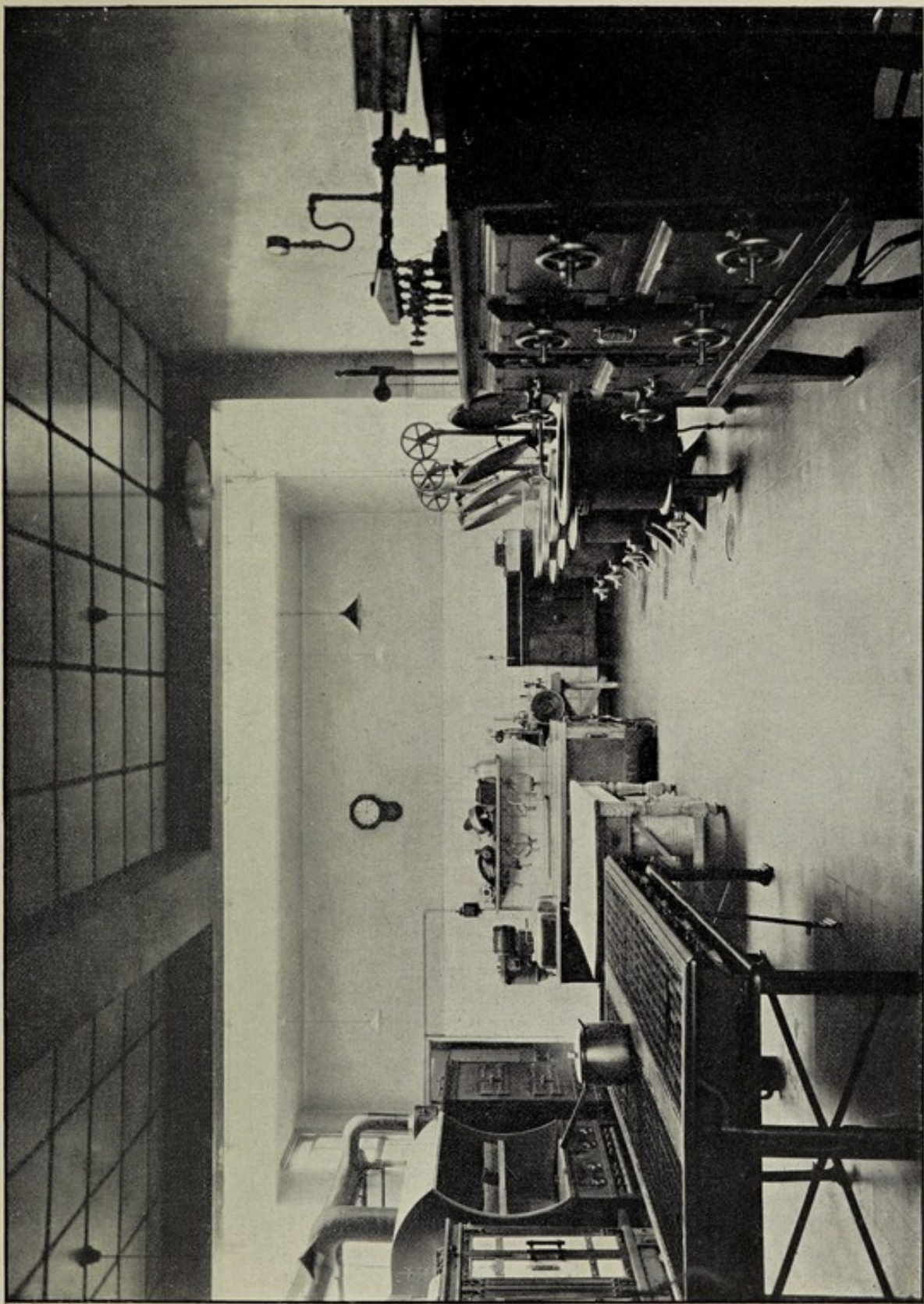
VICTORIA WARD—The East Verandah



SUN BATHING ON THE ALEXANDRA VERANDAH



THE THEATRE



THE KITCHEN



THE CHAPEL

THE  
ROYAL SEA-BATHING  
HOSPITAL

(FOUNDED AT MARGATE 1791)



REPORT  
LIST OF GOVERNORS, ETC.  
1934

*Offices:*

WATERGATE HOUSE, 15 YORK BUILDINGS  
ADELPHI, LONDON, W.C.2

THE

ROYAL SEA-BATHING

HOSPITAL

FOUNDED AT MARGATE 1861

REPORT

LIST OF GOVERNORS, ETC.

1914

DASHING 2011

WATERGATE HOUSE, 15 YORK BUILDINGS

ADLPHI, LONDON, W.C.2

## Contents

	PAGE
Patrons, Court of Directors, and Trustees .. .. .	5
London Medical Board, Visiting Staff, Officers and Officials ..	6-7
Report of the Court of Directors.. .. .	8-10
Statistical Tables .. .. .	11
Report of the London Medical Board .. .. .	12-13
Medical Superintendent's Report .. .. .	14-17
Medical Statistics .. .. .	18-24
Suitable Cases for Admission .. .. .	25-26
Trust Funds, Particulars of .. .. .	27-31
Bed Endowment Fund .. .. .	32-35
Special Trust Fund .. .. .	36
Contributions from the Livery Companies, etc. .. .. .	37-45
Balance Sheet .. .. .	46-49
Income and Expenditure Account, etc. .. .. .	50-55
Schedule of Investments .. .. .	56-58
Hodgson Five Shilling Fund .. .. .	59-61
Donations to the General Fund .. .. .	62
Boxes .. .. .	62
Annual Governors .. .. .	63-66
Quinquennial Governors .. .. .	67
Life Governors .. .. .	68-70
Gifts.. .. .	71
School Report .. .. .	72
Linen League .. .. .	73-75
Laws .. .. .	76-85
Bye-Laws and Privileges of Governors, etc. .. .. .	86-88
Rules Respecting Admission of Patients .. .. .	89-90
Rules for In-Patients .. .. .	91-92
Visiting Hours for Friends of Patients .. .. .	92
Contribution, Bequest Forms, and Plans of the Hospital ..	At end

# Contents

91	Visiting Hours for Friends of Patients
91-92	Rules for In-Patients
92-93	Rules Respecting Admission of Patients
94-95	Bye-Laws and Privileges of Governors, etc.
96-97	Law
98-99	Local League
100	School Report
101	Gilt
102-103	Life Governors
104-105	Quinquennial Governors
106	Annual Governors
107	Boxes
108-109	Donations to the General Fund
110-111	Hobson Five Shilling Fund
112-113	Schedule of Investments
114-115	Income and Expenditure Account, etc.
116-117	Balance Sheet
118-119	Contributions from the Livery Companies, etc.
120	Special Trust Fund
121-122	Bed Endowment Fund
123-124	Trust Funds, Particulars of
125-126	Suitable Cases for Admission
127-128	Medical Statistics
129-130	Medical Superintendent's Report
131-132	Report of the London Medical Board
133-134	Statistical Tables
135-136	Report of the Court of Directors
137-138	London Medical Board, Visiting Staff, Officers and Officials
139	Patrons, Court of Directors and Trustees

# The Royal Sea-Bathing Hospital

FOUNDED AT MARGATE 1791

*Patron :*

HIS MAJESTY THE KING.

*Vice-Patrons :*

H.R.H. F.M. THE DUKE OF CONNAUGHT, K.G.  
THE RT. HON. AND MOST REVEREND HIS GRACE THE LORD ARCHBISHOP  
OF CANTERBURY.

*President :*

MAJOR-GENERAL THE RT. HON. THE EARL OF ATHLONE,  
K.G., G.C.B., G.C.M.G., G.C.V.O., D.S.O.

*Vice-Presidents :*

THE RT. HON. THE EARL STANHOPE, K.G., D.S.O., M.C.	THE RT. HON. AND RT. REV. THE LORD BISHOP OF LONDON.
THE RT. HON. VISCOUNT BEARSTED, M.C.	WILLIAM H. ASKEW-ROBERTSON, ESQ.
THE RT. HON. THE LORD MAYOR.	THE HON. ESMOND HARMSWORTH.
	THE HON. MRS. DOUGLAS-PENNANT.

*Treasurer :*

—

*Court of Directors :*

THE RT. HON. LORD ANNALY, M.C.	SIR WILLANS NUSSEY, BT.
THE RT. HON. LORD BIDDULPH.	LIEUT.-COLONEL WM. VERE PACKE, D.S.O.
C. S. GORDON CLARK, ESQ.	CHARLES W. PHILLIMORE, ESQ.
THE HON. THOMAS EGERTON.	SIR D'ARCY POWER, K.B.E., F.R.C.S. Eng.
SIR LAURENCE GUILLEMARD, G.C.M.G., K.C.B.	ALBERT VAN DEN BERGH, ESQ.
V. WARREN LOW, ESQ., C.B., M.D. Lond., F.R.C.S. Eng.	THE HON. GERARD WALLOP.
ARTHUR J. MATTHEWS, ESQ., J.P.	THE HON. HUGH WYNDHAM.
A. C. NORMAN, ESQ.	

*Trustees :*

THE HON. GERARD WALLOP.	THE RT. HON. LORD BIDDULPH.
C. S. GORDON CLARK, ESQ.	

# Medical Board in London

## Physicians :

SIR JOHN F. H. BROADBENT, Bt., M.D. Oxon., F.R.C.P. Lond.	SIR HUMPHRY D. ROLLESTON, Bt., G.C.V.O., K.C.B., M.D. Camb., F.R.C.P. Lond.
SIR RAYMOND H. P. CRAWFURD, M.D. Oxon., F.R.C.P. Lond.	A. E. RUSSELL, Esq., M.D. Lond., F.R.C.P. Lond.
MORLEY FLETCHER, Esq., M.D. Camb., F.R.C.P. Lond.	R. W. A. SALMOND, Esq., O.B.E., M.D. Aberd.
A. M. H. GRAY, Esq., C.B.E., M.D., F.R.C.P. Lond., F.R.C.S. Eng.	R. C. B. WALL, Esq., D.M. Oxon., F.R.C.P. Lond.
GORDON M. HOLMES, Esq., C.M.G., C.B.E., M.D., F.R.C.P. Lond.	ROBERT A. YOUNG, Esq., C.B.E., M.D. Lond., F.R.C.P. Lond.
SIR E. COOPER PERRY, M.D. Camb., F.R.C.P. Lond.	

## Surgeons :

H. E. BATTEN, Esq., F.R.C.S. Eng.	JOHN MURRAY, Esq., F.R.C.S. Eng.
SIR GEO. LENTHAL CHEATLE, K.C.B., C.V.O., F.R.C.S. Eng.	MAX PAGE, Esq., D.S.O., M.S. Lond., F.R.C.S. Eng.
CLAUDE H. S. FRANKAU, Esq., C.B.E., D.S.O., M.S. Lond., F.R.C.S. Eng.	SIR D'ARCY POWER, K.B.E., F.R.C.S. Eng.
E. C. HUGHES, Esq., O.B.E., F.R.C.S., Eng.	WILFRED TROTTER, Esq., M.D. Lond., M.S., F.R.C.S. Eng.
HUGH LETT, Esq., C.B.E., F.R.C.S. Eng.	WILLIAM TURNER, Esq., M.S. Lond., F.R.C.S. Eng.
VINCENT WARREN LOW, Esq., C.B., M.D. Lond., F.R.C.S. Eng.	

## Honorary Consulting Staff :

W. GREENWOOD SUTCLIFFE, Esq., O.B.E., F.R.C.S. Eng., L.R.C.P. Lond.	} Surgeons
J. L. SAWERS, Esq., M.D. Lond., M.R.C.S. Eng.	
FREDERICK BOILEAU TREVES, Esq., O.B.E., M.B., B.C. (Cantab.), M.R.C.S. Eng., L.R.C.P. Lond.	
CHARLES J. HEATON, Esq., M.D. Brux., M.R.C.S., L.R.C.P. Lond. (Radiologist)	

## Visiting Radiologist :

DENYS B. I. HALLETT, M.A., M.B., B.Ch. Oxon., M.R.C.S. Eng.

## Visiting Ophthalmic Surgeon :

JAMES W. H. BABINGTON, Esq., M.D. Edin., M.B., Ch.B. Edin.

## Visiting Surgeon for Ear, Nose, and Throat Cases :

E. E. BURNIER, Esq., M.D. Lausanne, M.R.C.S. Eng., L.R.C.P. Lond., D.L.O.

## Visiting Dental Surgeon :

F. R. WALLIS, Esq., L.D.S., R.C.S. Eng., D.D.S. Penn.

*Honorary Solicitors :*

MESSRS. DAWSON & Co.

*Auditors :*

MESSRS. JAMES FRASER & SONS, *Chartered Accountants.*

*Bankers :*

MARTINS BANK, LTD.

*Chaplain :*

REV. HARRY LOVETT HUBBARD, M.A.

*Matron :*

MISS JOAN KEMPSON.

*Medical Superintendent :*

BASIL ARMSTRONG, Esq., M.C., M.B., B.S. Lond., M.R.C.S. Eng., L.R.C.P. Lond.

*Resident Assistant Medical Superintendent :*

G. E. DUNKERLEY, Esq., M.B., B.S. Lond., M.R.C.S. Eng., L.R.C.P. Lond.

*Resident House Surgeon :*

FREDERICK L. ROSE, B.A., M.D., University of Western Ontario, London, Canada.

*Secretary .*

A. NASH, Esq.

*Offices :*

WATERGATE HOUSE, 15 YORK BUILDINGS, ADELPHI, LONDON, W.C.2.

The One Hundred and Forty-Fourth  
Report  
*of*  
The Court of Directors  
*of*  
The Royal Sea-Bathing Hospital  
Margate.

The Court of Directors begs to submit the 144th Annual Report on the work of the Hospital during the year 1934.

The average daily number of occupied beds was 316·0, compared with 308·9 in 1933.

The number of applicants for admission was 363 as against 336 in the preceding year; 20 were found unsuitable by the Medical Examiners; 300 were admitted, of whom 255 were sent by Public Authorities.

The Income in 1934 was £42,972, as compared with £42,950 in 1933, and the Expenditure for General Purposes was £37,546, as against £36,450. The average cost per occupied bed was £118 16s. 4d., as against £117 19s. 11d. in 1933.

The amount received in legacies for General Purposes was £287, as compared with £264 in 1933.

The Court much regrets that there has been a further decline of £71 in Annual Subscriptions, which, with the loss last year, reduces our Subscription list by £154 per annum.

The Court is most grateful to the Governors who have continued their support, and desires specially to thank The Prudential Assurance Company, The Fishmongers' Company, and The Trustees of Smith's Charity for their generous grants.

Only one legacy has been received, and there is no absolute legacy now unpaid.

The Expenditure for General Purposes shows an increase of £1,096 over the previous year, which is principally accounted for by extensive repairs to King George V Wing. This Wing is in a very exposed position, and an outlay of £726 was necessary to put it in good condition.

The verandahs could not be used in bad weather, and shutters have now been provided at a cost of £869, thereby providing effective shelter when needed. The cost is not shown in the Income and Expenditure Account; but it appears in the Balance Sheet under Land, Buildings, and Equipment. The shutters being an addition to the building, the Expenditure was for Capital Purposes.

The two new ward kitchens referred to in last year's Report were completed during the year, and have given great satisfaction to the Sisters of the Wards.

The Court is glad to report that satisfactory arrangements have been made for the General Training of our Probationers. There has been less difficulty in obtaining nurses during the year.

The Court desires to thank most cordially the donors of useful and pecuniary gifts mentioned on page 71, and all who have contributed to the pleasure of the patients at Xmas and other times during the year.

The Medical-Superintendent's Report and Medical Statistics appear on pages 14-24.

The London Medical Board paid its annual visit of inspection to the Hospital on the 21st July, and its Report appears on pages 12-13.

The various matters mentioned in the Report have received the attention of the Committee of Management, and a scheme for providing additional accommodation for nurses and maids has been adopted. The scheme is to add two storeys to the Nurses' Home, which will then accommodate the whole of the nursing staff, and enable each nurse to have a separate bedroom. Certain quarters now occupied by nurses in the main building will then be set free for the accommodation of the maids. Their present quarters are very congested and unsuitable.

The increase in the number of patients in recent years has

necessitated a considerable increase in the number of nurses and maids. In order to attract the most suitable class of girls, and retain their services, the Court feels that it is most important to provide them with comfortable quarters and amenities which are expected in these modern times.

The estimated cost of the scheme is £15,000.

On the recommendation of the London Medical Board, Dr. Burnier was appointed Visiting Surgeon for Ear, Nose, and Throat cases, as from the 1st November, 1934.

The Report of the Ladies' Linen League appears on page 74. It will be seen that 292 garments have been provided for the poorest children in the Hospital. The practical sympathy thus shown by the ladies is much appreciated by the Court.

The Report on the School appears on page 72.

The Court deeply regrets to report the great loss the Hospital has sustained by the death of Mr. W. L. Ainslie, of the firm of Messrs. Dawson & Co.—the Honorary Solicitors to the Charity. Mr. Ainslie was elected a member of the Court of Directors in 1904 in recognition of his services to the Charity as Honorary Solicitor. He continued to take an active interest in the Hospital until his death.

The Court also very much regrets to report the resignation of the Vice-Chairman Mr. E. M. Preston, who joined the Court of Directors and Committee of Management in 1921. He was very regular in his attendance at the meetings, and took a very keen interest in the Charity. On moving into the country he found he could not very well attend the meetings which are held twice a month, one in London and the other at the Hospital.

The Court has elected Mr. Charles A. Phillimore to fill one of the vacancies on the Court.

In concluding the Report the Court trusts that it may continue to receive the support of the Governors and the public, especially in view of the heavy expenditure which will be incurred in 1935 in improving the accommodation for the nurses and servants.

Signed on behalf of the Court of Directors,

GERARD WALLOP

12th March, 1935.

Chairman.

# Statistical Tables

## IN-PATIENTS

### NUMBER OF BEDS AND IN-PATIENTS

	Numbers in 1933	Numbers in 1934
*Number of Beds available for use .. .. .	308	320
Average number of Patients resident daily throughout the year as counted and recorded daily .. .. .	308·9	316
Number of In-Patients in the Hospital at beginning of year	309	307
"    "    admitted during year .. .. .	287	300
"    "    in the Hospital at end of year ..	307	315
Average number of days each Patient was resident, ascer- tained by dividing the yearly total of daily counts by the number of Patients treated to a conclusion ..	390·2	395
* There are also Eight Beds for Isolation Cases.		
<b>OUT-PATIENTS.</b>		
Number of New Out-Patients .. .. .	93	114
"    "    Out-Patient Attendances .. .. .	1,370	1,568
"    "    Patients on books at the beginning of the year	86	112

ANNUAL EXPENDITURE ON IN-PATIENTS; AVERAGE COST OF EACH IN-PATIENT PER WEEK AND AVERAGE COST OF EACH IN-PATIENT. THE COST OF THE OUT-PATIENTS IS INCLUDED, AS THEY ARE FEW IN NUMBER.

N.B.—The following figures do not include any expenditure on the School.

	† Expenditure on In-Patients in 1933			Average cost of each In- Patient per week in 1933			* Expenditure on In-Patients in 1934			Average Cost of each In- Patient per week in 1934		
	£	s.	d.	£	s.	d.	£	s.	d.	£	s.	d.
<b>MAINTENANCE—</b>												
Provisions .. .. .	11,108	4	10	0	13	9	10,539	8	3	0	12	10
Surgery and Dispensary	1,898	19	7	0	2	4	1,911	15	6	0	2	4
Domestic .. .. .	8,553	12	11	0	10	8	8,548	4	8	0	10	5
Salaries, Wages, Main- tenance .. .. .	10,147	19	9	0	12	7	10,332	9	0	0	12	6
Miscellaneous Expenses	665	19	4	0	0	10	802	12	11	0	1	0
Administration .. .. .	1,341	8	5	0	1	8	1,310	18	0	0	1	7
Establishment .. .. .	1,143	4	7	0	1	5	2,289	1	4	0	2	9
Finance .. .. .	813	8	5	0	1	0	1,013	7	1	0	1	3
Average Total Cost of each In-Patient per week }				2	4	3				2	4	8
Average Total Cost of each In-Patient found by dividing the totals of the money columns marked † and * respectively by the number of In-Patients treated to a conclusion during the year,				126	2	5	—			125	17	0

## Report of the London Medical Board

A Meeting of the Medical Board was held at Margate on Saturday, 21st, July 1934. The Board visited various parts of the Hospital and afterwards issued the following Report:—

Your Medical Board visited various parts of the Hospital: The kitchen was clean and in admirable order. The food was tasted and found to be of good quality and appetising. A food trolley carrying the patients' dinners was followed from the kitchen to the farthest ward. The time taken was eight minutes and the food arrived hot. The kitchen itself was unduly warm and the provision of a fan was recommended. The quarters occupied by the nurses and domestic staff were inspected. They are somewhat inadequate and the furniture is of a very meagre description. It is recommended that a small side table and an easy chair should be placed in each room and that, where it is possible, each occupant should have a room to herself. There is, at present, no accommodation for safeguarding personal possessions. The sisters' and nurses' dinners were inspected. They were well served, of good quality, and the tables were properly laid. The fire apparatus of the Hospital appears to be adequate. A question was raised as to the provision of an increased ration of butter for the nursing staff.

The operation theatre was inspected. The new sterilising plant was reported to be satisfactory. The X-ray Department was also found to be in a good condition. It was well ventilated and the apparatus was properly protected. Should a surgeon be appointed to take charge of the Throat, Nose, and Ear cases, a room can be provided for his use without disturbing any of the present arrangements.

It was thought that some arrangements should be made for sterilising the mattresses, pillows, and blankets used in the Hospital, and that it would be desirable to have a lavatory for the use of the staff. This could be built in the inner quadrangle. The building is in good structural order with the exception of King George V Wing. Several manholes were inspected and it was found in every case that the drains were clean and performing

their function. The cisterns, both for fresh and salt water, were clean. The soil pipe under Alexandra Ward needs attention as it is said to get stopped occasionally. The floor beneath the new kitchen in Swinburne Ward also needs attention. The baths throughout the entire Hospital and the domestic staff quarters are showing signs of wear. Some will have to be replaced by new ones, others can be repainted. It would be necessary to add a storey to the nurses' quarters if each nurse was to be given a separate room. Provision we understand was made for such an additional story when the present building was planned.

D'ARCY POWER.

WILLIAM TURNER.

HERBERT E. BATTEN.

G. LENTHAL CHEATLE.

A. M. H. GRAY.

CECIL WALL.

A. E. RUSSELL.

## Medical Superintendent's Report

Ten years have now elapsed since the present system of presenting the results of treatment was adopted. Previous to this it had been deemed sufficient merely to state the number of cases in which a particular region, i.e. spine, hip, knee, etc., was involved and to record the condition of the patient on discharge as greatly benefited, benefited, or unbenefited. It was felt, however, that statistics were of little worth unless they showed results of treatment in relation to the gravity of the lesion present at the time of admission, its response to treatment, and the average time of treatment required by the various types of lesions. A mode of presentation of results was consequently instituted, which, while doing this, also embodied the nomenclature suggested at about that time by the Ministry of Health for their expression, and thereby rendered them to some extent comparable with the statistical tables published by other institutions in which cases of Non-Pulmonary Tuberculosis were treated.

The system has been found in practice to fulfil its purpose reasonably well. It is realised, of course, that in assigning a case to any particular category on admission and discharge, individual judgments may differ, but as the analysis and classification of results has been performed throughout by the same person, the criteria have remained more or less constant and the figures concerning any particular year of the series are in consequence comparable with those of preceding and succeeding years.

It may be found of interest to set out in tabular form the results achieved in this ten years' period. In so doing, I deal solely with the figures for cases of Surgical (i.e. Non-Pulmonary) Tuberculosis and neglect those of other diseases treated, as being too irregular in character and numbers to offer any useful comparison.

In all, 2,273 cases of Surgical Tuberculosis have been completed during this period, and the subjoined table shows their classification under regions affected, results of treatment, and average duration of stay.

REGION.	DISCHARGED.			Died.	Total.	Average stay in days (discharged cases only).
	Disease quiescent.	Improved.	Un-improved.			
Spine .. .. .	295	51	46	54	446	629
Hip joint .. .. .	170	48	16	20	254	565
Knee joint .. .. .	100	31	3	8	142	493
Other joints and limb bones	149	48	7	10	214	388
Abdominal .. .. .	295	64	8	24	391	274
Peripheral glands.. .. .	385	59	1	6	451	245
Other organs .. .. .	192	134	22	27	375	—
TOTALS .. .. .	1,586	435	103	149	2,273	—
PERCENTAGES .. .. .	69·8	19·1	4·5	6·6	—	—

The second table sets out year by year the total numbers of cases discharged, and the number and percentage of cases in which the disease is "Quiescent," i.e. in which it is inactive and a recrudescence is considered unlikely and where the patient is deemed likely in a short time to be fit to resume useful employment.

Year.	Total number of cases of Surgical Tuberculosis discharged.	Number "Quiescent."	Percentage.
1925	206	117	56·8
1926	207	154	74·4
1927	200	150	75·0
1928	199	141	70·9
1929	224	169	75·4
1930	213	168	78·9
1931	208	174	83·7
1932	236	190	80·5
1933	202	156	77·2
1934	215	163	75·8

Finally, I have attempted to show in tabular form the results of treatment in tuberculosis of *bones and joints*.

Year.	Total number of completed cases of Bone and Joint Tuberculosis.	Results (per cent.)		
		Disease Quiescent	Improved	Unimproved or Died
1925	109	42·4	39·4	18·4
1926	117	67·5	15·4	17·1
1927	115	68·7	20·0	11·3
1928	107	69·1	16·8	12·1
1929	105	64·8	21·0	14·3
1930	97	73·2	10·3	16·5
1931	111	79·3	9·9	10·8
1932	111	70·3	11·7	18·0
1933	102	66·7	10·8	22·5
1934	88	71·6	10·2	18·2

From the preceding tables it will be seen that results for the past year have been maintained at a satisfactory level.

The proportion of "advanced" cases admitted still remains high, this despite the fact that an increase in the number of beds to 320 and other circumstances have much diminished the time spent by applicants for admission on the "waiting-list."

In this connection it is perhaps worthy of remark that nine cases of Pott's Disease, admitted with paraplegia, were discharged during the year, eight of whom had recovered.

The weather during the early part of the summer was very good, and full advantage was taken of this for heliotherapy to be practised, but the months of August and September were on the whole cold and dull, although little rain fell.

The special departments of the Hospital, notably the Orthopaedic Workshops and the X-Ray Department, have maintained a high level in the quality and quantity of their output.

There has again been a considerable increase in the number of out-patients and their attendances, to which former in-patients attending for examination, advice, and the adjustment and

replacement of their apparatus largely contributed. No less than 193 former in-patients availed themselves of the opportunity of so doing during the past year, averaging over 1.5 visits per patient.

With the exception of two cases of diphtheria occurring in Lettsom Ward during the summer, the Hospital has enjoyed its usual immunity from attacks of the acute infectious fevers. In view of the prevalence of a severe form of diphtheria throughout the country during the present winter, it was thought desirable to Schick Test the child patients and the entire Staff of the Hospital and to immunise those found to be susceptible, and this measure has now been carried out.

The health of the Staff has been excellent and there has been no serious illness among them.

B. W. ARMSTRONG,  
*Medical Superintendent.*

25th February, 1935.

TABLE I. Age (on admission) and sex of cases of Non-Pulmonary Tuberculosis discharged in 1934.

REGION.	0—5		5—10		10—15		15—20		20—30		30—40		40—50		Over 50		TOTALS.		GRAND TOTALS.
	M.	F.	M.	F.	M.	F.	M.	F.	M.	F.	M.	F.	M.	F.	M.	F.	M.	F.	
Spine ..	..	1	1	..	1	4	2	..	4	5	6	3	2	1	..	26	14	40	
Hip joint ..	..	..	..	..	1	..	2	1	3	1	..	1	..	..	..	8	2	10	
Knee joint ..	..	..	..	..	3	..	1	1	..	1	..	..	..	..	4	4	..	8	
Other joints and limb bones	1	1	1	..	4	2	2	2	3	2	1	2	..	..	..	10	11	21	
Abdominal ..	1	..	7	1	6	12	7	1	6	3	5	1	..	..	..	27	23	50	
Peripheral glands ..	1	2	3	3	7	3	4	1	3	7	1	..	1	..	19	17	36		
Other organs ..	..	1	4	2	1	5	6	4	8	7	2	4	2	1	2	31	19	50	
TOTALS ..	3	5	11	8	18	15	24	10	37	31	20	14	10	5	2	125	90	215	
GRAND TOTALS ..	8	19	33	34	68	34	15	4	215										

TABLE II. Age (on admission) and sex of cases of Non-Pulmonary Tuberculosis who died in 1934.

REGION.	0—5		5—10		10—15		15—20		20—30		30—40		40—50		Over 50		TOTALS.		GRAND TOTALS.
	M.	F.	M.	F.	M.	F.	M.	F.	M.	F.	M.	F.	M.	F.	M.	F.	M.	F.	
Spine ..	..	..	..	..	1	..	..	..	1	..	..	..	1	..	..	1	..	4	
Hip joint ..	..	..	..	..	1	..	1	..	..	..	..	..	..	..	..	..	3	..	3
Knee joint ..	..	..	..	..	..	..	..	..	..	..	..	..	..	..	..	..	..	..	..
Other joints and limb bones	..	..	..	..	..	..	1	..	..	..	..	..	..	..	..	..	2	2	..
Abdominal ..	..	..	..	..	1	..	..	..	1	1	..	1	..	..	..	3	2	5	
Peripheral glands ..	..	..	..	..	..	..	..	..	..	..	..	..	..	..	..	..	..	..	
Other organs ..	..	..	..	..	1	..	..	..	..	2	..	1	..	..	..	5	..	5	
TOTALS ..	..	..	3	..	3	1	2	..	2	2	2	1	1	1	1	13	6	19	
GRAND TOTALS ..	..	..	3	2	4	2	3	2	4	3	2	2	2	1	19				
Mortality—Per cent.	..	..	13.6	10.8	5.6	5.6	8.1	11.8	20	8.1	11.8	8.1	20	8.1	8.1				

TABLE III.—Cases of tuberculosis of the spine completed in 1934.

CONDITION ON ADMISSION.	DISCHARGED.			Died.	Total.	Average stay in days (discharged cases only).
	Disease quiescent.	Improved.	Un-improved.			
CLASS 1. —Active, slight deformity	4	..	..	..	4	432
CLASS 2A.—Active, considerable deformity .. ..	1	1	..	..	2	182
2B.—Active, with abscess ..	13	2(1*)	2(1*)	3(2*)	20	722
CLASS 3A.—With sinus .. ..	5(1*)	..	1*	1	7	512
3B.—With paraplegia .. ..	8(1*)	..	1	..	9	824
CLASS 4. —Of long standing ..	2	..	..	..	2	478
TOTALS .. ..	33	3	4	4	44	645

TABLE IV.—Cases of tuberculosis of the hip joint completed in 1934.

CLASS 1. —Active, slight deformity	7(1*)	..	..	..	7	675
CLASS 2A.—Active, considerable deformity .. ..	..	..	..	1	1	..
2B.—Active, with abscess ..	1	..	..	..	1	838
CLASS 3. —With sinus .. ..	..	..	1	2	3	835
CLASS 4. —Of long standing ..	1	..	..	..	1	166
TOTALS .. ..	9	..	1	3	13	656

TABLE V.—Cases of tuberculosis of the knee joint completed in 1934.

CLASS 1A.—Synovial, active ..	2	2(1*)	..	..	4	284
1B.—Osseous, active, slight deformity .. ..	1	..	..	..	1	449
CLASS 2A.—Active, considerable deformity .. ..	..	..	..	..	..	..
2B.—Active, with abscess ..	2	1	..	..	3	529
CLASS 3. —With sinus .. ..	..	..	..	..	..	..
CLASS 4. —Of long standing ..	..	..	..	..	..	..
TOTALS .. ..	5	3	..	..	8	396

\* Complicated by Pulmonary Tuberculosis.

TABLE VI.—Cases of tuberculosis of the other joints and limb bones completed in 1934.

CONDITION ON ADMISSION.	DISCHARGED.			Died.	Total.	Average stay in days (discharged cases only).
	Disease quiescent.	Improved.	Un-improved.			
CLASS A1.—Smaller bones, ankle, tarsus and carpus .. .. .	5	1	1*	1	8	575
A2.—Ditto, with abscess .. .. .	2	1	..	..	3	285
A3.—Ditto, with sinus .. .. .	2	..	..	..	2	477
CLASS B1.—Long bones, shoulder and elbow	5	..	..	1	6	248
B2.—Ditto, with abscess .. .. .	..	..	..	..	..	..
B3.—Ditto, with sinus .. .. .	2(1*)	1	1*	..	4	526
TOTALS .. .. .	16	3	2	2	23	436

TABLE VII.—Cases of abdominal tuberculosis completed in 1934.

Peritonitis:—						
(a) Symptomatic .. .. .	2	..	..	..	2	254
(b) Clinical .. .. .	29	4	..	3	36	261
(c) With visceral lesions .. .. .	7	4	4	2	17	328
TOTALS .. .. .	38	8	4	5	55	281

TABLE VIII.—Cases of tuberculosis of peripheral glands completed in 1934.

1.—Glands, small and disseminated ..	3	..	..	..	3	169
2.—Glands, discrete and without caseation	5	..	..	..	5	274
3.—Glands, few, but with gross enlargement	2(1*)	..	..	..	2	310
4.—Glands in masses .. .. .	10	1	..	..	11	269
5.—Glands with sinus .. .. .	13	2	..	..	15	267
TOTALS .. .. .	33	3	..	..	36	263

\* Complicated by Pulmonary Tuberculosis.

TABLE IX.—Cases of tuberculosis of other organs completed in 1934.

	DISCHARGED.			Died	Total.	Average stay in days (discharged cases only).
	Disease quiescent.	Improved.	Un-improved.			
Tuberculosis of lungs† .. ..	..	1	..	..	1	589
"  "  mediastinal Glands .. ..	2	..	..	..	2	220
"  "  sternum .. ..	1	..	..	..	1	167
"  "  rib .. ..	4	2	..	1*	7	273
"  "  sacro-iliac joint .. ..	6	..	..	1	7	751
"  "  genito-urinary system .. ..	4	10	3(1*)	2	19	266
"  "  skin .. ..	7	2	..	..	9	216
Addison's disease .. ..	..	..	..	1	1	..
Tuberculous empyema .. ..	..	..	1	..	1	167
"  proctitis .. ..	1	..	..	..	1	395
"  irido-cyclitis .. ..	2	2	..	..	4	221
"  keratitis .. ..	2	..	..	..	2	230
TOTALS .. ..	29	17	4	5	55	..

\* Complicated by Pulmonary Tuberculosis.

† Omitted from Table I.

TABLE X.—Summary of results of treatment of cases of tuberculosis completed in 1934.

Spine .. ..	33	3	4	4	44	645
Hip joint .. ..	9	..	1	3	13	656
Knee joint .. ..	5	3	..	..	8	396
Other joints and limb bones .. ..	16	3	2	2	23	436
Abdominal .. ..	38	8	4	5	55	281
Peripheral glands .. ..	33	3	..	..	36	263
Other organs .. ..	29	17	4	5	55	..
TOTALS .. ..	163	37	15	19	234	..

TABLE XI.—Cases of Non-Tuberculous Disease completed in 1934

DISEASE.	DISCHARGED.			Died.	Total.	Average stay in days (discharged cases only).
	Disease quiescent.	Improved.	Un-improved.			
Chronic septic osteomyelitis ..	10	2	1	..	13	693
Chronic suppurative arthritis ..	3	..	..	..	3	688
Subacute infective arthritis ..	2	..	..	..	2	364
Chronic infective arthritis ..	..	2	..	..	2	366
Spondylitis deformans ..	..	1	..	..	1	393
Scoliosis (? simple) with paraplegia	1	..	..	..	1	432
Crush fracture of spine ..	2	..	..	..	2	110
Sarcoma of spine, etc. ..	..	..	1	..	1	84
Secondary carcinoma of spine ..	..	..	..	1	1	..
Epiphyseal coxa vara ..	..	1	..	..	1	78
Perthe's disease of hip ..	1	..	..	..	1	560
Chronic empyema ..	3	1	..	..	4	156
Bronchiectasis ..	..	..	1	..	1	112
Pelvic cellulitis ..	1	1	..	..	2	406
Faecal fistula ..	..	1	..	..	1	184
Subphrenic abscess ..	1	..	..	..	1	753
Debility ..	..	2	..	..	2	335
Otitis media and mastoiditis ..	..	1	..	..	1	51
Actinomycosis of lungs ..	..	..	..	1	1	..
Amyotonia congenita ..	..	1	..	..	1	36
TOTALS ..	24	13	3	2	42	..

TABLE XII.—Cases not treated to a conclusion (*i.e.* discharged at own request, at request of parents or correspondent, for misconduct, or transferred to Fever Hospital\* or other Institution before completion of prescribed treatment) and not included in the preceding tables.

Tuberculosis of spine	..	..	1
,,    ,, hip joint	..	..	1
,,    ,, knee joint	..	..	1
,,    ,, elbow	..	..	1
,,    ,, shoulder	..	..	1
,,    ,, tarsus	..	..	1
Abdominal tuberculosis	..	..	3
Tuberculous keratitis	..	..	1
,,    irido-cyclitis	..	..	1
,,    glands of neck	..	..	1
Gummatous ulceration of skin	..	..	1
Appendicectomy sinus	..	..	1
Neurasthenia	..	..	1
Melancholia—attempted suicide	..	..	1
TOTAL	..	..	16

\* Two cases transferred to Fever Hospital were subsequently readmitted.

TABLE XIII.—Causes of deaths of patients during 1934.

DISEASE.	COMPLICATION.	
Tuberculosis of spine	Pulmonary tuberculosis; tuberculous meningitis	1
,,    ,,    ,,	Abscess of lung	1
,,    ,,    ,,	Pulmonary tuberculosis	1
,,    ,,    ,,	Sepsis and broncho-pneumonia	1
,,    ,, hip joint	Death under anaesthesia	1
,,    ,,    ,,	Sepsis and amyloid disease	2
,,    ,, wrist	Otitis media and streptococcal meningitis	1
,,    ,, sacro-iliac joint	Sepsis	1
,,    ,, ribs	Mediastinal abscess and pulmonary tuberculosis	1
,,    ,, elbow	Acute intestinal obstruction	1
Abdominal tuberculosis	Tuberculous meningitis	3
,,    ,,	Acute intestinal obstruction	1
,,    ,,	Tuberculous proctitis	1
Renal tuberculosis	Tuberculous meningitis	1
,,    ,,	Acute suppurative pyelo-nephritis	1
Addison's disease	..	1
Actinomycosis of lungs	..	1
Carcinoma mammae	Secondary deposits in spine, etc.	1
	TOTAL	21

TABLE XIV.—Surgical Operations *under anæsthetics in 1934.*

(Exclusive of aspirations and minor operations.)

CONDITIONS.	NATURE OF OPERATIONS.	TOTAL.
Tuberculosis of spine .. ..*	Albee's operation .. ..	1
	Drainage of abscess .. ..	1
	Excision of sinuses, etc. .. ..	1
„ „ hip joint .. ..	Extra-articular arthrodesis .. ..	1
	Sub-trochanteric osteotomy .. ..	1
	Plastic operation on scar .. ..	2
	Curettage, etc., of sinuses .. ..	2
	Removal of inguinal gland for microscopy .. ..	2
„ „ knee joint .. ..	Excision .. ..	1
„ „ elbow joint .. ..	Drainage of joint .. ..	1
	Skin-grafting of sinus .. ..	1
„ „ tibia .. ..	Sequestrectomy and saucerization .. ..	1
„ „ sternum .. ..	Sequestrectomy and saucerization .. ..	1
„ „ sacro-iliac joint .. ..	Exploratory laparotomy .. ..	1
„ „ finger .. ..	Sequestrectomy .. ..	1
	Skin-grafting of cavity .. ..	1
„ „ cervical glands .. ..	Excision .. ..	21
	Biopsy for diagnosis .. ..	1
	Plastic operation on scar .. ..	2
„ „ inguinal glands .. ..	Excision .. ..	1
„ „ genito-urinary system .. ..	Cystoscopy .. ..	10
	Cystoscopy and ureteric catheterization .. ..	1
	Nephrectomy .. ..	2
	Orchidectomy .. ..	1
Tuberculous empyema .. ..	Excision of sinuses and drainage of cavity .. ..	1
	Skin-grafting of cavity .. ..	1
Lupus of foot .. ..	Amputation of toe .. ..	1
Chronic septic osteomyelitis .. ..	Sequestrectomy, saucerization, etc. .. ..	8
	Skin-grafting of cavity .. ..	8
Chronic suppurative arthritis of hip joint	Sequestrectomy and saucerization .. ..	1
	Skin-grafting of cavity .. ..	1
Chronic suppurative arthritis of shoulder	Sequestrectomy and saucerization .. ..	1
	Skin-grafting of cavity .. ..	1
Mastoiditis .. ..	Exploratory operation .. ..	1
	Radical mastoid operation .. ..	1
Sarcoma of spine, etc. .. ..	Biopsy for diagnosis .. ..	1
Adhesions of knee joint .. ..	Manipulation .. ..	2
Claw toe .. ..	Tenotomy and manipulation .. ..	1
Enlarged tonsils and adenoids .. ..	Removal .. ..	23
Acute appendicitis .. ..	Appendicectomy .. ..	6
Acute intestinal obstruction by volvulus	Reduction of volvulus .. ..	1
„ „ „ „ Tb. ulcer	Lateral anastomosis of ileum .. ..	1
„ „ „ „ Meckel's diverticulum	Excision of diverticulum .. ..	1
„ „ „ „ „	Ileostomy .. ..	1
Peri-nephric abscess .. ..	Cystoscopy and pyelography .. ..	1
Haemorrhoids .. ..	Clamp and ligature operation .. ..	2
Amyotonia congenita .. ..	Open lengthening of ham-strings .. ..	1
Accessory auricle .. ..	Removal .. ..	1
Encysted haematoma of forearm .. ..	Removal .. ..	1
	TOTAL .. ..	126

Aspirations and minor operations .. ..	619
Dental treatments .. ..	719
Ophthalmic treatments .. ..	168

## Suitable Cases for Admission

The Medical Board of this Institution desire to draw the attention of practitioners of medicine to the special advantages of the Royal Sea-Bathing Hospital at Margate for the treatment of Surgical Tuberculosis, and of certain other diseases which are likely to derive benefit from its climatic influences.

There appears to be some misapprehension as to the objects of this Hospital, as persons are sent who would be more appropriately received into a Convalescent Home, and others more fit for an Institution for Incurables; these unsuitable patients have to be sent home, and are thus subjected to unnecessary expense and disappointment.

Most varieties of Tuberculosis if sent early are admitted with advantage; among these may be mentioned affections of bones, joints, glands, eye, skin, affections of the Fauces and Larynx, of the Abdomen, of the Kidney, Bladder, and Testis. It is necessary to emphasize the desirability of sending these tuberculous cases to the dry, bracing air of the Isle of Thanet at the earliest possible period, at which time a satisfactory result or a complete recovery can be expected.

The Hospital stands in its own grounds of 6 acres, and is placed on the edge of the cliff. It is designed for the accommodation of 320 patients. The wards are large and airy, and are provided with hot and cold sea-water baths. There is also an Isolation Block containing eight beds.

No less than 98 beds are reserved for children, as it is the experience of the Staff that children in comparison with adults reap more prompt and permanent benefit from the bracing air and treatment. Education is provided for those able to receive it, and the school is "Approved" by the Board of Education.

The wards open on to covered verandahs, where patients can

remain night and day at all seasons of the year. There is a spacious and up-to-date operating theatre, an Electro-therapeutic Department, and a workshop for plaster work and splint making.

The Visiting Staff consists of a Surgeon for Ear, Nose, and Throat cases, a Radiologist in charge of the Electro-therapeutic Department, an Ophthalmic Surgeon, and a Dental Surgeon. There are also a Medical Superintendent, a Resident Assistant Medical-Superintendent, and a House Surgeon.

The Hospital is "Approved" under the National Health Insurance Act.

It is hoped that the Hospital Authorities may receive the assistance of the Medical Profession in the selection of appropriate cases. It should be understood that the following are inadmissible:—

Patients who are practically incurable or who require a very protracted stay in the Hospital, e.g., those suffering from chronic diseases of the Spine or Pelvis, especially when associated with suppuration of an infective type.

Cases of Pulmonary Tuberculosis, except children under 15 years of age with Incipient Phthisis.

Mere Convalescents.

Patients suffering from infectious disease or mentally afflicted.

Children under six years of age except under special circumstances.

## Trust Funds

### GENERAL ENDOWMENT FUND

In 1877 the late Mr. George Moore bequeathed a legacy of £1,000 to "The Permanent Fund" of the Hospital. This legacy, however, appears to have really been the commencement of "The Endowment Fund," although in 1883 Mrs. Matthews, a friend of the late Sir Erasmus Wilson, gave a donation of £1,000, "suggesting that it be a first payment towards the formation of an Endowment Fund." In 1884 the Fund was augmented by a legacy of £1,000 under the will of the late Baroness de Rothschild, and the foregoing amounts are represented in the Balance Sheet by £2,528 19s. 10d. Brighton Corporation Redeemable  $3\frac{1}{2}$  per cent. Stock.

In 1891, the Centenary of the foundation of the Hospital, efforts were made to increase this Fund by a public appeal, which resulted in adding to the endowments the following stocks now appearing in the Balance Sheet, viz., £83 14s. 9d. East India Railway Annuities, Class B, and £339 2s. 0d. Great Eastern Railway Consolidated 4 per cent. Preference Stock, the largest contribution to the Fund being a donation of £1,000 from the late Mr. Joseph Barton.

In 1899 the Fund was further augmented by £2,157 Birmingham Canal Navigation Stock, being a portion of a legacy of £5,000 left to the Hospital by the late General John Julius Johnstone.

In 1915 "W. R." transferred £300 Metropolitan Consolidated  $3\frac{1}{2}$  per cent. Stock to the General Endowment Fund. This was converted into £316 10s. 0d. London County  $4\frac{1}{2}$  per cent. Stock in 1929.

In 1917 A. C. Norman, Esq., compounded his Annual Subscription by a donation of £63, which has been invested in £105 12s. 4d. 3 per cent. Local Loans.

In 1919 the late Sir Henry Lennard, Bt., compounded his Annual Subscription by a gift of £150 Funding Loan 4 per cent.

In 1926, with the consent of the Charity Commission, the Hospital sold strips of land in front of the Hospital amounting to about 1,460 square yards, including the Sisters' Cottage, the Lodge, and two cottages to the Margate Corporation for the purpose of widening the Canterbury Road. The proceeds of the sale have been invested in the name of "The Official Trustees of Charitable Funds" in £3,478 ls. 9d. 4 per cent. Funding Loan and £3,615 ls. 1d. 3½ per cent. Conversion Stock. In order to provide accommodation for the Sisters two houses adjoining the grounds of the Hospital were purchased out of income at a cost of £2,200, and these houses are now vested in the Official Trustees of Charity Lands together with the Freehold of the Hospital.

#### Annual Income, £554

N.B.—In 1894 the late Mr. Charles Alfred Swinburne anonymously transferred to this Fund per the late Rt. Hon. Earl Stanhope £6,000 London and South Western Railway Preferred Converted Ordinary Stock, and £6,000 London and South Western Railway Deferred Ordinary Stock, and the same benefactor gave a further anonymous donation of £3,000 in 1896, which is represented in the Balance Sheet by £104 16s. 10d. Great Indian Peninsular Railway Annuities, Class B. At the request of the donor the aforementioned London and South Western Railway Stocks were sold in 1903 and the proceeds reinvested in £5,250 East India Railway 3 per cent. Debenture Stock, and £5,398 16s. 10d. Reading Corporation 3 per cent. Stock 1962. As at his death in 1904 he bequeathed the residue of his estate to the Endowment Fund of the Hospital, it has been thought advisable to show these stocks in the Balance Sheet under Swinburne Charity.

#### MARRIOTT BEQUEST

In 1898 Dr. Temple, the then Archbishop of Canterbury, appropriated the sum of £3,600 to the Endowment of the Royal Sea-Bathing Hospital, being a portion of one moiety of a sum of money which had been paid over to His Grace by the Trustees of the late Mr. Alfred Marriott of Hopton, who by his will dated the 29th March, 1888 directed His Grace to devote such money to the Endowment of Societies for assisting the fallen of either sex, or of Hospitals, or of Refuges within the Diocese of Canterbury

(each of such Endowments not to exceed £100 per annum) as should, in His Grace's opinion, be of the greatest public utility, and stand most in need of funds. The amount of £3,600, which was paid over to the Trustees of this Hospital, stands invested in £3,364 Nottingham Joint Station Stock.

**Annual Income, £100**

#### GORELY CHARITY

By her will proved the 29th October, 1880, the late Mrs. Susan Gorely bequeathed £5,000 to the Hospital, the bequest to be called "The Gorely Charity." By change of investments the amount of the fund has been increased to £5,901 15s. 10d., which is invested in first-class securities as shown in the Balance Sheet under Gorely Charity.

**Annual Income, £164**

#### MISS MARY ANN CARLTON'S TRUST

Under the will of Miss Mary Ann Carlton, proved on the 23rd November, 1854, this Hospital became entitled to a share in certain Stocks subject to the payment thereof of Annuities to certain Annuitants named in the will. The last surviving Annuitant died in 1896, and the amount of the bequest is represented in the Balance Sheet by £2,471 4s. 9d. Derby Corporation 3 per cent. Stock 1920/50 and £2,795 15s. 9d. Reading Corporation 3 per cent. Stock.

This legacy is held on the condition set out in a deed dated 31st December, 1878, that the Vicar for the time being of the Parish of Fulham shall be permitted to have in the Hospital "three or any less number of In-Patients" to be admitted on the sole recommendation of such Vicar, "subject to the general rules and regulations of the Infirmary for the admission and management of Patients."

**Annual Income, £157**

## SWINBURNE CHARITY

For the purpose of increasing the Endowments of the Hospital, the late Mr. Charles Alfred Swinburne of Andover gave during his life-time £5,250 East India Railway 3 per cent. Debenture Stock and £5,398 16s. 10d. Reading Corporation 3 per cent. Stock 1962, and £104 16s. 10d. Great Indian Peninsular Railway Annuities, Class B.

He further added to these amounts by his will dated the 26th January, 1904, and proved 18th April, 1904, wherein the following paragraph appears:—

“I direct my Trustees to hold all my Residuary Estate and the proceeds of the sale, realization, and conversion thereof in trust for the said Royal Sea-Bathing Hospital to which institution I give the same accordingly in addition to all sums which I have already given or may hereafter give to the Endowment Fund of such Hospital during my life-time, whether in my own name or otherwise, such Residuary Estate and proceeds to constitute and be part of such Endowment Fund, and not to be treated, considered, or applied by the Directors of such Hospital otherwise than as an Endowment legacy.”

The Legacy amounted to £38,236 8s. 11d. and has been invested in £6,390 East India Railway 3 per cent. Debenture Stock, and £4,183 10s. 0d. Union of South Africa 3 per cent. Inscribed Stock, £6,578 16s. 5d. London County 3 per cent. Stock, £1,863 0s. 1d. New Zealand 3 per cent. Inscribed Stock, £5,000 Canada 4 per cent. Stock, £5,000 West Australian Government 4 per cent. Stock, £5,151 18s. 4d. Union of South Africa 4 per cent. Stock, and £9,461 13s. 3d. Local Loans 3 per cent.

**Annual Income, £1,854**

## TIARKS' BEQUEST

The late Mr. Henry Frederic Tiarks bequeathed a Legacy of £100 to the Royal Sea-Bathing Hospital on 22nd January, 1912. His will provides that the Legacy shall not be treated as current revenue, but shall be invested, and that the income derived from the investment thereof shall be applied towards the permanent support of the Charity.

The Legacy is invested in £113 18s. 7d. New Zealand 3 per cent. Inscribed Stock, and appears in the Balance Sheet under Henry Frederic Tiarks' Bequest.

**Annual Income, £3 8s. 4d.**

## THE SIMMONS' TRUST

*Trustees*—The Rt. Hon. LORD BIDDULPH.

CHARLES YEOMAN, ESQ.

CYRIL FRANCIS HERBERT WATSON, ESQ.

By an Indenture dated the 6th November, 1903, the late Francis Richard Simmons of Ramsgate conveyed certain lands known as "Simmons Marshes," situate in the Parish of St. Nicholas at Wade, to trustees to hold the same upon trust, and to divide the net residue of the rents and profits equally between this Hospital and another for the general objects and purposes thereof.

The Endowment and Trust is to be called "The Simmons' Trust," and the Trustees are strictly prohibited from selling, exchanging, partitioning, mortgaging, or otherwise disposing of the property (otherwise than by demise or letting the same), the meaning and intention of the Founder being that the hereditaments shall for ever be held for the purpose of making a permanent endowment of the Hospitals by means of the net rents and profits thereof.

The lands and hereditaments are vested in "The Official Trustee of Charity Lands" by an order of the Charity Commission dated 6th January 1933.

**BED ENDOWMENT FUND.**

Ward.	Name.	Inscription.	Amount Contributed.	Annual Income.	Endower.
Victoria	1. Derby Bed	Derby Bed, endowed 22nd March, 1905, by Frederick Arthur, Earl of Derby, K.G., President of the Hospital.	£1,000	£31	The late Frederick Arthur, Earl of Derby, K.G.
Upper Wilson	2. Hannah Finnie Bed	Hannah Finnie Memorial Bed, endowed 7th August, 1906	£1,000	£33	The Executors of the late Mrs. Hannah Finnie out of the residuary estate bequeathed to them for distribution between charitable institutions as they should select.
King George V No. 1	3. Hugh Taylor Bed	Hugh Taylor Bed, endowed 1907, by his daughter.	£2,000	£67	The late Mrs. Streatfeild.
Louise	4. Maude Ashley Bed (I)	Maude Ashley Bed, endowed December 13th, 1911, by the Rt. Hon. Sir Ernest Cassel, G.C.B., G.C.M.G., G.C.V.O., in memory of Mrs. Maude Ashley.	£1,000	£34	The late Rt. Hon. Sir Ernest Cassel, G.C.B., G.C.M.G., G.C.V.O.

BED ENDOWMENT FUND—continued.

Ward	Name.	Inscription.	Amount Contributed.	Annual Income.	Endower.
Lettsom	5. Henry John Bed	Henry John Bed, endowed April 25th, 1912, by his mother, Eliza Streatfeild.	£1,000	£35	The late Mrs. Streatfeild.
Lettsom	6. Joseph Barton Bed	Joseph Barton Bed, endowed 14th December, 1912, by a Legacy of £1,000 in memory of Joseph Barton, a generous benefactor.	£1,000	£37	By Legacy allocated to endowment by Committee of Management, as a Memorial to the late Mr. Joseph Barton, who was a liberal supporter of the Hospital.
Hodgson	7. Mappin Bed	Mappin Bed, in memory of John Newton Mappin, a Vice-President of the Hospital, endowed 27th November, 1913.	£1,000	£41	By Legacy bequeathed by the late Mr. John Newton Mappin.

**BED ENDOWMENT FUND—continued.**

Ward	Name.	Inscription.	Amount Contributed.	Annual Income.	Endower.
King George V No. 1	8. Charles Freeman Bed	Charles Freeman Bed, named in memory of a generous benefactor, December 31st, 1914.	£962 12s.	£35	Amount allocated to endowment by Committee of Management as a Memorial to the late Mr. Charles Freeman, who was an anonymous liberal supporter of the Hospital 1891-1914.
Swinburne	9. Maude Ashley Bed (II)	Maude Ashley Bed, endowed in 1916 by the Rt. Hon. Sir Ernest Cassel, G.C.B., G.C.M.G., in memory of Mrs. Maude Ashley.	£1,000	£48	The late Rt. Hon. Sir Ernest Cassel, G.C.B., G.C.M.G., G.C.V.O.

BED ENDOWMENT FUND—continued.

Ward	Name.	Inscription.	Amount Contributed.	Annual Income.	Endower.
Swinburne	10. Geldart Bed	Geldart Bed, endowed June 28th, 1916, in memory of Mrs. Sarah Laura Sophia Geldart.	£1,000	£50	The Public Trustee as Administrator of the Estate of the late Mrs. Geldart, out of the residuary estate bequeathed to him for distribution between charitable institutions as he should select.
King George V No. 2	11. Henry Francis Bailey Bed	Henry Francis Bailey Bed, endowed 1918.	£1,000	£57	The Executor of the late Mr. H. F. Bailey, out of estate bequeathed to him for distribution between charitable institutions as he should select.
Upper Wilson	12. Emily Margaret Bed	Emily Margaret Bed, named in memory of Lady Emily Margaret Stanhope, who died June 12th, 1932, and endowed it by a Legacy of £1,000 November 1st, 1932.	£1,000	£36	The late Lady Emily Margaret Stanhope, by Legacy.

# Special Trust Fund

## MAJOR WILLIAM MORRISON BELL FUND

*Trustees*—Hon. ROBERT GERARD VALOYNES WALLOP.  
C. S. GORDON CLARK, ESQ.  
The Rt. Hon. LORD BIDDULPH.

The late Major Bell, formerly a Director of the Hospital, bequeathed a sum of £300 to his brother, Captain Bell, for charitable purposes, and he gave the same to this Hospital to found a fund in memory of the deceased. It has been invested in £304 2s. 8d. London County 3 per cent. Stock. The Income is not available for the general purposes of the Hospital, but is to be applied to the purchase of toys and other comforts (not being Medical comforts) for the use, benefit, and enjoyment of the children who are patients for the time being under treatment at the Hospital.

**Annual Income, £9.**

# Contributions from the Livery Companies and Trustees of other Funds

YEARS.								£	s.	d.	£	s.	d.
THE CORPORATION OF THE CITY OF LONDON.													
1800	..	..	..	..	..	..	..	100	0	0			
1802	..	..	..	..	..	..	..	200	0	0			
1811	..	..	..	..	..	..	..	200	0	0			
1847	..	..	..	..	..	..	..	200	0	0			
1858	..	..	..	..	..	..	..	105	0	0			
1874	..	..	..	..	..	..	..	105	0	0			
1889	..	..	..	..	..	..	..	105	0	0			
1892	..	..	..	..	..	..	..	105	0	0			
1909	..	..	..	..	..	..	..	50	0	0			
											1,170	0	0

## THE WORSHIPFUL COMPANY OF BREWERS.

1869	..	..	..	..	..	..	..	25	0	0			
1870	..	..	..	..	..	..	..	21	0	0			
1872	..	..	..	..	..	..	..	20	0	0			
											66	0	0

## THE WORSHIPFUL COMPANY OF BRODERERS.

1889	..	..	..	..	..	..	..	21	0	0			
1890	..	..	..	..	..	..	..	10	10	0			
1892	..	..	..	..	..	..	..	10	10	0			
1893	..	..	..	..	..	..	..	10	10	0			
1903	..	..	..	..	..	..	..	10	10	0			
											63	0	0

## THE WORSHIPFUL COMPANY OF CARPENTERS.

1904-23	(Five Guineas annually)	..	..	..	..	..	..	105	0	0			
											105	0	0

YEARS.								£	s.	d.	£	s.	d.
THE WORSHIPFUL COMPANY OF CLOTHWORKERS.													
1802	..	..	..	..	..	..	..	25	0	0			
1851	..	..	..	..	..	..	..	21	0	0			
1856	..	..	..	..	..	..	..	10	10	0			
1858	..	..	..	..	..	..	..	10	10	0			
1874	..	..	..	..	..	..	..	21	0	0			
1875-6	..	..	..	..	..	..	..	21	0	0			
(Ten Guineas annually)													
1877-80	..	..	..	..	..	..	..	84	0	0			
(Twenty Guineas annually)													
1882	..	..	..	..	..	..	..	31	10	0			
1886	..	..	..	..	..	..	..	21	0	0			
1888	..	..	..	..	..	..	..	21	0	0			
1890	..	..	..	..	..	..	..	50	0	0			
1893	..	..	..	..	..	..	..	52	10	0			
1894	..	..	..	..	..	..	..	31	0	0			
1898	..	..	..	..	..	..	..	100	0	0			
1904	..	..	..	..	..	..	..	100	0	0			
1908	..	..	..	..	..	..	..	100	0	0			
1913	..	..	..	..	..	..	..	50	0	0			
1914	..	..	..	..	..	..	..	10	10	0			
1915	..	..	..	..	..	..	..	52	10	0			
1920	..	..	..	..	..	..	..	10	10	0			
1921	..	..	..	..	..	..	..	52	10	0			
1926	..	..	..	..	..	..	..	52	10	0			
1930	..	..	..	..	..	..	..	52	10	0			
											<u>981</u>	<u>0</u>	<u>0</u>

THE WORSHIPFUL COMPANY OF CURRIERS.													
1888-1900	..	..	..	..	..	..	..	68	5	0			
(Five Guineas annually)													
1901	..	..	..	..	..	..	..	2	2	0			
1902-7	..	..	..	..	..	..	..	31	10	0			
(Five Guineas annually)													
1908-12	..	..	..	..	..	..	..	15	15	0			
(Three Guineas annually)													
1924-29	..	..	..	..	..	..	..	31	10	0			
(Five Guineas annually)													
											<u>149</u>	<u>2</u>	<u>0</u>

THE WORSHIPFUL COMPANY OF CUTLERS.													
1870	..	..	..	..	..	..	..	10	10	0			
1893	..	..	..	..	..	..	..	10	10	0			
1904-7	..	..	..	..	..	..	..	42	0	0			
(Ten Guineas annually)													
1910-12	..	..	..	..	..	..	..	31	10	0			
(Ten Guineas annually)													
											<u>94</u>	<u>10</u>	<u>0</u>

THE WORSHIPFUL COMPANY OF DRAPERS.													
1803	..	..	..	..	..	..	..	25	0	0			
1836	..	..	..	..	..	..	..	50	0	0			
1850-1881	..	..	..	..	..	..	..	168	0	0			
(Five Guineas annually)													
1857	..	..	..	..	..	..	..	105	0	0			
1915	..	..	..	..	..	..	..	26	5	0			
1916-32	..	..	..	..	..	..	..	357	0	0			
(Twenty Guineas annually)													
											<u>731</u>	<u>5</u>	<u>0</u>

EARS.							£	s.	d.	£	s.	d.
THE WORSHIPFUL COMPANY OF DYERS.												
1869	..	..	..	..	..	..	5	5	0			
1882-4	(Three	Guineas	annually)	..	..	..	9	9	0			
1885	..	..	..	..	..	..	5	5	0			
1887-9	(Five	Guineas	annually)	..	..	..	15	15	0			
1890	..	..	..	..	..	..	3	3	0			
1891-7	(Five	Guineas	annually)	..	..	..	36	15	0			
										75	12	0

THE WORSHIPFUL COMPANY OF FISHMONGERS.												
1834	..	..	..	..	..	..	50	0	0			
1851	..	..	..	..	..	..	25	0	0			
1858	..	..	..	..	..	..	25	0	0			
1891	..	..	..	..	..	..	26	5	0			
1892	..	..	..	..	..	..	52	10	0			
1896	..	..	..	..	..	..	52	10	0			
1903	..	..	..	..	..	..	26	5	0			
1911	..	..	..	..	..	..	26	5	0			
1916-20	(Four	Guineas	annually)	..	..	..	21	0	0			
1923	..	..	..	..	..	..	26	5	0			
1929	..	..	..	..	..	..	52	10	0			
1934	..	..	..	..	..	..	52	10	0			
										436	0	0

THE WORSHIPFUL COMPANY OF GOLDSMITHS.												
1802	(Ante)	..	..	..	..	..	25	0	0			
1802	..	..	..	..	..	..	25	0	0			
1843	..	..	..	..	..	..	50	0	0			
1844	..	..	..	..	..	..	52	10	0			
1848	..	..	..	..	..	..	50	0	0			
1851	..	..	..	..	..	..	50	0	0			
1858	..	..	..	..	..	..	100	0	0			
1866	..	..	..	..	..	..	100	0	0			
1874	..	..	..	..	..	..	100	0	0			
1889	..	..	..	..	..	..	200	0	0			
1892	..	..	..	..	..	..	250	0	0			
1903	..	..	..	..	..	..	400	0	0			
1907	..	..	..	..	..	..	250	0	0			
1911	..	..	..	..	..	..	150	0	0			
1915	..	..	..	..	..	..	100	0	0			
1919	..	..	..	..	..	..	500	0	0			
1923	..	..	..	..	..	..	100	0	0			
										2,502	10	0

THE WORSHIPFUL COMPANY OF GROCERS.												
1851	..	..	..	..	..	..	50	0	0			
1856	..	..	..	..	..	..	100	0	0			
1857	..	..	..	..	..	..	100	0	0			
1859	..	..	..	..	..	..	100	0	0			
1874	..	..	..	..	..	..	100	0	0			
1884	..	..	..	..	..	..	250	0	0			
1889	..	..	..	..	..	..	100	0	0			
1892	..	..	..	..	..	..	100	0	0			
1895	..	..	..	..	..	..	50	0	0			
1903	..	..	..	..	..	..	50	0	0			
1907	..	..	..	..	..	..	50	0	0			
1911	..	..	..	..	..	..	50	0	0			
Carried forward							..	..	..	1,100	0	0

YEARS.								£	s.	d.	£	s.	d.
THE WORSHIPFUL COMPANY OF GROCERS— <i>Continued.</i>													
	Brought forward .. .. .							1,100	0	0			
1919	..	..	..	..	..	..	100	0	0				
1923	..	..	..	..	..	..	50	0	0				
1928	..	..	..	..	..	..	50	0	0				
1933	..	..	..	..	..	..	50	0	0				
										<u>1,350</u>	0	0	
THE WORSHIPFUL COMPANY OF HABERDASHERS.													
1865	..	..	..	..	..	..	10	10	0				
1884	..	..	..	..	..	..	5	5	0				
1896	..	..	..	..	..	..	5	5	0				
1903-28	(Ten	Guineas	annually)	..	..	..	283	10	0				
										<u>304</u>	10	0	
THE WORSHIPFUL COMPANY OF IRONMONGERS.													
1803	..	..	..	..	..	..	25	0	0				
1851	..	..	..	..	..	..	21	0	0				
1855	..	..	..	..	..	..	21	0	0				
1857	..	..	..	..	..	..	20	0	0				
1870	..	..	..	..	..	..	20	0	0				
1875	..	..	..	..	..	..	10	10	0				
1892	..	..	..	..	..	..	10	10	0				
										<u>128</u>	0	0	
THE WORSHIPFUL COMPANY OF LEATHERSELLERS.													
1851	..	..	..	..	..	..	26	5	0				
1865	..	..	..	..	..	..	26	5	0				
1878	..	..	..	..	..	..	10	10	0				
1890-1909	(Ten	Guineas	annually)	..	..	..	210	0	0				
1910-11	(Five	Guineas	annually)	..	..	..	10	10	0				
										<u>283</u>	10	0	
THE WORSHIPFUL COMPANY OF MERCERS.													
1851	..	..	..	..	..	..	25	0	0				
1859	..	..	..	..	..	..	52	10	0				
1874	..	..	..	..	..	..	52	10	0				
1882	..	..	..	..	..	..	100	0	0				
1883-8	(One	Hundred	Guineas	annually)	..	..	630	0	0				
1889	..	..	..	..	..	..	157	10	0				
1890-2	(Fifty	Guineas	annually)	..	..	..	157	10	0				
1893	..	..	..	..	..	..	105	0	0				
1894-5	(Fifty	Guineas	annually)	..	..	..	105	0	0				
1896	..	..	..	..	..	..	105	0	0				
1897	..	..	..	..	..	..	157	10	0				
1898	..	..	..	..	..	..	207	10	0				
1899	..	..	..	..	..	..	102	10	0				
1900	..	..	..	..	..	..	102	10	0				
1901	..	..	..	..	..	..	100	0	0				
1903	..	..	..	..	..	..	52	10	0				
1907	..	..	..	..	..	..	105	0	0				
1910	..	..	..	..	..	..	126	0	0				
1913	..	..	..	..	..	..	126	0	0				
1916	..	..	..	..	..	..	126	0	0				
1920	..	..	..	..	..	..	126	0	0				
1923	..	..	..	..	..	..	120	0	0				
										<u>2,941</u>	10	0	

YEARS.

£ s. d.      £ s. d.

THE WORSHIPFUL COMPANY OF MERCHANT  
TAYLORS

1805 ( <i>Ante</i> )	..	..	..	..	..	..	21	0	0
1805	..	..	..	..	..	..	52	10	0
1848	..	..	..	..	..	..	21	0	0
1851	..	..	..	..	..	..	21	0	0
1856	..	..	..	..	..	..	30	0	0
1857	..	..	..	..	..	..	21	0	0
1859	..	..	..	..	..	..	21	0	0
1874	..	..	..	..	..	..	21	0	0
1889	..	..	..	..	..	..	52	10	0
1893	..	..	..	..	..	..	21	0	0
1903	..	..	..	..	..	..	31	10	0
1908	..	..	..	..	..	..	21	0	0
1911	..	..	..	..	..	..	21	0	0
1915	..	..	..	..	..	..	31	10	0
1919	..	..	..	..	..	..	31	10	0
1924	..	..	..	..	..	..	31	10	0
1929	..	..	..	..	..	..	31	10	0
									<u>481 10 0</u>

## THE WORSHIPFUL COMPANY OF PEWTERERS.

1892	..	..	..	..	..	..	21	0	0
1898	..	..	..	..	..	..	10	10	0
1902	..	..	..	..	..	..	10	10	0
1906	..	..	..	..	..	..	5	5	0
									<u>47 5 0</u>

## THE WORSHIPFUL COMPANY OF SADDLERS.

1878	..	..	..	..	..	..	10	0	0
1895	..	..	..	..	..	..	5	0	0
									<u>15 0 0</u>

## THE WORSHIPFUL COMPANY OF SALTERS.

1865-71	(Five Guineas annually)	..	..	..	..	..	36	15	0
1872-87	(Ten Guineas annually)	..	..	..	..	..	168	0	0
1888	..	..	..	..	..	..	21	0	0
1889-91	(Ten Guineas annually)	..	..	..	..	..	31	10	0
1892	..	..	..	..	..	..	31	10	0
1893-94	(Ten Guineas annually)	..	..	..	..	..	21	0	0
1895	..	..	..	..	..	..	31	10	0
1907	..	..	..	..	..	..	26	5	0
1911	..	..	..	..	..	..	21	0	0
1896-1916	(Ten Guineas annually)	..	..	..	..	..	220	10	0
1917	..	..	..	..	..	..	5	5	0
									<u>614 5 0</u>

YEARS.								£	s.	d.	£	s.	d.
THE WORSHIPFUL COMPANY OF SCRIVENERS.													
1873	..	..	..	..	..	..	..	5	0	0			
1903	..	..	..	..	..	..	..	5	5	0			
1906	..	..	..	..	..	..	..	5	5	0			
													<u>15 10 0</u>
THE WORSHIPFUL COMPANY OF SKINNERS.													
1851	..	..	..	..	..	..	..	10	0	0			
1858	..	..	..	..	..	..	..	21	0	0			
1874	..	..	..	..	..	..	..	26	5	0			
1884	..	..	..	..	..	..	..	10	10	0			
1889	..	..	..	..	..	..	..	21	0	0			
1893	..	..	..	..	..	..	..	10	10	0			
1895	..	..	..	..	..	..	..	15	15	0			
1910	..	..	..	..	..	..	..	21	0	0			
1911	..	..	..	..	..	..	..	15	15	0			
1912	..	..	..	..	..	..	..	10	10	0			
1913	..	..	..	..	..	..	..	31	10	0			
1914-18								52	10	0			
1920-25								63	0	0			
1926	..	..	..	..	..	..	..	5	5	0			
1927-34								84	0	0			
													<u>398 10 0</u>
THE WORSHIPFUL COMPANY OF VINTNERS.													
1874	..	..	..	..	..	..	..	21	0	0			
1884	..	..	..	..	..	..	..	21	0	0			
1890	..	..	..	..	..	..	..	10	10	0			
1894	..	..	..	..	..	..	..	10	10	0			
1903	..	..	..	..	..	..	..	10	10	0			
1906	..	..	..	..	..	..	..	10	10	0			
1910	..	..	..	..	..	..	..	10	10	0			
1912	..	..	..	..	..	..	..	10	10	0			
1915	..	..	..	..	..	..	..	10	10	0			
1923	..	..	..	..	..	..	..	10	10	0			
													<u>126 0 0</u>
THE WORSHIPFUL COMPANY OF WAXCHANDLERS.													
1862	..	..	..	..	..	..	..	10	10	0			
													<u>10 10 0</u>
BERMAN'S CHARITY.													
1871	..	..	..	..	..	..	..	10	0	0			
1872-88								178	10	0			
1890	..	..	..	..	..	..	..	10	10	0			
1901	..	..	..	..	..	..	..	5	5	0			
1903-5								15	15	0			
													<u>220 0 0</u>
DELMAR CHARITABLE TRUST.													
1908-33								273	0	0			
													<u>273 0 0</u>

YEARS.

## PRISON CHARITIES.

	£	s.	d.	£	s.	d.
1878-80 (One Hundred Guineas annually) ..	315	0	0			
1882 .. .. .	105	0	0			
1884-87 (Fifty Guineas annually) .. .. .	210	0	0			
1889-98 (Twenty-five Guineas annually) .. .. .	262	10	0			
				892	10	0

## SMITH'S CHARITY.

1903 .. .. .	50	0	0			
1907 .. .. .	100	0	0			
1912 .. .. .	150	0	0			
1913 .. .. .	50	0	0			
1914 .. .. .	100	0	0			
1916 .. .. .	100	0	0			
1917 .. .. .	50	0	0			
1918 .. .. .	100	0	0			
1919 .. .. .	200	0	0			
1920 .. .. .	30	0	0			
1921 .. .. .	100	0	0			
1923 .. .. .	100	0	0			
1924 .. .. .	50	0	0			
1926 .. .. .	100	0	0			
1928 .. .. .	100	0	0			
1929 .. .. .	200	0	0			
1931 .. .. .	200	0	0			
1932 .. .. .	100	0	0			
1933 .. .. .	200	0	0			
1934 .. .. .	100	0	0			
				2,180	0	0

## HOSPITAL SUNDAY FUND.

1874 .. .. .	312	12	6			
1875 .. .. .	297	12	6			
1876 .. .. .	315	0	0			
1877 .. .. .	400	16	8			
1878 .. .. .	385	8	4			
1879 .. .. .	309	16	0			
1880 .. .. .	291	13	4			
1881 .. .. .	393	15	0			
1882 .. .. .	450	0	0			
1883 .. .. .	506	5	0			
1884 .. .. .	536	13	4			
1885 .. .. .	507	18	4			
1886 .. .. .	527	18	4			
1887 .. .. .	625	0	0			
1888 .. .. .	572	18	4			
1889 .. .. .	572	18	4			
1890 .. .. .	604	3	4			
1891 .. .. .	628	6	8			
1892 .. .. .	603	10	4			
1893 .. .. .	437	10	0			
1894 .. .. .	383	6	8			
1895 .. .. .	550	0	0			
1896 .. .. .	335	8	4			
1897 .. .. .	297	10	0			
1898 .. .. .	225	0	0			

Carried forward .. .. £11,071 1 4

YEARS.	HOSPITAL SUNDAY FUND— <i>Continued.</i>						£	s.	d.	£	s.	d.
	Brought forward						11,071	1	4			
1899	..	..	..	..	..	..	520	16	8			
1900	..	..	..	..	..	..	287	10	0			
1901	..	..	..	..	..	..	291	13	4			
1902	..	..	..	..	..	..	287	10	0			
1903	..	..	..	..	..	..	325	0	0			
1904	..	..	..	..	..	..	287	10	0			
1905	..	..	..	..	..	..	356	5	0			
1906	..	..	..	..	..	..	271	17	6			
1907	..	..	..	..	..	..	260	0	0			
1908	..	..	..	..	..	..	213	15	0			
1909	..	..	..	..	..	..	205	16	8			
1910	..	..	..	..	..	..	172	10	0			
1911	..	..	..	..	..	..	152	10	2			
1912	..	..	..	..	..	..	127	3	9			
1913	..	..	..	..	..	..	137	10	0			
1914	..	..	..	..	..	..	120	13	0			
1915	..	..	..	..	..	..	101	0	0			
1916	..	..	..	..	..	..	95	16	8			
1917	..	..	..	..	..	..	97	18	4			
1918	..	..	..	..	..	..	112	10	0			
1919	..	..	..	..	..	..	97	18	4			
1920	..	..	..	..	..	..	125	0	0			
1921	..	..	..	..	..	..	120	0	0			
1922	..	..	..	..	..	..	105	0	0			
1923	..	..	..	..	..	..	95	0	0			
1924	..	..	..	..	..	..	110	0	0			
1925-28	..	..	..	..	..	..	480	0	0			
1929	..	..	..	..	..	..	100	0	0			
1930	..	..	..	..	..	..	80	0	0			
1931	..	..	..	..	..	..	70	0	0			
1932	..	..	..	..	..	..	70	0	0			
1933	..	..	..	..	..	..	70	0	0			
1934	..	..	..	..	..	..	70	0	0			
							<hr/>			17,089	5	0

HOSPITAL SATURDAY FUND.												
1889	..	..	..	..	..	..	103	0	0			
1890-94	..	..	..	..	..	..	125	0	0			
1896-1902	..	..	..	..	..	..	147	0	0			
1903	..	..	..	..	..	..	31	10	0			
1904-7	..	..	..	..	..	..	200	0	0			
1908-9	..	..	..	..	..	..	120	0	0			
1910-19	..	..	..	..	..	..	1,050	0	0			
1920-22	..	..	..	..	..	..	378	0	0			
1923-26	..	..	..	..	..	..	420	0	0			
1927	..	..	..	..	..	..	73	0	0			
1928-29	..	..	..	..	..	..	100	0	0			
1930	..	..	..	..	..	..	50	0	0			
1931	..	..	..	..	..	..	50	0	0			
1932	..	..	..	..	..	..	50	0	0			
1933	..	..	..	..	..	..	76	13	4			
1934	..	..	..	..	..	..	50	0	0			
							<hr/>			3,024	3	4

YEARS. £ s. d. £ s. d.  
 "ALEXANDRA DAY" GREAT NATIONAL FLORAL FÊTE.

1913	..	..	..	..	..	..	..	20	0	0	
1914	..	..	..	..	..	..	..	50	0	0	
1917	..	..	..	..	..	..	..	200	0	0	
1918	..	..	..	..	..	..	..	100	0	0	
1919	..	..	..	..	..	..	..	100	0	0	
1920	..	..	..	..	..	..	..	100	0	0	
1920	(per Mrs. Doughty, Margate)	..	..	..	..	..	..	50	0	0	
1921	..	..	..	..	..	..	..	100	0	0	
1922	..	..	..	..	..	..	..	100	0	0	
1923	..	..	..	..	..	..	..	50	0	0	
1924	..	..	..	..	..	..	..	50	0	0	
1925	..	..	..	..	..	..	..	50	0	0	
1932	(per The Mayoress of Margate)	..	..	..	..	..	..	5	0	0	
									<u>975</u>	<u>0</u>	<u>0</u>

ST. BRIDE FOUNDATION.

1899	..	..	..	..	..	..	..	10	10	0	
1914	..	..	..	..	..	..	..	10	10	0	
1915	..	..	..	..	..	..	..	10	10	0	
1916-20	(Five Guineas annually)	..	..	..	..	..	..	26	5	0	
1921-25	(Two Guineas annually)	..	..	..	..	..	..	10	10	0	
1927-28	(Five Guineas annually)	..	..	..	..	..	..	10	10	0	
1929	..	..	..	..	..	..	..	1	1	0	
1930	..	..	..	..	..	..	..	2	2	0	
									<u>81</u>	<u>18</u>	<u>0</u>

THE NATIONAL SUNDAY LEAGUE.

1917	..	..	..	..	..	..	..	31	10	0	
1919	..	..	..	..	..	..	..	50	0	0	
									<u>81</u>	<u>10</u>	<u>0</u>

THE ROYAL SEA-BATHING HOSPITAL, MARGATE

Dr.

Balance Sheet,

LIABILITIES

	£	s.	d.	£	s.	d.	£	s.	d.
(1) To Sundry Creditors—									
(1) General Fund .. ..	5,073	17	11						
(2) Buildings and Equipment ..	—	—	—						
							5,073	17	11
(2) „ Loans to Hospitals .. ..							—	—	—
(3) „ Capital Accounts—									
As at 1st January, 1934—									
(A) Hospital Endowments ..	92,280	4	4						
(B) Special Funds .. ..	300	0	0						
(C) Buildings and Equipment Funds—									
Balance as per last Account .. ..	47,528	11	0						
Add Transfer from Income and Expenditure Account ..	5,425	3	11						
							52,953	14	11
(D) General Fund—									
Balance as per last Account .. ..	68,528	1	0						
Suspense Funds .. ..									
							214,062	0	3
Carried forward ..							£219,135	18	2

**THE ROYAL SEA-BATHING HOSPITAL, MARGATE**

31st December, 1934

Cr.

ASSETS

	£	s.	d.	£	s.	d.	£	s.	d.
<b>(1) By Cash at Bank and in Hand—</b>									
On account of—									
<b>(A) Endowments—</b>				—	—	—	—	—	—
<b>(B) Special Funds—</b>									
At Martins Bank on account of Un- expended Income of Chapel Fund	84	1	10						
At Martins Bank on account of Unexpended Income of Bell Fund	1	0	0						
At Lloyds, Margate, on account of Unexpended Income of Samaritan Fund .. .. .		1	6						
At Lloyds, Margate .. .. .	294	6	0						
<b>(C) Buildings and Equipment Funds</b>				—	—	—			
<b>(D) General Fund—</b>									
At Coutts & Co. ..	202	2	0						
At Martins Bank (Current Account)	1,481	3	1						
Do. (Deposit Account)	7,500	0	0						
				9,183	5	1			
<b>(E) Suspense Funds .. .. .</b>							9,562	14	5
<b>(2) By Stocks of Unissued Stores on Hand .. .. .</b>							626	11	3
							£10,189	5	8
Carried forward									

THE ROYAL SEA-BATHING HOSPITAL, MARGATE

Dr.

Balance Sheet,

LIABILITIES

	£	s.	d.	£	s.	d.
Brought forward ..				219,135	18	2
 (4) To Unexpended Income—Balances of						
Special Funds—						
Chapel Fund .. .. .	84	1	10			
Bell Fund .. .. .	1	0	0			
Samaritan Fund .. .. .	0	1	6			
				85	3	4

N.B.—The following property is not included in the Balance Sheet:—Simmons' Marshes, The Site, Buildings, Furniture, and Appliances of the Hospital, except Hodgson Wards, Carlton and Western Verandahs, Day Rooms, New Ward, Additional Nurses' Quarters, and King George V Wing, Nurses' Home, Alexandra Verandah, Equipment of new Ward, Lettsom and Gorely Southern Verandahs, Entrance Lodge, Extension to Kitchen, Cold Storage, Resident Surgeons' Quarters, Ward Kitchens and King George V Wing (Shutters) .. .. .

£219,221 1 6

AUDITORS' CERTIFICATE.—We hereby certify that we have vouched and audited the above Balance Sheet and accompanying Accounts of the Hospital, and find the same to be correct. We have also agreed the Bankers' Balances and verified the Investments. To the best of our knowledge and belief the regulations of the Revised Uniform System have been followed.

JAMES FRASER & SONS,

*Chartered Accountants.*

LONDON, 26th February, 1935.

THE ROYAL SEA-BATHING HOSPITAL, MARGATE

31st December, 1934—continued

Cr.

ASSETS		£	s.	d.	£	s.	d.
	Brought forward ..				10,189	5	8
<b>(3) By Sundry Debtors—</b>							
	General Fund .. .. .	5,846	2	0			
	Buildings and Equipment .. .. .	—	—	—			
					5,846	2	0
<b>(4) ,, Internal Loan .. .. .</b>							
					—	—	—
<b>(5) ,, Investments (as detailed on pages 56 to 58)</b>							
	(A) Hospital Endowments ..	86,343	11	10			
	Ditto (in the names of the Official Trustees of Charitable Funds).. .. .	5,750	0	0			
	(B) Special Funds .. .. .	541	0	6			
	(C) Buildings and Equipment Funds .. .. .	—	—	—			
	(D) General Fund .. .. .	61,862	16	5			
	(E) Suspense Funds .. .. .	—	—	—			
					154,497	8	9
<b>(6) ,, Land, Buildings, and Equipment of the Hospital—</b>							
	Expenditure from 1st January, 1908, to 31st December, 1933 .. .. .	47,528	11	0			
	Expenditure during the year to 31st December, 1934—						
	(a) Ward Kitchens .. .. .	290	14	1			
	(b) King George V Wing (Shutters) ..	869	0	0			
					48,688	5	1
					£219,221	1	6

THE ROYAL SEA-BATHING HOSPITAL, MARGATE

Dr.

Income and Expenditure Account for

		INCOME					
		£	s.	d.	£	s.	d.
<b>Ordinary—</b>							
<b>I. VOLUNTARY GIFTS—</b>							
<b>1. SUBSCRIPTIONS, DONATIONS, ETC.:—</b>							
Annual Subscriptions ..	(see p. 66)	747	3	0			
Donations (see p. 62) ..		223	19	0			
Box Collections (see p. 62)		11	3	7			
<b>Entertainments—</b>							
Gross Receipts	— — —						
Less Expenses	— — —						
Gifts in Kind	— — —						
Other Voluntary Gifts ..					982	5	7
<b>2. CENTRAL FUNDS:—</b>							
King Edward's Hospital Fund .. .. .							
Hospital Sunday Fund		70	0	0			
Other Central Funds ..					70	0	0
							1,052 5 7
<b>II. RECEIPTS ON ACCOUNT OF SERVICES RENDERED—</b>							
<b>1. CONTRIBUTIONS ON ACCOUNT OF SERVICES TO PATIENTS:—</b>							
(a) Hospital Saturday Fund .. .. .		50	0	0			
(b) From Patients and their Societies—							
Patients ..		1,863	9	8			
Hospital Contributory Associations ..		2	0	0			
Approved Societies..		167	3	7			
Other sources ..							
					2,082	13	3
(c) From Public Authorities, viz.—							
Board of Education, Education Committees, County Councils, County Borough Councils, and Public Assistance Committees					33,318	7	4
Carried forward ..		35,401	0	7	1,052	5	7

THE ROYAL SEA-BATHING HOSPITAL, MARGATE

the year ending 31st December, 1934

Cr.

EXPENDITURE.

	£	s.	d.	£	s.	d.
<b>Ordinary—</b>						
I. PROVISIONS .. .. .				10,539	8	3
<b>II. SURGERY AND DISPENSARY—</b>						
1. Drugs, Chemicals, Disinfectants, etc...	786	17	3			
2. Dressings, Bandages, etc. .. ..	375	2	11			
3. Instruments and Appliances .. ..	631	19	9			
4. Wines and Spirits .. .. .	40	2	3			
5. Salaries and Wages of Dispensing Staff	64	19	0			
6. Sundries .. .. .	12	14	4			
				1,911	15	6
<b>III. DOMESTIC—</b>						
1. Renewal and repair of Furniture, Bedding, Crockery, etc. .. .. .	1,976	3	7			
2. Laundry .. .. .	2,875	16	3			
3. Cleaning and Chandlery .. .. .	257	8	2			
4. Water .. .. .	475	18	10			
5. Fuel and Lighting .. .. .	2,469	11	3			
6. Uniforms .. .. .	387	2	5			
7. Sundries .. .. .	106	4	2			
				8,548	4	8
<b>IV. SALARIES AND WAGES (MAINTENANCE)—</b>						
1. Medical .. .. .	1,721	11	0			
2. Nursing .. .. .	3,600	9	10			
3. Other Officers and Employees .. ..	4,531	13	2			
4. Pensions .. .. .	178	15	0			
5. Medical Superintendent's Allowance for House and Amenities .. .. .	300	0	0			
				10,332	9	0
<b>V. MISCELLANEOUS—</b>						
1. Printing, Stationery, Postages, Telephones, etc. .. .. .	334	11	6			
2. Advertisements .. .. .	48	5	1			
3. Insurance of Buildings, Equipment, Stores, etc. .. .. .	94	15	5			
4. Garden .. .. .	96	9	6			
5. Sundries .. .. .	228	11	5			
				802	12	11
Carried forward .. .. .				32,134	10	

## THE ROYAL SEA-BATHING HOSPITAL, MARGATE

Dr.

*Income and Expenditure Account for*

		INCOME					
		£	s.	d.	£	s.	d.
	Brought forward .. ..				35,401	0	7 1,052 5 7
2. FEES:—							
	Nurses' and Probationers'						
	Fees .. ..	—	—	—			
	Other Fees .. ..	—	—	—			
	3. OTHER RECEIPTS .. ..				92	1	2
					35,493 1 9		
III. INVESTED PROPERTY—							
	Interest, Dividends, etc.				5,571	18	4
	Rents, net .. ..				91	16	9
	Simmons' Trust .. ..				—	—	—
					5,663 15 1		
	<b>Ordinary Income</b>				42,209 2 5		
Extraordinary—							
I. LEGACIES—							
	Exors. of Miss A. M. Angles (dec.)				287	12	10
II. OTHER EXTRAORDINARY INCOME—							
	School—Sale of Work .. ..				12	3	1
	Board of Education—						
	Grant under Article—						
	40 (1) (a) (ii) .. ..	319	0	0			
	40 (2) .. ..	198	0	0			
	40 (1) (b) .. ..	17	19	6			
		534 19 6					
	Deduction under Teachers' (Superannuation) Acts 1922 to 1925 .. ..	71	17	9			
		463 1 9					
	<b>Extraordinary Income</b> .. ..				762 17 8		
	<b>Total Income</b> .. ..				42,972 0 1		
	<b>Balance, being excess of Total Expenditure over Total Income for the year</b> .. ..				£42,972 0 1		

## THE ROYAL SEA-BATHING HOSPITAL, MARGATE

the year ending 31st December, 1934—continued

Cr.

EXPENDITURE		£	s.	d.	£	s.	d.
Brought forward .. ..					32,134	10	4
<b>VI. ADMINISTRATION—</b>							
1. Salaries .. .. .		1,125	0	0			
2. Pensions .. .. .		—	—	—			
3. Printing, Stationery, Postages, Tele- phones, etc. .. .. .		138	15	6			
4. Advertisements .. .. .		4	12	3			
5. Law Charges .. .. .		—	—	—			
6. Auditors' Fee .. .. .		21	0	0			
7. Sundries .. .. .		21	10	3			
					1,310	18	0
<b>VII. ESTABLISHMENT—</b>							
Renewals and Repairs to Buildings and Plant .. .. .					2,289	1	4
<b>VIII. FINANCE—</b>							
1. Interest .. .. .		—	—	—			
2. Appeals .. .. .		10	11	10			
3. Rent .. .. .		300	0	0			
4. Rates and Taxes .. .. .		702	15	3			
					1,013	7	1
<b>Ordinary Expenditure .. ..</b>					36,747	16	9
<b>Extraordinary—</b>							
I. Contributions to other Institutions		5	5	0			
II. Other Extraordinary Expenditure— School—							
Teachers' Salaries .. .. .		724	2	0			
Stationery, Apparatus, etc. ..		69	12	5			
<b>Extraordinary Expenditure .. ..</b>					798	19	5
<b>Total Expenditure .. ..</b>					37,546	16	2
Balance being excess of Total Income over Total Expenditure for the year carried to Capital Account							
(c) Buildings and Equipment Funds ..					5,425	3	11
					£42,972	0	1

THE ROYAL SEA-BATHING HOSPITAL, MARGATE

MAJOR WILLIAM MORRISON BELL FUND

*Dr.* *Income and Expenditure Account for*

1934								£ s. d.
Jan. 1st.	To Balance	..	..	..	..	..	..	1 0 0
	„ Dividends	..	..	..	..	..	..	9 2 4
							£10 2 4	

SAMARITAN FUND

*Dr.* *Income and Expenditure Account for*

1934								£ s. d.
Jan. 1st.	To Balance	..	..	..	..	..	..	7 1 6
	„ Receipts Collecting Boxes	..	..	..	..	..	..	— — —
							£7 1 6	

CHAPEL FUND

*Dr.* *Income and Expenditure Account for*

1934								£ s. d.
Jan. 1st.	To Balance	..	..	..	..	..	..	64 5 5
Dec. 31st.	„ Dividends	..	..	..	..	..	..	7 9 0
	„ Offertories	..	..	..	..	..	..	25 15 5
							£97 9 10	

THE ROYAL SEA-BATHING HOSPITAL, MARGATE

MAJOR WILLIAM MORRISON BELL FUND

*the year ending 31st December, 1934*

*Cr.*

1934		£		s.		d.	
Dec. 31st.	By Sundry Disbursements .. .. .	9	2	4			
	„ Balance .. .. .	1	0	0			
		<u>£10</u>		<u>2</u>		<u>4</u>	

SAMARITAN FUND

*the year ending 31st December, 1934*

*Cr.*

1934		£		s.		d.	
Dec. 31st.	By Sundry Disbursements .. .. .	7	0	0			
	„ Balance .. .. .	0	1	6			
		<u>£7</u>		<u>1</u>		<u>6</u>	

CHAPEL FUND

*the year ending 31st December, 1934*

*Cr.*

1934		£		s.		d.	
Dec. 31st.	By Tuning and Repairing Organ .. .. .	8	8	0			
	„ Sundries .. .. .	5	0	0			
	„ Balance .. .. .	84	1	10			
		<u>£97</u>		<u>9</u>		<u>10</u>	

THE ROYAL SEA-BATHING HOSPITAL, MARGATE

SCHEDULE OF

INVESTMENTS ON CAPITAL ACCOUNTS AT

31st December, 1934

AT COST PRICE

(A) For Special Purposes.

(a) Hospital Endowments.

£	s.	d.		£	s.	d.
2,157	0	0	Birmingham Canal Navigation Stock	2,999	5	6
339	2	0	London and North Eastern 4 per cent. First Preference Stock .. .. .	450	8	9
2,528	19	10	Brighton Corporation Redeemable 3½ per cent. Stock, 1946 .. .. .	2,762	18	5
83	14	9	East India Railway Annuities, Class B	2,344	14	0
			W. R.'s GIFT—			
316	10	0	London County 4½ per cent. Stock, 1945/85 .. .. .	316	10	0
			MARRIOTT BEQUEST—			
3,364	0	0	London and North Eastern Railway 3 per cent. Debenture Stock ..	3,600	0	0
			GORELY CHARITY—			
395	0	0	London and North Eastern Railway 4 per cent. First Preference Stock ..	517	9	0
35	7	10	Great Indian Peninsular Railway An- nuities, Class B .. .. .	1,004	1	0
568	15	3	Derby Corporation 3 per cent. Redeem- able Stock, 1920/50 .. .. .	531	16	7
440	0	5	Reading Corporation 3½ per cent. Stock	519	4	6
1,274	2	7	Manchester Corporation 3 per cent. Stock	1,400	0	0
58	0	0	Scinde, Punjab, and Delhi Railway Annuities, Class B .. .. .	1,929	4	9
			H. F. TIARKS' BEQUEST—			
113	18	7	New Zealand 3 per cent. Inscribed Stock, 1945 .. .. .	100	0	0
			A. C. NORMAN'S GIFT—			
105	12	4	Local Loans 3 per cent. .. .. .	63	0	0
			THE LATE SIR HENRY LENNARD'S GIFT—			
150	0	0	Funding Loan 4 per cent., 1960/90 ..	120	0	0
			MISS MARY ANN CARLTON'S TRUST—			
2,471	4	9	Derby Corporation 3 per cent. Redeem- able Stock, 1920/50 .. .. .	2,310	14	11
2,795	15	9	Reading Corporation 3 per cent. Stock, 1962 .. .. .	2,697	17	6
			SWINBURNE CHARITY—			
11,640	0	0	East India Railway 3 per cent. Deben- ture Stock .. .. .	11,060	11	0
			Carried forward ..	£34,727	15	11

## THE ROYAL SEA-BATHING HOSPITAL, MARGATE

### (A) For Special Purposes—*continued.*

#### (a) Hospital Endowments—*continued.*

£	s.	d.		£	s.	d.
			Brought forward.. .. .	34,727	15	11
5,000	0	0	Dominion of Canada 4 per cent. Stock, 1940-60 .. .. .	5,019	3	0
5,151	18	4	Union of South Africa 4 per cent. Stock, 1943-63 .. .. .	5,100	16	0
5,000	0	0	Western Australian Government 4 per cent. Stock, 1942-62 .. .. .	4,994	1	0
6,578	16	5	London County 3 per cent. Stock, 1920	5,989	5	5
1,863	0	1	New Zealand 3 per cent. Stock, 1945 ..	1,500	0	0
5,398	16	10	Reading Corporation 3 per cent. Stock, 1962 .. .. .	5,115	9	0
4,183	10	0	Union of South Africa 3 per cent. Inscribed Stock 1954/64 .. .. .	4,055	8	6
104	16	10	Great Indian Peninsular Railway An- nuities, Class B .. .. .	3,005	13	0
9,461	13	3	Local Loans 3 per cent... .. .	5,636	0	0
			BED ENDOWMENT FUND—			
			DERBY BED—			
1,039	11	8	London County 3 per cent. Stock, 1920	1,000	0	0
			HANNAH FINNIE BED—			
1,127	10	0	London County 3 per cent. Stock, 1920	1,000	0	0
			HUGH TAYLOR BED—			
2,241	7	4	London County 3 per cent. Stock, 1920	2,000	0	0
			MAUDE ASHLEY BED, No. 1—			
1,139	9	9	New Zealand 3 per cent. Stock, 1945 ..	1,000	0	0
			HENRY JOHN BED—			
1,195	17	6	New Zealand 3 per cent. Stock, 1945 ..	1,000	0	0
			HENRY FRANCIS BAILEY BED—			
1,630	0	0	Conversion 3½ per cent. Stock .. .. .	1,000	0	0
			MAPPIN BED—			
1,034	16	6	Dominion of Canada 4 per cent. Stock, 1940/60 .. .. .	1,000	0	0
			EMILY MARGARET BED—			
1,030	16	6	Union of South Africa 3½ per cent., 1953/73 .. .. .	1,000	0	0
			Houses in Westbrook Terrace .. .. .	2,200	0	0
			In the names of the Official Trustees Charitable Funds—			
3,478	1	9	Funding Stock 4 per cent. 1960-90 ..	3,000	0	0
3,615	1	1	Conversion Stock 3½ per cent. .. .. .	2,750	0	0
			Total at Cost Price ..	£92,093	11	10

#### (b) Other Special Purposes—

			CHAPEL FUND—			
198	4	5	Consols 2½ per cent. .. .. .	186	12	6
100	0	0	Consols 2½ per cent. .. .. .	54	8	0
			BELL FUND—			
304	2	8	London County 3 per cent. Stock, 1920	300	0	0
			Total at Cost Price ..	£541	0	6

## THE ROYAL SEA-BATHING HOSPITAL, MARGATE

(B) For Buildings and Equipment—NIL.

(C) For General Purposes.				£	s.	d.	£	s.	d.
425	18	0	London and North Eastern Railway 4 per cent. First Preference Stock ..	620	2	4			
187	5	3	East India Railway Annuities, Class B ..	5,518	13	3			
1,000	0	0	East India Railway 3 per cent. Debenture Stock ..	968	14	3			
13,668	11	4	London County 3 per cent. Stock, 1920 .. ..	12,671	9	6			
1,338	0	4	2½ per cent. Consols ..	755	19	7			
4,737	18	6	Local Loans 3 per cent. ..	3,000	0	0			
1,000	0	0	Sheffield Corporation 3½ per cent. Stock ..	782	12	0			
2,840	5	9	Conversion 3½ per cent. Stock .. ..	2,217	8	0			
2,305	4	11	Consols 4 per cent. Stock ..	2,000	0	0			
2,543	9	4	Conversion 3½ per cent. Stock .. ..	2,000	0	0			
2,693	6	8	London County 3½ per cent. Stock .. ..	2,000	0	0			
6,225	11	4	Local Loans 3 per cent. ..	4,000	0	0			
4,466	1	4	Local Loans 3 per cent. ..	3,000	0	0			
2,272	10	0	Funding Loan 4 per cent., 1960/90 .. ..	2,000	0	0			
9,216	3	0	Local Loans 3 per cent. ..	7,000	0	0			
1,980	0	0	Southern Railway 4 per cent. Irredeemable Debenture Stock .. ..	2,000	5	6			
6,893	12	8	Local Loans 3 per cent. ..	6,000	0	0			
400	0	0	Dominion of Canada 4 per cent., 1953/58 .. ..	400	0	0			
1,000	0	0	Dominion of Canada 3¼ per cent. 1950/55..	965	0	0			
			—————	57,900	4	5			
			ENDOWED BEDS—						
			JOSEPH BARTON BED—						
1,234	8	11	New Zealand 3 per cent. Inscribed Stock, 1945 ..	1,000	0	0			
			CHARLES FREEMAN BED—						
1,000	0	0	Canada 3½ per cent. Stock, 1930/50 .. ..	962	12	0			
			MAUDE ASHLEY BED, No. 2—						
1,084	4	2	4½ per cent. Conv. Loan 1940/44 .. ..	1,000	0	0			
			GELDART BED—						
1,114	0	7	4½ per cent. Conv. Loan 1940/44 .. ..	1,000	0	0			
			—————	3,962	12	0			
			—————	£61,862	16	5			
			Total at Cost Price ..						

## The Hodgson Five Shilling Fund

This Fund was founded in 1855 by the late Rev. JOHN HODGSON, who acted as Honorary Secretary, as a useful auxiliary to the General Funds. In proposing the scheme, Mr. HODGSON stated:—

**“I have a plan for the increase of our Funds.**

**“Charities are numerous, and I would not be burdensome.**

**“My plan then is not to ask much from few, but little from all.”**

The little that he asked for individually was an annual subscription of 5s., but the amount he aimed at raising was **£2,500 per annum.**

To attain the end in view the services of a large number of ladies were secured as Honorary Collectors, and the success of the Fund was in a very large measure due to their kind efforts, as the following extract from Mr. HODGSON'S report, published in 1859, testifies:—

**“But the great success which has attended the Honorary Secretary's endeavour to form a Fund in Aid by means of 5/- per annum subscriptions is most especially to be attributed to the kindness of nearly 100 ladies and others in coming forward in different places as collectors of such 5/- subscriptions in their respective neighbourhoods.”**

The Committee of Management gratefully appreciates the efforts of Miss Jessie DeHorne Hovell and Miss M. J. Hodgson, who still kindly collect for the Fund.

# Subscribers to Hodgson Five Shilling Fund

	£	s.	d.		£	s.	d.
<b>B</b>				Brought forward	2	10	0
Ballard, Miss A. ..	0	10	0	Johnson, Miss	0	5	0
Boddington, Miss ..	0	10	0	Player, Miss ..	0	5	0
Bracebridge, Mrs. Comp- ton .. ..	0	5	0	Richards, Ivor, Esq. ..	0	5	0
Butler, Col. F. J. P. ..	0	10	0	Sanderson, Mrs. F. L. ..	0	5	0
Butler, H. A., Esq. ..	0	5	0	Scott, Miss ..	0	5	0
				Scott, Mrs. C. E.	0	5	0
				Warde, Rev. G. H.	0	5	0
				Woodhouse, Mrs.	0	5	0
				"Yaldhurst"	0	12	0
				<hr/>		5	2
							0
<b>C</b>				DeHorne Hovell, Miss Jessie .. ..			
Coleman, W. J., Esq. <i>Paid in 1933</i>				Collected—			
				Bevir, Anth- ony, Esq. . . .	0	10	0
				Broome-Giles, Mrs. ..	0	5	0
				Cameron, Lady	0	10	0
				Creagh, Mrs. . .	0	5	0
				Dawson, Louise Lady ..	0	5	0
				Everett, Lady	0	5	0
				Gowan, Mrs. Campbell ..	0	5	0
				Graham, Miss Eva ..	0	5	0
				Harrison, Miss	0	5	0
				Hill-Wood, The Hon. Lady	0	5	0
				Hovell, Hon. Mrs. Mark. . .	0	5	0
				Kelsall, Miss E. M. ..	0	5	0
				Kelsall, Mrs. T. M. ..	0	5	0
				Louth, Lady	0	5	0
				Royle Vernon, Esq. ..	0	5	0
				"St. Stephens"	0	2	0
				Thomas, Mrs. H. F. ..	0	5	0
				Wilson, Rev. Clement F. W. ..	0	5	0
				<hr/>		4	17
							0
				Husband, F. J., Esq. ..	1	0	0
				<hr/>			
Carried forward	2	10	0	Carried forward	14	14	0

Brought forward           £ s. d.  
14 14 0

**J**

Jones, Miss E. Denison   0 10 0  
Jones, Miss K. A.       .. 0 10 0

**L**

Lindley, Miss   ..   .. 0 10 0

**M**

Miller, The Misses   .. 0 10 0  
Mordaunt, The Misses .. 0 10 0

Carried forward   17 4 0

Brought forward   £ s. d.  
17 4 0

**P**

Perceval, Miss L.       .. 1 0 0  
Percival, Miss E. M.   .. 0 5 0  
Phillips, Miss       .. 1 0 0

**R**

Rickards, Miss E. E.   .. 0 5 0  
Rigden, Miss M...     .. 0 5 0  
Robertson, Mrs. R. H.  .. 0 5 0  
Rock, Miss Matilda   .. 0 5 0

**S**

Sabine, Mrs.       ..   .. 0 5 0  
Sanderson, Mrs.   ..   .. 0 5 0

**W**

Wells, Mrs.       ..   .. 0 5 0  
Woodford, Mrs. E. B.  .. 1 1 0

Total   ..    £22 5 0

## Donations

	£	s.	d.
" A.Q." .. .. .	3	10	0
All British Sickness and Dividing Club .. .. .	1	1	0
Biggerstaff, Thos. J., Esq. .. .. .	1	1	0
Brentford Football and Sports Club, Ltd. (per Harry C. Curtis, Esq.) .. .. .	5	0	0
Fishmongers, The Worshipful Company of .. .. .	52	10	0
Grindlay & Co., Messrs. .. .. .	10	10	0
Harvey, P. G. A., Esq. .. .. .	10	10	0
Huggins, Mrs. .. .. .	2	2	0
Kemp, Sir Joseph .. .. .	2	2	0
Lindley, Mrs. .. .. .	2	2	0
Nicholson, Mrs. H. B. .. .. .	2	2	0
" R." .. .. .	8	8	0
Skinners, The Worshipful Company of .. .. .	10	10	0
Smith, Mrs. . . . . .	1	0	0
Smith's Charity (Kensington Estate), Trustees of .. .. .	100	0	0
Sun Insurance Office Staff Hospital Fund .. .. .	1	1	0
Wakefield, Rt. Hon. Viscount, C.B.E. .. .. .	10	10	0
	£223 19 0		

## Boxes

Hospital .. .. .	11	3	7
	£11 3 7		

# Annual Governors

The Letters H.G., Q.G., and L.G., signify Honorary Governor, Quinquennial Governor, and Life Governor.

A	Annual Subscription		Annual Subscription	
	£	s.	£	s.
	d.	d.	d.	d.
Abady Jacques, Esq. ..	2	2	83	5
Adam, Mrs. Chivas ..	2	2	2	2
Albert and Victoria Hos- pital Aid Society ..	2	2	2	2
Allen, A. C., Esq. (paid in 1935)	2	2	1	1
Anderson, G.K., Esq.—L.G.	2	2	5	5
Annaly, The Lord, M.C.	1	1	1	1
Askew-Robertson, W. H., Esq. .. .. .	4	4	0	0
Athlone, K.G., Rt. Hon. The Earl of .. .. .	4	4	0	0
Atkin, Sannyer, Esq. ..	2	2	0	0
<b>B</b>				
Barclay, J., Esq. ..	5	5	0	0
Batchelor, D. E., Esq. ..	6	6	0	0
Baxendale, Lloyd H., Esq.	1	1	0	0
Bearsted, the Rt. Hon. Viscount .. .. .	2	2	0	0
Beatson, A. M., Esq. ..	2	2	0	0
Beckenham Charitable Society .. .. .	2	2	0	0
Bentinck, H. A., Esq. ..	2	2	0	0
Bevan, D. A., Esq.—L.G.	5	5	0	0
Biddulph, Rt. Hon. Lord	4	10	0	0
Bishopp, Edward, Esq. . .	2	2	0	0
Blackwell, Miss Rosa V.	1	1	0	0
Blount, Edward, Esq. ..	2	2	0	0
Bobby & Co. .. .. .	2	2	0	0
Brandt, H. B., Esq. ..	2	2	0	0
Bray, Constance Lady	2	2	0	0
Bridgeman, Hon. Mrs. Francis .. .. .	2	2	0	0
Brocklehurst, Miss Jane	2	2	0	0
Brocklehurst, Miss L. ..	2	2	0	0
Bromley Benevolent As- sociation .. .. .	8	8	0	0
Bromley Children's Care Committee .. .. .	4	4	0	0
Brown, A., Esq. .. .. .	2	2	0	0
Carried forward ..	£83	5	0	0
<b>C</b>				
			Brought forward	83
Brown, Mrs. E. Clifton	2	2	0	0
Buchanan, Mrs. .. .. .	2	2	0	0
Burke, Mrs. Ulick .. ..	1	1	0	0
Burnham, D.S.O., L. G., the Rt. Hon. Baron ..	5	5	0	0
Butcher, Mrs. .. .. .	1	1	0	0
<b>D</b>				
Campbell, Miss A. H. M.	2	2	0	0
Cave, C. J. P., Esq. ..	2	2	0	0
Chambers, C.B., Admiral	2	2	0	0
Churchill, Rev. W. H. ..	1	1	0	0
Civil Service Supply Assn.	2	2	0	0
Clark, C. S. Gordon, Esq.	3	3	0	0
Clowes, Legh A., Esq. ..	4	4	0	0
Cohen, Mrs. D. Stanley ..	2	2	0	0
Coldstream Guards, The	4	4	0	0
Collet, Sir Mark, Bt. ..	2	2	0	0
Connop, Mrs. H. .. .. .	2	2	0	0
Coulthurst, John W., Esq.	2	2	0	0
Courtaulds, Ltd. .. .. .	10	10	0	0
Courtney, Miss A. D. ..	2	2	0	0
Coutts & Co., Messrs. ..	10	10	0	0
Curtis, Miss .. .. .	1	0	0	0
<b>D</b>				
Dawson, Bennett, Ainslie, Wilson and Arnould, Messrs. .. .. .	2	2	0	0
Dawson, L. J., Esq. ..	2	2	0	0
Dawson, Miss Edith A. G.	2	2	0	0
Deacon, J. F. W., Esq. ..	5	5	0	0
Delmar Charitable Trust, per Messrs. Kerly Sons & Karuth .. .. .	10	10	0	0
Denniford, R. A., Esq. . .	4	4	0	0
Dickson, Mrs. J. W. ..	2	2	0	0
Carried forward ..	£176	13	0	0

	Annual Subscription		
	£	s.	d.
Brought forward	176	13	0
Douglas-Pennant, The Hon. Mrs. .. ..	10	10	0
Downey, E. L., Esq. ..	2	2	0
D'Oyly, Mrs.—L.G. ..	1	1	0

### E

"E. O. L." .. ..	1	1	0
Egerton, Hon. Thomas	1	1	0
Elliot, C.B., Colonel W...	4	4	0
Elvy, Miss Kate ..	1	1	0

### F

"F. C." .. ..	1	1	0
Field, H. Onslow, Esq.	1	1	0
Fitz-Clarence, Mrs. C. ..	1	1	0
Foster, Miss .. ..	1	1	0
Franklin, A. E., Esq. ..	2	2	0
Freemasons, United Grand Lodge of England ..	21	0	0
Fremlin Bros., Messrs. ..	2	2	0

### G

Gardner, Dr. Eric ..	2	2	0
Garvey, Miss .. ..	2	2	0
Gellan, A. T., Esq. ..	1	1	0
George, Samuel, Esq. ..	1	1	0
George, W. B., Esq. ..	10	10	0
Gibbs, Francis L., Esq...	2	2	0
Gibson, The late Miss M. W. .. ..	10	10	0
Gilbert, Lady .. ..	1	1	0
Gleghorn, T. R., Esq. ..	2	2	0
Glyn, Mrs. Egerton ..	2	2	0
Godlee, Mrs. .. ..	1	1	0
Gordon, Miss H. A. ..	2	2	0
Gordon, Mrs. A. D. ..	4	4	0
Gore, Frank, Esq. ..	1	1	0
Gore, Leslie F., Esq. ..	1	1	0
Gore, Mrs. H. R. ..	1	1	0
Graham, Miss F. E. ..	2	2	0
Great Western Railway Medical Fund Society	20	0	0

Carried forward £294 6 0

	Annual Subscription		
	£	s.	d.
Brought forward	294	6	0
Guillemard, G.C.M.G., K.C.B., Sir Laurence ..	1	1	0

### H

Hardcastle, Mrs. Alfred	2	2	0
Hardy, Charles, Esq. ..	2	2	0
Heath, C. W., Esq. ..	2	2	0
Heaton, E. G., Esq. ..	2	2	0
Hope, Miss S. E. Vaizey	1	1	0
Houghton, Mrs. F. ..	2	2	0
Hughes, Mrs. .. ..	4	4	0

### I

Isle of Thanet Gas Co. ..	2	2	0
---------------------------	---	---	---

### J

Jay, E. A. H., Esq., O.B.E. .. ..	2	2	0
Johnson, Miss Isabella ..	2	2	0
Jones, Miss A. E. ..	1	1	0
Jones, Miss E. F. ..	4	4	0
Joseph, A. D., Esq. ..	2	2	0
Jowitt, Lady .. ..	2	2	0

### K

Keen, W. Brock, Esq. ..	2	2	0
Kenyon, Mrs. Chas. ..	1	1	0
King Edward Memorial Hospital, Ealing ..	4	4	0
Kitson, Mrs. F. J. ..	2	2	0
Knight, Mrs. A. M. ..	2	2	0
Knowles, Mrs. .. ..	1	1	0
Knowles, Miss M. ..	2	2	0

### L

Lakin, Mrs. .. ..	2	2	0
Lancet, The .. ..	2	2	0
Laye, Miss Evelyn ..	2	2	0
Lee, Miss A. M. .. ..	2	2	0

Carried forward £349 19 0

	Annual Subscription		
	£	s.	d.
Brought forward	349	19	0
Leeds General Infirmary	2	2	0
Leven and Melville, Rt. Hon. Dowager Countess of	8	8	0
Lever Bros., Ltd.	10	10	0
Lewis, Mrs. Cyril	2	2	0
Lowndes, G. A. N., Esq., M.C.	2	2	0
Loyd, A. T., Esq.	4	4	0

### M

Marescaux, Mrs.	1	1	0
Marling, Capt. Walter B.	1	1	0
Marshall, Mrs.	2	2	0
Martin, Mrs. Edwin	2	2	0
Masters, Capt. Cyril H., R.M.A.	10	0	0
Matthews, A. J., Esq., J.P.	2	2	0
McAulay, Mrs.	2	2	0
McKechnie, P., Esq.	2	2	0
Mead, Mrs.	5	5	0
Megaw, Mrs.	2	2	0
Meyer, Theodore, Esq.	6	6	0
Mirrlees, Major A.—L.G.	2	2	0
Mocatta, E. L. de M., Esq.	2	2	0
Mond, LL.D., Sir Robert	2	2	0
Montefiore, Claude G., Esq.—L.G.	2	2	0
Murray, John, Esq., F.R.C.S. Eng.	4	4	0

### N

National Union of Tea- chers, The Benevolent and Orphan Fund of the	15	15	0
Newth, H. A., Esq.	1	1	0
Nicholson, Mrs. William	2	2	0
Nicholson, Mrs. H. B.	4	4	0
Norton, Miss L. M.	2	2	0
Norton, Miss	1	1	0
Nussey, Sir Willans, Bt.	2	2	0

### P

Packe, D.S.O., Lt.-Col. Wm.	2	2	0
Carried forward	£458	13	0

	Annual Subscription		
	£	s.	d.
Brought forward	458	13	0
Parke, Miss Olive S.	2	2	0
Pearce, Mrs.	2	2	0
Pearson, Miss Janet—L.G.	2	2	0
Pelly, Mrs. F. R.	2	2	0
Pott, Miss K. F...	2	2	0
Prudential Assurance Company, The	135	0	0

### R

Ratcliff, Miss M. C. M.	2	2	0
Resteghini, G., Esq.	2	2	0
Rodhouse, A. E., Esq.	1	1	0
Rothschild, Rt. Hon. the Dow. Lady	2	2	0
Rothschild, James de, Esq.	4	4	0
Royal Horse Guards, The	2	2	0

### S

Salisbury, Most Hon. Mar- chioness of	4	4	0
Sanders, Fred. A. W., Esq.	2	2	0
Sebag-Montefiore, The Honble. Mrs. R. M.	5	5	0
Shankland, Mrs...	2	2	0
Simeon, Ella Lady	2	2	0
Simpson, Miss E. E.	2	2	0
Soames, Mrs.	2	2	0
Stainton, E., Esq.	10	10	0
Stanhope, K.G., The Rt. Hon. Earl	6	6	0
Stevens, W. E., Esq.	2	2	0
Stevenson, Miss	2	2	0
Stevenson, Mrs. F. S.	2	2	0
Strange, Miss L.—L.G.	2	2	0

### T

Talbot, The Hon. Mrs.	4	4	0
Tidswell, Miss Aline	1	1	0
Timins, Mrs.	2	2	0
Toller, T. Eric, Esq.	2	2	0
Turner, G. Cresswell, Esq.	2	2	0

Carried forward £674 10 0

	Annual Subscription		
	£	s.	d.
Brought forward	674	10	0

V

Van den Bergh, Albert, Esq. .. .. .	10	10	0
Van den Berghs & Jur- gens (Sales Ld.) Messrs.	2	2	0

W

Wakefield, C.B.E., The Viscount .. .. .	2	2	0
Wakerley, Mr. Alderman, W.E. .. .. .	2	2	0
Walker, J. Wesley, Esq.	2	2	0
Walker, M.B., Dr. Lewis	2	2	0
Walker, Mrs. .. .. .	2	2	0
Wallop, the Hon. Gerard	5	5	0
Warren, Mrs. T. P. .. .	2	2	0

Carried forward £704 19 0

	Annual Subscription		
	£	s.	d.
Brought forward	704	19	0

Wedderburn, Miss .. .	2	2	0
Whalley, Mrs. F. S. .. .	2	2	0
White, Dr. and Mrs. Douglas .. .. .	1	1	0
Whitfield, Miss .. .. .	1	1	0
Williams, Mrs. .. .. .	1	1	0
Williams, Mrs. Stanley	2	2	0
Wilson, Miss M. L. .. .	4	4	0
Woodall, Mrs. Henry .. .	2	2	0
Wyndham, The Hon. Hugh .. .. .	2	2	0

Y

Yeatman, Miss E. V. .. .	2	2	0
--------------------------	---	---	---

724 18 0

Add Hodgson Fund, <i>see</i> page 60 .. .. .	22	5	0
---	----	---	---

£747 3 0

# Quinquennial Governors

1930

Broome & Green, Messrs.  
Clothworkers, the Worshipful Company of  
Huntley, Fredk. K., Esq.—H. G.  
Hurren, Herbert G., Esq., F.F.I.I.—H.G.  
Hurren, Samuel, Esq.—H.G.  
Longmore, Philip R., Esq.  
Nicholson, Miss  
Palmer, the Honble. Lewis  
Perry, Sir E. Cooper, M.D. Camb., F.R.C.P. Lond.—H.G.  
Skinners, The Worshipful Company of  
Thompson, George R., Esq.—H.G.  
Wakefield, The Rt. Hon. Lord, C.B.E.  
Wills, Mrs. Arnold.

1931

Albert and Victoria Hospital Aid Society  
Skinners, The Worshipful Company of  
Smith's Charity, The Trustees of

1932

Glyn Mills & Co., Messrs.  
Skinners, The Worshipful Company of  
Smith's Charity, The Trustees of

1933

Grocers, The Worshipful Company of  
Skinners, The Worshipful Company of  
Smith's Charity, The Trustees of

1934

Fishmongers, The Worshipful Company of  
Grindlay & Co., Messrs.  
Harvey, P. G. A., Esq.  
Skinners, The Worshipful Company of  
Smith's Charity (Kensington Estate), The Trustees of  
Wakefield, The Rt. Hon. Viscount, C.B.E.

# Life Governors

The Letters H.G., Q.G., and A.G. signify Honorary Governor, Quinquennial Governor, and Annual Governor

Date of  
Governorship  
and  
Last Donation.

Date of  
Governorship  
and  
Last Donation.

## A

1900-32	Allsop, Miss
1902-15	Allsop, Miss May
1890	Anderson, Geo. Knox, Esq.—A.G.
1921	Anstey, Miss L. M.
1878	Arendrup, Mrs.

## B

'96-1933	Bailey, Miss R. E.
'95-1913	Bathurst, Rt. Hon. Earl.
1901	Bentwich, Norman de Mattos, Esq.
1899	Best, C. W., Esq.
1892	Bevan, D. A., Esq.—A.G.
1892	Boyd, A. W. Lennox, Esq.
1893-97	Brenton, Mrs.
1888	Brooksbank, Mrs.
'93-1922	Burnham, D.S.O.—A.G., The Rt. Hon. Baron
1899	Bushnell, Miss
'85-1930	Butler, Mrs. Percy

## C

'94-1901	Catterall, Mrs.
1890	Christie-Miller, Chas. W., Esq.
1899	Cockerton, Miss
'83-1922	Cole, Miss C.

## D

1901	Daukes, Rev. F. Whitfield —H.G.
1901	Debenham, Miss Amy
1901	Debenham, Miss Phillis
1916	Dennis, Sir A. H., K.B.E., C.B.—H.G.

1918	Denny, C. F., Esq.—H.G.
1890	Dickinson, Miss L. J.
1875	Dixon, John P., Esq.— H.G.
'94-1922	Doveton, Mrs.
1866	D'Oyly, Mrs.—A.G.
1909	Dundas, Miss L.

## E

1885	Eland, Mrs.
------	-------------

## F

1878	Fulham, Vicar of (under Miss M. A. Carlton's Trust)—H.G.
------	--

## G

1874	George, Mrs. F.
'99-1921	Gibbs, Hon. Edith

## H

1897	Hall, Mrs. S.—H.G.
1897	Hall, Miss J. G.—H.G.
1897	Hall, Miss M. H.—H.G.
1880	Halsey, Mrs.
1899	Hare, Alf. Thomas, Esq. —H.G.
1859	Hoare, Mrs. Rolls
1890-91	Hodgson, George H., Esq. —H.G.
1892	Hughes-Hughes, Montagu E., Esq.

## J

'87-1919	Jaffray, Miss
----------	---------------

Date of  
Governorship  
and  
Last Donation.

**K**

- 1892 Kettle, E. Hartley, Esq.,  
M.D.  
1910 Kitchin, Miss H.  
1901 Knowles, Hugh Charles,  
Esq.  
1901 Knowles, Miss Kate Chris-  
tine

**L**

- 1894 Lea, Rev. Dr. T. Simcox  
—H.G.  
1915-21 Lindley, Miss  
1906 London, Rt. Rev. Lord  
Bishop of—H.G.  
1907 Lowe, Rev. Herbert H.,  
per "A.D.C."  
1885 Lowles, Mrs.  
1918 Ludlow, The Lady

**M**

- 1901 Macgeorge, H., Esq.—  
H.G.  
1895 Magee, Mrs.  
1891 Merriman, Mrs. Robert  
1860 Mildmay, Humphrey F.,  
Esq.  
1862 Miley, Miles, Esq.  
1893 Mills, F. C., Esq.  
1879-95 Mirrlees, Major A.—A.G.  
1886 Mocatta, Miss E.  
1900 Montefiore, C. G., Esq.—  
A.G.  
1910 Montefiore, C. J. G., Esq.  
—H.G. (in respect of a  
gift of £250 out of the  
estate of the late Louisa  
Sophia, Lady Goldsmid)

**N**

- 1885-91 Newington, Mrs. Camp-  
bell  
1917-19 Norman, A. C., Esq.

Date of  
Governorship  
and  
Last Donation.

- 1896-97 Norwich, Rt. Rev. Lord  
Bishop of, K.C.V.O.  
1919 Nussey, Sir Willans, Bt.  
—A.G.

**O**

- 1856 Oliver, Joseph, Esq.  
1899 Oliver, Christopher, Esq.

**P**

- '89-1915 Palmer, Chas. H., Esq.  
1878-95 Palmer, The Rt. Hon.  
Baron  
1913 Parr, Roger C., Esq.,  
M.A., D.L.  
1894 Pearson, Miss Janet—  
A.G.  
1882 Peile, Miss Bertha M.  
1921 Preston, E. M., Esq.

**R**

- 1895 Rank, The Honble. Mrs.  
J. A.  
1894 Raynolds, John, Esq.  
—  
Rogers, Alex., Esq.  
1900-19 Russell, Miss Katherine C.

**S**

- 1900 Sankey, Col. Sir Stuart,  
K.B.E., C.V.O.—H.G.  
'99-1912 Sharman-Crawford, Mrs.  
1892 Simpson, Pinder, Esq.—  
H.G.  
1901 Smith, William Arthur,  
Esq.—H.G.  
1932 Stanhope, K.G., The Rt.  
Hon Earl, H.G., A.G.  
1894 Strange, Miss L.—A.G.

Date of  
Governorship  
and  
Last Donation.

**T**

1913 Tracey, Mrs. Frank  
1889 Turner, Sharon G., Esq.—  
—H.G.

**V**

— Vidler, Rev. Arthur Cole-  
man—H.G.

**W**

1915 "W. R."

Date of  
Governorship  
and  
Last Donation.

1916 Weaver, F. C., Esq.—  
H.G.  
1926 Webb, Miss Gertrude—  
H.G.  
1905 Wells, W. D., Esq.  
'93-1907 Whitaker, W. Ingham,  
Esq.  
1880 Wilder, Mrs. Edmond  
1879 Wilkinson, Miss  
'98-1915 Wilson, Miss M. D.  
'99-1917 Winter, M., Esq.—H.G.  
1901 Woodrooffe, Mrs. Charles

# Gifts, 1934

GIFT.	DONOR.
GRAPES	Their Majesties the King and Queen
144 ½-LB. POTS OF JAM	Messrs. Robertson & Sons, London
24 EGGS AND FLOWERS	Mrs. Kemp, 24, Warwick Road, Margate
ONE WHITFIELD'S PATENT ADJUSTABLE INVALID BED	Anonymous (per Dr. Armstrong)
32 7-LB. POTS OF JAM	Messrs. Robertson & Sons, London
ONE INVALID CHAIR	A. Vanden Bergh, Esq., Margate
ONE WHEEL CHAIR	Do.
12 JIGSAW PUZZLES	<i>Daily Mail</i>
50 LBS. GRAPES	Messrs. Bobby & Co.
TOMATOES	Mrs. Deal, Margate
FISH	Margate Fishing Club
30 RABBITS	A. C. Norman, Esq.
CHRISTMAS FUND—	
TOBACCO, PIPES, ETC.	British Red Cross for Ex-Service Pen- sioners
8 CHRISTMAS TREES	Charles Knowles, Esq.
HOLLY AND MISTLETOE	
£2 2 0	Première "Polish Co."
TOYS	The Vicar, St. John's, Margate
£1 1 0	Per Dr. Armstrong
£2 2 0	L. S. Marshall, Esq.
£0 10 0	Mrs. Williams
£0 10 6	R. Turner, Esq.
£2 0 0	F. R. Wallis, Esq.
£2 0 0	A. J. Matthews, Esq.
£0 10 0	J. G. Holbrook, Esq.
£2 2 0	Hardware Plate Co.
£1 0 0	T. Roberts, Esq.
£1 1 0	A. R. Ashford, Esq.
£9 0 4	Margate Corporation Entertainments De- partment
£3 3 0	Sandwich Model Laundry
£0 5 0	Mrs. Hindle
£2 2 0	Messrs. Weston Bros.
JIGSAW PUZZLES	Dolcis Shoe Co.
4 TINS OF TOFFEE	B. Vesty, Esq.
BOX OF TOYS	Mrs. Tulley
CREAM	Messrs. Weston Bros.

# School Report for 1934

During the year 1934, 162 children attended the school.

As the ages of the children range from 2 to 16 years, the work is mainly individual, though it is possible to group for some lessons.

The syllabus covers all the usual school subjects; but the greater part of the afternoon session is devoted to handwork.

All teaching is done in the open air (except in unsuitable weather), and every care is taken to adapt the instruction to each child's particular need.

K. E. HOWLAND,  
*Head Teacher.*

# Linen League

*President :*

Miss COBB, J.P.

*Vice-Presidents :*

Miss MARY ANDERSON.  
Mrs. HOWLAND.  
Miss JOAN KEMPSON.  
Mrs. LEWIS.  
Miss MASSIE.  
Mrs. MOOR.

Mrs. NOOTT.  
Mrs. BRINTON PRICE.  
Mrs. ROYLE.  
Mrs. TULLY.  
Mrs. WATSON-SMITH.

*Honorary Secretary :*

Mrs. HOWLAND, The Croft, Hartsdown Road, Margate.

Other friends of the Hospital who are unable to become Vice-Presidents have kindly promised gifts of money and garments.

This Association is formed for the purpose of supplying garments for the use of patients of the R.S.B. Hospital, Margate.

Further particulars may be obtained of the Honorary Secretary or the Matron at the Hospital.

## Rules

### I

President subscribes 5s. and garments. Vice-Presidents subscribe 2s. 6d. annually; to be responsible for 22 garments a year (it is suggested that these garments may be collected from working members). To collect the garments and send them to the Hon. Sec., R.S.B. Hospital, Margate, before April 15th each year. All subscriptions may be paid at the General Meeting.

### II

A General Meeting to be held once a year at the R.S.B. Hospital the first week in May, at which all the work is to be exhibited.

### III

The Executive Officers of the Linen League to be elected at the General Meeting in May for three years. On resignation of an Executive Officer, a substitute may be appointed to serve until election.

## Report

The Twenty-Fifth Annual Meeting of the Linen League was held on May 4th, 1934, at the Hospital.

The President, Miss Cobb, J.P., presided.

There were present the following Vice-Presidents:—

Mrs. Watson-Smith, Mrs. Royle, and Mrs. Tully, Miss Joan Kempson and Mrs. Howland.

Letters of regret for absence were received from:—

Mrs. Lewis, Miss Massie, Mrs. Moor, and Mrs. Brinton Price.

The Subscriptions and Donations amounted to £2 2s. 6d.

After deducting 7s. 6d. for necessary expenses, the sum of £1 15s. 0d. was handed over to the Matron to be spent on materials for garments.

The President reported that once more the usefulness and quality of the garments contributed were excellent, and that grateful thanks were due to the Vice-Presidents for their continued interest, to Miss Kempson for all her valuable help through the year, and for making such a happy little gathering and to Mrs. Howland the Honorary Secretary for all her devoted work.

The Report was adopted and the Accounts passed on the proposal of Mrs. Watson-Smith, seconded by Mrs. Royle.

Signed on behalf of the Committee,

E. M. F. COBB.

May 4th, 1934.

The Vice-Presidents are asked to kindly note that the Matron states that the following articles are most needed:—

Boys' Jerseys (Grey).	White Wool, any thickness, 3-ply
Operation Stockings (all sizes).	double-knitting or super-wheeling
White Socks (all sizes—	most suitable (1 lb. of wool to
men, women, and children).	count as six garments).
Woollen Vests (all sizes).	Flannel Vests (the Matron can
Children's Woollen Gloves and Mittens	supply the patterns).
(grey or natural).	

The number of garments are as follows:—

In 1911 ..	413	In 1923 ..	581
„ 1912 ..	425	„ 1924 ..	544
„ 1913 ..	449	„ 1925 ..	548
„ 1914 ..	490	„ 1926 ..	537
„ 1915 ..	502	„ 1927 ..	606
„ 1916 ..	528	„ 1928 ..	543
„ 1917 ..	559	„ 1929 ..	585
„ 1918 ..	440	„ 1930 ..	520
„ 1919 ..	459	„ 1931 ..	397
„ 1920 ..	519	„ 1932 ..	308
„ 1921 ..	521	„ 1933 ..	297
„ 1922 ..	524	„ 1934 ..	292

#### LIST OF GARMENTS

Mrs. Tully .. .. .	33	Mrs. Watson-Smith .. .. .	22
Mrs. Brinton Price .. .. .	22	Mrs. Royle .. .. .	25
Mrs. Moor .. .. .	22	Mrs. Noott .. .. .	24
Mrs. Lewis .. .. .	25	Bought with Linen League	
Miss Kempson .. .. .	23	money (per Miss Kempson)	
Miss Massie .. .. .	22	(Jerseys) .. .. .	8
Miss Mary Anderson .. .. .	22		—
Mrs. Howland .. .. .	22		292
Miss Cobb .. .. .	22		—

New Subscriptions and Donations will be thankfully received by the Hon. Secretary.

# Laws

*of the*

## Royal Sea-Bathing Hospital

*Made and Passed at a Special Court of Governors held on the 24th day of March, 1931.*

*None of these Laws is to be repealed or altered, nor is any new Law to be made, except at a Special Court of Governors. (See Law XL.)*

### NAME OF THE CHARITY.

#### I.

The name of the Charity is THE ROYAL SEA-BATHING HOSPITAL.

It was founded in the year 1791, by the name of the General Sea-Bathing Infirmary, which name was by Royal Permission changed to that of the Royal Sea-Bathing Infirmary on the 17th of August, 1791, and on the 18th day of February, 1898, the present title was adopted with the like permission. The Charity has also at different times been known as The Margate Sea-Bathing Infirmary, The Royal National Sea-Bathing Hospital, The National Hospital for Scrofula at Margate, and by various other similar titles.

### PURPOSE OF THE CHARITY.

#### II.

The purpose for which the Charity is established is the reception of Patients suffering from Tuberculous and other diseases, which, in addition to skilled medical and surgical attention, require the benefits of sea-air and sea-bathing for their successful treatment.

Such persons may be admitted as—

- (a) Free Patients on a Governor's Free Letter of Recommendation, or Nomination to the Endowed Beds if certified to be necessitous.
- (b) Ordinary Patients on a Governor's Ordinary Letter of Recommendation and part payment prescribed by the Committee of Management.
- (c) Full Pay Patients on payment of the average cost per occupied bed, excluding Capital Expenditure, either by a Public Authority or Private Person.

Beds may be endowed and named in perpetuity by donations of not less than One Thousand Pounds, and the donor shall have the right of nomination subject to the Rules and Regulations and By-laws of the Hospital.

## GOVERNORS.

### III.

The Governors of the Charity shall consist of a Patron and Vice-Patrons, Patronesses, President, Vice-Presidents, Treasurer, and Life, Quinquennial, Annual, and Honorary Governors.

### IV.

Patrons, Vice-Patrons, and Patronesses may be elected at any Court of Governors, and also from time to time by the Court of Directors.

### V.

The President, Vice-Presidents, and Treasurer, who shall be Directors *ex officio*, shall be elected annually at the Annual Court of Governors, but a Special Court of Directors may, in the interim, appoint qualified persons, who shall hold office till the next Annual Court of Governors.

### VI.

Every donor of Thirty Guineas, or upwards, in one sum shall be a Life Governor. A donor of Ten Guineas, or upwards, in one sum shall be a Quinquennial Governor. An Annual Subscriber of not less than One Guinea shall be an Annual Governor so long as the subscription shall continue. Persons who have conferred signal benefits on the Hospital, and Executors or Trustees acting collectively under a Will by virtue of which a Legacy is paid to the Hospital, may be elected Honorary Governors by the Court of Directors, with such privileges as it may determine.

*N.B.—The term "Annual Subscriber" in these laws means one who subscribes annually for an indefinite number of years. The period should not be less than five years if a letter be presented.*

## GENERAL COURT OF GOVERNORS.

### VII.

The Court of Governors shall hold its Annual Court in London in each year, in the month of March or April, on such day, at such

hour, and in such place as shall be determined by the Committee of Management (*see* Law XXIV), and notice of the day, hour, and place of such Meeting shall be given to the Governors by letter sent through the Post Office, and by Public Advertisement, at least six days previous to the day of Meeting.

#### VIII.

At every Annual Court of Governors a "REPORT," prepared by the Directors, containing a summary of the transactions of the Charity since the last Annual Court of Governors, shall be read, the Balance Sheet and Account of Receipts and Expenditure shall be submitted, and the President, Vice-Presidents, Treasurer, Directors, Visiting Ophthalmic Surgeon, Radiologist, Dental Surgeon, and Auditors for the ensuing year shall be elected.

#### IX.

A Special Court of Governors shall at any time be convened by the Secretary, upon a written requisition of the President, or any two Vice-Presidents, or of the Treasurer, or of the Chairman, or of any four of the Directors, or of any seven of the Governors, setting forth the purpose or purposes for which such Special Court is to be held. A Special Court shall be convened by notice, in the same manner as hereinbefore provided in the case of the Annual Court, but such notice shall in addition state the purpose or purposes for which the Special Court is convened.

At a Special Court no matters shall be taken into consideration except those specified in the notice convening the same.

#### X.

No Annual Governor, whose subscription is in arrear three months, shall be entitled to vote at a Court of Governors, or to make any requisition under Law IX, until such arrears shall have been paid.

### TRUSTEES.

#### XI.

There shall be Trustees, in whom shall be vested the property of the Charity not otherwise vested in "The Official Trustee of Charity Lands" or "The Official Trustees of Charitable Funds" until such time as such property is so vested. The number of such Trustees shall not be less than three and shall not exceed six; they shall be appointed from time to time by the Court of Directors, who shall report such appointment to the next Annual Court of Governors.

No person shall be appointed a Trustee except a Governor of the Charity.

## COURT OF DIRECTORS.

### *Election.*

#### XII.

At the Annual Court of Governors there shall be chosen from among the Governors not more than TWENTY DIRECTORS, who shall, with the President, Vice-Presidents, and Treasurer (*see* Law V) form the Court of Directors. So far as may be, some of the Directors shall be resident within twenty miles of Margate.

#### XIII.

A Court of Directors specially summoned for the purpose may fill up any occasional vacancy in the office of Director by the appointment of a qualified person, who shall hold office until the next Annual Court of Governors.

No Governor who is not already a Vice-President, Treasurer, or Director of the Charity, shall be eligible to be elected as such unless notice in writing of the intention to propose such Governor for election to such office be given to the Secretary of the Charity fifteen days previous to the day on which the Court of Governors, or Court of Directors, is to be held, at which any such proposal is to be made. Every such notice shall state the name and address of the Governor to be proposed for any such office as above, and shall be signed by at least two Governors, and a copy thereof shall be placed in a conspicuous place in the Offices of the Charity in London and at Margate.

#### XIV.

No person holding any office or situation in the Charity, except the Treasurer, the Chairman, and the elected Members of the Medical Board, shall be eligible to be appointed a Vice-President or Director, or to act upon any Committee under these Laws while holding such position.

#### XV.

No tradesman of the Charity shall be eligible as a Vice-President or Director.

### *Meetings.*

#### XVI.

Ordinary Courts of Directors for the transaction of business shall be held in London three times during the year, on days and at a place and hour to be from time to time appointed by the Court. Notice of such Courts shall be given to each member by letter addressed to him at his usual place of residence.

At its first meeting after the Annual Court of Governors the Court shall elect its Chairman and Vice-Chairman for the ensuing year.

## XVII.

Special Courts of Directors shall be convened by the Secretary, on the order of the Court of Directors, or on the requisition of the President, or any Vice-President, or the Treasurer, or the Chairman, or any four of the Directors. Six days' notice, at least, shall be given of every Special Court to every Member by letter addressed to him at his usual place of residence. Such notice shall state the day, time, and place of meeting, and the purpose for which such Special Court is to be held.

At Special Courts no matters shall be taken into consideration, except those specified in the notice convening the same.

### *Procedure.*

## XVIII.

At any Court of Directors its Chairman, if present, shall take the Chair, and in his absence the Vice-Chairman if present, or if absent a Member of the Court shall be voted into the Chair.

Any Court of Directors may be adjourned to such time and place as the Members present may appoint.

At any Court of Directors, three shall form a quorum.

## XIX.

Whenever a Court of Directors is called, but a quorum is not formed, such member or members as may be present shall have power to adjourn the Court to another day; and in case of no member being present, the Secretary shall, with the concurrence of its Chairman, or, in his absence, of the Vice-Chairman, have power to adjourn it.

### *Business.*

## XX.

The business of the Court of Directors shall be as follows:—

- (a) To receive the Reports of the Finance Committee and Committee of Management.
- (b) To sanction all Capital Expenditure.
- (c) To consider and prepare the Annual Report for the General Court of Governors.
- (d) To elect the Finance Committee and the Committee of Management annually, with power at any time to discharge the same and appoint others; also to fill vacancies arising on such Committees.
- (e) To arrange for the Visiting of the Hospital by Official Visitors.

## XXI.

The Court of Directors shall, subject to the Laws of the Charity, have power to Frame Rules and Regulations for its own government, and the Government of the Finance Committee and Committee of Management.

### *Duties.*

## XXII.

It shall be the duty of each Director, who shall not also be a member of the Committee of Management, to inspect the Hospital at least once in the year, and to report in writing to the Chairman.

## THE FINANCE COMMITTEE.

## XXIII.

The Finance Committee shall consist of not more than three Members of the Committee of Management and the Treasurer, and its business shall be as follows:—

- (a) To consider and prepare the monthly report for the Committee of Management, and the quarterly report for the Court of Directors.
- (b) To sanction all investments.
- (c) To sign cheques.
- (d) To check the receipts of the Charity, and to make suggestions for increasing the same.
- (e) To see that the funds entrusted to the Court of Directors are properly applied to the purposes of the Charity, and are duly accounted for.

The Treasurer or a Member of the Finance Committee shall sign the receipt in discharge of a Legacy paid to the Hospital.

## THE COMMITTEE OF MANAGEMENT.

## XXIV.

The Committee of Management shall consist of the Treasurer, and of not more than ten other Members of the Court of Directors, to be elected by the Court of Directors. It shall hold office until its successor is appointed. It shall be responsible for and shall have entire control over the management of the Hospital, acting in accordance with the laws of the Charity and the Resolutions of the Courts of Governors and Directors, and shall have power to make Bye-laws which are not inconsistent therewith.

The Committee of Management shall meet twice monthly, once at Margate and once in London, and shall have power to adjourn Meetings. Special Meetings may be called by the Treasurer or the Chairman or any two Members.

At its first meeting after its annual election the Committee of Management shall elect its Chairman and Vice-Chairman for the ensuing year.

#### XXV.

The designation "the Chairman" in the Laws and Bye-laws shall mean the Chairman of the Committee of Management.

#### *Powers.*

#### XXVI.

The Committee of Management may enter into any Contracts or Covenants for the Purposes of the Hospital, may appoint, suspend on such terms and conditions (if any) as they think fit, and remove all Officials and Servants, may appoint and determine salaries, and grant pensions to its Officials and Servants for good and meritorious service according to a Pension Scheme of its own, or it may adopt The Federated Superannuation Scheme for Nurses and Hospital Officers (Contributory) or any other Scheme it thinks fit.

The Committee of Management may make rules and regulations for the government of the Hospital, and the admission, discharge, maintenance, and care of patients.

A Special Meeting of the Committee of Management, summoned with reasonable notice, shall have power to dismiss at once, or to deal with, any Official or Servant.

#### XXVII.

In addition to the powers of suspension or dismissal by these Laws given to the Committee of Management, it may, by its Rules, empower the Medical-Superintendent to suspend any Official at the Hospital, and to suspend or dismiss any Sister, Nurse, Carpenter, Engineer, Gardener, Porter, male or female servant, reporting the same to the next meeting of the Committee of Management.

#### *Quorum.*

#### XXVIII.

The quorum of the Committee of Management shall be, for audit, inspection, report, and to act in cases of emergency, two, and for ordinary business, three; provided that for the dismissal of the Secretary, Medical-Superintendent, or Matron, a quorum of not less than six, and the approval of the Treasurer shall be necessary.

## XXIX.

The Committee of Management shall not be entitled, without the sanction of the Court of Directors, to incur any Expenditure of Capital.

All supplies shall, as far as possible, be publicly advertised for.

## COMMITTEES.

### XXX.

The Court of Directors and the Finance Committee and Committee of Management shall have power to appoint from time to time, from among themselves, any Committee or Sub-Committee for any special purpose, to consist of not less than two members. The Chairman shall be an *ex officio* member of all Committees and Sub-Committees, and shall preside regularly at the meetings of the Finance Committee and Committee of Management.

## VOTING AT MEETINGS.

### XXXI.

In case of equality of votes at any Court of Governors, Court of Directors, Finance Committee, Committee of Management, or other Committee, or at a Sub-Committee, the Chairman presiding shall be entitled to a second or casting vote.

## MEDICAL BOARD.

### XXXII.

There shall be a Medical Board in London, consisting of twelve Physicians, who shall be Fellows or Members of the Royal College of Physicians in London, and twelve Surgeons, who shall be Fellows of the Royal College of Surgeons in England, and not practising pharmacy, which shall be consulted by the Court of Directors in all matters of importance connected with the Medical working of the Charity.

Whenever, from time to time, a vacancy shall occur amongst the elected Members of the Medical Board, it shall be filled up by the Court of Directors, upon the recommendation of the Medical Board.

The Physician or Surgeon appointed to fill such vacancy shall hold office for a term of five years from the date of election, but shall be eligible for reappointment.

When any vacancy shall occur on the Medical Staff, it shall be advertised, and the Medical Board shall consider the applications, and make recommendations to the Committee of Management for the appointment, with whom the election shall rest.

The Medical Board shall, subject to the approval of the Court of Directors, elect from their body one Physician and one Surgeon to

act as Examiners of the applications of patients for admission, and no patient shall be admitted until the application has been approved by these Examiners.

The Examiners shall be paid such honoraria as the Medical Board shall from time to time recommend.

The Medical Board shall meet when summoned by the Secretary, or upon the requisition of not less than four members of the Board.

The Secretary shall keep the Minutes.

## MEDICAL STAFF.

### XXXIII.

The Medical Staff of the Hospital shall consist of a Medical-Superintendent, a Resident Assistant Medical-Superintendent, and a Resident House Surgeon, all of whom shall be full-time Officers and shall not practise their profession except for the purposes of the Charity; a Visiting Ophthalmic Surgeon, and a Visiting Radiologist, who shall be fully qualified and registered, and shall attend at appointed times and when required, and such other Officers as the Committee of Management may from time to time determine.

The Medical Staff shall retire on reaching the age of 60 years, unless continued in office by the special decision of the Committee of Management.

### *Dental Surgeon.*

The Dental Surgeon must be duly registered. He shall attend to such cases as shall be brought to his notice by the Medical-Superintendent.

## ACCOUNTS.

### XXXIV.

An account shall be kept with some London Bank, to be approved by the Court of Directors, into which all moneys received on account of the Charity shall be paid, and upon which cheques shall be drawn in discharge of all debts due or owing by the Charity, signed by two Members of the Court of Directors, and countersigned by the Treasurer or Secretary.

### XXXV.

The cash accounts of the Charity shall be closed on the 31st of December in every year.

Upon such accounts being closed, the Finance Committee shall annually prepare a Balance Sheet, an Account showing in detail the receipts and expenditure of the Charity, a Statement of its property and such other accounts and statements as may be deemed necessary.

Such Balance Sheet, Statements and Accounts, together with all bills, vouchers, and books of account connected therewith, shall be submitted to the Auditors not later than the third week in February, and if upon examination they find the same to be correct, they shall so certify, and make their Report within two weeks from the receipt of such accounts to the Court of Directors.

#### XXXVI

The Auditors shall be Chartered Accountants, and shall be appointed for the ensuing year at the Annual Court of Governors

#### IN-PATIENTS.

#### XXXVII.

In-patients shall be provided with food in accordance with Dietary tables to be from time to time prepared and sanctioned by the Committee of Management.

The linen required by patients, bed linen only excepted, shall be provided by themselves.

#### OUT-PATIENTS.

#### XXXVIII.

Out-patients shall make such payments as shall be fixed by the Court of Directors.

#### XXXIX.

No person holding any office or situation in connection with the Charity shall receive any fee, reward, or gratuity from any tradesman, patient, or other persons, directly or indirectly, for any service done or to be done on account of the Charity.

#### REPEAL OR ALTERATION.

#### XL.

None of these Laws is to be repealed or altered, nor is any new Law to be made, except at a Special Court of Governors. The Committee of Management shall, however, have power to make alterations which shall be in force until the next Special Court of Governors, when they shall be submitted for confirmation or otherwise.

# Bye-Laws

## QUALIFICATIONS AND PRIVILEGES OF DONORS AND SUBSCRIBERS.

### I.

Every donor of One Hundred and Twenty Guineas, or upwards, at one payment, shall be a Life Governor, and shall be entitled to three In-patient Letters of Recommendation annually, viz. two Ordinary Letters, and one Free Letter for every complete sum of One Hundred and Twenty Guineas so given by him.

Every donor of Thirty Guineas, or upwards, in one sum, shall be a Life Governor, and shall be entitled to one Ordinary Letter annually for every complete sum of Thirty Guineas so given by him.

Every donor of Ten Guineas, or upwards, in one sum, shall be a Quinquennial Governor, and shall be entitled to one Ordinary Letter annually for five years, for every complete sum of Ten Guineas so given by him.

The donations of Corporations, Public Companies, Firms, and other Public Bodies shall be considered to confer privileges for the period of five years only from the time of the payment of such donation.

A donation of One Thousand Pounds shall entitle the donor to name a bed in perpetuity and, during life, to nominate necessitous patients to fill such bed when vacant, subject to such patients being approved by the Medical Board.

### II.

Every annual subscriber of Two Guineas, or upwards, shall, so long as his subscription shall continue, be an Annual Governor, and shall be entitled to one Ordinary Letter annually for each complete sum of Two Guineas annually subscribed by him.

Every annual subscriber of One Guinea shall, so long as his subscription shall continue, be an Annual Governor, and shall be entitled to one Ordinary Letter on payment of a second subscription, and on alternate years.

Annual Governors' Subscriptions shall be due in the twelfth month after payment of the first subscription, or in a month named by the Governor.

*N.B.—The term "annual subscriber" in these Bye-laws means one who subscribes annually for an indefinite number of years. The period should not be less than five years if a letter be presented.*

### III.

Every Clergyman, or Minister of Religion, who may have preached a Sermon or have given his pulpit or collected an offertory in favour of the Charity, whereby a sum of not less than Two Guineas shall have been collected, shall, during the ensuing twelve months, be entitled to one Ordinary Letter for every complete sum of Two Guineas so collected. If the offertory amount to Ten Guineas or upwards, he shall be entitled to the privileges of a Quinquennial Governor.

### IV.

Every authorised Honorary Collector of not less than Two Guineas, whether in Five-shilling Annual subscriptions, or by means of an entertainment, or otherwise, shall, after payment of such sum to the funds of the Charity, be entitled during the ensuing twelve months to one Ordinary Letter for every complete sum of Two Guineas so collected. If the amount remitted be Ten Guineas, or upwards, he shall be entitled to the privileges of a Quinquennial Governor.

### V.

Persons who have conferred signal benefits on the Hospital, and Executors or Trustees acting collectively under a will, by virtue of which a legacy is paid to the Hospital, may be elected Governors by the Court of Directors with such privileges as it may determine.

### VI.

In-patient Letters of Recommendation shall not be available after the expiration of twelve months from the date of issue, nor after the death of the Governor.

### VII.

A new Letter shall be required for each Ordinary or Free Patient in the Hospital at the expiration of every completed term of eight weeks' residence. In the event of such new Letter not being procured, the Patient will be charged as a Full Pay Patient.

### VIII.

Any Governor may recommend suitable persons as Out-patients, and the necessary forms may be obtained from the Secretary.

## IN-PATIENTS.

### IX.

In-patients are divided into three classes: Full Pay Patients, Ordinary Patients, and Free Patients.

Full Pay Patients shall pay such sum as represents the average cost per occupied bed, excluding Capital Expenditure.

Ordinary Patients shall pay so much towards their maintenance as for the time being shall be fixed by the Court of Directors.

Free Patients are admitted on a Governor's Free Letter or Nomination to the Endowed Beds, and are free of any charge whatever for a period not exceeding eight weeks in respect of each Free Letter, if allowed by the Medical Superintendent to remain so long in the Hospital. After such period has expired they may, if recommended by the Medical Superintendent, remain on as Ordinary or Full Pay Patients.

### VI.

In-patient Letters of Recommendation shall not be available after the expiration of twelve months from the date of issue, nor after the death of the Governor.

### VII.

A new Letter shall be required for each Ordinary or Free Patient in the Hospital at the expiration of every completed term of eight weeks' residence, in the event of such new Letter not being procured the Patient will be charged as a Full Pay Patient.

### VIII.

Any Governor may recommend suitable persons as Out-patients, and the necessary forms may be obtained from the Secretary.

# Rules Respecting the Admission of Patients

1. All patients, other than Full Pay Patients, must be recommended by a Governor of the Charity, and comply with the Instructions which will be found on the Letter of Recommendation. Full Pay Patients must furnish a Medical Certificate on a form to be obtained from the Secretary.

## IN-PATIENTS.

2. When all particulars on the Letter of Recommendation have been filled in, the Form must be sent to the Secretary, at the Offices of the Charity in London, who will give directions to the Patient where and when to attend the Medical Board if necessary.

3. All Consumptive Patients must be examined by the Medical Board in London, or at the Hospital before they can be admitted, and other Patients when necessary.

4. If the Patient be approved by the Medical Board for admission as an In-Patient, an order of admission will be sent as soon as there is a bed available.

## SPECIAL CONDITIONS.

5. The payments for Maintenance are: (a) In respect of Full Pay Patients, £18 4s. 0d.; (b) In respect of Ordinary Patients, £8 8s. if 15 years of age and upwards, and £4 4s. if under 15. In each case these payments are in respect of eight weeks, and must be made to the Secretary at the London Offices of the Charity before admission. The period of residence commences from the date appointed for admission. No patient has a prescriptive right to eight weeks' residence, and may be discharged by the Medical Superintendent before the expiration of eight weeks, if he considers so long a time unnecessary or unadvisable. In such cases a portion of payment made will be refunded. The term of residence may be extended on the advice of the Medical Superintendent of the Hospital but subject to the same conditions as regards discharge, and upon further payment being made, and a new Letter being presented after each period of eight weeks. A second Medical Certificate is not required. A Patient failing to procure a fresh Letter after each eight weeks' residence, will be charged as a Full Pay Patient, or such less sum as the Court of Directors may determine.

6. Patients are required to bring to the Hospital proper changes of Clothing, two Towels, a Hair Brush and Comb, Tooth Brush and small Tooth Comb. Vests, Combinations, Petticoats, Night Dresses and Towels are provided for children under 15 years of age, and should, therefore, not be brought. Washing is paid for by the Hospital, but all articles must be marked with the Patient's name in full, or the Hospital Authorities will not be responsible for their safe return.

7. No child under six years of age can (unless under very exceptional circumstances) be admitted as an In-Patient.

8. Unvaccinated children admitted to the Hospital may be vaccinated if considered advisable by the Medical-Superintendent.

9. Cheap Single Railway Tickets for patients and necessary attendants at 4s. 4½d. each for adults, and 3s. 1d. each for children under 12 years of age can be purchased at the London Termini only of the Southern Railway Company (South-Eastern and Chatham Section), and at Margate West Station on presentation of "Application Forms for Passenger Tickets at Reduced Fares." These forms may be obtained from the London Offices of the Hospital a few days before the patient is admitted to or discharged from the Hospital. The tickets are not available at intermediate Stations, nor by the "Granville Express" (3.15 p.m. down and 10.25 a.m. up from 1st June to 31st October), nor for visiting purposes.

10. If desired, Young Children and Helpless Patients can be met at Margate, but in this case due notice must be sent to the Medical-Superintendent at the Hospital, giving the day and time the train leaves London. Patients cannot be admitted or discharged on Sundays.

#### OUT-PATIENTS.

11. Ex-In-Patients attending as Out-Patients for examination and adjustment of splints, etc., are treated free. Other Out-Patients are required to pay such sum as the Medical Superintendent decides. Application for an appointment must be made by letter to the Medical-Superintendent of the Hospital.

*All communications to be addressed to the Secretary, R.S.B.H. Offices, Watergate House, 15, York Buildings, Adelphi, London, W.C.2,*

## Rules for In-Patients

1. Patients are liable to be discharged for offensive behaviour, disobedience, and for neglect of Rules.

2. No Patient shall be allowed to be absent from the Hospital except as specified in Rule 5.

3. Patients are invited to attend Ward Services on the week-days, and the Services in the Chapel on Sundays. In the case of Patients not conforming to the Church of England, arrangements will be made, when possible, for such Patients to attend their own services, or to be visited by the Ministers of their own denominations.

4. No drugs, provisions (chocolates and sweets and fruit excepted), wines or spirits, or other intoxicating liquors, are to be in the possession of any Patient except as supplied to him or her by the authorities from the Stores of the Hospital. Patients are requested to call the attention of their friends and visitors to this rule.

5. Convalescent patients are allowed to go out on week-days (public holidays excepted) by permission of the Medical-Superintendent or the Assistant Medical-Superintendent for a period not exceeding two hours. In the case of Female Patients these hours shall be between 2 p.m. and 4 p.m.; for Male Patients between 4 p.m. and 6 p.m. during the summer months, and between 10 a.m. and 12 a.m. during the rest of the year. Special arrangements are made to allow selected convalescent patients to bathe in the sea during the summer months.

6. No Patient shall be allowed to leave the Hospital on Sunday for any purpose, except to attend Divine Service.

7. Those Patients whose health will admit of their being actively employed, shall assist the Medical-Superintendent and their fellow Patients in every service that may be necessary for the general good.

8. The Patients shall not go into the ward-kitchens, writing or store-rooms, nor into each others' Wards.

9. They shall not play at any game for money, nor engage in any diversion which may disturb the peace and quietness of the Hospital. Except where Medical Officers' visits or Ward Services are in progress men Patients are permitted to smoke during the following hours:—

9 a.m. to 11 a.m.

1 p.m. to 2.30 p.m.

4 p.m. to 6 p.m.

7 p.m. to 8 p.m.

10. The Men and Women Patients are not to associate together, and the children only when permitted to do so by the Medical-Superintendent.

11. Patients must leave the Hospital on or before the day on which their term of residence expires; and parents, or friends, shall be called upon to provide in due time for the safe removal of children.

12. Patients having any cause for dissatisfaction are to make their complaints at the time to the Medical-Superintendent, or in his absence to the Assistant Medical-Superintendent, who will enquire into and report on the same to the Committee of Management. Complaints subsequently made will not be considered.

Meals are served in the Wards at the following times:

Breakfast .. .. . 7 a.m.

Dinner .. .. . 12.30 p.m.

Tea .. .. . 3.45 p.m.

Supper .. .. . 6 p.m.

#### **VISITING HOURS: 2-4 p.m. DAILY**

13. Children attending the Hospital School cannot be visited before 3 p.m. Friends should visit such children on Saturdays and Sundays between 2 p.m. and 4 p.m. Children under fifteen years of age are not allowed to visit children except by the permission of the Medical Superintendent.

# THE ROYAL SEA-BATHING HOSPITAL

FOUNDED AT MARGATE 1791

Bankers:—MARTINS BANK, Ltd.

To the Secretary,

R.S.B.H. Offices, Watergate House, 15, York Buildings, Adelphi, London, W.C.2.

I enclose an Annual Subscription of.....Guineas  
which I will pay annually in.....  
,, a Donation of.....Guineas

to the General Funds of the Hospital.

1935.

# BANKERS' ORDER

---

To

.....19

Messrs.....

.....

Please pay now and annually, until further notice,.....Guineas

to the account of The Royal Sea-Bathing Hospital, at Martins Bank, 16, Whitehall,

S.W. 1, and charge the same to my account.

Signature.....

Address .....

£

.....

.....

## FORM FOR BEQUEST OF MONEY OR STOCK

---

"I give and bequeath to the Trustees for the time being of THE ROYAL SEA-BATHING HOSPITAL, which was founded in 1791, by the name of The General Sea-Bathing Infirmary, and whose Hospital is situate at Margate,

the sum of }  
or } £  
Stock }

(free of duty) to be applicable for the general purposes and charitable objects of the said Hospital. And I declare that the receipt of the Treasurer or Treasurers for the time being of the said Hospital shall be a sufficient discharge for the same."

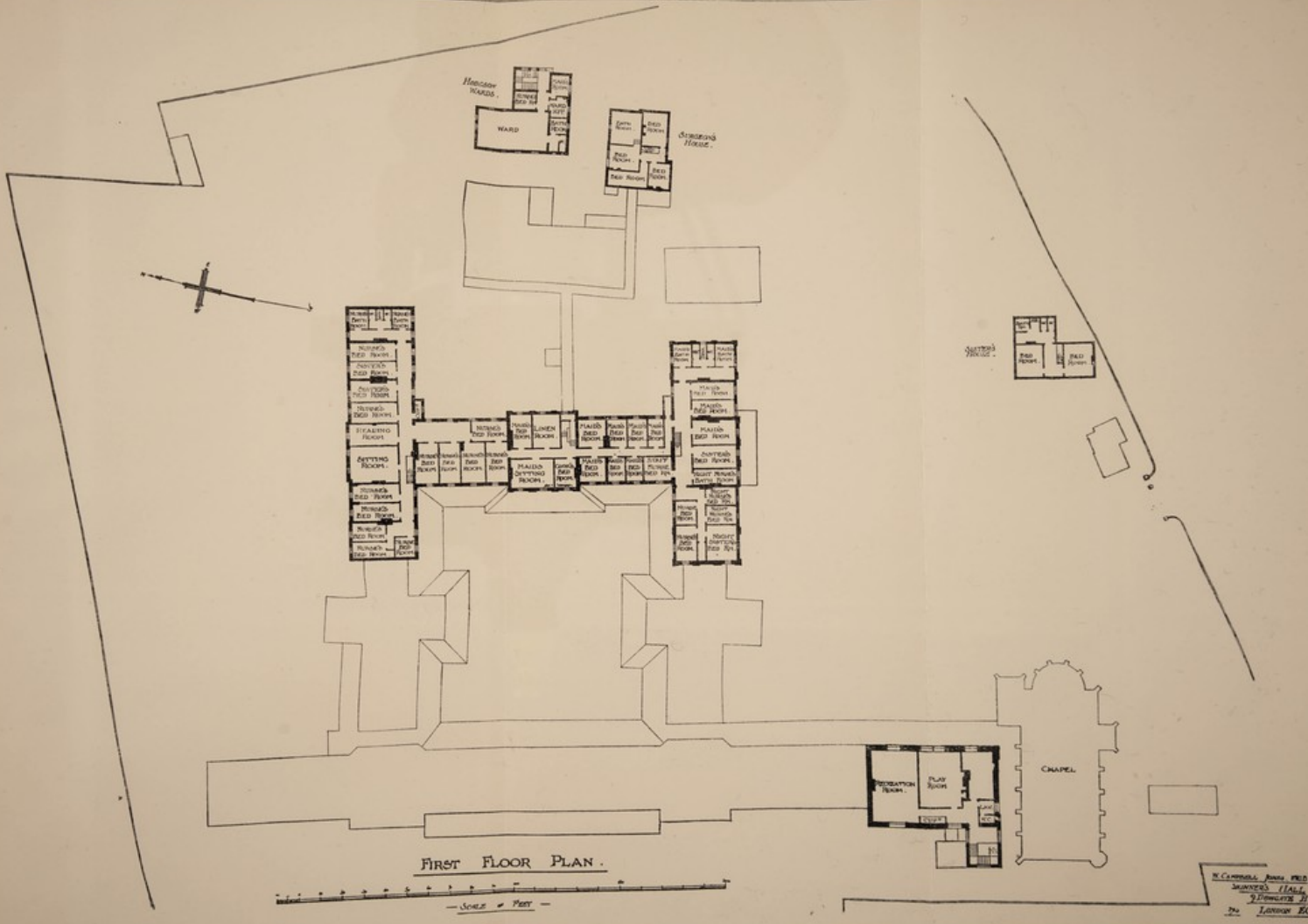
## FORM FOR REQUEST OF LAND OR BUILDINGS

"I give to the Trustees for the time being of THE ROYAL SEA-BATHING HOSPITAL, which was founded in 1791, by the name of The General Sea-Bathing Infirmary, and whose Hospital is situate at Margate,

[HERE DESCRIBE THE PROPERTY]

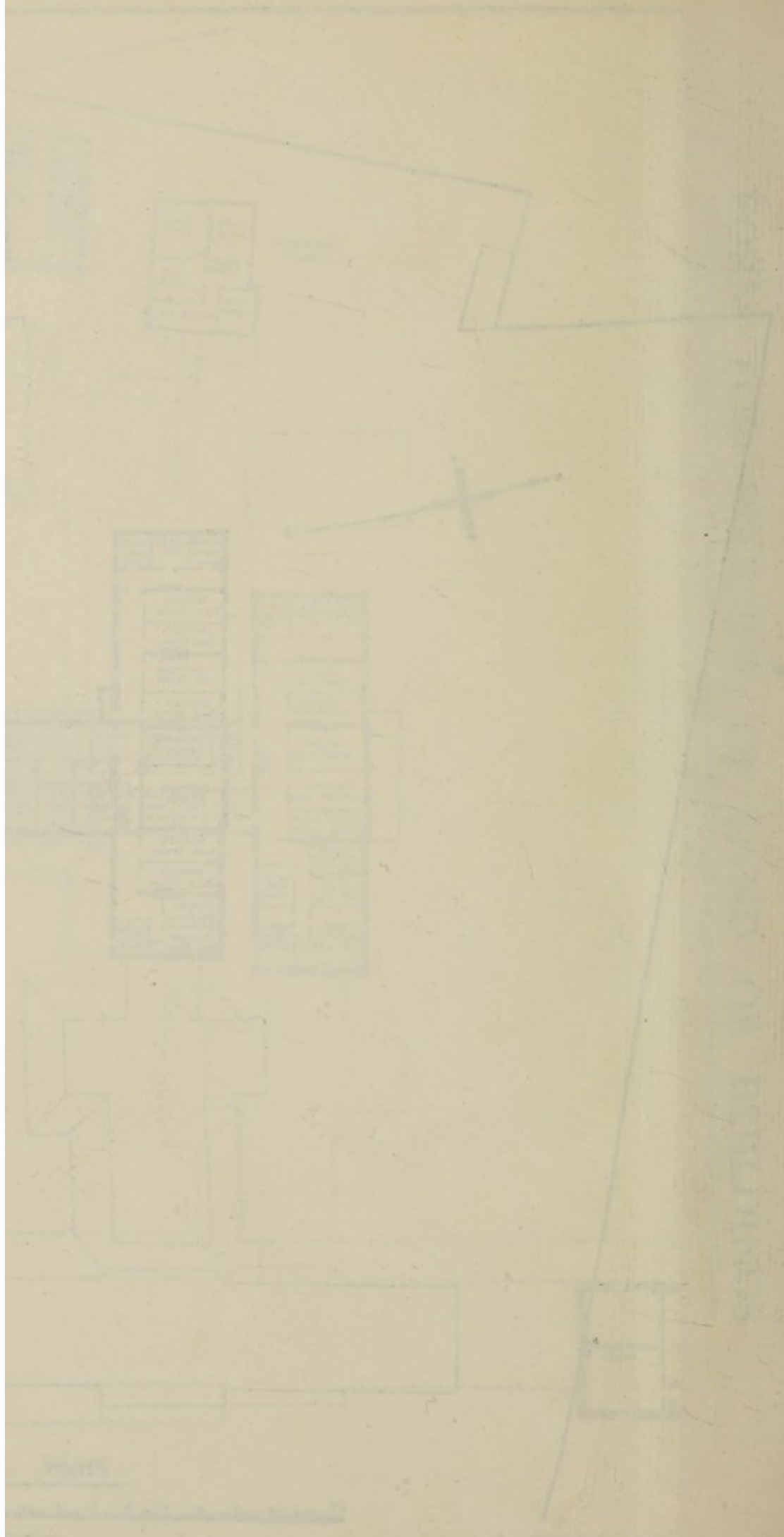
to hold the same subject to the provisions of the Mortmain and Charitable Uses Act, 1891, unto the said Trustees in fee simple for or all other my estate and interest therein. **In Trust** nevertheless, and to the intent that the same premises or the proceeds of the sale thereof may be applicable for the general purposes and charitable objects of the said Hospital."

—THE ROYAL SEA BATHING HOSPITAL, MARGATE, KENT. 1915.—



FIRST FLOOR PLAN.

W. CAMPBELL ARCHT. & BLDG. SURV.  
11, MARSDEN HALL,  
2, LONDON E.C. 4.

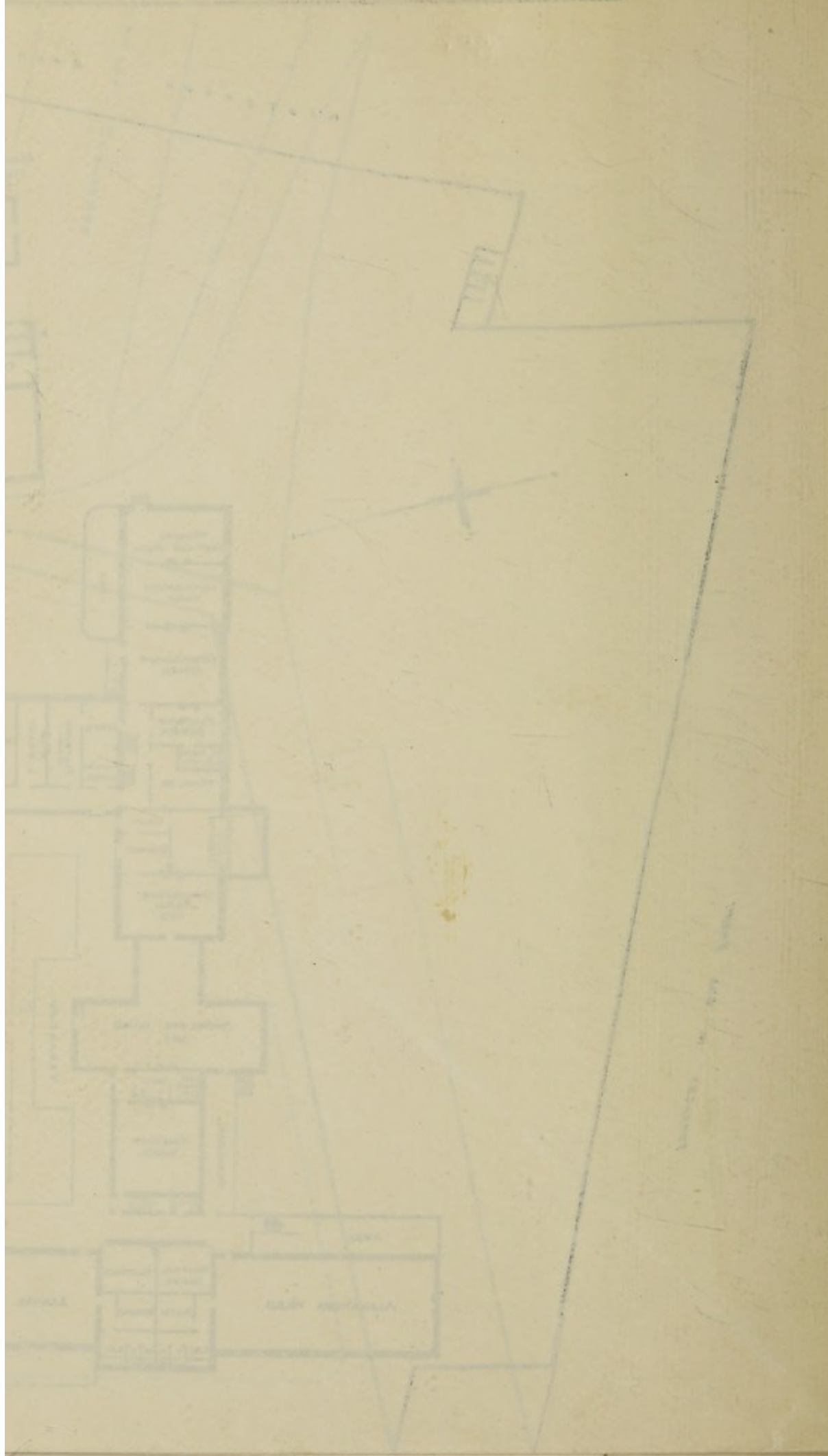


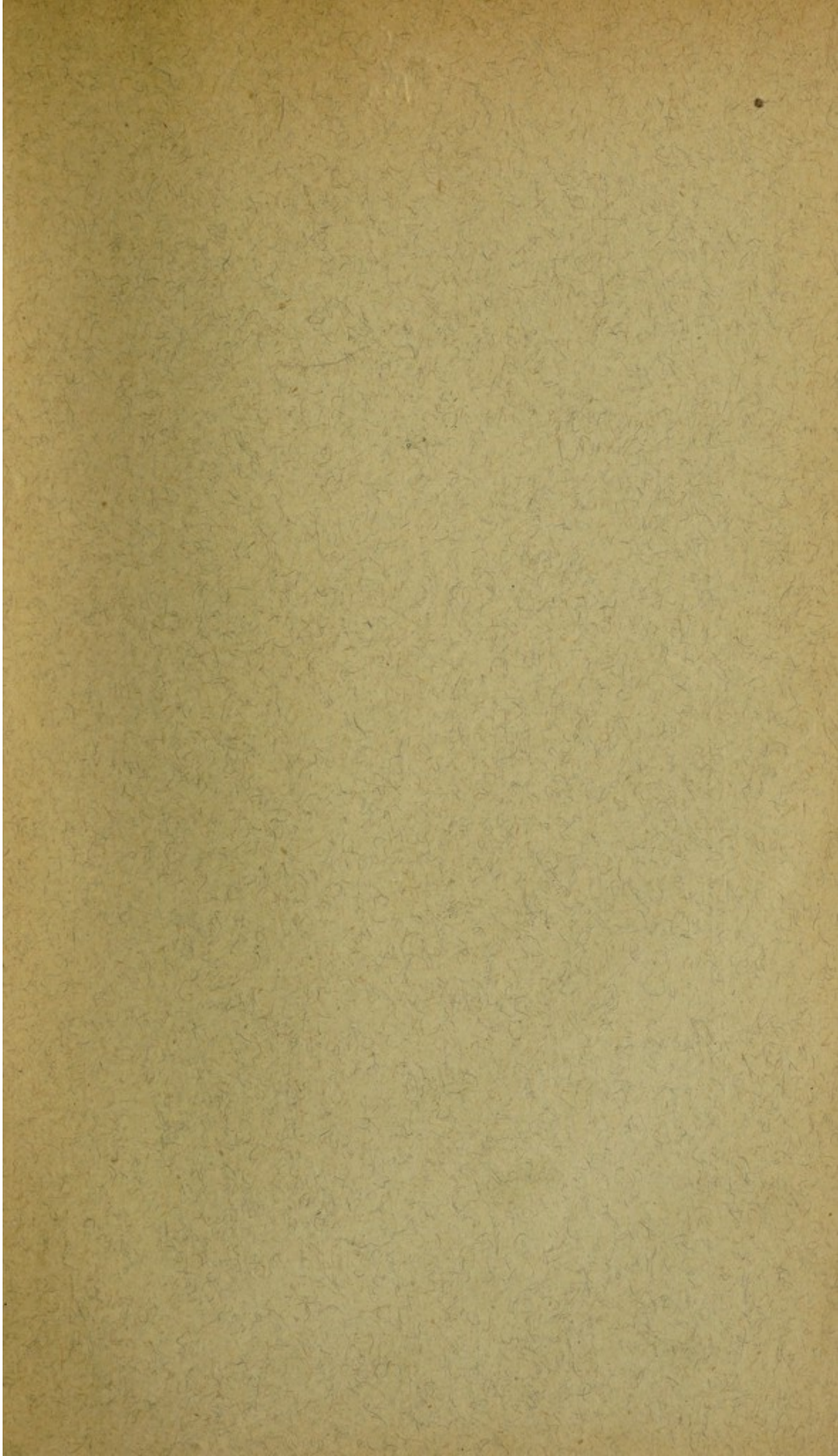
FOLD OUT

PLAN OF THE ...



—THE ROYAL SEA-BATH—





MAP SHOWING POSITION OF THE ROYAL SEA-BATHING HOSPITAL

