

Annual report : 1945 / Luton and Dunstable Hospital.

Contributors

Luton and Dunstable Hospital (Luton, England)

Publication/Creation

[Luton?] : [publisher not identified], 1945

Persistent URL

<https://wellcomecollection.org/works/n23bmuu3>

License and attribution

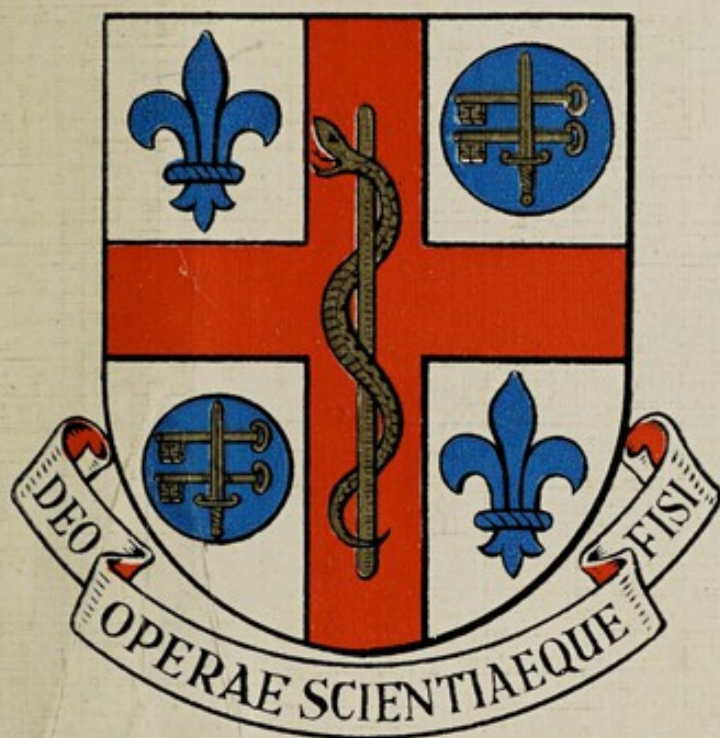
This work has been identified as being free of known restrictions under copyright law, including all related and neighbouring rights and is being made available under the Creative Commons, Public Domain Mark.

You can copy, modify, distribute and perform the work, even for commercial purposes, without asking permission.



Wellcome Collection
183 Euston Road
London NW1 2BE UK
T +44 (0)20 7611 8722
E library@wellcomecollection.org
<https://wellcomecollection.org>

LUTON & DUNSTABLE HOSPITAL
LUTON



SEVENTY-FOURTH ANNUAL

REPORT

for the year to

31st DECEMBER, 1945

The Year of Victory



The Coat of Arms

The Armorial Bearings illustrated on the cover were granted to the hospital by the College of Arms in 1944. The Fleurs de Lis in the first and fourth quarters are a reference to St. Mary's, the Parish Church of Luton, and the crossed keys and sword in the second and third quarters to the Church of St. Peter and St. Paul, Dunstable. The Rod of Aesculapius may be taken as the symbol of healing.

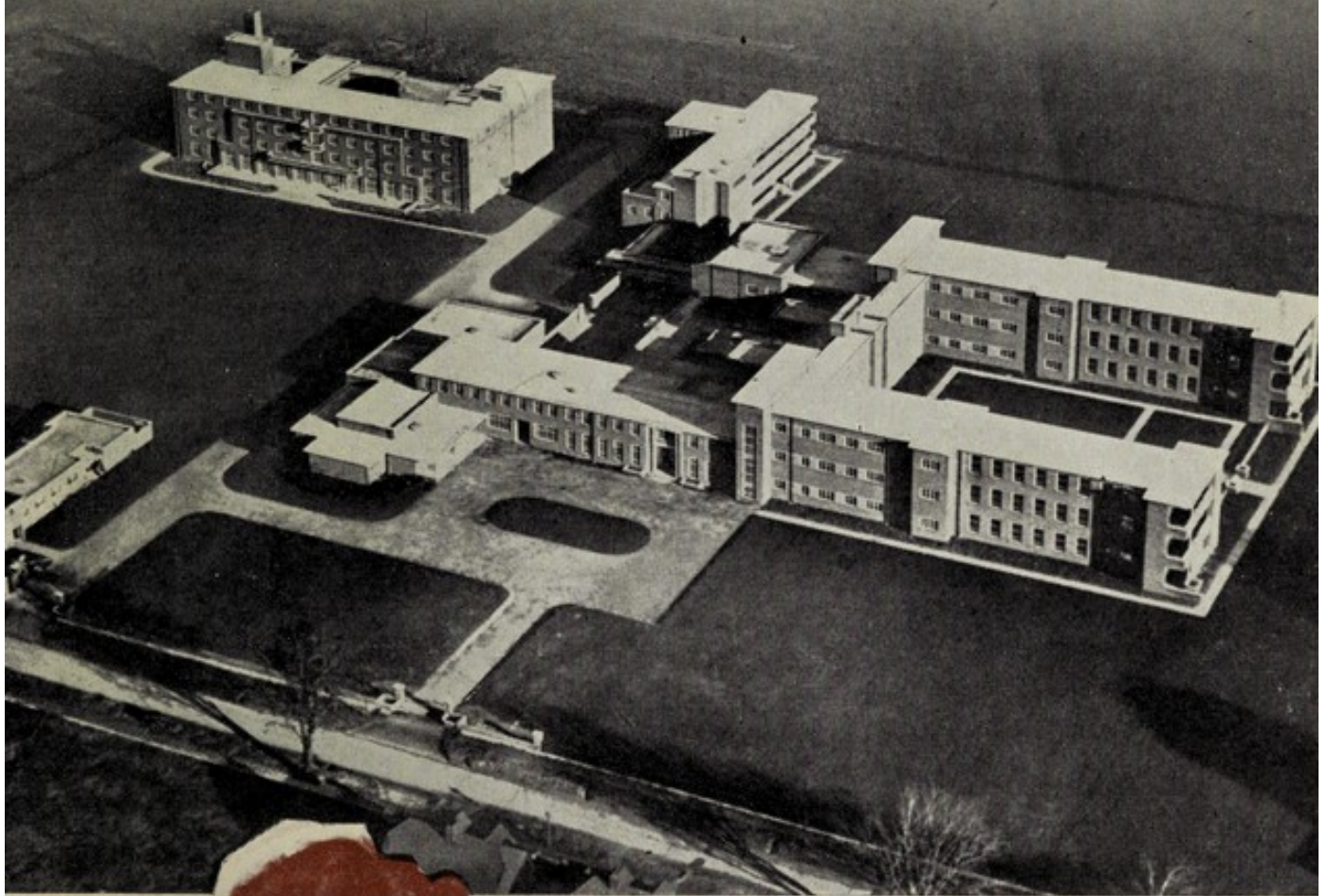
The Latin motto "Deo Operae Scientiaeque Fisi," literally translated, means "Our Faith is in God, science and devotion to duty."



22501043313

LUTON AND DUNSTABLE HOSPITAL

ANNUAL REPORT FOR THE YEAR 1945



Principal Contents:

	<i>Page</i>
Foreword	3
Board of Management ...	4
Annual Report of the Board	5
The Year's Work	7
Medical Staff, Committees and Officers	19
Statistics	22
Accounts and Balance Sheet	27
Subscriptions, Donations, etc.	31
Out - Patient Department Timetable	Cover 4





A HOSPITAL WARD IN THE NINETIES

This early photograph, taken in the 1890's, shows a ward in the old Bute Hospital. The four gentlemen, reading from left to right, are Doctors Thomson, Simons, Sworder and Pauli, and standing behind them is the Matron, Miss Babcock. Whether the three ladies represent the whole of the nursing staff is not known, but the total annual wage bill at that time was only £100! The cost of maintaining the hospital was less than £700 per annum—a sum we now spend in a few days.

It is interesting to compare this ward, with its absence of windows and its texts, pictures, and dust traps, with the light, cheerful and aseptic wards of to-day.

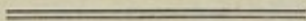
Foreword

THIS is the first Annual Report of the Luton and Dunstable Hospital to be published in times of peace ; we can be thankful that the hospital escaped damage from enemy action, and take pride in the service we were able to render to the sick and injured of Luton, Dunstable and district, to many evacuees, and to thousands of members of the Armed Forces during six years of unrelenting war.

We survived those difficult times with our voluntary principles and traditions unimpaired, with our hospital more deeply rooted in the affections of the people and with a high reputation extending far beyond the confines of South Bedfordshire.

In the heat and burden of the day we were sustained and fortified by the magnificent help received from all sections of the community and the selfless devotion to duty of all sections of the hospital staff.

Now we turn to the problems of the future ; at the moment we see through a glass, darkly, but although the shape of things to come is not clear to us and the voluntary hospital movement appears to be in jeopardy, all will hope that the traditions of service which for centuries have inspired our hospitals and been the guiding light of the medical and nursing professions, will not be allowed to fall by the way.



BOARD OF MANAGEMENT AND OFFICERS FOR 1945

President :
DR. J. W. BONE

Vice-President :
LADY KEENS, J.P.

Honorary Treasurer :
A. C. Fellingham

Board of Management :
(Figures in brackets indicate year of retirement)

Chairman : A. T. Worboys, J.P.

Ex-Officio Members :

The President, Vice-President, Honorary Treasurer, Honorary Solicitor, the Mayor of Luton and the Mayor of Dunstable.

Elected Members :

H. A. Blundell (1947)	H. I. Godfrey (1946)
G. V. S. Cotton (1946)	W. H. Lee (1946)
The Rev. Canon Wm. Davison, M.A., R.D. (1948)	Col. A. J. Mander, O.B.E., D.L., J.P. (1948)
Mrs. Durler, O.B.E., J.P. (1948)	A. Richardson (1947)
W. G. Durrant (1947)	A. E. Sharman (1948)
W. J. Edwards (1948)	H. Woods (1946)
A. F. England (1946)	A. T. Worboys, J.P. (1947)
John Gibbs (1947)	

Representative Members :

G. Brightman, J.P., C.C.	} Representing Bedfordshire County Council
W. B. Tydeman, C.C.	
Councillor J. Couldwell	} Representing Luton Town Council
Councillor G. Seaward	
Councillor R. E. Gibbins	} Representing Dunstable Town Council
Councillor B. J. Scott	
A. Chapman	Representing Registered Friendly Societies of Luton
A. Cook	Representing Registered Friendly Societies of Dunstable
E. A. Smith	} Representing Bedfordshire Hospital Service Association
W. G. Cole	
R. R. Hunter, M.C., J.P.	Representing Industrial Safety Association
A. Pickles	Representing Dunstable Hospital Fund
K. L. Jones	Representing United Service Men

Medical Members :

Dr. N. M. Munro	Dr. E. J. Crarer
Dr. H. D. Clarke	Dr. R. A. Sykes
Mr. L. W. Plewes, F.R.C.S. (Ed.)	

Honorary Solicitor :
W. Birch Carnley

Auditors :
Godfrey Laws & Co.

Matron :
Miss M. E. Redman

Medical Registrar :
S. D. Purcell, M.B., B.S.,
M.R.C.S., L.R.C.P.

Secretary :
R. E. Lingard, F.H.A.

(A full list of the Committees, Medical Staff and Officers will be found on pp. 19, 20)

Annual Report

THE Board of Management have pleasure in presenting their Annual Report to the Governors, the seventy-fourth since the establishment of the original Cottage Hospital in 1872.

In the following pages we have given a broad outline of the year's work, told something of our achievements and something of our difficulties, and recorded, albeit inadequately, our appreciation of all the loyal service which rendered it possible. Since the year saw the end of the war both in Europe and the Far East, we have described briefly the work of the hospital during the war years.

As this Report goes to press consideration is being given to the recently published National Health Service Bill. Whilst there is much to commend in the structure proposed for the organisation of hospital and specialist services, most of those to whom this Report comes will regret that the Bill provides for the taking over of voluntary hospital buildings and endowments and the elimination of their voluntary status. Many will feel that without endangering the efficiency of the regional administration, and without prejudice to the principle of public responsibility, it would have been possible to retain the voluntary hospitals as part of the new service—voluntary effort working side by side with State enterprise. This hospital is an example of what can be done by such co-operation; for some years financial support has been forthcoming from the Bedfordshire County Council; the Council have representatives on the Board of Management, and an agreement provides for close co-operation on matters of progress and development. The support of the County Council has helped the hospital to reach its present high standard; its relations with the Council and its officers have always been harmonious, and there has been no lessening of the voluntary support given to the Hospital—on the contrary, year by year there have been substantial increases.

At a special meeting of the Board of Management held on 25th March, 1946, to consider the Bill, the following resolution was passed:—

“That the Board disapproves of the appropriation of the voluntary hospitals' buildings and endowment funds; that the retention of voluntary hospitals, with necessary modifications, would be possible within the framework of the Regional structure, and that in the interests of the service and the patients they should be retained.”

We still hope that means may be found for the continuance of the great movement which has for so long been an integral part of our community life; for the moment at least we continue as a voluntary hospital, taking pride in our past achievements, needing still the interest and support of the community, and expressing once more our profound appreciation of all that was done to make possible another year's successful endeavour.

On behalf of the Board of Management,

A. T. WORBOYS, *Chairman.*
R. E. LINGARD, *Secretary.*



BUFFET

In the Out-Patient Hall is a buffet where patients and their friends can enjoy a cup of tea and light refreshments. From the buffet a trolley is taken round the wards every morning, and patients can buy cigarettes, stationery and various sundry items they need ; at the same time the morning post is distributed, so the buffet attendant's visit is doubly welcome.

The Year's Work

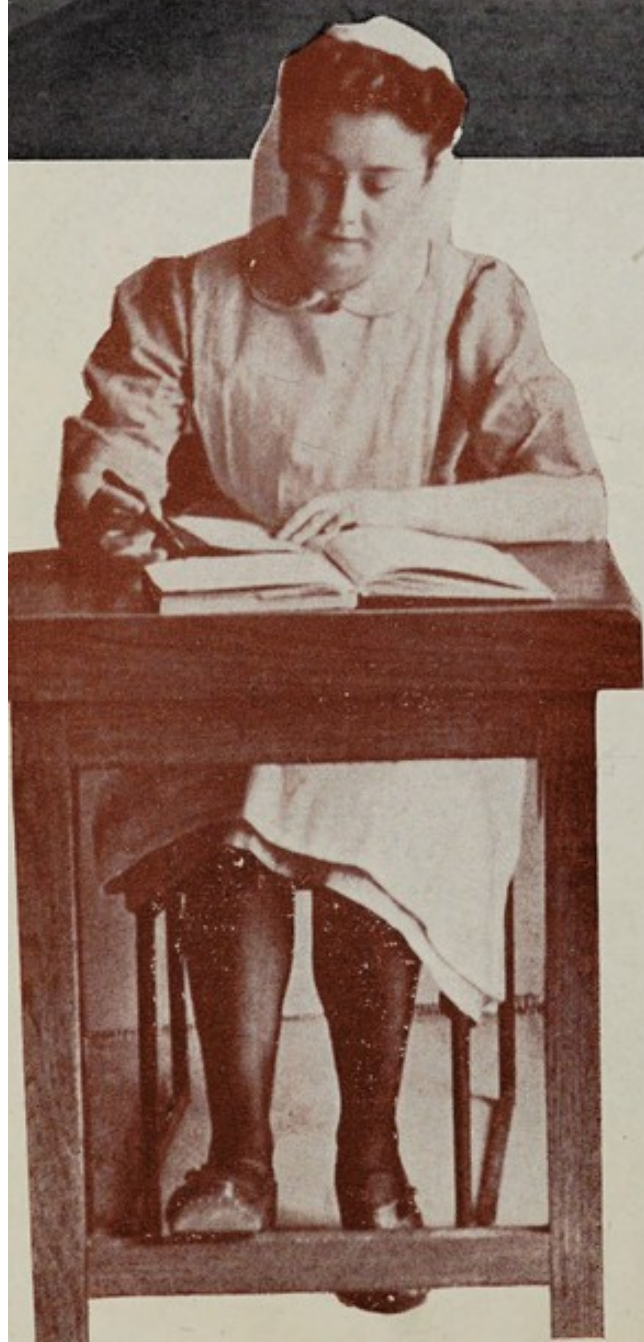
THE WAR.—A review of the year's work would not be complete without reference to the tasks the Hospital faced during six years of war. Barely six months elapsed between the opening of the new Hospital and the beginning of the war in Europe, and the clutch of circumstance accelerated the development of the Hospital's services, started when Her Majesty Queen Mary opened the new buildings on February 14th, 1939. An additional forty-four beds were crowded into our wards, and under the Sector arrangement of the Emergency Hospital Service, commenced an association with St. Bartholomew's Hospital, London, which has proved to be of great value. With the development of the war the demands on the Hospital gradually increased, not only in terms of numbers, but in the nature of the work undertaken. Enormous increases in numbers there were, but additional clinics, new departments, new techniques and methods of treatment all added their quota to the growing importance of the Hospital.

During the war years the Hospital admitted 23,659 in-patients and dealt with 134,896 new out-patients, a total of 352,701 out-patient attendances. The number of cases coming within the Emergency Medical Service were 6,692 in-patients and 11,218 out-patients. Sick and wounded from the Armed Forces treated in the wards amounted to 4,754, comprising British, American, French, Polish, and, indeed, patients of nearly all the United Nations. From them were received innumerable expressions of gratitude and appreciation of the skill and kindness they received, and the name of the Hospital will be remembered in many parts of the world for many years to come.

It would be impossible to enumerate all those who gave voluntary service to the Hospital during the war years: from all sections of the community, from many organisations and authorities, ready and generous help was forthcoming whenever it was required, and warm tribute must also be paid to the Hospital staff for their loyal and unstinted labour; they had many difficulties to face and always the problem of insufficient staff, inadequate accommodation and the innumerable complications arising from war-time conditions.

PATIENTS.—The work of the Hospital continued to increase during 1945 in spite of all the difficulties created by an acute shortage of staff. Admissions to the Wards amounted to 4,700, actually 22 more than 1944; the average number of patients resident daily being 157.32, compared with 152.67 in 1944. The average length of stay was 12.17 days, a slight increase over the previous year.

Although the wards were working to the limit of their capacity it has not been possible to keep pace with the demands. Unfortunately, the waiting list is constantly growing—starting the year at 390 it ended with a total of 674. During the past few years a large number of our waiting list patients have been transferred to Sector Hospitals, mainly the Ashridge Emergency Hospital; this hospital closed for general cases in the autumn of 1945, with dire effect on our waiting list position. Fortunately, arrange-



DEMONSTRATION ROOM

Our picture shows the Demonstration Room which adjoins the Lecture Room, its equipment including a full size model patient. The Training School for Nurses continues to be most successful and during 1945 fifteen of our nurses passed the Final State Examination. In the near future a Preliminary Training School will be established; plans have been prepared, licences received, and an early start will be made on the building and alterations required.

ments have since been made for a number of cases to be referred to the Royal Free Hospital at Arlesey; this offers temporary relief, but the final solution must be the provision of additional beds at the Luton and Dunstable Hospital. The urgency of the need has been brought to the notice of the Ministry of Health, and the Board will continue to do all that lies in their power to hasten the building of further wards.

More out-patients have been treated than ever before. New patients totalled 30,217, and attendances 84,989, compared with 29,779 and 79,938 respectively in 1944. All the clinics and special departments are extremely busy and work under some difficulty owing to inadequate accommodation. A Speech Therapy Clinic commenced in April, 1945, and proved a most valuable ancillary service, particularly to the Ear, Nose and Throat Department.

In the Casualty Department special attention has been given to the treatment of infected wounds of hands. The use of Penicillin and the sulphonamides and a highly developed technique applied through a specially organised clinic have greatly reduced the period of disability from such infections. Publication in Medical Journals of the results obtained aroused considerable interest.

FINANCE.—The ordinary income for the year amounted to £64,422, being £3,141 over 1944. Voluntary gifts reached a record figure of £10,872, almost £1,000 over the previous year. Annual subscriptions reached the record total of £3,997, and donations, special efforts and entertainments all showed substantial increases; grateful thanks are due to those who assisted the Hospital under these headings, and to the Appeals Committee and the Borough of Dunstable Hospital Organisation, whose splendid work has resulted in ever-increasing support of the Hospital.

In receipts on account of services rendered, the most notable increase was again in contributory scheme income, which amounted to £20,170, being £3,779 more than in 1944. This munificent support reflects the growing success of the Bedfordshire Hospital Service Association.

The total ordinary income amounted to £64,222, compared with £61,281 during 1944. Ordinary expenditure amounted to £68,162, an increase of £1,316, a satisfactory figure in view of increasing work and increasing costs. Extraordinary expenditure totalled £1,717, this figure including an expenditure of £884 on the removal of black-out and structural precautions.

The excess of total expenditure over total income for the year amounted to £5,457, being £2,492 less than in 1944, and the smallest deficit shown during the past five years. In accordance with our agreement the deficit will be met by the Bedfordshire County Council.

HOSPITAL SURVEY.—The Report of the Survey of Hospital Services in London and the surrounding area was published during the year by the Ministry of Health. It is gratifying to record that out of more than 500 hospitals dealt with in the Survey, the Luton and Dunstable Hospital was the only one described as "excellent," and this Hospital is one of the twenty-one for which priority of development was suggested. The recommendations of the Surveyors were carefully considered by the Board of Management and a comprehensive plan for the extension of the

Hospital has been prepared by the Architect in conjunction with the Development Committee. On the present site, and with further land adjoining which the Board have acquired, provision could be made for a Hospital of up to 1,000 beds, together with the necessary ancillary services.

When the first permanent extension can take place depends on factors outside the control of the Board of Management, and much will depend on the nature of the hospital organisation under the forthcoming National Health Service.

BOARD OF MANAGEMENT.—Mr. H. Richardson and Mr. H. G. Shoolbred retired from the Board in April, 1945. Both these gentlemen had long been associated with the management of the Hospital—Mr. Richardson joined the Board in 1929, and Mr. Shoolbred in 1919. They had rendered outstanding service, in recognition of which the Board will recommend to the Governors that they be appointed Honorary Life Governors of the Hospital. There were changes in the representation of the local authorities, and the Board were glad to welcome as new members Councillor J. Couldwell, of Luton, and Councillor B. J. Scott, of Dunstable. Other new members welcomed during the year were Mr. K. L. Jones, representative of United Service Men's Fund, and Mr. W. G. Durrant, a Governor.

After five years in office, Canon Davison relinquished the chairmanship of the Board in April, 1945. Canon Davison filled this office with distinction and competence, and the great regard in which he was held by the Board and the Hospital Staff, and the splendid progress made during the past five years can be regarded as a measure of his success. He was succeeded in the chair by Mr. A. T. Worboys.



RELAXATION

THE LATE LADY LUDLOW.—The Hospital suffered a sad loss by the passing of Lady Ludlow in December. Lady Ludlow was a Governor of the Hospital for 27 years ; she was a generous subscriber, and the munificent support she gave to the establishment of the new Hospital will always be remembered. The Hospital owed much to her influence, and it is a matter of satisfaction to the Board that one of the wards is, and will in perpetuity, be named *The Lady Ludlow Ward*.

PROGRESS.—The installation of the new X-Ray equipment was completed during the year, adding to the efficiency of this important department. The Ministry of Health have now approved the establishment of a Rehabilitation Department ; a building licence has been received and a start has now been made on the erection of the buildings. The Pathological Department continued to make progress. The manufacture of Penicillin ceased when Government supplies became freely available, this Hospital being appointed the distributing centre for the district. Research has continued, however, into methods of treatment, and a special base for Penicillin cream developed in the laboratory is now in general use. Publication has also been given in a scientific journal to a rapid diagnostic test for venereal disease which was developed in our laboratory. During the year, with the approval of the Board, a dietary expert from the Ministry of Health visited the Hospital to review the catering arrangements, on which a favourable report was subsequently received. To quote from the Ministry's letter " the catering arrangements generally are highly satisfactory, the menus are very good,



DUTY



RECORDS

In the Records Office are filed the clinical notes of 39,000 patients who have attended the hospital during the past four years. Each patient has an envelope in which are kept all his case papers, reports and copies of letters sent to his own Medical Practitioner after consultation or treatment in the hospital.



varied and well balanced, and all the patients and members of the staff who were spoken to expressed their appreciation of the food." After considering recommendations made by the Ministry of Health to all hospitals, and publications of the King Edward's Hospital Fund for London in connection with catering arrangements, the Board decided to appoint a qualified dietician as Food Supervisor, and this appointment was made in November, 1945.

MEDICAL STAFF.—Dr. Geoffrey Bourne unfortunately found it necessary to resign his appointment of Visiting Physician in November, and Dr. E. R. Cullinan, also of St. Bartholomew's Hospital, was appointed to succeed him. Dr. Terence East, who had been Consulting Physician to the Hospital for over seven years, resigned later in the year. Mr. Lopez Garcia, who was Assistant Fracture and Orthopaedic Surgeon for nearly four years, left to take up an appointment in Panama in December, and was succeeded by Miss S. D. Gadsden.

The Board desire to record once more their appreciation of the services of the Visiting Medical Staff and of the Medical Registrar and the Resident Medical Staff. The reputation of a hospital, and the standard of its work, depend to a great extent on the quality of its Medical Staff, and in this the Hospital is most fortunate.

NURSING STAFF.—The Hospital owes much to the high standard of the Nursing Staff, and the Board extend their thanks to Matron and her Staff for their loyal and efficient services. They carry a heavy burden, but there is much satisfaction in their calling, and the heartfelt appreciation of their patients so frequently expressed must be a great encouragement. Of the year's work the Matron, Miss M. E. Redman, writes as follows :—

Looking back over the Hospital activities of the past year, from the point of view of the Nursing Staff, is like looking at a film, the pictures of which are being thrown on the screen at an ever-increasing pace—so immensely busy have we been in the Wards and all the various Departments where our patients are treated. In spite of this acceleration, which is now becoming somewhat alarming, the year has been full of first-class work and our patients of absorbing interest to us all.

The change from war to peace has not relieved us much, if at all, in most respects, but the joy of working without blast-walls and free from black-out restrictions is undescrivable. We do appreciate this good luck, both for the patients and the staff, and are grateful to the House Committee for expediting the change—it was really quite pathetic to see the nurses' amazed and delighted faces when they looked for the first time through their Common Room windows !

Modern medical and surgical treatments, with their ever-changing elaborations and intricacies, demand much knowledge and skill on the part of the Nursing Staff and also an increase in their number but, in common with practically all the hospitals of the country, the demand is greater than the supply. In our Hospital this would not be so serious a consideration if reasonable domestic help were available, and my Committee continues to do its best to enable us to get orderlies and other domestic workers to relieve the nurses of all duties other than those actually concerned with the nursing and treatment of their patients. All honour and gratitude is due to the

Sisters and the Nurses who do their work under such pressure and in such difficult circumstances.

The Training School continues to flourish under our much-appreciated Sister Tutor, Miss F. Fletcher, and our Examination results have been excellent in spite of the students being unable to have as much free time for their theoretical studies as we deem necessary. We are most grateful to the members of the Medical Staff of the Hospital who give such splendid lectures to the students, and to the Examiners, Dr. Eberlie, Dr. Blount and Miss Joyce, the Matron of the Evelina Hospital, who do so much to maintain the standard of efficiency, both theoretical and practical. We are all thrilled to know that the building of our Preliminary Training School has now been sanctioned by the Ministry of Health, and this essential part of the School (unavoidably denied us during the war) will be of inestimable benefit to our Student Nurses.

Our Prize Giving on June 12th was a very happy event and especially marked by the fact that it was the first time our President, Dr. J. W. Bone, could present Hospital Badges to those Nurses who had completed their training, and also the first time that we had a reunion of those of our past Nurses who were able to attend. We shall look forward to welcoming ever-increasing numbers of our past Staff at our Prize Giving and Reunion and rejoice to hear such excellent accounts of them after passing out of their Training School. My Committee is just as anxious as I am to make the Training School still more efficient by bringing the Preliminary Training



School into being and by reducing the hours of work of the entire Nursing Staff at the first possible moment.

Our Student Nurses' Unit is actively engaged in all kinds of educational and social pursuits. In October we had our first Speech-making Contest and were honoured by having as the judges Miss H. K. Sheldon, Alderman J. Burgoyne and Mr. H. I. Godfrey, who showed great interest in the contest and were most encouraging in their comments. Miss Margaret Cobane (second year Student Nurse) gained the First Prize with what the judges termed "an outstandingly good speech."

Another honour came to the Unit when Miss Winifred E. Byers-Jones (third year Student Nurse) was selected by inter-hospital ballot to become the Eastern Area Representative of the voluntary hospitals on the Student Nurses' Association Central Representative Council of the Royal College of Nursing. In doing so, Miss Byers-Jones represents the students of over forty hospitals and she and other of our students have attended meetings in various parts of the country.

The Nurses' Social Club, among its other outdoor and indoor recreations, had a most successful Arts and Crafts Exhibition—the judge being Miss D. Williams, who was Honorary Secretary of the Hertfordshire Arts and Crafts Society. She was most helpful in her criticisms and the evening was much enjoyed.

I think the high-light of the year, as far as the Social Club was concerned, was the entertainment of some of the Officers and Sub-Mariners of H.M.



Submarine *Unbending*, which we had adopted after the sinking of her sister submarine *Undaunted*. Space would not allow of a full account of this memorable occasion, when we were presented with a beautiful cake basket, specially inscribed, and the replica of the "Jolly Roger Flag," which showed the wonderful successes of the child of our adoption.

Our Chapel Services continue to be well attended, and our Chaplain, the Reverend W. Francis Hicks, is always most kind and considerate in arranging services, both for us and for the patients.

This strenuous year drew to a close with very joyful Christmas festivities for the patients and the Staff, and with a happy anticipation of the dance promised to the Nursing Staff by Mr. A. T. Worboys, the Chairman of the Board of Management, and Mrs. Worboys.

The echoes of war still reverberate in the Hospital; in consequence, restrictions, austerities, and difficulties of a complex nature are still present, the greatest being the fear of the extinction of our voluntary traditions; but we are grateful to know that our patients are happy in our care and we are most happy to serve them.

BEDFORDSHIRE HOSPITAL SERVICE ASSOCIATION.—Reference has already been made to the magnificent support received from the Association during 1945. The success achieved has exceeded all expectations, not only financially, but from the aspect of service rendered to contributors. For all that has been done the Board extend warm thanks to the Committee and Officers of the Association, and to the Group Secretaries and Voluntary Workers. It is lamentable that after reaching such high standards of service the Association should find itself working under great difficulty due to doubts as to its future in the light of recent legislation regarding National Insurance and National Health Service. Whether or not there is to be a place for this and similar organisations which have made such a valuable contribution to the social welfare, is not yet clear, but for the moment the work must continue and the Association still needs the support and co-operation of all concerned.

ALMONER'S DEPARTMENT.—The importance of the Almoner's Department in a hospital is now widely recognised, and the Board are proud of the way this Hospital's department has developed. The thanks of the Board are due to the Almoner, Miss Bowman, and her Assistants, Mrs. Evans and Miss Garrett, for the valuable contribution they make to the welfare and progress of the patients.

Of the work of the department during the past year Miss Bowman writes as follows :—

I am very glad to be able to report that statistics of the work of the Almoner's Department during the year 1945 show, besides a great increase in the amount of work, a greatly extended field of usefulness. Modern medical science refuses more and more to accept the limitations of the patient's social background and personal difficulties as a bar to progress and recovery, and the fact that 1,728 patients were referred to the Department during the year for help in carrying out medical recommendations, proves that there is no lack of recognition of the importance of this aspect of medicine within our own Hospital.

Sometimes, the problem referred is connected with financial difficulty, but more often it is not. Problems are as varied as human beings themselves, but whatever the difficulty and whatever the means of dealing with it, the success of an Almoner's work is very largely dependent on outside agencies both statutory and voluntary, and we owe a very great debt of gratitude to them.

We very much appreciate the helpful understanding of the County and Borough Authorities particularly with regard to the tubercular patient and the school child, and much useful work has been done in co-operation with the Ministry of Labour, whose District Rehabilitation Officers make great efforts to find just the right kind of employment for our patients. With their help much has been done to re-settle the injured patient, and in many cases where a complete change of work was required, specialised training has been arranged and a number of our young patients with a serious handicap have been able to start their working lives equipped with a skilled trade.

We have continued to use the Ministry of Labour Residential Rehabilitation Centre at Egham with much success, and also Dr. Ling's Centre at Roffey Park.

We have used over thirty different Convalescent Homes in various parts of the country besides the Thomas Lye Home at Brighton, and we owe much to our own Matron at Brighton and the Matrons of other Homes for their close co-operation; again and again they have gone to great trouble to meet the needs of a particular patient.

We are also very grateful to the W.V.S. Car Service, and since July, when this ceased to function, to the Hospital Car Service arranged by St. John Ambulance Brigade, the B.R.C.S. and the W.V.S., and we are especially grateful to the volunteer drivers who give up so much of their time to help our patients. Both Luton and Dunstable branches of the British Legion have continued their very valuable help, and this report would not be complete without a special word of thanks to them, the B.R.C.S., the W.V.S., the S.S. & A.F.A. and the Welfare Departments of local firms.

Our own Samaritan Fund has continued to be of the greatest help. It has enabled us to do some of our most constructive work, and to the subscribers of this Fund I wish to express particularly grateful thanks. A sum of £371 4s. 4d. has been subscribed, and at the end of the year the Fund stood at £987 14s. 0d. Expenditure during the year amounted to £260 0s. 0d.—of this, however, £156 0s. 0d. has been refunded chiefly by various Societies that we have been able to interest in our patients. But we are still spending capital, and donations to the Samaritan Fund are very earnestly desired and will be very gratefully received.

ADMINISTRATIVE AND CLERICAL STAFF.—No hospital could function smoothly and efficiently without a well-organised administration. The Board and their Committees are well served by the secretarial and administrative staff and the clerical work in all departments is on a high level. The happy spirit of co-operation between Medical, Nursing and Lay Staffs brings harmony to the work of the Hospital, without which efficiency would be endangered.

CONVALESCENT HOME.—131 patients were admitted to the Thomas Lye Convalescent Home, Brighton, during the year, an increase of 36 over 1944, the average resident daily being 6.76, compared with 4.61. Income for 1945 amounted to £1,497, an increase of £332, and expenditure £1,294, an increase of £144. The income and expenditure account showed a credit balance of £203, compared with £15 the previous year, so that the financial position can be regarded as satisfactory. To the Matron, Miss Masterton, and her staff the Board extend their appreciation of the manner in which the Home is maintained. The patients derive great benefit from their stay at the Home and without exception speak most highly of their treatment.

LINEN LEAGUE.—The Linen League had a record year, the income amounting to £418 15s. 4d., a splendid increase of £128. After meeting small incidental expenses, the League was able to set aside £400 for the purchase of hospital linen, a most valuable contribution, for which the Board extend their thanks to the Chairman, Miss Redman; the Honorary Treasurer, Mrs. Mackenzie; the indefatigable Honorary Secretary, Mrs. Seaward; and to the Committee and growing list of Members. The increasing support received from the League reflects credit on the Officers and Committee, and is sincerely appreciated by the Board of Management.

APPEALS COMMITTEE.—Under the Chairmanship of Mr. G.

Seaward the Appeals Committee continued their activities throughout the year, all the usual annual efforts being highly successful. In addition, the Committee organised a Bazaar for the Building Fund in December and raised the sum of £725. The Committee are greatly helped by their friends in Dunstable and in the villages served by the Hospital, and the Board acknowledge with cordial thanks all the hard work put in by the Committee and their supporters during 1945. The success attending their efforts is illustrated by the great increase there has been in voluntary gifts during recent years.



"I thought this was supposed to be a VOLUNTARY hospital!"

(Reproduced by kind permission of the proprietors of *Punch*)

OFFICERS AND COMMITTEE FOR 1945

Executive Committee :

Chairman : Chairman of the Board
The President, Vice-President and Chairman of the following Committees :
House ; Finance ; Almoners ; Medical Advisory

House Committee :

Chairman : H. I. Godfrey
The President, Vice-President and Chairman of the Board
Mrs. Durler, O.B.E., J.P. R. R. Hunter, M.C., J.P.
W. J. Edwards Col. A. J. Mander, O.B.E., D.L., J.P.
A. F. England A. Richardson
Hugh Woods

Finance Committee :

Chairman : A. T. Worboys, J.P.
The President, Vice-President and Chairman of the Board
A. C. Fellingham H. I. Godfrey
J. Gibbs G. Seaward
R. E. Gibbins A. E. Sharman

Almoner's Committee :

Chairman : Hugh Woods
The President, Vice-President and Chairman of the Board
G. Brightman, J.P., C.C. K. L. Jones
Mrs. Durler, O.B.E., J.P. W. H. Lee
A. E. Sharman

Development Committee :

Chairman : Hugh Woods
The President, Vice-President and Chairman of the Board
G. V. S. Cotton Col. A. J. Mander, O.B.E., D.L., J.P.
H. I. Godfrey G. Seaward

MEDICAL STAFF :

Honorary Consulting Physicians :

F. S. Lloyd, O.B.E., M.D., M.R.C.S., L.R.C.P.
J. Robertson, M.B., Ch.B.

Honorary Consulting Surgeons :

J. W. Bone, M.B., C.M., B.Sc.
W. F. Eberlie, B.A., M.B., B.Ch., M.R.C.S., L.R.C.P.
E. K. Martin, M.B., M.S., F.R.C.S.

Consulting Physician in Psychological Medicine :

Neil McDiarmid, M.B., Ch.B.

Consulting Dermatologist :

Robert Klaber, M.D., F.R.C.P.

Consulting Ophthalmic Surgeon :

J. G. Freeman Heal, M.D., C.M., D.O.M.S.

Consulting Plastic Surgeon :

J. N. Barron, M.B., Ch.B., F.R.C.S.

Physician :

E. R. Cullinan, M.D., F.R.C.P. (Hon. Colonel)

Assistant Physicians :

H. D. Clarke, M.D., B.Ch., B.A.O.
D. A. Blount, M.D., B.S., M.R.C.S., L.R.C.P.
N. M. Munro, M.D.

Donald Barlow, M.B., M.S., F.R.C.S. L. R. Broster, O.B.E., D.M., M.Ch.,
F.R.C.S., F.A.S.A. (Hon.)

E. A. Butterworth, M.B., B.S., F.R.C.S.,
D.O.M.S., of the Middle Temple,
Barrister-at-Law
E. J. Crarer, M.B., Ch.B.
B. R. Vickers, M.B., B.S.
H. R. Melville, M.B., Ch.B.
R. A. Sykes, M.A., M.B., B.Chir.,
M.R.C.S., L.R.C.P.

John Beattie, M.A., M.D., F.R.C.S., F.W.C. Capps, F.R.C.S., L.R.C.P.
F.R.C.O.G.

<i>Fracture and Orthopaedic Surgeon :</i>	<i>Assistant Fracture and Orthopaedic</i>
L. W. Plewes, M.A., M.D. (Toronto),	<i>Surgeon :</i>
F.R.C.S. (Ed.)	Miss S. B. Gadsden, M.R.C.S., L.R.C.P.

E. E. Holdsworth, M.B., Ch.B., D.M.R.E. M. Seiler, M.D. (Lwow)

H. O'Meara, M.B., B.S. Douglas Wilson, M.B., Ch.B., D.A.
D. Blount, M.D., B.S., M.R.C.S., D. A. Clark, B.S., D.A.
L.R.C.P.

H. W. Graves-Morris, L.D.S.

Medical Officer in Charge, Emergency Medical Service, appointed by Ministry of Health :
L. W. Plewes, M.A., M.D. (Toronto), F.R.C.S. (Ed.)

Resident Medical Registrar and Deputy Medical Officer, E.M.S. :

January 1st to December 31st ... S. D. Purcell, M.B., B.S., M.R.C.S., L.R.C.P.

January 1st to December 31st ... W. G. Thomson, M.R.C.S., L.R.C.P.

January 1st to March 31st	J. Bullough, M.R.C.S., L.R.C.P.
January 1st to January 31st	M. S. Hughes, M.R.C.S., L.R.C.P.
January 1st to October 31st	G. Grossmark, M.R.C.S., L.R.C.P.
January 1st to March 31st	A. B. Wood, M.R.C.S., L.R.C.P.
March 19th to December 31st	N. J. Shah, M.B., B.S. (London)
May 1st to October 31st	O. D. Cuthbert, M.R.C.S., L.R.C.P.
November 3rd to December 31st	S. Seed, B.A., M.R.C.S., L.R.C.P.
November 7th to December 31st	R. A. Shaddick, M.R.C.S., L.R.C.P.

Miss P. L. Wheeler, M.I.S.Ch.

<i>Church of England :</i> The Rev. W. Francis Hicks	<i>Nonconformist :</i> The Rev. A. H. Gammage
<i>Assistant Matron :</i> Miss M. M. Hopkins	<i>Assistant Secretary :</i> Barnard A. Callam
<i>Almoner :</i> Miss B. Bowman, A.I.H.A.	<i>Pharmacist :</i> J. Conroy, M.P.S.

<i>Matron :</i>	<i>Honorary Medical Officer :</i>
Miss I. Masterton	Vacant

THE APPEALS COMMITTEE

Chairman : Councillor G. Seaward

Hon. Treasurer : Mrs. H. Woods

Hon. Secretary : Mrs. C. G. Squires

Mrs. Allen
Mrs. Archer
Mrs. Cross
Miss Currie
Mrs. Darnley
Mrs. Fletcher
Mrs. Gieves
Madame Groombridge

Miss Hopkins
Mrs. Horton
Mrs. King
Mrs. Limon
Mrs. Phillips
Miss M. E. Redman
Mrs. Rolfe
Mrs. Russell
Mrs. Saunders

Mrs. Seaward
Mrs. Sharman
Mrs. Shewring
Mrs. Simmons
Mrs. Slough
Mrs. Kelsall Thomas
Mrs. Warren
Mrs. Warwick
Mrs. West

VILLAGE ORGANISERS :

Barton	Miss Currie	Luton Hoo and East Hyde	Miss Tompson
Caddington	Mrs. Wellicombe	Markyate	Mrs. King
	Mrs. Etches	Slip End	Mrs. Harling and
Eaton Bray	Mrs. Oates		Mrs. Edwards
Edlesborough	Mrs. Gurney	Streatley	Mrs. Dunham
Harlington	Rev. Crowther-Green	Studham	Mrs. Dawson
	Mr. E. W. Huckle	Sundon	Mrs. Cornwall
Hockliffe	Mrs. Bunker	Tilsworth	Miss Price
Houghton Regis	Mrs. Fletcher	Toddington	Mrs. Hillyard
Icknield	Mrs. Cross	Totternhoe	Mrs. Waters
Kensworth	Mrs. Webdale	Whipsnade	Mrs. Beal

THE BEDFORDSHIRE HOSPITAL SERVICE ASSOCIATION

THE GENERAL CONTRIBUTORY SCHEME :

Enables Manual Workers and others of limited means to obtain free general hospital treatment, convalescent home treatment and many extra benefits for a weekly contribution of 4d., inclusive of dependants.

THE PROVIDENT FUND :

Enables any person, irrespective of income, to obtain cash grants towards the cost of treatment in paying wards and nursing homes ; contribution 1/- weekly, inclusive of dependants.

Executive Offices :

32a High Street, Bedford. Telephone 3189 and 4594 (to which all communications should be addressed).

District Office : Bute House, 18 Bute Street, Luton

STATISTICAL TABLES

STATISTICS FOR THE YEAR TO 31ST DECEMBER, 1945

I.—IN-PATIENTS

(a) NUMBER OF BEDS AND PATIENTS

	Number in 1945	Number in 1944
1. Beds :		
(a) Complement	214	214
(b) Average number occupied daily	157.32	153.67
2. Number of Patients in Hospital at beginning of year	155	157
3. Number of Patients admitted during the year	4,700	4,678
4. Number of Patients in Hospital at end of the year	137	155
5. Average number of days each Patient was resident	12.17	12.01

NOTE.—The above figures include the Private Wards, the numbers being as follows :

	1945	1944
Number of Beds	24	24
Number of Patients admitted	497	505
Average number resident daily	17.27	18.83
Average number of days each Patient was resident	12.74	13.59

(b) AVERAGE COST OF EACH IN-PATIENT PER WEEK : AVERAGE COST OF EACH IN-PATIENT

	1945			1944		
	Expendi- ture	Average Cost of each In-Patient per Week	Average Cost of each In-Patient	Average Cost of each In-Patient per Week	Average Cost of each In-Patient	
	£	£ s. d.	£ s. d.	£ s. d.	£ s. d.	
1. Provisions	7,510	18 3	1 11 10	18 6	1 11 9	
2. Surgery and Dispensary	5,571	13 7	1 3 7	15 1	1 5 11	
3. Domestic	9,251	1 2 9	1 19 2	1 0 7	1 15 0	
4. Salaries and Wages	23,559	2 17 5	4 19 10	2 15 9	4 15 7	
5. Miscellaneous	2,413	5 11	10 3	5 5	9 4	
6. Administration	1,858	4 7	7 11	4 0	6 11	
Statistical Cost	50,162	6 2 4	10 12 7	5 19 4	10 4 6	
7. Establishment	818	2 0	3 6	4 7	7 10	
8. Finance	1,371	3 4	5 10	3 4	5 11	
Total Cost	52,351	6 7 8	11 1 11	6 7 3	10 18 3	

II.—OUT-PATIENTS

(a) NUMBER OF PATIENTS AND ATTENDANCES

	Number in 1945	Number in 1944
1. Total number of new Out-patients	30,217	29,773
2. Total number of Out-patient attendances	84,989	78,938

STATISTICAL TABLES—continued.

(b) EXPENDITURE ON OUT-PATIENTS AND AVERAGE COST OF EACH OUT-PATIENT

	1945				1944				
	Expendi- ture	Average Cost of each Out-Patient		Average Cost of each Attendance		Average Cost of each Out-Patient		Average Cost of each Attendance	
	£	s.	d.	s.	d.	s.	d.	s.	d.
1. Provisions	730		5.80		2.06		5.77		2.17
2. Surgery and Dispensary	2,822	1	10.41		7.97	2	1.10		9.53
3. Domestic	1,083		8.60		3.06		8.57		3.23
4. Salaries and Wages	10,090	6	8.14	2	4.49	6	6.09	2	5.45
5. Miscellaneous	665		5.28		1.88		4.85		1.83
6. Administration	205		1.63		.58		1.43		.54
Statistical Cost	15,595	10	3.86	3	8.04	10	3.81	3	10.75
7. Establishment	90		0.71		0.25		2.02		.76
8. Finance	126		1.00		0.35		.96		.36
Total Cost	15,811	10	5.57	3	8.64	10	6.79	3	11.87

(c) ANALYSIS OF OUT-PATIENT FIGURES

	1945		1944	
	Total number of new Out-Patients	Total Attendances	Total number of new Out-Patients	Total Attendances
Medical Clinic	513	608	570	713
Surgical Clinics	1,665	3,281	1,514	2,996
Ear, Nose and Throat Clinic	738	1,410	681	997
Gynaecological Clinic	604	962	843	1,379
Psychological Medicine Clinic	266	442	308	496
Dermatological Clinic	554	806	501	692
Fracture and Orthopaedic Clinic	4,450	26,317	4,428	25,151
Physio-therapy Department	1,345	28,135	1,189	24,383
X-Ray Department	13,657	13,657	13,487	13,487
Casualty Department	6,409	9,213	6,252	8,644
Speech Therapy Clinic	16	158	—	—
TOTALS	30,217	84,989	29,773	78,938

III.—THE THOMAS LYE CONVALESCENT HOME

(a) NUMBER OF BEDS AND PATIENTS

	Number in 1945	Number in 1944
1. Number of Beds	10	10
2. Number of Patients admitted	131	95
3. Average number resident daily	6.48	4.61
4. Average number of days each patient was resident	18.63	17.95

(b) AVERAGE COST OF EACH PATIENT PER WEEK : AVERAGE COST OF EACH PATIENT

	1945			1944		
	£	s.	d.	£	s.	d.
1. Average Cost of each Patient per week	3	16	6	4	16	4
2. Average Cost of each Patient	10	3	8	12	4	6

THE LUTON AND

General Hospital Income and Expenditure

1944	EXPENDITURE	1945
£8,169	PROVISIONS	£ 8,240
	SURGERY AND DISPENSARY :—	
2,595	Drugs, Chemicals, etc.	2,800
2,937	Dressings, Bandages, etc.	1,439
3,209	Instruments and Appliances	3,441
296	Dispenser's Salary	342
4	Wines and Spirits	9
143	Sundries	362
9,184		8,393
	DOMESTIC :—	
905	Renewals and Repairs of Furniture, Bedding, etc. ...	1,308
1,877	Laundry	2,171
310	Cleaning and Chandlery	345
124	Water	164
5,348	Fuel, Lighting, Heat and Power	5,876
577	Uniforms	360
131	Sundries	110
9,272		10,334
	SALARIES AND WAGES :—	
7,817	Medical	8,426
10,033	Nursing (<i>Less</i> State Grant)	10,217
14,230	Other Officers and Employees	15,006
32,080		33,649
	MISCELLANEOUS :—	
1,669	Printing, Stationery, Postages, Telephone	1,831
136	Advertisements	374
235	Insurance	314
411	Garden	309
339	Sundries	250
2,790		3,078
	ADMINISTRATION :—	
1,397	Salaries	1,587
209	Printing, Stationery, Postages	253
81	Auditor's Fees	99
109	Sundries	124
1,796		2,063
	ESTABLISHMENT :—	
1,988	Renewals and Repairs to Buildings, etc.	803
105	Depreciation on Boiler	105
2,093		908
	FINANCE :—	
1,135	Interest	1,073
122	Appeals	191
205	Rates	233
1,462		1,497
66,846		68,162
5,565	BALANCE brought down	3,740
	EXTRAORDINARY EXPENDITURE :—	
223	A.R.P., including removal of blast walls, etc. ...	884
1,600	Reserve for Deferred Expenditure	—
561	Equipment for Pathological Dept., etc.	333
—	Architect's Fees on account of Development Schemes ...	500
£7,949		£5,457

DUNSTABLE HOSPITAL

Account for the year ended 31st December, 1945

(Figures adjusted to nearest £1)

1944 £	INCOME					1945 £	1945 £
	VOLUNTARY GIFTS :—						
3,861	Annual Subscriptions (page 31)	3,997		
5,186	Donations and Special Efforts (page 34)	5,586		
420	Box Collections (page 37)	404		
170	Entertainments (page 38)	654		
						10,641	
	CENTRAL FUNDS :—						
20	League of Mercy	20		
230	Hospital Sunday Fund (page 39)	210		
						230	
<u>9,887</u>							10,871
	RECEIPTS ON ACCOUNT OF SERVICES RENDERED :—						
	<i>Contributions on account of Services to Patients :—</i>						
1,991	In-Patients	2,232		
1,150	Out-Patients	1,197		
2,349	X-Ray Fees	2,211		
5,843	Private Ward Fees	5,692		
420	Pathological Fees	956		
530	Other Sources	211		
						12,499	
	<i>Contributory Schemes :—</i>						
16,391	B.H.S.A. and others		20,170	
	<i>Public Authorities :—</i>						
760	Beds. C.C. V.D. Grant	767		
1,714	X-Ray and other Fees	1,936		
						2,703	
	<i>Ministry of Health :—</i>						
19,425	Contributions towards Cost of Emergency Medical Service for Year—Estimate based on Ministry's Formula	17,356	
<u>50,573</u>							52,728
	INVESTED PROPERTY :—						
742	Interest and Dividends		742	
79	Rents		81	
<u>821</u>							823
5,565	BALANCE, being Excess of Ordinary Expenditure over Ordinary Income, carried down			3,740
<u>£66,846</u>							<u>£68,162</u>
	BALANCE, being Excess of Total Expenditure over Total Income, carried to Balance Sheet						
7,949							5,457
<u>£7,949</u>							<u>£5,457</u>

THE LUTON AND

BALANCE SHEET,

(Figures adjusted)

LIABILITIES.	£	£
SUNDRY CREDITORS :—		
Sundry Liabilities :—		
Hospital Maintenance Account	5,430	
Convalescent Home Account	64	
Barclays Bank, Ltd. :—		
Building Fund Overdraft	33,734	
	<hr/>	39,228
RESERVE for Deferred Expenditure		4,000
CAPITAL ACCOUNTS :—		
(a) HOSPITAL ENDOWMENT FUND :—		
As at 31st December, 1944	13,536	
Add Contributions received during the year	200	
	<hr/>	13,736
(b) GENERAL PURPOSES FUND :—		
As at 31st December, 1944		12,077
(c) BUILDING AND EQUIPMENT FUND :—		
As at 31st December, 1944	125,611	
Add Donations and Legacies received during the year	4,167	
	<hr/>	*129,778
* This sum includes £4,200 12s. 2d. earmarked for the Rehabilitation Department.		
(d) THOMAS LYE CONVALESCENT HOME FUND :—		
As at 31st December, 1944		26,173
FEDERATED SUPERANNUATION SCHEME FOR NURSES AND HOSPITAL OFFICERS :—		
Balance due to Insurance Companies and on deposit for Student Nurses		901
BEDFORDSHIRE COUNTY COUNCIL :—		
Grants over-advanced as at 31st December, 1944	51	
Amount for year 1945 as <i>per contra</i>	1,543	
	<hr/>	1,594
MAINTENANCE ACCOUNT :—		
THOMAS LYE CONVALESCENT HOME :—		
As at 31st December, 1944	93	
Add Excess of Income over Expenditure for the year as per account	203	
	<hr/>	296
		<hr/>
		£227,783

We have examined the within Accounts with the books and vouchers of the Balance Sheet is properly drawn up so as to exhibit a true and correct view of the as shown by the books of the Hospital. We have also verified the Investments
10, Cardiff Road,
Luton.
14th February, 1946.

UNSTABLE HOSPITAL

st DECEMBER, 1945

nearest £1)

ASSETS.						£	£
CASH AT BANK AND IN HAND :—							
General Hospital Maintenance Account	592	
Convalescent Home Maintenance Account	201	
Federated Superannuation Scheme	901	
							1,694
DEBTORS :—							
					£		
General Hospital, E.M.S.	5,608	
General Hospital, Others	4,299	
							9,908
Building and Equipment Fund	725	
Convalescent Home—Deposit at Brighton Corporation	20	
Convalescent Home—Deposit—Others	140	
							160
							10,793
INVESTMENTS ON CAPITAL ACCOUNT—ENDOWMENT AND GENERAL PURPOSES FUND :—							
As per Schedule	21,806	
Cash awaiting investment	1,078	
Cash at Bank (General Purposes Fund)	2,929	
							25,813
LANDS, BUILDING, AND EQUIPMENT OF THE HOSPITAL :—							
As at 31st December, 1944	160,467	
Expenditure during the year	2,319	
							162,786
(Note.—The amount received for the Rehabilitation Dept., as shown in the note against the Fund as <i>per contra</i> has not yet been expended).							
THOMAS LYE CONVALESCENT HOME INVESTMENT ACCOUNT :—							
£18,557 4% Consols	20,000	
£590 3% Conversion Stock	561	
£50 3% Defence Bonds	50	
							20,611
Lands, Building and Equipment at Brighton	5,562	
							26,173
NEW BOILER—As at 31st December, 1944						629	
Less depreciation	105	
							524
MAINTENANCE ACCOUNT—HOSPITAL :—							
Deficit for 1945 as per Account	5,457	
Grants from Bedfordshire County Council made on account	7,000	
Over-payment transferred to contra	1,543	
							£227,783

Hospital and certify them to be in accordance therewith. In our opinion the Hospital's affairs, according to the information and explanations given to us, and Cash Balances.

(Signed) GODFREY LAWS & CO.,
Incorporated Accountants,
Auditors.

Income and Expenditure Account for year ending 31st December, 1945

INCOME									
£									£
	RECEIPTS ON ACCOUNT OF SERVICES RENDERED :—								
403	Patients and their Societies	735
	INVESTED PROPERTY :—								
762	Interest and Dividends	762
<hr/>									
£1,165									£1,497

INVESTMENTS, ENDOWMENTS, & GENERAL PURPOSES, 31st December, 1945

	£	s.	d.
£531 4s. 0d. 2½% Consols	527	6	0
£505 6s. 2d. 3% Conversion Loan, 1948-53	500	0	0
£1,208 9s. 2d. 3½% Conversion Stock	1,300	0	0
£272 16s. 6d. 3% Conversion Stock, 1948-53	259	4	2
£118 2s. 0d. do. do. }	212	6	2
£105 3s. 2d. do. do. }			
£45 3% Defence Bonds	45	0	0
£720 3% do.	720	0	0
£401 10s. 4d. 3% Local Loans	388	19	8
£1 8s. 5d. do.	1	4	9
£402 16s. 7d. 3% Redemption Stock, 1986-96 }	450	0	0
£115 1s. 10d. do. do. }			
Eight £21 Luton Corporation 3½% Bonds	168	0	0
£376 17s. 4d. 2% Liverpool Corporation Stock	350	0	0
£2,100 3½% Sheffield Corporation Stock	2,023	0	0
£1,150 4% L.M.S. Debenture Stock }	1,496	19	3
£525 4% do. do. }			
£1,022 18s. 0d. 3½% War Stock }	1,760	0	0
£800 do. }			
£13 7s. 0d. do.	13	7	0
£678 0s. 5d. 3% Metropolitan Water Board "B" Stock	603	10	9
£362 7s. 3d. 4% Port of London Stock, 1940-60	300	0	0
£1,047 9s. 9d. 3% Federated Malay States Inscribed Stock, 1960-70	1,000	0	0
£280 3% Defence Bonds	280	0	0
£625 4% Funding Stock, 1960-90	500	0	0
£1,644 13s. 1d. 3% Savings Bonds, 1955-65 }	4,937	6	10
£3,623 0s. 8d. do. do. }			
£307 7s. 9d. do. do. }			
£19 13s. 9d. 3% Conversion Stock	21	0	0
£19 12s. 8d do.	21	0	0
£3,927 17s. 8d. 3% Savings Bonds, 1960-70	3,927	17	8
	£21,806	2	3

Note.—The above investments are stated at cost.

RESIDENCES OF PATIENTS, 1945

Town or Village	Total No. In- Patients	Total No. Out- Patients	Town or Village	Total No. In- Patients	Total No. Out- Patients
Aley Green ...	—	36	Leighton Buzzard ...	81	533
Amersham ...	—	4	Letchworth ...	3	18
Ampthill ...	3	61	Lilley ...	1	25
Aylesbury ...	—	20	Linslade ...	7	80
Barnet ...	—	3	Luton ...	3,030	19,961
Barton ...	19	151	Luton Hoo ...	2	39
Bedford ...	35	126	Markyate ...	7	153
Biggleswade ...	3	32	Pepperstock ...	—	9
Billington ...	3	3	Peters Green ...	1	11
Bletchley ...	34	204	Redbourn ...	7	50
Brickhill ...	1	23	St. Albans ...	14	74
Caddington ...	3	161	Sandy ...	4	30
Chalton ...	5	34	Sharpenhoe ...	1	12
Chiltern Green ...	—	34	Shillington ...	1	28
Cockernhoe ...	4	57	Silsoe ...	5	76
Dagnall ...	3	18	Slip End ...	10	95
Dunstable ...	477	2,771	Stanbridge ...	4	57
East Hyde ...	2	36	Streatley ...	8	67
Eaton Bray ...	24	117	Studham ...	10	30
Edlesborough ...	6	90	Sundon ...	29	115
Eggington ...	4	55	Tea Green ...	—	17
Flamstead ...	3	30	Tebworth ...	1	23
Flitwick ...	5	33	Tilsworth ...	—	48
Gravenhurst ...	4	20	Toddington ...	36	226
Harlington ...	4	56	Totternhoe ...	18	99
Harpenden ...	69	831	Watford ...	3	13
Hatfield ...	1	9	Welwyn ...	1	9
Heath & Reach ...	9	58	Westoning ...	6	54
Hemel Hempstead ...	—	15	Wheathampstead ...	4	68
High Wycombe ...	2	4	Whipsnade ...	4	32
Hitchin ...	22	109	Wing ...	—	21
Hockliffe ...	11	58	Woburn ...	9	28
Houghton Regis ...	38	413	Woodside ...	—	14
Ivinghoe ...	2	12	OTHER AREAS ...	578	2,227
Kensworth ...	13	91			
Kimpton ...	2	48			
Kinsbourne Green ...	3	33			
Knebworth ...	1	19			
				<hr/>	<hr/>
				4,700	30,217
				<hr/>	<hr/>

ANNUAL SUBSCRIPTIONS

"In faith and hope the World will disagree, but all mankind's concern is charity."—POPE.

	£	s.	d.		£	s.	d.
Abell, J. H.	4	4	0	Canham, H.	2	10	0
Abraham, Mrs. B. .. .	2	2	0	Cardwell, W. A. .. .	2	2	0
Abraham, H. (A. C. Horn) .. .	2	2	0	Cartwright, Geo. .. .	1	1	0
*A.C. Sphinx Sparking Plug Co., Ltd. .. .	100	0	0	Cassell, Rt. Hon. Sir Felix, Bart., K.C. .. .	10	0	0
Adamant Engineering Co., Ltd. .. .	4	4	0	Chalkley, H.	10	0	0
Alder, P. G.	2	2	0	Challice, W. T.	10	0	0
Allen, Percy	2	2	0	Chambers, R., Ltd. .. .	1	1	0
Alexanders (Luton) Ltd. .. .	2	2	0	Chapman, A. J.	1	1	0
Alliance Foundry Co., Ltd. .. .	3	3	0	Child, A. R. & Sons, Ltd. .. .	2	2	0
Ancient Order of Foresters (Luton District) .. .	3	3	0	Clarke, C.	4	4	0
Andrews, F. J.	4	4	0	Clarke, Clement, Ltd. .. .	2	2	0
Arnold, A. L.	2	0	0	Clarke & Co.	1	1	0
Ashwell, Percy	2	2	0	Clarke, P. A.	1	15	5
*Associated Portland Cement Mfrs., Ltd. .. .	7	10	0	*Clay, Chas. & Sons, Ltd. .. .	10	10	0
Attenborough, A. G.	4	4	0	Cleveley, G. H.	1	1	0
Attwood, S.	2	2	0	Climpson, A.	10	0	0
Aylott, Mrs.	1	1	0	Cohen, Mrs. Harold .. .	6	6	0
Bagni, C.	2	2	0	Colling, C.	1	0	0
*Bagshawe & Co., Ltd. .. .	100	0	0	Commer Cars, Ltd. .. .	100	0	0
Baker, Mrs. A.	2	2	0	Cook, F.	4	4	0
Baldwin, A. & Co.	10	6	0	Cooper, A. H.	1	1	0
Barclays Bank Ltd., Luton .. .	10	10	0	Cotton, G. V. S.	2	2	0
Barford, Mrs. A.	2	2	0	Coupees, Mrs. M. .. .	1	1	0
Barnard, Mrs. E. J.	1	1	0	Cox, W. H.	1	1	0
Barnard & Dawson	10	6	0	Crew, Mrs. D.	10	0	0
Barrett, B. E., Ltd.	4	4	0	*Cross & Co., Ltd. .. .	10	0	0
Barrett, P. F.	2	2	0	Crouch, Miss	15	0	0
Barrow, S.	1	0	0	Cumberland, Hugh .. .	2	2	0
Baskin, M. & Co.	2	2	0	*Cundall Folding Machine Co., Ltd. .. .	2	2	0
Baxter Hart & Geo. Carruthers, Ltd. .. .	2	2	0	Cunningham, Miss M. G. .. .	10	6	0
Bedford, R. W.	2	2	0	Currant & Creak, Ltd. .. .	3	3	0
Bell, W. & Son	2	2	0	Davis, Francis Bruce .. .	10	0	0
Bennett, S. J. & Son	1	1	0	Davis, K. Newsom	17	14	9
Berman, H.	10	6	0	Day, Arthur	10	10	0
Bernhard Baron Charitable Trust .. .	100	0	0	Day, Mrs. B. F.	3	3	0
Biggs, F. S. & Co.	4	4	0	Dee, Miss B.	1	1	0
Blake, G. W.	10	0	0	De Havilland Aircraft Co. .. .	5	5	0
Bland, Mrs.	1	1	0	Dillingham & Edwards, Ltd. .. .	5	5	0
Blinco, Chas. B.	2	2	0	Dudeney & Johnson, Ltd. .. .	3	3	0
Bloomfield, W. A.	1	1	0	Dunham, S. (G. Warren) .. .	2	2	0
Blows, A. H.	1	1	0	Dunham, W. G. & Sons .. .	1	1	0
Blundell, H. A.	4	4	0	Dunlop, Miss M.	1	0	0
*Blundell Bros. (Luton) Ltd. .. .	15	0	0	*Dunstable Gas & Water Co. .. .	21	0	0
Bone, Dr. J. W.	8	17	4	Durler, Mrs. R.	3	10	11
Boots (Chemists) Ltd.	10	10	0	Durler, Robert	7	17	4
*Borough Engineering Works, Ltd. .. .	10	10	0	Durler, H. & Son	1	1	0
Bottoms, Mrs. H. F.	1	0	0	Durrant, W. G.	4	4	0
Boutwood, Misses	1	1	0	Eastaff, A. & Co.	1	10	0
Bowles, J. W.	2	2	0	Eastern National Omnibus Co. .. .	2	2	0
Boynton, A.	5	5	0	Eastwood, Rev. C. A. .. .	1	0	0
Boynton, Wright & Hickman .. .	3	3	0	Eaton, A.	12	0	0
Branden, H.	1	1	0	Edwards, W. J.	2	2	0
Bracey Bros.	10	6	0	*Electrolux, Ltd.	135	4	8
British Portland Cement Mfrs. Ltd. .. .	2	10	0	Ellingham, Mrs. A. .. .	20	0	0
*British Gelatine Works, Ltd. .. .	10	10	0	England, A. F.	3	3	0
Brown, H. Cumberland	2	2	0	E. & S., C.W.S., Ltd., London .. .	10	10	0
*Brown, Henry & Sons (Timber) Ltd. .. .	7	14	5	Evelings, Ltd.	2	2	0
*Brown & Green, Ltd.	10	10	0	Facer, J. & Son	1	1	0
Brown & Thomas	10	6	0	Farmer, Mrs. A.	2	2	0
Burdekin, J. A. S.	1	1	0	Farmer, S. & Co.	1	1	0
Burgess, J. A. & Sons	2	2	0	Farr, G. F.	20	0	0
Burgess, Miss	4	4	0	Farr, Herbert	1	1	0
Burley, T., Ltd.	10	6	0	Fellingham, A. C.	1	1	0
Burt, E. O. R.	2	2	0	Felt & Fibre Dyeing Co., Ltd. .. .	5	5	0
Burton, M., Ltd.	1	1	0	Fifteens Tobacco Co., Ltd. .. .	21	0	0
Butcher, W. J.	1	1	0	Fleming Reid & Co. (Scotch Wool and Hosiery Co.) .. .	1	1	0
Butt, G.	2	2	0	Forsdyke, K.	10	6	0
Butterfield, H.	1	10	0	Franklin, C.	10	0	0
Button Bros.	2	2	0	Freeman, Hardy & Willis .. .	1	1	0
Byfield, J. T.	2	2	0	French, W.	1	1	0
				*Frickers Metal & Chemical Co., Ltd. .. .	13	13	0

ANNUAL SUBSCRIPTIONS—continued.

	£	s.	d.		£	s.	d.
Gale, A. & Son	1	1	0	Johnson, W. A. T.	1	1	0
Gates, Miss D.	2	2	0	Judge, L. J.	1	1	0
General Electric Co., Ltd.	5	5	0	Keens, Sir Thomas	5	0	0
George Hotel, Luton	2	2	0	Keens, Lady, J.P.	5	5	0
*Gibbs, Bamforth & Co., Ltd.	10	0	0	Keens, Shay, Keens & Co.	5	5	0
Gibbs & Dandy, Ltd.	21	0	0	Kenworthy, Frank	2	2	0
Gibbs, John	4	4	0	*Kent, G., Ltd.	200	0	0
Gibbs, R. A.	4	4	0	Kingham, Misses C. & E.	2	0	0
Gladwell, Mrs.	10	6		Kiteley, C. S.	1	1	0
Gladwin, Mr. & Mrs. M. E.	15	0		Knowles, C. E.	4	4	0
Godden & Rudd, Ltd.	10	0		Kuster, Mrs.	2	2	0
Godfrey, H. I.	5	5	0	Lacey, A.	1	1	0
Goodchild, M. & Co.	6	6	0	Lamport, A.	1	1	0
Goring & Son	2	2	0	*Laporte, B., Ltd.	90	12	7
Graham, J. R.	2	2	0	Large, R. Colin	6	6	0
Graves-Morris, H. W.	1	1	0	Lathom, F. W. F.	1	1	0
Gray & Co.	1	0	0	Levy, Mrs.	1	1	0
Gray, Ernest	2	2	0	Lilywhite, Geo. C.	10	10	0
Gray, S.	1	1	0	Lines, F. C.	2	2	0
Green, J. W., Ltd.	100	0	0	Linsell, J. J.	1	1	0
Green, Miss E.	1	1	0	Little, F.	21	0	0
Green, Miss W.	4	4	0	Lloyd, Dr. F. S.	1	1	0
Gregory, Aubrey	2	2	0	Lloyds Bank, Ltd.	1	1	0
Gregory & Perrett, Misses	3	3	0	Lockhart, P. W.	4	4	0
Gurney, W. R.	1	1	0	London Central Meat Co., Ltd.	2	2	0
Halford Cycle Co., Ltd.	2	2	0	*L.M. & S. Railway Co.	63	0	0
Harman & Son	1	1	0	L. & N.E. Railway Co.	2	2	0
Harmer, Miss D. M.	1	0	0	*Luton Building Co.	3	3	0
Harmer, G. & Co.	4	4	0	Luton & Dunstable Post Offices' Staffs	25	0	0
Harris, E. C.	10	6		*Luton Gas Co.	27	16	10
Harrison, Major A. J.	2	2	0	Luton Girls' High School	15	15	0
Harrison, F.	2	2	0	*Luton Industrial Co-operative Society, Ltd.	10	0	0
Harrison, W.	10	0		Luton Motor Co., Ltd.	10	10	0
Hart, G. L.	2	2	0	Luton Sanitary Steam Laundry	5	5	0
Hartop, B.	2	2	0	Luton Water Co.	20	0	0
Hawkesworth, P. E.	1	1	0	Lutonia Manufacturing Co.	2	2	0
Hay, Geo. & Co.	5	5	0	Lye, Ernest B.	50	0	0
Hayward Bros.	2	2	0	Machin & Co.	4	4	0
*Hayward-Tyler & Co., Ltd.	10	10	0	Mandel, R.	10	6	
Hedges, O. J.	3	3	0	Mander, Col. A. J., O.B.E., D.L., J.P.	1	1	0
Herbert, F.	1	1	0	Mangolds, Ltd.	1	1	0
Herts. & Beds. Bacon Factory	2	0	0	Mann, Walter	4	4	0
Hewitt, S.	10	0		Manyweathers, W. R.	4	4	0
Hickman, G.	1	1	0	Mardle, Mrs. C. M.	1	1	0
Hillier, John	2	2	0	Mares, C., Ltd.	1	1	0
Hobbs, H.	1	1	0	Mariner & Co.	10	10	0
Hobbs, Mrs.	2	2	0	Marks & Spencer, Ltd.	5	18	0
Holtum, T. W.	1	1	0	McAdam, Mr. & Mrs. J. J.	18	18	0
*Home Counties Newspapers, Ltd.	10	0	0	Meadows, Mrs. J. G.	1	0	0
Horton Bros.	4	4	0	Merchant, F. & Sons	2	2	0
Horwood & Boutwood, Ltd.	1	1	0	Merchant, Mrs. F. L.	2	2	0
*Hubbard, S., Ltd.	100	0	0	Midland Bank Ltd.	1	1	0
Hubbard, Miss A.	4	4	0	Mimms, W. H.	2	2	0
Hubbard, Miss W.	15	0		Mitchell & Plummer	2	2	0
Hubermantles, Ltd.	1	1	0	Moody, F. & Co.	10	6	
Hucklesby, A. H. & Co., Ltd.	3	3	0	Moody, H.	1	1	0
Hudson, Fredk.	2	2	0	Moody, Wm.	2	2	0
Hudson, Mr. & Mrs. G.	1	1	0	Morsley, H. R.	4	4	0
Hudson, the late Mr. Norman	1	1	0	Muckleston, A. E.	1	1	0
Hull, G. E.	2	2	0	Muller, E. H. (W. Hubbard, Ltd.)	2	2	0
Hull, H. W., Ltd.	2	2	0	Mullett, W. F.	2	2	0
Hunter, R. R., M.C., J.P.	2	2	0	National Provincial Bank	1	1	0
Impey, O. W.	2	2	0	Needham, Mrs. J. F.	10	6	
Independent Order of Oddfellows (Luton, Stopsley and Slip End)	5	5	0	Nelson, R.	2	2	0
Inwood, Cyril E.	2	2	0	Neve, F. Lethbridge	2	2	0
Iron Trades Employers' Insurance Association	20	0	0	Neville, T. E.	1	1	0
Jack, G. C.	10	0		Newbold & Martell	10	0	
Janes, A. J.	2	2	0	Newbury, A. E.	4	14	6
Janes, H. C.	10	10	0	Newman, G. W.	2	2	0
Jennings, Mrs. L.	1	1	0	Norwood, U. A.	2	2	0
Jeyes, Chas., Ltd.	105	0	0	Nott, C. & Co., Ltd.	5	5	0
Jones, C. F.	10	0		Nott, David	2	2	0
Jones, Kenneth	2	2	0				
Jones, L.	1	1	0				

ANNUAL SUBSCRIPTIONS—continued.

	£	s.	d.		£	s.	d.
Oakley, A. W.	2	2	0	Staddon, Alec H.	1	1	0
Oakley Bros.	2	2	0	Staddon, Mrs. M. D.	1	0	0
Oakley, J. H.	2	2	0	Stansfield, V.	2	2	0
Oakley, Col. R.	1	1	0	Stone, C. P.	10	10	0
Oates, Mrs. S.	2	2	0	Strange & Sons	2	2	0
Oliver, A. R.	4	4	0	Streatley & Sharpenhoe Consoli-			
Ordish, Miss	10	0	0	dated Charities	3	3	0
Olney, A. E.	2	2	0	Sunman & Hewson, Ltd.	10	10	0
Osborne, C. H. (Hats) Ltd.	2	2	0				
Page, Walter	1	1	0	Taylor, J.	2	2	0
Palmer, Lt.-Col. M.	2	2	0	Tearle, G.	2	2	0
Pargetter, Mrs. L.	1	1	0	Tearle, Mrs. J.	2	2	0
Park, W. E.	1	11	6	Tearle, R.	10	0	0
Parrott, S. C.	4	4	0	Thompson, G. A. J.	2	2	0
Parrott, R. W.	10	10	0	Timpson, Wm., Ltd.	1	1	0
Partridge, H. G. & Co.	1	1	0	Tompkins, J. & Sons	1	1	0
Payne & Treseman	1	1	0	Tomlin, J. H.	1	1	0
Peck, Alma G.	4	4	0	Tomlin Bros.	2	2	0
Perkins, Dorothy, Ltd.	2	0	0	Tooley, J. F.	3	3	0
Phillips, W.	3	3	0	Travers, J., Ltd.	1	1	0
Pickering, P. G. S.	1	1	0	Tripp, S.	10	6	0
Piggott, A. & Co.	5	5	0	Tudor Bakeries, Ltd.	3	3	0
Platts (Dyers) Ltd.	1	1	0	Tuke, A. W.	1	1	0
Plowman, W.	3	3	0	Turner, Miss M. E.	1	1	0
Plummer, R. B.	2	2	0	Tydemann, C.	1	1	0
Plummer, R. M.	1	1	0				
Plummer, Mrs. K. M.	2	2	0	Ure, Mrs. S. E.	1	15	5
Pool, W. J.	1	11	6				
Porter, J. & Co., Ltd.	2	2	0	*Vauxhall Motors, Ltd.	1,000	0	0
Prance, S. E.	1	1	0	Vyse, Sons & Co., Ltd.	3	3	0
Prudential Assurance Co., Ltd.	65	0	0				
Pryer, Miss A. H.	1	0	0	Walker, E.	1	1	0
Puddephatt, F.	1	1	0	Waller, G. A.	5	5	0
Punter, A. P.	1	1	0	Waller, H. R.	10	10	0
				Walser, Paul & Co.	2	2	0
Rainbow, C.	1	1	0	Wardill, N.	2	2	0
Randall, C. & W.	3	3	0	Wardill & Lambie	10	6	0
Read & Horn, Ltd.	4	4	0	Warren, Mrs. W.	1	1	0
Redrup & Starkings, Ltd.	2	2	0	*Waterlow & Sons, Ltd.	100	0	0
Richardson, A.	1	1	0	Watts, A. J.	2	2	0
Roberts, W. F.	10	0	0	Webb Bros.	10	6	0
Robinson Bros.	2	2	0	Webb, Edwin	1	1	0
Robinson & Butt	3	3	0	Webb, Mrs. C.	1	1	0
Robinson, W. & Co.	1	1	0	Webb & Baker, Ltd.	1	1	0
Ross-Skinner, Col. & Mrs. H.				Webdale, J. & Sons	2	2	0
Crawley	10	0	0	*Weekes, L., Ltd.	10	0	0
Royal Liver Friendly Society	1	1	0	Wernher, Sir Harold, Charitable			
*Rubber Bonders, Ltd.	5	5	0	Trust, Luton Hoo Estate Office	12	0	0
Rudd & Sons	2	2	0	Westminster Bank, Ltd.	1	1	0
				White, H. J.	10	6	0
Sainsbury, J., Ltd.	5	5	0	White, W.	1	1	0
Sale Bros.	3	3	0	Whitehouse, the late Mrs. C. M.	2	2	0
Sale, W. & Co.	2	2	0	Wild, G. A. & Sons	1	1	0
Sanders & Bagni	2	2	0	Wilkinson, C. E.	4	4	0
Sanders & Brightman	5	5	0	Williams, Misses	5	5	0
Saunders, J. & Son	1	1	0	Williams & Howard, Ltd.	6	6	0
Schragin, J.	4	4	0	Willson, A. C.	2	2	0
Seaward Bros.	4	4	0	Wing, F. H.	2	2	0
Segal, I.	2	0	0	Woakes, E. R.	2	2	0
Sell & Mitchell	1	1	0	Woods, Hugh & Co.	6	6	0
Sharman, F. C.	1	1	0	Woods, Mrs. K. H.	10	0	0
Sharpe, W. A. & Co.	2	2	0	Woolley, Saunders & Co., Ltd.	2	2	0
Shaw & Kilburn, Ltd.	1	1	0	Wootton & Webb	2	2	0
Shoolbred, H. G.	5	0	0	Worboys, A. T., J.P.	10	10	0
Simmons, E. & A.	1	1	0	Worboys, Mrs. A. T.	10	10	0
Sinfield, W.	1	1	0	Worboys, Miss Margaret	5	5	0
Skelton, T.	1	1	0	Worsley, C. J. & Co.	1	0	0
*Skefko Ball Bearing Co., Ltd.	200	0	0	Wrigley, J. K.	1	1	0
Slaters, Ltd.	2	2	0				
Small, W. A. & Sons	1	1	0	Yarrow, Miss	10	0	0
Smith, G. W.	1	1	0				
Smith, H. F.	10	6	0	Zoological Society of London	5	5	0
Smith, Miss E. C.	2	2	0				
Smith & Small, Ltd.	1	1	0	Subscriptions under 10s.	12	4	6
Snoxell, S. B. J.	1	1	0				
Spencer, T. A.	10	0	0				
Squires, G. C.	10	0	0				
Squires, J. G.	5	5	0				

£3,997 2 8

* Those marked with an asterisk are member firms of the Industrial Safety Association. The total subscriptions from this source amounted to £2,294 11s. 6d.

DONATIONS & SPECIAL EFFORTS, 1945—continued.

[illegible]

WHEN MAKING YOUR WILL . . .

During its seventy-four years existence the hospital has received many outstanding contributions by way of legacies ; its vital work can still be helped forward in this way. When making provision for the disposal of your estate please remember the Hospital

The following forms of bequest are suggested :—

OF LEGACY

"I give, devise and bequeath to the Luton and Dunstable Hospital, Luton, the sum of _____ free of Legacy Duty, to be applied for the general purposes of the said Institution. And I declare that the receipt of the Treasurer for the time being of the said Institution shall be a sufficient discharge of the said Legacy."

OF RESIDUE

"I give, devise and bequeath to the Luton and Dunstable Hospital, the residue of my estate for the general purposes of the said Institution, and I declare that the receipt of the Treasurer for the time being of the said Institution shall be a sufficient discharge for the same."

CONTRIBUTIONS TO SPECIAL FUNDS

ENDOWMENT FUND :						£	s.	d.
S. Hubbard, Ltd., towards endowment of bed						200	0	0
BUILDING FUND :						£	s.	d.
General :								
Appeals Committee—Bazaar						725	0	0
Dunstable Conservative Club						350	0	0
Fire Guard Block Scheme No. 10						18	19	4
Legacy of the late F. W. Baldock						10	0	0
" " A. W. Burgess						100	0	0
" " Mrs. E. Goodwin						100	0	0
" " C. Rudd						150	0	0
" " H. Shane						1,800	0	0
Luton Town Football Club						54	7	6
R.A.F. Station, Dunstable, proceeds of play						80	0	0
							3,388	6 10
For Rehabilitation Department :								
Alcocks (Peroxide) Ltd.						25	0	0
City of London 34th Platoon						81	0	0
Commer Cars, Ltd.						105	0	0
Cundall Folding Machine Co.						10	10	0
Dunstable Works Hospital Committee						150	0	0
E. & S., C.W.S. Cocoa Works						10	10	0
In memory of Miss Howes, Skefko Ball Bearing Co., Ltd.						5	10	0
Luton Building Co.						10	10	0
Odeon Theatre—Collection at Rehabilitation Meeting						40	1	6
Pyper, H. L.						50	0	0
Shoolbred Electrical Co., Ltd.						25	0	0
J. Simpson & Son						5	5	0
Skefko Ball Bearing Co., Ltd.						250	0	0
L. Weekes, Ltd.						10	0	0
							778	6 6
							£4,166	13 4

BOX COLLECTIONS

	£	s.	d.
Air Ministry Civilian Employees, Beechwood Park	2	13	3
A.R.P. Canteen—Lady Keens	5	3	8
Brown Owl Cafe	2	7	11
Buckingham, Mrs. B. M.	12	16	2
Chamberlain, Mrs. F.—Park Street Post Office	14	4	3
" Dallow Road Post Office	56	7	6
Clarke, Mrs. A.	1	3	11
Clarke, R.	8	0	1
Duberly & White, Ltd.	8	12	10
Eaton Bray Social Club	7	15	3
Harden, Sara	2	2	1
Luton & Dunstable Hospital—Various Boxes	260	6	4
Luton Liberal Club	1	8	3
Price, Mrs.	2	11	3
Robin Hood (Public House)	1	4	11
Staddon, A. H.	3	6	9
Sugar Loaf—New Town Street	1	10	0
Sunman & Hewson, Ltd.	7	6	7
Wiltshire, A. J.	1	7	7
Amounts under £1	3	7	6
	£403	16	1

ENTERTAINMENTS

	£	s.	d.
Barton W.V.S. Whist Drive and Dance—Mrs. Beechener	36	0	0
Caddington Victory Concert—Sheila Wellicome	5	15	0
Dunstable Pantomime, organised by Miss E. Holes	100	0	0
Dunstable Repertory Company—" Mr. Pimm Passes By "	13	0	2
Eaton Bray Social Club—Cinema Entertainment	21	0	0
Heath and Reach Home Guard and N.F.S. Gymkhana	5	0	0
Leicester Arms Darts Tournament—Mr. F. C. Dobson	5	5	0
Liberal Club Dance and Whist Drive—Mrs. E. Rainbow	40	0	0
Luton and South Beds. Liberal Club—Various Entertainments	42	10	0
Odeon Concert—Organised by Mr. Arthur Davies and Hospital Appeals Committee	200	0	3
Production Tool Alloy—Proceeds of Dances	37	2	0
R.A.F., Dunstable—Play, " Murder Without Crime "	64	2	3
Streatley Whist Drive—Mrs. Cross	7	16	0
Studham Dances and Whist Drives, per Mrs. Dawson	55	1	6
Toddington Dance—Mrs. Greengrass	10	0	0
Totternhoe Dances—Mrs. Waters	11	2	0
Amounts under £1	8	0	
	<hr/>		
	£654	2	2
	<hr/>		

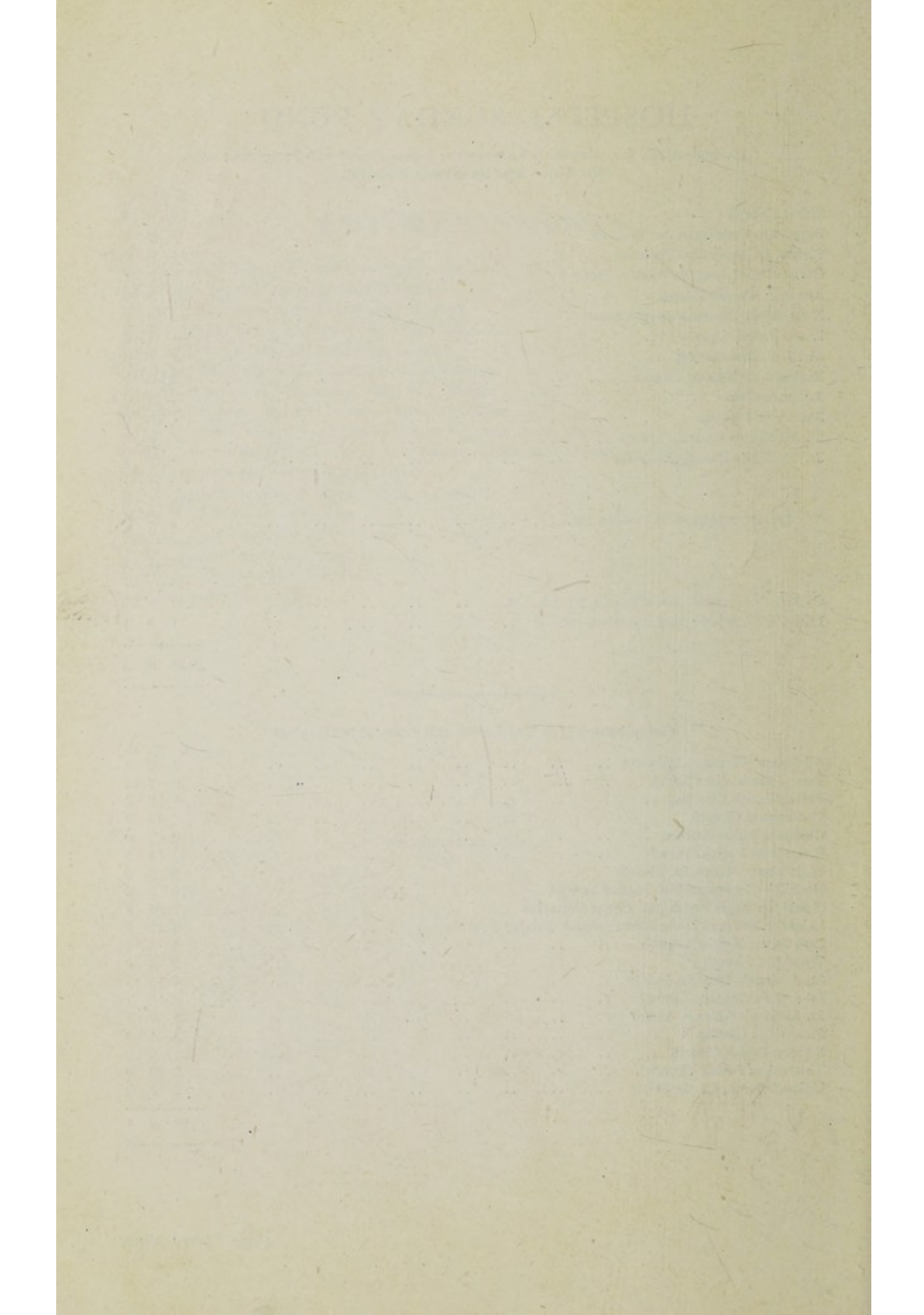
HOSPITAL SUNDAY FUND

Contributions for allocation between the Luton Children's Hospital and
The Luton and Dunstable Hospital.

	£	s.	d.
Biscot Church	10	0	0
Bury Park Congregational Church	5	5	0
Chapel St. Methodist Church	10	0	0
Christ Church and St. Peter's, Luton	6	9	8
Ebenezer Baptist Chapel	20	4	0
King Street Congregational Church	10	10	0
Luton Parish Church	41	15	4
Mr. J. E. Summerbee	1	1	0
Reginald St. Baptist Church	2	0	0
Selbourne Hall	2	0	0
Society of Friends	15	0	
St. Matthew's Church, Luton	6	6	0
St. Thomas's Church, Stopsley	4	6	2
	120	12	2
Less Expenditure on Postage, etc.	2	0	0
	£118	12	2
Children's Hospital two-fifths of £118 12s. 2d.	47	8	10
Luton & Dunstable Hospital three-fifths	71	3	4
	£118	12	2

Contributions for The Luton and Dunstable Hospital

	£	s.	d.
All Saints' Church, Chalgrave	3	0	0
Barton Methodist Church	8	7	10
Barton Parish Church	7	5	0
Caddington Church	2	10	0
Christadelphian Ecclesia	3	3	0
Eaton Bray Parish Church	37	11	5
High Town Methodist Church	5	5	0
Hockliffe Congregational Sunday School	10	0	0
Houghton Regis Parish and Christ Churches	7	6	8
Leighton Buzzard United Free Church Sunday Schools	4	12	0
Park Street Baptist Church	2	2	0
Woodside Church	2	2	0
St. Andrew's Church, Luton	6	16	3
St. Luke's Church, Luton	2	15	7
St. Saviour's Church, Luton	6	9	7
Stanbridge Church	2	4	9
Sundon Parish Church	21	0	0
Totternhoe Parish Church	2	10	0
Union Church, Castle Street	2	2	0
	£137	3	1



Milestones in the history of the Hospital

1872—Foundation of the Luton Cottage Hospital with three Beds.

1882—Opening of the Bute Hospital, Luton, with 26 Beds.

1904—New Wards, increasing Beds to 50.

1930—Private Ward Block of 20 Beds ; a new Nurses' Home.

1939—Her Majesty Queen Mary opened the Luton and Dunstable Hospital on the 14th February. 156 Hospital Beds, 24 Private Ward Beds.

1941—Extensions to the Out-Patient Department carried out at a cost of £3,300.

Q To-day every section of the Hospital is used to the limit of its capacity and accommodation for In-patients, Out-patients and Staff is very inadequate ; large extensions are urgently required and must be undertaken at the earliest possible moment if Luton and Dunstable are to have the hospital service they need.

THE LUTON & DUNSTABLE HOSPITAL LUTON

Telephone : Luton 3100.

CONSULTATIVE CLINICS

MEDICAL	Tuesday	10 a.m.	E. R. Cullinan, M.D., F.R.C.P. (Hon. Colonel)
SURGICAL	Monday	10 a.m.	Donald Barlow, M.S. (Lond.), F.R.C.S.
	Thursday	10 a.m.	Donald Barlow, M.S. (Lond.), F.R.C.S.
	Saturday	9.30 a.m.	L. R. Broster, O.B.E., D.M., M.Ch., F.R.C.S., F.A.S.A. (Hon.)
GYNAECOLOGICAL ..	Monday	2 p.m.	John Beattie, M.A., M.D., F.R.C.S., F.R.C.O.G.
EAR, NOSE AND THROAT	Tuesday	3 p.m.	F. W. C. Capps, F.R.C.S., L.R.C.P.
PSYCHOLOGICAL MEDICINE	Friday	2.30 p.m.	Neil McDiarmid, M.B., Ch.B.
ORTHOPAEDIC	Wednesday	By appoint- ment	L. W. Plewes, M.A., M.D. (Toronto), F.R.C.S. (Ed.)
DERMATOLOGICAL ..	Second & fourth Friday in each month	10 a.m.	

OTHER CLINICS

FRACTURE CLINIC ..	Every Week-day at 9 a.m.	L. W. Plewes, M.A., M.D. (Toronto), F.R.C.S. (Ed.)
PHYSIO-THERAPY	Every Week-day at 9 a.m.	L. W. Plewes, M.A., M.D. (Toronto), F.R.C.S. (Ed.)
DEPARTMENT (Only by appointment through one of the clinics)		
X-RAY DEPARTMENT ..	Radiography every Week-day	
Radiology	Monday	3 p.m. E. E. Holdsworth, M.B., Ch.B., D.M.R.E.
	Tuesday	9.30 a.m. " " "
	Thursday	3 p.m. " " "
	Friday	3 p.m. " " "
CASUALTY DEPARTMENT	Daily	

		Males	Females	
V.D. CLINIC	Monday	2 to 8 p.m.	2 to 3.30 p.m.	5 to 6.30 p.m.
	Tuesday	5.30 to 8 p.m.	4.30 to 6 p.m.	
	Wednesday	5.30 to 8 p.m.	4.30 to 6 p.m.	
	Thursday	5.30 to 8 p.m.	4.30 to 6 p.m.	
	Friday	2 to 8 p.m.	2 to 6 p.m.	L. Handley Ashken, L.M.S.S.A.

BANK HOLIDAYS

Clinics will not be held when they fall on a Bank Holiday. This does not apply to the Casualty Department, which is open at all times.

APPOINTMENTS

EXCEPT IN CASES OF EMERGENCY, PATIENTS CAN ONLY BE SEEN AT THE CLINICS BY APPOINTMENT. These should be made by letter or by personal application or telephone to the Records Office (Tel. 3100, Extension 15), between the hours of 9 a.m. and 5 p.m. Monday to Friday and Saturday between 9 a.m. and 12 noon. Applications in writing must be accompanied by a stamped addressed envelope. Appointments for the Fracture and Orthopaedic Clinic and X-Ray Department should be made with the Department concerned.