

Annual report of the National Temperance Hospital : 1947.

Contributors

National Temperance Hospital (London, England)

Publication/Creation

[London] : [publisher not identified], 1947

Persistent URL

<https://wellcomecollection.org/works/kbh5ff56>

License and attribution

This work has been identified as being free of known restrictions under copyright law, including all related and neighbouring rights and is being made available under the Creative Commons, Public Domain Mark.

You can copy, modify, distribute and perform the work, even for commercial purposes, without asking permission.



Wellcome Collection
183 Euston Road
London NW1 2BE UK
T +44 (0)20 7611 8722
E library@wellcomecollection.org
<https://wellcomecollection.org>

A - 1 JUN 48
O.R. 64

**THE
NATIONAL
TEMPERANCE
HOSPITAL**
Hampstead Road, N.W.1



**75th Annual Report
1947**

For the information of those into whose hands this Report may fall, it may be stated that the NATIONAL TEMPERANCE HOSPITAL was founded in 1873 for the Medical and Surgical treatment of the sick without recourse to the ordinary administration of alcohol. It was, at the same time, provided that the Medical Staff should be at liberty to administer alcohol when they deemed it needful, every such case to be recorded, and published in the succeeding Annual Report. During the seventy-five years of the Hospital's existence there have been 252 such cases in a total of 83,020 In-patients.*

As a GENERAL HOSPITAL, this Institution has a strong claim upon all benevolent persons, while its distinctive principle serves as a protection from those perils which attend the administration of alcohol, even for Medicinal objects.

* See copy of Rule LXII on page 15.

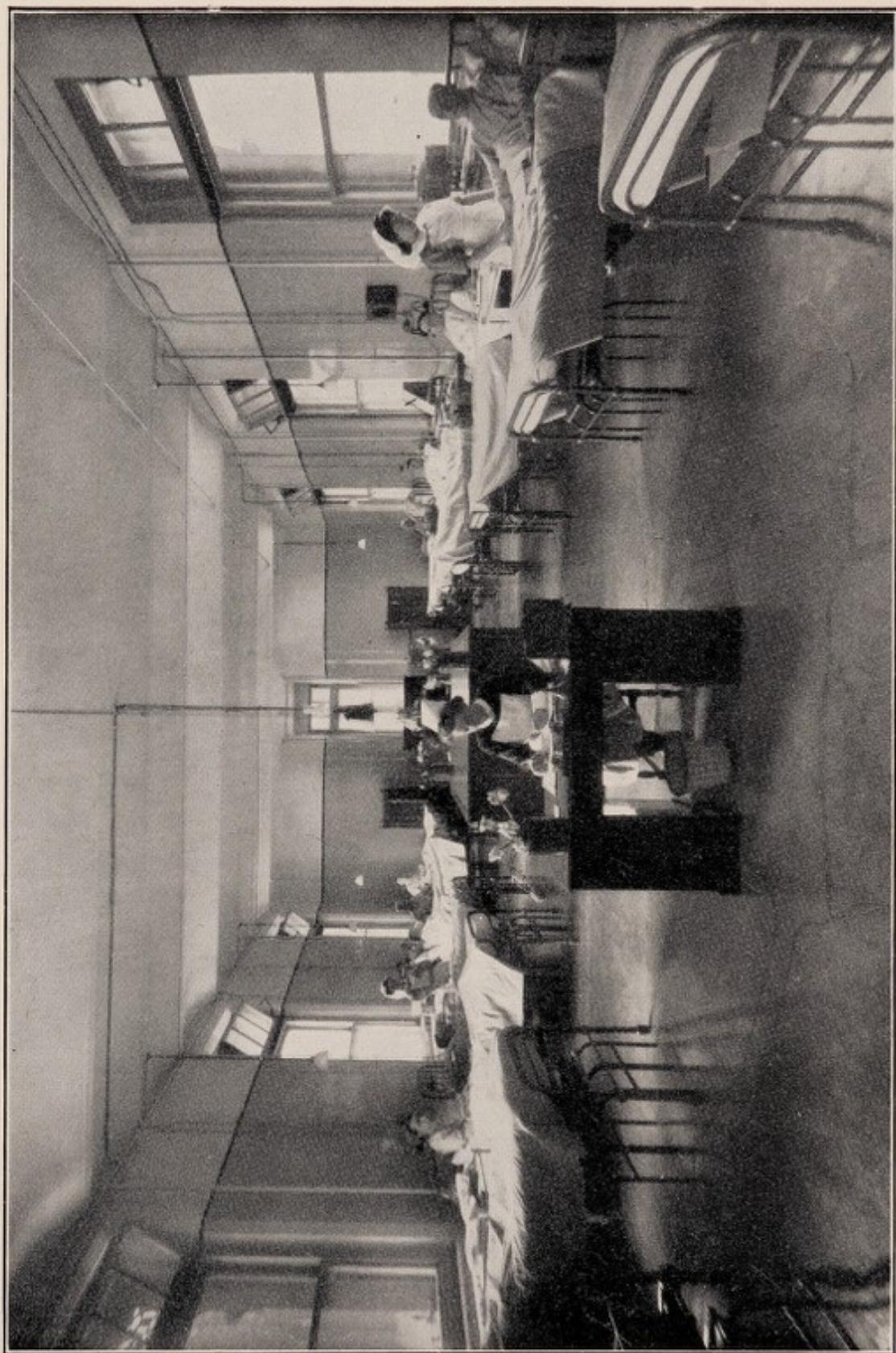
WELLCOME LIBRARY
Ann Rep
WX28
BE5
L84N27
1947



22501369989



DAME ELIZABETH CADBURY, D.B.E., M.A., J.P., President.



View of "Cadbury Ward"

Telephone No. EUSTON 5206

THE
SEVENTY-FIFTH ANNUAL REPORT
of the
National Temperance Hospital

Presented 5th May, 1948

Including the Report of the
BOARD OF MANAGEMENT
with the
Statistical Summaries of Patients,
AUDITED BALANCE SHEET
and
SUMMARY OF SUBSCRIPTIONS
For the Year ended
31st December, 1947

National Temperance Hospital

(ESTABLISHED 1873, INCORPORATED 1917).

HAMPSTEAD ROAD, N.W. 1

The Patron.

HER ROYAL HIGHNESS PRINCESS ARTHUR OF CONNAUGHT,
R.R.C., S.R.N.

Patrons.

HIS GRACE THE ARCHBISHOP OF CANTERBURY
THE RIGHT REV. THE LORD BISHOP OF LONDON.
LORD CLWYD OF ABERGELE. LADY BETHELL.
LADY SHEPHERD.

President.

Dame ELIZABETH CADBURY, D.B.E., M.A., J.P.

Vice-Presidents.

Sir EDWARD BARON.	Sir GEO. G. MITCHESON.
Lady CASSIDY.	W. W. PARKINSON, Esq.
R. A. COSTAIN, Esq.	Ald. FRANK G. RYE, L.C.C.
Mrs. R. A. COSTAIN.	Lady STANIER.
H. W. DANBURY, Esq.	Lady VEZEY STRONG.
The Rt. Hon. ISAAC FOOT, P.C.	H. S. SYRETT, Esq., C.B.E., LL.B., C.C.
A. J. HEALEY, Esq.	Sir WILLIAM LACON THRELFORD, M.B.E., F.C.A.
WILLIAM HEYWOOD, Esq.	A. W. WEST, Esq.

Board of Management.

HERBERT S. SYRETT, C.B.E., LL.B., C.C.
(Chairman.)

ARTHUR DOWNER, F.C.I.S.
(Vice-Chairman.)

M. MOUSTARDIER, F.S.A.A., F.C.I.S.
(Hon. Treasurer.)

Dr. G. BELLMAN.

Rev. J. REID CHRISTIE, M.A.

WILLIAM HEYWOOD.

Mrs. H. B. HANNAY.

Alderman E. A. MINTER, J.P.

CHARLES F. SMITH.

Councillor H. J. TREBY.

Secretary & House Governor.

ALFRED C. ADAMS, F.H.A., F.C.I.S.

Accountant.

Miss R. A. BROWN, B.Com.

Steward.

L. A. SHEFFIELD.

Appeal Officer.

Miss E. ALLEN.

Matron.

Miss M. M. FRASER ANNAND, B.A., S.R.N., S.C.M.

Assistant Matron.

Miss E. COULTHAM, S.R.N., S.C.M.

Sister Tutor.

Miss C. M. ADAMS, S.R.N.

Pharmacist.

B. E. IRESON, B.Sc., M.P.S.

Dispensers.

L. TOMPKINS. Miss J. AXON

Almoner.

Miss D. K. G. COLLIN, B.A., A.I.A.

Asst. Almoner.

Miss E. C. SPITZEL, A.I.A.

Auditors.

Messrs. VINEY, PRICE & GOODYEAR, Empire House,
St. Martin's-le-Grand, London, E.C. 1.

Bankers.

THE WESTMINSTER BANK, LIMITED,
52, Threadneedle Street, London, E.C. 2.

Solicitors.

Messrs. SYRETT & SONS, 2 John Street, Bedford Row, London, W.C. 1.

Architect.

WILLIAM B. BINNIE, F.R.I.B.A.

Consulting Engineer.

H. A. SANDFORD, M.A., F.G.S., M.I.Mech.E.

Consulting Physicians.

P. KEVIN BYRNE, B.A., M.D., B.S., M.R.C.P. (Lond.).
E. G. B. CALVERT, M.D. (Belf.), F.R.C.P. (Lond.), D.P.H.

Consulting Surgeons.

ARTHUR EVANS, M.D., F.R.C.S.
JAMES McCLURE, M.D. (Glas.), C.M., F.R.C.S.

Physicians.

FRANCIS C. ROLES, M.A., B.Ch., M.R.C.P.
J. BRUCE YOUNG, M.D. (Edin.), M.R.C.P. (Lond.)
P. E. THOMPSON HANCOCK, M.B. (Cantab.), F.R.C.P. (Lond.).

Assistant Physician and Neurologist.

A. S. HOLLINS, O.B.E., M.A., M.D., M.R.C.P.

Surgeons.

D. DENHAM PINNOCK, M.B., B.S. (Melb.), F.R.C.S.
R. A. KERR, M.C., M.B., B.Ch. (Belf.), F.R.C.S.
C. HOPE CARLTON, M.C., M.A., M.Ch., F.R.C.S.

Assistant Surgeon.

HARRY FREEMAN, F.R.C.S.

Consulting Ophthalmic Surgeons.

JOHN STROUD HOSFORD, F.R.C.S. (Edin.).
ALFRED E. A. LOOSELY, M.A., M.B., B.Ch., F.R.C.S.

Ophthalmic Surgeon.

A. G. LEIGH, M.D., F.R.C.S.

Gynæcologist.

H. BURT-WHITE, M.D., F.R.C.S., M.R.C.O.G.

Ear, Nose and Throat Surgeon.

E. CAREW-SHAW, F.R.C.S.

Assistant Ear, Nose & Throat Surgeon.

M. GORDON, F.R.C.S.

Physician for Diseases of the Skin.

E. W. PROSSER THOMAS, M.A., M.D., B.Ch.

Medical Officer in Charge, X-Ray Therapy and Diagnostic Depts.

R. MOORE PATTERSON, M.R.C.S., L.R.C.P., D.M.R. & E. (Camb.).

Medical Officer-in-Charge of Physical Medicine Dept.

J. D. THOMPSON, B.A., M.B., B.Ch., B.A.O.

Dental Surgeon.

B. MURRAY DAVIES, L.D.S., R.C.S.

Medical Registrar.

B. GANS, M.D., M.R.C.P. (Dec., 1946—March, 1948).
A. J. MOON, M.B., B.S., M.R.C.P. (March, 1948).

Surgical Registrar.

B. A. MEYER, M.B., Ch.B.

Pathologist Emeritus.

HAROLD H. SANGUINETTI, M.A., D.M., B.Ch. (Oxon).

Pathologist and Bacteriologist.

F. SILBERSTEIN, M.D. (Vienna) (April, 1948).

Anæsthetists.

J. A. S. PURVIS, M.B., B.Ch. (Belf.) G. F. PANTON, M.B., D.A.
S. MILLAR-DANKS, M.B., B.S., D.A.
J. A. W. ROBINSON, M.B., B.S., D.A.

Resident Medical Officer.

A. J. MOON, M.B., B.S., M.R.C.P. (1947).
A. MORGAN, M.B., B.S. (April 1948).

Chiropodist.

D. H. CADMAN, M.S.Ch.

ANNUAL REPORT.

In presenting to the Governors their 75th Annual Report and Accounts and Balance Sheet for the year ending 31st December, 1947, the Board of Management have pleasure in reporting the principal events of the year under review. As this will be the last complete year that the Hospital will be functioning under its old Foundation, perhaps they may be permitted to express a certain feeling of regret at the passing of an association lasting for upwards of three-quarters of a century, and an Institution which, thanks to the able and valued voluntary assistance given by hundreds of devoted friends, has rendered a great and lasting service to the community. It will be appreciated, however, that, as the Hospital will form an integral part of the new Health Service, the future holds out every hope for the continuance of the good work with the greater scope the new service offers for the welfare of the community in years to come. **FORE-WORD.**

They are glad to be able to report that during the year considerable progress towards replacing the various wards and departments in their pre-war positions has been achieved, and although it has not been possible to open all the beds that were then in use, the average number available was 114 against 94 the previous year. **WORK.**

The number of patients treated to a conclusion amounted to 1,864, compared with 1,396 the previous year, the increase being consequent upon the opening of further beds. **In-Patients.**

A considerable rise on last year's figures occurred, as will be seen from the following figures:— **Out-Patients.**

			1946.	1947.
New Cases	5,838	9,768
Attendances	30,248	41,268

This increase is due to the larger number of cases treated throughout, while the additional facilities provided by the Occupational Therapy Section of the Physical Medicine Department have increased attendances at this and other departments dealing with Out-Patients.

The usual heavy demand upon these beds has been maintained. A few rooms on the third floor became available, enabling further cases to be admitted to these beds. Altogether, 401 patients were treated against 266 the previous year. These figures would have been exceeded had it not been necessary at certain periods of the year, and particularly during the summer, to close the beds on the third floor owing to shortage of trained staff. There is no doubt these beds supply a real need of those who are unable to afford the cost of expensive Nursing Homes. **Private Pay-Beds**

Reinstatement of Departments and Wards.

The progress made towards completion of the war-damage repairs during the year has enabled the several wards and departments to resume their pre-war positions for the first time for eight years. The reinstatement of the new lift in the Main Building, replacing the one destroyed in January, 1941, made it possible to bring the upper floors into general use in June, when the Joseph Rank, Richard Rigg and Tustin Wards were re-opened. The fine Operation Theatre at the top of the Main Building, also closed for that period, commenced to function again in January, 1948. The removal from the temporary theatre in the Insull Wing basement has enabled arrangements for the extension of the X-Ray Department to the space thus vacated to be carried out. This is a long-overdue improvement, as this Department has for a long time badly needed more space for the increasing number of patients, and to accommodate new equipment recently installed.

X-Ray Department

Other Special Departments.

The addition to the Physical Medicine Department of an Occupational Therapy Section has provided a much-needed amenity, with Miss D. Birkbeck in charge. This department, which adjoins the Massage and Electrical Department, thus adds to the department's general efficiency a unit which has already proved of much value to those patients able to take advantage of its facilities for assisting them in making a speedy recovery towards convalescence.

Hon. Visiting Staff.

The Board desire to place on record their grateful thanks and appreciation to each member of the Hon. Medical and Surgical Staff, for their unremitting work, and for the loyal and devoted service they have rendered to the patients during the year.

Registrars and Resident Medical Staff.

They desire, also, to tender their appreciation of the services rendered by the Medical and Surgical Registrars and the Resident Medical Staff, who have carried out their respective duties under difficult conditions most efficiently.

Postgraduate Courses.

They are pleased to report that a series of Lectures under the auspices of The Fellowship of Medicine was held in October. As these courses were a regular feature in pre-war days, it is anticipated that in the near future these will be frequently arranged.

Postgraduate Officers.

The arrangement with the Ministry of Health whereby two Class I Officers are appointed for a period of six months, the salary paid to these Officers being reimbursed by the Ministry, has continued, the assistance proving mutually beneficial.

Pathologist.

The Board have to report the retirement of Dr. H. H. Sanguinetti, an old and valued member of the Medical Staff, who, for many years, has been in charge of the Pathological Department. The Board would like to place on record their appreciation and gratitude for Dr. Sanguinetti's devoted service over a period of 35 years.

Obituary.

It is with deep regret that the Board have to record the death in August of Mr. Charles Creed, the Senior Laboratory Technician, who, for over 20 years, carried out his duties with characteristic energy, enthusiasm and ability. His genial temperament endeared him to his many friends and colleagues, and he is much missed.

Mr. Hugh Davidson has been appointed in his place.

NATIONAL HEALTH SERVICE.

The Board have to report that, as the result of the National Health Service Act and negotiations with the Ministry of Health, the Hospital will be transferred on the "Appointed Day," which it is understood is July 5th, and included among those hospitals forming the North-West London Region.

It has, however, been clearly indicated by the Minister of Health that sympathetic consideration will be given to the principles on which the Hospital was founded, and it is understood that the name and identity of the Hospital will be maintained.

It is with much regret the Board have to report the resignation of Mr. W. G. Wilsher, who was obliged to relinquish his membership, having moved to the provinces. Although he served only a short number of years, having been elected in 1943, his co-operation and valued help was sincerely appreciated. **Board of Management.**

A very pleasant event occurred in April last, when a commemorative function was held in the Board Room, the Chairman being entertained at a Dinner by his colleagues, on celebrating his 70th Birthday. Mr. Arthur Downer, the Vice-Chairman, who presided, presented a gold wristlet watch on behalf of the Board, as a memento of the occasion. **Dinner to Mr. H. S. Syrett.**

The Board are deeply indebted to the many friends who have continued their Annual subscriptions and donations, and much appreciate the kindness and generosity accompanying these gifts, which, contrary to expectation, show only a short falling-off compared with the previous year. This is a welcome indication that the charitably disposed have not withheld their support during the difficult transition period, and this should encourage others to do likewise. **INCOME. Voluntary Gifts.**

Altogether £6,974 accrued under this heading, compared with £7,470 in 1946. Included in this total were the following amounts :—

	£
Hospitals' Flag Day	405
Alexandra Rose Day	200
London County Council, Cinema Grant ...	889
Middlesex County Council Cinema Grant ...	100
Prudential Assurance Co. Ltd.	130
Smith's Kensington Estate Charity	125
Dame Elizabeth Cadbury	100
Mr. and Mrs. R. Costain	100
Bernhard Baron Trust	100
Anonymous	200

The above total figure includes gifts from Temperance Societies amounting to £1,046, the various branches of the N.B.W.T.A.U. having contributed £673. **Temperance Societies.**

The many useful gifts of food, clothing and other articles received during the year have given much pleasure to both patients and staff, and are greatly valued and appreciated. **Gifts in Kind.**

The valued assistance rendered by the King Edward's Hospital Fund for London in their award of £2,500, and the grant of the Hospital-Sunday Fund of £430, is acknowledged with gratitude. The Board would take this opportunity of extending their cordial thanks for the welcome help rendered by both Funds, who for so many years have given timely help, which has added considerably towards enabling the Hospital to overcome its financial difficulties so successfully. **Central Funds.**

Receipts on account of services rendered.

The amounts accruing from Patients, both ordinary and private, owing to the larger number of patients treated, show an increase on the previous year of £2,629. Receipts from Contributing Schemes, however, register a decrease, due chiefly to the discontinuance by the Hospital Savings Association of their final grant.

Public Authorities.

The Government Grant during the year, amounting to £37,000, constitutes the major proportion of receipts under this heading, and has been an important factor in enabling the Hospital to continue functioning throughout the year, and meeting the ever-mounting increases in expenditure.

General Fund Investments.

The remaining Investments standing to the credit of the General Fund (£10,714) were realised during the year, on the instructions of the Ministry of Health, towards meeting current expenses and reducing the Overdraft at the Bank.

Legacies.

During the year an amount of £1,966 was received under this heading. The Board would express their deepest thanks for the generous thought which prompted those who remembered the Hospital in their Wills, and to the Executors acting on their behalf.

EXPENDITURE.

The total Expenditure for the year amounted to £67,739, compared with £50,128 in 1946. This very considerable increase is reflected in all headings of expenditure, but more especially that of salaries and wages; the adoption of standard rates of pay and wage rates for all grades having been effected. In order to maintain and increase wherever possible the efficiency necessary to the proper administration of an up-to-date modern Hospital, it is essential that the required staff and the necessary equipment should be secured if possible.

The various Departments are now equipped with every requisite to enable them to function satisfactorily. This has inevitably necessitated additional expenditure in replacing certain outworn apparatus by modern equipment, which expenditure is not likely to recur for some considerable time.

Maintenance repairs to buildings and departments affected by war damage have been carried out as urgently necessary; and the installation of a Cold Storage Room has provided the Catering Department with a much-needed improvement.

Cost per Bed.

The average cost per occupied bed shows an increase on that of the previous year, and is consequent upon the general all-round increases referred to. It is anticipated that, when all the available beds are open the average cost should register a definite decrease. During the year the number of beds closed was 44, due chiefly to war damage and other repairs, but also to a shortage of nursing staff.

NURSING.

The requisite numbers of nurses sufficient to staff the additional beds which became available during the year were obtained; student nurses having come forward more satisfactorily generally, but at certain times it has been hard to secure fully-trained staff, with the result that at some periods of the year a number of beds have had to remain closed. As the number of students increases the position proportionately is rendered easier. Owing to the position of the building and repair work, and the difficulty experienced in securing

staff, it has not been possible to register the minimum of 100 occupied beds (the General Nursing Council's minimum occupation to constitute a training school for nurses). It will be of interest to report, however, that this figure was considerably exceeded during the latter months of the year, when more beds became available due to the progress of the repair work. It is anticipated that there will be no difficulty in exceeding the required minimum number during 1948.

The securing of further places for students at the Preliminary Training School at Barnet, has somewhat eased the nursing situation. The building up of a considerably larger body of nurses from this source is essential to obviate the engagement of outside trained staff and assistant nurses, which has been necessary during the year, to keep the beds open.

**Preliminary
Training
School.**

Miss M. Auty was appointed in charge of this Department in February, 1947, following the resignation of Miss Monica Brogan in October, 1946.

**Massage and
Electrical
Department.**

Some progress has been made in providing a small number of rooms in the recently acquired premises adjoining the Hospital. Owing to the whole of these premises not being available until 1949 (the Day Nursery now in occupation will then be vacating), there is still need for a considerable number of rooms for nursing and domestic staff, to enable all the beds to function.

**Nurses' and
Domestics'
Sleeping
Accommoda-
tion.**

Resignations occurring during the year were that of Miss Marjorie Ramsden, who was appointed Sister in 1938, and who resigned to take up a course in Administration at the Royal College of Nursing, and Miss Dorothy L. Jones, Sister of Thomas Cash Ward, who resigned to take up the post of Matron of a Nursing Home.

Resignations.

The Board are glad to report that a considerable amount of excellent work has been achieved during the year by this Fund, the result of the efforts of the Almoner, Miss D. K. Collin, whose Report will be found on page 27. Miss Collin will be grateful for any financial help towards the augmentation of this Fund, which renders help in so many different ways to those patients in particular need of assistance. Contributions will be thankfully received and faithfully applied. This work cannot be met by Grants from the Ministry of Health, and it is therefore an opening for those who would like to continue to help the Hospital, but are deterred by the feeling that as it is now a State-aided Institution further voluntary assistance is unnecessary.

**Samaritan
Fund.**

The appointment in December of Mr. L. A. Sheffield, to take up the position as Steward is a step which the Board have taken as essential to deal with the modern difficulties of supplies, and to supervise the work of the Stores and male staff generally.

STEWARD.

The Board are deeply indebted to all who have given their willing and generous help in various ways for the benefit and comfort of the patients. They would refer especially to the ministrations of the various religious bodies, and particularly the members of the Highgate Baptist Church Choir, who have continued their regular weekly visits and ministrations to the patients; to the Librarian, Miss P. M. Mills, whose much-appreciated work under the auspices of the British Red Cross Society adds so greatly to the comfort and happiness of the patients in the weekly distribution of books to Mr. C. Howard for his valued help in entertaining the patients and staff on various occasions throughout the year, and to

THANKS.

the members of the North-West London Hospital Fund, whose voluntary services in collecting funds on visiting days are deeply appreciated. They also thank all those other friends who have come forward from time to time and given gratuitously of their best in the interests of the patients and staff.

To all those friends who have given so whole-heartedly of their best towards creating the good name this Hospital has deservedly won during the past 75 years, not only in vindicating the aspirations of those who were confident that the treatment of disease without recourse to the ordinary administration of alcohol was definitely beneficial to the well-being of the community, but to those who have given unstintedly to help maintain the Hospital in its great efforts to relieve the sick and needy, the Board give their hearty and sincere thanks.

**Appreciation
to Staff.**

The Board also wish to express their gratitude and thanks to every member of the Administrative, Nursing and Domestic Staffs who, throughout a difficult period, notwithstanding many restrictions, have carried out their respective duties in a loyal and efficient manner.

**Retirement of
Mr. A. C.
ADAMS.**

They cannot conclude this Report without reference to the impending retirement of their Secretary and House Governor, Mr. A. C. Adams, appointed in 1921. Mr. Adams has, for the past 27 years rendered loyal and devoted service to the Hospital and the Board, and carried out his duties in the most efficient manner throughout a period of difficult and sometimes desperate conditions. The Board are sure that all friends and supporters of the Hospital would wish to extend to Mr. Adams their good wishes for a long and restful retirement, which he may yet be spared to enjoy in the years to come.

The Board are taking the necessary steps to secure a competent successor to Mr. Adams, who, it is hoped will be able to take over the administration of the Hospital prior to the "Appointed Day," when, under Act of Parliament, it is transferred to the Ministry of Health.

**"Appointed
Day."**

The object of handing over to the Ministry of Health on the "Appointed Day" in July, an efficiently equipped General Hospital, functioning in every way satisfactorily, and able to cope with every form of disease with the most modern and up-to-date methods, will largely have been achieved. To continue this good work on identical lines as heretofore is our confident hope for the future.

The fact that all Hospitals have, as the result of the example set forth by this Hospital, reduced the consumption of alcohol to a minimum, is an admirable one, and can justly be regarded as an achievement worthy of the making.

**CONCLU-
SION.**

Finally, they desire to express a deep sense of thankfulness to Almighty God for the guidance and sustenance rendered to those responsible for the administration of the Hospital during the past years, and for enabling the required resources to be forthcoming over this long period. They earnestly pray that the future may envisage bright prospects for even greater service for the benefit of humanity and the cure of disease.

HERBERT S. SYRETT,

Chairman.

ALMONER'S REPORT FOR 1947.

1947 was an interesting year and can, I think, be used as a pointer for the future. Extra work was done, involving long and continuous case-work on some patients, particularly cancer cases, and for some such patients life was made at least more endurable than it would otherwise have been. The National Society for Cancer Relief were particularly helpful. Many old patients came back again and again for various forms of help and advice.

Finance is the feature this year I wish to stress. In 1947 there was a further increase in the money raised; in 1945 £500 was paid into the bank; in 1946 £1,000; and in 1947 just over £1,300. Most of this was contributed for definite cases, but some £300 was raised for general use, partly from the Jumble Sale, partly from the General Office Sale of Work, and partly from generous subscribers. I am stressing this financial side because it seems to me that in the future the Samaritan Fund should be more, instead of less, useful. It might be argued that with the new Health Plan so much will be paid by the Government that a Samaritan Fund will not be necessary. This should not be so; rather it should be possible for us to do work hitherto undreamed of. The Samaritan Fund is still to be the Hospital's to be disposed of as it will. If more subscribers help, the quality of the work done should be greatly improved. Hitherto the Almoner has only been able to aim at the bare necessities for the sick patient. The very inadequate Sick Benefit has only been supplemented by Relief and perhaps a small Samaritan Fund grant. In the future with a reasonable Insurance Benefit and a good Samaritan Fund, other plans can be made. Extra nourishment, help with domestic assistance, all those little extras which make so much difference when one is ill, should be possible more often. This should also relieve the worry and strain which the patient so often feels when his life savings are gradually dwindling, and which in the past has been unavoidable. Again, extra pocket money for convalescent cases should be possible, for if the Ministry pay the convalescence and the Almoner no longer has to raise the money, something for enjoyment can be provided. This should make convalescence far more worth while and far more successful. Again, there are those sick folk without wirelesses, and Old Age Pensioners on a tiny income, where a little help makes all the difference—indeed there are endless possibilities.

I should like to quote a case dealt with last year, to suggest the type of work already being done. An out-patient came up to one of the Medical Clinics. He was an epileptic, dirty, and generally not very desirable. For a week hostel accommodation was arranged while he was under medical supervision. Then he was helped with lodgings and finance. True the lodging was only Rowton House, but it was more or less a permanent place of residence. It is again true that for a time we lost trace of him, but back he came, and he was helped again. Now he is gradually regaining his self-respect and he works as a gardener. He is a little cleaner and I think on the way to becoming a respectable and useful citizen. Maybe next year the Physician will suggest retraining. If so, no doubt it can be arranged.

Maybe there will be something else. In any case he looks like being a comparative success.

DOROTHY K. COLLIN,

Almoner.

In-Patients' Department.

GENERAL STATISTICAL SUMMARY.

From 6th October, 1873, to 31st December, 1947.

(Seventy-Four years and three months.)

TOTAL IN-PATIENTS ADMITTED, 83,020.

I. *Results—*

Cured	46,223
Relieved	24,963
Unrelieved		5,977
Died	5,857
			Total	..	83,020

II. *Classification—*

Abstainers		28,156
Non-Abstainers		37,425
Unclassified and Children				...	17,439
			Total number admitted		83,020

NATIONAL TEMPERANCE HOSPITAL

I have pleasure in enclosing £ : : towards the Funds of the Hospital to be allocated thus :—

Donation	Subscription
£ : :	£ : :

Name

Address

Cheques and Postal Orders should be made payable to the Order of the Hospital and crossed "Westminster Bank Ltd." Treasury notes should be registered.

ORDER ON BANKERS

To Messrs.....

Gentlemen,

Please to pay annually until further notice on the.....

day of.....the sum of.....

to the Credit of NATIONAL TEMPERANCE HOSPITAL, at THE WESTMINSTER BANK LIMITED, 52, Threadneedle St., E.C.2, and charge the same to my account.

Signature.....

Date.....

£ : :

Annual Statistical Summary.

For In-patients during the years 1946 and 1947.

	1946.	1947.
Total Bed Complement	158	158
Average number of beds open during the year	94	114
Average number of Patients resident daily throughout the year	77	92
Number of In-Patients in the Hospital at beginning of the period	83	76
Number of In-Patients admitted during the year	1,389	1,876
Number of In-Patients in the Hospital at the end of the period	76	88
Average number of days each Patient was resident	20	18
Maximum number of beds occupied at one time	91	111

Cases treated to a conclusion within the years 1946 and 1947 :—

	1946.	1947.
Number in the Hospital at the beginning of the period	83	76
Number admitted during the year ...	1,389	1,876
Total	1,472	1,952
Number remaining in the Hospital at the end of the period	76	88
Total treated to conclusion	1,396	1,864

Annual Results of Treatment: In-Patients.

		Cured.	Relieved.	Un- relieved.	Died.	Total.
Oct. 6, 1873, to	April 30, 1874	33	39	—	1	73
Year ending	April 30, 1875	62	56	—	11	129
"	April 30, 1876	63	54	—	6	123
"	April 30, 1877	81	44	—	5	130
"	April 30, 1878	70	55	—	5	130
"	April 30, 1879	87	47	—	6	140
"	April 30, 1880	76	55	—	4	135
"	April 30, 1881	92	46	—	5	143
"	April 30, 1882	207	125	—	19	351
"	April 30, 1883	210	183	—	18	411
"	April 30, 1884	314	165	—	34	513
"	April 30, 1885	337	217	—	30	584
"	April 30, 1886	363	217	—	44	624
"	April 30, 1887	282	300	38	54	674
May 1, 1887, to	Dec. 31, 1887	249	180	32	34	495
Year ending	Dec. 31, 1888	328	291	59	57	735
"	Dec. 31, 1889	347	306	50	50	753
"	Dec. 31, 1890	390	258	60	45	753
"	Dec. 31, 1891	386	230	84	51	751
"	Dec. 31, 1892	549	201	55	54	859
"	Dec. 31, 1893	681	257	23	75	1,036
"	Dec. 31, 1894	701	254	30	59	1,044
"	Dec. 31, 1895	709	213	45	99	1,066
"	Dec. 31, 1896	802	202	65	88	1,157
"	Dec. 31, 1897	682	323	62	108	1,175
"	Dec. 31, 1898	705	401	84	100	1,290
"	Dec. 31, 1899	715	469	59	111	1,354
"	Dec. 31, 1900	851	234	80	117	1,282
"	Dec. 31, 1901	877	237	78	107	1,299
"	Dec. 31, 1902	780	421	143	127	1,471
"	Dec. 31, 1903	882	305	93	96	1,376
"	Dec. 31, 1904	735	439	65	98	1,337
"	Dec. 31, 1905	693	385	71	108	1,257
"	Dec. 31, 1906	756	312	83	115	1,266
"	Dec. 31, 1907	819	306	65	122	1,310
"	Dec. 31, 1908	674	418	100	120	1,312
"	Dec. 31, 1909	684	396	92	107	1,279
"	Dec. 31, 1910	721	395	69	104	1,289
"	Dec. 31, 1911	653	543	125	140	1,461
"	Dec. 31, 1912	837	441	61	110	1,449
"	Dec. 31, 1913	842	340	141	124	1,447
"	Dec. 31, 1914	826	219	127	119	1,291
"	Dec. 31, 1915	783	281	87	82	1,233
"	Dec. 31, 1916	680	295	106	90	1,171
"	Dec. 31, 1917	591	444	45	75	1,155
"	Dec. 31, 1918	735	250	67	102	1,154
"	Dec. 31, 1919	793	238	87	108	1,226
"	Dec. 31, 1920	932	216	100	79	1,327
"	Dec. 31, 1921	861	380	93	91	1,425
"	Dec. 31, 1922	452	440	74	93	1,059
"	Dec. 31, 1923	264	250	62	55	631
"	Dec. 31, 1924	465	364	71	87	987
"	Dec. 31, 1925	454	403	63	109	1,029
"	Dec. 31, 1926	588	459	52	117	1,216
"	Dec. 31, 1927	590	595	62	114	1,361
"	Dec. 31, 1928	794	445	111	118	1,468
"	Dec. 31, 1929	892	303	104	123	1,422
"	Dec. 31, 1930	723	358	129	94	1,304
"	Dec. 31, 1931	698	309	190	88	1,285
"	Dec. 31, 1932	781	421	84	110	1,396
"	Dec. 31, 1933	993	323	98	105	1,519
"	Dec. 31, 1934	881	633	142	100	1,786
"	Dec. 31, 1935	1,024	657	136	104	1,921
"	Dec. 31, 1936	897	792	210	100	1,999
"	Dec. 31, 1937	750	769	267	99	1,885
"	Dec. 31, 1938	903	794	268	96	2,061
"	Dec. 31, 1939	842	706	167	85	1,800
"	Dec. 31, 1940	903	608	114	79	1,704
"	Dec. 31, 1941	578	347	85	39	1,049
"	Dec. 31, 1942	853	376	90	54	1,373
"	Dec. 31, 1943	918	335	108	59	1,420
"	Dec. 31, 1944	792	291	171	87	1,341
"	Dec. 31, 1945	738	386	126	79	1,329
"	Dec. 31, 1946	710	482	126	78	1,396
"	Dec. 31, 1947	1,214	434	143	73	1,864
	Total	46,223	24,963	5,977	5,857	83,020

Form of Bequest.

“I Give and Bequeath to THE NATIONAL TEMPERANCE HOSPITAL of Hampstead Road, London, N.W.1, the sum of.....free of Legacy Duty, to be applied for the general purposes of the said Hospital.”

IMPORTANT.—By the Mortmain and Charitable Uses Act, 1891, Property of all kinds, including land of any tenure and also including Money lent on Mortgage and the securities therefor, may now lawfully be given to Charitable Institutions by Will.

The above printed form can be readily adapted to Gifts of Land by the substitution of the word “devise” for the word “bequeath.”

When a Will has been already made, and it is afterwards desired to benefit the Hospital, it will be sufficient if the form below is filled up, detached, duly signed and witnessed in like manner as the Will itself, and carefully attached to the existing Will.

This is a Codicil to the last Will and Testament of me.....dated.....

I give and bequeath to THE NATIONAL TEMPERANCE HOSPITAL of Hampstead Road, London, N.W.1, the sum of.....free of Legacy Duty, to be applied for the general purposes of the said Hospital. In witness whereof I have hereunto set my hand thisday of.....19.....

Signature of Testator or Testatrix.

Signed by the Testator..... as and for a Codicil to his.....
last Will and Testament dated.....
in the presence of us, both present at the same time, who at
his..... request, and in his..... presence, and in the presence
of each other, have hereunto set our names as witnesses.

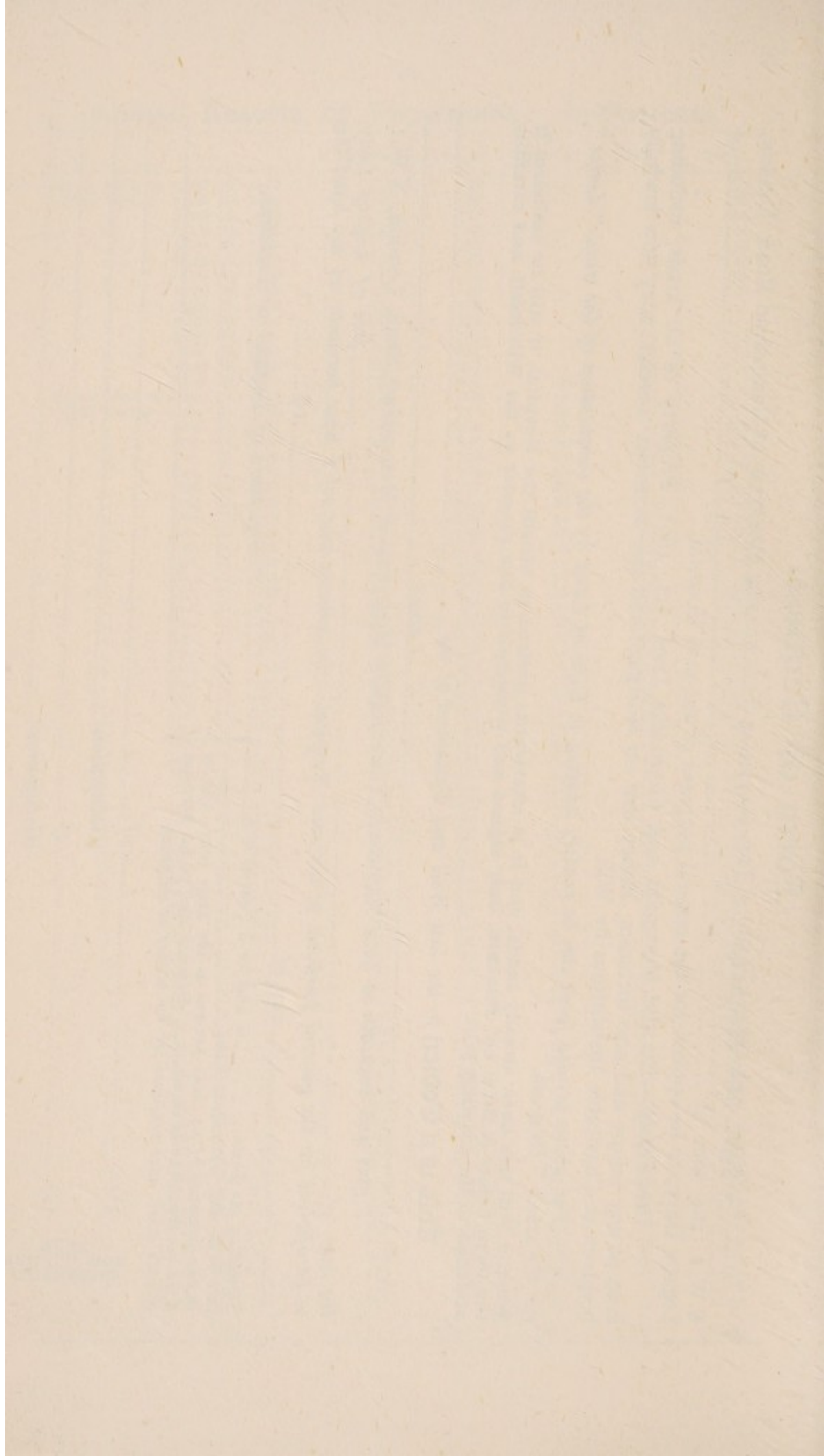
WITNESSES
SHOULD SIGN
HERE.

(1).....of.....

(Occupation)

(2).....of.....

(Occupation)



RESULTS (1947) :—

Cured	1,214
Relieved	434
Unrelieved	143
Died : Males 44, Females 29	73
	<hr/>
	1,864
	<hr/>

PERCENTAGE MORTALITY :—

For the aggregate	3.9
For the Males	5.9
For the Females	2.7

Abstainers, Non-Abstainers, etc.

Abstainers from Alcohol	483
Non-Abstainers	768
Children	613
	<hr/>
	1,864
	<hr/>

Exceptional Cases.**Administration of Alcohol under Rule LXII.**

RULE LXII.—EXCEPTIONAL CASES.

“As a special object of the Association is to discourage in the treatment of diseases the employment of alcohol, and to collect and furnish trustworthy evidence of the results of its disuse, it shall be incumbent on the prescribing Medical Officer, in any case where alcohol in any form is ordered for a patient, to enter in a book kept for that purpose the full particulars of the prescription, including the time, quantity, and reasons of its administration. The effect of the dose also shall subsequently be noted. *A record of all such cases in each year shall be included in the following Annual Report.*”

Extract from Board Minutes, 10th September, 1947.

“Mrs. C., aged 49 years. Admitted 26/4/47. Discharged 26/7/47. This patient was admitted suffering from bilateral ovarian carcinoma with many secondary deposits. The whole growth was inoperable. She later had deep X-Ray Therapy, which produced severe vomiting. Only fluids could be retained. To keep up her strength, I ordered Brandy as an easily assimilated form of nourishment in such a case; in all 40-oz. were given. The effect of alcohol was beneficial as it enabled the patient to finish her course of treatment. She is still alive and manages to look after her own house.”

H. Burt-White, M.D., F.R.C.S., M.R.C.O.G.

OUT-PATIENT DEPARTMENT

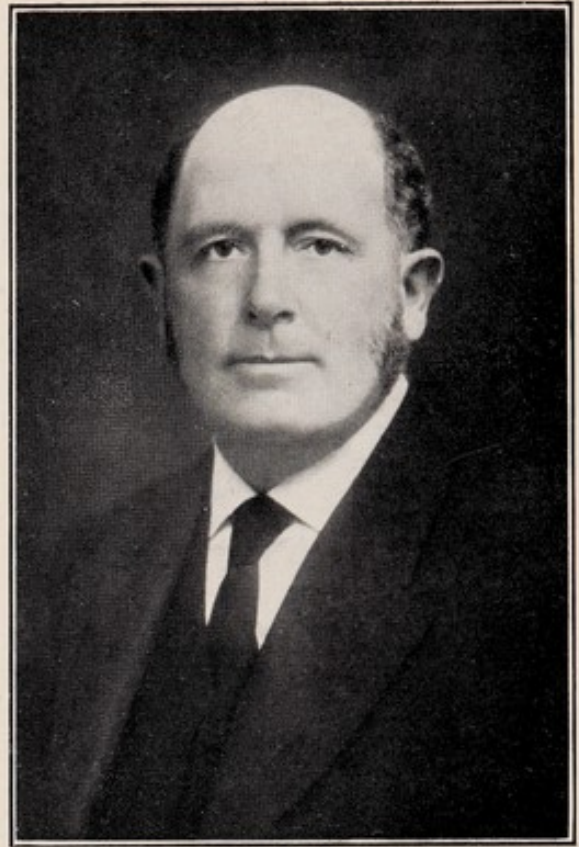
	New Out-patients	Out-patient Attendances.
	1947	1947
Casualties (including Road Accidents) ...	2,774	12,700
Medical	544	3,146
Surgical	752	2,960
Physical Medicine Clinic	320	1,317
Physiotherapy Dept.—		
Massage and Electrical	1,468	11,523
Sunlight	58	478
X-Ray Diagnostic	1,612	2,408
Treatment	120	1,156
Radiological Department Inspections ...	91	990
Occupational Therapy (seven months) ...	35	391
Electro Cardiograph	130	130
Ophthalmic	116	428
Fracture Clinic	76	441
Gynæcological	111	416
Ear, Nose, and Throat	655	1,012
Dental	72	267
Dermatological	168	576
Chiropody (three months)	60	325
Pathological	606	606
	9,768	41,268
	9,768	41,268

X-RAY DEPARTMENT

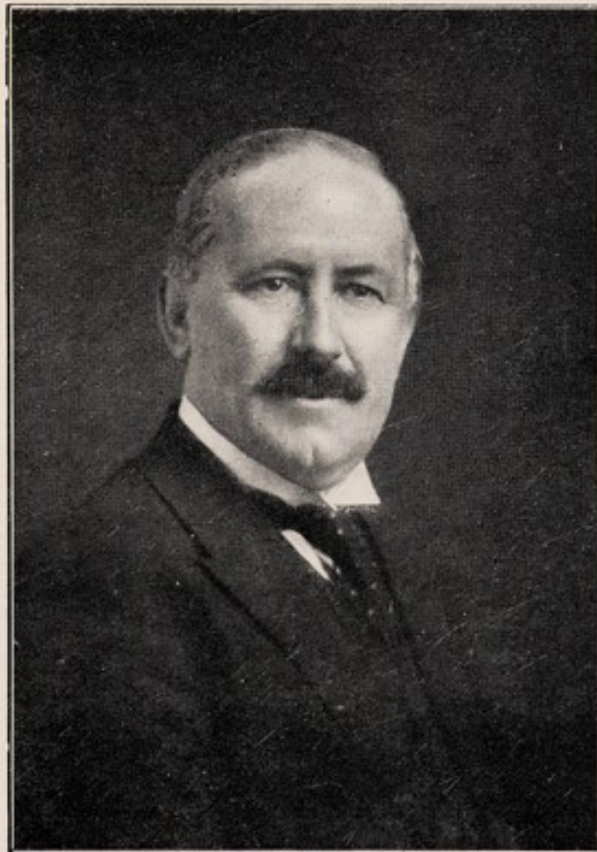
	1947 Attendances.
Diagnostic : In-patients	1,416
Out-patients	2,408
Number of Radiograms	15,296
Deep and Superficial Therapy.	
Patients	319
Attendances	1,614
Physiotherapy—Physical Medicine Department.	
In-patients	2,861
Out-patients	12,001
Occ.-Ther. (Seven months)	
In-patients	1,668
Out-patients	391



THOMAS CASH, Esq.
Chairman Board of Management 1873-1899
President 1900-1901



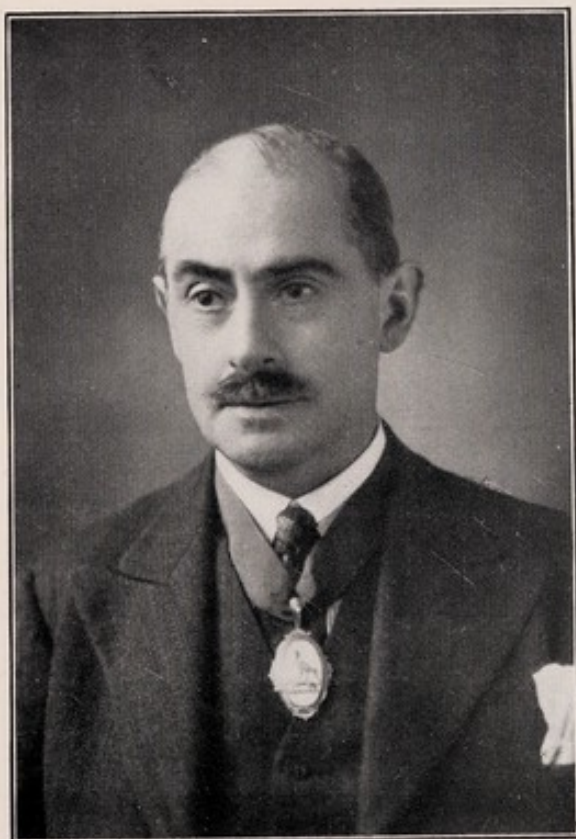
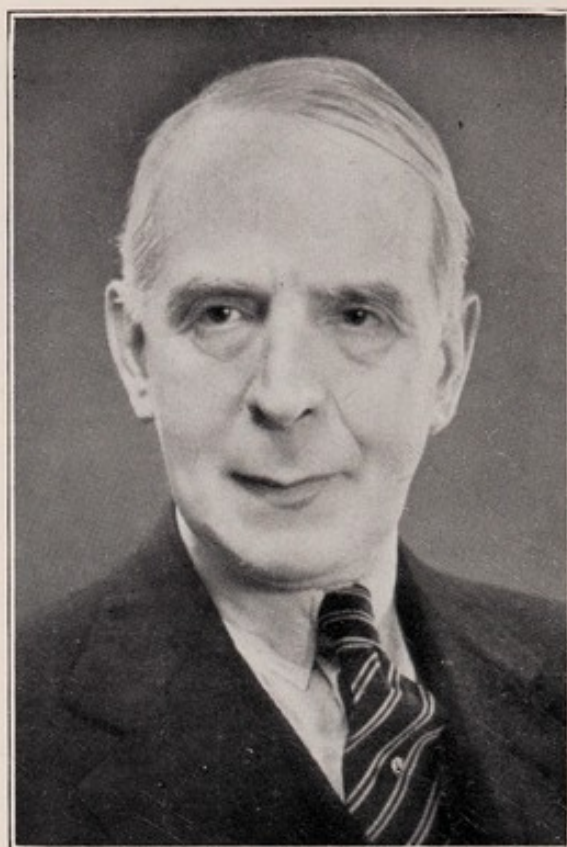
The Rt. Hon. Sir T. VEZEY STRONG,
K.C.V.O., K.B.E.
Chairman Board of Management 1899-1920
(Lord Mayor of London 1910-1911)



MAJOR RICHARD RIGG, O.B.E., T.D.,
J.P., M.A., F.S.A.
Chairman, Board of Management 1920-1939
President 1939-1942

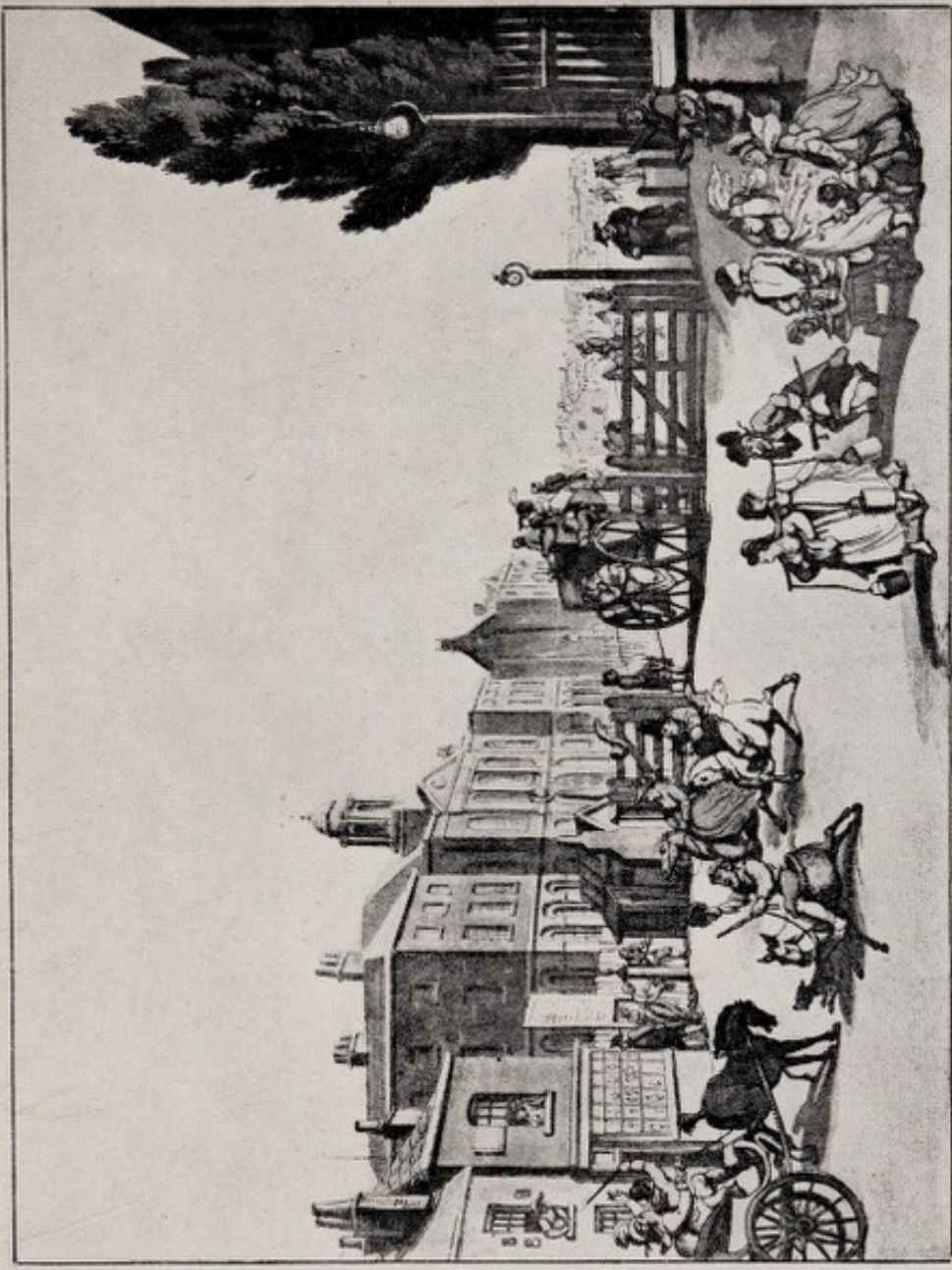
HERBERT S. SYRETT, Esq.,
C.B.E., LL.B., C.C.

Member of Board of Management 1928
Vice-Chairman Board of Management 1939
Chairman Board of Management 1939-



ARTHUR DOWNER, Esq., F.C.I.S.
Member of Board of Management 1929
Chairman of Nursing Committee 1940
Vice-Chairman Board of Management 1945-

This
 Print
 of the
TURNTPIKE
 Hampstead
 Road
 1800
 Taken from the
 Corner of what
 is now Robert St.
 depicts the Extra
 Moral Chapel of
 St James Westminster
 & the wing now
 occupied by the
 Temperance
 Hospital. &c
 presented to the
 Institution by
 John Leighton,
 Esq. &c.
 1890.

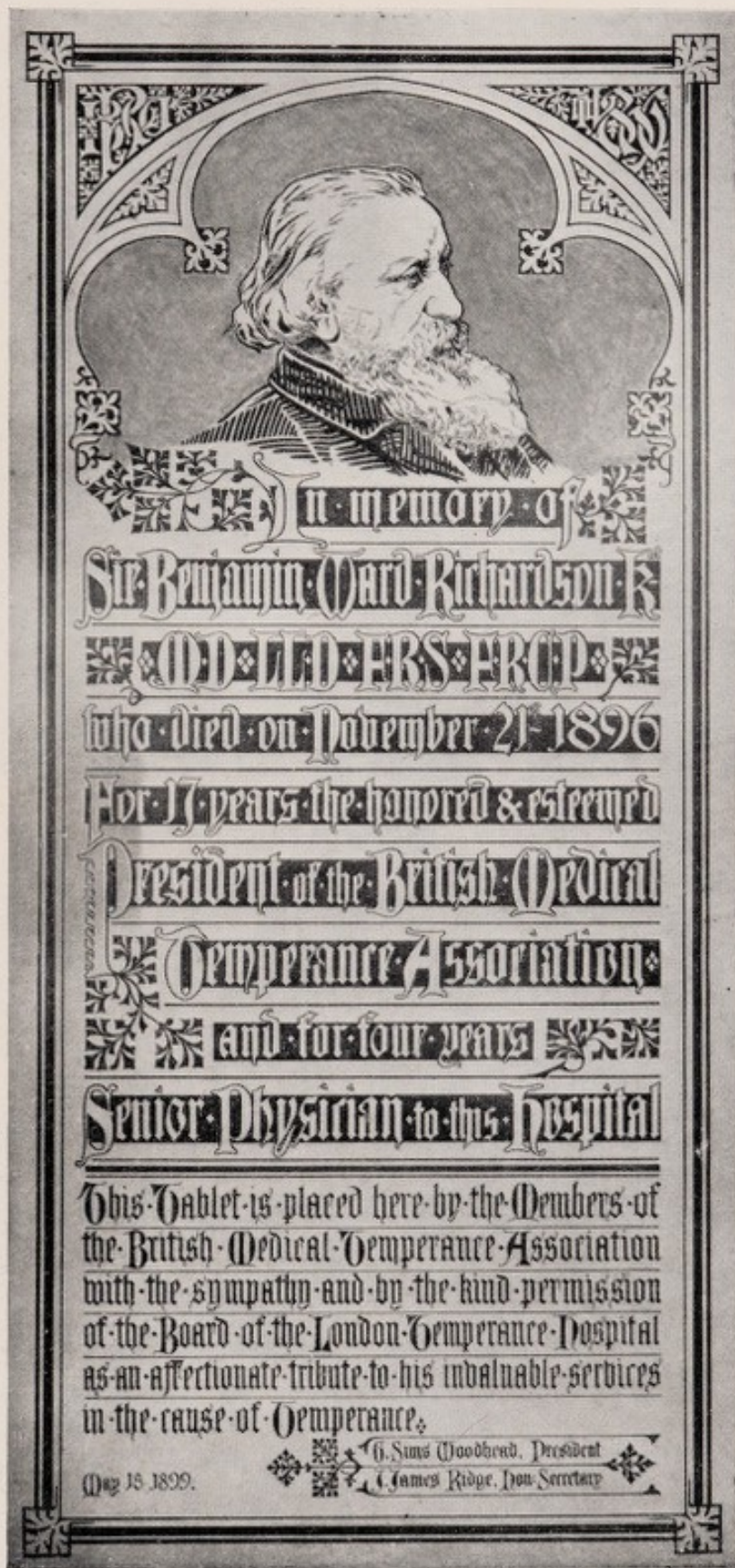


ROWLANDSON 1800.

Illustration showing St. James' Church, Hampstead Road, and ground now occupied by Main Building and Insull Wing.



View of the original premises, No. 112, Gower Street, containing 17 beds, in use from 1873 until the opening of New Buildings in Hampstead Road in 1881.



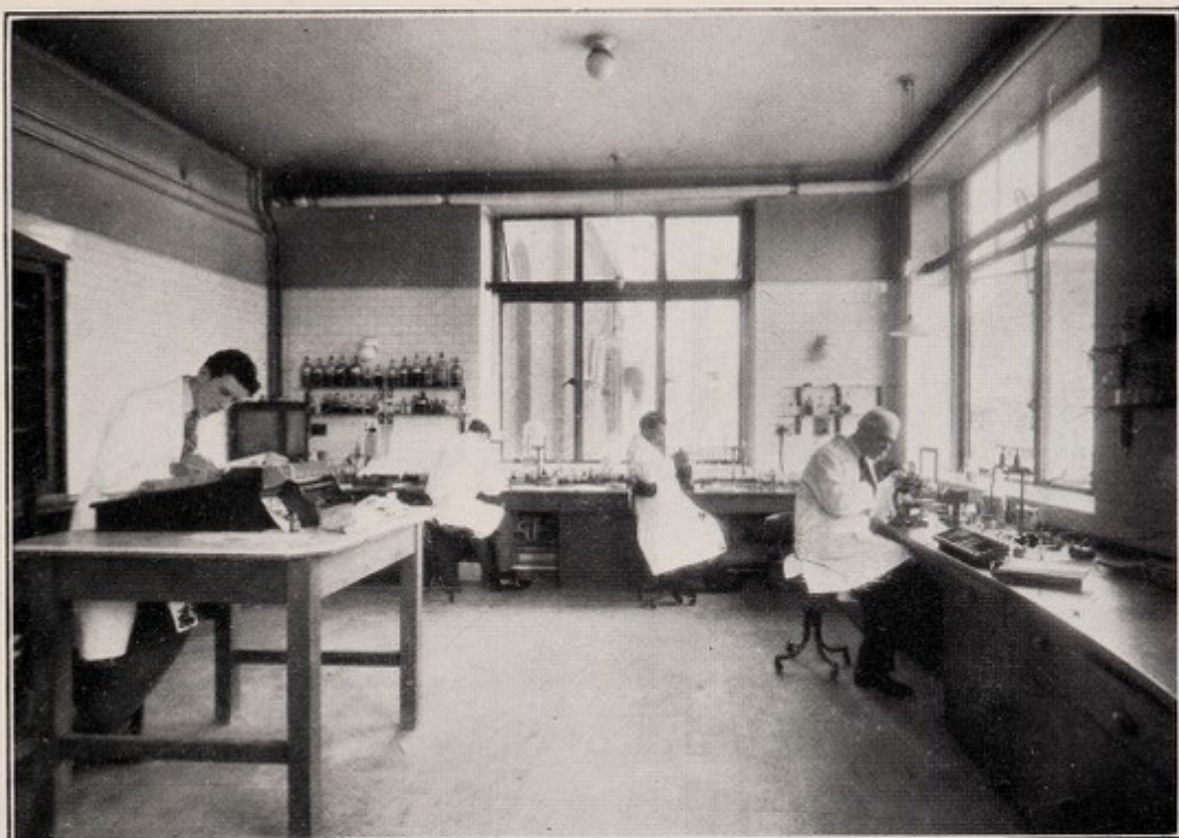
This Brass Tablet to the Memory of Sir Benjamin Ward Richardson, M.D., LL.D., F.R.C.P., Physician to the Hospital, is to be seen in the Main Building.



View of Main Building and Insull Wing.



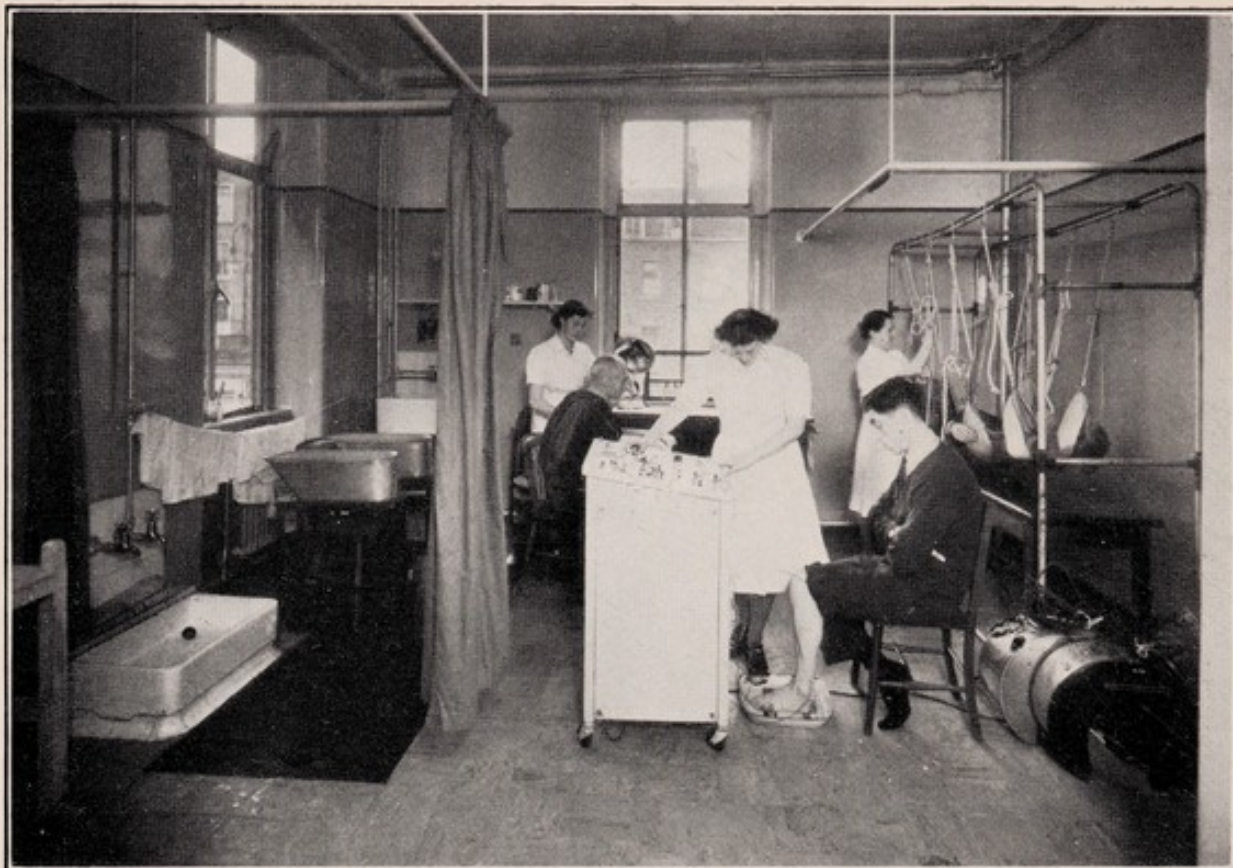
Front aspect of Insull Memorial Wing completed 1932 and the newly acquired building on adjoining site, to be used as a Nurses Home.



View of Main Laboratory—Pathological Department showing Dr. H. H. Sanguinetti and his Staff.



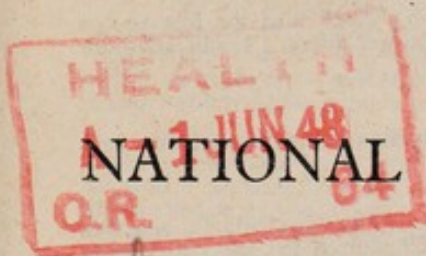
View of the new Occupational Therapy Department, with Miss D. Birkbeck and some of the patients.



View of Massage and Electrical Department in its restored quarters showing Miss M. Auty and patients.



View of Sturge Ward



THE
TEMPERANCE HOSPITAL

Library, W'hall.

President

DAME ELIZABETH CADBURY, D.B.E., M.A., J.P.

Holy Crown

Verbatim Report of Proceedings at the Seventy-Fifth Annual Meeting, held at Hampstead Road, London, N.W. 1, on Wednesday, the 5th day of May, 1948.

MR. HERBERT S. SYRETT, C.B.E., LL.B., C.C.
(Chairman of the Board of Management) Presided.

It has been one of our pleasures to help the whole of England. The fellowship and friendliness that goes between those who are well and those who are ill and the almost innate desire that everyone has to help those who are ill in hospital or those who are ill in their own homes does much towards healing the sick. But now the State is going to take over sometime in July. We are wondering what it is going to be like—perhaps Mr. Messer will tell us whether it is really going to be a fairy godmother. I had hoped—and gathered that you do too—that all our friends would still be interested in the Hospital and visit it and do what they can for those who are friendless or who have difficulties or sadness.

I would like to say a word or two about my husband, if I may. We have a cripple hospital in Birmingham, which now has about 250 beds. It was founded by my husband for crippled children, and he used to go every Sunday afternoon and talk to the children. Some of them who have now grown up have told me how much they appreciated those visits and I suggest that we do not want to lose any of that fellowship which exists between the ordinary public and those who are suffering.

Thank you very much for re-electing me President. Once more I hope that the Hospital will continue to do its good work and will go on even better than before. (Applause.)

THE CHAIRMAN: Thank you. Now, Mr. Moustardier, will you second that?

Mr. MOUSTARDIER: Thank you very much for re-electing me as treasurer although I am rather wondering whether a treasurer will be required after the 5th of July. I can quite see that the Government will buy its goods in bulk and send the goods of one kind to one hospital and goods of another kind to a different hospital.

THE CHAIRMAN: The next item is to elect our good friends Messrs. Viney, Price and Goodyear as auditors for the ensuing year, and I would like to say here and now how much we are indebted to Messrs. Viney, Price and Goodyear who bring their technical and professional knowledge to bear on our accounts and frequently pull us up when we go wrong and occasionally help us along. I am very glad to have the pleasure of moving that they be re-elected. I will ask Mrs. Hannay to second that resolution.

Mrs. H. B. HANNAY: I have very much pleasure in seconding that resolution.

THE CHAIRMAN: Thank you. All those in favour kindly hold up their hands. I declare that to be carried. I will now ask Mr. Penney to reply.

Mr. PENNEY: Dame Elizabeth, Mr. Chairman, and friends, I thank you for the re-appointment of my firm. Mr. Thomas asked whether it would be the right thing to re-appoint us for the ensuing year and we thought about it, and said we would be re-appointed. But whether we shall function after the 5th of July we do not know—however, we are on the safe side. At any rate, I shall sit here just as long as I can. Thank you for our re-appointment.

THE CHAIRMAN: The next item is rather a personal matter because it is the re-election of certain members of the Board of Management who retire, including myself and my friend, Mr. Downer, the Vice-Chairman, and my friend and colleague, the Rev. Reid Christie. There again, one does not quite know what our position is going to be under the new regime, because, of course, under the new Act of Parliament, the Committee, or the Board of Management, is appointed by the Regional Board which they set up, but at all events we have—as has already been pointed out—to carry on until the 5th of July. My aim and ambition has always been to get this Hospital worked up to concert pitch so that when we hand over—perhaps Mr. Messer does not like the expression “hand over”—and enter into this new partnership we may feel that we have done our job and that we have no reason to be ashamed of the Hospital, or the organisation or the personnel on the staff, of which I am sure we are all intensely proud. Therefore, for these reasons, I will ask you to re-elect those members to the Board of Management, and I will ask Councillor Treby to formally propose this resolution.

COUNCILLOR H. J. TREBY: Mr. Chairman, ladies and gentlemen, it is a very great honour and privilege for me to be able to propose this rather important motion. The Chairman has told you of the functions of the committee and he has left me very little to say. He has left out, however, his very own great abilities, his chairmanship, and how tactfully and patiently he presides over the Board. Mr. Downer does an immense amount of detailed work, not only at the board meetings, but he is often here in the week with the nurses—I know he is very popular with them, but I do not say that in any wrong way. (Laughter.) He has very much at heart their interests and I think they owe him a debt of gratitude for what he has done. (Hear, hear.)

Now I come to my dear old friend, the Rev. Reid Christie. We all know him so well and are delighted to see him here to-day; it is always a real pleasure when he is able to be with us. The Board have to go on until the 5th of July. What will happen after then we do not know, but I hope that Mr. Messer and his Regional Board will see to it that at least these three gentlemen will be allowed to pursue their activities and to co-operate with them, not only in a partnership, but to help to relieve them in the financial position. So, Mr. Chairman, I have very great pleasure in moving that yourself, Mr. Downer and the Rev. Reid Christie be re-elected as members of the Board.

THE CHAIRMAN: Thank you. Will somebody second that?

Mr. C. F. SMITH: I would like to have the pleasure of seconding that. I should also like to refer to your position during this transitional period, and I should like to mention here how you have overcome the obstacles and what a vast amount of work you have put in to try to put this Hospital in a right position when the carryover takes place. I should like to refer particularly to Mr. Downer's work on the nursing committee—you have already mentioned it, but I would like to stress it. I have very much pleasure in seconding the proposal.

THE CHAIRMAN: Thank you very much, Mr. Smith. Now then, the resolution is that I, Mr. Downer and the Rev. Reid Christie be re-elected on the Board of Management under the conditions which I have indicated. Those in favour kindly hold up their hands. Those against? Carried. Thank you very much.

Well, now, I see that I am next on the agenda to reply, but as I am replying to Mr. Messer—who is going to speak next—I will ask Mr. Downer to say a word, if he will, in response to this re-election, and then I am going to ask Mr. Messer to address the meeting.

MR. DOWNER: Dame Elizabeth, my dear friends, thank you very much indeed for re-electing the three of us. I am replying for the three of us and for the Board of Management, for the very glowing tributes that have been paid by the proposer and seconder—tributes very well earned by the Chairman and Rev. Reid Christie I am sure. I am a little bit embarrassed, but in reply I do want to emphasize what has already been said. During the very difficult period through which we have been passing for some months, Mr. Syrett, as Chairman of the Board, has carried out an enormous amount of work and detailed examination in connection with this new health scheme. I do not think anyone on the Board of Management would have been able to cope with it in such a masterly way as he has. We have come to meeting after meeting of the Board to find that Mr. Syrett has gone through much correspondence before the meeting and could tell us exactly how we stood. We should have been in a very difficult position had Mr. Syrett not been here to help us. We have paid tributes before, but we owe Mr. Syrett a great debt of gratitude and I hope that under this new scheme—whatever it may be—we shall at any rate have Mr. Syrett in a position to look after the interests of this Hospital. Thank you very much indeed for re-electing us.

THE CHAIRMAN: Mr. Messer, would it be convenient for you to give your address now. Do not be limited by the National Health Service—you can just speak as you feel. (Laughter.) Thank you very much. (Applause.)

MR. FRED MESSER, J.P., M.P.: Mr. Chairman, Dame Elizabeth, Mr. Mayor, ladies and gentlemen. If I were to talk on the National Health Service, it would take very much longer than the time at my disposal. At the present time I am engaged in going round to different parts of the region talking on Management Committees. Usually these meetings last for anything from one to two hours, and if, therefore, I were to talk on the Service as a whole, you would be very tired before I had finished and would probably understand less about it at the end than you did at the beginning.

I propose concentrating my attention, therefore, on the position that your Hospital is going to play. To do that it will be necessary to give you the background and indicate just how the scheme has been erected. The Minister is going to be responsible to the country for this service. He is not going to run the service—he could not. His department is not going to run the service, and you, Mr. Chairman—along with anybody else who has had anything to do with the Ministry of Health—know that they could not even if they tried. It is not their function.

What the Minister has done is to divide the country up into 14 regions which roughly means that each region will cover between three and four million people and to appoint a Regional Board for the organisation of the hospital service. But if the Ministry of Health cannot run the service neither can a Regional Board. First of all, I want to dispel any doubts that some armed body is going to direct your activities—nothing of the sort. What the Regional Board will do is to plan the service very much better than anybody else. It will be able to survey vast territory which will enable it to divide that territory into big enough groups, so that there can be a sufficient specialisation. Voluntary Hospitals which have been working as a unit, a self-contained independent unit, in very many cases are responsible for a vast amount of overlapping and redundancy; not consciously but merely by the very force of circumstance.

I have seen your very excellent Physiotherapy department here to-day, and frankly it is not big enough for the hospital. I have seen a Physiotherapy unit attached to a hospital with 14 beds and it is not used one day in a week. Now clearly there is something wrong, when we find that there is a hospital which has got more than it requires and another hospital less than it requires. When one sees this thing it is clear that something should be done to unify the service. But if we are going to unify the service, we shall have to be very careful how we do it so that we do not destroy the essential quality that is needed in a hospital—that is, the soul and the spirit of it. (Hear, hear.)

You can organise social services so that they give the maximum mechanical efficiency, but it does not follow that you get the maximum measure of happiness out of it. Those of you who are dealing with hospital work will be as aware as I am that it is not what you do alone that matters, but it is the way in which you do it. If, therefore, a Regional Board stretching from Westminster right down to the borders of Northamptonshire, and if that Regional Board attempted to do the day to day management of the hospital, it would fall down flat on it. What it needs is to appoint officials, give them instructions and let them have their head. There is no service which would be hampered so much as the hospital service if you attempted to do it that way. In a hospital you want freedom, elbow room, elasticity. You want to be able to adapt yourself to changing circumstances from week to week, from day to day and sometimes from hour to hour. Therefore, you must elect an instrument that will provide these qualities that were the best of the qualities in the old service plus all the improvements that can be gained from the new service.

What will happen is this. The Regional Board will group the hospitals together and they will appoint a Management Committee for the group. That Management Committee will be responsible to each individual hospital. It will be empowered to do the business side of the work. It will be empowered to carry into effect the decisions that may be made by the Regional Board as regards the specials. The Regional Board in its planning may conceivably say: "You here at the Temperance Hospital are missing a great opportunity. You ought to have bigger premises because you ought to have a maternity unit attached big enough to include a maternity training centre to attract midwives." We have not got enough midwives in the country. We want more maternity units, not merely because it may be better for the mothers to have their babies in the hospitals.

I can conceive, therefore, that there are possibilities of extension, the extent of which will be determined by the Regional Board working through the Management Committee. But just as the Management Committee is controlling and managing that group of hospitals, so will it rob the individual hospitals of their individuality, unless it makes provision for there

COUNCILLOR LILIAN BRYANT: Dame Elizabeth, Mr. Chairman, ladies and gentlemen, I should like to propose a vote of thanks to the management and to say how very much I have enjoyed being here this afternoon and to hear all about the wonderful work that has gone on at this Hospital under the management of so able a body. I do feel, very strongly, that you have nothing to fear after having heard Mr. Messer, but I do hope that the management will still go on so that this Hospital will not suffer in any way from the change. (Applause.)

THE CHAIRMAN: Thank you. I will now ask Miss Sanguinetti to second that vote of thanks.

MISS SANGUINETTI: Mr. Chairman, Dame Elizabeth, my friends, I rise to second this vote of thanks, and I do so with very great pleasure indeed and I crave permission to make one or two remarks.

The first is that I was very interested to hear Dame Elizabeth's reference to the sale of work in connection with this Hospital which was held at Exeter Hall, because only a few days ago I came across a photograph of the same bazaar. This photograph was very interesting from many points of view, one of which was the extraordinary types of costume many of the ladies were wearing.

Then I have my family connections with this Hospital. I came here first between the age of six and seven and as I am no longer particularly young, you can imagine that that is rather a long time ago. I have followed with very close and affectionate interest all the doings of this Hospital. I have been a patient here and I have been a patient in other hospitals, and I can well endorse my father's remarks in regard to the nursing staff and to the wonderful influence and spiritual direction that is gained from the tradition of this Hospital. I would like to say how much I hope that the tradition of its founders—my grandfather Thomas Cash amongst them—that tradition of love and service, particularly the total abstinence clause, should be maintained in the years to come.

Mr. Messer has somewhat reassured me that there is a possibility that that wonderful tradition of love and service may be carried on and it is indeed my prayer that it may be so. I thank, from my heart, all those who have so far contributed—the Board of Management, the medical staff, the nursing staff and all the other officials—and I am sure that I speak for everyone here when I say that we accord them a very, very warm vote of thanks. (Applause.)

THE CHAIRMAN: Thank you. Those in favour of the next resolution kindly hold up their hands. Those against? That is carried unanimously.

Well, Mr. Mayor and Miss Sanguinetti, I see I am down to reply and I can only say I really ought not to reply because I would like to endorse every word that has been said. I come into contact with the staff of various organisations, but I have never met a staff who are so willing, so helpful and co-operative as the staff of this Hospital has been. As has truly been said, the spirit and the idea of the service and the health and the welfare of the patients depends almost entirely on the work of the nursing and medical staff, and as Mr. Messer has pointed out, to the kitchen staff as well. One of the biggest troubles I have always experienced is trying to get the kitchen as it should be, but I am glad to say that I have found that they have been most helpful and co-operative, for which we are all very grateful.

In conclusion, I would like to refer to a matter which I should have done before and that is the impending retirement of our secretary, Mr. Adams. Mr. Adams tells me that he has been here 27 years; he was certainly here when I came, and words fail me when I try to say how very much I and the Board and all of us here are indebted to him for the wonderful way in which he has served this Hospital. He finds himself unable to go on for domestic reasons. We are very much indebted to Mr. Adams for the splendid service he has given to this Hospital and for the way in which he got the staff working.

We wish him happiness in his retirement, long life and all the pleasures and enjoyment that life can give after he has left this Hospital. I have also been asked to say some of us are trying to get a little presentation which we were trying to present to him to-day, but we are going to keep the list open. I would like, on behalf of the Board, to thank you, Mr. Adams, here, publicly, for the great service during the 27 years you so faithfully and well worked here. (Applause.)

Mr. A. C. ADAMS, F.H.A., F.C.I.S.: Mr. Chairman, Dame Elizabeth, ladies and gentlemen, the time is late, so I must not detain you long. I would like to thank the Chairman for his kind remarks, which I do not feel I thoroughly deserve. I would also like to take this opportunity of thanking him for according me that very warm tribute. I have been here a very long time, but the time is short compared with the time Dr. Sanguinetti has been here, so therefore, I cannot feel that I have broken any records. As regards secretaries, we have had about six since 1873, and only one, I think, remained over 20 years.

I can only say, Mr. Chairman, that I regret very much in many ways having to leave, for it has been a work which has given me great pleasure to undertake. The Hospital has been very near to my heart. We have been through very difficult times, but I have had a tremendous amount of co-operation from my colleagues. I should like to mention one by name. Miss Brown, my assistant, has helped me very much. It has been this help and that of others, some of whom have left, which has enabled me to carry on, but of course, I could not have got on as well as I have had it not been for the great assistance and co-operation received from Mr. Syrett and Mr. Downer. Mr. Penney, on my left, has also been a great help from time to time. Not only have I had the help from all those that I have mentioned, but I have always been assisted by the Matron and the members of the nursing staff. I do not think Miss Marshall is here, but I have known her for 12 years and she assisted me greatly. I should also like to thank Miss Merrell for the assistance she has given me. The present Matron has also given me the help I so much appreciate.

Before I conclude, I should like to tell you that the Board have appointed a gentleman who, I am sure, will carry on the good work and tradition of this Hospital. He hails from the hospital I came from—St. Bartholomew's—so I feel that you are in very safe hands for the future. What is in store for us we cannot tell, but we have already learned that we shall be working under very satisfactory conditions. The traditions and identity of the Hospital will be maintained and the great anxiety, lack of finance, which has been the bug-bear of the past 20 years will be removed to a large extent. I rather envy my successor in not having to worry about finance. I feel sure and I do hope that the future will be a good one and that the Hospital will carry on an increasingly good service in the future. Mr. Chairman, I thank you very much.

The proceedings then terminated with the singing of the Doxology.

OUT-PATIENT CLINICS

Physicians.Days of attendance
by appointment.

FRANCIS C. ROLES, M.A., B.Ch., M.R.C.P. ...	Thursday afternoon.
J. BRUCE YOUNG, M.D. (Edin.), M.R.C.P. (Lond.) ...	Wednesday afternoon. Saturday morning.
P. E. THOMPSON HANCOCK, M.B. (Cantab.), F.R.C.P. (Lond.) ...	
	Tuesday afternoon.

Assistant Physician.

A. S. HOLLINS, O.B.E., M.A., M.D., M.R.C.P.	Monday afternoon. Friday morning.
---	--------------------------------------

Surgeons.

D. DENHAM PINNOCK, M.B., B.S. (Melb.), F.R.C.S. ...	Thursday afternoon.
R. A. KERR, M.C., M.B., B.Ch. (Belf.), F.R.C.S. ...	Wednesday afternoon.
C. HOPE CARLTON, M.C., M.A., M.Ch., F.R.C.S.	Monday afternoon. Friday afternoon.

Assistant Surgeon.

HARRY FREEMAN, F.R.C.S. ...	Tuesday afternoon. Saturday morning.
-----------------------------	---

Ophthalmic Surgeon.

A. G. LEIGH, M.D., F.R.C.S. ...	Tuesday afternoon.
---------------------------------	--------------------

Aural Surgeon.

E. CAREW-SHAW, F.R.C.S. ...	Tuesday morning.
-----------------------------	------------------

Assistant Aural Surgeon.

M. GORDON, F.R.C.S. ...	Thursday morning.
-------------------------	-------------------

Gynæcological Surgeon.

H. BURT-WHITE, M.D., F.R.C.S., M.R.C.O.G.	Friday afternoon.
---	-------------------

Fracture Clinic.

C. HOPE CARLTON, M.C., M.A., M.Ch., F.R.C.S. ...	Monday afternoon.
--	-------------------

Physician for Diseases of Skin.

E. W. PROSSER THOMAS, M.A., M.D., B.Ch.	Tuesday morning.
---	------------------

Medical Officer-in-Charge, X-Ray Therapy and**Diagnostic Depts.**

R. MOORE PATTERSON, M.R.C.S., L.R.C.P., D.M.R. & E. (Camb.) ...	DAILY. Clinic Friday morning.
---	----------------------------------

Medical Officer-in-Charge, Physical Medicine**Dept.**

J. D. THOMPSON, B.A., M.B., B.Ch., B.A.O.	Monday morning. Wednesday afternoon.
---	---

Dental Surgeon.

B. MURRAY DAVIES, L.D.S., R.C.S. ...	Wednesday morning.
--------------------------------------	--------------------

Pathologist and Bacteriologist.

F. SILBERSTEIN, M.D. (Vienna) ...	Daily.
-----------------------------------	--------

Chiropodist.

D. H. CADMAN, Esq., M.S.Ch. ...	Monday morning.
---------------------------------	-----------------

Income and Expenditure Account (see also Legacies Account, page 25)

INCOME.		£	£	£	£
ORDINARY.					
I. Voluntary Gifts—					
1. Subscriptions, Donations, &c.—					
Annual Subscriptions	1,666	
Donations	5,020	
Box Collections	140	
Gifts in Kind	48	
Other Voluntary Gifts—					
Middlesex County Council, &c., re Entertainments Act				100	
				6,974	
2. Central Funds—					
King Edward's Hospital Fund	2,500	
Hospital Sunday Fund	430	
Other Central Funds	—	
				2,930	
				9,904	
II. Receipts on Account of Services Rendered—					
1. Contributions on Account of Services to Patients—					
(a) From Patients and their Societies—					
Patients—					
Ordinary	2,975	
Private Paying	8,538	
				11,513	
Contributory Schemes—					
Hospital Saturday Fund	253	
Hospital Saving Association	3,082	
Others	122	
Other Schemes—					
L.M.S. Railway Hospital Fund	733	
Approved Societies	—	
Other Sources	—	
Ministry of Pensions	25	
				15,728	
(b) From Public Authorities—					
(i) Government Grant—General	37,000	
(ii) Contribution towards Increases in Nursing Salaries	1,205	
(iii) Contribution towards Salaries of Super-numeraries	824	
(iv) Essex County Council	75	
				39,104	
2. Fees—					
Nurses' and Probationers' Fees	—	
Other Fees	17	
				17	
3. Other Receipts—					
Opticians	36	
				54,885	
III. Invested Property—					
Interest, Dividends, &c.	1,100	
Rents	921	
				2,021	
				Ordinary Income	66,810
EXTRAORDINARY.					
Transfer from Legacies Account		929
				Total Income	£67,739

for the year to the 31st December, 1947.

EXPENDITURE.										£	£
ORDINARY.											
I. Provisions		7,499
II. Surgery and Dispensary—											
1. Drugs, Chemicals, &c.	1,749	
2. Dressings, Bandages, &c.	869	
3. Instruments and Appliances	1,953	
4. Wines and Spirits	2	
5. Salaries and Wages of Dispensing Staff	1,615	
6. Sundries	129	
										6,317	
III. Domestic—											
1. Renewal and Repair of Furniture, Bedding, Crockery, &c.	1,554	
2. Laundry	1,537	
3. Cleaning and Chandlery	459	
4. Water	214	
5. Fuel and Lighting	5,186	
6. Uniforms	291	
7. Sundries	54	
										9,295	
IV. Salaries and Wages (Maintenance)—											
1. Medical	2,544	
2. Nursing	13,374	
3. Other Officers and Employees	16,526	
4. Pensions	152	
										32,596	
V. Miscellaneous—											
1. Printing, Stationery, Postages, Telephone, &c.	1,338	
2. Advertisements	221	
3. Insurance of Buildings, &c.	558	
4. Occupational Therapy	52	
5. Sundries	192	
										2,361	
VI. Administration—											
1. Salaries	2,689	
2. Pensions	—	
3. Printing, Stationery, Postages, Telephone, &c.	248	
4. Advertisements	1	
5. Law Charges	—	
6. Auditors' Fees	100	
7. Sundries	86	
										3,124	
VII. Establishment—										61,192	
Renewals and Repairs to Buildings and Plant	3,156	
VIII. Finance—											
1. Interest	1,601	
2. Appeals	1,255	
3. Rent	30	
4. Rates and Taxes	505	
										3,391	
Ordinary Expenditure										67,739	
EXTRAORDINARY.											
I. Contributions to other Institutions—											
Extraordinary Expenditure										—	
Total Expenditure										£67,739	

BALANCE SHEET.

		LIABILITIES.		£	£
1.	SUNDRY CREDITORS—				
	Amounts due to Tradesmen and others				7,498
2.	LOANS TO THE HOSPITAL—				
	General Fund :—				
	From Suspense Fund			300	
	Bank Loan and Overdraft, secured by a charge upon 108, Hampstead Road., N.W. 1			19,086	
	Mortgage, secured by charges upon Shop Property, Capital Redemption Policy, and Income from Endowment Fund Investments (as specified in the Schedule of Investments)			12,000	
	Buildings and Equipment Fund :—				
	Mortgage, secured as above			5,000	
3.	CAPITAL ACCOUNTS—				36,386
	(A) Hospital Endowments :—				
	Balance at Credit as per last Balance Sheet ...			24,060	
	Less Amount transferred to Capital Account—				
	General Fund (to adjust)			1,500	
				—————	22,560
	(B) Special Funds :—				
	Samaritan Fund :—				
	Balance at Credit as per last Balance Sheet ...			1,235	
	Rose Syrett Memorial Fund :—				
	Balance at Credit as per last Balance Sheet ...			250	
	Christmas Tree Fund :—			£	
	Balance at Credit as per last Balance Sheet ...			30	
	Less Grant to Matron's Christmas Fund ...			15	
				—————	15
					1,500
	(C) Buildings and Equipment Fund :—				
	Balance at Credit as per last Balance Sheet ...				216,574
	(D) General Fund :—				
	Balance at Credit as per last Balance Sheet ...			211	
	Add Amount transferred from Capital Account—				
	Hospital Endowments			1,500	
	Balance transferred from Legacies Account ...			1,037	
				—————	2,748
	Less Net Loss on realisation of Investments ...			444	
				—————	2,304
	(E) Suspense Fund :—				
	Donation, subject to a Life Annuity				300
4.	UNEXPENDED INCOME BALANCES OF SPECIAL FUNDS—				
	Samaritan Fund				215
					—————
					£287,337
					—————

AUDITORS'

We certify that we have examined the above Balance Sheet and the accompanying Association, and have found them to be in accordance therewith.

To the best of our knowledge and belief the regulations of the Revised Uniform treatment of Free Legacies, dated December, 1940, have been complied with.

We have obtained all the information and explanations we have required, and, in and correct view of the state of the Association's affairs, according to the best of our Empire House, St. Martin's-le-Grand,

London, E.C. 1.

22nd March, 1948.

31st December, 1947.

ASSETS.	£	£	£
1. CASH AT BANK AND IN HAND—			
On Account of:—			
(A) Hospital Endowments		62	
(B) Special Funds		230	
(C) Buildings and Equipment Fund ...		—	
(D) General Fund		506	
		798	798
2. STOCKS OF UNISSUED STORES ON HAND ...			3 420
3. SUNDRY DEBTORS—			
General Fund			13 610
4. INTERNAL LOANS—			
Suspense Fund—Loan to General Fund ...			300
5. INVESTMENTS (as per the Schedule of Investments)			
(A) Hospital Endowments		22,498	
(B) Special Funds:—			
Samaritan Fund		1,235	
Rose Syrett Memorial Fund		250	
(C) Buildings and Equipment Fund... ..		—	
(D) General Fund		—	
Capital Redemption Policy for £18,000 charged to Mortgagees as <i>per contra</i> : Premiums paid		4,916	
			28,899
The Market Value of the Investments at the 31st December, 1947, was as follows:—		£	
A. Hospital Endowments	19,720		
B. Special Funds:—			
Samaritan Fund	1,238		
Rose Syrett Memorial Fund	254		
6. LAND, BUILDINGS AND EQUIPMENT OF THE HOSPITAL—			
Expenditure from 1873 to the 31st Dec., 1946		240,275	
Add Expenditure during the year to the 31st Dec., 1947		35	
		240,310	
			£287,337

REPORT.

Income and Expenditure Account, and have compared the same with the Books of the System, as modified by the instructions of King Edward's Hospital Fund relating to the our opinion, the above Balance Sheet is properly drawn up so as to exhibit a true information and the explanations given to us, and as shown by the Books of the Association.

VINEY, PRICE & GOODYEAR,
Chartered Accountants.

Schedule of Investments—31st December, 1947.

Nominal Value	Description	Book Value
£ s. d.	HOSPITAL ENDOWMENTS.	£
2,630 19 1	*4% Consolidated Loan, 1957	2,729
1,818 3 2	3½% Conversion Loan, 1961	1,865
502 18 2	2½% Consolidated Stock	489
800 0 0	3% Defence Bonds	800
3,848 7 9	3% National Defence Loan, 1954/58	3,923
808 16 11	3% Savings Bonds, 1955/65	712
3,936 11 6	3½% War Stock	4,131
325 13 10	*3½% War Stock	329
500 0 0	*Brighton Corporation 5% Redeemable Stock, 1950/60	500
1,800 0 0	*City of Rio de Janeiro 4½% Consolidated Loan 1912 (Plan B)	1,254
1,613 0 0	*L.N.E.R. 5% Preferred Ordinary Stock	823
1,290 0 0	*L.N.E.R. Deferred Ordinary Stock	245
6,136 0 0	*L.N.E.R. 4% 2nd Preference Stock	3,559
656 0 0	*L.N.E.R. 4% Debenture Stock	499
	Freehold Land at Ewell, Surrey	640
		£22,498
	SAMARITAN FUND.	
663 7 4	3% Conversion Loan, 1948/53	633
45 13 7	3% National Defence Loan, 1954/58	47
47 9 9	3½% War Stock	50
462 0 0	L.N.E.R. 4% 1st Preference Stock	305
90 0 0	Southern Railway Preferred Ordinary Stock	70
61 0 0	Southern Railway Deferred Ordinary Stock	27
110 0 0	Southern Railway 5% Preference Stock	103
		£1,235
	ROSE SYRETT MEMORIAL FUND.	
250 0 0	3% Savings Bonds, 1960/70	£250

* Income charged to Mortgagees.

Statistical Tables.

*Statistics for Year to 31st December, 1947,
compared with those of the previous Year.*

I.—IN-PATIENTS.

(a) NUMBER OF BEDS AND IN-PATIENTS.

	Numbers in 1947	Numbers in 1946
1. Beds:		
(a) Complement at 31st December	158	158
(b) Average Daily Complement during Year	158	158
(c) Average Daily Number closed during the Year owing to—		
(i) Rebuilding or Extension Schemes	—	—
(ii) Repairs, Redecorations, Cleaning or Infection	—	—
(iii) Other Causes	44	64
(d) Average Daily Number open during the Year—		
(i) E.H.S. Casualty Beds	—	—
(ii) Other Beds... ..	114	94
(e) Average Daily Number occupied during the Year—		
(i) E.H.S. Casualty Beds occupied by Casualties	—	1
(ii) Other Beds... ..	92	76
2. Number of In-Patients in the Hospital at beginning of Year ...	76	83
3. Number of In-Patients admitted during Year	1,876	1,389
4. Number of In-Patients in the Hospital at the end of the Year ...	88	76
5. Average number of days each Patient was resident	18	20
(Ascertained by dividing the yearly total of daily counts, viz., 33,693 by the number of Patients treated to a conclusion, i.e., 2 + 3 - 4.)		
6. Number of Patients admitted and discharged during the Year who were resident:—		
(i) only 1 day	54	44
(ii) 2 and 3 days	317	118

(b) ANNUAL EXPENDITURE ON IN-PATIENTS APART FROM THAT ON OUT-PATIENTS. AVERAGE COST OF EACH IN-PATIENT PER WEEK, AND AVERAGE COST OF EACH IN-PATIENT.

	1947			1946		
	Expenditure on In-Patients	Average cost of each In-Patient per week *	Average Total cost of each In-Patient †	Average cost of each In-Patient per week *	Average Total cost of each In-Patient †	
	£ s. d.	£ s. d.	£ s. d.	£ s. d.	£ s. d.	
1. Provisions (including Board of Officials)	7,198 9 3	1 9 11	3 17 3	1 5 7	3 13 1	
2. Surgery and Dispensary	3,445 8 6	0 14 4	1 16 11	0 11 9	1 13 5	
3. Domestic	7,589 13 0	1 11 7	4 1 5	1 15 10	5 2 6	
4. Salaries and Wages (Maintenance)	26,397 12 2	5 9 8	14 3 3	4 14 8	13 10 10	
5. Miscellaneous	1,894 12 8	0 7 11	1 0 4	0 6 4	0 18 3	
6. Administration	2,503 12 10	0 10 4	1 6 10	0 8 4	1 3 10	
Statistical Cost ...	£ 49,029 8 5	£10 3 9	£26 6 0	£9 2 6	£26 1 11	
7. Establishment— Renewals and Repairs	2,528 17 7	0 10 6	1 7 2	0 10 3	1 9 4	
8. Finance	2,716 13 0	0 11 3	1 9 2	0 12 4	1 15 1	
Total Cost ...	£ 54,274 19 0	£11 5 6	£29 2 4	£10 5 1	£29 6 4	

* Average Cost per week found by dividing the amount of expenditure shown against each heading and total by the yearly total of daily counts (No. 5) in Section (a) above, and multiplying the numbers so obtained by 7.

† Average Cost per In-Patient found by dividing the amounts of expenditure shown against each heading and total by the number of In-Patients treated to a conclusion during the period (2 + 3 - 4 in No. 2 above).

Statistical Tables—Continued.

*Statistics for Year to 31st December, 1947,
compared with those of the previous Year.*

II.—OUT-PATIENTS.

(a) NUMBERS.

	Numbers in 1947	Numbers in 1946
1. Total Number of New Out-Patients	9,768	5,838
2. Total Number of Out-Patients' Attendances	41,268	30,248
(a) Number of Patients on books at the beginning of the year	—	—
(b) Number of Casualty Patients included in No. 1 above ...	2,774	3,675

(b) ANNUAL EXPENDITURE ON OUT-PATIENTS, AND AVERAGE COST OF EACH OUT-PATIENT ATTENDANCE AND OF EACH OUT-PATIENT.

	1947			1946		
	Expenditure on Out-Patients	Average cost of each Out-Patient Attendance *	Average Total cost of each Out-Patient †	Average cost of each Out-Patient Attendance *	Average Total cost of each Out-Patient †	
	£ s. d.	Pence	Pence	Pence	Pence	
1. Provisions (including Board of Officials)	297 1 4	1·73	7·30	0·46	2·39	
2. Surgery and Dispensary	2,871 9 8	16·70	70·55	13·29	68·86	
3. Domestic	1,705 3 1	9·91	41·90	2·56	13·25	
4. Salaries and Wages (Maintenance)	6,202 10 1	36·07	152·39	37·55	194·59	
5. Miscellaneous	466 5 9	2·71	11·46	2·05	10·61	
6. Administration	620 18 6	3·61	15·25	2·68	13·87	
Statistical Cost ...	£ 12,163 8 5	70·73	298·85	58·59	303·57	
7. Establishment— Renewals and repairs	627 3 11	3·65	15·41	10·5	54·41	
8. Finance	673 16 5	3·92	16·56	3·94	20·43	
Total Cost ...	£ 13,464 8 9	78·30	330·82	73·03	378·41	

* Average Cost per Out-Patient Attendance found by dividing the Amounts of Expenditure shown against each heading and total by the total number of Out-Patient Attendances (No. 2 in (a) above).

† Average Cost per Out-Patient found by dividing the amounts shown against each heading and total by the total number of New Out-Patients (No. 1 in (a) above).

National Temperance Hospital

HAMPSTEAD ROAD, N.W.1

NOTICE TO ANNUAL SUBSCRIBERS

Annual Subscribers, by filling up the following form of agreement for seven years, enable the Hospital to recover Income Tax on their subscriptions.

I,..... of

HEREBY COVENANT with NATIONAL TEMPERANCE HOSPITAL, HAMPSTEAD ROAD, that during the period of seven years from the date hereof or during my life whichever period shall be the shorter, I will pay annually to the said Fund such a sum as will after the deduction of Income Tax leave in the hands of the Fund a net sum of £..... (.....), such sum to be paid from my general fund of taxed income so that I shall receive no personal or private benefit in either of the said periods from the said sum or any part thereof. IN WITNESS whereof I have hereunto set my hand and seal this..... day of.....194.....

SIGNED, SEALED and DELIVERED

by the said

.....

In the presence of

Signature

Address

Occupation



[P.T.O.]

National Temperance Hospital

HAMPSTEAD ROAD, N.W.1

INCOME TAX

ON ANNUAL SUBSCRIPTIONS

The Honorary Treasurer desires to call attention to a provision in the Finance Acts which enables hospitals to recover Income Tax on their annual subscriptions where SUBSCRIBERS enter into an AGREEMENT to continue their subscriptions for a period (see Form of Covenant).

With Income Tax at 9/- in the £, although the subscriber pays no more than formerly, the Tax recovered by the Hospital amounts to 16/4 in £1. The Honorary Treasurer will be very grateful if subscribers will sign the form of Agreement.

Cheques should be made payable to the order of the "National Temperance Hospital," and should be crossed "Westminster Bank Limited, Threadneedle Street, E.C.2."

Should any further information be desired kindly communicate with the Secretary of the Hospital.

LEGACIES ACCOUNT.

	£		£
Executors of:—		Amount transferred to Income and Expenditure Account	929
Blackburn, E. J.	9	Balance transferred to General Fund Capital Account	1,037
Briant, W. B.	19		
Burrows, J. R.	100		
Coles, Miss J. M.	25		
Delleany, Mrs. E.	21		
Dixon, R.	58		
Harrington, Miss R. A.	100		
Johnson, W. T.	61		
Langsford, H. W.	90		
Rafferty, F. W.	1		
Read, C. S.	960		
Robinson, Miss E. H.	100		
Seager, W.	22		
Sturrock, Rev. I. J. W.	50		
Wimhurst, Mrs. E. C.	100		
Winch, Mrs. C. E.	250		
	<u>£1,966</u>		<u>£1,966</u>

SAMARITAN FUND.

RECEIPTS AND PAYMENTS ACCOUNT FOR THE YEAR TO THE 31st DECEMBER, 1947

RECEIPTS.		PAYMENTS.	
	£		£
Balance brought from last Account—		Grants to Patients—	
Cash at Bank and in hand	190	Expenses of Convalescence	391
Funds by Patients, their Societies, and Voluntary Bodies:—		Instruments and Appliances	470
	£	Travelling Expenses	132
Expenses of Convalescence	351	Other Grants	218
Instruments and Appliances	360		<u>1,211</u>
Travelling Expenses	70	Expenses	4
Other Grants	189	Balance carried to next Account—	
	<u>970</u>	Cash at Bank and in hand	215
Donations	129		
Proceeds of Jumble Sale	88		
Interest and Dividends	53		
	<u>£1,430</u>		<u>£1,430</u>

MATRON'S CHRISTMAS FUND.

RECEIPTS AND PAYMENTS ACCOUNT FOR THE YEAR TO THE 31st DECEMBER, 1947

RECEIPTS.		PAYMENTS.	
	£		£
Balance brought from last Account—		Refreshments	32
Cash at Bank and in hand	62	Presents and Decorations	20
Donations	28	Entertainments	25
Grant from Christmas Tree Fund	15		<u>77</u>
	<u>£105</u>	Postage	1
		Balance carried to next Account—	
		Cash at Bank and in hand	27
			<u>£105</u>

AUDITORS' REPORT.

We certify that we have examined the above Accounts and have compared them with the Cash Books and Vouchers and find them to be in accordance therewith.

VINEY, PRICE & GOODYEAR,
Chartered Accountants.

Empire House, St. Martin's-le-Grand, London, E.C.1.
22nd March, 1948.

In Memoriam Beds.

Name of Bed.		Name of Donor.		Ward.
<i>For Naming a Bed</i> £1,000.				
1.	" Margaret Bright Lucas "	National Women's Temperance Association	(1892)	Thomas Cash.
2.	" John Holt Skinner "	Mrs. Holt Skinner	(1899)	Sturge.
3.	" Beverley Memorial Bed "	Anonymous	(1905)	Thomas Cash.
4.	" Miss Elizabeth Lawson and Sir Wilfred Lawson, Bart, M.P. "	Mrs. Fordham	(1906)	Tustin.
5.	" William Forbes Laurie "	Mrs. William Forbes Laurie	(1910)	Joseph Rank.
6.	" Dr. W. K. Brewer "	Mrs. M. M. Brewer	(1924)	Sturge.
7.	" Charles Harvey "	Kent Band of Hope Union	(1927)	Cadbury.
8.	" William Shepherd "	Trustees of the late William Shepherd	(1929)	"
9.	" Edith E. Kidner "	The Misses Kidner	(1930)	Thomas Cash.
10.	" N. W. Hubbard "	Mrs. Hubbard	(1934)	Joseph Rank.
11.	" The R. Dixon (ex-patient) and Mrs. Dixon Bed "	Mr. and Mrs. R. Dixon	(1934)	Sturge.
12.	" Martha Hannay Bed "	Mrs. H. B. Hannay	(1944)	Thomas Cash.

In Memoriam Cots.

Name of Cot.		Amount.
<i>For Naming a Cot</i> £500.		
1.	" Jubilee Y.A.U. "	(1888)
2.	" Women's Total Abstinence Union "	(1897)
3.	" Y.A.U. "	(1904)
4.	" Hackney and East Middlesex Band of Hope Union "	(1908)
5.	" William Wightman "	(1908)
6.	" Y.A.U. "	(1915)
7.	" W. P. Norris Wood "	(1918)
8.	" George Eskholme "	(1920)
9.	" Independent Order of Rechabites "	(1923)
10.	" Ladies' Association "	(1925)
11.	" Watkinson Memorial "	(1930)
12.	" Hospital Aid Society "	(1931)
13.	" F. & J. Hughes Cot "	(1934)
14.	" Gertrude Willans' Cot "	(1934)
15.	" The James Barker Cot "	(1938)
16.	" The Lady Collins Cot "	(1939)
17.	" The Bracknell Services Canteen Cot "	(1944)
18.	" The Tottenham Branch Cot "	(1946)

Young Abstiners' Union (per Miss Cuff)	Grosvenor.
The Women's Total Abstinence Union	"
Young Abstiners' Union (per Miss New)	"
Hackney and East Middlesex Band of Hope Union	"
Sons of Temperance, London Division	"
Young Abstiners' Union	"
Mr. Peter F. Wood	"
Miss Florence Alice Eskholme	"
Independent Order of Rechabites (Salford Unity) per Fred. W. Brett	"
The Ladies' Association	"
Herne Bay Branch, National British Women's Total Abstinence Union.	"
Members of the Hospital Aid Society	Richard Rigg.
Mrs. Fanny Hughes	Thomas Cash.
Miss Gertrude Willans	Grosvenor.
Executors of James Barker Estate	Joseph Rank
Sir William Collins, K.C.V.O.	Grosvenor.
Bracknell Branch, National British Women's Total Abstinence Union	"
Tottenham Branch, National British Women's Total Abstinence Union	"

Life Governors.

Qualifying under Articles of Association (1917) Clause 9 (set b), being Donors of One Hundred Guineas or over.

Alexandra Day Fund Committee (Annual Grant)	King Edward's Hospital Fund (Annual Grant)
Aston Charities Trust Ltd.	Lees, Mrs. Edith
Buchanan, J. Gray, J.P.	Mansfield Bowling Club (President of)
Baron, Trustees of the Bernhard Trust	Marsden, J. D.
Bellman, Dr. G.	Masterpiece Cinemas Ltd. (S. Seeman, J. J. Cleaver)
Bellman, Mrs. G.	Middlesex County Council (Annual Grant)
Bennett, Edwin	Moss, Walter Alfred (James Barker Estate)
Binnie, William B., F.R.I.B.A.	North-West London Hospital Society (Chairman <i>pro tem.</i>)
Bundles for Britain, Inc. (Her Grace the Duchess of Leinster)	Paramount Astoria Theatres Limited (Geo. W. Budden)
Cadbury, Dame Elizabeth, D.B.E., M.A., J.P.	Peckover, Hon. Alexandrina
Cadbury, Barrow	Prudential Assurance Co., Ltd. (Annual Grant)
Carreras Ltd.	Rhodes, Miss A. G.
Chandler, G. H. (W. T. Johnson Estate)	Smith's (Kensington Estate) Charity
Cooper, H. G. (T. J. James Estate)	Shepherd, Trustees of the late William Shepherd
Costain, Mr. and Mrs. R. A.	S. African W.V.S. (Mrs. Waterson)
Cotterell, Mrs. Edith	S. African Red Cross Society (The Hon. Mr. Justice O. D. Schreiner, M.C., Mrs. Francis R. Phillips)
Cruse, A. P. (L. M. & S. Railway Hospital Fund)	Syrett, Herbert S., C.B.E., LL.B., C.C.
Cue, Mrs. P. A.	Spettigue, Mrs. Annie (Executrix, McLaren Estate)
Dixon, Mrs. Richard	Super Cinemas Ltd.
Downer, Arthur, F.C.I.S. (T. J. James Estate)	Threlford, Sir W. Lacon, F.C.A.
Freedman, Sidney (Hospital Aid Society)	United Kingdom Band of Hope Union
Gaumont British Picture Corporation Ltd. (A. W. Jarratt, W. G. Saunders, Major Walter Grant, Edward H. Lundy)	Warren, A. D.
Hannay, Mrs. H. B.	Waxman, A.
Hospital Saturday Fund (Annual Grant)	Widdows, Charles J. (Theodore Ransom Estate)
Hospital Sunday Fund (Annual Grant)	Wilkinson, Sir George H. Bart. (Lord Mayor's Air Raid Distress Fund)
Heywood, William	
Hubbard, Mrs.	
Kemp, Edward	

Elected Life Governors.

Constituted by a vote of the Board of Management for special services rendered.

Miss Renee Barnett	Miss Alice S. Marshall
Miss Priscilla Beard	W. W. Parkinson
Mrs. Bishop	Charles M. Power, O.B.E., M.C., F.H.A.
B. R. Cecil	S. J. Lea
Rt. Hon. J. R. Clynes, P.C., M.P.	Lady Shepherd
W. M. Dunn	H. J. Treby
Mrs. Harding	Miss A. Wheatley
Miss L. Joseph	

List of Presidents, Vice-Presidents, Members of the Board of Management, &c., of The National Temperance Hospital

From 1873 to 1948.

NOTE 1.—The figures following each name give the date of election to and duration of office
2.—An asterisk (*) indicates those holding office in April, 1948.

*HER ROYAL HIGHNESS PRINCESS ARTHUR OF CONNAUGHT, 1939-
Patron of the Hospital.

Presidents.

Sir Walter C. Trevelyan, Bart., 1873-1879. His Grace the Duke of Westminster, K.G.,
Samuel Bowley, 1879-1884. Thomas Cash, 1900-1901. 1887-1899.
Samuel Morley, M.P., 1884-1887. Sir George Livesey, 1903-1906.
Rt. Hon. Viscount Alverstone, P.C., G.C.M.G., 1906-1915.
The Most Honourable the Marquis of Lincolnshire, K.G., 1916-1924.
Major-General The Earl of Erroll, K.T., C.B., T.D., 1924-1927.
Sir H. Percy Shepherd, C.C., 1928-1939.
Major Richard Rigg, O.B.E., 1939-1942.
*Dame Elizabeth Cadbury, D.B.E., M.A., J.P., 1945-

Vice-Presidents.

Rt. Hon. Viscount Alverstone, P.C., G.C.M.G., Sir Henry Holloway, J.P., 1907-1918.
Josiah Beddow, 1907-1940. [1903-1906. F. J. Horniman, M.P., 1894-1905.
Albert G. Brazier, 1937-1938. Sir John Hutton, D.L., 1894-1903.
*Sir Edward Baron, 1942- Lady Hutton, 1923-1929.
George Blaiklock, J.P., 1927-1941. Dr. H. B. Knight-Chorley, 1927-1938.
Henry Boden, 1907-1908. Colonel G. F. Leverson, C.B., C.M.G., 1936-1938.
C. J. J. Bolton-Clark, F.R.E.S., 1930-1934. Sir George Livesey, 1906-1908.
Mrs. Shuttleworth Boden, 1909- *Sir Geo. G. Mitcheson, M.P., 1934-
Lt.-Col. H. C. Bulkeley, C.M.G., D.S.O., *W. W. Parkinson, 1931-
[1932-1938. H. J. Paterson, F.R.C.S., 1933-1940.
George Cadbury, 1898-1919. Miss P. H. Peckover, 1907-1931.
Dame Elizabeth Cadbury, M.A., D.B.E., The Rt. Rev. Bishop Perrin, D.D., 1930-1934.
Thomas Cash, 1899-1900. [1930-1945. Joseph Rank, 1923-1944.
*Lady Cassidy, 1943- Major R. Rigg, O.B.E., J.P., 1930-1939.
Arthur Cates, 1898-1901. Ald. Frank G. Rye, 1935-
D. Catt, F.R.G.S., F.I.S.A., 1931-1941. *Lady Stanier, 1943-
William Chapple, 1928-1934. Mrs. A. M. Serginson, 1931-1938.
R. Lawson Coad, 1935-1936. *Lady Vezey Strong, 1907-
Lady Collins, 1907-1935. *H. S. Syrett, C.B.E., LL.B., C.C., 1933-
Reginald Cory, 1926-1938. J. Edward Taylor, 1894-1905.
*Mrs. R. A. Costain, 1937- Mrs. H. G. Tetley, 1926-1946.
*R. A. Costain, 1937- Lady Thomas, 1926-1940.
Alderman William Crow, 1928-1932. *Sir Wm. Lacon Threlford, M.B.E., F.C.A., 1930-
T. A. Denny, 1898-1909. Henry Turner, 1926-1944.
Richard Dixon, 1935-1941. J. J. Tustin, 1894-1905.
*Rt. Hon. Isaac Foot, P.C., 1934- *A. W. West, 1938-
Mrs. Fordham, 1907-1909. Mrs. John Wilson, 1909-1917.
Rev. R. C. Gillie, M.A., D.C.L., 1926-1941. *A. S. Wilkin, 1930-
*William J. Heywood, 1930- Sir Howell J. Williams, D.L., J.P., 1934-1945.
Thomas Harris, 1907-1909. W. Winsford, 1910-1915.
*A. J. Healey, 1938- H. Ernest Wood, J.P., 1930-1946.
Arnold F. Hills, D.L., 1898-1903.

Chairmen of the Board.

Thomas Cash, 1873-1899. Major Richard Rigg, O.B.E., T.D., J.P., M.A.,
The Rt. Hon. Sir T. Vezey Strong, K.C.V.O., F.S.A., 1920-1939.
K.B.E., 1899-1920. *Herbert S. Syrett, Esq., C.B.E., LL.B., C.C.,
1939-

Treasurers.

John Hughes, 1873-1896. Sir Henry Holloway, J.P., 1903-1918.
Arnold F. Hills, D.L., 1896-1903. Robert A. Penney, J.P., 1920-1934.
*M. Moustardier, F.S.A.A., F.C.I.S., 1935-

Vice-Chairmen of the Board.

W. Tweedie, 1873-1874. John Hilton, 1906-1908.
Andrew Dunn, 1874-1883. Robinson Souttar, M.A., D.C.L., 1908-1909.
C. Kegan Paul, 1883-1889. Colonel Bolland, R.E., 1909-1912.
Sir John Hutton, D.L., 1890-1894. Edward Crawshaw, 1912-1920.
Frank Wright, J.P., 1894-1896. W. W. Parkinson, 1920-1921.
The Rt. Hon. Sir T. Vezey Strong, K.C.V.O., H. Ernest Wood, J.P., C.C., 1920-1930.
K.B.E., 1896-1899. Herbert S. Syrett, C.B.E., LL.B., C.C.,
Colonel Sheffield, 1899-1906. 1930-1939.
Arthur Downer, Esq., F.C.I.S., 1945- Councillor E. J. Saunders, J.P., 1939-1945.

Hon. Secretaries.

Rev. Dawson Burns, D.D., 1873-1909. Sir Edward W. Fithian, J.P., 1912-1916.
Robinson Souttar, M.A., D.C.L., 1909-1912. George Blaiklock, J.P., 1916-1943.

Members of the Board of Management.

Captain B. Alexander, F.I.S.A., 1926-1932. A. Stanley Bell, 1922-1925.
Admiral Alington, 1896-1899. *Dr. G. Bellman, 1930-
T. P. Baptie, J.P., 1884-1893. George Blaiklock, J.P., 1908-1943.
Very Rev. Dean Barker, M.A., 1904-1906. Brazier, Albert G., 1935-1937.

Members of the Board of Management—continued.

- Lt.-Col. H. C. Bulkeley, C.M.G., D.S.O., 1932. John Mann, 1873-1902.
 Col. G. H. Bolland, 1898-1912. Philip Marsh, 1921-1930.
 Mrs. Alfred Brooks, 1921-1945. *Alderman Ernest A. Minter, 1942-
 Deputy J. Rowland Brough, H.M.L., 1921. *M. Moustardier, F.S.A.A., F.C.I.S., 1933-
 Rev. Dawson Burns, D.D., 1873-1909. J. G. Murdoch, 1894-1902.
 Sir W. H. E. Bragge, Bart., 1880-1882. G. A. Nicholas, F.R.G.S., 1930-1939.
 W. S. Caine, M.P., 1885-1886. Hugh Owen, 1873-1874.
 W. Carr, 1919-1924. W. W. Parkinson, 1914-1930.
 Thomas Cash, 1873-1899. H. J. Paterson, C.B.E., F.R.C.S., 1926-1940.
 *Rev. J. Reid Christie, M.A., 1933- C. Kegan Paul, 1882-1890.
 R. Lawson Coad, 1914-1935. Hon. T. H. Pelham, 1876-1880.
 John M. Cook, 1873-1884. R. A. Penney, J.P., 1912-1934.
 Edward Crawshaw, 1900-1922. Capt. W. H. Phipps, R.N., 1873-1876.
 George Cursons, M.B.E., J.P., 1912-1929. H. Josiah Pollard, 1902-1905.
 Rev. T. Eynon Davies, 1919. Rt. Rev. Bishop Perrin, 1914-1929.
 Frank Debenham, 1882-1884. Major Richard Rigg, O.B.E., T.D., J.P.,
 Hon. Conrad Dillon, 1884-1889. Mrs. Richard Rigg, 1931-1942. [1914-1942.
 F. W. Dimbley, J.P., 1904-1907. W. Robertson, J.P., 1917-1929.
 *Arthur Downer, F.C.I.S., 1929- Col. Sandwith, 1873-1883.
 N. B. Downing, 1875-1879. W. R. Selway, 1873-1876.
 Andrew Dunn, 1874-1885. Lady Vezey Strong, 1920-1924.
 Frank Dymond, 1908-1920. Mrs. A. M. Serginson, 1925-1930.
 Rev. R. Faraker, M.A., 1891-1904. Colonel Sheffield, 1879-1906.
 Sir Edward W. Fithian, J.P., 1907-1916. Sir J. Bamford Slack, M.P., 1899-1903.
 Rev. Canon Fleming, B.D., 1877-1879. *Charles F. Smith, Esq., 1944-
 E. Aisbitt Gibson, 1908-1913. Frederick Smith, 1893-1902.
 Rev. R. C. Gillie, M.A., D.C.L., 1912-1941. Mrs. E. Blaiklock-Smith, 1926-1944.
 William Green, 1887-1891. Councillor E. J. Saunders, 1930-1945.
 Henry Gurney, 1899. Robinson, Souttar, M.A., D.C.L., 1902-1912.
 *Mrs. Helen B. Hannay, 1944- E. S. Spicer, 1906-1907.
 Richard Hartley, 1906-1914. The Rt. Hon. Sir T. Vezey Strong, K.C.V.O.,
 Rev. Charles Herbert, 1931-1935. K.B.E., 1890-1920.
 Hon. and Very Rev. the Dean of Hereford Rev. S. D. Stubbs, M.A., 1873-1898.
 *William H. Heywood, Esq., 1944- [1889-1891. *H. S. Syrett, C.B.E., LL.B., C.C., 1928-
 John Hilton, 1873-1908. Sir John Thomas, J.P., 1909-1920.
 W. Austin Hubbard, 1937-1938. Lady Thomas, 1921.
 Sir John Hutton, D.L., 1874-1894. Sir Wm. Lacon Threlford, M.B.E., F.C.A.,
 John Kempster, J.P., 1873-1877. E. C. Tisdall, 1873-1893. [1924-1929.
 A. J. Karking, 1873-1874. *Councillor Henry J. Treby, 1946-
 Dr. David Lawson, 1931-1946. Henry Turner, 1918-1922.
 Colonel G. F. Levenson, C.B., C.M.G., Wm. Tweedie, 1873-1874.
 Sir George Livesey, 1883-1884. [1925-1936. Rev. H. Russell Wakefield, M.A., 1904.
 Dr. G. B. Longstaff, 1879-1883. William G. Wilsher, 1943-1947.
 Rev. G. W. McCree, 1873-1874. H. Ernest Wood, J.P., C.C., 1903-1933.
 P. M. McFarlane, 1922. Frank Wright, J.P., 1873-1896.
 Sir John McDougall, 1893-1909. Major Lawrence Wright, T.D., 1929-1933.

Secretaries.

- James Vincent, 1873-1874. A. W. Bodger, 1895-1916.
 Tom Munday, 1885-1889. R. T. Lawlor, 1916-1920.
 Thos. Davies, 1889-1890. Robert J. Denholm, 1920-1921.
 E. Wilson Taylor, 1890-1895.

Secretary and House Governor.*

- Alfred C. Adams, F.H.A., F.C.I.S., 1921-1948.
 * Designated, 1947.

Mâtrons.

- Miss Orme, 1875-1898. Miss Kathleen A. Smith, 1921-1923.
 Miss Lucas, 1898-1901. Miss Alice S. Marshall, 1923-1934.
 Miss A. Richardson, 1901-1920. Miss Mary E. Merrell, 1934-1945.
 Miss M. S. Donaldson, 1920-1921. *Miss M. M. F. Annand, B.A., 1945-

Medical Report, 1947.

Surgical Report, 1947.

DISEASES	Cases	Cured	Re- lieved	I. S. Q.	Died	DISEASES	Cases	Cured	Re- lieved	I. S. Q.	Died
Cardio-vascular ...	65					Head and Neck ...					
Degenerative conditions		1	19	3	12	Diseases of Eye, Ear, Nose and Throat ...	37	30	7	—	—
Rheumatic Heart Disease		2	18	4	2	Diseases of Thorax (Bronchi and Lungs)	415	394	17	4	—
Various ...		1	1	2	—	Diseases of Alimentary Canal (Oesophagus to Rectum) ...	2	—	2	—	—
Respiratory ...	144				6	Other Abdominal Conditions (Gall, Bladder, Spleen and Pancreas) ...	107	52	35	5	15
Acute Conditions		83	5	2	2	Diseases of Urinary Tract ...	20	9	9	2	—
Chronic Conditions		2	22	15	2	Diseases of Male and Female Generative Systems (including Gynaecology and Hernia) ...	31	14	11	5	1
Various ...		4	1	2	—	Diseases of Cardio-vascular System and Peripheral Nervous System ...	184	128	39	12	5
Alimentary ...	63				—	Diseases of Breast ...	20	9	8	3	—
Functional derangements		5	7	1	—	Diseases of Bones, Muscles, Joints, Tendons, Fasciæ and Skin (including Orthopædic cases of Fracture) ...	16	3	12	1	—
Acute Inflammatory ...		15	4	1	—	Miscellaneous Cases ...					
Chronic Inflammatory		3	22	1	—	Cases of CANCER (not included above)					
Various ...		—	2	2	—	Totals ...	1,018	750	199	45	24
Urinary ...	23	9	7	5	2	INSULL WING ...	329	244	49	25	11
Metabolic and Endocrine ...	15	4	8	3	—	GRAND TOTALS ...	1,347	994	248	70	35
Nervous System ...	36	6	13	11	6	TOTAL OPERATIONS ...	1,289	—	—	—	—
Psychological ...	10	—	5	5	—						
Mental Diseases ...	6	1	4	1	—						
Lymphatic and Blood-forming Systems ...	21	5	14	—	2						
Acute Infective Fevers ...	10	10	—	—	—						
Poisoning ...	8	6	1	—	1						
Parasites ...	5	5	—	—	—						
Muscles, Bones and Joints	13	3	9	1	—						
Skin ...	14	9	4	1	—						
Miscellaneous ...	19	9	4	6	—						
Totals ...	452	183	170	66	33						
INSULL WING ...	65	37	16	7	5						
GRAND TOTALS ...	517	220	186	73	38						

DEDICATION WARDS

Wards in the Main Buildings are named as follows:—

- “**Thomas Cash**” (17 beds). (Sister P. M. C. James).
In memory of Thomas Cash, the first Chairman (1873–1899).
- “**Sturge**” (18 beds). (Sister R. Watt).
In memory of George Sturge, a generous contributor.
- “**Cadbury**” (18 beds). (Sister G. Davies).
Named as a tribute to the generosity of the late Mr. George and Mrs. (now Dame Elizabeth) Cadbury, whose gifts included the first Nurses’ Home in Cardington Street.
- “**Grosvenor**” (Children’s Ward, 15 beds). (Sister I. C. M. Searles).
Opened by the Duchess of Westminster in 1890.
- “**Richard Rigg**” (18 beds). (Sister E. Revill).
In memory of Major Richard Rigg, O.B.E., J.P., Chairman 1920–1939, and President 1939–1942.
- “**Joseph Rank**” (18 beds). (Sister J. McLennan).
Named in grateful memory of Mr. Joseph Rank, a generous contributor.
- “**Tustin**” (12 beds).
In memory of John Tustin, a generous benefactor who gave liberally in the early days of the Hospital’s history.
- “**Florence and Elizabeth**” (12 beds).
Dedicated to the memory of the Mother and Mother-in-Law of the present Chairman, Mr. Herbert S. Syrett, C.B.E., LL.B., C.C.

VEZEY STRONG MEMORIAL WING

The Scheme of Reconstruction of the Main Building, undertaken in 1925, when the entire central section of the Main Building was modernised, was named to commemorate the Chairmanship of the late Sir T. Vezey Strong, K.C.V.O., who held this office for 20 years, 1900–1920.

The Wing consists of:—

Operating Theatre and Departments. (Sister L. R. Gray in charge).
Nurses’ Home (33 rooms). (Home Sister, Miss E. M. Ashton).
Sisters’ and Nurses’ Sitting Rooms.
Kitchens, Still Room, Dining Rooms, and Catering Department
(Catering Officer, Miss N. Barber).

INSULL MEMORIAL WING

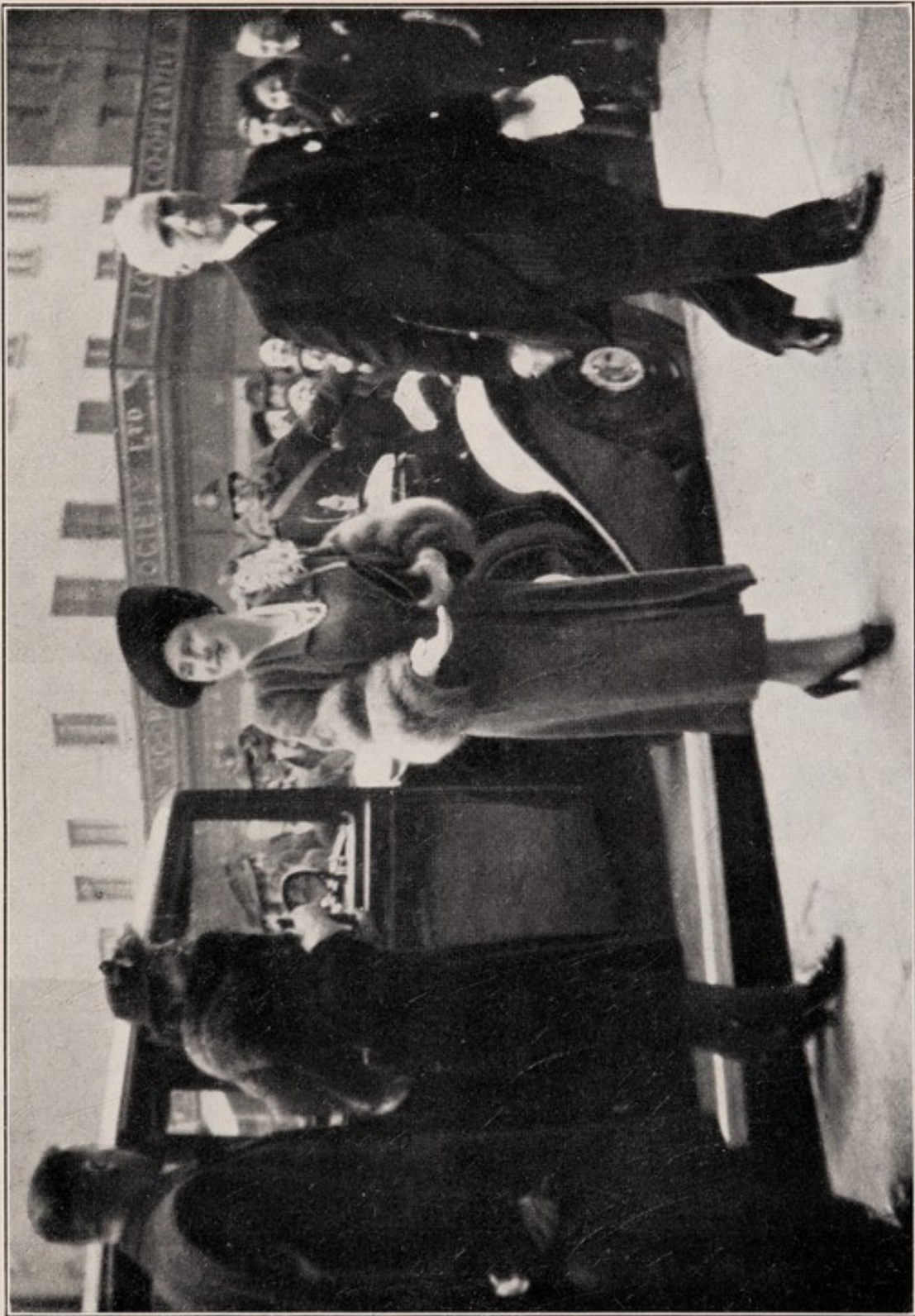
Erected in 1932, as an extension of the Out-Patients’ Department (1907), and named after the late Mr. Samuel Insull and his family, who gave liberally towards the cost. The late Sir Percy Shepherd, President (1928–39), as Trustee, William Shepherd Estate, also gave generously.

The Wing consists of:—

Out-Patients’ Department, Waiting Hall and Clinics. (Sister C. J. Smith in charge).
Dispensary and Almoner’s Offices.
Pathological Department.
X-Ray Departments—
(Diagnostic and Radiotherapeutic.)
Physical Medicine Departments—
(Massage and Electrical, Occupational Therapy.)
Nurses’ Lecture Room.
Nurses’ Bedrooms (two floors).
Operating Theatre and Departments. (Sister N. Brooks in charge).
Private Pay Beds (two floors, 30 beds) (Sister N. Brooks in charge).

Notable Events.

- 1871.—**FEBRUARY.** Appointment of Provisional Committee at 337, Strand, London.
- 1873.—**MAY 6.** First Meeting of Subscribers, at 112, Gower Street, for adoption Rules and election of Officers.
- 1873.—**OCTOBER 3.** Opening Soiree, at 112, Gower Street. First patient admitted Monday, October 6.
- 1874.—**MAY 28.** First Annual Meeting in the London Tavern; Sir W. C. Trevelyan, Bart., in the Chair.
- 1876.—**JUNE.** National Bazaar in Exeter Hall opened by Lady Aberdare.
- 1879.—**MAY 8.** Foundation Stone of New Hospital Buildings laid on Freehold Site in the Hampstead Road, by Sir Wilfred Lawson, Bart., M.P.
- 1881.—**MARCH 4.** Opening of New Hospital Buildings by the Lord Mayor (Alderman McArthur, M.F.), who attended, with the Sheriffs of London and Middlesex, in state.
- 1884.—**APRIL 24.** Foundation Stone of West Wing of Hospital laid at north end of the building in Cardington Street, by the Duke of Westminster.
- 1885.—**OCT. 9.** Opening of West Wing by the Bishop of London (Dr. Temple).
- 1886.—**JULY 17.** Saturday. Breakfast at the Hospital to the Colonial Members of the British and Colonial Temperance Congress.
- 1892.—**MAY 11.** Opening of "Grosvenor Ward" for Children.
- 1894.—**OCTOBER 8.** Conversazione at the Hospital to celebrate the Twenty-first Anniversary of the opening of the Institution.
- 1894.—**NOVEMBER 2.** Visit of the Lord Mayor of London (Sir George Robert Tyler, Bart.), the Lady Mayoress, and the Sheriffs of London and Middlesex.
- 1898.—**FEB. 23.** Opening of Nurses' Home, the Gift of Mr. George Cadbury.
- 1899.—**MARCH 16.** Opening of New Ward by the President of the Hospital, His Grace the Duke of Westminster.
- 1903.—**OCTOBER 28.** Visit of the Lord Mayor of London (Sir Marcus Samuel, Bart.), the Lady Mayoress, and the Sheriffs of London and Middlesex.
- 1906.—**OCTOBER 25.** Foundation Stone of New Out-Patients' Hall laid by Lady Strong.
- 1907.—**MAY 14.** New Out-Patients' Hall opened by HER ROYAL HIGHNESS PRINCESS LOUISE, Duchess of Argyll, Sir T. Vezey Strong presiding.
- 1911.—**MARCH 29.** Reception at the Mansion House by the Lord Mayor and Lady Mayoress, the Rt. Hon. Sir T. Vezey Strong, K.C.V.O., and Lady Strong.
- 1917.—**NOVEMBER 6.** Incorporation of Hospital.
- 1920.—**AUGUST 11.** Lady Strong first lady member of the Board.
- 1920.—**OCT. 3.** Death of the Rt. Hon. Sir T. Vezey Strong, K.C.V.O., K.B.E.
- 1925.—**JUNE 10.** Opening of New Nurses' Home, Operation Dept., &c., by H.R.H. Prince Arthur of Connaught, K.G.
- 1928.—**MARCH 21.** Sir H. Percy Shepherd, C.C., elected President.
- 1932.—**SEPTEMBER.** Completion of "Insull Memorial Wing" and opening of Special Departments and Private Wards.
- 1938.—**DECEMBER.** Purchase of Site in Cardington Street for erection of Maternity and Gynæcological Wing.
- 1939.—**SEPTEMBER.** Declaration of War. Hospital included with Casualty 1A (E.M.S.) Hospitals.
- 1940.—**MARCH 28.** Sir Percy Shepherd, C.C., elected President Emeritus.
Major Richard Rigg, elected President.
- 1940.—**OCTOBER.** Hospital Bombed; damage to East Wing, &c.
- 1941.—Hospital bombed three times, resulting in complete destruction of Lift and Staircase—Main Building.
- 1942.—**MARCH 18.** Visit of HER MAJESTY THE QUEEN.
- 1942.—**AUGUST 29.** Death of Major Richard Rigg, O.B.E., T.D., J.P., M.A., (Cantab.), F.S.A.
- 1944.—**MAY 5.** Dame Elizabeth Cadbury, D.B.E., M.A., J.P., elected President.
- 1945.—Conclusion of Hostilities. 2nd World War.
- 1946.—Purchase of "Orphanage" Annexe, 108, Hampstead Road, and sale of Cardington Street site.
- 1947.—Reopening of Wards and Departments affected by War Damage, restoration of Main Lift and Staircase.



Her Majesty the Queen, on the occasion of her Visit (March, 1942)



Group of Nursing Staff (1947) with Chairman of Nursing Committee, and Secretary.

**A DONATION OR LEGACY OF
£1,000**

is necessary to Endow a Bed.

.....

**A DONATION OR LEGACY OF
£500**

is necessary to Endow a Cot.

M^CCorquodale & Co., Ltd., London.
