

Reports : 1944 / Middlesex Hospital and Cancer Wing. Middlesex Hospital Medical School.

Contributors

Middlesex Hospital.

Middlesex Hospital. Cancer Wing.;Middlesex Hospital. Medical School.

Publication/Creation

[London] : [publisher not identified] 1944

Persistent URL

<https://wellcomecollection.org/works/apnk758b>

License and attribution

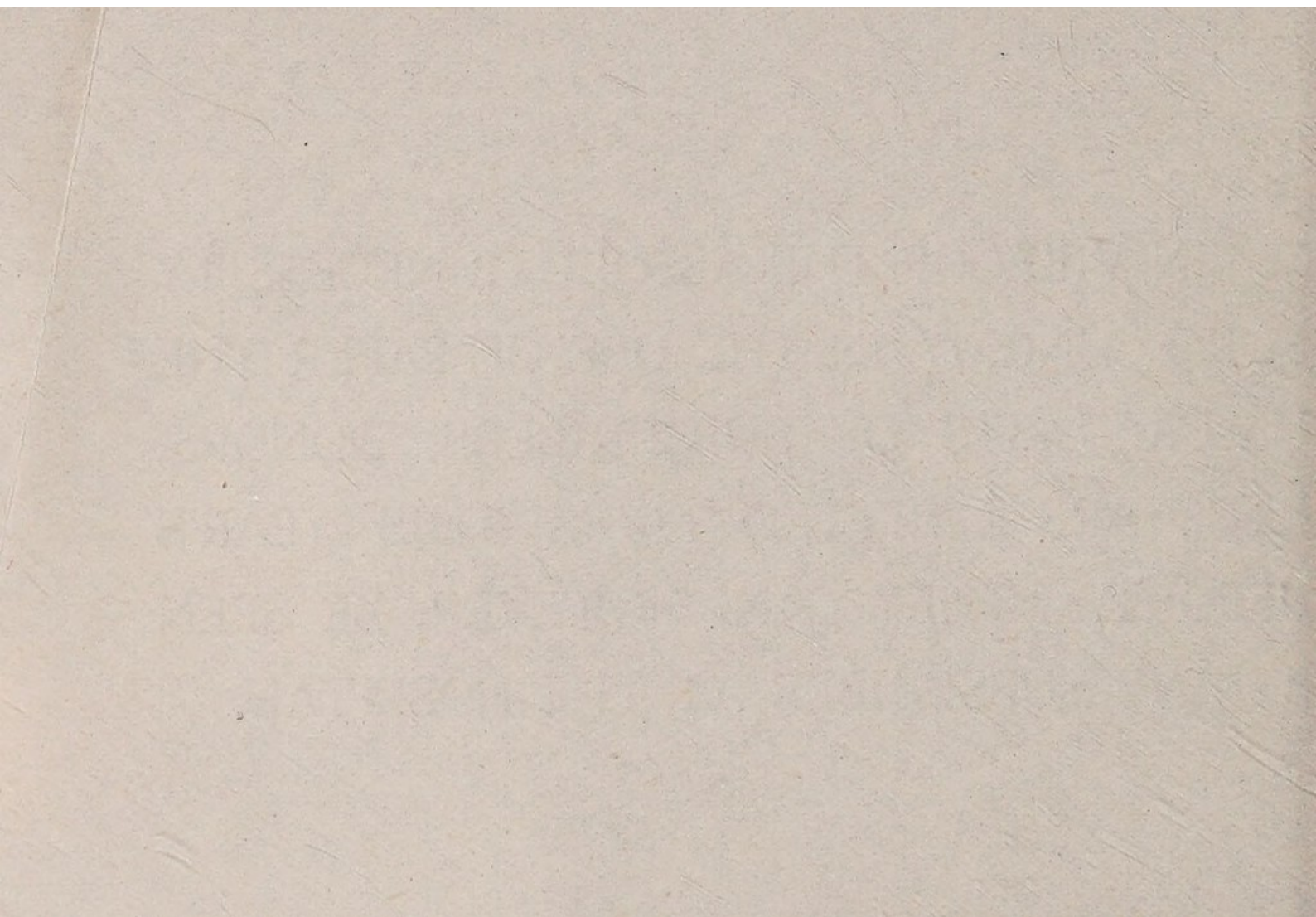
This work has been identified as being free of known restrictions under copyright law, including all related and neighbouring rights and is being made available under the Creative Commons, Public Domain Mark.

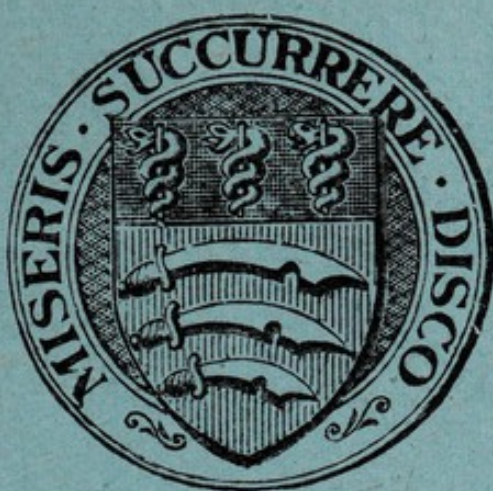
You can copy, modify, distribute and perform the work, even for commercial purposes, without asking permission.



Wellcome Collection
183 Euston Road
London NW1 2BE UK
T +44 (0)20 7611 8722
E library@wellcomecollection.org
<https://wellcomecollection.org>

IN VIEW OF THE ABSOLUTE NECESSITY
FOR ECONOMY IN THE USE OF PAPER THE
USUAL LISTS OF SUBSCRIBERS, DONORS,
ETC., ARE OMITTED FROM THIS YEAR'S
REPORT. THEY CAN, HOWEVER, BE SEEN
BY ANY SUBSCRIBER AT THE HOSPITAL.





THE MIDDLESEX HOSPITAL
AND
CANCER WING.

THE MIDDLESEX HOSPITAL
MEDICAL SCHOOL.



REPORTS
FOR THE YEAR 1944.

MORTIMER STREET,
LONDON, W. I.

TELEPHONE :—
MUSEUM 8333

WELLS
LIBRARY
Ann Arbor
WX28
.B65
L84M62
1944



22501630296

TO SUBSCRIBERS.

To the many Subscribers who have already entered into the 7 Years' Subscription Agreement we offer our warm thanks.

We shall be most grateful to all those Subscribers who have *not* yet made use of the Agreement, which is for seven years or during life, whichever is the shorter period, if they will do so.

When Income Tax is payable at the full standard rate the Agreement enables the Hospital to recover the Income Tax paid on the Subscription: and it also enables Subscribers liable to Surtax to deduct the gross amount of their Subscriptions from the income assessable for that tax.

Thus, without any extra expense to themselves, they can benefit the funds of the Hospital.

With Income Tax at 10/- in the £ the value of a subscription to the Hospital is doubled.

During 1944 many Governors and friends of the Hospital were successful in enlisting new Subscribers for the Middlesex Hospital.

Will all our friends make, this year, a special effort to bring in new Subscribers, and ask them to make use of the Agreement, which adds so materially to the value of their support ?

ENDOWMENT of BEDS and COTS.

Benefactors may Endow Beds in the Hospital according to the following scale :—

For One Year	<i>Thirty Guineas.</i>
For Life of Donor	<i>Three Hundred Guineas.</i>
In Perpetuity	<i>One Thousand Guineas.</i>

The scale of Children's Cots in the Hospital, and for Beds in the Convalescent Home, is :—

For One Year	<i>Fifteen Guineas.</i>
For Life of Donor	<i>One Hundred and Fifty Guineas.</i>
In Perpetuity	<i>Five Hundred Guineas.</i>

A plate, with inscription to be approved by the Board of Governors, may, if desired, be placed over the Bed or Cot endowed.

To Mess^{rs} _____

Gentlemen,

Please to pay now
and annually until further notice on the
day of _____

the sum of _____ Guineas
to the Credit of the*
Fund of The Middlesex Hospital,
at Mess^{rs} Coutts & Co 16, Cavendish
Square, W. 1, and charge the same to my account.

Signature _____


Date _____ 194 _____

L

* Please insert the words.

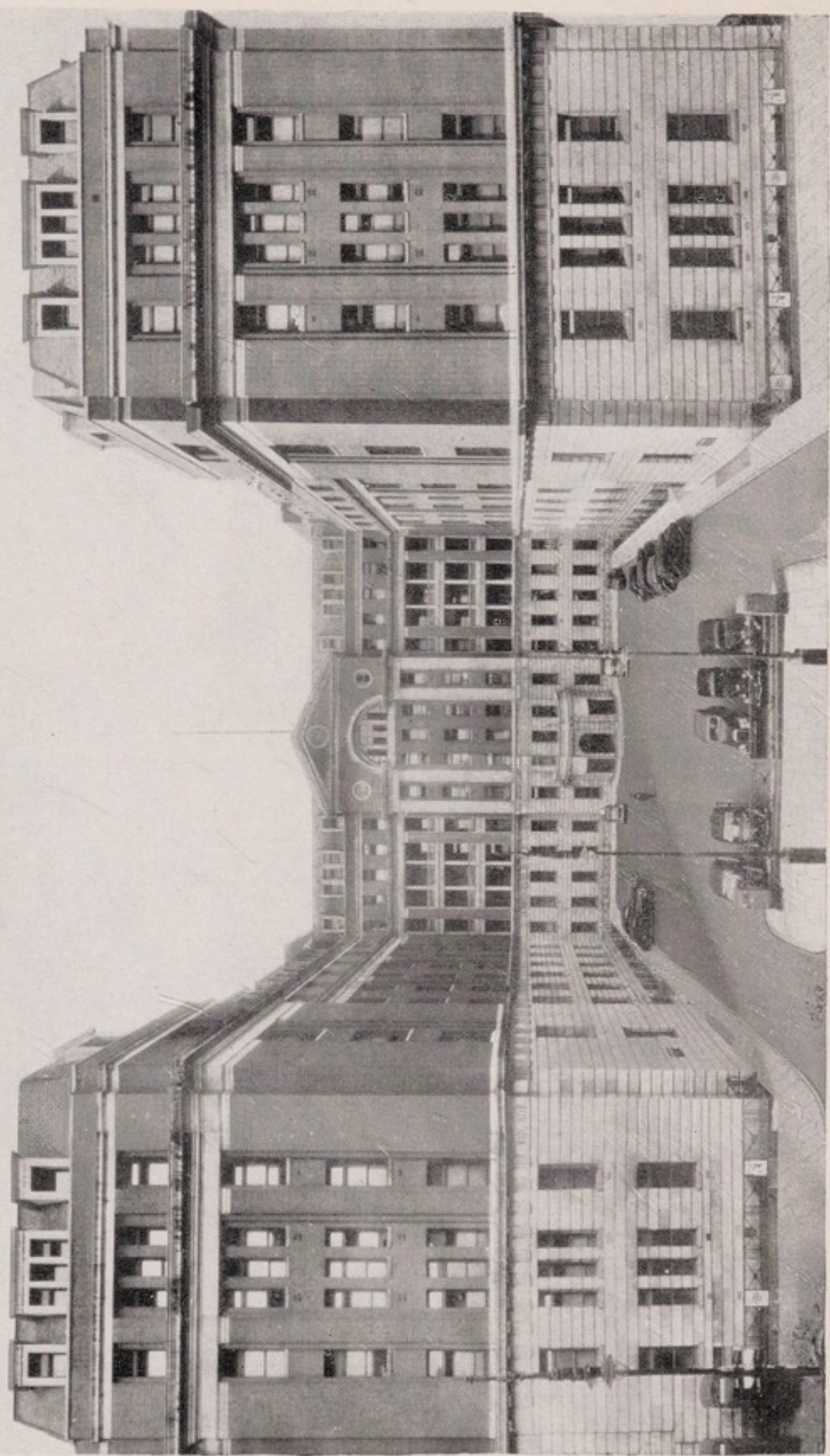
{ "General."
"Cancer Wing."
"Cancer Research."

[Faint, illegible handwriting visible through the paper, likely bleed-through from the reverse side.]



Digitized by the Internet Archive
in 2019 with funding from
Wellcome Library

<https://archive.org/details/b31698050>



Founded 1745

The Middlesex Hospital

Re-built 1935

THE MIDDLESEX HOSPITAL

(FOUNDED 1745)

AND

CANCER WING

(INSTITUTED 1792).

**THE MIDDLESEX HOSPITAL
MEDICAL SCHOOL**

(FOUNDED 1835).

REPORTS

FOR THE YEAR 1944.

THE MIDDLESEX HOSPITAL

(FOUNDED 1547)

AND

CANCER WING

(INSTITUTED 1902)

THE MIDDLESEX HOSPITAL

MEDICAL SCHOOL

(FOUNDED 1835)

REPORTS

FOR THE YEAR 1944

Patrons :—

HIS MAJESTY THE KING.
HER MAJESTY QUEEN MARY.

President :—

HIS GRACE THE DUKE OF NORTHUMBERLAND.

Vice-Presidents :—

H.R.H. PRINCESS ALICE, COUNTESS OF ATHLONE.
HIS GRACE THE DUKE OF PORTLAND, K.G., P.C., G.C.V.O.
THE MOST HON. THE MARQUESS OF CARISBROOKE, G.C.B., G.C.V.O.
THE RIGHT HON. THE EARL OF DERBY, K.G., P.C., G.C.B., G.C.V.O.
THE RIGHT HON. THE EARL OF ATHLONE, K.G., G.C.B.,
G.C.M.G., G.C.V.O., D.S.O.
THE RIGHT HON. LORD HOWARD DE WALDEN.
THE RIGHT HON. LORD MILDMAY OF FLETE, P.C.
THE RIGHT REV. AND RIGHT HON. A. F. WINNINGTON INGRAM,
P.C., K.C.V.O., D.D., LL.D.
THE LADY VIOLET ASTOR.
THE HON. SIR ARTHUR STANLEY, G.B.E., C.B., M.V.O.
LT.-COL. THE HON. J. J. ASTOR.
THE HON. T. B. MONEY-COUTTS.
SIR HERBERT E. MORGAN, K.B.E.
SIR EDWARD PENTON, K.B.E.
SIR ALFRED WEBB-JOHNSON, Bt., K.C.V.O., C.B.E., D.S.O., T.D., M.B.,
Ch.B., P.R.C.S., F.A.C.S., F.R.A.C.S.
REGINALD BEDDINGTON, Esq., C.B.E.
F. CAVENDISH BENTINCK, Esq.
SIR WILLIAM COLLINS.
S. A. COURTAULD, Esq.
RICHARD C. DAVIS, Esq.

Treasurer :—

THE HON. THOMAS B. MONEY-COUTTS.

Board of Management :—

CHAIRMAN.

LT.-COL. THE HON. J. J. ASTOR (Vice-President).

VICE-CHAIRMAN.

THE HON. THOMAS B. MONEY-COUTTS (Vice-President).

REGINALD BEDDINGTON, Esq., C.B.E. (Vice-President).

F. CAVENDISH BENTINCK, Esq., (Vice-President).

THE HON. MRS. DAVID BOWES-LYON.

ARTHUR BULL, Esq., M.B.E.

SIR WILLIAM COLLINS (Vice-President).

A. F. B. COOKE, Esq.

SAMUEL A. COURTAULD, Esq., J.P. (Vice-President).

RICHARD C. DAVIS, Esq. (Vice-President).

FRANK H. DORAN, Esq.

THE LORD EBBISHAM, G.B.E.

THE HON. SIR RAYMOND EVERSHERD.

CAPTAIN THE HON. H. E. FITZALAN-HOWARD.

MAX FREEMAN, Esq.

COLONEL W. ALAN GILLETT, T.D., D.L.

J. H. HAMBRO, Esq.

RONALD O. HAMBRO, Esq.

AIR-COMMODORE LIONEL HEALD, K.C., R.A.F.

A. E. HUGHES, Esq., J.P.

BRIG. GEN. K. J. KINCAID-SMITH, C.B., C.M.G., D.S.O.

THE RT. HON. THE EARL OF LEITRIM.

LT.-COL. R. N. MACDONALD-BUCHANAN, M.B.E., M.C.

THEOBALD MATHEW, Esq.

THE LORD MILDMAI OF FLETE, P.C. (Vice-President).

WALTER MORISON, Esq.

THE LADY AGNES PEEL.

SIR FREDERICK H. RICHMOND, Bt.

ADMIRAL SIR PERCY ROYDS, C.B., C.M.G., M.P.

THE WORSHIPFUL THE MAYOR OF ST. MARYLEBONE.

J. DOUGLAS WATSON, Esq.

MAJOR SIMON WHITBREAD.

THE LADY WRAXALL.

Treasurers are ex-officio Members of the Board.

Secretary-Superintendent :—

S. R. C. PLIMSOLL, Esq., M.C., B.A.

Consulting Physicians :—

- ARTHUR FRANCIS VOELCKER, Esq., M.D., F.R.C.P., Marhamchurch, Bude, Cornwall.
 R. A. YOUNG, Esq., C.B.E., M.D., B.Sc., F.R.C.P., 22 Down St., Mayfair, W.1.
 C. E. LAKIN, Esq., M.D., B.S., F.R.C.P., F.R.C.S., 58 Portland Place, W.1.

Physicians :—

- E. A. COCKAYNE, Esq., D.M., F.R.C.P., Middlesex Hospital, W.1.
 G. E. S. WARD, Esq., M.D., B.S., F.R.C.P., 47, Bedford Court Mansions,
 Bedford Avenue, W.C.1.
 G. E. BEAUMONT, Esq., M.A., D.M., F.R.C.P., 24 Wimpole Street, W.1.
 T. IZOD BENNETT, Esq., M.D., B.S., F.R.C.P., Middlesex Hospital, W.1.

Physicians to Out-Patients :—

- H. E. A. BOLDERO, Esq., M.A., D.M., B.Ch., F.R.C.P., 68 Wimpole Street, W.1.
 BRIGADIER D. E. BEDFORD, M.D., B.S., F.R.C.P., R.A.M.C.
 BRIGADIER H. L. MARRIOTT, M.D., F.R.C.P., R.A.M.C.

Consulting Surgeons :—

- W. SAMPSON HANDLEY, Esq., M.D., M.S., F.R.C.S., 29 Welbeck Street, W.1.
 SURGEON REAR-ADMIRAL GORDON GORDON-TAYLOR, C.B., O.B.E., LL.D. (Toronto),
 M.A., M.S., M.B., B.Sc., F.R.C.S., F.R.A.C.S. (Hon.), F.A.C.S. (Hon.), F.R.C.S. (C.) (Hon.), R.N.

Surgeons :—

- SIR ALFRED WEBB-JOHNSON, BART., K.C.V.O., C.B.E., D.S.O., T.D., M.B., Ch.B., P.R.C.S.,
 F.A.C.S., F.R.A.C.S. 70 Portland Place, W.1.
 W. TURNER WARWICK, Esq., M.A., M.B., B.Ch., F.R.C.S.,
 Fitzroy Farm Cottage, Fitzroy Park, Highgate.
 R. VAUGHAN HUDSON, Esq., F.R.C.S., 75 Harley Street, W.1.
 E. W. RICHES, Esq., M.C., M.B., M.S., F.R.C.S., 22 Weymouth St., W.1.

Surgeons to Out-Patients :—

- D. H. PATEY, Esq., M.S., F.R.C.S., 121 Harley Street, W.1.
 MAJOR P. B. ASCROFT, M.B.E., M.S., F.R.C.S., R.A.M.C.

SPECIAL DEPARTMENTS.**Consulting Physician for Diseases of the Skin :—**

- HENRY MACCORMAC, Esq., C.B.E., M.D., Ch.B., F.R.C.P., 23 Wimpole Street, W.1.

Physician for Diseases of the Nervous System :—

- BRIGADIER DOUGLAS McALPINE, M.D., Ch.B., F.R.C.P., R.A.M.C.

Physician to the Department of Psychological Medicine :—

- NOEL G. HARRIS, Esq., M.D., F.R.C.P., D.P.M., 2 Devonshire Place, W.1.

Consulting Obstetric and Gynæcological Surgeons :—

- SIR COMYNS BERKELEY, M.A., M.D., M.C., F.R.C.S., F.R.C.P., F.R.C.O.G., M.M.S.A. (Hon.),
 c/o Central Midwives Board, 73 Great Peter Street, Westminster, S.W.1.
 VICTOR BONNEY, Esq., M.D., M.S., B.Sc., F.R.C.S., F.R.A.C.S., 149 Harley Street, W.1.

Obstetric and Gynæcological Surgeon :—

L. C. RIVETT, Esq., M.A., M.C., F.R.C.S., F.R.C.O.G., 135 Harley Street, W.1.

Assistant Obstetric and Gynæcological Surgeons :—

AIR-COMMODORE FREDERICK ROQUES, M.A., M.D., M.Ch., F.R.C.S., F.R.C.O.G.,
R.A.F.

W. R. WINTERTON, Esq., M.A., M.B., B.Chir., F.R.C.S., M.R.C.O.G., 41 Harley Street, W.1.

Consulting Ophthalmic Surgeons :—

SIR ARNOLD LAWSON, K.B.E., M.D., F.R.C.S., 12 Harley Street, W.1.

R. AFFLECK GREEVES, Esq., B.A., M.B., B.S., F.R.C.S., 23 Wimpole Street, W.1.

Ophthalmic Surgeon :—

MAURICE H. WHITING, Esq., O.B.E., M.A., M.B., B.Ch., F.R.C.S., 51 Wimpole Street, W.1.

Consulting Aural Surgeon :—

SOMERVILLE HASTINGS, Esq., M.S., F.R.C.S., M.P., 33 Murray Road, Northwood.

Aural Surgeons :—

C. P. WILSON, Esq., C.V.O., F.R.C.S., 65 Wimpole Street, W.1.

J. P. MONKHOUSE, Esq., M.B., B.S., F.R.C.S., 87 Harley Street, W.1.

Consulting Dental Surgeons :—

W. S. NOWELL, Esq., M.A., M.R.C.S., L.D.S., St. Peter's House, Canterbury, Kent.

H. WATSON TURNER, Esq., M.R.C.S., L.R.C.P., L.D.S., c/o Reginald Taylor, 4 New
Square, Lincoln's Inn.

W. WARWICK JAMES, Esq., O.B.E., F.R.C.S., L.D.S., 2 Park Crescent, Portland Place, W.1.

Dental Surgeons :—

A. L. PACKHAM, Esq., M.R.C.S., L.R.C.P., L.D.S., 79 Portland Place, W.1.

H. W. BREESE, Esq., M.R.C.S., L.R.C.P., L.D.S., The Middlesex Hospital, Mortimer St., W.1.

Assistant Dental Surgeons :—

J. W. SCHOFIELD, Esq., M.R.C.S., L.R.C.P., L.D.S., 90 Harley Street, W.1.

D. GREER WALKER, Esq., M.A., M.B., B.A.O., M.DENT.Sc., Middlesex Hospital, W.1.

Consulting Orthopædic Surgeon :—

A. S. BLUNDELL BANKART, Esq., M.A., M.Ch., F.R.C.S., 95 Harley Street, W.1.

Orthopædic Surgeon :—

BRIGADIER PHILIP WILES, M.S., F.R.C.S., R.A.M.C.

Plastic Surgeon :—

RAINSFORD MOWLEM, Esq., M.B., Ch.B., N.Z., F.R.C.S., 149 Harley St., W.1.

Department of Urology :—

SIR ALFRED WEBB-JOHNSON, BART., K.C.V.O., C.B.E., D.S.O., T.D., M.B., Ch.B., P.R.C.S.,
F.A.C.S., F.R.A.C.S., 70 Portland Place, W.1.

E. W. RICHES, Esq., M.C., M.B., M.S., F.R.C.S., 22 Weymouth St., W.1.

Department for Diseases of the Rectum :—

W. TURNER WARWICK, Esq., M.A., M.B., B.Ch., F.R.C.S., Fitzroy Farm Cottage, Fitzroy
Park, Highgate.

CHILDREN'S DEPARTMENT.**Physician :—**

ALAN MONCRIEFF, Esq., M.D., F.R.C.P., 121 Harley Street, W.1.

Medical Officer in Charge of the Infant Consultation Centre :—

ALAN MONCRIEFF, Esq., M.D., F.R.C.P., 121 Harley Street, W.1.

Consulting Anæsthetist :—

H. P. CRAMPTON, Esq., M.A., M.D., B.Ch., M.R.C.S., L.R.C.P., D.A., 36, Station Road, Burgess Hill, Sussex.

R. E. APPERLY, Esq., M.R.C.S., L.R.C.P., D.A., Morwenna, Cheltenham Road., Painswick.

Anæsthetists :—

A. E. W. IDRIS, Esq., M.R.C.S., L.R.C.P., D.A., Tindal House Emergency Hospital, Aylesbury.

MAJOR BERNARD R. M. JOHNSON, M.R.C.S., L.R.C.P., D.A., R.A.M.C.

F. W. ROBERTS, Esq., M.B., B.S., M.R.C.S., L.R.C.P., D.A., 47 Wimpole Street, W.1.

Anæsthetist to the Dental Department :—

C. J. M. DAWKINS, Esq., M.A., M.D., B.Ch., M.R.C.S., L.R.C.P., D.A., 1 Eton Avenue, N.W.3.

Honorary Director of the Department of Radio-Therapy.

J. H. DOUGLAS WEBSTER, Esq., M.D., Ch.B., F.R.C.P., 14 Harley Street, W.1.

Medical Officer in Charge of the Department of Radio-Therapy :—

PROFESSOR B. W. WINDEYER, M.B., B.S., F.R.C.S., F.F.R., D.M.R.E.

Assistants :—

MAJOR J. P. RABAN, M.R.C.S., L.R.C.P., D.M.R.E., R.A.M.C.

L. M. SHORVON, Esq., M.B., B.S., D.A., D.C.H., D.M.R.

J. BORROWDALE, Esq., M.B., B.S.

Physician in Charge of the Department of X-Ray Diagnosis :—

H. K. GRAHAM HODGSON, Esq., C.V.O., M.B., B.S., F.R.C.P., D.M.R.E., Middlesex Hospital, W.1.

Honorary Radiologists (Diagnostic) :—

F. C. GOLDING, Esq., M.B., ChM. (Syd.), M.R.C.P., D.M.R.E.

LT.-COL. E. SAMUEL, M.D., B.Sc., F.R.C.S., D.M.R.E., F.F.R.

Assistants in the Radiological Department (Diagnostic) :—

T. V. L. CRICHLLOW, Esq., B.Sc., M.R.C.S., L.R.C.P., D.M.R.E.

R. J. L. O'DONOGHUE, Esq., D.S.O., M.B., B.S., M.R.C.P., D.M.R.E.

D. C. PORTER, Esq., M.D., M.B., D.M.R.

Physician with Charge of Physical Medicine :—

BRIGADIER FRANK HOWITT, C.V.O., M.D., F.R.C.P., R.A.M.C., 87 Harley Street, W.1.

Assistant :—

E. A. RUCKER, Esq., M.R.C.S., L.R.C.P.

Medical Officer i/c First Aid Post and Gas Cleansing Station :—

H. W. HARVEY, Esq., F.R.C.S. (Edin.), 121, Harley Street, W.1.

Physicist :—

PROFESSOR SIDNEY RUSS, C.B.E., D.Sc.

The Bland-Sutton Institute of Pathology.**Director :—**

PROFESSOR JAMES MCINTOSH, M.D., Ch.B., LL.D.

Reader in Morbid Anatomy and Histology.

R. W. SCARFF, Esq., M.B., B.S.

Lecturer in Bacteriology and Pathology :—

BRIGADIER L. E. H. WHITBY, C.V.O., M.C., M.A., M.D., B.Ch., F.R.C.P., D.P.H., R.A.M.C.

The Ferens Institute of Oto-Laryngology.**Surgeons :—**

SOMERVILLE HASTINGS, Esq., M.S. F.R.C.S.

C. P. WILSON, Esq., C.V.O., F.R.C.S.

J. P. MONKHOUSE, Esq., M.B., B.S., F.R.C.S.

The Courtauld Institute of Biochemistry :—

PROFESSOR E. C. DODDS, M.V.O., D.Sc., Ph.D., M.D., F.R.C.P., F.I.C., F.R.S. (Edin.), F.R.S.

Registrars :—

Acting Medical.—D. B. JELLIFFE, Esq., M.B., B.S., M.R.C.P., D.C.H.
P. VENABLES, Esq., M.B., B.Ch.

Acting Surgical.—A. M. WOOD, Esq., M.B., B.S.
W. H. DYSON, Esq., M.B., B.S.
T. J. WILMOT, Esq., M.B., B.S.

Obstetric and Gynaecological.—G. B. LIVINGSTON, Esq., M.B., B.S.

Otological.—Vacant.

Fracture and Orthopaedic.—Vacant.

Anaesthetic.—Vacant

Dental.—Vacant.

Medical Committee :—

MAJOR P. B. ASCROFT, M.B.E., M.S., F.R.C.S., R.A.M.C.	BRIGADIER DOUGLAS McALPINE, M.D., Ch.B., F.R.C.P., R.A.M.C.
A. S. BLUNDELL BANKART, Esq., M.A., M.Ch., F.R.C.S.	PROFESSOR JAMES MCINTOSH, M.D., Ch.B.
G. E. BEAUMONT, Esq., M.A., D.M., F.R.C.P.	BRIGADIER H. L. MARRIOTT, M.D., F.R.C.P., R.A.M.C.
BRIGADIER D. E. BEDFORD, M.D., B.S., F.R.C.P., R.A.M.C.	ALAN MONCRIEFF, Esq., M.D., F.R.C.P.
T. IZOD BENNETT, Esq., M.D., B.S., F.R.C.P.	J. P. MONKHOUSE, Esq., M.B., B.S., F.R.C.S.
SIR COMYNS BERKELEY, M.C., M.A., M.D., F.R.C.S., F.R.C.P., F.R.C.O.G., M.M.S.A. (Hon.).	R. MOWLEM, Esq., M.B., Ch.B., N.Z., F.R.C.S.
H. E. A. BOLDERO, Esq., M.A., D.M., B.Ch., F.R.C.P.	A. L. PACKHAM, Esq., M.R.C.S., L.R.C.P., L.D.S.
H. W. BREESE, Esq., M.R.C.S., L.R.C.P., L.D.S.	D. H. PATEY, Esq., M.S., F.R.C.S.
E. A. COCKAYNE, Esq., M.D., F.R.C.P.	E. W. RICHES, Esq., M.C., M.B., M.S., F.R.C.S.
PROFESSOR E. C. DODDS, M.V.O., D.Sc., Ph.D., M.D., F.R.C.P., F.I.C., F.R.S. (Edin.), F.R.S.	L. C. RIVETT, Esq., M.C., M.A., F.R.C.S., F.R.C.O.G.
SURGEON REAR-ADMIRAL GORDON GORDON-TAYLOR, C.B., O.B.E., LL.D. (Toronto), M.A., M.S., M.B., B.Sc., F.R.C.S., F.R.A.C.S. (Hon.), F.A.C.S. (Hon.), F.R.C.S. (C.) (Hon.), R.N.	F. W. ROBERTS, Esq., M.B., B.S., D.A.
R. AFFLECK GREEVES, Esq., B.A., M.B., B.S., F.R.C.S.	AIR-COMMODORE F. ROQUES, M.A., M.D., M.Ch., F.R.C.S., F.R.C.O.G., R.A.F.
NOEL G. HARRIS, Esq., M.D., F.R.C.P., D.P.M.	R. W. SCARFF, Esq., M.B., B.S.
SOMERVILLE HASTINGS, Esq., M.S., F.R.C.S., M.P.	J. W. SCHOFIELD, Esq., M.R.C.S., L.R.C.P., L.D.S.
H. K. GRAHAM HODGSON, Esq., C.V.O., M.B., B.S., F.R.C.P., D.M.R.E.	D. GREER WALKER, Esq., M.A., M.B., B.Ch., B.A.O., M.DENT.Sc.
BRIGADIER FRANK HOWITT, C.V.O., M.D., F.R.C.P., R.A.M.C.	G. E. S. WARD, Esq., M.D., B.S., F.R.C.P.
R. VAUGHAN HUDSON, Esq., F.R.C.S.	W. TURNER WARWICK, Esq., M.A., M.B., B.Ch., F.R.C.S.
A. E. W. IDRIS, Esq., M.R.C.S., L.R.C.P., D.A.	SIR ALFRED WEBB-JOHNSON, BART., K.C.V.O., C.B.E., D.S.O., T.D., M.B., Ch.B., F.R.C.S., F.A.C.S., F.R.A.C.S.
MAJOR B. R. M. JOHNSON, M.R.C.S., L.R.C.P., D.A., R.A.M.C.	J. H. DOUGLAS WEBSTER, Esq., M.D., Ch.B., F.R.C.P.
C. E. LAKIN, Esq., M.D., B.S., F.R.C.P., F.R.C.S.	M. H. WHITING, Esq., O.B.E., M.A., M.B., B.Ch., F.R.C.S.
HENRY MacCORMAC, Esq., C.B.E., M.D. Ch.B., F.R.C.P.	BRIGADIER PHILIP WILES, M.S., F.R.C.S., R.A.M.C.
	C. P. WILSON, Esq., C.V.O., F.R.C.S.
	W. R. WINTERTON, Esq., M.A., M.B., B.Chir., F.R.C.S., M.R.C.O.G.
	R. A. YOUNG, Esq., C.B.E., M.D., B.Sc., F.R.C.P.
	PROFESSOR B. W. WINDEYER, M.B., B.S., F.R.C.S., F.F.R., D.M.R.E.

Pharmacist :—

S. H. WHITE, Esq., Ph.C., M.P.S.

Solicitor :—

A. L. H. CARTER, Esq., 6 Bedford Row, W.C.1.

Architect :—

ALNER W. HALL, Esq., M.C., F.R.I.B.A., Crown Buildings, 9 Southsmp-ton Row, W.C.1.

Bankers.**For Receiving Subscriptions and General Purposes :—**

MESSRS. COUTTS AND Co., 16 Cavendish Square, W.1.

THE WESTMINSTER BANK, LIMITED., 1 Cavendish Square, W.1.

Accountants :—

MESSRS. PRICE, WATERHOUSE AND Co., 3 Frederick's Place, E.C.2.

Chaplain :—

THE REV. B. A. WALL.

Matron and Lady-Superintendent of Nurses :—

MISS D. M. SMITH, O.B.E.

Lady Almoner :—

MISS M. J. ROXBURGH.

Assistant Lady Almoner :—

MISS I. M. DADSWELL.

CANCER AND GENERAL RESEARCH COMMITTEE.

S. A. COURTAULD, Esq., LL.D. (CHAIRMAN).

H. E. A. BOLDERO, Esq., M.A., D.M., B.Ch., F.R.C.P.

NORMAN BREWIS, Esq.

RICHARD C. DAVIS, Esq.

MAX FREEMAN, Esq.

SURGEON REAR-ADMIRAL G. GORDON-TAYLOR, O.B.E., M.A., M.S., B.Sc., M.B.
F.R.C.S., F.R.A.C.S., R.N.

C. E. LAKIN, Esq., M.D., B.S., F.R.C.P., F.R.C.S.

ALAN MONCRIEFF, Esq., M.D., F.R.C.P.

J. DOUGLAS WATSON, Esq.

J. H. DOUGLAS WEBSTER, Esq., M.D., Ch.B., F.R.C.P.

MAJOR SIMON WHITBREAD.

D. H. PATEY, M.S., F.R.C.S.

WALTER MORISON, Esq.

A. F. B. COOKE, Esq.

C. P. WILSON, C.V.O., F.R.C.S.

R. W. SCARFF, M.B., B.S.

The Bland-Sutton Chair of Pathology :—

JAMES MCINTOSH, Esq., M.D., Ch.B., LL.D.

The Joel Professor of Physics :—

SIDNEY RUSS, Esq., C.B.E., D.Sc.

The John Astor Professor of Physiology :—

SAMSON WRIGHT, Esq., M.D., F.R.C.P.

The S. A. Courtauld Professor of Anatomy :—

JOHN KIRK, Esq., M.B., Ch.B., F.R.C.S. (Edin.).

The Professor of Chemistry :—

W. B. TUCK, Esq., D.Sc., F.I.O.

The S. A. Courtauld Professor of Bio-Chemistry :—

E. C. DODDS, Esq., M.V.O., D.Sc., Ph.D., M.D., F.R.C.P., F.I.C., F.R.S. (Edin.), F.R.S.

The Professor of Radiology (Therapeutic) :—

B. W. WINDEYER, M.B., B.S., F.R.C.S. (Ed.), F.F.R., D.M.R.E.

The Honorary Treasurer of the Medical School :—

SIR ALFRED WEBB-JOHNSON, BT., K.C.V.O., C.B.E., D.S.O., T.D., M.B., CH. B.,
P.R.C.S., F.A.C.S., F.R.A.C.S.,

Secretary :—

R. A. FOLEY, Esq., F.C.C.S.

CANCER INVESTIGATIONS.**Scientific Staff.****Pathological :—**

PROFESSOR J. MCINTOSH, M.D., CH.B., LL.D.

R. W. SCARFF, Esq., M.B., B.S.

F. R. SELBIE, Esq., M.A., M.D., M.B., CH.B.

Biochemical :—

PROFESSOR E. C. DODDS, M.V.O., D.Sc., Ph.D., M.D., F.R.C.P., F.I.C., F.R.S. (Edin.), F.R.S.

W. LAWSON, Esq., M.Sc., A.I.C.

J. D. ROBERTSON, Esq., M.D., D.Sc., F.R.S. (Edin.).

Radiological :—

PROFESSOR S. RUSS, C.B.E., D.Sc.

J. E. ROBERTS, Esq., Ph.D.

F. T. FARMER, Ph.D.

GLADWYS M. SCOTT.

RADIUM RESEARCH COMMITTEE.

H. E. A. BOLDERO, Esq., M.A., D.M., B.Ch., F.R.C.P.

PROFESSOR E. C. DODDS, M.V.O., D.Sc., Ph.D., M.D., F.R.C.P., F.I.C., F.R.S. (Edin.), F.R.S.

R. VAUGHAN HUDSON, Esq., F.R.C.S.

HENRY MACCORMAC, Esq., C.B.E., M.D., CH.B., F.R.C.P.

PROFESSOR JAMES MCINTOSH, M.D., CH.B., LL.D.

L. C. RIVETT, Esq., M.A., M.C., F.R.C.S., F.R.C.O.G.

PROFESSOR SIDNEY RUSS, C.B.E., D.Sc.

SIR ALFRED WEBB-JOHNSON, K.C.V.O., C.B.E., D.S.O., T.D., M.B., CH.B.,
P.R.C.S., F.A.C.S., F.R.A.C.S.

J. H. DOUGLAS WEBSTER, Esq., M.D., CH.B., F.R.C.P.

C. P. WILSON, Esq., C.V.O., F.R.C.S.

PROFESSOR B. W. WINDEYER, M.B., B.S., F.R.C.S., F.F.R., D.M.R.E.

ADMISSION OF PATIENTS.

Patients are required to contribute in accordance with their means towards the cost of their maintenance. The amount of a Patient's contribution is agreed upon after enquiries made, either before or after admission to the Hospital, from the Patient or the Patient's relatives or friends; but no distinction is made between those who can and those who cannot afford to contribute.

Patients are required to contribute 1/- at each attendance, but are excused from payment if their circumstances warrant it. Further contributions are invited from those attending the Special Departments.

Patients are received for admission, or for Out-Patient Treatment :—

Admissions—Nassau Street Entrance, 11.30 a.m., on any week-day.

Accidents and Urgent Cases—Nassau Street Entrance, at any time of the day or night.

Medical and Surgical Cases—Out-Patient Department, Nassau Street, as follows :—

An Appointment System has been instituted for the clinics marked * and Doctors and Patients with Doctors' letters, are requested to communicate with the Appointments Secretary at the Hospital (Museum 8333, Extension 325). As it is anticipated that the Appointment System may be extended to other Clinics in the near future, Doctors and Patients are advised to make enquiries in the first instance about all Clinics.

Medical Cases are seen by the Casualty Medical Officer every week-day at 9.30 a.m. and attended :—On Mondays at 1.30 p.m. by Dr. G. E. S. WARD; on Thursdays at 1.30 p.m. by Dr. T. IZOD BENNETT; on Fridays at 1.30 p.m. by Dr. H. E. A. BOLDERO*. Out-Patients can also be seen on Tuesdays at 1.30 p.m. by appointment.

Surgical Cases are seen by the Casualty Surgical Officer every week-day at 9.30 a.m. and attended :—On Tuesdays at 1.30 p.m. by Mr. D. H. PATEY*, on Wednesdays at 1.30 p.m. by Sir ALFRED WEBB-JOHNSON, on *Thursdays at 1.30 p.m. by Mr. E. W. RICHES (urgent cases) and on Fridays at 1.30 p.m. by Mr. R. VAUGHAN HUDSON. Out-Patients can also be seen on Mondays at 1.30 p.m. (new Patients by appointment).

Diseases of Children under fourteen years of age are attended by Dr. A. MONCRIEFF on Mondays at 9.30 a.m.

Infant Welfare Clinic is attended on Mondays at 1.30 p.m., Tuesdays and Fridays at 3.0 p.m.

Diseases of the Skin are attended by Dr. H. MACCORMAC* on Thursdays at 9.30 a.m.

Diseases of the Nervous System are attended by Dr. P. H. SANDIFER* on Tuesdays at 1.30 p.m.

Lying-in Patients must attend on Thursdays at 9.30 a.m.

Diseases of Women are attended by Mr. L. C. RIVETT on Fridays at 9.30 a.m., and Mr. W. R. WINTERTON* on Mondays at 9.30 a.m.

Diseases of the Eye are attended by Mr. R. AFFLECK GREEVES and Mr. MAURICE H. WHITING on Tuesdays at 9.30 a.m., and by Mr. R. AFFLECK GREEVES on Fridays at 9.30 a.m.

Diseases of the Ear, Nose and Throat are attended by Mr. SOMERVILLE HASTINGS and Mr. J. P. MONKHOUSE on Fridays at 9.30 a.m., and by Mr. C. P. WILSON on Tuesdays at 9.30 a.m.

Diseases of the Rectum are attended by Mr. W. TURNER WARWICK on Wednesdays at 9.30 a.m.

***Diseases of the Genito-Urinary System** are attended by Mr. E. W. RICHES on Thursdays at 1.30 p.m.

***Varicose Veins** are attended on Mondays at 1.30 p.m.

Orthopædic Clinic is attended by Mr. BLUNDELL BANKART on Tuesdays at 9 a.m. at the Fracture Clinic, Main Hospital.

Plastic Surgery Clinic is attended by Mr. RAINSFORD MOWLEM on Tuesdays at 9.30 a.m.

Diseases of the Teeth are attended by Mr. J. W. SCHOFIELD on Mondays at 9.30 a.m.; by Mr. D. GREER WALKER on Wednesdays at 9.30 a.m. and by Mr. A. L. PACKHAM on Fridays at 9.30 a.m.

Cancer.—Out-patients are attended on Wednesdays at 9.30 a.m. and 1.30 p.m. in the Meyerstein Institute.

Venereal Diseases, 1.30 p.m. on Wednesdays. New patients may obtain treatment in the Casualty Department at any time. Daily treatment (Male and Female) by arrangement.

In-Patients are expected to be provided with clean and suitable clothing and change of linen. They also have to provide themselves with washing materials. In all cases where the Patients are too poor to provide themselves with these articles they are supplied to them by the Lady Almoner from special funds which she has at her disposal for the purpose.

Any Officer, Sister, Nurse, Servant, or person employed in any Department of the Hospital accepting Money, or Presents of any kind, from a Patient, or relative or friend of any Patient, on any pretence whatever, is liable to dismissal.

The following Cases are not admitted into the Hospital :—

1. Those which are, upon due examination, deemed *Incurable*, as *Advanced Consumption*, etc.
2. Complaints so tedious of cure as to preclude for a long time the admission of more urgent cases, as *Chronic Ulcers of the Legs*, etc.
3. Disorders to the cure of which other establishments are devoted, as *Persons of Unsound Mind*, etc.
4. Those which are more properly objects for Public Assistance, as wanting Food and not Medicine.
5. Those whose admission might endanger the other Patients, as persons suffering from *Infectious Diseases*.
6. Complaints likely to be aggravated rather than relieved by confinement within the walls of a Hospital, but such cases, if deemed proper objects, may receive advice and medicine as *Out-Patients*.

Prior to sending up Patients from the Country, the Resident Medical Officer should be applied to, in order to learn whether there is room, and such application should be accompanied by a medical certificate setting out fully the nature of the case.

THE MIDDLESEX HOSPITAL CANCER WING.

ADMISSION OF PATIENTS.

1. Out-Patients suffering from cancer are specially attended in the Meyerstein Institute on Wednesdays at 9.30 A.M. and 1.30 P.M. and Thursdays at 1.30 P.M.

2. No patient can be admitted unless previous application has been made and the case considered.

VISITING DAYS.

Sundays	2 to 4 p.m.
Tuesdays	4 to 5 p.m.
Thursdays	4 to 5 p.m.
MATERNITY	{	Sundays	4 to 5 p.m.
					Tuesdays	4 to 5 p.m.
					Thursdays	4 to 5 p.m.
					Daily	7 to 8 p.m.
					(husbands only)	

N.B.—Every patient on admission to the Hospital is supplied with two visiting cards, and on no account can more than two visitors be allowed to see a patient at the same time.

REPORT
OF THE
BOARD OF GOVERNORS
OF THE
MIDDLESEX HOSPITAL, 1944.

The main feature of our report for 1944 is the evidence it offers of the active, successful and most important work being done in the research departments of the Hospital. In view of the reduced staff and other difficulties due to war conditions, and after five arduous years, this is a remarkable effort.

Short statements from the departments concerned have been drafted by them for our lay public and are here published. That on Stilboestrol, the first medicament administered by mouth to have any effect on cancer, must, as such, constitute a landmark.

Of four great medical discoveries, in their order of appearance, the water process production of insulin, the clinical application of what is commonly known as M. & B., Penicillin and Stilboestrol, the first two and the last stand to the credit of the Middlesex Hospital.

Apart from the most important original work being done in research, the year from the point of view of the Hospital has been largely a matter of marking time. It was a period devoted to discussions on the framework of a National Health Service from which, by the end of the year, no conclusions had then emerged.

The principal groups interested, the Hospitals, the Medical Profession, the Teaching Schools, had all held numerous meetings of the various bodies representing them. The Teaching Hospitals

had put their views before the Goodenough Committee, the Medical Profession had sought to achieve unity of aim through the British Medical Association and the Royal Colleges, and the two groups of Hospitals, Voluntary and Municipal, had formulated their comment and criticism on the original White Paper of the Ministry of Health.

The Ministry of Health had received deputations from all these bodies ; and it became apparent that considerable modification of the original proposals in the White Paper would be necessary before a good working agreement could be achieved. There is reason to think that this will come about.

We feel sure that the Teaching Hospitals will emerge as independent units, as strong or stronger than they were in the past. But this belief assumes that their friends will give them as generous support in the future as in the past, not so much on the old basis of charity as on the much broader ground of ensuring freedom and elasticity of medical education and research, both clinically and in the laboratory, to the benefit of the community and, further, of humanity as a whole.

Domestically, the Hospital can report a good year's work, which again might have been better in quantity had there been the maintenance staff to make it possible to open more beds. As the Labour Exchanges could barely keep up with the normal wastage representations were made direct to the Ministers of Health and Labour. But the shortage, especially of domestic staff, seems universal. We have empty beds, we have medical and nursing staff, but we have no maintenance staff and so cannot open them.

RESEARCH DEPARTMENT REPORTS.**BLAND-SUTTON INSTITUTE.****Chemotherapy.****Wound Antiseptics.**

This investigation has been continued and a number of new and modified substances have been tested. The most successful of these has been flavazole (Boots) which is a compound of proflavine and sulphathiazole, a substance which is active over a wide range of bacteria found in wounds and other lesions and is the most active chemotherapeutic substance we have yet found against the Gram-negative wound bacteria. Clinical trials have been carried out against battle casualties, both in the field and in hospital, and in a plastic unit, the results of which have been highly satisfactory. A valuable characteristic of this drug is its power to suppress chronic infections in wounds and thus allow plastic operations to be carried out which otherwise might have been delayed for months.

Penicillin.

Bacteriological research has been continued in association with the Penicillin Research Unit of the Middlesex Hospital under the auspices of the Penicillin Trials Committee of the Medical Research Council, and more recently with special reference to the treatment of subacute endocarditis. This has necessitated a large number of special investigations and the development of new technique for the control and adjustment of treatment. Special study has been made of the most suitable method of administration and the information thus obtained has proved of great value in helping the clinical administration of the drug. At present tests are being carried out on the efficacy of penicillin and other drugs in the treatment of syphilis, and their action on the spirochaete.

Cancer.

Research in this direction has been mainly on the stimulating effect of chemical and other substances on tumour virus agents.

The Bland-Sutton Institute has continued to prepare a large number of sections from material from specially difficult cases received for the diagnosis of cancer for the Pathological Subcommittee of the Clinical Cancer Research Committee of the British Empire Cancer Campaign.

Bacteriology.

Again much of the time in the Bacteriological Department has been expended on the diagnosis and control of infections, in particular in relation to septic throats (haemolytic streptococci, etc.), cross-infection in wards and dysenteries.

Haematology.

In addition to carrying out many routine examinations much time has been spent in grouping individuals in connection with the Blood Transfusion Service. Particular attention has been paid to the incidence of the Rh factor and much extra research has been done on this, the importance of which is being clearly brought to light in connection with the Maternity Department.

Barnato-Joel Laboratories.

Experimental Research has been continued in spite of difficulties. Two outstanding requirements in treatment by means of X-rays and Radium are knowledge of how living cells react to these rays, without this there can be no scientific basis for prescribing the doses to be given; and in the second place there should be available reliable methods for measuring these doses.

Both of these aspects of research continue to be studied; within the last two years two instruments have been devised which mark definite progress in measurement, one is the valve electrometer and the other is an X-ray output meter which registers the intensity of the rays as they are being given to the patient; it is called the M.H. X-ray Output Meter.

Courtauld Institute of Biochemistry.

During the year 1944 intensive work on the synthetic oestrogens has been conducted. It will be remembered that the discovery of stilboestrol was first published in 1939 and since that time its clinical use has extended throughout the world.

In addition to the use of stilboestrol in the treatment of various medical and gynaecological disorders, it has been shown to be the first substance administered by mouth ever to have any effect on cancer.

The symptomatic relief of carcinoma of the prostate is now recognised and is a standard method of treatment.

Intensive research has been continued in the department to investigate the nature and mechanism of this phenomenon. Intensive experiments have been conducted on the metabolism of the Synthetic oestrogens in carcinoma of the prostate and also in carcinoma of the breast. A certain amount of success has been demonstrated in the treatment of the latter condition.

Chemical work directed towards the production of new synthetic oestrogens has also been undertaken. The biological activities of this group of substances are being explored.

It has also been demonstrated that certain stilbene derivatives possess feeble but definite carcinogenic activity. A new series of analgesic compounds have been discovered and members of the diphenylethylamine series have been shown to possess limited but definite analgesic powers. The therapeutic importance of these observations is being explored.

The clinical routine analysis have provided a considerable amount of material for investigation, and research on the basal metabolic rate in various conditions continues.

MEDICAL STAFF.

During the year Dr. H. MacCormac, Physician to the Department for Diseases of the Skin, Mr. A. S. Blundell Bankart, Senior Orthopaedic Surgeon, and Dr. H. P. Crampton, Anaesthetist to the Hospital, on reaching retiring age, were appointed by the Court Honorary Consultants to the Hospital. They consented, most generously, to continue their duties for another year to assist the Hospital during the time that so many of the Staff are absent in the Forces.

We regret to record that Mr. Apperly, Senior Anaesthetist, was obliged, owing to ill-health, to retire.

The general policy of the Hospital is not to fill vacancies in the Junior Staff whilst so many of the younger men are away, but exceptions in some special departments have had to be made in order to keep them in being. The X-Ray Diagnostic Department is one of these, and we welcome Dr. Campbell Golding and Lt.-Col. Eric Samuel who have been appointed Honorary Assistant Radiologists.

THE NURSING SERVICE.

The numbers in the various Schools have been well maintained and applications have been numerous.

During the early part of the year, work continued without interruption, but, beginning in June, the flying bombs were somewhat disturbing and we reverted to arrangements similar to those during the "Blitz."

For months before D-day, we had our plans made to release staff from The Middlesex and Sector Hospitals to help with casualties treated at the coastal hospitals and Theatre teams were also ready. We managed somehow to let them go and also to deal with our own troubles in Southern England. Midwives were also loaned to help staff the Maternity Homes evacuated outside London.

At the request of the Medical Adviser to the Secretary of State for India, it has been agreed to accept some Indian Students for Nursing Training.

We have given facilities for practical experience in the various departments for senior State Registered Nurses taking the administrative course at the Royal College of Nursing.

The following most generous gifts have been accepted :—

An anonymous gift, through Mr. Doran, the Chairman of the Nursing Sub-Committee, to provide Medals for Sisters with over five years' service as Sister.

Two prizes to be presented annually to Junior Nurses, presented by Miss E. C. Pearce—for many years Sister Tutor.

Money for a film projector, given anonymously.

We are pleased to record that in the Physiotherapy Society's examinations, three Distinctions in Electro-Therapy have been gained by our students.

We congratulate Miss E. M. Land, our Assistant Matron, on being awarded the M.B.E.

We regret to announce the death of three former Matrons :—

Miss Eleanor C. Vernet 1905 to 1909.

Dame Alicia Lloyd-Still, D.B.E., R.R.C. 1909 to 1913.

Miss M. Gertrude Montgomery, R.R.C. 1913 to 1928.

The Chaplain.

During this year our Chaplain, the Rev. C. P. Gliddon left us to take up parish work, and we had much pleasure in welcoming the Rev. Bernard Wall on his appointment to fill the vacancy.

MIDDLESEX HOSPITAL LADIES' ASSOCIATION.

The Association is pleased to report that all its activities have been maintained and no call for service from the Hospital had to be refused, in spite of added war difficulties and strain, in fact the first flying bomb to fall near the Middlesex found the L.A. 'on the spot', as Mrs. Milburn and Mrs. Clements promptly prepared the Out-Patients' Canteen Trolley and served free tea to all arrivals. Again it is to the faithful few that we owe our capacity to carry on, but we hope that shortly we shall be able to expand our work and to recruit large numbers of new friends and helpers.

INFANT WELFARE DEPARTMENT.

Report for 1944.

	1944	Corresponding figures for 1943
No. of Children who attended ..	398	412
Total attendances	2,873	3,613
New Cases	147	151
No. of attendances of expectant mothers at Mothercraft class..	215	289
Test Feeds	190	126
Home visits	1,517	1,747
Visitors to I.W. Office	1,089	1,199

The figures for 1944 reflect the diminished population during the flying bomb phase and attendances fell off in July and August. Actually during this period more home visits than usual were paid

and the fact that the total home visits for the year is smaller is due to staff difficulties. The voluntary helpers have continued their valuable work despite all forms of enemy action. During the year assistance from various sources is gratefully acknowledged :—

Packages of Food Auckland (New Zealand) A.A.

Christmas toys America, and St. Luke's Church,
Kew Gardens.

Needlework & Knitting.. Mothers' Union, Kew Gardens.

ALMONERS' DEPARTMENT.

1944 Statistics.

Patients sent to :—

Convalescent Homes	Adults 102	Children 7
----------------------------	------------	------------

Sanatoria	48	..	5
-----------	----	----	----	----	----	----	---

Supplied with Surgical Appli-	
ances	761

District Nursing Association .. 124

It is with regret that we record the retirement of Miss Dover, Head Almoner, after many years of loyal service. The appointment of her successor was referred to a Joint Committee which had under consideration the development and future organisation of Social Medicine. This aspect of medical treatment is of growing importance, and whilst members of the Honorary Staff have always, as individuals, recognised it both in practice and in teaching, further facilities must be provided.

We welcome the appointment of Miss M. J. Roxburgh, who had previously held with great success the Secretaryship of the Institute of Hospital Almoners.

ALL HELP LEAGUE.

Though the number of our ex-patients is, for several causes, less than in pre-war days, and the meetings and functions we used to hold were impossible in the war years, their loyalty and enthusiasm is no less. The support they give us is a notable tribute to the Voluntary system and, we like to think, a particular tribute to our own Hospital. We offer them our warmest thanks for the help they bring to us.

J. J. ASTOR,

Chairman

The Medical School (1943-44).

Students.

The Hospital and Medical School are fully equipped for the theoretical and practical teaching of all the subjects of the Medical Curriculum. Chemistry, Physics and Biology are also taught in preparation for the 1st M.B., (Lond.) and the Pre-medical Examination. Every effort is made to encourage co-ordination and prevent the division of the curriculum into water-tight compartments. This arrangement ensures that the student, instead of proceeding to the study of the various subjects as if they were isolated and having little or no relation to each other, is taught each subject by professors, lecturers and teachers, who are instructing medical students only, and are in close touch with all the other departments of the school. Under this arrangement not only have students of the Middlesex Hospital obtained the highest honours in examinations, but they have also been admirably equipped for the practice of medicine and surgery, and to take the fullest advantage of any new knowledge which research may bring to light. The value to the student and to medicine is obvious, for the teaching of the elementary subjects is closely connected with that of the clinical subjects.

Special classes are available for students proceeding to the higher examinations. Courses of instruction are held for those preparing for the Medical Diplomas in Radiology and Electrology, and for the †Primary F. R. C. S. Examination. Additional laboratory accommodation is provided for original research. Clinical teaching is being continued in London and in the Sector Hospitals at Tindal House (Aylesbury), Mount Vernon (Northwood), and Central Middlesex County Hospital (Park Royal), also at the Royal Hospital, Wolverhampton.

†—This course is closed for the duration of the War.

Research Work and Investigations.

The generous support afforded us during the past year by the Medical Research Council, the British Empire Cancer Campaign, and the Sir Halley Stewart Trust, is gratefully acknowledged.

In recognition of the munificence of the late Sir John Bland-Sutton, Bt., and his great services both to the Hospital and Medical School, the University of London has, at the request of the Medical School Council, re-named the University of London Chair of Pathology tenable in the Medical School.

In future its title will be "the Bland-Sutton Chair of Pathology."

Honours.

Sir Alfred Webb-Johnson has been created a Baronet, and Dr. L. E. H. Whitby a Knight Bachelor, by H.M. The King.

Mr. Theobald Mathew has been appointed Director of Public Prosecutions.

War Distinctions.

The following awards have been conferred by H.M. The King.

1. Surgeon Lieut. J. I. Thomas, R.N.V.R., awarded the D.S.C.
2. Captain A. G. Hewer, R.A.M.C., awarded the M.C.
3. Captain J. C. R. Nuttall-Smith, R.A.M.C., awarded the M.C.
4. Lt.-Col. F. P. Lee Lander, R.A.M.C., awarded the O.B.E.
5. Surgeon Lieut. I. H. Miller, R.N.V.R., Mentioned in Despatches.
6. Major R. K. Pilcher, R.A.M.C., awarded the M.C.
7. Lt.-Col. F.R. Langmaid, R.A.M.C., awarded the O.B.E.
8. Captain B. McN. Truscott, R.A.M.C., awarded the M.B.E.
9. Major H. K. Meller, R.A.M.C., awarded the M.B.E.
10. Lt.-Col. Hamish Allan, R.A.M.C., awarded the M.C.
11. Group-Capt. F. E. Lipscomb, R.A.F.V.R., Mentioned in Despatches.

Deaths.

It is with deep regret that I record the following deaths:—

W. Essex Wynter, (late Consulting Physician).

Sir Hubert Bond, (Emeritus Lecturer in Psychiatry).

Sir James Dundas-Grant.

We acknowledge with gratitude the following legacies and donations :—

Medical School.

Donations.

Deed of Covenant for seven years from an anonymous Donor to found the Countess of Lisburne Memorial Studentship for the study of malignant diseases—
£3,050

The Lockhead Central Charities—£15 p.a.

Legacy.

For the purpose of assisting graduates of the Medical School to qualify as Specialists or to travel, from the state of the late Miss E. M. H. Reily—£4,000.

Cancer Research.

Donations.

Miss Bessie Crookshank—five donations of £500, £100, £75, £50 and £25.

Lord Latymer £100.

D. M. Cohen £75.

G. A. Wilson £20.

Mr. and Mrs. Rymer .. £15.

Mrs. Emmett £10.

Mrs. Norah Bolitho .. £10.

Legacies.

Estate of the late J. A. Wood on account—£14,760

„ „ Miss E. M. Yates on account
£5,251 10s. 0d.

„ „ H. S. Schmidt—£450.

„ „ Miss D. M. Kerr on account £200.

„ „ George Brooks—£100.

H. E. A. BOLDERO,

Dean of the Medical School,

Middlesex Hospital,

London, W. 1.

STATISTICAL TABLES.

THE MIDDLESEX HOSPITAL AND CANCER WING

Statistics for Year to 31st Dec., 1944. Compared with those of the previous Year

I.—IN-PATIENTS. (a) NUMBER OF BEDS AND IN-PATIENTS.

	1944.	Numbers in Previous Year.
(1) Beds: (a) Complement at 31st December	625	625
(b) Average Daily Complement during the year ...	625	625
(c) Average Daily Number Closed during the year owing to :—		
(i) Re-building or Extension Schemes	<i>Nil</i>	<i>Nil</i>
(ii) Repairs, Redecoration, Cleaning or Infection ...	<i>Nil</i>	<i>Nil</i>
(iii) Other Causes—War Emergency Hospital Service ...	240.34	233
(d) Average Daily Number open during the year :—		
(i) E.H.S. Casualty Beds	*200	*200
(ii) Other beds	184.66	192
(e) Average daily number occupied during the year :—		
(i) E.H.S. Casualty beds occupied by Casualties ...	26.19	24.26
(ii) Other beds	202.67	226.32
(2) Number of In-patients in the Hospital at the beginning of the year	259	231
(3) Number of In-patients admitted during the year	5,083	5,793
(4) Number of In-patients in the Hospital at the end of the year ...	258	259
(5) Average number of days each patient was resident... ..	16.48	15.86
<i>(Ascertained by dividing the total daily counts during the year, viz., 83761 by the number of patients treated to a conclusion, i.e., (2) + (3) — (4).)</i>		
(6) Number of Patients admitted and discharged during the year who were resident for		
(i) One day only	299	189
(ii) 2 and 3 days	265	225

* Note.—This figure includes 80 Reserve "A" beds.

II—OUT PATIENTS. (a) NUMBERS.

	Total 1944.	Numbers in previous Year.
(1) Total Number of New Out-patients	50,954	61,502
(2) Total Number of Out-patients attendances... ..	222,524	249,461
(A) Number of Patients on books at the beginning of the year ...	—	—
(B) Number of Casualty Patients included in No. (1) above ...	19,295	20,820
(C) Number of Maternity Patients included in No. (1) above, attended at home	18	7
(D) Number of attendances on Maternity Patients included in No. (2) above	409	96

NUMBER OF IN-PATIENTS AND OUT-PATIENTS TREATED DURING THE YEAR.

1944.

IN-PATIENTS :—

Medical	1,060
Surgical	1,419
Gynæcological	368
Maternity	547
Paying Patients	609
Cancer	369
E.H.S.	711

5,083

Average number of beds occupied 228.86

OUT-PATIENTS :—

Medical	2,554
„ Casualties	7,303
				9,857
Surgical	1,648
„ Casualties	11,992
				13,640
Diseases of Women	805
„ Children	184
Infant Welfare	146
Lying-in Cases	636
Dental	1,012
Skin	1,461
Ophthalmic	1,035
Ear, Nose and Throat	1,386
Nervous Diseases	875
Genito-Urinary	395
Diseases of Rectum	384
Orthopædic	808
Venereal	269
Diseases of the Chest	2
Varicose Veins	630
Fractures	457
Plastic Surgery	147
Speech Clinic...	16

34,145

Radio Therapy Department ...

708

Electro-Therapy, Massage and

X-Ray Departments ...

16,101

50,954

Attendances of Out-Patients ... 114,341

Attendances in Radio Therapy
Department ... 18,425Attendances in Electro-Therapy,
Massage and X-Ray Departments 89,758

222,524

INCOME AND EXPENDITURE

ACCOUNT

AND

BALANCE SHEET.

1944.

Dr.

INCOME AND EXPENDITURE ACCOUNT

ORDINARY—	INCOME.	£	£	£
I. VOLUNTARY GIFTS—				
1. SUBSCRIPTIONS DONATIONS, ETC.—				
Annual } Hospital	12,370			
Subscriptions } Cancer Wing	1,643			
			14,013	
Donations—Hospital	10,895			
Cancer Wing	1,144			
			12,039	
All Help League			1,129	
Box } Hospital	1,561			
Collections } Cancer Wing	11			
			1,572	
Entertainments			Nil	
Gifts in kind			Nil	
Other Voluntary Gifts			Nil	
			28,753	
2. CENTRAL FUNDS—				
King Edward's Hospital Fund	9,000			
(Including the Convalescent Home at Clacton-on-Sea)				
Hospital Sunday Fund	2,520			
			11,520	
				40,273
II. RECEIPTS ON ACCOUNT OF SERVICES RENDERED—				
1. CONTRIBUTIONS ON ACCOUNT OF SERVICES TO PATIENTS—				
(a) From Patients and their Societies—				
Patients—Hospital	10,209			
Cancer Wing	1,387			
			11,596	
Hospital Saturday Fund			1,176	
Hospital Savings Association				
Hospital	12,810			
Cancer Wing	1,307			
			14,117	
Approved Societies—Hospital	Nil			
Cancer Wing... ..	Nil			
			Nil	
Paying Patients' Account			23,591	
			50,480	
(b) From Public Authorities—				
Infant Welfare Grant	419			
Government Emergency Hospital Scheme. Contributions towards cost of Casualty Service	82,465			
Contributions towards Nursing Salaries	2,104			
Scabies Clinic Grant	225			
			85,213	
2. FEES—			135,593	
Nurses' and Probationers' Fees			869	
3. OTHER RECEIPTS—				
Sundries—	131			
Medical Research Council for Pen- icillin Research	350			
			481	
				137,043
III. INVESTED PROPERTY—				
Interest, Dividends, etc.—Hospital	9,705			
Cancer Wing	3,279			
Barnato-Joel	6,579			
			19,563	
G. G. Nicol Trust			130	
Zunz Bequest			700	
David Hughes Trust			4,339	
Miss A. M. Bird Trust			300	
Rents—Hospital	2,372			
Cancer Wing	551			
			2,923	
				27,955
ORDINARY INCOME			Carried forward	£205,271

for the year ending 31st December, 1944.

Cr.

EXPENDITURE.					
ORDINARY—					
		£	£	£	
I. PROVISIONS	...				19,277
II. SURGERY AND DISPENSARY—					
1. Drugs	...	8,971			
„ V.D. Department	...	208			
			9,179		
2. Dressings, Bandages, etc.	...		2,322		
3. Instruments and Appliances	...		8,072		
4. Wines and Spirits	...		135		
5. Salaries and Wages of Dispensing Staff	...	2,817			
V.D. Dept.	...	82			
Superannuation Contribution Account	...	339			
			3,238		
6. Sundries	...		760		
7. Pathological Department Examinations	...		1,859		
8. Venereal Department Examinations	...		600		
9. Services in Physics Department	...		738		
				26,903	
III. DOMESTIC—					
1. Renewals and Repairs of Furniture, Bedding, Crockery, etc.	...		2,877		
2. Laundry	...		6,605		
3. Cleaning and Chandlery	...		771		
4. Water	...		545		
5. Fuel and Lighting	...		15,510		
6. Uniforms	...		1,613		
7. Sundries	...		4		
				27,925	
IV. SALARIES AND WAGES (MAINTENANCE)					
1. Medical	...		7,834		
2. Nursing	...	28,408			
Superannuation Contribution Account	...	6,447			
			34,855		
3. Other Officers and Employees	...	52,193			
Superannuation Contribution Account	...	829			
			53,022		
4. Pensions	...		2,083		
				97,794	
V. MISCELLANEOUS—					
1. Printing, Stationery, Postages, Telephones, etc.	...		3,237		
2. Advertisements	...		33		
3. Insurance of Buildings, Equipment, Stores, etc.	...				
General	...		1,371		
War Damage Contribution	...		630		
4. Garden	...		Nil.		
5. Sundries	...		544		
				5,815	
VI. ADMINISTRATION—					
1. Salaries	...	5,442			
Superannuation Contribution Account	...	636			
			6,078		
2. Pensions	...		1,307		
3. Printing, Stationery, Postages, Tele- phones, etc.	...		376		
4. Advertisements	...		Nil.		
5. Law Charges	...		38		
4. Authors' Fees	...		210		
7. Sundries	...		117		
				8,126	
Carried forward	...				£185,840

GENERAL FUND AND INCOME AND EXPENDITURE ACCOUNT

INCOME—continued.

		£
	Brought forward	205,271
EXTRAORDINARY—		
Transfer from Legacies Account		Nil
TOTAL INCOME		£205,271

SUBJECT TO AUDIT.

CANCER WING—continued.

31

for the year ending 31st December, 1944—continued.

Cr.

EXPENDITURE—continued.

	£	£	£
Brought forward ...			185,840
VII. ESTABLISHMENT—			
Reserve for Renewals and Repairs to Buildings and Plant ...			2,510
VIII. FINANCE—			
1. Interest ...		Nil.	
2. Appeals ...	491		
All Help League ...	63		
		554	
Salaries of Under-Treasurer and Staff ...	1,449		
Superannuation Contribution Account ...	72		
		1,521	
3. Rent ...		350	
4. Rates and Taxes ...		2,334	
		4,759	
ORDINARY EXPENDITURE ...			193,109
EXTRAORDINARY—			
		Nil.	
Balance being excess of Total Income over Total Expenditure ...			12,162

£205,271

GENERAL FUND AND

LEGACIES ACCOUNT for the

HOSPITAL—

INCOME.

LEGACIES, 1944.

The Executors and Trustees of the late—

	£	s.	d.
Adolph Weil	10,000	0	0
W. T. Johnson	5,490	0	0
A. D. Serena	3,267	5	5
Mrs. R. E. Albery	2,700	0	0
Miss Nora Wallis	2,312	10	0
Mr. E. Bradbury	879	3	3
Sir Arthur Pinero	617	11	3
St. Andrew St. John Winnie	480	0	0
Miss I. M. Chinchin	452	18	8
Major A. Corrie Keep	360	0	0
Mrs. A. R. Moggridge	300	0	0
S. H. Tampin	296	11	6
Mrs. M. L. Youngerman	200	0	0
E. S. Marcus	133	2	8
William Arlidge	130	19	8
Miss Louise S. J. Aston	112	18	7
S. P. Waddington	111	2	3
Miss E. M. Clemance	100	0	0
Miss K. M. Pearce Gould	100	0	0
G. R. Boorer	50	0	0
M. L. Evans	50	0	0
Miss L. M. Louthean	50	0	0
F. H. Say	50	0	0
S. J. Wingate	45	0	0
Mrs. Caroline Berg	37	14	1
Miss K. R. Wright	28	6	6
Newall Trust	26	8	11
Mrs. R. Dansey	15	18	3
Miss R. Hastie	10	14	6
Miss S. B. Kent	10	0	0
Miss H. A. Robinson	10	0	0
J. Sanderson	5	7	5
C. E. Morris	1	10	5
Miss M. Hunt	0	3	4

28,435 6 8

Less Tax disallowed 70 10 4

28,365

CANCER WING—

Miss Nora Wallis	2,250	0	0
Miss Ellen Niven	500	0	0
Mrs. J. D. West	200	0	0
H. S. Booth	70	15	9
Mrs. Annie Goalen	50	0	0
Miss Emily Richards	29	1	3
J. J. Macbean	4	9	6
E. A. Wolfe	1	2	6

3,105

£31,477

Year ending 31st December, 1944.

EXPENDITURE.

Amount transferred to the Capital Account for Buildings and Equipment	£	434
Amount transferred to Income and Expenditure Account	Nil	
Amount Transferred to General Fund	31,036	

£31,470

	£	£
1. SUNDRY CREDITORS—		
General Fund	32,039	
Convalescent Home Fund	745	
		32,784
NOTE.—		
Estimated Capital Liability on Buildings ...	<i>Nil</i>	
2. LOANS TO HOSPITAL—		
On Account of Special Funds—		
Convalescent Home Fund—		
Mortgage from Spicer Trust Fund		21,000
INTERNAL LOANS—		
On Account of Special Funds—		
Convalescent Home Fund—		
Advance from General Fund	4,679	
Dresden Assistance Fund—		
Advance from General Fund	462	
		5,141
3. CAPITAL ACCOUNTS—		
(a) Hospital Endowments (as per Schedule No. 1) ...	699,764	
(b) Special Funds (as per Schedule No. II)	100,112	
(c) Buildings and Equipment (as per Schedule No. III)	1,446,299	
(d) General Fund (as per Schedule No. IV)	99,911	
(e) Suspense Funds (as per Schedule No. V)	22,387	
		2,368,473
* (Funds in Court held for the benefit of the Hospital, £22,691 0 0.)		
4. UNEXPENDED INCOME BALANCES OF SPECIAL FUNDS—		
Dresden Assistance Fund	3,198	
Miss Anne Watson Dental Fund	64	
George Balfour Black Fund	222	
Trained Nurses' Institute	<i>NIL</i>	
Convalescent Home Fund	2,168	
		5,652
Carried forward		£2,433,050

	£	£
1. CASH AT BANK AND IN HAND—		
Endowment Funds—		
Permanent Endowment Fund	1,352	
Special Funds	4,580	
General Fund—		
Hospital	37,358	
Suspense Funds	1,519	
	<hr/>	44,809
2. STOCKS OF UNISSUED STORES ON HAND		15,369
3. SUNDRY DEBTORS—		
General Fund	34,085	
Convalescent Home Fund	467	
Dresden Assistance Fund	713	
	<hr/>	35,265
4. INTERNAL LOANS—		
On Account of the General Fund—		
Convalescent Home Fund	4,679	
Dresden Assistance Fund	462	
	<hr/>	5,141
5. LAUNDRY MOTOR AND PLANT—		
Outlay carried forward		209
6. INVESTMENTS—		
(a) Hospital Endowments	698,412	
(b) Special Funds	85,853	
(c) Buildings and Equipment	6,178	
(d) General Fund	39,789	
(e) Suspense Funds	20,756	
	<hr/>	850,988
Carried forward ...		<hr/> £951,781

			£	£	£
	Brought forward	951,781
7. LAND, BUILDINGS, AND EQUIPMENT OF THE HOSPITAL—					
No valuation in the Hospital Books, with the exception of the following—					
Hospital—					
As at 31st Dec. 1943	72,503		
Expenditure during 1944	494		
				72,997	
No. 4 Mortimer Street—					
As at 31st December, 1943		1,457	
Residential College					
As at 31st December 1943		4,327	
Radium—Cost—					
As at 31st December, 1943		1,345	
Laundry—					
As at 31st December, 1943		720	
Convalescent Home—					
As at 31st December, 1943		41,037	
					121,883
Cancer Wing—As at 31st December, 1943 ...					
Hospital		3,168	
Radium—Cost		6,307	
Barnato-Joel Trust—					
Buildings and Equipment	60,360		
Nassau Street and Suffolk Mews	9,711		
				70,071	
					79,546
Reconstruction Fund—					
Hospital Preliminary Costs,	Reconstruction Expenses, Costs of Transference,	(including Incidental etc.)—			
As at 31st December, 1943		920,717	
New Nurses' Home—					
As at 31st December, 1943		359,123	
					1,279,840
					£2,433,050

SCHEDULE 1.—HOSPITAL ENDOWMENTS.

NAME OF FUND.					AMOUNT.		
					£	£	£
GENERAL HOSPITAL.							
Permanent Endowment Fund as per last Balance Sheet						282,553	
Donation received in 1922—							
The Lord Bearsted's Gift						1,000	
W. H. Collins, Esq. (for endowment of the Collins X-Ray Dept.)—						50,000	
Sir Edward W. Meyerstein (for endowment of the Meyerstein Institute of Radio-Therapy) as per last Balance Sheet						50,000	
						<u>383,553</u>	
Donations to the Permanent Endowment Fund, 1943 and Profit on Sales of Securities						21,216	
							404,769
Marshall Trust Fund							563
William Hollins Fund							278
Robert Nash Wards—							
As per last Balance Sheet						2,515	
Add Profit on Sale of Securities						7	
						<u>2,522</u>	
Dresden Settlement Fund							9,927
Hanmer Trust Fund							114
Sir David Salomon's Insurance Fund							55
Prince Francis of Teck Memorial Fund							34,799
Debenham Trust							<u>1,779</u>
Herbert Potter Memorial Fund—							
As per last Balance Sheet						303	
Add Profit on Sale of Securities						10	
						<u>313</u>	
CANCER WING.							
Permanent Endowment Fund—							
As per last Balance Sheet					65,228		
Add Profits on Sales of Securities					417		
						<u>65,645</u>	
Edith May Goddard Fund						50	
Samuel Lewis Ward Fund—							
As per last Balance Sheet						4,064	
Add Profit on Sale of Securities						1,146	
						<u>5,210</u>	
Barnato-Joel Trust Fund—							
Original Capital					250,000		
Transferred from Income and Expenditure Account					24,003		
					<u>274,003</u>		
Depreciation in Value of Securities to 31st December, 1924					54,116		
					<u>219,887</u>		
Less Amount taken to Buildings and Equipment Fund					70,072		
					<u>149,815</u>		
Add Profit on Realization of Securities					23,925		
						<u>173,740</u>	
							244,645
							<u>£699,764</u>

SCHEDULE II.—OTHER SPECIAL PURPOSES.

NAME OF FUND.				AMOUNT.		
				£	£	£
Samaritan and Convalescent Home Fund—						
As per last Balance Sheet		15,651	
Miss Julia Thomas Trust Fund		1,892	
Miss Anne Watson Dental Fund		1,100	
Hulke Endowment Fund—						
As per last Balance Sheet	...		13,179			
Add Profit on Sale of Securities			80		13,259	
						31,902
Lady Probationer Fee and Trained Nurses' Institute Fund—						
As per last Balance Sheet	...				9,226	
Add Profit on Sale of Securities					115	
						9,341
Spicer Trust Fund			21,523
Fardon Memorial Fund			166
Dresden Assistance Fund			30,152
Christmas Tree Fund—						
As per last Balance Sheet		194	
Dividends in 1944		5	
						199
George Balfour Black Fund—						
As per last Balance Sheet	...				2,158	
Add Profit on Sale of Securities					51	
						2,209
Nurses' Prize Fund			155
Sir Edward Meyerstein Nurses' Scholarship Fund...						2,700
T. Sanderson-Wells' Nurses Prizes Fund				548
The Lady (Sybil Elizabeth Beddington) with the Book Trolley Fund						1,000
The Eveline Pearce Nurses Prize Fund				156
The Alexander Daltropp Fund				61
						<u>£100,112</u>

SCHEDULE III.—BUILDINGS AND EQUIPMENT.

NAME OF FUND.				AMOUNT.		
				£	£	£
Hospital—						
As per last Balance Sheet		73,641	
Donations in 1944 :—						
General		Nil	
Transfer from Legacies Account			434	
						74,075
Carried forward				£74,075

40 CAPITAL ACCOUNTS, 31ST DECEMBER, 1944—continued.

SCHEDULE III.—BUILDINGS AND EQUIPMENT—continued.

NAME OF FUND.	AMOUNT.	£
Brought forward	74,075
Out Patients Department—		
General ...	7,816	
Physical Medicine ...	2,000	
As per last Balance Sheet ...	9,816	
Dividends in 1944 ...	60	
Profit on Sale of Securities ...	27	
		9,903
Radium as per last Balance Sheet ...		596
Reconstruction Fund—		
As per last Balance Sheet ...	793,776	
Lord Woolavington Paying Block Fund ...	126,941	
		920,717
New Nurses' Home Fund—		
As per last Balance Sheet ...		363,618
Cancer Wing—		
Barnato-Joel Trust Fund ...	70,072	
Nurses' Home ...	971	
Prudhoe Operating Theatre ...	30	
Radium ...	6,317	
		77,390
		<u>£1,446,299</u>

SCHEDULE IV.—GENERAL FUND.

	£	£
As per last Balance Sheet ...	54,282	
Transfer from Legacies Account ...	31,036	
Excess of Income over Expenditure for 1944 ...	12,162	
Profit on Sale of Securities... ..	32	
		97,512
Reserve for Renewals and Repairs—		
As per last Balance Sheet ...	1,371	
Add Reserve for 1944 ...	2,510	
	3,881	
Less Expenditure in 1944 ...	1,482	
		2,399
		<u>£99,911</u>

SCHEDULE V.—SUSPENSE FUNDS.

For use of Neurological Wards ...	211	
For use of Out-Patients' Department ...	100	
For use of Infant Welfare Department—		
Donations ...	406	
For use of Ladies' Association—		
Contributions from Second Hand Depot ...	30	
For use of Woolavington Wing ...	36	
For use of Chaplain ...	103	
For use of Diabetic Clinic ...	75	
For use of Sanderson-Wells' Nurses Prize Fund ...	41	
For use of Ear, Nose and Throat Department ...	50	
Zunz Bequest ...	20,755	
For use of Occupational Therapy Department ...	11	
For use of Library ...	124	
For use of New Nurses' Home Fund ...	343	
For use of Eveline Pearce Nurses' Prize Fund ...	2	
For use of Cardiographic Department ...	100	
		<u>£22,387</u>

I.—HOSPITAL ENDOWMENTS.

HOSPITAL.			Valuation at 31st Dec., 1924 or at date of receipt, or cost		
<i>PERMANENT ENDOWMENT FUND.</i>					
£	s.	d.			£
3,214	16	10	3½ per cent. War Stock 1952	...	3,346
26,657	15	10	3½ per cent. Conversion Loan 1961	...	27,140
175	5	6	Southern Railway 5 per cent. Preference Stock	...	178
4,968	0	0	London, Midland and Scottish Railway 4 per cent. Preference Stock	...	4,043
1,733	0	7	Funding 4 per cent. Loan	...	1,997
40,235	3	9	Local Loans 3 per cent. Stock	...	38,174
8,300	0	0	London County Consolidated 3½% stock	...	8,197
8,753	2	1	3 per cent. National Savings Bonds 1955/65	...	8,757
7,249	5	7	2 per cent. Conversion Stock 1943/45	...	7,300
300	0	0	Bradford Corpn. 3½ per cent Red. Debenture Stock	...	303
1,000	0	0	Leeds Corpn. 3½ per cent. Debenture Stock	...	1,050
125	0	0	Shares. Clayton Installations Ltd. £1 Shares	...	6
2,119	5	5	2½ per cent. Funding Stock 1956/61	...	2,050
571	10	4	3 per cent. Redemption Stock 1986/96	...	580
5,653	9	7	2½ per cent. Consolidated Stock	...	4,635
			Freehold Property—		
			Hospital Site	...	58,692
			Ladbroke Estate	...	10,000
			Cropper Estate Fee Farm Rents	...	475
			Cleveland Street Annexe	...	71,031
			26 Nassau Street	...	5,269
			49, 49A Tottenham Street	...	5,208
			47 Tottenham Street	...	1,803
			Highwood House	...	21,034
			150 New Cavendish Street	...	2,273
			Owned jointly with Medical School (half-cost)
			10 Mortimer Street and 1 Nassau Street	...	18,119
					301,660
			<i>THE LORD BEARSTED GIFT OF £1,000.</i>		
1,615	5	11	Local Loans 3% Stock	...	1,554
			<i>THE W. H. COLLINS GIFT OF £50,000</i>		
15,531	14	2	Consolidated 4 per cent. Stock	...	14,329
21,264	15	0	3½ per cent. Conversion Loan, 1961	...	22,252
7,962	3	3	Local Loans 3 per cent. Stock	...	7,143
7,142	0	0	3 per cent. National Savings Bonds 1955/65	...	7,142
					50,866
			<i>THE SIR EDWARD W. MEYERSTEIN GIFT OF £50,000</i>		
27,200	0	0	Consolidated 4 per cent Stock	...	25,094
23,876	0	6	3½ per cent. Conversion Loan, 1961	...	24,921
					50,015
					£404,095
			<i>"MARSHALL" TRUST FUND.</i>		
500	0	0	Debenhams, Limited (500 6½ per cent. Cumulative 1st Preference Shares)	...	563
			<i>"WILLIAM HOLLINS" Fund.</i>		
300	14	4	Croydon Corporation 4½ per cent Redeemable Stock 1945—1965	...	278
			<i>"ROBERT NASH" WARDS.</i>		
200	0	0	Commercial Gas Company 3 per cent. Debenture Stock	...	115
264	0	0	Commercial Gas Company 5 per cent. Debenture Stock	...	259
915	0	0	Gas Light and Coke Co., 3 per cent. Consolidated Debenture Stock, Irredeemable	...	549
625	0	0	Gas Light and Coke Co.'s 4 per cent. Consolidated Preference Stock	...	500
165	0	0	Gas Light and Coke Co. 3½ per cent. Maximum Stock	...	104
485	0	0	South Metropolitan Gas Company Perpetual 3 per cent. Debenture Stock	...	295
405	12	10	Local Loans 3% Stock	...	390
294	19	7	3½% Conversion Loan 1961	...	310
					£2,522

SCHEDULE OF INVESTMENTS, 31st DECEMBER, 1944—continued.

HOSPITAL ENDOWMENTS—*continued.*

DRESDEN SETTLEMENT FUND.

£ s. d.				Valuation at 31st Dec., 1924, or at Date of receipt, or cost.	
				£	
2,410	6	11	3½ per cent. Conversion Loan, 1961	...	2,623
	28	0	Scinde, Punjaub, and Delhi Railway "B" Annuity		490
3,375	0	0	London, Midland and Scottish Railway 4 per cent. Debenture Stock	...	2,839
4,775	0	0	Southern Railway 4 per cent. Debenture Stock	...	3,975
					£9,927

"HANMER" TRUST FUND.

200	0	0	Consolidated 2½ per cent. Stock (Official Trustees of Charitable Funds)	...	£114
-----	---	---	--	-----	------

SIR DAVID SALOMON'S INSURANCE FUND.

57	10	10	Local Loans 3% Stock	...	£55
----	----	----	----------------------	-----	-----

PRINCE FRANCIS OF TECK MEMORIAL FUND.

17,788	3	2	Local Loans 3% Stock	...	17,110
660	0	0	London and North Eastern Railway 4 per cent. 2nd Guaranteed Stock	...	539
660	0	0	London and North Eastern Railway 4 per cent. 1st Preference Stock	...	537
12,465	0	0	London, Midland and Scottish Railway 4 per cent. Debenture Stock	...	10,486
5,000	0	0	Debenhams, Limited (5,000 6½ per cent. Cumula- tive 2nd Preference Shares)	...	6,125
62	10	0	Debenhams, Limited (1,250 Ordinary Shares of 1/- each)	...	
1	11	7	3½ per cent. Conversion Loan, 1961	...	2
					£34,799

DEBENHAM TRUST.

1,242	1	6	3% Local Loans	...	1,164
535	0	0	Debenhams, Limited (535 6½ per cent. Cumulative 1st Preference Shares)	...	615
4	10	3½%	Conversion Loan 1961	...	5/-
					£1,779

HERBERT POTTER MEMORIAL FUND.

297	10	3	3½% Conversion Loan 1961	...	313
-----	----	---	--------------------------	-----	-----

SCHEDULE OF INVESTMENTS, 31st DECEMBER, 1944—continued.

HOSPITAL ENDOWMENTS—*continued.*

				Valuation at 31st Dec., 1924, or at date of receipt, or cost.
CANCER WING.				
PERMANENT ENDOWMENT FUND—				
£	s.	d.		£
4,140	0	0	London and North Eastern Railway 4 per cent. 1st Guar. Stock	3,436
2,114	0	0	London, Midland and Scottish Railway 4 per cent. Pref. Stock	1,720
3,029	0	0	Great Central and Midland Railway 3½ per cent. Guaranteed Stock	2,211
6,288	7	10	Croydon Corporation 4½ per cent. Redeemable Stock 1945—1965	5,817
2,266	15	5	Hull Corporation 4½ per cent. Stock 1945—1960	2,083
20,623	18	8	3½ per cent. Conversion Loan 1961	21,563
1,322	12	4	Consolidated 4 per cent. stock	1,128
9,077	4	9	Local Loans 3% Stock	8,730
360	0	0	Canadian Pacific Railway Co. 4% Non-Cumulative Preference Stock	211
90	0	0	London & North Eastern Railway 4% 2nd Guaranteed Stock	63
50	0	0	London & North Eastern Railway 4% Debenture Stock	49
13	0	0	P.A. East Indian Railway Annuity Class "D"	302
160	0	0	Gas, Light & Coke Co. 4% Consolidated Preference Stock	81
120	0	0	London & North Eastern Railway 3% Debenture Stock	88
25	0	0	Southern Railway 5% Preference Stock	23
410	0	0	London Midland & Scottish Railway 4% Debenture Stock	412
140	0	0	Central Electricity Board 5% Stock 1950/70	155
250	0	0	London Transport 4½% "A" Stock	289
350	0	0	Port of London 3½% Registered Stock 1965/75	338
70	0	0	Commonwealth of Australia 3½% Stock, 1954/59	70
70	0	0	Commonwealth of Australia 3½% Stock, 1956/61	69
120	0	0	Canadian Pacific Railway Co. Perpetual 4% Consolidated Stock	116
50	0	0	Commonwealth of Australia 3½% Stock, 1950/52	51
85	0	0	Western Australia 3½% Inscribed Stock, 1935/55... ..	85
400	0	0	3% National Savings Bonds, 1955/65	400
235	0	0	3% National Savings Bonds, 1960/70	235
Freehold Properties (at cost)—				
62, 64 and 66 Goodge Street, and				
4, 6, 8, 10, 12, 14, 16, 18, 20 and 22				
Cleveland Street				10,209
Leashold Properties (at cost less amortization)				
66 Goodge Street				4,279
38 Upperton Road, Eastbourne				753
				<hr/>
				£64,966

SCHEDULE OF INVESTMENTS, 31st DECEMBER, 1944—continued.

HOSPITAL ENDOWMENTS— <i>continued.</i>						Valuation at 31st Dec., 1924, or at date of receipt, or cost.
<i>EDITH MAY GODDARD FUND—</i>						£
£	s.	d.				
63	12	8	3½ per cent. Conversion Loan, 1961	50
<i>SAMUEL LEWIS WARD—</i>						
3,494	8	5	Local Loans 3% per cent. Stock	3,320
2,043	7	1	Croydon Corporation 4½ per cent. Redeemable Stock 1945—1965	1,890
						£5,210
<i>BARNATO-JOEL TRUST—</i>						
100,000	0	0	London County Council 3 per cent. Stock	65,500
101,515	16	11	3½ per cent. Conversion Loan 1961	108,241
						173,741
TOTAL ...						£698,412
<i>FUNDS IN COURT HELD FOR BENEFIT OF HOSPITAL—</i>						£
Pieschell's Perpetual Annuity						2,295
5,424	0	0	Great Western Railway 5 per cent. Con. Guar. Stock (Chancery Division of the High Court)	5,614
16,003	0	0	London, Midland and Scottish Railway 4 per cent. Guar. Stock (Chancery Division of the High Court)	13,282
1,808	0	0	London and North-Eastern Railway 4 per cent. 1st Guar. Stock (Chancery Div. of the High Court)...	1,500
						£22,691
II.—SPECIAL FUNDS.						
<i>SAMARITAN AND CONVALESCENT HOME FUND.</i>						
497	19	2	3½ per cent. Conversion Loan, 1961	538
936	0	0	London and North Eastern Railway 4 per cent. 1st Preference Stock (George Sturge Trust)	761
Freehold Ground Rent of £10 per annum secured on No. 4 Lancaster Road (at cost)						279
						£1,578
<i>MISS JULIA THOMAS TRUST FUND.</i>						
1,153	14	5	3½ per cent. Conversion Loan 1961	£907
950	0	0	3% National Savings Bonds 1955/65	950
						£1,857
<i>MISS ANNE WATSON DENTAL FUND.</i>						
1,464	0	7	3½ per cent. Conversion Loan, 1961	£1,100
<i>HULKE ENDOWMENT FUND.</i>						
900	0	0	3% National Savings Bonds 1955/65	900
740	0	0	Canadian Pacific Railway Co. 4 per cent. Non- cumulative Preference Stock	573
2,225	0	0	London and North Eastern Railway 4 per cent. 1st Preference Stock	1,528
1,545	0	0	London and North Eastern Railway 4 per cent. 2nd Guaranteed Stock	1,182
2,490	17	4	3½ per cent. Conversion Loan, 1961	2,485
4,766	2	3	Consolidated 4 per cent. Stock	3,968
2,892	11	9	Local Loans 3% Stock	2,611
						13,247
<i>LADY PROBATIONER FEE AND TRAINED NURSES' INSTITUTE FUND.</i>						
19	5	6	Southern Railway 5 per cent. Preference Stock	20
500	0	0	London, Midland and Scottish Railway 4 per cent. Preference Stock	407
8,375	18	6	3½ per cent. Conversion Loan, 1961	8,914
						£9,341

SCHEDULE OF INVESTMENTS, 31st DECEMBER, 1944—continued.

SPECIAL FUNDS—continued.

			Valuation at 31st Dec., 1924, or at date of receipt, or cost.	
			£	
<i>SPICER TRUST FUND.</i>				
£	s.	d.		
114	16	10	Croydon Corporation 4½ per cent. Redeemable Stock 1945—1965	107
409	0	0	Southern Railway 5 per cent. Preference Stock	416
			Mortgage on Convalescent Home	21,000
				<u>£21,523</u>
<i>FARDON MEMORIAL.</i>				
4	11	7	Southern Railway 5 per cent. Preference Stock	5
148	7	9	3½ per cent. Conversion Loan, 1961	161
				<u>£166</u>
<i>DRESDEN ASSISTANCE FUND.</i>				
81	0	0	East Indian Railway "B" Annuity	1,503
9,043	10	5	British East Africa (Kenya) 6 per cent. Stock 1946—1956	10,354
8,392	3	4	London County Consolidated 3 per cent. Stock	5,486
500	0	0	London, Midland and Scottish Railway 4 per cent. Guaranteed Stock	415
1,125	0	0	London, Midland and Scottish Railway 4 per cent. Preference Stock	915
300	0	0	London and North Eastern Railway 4 per cent. 2nd Guaranteed Stock	245
300	0	0	London and North Eastern Railway 4 per cent. 1st Preference Stock	244
500	0	0	Great Western Railway 5 per cent. Consolidated Guaranteed Stock	521
480	0	0	Southern Railway 5 per cent. Guaranteed Preference Stock	492
8,280	0	0	Southern Railway 5 per cent. Preference Stock	8,424
640	2	0	3½ per cent. Conversion Loan 1961	484
1,050	0	0	3% National Savings Bonds 1955/65	1,050
				<u>£30,133</u>
<i>CHRISTMAS TREE FUND.</i>				
78	11	11	Local Loans 3% Stock	76
17	3	10	Southern Railway 5 per cent. Preference Stock	18
42	19	6	3½ per cent. Conversion Loan, 1961	46
				<u>£140</u>
<i>NURSES' PRIZE FUND.</i>				
142	17	0	Conversion 3½ per cent. Loan, 1961	£155
<i>SIR EDWARD MEYERSTEIN NURSES' SCHOLARSHIP FUND.</i>				
2,790	7	9	Local Loans 3% Stock	2,700
<i>T. SANDERSON-WELLS' NURSES PRIZE FUND.</i>				
30 Shares			Westminster Bank Ltd. £4 Shares, £1 paid	145
20 Shares			Phoenix Insurance Co. Ltd. £1 Shares, fully paid	310
15	0	0	British-American Tobacco Co. Ltd. Ordinary Stock	93
				<u>£548</u>
<i>THE LADY (SYBIL ELIZABETH BEDDINGTON) WITH THE BOOK TROLLEY FUND.</i>				
1,328	15	5	Local Loans 3 per cent. Stock	£1,000
<i>CANCER WING.</i>				
<i>GEORGE BALFOUR BLACK FUND—</i>				
2,100	7	10	3½ per cent. Conversion Loan 1961...	2,209
<i>EVELINE PEARCE NURSES' PRIZE FUND.</i>				
195	8	4	2½ per cent. Consolidated Stock	156
				<u>£85,853</u>
			TOTAL...	£85,853

SCHEDULE OF INVESTMENTS, 31st DECEMBER, 1944—continued.

3. BUILDINGS AND EQUIPMENT.

				Valuation at 31st Dec., 1924, or at date of receipt, or cost.	
£	s.	d.		£	
1,074	5	2	3½ per cent Conversion Stock 1961	...	1,130
433	13	7	Southern Railway 5 per cent. Preference Stock	...	441
					<hr/>
					£1,571

NEW NURSES' HOME BUILDING FUND.

4,642	10	9	2½ per cent. Conversion Stock, 1944—1949	...	4,607
					<hr/>
TOTAL					£6,178

4. GENERAL FUND.

GENERAL PURPOSES.

125	0	0	St. Pancras House Improvement Society 2½% stock	63
37	0	0	Dunderland Iron Ore Co., Ltd., Income Debenture Stock	7
25	0	0	Daysohms, Limited, Ordinary Shares	(No value)
400	0	0	3% Local Loans	380
1,000	0	0	3% Defence Bonds	1,015
800	0	0	3% Conversion Loan 1948/53	824
2,010	10	1	4% Funding Stock 1960/90	2,281
900	0	0	3% Savings Bonds 1955/65...	905
9,917	12	3	2% Conversion Stock 1943/45	10,000
4,102	10	0	3½% Conversion Loan 1961	4,314
29,789	9	6	2½ % National War Bonds	30,000
TOTAL				£39,789

5. SUSPENSE FUNDS.

ZUNZ REQUEST.

19,737	11	1	3½% Conversion Loan 1961	...	£20,756
--------	----	---	--------------------------	-----	---------

THE MIDDLESEX HOSPITAL MEDICAL SCHOOL.

ESTABLISHED 1835, PURSUANT TO A RESOLUTION OF A QUARTERLY
COURT HELD MAY 7, 1835. ENLARGED 1887. AMALGAMATED
WITH THE HOSPITAL 1896.

THE Buildings and Premises, together with the Bland-Sutton Institute of Pathology, the Courtauld Institute of Biochemistry, and other appurtenances appropriated to the School, are the property of the Governors of the Hospital, and are under the same management and control as the Hospital.

Chairman.

LT.-COLONEL THE HON. J. J. ASTOR, D.Lit.

COUNCIL OF THE MEDICAL SCHOOL.

Chairman.

S. A. COURTAULD, Esq., LL.D.

Members nominated by the Board of Governors.

REGINALD BEDDINGTON, Esq., C.B.E.

A. F. B. COOKE, Esq.

RICHARD C. DAVIS, Esq.

F. H. DORAN, Esq.

MAX FREEMAN, Esq.

THEOBALD MATHEW, Esq., M.C.

J. DOUGLAS WATSON, Esq.

WALTER MORISON, Esq.

Members elected by the Honorary Medical and Surgical Staff.

G. E. S. WARD, Esq., M.D., B.S., F.R.C.P.

J. P. MONKHOUSE, Esq., M.B., B.S., F.R.C.S.

RAINSFORD MOWLEM, Esq., M.B., Ch.B. (N.Z.), F.R.C.S.

W. R. WINTERTON, Esq., M.A., M.B., B.Chir., F.R.C.S., M.R.C.O.G.

Members elected by the Medical School Committee.

PROFESSOR S. RUSS, C.B.E., D.Sc.

PROFESSOR E. C. DODDS, M.V.O., D.Sc., Ph.D., M.D., F.R.C.P.,
F.R.S. (Edin.), F.R.S.

PROFESSOR JOHN KIRK, M.B., F.R.C.S. (Edin.).

D. H. PATEY, Esq., M.B., M.S., F.R.C.S.

Chairman of the Medical School Committee.

PROFESSOR J. McINTOSH, M.D., Ch.B., LL.D.

Honorary Treasurer of the Medical School.

SIR ALFRED WEBB-JOHNSON, Bt., K.C.V.O., C.B.E., D.S.O., T.D.,
M.B., Ch.B., F.R.C.S., F.R.A.C.S. (Hon.), F.A.C.S. (Hon.).

Dean of the Medical School.

H. E. A. BOLDERO, Esq., M.A., D.M., F.R.C.P.

School Secretary.

R. A. FOLEY, Esq., F.C.C.S.

Secretary to the Council.

S. R. C. PLIMSOLL, Esq., M.C., B.A.

PROFESSORS, LECTURERS AND DEMONSTRATORS IN THE MEDICAL SCHOOL.

Emeritus Lecturers in Medicine	...	{ A. F. VOELCKER, M.D., F.R.C.P. R. A. YOUNG, C.B.E., M.D., B.Sc., F.R.C.P.
Emeritus Lecturers in Surgery	...	W. SAMPSON HANDLEY, M.D., M.S., F.R.C.S.
Emeritus Lecturers in Gynæcology	{	SIR COMYNS BERKELEY, M.A., M.D., M.CHIR., F.R.C.P., F.R.C.S., F.R.C.O.G., M.M.S.A. (HON.). VICTOR BONNEY, M.D., M.S., B.Sc., F.R.C.S., F.R.A.C.S.
Emeritus Lecturer in Anatomy	...	PROFESSOR THOMAS YEATES, M.B., C.M.
Principles and Practice of Medicine	{	C. E. LAKIN, M.D., B.S., F.R.C.P., F.R.C.S. E. A. COCKAYNE, D.M., B.Ch., F.R.C.P. G. E. S. WARD, M.D., B.S., F.R.C.P. G. E. BEAUMONT, M.A., D.M., F.R.C.P. T. IZOD BENNETT, M.D., B.S., F.R.C.P.
Principles and Practice of Surgery	{	SURGEON REAR-ADMIRAL G. GORDON-TAYLOR, C.B., O.B.E., LL.D. (Toronto), M.A., M.S., M.B., B.Sc., F.R.C.S., F.R.A.C.S., (HON.), F.A.C.S., (HON.) F.R.C.S., (C.) (HON.), R.N. SIR ALFRED WEBB-JOHNSON, BT., K.C.V.O., C.B.E., D.S.O., T.D., M.B., CH.B., P.R.C.S., F.R.A.C.S. (HON.), F.A.C.S. (HON.) W. TURNER WARWICK, M.A., M.B., B.CHIR., F.R.C.S. R. VAUGHAN HUDSON, F.R.C.S. E. W. RICHES, M.C., M.B., M.S., F.R.C.S.
Practical Medicine	...	{ BRIGADIER D. E. BEDFORD, M.D., B.S., F.R.C.P., R.A.M.C. H. L. MARRIOT, M.D., B.S., F.R.C.P.
General Pathology, Bacteriology, Morbid Anatomy, Morbid His- tology, and Clinical Pathology	{	PROFESSOR JAMES MCINTOSH, M.D., CH.B., LL.D. BRIGADIER SIR LIONEL WHITBY, C.V.O., M.C., M.A., M.D., B.CHIR., F.R.C.P., D.P.H., R.A.M.C. R. W. SCARFF, M.B., B.S. C. J. C. BRITTON, M.D., CH.B., D.P.H.
Biochemistry (S. A. Courtauld Professorship)	{	PROFESSOR E. C. DODDS, M.V.O., D.Sc., PH.D., M.D., B.S., F.R.C.P., F.I.C., F.R.S. (Edin.), F.R.S. W. LAWSON, M.Sc., A.I.C. J. D. ROBERTSON, M.D., CH.B., M.R.C.P., D.P.H., F.R.S. (Edin.).
Hygiene, Public Health and Sani- tary Law	{	J. A. STRUTHERS, M.D., B.Ch., M.R.C.P., D.P.H. (of the Inner Temple, Barrister-at-Law.)
Medical Pathology	...	C. E. LAKIN, M.D., B.S., F.R.C.P., F.R.C.S.
Surgical Pathology	...	D. H. PATEY, M.B., M.S., F.R.C.S.
Practical Surgery	...	E. W. RICHES, M.C., M.B., M.S., F.R.C.S.
Operative Surgery	...	D. H. PATEY, M.B., M.S., F.R.C.S.
Midwifery	...	{ L. CARNAC RIVETT, M.A., M.B., M.CHIR., F.R.C.S., F.R.C.O.G. FREDERICK W. ROQUES, M.A., M.D., M.CHIR., F.R.C.S., F.R.C.O.G. W. B. WINTERTON, M.A., M.B., B.CHIR., F.R.C.S., M.R.C.O.G.
Forensic Medicine	...	J. A. STRUTHERS, M.D., B.CHIR., M.R.C.P., D.P.H. (of the Inner Temple, Barrister-at-Law).
Toxicology	...	PROFESSOR W. B. TUCK, D.Sc., F.I.C.
Pharmacology	...	C. A. KEELE, M.D., M.R.C.P.
Therapeutics	...	A. A. MONCRIEFF, M.D., F.R.C.P.

Clinical Medicine	C. E. LAKIN, M.D., B.S., F.R.C.P., F.R.C.S. E. A. COCKAYNE, D.M., B.CH., F.R.C.P. G. E. S. WARD, M.D., B.S., F.R.C.P. G. E. BEAUMONT, M.A., D.M., F.R.C.P. T. IZOD BENNETT, M.D., B.S., F.R.C.P. SURGEON REAR-ADMIRAL G. GORDON-TAYLOR, C.B., O.B.E., LL.D. (Toronto), M.A., M.S., M.B., B.Sc., F.R.C.S., F.R.A.C.S., (HON.) F.A.C.S., (HON.) F.R.C.S., (C.) (HON.), R.N.
Clinical Surgery	SIR ALFRED WEBB-JOHNSON, BT., K.C.V.O., C.B.E., D.S.O., T.D., M.B., CH.B., F.R.C.S., F.R.A.C.S. (HON.), F.A.C.S. (HON.). W. TURNER WARWICK, M.A., M.B., B.CHIR., F.R.C.S. R. VAUGHAN HUDSON, F.R.C.S. E. W. RICHES, M.C., M.B., M.S., F.R.C.S.
Clinical Gynæcology	L. CARNAC RIVETT, M.A., M.B., M.CHIR., F.R.C.S., F.R.C.O.G.
Dermatology	H. MACCORMAC, C.B.E., M.D., CH.B., F.R.C.P.
Neurology	BRIGADIER DOUGLAS MCALPINE, M.D., F.R.C.P., R.A.M.C.
Ophthalmology	D. AFFLECK GREEVES, B.A., M.B., F.R.C.S. M. H. WHITING, O.B.E., M.A., M.B., B.CHIR., F.R.C.S. SOMERVILLE HASTINGS, M.S., F.R.C.S., M.P.
Laryngology and Otology	C. P. WILSON, C.V.O., F.R.C.S. J. P. MONKHOUSE, M.B., B.S., F.C.S.
Orthopædic Surgery	A. S. BLUNDELL BANKART, M.A., M.CHIR., F.R.C.S. COLONEL PHILLIP WILES, M.S., F.R.C.S.
Diseases of Children	A. A. MONCRIEFF, M.D., F.R.C.P.
Psychological Medicine	NOEL G. HARRIS, M.D., B.S., F.R.C.P., D.P.M.
Plastic Surgery	RAINSFORD MOWLEM, M.B., CH.B., (N.Z.), F.R.C.S.
Anæsthetics	H. P. CRAMPTON, M.A., M.D., B.CHIR., M.R.C.S., L.R.C.P., D.A. A. E. WILLIAMS IDRIS, M.R.C.S., L.R.C.P., D.A. MAJOR B. R. M. JOHNSON, M.R.C.S., L.R.C.P., D.A., R.A.M.C. F. W. ROBERTS, M.B., B.S., D.A.
Odontology	A. L. PACKHAM, M.R.C.S., L.R.C.P., L.D.S. H. W. BREESE, M.R.C.S., L.R.C.P., L.D.S. J. W. SCHOFIELD, M.R.C.S., L.R.C.P., L.D.S. D. G. WALKER, M.A., M.B., B.CH., B.A.O., M.DENT. SC.
Anatomy (S. A. Courtauld Professorship)	PROFESSOR JOHN KIRK, M.B., CH.B. (ED.), F.R.C.S. (ED.). L. J. PANTING, M.A., M.B., B.CH. M. R. RIFAAT, M.B., CH.B. L. P. LE QUESNE, B.M., B.CH. (OXON).
Demonstrators	PROFESSOR JOHN KIRK, M.B., CH.B. (ED.), F.R.C.S. (ED.).
Applied Anatomy	J. H. WOODGER, D.Sc.
Practical Histology	PROFESSOR JOHN KIRK, M.B., CH.B. (ED.), F.R.C.S. (ED.).
Physiology (John Astor Professorship)	PROFESSOR SAMSON WRIGHT, M.D., F.R.C.P. D. SLOME, M.A., Ph.D., M.B., CH.B.
Lecturer in Pharmacology and Therapeutics	C. A. KEELE, M.D., M.R.C.P.
Applied Physiology	PROFESSOR SAMSON WRIGHT, M.D., F.R.C.P.
Chemistry—inorganic, Organic, and Practical	PROFESSOR W. B. TUCK, D.Sc., F.I.C.
Demonstrator	W. H. S. CHEAVIN.
Physics (Joel Professorship)—Theoretical and Practical	PROFESSOR SIDNEY RUSS, C.B.E., D.Sc.
Research Assistant	J. E. ROBERTS, Ph.D., B.Sc.
Demonstrator	J. C. JONES, B.A.
Biology (University Readership)	J. H. WOODGER, D.Sc.
Demonstrator	C. L. FOSTER, M.Sc.
Radiology (Diagnostic)	H. K. GRAHAM HODGSON, C.V.O., M.B., B.S., F.R.C.P., D.M.R.E.
Radio-Therapy	J. H. DOUGLAS WEBSTER, M.D., CH.B., F.R.C.P. (Ed.). PROFESSOR B. W. WINDEYER, M.B., B.S., F.R.C.S., F.F.R., D.M.R.E.
Physical Medicine	BRIGADIER FRANK HOWITT, C.V.O., M.A., M.D., B.CHIR., F.R.C.P., R.A.M.C.
Practical Pharmacy	S. H. WHITE, Ph.C., M.P.S.

THE MIDDLESEX HOSPITAL MEDICAL SCHOOL.

THREE Casualty Medical and Two Casualty Surgical Officers, Eight Resident Officers to the Special Departments, Ten Resident House Surgeons, Ten Resident House Physicians, Two Resident Gynæcological House Surgeons, Two Resident Officers to the Maternity and Children's Dept., Thirteen Registrars, Three Resident Anæsthetists, one Resident Dental House Surgeon and one Clinical Research Assistant to the Courtauld Wards, are normally appointed annually from among the qualified Students of the Hospital.

During the war the number of appointments at the Hospital is reduced, but additional appointments are available at Hospitals in the Sector.

There are awarded annually, two Open Entrance Scholarships value £100 each, one in Arts and one in Science. Two Scholarships value £100 each open to Students of Oxford and Cambridge Universities who have completed their Anatomical and Physiological studies. Two Scholarships endowed by the late Sir Edward Meyerstein, value £100 each, open to University of London Students who have at the Middlesex Hospital Medical School completed the curriculum for the 2nd M.B., Examination. The Freer Lucas Scholarship and the Asher Asher Prize to a Pupil of Epsom College who has passed the 1st M.B., Examination. The Colin Mackenzie Price value £10 10s., Anatomy and Physiology. The Hetley Clinical Prize of £25, the Leopold Hudson Prize value £11 11s., Surgical Pathology and Bacteriology, the Kingston Fowler Prize value £15, Pathology, Bacteriology, and Morbid Histology. The Lyell Medal and Scholarship value £55 5s., for proficiency in Surgical Anatomy and Dissection, etc. Two Broderip Scholarships, value £60 and £40 respectively, for proficiency in Clinical knowledge. The Freeman Scholarship value £30, Gynæcology and Obstetrics. The John Murray Medal and Scholarship value £25, Theoretical and Practical Medicine, awarded every third year. Numerous Research Scholarships and Class Prizes are also awarded.

The Tutors superintend and assist Students in their studies without extra fee, and thus the necessity of obtaining private instruction away from the Medical School is obviated.

FEES :—

A. Entrance Fee	£15 15 0
B. Annual Fee	£50 0 0

For the subjects of the Entrance Scholarships and any additional information please apply to the Dean of the Medical School or to the School Secretary.



**REPORTS
OF
THE MIDDLESEX HOSPITAL
AND
CANCER WING
AND
THE MIDDLESEX HOSPITAL
MEDICAL SCHOOL
FOR THE YEAR 1944.**

**Donations and Subscriptions will be
thankfully received by Lieut.-C I. the
Hon, J. J. Astor, Chairman, at the
Hospital,**