

Reports : 1945 / Middlesex Hospital and Cancer Wing. Middlesex Hospital Medical School.

Contributors

Middlesex Hospital.

Middlesex Hospital. Cancer Wing.;Middlesex Hospital. Medical School.

Publication/Creation

[London] : [publisher not identified] 1945

Persistent URL

<https://wellcomecollection.org/works/tpwzrswa>

License and attribution


This work has been identified as being free of known restrictions under copyright law, including all related and neighbouring rights and is being made available under the Creative Commons, Public Domain Mark.

You can copy, modify, distribute and perform the work, even for commercial purposes, without asking permission.



Wellcome Collection
183 Euston Road
London NW1 2BE UK
T +44 (0)20 7611 8722
E library@wellcomecollection.org
<https://wellcomecollection.org>

IN VIEW OF THE ABSOLUTE NECESSITY
FOR ECONOMY IN THE USE OF PAPER THE
USUAL LISTS OF SUBSCRIBERS, DONORS,
ETC., ARE OMITTED FROM THIS YEAR'S
REPORT. THEY CAN, HOWEVER, BE SEEN
BY ANY SUBSCRIBER AT THE HOSPITAL.

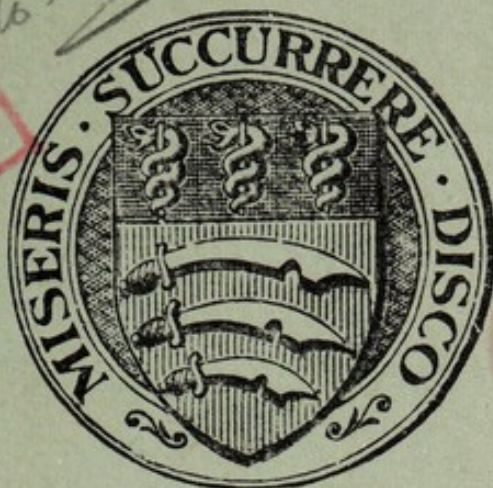
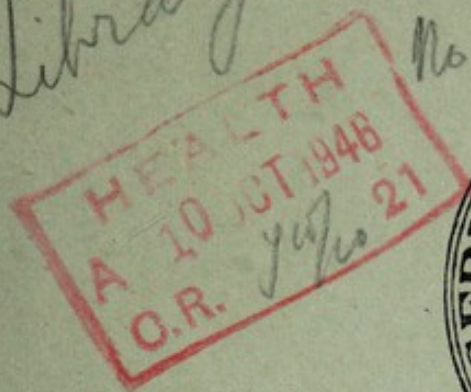


Digitized by the Internet Archive
in 2019 with funding from
Wellcome Library

<https://archive.org/details/b31694421>

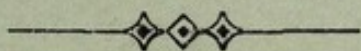
Library

No enclos



THE MIDDLESEX HOSPITAL
AND
CANCER WING.

THE MIDDLESEX HOSPITAL
MEDICAL SCHOOL.



REPORTS
FOR THE YEAR 1945.

MORTIMER STREET,
LONDON, W. I.

TELEPHONE:—
MUSEUM 8333

WELLCOME
LIBRARY
Acq. Rec.
WX28
.B65
L84M53
1945



22501602815

TO SUBSCRIBERS.

To the many Subscribers who have already entered into the 7 Years' Subscription Agreement we offer our warm thanks.

We shall be most grateful to all those Subscribers who have *not* yet made use of the Agreement, which is for seven years or during life, whichever is the shorter period, if they will do so.

When Income Tax is payable at the full standard rate the Agreement enables the Hospital to recover the Income Tax paid on the Subscription.

Thus, without any extra expense to themselves, Subscribers can benefit the funds of the Hospital.

With Income Tax at 9/- in the £ the value of subscriptions to the Hospital is shown in the table below :—

Nett Amount of Annual Subscription payable by Subscriber.			Income Tax recoverable by the Hospital.			Gross Amount of Annual Subscription.		
£	s.	d.	£	s.	d.	£	s.	d.
1	1	0	...	—	17 2	...	1	18 2
2	2	0	..	1	14 4	...	3	16 4
3	3	0	...	2	11 7	...	5	14 7
4	4	0	...	3	8 9	...	7	12 9
5	5	0	...	4	5 11	...	9	10 11
10	10	0	...	8	11 10	...	19	1 10

During 1945 many Governors and friends of the Hospital were successful in enlisting new Subscribers for the Middlesex Hospital.

Will all our friends make, this year, a special effort to bring in new Subscribers, and ask them to make use of the Agreement, which adds so materially to the value of their support ?

ENDOWMENT of BEDS and COTS.

Costs, and the value of money, have so altered in the course of two hundred years that to endow a bed, that is, to meet its annual maintenance cost, by a single payment of 1,000 guineas, the figure quoted for generations, is now manifestly impossible.

A new scale, set out below, is therefore proposed. The Hospital will of course honour its old rates in any cases in which a testator has bequeathed money, prior to 1946, for the endowment of beds and cots on the old scale.

The new scale is as follows :—

Benefactors desirous of promoting the welfare of the Hospital by supporting the Endowment Fund will have the right to a tablet recording their gifts in the Ward of their choice.

For One Year *Fifty Guineas.*

For Life of Donor *Three Hundred Guineas.*

In Perpetuity *One Thousand Guineas.*

Similar tablets in the Children's Wards, and the Convalescent Home will be erected,

For One Year *Thirty Guineas.*

For Life of Donor *One Hundred and Fifty Guineas.*

In Perpetuity *Five Hundred Guineas.*

The outright endowment of a Bed or Cot will be a matter of arrangement, and must depend upon the cost of maintenance from time to time and the capital sum required to produce it.

To Mess^{rs} _____

Gentlemen,

Please to pay now
and annually until further notice on the
_____ day of _____

the sum of _____ Guineas

to the Credit of the*
Fund of The Middlesex Hospital,
at Mess^{rs} Coutts & Co 16, Cavendish
Square, W. 1, and charge the same to my account

Signature _____

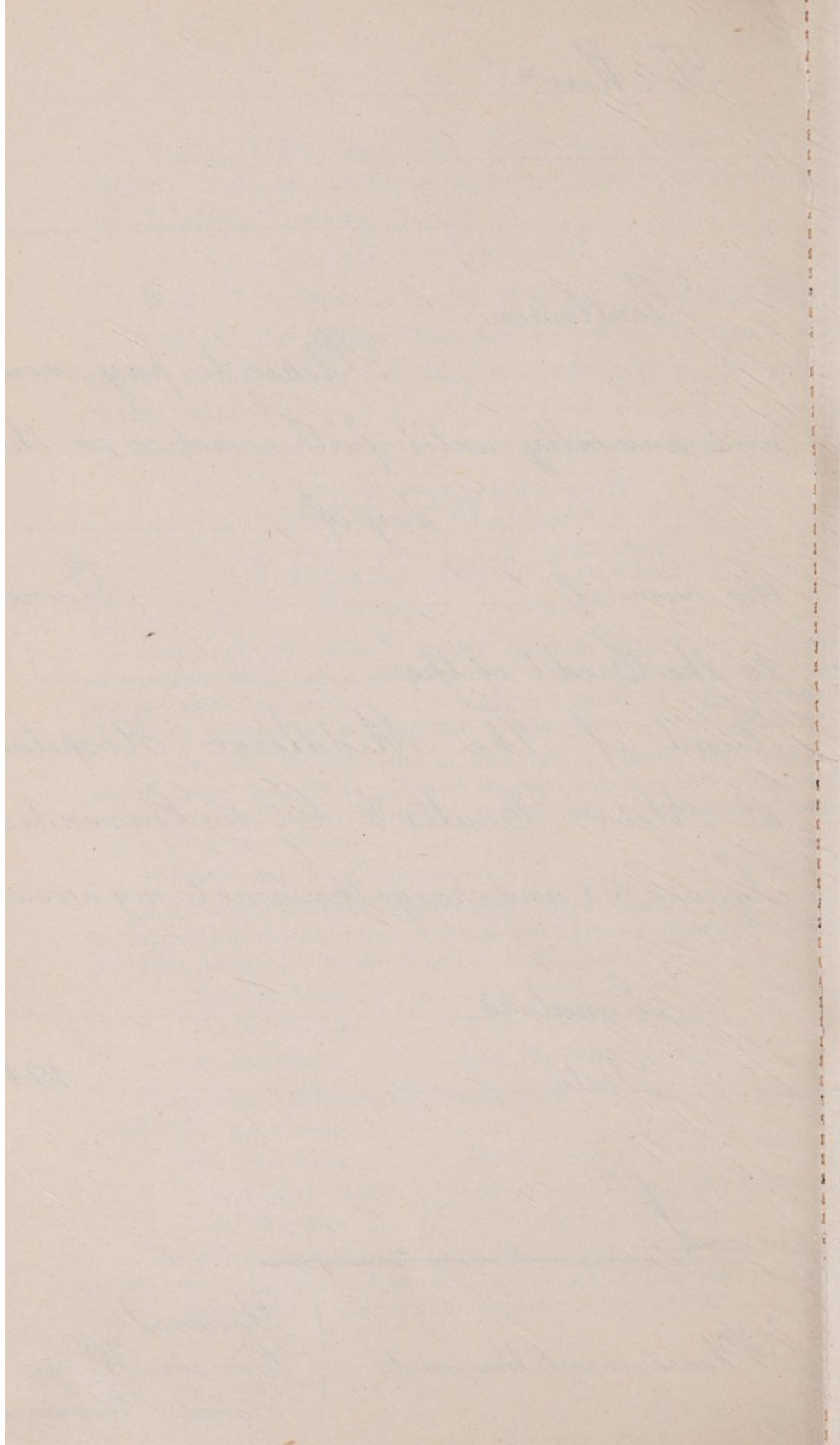
Date _____

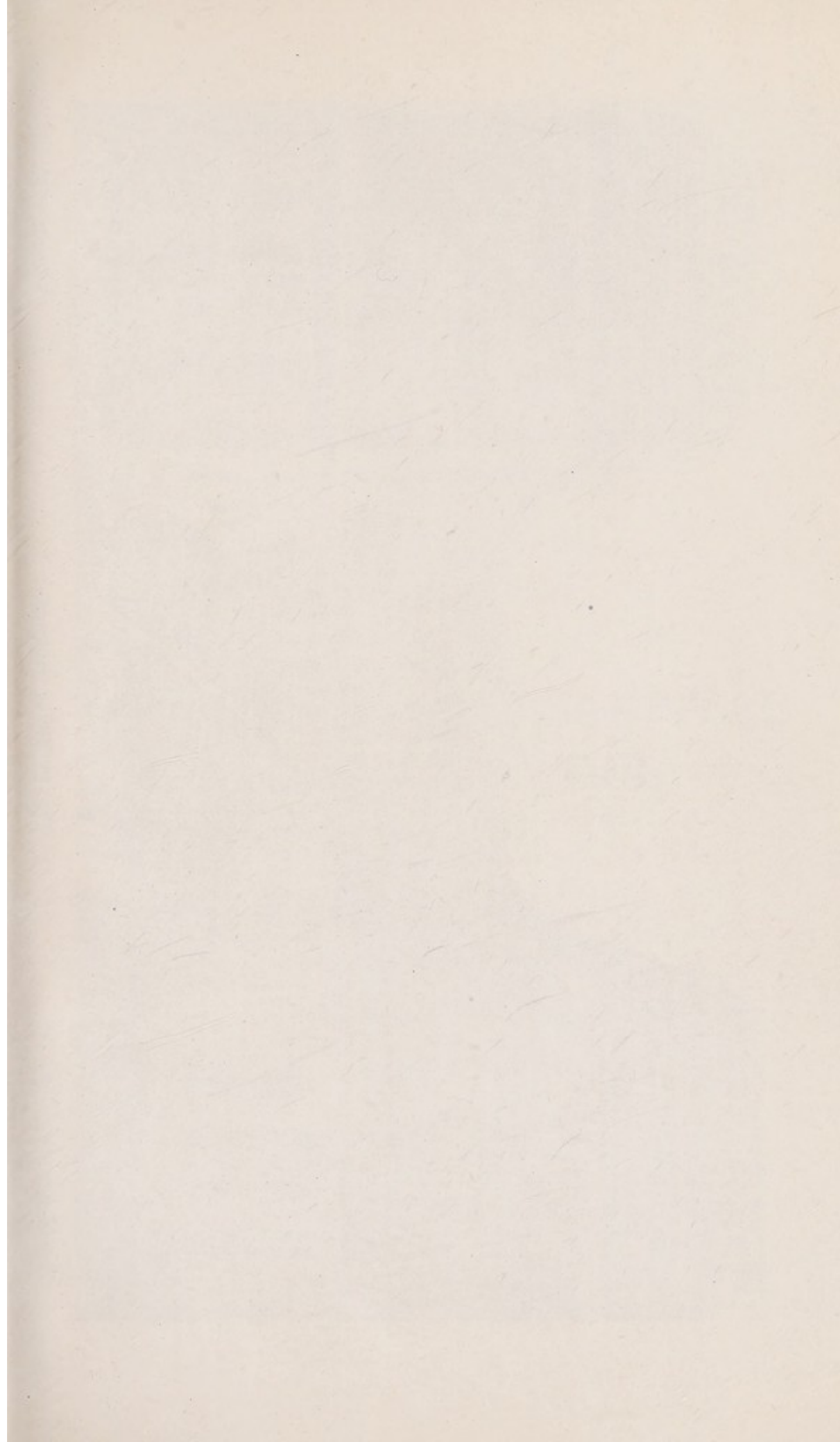
194 _____

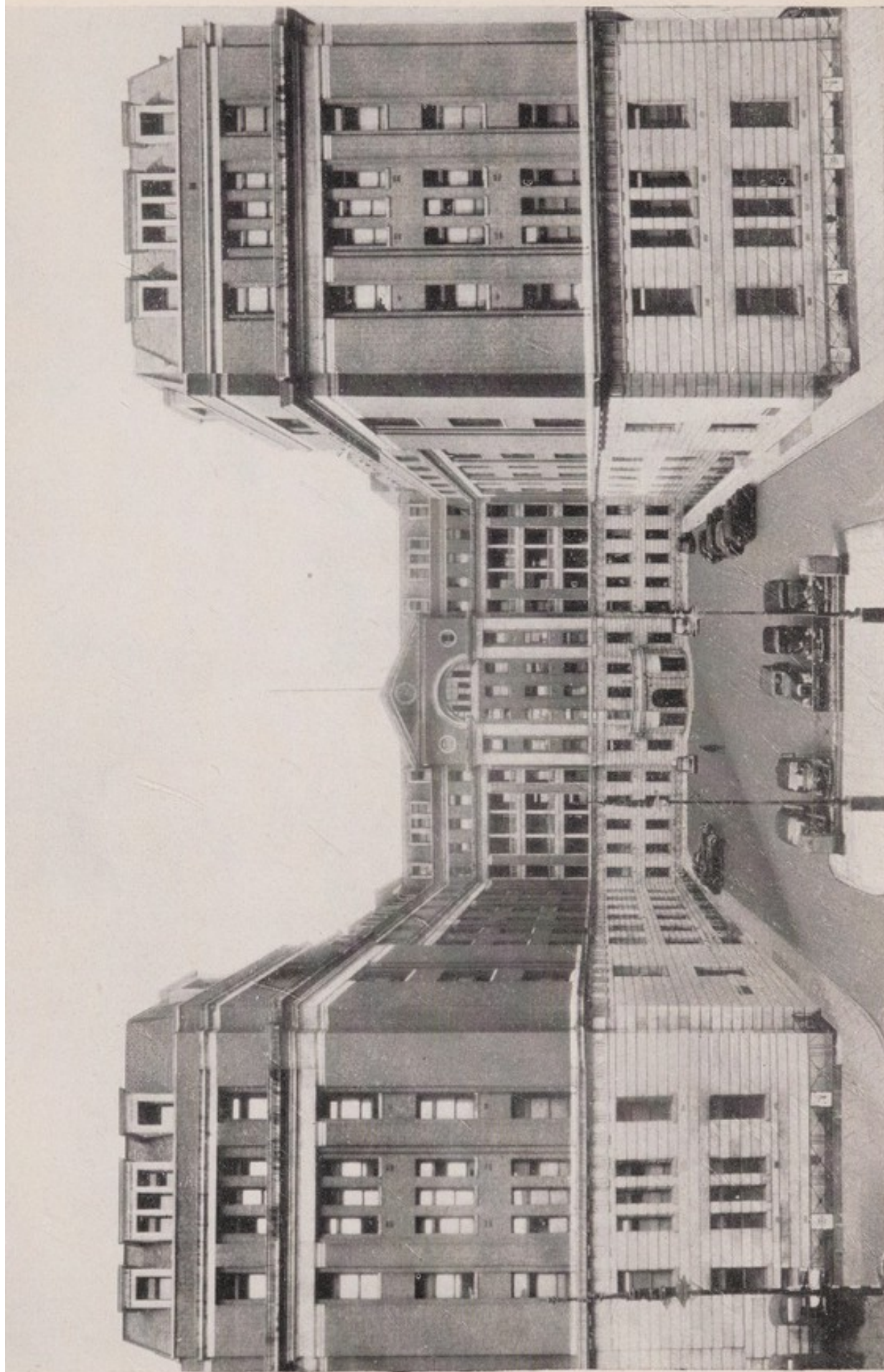
L _____

* Please insert the words

{ "General"
"Cancer Wing."
"Cancer Research"







Founded 1745

The Middlesex Hospital

Re-built 1935

THE MIDDLESEX HOSPITAL

(FOUNDED 1745)

AND

CANCER WING

(INSTITUTED 1792).

**THE MIDDLESEX HOSPITAL
MEDICAL SCHOOL**

(FOUNDED 1835).

REPORTS

FOR THE YEAR 1945.

THE MIDDLESEX HOSPITAL

(FOUNDED 1745)

AND

CANCER WING

(INSTITUTED 1902)

THE MIDDLESEX HOSPITAL
MEDICAL SCHOOL

(FOUNDED 1835)

REPORTS

FOR THE YEAR 1945

Patrons :—

HIS MAJESTY THE KING.
HER MAJESTY QUEEN MARY

President :—

HIS GRACE THE DUKE OF NORTHUMBERLAND.

Vice-Presidents :—

H.R.H. PRINCESS ALICE, COUNTESS OF ATHLONE.

HIS GRACE THE DUKE OF PORTLAND, K.G., P.C., G.C.V.O.

THE MOST HON. THE MARQUESS OF CARISBROOKE, G.C.B., G.C.V.O.

THE RIGHT HON. THE EARL OF DERBY, K.G., P.C., G.C.B., G.C.V.O.

THE RIGHT HON. THE EARL OF ATHLONE, K.G., G.C.B.,
G.C.M.G., G.C.V.O., D.S.O.

THE RIGHT HON. LORD HOWARD DE WALDEN.

THE RIGHT HON. LORD MILDMAY OF FLETE, P.C.

THE LADY VIOLET ASTOR.

THE HON. SIR ARTHUR STANLEY, G.B.E., C.B., M.V.O.

COL. THE HON. J. J. ASTOR.

SIR THEOBALD MATHEW, M.C.

THE HON. T. B. MONEY-COUTTS.

SIR HERBERT E. MORGAN, K.B.E.

SIR EDWARD PENTON, K.B.E.

SIR ALFRED WEBB-JOHNSON, Bt., K.C.V.O., C.B.E., D.S.O., T.D., M.B.,
Ch.B., P.R.C.S., F.A.C.S., F.R.A.C.S.

REGINALD BEDDINGTON, Esq., C.B.E.

F. CAVENDISH BENTINCK, Esq.

SIR WILLIAM COLLINS.

S. A. COURTAULD, Esq.

RICHARD C. DAVIS, Esq.

Treasurer :—

THE HON. T. B. MONEY-COUTTS.

Board of Management :—

CHAIRMAN.

COL. THE HON. J. J. ASTOR (Vice-President).

VICE-CHAIRMAN.

THE HON. T. B. MONEY-COUTTS (Vice-President).

REGINALD BEDDINGTON, Esq., C.B.E. (Vice-President).

F. CAVENDISH BENTINCK, Esq., (Vice-President).

THE HON. MRS. DAVID BOWES-LYON.

ARTHUR BULL, Esq., M.B.E.

SIR WILLIAM COLLINS (Vice-President).

A. F. B. COOKE, Esq.

SAMUEL A. COURTAULD, Esq., J.P. (Vice-President).

RICHARD C. DAVIS, Esq. (Vice-President).

FRANK H. DORAN, Esq.

THE LORD EBBISHAM, G.B.E.

THE HON. SIR RAYMOND EVERSHED.

MAX FREEMAN, Esq.

J. H. HAMBRO, Esq.

RONALD O. HAMBRO, Esq.

AIR-COMMODORE LIONEL HEALD, K.C., R.A.F.

A. E. HUGHES, Esq., J.P.

NOEL HUTTON, Esq.

BRIG. GEN. K. J. KINCAID-SMITH, C.B., C.M.G., D.S.O.

LT.-COL. R. N. MACDONALD-BUCHANAN, M.B.E., M.C.

SIR THEOBALD MATHEW, M.C.

WALTER MORISON, Esq.

Mrs. BRUCE OTTLEY.

J. A. POLLEN, Esq.

THE WORSHIPFUL THE MAYOR OF ST. MARYLEBONE.

J. DOUGLAS WATSON, Esq.

SIR ALFRED WEBB-JOHNSON, BT., K.C.V.O., C.B.E., D.S.O., T.D., M.B., C.I.B., P.R.C.S.,
F.A.C.S., F.R.A.C.S.

MAJOR SIMON WHITBREAD.

THE LADY WRAXALL.

Treasurers are ex-officio Members of the Board.

Secretary-Superintendent —

BRIGADIER G. P. HARDY-ROBERTS, C.B., C.B.E.

Consulting Physicians :—

ARTHUR FRANCIS VOELCKER, Esq., M.D., F.R.C.P., Marhamchurch, Bude, Cornwall.

R. A. YOUNG, Esq., C.B.E., M.D., B.Sc., F.R.C.P., 22 Down St., Mayfair, W.1.

C. E. LAKIN, Esq., M.D., B.S., F.R.C.P., F.R.C.S., 58 Portland Place, W.1.

E. A. COCKAYNE, Esq., D.M., F.R.C.P., Middlesex Hospital, W.1.

Physicians :—

G. E. S. WARD, Esq., M.D., B.S., F.R.C.P., 47, Bedford Court Mansions,
Bedford Avenue, W.C.1.

G. E. BEAUMONT, Esq., M.A., D.M., F.R.C.P., 24 Wimpole Street, W.1.

T. IZOD BENNETT, Esq., M.D., B.S., F.R.C.P., Middlesex Hospital, W.1.

H. E. A. BOLDERO, Esq., M.A., D.M., B.Ch., F.R.C.P., 68 Wimpole Street, W.1.

Physicians to Out-Patients :—

D. E. BEDFORD, Esq., M.D., B.S., F.R.C.P.

H. L. MARRIOTT, Esq., M.D., F.R.C.P.

Consulting Surgeons :—

W. SAMPSON HANDLEY, Esq., M.D., M.S., F.R.C.S., 29 Welbeck Street, W.1.

SURGEON REAR-ARMIRAL SIR GORDON GORDON-TAYLOR, K.B.E., C.B., LL.D.
(Toronto), M.A., M.S., M.B., B.Sc., F.R.C.S., F.R.A.C.S. (Hon.), F.A.C.S. (Hon.), F.R.C.S. (C.)
(Hon.), R.N.

SIR ALFRED WEBB-JOHNSON, BART., K.C.V.O., C.B.E., D.S.O., T.D., M.B., Ch.B., P.R.C.S.,
F.A.C.S., F.R.A.C.S. 70 Portland Place, W.1.

Surgeons :—

W. TURNER WARWICK, Esq., M.A., M.B., B.Ch., F.R.C.S.,
Fitzroy Farm Cottage, Fitzroy Park, Highgate.

R. VAUGHAN HUDSON, Esq., F.R.C.S., 75 Harley Street, W.1.

E. W. RICHES, Esq., M.C., M.B., M.S., F.R.C.S., 22 Weymouth St., W.1.

D. H. PATEY, Esq., M.S., F.R.C.S., 121 Harley Street, W.1.

Surgeons to Out-Patients :—

P. B. ASCROFT, Esq., M.B.E., M.S., F.R.C.S., Middlesex Hospital, W.1.

Assisting Surgeon :—

R. S. HANDLEY, Esq., O.B.E., M.B., F.R.C.S., 29, Welbeck Street, W.1.

SPECIAL DEPARTMENTS.**Consulting Physician for Diseases of the Skin :—**

HENRY MACCORMAC, Esq., C.B.E., M.D., Ch.B., F.R.C.P., 23 Wimpole Street, W.1.

Physician for Diseases of the Skin :—

F. RAY BETTLEY, M.D., M.R.C.P.

Physician for Diseases of the Nervous System :—

DOUGLAS MCALPINE, Esq., M.D., Ch.B., F.R.C.P., 27 Harley Street, W.1.

Physician to the Department of Psychological Medicine :—

NOEL G. HARRIS, Esq., M.D., F.R.C.P., D.P.M., 2 Devonshire Place, W.1.

Consulting Obstetric and Gynaecological Surgeon :—

VICTOR BONNEY, Esq., M.D., M.S., B.Sc., F.R.C.S., F.R.A.C.S., 149 Harley Street, W.1.

Obstetric and Gynæcological Surgeon :—

L. C. RIVETT, Esq., M.A., M.C., F.R.C.S., F.R.C.O.G., 135 Harley Street, W.1.

Assistant Obstetric and Gynæcological Surgeons :—

FREDERICK ROQUES, M.A., M.D., M.Ch., F.R.C.S., F.R.C.O.G., 55 Harley St., W.1.

W. R. WINTERTON, Esq., M.A., M.B., B.Chir., F.R.C.S., M.R.C.O.G., 41 Harley Street, W.1.

Consulting Ophthalmic Surgeons :—

SIR ARNOLD LAWSON, K.B.E., M.D., F.R.C.S., 12 Harley Street, W.1.

R. AFFLECK GREEVES, Esq., B.A., M.B., B.S., F.R.C.S., 23 Wimpole Street, W.1.

Ophthalmic Surgeon :—

MAURICE H. WHITING, Esq., O.B.E., M.A., M.B., B.Ch., F.R.C.S., 51 Wimpole Street, W.1.

Assistant Ophthalmic Surgeon :—

A. J. B. GOLDSMITH, Esq., M.B., B.S., F.R.C.S.

Consulting Aural Surgeon :—

SOMERVILLE HASTINGS, Esq., M.S., F.R.C.S., M.P., 12 Westminster Palace Gardens, Victoria Street, S.W.1.

Aural Surgeons :—

C. P. WILSON, Esq., C.V.O., F.R.C.S., 65 Wimpole Street, W.1.

J. P. MONKHOUSE, Esq., M.B., B.S., F.R.C.S., 87 Harley Street, W.1.

Consulting Dental Surgeons :—

W. S. NOWELL, Esq., M.A., M.R.C.S., L.D.S., St. Peter's House, Canterbury, Kent.

H. WATSON TURNER, Esq., M.R.C.S., L.R.C.P., L.D.S., c/o Reginald Taylor, 4 New Square, Lincoln's Inn.

W. WARWICK JAMES, Esq., O.B.E., F.R.C.S., L.D.S., 2 Park Crescent, Portland Place, W.1.

Dental Surgeons :—

A. L. PACKHAM, Esq., M.R.C.S., L.R.C.P., L.D.S., 79 Portland Place, W.1.

H. W. BREESE, Esq., M.R.C.S., L.R.C.P., L.D.S., The Middlesex Hospital, Mortimer St., W.1.

Assistant Dental Surgeons :—

J. W. SCHOFIELD, Esq., M.R.C.S., L.R.C.P., L.D.S., 90 Harley Street, W.1.

D. GREER WALKER, Esq., M.A., M.B., B.A.O., M.DENT.SC., 24 Upper Wimpole Street, W.1.

Consulting Orthopædic Surgeon :—

A. S. BLUNDELL BANKART, Esq., M.A., M.Ch., F.R.C.S., 95 Harley Street, W.1.

Orthopædic Surgeon :—

PHILIP WILES, Esq., M.S., F.R.C.S., Middlesex Hospital, Mortimer Street, W.1.

Plastic Surgeon :—

RAINSFORD MOWLEM, Esq., M.B., Ch.B. (N.Z.), F.R.C.S., 149 Harley St., W.1.

Department of Urology :—

SIR ALFRED WEBB-JOHNSON, BART., K.C.V.O., C.B.E., D.S.O., T.D., M.B., Ch.B., F.R.C.S., F.A.C.S., F.R.A.C.S., 70 Portland Place, W.1.

E. W. RICHES, Esq., M.C., M.B., M.S., F.R.C.S., 22 Weymouth St., W.1.

Department for Diseases of the Rectum :—

W. TURNER WARWICK, Esq., M.A., M.B., B.Ch., F.R.C.S., Fitzroy Farm Cottage, Fitzroy Park, Highgate.

CHILDREN'S DEPARTMENT.**Physician :—**

PROFESSOR ALAN MONCRIEFF, M.D., F.R.C.P., 121 Harley Street, W.1.

Medical Officer in Charge of the Infant Consultation Centre :—

PROFESSOR ALAN MONCRIEFF, M.D., F.R.C.P., 121 Harley Street, W.1.

Consulting Anæsthetists :—

H. P. CRAMPTON, Esq., M.A., M.D., B.Ch., M.R.C.S., L.R.C.P., D.A., 36 Station Road,
Burgess Hill, Sussex.

R. E. APPERLY, Esq., M.R.C.S., L.R.C.P., D.A., Morwenna, Cheltenham Road., Painswick.

Anæsthetists :—

A. E. W. IDRIS, Esq., M.R.C.S., L.R.C.P., D.A., 33 Millfield Lane, N.6.

BERNARD R. M. JOHNSON, Esq., M.R.C.S., L.R.C.P., D.A.

F. W. ROBERTS, Esq., M.B., B.S., M.R.C.S., L.R.C.P., D.A., 47 Wimpole Street, W.1.

Anæsthetist to the Dental Department :—

C. J. M. DAWKINS, Esq., M.A., M.D., B.Ch., M.R.C.S., L.R.C.P., D.A., 1 Eton Avenue,
N.W.3.

Honorary Director of the Department of Radio-Therapy.

J. H. DOUGLAS WEBSTER, Esq., M.D., Ch.B., F.R.C.P., 14 Harley Street, W.1.

Medical Officer in Charge of the Department of Radio-Therapy :—

PROFESSOR B. W. WINDEYER, M.B., B.S., F.R.C.S., F.F.R., D.M.R.E.

Assistants :—

J. P. RABAN, Esq., M.R.C.S., L.R.C.P., D.M.R.E.

E. M. JAPHA, Esq., M.B., B.S., D.M.R.

L. M. SHORVON, Esq., M.B., B.S., D.A., D.C.H., D.M.R.

J. BORROWDALE, Esq., M.B., B.S., D.M.R.

Physician in Charge of the Department of X-Ray Diagnosis :—

H. K. GRAHAM HODGSON, Esq., C.V.O., M.B., B.S., F.R.C.P., D.M.R.E.,
Middlesex Hospital, W.1.

Honorary Radiologists (Diagnostic) :—

F. C. GOLDING, Esq., M.B., Ch.M. (Syd.), M.R.C.P., D.M.R.E.

E. SAMUEL, Esq., M.D., B.Sc., F.R.C.S., D.M.R.E., F.F.R.

Assistants in the Radiological Department (Diagnostic) :—

T. V. L. CRICHTON, Esq., B.Sc., M.R.C.S., L.R.C.P., D.M.R.E.

R. J. L. O'DONOGHUE, Esq., D.S.O., M.B., B.S., M.R.C.P., D.M.R.E.

Physician with Charge of Physical Medicine :—

FRANK HOWITT, Esq., C.V.O., M.D., F.R.C.P., 87 Harley Street, W.1.

Assistant :—

E. A. RUCKER, Esq., M.R.C.S., L.R.C.P.

Physicist :—

PROFESSOR SIDNEY RUSS, C.B.E., D.Sc.

The Bland-Sutton Institute of Pathology.**Director :—**

PROFESSOR JAMES MCINTOSH, M.D., Ch.B., LL.D.

Reader in Morbid Anatomy and Histology.

R. W. SCARFF, Esq., M.B., B.S.

The Ferens Institute of Oto-Laryngology.**Surgeons :—**

C. P. WILSON, Esq., C.V.O., F.R.C.S.

J. P. MONKHOUSE, Esq., M.B., B.S., F.R.C.S.

The Courtauld Institute of Biochemistry :—

PROFESSOR E. C. DODDS, M.V.O., D.Sc., Ph.D., M.D., F.R.C.P., F.I.C., F.R.S. (Edin.), F.R.S.

Registrars :—**Acting Medical.**—G. M. COLSON, Esq., B.M., B.Ch.

R. I. MEANOCK, Esq., M.B., B.S.

K. N. V. PALMER, Esq., M.B., M.R.C.P.

Acting Surgical.—A. M. WOOD, Esq., M.B., B.S.

W. H. DYSON, Esq., M.B., B.S.

T. J. WILMOT, Esq., M.B., B.S.

Obstetric and Gynaecological.—G. B. LIVINGSTON, Esq., M.B., B.S.**Otological.**—Vacant.**Fracture and Orthopaedic.**—Vacant.**Anaesthetic.**—Vacant**Dental.**—Vacant.**Medical Committee :—**

- | | |
|---|---|
| P. B. ASCROFT, Esq., M.B.E., M.S., F.R.C.S. | R. MOWLEM, Esq., M.B., Ch.B. (N.Z.), F.R.C.S. |
| A. S. BLUNDELL BANKART, Esq., M.A., M.Ch., F.R.C.S. | A. L. PACKHAM, Esq., M.R.C.S., L.R.C.P., L.D.S. |
| G. E. BEAUMONT, Esq., M.A., D.M., F.R.C.P. | D. H. PATEY, Esq., M.S., F.R.C.S. |
| D. E. BEDFORD, Esq., M.D., B.S., F.R.C.P. | E. W. RICHES, Esq., M.C., M.B., M.S., F.R.C.S. |
| T. IZOD BENNETT, Esq., M.D., B.S., F.R.C.P. | L. C. RIVETT, Esq., M.C., M.A., F.R.C.S., F.R.C.O.G. |
| T. RAY BETTLEY, Esq., M.D., M.R.C.P. | F. W. ROBERTS, Esq., M.B., B.S., D.A. |
| H. E. A. BOLDERO, Esq., M.A., D.M., F.R.C.P. | F. ROQUES, Esq., M.A., M.D., M.Ch., F.R.C.S., F.R.C.O.G. |
| H. W. BREESE, Esq., M.R.C.S., L.R.C.P., L.D.S. | R. W. SCARFF, Esq., M.B., B.S. |
| PROFESSOR E. C. DODDS, M.V.O., D.Sc., Ph.D., M.D., F.R.C.P., F.I.C., F.R.S. (Edin.), F.R.S. | J. W. SCHOFIELD, Esq., M.R.C.S., L.R.C.P., L.D.S. |
| A. S. B. GOLDSMITH, Esq., M.B., B.S., F.R.C.S. | D. GREER WALKER, Esq., M.A., M.B., B.Ch., B.A.O., M.DENT.Sc. |
| R. S. HANDLEY, Esq., O.B.E., M.B., F.R.C.S. | G. E. S. WARD, Esq., M.D., B.S., F.R.C.P. |
| NOEL G. HARRIS, Esq., M.D., F.R.C.P., D.P.M. | W. TURNER WARWICK, Esq., M.A., M.B., B.Ch., F.R.C.S. |
| H. K. GRAHAM HODGSON, Esq., C.V.O., M.B., B.S., F.R.C.P., D.M.R.E. | SIR ALFRED WEBB-JOHNSON, BART., K.C.V.O., C.B.E., D.S.O., T.D., M.B., Ch.B., P.R.C.S., F.A.C.S., F.R.A.C.S. |
| FRANK HOWITT, Esq., C.V.O., M.D., F.R.C.P. | J. H. DOUGLAS WEBSTER, Esq., M.D., Ch.B., F.R.C.P. |
| R. VAUGHAN HUDSON, Esq., F.R.C.S. | M. H. WHITING, Esq., O.B.E., M.A., M.B., B.Ch., F.R.C.S. |
| A. E. W. IDRIS, Esq., M.R.C.S., L.R.C.P., D.A. | PHILIP WILES, Esq., M.S., F.R.C.S. |
| B. R. M. JOHNSON, Esq., M.R.C.S., L.R.C.P., D.A. | C. P. WILSON, Esq., C.V.O., F.R.C.S. |
| DOUGLAS McALPINE, Esq., M.D., Ch.B., F.R.C.P. | W. R. WINTERTON, Esq., M.A., M.B., B.Chir., F.R.C.S., M.R.C.O.G. |
| PROFESSOR JAMES McINTOSH, M.D., Ch.B. | R. A. YOUNG, Esq., C.B.E., M.D., B.Sc., F.R.C.P. |
| H. L. MARRIOTT, Esq., M.D., F.R.C.P. | PROFESSOR B. W. WINDEYER, M.B., B.S., F.R.C.S., F.F.R., D.M.R.E. |
| PROFESSOR ALAN MONCRIEFF, M.D., F.R.C.P. | |
| J. P. MONKHOUSE, Esq., M.B., B.S., F.R.C.S. | |

Pharmacist :—

S. H. WHITE, Esq., Ph.C., M.P.S.

Chaplain :—

THE REV. B. A. WALL.

Matron and Lady-Superintendent of Nurses .—

MISS M. MARRIOTT.

Assistant Secretary :—

H. M. WILKINSON, Esq., M.C., B.A., F.H.A.

Chief Accountant :—

A. J. HOWIE, Esq., A.C.A.

Steward :—

V. L. LEEK, Esq., A.C.I.S.

Chief Engineer :—

D. LATTO, Esq., A.M.I. (Mar.) E.

Registry Superintendent :—

MISS D. SEATON.

Lady Almoner :—

MISS M. J. ROXBURGH.

Assistant Lady Almoner :—

MISS I. M. DADSWELL.

Solicitor :—

A. L. H. CARTER, Esq., 6 Bedford Row, W.C.1.

Architect :—

ALNER W. HALL, Esq., M.C., F.R.I.B.A., Crown Buildings, 9 Southampton Row, W.C.1.

Bankers.**For Receiving Subscriptions and General Purposes :—**

MESSRS. COUTTS AND Co., 16 Cavendish Square, W.1.

THE WESTMINSTER BANK, LIMITED., 1 Cavendish Square, W.1.

Accountants :—

MESSRS. PRICE, WATERHOUSE AND Co., 3 Frederick's Place, E.C.2.

CANCER AND GENERAL RESEARCH COMMITTEE.

ARTHUR BULL, Esq., M.B.E.

A. F. B. COOKE, Esq.

RICHARD C. DAVIS, Esq.

MAX FREEMAN, Esq.

C. E. LAKIN, Esq., M.D., F.R.C.P., F.R.C.S.

PROFESSOR ALAN MONCRIEFF, M.D., F.R.C.P.

WALTER MORISON, Esq.

D. H. PATEY, Esq., M.S., F.R.C.S.

R. W. SCARFF, Esq., M.B., B.S.

SURGEON REAR ADMIRAL SIR GORDON GORDON-TAYLOR, K.B.E., M.A.,

F.R.C.S., F.R.A.C.S., R.N.

J. DOUGLAS WATSON, Esq.

W. TURNER WARWICK, Esq., M.A., M.B., B.Ch., F.R.C.S.

J. H. DOUGLAS WEBSTER, Esq., M.D., F.R.C.P.

CAPTAIN SIMON WHITBREAD.

The Bland-Sutton Chair of Pathology :—

PROFESSOR JAMES MCINTOSH, M.D., CH.B., LL.D.

The Joel Professor of Physics :—

PROFESSOR SIDNEY RUSS, C.B.E., D.Sc.

The John Astor Professor of Physiology :—

PROFESSOR SAMSON WRIGHT, M.D., F.R.C.P.

The S. A. Courtauld Professor of Anatomy :—

PROFESSOR JOHN KIRK, M.B., CH.B., F.R.C.S. (Edin.).

The Professor of Chemistry :—

PROFESSOR W. B. TUCK, D.Sc., F.I.O.

The S. A. Courtauld Professor of Bio-Chemistry :—

PROFESSOR E. C. DODDS, M.V.O., D.Sc., Ph.D., M.D., F.R.C.P., F.I.C., F.R.S. (Edin.), F.R.S.

The Professor of Radiology (Therapeutic) :—

PROFESSOR B. W. WINDEYER, M.B., B.S., F.R.C.S. (Ed.), F.F.R., D.M.R.E.

The Honorary Treasurer of the Medical School :—SIR ALFRED WEBB-JOHNSON, BT., K.C.V.O., C.B.E., D.S.O., T.D., M.B., CH. B.,
P.R.C.S., F.A.C.S., F.R.A.C.S.,**Secretary :—**

R. A. FOLEY, Esq., F.C.C.S.

CANCER INVESTIGATIONS.**Scientific Staff.****Pathological :—**

PROFESSOR J. MCINTOSH, M.D., CH.B., LL.D.

R. W. SCARFF, Esq., M.B., B.S.

F. R. SELBIE, Esq., M.A., M.D., M.B., CH.B.

Biochemical :—

PROFESSOR E. C. DODDS, M.V.O., D.Sc., Ph.D., M.D., F.R.C.P., F.I.C., F.R.S. (Edin.), F.R.S.

W. LAWSON, Esq., M.Sc., A.I.C.

J. D. ROBERTSON, Esq., M.D., D.Sc., F.R.S. (Edin.).

Radiological :—

PROFESSOR S. RUSS, C.B.E., D.Sc.

J. E. ROBERTS, Esq., Ph.D.

F. T. FARMER, Ph.D.

GLADWYS M. SCOTT.

RADIUM RESEARCH COMMITTEE.

H. E. A. BOLDERO, Esq., M.A., D.M., B.Ch., F.R.C.P.

PROFESSOR E. C. DODDS, M.V.O., D.Sc., Ph.D., M.D., F.R.C.P., F.I.C., F.R.S. (Edin.), F.R.S.

R. VAUGHAN HUDSON, Esq., F.R.C.S.

HENRY MACCORMAC, Esq., C.B.E., M.D., CH.B., F.R.C.P.

PROFESSOR JAMES MCINTOSH, M.D., CH.B., LL.D.

L. C. RIVETT, Esq., M.A., M.C., F.R.C.S., F.R.C.O.G.

PROFESSOR SIDNEY RUSS, C.B.E., D.Sc.

SIR ALFRED WEBB-JOHNSON, K.C.V.O., C.B.E., D.S.O., T.D., M.B., CH.B.,
P.R.C.S., F.A.C.S., F.R.A.C.S.

J. H. DOUGLAS WEBSTER, Esq., M.D., CH.B., F.R.C.P.

C. P. WILSON, Esq., C.V.O., F.R.C.S.

PROFESSOR B. W. WINDEYER, M.B., B.S., F.R.C.S., F.F.R., D.M.R.E.

ADMISSION OF PATIENTS.

Patients are required to contribute in accordance with their means towards the cost of their maintenance. The amount of a Patient's contribution is agreed upon after enquiries made, either before or after admission to the Hospital, from the Patient or the Patient's relatives or friends; but no distinction is made between those who can and those who cannot afford to contribute.

Patients are required to contribute 1/- at each attendance, but are excused from payment if their circumstances warrant it. Further contributions are invited from those attending the Special Departments.

Patients are received for admission, or for Out-Patient Treatment :—

Admissions—Nassau Street Entrance, 11.15 a.m., on any week-day.

Accidents and Urgent Cases—Nassau Street Entrance, at any time of the day or night.

Medical and Surgical Cases—Out-Patient Department, Cleveland St. Annexe, as follows :—

An Appointment System has been instituted for the clinics marked * and Doctors and Patients with Doctors' letters, are requested to communicate with the Appointments Secretary at the Hospital (Museum 8333, Extension 325). As it is anticipated that the Appointment System may be extended to other Clinics in the near future, Doctors and Patients are advised to make enquiries in the first instance about all Clinics.

Medical Cases are seen by the Casualty Medical Officer every week-day at 9.30 a.m. and attended :—On Mondays at 1.30 p.m. by Dr. G. E. S. WARD* ; on Tuesdays at 1.30 p.m. by Dr. H. L. MARRIOTT* ; on Wednesdays at 1.30 p.m. by Dr. D. EVAN BEDFORD ; on Thursdays at 1.30 p.m. by Dr. T. IZOD BENNETT* and by Dr. F. D. HOWITT (physical medicine) ; and on Fridays at 1.30 p.m. by Dr. H. E. A. BOLDERO.

Surgical Cases are seen by the Casualty Surgical Officer every week-day at 9.30 a.m. and attended :—On Mondays at 1.30 p.m. by Mr. P. B. ASCROFT* ; on Tuesdays at 1.30 p.m. by Mr. D. H. PATEY* ; on Wednesdays at 1.30 p.m. by Mr. TURNER WARWICK ; on Thursdays at 1.30 p.m. by Mr. E. W. RICHES* ; and on Wednesdays at 9.0 a.m. by Mr. R. VAUGHAN HUDSON.

Diseases of Children under fourteen years of age are attended by PROFESSOR A. MONCRIEFF on Mondays at 9.30 a.m.

Infant Welfare Clinic is attended on Mondays at 1.30 p.m., Tuesdays and Fridays at 3.0 p.m.

Diseases of the Skin are attended by Dr. F. Ray Bettley* on Mondays and Thursdays at 9.30 a.m.

Diseases of the Nervous System are attended by Dr. D. McALPINE* on Tuesdays at 1.30 p.m. (New Patients by appointment, 2nd and 4th Friday in Month).†

Lying-in Patients must attend on Thursdays at 9.30 a.m.

Diseases of Women are attended by Mr. F. W. ROQUES on Wednesdays at 9.30 a.m., and Mr. W. R. WINTERTON* on Mondays at 9.30 a.m.

Diseases of the Eye are attended by Mr. A. J. B. GOLDSMITH and Mr. MAURICE H. WHITING on Tuesdays at 9.30 a.m., and by Mr. A. J. B. GOLDSMITH on Fridays at 9.30 a.m.

†* **Psychological Medicine**—Dr. NOEL HARRIS on Thursdays at 9.0 a.m.

Diseases of the Ear, Nose and Throat are attended by Mr. C. P. WILSON on Tuesdays at 9.30 a.m. and by Mr. J. P. MONKHOUSE on Fridays at 9.30 a.m.

Diseases of the Rectum are attended by Mr. W. TURNER WARWICK on Wednesdays at 4.0 p.m.

***Diseases of the Genito-Urinary System** are attended by Mr. E. W. RICHES on Thursdays at 1.30 p.m.

***Varicose Veins** are attended on Mondays at 1.30 p.m.

Orthopædic Clinic is attended by Mr. BLUNDELL BANKART on Tuesdays and by Mr. PHILIP WILES on Fridays at 9.0 a.m. at the Fracture Clinic, Main Hospital.

Plastic Surgery Clinic is attended by Mr. RAINSFORD MOWLEM on Tuesdays at 9.30 a.m.

Diseases of the Teeth are attended by Mr. J. W. SCHOFIELD on Mondays at 9.30 a.m. ; by Mr. D. GREER WALKER on Wednesdays at 9.30 a.m. and by Mr. A. L. PACKHAM on Fridays at 9.30 a.m.

Cancer.—Out-patients are attended on Wednesdays at 9.30 a.m. and 1.30 p.m. in the Meyerstein Institute.

Venereal Diseases, 1.30 p.m. on Wednesdays. New patients may obtain treatment in the Casualty Department at any time. Daily treatment (Male and Female) by arrangement.

In-Patients are expected to be provided with clean and suitable clothing and change of linen. They also have to provide themselves with washing materials. In all cases where the Patients are too poor to provide themselves with these articles they are supplied to them by the Lady Almoner from special funds which she has at her disposal for the purpose.

Any Officer, Sister, Nurse, Servant, or person employed in any Department of the Hospital accepting Money, or Presents of any kind, from a Patient, or relative or friend of any Patient, on any pretence whatever, is liable to dismissal.

The following Cases are not admitted into the Hospital :—

1. Those which are, upon due examination, deemed *Incurable*, as Advanced Consumption, etc.

2. Complaints so tedious of cure as to preclude for a long time the admission of more urgent cases, as *Chronic Ulcers* of the Legs, etc.

3. Disorders to the cure of which other establishments are devoted, as *Persons of Unsound Mind*, etc.

4. Those which are more properly objects for Public Assistance, as wanting Food and not Medicine.

5. Those whose admission might endanger the other Patients, as persons suffering from *Infectious Diseases*.

6. Complaints likely to be aggravated rather than relieved by confinement within the walls of a Hospital, but such cases, if deemed proper objects, may receive advice and medicine as *Out-Patients*.

Prior to sending up Patients from the Country, the Resident Medical Officer should be applied to, in order to learn whether there is room, and such application should be accompanied by a medical certificate setting out fully the nature of the case.

THE MIDDLESEX HOSPITAL CANCER WING.

ADMISSION OF PATIENTS.

1. Out-Patients suffering from cancer are specially attended in the Meyerstein Institute on Wednesdays at 9.30 A.M. and 1.30 P.M. and Thursdays at 1.30 P.M.

2. No patient can be admitted unless previous application has been made and the case considered.

VISITING DAYS.

Sundays	2 to 4 p.m.
Tuesdays	6 to 7 p.m.
Thursdays	4 to 5 p.m.
MATERNITY	{	Sundays	4 to 5 p.m.
					Tuesdays	4 to 5 p.m.
					Thursdays	4 to 5 p.m.
					Daily	7 to 8 p.m.
					(husbands only)	

N.B.—Every patient on admission to the Hospital is supplied with two visiting cards, and on no account can more than two visitors be allowed to see a patient at the same time.

**THE MIDDLESEX HOSPITAL
AND
CANCER WING
THE MIDDLESEX HOSPITAL
MEDICAL SCHOOL
REPORTS
for the year 1945.**

We greatly regret the delay in presenting the Report and Accounts for 1945. Our Auditors are overwhelmed with work, and we have been unable to submit audited accounts to King Edward's Hospital Fund for London.

At last we are able to report that after five years of cramped work, damaged buildings, blast-walls and blackout, the Hospital is beginning to throw off the material effects of the war. The Annexe, our Out-Patient Department, which was hit and largely burned out, has been repaired and re-opened. As its top floor, in the North Wing, has disappeared, we are short of clinic accommodation and are trying to see how this can be supplemented: but we have at least been able to move Out-Patients from the Cancer Wing, and plans have been passed for the rebuilding of its north sanitary tower. When we can get a licence for this we shall have the whole of the Cancer Wing and the Neurological Unit in commission again. As one unit is complete and occupied, so more space is freed for repairs or cleaning and reconditioning, and the Plans Committee is at work at this on a scheme of priorities approved by the Board.

It gives us great satisfaction to see the Hospital beginning to look more like itself again. It will soon be ready to accept more patients, both In and Out, and to find adequate accommodation for the Honorary Staff who are steadily returning from their long

exile, and for the men to be appointed to the Junior Honorary Staff in 1946 to fill the vacancies that have accumulated in the war years.

We are still severely restricted in our opening of more beds by the domestic service situation. The position there shows no signs of any immediate improvement.

Again this year we can justly lay emphasis upon the vitality and the value of our Research Departments and their work. In spite of the draining away of staff during the war and of other difficulties, not only have standards been maintained but much valuable progress made, as the brief reports from the various Departments attest.

We cannot as yet comment in any detail upon the proposed Bill for a National Health Service. This must wait for publication of the Bill and most of all upon the shape which it may take in the Committee stage. But we hope we are not too optimistic in thinking that the Teaching Hospitals may well, with their day to day maintenance assured, become stronger and more useful than ever before. We shall still, as in the past, rely upon our supporters through their subscriptions and donations to provide us with that margin of financial freedom which will enable us to provide the amenities and initiate the developments in treatment, teaching and research which have been the peculiar province of the Teaching Hospitals. We look with confidence to receiving that support.

RESEARCH DEPARTMENT REPORTS.

BLAND-SUTTON INSTITUTE.

Chemotherapy.

Anaerobic Infections of Wounds.

The search for new wound antiseptics has been continued and particularly for those capable of dealing with anaerobic infections in battle casualty wounds. A large number of compounds have been tested and the conclusion arrived at is that no single drug is

likely to be a panacea for these types of infections and therefore a mixture of two or three drugs should be used. Clinical trials have been carried out both in the field and in hospital and the results have been highly satisfactory.

Penicillin.

Work in association with the Penicillin Research Unit of the Middlesex Hospital has been continued with special reference to the treatment of acute surgical infections and subacute bacterial endocarditis, and reports on these conditions have been published. Eighteen cases of proved subacute bacterial endocarditis have been treated with large doses for a long period and the results have shown that the condition is curable in a large proportion of cases.

Research has been done to assess the value of penicillin in the treatment of human syphilis and it has been concluded that it acts best in conjunction with arsenical and other anti-syphilitic drugs.

Cancer.

Research into the causation of cancer has been energetically carried out, particularly in relation to chemical substances and viruses capable of producing tumours. Interesting facts have come to light as to the possibility of changing the susceptibility of the tissue cells to these cancer agents.

The histological appraisal of tumours in which there has been difficulty in arriving at a correct diagnosis has been made on behalf of the Clinical Cancer Research Committee of the British Empire Cancer Campaign and this has entailed the preparation of a large number of histological sections.

Bacteriology.

Assessments have been made of the susceptibility of bacteria to various chemotherapeutic drugs in order to arrive at the correct treatment. A study has also been made of the factors which interfere with the chemotherapeutic action of drugs.

Haematology.

A number of obscure blood conditions have been investigated and work on the Rhesus factor has been continued especially in relation to the Maternity Department where it has been found that the determination of the Rhesus factor has become of great importance in antenatal medicine.

BARNATO JOEL LABORATORIES.

The part taken by the Barnato Joel in the work of the Hospital is largely in connection with the treatment of malignant disease.

For many years methods of treatment by means of X-rays, Radium and Radon have become more specialised and detailed. This calls for the intimate collaboration of physicists with the radiotherapists, in order that the various points of technique may be fully considered in any plan of treatment for the patient.

Added to this, active research continues on the effects of the various forms of radiation upon living organisms, and on the development of new instruments of precision for use in the clinic.

COURTAULD INSTITUTE OF BIOCHEMISTRY.

Since the cessation of hostilities in 1945, every effort has been made to restore the department to its pre-war level. During the war, the staff of the Institute had dwindled to three qualified persons. Work carried on throughout the war but was naturally at a very low ebb in view of the lack of assistance.

Thanks to the generous provision of sums of money from various bodies, new appointments have been made, and there appears to be little doubt that in 1946 the staff of the Institute will be even greater than in 1939. It can be reported now that rehabilitation with regard to staff is complete.

The research work for the current year has been an extension of last year's investigations. Synthetic research in the oestrogen field has been continued, and a special study has been made into the metabolism of the oestrogens in the treatment of malignant disease.

The work of the treatment of carcinoma of the prostate with stilboestrol has been greatly extended, and new methods for the estimation of certain synthetic oestrogens in the urine and other body fluids have been evolved.

The routine work has grown considerably in view of the return of members of the honorary staff and the figures of analyses are once more approaching the pre-war level. Unfortunately the work has been held up by staff difficulties and unless these can be solved in the near future it will be impossible to conduct the routine work requested by the Hospital.

THE BOARD.

We have to record with great regret the death in May of Mr. G. Vaughan Morgan, a Vice-President of the Hospital, and an indefatigable promoter of its interests. The loss of his wise counsel will be deeply felt.

Resignations from the Board during the year have been received from :—Captain the Hon. H. E. Fitzalan-Howard, Colonel W. A. Gillett, the Rt. Hon. the Earl of Leitrim, Sir Frederick Richmond, Bt., and Admiral Sir Percy Royds, C.B., C.M.G. We thank these gentlemen for their great services to the Hospital, and much regret that years, health or distance have compelled them to leave us.

We welcome most heartily the following new members of the Board :—Mrs. Bruce Ottley, Air Commodore L. F. Heald, K.C., Mr. J. A. Pollen, Mr. Noel Hutton, and Sir Alfred Webb-Johnson Bt., P.R.C.S.

Mr. S. R. C. Plimsoll, Secretary-Superintendent, who has been in the service of the Hospital for twenty-six years, will be retiring on pension next year, and we hope to know his successor's name in time to appear in the Staff lists in the Report. Mr. Plimsoll has seen the Hospital grow from the small XVIIIth Century buildings to its present form, and had his share both in providing the huge fund raised to rebuild the Hospital, and in preserving in the great new buildings the friendliness characteristic of the old.

We wish him good health and fresh interests in his retirement.

During this year the Board, on the advice of the Medical Committee and the War Emergency Committee, which had been acting for the Board during the war years, determined to recommend to the Court a revision of the constitution of the Election Committee. It was clear that that Committee, particularly in view of the numerous appointments to the Honorary Staff to be made in the near future, must be strengthened. This was done by a revision of the proportionate representation of the Court, the Board, the Medical Committee and the Medical School Council, and by the addition of representatives of the University of London and of the Royal Colleges of Physicians, Surgeons and Gynaecologists at elections to appointments in which they were professionally interested. The Court approved the proposal and the Laws were amended accordingly.

A complete revision of the Laws which had not been undertaken since 1921 had been discussed in 1943, and referred to the Legal Committee. Before any serious work had been undertaken the proposals of the Coalition Government to provide a National Health Service, the probable legal separation of Medical Schools and uncertainty about the duties of both Boards of Management and the Honorary Medical Staff made it appear a waste of time to attempt such a revision. When, however, the present Government's proposals are passed by the House, such a revision will become not merely desirable but necessary.

MEDICAL STAFF.

During the year, Dr. E. A. Cockayne, Physician to the Hospital, was appointed by the Court Honorary Consultant on reaching retiring age. Mr. Somerville Hastings, Consulting Aural Surgeon, and Dr. H. P. Crampton, Consulting Anaesthetist, ceased their active connection with the Hospital. Sir Alfred Webb-Johnson on reaching retiring age was appointed Consulting Surgeon, but has consented to continue his duties on the active staff until vacancies created by the war have been refilled.

We congratulate most sincerely Surgeon Rear-Admiral Sir Gordon Gordon-Taylor on the well-deserved honour of the K.B.E. recently conferred on him by His Majesty, and Professor Alan Moncrieff on his appointment to the Nuffield Chair of Child Health in the University of London.

We record with profound regret the deaths of Sir Comyns Berkeley, Consulting Obstetric and Gynaecological Surgeon, and of Dr. W. Essex Wynter, Consulting Physician.

It is intended in 1946 to fill the vacancies in the Junior Staff in March, May and November, after giving adequate notice so that those still in the forces may apply.

THE NURSING SERVICE.

The tremendous world events of the past year have had little noticeable effect on the theoretical side of the student Nurses' work, but we feel that we can now hope and plan for great developments in the future.

There has been no falling off in the number of applicants for the various Schools; nearly 2,000 have asked for particulars of training.

During the year the percentage of passes in examinations has been 93.8%, the total entries being 457.

We congratulate the following who have been successful in obtaining post-graduate certificates:—

Miss F. I. Radley, Diploma in Nursing with Methods of Teaching and Educational Psychology of London University and Sister Tutor's certificate of the Royal College of Nursing.

M.S.R. Examination.

Miss R. B. M. Douglas.

Miss A. N. Plowman.

Mrs. R. H. Young (née Porri).

Miss J. M. Young.

Midwives' Teacher's Certificate.

Miss L. M. Bartlett.

The following Members have received honours this year and we send them our congratulations :—

Miss B. J. Parker, Q.A.R.N.N.S., awarded the A.R.R.C.

Miss D. W. Cheetham, Q.A.I.M.N.S., awarded the R.R.C.

Mrs. L. Lacy (née Knowles), awarded the A.R.R.C.

Mrs. A. Styles (née Smith), awarded the M.B.E.

Miss M. A. Crowther, awarded the M.B.E.

We are looking forward to the time when as much as possible of the Hospital will be fully opened and our scattered staff returns. We are still handicapped by shortage of domestic and portering staffs.

We have so much for which to be thankful and especially that although we had four direct hits and showers of incendiaries on the Hospital, and much in the neighbourhood of the Hospital was destroyed by bombs, incendiaries and rockets, not one in-patient or member of the nursing staff was hurt, and it will be possible to use nearly the whole of the Hospital buildings.

Miss D. M. Smith, O.B.E., after seventeen years magnificent service to the Hospital in the post of Matron, is leaving to take up a similar position at her old Hospital, Guy's. Miss Smith was the youngest matron to be appointed to a great teaching hospital, and that at a most difficult time, during the Hospital's rebuilding Miss Smith's wisdom and practical ability have been of inestimable benefit to nursing, both in this Hospital and in wider sphere. Her handling of the many difficulties created by the war has been beyond all praise. While we part from Miss Smith with the deepest regret, we do most heartily congratulate Guy's on their new Matron.

Miss Smith will be retiring early in 1946, when her successor will be appointed.

INFANT WELFARE DEPARTMENT.

The work of the department is slowly increasing towards pre-war levels, as the following figures show :—

	1944	1945
No. of children attending	389	429
Attendances made	2,873	3,865
Attendances of expectant mothers at Mothercraft Class	215	223
Home Visits	1,517	1,987

The Red Cross Society has very kindly sent members of the V.A.D. to help in the work at the Clinic sessions, as so many of the old voluntary helpers have had to resign. There have been some interesting visitors to the clinic, doctors and nurses, to study welfare work, including some from Malta, Greece and China.

ALMONER'S DEPARTMENT.

It has long been recognised at this Hospital that the successful treatment of patients cannot be undertaken without due regard to the conditions under which they live and work. The function of an Almoner's department is to provide the means by which information on these matters may be made available to the Medical Staff, and also to the Statutory and Voluntary Social Services set up to help ill or convalescent patients and their families, so that these may be brought into action where required. Thus, the Almoner's department has contact with a large variety of services, such as the Family Welfare Association, the L.C.C. School Care Committees, the Re-habilitation Service of the Ministry of Labour, the National Society of Cancer Relief, to name only four of the many agencies with which the department has correspondence day by day.

The department is staffed by Almoners trained in social service and by administrative and clerical assistants. The past year has been one of building up from the necessarily restricted staff of the war years towards the kind of department that is required to meet the demands of the future.

During the year, the Board agreed to requests made by the Institute of Almoners and by the Social Science Department of the London School of Economics, to allow students from both these bodies to spend part of their time of practical training in the department.

MIDDLESEX HOSPITAL LADIES' ASSOCIATION.

The Middlesex Hospital Ladies' Association is pleased and proud to be able to state that, in spite of post-war weariness, none of the services to the patients have suffered and the War finished with our record of "no requests from the Hospital to the Ladies' Association have been refused" untarnished. The move of the Out-Patients Department back to Cleveland Street upset the Canteen workers at first, as the numbers served were fewer, but now all the workers are full out again and happily settled in their new quarters. We are glad to say that the few who have borne the weight of the Ladies' Association work during the war years are at last being augmented and we hope soon to see a large increase in the number not only of our members, but of active members, and also an increase in our usefulness to the Middlesex. Already new Librarians are enrolled and as more wards are opened up so they are served with the much appreciated skill and kindness which is traditional in this branch. The Out-Patients' Canteen has been made into a separate branch under its own Hon. Organiser, who has again a full rota for the efficient functioning of this important work, and arrangements are made to re-start the Trolley Service to the Wards early in 1946. We are planning too to take over again the care of the gardens and the organisation of the Children's Branch, which of necessity lapsed during the grim days of bombs and V weapons.

APPEALS AND FUNCTIONS.

We have again to acknowledge our indebtedness to the Middlesex County Rugby Football Union who once more placed the greater part of the proceeds of the Seven-a-Side Finals at

Richmond at our disposal. We greatly value the staunch support which the Union has given us for so many years.

Mrs. H. G. D. Leveson-Gower organised Combined Hospitals' Flag Day and Mrs. D. H. Patey Alexandra Rose Day for the Hospital. To both these ladies, their helpers and sellers, our thanks are due for their efforts and the success that attended them.

ALL HELP LEAGUE.

We have again received the most loyal support from our members and by their contributions the income from the League was increased by £134 5s. 1d., making the total this year £1,252 11s. 3d. Those who continue to help us take a very keen interest in our welfare and are always most willing to give practical assistance whenever we hold one of our annual efforts to raise funds.

This year we have about one hundred new members, who help to take the place of those we have lost during the past six years.

The support we receive from our members is deeply appreciated and we are confident that we can count on it in the future as we have always done in the past.

After our general survey of the year, one or two special notes may interest our friends.

On May 2nd Mr. G. J. H. Chapman, Rover Scout Leader, was received by the Emergency War Committee on the impending stand-down of the Rover Scout Services and warmly thanked for the splendid work done in and for the Hospital by the 10th St. Marylebone Rover Scout Crew. He was warmly congratulated on a wonderful record of unbroken night service through the war period and was presented with an inscribed silver salver.

In May it was reported by the Dean that at the request of the War Office and the British Red Cross, 100 students from London Medical Schools, of which 10 had been supplied by the Middlesex Hospital had been sent to N.-W. Europe, originally with the

intention of checking the feeding of liberated Holland. The students had subsequently been diverted to Belsen Concentration Camp where they had been highly commended for the excellent work they had done there.

In December a very friendly offer from the Alfred Hospital, Melbourne, to "adopt" the Middlesex Hospital, and to send food parcels to all its staff as a Christmas present, was received and gratefully accepted.

In April a presentation was made by the Board to Mr. A. F. Hardingham, Senior Dispensary Porter, in recognition of his 50 years of continuous service in the Hospital. He decided to carry on with his duties for a time, though he has long been free to retire on pension.

Finally, we return to the opening of this Report. The Hospital has continued to do good work and, as fast as licences, labour and domestic service permit, is returning to its old size and standards. For the reasons we have already given you we continue to count upon your whole-hearted sympathy and support.

J. J. ASTOR,

Chairman.

The Board Room.

The Medical School (1944-45).

Students.

The Hospital and Medical School are fully equipped for the theoretical and practical teaching of all the subjects of the Medical Curriculum. Chemistry, Physics and Biology are also taught in preparation for the 1st M.B. (Lond.), and for the Pre-Medical Examination (Conjoint Board). Every effort is made to encourage co-ordination and prevent the division of the curriculum into watertight compartments. This arrangement ensures that the student, instead of proceeding to the study of the various subjects as if they were isolated and having little or no relation to each other, is taught each subject by professors, lecturers and teachers, who are instructing medical students only, and are in close touch with all the other departments of the school. Under this arrangement not only have students of The Middlesex Hospital obtained the highest honours in examinations, but they have also been admirably equipped for the practice of medicine and surgery, and to take the fullest advantage of any new knowledge which research may bring to light. Its value to the student and to medicine is obvious, for the teaching of the elementary subjects is closely connected with that of the clinical subjects.

Special classes are available for students proceeding to the higher examinations. Courses of instruction are held for those preparing for the Medical Diplomas in Radiology and Electrolgy, and for the Primary F.R.C.S., Examination. Laboratory accommodation is provided for original research. Clinical teaching is being continued in London and at the Sector Hospitals, Mount Vernon Hospital, Northwood, and Central Middlesex Hospital. Also at the Royal Hospital, Wolverhampton.

Research Work and Investigations.

The generous support afforded us during the past year by the Medical Research Council, the British Empire Cancer Campaign,

the Sir Halley Stewart Trust, the Imperial Chemical Industry Limited, and Messrs. Boots Limited, is gratefully acknowledged.

The University of London from its Central Research Fund made the Medical School a very generous grant, which enabled us to purchase important apparatus for use in the Courtauld Institute of Biochemistry.

During the Year the following Honours and Distinctions have been awarded to Middlesex men.

Honours.

Mr. Gordon Gordon-Taylor, Consultant Surgeon to the Hospital, has received a Knighthood from H.M. The King.

Distinctions.

Sir Lionel Whitby, C.V.O., M.C., has been elected Regius Professor of Physic, University of Cambridge.

War Distinctions.

The following awards have been conferred by H.M. The King.

1. Captain J. M. Willcox, R.A.M.C., awarded the D.S.O.
2. Captain J. D. Fisher, R.A.M.C., awarded the M.C.
3. Lieut.-Colonel G. E. W. Wolstenholme, awarded the O.B.E.
4. Lieut.-Colonel S. W. K. Arundell and Lieut.-Colonel N. Bickford, Mentioned in Dispatches.
5. Colonel J. P. Raban and Major D. W. Ashcroft, Mentioned in Dispatches.
6. Lieut.-Colonel Max Summers awarded the D.S.O.
7. Lieut.-Colonel I. B. Pirie awarded the M.B.E.
8. Lieut.-Colonel (Temporary) A. E. Kingston (Military Division), awarded the O.B.E.
9. Captain R. W. Gunderson, Captain D. G. Howatson, Captain R. M. Wiltshire, and Captain N. E. Monteuuis, Mentioned in Dispatches.
10. Lieut.-Colonel (Temporary) R. S. Handley (Military Division), awarded the O.B.E.

Deaths.

It is with deep regret that I record the following deaths:—

Sir Comyns Berkeley, late consulting Obstetric and Gynaecological Surgeon.

G. Vaughan Morgan, a past Chairman of the Medical School Council.

**The Medical School acknowledges with Gratitude
Donations and Legacies Received during the Year.**

Donations.

Deeds of Covenant from Messrs. Courtaulds Limited for research into the structure of Proteins—£2,200 p.a.

Deed of Covenant from Mrs. Philip Hill to provide the salary for a Professor of Experimental Biochemistry—£1,500 p.a., and a promise to make a donation of £50,000 at the expiration of the Covenant or her earlier death to endow "The Philip Hill Memorial Chair of Experimental Biochemistry."

Cancer Research.**Donations.**

Lord Latymer	£100.
Miss Bessie Crookshank—3 donations of £25, £25 and £50.		
H. J. Reid	£100.
T. C. des Barres..	£25.
Mrs. Symons and Friends	£23.
O. S. Ruane, J. Ruane & Sons Limited and		
T. W. Garner & Co. (Farms)	£16 12s.
Mr. and Mrs. A. Rymer Roberts	£15.
"Lodge of Happiness," in memory of J.A. Miller		£10 10s.

Legacies.

Estate of the late Miss E. M. Yates further on account—
£806 7s. 8d.

"	"	J. A. Wood further on account—£550.
"	"	Mrs. Alice Heath—£500.
"	"	J. M. Barlow—£200.
"	"	Miss Annie Tate—£200.
"	"	H. Parkinson—£100.

H. E. A. BOLDERO,

Dean of the Medical School,

Middlesex Hospital, London, W. 1,

INCOME AND EXPENDITURE ACCOUNT AND BALANCE SHEET.

1945.

GENERAL FUND AND INCOME AND EXPENDITURE ACCOUNT

Dr.

ORDINARY—		INCOME.	£	£	£
I. VOLUNTARY GIFTS—					
1. SUBSCRIPTIONS DONATIONS, ETC.—					
Annual Subscriptions	Hospital	...	11,704		
	Cancer Wing	...	1,631		
				13,335	
Donations—Hospital		...	9,041		
	Cancer Wing	...	1,130		
				10,171	
All Help League		...		1,242	
Box	Hospital	...	1,801		
Collections	Cancer Wing	...	13		
				1,814	
Entertainments		...		Nil	
Gifts in kind		...		Nil	
Other Voluntary Gifts		...		Nil	
				26,562	
2. CENTRAL FUNDS—					
King Edward's Hospital Fund		...	9,000		
(Including the Convalescent Home at Clacton-on-Sea)					
Hospital Sunday Fund		...	2,200		
				11,200	
					37,762
II. RECEIPTS ON ACCOUNT OF SERVICES RENDERED—					
1. CONTRIBUTIONS ON ACCOUNT OF SERVICES TO PATIENTS—					
(a) From Patients and their Societies—					
Patients—Hospital		...	16,066		
	Cancer Wing	...	1,459		
				17,525	
Hospital Saturday Fund		...		1,702	
Hospital Savings Association		...			
Hospital		...	13,568		
	Cancer Wing	...	1,248		
				14,816	
Approved Societies—Hospital		...	Nil		
	Cancer Wing...	...	Nil		
				Nil	
Paying Patients' Account		...		29,549	
				63,592	
(b) From Public Authorities—					
Infant Welfare Grant		...	419		
Government Emergency Hospital Scheme. Contributions towards cost of Casualty Service		...	44,942		
Contributions towards Nursing Salaries		...	Nil.		
Scabies Clinic Grant		...	287		
				45,648	
				109,240	
2. FEES—					
Nurses' and Probationers' Fees		...		331	
3. OTHER RECEIPTS—					
Sundries—		...	197		
Medical Research Council for Penicillin Research		...	350		
				547	
					110,118
III. INVESTED PROPERTY—					
Interest, Dividends, etc.—Hospital		...	10,962		
	Cancer Wing	...	3,274		
	Barnato-Joel	...	6,553		
				20,789	
G. G. Nicol Trust		...		130	
Zunz Bequest		...		700	
David Hughes Trust		...		4,827	
Miss A. M. Bird Trust		...		300	
Rents—Hospital		...	2,756		
	Cancer Wing	...	586		
				3,342	
					30,088
ORDINARY INCOME				Carried forward	£177,968

CANCER WING.—SEE ALSO LEGACIES ACCOUNT, PAGE 34.
for the year ending 31st December, 1945.

31

£r.

EXPENDITURE.				
ORDINARY—				
	£	£	£	
I. PROVISIONS			22,886	
II. SURGERY AND DISPENSARY—				
1. Drugs	10,532			
„ V.D. Department	203			
		10,735		
2. Dressings, Bandages, etc.		2,959		
3. Instruments and Appliances		9,733		
4. Wines and Spirits		73		
5. Salaries and Wages of Dispensing Staff	3,133			
V.D. Dept.	82			
Superannuation Contribution Account	358			
		3,573		
6. Sundries		1,017		
7. Pathological Department Examinations		2,437		
8. Venereal Department Examinations		600		
9. Services in Physics Department		786		
			31,913	
III. DOMESTIC—				
1. Renewals and Repairs of Furniture, Bedding, Crockery, etc.		6,076		
2. Laundry		6,346		
3. Cleaning and Chandlery		1,194		
4. Water		659		
5. Fuel and Lighting		18,902		
6. Uniforms		1,192		
7. Sundries		5		
			34,374	
IV. SALARIES AND WAGES (MAINTENANCE)				
1. Medical		7,894		
2. Nursing	29,606			
Superannuation Contribution Account	6,398			
		36,004		
3. Other Officers and Employees	54,126			
Superannuation Contribution Account	554			
		54,680		
4. Pensions		2,156		
			100,734	
V. MISCELLANEOUS—				
1. Printing, Stationery, Postages, Telephones, etc.		3,682		
2. Advertisements		96		
3. Insurance of Buildings, Equipment, Stores, etc.				
General		1,317		
War Damage Contribution		Nil.		
4. Garden		Nil.		
5. Sundries		658		
			5,753	
VI. ADMINISTRATION—				
1. Salaries	6,336			
Superannuation Contribution Account	623			
		6,959		
2. Pensions		1,307		
3. Printing, Stationery, Postages, Telephones, etc.		395		
4. Advertisements		Nil.		
5. Law Charges		61		
6. Auditors Fees		210		
7. Sundries		150		
			9,082	
Carried forward ...			£204,742	

Pr.

GENERAL FUND AND INCOME AND EXPENDITURE ACCOUNT

INCOME—continued.

EXTRAORDINARY—

	Brought forward ...	£ 177,968
Transfer from Legacies Account ...		29,275
Balance being excess of Total Expenditure over Total Income ...		4,684
TOTAL INCOME ...		£211,927

SUBJECT TO AUDIT.

CANCER WING—*continued.*

33

for the year ending 31st December, 1945—*continued.*

£ r.

EXPENDITURE—*continued.*

	£	£
Brought forward ...		204,742
VII. ESTABLISHMENT—		
Reserve for Renewals and Repairs to Buildings and Plant ...		2,510
VIII. FINANCE—		
1. Interest ...		<i>Nil.</i>
2. Appeals ...	561	
All Help League ...	83	
	644	
Salaries of Under-Treasurer and Staff ...	1,200	
Superannuation Contribution Account ...	114	
	1,314	
3. Rent ...	350	
4. Rates and Taxes ...	2,367	
	4,675	
ORDINARY EXPENDITURE ...		211,927
EXTRAORDINARY—		
		<i>Nil.</i>
		£211,927

SUBJECT TO AUDIT.

GENERAL FUND AND LEGACIES ACCOUNT for the

HOSPITAL—

LEGACIES, 1945.

GENERAL FUND—

The Executors and Trustees of the late—

					£	s.	d.
Miss E. R. Moullin	6,067	16	6
Sir Arthur Pinero	4,000	0	0
Adolp Weil	4,000	0	0
Sir William Jury	3,750	0	0
Miss C. Dobbin...	2,000	0	0
Mrs. R. E. Albery	1,143	15	5
Miss A. F. Peters	963	12	5
L. Morgan Davies	774	19	0
F. E. Dixon	507	18	10
Miss Florence Tulk	500	0	0
Miss M. R. Classon	465	19	9
W. C. Harrold	450	0	0
Hon. Miss G. E. Pitt	400	11	10
Mrs. M. L. Youngerman	399	19	1
J. P. Waddington	308	6	9
Miss Alice E. Harland...	200	0	0
Mrs. O. M. Meisner	200	0	0
Saville Smith Trust	180	7	6
Miss I. Kirkby	180	0	0
Miss Emily Dowling	130	15	6
Lady Inglis	122	16	6
William Arlidge	115	12	9
Mrs. R. Hastie	70	15	10
Norman Green	63	0	0
Miss B. Couch	50	0	0
Francis Edwards	50	0	0
Miss C. H. Greenhaugh	50	0	0
Miss E. Pratt	50	0	0
Mrs. Annie Millar	50	0	0
Miss J. V. Wallace	50	0	0
E. F. Davidson	32	9	10
Henry Carr Gibbs	25	0	0
Aubrey Hyman	25	0	0
F. B. Newcombe	25	0	0
Newall Trust	18	19	2
Ernest Soutter	14	9	2
Miss M. M. Yates	10	0	0
E. S. Marcus	9	5	1
Miss I. M. Chinchin	6	13	4
Mrs. E. Bradbury	3	9	9
Mrs. R. Dansey	0	4	0
					27,466	18	0
Less Income Tax disallowed	32	7	9
							27,435

CANCER WING—

Mrs. M. A. L. Poulter	1,032	3	11
A. N. Tomlins	500	0	0
F. S. Champion	221	14	10
Mrs. Alice Rutter	85	0	3
E. A. Wolfe	1	2	6
							1,840

£29,275

Year ending 31st December, 1945.

EXPENDITURE.

Amount transferred to the Capital Account for Buildings and Equipment	£	Nil
Amount transferred to Income and Expenditure Account	29,275	
Amount Transferred to General Fund	Nil	

1. SUNDRY CREDITORS—

General Fund	41,723	
Convalescent Home Fund	1,217	
							42,940

NOTE.—

Estimated Capital Liability on Buildings ... Nil

2. LOANS TO HOSPITAL—

On Account of Special Funds—							
Convalescent Home Fund—							
Mortgage from Spicer Trust Fund				21,000

INTERNAL LOANS—

On Account of Special Funds—							
Convalescent Home Fund—							
Advance from General Fund	4,842		
Dresden Assistance Fund—							
Advance from General Fund	1,076		
							5,918

3. CAPITAL ACCOUNTS—

(a) Hospital Endowments (as per Schedule No. I)	...	716,778	
(b) Special Funds (as per Schedule No. II)	...	101,888	
(c) Buildings and Equipment (as per Schedule No. III)		1,446,830	
(d) General Fund (as per Schedule No. IV)	...	94,002	
(e) Suspense Funds (as per Schedule No. V)	...	31,914	
			2,391,412
* (Funds in Court held for the benefit of the Hospital, £22,691 0 0.)			

4. UNEXPENDED INCOME BALANCES OF SPECIAL FUNDS—

Dresden Assistance Fund	3,346	
Miss Anne Watson Dental Fund	90	
George Balfour Black Fund	171	
Trained Nurses' Institute	NIL	
Convalescent Home Fund	1,885	
						5,492

Carried forward £2,466,762

	£	£
1. CASH AT BANK AND IN HAND—		
Endowment Funds—		
Permanent Endowment Fund	145	
Special Funds	5,866	
Buildings and Equipment Fund	180	
General Fund—		
Hospital	25,100	
Suspense Funds	5,038	
	<hr/>	36,329
2. STOCKS OF UNISSUED STORES ON HAND		12,952
3. SUNDRY DEBTORS—		
General Fund	44,095	
Convalescent Home Fund	391	
Dresden Assistance Fund	712	
	<hr/>	45,198
4. INTERNAL LOANS—		
On Account of the General Fund—		
Convalescent Home Fund	4,842	
Dresden Assistance Fund	1,076	
	<hr/>	5,918
5. LAUNDRY MOTOR AND PLANT—		
Outlay carried forward		104
6. INVESTMENTS—		
(a) Hospital Endowments	716,633	
(b) Special Funds	87,509	
(c) Buildings and Equipment	6,178	
(d) General Fund	47,556	
(e) Suspense Funds	26,876	
	<hr/>	884,752
Carried forward ...		<hr/> £985,253

	£
Brought forward	2,466,762
<div style="border: 1px solid black; height: 600px; width: 100%; position: relative;"> <div style="position: absolute; top: 0; right: 0; width: 100%; height: 100%; transform: rotate(45deg);"></div> </div>	

£2,466,762

SUBJECT TO AUDIT.

	£	£	£
Brought forward	985,253
7. LAND, BUILDINGS, AND EQUIPMENT OF THE HOSPITAL—			
No valuation in the Hospital Books, with the exception of the following—			
Hospital—			
As at 31st Dec. 1944 ...	72,997		
Expenditure during 1945 ...	240		
		73,237	
No. 4 Mortimer Street—			
As at 31st December, 1944 ...		1,457	
Residential College			
As at 31st December 1944 ...		4,327	
Radium—Cost—			
As at 31st December, 1944 ...		1,345	
Laundry—			
As at 31st December, 1944 ...		720	
Convalescent Home—			
As at 31st December, 1944 ...		41,037	
			122,123
Cancer Wing—As at 31st December, 1944 ...			
Hospital ...		3,168	
Radium—Cost ...		6,307	
Barnato-Joel Trust—			
Buildings and Equipment ...	60,360		
Nassau Street and Suffolk Mews ...	9,711		
		70,071	
			79,546
Reconstruction Fund—			
Hospital Reconstruction (including Preliminary Expenses, Incidental Costs, Costs of Transference, etc.)—			
As at 31st December, 1944 ...		920,717	
New Nurses' Home—			
As at 31st December, 1944 ...		359,123	
			1,279,840
			£2,466,762

SUBJECT TO AUDIT.

THE MIDDLESEX HOSPITAL MEDICAL SCHOOL.

ESTABLISHED 1835, PURSUANT TO A RESOLUTION OF A QUARTERLY
COURT HELD MAY 7, 1835. ENLARGED 1887. AMALGAMATED
WITH THE HOSPITAL 1896.

THE Buildings and Premises, together with the Bland-Sutton Institute of Pathology, the Courtauld Institute of Biochemistry, and other appurtenances appropriated to the School, are the property of the Governors of the Hospital, and are under the same management and control as the Hospital.

Chairman.

COLONEL THE HON. J. J. ASTOR.

COUNCIL OF THE MEDICAL SCHOOL.

Chairman.

S. A. COURTAULD, Esq., LL.D.

Members nominated by the Board of Governors.

A. F. B. COOKE, Esq.
RICHARD C. DAVIS, Esq.
F. H. DORAN, Esq.
MAX FREEMAN, Esq.
J. H. HAMBRO, Esq.
SIR THEOBALD MATHEW, M.C.
WALTER MORISON, Esq.
J. DOUGLAS WATSON, Esq.

Members elected by the Honorary Medical and Surgical Staff.

H. L. MARRIOTT, Esq., M.D., B.S., F.R.C.P.
D. McALPINE, Esq., M.D., F.R.C.P.
P. B. ASCROFT, Esq., M.B.E., M.S., F.R.C.S.
B. R. M. JOHNSON, Esq., L.R.C.P., M.R.C.S., D.A.
D. H. PATEY, Esq., M.S., F.R.C.S.

Members elected by the Medical School Committee.

PROFESSOR S. RUSS, C.B.E., D.Sc.
PROFESSOR E. C. DODDS, M.V.O., D.Sc., Ph.D., M.D., F.R.C.P.,
F.R.S. (Edin.), F.R.S.
PROFESSOR JOHN KIRK, M.B., F.R.C.S. (Edin.).
PROFESSOR J. McINTOSH, M.D., Ch.B., LL.D.
R. W. SCARFF, Esq., M.B., B.S.
J. H. WOODGER, Esq., D.Sc.

Dean of the Medical School.

H. E. A. BOLDERO, Esq., M.A., D.M., F.R.C.P.

Secretary to the Council.

R. A. FOLEY, Esq., F.C.C.S.

PROFESSORS, LECTURERS AND DEMONSTRATORS IN THE MEDICAL SCHOOL.

Emeritus Lecturers in Medicine	...	{ A. F. VOELCKER, ESQ., M.D., F.R.C.P. R. A. YOUNG, ESQ., C.B.E., M.D., B.Sc., F.R.C.P.
Emeritus Lecturer in Surgery	...	W. SAMPSON HANDLEY, ESQ., M.D., M.S., F.R.C.S.
Emeritus Lecturer in Gynæcology		VICTOR BONNEY, ESQ., M.D., M.S., B.Sc., F.R.C.S., F.R.A.C.S.
Emeritus Lecturer in Anatomy	...	PROFESSOR THOMAS YEATES, M.B., C.M.
Principles and Practice of Medicine		{ C. E. LAKIN, ESQ., M.D., B.S., F.R.C.P., F.R.C.S. G. E. S. WARD, ESQ., M.D., B.S., F.R.C.P. G. E. BEAUMONT, ESQ., M.A., D.M., F.R.C.P. T. IZOD BENNETT, ESQ., M.D., B.S., F.R.C.P.
Principles and Practice of Surgery		{ W. TURNER WARWICK, ESQ., M.A., M.B., B.CHIR., F.R.C.S. R. VAUGHAN HUDSON, ESQ., F.R.C.S. E. W. RICHES, ESQ., M.C., M.B., M.S., F.R.C.S.
Practical Medicine	...	{ D. E. BEDFORD, ESQ., M.D., B.S., F.R.C.P. H. L. MARRIOTT, ESQ., M.D., B.S., F.R.C.P.
General Pathology, Bacteriology, Morbid Anatomy, Morbid His- tology, and Clinical Pathology		{ PROFESSOR JAMES MCINTOSH, M.D., CH.B., LL.D. R. W. SCARFF, ESQ., M.B., B.S. C. J. C. BRITTON, ESQ., M.D., CH.B., D.P.H.
Biochemistry (S. A. Courtauld Professorship)		{ PROFESSOR E. C. DODDS, M.V.O., D.Sc., Ph.D., M.D., B.S. F.R.C.P., F.I.C., F.R.S. (Edin.), F.R.S. W. LAWSON, ESQ., M.Sc., A.I.C. J. D. ROBERTSON, ESQ., M.D., CH.B., M.R.C.P., D.P.H., F.R.S. (Edin.).
Hygiene, Public Health and Sani- tary Law		{ J. A. STRUTHERS, ESQ., M.D., B.Ch., M.R.C.P., D.P.H. (of the Inner Temple, Barrister-at-Law.)
Medical Pathology	...	C. E. LAKIN, ESQ., M.D., B.S., F.R.C.P., F.R.C.S.
Surgical Pathology	...	D. H. PATEY, ESQ., M.B., M.S., F.R.C.S.
Practical Surgery	...	P. B. ASCROFT, ESQ., M.B.E., M.B., M.S., F.R.C.S.
Operative Surgery	...	D. H. PATEY, ESQ., M.B., M.S., F.R.C.S.
Midwifery	...	{ L. CARNAC RIVETT, ESQ., M.A., M.B., M.CHIR., F.R.C.S., F.R.C.O.G. FREDERICK W. ROQUES, ESQ., M.A., M.D., M.CHIR., F.R.C.S., F.R.C.O.G. W. R. WINTERTON, ESQ., M.A., M.B., B.CHIR., F.R.C.S., M.R.C.O.G.
Forensic Medicine	...	H. L. MARRIOTT, ESQ., M.D., B.S., F.R.C.P.
Toxicology	...	PROFESSOR W. B. TUCK, D.Sc., F.I.C.
Pharmacology	...	C. A. KEELE, ESQ., M.D., M.R.C.P.
Therapeutics	...	PROFESSOR A. A. MONCRIEFF, M.D., F.R.C.P.
Clinical Medicine		{ G. E. S. WARD, ESQ., M.D., B.S., F.R.C.P. G. E. BEAUMONT, ESQ., M.A., D.M., F.R.C.P. T. IZOD BENNETT, ESQ., M.D., B.S., F.R.C.P. H. R. A. BOLDERO, ESQ., D.M., F.R.C.P. D. E. BEDFORD, ESQ., M.D., F.R.C.P. H. L. MARRIOTT, ESQ., M.D., B.S., F.R.C.P.

Clinical Surgery	W. TURNER WARWICK, ESQ., M.A., M.B., B.CHIR., F.R.C.S. R. VAUGHAN HUDSON, ESQ., F.R.C.S. E. W. RICHES, ESQ., M.C., M.B., M.S., F.R.C.S. D. H. PATEY, ESQ., M.B., M.S., F.R.C.S. P. B. ASCROFT, ESQ., M.B.E., M.S., F.R.C.S.
Clinical Gynæcology	L. CARNAC RIVETT, ESQ., M.A., M.B., M.CHIR., F.R.C.S., F.R.C.O.G.
Dermatology	H. MACCORMAC, ESQ., C.B.E., M.D., CH.B., F.R.C.P.
Neurology	DOUGLAS MCALPINE, ESQ., M.D., F.R.C.P.
Ophthalmology	R. AFFLECK GREEVES, ESQ., B.A., M.B., F.R.C.S. M. H. WHITING, ESQ., O.B.E., M.A., M.B., B.CHIR., F.R.C.S.
Laryngology and Otology	C. P. WILSON, ESQ., C.V.O., F.R.C.S. J. P. MONKHOUSE, ESQ., M.B., B.S., F.C.S.
Orthopædic Surgery	A. S. BLUNDELL BANKART, ESQ., M.A., M.CHIR., F.R.C.S. PHILLIP WILES, ESQ., M.S., F.R.C.S.
Diseases of Children	PROFESSOR A. A. MONCRIEFF, M.D., F.R.C.P.
Psychological Medicine	NOEL G. HARRIS, ESQ., M.D., B.S., F.R.C.P., D.P.M.
Plastic Surgery	RAINSFORD MOWLEM, ESQ., M.B., CH.B., (N.Z.), F.R.C.S.
Anæsthetics	A. E. WILLIAMS IDRIS, ESQ., M.R.C.S., L.R.C.P., D.A. B. R. M. JOHNSON, ESQ., M.R.C.S., L.R.C.P., D.A. F. W. ROBERTS, ESQ., M.B., B.S., D.A.
Odontology	A. L. PACKHAM, ESQ., M.R.C.S., L.R.C.P., L.D.S. H. W. BREESE, ESQ., M.R.C.S., L.R.C.P., L.D.S. J. W. SCHOFIELD, ESQ., M.R.C.S., L.R.C.P., L.D.S. D. G. WALKER, ESQ., M.A., M.B., B.CH., B.A.O., M.DENT. SC.
Anatomy (S. A. Courtauld Professorship)	Pro-	PROFESSOR JOHN KIRK, M.B., CH.B. (ED.), F.R.C.S. (ED.).
Applied Anatomy	PROFESSOR JOHN KIRK, M.B., CH.B. (ED.), F.R.C.S. (ED.).
Practical Histology	J. H. WOODGER, ESQ., D.Sc.
Physiology (John Astor Professorship)	PROFESSOR SAMSON WRIGHT, M.D., F.R.C.P.
Lecturer in Pharmacology and Therapeutics	C. A. KEELE, ESQ., M.D., M.R.C.P.
Applied Physiology	PROFESSOR SAMSON WRIGHT, M.D., F.R.C.P.
Chemistry—Inorganic, Organic, and Practical	PROFESSOR W. B. TUCK, D.Sc., F.I.C.
Physics (Joel Professorship)—Theoretical and Practical	PROFESSOR SIDNEY RUSS, C.B.E., D.Sc.
Biology (University Readership)	J. H. WOODGER, ESQ., D.Sc.
Radiology (Diagnostic)	H. K. GRAHAM HODGSON, ESQ., C.V.O., M.B., B.S., F.R.C.P., D.M.R.E.
Radio-Therapy	J. H. DOUGLAS WEBSTER, ESQ., M.D., CH.B., F.R.C.P. (ED.). PROFESSOR B. W. WINDEYER, M.B., B.S., F.R.C.S., F.F.R., D.M.R.E.
Physical Medicine	FRANK HOWITT, ESQ., C.V.O., M.A., M.D., B.CHIR., F.R.C.P.
Practical Pharmacy	S. H. WHITE, ESQ., Ph.C., M.P.S.

THE MIDDLESEX HOSPITAL MEDICAL SCHOOL.

THREE Casualty Medical and Two Casualty Surgical Officers, Eight Resident Officers to the Special Departments, Ten Resident House Surgeons, Ten Resident House Physicians, Two Resident Gynæcological House Surgeons, Two Resident Officers to the Maternity and Children's Dept., Thirteen Registrars, Three Resident Anæsthetists, one Resident Dental House Surgeon and one Clinical Research Assistant to the Courtauld Wards, are normally appointed annually from among the qualified Students of the Hospital.

During the war the number of appointments at the Hospital was reduced, but additional appointments are still available at Hospitals in the Sector.

There are awarded annually, two Open Entrance Scholarships value £100 each, one in Arts and one in Science. Two Scholarships value £100 each open to Students of Oxford and Cambridge Universities who have completed their Anatomical and Physiological studies. Two Scholarships endowed by the late Sir Edward Meyerstein, value £100 each, open to University of London Students who have at the Middlesex Hospital Medical School completed the curriculum for the 2nd M.B., Examination. The Freer Lucas Scholarship and the Asher Asher Prize to a Pupil of Epsom College who has passed the 1st M.B., Examination. The Colin Mackenzie Price value £10 10s., Anatomy and Physiology. The Hetley Clinical Prize of £25, the Leopold Hudson Prize value £11 11s., Surgical Pathology and Bacteriology, the Kingston Fowler Prize value £15, Pathology, Bacteriology, and Morbid Histology. The Lyell Medal and Scholarship value £55 5s., for proficiency in Surgical Anatomy and Dissection, etc. Two Broderip Scholarships, value £60 and £40 respectively, for proficiency in Clinical knowledge. The Freeman Scholarship value £30, Gynæcology and Obstetrics. The John Murray Medal and Scholarship value £25, Theoretical and Practical Medicine, awarded every third year. Numerous Research Scholarships and Class Prizes are also awarded.

The Tutors superintend and assist Students in their studies without extra fee, and thus the necessity of obtaining private instruction away from the Medical School is obviated.

FEES :—

A. Entrance Fee	£15 15 0
B. Annual Fee	£50 0 0

For the subjects of the Entrance Scholarships and any additional information please apply to the Dean of the Medical School or to the School Secretary.

THE MIDDLESEX HOSPITAL MEDICAL SCHOOL

THREE Casualty Medical and Two Casualty Surgical Officers, Eight Resident Officers to the Special Departments, Ten Resident House Surgeons, Ten Resident House Physicians, Two Resident Gynaecological and Obstetrical Officers to the Maternity and Gynaecological Dept., Thirteen Registrars, Three Resident Anaesthetists, one Resident Dental House Surgeon and one Clinical Research Assistant to the Consultants. Honorary appointments are made annually from among the qualified students of the Hospital.

During the war the number of appointments at the Hospital was reduced, but additional appointments are still available at Hospitals in the Sector.

There are awarded annually two Open Entrance Scholarships value £100 each, one in Arts and one in Science. The Scholarships value £100 each open to students of Oxford and Cambridge Universities who have completed their Anatomical and Physiological studies. The Scholarships awarded by the late Sir Edward Clarke, value £100 each, open to University of London students who have completed the

Blades, East & Blades, Limited, 17, Abchurch Lane, E.C.4.

course for the 2nd M.B. Examination. The First Junior Scholarship and the Asher Prize to a pupil of Epsom College who has passed the 1st M.B. Examination. The Collis Mockler Prize value £10 10s. Anatomy and Physiology. The Hodge Clinical Prize of £25, the Leopold-Hudson Prize value £11 11s. Surgical Pathology and Bacteriology, the Kingston Fowler Prize value £10, Pathology, Bacteriology, and Morbid Histology. The Royal Medal and Scholarship value £55 5s. for proficiency in Surgical Anatomy and Dissection etc. The Brodrip Scholarships value £50 and £40 respectively for proficiency in Clinical knowledge. The Freeman Scholarship value £25 for Gynaecology and Obstetrics. The John Murray Medal and Scholarship value £25, Theoretical and Practical Medicine, awarded every third year. Numerous Research Scholarships and Class Prizes are also awarded.

The Tutor's assistant and assist students in their studies without extra fee, and thus the necessity of obtaining private instruction away from the Medical School is obviated.

For the subjects of the Entrance Scholarships and any additional information please apply to the Dean of the Medical School or to the School Secretary.



**REPORTS
OF
THE MIDDLESEX HOSPITAL
AND
CANCER WING
AND
THE MIDDLESEX HOSPITAL
MEDICAL SCHOOL
FOR THE YEAR 1945.**

**Donations and Subscriptions will be
thankfully received by Colonel the
Hon. J. J. Astor, Chairman, at the
Hospital.**