

**Reports : 1942 / Middlesex Hospital and Cancer Wing. Middlesex Hospital Medical School.**

**Contributors**

Middlesex Hospital.

Middlesex Hospital. Cancer Wing.;Middlesex Hospital. Medical School.

**Publication/Creation**

[London] : [publisher not identified] 1942

**Persistent URL**

<https://wellcomecollection.org/works/py4au9ak>

**License and attribution**

This work has been identified as being free of known restrictions under copyright law, including all related and neighbouring rights and is being made available under the Creative Commons, Public Domain Mark.

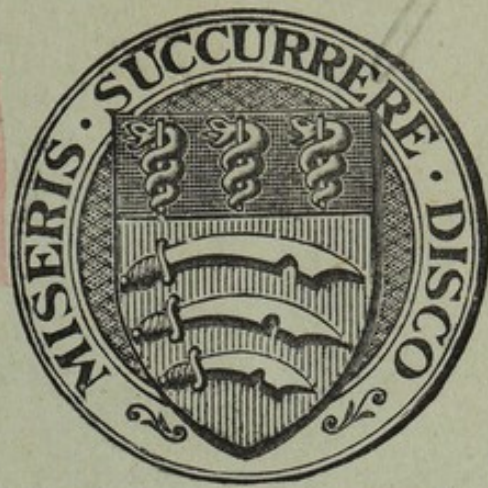
You can copy, modify, distribute and perform the work, even for commercial purposes, without asking permission.



Wellcome Collection  
183 Euston Road  
London NW1 2BE UK  
T +44 (0)20 7611 8722  
E [library@wellcomecollection.org](mailto:library@wellcomecollection.org)  
<https://wellcomecollection.org>

*Library*

HEALTH  
A - 907T.1943  
C.R. 2/11 67



**THE MIDDLESEX HOSPITAL**  
AND  
**CANCER WING.**

**THE MIDDLESEX HOSPITAL**  
**MEDICAL SCHOOL.**



**REPORTS**  
**FOR THE YEAR 1942.**

MORTIMER STREET,  
LONDON, W. I.

TELEPHONE :—  
MUSEUM 8333

WELLCOME LIBRARY
Ann Rep
WX28
.B65
L84 M62
1942



22501602851

# TO SUBSCRIBERS.

---

To the many Subscribers who have already entered into the 7 Years' Subscription Agreement we offer our warm thanks.

We shall be most grateful to all those Subscribers who have *not* yet made use of the Agreement, which is for seven years or during life, whichever is the shorter period, if they will do so.

When Income Tax is payable at the full standard rate the Agreement enables the Hospital to recover the Income Tax paid on the Subscription: and it also enables Subscribers liable to Super Tax to deduct the gross amount of their Subscriptions from the income assessable for that tax.

Thus, without any extra expense to themselves, they can benefit the funds of the Hospital very materially, as is shown by the Table, calculating income tax at 10/- in the £, below:—

Nett Amount of Annual Subscription payable by Subscriber.	Income Tax recoverable by the Hospital.	Gross Amount of Annual Subscription.
£ s. d.	£ s. d.	£ s. d.
1 1 0     ...	1 1 0     ...	2 2 0
2 2 0     ..	2 2 0     ...	4 4 0
3 3 0     ...	3 3 0     ...	6 6 0
4 4 0     ...	4 4 0     ...	8 8 0
5 5 0     ...	5 5 0     ...	10 10 0
10 10 0     ...	10 10 0     ...	21 0 0
21 0 0     ...	21 0 0     ...	42 0 0
31 10 0     ...	31 10 0     ...	63 0 0
42 0 0     ...	42 0 0     ...	84 0 0
52 10 0     ...	52 10 0     ...	105 0 0

During 1941 many Governors and friends of the Hospital were successful in enlisting new Subscribers for the Middlesex Hospital.

---

Will all our friends make, this year, a special effort to bring in new Subscribers, and ask them to make use of the Agreement, which adds so materially to the value of their support?

---

## ENDOWMENT of BEDS and COTS.

---

Benefactors may Endow Beds in the Hospital according to the following scale :—

For One Year	.....	<i>Thirty Guineas.</i>
For Life of Donor	.....	<i>Three Hundred Guineas.</i>
In Perpetuity	.....	<i>One Thousand Guineas.</i>

The scale of Children's Cots in the Hospital, and for Beds in the Convalescent Home, is :—

For One Year	.....	<i>Fifteen Guineas.</i>
For Life of Donor	.....	<i>One Hundred and Fifty Guineas.</i>
In Perpetuity	.....	<i>Five Hundred Guineas.</i>

A plate, with inscription to be approved by the Board of Governors, may, if desired, be placed over the Bed or Cot endowed.

To Mess<sup>rs</sup> \_\_\_\_\_

Gentlemen,

Please to pay now  
and annually until further notice on the  
\_\_\_\_\_ day of \_\_\_\_\_

the sum of \_\_\_\_\_ Guineas

to the Credit of the\*

Fund of The Middlesex Hospital,  
at Mess<sup>rs</sup> Coutts & Co 16, Cavendish  
Square, W. 1., and charge the same to my account.

Signature \_\_\_\_\_

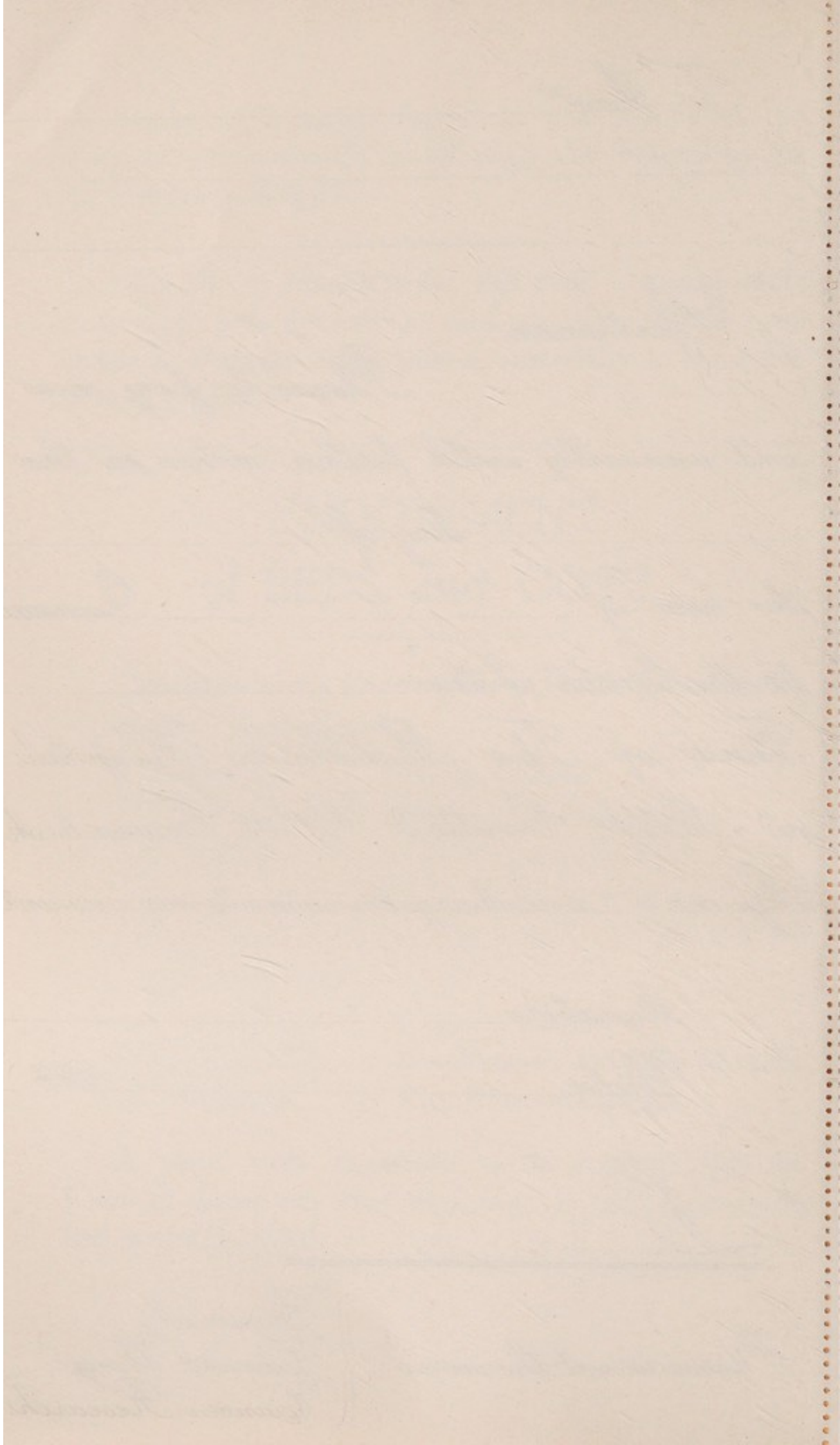
Date \_\_\_\_\_


194 \_\_\_\_\_

L " "

\* Please insert the words

{ "General"  
"Cancer Wing"  
"Cancer Research."





Digitized by the Internet Archive  
in 2019 with funding from  
Wellcome Library

<https://archive.org/details/b3169441x>





Sixteenth-Century Almshouses, part of Bartholomew Manor, Newbury, Berks., restored and altered 1927-8 as homes of rest for retired Sisters and Nurses of the Middlesex Hospital. Presented to the Hospital by Dr. Walter Essex Wynter, M.D., F.R.C.P., F.R.C.S., consulting physician to the Hospital. Architect: A. J. Campbell-Cooper, L.R.I.B.A. Reproduction by courtesy of the Art Editor "Country Life."

**THE MIDDLESEX HOSPITAL**

(FOUNDED 1745)

AND

**CANCER WING**

(INSTITUTED 1792).

---

**THE MIDDLESEX HOSPITAL  
MEDICAL SCHOOL**

(FOUNDED 1835).

---

**REPORTS**

FOR THE YEAR 1942.

THE MIDDLESEX HOSPITAL

(FOUNDED 1745)

CANCER WING

(INSTALLED 1902)

THE MIDDLESEX HOSPITAL

MEDICAL SCHOOL

(FOUNDED 1857)

REPORTS

FOR THE YEAR 1911

Printed and Published by  
at No. 11, Abchurch Lane, London, E.C. 4.  
W. B. CLAY & CO., LTD., BUNGAY, SUFFOLK.

**Patrons :—**

HIS MAJESTY THE KING.  
HER MAJESTY QUEEN MARY.

**President :—****Vice-Presidents :—**

H.R.H. PRINCESS ALICE, COUNTESS OF ATHLONE.  
HIS GRACE THE DUKE OF PORTLAND, K.G., P.C., G.C.V.O.  
THE MOST HON. THE MARQUESS OF CARISBROOKE, G.C.B., G.C.V.O.  
THE RIGHT HON. THE EARL OF DERBY, K.G., P.C., G.C.B., G.C.V.O.  
THE RIGHT HON. THE EARL OF ATHLONE, K.G., G.C.B.,  
G.C.M.G., G.C.V.O., D.S.O.  
THE RIGHT HON. LORD HOWARD DE WALDEN.  
THE RIGHT HON. LORD MILDMAY OF FLETE, P.C.  
THE RIGHT REV. AND RIGHT HON. A. F. WINNINGTON INGRAM,  
P.C., K.C.V.O., D.D., LL.D.  
THE LADY VIOLET ASTOR.  
THE HON. SIR ARTHUR STANLEY, G.B.E., C.B., M.V.O.  
LT.-COL. THE HON. J. J. ASTOR, M.P.  
THE HON. T. B. MONEY-COUTTS.  
SIR HERBERT E. MORGAN, K.B.E.  
SIR EDWARD PENTON, K.B.E.  
SIR ALFRED WEBB-JOHNSON, K.C.V.O., C.B.E., D.S.O., T.D., M.B.,  
Ch.B., P.R.C.S., F.A.C.S., F.R.A.C.S.  
REGINALD BEDDINGTON, Esq., C.B.E.  
F. CAVENDISH BENTINCK, Esq.  
W. H. COLLINS, Esq.  
S. A. COURTAULD, Esq.  
RICHARD C. DAVIS, Esq.  
G. VAUGHAN MORGAN, Esq.

**Treasurer :—**

THE HON. THOMAS B. MONEY-COUTTS.

**Board of Management :—**

## CHAIRMAN.

LT.-COL. THE HON. J. J. ASTOR, M.P. (Vice-President).

## VICE-CHAIRMAN.

THE HON. THOMAS B. MONEY-COUTTS (Vice-President).

REGINALD BEDDINGTON, Esq., C.B.E. (Vice-President).

F. CAVENDISH BENTINCK, Esq., (Vice-President).

THE HON. MRS. DAVID BOWES-LYON.

NORMAN BREWIS, Esq.

ARTHUR BULL, Esq.

W. H. COLLINS, Esq. (Vice-President).

SAMUEL A. COURTAULD, Esq., J.P. (Vice-President).

RICHARD C. DAVIS, Esq. (Vice-President).

FRANK H. DORAN, Esq.

THE LORD EBBISHAM, G.B.E.

RAYMOND EVERSLED, Esq., K.C.

CAPTAIN THE HON. H. E. FITZALAN-HOWARD.

MAX FREEMAN, Esq.

COLONEL W. ALAN GILLETT, T.D., D.L.

J. H. HAMBRO, Esq.

RONALD O. HAMBRO, Esq.

ALDERMAN A. E. HUGHES.

BRIG. GEN. K. J. KINCAID-SMITH, C.B., C.M.G., D.S.O.

THE RT. HON. THE EARL OF LEITRIM.

MAJOR R. N. MACDONALD-BUCHANAN, M.C.

THEOBALD MATHEW, Esq.

THE LORD MILD MAY OF FLETE, P.C. (Vice-President).

G. VAUGHAN MORGAN, Esq. (Vice-President).

THE LADY AGNES PEEL.

SIR FREDERICK H. RICHMOND, Br.

ADMIRAL SIR PERCY ROYDS, C.B., C.M.G., M.P.

THE WORSHIPFUL THE MAYOR OF ST. MARYLEBONE.

H. GORDON SELFRIDGE, Esq.

W. LINTS SMITH, Esq.

J. DOUGLAS WATSON, Esq.

MAJOR SIMON WHITBREAD.

THE LADY WRAXALL.

Treasurers are ex-officio Members of the Board.

**Secretary-Superintendent :—**

S. R. C. PLIMSOLL, Esq., M.C., B.A.

**Consulting Physicians :—**

WILLIAM PASTEUR, Esq., C.B., C.M.G., M.D., F.R.C.P.,  
Brendon, Warwick Park, Tunbridge Wells, Kent.

WALTER ESSEX WYNTER, Esq., M.D., F.R.C.P., F.R.C.S.,  
Bartholomew Manor, Newbury, Berks.

ARTHUR FRANCIS VOELCKER, Esq., M.D., F.R.C.P., Marhamchurch, Bude, Cornwall.

R. A. YOUNG, Esq., C.B.E., M.D., B.Sc., F.R.C.P., 22 Down St., Mayfair, W.1.

C. E. LAKIN, Esq., M.D., B.S., F.R.C.P., F.R.C.S., 58 Portland Place, W.1.

**Physicians :—**

E. A. COCKAYNE, Esq., D.M., F.R.C.P., Middlesex Hospital, W.1.

G. E. S. WARD, Esq., M.D., B.S., F.R.C.P., Mount Vernon Hospital, Northwood.

G. E. BEAUMONT, Esq., M.A., D.M., F.R.C.P., 24 Wimpole Street, W.1.

T. IZOD BENNETT, Esq., M.D., B.S., F.R.C.P., Middlesex Hospital, W.1.

**Physicians to Out-Patients :—**

H. E. A. BOLDERO, Esq., M.A., D.M., B.Ch., F.R.C.P., 68 Wimpole Street, W.1.

BRIGADIER D. E. BEDFORD, M.D., B.S., F.R.C.P., R.A.M.C.

**Assistant Physician :—**

BRIGADIER H. L. MARRIOTT, M.D., F.R.C.P., R.A.M.C.

**Consulting Surgeons :—**

W. SAMPSON HANDLEY, Esq., M.D., M.S., F.R.C.S., 23 Wimpole Street, W.1.

SURGEON REAR-ADMIRAL GORDON GORDON-TAYLOR, C.B., O.B.E., LL.D. (Toronto),  
M.A., M.S., M.B., B.Sc., F.R.C.S., F.R.A.C.S. (Hon.), F.A.C.S. (Hon.), F.R.C.S. (C) (Hon.), R.N.

**Surgeons :—**

SIR ALFRED WEBB-JOHNSON, K.C.V.O., C.B.E., D.S.O., T.D., M.B., Ch.B., P.R.C.S.,  
F.A.C.S., F.R.A.C.S. 70 Portland Place, W.1.

W. TURNER WARWICK, Esq., M.A., M.B., B.Ch., F.R.C.S.,  
Fitzroy Farm Cottage, Fitzroy Park, Highgate.

R. VAUGHAN HUDSON, Esq., F.R.C.S., 75 Harley Street, W.1.

E. W. RICHES, Esq., M.C., M.B., M.S., F.R.C.S., 22 Weymouth St., W.1.

**Surgeons to Out-Patients :—**

D. H. PATEY, Esq., M.S., F.R.C.S., 121 Harley Street, W.1.

**Assistant Surgeon :—**

MAJOR P. B. ASCROFT, M.S., F.R.C.S., R.A.M.C.

**SPECIAL DEPARTMENTS.****Physician for Diseases of the Skin :—**

HENRY MacCORMAC, Esq., C.B.E., M.D., Ch.B., F.R.C.P., 23 Wimpole Street, W.1.

**Physician for Diseases of the Nervous System :—**

BRIGADIER DOUGLAS McALPINE, M.D., Ch.B., F.R.C.P., R.A.M.C.

**Physician to the Department of Psychological Medicine :—**

NOEL G. HARRIS, Esq., M.D., F.R.C.P., D.P.M., 2 Devonshire Place, W.1.

**Consulting Obstetric and Gynæcological Surgeons:—**

SIR COMYNS BERKELEY, M.A., M.D., M.C., F.R.C.S., F.R.C.P., F.R.C.O.G., M.M.S.A. (HON.),  
c/o Central Midwives Board, 73 Great Peter Street, Westminster, S.W.1.

VICTOR BONNEY, Esq., M.D., M.S., B.Sc., F.R.C.S., F.R.A.C.S., 149 Harley Street, W.11.

**Obstetric and Gynæcological Surgeon:—**

L. C. RIVETT, Esq., M.A., M.C., F.R.C.S., F.R.C.O.G., 135 Harley Street, W.1.

**Assistant Obstetric and Gynæcological Surgeons:—**

WING COMMANDER FREDERICK ROQUES, M.A., M.D., M.Ch., F.R.C.S., F.R.C.O.G.,  
R.A.F.

W. R. WINTERTON, Esq., M.A., M.B., B.Chir., F.R.C.S., M.R.C.O.G., 41 Harley Street, W.11.

**Consulting Ophthalmic Surgeon:—**

SIR ARNOLD LAWSON, K.B.E., M.D., F.R.C.S., 12 Harley Street, W.1.

**Ophthalmic Surgeon:—**

R. AFFLECK GREEVES, Esq., B.A., M.B., B.S., F.R.C.S., 23 Wimpole Street, W.1.

**Assistant Ophthalmic Surgeon:—**

MAURICE H. WHITING, Esq., O.B.E., M.A., M.B., B.Ch., F.R.C.S., 51 Wimpole Street, W.11.

**Consulting Aural Surgeons:—**

F. J. CLEMINSON, Esq., M.A., M.Ch., F.R.C.S., Spain End, Willingale, Ongar Essex.

SOMERVILLE HASTINGS, Esq., M.S., F.R.C.S., 33 Murray Road, Northwood.

**Aural Surgeons:—**

C. P. WILSON, Esq., C.V.O., F.R.C.S., 65 Wimpole Street, W.1.

J. P. MONKHOUSE, Esq., M.B., B.S., F.R.C.S., 87 Harley Street, W.1.

**Consulting Dental Surgeons:—**

W. S. NOWELL, Esq., M.A., M.R.C.S., L.D.S., St. Peter's House, Canterbury, Kent.

H. WATSON TURNER, Esq., M.R.C.S., L.R.C.P., L.D.S., c/o Reginald Taylor, 4 New  
Square, Lincoln's Inn.

W. WARWICK JAMES, Esq., O.B.E., F.R.C.S., L.D.S., 2 Park Crescent, Portland Place, W.11.

**Dental Surgeons:—**

A. L. PACKHAM, Esq., M.R.C.S., L.R.C.P., L.D.S., 79 Portland Place, W.1.

H. W. BREESE, Esq., M.R.C.S., L.R.C.P., L.D.S., The Middlesex Hospital, Mortimer St., W.11.

**Assistant Dental Surgeons:—**

J. W. SCHOFIELD, Esq., M.R.C.S., L.R.C.P., L.D.S., 90 Harley Street, W.1.

D. GREER WALKER, Esq., M.A., M.B., B.A.O., M.DENT.Sc., Middlesex Hospital, W.11.

**Orthopædic Surgeon:—**

A. S. BLUNDELL BANKART, Esq., M.A., M.Ch., F.R.C.S., 95 Harley Street, W.1.

**Assistant Orthopædic Surgeon:—**

COLONEL PHILIP WILES, M.S., F.R.C.S., R.A.M.C.

**Plastic Surgeon:—**

RAINSFORD MOWLEM, Esq., M.B., Ch.B., N.Z., F.R.C.S., 149 Harley St., W.1.

**Department of Urology:—**

SIR ALFRED WEBB-JOHNSON, K.C.V.O., C.B.E., D.S.O., T.D., M.B., Ch.B., F.R.C.S.,  
F.A.C.S., F.R.A.C.S., 70 Portland Place, W.1.

E. W. RICHES, Esq., M.C., M.B., M.S., F.R.C.S., 22 Weymouth St., W.1.

**Department for Diseases of the Rectum:—**

W. TURNER WARWICK, Esq., M.A., M.B., B.Ch., F.R.C.S., Fitzroy Farm Cottage, Fitzroy  
Park, Highgate.

**CHILDREN'S DEPARTMENT.****Physician:—**

ALAN MONCRIEFF, Esq., M.D., F.R.C.P., 121 Harley Street, W.1.

**Medical Officer in Charge of the Infant Consultation Centre:—**

ALAN MONCRIEFF, Esq., M.D., F.R.C.P., 121 Harley Street, W.1.

**\* Anæsthetists :—**

- R. E. APPERLY, Esq., M.R.C.S., L.R.C.P., D.A., 15 Burgess Hill, N.W.2.  
 H. P. CRAMPTON, Esq., M.A., M.D., B.Ch., M.R.C.S., L.R.C.P., D.A., 2 Station Road Villas,  
 Burgess Hill, Sussex.  
 A. E. W. IDRIS, Esq., M.R.C.S., L.R.C.P., D.A., Tindal House Emergency Hospital, Aylesbury.  
 MAJOR BERNARD R. M. JOHNSON, M.R.C.S., L.R.C.P., D.A., R.A.M.C.  
 F. W. ROBERTS, Esq., M.B., B.S., M.R.C.S., L.R.C.P., D.A., 47 Wimpole Street, W.1.

**Anæsthetist to the Dental Department :—**

- C. J. M. DAWKINS, Esq., M.A., M.D., B.Ch., M.R.C.S., L.R.C.P., D.A., 1 Eton Avenue,  
 N.W.3.

**Honorary Director of the Department of Radio-Therapy.**

- J. H. DOUGLAS WEBSTER, Esq., M.D., Ch.B., F.R.C.P., 117 Harley Street, W.1.

**Medical Officer in Charge of the Department of Radio-Therapy :—**

- PROFESSOR B. W. WINDEYER, M.B., B.S., F.R.C.S., F.F.R., D.M.R.E.

**Assistants :—**

- MAJOR J. P. RABAN, M.R.C.S., L.R.C.P., D.M.R.E., R.A.M.C.  
 I. G. WILLIAMS, Esq., M.B., B.S., F.R.C.S., D.M.R.E.  
 E. M. JAPHA, Esq., M.B., B.S.  
 M. HALBERSTAEDTER, Esq. M.B., M.R.C.S., D.M.R.E.  
 G. B. STANFORD, Esq., M.R.C.S., L.R.C.P., F.R.P.S.

**Physician in Charge of the Department of X-Ray Diagnosis :—**

- H. K. GRAHAM HODGSON, Esq., C.V.O., M.B., B.S., F.R.C.P., D.M.R.E.,  
 Middlesex Hospital, W.1.

**Assistants in the Radiological Department (Diagnostic) :—**

- T. V. L. CRICHLAW, Esq., B.Sc., M.R.C.S., L.R.C.P., D.M.R.E.  
 R. J. L. O'DONOGHUE, Esq., D.S.O., M.B., B.S., M.R.C.P., D.M.R.E.  
 F. C. GOLDING, Esq., M.B., M.Ch., M.R.C.P., D.M.R.E.  
 D. C. PORTER, Esq., M.D., M.B., D.M.R.

**Physician with Charge of Physical Medicine :—**

- BRIGADIER FRANK HOWITT, C.V.O., M.D., F.R.C.P., R.A.M.C.,  
 87 Harley Street, W.1.

**Assistant :—**

- E. A. RUCKER, Esq., M.R.C.S., L.R.C.P.

**Medical Officer i/c First Aid Post and Gas Cleansing Station :—**

- H. W. HARVEY, Esq., F.R.C.S. (Edin.), 121, Harley Street, W.1.

**Physicist :—**

- PROFESSOR SIDNEY RUSS, C.B.E., D.Sc.

**The Bland-Sutton Institute of Pathology.****Director :—**

- PROFESSOR JAMES McINTOSH, M.D., Ch.B., LL.D.

**Reader in Morbid Anatomy and Histology.**

- R. W. SCARFF, Esq., M.B., B.S.

**Lecturer in Bacteriology and Pathology :—**

- BRIGADIER L. E. H. WHITBY, C.V.O., M.C., M.A., M.D., B.Ch., F.R.C.P., D.P.H., R.A.M.C

**The Ferens Institute of Oto-Laryngology.****Honorary Director :—**

- F. J. CLEMINSON, Esq., M.A., M.Ch., F.R.C.S.

**Surgeons :—**

- SOMERVILLE HASTINGS, Esq., M.S. F.R.C.S.  
 C. P. WILSON, Esq., C.V.O., F.R.C.S.  
 J. P. MONKHOUSE, Esq., M.B., B.S., F.R.C.S.

**The Courtauld Institute of Biochemistry :—**

- PROFESSOR E. C. DODDS, M.V.O., D.Sc., Ph.D., M.D., F.R.C.P., F.I.C., F.R.S. (Edin.), F.R.S.



**Registrars :—****Acting Medical.**—K. P. BALL, Esq., M.B., B.S., M.R.C.P.

C. H. C. UPJOHN, Esq., M.B., B.Ch., M.R.C.P.

**Acting Surgical.**—D. RANGER, Esq., M.B., B.S., F.R.C.S.

H. L. McMULLEN, Esq., M.B., B.Chir., F.R.C.S.

R. H. PERCIVAL, Esq., B.M., B.Ch., F.R.C.S.

**Obstetric and Gynaecological.**—R. S. MONRO, Esq., M.B., B.Ch., F.R.C.S.**Otological.**—Vacant.**Fracture and Orthopaedic.**—Vacant.**Anaesthetic.**—Vacant**Dental.**—Vacant.**Medical Committee :—**

- |   |  |
|---|--|
| R. E. APPERLY, Esq., M.R.C.S., L.R.C.P., D.A.   | HENRY MACCORMAC, Esq., C.B.E., M.D., CH.B., F.R.C.P.   |
| MAJOR P. B. ASCROFT, M.S., F.R.C.S., R.A.M.C.   | BRIGADIER DOUGLAS McALPINE, M.D., CH.B., F.R.C.P., R.A.M.C.  |
| A. S. BLUNDELL BANKART, Esq., M.A., M.Ch., F.R.C.S.   | PROFESSOR JAMES McINTOSH, M.D., CH.B.  |
| G. E. BEAUMONT, Esq., M.A., D.M., F.R.C.P.  | BRIGADIER H. L. MARRIOTT, M.D., F.R.C.P., R.A.M.C.   |
| BRIGADIER D. E. BEDFORD, M.D., B.S., F.R.C.P., R.A.M.C.   | ALAN MONCRIEFF, Esq., M.D., F.R.C.P.   |
| T. IZOD BENNETT, Esq., M.D., B.S., F.R.C.P.   | J. P. MONKHOUSE, Esq., M.B., B.S., F.R.C.S.  |
| SIR COMYNS BERKELEY, M.C., M.A., M.D., F.R.C.S., F.R.C.P., F.R.C.O.G., M.M.S.A. (Hon.)  | R. MOWLEM, Esq., M.B., Ch.B., N.Z., F.R.C.S.   |
| H. E. A. BOLDERO, Esq., M.A., D.M., B.Ch., F.R.C.P.   | A. L. PACKHAM, Esq., M.R.C.S., L.R.C.P., L.D.S.  |
| H. W. BREESE, Esq., M.R.C.S., L.R.C.P., L.D.S.  | D. H. PATEY, Esq., M.S., F.R.C.S.  |
| F. J. CLEMINSON, Esq., M.A., M.Ch., F.R.C.S.  | E. W. RICHES, Esq., M.C., M.B., M.S., F.R.C.S.   |
| E. A. COCKAYNE, Esq., M.D., F.R.C.P.  | L. C. RIVETT, Esq., M.C., M.A., F.R.C.S., F.R.C.O.G.   |
| H. P. CRAMPTON, Esq., M.A., M.D., B.Ch., M.R.C.S., L.R.C.P., D.A.   | F. W. ROBERTS, Esq., M.B., B.S., D.A.  |
| PROFESSOR E. C. DODDS, M.V.O., D.Sc., Ph.D., M.D., F.R.C.P., F.I.C., F.R.S. (Edin.), F.R.S.   | WING COMMANDER F. ROQUES, M.A., M.D., M.Ch., F.R.C.S., F.R.C.O.G., R.A.F.                            |
| SURGEON REAR-ADMIRAL GORDON GORDON-TAYLOR, C.B., O.B.E., LL.D. (Toronto), M.A., M.S., M.B., B.Sc., F.R.C.S., F.R.A.C.S. (Hon.), F.A.C.S. (Hon.), F.R.C.S. (C.) (Hon.), R.N. | R. W. SCARFF, Esq., M.B., B.S.   |
| R. AFFLECK GREEVES, Esq., B.A., M.B., B.S., F.R.C.S.  | J. W. SCHOFIELD, Esq., M.R.C.S., L.R.C.P., L.D.S.  |
| NOEL G. HARRIS, Esq., M.D., F.R.C.P., D.P.M.  | D. GREER WALKER, Esq., M.A., M.B., B.Ch., B.A.O., M.DENT.Sc.   |
| SOMERVILLE HASTINGS, Esq., M.S., F.R.C.S.   | G. E. S. WARD, Esq., M.D., B.S., F.R.C.P.  |
| H. K. GRAHAM HODGSON, Esq., C.V.O., M.B., B.S., F.R.C.P., D.M.R.E.  | W. TURNER WARWICK, Esq., M.A., M.B., B.Ch., F.R.C.S.   |
| BRIGADIER FRANK HOWITT, C.V.O., M.D., F.R.C.P., R.A.M.C.  | SIR ALFRED WEBB-JOHNSON, K.C.V.O., C.B.E., D.S.O., T.D., M.B., Ch.B., P.R.C.S., F.A.C.S., F.R.A.C.S. |
| R. VAUGHAN HUDSON, Esq., F.R.C.S.   | J. H. DOUGLAS WEBSTER, Esq., M.D., Ch.B., F.R.C.P.   |
| A. E. W. IDRIS, Esq., M.R.C.S., L.R.C.P., D.A.  | M. H. WHITING, Esq., O.B.E., M.A., M.B., B.Ch., F.R.C.S.   |
| MAJOR B. R. M. JOHNSON, M.R.C.S., L.R.C.P., D.A., R.A.M.C.  | MAJOR PHILIP WILES, M.S., F.R.C.S., R.A.M.C.   |
| C. E. LAKIN, Esq., M.D., B.S., F.R.C.P., F.R.C.S.   | C. P. WILSON, Esq., C.V.O., F.R.C.S.   |
|   | W. R. WINTERTON, Esq., M.A., M.B., B.Chir., F.R.C.S., M.R.C.O.G.                                     |
|   | R. A. YOUNG, Esq., C.B.E., M.D., B.Sc., F.R.C.P.   |
|   | PROFESSOR B. W. WINDEYER, M.B., B.S., F.R.C.S., F.F.R., D.M.R.E.                                     |

**Pharmacist :—**

S. H. WHITE, Esq., Ph.C., M.P.S.

**Solicitor :—**

L. H. CARTER, Esq., 6 Bedford Row, W.C.1.

**Architect :—**

ALNER W. HALL, Esq., M.C., F.R.I.B.A., Crown Buildings, 9 Southampton Row, W.C.1.

**Bankers.****For Receiving Subscriptions and General Purposes :—**

MESSRS. COUTTS AND Co., 16 Cavendish Square, W.1.

THE WESTMINSTER BANK, LIMITED., 1 Cavendish Square, W.1.

**Accountants :—**

MESSRS. PRICE, WATERHOUSE AND Co., 3 Frederick's Place, E.C.2.

**Chaplain :—**

THE REV. A. F. BLOORE.

**Matron and Lady-Superintendent of Nurses :—**

Miss D. M. SMITH, O.B.E.

**Lady Almoner :—**

Miss W. M. DOVER.

**Assistant Lady Almoner :—**

Miss I. M. DADSWELL.

**CANCER AND GENERAL RESEARCH COMMITTEE.**

S. A. COURTAULD, Esq., LL.D. (CHAIRMAN).

H. E. A. BOLDERO, Esq., M.A., D.M., B.Ch., F.R.C.P.

NORMAN BREWIS, Esq.

F. J. CLEMINSON, Esq., M.A., M.Ch., F.R.C.S.

RICHARD C. DAVIS, Esq.

MAX FREEMAN, Esq.

SURGEON REAR-ADMIRAL G. GORDON-TAYLOR, O.B.E., M.A., M.S., B.Sc., M.B.

F.R.C.S., F.R.A.C.S., R.N.

C. E. LAKIN, Esq., M.D., B.S., F.R.C.P., F.R.C.S.

ALAN MONCRIEFF, Esq., M.D., F.R.C.P.

J. DOUGLAS WATSON, Esq.

J. H. DOUGLAS WEBSTER, Esq., M.D., Ch.B., F.R.C.P.

CAPTAIN SIMON WHITBREAD.

D. H. PATEY, M.S., F.R.C.S.

**The Professor of Pathology :—**

JAMES MCINTOSH, Esq., M.D., Ch.B., LL.D.

**The Joel Professor of Physics :—**

SIDNEY RUSS, Esq., C.B.E., D.Sc.

**The John Astor Professor of Physiology :—**

SAMSON WRIGHT, Esq., M.D., F.R.C.P.

**The Courtauld Professor of Anatomy :—**

JOHN KIRK, Esq., M.B., Ch.B., F.R.C.S. (EDIN.).

**The Professor of Chemistry :—**

W. B. TUCK, Esq., D.Sc., F.I.O.

**The S. A. Courtauld Professor of Bio-Chemistry :—**

E. C. DODDS, Esq., M.V.O., D.Sc., Ph.D., M.D., F.R.C.P., F.I.C., F.R.S. (EDIN.), F.R.S.

**The Honorary Treasurer of the Medical School :—**

SIR ALFRED WEBB-JOHNSON, K.C.V.O., C.B.E., D.S.O., T.D., M.B., CH.B.,  
P.R.C.S., F.A.C.S., F.R.A.C.S.,

**Secretary :—**

R. A. FOLEY, Esq., F.C.C.S.

---

**CANCER INVESTIGATIONS.**
**Scientific Staff.****Pathological :—**

PROFESSOR J. MCINTOSH, M.D., CH.B., LL.D.

R. W. SCARFF, Esq., M.B., B.S.

F. R. SELBIE, Esq., M.A., M.D., M.B., CH.B.

**Biochemical :—**

PROFESSOR E. C. DODDS, M.V.O., D.Sc., Ph.D., M.D., F.R.C.P., F.I.C., F.R.S. (Edin.), F.R.S.A.

W. LAWSON, Esq., M.Sc., A.I.C.

J. D. ROBERTSON, Esq., M.D., D.Sc., F.R.S. (Edin.).

**Radiological :—**

PROFESSOR S. RUSS, C.B.E., D.Sc.

J. E. ROBERTS, Esq., Ph.D.

F. T. FARMER, Ph.D.

GLADWYS M. SCOTT.

---

**RADIUM RESEARCH COMMITTEE.**

H. E. A. BOLDERO, Esq., M.A., D.M., B.Ch., F.R.C.P.

PROFESSOR E. C. DODDS, M.V.O., D.Sc., Ph.D., M.D., F.R.C.P., F.I.C., F.R.S. (Edin.), F.R.S.A.

R. VAUGHAN HUDSON, Esq., F.R.C.S.

HENRY MACCORMAC, Esq., C.B.E., M.D., CH.B., F.R.C.P.

PROFESSOR JAMES MCINTOSH, M.D., CH.B., LL.D.

L. C. RIVETT, Esq., M.A., M.C., F.R.C.S., F.R.C.O.G.

PROFESSOR SIDNEY RUSS, C.B.E., D.Sc.

SIR ALFRED WEBB-JOHNSON, K.C.V.O., C.B.E., D.S.O., T.D., M.B., CH.B.,  
P.R.C.S., F.A.C.S., F.R.A.C.S.

J. H. DOUGLAS WEBSTER, Esq., M.D., CH.B., F.R.C.P.

C. P. WILSON, Esq., C.V.O., F.R.C.S.

PROFESSOR B. W. WINDEYER, M.B., B.S., F.R.C.S., F.F.R., D.M.R.E.

## ADMISSION OF PATIENTS.

---

**Patients are required to contribute in accordance with their means towards the cost of their maintenance. The amount of a Patient's contribution is agreed upon after enquiries made, either before or after admission to the Hospital, from the Patient or the Patient's relatives or friends; but no distinction is made between those who can and those who cannot afford to contribute.**

**Patients are required to contribute 1/- at each attendance, but are excused from payment if their circumstances warrant it. Further contributions are invited from those attending the Special Departments.**

**Patients are received for admission, or for Out-Patient Treatment:—**

**Admissions—Nassau Street Entrance, 11.30 a.m., on any week-day.**

**Accidents and Urgent Cases—Nassau Street Entrance, at any time of the day or night.**

**Medical and Surgical Cases—Out-Patient Department, Nassau Street, as follows:—**

**Medical Cases** are seen by the Casualty Medical Officer every week-day at 9.30 a.m. and attended:—On Mondays at 1.30 p.m. by Dr. G. E. S. WARD; on Tuesdays at 1.30 p.m. ; on Thursdays at 1.30 p.m. by Dr. T. IZOD BENNETT; on Fridays at 1.30 p.m. by Dr H. E. A. BOLDERO.

**Surgical Cases** are seen by the Casualty Surgical Officer every week-day at 9.30 a.m. and attended:—On Tuesdays at 1.30 p.m. by Mr. D. H. PATEY, on Wednesdays at 1.30 p.m. by Sir ALFRED WEBB-JOHNSON, on Thursdays at 1.30 p.m. by Mr. E. W. RICHES (urgent cases) and on Fridays at 1.30 p.m. by Mr. R. VAUGHAN HUDSON. Out-Patients can also be seen on Mondays at 1.30 p.m.

**Diseases of Children** under fourteen years of age are attended by Dr. A. MONCRIEFF on Mondays at 9.30 a.m.

**Infant Welfare Clinic** is attended on Mondays at 1.30 p.m., Tuesdays and Fridays at 3.0 p.m.

**Diseases of the Skin** are attended by Dr. H. MACCORMAC on Thursdays at 9.30 a.m.

**Diseases of the Nervous System** are attended by Dr. P. H. SANDIFER on Tuesdays at 1.30 p.m.

**Lying-in Patients** must attend on Thursdays at 9.30 a.m.

**Diseases of Women** are attended by Mr. L. C. RIVETT on Fridays at 9.30 a.m., and Mr. W. R. WINTERTON on Mondays at 9.30 a.m.

**Diseases of the Eye** are attended by Mr. R. AFFLECK GREEVES and Mr. MAURICE H. WHITING on Tuesdays at 9.30 a.m., and by Mr. R. AFFLECK GREEVES on Fridays at 9.30 a.m.

**Diseases of the Ear, Nose and Throat** are attended by Mr. SOMERVILLE HASTINGS and Mr. J. P. MONKHOUSE on Fridays at 9.30 a.m., and by Mr. C. P. WILSON and Mr. J. P. MONKHOUSE on Tuesdays at 9.30 a.m.

**Diseases of the Rectum** are attended by Mr. W. TURNER WARWICK on Wednesdays at 9.30 a.m.

**Diseases of the Genito-Urinary System** are attended by Mr. E. W. RICHES on Thursdays at 1.30 p.m.

**Varicose Veins** are attended on Mondays at 1.30 p.m.

**Orthopædic Clinic** is attended by Mr. BLUNDELL BANKART on Tuesdays at 9 a.m. at the Fracture Clinic, Main Hospital.

**Plastic Surgery Clinic** is attended by Mr. RAINSFORD MOWLEM on Tuesdays at 9.30 a.m.

**Diseases of the Teeth** are attended by Mr. J. W. SCHOFIELD on Mondays at 9.30 a.m. ; by Mr. D. GREER WALKER on Wednesdays at 9.30 a.m. and by Mr. A. L. PACKHAM on Fridays at 9.30 a.m.

**Cancer.**—Out-patients are attended on Wednesdays at 9.30 a.m. and 1.30 p.m. in the Meyerstein Institute.

**Tuberculosis Clinic** is attended by Dr. H. E. A. BOLDERO on Fridays at 1.30 p.m.

**Venereal Diseases,** 1.30 p.m. on Wednesdays. New patients may obtain treatment in the Casualty Department at any time. Daily treatment (Male and Female) by arrangement.

In-Patients are expected to be provided with clean and suitable clothing and change of linen. They also have to provide themselves with washing materials. In all cases where the Patients are too poor to provide themselves with these articles they are supplied to them by the Lady Almoner from special funds which she has at her disposal for the purpose.

Any Officer, Sister, Nurse, Servant, or person employed in any Department of the Hospital accepting Money, or Presents of any kind, from a Patient, or relative or friend of any Patient, on any pretence whatever, is liable to dismissal.

The following Cases are not admitted into the Hospital :—

1. Those which are, upon due examination, deemed *Incurable*, as Advanced Consumption, etc.
2. Complaints so tedious of cure as to preclude for a long time the admission of more urgent cases, as *Chronic Ulcers* of the Legs, etc.
3. Disorders to the cure of which other establishments are devoted, as *Persons of Unsound Mind*, etc.
4. Those which are more properly objects for Public Assistance, as wanting Food and not Medicine.
5. Those whose admission might endanger the other Patients, as persons suffering from *Infectious Diseases*.
6. Complaints likely to be aggravated rather than relieved by confinement within the walls of a Hospital, but such cases, if deemed proper objects, may receive advice and medicine as *Out-Patients*.

**Prior to sending up Patients from the Country, the Resident Medical Officer should be applied to, in order to learn whether there is room, and such application should be accompanied by a medical certificate setting out fully the nature of the case.**

## THE MIDDLESEX HOSPITAL CANCER WING.

### ADMISSION OF PATIENTS.

1. Out-Patients suffering from cancer are specially attended in the Meyerstein Institute on Wednesdays at 9.30 A.M. and 1.30 P.M.
2. No patient can be admitted unless previous application has been made and the case considered.

### VISITING DAYS.

<b>Sundays</b>	...	...	...	...	...	...	<b>2 to 4 p.m.</b>
<b>Tuesdays</b>	...	...	...	...	...	...	<b>4 to 5 p.m.</b>
<b>Thursdays</b>	...	...	...	...	...	...	<b>4 to 5 p.m.</b>
<b>MATERNITY</b>	...	...	...	...	{ <b>Sundays</b> 2 to 3 p.m. <b>Tuesdays</b> 4 to 5 p.m.		

N.B.—Every patient on admission to the Hospital is supplied with two visiting cards, and on no account can more than two visitors be allowed to see a patient at the same time.

**REPORT**  
**OF THE**  
**BOARD OF GOVERNORS**  
**OF THE**  
**MIDDLESEX HOSPITAL, 1942.**

---

The year 1942 in the Hospital World was notable for the introduction, in spite of the war, of four major questions, each concerned with the future development of the national health service.

They were :—

- (1) The Beveridge Report.
- (2) The Report of the Joint Committee of the British Hospitals Association and the British Hospitals Contributory Schemes Association on Hospital Income Limits and, ultimately, "all-in" cover for all classes.
- (3) The Goodenough Committee on post-war medical education.
- (4) The Rushcliffe Report on Nursing Salaries and Emoluments.

The first three are under consideration ; the last has been accepted and adopted by all hospitals.

Any one of these would have been a first class issue in pre-war days. Their emergence together is evidence, not confined to this field, of an awakening of the social conscience without precedent in the past.

Of the Beveridge Report it may be said that that part dealing with a uniform health service, which vitally concerns us, as it does the Medical Profession, is at once the most complicated as it is the least pressing. We need the implementation of social security, and quickly, if we are not to find ourselves after this war as we were after the last with no adequate plans. But we already have a

good, if somewhat unrelated, health service and can safely take time to work out the practical and generally acceptable co-ordination and development of the existing and the proposed new arrangements.

There are, as we showed last year, many instances of a new spirit of co-operation between hospitals, both as between the Voluntary Hospitals themselves and between them and Municipal Institutions. Perhaps the most striking of these was the Interim Report issued by a Joint Committee of the B.H.A. and the B.H.C.S.A. on Income Limits and the many questions incidental to them. This report was considered and accepted by all the Hospital Regions, and by the Association of Contributory Schemes. Such virtual unanimity on an important matter of policy has not been known in the Hospital World before. The report has not been implemented officially, as it awaits acceptance of the terms, both for patients and for the Medical Profession, of a Provident Scheme to cover all above the ordinary Hospital income limits. It must wait also for such adaptation as may be necessary when the Minister of Health has agreed with all the bodies concerned upon the outlines of the National Health Service.

A major issue is that of post-war clinical education, now before the Goodenough Committee. It is a subject of vital importance to the Teaching Hospitals and their medical schools and must involve, as does the Beveridge Report, financial assistance from Public Funds. At the same time it is essential in the interest of Medicine itself, of the Medical Profession, of the Hospitals, and consequently of all patients, whether in Voluntary or Municipal Hospitals, that freedom of thought and practice be preserved, freedom of teaching, freedom of research. None of these should come under the control of Local Authorities, however close collaboration can be managed on the general administration of the Health Service. A Memorandum on this subject was prepared by the Committee of Chairmen of the London Teaching Hospitals, which was subsequently adopted by the Teaching Hospitals of Scotland and the Provinces, who added notes on some points peculiar to



themselves. The Deans of the Medical Schools have submitted a memorandum, and both bodies, together with others interested in education, are to give oral evidence.

The scientists, as the philosophers, tell us that the old dialectic difference between "kind" and "degree" has broken down. However, they are still convenient generalisations for the layman and will serve here. The difference between the Voluntary Hospital system and the Municipal system is not one of "degree" of service to the public, but of "kind" of organisation. The Local Authorities are elected to carry out lines of public policy. They may know nothing of Medicine or hospital administration, except what they learn from their Medical Officers of Health at their Committees. The Medical Officer is responsible to his Committee, his Hospital Superintendents are in turn responsible to him. Their Medical Officers again are, except in a few instances, which are by grace and not by right, under the Medical Superintendent's authority. They must conform to his wishes in using this method of treatment or not using that. Medical opinion has no expression. A new practice may have been adopted by the Teaching Hospitals and the Medical Press, but it may not reach down to the wards of the Municipal Hospitals. The Medical Officer of Health is in most instances too absorbed in his many administrative responsibilities to be able to keep up with modern ideas, and in any case no one man can be up-to-date in the dozen or more branches of medicine and surgery.

The Voluntary Hospitals on the other hand have active medical committees on which all members of the Honorary Staff serve. On them all new ideas are discussed, the crank is controlled, and the pioneer encouraged. They are governed by men and women who voluntarily give their time and their support because of their keen interest in hospital work, and are eager to find the finance for and promote all new developments. The Teaching Hospitals in particular recruit the best brains to their medical staff and have the practical and sympathetic support of enlightened laymen.

There can be no question as to which system is the better. We learn that efforts are being made, as, for example, by the L.C.C., to free their medical staffs from the strait waistcoat of tradition. But until this is done, and an effective central Medical Advisory Committee appointed to the Minister of Health, it would be folly to interfere with the freedom of the Voluntary Hospitals, and above all of the Teaching Hospitals and their Medical Schools.

And finally the Rushcliffe Report, as we have said, has been universally adopted. It had for years been recognised that the Nursing Profession was under-paid. But for the war, however, and the immensely increased demand by the Ministry and the Services for nurses, trained and in training, it would not have been possible, financially, to do much to improve the position. Now, however, with the Government paying 50% of the increased cost of carrying out the Rushcliffe recommendations this has been done, though the additional burden on the hospitals will be a formidable consideration after the war. To the Middlesex Hospital alone the 50% of the increase which it now carries amounts to £3,300 whilst when all its wards are open again and all its nurses back from the Sector Hospitals, the annual 50% charge on the Hospital funds will amount to £8,500.

Whilst on these major issues, raised mostly from without, the Hospitals of the country have found their own views and voice in their politics, they have also organised themselves. The B.H.A. in whose activities the Hospitals take far more interest and part than was the case in the years of peace, now speaks on most questions for the Hospitals as a whole, and meets the Ministry with authority, on E.M.S. matters, on the future organisation of the Hospital service and on the countless matters of supplies, administration, wages and so on, which war conditions raised in an acute form. In London the Voluntary Hospitals Committee, which is a constituent body of the B.H.A. has been greatly strengthened and deals with most matters directly affecting London Hospitals and their particular problems. The Teaching Hospitals have their

peculiar responsibilities, their combination of research and the applications of its results for the benefit of their patients on the one hand and their teaching functions, both of doctors and nurses on the other. They too, have come together and eliminated much of the unnecessary rivalries and competition of the past. Whilst for years they have had a Committee of the Deans of their Medical Schools, they have now set up a Committee of Chairmen of Teaching Hospitals. Much valuable work has already been done.

So much for general Hospital policy, external and internal.

As regards the Middlesex Hospital's own affairs, permission having been obtained from the Ministry of Health to repair the damage to the upper floor of the East Wing, the Maternity Department was able to return to its own unit in August. We have now, including the provision of cubicles for Officers' Wives, more beds for this department than before the war, a most valuable development.

There is no change, however, in the number of general beds in the Middlesex Hospital to report, but we now have an additional 200 in our Country Branch in the grounds of Mount Vernon Hospital at Northwood. These are staffed by our own Medical Staff, Sisters and Nurses, and the Convoy System, which we hope may be perpetuated in some form after the war, makes it possible to get patients away from London sooner than in the past. In addition we share with five other large hospitals, north of the Thames, who, like us, specialise in Radio-Therapy, in 150 beds at Mount Vernon set aside for this treatment. They are under the direction of our own Professor of Radiology.

And we are hoping shortly to re-open 40 more beds—two wards—in the Middlesex itself. The greatest difficulty there is in the universal shortage of domestic staff. But from this review it will be realised that we have restored to the public much the greater part of the service curtailed by the provision in early days of beds for casualties, and by the clearing of upper wards for safety's sake during the blitzes.

Though the position as regards In-Patients steadily improves, the loss of two-thirds of our Out-Patient Annexe in Cleveland Street by bombs and fire in 1940/41 has made this work most difficult. We hope to recondition part of these buildings in the near future, which will lessen the strain on the Staff and reduce delays and some discomfort for patients. Meantime an adequate service is maintained, in spite of shortage of staff due to absence of members on service, the spreading of the rest of the staff over the Sector Hospitals and the difficulty of obtaining Clinical Assistants and retaining the younger qualified men.

### MEDICAL RESEARCH.

#### **Bland-Sutton Institute of Pathology.**

Research work has continued on much the same lines as last year and includes such items as the following :—

One important study has been the continuation of our work on the mechanism of the resistance of the normal tissues to tumour invasion. Some tumours incite a great increase in the number of the white cells in the blood and the increase appears to be proportional to the malignancy of the tumour.

The factors necessary for the initiation of tumours are likewise being investigated. Normal tissues were made more susceptible by injecting various chemical substances. The chemical substances which produced the greatest susceptibility were those that called forth a vigorous cellular reaction.

New methods of microscopical resolution are being applied to the study of the morphology of viruses. This work is naturally slow because of the impossibility of obtaining pure virus in concentrated form.

III. Histological investigations have been continued on the morphology of tumours and on the effects of treatment by radiation.

Bacteriological research has been mainly concerned with the application of antiseptics and chemo-therapeutic remedies and the prevention of hospital infection. Endeavours have been made to

get more efficient chemo-therapeutic substances for application to wounds. We have advised the use of a mixture of sulphathiazole and proflavine and this mixture is now undergoing actual test in war conditions.

Another urgent item is the study of the development of resistance in bacteria to drugs which is not an uncommon complication following the clinical application of these substances. From these studies it is hoped to gain further insight into the nature of the action of these drugs on bacteria.

With regard to the possibility of the transmission of syphilis by blood transfusion, tests have been carried out to determine how long the causal organism can survive. It has been concluded that under the current conditions of the preparation and storing of transfusion fluids the risk of transmitting syphilis by transfusion is negligible.

#### **Barnato Joel Laboratories.**

Closely related to the cancer problem is the work of the Barnato Joel Laboratories on the bearing of physics upon the treatment of patients by means of X-rays and radium. As a result of this study it is now probably true to say that doses of radiation are dispensed to-day with just as much care and to a large extent with the same degree of accuracy as drugs used in the treatment of other diseases.

#### **Courtauld Institute of Biochemistry.**

During the last year, the work of the Institute has been carried on as before, but in addition we have been able to increase the volume of both the routine and the research work.

The routine investigations of in-patients and out-patients has now increased to more than half of what it was in pre-war days. A large number of investigations have been conducted, particularly in connection with the biochemistry of Graves' disease.

Observations have also been made on the calcium intake and output in pregnancy and hyperthyroidism, and the effect of the administration of various forms of calcium salts have been observed.

Chemical research has been along the lines already pursued namely, the preparation of further compounds of oestrogenic activity. A number of derivatives of the highly active oestrogens such as stilboestról, hexoestrol and dienoestrol have been prepared with a view to modifying their rate of absorption and action.

An entirely new line of work has been brought to publication stage. A number of substances have been synthesised which possess a morphine-like activity. It is hoped that by the continuation of this work, new therapeutic agents may be evolved.

Work on the relationship between the pituitary and the ovary has also continued in the department.

### **The Nursing Service.**

The Nursing Staff of this Hospital continues to render splendid service under great difficulties. The shortage of domestic staff referred to has thrown more work upon them, had for long prevented us from opening another floor of the Woolavington Wing and still prevents us from opening the two wards of 40 beds. The Ministry of Labour still regards Hospital service as a secondary consideration, even though it is now considering putting the Nursing service into the 1st Priority class—but one is dependent upon the other—and the Exchanges press women to take up Services or Factory work rather than Hospital Service.

Applications for nursing training have, however, been well maintained and an additional Preliminary Training School is now held to increase the number of qualified nurses. The results of State and other examinations continue to be excellent.

We take this opportunity of congratulating our Matron on the well-deserved honour of the O.B.E. conferred upon her.

### **Medical Staff.**

The University of London has agreed to the establishment of a Chair of Radiology (Therapeutic) tenable at the Middlesex Hospital Medical School, and we are pleased to report that Mr. B. W. Windeyer has been elected to the Chair. Professor Windeyer will, however, continue to hold the appointment of Officer in Charge of the Meyerstein Institute of Radio-Therapy, and in addition acts as Director of the joint Radio-Therapy unit of 150 beds at Mount Vernon.

A most notable list of Distinctions, Awards and Honours appears in the Medical School Report, but we would here like to offer our congratulations to Sir Alfred Webb-Johnson on his re-election as President of the Royal College of Surgeons and the honour of K.C.V.O. conferred upon him, and to Dr. H. E. A. Boldero on his election as Registrar of the Royal College of Physicians. These and many other distinctions do honour alike to their Hospital and to the recipients.

### Chapel.

We deeply regret the death in August last of the Rev. W. R. Cargill, Honorary Chaplain and Member of the Board.

The Rev. A. E. Bloore has been appointed to the post of Resident Chaplain and took up his duties on 1st December.

On Hospital Sunday, June 7th, the evening service was broadcast from the Hospital Chapel. The Service was conducted by Mr. Cargill and the Lesson was read by Sir Alfred Webb-Johnson.

### Finance.

Subscriptions have been well maintained and receipts from legacies exceed the amounts received in the years 1940 and 1941.

Alexandra Day under the Chairmanship of Mrs. Baer produced a record collection of £1,066 and this has been made up to £1,100 by the Alexandra Day Committee.

Mrs. Patey kindly undertook the organisation of the Hospital Flag Days and the total collected of £1,000 was also a record.

Among the many notable benefactions for 1942 was the sum of £309 3s. 3d. raised by the Seven-a-Side Competition organised by the Middlesex County Rugby Football Union. It has meant much hard work and generous expenditure of time to keep this football event going during the war.

In these days of paper economy it is not possible to thank all our friends by name. We assure them we are not unmindful, nor ungrateful.

### **Services, Appeals, Functions.**

The British Empire Cancer Campaign continues to support our Cancer Research work, and the value of this help is partly reflected in the brief notes on Research work now proceeding. We offer our grateful thanks to the Council of the Campaign.

### **Report of the Ladies' Association.**

The Ladies' Association is still serving the Hospital to the best of its ability. Though the number of active members is naturally reduced, the activity of those who remain is much increased and no opportunity to serve the Hospital has been lost.

By the death of Lady Bland-Sutton, whose name is so indissolubly connected with the Middlesex, the Association has unhappily lost one of its founders and most generous and enthusiastic workers.

On May 12th, 1942, a General Meeting was held in the Nurses' Home. We were very proud and pleased to have amongst us again the President of the Association, Her Royal Highness Princess Arthur of Connaught, as also the ever welcome presence of Lady Violet Astor, who accepted our cheques on behalf of the Hospital. Since then the Association has completed the £1,000 necessary to endow the 2nd Ladies' Association Bed. This has been possible through the hard work of the Honorary Treasurer and on account of the unexpected fact that the Out-Patient Canteen, whilst charging considerably less for a cup of tea than anywhere outside ('Best and cheapest cup of tea in London', as one often hears) has contributed notably to the General Fund.

The Work Society has overcome all difficulties, notably the absence from Town of most of the Committee, and its Honorary Secretary has promptly met all Matron's requirements.

The Library, as always, is greatly appreciated by the patients and we are very lucky, in these hard times, to be able to keep up the full peace time service; this has been managed by the remaining Librarians giving far more time than previously.



The work of the Ladies' Ambulance, though still diminished, is carried out with the old skill and enthusiasm.

The most outstanding feature of the year's activities has been the rapid development of the Out-Patients Canteen, which goes on from strength to strength and has become well established in the affection of those it caters for. The Honorary Organiser of the National Emergency branch still helps in the Blood Transfusion Service and has, in addition, found a member to attend the Nurses' Dental Clinic, whose services have been greatly appreciated. The College mending is still being done by this Branch and other offers to mend and sew have been gratefully utilised.

Some of our branches are still on a war-time basis and their hopes are fixed on rapid expansion once the Hospital resumes its full peace-time activities and calls on their services.

### All Help League.

The generous help of the League members during the year 1942 resulting in the sum of £1,276 2s. 2d. being credited to the General Funds was most encouraging and showed an increase of over £100 on the previous year's total. This is a most creditable effort when one realises that many members have had to drop out and that there are many now serving with the forces who cannot give their support as formerly. To balance this, however, we have enrolled more than 100 new members who we hope will work as well on our behalf as have those in the past.

This year the sum raised by the sale of Tinfoil was £65 10s. 4d. which although a lesser amount than last year, represents actually a larger collection of the commodity. We hope that our members and their friends will continue to help us by sending in large and even larger parcels.

The response made by our London members for help for Emblem and Alexandra Days was, once again, very gratifying. There is much to be done in the organising before the event and also

on the day and workers came early and remained late and did not seem to notice fatigue in what we all realise is a very tiring task. The largest proportion of sellers were "All Help Leaguers" and they certainly did their part well in bringing in a large number of heavily laden collecting tins.

It is fitting that we should record our special thanks to Mr. J. H. Maunder who has now collected over £300 by weekly box collections and Mr. G. Day who regularly helps with the sorting, filling and stacking of Tinfoil sacks.

We hope that the coming year may hold no less success than did the preceding one, and we thank our ex-patients and their friends for the invaluable assistance they bring to "their" Hospital.

#### Lady Almoner's Department.

The work in this department continues satisfactorily, and the number of patients attending and requiring help shows a marked increase on the early days of the war. We are very glad that the important work of visiting patients suffering from Cancer has not had to cease entirely—though transport difficulties necessarily curtail it. Undoubtedly the most important work of the Almoner is to assist the patient, in the Hospital, about to leave the Hospital, or in the Home. But, under present arrangements, the Almoner's Department is also entrusted with the collecting from Patients and their Schemes, their contributions to their cost of maintenance, treatment, of course, being given free. These contributions show another most satisfactory increase:—

		£	s.	d.
Direct Contributions	...	8,218	0	0
H.S.A.	... ..	12,377	0	0
H.S.F.	... ..	810	0	0
		<hr/>		
		£21,405	0	0
		<hr/> <hr/>		

### Infant Welfare Department.

The work of this department continues to be of great importance and as the appended figures show advice is sought by mothers in an increasing volume. The number of children on the books and the total attendances have risen since 1941. Thanks are due to the faithful voluntary helpers who make the work of the Welfare Clinic possible and especially to Mrs. Precope who interprets for our Cypriot mothers. The Mothers' Union of St. Luke's Church, Kew Gardens, continues to help by making clothes.

	1941	1942
Children on Books ... ..	343	401
Attendances ... ..	2,557	3,430
New Cases ... ..	156	161
Expectant Mothers attending Class ...	244	308
Home Visits ... ..	1,584	1,379
Visits by Mothers to Welfare for Advice	1,145	1,339

Again we end a year as we began it, with our profession of faith in the vital importance of the Voluntary Hospital System. And we believe we have reason to be proud of the share in its political support which the Middlesex Hospital is giving, just as we are grateful for all the support given to us by our friends to maintain and extend our own service to the public.

J. J. ASTOR,

*Chairman.*

## **The Medical School (1941-42).**

---

### **Pre-Clinical Students.**

Students studying the pre-clinical subjects are again being taught in the Medical School in London, having returned from Leeds in October, 1942. During the Summer vacation the Departments concerned were made ready for their reception, thus enabling the teaching staff and students to continue their work without delay.

We are most grateful to the Authorities of the University of Leeds for the kind way in which they so readily and so generously afforded our staff and students accommodation during their stay of two years in Leeds, from October 1940 to July 1942. The teaching, athletic, and Union facilities afforded were excellent and were most welcome at a time when teaching in London was made difficult by enemy action. We are, therefore, glad to make this permanent record of our appreciation for all that the Vice-Chancellor and officers of the University of Leeds did for Middlesex students during their stay.

### **Clinical Students.**

The distribution of our students during the period of their clinical training remains unchanged and the standard of teaching has been maintained. We are happy again to acknowledge that the continued goodwill and co-operation of the Middlesex County Council, the Buckinghamshire County Council, and the Board of Governors of Mount Vernon Hospital, have played a very large part in making this possible.

The arrangement with the Royal Hospital, Wolverhampton, which began in 1940, and which provided for a limited number of clinical students to receive instruction there, continues to be a most satisfactory one for us.

**Deaths.**

It is with very deep regret that I record the death on February 10th, 1943, of Lady Bland-Sutton. Her late husband Sir John Bland-Sutton, Bart., did much to advance the Medical School, and the status it enjoys to-day is in some measure directly due to his foresight and generosity.

Lady Bland-Sutton did much to support and further his work for the Medical School and by bequests in her Will, has carried out her distinguished husband's wishes. A large proportion of his personal estate is left for the endowment of the Bland-Sutton Institute, which he built at a time when few realised the future of Pathology.

**Appointment.**

It gives me much pleasure to report that the Senate of the University of London appointed Dr. B. W. Windeyer on October 1st, 1942, to the University Chair of Radiology (Therapeutic) tenable at the Middlesex Hospital Medical School. Thus Dr. Windeyer receives the title of Professor of Radiology in the University of London, with the status and designation of appointed teacher. The post also carries with it Membership of the Faculty of Medicine and of the Board of Advanced Medical Studies.

**Research Work and Investigations.**

The continued encouragement and generous support again afforded us during the past year by the Medical Research Council, the British Empire Cancer Campaign, and the Sir Halley Stewart Trust, is gratefully acknowledged. This continued support is particularly appreciated, and is necessary, if we are to maintain essential research work in spite of war conditions.

**Distinctions and Honours.**

Sir Alfred Webb-Johnson has been re-elected President of the Royal College of Surgeons of England. We are also pleased to report that H.M. The King has conferred the honour and rank of K.C.V.O. upon Sir Alfred.

Dr. H. E. A. Boldero has been elected Registrar of the Royal College of Physicians of London.

Mr. E. W. Riches, F.R.C.S., has been awarded the Jacksonian Prize for 1942 and has been offered a Hunterian Professorship for 1943.

Dr. E. A. Cockayne has been elected President of the Royal Entomological Society.

Dr. G. E. S. Ward has been appointed a Censor of the Royal College of Physicians.

Professor E. C. Dodds has been awarded by the University of London, The William Julius Mickle Fellowship.

Dr. J. W. Brown has been nominated by the President of the Royal College of Physicians, Bradshaw Lecturer for 1943.

The following Middlesex men have been elected Fellows of the Royal College of Physicians :—

Dr. H. Joules, Dr. M. Kremer, Dr. R. H. Parry, Dr. K. Robson, and Dr. J. L. Lovibond.

### **War Distinctions and Honours.**

The following awards have been conferred by H.M. The King upon old students of the Middlesex Hospital :—

Major P. B. Ascroft, R.A.M.C., awarded the M.B.E. (Military Division), in recognition of gallant and distinguished services in the Middle East.

Surg. Lt. Cdr. H. G. Rees, R.N.V.R. awarded the O.B.E., "For endurance and devotion to duty when H.M. ships Cornwall and Dorsetshire were sunk by Japanese air attacks in the Indian Ocean."

Captain R. D. I. Beggs, R.A.M.C., awarded the M.C. in recognition of gallant and distinguished services in the Middle East, and mentioned in dispatches for similar services.

Surgeon Lieutenant R. C. R. Gethen, R.N.V.R., has received a commendation for bravery during an enemy air attack.

Flt. Lt. T. H. Cullen, R.A.F.V.R. awarded the M.B.E. for gallant and courageous services during the Allied withdrawal from Crete, while he was himself suffering from dysentery.

Flt. Lt. B. J. O. Winfield, R.A.F.V.R. awarded the A.F.C.

Captain P. J. Wormald, I.M.S., mentioned in dispatches in recognition of gallant and distinguished services in Waziristan.

We acknowledge with gratitude the following legacies and donations :—

Legacies for Cancer Research from :—

	£	s.	d.
Mr. I. H. Meyer ... ..	12	0	0
Mr. G. A. Wilson ... ..	100	0	0
Miss Broughton ... ..	25	0	0

Legacy for the endowment of the Bland-Sutton Institute from the estate of the late Theodor Westrik further on account of the residue, £2,728 8s. 2d.

Legacy for the Ferens Institute of Otology from the estate of the late Miss E. M. Yeo, £100.

Four donations for the Comfort Crookshank Endowment Fund for Cancer Research from Miss Bessie Crookshank of £200, £10, £25, and £50.

*H. E. A. BOLDERO,*

*Dean of the Medical School,*

*Middlesex Hospital.*

*London, W. 1.*

**INCOME AND EXPENDITURE**

**ACCOUNT**

**AND**

**BALANCE SHEET.**

**1942.**



Dr.

## INCOME AND EXPENDITURE ACCOUNT

ORDINARY—	INCOME.	£	£	£
<b>I. VOLUNTARY GIFTS—</b>				
1. SUBSCRIPTIONS DONATIONS, ETC.—				
Annual Subscriptions	Hospital... Cancer Wing	... ...	12,281 1,344	
Donations—Hospital	... Cancer Wing	... ...	9,516 702	13,625
All Help League	... Box	... ...	... ...	10,218 1,289
Collections	Hospital... Cancer Wing	... ...	1,054 6	
Entertainments	... ...	... ...	... ...	1,060 Nil
Gifts in kind	... ...	... ...	... ...	Nil
Other Voluntary Gifts	... ...	... ...	... ...	Nil
				26,192
2. CENTRAL FUNDS—				
King Edward's Hospital Fund	... (Including the Convalescent Home at Clacton-on-Sea)	... ...	9,500 ...	
Hospital Sunday Fund	... ...	... ...	2,630 ...	12,130
				38,322
<b>II. RECEIPTS ON ACCOUNT OF SERVICES RENDERED—</b>				
1. CONTRIBUTIONS ON ACCOUNT OF SERVICES TO PATIENTS—				
(a) From Patients and their Societies—				
Patients—Hospital	... Cancer Wing	... ...	13,092 630	13,722
Hospital Saturday Fund	... ...	... ...	... ...	810
Hospital Savings Association—	Hospital... Cancer Wing	... ...	10,695 1,681	12,376
Approved Societies—Hospital	... Cancer Wing	... ...	Nil Nil	Nil
Paying Patients' Account	... ...	... ...	... ...	19,719 46,627
(b) From Public Authorities—				
Infant Welfare Grant	... ...	... ...	524 ...	
Government Emergency Hospital Scheme. Contributions towards cost of Casualty Service...	... ...	... ...	30,759 ...	
Scabies Clinic Grant	... ...	... ...	231 ...	31,514
				78,141
2. FEES—				
Nurses' and Probationers' Fees	... ...	... ...	... ...	2,364
3. OTHER RECEIPTS—				
Sundries—	... ...	... ...	507 ...	
Receipts for use of Radon for Private Patients	... ...	... ...	Nil ...	507
				81,012
<b>III. INVESTED PROPERTY—</b>				
Interest, Dividends, etc.—Hospital	... Cancer Wing	... ...	84,32 2,973	
	Barnato-Joel	... ...	6,579 ...	17,984
G. G. Nicol Trust...	... ...	... ...	... ...	130
Zunz Bequest	... ...	... ...	... ...	700
David Hughes Trust	... ...	... ...	... ...	3,939
Miss A. M. Bird Trust	... ...	... ...	... ...	300
Rents—Hospital	... Cancer Wing	... ...	2,046 560	
				2,606
				25,659
ORDINARY INCOME	... ...	... ...	... ...	Carried forward £144,993

for the Year ending 31st December, 1942.

Cr.

		EXPENDITURE.		
ORDINARY—		£	£	£
I PROVISIONS	... ..			12,090
II. SURGERY AND DISPENSARY—				
1. Drugs	... ..	6,560		
" V.D. Department	... ..	222		
			6,782	
2. Dressings, Bandages, etc.	... ..		1,660	
3. Instruments and Appliances	... ..		6,191	
4. Wines and Spirits	... ..		105	
5. Salaries and Wages of Dispensing Staff...		3,104		
V.D. Dept.	... ..	82		
Superannuation Contribution Account...		311		
			3,497	
6. Sundries	... ..		708	
7. Pathological Department Examinations...			1,761	
8. Venereal Department Examinations	... ..		600	
9. Services in Physics Department	... ..		808	
				22,112
III. DOMESTIC—				
1. Renewals and Repairs of Furniture, Bedding, Crockery, etc.	... ..		1,469	
2. Laundry	... ..		5,574	
3. Cleaning and Chandlery	... ..		2,240	
4. Water	... ..		520	
5. Fuel and Lighting	... ..		12,688	
6. Uniforms	... ..		972	
7. Sundries	... ..		1	
				23,464
IV. SALARIES AND WAGES (MAINTENANCE)				
1. Medical	... ..		5,794	
2. Nursing	... ..	17,369		
Superannuation Contribution Account...		3,438		
			20,807	
3. Other Officers and Employees	... ..	46,135		
Superannuation Contribution Account...		833		
			46,968	
4. Pensions	... ..		1,901	
				75,470
V. MISCELLANEOUS—				
1. Printing, Stationery, Postages, Telephones, etc.	... ..		2,873	
2. Advertisements	... ..		120	
3. Insurance of Buildings, Equipment, Stores, etc.	... ..			
General	... ..		994	
War Damage Contribution	... ..		1,637	
4. Garden	... ..		Nil	
5. Sundries	... ..		326	
				5,950
VI. ADMINISTRATION—				
1. Salaries	... ..	5,252		
Superannuation Contribution Account...		563		
			5,815	
2. Pensions	... ..		1,307	
3. Printing, Stationery, Postages, Tele- phones, etc.	... ..		383	
4. Advertisements	... ..		Nil	
5. Law Charges	... ..		67	
6. Auditors' Fees	... ..		210	
7. Sundries	... ..		141	
				7,923
B	Carried forward			£147,009

**GENERAL FUND AND  
INCOME AND EXPENDITURE ACCOUNT**

---

INCOME—*continued.*

		£
	Brought forward ... ..	144,993
<b>EXTRAORDINARY—</b>		
Transfer from Legacies Account .. .. .		11,321
<b>TOTAL INCOME .. .. .</b>		<b>£156,314</b>

---

We have examined the above Accounts for the year ending 31st December, 1942, with the report that to the best of our knowledge and belief the regulations of the Revised Uniform System Fund relating to the treatment of Free Legacies dated December, 1940, and to the treatment of

CANCER WING—(continued).  
for the Year ending 31st December, 1942—continued.

35

Cr.

EXPENDITURE—continued.

	£	£	£
Brought forward ...			147,009
<b>VII. ESTABLISHMENT—</b>			
Renewals and Repairs to Buildings and Plant ... ..			1,532
<b>VIII. FINANCE—</b>			
1. Interest ... ..		324	
2. Appeals ... ..	402		
All Help League ... ..	74		
	————	476	
Salaries of Under-Treasurer and Staff ...	1,739		
Superannuation Contribution Account ...	88		
	————	1,827	
3. Rent ... ..		350	
4. Rates and Taxes ... ..		2,527	
		————	5,504
ORDINARY EXPENDITURE ... ..			154,045

**EXTRAORDINARY—**

**I. CONTRIBUTIONS TO OTHER INSTITUTIONS—**

Maintenance of Patients at Mount Vernon Hospital ... ..			2,269
--	--	--	-------

£156,314

books and vouchers of the Hospital and have found them to be in agreement therewith. We of Hospital Accounts, as rectified in accordance with the circular of King Edward's Hospital Reserve for Renewals and Repairs dated 23rd March, 1943, have been followed.

PRICE, WATERHOUSE & CO.,  
Chartered Accountants,  
3 Frederick's Place, Old Jewry, E.C.

## INCOME.

## HOSPITAL—

## LEGACIES, 1942.

*The Executors and Trustees of the late—*

	£	s.	d.
Miss C.R. Gorringe ... ..	11,250	0	0
Miss E. M. Agnew ... ..	2,500	0	0
E. C. C. Marshall ... ..	2,008	4	4
Miss M. R. Classon ... ..	2,000	0	0
Mrs. Mary Smyth ... ..	2,000	0	0
Charles Ansell ... ..	854	16	2
W. Arlidge ... ..	818	18	3
Mrs. Annie Goff ... ..	730	0	0
Miss R. Hastie ... ..	705	0	0
Arthur Lloyd ... ..	500	0	0
D. H. Conner ... ..	400	0	0
Dr. W. R. Ashurst ... ..	390	0	0
Mrs. F. A. Hartmann ... ..	321	14	5
Miss C. L. Moore ... ..	300	0	0
C. E. Marshall ... ..	277	13	6
Adams Trust (Miss M. C. Blake) ... ..	251	4	9
Miss Lucy Turner ... ..	250	8	7
P. W. Milln ... ..	250	0	0
Mrs. M. M. Rause ... ..	232	13	9
Miss A. N. G. Mason ... ..	200	10	0
W. Patmore ... ..	200	0	0
Mrs. A. F. Thomas ... ..	200	0	0
Dr. G. M. Simpson ... ..	129	4	9
Miss J. G. Chaffe ... ..	124	2	6
Miss E. Elliott ... ..	120	7	5
W. Roba ... ..	105	18	7
E. C. Cole ... ..	100	0	0
Miss M. L. Crick ... ..	100	0	0
M. Hassell ... ..	100	0	0
A. J. Skinner ... ..	100	0	0
Miss M. A. Bromhall ... ..	90	0	0
Miss H. Gibbons ... ..	55	0	0
David Noebl ... ..	50	0	0
Sir W. Shroeder ... ..	50	0	0
Mrs. F. E. Silk ... ..	50	0	0
Mrs. Francis Tanburn ... ..	50	0	0
E. S. Marcus ... ..	32	5	0
C. E. Morris ... ..	30	2	2
Miss F. M. Hearle ... ..	25	0	0
F. J. Evans ... ..	22	10	0
Sir H. W. Lucy ... ..	21	9	10
Miss N. Gorst ... ..	20	0	0
Newall Trust ... ..	11	14	2
S. Moses ... ..	10	5	1
C. B. Barnes ... ..	10	0	0
James Sanderson ... ..	8	1	4
C. E. Gee ... ..	5	8	5

28,062 13 0

Less transfers to Endowment, etc. ... ..

565 0 0

27,498

## CANCER WING.

Miss E. D. Roberts ... ..	1,100	0	0
J. T. McBean ... ..	900	0	0
Mrs. L. G. Stainton ... ..	900	0	0
H. Scott Booth ... ..	750	0	0
J. D. Lees ... ..	100	0	0
Mrs. E. M. Webster ... ..	50	0	0
Mrs. J. D. West ... ..	12	10	0
E. A. Wolfe ... ..	1	2	6

3,814

31,312

Year ending 31st December, 1942.

EXPENDITURE.

Amount transferred to the Capital Account for Buildings and Equipment ... ..	£	8,186
Amount transferred to Income and Expenditure Account ... ..	11,321	
Amount Transferred to General Fund ... ..	11,805	

£31,312

	£	£
<b>1. SUNDRY CREDITORS—</b>		
General Fund ... ..	22,004	
Convalescent Home Fund ... ..	651	
	<hr/>	22,655
<b>NOTE.—</b>		
Estimated Capital Liability on Buildings ... Nil		
 <b>2. LOANS TO HOSPITAL—</b>		
On Account of Special Funds—		
Convalescent Home Fund—		
Mortgage from Spicer Trust Fund ... ..		21,000
INTERNAL LOANS—		
On Account of Permanent Endowment Fund—		
Loan from General Fund ... ..	984	
On Account of Special Funds—		
Convalescent Home Fund—		
Advance from General Fund ... ..	4,676	
Dresden Assistance Fund—		
Advance from General Fund ... ..	635	
	<hr/>	6,295
 <b>3. CAPITAL ACCOUNTS—</b>		
* (a) Hospital Endowments (as per Schedule No. I) ...	660,690	
(b) Special Funds (as per Schedule No. II) ... ..	99,639	
(c) Buildings and Equipment (as per Schedule No. III)...	1,445,361	
(d) General Fund (as per Schedule No. IV) ... ..	41,124	
(e) Suspense Funds (as per Schedule No. V) ... ..	21,669	
	<hr/>	2,268,483
* (Funds in Court held for the benefit of the Hospital, £22,691 0 0.)		
 <b>4. UNEXPENDED INCOME BALANCES OF SPECIAL FUNDS—</b>		
Dresden Assistance Fund ... ..	2,134	
Miss Anne Watson Dental Fund ... ..	45	
George Balfour Black Fund ... ..	168	
Trained Nurses' Institute ... ..	104	
Convalescent Home Fund ... ..	1,466	
	<hr/>	3,917
		<hr/>
Carried forward ... ..		£2,322,350

	£	£
1. CASH AT BANK AND IN HAND—		
Endowment Funds—		
Permanent Endowment Fund ... ..	NIL	
Special Funds ... ..	2,818	
Buildings and Equipment Fund—		
New Nurses Home Fund ... ..	34	
General Fund—		
Hospital ... ..	12,822	
Suspense Funds ... ..	1,269	
	<u>          </u>	16,943
2. STOCKS OF UNISSUED STORES ON HAND		14,475
3. SUNDRY DEBTORS—		
General Fund ... ..	28,574	
Convalescent Home Fund ... ..	503	
Dresden Assistance Fund ... ..	710	
	<u>          </u>	29,787
4. INTERNAL LOANS—		
On Account of the General Fund—		
Convalescent Home Fund ... ..	4,676	
Dresden Assistance Fund ... ..	635	
Permanent Endowment Fund ... ..	984	
	<u>          </u>	6,295
5. LAUNDRY MOTOR AND PLANT—		
Outlay carried forward ... ..		419
6. INVESTMENTS—		
(a) Hospital Endowments ... ..	661,674	
(b) Special Funds ... ..	85,451	
(c) Buildings and Equipment ... ..	6,005	
(d) General Fund ... ..	542	
(e) Suspense Funds ... ..	20,400	
	<u>          </u>	774,072
Carried forward ...		<u>£841,991</u>



	£
Brought forward ... ..	2,322,350
(The remainder of the sheet is crossed out with a diagonal line)	
	<u>£2,322,350</u>

We have examined the above Balance Sheet dated 31st December, 1942, with the books that to the best of our knowledge and belief the regulations of the Revised Uniform System of relating to the treatment of Free Legacies dated December, 1940, and to the treatment of Reserve inspected the documents of title in respect of the Freehold and Leasehold Land and Buildings the balances with Bankers at the date of the Balance Sheet.

9th July, 1943.

	£	£	£
Brought forward	...	...	841,991
<b>7. LAND, BUILDINGS, AND EQUIPMENT OF THE HOSPITAL—</b>			
No valuation in the Hospital Books, with the exception of the following—			
Hospital—			
As at 31st Dec., 1941 ... ..	71,442		
Expenditure during 1942 ... ..	429		
Expenditure during 1942 "A.R.P."...	351		
	<u>72,222</u>		
Less War Damage, 1941 ... ..	135		
		<u>72,087</u>	
No. 4 Mortimer Street—			
As at 31st December, 1941 ... ..		1,457	
Residential College—			
As at 31st December, 1941 ... ..		4,327	
Radium—Cost—			
As at 31st December, 1941 ... ..		1,345	
Laundry—			
As at 31st December, 1941 ... ..	1,290		
Less War Damage, 1940/41 ... ..	570		
	<u>720</u>		
Convalescent Home—			
As at 31st December, 1941 ... ..		41,037	
		<u>120,973</u>	
Cancer Wing—As at 31st December, 1941.			
Hospital ... ..		3,168	
Radium—Cost ... ..		6,307	
Barnato-Joel Trust—			
Buildings and Equipment ... ..	60,360		
Nassau Street and Suffolk Mews ...	9,711		
	<u>70,071</u>		
		<u>79,546</u>	
Reconstruction Fund—			
Hospital Reconstruction (including Preliminary Expenses, Incidental Costs, Costs of Transference, etc.)—			
As at 31st December, 1941 ... ..		920,717	
New Nurses' Home—			
As at 31st December, 1941 ... ..		359,123	
		<u>1,279,840</u>	
		<u>£2,322,350</u>	

and vouchers of the Hospital and have found them to be in agreement therewith. We report Hospital Accounts as modified in accordance with the circular of King Edward's Hospital Fund for Renewals and Repairs dated 23rd March, 1943, have been followed. During the year we and have had produced to us certificates from Bankers and others verifying the Investments and

PRICE, WATERHOUSE & CO.,

Chartered Accountants.

3 Frederick's Place, Old Jewry, E.C.

# THE MIDDLESEX HOSPITAL MEDICAL SCHOOL.

ESTABLISHED 1835, PURSUANT TO A RESOLUTION OF A QUARTERLY  
COURT HELD MAY 7, 1835. ENLARGED 1887. AMALGAMATED  
WITH THE HOSPITAL 1896.

THE Buildings and Premises, together with the Bland-Sutton Institute  
of Pathology, the Courtauld Institute of Biochemistry, and other  
appurtenances appropriated to the School, are the property of the  
Governors of the Hospital, and are under the same management and  
control as the Hospital.

*Chairman.*

LT.-COLONEL THE HON. J. J. ASTOR, D.Lit., M.P.

COUNCIL OF THE MEDICAL SCHOOL.

*Chairman.*

S. A. COURTAULD, Esq., LL.D.

*Members nominated by the Board of Governors.*

REGINALD BEDDINGTON, Esq., C.B.E.

ARTHUR BULL, Esq.

RICHARD C. DAVIS, Esq.

F. H. DORAN, Esq.

MAX FREEMAN, Esq.

THEOBALD MATHEW, Esq.

J. DOUGLAS WATSON, Esq.

W. LINTS SMITH, Esq.

*Members elected by the Honorary Medical and Surgical Staff.*

G. E. S. WARD, Esq., M.D., B.S., F.R.C.P.

D. H. PATEY, Esq., M.B., M.S., F.R.C.S.

C. P. WILSON, Esq., C.V.O., F.R.C.S.

W. R. WINTERTON, Esq., M.A., M.B., B.Chir., F.R.C.S., M.R.C.O.G.

*Members elected by the Medical School Committee.*

PROFESSOR J. McINTOSH, M.D., Ch.B., LL.D.

PROFESSOR S. RUSS, C.B.E. D.Sc.

PROFESSOR E. C. DODDS, M.V.O., D.Sc., Ph.D., M.D., F.R.C.P.,

F.R.S. (Edin.), F.R.S.

PROFESSOR W. B. TUCK, D.Sc., F.I.C.

PROFESSOR JOHN KIRK, M.B., F.R.C.S. (Edin.).

PROFESSOR SAMSON WRIGHT, M.D., F.R.C.P.

PROFESSOR B. W. WINDEYER, M.B., B.S., F.R.C.S., D.M.R.E.

J. H. WOODGER, Esq., D.Sc.

*Chairman of the Medical School Committee.*

E. A. COCKAYNE, Esq., M.A., D.M., F.R.C.P.

*Honorary Treasurer of the Medical School.*

SIR ALFRED WEBB-JOHNSON, K.C.V.O., C.B.E., D.S.O., T.D.,  
M.B., Ch.B. P.R.C.S., F.R.A.C.S. (Hon.), F.A.C.S. (Hon.).

*Dean of the Medical School.*

H. E. A. BOLDERO, Esq., M.A., D.M., F.R.C.P.

*School Secretary.*

R. A. FOLEY, Esq., F.C.C.S.

*Secretary to the Council.*

S. R. C. PLIMSOLL, Esq., M.C., B.A.

## PROFESSORS, LECTURERS AND DEMONSTRATORS IN THE MEDICAL SCHOOL.

Emeritus Lecturers in Medicine ...	{	WILLIAM PASTEUR, C.B., C.M.G., M.D., F.R.C.P. W. ESSEX WYNTER, M.D., F.R.C.P., F.R.O.S. A. F. VOELCKER, M.D., F.R.C.P. R. A. YOUNG, C.B.E., M.D., B.Sc., F.R.C.P.
Emeritus Lecturers in Surgery ...	W. SAMPSON HANDLEY, M.D., M.S., F.R.C.S.	
Emeritus Lecturer in Psychiatry...	SIR C. HUBERT BOND, K.B.E., LL.B., D.Sc., M.D., F.R.C.P.	
Emeritus Lecturers in Gynæcology	{	SIR COMYNS BERKELEY, M.A., M.D., M.CHIR., F.R.C.P., F.R.C.S., F.R.C.O.G., M.M.S.A. (HON.) VICTOR BONNEY, M.D., M.S., B.Sc., F.R.C.S., F.R.A.C.S
Emeritus Lecturer in Anatomy ...	PROFESSOR THOMAS YEATES, M.B., C.M.	
Principles and Practice of Medicine	{	C. E. LAKIN, M.D., B.S., F.R.C.P., F.R.O.S. E. A. COCKAYNE, D.M., B.Ch., F.R.O.P. G. E. S. WARD, M.D., B.S., F.R.C.P. G. E. BEAUMONT, M.A., D.M., F.R.C.P. T. IZOD BENNETT, M.D., B.S., F.R.C.P.
Principles and Practice of Surgery	{	SURGEON REAR-ADMIRAL G. GORDON-TAYLOR, C.B., O.B.E., LL.D. (Toronto), M.A., M.S., M.B., B.Sc., F.R.C.S., F.R.A.C.S., (HON.) F.A.C.S., (HON.) F.R.C.S., (C) (HON.) R.N. SIR ALFRED WEBB-JOHNSON, K.C.V.O., C.B.E., D.S.O., T.D., M.B., Ch.B., F.R.C.S., F.R.A.C.S. (HON.) F.A.C.S. (HON.) W. TURNER WARWICK, M.A., M.B., B.CHIR., F.R.C.S. R. VAUGHAN HUDSON, F.R.C.S. E. W. RICHES, M.C., M.B., M.S., F.R.C.S.
Practical Medicine ...	{	BRIGADIER D. E. BEDFORD, M.D., B.S., F.R.C.P., R.A.M.C. BRIGADIER H. L. MARRIOTT, M.D., B.S., F.R.C.P., R.A.M.C.
General Pathology, Bacteriology, Morbid Anatomy, Morbid His- tology, and Clinical Pathology	{	PROFESSOR JAMES MCINTOSH, M.D., Ch.B., LL.D. BRIGADIER L. E. H. WHITBY, C.V.O., M.C., M.A., M.D., B.CHIR., F.R.C.P., D.P.H., R.A.M.C. R. W. SCARFF, M.B., B.S. C. J. C. BRITTON, M.D., Ch.B., D.P.H.
Biochemistry (S. A. Courtauld Professorship)	{	PROFESSOR E. C. DODDS, M.V.O., D.Sc., Ph.D., M.D., B.S., F.R.C.P., F.I.C., F.R.S. (Edin.), F.R.S. W. LAWSON, M.Sc., A.I.C. J. D. ROBERTSON, M.D., Ch.B., M.R.C.P., D.P.H. F.R.S. (Edin.) J. BARRETT, Ph.D., B.Sc.
Hygiene, Public Health and Sanitary Law	{	J. A. STRUTHERS, M.D., B.Ch., M.R.C.P., D.P.H. (of the Inner Temple, Barrister-at-Law).
Medical Pathology ...	C. E. LAKIN, M.D., B.S., F.R.C.P., F.R.O.S.	
Surgical Pathology ...	D. H. PATEY, M.B., M.S., F.R.C.S.	
Practical Surgery ...	E. W. RICHES, M.C., M.B., M.S., F.R.C.S.	
Operative Surgery ...	D. H. PATEY, M.B., M.S., F.R.C.S.	
Midwifery ...	{	L. CARNAC RIVETT, M.A., M.B., M.CHIR., F.R.C.S., F.R.C.O.G. WING COMDR. FREDERICK W. ROQUES, M.A., M.D., M.CHIR., F.R.C.S., F.R.C.O.G., R.A.F. W. R. WINTERTON, M.A., M.B., B.CHIR., F.R.C.S., M.R.C.O.G.
Forensic Medicine ...	J. A. STRUTHERS, M.D., B.Chir., M.R.C.P., D.P.H. (of the Inner Temple, Barrister-at-Law).	
Toxicology ...	PROFESSOR W. B. TUCK, D.Sc., F.I.C.	
Pharmacology ...	C. A. KEELE, M.D., M.R.C.P.	
Therapeutics ...	A. A. MONCRIEFF, M.D., F.R.C.P.	

Clinical Medicine ... ..	...	...	<ul style="list-style-type: none"> <li>C. B. LAKIN, M.D., B.S., F.R.C.P., F.R.C.S.</li> <li>E. A. COCKAYNE, D.M., B.Ch., F.R.C.P.</li> <li>G. E. S. WARD, M.D., B.S., F.R.C.P.</li> <li>G. E. BRAUMONT, M.A., D.M., F.R.C.P.</li> <li>T. IZOD BENNETT, M.D., B.S., F.R.C.P.</li> </ul>
Clinical Surgery ... ..	...	...	<ul style="list-style-type: none"> <li>SURGEON REAR-ADMIRAL G. GORDON-TAYLOR, C.B., O.B.I.E. LL.D. (Toronto), M.A., M.S., M.B., B.Sc., F.R.C.S. F.R.A.C.S., (HON.) F.A.C.S., (HON.) F.R.C.S., (CO (HON.), R.N.</li> <li>SIR ALFRED WEBB-JOHNSON, K.C.V.O., C.B.E., D.S.CO T.D., M.B., Ch.B., P.R.C.S., F.R.A.C.S. (Hon.) F.A.C.S. (Hon.)</li> <li>W. TURNER WARWICK, M.A., M.B., B.Chir., F.R.C.S.</li> <li>R. VAUGHAN HUDSON, F.R.C.S.</li> <li>E. W. RICHES, M.C., M.B., M.S., F.R.C.S.</li> </ul>
Clinical Gynæcology ... ..	...	...	L. CARNAC RIVETT, M.A., M.B., M.Chir., F.R.C.S.S. F.R.C.O.G.
Dermatology ... ..	...	...	H. MACCORMAC, C.B.E., M.D., Ch.B., F.R.C.P.
Neurology ... ..	...	...	BRIGADIER DOUGLAS MCALPINE, M.D., F.R.C.P., R.A.M.C.
Ophthalmology ... ..	...	...	<ul style="list-style-type: none"> <li>R. AFFLECK GREEVES, B.A., M.B., F.R.C.S.</li> <li>M. H. WHITING, O.B.E., M.A., M.B., B.Chir., F.R.C.S.</li> </ul>
Laryngology and Otology...	...	...	<ul style="list-style-type: none"> <li>SOMERVILLE HASTINGS, M.S., F.R.C.S.</li> <li>C. P. WILSON, C.V.O., F.R.C.S.</li> <li>J. P. MONKHOUSE, M.B., B.S., F.R.C.S.</li> </ul>
Orthopædic Surgery ... ..	...	...	<ul style="list-style-type: none"> <li>A. S. BLUNDELL BANKART, M.A., M.Chir., F.R.C.S.</li> <li>COLONEL PHILIP WILES, M.S., F.R.C.S.</li> </ul>
Diseases of Children ... ..	...	...	A. A. MONCRIEFF, M.D., F.R.C.P.
Psychological Medicine ... ..	...	...	NOEL G. HARRIS, M.D., B.S., F.R.C.P., D.P.M.
Plastic Surgery ... ..	...	...	RAINSFORD MOWLEM, M.B., Ch.B., (N.Z.), F.R.C.S.
Anæsthetics ... ..	...	...	<ul style="list-style-type: none"> <li>R. B. APPERLY, M.R.C.S., L.R.C.P., D.A.</li> <li>H. P. CRAMPTON, M.A., M.D., B.Chir., M.R.C.S., L.R.C.P. D.A.</li> <li>A. R. WILLIAMS IDRIS, M.R.C.S., L.R.C.P., D.A.</li> <li>MAJOR B. R. M. JOHNSON, M.R.C.S., L.R.C.P., D.A. R.A.M.C.</li> <li>F. W. ROBERTS, M.B., B.S., D.A.</li> </ul>
Odontology ... ..	...	...	<ul style="list-style-type: none"> <li>A. L. PACKHAM, M.R.C.S., L.R.C.P., L.D.S.</li> <li>H. W. BREESE, M.R.C.S., L.R.C.P., L.D.S.</li> <li>J. W. SCHOFIELD, M.R.C.S., L.R.C.P., L.D.S.</li> <li>D. G. WALKER, M.A., M.B., B.Ch., B.A.O., M.DENT.Sc.</li> </ul>
Anatomy (S. A. Courtauld Pro- fessorship) ... ..	...	Prof.	PROFESSOR JOHN KIRK, M.B., Ch.B. (Ed.), F.R.C.S. (Ed.)
Demonstrators ... ..	...	...	<ul style="list-style-type: none"> <li>W. HOUSTON, M.B., Ch.B., B.A.O.</li> <li>L. J. PANTING, M.A., M.B., B.Ch.</li> <li>M. R. RIFAAT, M.B., Ch.B.</li> </ul>
Practical Histology ... ..	...	...	J. H. WOODGER, D.Sc.
Physiology (John Astor Profes- sorship) ... ..	...	Prof.	<ul style="list-style-type: none"> <li>PROFESSOR SAMSON WRIGHT, M.D., F.R.C.P.</li> <li>D. SLOME, M.A., Ph.D., M.B., Ch.B.</li> </ul>
Lecturer in Pharmacology and Therapeutics ... ..	...	...	C. A. KEELE, M.D., M.R.C.P.
Applied Physiology ... ..	...	...	PROFESSOR SAMSON WRIGHT, M.D., F.R.C.P.
Chemistry—Inorganic, Organic, and Practical ... ..	...	...	PROFESSOR W. B. TUCK, D.Sc., F.I.C.
Demonstrator ... ..	...	...	W. H. S. CHEAVIN.
Physics (Joel Professorship)— Theoretical and Practical ... ..	...	Prof.	PROFESSOR SIDNEY RUSS, C.B.E., D.Sc.
Research Assistant ... ..	...	...	J. E. ROBERTS, Ph.D., B.Sc.
Demonstrator ... ..	...	...	J. C. JONES, B.A.
Biology (University Readership) ... ..	...	...	J. H. WOODGER, D.Sc.
Demonstrator ... ..	...	...	C. L. FOSTER, M.Sc.
Radiology (Diagnostic) ... ..	...	...	H. K. GRAHAM HODGSON, C.V.O., M.B., B.S., F.R.C.P., D.M.R.E.
Radio-Therapy ... ..	...	...	<ul style="list-style-type: none"> <li>J. H. DOUGLAS WEBSTER, M.D., Ch.B., F.R.C.P. (Ed.).</li> <li>PROFESSOR B. W. WINDEYER, M.B., B.S., F.R.C.S., F.F.R., D.M.R.E.</li> </ul>
Physical Medicine ... ..	...	...	BRIGADIER FRANK HOWITT, C.V.O., M.A., M.D., B.Chir., F.R.C.P., R.A.M.C.
Practical Pharmacy ... ..	...	...	S. H. WHITE, Ph.C., M.P.S.

## THE MIDDLESEX HOSPITAL MEDICAL SCHOOL.

---

**T**HREE Casualty Medical and Two Casualty Surgical Officers. Eight Resident Officers to the Special Departments, Ten Resident House Surgeons, Ten Resident House Physicians, Two Resident Gynæcological House Surgeons, Two Resident Officers to the Maternity and Children's Dept., Thirteen Registrars, Three Resident Anæsthetists, one Resident Dental House Surgeon and one Clinical Research Assistant to the Courtauld Wards, are normally appointed annually from among the qualified Students of the Hospital.

During the war the number of appointments at the Hospital is reduced, but additional appointments are available at Hospitals in the Sector.

*There are awarded annually, two Open Entrance Scholarships value £100 each, one in Arts and one in Science. Two Scholarships value £100 each open to Students of Oxford and Cambridge Universities who have completed their Anatomical and Physiological studies. Two Scholarships endowed by the late Sir Edward Meyerstein, value £100 each, open to University of London Students who have at the Middlesex Hospital Medical School completed the curriculum for the 2nd M.B., Examination. The Freer Lucas Scholarship and the Asher Asher Prize to a Pupil of Epsom College who has passed the 1st M.B., Examination. The Colin Mackenzie Prize value £10 10s., Anatomy and Physiology. The Hetley Clinical Prize of £25, the Leopold Hudson Prize value £11 11s., Surgical Pathology and Bacteriology, the Kingston Fowler Prize value £15, Pathology, Bacteriology, and Morbid Histology. The Lyell Medal and Scholarship value £55 5s., for proficiency in Surgical Anatomy and Dissection, etc. Two Broderip Scholarships, value £60 and £40 respectively, for proficiency in Clinical knowledge. The Freeman Scholarship value £30, Gynæcology and Obstetrics. The John Murray Medal and Scholarship value £25, Theoretical and Practical Medicine, awarded every third year. Numerous Research Scholarships and Class Prizes are also awarded.*

The Tutors superintend and assist Students in their studies without extra fee, and thus the necessity of obtaining private instruction away from the Medical School is obviated.

### FEES :—

A. Entrance Fee	...	...	...	...	...	...	...	...	...	...	£15 15 0
B. Annual Fee	...	...	...	...	...	...	...	...	...	...	£50 0 0

For the subjects of the Entrance Scholarships and any additional information please apply to the Dean of the Medical School or to the School Secretary.

# THE MIDDLESEX HOSPITAL MEDICAL SCHOOL

The Middlesex Hospital and the Middlesex Hospital Medical School are situated in the Strand, London, W.C.2. The Hospital is a large and modern building, and the Medical School is a separate building, situated in the Strand, London, W.C.2. The Hospital is a large and modern building, and the Medical School is a separate building, situated in the Strand, London, W.C.2.

The Medical School is a large and modern building, situated in the Strand, London, W.C.2. The Medical School is a large and modern building, situated in the Strand, London, W.C.2. The Medical School is a large and modern building, situated in the Strand, London, W.C.2.

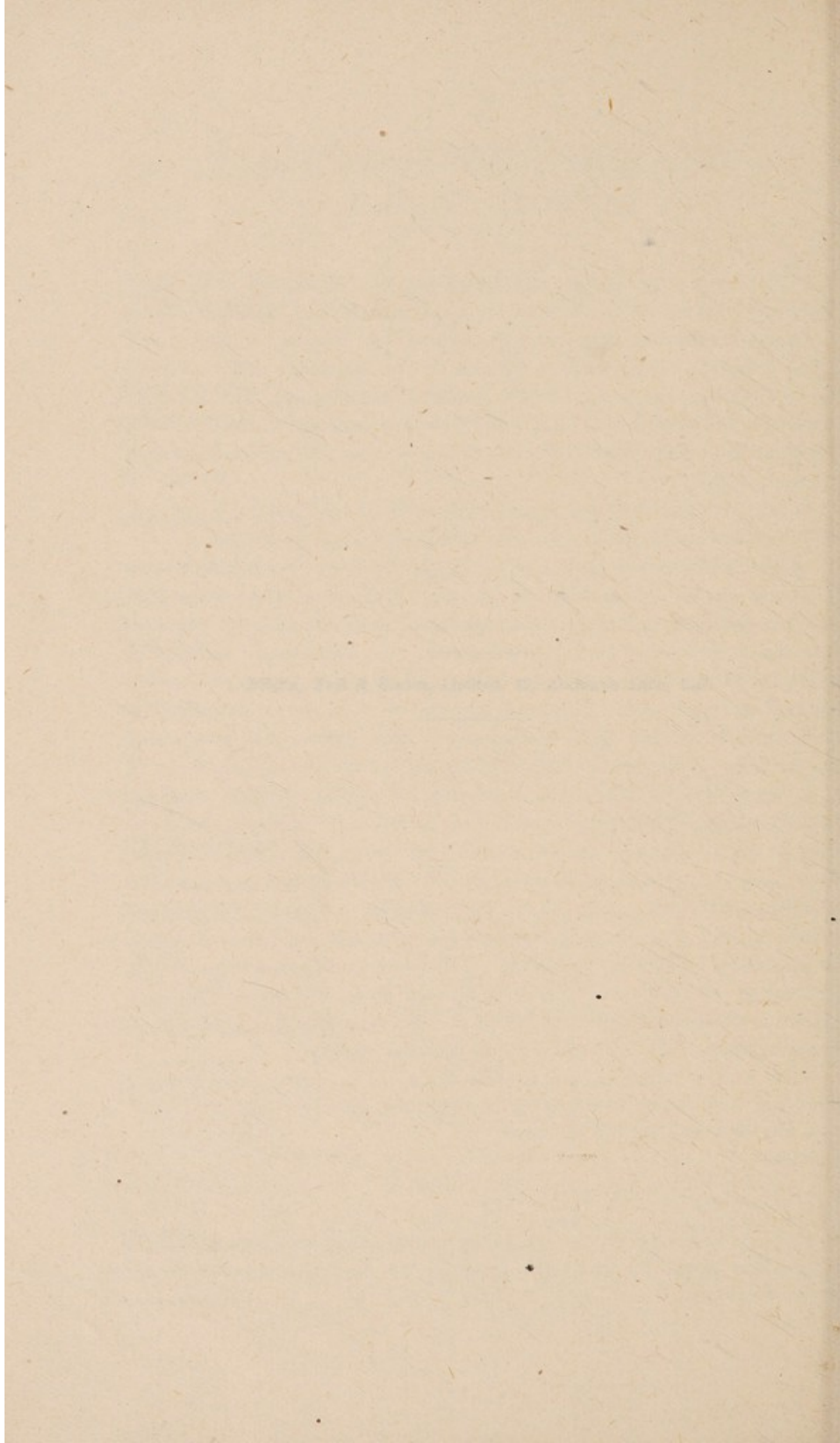
**Blades, East & Blades, Limited, 17, Abchurch Lane, E.C.**

The Medical School is a large and modern building, situated in the Strand, London, W.C.2. The Medical School is a large and modern building, situated in the Strand, London, W.C.2. The Medical School is a large and modern building, situated in the Strand, London, W.C.2.

The Medical School is a large and modern building, situated in the Strand, London, W.C.2. The Medical School is a large and modern building, situated in the Strand, London, W.C.2. The Medical School is a large and modern building, situated in the Strand, London, W.C.2.









**REPORTS**  
**OF**  
**THE MIDDLESEX HOSPITAL**  
**AND**  
**CANCER WING**  
**AND**  
**THE MIDDLESEX HOSPITAL**  
**MEDICAL SCHOOL**  
**FOR THE YEAR 1942.**

---

**Donations and Subscriptions will be  
thankfully received by Lieut.-Col. the  
Hon. J. J. Astor, M.P., Chairman, at  
the Hospital.**