

Annual report : 1948 / Grace Hospital.

Contributors

Grace Hospital (Detroit, Mich.) nr 91045481

Publication/Creation

Detroit, Mich. : [publisher not identified], 1948

Persistent URL

<https://wellcomecollection.org/works/rj8nfz8w>

License and attribution

This work has been identified as being free of known restrictions under copyright law, including all related and neighbouring rights and is being made available under the Creative Commons, Public Domain Mark.

You can copy, modify, distribute and perform the work, even for commercial purposes, without asking permission.



Wellcome Collection
183 Euston Road
London NW1 2BE UK
T +44 (0)20 7611 8722
E library@wellcomecollection.org
<https://wellcomecollection.org>

THE
GRACE HOSPITAL



SIXTIETH
ANNUAL REPORT
1948



DETROIT, MICHIGAN

FORM OF BEQUEST

*I give and bequeath to The Grace Hospital
in the City of Detroit, the sum of*

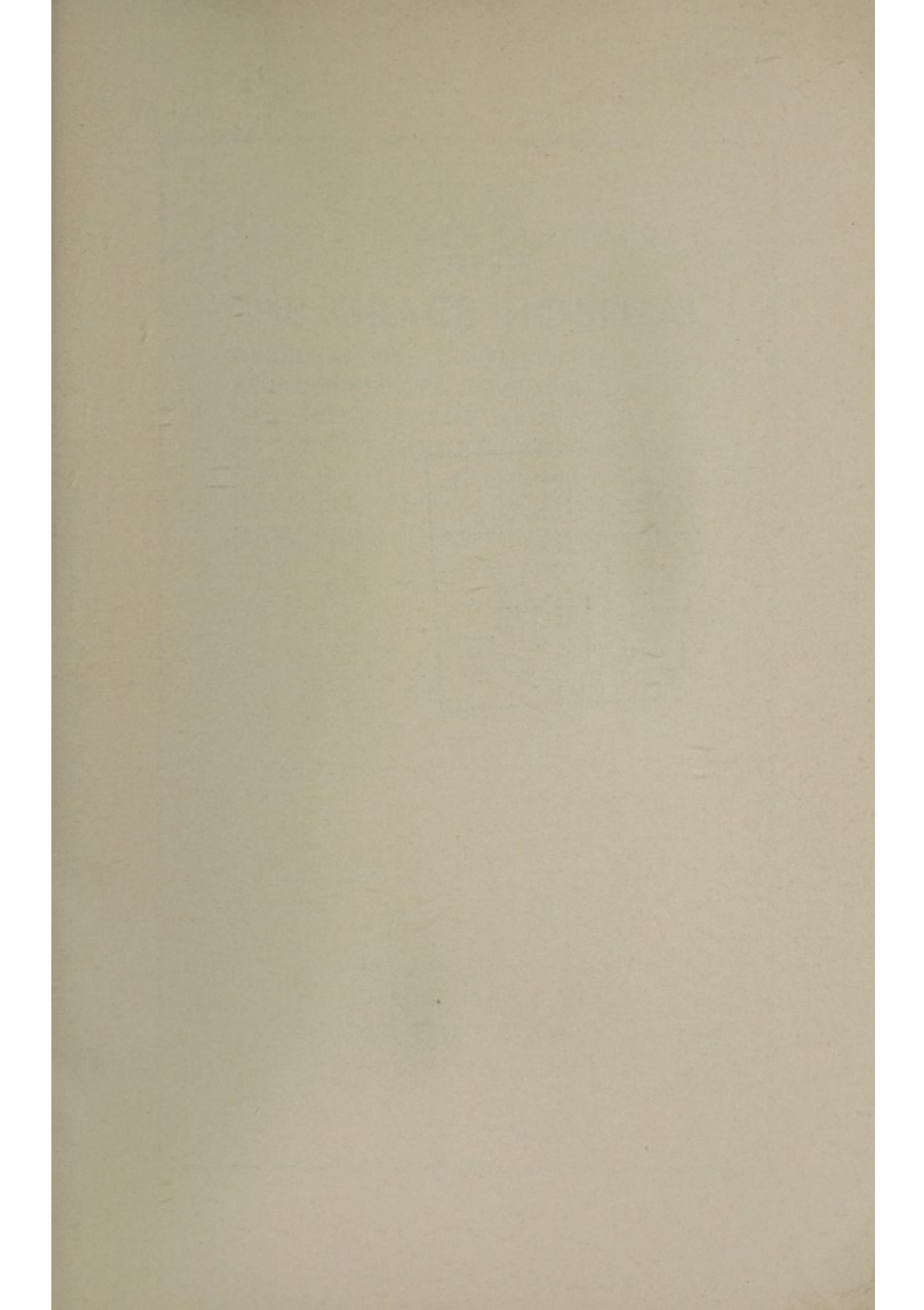
*to be applied to the use and benefits of said Hospital
under the direction of its Board of Trustees.*

*Date*_____

*Signed*_____



22501597992



WELLCOME
LIBRARY
Ann Pop
WX28
.EM5
D48 G72
1948

SIXTIETH ANNUAL REPORT
OF

THE GRACE HOSPITAL

INCORPORATED NOVEMBER 28TH, 1888
RE-INCORPORATED NOVEMBER 22ND, 1918
OPENED FOR THE RECEPTION OF
PATIENTS DECEMBER 6TH, 1888

REPORTS CLOSE WITH CALENDAR
YEAR DECEMBER 31ST, 1948

DETROIT
MICHIGAN



MRS. HENRY B. JOY

MRS. HENRY B. JOY

An Appreciation

This sixtieth issue of The Grace Hospital's annual report is affectionately dedicated to Mrs. Henry B. Joy, whose close association with the Hospital and the School of Nursing during its entire period of existence has meant so much to its progress.

To quote from the citation when Mrs. Joy was given the honorary degree of Doctor of Arts by Wayne University, Detroit, Michigan, is fitting in that no better words could express her work at The Grace Hospital.

"In our community, her life and work are an inspiration, often to lead the way, always to kindle the spirit of others. The story of her activities is legendary. In every good work whether for social welfare, health and civic improvement; for education and assistance to young and old; for the encouragement of art and music; and especially for the development of the best patriotism, she has provided brilliant leadership. Buildings stand because she helped erect them; lives are stronger, limbs are straighter, hearts are lighter, minds are clearer, because she helped to heal them."

No one organization can wholly claim Mrs. Joy, but we at The Grace Hospital love and respect her, and her example is one of inspiration and the finest in leadership.

FACTS OF INTEREST

- 1888 November 28th, Hospital Incorporated.
December 6th, Hospital Opened for Reception of Patients.
- 1889 General Endowment Fund Contributed—\$100,000.00.
Free Dispensary Established.
- 1890 General Endowment Fund No. 2 Contributed—\$200,000.00.
- 1891 First Class of Nurses Graduated.
- 1899 First Nurses' Home Constructed.
- 1906 The Grace Hospital Polyclinic Opened.
- 1908 Course (Post-Graduate) in Hospital Economics, Administration and Institutional Nursing Established (November).
Purchase of Additional Frontage—Nurses' Home Lot.
- 1910 Surgical Addition Completed and Operating Rooms opened.
Addition to Nurses' Home.
- 1911 Brush Street Lot Leased from City.
- 1912 Ella Tefft Barbour Infant Ward Opened.
- 1913 Miriam Memorial Branch Given to the Hospital.
Social Service Department Inaugurated.
Newberry Room for Graduate Nurses Endowed.
- 1914 Oscar LeSeure Medical Library Established.
- 1914-15 Surgical Pavilion built at Miriam Memorial Branch.
- 1915 Second Addition to the Nurses' Home.
- 1916-17 X-Ray Addition and New Children's Ward constructed.
- 1919-21 New North Wing Main Hospital constructed.
Nurses' Home at Miriam Memorial Branch constructed.
- 1921 Helen Newberry Joy Vacation Home for Nurses.
- 1922 New story providing Laboratory and X-Ray Therapy Department.
- 1923 Industrial Shops Buildings constructed.
- 1924 Elevator No. 3 installed and Ward Service Room constructed.
- 1925-26 Joseph W. Dailey Clinic Building constructed.
- 1926 Private patients' suite K and L constructed.
- 1929 May 12 to May 20; Campaign for \$1,850,000.00.
- 1930 Remodeling of north bay of main building, nursery and addition of nine new private and anesthetic rooms.
- 1931 Nurses' home, Helen Handy Newberry Memorial.
Staff, Women's and Men's Buildings remodeled.
Addition to Laundry and New Refrigerating Plant.
- 1931-32 Memorial Building erected with funds pledged in 1929.
- 1933 January 9th, Memorial Building opened for reception of patients.
- 1935 Opening of new Deep Therapy Department.
- 1937 Remodeling and Re-equipping of Department of Radio-Therapy.
- 1937-38 Construction of Service Addition.
- 1938 Modernization of Main Operating Suite.
- 1940 Construction Northwestern Branch started. New Urological Operating Room and remodeling of Urological Department.
Remodeling of Maternity Department.
- 1941 Construction of Corridors connecting Private Pavilion and Corridor L, and Ward 20 and Corridor D.
- 1942 January 28th, Northwestern Branch opened for the reception of patients.
- 1946 Remodeling of Main Kitchen.
- 1947 Construction of new Store Room, Main Hospital.
- 1947 Construction of new Occupational Therapy Room, Main Hospital.
- 1948 Remodeling of O. R. #1.

BOARD OF TRUSTEES

1948

Regular Meetings Third Thursday of Each Month

OFFICERS

William T. Barbour, *President*

James S. Holden, *First Vice-President*

Arthur W. Winter, *Second Vice-President*

Samuel R. Kingston, *Secretary*

Kenneth B. Babcock, *Treasurer*

George D. Bailey

Oscar L. Bard

Henry T. Bodman*

Howard A. Coffin

D. Dwight Douglas

Henry T. Ewald

D. M. Ferry, Jr.

John A. Fry

Edgar A. Guest

J. King Harness

A. Douglas Jamieson

Henry B. Joy, Jr.

William S. Knudsen**

William G. Lerchen

John N. Lord

James McMillan

Murray W. Sales

Charles Wright, Jr.

BOARD OF LADY MANAGERS

1948

Mrs. Helen Newberry Joy, *President*

Mrs. W. T. Barbour, *Vice-President*

Mrs. James S. Holden

Mrs. J. Thayer McMillan

Mrs. John S. Newberry

Mrs. L. S. Trowbridge

* Re-appointed to Board February, 1949.

** Deceased.

COMMITTEES OF THE BOARD OF TRUSTEES

1948

EXECUTIVE COMMITTEE

Murray W. Sales, *Chairman*
 Charles Wright, Jr., *Vice-Chairman*

George D. Bailey	J. King Harness	Samuel R. Kingston
Oscar L. Bard	James S. Holden	John N. Lord
D. Dwight Douglas	A. Douglas Jamieson	James McMillan
John A. Fry		Arthur W. Winter

FINANCE COMMITTEE

Oscar L. Bard, *Chairman*

Samuel R. Kingston	George D. Bailey	James S. Holden
--------------------	------------------	-----------------

SCHOOL OF NURSING COMMITTEE

Samuel R. Kingston, *Chairman*

K. B. Babcock, M.D.	Anna Kirk, R.N.	Ella McNeil, R.N.
Mrs. Henry B. Joy	C. S. Kennedy, M.D.	Mrs. Phelps Newberry
Henry B. Joy, Jr.	William B. Lerchen	Arthur W. Winter
A. Douglas Jamieson	Kathleen Young Sands, R.N.	

COMMITTEE ON FREE BEDS AND DONATIONS

Edgar A. Guest	J. King Harness, <i>Chairman</i>	Charles Wright, Jr.
----------------	----------------------------------	---------------------

PROPERTY AND REAL ESTATE COMMITTEE

Henry T. Ewald	Charles Wright, Jr., <i>Chairman</i>	James S. Holden
----------------	--------------------------------------	-----------------

INVESTMENT COMMITTEE

(Sub-Committee of Finance Committee)

James S. Holden	Oscar L. Bard, <i>Chairman</i>	Arthur W. Winter
-----------------	--------------------------------	------------------

The President and Treasurer, ex-officio members of all Committees.

OFFICERS

Director—

Kenneth B. Babcock, M.D.

Assistant Directors—

Frank A. Weiser, M.D.

Frederick W. Hyde, Jr., M.D.

W. F. Middleton

Chief Anesthetist—

Myra E. Babcock, M.D.

Auditor—

Alvin Davis

Chief Engineer—

John McNutt

Director of Nursing—

Kathleen Young Sands; R.N., B.S., M.A.

Executive Dietitian—

Onalee Hostetler, B.S.

Matron—

Mrs. Mae Froslid, R.N.

Pharmacist—

Carl A. Abend, Ph.G.

Henry Knazak, Ph.G., Assistant

Purchasing Agent—

James E. Leitch

Maintenance Supt.—

Max L. Roberts

NORTHWESTERN BRANCH

Assistant Director—

C. H. Carpenter, M.D.

Director of Nursing Service—

Anne Callahan, R.N.

Pharmacist—

Edmund Bolio, Ph.G.

Matron—

Flossie B. Wilson

THE GRACE HOSPITAL MEDICAL STAFF

1948

OFFICERS

M. A. Darling, M.D., *Chief of Staff*
 C. S. Kennedy, M.D., *Vice-Chief*
 C. K. Hasley, M.D., *Secretary*
 L. W. Hull, M.D., *Treasurer*

EXECUTIVE COMMITTEE

M. A. Darling, M.D., *Chairman*

L. T. Colvin, M.D.	C. I. Owen, M.D.
P. C. Gittins, M.D.	O. W. Pickard, M.D.
R. S. Goux, M.D.	R. P. Reynolds, M.D.
E. S. Gurdjian, M.D.	F. A. Weiser, M.D.,
H. T. Howlett, M.D.	K. B. Babcock, M.D.
H. A. Jarre, M.D.	C. H. Carpenter, M.D.
C. S. Kennedy, M.D.	F. W. Hyde, Jr., M.D., <i>Secretary</i>

CONSULTING STAFF

Bruce Anderson, M.D.	E. D. MacKenzie, M.D.	W. R. Olmsted, M.D.
N. I. Bentley, M.D.	F. B. MacMullen, M.D.	W. G. Paterson, M.D.
W. E. Blodgett, M.D.	E. G. Martin, M.D.	H. W. Plaggemeyer, M.D.
R. Costello, M.D.	E. W. May, M.D.	W. H. Price, M.D.
G. A. Ford, M.D.	F. W. McAfee, M.D.	R. M. Richards, M.D.
J. E. Gleason, M.D.	R. J. McClellan, M.D.	R. L. Schafer, M.D.
J. A. J. Hall, M.D.	H. L. Morris, M.D.	R. Sterba, M.D.
Lynn Hershey, M.D.	G. P. Myers, M.D.	C. E. Vreeland, M.D.
G. B. Hoops, M.D.		F. A. Weiser, M.D.

DIVISION OF GENERAL MEDICINE

L. T. Colvin, M.D., *Attending Chief*
D. Myers, M.D., *Attending Vice-Chief*

Attending Physicians

R. J. Elvidge, M.D.	Stuart Wilson, M.D.	L. B. Young, M.D.
C. P. Schneider, M.D.		N. W. Diebel, M.D.

Associate Physician

G. L. Waldbott, M.D.

Assistant Physicians

A. A. Norconk, M.D.	H. A. Klein, M.D.	M. Schaeffer, M.D.
H. B. Bennett, M.D.	M. Levin, M.D.	R. Sterling, M.D.
E. Bringard, M.D.	J. A. Maloney, M.D.	M. Teitelbaum, M.D.
R. Q. DeTomas, M.D.	A. R. Marsh, M.D.	W. R. Sargent, M.D.
G. S. Fisher, M.D.	H. S. Mellen, M.D.	C. Brown, M.D.
	J. H. Maxwell, M.D.	

Clinical Assistants

A. S. Friedlaender, M.D.	W. B. McIntyre, M.D.	M. Stamell, M.D.
S. Friedlaender, M.D.	M. L. Lichter, M.D.	M. J. Steinhardt, M.D.
R. S. McBroom, M.D.	H. Small, M.D.	

Voluntary Assistants

B. H. Bader, M.D.	L. L. Kline, M.D.	J. E. Collins, M.D.
Everett Durham, M.D.	F. Levagood, M.D.	A. W. Walter, M.D.
F. W. Hyde, Jr. M.D.	A. Wilson, M.D.	R. R. Barber, M.D.

SECTION OF GASTRO-ENTEROLOGY

R. J. Elvidge, M.D., *Attending (Chr.)*
J. H. Maxwell, M.D., *Assistant*
R. R. Sterling, M.D., *Assistant*

SECTION OF DERMATOLOGY

A. E. Schiller, M.D., *Attending (Chr.)*
C. K. Hasley, M.D., *Attending*
R. S. Dixon, M.D., *Attending*
H. H. Holman, M.D., *Assistant*
Alice Palmer, M.D., *Assistant*
C. Courville, M.D., *Vol. Asst.*

SECTION OF PEDIATRICS

K. C. MacPherson, M.D.
Attending (Chr.)
M. Jacoby, M.D., *Associate*
Thelma Wygant, M.D., *Associate*
R. M. Kraft, M.D., *Associate*
Helen Tasker, M.D., *Cl. Assistant*
L. E. Heideman, M.D., *Vol. Asst.*
Rachel McClelland, M.D., *Vol. Asst.*

SECTION OF ENDOCRINOLOGY

C. D. Eaton, M.D., *Assistant (Chr.)*
G. S. Fisher, M.D., *Assistant*

SECTION OF CARDIOLOGY

L. T. Colvin, M.D., *Attending (Chr.)*
M. M. Levin, M.D., *Assistant*
H. S. Mellen, M.D., *Assistant*
A. A. Norconk, M.D., *Assistant*

SECTION OF PHYSICAL MEDICINE

M. K. Newman, *Attending*

SECTION OF NEUROLOGY AND
PSYCHIATRY

R. Kernkamp, M.D., *Assoc. (Chr.)*
Ivan Berlien, M.D., *Assistant*
Irving I. Edgar, M.D., *Assistant*
S. C. Grossman, M.D., *Assistant*
M. L. Freier, *Vol. Assistant*

SECTION OF DIABETES

D. B. Marcus, M.D., *Assistant (Chr.)*
C. D. Eaton, M.D., *Assistant*
D. E. Cohn, M.D., *Assistant*
A. E. Kozlinski, M.D., *Cl. Assistant*

DIVISION OF GENERAL SURGERY

C. S. Kennedy, M.D., *Attending Chief*H. G. McLean, M.D., *Attending Vice-Chief*

R. P. Reynolds, M.D., <i>Attending</i>	W. A. Lange, M.D., <i>Assistant</i>
W. W. Babcock, M.D., <i>Attending</i>	Alfred Large, M.D., <i>Assistant</i>
W. W. McGregor, M.D., <i>Attending</i>	S. L. Lipinski, M.D., <i>Assistant</i>
H. K. Shawan, M.D., <i>Attending*</i>	E. B. McCollum, M.D., <i>Assistant</i>
G. Wilson, M.D., <i>Attending</i>	H. C. Rees, M.D., <i>Assistant</i>
R. Altman, M.D., <i>Associate</i>	J. G. Slevin, M.D., <i>Assistant</i>
T. H. Crews, M.D., <i>Associate</i>	C. E. Umphrey, M.D., <i>Assistant</i>
A. J. Font, M.D., <i>Associate</i>	W. R. Wreggit, M.D., <i>Assistant</i>
H. T. Howlett, M.D., <i>Associate</i>	Henry L. Burr, M.D., <i>Cl. Assistant</i>
J. G. Israel, M.D., <i>Associate</i>	Ivan LaCore, M.D., <i>Cl. Assistant</i>
E. G. Krieg, M.D., <i>Associate</i>	C. J. Sprunk, M.D., <i>Cl. Assistant</i>
P. Lippold, M.D., <i>Associate</i>	C. E. Stellhorn, M.D., <i>Cl. Assistant</i>
C. Lemley, M.D., <i>Associate</i>	Howard A. Baker, M.D., <i>Vol. Asst.</i>
L. R. Adler, M.D., <i>Assistant</i>	John Boccaccio, M.D., <i>Vol. Assistant</i>
L. Braitman, M.D., <i>Assistant</i>	Garth H. Harley, M.D., <i>Vol. Asst.</i>
M. O. Cantor, M.D., <i>Assistant</i>	H. Y. Hoffman, M.D., <i>Vol. Asst.</i>
D. Cameron, M.D., <i>Assistant</i>	D. J. Kennedy, M.D., <i>Vol. Asst.</i>
R. F. Fenton, M.D., <i>Assistant</i>	J. Kerzman, M.D., <i>Vol. Assistant</i>
P. C. Gittins, M.D., <i>Assistant</i>	R. F. Lipton, M.D., <i>Vol. Assistant</i>
R. R. Goldstone, M.D., <i>Assistant</i>	G. E. Millard, M.D., <i>Vol. Assistant</i>
F. W. Gottschalk, M.D., <i>Assistant</i>	Albert Nickels, M.D., <i>Vol. Asst.</i>
L. J. Gravelle, M.D., <i>Assistant</i>	Charles O'Donnell, M.D., <i>Vol. Asst.</i>
J. E. Hauser, M.D., <i>Assistant</i>	M. M. Pensler, M.D., <i>Vol. Assistant</i>
L. V. Hewitt, M.D., <i>Assistant</i>	M. A. Sorock, M.D., <i>Vol. Assistant</i>
E. J. Hammer, M.D., <i>Assistant</i>	D. C. Burnham, M.D., <i>Vol. Asst.</i>
R. P. Ohlmacher, M.D., <i>Assistant</i>	Thomas Arminski, M.D., <i>Vol. Asst.</i>
	James H. McCadie, M.D., <i>Vol. Asst.</i>

* Deceased.

SECTION OF INDUSTRIAL MEDICINE

E. H. Hanna, M.D., *Attending* (Chr.)
A. W. Hudson, M.D., *Assistant*
W. Y. Kennedy, M.D., *Assistant*
G. A. Eadie, M. D., *Cl. Assistant*

SECTION OF ANESTHESIA

Myra E. Babcock, M. D., *Attending*

SECTION OF UROLOGY

L. W. Hull, M.D., *Attending* (Chr.)
G. C. Burr, M.D., *Attending*
C. G. Weltman, M.D., *Attending*
L. N. Fleming, M.D., *Assistant*
J. D. Schmaltz, M.D., *Vol. Asst.*
E. R. Simon, M.D., *Vol. Assistant*

SECTION OF NEUROSURGERY

E. S. Gurdjian, M.D., *Attend.* (Chr.)
J. E. Webster, M.D., *Assistant*

SECTION OF DENTAL SURGERY

W. A. Cook, D.D.S., *Attend.* (Chr.)
C. Fox, D.D.S., *Attending*
L. Rogers, D.D.S., *Attending*
M. Bloom, D.D.S., *Associate*
S. P. McBride, D.D.S. *Assistant*
C. B. Somers, D.D.S., *Assistant*
W. H. Phillips, D.D.S., *Cl. Assistant*
B. B. Cook, D.D.S., *Cl. Assistant*

SECTION OF PROCTOLOGY

D. McLean, M.D., *Associate*

SECTION OF ORTHOPEDICS

F. E. Curtis, M.D., *Attending* (Chr.)
F. H. Purcell, M.D., *Attending*
D. M. Stiefel, M.D., *Attending*
W. H. Blodgett, M.D., *Assistant*
G. A. Brough, M.D., *Assistant*
H. Gehring, M.D., *Assistant*
P. G. Shifrin, M.D., *Assistant*

SECTION OF THORACIC SURGERY

W. A. Hudson, M.D., *Attending* (Chr.)
L. A. Pratt, M.D., *Associate*
K. A. Wood, M.D., *Assistant*
R. Shapiro, M.D., *Cl. Assistant*

DIVISION OF PATHOLOGY AND
LABORATORIES

C. I. Owen, M.D., *Attending*
L. W. Walker, M.D., *Assistant*

DIVISION OF RADIOLOGY

H. A. Jarre, M.D., *Attending*
C. K. Hasley, M.D., *Attending*
J. M. Foley, M.D., *Associate*
W. Cosgrove, M.D., *Assistant*
F. K. Weitersen, M.D., *Assistant*
C. Roland, M.D., *Vol. Assistant*
V. T. Scoville, M.D., *Vol. Assistant*

DIVISION OF OPHTHALMOLOGY
AND OTOLARYNGOLOGY

R. S. Goux, M.D., *Attending Chief*
J. R. Birch, M.D., *Attd. Vice-Chief*

SECTION OF OPHTHALMOLOGY

L. J. Croll, M.D., *Attending*
H. Pliskow, M.D., *Assistant*
R. J. Reisman, M.D., *Assistant*
M. J. Pierson, M.D., *Cl. Asst.*
M. A. Wainstock, M.D., *Cl. Asst.*
M. Croll, M.D., *Vol. Assistant*
L. Goux, M.D., *Vol. Assistant*

SECTION OF OTOLARYNGOLOGY

R. S., Goux, M.D., *Attending*
J. R. Birch, M.D., *Attending*
B. Proctor, M.D., *Associate*
A. W. Erkfitz, M.D., *Assistant*
E. J. Levitt, M.D., *Assistant*
R. G. Burroughs, M.D., *Vol Asst.*

SECTION OF BRONCHOSCOPY

W. A. Hudson, M.D., *Attend.* (Chr.)
J. R. Birch, M.D., *Attending*
L. A. Pratt, M.D., *Associate*
R. Shapiro, M.D., *Cl. Assistant*

DIVISION OF GYNECOLOGY AND OBSTETRICS

O. W. Pickard, M.D., *Attending Chief*W. B. Mitchell, M.D., *Attend. Vice-Chief*

M. A. Darling, M.D., <i>Attending</i>	W. K. Tregenza, M.D., <i>Assistant</i>
L. E. Bauer M.D., <i>Associate</i>	R. T. Burns, M.D., <i>Cl. Assistant</i>
J. H. Curhan, M.D., <i>Associate</i>	W. F. Stanley, M.D., <i>Cl. Assistant</i>
O. H. Ensing, M.D., <i>Associate</i>	G. J. Bush, M.D., <i>Cl. Assistant</i>
E. S. Hoffman, M.D., <i>Associate</i>	E. J. Igna, M.D., <i>Cl. Assistant</i>
H. H. Lampman, M.D., <i>Associate</i>	B. E. Nolan, M.D., <i>Cl. Assistant</i>
S. S. Wittenberg, M.D., <i>Associate</i>	R. Bogue, M.D., <i>Cl. Assistant</i>
H. W. Free, M.D., <i>Assistant</i>	R. O. Dubpernell, M.D., <i>Vol. Asst.</i>
D. F. Strohschein, M.D., <i>Assistant</i>	J. L. Kitzmiller, M.D., <i>Vol. Asst.</i>
K. L. Miller, M.D., <i>Assistant</i>	G. S. Olmsted, M.D., <i>Vol. Assistant</i>
Delma Thomas, M.D., <i>Assistant</i>	Stella M. Delaini, M.D., <i>Vol. Asst.</i>

GENERAL PRACTICE SECTION

P. C. Gittins, M.D., *Attending Chief*J. A. Maloney, M.D., *Attend. Vice-Chief*

Howard Rees, M.D., <i>Attending</i>	R. E. DeSpelder, M.D., <i>Vol. Asst.</i>
E. L. Bringard, M.D., <i>Attending</i>	J. J. Dubin, M.D., <i>Vol. Assistant</i>
R. Q. DeTomas, M.D., <i>Attending</i>	John F. Dzuiba, M.D., <i>Vol. Asst.</i>
A. R. Marsh, M.D., <i>Attending</i>	Stanley Fenton, M.D., <i>Vol. Assistant</i>
D. E. Cohn, M.D., <i>Associate</i>	H. S. Foley, M.D., <i>Vol. Assistant</i>
Russell Fenton, M.D., <i>Associate</i>	D. H. Fauman, M.D., <i>Vol. Assistant</i>
W. L. Foster, M.D., <i>Assistant</i>	H. C. Galantowicz, M.D., <i>Vol. Asst.</i>
Mary M. Frazer, M.D., <i>Assistant</i>	W. A. Geitz, M.D., <i>Vol. Assistant</i>
F. J. Hodoski, M.D., <i>Assistant</i>	W. W. Hassig, M.D., <i>Vol. Assistant</i>
A. E. Kozlinski, M.D., <i>Assistant</i>	M. M. Hochman, M.D., <i>Vol. Asst.</i>
F. A. Krynicki, M.D., <i>Assistant</i>	B. B. Israel, M.D., <i>Vol. Assistant</i>
R. C. Magnell, M.D., <i>Assistant</i>	C. S. Kogut, M.D., <i>Vol. Assistant</i>
H. A. Meinecki, M.D., <i>Assistant</i>	R. Lignell, MD., <i>Vol. Assistant</i>
W. R. Sargent, M.D., <i>Assistant</i>	I. D. Nickerson, M.D., <i>Vol. Asst.</i>
R. J. Scott, M.D., <i>Assistant</i>	N. T. Pasternacki, M.D., <i>Vol. Asst.</i>
Charles W. Sellers, M.D., <i>Assistant</i>	F. P. Rhoades, M.D., <i>Vol. Asst.</i>
James R. Stein, M.D., <i>Assistant</i>	Ralph C. Rueger, M.D., <i>Vol. Asst.</i>
J. H. Schlemer, M.D., <i>Assistant</i>	Stanley V. Sciarrino, M.D., <i>Vol. Asst.</i>
E. G. Walker, M.D., <i>Assistant</i>	R. F. Schultz, M.D., <i>Vol. Asst.</i>
J. J. Boccia, M.D., <i>Vol. Assistant</i>	V. E. Slahetka, M.D., <i>Vol. Asst.</i>
S. A. Bennett, M.D., <i>Vol. Assistant</i>	T. Stokfisz, M.D., <i>Vol. Assistant</i>
A. Bloch, M.D., <i>Vol. Assistant</i>	H. Stamell, M.D., <i>Vol. Assistant</i>
J. D. Bryce, M.D., <i>Vol. Assistant</i>	W. E. Stanley, M.D., <i>Vol. Assistant</i>
H. L. Buller, M.D., <i>Vol. Assistant</i>	Harry L. Stern, M.D., <i>Vol. Assistant</i>
M. M. Burstein, M.D., <i>Vol. Assistant</i>	L. H. Spencer, M.D., <i>Vol. Assistant</i>
I. M. Burstein, M.D., <i>Vol. Assistant</i>	Don A. Young, M.D., <i>Vol. Assistant</i>
H. L. Burstein, M.D., <i>Vol. Assistant</i>	Harry O. Chall, M.D., <i>Vol. Assistant</i>
S. O. Cotton, M.D., <i>Vol. Assistant</i>	L. E. Feldkamp, M.D., <i>Vol. Asst.</i>
N. Droock, M.D., <i>Vol. Assistant</i>	Hubert R. John. M.D., <i>Vol. Asst.</i>

RESIDENT HOUSE STAFF

1948 - 1949

RESIDENTS

DIVISION OF SURGERY

Thomas C. Arminski, B.S., M.D.	Paul T. Lahti, A.B., M.D.
Hal G. Aulie, B.S., M.D.	James H. McCadie, M.D.
Martin L. Biery, B.S., M.D.	Harold P. McGinnes, B.S., M.D.
Eugene F. Bolliger, M.D.	Robert F. Powers, A.B., M.D.
Andrew G. Brown, B.S., M.D.	William M. Sokol, B.S., M.D.
David C. Burnham, B.S., M.D.	Robert C. Ries, A.B., M.D.
Robert P. Clifford, M.D.	Charles E. Stebbins, A.B., M.D.
William L. Cooper, B.S., M.D.	Gerald S. Wilson, B.A., M.D.
Raymond C. Husband, B.S., M.D.	William C. Wyte, B.S., M.D.

DIVISION OF GYNECOLOGY AND OBSTETRICS

Charles E. Darling, A.B., M.D.	Donald V. Hobbs, B.S., M.D.
Stella M. Delaini, B.S., R.N., M.D.	Richard G. Ries, A.B., M.D.
Robert A. Dubpernell, B.S., M.D.	Preston S. Houk, A.B., M.D.
Lyle D. Elliott, A.B., M.D.	Masamichi Suzuki, A.B., M.D.
Robert G. Gallimore, B.S., M.D.	Joseph B. Woolfenden, B.S., M.D.
John Gilmore, B.A., M.D.	William J. Yetzer, A.B., M.D.

DIVISION OF MEDICINE

James Aiuto, B.S., M.D.	Lewis L. Stewart, B.S., M.D.
Radivoj R. Barber, A.B., M.D.	Bernard J. Sweeney, B.S., M.D.
James E. Collins, B.S., M.D.	Arthur W. Walter, B.S., M.D.
Everett W. Durham, A.B., M.D.	Floyd J. Walter, A.B., M.D.
Herschel A. Shulman, B.S., M.D.	Edwin J. Westfall, B.S., M.D.

SECTION OF OPHTHALMOLOGY AND OTOLARYNGOLOGY

Andrew J. Owens, A.B., M.D.	Howard C. Pugh, A.B., M.D.
Mary Jane Sweeney, B.S., M.D.	

SECTION OF UROLOGY

John M. McLaughlin, B.S., M.D.	Maitland Stewart, Jr., A.B., M.D.
--------------------------------	-----------------------------------

DIVISION OF RADIOLOGY

Hugh T. Caumartin, B.S., M.D.	Donald J. Ryan, M.D.
Donald C. MacDonald, B.S., M.D.	Victor T. Scoville, A.B., M.D.

SECTION OF NEUROSURGERY

Ralph E. Dawson, Jr., B.S., M.D.	Frederick R. Latimer, A.B., M.D.
----------------------------------	----------------------------------

DIVISION OF PATHOLOGY

Donald C. Brown, B.S., M.D.	Henry DeLeeuw, B.S., M.D.
Leon R. Boruch, B.S., M.D.	

GENERAL ROTATING RESIDENTS

Martin J. Cannon, B.S., M.D.	Joseph D. Picard, M.D.
Thomas L. Coriden, A.B., M.D.	William S. Reed, M.D.
Paul Haak, B.A., M.D.	Russell G. Sandberg, A.B., M.D.
Richard D. Jackson, B.S., M.D.	Richard A. Sanctuary, A.B., M.D.
Burns G. Newby, B.S., M.D.	Shih-Ming Tai, B.S., M.D.

INTERNES

1948 - 1949

Earl D. Acker, B.S., M.D.....	July 1, 1948 to July 1, 1949
Richard G. Barstow, M.D.....	July 1, 1948 to July 1, 1949
Richard P. Berko, M.D.....	July 1, 1948 to July 1, 1949
James L. Brady, Jr., B.S., M.D.....	July 1, 1948 to July 1, 1949
Richard D. Budd, M.D.....	July 1, 1948 to July 1, 1949
Eugene J. Cetnar, M.D.....	July 1, 1948 to July 1, 1949
Charles N. Clarke, A.B., M.D.....	July 1, 1948 to July 1, 1949
Richard K. Crissman, B.S., M.D.....	July 1, 1948 to July 1, 1949
Raymond A. Debo, B.S., M.D.....	July 1, 1948 to July 1, 1949
John O. Esslinger, M.D.....	July 1, 1948 to July 1, 1949
Donald G. Hunter, M.D.....	July 1, 1948 to July 1, 1949
Ruben Kurnetz, B.S., M.D.....	July 1, 1948 to July 1, 1949
Frederick E. Marsh, Jr., B.S., M.D.....	July 1, 1948 to July 1, 1949
William H. Murray, M.D.....	July 1, 1948 to July 1, 1949
Seymour L. Rapp, B.S., M.D.....	July 1, 1948 to July 1, 1949
Kenneth J. Ray, M.D.....	July 1, 1948 to July 1, 1949
Andrew G. Sharf, B.A., M.D.....	July 1, 1948 to July 1, 1949
Madoka Shibuya, A.B., M.A., M.D.....	July 1, 1948 to July 1, 1949
Howard L. Smith, M.D.....	Jan. 1, 1948 to Jan. 1, 1949
Robert L. Tentler, B.S., M.D.....	July 1, 1948 to July 1, 1949
Harry Trosman, M.D.....	July 1, 1948 to July 1, 1949
David A. Wasser, M.D.....	July 1, 1948 to July 1, 1949

SUBSCRIBERS TO GENERAL ENDOWMENT FUNDS

1888

ENDOWMENT FUND No. 1

James McMillan	\$50,000.00	
John S. Newberry	50,000.00	
		<u>\$100,000.00</u>

1890

ENDOWMENT FUND No. 2

Helen H. Newberry	\$50,000.00	
James McMillan	50,000.00	
Dexter M. Ferry	50,000.00	
H. Kirke White	10,000.00	
Martin S. Smith	10,000.00	
Wm. C. McMillan	10,000.00	
Thomas Ferguson	5,000.00	
Hon. Truman H. Newberry	2,333.34	
John S. Newberry	2,333.33	
Helen Handy Newberry	2,333.33	
Ransom Gillis	1,000.00	
H. A. Newland	1,000.00	
A. E. F. White	1,000.00	
E. S. Barbour	1,000.00	
J. B. Mulliken	1,000.00	
Amos Chaffee	1,000.00	
Mrs. Redman, 1890	500.00	
Alanson Sheley, 1893	500.00	
E. H. Flinn, 1912	5,000.00	
Mary McMillan, 1919	5,000.00	
Philip H. McMillan, 1920	10,000.00	
Julia F. Owen, 1922	5,000.00	
Elizabeth A. McMillan, 1923	91,045.50	
Irene Sprague Moore, 1923	2,000.00	
Jessie Knight, 1923	500.00	
Oscar LeSeure, M.D., 1926	25,000.00	
Charles A. Dean, 1927	1,000.00	
Millard T. Conklin, 1928	25,000.00	
Dr. George Ralph, and Maggie Hayward Andrews, 1941	5,000.00	
Estate of Harriet B. Newberry, 1943	500.00	
Estate of Truman H. Newberry, 1947	5,000.00	
		<u>\$379,045.50</u>
Amos Chaffee, 1888, Real Estate (estimated)	\$51,056.71	

ENDOWED ROOMS AND BEDS

Mrs. E. T. Barbour, 1901—Room 230, Corridor F

*To be known as the Tefft Memorial Room in memory of her father.
Candidates for this room to be nominated by the donor or her heirs.*

Ladies of the Maccabees, 1901—Bed in Women's Surgical Ward

*For the free use of the members of the Order of the Ladies of the
Modern Maccabees of Michigan.*

Mrs. Delia Hanmer, 1908—Room 239, Corridor F

For the free use of singers and musicians of Detroit.

Woman's Benevolent Association, 1912—Bed in Women's
Surgical Ward

*For use of members of the Order of the Ladies of the Maccabees
of the World.*

Mrs. Helen H. Newberry, 1913	}	Room 201
Hon. Truman H. Newberry, 1913		
John S. Newberry, 1913		
Mrs. Helen N. Joy, 1913		

*For the free use of graduates of the Grace Hospital School of
Nursing.*

Miss Elizabeth P. Kirby, 1919—Room 403

To be known as the George Kirby Room.

ROOMS AND WARDS FURNISHED BY FRIENDS OF THE HOSPITAL

CORRIDOR B

Room (207) In memory of Mrs. Emory Low Ford.

CORRIDOR C

Room (307) In memory of Mrs. Elisha H. Flinn.

CORRIDOR D

Room (401) In memory of Ethel Stark Dunn.
Room (402) In memory of Dr. Charles Hastings.
Room (403) In memory of George Kirby.
Room (406) In memory of Dr. Louis J. Goux.
Room (407) Oscar LeSeure Room.

CORRIDOR E

Ward (10) The Frederick Buhl Memorial Ward.
Ward (12) The Elisha H. Flinn Memorial Ward.
Ward (14) Mrs. Philip McMillan.
Ward (16) Mrs. Geo. M. Black.

CORRIDOR F

Room (229) The Caroline B. Stanton Memorial Room (Mrs. J. S. Newberry).
Room (230) The Tefft Memorial Room (Mrs. E. T. Barbour).
Room (231) Eber W. Cottrell.
Room (232) Clara Boyer.
Room (233) Mrs. DeWitt H. Taylor.
Room (234) Ladies of the Fort Street Presbyterian Church.
Room (235) Mrs. Chas. E. Holland.
Room (236) The Ohio Society of Detroit.
Room (237) The Colburn Memorial Room (Mrs. W. C. Colburn).
Room (238) Mrs. Helen N. Joy.
Room (239) The Hanmer Room for Musicians (Mrs. Delia Hanmer).
Room (240) Elijah H. Drake, M.D. (Dr. H. B. Drake).
Room (241) Mrs. Ransom Gillis.
Room (242) Memorial to Anna M. C. Wetmore (Miss Blanche and Mr. E. C. Wetmore).

CORRIDOR G

Operating Room No. 1—In memory of Harriet V. Conklin.
(Furnished by M. T. Conklin).
Operating Room No. 2—In memory of Henry and Lucinda Smith.
(Furnished by Mrs. M. T. Conklin).

CORRIDOR L

Room (447) Dr. Geo. Ralph, and Maggie Hayward Andrews.
Room (448) Dr. Rebecca Mayers.
Room (449) Luella D. Macauley.
Rooms (445-446) Kittie G. Shiell Memorial. (Mr. Robert Shiell)

SPECIAL BEQUESTS AND GIFTS

Mrs. Newell Avery, 1893.....	\$ 1,000.00
Mr. Eldridge M. Fowler, 1905.....	10,000.00
Special bequest, the income of which is to be devoted to the "education and equipment of nurses."	
Mrs. Delia Hanmer, 1908.....	7,250.00
Bequest for the endowment of a room for the hospital care of sick singers and musicians of Detroit.	
Mrs. Helen N. Newberry, 1909.....	20,000.00
Voluntary payment of all outstanding obligations contracted by the Hospital in erecting the Helen Newberry Nurses' Home.	
Mrs. Levi Grandy, 1910.....	1,500.00
Special bequest to Building Fund.	
Mr. Henry B. Joy, 1911.....	450.00
Contribution to cover cost of new elevator machinery.	
Mr. W. T. Barbour, 1912.....	1,000.00
Contribution for the equipment and furnishings of an infant ward, to be known as the Ella Tefft Barbour Infant Ward in memory of his mother.	
Mrs. E. T. Barbour, 1912.....	3,000.00
Bequest as an endowment fund, the income of which shall be devoted to the maintenance of the Tefft Memorial Room.	
Mrs. Helen Handy Newberry, 1913.....	5,000.00
A bequest, the income to be devoted to the maintenance of the Helen Newberry Nurses' Home.	
Mrs. Helen Handy Newberry, 1913.....	10,000.00
A bequest toward the endowment of a room for the free use of the graduates of The Grace Hospital School of Nursing.	
Hon. Truman H. Newberry	} 1913
Mr. John S. Newberry	
Mrs. Helen N. Joy	
Contributions to complete the endowment of a room for the free use of the graduates of The Grace Hospital School of Nursing.	
Miss Elizabeth P. Kirby, 1919.....	25,000.00
Bequest as an endowment Room 403.	
Miss Elizabeth P. Kirby, 1919.....	2,000.00
Bequest, the income of which is to be devoted to mainte- nance of rooms 402 and 403.	
The Grace Hospital Attending Staff, 1920.....	3,885.00
For Operating Room Equipment.	
Jos. W. Dailey, 1923.....	57,045.00
Bequest for the care of Indigent Sick.	
Jos. W. Dailey, 1923.....	125,000.00
Bequest, one-half interest in the Jos. W. Dailey Bldg.	
Dr. R. H. Stevens, 1924.....	4,730.00
For Deep Therapy and Physiotherapy equipment.	
Mr. W. T. Barbour, 1925.....	5,000.00
For Purchase of X-Ray Equipment, O. P. D.	
Mr. Alexander Dow, Detroit Edison Co., 1926-27-28-29-30-31-32- 33-34-35-36-37-38-39-40-41-42-43-44-45-46-47-48.....	18,600.00
Col. Frank J. Hecker, 1928.....	5,000.00
Bequest, Endowed Bed.	

Mr. Isaac G. Jenkins, 1929.....	3,500.00
<i>Bequest for the care of the sick through the Woodward Avenue Baptist Church.</i>	
Helen N. Joy	} Nurses' Home, 1923-40..... 450,000.00 Helen Handy Newberry Memorial.
John S. Newberry	
Hon. Truman H. Newberry	
Estate of Sarah Bacon Hill, 1939-1946-1947.....	6,500.00
<i>Bequest toward the endowment of a room.</i>	
Helen N. Joy, 1940.....	9,500.00
<i>Deed to Nurses' Vacation Home and Cottage, Elba Island.</i>	
Edith S. Newberry, 1944.....	10,000.00
<i>Bequest to provide free care for qualified patients residing in Wayne County.</i>	
Mr. W. T. Barbour, 1945-1946	25,000.00
<i>To research fund</i>	
Henry E. Candler, 1946-48	1,500.00
<i>In honor of Dr. H. W. Plaggemeyer</i>	
Mr. W. T. Barbour, 1947-48	24,330.00
<i>To general fund</i>	
Mr. Maxwell Jopsey	2,500.00
<i>Diabetic research.</i>	



Lobby and Lounge Nurses' Home



MEMORIALS

During the campaign for building funds, May 12 to 29, 1929, the following friends of the Hospital subscribed for designated memorials.

- Advertisers Inc.—Visitor's Room No. 401.
 Margaret C. Barbour, Nurses' Rest Room No. 19-D. Dedicated to Wm. J. and Irene Chittenden.
 Wm. T. Barbour, South Wing, 1st Floor. Dedicated to Ella Tefft Barbour.
 Mrs. Hoyt and Mrs. Sherrard (Berry Estate), Solarium No. 100. Memorial Edwin Lodge, M.D.
 Mr. and Mrs. Howard B. Bloomer, Solarium No. 417. Dedicated to Warren L. Babcock, M.D.
 Mr. and Mrs. Henry E. Bodman, Private Room No. 436.
 Howard Bonbright, Private Room No. 296.
 Mrs. Ralph H. Booth, Private Room Suite No. 436 to No. 491. Memorial Ralph H. Booth.
 Mr. and Mrs. Walter O. Briggs, North Wing, 2nd Floor.
 Mr. and Mrs. Frank W. Brooks, Jr., Private Room No. 475.
 Caille Brothers, Visitors' Room No. 201.
 Mrs. George H. Clippert, Private Room No. 478. Memorial—George H. Clippert.
 Student Loan Fund Society, Private Room No. 297. Memorial—George G. Caron, M.D.
 Mr. and Mrs. Aaron DeRoy, Private Room No. 495.
 George G. and Anna A. Epstein, Private Room No. 465. Memorial—Bloome Epstein.
 P. T. Evans, Private Room No. 434. Memorial—Jennie Fordyce Evans.
 The Evans Sherratt Co., Dental Room No. 32-C. Memorial—Bruce F. Evans.
 Mr. and Mrs. D. M. Ferry, Jr., Private Rooms No. 463 to 472. Memorial—C. C. Miller, M.D. (No. 468) Solarium No. 435.
 Mr. and Mrs. Leon and H. J. L. Frank, Private Room 497. Memorial—Ella Virginia Frank.
 Robert W. Gillman, Private Room No. 439. Memorial—Henry Gillman.
 Mr. P. H. Grennan, Private Room No. 493. Memorial—Estelle F. Grennan.
 Himelhoch Brothers, Private Room No. 295. Memorial—Bluma Himelhoch.
 Mr. and Mrs. James S. Holden, Oscar LeSeure Surgical Division—North Wing, 3rd Floor.
 Mrs. Helen Newberry Joy
 John S. Newberry
 Hon. Truman H. Newberry } Memorial—Helen Handy Newberry
 } Nurses' Home.
 Mr. and Mrs. Barnes Newberry, Private Room No. 481, Memorial—Carol Hope Newberry.
 Phelps Newberry, Ward No. 275. Dedicated to Harriet Barnes and Truman Handy Newberry.
 Mrs. Harriet Barnes Newberry, Private Rooms No. 282 to No. 285.
 Christina Muir Newberry, Ward No. 274. Dedicated to Christina Muir and Corwin Van Husan.

- Mr. and Mrs. Jerome E. J. Keane, Private Room No. 467. Memorial—Annette Dwyer Keane.
- Mrs. J. B. Kennedy, Private Room No. 478. Memorial—Dr. J. B. Kennedy.
- Mrs. Anna Kresge and Family, Pediatric and Maternity Service, South Wing, 3rd Floor. Dedicated to Dr. R. J. Palmer.
- Mr. and Mrs. Stanley S. Kresge, X-Ray Suite—3rd Floor, Center. Dedicated to Anna E. Kresge.
- Staff Room No. 6A. Dedicated to Dr. Bruce Anderson.
- Ward No. 276. Dedicated to Dr. Bruce Anderson.
- Mrs. Alice D. Lodge, Ward 289. Memorial—Dr. Edwin Lodge.
- Mrs. Jean M. Low, Private Room No. 492. Memorial—Alfred M. Low.
- Francis C. McMath, Private Room No. 473. Memorial—Gertrude Marks.
- Mr. and Mrs. J. T. McMillan, Front Lobby.
- Louis Mendelssohn, Solarium No. 134-A.
- Mrs. Alice Booth Miller, Private Room No. 477.
- Henry L. Obetz, Jr., Ethel O. Fullenwider and Jessie O. Rose. Private Room No. 286. Memorial—H. L. Obetz, M.D.
- Dr. and Mrs. Clarence I. Owen, Private Room No. 271. Memorial—Etta M. Wise.
- Papoose Club. Papoose Fountain.
- George Harrison Phelps, Private Rooms No. 484 and No. 485.
- Mrs. George S. Rolshoven, Private Room No. 476. Memorial—Herman A. Rolshoven.
- Mr. and Mrs. Murray W. Sales, Front Lobby No. 101. Memorial—Frances Murray and Leonard Sales.
- Mr. and Mrs. S. E. Sallan, Visitor's Room No. 126.
- Mr. and Mrs. J. B. Schlotman, Solarium No. 213.
- Mr. and Mrs. D. W. Simons, Private Room No. 466. Memorial—Ruth Oppenheim Simons.
- Mrs. Harriet B. Staley, Solarium No. 288. Memorial—John W. Staley.
- Dr. and Mrs. C. Emerson Vreeland, Gastro-Intestinal Room.
- Mr. and Mrs. Fred Wardell, North Wing, 1st Floor.
- C. C. Winningham, Private Room No. 474.
- Mr. and Mrs. E. B. Whitcomb, Private Room No. 463. Dedicated to James E. and Harriet J. Scripps.

SPECIAL MEMORIALS

- Dr. Stephen H. Knight Memorial, Solarium 321-A.
- Dr. Rollin H. Stevens, Memorial, Private Room No. 494.
- William A. Giffen Memorial.
- Samuel H. Meyers Memorial.

NORTHWESTERN BRANCH MEMORIALS

- Mrs. C. Roy Davis, Operating Room 2. Memorial—C. Roy Davis, M.D.
- Mrs. B. L. Bryant, Private Room No. 504. Memorial—B. L. Bryant, M.D.
- Dr. C. A. Fettig, Private Room No. 511. Memorial—Dr. Felix Fettig.
- Dr. George L. Koessler, Double Room No. 314.
- Dr. and Mrs. J. A. Nowicki, Private Room No. 503.
- Mrs. Grace E. Mercer, Electrocardiograph Room No. 81-E.

REAL ESTATE AND PROPERTY ACCOUNT

1888	Cost of construction, Main building hospital.....	\$ 124,890.44
1888	Cost of equipment and furnishings for same.....	15,917.85
1888	Hospital and Nurses' Home real estate (estimated)....	51,056.71
1899	Cost of construction and equipment, main building Nurses' Home	27,911.81
1910	Cost of construction and equipment, new addition to Hospital	113,736.36
1910	Cost of construction and equipment, new addition Nurses' Home	17,835.84
1913	Miriam Memorial Branch gift, real estate and buildings	20,000.00
1914	Cost of construction and equipment, Women's Building	45,220.27
1914-15	Cost of construction and equipment, Operating Pavilion, Miriam Memorial Branch	2,647.52
1915-16	Cost of construction, west addition Nurses' Home.....	3,494.76
1916-17	Cost of construction and equipment—X-Ray addition..	7,060.44
1916-17	Cost of construction and equipment—Children's Ward..	7,379.98
1919	Expenditures account construction of Nurses' Home Miriam Memorial Branch	59,498.77
1919-21	Expenditures account construction of North Wing, Main Building	106,404.36
1922	Cost of construction and equipment, Laboratory addition	20,761.01
1923	Construction account Ward Utility Rooms.....	12,370.33
1923	Industrial Shops Building and Equipment.....	26,455.87
	Alexandrine Ave. E. Properties, Cost.....	125,036.97
1924	Alexandrine Ave. E. Properties, Garages.....	8,279.71
1926	Out-Patient Department and Equipment.....	241,753.16
1926	Purchase of 259 W. Grand Blvd.....	20,000.00
1927	Private Pavilions (K. and L.).....	148,616.57
1928	Fire-proofing Women's Building.....	3,061.95
1929	Purchase of 255 West Grand Blvd.....	22,500.00
1930	Office and Nursery Wing (alteration).....	34,600.53
	Pharmacy and P. R. South Wing.....	30,083.27
	Laundry addition	22,925.08
1931	Nurses' Home, Helen Handy Newberry Memorial.....	598,453.74
	Men's Building, Alterations, formerly Nurses' Home....	22,961.41
1931-33	Memorial Building, including Refrigeration Plant and Laundry addition	784,390.78
1935	Rebuilding Deep Therapy Department.....	4,778.47
1935	New Dietetic and Chemical Laboratories, Nurses' Home	2,488.36
1938	Library and Service Addition.....	70,461.31
1938	Operating Room and Laboratory Alterations.....	11,085.18
1938-42	Northwestern Branch, The Grace Hospital.....	1,368,088.20
1940	Nurses' Vacation Home and Cottage—Elba Island.....	9,500.00
1945	Passageway to Laboratory—Main Hospital.....	4,930.33
1945	Addition to 5th Floor Kitchen—Main Hospital.....	16,790.97
1946-47	Rehabilitation of Main Kitchen.....	100,284.70
1947	Main Storeroom	14,134.25
		<hr/>
		\$ 4,327,877.31

ENDOWMENT AND ANNUITIES

\$50,000 endows a private room and permits the donor to name the occupant of the bed.

\$25,000 endows a ward bed and permits the donor to name the occupant of the bed.

\$2,500 will pay the expenses of a patient or patients in a ward bed for one year, and permits the donor to name the occupant of the bed.

\$1,000 will decorate and furnish a private room. The donor's name, or the name of another as a memorial, can appear on a tablet on the door of such room.

\$750 will completely furnish a private room. The donor's name, or the name of another, as a memorial, can appear on a tablet on the door of such room.

FORM OF BEQUEST

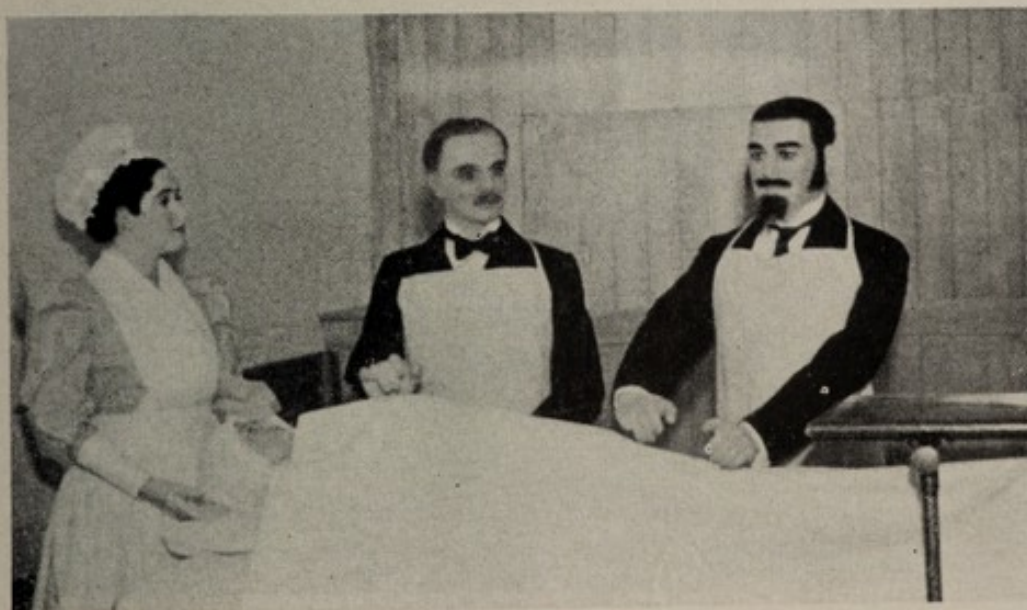
*I give and bequeath to The Grace Hospital in the City
of Detroit, the sum of.....
to be applied to the use and benefits of said Hospital for the
purpose of.....
under the direction of its Board of Trustees.*

Date.....

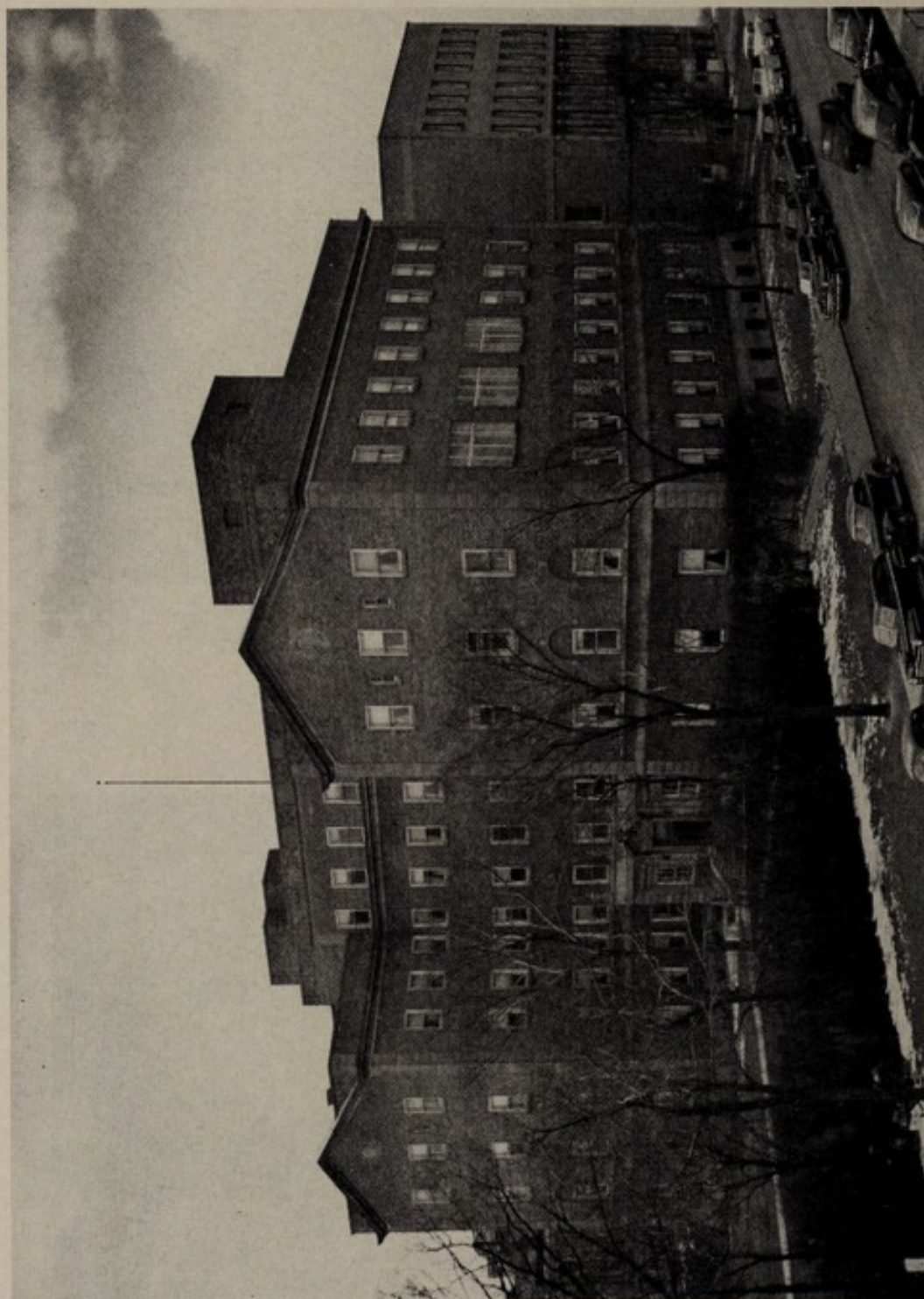
Signed.....



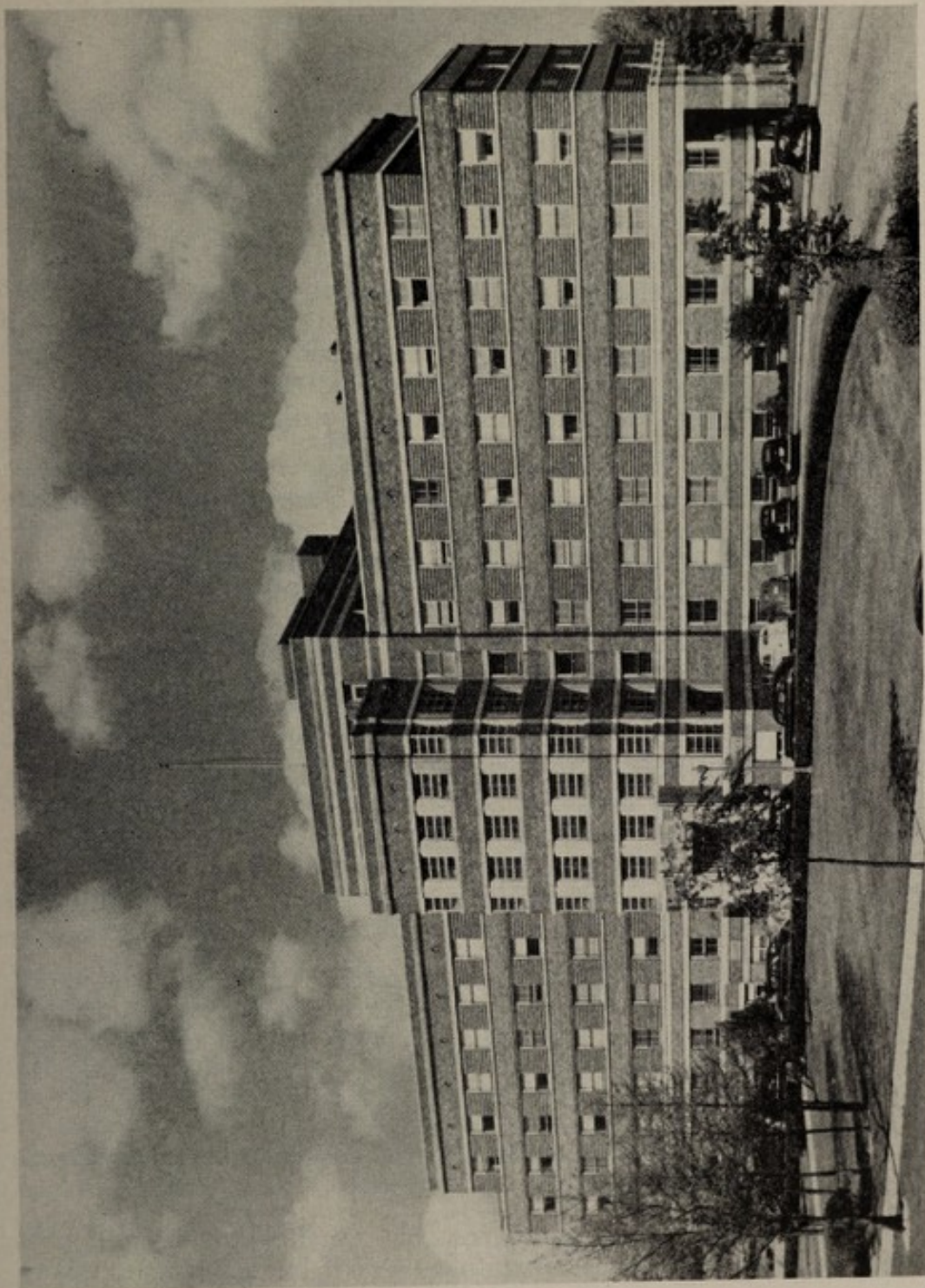
Grace Hospital
1888



Operating Room Scene
Vintage of 1888



*Memorial Building
Brush Street Entrance*



The Grace Hospital—Northwestern Branch

DIRECTOR'S REPORT

*Board of Trustees,
The Grace Hospital,
Detroit 1, Michigan
Gentlemen:*

It is customary that an accountancy of the stewardship of The Grace Hospital be rendered each year and the report for the year 1948 is herewith presented. However, before going into the statistical and general resume of the fiscal year itself, I would like to bring other facts to the attention of the Board.

Sixty years ago, on December 6th, 1888, the first patient was admitted to the then newly born Grace Hospital—an institution of approximately 100 beds located well on the outskirts of Detroit. One year later a training school for nurses was started—now the oldest nursing school in continuous operation in the City.

Sixty years later on its anniversary date, The Grace Hospital can review its record with pride. Some five hundred forty-seven thousand, six hundred thirty-nine (547,639) patients have been discharged through its doors and over sixty thousand (60,000) babies have been born. The hospital physical plant comprises two distinct units with a total bed capacity of 756 patients and a payroll of close to fifteen hundred employees. Even now there is evidence of further growing pains, and architects, in cooperation with the Trustees and the Administration, are planning an additional hundred bed unit to the Northwestern Branch.

No institution can live and grow unless it's founded on more than bricks, mortar and figures. The Grace Hospital was born and dedicated to two major premises: (1) That it give the best care possible to its patients. (2) That it train and teach its doctors and nurses to give service to the community and humanity.

That it has not broken faith is evidenced by its many doctors, nurses and technical graduates.

All of this has been made possible by the present and past Board of Trustees and the Hospital's many friends. Through wars and depressions the spirit of service has always been present. It is a proud record.

It is, therefore, with humility as well as pride that I give you this report for one year—the year of 1948—our 60th anniversary.

SUMMARY OF HOSPITAL SERVICE

For the Year, 1948

	Main Hospital	Northwestern Branch	Combined
Number of Adults Remaining in Hospital December 31, 1948	323	142	465
Number of Adults Discharged in 1948.....	16,518	9,283	25,801
Total Number of Adult Patients.....	16,841	9,425	26,266
Number of Infants Remaining in Hospital December 31, 1948	43	41	84
Number of Infants Discharged in 1948.....	2,432	2,649	5,081
Total Number of Infants.....	2,475	2,690	5,165
Total Patients Treated in Hospital During 1948	19,316	12,115	31,431
Total Treated in Emergency Department During 1948	4,352	6,657	10,409
Total Treated in Hospital and Emergency Departments During 1948	23,668	18,772	41,840
Total Number of Visits to Out-Patient Department	29,566
Total Adult Patient Days.....	129,740	60,721	190,461
Total Infant Patient Days.....	13,571	15,657	29,228
Total Patient Days	143,311	76,378	219,689
Number of Days Free Treatments— Free Cost to Patients.....	8,745
Daily Average Number of Patients.....	392	209	601
Average Length of Treatment of Each Patient — Days	7.4	6.3	6.8
Cost of Maintenance per Patient Per Day....	\$20.37	\$21.30	\$20.66

Again this year we show a greater number of patients treated than ever before, yet a smaller number of actual patient days spent at the hospital. This latter means an actual loss in daily income and is occasioned by the early ambulation and subsequent short stay of patients. Our Obstetrical Department has shown a noticeable percentage loss in bed occupancy. This is true nationally as well as locally and follows closely birth and population curves. Most hospitals are very flexible in their ability to substitute other types of bed cases when one department lags, but of all categories, obstetrical cases must be kept isolated in a separate department with specific rules and regulations. Even though there is an actual dearth of medical and surgical beds, no such cases can be allowed on an obstetrical floor. Statisticians and chartists point out to us that this condition will exist for at least the next five years.

The stark reality of higher costs must still be faced in view of the continued rise in prices of drugs and labor, plus the probability of a social security payroll tax before the end of the year.

PROFESSIONAL ACTIVITIES

Our Department of Education and Research has developed so rapidly and well that I have requested Dr. Frank A. Weiser, its Director, to make a special report which appears on page 35.

It is with a sense of sorrow and great loss that I report to you the death of four members of the Staff in 1948.

Dr. Emil Amberg of the Nose and Throat Department, and Dr. Frank Mabey formerly of the Obstetrical and Gynecological Department, had served long and faithfully both on the Active and Out-Patient Department Staffs. Dr. George Livingston had been with us only a few short months when taken and Dr. Burton Rhuberry, 1943 Interne, died while still taking residency training at another hospital.

As this report was being compiled, notification came of the death of Dr. Harold K. Shawan, long an Attending Member of our Surgical Staff. Dr. Shawan was one of Detroit's outstanding surgeons and a splendid teacher. The interne or resident fortunate enough to draw several months preceptorship under him learned much and his service was always in demand.

ALTERATIONS AND IMPROVEMENTS

During the year many alterations and improvements have been made to both hospitals. This spring the Northwestern Branch was completely painted exteriorly and caulked. The power house walls were supplemented with additional auxiliary walls to prevent further damage from soil pressure. New sterilizing units were added to both the Operating Room and Surgical Supply.

At the Main Hospital many much needed improvements have been accomplished.

Operating Room No. 1 has been completely renovated and is now the largest and best equipped of all the modern operating rooms. Corridors B and C of the old building have new floors, sound proof ceiling, fluorescent lighting and modernized utility rooms. The Cashier's Office, Telephone Room and Blood Bank have been sound proofed.

Room 201 which is our endowed room for Grace graduate nurses has been tastily redecorated. Room 202, as an experiment, has been papered with a new washable wall paper which may be the answer to some of our room maintenance problems. It will be watched closely.

Our Diagnostic X-Ray Department is being revamped step by step and should be over 50% completed by the end of 1949. This is being accomplished without loss of service or too much inconvenience to patients.

FUTURE PLANS

It has been announced by the Greater Detroit Hospital Fund Committee that our hospital will be allocated \$1,250,000.00 of a planned \$19,000,000.00 to be raised for the addition of some fifteen hundred acute hospital beds for the greater metropolitan area of Detroit. It was stipulated that this money should go towards an approximate 100 bed addition to the Northwestern Branch. Architects have been engaged and the first sketches are now ready for your approval. Sketches are likewise being drawn for a proposed employees dormitory to be on the southeast corner of the hospital grounds. The Northwestern area of Detroit is zoned and will not permit the construction of apartment buildings or boarding houses, consequently many of our employees travel 10 to 12 miles twice daily on buses to reach their work. Such a dormitory will increase both efficiency and good service besides make for much employee happiness.

TRENDS

There is no question or doubt but what the present national government is socialistically inclined. Just what this portends for the great group of non-profit hospitals is a matter for grave conjecture. This much is fairly certain. Employees of all hospitals will be given social security status. This is a relatively small matter and has been coming for several years. The Wagner-Murray-Dingell Bill has been revived. To make it work, however, with all its implications of "government medicine" a tax burden would be added to the public which that group could not absorb or stand at this time without courting a major depression. Labor we understand has stated specifically that it will not support this Bill at this time. The many pros and cons thrown across the water from the present English system leave grave doubts of efficacy of this form of control. That part of the Hoover Report, dealing with sick and hospital care, showed terrific wastage and duplication in all branches of the Armed Forces, Veterans Administration and the Public Health Service. Yet the National administration has promised the people that it will aid and add to our health structure so that more and better care will be acceptable to all peoples. It is a large order to fill and must be watched carefully.

ACKNOWLEDGEMENTS

Our hospital is a service institution and this past year has once again given us reason to be proud of the unity of purpose and striving for improved service on the part of all employees, nurses

and physicians. I wish therefore, to express my thanks to all employees who have cooperated so whole-heartedly, throughout the year; the Executive Committee of the Attending Medical Staff for yeoman service in the reorganization of the Staff and helping in the solution of many vexing professional problems; to the officers of the Board and to all the Trustees for their understanding approach and many thoughtful considerations.

Respectfully submitted,

KENNETH B. BABCOCK, M. D.,
Director

REPORT OF DIRECTOR OF EDUCATION

The Department of Education and Clinical Research began its activity on October 1, 1947. Its program was activated on July 1, 1948. The interim was devoted to a survey of the available teaching personnel, a study of the methods used in representative hospitals in the East and Middle West and conferences with Deans of Medical Schools in those areas. In cooperation with Graduate Training Committees appointed from each major department of the hospital, the objective of this office was determined.

Because patients are not segregated by departments, it was necessary to devise some means of allocating patients which would approach segregation. This was accomplished by dividing the hospitals into six divisions, and assigning a group of interns and residents, in charge of a Head Resident, to each division to function as a team in the study of disease and to insure adequate teaching. Each unit functions autonomously. Case assignments, Ward rounds, division conferences, are the responsibilities of the Division Head Resident—The Internes move from one division to the next every two months—The Residents every six months—thus every Intern has contact with every Resident. Each major Department is in charge of a Chief Resident—In Medicine, Dr. J. Aiuto, in Obstetrics and Gynecology Dr. C. E. Darling, in Surgery, Dr. C. E. Stebbins. It is their function to correlate the teaching activities of their respective departments with the other departments.

As of July 1, 1948, each Resident has been assigned a permanent day in the Out-Patient Department which he attends throughout his residency stay. Patients from his clinic admitted to the hospital are under his care. A qualified Visiting Staffman works with him as counsellor. The Internes also rotate through the various Out-Patient Clinics.

For the 1948-49 year there were 32 Interns and 43 Residents.

The Basic Sciences as Academic courses at Wayne University have been discontinued. Basic Sciences are taught in their application to clinical medicine at the bedside and in seminars and departmental meetings, and during the six months service in Pathology. The major share of the discussions are prepared and given by the Residents under Visiting Staff guidance and supervision.

During the past year there have been held three one hour seminars weekly, a weekly meeting of each department, a weekly

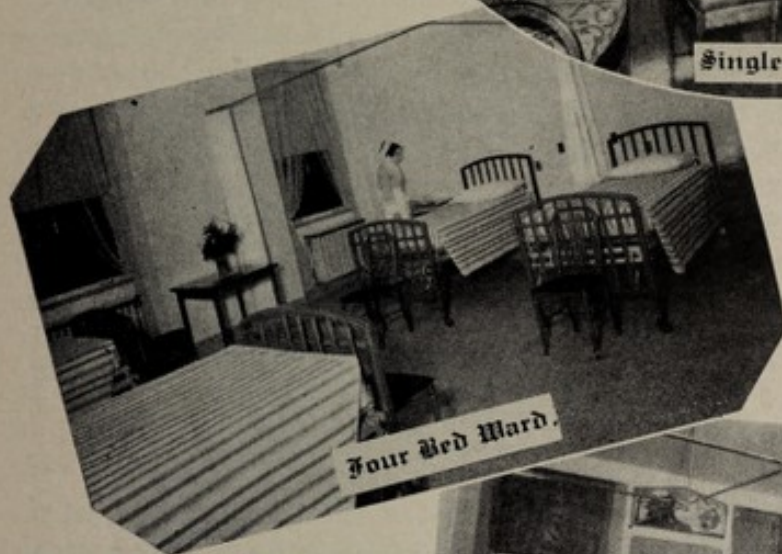
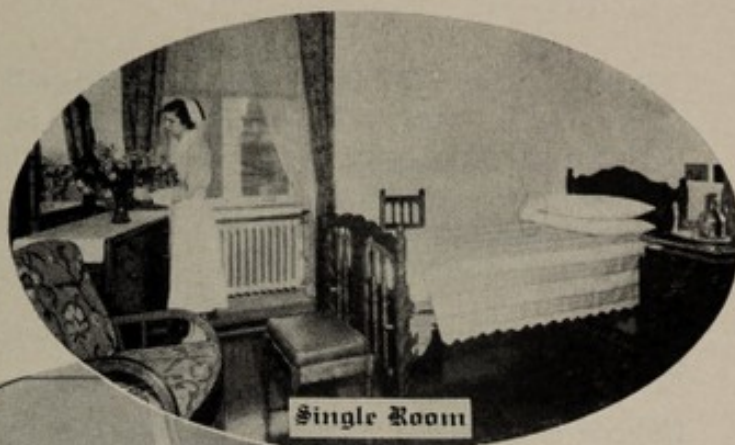
Clinical Pathological Conference, a monthly meeting of the specialty departments, a weekly conference by each division with the Director of Education, a monthly meeting of departmental Journal Clubs and intradivisional meetings which vary in number from two or more depending on the wishes of members of each individual division.

The House Staff has worked well without prescribed rules and regulations as such. There is a greater interest in sound clinical and basic medicine, better records, and better rapport between Interne and Resident and between the House Staff and Visiting Staff. These things were possible only because the Visiting Staff and the Administration has been so cooperative and sympathetic with the program and because the Interne-Resident Staff has worked hard. The Trustees who support this office financially have given more than common encouragement. The professional library, under Mrs. Brewer, has been of great help. The Visiting Staff who have given freely of their time from busy practices are probably most responsible for the measure of success achieved to date.

Respectfully submitted,

FRANK A. WEISER, M.D.

*Director of Education
and Clinical Research*



MEMORIAL BUILDING—1932

REPORT OF THE SCHOOL OF NURSING

To the Board of Trustees
The Grace Hospital
Detroit, Michigan
Gentlemen:

I have the honor of presenting the Annual Report of the School of Nursing for the year ending, December 31, 1948.

Director of the School of Nursing and Nursing Service.....	1
Assistant Director of the School of Nursing and Nursing Service.....	1
Assistant Director of the School of Nursing.....	1
Assistant Directors of Nursing Service.....	3
Supervisor of Student Health Service.....	1
Instructor of Medical and Surgical Nursing.....	1
Assistant Instructor of Medical and Surgical Nursing.....	0
Instructors of Nursing Arts.....	1
Assistant Instructors of Nursing Arts.....	3
Part Time Instructors.....	1
Supervisor of Operating Rooms.....	1
Assistant Supervisor of Operating Rooms.....	2
Graduate Nurse Anesthetists	6
Supervisor of Obstetrical Department.....	1
Assistant Supervisor of Obstetrical Department.....	1
Teaching Supervisors—Medical and Surgical.....	1
Night Supervisors	2
Assistant Night Supervisors	2
Number of Subsidiary Workers.....	197
Head Nurses	18
Staff Nurses (average for year).....	83
Number of inquiries received and questionnaires sent out.....	489
Number of applications sent out.....	331
Number of applications received.....	118
Number of medical examinations—Prospective students.....	115
Number of students admitted (including 3 by transfer).....	79
Number of graduates completing course.....	89
Number of students re-instated.....	6
Number of students rejected during the pre-clinical period.....	3
Number of students resigned.....	19
Number of days illness—students.....	683
Number of visits to Health Clinic.....	1153
Number of days vacation.....	4387
Number of students in School of Nursing.....	125
Number of pre-clinical students in School of Nursing.....	53
Number of Wayne University students (advanced).....	14
Total number of students, January 1, 1949.....	197

In reviewing the School of Nursing and Nursing Service for the year 1948, there are many discouraging factors. The shortage of graduate nurses became more acute and the number of student nurses decreased markedly during this period. It has only been by close supervision and the co-operative efforts of all in the Department of Nursing that we were able to carry the program with any degree of success. At times it was difficult to staff the wards, but we feel that no patient was deprived of adequate nursing care.

Wayne University College of Nursing has continued the co-operative program started last year. Our students continue to take two semesters of work in the University, and it has been of great value to the students. At the same time, it has assured our School of a well-prepared faculty. We are indeed grateful to Wayne University for their help at a difficult period.

Recruiting well-prepared students has been a major problem and concerns us all very much. Recruiting has been carried on a national, state, and local level, and we feel that continued recruiting efforts will eventually yield more tangible returns.

Graduation exercises were held on May 10, 1948 at the Detroit Institute of Arts. Reverend Frederick Olert, Pastor of the First Presbyterian Church of Detroit, was the speaker. Ninety-two graduates received the pin and diploma of the School.

Joy Lodge was opened on Decoration Day, and the students and graduates of the School enjoyed the summer visits there very much. We express our appreciation to Mrs. Henry B. Joy for her generosity in making this home a real vacation and rest haven to our nurses. To Mr. and Mrs. Henry Rossman and to Mrs. Georgie Waterman, may we express our appreciation for their part in making the vacation home a real home to all who visited the lodge.

Our extra curricula program has been in full swing during the school year. The Glee Club, under the direction of Mr. William Robinson, has been very successful and is a source of pride to the friends of the School. Other activities, such as bowling, dances, basketball, parties, etc., have kept our social director's schedule well filled.

The dearth of well-prepared instructors, supervisors and head nurses has been a serious problem for the faculty, which is inadequate at the present time. There does not seem to be much relief in sight because the demand for well-prepared people in schools of nursing far exceeds the supply.

Again we kept complete records of nursing care hours contributed by the students. The year 1948 shows a decrease over the year 1947.

Student hours contributed are as follows:

First year students.....	19,982
Second year students.....	94,453
Third year students.....	104,384
(Wayne University-Five year students).....	6,932
Total.....	225,751

In 1945 students contributed.....	464,583 hours
In 1946 students contributed.....	435,244 hours
In 1947 students contributed.....	333,275 hours
In 1948 students contributed.....	225,751 hours

These figures tell the story of the decreased enrollment in the School.

During the year we lost twenty-seven students. Seven of these were pre-clinical students; five, first-year students; fourteen, second-year students; and one, third-year student.

The following reasons were given:

Marriage	6
Scholastic failure	6
Family responsibilities	6
Health	4
Dropped from the School	1
Did not like nursing.....	4
	<hr/>
Total.....	27

Several of these students may re-enter the School at a later date. During the year, we re-instated six students, thus cutting our net loss to twenty-one.

To the following we express our appreciation for the cooperation and help we have received—the Board of Trustees, the School of Nursing Committee, to Dr. Kenneth Babcock—our Director, the Women's Auxiliary of The Grace Hospital, the Alumnae Association, the Volunteers, the Department Heads, the Faculty, our Students and to the many friends of the Hospital who have helped us achieve many of our objectives. We look forward to 1949 with confidence in the future of our School and Hospital because of the deep interest and support of our valued friends. Our School is now sixty years old—January 1, 1949, and has graduated 2,349 nurses, many of whom are holding places of trust and responsibility throughout the world.

Respectfully submitted,

KATHLEEN YOUNG SANDS, R.N.

*Director, School of Nursing
and Nursing Service*

THE GRACE HOSPITAL SCHOOL OF NURSING

NURSING STAFF — 1948

Kathleen Young Sands, R.N., B.S., M.A.	Director, School of Nursing and Nursing Service
*Margaret McNaughton, R.N., B.S.	Assistant Director, School of Nursing and Nursing Service
Ethel MacLennan, R.N., B.S.	Assistant Director, School of Nursing
Naomi Edwards, R.N., B.S.	Assistant Director of Nursing
*Marjorie Sanders, R.N., B.S.	Assistant to Director of Nurses
Irene G. Dickerson, R.N.	Assistant Director of Nursing Service
Grayce B. Smith, R.N.	Assistant Director of Nursing Service
Dorothy West, R.N.	Supervisor of Student Health
Marjorie Irwin, R.N., B.S., M.A.	Instructor in Medical and Surgical Nursing
Minnie Vinciguerra, R.N., B.S.	Instructor of Nursing Arts
Elizabeth Davis Baggleman, R.N., B.S.	Assistant Instructor of Nursing Arts
Elizabeth Burnett, R.N., B.S.	Supervisor, Out-Patient Department
Elizabeth McConachie, R.N., B.S.	Assistant Supervisor, Out-Patient Department
Faith Bradeck, R.N., A.B.	Part Time Instructor of Subsidiary Workers
Jessie Scureman, R.N.	Evening Supervisor
Mary Jeffrey, R.N.	Assistant Evening Supervisor
Charlotte J. Keigh, R.N., B.S.	Night Supervisor
Mary Cassell, R.N.	Assistant Night Supervisor
Mabel T. McCarthy, R.N.	Obstetrical Supervisor
Mary Lou Leffler, R.N., B.S.	Assistant Supervisor and Instructor in Obstetrical Nursing
Cordelle Pietz, R.N., B.S.	Pediatrics Supervisor
*Verlie Ziegler, R.N., B.S.	Medical and Surgical Supervisor
Mary Camilla Davis, R.N., B.S.	Medical and Surgical Supervisor
Mary Margaret Weinschreider, R.N.	Operating Room Supervisor
Eugenia Petersen, R.N.	Assistant Operating Room Supervisor
Magdalene Kozlowski, R.N.	Assistant Operating Room Supervisor
Gladys I. Young, A.B.	Social Director, School of Nursing
Evelyn Gutowske, B.A.	Librarian, School of Nursing
Edna Dodd	Matron, Nurses' Residence
Lauretta Creighton	Assistant Matron, Nurses' Residence
Anne Monaghan	Assistant House Mother (Evening Duty)
Dorothy McCormick	Secretary
Sophia Kamer	Typist
*Martha Gies	Typist
Myra E. Babcock, M.D.	Chief Anesthetist
Mabel Courtney, R.N.	Nurse Anesthetist
Ada Snider, R.N.	Nurse Anesthetist
Onalee D. Hostetler, B.S.	Executive Dietitian
Jeanne Cox, B.S.	Assistant Dietitian
Olga Wasylyk, B.S.	Assistant Dietitian
Esther L. Patterson, B.S.	Assistant Dietitian

HEAD NURSES

Philomena Ratchford, R.N.	Lillian Mackie, R.N.	Frances G. Scott, R.N.
LaVaughn Sharp, R.N.	Helen Rice, R.N.	Mary Fuller, R.N.
Pearl Sipsock, R.N.	Mary M. Pio, R.N.	Thelma Gibson Radden, R.N.
Helen Ries, R.N.	Josephine Bopp, R.N.	Ann Duban, R.N.
	Norma J. Iveson, R.N.	

ACTING HEAD NURSES

Edna Rosin, R.N.	Virginia Davidson, R.N.	Mary Masterson, R.H.
Laura Dino, R.N.	Josephine Brown, R.N.	Martha Barnett, R.N.

THE GRACE HOSPITAL—NORTHWESTERN BRANCH

Anne Callahan, R.N.	Director of Nursing Service
Blanche A. Patterson, R.N.	Assistant Director of Nursing Service

SUPERVISORS

Mayaloes Riechen, R.N.	Frances E. Collins, R.N.	Mary J. Augustine, R.N.
Elizabeth Owen, R.N.	Beatrice Rabin, R.N.	Dorothy Farnsworth, R.N.
Gertrude Clune, R.N.	Marie Cashin, R.N.	Ysobel Chisholm, R.N.
Genevieve Sproul, R.N.	F. Colette Jensen, R.N.	Beatrice Floore, R.N.

DIETITIANS

Patricia Navin, B.S.	Barbara Perkins, B.S.	Marion Tazelaar, B.S.
----------------------	-----------------------	-----------------------

ANESTHETISTS

Marjorie Reynolds, R.N.	Virginia Richter, R.N.	Erma Thomas, R.N.
Madeleine Huels, R.N.	Mary De Witt, R.N.	S. Marie Casey, R.N.

*Resigned

CLASS OF 1948

Accola, Alma	Hollowell, Patricia
Andersen, Agnes	Hollyer, Alice
Barber, Margaret	Jarman, Mary
Benoit, Marybell	Jarvi, Helen
Blaine, Joyce	Johnson, Doris
Blossie, Katherine	Johnson, Ruth
Botke, Marjorie	Johnson, Shirley
Brendel, Mattie Lou	Kelly, Jeanne
Bristow, Dorothy	Krampitz, Marian
Budge, Allene	Krol, Eleanor
Bulka, Amelia	Lahti, Della
Capatanos, Helen	Lahti, Viola
Carey, Rebecca	Lands, Beatrice
Carlson, Norma	Lauzon, Pauline
Carpenter, Frances	Leisenring, Mary Lou
Clemett, Florence	Lewis, Margaret
Cossairt, Margaret	Lewis, Sara Gail
Crawford, Eunice	Liedtke, Marie
Cummings, Betty	McCathney, Lois
Deneen, Roberta	McLeod, Margaret
Dick, Geraldine	McMillan, Marion
Drescher, Barbara	Martin, Joanna
Dukelow, Betty	Mathie, Mary
Feeney, Shirley	Maul, Phyllis
Fell, Nancy	Merrell, Dorothy
Ferguson, Geraldine	Method, Jean
Foltting, Elsie	Middleton, Georgianna
Forrest, Eloise	Miller, Dorcas
Gordon, Patricia	Monroe, Jean
Gratz, Dorothy	Pardington, Eleanor
Graure, Virginia	Pearse, Marjorie
Gready, Lois	Phelps, Wanda
Hawes, Laura	Pilz, Jean
Hayward, Beatrice	Pruitt, Nina
Hill, Virginia	Rarity, Marian

CLASS OF 1948 (Continued)

Scane, Margaret
Sebastian, Ruth
Sharkofsky, Patricia
Shaw, Mary Jo
Simpson, Norma

Strey, Arline
Strayhorn, Marion
Town, Theola
Weimer, Barbara
White, Janet

Skrynarz, Dorothy
Sparks, Catherine
Spiecker, Edith
Stanley, Ardis
Stevens, Kathleen

Williams, Virginia
Wilson, Clara
Wulff, Dorothy
Zimmerman, Gladys



Helen N. Joy Nurses' Vacation Home

This beautiful home on Elba Island in the Detroit River was purchased by Mrs. Helen N. Joy for the use of student nurses of The Grace Hospital, and graduate nurses of Detroit schools, on week ends and during their vacation periods, if they desire to avail themselves of its use. The house was entirely rebuilt and remodeled to accommodate comfortably thirty nurses at a time. It also has emergency provisions for twenty additional, giving it a total capacity of fifty nurses.

This Home occupies an elevated position on a bluff overlooking the mouth of the Detroit River. The large grounds and spacious verandas make it an ideal playground for tired nurses. The other buildings include a caretaker's cottage, garage and ice house. The grounds are several acres in extent. A large garden, ample in size, is part of the property. There are a large number of shade trees on the grounds, and in addition sixty fruit trees, including apple, pear, cherry, plum and mulberry. A dock for boats and a bathing beach are features of this summer home.

Student nurses from The Grace Hospital School of Nursing from May 1 to October 1, are sent to the home in groups of thirty. The Hospital maintains a bus service between the Main Hospital and the Vacation Home. The Home is in charge of a caretaker throughout the year, and a housekeeper, cook and maid are employed during the summer months.

POST GRADUATE COURSES

During the year 1948 we received 143 inquiries in reference to the Post Graduate courses given by the hospital. We were requested to recommend candidates for the following positions:

Anesthetists	92
Medical Technologists	70

COURSE IN GENERAL ANESTHESIA

(Inaugurated in 1918)

GRADUATES 1948

Nola Blair, R.N.	Lieucelle Oder, R.N.	Libera Mascia, R.N.
Teresa R. Canty, R.N.	Esther Touchberry, R.N.	Charlotte E. Lane, R.N.
Frances Lenosky, R.N.	Mary L. DeWitt, R.N.	Marian Revta, R.N.
Dorothy Heidtman, R.N.	Mary Shaw, R.N.	Mary Winkler, R.N.
Evelyn Arans, R.N.	Mary J. Kellan, R.N.	Rachel Briggs, R.N.
Harlan Campbell, R.N.	Pauline Kryvicky, R.N.	Stella Casey, R.N.
Madeleine M. Huels, R.N.	Mary I. Bennett, R.N.	Shirley Dunphy, R.N.
Ann Van Kula, R.N.	Brady Willette, R.N.	Virginia Heath, R.N.
Victoria Perlingean, R.N.	Gladys Hughes, R.N.	Betty Smith, R.N.
Rose Keplinger, R.N.	Florence Kustra, R.N.	Thomas Parker, R.N.
	Marcia Goldsmith, R.N.	

MEMBERS OF CLASS

1948 - 1949

Evelyn Rubin, R.N.	Antone W. Nocero, R.N.	June Ray, R.N.
Raymond Gessler, R.N.	Elaine Sargeant, R.N.	Norma Sugarman, R.N.
Irene Cerutti, R.N.	Eileen Austin, R.N.	Rachel Urschaltz, R.N.
Ruth Brucklmayer, R.N.	Bert Dubberly, R.N.	Ella Jean Wells, R.N.
Dorothea Eggers, R.N.	Thelma Hardwick, R.N.	Salam Jeha, R.N.
Winifred Guilliams, R.N.	Daphne Jungk, R.N.	George Bondranko, R.N.
Lillian Razzano, R.N.	Katharine Morrow, R.N.	Relva Tefteller, R.N.
Evelyn Albaugh, R.N.	Leona Wolfe, R.N.	Avis Anderson, R.N.
Charlotte Emling, R.N.	Marjorie Dick, R.N.	Gladys Richardson, R.N.
Irma Kasischke, R.N.	Everett F. Kaup, R.N.	Louise L. Sparks, R.N.

COURSE IN MEDICAL TECHNOLOGY

(Inaugurated in 1919)

GRADUATES 1948

Jean L. Sawdon	Helen M. Haggard	Jean Frailing
Shirley Knox	Mary P. McAllen	Helen Zielinski
Rachel Robertson	Priscilla Fixter	Annette Bennett
Beth Clifford	Marie Spinazze	Norma Jordon

MEMBERS OF CLASS

1948 - 1949

Marie R. Acebo	Lois Ann Sockman	Doreen Murray
Joy Anderson	Marjorie Ballantine	Marion Warnock
Mable C. Blizzard	Barbara Bishop	Ruth Holmes
Zora Johnston	Joyce Gerds	Margaret T. Brown
Jean Scott	Colleen Joseph	Joann Agemy
	Florence Langousse	

X-RAY TECHNIQUE

(Inaugurated in 1914)

MEMBERS OF CLASS

1948

Eugene G. McMaster

Mary Patricia Graham

REPORT OF THE DIRECTOR OF LABORATORIES

1948

To the Director.

The following is the statistical report of the work of the laboratory for the year 1948. The work of the Out-Patient Department is included.

DEPARTMENT OF BACTERIOLOGY:	Main Hosp.	N. W. Branch
Smears and cultures	5,548	1,888
Blood cultures	335	185
Animal inoculations	29	17
Autogenous vaccines prepared	8	1
Cultures and smears for fungi	50	17
Examinations for trichomonas vaginalis	157	7
Darkfield examinations	43	0
Examinations of stools and urines for enteric organisms	95	53
Examinations of exudates and transudates	51	68
Milk cultures	78	0
Nursery formula cultures	815	29
Operating room cultures	115	0
Blood phagocytic indices	39	75
Skin tests including Mantoux, Brucellergen ..	155	69
Penicillin level	34	4
TOTAL	7,552	2,413
 DEPARTMENT OF HEMATOLOGY:		
Blood counts	15,417	5,938
Studies of blood clotting	3,927	1,996
Special hematological studies	564	215
Blood sedimentation rates	2,299	607
TOTAL	22,207	8,756
 DEPARTMENT OF SEROLOGY:		
Blood Kahns	12,274	4,242
Quantitative Kahns	225	0
Blood Klines	12,314	4,330
Spinal Kahns	709	264
Spinal Klines	573	264
Blood Widal's	121	62
Blood agglutination tests for special organisms	137	88
Blood heterophile antibody reaction	123	32
Blood typings	5,293	2,186
Blood matchings	4,311	1,688
Blood Rh factors	3,215	2,133
TOTAL	39,295	15,289

DEPARTMENT OF BIOCHEMISTRY:		
	Main Hosp.	N. W. Branch
Routine urinalysis	27,108	12,383
Special biochemical analyses of urines	414	76
Blood biochemical analyses including sugars, proteins, etc.	13,125	4,206
Bood chemical analyses including sulfonamides, etc.	100	83
Organ function tests including tolerance tests, Mosenthals, etc.	386	204
Gastric analyses	281	174
Fecal analyses	466	336
Stool for bile and urobilinogen	22	0
Spinal fluid examinations including cytological, biochemical, bacteriological	908	264
Kidney stone analyses	3	4
TOTAL	42,813	17,730
DEPARTMENT OF PATHOLOGY:		
Tissues from operative specimens	12,230	Include N. W. Branch)
Postmortem examinations	320	80
Postmortem tissue blocks	7,770	Include N. W. Branch)
Exudates and transudates for carcinoma cells	276	Include N. W. Branch)
TOTAL	20,596	80
MISCELLANEOUS GROUP:		
Urine pregnancy tests	652	130
Basal metabolism tests	1,115	391
Milk butter fat, total solids and specific gravity determinations	78	0
Cream butter fat determinations	78	0
Vital capacity	6	0
Semen appraisal	12	0
Plasma - Units of 250 cc	306	227
Blood - Units of 500 cc	2,917	1,190
TOTAL	5,164	1,938
GRAND TOTAL	137,627	46,206

Respectfully submitted,

CLARENCE I. OWEN, M.D.
Director of Laboratories

REPORT OF THE UROLOGICAL DEPARTMENT
1948

TO THE DIRECTOR:

The following is the report of the Department of Urology, The Grace Hospital, for the year 1948.

IN-PATIENT DEPARTMENT

OPERATIONS:

Kidneys	45
Ureters	11
Urethra	11
Scrotum	91
Penis	9
Bladder	122
Bladder Resections	0
Prostatectomies	62
Prostatic Resections	52
Miscellaneous	4
	<hr/> 407

DIAGNOSIS:

Cystoscopies	151
Cystoscopies and Pyelograms	601
Ureteral Catheterizations	59

TOTAL 1217

OUT-PATIENT DEPARTMENT

Cystoscopies and Pyelograms	79
-----------------------------------	----

Respectfully submitted,

L. W. HULL, M.D.

Chief, Urological Department

DEPARTMENT OF X-RAY THERAPY

Main Hospital

1948

Malignancies	231 Patients
Benign Tumors	17 Patients
Infections and Inflammations	309 Patients
Miscellaneous	93 Patients
Radium	43 Patients

Total Number of Patients..... 693

X-Ray Treatments	6184
Examinations	676
Clinic Treatments	213
Radium Cases	43

Total Treatments and Examinations.....7116

DIVISION OF RADIOLOGY

ANNUAL REPORT — 1948

During 1948 a realistic appraisal of the physical facilities of the diagnostic section of the Department of Radiology became necessary. The following major conditions had to be recognized:

1. A severe break-down of the obsolete dark room facilities.
2. The necessity for additional and more modern equipment, particularly such adapted for examinations in the orthopedic and neurosurgical fields.
3. The lack of suitable and efficient waiting and dressing rooms, of sufficient space and facilities for the ever increasing secretarial and clerical work, of the unavoidable need for additional room for consultation, film study, reading and teaching and of adequate communication facilities.
4. The probability that within a reasonable time—approximately ten years at least—there would neither be a material expansion of the hospital nor could there be an allotment of any material additional space to the existing rooms of the X-ray Department.

In view of the limitations listed in the preceding last paragraph, not all these needs could be met or will be met but a reorganization of the whole department was agreed on and a good start was made on this plan.

During 1947 the obsolete equipment of room 388 was replaced by entirely new and modern facilities: a new well-controlled generating unit with a motor driven tilt table, a suitable tube stand, a spot film device, two rotating target tubes and the necessary smaller supply.

During 1948 an entirely new and modern installation was made in rooms 391 and 391A, giving us dark room and film processing facilities of which we are justly proud and which already have proved very satisfactory and pleasing.

Room 386 was redesigned to give our first secretary a small, but quietly efficient work room.

Room 385 was redesigned as a new fracture room and entirely rebuilt. During the next few weeks we expect installation in this room of the most advanced multiplane fluoroscopic—radiographic ceiling mounted unit.

Room 389 will be redesigned and equipped as a major radiographic room No. 2. Workmen are ready in the near future to undertake the necessary alterations of this room. Equipment is on order and partly already in storage.

The dressing rooms 390 and 328 will be re-equipped for more efficient, more hygienic and esthetic use and appearance (equipment is on order).

A part of room 390 has been set aside as a second consultation room. Additional mobile film reading facilities have been planned.

A complete rehabilitation of rooms 326 and 327 as main radiographic room No. 1 and waiting room is under consideration, also installation of sufficient communication facilities and office equipment.

This program should be completed by Fall of 1949. It is believed that new equipment has been acquired at an advantageous time and price. The completion of these plans will give the hospital as good and efficient a department as can be designed under the limitations stated and we, who work in this department, who have been aware of our handicap during so many years of the past, are grateful to the Director and the Board of Trustees for the encouragement given us and for all the new provisions mentioned on these pages which will contribute very materially to efficiency and happiness in our work, though they may fall short of our idealistic hopes.

The major problems remaining under consideration at the present time:

1. Facilities for photo-fluorographic examination of the chest of every admission to the hospital, possibly in conjunction with a minimum of compulsory laboratory work on each patient—urinalysis, blood count and Kahn test.
2. Improvements in the physical facilities of the department of Radiation Therapy in conjunction with improvements of operating room facilities.
3. A laboratory for work with radio-active isotopes including the necessary personnel—physicist, biologic chemist and technicians.

A solution of these problems may eventually be found in conjunction with building plans for the Northwestern Branch Hospital.

Members of the department are participating actively in the training and educational program at the hospital as organized by the educational director. The training of x-ray technicians will have to be reviewed as we can give them excellent practical experience, but are not equipped to undertake effectively the theoretical schooling which they should have. A combined effort of various Detroit hospitals in conjunction with Wayne University might well be considered for this community service.

The personnel of the department now consists of thirty-one people, ten of them physicians. Dr. Carl Roland left our group in December, 1948, to become Radiologist to the Danville Polyclinic in Danville, Illinois and to be associated with the veterans facility of that city.

The statistical report concerning the work in the department is attached herewith.

C. K. HASLEY, H. A. JARRE,
Attending Radiologists.

DIVISION OF RADIOLOGY

1948

ROENTGEN EXAMINATION OF:			
	Northwestern Branch	Main Hospital	Clinic
I. Accessory cranial structures, facial bones, sinuses, mastoids and teeth	159	456	75
II. Cranial and intracranial structures including pneumo-encephalography	184	1141	63
III. Spinal column including myelography....	372	1349	139
IV. Extremities	1902	2541	291
V. Chest	2147	4306	514
VI. Gall bladder and Gastro-intestinal tract	3322	3677	284
VII. Genito-urinary tract including pregnancy and hysterosalpingography....	569	1157	83
	<hr/>	<hr/>	<hr/>
TOTAL	8655	14627	1449
GRAND TOTAL			24731

REPORT OF THE DEPARTMENT OF ANESTHESIA

The Department of Anesthesia reports a total of 18,938 anesthetics administered at the Main and Branch Hospitals for the year 1948.

ANESTHETIC ADMINISTRATIONS FOR SURGERY—

	Main Hospital	Northwestern Branch
Nitrous	3,573	2,078
Ether	1,643	463
Spinal	1,076	604
Continuous Spinal	212	147
Local	2,395	596
Caudal	7	1
Cyclopropane	202	41
Ethylene	213	348
Sodium Pentothal	109	315
I. V. Procaine	2	4
Vinethene	20	20
Ethyl Chloride	2	1
	<hr/> 9,454	<hr/> 4,618

ANESTHETIC ADMINISTRATIONS FOR OBSTETRICS—

Nitrous	1,771	1,454
Ether	217	601
Cyclopropane	121	119
Spinal	1	261
Local	36	32
Caudal	92	159
Ethylene	1	1
	<hr/> 2,239	<hr/> 2,627

There have been 33 graduate nurses admitted to the Grace Hospital School for Nurse Anesthetists during the year. Special lectures by 14 Physicians have been given besides the entire class work of 287 hours required for this course.

Respectfully submitted,

MYRA BABCOCK, M.D.

Director, Dept. of Anesthesia

SOCIAL SERVICE DEPARTMENT

1948 Annual Report

To the Director:

The following report for the year of 1948 is based on the activities of two workers. The time of one worker was given almost entirely to those activities of the Out-Patient Department related to determining the eligibility of patients for service and to assisting in planning for the hospitalization of clinic patients. The director assisted with these activities and carried the case work services.

The interviews reported include office and hospital interviews with patients, their relatives, and agency workers serving in the place of parents. No record was kept of the many people (hospital employees, staff physicians and other individuals) who came to the office for information regarding community services for people in whom they were interested. Nor was any record kept of the numerous telephone calls: (1) to and from patients and their relatives about care; (2) from prospective patients and about eligibility for care and the clinic services available; (3) to and from workers in other agencies inquiring about services and to exchange information about specific patients in attempting to coordinate agency services and to assist individuals to secure the services best suited to their needs.

Of a total of 6,079 interviews 4,746 were concerned with the eligibility of patients for care in the Out-Patient Department and 419 with arrangements for the hospitalization of clinic patients. The remaining 914 interviews were concerned with various miscellaneous services to patients, such as referrals to other agencies, assisting in securing orthopedic and other surgical appliances, or helping to arrange for the convalescent care of patients in their own homes or in Nursing Homes.

A statistical comparison of the interviews with patients in 1948 with those of 1947 seems to show two things: (1) the number of people who applied for care in the Out-Patient Department increased greatly in 1948; (2) the number of ineligible people who applied for care was much larger in 1948. The chief reason for the rejection of a patient for care is a family or individual income in excess of the budget on which clinic admissions are based. Patients who have been registered in other clinics are not accepted but are referred back to the clinic where they have been examined. When a patient is eligible financially but has been seen by a private physician within the past two years, a written referral or release from that physician must be presented before the patient is accepted for care. Very few patients financially eligible for clinic care were unable to be released from former private physicians.

In 1947 16.5% and in 1948 27% of the applicants were not eligible for care in the Out-Patient Department. The same trend may be observed in the

referrals for hospitalization. More clinic patients were accepted for hospitalization in 1948, but a larger portion (9%) were referred elsewhere than in 1947 when only 2.6% of the clinic patients needing hospitalization were referred elsewhere for care. It was necessary to refer clinic patients elsewhere for hospitalization either because the facilities were not available or the patients were unable to make satisfactory financial arrangements for care here.

The summary which follows gives some indication of the trends from 1947 to 1948:

PATIENTS INTERVIEWED REGARDING ELIGIBILITY FOR CARE

Year	NEW PATIENTS INTERVIEWED			OLD PATIENTS INTERVIEWED		
	Inter- viewed	Number Accepted	Not Accepted	Inter- viewed	Number Accepted	Not Accepted
1947	1869	1560	309 (16.5%)	1083	981	102 (9.4%)
1948	2612	1901	711 (27%)	2134	1995	139 (6.5%)

PATIENTS INTERVIEWED TO ARRANGE FOR HOSPITALIZATION

Year	Number		Not Accepted
	Interviewed	Accepted	
1947	419	408	11 (2.6%)
1948	685	622	63 (9%)

During the year a total of 73 patients were carried for casework service. Thirty-two of these were private patients in the hospital, the remainder were patients active in the Out-Patient Department. During the year the average case load was 11.8 cases per month. The cases referred from the hospital were in most instances, patients with problems requiring immediate service. Usually there was no further contact with these patients after they left the hospital. Because of this, the amount of service which could be given was determined to some extent by whether the referral was made early or late in the period of hospitalization. Casework service to clinic patients can be extended over a longer period of time, so is usually more adequate than that given to a hospital patient who is referred in the last days of hospitalization. On the whole, the casework service has been limited in 1948 because of the pressures for immediate attention to such Out-Patient Department activities as determining the eligibility of patients for care, arranging for the hospitalization of patients and the miscellaneous services.

Respectfully submitted,

IRENE BOWER,

Director, Social Service Department

THE OUT-PATIENT DEPARTMENT

January 27, 1949

To the Director:

The past year has been a busy one for the Out-Patient Department. There were a total of 29,521 patient-visits for 1948. This represents an increase of 3,173 visits over 1947, or a 12% rise in the utilization of facilities. This is also a rise of 23% over 1946.

We have been fortunate in obtaining part-time volunteer service through the cooperation of the Women's Auxiliary to the Grace Hospital in furnishing us much needed help. The constantly increasing demands on our employees and facilities were met satisfactorily only through the earnest efforts of the Auxiliary. Beginning in May, 1948, through to the end of the year, one thousand one hundred forty-eight (1,148) hours of service were given to us by the Auxiliary members.

With the initiation of our new intern-resident training program, the Out-Patient Department became one of the key areas in the program. New clinic scheduling was a necessity to utilize the residents' and interns' available time to the best advantage and with the minimum of conflicts for their services, both in the Out-Patient Department and in the Hospital. Changing of clinic days and clinic hours also raised problems of attendance at the clinics by members of the attending medical staff. Through the kind and earnest cooperation of the medical staff and Doctor F. A. Weiser, Director of Education, an arrangement of clinics was completed which, while not completely satisfactory, is workable and with occasional minor changes will show continual improvement.

Due to the special interest shown and the undoubted value demonstrated, three new specialty clinics have been added. There is a Pulmonary Clinic for special work in diseases of the lungs, a Psychosomatic Clinic evidencing the present medical and public interest in this phase of medicine, and a Plastic Surgery Clinic. These additions enabled us to broaden the scope of our work and give better service to the patient, as well as in the improving of our training facilities.

Respectfully submitted,

F. W. HYDE, JR., M.D.,

Director, Out-Patient Department.

THE GRACE HOSPITAL OUT-PATIENT DEPARTMENT
Report For The Year, 1948

CLINIC	TOTAL VISITS	
	1947	1948
Allergy	737	884
Cardiac	1,001	1,207
Dental	1,426	1,855
Dermatology	1,097	1,053
Diabetic	1,805	2,585
Endocrine	363	217
Gastroenterology	196	337
Gynecology	1,940	2,462
Hematology	366	313
Medicine	7,701	7,284
Neurology	220	432
Obstetrics	181	139
Otolaryngology	1,173	1,336
Ophthalmology	1,630	2,170
Orthopedics	567	658
Pediatrics	216	194
Physiotherapy	1,055	535
Proctology	234	185
Psychiatry	72	66
Psychosomatic	—	45
Pulmonary	—	114
Surgical	787	1,676
Tumor	281	310
Urology	545	499
Vascular	1,064	850
Venereal Disease	1,691	2,031
TOTAL CLINIC VISITS	26,348	29,521
TRANSFERRED TO HOSPITAL....	424	577

Old Patients Visits	27,210	Prescriptions	29,972
New Patients Visits	2,311	Laboratory Ex-	
Clinic Visits	27,255	aminations	11,519
Employee Clinic Visits....	2,296	X-Ray Films	1,198
Total Clinic Visits	29,521	Fluoroscopes	303
Total Cash Received	\$16,804.81	Basal Metabolism	194
Employees Payroll		Bronchoscopys	24
Deduction	\$ 214.81	Electrocardiograms	149
Total Cash Income.....	\$17,019.62	Electroencephalograms ..	34
1948 Community Fund		Total Clinic Expense	\$109,691.90
Allowance	\$56,884.30		

THE REPORT OF THE WOMEN'S AUXILIARY
TO THE GRACE HOSPITAL — FEB. 1949

The Woman's Auxiliary to The Grace Hospital has, as of February 1st, 1949, a membership of 224, composed of doctor's wives and women interested in the work of Grace Hospital and the various projects sponsored by this group. The meetings are held the first Tuesday of each month usually in the Nurses Home. Interesting programs are offered and a social hour with tea follows each meeting.

Our budget for the year 1948-49 is \$1,780.00 which amount is to be raised by dues, the Ways and Means Committee and special gifts. Of our budget, \$500.00 has been earmarked as the second installment on the Public Address System for the Main Hospital—\$50.00 for a Christmas Gift for the Nurses—and \$370.00 to purchase a government bond to be set aside for the Permanent Camp Fund. The Ways and Means Committee with Mrs. George Fisher as Chairman sponsored a theatre party in the fall and has plans for a Dessert Bridge in April. Our sincere appreciation goes to the Staffs of both Hospitals for their assistance in making these projects such a success.

The Auxiliary Gift Shop in the Northwestern Branch which was opened February 24, 1947, is now on a firm footing and has, due to the untiring efforts of the personnel, Mrs. A. Newbarr, Mrs. D. S. Stiefel and Mrs. John Hauser, filled a very much appreciated service to the patients, the Hospital and the nurses. Expansion is limited due to the lack of space but, with the addition to the Hospital in 1950 we have hopes and promises of better facilities. Augmenting the Gift Shop's stock in trade sewing groups have been working on both the East and North sides of the city. These groups along with their production tend to stimulate friendly relations and interest in the varied projects of the Auxiliary.

The Volunteer Service to the Clinic is still being carried on. The workers have availed themselves of very good looking white smocks with their names and "Women's Auxiliary Volunteer Service" embroidered on them. All of this makes them look quite professional.

The Camp Committee for Diabetic Children held a very enjoyable Camp Reunion Christmas Party on December 19th. Forty-seven Diabetic Children and their parents attended, the Committee being host to 150 in all. The entertainment, games, presents delivered by Santa Claus himself, and refreshments provided by Mrs. Eaton and her Committee made it an outstanding affair in the philanthropies of our Hospital. The Camp Committee are now working most diligently on the plans to organize a camp for this summer. The camp site and the time is already assured. They need Medical and Nursing Staffs most of all and would appreciate the cooperation and assistance of those qualified.

Respectfully submitted,

ALICE M. ASSELIN, Pres.

REPORT OF THE DIETARY DEPARTMENT

To the Director:

May I present the following report for the Dietary Department for the year 1948:

At the main hospital there have been several major projects for the year, some of which have been completed and some of which are indefinite as far as operating dates are concerned.

Bedside service of trays throughout the hospital has been accomplished, eliminating the split responsibility of delivery between dietary and nursing departments. Selective menu service has been expanded to cover Corridor F in addition to the two private pavilion units. Individualized dietary attention is being given to the pediatric section with much more satisfactory results in our children's trays, both for nutrition and palatability.

A Dietary Manual has been completed for publication early in 1949. There has been a good deal of work done on standardization of recipes, but this is, of course, a long range undertaking.

The addition of several pieces of equipment has lightened our work and cleaning schedules. These are the stainless steel trough under the stock pots in Memorial kitchen, the stainless steel backs on the ranges in Main Kitchen, and the specially designed stainless steel tables and return rack in our Main Dishwashing room. Remodeling of the Nourishment room with addition of an electric range and cupboards make a most workable unit.

MEAL SERVICE FOR 1948

	Main	Branch	Total
Therapeutic Diets per Day.....	238	131	369
Therapeutic Diets for Year.....	85,547	47,222	132,769
Total Meals per Day.....	2,806	1,030	3,836
Grand Total of Meals for Year.....	1,010,252	370,855	1,381,107

DIETARY STAFF

MAIN

Onalee Hostetler, B.S.....	Executive Dietitian
Elizabeth Moore, B.S.....	Assistant Executive Dietitian
Katherine Erwin, B.S.....	Administrative Dietitian
Jean Cox, B.S.....	Administrative Dietitian
Janet Hogan, B.S.....	Therapeutic Dietitian
Janet Sharp, B.S.....	Therapeutic Dietitian
Olga Wasylyk, B.S.....	Pediatric and Teaching Dietitian
Mary Florence Jensen, B.S.....	Private Pavilion Dietitian
Charlotte Krippene, B.S.....	Ward Dietitian
Esther Patterson, B.S.....	Assistant Dietitian
Eileen Caldwell, B.S.....	Assistant Dietitian
Jeannette Johnson	Assistant Dietitian

NORTHWESTERN BRANCH

Patricia Navin, B.S.....	Executive Dietitian
Barbara Perkins, B.S.....	Staff Dietitian
Marian Tozelaar, B.S.....	Staff Dietitian

Respectfully submitted,

ONALEE HOSTETLER, B.S.,
Executive Dietitian.

REPORT OF THE PHYSICAL MEDICINE AND REHABILITATION SERVICE

To the Director:

We submit to you a report of our activities during the past year.

Our activities have continued to undergo a transformation into a full fledged program of rehabilitation for in-patients and out-patients. Because of our expanding program in neuromuscular disease, a specially trained therapist, Miss Sophie Radlow was added to the department. Another trained assistant was directed to aid in the heavy resistance program which is used to supplement manual exercise. Additional equipment, such as the Kanavel table, chest pulleys with extra weights, shoulder wheel and shoulder ladders also are used to supplement the exercise program. The Department of Occupational Therapy has directed its activities to provide functional training, so rehabilitation can have this special type of exercise. A variety of patients were treated this year: multiple sclerosis, hemiplegias, Guillian-Barre Syndrome, post neurosurgical paralyses, peripheral nerve injuries, arthritis, peripheral vascular disease and many types of orthopedic disabilities.

Our present staff consists of Mrs. Macdonald, Miss Radlow and Miss Burton. Miss Olmstead and Mr. Souture are supplementary aids.

Teaching on a state wide basis was provided by an audiovisual program conducted by the hospital and Wayne University. Therapists, nurses, and physicians were shown films in all phases of rehabilitation and physical medicine. We also conducted a program of postgraduate physical medicine for the Medical School of Wayne University (one of six schools in this country). The first seminar in postgraduate teaching in physical medicine in this state was held at Bay City on February 1st, 1948.

Our statistics reflect the changing types of physical medicine practiced at The Grace Hospital. Rehabilitation exercises occur for the first time amongst the modalities, and general exercise is increased markedly, indicating the trend toward activation of the patient and lessening of machine therapy. There has been a general increase of twenty per cent in number of treatments conducted.

Respectfully submitted,

MAX KARL NEWMAN, M.D.,

Section Physical Medicine.

MODALITIES

	Whirlpool	Radiant Heat	Diathermy	Galvanism	Massage	Exercise	Ultra Violet	Pavaex	Skin Temperature	Fluorescin Dye	Muscle Test	Paraffin	Rehabilitation Exercises	Blood Irradiation	MONTHLY TOTAL	YEARLY TOTAL
January	25	175	102	16	235	201	52	10	13	1	2	0	0	0	832	
February	49	229	105	10	277	218	56	7	8	0	3	0	0	0	963	1,795
March	61	267	121	42	361	278	43	28	20	5	6	0	0	0	1,232	3,027
April	67	316	120	15	445	402	60	12	15	5	7	20	0	0	1,484	4,511
May	50	277	67	31	332	308	63	3	18	3	1	2	0	0	1,155	5,666
June	22	216	149	10	267	189	28	28	17	2	2	2	0	0	932	6,598
July	61	257	65	26	315	284	7	0	13	1	8	5	0	0	1,042	7,640
August	21	256	48	29	265	285	18	9	14	0	8	0	0	0	953	8,593
September	14	219	64	18	228	240	24	15	8	0	1	0	35	0	866	9,459
October	36	202	56	4	245	238	14	6	6	0	0	0	88	1	896	10,355
November	13	237	55	3	228	213	22	23	3	0	0	0	96	0	893	11,248
December	44	213	103	21	286	232	27	16	3	0	0	0	97	0	1,042	12,290
TOTAL	463	2,864	1,055	225	3,484	3,089	414	157	138	17	38	29	316	1	12,290	81,182

GIFTS AND CONTRIBUTIONS

Mr. and Mrs. C. T. Cassel—Underwood Typewriter.

Evans-Sherratt Company—\$100.00 for X-Ray Department.

Mr. and Mrs. Peter H. Vroom—Basket of White Mums.

Dr. W. B. Mitchell—Ash Trays

Mr. and Mrs. Bill Boesky—Six Baskets of White Mums.

Mr. J. J. Thompson—\$100.00 for Proctology Department.

Mr. Abraham Shapiro—\$100.00 for Research Fund.

Dr. R. L. Clarke—Picture for Library.

Mrs. Julia Rosenberg—Flowers.

Girl Scout Troop No. 823—Candy tray favors for Children's Ward.

Mrs. Louis B. Auger—\$100.00 for Proctology Department.

Mr. Joseph Angilen—\$200.00.

Mr. Henry E. Candler—\$500.00 for Urology Department.

ANNUAL REPORT

OCCUPATIONAL THERAPY DEPARTMENT

In 1948, the first full year of operation, the Occupational Therapy Department planned a guided treatment program for a wide range of disabilities:

- 25% Hemiplegia
- 30% General medical and surgical
- 17% Multiple sclerosis
- 15% Orthopedic Surgery
- 9% Arthritis
- 4% Neuro--psychiatric

Report of Treatments:

MONTH	IN PATIENTS				OUT PATIENTS		TOTALS	
	ADULT		CHILDREN					
	No. Pts.	Treat.	No. Pts.	Treat.	No. Pts.	Treat.	No. Pts.	Treat.
Jan.	3	15	29	124	4	23	36	162
Feb.	3	29	93	379	4	24	100	432
Mar.	10	42	50	192	6	29	66	283
Apr.	10	71	46	139	5	29	61	239
May.	4	18	36	124	5	27	45	169
June.	7	32	42	112	6	14	55	158
July.	5	42			8	19	13	61
Aug.	9	47	2	5	8	60	19	112
Sept.	8	70	26	47	11	62	45	179
Oct.	6	72	40	45	10	84	56	201
Nov.	5	67	18	29	10	79	33	175
Dec.	4	53	19	62	9	70	32	185
							471	2256

In addition to the treatment program two training courses have been given for occupational therapy aides. This is a volunteer program for older high school girls who are in the Girl Scouts, Y-Teens, or Horizon Clubs and at the completion of twenty hours of instruction give fifty hours of service in various occupational therapy departments in the Detroit area.

The Wayne University Occupational Therapy Curriculum has its professional program centered in the Grace Hospital Occupational Therapy Department under the direction of Professor Barbara Jewett, O.T.R.

Miss Bettie Pflueger, O.T.R. supervises the clinical training of the students in the Grace Hospital Occupational Therapy Department.

BOOKS AND JOURNALS FOR MEDICAL LIBRARY

Dr H. C. Rees
Dr. F. Levagood
Dr. F. A. Weiser
Dr. W. B. Mitchell
Dr. A. H. Whittaker
Dr. W. W. Babcock
Dr. R. G. Burroughs
Dr. E. B. McCollum
Dr. D. W. McLean
Dr. K. B. Babcock
Dr. F. W. Hyde, Jr.
Dr. Voss Harrell
Dr. C. S. Kennedy
Mrs. F. A. Mabee
The Schettler Drug Co.
Dr. M. Teitelbaum
Dr. C. I. Owen
Dr. C. S. Ratigan
Dr. L. R. Adler
Dr. P. G. Shifrin
Dr. M. A. Darling
Dr. F. J. Hodoski

Dr. L. W. Hull
Dr. R. Gallimore
Dr. H. S. Sugar
Dr. A. P. Hudgins
Dr. S. S. Wittenberg
Dr. B. Spector
Dr. P. C. Gittens
Dr. O. W. Pickard
Detroit Public Library
Dr. R. L. Clarke
Dr. W. Yetzer
Dr. E. G. Krieg
Dr. Karl Miller
Dr. L. J. Gravelle
Dr. George Fisher
Dr. G. L. Waldbott
Dr. W. B. McIntyre
Dr. R. G. Burroughs
Dr. John Boccaccio
Dr. R. P. Reynolds
Dr. J. A. Maloney
Dr. H. A. Jarre

BOOKS AND MAGAZINES FOR PATIENTS LIBRARY

Dr. M. A. Darling
Mrs. C. S. Brewer
Mrs. Boswell
Mr. and Mrs. H. L. Dresser
Dr. K. C. MacPherson
Dr. H. A. Jarre
Mr. Russell Johnson
Mr. W. F. Middleton
Miss M. Wright
Dr. Voss Harrell
Mrs. Martin Biery
Mr. George E. Thurlow
Sacred Heart Circle No. 261
Daughters of Isabella

Mr. Thomas W. Brewer
Mrs. M. Frosliid
Mr. August Wesserling
Mrs. Fordson
Dr. H. C. Rees
Miss Dorothy Richardson
Miss Mary Clapper
Mr. John McNutt
Mrs. R. L. Clark
Mr. Burt Evans
Mr. C. Mattix
Mr. Kenneth Frosliid
Mr. Hugo Glaesner
Mrs. Theresa Melvin

GIFTS AND CONTRIBUTIONS

Northwestern Branch

Members of Staff—\$500.00
 Members of Staff—\$300.00
 Dr. Wm. A. Lange—Dermatome
 Ira Wilson & Sons Dairy Co.—“Our Baby’s Book” for new mothers
 Parents’ Magazine—Baby Care Manual for New Mothers
 The Hospital Exhibit Plans—\$15.00
 Gray Ladies—Tray Favors
 Brownie Troop No. 54—Tray Favors
 Girl Scout Troop No. 771—Tray Favors
 Brownie Troop No. 328, Edgar Guest School—Tray Favors
 Staff—Christmas gifts for all employees.

MAGAZINES

Mrs. P. G. Wright	Kenneth Frosliid	Mr. & Mrs. J. C. Jeffrey
Dr. & Mrs. R. K. Johnson	Miss T. O’Rourke	Miss H. Beckler
Dr. A. A. Newbarr	Dr. L. E. Bauer	Dr. A. Norconk
Mrs. Jacob Raimi	Miss M. Perkins	Mrs. George Yorgen
Mr. Ashby C. Sturdevant	Mrs. Ed. Somerville	

BOOKS FOR LIBRARY

W. W. Babcock, M.D.—4 Vols. “Modern Medicine in Treatment” and 12 book covers.
 H. Gehring, M.D.—1948 Journal of American Medical Association Magazines.
 D. B. Galerneau, M.D.—4th Edition, “Minor Surgery.”
 H. T. Howlett, M.D.—Books.

SURGICAL DRESSINGS

Mrs. Edith White
 Mrs. J. Worme—Ward Memorial Church
 Sarah Circle—Outer Drive Presbyterian Church

VOLUNTEER SERVICE HOURS

7 Gray Ladies (Cancer Detection Center).....3000 Hours of Service
 3 Gray Ladies.....700 Hours of Service

FLOWERS

Aero Mechanics High School (Mr. Taberhan, Principal)
 Maskell Flowers—For National Flower Week.
 Gray Ladies—Plants.

DONATIONS TO THE SCHOOL OF NURSING AND NURSING SERVICE

Mr. Gordon Van Wormer—Convalescent Chair for Room 201
 Medical and Surgical Staff—\$600.00 for Graduate and Student Christmas Fund
 Women's Auxiliary to The Grace Hospital—\$50.00 Cash Gift for Student Christmas Fund
 Dr. Milton A. Darling—Tickets for Olympic Trials
 Mr. Bob Cameron—Daily Newspaper for Hospitalized Student Nurses
 Alumnae Association—\$10.00 Cash Gift to Students Nurses' Glee Club
 Mrs. Henry B. Joy—Four Season Tickets, Detroit Symphony Orchestra
 Dr. Charles S. Kennedy—Valentine Dance
 Dr. R. S. Goux—Cash Gift for Furniture for the Patio of the Nurses' Residence
 Class of September 1944-1947—Full Length Mirror for Nurses' Residence
 Mrs. Kathleen Young Sands—Cash Gift for Two Hair Dryers
 Class of January 1945-1948—\$40.00 for Basket Ball Equipment
 Dr. John L. Boccaccio—Blotters
 Alumnae Association—Christmas Plant for Nurses' Residence
 Class of September 1945-1948—Radio for Nurses' Residence
 Dr. R. DeTomaso—Box of Candy for Student Nurses
 Women's Association of the Detroit Symphony Orchestra—Two Season Tickets
 Wayne County Medical Auxiliary—Ten Drawings on \$500.00 Gift Certificate
 Mrs. Henry B. Joy—Picture of Class of 1914

THEATRE AND CONCERT TICKETS

Mr. Henry Reichhold	Mr. Alex Schreiber
Mrs. Frank McCormick	Women's Auxiliary
Mrs. Henry B. Joy	Women's Association for the
Dr. J. G. Israel	Detroit Symphony Orchestra
Mr. Otto—Civic Theatre	

FLOWERS

Mr. and Mrs. John N. Lord	Dr. and Mrs. Milton A. Darling
Mr. and Mrs. Samuel Kingston	Dr. and Mrs. Peter Shifrin
Faculty and Staff, The Grace Hospital	Dr. and Mrs. Kenneth B. Babcock
Doctors Hasley, Jarre and Assistants	Alumnae Association to The Grace
Mrs. Wartosky	Hospital School of Nursing
Mrs. George Wietersen	Mr. Kamadas, Grace-Harper Florist
Northwestern Branch—The Grace	
Hospital	

BOOKS AND MAGAZINES

F. A. Davis Co	J. B. Lippincott Co.	Josephine Kenny
Eugena M. Petersen	C. V. Mosby Co.	Mrs. Chloe Brewer
Mrs. Henry B. Joy	G. P. Putnam's Sons	Jennie Freese
Kathleen Zitzelberger	W. B. Saunders Co.	Mrs. W. B. Mitchell
Mrs. Sylvia Mellman	Edna Dodd	Mrs. Doris Bean
Marjorie Irwin	Dr. and Mrs. Geo. E. Sands	Mrs. Mary Cassell
Mrs. Ethel MacLennan	Mrs. Grayce Smith	Mrs. Ruth McLaughlin
Helen E. Jarvi	Mary Louise Leffler	Elizabeth Burnett
Dr. E. B. McCollum	Gladys I. Young	Mrs. Alice Steinbach

PREPARATION OF SURGICAL DRESSINGS

Women's Auxiliary to The Grace Hospital
 First Congregational Church, Detroit, Michigan

VOLUNTEER SERVICE HOURS

Red Cross Grey Ladies Corps gave.....760½ Hours of Service

ANNUAL ANALYSIS OF SERVICE

FOR 1948

MAIN HOSPITAL

SERVICE	DISCH'ED PATIENTS	HOSPITAL DAYS	DEATHS	AUTOP- SIES	CONSUL- TATIONS
Medical	3323	30,027	270	124	690
Surgical	2711	22,570	47	28	245
Obstetrical (3015)					
Delivered	2456	13,853	1		148
Aborted	266	1,416	1		25
Not Delivered	294	860	1		20
Gynecology	1724	14,416	5	2	102
E.E.N.T.	1624	4,834	2	2	30
Urology	745	6,532	11	5	63
Orthopedics	488	4,462	3	2	42
Pediatrics					
Children	170	1,286	9	3	19
Newborn	2432	13,870	59	41	40
Dermatology	66	728	2	2	16
Proctology	423	2,864			23
Traum. Surgery	674	5,062	13	8	53
Tumor	755	9,453	78	46	118
Neuro Surgery	789	9,060	52	27	225
TOTAL DISCHARGES ...	18,940	141,293	554	290	1859



RESULTS		MISCELLANEOUS	
Recovered	9,261	Stillborn Infants	43
Improved	8,122	SB Autopsies	20
Not Improved	470	Aborted Fetus	70
Not Treated	237	Male Patients	7,320
For Diagnosis only	296	Female Patients	11,620
Deaths	554	Children,	
Under 48 hrs.	212	age 14 and under	1,695
Over 48 hrs.	342	Operations:	
Coroner's Cases	78	Major	4,240
		Minor	6,428
TOTAL DISCHARGES	18,940	Total Operations	10,668

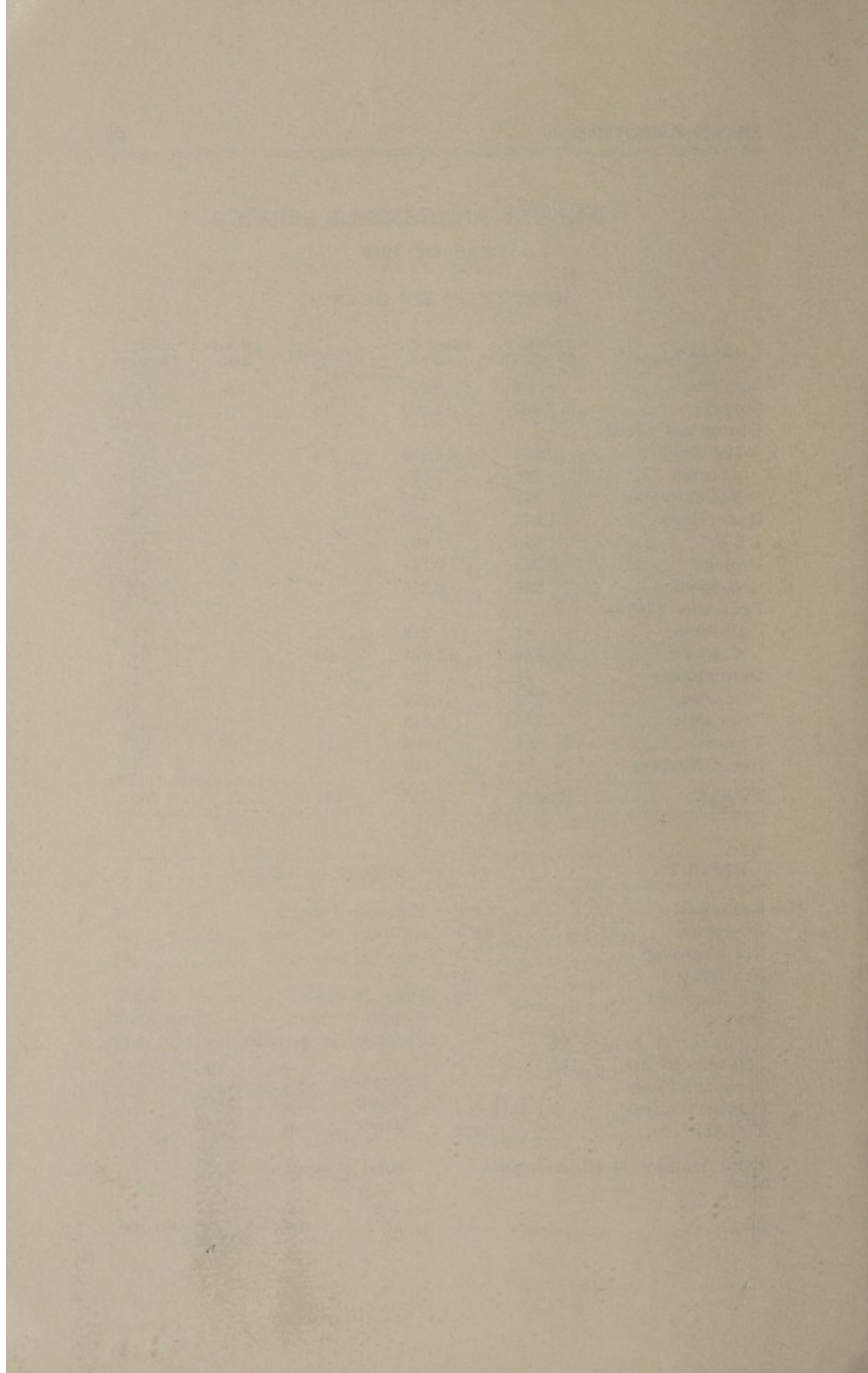
ANNUAL ANALYSIS OF SERVICE

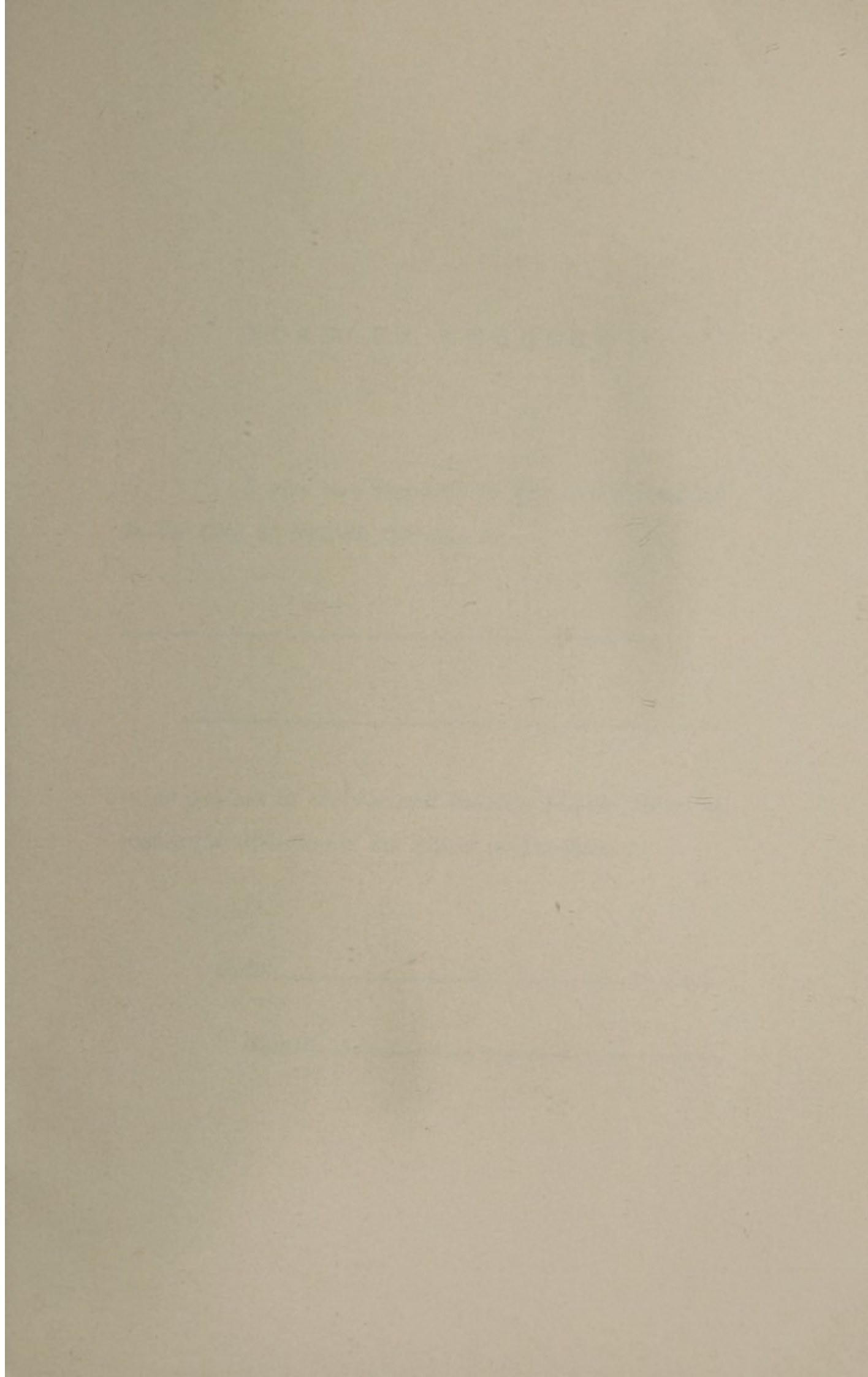
YEAR OF 1948

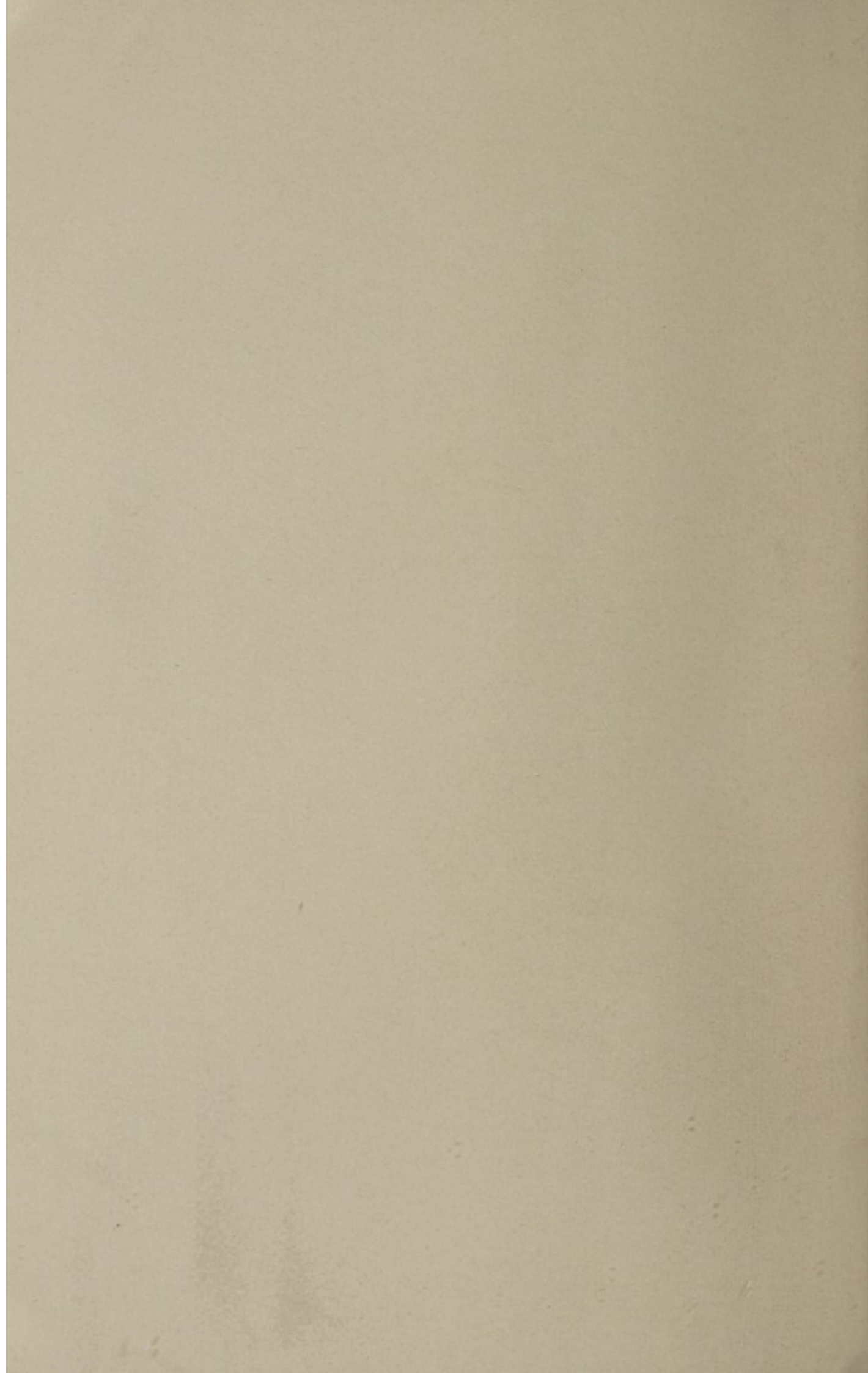
NORTHWESTERN BRANCH

SERVICE	DISCH'ED PATIENTS	HOSPITAL DAYS	DEATHS	AUTOP- SIES	CONSUL- TATIONS
Medicine	1,380	10,088	79	26	242
Surgery	1,687	13,262	18	9	81
Obstetrical (3107)					
Delivered	2,661	14,980	3	1	139
Aborted	206	1,005			24
Not delivered	240	497			6
Gynecology	1,042	7,605			31
E.E.N.T.	525	1,891	1		14
Urology	313	2,144	5	2	51
Orthopedics	238	2,256	2	1	32
Pediatrics (2690)					
Children	41	216	1		1
Newborn	2,649	15,695	50	12	24
Dermatology	18	134			3
Proctology	222	1,354			2
Traumatic	376	2,515	3		28
Tumors	321	2,968	29	8	20
Neuro-Surgery	13	118			2
TOTAL	11,932	76,728	191	59	700

RESULTS		MISCELLANEOUS	
Recovered	8,611	Stillborn Infants	44
Improved	2,658	Stillborn Autopsies	21
Not improved	333	Aborted fetuses	38
Not treated	60		
For diagnosis	79	Male Patients	3,860
Deaths	191	Female Patients	8,072
(Under 48 hrs.)....	62	Children 14 & under	543
(Over 48 hrs.)....	129		
Coroner's Cases	6	Operations	
Coroner's Cases	2 (Out Pts.)	Major	2,373
TOTAL	11,932	Minor	3,005
* Out deaths	4 (2) Autopsies	Total Operations	5,378







FORM OF BEQUEST

*I give and bequeath to The Grace Hospital
in the City of Detroit, the sum of*

*to be applied to the use and benefits of said Hospital
under the direction of its Board of Trustees.*

*Date*_____

*Signed*_____

