

Annual report of the Board of Management : 1940 / Hartley Hospital, Colne.

Contributors

Hartley Hospital (Colne, Lancashire, England) nb2013018234

Publication/Creation

[Place of publication not identified] : [publisher not identified], 1940

Persistent URL

<https://wellcomecollection.org/works/qd8hbx9x>

License and attribution

This work has been identified as being free of known restrictions under copyright law, including all related and neighbouring rights and is being made available under the Creative Commons, Public Domain Mark.

You can copy, modify, distribute and perform the work, even for commercial purposes, without asking permission.



Wellcome Collection
183 Euston Road
London NW1 2BE UK
T +44 (0)20 7611 8722
E library@wellcomecollection.org
<https://wellcomecollection.org>



Library



The
Hartley Hospital
Colne

○

**ANNUAL
REPORT**

○

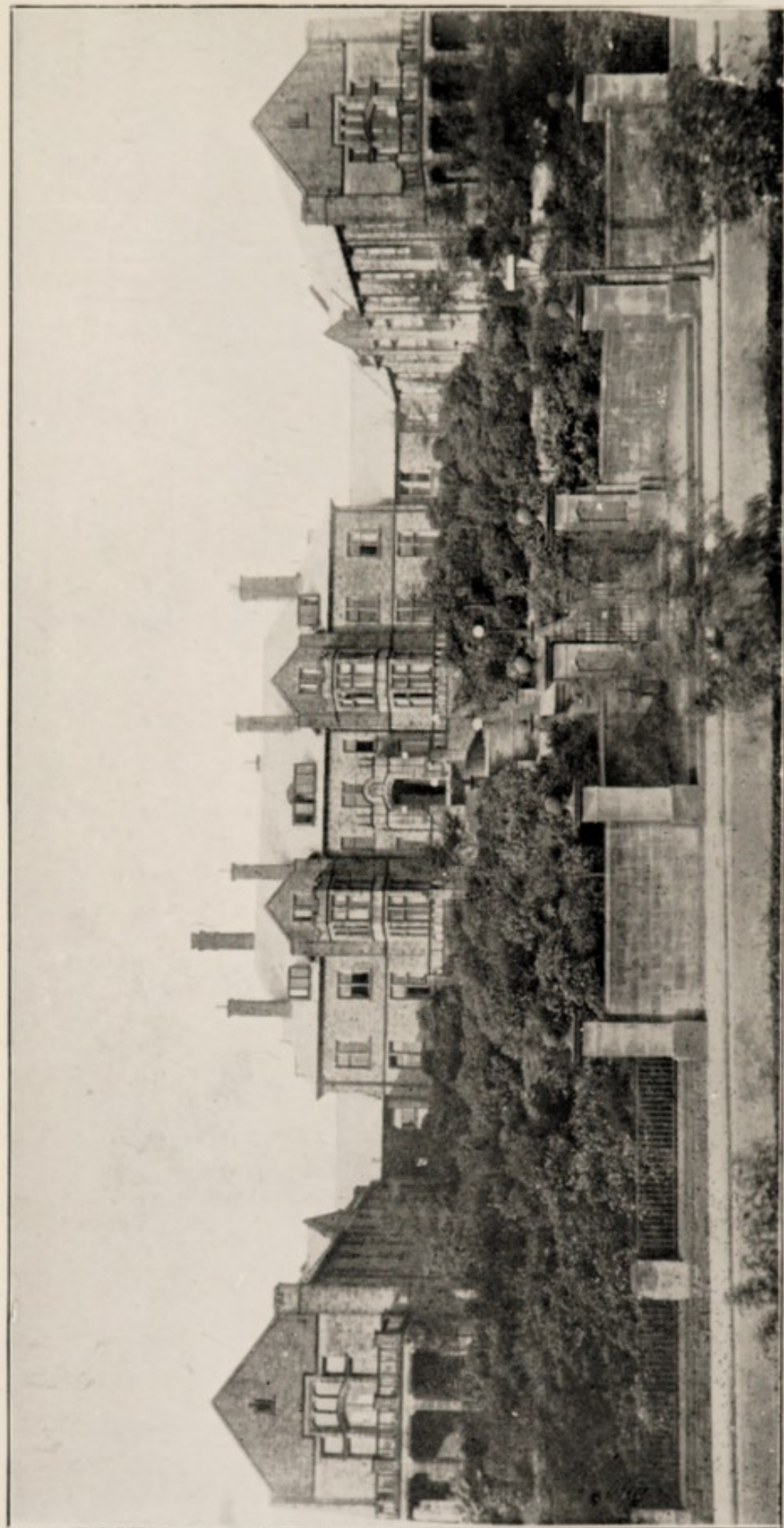
For the Year
1940

WELL COME
LIBRARY
Acq. Rep
WX28
.B65
C71H33
1940



22501578398

THE Ambulance of the Colne St. John Ambulance Association is available for the use of Patients from all parts of the District. For its use, apply to the Superintendent or any member of the Ambulance Corps.
(Telephone 495).



THE HARTLEY HOSPITAL, COLNE.

The Hartley Hospital, Colne

ANNUAL REPORT

of the Board of Management for the year
ended 31st December, 1940.

Annual Meeting of Governors and Sub-
scribers at the Town Hall, Colne, on
Thursday, the 6th March, 1941, at
7-30 p.m.

Annual Meeting of Representatives of
Contributors to the Voluntary Weekly
Contributory Scheme at the Town Hall,
Colne, on Monday, the 3rd March, 1941,
at 7-30 p.m.

THE HARTLEY HOSPITAL, COLNE.

THE Hospital, fully equipped, was the gift to their native town, by the late Sir William and Lady Hartley, and was opened on the 21st June, 1924, by Miss Christiana Hartley, J.P., of Southport. The Hartley Hospital superseded the Colne Jubilee Cottage Hospital, also the gift of Sir William and Lady Hartley, which was opened on the 20th April, 1900.

The Hartley Hospital stands on the northerly side of the highway leading from Colne to Keighley. The site rises steeply from the highway, and the buildings are set back 100 feet, the intervening space being laid out in terraced lawns. The whole site occupies an area of about $4\frac{1}{2}$ acres.

ACCOMMODATION.

Women's Ward.—66ft. long, 27ft. wide, 12ft. high; Sixteen beds, with day room and necessary conveniences.

Children's Ward.—30ft. long, 22ft. wide, 11ft. high; Eight beds and one baby's cot, with day room and necessary conveniences.

Men's Ward.—50ft. long, 27ft. wide, 12ft. high; Twelve beds, with day room and necessary conveniences.

Private Wards.—Four in two pairs, each pair having its own bathroom and sanitary accommodation.

Emergency or Isolation Ward—Two beds.

Operating Theatre, with sterilising and anæsthetising rooms; Dispensary, etc.

An extension of the buildings was completed during the year 1934 to accommodate new X-Ray Department and Out-Patients' Department, with waiting hall, Consulting and Treatment Rooms.

A suite of Sitting Rooms, with Kitchenette, etc., were completed and occupied by the Nursing Staff in October, 1939.

The Hospital serves the Borough of Colne and the adjoining districts of Trawden and Foulridge.

THE HARTLEY HOSPITAL, COLNE.

President :

His Worship the Mayor of Colne.
(Councillor Arthur Parkinson, J.P.)

Chairman of Board of Management :

Mr. William Hyde, J.P.

Vice-Chairman of Board of Management

Mr. Robert Duckworth, J.P.

Board of Management.

Constituted in conformity with the Rules and Regulations made in pursuance of the Trust Deed.

His Worship the Mayor of Colne (*ex-officio*).
(Councillor Arthur Parkinson, J.P.)

Two Members nominated by Miss C. Hartley, J.P. :

* Ald. R. Knight, J.P., and Mr. H. W. Croasdale.

Four Members nominated by the Colne Town Council :

*Alderman J. White, J.P.
 " R. S. Pilling, J.P.
Councillor A. Parkinson, J.P.
 " G. E. Wilmore.

Nine Elective Members :

To retire February, 1941.	To retire February, 1942.
*Coun. E. Duckworth, J.P.	*Mr. Robert Duckworth, J.P.
Mr. D. A. Barritt.	*Mr. Wm. Hyde, J.P.
*Miss S. A. Hartley.	*Miss E. M. Whitworth.

To retire February, 1943.
Mr. Wilson H. Hey, F.R.C.S.
*Mr. E. G. Westmore, J.P., F.C.A.
*Mrs. E. M. Duckworth.

Six Members nominated by representatives of Weekly Contributors who retire at Annual Meeting in March, 1941.

Mr. J. Sugden.	Mr. J. W. Greenwood, J.P.
*Mr. R. Crabtree.	Mr. H. Allum.
Mr. J. Calvert.	Mr. A. E. Keene.

* Members of the House Committee during the year 1940.

THE HARTLEY HOSPITAL, COLNE.

OFFICERS:

Honorary Surgeons :

John H. Watson, M.B., B.S., F.R.C.S. Eng.
 Wilson H. Hey, M.B., B.S., F.R.C.S. Eng.
 Peter McEwan, M.A., M.B., Ch.B., F.R.C.S. Edin.
 A. Callam, D.S.O., M.D., Ch.B., F.R.C.S., Eng.
 H. A. Rippiner, M.B., Ch.B., F.R.C.S., Eng.

Assistant Honorary Surgeon :

J. A. Mackenzie, M.A., M.B., Ch.M.

Honorary Physicians:

F. C. Macaulay, M.C., M.B., H. H. Bullough, M.B., Ch.B.
 Ch.B. A. W. R. Eardley, M.B., Ch.B.
 A. W. Eadie, M.B., Ch.B.
 J. B. Aitken, M.B., Ch.B. G. S. Easton, M.B., Ch.B.
 W. Alexander, M.A., M.B., Ch.B., D.P.H.

Honorary Anæsthetists :

W. C. Muir, M.B., Ch.B. K. G. Huxham, L.R.C.P. & S,

Honorary Radiologist :

James Grieve, M.A., M.B., Ch.B., D.M.R.E. Camb.,
 Dip. P. Psych. Eng.

Honorary Aurist and Laryngologist

Donald Watson, M.B., Ch.B., F.R.C.S. Eng.

Honorary Ophthalmic Surgeon :

W. H. Kiep, M.B., Ch.B., D.O. (Oxon).

Pathologist :

C. J. Young, M.B., Ch.B., D.P.H., D.T.M. (Liv.)

Bio-Physical Assistant :

P. Hargreaves, B.P.A.

Honorary Dental Surgeons:

J. W. Sidebottom, L.D.S. S. Gordon Ross, L.D.S.
 J. E. Ilott, L.D.S., R.C.S. Eng.

Matron : Miss A. E. Casserley, R.R.C.

Secretary : Mr. H. W. Croasdale.

Hon. Solicitor : Mr. L. A. Venables (Town Clerk).

Hon. Auditors : Messrs. John Stansfield, Westmore & Co.

Treasurers and Bankers : Martins Bank, Ltd., Colne.

District Nurses : Miss E. M. McCulla and Miss E. Rigby.

Organizing Secretary of Weekly Contributory Scheme :

Ald. J. E. Keighley, J.P.

THE HARTLEY HOSPITAL, COLNE.

REPORT

of the Board of Management for the year ended the 31st December, 1940, to be presented to the Annual Meeting of Governors and Subscribers, to be held at the Town Hall, Colne, on Thursday, the 6th March, 1941, at 7-30 pm.

The Hartley Hospital, in common with other hospitals in the Country, is participating in the organisation set up by the Ministry of Health to deal with casualties arising out of the war, but happily, so far the hospital has not had to deal with a large number of either civilian or Service casualties.

Although there have been many difficulties owing to war-time restrictions, the hospital has been able to function in a satisfactory manner throughout the past year, and, as the statistics show, a record number of persons received attention in both the in-patient and out-patient departments.

A section of the hospital has now been specially allocated and equipped in readiness for the reception and treatment of war casualties, such provision will have the effect of reducing the accommodation available for ordinary civilian patients.

Measures have been adopted to protect the hospital and its inmates against enemy action.

THE YEAR'S WORK.

The total number of patients who received attention at the hospital during the year was 1,901, viz.: In-patients 766 and Out-patients 1135. The following is a statistical summary of the patients with comparisons with recent years:

IN-PATIENTS—STATISTICS.

	1936	1937	1938	1939	1940
No. of patients	671	700	661	675	766
Surgical Cases	635	644	611	601	715
Medical Cases	36	56	50	74	51
Surgical Operations performed ..	428	488	436	455	537
Accident Cases	47	41	47	54	45
Average length of stay of patients, days	20	18	19	20.5	18
Daily average number of patients in Hospital	29	28	30	30	32

Residence of Patients:—

Colne	581	592	557	566	642
Trawden	48	59	56	49	69
Foulridge	21	24	23	29	31
Other Districts	21	25	25	31	24

OUT-PATIENTS.

Total No. of Out-Patients	849	886	1041	998	1135
X-Ray Cases	312	324	393	376	449
Eye	211	200	243	216	200
Ear, Nose and Throat	158	173	172	160	164
Daily Dressings	15	12	12	17	17
Accidents and Minor Operations ..	25	22	26	29	42
Consultations & Examinations ...	128	155	188	195	251
Serum Injections	—	—	7	5	12

Residence of Out-patients:—

Colne	719	734	903	851	973
Trawden	73	86	82	75	91
Foulridge	29	28	32	30	39
Other Districts	28	38	24	42	32

X-RAY DEPARTMENT.

Number of Patients	489	492	552	538	723
In-Patients	177	168	159	162	274
Out-Patients	312	324	393	376	449
Films Exposed	—	1560	1453	1858	2211

DISTRICT NURSING.

During the year 6748 visits were paid by the District Nurses to the homes of 315 patients.

The District Nursing Service is affiliated to the Lancashire County Nursing Association, and Miss E. M. Whitworth is the Board's representative member of the Association.

Two trained nurses are provided to assist in the home nursing of such patients as the Doctor in attendance may require.

No charge is made for the services of the Nurses. The service is maintained out of the Hospital Funds augmented by the collection on Alexandra Rose Day, and by such donations as are received from patients.

PATIENTS PROVIDED FOR AT OTHER INSTITUTIONS,
Etc.

Admission to other Institutions was arranged for persons entitled under the Rules of the Voluntary Weekly Contributory Scheme as follows:—

Burnley Victoria Hospital	89
Burnley Municipal Hospital	24
Nelson Reedyford Hospital	54
Manchester Royal Infirmary	9
Bradford Eye & Ear Hospital	8
Bradford Royal Infirmary	2
Liverpool Northern Hospital	2
Harrogate Royal Bath Hospital ...	9
Preston Royal Infirmary	1
Keighley Victoria Hospital	1
Leeds General Hospital	1
Manchester St. Mary's Hospital ...	2

 202

Also 40 consultations were held by visiting Surgeons or Specialists at the homes of patients in cases of emergency.

PRIVATE NURSING.

Families desirous of engaging the services of trained nurses for private patients are requested to make application either to their Doctor or to the Matron, who will be pleased to furnish full particulars. The terms are printed on page 46 of this Report.

STAFF.

The Board have pleasure in again acknowledging the services of the members of the Honorary Medical Staff and the visiting Consultants, also the devoted services of the Matron and Nursing Staff, all of whom have carried out their duties in the best interests of the hospital and patients. Mr. P. Hargreaves, B.P.A., has continued to apply bio-physical treatment to patients who require it, for which services the Board thank him.

INCOME AND EXPENDITURE.

The total expenditure for the year amounted to £9009/14/0 and included £8218/10/3 for the maintenance of the hospital; £414/17/4 for District Nursing; £288/14/6 was contributed to other Institutions and Bank Charges amounted to £87/11/11.

The total income for the year amounted to £9153/0/1, which was derived from the following sources:—Subscriptions, Donations, and Proceeds of Voluntary Efforts £1543/11/10; the Voluntary Weekly Contributory Scheme £4027/8/3; receipts on account of services to patients £1378/13/2; from invested Funds £1794/5/11; miscellaneous £155/10/7, and £253/10/4 in bequests.

A balance of £305/15/9 is carried forward as against the sum of £183/9/8 brought forward from last year's account.

The income has been sufficient to meet all current expenses during the year in maintaining the hospital, the provision of District Nursing and contributing for the treatment of patients at other Institutions, but there is an outstanding balance of £1349/12/1 owing to the Bank on the Building Extension Account.

ENDOWMENT FUND.

At the 31st December, 1940, the Endowment Fund stood at £41,432/4/10d.

The Board gratefully acknowledge the following benefactions to the hospital during the year.

A legacy of £1000 to the Endowment Fund left by the late Miss Jane Smallpage formerly of Colne, but late of Torrisholme, Lancaster, to be applied for the endowment of a bed in the Women's Ward.

The Stonebridge Cotton Manufacturing Co., Ltd., Colne, by Deed covenanted to pay the sum of £150 per year for seven years to be applied to the endowment of a bed in the hospital to be known as "The Harry Broughton Bed."

The sum of £200 bequeathed to the hospital by the late Mr. William Thornton of Reginald Street, Colne.

The sum of £50 bequeathed to the hospital by the late Mrs. Annie Lund, of 202, Skipton Road, Colne.

LINEN LEAGUE.

An exhibition of the linen and garments provided by the Linen League was held at the hospital on the 17th April, when the articles to the value of £157/8/6d. were formally handed over by Mrs. J. H. Watson of Nelson on behalf of the Ladies.

FOOTBALL COMPETITION.

The Second Annual Mills and Workshops Football Cup Competition which was organised in the spring of the year resulted in the sum of £80 being handed over to the funds of the hospital. To the players and those who acted as members of the Committee or who by their interest and attendance at the matches contributed to the success of the Competition, the Board express their thanks.

VOLUNTARY WEEKLY CONTRIBUTORY SCHEME.

The amount received from the Voluntary Weekly Contributory Scheme for the year was £4027/8/3d., an increase of £222/6/4d. upon the amount for the previous year.

The amount collected from this source is regarded as very satisfactory; it represents the contributions of 1d. or 2d. per week of nearly 10,000 persons, which may be taken as an indication that the services provided at the hospital and by the District Nurses are fully recognised and appreciated in the district.

An appeal is made to everyone to become either an Annual Subscriber or a Weekly Contributor under the scheme.

Those who are unable to contribute through an organised works collection, may join the scheme upon applying to the Organising Secretary of the scheme at 2a, Albert Road, Colne, to whom they can pay their contributions either quarterly or annually.

The co-operation of employers and their office staffs in the collection and remittance of contributions is greatly appreciated.

CONSTITUTION OF BOARD.

The three elective members of the Board of Management who retire in accordance with rule are:— Councillor E. Duckworth, J.P., Mr. David A. Barritt and Miss S. A. Hartley, and they are eligible for re-election.

The six members of the Board to be elected to represent Weekly Contributors will be nominated at the Annual Meeting of Contributors to be held on the 3rd March, 1941.

The Board regret the death of Mr. Joseph Sugden, who for 20 years served as a member of the Board representing the Weekly Contributors. He was most regular in his attendance at meetings and gave devoted service to the hospital.

GENERAL THANKS.

Sincere thanks are tendered to the Honorary Auditors, Messrs. John Stansfield, Westmore and Co., Chartered Accountants, for once more auditing the accounts, and to all who have during the year helped in the furtherance of the work of the hospital and its auxiliary services, and also to the following:—

- To the Mayor and Corporation of Colne for their subscription of £400 to cover the cost of water, gas and electricity rates.
- To all subscribers to the various funds of the hospital;
- To all who contributed by money or gifts in kind for the Christmas cheer of the patients and staff;
- To those who have sent gifts, periodicals and other presents for the staff and patients during the year;
- To the organisers of social functions in aid of the funds;
- To the Church Choirs and Glee Parties who have entertained the patients in hospital;
- To the Clergy for their frequent visits and ministrations to patients;
- To members of St. John Ambulance Association for their attendance upon, and transport of, patients to the hospital;
- To the Inspector and Members of Lancashire County Police Force for valuable help on many occasions; and to the many persons who willingly convey urgent telephone messages to relatives of patients;
- To Mr. T. Blakeman for his supervision of the collection boxes in hotels and clubs;
- To the Press for their help throughout the year.

CONCLUSION.

In conclusion, the Board again express their gratitude for the interest and financial support which the hospital has received from subscribers and friends during the past year, and earnestly appeal to all sections of the public for a continuance of that support to enable the work to be maintained in an efficient manner.

WM. HYDE, Chairman.

H. W. CROASDALE, Secretary.

THE HARTLEY HOSPITAL, COLNE

AND DISTRICT NURSING.

Comparative Statement of numbers of patients treated and Income and Expenditure since the work was transferred from the Cottage Hospital to the Hartley Hospital in the year 1924.

Year	No. of In-patients	No. of Out-patients	Visits by District Nurses	Total Income £	Total Expenditure £	Amount from W'kly Contributory Scheme £	Amount of Endowment Fund. £
1924	292	137	6037	5248	4660	3245	25,753
1925	565	721	6527	7244	6685	3688	30,969
1926	568	531	6264	7213	7030	3862	31,348
1927	611	765	6325	8135	7881	3958	32,338
1928	612	656	6159	8418	6946	4104	33,336
1929	656	704	6325	8215	8284	3851	33,338
1930	683	746	6196	7913	8183	3397	37,354
1931	661	719	6872	7802	7533	3186	37,657
1932	658	766	6278	7923	7413	3438	37,812
1933	621	823	7070	7798	7543	3638	37,914
1934	715	857	6782	8007	7779	3735	38,392
1935	708	990	7342	8075	8224	3738	38,394
1936	671	849	7416	8086	8066	3866	38,757
1937	700	886	6660	8310	8045	3915	41,260
1938	661	1041	6972	8127	8090	3660	41,260
1939	675	998	6733	8389	8588	3805	41,260
1940	766	1135	6748	9153	9009	4027	41,432

**Please send your Silver Paper, Scrap
Silver, &c., to the Hartley Hospital
There is a market for it.**

THE HARTLEY HOSPITAL, COLNE.

List of Beds, Cots, Etc., already named, with the inscriptions on tablets.

Beds: Women's Ward:

- 1924. "The Elizabeth Sagar Bed," endowed by Alfred P. Sagar, Esq., J.P., and William Sagar, Esq.
- 1924. "The Emmeline Ward Bed."
- 1924. Bed endowed by The Colne & District Co-operative Society, Limited.
- 1924. Bed endowed by Lady Nelson, Gledstone Hall.
- 1924. Bed endowed by Joseph Smith, Esq., Horsfield, Colne.
- 1926. In memory of Mary Alice Broughton, Highcliffe Colne.
- 1926. "The Mary Ann England Bed," endowed by Mary Gordon Burnett.
- 1934. "The Trawden Bed," endowed by the Inhabitants of Trawden.
- 1937. "The Annie Shuttleworth Bed," endowed by the late Joseph and Annie Shuttleworth, of 52, Keighley Road, Colne.

Beds: Men's Ward:

- 1924. In memory of Rennie Bannister, bed endowed by Mrs. Bannister.
- 1924. "The Harold Smith Bed," endowed by his parents, Mr. and Mrs. John Smith, Calderglen, Colne.
- 1924. Bed endowed by Mr. Richard Lambert, of Aintree, and formerly of Colne.
- 1924. Bed endowed by The Carr Manufacturing Co., Ltd., Cotton Tree, Colne.
- 1937. "The Joseph Shuttleworth Bed," endowed by the late Joseph and Annie Shuttleworth, of 52, Keighley Road, Colne.
- 1940. "The Harry Broughton Bed," endowed by the Stonebridge Cotton Manufacturing Co., Ltd., Colne.

Cots: Children's Ward:

- 1906. By H. Mancknols Walton, Esq., in memory of his father, William Walton, of Walverden House, Nelson.
- 1914. By Edward Catlow, Esq., and Mrs. Clara Tattersall, in memory of their father and mother, Samuel and Mary Catlow, of St. Annes-on-Sea, and formerly of Colne.
- 1919. In memory of William Charles Asquith and Jane Asquith, of East Parade, Colne.
- 1922. By the late John Proctor Clark, of Chapel Street, Colne.
- 1924. By Miss Joy Cant, in memory of her Grandpa, Sir William Hartley.
- 1924. By Miss Christina A. M. Higham, in memory of her Grandpa, Sir William Hartley.
- 1924. "The George Hyde Cot," endowed by his parents, Mr. and Mrs. Henry Hyde, Craigmere, Colne.
- 1924. By the family, in loving and honoured memory of George Rushworth and Sarah Rushworth, Bank House, Colne.
- 1926. "The Lily Duckworth Cot," endowed in loving memory by Edgar Duckworth, Esq.
- 1930. By the late James and Elizabeth Williamson, of Wayne, Pennsylvania, U.S.A.
- 1937. "The John Barritt Cot," endowed by his parents, Mr. and Mrs. David H. Barritt, of St. Annes-on-Sea, and formerly of Colne.

A Cot is maintained by The Prudential Assurance Co., Ltd.

The endowment or naming of a bed or cot is a suitable means of permanently benefitting the hospital and of perpetuating the memory of a relative or friend. The Endowment Fund is invested and the income applied towards the Hospital Maintenance Account.

For a donation of £1,000 a bed may be named, and for a donation of £500 a cot may be named, although the interest derived from the investment of such amounts is far short of defraying the annual cost per bed or cot.

THE HARTLEY HOSPITAL, COLNE

Bequests and Donations to the Endowment Fund of Sums of £50 and over, showing the year in which made:

		£	s.	d.
1897 - 1900	Colne Tradesmen's Association (proceeds of Industrial Exhibition)	210	8	10
	Councillor H. Holgate	190	0	0
	Mr. Edward Carr, J.P., Langroyd	150	0	0
	The Right Hon. The 16th Earl of Derby, K.G., P.C.	100	0	0
	Alderman and Mrs. Samuel Catlow, Stanley Villas	100	0	0
	Alderman and Mrs. Calvin Knight, Northfield	100	0	0
	Messrs. Wm. and Hy. Hewitt, Albert Road	100	0	0
	Mr. George Rushworth, Shaw Street	100	0	0
	Colne and District Power Loom Weavers' Association	100	0	0
	Colne & District Co-operative Society	100	0	0
	Bequest by the late Mrs. Haines, of London	50	0	0
	Colne Trinity Baptist Church	50	0	0
	Mr. J. H. Threlfall, Moorlands, Foulridge	50	0	0
	Mr. William Astley, Nelson, for Mother and Family	50	0	0
	Royal Lancashire Lodge of Freemasons (No. 116) ...	50	0	0
	Colne Inghamite Church	50	0	0
	Mr. William Bateman, Ryburne House	50	0	0
1901	Mr. George Rushworth, Shaw Street	50	0	0
	Mr. Henry Hewitt, Albert Road	50	0	0
	Messrs. Joseph Eccles & Co.	50	0	0
1902	Wesleyan Methodist Church, Albert Road	50	0	0
1903	Bequest by the late Maria Blackburn, of Clayton Street, Colne (free of duty)	200	0	0
1905	Bequest by the late Elizabeth Spencer, of Collingwood Street, Colne	97	2	0
1906	Bequest by the late William Walton, of Walverden House, Nelson, to endow a Cot	500	0	0
1907	Bequest by the late John Proctor Clark, of Chapel Street, Colne, payable on death of Testator's widow	500	0	0
	Bequest by the late Alice Winterbottom, of Colne (free of duty)	100	0	0
1913	Bequest by the late E. A. Lambert, of Aintree (formerly of Colne)	50	0	0
	Bequest by the late Elizabeth Hudson, Oak Street, Colne	50	0	0

		£	s.	d.
1914	Endowment of a Cot by Mr. Edward Catlow and Mrs. Clara Tattersall in memory of the late Samuel Catlow, J.P., and Mary Catlow, of St. Annes-on-Sea, formerly of Colne	500	0	0
1918.	Bequest by the late Ann Smallpage, of Scarborough, formerly of Colne	50	0	0
1919	Bequest by the late Jane Asquith, of East Parade, Colne, in memory of her late husband, William Charles Asquith	500	0	0
1921	Bequest by the late Alfred Thornber Ellis, of Southport	200	0	0
	Mr. John Stansfield, A.C.A.	50	0	0
	Mr. Wilson H. Hey, F.R.C.S.	105	0	0
1924	Carr Manufacturing Co., Ltd., Standroyd Mill	1000	0	0
	Lady Nelson, Gledstone	1000	0	0
	Mrs. Bannister, High Brake, Colne	1000	0	0
	Mr. and Mrs. John Smith, Calderglen, Colne	1000	0	0
	Miss E. Ward, 33, Keighley Road, Colne	1000	0	0
	From the Executors of the late Richard Lambert, Aintree	1000	0	0
	Messrs. Alfred P. and William Sagar, Ball Grove ...	1000	0	0
	Mr. Joseph Smith, Horsfield	1000	0	0
	The Colne & District Co-operative Society, Ltd. ...	1000	0	0
	The family in memory of George Rushworth and Sarah Rushworth	500	0	0
	Miss J. Cant	500	0	0
	Miss C. A. M. Higham	500	0	0
	Mr. William Hyde, J.P., West Lynn, Colne	500	0	0
	Mr. Henry Hyde, Craigmere, Colne	500	0	0
	Messrs. Caleb Duckworth, Ltd.	150	0	0
	Misses Ayre, Eastleaves, Colne	100	0	0
	Mr. James Greenwood, 55, Albert Road, Colne	100	0	0
	Mr. Hartley Rushton, Overdale	100	0	0
	Miss M. Greenwood, Skipton Road, Colne	100	0	0
	Mr Richard Sagar, Heyroyd, Colne	100	0	0
	The Colne & District Weavers' Association	100	0	0
	Alderman T. Hey, J.P., 12, Linden Road, Colne	50	0	0
	Mr. Joshua Duckworth	50	0	0
1925	Bequest by the late Mary Gordon Burnett, of Reading, formerly of Colne, to endow a bed to be named "The Mary Ann England Bed"	1000	0	0
	Mr. and Mrs. James Greenwood, The Rough, Colne	100	0	0

		£	s.	d.
1925	The Colne Permanent Benefit Building Society	200	0	0
	Mr. H. Broughton, Highcliffe, Colne	1000	0	0
	Mr. Edgar Duckworth, Highcliffe, Colne	500	0	0
	Mr. E. A. Spivey, The Grove, Colne	50	0	0
	Mr. and Mrs. Alfred Varley, 35, Keighley Road, Colne	50	0	0
1927	Bequest by the late Alfred Stoddart, Duke St., Colne	50	0	0
1928	Bequest by the late Margaret Judson Hartley, of Keighley Road, Colne	100	0	0
	Colne Tramways Social Club	104	0	0
1929	Bequest by the late Emmeline Ward, of Keighley Road (free of legacy duty)	2000	0	0
	Bequest by the late James Williamson, of Wayne, Pennsylvania, 2,500 dollars free of duty	513	14	10
1930	Bequest by the late Lady Hartley	1500	0	0
	Bequest by the late Martha Ann Atkinson, of 71, Derby Street, Colne (subject to a life interest)	400	0	0
1931	Donation from Mrs. Rowlands and Mrs. McAllister in remembrance of their late aunt, Miss Elizabeth Watson, of Greenfield, Colne	100	0	0
	Bequest by the late Mary Jane Riley, of Foulridge ...	100	0	0
1934	Bequest by the late Charles G. Ratcliffe, J.P., of Park House, Colne	75	0	0
	Bequest by the late William Duerden, of Hill Street, Colne	50	0	0
	Endowment of a Bed by the Inhabitants of Trawden	1000	0	0
1937	Endowment of the "John Barritt Cot" by Mr. & Mrs. David H. Barritt, St. Annes-on-Sea	500	0	0
	Bequest by Joseph & Annie Shuttleworth, 52, Keighley Road, Colne	2000	0	0
1940	Bequest by the late William Thornton of Reginald Street, Colne	200	0	0
	Bequest by the late Mrs. Annie Lund, of 202, Skipton Road, Colne	50	0	0

**Will you be good enough to circulate
this Report when you have perused it?**

THE HARTLEY

Summary of Income and Expenditure for

1939.
For Comparison.

£ s. d.		INCOME.		£ s. d.		£ s. d.		£ s. d.	
381 18 4				Balance brought forward				183 9 8	
ORDINARY.									
1. VOLUNTARY GIFTS—									
1. Subscriptions, Donations, etc.—									
787 2 6	Annual Subscriptions	751 5 6							
177 19 0	Donations	364 16 1							
64 17 9	Church Collections	67 8 5							
36 4 8	Box Collections	49 5 5							
114 15 9	Linen League	157 8 6							
50 12 11	Alexandra Rose Day	73 7 11							
80 0 0	Football Competition	80 0 0							
44 10 0	Pound Day	— — —							
<hr/>				<hr/>		1543 11 10			
1356 2 7									
3805 1 11	2. Voluntary Weekly Contributory Scheme			4027 8 3					
II. RECEIPTS ON ACCOUNT OF SERVICES									
TO PATIENTS—									
1151 7 10	From Patients	1155 10 8							
38 12 6	District Nursing	40 11 4							
133 15 6	Fees for Private Nursing	10 1 6							
104 0 0	Ministry of Health—Emergency Hospitals Scheme	172 9 8							
<hr/>				<hr/>		1378 13 2			
1427 15 10									
III. INVESTED PROPERTY.									
1287 2 4	Interest, Dividends, etc.	1021 10 0							
488 4 2	Income Tax Reclaimed	756 15 11							
16 0 0	Rent of land	16 0 0							
<hr/>				<hr/>		1794 5 11			
1791 6 6									
IV. MISCELLANEOUS.									
8 17 9	Ministry of Health Grant—A.R.P. Expenditure	59 17 6							
<hr/>				<hr/>		155 10 7			
8389 4 7	Ordinary Income			<hr/>			8899 9 9		
EXTRAORDINARY.									
		Bequest by late William Thornton		200 0 0					
		" " " Mrs. Annie Lund		53 10 4					
				<hr/>		253 10 4			

£8336 9 9

H. W. CROASDALE, Secretary.

HOSPITAL, COLNE.

the year ended the 31st December 1940.

1939. For Comparison.		EXPENDITURE.		£ s. d.	£ s. d.
£ s. d.		ORDINARY.			
1412 16 0	I. PROVISIONS				1560 9 6
202 2 8	II. SURGERY AND DISPENSARY—				
32 5 6	Drugs, Chemicals	178 6 0			
68 7 11	Pathological Examinations	31 18 0			
98 6 1	Dressings, Bandages, etc.	90 2 10			
278 14 2	Instruments and Repairs	82 19 3			
41 8 11	X-Ray Films, etc.	141 11 0			
	Sundry Appliances	36 8 11			561 6 0
721 5 3					
211 6 8	III. DOMESTIC—				
38 18 5	Renewal and Repair of Furniture, Bedding, Crockery, etc.	266 11 0			
44 3 2	Laundry (soap and other materials)	43 13 0			
42 4 6	Cleaning Materials	46 17 7			
560 17 6	Water	98 2 3			
84 13 4	Fuel	612 17 1			
224 6 11	Gas	84 8 8			
60 13 6	Electricity	216 0 8			
16 17 11	Uniforms	85 0 11			
	Sundries	20 15 9			1474 6 11
1284 1 11					
850 13 0	IV. SALARIES AND WAGES (Maintenance)—				
1385 18 8	Consultants' Honoraria and Fees	783 16 4			
1009 18 10	Nursing	1351 17 10			
	Porters, Domestic and Laundry	1158 17 6			3294 11 8
3246 10 6					
66 9 5	V. MISCELLANEOUS.—				
75 18 0	Printing, Stationery, Postages, Telephone and Advertisements	71 8 8			
32 3 9	Insurances	84 18 10			
	Other	46 5 1			202 12 7
174 11 2					
400 0 0	VI. ADMINISTRATION—				
44 15 1	Salaries	400 0 0			
	Printing, Stationery, Postages & Advertisements	49 11 6			449 11 6
444 15 1					
477 8 11	VII. ESTABLISHMENT—				
120 3 10	Renewals and Repairs to Buildings and Plant	538 1 4			
	Garden	98 13 4			636 14 8
597 12 9					
47 4 9	VIII. FINANCE— ...				
38 17 5	Bank Interest	87 11 11			
	Rates and Taxes	38 17 5			126 9 4
86 2 2					
7967 14 10	Total Ordinary Expenditure ...				8306 2 2
	EXTRAORDINARY.				
416 3 8	District Nursing	414 17 4			
203 14 9	Contributions to other Institutions	288 14 6			703 11 10
619 18 5					
8587 13 3	Total Expenditure				9009 14 0
	Transfer to Endowment Fund				21 0 0
	Carried Forward				305 15 9
					9336 9 9

THE HARTLEY HOSPITAL, COLNE.

ENDOWMENT FUND—Year ended 31st December, 1940.

	£	s.	d.		£	s.	d.
To Amount of Endowment Fund at 31st December, 1939	41,260	18	5	By Investments with Colne Corporation	41,070	18	3
" Stonebridge Manufacturing Co., Ltd. First instalment under Deed of Covenant	150	0	0	" 361 shares in the British Cotton Growing Association (nominal) ...	361	0	0
Transfer from Maintenance A/c.	21	0	0	" Cash in Bank	6	7	
Bank Interest	6	5					
	£41,432	4	10		£41,432	4	10

20

BUILDING EXTENSION ACCOUNT—Year ended 31st December, 1940.

	£	s.	d.		£	s.	d.
To Balance owing to Bank	1349	12	1	By Balance (owing to Bank) Brought Forward	1139	12	2
				" Payments to Contractors during the year	209	19	11
	£1349	12	1		£1349	12	1

H. W. CROASDALE, Secretary.

We have examined the Books and Accounts of the Hartley Hospital, Colne, for the year ended 31st December, 1940, together with the foregoing Maintenance Account, Endowment Fund Account and Building Extensions Account, and certify that in our opinion they show the correct state of the affairs of the Hospital. We have obtained all the information and explanations we have required, and have verified the investments of the Endowment Fund Account.

JOHN STANSFIELD, WESTMORE & CO., Chartered Accountants.

Albert Road, Colne. 27th January, 1941.

Hon. Auditors.

THE HARTLEY HOSPITAL, COLNE.

SUBSCRIPTIONS

for the year 1940.

The Funds are applied in maintaining the Hartley Hospital and District Nursing.

Name.	Address.	£	s.	d.
Ayre, Misses	Eastlemes	2	2	0
Ayre, Mr. & Mrs. G. L.	Lingmell, Bent L'n.	1	1	0
Anderson, Mr. & Mrs. R.	77, Albert Road ...	1	1	0
Allen, Mr. J. E.	64, Albert Road ...	1	1	0
Bateman, Mrs. M.	142, Keighley Road	2	2	0
Badgery, Mr. T. S. M., Burwains, Foulridge		1	1	0
Barritt, Messrs. J. W. & Co. Grove Mill		2	2	0
Bentley, Mrs.	Alkincoats Lodge	1	1	0
Bentley, Mr. Roy, 77, Alkincoats Road		1	1	0
Berry, Mrs.	Burnside, F'ridge ...	2	2	0
Bogue, Mr. H. J.	Albert Road ...	1	1	0
Boots, The Chemists	Market Street ...	1	11	6
Bracewell, Mr. & Mrs. T.	31, Brown Street ..	2	0	0
Brierfield Mills Hospital Fund		3	3	0
Bolton, Mr. Harry, The Croft, Skipton Old Rd. ...		3	3	0
Brown, Mr. J.		1	1	0
Broughton, Mrs. F., Lyngarth, Castle Road		2	2	0
Burnley & District Licensed Victuallers' Assoc. ..		2	2	0
Carr Manufacturing Co. Ltd. Standroyd Mill		1	1	0
Catholic Club, Colne		*1	1	0
Catlow, Messrs. J. (Bricks) Ltd., Knotts Lane				
Brick Works		2	2	0
Clegg, Mr. J. S.	East Parade ...	1	1	0
Colne Corporation (in lieu of account for Water, Gas & Electricity)		400	0	0
Colne Churchwardens, Annual Income of Anderton Charity		4	3	0
Colne Consolidated Charities		23	0	0
Colne Masonic Lodge 4402		2	2	0
Colne Textile Affiliated Clubs		*2	2	0

*Received after Account closed.

Name.	Address.	£	s.	d.
Colne Power-Loom Overlookers' Association	...	2	2	0
Colne Whist Club	4	4	0
Colne & District Co-operative Society, Ltd.	21	0	0
Colne & District Society for the Blind	5	5	0
Colne & District Weavers' Association	15	15	0
District Bank, Ltd., Staff Charities	2	2	0
Dodgeon, Mr. Smith 1, Regent Avenue	1	1	0
Duckworth, Mrs. Caleb The Ridge, F'ridge	1	1	0
Duckworth, Mr. Francis Swanside	1	1	0
Duckworth, Mr. Robert, J.P. The Close, F'ridge	2	2	0
Duckett, Mr. Albert	10	6	
Earnshaw & Bottomley Raglan Street	1	1	0
Farralley, Miss L. M.	10	0	
Feather, Mrs. M. Brookfield, L. B'dg.	1	1	0
Foulds, Mr. & Mrs. T. Highfield, Bott Lane	2	2	0
Foulds, Mrs. E. A. 64, Stonebridge Tr.	1	1	0
Franken, Mrs. 109, Albert Road	1	1	0
Gawthrop, Mrs. 85, Keighley Road	1	1	0
Green, Mr. Chas. 61, Market Street	*1	1	0
Greenwood, Mrs. F. 24, Haverholt Rd.	1	1	0
Haighton, Mr. & Mrs. E., Lower Emmott House	*2	2	0
Hargreaves, Messrs. T. & Sons, Ltd., Viaduct Mill	1	1	0
Hartley, Miss C., J. P. Southport	5	0	0
Hartley, Mrs. Turner, Teneriffe Bungalow, F'dge	1	1	0
Hartley, Mr. & Mrs. T. H. 53, Albert Road	1	1	0
Hey, Messrs. J. & Co. Derby Street	3	3	0
Hey, Mr. J. N., J.P. West Cliffe, F'dge	2	2	0
Hey, Miss M. H. 12, Linden Road	1	1	0
Higham, Mrs. P. Southport	10	0	0
Hindle, Mr. T. T., Solicitor 7, Colne Lane	1	1	0
Howarth, Miss 42, Albert Road	1	1	0
Hyde, Messrs. T. & Co. Derby Street Mill	5	5	0
Kirkham, Rev. R., The Vicarage, Foulridge	1	1	0
Knight, Ald. R., J.P. Ryburn House	*2	2	0
Kershaw, Mr. B. 109, Albert Road	1	1	0

*Received after Account closed.

Name.	Address.	£	s.	d.
Lancashire Public Assistance Committee		33	3	0
Landless, Mr. T. A.	Station Yard ...	1	1	0
Laycock, Messrs. T. & J.	Grosvenor Street	1	1	0
London, Midland & Scottish Railway Hospital Fund		12	12	0
Loynd, Mr. & Mrs. Wilson	102, Park Drive ...	2	2	0
Lund, Messrs. Luke & Sons, Ltd., 56, Market St.		2	2	0
Mason, Messrs. T., Ltd.	Primet Mill	5	5	0
Mellin, Mr. J. F.	Martins Bank	1	1	0
Midland W. M. Club	1	1	0
Midland Bank Ltd.	Colne	1	1	0
Nelson & Dist. Assoc. of Preparatory Workers ..		2	2	0
Nelson, Mr. J.	Thornlea	2	2	0
The Mayor and Mayoress—				
Parkinson, Coun. & Mrs. A.	105, Langroyd Rd.	2	2	0
Perkins, Mr. H. W. T.	Alkincoats Road ...	1	1	0
Petty, Mrs. J. T.	Keighley Road ...	1	1	0
Pickles, Messrs. Jas. & Sons,	Market Street ...	5	5	0
Pilgrim, Mr. W. A.	Noyna Mede	2	2	0
Pilling, Messrs. J. & Sons, Ltd., Primet Foundry		*3	3	0
Pilling, Miss M.	Bardsey	10	0	
Post Office, "Fines and Games Fund		4	4	0
Preston, Mr. H. S., Gadshill, Favordale Road ...		1	1	0
Prudential Assurance Coy., Ltd.		20	0	0
Rankin, Mr. J. D.	Stanley House ...	2	2	0
Ratcliffe, Brown & Lancaster	Riverside Mill ...	1	1	0
Riddiough, J. & C., Ltd.,	Valley Saw Mills	2	2	0
Riley, Messrs. W. & A., Ltd.,	Holker Street Mill	2	2	0
Robinson, Dr. R. E.	148, Keighley Rd.	1	1	0
Rotary Club of Colne	5	5	0
Roses Lodge of Freemasons, Colne		4	4	0
Royal Lancs. Lodge of Freemasons, No. 116 ...		*3	3	0
Rushton, Mr. Hartley	Oak Mill	2	2	0
Sagar, Miss E., J. P.	Garth Holme ...	1	1	0
Sagar, Mr. Richard	Heyroyd	2	2	0
Scott, Mrs.	Gwastadd Hall ...	10	0	0
Sefton Working-Men's Club	Knotts Lane ...	1	1	0
Senior, Mr. J.	150, Keighley Road	1	1	0
Sidebottom, Mr. J. W.	Woodlands, Nelson	1	1	0
Smith, Mrs. Joseph	Horsfield	3	3	0

*Received after Account closed.

Name.	Address.	£	s.	d.
Spencer Northern Dairies Ltd., Colne		1	1	0
Spivey, Mr. E. A.	The Grove	2	2	0
Stansfield, Mr. W. N.,	Cliff Meadow, Foul'ge	*1	1	0
Stansfield, Miss	24, Haverholt Rd.	2	2	0
Stonebridge Cotton Manufacturing Co., Ltd., Colne		5	5	0
Sumner, Messrs. R. & Co., Ltd. Liverpool		3	3	0
Swire, Messrs. Andrew, Ltd. Railway St. Mill ..		2	2	0
Tempest, Mr. J.		2	0	0
Trawden Hospital & Ambulance Fund Committee		8	8	0
Varley, Mrs. A.	35, Keighley Road	*1	1	0
Venables, Mr. L. A.	Favordale Road ...	2	2	0
Veterans' Club		1	1	0
Vipond, Miss E.	62a, Market Street	0	10	6
White, Messrs. W. B., Ltd.	Red Scar Works ..	2	2	0
Whitworth, Miss E. M.	Ash Mount	1	1	0
Wilding, Mr. L. E.	Fernlea, Castle Rd.	1	1	0
Wilkinson, Mrs. J.	1, Grosvenor Street	1	1	0
Wilson, Mr. J.	Church Street ...	2	2	0
Wilson, Mrs. T.	2, Granville Street	1	1	0
Wilmore, Messrs. G. & Son	Church Street ...	1	1	0
Winewall Mechanics' Institut		1	1	0
Whittaker, Mr. H.	High Brake	1	1	0
Woolworth, Messrs. F. W. & Co., Ltd., Market St.		5	0	0
		<u>£751</u>	<u>5</u>	<u>6</u>

*Received after Account closed.

DISTRICT NURSING

Lancashire County Council	24	0	0
Nelson District Nursing Association—			
(Colne Contributors)	10	16	4
Donations from Patients	5	15	0
		<u>£40</u>	<u>11 4</u>

Please send your Silver Paper, Scrap
Silver, &c., to the Hartley Hospital.
There is a market for it.

THE HARTLEY HOSPITAL, COLNE.

**Donations and Proceeds of Special Efforts,
1940.**

	£	s.	d.
Proceeds of Hospital Dance, 12th January, 1940	30	17	4
Gracie Field's Christmas Eve Appeal, per the Combined Hospitals Broadcast Appeals Committee	9	18	6
Messrs. T. H. Taylor and Son, Auctioneers, Skipton realised at Barnside Farm by the Sale of gifts by Messrs. Mellin, Son and friends, Messrs. James Hird & Sons, Preston Farmers' Trading Soc., & Mr. Alfred Howard	6	3	0
Mrs. Cant, Sevenoaks, for Comforts for patients	5	0	0
Proceeds of Bring and Buy Sale, 12th June	84	12	8
Messrs. J. Hartley, E. Heys, H. Hartley, E. Tye & J. Moran, being one-third of money received by them from I.L.P. Funds	20	12	8
Skipton Auction Mart Co., Ltd.	8	0	0
Mr. R. Smith, 6, Basil Street, Colne	5	5	0
Preston Quarter Sessions, Magistrates Mess per Sir William Ascroft	10	0	0
Burnley & District Licensed Victuallers, Bowling Section	3	10	0
Mr. S. Lord, 12, Thomas Street	1	19	2
Colne & District Room & Power Tenants Association	30	0	0
Miss E. J. McRae, Sunderland	1	0	0
Alderman R. S. Pilling, J.P.	10	0	0
Mr. R. Pilling	2	6	
Miss E. Wain, 79, Albert Road	10	0	0
Master T. and Miss P. Wood	10	0	0
Misses M. Leeming, A. Heys, H. Sunderland, D. Heys and Master R. Sunderland	18	9	
A Friend	1	0	0
Mrs. Crabtree, Kelbrook	1	0	0
Mrs. Powell	2	0	0
Mrs. Nelson, Grey Toft, Nelson	10	0	0
The Late Mrs. Dugdale's daughters	10	0	0
Mrs. Hindle	2	0	0
Mr. James Ralph	3	0	0
County Brook Mill Co., Ltd., Social Committee	7	0	0
National Farmers' Union, Colne Branch, Proceeds of Ball and Social	20	0	0
Messrs. Holden's Warddressers, balance of Collection	7	6	
Royal Order of Buffaloes, Colne Branch	9	6	
Colne Women's Social Service Club	10	10	0
Mr. H. W. T. Perkins	3	0	0
Colne Parks Bowling Finals	14	6	
Colne Overlookers Club—Proceeds of Concert and Sale ...	4	1	6
Mr. F. Butler	1	0	0
Colne Golf Club	5	0	0
Miss Cook, Northroyd, Castle Rd. Proceeds of raffle for doll	10	13	6
Mrs. Salisbury	10	0	
Colne & District Co-operative Soc., Ltd.—Dividend on Share No. 345	43	10	0
	£364	16	1

THE HARTLEY HOSPITAL, COLNE.

Collections at Churches, 1940.

COLNE.										£	s.	d.
Colne Parish Church	15	15	0
Holy Trinity Church, Burnley Road	1	1	0
Christ Church	—	—	—
St. George's Mission Church, Alkincoats	—	—	—
Church of the Sacred Heart, Queen Street	4	4	0
Methodist Church, Albert Road	3	3	0
" " Collingwood Street	1	1	0
" " Langroyd Road	1	1	0
" " " "	1	3	0
" " Laneshawbridge	10	6	
" " Cotton Tree	12	0	
" " Black Lane Ends	10	0	
" " Exchange Street	—	—	—
" " Skipton Road	1	0	0
" " Primet Bridge	1	1	0
" " Wycollar	5	3	
Bethel Independent Methodist Church, Burnley Road	2	2	0
Inghamite Church, Cotton Tree Lane	5	5	7
" " Winewall	—	—	—
" " Colne	—	—	—
Congregational Church, Dockray Street	3	3	0
Unitarian Church, Stanley Street	1	1	0
Providence Independent Methodist Church	1	1	0
Trinity Baptist Church (Mayor's Sunday)	15	1	1

TRAWDEN.

St. Mary's Church	3	3	0
Zion Independent Methodist Church	2	2	0

FOULRIDGE.

St. Michael and All Angels' Church	2	2	0
Methodist Church	1	1	0

£67 8 5

Please remember the Hospital when
distributing the proceeds of efforts
for charitable objects.

THE HARTLEY HOSPITAL, COLNE.

COLLECTION BOXES.

	£	s.	d.
At the Hospital	18	16	10
Intake Bowling Club	6	6	0
British Legion Club	8	0	0
White Lee Head Club, Trawden	2	2	0
Clothlookers' Club	4	4	0
Royal Ancient Order of Buffaloes	2	2	0
Grand Club, Trawden	2	2	0
Garden Vale Club	1	1	0
2a, Albert Road	1	15	6
Town Hall Box	0	18	5
Derby Arms	1	1	0
Parkers Arms	0	14	0
Fleece Inn	0	2	8
	<hr/>		
	£49	5	5
	<hr/>		

You can help the Hospital funds by having a small collection box handy. The Secretary, on receipt of post card, will send you a box.

THE HARTLEY HOSPITAL, COLNE.

SUMMARY OF AMOUNTS RECEIVED UNDER THE WEEKLY CONTRIBUTORY SCHEME.

The Funds are applied in maintaining the Hartley Hospital, the specialised treatment of patients in other Hospitals and District Nursing.

Workpeople Employed by—	£	s.	d.	£	s.	d.
Alderson, D. E., Foulridge				1	5	0
Atkinson, H. & Sons, Bridge Street				2	11	3
Bannister, H. W. Ltd., Forest Shed Trawden				56	3	6
Blackburn Assurance Co. Ltd., Staff				6	11	3
British Hat Band Manuf. Ltd., Spring Gardens Mill				15	6	6
Brown, James, Market Street, Colne				3	0	0
Burnley, Colne and Nelson Transport Committee				40	13	6
Britannic Assurance Co., Ltd., Staff				2	6	2
Blackburn Savings Bank Staff					18	8
Burrows and Seed Ltd., Motor Engineers, Colne				3	19	1
Barritt, J. W. Ltd., Grove Mill				37	17	11
Burrows and Green, Engineers, Trawden				5	13	9
Butterworth Bros. and Hey, Kyber Street Mill				23	3	2
Bentley, A. and Sons, Parliament Street				8	11	11
Bunkers Hill Manuf. Co., Bunkers Hill Mill				15	14	11
Bannister, Joseph, Hollin Hall, Trawden				3	12	6
Benker Co., Ltd., Albert Road Colne				2	0	10
Britain's Ltd., Spring Gardens Mill				11	6	10
Bess Silk Fabrics Ltd., Spring Gardens Mill				23	7	0
Berry, W. N. and Sons, Croft Mill, Foulridge *21 14 0				—	—	—
Carr Manuf. Co. Ltd., Standroyd Mills				138	7	6
Craddock's, Derby Street				1	1	8
Cawthra, J. and Co. Ltd., Bradford Mills				34	8	10
Co-operative Insurance Ltd., Staff				3	0	8
Colne Postal Staff				—	—	—
Crabtree Bros. Ltd., Mill Furnishers, Waterside				9	12	5
Crabtree, T. and Co. Ltd., Vivary Bridge Mill				20	5	1
Colne Co-operative Society Ltd., Colne Hall				119	8	0
Colne Teaching Staff				27	18	2
Caddy, E. J., Skipton Road, Colne				—	—	—
Coulton and Co., Ltd., Times Office				3	1	8
Culley and Co. Ltd., Wine Merchants, Market Street				2	13	8
Cork, George, Reed Maker				1	19	0
Cowgill, Rennie, Coal Merchant				2	0	0
Crabtree, J. and Co., Swanfield *4 15 2				—	—	—

*Received after Account closed.

Workpeople Employed by—	£	s.	d.
County Brook Mill, County Brook, Foulridge	12	15	0
Christ Church School Staff	1	16	0
Cross and Lawson, Contractors	5	14	4
Cowling, J., Carting Agent	2	3	4
Catlow, John, (Bricks) Ltd.	6	15	4
Colne Abattoirs, Employers	2	2	2
Crabtree, A. W. and Brother, Birchenlee Mill	15	10	2
Colne Staff Ministry of Labour	5	14	0
County Police, Colne	13	7	4
Duckworth, C. Ltd., Colne Lane	23	11	6
Duckworth, J. Ltd., Colne Lane	8	12	9
Duckworth, F. Ltd., Spring Lane	4	8	8
Derbyshire and Knowles, Swanfield Mill	12	7	3
Exley, Allen, Decorator	1	5	0
Empress Mill Co., Empress Mill	4	17	2
Earnshaw and Bottomley, Contractors	—	—	—
Frankland's Ltd., Walton Street Mill	21	10	0
Foulds, T. and Son Ltd., Green Shed and Gt. Holme Mills	61	12	6
Fenner, J. H. and Co. Ltd., Winewall Mill	5	18	7
Farnhill and Co. Ltd., Oak Mills	32	11	2
Foulds, E. A. Ltd., Engineers	12	8	8
Foulds and Bury, Ltd., Vale Mill	26	12	11
Fisher, Ridehalgh and Duckett, Crescent Mill	13	1	0
Farnhill and Co. Ltd., Office Staff	1	19	0
Feather, W. and Sons, Ltd., Haulage Contractors	43	17	2
Foulds, T. and Co., Ironfounders	4	2	10
Glen Mills Ltd., Glen Mills, Colne	18	7	0
Gallic Crepes Ltd., Spring Gardens Mill	10	5	1
Greenwood, S. and Sons, Vivary Bridge	4	7	0
Gallons Ltd., Market Street, Colne	13		0
Houldsworth, H., Calder Bank Mill	17	12	0
Hartley, Turner, Oak Mills	39	14	8
Hyde, T. and Co., Derby Street Mill	66	8	5
Hodson and Simpson, Coal Merchants	2	0	0
Hargreaves, T. and Sons Ltd., Viaduct Mill	41	0	11
Hendley's, Skipton Road, Colne	15		0
Hartley, Edward and Sons Ltd., Vivary Bridge Mill	15	0	0
Hartley Bros. (1926) Ltd., Oak Mills	32	3	10
Harris, Bolton and Co. Ltd., Garden Vale Mill	24	8	11
Holt, James, Further Lea Farm, Colne	2	2	0
Houghton, E., Higgin Street, Colne	1	4	0
Helliwell and Co., Great Holme Mill	1	12	6
Harrison, Walter, Winewall	20	0	0
Hoyle, D. and Co. Ltd., Perfection Works	5	16	4
Hodgson, J. H., Decorator	2	6	0
Hartley's (Garden Vale) Ltd., Valley Mills, Laneshawb'ge	13	11	0
Hodgson, W., Joiner, Byron Road, Colne	4	3	4
Halliwell, W. E., Market Street, Colne	2	12	0

Workpeople Employed by—		£	s.	d.
Hirst, H. and Son, Bond Street, Colne	...	8	2	3
Hopkinson's (Trawden) Ltd., Black Carr Mills, Trawden	...	106	1	5
Heys, Geo. H. Ltd., Market Street, Colne	...	11	8	
Hill, Heaton, Plasterer	...	1	16	2
Hartley, W. and Co. Ltd., Vivary Bridge Mill	...	11	1	2
Irving, J., Decorator	...	1	11	4
Ingham, B., Printer	...	1	11	10
Kirk, E. and Co. Ltd., Excelsior Works	...	13	16	10
Keen, Ernest, Leather Dresser	...	5	0	0
Kitchen, D. Ltd., Motor Engineers	...	5	6	11
Longbottom, W., Coal Merchant	...	2	0	0
Lonsdale and Co. Ltd., Peel Mill, Foulridge	...	54	19	5
Laycock, T. and J., Plasterers	...	1	9	8
Lord Street Junior School Staff	...	3	4	0
Lund, Luke and Sons, Cross Street Bakery	...	9	3	10
Leyland Construction Co., Leyland	...	1	3	2
Milson Knitwear, Turney Crook and Colne Lane	...	19	14	1
Mason, T. Ltd., Primet Mill	...	95	12	5
Mercer, A. and F., Boundary Mill	...	23	19	9
Moorhouse, J. and Son Ltd., Hollin Hall Mill, Trawden	...	67	14	2
Melfar Manufacturing Co., Oak Mills	...	5	11	0
North Valley Services	...	7	3	6
Nelson and District Hairdressers' Association	...	2	10	0
Newton, W., Decorator	...	16	8	
Oak Mills (Colne) Ltd.	...	17	4	
Ombler Bros., Laneshawbridge	...	10	0	
Pilling, J. and Sons Ltd., Primet Foundry	...	105	19	8
Preston, J. and Sons, Swanfield Mills	...	8	19	1
Pickles (Trawden) Ltd., Forest Mill, Trawden	...	13	16	7
Pickles, J. Ltd., Bankfield Mill	...	45	4	5
Parker, David, Plumber	...	3	8	0
Preston Farmers Assn., Brown St., and Garden Vale Mill	...	6	5	7
Pearson, J. and Co. Ltd., Peerart Works	...	24	17	5
Pickles, Amos, Scar Mount Bakery, Trawden	...	11	17	8
Parker, J. G. Ltd., Printers	...	1	17	6
Pickles, J. B. Ltd., Cottontree, Colne	...	12	6	
Pillings Ltd., Vivary Bridge Mills	...	24	0	8
Pickles, James and Sons, Butchers	...	5	0	0
Pickles, J. and Co., Swanfield Mill	...	10	5	6
Primet Infant School Staff	...	2	0	0
Pilling, J. and Sons Ltd., C.I.A. Inspectors	...	2	9	0
Qualitex Silks Ltd., Spring Gardens Mill	...	18	12	0

Workpeople Employed by—	£	s.	d.	£	s.	d.
Ratcliffe, Brown and Lancaster, Riverside Mill	29	10	2			
Riley, W. and A. Ltd., Holker Street Mill	89	0	0			
Ratcliffe, C. G. Ltd., Greenhill Mill	48	12	2			
Roberts, J. F. and H. Ltd., New Shed, Foulridge	88	13	5			
Rushworth, G. W. Ltd., Motor Engineers	2	0	0			
Rushton, Hartley Ltd., Oak Mills	30	16	5			
Refuge Assurance Co. Ltd., Staff	2	16	10			
Riley, E. and P. Ltd., Walk Mill	51	5	10			
Riley and Waring, Joiners	4	11	4			
Riddiough, J. and Co. Ltd., Valley Saw Mills	9	3	6			
Rushworth Bros. Ltd., Crane Works	14	16	2			
Redman, T. and Co. Ltd., Market Street, Colne	3	0	5			
Rushworth, G. and Son Ltd., Stanley Mills	*6	12	10	—	—	—
Roberts and Slater, Market Street, Colne	1	1	0			
Sagar, J. R. and Co. Ltd., Spring Gardens Mill	4	7	6			
Sagar, W. and J. Ltd., Ball Grove Tannery	102	15	2			
Smith, Samuel and Sons Ltd., Waterside Tannery	65	9	0			
Swire, Andrew Ltd., Railway Street Mill	32	18	2			
Smith, Sydney, Swanfield Mill	8	0	0			
Scaife, Robert Ltd., Swanfield Tool Works	9	1	3			
Stonebridge Cotton Manuf. Co. Ltd., Stonebridge and Langroyd Mills	268	11	4			
South Valley Manuf. Co. Ltd., Great Holme Mill	58	4	2			
Stephenson, G. and Son, Bond Street, Colne	1	5	0			
Smith, J. W. Market Street, Colne	2	18	4			
Spencer Northern Dairies Ltd., Peter Street	2	6	0			
Shuttleworth, J. T. and Sons, Decorators, Trawden	1	14	8			
Stearn, Isaac and Son	1	11	4			
Smith and Wild Ltd.	3	3	0			
Turner, George, Joiner, Swanfield	1	10	4			
Tyson, J. F. and Son, Tinplate Workers	2	12	0			
Trawden Urban District Council Staff	16	8				
Trawden Utility Poultry Society Staff	2	6	8			
Tillotson, T. M., Motor Engineers	1	5	0			
Thornton, James Ltd., Coal Merchants	6	6	6			
Tobias, H., Radio Rentals, Church Street, Colne	3	0	8			
Varley, W. and Sons, Plumbers	7	14	1			
Veevers, T., Wholesale Confectioners	*4	0	0	—	—	—
Visi Chick Brooder Co., Garden Vale Mill	11	5	0			
Wilson, Tom, Newsagent	1	0	7			
Weston Engineering Co. Ltd., Foulridge	24	4	2			
White, W. B. and Sons, Ltd., Red Scar Works	102	3	1			
Weavers Office Staff, Tower Buildings	8	10	0			
Whittam, James, Corner House	5	0	0			
West Street School, Infant Department Staff	3	0	0			
Wilmore, George and Son, Wine Merchants	3	6	7			
Wormwell, Crabtree H., Plumber	2	10	4			
Whittaker, C., Exors of	2	1	4			

*Received after Account closed.

Workpeople Employed by—						£	s.	d.
Whittaker Bros., Shipley Mill, Trawden	7	14	11
Whittaker, H., Swanfield Mill	30	6	0
Whittaker, Joseph, Calder Mill	5	1	10
Wood, R. A., Contractor	—	—	—

Corporation Departments:—

Gas	26	6	0
Water	6	5	6
Electricity	15	16	10
Highways	41	2	8
Sewerage	3	7	2
Health	5	1	8
Destructor	9	15	2
Fire Brigade	16	6	
Parks	5	19	7
Cemetery	2	7	6
General	14	6	11
A.R.P.	15	1	0
						<hr/>		
						146	6	6
Individual Contributions	675	1	8
						<hr/>		
						£4027	8	3
						<hr/>		

Please remember the Hospital when
distributing the proceeds of efforts for
charitable objects.

THE HARTLEY HOSPITAL, COLNE.

VISITORS.

Friends are permitted to visit patients in the Hospital on Tuesdays, between the hours of 3 and 4 p.m., and on Saturdays between the hours of 2-30 and 4-30 p.m. Not more than two visitors are allowed to see each patient at any one time, and they must produce the visitors' admission card. Children under 14 years of age are not admitted.

In very serious cases special arrangements are made for near relatives only to see patients at other convenient times.

Visitors to patients in Private Wards are permitted each day between the hours of 3 and 6 p.m., when the condition of the patients will allow.

**Please send your Silver Paper, Scrap
Silver, &c., to the Hartley Hospital.**

Gifts are solicited of Linen and Calico for Hospital purposes; and also of entertaining books for the use of the patients. Grateful thanks are given for the donations of this description which have been received during the past twelve months.

THE HARTLEY HOSPITAL, COLNE.

VOLUNTARY WEEKLY CONTRIBUTORY SCHEME.

1.—The funds raised by the weekly contributions of 1d. where the earnings are under £1 and 2d. where the earnings are £1 and upwards per week shall be applied:—

- (a) In the maintenance of the Hartley Hospital.
- (b) In providing a limited number of "Recommends" for treatment of a special nature in other hospitals with whom arrangements have been made (for which there is no provision at the Hartley Hospital).
- (c) In contributing **towards** the cost of the consultation of specialists.
- (d) In maintaining the services of District Nurses.

2.—Contributors in need of benefits must in all cases present to the Organising Secretary at his office, 2a, Albert Road, Colne, a form obtained from their medical attendant before either a recommend for any hospital or authority to visit a specialist can be issued. In cases of grave urgency the form must be presented as early as possible.

3.—Twenty-six weeks after entry to the scheme, contributors, or their dependents* shall be entitled to:—

- (a) Maintenance and Nursing without charge in the general wards of the Hartley Hospital.
- (b) A recommend for admission for special treatment (not maintenance charges) or for the consultation of specialists at other hospitals with whom arrangements have been made.

**Dependents shall only include the wife and children (under 16 years of age) who are not workers.*

All benefits under the scheme will cease at the expiration of 26 weeks from the date of discontinuance of contributions to the fund.

4.—The Committee cannot accept responsibility for any fees or expenses incurred by contributors or members of their families visiting specialists on their own initiative. No payment will be made for any treatment or operation by specialists privately arranged.

5.—In urgent cases where it may be necessary, on the advice of the medical attendant, to consult a specialist at the home of the patient, the Committee may make a grant (not exceeding £1 1s. 0d.) towards the cost incurred; providing that the conditions of Rules 2 and 3 above have been complied with.

6.—**No payment** will be made from the Hospital funds for any expenses incurred for treatment in any private nursing home or private ward of any hospital, nor can contributions be made from the funds for any surgical or other appliances required by contributors.

7.—The funds shall not be applied in providing for treatment of infectious or contagious disease, tubercular (except surgical treatment), mental diseases, or maternity patients; such cases being otherwise provided for.

8.—Contributors may appeal to the Board of Management in any case not dealt with in the rules, and the decision of the Board shall be final.

9.—Contributors may make their weekly payments through the firm by whom they are employed or as individual contributors direct to the Organising Secretary.

10.—A meeting of the representatives of contributors shall be held annually to receive the report of the year's work and the application of the funds, and to elect representatives to serve upon the Board of Management.

THE HARTLEY HOSPITAL, COLNE.

LINEN LEAGUE

Year 1939—40.

Patroness :

MISS CHRISTIANA HARTLEY, J.P., Southport.

President :

Mrs. HENRY HYDE, Craigmere, Colne.

Vice-Presidents :

THE MAYORESS
(Mrs. A. PARKINSON),
105, Langroyd Road.

Mrs. J. SMITH,
227, Keighley Road.

Members :

Mrs. J. B. AITKEN, 49, Albert Road.
Mrs. W. ALEXANDER, 33, Keighley Road.
Mrs. F. BROUGHTON, Lyngarth, Castle Road.
Mrs. C. DUCKWORTH, The Ridge, Foulridge
Mrs. A. DUCKWORTH, Braeside.
Mrs A. W. EADIE, Albert House.
Mrs. A. W. R. EARDLEY, 23, Keighley Road.
Mrs. G. S. EASTON, 88, Albert Road.
Miss S. A. HARTLEY, 6, Basil Street.
Miss M. H. HEY, 12, Linden Road.
Dr. JEAN MACAULAY, 6, Keighley Road.
Mrs. J. L. RATCLIFFE, The Garth.
Mrs. R. E. ROBINSON, 148, Keighley Road.
Miss E. SAGAR, J.P., Garth Holme.
Miss E. M. WHITWORTH, Ash Mount.

Miss A. E. CASSERLEY, R.R.C.,
(*Matron*).

Hon. Secretary :

Miss MARY RUSHWORTH, J.P., 122, Keighley Road, Colne.

Hon. Treasurer :

Mrs. F. BROUGHTON, Lyngarth, Castle Road, Colne.

RULES

1.—The Linen League consists of a Patroness, President, Vice-Presidents, Members and Associates.

2.—The Vice-Presidents subscribe £1 1s. 0d. per annum.

3.—Members subscribe 10/- and each have at least six Associates. It is hoped that many of the Members will obtain a larger number of Associates than six, but that is the minimum number.

4.—Associates subscribe 5/- or more.

5.—Associates must send in their subscriptions annually to their Member.

6.—Each Member sends the subscriptions of herself and her Associates, with names and addresses of the Associates, to the Hon. Secretary (Miss M. Rushworth) or Hon. Treasurer (Mrs. F. Broughton) not later than the 23rd February in each year.

7.—The General Meeting and show of the Linen and Garments provided during the year will be held some time in the Spring.

It has been considered preferable to fix a small annual subscription instead of asking Members and Associates to provide articles of linen, so as to ensure uniformity in quality, size, etc., and to provide such articles as are most needed.

THE HARTLEY HOSPITAL LINEN LEAGUE.

Year 1939-40.

The continued support of Subscribers and Helpers has enabled the League for the fifteenth year in succession to provide the Hospital with the household linen required and also to provide garments for patients in the hospital.

Sincere thanks are tendered to all Subscribers, to the lady who has done most of the mending, also to those who patronised or helped in any way at the Whist and Bridge Drive and at the "Bring and Buy" Sale held at "Craigmore," by the kindness of Mrs. Hy. Hyde.

The Annual Show of Linen was held on the 17th April, 1940, when the same was formally handed over to the hospital by Mrs. J. H. Watson, of Nelson.

The following is a list of the articles provided at a cost of £157 8s. 6d.

36 pairs bed sheets, 24 pairs cot sheets, 3 doz. draw sheets, 6 doz. blankets, 6 doz. cot blankets, 8 doz. pillow cases, 1 doz. hem-stitched pillow cases, 27 yards of tabling for table cloths, 1 doz. linen tray cloths, 36 counterpanes, 12 cot counterpanes, 77 yards dowlais for tea towels, 3 doz. huckaback doctors' towels, 110 yards cream winceyette for patients' gowns and binders, 4 doz. nursery squares, 47 yards huckaback for aseptic towels, 45 yards huckaback for theatre operation towels, 1 doz. operation gowns, 6 children's gowns, 8 babies' gowns, 9 matinee coats and jackets, 2 pairs bed socks.

INCOME AND EXPENDITURE. 1939-40.

INCOME.	£ s. d.	EXPENDITURE	£ s. d.
Balance brought forward	26 10 4	Linen, etc., provided	157 8 6
Subscriptions	120 15 6	Report Booklets	6 10 6
Proceeds of "Bring and Buy"		Cards and Envelopes	1 3 6
Sale	40 0 6	Hon. Secretary's Expenses	13 4
Proceeds of Whist & Bridge		Account Book	2 6
Drive	11 0 0	Balance carried forward	32 8 0
	£198 6 4		£198 6 4

Examined with the vouchers and found correct.

Colne.
17th December, 1940.

J. STANSFIELD, WESTMORE & Co.,
Chartered Accountants, Hon. Auditors.

SUBSCRIPTIONS - 1939-40

Miss C. Hartley, J.P., Southport	£5	0	0
Mrs. J. H. Watson, Barrowford	£1	0	0
Mrs. Casserley, Liverpool	£1	1	0
Miss Mary Rushworth, J.P.	£1	1	0
Mrs. H. Hyde, Craigmere	£2	2	0
A Friend		5	0

The Mothers' Union, Colne Parish Church	£4	10s.	0d.
Friendly Helpers' League, Colne Parish Church	£2	0s.	0d.
St. George's Church Sewing Class	£3	0s.	0d.

Mrs. AITKEN, Albert Road—£2 2s. 0d.

Per. Mrs. ALEXANDER, Priestfield (10/-) — £6 0s. 0d.

	s.	d.		s.	d.
Mrs. Beattie, 47, Keighley Road ...	5	0	Miss A. McCulla, 39, Penrith Cres.	5	0
Mrs. Bennett, 5, Brown Street	5	0	Miss Morville 52, Clarendon Drive	5	0
Mrs. Blackburn, 52, Keighley Road	5	0	Mrs. Nicholson, 27, Keighley Road	5	0
Mrs. Capstick, 2, Dale Street	5	0	Mrs. Parsons, 107, Keighley Road ...	5	0
Mrs. Greene, 3, Gordon Street	5	0	Mrs. Robinson, 212, Keighley Road	5	0
Mrs. Greenwood	5	0	Miss Rycroft, Acornley, Bent Lane	5	0
Mrs. Hartley, 75, Park Drive	5	0	Miss Shaw, East Leigh	5	0
Miss Hartley, 123, Keighley Road ...	5	0	Mrs. Silverwood, 12, Bence Street	10	0
Mrs. Hopkinson, St. Annes-on-Sea	5	0	Mrs. Tatham, 111, Keighley Road ...	5	0
Mrs. Lund, 176, Keighley Road	5	0	Mrs. Wilding, Fernlea	5	0
Miss Mann, East Cote	5	0			

Per. Mrs. BROUGHTON, Lyngarth (21/-) — £7 16s. 0d.

Mrs. Ashworth, Long Meadow	5	0	Mrs. Heyworth, 79, Keighley Road	5	0
Mrs. Bateman, 142, Keighley Road	5	0	Mrs. Hindle, Higherfield	5	0
Mrs. Berry, The Cliff	5	0	Mrs. Hoyle, 79, Keighley Road	5	0
Mrs. Biggs, 52, Harrison Drive	5	0	Mrs. Parker, 15, Castle Road	5	0
Mrs. Bird, Lane Head, Barnoldswick	5	0	Mrs. Rollinson, 59, Harrison Drive	5	0
Mrs. Birtwistle, 109, Lidgett	5	0	Mrs. Rushworth, The Rough	10	0
Mrs. F. Broughton, The Coppy	5	0	Miss Rushworth, 122, Keighley Road	10	0
Miss Broughton, Lyngarth	5	0	Miss Smith, 55, Keighley Road	5	0
Mrs. Dewhurst, 7, Calder Street ...	5	0	Mrs. Watson, The Bungalow	5	0
Mrs. Farrington, Beechwood	5	0	Mrs. Westmore, The Warren, F'dge	5	0
Mrs. Green, Carry Bridge Farm ...	5	0	Mrs. A. White, 50, Alkincoats Road	5	0
Mrs. W. E. Greenwood, Sleaford ...	5	0	Mrs. Varley, Lindale	5	0
Mrs. Hardacre, 27, Castle Road ...	5	0			

Per Miss CASSERLEY, The Hartley Hospital (10/-) — £13 5s. 6d.

Miss Allison, Maternity Hospital ...	10	0	Mrs. Hartley, Lane Head Farm	5	0
Mrs. Armistead, York Villas	5	0	Mrs. Hartley, Well Head, Trawden	5	0
Miss G. Armistead, York Villas	5	0	Mrs. Hartley, Barrow-in-Furness ...	5	0
Mrs. Bannister, Hollin Hall, Twdn.	5	0	Miss Hartley, Langroyd, Rimington	5	0
Mrs. Bentley, Alkincoats Lodge	10	6	Miss Haslam, Craigmere	5	0
Mrs. Bentley, 77, Alkincoats Road ...	10	0	Mrs. W. Hey, Albert Road	5	0
Mrs. Blackburn, Flass Farm	5	0	Miss Howes, 19a, Swan Croft	5	0
Mrs. Blades, Nelson	5	0	Mrs. Johnson Maidstone	5	0
Mrs. Bond 108 Burnley Road	5	0	Mrs. Johnson, 35, Sheridan Road ...	5	0
Miss S. Chadwick, 33, Elm Street ...	5	0	Mrs. Kay, 104, Barrowford Road ...	5	0
Mrs. Coleclough, Browsholme	5	0	Mrs. Kitchen, Dewhurst Street	5	0
Mrs. Cotton, Lyn Tor	5	0	Mrs. Lancaster, 54, Parker Street	5	0
Mrs. Croasdale, Breeze Ho., F'dge.	5	0	Mrs. Marsh, 16, Brown Street West	5	0
Mrs. Croasdale, Gayford House	5	0	Mrs. Nelson, Thornlea	5	0
Mrs. Davey, Bolton	5	0	Miss Pollard, Southfield Terrace ...	5	0
Miss Davey, 190, Skipton Road	5	0	Mrs. Pickles, Noynaroyd	5	0
Mrs. Edmondson, Bradford	5	0	Mrs. Priestley	20	0
Mrs. Feather, The Bungalow	5	0	Miss G. Rhodes, Noster House	5	0
Mrs. Fell, Foulridge	5	0	Miss Rigby, 91, Keighley Road	5	0
Mrs. Foster, 86, Park Drive	5	0	Mrs. Roberts, West Kirby	5	0
Miss Gelder, Bolton	5	0	Mrs. Thompson, Southport	5	0
Mrs. Gott, Hopkinson Ter., Trawden	5	0	Mrs. White, Crigglestones	5	0
Mrs. Hargreaves, Park Road, Bdsd.	5	0			

Per Mrs. A. DUCKWORTH, Braeside (20/-) — £3 10s. 0d.

Mrs. A. Ashworth, The Park	5 0	Mrs. W. Swire, 3, Spring Grove ...	5 0
Mrs. Barritt, Norcroft	5 0	Mrs. H. Swire, Wheat Close	5 0
Mrs. F. B. Duckworth, Spring Mt. ...	5 0	Mrs. Varley, Kirkroyd	5 0
Mrs. B. Hartley, 7, Spring Grove ...	5 0	Mrs. Venables, Pendle Dene	5 0
Mrs. H. Pickles, 53, Keighley Road	10 0		

Per Mrs. DUCKWORTH, The Ridge (10/-) — £4 15s. 0d.

Mrs. H. Bannister, Brantwood	5 0	Mrs. Loynd, 102, Park Drive	10 0
Mrs. E. Duckworth, Manor House	10 0	Mrs. Mayo, 136, Keighley Road	5 0
Miss W. Duckworth, The Close ...	5 0	Mrs. Pickles, 160, Keighley Road ...	5 0
Miss Duckworth, The Ridge	5 0	Mrs. Stansfield, Cliff Meadow	10 0
Mrs. Harrison, 170, Keighley Road	5 0	Mrs. J. Stansfield, Kirkstone	5 0
Mrs. Hartley, Teneriffe Bungalow ...	5 0	Mrs. H. N. Stansfield, Plush Laithe	
Mrs. J. N. Hey, Westcliffe	5 0	Cottage	5 0
Mrs. A. Hoyle, 6, Derby Street	5 0		

Per Mrs. EADIE, Albert House (21/-) — £7 11s. 0d.

Mrs. Atkinson, Bank House	5 0	Mrs. Hey, 12, Higgin Street	5 0
Miss Bolton, The Croft	5 0	Mrs. Hodgson, 9, Albert Road	5 0
Mrs. Brotherton, 169, N. Valley Rd. ...	5 0	Miss Horsfield, 16, Albert Road	5 0
Mrs. J. Crabtree, Kelbrook	5 0	Mrs. Kendall, Fern Dene	5 0
Miss Croasdale, 5, Lancaster Street	5 0	Miss Mack, 2, Albert Road	5 0
Miss M. Duckworth, Rimington ...	5 0	Mrs. Moran, Albert Road	5 0
Mrs. M. H. Eadie, Albert House ...	5 0	Mrs. A. Pickles, The Nook	5 0
Mrs. Goth, 10, Albert Road	5 0	Mrs. Rankin, Stanley House	5 0
Miss E. Green, Foulridge	5 0	Mrs. J. D. Robertson, Barnoldswick	5 0
Mrs. T. E. Green, Hillcroft	5 0	Mrs. S. G. Ross, Albert Road	5 0
Mrs. T. Foulds Highfield Cottage ...	5 0	Mrs. Rushton, Bryn Tor	10 0
Mrs. C. F. Foulds, Overdale	5 0	Mrs. Sutcliffe, 10, Gill Street	5 0
Mrs. T. H. Hartley, Albert Road ...	5 0		

Per Mrs. EARDLEY, Keighley Road (10/-) — £2 10s. 0d.

Mrs. N. Broughton, Whiteholme ...	5 0	Mrs. Sagar, Heyroyd	5 0
Miss Clegg, East Parade	5 0	Miss Sagar, Heyroyd	5 0
Mrs. Hartley, 2, Hopkinson Terrace	5 0	Mrs. J. Smith, Horsfield	5 0
Mrs. Pickles, Reef Edge, Foulridge	5 0	Mrs. S. Smith	5 0

Per Mrs. EASTON, 88, Albert Road (10/-) — £12 10s. 0d.

Mrs. Ainsworth 2, Lord Street	5 0	Mrs. Pickles, 28, Higgin Street	5 0
Mrs. T. N. Bracewell, 31, Brown St. ...	5 0	Mrs. Pickles, 140, Keighley Road ...	5 0
Mrs. Bracewell, Blackpool	5 0	Mrs. Preston, Gadshill	5 0
Mrs. Brown, Oakcliffe	5 0	Mrs. Preston, 33, Milton Road ...	5 0
Mrs. C. Bulcock, Bent Lane	5 0	Mrs. Ridehalgh, Netherholme	5 0
Mrs. Brimfield, 45, Albert Road ...	5 0	Miss M. Riley, 221, Burnley Road	5 0
Mrs. Clark, 3, Priestfield Avenue ...	5 0	Mrs. Rutter, Priestfield Avenue ...	5 0
Mrs. Dennis, 90, Alkincoats Road	5 0	Mrs. Schofield, 73, N. Valley Road	5 0
Mrs. Feather, 33, Brown Street ...	5 0	Mrs. Senior, 150, Keighley Road ...	5 0
Mrs. Fothergill, 83, Barrowford Rd. ...	5 0	Mrs. A. Shaw, 178, Keighley Road	5 0
Mrs. Foulds, 196, Skipton Road ...	5 0	Mrs. Slater 79, Albert Road	5 0
Mrs. Franken, 109, Albert Road ...	5 0	Mrs. Smith, 119, Albert Road	5 0
Mrs. Harrop, The Cottage, Lidgett	5 0	Mrs. Smith, 162, Barrowford Road	5 0
Mrs. Hatfield, Heirs House Farm ...	5 0	Mrs. J. Smith, Chirnside	5 0
Miss Haworth, 42, Albert Road ...	5 0	Miss R. Smith, Monkroyd Farm ...	5 0
Mrs. Heaton, 42, Parker Street	5 0	Mrs. N. Smith Norwood	5 0
Mrs. Helme, 34, Albert Road	5 0	Mrs. Stott, 23 Brown Street	5 0
Mrs. Kershaw, 109, Albert Road ...	5 0	Mrs. H. G. Sutcliffe, 31, Priestfield	
Mrs. Kirk, 76, Albert Road	5 0	Avenue	5 0
Mrs. Kirk, Newlands, Red Lane ...	5 0	Mrs. P. Swire, Oakfield, Lidgett ...	5 0
Mrs. E. Kirk, 109, Parker Street ...	5 0	Mrs. Thompson, Crown Hotel	5 0
Mrs. McKell, Keighey Road	5 0	Mrs. Wainman, 16, Moorhead Street	5 0
Mrs. Mercer, 3, Ash Grove, L. B. ...	5 0	Mrs. W. White, Wyndcliffe	5 0
Mrs. W. Morville, 105, Parker St. ...	5 0	Mrs. Whittle, 61 Alkincoats Road	5 0
Mrs. Perkins, 81, Alkincoats Road	5 0		

Per Miss HARTLEY, 6, Basil Street (10/-) — £5 1s. 0d.

Mrs. H. Allum, 5, Wordsworth Road	5 0	Miss M. Hartley, 25, Hill Street	5 0
Mrs. Bailey, Priestfield Avenue	5 0	Miss B. Higginson, Blackpool	5 0
Mrs. Barritt, Newlands	5 0	Mrs. Holmes 16 Skipton Road	5 0
Miss A. Boyd, Keighley Road	5 0	Miss M. Johnson, 128, Knotts Lane	5 0
Mrs. Berry, 40, Castle Road	5 0	Mrs. Keighley, 3, Grosvenor Street	21 0
Mrs. Crabtree 212, Skipton Road	5 0	Miss Keighley, 3, Grosvenor Street	5 0
Mrs. E. A. Foulds, Stonebridge	5 0	Miss McCulla 39 Penrith Crescent	5 0
Miss B. Hartley, Blackpool	5 0		

Per Miss HEY, 12, Linden Road (10/-) — £4 5s. 0d.

Mrs. Allen, 64, Albert Road	5 0	Mrs. Marland, 38, Clarendon Drive	5 0
Mrs. Bogue, Nelson	5 0	Mrs. W. Riddiough, Little Manor	10 0
Mrs. J. Butterworth Alkincoats Rd.	5 0	Mrs. Sidebottom, Nelson	5 0
Mrs. Gough, Burnley	5 0	Miss G. M. Spivey, The Grove	5 0
Mrs. Greenwood, 24, Haverholt Rd.	5 0	Miss E. G. M. Tillotson	5 0
Mrs. Hartley, 18, Moorhead Street	5 0	Mrs. Whitaker, 126, Keighley Road	5 0
Mrs. F. Hoyle, Woodside	5 0	Mrs. Varley, 35, Keighley Road	5 0

Per Dr. JEAN MACAULAY, 6, Keighley Road (10/-) — £5.

Miss Ayre, Eastlimes	5 0	Mrs. Pilgrim, Noyna Mede	5 0
Mrs. J. L. Ayre, Lingmell	5 0	Mrs. Podmore, 118, Keighley Road	5 0
Mrs. Badgery, Burwains, Foulridge	5 0	Mrs. Macvicar, The Rectory	5 0
Mrs. Dodgson, 1, Regent Avenue	5 0	Mrs. J. Sagar, Brooklands	5 0
Mrs. Keen, Homeland Kelbrook	5 0	Mrs. Smith, 203, Skipton Road	5 0
Mrs. Kellett, 23, Priestfield Avenue	5 0	Mrs. Threlfall, Highfield	5 0
Mrs. Packham, Nelson	5 0	Mrs. Whittaker, High Brake	5 0
Mrs. Petty, 253, Keighley Road	5 0	Mrs. Wilson, 2, Granville Street	5 0
Mrs. Phillips, 132, Keighley Road	5 0	Mrs. Wraw, Kathlyn	5 0

Per Mrs. RATCLIFFE, The Garth (10/-) — £3 15s. 0d.

Mrs. Calvert, 2, Duke Street	5 0	Mrs. J. Hindley, Leach House	5 0
Mrs. Catton, Springfield	5 0	Mrs. Parkinson, 105, Langroyd Road	5 0
Mrs. P. Forbes White, Harrow-on-the-Hill	5 0	Mrs. H. N. Roberts, Burnley	5 0
Mrs. J. Greenwood, 25 North Street	5 0	Mrs. Robinson, 189, Burnley Road	5 0
Mrs. Houghton, Lower Emmott	5 0	Mrs. R. Sagar, Innafield	5 0
Mrs. J. Hartley, 2 Linden Road	5 0	Mrs. N. Sagar, The Sheiling	5 0
		Mrs. H. Smith, Netherheys	5 0

Per Mrs. ROBINSON, 148, Keighley Road (10/-) — £8 10s. 0d.

Miss Mary Armistead, York Villas	5 0	Miss Mary King, Bent Lane	5 0
Miss Atkinson, 12, Glen Street	5 0	Miss Sarah King, Bent Lane	5 0
Miss Bannister, Stunstead House	5 0	Mrs. Marsden, 23 Hill Street	5 0
Mrs. Bowker, Laneshaw Bridge	5 0	Miss McLean, 127, Skipton Road	5 0
Mrs. Brown, 206, Keighley Road	5 0	Dr. Monica Clarke, Burnley	5 0
Miss Busfield, 27, Priestfield Avenue	5 0	Mrs. Shackleton, 19, Wordsw'th Rd.	5 0
Mrs. Cook, Viewfield, Keighley Road	5 0	Miss M. Shaw, 98, Park Drive	5 0
Mrs. Dewhurst, 2, Granville Street	5 0	Miss Spencer, 111, Cotton Tree Lane	5 0
Mrs. E. V. Doyle, 119, Keighley Rd.	5 0	Miss Stansfield, 24, Haverholt	5 0
Miss Edmondson, 31, Alkincoats Rd.	5 0	Mrs. Stearn, Church Street	5 0
Miss Fort, Springfield	5 0	Mrs. J. E. Taylor, Horton Dene	5 0
Miss I. Foulds 64, Stonebridge Terr.	5 0	Mrs. A. Taylor, 42, Milford Street	5 0
Mrs. S. N. Greenwood, 2, Carr Road	5 0	Miss Thompson, 17, Regent Avenue	5 0
Mrs. Halstead, 5, Elm Street	5 0	Miss L. Tierney, 6, Bence Street	5 0
Mrs. Heyworth, Blackpool	5 0	Miss Ward, 127, Skipton Road	5 0
Mrs. Higson, 138, Langroyd Road	5 0	Mrs. Wilson, 10, Albert Road	5 0

Per Miss E. SAGAR, J.P., Garth Holme (10/-) — £6

Mrs. Barritt, Trevor, Alkincoats	5 0	Mrs. Mills, 3, Earl Street	5 0
Miss S. Eastwood, 115, Keighley Rd.	5 0	Mrs. K. Sagar, Burnside	5 0
Miss B. Hartley, Brown Street East	5 0	Mrs. T. P. Sagar, Garfield	5 0
Mrs. Haigh, 195, Langroyd Road	5 0	Mrs. H. O. Sagar, Eastfield	5 0
Mrs. J. Haigh, 10, Newtown	5 0	Mrs. Spencer, Castle Road	5 0
Mrs. J. Hodgson, 1 Lancaster Street	5 0	Miss Spivey, The Grove	5 0
Mrs. Houghton, 101, Albert Road	5 0	Mrs. Thompson, 163, Skipton Road	5 0
Mrs. Lee, 3, Ellesmere Avenue	5 0	Miss Vipond, 62, Market Street	5 0
Mrs. Lister, 199, Skipton Road	5 0	Mrs. Whittaker 217, Skipton Road	5 0
Miss Lord, Dudley Street	5 0	Mrs. Wilkinson, 15, Primet Bridge	5 0
Mrs. Marsden, 15, Albert Road	5 0	Mrs. Young, Pendears	5 0

Per Mrs. SMITH, 146, Keighley Road (21/-) — £5 1s. 0d.

Miss Banks, 80 Park Drive	5 0	Mrs. E. A. Hartley, 146 Keighley Rd.	5 0
Mrs. Boocock, 135, Skipton Road ...	5 0	Miss Pilling, 34, Mabel Street	5 0
Mrs. Boocock, 210, Skipton Road ...	5 0	Mrs. J. Riddiough, Glenroyd	5 0
Mrs. Butler, Crow Nest	5 0	Mrs. Sharp, Laneshaw Bridge	5 0
Mrs. Duckworth, Vivary Mount	5 0	Miss Smith, Albert Road	5 0
Mrs. Heap, 229, Keighley Road	5 0	Mrs. Wells, 4, Dale Street	5 0
Mrs. Gawthrop, 85, Keighley Road	5 0	Mrs. Whittaker, 78, Park Drive ...	5 0
Mrs. F. Greenwood, 202 Keighley Rd.	5 0	Mrs. J. Whittaker, 144, Keighley Rd.	5 0

Per Miss E. M. WHITWORTH, Ash Mount (10/-) — £3 5s. 0d.

Miss Aldersley, 13, Chatham Street	5 0	Miss M. Hirst, 130, Keighley Road	5 0
Mrs. Berry, Burnside, Foulridge ...	5 0	Mrs. Hyde, Wynstone	10 0
Miss Binns, 31, Duke Street	5 0	Mrs. Mackriel, 73, Albert Road ...	5 0
Mrs. Clarkson, Southport	5 0	Mrs. Walker, 322, Burnley Road ...	5 0
Miss Hirst, 130, Keighley Road ...	5 0	Mrs. Wilmore, Lea Bank, Foulridge	5 0



THE HARTLEY HOSPITAL CHARITY FOOTBALL COMPETITION.

President: Robert Duckworth, Esq., J.P.

Vice-Presidents:

His Worship the Mayor (Councillor A. Burrell, J.P.).

H. Atkinson, Esq.	Councillor A. Pickles.
M. Booth, Esq.	Miss M. Pickles.
C. Bradshaw, Esq.	Alderman R. S. Pilling, J.P.
H. Brown, Esq.	Councillor W. Riddiough.
Councillor S. Catlow.	H. O. Sagar, Esq.
G. Catton, Esq.	J. R. Sagar, Esq.
R. Crabtree, Esq.	W. N. Sagar, Esq.
H. W. Croasdale, Esq.	J. Senior, Esq.
F. W. Dickinson Esq. .	Alderman W. Smith, J.P.
W. Drabble, Esq.	S. F. Smith, Esq.
W. Edmondson, Esq.	Mrs. P. Spencer.
W. Gill, Esq.	J. A. Swift, Esq.
Miss Haworth.	J. Sugden, Esq.
William Hyde, Esq., J.P.	J. Thompson, Esq.
A. E. Keene, Esq.	A. E. White, Esq.
Alderman J. E. Keighley, J.P.	H. R. White, Esq.
W. I. King, Esq.	W. P. White, Esq.
Alderman R. Knight, J.P.	Councillor W. Whittle.
A. H. Lonsdale, Esq.	D. Wilkinson, Esq.
Dr. F. C. Macaulay.	E. R. Williams, Esq.
J. W. Nutter, Esq.	Councillor G. E. Wilmore.
Coun. A. Parkinson, J.P.	J. Wilson, Esq.
H. W. T. Perkins, Esq.	R. A. Wood, Esq.

OFFICIALS:

Chairman—Mr. W. Farnhill, 26, Lime Street, Colne.

Vice-Chairman—Mr. J. Bailey, 18, Birtwistle Avenue, Colne.

Hon. Treasurer—Mr. F. J. Holmes, 11, Priestfield Avenue,
Colne.

Assistant Secretary—Mr. Harry Wilkinson, Jun., 12, Rutland
Street, Colne.

General Secretary — Mr. Wilfrid Brame, D.P.A., A.C.I.S.,
1, Carr Road, Colne.

Standing Committee (including the above officials):

Mr. A. Allister	Mr. J. Platt
Mr. E. Green	Mr. J. Pollard
Mr. D. Greenwood	Mr. W. T. Rallison
Mr. V. Parkinson	Mr. T. Robertson
Mr. D. Pickles	Mr. A. Snowden

SECOND ANNUAL REPORT AND ACCOUNTS FOR THE YEAR 1940.

Ladies and Gentlemen,

We have pleasure in presenting our Second Annual Report and Accounts for the year 1940.

At the end of our first Competition last year, we were justifiably anticipating a most successful season in 1940. Our hopes were, unfortunately, short-lived, for within a few months the country was at War. It was, therefore, under sad and somewhat depressing conditions that the Committee met in December and again in January last to decide whether to run a Competition this year. After very careful consideration of all the circumstances, and particularly those arising as a direct outcome of hostilities, the Committee decided to organise a Competition provided a sufficient number of teams entered to justify such a course. The Committee were confident the full support of the public would be forthcoming if the matches were played. This confidence, as results show, was not misplaced.

The response from firms was encouraging, and the Competition went forward. Sixteen entries were received, against twenty-five last season. In view of the fact that the staffs of several firms had already been depleted by men having been called up for military service, and firms and men were working and living under conditions greatly disturbed in consequence of the War, the entries received were considered most satisfactory.

Although the main object of the competition is to raise money for the Hospital, we think it also provides a source of pleasure and benefit to many of the people of Colne and district and it is felt that this latter object has been fully achieved in 1940. The matches have provided enjoyment and relief to many during dark and trying days.

We are indeed grateful to the teams who entered the Competition, and to the public for their splendid support: to them we extend our very best thanks. Financially, also, the Competition was a success, and we are happy and proud to be able to hand over to the Hospital the sum of £80, the same amount as last year.

It is not possible to thank individually, all who have helped to make the Competition so successful, but we do wish to express our sincere thanks to our President, Mr. Robert Duckworth, J.P., for his continued interest in, and support of, our Competition, and we add the hope that it will be our good fortune to have him with us in that capacity for a long time ahead; to our Vice-Presidents for their valuable support; to those who purchased member's cards; Colne Education Committee for the use of Old Earth Ground; Colne St. John Ambulance Corps; Mr. J. Whittaker; National Union of General and Municipal Workers for the use of a Committee room; Victoria Picture-drome Ltd. for cinema advertising; and the Local Press for the publicity accorded to us.

WM. FARNHILL, Chairman.

WILFRID BRAME, Secretary.

THE HARTLEY HOSPITAL CHARITY COMPETITION.

Statement of Accounts for 1940.

INCOME			EXPENDITURE		
	£	s. d.		£	s. d.
Balance brought forward	6	2 9½	Printing and Advertising	5	4 4
Subscriptions from President, and Vice-Presidents	20	0 0	Miniture Silver Cups—Nett	14	11 6
Members' Cards, 52 at 2/-	5	4 0	Referees' and Linesmen's Fees	3	13 2
Donations	6	19 7	Football Equipment	2	12 6
Teams' Entrance Fees, 16 at 7/6	6	1 6	Ground Expenses:—		
Gate Receipts:—			Rent of Field	1	0 0
1st Round	14	16 11½	Repairs on Ground	12	6
2nd Round	9	3 11½	Marking Field and		
Semi-Finals	15	16 4	Running Expenses	4	0 7½
Final	25	18 2½			
	65	15 5½		5	13 1½
Friendly Games ...	4	10 11	Postage and Telephones		13 6
			Insurance of Cups		6 0
Referees' Fees returned	14	0	Grant to Army Charities	1	0 0
Linesmen's Fees returned	8	0	Allocation to Hartley Hospital	80	0 0
Bank Interest	3	7	Balance (Cash in Bank)	2	5 8½
	£115	19 10		£115	19 10

Signed—W. FARNHILL, Chairman.

F. J. HOLMES, Hon. Treasurer.

WILFRID BRAME, Hon. Secretary.

Audited and found correct.

(Signed) D. PICKLES & J. PLATT,

Hon. Auditors.

THE HARTLEY HOSPITAL, COLNE.

TERMS FOR PRIVATE NURSING.

	£	s.	d.
For first two months, per week	3	3	0
(after which £3 13s. 6d. per week)			
For half a week (three days)	1	11	6
*Fevers and Infectious Cases, per week	3	13	6
For a single day at a case (not exceeding 12 hours)	1	1	0
For one night (do. do.)	1	1	0
Attendance at Operations	1	1	0
When, for the convenience of Patients, the Nurse returns to sleep at the Hospital, per week	3	13	6

*In these cases an extra Fee of £2 2s. 0d. will be charged to defray the expenses of Quarantine.

Families engaging Nurses are respectfully requested to communicate with the Matron concerning any matter affecting them.

It is expected that, when practicable, at least twenty-four hours' notice of the termination of a Nurse's engagement will be sent to the Matron.

It is requested that the Nursing Fees be paid to the Hospital Secretary every month. Cheques to be made payable to the Hartley Hospital, Colne.

Cost of laundry per week and travelling expenses to be paid to the Nurse.

When a private Nurse is engaged for patient in hospital, the sum of £1 15s. 0d. per week, in addition to the fee of £3 3s. 0d., will be charged.

Applications for Nurses and for further particulars should be made to the Matron, Hartley Hospital, Colne.

How you may help the Hospital.

- By becoming an Annual Subscriber to the funds of the Hospital. If you are already a Subscriber will you please consider increasing the amount?
- By giving a Donation to the Maintenance or Endowment Funds.
- By remembering the Hospital in your Will.
- By becoming a Contributor to the Weekly Contributory Scheme.
- By collecting Donations
(Official Collecting Boxes will be supplied on request).
- By giving the Proceeds of Public and Private Entertainments.
- By becoming an Associate of the Linen League.
- By purchasing a Rose on "Alexandra Day," Saturday, 28th June, 1941.
- By having the No. 345 entered on checks for any purchases you make at the Shops or Cafe of the Colne Co-operative Society Limited.
- By securing a Church or Chapel Collection.
- By sending your Silver Paper, Scrap Silver, etc., to the Hospital.
- By sending Gifts of Linen and Calico for Hospital purposes.
- By sending entertaining Books and Magazines for the use of Patients.

To the Secretary,
Hartley Hospital,
Colne.

Dear Sir,

I have pleasure in enclosing

for £ : : as a subscription (or
donation) as under.

Name

Address

General Funds of the Hospital

(Subscription) £

General Fund (Donation) £

Please help the Board of Management by handing this Form to
someone who is not a contributor to the funds of the Hospital

Form for use by those desirous of remembering the Hospital in
their Wills.

FORM OF BEQUEST

of Money or Stock to

The Hartley Hospital, Colne.

I bequeath to the Endowment Fund of THE
HARTLEY HOSPITAL, COLNE, the sum of

*Or for the perpetual Endowment of a Bed to my memory in the said Hartley Hospital or for the perpetual Endowment of a Cot to the memory of

.....
pounds (free of duty) to be applied* to the general purposes of the said Hospital AND I declare that the receipt of the Treasurer or other proper person
..... for the time being of the said Hospital shall be a sufficient discharge for the same.

NOTE.—By virtue of the Mortmain and Charitable Uses Act, 1891 (54 and 55 Vict. c. 73), **every kind of property** may be left by Will to the Hospital.

N.B.—£1,000 WILL NAME A BED.

£500

..

..

COT.

if you are disposed to make a bequest in favour of the Hospital, you are invited to fill in the appended Codicil, and sign the same in the presence of two witnesses. The Codicil should then be placed with your Will, the trouble of altering which will thus be avoided.

This is a Codicil to the last Will and Testament

Insert here full name and description. of me
of

in the County of

I give and bequeath to the Endowment Fund of THE HARTLEY HOSPITAL, COLNE, the sum ofpounds free of all Duty, including Estate Duty on such part of the Legacy as is payable out of the proceeds of sale of real estate, to be applied to the general uses and purposes of the said Hospital. AND I declare that the receipt of the Treasurer or other proper officer for the time being of the said Hospital shall be a sufficient discharge for the same. IN WITNESS whereof and in confirmation of my said Will in other respects, I have hereunto set my hand this day of19

SIGNED by the said

*
.....as and for a Codicil to ^{hi}her
last Will and Testament in the presence of us
present at the same time who at ^{his}her request in ^{his}her
sight an presence and in the presence of each
other have hereunto subscribed our names. } (Signature)

Name

Address

Occupation

Name

Address

Occupation

*Insert here full name.



THE HARTLEY HOSPITAL, COLNE

1940.

Patients Treated:

In-Patients	766
Surgical Operations	537
Out-Patients	1135
Visits by District Nurses	6748

Do you realise that by reason of the present conditions your chances of requiring the services of the Hospital have been doubled? The Hospital is ready to treat you if required. Ever since the outbreak of war the Hospital's services have been re-organised and extended to meet the new circumstances.

The Committee appeal to YOU to help them to maintain this important service.