

Report and statement of accounts : 1946 / Sevenoaks & Holmesdale Hospital.

Contributors

Sevenoaks & Holmesdale Hospital (Sevenoaks, England)

Publication/Creation

Sevenoaks : Reliance & Sennocke Press, 1946

Persistent URL

<https://wellcomecollection.org/works/akqhfpt>

License and attribution

This work has been identified as being free of known restrictions under copyright law, including all related and neighbouring rights and is being made available under the Creative Commons, Public Domain Mark.

You can copy, modify, distribute and perform the work, even for commercial purposes, without asking permission.



Wellcome Collection
183 Euston Road
London NW1 2BE UK
T +44 (0)20 7611 8722
E library@wellcomecollection.org
<https://wellcomecollection.org>

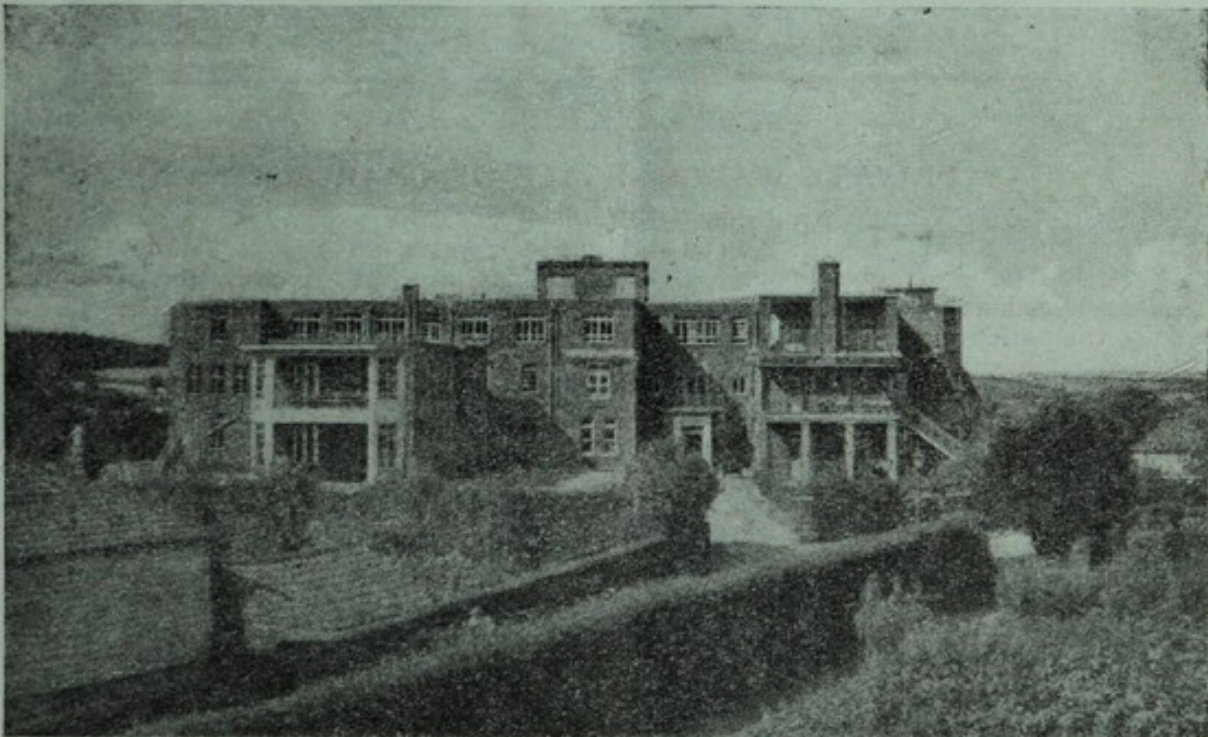
Library

SEVENOAKS & HOLMESDALE HOSPITAL

HEALTH
A 14 JUN 1947
O.R. S14/6 23

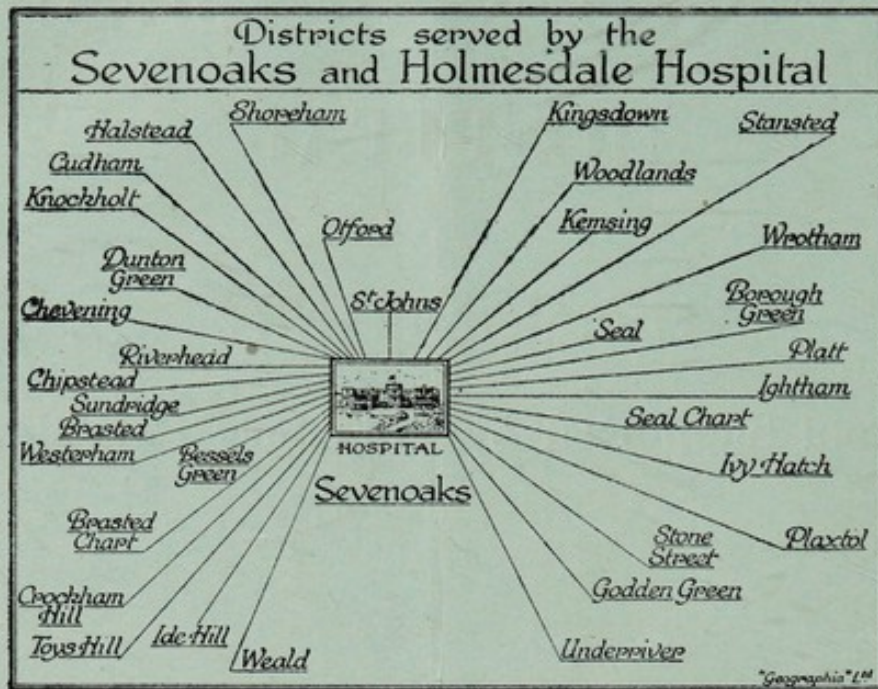
Founded in 1870

Built and Supported by Voluntary Contributions



SEVENTY-THIRD REPORT AND STATEMENT OF ACCOUNTS

For the year ended 31st December, 1946



PRIVATE WARDS—SCALE OF CHARGES.

Ward with 1 bed—7½ and 8½ gns. per week.
Ward with 2 beds—5½ gns. per week.

The above charges include ordinary nursing, but are exclusive of Physicians' or Surgeon's fees which are a matter of arrangement between the patient and the Doctor concerned.

Special nursing, special drugs, use of operating theatre, X-Ray and Pathological examinations and physiotherapy are not included in the above charges.

Subscribers of not less than £2 2s. 0d. p.a. are entitled, three months after their first annual payment, to the following reduction :

Subject to the rules of the Hospital, a man, his wife and children, up to the age of 15 will be entitled to admission to the Private Wards at a reduction of £2 2s. 0d. per week for 4 weeks on the above charges, in any one year.

GENERAL WARDS—SCALE OF CHARGES

Patients who are not members of the Sevenoaks Hospital Aid Scheme or a similar contributory Association are asked to pay a minimum weekly of £1 11s. 6d. to £3 3s. 0d. Those who are in a position to pay more are asked to do so. Patients who are unable to pay the minimum charges are asked to communicate with the Secretary and House Governor.

SPECIALIST OUT-PATIENT DEPARTMENT.

A minimum consultation fee of 2/6 is payable by all patients who attend any of the out-patient specialist clinics attached to the Hospital. Hospital Aid Scheme patients are treated free on production of a voucher.

X-RAY DEPARTMENT

Ordinary Hospital patients attending for X-Ray will be charged a regulation fee in accordance with the type of X-Ray examination performed. Hospital Aid Scheme patients are covered for treatment on submission of the usual voucher.

Private X-Ray patients are charged in accordance with an approved scale.



22501925593

SEVENOAKS & HOLMESDALE HOSPITAL
KENT

JUNE, 1947.

NOTICE is HEREBY GIVEN that the Annual General Meeting of the Governors of the Sevenoaks and Holmesdale Hospital will be held in the Board Room of the Hospital on MONDAY, JUNE 23rd, 1947, commencing at 5.30 p.m., when the President, Major-General G. J. Farmar, C.B., C.M.G., will preside.

The presence of all Governors is invited.

STANLEY B. SARGEANT,
Secretary and House Governor.

A G E N D A .

1. Notice convening the Meeting to be read.
2. Minutes of the previous Annual General Meeting.
3. Correspondence.
4. To receive the Accounts of the Hospital made up to the 31st December, 1946.
5. To receive the report of the Board of Management.
6. To elect a President.
7. To elect the Vice-Presidents.
8. To elect an Honorary Treasurer.
9. To elect an Honorary Auditor.
10. To elect an Honorary Chaplain.
11. To elect members to fill the six vacancies on the Board of Management.
12. General Business.

Digitized by the Internet Archive
in 2019 with funding from
Wellcome Library

<https://archive.org/details/b31688925>

Sevenoaks & Holmesdale Hospital

FOUNDED 1870

Opened	-	-	-	1873	-	8 Beds
Extended (Reid Ward)	-	-	-	1904	-	11 Beds
Rebuilt	-	-	-	1922	-	26 Beds
Extended (Latter Children's Ward)				1928	-	35 Beds
Extended	-	-	-	1935	-	64 Beds

TELEPHONE No. 2265 (TWO LINES)

TELEPHONE (Secretary & House Governor) No. 2946

**Accidents of severe nature admitted
into the Hospital at any time**

VISITING DAYS

General Wards :

Sundays and Wednesdays - 2 to 4 p.m.

Private Wards :

Daily from 10—12 noon, 2 to 4 p.m. and 6 to 8 p.m.

SEVENOAKS :
THE CAXTON AND HOLMESDALE PRESS, 24 SOUTH PARK

President :

MAJOR-GENERAL G. F. FARMAR, C.B., C.M.G.

Vice-Presidents :

THE RT. HON. THE EARL STANHOPE, K.G., P.C., D.S.O., M.C.
 THE RT. HON. LORD MILDMAY OF FLETE, T.D. (the late)
 MAJOR-GENERAL THE RT. HON. LORD SACKVILLE, K.B.E., C.B., C.M.G.
 SIR ERNEST M. DOWSON, K.B.E.
 MRS. E. G. LATTER.
 MISS E. M. WILKINSON (the late).
 HUGH MICKLEM, J.P.

Life Governors :

MRS. ANSON.	SIR WALTER MONCKTON, K.C.,
C. W. BOISE.	K.C.V.O., K.C.M.G.
A. BRINSON.	HUGH OUTRAM.
DR. F. MARSDEN BURNETT.	C. S. PRYOR.
DR. A. N. CRAWFORD.	MRS. C. S. PRYOR.
J. BURY CULLEN.	MISS M. C. PRYOR.
MRS. CUTHBERTSON.	H. C. PRYOR.
JOHN DIXON, F.C.A.	S. C. PRYOR.
GEO. A. FAWCETT.	A. H. READ.
P. C. FAWCETT.	F. M. ROBERTS.
W. T. GERMANEY.	SIR ROBERT REID.
MISS B. L. GOFF.	J. B. ROWELL.
HUGH D. C. GRACE.	MISS SKARRATT.
ARTHUR J. HICKS.	MRS. SKILBECK.
C. M. HILDER.	THE RT. HON. EARL STANHOPE, K.G.,
LT.-COL. SIR JOHN D. LAURIE, Bt.,	P.C., D.S.O., M.C.
T.D., J.P.	C. THEOBALD.
SIR JOHN LLOYD.	MRS. THEOBALD.
HUGH MICKLEM, J.P.	MISS AGNES F. TURNER.
THE HON. VIOLET MILLS.	HENRY WOODALL, J.P.
	S. EVAN B. YOUNG.

Trustees :

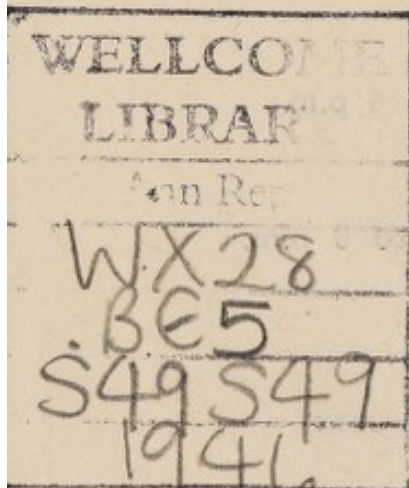
LT.-COL. SIR JOHN D. LAURIE, Bt., T.D., J.P.,
 A. W. MARTIN.
 S. EVAN B. YOUNG.

Chairman of the Board :

HUGH MICKLEM, J.P.

Vice-Chairman of the Board :

GORDON F. ROGERS, J.P.



Board of Management :

MAJOR-GENERAL G. J. FARMAR, C.B., C.M.G.
 MISS BURNABY-ATKINS.
 CAPT. F. P. CAINE.
 A. V. CRAZE.
 HOWARD T. CROSS.
 J. BURY CULLEN.
 JOHN DIXON, F.C.A.
 W. T. GERMANEY.
 MRS. GRACE.
 ARTHUR J. HICKS.
 R. H. HARDY.
 SIR CHARLES INNES, K.C.S.I., C.I.E.
 A. CLIVE KNOCKER.
 LT.-COL. SIR JOHN D. LAURIE, BT., T.D., J.P.
 BRIG-GENERAL GUY LUBBOCK, C.M.G., D.S.O.
 HUGH MICKLEM, J.P.
 GORDON F. ROGERS, J.P.
 J. F. A. SWANSTON.
 MRS. MILLNS } Visiting
 MRS. RUSSELL VICK. } Committee.
 DR. J. FINLAY ALEXANDER. }
 DR. N. HAY BOLTON. } Medical Staff.
 DR. RONALD A. WALKER. }
 H. T. CROSS. } Hospital Aid
 A. H. DANIELS. } Committee.

Executive Committee :

HUGH MICKLEM, J.P.
 GORDON F. ROGERS, J.P.
 HOWARD T. CROSS (Co-opted).
 H. T. CROSS (Hospital Aid Committee).
 JOHN DIXON, F.C.A.
 MRS. GRACE.
 R. H. HARDY.
 ARTHUR J. HICKS
 MRS. RUSSELL VICK (Visiting Committee).
 DR. RONALD A. WALKER (Medical Staff).
 J. F. A. SWANSTON.

Ladies Visiting Committee :

MISS C. BURNABY-ATKINS (Chairman).
 MRS. ANSON.
 MRS. MILLNS.
 THE HON. VIOLET MILLS.
 MRS. CARVER.
 MRS. SKILBECK.
 MRS. H. G. MARSHALL.
 MRS. RUSSELL VICK.
 MRS. LAURIE.
 THE LADY KILMAINE

MEDICAL STAFF.**Consulting Surgeon :**

W. H. C. ROMANIS, M.A., M.B., M.Ch., (Cantab.), F.R.C.S.,
149, Harley Street, W.1.

Consulting Physicians :

J. BURNFORD, M.B., F.R.C.P., D.P.H.,
4, Devonshire Place, W.1.

J. FORREST SMITH, F.R.C.P., M.R.C.S.,
149, Harley Street, W.1.

Consulting Orthopaedic Surgeon :

V. H. ELLIS, M.A., M.D., F.R.C.S.,
14, Wimpole Street, W. 1.

Consulting Gynaecologists & Obstreticians:

A. J. WRIGLEY, M.D., F.R.C.S., F.R.C.O.G.,
149, Harley Street, W.1.

A. MORRIS JOHNS, M.D., Ch.B., F.R.C.O.G.,
19, Harley Street, W.1.

R. B. K. RICKFORD, M.D., F.R.C.S., M.R.C.O.G.,
St. Thomas's Hospital, S.E.1.

Consulting Cardiologist :

S. S. SUZMAN, M.R.C.S., M.R.C.P.,
84, Harley Street, W.1.

Consulting Urologist :

R. H. O. B. ROBINSON, F.R.C.S.,
149, Harley Street, W.1.

Physicians and Surgeons :

J. FINLAY ALEXANDER, M.A., M.D., (Cantab).

E. C. ARCHER, M.B., B.S., M.R.C.S., L.R.C.P.

N. HAY BOLTON, M.D., D.T.M. & H., F.R.C.S.(Edin.)

A. CARNARVON BROWN, M.R.C.S., L.R.C.P.

KENYON CARNARVON BROWN, M.B., B.S., M.R.C.S.,
L.R.C.P., D.A.(Eng.).

T. M. DANIEL, M.B., B.Ch.,(Cantab.), M.R.C.S., L.R.C.P.

JENNIFER DANIEL, M.R.C.S., L.R.C.P.

A. PAGE GASTON, M.B., B.S., (Lond.), M.R.C.S., L.R.C.P.

J. M. HARRISON, D.S.C., M.R.C.S., L.R.C.P.

H. W. HAY, M.R.C.S., L.R.C.P.

MOYRA ABELSON, M.D., B.S., M.R.C.S., L.R.C.P.

T. DUNCAN PATON, M.B., Ch.B.(Edin.)

A. H. W. ROFFEY, M.B., B.S., (Lond.), M.R.C.S., L.R.C.P.

RONALD A. WALKER, L.M.S.S.A., L.R.C.P.

GORDON WARD, M.D.

DUNCAN MACARTHUR, M.B., B.Ch.

D. E. YARROW, M.B., B.Ch., M.R.C.S., L.R.C.P., D.C.H.

T. A. WESTON, M.A., B.Ch., F.R.C.S.

Radiologist :

HUGH R. C. HAY, M.B., Ch.B., D.M.R.E. (Cantab.)

Hon. Dental Surgeon :

T. W. E. PUGH, B.D.S., (Lond.), L.D.S., R.C.S.

ADMINISTRATIVE STAFF :

Secretary and House Governor :

STANLEY B. SARGEANT, F.C.C.S.

Matron :

MISS M. A. JEFFERY, S.R.N., S.C.M.

Assistant Matron :

MISS E. EVANS, S.R.N.

Radiographer :

MISS H. JOYSE BUILT, M.S.R.

Hon. Chaplain :

REV. EDWARD A. HAWKES, M.A.

Hon. Treasurer :

R. H. HARDY (Chartered Accountant).

Hon. Auditor :

JOHN DIXON, F.C.A., Byways, Seal.

Bankers :

WESTMINSTER BANK LTD., SEVENOAKS.

PRESIDENT'S REPORT FOR 1946.

I HAVE pleasure in presenting the 73rd Annual Report and Accounts for the year 1946.

1946 can be truly said to have been a momentous year in the annals of the Hospital Service.

The National Health Bill was published in the Spring, and after having been debated in and out of Parliament in November became the Act, amended and approved in some particulars from its original form, but remaining substantially the measure first introduced by the Minister of Health. There is little doubt that the Act will duly come into operation in 1948.

In the meantime it is the duty of your Board to maintain the Hospital at its present efficient level, and it looks forward with confidence to those many friends of the Hospital who in the past have given help in so very many ways, to continue their assistance until such time as the Hospital system is absorbed into the State Service.

Obituary.

Your Committee record with deep regret the death of one who in the past gave great service to your Hospital. I refer to the late Pay-Master Rear Admiral H. M. C. Elliott, Chairman of the Hospital from 1933 until 1945 and a member of the Board of Management from 1933 until 1946. The news of Admiral Elliott's death followed very swiftly on that of Mrs. Elliott. No words of mine are adequate with which to refer to the splendid service rendered by both these friends, and I can only say that by their passing the institution which they both loved, is the poorer. To perpetuate their memory, your Board have agreed to place a Memorial Plaque in the Hospital Chapel, a building which the late Mrs. Elliott took so much interest in, and which it was her heart's desire to see built.

In the early part of 1947, Miss Mabel Wilkinson of "Frankfield," Seal Chart, passed away. It will be recalled that for very many years, the late Miss Wilkinson gave much of her time and did much wonderful work for the Hospital. It is difficult for me to say just how much we owe to this lady for her devotion to the Sevenoaks Hospital, and it is fitting that your Board have agreed to name the double private ward "The Mabel Wilkinson Ward" to her memory.

Yet another great supporter passed away in the early part of 1947 in the person of Lord Mildmay of Flete. The late Lord Mildmay had been a Vice-President of the Hospital since its foundation in 1870, and your Board record with gratitude his great services to Sevenoaks and its Hospital.

Income and Expenditure Account.

From this account it will be seen that Expenditure exceeded Income to the extent of £237 2s. 10d., but that there was a credit balance at the Bank on December 31st, 1946, amounting to £1577 10s. 1d. This was made possible in some measure to the receipt of a grant of £2490 from the Kent Education Committee under the Education Act, 1944, being half the payment for the treatment of School-Children from maintained schools in the area. It is expected that a similar sum will be received during the present year to cover costs up to and including March 31st, 1947.

It is interesting to note that Income has been well maintained—subscriptions, donations, patients payments, Hospital Aid Scheme contributions, etc., being well up to standard. We have to thank many who so kindly organized entertainments and gave financial help to our funds, and in particular those who initiated the Darts Competition, and the O.W.L.S. for their most successful Gymkhana.

As expected, expenditure has risen considerably. With the adoption of the Rushcliffe Scale of Salaries for Nurses, and the introduction of new scales prepared by the National Joint Council for Hospitals and Allied Institutions for domestics, porters and other staff, salaries and wages have increased by over £1700. Rising costs of all commodities is responsible for increases elsewhere in the account, and your Committee cannot hope to show any marked decrease in expenditure during 1947.

Balance Sheet.

It will be noted in the Balance Sheet that under item 3 Capital Accounts (a) Hospital Endowments that a sum of £1250 has been transferred to General Fund Capital, this amount representing legacies and gifts which are not attached to any Trust, and which is free Capital to be spent for the general maintenance of the Hospital. In the 1947 annual report further details in regard to this matter will be given.

Legacy.

During the year the sum of £2450 was received, being the balance due in respect of the "Rayner Felix Baker" Bequest. Under the terms of the Will, this amount has been invested, and is shown on the Balance Sheet. We are indeed grateful for this additional assistance.

Statistical Tables.

Owing to the shortage of nursing staff, your Board were compelled to close the male medical ward during the whole of

1946. In addition the women's surgical ward was closed for a period, and due to infection, the children's ward was also shut for approximately four weeks. Due to these closures, the average number of patients in hospital daily fell from 45.3 in 1945 to 42.1 in 1946. Out-Patients and X-Ray examinations have increased considerably, out-patients numbering 2186 in 1946 against 1651 in 1945. X-Ray patients rose from 2466 in 1945 to 2948 in 1946. 930 in-patients were admitted to the wards against 1011 in 1945. 561 major operations and 623 minor operations were performed.

Ladies' Hospital Association.

I again express on behalf of your Committee our deep sense of gratitude to the Ladies' Hospital Association under their hard-working Chairman, Mrs. Hugh Grace. The annual "Pound Day" was a record, £488 in cash being received against £426 9s. 2d. in 1945. The value of goods increased from £163 in 1945 to £190 in 1946. To the organisers and to all who assisted in this splendid effort grateful thanks is extended. During the year the Association organized a Recital at King's Hall, Sevenoaks, at which Dame Sybil Thorndike very generously gave her services. In addition "Bring and Buy" Sales were held at "Charles Oak," Chevening, and also at "Bitchet Wood," Stone Street. From these three events nearly £300 was realised. The Association knowing that the Hospital was in dire need of a new refrigerator generously defrayed the whole cost amounting to £240, and in addition provided sufficient money to enable the wireless installation to be renovated. Not content with these efforts, a vegetable collection was organized throughout the district, with the result that vegetables to the value of some £60 were sent into the Hospital in addition to the various amounts in cash. Such assistance as this is most encouraging to your Board, and we are grateful to all who gave money, goods and time to these respective efforts.

The Ladies' Association report will be found on page 30.

Alexandra Rose Day.

Under the able directorship of Mrs. Harper, Alexandra Rose Day produced no less than £387 19s. 4d., and to all who assisted by way of collecting and giving we say a special "Thank You."

Ladies' Visiting Committee.

Many useful improvements have been effected through the recommendations of this Committee under the Chairmanship of Miss Burnaby-Atkins. It is so helpful to have the assistance of a Committee whose members give up so much time to help

the Committee of Management in its work, and we are truly grateful to all members of the Ladies' Visiting Committee.

Ladies' Linen League.

Our renewed thanks are tendered to members of the Linen League, and in particular to Miss M. Cross, who undertake the task of providing blankets, sheets, etc., for the wards and the Nurses Hostel. The expenditure on bedding is very large in a Hospital, and for very many years the Linen League have been instrumental in saving the Institution many hundreds of pounds.

Medical Staff.

Your Board welcome the following appointments to the medical and consulting staff :—

- MR. R. H. O. B. ROBINSON, M.B., Ch.B., F.R.C.S., Eng.
 MR. KENYON CARNARVON BROWN, M.B., B.S., M.R.C.S.,
 L.R.C.P., D.A.
 MR. DUNCAN MACARTHUR, M.B., Ch.B.
 MR. T. A. WESTON, M.B., B.Ch., F.R.C.S., (Ed.)
 MR. HUGH R. C. HAY, M.B., Ch.B., D.M.R.E., (Camb.),
 Radiologist.

The Medical Staff have continued their great work throughout the year. We are indebted to Dr. N. Hay Bolton, M.D., D.T.M & H., F.R.C.S., who has continued to attend the hospital to perform many operations, and our thanks are extended to both the hospital medical staff and the consulting specialists who give their skill and attention to the patients.

Conclusion.

So many friends have given their wholehearted support during 1946 that it is impossible to single out any particular person, but it can be assured that your Board are greatly appreciative of the loyal help so willingly given to the Hospital. Without such support the Hospital would have been unable to continue its service to the patients, and it is to be hoped that for the period which remains to us as a voluntary hospital, all supporters in the past will assist us in the future.

Our Nursing Staff under the able leadership of Matron (Miss M. A. Jeffery) and her Assistant have given yeoman service under trying circumstances. To the Secretary and House Governor (Mr. S. B. Sargeant) and his Staff, the Radiographers, Porters, Domestics and all others our thanks are conveyed for the efficient manner in which their work has been carried out throughout the year.

G. J. FARMAR,
 Major-General,
President,

AVERAGE NUMBER OF PATIENTS AND STAFF
RESIDENT AND RATIONED DAILY

	GENERAL WARDS	1946	1945
		—	—
Ordinary Patients		13.3	16.2
Hospital Aid Scheme Contributors		21.3	19.2
		—	—
Total Hospital's own Patients		34.6	35.4
Emergency Hospital Scheme Patients1	2.1
		—	—
General Ward Daily Average		34.7	37.5
		—	—

PRIVATE PAY BED WARDS

Ordinary Patients	6.8	7.1
Hospital Aid Scheme Contributors6	.7
	—	—
Private Ward Daily Average	7.4	7.8
	—	—
Total Average Number of Patients Daily	42.1	45.3
Total Average Number of Staff Rationed Daily	46.9	49.2
	—	—
Total Persons Rationed Daily	89.0	94.5
	—	—

Cost of Rations per Person (Patients and Staff)		
per week	12/3	11/6

STAFF (Maintenance)—

Matron, Assistant Matron, 6 Sisters, 13 Nurses,
12 Student Nurses, 2 Radiographers, 14
Domestic Staff

49 51

STAFF (Maintenance) Male—

Porters, Telephone Operators, Theatre
Attendant and Garden Staff

8 8

Statistical Tables

(1946 compared with 1945)

I. IN-PATIENTS

A. Number of Beds and In-Patients

	1946	1945
Beds available daily (64 normal)	53.1	88.3
Patients resident daily	42.1	45.3
Private Pay Bed Patients included in above ...	7.4	7.8
Patients admitted during the year	930	1011
Average number of days each Patient was resident	16.5	16.3

B. Average Cost of each Occupied Bed per week

	1946		1945
	Expenditure on In-Patients	Average cost of each In-Patient per week	Average cost of each In-Patient per week
Number of In-Patients daily	42.1	42.1	45.3
	£	£ s. d.	£ s. d.
1 Provisions (Patients and Staff)	2740	1 5 0	1 3 6
2 Surgery and Dispensary ...	1683	15 4	14 7
3 Domestic... ..	3276	1 9 10	1 4 5
4 Salaries and Wages (Maintenance)	8182	3 14 6	2 12 6
5 Miscellaneous	786	7 2	6 5
6 Administration	1452	13 3	9 9
7 Establishment	1288	11 9	5 2
8 Finance	345	3 2	2 3
Total In-Patient Expenditure ...	£19752	£9 0 0	£6 18 7
"Cases not detained" Expenditure	£1627		
Total Hospital Expenditure	£21379		

II. OUT-PATIENTS

No regular Out-Patient Department is maintained, but a number of "Cases not detained" were dealt with, one attendance only being necessary in most cases.

X-Ray Out-patient Examinations are now included in this table.

A. Number of "Cases not detained"

	1946	1945
Cases not detained	2114	1651
Out-patient X-Ray Examinations	2649	2019
Total	4763	3670

B. Estimated Expenditure on above

Cost of Surgery and Dispensary and Films, time of Staff, and share of Hospital upkeep, estimated at 6/- per case not detained, and 7/6 per X-Ray Examination.

**HOSPITAL INVESTMENTS MADE UP OF LEGACIES,
GIFTS AND COLLECTIONS on page 13, HELD IN
THE NAME OF THE CHARITY COMMISSIONERS.**

	Cash Invested			Amount of Stock		
	£	s.	d.	£	s.	d.
(a) Endowment Fund Capital.						
(1) Trusts created by the Testators—						
3½% War Loan	4077	10	0	3801	3	8
2½% Treasury Stock	2022	10	0	2287	9	9
3% Defence Bonds. 4th Issue ...	2000	0	0	2000	0	0
2½% Defence Bonds	450	0	0	450	0	0
	£8550					
2) Allocated to Endowment Fund by the Committee (not subject to Trusts)—						
3% Savings Bonds, 1955-65 ...	1200	0	0	1200	0	0
3% War Loan	500	0	0	493	15	6
3½% War Loan	100	0	0	93	0	0
2½% Consolidated Stock	200	0	0	345	5	0
3½% Conversion Stock, 1961 ...	340	0	0	419	18	11
2½% Treasury Stock	710	13	0	849	11	8
3½% Commonwealth of Australia ...	2000	0	0	2105	1	0
5% Agricultural Mtge. Corpn. Deb. Stock	1000	0	0	996	3	4
5% London Transport "B" Stock	598	16	9	486	0	0
Miscellaneous Stock bequeathed.						
3% Redemption Stock				73	14	9
Ottoman Railway Holding Co. Debenture Stock	60	0	0	52	0	0
1/- shares, 10 shares				10	0	
Chilian Transandine Railway 1st Mtge. Deb. Stock				166	0	0
	£6709			9	9	
Total Endowment Fund Capital in B/S	£15259			9	9	
(b) Special Funds Capital (not subject to Trusts).						
(1) Samaritan Fund Collection—						
● 2½% Treasury Stock	398	9	8	800	0	0
(2) Stanhope Fund Collection—						
3½% New South Wales Stock ...	347	10	6	346	12	2
As per Balance Sheet ...	£746			0	2	
(d) General Fund Capital (not subject to Trusts)—						
3% Metropolitan Water "B" Stock	1250	0	0	1416	9	8

**LEGACIES, GIFTS AND COLLECTIONS INVESTED ;
DEEDS HELD BY THE CHARITY COMMISSIONERS FOR
THE HOSPITAL see page 12.**

	£	s.	d.	£	s.	d.
(a) Endowment Fund Capital.						
(1) Trusts created by the Testators—						
1931 Mrs. A. E. Waller Trust ...	100	0	0			
1934 } R. F. Baker Trust ...	8450	0	0			
1946 }				£8550	0	0
 (2) Allocated here by the Hospital (not subject to Trusts)—						
1910 David Reid Gift ...	500	0	0			
1913 Dr. A. J. Alliott Collection ...	598	16	9			
1923 Dr. J. E. Blomfield Collection ...	200	0	0			
1923 Jabez Mann Gift ...	200	0	0			
1924 King Edward VII Memorial Collection ...	100	0	0			
1924 War Memorial Collection ...	100	0	0			
1926 F. G. Kemp Legacy ...	100	0	0			
1927 J. Packham Legacy ...	10	13	0			
1928 Mrs. Latter's gift in addition to the 9 bed Children's Ward given by her in Memory of her Husband ...	4000	0	0			
1930 G. F. France Gift ...	100	0	0			
1932 W. H. Moss Legacy ...	100	0	0			
1934 Robert Somervell Legacy ...	100	0	0			
1936 Keg Meg Club Collection ...	500	0	0			
1941 Profit on Redemption of Stock Gifts ...	100	0	0			
				£6709	9	9
 Balance Sheet Total Endowment Fund Capital ...						
				£15259	9	9
 (b) Special Funds Capital (not subject to Trusts)—						
1887 Samaritan Fund Collection to commemorate Queen Victoria's Jubilee ...	398	9	8			
1908 Stanhope Fund Collection, to commemorate the 6th Earl, 30 years President of the Hospital ...	347	10	6			
				£746	0	2
 (d) General Funds Capital (not subject to Trusts)—						
1937 Mrs. Walter Hay Gift ...	1000	0	0			
1939 James Attfield Gift ...	250	0	0			
				£1250	0	0

Hospital Aid Contributory Scheme.

COMMITTEE.

H. T. CROSS (*Chairman*), East Weir, Seal Hollow Road, Sevenoaks
 F. BALLARD, Sundridge.
 A. H. DANIELS, Lansdowne, Ightham, nr. Sevenoaks.
 W. COSGROVE, The Green, Westerham.
 G. K. HANCOCK, The Post Office, Chipstead.
 H. R. FULLER, 23 Bushes Road, Sevenoaks.
 L. MANN, 21 Lambarde Drive, Sevenoaks.
 MRS. KIRBY, 21 Argyle Road, Sevenoaks,
 S. B. SARGEANT, F.C.C.S., Sevenoaks and Holmesdale Hospital
 (*Hon. Secretary*).

RULES OF THE SCHEME.

1. The Scheme is to be entirely on a voluntary basis.
 - (a) In return for a weekly payment of threepence, provided their income is not above £200 p.a., members are entitled to free treatment in the Sevenoaks Hospital twelve weeks after the first payment has been made. Assistance is also given to members and their dependants should they be admitted to any other voluntary hospital in Great Britain. Similar arrangements apply to contributors who are admitted to County Council hospitals.
 - (b) Similar benefits may be enjoyed by those whose incomes range from £200 to £375 p.a. on payment of £1 annually.
2. Every case must be certified by a doctor as suitable for hospital treatment.
3. When requiring treatment, contributors should take their card to their collector who will give them a certificate which must be handed in at the Hospital and which will entitle them to free treatment. Members who fail to produce the necessary voucher will be presented with an account.
4. Assistance is also given to contributors where out-patient treatment has to be given away from the hospital.

NOTE.—The Sevenoaks Hospital aid scheme will remain in being until such time as H.M. Government make full arrangement for treatment in Hospitals under the National Health Act, 1946. Full details, when available will be sent to all collectors.

For further particulars of the scheme, please apply to the Secretary and House Governor, Sevenoaks and Holmesdale Hospital.

LIST OF COLLECTORS AND COLLECTIONS
YEAR ENDING DECEMBER, 1946.

Sevenoaks.						£	s.	d.
Barton, Mr. E.,	Caxton Press	20	15	6
Bryant, Mr. V. A.	Sevenoaks Sanitary Laundry	11	2	3
Colegate, Miss D.	38 Buckhurst Avenue	114	0	3
Cross, Mr. H. T.	East Weir, Seal Hollow Road	136	8	0
Crook, Mr. R.	Sevenoaks Brickworks	6	10	1
deLevante, Mr. W.	26 St. John's Hill	56	16	3
Farmer, Mr. F.	Messrs. Higgs & Tye, Ltd.	26	14	0
General Post Office.	British Hospitals Association		4	4
Goldsmith, Mrs.	The Almshouses	4	11	0
Highfield, Mr. E.	Messrs. Young & Son Ltd.	22	11	4
Holmes, Mr. A. J.	2 Coombe Avenue	133	14	4
Hurdle, Mr. F.	Bulimba Cottages, Oakhill Road	36	17	6
Hawkes, Messrs. L. A. G.	Victoria road	5	1	9
Kirby, Mrs.	21 Argyle Road	218	18	7
Luck, Mr.	Hillingdon Lodge	17	12	10
Mason, Mr.	Knole Estate Office	20	1	9
Mann, Mr. L.	21 Lambarde Drive	36	1	6
Marchant, Mr. E.	Messrs. J. Salmon Ltd.	53	8	3
Mundey, Mr. H.	166 Seal Road	38	10	6
Orchard, Mr. C.	Messrs. Moorewood & Co.	4	4	6
Sevenoaks Hospital Staff		4	13	6
Sevenoaks Hospital Group		710	15	2
Sennocke Engineering Co.		6	1	3
Smith, Mr. R. J.	St. John's Road	193	4	2
Smith, Mr. W. J.	17 Holyoake Terrace	32	16	6
Shorter, Mrs. A. C.		2	2	0
Stanton, Mrs.	Abbotsford, Greenwood	6	14	0
St. Michaels School.	Otford, Sevenoaks	7	17	6
Sherlock, Mr.	Riverhill Gardens	13	13	0
Vallins, Mr. F.	Sevenoaks Water Works	25	7	9
						£1967	9	4
Bitchet Green.						£	s.	d.
Kiddell, Mrs.	Cherry Tree Cottage	9	11	9
Brasted.								
Durtnell, Messrs. R. & Sons		22	13	0
Warner, Mr. A. C.	The School House	132	8	6
Borough Green.								
Broadmore, Mr. W. F.	Quarry Hill	80	11	8
Chevening.								
Shotter, Miss.	Chevening Estate Office	35	6	0
Chipstead.								
Hancock, Mr. G.	The Post Office	119	4	9
Dunton Green.								
Banks, Mrs. E.	2 Station Road	25	18	3
Cobb, Mrs. E.	172 London Road	36	10	6
Cooper, Mrs.	30 Station Road	159	19	9
Jessups Lime Products Ltd.		4	6	6
L.P.T.B. Employee's Friendly Society		25	14	9
Carried forward						£2,619	14	9

£ s. d
Brought forward 2,619 14 9

Godden Green.

Kent, Mrs. H. The Old Post Office 24 11 0

Halstead.

Payne, Mr. S. B. The Post Office 50 17 0

Ide Hill.

King, Mrs. 5 Creaseys Row 109 16 6

Muddle, Mr. B. J. Everlands Gardens 12 3 9

Ightham.

Daniels, Mr. A. H. Lansdowne 199 4 3

Ivy Hatch.

Bance, Mrs. 13 9 6

Kemsing.

Baldwin, Mr. G. F. Noah's Ark 18 19 0

Bradshaw, Mrs. Orchard House 230 7 9

Pattullo, Mrs. Heaverham 16 4 9

Knockholt.

Fowler, Mr. W. J. The Post Office 34 16 6

Otford.

Nash, Mr. J. Builder 6 7 6

Turner, Mr. G. 6 Rye Lane 103 10 6

Platt.

Shearman, Miss A. M. Rudge 58 3 0

Riverhead.

Braid, Miss D. 1 London Road 72 10 0

Marley Tile Co., Ltd. 28 17 5

Williams, Mrs. 4 Witches Lane 87 6 6

Seal.

Finney, Mrs. High Street 123 19 9

Watson, Mrs. Seal Laundry 18 12 8

Seal Chart.

Butcher, Mrs. Chart Farm 29 14 9

Peirce, Miss. Crown Point Hill. 7 17 0

Shoreham.

Fitzgerald, Mrs. Walnut Tree Cottage 71 6 9

Hillier, Mrs. Copt Hall 7 0 0

Stone Street.

Woodgate, Mrs. Fernlea 32 10 6

Sundridge.

Ballard, Mr. F. The Post Office 75 4 9

Hibbens, Mr. T. E. Sevenoaks & District Electricity 41 18 6

Underriver.

Platt, Miss. Hollandhurst 3 5 3

Weald.

Wood, Mrs. Lilac Cottage 153 5 2

Westerham.

Cosgrove, Mr. W. 55 2 0

Horton & Sons Ltd., Messrs. 12 5 6

Wrotham.

Bolton, Mrs. N. Hay. West House 94 7 9

French, Miss. St. Mary's Road 26 4 0

£4439 14 0

BALANCE SHEET as at the 31st December 1946.

Liabilities.			Assets.		
	£ s. d.	£ s. d.		£ s. d.	£ s. d.
1 Sundry Creditors—			1 Cash at Bank and in Hand—		
(d) General Fund		2600 2 9	On account of:		
2 Loans to Hospital—			(b) Special Funds in Separate Bank		
(d) From Sundry Persons free of interest		267 16 9	Accounts—		
3 Capital Accounts (page 13)—			1. Samaritan Fund, 1887	232 19 4	
(a) Hospital Endowments—			2. Stanhope Fund, 1908	150 8 9	383 8 1
Balance at 31.12.45	14059 9 9		(d) General Fund.		
Less Legacies and Gifts not			Cash at Westminster Bank Ltd.	1577 10 1	
subject to Trusts, now			Petty Cash with Secretary and		
transferred to General			Matron	51 14 7	1629 4 8
Fund Capital	1250 0 0				2012 12 9
			2 Stock of Unissued Stores on Hand—		
Add R. F. Baker, balance	12809 9 9		(d) Emergency Stock		358 8 2
of Legacy to close Trust	2450 0 0		3 Sundry Debtors—		
Endowments under Trusts		15259 9 9	(d) General Fund		1351 18 5
(b) Special Funds—			4 Internal Loan (£5064 18s. 7d. at 31.12.45)		—
1. Samaritan Fund, 1887	398 9 8		5 Investments at cost (page 12)—		
2. Stanhope Fund, 1908	347 10 6	746 0 2	(a) Hospital Endowments		
(c) Building and Equipment Fund—			Balance at 31.12.45	14059 9 9	
Contributions to 31.12.45	69945 6 10		Less Transfer to General		
Add Transfer hereto from			Fund	1250 0 0	
General Fund of balance				12809 9 9	
undersubscribed	5064 18 7	75010 5 5	Add R. F. Baker Legacy		
(d) General Fund of Accumulated			invested in 1946	2450 0 0	
surplus since 1870—			(Market Value £16843 19s. 1d.)		15259 9 9
Balance at 31.12.1945	5773 13 2		(b) Special Funds		
Less over expended in 1946	237 2 10		1. Samaritan Fund, 1887	398 9 8	
	5536 10 4		2. Stanhope Fund, 1908	347 10 6	
Less Transfer to Building			(Market Value £1152 4s. 10d.)		746 0 2
Fund of its undersub-			(d) General Fund		
scribed balance	5064 18 7		Transfer from Hospital En-		
Add Transfer from Endow-	471 11 9		dowments of "free" Legacies		
and Gifts not being Trusts	1250 0 0		and Gifts		
Available Capital		1721 11 9	(Market Value £1445 4s. 3d.)		1250 0 0
4 Unexpended Income Balances of Special Funds (b)—		92737 7 1	6 Land, Buildings and General Equipment of the Hospital—		
		383 8 1	(c) Capital Expenditure since founda-		
		£95988 14 8	tion in 1870 as at 31.12.45		75010 5 5
					£95988 14 8

ACCOUNTS, 1946

Income and Expenditure

Account

and

Balance Sheet

I have audited the above Balance Sheet and the accompanying Income and Expenditure Account and, having compared them with the Books of the Hospital, I find them to be correct. I have verified the Investments and the Bank Balances. To the best of my knowledge and belief the Regulations of the Revised Uniform System of Hospital Accounts as adopted by the Central Funds have been followed in the preparation of the Accounts.

Seal, Sevenoaks.
28th January, 1947.

JOHN DIXON, Chartered Accountant,
Hon. Auditor.

INCOME AND EXPENDITURE ACCOUNT for the year ended 31st December 1946

Average number of In-patients daily during this year ... 1946 1945
 Average number of Beds Available daily (64 normal) ... 42.1 45.3
 ... 53.1 88

1945	1946	1945	1946
£	£ s. d.	£	£ s. d.
ORDINARY INCOME			
I. Voluntary Gifts			
1. Subscriptions, Donations, etc.			
1519	(a) Annual Subscriptions ... 1569 9 4		
	Income Tax recovered on Governated Subscriptions ... 561 8 7		2130 17 11
2182	Total Subscriptions (pages 17-22) ...		
(b) Donations:			
1949	As listed on pages 23-25 1398 18 4		
404	Alexandra Day ... 387 19 4		
207	Boxes (page 29) ... 187 5 8		
124	Congregational (page 26) 122 5 8		
427	Pound Day Cash ... 488 0 0		
3111	Total ... 2584 9 0		
2. Central Funds			
20	League of Mercy ... 30 0 0		
3131	Total Cash Donations ... 2614 9 0		
3. Gifts in kind			
372	Detailed on page 26 ... 356 15 10		
3503	Total Donations ... 2971 4 10		
5685	Total Voluntary Gifts ... 5102 2 9		
II. Receipts on Account of Services Rendered			
1. Services to Patients:-			
(a) From Patients and their Societies			
i. Patients:			
888	General Wards ... 766 4 10		
131	Cases not detained ... 174 12 6		
549	X-Ray Examinations ... 581 5 6		
1568	Total ... 1522 2 10		
2794	Private Ward Patients 2770 3 11		
4363	Total ... 4292 6 9		
ii. Societies:-			
	Stonewalk Hospital Aid Scheme		
3970	Total Collections 4439 14 0		
Less			
Paid to Medical Staff 855 7 6			
692	To Other Hospitals 1461 4 1		2316 11 7
1458	Total ...		
2512	Other Schemes:-		2103 2 5
506	(b) From Public Authorities (Stonewalk Hospital Aid Scheme) ... 910 2 6		
118	X-Ray of Chests ... 116 3 0		
7519	Total Services rendered ... 7421 14 8		
11204	Total Vol. Gifts & Services rend. less ... 112523 17 5		
2. Fees:-			
Nurses' and Probationers,			
Other Receipts:-			
Hospital Emergency Scheme, for the year ended 31st Decem- ber 1946, Rashcliffe Scheme, etc., including arrears ... 8071 13 7			
4457	Total ...		
III. Invested Property			
Interest on Endowment Investments ... 546 5 3			
518	Total ... 21141 16 3		
18199	Total Ordinary Income		
DEFICIENCY being Excess of Ordinary Expenditure over Ordinary Income for the year 1946 ... 237 2 10			
nil	Total ... 21378 19 1		
18199	Total ... 21378 19 1		
ORDINARY EXPENDITURE			
I. Provisions ... 2858 16 9			
II. Surgery and Dispensary			
816	1. Drugs, Chemicals, etc. ... 1015 1 5		
247	2. Dressings, Bandages, etc. ... 201 4 0		
1038	3. Instruments, Appliances ... 1197 8 8		
12	4. Wines and Spirits ... 5 8 0		
5	5. Salaries of Dispensing Staff ... 18 4		
11	6. Sundries ... 18 4		
2124	Total ... 2420 0 5		
III. Domestic			
353	1. Removal and Repair of Furniture, Crockery, etc. ... 589 10 10		
538	2. Laundry ... 713 3 8		
222	3. Cleaning and Chandlery ... 138 7 5		
130	4. Water ... 103 15 11		
1597	5. Fuel, Lighting and Heat ... 1823 9 1		
130	6. Uniforms ... 145 17 1		
4	7. Sundries ...		
2974	Total ... 3514 4 0		
IV. Salaries and Wages (Maintenance)			
3839	1. Medical ... 4773 0 10		
289	2. Nursing ... 262 3 2		
1050	3. Radiographers ... 1422 13 4		
1683	4. Porters ... 2142 17 3		
6861	5. Domestic ... 8600 14 7		
V. Miscellaneous			
261	1. Printing, Postages, etc. ... 239 10 3		
41	2. Advertisements ... 63 16 8		
153	3. Insurance of Buildings, Equipment, etc. ... 190 8 3		
337	4. Garden ... 308 8 8		
1	5. Sundries ... 24 14 1		
793	Total ... 826 17 11		
VI. Administration			
951	1. Salaries ... 1248 19 9		
182	2. Pensions ... 208 17 7		
6	3. Printing, Postages, etc. ...		
4	4. Advertisements ...		
5	5. Law Charges ...		
42	6. Auditors Fee ... 35 17 4		
1181	7. Sundries ... 1493 14 8		
VII. Establishment			
638	Renewals and Repairs to Buildings and Plant ... 1319 16 9		
VIII. Finance			
10	1. Bank Interest on Overdraft ... 25 10 4		
50	2. Appeals ... 48 1 2		
3	3. Rent—Hospital owns land and buildings ... 271 2 6		
217	4. Rates and Taxes ... 344 14 0		
277	Total ... 21378 19 1		
17683	Total Ordinary Expenditure		
SURPLUS, being Excess of Ordinary Income over Ordinary Expenditure for the year 1946 ... nil			
518	Total ... 21378 19 1		
18199	Total ... 21378 19 1		

NOTE.—In addition to the above the sum of £2450 was received during the year to close the "R. F. Baker Trust Legacy," making £8450 in all. In accordance with the conditions in the will, this has been invested as Capital and added to the Endowment Fund in the Balance Sheet.

ANNUAL SUBSCRIPTIONS RECEIVED IN 1946.

Subscribers whose names are printed in *italics* have signed Covenants. The amount of Income Tax recovered, or in the course of recovery, under the Covenant has been added to the subscription paid, and the total value to the Hospital of each covenanted subscription is shown.

The letter "b" indicates that the subscription is paid by Bankers Order, thus saving a considerable amount of time and money.

	£	s.	d.		£	s.	d.
<i>b</i> Abbott, S. ...	1	1	0	Brought forward	291	7	7
<i>b</i> Abelson, Dr. ...	1	1	0	<i>b</i> Bastable, W. Hugh ...	3	3	0
<i>b</i> Abrahams, H.N. ...	5	14	7	<i>b</i> Bastone, Miss G. M. ...	10	0	
<i>b</i> Adie, Miss E. H. ...	1	0	6	<i>b</i> Batchan, Mrs. ...	10	6	
<i>b</i> Adie, Miss E. H. ...	10	0		<i>b</i> Batchelor Miss M. H.			
Adkin, J. H. ...	2	2	0	(the late) ...	3	16	4
Adkins, B. R. ...	2	2	0	<i>Beardsworth, Mrs. A. A.</i>	1	18	2
<i>b</i> Airey, Arthur J. ...	2	2	0	Beatty, Harcourt C. ...	4	4	0
<i>b</i> Aldred, A. H. K. ...	1	1	0	<i>b</i> Bennett, Rex G. ...	2	2	0
<i>b</i> Alexander, Mrs. K. N. ...	10	6		Bentall, Rex ...	1	1	0
<i>b</i> Alexander, R. ...	1	1	0	Bentley, Mrs. ...	10	0	
Allen, Mrs. & Miss ...	1	5	0	<i>b</i> Berry, Miss A. M. ...	2	2	0
Allen, Mrs. C. C. ...	2	2	0	<i>b</i> Berwick, S. V. ...	9	1	9
Alston, J. F. ...	2	2	0	Bevan, Miss F. L. ...	1	1	0
<i>b</i> Amsden, Miss ...	5	0		<i>b</i> Beveridge, Alex. ...	4	4	0
<i>b</i> Amsden, Miss Ethel A. ...	5	0		<i>b</i> Bicester, Lady ...	5	0	0
<i>b</i> Anonymous ...	181	16	6	<i>b</i> Blackall, Miss O. L. ...	4	4	0
<i>Ansell, W. H.</i> ...	3	19	4	Blackall, Miss O. L. ...	1	0	0
Anson, Mrs. ...	10	10	0	Blockey, Miss K. J. ...	10	6	
Aplin, E. J. ...	2	2	0	Blofield, Rev. T. ...	1	1	0
<i>b</i> Apthorpe, Mrs. ...	1	1	0	Blundell, Mrs. E. C. ...	10	0	
<i>b</i> Arnott, Scott ...	2	2	0	<i>b</i> Blundell, Douglas R., J.P. ...	3	16	4
<i>b</i> Ashton, Mrs. ...	2	2	0	<i>b</i> Boise, C. W. ...	47	14	7
<i>b</i> Athill, Mrs. ...	1	18	2	<i>Boning, L. G.</i> ...	4	4	0
<i>Athill, Miss Mildred</i> ...	9	15	11	<i>b</i> Boots, the Chemist ...	3	13	6
<i>b</i> Athill, Miss Winifred ...	1	18	2	Bosanquet, Mr. & Mrs.			
Attfield, A. J. ...	1	1	0	G. C. ...	1	1	0
Attfield, Mrs. E. C. ...	1	1	0	<i>b</i> Bowra, C. A. V. ...	1	1	0
Avis, C. E. ...	2	2	0	<i>Boyes, Mrs. M. A.</i> ...	1	18	2
<i>Baden, P.</i> ...	3	16	4	<i>Bradley, Benjamin</i> ...	1	18	2
<i>b</i> Baker, Geo. P. ...	19	1	10	<i>b</i> Brandon, John ...	2	2	0
<i>b</i> Ballantyne, Mrs. W. H. ...	10	6		Branson, Mrs. E. W. ...	2	2	0
Ballantyne, W. H. ...	1	1	0	Bray, Mrs. R. ...	2	2	0
<i>b</i> Ballard, Mrs A ...	2	2	0	<i>b</i> Breething, O. J. ...	1	1	0
<i>b</i> Bannister, T. E. ...	1	1	0	Brewer, The Misses ...	3	3	0
<i>b</i> Banks, E ...	3	16	4	Brodribb, The Misses ...	12	6	
<i>b</i> Banks, G. ...	3	16	4	Bromwich, Rear Ad-			
Barclay's Bank, Ltd. ...	2	2	0	miral G. H., D.S.O	1	1	0
Barrett, T. E. Chester,				<i>b</i> Brown, Mr. & Mrs.			
M.A., L.I.B. ...	2	2	0	Ancell H. ...	2	2	0
Bartlett, Mrs. Lilian ...	10	0		Brown, Capt. & Mrs.			
<i>Barton, Miss Lilian</i> ...	5	14	7	Anthony ...	1	1	0
				<i>b</i> Brown, Mrs. Gordon ...	3	3	0
Carried forward	£291	7	7	Carried forward	£421	13	1

	£	s.	d.		£	s.	d.
Brought forward	421	13	1	Brought forward	576	7	6
Brown, Miss M. C. ...		10	0	bCorry, H. W. ...	5	5	0
Browne, F. A. ...	2	2	0	Couchman, Amos ...	1	1	0
Bruce, Mrs. J. ...	1	1	0	Coxon, Lady ...	4	10	10
Bruford, J. W. ...	4	4	0	bCraggs, G. Vincent ...	9	1	9
bBryant, V. A. ...	1	1	0	Craze, A. V., J.P. ...	3	3	0
Bullough, A. W. ...	1	1	0	Cripps Day, F. H., M.A., Ll.M. ...	2	2	0
Burchall, James ...	1	1	0	Crosbie-Hill, Barton & Mrs. ...	9	1	9
bBurnaby-Atkins, Miss C. ...	1	1	0	bCross, Howard T. ...	5	14	7
Burnaby-Atkins, Miss M. ...	10	6		bCross, Mrs. Howard T. ...	3	16	4
bBurrell, K. ...	5	5	0	bCross, Miss M.M. ...	2	2	0
Burrows, Mrs. M. N. ...	2	2	0	Crow, A. L. ...	5	5	0
Burrows, Miss (1944/5) ...	1	1	0	bCrow, W. Robert ...	3	16	4
Bushell, Watkins, & Smith, Ltd. ...	2	2	0	bCrum-Ewing, Mrs. H. R. ...	1	18	2
bCable, Chas. J., Major ...	1	1	0	bCullen, J. B. ...	9	10	11
bCaine, Capt. F. P. ...	11	9	0	Dalbiac, A. H. ...	1	1	0
bCampbell, Mrs. ...	1	1	0	Dark, Robert ...		10	0
bCampion, Mr. & Mrs. C. A. G. ...	5	0	0	Dartford Brewery Co. Ltd. ...	2	2	0
Carden, Mrs. ...	1	0	0	Darwin, Mrs. C. ...	1	1	0
bCarey, Miss O. V. ...	2	2	0	bDaukes, Lady ...	1	1	0
Cartwright, G. ...	1	1	0	bDavis, Mrs. M. E., J.P. ...	4	4	0
Cave, Alan G. ...	9	1	9	bDavis, Mrs. A. M. ...	5	14	7
Case, E. W. G. ...	1	18	2	bDaws, William ...	3	16	4
Caxton & Holmesdale Press ...	2	2	0	Deed, Mrs. M. 1945/6 ...	5	18	4
bChapman, Charles (the late) ...	4	0	0	deRougemont, Ernest C. ...	2	2	0
Charles, Miss A. ...		5	0	bDevitt, Howson F. ...	1	18	2
Cheney, A. H. 1945 ...	2	2	0	de Winton, Miss V. ...	1	1	0
bChitty, Miss ...	1	0	0	bDinwiddy, Mrs. E. M. ...	9	10	11
Christian, Mr. & Mrs. B. ...	2	2	0	Dinwiddy, Lt. G. D. ...	2	2	0
Christy, Miss ...	1	0	0	Dixon, Mr. & Mrs. John ...	19	1	10
bCleaver, Mr. & Mrs. R. L. ...	1	16	4	Doble, F. K. ...	10	0	0
bCoates, J. B. M. ...	9	10	11	Dolton, W. Clifford ...	2	2	0
Cohen, Sir Herbert, Bart, O.B.E. ...	2	2	0	Donaldson, J. H. ...	3	16	4
bColeman, Miss Dorothy ...	3	16	4	Down, S. J. ...	1	1	0
bColgrain, The Rt. Hon. Lord ...	9	1	9	Dowson, Sir Ernest, K.B.E. ...	3	3	0
Collard, S. ...	2	2	0	bDriffin, Mrs. A. H. ...	3	16	4
Collier, J. (1944/5) ...	2	0	0	bDruce, John C. ...	3	16	4
bCollier, W. B. ...	2	2	0	Drysdale, Mrs. ...	5	0	0
Collins, Mr. & Mrs. D. ...	3	3	0	bDubuisson, J. M. ...	3	16	4
Colthup, Mr. & Mrs. A. G. ...	2	2	0	Duff, James ...	2	2	0
bColyer-Ferguson, Lady ...	2	2	0	bDunsany, Lord ...	2	2	0
bConstant, Mr. & Miss ...	21	0	0	bDurtnell, R. ...	2	2	0
bCook, James, O.B.E., & Mrs. ...	1	18	2	Durtnell, G. ...		10	6
bCooke-Hurle, Miss M. J. ...	4	4	0	Duveen, John ...	2	2	0
bCooper, Harold ...	3	16	4	Eastwood, Rev. J. Hastings ...	3	16	4
bCooper, Miss Violet ...	1	18	2	Ede, Mrs. A. J. ...	3	3	0
Cooper, W. H. ...	1	1	0	Edwards, Mrs. H. ...	2	2	0
bCordy, Leslie F. ...	2	2	0	bElder, Mrs. ...	1	1	0
				bElliott, Miss P. M. ...	2	2	0
				bEllis, F. W. ...	10	10	0
				Emerson, Lt.-Col. Sir H. ...	1	1	0
				bEnglish, M. C. ...	3	16	4
Carried forward	£567	7	6	Carried forward	£768	1	10

	£	s.	d.		£	s.	d.
Brought forward	768	1	10	Brought forward	928	2	5
<i>bEnglish, F. W.</i> ...	3	16	4	Gray, A. L. ...	3	0	0
<i>bEvans, Miss Gertrude</i> ...	1	1	0	Greenlees, T. ...	2	2	0
Evans, Miss Viola ...	10	6		<i>bGregory, Lady</i> ...	5	5	0
<i>bEvans-Gordon, Miss</i> ...	5	0	0	<i>bGregory, Mrs. Amy</i> ...	2	2	0
<i>bEve, C. A.</i> ...	1	18	2	Gresley, Mrs. L. ...	1	18	2
Everitt, R. A. ...	2	2	0	<i>bGrudgeon, C.</i> ...	19	1	
Ewbank, The Misses ...	1	1	0				
<i>bFairlawne (Tonbridge) Ltd.</i>				<i>bHadow, Lt.-Col. A. L.,</i>			
	10	10	0	C.M.G. ...	2	2	0
<i>bFarmar, Maj.-Gen. G. J.,</i>				Halfhead, Mrs. D. ...	1	0	0
C.B., C.M.G. ...	39	2	9	<i>bHalliburton, R.</i> ...	2	0	0
<i>bFarmar, Major T. C., M.C.</i> ...	1	1	0	Hampton, Mrs. Hilda ...	2	0	0
Farnell, Miss R. ...	5	0		Hamlyn, F. ...	2	2	0
Farrant, Miss ...	1	1	0	<i>bHamlyn, J. F.</i> ...	2	2	0
Fawcett, Mrs. C. A. ...	1	18	2	Hammond, Miss L. ...	3	3	0
<i>bFawcett, Geo. E....</i> ...	4	4	0	Hann, P. R. ...	2	2	0
Fawkes, F. S. E. ...	10	10	0	Hancock, F. ...	1	1	0
<i>bFell, Capt. J. H.</i> ...	3	16	4	<i>bHanson, Rev. R. E.</i> ...	1	1	0
Fenton, J. E. ...	5	5	0	Hardy, R. H. ...	3	16	4
<i>bField-Marsham, Maj. C. G.</i> ...	1	7	0	<i>bHarper, Mrs.</i> ...	2	2	0
<i>bFife, Mrs. Jane</i> ...	1	1	0	<i>bHarrison, Sir E. R.</i> ...	1	1	0
Finch, A. C. ...	2	2	0	Harrison, G. H. ...	10	0	
Findlay, J. Crawford ...	1	1	0	Harrison, Ronald H. ...	1	1	0
Fletcher, Miss G. ...	10	6		Hart-Dyke, Mrs. R. (the			
Flockhart, Duncan & Co	1	1	0	late) ...	1	1	0
Flower, Lady ...	2	2	0	Hartley, Mrs. ...	1	1	0
<i>bForbes, Miss May</i> ...	1	18	2	<i>bHarvey, Leslie C.</i> ...	2	2	0
Foster, Lt.-Col. T. H. ...	2	2	0	<i>bHatfield, Maj. E. R.,</i>			
Foster, Miss ...	2	2	0	D.S.O. ...	3	16	4
Franks, Arthur ...	2	10	0	Hawkins, A. L. & Co. ...	2	2	0
Fraser, Mrs. M. E. ...	1	1	0	<i>bHearson, W. H....</i> ...	4	4	0
<i>bFraser, Robert</i> ...	3	16	4	Heath, Miss Rachel F. ...	3	3	0
<i>bFreeman, Mrs.</i> ...	1	1	0	Heather, B. A. ...	2	1	0
Freeman, Hardy & Willis				<i>bHebb, J. P.</i> ...	1	1	0
Ltd. ...	10	6		Hewer, Miss D. G. &			
<i>bFrench, H. A.</i> ...	4	4	0	Miss Tower ...	2	2	0
				Hewes, Mrs. Mary ...	2	2	0
Gale, G. A. ...	6	6	0	Heywood, S. D. ...	10	0	
Garnett, H. J. ...	1	1	0	<i>bHicks, Arthur J.</i> ...	21	0	0
Garnham, L. S. ...	4	4	0	<i>bHillier, Ronald</i> ...	8	8	0
Garrould, E. R., Ltd. ...	1	1	0	Hills Bros., Ltd. ...	1	1	0
<i>bGlenny, Miss E. B.</i> ...	1	1	0	<i>bHills, J. Stuart</i> ...	4	0	0
<i>bGilford, Mr. & Mrs.</i> ...	2	2	0	<i>bHobson, R. B.</i> ...	9	10	11
Goddard, F. C. ...	1	1	0	Hodgkinson, E. S. ...	2	2	0
Godfrey, Mrs. C. ...	1	1	0	<i>bHolgate, John J., & Son</i>	1	1	0
<i>bGodfrey, Admiral John</i>				Holmes, H. T., C.V.O.,			
H. C. B. & Mrs. ...	3	16	4	C.B.E., I.S.O. ...	10	6	
Godin, S. W. ...	2	2	0	Hopkins, Mrs. J. L. ...	1	1	0
<i>bGodsall, Mrs. John</i> ...	10	0		Hopkins, Mrs. F. C. ...	1	1	0
Goff, Miss ...	2	2	0	Horobin, S. ...	1	0	0
<i>bGoff, Miss B. L....</i> ...	3	13	6	<i>bHouse, Wm. Harold</i> ...	1	18	2
Gower, W. H. ...	1	1	0	<i>bHowe, Mrs. A. B.</i> ...	5	14	7
<i>bGrace, Mr. & Mr. Hugh</i>				Howeson, Mr. & Mrs. J. ...	9	10	11
D. C. ...	6	6	0	<i>bHutton, Mrs. William</i> ...	9	10	11
<i>bGrant, James</i> ...	1	1	0	Hyders, Ltd. ...	1	1	0
Carried forward	£928	2	5	Carried forward	£1,074	8	4

	£	s.	d.		£	s.	d.
Brought forward	1,074	8	4	Brought forward	1,330	9	1
<i>b</i> Ide, F. G. ...	1	1	0	Lloyds Bank Ltd. ...	2	2	0
Ide Hill Charities ...	2	2	0	<i>b</i> Loch, A. J. ...	1	18	2
<i>Inman, W. M.</i> ...	3	16	4	<i>b</i> Long, Mrs. P. A. M. ...	3	16	4
<i>b</i> Innes, Sir Charles, K.C.S.I., C.I.E. ...	2	2	0	Longuet-Higgins, Rev. H. H. L. ...	2	2	0
International Tea Co., Ltd. ...	10	6		<i>b</i> Lovell, A. Gordon ...	10	10	0
Isted, Miss K. ...	2	2	0	<i>b</i> Lovell, E. D. ...	1	18	2
Jameson, Miss A. C. M. ...	5	0		Lovett, F. C. ...	2	2	0
Jarvis, S. N. ...	2	0	0	<i>b</i> Lovett, Herbert ...	3	16	4
<i>b</i> Jerwood, W. L. ...	4	4	0	<i>b</i> Lubbock, Brig.-Gen. Guy C.M.G., D.S.O. ...	3	0	0
<i>b</i> Johnson, E. M. ...	19	1	10	Lunnis, Miss B. A. ...	2	2	0
<i>b</i> Johnson, Mrs. Ingram ...	1	18	2	Lywood, E. & Son, Ltd. ...	3	3	0
Jones, A. Basil ...	2	0	0	MacFisheries, Ltd. ...	1	1	0
Jones, Mrs. B. M. ...	2	2	0	<i>b</i> Malleson, L. ...	1	1	0
Jones, Francis E. ...	2	2	0	<i>b</i> Manley, V. C. ...	2	2	0
Jones, Mrs. P. ...	1	1	0	<i>b</i> Mansell, C. E. ...	2	2	0
Jones, Mrs. T. S. ...	10	6		Mansfield, J. A. ...	2	2	0
<i>b</i> Jones-Davies, Rev. H. ...	1	1	0	Mansfield, Dr. & Mrs. ...	10	0	
Jones-Davies, Mrs. ...	1	1	0	Mantle, Geo. ...	2	2	0
Judd, Mr. & Mrs. ...	3	3	0	<i>b</i> Manwaring, Mrs. E. C. ...	1	1	0
Keen, Mrs. F. ...	1	1	0	<i>b</i> Marriott, Mrs. A. M. ...	10	0	
"Kent Messenger," ...	3	3	0	<i>b</i> Marriott, Miss M. W. ...	10	0	
<i>b</i> Keith Lucas, Mrs. ...	2	2	0	<i>b</i> Marsh, E. F. ...	3	0	0
<i>b</i> Kennedy, Mrs. K. M. S. ...	2	2	0	Marshall, H. G. ...	1	1	0
Kershaw, Mrs. G. B. ...	3	3	0	<i>b</i> Marsham, Mrs. C. H. B. ...	1	12	2
<i>b</i> Kerslake, S. S. ...	2	2	0	Martin, Charles ...	2	2	0
<i>b</i> Kesteven, Miss N. ...	3	16	4	Martin, Mrs. Jessie ...	3	3	0
<i>b</i> Kiddell, A. J. B. ...	2	2	0	Martin's Bank Ltd. ...	2	2	0
Kilmaine, Rt. Hon. Lord ...	2	2	0	Marx, H. ...	10	10	0
<i>b</i> Kipping, Mrs. M. A. ...	10	0		Mason, F. M. ...	1	1	0
<i>b</i> Kipps, Miss G. ...	1	18	2	Massey, Mrs. ...	2	0	0
<i>b</i> Knight, Hugh D. ...	1	1	0	May, F. E. ...	2	2	0
Knight, T. B. ...	1	1	0	McCartney, Mrs. M. L. ...	2	0	0
<i>b</i> Knocher, A. Clive ...	9	10	11	McChesney, P. J. ...	2	2	0
<i>b</i> Knös, Miss G. ...	1	16	4	<i>b</i> McDermott, Mrs. E. W. ...	2	2	0
<i>b</i> Knox, Col. H. M. Owen ...	2	2	0	<i>b</i> Mearns, Dr. Colin ...	3	16	4
Lambourne, Charles ...	2	0	0	<i>b</i> Medcalf, Mrs. ...	2	2	0
Larcombe, S. P. ...	2	2	0	Meredith, Hubert A. ...	5	5	0
<i>b</i> Latter, Rev. Kenneth A. ...	1	1	0	<i>b</i> Micklem, Hugh, J.P. ...	47	14	7
<i>b</i> Latter, Mrs. ...	3	16	4	<i>b</i> Micklem, Major G. H. ...	3	16	4
Latter, Miss ...	2	2	0	Midland Bank Ltd. ...	2	2	0
Lascelles, R. F. ...	4	4	0	Mildmay of Fleete, Rt. Hon. Lord, T.D. (the late) ...	3	3	0
<i>b</i> Lauder, Mrs. R. D. ...	2	2	0	Millns, Mrs. ...	6	6	0
Laurie, Mrs. H. C. ...	5	5	0	<i>b</i> Mills, Hon. Violet ...	18	3	6
<i>b</i> Laurie, Lt.-Col. Sir John D., Bart., T.D., J.P. ...	4	4	0	<i>b</i> Milnes, Mrs. ...	2	2	0
<i>b</i> Lawrence, Miss I. ...	1	1	0	Mitchell, R. J. W. ...	5	0	0
<i>b</i> Lawther, M. S. ...	3	16	4	<i>b</i> Mitcheson, Miss C. P. ...	1	1	0
League of Old Patients ...	125	8	10	<i>b</i> Mitcheson, Miss C. P. ...	10	0	
Lee, Cyril ...	1	1	0	Moat, Miss F. J. ...	5	0	
Leech, Mrs. K. M. ...	1	0	0	<i>b</i> Monckton, Sir Walter, K.C., K.C.V.O., K.C.M.G. ... 1 0 0	1	0	0
<i>b</i> Lefroy, Mrs. ...	2	2	0				
Lennox, Mrs. ...	1	1	0				
<i>b</i> Little, Mrs. A. G. ...	1	18	2				
Carried forward	£1,330	9	1	Carried forward	£1,517	4	0

	£	s.	d.		£	s.	d.
Brought forward	1,517	4	0	Brought forward	1,664	14	9
Monckton, F. L. ...	2	2	0	<i>b</i> Ridgers, Mrs. Barbara ...	1	18	2
<i>b</i> Mooney, Capt. G. K. ...	3	12	8	<i>b</i> Ritchie, Mrs. ...	1	1	0
Morgan, T. W. ...	1	1	0	<i>b</i> Robb, Mrs. & Miss ...	3	3	0
<i>b</i> Morris, H. ...	2	2	0	<i>b</i> Roberts, F. M. ...	9	10	11
Mountford, Miss Edith	1	1	0	<i>Roberts, Russell E. G.</i> ...	3	16	4
Mullen, G. H. ...	2	2	0	Robinson, Mrs. A. ...	5	0	0
National Provincial Bank				Robinson, R. ...	10	10	0
Ltd. ...	2	2	0	<i>b</i> Rogers, A. E. ...	6	6	0
Newsome, Mrs. J. W. ...	2	2	0	<i>Rogers, Gordon F., J.P.</i> ...	5	14	7
New Beacon School ...	1	1	0	<i>b</i> Rogers, Miss F. M. ...	2	2	0
<i>b</i> Nicholson, Harold, M.P.	5	0	0	<i>b</i> Rogers, Miss P. M. ...	3	16	4
<i>b</i> Noon, Miss D. ...	1	18	2	Rogers & Marchant ...	2	2	0
<i>b</i> Noon, Miss M. ...	1	18	2	Russell & Bromley ...	1	1	0
<i>b</i> Norman, Mrs. J. S. ...	1	1	0	<i>b</i> Sackville, Major-Gen. The			
<i>b</i> Oak Laundry ...	1	1	0	<i>Rt. Hon. Lord, K.B.E.,</i>			
Oates, The Misses K. & B.	2	0	0	<i>C.B., C.M.G.</i> ...	10	10	0
Page & Co. ...	1	1	0	<i>b</i> Sanderson, Lady ...	5	14	7
Patten, Rev. John A.,				Saunders, Mrs. C. R. ...	2	2	0
<i>M.A. (the late)</i> ...	1	1	0	<i>b</i> Sayers, Miss ...	10	0	0
Pattenden, A. W. ...	1	0	0	<i>b</i> Sclanders, Mrs. ...	21	0	0
Pattenden, Mrs. E. ...	1	1	0	<i>b</i> Scott, Mrs. Charles ...	4	17	4
Pattullo & Vinson ...	10	10	0	Scott, Mrs. M. A. ...	2	2	0
Payne, G. A. ...	2	2	0	<i>b</i> Scott-Cooper, Mrs. ...	3	16	4
<i>Payne, K. T.</i> ...	5	14	7	<i>b</i> Seabrooke, H. C. ...	1	18	2
Paynes Stores ...	2	2	0	<i>b</i> Seeley, W. N. ...	2	2	0
<i>b</i> Pearce & Sons, F. ...	2	2	0	<i>b</i> Sellek, W. E. ...	3	16	4
Pearce Clark, Mrs. ...	2	2	0	Sellens, F. G. ...	10	0	0
Pelton, Mrs. S. L. ...	2	0	0	<i>b</i> Sennett, Mr. & Mrs.			
Perkins, F. M. ...	1	1	0	<i>L. C.</i> ...	10	10	0
<i>b</i> Peploe, Mrs. S. K. ...	5	14	7	<i>b</i> Seymour, Miss Gwendoline	2	2	0
<i>b</i> Peploe, Mrs. S. K. ...	2	2	0	Seymour, Miss M. ...	2	2	0
Pett, Robert A. ...	1	1	0	<i>b</i> Sharpe, Miss E. M. ...	1	0	0
<i>b</i> Philcox, G. V. ...	10	0	0	Simpson, J. A. F. ...	2	2	0
<i>b</i> Pierce, C. W. ...	1	1	0	<i>b</i> Simpson, W. R. ...	8	8	0
Pinney, Mr. & Mrs. C. J.	1	1	0	<i>b</i> Simpson, Mrs. W. M. ...	1	18	2
<i>b</i> Pittar, Miss M. A. ...	1	0	0	<i>b</i> Sinclair, Mrs. E. L. ...	2	2	0
Platt, Mrs. ...	1	1	0	<i>Skilbeck, C. Thornton</i> ...	3	16	4
Plumbe, C. ...	10	6		<i>Skilbeck, Mrs. C. T.</i> ...	5	14	7
Poland, Mrs. ...	1	0	0	<i>Skinner, Compton S.</i> ...	1	18	2
<i>b</i> Ponsonby, Col. C. E.,				<i>Smethurst, Mr. & Mrs.</i>			
<i>T.D., M.P.</i> ...	4	4	0	1945/6 ...	8	8	0
<i>Pothecary, Mrs.</i> ...	1	18	2	<i>b</i> Smith, A. E. ...	3	3	0
Potter, Mr. & Mrs. R. W.	2	2	0	Smith, Caleb ...	10	6	
<i>b</i> Pryor, Mr. & Mrs. C. S.	9	10	11	<i>b</i> Smith, S. Harold ...	4	4	0
Purcell, H. K. ...	1	1	0	Smith, Walter (Brasted)			
<i>b</i> Pym, Maj. C. E., J.P. ...	5	12	1	Ltd. ...	5	5	0
<i>Rainey, A. G. A.</i> ...	10	0	0	Smithers, Miss Eva ...	3	0	0
<i>b</i> Ramsey, Miss E. L. ...	1	1	0	Smithers, Hubert ...	3	3	0
Ransom, W. ...	5	0		Smithers, Mrs. Langley ...	3	3	0
<i>b</i> Read, C. E. ...	4	4	0	<i>b</i> Smithers, Mrs. Langley ...	2	2	0
Reece, Mrs. ...	1	0	0	Smithers, Norman ...	3	3	0
<i>b</i> Reid, A. G. ...	5	5	0	Smyth, C. Asheson ...	2	2	0
Richards, H. W. ...	5	5	0	South Suburban Co-op-			
<i>Richardson, Capt. T. H.,</i>				erative Society Ltd. ...	2	2	0
<i>J.P.</i> ...	9	10	11	South Suburban Gas Co. ...	5	5	0
				Spicer, Capt. K. ...	2	2	0
Carried forward	£1,664	14	9	Carried forward	£1,869	0	7

	£	s.	d.		£	s.	d.
Brought forward	1,869	0	7	Brought forward	2,011	1	6
Spicer, A. E. ...	2	2	0	Watney, Combe & Reid Ltd. ...	2	2	0
<i>b</i> Spielman, E. R. M. ...	2	2	0	<i>b</i> Watney, Dr. M. H. ...	4	4	0
Spurrell, Mr. & Mrs. F. C. ...	2	2	0	Wayte-Wood, G. ...	4	4	0
St. Clere Estates Ltd. ...	10	0	0	Webb, Lt.-Col. A. H., C.M.G., D.S.O., & Mrs. ...	1	0	0
<i>b</i> Stacey, E. ...	3	16	4	<i>b</i> Webb, Mrs. Edward ...	10	10	0
<i>b</i> Standen, Mr. & Mrs. H. W. ...	4	4	0	Wells, Major S. W. ...	3	3	0
Standing, L. N. ...	2	2	0	Wells, Mrs. ...	2	2	0
<i>b</i> Stanhope, Rt. Hon. Earl, K.G., P.C., D.S.O., M.C. ...	9	1	9	Westacott, Mrs. M. J. ...	3	0	0
<i>b</i> Steven, Mrs. M. ...	5	0	0	West Kent Laundry Ltd. ...	3	3	0
<i>b</i> Stewart, Miss. 1945/6 ...	28	3	6	Westminster Bank Ltd. ...	2	2	0
Stewart-Moore, Mrs. ...	2	0	0	<i>b</i> Weston, F., O.B.E. ...	1	1	0
Stour, Miss B. ...	1	1	0	Wheeler, L. J. C. ...	1	1	0
Streatfeild Rev. Roland H. & Mrs. ...	1	1	0	<i>b</i> Whitcombe, Mrs. ...	1	1	0
<i>b</i> Street, W. W. ...	5	0	0	Whiteman, Mrs. N. ...	10	6	0
Summerfield, G. ...	10	0	0	Whiting, J. S. ...	2	2	0
<i>b</i> Sutton, C. J. ...	10	0	0	<i>b</i> Whitlock, Mrs. S. J. ...	1	1	0
<i>b</i> Swan, Miss M. E. ...	1	18	2	<i>b</i> Whyntie, W. ...	2	2	0
Swanston, J. F. A. ...	19	1	10	Whyte, Mrs. P. L. ...	1	1	0
<i>b</i> Taylor, Mr. & Mrs. H. L. ...	3	3	0	Whyte, Mrs. W. ...	2	2	0
Taylor, John A. ...	10	0	0	Wilkinson, Miss (The late) ...	14	10	10
Taylor, Wm. G. ...	10	6	0	<i>b</i> Wilkinson, Rev. A. H. ...	1	1	0
Terry, Mrs. ...	2	2	0	<i>b</i> Wilkinson, Miss T. M. ...	1	1	0
Theobald, A. F. ...	1	1	0	<i>b</i> Williams, R. ...	2	2	0
<i>b</i> Thompson, A. Beeby ...	2	2	0	Wilson, E. J. ...	1	10	0
<i>b</i> Thompson, John ...	4	4	0	<i>b</i> Wilson, Mrs. E. H. ...	1	1	0
<i>b</i> Tooth, F. G. ...	2	2	0	Wilson, R. P. ...	2	2	0
Townsend, B. F. ...	2	0	0	Wood, The Misses D. & O. ...	2	2	0
Townsend, Rev. D. A. ...	1	0	0	Wood, Mrs. E. ...	10	0	0
Townsend, H. F. ...	2	2	0	Wood, Mrs. R. ...	2	2	0
Turner, Miss A. ...	1	0	0	<i>b</i> Woodall, Henry. J.P. ...	9	10	11
<i>b</i> Turner, Miss Agnes F. ...	4	4	0	Woodhams, F. ...	2	2	0
<i>b</i> Turner, E. J. ...	2	2	0	Worlds Stores Ltd. ...	10	6	0
<i>b</i> Turner, Mrs. E. M. ...	2	2	0	Worssam, Mr. & Mrs. L.A. ...	4	4	0
<i>b</i> Turner, H. J. ...	2	2	0	<i>b</i> Wright, Eldon ...	10	6	0
Underwood, The Misses ...	10	6	0	<i>b</i> Wright, John ...	1	1	0
Uridge's Stores ...	2	2	0	<i>b</i> Wright, Mrs. L. ...	1	18	2
Vestey, Mrs. R. A. ...	2	0	0	Wright, Mrs. ...	10	0	0
<i>b</i> Vick, Mrs. Russell ...	2	2	0	Young, Alec C., J.P. ...	2	2	0
<i>b</i> Vizard, John ...	3	16	4	Young, H. J. ...	2	2	0
Walker, F. E. T. ...	4	4	0	<i>b</i> Young, Capt. J. H. ...	2	0	0
Walker, Dr. R. A. ...	2	2	0	<i>b</i> Young, S., & Son Ltd. ...	10	10	0
Waring, Mrs. E. L. ...	10	0	0	Young, Mr. & Mrs. Sidney ...	10	10	0
<i>b</i> Warren, Leslie ...	2	2	0	Young, Stamford ...	2	2	0
				Zambra, M. W. ...	2	2	0
				Total ...	£2138	9	11
Carried forward	£2,011	1	6				
Hospital Maintenance :	SUMMARY.				£	s.	d.
Paid in Cash ...					1569	9	4
Tax recovered on Subscriptions ...					569	0	7
					2138	9	11
Less Tax Claims 1945 rejected ...					7	12	0
					£2130	17	11

DONATIONS, 1946.

	£	s.	d.
Akehurst, W. J.	2	2	0
Alexander, J. Finlay	2	2	0
Anonymous	20	0	0
Anonymous	5	0	0
Anonymous		1	0
Anonymous	1	0	0
Anonymous		10	0
Anonymous	2	2	0
Anonymous	1	0	0
Anonymous	1	0	0
Attersol, Mrs. (the late)	20	0	0
Baird, Mrs. (Vegetable Collection monies)	1	9	6
Baldwin, Mrs. F.	1	0	0
Ballard, Mrs.	2	0	0
Basted, Miss. Carol Singing.	1	10	2
Beeching, Mrs. Carol Singing.	3	2	0
Bevington, Miss... ..	1	0	0
Birrell, Mrs. (Vegetable collection monies)		10	0
Bluebird Motor Hire Service	10	0	0
Bluebird Motor Hire Service (Proceeds of Dance)	41	5	0
Bolton, Miss E. C.	1	1	0
Bradbourne College, Pupils of	10	0	0
Brigden, Mrs.		5	0
Brinkley, Mr. A.		3	6
Brinson, Miss F. M.		1	0
British Hospitals Association, per		4	4
Brookes, Mr. A.	6	0	0
Bull Inn, Otford, Games Club	6	12	9
Burgess, Mr.		10	6
Cadney, Mr. B. R.		10	0
Campbell, Mrs. C.	5	5	0
Chatfield, Mrs. A.	5	0	0
Coltman, Mr. E. J.		10	6
Constant, Mrs. (In memory of the late Mrs. Elliott)	5	0	0
Cookson, Mrs.	1	1	0
Cowland, Miss		2	6
District Bank Staff Charities Fund	1	1	0
Doyle, Mr. & Mrs.	5	0	0
Elephant's Head Slate Club	5	4	6
Ellis, Miss M.	1	0	0
Evans, Miss A.	1	5	0
Evan, Miss E. (Asst. Matron (Proceeds of Jumble Sale)	73	10	3
Gaston, Dr. A. Page	5	5	0
Gatcombe, Mrs.	1	0	0
Gillett, Mrs. (Vegetable Collection monies)	4	9	6
Gillham, Mr. H.		17	0
Girdlers Company	9	0	0
Gordon, Mr. & Mrs. F. E.	5	0	0
Goring, Mr. G.	7	4	0
Gould, Mr. L. J. W.	2	2	0
Greenwood, Mrs.	3	9	0
Hammond, Mr.	1	0	0
Hancock, Miss K. M.	1	1	0
Hider, Mrs.	2	0	0
Hillman, Mrs.	1	0	0
Home Farm Staff	1	16	0

Carried forward £291 5 0

DONATIONS—*continued.*

						£	s.	d.
	Brought forward					291	5	0
House, Mr. W. H. Sale of Photographs.	19	9	4
Hosey School, Westerham		12	6
Hospital Darts Competition, 1945/6	49	1	2
Hospital Darts Competition, 1947	15	0	0
Inquest Fees		15	0
Ivy Hatch (Vegetable Collection monies)		2	6
Jessup, Mrs. M. M.	6	6	0
Johnson, Mr. E.	5	0	0
Jone -Davies, Mrs.	1	1	0
Joynson, Mrs.	10	10	0
Keeble-Harris, Mr. N.	10	10	0
Kemp, Mrs. E. C.		10	0
Kensing (Vegetable Collection monies)		10	0
Kent County Constabulary, Sevenoaks Division	5	0	0
Kent County Civil Defence Mobile Reserve Club	52	15	7
Kimber, Mrs.		5	0
King, Mrs.		10	0
King's Head Inn, Bessels Green	4	0	0
Ladies Auxiliary of the Licensed Trade	2	2	0
Ladies' Hospital Association (To pay for new refrigerator & repair of wireless)	260	0	0
League of Old Patients (Anonymous donation)	10	0	0
Levett, Mrs. A.		2	6
Lyle, Mrs. (Vegetable Collection monies)	4	17	6
Mallison, Mr. L.	2	2	0
Marley Tile Co., Ltd.	14	18	6
Naylor, Mrs.	1	15	0
Neyland House School. Upkeep of Cot.	30	0	0
Newman, Mrs.		10	0
Osbourne, Mrs. (In lieu of Flowers)	15	15	0
Outhwaite, Mrs. E.	1	1	0
O.W.L.S.	2	2	4
O.W.L.S. Motor Club (Proceeds of Gymkhana)	282	5	6
Packham, Mr. A. L.	8	0	6
Pattenden, Mrs....		5	0
Platt, Mr. W. J.	2	2	0
Pound, Mr. H. J.	5	5	0
Price, Mary & Joan, London (Sale of Handwork)	1	8	0
Pryor, Mrs.	1	0	0
Pugh, Major L. P.	3	9	0
Putman, The Misses	1	1	0
Reece, Miss B.		7	0
Ridge, Mrs.	5	5	0
Riverhead & Chevening Gardeners' Association & Women's Institutes	6	0	0
Sellens, Mr. F. G.	2	14	0
Sevenoaks Dairy Farmers	10	10	0
Sevenoaks Homeguard Old Comrades Association	5	0	0
Sevenoaks Hospital Medical Staff Fund	50	0	0
Sevenoaks Post Office. Fines & Gains.	2	0	0
Sevenoaks School. Upkeep of Cot.	24	5	5
Sevenoaks Rural District Council (Sunday entertainments)	8	6	3
Sevenoaks Sisterhood	2	2	0
Sevenoaks Urban District Council (Sunday entertainments)	40	0	0
Skevigton, Mr. W.	1	0	0
	Carried forward					£1,280	14	7

DONATIONS—*continued.*

								£	s.	d.
						Brought forward		1,280	14	7
Smith, Mrs.		5	0
Smith, Miss L.	3	3	0
St. John's C. of E. Primary School		15	0
Stringer, Mrs. A.	5	5	0
Styles, Miss	2	2	0
Symington, Mr. J.	7	7	0
Tassell, Mr. (Vegetable Collection donation)		10	0
Taylor, Dr. E. L.	3	3	0
Thomas, Mr. A. C.	2	0	0
Trace, Mr. R.	5	0	0
Two Little Girls of Wickenden Road		6	6
Upper St. John's Hill Business Premises Fire Guard Post	13	5	0
Vizard, J. & L. Bowman (half proceeds of Dance)	8	13	0
Walkey, Mrs.	1	0	0
Walthamstow Hall School	6	0	0
Walton, Mr. J.	5	0	0
War Dept. Constabulary Auxiliary Association	2	7	9
Waters, Mrs.	1	1	0
Webb, Mr.		10	0
West Kent District Association Camping Club	1	9	0
Wickens, Mrs. A.	1	1	0
White, Mrs. M. A.	1	1	0
Wilkin, Mr.		10	0
Wilson, Mrs. S. J.	2	2	0
Wingfield, the Hon. Mrs.	10	0	0
Wise, Mr. & Mrs. C. A.		10	0
Wisdom, Mr. C.	1	1	0
Wood, Mrs. F. P.	5	5	0
Woolf, Jane and Brian (Carols)	1	0	0
Woolworth, F. W. & Co., Ltd.	20	0	0
Young, Mr. Alec C. (In memory of late Mr. H. G. Waller)	1	10	0
Young & Sons Staff, of (In memory of late Mr. H. G. Waller)	5	1	6
								£1398	18	4

CONGREGATIONAL COLLECTIONS.

	£	s.	d.
Badgers Mount Sunday School	...	10	0
Brasted, St. Martin's	3	8	7
Brasted Chart Church	1	9	9
Dunton Green Parish Church	5	3	7
Fairseat, Holy Innocents	2	15	0
Halstead, St. Margarets	5	16	0
Ightham, St. Peter's	3	0	0
Kemsing, St. Mary's	3	10	0
Knockholt, St. Katherine's	8	8	11
Otford, St. Bartholomew's	7	10	6
Otford Lane Mission Church	8	0	0
Otford Methodist Church	1	0	0
Platt, St. Mary's	3	7	1
Riverhead, St. Mary's	2	2	0
Sevenoaks :—			
Congregational Church	9	1	9
St. Luke's, Kippington	10	3	8
St. Mary's, Kippington...	10	2	2
St. Nicholas Parish Church	12	13	11
Seal Parish Church	11	9	9
Stanstead Church	3	0	0
Underriver, St. Margaret's	3	3	0
Woodlands Church	3	7	0
Wrotham, St. George's	3	3	0
	<u>£122</u>	<u>5</u>	<u>8</u>

Last years' total.....£124 3s. 4d.

GIFTS IN KIND.

	1946			1945		
	£	s.	d.	£	s.	d.
Linen League (estimated)	150	0	0	183	4	6
Pound Day	180	12	8	163	17	5
Other Days	26	3	2	25	0	0
	<u>£356</u>	<u>15</u>	<u>10</u>	<u>£372</u>	<u>1</u>	<u>11</u>

Many valuable gifts were received for the equipment of the Hospital and also for the benefit of the patients, which are not included in the above, nor of course is the kind and constant supply of flowers, which are greatly appreciated in the wards. This list represents only such gifts as definitely reduce **necessary** expenditure and have to be brought into the accounts in order to arrive at a true average weekly cost per patient.

COLLECTING BOXES.

General :						£	s.	d.	£	s.	d.
Akehurst, Messrs.	1	17	6			
Ballard, Mrs., " Nigger Boy "	6	10	0			
Beveridge, Alex.	2	19	0			
Bluebird Hire Service		16	5			
Carpenter, Mr. (Car Park Cafe)	1	2	1			
Church of England School, Sundridge		18	0			
Davis, Mr., St. John's Hill	1	5	10			
Fuller, Mr. & Mrs., Seal Road	1	13	0			
Goldsmith, Mrs.		18	5			
Greene, Mrs., Savings Group	3	0	5			
Ibbett, Mosely, Card & Co.	28	1	9			
Hott, Mrs., Wool Shop, St. John's		15	3			
Lawrence, Mr., St. John's		9	0			
Lowries Stores, Otford	1	10	0			
Mathews, Mr., York House, Seal		5	4			
Parris, E., Sevenoaks	1	19	3			
Paynes Stores		13	9			
Pearce & Sons	2	0	9			
Plenty, Mr., St. John's	1	5	0			
Pryor, Mrs., " Irene," Otford		19	6			
Smith, Mrs., Otford Road, Sevenoaks	2	2	8			
Studd, Mr., St. John's		4	3			
Turner's Tyre Shop		4	7			
Vine Post Office	1	18	3			
Wellband, Mr., St. John's		2	8			
Wilkin, Mr., Hillingdon Avenue	1	5	6			
									64	18	2
Groups :											
Hospital Wards & Departments	35	14	4			
Ladies' Hospital Association	9	11	5			
									45	5	9
Clubs :											
Knole Golf Club	1	0	1			
Sevenoaks Constitutional Club		18	6			
									1	18	7
Licensees.											
Brasted, King's Arms		9	0			
Chipstead, George & Dragon	2	0	0			
Chipstead, The Crown	1	0	0			
Dunton Green, Duke's Head	2	0	0			
Godden Green, The Buck's Head	3	16	11			
Hildenborough, Old Cock Inn		19	6			
Ightham, Harrow Inn		16	6			
Ightham, Cob Tree		18	6			
Ightham, Chequers	2	5	6			
Ivy Hatch, The Plough		17	0			
Kemsing, The Wheatsheaf		4	3			
Otford, The Bull	1	5	8			
Otford, The Crown	2	11	11			
Otford, The Woodman	1	17	7			
Riverhead, Amherst Arms	2	13	1			
Riverhead, White Hart		7	6			
Riverhill, White Hart	3	1	11			
Seal, The Crown		14	3			
Seal, The Elephant's Head		10	0			
Seal, Five Bells Inn		2	0			
Carried forward ...						£28	11	1	112	2	6

COLLECTING BOXES (Licensees)—*continued.*

				£	s.	d.	£	s.	d.
	Brought forward			28	11	1	112	2	6
Seal, Kentish Yeoman	1	5	4			
Seal, Prince of Wales	1	16	0			
Seal Chart, Crown Point Inn	1	2	6			
Sevenoaks, Anchor Inn	1	17	9			
Sevenoaks, Bat & Ball		10	3			
Sevenoaks, Camden Arms	2	5	6			
Sevenoaks, Castle Hotel	1	8	10			
Sevenoaks, Compasses	4	18	0			
Sevenoaks, Dorset Arms	11	17	8			
Sevenoaks, Greyhound		11	6			
Sevenoaks, Railway & Bicycle	7	14	7			
Sevenoaks, Railway Tavern		8	9			
Sevenoaks, Vine Tavern	1	7	7			
Shoreham, The Crown		8	0			
Shoreham, Two Brewers		11	10			
Stansted, The Black Horse	8	8	0			
							75	3	2
							<u>£187</u>	<u>5</u>	<u>8</u>

NOTE.—In the above total, 12s. from the Anchor Inn and £1 15s. 0d. from the Camden Arms is credited to the Hospital Darts Competition for 1947.

Ladies' Hospital Association.

CENTRAL COMMITTEE.

Chairman :

MRS. HUGH GRACE,
Charles Oak, Chevening.

Vice-Chairman :

MRS. HARPER, Vine House, Sevenoaks.
MRS. KILLICK, Wickhurst Manor, nr. Sevenoaks.

Hon. Secretary and Treasurer :

MRS. E. H. C. PLATT,
Red Gables, Woodland Rise, Sevenoaks.

District Representatives :

SEVENOAKS	MRS. ARCHER	MRS. GRANT
			MRS. HARPER	MRS. HARVEY
			MRS. LAUDER	
BRASTED, BRASTED CHART, TOYS HILL & SUNDRIDGE			THE LADY KILMAINE	
CHIPSTEAD, CHEVENING, BESSELS GREEN, IDE HILL			MRS. BECK	
RIVERHEAD & DUNTON GREEN			MRS. ELDER	
BOROUGH GREEN, WROTHAM AND PLATT	MRS. LITTLE (for Pound Day)	
KNOCKHOLT, HALSTEAD, CUDHAM	MRS. ALISON BEER	
IGHTHAM, PLAXTOL, IVY HATCH	MRS. RONALD WALKER	
KEMSING, WOODLANDS, SHOREHAM & OTFORD	MRS. LYLE	
			MRS. FITZGERALD	
SEAL & GODDEN GREEN	MRS. BAXTER	
SEAL CHART & STONE STREET			MRS. GILLETT	
WEALD, UNDERRIVER	MRS. KILLICK	
WESTERHAM, CROCKHAM HILL			Vacant	

Representative for Hospital Visiting Committee :

MRS. SKILBECK

Representative for Linen League :

MISS M. CROSS.

REPORT.

October, 1945, to December, 1946.

The L.H.A. having been in abeyance during the war years, 1939—45, has published no report since 1939. A short account therefore, of its activities since its re-organisation in October, 1945, may be of interest. In passing, however, it is satisfactory to record that even during those six moribund years, the L.H.A. contributed £3,431 to Hospital Funds by collecting boxes and by the Annual Pound Day which was held under very great difficulties.

In the late Autumn of 1945 it was felt that our Association should come to life again, but it was not easy to start afresh, and that winter was chiefly spent in re-forming our Central Committee and local Branch Committees. The death of Margaret Elliott, our first Hon. Secretary and Treasurer, in February, 1946, was a greivous loss to the L.H.A. into which she had put all her energy and enthusiasm ; we owed her much. But we are fortunate in having Mrs. Platt as her successor, and she has proved herself to be an able and energetic Secretary.

Pound Day in March produced £500 in cash and goods valued at nearly £190, thanks to our splendid collectors. These figures showed a substantial increase on previous years.

During the past Autumn local branches have organised vegetable collections which have been valued at £60.

In March, Dame Sybil Thorndike gave a delightful Recital in the King's Hall, Sevenoaks, by which a sum of £113 was realised.

During the summer, two Bring and Buy Sales were held in the gardens of Charles Oak, Chevening and Bitchet Wood, Stone Street, resulting in a total sum of £177—in spite of the bad weather on the second of these occasions. We were very grateful to Mr. Micklem for the use of his lovely garden.

With the proceeds of these two efforts we have been able to present a large and much needed Refrigerator to the Hospital, costing £240, and have also paid for the complete overhaul of the wireless installation throughout the building.

At Christmas, 1945 and 1946, we have contributed £10 towards Matron's Christmas Fund. To sum up, we have provided for the Hospital the following amounts in the past year :

Pound Day	£
Refrigerator	690
Hospital Wireless, Overhaul of				240
Christmas Fare	20
Vegetable Collection	20
				60
				—
Total	£1030
				—

Our membership is not as large as in pre-war years, but perhaps " coming events cast their shadows before " and we are not altogether surprised. The *quality* of our Central Committee however, is as good as ever and I tender the members of it my grateful thanks for their keenness and activity. Our Meetings have been held each month at Vine House, by kind invitation of Mrs. Harper, whom we thank most cordially.

FREDERICA M. GRACE,
Chairman.

Linen League.

Committee :

MRS. J. L. HARPER
MRS. MILLNS (Chairman)
MRS. RUSSELL VICK (Representing Visiting Committee).
MRS. GRACE (Representing Ladies' Hospital Association).

Hon. Treasurer :

MISS M. CROSS, Highclere, Serpentine Road, Sevenoaks.

Hon. Secretary :

MRS. DINWIDDY, Greenhills, Oakhill Road, Sevenoaks.

The Sevenoaks and Holmesdale Hospital is entirely dependent on the efforts and funds of the Linen League for all its supplies of linen and garments.

In 1946 subscriptions and donations amounted to £283 14s. 4d. and 835 articles, to the value of £270, were sent to the hospital.

The members of the Mending Parties continued to come regularly and willingly to the hospital every Tuesday—in spite of many other calls on their time—and by their excellent work the contents of the linen cupboards were kept in good repair.

STATEMENT OF ACCOUNTS for Period 22nd September, 1945, to 3rd December, 1946.

	Receipts.			Payments.			
	£	s.	d.		£	s.	d.
By Balance brought forward—				To Cheque Book, 5/-			
Bank				Printing and Stationery			
Petty Cash				Expenses—Dame Sybil Thorndike Recital			
Subscriptions	54	3	9	Wreath—Mrs. Elliott			
Donations	51	0	3	Chairman's expenses			
Bank Interest	4	4	0	Petty Cash (Postages, stamps)			
Seal Vegetable Collection	2	12	6	Matron—Xmas Fare, 1945			
Bring and Buy Sale—Chevening	54	4	4	Donations to Hospital:			
Bring and Buy Sale—Bitchett Wood	122	6	8	Cost of Refrigerator			
Dame Sybil Thorndike Recital	113	17	0	Cost of overhaul of Hospital wireless	240	0	0
				From Pound Day	20	0	0
				Balance in hand at Bank	104	9	9
				Petty Cash	19	3	3
					£403	16	10

Audited and found correct.
Midland Bank, Ltd., Sevenoaks.

(Signed) L. E. BENNETT.
6.12.1946.

**SEVENOAKS & HOLMESDALE HOSPITAL.
LEAGUE OF OLD PATIENTS.**

Founded August, 1945.

MINIMUM Annual Subscription 2/6. Children 1/-.
Children supplied with special membership badge on joining.

All subscriptions and box collections paid into the General Fund of the Hospital as " Gifts from Old Patients."

Proceeds from boxes will go towards the naming of an " Old Patient's Bed " in one of the General Wards.

301 Old Patients have joined the League since August, 1945.

158 Collecting Boxes have been issued, and the total income received during 1946 was £135 8s. 10d.

All Old Patients of the Sevenoaks Hospital are urged to join, and by so doing show their gratitude for treatment received.

The sincere thanks of the Committee are extended to all those patients who have given support to the League since its inception.

For further particulars, please apply to :—

THE SECRETARY AND HOUSE GOVERNOR,
Sevenoaks and Holmesdale Hospital. Telephone 2946).

The Committee of the Sevenoaks & Holmesdale Hospital desires to express its grateful appreciation to all who have given assistance in any way, since its foundation in 1870.

Under the 1946 National Health Act Voluntary Hospitals will be taken over by the State. Until the "Appointed Day" **YOUR** Hospital must carry on. Subscribers, Donors and all friends of the Hospital are earnestly asked to continue their support to enable this Essential Service to be fully maintained.