

Annual report : 1942 / Coventry and Warwickshire Hospital.

Contributors

Coventry and Warwickshire Hospital.

Publication/Creation

Coventry : [publisher not identified], 1942

Persistent URL

<https://wellcomecollection.org/works/r9prwe65>

License and attribution

This work has been identified as being free of known restrictions under copyright law, including all related and neighbouring rights and is being made available under the Creative Commons, Public Domain Mark.

You can copy, modify, distribute and perform the work, even for commercial purposes, without asking permission.



Wellcome Collection
183 Euston Road
London NW1 2BE UK
T +44 (0)20 7611 8722
E library@wellcomecollection.org
<https://wellcomecollection.org>

Coventry and Warwickshire Hospital

(Incorporated).

Notice of First General Meeting

Notice is hereby given that the FIRST GENERAL MEETING of GOVERNORS of the COVENTRY AND WARWICKSHIRE HOSPITAL, Incorporated the twenty-fourth day of December 1942, will be held at the HOSPITAL, STONEY STANTON ROAD, COVENTRY, on TUESDAY, MARCH 23rd 1943, at 6-15 p.m., for the transaction of the following business :—

- (1) To Receive the Report of the Board, together with Audited Balance Sheet, and Income and Expenditure Account, for the year ended December 31st 1942.
- (2) To Elect a President for the ensuing year.
- (3) To Elect Vice-Presidents for the ensuing year.
- (4) To Appoint two past Chairmen of the Board of Management and two past Chairmen of the Coventry and Warwickshire Hospital Saturday Fund Committee, as members of the Board for the ensuing year.
- (5) To Elect Ten Governors as members of the Board of Management.
- (6) To Elect an Auditor for the ensuing year and to fix the remuneration of the Auditor.

BY ORDER OF THE BOARD.

(Signed) S. CECIL HILL.

House Governor and Secretary.

5th March 1943.

(Extract from Article 34 of the Articles of Association of the Hospital :—
NOTICE OF THE INTENTION TO PROPOSE ANY CANDIDATE (FOR ELECTION TO THE BOARD) MUST BE SIGNED BY TWO GOVERNORS AND DELIVERED TO THE SECRETARY AT THE REGISTERED OFFICE OF THE HOSPITAL (STONEY STANTON ROAD, COVENTRY) AT LEAST FORTY-EIGHT HOURS BEFORE THE MEETING AT WHICH THE ELECTION OF THE BOARD TAKES PLACE. THE NOTICE MUST BE ACCOMPANIED BY THE NOMINEE'S WRITTEN CONSENT TO SERVE IF ELECTED).

ANNUAL REPORT.

The Board of Management has pleasure in presenting its Report, together with Statement of Accounts, for the year ended December 31st 1942.

ROYAL VISITORS.

The King and Queen visited the wrecked Hospital on February 25th 1942. Their Majesties, who were most sympathetic and clearly distressed to learn of the loss of life and to see the extent of the damage sustained, were very interested in the steps taken to provide alternative accommodation.

Later in the year, Her Royal Highness the Princess Royal visited the Hospital and made an extended tour of the wrecked buildings. Her Royal Highness recalled that she had promised to open the new Hospital buildings in October 1939, (this ceremony, however, was cancelled owing to the outbreak of War).

HOSPITAL ACCOMMODATION.

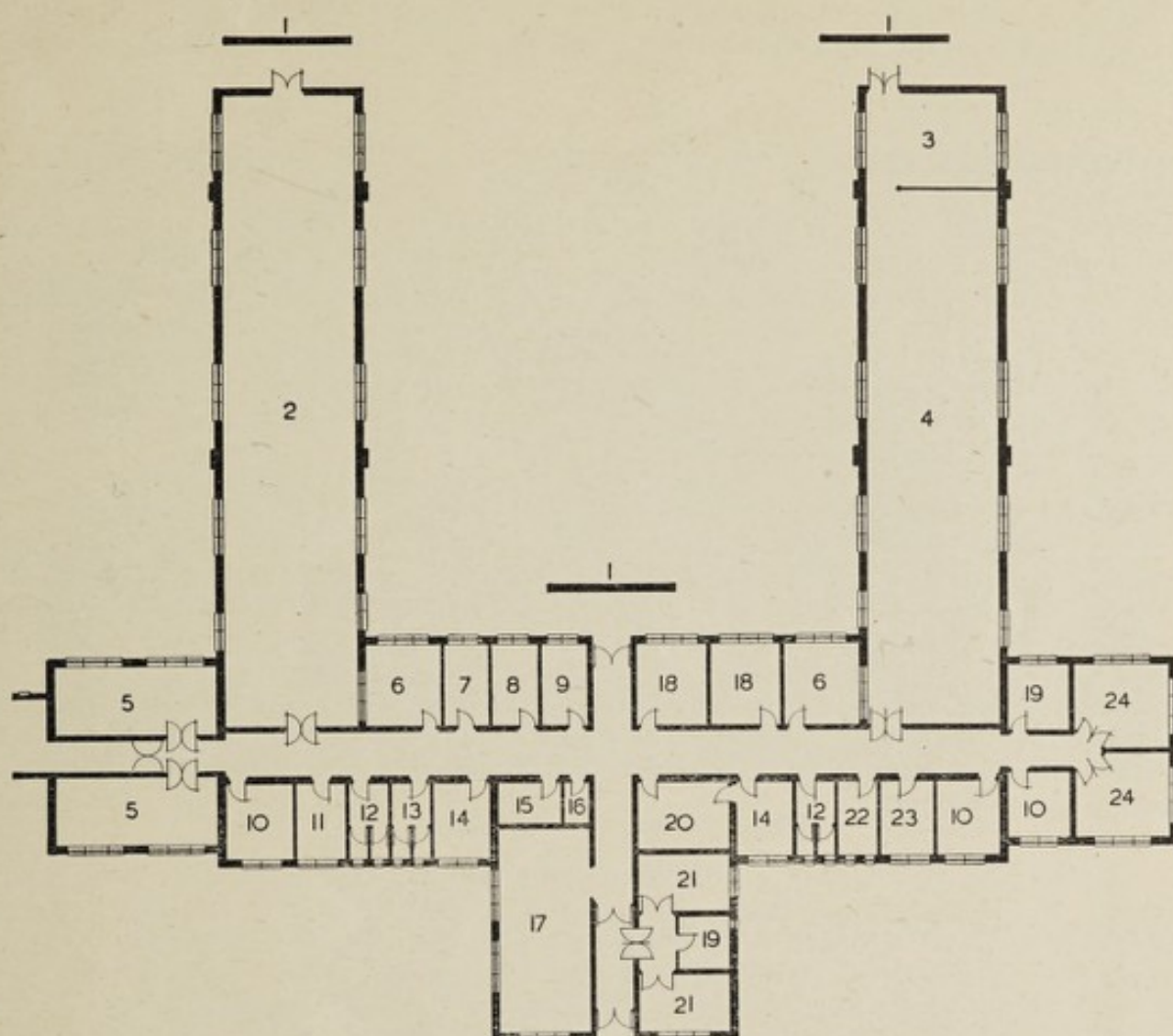
The first of the new two-Ward units at the Keresley Branch Hospital was completed towards the end of March and was formally opened on April 21st by Sir Alfred Herbert, who was supported by Viscount Nuffield. Lord Leigh, President of the Hospital, presided over the large and distinguished gathering present, which included His Worship the Mayor of Coventry, Councillor A. R. Grindlay, Lord Iliffe (a past President), Lady Herbert (a Vice-President), and numerous representatives of the civic and industrial life of the City. The Ceremony was made the occasion for naming a number of Beds and Cots in acknowledgement of generous sums subscribed to the Appeal Fund.

In recognition of the generous donations to the Appeal Fund made by Lord Nuffield and Sir Alfred Herbert, and in appreciation of their continuing very practical interest in the Hospital and its work, the two new Wards were named "Nuffield Ward" and "Alfred Herbert" Ward. Governors will recall that the "Nuffield" and "Alfred Herbert" Wards at the Coventry Hospital were destroyed when the Hospital was wrecked by enemy action.

On September 30th, the second two-Ward unit was opened by the Mayor of Coventry, Councillor A. R. Grindlay, and on this occasion, also, a number of Beds and Cots were named in acknowledgement of special efforts and contributions towards the Emergency Fund. These two Wards, by resolution of the Board, were afterwards named "Wyley Ward" and "Henry Johnson Ward."

Thus, within a period of 18 months following the destruction of the Hospital buildings in Coventry, alternative accommodation had been provided for 260 out of the 452 in-patient beds previously available, an achievement of which the Citizens of Coventry — who found the necessary funds — and the Hospital Committee, may justly be proud. But **additional** Hospital accommodation was still necessary — **is still necessary** — and with adequate funds in hand, application was made for Licence to build a third two Ward





Second Two-Ward Unit.—Surgical and Maternity Cases.

- | | | | | |
|---------------------------|-------------------|----------------------|---------------------|---------------------|
| 1. Blast Wall. | 6. Ward Kitchen. | 11. Linen and Store. | 16. Switch Room. | 21. Isolation. |
| 2. 32 Bed Ward. | 7. Clean Linen. | 12. Patients' Lavs. | 17. Nursery. | 22. Linen. |
| 3. Day Room. | 8. Staff. | 13. Staff Lavs. | 18. Single Ward. | 23. Waiting Ward. |
| 4. 20 Bed Maternity Ward. | 9. Sisters' Room. | 14. Bath Room. | 19. Sterilizing. | 24. Labour Theatre. |
| 5. 3 Bed Ward. | 10. Sluice Room. | 15. Maids' Room. | 20. Reception Room. | |

unit, which would include additional Nursing Staff accommodation, so very urgently needed. It is a matter for great regret — and of great concern to Coventry — that this application was refused, on the grounds that the available resources in labour and materials can be used only for purposes vital to the furtherance of the National War Effort. We have been assured of the Minister's appreciation of the efforts made to reinstate Hospital services, and we feel that the Minister is not unsympathetic to Coventry's needs, but while we realise the necessity for careful control of materials and labour, the Board is firm in its opinion that the provision of more Hospital accommodation immediate to the City **is essential**, and it is earnestly hoped that the Ministry will re-consider its decision.

KITCHENS AT KERESLEY.

The cooking facilities at the Alcock Hospital — which consisted only of two coal-ranges — were, of course, quite inadequate to cater for the increasing numbers of patients and staff. Part of the new equipment installed at Coventry in 1939 has been transferred to

Keresley, and although the amount of kitchen accommodation is restricted, sufficient apparatus has been installed to meet the needs of much greater numbers of patients and staff.

OPHTHALMIC UNIT.

The accommodation at the Kenilworth Convalescent Home (No. 3 Branch) has been in full use for the reception and treatment of eye cases since May 11th. A bedroom on the first floor was converted into an operating theatre, and although the building generally cannot, by any means, be regarded as ideal for Hospital purposes, the arrangements made have worked extremely smoothly and satisfactorily.

MEDICAL BRANCH.

"The Towers," Kenilworth (No. 2 Branch) has been in continuous use throughout the year for the treatment of medical cases. This unavoidable dispersal of Hospital services — necessarily resulting in increased maintenance costs and administrative difficulties — is much regretted, but Governors will be satisfied to know that the arrangements have worked well, as evidenced by the many expressions of appreciation and congratulation from patients. The Board has given much thought to necessary fire precautions at "The Towers," : a motor fire pump has been installed, hose reels have been provided on each floor, and, more recently, an outside fire-escape staircase has been erected.

CHILDREN'S WARD.

In an endeavour to meet, if only partially, the demand for Hospital beds for children under 12, the in-patient accommodation in the Casualty Block at Keresley, originally intended as an adult Ward, is now in use as a Children's ward, thus permitting the resumption of our Ear, Nose and Throat services for children. Since the close of the year, these services for adults have also been resumed, the increased accommodation available following the opening of the second two-Ward block having made it possible to allocate a number of adult beds for Ear, Nose and Throat cases.

CASUALTY DEPARTMENT.

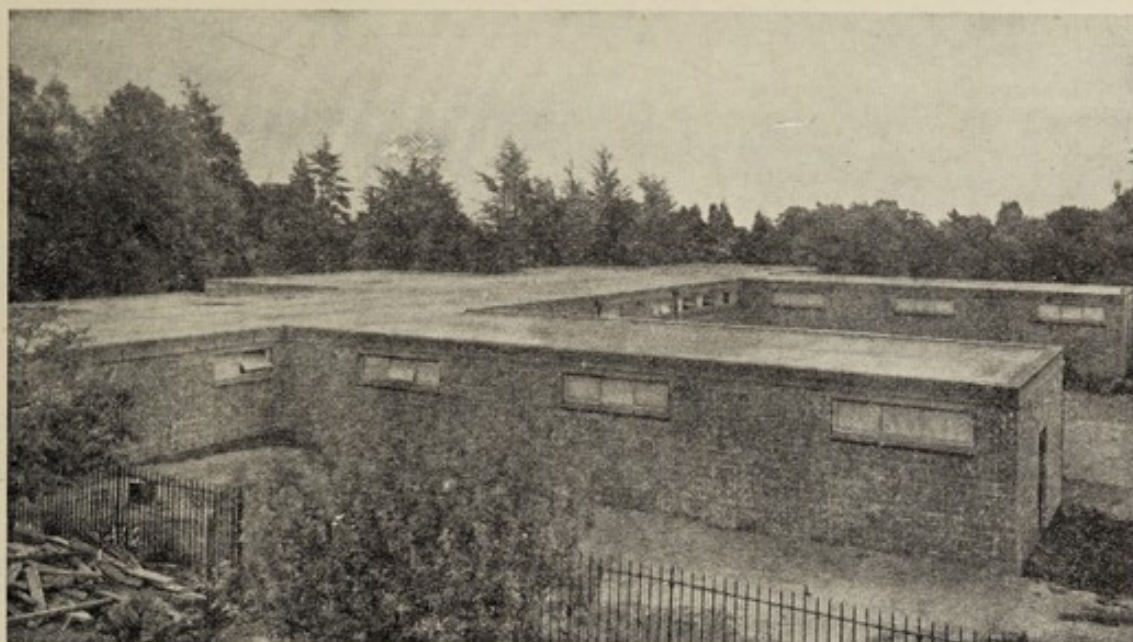
As the result of a re-arrangement of accommodation in the Out-Patient Department in Coventry, it has been possible to provide better facilities for the treatment of casualties, a most necessary improvement, bearing in mind that during the year 39,783 casualty attendances were recorded.

OUT-PATIENTS.

Towards the end of the year, a system of Appointments for out-patients was introduced, with a view to reducing the waiting time of out-patients and to relieve the heavy pressure upon the staff and services at "peak" periods. The scheme shows every sign of being successful, although some difficulties must necessarily occur from time to time, particularly because of the increasing demands upon the time and services of the Medical Staff.

X-RAY DEPARTMENT.

Governors will recall that the new X-Ray diagnostic apparatus, which was installed in 1939, was completely destroyed by enemy action ; with the result that the remaining plants have been very heavily over-worked — during the year 14,081 patients were



Exterior View of Two-Ward Unit.

X-Rayed (requiring 26,201 X-Ray photographs). Following application to the Ministry, a new X-Ray plant has been specially released for our use and is now being installed. The cost, which will amount to approximately £2,000, will be met initially out of the Emergency Appeal Fund, but will be recovered later as part of our claim under the War Damage Act.

NURSES' ACCOMMODATION.

The shortage of accommodation for the nursing staff has continued to engage the serious attention of the Board. Thanks are due to Captain and Mrs. Miller for their readiness in placing part of their residence, Coundon Court, at the disposal of the Hospital for resident nurses, and this has eased the situation to some extent. Nevertheless, additional accommodation for the nursing staff is very urgently needed.

OBITUARY.

It is with feelings of regret that the Board records the deaths of Mr. W. Coker Iliffe, Dr. A. H. Laird and Dr. E. Rice. Mr. Coker Iliffe was a Vice-President of the Hospital, very deeply interested in its work and a very generous donor. By his death the Hospital has lost a valued friend and supporter.

Dr. Laird, after serving for a period as Honorary Anaesthetist, was appointed Visiting Radiologist in 1920 and had charge of the X-Ray Diagnostic and Therapy Department. The Board desires to place on record its sense of appreciation of his valued services over a period of nearly 30 years.

Dr. E. Rice was Resident Surgical Officer of the Hospital for a period of 18 years and retired in 1931, and during his long service he won the esteem and affection of the Hospital Committee and his colleagues on the Medical Staff.

THE YEAR'S WORK.

IN-PATIENTS.

	1941.	1942.
Total admissions from January 1st to December 31st ...	2569	4530

OUT-PATIENTS.

				NEW CASES.		TOTAL ATTENDANCES.	
				1941	1942	1942	
Medical	1119	1882	4571	
Surgical	1782	2628	5512	
Skin	555	765	2112	
Gynaecological and Ante-Natal	424	1135	2091	
E.N.T.	1306	2225	4562	
Fractures and Orthopaedics	2958	3936	18360	
Venereal Diseases	567	995	19168	
Psychiatric	230	182	727	
Ophthalmic and Orthoptic	1782	2297	14021	
Dental	680	782	952	
E.M.S. Scheme	684	*	*	
Air Raid Casualties	176	Nil	Nil	
				12263	16827	72076	
Casualties :—							
General Surgical	10118	12841	32423	
Eyes	3738	3895	7360	
E.M.S.	462	*	*	
Air Raid Casualties	46	Nil	Nil	
				14364	16736	39783	
				26627	33563		
Physio-Therapy Treatments	78429	
X-Ray — Diagnostic	14081	
X-Ray — Treatments	4386	
Out-Patient Dressings, Injections, etc.,	4657	
Total number of attendances and treatments in all Departments in 1942 :—						213412	

* Included in the departmental numbers of new cases

INCOME.

Ordinary income for the year amounted to £80,329 2s. 5d. compared with £67,615 2s. 8d. in 1941, and the total income including Legacies amounted to £85,531 14s. 0d. as against £76,720 18s. 4d. for the previous year.

EXPENDITURE.

Total ordinary expenditure for the year amounted to £60,070 18s. 8d. against £49,501 6s. 5d. in 1941; total expenditure amounted to £64,260 18s. 8d. compared with £50,689 16s. 3d. for the previous year. This increased expenditure is due, of course, mainly

to the larger number of patients treated and to a lesser degree, to the still rising costs of commodities. The final accounts disclose an excess of total income over total expenditure amounting to £21,270 15s. 4d.

HOSPITAL SATURDAY FUND.

Grants totalling £50,000 — far exceeding any previous annual contribution made to the Hospital — have been received during the year from the Hospital Saturday Fund. The increased income available to the Hospital Saturday Fund Committee illustrates the growing strength of Contributory Scheme effort and for this very material and valued help we tender to the Hospital Saturday Fund renewed and grateful thanks.

EMPLOYERS' CONTRIBUTIONS AND ANNUAL SUBSCRIPTIONS.

Many more Firms and Employers have adopted the suggested basis of 3d. per week per employee as a subscription towards the Hospital funds and the total receipts from annual subscriptions amounted to £17,672 6s. 8d.

ALEXANDRA ROSE DAY.

Once again all previous efforts have been exceeded and the record sum of £1,306 13s. 0d. was handed to the Hospital as a result of the Alexandra Rose Day collections held in July 1942. To the organisers, collectors and all who helped in this effort the Board tenders most sincere thanks.

HOSPITAL SUNDAY FUND.

Another record collection from the Hospital Sunday Fund Committee has helped to swell the income for the year and we extend to that Committee, their many helpers and the representatives of the Churches, sincere and grateful thanks for the most welcome contribution of £1,526 0s. 1d.

LADIES' AUXILIARY COMMITTEE.

The Ladies' Auxiliary Committee continues to be of very great help and service in providing Hospital linen and garments for the patients while, in addition, a very substantial contribution of £474 1s. 0d. was handed to the Hospital during the year. To the members of the Committee and its many workers, the Board tenders sincere appreciation and thanks.

EMERGENCY APPEAL FUND.

During the year contributions to the Emergency Appeal Fund amounted to £22,341 18s. 2d., bringing the total fund at the close of the year to £102,503 2s. 0d. with cash received £67,144 8s. 2d.

Total expenditure on the reinstatement of Hospital buildings and services has amounted to £46,436 5s. 0d., leaving a cash balance in hand at the end of the year including balance of interest-free loan, of £29,279 11s. 9d.

LEGACIES.

The following Legacies were received during the year which we acknowledge with gratitude.

					£	s.	d.
The late	Mr. H. E. Caldicott	1,000	0	0
"	"	Mrs. M. J. Ebdell	50	0	0
"	"	Mrs. A. A. Sanders	100	0	0
"	"	Mr. W. A. Oubridge	1,000	0	0
"	"	Mr. Thos. Randle	25	0	0
"	"	Mrs. M. E. Adams	100	0	0
"	"	Mr. G. G. Price	2,841	4	8
"	"	Miss E. Nutting	86	6	11

GENERAL.

The Board extends most grateful thanks for the many contributions received during the year for the general purposes of the Hospital.

Annual subscribers of £2 2s. od. or more are reminded that they have the right to be registered as Governors of the Hospital, to attend and vote at Quarterly and other meetings of Governors, and, if elected, to serve upon the Board of Management. Firms and Societies subscribing £5 5s. od. or more have the right to nominate Governors in accordance with the amount subscribed annually.

GIFTS.

The Board acknowledges with deep gratitude the many and useful gifts received during the year and is especially grateful for the help received from Canadian and American sources and the British War Relief Societies.

VISITING STAFF.

Dr. J. C. Heather, Visiting Physician, is now serving with His Majesty's Forces and Dr. W. Fraser Annand, who was appointed Consulting Physician when he retired from the active Staff in July 1939, has returned to active duty again.

Dr. F. Pilkington has also been called up for service with the Forces and the Board has appointed Dr. Lilian Hayward as Acting Physician in Psychological Medicine for the Period of the War.

Other war-time appointments are as follows :—

Dr. J. M. Woodburn Morison, Radiologist.
Dr. Mary Russell, full-time Assistant Surgeon to the E.N.T. Dept.
Dr. H. P. McNamara and Dr. G. Robertson, as Medical Registrars.
Dr. E. Lodge, Clinical Assistant to the Dermatological Department.
Dr. J. P. Harger, Anaesthetist at Kenilworth Convalescent Home.
Dr. K. E. Barlow, Clinical Assistant in the X-Ray Department.
Dr. N. Oughton, Clinical Assistant in the Ophthalmic Dept.

NURSING.

Throughout the year the Nursing Department has maintained a high standard of efficiency despite the many and increasing difficulties occasioned by the War.

PRESS.

The Board again acknowledges its obligation to the Local Press which continues to render very valuable help to the Hospital in making known its great needs and by supporting the Hospital work and activities.

GENERAL.

The Board concludes its report with an expression of thanks to all members of the Hospital Staff who have continued to carry out their duties so well and so loyally during another very difficult and trying year.

(Signed) G. T. SMITH-CLARKE.

Chairman.

The Board desires to place on record its great appreciation of the services rendered to the Hospital by Captain G. T. Smith-Clarke, the Chairman. It is mainly through his initiative and enterprise that, in the period of some eighteen months following the destruction of the Hospital, alternative accommodation has been provided for 260 in-patient beds. In addition, plans for a third Two-Ward unit at Keresley were prepared, adequate funds were in hand, and had it been possible to obtain the necessary licence to build, Captain Smith-Clarke would have had the great satisfaction of knowing that a large proportion of Coventry patients could have received Hospital treatment within their City. Governors will join with the Board in expressing regret that the full scheme for reinstatement of services could not be completed, but it is largely due to the indefatigable efforts of Captain Smith-Clarke that so much has been accomplished, and the Board tenders to him renewed thanks and gratitude for the valued services he has rendered to the Hospital.

COVENTRY AND

INCOME AND EXPENDITURE ACCOUNT

INCOME.

ORDINARY :—

1. VOLUNTARY GIFTS :—

Subscriptions and Donations, etc. :—

Annual Subscriptions	17672	6	8		
Donations	908	13	4		
Entertainments	1308	13	0		
Ladies Auxiliary Committee :—										
Annual Subscriptions and Donations	474	1	0		
									20363	14 0

2. CENTRAL FUNDS :—

Hospital Saturday Fund	50000	0	0		
Hospital Sunday Fund	£1526	0	1		
Less received in 1943	221	8	2		
									1304	11 11
									51304	11 11

3. RECEIPTS ON ACCOUNT OF SERVICES RENDERED :

Private Patients	1640	12	8		
Patients and their Societies	3186	8	7		
Contributory Schemes	12	11	10		
" " Per Hospital Saturday Fund	323	12	3		
Public Authorities	1082	7	3		
									6245	12 7

4. INVESTED PROPERTY :—

Interest from Dividends, etc., General Fund	1209	9	5		
" " " Alcock Convalescent Fund	534	0	2		
" " " Other Convalescent Funds	205	19	10		
Rent	465	14	6		
									2415	3 11
									80329	2 5

Total Ordinary Income 80329 2 5

Carried forward ... £80329 2 5

WARWICKSHIRE HOSPITAL

for the year ended DECEMBER 31st, 1942.

EXPENDITURE

								£	s.	d.	£	s.	d.
ORDINARY :—													
1. PROVISIONS :—													
Meat	1268	7	7			
Fish and Poultry	171	1	6			
Butter, Bacon, etc.	733	19	0			
Eggs	109	1	6			
Milk	1569	3	11			
Bread and Flour	270	1	9			
Groceries, including :—	Rice, Tea, Sugar and Coffee						...	1051	13	7			
Vegetables	554	14	3			
Malt Liquors	1	10	0			
Aerated Waters	17	6	10			
												5746	19 11
2. SURGERY AND DISPENSARY :—													
Drugs, Chemicals, etc.	3642	7	7			
Dressings and Bandages	1857	12	6			
Instruments and Appliances	650	4	0			
Wines and Spirits	8	14	0			
Salaries : Dispensing Staff	685	1	2			
Catgut and Gloves	392	7	2			
X-Ray	2616	0	8			
Cardiograph and Massage	159	18	7			
Pathological	2221	1	1			
Sundries	127	1	4			
												12360	8 1
3. DOMESTIC :—													
Renewals, Repair of Furniture, Bedding, Crockery, etc.	336	8	7			
Laundry	2181	16	1			
Cleaning and Chandlery	269	19	6			
Water	341	1	7			
Fuel : Lighting, Heat and Power	4768	3	5			
Uniforms	46	6	5			
Sundries	93	12	10			
												8037	8 5
Carried forward										£26144	16 5

COVENTRY AND

INCOME AND EXPENDITURE ACCOUNT

Brought forward £80329 2 5

EXTRAORDINARY INCOME :—

Legacies for general purposes	5202 11 7	
					<hr/>	5202 11 7
						<hr/>
						£85531 14 0
						<hr/>

WARWICKSHIRE HOSPITAL

for the Year ended DECEMBER 31st, 1942. (contd.)

									£	s.	d.
							Brought forward	...	261	44	16 5
4.	SALARIES AND WAGES :—										
	Medical	6328	12	1		
	X-Ray	1563	7	8		
	Nursing	7205	7	0		
	Massage	2006	4	7		
	Mechanics and Stokers	2392	0	0		
	Porters	1582	14	2		
	Domestic	3696	5	8		
	Other Officers and Employees	2155	14	2		
	Pensions	617	13	2		
										275	47 18 6
5.	MISCELLANEOUS :—										
	Printing, Stationery, Postages and Telephone	1144	4	6		
	Advertisements	406	7	10		
	Insurance	514	19	11		
	Garden	706	8	3		
	Sundries	660	9	8		
										343	2 10 2
6.	ADMINISTRATION :—										
	Salaries	2801	18	2		
	Printing, Stationery and Postages	305	0	2		
	Advertisements	32	9	4		
	Legal Charges	41	18	0		
	Sundries	157	15	2		
										333	9 0 10
7.	ESTABLISHMENT :—										
	Renewals and Repairs to Buildings and Plant	779	0	11		
	Air Raid Precautions	264	9	2		
										104	3 10 1
8.	FINANCE :—										
	Interest	510	5	8		
	Printing, Stationery and Postages	6	19	0		
	Rates and Taxes	2032	7	5		
	Sundries	5	9	7		
	Appeals	8	1	0		
										256	3 2 8
	Total Ordinary Expenditure				640	70 18 8
EXTRAORDINARY EXPENDITURE :—											
	War Damage Insurance				190	0 0
	BALANCE OF INCOME OVER EXPENDITURE				212	70 15 4
										£855	31 14 0

COVENTRY AND

BALANCE SHEET, as at

LIABILITIES.						£	s.	d.	£	s.	d.
1.	SUNDRY CREDITORS :—										
	General Fund	9651	0	5			
	Emergency Fund	4521	8	8			
	Other Funds	558	14	3			
									14731	3	4
2.	LOANS TO HOSPITAL :—										
	Interest-free Loan, for reinstatement of Hospital Services following damage by enemy action.					10000	0	0			
	Less amount repaid	1428	11	6			
									8571	8	6
3.	CAPITAL ACCOUNTS :—										
	(a) Hospital Endowments	14788	6	4			
	(b) Special Funds :—										
	Alcock Convalescent Fund	13068	11	7			
	Other Convalescent Funds	5477	13	10			
									33334	11	9
	(c) General Fund :—										
	Accumulated free bequests and donations	68411	8	2			
	Balance brought forward from last account	8338	17	4			
	Excess of Income over Expenditure for the year	21270	15	4			
									98021	0	10
	(d) Building and Equipment Funds :—										
	Extension Fund, including £100,000 Appeal Fund and Centenary Appeal Fund :—										
	Balance as per last account	142372	17	6			
	Add receipts during the year	6113	10	9			
									148486	8	3
4.	OTHER FUNDS :—										
	Emergency Appeal Fund, for reinstatement of Hospital Services :—										
	Balance as per last account	47052	10	0			
	Add receipts during the year	20447	17	0			
	Renewals and Equipment Fund	67500	7	0			
	Air-raid Relief Fund	1510	9	7			
	Samaritan and After Care Fund	176	11	9			
	Superannuation Fund	89	16	9			
	Nurses Library Fund	431	18	2			
						200	0	0			
									69909	3	3
5.	UNEXPENDED INCOME OF SPECIAL FUNDS :—										
	Convalescent Funds				631	15	10
6.	SUSPENSE ACCOUNT :—Income for special purposes subject to allocation										
					1519	15	0
									£375205	6	9

Signed, G. T. SMITH-CLARKE }
H. R. BROOKS } Members of Board of Management.

WARWICKSHIRE HOSPITAL

31st DECEMBER, 1942.

ASSETS.

	£	s.	d.	£	s.	d.
1. CASH AT BANK AND IN HAND :—						
Balances on account of General Fund and Special Funds :—						
General Account	79768	12	9			
Emergency Appeal Fund	21064	2	0			
Renewals and Equipment Account	1510	9	7			
Air-Raid Relief Fund	176	11	9			
Samaritan and After Care Fund	89	16	9			
Superannuation Fund	431	18	2			
Nurses Library Fund	200	0	0			
Convalescent Funds	631	15	10			
Salaries Imprest Account	1500	0	0			
Cash in hand	231	17	0			
	105605	3	10			
Less Debit on Extension Fund A/c.	59079	0	11			
	46526	2	11			
Loan Account	8571	8	6			
				55097	11	5
2. INVESTMENTS AT COST :—						
Endowments	14788	6	4			
Special Funds	18546	5	5			
General Fund	15227	13	2			
				48562	4	11
3. PROPERTY AT COST :— (no account is taken of the extensive damage to properties sustained through enemy action).						
Main Hospital Buildings and Nurses' Home	Not Valued					
Extensions and additions, Coventry	22483	16	4			
Expenditure on New Extensions, Coventry (<i>Less</i> donations for new Offices, Hospital Saturday Fund)	183735	10	9			
Alcock Hospital — Purchase and alterations	13707	10	10			
Expenditure on re-instatement of Hospital Services, Keresley and Kenilworth.						
Balance as last A/c.	£18919	2	7			
Expenditure during the year	27517	2	5			
	46436	5	0			
				266363	2	11
4. SUNDRY DEBTORS				1802	7	6
5. STOCKS OF UNISSUED STORES IN HAND				3380	0	0

£375205 6 9

I have audited the above Balance Sheet of December 31st, 1942, and have obtained all the information and explanations I have required. In my opinion such Balance Sheet is properly drawn up so as to exhibit a true and correct view of the state of the Hospital's affairs according to the information and explanations given to me and as shown by the books of the Hospital.

COVENTRY, 1st March, 1943.

Signed, SIDNEY T. PEIRSON, F.C.A., Auditor.

List of Investments

GENERAL ACCOUNT.

£	s.	d.							
500	0	0	Canadian Pacific Railway 4% Pref. Consol. Debenture Stock	...					
1543	14	9	2½% Consols
1037	13	3	"
1903	8	11	3½% Conversion Stock
500	11	6	3½% Conversion Stock
426	0	0	3½% Conversion Stock
969	12	11	2½% Coventry Corporation Red. Stock
2400	0	0							
650	0	0	3% Coventry Corporation Red. Stock
400	0	0	Coventry Canal Navigation Shares
150	0	0	East India Railway Annuities, Class C
13	0	0	Leigh Mills Co. Ltd., Ordinary Shares
126	0	0	6½% Leigh Mills Co. Ltd., Conv. Pref. Shares
125	0	0	3½% Liverpool Corporation Mortgage
1000	0	0	5% Local Bonds (Coventry)
1000	0	0	3% Local Loans
2758	12	6	4% London, Midland & Scottish Railway Debenture Stock
3757	0	0	4% London, Midland & Scottish Railway Co., Preference Stock
290	0	0	4% London & North Eastern Railway Co., Preference Stock
232	0	0	386 National Savings Certificates
500	0	0	3% Reading Corporation Red. Stock
250	0	0	Sharpness New Docks, Gloucester and Birmingham Navigation Co. Conversion Preference Stock
2850	0	0	3½% War Stock
857	8	6	3½% War Loan
2801	16	6	3½% War Loan
25	0	0	5½% Mortgage on 117-119 Cox Street
			34 Stoney Stanton Road, Freehold House
			3, 4, 5, 6, 7, 8 and 9, Tower Cottages, Freehold Houses
250	0	0	3% Defence Bonds
4000	0	0	Savings Bonds
31316	18	10							

THE "ALCOCK" COVALESCENT FUND.

£	s.	d.							
2032	12	4	4% Consolidated War Stock
4000	0	0	3½% Conversion Loan, Ins. Stock
2000	0	0	4% Funding Loan, 1960-1990 Ins. Stock
2000	0	0	4½% Great Western Railway Co. Debenture Stock
2403	11	8	3% Local Loans
1497	8	0	3½% War Stock
13933	12	0							

THE "MINISTER" CONVALESCENT FUND.

£	s.	d.							
2382	3	11	3% Local Loans
1651	16	10	3% Coventry Corporation Red. Stock
1000	0	0	2½% Coventry Corporation Preference Stock
1450	0	0	4% London & North Eastern Railway Co., Preference Stock
			8 National Savings Certificates
6484	0	9							

DR. READ'S MEMORIAL FUND.

£	s.	d.							
75	14	2	3½% War Stock