

Report of the Charing Cross Hospital : 1949.

Contributors

Charing Cross Hospital.

Publication/Creation

[London?] : [publisher not identified] 1949

Persistent URL

<https://wellcomecollection.org/works/h4mx7xe9>

License and attribution

This work has been identified as being free of known restrictions under copyright law, including all related and neighbouring rights and is being made available under the Creative Commons, Public Domain Mark.

You can copy, modify, distribute and perform the work, even for commercial purposes, without asking permission.



Wellcome Collection
183 Euston Road
London NW1 2BE UK
T +44 (0)20 7611 8722
E library@wellcomecollection.org
<https://wellcomecollection.org>

REPORT
OF THE
Charing Cross Hospital
LONDON
(Founded in 1818)



FOR THE
PERIOD 1st JANUARY, 1948 to 31st MARCH
1949

WELLCOME
LIBRARY
Ann Rep
WX 28
.BC5
L84 C 47
1949



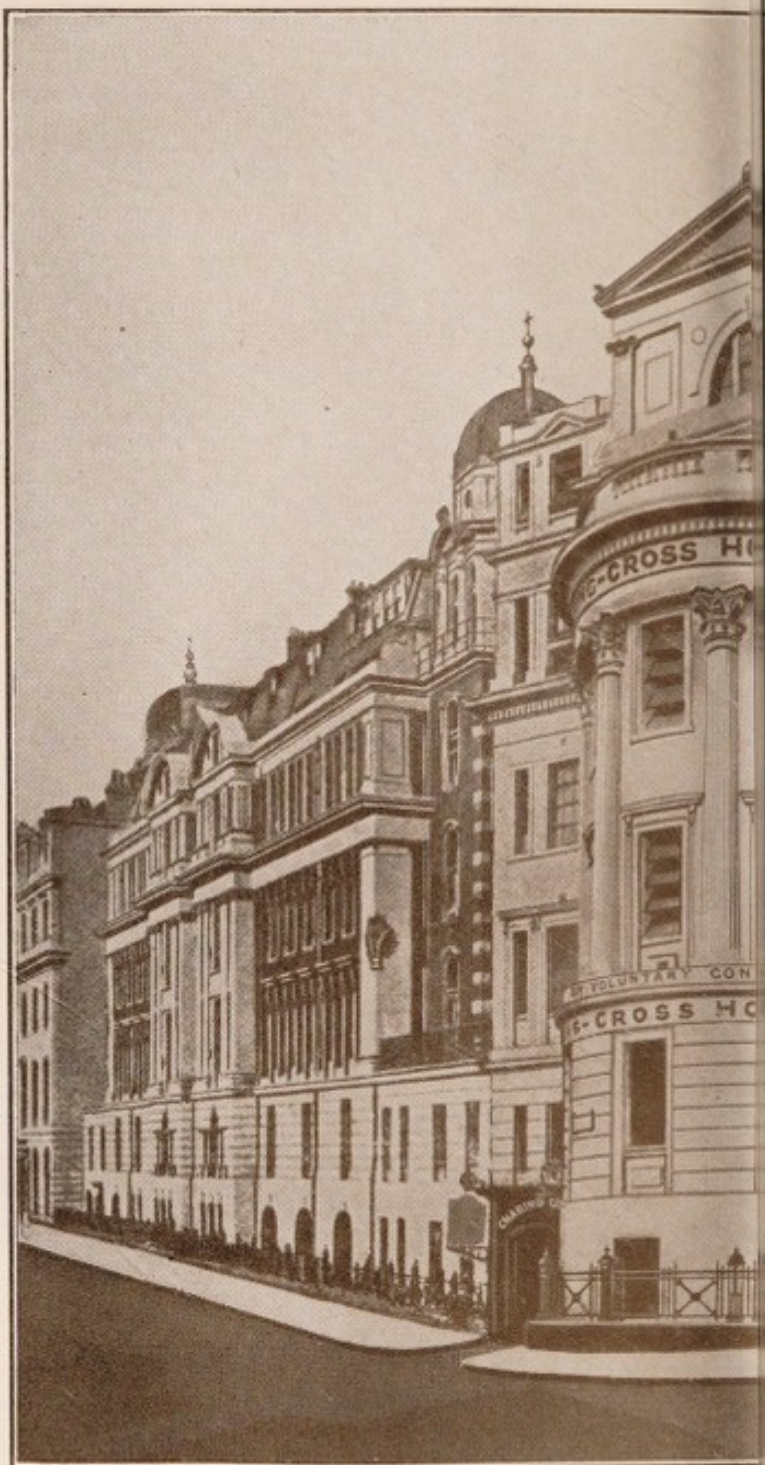
22501911072

CHARING CROSS HOSPITAL


LONDON

Patrons:

THEIR MOST GRACIOUS MAJESTIES THE KING AND QUEEN
HER MOST GRACIOUS MAJESTY QUEEN MARY







Digitized by the Internet Archive
in 2019 with funding from
Wellcome Library

<https://archive.org/details/b31685596>

BOARD OF GOVERNORS

Chairman : THE RT. HON. LORD INMAN, P.C., J.P.

JOHN ADAMSON, Esq., C.A.
LESLIE G. BANKS, Esq., L.C.C.
COLONEL W. H. BATEMAN, M.C.,
M.Inst.C.E.
GEOFFREY BLES, Esq.
L. R. BROSTER, Esq., O.B.E., M.A.,
D.M., M.Ch., F.R.C.S.
PROFESSOR W. BURNS.
GEORGE W. CANTER, Esq., C.B.E.
W. N. CHELLINGWORTH, Esq.
H. E. COMBEN, Esq., B.Sc.,
A.M.I.C.E.
VICTOR F. DEEKS, Esq.
ARTHUR O. GRAY, Esq., M.D.,
F.R.C.P., F.R.C.S., F.R.C.O.G.
R. A. HICKLING, Esq., B.A., M.D.,
F.R.C.P.
DR. BERNARD HOMA, L.C.C.
SIR ALFRED HURST, K.B.E., C.B.
MISS E. S. LAING.

NORMAN C. LAKE, Esq., D.Sc.,
M.D., M.S., F.R.C.S.
BERNARD LEWIS, Esq.
MRS. E. O. LINDGREN.
HOWARD P. MARSHALL, Esq.
THE HON. MR. JUSTICE MORRIS
C.B.E., K.C., M.C., B.A., LL.B.
ALDERMAN GEORGE A.
PARGITER, M.P.
MISS K. PROUD.
W. D. SOUTHERN, Esq., L.R.C.P.,
M.R.C.S., L.D.S.
SIR JOHN S. STEWART-WALLACE,
C.B.
MRS. F. M. SUGGATE, J.P.
DAVID TREVOR, Esq., M.S.,
F.R.C.S.
PROFESSOR H. W. C. VINES,
M.A., M.D.
H. J. WASBROUGH, Esq.

Secretary to the Board
GEORGE J. JONES, Esq.

Assistant Secretaries
A. M. BARKER, Esq.
S. GARBUTT, Esq.
P. E. WINDO, Esq.

STANDING COMMITTEES

General Purposes and Finance Committee

Chairman : THE RT. HON. LORD INMAN, P.C., J.P.

SIR JOHN S. STEWART-WALLACE,
C.B. (Vice-Chairman).
JOHN ADAMSON, Esq., C.A.
GEOFFREY BLES, Esq.
L. R. BROSTER, Esq., O.B.E., M.A.,
D.M., M.Ch., F.R.C.S.
GEORGE W. CANTER, Esq., C.B.E.
VICTOR F. DEEKS, Esq.

SIR ALFRED HURST, K.B.E., C.B.
MISS E. S. LAING.
BERNARD LEWIS, Esq.
DAVID TREVOR, Esq., M.S., F.R.C.S.
PROFESSOR H. W. C. VINES, M.A.,
M.D.
H. J. WASBROUGH, Esq.

Establishment Committee

Chairman : SIR JOHN S. STEWART-WALLACE, C.B.

LESLIE G. BANKS, Esq., L.C.C.
GEOFFREY BLES, Esq.
VICTOR F. DEEKS, Esq.
R. A. HICKLING, Esq., B.A., M.D.,
F.R.C.P.
MISS E. S. LAING.

MRS. E. O. LINDGREN.
DAVID TREVOR, Esq., M.S., F.R.C.S.
PROFESSOR H. W. C. VINES, M.A.,
M.D.
H. J. WASBROUGH, Esq.

House Committee

Chairman : GEOFFREY BLES, Esq.

GEORGE W. CANTER, Esq., C.B.E.
W. N. CHELLINGWORTH, Esq.
E. A. CROOK, Esq., M.A., B.M.,
M.Ch., F.R.C.S.
R. A. D. FLEMING, Esq.
ARTHUR O. GRAY, Esq., M.D.,
F.R.C.P., F.R.C.S., F.R.C.O.G.

R. A. HICKLING, Esq., B.A., M.D.,
F.R.C.P.
F. G. HOLE, Esq.
MISS E. S. LAING.
MRS. E. O. LINDGREN.
MISS K. PROUD.
MRS. F. M. SUGGATE, J.P.

*Medical Committee***Chairman :** L. R. BROSTER, Esq., O.B.E., M.A., D.M., M.Ch., F.R.C.S.*Lay Member of the Board of Governors :*

GEOFFREY BLES, Esq.

SIR JOHN S. STEWART-WALLACE,
C.B.*Harrow Hospital Representatives :—*H. E. THORN, Esq., M.B., L.R.C.P.,
M.R.C.S.MISS LUCY PARKER, M.D.,
M.R.C.P.*Wembley Hospital Representatives :*D. H. CAMPBELL, Esq., M.B.,
Ch.B.A. J. COKKINIS, Esq., M.B.,
F.R.C.S.H. G. E. ARTHURE, Esq., M.D.,
F.R.C.S., M.R.C.O.G.H. K. ASHWORTH, Esq., M.B.,
L.R.C.P., M.R.C.S., D.A., F.F.A.G. BELLMAN, Esq., L.R.C.P.,
M.R.C.S., D.A.L. GRAHAM BROWN, Esq., M.C.,
M.A., M.D., F.R.C.S.R. J. CLAUSEN, M.C., M.B., D.A.,
F.F.A.E. A. CROOK, Esq., M.A., M.Ch.,
F.R.C.S.A. DOYNE BELL, Esq., M.A., D.M.,
F.R.C.P.H. A. DUNLOP, Esq., M.Sc., M.D.,
F.R.C.P.F. A. ELLIOTT, Esq., M.B., Ch.B.,
(Capetown), F.R.C.P.R. A. FITZSIMONS, Esq., M.B.,
B.Sc., F.R.C.S.A. O. GRAY, Esq., M.D., F.R.C.P.,
F.R.C.S., F.R.C.O.G.R. A. HICKLING, Esq., B.A., M.D.,
F.R.C.P.J. L. HOPKINS, Esq., L.M.S.S.A.,
D.A.NORMAN C. LAKE, Esq., D.Sc.,
M.D., M.S., F.R.C.S.A. CAMERON MacLEOD, Esq., M.B.,
F.R.C.S.C. JENNINGS MARSHALL, Esq.,
M.D., M.S., F.R.C.S.J. G. MILNER, Esq., M.A., M.B.,
F.R.C.S.R. MOORE PATTERSON, Esq.,
M.C., L.R.C.P., M.R.C.S., D.M.R.E.A. A. W. PETRIE, Esq., C.B.E., M.D.,
F.R.C.P., F.R.C.S., D.P.M.N. S. PLUMMER, Esq., M.D.,
F.R.C.P.SEYMOUR J. R. REYNOLDS, Esq.,
M.A., M.B., L.R.C.P., M.R.C.S.,
D.M.R.E.H. S. SHARP, Esq., B.A., M.B.,
F.R.C.S.ANGUS SMITH, Esq., L.R.C.P.,
M.R.C.S., D.A.K. SHIRLEY SMITH, Esq., B.Sc.,
M.D., F.R.C.P.W. D. SOUTHERN, Esq., M.D.,
F.R.C.P.T. FANE TIERNEY, Esq., L.R.C.P.,
M.R.C.S., D.M.R.E.

DAVID TREVOR, Esq., M.S., F.R.C.S.

PROFESSOR H. W. C. VINES,
M.A., M.D.E. C. WARNER, Esq., B.Sc., M.D.,
F.R.C.P.J. E. M. WIGLEY, Esq., M.B.,
F.R.C.P.EVERARD H. G. WILLIAMS, Esq.,
M.D., M.R.C.P., F.R.C.S.(Ed.),
F.R.C.O.G.K. M. C. WOODRUFF, Esq., M.B.,
L.R.C.P., M.R.C.S., F.F.A.*Planning Committee***Chairman :** PROF. H. W. C. VINES, M.A., M.D.COLONEL W. H. BATEMAN, M.C.,
M.Inst.C.E.A. DOYNE BELL, Esq., M.A., D.M.,
F.R.C.P.

W. N. CHELLINGWORTH, Esq.

DR. BERNARD HOMA, L.C.C.

MISS E. S. LAING.

NORMAN C. LAKE, Esq., D.Sc.,
M.D., M.S., F.R.C.S.

BERNARD LEWIS, Esq.

HOWARD P. MARSHALL, Esq.

ALDERMAN GEORGE PARGITER,
M.P.W. D. SOUTHERN, Esq., L.R.C.P.,
M.R.C.S., L.D.S.SIR JOHN S. STEWART-WALLACE,
C.B.The Chairman is *ex officio* a member of all Committees.*Bankers*ROYAL BANK OF SCOTLAND, Messrs. DRUMMONDS' BRANCH,
49 Charing Cross, S.W.1.

Messrs. LLOYDS BANK, Ltd., 22-24 Southampton Street, W.C.2.

Honorary Solicitors

Messrs. FLADGATE & Co., 70 Pall Mall, S.W.1.

OFFICERS OF THE PARENT HOSPITAL

Consulting Physicians

W. J. FENTON, Esq., M.D., F.R.C.P., 27 Wimpole Street, W.1.
 F. H. YOUNG, Esq., O.B.E., M.D., F.R.C.P., 31 Weymouth Street, W.1.
 GORDON M. HOLMES, Esq., C.M.G., C.B.E., M.B., D.Sc., F.R.C.P., F.R.S.,
 111 Harley Street, W.1.

Consulting Obstetric Physician

CUTHBERT LOCKYER, Esq., M.D., F.R.C.P., F.R.C.S.(Eng.), Alverton Cottage,
 Penzance, Cornwall.

Consulting Physician for Diseases of the Skin

J. M. H. MacLEOD, Esq., M.A., M.D., F.R.C.P., Pannelly, Lower Bourne, Farnham,
 Surrey.

Consulting Surgeons

W. S. FENWICK, Esq., M.S., F.R.C.S., Earldom's Lodge, Whiteparish, near
 Salisbury.
 P. L. DANIEL, Esq., F.R.C.S., Gilcroft, Checkenden, Oxon.

Consulting Ophthalmic Surgeons

W. H. McMULLEN, Esq., O.B.E., M.B., F.R.C.S., 86 Brook Street, W.1.
 M. L. HINE, Esq., M.D., F.R.C.S., 73 Harley Street, W.1.

Consulting Physician to Children's Department

C. K. J. HAMILTON, Esq., M.C., B.A., B.M., F.R.C.P., Castle Farm, Exford,
 near Minehead, Somerset.

Consulting Physician to the Throat, Ear and Nose Department

E. D. D. DAVIS, Esq., F.R.C.S., 9 Weymouth Street, W.1.

Consulting Physician to Radiological Department

RUSSELL J. REYNOLDS, Esq., C.B.E., M.B., B.S., F.R.C.P., D.M.R.E.,
 30 Welbeck Street, W.1.

Consulting Orthopædic Surgeon.

HERBERT BATTEN, Esq., F.R.C.S., 17 Ravenscourt Square, W.6.

Consulting Anæsthetist.

HENRY JOHNSON, Esq., L.S.A., L.R.C.P., D.A.,
 11 Chadwick Road, Westcliff-on-Sea.

Physicians.

R. A. HICKLING, Esq., B.A., M.D., F.R.C.P., 99 Harley Street, W.1.
 K. SHIRLEY SMITH, Esq., B.Sc., M.D., F.R.C.P., 122 Harley Street, W.1.
 EDWIN C. WARNER, Esq., B.Sc., M.D., F.R.C.P., 13 Harley Street, W.1.

Physicians in charge of Out-Patients.

H. A. DUNLOP, Esq., M.Sc., M.D., F.R.C.P., 48 Wimpole Street, W.1.
 N. S. PLUMMER, Esq., M.D., F.R.C.P., 49 Harley Street, W.1.

Assistant Physician.

F. A. ELLIOTT, Esq., M.B., Ch.B. (Capetown), F.R.C.P., 27 Weymouth Street, W.1.

Obstetric Physicians.

A. O. GRAY, Esq., M.D., F.R.C.P., F.R.C.S., F.R.C.O.G., 17 Harley Street, W.1.
 EVERARD H. G. WILLIAMS, Esq., M.D., M.R.C.P., F.R.C.S.(Edin.), F.R.C.O.G.,
 79 Harley Street, W.1.

Assistant Obstetric Physician.

H. G. E. ARTHURE, Esq., M.D., F.R.C.S., M.R.C.O.G.,
 50 Wimpole Street, W.1.

Physician to Children's Department

A. DOYNE BELL, Esq., M.A., D.M., F.R.C.P.,
99 Harley Street, W.1.

Physician for Diseases of the Skin.

J. E. M. WIGLEY, Esq., M.B., F.R.C.P., 132 Harley Street, W.1.

Diagnostic Radiologist.

T. FANE TIERNEY, Esq., L.R.C.P., M.R.C.S., D.M.R.E.,
58 Harley House, N.W.1.

Assistant Diagnostic Radiologist.

SEYMOUR J. R. REYNOLDS, Esq., M.A., M.B., L.R.C.P., M.R.C.S., D.M.R.E.,
Camelot, Renfrew Road, Kingston Hill, Surrey.

Radiotherapist.

R. MOORE PATTERSON, Esq., M.C., L.R.C.P., M.R.C.S., D.M.R.E.,
86 Harley Street, W.1.

Physician for Psychological Medicine

A. A. W. PETRIE, Esq., C.B.E., M.D., F.R.C.P., F.R.C.S., D.P.M.,
Medical Superintendent, Banstead Mental Hospital, Sutton, Surrey.

Physician in Charge Electro-Cardiographic Department

K. SHIRLEY SMITH, Esq., B.Sc., M.D., F.R.C.P., 122 Harley Street, W.1.

Surgeons.

N. C. LAKE, Esq., D.Sc., M.D., M.S., F.R.C.S., 51 Welbeck Street, W.1.
C. JENNINGS MARSHALL, Esq., M.D., M.S., F.R.C.S., 121 Harley Street, W.1.
L. R. BROSTER, Esq., O.B.E., M.A., D.M., M.Ch., F.R.C.S.,
111 Harley Street, W.1.

Surgeons in Charge of Out-Patients.

E. A. CROOK, Esq., M.A., M.Ch., F.R.C.S., 149 Harley Street, W.1.
A. CAMERON MACLEOD, Esq., M.B., F.R.C.S., 42 Harley Street, W.1.
R. A. FITZSIMONS, Esq., M.B., B.Sc., F.R.C.S., 150 Harley Street, W.1.

Surgeon-Dentist.

W. D. SOUTHERN, Esq., L.R.C.P., M.R.C.S., L.D.S., 22 Wimpole Street, W.1.

Surgeon for Diseases of the Throat, Ear and Nose.

L. G. BROWN, Esq., M.C., M.A., M.D., F.R.C.S., 82 Portland Place, W.1.

Assistant Surgeon for Diseases of the Throat, Ear and Nose.

H. S. SHARP, Esq., B.A., M.B., F.R.C.S., 149 Harley Street, W.1.

Surgeon to Orthopaedic Department

DAVID TREVOR, Esq., M.S., F.R.C.S., 51 Welbeck Street, W.1.

Surgeon to Ophthalmic Dept.

J. G. MILNER, Esq., M.A., M.B., F.R.C.S., 34 Wimpole Street, W.1.

Surgeon-Anæsthetist.

R. J. CLAUSEN, Esq., M.C., M.B., D.A., F.F.A.,
Garden Flat, 46 Marlborough Place, N.W.8.

Anæsthetists.

K. M. C. WOODRUFF, Esq., M.B., L.R.C.P., M.R.C.S., F.F.A., 12 St. John's
Wood Road, N.W.8.
G. BELLMAN, Esq., L.R.C.P., M.R.C.S., D.A.,
The Cottage, Potten End, Berkhamsted.
H. K. ASHWORTH, Esq., M.B., L.R.C.P., M.R.C.S., D.A., F.F.A.,
11 Mansfield Street, W.1.
J. L. HOPKINS, Esq., L.M.S.S.A., D.A., 1 Marlborough Crescent, W.4.
ANGUS J. SMITH, Esq., L.R.C.P., M.R.C.S., D.A.,
23 Park Square East, N.W.1.

Pathologist and Lecturer on Morbid Anatomy and Morbid Histology.
 PROFESSOR H. W. C. VINES, M.A., M.D.

Bacteriologist.
 D. P. KING, Esq., M.A., M.D.

Chemical Pathologist.
 PROFESSOR J. PATTERSON, M.Sc., Ph.D.

Medical Registrars.
 V. EDMUNDS, Esq., M.D., M.R.C.P.
 G. A. BEDWELL, Esq., M.B., M.R.C.P.
 W. O'BRIEN, Esq., M.B., M.R.C.P.

Surgical Registrars.
 A. ELTON, Esq., M.B., F.R.C.S.
 A. R. MAKEY, Esq., M.B., F.R.C.S.
 E. TROENSEGAARD-HANSEN, Esq., F.R.C.S.

Orthopædic Registrar.
 J. E. BUCK, Esq., M.B., F.R.C.S.

Gynæcological Registrar.
 E. M. SANDLER, Esq., M.B., Ch.B.(Capetown), M.R.C.O.G.

Obstetric Registrar.
 W. H. GOODWIN, Esq., M.B., F.R.C.S.

Ear, Nose and Throat Department Registrar.
 A. J. E. BLAYNEY, Esq., M.B., M.Ch.

Anæsthetic Registrar.
 L. CLEMENT, Esq., L.R.C.P., M.R.C.S., D.A.

Cancer and Radium Registrar.
 J. H. F. MUNDIE, Esq., L.R.C.P., M.R.C.S.

Resident Medical Officer
 D. DOOLEY, Esq., B.A., L.R.C.P., M.R.C.S.

Chief Pharmacist.
 J. R. ELLIOTT, Esq., Ph.C., M.P.S., D.B.A., F.C.S.

Chaplain.
 THE VICAR OF ST. MARTIN-IN-THE-FIELDS.

Matron.
 MISS D. M. DICKINSON.

Almoner.
 MISS E. M. BOTTING.

Finance Officer.
 A. D. AMEY, Esq., A.H.A., F.I.A.C.

Secretary.
 A. M. BARKER, Esq., F.H.A.

House Governor.
 GEORGE J. JONES, Esq., F.H.A.

CHARING CROSS HOSPITAL

ANNUAL REPORT

This Report covers the period 1st January, 1948, to 31st March, 1949. It embraces the transition from the voluntary system of Hospital Management to the National Health Service. It is only fitting, therefore, that an expression of gratitude should be placed on record, in the warmest possible terms, to all those benefactors and supporters who gave so generously of their money and their time over the years to ensure the maintenance of the Hospital.

Charing Cross Hospital has reason to be proud of its past record of service to the sick, and looks forward under the new conditions to a continuance of that service and of the friendly atmosphere which has always prevailed throughout the Hospital.

The change-over from the voluntary system to the National Health Service took place on the 5th July, 1948. The Council held its last meeting in June, when the Chairman expressed his deep gratitude to the departing members for all their help during many years of ungrudging service.

The transition was made remarkably smoothly, and for this much credit is due to the medical, nursing and administrative staff, both for the preparatory work they did and for the admirable spirit in which they undertook their new responsibilities. There has, indeed, been evident a marked sense of team spirit not only in the Hospital staff, but in the newly constituted Board of Governors and the various committees, and this augurs well for the great project which the Hospital has in hand.

ACCOUNTS

The Final Accounts from 1st January, 1948, to the 4th July, 1948, the date when the voluntary system came to an end, are published with this Report.

CHARING CROSS HOSPITAL GROUP

On 5th July, 1948, in accordance with the provisions of the National Health Service Act (1946), the three Hospitals known hitherto as Charing Cross Hospital, Harrow Hospital and Wembley Hospital, were merged as a single Teaching Hospital, by order of the Minister of Health, under the title of "Charing Cross Hospital." The Rt. Hon. Lord Inman, P.C., J.P., was appointed Chairman of the Board of Governors, which included members of the previous Governing Bodies of the Hospitals concerned, together with representatives from various branches of public life. The Board of Governors, at its first meeting, appointed a House Committee at each of the three constituent Hospitals; these House Committees to be responsible for the day-to-day administration of the Hospitals concerned. In this way it was felt that local interest would be maintained, and experience has proved the wisdom of the arrangement. Other Committees appointed were the General Purposes

and Finance Committee, the Establishment Committee, the Medical Committee, and the Planning Committee. These Committees meet monthly, and report to the Board, which normally meets once every two months.

RESIGNATION FROM THE BOARD OF GOVERNORS

The resignation of Sir Sydney Parkes, C.B.E., formerly Honorary Treasurer of the Hospital, was received by the Board with great regret, and thanks are expressed to him for his able and valuable services to the Hospital.

DEATH OF DR. A. W. OXFORD

The news of the death of Dr. Oxford on 30th May, 1948, was received with profound regret by those who remembered his many years of honorary service to the Hospital as Resident Medical Officer and as a member of the Council.

RESEARCH AND AMENITIES FUND

Provision has been made in the National Health Service Act for the continuance of voluntary support to provide amenities for patients and staff of Hospitals, and for research. It is pleasing to report that many friends of the associated Hospitals have, in fact, continued their contributions for these special purposes, and the Board wish to thank them for their greatly esteemed help. A record of the amount received since the 5th July, 1948, to the 31st March, 1949, is shown elsewhere in this Report, and a list of contributions can be seen at the Hospitals by anyone who is interested.

THE NEW HOSPITAL AT NORTHWICK PARK

Negotiations have proceeded steadily towards the acquisition of the site upon which it is hoped the new Hospital will be built. Plans of the proposed buildings have been prepared by the Architects, Messrs. Adams, Holden & Pearson, in detailed consultation with the Planning Committee, under the chairmanship of Professor H. W. C. Vines. The plans have been submitted to the Ministry of Health for approval.

ST. GILES'S SITE

It is anticipated that the sale of the St. Giles's Site will be accomplished in the near future. The proceeds from the sale will be used to liquidate the loan from the Bankers, and the balance will be added to the Hospital's Endowment Fund.

MEDICAL STAFF

At the request of the Ministry of Health, a Sub-Committee, known as the Medical and Dental Staffing Sub-Committee, was set up under the chairmanship of Sir John Stewart-Wallace, C.B., to consider and report to the Board on the medical staffing requirements of the Hospital, as a result of which, contracts will be issued for the future service of the Medical Staff at the constituent Hospitals.

NURSING STAFF

The recruitment of nurses has continued satisfactorily, and in addition to covering adequately the work of the parent Hospital, it has been possible to staff the extra beds opened at the Charing Cross Annexe at Mount Vernon Hospital. The Board has also been able to assist in the staffing of some wards at Mount Vernon Hospital, not under its control, in response to an urgent appeal by the North West Metropolitan Regional Hospital Board.

Another pleasing feature to record is that, in answer to an appeal for volunteers to be seconded for a period of three months for the nursing of tuberculosis patients at Harefield Sanatorium, no less than one hundred of our nurses responded.

The nursing staffs of the three Hospitals are gradually being co-ordinated into one Group Training School, and we have welcomed nurses from Wembley Hospital to the Senior Training Block, and some Charing Cross nurses are working at Wembley Hospital. In this connection, steps are being taken to obtain accommodation for an additional and enlarged Nurses' Preliminary Training School.

The examination results have been excellent, and reflect great credit on the Matron and Sister Tutor.

ALMONERS' DEPARTMENT

The introduction of the full social security programme altered the character of the work of the almoners in some ways. No longer is it necessary to assess payments by patients towards the cost of their treatment, and more time is therefore available for the real purpose for which the almoner functions, namely, the helping of the patients from a purely social aspect.

It may be mentioned here that the lack of provision for old people and the chronic sick is a matter of acute concern. There is a growing number of patients who are no longer in need of general Hospital treatment, but cannot be discharged as the Hospital is under an obligation to provide accommodation for a certain number of the chronic sick.

A scheme for diversional occupation has been started for long-term patients, and regular visits for instruction and encouragement are made by members of the British Red Cross Society, which are greatly appreciated by the patients concerned.

EXPRESSIONS OF APPRECIATION

In concluding this Report, the Board wishes to express most grateful appreciation to all concerned for the loyal and enthusiastic manner in which they have carried out their duties at the Hospital since the Appointed Day. The strong sense of co-operation which has been manifest in overcoming the initial difficulties in the change over from the voluntary to the State Services, encourages the Board to look forward hopefully to the successful and happy administration of the Hospital under the National Health Service.

On behalf of the Board of Governors,

INMAN,

Chairman.

ACCOUNTS

CHARING CROSS HOSPITAL

INCOME AND EXPENDITURE for the Period 1st January to 4th July, 1948

INCOME		EXPENDITURE	
£	s. d.	£	s. d.
ORDINARY			
I. VOLUNTARY GIFTS—			
1. Subscriptions, Donations, etc.—			
Subscriptions	1,369 19 6		2,892 19 4
Donations	3,725 16 1		1,904 5 6
Box Collections	845 14 10		4,441 6 6
Gifts in Kind	373 9 7		19 14 5
Other Voluntary Gifts	—		1,605 4 3
	6,315 0 0		529 13 7
			11,393 3 7
II. RECEIPTS ON ACCOUNT OF SERVICES RENDERED—			
1. Contributions on Account of Services to Patients—			
<i>(a) From Patients and their Societies—</i>			
Patients	7,953 4 1		2,388 13 3
Contributory Schemes—			2,695 13 4
Hospital Saturday Fund	4,002 19 6		935 7 0
Hospital Saving Association...	2,656 17 6		289 4 2
Other Schemes...	521 3 2		6,822 15 9
Approved Societies	—		1,838 6 8
Other Sources	—		178 9 10
	12,134 4 3		15,148 10 0
<i>(b) From Public Authorities Government Emergency Hospital Scheme: Contribution towards cost of Casualty Service</i>			
	1,629 18 3		16,278 3 11
	1,067 0 0		17,595 7 7
	2,696 18 3		22,977 8 10
	14,831 2 6		1,207 1 11
			58,058 2 3
III. INVESTED PROPERTY—			
2. Fees			
3. Other Receipts—			
The Court of the University of London	9,000 0 0		1,535 14 3
			117 0 2
			537 6 3
			511 13 7
			1,100 6 8
			3,802 0 11
IV. MISCELLANEOUS—			
1. Printing, Stationery, Postages, Telephones, etc.			
2. Advertisements			
3. Insurance of Buildings, Equipment, Stores, etc.			
4. Sundries			
5. Travelling Facilities for Nurses to Hampstead Home			
VI. ADMINISTRATION—			
1. Salaries			
2. Pensions			
3. Printing, Stationery, Postages, Telephones, etc.			
4. Advertisements			
5. Law Charges			
6. Audit Fee			
7. Sundries			
Net Rents from Property acquired for Rebuilding Purposes			
4,112 11			

ORDINARY INCOME ...	39,883	15	1						
Transferred from Legacies Account ...	1,640	13	6						1,470 \$ 9
Balance being Excess of Total Expenditure over Total Income for the period transferred to General Fund Capital Account (see page 14) ...	72,407	3	7						
<p>VII. ESTABLISHMENT— Reserve for Renewals and Repairs to Buildings and Plant ...</p> <p>VIII. FINANCE—</p> <p>1. Interest ... 2,550 11 11</p> <p>2. Appeals ... 461 17 5</p> <p>3. Rent ... 432 14 10</p> <p>4. Rates and Taxes ... 1,375 7 5</p> <p>4,820 11 7</p>									
ORDINARY EXPENDITURE									113,931 12 2

EXTRAORDINARY	
1. Contributions to other Institutions	—
2. Other Extraordinary Expenditure	—
...	...
...	...
TOTAL EXPENDITURE	£113,931 12 2

LEGACIES ACCOUNT

Received during the period (see page 00)	£	s.	d.		£	s.	d.
...	1,640	13	6
					<hr/>		
					£1,640	13	6

THE ALMONER'S BENEVOLENT FUND for the Period 1st January to 4th July, 1948

[illegible]

CHARING CROSS HOSPITAL SPECIAL (Skin Diseases) FUND

INCOME		EXPENDITURE	
1948	1948	1948	
July 4—Dividends received from the Charity Commissioners ...	July 4—Transferred to Research and Amenities Fund— For Apparatus for Out-Patients' Skin Department ...	£	s. d.
...	...	52	2 0
...	52 2 0
		£52	2 0

BALANCE SHEET, 4th July, 1948

LIABILITIES		ASSETS	
£	£	£	£
I. SUNDRY CREDITORS—		I. CASH AT BANK AND IN HAND—	
1. General Fund	23,416	On account of—	
2. Benevolent Fund	420	A. Endowments	—
3. Superannuation Account	1,338	B. Special Funds—	
		Benevolent Fund	639
II. LOANS TO HOSPITAL—	25,174	Wakefield Research Fund	185
Building Fund—		Research and Amenities	3,230
Lloyds Bank Ltd.—Secured against deeds of		Staff Superannuation Account	1,338
the St. Giles' Estate	120,000	C. Buildings and Equipment Fund	—
General Fund—		D. General Fund	—
Overdraft	100,402		5,392
III. CAPITAL ACCOUNTS—	220,402	II. STOCKS OF UNISSUED STORES ON HAND—	
A. Hospital Endowments (per last account)	230,032	As certified by Officers of the Hospital	10,033
Net amount added during the year (see page 14)	2,038		
		III. SUNDRY DEBTORS—	
B. Special Funds—		Benevolent Fund	253
Benevolent Purposes (per last account)	11,206	General Fund	10,337
Net amount deducted during the period (adjustment of capital on conversion of Railway Stock to British Transport 3%)	345		10,590
		IV. INVESTMENTS (as detailed on page 14)—	
Chapel Fund (per last account)	10,861	A. Hospital Endowments	232,070
Wakefield Research Fund (per last account)	2,107	B. Special Funds	12,968
Research and Amenities Fund	185	C. Buildings and Equipment Fund	—
	3,230	D. General Fund	—
			245,038
C. Buildings and Equipment Fund (per last account)	506,954	V. LAND, BUILDINGS AND EQUIPMENT OF THE HOSPITAL—	
Net amount added during the period (see page 14)	5,478	Expenditure from the year 1818 to 31st December, 1947	506,584
		Expenditure during the year to 4th July, 1948—	
Rebuilding Fund (per last account)	119,903	Hospital—	
Net Amount added during the period (see page 14)	28,303	New Equipment	506
		New Works	5,342
			5,848
	148,206	Rebuilding Scheme—	
		Balance per last Account	512,432
			268,206

IV. UNEXPENDED INCOME BALANCES OF
SPECIAL FUND—

Benevolent Fund—

Balance at 1st January, 1948
Less Deficit for the period ended 4th
July, 1948

542

70

472

£1,155,139

VI. GENERAL FUND—

Adverse Balance at 4th July, 1948 (see
page 14)

103,448

£1,155,139

We have audited the above Balance Sheet and the foregoing Income and Expenditure and other Accounts, and having compared them with the books of the Hospital, we find them to be in agreement therewith. We have verified the Investments and Bank Balances.

3 FREDERICK'S PLACE, LONDON, E.C.2.

18th October, 1949.

PRICE, WATERHOUSE & Co.

Chartered Accountants.

CAPITAL ACCOUNT, 4th July, 1948

	£	s.	d.	£	s.	d.
A.—HOSPITAL ENDOWMENTS						
Balance per last Account				230,032	7	5
Add Received to 4th July, 1948—						
Mrs. M. A. Snood, Endowment	500	0	0			
Ashley Courtenay, Endowment	24	12	0			
Capital Adjustments—						
Appreciation on Sale of 2½% Consols, £4,168 6s.	945	16	1			
Conversion of Railway Stocks to British Transport Guaranteed 3% 1978/88	646	5	1			
Transfer of National Savings Certificates from General Fund...	2	5	0			
	2,118	18	2			
Less Capital Adjustment on Redemption of £1900 Buenos Aires Great S. Railway 4% Debenture Stock at par	80	19	10			
				2,037	18	4
				£232,070	5	9
C.—BUILDINGS AND EQUIPMENT FUND—						
Balance per last Account				506,953	14	9
Add Transfer from General Fund, being net amount expended on Hospital New Works and Equipment for the period ended 4th July, 1948	5,848	2	6			
Less Transfer to Research and Amenities Fund—						
Ambulance Fund	£21	10	9			
Radium Fund	348	0	0			
	369	10	9			
				5,478	11	9
				£512,432	6	6
D.—GENERAL FUND—						
Balance per last Account				4,510	4	3
Add Reserves written back—						
Renewals and Repairs	4,416	2	1			
Hampstead Delapidations	1,061	7	7			
	5,477	9	8			
Less—						
Deficit for period to 4th July, 1948, per Income and Expenditure Account	£72,407	3	7			
Transfer to Rebuilding Fund Capital Account to reduce loan to £120,000 allowed by Lloyds Bank against security of St. Giles' Estate	28,302	15	8			
Net amount expended on Lands, Buildings and Equipment to 4th July, 1948	5,848	2	6			
Transfer to Endowment Fund for Research and Amenities	—					
Postage Stamps	£16	3	3			
National Savings Certificates	2	5	0			
	18	8	3			
Amounts written off—						
B.H.A. Nursing Salaries Claim	6,856	16	6			
Tax on Subscription under Deed of Covenant	2	7	0			
	113,435	13	6			
Net Amount deducted to 4th July, 1948				107,958	3	10
DEBIT BALANCE as at 4th July, 1948				103,447	19	7
E.—REBUILDING FUND—						
Balance per last Account				119,902	16	7
Add Transfer from General Fund amount to reduce loan to £120,000, allowed by Lloyds Bank against security of St. Giles' Estate				28,302	15	8
				£148,205	12	3

LEGACIES

FOR THE PERIOD 1ST JANUARY TO 4TH JULY,
1948.

	£	s.	d.
Exors. of the late—			
Adams, W. E.	50	0	0
Ansell, C.	68	8	10
Aves, Mrs. H.	3	1	11
Chaine, Com. F. W.	2	6	0
Chinchen, Mrs. I. M.	4	3	2
Criddle, Mrs. A. S.	98	16	1
Ferrier, F. V. E.	3	14	2
Moss Vernon, I.	378	2	3
Portman, A. F. B.	923	16	10
Soutter, E.	74	17	7
Taylor, J. C. M.	33	6	8

£1,640 13 6

HOSPITAL CONTRIBUTORY SCHEMES
for the Period 1st January to 4th July, 1948

	£	s.	d.		£	s.	d.
Bath, Hospital Service Scheme...	10	0		Printers' Medical Aid & Sana-			
Bishop's Stortford Hospital Cont.				toria Association ...	7	6	
Scheme ...	5	10	0	Railway Executive—			
Bristol Medical Institutions Cont.				Great Western Region ...	14	0	0
Scheme ...	9	10	0	London Midland Region ...	78	16	0
Chesham Cottage Hospital Cont.				London N. Eastern Region ...	4	4	0
Scheme ...	32	10	0	Royal Dockyards Hospital Cont.			
Dartford, Livingstone Hospital				Scheme ...	10	0	
Cont. Scheme ...	10	10	0	Royal Isle of Wight Hospital			
Deal, Victoria Hospital Cont.				Cont. Scheme ...	10	0	
Scheme ...	50	0	0	Stewart & Lloyd's Hospital Fund	33	6	8
East Surrey Hospital Cont.				Surbiton Hospital Guild ...	7	10	0
Scheme ...	47	0	0	Swindon & North Wilts Hospital			
Eastleigh Hospital Cont. Scheme	10	0		Cont. Scheme ...	10	0	
Gas Light Benefit & Hospital				Tate Refinery ...	7	6	
Society ...	29	5	0	Thanet Hospitals Cont. Scheme	2	0	0
Gosport War Memorial Hosp.				Walthamstow, Connaught Hosp.			
Cont. Scheme ...	10	10	0	Cont. Scheme ...	22	10	0
Harrow Hospital Aid Council ...	12	6	0	Walton & Weybridge Hospital			
Herne Bay, Queen Victoria Mem.				Cont. Scheme ...	9	13	0
Hos. Cont. Scheme ...	3	10	0	Watford & Bushey Hospital			
Hertford County Hospital Cont.				Contribution Scheme ...	48	13	0
Scheme ...	8	0	0	Welwyn, Queen Victoria Mem.			
Hospitals Benevolent Fund for				Hosp. Cont. Scheme ...	16	6	
East Sussex ...	1	12	0	Wembley Hospital Contributory			
Leeds General Infirmary Cont.				Scheme ...	32	17	0
Scheme ...	16	0		West Kent General Hospital			
Leeds United Hospitals Cont.				Pay Day Fund ...	9	9	0
Scheme ...	10	0		West Surrey & Aldershot Hosp.			
Lowestoft & North Suffolk Hosp.				League ...	6	0	
Cont. Scheme ...	10	0		West Sussex Associated Hosps.			
Medway Hospital Management				Cont. Scheme ...	4	15	0
Committee ...	4	0	0	Wills, Messrs. W. D. & H. O.,			
Norfolk Hospital Contributors'				Hospital Fund ...	4	0	0
Association ...	14	0	0	Woking Hospital Cont. Scheme	4	3	0
Northampton General Hospital							
Cont. Scheme ...	10	0					
Preston Royal Infirmary Cont.							
Scheme ...	10						

£521 3 2

PUBLIC AUTHORITIES
for the Period 1st January to 4th July, 1948

Bedfordshire County Council,				London County Council T.B. ...	301	0	0
Maintenance In-Patient ...	20	0	0	Luton Borough Council, Out-			
Buckinghamshire C. Council,				Patient Treatment ...	2	3	
Out-Patient Treatment ...	15	0		Middlesex County Council, In-			
Doncaster County Borough, In-				Patient Treatment ...	13	13	0
Patient Maintenance ...	39	12	0	Ministry of Pensions, In and Out-			
Dudley County Borough, In-				Patient Treatment ...	690	13	9
Patient Maintenance ...	50	8	0	Surrey County Council, In and			
Essex County Council, In-Patient				Out-Patient Treatment ...	147	11	10
Maintenance ...	70	0	0	Westminster City Council (Mat-			
Kent County Council, In-Patient				ernity and Child Welfare) ...	222	19	11
Maintenance ...	8	12	6				
Leeds City Council, In-Patient							
Maintenance ...	64	10	0				

£1,629 18 3

RESEARCH AND AMENITIES

as at 31st March, 1949

	ASSETS			HARROW			WEMBLEY			TOTAL		
	CHARING CROSS			£	s.	d.	£	s.	d.	£	s.	d.
INVESTED PROPERTY—												
Trustee Securities	234,121	16	1	7,349	12	1	30,128	10	0
St. Giles' Estate	268,205	12	3				268,205	12	3
Cash at Bank and in Hand	7,007	16	10	664	17	1	731	16	8
Sundry Debtors	664	19	3	256	4	7		921	3 10

510,000 4 5

8,270 14 6

30,860 6 8

£549,131 5 7

it is transferable to the Ministry or is to be retained by the Board of Governors.

GEORGE J. JONES,
Secretary to the Board.

ARTHUR D. AMEY,
Finance Officer to the Board.

ENDOWMENT FUND FOR INCOME AND EXPENDITURE ACCOUNT

				INCOME									TOTAL		
				CHARING CROSS	HARROW	WEMBLEY									
VOLUNTARY GIFTS	2,570	17	7	1,090	15	5	1,148	17	4	4,810	10	4
INVESTED PROPERTY—															
Interest from Investments	5,445	14	2	218	17	8	602	11	0	6,267	2	10
David E. Hughes Fund	4,652	0	5	—			—			4,652	0	5
Net Rents	4,611	13	7	1	0	0	—			4,612	13	7
LEGACIES	6,671	3	5	100	0	0	—			6,771	3	5
				23,951	9	2	1,410	13	1	1,751	8	4	27,113	10	7
														<u>£27,113</u>	<u>10 7</u>

Excess Income over Expenditure brought down £ s. d.
24,885 11 10

£24,885 11 10

RESEARCH AND AMENITIES

as at 31st March, 1949

	EXPENDITURE						
	CHARING CROSS	HARROW	WEMBLEY		TOTAL		
Bank Interest on Loan	1,826 8 6	—	—		1,826 8 6		
Purchase of Television Set for Nurses...	106 17 10	—	—		106 17 10		
Christma Festivities	—	117 15 9	156 8 2		274 3 11		
Miscellaneous	7 3 0	13 5 6	—		20 8 6		
	1,940 9 4	131 1 3	156 8 2		2,227 18 9		
Excess Income over Expenditure carried down	22,010 19 10	1,279 11 10	1,595 0 2		24,885 11 10		
	23,951 9 2	1,410 13 1	1,751 8 4		27,113 10 7		

								£	s.	d.
Transfer to Capital Account: St. Giles' Estate	20,000	0	0
Unexpended Balance carried forward	4,885	11	10

£24,885 11 10

STATISTICS

for the Year to 31st December, 1948, compared with those of the previous year

I. IN-PATIENTS

	Charing Cross		Harrow		Wembley		Group Total	
	1947	1948	1947	1948	1947	1948	1947	1948
1. Beds: (a) Complement at 31st December ...	303	*304	122	122	103	100	528	526
(b) Average Daily Complement during the year ...	303	304 *	122	122	102	102.75	527	528.75
(c) Average Daily Number Closed during the year owing to:—								
(i) Rebuilding or Extension Schemes ...	—	—	—	—	—	2.17	—	2.17
(ii) Repairs, Redecoration, Cleaning or Infection ...	14	23	3.22	1.96	—	0.47	17.22	25.43
(iii) Other Causes (Shortage of Domestic Staff, etc.)	—	—	7.44	—	—	—	7.44	—
(d) Average Daily Number Open during the year ...	289	281	111.34	120.0	102	100.11	502.34	501.15
(e) Average Daily Number Occupied during the year ...	242.6	233	98.44	101.3	81.1	93.16	422.14	427.46
2. Number of In-Patients in the Hospital at beginning of year ...	226	235	83	98	77	71	386	404
3. Number of In-Patients admitted during year ...	4254	4115	2627	3038	2062	2472	8943	9625
4. Number of In-Patients in the Hospital at the end of the year ...	239	241	98	80	71	82	408	363
5. Average Number of Days each Patient was resident (ascertained by dividing the yearly total of daily counts, by the number of Patients treated to a conclusion, i.e., (2) + (3) — (4)) ...	20.88	18.1	13.75	12.13	14.31	14.4	16.31	14.88
6. Number of Patients admitted and discharged during the year who were resident for:—								
(i) only 1 day ...	83	92	316	449	168	195	567	736
(ii) 2 and 3 days ...	71	86	372	790	335	319	778	1195

* Charing Cross Hospital is responsible for a further 144 beds located at the Mount Vernon Hospital.

II. OUT-PATIENTS

	Charing Cross		Harrow		Wembley		Group Total	
	1947	1948	1947	1948	1947	1948	1947	1948
1. Total Number of new Out-Patients ...	29,226	31,974	12,058	14,747	20,616	18,860	61,900	65,581
2. Total Number of Out-Patient Attendances ...	139,832	144,111	62,299	75,294	64,446	62,869	266,577	282,274
(a) Number of Casualty Patients included in No. 1 above ...	21,848	23,572	13,602	18,516	11,731	9,414	47,181	51,502
(b) Number of Maternity Patients included in No. 1 above attended at home ...	—	—	—	—	—	—	—	—
(c) Number of attendances of Maternity Patients included in No. 2 above ...	5,066	5,764	—	—	—	—	5,066	5,764

CHARING CROSS HOSPITAL SCHEDULE OF INVESTMENTS

Name of Stock	Stock held at 31st Dec., 1947			Additions during the Half-Year			Proceeds from			Profit on Sales, Loss*			Stock held at 4th July, 1948		
	Nominal Amount	Value at Cost Price	£ s. d.	Nominal Amount	Value at Cost Price	£ s. d.	£ s. d.	Value at Cost Price	£ s. d.	£ s. d.	£ s. d.	£ s. d.	Nominal Amount	Value at Cost Price	£ s. d.
A. HOSPITAL ENDOWMENTS—															
London County 2½%	73,402	63,500	14 0	21,901	21,701	2 0	—	—	—	—	—	—	73,402	63,500	14 0
Manchester Corporation 3% Redeemable Stock, 1958/63	53,541	52,288	14 6	—	—	—	—	—	—	—	—	—	21,901	21,701	2 0
Funding 2½%, 1952/57	2,000	2,000	0 0	—	—	—	—	—	—	—	—	—	53,541	52,288	14 6
3½% London County, 1952/62 Consol.	3,951	3,877	18 4	239	248	13 8	—	—	—	—	—	—	2,000	2,000	0 0
3½% War Stock	16,066	15,619	14 8	—	—	—	—	—	—	—	—	—	20,256	19,746	6 8
3½% War Stock	4,168	2,259	5 7	—	—	—	—	—	—	—	—	—	—	—	—
Consolidated 2½%	910	1,000	0 0	—	—	—	3,205	1 8	—	945	16 1	—	910	1,000	0 0
Nottingham Corporation 3% Irredeemable	—	—	—	—	—	—	—	—	—	—	—	—	—	—	—
Industrial and General Trust 3½% Deb. 1960/80	3,036	3,024	18 9	—	—	—	—	—	—	—	—	—	3,036	3,024	18 9
Metropolitan Water 3% B Stock	2,301	2,000	0 0	—	—	—	—	—	—	—	—	—	2,301	2,000	0 0
Tenement Dwelling Co., 10 x £10 Shares	100	100	0 0	—	—	—	—	—	—	—	—	—	100	100	0 0
Southern Railway Co. 4% Deb.	630	702	15 0	—	—	—	807	11 7	—	192	8 5*	—	—	—	—
L.M.S. Railway 4% Deb.	937	725	0 0	—	—	—	1,112	2 0	—	409	7 0	—	—	—	—
L.N.E. Railway 4% Deb.	1,000	725	0 0	—	—	—	1,183	15 0	—	458	15 0	—	—	—	—
G.W. Railway 4% Deb.	875	721	17 6	—	—	—	1,121	12 10	—	399	15 4	—	—	—	—
L.M.S. Railway 4% Pref.	1,392	1,618	9 8	—	—	—	1,189	5 10	—	429	3 10*	—	—	—	—
East London Water Works 3% Deb.	927	999	7 8	—	—	—	—	—	—	—	—	—	927	999	7 8
Australia 3½%, 1954/59	2,524	2,493	0 0	—	—	—	—	—	—	—	—	—	2,524	2,493	0 0
Australia 3½% Reg., 1965/69	6,179	6,026	5 0	—	—	—	—	—	—	—	—	—	6,179	6,026	5 0
Buenos Ayres S. Ry. 4% Deb.	1,900	1,980	19 10	—	—	—	—	—	—	—	—	—	—	—	—
New South Wales 1930/50 3½%	1,026	1,000	0 0	—	—	—	—	—	—	—	—	—	—	—	—
Gt. Indian Pen. Ry. Co. B Annuity	33	684	8 10	—	—	—	—	—	—	—	—	—	—	—	—
Madras Ry. B Annuity	46	996	13 0	—	—	—	—	—	—	—	—	—	—	—	—
East Indian Ry. Co. B Annuity	16	500	0 0	—	—	—	—	—	—	—	—	—	—	—	—
3% Savings Bonds, 1955/65	6,036	6,037	1 8	—	—	—	—	—	—	—	—	—	—	—	—
3% Funding Stocks, 1959/69	4,051	4,100	11 3	—	—	—	—	—	—	—	—	—	—	—	—
3% Savings Bonds, 1960/70	11,274	11,276	2 9	—	—	—	—	—	—	—	—	—	—	—	—
3½% Commonwealth of Australia, 1956/61	1,030	1,000	15 8	—	—	—	—	—	—	—	—	—	—	—	—
3½% Commonwealth of Australia, 1964/74	5,172	5,014	10 2	—	—	—	—	—	—	—	—	—	—	—	—
3½% Commonwealth of Australia, 1961/66	4,977	5,014	10 2	—	—	—	—	—	—	—	—	—	—	—	—
3% Savings Bonds, 1965/75	1,000	1,000	0 0	—	—	—	—	—	—	—	—	—	—	—	—
2½% Savings Bonds, 1964/67	7,055	7,395	9 2	—	—	—	—	—	—	—	—	—	—	—	—
2½% Funding Stock, 1956/61	—	—	—	—	—	—	—	—	—	—	—	—	—	—	—
British Transport 3%, G., 1967/72	—	—	—	—	—	—	—	—	—	—	—	—	—	—	—
British Transport 3%, G., 1978/88	—	—	—	—	—	—	—	—	—	—	—	—	—	—	—
2½% Defence Bonds	1,000	1,000	0 0	—	—	—	—	—	—	—	—	—	—	—	—
National Savings Certificates	—	—	—	—	—	—	—	—	—	—	—	—	—	—	—
Antifire (Sales), 1 fully paid Cum. Pref. Share, £1 each	1	—	—	—	—	—	—	—	—	—	—	—	1	—	—
6,000 fully paid Ord. Shares, 1s. each	300	—	—	—	—	—	—	—	—	—	—	—	300	—	—
27 Shares, 1s. each, Metropolitan Industries	1	—	—	—	—	—	—	—	—	—	—	—	1	—	—
		£228,660	5 2				£12,418	8 2	£10,519	8 11	£1,511	1 4		£232,070	5 9

B. SPECIAL FUNDS

Name of Stock									
CHAPEL FUND—									
Funding 2½%	2,161	1	7	2,107	1	9	...
BENEVOLENT FUND—									
War Loan, 3½%	1,454	4	1	1,384	16	9	...
Conversion Loan, 1961, 3½%	1,223	5	8	850	18	3	...
Funding 2½%	1,804	17	3	1,759	15	6	...
L. & N.E. Rly. 1st Pref. 4%	693	0	0	749	7	4	...
Canadian Pacific Rly. 4% Deb.	912	0	0	999	5	1	...
Madras Rly. Co. B Annuity	6	14	9	p.a.	155	12	0
3% Savings Bonds, 1960/70	1,020	19	0	1,020	19	0	...
3½% Australia Reg., 1961/66	615	3	9	619	16	1	...
3½% Australia Reg., 1964/74	639	7	9	619	16	1	...
2½% Savings Bonds, 1964/67	2,911	6	6	3,045	19	11	...
British Transport 3%, 1978/88
	403	13	5

BENEVOLENT FUND

BALANCE SHEET as at 31st March, 1949

LIABILITIES		£	s.	d.	ASSETS		£	s.	d.
CAPITAL ACCOUNT—									
Transferred from dissolved authorities, 4th July, 1948 (Section 60 of the Act)	Investments
TRANSFERS—					Cash at Bank and in Hand
1. Balance of revenue from dissolved authorities, 4th July, 1948	10,860 12 1			10,860 12 1
2. Balance of revenue for the nine months ended 31st April, 1949	471 17 2		
		344 5 9			816 2 11
				<u>£11,676 15 0</u>					<u>£11,676 15 0</u>

INCOME AND EXPENDITURE ACCOUNT, Nine Months to 31st March, 1949

INCOME		£	s.	d.	EXPENDITURE		£	s.	d.
Instruments	21	4	5	Instruments	27	8	4
Convalescence	118	0	5	Convalescence	159	15	8
Interest on Investments	232	4	1	Diversional Occupation	13	3	2
Diversional Occupation	12	16	6	Miscellaneous	158	17	10
Hospital Sunday Fund	160	0	0					
Miscellaneous	159	5	4					
					Balance transferred to Capital Account	359	5	0
							344	5	9
							<u>£703 10 9</u>		

CHARING CROSS HOSPITAL

LONDON, W.C.2.

Daily Attendances of Medical and Surgical Staff for Out-patients

APPOINTMENT SYSTEM IS NOW IN OPERATION FOR MEDICAL, SURGICAL, ORTHOPAEDIC, GYNAECOLOGICAL, EYES AND CHILDREN'S DEPARTMENTS.

Tel. : TEMple Bar 7788

PHYSICIANS

SURGEONS

Monday

Dr. Doyne Bell (Children)	9-30 a.m.	Mr. Southern (Dental)	9-30 a.m.
Dr. Shirley Smith ...	1-00 p.m.	Mr. Lake ...	1-30 p.m.
Dr. Wigley (Skin) ...	1-30 p.m.		

Tuesday

Mr. Milner ...	9-30 a.m.	Mr. Brown and Mr. Sharp (Ear, Nose and Throat)	9-30 a.m.
Dr. Elliott ...	9-30 a.m.		
Dr. Hickling ...	1-00 p.m.	Mr. Crook ...	1-30 p.m.

Wednesday

Dr. Petrie (Shock Therapy)	10-00 a.m.	Mr. Everard Williams (Gynaecological)	9-30 a.m.
Dr. Dunlop ...	1-30 p.m.	Mr. Fitzsimons ...	9-30 a.m.
Dr. Fane Tierney (Radio-logical)	2-00 p.m.	Mr. Broster ...	1-30 p.m.

Thursday

Dr. Wigley (Skin) ...	9-30 a.m.	Mr. Trevor (Orthopaedic)	9-30 a.m.
Dr. Petrie (Psychological Medicine) ...	10-00 a.m.	Mr. Marshall ...	2-00 p.m.
Dr. Warner ...	1-30 p.m.	Mr. Southern (Dental)	9-30 a.m.
		Mr. Gray (Gynae.) ...	9-30 a.m.

Friday

Dr. Doyne Bell (Children)	9-15 a.m.	Mr. Sharp (Ear, Nose and Throat)	9-30 a.m.
Dr. Plummer ...	1-30 p.m.		
Dr. Moore Patterson (Radio-Therapy) ...	2-00 p.m.	Mr. Arthure (Ante-Natal Gynaecological)	9-30 a.m.
Dr. Plummer (Chest)...	4-30 p.m.	Mr. MacLeod ...	1-30 p.m.

Saturday

Mr. Arthure (Post-Natal) 9-30 a.m.

FRACTURE CLINIC, daily at 9 a.m.

PHYSIO-THERAPY DEPT., daily (excepting Saturday), 9 a.m.-5 p.m.

ELECTROCARDIOGRAPHIC DEPARTMENT, daily (excepting Sat.), 9 a.m.-5 p.m.

HARROW HOSPITAL

House Committee

Chairman: H. J. WASBROUGH, Esq.

ERNEST AMOR, Esq.
NORMAN AXFORD, Esq.
T. BANKS, Esq.
MRS. F. BROWN
F. H. HALE, Esq.
SIR ALFRED HURST, K.B.E., C.B.
MISS E. S. LAING
J. C. LEIGH, Esq.

MISS LUCY PARKER, M.D.,
M.R.C.P.
MISS D. M. ROBINSON
A. W. SIDDONS, Esq.
G. F. TELFER, Esq., J.P.
H. E. THORN, Esq., M.B., B.S.,
L.R.C.P., M.R.C.S.
L. S. WOODRUFF, Esq.

MEDICAL STAFF

Physicians

R. A. HICKLING, B.A., M.D., F.R.C.P.
RAYMOND GREENE, M.A., D.M., B.Ch., M.R.C.P.

Neurologist

C. M. HINDS HOWELL, M.A., M.D., B.Ch., F.R.C.P.

Paediatrician

A. DOYNE C. BELL, M.A., D.M., F.R.C.P.

Assistant Paediatrician

SYBIL ALDRIDGE, M.B., B.S., D.C.H.

Dermatologist

I. MUENDE, B.Sc., M.B., B.S., M.R.C.P.

Radiologist

F. G. NICHOLAS, M.B., B.S., D.M.R.E.

Surgeons

JULIAN TAYLOR, O.B.E., M.S., M.B., F.R.C.S.
N. P. JEWELL, O.B.E., M.C., B.A., M.D., B.Ch., F.R.C.S.I., I.M., D.P.H.
C. W. FLEMMING, O.B.E.(Mil.), D.M., M.Ch., F.R.C.S.
D. R. DAVIES, M.B., B.S., F.R.C.S.

Surgeon—Varicose Vein Clinic

R. ROWDEN FOOTE, M.R.C.S., L.R.C.P., D.R.C.O.G.

General Practitioner Surgeon

H. E. THORN, M.B., B.S.

Aurist and Laryngologists

NORMAN A. JORY, B.Sc., F.R.C.S.
D. WALKER ASHCROFT, M.B., Ch.B., D.L.O., F.R.C.S.

Honorary Orthopaedic Surgeon

B. WHITCHURCH HOWELL, M.B., B.S., F.R.C.S.

Orthopaedic Surgeon

K. I. NISSEN, B.Sc., M.D., Ch.B., F.R.C.S.

Gynaecologists

W. McK. H. McCULLAGH, D.S.O., M.C., B.A., M.B., B.Ch., B.A.O., F.R.C.S.,
F.R.C.O.G.
ARNOLD L. WALKER, M.A., M.B., B.Ch., F.R.C.S., F.R.C.O.G.

Honorary Ophthalmologist

C. DEE SHAPLAND, M.B., B.S., M.R.C.P., F.R.C.S.

Honorary Physician in Hygiene

E. W. CARYL THOMAS, B.Sc., M.D., B.S., D.P.H.

Honorary Tuberculosis Officer

H. J. TRENCHARD, M.R.C.P., M.B., Ch.B., D.M.R.D.

Anaesthetist

ELEANOR H. RUSSELL, M.D., B.S., D.A.

General Practitioner Anaesthetists

K. M. BELL, M.B., Ch.B.

S. HALPERIN, M.R.C.S., L.R.C.P.

KATHLEEN McARTHUR, M.A., M.R.C.S., L.R.C.P.

R. M. McKEOWN, M.B., B.Ch., B.A.O.

G. J. V. NELSON, M.B., B.S.

JOHN L. PARKER, M.B., Ch.B.

J. E. S. STEPHENS, M.R.C.S., L.R.C.P.

O. R. TISDALL, M.A., D.M., B.Ch.

Pathologist

J. UNGAR, M.R.C.S., L.R.C.P., M.D.(Prague)

Medical Director in Charge of Physical Treatment Centre

G. G. FARRINGTON, M.B., B.S., F.R.C.S.(Edin.).

Duty Medical Officers

K. M. BELL, M.B., Ch.B.

JOHN L. PARKER, M.B., Ch.B.

MUNGO PARK, M.B., Ch.B.

J. E. S. STEPHENS, M.R.C.S., L.R.C.P.

Matron

MISS EDITH MARTIN, S.R.N., S.C.M.

Physiotherapist in Charge at Physical Treatment Centre

MISS M. W. LOCK, M.C.S.P., T.M.M.G.

Secretary

SYDNEY GARBUTT, F.H.A.

HARROW HOSPITAL

INCOME AND EXPENDITURE ACCOUNT for the Period 1st January to 4th July, 1948

ORDINARY		INCOME		EXPENDITURE	
	£		£		£
I. VOLUNTARY GIFTS—					
1. Subscriptions, Donations, etc.—					
Annual Subscriptions	382				1,427
Subscriptions for Named Beds	329				1,159
Donations	334		711		1,129
Churches	26				437
Hospitals Week Collection	—				2
M.C.C. re Cinema Entertainments	483				—
Other Collections and Events	163				145
H.A.C. Donation (P.W.C.S.)	—				—
Box Collections : H.A.C.	—		1,006		—
" Other	48		48		—
Entertainments	—				—
Gifts in Kind	—		1,498		—
2. Central Funds—					
King Edward's Hospital Fund	—				795
Hospital Sunday Fund	—				1,128
Alexandra Day	—				139
					120
					2,081
					283
					73
					4,619
II. RECEIPTS ON ACCOUNT OF SERVICES RENDERED—					
1. Contributions on Account of Services to Patients—					
(a) From Patients and their Societies					
Patients	6,745				5,879
Contributory Schemes—					9,962
Hosp. Saturday Fund...					8,355
Hosp. Saving Assn. ...					—
Hosp. Aid Council ...					292
L.M.S. Rly. Hosp. Fund					72
Other Schemes...					202
					265
					48
					879
III. DOMESTIC—					
1. Renewal and Repair of Furniture, Bedding, Crockery, etc.			1,006		795
2. Laundry			48		1,128
3. Cleaning and Chandlery					139
4. Water					120
5. Fuel and Lighting			1,498		2,081
6. Uniforms					283
7. Sundries					73
					4,619
IV. SALARIES AND WAGES (MAINTENANCE)—					
1. Medical					5,879
2. Nursing					9,962
3. Other Officers and Employees					8,355
4. Pensions					—
					24,196
V. MISCELLANEOUS—					
1. Printing, Stationery, Postages, Telephones, etc.					292
2. Advertisements					72
3. Insurance of Buildings, Equipment, Stores, etc.					202
4. Garden					265
5. Sundries					48
					879

[illegible]

HARROW HOSPITAL

BALANCE SHEET at 4th July, 1948

LIABILITIES		£	£	ASSETS		£	£
1. SUNDRY CREDITORS—				1 CASH IN HAND—			
(a) Children's Ward Fund	...	12		On Account of Endowments—			
(b) Land, Buildings and Equipment Fund	...	412		Children's Ward Fund	...		64
(c) General Fund	...	4,452		2. STOCK OF UNISSUED STORES IN HAND	...		3,490
			4,876	3. SUNDRY DEBTORS—			
2. LOANS TO HOSPITAL—				(a) Land Buildings and Equipment Fund	...		
General Fund Bank Overdraft	...		6,261	(b) General Fund	...		6,431
3. CAPITAL ACCOUNTS—				4. INVESTMENTS—			
(a) Hospital Endowments—				(a) Hospital Endowments—			
Brought forward from 1947—				Children's Ward Fund—			
Children's Ward Fund	...	2,558		£254 2½% Consols (at cost)	...	252	
William Martin Cot Fund	...	1,939		£742 3% Savings Bonds, 1965/75 (at cost)	...	742	
Edward Joseph Embleton Bed Fund	...	1,000		£1,400 3% Defence Bonds, 4th issue (at cost)	...	1,400	
Blessley Bed Fund	...	1,000		£25 3% Defence Bonds, 3rd issue (at cost)	...	25	
Iwa Bliss Bed Fund	...	900		£78 British Transport 3% Guaranteed Stock, 1978/88 (at cost)	...	75	
		7,397		William Martin Cot Fund—			
Received during 1948—				£1,417 3% Savings Bonds, 1965/75 (at cost)	...	1,417	
William Martin Cot Fund—transferred from	...	17		£498 3½% War Stock (at cost)	...	516	
General Fund	...		7,414	£23 2½% Consols (at cost)	...	23	
(b) Land, Buildings and Equipment Funds—				Iwa Bliss Bed Fund—			
Brought forward from 1947	...	95,078		£900 3% Defence Bonds (at cost)	...	900	
Transferred from General Fund	...	11,931		Edward Joseph Embleton Bed Fund—			
			107,009	£1,000 3% Savings Bonds, 1960/70 (at cost)	...	1,000	
4. GENERAL FUND—				Blessley Bed Fund—			
Excess of Income over Expenditure for the period 1st Jan.,				£1,000 3% Defence Bonds, P.O., 4th issue (at cost)	...	1,000	
to 4th July, 1948	...	12,468		5. LAND, BUILDINGS AND EQUIPMENT OF THE HOSPITAL			7,350
Less Debit Balance brought forward	...	£520		Expenditure from 1906 to 31st December, 1947	...	106,593	
Transfers to William Martin Cot Fund	...	17		Expenditure for the period to 4th July, 1948	...	1,632	
Transfer to Land, Buildings and Equipment Funds	...	11,931					108,225
		12,468					
			£125,560				£125,560

AUDITORS' CERTIFICATE

I have audited the above Balance Sheet dated the 4th July, 1948, together with the Income and Expenditure Account for the period to 4th July, 1948.

I certify that, to the best of my knowledge and belief, the requirements of the Revised Uniform System of Hospital Accounts, as modified by the instructions of King Edward's Hospital Fund relating to the treatment of Free Legacies dated December, 1940, have been followed, and that such Balance Sheet is properly drawn up so as to exhibit a true and correct view of the affairs of the Hospital, according to the best of my information and the explanations given to me, and as shown by the books of the Hospital.

19 HENRIETTA STREET, STRAND,
LONDON, W.C.2.
25th July, 1949,

N. HALL KEEN,
Chartered Accountant,

HARROW HOSPITAL INVESTMENTS

HOSPITAL ENDOWMENTS

	£	s.	d.
CHILDREN'S WARD FUND—			
£254 8s. 7d. 2½% Consols (at cost)	251	17	9
£741 18s. 3d. 3% Savings Bonds, 1965/75 (at cost)	741	18	3
£1,400 3% Defence Bonds, 4th issue (at cost)	1,400	0	0
£25 3% Defence Bonds, 3rd issue (at cost)	25	0	0
£78 4s. 8d. British Transport 3% Guaranteed Stock, 1978/88	75	0	0
WILLIAM MARTIN COT FUND—			
£1,417 6s. 8d. 3% Savings Bonds, 1965/75 (at cost)	1,417	6	8
£450 3½% War Stock (at cost)	515	15	0
47 11s. 3½% War Stock (at cost)	22	14	5
£13 2½% Consols (at cost)	900	0	0
IVA BLISS BED FUND—			
£900 3% Defence Bonds (at cost)	1,000	0	0
EDWARD JOSEPH EMBLETON BED FUND—			
£1,000 3% Savings Bonds, 1960/70 (at cost)	1,000	0	0
BLESLEY BED FUND—			
£1,000 3% Defence Bonds, P.O., 4th issue	1,000	0	0
	£7,349	12	1

HARROW HOSPITAL LEGACIES ACCOUNT

Free Legacies received during the period ended 4th July, 1948—
Exors. of the late Mr. T. R. Stevens

Mr. W. J. Scholl	£
Mr. Chas. Hawkins	110
Mr. J. Wright Cooper	100
Mr. J. F. Moore	377
Dr. S. H. Lambert	250
	100
	70
	£1,007

Transferred to Income and Expenditure Account

£
1,007

£1,007

WEMBLEY HOSPITAL

House Committee

Chairman : V. F. DEEKS, Esq.

MRS. C. BRIGHTMAN
D. H. CAMPBELL, Esq., M.B., Ch.B.
E. B. COLLISON, Esq.
H. E. COMBEN, Esq., B.Sc.,
A.M.I.C.E.
R. TUDOR EDWARDS, Esq.,
M.R.C.S., D.P.H.
MRS. W. EVERSLED

COUNCILLOR A. C. GARRETT
MRS. B. JONES
ALDERMAN C. J. LIFE
F. A. MASKELL, Esq.
MISS E. S. LAING
E. R. REES, Esq., M.D., M.R.C.O.G.
MARSDEN RYLE, Esq.

OFFICERS OF THE HOSPITAL

Physicians

NORMAN HILL, Esq., M.D., B.S.(Lond.), M.R.C.P.(Lond.)
J. S. RICHARDSON, Esq., M.V.O., M.A., M.D., F.R.C.P.

Physician and Cardiologist

REGINALD HILTON, Esq., M.A., M.D.(Cantab), F.R.C.P.

Surgeons

E. K. MARTIN, Esq., M.S.(Lond.), F.R.C.S.
G. F. GRANT BATCHELOR, Esq., M.D., M.Ch.(St. And.), F.R.C.S.
A. J. COKKINIS, Esq., M.B., B.S.(Lond.), F.R.C.S.

Assistant Surgeon

J. SHIRLEY CALLCUTT, Esq., M.B. Ch.B.

Gynæcologists

J. W. RAIT BELL, Esq., L.R.C.P.I. & L.M., L.R.C.S.I. & L.M.
GERTRUDE DEARNLEY, M.D., B.S.(Lond.), F.R.C.O.G.

Assistant Gynæcologist

E. R. REES, Esq., M.D., M.R.C.O.G.

Neurologist

E. A. BLAKE-PRITCHARD, Esq., M.D.(Cantab), F.R.C.P.

Ophthalmic Surgeon

ARTHUR LISTER, Esq., M.B., B.Ch., F.R.C.S.

Surgeons for Diseases of Ear, Nose and Throat

J. F. SIMPSON, Esq., F.R.C.S.
MAXWELL ELLIS, Esq., M.D., M.S.(Lond.), F.R.C.S.
E. R. GARNETT PASSE, Esq., F.R.C.S., D.L.O.

Physician for Diseases of the Skin

A. C. ROXBURGH, Esq., M.A., M.D., B.Ch.(Cantab), F.R.C.P.

Department of Physical Medicine

M. C. WOODHOUSE, Esq., M.B., Ch.B., D.P.M.
R. M. MASON, Esq., M.A., B.M., B.Ch., M.R.C.P.

Consulting Anæsthetist (Emeritus)

H. N. WEBBER, Esq., B.Ch.(Cantab), D.A.

Anæsthetists

J. KENNEDY HARPER, Esq., B.A., M.B., B.Ch., B.A.O., D.A.
ELEANOR H. RUSSELL, M.D., B.S., D.A.

Pathologist

JOHN N. CUMINGS, Esq., M.D.(Lond.), M.R.C.P.

Radiologist

R. O'DONOGHUE, Esq.,
M.A.(Dub.), M.B., B.S.(Lond.), M.R.C.P., D.M.R.E.(Cantab), D.S.O.
D. W. SETH-SMITH, Esq., M.R.C.S., L.R.C.P., D.M.R.

Dental Surgeons

CHARLES S. LAFFERTY, Esq., L.D.S., R.C.S.(I)
STANLEY STEVENS, Esq., L.D.S., R.C.S.(Eng.)

Matron

MISS M. G. FORBES

Secretary

P. E. WINDO Esq., F.H.A.

34

We have compared the above Balance Sheet with the books, vouchers and Securities of the Hospital, and find the same correct and in accordance therewith. We certify that to the best of our knowledge and belief the regulations of the "Revised Uniform System" has been modified by the instructions of King Edward's Hospital Fund relating to the treatment of Free Legacies, dated December, 1940, and to the treatment of Reserve for Renewals and Repairs dated 23rd March, 1943, have been followed.

DUNDEE HOUSE, 15 EASTCHEAP,
LONDON, E.C.3.
8th June 1949.

SUNDERLAND, MOUNTSTEPHEN & CO.
(Chartered Accountants),
Honorary Auditors.

DUNDEE HOUSE, 15 EASTCHEAP,
LONDON, E.C.3.
8th June, 1949.

283

£168,782

E. E. WINDO, Secretary.

WEMBLEY HOSPITAL INVESTMENTS

HOSPITAL ENDOWMENTS

	£	s	d.
3½% War Stock (Bequest of J. W. Comben)	1,000	0	0
" " (Bequest of Jessie Alty Walker)	1,000	0	0
" " (Sir John Howard Trust)	227	7	0
" " (Duke and Duchess of Gloucester Endowment Fund)	500	0	0
" " (Anne Copland Fund)	1,027	10	0
" " (Mitchell Fund)	200	0	0
" " (George Titus Barham Bequest)	20,000	0	0
British Transport 3% Guaranteed Stock, 1978/88 (Anne Copland Fund)	2,311	13	0
Western Australia 4% Ins. Stock, 1942/62 (Anne Copland Fund)	240	0	0
3½% Conversion Stock (Bonus Fund)	10	0	0
3% Savings Bonds, 1955/65 (John Cory Fund)	500	0	0
3% Savings Bonds, 1960/70 (Sir John Howard Trust)	1,000	0	0
" " (Barham-Mitchell Fund)	100	0	0
3% Savings Bonds, 1965/75 (Ward, Bed and Cot Funds)	200	0	0
" " (Endowment Fund)	250	0	0
2½% Defence Bonds (Endowment Fund)	1,010	0	0
2½% Savings Bonds, 1964/67 (Endowment Fund)	552	0	0
	<u>£30,128</u>	<u>10</u>	<u>0</u>

