

# **Report of the Clayton Hospital and Wakefield General Dispensary : 1928.**

## **Contributors**

Clayton Hospital and Wakefield General Dispensary.

## **Publication/Creation**

Wakefield : [publisher not identified], 1928

## **Persistent URL**

<https://wellcomecollection.org/works/ju9q2xf7>

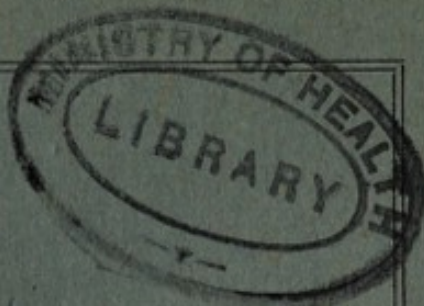
## **License and attribution**

This work has been identified as being free of known restrictions under copyright law, including all related and neighbouring rights and is being made available under the Creative Commons, Public Domain Mark.

You can copy, modify, distribute and perform the work, even for commercial purposes, without asking permission.



Wellcome Collection  
183 Euston Road  
London NW1 2BE UK  
T +44 (0)20 7611 8722  
E [library@wellcomecollection.org](mailto:library@wellcomecollection.org)  
<https://wellcomecollection.org>



THE  
ONE HUNDRED AND FORTY-FIRST REPORT  
OF THE  
**CLAYTON HOSPITAL**  
AND  
WAKEFIELD  
GENERAL DISPENSARY

FOR THE YEAR ENDED 31st DECEMBER, 1928,

ADOPTED AT THE

ANNUAL MEETING, held the 30th January, 1929.

---

*The Clayton Hospital was founded in 1854 by  
Thomas Clayton and Incorporated with the  
Wakefield General Dispensary,  
Established 1787.*

Wakefield:

PRINTED BY W. H. MILNES LD., WOOD STREET



## Form of Bequeathing a Legacy.

—o—

I give and bequeath to the Treasurer for the time being of the Clayton Hospital and Wakefield General Dispensary the sum of \_\_\_\_\_, free from legacy duty,\* for the general purposes of the said Institution; to be paid within \_\_\_\_\_ calendar months next after my death, exclusively out of such part of my real and personal estate as by the laws in force at my death may be bequeathed for charitable purposes, and in priority to all other payments thereout; but to be subject to abate proportionately with other legacies in case my general personal estate shall be insufficient for payment of them in all in full. And I declare that the receipt of the Treasurer for the time being of the said Institution shall be an effectual discharge for the said legacy.

\* If so intended.

The endowment of a Bed or Cot affords a very excellent means of perpetuating the memory of Relatives or Friends.

**£1000 endows a Bed in perpetuity.**

**£500 endows a Cot in perpetuity.**

Subscriptions and Donations will be thankfully received by the Hon. Treasurer, Mr. Nigel Leatham, Barclays Bank Ltd. Wakefield, or by the Superintendent and Secretary Mr. Henry Maw, Clayton Hospital, Wakefield.



22501899933

W. L. G. G. G.
LIBRARY
Ann Rep
WX28
.BC5
W14C62
1928

Clayton Hospital  
and  
Wakefield General Dispensary

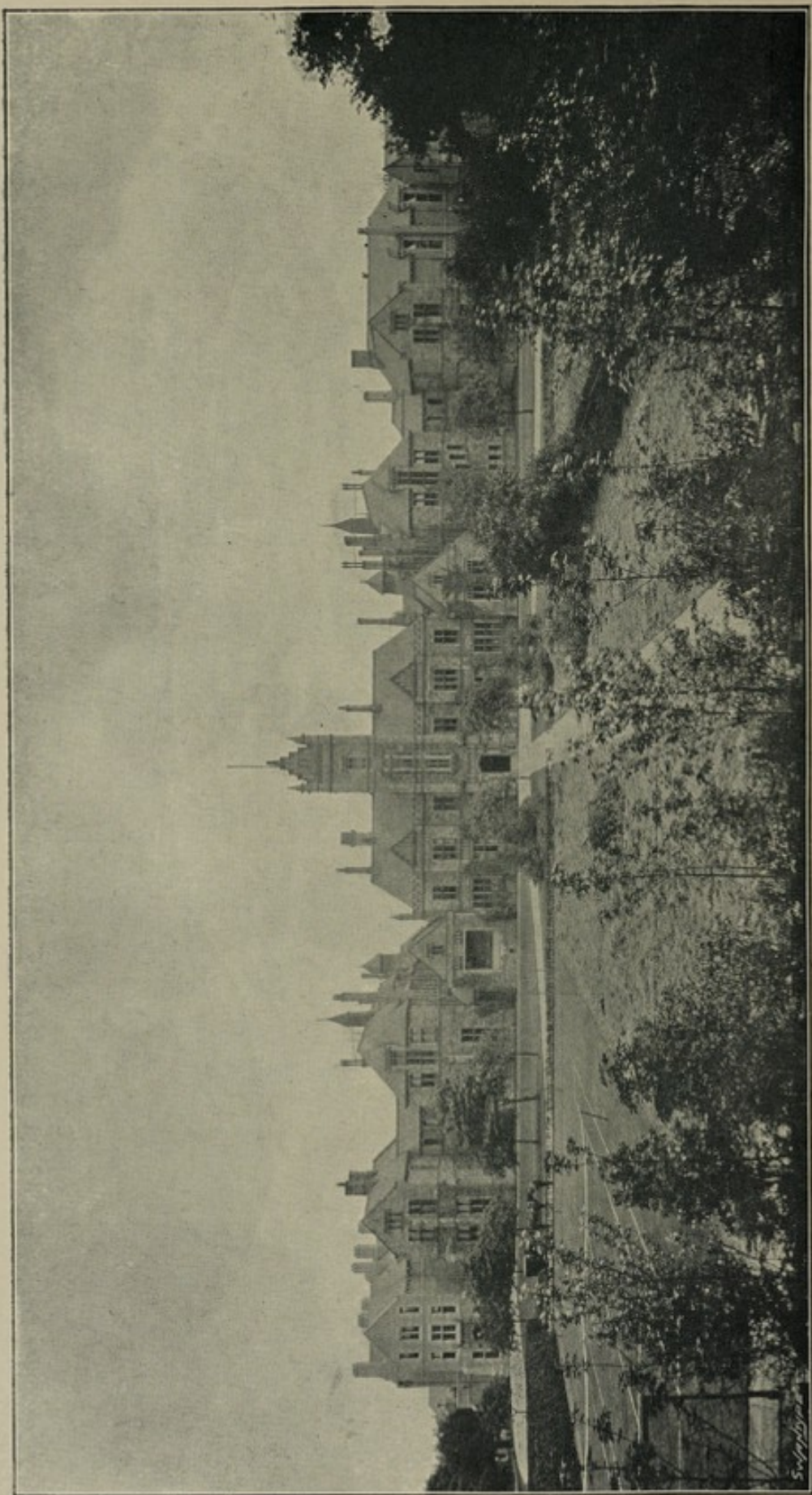
---

NOTICE

---

SUBSCRIBERS are respectfully requested to use every effort to prevent an abuse of the Charity, and to make careful enquiry into the condition of those who apply to them for Recommendations.





THE  
ONE HUNDRED AND FORTY-FIRST REPORT  
OF THE  
**CLAYTON HOSPITAL**  
AND  
**WAKEFIELD**  
**GENERAL DISPENSARY**

FOR THE YEAR ENDED 31st DECEMBER, 1928,

ADOPTED AT THE  
ANNUAL MEETING, held the 30th January, 1929.



*The Clayton Hospital was founded in 1854 by  
Thomas Clayton and Incorporated with the  
Wakefield General Dispensary,  
Established 1787.*

Wakefield:  
PRINTED BY W. H. MILNES LD., WOOD STREET



# Officers of the Institution, 1929.

## President.

WILLIAM BRIGGS, J.P.

## Trustees.

VISCOUNT ALLENDALE  
BASIL S. BRIGGS  
WILLIAM BRIGGS, J.P.  
E. A. FOWLIE, F.A.I.  
J. H. GREAVES  
A. A. HALEY

JOHN L. LEE, J.P.  
E. C. STONEHOUSE  
T. P. TEW, J.P.  
J. W. THOMSON  
J. W. WALKER, J.P., O.B.E.

## Vice-Presidents.

THE LORD BISHOP OF WAKEFIELD  
SIR E. BROTHERTON, BART.  
J. E. CHARLESWORTH  
GEO. W. L. FERNANDES  
H. H. HOLDSWORTH  
J. ILLINGWORTH

J. L. LEE, J.P.  
THE MAYOR OF WAKEFIELD  
EDWIN LEIGH  
SIR EDMUND STONEHOUSE  
J. W. WALKER, J.P., O.B.E.

## Honorary Consulting Staff.

J. W. WALKER, O.B.E., M.R.C.S., L.R.C.P.,  
THOMAS SMITH, M.B., C.M.

## Honorary Physicians.

THOMAS WALKER, M.C., M.B., B.Ch.,  
B.A.O.

## Honorary Surgeons.

J. W. THOMSON, M.A., M.B., C.M.  
G. W. THOMAS, M.B., B.S., F.R.C.S.  
T. E. LISTER, M.B., Ch.B.

## Honorary Assistant Surgeons.

J. B. LYLE, M.B., B.Ch., B.A.O.  
S. SOWRAY GREAVES, D.S.O., M.C.,  
M.R.C.S., L.R.C.P.

WESTAL GEYER, M.B., Ch.B.

## Honorary Ophthalmic and Aural Surgeon.

LIONEL T. WELLS, M.R.C.S., L.R.C.P.

## Assistant Ophthalmic Surgeon.

J. SMYTH, M.B., Ch.B.

## Honorary Pathologist.

P. L. SUTHERLAND, M.B., Ch.B., D.Sc.

## Honorary Radiologist

J. A. THOMSON, B.Sc., M.B., Ch.B.

## Honorary Orthopaedic Surgeon

J. W. THOMSON, M.A., M.B., C.M.

## Assistant Orthopaedic Surgeon

D. H. RUSSELL, M.D., F.R.C.S.(E), M.C.

## Assistant Physician in charge of Ultra Violet Light Department.

M. PURDIE, M.B., Ch.B.

## Physician in charge of Venereal Diseases Department.

A. W. FREW, L.R.C.P., L.R.C.S., D.P.H.

## Honorary Anaesthetists

D. H. RUSSELL, M.D., F.R.C.S. (E)

A. M. DUFF, M.B., Ch.B.

## Honorary Dental Surgeons.

J. P. COCKER, L.D.S. (Eng.)

W. S. HARRIS, L.D.S. (Eng.)

## House Surgeons.

J. M. PATTERSON, M.B., Ch.B.

A. R. OLIVER, M.B., Ch.B.

## Matron.

MISS AGNES CAMERON

## Dispenser.

MISS A. E. LASBREY

## Board of Governors.

THE TRUSTEES, THE PRESIDENT AND VICE-PRESIDENTS,  
THE HONORARY MEDICAL AND SURGICAL STAFF, AND

GEO. E. APPELVARD  
A. W. ARCHER  
H. F. ATTER  
MRS. BATES  
† J. BREAKWELL  
\* T. E. CATTERALL  
D. H. CURRER BRIGGS  
\* EVAN DAVIES  
† E. N. ELLIS  
C. W. FENNELL  
J. H. FISHER  
\* F. W. GRAHAM  
Rev. H. L. GWYER  
H. J. HASLEGRAVE  
G. B. HILLMAN

† F. W. LOFTHOUSE  
MISS MACKIE  
EDWARD MILNES  
A. PICKLES  
\* S. PICKLES  
REV. FATHER RATCLIFFE  
R. REID  
† G. H. SADLER  
A. SMALLWOOD  
† G. F. STOCKDALE  
MISS F. E. PERCY TEW  
A. H. WEBSTER  
D. WHITEHEAD  
REV. F. WINTERBURN

## \* Corporation Representatives.

Honorary Treasurer.  
NIGEL LEATHAM

## † Workpeople's Representatives.

Auditors.  
J. W. CLOSE, HIRST & CO.,

Superintendent and Secretary: HENRY MAW.

Telephone No. 2239, Wakefield.

## Committees, 1929.

### House Committee.

*Chairman*—A. H. WEBSTER

*Vice-Chairman*—E. A. FOWLIE

GEO. E. APPLEYARD  
F. W. GRAHAM  
G. B. HILLMAN  
F. W. LOFTHOUSE

Miss MACKIE  
EDWARD MILNES  
G. F. STOCKDALE  
H. J. HASLEGRAVE

### Finance Committee.

*Chairman*—H. H. HOLDSWORTH

*Vice-Chairman*—J. L. LEE

H. F. ATTER  
D. H. CURRER BRIGGS  
E. A. FOWLIE  
J. H. GREAVES  
A. A. HALEY  
F. W. LOFTHOUSE

A. PICKLES  
G. H. SADLER  
A. SMALLWOOD  
SIR E. STONEHOUSE  
J. W. THOMSON  
A. H. WEBSTER

### General Works Committee.

*Chairman*—J. H. GREAVES

*Vice-Chairman*—J. W. THOMSON

H. F. ATTER  
BASIL S. BRIGGS  
E. DAVIES  
C. W. FENNELL  
A. A. HALEY  
H. J. HASLEGRAVE  
G. B. HILLMAN  
H. H. HOLDSWORTH

J. L. LEE.  
EDWARD MILNES  
G. H. SADLER  
SIR E. STONEHOUSE  
E. C. STONEHOUSE  
MISS F. E. PERCY TEW  
A. H. WEBSTER

### Ladies' Visiting Committee.

Mrs. BATES  
Mrs. BASIL BRIGGS  
Miss BRIGGS  
Mrs. CHARLES FENNELL  
Mrs. LISTER  
Mrs. LOFTHOUSE  
Mrs. MARRIOTT

Mrs. R. MAY  
Miss MACKIE  
LADY KATHLEEN  
PILKINGTON  
Miss F. E. PERCY TEW  
Mrs. THOMAS

### Medical Officers' Committee.

*Chairman*—J. W. THOMSON

*Vice-Chairman*—L. T. WELLS

J. P. COCKER  
A. M. DUFF  
W. GEYER  
S. SOWRAY GREAVES  
W. S. HARRIS  
T. E. LISTER  
J. B. LYLE

M. PURDIE  
D. W. RUSSELL  
J. SMYTH  
P. L. SUTHERLAND  
J. A. THOMSON  
G. W. THOMAS  
T. WALKER



## Auxiliary Committees.

### Wakefield Workpeople's Clayton Hospital Fund.

*Chairman*: G. H. SADLER

*Vice-Chairmen*: G. A. MUNTON, E. N. ELLIS

C. Ashton	G. W. PARKER
J. Breakwell	E. Peckett
H. Dawson	H. Priest
S. Harker	A. Sharratt
J. Illingworth	G. F. Stockdale
G. Ingham	J. Walker
H. V. Lambert	D. Whitehead
J. Murphy	J. R. Wilson
G. W. Naylor	

*Hon. Secretary*—F. W. LOFTHOUSE, 3 Clarendon St., Wakefield

*Hon. Treasurer*—E. A. FOWLIE, King St., Wakefield

### Ladies' Linen League.

*President*—Mrs. A. A. BONNER

*Vice-Presidents*—Mrs. P. CARR, Mrs. W. E. HAIGH,

Mrs. J. H. GLOYNE, Mrs. J. HARDY RICHARDS.

*Hon. Secretary*—Mrs. F. W. LOFTHOUSE

*Hon. Treasurer*—Mr. E. A. FOWLIE

Mrs. H. R. Baugh	Mrs. A. H. Hobson
Mrs. A. W. Bass	Mrs. R. May
Mrs. J. C. Bennett	Mrs. J. Hardy Richards
Mrs. P. Carr	Mrs. J. Sykes
Mrs. H. A. Douglas	Mrs. F. Ward
Mrs. E. A. Fowlie	Mrs. F. W. Wilson
Mrs. B. H. Frost	Mrs. J. P. Wilson
Mrs. J. H. Gloyne	
Mrs. W. E. Haigh	

### Hospital Committees

have also been formed in the following districts. Grants are made to the Clayton Hospital either direct or through the Workpeople's Hospital Fund.

Ackworth	Methley
Altofts	Netherton and Midgley
Castleford	Newton Hill
Crofton	Normanton
Featherstone	Ossett
Flockton	Ryhill and Havercroft
Glass Houghton	South Elmsall
Hemsworth	South Kirkby
Hopetown and Whitwood	South Hiendley
Horbury and District	Stanley
Kinsley and Fitzwilliam	Sharlston

## Days and Hours for Attendance of Patients.

---

### IN-PATIENTS.

In-Patients are admitted as arranged by the Honorary Staff or House Surgeons.

---

Accidents or emergency cases are admitted at all times.

### OUT-PATIENTS.

Surgical Cases	-	-	Wednesday, at 2-30 p.m.
Medical Cases	-	-	Tuesday, } at 9-30 a.m.
		-	Thursday, }
Ophthalmic & Aural Cases			Thursday, at 2-30 p.m.
Dental Cases	-	-	Monday, } at 9-0 a.m.
		-	Friday, }
Orthopaedic Cases	-	-	Saturday, at 9-30 a.m.
X Ray Department	-		See Regulations on inside of cover.
U. V. Ray Department	-	-	(See Page 9).
Massage Department	-	-	(See Page 8).
Venereal Diseases Department	-		(See Page 8).

### CASUALTY DEPARTMENT.

Open all times of the day or night.

---

### Visiting Days for Patients' Friends.

Wednesday,	-	-	2 to 4.
Saturday,	-	-	2 to 4.

No Visitor is allowed at any other time except by permission of the Superintendent and Secretary.

Only two Visitors are allowed to see patients at one time.

Visitors must produce their Visiting Card supplied for the purpose.



RECORD OF ATTENDANCES AT MEETINGS OF THE BOARD  
OF GOVERNORS AND ITS COMMITTEES,  
HOSPITAL YEAR, 1928.

	Board of Governors.	House Committee.	Finance Committee	Medical Officers' Com.	General Works.	Joint Committee.	Trustees.	Special & Sub- Committees.	Total.
Possible Attendances..	14	49	12	13	11	2	1	12	
Appleyard, G. E. ..	—	37	—	—	—	1	—	1	39
Allendale, Viscount ..	—	—	—	—	—	—	—	—	—
Atter, H. F. ..	11	—	6	—	8	—	—	5	30
Archer, A. W. ..	—	—	—	—	—	—	—	—	—
Briggs, William ..	13	—	—	—	8	1	—	10	32
Briggs, Basil S. ..	4	—	—	—	2	—	1	—	7
Briggs, D. H., Currer ..	4	—	4	—	—	—	—	—	8
Bates, Mrs. J. H. ..	9	—	—	—	—	—	—	—	9
Brotherton, Sir E. A., Bart.	—	—	—	—	—	—	—	—	—
Breakwell, J. ..	8	—	—	—	—	—	—	—	8
Charlesworth, J. ..	—	—	—	—	—	—	—	—	—
Cocker, J. P. ..	2	—	—	5	—	—	—	—	7
Davies, Evan ..	10	—	—	—	3	—	—	—	13
Duff, Dr. ..	1	—	—	5	—	—	—	—	6
Ellis, E. N. ..	14	—	—	—	—	—	—	—	14
Fennell, C. W. ..	9	—	—	—	6	—	—	—	15
Fowlie, E. A. ..	6	37	5	—	1	—	—	2	51
Fisher, J. H. ..	4	—	—	—	—	—	—	—	4
Greaves, J. H. ..	12	—	1	—	11	—	1	9	34
Graham, F. W. ..	3	36	—	—	—	—	—	1	40
Greaves, S. S. ..	1	—	—	4	—	1	—	—	6
Geyer, Dr. W. ..	—	—	—	3	—	—	—	—	3
Gwyer, Rev. ..	7	—	—	—	—	—	—	—	7
Holdsworth, H. H. ..	5	—	10	—	3	—	—	3	21
Haslegrave, H. J. ..	8	31	—	—	8	1	—	7	55
Haley, A. A. ..	3	—	—	—	2	—	—	—	5
Hillman, G. B. ..	3	—	—	—	—	—	—	2	5
Ingham, G. ..	—	—	—	—	—	—	—	5	5
Illingworth, J. ..	10	—	—	—	—	—	—	—	10
Leatham, N. ..	—	—	—	—	—	—	—	—	—
Lee, J. L. ..	14	—	10	—	9	—	1	—	34
Lofthouse, F. W. ..	1	30	—	—	—	—	—	—	31
Lister, T. E. ..	2	—	—	6	—	1	—	—	9
Lyle, Dr. J. B. ..	—	—	—	2	—	—	—	—	2
Mackie, Miss ..	12	29	—	—	—	1	—	—	42
Milnes, Edward ..	13	42	—	—	9	1	—	—	65
Pickles, A. ..	14	—	11	—	—	—	—	—	25
Pickles, S. ..	5	—	—	—	—	—	—	—	5
Purdie, Dr. M. ..	—	—	—	—	—	—	—	—	—
Parker, G. W. ..	12	—	—	—	—	—	—	—	12
Ratcliffe, Rev. Father ..	12	—	—	—	—	—	—	—	12
Russell, D. H. ..	—	—	—	4	—	—	—	—	4
Rt. Rev. Bishop of Wakefield	—	—	—	—	—	—	—	—	—
Reid, R. ..	1	—	—	—	—	—	—	—	1
Stockdale, G. F. ..	9	40	—	—	—	—	—	—	49

## RECORD OF ATTENDANCES AT MEETINGS (Continued).

	Board of Governors.	House Committee.	Finance Committee.	Medical Officers' Com.	General Works.	Joint Committee.	Trustees.	Special & Sub- Committees.	Total.
Possible Attendances..	14	49	12	13	11	2	1	12	
Sutherland, Dr. P. L. ..	2	—	—	2	—	1	—	—	5
Stonehouse, Sir Ed. ..	10	—	2	—	3	—	—	8	23
Stonehouse, E. C. ..	4	—	2	—	5	—	1	—	12
Smallwood, A. ..	9	—	8	—	—	—	—	—	17
Smyth, Dr. J. ..	—	—	—	—	—	—	—	—	—
Sadler, G. H. ..	11	—	10	—	—	—	—	—	21
Smith, Dr. T. ..	1	—	—	1	—	1	—	1	4
Thomson, J. W. ..	4	—	—	8	5	2	—	3	22
Tew, Miss F. E. Percy ..	14	—	—	—	9	—	—	—	23
Tew, T. P. ..	5	—	—	—	—	—	—	—	5
Thomas, G. W. ..	1	—	—	6	—	1	—	—	8
Thomson, J. A. ..	—	—	—	—	—	—	—	—	—
Webster, A. H. ..	13	46	9	—	9	2	—	9	88
Winterburn, Rev. F. ..	7	—	—	—	—	—	—	—	7
Walker, J. W. ..	1	—	—	—	—	—	—	—	1
Wilson, Col. H. C. B. ..	—	—	—	—	—	—	—	—	—
Wells Dr. L. T. ..	—	—	—	8	—	—	—	—	—
Walker, Dr. T. ..	1	—	—	10	—	2	—	—	13

The **BOARD OF GOVERNORS** meets on the third Tuesday in each month at 6-30 p.m.

The **HOUSE COMMITTEE** meets on Monday of each week at 12 noon.

The **FINANCE COMMITTEE** meets on the Thursday preceding the Board Meeting at 6 p.m.

The **MEDICAL OFFICERS COMMITTEE** meets on the Wednesday preceding the Board Meeting at 4-15 p.m.

The **JOINT, GENERAL WORKS, and SPECIAL COMMITTEES** meet when occasion requires.

The **TRUSTEES** meet when required.



### X-RAY DEPARTMENT.

Medical Officer in Charge : Dr. J. ALEXANDER THOMSON.

Report for year ended 31st December, 1928.

Radiographic Cases	...	...	3005
Treatment Cases	...	...	62
			<hr/> 3067

Number of Radiograms 5252. Number of Treatments 510.

Number of Barium Meal examinations 241.

Number of attendances in Treatment Department 656.

### MASSAGE AND MEDICAL ELECTRICITY DEPARTMENT.

Medical Officer in Charge : DR. D. H. RUSSELL

*Hours for Attendance for Out-Patients.*

Monday 11 a.m. to 7-0 p.m.

Tuesday and Thursday 9 a.m. to 1 p.m. 1-30 p.m. to 4-30 p.m.

Wednesday and Friday, 9 a.m. to 1 p.m., 1-30 p.m. to 2-30 p.m.,  
4-30 p.m. to 7-0 p.m.

Saturday, 9 a.m. to 12-30 p.m.

Report for year ended 31st December, 1928.

Number of New Patients	...	452
Number of Attendances of Out-Patients		7774
Number of Treatments given	...	12737
Number of In-Patient Treatments	...	1340

### VENEREAL DISEASES DEPARTMENT.

Medical Officer in Charge : Dr. A. W. FREW.

*Hours of Attendance :*

MALES : Wednesday, 6 p.m. to 8 p.m. Friday, 10 a.m. to 12 noon

FEMALES : Monday, 4 p.m. to 6 p.m. Friday, 3 p.m. to 5 p.m.

#### Irrigation Department.

MALES : Weekdays, 8 a.m. to 12 noon, 6 p.m. to 8 p.m.

Sundays, 10 a.m. to 12 noon

FEMALES : By Appointment.

Report for year ended 31st December, 1928.

NEW CASES.

ATTENDANCES.

394

12305

## ULTRA VIOLET RAY DEPARTMENT.

Medical Officer in Charge: DR. M. PURDIE.

### *Hours of Attendance.*

Monday, 9 a.m. to 10 a.m.

Tuesday and Thursday, 4-30 p.m. to 7 p.m.

Wednesday, Friday and Saturday, 2-30 p.m. to 4-30 p.m.

Report for the year ended 31st December, 1928

Number of New Patients ...	...	117
Number of Treatments given	...	8013

---

## REQUIREMENTS

---

The growth of the work of the Clayton Hospital makes it necessary to consider the enlargement of the Institution. The following are some of the most urgent needs at the present time. An earnest appeal is made for funds to enable the Board of Governors to proceed with these essential improvements.

- (1) A Pathological Laboratory and Equipment.
- (2) Enlargement of the Kitchen.
- (3) Additional X-Ray Apparatus.
- (4) Additional Apparatus for Massage and Electrical Department.



## REPORT.

THE Board of Governors has pleasure in presenting the Annual Report and Statements of Account for the year ended 31st December, 1928.

The statistics for the year together with the corresponding figures for the previous year are as follows :—

### IN-PATIENTS.

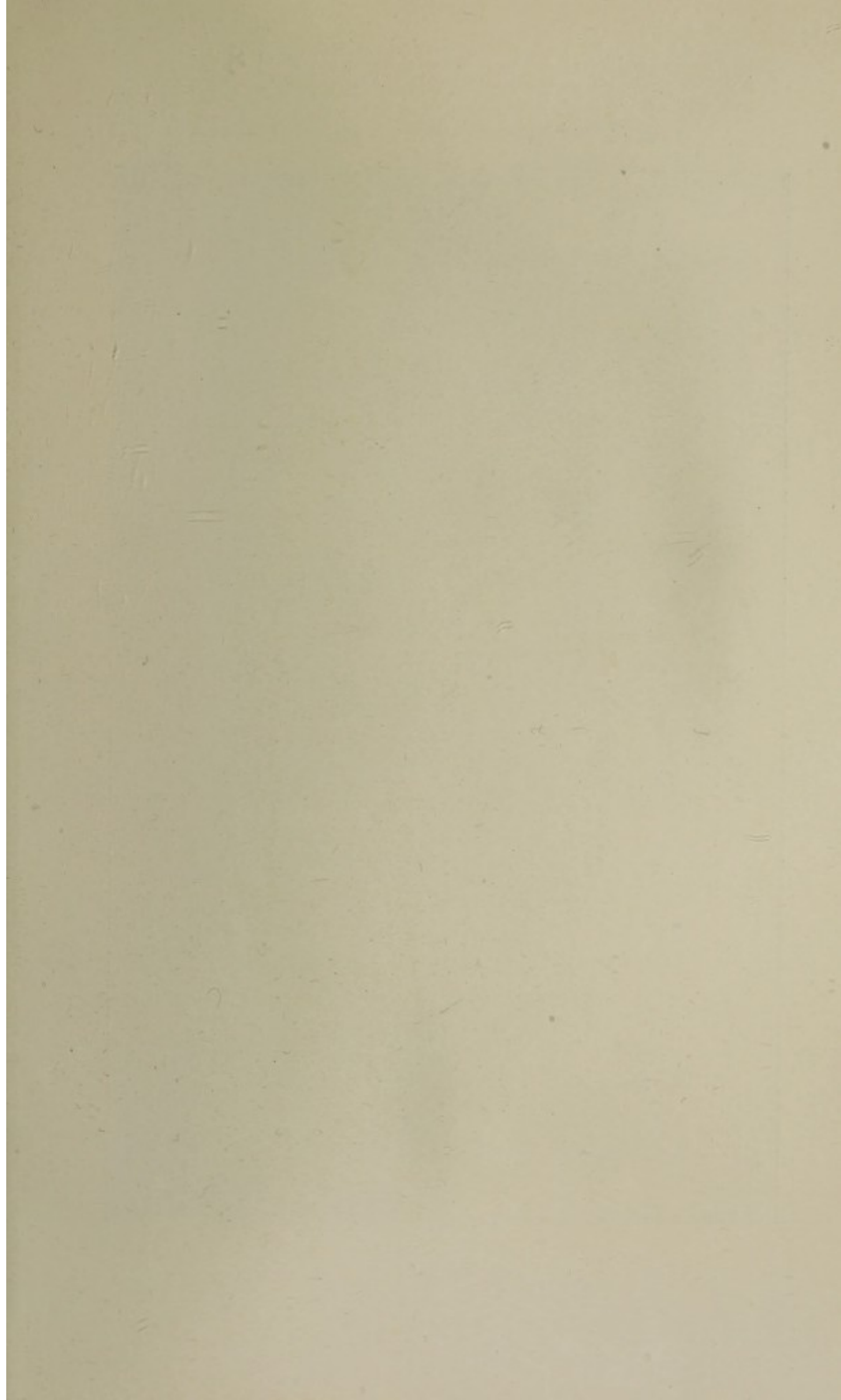
	1927	1928
Number of Patients Treated ...	1998	2027
Daily average number of Patients ...	107·8	106·2
Average length of stay (in days) ...	20·7	20·2
Death Rate ...	6·4%	7%
Death Rate (after deducting those who died within 48 hours) ...	4·3%	5%
Number of Operations (Both Theatres) ...	2610	3163

### OUT-PATIENTS.

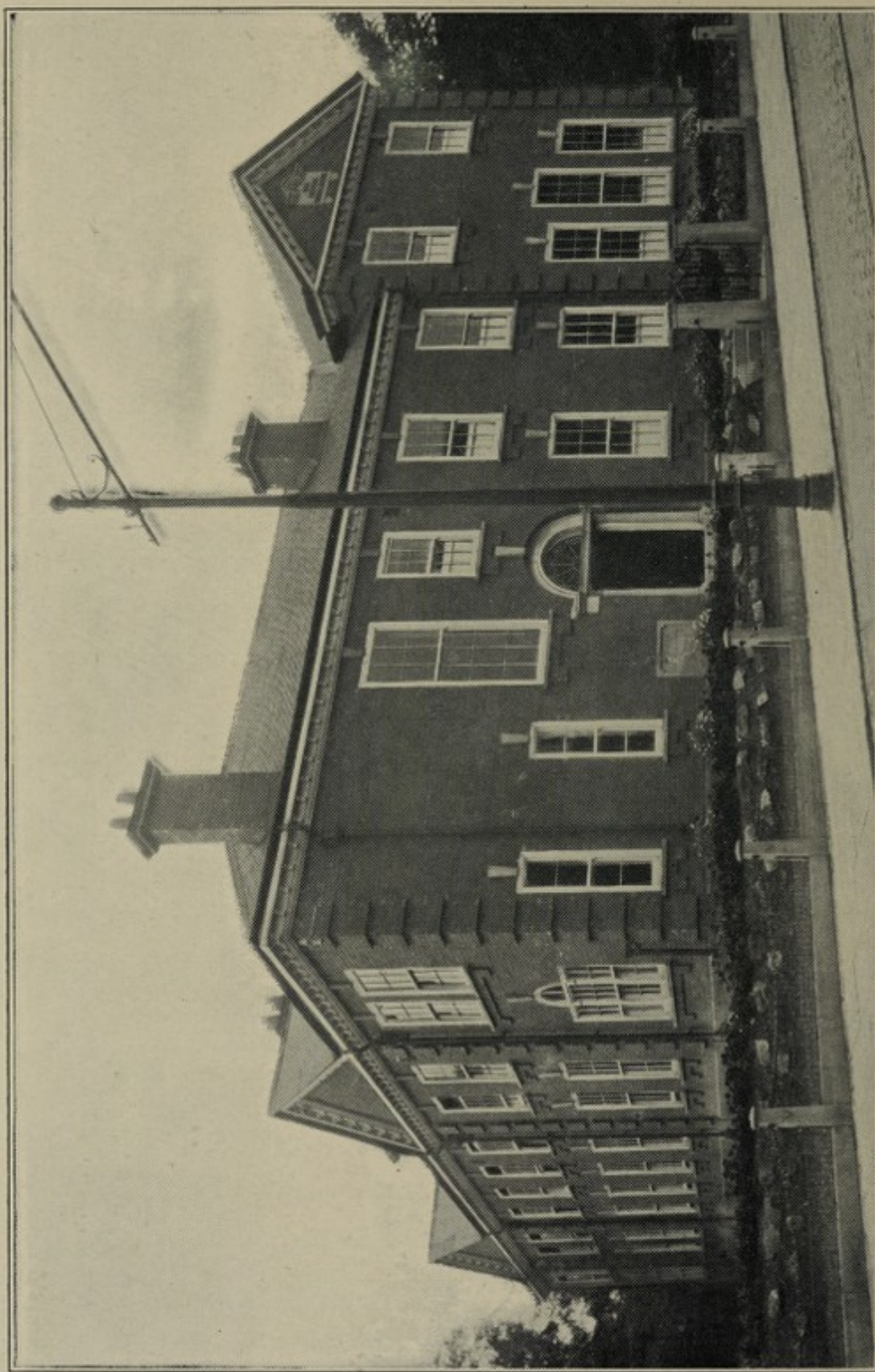
Number of Out-Patients treated	9030	9685
Number of Out-Patients Attendances	57319	62404

The cost of treatment of In-Patients after deducting the cost of the Out-Patients, works out as follows :—

	1927			1928		
	£	s.	d.	£	s.	d.
Average Cost per occupied bed	112	14	5	115	9	3
“ “ Patient treated to a conclusion ...	6	8	2	6	6	3
Weekly cost of each In-Patient	2	3	4	2	4	5
Average cost of each Out-Patient	0	4	7½	0	5	2







WAR MEMORIAL NURSES' HOME



From the foregoing it will be seen that the work of the Hospital again shews an increase. The number of In-Patients treated is easily a record, and until increased accommodation is provided, it is improbable that more patients can possibly be admitted in a year. The facilities for the treatment of Out-Patients are now admirable and a still greater number can be dealt with. Further statistics relating to both In-and Out-Patients will be found later in the Report.

Turning to the financial position of the Hospital it Finance will be seen that in spite of the utmost care on behalf of the Committees concerned, there has been an increase in the ordinary expenditure of £536 3s. 4d. This increase is only to be expected in view of the greater cost involved in the maintenance of the Canning Childs Out-Patient Department, which has only been open during the past four months, and the other new departments which have been opened in recent years. The increase in expenditure is a matter for very serious consideration and calls for additional efforts to raise funds, from all sections of the community. The income of the Hospital shews a very slight increase £96 2s. 1d. This is entirely due to the much larger amount paid over by the Workpeople's Hospital Fund Committee, and to increased Annual Subscriptions. There has been a serious falling off in donations and in the payments by Approved Societies. The fact that the August Bank Holiday Gala was spoilt by the bad weather meant a loss in income of about £300. Under the circumstances, the Board feel very grateful for the help they have received from the many efforts in aid of the Hospital. They wish to place on record their deep feeling of gratitude to all those who have organised efforts in aid of the Hospital, and of their appreciation of the help received.

The outstanding feature of the year's work has been the opening of the Canning Childs Out Patients Depart- Canning Childs  
Out-Patients  
Department



ment. This new and beautiful building was opened by Mr. Childs himself in July. Mr. Childs, who was accompanied by his wife, was on a visit to this country and much against his wish, consented to perform the opening ceremony. The day will always be a memorable one in the history of the Hospital. Mr. Childs in a charming and characteristic speech, expressed his satisfaction with the building and equipment. The new building is indeed a magnificent gift and will be the means of providing for the treatment of many thousands of patients.

#### New Wards.

A further striking example of Mr. Childs' generosity and his interest in the City, has to be especially noted in this report. The need for an extension of the In-Patient accommodation has long been known, and this need had become acute. The Board felt that owing to the depression in industry, the time was hardly opportune to make an appeal for funds and they were deeply concerned as to the way in which the necessary money could be raised. To their profound relief, Mr. Canning Childs intimated that he would be prepared to defray the whole cost of the extension. It is impossible to express the feeling of thankfulness and gratitude for this further wonderful proof of Mr. Childs' generosity. The new building is to be known as the "Ann Canning Hospital for Women." The plans have been prepared and building operations will commence early in the New Year. The name of Childs will be forever linked with the Clayton Hospital and his generosity will stand for all time.

The new building is to be erected at right angles to the new Out-Patients Department. It will be two storeys high, and contain accommodation for forty patients in the large wards, and also separate wards for eight private patients. It will also contain an operation theatre and the usual offices and sanitary annexes. It is to be built to the designs of Messrs. Massie & Holdsworth, Architects, of Wakefield.



The addition to the Hospital of nearly fifty beds will mean that considerable enlargements will have to be made in other departments. The Board are at present considering plans for the extension of the X-Ray and Electrical Departments and for an enlargement of the Kitchen. During the year, the Laundry has been brought up to date, new machinery has been installed, the old steam engine has been scrapped and the machinery is now electrically driven. This improvement has cost about £400 but the result has been well worth the money. Other alterations and improvements carried out during the year have been the purchase of a supply of new lockers and ward screens. The addition of two more Mercury Vapour Lamps to the Ultra Violet Ray Department, a new Diathermy Apparatus, an additional Boyles Anæsthetic Apparatus, (the gift of Mr. J. H. Greaves) and an Albees Electric Bone Drill for the Orthopædic Department.

During the year, the Board have made arrangements with the Radium Institute to loan supplies of Radium for use in Cancer cases. This arrangement has worked very well, but it would be a source of considerable satisfaction to the Board if the Hospital was in possession of its own Radium supply. Lack of funds prevents them from purchasing a supply, but they appeal for help in this direction. A sum of £2,000 would enable them to purchase a supply of Radium which would meet the present needs.

The Board wish to once again place on record their appreciation of, and grateful thanks to, the members of the Honorary Staff. The number of patients treated speaks volumes for their work. Some changes have taken place. Dr. Thomas Smith the Senior Physician retired in September and was made a Consulting Physician. Dr. J. B. Lyle and Dr. Sowray Greaves were promoted to the Senior Staff and Dr. T. E. Lister has been appointed to the Senior Staff on the Surgical side. Mr. W. S. Harris, L.D.S., has been appointed an Honorary Dental Surgeon.



Board of  
Governors

Some changes have taken place in the membership of the Board of Governors. To fill vacancies which had arisen in the previous year, the following gentlemen have been elected

1. Mr. A. W. Archer (South Kirkby, Hemsworth & Featherstone Collieries).
2. Mr. J. H. Fisher, Normanton Hospital Committee.
3. Rev. H. L. Gwyer, Vicar of St. John's Church, Wakefield.
4. Mr. C. W. Parker, Chairman, Workpeople's Hospital Fund.
5. Mr. R. Reid, Horbury.
6. Mr. A. Smallwood, Wakefield.

There have been no changes in membership of the Ladies Visiting Committee. The members of this Committee have continued their good work and the Board extend to them their thanks.

Ladies' Linen  
League

The Ladies Linen League has again had a most successful year. The assistance which the League renders to the Hospital cannot be reckoned only in the value of the linen supplied, which amounted to over £200, but the enthusiasm of the members is a great asset to the Hospital. At the Annual Meeting held in October, the Hon. Secretary, Mrs. F. W. Lofthouse, was presented with a Writing Bureau by the Committee as an expression of the esteem in which she is held.

## Staff

The Board would like to place on record their appreciation of the work of the members of the Administrative and Nursing Staffs. Without a competent staff the work which is continually growing could not be carried on in the present highly efficient manner. The work of the House Surgeons has been particularly arduous and has been carried out cheerfully and well. There have been some changes. Dr. N. Robinson and Dr. S. P. Sloan left during the year and were succeeded by Dr. J. M. Paterson and Dr. A. Ruskin Oliver.

The Governors wish once again to place on record <sup>Thanks</sup> their heartfelt thanks for the help of all who have assisted in the work of the Hospital, either by gifts of money, gifts in kind or by personal service. Special mention should be made of the grants by the Wakefield Workpeople's Committee and the other local Committees (The revenue from this source constitutes the backbone of the Hospital's income)—the splendid help of the Amateur Operatic Society, and Amateur Dramatic Society—the efforts of the Motor Cycle and Light Car Club—The Wakefield Canine Society—the Re-Union Whist Club and many other friends. Without the aid of all these societies and committees, it would be impossible to carry on the work. Still more help is needed and the Governors earnestly appeal to all who live in the city or in the district served by the Hospital, to assist them in the great work they have in hand.



# CLAYTON HOSPITAL AND

## ABSTRACT OF TREASURER'S ACCOUNTS

				£	s.	d.	£	s.	d.
				INCOME.					
A. ORDINARY.									
1	ANNUAL SUBSCRIPTIONS	...	..	..	2942	17	9		
2	DONATIONS :—								
	Ordinary	..	...	...	817	13	10		
	Patients	...	...	...	236	16	0		
					<hr/>			1054	9 10
3	CONGREGATIONAL COLLECTIONS	...	...	..	146	8	0		
4	WORKPEOPLE'S CONTRIBUTIONS :—								
	Workpeople's Clayton Hospital Committee				3822	18	2		
	L. M. & S. Railway Hospital Fund	...	...	...	354	2	6		
	(Paid through Workpeople's Committee).				<hr/>			4177	0 8
5	INVESTED PROPERTY :—								
	Dividends and Interest	...	...	...	3846	1	2		
	Returned Income Tax	...	...	...	322	0	0		
	Rents	..	...	...	30	0	0		
	Interest on Deposit Account	..	..	..	20	10	9		
	Bank Interest	...	...	...	28	5	6		
					<hr/>			4246	17 5
6	RECEIPTS IN RESPECT OF SERVICES TO PATIENTS :—								
	Approved Societies	...	..	..	484	15	6		
	Venereal Diseases Department	...	...	...	1230	18	0		
	Local Authorities	...	...	..	177	11	0		
	X-Ray and U.V. Ray Departments—Fees				238	13	0		
					<hr/>			2231	17 6
7	THOMAS CLAYTON'S TRUSTEES	..	..	..	285	0	0		
8	OTHER RECEIPTS :—								
	Sale of Kitchen Waste	...	..	..	30	3	7		
	Tonsil and Adenoid Cases	..	...	...	56	3	0		
	Sale of Silver Paper	...	...	...	32	3	4		
	Spirit Duty refund	...	...	...	5	7	0		
	Sundries	..	...	...	21	1	5		
					<hr/>			144	18 4
TOTAL ORDINARY INCOME				..	..	15229	9	10	

Carried forward .. .. £15,229 9 10

Ack 18/9

Yorks

Div. VA



Annual Reports of Voluntary Hospitals.

1. Name of Hospital Clayton Hospital  
Walsfield
2. A copy of the Annual Report(s) for 1927/8

~~is~~  
— enclosed herewith.  
are

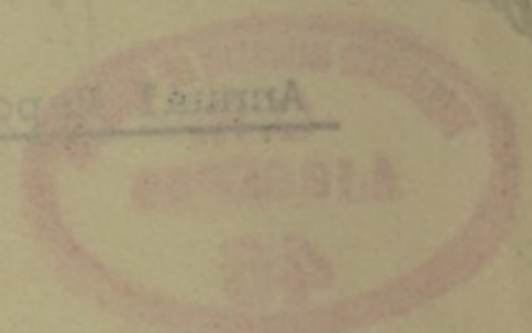
3. A copy of the Annual Report for each  
future year will be forwarded on publication.

Signed Henry Shaw

(Secretary or other  
responsible officer  
of the Hospital).



## Annual Reports of Voluntary Hospitals.



Name of Hospital

2. A copy of the Annual Report(s) for

is enclosed herewith.

etc

3. A copy of the Annual Report for each

future year will be forwarded on publication

Signed

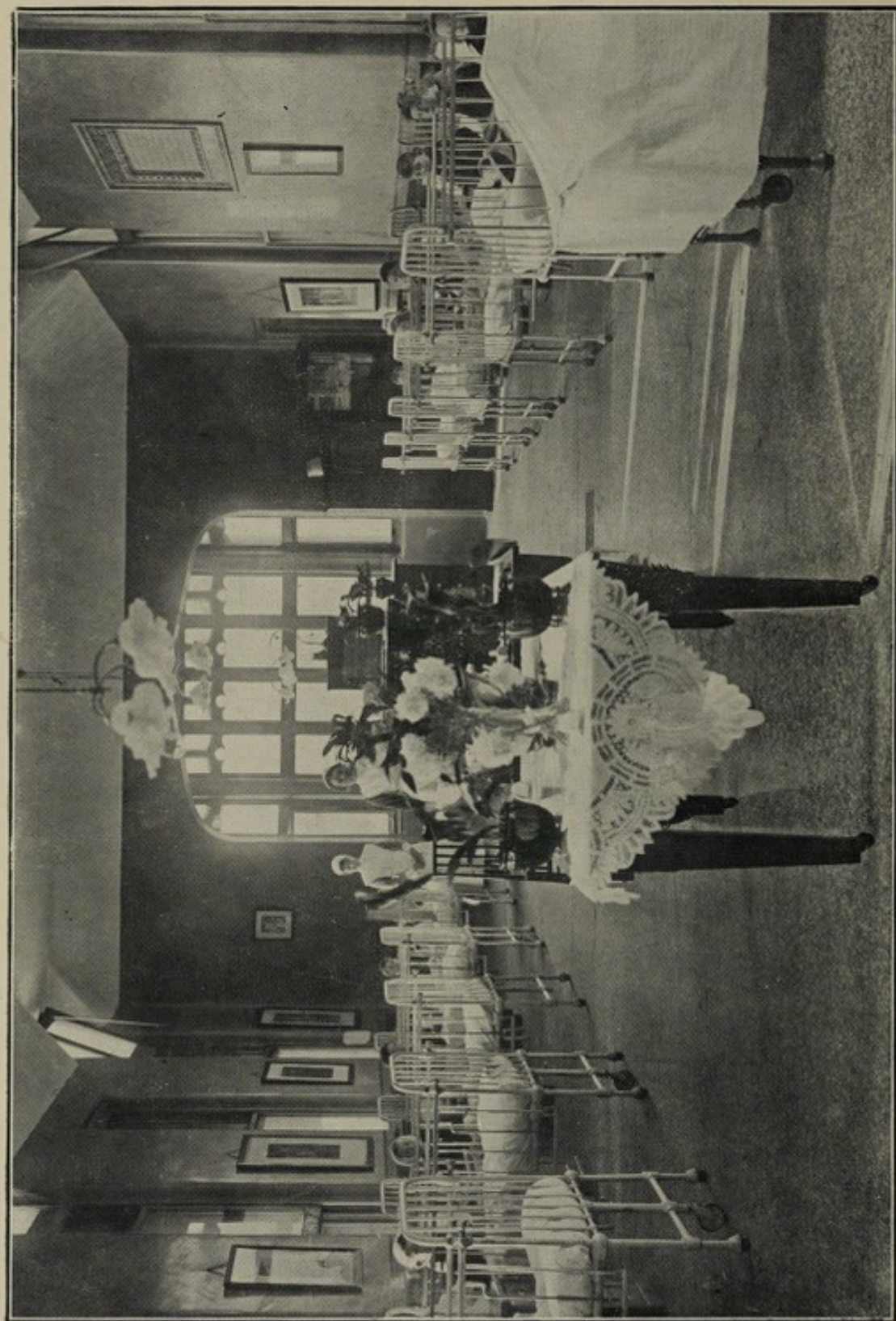
(Secretary or other

responsible officer

of the Hospital).







THE CHILDREN'S WARD

## WAKEFIELD GENERAL DISPENSARY.

FOR THE YEAR ENDING 31st DECEMBER, 1928.

				£	s.	d.	£	s.	d.
				EXPENDITURE.					
A. MAINTENANCE.									
1 PROVISIONS :—									
Meat	...	...	...	949	3	11			
Fish and Poultry	...	...	..	262	15	8			
Butter, Bacon, &c.	...	...	..	351	11	8			
Eggs	...	...	..	3	12	2			
Milk	...	...	...	611	17	2			
Bread and Flour	...	...	..	147	17	3			
Groceries	...	...	...	322	16	10			
Vegetables and Fruit	...	...	...	243	6	10			
Malt Liquors	...	...	...	7	10	0			
Aerated Waters	...	...	...	4	2	6			
							2904	14	0
2 SURGERY & DISPENSARY :—									
Drugs, Chemicals, &c.	...	...	...	674	12	9			
Instruments and Appliances	...	...	...	358	4	9			
Dressings and Bandages	...	...	...	508	6	3			
Wines and Spirits	...	...	...	30	18	9			
X-Ray Equipment	...	...	...	495	19	0			
Bottles, Corks and Sundries	...	...	...	43	7	2			
							2111	8	8
3 DOMESTIC :—									
Renewal and Repair of Furniture	...	...	...	91	19	6			
"    "    Bedding and Linen	...	...	...	103	16	4			
"    "    Hardware, Crockery,	...	...	...						
Brushes, &c.	...	...	..	83	5	9			
Cleaning and Laundry Materials	...	...	...	155	16	11			
Water	...	...	..	251	4	10			
Fuel and Lighting :—									
Coal and Coke	...	...	...	922	5	5			
Gas	...	...	..	64	6	10			
Electricity	...	...	...	443	11	4			
Oil & Wood	...	...	...	7	2	3			
Uniforms	...	...	...	155	4	4			
Sundries	...	...	...	0	7	0			
							2279	0	6
4 ESTABLISHMENT :—									
Insurance	...	...	...	81	1	2			
Renewals and Repairs	...	...	...	321	3	6			
Annual Cleaning	...	...	...	273	18	6			
Garden	...	...	...	187	0	0			
Telephone and Sundries	...	...	...	114	14	2			
							977	17	4
5 SALARIES & WAGES :—									
Medical	...	...	...	801	5	9			
Dispensary	...	...	...	239	0	0			
Nursing	...	...	...	1732	3	3			
Radiographers	..	...	...	408	8	0			
Mechanics	...	...	...	189	16	0			
Porters	...	...	...	759	0	6			
Domestic Servants	..	...	...	616	14	10			
Laundry Servants	...	..	...	203	15	1			
Massage	...	...	...	178	0	0			
Other Salaries and Wages	..	..	..	209	13	6			
Insurance Contributions	..	..	..	129	7	6			
							5467	4	5
Carried forward				..	..	£13,740	4	11	



## ABSTRACT OF TREASURER'S ACCOUNTS

	£	s.	d.
Brought forward	15,229	9	10
Balance being excess of Expenditure over Income for the year	87	16	6

---

£15,317 6 4

---

We have examined the above Accounts with the Books, Vouchers, &c., presented to us by the Superintendent, and with the certified Income and Expenditure Account of the Wakefield Workpeople's Clayton Hospital Fund and which in our opinion is correct.

J. W. CLOSE, HIRST & CO.,

Chartered Accountants,

*Auditors.*

Leeds, 25th January, 1929.

			£	s.	d.	£	s.	d.
	Brought forward	...				...	13740	4 11
6 MISCELLANEOUS :—								
Printing Stationery and Postages	...	...	51	1	4			
Advertisements	...	...	9	3	3			
Sundries (Barber, &c.)	...	...	52	16	4			
							113	0 11
Total Cost of Maintenance	...	...	13853	5	10			
B. ADMINISTRATION.								
1 MANAGEMENT :—								
Official Salaries	...	...	480	0	0			
,, Printing, Postages and Telegrams	...	...	114	1	9			
,, Advertisements	...	...	2	19	0			
Law Charges	...	...						
Audit Fee	...	...	10	10	0			
Sundries	...	...	15	16	11			
							623	7 8
							120	0 0
2 FINANCE, APPEALS, &c :—								
Total Cost of Administration	...	...	743	7	8			
C. RATES AND TAXES								
	...	...					180	2 4
D. Extraordinary Expenditure :—								
Electrification of Laundry and new Laundry Machinery	...	...	390	15	0			
Radium Emanations	...	...	40	19	0			
Advisor's Fees (New Wing)	...	...	26	5	0			
U. V. Ray Apparatus	...	...	39	12	0			
New Lockers etc.	...	...	34	0	0			
Bank Charges	...	...	1	17	6			
Subscriptions to other Institutions	...	...	7	2	0			
							540	10 6



## ABSTRACT OF TREASURER'S ACCOUNTS

## CASH STATEMENT

1927.	£	s.	d.	£	s.	d.
Dec. 31—Cash in hands of Superintendent	135	0	0			
Do. do. Matron ..	10	0	0			
				145	0	0
Balance at Bank . . . . .				772	13	2

---

£917 13 2

---

## DEPOSIT ACCOUNT.

1927.	£	s.	d.	£	s.	d.
Dec. 31—Balance at Bank	651	10	7			
1928.						
Legacy :—						
The late Mrs. Sarah J. Brown	94	9	11			
Bank Interest ..	20	10	9			

---

£766 11 3

---

## FOR THE YEAR ENDING 31st DECEMBER, 1928.

## 31st DECEMBER, 1928.

1928.	£	s.	d.	£	s.	d.
Dec. 31—Balance at Bank	...	...	...	684	16	8
Cash in hands of Superintendent	...	135	0 0			
„ Do. do. Matron	..	10	0 0			
				145	0 0	
Balance of Expenditure over Income	..			87	16	6
				£917	13	2

## 31st DECEMBER, 1928.

1928.	£	s.	d.	£	s.	d.
Dec. 31—Bank Interest transferred to Current a/c				20	10	9
Balance at Bank	..			746	0	6

---



---

£766 11 3

We have examined the above Account with the Books and Vouchers presented to us by the Secretary, and which in our opinion is correct.

J. W. CLOSE, HIRST & CO.,

Chartered Accountants,

*Auditors.*

Leeds, 25th January, 1929.



## ABSTRACT OF THE TREASURER'S ACCOUNT

Dr.

		THE MACKIE					
1927.		£ s. d.			£ s. d.		
Dec. 31—	Balance at Bank ...	...	113	16	5		
	Cash in Hands of Secretary ...	...	0	4	8		
		<hr/>			114	1	1
1928.							
Dec. 31—	Interest on Investments ..	...	18	14	5		
	Returned Income Tax ...	...	4	13	8		
	Bank Interest ...	...	1	17	0		
		<hr/>			25	5	1

---

---

£139 6 2

---

---

		THE LUPSET					
1927.		£ s. d.					
Dec. 31—	Balance at Bank ...	...	146	13	2		
	Cash in Hands of Secretary ..	..	0	4	7		
1928		<hr/>			146	17	9
Dec. 31—	Interest on Investments ..	...	27	3	10		
	Returned Income Tax ...	...	6	8	6		
	Bank Interest ...	...	2	4	6		
		<hr/>			35	16	10

---

---

£182 14 7

---

---

		DANIEL GASKELL					
1927.		£ s. d.			£ s. d.		
Dec. 31—	By Balance at Bank ...	...			69	4	3
1928.							
Dec. 31—	Interest on Investments ...	...	3	15	5		
	Returned Income Tax ...	...	0	18	10		
	Bank Interest ...	...	1	1	3		
		<hr/>			5	15	6

---

---

£74 19 9

---

---

FOR THE YEAR ENDING 31st DECEMBER, 1928.

Cr.

**MEMORIAL FUND.**

1928.	£	s.	d.
Dec. 31—Cost of Patients sent to Convalescent Homes during the Year ... ..	10	16	0
Balance at Bank ... ..	128	5	6
Cash in hands of Secretary ... ..	0	4	8
	—	128	10 2

We have examined the above Account, with the Books and Vouchers presented to us by the Secretary, and which in our opinion is correct.

J. W. CLOSE, HIRST & CO.,  
Chartered Accountants,  
Leeds, 25th January, 1929. AUDITORS

£139 6 2

**FUND ACCOUNT.**

1928.	£	s.	d.	£	s.	d.
Dec. 31—Cost of Patients sent to Convalescent Homes during the Year ... ..				34	6	8
Balance at Bank ... ..	144	18	0			
Cash in hand ... ..	3	9	11			
	—	148	7 11			

We have examined the above Account, with the Books and Vouchers presented to us by the Secretary, and which in our opinion is correct.

J. W. CLOSE, HIRST & Co.,  
Chartered Accountants,  
Leeds, 25th January, 1929. AUDITORS.

£182 14 7

**FUND ACCOUNT.**

1928.	£	s.	d.
Dec. 31—Balance at Bank ... ..	74	19	9

We have examined the above Account, with the Books and Vouchers presented to us by the Secretary, and which in our opinion is correct.

J. W. CLOSE, HIRST & CO.,  
Chartered Accountants,  
Leeds, 25th January, 1929. AUDITORS.

£74 19 9



## ABSTRACT OF THE TREASURER'S ACCOUNTS

Dr.

## NEW NURSES HOME

				£	s.	d.
1927.						
Dec. 31—	Balance at Bank	...	...	75	9	7
1928.						
Dec. 31—	Interest on Deposit Account					
	transferred	...	..	3	6	4
	Bank Interest	...	...	0	18	6
				<hr/>		
					4	4 10

---

£79 14 5

---

## NEW NURSES HOSTEL

				£	s.	d.
1927						
Dec. 31—	Balance at Bank	...	...	498	3	1
1928						
Dec. 31—	Bank Interest	...	..	3	6	4

---

£501 9 5

---

FOR THE YEAR ENDING 31st DECEMBER, 1928.

Cr.

## FUND ACCOUNT.

1928.				£	s.	d.
Dec. 31—Polishing Floors	...	...	7 17 6			
Grant to Engineer	...	...	5 0 0			
					12	17 6
Balance at Bank	...	...		66	16	11

---



---

 £79 14 5

We have examined the above Account, with the Books and Vouchers presented to us by the Secretary, and which in our opinion is correct.

J. W. CLOSE, HIRST &amp; CO.,

Chartered Accountants,

Leeds, 25th January, 1929.

AUDITORS.

## DEPOSIT ACCOUNT

1928				£	s.	d.
Dec. 31—Purchase of 5 per cent. War Stock	...	..	400 0 0			
Bank Interest transferred to Current Account	..	..	3 6 4			
Balance at Bank	..	..	98 3 1			

---



---

 £501 9 5

We have examined the above Account with the Books and Vouchers presented to us by the Secretary, and which in our opinion is correct.

J. W. CLOSE, HIRST &amp; CO.,

Chartered Accountants,

Leeds, 25th January, 1929.

AUDITORS.



## ABSTRACT OF THE TREASURER'S ACCOUNT

Dr.

## OUT-PATIENTS DEPARTMENT

1927				£	s.	d.
Dec. 31—	Balance at Bank	..	..	487	9	6
1928						
Dec. 31—	Interest on Investments	..	..	768	1	0
	Repaid Income Tax	..	..	239	7	0
	Bank Interest	..	..	15	5	9
	Deposit Account Interest (transferred)			27	17	10
				<hr/>		
					1050	10 10
	Wakefield Corporation Mortgage repaid				11500	0 0
				<hr/>		
				£13038	0	4
				<hr/>		

## OUT-PATIENTS DEPARTMENT BUILD—

1928						
Dec. 31—	Bank Interest	..	..	27	17	10
	Wakefield Corporation Mortgage repaid				1500	0 0
				<hr/>		
				£1527	17	10
				<hr/>		

FOR THE YEAR ENDING 31st DECEMBER, 1928.

Cr.

## BUILDING FUND ACCOUNT

				£	s.	d.
NEW OUT PATIENTS DEPARTMENT BUILDING.						
1928						
Dec. 31—	Contractors' Accounts	..	..	9702	19	5
	Architect's Fees	..	..	412	0	0
	Grant to Staff ...	..	..	15	0	0
	Sundry Expenses	..	..	20	15	2
	Furnishing	..	..	1149	6	5
	Expenses in connection with Opening Ceremony	..	..	72	0	9
	Balance at Bank	..	..	1645	18	7
	Cash in Hand	..	..	20	0	0
				£13038	0	4

We have examined the above Account with the Books and Vouchers presented to us by the Secretary, and which in our opinion is correct.

J. W. CLOSE, HIRST & CO.,  
Chartered Accountants,  
Leeds, 25th January, 1929. AUDITORS.

## ING FUND DEPOSIT ACCOUNT

				£	s.	d.
1928						
Dec. 31—	Bank Interest transferred to Out-Patients Current Account	..	..	27	17	10
	Transfer to Out-Patients Current Account	..	..	1500	0	0
				£1527	17	10

We have examined the above Account with the Books and Vouchers presented to us by the Secretary, and which in our opinion is correct.

J. W. CLOSE, HIRST & CO.  
Chartered Accountants,  
Leeds, 25th January, 1929. AUDITORS.



## WAKEFIELD &amp; DISTRICT WORKPEOPLE'S

Statements of Receipts and Payments.  
Cr.

PAYMENTS				£	s.	d.
To Printing, Advertising, &c	..	..	...	41	2	6
„ Prizes for Box Collections	..	..	..	30	1	6
„ Honorarium to Secretary ..	..	..	..	30	0	0
„ „ „ Treasurer ..	..	..	..	10	0	0
„ „ „ to Box Collectors	..	..	..	10	0	0
„ Sundry Expenses, Postages, &c.	..	..	..	17	15	0
„ Collecting Boxes	..	..	..	6	0	0
„ Programmes for Sacred Concert	..	..	..	5	11	2
„ Repairs to Charity Cup and Case	..	..	..	6	15	0
„ Payments on Account to General Fund	..	..	..	4177	0	8
„ Balance at Bank	..	..	..	972	10	0
„ „ in Hand	..	..	..	558	1	5
				<hr/> £5864 17 3 <hr/>		

We have examined the above Accounts with the Books and Vouchers, which in our opinion are correct.

J. W. CLOSE, HIRST & CO.,  
Chartered Accountants, *Auditors.*

## CLAYTON HOSPITAL FUND.

Year ending December 31st, 1928.

Dr.

RECEIPTS.				£	s.	d.
By Balance brought forward	..	..	..	945	0	7
„ Workshops and Factories	..	..	..	2185	12	9
„ Collieries ..	..	..	..	1941	1	2
„ Hotels, Clubs, &c.	..	..	..	319	16	1
„ City Police ..	..	..	..	15	18	7
„ Playhouse Concert, per Mr. C. Shayler	..	..	..	103	16	10
„ Wakefield Old Band ..	..	..	..	14	8	1
„ Open Air Sacred Concert	..	..	..	21	7	1
„ Wakefield Boot Traders' Association	..	..	..	6	0	0
„ Hemsworth Rural District Council ..	..	..	..	3	7	9
„ Wakefield and District Intermediate Rugby Football League	..	..	..	5	0	0
„ District Committees—				£	s.	d.
Sharlston ..	..	..	..	64	4	0
Altofts ..	..	..	..	30	0	0
South Kirkby ..	..	..	..	30	0	0
Ryhill and Havercroft ..	..	..	..	20	0	0
Hemsworth ..	..	..	..	43	0	0
Ackworth ...	..	..	..	10	10	0
Methley ...	..	..	..	10	0	0
Crofton ..	..	..	..	16	16	0
Normanton — ..	..	..	..	42	10	0
Ryhill District Ladies ..	..	..	..	10	0	0
Brierley ..	..	..	..	5	0	0
Wragby ..	..	..	..	17	0	0
				299	0	0
„ Bank Interest ..	..	..	..	4	8	4
				£5864	17	3

F. W. LOFTHOUSE, Hon. Sec., 3, Clarendon Street, Wakefield.

E. A. FOWLIE, F.A.I., Hon. Treasurer, King Street Chambers, Wakefield.



# Statistical Return of Patients.

For the Years 1927-28.

## I. In-Patients.

### A. Number of Beds and In-Patients.

	Numbers in 1927.	Numbers in 1928.
(1) Number of Beds available for use .. ..	108	108
(2) Average Number of Patients resident daily throughout the year as counted and recorded daily .. ..	107.8	106.2
(3) Number of In-Patients in Hospital at beginning of year ..	95	101
(4) Number of In-Patients admitted during the year ..	1902	1928
(5) Number of In-Patients in Hospital at the end of the year ..	101	102
(6) Average number of days each Patient was resident ..	20.7	20.2

### B. Expenditure on In-Patients apart from that on Out-Patients; Average Cost of each In-Patient per week; and Average Cost of each In-Patient.

	Expenditure on In-Patients, 1927.	Average Cost of each In-Patient per week.	Expenditure on In-Patients 1928.	Average Cost of each In-Patient per week.
	£ s. d.	s. d.	£ s. d.	s. d.
<b>MAINTENANCE—</b>				
Provisions ..	2746 8 10	9 10	2804 14 0	10 2
Surgery and Dispensary ..	1445 1 11	5 2	1516 7 10	5 6
Domestic ..	2170 13 1	7 9	2014 0 6	7 3½
Establishment ..	720 7 3	2 6	952 17 4	3 5
Salaries and Wages ..	4213 11 3	15 3	4114 4 5	14 11
Miscellaneous Expenses	130 8 5	0 5	101 0 11	0 4
<b>ADMINISTRATION—</b>				
Management ..	474 3 11	1 8	467 7 8	1 8
Finance ..	100 0 0	0 4	120 0 0	0 5
Rates and Taxes ..	150 5 4	0 6	165 2 4	0 8½
	12151 0 0	2 3 5	12255 15 0	2 4 5

	Over all Expenditure £ s. d.	After deducting cost of Out-Patients, etc. £ s. d.
Average Cost per occupied Bed ..	144 3 10	115 9 3
Average cost of each In-Patient per week ..	2 15 5	2 4 5
Average cost of each In-Patient treated to a conclusion ..	7 19 2	6 6 3

## II. Out-Patients.

	New Cases	Attendances
Medical and Surgical Clinics ..	945	2337
Aural and Ophthalmic Clinics ..	1067	2774
Orthopaedic Clinics ..	250	918
Casualty, Massage, X-Ray, etc. ..	7029	44070
Venereal Diseases Clinics ..	394	12305
	<u>9685</u>	<u>62404</u>

# Table showing Residences of In-Patients

Twelve Months ending December 31st, 1928.

Askern .. .. .	2	Knottingley .. .. .	2
Airedale .. .. .	9	Liverpool .. .. .	2
Ackworth .. .. .	8	Leeds .. .. .	7
Altofts .. .. .	19	Lofthouse Gate .. .. .	22
Batley .. .. .	1	Monk Fryston .. .. .	3
Bottomboat .. .. .	9	Middlestown .. .. .	9
Bradford .. .. .	1	Moorthorpe .. .. .	6
Bretton West .. .. .	1	Manchester .. .. .	2
Barnsley .. .. .	6	Nostell .. .. .	5
Birmingham .. .. .	1	Normanton .. .. .	108
Brierley .. .. .	4	Netherton .. .. .	3
Brandy Carr .. .. .	2	Newmillerdam .. .. .	8
Buxton .. .. .	1	Outwood .. .. .	66
Cudworth .. .. .	2	Overton .. .. .	1
Crofton .. .. .	40	Ossett .. .. .	7
Clayton West .. .. .	1	Purston .. .. .	2
Cleckheaton .. .. .	1	Pontefract .. .. .	3
Castleford .. .. .	5	Painthorpe .. .. .	7
Chaplethorpe .. .. .	8	Richmond .. .. .	1
Crigglestone .. .. .	17	Ryhill .. .. .	46
Darfield .. .. .	1	Royston .. .. .	2
Durkar .. .. .	9	Rothwell .. .. .	5
Denby Dale .. .. .	1	South Kirkby .. .. .	81
Doncaster .. .. .	2	Sharlston .. .. .	31
Dewsbury .. .. .	3	South Hiendley .. .. .	20
Emley .. .. .	1	Sandal .. .. .	62
East Ardsley .. .. .	10	Streethouse .. .. .	17
Fitzwilliam .. .. .	78	South Elmsall .. .. .	6
Fryston .. .. .	3	Snydale .. .. .	2
Flushdyke .. .. .	2	Shafton .. .. .	2
Foulby .. .. .	2	Sedgley .. .. .	1
Featherstone .. .. .	21	Stanley .. .. .	63
Flockton .. .. .	2	Stainforth .. .. .	1
Gildersome .. .. .	1	Thornhill .. .. .	1
Glass Houghton .. .. .	2	Tingley .. .. .	3
Goole .. .. .	1	Upton .. .. .	1
Horbury .. .. .	48	Wakefield .. .. .	807
Hemsworth .. .. .	123	Warmfield .. .. .	2
Hemswell (Lincs.) .. .. .	1	Woodkirk .. .. .	1
Hull .. .. .	1	Woolley .. .. .	3
Halifax .. .. .	1	Winterset .. .. .	1
Kippax .. .. .	1	Wragby .. .. .	1
Keighley .. .. .	1	Walton .. .. .	11
Kinsley .. .. .	35	Wrenthorpe .. .. .	18
Kirkhamgate .. .. .	6		

Total 1946

## Operations.

1928. Theatre 1177.	Outpatients 1986.	Total 3163.
1927. Theatre 1027.	Outpatients 1583.	Total 2610.
Increase 150.	403.	Total 553.



# RECEIPTS FOR THE LAST TEN YEARS.

Year.	Annual Subscriptions.			Donations and Boxes.			Congregational Collections.			Workpeople's Contributions.			Invested Property.			Other Receipts.			Total ordinary Income.			Legacies and other extraordinary Receipts.			PATIENTS	
	£	s.	d.	£	s.	d.	£	s.	d.	£	s.	d.	£	s.	d.	£	s.	d.	£	s.	d.	£	s.	d.	IN.	OUT.
1919	395	7	6	189	15	9	171	16	8	2066	10	5	4250	16	0	1666	4	3	8740	10	7	2600	0	0	954	4417
1920	1198	8	6	242	5	1	152	2	5	2428	10	1	4012	11	2	2518	7	2	10552	4	5	408	0	0	1221	5174
1921	1771	7	4	457	14	7	188	4	0	2697	11	6	4452	15	0	2799	1	4	11866	13	9	310	0	0	1421	5722
1922	1540	3	3	1422	7	1	170	13	10	3411	19	0	4347	2	2	2573	13	9	12752	15	4	100	0	0	1414	5934
1923	1899	9	0	1193	0	0	204	13	4	4323	4	7	3831	15	6	1328	19	2	12781	1	7	2338	0	7	1338	6880
1924	2704	8	6	1050	5	9	164	3	8	4273	2	11	4112	9	9	2460	7	1	14764	17	8	1061	12	0	1797	6510
*1924 1925	3841	0	9	2253	5	8	204	7	3	6565	0	1	6815	16	8	3736	9	2	23415	19	7	2190	8	4	2628	10369
1926	2524	10	10	1246	5	2	135	18	0	3622	3	9	4197	1	11	3091	0	5	14827	0	1	--	--	--	1990	8592
1927	2582	3	10	1663	9	5	147	2	5	3514	6	8	4215	7	7	3010	17	10	15133	7	9	945	13	3	1998	9030
1928	2942	17	9	1054	9	10	146	8	4	4177	0	8	4246	17	5	2661	15	10	15229	9	10	94	9	11	2027	9685

\* 18 Months

# EXPENDITURE FOR THE LAST TEN YEARS.

Year.	MAINTENANCE.										ADMINISTRATION.			Total ordinary Expenditure.	Extra- ordinary Expenditure	Daily Aver- age Occu- pied Beds.																					
	Provisions.	Surgery and Dispensary.	DOMESTIC EXPENSES		Establish- ment Charges.	Salaries, Wages, &c.	Miscellan- eous.	Manage- ment	Finance.	Rates and Taxes.																											
			Fuel, Light, Wat-r, &c.	Sundry.																																	
											£	s.	d.				£	s.	d.	£	s.	d.															
1919	2755	0	7½	1674	0	1	1416	2	11	795	10	0½	558	13	6	2290	10	0	80	2	11	241	5	10½	22	7	9	60	18	4	9894	11	0½	251	11	0	73·2
1920	3665	16	8	2013	8	8	1730	12	2	807	5	8	537	19	11	2846	12	7	110	12	0	382	14	5	19	6	4	104	12	1	12209	0	6	354	15	9	84·2
1921	4150	14	1	2676	17	2	2462	7	3	948	6	7	1422	2	7	3858	14	10	217	5	2	453	11	2	65	0	0	153	2	0	16408	0	10	1075	18	6	89·1
1922	3342	15	5	1677	17	6	1899	3	8	982	5	6	612	6	1	3980	19	2	228	11	7	467	16	1	60	0	0	177	12	3	13429	5	3	981	4	4	88·6
1923	2748	14	11	1459	18	0	1616	3	10	806	18	8	1274	12	4	3979	4	11	131	7	1	450	2	1	60	0	0	149	3	7	12676	5	5	519	3	7	85·6
1924	2906	9	7	2119	11	6	1710	13	11	998	4	7	999	11	5	4351	16	0	139	1	7	470	2	9	62	1	0	147	9	8	13905	2	0	1868	8	1	90·7
1924 1925	4629	14	9	3406	12	3	2354	4	8	1206	8	1	1322	6	5	7204	11	4	227	5	6	777	13	7	157	2	0	226	7	6	21512	6	1	4085	19	3	93·5
1926	3077	15	9	2015	17	2	2148	2	0	535	3	1	821	12	4	5113	6	9	140	5	4	545	2	3	100	0	0	261	17	9	14759	2	5	120	4	8	100
1927	2846	8	10	2035	1	11	1768	19	11	581	13	2	760	18	0	5270	11	3	142	8	5	549	3	11	100	0	0	185	5	4	14240	10	9	840	12	3	107·8
1928	2904	14	0	2111	8	8	1688	10	8	590	9	10	977	17	4	5467	4	5	113	0	11	623	7	8	120	0	0	180	2	4	14776	15	10	540	10	6	106·2

\* 18 Months



## Donations.

	£	s.	d.
Alpha W.M.C. Hemsworth (Concert) ... ..	5	0	0
do. do, ... ..	2	2	0
Amateur Bowling Association ... ..	8	13	0
Altofts Carnival Committee ... ..	20	0	0
Amateur Bowling Competition ... ..	4	3	7
Bramham, Jas. N. (proceeds of Concert) ... ..	6	3	0
Beaumont, J. ... ..	10	10	0
British Legion-Hemsworth Branch ... ..	1	1	2
Bottomboat Clarence W.M.C. ... ..	2	15	6
British Legion United Service Trust Fund ... ..	6	19	0
Bretton Musical Society ... ..	9	0	0
Crofton Junction Athletic Club ... ..	2	0	0
Crigglestone Hospital and Nursing Fund ... ..	14	0	0
Crofton Tennis Club ... ..	10	0	0
Crigglestone Hospital Fund ... ..	15	0	0
East and West Ardsley and District Farmers Association ... ..	10	10	0
Fitters and Blacksmiths Football Match ... ..	0	14	0
Featherstone Hospital Fund Effort ... ..	31	13	4
Five Mummers at Newmillerdam ... ..	0	8	0
Fitzwilliam W.M. Club ... ..	2	0	0
Greaves, J. H. ... ..	31	18	10
Goodwin, Vera (Maypole ... ..	1	1	0
Harrap, Mrs. F. ... ..	50	0	0
Horbury Ind. Co-op. Society ... ..	1	0	0
Hemsworth W.R. Constabulary Sports Club ... ..	15	0	0
Hartley & Hodgson, Messrs. (proceeds of Carnival) ... ..	1	5	0
Horbury Victoria Prize Band ... ..	2	0	8
Horse and Jockey—Altofts ... ..	2	13	0
Hartley, Mrs. ... ..	0	10	6
Ings Road Old Scholars Association, per H. Stephenson ... ..	3	0	0
Kinsley and Fitzwilliam Hospital Committee (Concert) ... ..	6	0	0
Lockwood & Wood, Messrs. ... ..	7	5	0
McInnes, R. C. ... ..	1	1	0
North Featherstone W.M.C. ... ..	1	1	0
Netherton W.M. Club and Institute (Bag Day and Whist Drive) ... ..	4	4	0
Normanton Girls' High School ... ..	10	0	0
Netherton Tennis Club ... ..	7	15	0
Normanton U.D.C. Carnival ... ..	20	0	0
Netherton & Midgley Hospital Committee ... ..	10	0	0
Newton Hill Hospital Fund ... ..	25	0	0
Noble & Hampshire, Messrs. (Whist Drive) ... ..	5	5	0
Nostell and Ryhill Station Master and Staff ... ..	1	3	0
Ossett Hospital and Convalescent Fund ... ..	42	0	0
Re-Union Whist Club ... ..	65	0	0
Residents of School Hill, Lake Lock ... ..	0	7	6
Sandal Young Men's Bible Class ... ..	2	2	0
Shaw, R. C. (proceeds of Concert) ... ..	4	11	0
Station Hotel, Crigglestone ... ..	5	0	0
Ship Inn, Bottomboat ... ..	3	7	0
Ship Inn, Lee Moor ... ..	1	15	0
Stanley Urban District Council—Officials and Workmen ... ..	5	5	0
West Riding Hotel (per Mrs. Long) ... ..	1	1	0
Wakefield City & District Canine Society ... ..	40	0	0
Wakefield Chamber of Trade ... ..	7	8	6
do. do. ... ..	21	17	0
Whinney Moor Hotel ... ..	10	10	0
Wakefield Operatic Society ... ..	41	15	3
Workmen Employed by W.R.C.C. Highways Department ... ..	11	2	0







# Congregational Collections, 1928.

£ s. d.

## Wakefield Wesleyan Circuit :—

West Parade Church	..	..	..	9	12	5			
Eastmoor	..	..	..	1	4	1			
Belle Vue	..	..	..	1	7	0			
Lofthouse	..	..	..	1	2	0			
East Ardsley	..	...	...		17	11			
Newmillerdam	..	..	..	1	5	6			
Kirkhamgate	..	..	..	0	12	6			
Alverthorpe	..	..	..	1	1	0			
Outwood	..	..	..	2	1	6			
Sandal	..	..	..	1	14	1			
							20	18	0
Wakefield Cathedral ..	..	..	..				18	3	1
St. John's, Church, Wakefield	...	..	..				10	9	3
Sandal Parochial Church Council	..	..	..				9	6	6
St. Austin's Church	..	..	..				8	3	6
St. Peter's Church Horbury	..	..	..				7	13	7
Zion Chapel	...	..	...				7	12	7
John Street Congregational Chapel Wakefield	..	..	..				5	15	6
West Riding Mental Hospital Church	..	..	..				4	10	0
St. James Church, Chapelthorpe..	..	..	..				4	2	2
St. Michael's, Church, Wakefield	..	..	..				4	1	7
Christ Church Brotherhood	..	..	..				3	13	0
Woolley Church	...	..	..				3	13	0
St. Mary Magdalene Church Altofts	..	..	..				3	6	1
Alverthorpe Parish Council..	..	..	..				3	3	0
Westgate End Wesleyan Church Wakefield	..	..	..				3	2	4
Duke of York Street Chapel Wakefield	..	..	..				2	14	0
St. Peters Church Kirkthorpe	..	..	..				2	11	9
Westgate Unitarian Chapel Wakefield	..	..	..				2	11	6
Belle Vue P. M. Church	..	..	..				2	10	0
Outwood Friendly Societies	..	...	..				2	8	11
Christ Church South Ossett	..	..	...				2	8	7
Flanshaw Congregational Church	...	...	...				2	2	0
St. James' Church, Thornes Wakefield	..	..	..				2	2	0
High St. Wesleyan Church Horbury	..	..	..				1	10	0
St. Luke's Church Sharlston	..	..	..				1	10	0
Thorpe Wesleyan Chapel	...	...	..				1	6	6
St. John's Church Horbury Bridge	..	..	..				1	5	6
Christ Church Wakefield	...	..	..				1	0	6
United Methodist Church, Stanley	..	..	..				0	12	6
St. Aidan's Mission Church	...	..	..				0	12	5
Outwood Church	..	..	..				0	10	6
Healey Mission War Memorial	...	..	..				0	9	5
South Ossett Church Sunday School	..	...	...				0	9	1

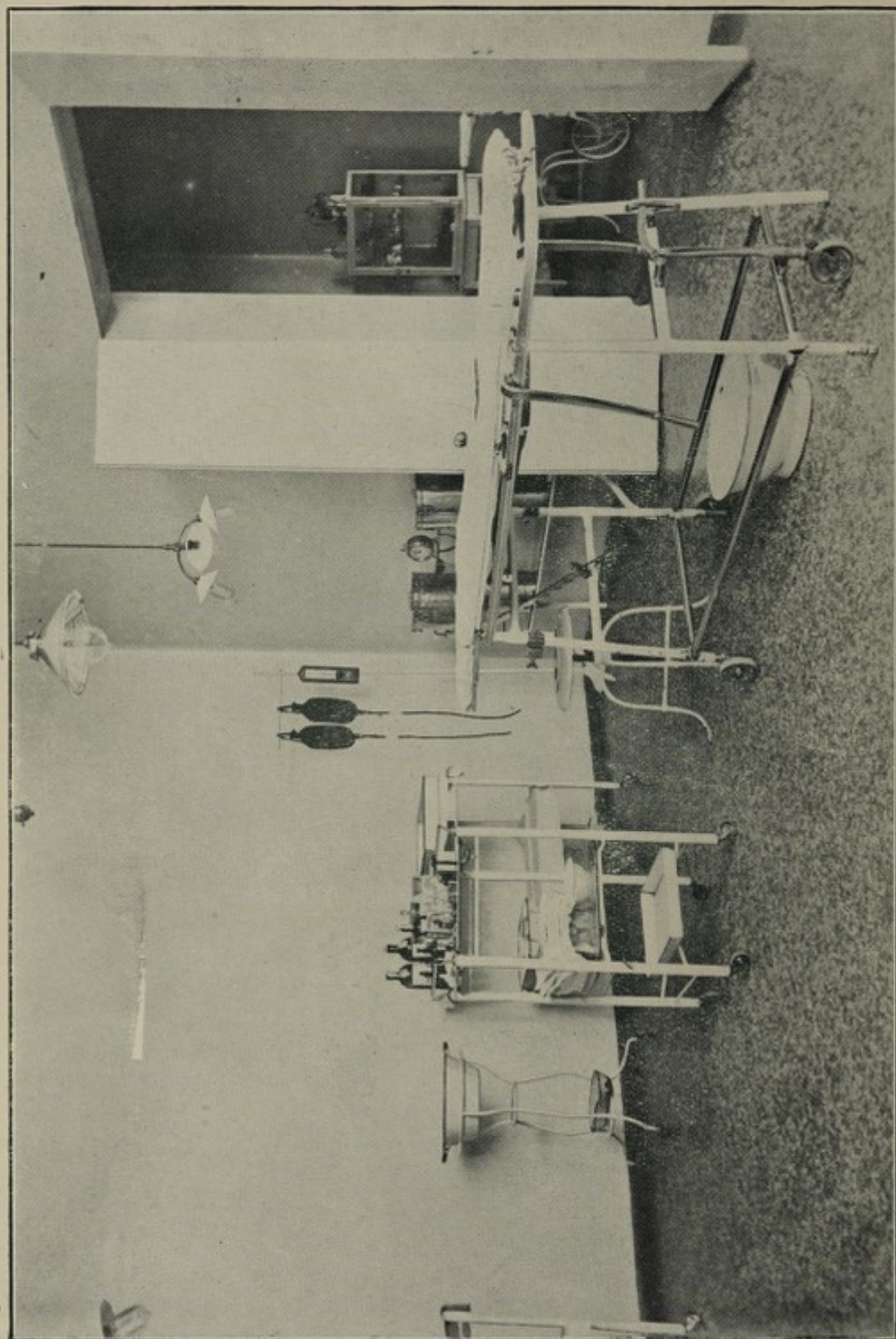
---

 £146 8 4
 

---

THE UNIVERSITY OF CHICAGO





THE OPERATION THEATRE

**Legacies to the Clayton Hospital and Wakefield  
General Dispensary, 1833-1928.**

	£	s.	d.		£	s.	d.
1833 Teall, James ..	25	0	0	1894 Harrison, Samuel			
1834 Barff, William ..	20	0	0	Fozard	20000	0	0
1835 Walton, Pearson	50	0	0	1894 Martin, Charles	90	0	0
1844 Johnstone, Mrs.	50	0	0	1895 Pickard, Miss			
1845 Maude, Miss				Hannah (Bal-			
Louisa ..	50	0	0	ance of Resi-			
1850 Allinson, Mrs...	50	0	0	due) ..	6285	14	4
1850 Parrott, Mrs. ..	50	0	0	1895 Higgins, T. S. .	1000	0	0
1850 Schofield John..	50	0	0	1895 Sanderson, J. S.	22	10	0
1856 Rayner, William	10	0	0	1896 Briggs, James G.	46	1	2
1857 Barker Dennis ..	19	19	0	1896 Harrison, Samuel			
1857 Ridsdale, Geo...	90	0	0	Fozard (Bal-			
1858 Leatham, J. A.	100	0	0	ance of Resi-			
1862 Vincent, George	50	0	0	due, £1700 less			
1863 Allott, Mrs. ..	44	15	0	£185 18s od.)	1514	2	0
1863 Freeman, Mrs.	50	0	0	1897 Harrison, Samuel			
1863 Sturges, Mrs. ..	50	0	0	Fozard (Resi-			
1865 Barff, John ..	19	19	0	duary Account,			
1865 Clayton, Mrs. M.	89	13	0	Part), Com-			
1867 Scholey, John ..	20	0	0	mercial Bank,			
1869 Jordan, Mr. ..	301	14	6	Australia, Ltd.	33	6	8
1870 Pickard, John ..	50	0	0	1897 Harrison, Samuel			
1870 Rayner, W. ..	50	0	0	Fozard (Bal-			
1871 Speight, Wm. ..	50	0	0	ance of Resi-			
1872 Hargreaves, Miss	78	3	2	due), Gillman			
1872 Hicks, Charles..	250	0	0	and Spencer			
1872 Tetley, Mrs. ..	180	0	0	Bond realized	505	6	6
1873 Gaskell, J. Milnes	100	0	0	1897 Special Donation	5	8	0
1875 Smith, S. ..	45	0	0	1897 Thomas, Mrs.			
1876 Gaskell, Daniel	100	0	0	Sarah, Ossett	10	0	0
1877 Tew, Edward	3600	0	0	1898 Arnold Emma ..	100	0	0
1880 Searle, Miss ..	52	18	4	1898 Harrison, Samuel			
1881 Westerman, G. H.	100	0	0	Fozard (Resi-			
1882 Clayton, Mrs. ..	200	0	0	duary Account)	13	8	11
1882 Smith, Miss J. D.	100	0	0	1899 Fernandes, J. L.	100	0	0
1883 Ashton, Mrs. Eliza	45	0	0	1899 Mackie, Miss			
1883 Errington, Wm.	100	0	0	Eliza Hannah	100	0	0
1883 Roberts, J. ..	100	0	0	1900 Part Commercial			
1885 Baldwin, Mrs. ..	100	0	0	Bank, Australia,			
1886 Mackie R. B. M. P.	1000	0	0	Ltd., Harrison's			
1887 Coates, J. H. ..	100	0	0	Residue ..	100	0	0
1888 Scott, Miss ..	100	0	0	1900 Cuttle, Michael .	85	3	0
1889 Fawcett, Mrs. Ann	199	14	8	1900 Shaw, Joseph ..	2000	0	0
1889 Hardman, Mrs.	101	14	0	1900 Shaw, Joseph,			
1891 Lidster, W. ..	7	3	7	Residuary			
1891 Pickard, Andrew	1000	0	0	Account ..	55000	0	0
1892 Pickard, Miss				1901 Shaw, Joseph,			
Hannah ..	1000	0	0	Residuary			
1893 Barker, Major	2000	0	0	Account ..	10000	0	0
1893 Chappel, Benj.	50	0	0	1901 Longbottom,			
1893 Ellerton, Mrs. ..	100	0	0	Isaac ..	20	0	0
1894 Alder, George ..	250	0	0				



		£	s.	d.			£	s.	d.
1901	Part Commercial Bank, Australia, Ltd., Harrison's Residue ..	66	13	4	1909	Shaw, Joseph (Residuary Account) ..	1000	0	0
1902	Harrison, Samuel Fozard, Residuary Account and Interest ..	173	17	6	1910	Kenworthy, Geo. Thorp ..	100	0	0
1902	Shaw, Joseph, Residuary Account ..	5000	0	0	1910	Hutt, George ..	100	0	0
1902	Wormald, Henry, Ossett ..	25	0	0	1910	Shaw, Joseph (Residuary Account) ..	500	0	0
1902	Roberts, Mary Ann ..	2060	0	0	1911	Proctor, Charles	100	0	0
1903	Shaw, Joseph, Residuary Account ..	2500	0	0	1911	Shaw, Joseph (Residuary Account) ..	500	0	0
1904	Part Commercial Bank, Australia, Ltd., Harrison's Residue ..	66	13	4	1912	Shaw, Joseph (Residuary Account) ..	750	0	0
1904	Cuttle, Michael, 1/6th Residue.	14	13	0	1912	Tew, H. S. ..	9000	0	0
1904	Shaw, Joseph, Residuary Account ..	1500	0	0	1914	Shaw, Joseph, Residuary Account ...	750	0	0
1905	Shaw, Joseph, Residuary Account ..	1500	0	0	1915	R. Kelsey Hill (Half Legacy)	500	0	0
1906	Part Commercial Bank, Australia, Ltd., Harrison's Residue ..	66	13	4	1915	Joseph Shaw, Residuary Account ...	750	0	0
1906	Shaw, Joseph, Residuary Account ..	1000	0	0	1916	Wm. Hurst ..	1000	0	0
1907	Balance Commercial Bank, Australia, realised, (Harrison's Residue)	624	3	4	1916	R. Kelsey Hill (on further account) ...	250	0	0
1907	Newton, Miriam	500	0	0	1916	John Gill ..	1556	4	7
1907	Ellerton, George Victor ..	100	0	0	1916	Do. (£423 Great Eastern Railway Stock)			
1907	Himsworth, Ellen	50	0	0	1917	R. Kelsey Hill (Balance) ..	271	12	0
1907	Shaw, Joseph (Residuary Account) ..	1000	0	0		Mrs. Kelly Holdsworth ..	1222	17	6
1907	White, George ..	500	0	0		Major Charlesworth ..	900	0	0
1908	White, Joseph Fletcher ..	1000	0	0	1919	H. Dawson ..	2000	0	0
1908	Haigh, Miss Elizabeth ..	1000	0	0		Mrs. Mickelthwaite ..	100	0	0
1908	Shaw, Joseph (Residuary Account) ..	1000	0	0	1921	Percy Tew ..	250	0	0
1909	Stubley, George	250	0	0		J. Longbottom ..	60	0	0
					1922	John S. Booth ..	100	0	0
					1923	Mrs. M. A. Roberts	21	15	7
					1924	Sir Edward Green Bt. ..	500	0	0
						Mrs. Hawksworth	20	0	0
					1925	W. V. Metcalfe	1670	8	4
						Viscount Allendale ..	500	0	0
						Miss A. M Smith	20	0	0
					1927	Mrs. Milnes-Gaskell ..	450	0	0
						Henry Smith ..	100	0	0
					1928	Mrs. Sarah J. Brown ..	94	9	11

## Investments.

*31st December, 1928.*

£	s.	d.	
20000	0	0	2½ per cent. Consolidated Stock
1904	4	11	2½ per cent. Consolidated Stock
10000	0	0	India, 3 per cent. Consolidated Stock
2156	12	9	Metropolitan Water 3 per cent. Stock
5000	0	0	Metropolitan Consolidated 3 per cent. Stock
5000	0	0	Metropolitan Consolidated 2½ per cent. Stock
1333	6	8	Metropolitan Water Board 3 per cent. (A) Stock
3000	0	0	Local Loans 3 per cent. Stock
5625	2	10	London County Council 3 per cent. Consolidated Stock
1151	1	7	Nottingham Corporation 3 per cent. Irredeemable Stock
5000	0	0	Manchester Corporation 3 per cent. Stock
10230	12	10	5 per cent. War Stock. 1929-47
3629	0	6	4½ per cent. War Stock. 1925-45
400	0	0	Belfast Corporation 5 per cent. Stock
10000	0	0	London Midland & Scottish Railway 4 per cent. Preference Stock
7500	0	0	" " " " " "
6250	0	0	" " " " " "
780	0	0	London & North Eastern Railway Co. 4 per cent. Second Guaranteed Stock.
780	0	0	London & North Eastern Railway Co. 4 per cent. First Preference Stock.
200	0	0	Shrewsbury & Hereford Railway 6 per cent. Rent Charge Stock.
1460	0	0	London Midland & Scottish Railway Co. 4 per cent. Debt Stock.
2190	0	0	Leeds Corporation 3 per cent. Stock (1902 Issue)
1650	0	0	Leeds Corporation 3 per cent. Stock (1906 Issue)
2000	0	0	Dominion of Canada 3½ per cent. Stock
6000	0	0	Wakefield Corporation 3 per cent. Redeemable Stock
423	0	0	London & North Eastern Railway Company 4 per cent. First Preference Stock
1500	0	0	4½ per cent. Registered Treasury Bonds
624	19	1	3½ per cent. Conversion Loan.
1455	11	7	3½ per cent. Conversion Loan
2070	7	9	3½ per cent. Conversion Loan
595	19	7	3½ per cent. Conversion Loan
			An Annuity of £128 in the East India Railway Company. Class "B."

£	s.	d.	MACKIE CONVALESCENT FUND.
585	0	0	London Midland & Scottish Railway Co. 4 per cent. Pref. Stock

### LUPSET FUND.

561	0	0	London & North Eastern Railway Co. 3 per cent. Debt. Stock.
509	10	1	Dominion of Canada 3 per cent. Inscribed Stock.
50	0	0	India 3 per cent. Consolidated Stock.

### DANIEL GASKELL FUND

118	0	0	London Midland & Scottish Ry. Co. 4 per cent. Preference Stock.
-----	---	---	---



## Investments—continued.

### OUT-PATIENTS BUILDING FUND ACCOUNT.

£	s.	d.	
10000	0	0	Wakefield Corporation 4 $\frac{3}{4}$ per cent. Mortgage Bond.

### HOUSE PROPERTY.

The Hospital, Nurses Home, and Grounds.

Sigston Villa.

Two Cottages in Wentworth Street.

Canning Childs Out Patient Department

We have verified the correctness of the Government Securities and examined the Script and Deeds of the above Investments.

J. W. CLOSE, HIRST & Co., Chartered Accountants,  
Leeds, 25th January, 1929. AUDITORS.

## Gifts in Kind.

**GAME, FLOWERS, FRUIT, AND VEGETABLES.**—Miss Mackie, The Cathedral, Lofthouse Gate, Primitive Methodist Chapel, Sunday School, St. Michael's School, Infants Dept., Lady Kathleen Pilkington, St. John's Church, Mrs. Cartridge, Mrs. A. A. Haley, Mrs. Berry, Fur and Feather Society, New Sharlston Primitive Methodist School, Mrs. Ledger Holdsworth Bishopgarth, Stanley Parish Church, Margaret and Gertrude Walker, Mrs. Taylor, Bethel United Methodist Chapel, St. Mary's Church Horbury Junction, Herbert Barnes, United Methodist Church Robin Hood, Primitive Methodist Chapel Market Street, Primitive Methodist Chapel Lofthouse, Mrs. Whittle, Altofts Church, Belle Vue Primitive Methodist Church, Sandal Parish Church, Mrs. W. H. Kingswell, Mrs. A. Shaw, Mrs. Mosley, Newmillerdam Flower Show, Mrs. A. H. Hobson, Mrs. S. Ellis, Mr. Gledhill, St. John's Church Calder Grove, Crigglestone Flower Show Committee, Salvation Army, Zion Sunday School (Primary and Junior), St. Michael's Sunday School, Mrs. Ellis, Westgate End Wesleyan Sunday School, Wrenthorpe Methodist Chapel, St. Mary's School, Mrs. Ripley, Wragby Church, New Crofton Mission, Mr. Jackson and Mr. Woodhead, Walton Church, Kirkthorpe Church, Lofthouse Church, Deaf and Dumb Institute, Clarendon Street Girls' Sunday School Class ix., Lupset Wesleyan Church, Primitive Methodist Church Horbury, Stanley Parish Church, St. Andrew's Church, Wrenthorpe Church, Sandal Parish Church, St. Mary's Church South Elmsall, Wakefield Chantry, Viscount Allendale, Mr. J. H. Greaves, Miss Hilda Redfern.

**CAKES, SWEETS, TOYS, FOR CHILDREN**—Mrs. Cartridge & Ronine Brentley, Mrs. Sawford, Miss Ann Sawtell, Mrs. Chalker, Florence & Annie Burrells, Billy Bratley, Miss Gill, Mrs. T. L. Grimshaw, Mr. C. B. White, Anonymous, Miss Millor, Doreen & Margaret Johnson, David & Edward Oakland, Mrs. Haigh, Mesdames Allott, Bonner, & Goldsborough, Mr. Mawson, Alice Arnold & Bessy Hartley, Joyce Hartley & Dorothy Newell,



## Gifts in Kind—*continued.*

Miss Robertshaw, Mr. Cyril B. White, Miss M. Sharp, Mrs. Eric Stonehouse, Miss D. M. Foster, Mrs. Hartley, Mrs. John Bywater, Mrs. C. Hill, Mr. Joe Whitworth, Margaret & Norman Furness, Miss Molly Charlesworth, Mrs. Burton, Charlie Bulmer, Mrs. Warren, May Consterdine, Jack & Norman England.

SHIRTS, SOCKS, BED-JACKETS, ETC.—Mrs Richard Turner, Mrs. Marriott, Mrs. Brown, Miss N. Cliff, Mrs. Smithson, Mrs. Varley.

PAPERS, MAGAZINES, AND BOOKS—Mr. A. J. Beaumont, Mrs. Swithenbank, Miss M. Chalker, Miss Stella Shearman, Mrs. Loxley, Mrs. Sawford, Mrs. M. Ancott, Phyllis & Harry Clough, Miss Benton, Mrs. F. B. Harrison, Miss Mackie, Miss Pitt, Miss A. Lupton, Mrs. Spilsbury, Mrs. Thorpe, Miss Mitchell, Mrs. Catterall, Mrs. Moggs, Margaret & Norah Hammond, Mrs. Edmondson, Mrs. Holdsworth, Mrs. Ward, Miss Anderson, Mrs. R. Turner, Mr. J. H. Mortimer, Mrs. Illingworth, Mrs. Crompton, Miss Ann Sawtell, Tony Wright, Mrs. Rabaghati, Mrs. Cecil Chalker, Mrs. Markett, Mrs. Gillott, Mrs. Royston, Miss Kathleen Eastwood, Mrs. A. Batty, Mr. W. B. Anderson, Mrs. Chalker, Mr. Burdin, Mrs. Heptonstall, Anonymous, Margaret & Doreen Johnson, Miss Irene Stevenson, Mr. A. Peel, Mrs. Percy Greaves, Miss Purseglove, Miss Newsome, Mrs. Walker, Mr. Fred Greenwood, Mrs. Dowson, Mrs. H. Porter, Mrs. Newbold, Miss Armitage, Mr. F. A. Greenwood, Dorothy Isherwood, Mrs. S. Armitage, Mr. Tilford, Mr. R. Newland, Mrs. H. Wilson, Miss Dixon, Mrs. Bradley, Miss Hall, Mrs. Pallet, Mrs. Waterhouse, Miss Fricker, Mrs. Roberts, Mrs. Ward, Miss Patricia Ward, Mrs. Thornhill Simpson, Mrs. Dixon, Mrs. MacLeod, Mrs. H. G. Wells, Mrs. Salisbury, Mrs. Carr, Mr. S. R. Nicholls, Mrs. Thresh, Miss Caven, Vera Fisk, Mrs. Pinder, Mrs. Firth, Mrs. Westwood, Miss Webb, Mrs. Laverack, Mrs. Surgery, Mrs. Parkinson, Mrs. Leighton, Mrs. Rogerson, Irene & Clarice Gregg, Mr. J. B. Taylor, Mrs. J. Ormiston, Mrs. Almgill, Miss Creaser, Mrs. Arthur Saville, Mrs. G. Hudson, Mrs. Crome, Wakefield Window Cleaning Co., Mrs. P. Howarth, Mrs. Buckley, Kenneth Shillito, Mr. Lupton, Mr. R. Sutcliffe, Mrs. Goodwin, Mrs. Bates, Mr. Fred Blackburn, Miss S. Platts, Mrs. J. B. Cooke, Mrs. Wakelam, George Varley, Mrs. Fisher, Mrs. Atter, Mrs. Nutton, Miss Gledhill, Mrs. Speck, Noel Woods, Miss H. Hudson, Mrs. J. Birkenshaw, Mrs. H. Crowe, Miss Pearl Farrar, Miss M. G. Wood, Miss Gladys Probert, Miss Doughtery, Mrs. Stannix, Mrs. Summers, Harold Box, Mrs. Broadhead, Miss Pearman, Mr. F. Wilcock, Mrs. Marley, Mrs. Brearley, Miss Oxley, Mrs. Gillott, Mrs. Broadhead, Mrs. Rodgers, Mrs. Slater, Mrs. Davy, Mrs. Varley, Miss Ursula Wells, Miss Elsie Caines, Mr. Telford, Rev. A. H. Hall, Master W. Kerb, Miss Ida Patch, Mrs. Sowray Greaves, David & Ian Moorhouse, Miss B. Mitchell, W.R.E.T.Co., Mr. H. Whone, Mrs. Gilbert, Mrs. Pinder, Mrs. Strickland, Marjory Wheatley, Mr. Outhwaite, Mrs. Cooper, Mr. Oates, Miss A. Armitage, Mrs. Ena Bower, Miss Gilbey, Liberal Club, Mrs. Wood, Miss Goldthorp, Mrs. Swales, Stella Shearman, Miss Marjory Darling, Mrs. Waterhouse, Miss Sheila Robinson, Mrs. P. C. Greaves, Miss D. Yates, Mrs. Rhodes, Mrs. Stephenson, Mrs. Burnill, Mrs. Ruberry, Mrs. Norbury, 10th Wakefield Rangers, Miss K. Hawksworth, Mr. F. Mawson, Mr. Ernest Holt, Mrs. H. H. Holdsworth, Harry Walker, G. Lindley, Miss M. Chalker, Irene Joy, Margaret & John Dykes, Mr. Raper.

MISCELLANEOUS.—Mrs. Longley (Bottles), Mr. Everson (Brawn), "A Friend" (Shoes), Mr. Taylor (Ice Cream), Miss Kerry (Teacakes), Anon (10s.), Mr. Thompson (Milk), Mr. J. Swainson (Milk), Mrs. Harrap (Medical Appliance).

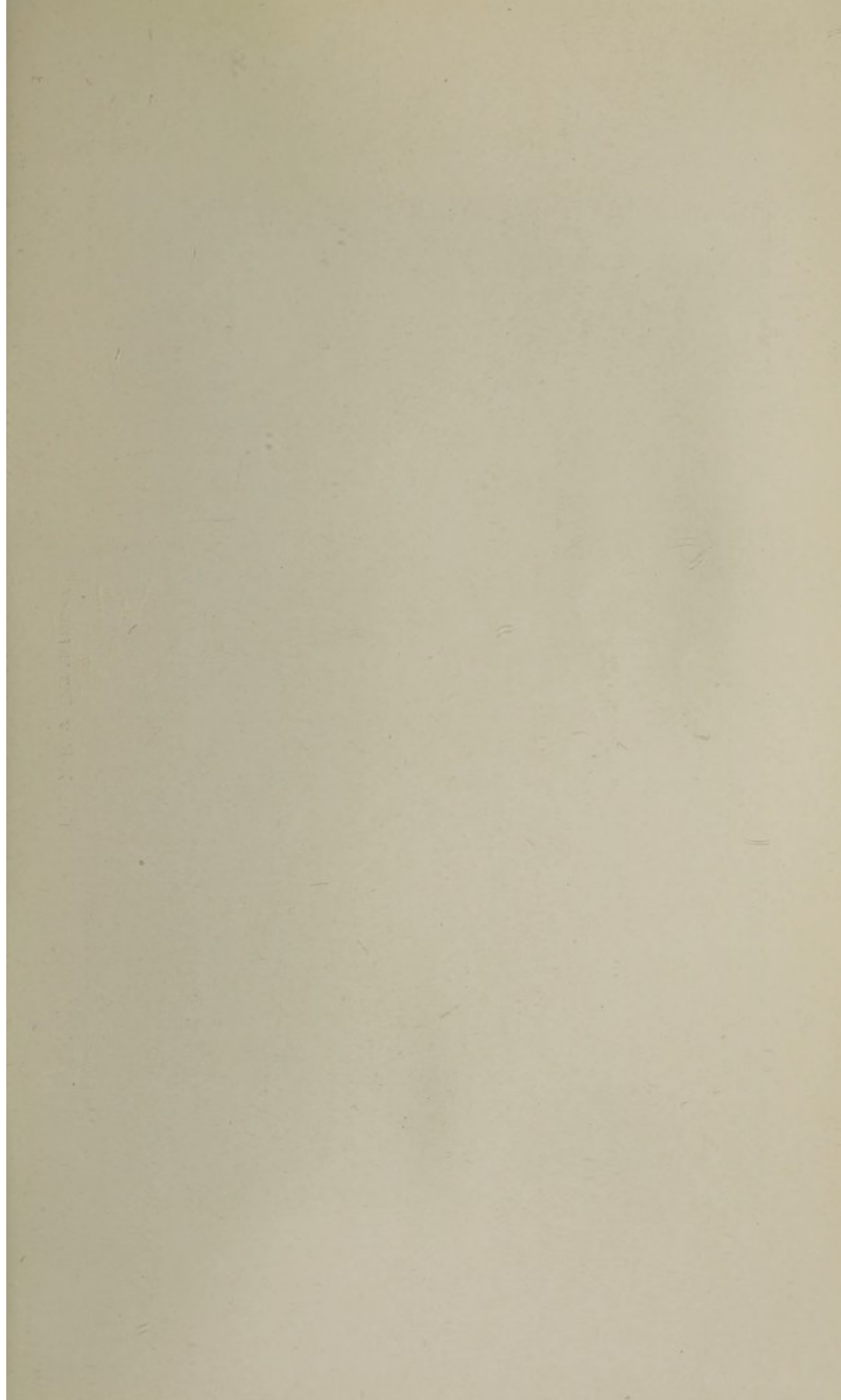


# Annual Subscriptions

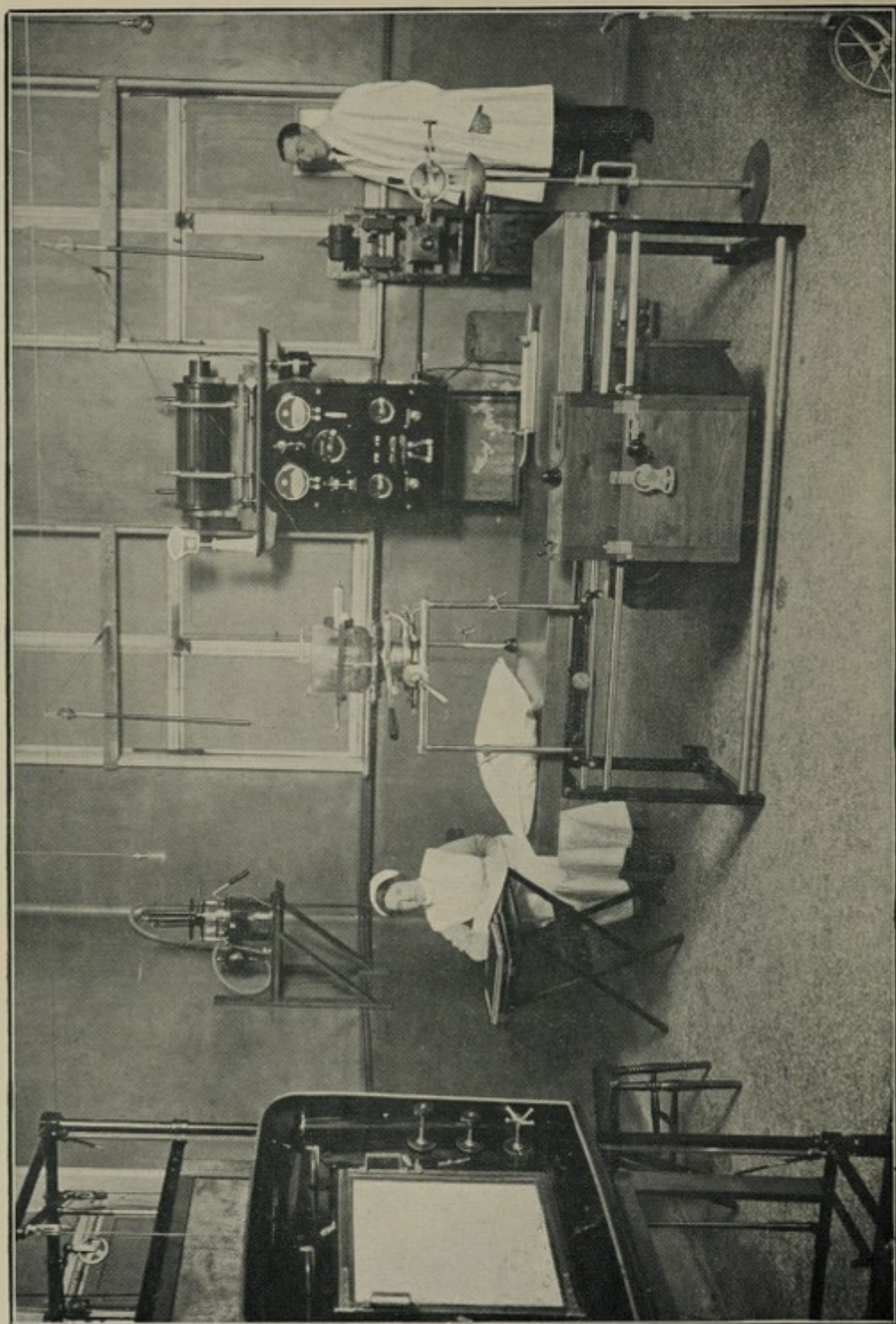
FOR THE YEAR ENDED 31st DECEMBER, 1928.

*Should any error appear in this list the Superintendent will be glad to be informed of same.*

	£	s.	d.
Ackton Hall Colliery Co. Ltd., Featherstone .. ..	50	0	0
Aire & Calder Navigation Co., Leeds .. ..	5	5	0
Alexandre, Ltd., Leeds .. ..	0	10	6
Allendale Viscount, Bretton .. ..	10	10	0
Allibone, A. C., Wakefield .. ..	1	1	0
Altofts Co-operative Society, Ltd. .. ..	5	5	0
Andrassy, H., Horbury .. ..	3	3	0
"Anonymous" .. ..	1	1	0
Appleyard, G. E., Sandal .. ..	1	1	0
Archbishop Holgate's Hospital .. ..	1	11	4
Archer, W. B., Wakefield .. ..	1	1	0
Ardsley Station Staff, L.N.E.R. .. ..	5	0	0
Ardsley Enginemen & Staff Infirmary Fund .. ..	37	10	0
Armitage, G. & Sons, Ltd., Robin Hood .. ..	21	12	10
Atkinson, Wm. & Son, Wakefield .. ..	1	1	0
Atter, H. F., Wakefield .. ..	1	1	0
Baines T. .. ..	1	1	0
Baines, Richard, Ltd., Horbury .. ..	2	10	0
Baines, J. Ellis, Horbury .. ..	5	0	0
Barker, W. W., Horbury .. ..	2	2	0
Bates, John H., J.P., Sandal .. ..	3	3	0
Bates, Mrs. J. H., Sandal .. ..	2	2	0
Baynes, J. B., Wakefield .. ..	1	1	0
Baynes & Co., Wakefield .. ..	1	1	0
Beaumont & Saville, Wakefield .. ..	2	2	0
Beaumont, J. .. ..	2	2	0
Benzol & By-Products, Ltd., Crigglestone .. ..	30	0	0
Beverley Bros. Ltd., Wakefield .. ..	3	3	0
Blakey, G. & Son (Shopfitters) Ltd., Wakefield .. ..	5	0	0
Blundell, W. H., Wakefield .. ..	0	10	6
Booth, Andrew, Wakefield .. ..	1	1	0
"Boots the Chemists," Nottingham .. ..	4	4	0
Bradley & Craven Ltd., Wakefield .. ..	15	0	0
Bradleys (Chester) Ltd., Chester .. ..	1	1	0
Briggs, William, J.P., Wakefield .. ..	5	5	0
Briggs, Basil S., Wakefield .. ..	1	1	0
British & Argentine Meat Co., Ltd., Leeds .. ..	1	1	0
British Jeffrey Diamond, Ltd. .. ..	26	5	0
Briggs, Henry Son & Co., Ltd., Whitwood .. ..	42	17	0
Brotherton, & Co. Ltd., Wakefield .. ..	5	5	0
Brown, F. W. Wakefield .. ..	1	1	0
Bolles' Lady Charity, Wakefield .. ..	1	1	0
Bolton, Dr. J. Shaw, Wakefield .. ..	1	1	0
Brotherton, Sir E. A. Bt., Leeds .. ..	5	5	0
Bullock, Mrs. J. .. ..	2	2	0
Bullock, J. & Sons, Wakefield .. ..	2	2	0
Burton, Montague, Ltd., Leeds .. ..	0	10	6
Cadbury Bros., Ltd. .. ..	1	1	0







THE X-RAY DEPARTMENT



	£	s.	d.
Capstick, J. Wakefield .. .. .	2	2	0
Carter, E. H. & Co., Huddersfield .. .. .	0	10	6
Castleford Infirmary Committee .. .. .	20	0	0
Chalker, Henry, Sandal .. .. .	1	1	0
Chaplin, J. L., & Son, Wakefield .. .. .	2	2	0
Chaplin, Edward M., Wakefield .. .. .	0	10	6
Charlesworth, J. & J., Ltd., Wakefield .. .. .	133	15	0
Clark, H. B. & Co. (Successors) Ltd., Wakefield .. .. .	2	2	0
Clayton, Col. W. Kitson, Wakefield .. .. .	1	1	0
Clayton, C. H., Wakefield .. .. .	1	1	0
Coke, Col. J. d'E. (West Riding Constabulary) .. .. .	15	0	0
Colbeck Brothers, Ltd., Alverthorpe .. .. .	20	0	0
Coles, W. H., Wakefield .. .. .	1	1	0
Cooke, J. B., Wakefield .. .. .	1	1	0
Coxley Mill Co., Coxley Valley .. .. .	3	0	0
Cradock, G. & Co., Ltd., Wakefield .. .. .	25	0	0
Crigglestone Industrial and Provident Society Ltd. .. .. .	5	5	0
Crooke, George & Sons Ltd., Wakefield .. .. .	3	3	0
Crowther's Dr., Almshouse Charity, Wakefield .. .. .	1	1	0
Davis (Wakefield) Ltd., Wakefield .. .. .	3	3	0
Denby Grange Collieries, Wakefield .. .. .	20	0	0
Dews, Thomas, Wakefield .. .. .	1	1	0
Dickinson, Harold C., Wakefield .. .. .	1	1	0
Dixon, Sir W. Vibart, London .. .. .	1	1	0
Dodgson, R. P., Wakefield .. .. .	0	10	6
Driver, John S., Bradford .. .. .	1	0	0
Dudding, J. W., Wakefield .. .. .	1	1	0
Dunn, G. A. & Co. Ltd., London .. .. .	1	1	0
Dyson, John & Sons, Leeds .. .. .	1	1	0
Dyson, R. S. & Co., Ltd., Wakefield .. .. .	5	5	0
Earnshaw, Job & Brothers, Wakefield .. .. .	2	2	0
East & West Ridings of Yorkshire Voluntary Hospitals Committee .. .. .	22	13	0
Eden, Bishop G.R. .. .. .	1	1	0
Edey, Edwin, Wakefield .. .. .	5	5	0
Eggleston, M. I., Wakefield .. .. .	1	1	0
Ellis, R. Geoffrey, M.P., Skipton .. .. .	5	5	0
Ellis, Sam, Wakefield .. .. .	1	1	0
Emley Industrial Co-op. Provident Soc. Ltd. .. .. .	1	1	0
Everatt Brothers, Wakefield .. .. .	0	10	6
Everson, A. H., Wakefield .. .. .	5	0	0
Fennell, C. W., Wakefield .. .. .	1	1	0
Firth, Frank & Son & Staff .. .. .	4	0	0
Fisher, A. B., Ltd., Wakefield .. .. .	4	4	0
Fleming Reid & Co., Ltd., Greenock .. .. .	1	1	0
Flockton Coal Co. Ltd., Horbury .. .. .	20	0	0
Flockton Industrial Co-operative Society Ltd. .. .. .	2	2	0
Flockton Hospital Committee .. .. .	7	0	0
Fotherby & Co., Ltd., Wakefield .. .. .	5	5	0
Forresters, A.O., Wakefield, Old District .. .. .	1	1	0
Freeman, Hardy & Willis, Ltd., Leicester .. .. .	2	2	0
Gilderdale, W., Wakefield .. .. .	1	1	0
Gillott, Herbert, Wakefield .. .. .	0	10	6
Glass Houghton Medical Charities .. .. .	12	0	0
Glass Houghton Collieries Charitable Institutions Fund .. .. .	25	0	0
Goodsons Limited, Manchester .. .. .	1	0	0
Graham, F. W., Wakefield .. .. .	1	1	0
Greaves, Mr. & Mrs. A. E., Walton .. .. .	2	2	0
Greaves, J. H., Wakefield .. .. .	5	0	0
Greaves, Percy C., Sandal .. .. .	5	5	0
Green, D. Lycett, Ripley .. .. .	10	10	0
Green, E. & Son, Ltd., Wakefield .. .. .	36	0	0



			£	s.	d.
Hagenbach, C. & Sons, Ltd. Wakefield	..	..	..	1	1 0
Hague Bros., Wakefield	..	..	..	1	1 0
Haigh, Thomas & Sons, Wakefield	..	..	..	2	2 0
Haigh, W. E., Wakefield	..	..	..	1	1 0
Haley, Alfred & Co. Ltd., Wakefield	..	..	..	21	0 0
Hall, G., Wakefield	..	..	..	1	1 0
Hall, G. & J., Wakefield	..	..	..	1	1 0
Hamshaw, J. & Son Wakefield	..	..	..	1	1 0
Hargrave Bros., Wakefield	..	..	..	2	2 0
Harrap Fred, Woodthorpe	..	..	..	10	10 0
Harrap, Brothers, Alverthorpe	..	..	..	6	6 0
Harrison, E. L., Wakefield	..	..	..	1	1 0
Harrison's Charity, Dewsbury	..	..	..	5	5 0
Harrop, C. & Sons, Ltd., Horbury	..	..	..	2	2 0
Hart & Levy, Leicester	..	..	..	1	1 0
Hemsworth Poor Law Guardians	..	..	..	26	5 0
Hemsworth L.N.E. Railway Hospital Fund	..	..	..	7	0 0
Hemsworth, Grimethorpe & District Gas Co. Ltd.	..	..	..	2	2 0
Hemsworth Rural District Council	..	..	..	2	12 4
Hepburn Conveyor Co. Ltd., Wakefield	..	..	..	5	1 6
Hill, Rowland H. Sandal	..	..	..	1	1 0
Hinchcliffe, John & Sons	..	..	..	2	2 0
Hinchcliffe, John & Sons (Employees)	..	..	..	7	9 3
Hipps, Ltd., Wakefield	..	..	..	0	10 6
Hirst & Hodgson, Ltd., Wakefield	..	..	..	5	5 0
Hobson, Mrs. Crigglestone	..	..	..	0	10 6
Hodroyd Coal Co. Ltd.	..	..	..	52	10 0
Holbrook, W., Wakefield	..	..	..	5	5 0
Holdsworth, Harold & Co., Wakefield	..	..	..	20	10 0
Holdsworth, James, Wakefield	..	..	..	2	2 0
Home & Colonial Stores, Ltd., London	..	..	..	1	1 0
Hopetown & Whitwood Medical Charities Committee	..	..	..	5	0 0
Horbury Industrial Co-operative Society Ltd.	..	..	..	7	7 0
Horbury Bridge Mills Co.	..	..	..	6	3 4
Horbury Woolpacks Sick Society	..	..	..	1	1 0
Horbury Bridge Hospital Sunday Committee	..	..	..	6	0 0
Horbury and District Hospital Committee	..	..	..	125	0 0
Horbury Common Land Trustees	..	..	..	3	3 0
Horbury House of Mercy	..	..	..	2	2 0
Hyland, Limited Wakefield	..	..	..	5	0 0
Jacksons Limited, Stockport	..	..	..	1	1 0
Jessop, George & Son Ltd., Batley	..	..	..	2	2 0
Kaye, Lt. Col. H.S. Wakefield	..	..	..	3	3 0
Kaye, Sir Cecil Lister, Bart.	..	..	..	1	0 0
Kay, Mr. & Mrs. S. C., Wakefield	..	..	..	1	0 0
Kinsley and Fitzwilliam Hospital Committee	..	..	..	12	10 0
Kirkhamgate Hospital Committee	..	..	..	8	0 0
Leake, R. & Sons' Employees, Normanton	..	..	..	1	0 0
Lee, J. L., J.P., Wakefield	..	..	..	1	0 0
Lee, G. & Sons Ltd., Wakefield	..	..	..	21	0 0
Lee, Tom, Sandal	..	..	..	0	10 6
Leeds and Wakefield Breweries Ltd.	..	..	..	4	4 0
Leeds Industrial Co-op. Society Ltd.	..	..	..	2	2 0
Legard, Walter, Wakefield	..	..	..	1	1 0
Legard, S.	..	..	..	1	1 0
Lill, Charles Hemsworth	..	..	..	1	1 0
Lindsay, J. & Sons, Ltd., Nottingham	..	..	..	1	15 6
Lister, John R., Wakefield	..	..	..	2	2 0
Locke & Co. (Newland) Ltd., Normanton	..	..	..	50	0 0
Lofthouse Colliery Co., Ltd.	..	..	..	72	12 0
London & North Eastern Ry. Co.	..	..	..	5	0 0



				£	s.	d.
Loxley, T. B., Wakefield	..	..	..	2	2	0
Mackie, Miss, Wakefield	..	..	..	5	5	0
Manor Haigh Moor Colliery, Ltd. Wakefield	..	..	..	5	0	0
Marks & Spencer, Ltd., London	..	..	..	4	4	0
Marriott, W. H., Sandal	..	..	..	2	2	0
Martin, Fred, Wakefield	..	..	..	0	10	6
Massie, Frank, Wakefield	..	..	..	1	1	0
Masterman, G. & Sons, Wakefield	..	..	..	1	1	0
Maxims (Tailors) Ltd., Leeds	..	..	..	0	10	6
Meadow Dairy Co., Ltd., London	..	..	..	1	1	0
Melias, Ltd. Liverpool	..	..	..	1	1	0
Middlestown Co-op. Industrial Society Ltd.,	..	..	..	2	2	0
Middlestown and Overton Hospital Committee	..	..	..	20	0	0
Milner, Walter, Woodthorpe	..	..	..	1	1	0
Milnes, W. H. Ltd., Wakefield	..	..	..	2	2	0
Mitchell, J., Horbury	..	..	..	1	1	0
Moodie, Alfred, Ltd., Wakefield	..	..	..	2	2	0
Moorhouse, G. A. Wakefield	..	..	..	2	2	0
Moorhouse, W. B. Wakefield	..	..	..	1	1	0
Mountain, P.	..	..	..	1	1	0
McGrath, J. C., Stanley	..	..	..	2	2	0
McInnes, Robt. C., Wakefield	..	..	..	1	1	0
Nettleton Bros., Wakefield	..	..	..	1	1	0
New Sharlston Colliery Co. Ltd.	..	..	..	150	0	0
Norbury, E. J. & Co., Wakefield	..	..	..	1	1	0
Normanton Gas Co.	..	..	..	5	5	0
Northern Carton & Skillet Co., Ltd.	..	..	..	0	10	0
Nostell Colliery, Ltd.	..	..	..	100	0	0
Nymph Lodge Y.A.O.D.,	..	..	..	1	1	0
Ossett Industrial Co-op. Society, Ltd.,	..	..	..	2	2	0
Outhwaite, Mr. & Mrs. G.W., Horbury	..	..	..	1	1	0
Outwood Church Friendly Society	..	..	..	1	17	6
Paffley Bros., Wakefield	..	..	..	0	10	6
Paton & Baldwins, Ltd., Wakefield	..	..	..	45	10	0
Peace, A. & Co., Wakefield	..	..	..	1	1	0
Perkin, F. K. & Sons, Wakefield	..	..	..	1	1	0
Phipps, Mrs. R., Wakefield	..	..	..	2	2	0
Pickard, Alfred	..	..	..	2	2	0
Pickles, Arthur, Wakefield	..	..	..	10	10	0
Pickles, Charles Henry, Ltd., Leeds	..	..	..	1	1	0
Pilkington, Lady Kathleen, Chevet	..	..	..	1	1	0
Pilkington, Sir Thomas, Chevet	..	..	..	5	5	0
Pinchbeck, J. I., Wakefield	..	..	..	1	1	0
Plumridge, J. H., Wakefield	..	..	..	0	2	6
Pontefract Industrial Co-op. Society, Ltd.	..	..	..	10	0	0
Pope & Pearson, Ltd., Altofts	..	..	..	21	0	0
Preston, J. & Son, Wakefield	..	..	..	1	1	0
Prudential Assurance Co., Ltd.,	..	..	..	45	0	0
Raines, Sidney, Wakefield	..	..	..	5	0	0
Reid, John & Son and Employees, Horbury	..	..	..	54	5	10
Reynolds Stott & Haslegrave, Ltd.	..	..	..	5	5	0
Rhodes, Joseph & Sons, Ltd., Wakefield	..	..	..	5	0	0
Robb, Walter, Ltd., Wakefield	..	..	..	5	5	0
Roberts, Charles, & Co., Ltd., Horbury	..	..	..	50	0	0
Rogers & Co. (Cardiff) Ltd., Employees, Ossett	..	..	..	0	10	6
Rowand, R., Wakefield	..	..	..	1	1	0
Sanderson, George, Wakefield	..	..	..	1	1	0
Seamless Steel Boat Co. Ltd., Wakefield	..	..	..	5	0	0
Sharpe, W. N., Ltd., Wakefield	..	..	..	8	17	3
Shaw & Rusby, Sandal	..	..	..	2	2	0
Sheard, S. & Co., Wakefield	..	..	..	2	2	0



				£	s.	d.
Shipmans, Ltd., Wakefield .. .. .	..	..	..	0	10	0
Smith, J. W., Wakefield .. .. .	..	..	..	2	2	0
Smiths, John, Tadcaster Brewery Co., Ltd. .. .. .	..	..	..	3	3	0
South Hiendley Hospital Committee .. .. .	..	..	..	17	0	0
South Kirkby, Featherstone and Hemsworth Collieries Ltd. .. .. .	..	..	..	350	0	0
Spilsbury, A. J., M.A., Wakefield .. .. .	..	..	..	2	2	0
Spurr Innan & Co., Wakefield .. .. .	..	..	..	10	0	0
Stanley U.D. Hospital Fund .. .. .	..	..	..	24	11	0
Star Boot Co., Ltd., Wakefield .. .. .	..	..	..	2	2	0
Stephensons Ltd., Wakefield .. .. .	..	..	..	2	2	0
Stonehouse, M.P., Ltd., Wakefield .. .. .	..	..	..	20	0	0
South Elmsall Friendly Societies' Council and Hospital Committee .. .. .	..	..	..	10	10	0
St. Oswald, Lord, Trustees of .. .. .	..	..	..	5	0	0
Stringer & Son, Ltd., Clayton West .. .. .	..	..	..	3	3	0
Stubley, G. & J., Ltd., Wakefield .. .. .	..	..	..	15	0	0
Summers & Co., Wakefield .. .. .	..	..	..	1	1	0
Taylor, C. E. & Co., Ltd., Staff .. .. .	..	..	..	1	1	0
Terry, Greaves & Co., Roundwood .. .. .	..	..	..	30	0	0
Tetley, S. & Sons Ltd., Leeds .. .. .	..	..	..	2	2	0
Tew, T. P., J.P., Brightling Park .. .. .	..	..	..	3	3	0
Tew, Miss F. E. Percy, Heath .. .. .	..	..	..	5	0	0
Textile Workers, National Union of .. .. .	..	..	..	2	2	0
Townsend H. J. .. .. .	..	..	..	1	1	0
Turner, Charles & Sons, Wakefield .. .. .	..	..	..	3	3	0
Turner, Arthur, Newton Bar .. .. .	..	..	..	1	1	0
Twigge, L. & Sons, Wakefield .. .. .	..	..	..	1	1	0
Victoria Coal & Coke Co., Ltd., Wakefield .. .. .	..	..	..	50	0	0
Wakefield Corporation Staff .. .. .	..	..	..	26	5	8
Wakefield City Teacher's Association .. .. .	..	..	..	35	14	9
Wakefield Charities .. .. .	..	..	..	10	10	0
Wakefield Corporation .. .. .	..	..	..	100	0	0
Wakefield Borough Co-op. Society., Ltd., .. .. .	..	..	..	10	10	0
Wakefield "Express" Series, Ltd. .. .. .	..	..	..	2	2	0
Wakefield Window Cleaning Co. .. .. .	..	..	..	1	0	0
Wakefield Industrial Co-op. Society, Ltd., .. .. .	..	..	..	21	0	0
Wakefield Gas Light Co. .. .. .	..	..	..	5	5	0
Wakefield Guardians of the Poor .. .. .	..	..	..	100	0	0
Wakefield Post Office .. .. .	..	..	..	4	0	0
Waddington, T., Wakefield .. .. .	..	..	..	1	0	0
Wade, W. & Sons, Ltd., Wakefield .. .. .	..	..	..	11	0	0
Walker, J. W., East Hagbourne .. .. .	..	..	..	1	1	0
Walker Bros. .. .. .	..	..	..	1	1	0
Waller, Thomas, Purston .. .. .	..	..	..	1	1	0
Waterhouse, J. C., Ltd., Wakefield .. .. .	..	..	..	5	0	0
Watson & Kenworthy, Wakefield .. .. .	..	..	..	4	4	0
Webster Brothers, Staff, Wakefield .. .. .	..	..	..	6	6	6
Webster Brothers, (Wakefield) Ltd. .. .. .	..	..	..	5	0	0
Wensley, Charles & Sons, Wakefield .. .. .	..	..	..	2	2	0
Wensley, Mrs. Wakefield .. .. .	..	..	..	0	10	6
Wentworth, Major, Woolley .. .. .	..	..	..	2	2	0
Westgate Brick Co., Ltd., Wakefield .. .. .	..	..	..	2	2	0
West Riding Hotel .. .. .	..	..	..	2	2	0
West Riding County Officer's Association .. .. .	..	..	..	19	13	0
West Yorkshire Printing Co., Ltd., Wakefield .. .. .	..	..	..	3	3	0
White, Henry, Wakefield .. .. .	..	..	..	1	1	0
White, Edward & Sons, Ltd., Wakefield .. .. .	..	..	..	2	2	0
White, J. Wilfred, Wakefield .. .. .	..	..	..	1	1	0
Whitwood Chemical Co. Ltd. Normanton .. .. .	..	..	..	2	2	0
Wilkinson, J., Wakefield .. .. .	..	..	..	1	1	0
Winterburn, Rev. F. .. .. .	..	..	..	1	1	0
Womersley, H., Wakefield .. .. .	..	..	..	2	2	0

				£	s.	d.
Wood & Burt, Wakefield	..	..	..	..	3	18 0
Yates Bros. & Co., Manchester	..	..	..	..	1	1 0
Yorkshire Press & Tool Co., Ltd., Wakefield	..	..	..	..	3	3 0
Yorkshire (West Riding) Electric Tramways Co Ltd.	..	..	..	..	10	10 0
Ziegler, G. F., Wakefield	..	..	..	..	1	10 0
Zion Brotherhood, Wakefield	..	..	..	..	1	1 0
Zion P.M.E., Wakefield	..	..	..	..	3	0 0
				<hr/>		
				£2942	17	9

Subscriptions received after the books were closed.

I.O.O.F., M.U., St. Peter's Lodge, Newmillerdam	..	..	..	..	1	1 0
Northern Butcher's Hyde and Skin Co.	..	..	..	..	2	2 0
New Monckton Collieries Ltd.	..	..	..	..	50	0 0
Shaw W. H. & Sons	..	..	..	..	2	2 0
				<hr/>		
Total...				£55	5	0

---

A BED may be named in perpetuity by a  
Donation or Legacy of £1,000.

A COT may be named in perpetuity by a  
Donation or Legacy of £500.

---



# Workpeople's Clayton Hospital Fund

OR

## Hospital Saturday Collections, 1928.

The following collections in aid of the Clayton Hospital and Wakefield General Dispensary have been received from the Workpeople employed by the following firms, also District Committees, Hotels and Clubs :—

	£	s.	d.
Aire and Calder, Navigation, Wakefield and Stanley	25	18	6
Ackton Hall Colliery	106	0	0
Ackworth Hospital Committee	10	10	0
Altofts Friendly Societies' Hospital Committee	30	0	0
Armitage, George & Sons, Ltd.	21	12	10
Ambler Thos. & Sons,	44	15	2
Benzol and By Products Ltd.	31	10	0
Brotherton & Co., Ltd.	7	9	0
Blackburn Hy. Exors.	3	14	9
Bradley & Craven, Ltd.	52	4	2
Barber R.	10	6	
Bank Interest	4	8	4
Blackburn & Crawshaw	3	3	0
Brierley and Furry Moor Colliery	40	0	0
Brierley Hospital Committee	5	0	0
Borough Industrial Co-op. Society, Ltd.	3	3	0
Beverley Brothers, Ltd.	9	18	1
Baines Richard, Ltd.,	9	0	0
Bullock J. & Sons, Ltd.	3	18	4
Cradock, Geo. & Co., Ltd.	77	14	0
City Corporation :—			
Electricity Department	17	11	3
Street Lighting Department	4	8	5
General Works Department	26	10	9
Sewerage Department	6	7	9
Scavenging Department	14	19	2
Waterworks Department	4	18	3
City Police	15	18	7
Crofton Hospital Committee	16	16	0
Colbeck Bros., Ltd.	45	1	6
Crigglestone Haigh Moor Colliery	2	3	0
Central Garage (Wakefield) Ltd.	2	3	0
Co-operative Society Ltd., Crigglestone	2	13	2
Charlesworth J. & J., Ltd., Colliery and Coke Ovens	15	0	0
Crook, Geo., & Sons, Ltd.	40	2	1
Dyson, R. S. & Co., Ltd.	16	3	0
Dews, Thomas	2	17	0
Drake and Warters	3	0	0
Dewhirst Edmund,	1	0	0
Emley Moor Colliery	5	0	0
Earnshaw, Job & Bros., Ltd.	6	17	8

	£	s.	d.
"Express" Series, Ltd. ...	6	1	4
Featherstone Main Colliery :—			
Surfacemen	26	12	0
Underground	129	18	11
Fishers Ltd.	1	14	3
Gas Light Company, Ltd.,	16	0	0
Green, E. & Son, Ltd.	74	4	4
do. Social Club	0	17	6
Goodall, Lister, & Goodall	1	10	7
Gillatt H.,	3	3	0
Green, A. Clifford	3	15	10
Gosnay's, Northgate	3	15	0
Hemingway Bros., Ltd.,	3	14	2
Holliday, R. & Sons, Ardsley,	5	0	0
Hemsworth Colliery	65	0	0
Hemsworth Hospital Committee	43	0	0
Haley, Alfred & Co.	135	3	0
Haigh Colliery	32	0	0
Harrison, J. W. Ltd.	11	0	0
Hartley Bank Colliery,	41	19	9
Harrap Bros.,	25	0	0
Holdsworth, Harold, & Co.	90	16	1
Hemsworth Rural District Council	3	7	9
Hope, George & Sons	2	10	0
Harrap Bros., Wesgate Common	3	12	0
Horbury Bridge Mills Co.	6	3	4
Hepworth Bros.	3	0	0
Holdsworth Harry		10	6
Hainsworth, H.	10	18	6
Ives, James	2	0	0
Lofthouse Colliery, Ltd.	153	10	11
Low Laithes Colliery Concrete Works	10	10	0
Lee George & Sons, Ltd.	89	3	3
Legard, James & Sons	4	0	0
Lister, John R.	3	19	4
Leeds and Wakefield Brewery Ltd	1	9	3
Low Laithes Colliery Co., Brick & Kerb Works	1	10	1
Manor Haigh Moor Colliery	17	11	5
Methley Hospital Committee	10	0	0
Normanton Hospital Committee	42	10	0
Nostell Colliery	49	19	0
Newmarket Silkstone Colliery	120	0	0
New Pelaphone Engine Co., Ltd.	4	3	7
Non-Resident Staff, Clayton Hospital	2	8	4
New Monckton Collieries Ltd., 3 and 4 Pits	100	0	0
do. Sinkers and Staff 5 Pits	4	10	0
Open-Air Sacred Concert	21	7	1
Officers of H.M. Prison	28	8	2
Poppleton, Richard & Sons, Ltd.	16	17	1
Pope & Pearson, Ltd.	115	10	11
Pickles, J. & Sons	2	8	6
Patons & Baldwin's Ltd.—			
Rutland Mills	125	0	0
Thornes Mills	28	0	0
Playhouse Concerts per Mr. C. Shayler	103	16	10
Registry of Deeds	6	15	6
Rhodes, J. & Sons, Ltd.	25	4	0
Reynolds, Stott, & Haslegrave Ltd.	18	6	0
Ryhill and Havercroft Friendly Societies' Hospital Committee	20	0	0
Reid John & Sons and Employees.	5	12	1



	£	s.	d.
Railways :—			
L. & N.E., Goods Dept., Kirkgate ... ..	13	7	6
do. do. Wrenthorpe .. ..	8	9	0
do. do. Westgate .. ..	2	2	0
do. Engineer's Dept. .. ..	3	8	0
L M. & S. Hospital Fund .. ..	354	2	6
Roberts, Charles & Co., Ltd., .. ..	75	0	0
Refuge Assurance Co., Ltd. .. ..	4	5	4
Robb, Walter, Ltd., .. ..	1	16	6
Raines S. .. ..	5	6	6
Rayner & Mitchell, Horbury .. ..	4	4	0
Re-union Whist Club .. ..	7	10	0
Ryhill and District Ladies' Hospital Committee .. ..	10	0	0
Sanderson & Clayton, Ltd. .. ..	11	4	11
Sharlston Hospital Committee .. ..	64	4	0
South Kirkby Hospital Committee .. ..	30	0	0
Sharlston Collieries, Ltd. ... ..	257	12	10
Sharlston West Collieries, Ltd. ... ..	320	13	6
South Kirkby Collieries, Ltd. ... ..	40	0	0
Spurr, Inman, & Co Ltd. ... ..	5	5	0
Sanitary Steam Laundry, Ltd. ... ..	4	10	10
Shaw E. P. & Co. Ltd. ... ..	6	5	0
Stubley, G. & J., Ltd. ... ..	71	0	0
Stonehouse M.P., Ltd., .. ..	50	0	0
Spencer Wire Co. ... ..	26	8	6
Sutcliffe E. Limited .. ..	9	5	0
Sugden, Wm. & Sons .. ..	38	0	0
Swale, T. Ltd. ... ..	4	10	0
Sanderson Michael Ltd. ... ..	3	3	0
Star Boot Repairing Co. ... ..	6	10	0
Senior Harold, and Staff .. ..	4	16	0
Swale, H. .. ..	0	11	0
Typographical Society .. ..	2	2	0
Turner, Charles & Sons .. ..	7	0	0
Tadcaster Tower Brewery Co. Ltd. ... ..	2	2	0
Turner, Arthur .. ..	3	0	0
Talbot, A. & Sons .. ..	1	15	11
Victoria Coal and Coke Co., Ltd. ... ..	154	8	10
Wade, W. & Sons Ltd. ... ..	19	10	0
Wragby and District Hospital Committee .. ..	17	0	0
Wakefield Industrial Co-op. Society, Ltd. ... ..	47	0	0
West Yorkshire Printing Co. Ltd. ... ..	12	19	7
Waterhouse, J. C. & Son .. ..	10	0	0
Williams & Womersley .. ..	8	2	8
Whitwood, Snyderdale, & Saville Collieries .. ..	50	0	0
Wakefield & District Farmers, Ltd. ... ..	2	3	0
Wakefield City & District Hope to Prosper Friendly Society, 4446 York .. ..	2	2	0
Wakefield Industrial Co-op. Society, Ltd., Painting Dept. ... ..	2	18	8
Wood & Burt, Thornes Mills .. ..	15	5	0
Wrenthorpe Mineworkers' Convalescent, Death, and Hospital Fund .. ..	50	0	0
Wakefield Old Prize Band .. ..	14	8	1
Westgate Brick Co., Ltd. ... ..	5	11	0
Wakefield Perseverance Friendly Society .. ..	2	2	0
Wakefield Boot Traders' Association .. ..	8	13	0
Wormald F. .. ..	1	4	0
Wakefield & District Intermediate Rugby Football League .. ..	5	0	0
Yorkshire Railway Waggon Co. Ltd., .. ..	4	0	0
Yorkshire (West Riding) Electric Tramways Co., Ltd. ... ..	84	0	0

## HOTELS.

	£	s.	d.
Admiral Duncan	2	4	9
Angel	2	16	0
Alexandra	2	4	7
Brunswick	2	16	6
Bridge	0	10	0
Bull and Mouth	0	11	0
Crown and Anchor	1	2	1
Criterion	4	10	3
Castle	1	4	0
College	0	17	0
Cutter	4	7	9
Clarence	5	5	0
Commercial	5	19	6
Duke of York	2	14	3
Dyson, W. H., Wood Street Corner	1	1	0
Dog and Gun	0	15	5
Eagle	6	3	3
Fitzwilliam	10	5	0
Grazier's, Market Street	2	1	9
Grazier's, Belle Vue	7	15	4
Harewood Arms	2	2	6
Jolly Sailor	2	12	0
Lord Nelson	7	14	0
Mark Lane Tavern	1	12	6
New Dusty Miller	2	2	4
New Inn, Durkar	4	0	0
No. 2c		13	6
Old Globe	3	15	0
Old Shades	3	11	9
Portobello	7	1	2
Redoubt	0	17	0
Station, Crigglestone	2	2	0
Smith's Arms	7	16	3
Ship, Bridge Street	10	14	11
Shakespeare	4	2	4
Victoria, Outwood	12	8	5
Vine Tree	8	1	6
Wheatsheaf, Stanley	0	14	0
White Horse	3	4	9
White Bear	3	4	6
York Street	5	9	4

## CLUBS.

Conservative, Zetland Street	16	17	6
Do. Belle Vue	2	11	11
Liberal Belle Vue	1	4	7
Villa, Sharlston	4	3	2
Brook House, Sandal	7	8	4
Victoria, Stanley		6	9
Kinsley	6	6	0
Stanley Lane End	4	14	7
Alverthorpe	8	14	6
Bottomboat		17	3
Horbury	5	14	0
Westgate, Horbury Road	4	3	8
Eastmoor	1	14	0
York Street	18	16	6
Hemsworth Colliery Athletic	13	1	6





## CONTENTS.

---

List of Officers	...	...	...	...	2
Committees, 1929	...	...	..	...	3
Auxiliary Committees	...	...	...	...	4
Days and Hours for Attendance of Patients	..			...	5
Attendances at Meetings	...	...		...	6
X-Ray Department	...	...	...	...	8
Massage and Medical Electricity Department	...			...	8
Venereal Diseases Department	...	..		...	8
Ultra Violet Ray Department	...	...		...	9
Report	...	...	...	...	10
Abstract of Treasurer's Accounts	...	...		...	16
Ditto Mackie Convalescent Fund	...			...	22
Ditto Lupset Convalescent Fund	...			...	22
Ditto Daniel Gaskell Fund	..	...		...	22
Ditto War Memorial Nurses Hostel Fund Account	...			...	24
Ditto Out-Patients Department Building Fund Account				...	26
Workpeople's Fund, Treasurer's Account	...			...	28
Statistical Return of Patients	...	...		...	30
Table shewing Residences of In-patients	...			...	31
Operations	...	...	...	...	31
Receipts for the last Ten Years	...	...		...	32
Expenditure for the last Ten Years		...		...	33
Donations	...	...	...	...	34
Congregational Collections	...	...		...	36
Legacies	...	...	...	...	37
Investments (General)	...	...	...	...	39
Ditto (Mackie Fund)	...	...		...	39
Ditto (Lupset Fund)	...	...		...	39
Ditto (Daniel Gaskell Fund)...		...		...	39
Ditto (Out-Patients Building Fund Account)				...	40
Gifts in Kind	...	...	...	...	40
Annual Subscriptions	...	...	...	...	42
Workpeople's Contributions	...	...		...	48



# *X-Ray Department.*

## REGULATIONS.

### Hours for Radiographic Cases.

Monday and Wednesday	...	9-30 to 12 noon
Tuesday, Thursday and Saturday	...	9-30 to 11-45 a.m.
Friday	... ..	9-30 to 4-45 p.m.

A Doctor's note should accompany the patient stating the precise point on which information is desired.

### Examination by Opaque Meal and of the abdominal region.

- Examinations can only be made by appointment.
- Notice to be given at once if prints are required.

### Treatment Cases.

Monday and Wednesday afternoons.  
Appointments to be made in all cases.

### Private Cases.

Appointments to be made in all cases.

All patients who are not regular contributors to the Workpeople's Hospital Fund will be expected to pay something towards the cost of their examination or treatment.

NOTE:—Appointments should be arranged either directly with the department or through the Superintendent.