

**Report of the Board of Management with statement of accounts and list of subscriptions and donations : 1934 / Chesterfield and North Derbyshire Royal Hospital.**

**Contributors**

Chesterfield and North Derbyshire Royal Hospital. no2002088636

**Publication/Creation**

Chesterfield : [publisher not identified] 1934

**Persistent URL**

<https://wellcomecollection.org/works/xqrchem4>

**License and attribution**

This work has been identified as being free of known restrictions under copyright law, including all related and neighbouring rights and is being made available under the Creative Commons, Public Domain Mark.

You can copy, modify, distribute and perform the work, even for commercial purposes, without asking permission.



Wellcome Collection  
183 Euston Road  
London NW1 2BE UK  
T +44 (0)20 7611 8722  
E [library@wellcomecollection.org](mailto:library@wellcomecollection.org)  
<https://wellcomecollection.org>



Chesterfield  
and North Derbyshire  
Royal Hospital.

---

Annual Report

for the Year 1934.

---

£1,000 endows a Bed.  
£500 endows a Cot.





22501899773



The Annual Meeting will be held in the Council Chamber, Memorial Hall, Chesterfield, at 4-30 p.m., on Thursday, March 21st, 1935.

All Subscribers are invited to attend.

Subscriptions became due 1st January last.

Subscribers are earnestly requested to pay them at an early date to the Secretary, or to the Westminster Bank, Limited, Chesterfield.

## ORDER ON BANKERS

To ..... Bank.

Gentlemen,

Please pay the sum of £ : : ( .....pounds  
.....shillings.....pence) to WESTMINSTER BANK, LIMITED,  
CHESTERFIELD, for the credit of THE CHESTERFIELD & NORTH DERBYSHIRE  
ROYAL HOSPITAL, on receipt of this order, and continue to pay the same amount  
annually on the.....day of....., and charge the same  
to my account. This order is to remain in force until cancelled by me in writing.

Two-penny

Signature.....

Stamp.

Date.....

£



WELLCOME
LIBRARY
Ann Rep
WX28
.B65
C52C52
1934



The ANNUAL MEETING will be held in the Council Chamber, Memorial Hall, Chesterfield, at 4-30 p.m., on Thursday, March 21st, 1935.

---

---

Chesterfield and North Derbyshire  
Royal Hospital.

---

---

**REPORT**  
OF THE  
Board of Management  
WITH  
Statement of Accounts  
AND  
List of Subscriptions and Donations  
FOR THE  
Year ending December 31st, 1934

---

---

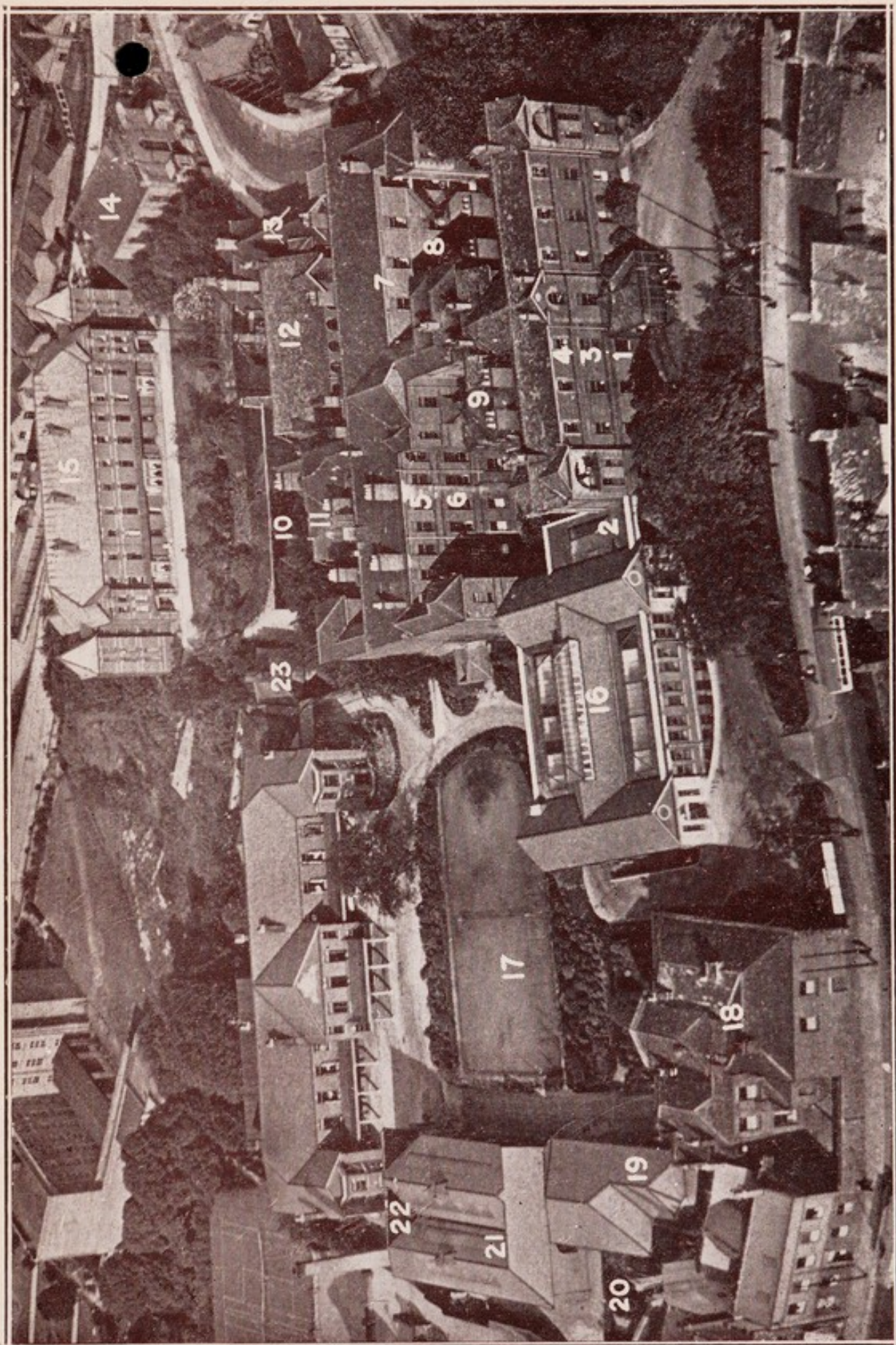
CHESTERFIELD :  
BALES & WILDE, PRINTERS, GLUMAN GATE.



## KEY TO AERIAL VIEW OF HOSPITAL.

- |                     |  |
|---------------------|--|
| 1. Administration.  | 14. Durrant Hall.                        |
| 2. Ambulance Bay.   | 15. Nurses' Home.                        |
| 3. Markham Ward.    | 16. Casualty and Out-Patient Department. |
| 4. Children's Ward. | 17. Site now occupied by Murphy Ward,    |
| 5. Barnes' Ward.    | Ophthalmic Out-Patient Department        |
| 6. Portland Ward.   | and Theatre.                             |
| 7. Staveley Ward.   | 18. Holywell House.                      |
| 8. Devonshire Ward. | 19. Holywell House Annexe.               |
| 9. Main Theatre.    | 20. Holywell House Extension.            |
| 10. Basil Ward.     | 21. Laundry.                             |
| 11. Manvers' Ward.  | 22. Boilers.                             |
| 12. Eastwood Ward.  | 23. Mortuary.                            |
| 13. V.D.            |  |









## CHESTERFIELD AND NORTH DERBYSHIRE ROYAL HOSPITAL.

### HISTORY.

**T**HE Hospital was founded by Deed of Trust in 1854 and with it was incorporated a Dispensary, established in 1800 for the benefit of such poor people "as have not relief from the Parish and are unable to pay for medicine and assistance themselves."

The premises taken over for the Hospital were situate in St. Mary's Gate, opposite the Church, and were rented from Mr. Richard Dixon for £15 per annum, the rooms comprising a "parlour," a "front room," a "sitting room," two "lodging rooms" and two "attics."

The first meeting of the Board of Management was held on the 3rd May, 1854, when the Duke of Devonshire was elected President.

The Income for the first year was £714 18s. 4d., and the Expenditure, including equipment, amounted to £360 6s. 8d. The In-Patients numbered 10.

The Hospital accommodation, however, soon proved inadequate, and Durrant Hall and Grounds were purchased from the Duke of Devonshire for the nominal consideration of £100.

The Hall was demolished with the exception of the kitchens, which were utilised as part of the present buildings.

The foundation stone was laid on the 28th September, 1859, by the Rt. Hon. Spencer Compton Cavendish, Marquis of Hartington (afterwards the 8th Duke of Devonshire). The ceremony was preceded by a Public Breakfast and the stonelaying was carried out with full masonic honours, and in June, 1860, the Hospital was opened for the admission of cases.

In 1863 a special appeal was made to those employed in or about the Collieries, Manufactories and Railways of the district to support the Institution "expressly designed for their own benefit," and the workmen at a number of concerns consented to a deduction from their wages of sums varying from a farthing to a penny per week, and in the following year the Hospital had working men representatives elected by popular vote to sit on the Board of Management. This system has greatly extended and in 1930 the workpeople in the Hospital area contributed the very large sum of £15,250 1s. 1d. It should be noted that the employers have, by arrangement, agreed to contribute 33½ per cent. of the money contributed by the employees. The Board of Management includes, also, 12 working men representing the different industries and trades.

The Devonshire Ward and a new Dispensary were added in 1873, and the Portland Ward in 1890, bringing the accommodation for patients up to 60 beds.

In 1901 the late Alderman Edward Eastwood purchased from the School Board the Durrant Road School and the Board's Offices adjoining, and presented them to the Institution fully equipped for the purpose of two Medical Wards, the male Ward being named after the Donor and the female Ward after the late Earl Manvers, who performed the opening ceremony in April, 1902.

A Röntgen Ray apparatus was installed in 1903.



In 1904 the late Alderman Edward Eastwood gave to the Hospital a piece of land adjoining the Hospital, on which was subsequently erected a Nurses' Home, thus setting free, for the accommodation of further patients, the whole of the top floor of the original buildings. An Ophthalmic Department was also inaugurated. The alterations and extensions were carried out in 1907 and 1908 and provided for an increase of 39 surgical and ophthalmic beds, a Nurses' Home to accommodate all the Nursing Staff, an anæsthetic room, and a Mortuary, bringing up the total bed accommodation to 110.

On 29th July, 1908, the Nurses' Home was opened by the Duchess of Devonshire.

The Basil Ward of 20 beds, given by the late Mr. Charles Markham in memory of his brother, the late Sir Arthur Basil Markham, was opened on November 9th, 1916, making the total bed accommodation 150.

In January, 1918, the Royal Patronage was bestowed upon the Hospital, the title being changed to "The Chesterfield and North Derbyshire Royal Hospital."

The Orthopædic and Electrical Department was opened early in 1919, the Nurses' Dining Room being appropriated for this purpose, and the Board Room utilised for the Nurses' Dining Room.

In 1919 the late Ald. G. A. Eastwood gave to the Hospital Holywell House and grounds, on which a new Out-Patient block was erected, comprising Consulting rooms, Ophthalmic Examination room, Casualty room, Orthopædic, Electrical and Massage rooms, Pathological Laboratory, X-Ray rooms, etc. Alterations were made to Holywell House, providing accommodation for 23 members of the Nursing Staff. A Laundry was also erected and opened in 1923, the cost of the alterations and extensions amounting to £50,029 16s. 8d.

The old Out-Patient Department was adapted for the use of the Resident Medical Staff, which now numbers five, and considerable improvements were made in the old administrative block.

In 1923 the late Mr. Charles Markham gave shares to the value of £10,000 for the purpose of providing additional beds for women and children, and the Staveley Ward was built over the Devonshire Ward, bringing the total bed accommodation for patients up to 190. The addition of this Ward necessitated further accommodation for the Nursing Staff, and an annexe was built to Holywell House containing 18 rooms.

In 1926 an appeal was made by the Mayor of Chesterfield for providing a Wireless Installation, and every adult bed is now fitted with headphones, the Children's Ward having a Loud Speaker.

In 1931, a New Block of two storeys was opened by the Duke of Devonshire, the capital cost being £22,035. It contains on the first floor a Ward of 31 beds, called the Murphy Ward, to commemorate the legacy of £10,000 bequeathed by the late Mr. Thomas Murphy. The ground floor comprises a new Ophthalmic Out-Patient Department, a complete Theatre Unit for the use of this Department and the Ear, Nose and Throat Department, and a Laboratory for the Pathological Department. Eighteen additional rooms for the Nursing and Domestic Staffs were added to Holywell House. 126 milligrammes of Radium and the necessary accessories were purchased and a building erected for the Department, the total cost being £2,135. An X-Ray Film Store was also built. The bed accommodation for patients is now 220.

A Psychiatric Clinic for the treatment of nervous disorders was opened in September, 1934.



## OFFICERS FOR THE YEAR 1934.

---

### President:

HIS GRACE THE DUKE OF DEVONSHIRE, K.G.

### Vice-Presidents:

W. B. M. JACKSON, J.P. (the late).    E. C. BARNES, C.B.E., D.L., J.P.  
 BRIG.-GEN. G. M. JACKSON, D.L., J.P.    G. A. EASTWOOD, J.P. (the late).  
 MRS. M. H. MARKHAM, J.P.

### Trustees:

M. S. BRODHURST.    MAJOR H. H. JACKSON, J.P.  
 G. A. EASTWOOD, J.P. (the late).    THEO. PEARSON.  
 T. H. BARNES.    E. D. SWANWICK.

### Treasurer:

F. JACKSON.

### Board of Management:

THEO. PEARSON, *Chairman*.

E. C. BARNES, J.P., *Vice-Chairman*.

G. A. EASTWOOD, J.P. (the late), *Vice-Chairman*.

M. S. BRODHURST.	F. VERNEY.
T. E. HASLAM, J.P.	REV. E. W. PLATT, M.A., B.D.
E. D. SWANWICK.	LT.-COL. V. O. ROBINSON, M.C., J.P.
G. CLARK, J.P.	G. J. EDMUNDS, J.P.
SIR E. SHENTALL, J.P.	REV. H. WILSON.
C. J. HOWSON, J.P.	MISS S. B. EASTWOOD, J.P.
MAJOR I. W. LAMONBY.	J. S. ASKWITH.
G. F. CHAMBERS.	CAPT. CARYL H. M. OWEN.

(The Members of the Honorary Medical Staff are *ex-officio* Members of the Board of Management).

### Representative Working Men:

R. J. FLANAGAN and A. M. BARBER, Eckington District.  
 I. WHITTON and W. J. DAVIES, Staveley District.  
 A. E. ORWIN and T. DERNIE, Sheepbridge District.  
 J. EYRE and J. GREAVES, Chesterfield District.  
 C. BOOKER and R. OWEN, Grassmoor District.  
 E. HOOPER and T. HARDY, Clay Cross, Pilsley and Tibshelf District.



**House Committee:**THEO. PEARSON, *Chairman.*G. J. EDMUNDS, J.P., *Vice-Chairman.*

E. C. BARNES, C.B.E., D.L., J.P.      C. J. HOWSON, J.P.

G. A. EASTWOOD, J.P. (the late).      G. CLARK, J.P.

M. S. BRODHURST.      L. E. SUTCLIFFE, M.B.

R. OWEN.      T. HARDY.

E. D. SWANWICK.      MISS S. B. EASTWOOD, J.P.

J. EYRE.

**Elective Committee:****Board of Management and the following—**

S. BERRESFORD.

R. PLOWRIGHT.

W. HAWKSLEY EDMUNDS, J.P.

WALTER C. MACARTNEY.

L. D. BIRD.

WM. P. WARNER.

**Representative Working Men:**

W. BAKER.

E. CARTER.

J. A. BARKER.

G. MOWBRAY.

A. SWIFT.

W. WICKS.

**Hon. Consulting Physician:**ARTHUR COURT, B.A., M.B., B.Ch., Cantab., L.R.C.P., Lond.,  
M.R.C.S., Eng.**Hon. Physicians:**

R. A. MCCREA, M.B., B.Ch., B.A.O., R.U.I.

A. C. S. COURTS, M.D., B.S., Lond.

**Hon. Consulting Surgeon:**

ALBERT GREEN, M.B., Lond., L.R.C.P., M.R.C.S.

**Hon. Surgeons:**

FLAVELL EDMUNDS, M.R.C.S., Eng., L.R.C.P., Lond.

T. R. EVANS, M.D., Ch.B., Edinburgh.

L. E. SUTCLIFFE, M.B., Ch.B., Sheffield.

F. J. MILWARD, M.A., M.Ch., Cantab., F.R.C.S., Eng.

**Hon. Ophthalmic Surgeon:**

W. M. MUIRHEAD, M.B., Ch.B., Sheffield.

**Hon. Consulting Orthopædic Surgeon:**

A. GARRICK WILSON, F.R.C.S., Eng., B.A., M.B., M.Ch., Cantab.

**Hon. Surgeon to the Ear, Nose and Throat Department:**

GEORGE WILKINSON, B.A., M.B., F.R.C.S., Eng.

**Hon. Assistant Surgeons to the Ear, Nose and Throat Department:**

R. B. N. SMARTT, B.A., M.B., B.Ch., B.A.O.

F WEBSTER FURNISS, M.A., Cantab., M.R.C.S., L.R.C.P.

**Hon. Physician to the Psychiatric Clinic:**

E. L. HOPKINS, M.C., M.R.C.S., L.R.C.P., D.P.H., D.P.M.

**Hon. Anæsthetists:**

C. O'BRIEN, M.C., M.D., B.Ch., B.A.O.  
 J. P. DAVIE, M.A., M.D., Ch.B., Edinburgh.  
 A. M. DUTHIE, D.S.O., M.C., M.A., M.D., Ch.B., Aberdeen,  
 F.R.C.S., Edinburgh.  
 H. E. POOLER, M.B., Ch.B., St. Andrews.  
 J. S. HUTCHISON, M.B., Ch.B., Aberdeen.  
 A. JEFFREY, M.B., Ch.B., Edinburgh.

**Hon. Consulting Radiologist:**

W. HARWOOD NUTT, M.D.

**Hon. Radiologist:**

J. L. GROUT, M.C., F.R.C.S., Edinburgh, M.R.C.S., L.R.C.P.

**Pathological and Bacteriological Department:**

STAFF OF SHEFFIELD UNIVERSITY.

Hon. Assistant: N. R. POOLER, M.R.C.S., L.R.C.P., M.B., B.S., Lond.

**Hon. Consulting Dental Surgeon:**

HAROLD SMITH, L.D.S., R.C.S., Eng.

**Hon. Dental Surgeon:**

CLAUDE FURNESS, L.D.S., R.C.S.I.

**Resident Surgical Officer:**

H. T. FLEMING, M.B., B.Ch., B.A.O. F.R.C.S.I.

**House Surgeons:**

D. R. ASHTON, M.R.C.S., L.R.C.P.  
 W. J. BREMNER, M.B., Ch.B., Aberdeen.  
 V. S. HUGHES-DAVIES, M.B., Ch.B., Liverpool, M.R.C.S., L.R.C.P.  
 J. A. KILPATRICK, M.B., Ch.B., Glasgow.

**Honorary Auditors:**

R. L. MARSDEN & Co., Chartered Accountants.

**Hon. Consulting Engineer:**

W. V. HASLAM, A.M.I.E.E.

**Matron:**

MISS M. A. BERRY, A.R.R.C.

**Assistant Matron:**

MISS H. NOCK.

**Superintendent and Secretary:**

G. SUNNUCK.

**Assistant Secretary:**

E. BARBER.



# CHESTERFIELD AND NORTH DERBYSHIRE ROYAL HOSPITAL.

---

## REPORT

**Of the Board of Management for the  
Year ended 31st December, 1934.**

---

The Board of Management beg to present their Annual Report and Statement of Accounts for the past year ended 31st December, 1934, this being the 81st year since the establishment of the Hospital.

It is with the greatest regret that the Board have to report the death of two Vice-Presidents, Mr. G. A. Eastwood and Mr. W. B. M. Jackson. Mr. Eastwood had been a member of the Board for thirty-four years, Vice-Chairman since 1902, and was made a Vice-President in 1931. During the whole of this long period, Mr. Eastwood never spared himself in his work for the Institution and was for sixteen years Chairman of the House Committee. He was also a very generous donor to the Hospital and his benefactions included the gift of Holywell House and grounds in 1919. His death is a most serious loss to the Institution and the Board desire to place on record their very sincere regret and their great appreciation of his many services. Under his will the Hospital will receive a Legacy of £10,000.

Mr. W. B. M. Jackson had been a member of the Board since 1900, being appointed a Vice-President in 1911. Although latterly he had not taken an active part in the administrative work of the Board, he had always taken a deep interest in the welfare of the Hospital.

The portrait of Mr. E. C. Barnes, which was referred to in the last Report, was presented to him on August 8th by the President, His Grace the Duke of Devonshire. A replica had also been painted and Mr. Barnes retained this, handing over the Portrait to the Hospital. This has now been hung in the Board Room.

Mr. A. Garrick Wilson, F.R.C.S., who joined the Hon. Staff as Orthopædic Surgeon in 1922, resigned his position



on leaving the district to take up residence in the South of England. He has been appointed Hon. Consulting Orthopædic Surgeon.

Arrangements for a successor to Mr. Garrick Wilson are practically completed, and on the advice of the Hon. Staff it has been decided to inaugurate a Fracture Clinic. The scheme for the re-organisation of the Orthopædic Department is being drawn up and will be put into operation at an early date. The Board trust that the new Clinic will prove of great benefit to the numerous accident cases with which the Hospital has to deal.

Dr. N. R. Pooler resigned his position as Honorary Anæsthetist on being appointed Honorary Assistant to the Pathological and Bacteriological Department, and Dr. A. Jeffrey, M.B., Ch.B.(Edinburgh), has been elected to fill the vacancy.

A Psychiatric Clinic for the treatment of nervous disorders was opened in September, under the charge of Dr. E. L. Hopkins, M.C., M.R.C.S., L.R.C.P., D.P.H., D.P.M., and has already proved its usefulness.

## FINANCE.

### Expenditure.

The Statement of Accounts shows that the Ordinary Expenditure for the year was £27,831 0s. 8d., against £27,418 14s. 4d. in 1933, and Special Expenditure £728 15s. 8d., making a total of £28,559 16s. 4d., exclusive of the cost of the Venereal Department, £1,472 9s. 0d., which is defrayed by the County Council.

The Ordinary Expenditure was £412 6s. 4d. more than in 1933, and this increase is chiefly accounted for by the increased number of patients admitted.

During the year it was found necessary to repair the walls of the Sterilising Room of the Main Theatre, and this was effected by fixing stainless steel sheets to the walls. This has proved very satisfactory.

In addition, a considerable amount of work has been done in the way of repairs and renovations, including an enclosed Fuel Store for the boilers, improvements to the Manvers Ward, and a new floor in the Children's Ward.

The Extraordinary Expenditure was £728 15s. 8d. This included the sum of £665 6s. 8d. for improvements in the X-Ray Department and the purchase of Anæsthetic Apparatus, which has been met by a grant for this amount by the Derbyshire Miners' Welfare Committee. There is



still £634 13s. 4d. to be received from the Derbyshire Miners' Welfare out of the grant of £1,600 referred to in last year's Report.

### Income.

The Ordinary Income was £27,207 3s. 4d., against £26,844 14s. 5d., an increase of £362 8s. 11d. In comparing the two years the following facts should be taken into account: (a) The figures for 1933 included a sum of £1,386 2s. 3d., which represented arrears from 1932; (b) 1934 figures include an item of £1,000 received from the Chesterfield Royal Hospital Voluntary Workers' Association. This sum of £1,000 includes £100 received in response to Miss Violet Markham's Wireless Appeal on September 2nd, and £108 7s. 6d. gross, £88 1s. 6d. net, received from the Stock Exchange Dramatic and Operatic Society in connection with the sale of "Help Yourself" Annuals. In previous years the income from this source has been credited to Capital Accounts. The best thanks of the Board are offered to the Chesterfield Royal Hospital Voluntary Workers' Association for the immense amount of work done by members of the various Committees during the year.

There is a deficiency between Ordinary Income and Ordinary Expenditure of £623 17s. 4d.

The accumulated deficiency for the past three years has now reached the considerable sum of £3239 2s. 8d.

Reference has been made in the Reports for the past three years to the increased contributions, i.e., from twopence to twopence halfpenny per week, paid by the majority of the workpeople in the district. There are, however, still a few employees of some firms who have not yet made the increase in their contributions, and the Board sincerely trust that, in view of the heavy deficits of the past three years and in fairness to their fellow-workmen, they will fall into line as speedily as possible.

Although there was an increase in contributions received from workpeople during the twelve months ended 31st December (£15,018 2s. 2d.) of £495 13s. 0d., the Board feel that there are still a number of employees of traders and small firms in the district, who do not contribute at all, or on a very reduced scale. It is, of course, impossible to get into direct touch with all employees in the large area served by the Hospital, and the Board must rely on the help of all well-wishers of the Hospital in this matter.



The Income includes donations of £100 from Mr. S. Berresford; £50 each from Mr. George Clark, J.P., and Mrs. Clark, on attaining their Golden Wedding Anniversary; an anonymous gift of £50 from "a grateful patient"; £50 from the Chesterfield Royal Hospital Whist Shield Competition, and £70 5s. 0d. from the Directors of the Chesterfield Football Club, grant out of proceeds of Practice Matches. To these donors, to the Committees working in connection with the Whist Shield Competition, and to the Directors of the Chesterfield Football Club, we tender our sincere thanks.

The sum of £23 0s. 6d. Bank Interest on the Repairs and Improvements Suspense Account has been added to this account, which now stands at £1,103 17s. 9d.

The Board again desire to place on record their very great appreciation of the continued activities of the Linen League, inaugurated in 1932. Wonderful work has been done by the supply of bed linen and various articles to the approximate value of £280, and, in addition, many comforts have been supplied to the patients.

The Egg Collection organised by the Chesterfield and District Agricultural Discussion Society resulted in over 43,000 eggs being received, a proportion of which were placed in cold storage. This arrangement proved very satisfactory. The Board tender their most sincere thanks to the Society and to all the collectors, including the school children, for their work in connection with it.

The Board also tender their most grateful thanks to all classes of subscribers for their generous assistance, and to the Hospital Committees (£1,897 2s. 10d.), the workers of the Women's Medical Ward Fund (£608 3s. 8d.), and the Alexandra Rose Day Fund (£173), for their efforts on behalf of the Hospital.

No legacies have been received during the year.

### IN-PATIENTS AND OUT-PATIENTS.

During the year 1934, 3,016 patients were admitted to the Hospital, being 268 more than in 1933. At the close of the year 1933 there were 153 patients in the Institution, so that 3,169 in all have received In-patient treatment, being an increase of 248 compared with 1933.

Of the 153 patients remaining in Hospital at the end of 1933, 134 were cured or relieved, seven unrelieved, nine died, two were transferred to other Institutions, and one remained in Hospital.



Of the 3,016 patients admitted during 1934, there were :—

2445	Cured or relieved.
157	Unrelieved.
172	Died.
15	Left at their own request.
38	Transferred to other Institutions.
189	Remaining in Hospital (exclusive of one
—	remaining from 1932).
3016	

The total number of deaths of patients admitted during the year was 172, of which number 51 died within 48 hours of admission.

There have been 4,567 cases in which anæsthetics have been administered during the year, the number of operations performed being 4,720.

There were 4,906 persons X-Rayed during the year, and in the Diathermy Department 12 patients (11 new, 1 old) made 191 attendances. Screen examinations numbered 326. In the Ultra-Violet Ray Department 68 cases were dealt with, the number of attendances being 1,954.

During the year, 8,145 patients were treated in the Out-patient Department, as compared with 8,033 in 1933.

Medical and Surgical ...	4,298
Orthopædic ...	215
Ear, Nose and Throat ...	1,451
Ophthalmic ...	1,557
Dental ...	585
Psychiatric ...	39
	<hr/>
	8,145

In addition to the above, 6,067 cases were treated in the Casualty Department, of which number 1,331 persons ultimately became In-patients.

In the Orthopædic, Electrical and Massage Department the attendances numbered 35,334.

The total attendances of Out-patients, excluding the Venereal Department, numbered 95,715.

In the Special Department dealing with Venereal Diseases, the number of new cases dealt with was 257. During the year, 203 persons were discharged cured. The whole of the expenses in this Department are borne by the County Authorities.



## GENERAL.

During the year further improvements have been made in the X-Ray Department. As previously stated, the sum of £634 13s. 4d. will be available for alterations and additions to existing apparatus out of the grant of £1,600 made by the Derbyshire Miners' Welfare Committee.

The arrangements for the provision of Blood Donors made by members of the St. John Ambulance Brigade and Rover Souts have again proved very satisfactory, and the Board tender their thanks to all who have given their services. It is very desirable, however, that additional donors be available and the Board appeal for volunteers to augment the list.

The scheme under which subscribers benefit the Hospital by signing an agreement (a copy of which appears on page 67) has been adopted by several more subscribers during the year. By this method the Hospital will receive a further 6/1 for each £1 1s. 0d. subscribed (with Income Tax at 4/6 in the £). It is earnestly hoped that, in the coming year, more subscribers will help the Hospital in this way.

The Library, of which members of the "Toc H" act as Librarians, has been continued, and has been a source of great pleasure to the patients, and thanks are accorded to all helpers in this connection.

The Ladies' Section of "Toc H" still continues to run the Canteen for the supply of refreshments for the patients attending the Out-patient Department. This is still proving a great boon to the patients attending, and hearty thanks are given to the ladies who devote so much time and trouble to this useful work.

Numerous gifts have been presented to the Hospital during the year, and the Board desire to express their thanks to the donors.

THEO. PEARSON,

*Chairman of the Board of Management.*



# INCOME AND EXPENDITURE ACCOUNT FOR

## INCOME.

### ORDINARY.

#### I. Voluntary Gifts.

Subscriptions, Donations, etc.:	£	s.	d.	£	s.	d.
Annual Subscriptions and Employers' Contributions (see page 21) ... ..	5234	3	9			
Add Income Tax recoverable on Annual Subscriptions, 1933-4 ... ..	13	1	0			
Donations (see page 30) ... ..	934	6	0			
Boxes (see page 34) ... ..	187	0	4			
Hospital Committees (see page 37) ... ..	1897	2	10			
School Collections (see page 39) ... ..	86	3	0			
Alexandra Rose Day ... ..	173	0	0			
Women's Medical Ward Fund (see page 41) ... ..	608	3	8			
Hospital Sunday Fund (see page 46) ... ..	325	14	5			
Workmen's Collections (see page 49) ... ..	15018	2	2			
Gifts in Kind ... ..	440	7	0			
Tin Foil and Silver Paper ... ..	8	19	5			
				24926	3	7

#### II. Receipts on Account of Services Rendered.

Contributions on Account of Services to Patients:—

(a) From Patients and their Societies—						
Approved Societies (see page 57) ... ..	546	8	0			
Re Motor Accidents (see page 57) ... ..	419	13	2			
(b) From Public Authorities—				966	1	2
Pensions Committees and War Office ... ..	55	9	6			
Chesterfield Corporation, re Tonsil & Adenoid Patients	15	15	0			
Derbyshire County Council, re Tonsil and Adenoid Patients	29	5	0			
				100	9	6

#### III. Invested Property.

Interest, Dividends, etc., less Bank Charges ... ..	1102	18	1			
Rents ... ..	111	11	0			
				1214	9	1

**Total Ordinary Income** ... .. 27207 3 4

### EXTRAORDINARY.

(a) Legacies (Nil) ... ..						
(b) Grant from Derbyshire Miners' Welfare Fund to defray expenses re X-Ray equipment, etc. (see contra)				665	6	8

**Balance**, being excess of Total Expenditure over Income for  
the Year ... .. 687 6 4

We have examined the above Account with the Books and Vouchers, and certify that it agrees therewith.

R. L. MARSDEN & Co.,  
Chartered Accountants,  
Honorary Auditors.

14th February, 1935.

# THE YEAR ENDED 31st DECEMBER, 1934.

EXPENDITURE.						Daily Average No. of In-Patients, 190.95		
ORDINARY.						£	s.	d.
I. Provisions	...	...	...	...	...			4440 12 9
II. Surgery and Dispensary.								
Drugs, Chemicals, Disinfectants, etc.	...	...	...	...	...	1159	18	5
Dressings, Bandages, etc.	...	...	...	...	...	1132	18	1
Instruments and Appliances	...	...	...	...	...	1128	19	8
Wines and Spirits	...	...	...	...	...	72	18	9
Salaries and Wages of Dispensing Staff	...	...	...	...	...	569	17	10
Sundries	...	...	...	...	...	178	1	1
								4242 13 10
III. Domestic.								
Renewal and Repair of Furniture, Bedding, Crockery, etc.	...	...	...	...	...	768	18	5
Laundry	...	...	...	...	...	1301	16	2
Cleaning and Chandlery	...	...	...	...	...	199	19	5
Water	...	...	...	...	...	374	0	7
Fuel and Lighting	...	...	...	...	...	2151	6	1
Uniforms	...	...	...	...	...	90	3	8
Sundries	...	...	...	...	...	3	15	10
								4890 0 2
IV. Salaries and Wages (Maintenance).								
Medical	...	...	...	...	...	1756	1	11
Nursing	...	...	...	...	...	4669	9	11
Other Officers and Employees	...	...	...	...	...	3807	19	8
Pensions	...	...	...	...	...			
								10233 11 6
V. Miscellaneous.								
Printing, Stationery, Postages, Telephones, etc.	...	...	...	...	...	318	11	7
Advertisements	...	...	...	...	...	61	4	8
Insurance of Buildings, Equipment, Stores, etc.	...	...	...	...	...	173	19	2
Garden	...	...	...	...	...	119	4	6
Sundries	...	...	...	...	...	38	3	9
								711 3 8
V(a). Venereal Diseases Department.						£	s.	d.
Expenses Year ending 30th Sept., 1934	...	...	...	...	...	1472	9	0
LESS Derbyshire County Council—								
Cash for expenses for Year ending 30th September, 1934	...	...	...	...	...	1472	9	0
VI. Administration.								
Salaries	...	...	...	...	...	600	0	0
Pensions	...	...	...	...	...			
Printing, Stationery, Postages, Telephones, etc.	...	...	...	...	...	58	0	8
Advertisements	...	...	...	...	...	1	2	6
Law Charges	...	...	...	...	...			
Auditors' Fee	...	...	...	...	...			
Sundries	...	...	...	...	...	20	13	11
Superannuation (Management Charges)	...	...	...	...	...	14	0	6
								693 17 7
VII. Establishment.								
Renewals and Repairs to Buildings and Plant	...	...	...	...	...			2155 16 9
VIII. Finance.								
Interest	...	...	...	...	...			
Appeals	...	...	...	...	...	19	9	9
Rent	...	...	...	...	...			
Rates and Taxes	...	...	...	...	...	443	14	8
								463 4 5
Total Ordinary Expenditure	...	...	...	...	...			27831 0 8
EXTRAORDINARY.								
Contributions to other Institutions	...	...	...	...	...	63	9	0
Expenditure re X-Ray Equipment	...	539	0	0				
Expenditure re Anæsthetic Apparatus	...	126	6	8				
						665	6	8
Total Extraordinary Expenditure	...	...	...	...	...			728 15 8
Total Expenditure								£28559 16 4



## BALANCE SHEET

LIABILITIES.						£	s	d.	£	s	d.
<b>I. Sundry Creditors</b> ... ..											
<b>II. Loans to Hospital.</b>											
Westminster Bank, Ltd.—											
General Account ... ..									3121	14	23
<b>III. Capital Accounts.</b>											
(a) Hospital Endowments ... ..						9481	12	11			
Sheffield Equalised Independent Druids Cot ... ..						162	13	6			
As per last Balance Sheet ... ..									9644	6	53
(b) For Buildings and Equipment:—											
As per last Balance Sheet ... ..									83931	0	91
(c) Radium Fund Account, as per last Balance Sheet ... ..									2134	16	83
(d) For General Purposes, as per last Balance Sheet ... ..									28897	14	83
<b>IV. Unexpended Income Balances of Special Funds.</b>											
Repairs and Improvements Suspense Account, as per last											
Balance Sheet ... ..						1080	17	3			
Add Bank Interest received during year ... ..									23	0	6
									1103	17	91

N.B.—(A) Investments on Capital Accounts.—The values shown are in excess of the total market value on 31st December, 1934.

(B) The cost of the Buildings and the Equipment prior to 1st January, 1919, and the value of Holywell House at the date of the gift are not included in the above Balance Sheet.

We have audited the above Balance Sheet and certify its correctness, subject to the footnotes attached.

R. L. MARSDEN & CO.,

Chartered Accountants,

Chesterfield, Doncaster and Alfreton.

14th February, 1935.

Honorary Auditors.

£128833 10 5



**31st DECEMBER, 1934.**

ASSETS.		£	s.	d.	£	s.	d.
<b>Cash at Bank and in Hand—</b>							
Capital Account (Endowments) Cash at Bank	...	46	18	6			
Capital Account (General Purposes) Cash at Bank	...	3414	4	8			
Generally on Account of the Hospital, Cash in Hand	...	50	0	0			
Repairs and Improvements Suspense Account, Cash at Bank	...	1103	17	9			
					4615	0	11
		£	s.	d.			
Superannuation Account, Cash at Bank	...	232	14	2			
Less Superannuation Fund Account	...	232	14	2			
Superannuation Deposit Account, Cash at Bank	...	25	6	8			
Less Superannuation Deposit Fund Account	...	25	6	8			
<b>Sundry Debtors</b>	...				161	13	3
<b>Venereal Diseases Clinic—</b>							
Expenses from 1st October, 1934, not yet ascertained.							
<b>Investments on Capital Accounts—</b>							
(a) For Special Purposes.							
Hospital Endowments.							
4 per cent. Consolidated Stock, Nominal Value	£2221 16s. 7d.	1800	0	0			
2½ per cent. Consols, Nominal Value	£2594 6s. 9d.	1500	0	0			
Chesterfield Corporation £4000 Loan at 5 per cent.	...	4000	0	0			
5 per cent. Conversion Stock, 1944/1964, Nominal Value	£239 19s. 0d. (The Miss Jane North Fund)	255	7	11			
3½ per cent. War Loan, Nominal Value	£2100	2042	0	0			
					9597	7	11
(b) For General Purposes.							
2½ per cent. Conversion Loan, Nominal Value	£11177 17s. 0d.						
This stock was purchased out of the proceeds realised on the Sale of 3½ per cent. War Loan, Nominal Value £9150 (Purchase Price £8801 9s. 0d.), and 4 per cent. Consolidated Stock, Nominal Value £1304 12s. 6d. (Purchase Price £1050)							
London, Midland & Scottish Railway Company, 4 per cent. Debenture Stock, Nominal Value	£1400	1850	0	0			
Great Western Railway Company, Consolidated Stock, Nominal Value	£108	310	0	0			
Rotherham Corporation 6 per cent. Redeemable Stock, 1938-1950, Nominal Value	£609 0s. 9d.	609	0	9			
Tredegar Iron & Coal Co., Ltd., 6,000 £1 "B" Shares, fully paid	...	10350	0	0			
					22970	9	9
<b>Land, Buildings and Equipment of the Hospital.</b>							
The Cost of the Hospital and all Equipment to December 31st, 1918 (see footnote "B").							
Expenditure from 1st January, 1919, to 31st December, 1919, Building and Equipment of Orthopaedic and Electrical Department, and additions to X-Ray Equipment	...	995	12	8			
Holywell House, given by the late Mr. G. A. Eastwood, for "Extension" purposes (see footnote "B.")							
Capital Expenditure on Extensions Accounts, as per last Balance Sheet	...	83931	0	9			
Durrant Hall (late Baptist Chapel), as per last Balance Sheet	...	1517	7	7			
Capital Expenditure on Radium Department as per last Balance Sheet	...	2134	16	8			
<b>Income and Expenditure Account.</b>							
Excess of Total Expenditure over Income for the Year 1934	...	687	6	4			
Add Balance as per last Balance Sheet	...	2222	14	7			
					2910	0	11
					£128833	10	5







## EXPENDITURE.

Year	Provisions	Surgery and Dispensary	Domestic	Establish- ment	Salaries and Wages	Mis- cellaneous	Administra- tion	Finance Rent, Rates and Taxes	Total	Special Expen- diture	Grand Total
1925	£ 4294	£ 3922	£ 3448	£ 940	£ 8193	£ 471	£ 586	£ 364	£ 22218	£ 7678	£ 29896
1926	4182	3675	4019	822	8940	355	612	425	23030	1590	24620
1927	4317	4254	4488	589	8037	683	596	362	23326	1840	25166
1928	4403	5041	4072	883	8514	779	596	349	24637	916	25553
1929	4259	4540	3797	1627	8504	656	606	488	24477	236	24713
1930	4395	4403	3881	1596	8842	720	675	622	25134	6770	31904
1931	4491	4520	4108	1679	8837	754	708	601	25698	17138	42836
1932	4683	4522	4417	2227	9668	736	709	465	27427	1611	29038
1933	4730	4357	4575	1961	9977	656	688	475	27419	109	27528
1934	4441	4243	4890	2156	10233	711	694	463	27831	729	28560

The Venereal Department is not included in this Table.

The Accounts for 1927 to 1934 are in accordance with the Revised System of Hospital Accounts, so that some of the items are not comparable with previous years.



# PATIENTS—Number and Cost for period 1925-1934.

Year	IN-PATIENTS ADMITTED				OUT-PATIENTS.				Accidents and Emergencies (excluding admissions)	Average stay of In-patients	Average Daily Occupied Beds				Average Cost per			Cost per Occupied Bed
	Surgical	Medical	Ophthalmic	Total	Surgical and Medical	Ophthalmic	Dental	Total			Surgical	Medical	Ophthalmic	Total	In-Patient	In-Patient per day	Out-Patient	
1925	2122	186	102	2410	4189	1384	587	6160	3837	27.26 days	155.13	14.92	8.38	£ s. d. 7 12 9½	s. d. 5 7	s. d. 8 0½	£ s. d. 102 1 3	
1926	2365	233	129	2727	3959	1198	743	5900	4494	23.91	149.98	19.76	8.61	6 19 2½	5 10	7 10	106 5 4½	
1927	2377	291	179	2847	4777	1424	902	7103	5071	23.09	148.89	22.62	9.47	6 13 9	5 9½	6 10½	105 13 7½	
1928	2503	258	188	2949	5277	1439	1026	7742	5251	22.43	148.03	21.44	11.49	6 16 9½	6 1½	6 10	111 12 6	
1929	2318	304	176	2798	5001	1490	706	7197	5164	23.95	148.29	23.50	11.25	7 4 10	6 0½	6 11	110 6 10	
1930	2368	243	175	2786	5369	1526	646	7541	4812	23.50	150.08	19.22	10.39	7 9 3½	6 4½	6 11½	115 18 10½	
1931	2160	258	205	2623	5540	1467	606	7613	4579	25.27	144.66	24.64	11.72	8 3 7½	6 5½	6 11½	118 4 2	
1932	2179	240	291	2710	5863	1564	677	8104	4469	26.47	153.07	28.78	13.59	8 9 8½	6 5	7 2	117 6 1	
1933	2237	299	212	2748	5817	1610	606	8033	4482	24.97	141.74	33.47	14.13	8 5 7½	6 7½	7 2½	121 0 11½	
1934	2513	322	181	3016	6003	1557	585	8145	4736	23.40	150.54	28.18	12.23	7 15 10	6 8	7 2	111 7½	

The Venereal Clinic Figures are not included in the above Table.

†Staveley Ward opened 3rd February, 1925.

‡Murphy Ward opened 15th October, 1931.



## ANNUAL SUBSCRIPTIONS

**For the Year ending December 31st, 1934.**

Subscribers marked thus \* have signed an agreement to pay their subscriptions for seven years or their lifetime, whichever is the shorter. This will enable the Hospital to recover the Income Tax paid by the Subscribers on the amount of their subscriptions. Full particulars of this method of increasing the Hospital's income appear on page 66.

	£	s.	d.
Allsop, Thos., J.P., Barlow Gate, Newbold	1	1	0
Alvey, S. B., High Street, Tibshelf	0	5	0
Armistead Bros., Corporation Street, Chesterfield	0	2	6
Ashmore, A., Church Street, Pilsley	0	5	0
Ashmore, J. E., Holymoorside	0	10	6
Ashmore, Mrs. F., The Cottage, Angel Yard, Saltergate, Chesterfield	1	0	0
Atrill, N., Ltd., Gluman Gate, Chesterfield	2	0	0
Austin, John, Grasmere Lodge, Thornfield Avenue, Linden Avenue, Chesterfield	5	0	0
Babbington Coal Company, Nottingham	50	0	0
Baker, L. H., 30, Spencer Street, Chesterfield	1	1	0
*Barfoot, J. R. D., West Bars, Chesterfield	5	0	0
Bargh, R., Holywell Cycle Depôt, Chesterfield	0	5	0
Barker, A., Chesterfield Road, Middle Duckmanton, Chesterfield	0	5	0
Barker's, Low Pavement, Chesterfield	5	5	0
Barlow, Mr. and Mrs. W., 37, Station Road, Pilsley	2	2	0
*Barnes, E. C., C.B.E., Ashgate Lodge, Chesterfield	5	0	0
Barnes, G. F., Ashgate Road, Chesterfield	2	2	0
Barnes, T. Harold, 30, Chapel Street, Belgrave Square, S.W.1	3	3	0
Barr, Dr. J. Fulton, Hundall, Unstone	3	3	0
Bassetlaw and District Cricket League, per C. L. Harrison, Harthill, near Sheffield	1	13	0
Bates, Mrs. H., Holywell Street, Chesterfield	0	10	6
Beardow, S., Press, Old Tupton	2	0	0
Bennett Bros., Brookside Nurseries, Chesterfield	2	0	0
Bennett, Mr. and Mrs. Alfred, West Field, Brookside, Chesterfield	2	0	0
Bennett, W. A., Inkersall Farm, Brimington	2	0	0
Bingham, E. Lodge Farm, Handley, Clay Cross	1	0	0
Bird, S. E., 401, Sheffield Road, Whittington Moor,	1	0	0
Birks, John Wm. Farrow, 31, Markham Road, Chesterfield	2	2	0
Blackshaw & Sons, High Street, Chesterfield	1	1	0
Blackwell Colliery Company, Limited	50	0	0
Blair Brothers, Hunloke Arms Colliery, Wingerworth	5	5	0
Blakesley, Harold W., Cavendish Chambers, Chesterfield	1	1	0
Blythe, Mrs., 30, Holywell Street, Chesterfield	0	10	0
Boden, J., Falcon Restaurant, Low Pavement, Chesterfield	5	5	0
Boldry, G., Hill Top Farm, Duckmanton	2	2	0
Boldry, J. S., Hawksley Avenue, Chesterfield	0	10	6
Bolsover Colliery Company, Limited	465	5	4



	£	s.	d.
Bolsover Home Grown Fruit Preserving Company, Ltd.	5	5	0
Bolsover Urban District Council, per W. Veevers	10	0	0
Booker, H., Harewood Grange, Holymoorside	0	10	0
Boots, The Chemists, Chesterfield	1	1	0
Boult & Clough, Park Road, Chesterfield	0	5	0
Bostock, W., National Provincial Bank, Chesterfield	2	2	0
Botham, J. A., 506, Chatsworth Road, Chesterfield	2	2	0
Bower, Joseph, Whitbank, Alton, Tupton	0	10	0
*Bradley, Miss L., The Hawthorns, Old Brampton	1	1	0
*Bradley, T. H., 202, Ashgate Road, Chesterfield	1	1	0
*Bradley, Wm., 48, York Street, Hasland	0	12	6
Brailsford, H., 44, High Street, Staveley	1	0	0
*Bramley, F. H., The Lodge, Unstone	1	1	0
Brampton Brewery Company, Limited	10	10	0
Brayshaw & Bateman, Cavendish Street, Chesterfield	3	3	0
Bright, Miss, Bank Close, Chesterfield	5	0	0
British Thomson-Houston Company, Limited	5	0	0
*Britt & Sons, South Street, Chesterfield	1	1	0
Brodhurst, M. S., Newbold Gate, Chesterfield	2	2	0
Brooke, C. E., 25, Market Street, Staveley	1	0	0
Brough, G., Green Leas, Newbold, Chesterfield	1	0	0
Brunt, Alfred, Red House, Heath	1	1	0
Buckley, E., Somersall Farm, Brampton	1	0	0
Bulcock, J. W., 130, Sheffield Road, Chesterfield	0	2	6
Bunce, Mrs. J., 61, Market Street, Clay Cross	0	10	0
Burnside, Rev. F. H., Hawton Rectory, near Newark	1	1	0
Burton, Montague, Ltd., High Street, Chesterfield	1	1	0
Butler, R. & Son, Main Street, Newton	2	2	0
Calladine, J., 2, John Street, Clay Cross	0	5	0
Carline, Watson, Bird & Co., Saltergate, Chesterfield	3	3	0
Carruthers, Mrs., 8, Gower Street, Bloomsbury, London, W.C.	10	0	0
Cartledge, Mr. and Mrs. A., 44, Chapel Street, Whittington Moor	0	10	0
Caudwell, F. J., Church Hill Farm, Blackwell	0	10	0
Caudwell, Mrs. J., Whitecotes Farm, Boythorpe	1	1	0
Chambers, G. A., 37, Alexandra Road, Chesterfield	1	0	0
Chapman, C., "Westville," Chatsworth Rd., Chesterfield	1	1	0
Chapman, Wm., Barlborough Common	1	0	0
Chappell, G. A., Manor House Farm, Old Tupton	1	0	0
Chatsworth Estates Company, per J. D. Penrose, 68, St. Helen's Street, Chesterfield	20	0	0
Chesterfield Brewery Company, Limited	5	0	0
Chesterfield Corporation	130	6	5
Chesterfield and District Caledonian Association, per Mrs. Nicholson, 91, Newbold Road, Chesterfield	2	2	0
Chesterfield & District Co-operative Society, Limited	15	15	0
Chesterfield & District Licensed Victuallers' Association	2	2	0
Chesterfield & District Medical Association	5	5	0
Chesterfield Hide & Skin Co., Ltd.	2	2	0
Chesterfield Tube Company, Limited	132	6	1
Clark, A. B., 51, Old Hall Road, Chesterfield	1	0	0
Clark, George, J.P., The Cedars, Chesterfield	1	1	0
Clark, Mrs., The Cedars, Chesterfield	1	1	0
Clarke, G., Oaklands, Great Barlow	1	1	0



	£	s.	d.
Clark, Joseph, Pear Tree Farm, Tupton ...	2	0	0
Clayton, Norman F., 8, Soresby Street, Chesterfield ...	0	10	6
Clay Cross Company, Limited ...	412	14	0
Clayton, J. & Sons, Clayton Street, Chesterfield ...	1	1	0
Clayton, J. J., Ltd., Whittington Moor ...	0	11	7
Clayton, Rt. Rev. G. H., Bishop of Johannesburg ...	2	2	0
Clements, Mrs. A., The Quintas, Spital ...	1	1	0
Collis, J. & Sons, Ltd., Saltergate, Chesterfield ...	1	1	0
Cook, A. W., 41, Saltergate, Chesterfield ...	1	1	0
Cox, Mrs., Post Office, Heath ...	0	2	6
Cragg Brothers, High Street, Staveley ...	0	15	0
Craggs, W. H., 3, Poplar Avenue, Chesterfield ...	1	1	0
Cummings, Wm. & Co., Ltd., Old Whittington ...	2	2	0
Cutts, Mrs. E., 24, Market Place, Bolsover ...	0	10	6
Cutting, Mrs. S., Grouse Inn, Chatsworth Road, Chesterfield ...	0	5	0
Davis, G. F., Top Road, Calow ...	2	2	0
Davison, L., 8, Churston Road, Chesterfield ...	1	1	0
Davy, Arthur & Sons, Ltd., Paternoster Row, Sheffield ...	0	6	0
Dawson, E., Hunloke Road, Holmewood ...	1	1	0
*Deacon, M., J.P., Chase Cliffe, Whatstandwell, Matlock ...	2	2	0
Dennis, Miss, 12, Spital Road, Chesterfield (1933 Sub.) ...	0	5	0
Do. Do. Do. (1934 Sub.) ...	0	5	0
Derbyshire, A., Ltd., Whittington Moor ...	1	1	0
Derbyshire Carriage & Wagon Company, Limited, New Whittington ...	10	10	0
Derbyshire, Mrs. A., Curbar House, Newbold Moor ...	1	10	0
Derbyshire County Council, Public Assistance Depart- ment, per H. W. Skinner ...	10	10	0
Derbyshire, Nottinghamshire and Midland Counties Colliery Enginemmen, Firemen and Motormen's Union (per G. Annable) ...	3	3	0
*Dobbs, Mrs. E. H., Burlington Street, Chesterfield ...	1	1	0
Doe Lea and District Women's Institute, per Mrs. D. A. Heslington ...	5	0	0
Doe Lea Colliery Co., Ltd., Doe Lea ...	5	0	0
Donkin, Bryan, Company, Limited, Chesterfield ...	89	8	6
*Dunks, W., 154, Park Road, Chesterfield ...	1	1	0
Dutton, F. W., Market Place, Chesterfield ...	1	1	0
Eastwood, G. A., J.P. (the late), Brambling House, Chesterfield ...	10	0	0
*Eastwood, Miss, J.P., Brambling House, Chesterfield ...	3	3	0
Eaton, Wilfred, Bramley Vale, Glapwell ...	2	2	0
Eckington, Beighton and Killamarsh Ploughing Association, per H. B. Helliwell, Commonsides Farm, Hackenthorpe (1933 Sub.) ...	2	0	0
Do. (1934 Sub.) ...	2	10	0
*Edmunds, Capt. G. J., J.P., "Ivycourt," Brookside, Chesterfield ...	2	2	0
*Edmunds, W. Hawksley, J.P., Gladstone Road, Chesterfield ...	1	1	0
Edmunds, Wilfred, Limited, Chesterfield ...	2	2	0
Elliott, S., Steeple Works, Chesterfield ...	3	0	0
Ellis, Son & Paramore, Spring Street, Sheffield ...	2	2	0
Eyre & Sons, Ltd., Holywell Street, Chesterfield ...	9	10	0



	£	s.	d.
Fabry, R., 7, Devonshire Road, Beauchief	1	1	0
*Fawcett, E. D., Unstone	1	1	0
Finningley, Mrs. A., 28, Holland Road, Old Whittington	5	0	0
Fish, Harry, Saltergate, Chesterfield	1	1	0
Fleming, Reid & Company, Limited, Knivesmith Gate, Chesterfield	1	1	0
Fletcher, Charles, Scarsdale Colliery, Sutton Scarsdale	5	11	0
Fletcher, E., Scarsdale Colliery, Sutton Scarsdale	0	10	6
Fletcher, E., 122, Barrow Hill	1	1	0
Ford, L., 9, Market Hall, Chesterfield	1	0	0
Fox, T., 86, Chatsworth Road, Chesterfield	1	0	0
Freeman, Hardy & Willis, Ltd., Rutland Street, Leicester	0	10	6
Frisby, J., Limited, St. James' Buildings, Humberstone Gate, Leicester	0	10	6
Frith, J. W., Netherthorpe	1	1	0
Furness, J. W., Crown and Cushion Inn, Low Pavement, Chesterfield	0	5	0
Garland, Mr. and Mrs. J. W., 35, College Avenue, Staveley	0	10	0
*Gaunt, C. E., West Bars, Chesterfield	2	2	0
George, Miss I. A., 30, Gluman Gate, Chesterfield	1	10	0
Gilman, T. W., Post Office, Barrow Hill	1	1	0
Glossop, C. R., Park Gate Farm, Handley	2	0	0
*Glossop, Frederick W.	2	2	0
Goodwin, F. & Son, West Bars, Chesterfield	1	1	0
Gosforth Foundry Company, Limited, Dronfield	2	2	0
Gothard, J. & Sons, Saltergate, Chesterfield	3	3	0
Grassmoor Company, Limited	230	12	1
Greaves, A. & Son, Ltd., Market Place, Chesterfield	1	1	0
Greaves, Miss D. I., 34, Station Road, Whittington Moor	1	1	0
Greaves, Thos., 166, Old Hall Road, Chesterfield	5	0	0
Green, A., Whittington	1	1	0
Green, J. H. & F. W., Whittington	3	3	0
Grieves, E., Avon Cottage, Staveley	1	0	0
Haag & Sons, Gluman Gate, Chesterfield	1	0	0
Hadfield, S. & Sons, Ltd., High Street, Chesterfield	5	5	0
Hall, T., 21, Calow Lane, Hasland	0	5	0
Hanson, F., South Street, Chesterfield	0	2	0
Harber, R., 193, Sheffield Road, Whittington Moor	1	0	0
Hardisty, E., Swinsty, Riddlesden, Keighley	1	0	0
Hardwick Colliery Company, Limited, Heath	460	13	0
Hardwick, S. & T., Heath	0	5	0
Hardy, A. E., Station Road, Pilsley	2	2	0
Harrison, J. & Sons, Ltd., Knivesmith Gate, Chesterfield	2	2	0
Harrison, Mr. and Mrs. F. T., Gluman Gate, Chesterfield	0	10	0
Hartington, Marquis of, Churchdale Hall, near Bakewell	5	0	0
Haslam, F., Limited, Doncaster	0	14	6
Haslam, T. E., J.P., Broom House, Sheepbridge	3	3	0
Hearnshaw, A., 31, Queen Street, Chesterfield	2	0	0
Heath, A., Old Road, Chesterfield	2	2	0
Heath & Williamthorpe Co-operative Society, Holme-wood	2	2	0
Heathcote, J. H., Post Office, Scarcliffe	1	1	0
Hewson, Rev. W. R., The Rectory, Eckington	1	1	0
Hibbert, Frank, 33, Wharfe Lane, Chesterfield	1	0	0
Hicks, R., & Son, 52-4, Duke Street, Whittington Moor	3	3	0



	£	s.	d.
Hill, George, 24, Commonsides, Barlow ... ..	0	10	0
Hilton, 166, Station Road, Shirebrook ... ..	0	2	6
Hinch, Phos. W., Church Street, Brimington ... ..	2	2	0
Hitchcock, L., Knifsmith Gate, Chesterfield ... ..	0	6	0
Hodgson, Henry, Yew Tree Farm, Old Tupton ... ..	1	10	0
Hollingworth, R., Prince of Wales Inn, Whittington Moor	1	0	0
Hollis & Brummell, Park Road, Chesterfield ... ..	5	5	0
Holmes, A. H., 58, Vincent Crescent, Chesterfield ... ..	2	2	0
Holt, Thomas, 27, Princess Street, New Brimington ...	1	0	0
Hopkinson, C. E., Mooredge Farm, Tansley, Matlock ...	0	10	0
Hounsfield, Miss M. A., "Holmesfield," 32, Fernwood Avenue, Streatham, S.W.16 ... ..	1	1	0
Howson, C. J., J.P., Fairfield, Chesterfield ... ..	1	1	0
Hoyle, Misses A. E. and L., 75, West Bars, Chesterfield	1	1	0
Hunloke, Sir Philip, J.P., Wingerworth ... ..	4	4	0
Hunt, J., 1, Warwick Street, Birdholme, Chesterfield ...	0	5	0
Hunter, J., Markham House, Duckmanton ... ..	2	2	0
Hyde, Robert & Son, Limited, Clarendon Works, Chesterfield ... ..	1	1	0
Independent Order of Good Templars, Lifeboat Lodge per A. Seaman ... ..	0	15	0
Independent Order of Rechabites (Chesterfield District), Gluman Gate, Chesterfield ... ..	10	10	0
Irving & Co., Limited, Gluman Gate, Chesterfield ...	3	3	0
Jackson, Mrs. G. M., The Hall, Clay Cross ... ..	2	2	0
Jackson, W. B. M., J.P. (the late), Glapwell Hall, Chesterfield ... ..	10	10	0
Jackson & Fryer, 19, Stephenson Place, Chesterfield ...	5	5	0
Jackson's, Limited, 31, Stephenson Place, Chesterfield ...	0	10	6
Jephson & Son, Knifsmith Gate, Chesterfield ... ..	1	1	0
Jones, Mrs. Agnes A., 404, Derby Road, Chesterfield ...	0	5	0
Jervis Brothers, Horns Garage, Chesterfield ... ..	1	0	0
Jordon, R., and Miss C. Jordon, 570, Chatsworth Road, Chesterfield ... ..	3	10	0
Kelly, Mrs. E., 1, Pleasant Place, Barker Lane, Chesterfield ... ..	0	3	0
Kent, E., Beetwell Street, Chesterfield ... ..	1	0	0
Kent, E. L., Beetwell Street, Chesterfield ... ..	0	10	0
Kerr, O. J. W., Ashgate Road, Chesterfield ... ..	1	1	0
Killamarsh Co-operative Society, Limited ... ..	2	2	0
King, John & Son (Enamellers), Ltd., Whittington Moor	7	15	0
Kirk, G. F., Limited, Chatsworth Road, Chesterfield ...	3	3	0
Kirkham, George, Tutbury Villa, Eckington ... ..	1	1	0
Knowles, Miss K., 208, Old Road, Chesterfield ... ..	2	0	0
Lamp Caps, Limited, Chesterfield ... ..	9	9	0
Latham, E. J., Main Street, Shirebrook ... ..	1	1	0
Laver, Arnold & Co., West Bars, Chesterfield ... ..	3	3	0
Leadbeater & Peters, Ltd., Stephenson Place, Chesterfield	2	2	0
Legard's Leather Stores, South Street, Chesterfield ...	1	0	0
Lewis, I., Market Place, Chesterfield ... ..	1	1	0
*Lignum, E. S., Boot and Shoe Inn, Grassmoor ... ..	1	1	0
Limb, W., Heath ... ..	0	5	0
Littlewood, Miss M., Hill Crest, Glapwell Hill, Doe Lea	0	10	6
Liverpool Victoria Friendly Society, Victoria House, Southampton Row, London, W.C.1 ... ..	3	3	0



	£	s.	d.
Lister, Bernard, Whittington Moor ... ..	1	0	0
London & North Eastern Railway Company ... ..	0	0	0
Lowe, F. C., & Son, West End Stores, Chesterfield ... ..	1	1	0
Lucas, B. C., Huntworth, Stoke Bishop, Bristol ... ..	3	3	0
Macartney, Walter C., Ashgate House, Chesterfield ... ..	3	3	0
Mackenzie, I. Scott ... ..	1	1	0
Margereson, C., The Bungalow, Barlow ... ..	1	1	0
Margereson, G., Pratt Hall, Cutthorpe ... ..	1	0	0
Margereson, W. H., Sidlings Farm, Tapton ... ..	2	2	0
Markham & Company, Limited ... ..	100	0	0
Marks, Charles H., 34, Devonshire Avenue, Hasland ... ..	1	0	0
Marks & Spencer, Ltd., High Street, Chesterfield ... ..	2	2	0
Marshall, W. H., & Sons, Beetwell Street, Chesterfield ... ..	2	0	0
Marson, Benjamin J., Barrow Hill ... ..	2	2	0
Mason, F. W. (the late), 27, Market Hall, Chesterfield ... ..	0	10	6
*Mason, Mr. and Mrs. H., 182, Chatsworth Road, Chesterfield ... ..	1	1	0
Mason, Mrs. T., 14, Storforth Lane Terrace, Hasland ... ..	0	10	0
Maule & Company, Huntingdon Street, Nottingham ... ..	1	1	0
Maypole Dairy Company, Limited, Leonard Street, City Road, London, E.C. ... ..	1	1	0
Meadow Dairy Co., Ltd., 196, City Road, London, E.C.1 ... ..	0	10	6
*Middleton, Harry, Saltergate, Chesterfield ... ..	1	1	0
Midland Fruit Preserving Company, Ltd., Whittington Moor ... ..	6	0	0
Miles, G. H., 19, Holywell Street, Chesterfield ... ..	0	10	0
Miles, Mrs. M., Cavendish Street, Chesterfield ... ..	0	5	0
Milner, Angus, Acre Street, Pilsley ... ..	0	13	0
Mitchell, C. W., 22, Chapel Street, Mosboro' ... ..	0	10	0
Moore, Donald, 11, Hollingwood Crescent, Hollingwood ... ..	0	10	0
Morgan, Crossley & Company, Limited, Miles Platting, Manchester ... ..	2	2	0
Murray, George, Barley Mow Inn, Wingerworth ... ..	1	1	0
Murray, P., 37, Sheffield Road, Chesterfield ... ..	0	5	0
Nadin, W., & Son, West Bars, Chesterfield ... ..	0	10	6
Nash, F., 10, Beetwell Street, Chesterfield ... ..	0	5	0
National Deposit (Approved) Friendly Society (Chesterfield Branch), per W. T. Woodbridge ... ..	1	0	0
National Farmers' Union, Alferton Branch, per M. B. Bryan, Long Croft, Oakerthorpe, Derby ... ..	5	5	0
National Federation of Retail Newsagents (Chesterfield Branch), per G. H. Miles, Holywell St., Chesterfield ... ..	1	1	0
National Institution for Persons Requiring Care and Control, New Whittington ... ..	2	2	0
Naylor, Mrs. B., 133, Sheffield Road, Chesterfield ... ..	0	5	0
New Byron Brick Company, Soar Lane, Leicester ... ..	2	2	0
Newton, Isaac, 76, Hunloke Road, Holmewood ... ..	1	1	0
Nodder, Rev. J. B., Ashover ... ..	2	0	0
Norman, Mrs. A., 44, Mansfield Road, Hasland ... ..	0	5	0
Norman, John, Wingerworth ... ..	1	1	0
North, Hon. John M. W., 396, London Road, Isleworth, Middlesex ... ..	2	2	0
Nottingham & District (Mansfield Branch) Women's Licensed Trade Defence Association, per Mrs. Joyce, Swan Inn, Bolsover ... ..	1	1	0



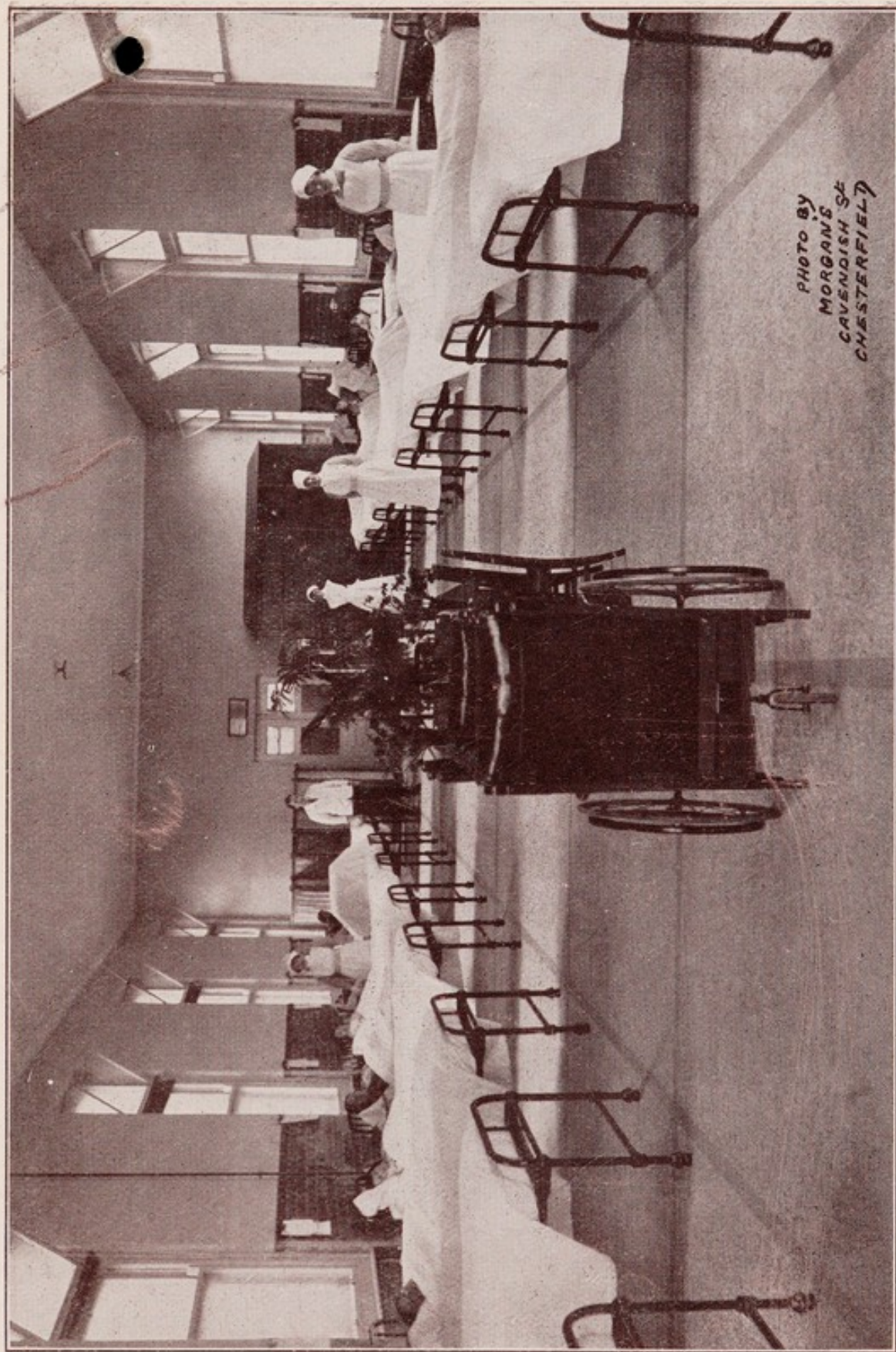


PHOTO BY  
MORGAN'S  
CAVENDISH ST  
CHESTERFIELD

STAVELEY WARD.







	£	s.	d.
Nuttall, Mrs. E., Stephenson Place, Chesterfield ...	1	1	0
Ormerod & Co., Bakewell and Chesterfield ...	2	2	0
Osborne & Co., Ltd., Dronfield ...	3	6	8
Oxcroft Colliery Company ...	160	0	0
Oxcroft Colliery Officials, per John Campbell ...	25	0	0
Oxcroft & District Co-operative Society ...	5	0	0
Owen, Capt. C. H. M., Holly House, Norbriggs ...	1	1	0
Parker, W. T., "Belmore," Hasland ...	2	2	0
Parrott, George, Moorfield Lane, Bolsover ...	0	5	0
Patent Electric Shot Firing Company, Chesterfield ...	10	0	0
Patrick, J. A., West Pool Villas, 105, Saltergate, Chesterfield ...	1	1	0
Peabody, E., High Street, Staveley ...	1	0	0
Pearson & Company (Chesterfield), Ltd., Whittington Moor ...	44	0	0
Pearson, James, Ltd., Brampton ...	2	2	0
Pilley, H., Ltd., Central Pavement, Chesterfield ...	1	1	0
Pilley, Mr. and Mrs. H., Central Pavement, Chesterfield ...	1	1	0
Pilsley Colliery Company, Limited ...	105	0	0
Platts, Mrs. W., 106, Peveril Road, Chesterfield ...	0	11	0
Plowright Bros., Limited, Chesterfield ...	39	6	8
Powell, Mrs. E., 11, Ashfield Road, Hasland ...	0	10	6
Prestwich, Wm., & Sons, Limited, Dronfield ...	3	3	0
Prudential Assurance Company, Limited, Holborn Bars, London, E.C. ...	6	6	0
Public Benefit Boot Company, Limited, St. Paul's Street, Leeds ...	0	5	0
Pugh, C. E., Lock's Lane Farm, Pilsley ...	2	2	0
Pugh, G., The Poplars, North Wingfield ...	1	0	0
Randall, W., Mansfield Road, Hasland ...	1	10	0
Reatchlous, H., 2, Bower Terrace, Maidstone ...	2	2	0
Redgate, J. A., Post Office, Doe Lea ...	1	0	0
Reed, H. W., 3, The Gables, High Street, Staveley ...	1	1	0
Renishaw Iron Company, Limited ...	7	6	5
*Rhodes, W., J.P., Chatsworth Road, Chesterfield ...	2	2	0
Rignall, F., Rose Hill, Brookside, Chesterfield ...	2	2	0
Ripley Co-operative Society ...	5	5	0
Robinson, Arthur, New Square, Chesterfield ...	1	1	0
Robinson, Miss F., Wheatbridge Mills, Chesterfield ...	2	2	0
Robinson, Mrs. J., Moorside Cottage, Chatsworth Road, Chesterfield ...	2	2	0
Robinson, J. T., & Sons, Stone Lane, New Whittington ...	1	1	0
*Robinson, Chas. W., Moorlands, Brampton ...	10	0	0
Robinson, C. W., Wheatbridge Mills, Chesterfield ...	54	8	8
Robinson, J. B., Wheatbridge Mills, Chesterfield ...	54	8	7
Robinson, Philip, Wheatbridge Mills, Chesterfield ...	54	8	7
Robinson, V. O., Wheatbridge Mills, Chesterfield ...	54	8	7
Robinson, Mrs. W. B., 696, Brookside, Chesterfield ...	5	0	0
Robinson, W. J., Gluman Gate, Chesterfield ...	2	2	0
Rogers, J., & Co., 10, Station Road, Whittington Moor ...	2	2	0
Rooth, J. H., Burlington Street, Chesterfield ...	0	5	0
Rough, Arthur J., 18, Rose Cottages, Grassmoor ...	1	1	0
Royal Liver Friendly Society, per L. Pybus, 23a, Market Place, Chesterfield ...	1	1	0
Rushton, Mrs., 27, Eyre Street, Chesterfield ...	1	1	0



	£	s.	d.
Russell, H., Nursery Farm, Arkwright Town ...	2	2	0
Ryland Works, Ltd., Newbold Road, Chesterfield ...	0	0	0
Savidge, Miss L. K., Nethermoor Farm, Wingerworth ...	10	0	0
*Savidge, S., Nethermoor Farm, Wingerworth ...	1	1	0
*Saxton, I. H., Brookside, Chesterfield ...	2	2	0
Scarsdale Brewery Company, Limited ...	5	5	0
Seaman, Arthur, 43, Bank Street, Chesterfield ...	0	10	0
Service Motors, Knifsmith Gate, Chesterfield ...	1	1	0
Sharman, Mrs. M. A., Crown Inn, Tibshelf ...	0	5	0
*Sharman, Walter, School House, Unstone ...	2	2	0
Sheepbridge Coal & Iron Company, Limited ...	448	7	3
Sheepbridge Stokes Centrifugal Castings Co., Ltd. ...	46	0	0
"Sheffield Independent," re Nignogs Cot ...	30	0	0
"Sheffield Telegraph and Star," re Gloops Cot ...	30	0	0
Shentall, A., Gluman Gate, Chesterfield ...	2	2	0
Shentall, J., Limited, Whittington Moor ...	10	0	0
Shentall, Sir E., J.P., St. Mary's Gate, Chesterfield ...	5	5	0
Shelton, Mrs. S., 36, Lime Avenue, Staveley ...	1	0	0
Shirebrook Colliery, Limited ...	36	13	4
Short, C. P., 17, Gluman Gate, Chesterfield ...	0	10	6
Simms, Frank, Beetwell Street, Chesterfield ...	0	5	0
*Simms, Herbert, "Eastbourne," 16, High Street, Staveley ...	2	2	0
Sims, N. D., Red Roofs, Walton ...	1	1	0
Sims, S., & Sons, Ltd., Britannia Works, New Whittington	5	5	0
Siddons, Geo. C., Studfield Ganister Works, Loxley, near Sheffield ...	2	11	0
Slack, E. H., 102, Peveril Road, Chesterfield ...	2	0	0
Slatcher, L., Station Road, Pilsley ...	0	5	0
Smith, Mrs., Terminus Hotel, Brampton ...	2	2	0
Smith, Fredk., Hollins Green Farm, Holmgate, Clay Cross	1	0	0
Smith, Laurie, 442, Chatsworth Road, Chesterfield ...	0	10	6
Smith, Mrs. R. H., 8, Tapton Terrace, Chesterfield ...	1	0	0
Spafford, G., Barlow ...	1	1	0
Spencer, John T., The Mount, Park Road, Chesterfield	1	1	0
Standing, R., Springwood Colliery, Sutton Scarsdale ...	5	0	0
Stanton Bros., West Bars, Chesterfield ...	1	1	0
*Stanton, F. C., 166, Old Hall Road, Chesterfield ...	2	2	0
Stanyon, H., Hunloke Road, Holmewood ...	0	10	0
Staveley Charities, Trustees of, per R. W. Barlow, Staveley	6	6	0
Staveley Coal & Iron Company, Limited ...	982	6	8
Stead & Simpson, Belgrave Square, Leicester ...	1	11	6
Steel Breaking & Dismantling Company, Limited ...	0	18	10
Stokes, R. J., & Co., Knifsmith Gate, Chesterfield ...	1	1	0
Stone, S., & Sons, Staveley ...	5	5	0
Stone, C. A., "Risehill," Chatsworth Road, Chesterfield	0	10	0
Styring, A., Saltergate, Chesterfield ...	3	0	0
Sutton, C. W., Belvoir Terrace, Sheepbridge ...	1	1	0
Swale, Seth W., Sheffield Road, Chesterfield ...	2	2	0
Swallow, F. K., Burlington Street, Chesterfield ...	2	2	0
Swallow & Sons, Burlington Street, Chesterfield ...	4	4	0
*Swanwick, E. D., Whittington House, Old Whittington	2	2	0
*Swanwick, Mrs., Whittington House, Old Whittington	2	2	0
*Sykes, Mrs. A. C., Sherwood Lodge, Bolsover ...	1	1	0
Symonds, Mr. and Mrs. A., Moorlands, Manor Road, Brimington ...	1	1	0



	£	s.	d.
Taylor, Mrs. H., Queen Street, Chesterfield ... ..	1	1	0
Taylor, Mr. and Mrs. Harold, Old Hall Road, Chesterfield	1	11	6
Taylor, W. F., & Sons, Limited, Stephenson Place, Chesterfield ... ..	5	5	0
Thickett, J., Soresby Street ... ..	0	10	6
Thompson, J. W. (Chesterfield), Ltd., Old Whittington	2	2	0
Thompson, R., Ltd., Holywell Street, Chesterfield ...	6	0	0
Tibshelf Co-operative Society, Ltd. ... ..	3	3	0
Tinley & Son, Knivesmith Gate, Chesterfield ... ..	1	1	0
Tissington, Chas. E., "Sunrae," High Street, Brimington	1	0	0
Toc H Canteen Ladies, per Mrs. E. A. Urton, 121, Ash- gate Road, Chesterfield ... ..	3	3	0
*Toplis, J. H., Old Brampton ... ..	1	1	0
Topham, Arthur, 15, Hollis Lane, Chesterfield ... ..	1	5	0
Townrow, Mrs. A. A., Somersall Lane, Chesterfield ...	2	2	0
Townrows Limited, Chesterfield ... ..	5	5	0
Turner, D. N., J.P., Walton Lodge ... ..	5	0	0
Turner, H. H., East Bank, Chesterfield ... ..	10	10	0
Turner, John, Ltd., Packers' Row, Chesterfield ... ..	5	0	0
Turner, Miss K., East Bank, Chesterfield ... ..	2	2	0
Twelves, E., Ltd., Stephenson Place, Chesterfield ...	1	1	0
Tylden-Wright, Lt.-Col. H., J.P., Walton Cottage, Chesterfield ... ..	2	2	0
Tyler & Company, Burlington Street, Chesterfield ...	1	1	0
United Commercial Travellers' Association (per T. Brummell, 28, Foljambe Road, Chesterfield) ...	2	2	0
Urton, W., West Bars, Chesterfield ... ..	2	2	0
Varney, James, Apperknowle ... ..	0	10	0
Verney, Frederick, Walton ... ..	0	10	6
*Wakerley, W. E., "Woodside," Walton, Chesterfield ...	10	10	0
Walker, G. F., George and Dragon Inn, Newton ... ..	0	5	0
Walker, Louis, 9, West Bars, Chesterfield ... ..	0	10	0
Walker, Mrs., "Woodside," Chesterfield ... ..	3	3	0
Walker, W. R., Loads, Holymoorside ... ..	2	0	0
Walters, John, 11, Nesbit Street, Hillstown, Bolsover ...	1	0	0
Ward, A., 34, Chester Street, Chesterfield ... ..	0	2	6
Ward, S. H., & Co., Sheaf Brewery, Sheffield ... ..	1	1	0
Warner, Peter, Market Place, Chesterfield ... ..	3	3	0
Warner, W. P., Market Place, Chesterfield ... ..	2	2	0
Wastnadge, J. W., Chesterfield Road, Shuttlewood ...	0	5	0
Watertight Fittings, Ltd., Chesterfield ... ..	1	5	6
Welbeck Estates, Limited, per T. Warner Turner ...	10	0	0
Wells, J. & G., Limited, Eckington ... ..	37	10	0
Westminster Bank, Limited ... ..	3	3	0
Wheatcroft, Geo., 68, Soresby Street, Chesterfield ...	0	10	0
White, J. B., & Sons, High Street, Chesterfield ... ..	2	2	0
White's (Furniture), Ltd., Chesterfield ... ..	1	1	0
White's (Music), Ltd., Chesterfield ... ..	2	2	0
Whitham, F. A., 35, Swanwick Street, Old Whittington	1	0	0
Whitworth, G. H., Palterton ... ..	0	10	0
Williamson, E., Barrow Hill Hotel ... ..	1	1	0
Wilson, J. P., 37, Doe Lea ... ..	2	2	0
Wilson, R., Victoria Hotel, Shirebrook ... ..	0	10	0
Wilson, Walter, 31, Alexandra Road, Dronfield ... ..	1	0	0
Winson, Nurse, Stretton, near Alfreton ... ..	0	10	0



	£	s.	d.
Wood, T. P., & Co., High Street, Chesterfield ...	1	1	0
Woodbine, W., Sutton Springwood, Calow ...	1	1	0
Woodhead, E. R., High Street, Chesterfield ...	5	0	0
Woodhead, J. F., High Street, Chesterfield ...	5	0	0
Woolworth, F. W., Limited, Chesterfield ...	8	5	0
Wright, E., & Company, Limited, Brampton ...	2	2	0
Wright, N., Knivesmith Gate, Chesterfield ...	0	5	0
*Wycherley, F. H., Market Place, Bolsover ...	0	10	6
Yates, F., 35, Stephenson Place, Chesterfield ...	1	0	0
Yeomans, W., Beetwell Street, Chesterfield ...	4	4	0
	<u>£5234</u>	<u>3</u>	<u>9</u>

### DONATIONS, 1934.

	£	s.	d.
"A Memory" ...	1	0	0
"A Well Wisher" ...	0	2	0
"An Old Lady" ...	1	0	0
Anonymous ...	0	1	0
Anonymous ...	0	5	0
"Apperknowle, with best wishes for the Hospital" ...	1	7	0
Armstrong, Mrs. F., 12, Park Row, Clay Cross—Entertainment at Clay Cross Drill Hall ...	2	15	4
Ashover Hydro—per Mr. Grayson ...	0	16	0
Aspley, Miss Lily, and Miss Joyce Harrison, 32, Market Street, Eckington ...	1	0	0
Barfoot, J. R. D., West Bars, Chesterfield ...	2	0	0
Barlow Commonsides Well Dressing—per E. Bowler, Barlow ...	1	1	0
Barlow Well Dressing—Collection at Dressing of Small Well—per E. Kingston, Barlow ...	1	10	0
Barnett, B., 61, Henry Street, Whittington Moor—Ladies and Gentlemen of Pottery Lane, Whittington Moor ...	2	8	0
Bates, Miss C., 22, Fairfield Road, Chesterfield ...	1	0	0
Bennel, Miss Audrey, 295, Derby Road, Chesterfield—Proceeds of Concert by Happy Girls' Concert Party ...	1	5	3
Berresford, S., Avondale Road, Chesterfield ...	100	0	0
Bolsover Central Hall—Proceeds of Concert, per E. and R. Dakin ...	9	2	6
Brackenfield Whist Drive and Dance—Proceeds per Mrs. J. Barker, Lindway Lane, Brackenfield ...	3	0	0
Bradshaw, Miss Muriel, 44, New Hall Road, Chesterfield—re Sale of Trinkets ...	0	12	6
Cash, Messrs. A. J. & Sons—re the late Mrs. Fanny Allen ...	5	0	0
Chatsworth Estates Company, Chatsworth Admission Fund—per W. K. Shemwell ...	25	0	0
Chase, L. H., Southwood, St. Anne's Hill, Chertsey, Surrey ...	1	1	0
Checklin, Miss T. E., High Street, Stonebroom ...	0	10	0
Chesterfield Boro' Police—Fire Brigade Ball ...	5	18	3
Chesterfield & District Amateur Bowling Association—per J. W. Madin, 134, Derby Road, Chesterfield ...	6	0	0



Chesterfield & District Minor Cricket Association—per			
E. Sibilia, 52, Storrs' Road, Chesterfield ... ..	3	15	8
Chesterfield Football Club—Proceeds of Practice Matches	70	5	0
Chesterfield Grammar School—Monies Lost and Un- claimed—per E. Howard Smith ... ..	0	1	11
Chesterfield Queen's Park Annexe Bowling Club—per			
J. A. Clay ... ..	0	9	0
Chesterfield Royal Hospital—Nurses' Concert ... ..	14	0	9
Chesterfield Royal Hospital Staff Dance ... ..	32	6	9
Chesterfield Royal Hospital—Turkey Raffle—per J. Tomlinson ... ..	2	1	0
Chesterfield Royal Hospital Whist Shield Competition	50	0	0
Chesterfield Rugby Club—re Seven-a-side Contest—per			
Ivor Jones ... ..	2	10	0
Chesterfield Tube Works Sports Club, per P. Preece ...	30	14	0
Clark, G., The Cedars, Chesterfield ... ..	50	0	0
Clark, Mrs. G., The Cedars, Chesterfield ... ..	50	0	0
Clay Cross Park Tennis Club—per R. Hopkinson, 137, Market Street, Clay Cross ... ..	1	10	0
Collier, Mrs., c/o "Rookery Nook," Highfield Road, Chesterfield ... ..	0	3	0
Cooper, Mrs. M. J., 18, Welbeck Street, Creswell ...	0	10	0
Cordwell Well Dressing, per G. H. Chapman ... ..	0	12	5
Crown & Anchor Inn, Sheffield Road, Chesterfield— Proceeds of Special Effort by "Crown & Anchor" Committee ... ..	5	3	8
Crown & Anchor Inn—Proceeds of Vegetable Show, per E. H. Kilpin ... ..	6	10	0
Dales, Miss, Rectory Cottage, Upper Langwith—Proceeds re Doll ... ..	3	10	6
Derby County Rugby Union—per D. I. Jones, Brockwell House, Chesterfield ... ..	2	10	0
Derbyshire County Council Public Assistance Department	18	18	0
Derbyshire Federation of Homing Societies—per A. A. Empson, The Gables, King Street, Whittington Moor	7	5	0
"Derbyshire Times" Sports, organised by the "Derby- shire Times" and Councillor T. J. Mitchell ...	35	0	9
"Derbyshire Times" Walk—Collection, etc. ... ..	14	8	0
Dixon, Mrs. E., Whirlow House, Park Head, Sheffield ...	2	0	0
Doe Lea Mission Gala—per Mr. Foyster ... ..	12	0	0
East Derbyshire Association National Union of Teachers, per Miss M. Doe, 28, Compton Street, Chesterfield	10	0	0
Eggs, in lieu of—per J. H. Clarke, Longcourse Farm, Duckmanton ... ..	0	5	0
Eggs—in lieu of—per D. McLarty, High House Farm, Walton ... ..	0	3	0
Eggs—in lieu of ... ..	0	2	6
"E.H.T."—per "W.B." ... ..	0	5	6
Fletcher, Miss, in lieu of Eggs ... ..	0	5	0
Fowler, Mrs., Hardstoft, Pilsley ... ..	0	7	0
Froggatt, Mrs., 6, Foljambe Road, Chesterfield ... ..	0	1	1
Frost, G. W., 6, Station Road, Bolsover ... ..	0	10	0
Furness, C. A. ... ..	0	15	0
Glossop, A. W. Compton, Holywell Street, Chesterfield	0	10	0
Godfrey, Mrs., 17, Main Road, Grassmoor ... ..	0	5	0
"Grateful Patient" ... ..	50	0	0



	£	s.	d.
Green, Master J., and Misses Joyce and Hilary Preece ...	0	1	6
Halksworth, S., "Somerley," Holymoorside, Chesterfield	2	0	0
Harrison, Miss Nina, 6, Mansfield Road, Newbold— Proceeds of Two Children's Concerts ...	1	3	0
Heath Men's Institute—Proceeds of Whist Drive and Dance run in conjunction with Women's Institute	10	6	1
Hedge, George, 4, Station New Road, Old Tupton ...	0	10	0
"Highfields Dance" ...	2	0	5
Hodson, Nurse (the late), "Woodside," Hasland Green Chesterfield ...	1	0	0
"In Grateful Remembrance of the late Alderman Geo. Eastwood" ...	1	1	0
Iron Trades Employers' Insurance Association—per S. W. Gladwell, 88, Victoria Street, N.W.1 ...	10	0	0
Jacques, H. J., 54, King Street, Brimington ...	1	1	0
Junior Imperial League—Proceeds of Carol Singing—per Miss Brown, 28, Littlemoor Crescent, Newbold ...	0	14	9
Key, Wm., Cordwell Farm, Holmesfield ...	6	0	0
Knott, J., Avon Cottage, Staveley ...	0	10	0
"L.H." ...	0	2	6
L.M.S. Railway Horticultural Show—per Mr. Bradley, 48, York Street, Hasland ...	0	18	0
Lievesley, F., 3, Prospect Road, Old Whittington ...	0	10	0
Longshaw Sheep Dog Trial Association—per W. J. M. Bocking, Hathersage ...	10	0	0
Lord, Miss, 12, Newbold Drive—Proceeds of Children's Concert ...	0	18	6
Madin, Mrs. T. R., 21, New Queen Street, Chesterfield	30	0	0
Mansfield & District Beef & Pork Butchers Association— per E. Marriott, 28, Portland Street, Mansfield ...	7	0	0
Mather, B. & Co., Chesterfield—re Hale ...	9	19	6
Mather, G., Ankerbold Farm, Old Tupton ...	1	0	0
Miles, B. J., Old Wood, Skellingthorpe, near Lincoln ...	0	10	0
Mills, Bertram, Circus—Cabaret Show at "Rising Sun" Hotel, Bamford—per S. J. Franklin ...	11	2	11
Morton Holy Cross Church Sunday School—Teachers and Friends—Proceeds of Carol Singing ...	2	5	0
Nuttall, A., Mount Pleasant, Newton ...	0	10	0
Old Bolsover Anglers and Friends—per P. Coupe, Castle Inn, Bolsover ...	2	2	0
Owen, Mrs. E., 8, Marsden Street, Chesterfield ...	0	2	6
Parker, Miss Dickie, Stand Road, Whittington Moor— Proceeds of Dancing Display ...	9	14	0
Peak, Mrs. Gladys, "Greylands," Alderley Edge ...	5	5	0
Pope, G. H., 46, St. Thomas' Row, Tibshelf ...	4	0	0
Poppleton, Miss G., 10, Langer Lane, Chesterfield—re Dancing Display ...	2	15	0
Railway Hotel, Whittington Moor—re Sale of Vegetables, per H. Bamford ...	3	10	0
Robertson, Mrs. N. C., 47, Warwick Road, Kensington, S.W.5 ...	1	0	0
Ross, Mrs., Gloucester Road, Chesterfield ...	0	1	0
Saxton, R. G., Stonebroom ...	0	5	0
Silverwood, Miss W., Council School, Dronfield ...	0	2	0



	£	s.	d.
"Six Stitches, New Year's Eve, 1914-15" and "Seven Stitches, 31-3-31" ... ..	0	10	0
Stacey, Mrs. J., and E. and A. Barnes, 23, Spa Lane, Chesterfield ... ..	1	0	0
Staveley Company's Offices—10/- Note Found, per G. Warren ... ..	0	10	0
Staveley Dance, proceeds of—per Mrs. L. M. Reed, 3, Gables, High Street, Staveley ... ..	10	0	0
Swanwick, E. D., Old Whittington ... ..	25	0	0
Taylor, Wm. A., & Sons, "St. Lawrence," North Wingfield ... ..	5	0	0
Whittington Moor "Prince of Wales" Death & Divide Club, per R. Hollingworth ... ..	2	15	0
Wickens, B., 43, Ralph Road, Netherthorpe, Staveley ... ..	3	0	0
Wilkinson, J., 14, Brockwell Terrace, Chesterfield ... ..	0	2	6
Wright, E., Station Road, Pilsley ... ..	0	10	0

## THANKOFFERINGS.

	£	s.	d.
Ball, Mrs., Holywell Street, Chesterfield ... ..	0	5	0
Barton, Harold, Station Road, Pilsley ... ..	1	1	0
Beardall, G., 8, Newbold Avenue, Newbold ... ..	2	2	0
Booth, John R., Churchside Farm, Hasland ... ..	1	1	0
Bowler, H., Commonsides, Great Barlow ... ..	2	0	0
Cook, F., 288, Old Road, Chesterfield ... ..	2	0	0
Cooper, Mrs. M. J., 18, Welbeck Street, Creswell ... ..	1	0	0
Damms, N., 72, Storrs' Road, Chesterfield ... ..	3	3	0
Dennis, Miss, 12, Spital Lane, Chesterfield ... ..	0	10	0
Edwards, G., 2, Devonshire Avenue, Hasland ... ..	0	5	0
Elcock, Wm., 25, King Street, Brimington ... ..	5	0	0
Elvidge, F., "Hazleford," Ashfurlong Road, Dore ... ..	5	5	0
Fielding, W. H., Elmtown Lodge, Creswell ... ..	1	1	0
Fish, H., Saltergate, Chesterfield ... ..	2	2	0
George, M., 12a, Newbold Road, Chesterfield ... ..	1	1	0
Hall, Mrs. E., Station Road, Pilsley ... ..	0	10	0
"H.C." ... ..	5	5	0
Howard, Miss E., 173, Chatsworth Road, Chesterfield ... ..	1	0	0
Hurst, Mrs., 94, Devonshire Drive, Langwith ... ..	1	1	0
Ingham, H., 21, Avondale Road, Chesterfield ... ..	2	0	0
Levers, A., 2, Chapel Street, Whittington Moor ... ..	1	0	0
Marriott, Mr., Whitbank, Alton, Tupton ... ..	2	0	0
Mason, Albert, 75, Welbeck Street, Creswell ... ..	1	0	0
Masters, Mrs., 37, Queen Street, New Brimington ... ..	0	10	0
Middleton, George, "Beechcliffe," 156, Park Road, Chesterfield ... ..	6	0	0
Mitchell, H., Laurel Cottage, Newbold Back Lane, Chesterfield ... ..	5	0	0
Needham, J., Grange House Farm, Barlow ... ..	5	0	0
Nuttall, A., Mount Pleasant, Newton ... ..	1	0	0
"One who knows" ... ..	1	0	0
Parks, H., Whittington Hall Gardens ... ..	1	0	0
Peabody, Mr. and Mrs. W. H., 36, Albert Street, Chesterfield ... ..	2	0	0
Radford, Mr., Bolsover Castle ... ..	1	0	0
Ratcliffe, Mrs. E., 270, Chatsworth Road, Chesterfield ... ..	1	0	0
Reading, Mrs., 10, Dickenson Road, Chesterfield ... ..	3	0	0



	£	s.	d.
Reeve, A., 9, Devonshire Avenue, Hasland ... ..	0	10	0
Revill, Miss S. A., Bank Cottage, Ashover ... ..	0	10	0
Slater, Percy, 4, North Street, Alfreton ... ..	0	10	6
Smith, Mrs., 41, Sycamore Avenue, Boythorpe ... ..	1	0	0
Stephens, A. G., 10, Lime Avenue, Staveley ... ..	5	0	0
Street, J. W., 12, Shaftesbury Avenue, Chesterfield ...	1	1	0
Thorpe, G. E., 50, Welbeck Road, Bolsover ... ..	1	0	0
Tomlinson, Mr., Stretton Farm, Alfreton ... ..	2	0	0
Tonks, O. J., "Westville," Storforth Lane, Chesterfield	4	4	0
Toplis, Miss, 211, Sheffield Road, Chesterfield ... ..	1	0	0
Ward, V. L., 56, Lordsmill Street, Chesterfield ... ..	5	0	0
Wilton, Mrs., 56, Vale Drive, Shirebrook ... ..	0	10	0
Wingfield, R., 4, Oaklands Road, Kersal, Salford, 7 ...	1	0	0
"With thanks" ... ..	1	1	0
	<hr/>		
	£934	6	0

## COLLECTING BOXES.

### LICENSED HOUSES.

#### CHESTERFIELD.

	£	s.	d.	£	s.	d.
Alma Inn, Brampton ... ..	1	4	6			
Alma Inn, Derby Road ... ..	16	17	9			
Bricklayers' Arms, South Street ... ..	0	2	4			
Chesterfield Arms, Newbold Road ... ..	0	12	6			
Commercial Hotel, Vicar Lane ... ..	0	7	0			
Corner House Hotel, Gluman Gate ... ..	0	11	5			
Crown & Anchor Inn, Stonegravels ... ..	2	16	4			
Crown & Cushion Inn, Low Pavement ... ..	0	10	0			
Devonshire Arms Hotel, Holywell Street ... ..	0	3	0			
Durham Ox, Brampton ... ..	0	17	7			
Furnace Inn, Furnace Hill ... ..	0	8	11			
Furnace Inn, Derby Road, ... ..	7	3	9			
Highfield Hotel, Highfields ... ..	0	6	5			
Horns Hotel, Lordsmill Street ... ..	8	17	10			
Industry Inn, Queen Street ... ..	1	15	8			
Market Hotel, New Square ... ..	0	3	3			
Masons' Arms, Chatsworth Road ... ..	0	2	1			
Nags Head Hotel, Derby Road ... ..	4	9	0			
Old Angel, Packers' Row ... ..	0	15	0			
Old Britannia Inn, Old Hall Road ... ..	0	2	0			
Old Feathers Hotel, Lordsmill Street ... ..	0	4	3			
Phoenix Inn, St. Mary's Gate ... ..	0	5	0			
Punch Bowl Hotel, Holywell Street ... ..	0	3	0			
Queen's Head Hotel, Gluman Gate ... ..	0	3	1			
Red Lion Inn, Brampton ... ..	1	0	0			
Royal Oak Inn, Chatsworth Road ... ..	0	1	8			
Royal Oak Inn, The Shambles ... ..	1	16	5			
Ship Inn, Lordsmill Street ... ..	1	1	0			
Station Hotel, Corporation Street ... ..	0	2	4			
Swan Inn, St. Mary's Gate ... ..	1	0	6			



	£	s.	d.	£	s.	d.
Terminus Hotel, Brampton ... ..	0	1	8			
Three Horse Shoes Inn, High Street ...	1	15	4			
Victoria Inn, Victoria Street West ...	1	6	9			
Volunteer Inn, Holywell Cross ... ..	0	5	0			
Welbeck Inn, Soresby Street ... ..	0	4	0			
Wheatsheaf Hotel, High Street ... ..	0	15	0			
Wood, T. P. & Co. (Snack Bar) ... ..	0	5	0			
Yellow Lion Inn, Saltergate ... ..	0	6	10			
	<hr/>			59	3	2
BARLOW.						
Peacock Hotel ... ..				0	3	8
BARROW HILL.						
Barrow Hill Hotel ... ..				15	3	6
BOLSOVER.						
Anchor Inn ... ..	7	16	0			
Blue Bell Inn ... ..	0	7	0			
Cross Keys Hotel ... ..	4	4	0			
Swan Inn ... ..	0	10	0			
	<hr/>			12	17	0
CLAY CROSS:						
Crown Hotel ... ..	0	19	8			
Victoria Hotel ... ..	1	0	0			
	<hr/>			1	19	8
CUTTHORPE:						
Cutthorpe Hotel ... ..	0	10	3			
Gate Inn ... ..	0	6	6			
Peacock Inn ... ..	0	5	7			
	<hr/>			1	2	4
DUCKMANTON:						
Duckmanton Hotel ... ..				2	13	11
GLAPWELL:						
Young Vanish Inn ... ..				0	5	0
GRASSMOOR:						
Boot and Shoe Inn ... ..	0	2	6			
Miners' Arms Inn ... ..	0	3	5			
	<hr/>			0	5	11
HARDSTOFT:						
Shoulder of Mutton Inn ... ..				0	2	6
HEATH:						
Elm Tree Inn ... ..				0	4	4
HOLLINGWOOD:						
Hollingwood Hotel ... ..				0	11	2
HOLMEWOOD:						
Holmewood Hotel ... ..	13	2	3			
Williamthorpe Hotel ... ..	5	12	4			
	<hr/>			18	14	7



	£	s.	d.	£	s.	d.
<b>HOLYMOORSIDE :</b>						
Star Inn ... ..	...	...	...	0	19	0
<b>MARSDEN MOOR :</b>						
Gate Inn ... ..	...	...	...	0	12	2
<b>PILSLEY :</b>						
Commercial Hotel ... ..	0	8	4			
Gladstone Arms Hotel ... ..	0	4	3			
	<hr/>			0	12	7
<b>SHUTTLEWOOD :</b>						
Travellers' Rest Inn ... ..	...	...	...	0	2	6
<b>STAVELEY :</b>						
Angel Inn ... ..	0	5	9			
Nag's Head Hotel ... ..	0	15	0			
Poolsbrook Hotel ... ..	6	19	1			
Speedwell Inn ... ..	0	8	0			
	<hr/>			8	7	10
<b>UNSTONE :</b>						
Horse and Jockey Inn ... ..	...	...	...	1	0	5
<b>WALTON :</b>						
White Hart Inn ... ..	...	...	...	0	3	9
<b>WOOLLEY MOOR :</b>						
White Horse Inn ... ..	...	...	...	0	10	0
<b>CLUBS, ETC. :</b>						
Arkwright Town Miners' Welfare Club ...	1	17	6			
Birdholme Working Men's Club ... ..	1	5	0			
Bolsover (Welbeck Rd.) Working Men's Club	2	12	0			
Calow Working Men's Club and Institute ...	1	0	0			
Carr Vale Working Men's Institute ... ..	15	1	3			
Glapwell Colliery Institute, Doe Lea ...	2	19	8			
Grassmoor Working Men's Club and Institute ... ..	1	10	0			
Hasland L.M. & S. Railway Institute ...	1	13	10			
Hasland Working Men's Club and Institute	1	1	0			
Markham Colliery Sports Club ... ..	1	10	6			
Morton Social Club ... ..	1	11	6			
North Wingfield Workmen's Club ... ..	1	1	0			
Oxcroft Colliery Workmen's Institute ...	2	0	0			
Shuttlewood and Stanfree Ex-Servicemen's Club ... ..	1	19	0			
Stonebroom Workmen's Social Club ... ..	2	15	0			
Temple Normanton Workmen's Club ... ..	0	12	0			
Tibshelf (Brook Street) Social Club ...	1	0	0			
Unstone Miners' Welfare Club ... ..	1	4	6			
Westhouses Workmen's Social Club and Institute ... ..	1	1	6			
	<hr/>			43	15	3



## OTHER COLLECTING BOXES:

	£	s.	d.	£	s.	d.
Bali, Mrs., Holywell Street, Chesterfield ...	0	6	1			
Boldry, J. S., Hawksley Avenue, Chesterfield	0	3	7			
Bradley, Mrs., 1, Devonshire Drive, Langwith	0	14	0			
Davis, A. L., 2, Devonshire Street, Chesterfield	0	4	4			
Elliott, J. H., Chesterfield Road, Staveley ...	0	10	0			
Gordon's Stall, Market Place, Chesterfield ...	1	8	3			
Hatfield, A. H., Gluman Gate, Chesterfield ...	0	13	8			
Hunt, James, 1, Warwick Street, Chesterfield	0	5	0			
Iliffe, A., Holywell Street, Chesterfield ...	0	15	8			
Minney, J., The Hippodrome, Clay Cross ...	0	10	0			
Moore, W., Saltergate, Chesterfield ...	0	2	0			
Refuge Assurance Company, Cavendish Street, Chesterfield ... ..	0	3	2			
Royal London Assurance Co., Stephenson Place, Chesterfield ... ..	0	13	6			
Savage, Mr. and Mrs., High Street, Clay Cross	0	5	7			
Staveley Company's Motor Ambulance ...	9	2	3			
Staveley Company's Swimming Club, Ring- wood Baths, Staveley Works ... ..	1	5	11			
Westminster Bank, Limited, Chesterfield ...	0	7	1			
				17	10	1
				£187	0	4

## FRIENDLY SOCIETIES AND HOSPITAL COMMITTEES.

	£	s.	d.
Ancient Order of Foresters' Friendly Society (Court Fowler, No. 4946) ... ..	1	0	0
Ancient Order of Foresters' Friendly Society (Court Havelock, No. 2930) ... ..	1	1	0
Ashover ... ..	28	8	0
Ault Hucknall ... ..	2	2	2
Barlow ... ..	5	9	1
Earrow Hill Memorial Club ... ..	100	0	0
Bolsover ... ..	80	0	0
Bolsover (New) ... ..	10	0	0
Bolsover Penny in the Pound ... ..	9	9	0
Brampton Friendly Societies Council ... ..	3	1	10
Brimington ... ..	60	0	0
Calow and Duckmanton ... ..	24	0	0
Chesterfield Royal Hospital Voluntary Workers' Associ- ation ... ..	1000	0	0
Clay Cross and District ... ..	140	0	0
Cricketers' Inn (Newbold) Sick and Dividing Club ...	1	0	0
Creswell ... ..	7	6	0
Dronfield ... ..	12	0	0
Dronfield Fancy Dress and Cycle Parade ... ..	20	0	0
Grassmoor ... ..	13	0	0
Hasland ... ..	25	0	0



	£	s.	d.
Hillstown Miners' Welfare ... ..	81	5	0
Hollingwood ... ..	1	0	0
Holmewood ... ..	20	0	0
Killamarsh ... ..	7	0	0
Manchester Unity Order of Oddfellows:—			
King William IV. Lodge, Chesterfield ... ..	2	0	0
Marquis of Hartington Lodge, Chesterfield ... ..	3	0	0
Loyal Terra Firma Lodge ... ..	1	1	0
Marsh Lane Hospital Committee ... ..	4	0	0
New Whittington ... ..	102	2	0
(Including the following contributions: New Whittington Miners' Welfare Institute (R. Diggle), £10/10/0; New Whittington Social Club (E. Bickerton), £4/4/3; E. D. Swanwick, £1/1/0; W. Baines, £1/1/0; P. Parker, £1; C. Hill, £4; T. D. Sims, 10/-; J. Gilbert, 10/6; E. Dunlop, 5/-; Crown Hotel, 7/-; Royal Hotel, 7/9; Star Inn, 2/-; Bath Hotel, 1/-; Women's Adult School, 12/6; Forge Hotel, 1/-; Women's Friendly Society, £2/2/0).			
Old Whittington and Sheepbridge ... ..	50	0	0
(including the following contributions: Sheepbridge Works Institute, Box, £6/5/3½; Old Whittington and Sheepbridge Miners' Welfare, Box, 17/11).			
Rational Association Friendly Society, Branch 427, Whittington Moor ... ..	0	10	0
Royal Antedeluvian Order of Buffaloes, G.L.E.:—			
	£	s.	d.
Pride of the Dale Lodge, Great Longstone ... ..	1	1	0
Marquis of Hartington Lodge, 5185 ... ..	0	10	0
Sanforth Lodge ... ..	0	5	0
Palace Lodge ... ..	0	5	0
Sir J. Greaves' Lodge ... ..	0	5	0
Bramley Vale Lodge ... ..	0	5	0
Cavendish Lodge ... ..	0	10	0
Castle Lodge ... ..	0	5	0
Midland Lodge ... ..	0	10	0
Wembley Lodge ... ..	0	5	0
Lady Buff Helpers ... ..	0	10	0
Hunloke Lodge ... ..	0	14	0
Hemmington Lodge ... ..	0	5	0
Hardwick Lodge, 367 ... ..	0	5	0
J. B. Boldry Lodge ... ..	0	5	0
Paget Lodge, 849 ... ..	0	10	6
Scarccliffe ... ..	6	10	6
Shirebrook ... ..	9	10	0
South Normanton ... ..	30	0	0
Temple Normanton Invalid and Hospital Fund ... ..	5	5	0
Tibshelf British Legion ... ..	8	0	0
Welbeck and District Hospital Scheme ... ..	1	1	0
Whittington Moor and District Sunday School Union ... ..	7	7	0
Whitwell ... ..	7	14	3
	75	0	0
	£1897	2	10



# DAY SCHOOLS.

	£	s.	d.
Apperknowle (Council) Infants ... ..	0	2	0
Arkwright Town (Council) ... ..	0	7	6
Ashover (Council) ... ..	1	0	0
Ashover Upper End (Endowed) ... ..	0	11	5
Ault Hucknall (C. of E.) ... ..	0	5	6
Barrow Hill (Council) ... ..	0	17	0
Blackwell (C. of E.) ... ..	0	16	0
Blackwell and Berrister (Council) ... ..	0	17	0
Bolsover Colliery ... ..	0	16	6
Bolsover (C. of E.) ... ..	1	0	0
Bolsover (New) Infants (Council) ... ..	0	6	0
Bolsover, Welbeck Road (Council) ... ..	0	11	1
Calow (C. of E.) ... ..	0	3	6
Chesterfield:—			
Brampton Girls' Modern ... ..	2	13	7
Brampton Junior Mixed ... ..	0	16	6
Brampton Infants' ... ..	2	19	6
Caretakers ... ..	0	4	8
Cavendish Junior Girls' ... ..	0	17	6
Cavendish Infants' ... ..	0	9	9
Central Boys' Modern ... ..	0	6	6
Central Girls' Modern ... ..	3	0	0
Christ Church Infants' and Junior ... ..	0	4	11½
Derby Road Girls' Modern ... ..	1	11	8
Derby Road Infants' ... ..	0	18	10½
Derby Road Junior Mixed ... ..	1	18	4
Education Office ... ..	0	6	8
"Gilbert Heathcote" Junior Boys' ... ..	1	0	4½
Girls' High School ... ..	5	0	0
Grammar School ... ..	1	6	3
Hasland (Eyre Street) Infants' ... ..	0	18	2½
Hasland (C. of E.) Junior Mixed ... ..	0	15	0
Hasland Hall Mixed Modern ... ..	1	8	4½
Highfield Hall Infants' and Junior ... ..	0	16	10
Hipper Street Junior Mixed ... ..	2	1	7
Hipper Street Infants' ... ..	0	11	4
"Mary Swanwick" Mixed Modern ... ..	0	15	2½
"Mary Swanwick" Primary ... ..	1	13	5
Newbold (C. of E.) Infants' and Junior ... ..	0	3	7½
New Whittington Mixed Modern ... ..	2	0	1
New Whittington Infants' and Junior ... ..	3	9	0
Old Road Infants' and Junior ... ..	1	11	10
Old Road Mixed Modern ... ..	0	19	9
Old Whittington (Brushes) Infants' and Junior ... ..	0	14	4
"Peter Webster" Boys' Modern ... ..	0	7	11½
St. Helen's Junior Mixed and Infants ... ..	2	0	7½
St. Mary's (R.C.) Senior ... ..	0	11	10
St. Mary's (R.C.) Junior ... ..	0	12	1½
Spital Infants' ... ..	0	6	10½
Tapton House Selective Central ... ..	0	17	11½
"Violet Markham" Girls' Modern ... ..	0	19	6
Whittington Moor Infants' ... ..	1	4	6½



Chesterfield (continued) :—						£	s.	d.
" William Rhodes " Junior	...	...	...	...	...	0	8	8½
" William Rhodes " Boys' Modern	...	...	...	...	...	1	4	3½
" William Rhodes " Junior Mixed	...	...	...	...	...	1	4	4½
" William Rhodes " Infants'	...	...	...	...	...	0	17	11
Clay Cross (Council)	...	...	...	...	...	3	16	9
Clowne (Council)	...	...	...	...	...	1	11	6
Cutthorpe (Council)	...	...	...	...	...	0	3	8
Danesmoor (Council)	...	...	...	...	...	0	3	9
Doe Lea (Council)	...	...	...	...	...	0	6	6
Duckmanton (Central Council)	...	...	...	...	...	0	7	1
Grassmoor (Council)	...	...	...	...	...	0	11	3
Handley (C. of E.), Staveley	...	...	...	...	...	0	3	0
Handley (C. of E.), Stretton	...	...	...	...	...	0	10	0
Heath (Council)	...	...	...	...	...	0	9	0
Heath (C. of E.)	...	...	...	...	...	0	5	0
Hollingwood Infants' Council	...	...	...	...	...	0	3	0
Hollingwood (Junior)	...	...	...	...	...	0	7	6
Holymoorside (Council)	...	...	...	...	...	0	13	6
Langwith (Bassett)	...	...	...	...	...	1	0	0
Mastin Moor (C. of E.)	...	...	...	...	...	0	7	6
Newton (Council)	...	...	...	...	...	0	17	6
North Wingfield (Council)	...	...	...	...	...	0	14	8
Palterton Infants' (Council)	...	...	...	...	...	0	2	9
Park House (Council)	...	...	...	...	...	0	18	4
Pilsley (Council)	...	...	...	...	...	0	18	2
Poolsbrook (Council)	...	...	...	...	...	0	6	0
Rowthorne (Council)	...	...	...	...	...	0	2	6
Shuttlewood Junior and Infants' (Council)	...	...	...	...	...	0	16	6
Shuttlewood Senior Mixed (Council)	...	...	...	...	...	0	7	6
Spinkhill (R.C.)	...	...	...	...	...	0	12	6
Stainsby (Council)	...	...	...	...	...	0	5	0
Stanfree Infants' (Council)	...	...	...	...	...	0	2	7
Staveley, Church Street (C of E.)	...	...	...	...	...	0	5	6
Staveley, Middlecroft (Boys)	...	...	...	...	...	0	15	0
Staveley, Middlecroft (Girls)	...	...	...	...	...	0	14	0
Staveley (R.C.)	...	...	...	...	...	0	10	0
Staveley, Speedwell (C. of E.)	...	...	...	...	...	0	10	0
Sutton-cum-Duckmanton (C. of E.)	...	...	...	...	...	0	9	0
Temple Normanton (C. of E.)	...	...	...	...	...	0	2	0
Tibshelf (Alfreton Road) Junior	...	...	...	...	...	0	6	6
Tibshelf (Alfreton Road) Infants'	...	...	...	...	...	0	4	3
Tibshelf (Staffa Street) Junior and Senior	...	...	...	...	...	0	10	1
Tibshelf (Staffa Street) Infants'	...	...	...	...	...	0	6	2
Tupton (Council)	...	...	...	...	...	1	8	1
Unstone St. Mary's and Apperknowle Schools	...	...	...	...	...	0	5	0
Unstone (Council)	...	...	...	...	...	0	5	0
Walton (Council)	...	...	...	...	...	0	6	6
Westhouses (Council)	...	...	...	...	...	1	8	6
Wigley (Council)	...	...	...	...	...	0	7	3
Wingerworth	...	...	...	...	...	0	2	3
Woodthorpe (C. of E.)	...	...	...	...	...	0	5	0

---

£86 3 0



# WOMEN'S MEDICAL WARD FUND.

President—Miss S. B. Eastwood, J. P.  
Hon. Secretary—Mrs. A. W. Swale, Hady House, Chesterfield.

## Collections for the Year ending December 31st, 1934.

	£	s.	d.
<b>ARKWRIGHT TOWN—</b>			
Mrs. Fretwell ... ..	5	15	1
<b>ASHOVER—</b>			
Miss E. A. Bradley, Miss H. Bradley, £4/15/4; Miss Barber, £1/12/-; Mrs. J. Garner, £1/13/10; Mrs. W. Holmes, 17/3; Mrs. Kitchen, Mrs. A. Mellor, 8/9; Mrs. D. Spencer, 7/-; Mrs. A. Towndrow, £2/13/6; Mrs. Whitworth, £1/11/4; Miss Beresford, 11/10; Mrs. J. Featherstone, £2/8/6; Mrs. J. Holmes, £1/6/2; Mrs. J. White, 14/-; Whist Drive, £3/7/3; Competitions, £2/13/3 ... ..	25	0	0
<b>AULT HUCKNALL, HARDWICK, ROWTHORNE AND STAINSBY—</b>			
Mrs. Gleave, Ault Hucknall Parish Church Mothers' Union, £5/9/6; Miss E. Littlewood (Glapwell, Rowthorne, Hardwick), £2/7/-; Miss E. Clayton (Stainsby), £1/1/9 ... ..	8	18	3
<b>BARLBOROUGH—</b>			
Mrs. Greaves ... ..	5	0	1
<b>BARLOW—</b>			
Mrs. C. Margereson, £5/1/6; Miss E. M. Margereson, £3/3/9; Mrs. H. Morgan, £2; Mrs. F. Morgan, £1/2/6; Miss M. Bramwell, £2/4/- ... ..	13	11	9
<b>BLACKWELL, NEWTON AND WESTHOUSES—</b>			
Mrs. Wallis, Mrs. Peake and Mrs. Whaley (whist drive), £5/5/9½; Mrs. C. Hall, £1/1/3; Mrs. England and Mrs. Riley, £4/1/11½; Mrs. Rockley and Mrs. Molyneux, £4/16/6; Mrs. Smith and Mrs. G. H. Wilson, £2/16/-; Mrs. S. E. Ward and Mrs. Edwards, £1/14/1; Mrs. Millward and Mrs. Paskin, £2/7/6; Mrs. Smith and Mrs. Blant, £1/5/2; Mrs. Freeman and Mrs. Buxton, £2/1/9 ... ..	25	10	0
<b>BOLSOVER, HILLSTOWN AND PALTERTON—</b>			
Lady Houfton, £2/2/-; New Bolsover Hospital Fund, £5/5/-; Mrs. T. Turner, £2/1/-; Mrs. Critchlow and Mrs. Keeton, £3/3/-; Mrs. Bilton and Mrs. Crosby, £2/17/1; ... ..	15	8	1
<b>BOYTHORPE—</b>			
Mrs. Bridges, Mrs. C. E. Aldam, £2/13/5; Mrs. E. A. Fletcher, £7/18/7; Mrs. Graham, £1/8/6; Mrs. B. Mason, £1/14/2; Mrs. Sylvester (Walton Road), £3/9/8 ... ..	17	4	4
<b>BRACKENFIELD—</b>			
Mrs. R. Barker, £2/10/-; Mrs. H. Roper, £2/10/-	5	0	0



## BRAMPTON—

Mrs. Dearsley, £6/2/3; Mrs. M. Allen, 18/-; Mrs. Buxton, £2/8/7; Mrs. Chambers, 9/6; Mrs. Creswell, £1/14/6; Mrs. Dronfield, £2/5/6; Mrs. R. E. Fleming, £1/10/-; Mrs. Goodwin, £1/12/-; Miss M. E. Howard, 16/-; Miss E. Knowles, £2/9/-; Mrs. Kee, £1/9/3; Mrs. Lavender, £1/7/6; Mrs. J. Lewis, £1/16/0½; Miss F. Marshall, 14/-; Miss H. Martin, 18/8; Mrs. Oubridge, 14/-; Mrs. Partington, 12/-; Mrs. Pashley, £1/16/6; Mrs. Ruddock, £1/5/3; Mrs. E. Smith, 15/6; Mrs. A. Turner, 17/3; Miss E. Thompson, £1/3/6; Mrs. Webster, £2/5/-; Mrs. W. Webster, 15/-	...	...	...	...	...	...	36	14	9½
--	-----	-----	-----	-----	-----	-----	----	----	----

## ROBINSON &amp; SONS, LTD.—

(Collected from female employees), per Miss F. Robinson).

## WHEATBRIDGE WORKS—

Miss P. Lowde, 4/-; Miss L. Millar, 3/6; Miss E. Berresford, 10/3; Miss M. Teather, 7/9; Miss M. Jacques, 13/-; Miss M. Asquith, 8/5; Miss A. Oldknow, 5/10; Miss F. Eyre, £1/1/2	...	...	...	3	13	11
---	-----	-----	-----	---	----	----

## ROUND BOX DEPARTMENT—

Mrs. Marsh, £1/11/8; Miss A. Kerwin, £2/2/11; Mr. F. Smith, 7/-; Mr. R. Drayton, 5/3	...	...	4	6	10
--	-----	-----	---	---	----

## WALTON WORKS—

Mrs. Hall, £1/7/-; Miss M. Robinson, £1/13/9; Miss J. Dale, £2/1/-; Mrs. Morris, £4/7/-; Miss H. Carr, 10/4; Miss C. Briggs, £1/9/9; Mr. C. W. Smith, 16/3; Miss L. Parkin, 4/6; Mr. H. Randall, 8/9	...	...	...	...	12	18	4
--	-----	-----	-----	-----	----	----	---

## HOLME BROOK WORKS—

Miss H. E. Stone,	...	...	...	...	2	0	2
-------------------	-----	-----	-----	-----	---	---	---

## PORTLAND WORKS—

Mrs. Rudge, 11/8; Miss M. Attwood, 7/4; Miss D. Marples, 9/1	...	...	...	...	1	8	1
--	-----	-----	-----	-----	---	---	---

## STAFF—

Miss V. Bryan, 11/9; Miss M. Allen, 2/3; Miss L. Smith, 3/6; Miss N. Miller, 5/3	...	...	...	1	2	9
--	-----	-----	-----	---	---	---

## BRAMPTON, OLD—

Miss Hays	...	...	...	...	3	8	9
-----------	-----	-----	-----	-----	---	---	---

## BRIMINGTON AND TAPTON—

Mrs. J. J. Brelsford, £2/6/-; Anon., 1/-; Miss V. Belfitt, £2/4/1; Miss E. Berresford, £2/3/-; Mrs. L. Brelsford, £1/12/5; Miss Buckley, £2/14/1; Miss Frost, 15/3; Miss Kirkham, £1/6/8; Miss M. Widdowson, 17/1; Miss L. Chappell, 7/6; Mrs. and Miss Matthews, £3/14/6; Miss Parke, 17/10	...	18	19	5
--	-----	----	----	---

## CALOW—

Mrs. O'Farrell, £1/3/8; Misses Clarkson and Ind, £2/10/-; Mrs. J. Allsop, £1/1/3	...	...	4	14	11
--	-----	-----	---	----	----





Photo by]

MURPHY WARD.

[H. J. Morgan, Chesterfield.







## CHESTERFIELD—

Mrs. M. Ashmore, £1/4/-; Mrs. W. H. Atrill, £3/6/4; Mrs. P. Austin and Miss Ludlam, £1/9/6; Mrs. Buxton, £1/11/6; Mrs. Chubb, £2/10/-; Mrs. Cowley, £1/7/-; Miss A. Charlesworth, £1/13/-; Mrs. Greatorex, £3/18/6; Miss Hays, 13/10½; Mrs. J. Hodkin, £1/7/7; Mrs. R. Holmes, £1/2/6; Mrs. T. Madin, £3/6/4; Miss N. Metcalfe, £1/12/-; Mrs. G. Perrin, £1/17/-; Mrs. Proctor, 18/-; Mrs. Rushton, £1/9/6; Miss Ryde, 12/9; Mrs. A. B. Short and Mrs. S. Barlow, £3/10/-; Mrs. W. R. Short, £1/6/-; Mrs. R. Smithson, £1/15/-; Miss E. Tennant, £1/1/-; Mrs. C. Whiting, £3/9/2; Mrs. S. Phipps, 18/10; Mrs. Phillips, £1/1/6 ... 43 0 10½

## CLAY CROSS—

Mrs. S. Smith, Mrs. J. Cutts and Mrs. A. Gregory, £1/16/8; Miss M. Gregory, £1/6/9½; Mrs. M. A. Marsh and Mrs. F. Marsh, £4/3/3½; Mrs. Mitchell and Mrs. Walker, £2/2/-; Miss A. Knott, £2/3/6; Mrs. A. Mills and Miss N. Green, £4/3/-; Mrs. Lanckham and Mrs. Bradder, £4/0/4 ... 19 15 7

## CLOWNE—

Mrs. Arthur £1/6/7; Mrs. Ashley, £2/12/-; Mrs. Davis, £2; Mrs. Breedon, £2/10/-; Mrs. D. Rodgers, 16/9; Mrs. E. Smith, 16/9; Miss D. Wigg, 14/3 ... 10 16 4

## CUTTHORPE—

Miss A. Tomlinson, Miss H. Crookes, Miss I. Margereson and Mrs. F. Wood ... 9 7 6

## DANESMOOR—

Mrs. G. E. Parsons and Miss Parsons ... 5 3 5

## DERBY ROAD—

Mrs. Woodman, £2/2/-; Mrs. Barker, £1/3/-; Mrs. Bedford and Mrs. Fell, £1/17/3½; Mrs. Bollans, £1/9/11½; Mrs. Heathcote, £1/2/6; Mrs. Hedley, 11/4; Mrs. J. Inch, 11/2; Mrs. S. Lowe and Mrs. Chambers, £1/14/9; Mrs. E. E. Wilde, £1/11/9; Mrs. Bennel and Mrs. Renshaw, 12/10 ... 12 16 7

## GRASSMOOR—

Mrs. E. Browett and Mrs. B. Farnsworth, £1/4/8; Mrs. Higginbottom, 16/-; Mrs. F. M. Neale, £1/13/-; Mrs. J. Robinson, 19/6; Mrs. E. Smith, £1/1/6; Mrs. H. Tunnicliffe, 6/1½; Mrs. Wilmott and Mrs. Hartshorne, £1/13/9½ ... 7 14 7

## HASLAND—

Mrs. W. V. Davies, £2/10/3; Mrs. Arnold, £2; Miss E. Bradley, £1/2/8; Mrs. Brothers, 11/2; Mrs. Campion, £2/13/4; Mrs. Cooper, 9/-; Mrs. Marks, 16/-; Mrs. C. Melton, £1/1/-; Mrs. A. Moulds, £1/1/7; Mrs. A. Wheatcroft, 9/9; Mrs. Wright, £1/8/8; Mrs. Hale, £1/5/4; Mrs. G. Rowe, £3; Mrs. Vintiner, £1/10/8 ... 19 19 5



## HOLLINGWOOD AND BARROW HILL—

Mrs. W. Priest and Mrs. F. Goulding, £3/5/4; Miss D. Knighton, £2/5/8; Mrs. F. Pearson (Ringwood Club), £2/2/3; Mrs. R. Reddish, £3/6/6; Mrs. G. Walters, £2/12/9; Mrs. L. Neale, £2/2/- ... 15 14 6

## HOLMESFIELD, HORSLEY GATE, CORDWELL, ETC.—

Mrs. Smith and Mrs. Heald, ... 4 9 3½

## HOLMEWOOD—

Nurse Moakes, £1; Mrs. D. Moakes, 14/-; ... 1 14 0

## HOLYMOORSIDE—

Mrs. Wibberley, ... 10 11 0

## LANGWITH—

Mrs. J. A. Tankard, £1/12/3; Mrs. A. Hubbard, 14/9; Mrs. E. Lee, 16/-; Mrs. Wallace Cooper, 16/7; Mrs. W. Pickering, 12/-; Mrs. Pitchford, 8/-; Mrs. W. Reaney, 13/1; Mrs. T. and Mrs. T. H. Renshaw, £1/10/3½; Mrs. Whitehead, £1/1/8½; Mrs. R. Ayres, £2/7/10½; Mrs. W. T. Sowden, £2/18/9; Mrs. Wass, 10/9 ... 14 2 0½

## LOWGATES AND NETHERTHORPE—

Mrs. Hadfield and Miss Wright ... 3 7 0

## MASTIN MOOR—

Mrs. J. Howells and Mrs. F. Webster ... 3 15 1

## NEWBOLD AND DUNSTON—

The Misses Taylor, £2/14/-; Mrs. Ashley, £2/7/-; Mrs. F. Bennett, £1/15/-; Miss F. Charles and Miss D. Webb, 14/8; Mrs. Coupe, £1/5/-; Miss Everard, £1/10/-; Miss M. Jackson, £4/16/6; Mrs. E. Durham, £3; Miss Hinchley, 16/8; Mrs. M. Kay, £1/18/11; Miss Nixon, 14/7; Mrs. C. Preece, £1/16/9; Miss A. Tagg, £1/13/-; Mrs. R. Tomlinson, £1/16/5; Mrs. F. Watkinson, £1/6/8; Mrs. J. and Miss Wilkinson, £1/6/6; Mrs. Wainwright, £3/4/1; Miss Wilson, £3/2/6½ ... 35 18 3½

## NORTH WINGFIELD, HEPTHORNE LANE AND ANKERBOLD—

Mrs. Mosley and Mrs. S. Hoult, £2/5/4; Mrs. Rignall, £3/12/4; Miss Marsh, £2/5/8; Mrs. W. A. Taylor and Mrs. A. Taylor, £1/3/6 ... 9 6 10

## PILSLEY—

Per Mrs. King.—House Collection, £1/5/-; Ladies of Pilsley Wesleyan Bright Hour, 5/-; Ladies of Pilsley P.M. Bright Hour, 10/-; St. Mary's Church Women's Meeting, 7/6; Whist Drive, £5/2/- ... 7 9 6

## POOLSBROOK AND HARTINGTON—

Miss Buxton and Mrs. Evans ... 4 15 0

## SHIREBROOK—

Mrs. J. Gilbert ... 2 12 2

## SHIRLAND, HIGHAM AND HALLFIELD GATE—

Miss Bradley, £5/2/-; Mrs. Hadfield, £3/5/- ... 8 7 0



	£	s.	d.
SHUTTLEWOOD, OXCROFT AND BENTINCK—			
M. E. Hodson ... ..	5	12	0
SPITAL AND HADY HILL—			
Mrs. A. W. Swale and Mrs. A. Elliott, £3/0/7;			
Mrs. H. Henson, £1/9/1; Miss B. Lowe, 4/-; Mrs.			
G. B. Lowe, £1/13/7 ... ..	6	7	3
STAVELEY—			
Mrs. B. Howells and Mrs. F. Addy, £4/19/3; Mrs.			
Reddish, £4/6/- ... ..	9	5	3
STONEGRAVELS—			
Mrs. A. B. Short and Mrs. H. Collis, £5/0/1; Mrs.			
Hursthouse, 14/-; Mrs. J. Leary, £2/6/11; Mrs.			
T. J. Mitchell and Mrs. E. Miller, £2/4/1; Mrs.			
Tonkin, £4/8/- ... ..	14	13	1
STRETTON—			
Mrs. C. R. Fox ... ..	4	17	9
SUTTON-CUM-DUCKMANTON—			
Mrs. Ottewell, Mrs. Hole and Miss Slater ... ..	0	7	0
TIBSHELF—			
Mrs. Greenwood, Mrs. Ainsworth and Mrs. Inch,			
£1/10/-; Mrs. Boot, 18/6; Mrs. Chattle, 12/-; Mrs.			
Coupe and Mrs. W. Bott, £1/5/8; Mrs. Gardner,			
10/8; Mrs. G. Goodall, £1/9/8; Mrs. W. Goodall			
and Mrs. G. Bingham, £1/15/1; Mrs. Lowe, £1;			
Mrs. Marshall and Miss E. Reynolds, £1/1/9; Mrs.			
Mitchell (donation), £2; Mrs. C. Smith, 16/6; Mrs.			
Wood, £2/1/4; Mrs. Draycott, £1/7/6; Mrs. T.			
Marriott, 14/2; Mrs. J. Searston, £1/11/6; Sewing			
Committee, £2; Flag Day, £10/17/6; Jumble Sale,			
£2/7/1; Party Whist Drive, per Mrs. Gardner, 9/4;			
Party Whist Drive, per Mrs. Greenwood, 12/6;			
Tea, per Mrs. Smith, 7/-; Sewing, etc., per			
Mrs. W. Goodall, 6/-; Prize Draw, per Mesdames			
Ainsworth and Inch, 10/-; Prize Draw, per Mrs.			
Searston, 8/6 ... ..	36	12	3
UNSTONE, APPERKNOWLE AND HUNDALL—			
Miss Pinder ... ..	3	11	6
WADSHELF—			
Mrs. E. Hill ... ..	4	6	0
WALTON—			
Miss J. Thorpe ... ..	8	0	2
WHALEY VILLAGE—			
Miss J. Bowler ... ..	2	12	0
WHITTINGTON AND SHEEPBRIDGE—			
OLD WHITTINGTON—			
Mrs. Redfern, Miss Doe and Mrs. Hall, £1/13/4;			
Mrs. Dodd, £1/2/1; Mrs. Goodwin, £2/8/6½; Mrs.			
Peach, £1/17/-; Mrs. Moxon and Mrs. Eric Moxon,			
£1/1/2; Mrs. Ward, 8/-; Misses Adams and Car-			
penter, £3/16/1; Mrs. Durham, £2/6/4 ... ..	14	12	6½
NEW WHITTINGTON—			
Misses Bennett and Johnson, £2/11/4; Mrs. Emms,			
£2/13/-; Mrs. Tacon and Mrs. Smithurst, £3/12/6	8	16	10



	£	s.	d.
<b>THE BRUSHES—</b>			
The Misses Higginbottom ... ..	2	0	
<b>WHITTINGTON MOOR—</b>			
Misses Galer and Elliott, 5/10; Miss Freeman, £1/8/9½; Mrs. S. E. Hill, £2/8/- ... ..	4	2	7½
<b>WINGERWORTH—</b>			
Miss Handbury, £3/17/3; Mrs. Burton, £3/15/10; Mrs. J. R. Ground, £2/12/1; Mrs. F. M. Allen, £2/5/6½ ... ..	12	10	8½
<b>WOODTHORPE AND NORBRIGGS—</b>			
Mrs. J. E. Smith ... ..	3	2	6
<b>WOOLLEY AND HANDLEY—</b>			
Miss Crofts (Woolley Moor, Stretton), £3; Miss Bradley (Handley Cross), £2/6/- ... ..	5	6	0
Collected on occasion of visit of members to Hospital	0	4	8
	<b>£608</b>	<b>3</b>	<b>8</b>

## COLLECTIONS IN PLACES OF DIVINE WORSHIP

for the year ending December 31st, 1934.

	£	s.	d.
Arkwright Town Methodist Church ... ..	0	10	0
Ashover, The Butts Methodist Church ... ..	0	13	6
Ault Hucknall Church ... ..	2	11	0
Barlow Methodist Church ... ..	1	5	0
Barrow Hill, St. Andrew's Church ... ..	2	1	0
Barrow Hill Ebenezer Methodist Church ... ..	1	0	0
Blackwell Methodist Church ... ..	0	10	0
Bolsover Church ... ..	6	0	0
Bolsover Congregational Church ... ..	2	0	0
Bolsover Town End Methodist Church ... ..	2	15	9
Bolsover (Trinity) Methodist Church ... ..	0	10	4
Bolsover (Xmas Day and New Year's Eve United Services of Town End Methodist, Trinity and Congregational Churches) ... ..	1	15	0
Bolsover (Good Friday United Service at Trinity Methodist Church) ... ..	1	7	0
Brampton Congregational Church ... ..	13	6	9
Brampton Congregational Church Sunday School (Primary Department) ... ..	0	5	0
Brampton Glad Tidings Hall ... ..	2	0	0
Brampton Gospel Mission Hall ... ..	2	15	0
Brampton (Old) Church ... ..	6	11	3
Brampton (Old) Hollins Methodist Church ... ..	0	10	0
Brampton St. Mark's Church ... ..	1	0	0
Brampton St. Thomas' Church ... ..	7	15	4
Brampton (Victoria Street) Methodist Church ... ..	1	4	0
Brimington Christadelphians, per R. Wharton, "Rose- mount," Station Road, Brimington ... ..	1	0	0



	£	s.	d.
Brimington (Common) Ebenezer Methodist Church ...	0	13	0
Brimington Congregational Church ...	2	0	0
Brimington (New) Methodist Church ...	1	0	3
Brimington Parish Church ...	6	11	6
Brimington Methodist Church (Mount Zion) ...	1	0	0
Calow Church ...	1	12	10
Calow Congregational Church ...	2	0	0
Calow Congregational Church, Women's Guild ...	0	13	0
Chesterfield Baptist Church ...	3	5	5
Chesterfield Christ Church, Stonegravels ...	3	11	2
Chesterfield Congregational Church ...	27	4	0
Chesterfield Congregational Church Sunday School (Soresby Street) ...	2	17	0
Chesterfield Holy Trinity Church ...	9	14	0
Chesterfield Men's Adult School ...	0	5	0
Chesterfield Parish Church ...	11	6	4
Chesterfield Methodist Church (Holywell Cross) ...	4	0	0
Chesterfield Methodist Church (Sheffield Road) ...	0	11	0
Chesterfield Ragged School ...	2	16	0
Chesterfield Roman Catholic Church ...	6	4	0
Chesterfield, Saltergate Methodist Circuit:—	£	s.	d.
Methodist Church, Saltergate, Chesterfield	10	0	0
Wesley Hall, Hollis Lane, Chesterfield ...	0	12	3
Methodist Church, Old Hall Road, Chesterfield ...	0	16	1
Methodist Church, Storrs' Road, Chesterfield ...	2	15	11
Methodist Church, Bolsover ...	2	5	0
Methodist Church, Brimington ...	1	10	10
Methodist (Bethel) Church, Brimington ...	0	11	3
Methodist Church, Derby Road, Chesterfield ...	0	14	3
Methodist Church, Handley ...	0	12	0
Methodist Church, Hasland ...	0	17	3
Methodist Church, Hillstown ...	0	8	7
Methodist Church, Holmewood ...	0	15	0
Methodist Church, Inkersall ...	0	5	0
Methodist Church, Littlemoor, Newbold ...	0	15	0
Methodist Church, New Bolsover ...	1	2	0
Methodist Church, New Whittington ...	1	5	0
Methodist Church, Old Whittington ...	1	0	0
Methodist Church, Pottery Lane, Whittington Moor ...	0	4	7
Methodist Church, Poolsbrook ...	0	17	0
Methodist Church, Staveley ...	4	0	0
Methodist Church, Unstone ...	0	12	9
Methodist Church, Wadshelf ...	0	9	7
Methodist Church, Whittington Moor ...	1	5	0
	33	14	4
Chesterfield Spiritualist Society, No. 1 ...	1	0	0
Chesterfield St. Augustine's Church ...	3	0	0
Chesterfield St. Leonard's Church, Spital ...	2	10	0
Chesterfield Unitarian Church ...	5	4	0
Chesterfield Methodist Church, Marsden Street ...	6	6	0
Chesterfield Methodist Sisterhood, Marsden Street ...	2	2	0



	£	s.	d.
Chesterfield Salvation Army ... ..	1	1	0
Chesterfield Women's Adult School ... ..	5	0	0
Clay Cross Baptist Church ... ..	1	10	0
Clay Cross Church ... ..	3	13	6
Clay Cross Methodist Church (Market Street) ... ..	2	1	6
Clowne Methodist Church ... ..	1	13	8
Coal Aston Wesleyan Reform Church ... ..	0	10	0
Creswell Methodist Churches (United Watch-Night Service) ... ..	0	10	6
Creswell Household of Faith (per J. T. Fretwell) ... ..	1	10	0
Creswell Methodist Church (Mansfield Road) ... ..	1	6	0
Cutthorpe Methodist Church ... ..	1	0	0
Cutthorpe Mission Church ... ..	0	14	2
Danesmoor St. Barnabas' Church ... ..	1	0	0
Doe Lea Mission Church ... ..	0	16	3
Dronfield Congregational Church ... ..	0	10	0
Dronfield Methodist Iron Church ... ..	1	2	6
Dronfield Parish Church ... ..	1	10	0
Dronfield Women's Adult School ... ..	1	5	0
Eckington (Mount Zion) Methodist Church) ... ..	0	7	6
Grassmoor Church ... ..	1	2	6
Grassmoor Methodist Church ... ..	1	11	0
Handley Church, near Sheffield ... ..	0	15	6
Handley (Clay Cross) St. Mark's Mission Church ... ..	2	5	0
Hardstoft Mission Church ... ..	0	5	0
Hasland Baptist Mission Church ... ..	0	10	0
Hasland Church ... ..	3	0	0
Heath Church ... ..	5	0	0
Higham Methodist Church ... ..	1	0	0
Holmesfield Wesleyan Reform Church ... ..	0	7	6
Hollingwood, St. Francis' Church ... ..	2	2	2
Holymoorside Church ... ..	1	0	0
Holymoorside Congregational Church ... ..	0	15	0
Holymoorside Methodist Church ... ..	1	2	6
Marsden Moor Methodist Church ... ..	1	8	0
Marsden Moor Mission Church ... ..	0	10	10
Milltown Methodist Church ... ..	2	10	0
Morton Church ... ..	3	10	10
Mosborough Glyn Vivian Mission Church ... ..	1	17	6
Newbold Church ... ..	5	9	8
Newbold (Highfield) Methodist Church ... ..	1	2	3
New Whittington Baptist Church ... ..	0	15	0
New Whittington Church ... ..	3	3	3
New Whittington Men's Adult School ... ..	0	10	0
New Whittington Sunday School Union ... ..	3	3	0
New Whittington Women's Adult School ... ..	0	10	0
Palterton Methodist Church ... ..	0	7	6
North Wingfield Methodist Church (Ling's Row) ... ..	0	10	0
Scarcliffe Church ... ..	2	2	0
Sheepbridge Ebenezer Church ... ..	1	0	0
Shirland St. Leonard's Church ... ..	2	2	0
South Wingfield (Birches Lane) Baptist Church ... ..	0	15	0
Spinkhill Roman Catholic Church ... ..	1	1	9
Stanfree Methodist Church ... ..	0	5	0
Staveley Methodist Free Church (Lowgates) ... ..	6	3	0



	£	s.	d.
Staveley Parish Church and Mission Churches ... ..	5	0	0
Staveley St. Joseph's Roman Catholic Church ... ..	1	6	0
Staveley Salvation Army ... ..	0	10	0
Stonebroom Baptist Church ... ..	2	0	0
Stonebroom Church ... ..	4	4	0
Stonebroom Free Church Council ... ..	1	0	0
Stretton St. James' Mission Church ... ..	0	10	0
Sutton-cum-Duckmanton Churches ... ..	1	12	1
Temple Normanton Church ... ..	1	0	0
Temple Normanton Church Sunday School ... ..	0	10	0
Tibshelf Church ... ..	4	14	11
Tibshelf Methodist Church Women's Guild ... ..	1	0	0
Tibshelf St. Thomas' Mission Church ... ..	0	13	3
Tibshelf Methodist Church ... ..	1	8	0
Troway Methodist Church ... ..	1	11	0
Tupton (Old) Methodist Church ... ..	0	11	3
Wadshelf Mission Church ... ..	0	10	0
Walton Church ... ..	0	13	0
Wessington Church ... ..	2	12	0
Westhouses Church ... ..	0	16	3
Whittington Church ... ..	4	7	8
Whittington Moor Congregational Sunday School ... ..	0	12	6
Whittington Moor Congregational Church (United Service, Xmas morning) ... ..	0	7	0
Whittington Moor and District Sunday School Union ... ..	0	5	0
Whittington (Old) Mount Tabor Methodist Church ... ..	0	10	0
Wingerworth Church ... ..	2	19	6
Wingerworth Methodist Church ... ..	1	0	0
Winning, B., Methodist Church ... ..	0	7	6
Woodthorpe St. Peter's Mission Church ... ..	0	17	5
	£325	14	5

## WORKING MEN'S SUBSCRIPTIONS

For the year ending December 31st, 1934.

### 1.—Chesterfield District.

	£	s.	d.
Allen & Orr, Saltergate, Chesterfield ... ..	20	10	0
Adams, A., 36, Chatsworth Road, Chesterfield ... ..	1	10	0
Avery, W. & T., 17-21, Waingate, Sheffield ... ..	2	15	9
Backhouse, H., Cross Street West, Chesterfield ... ..	1	1	10
Baker, L. H., 30, Spencer Street, Chesterfield ... ..	2	11	10
Bales & Wilde, Gluman Gate, Chesterfield ... ..	1	16	5
Barker Pottery, Brampton ... ..	20	0	0
Barker's, Market Hall, Chesterfield ... ..	0	16	0
Bennett Brothers, Brookside Nurseries, Chesterfield ... ..	1	16	0
Berrisford, H. E., Saltergate ... ..	5	2	7
Black, Sir A. W., 29, Durrant Road, Chesterfield ... ..	2	0	0
Blackburn's Confectionery Works, Victoria St., Brampton	0	19	8
Blackburn Philanthropic Assurance Co., Ltd., Beetwell Street, Chesterfield ... ..	1	3	6
Blackshaw's Café, High Street, Chesterfield ... ..	5	4	0



	£	s.	d.
Blair Brothers, Hunloke Arms Colliery, Wingerworth ...	4	15	0
Boden, J., Falcon Restaurant, Low Pavement, Chesterfield	7	6	
Brady, E., 1, Lordsmill Street, Chesterfield ...	0	6	6
Braim & Cooper, Ltd., 11, Higher Albert Street, Chesterfield ...	1	10	0
Brampton Brewery Company, Limited ...	26	3	1
Brayshaw & Bateman, Cavendish Street, Chesterfield ...	2	9	3
Britannic Assurance Company, Saltergate, Chesterfield ...	9	0	0
British & Argentine Meat Co., Ltd., Burlington Street, Chesterfield ...	0	12	0
British & Argentine Meat Co., Ltd., Market Hall, Chesterfield ...	0	18	6
British Foundry Units, Ltd., Sheffield Road, Chesterfield	3	1	6
British Thomson-Houston Company, Limited ...	60	12	6
Broomhead Bros., Limited, Packers' Row, Chesterfield ...	5	10	0
Burkitt, W. & S., Saltergate, Chesterfield ...	0	15	8
Bright, John, Ltd., Packers' Row, Chesterfield ...	0	1	10
British Widows' Assurance Co., Ltd., 34, Compton Street, Chesterfield ...	1	10	0
Brook, C., & Co., Cavendish Street, Chesterfield ...	2	2	6
Cabinet Supply Co., 38a, St. Mary's Gate, Chesterfield ...	2	9	9
Caledonian Biscuit Co., Ltd., Market Hall, Chesterfield ...	0	17	11
Cavendish Motors, Limited, Chesterfield ...	9	12	8
Central Leather Stores, Lordsmill Street, Chesterfield ...	1	14	8
Chesterfield Borough Police ...	15	12	0
Chesterfield Brewery Company, Limited ...	11	9	3
Chesterfield Cold Stores and Ice Works ...	1	19	1
Chesterfield Co-operative Society, Limited, West Bars ...	105	0	0
Chesterfield Corporation:—	£	s.	d.
Borough Treasurer's Department ...	30	12	10
Cleansing Department ...	38	17	6
Electricity Department ...	28	4	10
Gas Department ...	57	11	0
Gas Department (Whittington) ...	2	1	8
Highways Department ...	60	19	9
Highways Department (Whittington) ...	15	7	0
Markets and Stephenson Hall ...	14	19	6
New Sewage Works ...	9	13	0
Transport Department ...	89	9	5
	347	16	6
Chesterfield and Bolsover Water Board:—			
Water Department ...	30	18	11
Water Department (Linacre) ...	12	3	9
	43	2	8
Chesterfield County Court, per J. Kee ...	6	18	4
Chesterfield and District Window Cleaning Society, Gluman Gate, Chesterfield ...	1	10	0
Chesterfield Division, Derbyshire County Constabulary ...	14	14	0
Chesterfield Employment Exchange ...	9	14	8
Chesterfield Hide & Skin Co. ...	1	16	6
Chesterfield Mines Rescue Station ...	6	0	0
Chesterfield Post Office (Engineer's Department) ...	5	14	0
Chesterfield Post Office Benevolent Fund ...	30	0	0
Chesterfield Royal Hospital (non-resident Staff) ...	22	10	6
Chesterfield Steam Laundry ...	16	0	0



	£	s.	d.
Chesterfield Tube Company, Limited ... ..	396	18	5
Clay, J., & Sons, Clayton Street, Chesterfield ... ..	13	0	0
Clayton, J. J., Limited, Whittington Moor ... ..	1	14	9
Collis, J., & Sons, Ltd., Saltergate ... ..	8	5	0
Corporation Theatre, Chesterfield ... ..	0	15	5
Cox, Hugh, Heanor ... ..	0	13	6
Cropper, H., Packers Row, Chesterfield ... ..	0	19	0
Crow, A. M., & Sons, Union Walk, Chesterfield (and firm)	3	10	0
Cumming, W. & Company, Limited, Blacking Mills, Whittington ... ..	14	7	3
Davy, A. & Sons, Limited, Chesterfield ... ..	0	18	4
Derbyshire, A., Ltd., Whittington Moor ... ..	2	7	8
Derbyshire Carriage & Wagon Co., Ltd., New Whittington	41	7	0
Derbyshire Sanatorium, Walton (Male Staff) ... ..	1	16	9
Derbyshire Sanatorium, Walton (Nursing Staff) ... ..	3	7	3
Donkin, Bryan, Company, Limited ... ..	268	5	5
Derbyshire County Council, Works Department, Spondon House School, Spondon, near Derby ... ..	10	0	0
East Midland Motor Services, Ltd., Chesterfield ... ..	66	10	9
Eastwood, E., Wagon Works, Chesterfield ... ..	48	19	6
Edmunds, Wilfred, Limited ... ..	13	10	0
Elliott, S., Steeple Works, Chesterfield ... ..	13	13	11
Employment Exchange, Sutton-in-Ashfield ... ..	1	0	0
Eyre & Sons, Ltd. :—	£	s.	d.
Cabinet Department ... ..	10	0	0
Painting Department ... ..	1	4	3
Shop Employees ... ..	18	0	0
	29	4	3
Fisher, S. A., 79, Newbold Road, Chesterfield ... ..	1	2	6
Fletcher, Charles, Scarsdale Colliery, Sutton Scarsdale ...	14	12	0
Fletcher, W. & R., Ltd, Packers' Row, Chesterfield ...	1	5	0
Fox, T, 86, Chatsworth Road, Chesterfield ... ..	1	13	8
Frisby's, Limited, Chesterfield ... ..	3	8	0
Gaunt, C. E., West Bars, Chesterfield ... ..	20	18	11
Gray & Lewis, Limited, Spital ... ..	13	18	8
Green, A., Limited, Whittington ... ..	6	0	0
Greaves, A., & Son, Market Place, Chesterfield ... ..	4	1	1
Hardware (Chesterfield) Ltd. ... ..	3	3	0
Haslam, Frank, Ltd., Doncaster ... ..	2	3	6
Hattersley, B., Chatsworth Road, Chesterfield ... ..	2	10	11
Hearnshaw, A., 31, Queen Street, Chesterfield ... ..	2	16	2
Heath, Arthur, Old Road, Brampton ... ..	7	10	3
Heywoods, Ltd., Packers' Row, Chesterfield ... ..	0	9	0
Hippodrome, Chesterfield ... ..	1	8	2
Hollis & Brummell, Park Road, Chesterfield ... ..	3	14	8
Hoole, C. L. & Sons, Bacon's Lane Chesterfield (and firm)	3	5	0
Hunters, Ltd., Low Pavement, Chesterfield ... ..	2	13	0
Hyde, Robert & Sons, Ltd., Clarendon Works, Chesterfield	9	8	1
Hygienic Bakeries, Ltd., Holywell Cross, Chesterfield ...	4	3	6
Jay's Furnishing Stores, Corporation Street, Chesterfield	0	1	4
Johnson, S. & Son, Chatsworth Road, Chesterfield ...	2	0	0
Kenning, George (Chesterfield), Limited, Vicar Lane, Chesterfield ... ..	7	1	2
Kirk, G. F., Ltd., Chatsworth Road, Chesterfield ... ..	30	2	6
Lamp Caps, Ltd., Sheffield Road, Chesterfield ... ..	56	17	11



	£	s.	d.
Leewood Colliery Co., Ltd., 14, Wharfe Street, Sheffield (and firm) ... ..	22	3	0
Lighton, T. & Sons, Ashgate (and firm) ... ..	2	0	0
Lipton, Ltd., Low Pavement, Chesterfield ... ..	1	6	9
Liverpool Victoria Friendly Society, Chesterfield ... ..	2	1 <sup>c</sup>	0
London, Midland & Scottish Railway (see Eckington District No. 3, page 54).			
Legard's Leather Stores, South Street, Chesterfield ...	1	10	0
London & North Eastern Railway Company:—	£	s	d.
Bolsover and Arkwright Town ... ..	7	10	6
Chesterfield ... ..	42	18	1
Chesterfield Market Place (Traffic Dept.) ... ..	5	2	0
Grassmoor and Heath ... ..	11	0	0
Langwith ... ..	80	0	0
Sheepbridge ... ..	1	17	5
Staveley Town ... ..	120	0	0
Staveley Town (Engineer's Department) ... ..	5	18	11
Tibshelf and Pilsley ... ..	4	0	0
Carriage & Wagon Department, Annesley Sidings, Newstead, Notts. ...	1	0	0
	279	6	11
Markham & Company, Limited ... ..	280	0	0
Marks & Spencer, High Street, Chesterfield ... ..	10	14	2
Mason, A. W., Saltergate, Chesterfield ... ..	8	5	1
Mason, H. & Son, Chatsworth Road, Brampton (and firm) ...	2	12	0
Maypole Dairy Company, Limited, Chesterfield ... ..	1	0	0
Mee, T., Chatsworth Road, Chesterfield ... ..	1	10	6
Melias, Limited, High Street, Chesterfield ... ..	0	6	9
Morgan, Crossley & Company, Goyt Side, Brampton ...	4	17	0
Nash, F., Beetwell Street, Chesterfield ... ..	0	2	3
Needham, Arthur, 7, Rhodes Avenue, Newbold ... ..	5	0	0
Park Foundry Company, Park Road, Chesterfield ... ..	1	0	0
Pashley, F. V., Gluman Gate, Chesterfield ... ..	2	3	10
Patent Electric Shot Firing Company, Peveril Road, Chesterfield ... ..	26	0	0
Pearl Assurance Co., Ltd., Low Pavement, Chesterfield ...	9	15	0
Pearson, James, Ltd., The Pottery, Brampton ... ..	12	0	0
Playfairs, Ltd., Low Pavement, Chesterfield ... ..	0	7	6
Plowright Bros., Ltd., Brampton ... ..	118	0	0
Proctor, R. W. & Sons, Ashgate Road, Chesterfield ...	4	18	3
Provident Clothing Supply Co., Ltd., 10, Saltergate, Chesterfield ... ..	0	2	11
Prudential Assurance Co., Ltd., Chesterfield ... ..	14	15	6
Public Benefit Boot Co., Stephenson Place, Chesterfield ...	2	3	4
Randall, W., Mansfield Road, Hasland ... ..	5	1	4
Redfern, S. E., Ltd., High Street, Chesterfield ... ..	0	15	6
Refuge Assurance Company, Cavendish Street, Chesterfield ...	5	5	0
Rhodes, William, Chatsworth Road, Chesterfield ... ..	4	10	0
Ripley Branch, Amalgamated Co-operative Society Union ...	3	0	0
Robinson & Sons, Ltd., Wheatbridge Mills ... ..	652	1	8
Robinson, J. T. & Sons, Limited, New Whittington ...	3	19	6
Robinson, W. J., Gluman Gate, Chesterfield ... ..	0	13	2
Robson, F., 120, Harcourt Road, Sheffield ... ..	3	10	0
Rodgers, S. T., Victoria Cabinet Works, Whittington Moor ...	4	10	0
Rowell & Son, South Street, Chesterfield ... ..	3	7	8
Ryland Works, Ltd., Newbold Road, Chesterfield ... ..	16	13	3



	£	s.	d.
Revill & Beresford, 40, Boythorpe Avenue, Chesterfield	4	0	0
Salt & Short, Ltd., Chatsworth Road, Chesterfield ...	1	15	6
Scarsdale Brewery Company, Ltd., St. Mary's Gate, Chesterfield ... ..	13	14	4
Scottish Legal Assurance Society, Knifesmith Gate, Chesterfield ... ..	2	1	0
Shell Mex and British Petroleum, Ltd., Wharfe Lane, Chesterfield ... ..	0	2	10
Shentall, A., Ltd., Gluman Gate, Chesterfield ...	5	7	1
Shentall, John, Limited, Whittington Moor ...	36	6	9
Shentall, Sir Ernest, St. Mary's Gate, Chesterfield ...	15	0	0
Short, J. J., High Street, Chesterfield ...	1	2	4
Short, S. E. & Co., Gluman Gate, Chesterfield ...	1	11	0
Service Motors, Ltd., Knifesmith Gate, Chesterfield ...	0	3	0
Siddons, Geo. C., Studfield Ganister Works, Loxley, Sheffield (Holmoorside Branch, and firm) ...	2	9	0
Smith, W. H. & Sons, West Bars Station, Chesterfield ...	3	18	9
Standing, R., Springwood Colliery, Sutton Scarsdale ...	14	14	6
Stanton Brothers, West Bars, Chesterfield ...	0	12	8
Station Hotel, Chesterfield ... ..	8	17	0
Steel-Breaking & Dismantling Company, Sheffield Road	2	13	8
Swale, Arthur, Vicar Lane ... ..	4	18	9
Swale, S. & Sons, Limited, Sheffield Road ...	9	19	10
Swallow, J. K. & Sons, Burlington Street ...	11	4	10
Tar-Mac, Ltd., Derby Road, Birdholme ...	16	10	0
Taylor Bros., High Street ... ..	0	10	0
Taylor's Drug Co., Ltd., Stephenson Place, Chesterfield	0	6	5
Taylor, W. F. & Sons, Limited, Stephenson Place ...	9	12	6
Thickett, J., Soresby Street, Chesterfield ...	2	3	3
Thompson, J. W., Old Whittington ... ..	3	9	1
Thompson, Robert, Ltd., Holywell Street, Chesterfield ...	4	15	0
Topham, Arthur, 15, Hollis Lane, Chesterfield ...	3	15	0
Townrow & Sons, Limited, Hipper Corn Mills ...	1	17	9
Turner, Douglas, Market Hall, Chesterfield ...	3	18	7
Turner, John, Ltd., Packers' Row, Chesterfield ...	16	12	2
Unwin, B., Market Hall, Chesterfield ...	1	1	9
Verney, F., Ltd., Brampton Wharf ... ..	3	15	0
Wagon Repairs, Ltd., Chatsworth Wagon Works ...	58	19	2
Walters & Westby, Ltd., 54, Marshall Road, Woodseats, Sheffield ... ..	8	3	7
Walton Pottery, Brampton ... ..	3	17	0
Warner, Peter, High Street, Chesterfield ...	5	4	0
Watertight Fittings, Limited (and firm) ...	3	16	7
White, J. B. & Sons, Limited, High Street, Chesterfield ...	2	10	0
White's (Furniture), Ltd., Corporation Street, Chesterfield	11	1	7
Whitecotes Colliery, Boythorpe ... ..	7	9	6
Wood, T. P. & Company, High Street, Chesterfield ...	10	0	0
Woodhead & Sons, Limited, High Street, Chesterfield ...	10	0	0
Wragg, R. & Sons, Markham Road, Chesterfield ...	2	5	0
Wright, E. & Co., Wheatbridge Potteries, Chesterfield ...	7	0	0
Wright, W. & Sons, Knifesmith Gate, Chesterfield ...	0	10	8
Yates, F., Holywell Street, Chesterfield ...	0	8	0
Yeomans, W., Beetwell Street ... ..	9	11	0
Yorkshire Billposting Co., 1, Eyre Street, Chesterfield ...	1	6	9

---

£3859 5 1



## 2.—Sheepbridge District.

	£	s.	d.	£	s.	d.
Sheepbridge Coal & Iron Co., Ltd.—						
Forge ... ..	73	7	9			
Furnaces ... ..	51	4	5			
Mechanics ... ..	165	7	0			
Old Foundry ... ..	107	10	4			
Foundry Engineers' Department ... ..	42	12	4			
				440	1	10
Glapwell Colliery—						
Underground ... ..	750	0	0			
Surface ... ..	100	0	0			
				850	0	0
Langwith Colliery ... ..				85	0	0
Sheepbridge Stokes Centrifugal Castings Company ... ..				138	15	4
Pearson & Company (Chesterfield), Ltd.—						
Bottom Pottery ... ..	73	8	3			
Brickyard ... ..	12	0	0			
Round Kilns ... ..	8	0	0			
Newbold Farm ... ..	1	5	6			
Tunnel Kilns ... ..	20	0	0			
Chesterfield Fireclays Mines ... ..	4	18	3			
Newbold Pit ... ..	10	8	0			
				130	0	0
Beighton, Thos., Brimington (and firm) ... ..				20	0	0
Bradshaw, J. & Son, The Potteries, Whittington Moor (and firm) ... ..				5	12	6
Cobnor Wood Colliery, Barlow (and firm) ... ..				7	10	0
Davis, W. H. & Sons, Langwith ... ..				17	17	0
Gosforth Foundry Company, Limited, Dronfield ... ..				8	5	9
Heywoods, Ltd., Whittington Moor ... ..				0	8	8
Hicks, R. & Sons, 52—4, Duke Street, Whittington Moor ... ..				7	8	4
King, John & Son, Ltd., Whittington Moor ... ..				23	4	9
Maypole Dairy Co., Ltd., Whittington Moor ... ..				0	2	0
Midland Fruit Preserving Company, Whittington Moor ... ..				23	19	9
Osborne & Company (Dronfield), Ltd, Dronfield ... ..				9	19	10
Parsons, A. E., 403, Sheffield Road, Whittington Moor ... ..				4	17	3
Pass, J. & Son, Mill Sidings, Old Whittington ... ..				1	14	8
Prestwich, Wm. & Sons, Ltd., Dronfield—Sheepbridge Tar-Mac Works ... ..				45	3	9
Shirebrook Colliery ... ..				100	0	0
Whitham, E. W., 379, Sheffield Road, Whittington Moor ... ..				5	0	0
				£1925	1	5

## 3.—Eckington District.

	£	s.	d.	£	s.	d.
Bolsover Colliery Company, Limited—						
Underground ... ..	591	2	11			
Surface ... ..	163	3	6			
Office Staff ... ..	27	11	0			
				781	17	5
Bolsover Home Grown Fruit Preserving Co., Ltd. ... ..				7	16	6



	£	s.	d.
Bolsover Urban District Council ... ..	14	8	6
Co-operative Wholesale Society, Hosiery Factory, Huddersfield ... ..	3	3	0
Creswell Colliery ... ..	373	10	0
Doe Lea Colliery Co., Ltd., Doe Lea ... ..	10	0	0
London, Midland & Scottish Railway Co., General Hospital Fund (for Chesterfield and District) ...	700	0	0
National Union Railwaymen, Creswell Branch ...	2	0	0
New Byron Brick Co., Palterton ... ..	10	8	0
Oxcroft Colliery Co., Ltd.—	£	s.	d.
Oxcroft—Underground and Surface ...	352	11	11
Barlborough—Oxcroft No. 3 ... ..	150	0	0
	502	11	11
Oxcroft and District Co-operative Society ... ..	3	9	4
Pleasley and Pleasley Hill Co-operative Society ...	6	6	0
Renishaw Iron Company, Limited—	£	s.	d.
Renishaw Iron Company, Limited ...	11	0	11
Appleby & Company ... ..	3	11	10
	14	12	9
Welbeck Colliery ... ..	10	0	0
Wells, J. & G., Eckington Collieries ... ..	112	10	0
	£2552	13	5

#### 4.—Staveley District.

	£	s.	d.	£	s.	d.
Staveley Coal & Iron Company, Limited—						
Ironworks (New Foundry), Ironworks (Old Foundry), Ironworks, Mechanics and Enginewrights, and Devonshire Works ... ..	1640	0	0			
Ireland Colliery ... ..	300	0	0			
Markham Colliery ... ..	548	0	0			
Warsop Main Colliery ... ..	60	0	0			
	2548	0	0			
Britannic Assurance Co., Ltd., Staveley ... ..	3	0	0			
Hardy & Martin, Staveley (and firm) ... ..	5	0	0			
Royal London Assurance Co., Staveley ... ..	6	0	0			
Staveley Co-operative Society ... ..	15	0	0			
Staveley Parish Council Sanitary Department ...	9	10	0			
Stone, S. & Sons, Staveley ... ..	4	15	0			
	£2591	5	0			

#### 5.—Grassmoor District.

	£	s.	d.
Grassmoor Company, Limited—			
Nos. 1 and 2 Pits Underground, Nos. 3 and 4 Pits Underground, Surface and Coke Ovens ... ..	839	18	6
Simon Carves, Ltd. (Contract at Grassmoor Colliery) ...	10	14	6
Hardwick Colliery Company, Limited—			
Nos. 1, 2 and 3 Pits Underground, Surface, Brick Yard and Coke Ovens ... ..	1385	1	5
	£2235	14	5



## 6.—Clay Cross, Pilsley and Tibshelf District.

	£	s.	d.
Babbington Coal Company—Tibshelf Collieries ...	100	0	0
Bailey, T. F., Stock Yard, Flaxpiece Road, Clay Cross	0	10	10
Blackwell Colliery Company, Limited ...	150	0	0
Koppers Coke Ovens, Ltd., c/o Blackwell Colliery ...	1	10	4
Britannic Assurance Co., Ltd., Clay Cross ...	6	12	6
Clay Cross Company—	£	s.	d.
Underground, Surface, Coke Ovens,			
Brickyard, Furnaces and Foundry ...	1064	12	2
Bonds Main Colliery ...	142	0	0
	1206	12	2
Clay Cross Urban District Council ...	8	0	0
Doncaster Wagon Company, Clay Cross Station, Old			
Tupton ...	3	16	1
Employment Exchange, Clay Cross ...	1	16	6
Kennings, Ltd., The Motor Depot, Clay Cross ...	20	10	3
Flavell, Isaac, Market Street, Clay Cross ...	3	13	2
Nightingale, E., Williamthorpe Road, North Wingfield ...	2	0	0
Pearl Assurance Company, Ltd., Clay Cross ...	1	0	0
Pilsley Colliery Company, Limited—			
Nos. 1, 2 and 3 Pits Underground, Nos. 1, 2 and			
3 Pits Surface ...	315	0	0
Reeve & Kenning, Limited, Pilsley (and firm) ...	20	0	0
Refuge Assurance Company, Ltd., Clay Cross ...	3	9	0
Robotham, H., Chesterfield Road, Clay Cross ...	0	2	0
Tibshelf Equitable Co-operative Society, Ltd., Tibshelf	1	0	0
Wingfield Manor Colliery, South Wingfield ...	6	0	0
Wharmby, Arthur, 29, Church Lane, North Wingfield			
(and firm) ...	2	10	0
	£1854	2	10

## DISTRICTS.

	1929.			1930.			1931.			1932.			1933.			1934.		
	£	s.	d.	£	s.	d.	£	s.	d.	£	s.	d.	£	s.	d.	£	s.	d.
Chesterfield ...	2984	11	7	3419	10	11	3298	1	3	3288	3	0	3500	16	10	3859	5	11
Sheepbridge ...	1611	13	4	1895	8	6	1867	8	8	1833	8	0	1719	6	8	1925	1	5
Eckington ...	2192	14	6	2321	11	6	2273	2	7	2409	14	6	2549	18	4	2552	13	5
Staveley ...	2487	19	2	2903	13	10	2464	8	6	3144	2	3	2663	10	5	2591	5	0
Grassmoor ...	2326	15	9	2367	12	3	2237	11	6	2369	8	5	2267	13	1	2235	14	5
Clay Cross, Pilsley and Tibshelf ...	2346	9	5	2342	4	1	2079	3	8	2051	3	8	1821	3	10	1854	2	10
	£13950	3	9	15250	1	1	14219	16	2	15095	19	10	14522	9	2	15018	2	2



## CONTRIBUTIONS FROM APPROVED SOCIETIES.

				£	s.	d.
Co-operative Insurance Society	...	...	...	5	0	0
National Amalgamated Union of Shop Assistants,						
Warehousemen and Clerks	...	...	...	4	16	0
Prudential Approved Society	...	...	...	312	1	0
Sheffield Equalised Independent Druids	...	...	...	221	8	0
Bankers' Health Insurance Company	...	...	...	3	3	0
				<u>£546</u>	<u>8</u>	<u>0</u>

## CONTRIBUTIONS RE MOTOR ACCIDENTS.

				£	s.	d.
Alliance Assurance Company	...	...	...	17	18	10
Ashton & Company (Solicitors)	...	...	...	15	2	10
Bradley, G. (Solicitor)	...	...	...	3	3	0
Britannic Assurance Company	...	...	...	28	9	3
Car and General Insurance Corporation, Ltd.	...	...	...	3	17	6
Coal and Iron Trades Insurance Company	...	...	...	14	14	6
County Fire Office	...	...	...	3	1	9
Elvidge, F.	...	...	...	8	18	2
Eagle Star and British Dominions Insurance Company	...	...	...	23	0	6
Ensign Motor Policies	...	...	...	25	0	0
Federated Employers' Insurance Association, Ltd.	...	...	...	4	18	0
General Accident, Fire and Life Assurance Corporation, Limited	...	...	...	61	14	9
Gresham Fire and Accident Insurance Society, Limited	...	...	...	10	19	4
Law Accident Insurance Society	...	...	...	11	19	5
Motor Union Insurance Company	...	...	...	18	6	10
Mather & Company (Solicitors)	...	...	...	21	15	10
Norwich Union Fire Insurance Society, Limited	...	...	...	57	16	4
Railway Passengers' Assurance Company	...	...	...	4	13	0
Road Transport and General Insurance Company	...	...	...	38	3	5
Royal London Mutual Insurance Society	...	...	...	3	1	10
Scottish Automobile and General Insurance Co., Ltd.	...	...	...	9	6	1
State Assurance Company	...	...	...	15	8	5
Yorkshire Insurance Company	...	...	...	18	3	7
				<u>£419</u>	<u>13</u>	<u>2</u>



## GIFTS IN KIND.

Egg Collection, organised by the Chesterfield and District Agricultural Discussion Society. President—Dr. R. A. McCrea; Chairman—Mr. J. W. Needham (Barlow); Hon. Secretary—Mr. E. Heath (Eastmoor).

The following ladies and gentlemen acted as collectors:—

- Apperknowle and Unstone—Mr. A. Key, Unstone Grange, Unstone.
- Ashgate and Old Brampton—Mrs. S. Shemwell, Ashgate House Farm, and Misses Dakin, Yew Tree Cottage.
- Ashover and Stanedge—Mrs. H. Mellor, Miss Holmes, Miss U. Walker, Miss V. Hinde, Mrs. T. Spencer, Miss H. Robinson, Miss Marriott, Miss D. Hopkinson, Mrs. Smith, Mrs. H. Shaw, Miss Wood, Miss Marriott, Miss Bown and Mrs. A. Towndrow.
- Barlborough—Mr. K. Widdowson, Clowne Fields Farm.
- Barlow—Mr. H. Needham, High Lightly Farm; Mr. J. W. Needham, New Farm.
- Barrow Hill—Mr. E. Fletcher.
- Blackwell—Miss Caudwell, Church Hill Farm.
- Brackenfield—Mr. James Ashby, Church Farm.
- Bolsover—Mr. F. W. Hunt, Town End Farm.
- Brimington—Mr. W. F. Austin, Fairfield.
- Brimington Common—Mr. F. T. Swain, Lodge Farm.
- Calow—Mr. G. W. Graves, Cote House Farm, Tapton.
- Calow Green and Sutton Springs—Mrs. F. Austin, Wood Nook, Calow Green.
- Clay Cross—Miss P. Jackson, Clay Cross Hall.
- Clowne—Mr. P. W. Gill, School House.
- Creswell—Mr. J. W. Fielding, Elmtun Lodge.
- Dronfield and Dronfield Woodhouse—Mr. T. Vickers, Poole Farm, Dronfield Woodhouse.
- Duckmanton—Mr. J. H. Clark, Long Course Farm.
- Eastmoor—Mr. W. Kirkham, Wadshelf Green.
- Elmtun—Mr. J. W. Fielding, Elmtun Lodge.
- Glappwell, Doe Lea and Bramley Vale—Mrs. G. Bunting, Netherton House, Glappwell.
- Grassmoor—Mr. Geo. Robinson, Mill Lane, and Mr. Geo. Wilmot, Avenue Farm.
- Hady—Mr. Wm. Heathcote, Green House Farm, Hasland, and Mr W. H. Stevens, Calow House Farm, Hasland.
- Handley (Clay Cross)—Miss Bradley, Handley Hill.
- Handley (Sheffield), Mrs. F. A. Marples, Devonshire Arms.
- Hardstoft—Mrs. E. Pugh, Locks Lane Farm.
- Hasland—Mr. Wm. Heathcote, Green House Farm, and Mr. W. H. Stevens, Calow House Farm.
- Heath and Holmewood—Miss A. Hardwick and Mrs. Sheldon, Laurel Farm.
- Holymoorside—Mr. B. Swain, Grove Farm, Upper Loads.
- Hundall and Unstone Green—Mr. W. Outram, The Stores, Unstone Green.
- Inkersall and Hollingwood—Mr. H. E. Swain, Pond House Farm, Hollingwood.
- Langwith—Mr. W. N. Wood, Church Farm, Upper Langwith.
- Morton—Mr. Thomas Mosley, Haver Hill Farm.
- Newbold—Mr. Louis Needham, Green Farm.



Newton—Mrs. Fred Robinson, The Homestead.  
 New Whittington—Mr. R. C. Glossop, Park Gate, Handley, Sheffield.  
 North Wingfield—Mr. P. Holmes, The Elms.  
 Palterton—Mr. A. Turner, Hall Farm.  
 Pilsley, Lower—Mrs. E. Pugh, Locks Lane Farm.  
 Pilsley—Mr. H. Savage, Manor Farm, and Mr. T. Woodall, Ivy Farm.  
 Pratt Hall and Freebitch—Miss I. Margereson, Pratt Hall.  
 Rowthorne—Miss White.  
 Shirebrook—Mr. George Key, Stoney Houghton, Pleasley.  
 Shuttlewood—Mr. Z. Breedon, junr., Woodside Cottage.  
 Spital—Mr. Wm. Heathcote, Green House Farm, Hasland, and Mr. W. H. Stevens, Calow House Farm, Hasland.  
 Stainsby—Mr. R. Fletcher, School House.  
 Staveley and Poolsbrook—Mr. Lee Arthur, Woodthorpe, and Mr. B. Mullins.  
 Stretton—Mrs. Wragg and Mrs. Stubbins, Fern Lea.  
 Sutton Scarsdale—Mr. F. W. Glazebrook, Oak Tree Farm.  
 Tapton—Mr. W. G. Graves, Cote House Farm.  
 Temple Normanton—Mr. J. Wright.  
 Tibshelf—Miss Barber, The Hurst.  
 Wadshelf—Mr. W. Kirkham, Wadshelf Green.  
 Walton—Mr. D. McLarty, High House.  
 Whittington—Mr. A. Jones, Holly House Farm, Old Whittington.  
 Westhouses—Mrs. Booth, junior, The Farm.  
 Wigley and Hare Edge—Miss I. Turner, The Birches, Old Brampton.  
 Wingerworth—Messrs. F. W. and G. F. Allen, Lydgate Farm.  
 Woodthorpe (Clay Cross)—Mrs. Astell.  
 Woodthorpe (Staveley)—Mr. Z. Breedon, junr., Woodside Cottage, Shuttlewood.  
 Woolley Moor—Miss Bradley, Handley Hill.

**The Elementary Schools of the District also co-operated.**

---



## Chesterfield and North Derbyshire Royal Hospital Linen and Clothing League.

President : Her Grace the Duchess of Devonshire.

Chairman : Mrs. L. D. Bird.      Vice-Chairman : Mrs. G. F. Barnes.

Hon. Treasurer : Mrs. W. J. Wilkinson.

Hon. Secretary : Mrs. Walter C. Macartney.

## Contributions of Eggs, Fruit, Flowers, etc., from Churches, Chapels and Schools in 1934.

Anonymous.	Hasland Church and Sunday School.
Ashover Church.	Heath Church.
Ault Hucknall Parish Church and Sunday School.	Hollingwood Church.
Barlborough Church.	Holymoorside Congregational Sunday School.
Barrow Hill Girls' School.	Langwith Junction Mission Church.
Bolsover Parish Church.	Old Brampton Church.
Brackenfield Church.	Shirland Church and Sunday School.
Brampton Mount Zion Sunday School.	Staveley Ebenezer Methodist Church.
Brampton Congregational Church and Sunday School.	Stonebroom Church.
Clay Cross Church of Latter Day Saints.	Sutton-cum-Duckmanton Sunday School.
Clay Cross (Market Street) Methodist Church.	Sutton Scarsdale Church.
Cutthorpe Mission Church.	Temple Normanton Church and Sunday School.
Doe Lea Primitive Methodist Church.	Tibshelf Parish Church and Sunday School.
Dronfield Church.	Tibshelf Free Church.
Duckmanton Church and Sunday School.	Westhouses Church.
	Wingerworth Church.



## The following have sent Presents during 1934.

- |                                       |                                    |
|---------------------------------------|------------------------------------|
| Anonymous.                            | Mr. Harold Lee.                    |
| Bainbridge Hall, Bolsover,            | Mrs. Lenthall.                     |
| Sewing Party.                         | Mr. J. E. Longmate.                |
| Miss Barker, Lincoln.                 | Miss Lord.                         |
| Mr. E. C. Barnes, C.B.E.              | Mr. Walter C. Macartney.           |
| Mrs. E. C. Bates.                     | Mrs. W. H. Margereson.             |
| Mr. Bennett.                          | Messrs. J. D. Marsden, Nottingham. |
| Mrs. Birks.                           | Mr. E. Mitchell.                   |
| Mr. Blatherwick, Fairfield, Bolsover. | Mr. Needham.                       |
| Mr. Bolton, Derby.                    | "Nig Nogs," per "Sheffield         |
| Mr. H. Boulter, Glapwell.             | Independent."                      |
| Mr. Bradley, Hasland.                 | Mr. Talbot O'Farrell.              |
| Miss Chambers.                        | Old Whittington and Sheepbridge    |
| Chesterfield Brewery.                 | Hospital Committee.                |
| Chesterfield Girls' High School.      | Col. and Mrs. Orange-Bromehead.    |
| Chesterfield Hippodrome.              | Mr. Owen, Clay Cross.              |
| Chesterfield People's Service Club.   | Miss Joan Parkes, Barrow Hill.     |
| Clay Cross Secondary School           | Mrs. J. D. Penrose.                |
| (Florence Nightingale House).         | Mrs. Prestwich, Dronfield.         |
| Clay Cross Girl Guides.               | Mrs. Piper.                        |
| Mrs. A. Clements.                     | Mr. Pope, Tibshelf.                |
| Mrs. M. Clarke, Morton.               | Mrs. Potter, Newbold Moor.         |
| Mrs. Cockayne.                        | Mrs. Savage.                       |
| "Daily Mail."                         | Mr. A. C. Seals.                   |
| Sister Dawkins.                       | "Sheffield Independent"            |
| Derby Lane Girls' Modern School,      | Children's Ring.                   |
| Chesterfield.                         | Mr. A. Shentall.                   |
| Derbyshire Needlework Guild.          | Mr. J. Simpson.                    |
| "The Derbyshire Times."               | Mrs. Slatcher.                     |
| The Duchess of Devonshire.            | Mrs. Smith.                        |
| Ald. G. A. Eastwood (the late).       | Mr. D. W. Spittlehouse, Langwith.  |
| Mrs. Isaac Freshwater.                | Mr. E. D. Swanwick.                |
| Mr. Gibson, Old Whittington.          | Mr. Tomlinson, Shirebrook.         |
| Mr. Gilbert, Shirebrook.              | Mr. D. N. Turner.                  |
| "Gloops Club," per "Aunt Edith."      | Lt.-Col. H. Tylden-Wright.         |
| Mrs. Hancock, Newbold.                | Victoria Enterprises, Limited.     |
| Mrs. Haslam, Hardstoft.               | Mr. Peter Warner.                  |
| Rev. Holden, Eckington.               | Mrs. Watson, North Wingfield.      |
| Hollingwood Council School.           | Mrs. Wallis.                       |
| Mrs. Hopkinson, Tansley.              | Mrs. Webb.                         |
| Mrs. Jones, Newton.                   | Mr. Webb, Dronfield.               |
| Mr. Johnson.                          | Messrs. F. W. Woolworth & Co.      |
| Mr. Kay.                              | Miss Helen Young, Old Whittington. |



## Christmas Gifts, 1934.

- Anonymous.  
 Mr. E. C. Barnes, C.B.E.  
 Brampton Brewery Co. Employees.  
 Mr. M. S. Brodhurst.  
 Mr. W. Chapman, Pilsley.  
 Chesterfield High School Old Girls' Guild.  
 Chesterfield Girls' High School.  
 Mr. G. Clark, J.P.  
 Clay Cross Works Sick and Accident Club.  
 Dr. A. C. S. Courts.  
 Dr. J. P. Davie.  
 Mr. W. J. Davies.  
 The Duke of Devonshire (Xmas Tree and Evergreens).  
 Dr. A. M. Duthie.  
 Miss Eastwood, J.P.  
 Eckington Collieries Workmen's Field Club.  
 Mr. G. J. Edmunds, J.P.  
 Mr. W. H. Edmunds, O.B.E., J.P.  
 Mr. F. Edmunds, M.R.C.S.  
 Mr. T. R. Evans, M.D.  
 Messrs. Eyre & Sons.  
 Mr. J. Eyre.  
 Mr. C. A. Furness, L.D.S.  
 Dr. F. W. Furniss.  
 Glapwell Colliery Employees Underground and Surface Clubs.  
 Mrs. Alfred Glossop.  
 Mr. A. Gratton and Friends, Devonshire Works.  
 Dr. J. L. Grout.  
 Mr. T. Hardy, Pilsley.  
 Mr. E. T. Hargraves.  
 Mr. F. J. Harris.  
 Mr. and Mrs. E. G. Haslam.  
 Mr. T. E. Haslam, J.P.  
 Mr. C. J. Howson, J.P.  
 Col. B. M. and Mrs. Humble-Burkitt.  
 Dr. J. S. Hutchison.  
 Mr. F. Jackson.  
 Brig.-Gen. G. M. Jackson.  
 Mr. W. B. M. Jackson (the late).  
 Mrs. C. C. Johnstone.  
 Langwith Colliery Workmen's Hospital Fund.  
 Mr. Chas. Lawson.  
 Mr. and Mrs. Walter C. Macartney.  
 Dr. R. A. McCrea.  
 Mrs. M. H. Markham.  
 Mr. E. Miller.  
 Mr. F. J. Milward, F.R.C.S.  
 Mrs. E. S. Mitchell.  
 Mr. and Mrs. Mowbray.  
 New Bolsover Hospital Committee.  
 Mrs. Norman.  
 Oxcroft Colliery Underground and Surface Club.  
 Messrs. Pearson & Co. (Chesterfield), Ltd., Employees.  
 Mr. Theo. Pearson.  
 Mr. F. Pilley (loan of Crockery).  
 Pilsley Colliery Employees.  
 Mr. R. Plowright.  
 Dr. H. E. Pooler.  
 Mrs. Raybould.  
 Mrs. J. Robinson.  
 Lt.-Col. V. O. Robinson.  
 Mrs. W. B. Robinson.  
 Scarsdale Brewery Company, Limited.  
 Mr. A. Shentall.  
 Dr. R. B. N. Smartt.  
 Mr. L. E. Sutcliffe, M.B.  
 Mr. F. K. Swallow.  
 Mr. E. D. Swanwick, M.A.  
 Messrs. W. F. Taylor & Sons, Limited.  
 Mr. J. W. Thompson.  
 Mr. R. Thompson.  
 Mrs. A. A. Townrow.  
 Miss D. G. Townrow.  
 Toc H. League of Women Helpers.  
 Tupton Boy Scouts.  
 Messrs. John Turner, Limited.  
 Mr. D. N. Turner.  
 Mr. Peter Warner.  
 Warsop Main Colliery Workmen's Hospital Fund.  
 The West End Bakeries.  
 Whitwell Hospital Committee.  
 Rev. Father Wilson.  
 Messrs. E. Woodhead & Sons.  
 Mr. G. Wilkinson, F.R.C.S.

## Christmas Decorations.

Messrs. Eyre & Sons, Limited.



## LIFE GOVERNORS.

December 31st, 1934.

						£	s.	d.	
Abbott, W. H.	...	...	...	...	...	200	0	0	1930
Allsop, T., J.P.	...	...	...	...	...	20	0	0	1920
Atkinson, T. D.	...	...	...	...	...	20	0	0	1900
*Barker, E. A.	...	...	...	...	...	—			1918
Barnes, E. C., C.B.E., D.L., J.P.	...	...	...	...	...	125	0	0	1908
Do.	...	...	...	...	...	200	0	0	1910
Do.	...	...	...	...	...	500	0	0	1920
Do.	...	...	...	...	...	500	0	0	1921
Do.	...	...	...	...	...	100	0	0	1923
Barrow, Mrs.	...	...	...	...	...	20	0	0	1904
Bassett, John	...	...	...	...	...	105	0	0	1920
Berresford, S.	...	...	...	...	...	20	0	0	1920
Do.	...	...	...	...	...	250	0	0	1931
Do.	...	...	...	...	...	100	0	0	1934
Bird, Sir W. B. M.	...	...	...	...	...	20	0	0	1907
Bower, T. W., J.P.	...	...	...	...	...	500	0	0	1917
Bransom, William	...	...	...	...	...	20	0	0	1921
Brodhurst, M. S.	...	...	...	...	...	21	0	0	1907
Do.	...	...	...	...	...	25	0	0	1921
*Carruthers, Mrs.	...	...	...	...	...	200	0	0	1907
Do.	...	...	...	...	...	50	0	0	1910
Do.	...	...	...	...	...	150	0	0	1915
Do.	...	...	...	...	...	100	0	0	1920
Chambers, F.	...	...	...	...	...	100	0	0	1920
Clark, George, J.P.	...	...	...	...	...	50	0	0	1934
Do. Mrs.	...	...	...	...	...	50	0	0	1934
Clarke, George	...	...	...	...	...	25	0	0	1925
Close, J. S.	...	...	...	...	...	20	0	0	1913
Deacon, M., J.P.	...	...	...	...	...	25	0	0	1907
Do.	...	...	...	...	...	25	0	0	1911
Devonshire, Duke of	...	...	...	...	...	250	0	0	1909
Do.	...	...	...	...	...	300	0	0	1910
Do.	...	...	...	...	...	50	0	0	1911
Do.	...	...	...	...	...	250	0	0	1922
Do.	...	...	...	...	...	250	0	0	1923
Eastwood, Miss S. B., J.P.	...	...	...	...	...	20	0	0	1919
Eastwood, Tom	...	...	...	...	...	20	0	0	1891
Hall, Harry	...	...	...	...	...	25	0	0	1924
Hargraves, E. T.	...	...	...	...	...	21	0	0	1903
Do. Mrs	...	...	...	...	...	21	0	0	1904
*Harrison, S. H.	...	...	...	...	...	—			1918
Hartington, Marquis of	...	...	...	...	...	20	0	0	1920
Holford, Miss B.	...	...	...	...	...	50	0	0	1918
Hollindale, J. T.	...	...	...	...	...	20	0	0	1913
Hopkinson, J.	...	...	...	...	...	20	0	0	1904
Howson, C. J., J.P.	...	...	...	...	...	20	0	0	1905
Humble-Burkitt, Col. B. M., C.M.G., D.S.O.	...	...	...	...	...	25	0	0	1924
Do.	...	...	...	...	...	21	0	0	1925



	£	s.	d.	
Hunloke, Sir Philip, J.P. ... ..	50	0	0	1907
Do. ... ..	50	0	0	1908
Langford, W. R. G. ... ..	20	0	0	1917
Locke, A. C. ... ..	21	0	0	1908
Lucas, B. C. ... ..	20	0	0	1873
Do. ... ..	100	0	0	1904
Do. ... ..	105	0	0	1920
Do. ... ..	500	0	0	1924
Do. ... ..	250	0	0	1926
Markham, Mrs. Margaret H., J.P. ... ..	50	0	0	1907
Do. ... ..	50	0	0	1916
Mason, Mrs. E. ... ..	20	0	0	1901
Millard, John ... ..	20	0	0	1922
‡Mitchell, T. J. ... ..	—			1934
Nicholls, Wm. John ... ..	20	0	0	1920
Portland, Duke of ... ..	250	0	0	1907
Do. ... ..	100	0	0	1910
Do. ... ..	100	0	0	1914
*Preskey, G. ... ..	—			1918
Quarton, F. ... ..	20	0	0	1910
Do. Mrs. ... ..	100	0	0	1920
Robinson, C. W. ... ..	20	0	0	1914
Do. ... ..	50	0	0	1920
Robinson, Lt.-Col. V. O., M.C. ... ..	25	0	0	1921
Do. ... ..	50	0	0	1931
Robinson, Mrs. W. B. ... ..	50	0	0	1928
Rutland, Duke of ... ..	30	0	0	1907
Sharman, Walter ... ..	20	0	0	1928
Shea, Mrs. J. Goodwin ... ..	100	0	0	1924
Shentall, Sir Ernest ... ..	100	0	0	1921
*Swale, A. ... ..	—			1918
Swallow, Frederick K. ... ..	20	0	0	1920
Swanwick, E. D. ... ..	25	0	0	1920
Syddall, S. A. ... ..	20	0	0	1918
Taylor, W. H. ... ..	20	0	0	1919
Taylor, Mrs. H. ... ..	50	0	0	1902
Do. ... ..	25	0	0	1908
Tomlinson, Mrs. A. ... ..	50	0	0	1918
Turner, Harold H. ... ..	20	0	0	1907
Do. ... ..	20	0	0	1926
Tylden-Wright, Lt.-Col. H., J.P. ... ..	100	0	0	1918
Wakerley, W. E. ... ..	26	5	0	1920
Webster, James ... ..	25	0	0	1925
Woodhead, E. R. ... ..	100	0	0	1923

\*—For services in connection with the Chesterfield and District Traders' Effort of 1917-1918.

‡—For services in connection with Sports Meetings, 1928-1934.

NOTE.—A donation of at least £40 is now necessary to constitute the Donor a Life Governor.



## ENDOWMENT OF BEDS OR COTS.

1917—T. W. Bower, Esq., J.P.—Cot	...	...	...	...	£500
1924—The Dennis Bayley Fund Bed	...	...	...	...	£1500
1926—Anonymous—Bed	...	...	...	...	£1000
1927—Anonymous—Three Beds	...	...	...	...	£3000
1928—Anonymous—Bed	...	...	...	...	£1000
1929—The John and Mary Hatton Cot	...	...	...	...	£900

### Beds Maintained by Annual Payment.

1929—The "Gloops" Cot	...	...	...	...	£30
1932—"Sheffield Independent" Children's Ring "Nignog"	...	...	...	...	£30
Cot	...	...	...	...	£30

### Beds Named in Consideration of a Payment to the Capital Account.

1926—The Elizabeth Lowe Bed	...	...	...	...	£1034
-----------------------------	-----	-----	-----	-----	-------

---

## GIFTS OR BEQUESTS.

The Board of Management wish to draw the attention of the benevolent public to the fact that a bed may be named in perpetuity upon receipt of £1,000, or of a legacy of the same amount (free of duty) specially bequeathed for this purpose, and that a cot may be named under the same conditions upon payment of £500.

A tablet with an inscription recording the names of the benefactors, or that of relatives or friends whom it is desired to commemorate, would be affixed to the bed so appropriated.



## Recovery of Income Tax on Annual Subscription.

---

By filling up a Form similar to the one on page 67 you add value to your present subscription and you will benefit the Hospital to the extent of another

### 6/1 on each Annual Subscription of One Guinea.

YOU still pay the same amount—but by executing a DEED OF GIFT you enable the Hospital to claim Income Tax thereon.

---

Subscribers to a Hospital who give a written agreement that they will pay their subscriptions for a period of seven years or during their lifetime, whichever shall be the shorter, will enable that Hospital to recover the Income Tax paid by the subscriber; and, further, the subscriber, if a super tax payer, may deduct the gross amount of his annual subscription from the amount of income which he returns as assessable for super tax.

With Income Tax at 4/6 in the £1, the following example is given in respect of an annual subscription of £1 1s. 0d. (the figures applicable to larger subscriptions are in proportion):—

For every £1 1s. 0d. of annual subscriptions the Hospital will recover 6/1, and the subscriber who now gives £1 1s. 0d. annually will have the satisfaction of knowing that this £1 1s. 0d. will be worth £1 7s. 1d. to the Hospital, without any additional expense to the subscriber and without any trouble, as the Hospital will recover the amount from the Income Tax authorities.

In view of the large additional income which may accrue to the Hospital in this way, without any trouble or expense to subscribers, it is hoped that all subscribers will fill in the attached form.

It will not be necessary for subscribers who have given Bankers' orders to alter that order in any way.

The Secretary of the Hospital will gladly give further information and will prepare a Deed upon request.

If all our subscribers were to use the form appearing on page 67 our income from subscriptions would be considerably increased.



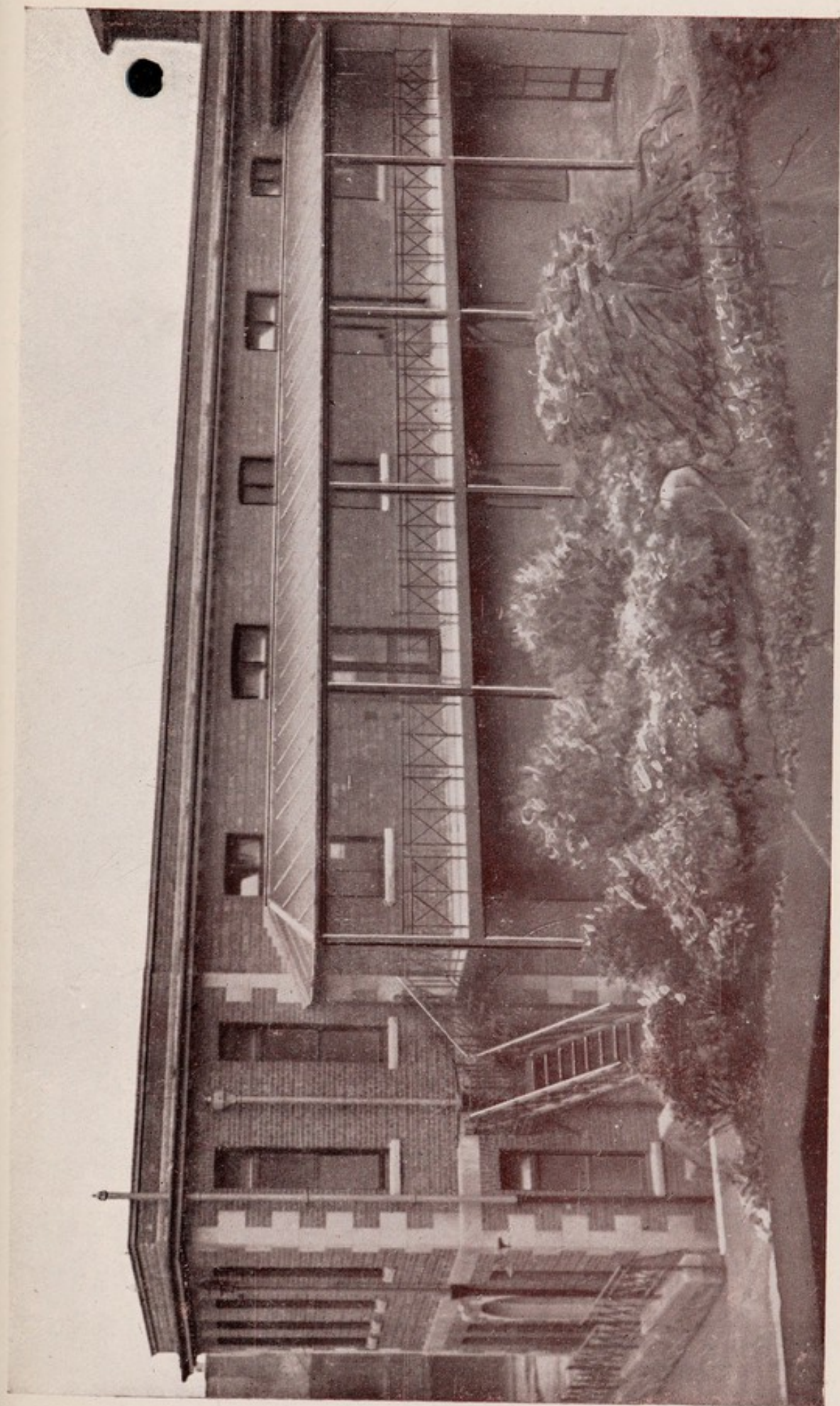


Photo by]

MURPHY WARD AND OPHTHALMIC OUT-PATIENT DEPARTMENT.

[Tom Evans, Chesterfield.







AGREEMENT TO CONTRIBUTE TO  
THE CHESTERFIELD AND NORTH DERBYSHIRE  
ROYAL HOSPITAL.

---

I, .....

of .....

in the County of.....

HEREBY COVENANT WITH The Chesterfield and North  
Derbyshire Royal Hospital that for seven years from the

.....day of.....193..., or during my

lifetime, whichever period shall be the shorter, I will pay annually

to the said Hospital such a sum as will leave, after deduction of

Income Tax at the rate for the time being in force, the sum of

£ : : such sum to be paid from my General Fund of

Taxed Income, so that I shall not receive any personal or private

benefit in any of the said years from the said sum or any part

thereof.

The payment for each year to be deemed for the period of  
the current tax year.

In witness whereof I  
have hereunto set my  
hand and seal this

.....day of

.....193 .

Signature .....

Signed, Sealed and  
delivered by the said

Signature .....

.....  
in the presence of

Address .....

Occupation .....



The above form, when completed, should be sent to the  
Secretary, Royal Hospital, Chesterfield.





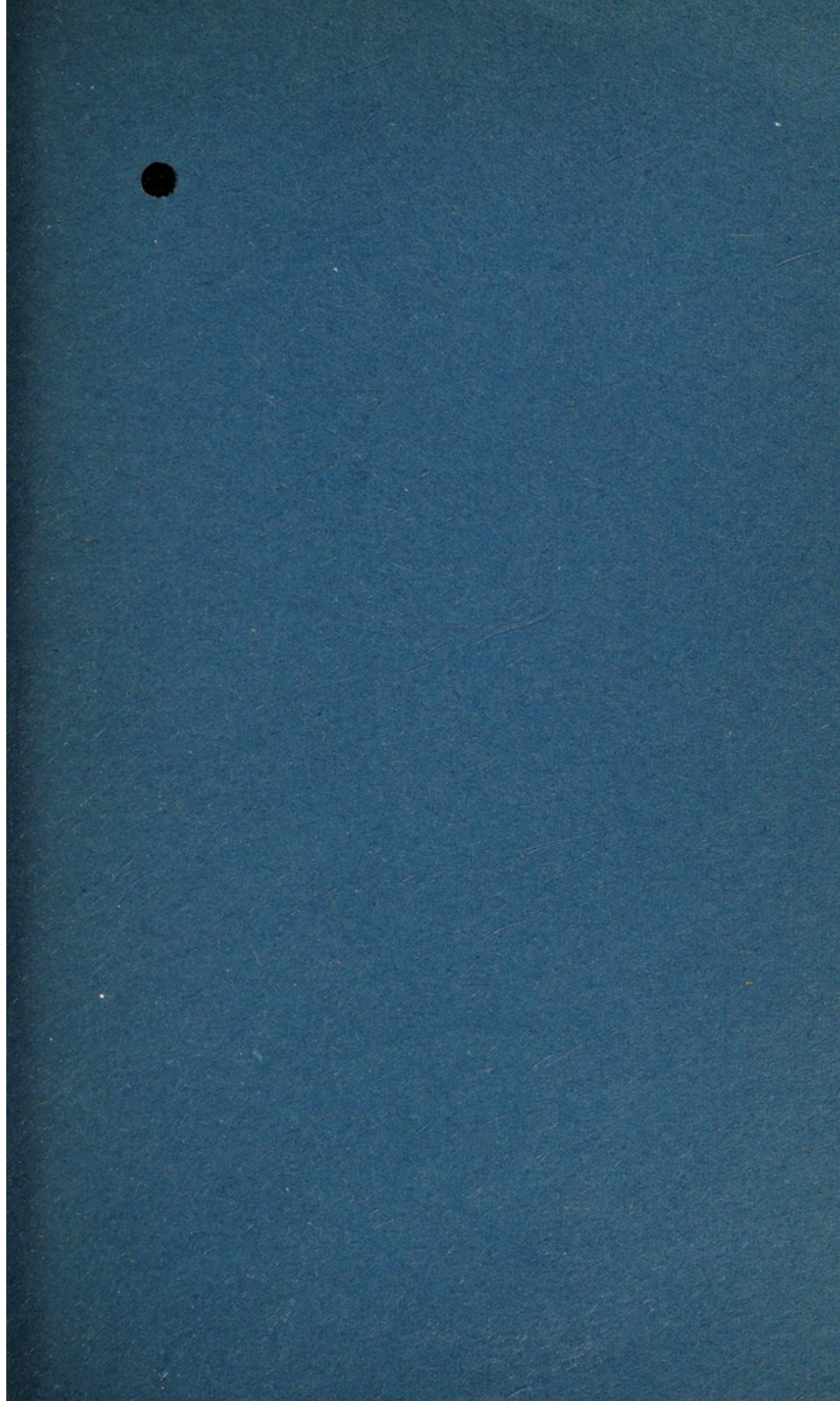














# CHESTERFIELD AND NORTH DERBYSHIRE ROYAL HOSPITAL.

---

BEDS FOR PATIENTS ... 220.

---

## PATIENTS TREATED, 1934.

In-Patients	-	-	-	3,169
Out-Patients	-	-	-	8,145
Accidents and Emergencies				4,736
(excluding Admissions).				
Expenditure, 1934	-	-		£28,559
Income, 1934	-	-		£27,872
Deficit	-	-		£687

**Additional Support Urgently Needed.**

---

*To the Chairman of the Chesterfield and North Derbyshire  
Royal Hospital.*

---

Enclosed is £ : : towards the  
maintenance of the Hospital.

Name .....

Address .....

.....

Date.....

Cheques should be made payable to "The Chesterfield and North  
Derbyshire Royal Hospital."