

Report of the Board of Management with statement of accounts and list of subscriptions and donations : 1933 / Chesterfield and North Derbyshire Royal Hospital.

Contributors

Chesterfield and North Derbyshire Royal Hospital. no2002088636

Publication/Creation

Chesterfield : [publisher not identified] 1933

Persistent URL

<https://wellcomecollection.org/works/bajkdqxv>

License and attribution

This work has been identified as being free of known restrictions under copyright law, including all related and neighbouring rights and is being made available under the Creative Commons, Public Domain Mark.

You can copy, modify, distribute and perform the work, even for commercial purposes, without asking permission.



Wellcome Collection
183 Euston Road
London NW1 2BE UK
T +44 (0)20 7611 8722
E library@wellcomecollection.org
<https://wellcomecollection.org>

Derby.

Library



Chesterfield
and North Derbyshire
Royal Hospital.

Annual Report
for the Year 1933.

£1,000 endows a Bed.
£500 endows a Cot.



22501899817

The Annual Meeting will be held in the Council Chamber, Memorial Hall, Chesterfield, at 4-30 p.m., on Thursday, March 15th, 1934.

All Subscribers are invited to attend.

Subscriptions became due 1st January last.

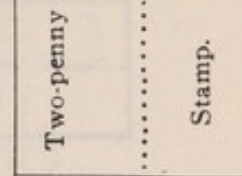
Subscribers are earnestly requested to pay them at an early date to the Secretary, or to the Westminster Bank, Limited, Chesterfield.

ORDER ON BANKERS

To Bank.

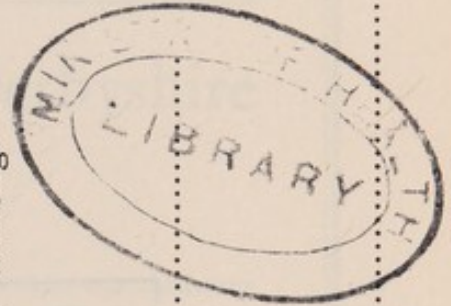
Gentlemen,

Please pay the sum of £ : : (.....pounds
.....shillings.....pence) to WESTMINSTER BANK, LIMITED,
CHESTERFIELD, for the credit of THE CHESTERFIELD & NORTH DERBYSHIRE
ROYAL HOSPITAL, on receipt of this order, and continue to pay the same amount
annually on the.....day of....., and charge the same
to my account. This order is to remain in force until cancelled by me in writing.



Signature.....

Date.....



WELLCOME
LIBRARY

Ann Rep

WX28

. B65

C52C52

1933

The ANNUAL MEETING will be held in the Council Chamber, Memorial Hall, Chesterfield, at 4-30 p.m., on Thursday, March 15th, 1934.

Chesterfield and North Derbyshire
Royal Hospital.

REPORT

OF THE

Board of Management

WITH

Statement of Accounts

AND

List of Subscriptions and Donations

FOR THE

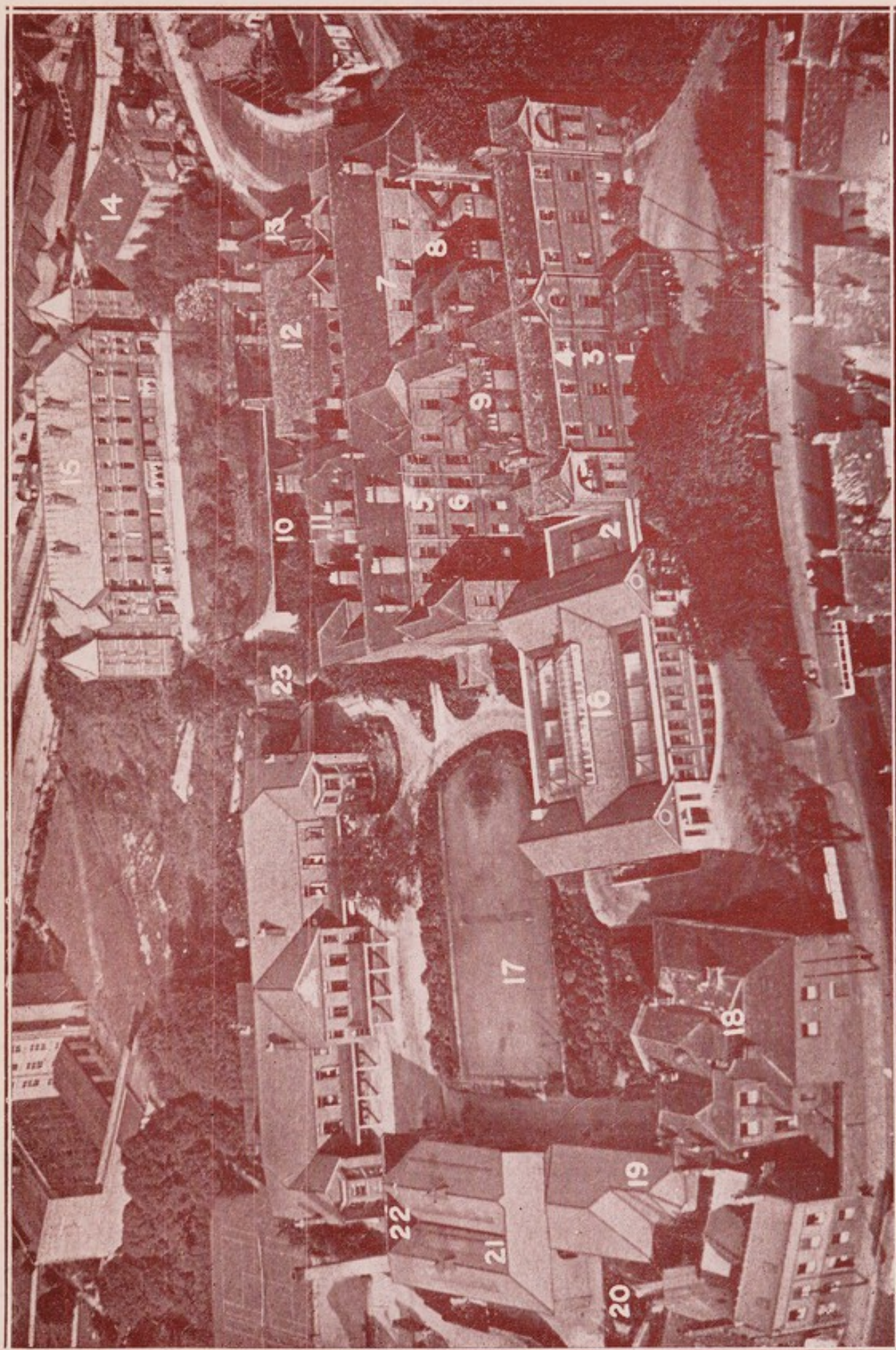
Year ending December 31st, 1933.


CHESTERFIELD :

BALES & WILDE, PRINTERS, GLUMAN GATE.

KEY TO AERIAL VIEW OF HOSPITAL.

- | | |
|---------------------|--|
| 1. Administration. | 14. Durrant Hall. |
| 2. Ambulance Bay. | 15. Nurses' Home. |
| 3. Markham Ward. | 16. Casualty and Outpatient Department. |
| 4. Children's Ward. | 17. Site now occupied by Murphy Ward,
Ophthalmic Out-Patient Department
and Theatre. |
| 5. Barnes' Ward. | 18. Holywell House. |
| 6. Portland Ward. | 19. Holywell House Annexe. |
| 7. Staveley Ward. | 20. Holywell House Extension. |
| 8. Devonshire Ward. | 21. Laundry. |
| 9. Theatre. | 22. Boilers. |
| 10. Basil Ward. | 23. Mortuary. |
| 11. Manvers' Ward. | |
| 12. Eastwood Ward. | |
| 13. V.D. | |





Digitized by the Internet Archive
in 2019 with funding from
Wellcome Library

<https://archive.org/details/b31685122>

CHESTERFIELD AND NORTH DERBYSHIRE ROYAL HOSPITAL.

HISTORY.

THE Hospital was founded by Deed of Trust in 1854 and with it was incorporated a Dispensary, established in 1800 for the benefit of such poor people "as have not relief from the Parish and are unable to pay for medicine and assistance themselves."

The premises taken over for the Hospital were situate in St. Mary's Gate, opposite the Church, and were rented from Mr. Richard Dixon for £15 per annum, the rooms comprising a "parlour," a "front room," a "sitting room," two "lodging rooms" and two "attics."

The first meeting of the Board of Management was held on the 3rd May, 1854, when the Duke of Devonshire was elected President.

The Income for the first year was £714 18s. 4d., and the Expenditure, including equipment, amounted to £360 6s. 8d. The In-Patients numbered 10.

The Hospital accommodation, however, soon proved inadequate, and Durrant Hall and Grounds were purchased from the Duke of Devonshire for the nominal consideration of £100.

The Hall was demolished with the exception of the kitchens, which were utilised as part of the present buildings.

The foundation stone was laid on the 28th September, 1859, by the Rt. Hon. Spencer Compton Cavendish, Marquis of Hartington (afterwards the 8th Duke of Devonshire). The ceremony was preceded by a Public Breakfast and the stonelaying was carried out with full masonic honours, and in June, 1860, the Hospital was opened for the admission of cases.

In 1863 a special appeal was made to those employed in or about the Collieries, Manufactories and Railways of the district to support the Institution "expressly designed for their own benefit," and the workmen at a number of concerns consented to a deduction from their wages of sums varying from a farthing to a penny per week, and in the following year the Hospital had working men representatives elected by popular vote to sit on the Board of Management. This system has greatly extended and in 1930 the workpeople in the Hospital area contributed the very large sum of £15,250 1s. 1d. It should be noted that the employers have, by arrangement, agreed to contribute 33½ per cent. of the money contributed by the employees. The Board of Management includes, also, 12 working men representing the different industries and trades.

The Devonshire Ward and a new Dispensary were added in 1873, and the Portland Ward in 1890, bringing the accommodation for patients up to 60 beds.

In 1901 the late Alderman Edward Eastwood purchased from the School Board the Durrant Road School and the Board's Offices adjoining, and presented them to the Institution fully equipped for the purpose of two Medical Wards, the male Ward being named after the Donor and the female Ward after the late Earl Manvers, who performed the opening ceremony in April, 1902.

A Röntgen Ray apparatus was installed in 1903.

In 1904 the late Alderman Edward Eastwood gave to the Hospital a piece of land adjoining the Hospital, on which was subsequently erected a Nurses' Home, thus setting free, for the accommodation of further patients, the whole of the top floor of the original buildings. An Ophthalmic Department was also inaugurated. The alterations and extensions were carried out in 1907 and 1908 and provided for an increase of 39 surgical and ophthalmic beds, a Nurses' Home to accommodate all the Nursing Staff, an anæsthetic room, and a Mortuary, bringing up the total bed accommodation to 110.

On 29th July, 1908, the Nurses' Home was opened by the Duchess of Devonshire.

The Basil Ward of 20 beds, given by the late Mr. Charles Markham in memory of his brother, the late Sir Arthur Basil Markham, was opened on November 9th, 1916, making the total bed accommodation 150.

In January, 1918, the Royal Patronage was bestowed upon the Hospital, the title being changed to "The Chesterfield and North Derbyshire Royal Hospital."

The Orthopædic and Electrical Department was opened early in 1919, the Nurses' Dining Room being appropriated for this purpose, and the Board Room utilised for the Nurses' Dining Room.

In 1919 Ald. G. A. Eastwood gave to the Hospital Holywell House and grounds, on which a new Out-Patient block was erected, comprising Consulting rooms, Ophthalmic Examination room, Casualty room, Orthopædic, Electrical and Massage rooms, Pathological Laboratory, X-Ray rooms, etc. Alterations were made to Holywell House, providing accommodation for 23 members of the Nursing Staff. A Laundry was also erected and opened in 1923, the cost of the alterations and extensions amounting to £50,029 16s. 8d.

The old Out-Patient Department was adapted for the use of the Resident Medical Staff, which now numbers five, and considerable improvements were made in the old administrative block.

In 1923 the late Mr. Charles Markham gave shares to the value of £10,000 for the purpose of providing additional beds for women and children, and the Staveley Ward was built over the Devonshire Ward, bringing the total bed accommodation for patients up to 190. The addition of this Ward necessitated further accommodation for the Nursing Staff, and an annexe was built to Holywell House containing 18 rooms.

In 1926 an appeal was made by the Mayor of Chesterfield for providing a Wireless Installation, and every adult bed is now fitted with headphones, the Children's Ward having a Loud Speaker.

In 1931, a New Block of two storeys was opened by the Duke of Devonshire, the capital cost being £22,035. It contains on the first floor a Ward of 31 beds, called the Murphy Ward to commemorate the legacy of £10,000 bequeathed by the late Mr. Thomas Murphy. The ground floor comprises a new Ophthalmic Out-patient Department, a complete Theatre Unit for the use of this Department and the Ear, Nose and Throat Department, and a Laboratory for the Pathological Department. Eighteen additional rooms for the Nursing and Domestic Staffs were added to Holywell House. 126 milligrammes of Radium and the necessary accessories were purchased and a building erected for the Department, the total cost being £2,135. An X-Ray Film Store was also built. The bed accommodation for patients is now 220.

OFFICERS FOR THE YEAR 1933.

President:

HIS GRACE THE DUKE OF DEVONSHIRE, K.G.

Vice-Presidents:

W. B. M. JACKSON, ESQ., J.P. E. C. BARNES, ESQ., C.B.E., D.L., J.P.
 BRIG.-GEN. G. M. JACKSON, D.L., J.P. G. A. EASTWOOD, ESQ., J.P.
 MRS. M. H. MARKHAM, J.P.

Trustees:

M. S. BRODHURST, ESQ. MAJOR H. H. JACKSON, J.P.
 G. A. EASTWOOD, ESQ., J.P. THEO. PEARSON, ESQ.
 T. H. BARNES, ESQ. E. D. SWANWICK, ESQ.

Treasurer:

F. JACKSON, ESQ.

Board of Management:

THEO. PEARSON, ESQ., *Chairman*.
 E. C. BARNES, ESQ., J.P., *Vice-Chairman*.
 G. A. EASTWOOD, ESQ., J.P., *Vice-Chairman*.
 M. S. BRODHURST, ESQ. F. VERNEY, ESQ.
 T. E. HASLAM, ESQ., J.P. REV. E. W. PLATT, M.A., B.D.
 E. D. SWANWICK, ESQ. MAJOR V. O. ROBINSON, M.C., J.P.
 G. CLARK, ESQ., J.P. G. J. EDMUNDS, ESQ., J.P.
 SIR E. SHENTALL, J.P. REV. H. WILSON.
 C. J. HOWSON, ESQ., J.P. MISS S. B. EASTWOOD, J.P.
 MAJOR I. W. LAMONBY. S. N. TURNER, ESQ.
 G. F. CHAMBERS, ESQ. J. S. ASKWITH, ESQ.

(The Members of the Honorary Medical Staff are *ex-officio* Members of the Board of Management).

Representative Working Men:

MESSRS. A. SWIFT and R. J. FLANAGAN, Eckington District.
 MESSRS. A. GRATTON and I. WHITTON, Staveley District.
 MESSRS. J. S. MUGGLESTONE and A. E. ORWIN, Sheepbridge District.
 MESSRS. J. EYRE and J. WILKINSON, Chesterfield District.
 MESSRS. R. OWEN and C. BOOKER, Grassmoor District.
 MESSRS. T. HARDY and E. HOOPER, Clay Cross, Pilsley and Tibshelf District.

House Committee:

MR. THEO. PEARSON, *Chairman*.

MR. M. S. BRODHURST, *Vice-Chairman*.

MR. E. C. BARNES, C.B.E., D.L., J.P.	MR. G. CLARK, J.P.
MR. G. A. EASTWOOD, J.P.	MR. L. E. SUTCLIFFE, M.B.
MR. R. OWEN.	MR. T. HARDY.
MR. E. D. SWANWICK.	MISS S. B. EASTWOOD, J.P.
MR. C. J. HOWSON, J.P.	MR. G. J. EDMUNDS, J.P.

Elective Committee:

Board of Management and the following—

S. BERRESFORD, ESQ.	R. PLOWRIGHT, ESQ.
W. HAWKSLEY EDMUNDS, ESQ., J.P.	WALTER C. MACARTNEY, ESQ.
L. D. BIRD, ESQ.	WM. P. WARNER, ESQ.

Representative Working Men:

MR. J. GREAVES.	MR. E. CARTER.
MR. J. A. BARKER.	MR. G. MOWBRAY.
MR. J. W. VALLANCE.	MR. W. WICKS.

Hon. Consulting Physician:

ARTHUR COURT, ESQ., B.A., M.B., B.Ch., Cantab., L.R.C.P., Lond.,
M.R.C.S., Eng.

Hon. Physicians:

R. A. MCCREA, ESQ., M.B., B.Ch., B.A.O., R.U.I.
A. C. S. COURTS, ESQ., M.D., B.S., Lond.

Hon. Consulting Surgeon:

ALBERT GREEN, ESQ., M.B., Lond., L.R.C.P., M.R.C.S.

Hon. Surgeons:

FLAVELL EDMUNDS, ESQ., M.R.C.S., Eng., L.R.C.P., Lond.
T. R. EVANS, ESQ., M.D., Ch.B., Edinburgh.
L. E. SUTCLIFFE, ESQ., M.B., Ch.B., Sheffield.
F. J. MILWARD, ESQ., M.A., M.Ch. (Cantab.), F.R.C.S., Eng.

Hon. Ophthalmic Surgeon:

W. M. MUIRHEAD, ESQ., M.B., Ch.B., Sheffield.

Hon. Orthopædic Surgeon:

A. GARRICK WILSON, ESQ., F.R.C.S., Eng., B.A., M.B., M.Ch., Cantab.

Hon. Surgeon to the Ear, Nose and Throat Department:

GEORGE WILKINSON, ESQ., B.A., M.B., F.R.C.S., Eng.

Hon. Assistant Surgeons to the Ear, Nose and Throat Department:

R. B. N. SMARTT, ESQ., B.A., M.B., B.Ch., B.A.O.
F. WEBSTER FURNISS, ESQ., M.A., Cantab., M.R.C.S., L.R.C.P.

Hon. Anæsthetists:

C. O'BRIEN, ESQ., M.C., M.D., B.Ch., B.A.O.
J. P. DAVIE, ESQ., M.A., M.D., Ch.B., Edinburgh.
A. M. DUTHIE, ESQ., D.S.O., M.C., M.A., M.D., Ch.B., Aberdeen,
F.R.C.S., Edinburgh.
H. E. POOLER, ESQ., M.B., Ch.B., St. Andrews.
N. R. POOLER, ESQ., M.R.C.S., L.R.C.P., M.B., B.S., Lond.
J. S. HUTCHISON, ESQ., M.B., Ch.B., Aberdeen.

Hon. Consulting Radiologist:

W. HARWOOD NUTT, ESQ., M.D.

Hon. Radiologist:

J. L. GROUT, ESQ., M.C., F.R.C.S., Edinburgh, M.R.C.S., L.R.C.P.

Pathological and Bacteriological Department:

STAFF OF SHEFFIELD UNIVERSITY.

Hon. Consulting Dental Surgeon:

HAROLD SMITH, ESQ., L.D.S., R.C.S., Eng.

Hon. Dental Surgeon:

CLAUDE FURNESS, ESQ., L.D.S., R.C.S.I.

Resident Surgical Officer:

J. M. WRIGLEY, ESQ., M.R.C.S., L.R.C.P.

House Surgeons:

W. G. WRIGHT, ESQ., M.R.C.S., L.R.C.P.
J. A. KILPATRICK, ESQ., M.B., Ch.B., Glasgow.
E. O. BELL, ESQ., M.B., Ch.B., Edinburgh.
N. W. GARDENER, ESQ., M.R.C.S., L.R.C.P.

Honorary Auditors:

MESSRS. R. L. MARSDEN & Co., Chartered Accountants.

Hon. Consulting Engineer:

W. V. HASLAM, ESQ., A.M.I.E.E.

Matron:

MISS M. A. BERRY, A.R.R.C.

Assistant Matron:

MISS H. NOCK.

Superintendent and Secretary:

MR. G. SUNNUCK.

Assistant Secretary:

MR. E. BARBER.

CHESTERFIELD AND NORTH DERBYSHIRE ROYAL HOSPITAL.

REPORT

Of the Board of Management for the Year ended 31st December, 1933.

The Board of Management have pleasure in presenting their Annual Report and Statement of Accounts for the past year ended 31st December, 1933, this being the 80th year since the establishment of the Hospital.

At the Annual Meeting this year it was unanimously resolved that a presentation should be made to Mr. E. C. Barnes, to mark the general appreciation of his great services to the Hospital. It was subsequently decided that the presentation should take the form of a Portrait and replica. The donations already received have enabled the Board to commission a well-known artist to carry out the work.

It is with sincere regret that the Board have to report the death of Dr. P. F. MacGinnis, who was appointed Hon. Pathologist and Bacteriologist in 1917 when the Department was opened. Owing to the failing health of Dr. MacGinnis, in 1932, it became necessary to obtain assistance in order to maintain the efficiency of the Pathological Department. Arrangements have been made for the work of this Department to be carried out in co-operation with the Pathological Department of the Sheffield University.

Dr. G. C. Gell resigned his position as Hon. Anæsthetist on leaving the district. The vacancy has been filled by the election of Dr. J. S. Hutchison, M.B., Ch.B.(Aberdeen).

EXTENSIONS.

The accounts in connection with the Murphy Ward block have now been paid and the outstanding debit balance of £304 8s. 1d. met by donations, including a grant of £300 from the Derbyshire Miners' Welfare Fund.

RADIUM.

In the absence of further donations to the Radium Account, the Board thought it best to liquidate the outstanding debt of £59 16s. 4d. by the transfer of

£53 14s. 3d. standing to the credit of the Devonshire Wing Extension Account and the transfer of £6 2s. 1d. from the General Account.

The total expenditure on installation of Radium was £2,134 16s. 8d.

FINANCE.

The Board wish to point out that, at the request of the Auditors, an alteration has been made, as outlined below, in the method of ascertaining the Income of the Hospital for the year. The deficit for the year, therefore, appears to be substantially less than is actually the case.

Expenditure.

The Statement of Accounts shows that the Ordinary Expenditure for the year was £27,418 14s. 4d., against £27,426 11s. 8d. in 1932, and Special Expenditure £109 0s. 1d., making a total of £27,527 14s. 5d., exclusive of the cost of the Venereal Department, £1,566 16s. 7d., which is defrayed by the County Council.

The Ordinary Expenditure was £7 17s. 4d. less than in 1932.

Income.

The Ordinary Income was £26,844 14s. 5d., against £25,558 13s. 4d. in 1932, an increase of £1,286 1s. 1d. There is a deficiency between Ordinary Income and Ordinary Expenditure of £573 19s. 11d.

The amounts taken to the credit of the Income and Expenditure Account for Subscriptions, Donations, etc., hitherto were the actual items of cash received during the financial year. The detailed lists of contributions, however, included items which, although belonging to the Income of the particular year, were not received until after December 31st. An adjustment was, therefore, necessary each year in order to agree the detailed lists with the total shown in the Income and Expenditure Account. For the year 1933, all Income properly belonging to that year, and received up to 31st January, 1934, has been included in the Income and Expenditure Account, and consequently, the totals of the lists of contributions agree with the totals in this account. The effect is that, in addition to the actual income for the year, the accounts also benefit by the amount of £1,386 2s. 3d. arrears for 1932 received during 1933.

In the Reports for the past two years reference has been made to the increased contributions, i.e., from twopence to twopence-halfpenny per week, paid by the

majority of the workpeople in the district. There are, however, still a few employees of the large firms who have not yet made the increase in their contributions, and the Board sincerely trust that, in view of the heavy deficits of the past two years, and in fairness to their fellow-workmen, they will fall into line as speedily as possible.

In addition, the Board feel that there are still a number of employees of traders and small firms in the district who do not contribute at all, or on a very reduced scale. It is, of course, impossible to get into direct touch with all employees in the large area served by the Hospital, and the Board must rely on the help of all well-wishers of the Hospital in this matter. Contributions received from workpeople during the twelve months ended 31st December amounted to £14,619 15s. 3d., a decrease compared with the previous year of £476 4s. 7d. This is no doubt attributable to the present state of trade.

The Income includes the sum of £234 1s. 1d. from the Chesterfield Traders, this being the amount realised from a Bazaar organised by the Chamber of Trade, to whom the thanks of the Board are accorded for such a welcome contribution.

A grant of £1,600 has been made during the year by the Derbyshire Miners' Welfare Committee. Of this amount £300 has already been received and applied to extinguishing the debt on the Murphy Block extensions. The outstanding amount of £1,300 will be spent on X-Ray improvements and the purchase of additional apparatus for the Operating Theatre. The Board desire to express their sincere thanks to the Committee for this most opportune help.

The amount received from the Chesterfield Royal Hospital Voluntary Workers' Association was £800. This sum includes £142 gross, £108 6s. 6d. net, received from the Stock Exchange Dramatic and Operatic Society in connection with the sale of "Help Yourself" Annuals. The Board thank the Committee and all voluntary workers most heartily for the great amount of time and work which they have given and for the large sum handed over in a very difficult period. Thanks are also due to the Local Branch of the Cinema Exhibitors' Association, who made a grant of £84 10s. 9d. out of the proceeds of Cinema Sunday; and to the Directors of the Chesterfield Football Club, for the sum of £92 15s. 9d. raised by means of Practice

Matches. These amounts have been placed to the credit of the Repairs and Improvements Suspense Account, bringing the total amount of this Fund up to £1,080 17s. 3d.

The Board desire to place on record their very great appreciation of the continued activities of the Linen League, inaugurated last year. Wonderful work has been done by the supply of bed linen and various articles to the approximate value of £270, and in addition many comforts have been supplied to the patients.

The Chesterfield and District Agricultural Discussion Society's effort was again highly successful, and the Board tender their most sincere thanks to the Society and to all the collectors, including the school children, for their work in connection with it. The number of eggs received was more than could be preserved at the time. Arrangements have been made to put a large proportion of eggs into cold storage and more eggs will be available for patients.

The Board also tender their most grateful thanks to all classes of subscribers for their generous assistance, and to the Hospital Committees (£1,080 14s. 11d.), the workers of the Women's Medical Ward Fund (£577 14s. 6d), and the Alexandra Rose Day Fund (£148), for their efforts on behalf of the Hospital.

Legacies have been received as follows :—

Executors of the late				£	s.	d.
Miss Louisa Botham	50	0	0
Miss Olive Herring	100	0	0
Mr. Francis Ottewell	232	19	2
Mr. Thos. Scott	100	0	0
Miss Ellen Ward	50	0	0

These sums have been placed to the credit of the Capital Account (General Purposes).

IN-PATIENTS AND OUT-PATIENTS.

During the year 1933, 2,748 patients were admitted to the Hospital, being 38 more than in 1932. At the close of the year 1932 there were 173 patients in the Institution, so that 2,921 in all have received In-patient treatment, being an increase of 46 compared with 1932.

Of the 173 patients remaining in Hospital at the end of 1932, 147 were cured or relieved, fourteen unrelieved, five died, four were transferred to other Institutions, and three remained in Hospital.

Of the 2,748 patients admitted during 1933, there were :—

2276	Cured or relieved.
139	Unrelieved.
145	Died.
8	Left at their own request.
30	Transferred to other Institutions.
150	Remaining in Hospital (exclusive of three remaining from 1931 and 1932).
2748	

The total number of deaths of patients admitted during the year was 145, of which number 44 died within 48 hours of admission.

There have been 4,274 cases in which anæsthetics have been administered during the year, the number of operations performed being 4,440.

There were 4,476 persons X-Rayed during the year, and in the Diathermy Department 13 patients (11 new, 2 old) made 131 attendances. Screen examinations numbered 390. In the Ultra-Violet Ray Department 171 cases were dealt with, the number of attendances being 2453.

During the year, 8,033 patients were treated in the Out-patient Department, as compared with 8,104 in 1932.

Medical and Surgical ...	4,098
Orthopædic ...	324
Ear, Nose and Throat ...	1,395
Ophthalmic ...	1,610
Dental ...	606
	<hr/>
	8,033

In addition to the above, 5,644 cases were treated in the Casualty Department, of which number 1,162 persons ultimately became In-patients.

In the Orthopædic, Electrical and Massage Department the attendances numbered 31,524.

The total attendances of Out-patients, excluding the Venereal Department, numbered 89,035.

In the Special Department dealing with Venereal Diseases, the number of new cases dealt with was 316. During the year, 213 persons were discharged cured. The whole of the expenses in this Department are borne by the County Authorities.

GENERAL.

The improvements in the X-Ray Department, referred to in the last year's Report, have been continued during the year. Out of the grant of £1,600 from the Derbyshire Miners' Welfare Committee, which has been previously mentioned, the sum of £1,150 is being allocated to this Department to be spent in providing new and improved apparatus. When these alterations and additions are completed the Department will have modern and up-to-date equipment throughout.

The arrangements for the provision of Blood Donors made by members of the St. John Ambulance Brigade and Rover Scouts have again proved very satisfactory, and the Board tender their thanks to all who have given their services.

Several subscribers have shown their desire to benefit the Hospital still further by signing an agreement, a copy of which appears on page 65. By this method the Hospital will receive a further 7/- for each £1 1s. 0d. subscribed (with Income Tax at 5/- in the £). It is earnestly hoped that their example will be largely followed.

The Library, of which members of the "Toc H" act as Librarians, has been continued, and has been a source of great pleasure to the patients, and thanks are accorded to all helpers in connection with the Library.

The Ladies' Section of "Toc H" still continues to run the Canteen for the supply of refreshments for the patients attending the Out-patient Department. This has, in the past, proved a great boon to the patients attending, and hearty thanks are given to the ladies who devote so much time and trouble to this useful work.

Numerous gifts have been presented to the Hospital during the year, and the Board desire to express their thanks to the donors.

THEO. PEARSON,

Chairman of the Board of Management.

INCOME AND EXPENDITURE ACCOUNT FOR

INCOME.

ORDINARY.

I. Voluntary Gifts.

Subscriptions, Donations, etc.:—

	£	s.	d.	£	s.	d.
Annual Subscriptions and Employers' Contributions (see page 21)	4864	1	0			
Add Income Tax recoverable on Annual Subscriptions ...	6	16	8			
Donations (see page 30)	982	5	11			
Boxes (see page 34)	187	18	6			
Hospital Committees (see page 37)	1080	14	11			
School Collections (see page 38)	89	1	11			
Alexandra Rose Day	148	0	0			
Women's Medical Ward Fund (see page 40)	577	14	6			
Hospital Sunday Fund (see page 45)	298	7	4			
Workmen's Collections (see page 48)	14522	9	2			
Gifts in Kind (see page 57)	523	14	5			
Tin Foil and Silver Paper	15	4	0			
				23296	8	4
Subscriptions, Donations, etc., received for the year 1932				1386	2	3

II. Receipts on Account of Services Rendered.

Contributions on Account of Services to Patients:—

(a) From Patients and their Societies—						
Approved Societies (see page 56)	765	11	0			
Re Motor Accidents (see page 56)	122	18	4			
(b) From Public Authorities—				888	9	4
Pensions Committees and War Office	40	1	8			
				40	1	8

III. Invested Property.

Interest, Dividends, etc., less Bank Charges	1132	15	10			
Rents	100	17	0			
				1233	12	10
Total Ordinary Income				26844	14	5

EXTRAORDINARY.

- (a) Legacies and Donations on Capital Account (see Balance Sheet)
- (b) Net proceeds from Voluntary Workers' Association, Cinema Sunday Grant, Contribution from Chesterfield Football Club, and Grant from Derbyshire Miners' Welfare Committee (see Balance Sheet) ...

Balance, being excess of Total Expenditure over Income for the Year	683	0	0
---	-----	---	---

We have examined the above Account with the Books and Vouchers, and certify that it agrees therewith.

R. L. MARSDEN & CO.,
Chartered Accountants,
Honorarv Auditors.

19th February, 1934.

THE YEAR ENDED 31st DECEMBER, 1933.

ORDINARY.	EXPENDITURE.			Daily Average No. of In-Patients, 189.34.		
	£	s.	d.	£	s.	d.
I. Provisions				4730	6	7
II. Surgery and Dispensary.						
Drugs, Chemicals, Disinfectants, etc.	1111	5	3			
Dressings, Bandages, etc.	1023	1	9			
Instruments and Appliances	1384	13	4			
Wines and Spirits	104	8	6			
Salaries and Wages of Dispensing Staff	574	12	9			
Sundries	159	3	5			
				4357	5	0
III. Domestic.						
Renewal and Repair of Furniture, Bedding, Crockery, etc.	671	11	0			
Laundry	1189	7	2			
Cleaning and Chandlery	180	9	4			
Water	435	4	6			
Fuel and Lighting	2020	11	2			
Uniforms	76	16	5			
Sundries	0	18	3			
				4574	17	10
IV. Salaries and Wages (Maintenance).						
Medical	1616	11	8			
Nursing	4563	3	3			
Other Officers and Employees	3789	18	1			
Pensions	7	10	0			
				9977	3	0
V. Miscellaneous.						
Printing, Stationery, Postages, Telephones, etc.	302	7	6			
Advertisements	39	0	10			
Insurance of Buildings, Equipment, Stores, etc.	160	8	4			
Garden	117	0	0			
Sundries	36	14	7			
				655	11	3
V(a). Venereal Diseases Department.						
Expenses Year ending 30th Sept., 1933	1566	16	7			
LESS Derbyshire County Council—						
Cash for expenses for Year ending 30th September, 1933	1566	16	7			
VI. Administration.						
Salaries	600	0	0			
Pensions						
Printing, Stationery, Postages, Telephones, etc.	58	3	5			
Advertisements	1	1	0			
Law Charges						
Auditors' Fee						
Sundries	13	15	8			
Superannuation (Management Charges)	14	17	6			
				687	17	7
VII. Establishment.						
Renewals and Repairs to Buildings and Plant				1960	12	7
VIII. Finance.						
Interest						
Appeals	14	13	2			
Rent						
Rates and Taxes	460	7	4			
				475	0	6
Total Ordinary Expenditure				27418	14	4
EXTRAORDINARY.						
Contributions to other Institutions	102	18	0			
Contribution to extinguish debt on Radium Fund A/c.	6	2	1			
Total Extraordinary Expenditure				109	0	1
Total Expenditure				£27527	14	5

BALANCE SHEET

LIABILITIES.						£	s.	d.	£	s.	d.
I. Sundry Creditors.						
II. Loans to Hospital.											
Westminster Bank, Ltd.—											
General Account				2467	17	9
III. Capital Accounts.											
(a) Hospital Endowments	9481	12	11			
Sheffield Equalised Independent Druids Cot	162	13	6			
As per last Balance Sheet				9644	6	5
(b) For Buildings and Equipment:—											
Extensions Fund Account as per last Balance Sheet									50029	16	8
Devonshire Wing Extension Fund Account, as per											
last Balance Sheet	11919	4	10			
Add Bank Interest	0	19	7			
						11920	4	5			
Less transferred to Radium Fund Account	53	14	3			
									11866	10	2
Future Extensions Fund Account, as per last											
Balance Sheet	21730	5	10			
Add Donations received during year and Bank											
Interest	4	8	1			
Add Grant from Miners' Welfare Fund	300	0	0			
									22034	13	11
(c) Radium Fund Account, as per last Balance Sheet	2075	0	4			
Add Transfer from Devonshire Wing Account	53	14	3			
Add Transfer from General Account	6	2	1			
									2134	16	8
(d) For General Purposes, as per last Balance Sheet	28364	15	6			
Add Legacies received during the year:—											
Exors. of late Miss Louisa Botham	50	0	0			
Exors. of late Miss Olive Herring	100	0	0			
Exors. of late Mr. Francis Ottewell	232	19	2			
Exors. of late Mr. Thomas Scott	100	0	0			
Exors. of late Miss Ellen Ward	50	0	0			
									28897	14	8
IV. Unexpended Income Balances of Special Funds.											
Repairs and Improvements Suspense Account, as per last											
Balance Sheet	101	7	5			
Add Donations:—											
Voluntary Workers' Association	800	0	0			
Cinema Sunday Grant	84	10	9			
Chesterfield Football Club	92	15	9			
Bank Interest received during year	2	3	4			
									1080	17	3

N.B.—(A) Investments on Capital Accounts.—The values shown are those at the date of the purchase or gift. These figures are in excess of the total market value on 31st December, 1933.

(B) The cost of the Buildings and the Equipment prior to 1st January, 1919, and the value of Holywell House at the date of the gift are not included in the above Balance Sheet.

We have audited the above Balance Sheet and certify its correctness, subject to the footnotes attached.

R. L. MARSDEN & CO.,

Chartered Accountants,
Chesterfield, Doncaster and Alfreton.
Honorary Auditors.

19th February, 1934.

£128156 13 6

31st DECEMBER, 1933.

ASSETS.		£	s.	d.	£	s.	d.
Cash at Bank and in Hand—							
Capital Account (Endowments) Cash at Bank	46	18	6			
Capital Account (General Purposes) Cash at Bank	3414	4	8			
Generally on Account of the Hospital, Cash in Hand	50	0	0			
Repairs and Improvements Suspense Account, Cash at Bank	1080	17	3			
					4592	0	5
		£	s.	d.			
Superannuation Account, Cash at Bank	215	12	0			
Less Superannuation Fund Account	215	12	0			
Superannuation Deposit Account, Cash at Bank	32	17	1			
Less Superannuation Deposit Fund Account	32	17	1			
Sundry Debtors							
...	...				195	3	2
Venereal Diseases Clinic—							
Expenses from 1st October, 1933, not yet ascertained.							
Investments on Capital Accounts—							
(a) For Special Purposes.							
Hospital Endowments.							
4 per cent. Consolidated Stock, Nominal Value	£2221 16s. 7d.	1800	0	0			
2½ per cent. Consols, Nominal Value	£2594 6s. 9d.	1500	0	0			
Chesterfield Corporation	£4000 Loan at 5 per cent.	4000	0	0			
5 per cent. Conversion Stock, 1944/1964, Nominal Value	£239 19s. 0d. (The Miss Jane North Fund)	255	7	11			
3½ per cent. War Loan, Nominal Value	£2100	2042	0	0			
					9597	7	11
(b) For General Purposes.							
3½ per cent. War Loan, Nominal Value	£9150	8801	9	0			
London, Midland & Scottish Railway Company, 4 per cent. Debenture Stock, Nominal Value	£1400	1850	0	0			
4 per cent. Consolidated Stock, Nominal Value	£1304 12s. 6d.	1050	0	0			
Great Western Railway Company, Consolidated Stock, Nominal Value	£108	310	0	0			
Rotherham Corporation 6 per cent. Redeemable Stock, 1938-1950, Nominal Value	£609 0s. 9d.	609	0	9			
Tredegar Iron & Coal Co., Ltd., 6,000 £1 "B" Shares, fully paid		10350	0	0			
					22970	9	9
Land, Buildings and Equipment of the Hospital.							
The Cost of the Hospital and all Equipment to December 31st, 1918 (see footnote "B")							
Expenditure from 1st January, 1919, to 31st December, 1919, Building and Equipment of Orthopaedic and Electrical Department, and additions to X-Ray Equipment ...					995	12	8
Holywell House, given by Mr. G. A. Eastwood, for "Extension" purposes (see footnote "B.")							
Capital Expenditure on Extensions Account, as per last Balance Sheet ...					50029	16	8
Capital Expenditure on Devonshire Wing Extension Account, i.e., Staveley Ward and Holywell House Annexe, as per last Balance Sheet ...					11866	10	2
Durrant Hall (late Baptist Chapel), as per last Balance Sheet					1517	7	7
Capital Expenditure on Future Extensions Account, i.e., Murphy Ward, New Ophthalmic Out-Patient Department, and additions to Holywell House, as per last Balance Sheet					22034	13	11
Capital Expenditure on Radium Department as per last Balance Sheet ...					2134	16	8
Income and Expenditure Account.							
Excess of Total Expenditure over Income for the Year 1933 ...		683	0	0			
Add Balance as per last Balance Sheet ...		1539	14	7			
					2222	14	7
					£128156	13	6

EXPENDITURE.

Year	Provisions	Surgery and Dispensary	Domestic	Establish- ment	Salaries and Wages Maintenance	Mis- cellaneous	Administra- tion	Finance Rent, Rates and Taxes	Total	Special Expen- diture	Grand Total
1924	£ 3959	£ 3700	£ 3548	£ 849	£ 6993	£ 389	£ 549	£ 346	£ 20333	£ 13307	£ 33640
1925	4294	3922	3448	940	8193	471	586	364	22218	7678	29896
1926	4182	3675	4019	822	8940	355	612	425	23030	1590	24620
1927	4317	4254	4488	589	8037	683	596	362	23326	1840	25166
1928	4403	5041	4072	883	8514	779	596	349	24637	916	25553
1929	4259	4540	3797	1627	8504	656	606	488	24477	236	24713
1930	4395	4403	3881	1596	8842	720	675	622	25134	6770	31904
1931	4491	4520	4108	1679	8837	754	708	601	25698	17138	42836
1932	4683	4522	4417	2227	9668	736	709	465	27427	1611	29038
1933	4730	4357	4575	1961	9977	656	688	475	27419	109	27528

The Venereal Department is not included in this Table.

The Accounts for 1927 to 1933 are in accordance with the Revised System of Hospital Accounts, so that some of the items are not comparable with previous years.

PATIENTS—Number and Cost for period 1924-1933.

Year	IN-PATIENTS ADMITTED				OUT-PATIENTS				Average stay of In-patients	Average Daily Occupied Beds				Average Cost per			Cost per Occupied Bed
	Surgical	Medical	Ophthalmic	Total	Surgical and Medical	Ophthalmic	Dental	Total		Surgical	Medical	Ophthalmic	Total	In-Patient	In-Patient per day	Out-Patient	
1924	1786	172	114	2072	3920	1239	506	5665	days 26.55	122.31	17.86	7.80	+147.97	£ s. d. 8 1 2½	s. d. 6 1	s. d. 8 10½	£ s. d. 111 2 5½
1925	2122	186	102	2410	4189	1384	587	6160	27.26	155.13	14.92	8.38	+178.43	7 12 9½	5 7	8 0½	102 1 3
1926	2365	233	129	2727	3959	1198	743	5900	23.91	149.98	19.76	8.61	178.35	6 19 2½	5 10	7 10	106 5 4½
1927	2377	291	179	2847	4777	1424	902	7103	23.09	148.89	22.62	9.47	180.98	6 13 9	5 9½	6 10½	105 13 7½
1928	2503	258	188	2949	5277	1439	1026	7742	22.43	148.03	21.44	11.49	180.96	6 16 9½	6 1½	6 10	111 12 6
1929	2318	304	176	2798	5001	1490	706	7197	23.95	148.29	23.50	11.25	183.04	7 4 10	6 0½	6 11	110 6 10
1930	2368	243	175	2786	5369	1526	646	7541	23.50	150.08	19.22	10.39	179.69	7 9 3½	6 4½	6 11½	115 18 10½
1931	2160	258	205	2623	5540	1467	606	7613	25.27	144.66	24.64	11.72	181.02	8 3 7½	6 5½	6 11½	118 4 2
1932	2179	240	291	2710	5863	1564	677	8104	26.47	153.07	28.78	13.59	195.44	8 9 8½	6 5	7 2	117 6 1
1933	2237	299	212	2748	5817	1610	606	8033	24.97	141.74	33.47	14.13	189.34	8 5 7½	6 7½	7 2½	121 0 11½

The Venereal Clinic Figures are not included in the above Table.

† Devonshire Ward was closed from June 8th to November 15th, 1924. † Staveley Ward opened 3rd February, 1925.

Murphy Ward opened 15th October, 1931.

ANNUAL SUBSCRIPTIONS

For the Year ending December 31st, 1933.

Subscribers marked thus * have signed an agreement to pay their subscriptions for seven years or their lifetime, whichever is the shorter. This will enable the Hospital to recover the Income Tax paid by the Subscribers on the amount of their subscriptions. Full particulars of this method of increasing the Hospital's income appear on page 64.

	£	s.	d.
Adams, E. L., School House, Barrow Hill	1	0	0
Allsop, Thos., J.P., Barlow Gate, Newbold	1	1	0
Alvey, S. B., High Street, Tibshelf	0	5	0
Ancient Order of Foresters Friendly Society (Court Havelock, 2930)—per C. Townsend, 81, Handley Road, New Whittington	1	1	0
Ashmore, A., Church Street, Pilsley	0	5	0
Ashmore, J. E., Holymoorside	0	10	6
Ashmore, Mrs. F., The Cottage, Angel Yard, Saltergate, Chesterfield	0	10	0
Atrill, N., Ltd., Gluman Gate, Chesterfield	2	0	0
Austin, John, Grasmere Lodge, Thornfield Avenue, Linden Avenue, Chesterfield	5	0	0
Babbington Coal Company, Nottingham	50	0	0
Baker, L. H., 30, Spencer Street, Chesterfield	1	1	0
Barfoot, J. R. D., West Bars, Chesterfield	5	5	0
Bargh, R., Holywell Cycle Depôt, Chesterfield	0	5	0
Barker, A., Chesterfield Road, Middle Duckmanton, Chesterfield	0	5	0
Barker's, Low Pavement, Chesterfield	5	5	0
Barlow, Mr. and Mrs. W., 37, Station Road, Pilsley ...	2	2	0
Barnes, E. C., C.B.E., Ashgate Lodge, Chesterfield ...	5	0	0
Barnes, G. F., Ashgate Road, Chesterfield	2	2	0
Barnes, T. Harold, 30, Chapel Street, Belgrave Square, S.W.1	3	3	0
Barr, Dr. J. Fulton, Hundall, Unstone	3	3	0
Bassetlaw and District Cricket League, per C. L. Harrison, Harthill, near Sheffield	1	13	0
Beardow, S., Press, Old Tupton	2	0	0
Bennett Bros., Brookside Nurseries, Chesterfield ...	2	0	0
Bennett, Mr. and Mrs. Alfred, West Field, Brookside, Chesterfield	2	0	0
Berresford, S., Avondale Road, Chesterfield	5	0	0
Bescoby, A. C., Grammar School, Chesterfield	0	10	0
Bingham, E., Lodge Farm, Handley, Clay Cross ...	1	0	0
Bird, S. E., 401, Sheffield Road, Whittington Moor ...	1	0	0
Birks, John Wm. Farrow, 31, Markham Rd., Chesterfield	2	2	0
Blackshaw & Sons, High Street, Chesterfield	1	1	0
Blackwell Colliery Company, Limited	26	5	0
Blair Brothers, Hunloke Arms Colliery, Wingerworth...	5	0	0
Boden, John & Co., Falcon Café, Low Pavement, Chesterfield	5	5	0
Boldry, J. S., Hawksley Avenue, Chesterfield	0	10	6
Bolsover Colliery Company, Limited	371	7	6

	£	s.	d.
Bolsover Home Grown Fruit Preserving Company, Ltd.	5	5	0
Bolsover Urban District Council, per T. B. Kenyon ...	10	10	0
Booker, H., Harewood Grange, Holymoorside ...	0	10	0
Boots, The Chemists, Chesterfield ...	1	1	0
Boult & Clough, Park Road, Chesterfield ...	0	5	0
Bradley, Miss L., The Hawthorns, Old Brampton ...	1	1	0
Bradley, T. H., 202, Ashgate Road, Chesterfield ...	1	0	0
Bradley, Wm., 48, York Street, Hasland ...	0	10	6
Brailsford, H., 44, High Street, Staveley ...	1	0	0
*Bramley, F. H., The Lodge, Unstone ...	2	2	0
Brampton Brewery Company, Limited ...	10	10	0
Brayshaw & Bateman, Cavendish Street, Chesterfield ...	3	3	0
Bright, Miss, Bank Close, Chesterfield ...	5	0	0
British Thomson-Houston Company, Limited ...	5	0	0
Britt & Sons, South Street, Chesterfield ...	1	1	0
Brodhurst, M. S., Newbold Gate, Chesterfield ...	2	2	0
Brooke, G. E., 25, Market Street, Staveley ...	1	0	0
Brough, G., Green Leas, Newbold, Chesterfield ...	1	0	0
Brown, W. H. & Sons, High Street, Tibshelf ...	2	2	0
Buckley, E., Somersall Farm, Brampton ...	1	0	0
Bullock, J. W., 130, Sheffield Road, Chesterfield ...	0	2	6
Bunce, J., 61, Market Street, Clay Cross ...	0	10	0
Burley, A., 27, Saltergate, Chesterfield ...	0	5	0
Burnside, Rev. F. H., Hawton Rectory, near Newark ...	1	1	0
Burton, Montague, Ltd., High Street, Chesterfield ...	1	1	0
Butler, R. & Son, Main Street, Newton ...	1	1	0
Cadman, John, 71, Hunloke Road, Holmewood ...	0	5	0
Calladine, J., 2, John Street, Clay Cross ...	0	5	0
Carline, Watson, Bird & Co., Saltergate, Chesterfield ...	3	3	0
Carruthers, Mrs., 8, Gower Street, Bloomsbury, London, W.C. ...	10	0	0
Caudwell, F. J., Church Hill Farm, Blackwell ...	0	10	0
Caudwell, Mrs. J., Whitecotes Farm, Boythorpe ...	1	1	0
Chambers, G. A., 37, Alexandra Road, Chesterfield ...	1	0	0
Chapman, C., "Westville," Chatsworth Rd., Chesterfield ...	1	1	0
Chapman, Wm., Barlborough Common ...	1	0	0
Chappell, G. A., Manor House Farm, Old Tupton ...	1	0	0
Chatsworth Estates Company, per J. D. Penrose, 68, St. Helen's Street, Chesterfield ...	20	0	0
Chesterfield Brewery Company, Limited ...	5	0	0
Chesterfield Corporation ...	126	2	4
Chesterfield and District Caledonian Association, per Mrs. Nicholson, 91, Newbold Road, Chesterfield ...	2	2	0
Chesterfield & District Co-operative Society, Limited...	15	15	0
Chesterfield & District Licensed Victuallers' Association	2	2	0
Chesterfield & District Medical Association ...	5	5	0
Chesterfield Hide & Skin Co., Ltd. ...	2	2	0
Chesterfield Tube Company, Limited ...	94	19	8
Clark, A. B., 51, Old Hall Road, Chesterfield ...	1	0	0
Clark, Geo., J.P., The Cedars, Chesterfield ...	1	1	0
Clark, Mrs., The Cedars, Chesterfield ...	1	1	0
Clarke, G., Wheatbridge Road, Chesterfield ...	1	1	0
Claybyn, Norman F., 8, Soresby Street, Chesterfield ...	0	10	6
Clay Cross Company, Limited ...	407	4	11
Clayton, J. & Sons, Clayton Street, Chesterfield ...	1	1	0
Clayton, J. J., Ltd., Whittington Moor ...	0	11	6

	£	s.	d.
Clayton, Ven. Archdeacon G. H., The Vicarage, Chesterfield	2	2	0
Clements, Mrs. A., The Quintas, Spital	1	1	0
Collis, J. & Sons, Ltd., Saltergate, Chesterfield	1	1	0
Cook, A. W., 41, Saltergate, Chesterfield	1	1	0
Cox, Mrs., Post Office, Heath	0	2	6
Cragg Brothers, High Street, Staveley	0	15	0
Craggs, W. H., 3, Poplar Avenue, Chesterfield	1	1	0
Crossley, W., & Sons, Low Pavement, Chesterfield	2	2	0
Cummings, Wm., & Co., Ltd., Old Whittington	2	2	0
Cutts, Mrs. E., 24, Market Place, Bolsover	0	10	6
Davis, G. F., Top Road, Calow	2	2	0
Davison, L., 8, Churston Road, Chesterfield	1	1	0
Davy, Arthur & Sons, Ltd., Paternoster Row, Sheffield	0	7	3
Dawson, E., Hunloke Road, Holmewood	1	1	0
*Deacon, M., J.P., Chase Cliffe, Whatstandwell, Matlock	2	2	0
Derbyshire, A., Ltd., Whittington Moor	1	1	0
Derbyshire Carriage & Wagon Company, Limited, New Whittington	10	10	0
Derbyshire, Mrs., A., Curbar House, Newbold Moor ...	1	10	0
Derbyshire County Council, Public Assistance Depart- ment, per H. W. Skinner	10	10	0
Derbyshire, Nottinghamshire and Midland Counties Colliery Enginemen, Firemen and Motormen's Union (per G. Annable)	3	3	0
Dobbs, Mrs. E. H., Burlington Street, Chesterfield ...	1	1	0
Doe Lea and District Women's Institute, per Mrs. D. A. Heslington	5	0	0
Donkin, Bryan, Company, Limited, Chesterfield ...	81	6	0
*Dunks, W., 154, Park Road, Chesterfield	1	1	0
Dutton, F. W., Market Place, Chesterfield	1	1	0
Eastwood, G. A., J.P., Brambling House, Chesterfield...	10	0	0
Eastwood, Miss, J.P., Brambling House, Chesterfield ...	3	3	0
Eaton, Wilfred, Bramley Vale, Glapwell	2	2	0
Edmunds, Capt. G. J., J.P., "Ivycourt," Brookside, Chesterfield	2	2	0
Edmunds, W. Hawksley, J.P., Gladstone Road, Chesterfield	1	1	0
Edmunds, Wilfred, Limited, Chesterfield	2	2	0
Elliott, F., 75, Newbold Road, Chesterfield	1	0	0
Elliott, S., Steeple Works, Chesterfield	4	0	0
Ellis, Son & Paramore, Spring Street, Sheffield ...	2	2	0
Eyre & Sons, Ltd., Holywell Street, Chesterfield ...	9	18	0
Fabry, R., "Dunmallet," Cromwell Road, Chesterfield ...	1	1	0
Fawcett, E. D., Unstone	1	1	0
Finningley, Mrs. A., 28, Holland Road, Old Whittington	5	0	0
Flavell, Mrs. Isaac, Market Street, Clay Cross	1	0	0
Flavell, Isaac, Market Street, Clay Cross	1	1	0
Fleming, Reid & Company, Limited, Knivesmith Gate, Chesterfield	1	1	0
Fletcher, Charles, Scarsdale Colliery, Sutton Scarsdale	5	9	9
Fletcher, E., Scarsdale Colliery, Sutton Scarsdale ...	1	1	0
Fletcher, E., 122, Barrow Hill	1	1	0
Ford, L., 9, Market Hall, Chesterfield	1	0	0
Fox, T., 86, Chatsworth Road, Chesterfield	1	0	3
Freeman, Hardy & Willis, Ltd., Rutland Street, Leicester	0	10	6

	£	s.	d.
Frisby, J., Limited, St. James' Buildings, Humberstone Gate, Leicester	0	10	6
Frith, J. W., Netherthorpe	1	1	0
Furness, J. W., Crown and Cushion Inn, Low Pavement, Chesterfield	0	5	0
*Gaunt, C. E., West Bars, Chesterfield	2	2	0
George, Miss I. A., 30, Gluman Gate, Chesterfield	1	10	0
Gilman, T. W., Post Office, Barrow Hill	1	1	0
Glossop, C. R., Park Gate Farm, Handley	2	0	0
*Glossop, Fredk. W.	2	2	0
Goodwin, F. & Son, West Bars, Chesterfield	1	1	0
Gosforth Foundry Company, Limited, Dronfield	2	2	0
Gothard, J. & Sons, Saltergate, Chesterfield	3	3	0
Grassmoor Company, Limited	228	16	6
Greaves, A. & Son, Ltd., Market Place, Chesterfield	1	1	0
Greaves, Miss D. I., 34, Station Road, Whittington Moor	1	1	0
Greaves, Thos., 166, Old Hall Road, Chesterfield	5	0	0
Green, A., Oak Bank, Whittington	1	1	0
Green, J. H. & F. W., Whittington	3	3	0
Green, Mrs. J. H., 181, Chatsworth Road, Chesterfield	1	0	0
Grieves, E., Avon Cottage, Staveley	1	0	0
Haag & Sons, Gluman Gate, Chesterfield	1	0	0
Hadfield, S., & Sons, Ltd., High Street, Chesterfield	5	5	0
Hall, T., 21, Calow Lane, Hasland	0	5	0
Hambidge & Company, Beetwell Street, Chesterfield	1	1	0
Hanson, F., South Street, Chesterfield	0	2	0
Harber, R., 193, Sheffield Road, Whittington Moor	1	0	0
Hardisty, E., Swinsty, Riddlesden, Keighley	1	0	0
Hardwick Colliery Company, Limited, Heath	475	17	4
Hardwick, S. & T., Heath	0	5	0
Hardy, A. E., Station Road, Pilsley	2	2	0
Harrison, J., & Sons, Ltd., Knifsmith Gate, Chesterfield	2	2	0
Harrison, Mr. and Mrs. F. T., Gluman Gate, Chesterfield	0	10	0
Hartington, Marquis of, Churchdale Hall, near Bakewell	5	0	0
Haslam, F., Ltd., Doncaster	2	4	6
Haslam, T. E., J.P., Broom House, Sheepbridge	3	3	0
Hearnshaw, A., 31, Queen Street, Chesterfield	1	1	0
Heath, A., Old Road, Chesterfield	2	2	0
Heath & Williamthorpe Co-operative Society, Holme-wood	2	2	0
Heathcote, J. H., Post Office, Scarcliffe	1	1	0
Hewson, Rev. W. R., The Rectory, Eckington	1	1	0
Hicks, R., & Son, 52-4, Duke Street, Whittington Moor	3	3	0
Hill, George, 24, Commonsides, Barlow	0	10	0
Hill, Henry R. (the late), 123, Barrow Hill	1	1	0
Hilton, J., 166, Station Road, Shirebrook	0	2	6
Hinch, Thos. W., Church Street, Brimington	2	2	0
Hitchcock, L., Knifsmith Gate, Chesterfield	0	6	0
Hodgson, Henry, Yew Tree Farm, Old Tupton	1	10	0
Hollingworth, R., Prince of Wales Inn, Whittington Moor	1	0	0
Hollis & Brummell, Park Road, Chesterfield	5	5	0
Holmes, A. H., 27, Vincent Crescent, Chesterfield	2	2	0
Holt, Thomas, 27, Princess Street, New Brimington	1	0	0
Hopkinson, Mrs. L., Biggin Farm, Tibshelf	3	0	0



PHOTO BY
MORGAN'S
CAVENDISH ST
CHESTERFIELD

STAVELEY WARD.



	£	s.	d.
Hounsfield, Miss M. A., "Holmesfield," 32, Fernwood Avenue, Streatham, S.W.16	1	1	0
Howsley & Nightingale, Aigburth, Highfield, North Wingfield	1	1	0
Howson, C. J., J.P., Fairfield, Chesterfield	1	1	0
Hoyle, Misses A. E. and L., 75, West Bars, Chesterfield	1	1	0
Hunloke, Sir Philip, J.P., Wingerworth	4	4	0
Hunt, J., 1, Warwick Street, Birdholme, Chesterfield	0	5	0
Hunter, J., Markham House, Duckmanton	2	2	0
Hyde, Robert & Son, Limited, Clarendon Works, Chesterfield	1	1	0
Independent Order of Good Templars, Lifeboat Lodge, per A. Seaman	0	17	0
Independent Order of Rechabites (Chesterfield District), Gluman Gate, Chesterfield	10	10	0
Irving & Co., Ltd., Gluman Gate, Chesterfield	3	3	0
Jackson, Mrs. G. M., The Hall, Clay Cross	2	2	0
Jackson, W. B. M., J.P., Glapwell Hall, Chesterfield	10	10	0
Jackson & Fryer, 19, Stephenson Place, Chesterfield	5	5	0
Jackson's, Limited, 31, Stephenson Place, Chesterfield	0	10	6
Jephson & Son, Knifsmith Gate, Chesterfield	1	1	0
Jones, Mrs. Agnes A., 404, Derby Road, Chesterfield	0	5	0
Jervis Brothers, Horns Garage, Chesterfield	1	0	0
Jordon, R., and Miss C. Jordon, 570, Chatsworth Road, Chesterfield	4	10	0
Kelly, Mrs. E., 1, Pleasant Place, Barker Lane, Chesterfield	0	3	0
Kent, E., Beetwell Street, Chesterfield	1	0	0
Kent, E. L., Beetwell Street, Chesterfield	0	10	0
Kerr, O. J. W., Ashgate Road, Chesterfield	1	1	0
Killamarsh Co-operative Society, Limited	2	2	0
King, John & Son (Enamellers), Ltd., Whittington Moor	6	13	9
Kirk, G. F., Limited, Chatsworth Road, Chesterfield	3	3	0
Kirk, G. M., Market Hall, Chesterfield	0	10	6
Kirkham, George, Tutbury Villa, Eckington	0	10	6
Knowles, Miss K., 208, Old Road, Chesterfield	2	0	0
Lamp Caps, Ltd., Chesterfield	9	9	0
Laver, Arnold & Co., West Bars, Chesterfield	3	3	0
Leadbeater & Peters, Ltd., Stephenson Place, Chesterfield	2	2	0
Legard's Leather Stores, South Street, Chesterfield	1	0	0
Lewis, I., Market Place, Chesterfield	1	1	0
Lievesley, W. B., "Charnwood," Newbold	0	10	6
Lignum, E. S., "Boot & Shoe" Inn, Grassmoor	0	10	0
Limb, W., Heath	0	5	0
Littlewood, Miss M., Hill Crest, Glapwell Hill, Doe Lea	0	10	6
Liverpool Victoria Friendly Society, Victoria House, Southampton Row, London, W.C.1	3	3	0
Lomas, Mrs. E., 32, Holywell Street, Chesterfield	0	5	0
London & North Eastern Railway Company	10	0	0
Lucas, B. C., Huntworth, Stoke Bishop, Bristol	3	3	0
Macartney, Walter C., Ashgate House, Chesterfield	3	3	0
Mackenzie, I. Scott, "Ravensworth," Duckmanton	1	1	0
Margereson, C., The Bungalow, Barlow	1	1	0
Margereson, G., Pratt Hall, Cutthorpe	1	0	0
Margereson, W. H., Sidlings Farm, Tapton	2	2	0

	£	s.	d.
Markham & Company, Limited	100	0	0
Marks, Charles H., 34, Devonshire Avenue, Hasland ...	1	0	0
Marks & Spencer, Ltd., High Street, Chesterfield ...	2	2	0
Marshall, Mrs., Terminus Hotel, Brampton	2	2	0
Marson, Benjamin J., Barrow Hill	2	2	0
Mason, Charles, Ltd., Hipper Street, Chesterfield ...	1	1	0
Mason, F. W., 27, Market Hall, Chesterfield	0	10	6
Mason, Mr. and Mrs. H., 182, Chatsworth Road, Chesterfield	1	0	0
Maule & Company, Huntingdon Street, Nottingham ...	1	1	0
Maypole Dairy Company, Limited, Leonard Street, City Road, London, E.C.	1	1	0
Meadow Dairy Co., Ltd., 196, City Road, London, E.C.1	1	1	0
Middleton, Harry, Saltergate, Chesterfield	0	10	0
Midland Fruit Preserving Company, Ltd., Whittington Moor	6	0	0
Miles, G. H., 19, Holywell Street, Chesterfield	0	10	0
Miles, Mrs. M., Cavendish Street, Chesterfield	0	5	0
Milner, Angus, Acre Street, Pilsley	0	13	0
Mitchell, C. W., 3, Duke Street, Mosbro'	0	5	0
Morgan, Crossley & Company, Limited, Miles Platting, Manchester	2	2	0
Murray, George, Barley Mow Inn, Wingerworth ...	1	1	0
Murray, P., 37, Sheffield Road, Chesterfield	0	5	0
Nadin, W., & Son, West Bars, Chesterfield	0	10	6
Nash, F., 10, Beetwell Street, Chesterfield	0	5	0
National Deposit (Approved) Friendly Society (Chester- field Branch), per W. T. Woodbridge	1	0	0
National Farmers' Union, Alfreton Branch, per M. B. Bryan, Long Croft, Oakerthorpe, Derby	5	5	0
National Federation of Retail Newsagents (Chesterfield Branch), per G. H. Miles, Holywell St., Chesterfield	1	1	0
National Institution for Persons Requiring Care and Control, New Whittington	2	2	0
New Byron Brick Company, Soar Lane, Leicester ...	2	2	0
Newton, Isaac, 76, Hunloke Road, Holmewood	1	1	0
Nodder, Rev. J. B., Ashover	2	0	0
Norman, Mrs. A., 44, Mansfield Road, Hasland	0	5	0
Norman, John, Wingerworth	1	1	0
North, Hon. John M. W., 396, London Road, Isleworth, Middlesex	2	2	0
Nottingham & District (Mansfield Branch) Women's Licensed Trade Defence Association, per Mrs. Joyce, Swan Inn, Bolsover	1	1	0
Nuttall, Mrs. E., Stephenson Place, Chesterfield ...	1	1	0
Orr, H. D. (the late), Saltergate, Chesterfield	2	2	0
Osborne & Co., Ltd., Dronfield	2	10	3
Oxcroft Colliery Company	125	0	0
Oxcroft Colliery Officials, per John Campbell	25	0	0
Oxcroft & District Co-operative Society	5	0	0
Parker, W. T., "Belmore," Hasland	2	2	0
Parrott, George, Moorfield Lane, Bolsover	0	5	0
Pashley, F. V., Gluman Gate, Chesterfield	0	10	0
Patent Electric Shot Firing Company, Chesterfield ...	10	0	0
Patrick, J. A., West Pool Villas, 105, Saltergate, Chesterfield	1	1	0

	£	s.	d.
Peabody, E., High Street, Staveley	1	0	0
Pearson & Company (Chesterfield), Ltd., Whittington Moor	44	0	0
Pearson, James, Ltd., Brampton	2	2	0
Pilley, H., Central Pavement, Chesterfield	1	1	0
Pilsley Colliery Company, Limited	116	13	4
Platts, Mrs. W., 106, Peveril Road, Chesterfield	1	1	0
Plowright Bros., Limited, Chesterfield	45	0	0
Powell, Mrs. E., 11, Ashfield Road, Hasland	0	10	6
Prestwich, Wm. & Sons, Limited, Dronfield	3	3	0
"Prince of Wales" Death and Divide Club, Whittington Moor, per R. Hollingworth	2	0	0
Proctor, Mr., and Mrs. J. J., "Edale," Holymoorside	1	0	0
Prudential Assurance Company, Limited, Holborn Bars, London, E.C.	6	6	0
Public Benefit Boot Company, Limited, St. Paul's Street, Leeds	0	5	0
Pugh, C. E., Lock's Lane Farm, Pilsley	2	2	0
Pugh, G., The Poplars, North Wingfield	1	0	0
Randall, W., Mansfield Road, Hasland	1	10	0
Redgate, J. A., Post Office, Doe Lea	1	0	0
Reed, H. W., 3, The Gables, High Street, Staveley	1	1	0
Renishaw Iron Company, Limited	7	7	5
*Rhodes, W., J.P., Chatsworth Road, Chesterfield	2	2	0
Rignall, F., Rose Hill, Brookside, Chesterfield	2	2	0
Ripley Co-operative Society	5	5	0
Robinson, Arthur, New Square, Chesterfield	1	1	0
Robinson, Miss F., Wheatbridge Mills, Chesterfield	2	2	0
Robinson, Mrs. C. P. (the late), Goldwell House, Chesterfield	3	0	0
Robinson, Mrs. J., Moorside Cottage, Chatsworth Road, Chesterfield	2	2	0
*Robinson, Chas. W., Moorlands, Brampton	10	0	0
Robinson, C. W., Wheatbridge Mills, Chesterfield	52	14	5
Robinson, J. B., Wheatbridge Mills, Chesterfield	52	14	6
Robinson, Philip, Wheatbridge Mills, Chesterfield	52	14	6
Robinson, V. O., Wheatbridge Mills, Chesterfield	52	14	6
Robinson, Mrs. W. B., 696, Brookside, Chesterfield	5	0	0
Robinson, W. J., Gluman Gate, Chesterfield	2	2	0
Rogers, J. & Co., 10, Station Road, Whittington Moor	2	2	0
Rooth, J. H., Burlington Street, Chesterfield	0	5	0
Rough, Arthur J., 18, Rose Cottages, Grassmoor	1	1	0
Royal Liver Friendly Society, per L. Pybus, 23a, Market Place, Chesterfield	1	1	0
Rushton, Mrs., 27, Eyre Street, Chesterfield	1	1	0
Russell, H., Nursery Farm, Arkwright Town	2	2	0
Savidge, Miss L. K., Nethermoor Farm, Wingerworth	0	10	0
Savidge, S., Nethermoor Farm, Wingerworth	1	1	0
Saxton, I. H., Brookside, Chesterfield	2	2	0
Scarsdale Brewery Company, Ltd.	5	5	0
Seaman, Arthur, 43, Bank Street, Chesterfield	0	10	0
Service Motors, Knifessmith Gate, Chesterfield	1	1	0
Sharman, Mrs. M. A., Crown Inn, Tibshelf	0	5	0
*Sharman, Walter, School House, Unstone	2	2	0
Sheepbridge Coal & Iron Company, Limited	430	12	0
Sheepbridge Stokes Centrifugal Castings Co., Ltd.	36	0	0

	£	s.	d.
"Sheffield Independent," re Nignogs Cot	30	0	0
"Sheffield Telegraph and Star," re Gloops Cot	30	0	0
Shentall, A., Gluman Gate, Chesterfield	2	2	0
Shentall, J., Limited, Whittington Moor	10	0	0
Shentall, Sir E., J.P., St. Mary's Gate, Chesterfield	5	5	0
Shirebrook Colliery, Limited	36	13	4
Short, C. P., 17, Gluman Gate, Chesterfield	0	10	6
Simms, Frank, Beetwell Street, Chesterfield	0	5	0
*Simms, Herbert, "Eastbourne," 16, High Street, Staveley	2	2	0
Sims, N. D., 26, Tennyson Avenue, Chesterfield	1	1	0
Sims, S., & Sons, Ltd., Britannia Works, New Whittington	5	5	0
Slatcher, L., Station Road, Pilsley	0	2	6
Smales, Thos., Devonshire House, Barrow Hill	1	0	0
Smith, Laurie, 442, Chatsworth Road, Chesterfield	0	10	6
Smith, Mrs. R. H., 8, Tapton Terrace, Chesterfield	1	0	0
Spafford, G., Barlow	1	1	0
Spencer, John T., The Mount, Park Road, Chesterfield	1	1	0
Spiers, J. E., Dunstone Grange, Newbold	1	0	0
Standing, R., Springwood Colliery, Sutton Scarsdale...	5	0	0
Stanton Bros., West Bars, Chesterfield	1	1	0
Stanton, F. C., 166, Old Hall Road, Chesterfield	2	2	0
Stanyon, H., Hunloke Road, Holmewood	0	10	0
Staveley Charities, Trustees of, Staveley, per R. W. Barlow, Staveley	4	4	0
Staveley Coal & Iron Company, Limited	861	13	4
Stead & Simpson, Belgrave Square, Leicester	1	11	6
Steel Breaking & Dismantling Company, Limited	1	5	6
Stephens, Thomas, 63, Lime Avenue, Staveley	1	1	0
Stokes, R. J. & Co., Knifemith Gate, Chesterfield	1	1	0
Stone, S., & Sons, Staveley	5	5	0
Stone, C. A., "Risehill," Chatsworth Road, Chesterfield	1	1	0
Sutton, C. W., Belvoir Terrace, Sheepbridge	1	1	0
Swale, Seth W., Sheffield Road, Chesterfield	2	2	0
Swallow, F. K., Burlington Street, Chesterfield	1	1	0
Swallow & Sons, Burlington Street, Chesterfield	4	4	0
Swanwick, E. D., Whittington House, Old Whittington	2	2	0
Swanwick, Mrs., Whittington House, Old Whittington	2	2	0
Sykes, Mrs. A. C., Sherwood Lodge, Bolsover	1	1	0
Symonds, Mr. and Mrs. A., Moorlands, Manor Road, Brimington	1	1	0
Taylor, Mrs. H., Queen Street, Chesterfield	1	1	0
Taylor, Mr. and Mrs. Harold, Old Hall Road, Chesterfield	2	2	0
Taylor, W. F. & Sons, Limited, Stephenson Place, Chesterfield	5	5	0
Taylors Drug Co., Ltd., Stephenson Place, Chesterfield (Goods to value of £1 1s. 0d).	0	10	6
Thickett, J., Soresby Street, Chesterfield	2	2	0
Thompson, J. W. (Chesterfield), Ltd., Old Whittington	6	0	0
Thompson, R., Ltd., Holywell Street, Chesterfield	3	3	0
Tibshelf Co-operative Society, Ltd.	1	0	0
Tissington, Chas. E., "Sunrae," High Street, Brimington	1	1	0
Todd, Miss H., 35, Station Road, Whittington Moor	1	1	0
Toplis, J. H., Old Brampton	1	1	0
Topham, Arthur, 15, Hollis Lane, Chesterfield	1	10	8
Townrow, Mrs. A. A., Somersall Lane, Chesterfield	2	2	0

	£	s.	d.
Townrows, Ltd., Chesterfield	5	5	0
Turner, D. N., J.P., Walton Lodge	5	0	0
Turner, H. H., East Bank, Chesterfield	10	10	0
Turner, John, Ltd., Packers' Row, Chesterfield	5	0	0
Turner, Miss K., East Bank, Chesterfield	2	2	0
Twelves, E., Ltd., Stephenson Place, Chesterfield	1	1	0
Tylden-Wright, Lt.-Col. H., J.P., Walton Cottage, Chesterfield	2	2	0
Tyler & Company, Burlington Street, Chesterfield	1	1	0
United Commercial Travellers' Association (per H. Dronfield, West End, Old Road, Chesterfield)	2	2	0
Urton, W., West Bars, Chesterfield	2	2	0
Varney, James, Apperknowle	0	10	0
Verney, Fredk., Walton	0	10	6
*Wakerley, W. E., "Woodside," Walton, Chesterfield	10	10	0
Walker, G. F., George and Dragon Inn, Newton	0	5	0
Walker, Louis, 9, West Bars, Chesterfield	0	10	0
Walker, Mrs., Woodside, Chesterfield	3	3	0
Walker, W. R., Loads, Holymoorside	2	0	0
Walters, John, 11, Nesbit Street, Hillstown, Bolsover	1	0	0
Ward, A., 34, Chester Street, Chesterfield	0	2	6
Ward, S. H. & Co., Sheaf Brewery, Sheffield	1	1	0
Ward, Wm., Brockhurst, Ashover	0	10	0
Warner, Peter, Market Place, Chesterfield	3	3	0
Warner, W. P., Market Place, Chesterfield	2	2	0
Wastnadge, J. W., Chesterfield Road, Shuttlewood	0	5	0
Welbeck Estates, Ltd., per T. Warner Turner	10	0	0
Wells, J. & G., Ltd., Eckington	37	10	0
Westminster Bank, Limited	3	3	0
Wheatcroft, Geo., 68, Soresby Street, Chesterfield	0	10	0
White, J. B., & Sons, High Street, Chesterfield	2	2	0
White's (Furniture), Ltd., Chesterfield	1	1	0
White's (Music), Ltd., Chesterfield	2	2	0
Wilbourn, J. H., 20, Mansfield Road, Hasland	1	0	0
Williamson, E., Barrow Hill Hotel	1	1	0
Wilson, J. P., 37, Doe Lea	1	1	0
Wilson, R., Victoria Hotel, Shirebrook	0	10	0
Wilson, Walter, 31, Alexandra Road, Dronfield	1	0	0
Winson, Nurse, Stretton, near Alfreton	0	10	0
Wood, T. P., & Co., High Street, Chesterfield	1	1	0
Woodbine, W., Sutton Springwood, Calow	0	10	6
Woodhead, E. R., High Street, Chesterfield	5	0	0
Woodhead, J. F., High Street, Chesterfield	5	0	0
Woodhead, J., Chesterfield Road, Staveley	0	2	6
Wright, E., & Company, Limited, Brampton	2	2	0
Wright, N., Knifsmith Gate, Chesterfield	0	5	0
Wright, T., 60, Prospect Street, Alfreton	0	5	0
Wycherley, F. H., Market Place, Bolsover	0	10	6
Yates, F., 35, Stephenson Place, Chesterfield	1	0	0
Yeomans, W., Beetwell Street, Chesterfield	4	4	0

£4864 1 0

DONATIONS, 1933.

	£	s.	d.
An old Lady Pensioner, per the Mayor of Chesterfield	2	0	0
Anonymous	0	5	0
Anonymous	10	0	0
Anonymous (Barrow Hill)	0	5	0
Anonymous ("To be used for the good of the Hospital")	5	0	0
Anonymous (in lieu of wreath)	1	0	0
Arkwright Town Labour Party—per B. Barnes, 136, Arkwright Town	0	10	0
Aspley, Mr. and Mrs., 32, Market Street, Eckington ...	0	2	6
Bacon, A., Greyhound Inn, Milltown—Collection on train	0	1	6
Barker, John W., The Hurst, Tibshelf	2	2	0
Barker, Mr. and Mrs. F., Manor Farm, Duckmanton ...	2	2	0
Barker, Mrs., 49, Sheffield Road, Chesterfield	5	0	0
Barr, Dr. J. Fulton, Hundall, Unstone	10	0	0
Berresford, S., "Lunch Table"	0	10	0
Biggs, John, 8, Parkhouse Road, Lower Pilsley	0	5	0
Bird, F., 7, Devonshire Cottages, Barrow Hill	0	10	0
Blagdon, T. W. (the late), Highfield Road, Chesterfield	0	10	6
Boldry, George, Portland Hotel, Chesterfield	2	2	0
Booker, T. W., Overholme Farm, Cutthorpe	4	0	0
Booth, Miss M., The Butts House, Ashover (re Linen League)	6	0	0
Botham, J. A., 506, Chatsworth Road, Chesterfield ...	1	1	0
Boyce, Mr., "Corner House," Gluman Gate, Chesterfield	1	1	0
Brackenfield Whist Drive and Dance—per Mrs. J. Barker, Lindway Lane, Brackenfield	3	14	0
Brimington Company of 4th Southwell and Derby Cadets, Church Lads' Brigade—Proceeds of Whist Drives—per W. W. Penney, 51, John Street, Brimington	2	0	0
British Charities Association, 103, Kingsway, W.C.2 ...	40	0	0
British Charities Association, "On to Prosperity Contest"	10	11	6
British Thomson-Houston Co., Ltd., Sports Club— Collection at Cricket Match, per Mr. Ball	0	6	0
Brown, Mrs. M., Woodhead Farm, Chander Hill, Holymoorside	0	10	0
Butler, R., Main Street, Newton	1	0	0
Buxton Lime and Limestone Hospital Fund—per D. Marsden Jones, c/o I.C.I. (Lime), Ltd., Royal Exchange, Buxton	0	17	6
Chapman, Mrs. H., Skerne, Driffild	5	0	0
Chase, L. W., Southwood, St. Anne's Hill, Chertsey, Surrey	1	0	0
Chatsworth Estates Company, Chatsworth Admission Fund—per W. K. Shemwell	25	0	0
Chesterfield Borough Police—Fire Brigade Ball ...	7	16	6
Chesterfield Cage Bird Society—per E. A. Speirs, 2, New Villas, Piccadilly, Chesterfield	7	3	6
Chesterfield Chamber of Trade—Proceeds of Bazaar— per G. D. Denwood	234	1	1
Chesterfield Co-operative Boot Repair Department— "Forfeits"	0	3	0

	£	s.	d.
Chesterfield and District Agricultural Discussion Society—per E. Heath and S. Shemwell ...	45	10	4
Chesterfield and District Amateur Bowling Association—per J. W. Madin, 134, Derby Road, Chesterfield ...	8	3	4
Chesterfield and District Beef and Pork Butchers' Association—per F. Bestall ...	49	8	0
Chesterfield and District Lawn Tennis Tournament Committee—per A. G. Harrison ...	4	9	3
Chesterfield and District Minor Cricket Association—per P. Staton ...	9	9	0
Chesterfield Ladies' Swimming Club—per Mrs. A. H. Lander, 8, Higher Albert Street, Chesterfield ...	0	15	0
Chesterfield Pony Racing Committee—per J. Tomlinson ...	55	1	10
Chesterfield Royal Hospital—Nurses' Effort ...	12	0	0
Chesterfield Councillors versus Officials Cricket Match, per the Town Clerk ...	5	19	6
Chesterfield Tube Works Sports Club—per P. Preece...	35	3	6
Clay Cross Company Employees, special contribution—per A. Butterworth ...	2	10	0
Clay Cross Girl Guides Association—per Miss Jackson ...	2	0	0
Clay Cross Motor Cycle Club, Ladies' Section—per Mr. Roebottom ...	3	7	0
Clayton Challenge Shield Football Association—per H. Bavin, 61, Gloucester Road, Chesterfield ...	2	2	0
College of Nursing, Chesterfield Branch—per Miss Berry ...	5	0	0
Cooper, T. E., 2a, Cross Street, Chesterfield ...	0	10	0
Cordwell Well Dressing, part proceeds—per Rev. J. S. Stancliffe, Holmesfield Vicarage ...	1	3	6
Coupe, Edwin, 3, Brookfield Avenue, Brookside ...	0	10	0
Derby District Cyclists' Club, collection at Clay Cross Works—per Major H. H. Jackson ...	0	16	6
Derbyshire Federation of Homing Societies—per A. A. Empson, The Gables, King Street, Whittington Moor ...	7	10	0
"Derbyshire Times" Sports, organised by "The Derbyshire Times" and Councillor T. J. Mitchell ...	39	4	2
"Derbyshire Times" Walk, collection, etc. ...	12	1	5
Dickinson & Whitham, Messrs, part proceeds of Ham unclaimed at Police Sports ...	2	17	6
Eastwood, Miss I., 23, Farnsworth Street, Hasland ...	2	0	0
Elliott, L. W., 5, Dixon's Road, Chesterfield ...	1	0	0
Fine, A ...	0	10	0
Fine, A ...	0	10	0
Fish, Mrs. J. N., 3, Saltergate, Chesterfield ...	1	1	0
Gainey, Mrs., The Limes, 9, Wharf Lane, Chesterfield...	1	0	0
Goucher, L., 4, Devonshire Road, Hasland ...	0	10	0
Green, Master J., and Misses Joyce and Hilary Preece, proceeds of Entertainment—per Miss D. M. Watkinson ...	0	1	8
Hardwick Hall Admission Fund—per J. D. Penrose ...	10	0	0
Heath Whist Drive and Dance—per E. Elvidge ...	15	6	6
Henson, Mrs. C., 7, Staveley Road, New Whittington ...	0	1	0
Hibbert, Frank, 33, Wharf Lane, Chesterfield ...	1	0	0
Holford, Miss B., Breaston, near Derby ...	2	10	0

	£	s.	d.
Hollingwood Hotel Dance proceeds—per H. P. Carter, 30, Princess Street, New Brimington	1	1	0
"Horace," Dronfield—per Mrs. Hay	0	2	0
Hughes, Mrs., Ward Street, New Tupton	2	10	0
"In Memory"	12	12	0
Iron Trades Employers Insurance Association—per S. W. Gladwell, 88, Victoria Street, N.W.1	10	0	0
Jordon, Miss C., 570, Chatsworth Road, Chesterfield— Collection by Dog "Jock"	0	4	0
London, Midland & Scottish Railway Horticultural Show—per J. Moore, 335, Hasland Road, Chesterfield	1	0	3
Margereson, W. H., Sidlings Farms, Chesterfield— Competition re Pig	5	11	2
Mason, Mrs. E., "Ferndale," 8, Briar Road, Netheredge, Sheffield, 7	1	0	0
Mason, Mrs. T., 14, Storforth Lane Terrace, Hasland... ..	0	10	0
Mitchell, Mrs. A. E. L., 127, Newbold Road, Chesterfield	10	0	0
Morton Holy Cross Church Sunday School Teachers and Friends—proceeds of carol singing	2	2	6
National Institution for Persons Requiring Care and Control	2	5	4
Nunney, P. H., 10, Skippon Terrace, Thorner, near Leeds	4	4	0
Parker, W. A., 19, Scarsdale Avenue, Blackpool	1	0	0
Payne, Miss Edith, in lieu of eggs	0	1	0
Pope, G. H., 46, St. Thomas' Road, Tibshelf	4	0	0
"Postal Order"	0	0	6
Railway Hotel, Whittington Moor, sale of Vegetables— per H. Bamford	2	8	0
Riseley, Miss, 13, North Street, Hepthorne Lane	2	0	0
Robertson, Mrs. N. C., 47, Warwick Road, Kensington, S.W.5	1	0	0
Robinson, Master Graham, 31, Spencer St., Chesterfield	0	1	0
Robinson & Sons, Ltd., Sports Club, proceeds of Skating on Walton Dam—per J. Stanyard	10	13	1
Rowell, Miss Jean—Proceeds of Concert	1	6	0
Ryland Works, Ltd.—Balance re Wreath	0	7	0
Sadler, E., & Company, The Green, Matlock, part proceeds of sale of Poultry House—per W. T. Parker	1	8	3
Saxton, R. G., Stonebroom	0	2	6
Sheepbridge United Football Club, proceeds from Football Match with Woodseats Baptist—per L. Soar, Quarry Bank, Sheepbridge	0	16	6
Shirebrook Dance Committee—per Mrs. Wilde and Mrs. Knighton	5	2	0
"Six Stitches"	0	10	0
Slater, Matthew, 268, Sheffield Road, Chesterfield	1	1	0
Staveley Dance, proceeds of—per Mrs. L. M. Reed, Three Gables, High Street, Staveley	10	0	0
Staveley Ploughing Association—per T. Lee Arthur, Norbriggs	10	0	0
Tarlton, Miss, The Glebe, North Wingfield	0	10	0
"Three Gloops," per C. E. Gaunt	0	5	0
Tibshelf (2nd) Scout Group—per C. Rhodes, 18, Chatsworth Street, Tibshelf	2	0	0
Tomlinson, Mrs., Breaston, near Derby	2	10	0

	£	s.	d.
Turner, Mrs., 115, Holmgate Road, Clay Cross—One amateur gardener's Carnival Effort	1	6	0
Walker, G., 66, Park Road, Chesterfield	0	4	0
Walker, T. H., Holmesfield	0	10	0
West Ward Allotment Holders' Association—per G. H. Whaley	5	0	0
Whittington Moor Co-operative Guild, proceeds of Dance—per F. M. Gray	3	10	0
Worthington, W., 16, Lowgates, Staveley	5	5	0
	£860	11	8

THANKOFFERINGS.

Anonymous	0	5	0
Anonymous	1	0	0
Bailey, C. H., 12, Devonshire Avenue, New Whittington	1	0	0
Barlow, Harold, Station Road, Pilsley	1	1	0
Bates, Arthur, 13, High Street, Clay Cross	1	0	0
Booth, John R., Churchside Farm, Hasland	2	2	0
Bower, Joseph, Whitbank, Alton, Tupton	0	10	0
Bramfitt, Mrs., 4, Bennett Street, Bath	1	1	0
Cartledge, A., 44, Chapel Street, Whittington Moor ...	0	10	0
Carver, Mrs., 183, Southmoor Road, Brimington ...	2	0	0
Checklin, Miss E., High Street, Stonebroom	1	0	0
Collins, Miss Beryl, 51, Gateford Road, Worksop ...	0	10	0
Cotterill, J. W., 49, St. Thomas' Street, Chesterfield ...	10	0	0
Cowley, Mark, 8, Devonshire Road, Hasland	1	1	0
Dales, Miss, Rectory Cottage, Upper Langwith	1	0	0
Fawcett, C., 15, Farnsworth Street, Hasland	1	1	0
Godber, John C., Broomhill Road, Old Whittington, Chesterfield	5	5	0
Grafton, Jesse, Beeley, near Rowsley	1	0	9
Green, Miss J. P., 193, Old Road, Chesterfield	1	0	0
Greenbury, J. B., 48, Highfield Avenue, Chesterfield ...	0	10	0
Grosse, John H., Millhouse, Back Lane, Pilsley	0	15	0
Hadfield, B., Highfield Hall Farm, Stonegravels, Chesterfield	5	0	0
Hanson, Miss L., 19, Gloucester Road, Chesterfield ...	5	0	0
Haslam, Leonard, Far Lane, Barlow	1	0	0
Hill, Henry, Sunny Bank, Cutthorpe	3	0	0
Hobson, Mrs., 107, Highfield Lane, Newbold	1	0	0
Hodgson, Henry, Belvoir Terrace, Sheepbridge	5	0	0
Hopkinson, Mrs., Moor Edge Farm, Tansley, Matlock	0	10	0
Hutchinson, Mr., The Laurels, Holmewood	3	0	0
Johnson, Miss, 5, Cobden Road, Chesterfield	5	5	0
Kent, Miss	0	10	6
Key, Herbert, School Hill, Cutthorpe	7	0	0
Kingwell, W. C., 67, Rutland Road, Chesterfield	0	10	0
Lansdown, E., 305, Old Hall Road, Chesterfield	2	2	0
Loveland, Alan, The Limit, Kettering Road, Moulton, Northampton	1	0	0
Loveland, Mrs. Alice, Windyridge, Kettering Road, Moulton, Northampton	7	0	0
Marshall, Mrs., Terminus Hotel, Brampton	2	2	0
Mason, T., 14, Storforth Lane Terrace, Hasland	0	10	0
Mellor, Miss E. M., 31, York Street, Hasland	2	0	0
Moon, W., 1909 Cottages, King Street, New Brimington	5	0	0

	£	s.	d.
Mother Helen, St. Peter's Mission House, Calow ...	0	10	0
Revill, Miss, c/o Mrs. Keeling, Bank Cottage, Ashover	1	0	0
Roberts, Miss Blanche, c/o Ashgate House, Chesterfield	1	10	0
Rhodes, John H., 40, Highfield Avenue, Chesterfield ...	5	0	0
Riley, A. C., 12, Traffic Terrace, Barrow Hill ...	1	0	0
Russell, H., Nursery Farm, Arkwright Town ...	10	0	0
Symonds, Wm. A., 123, Storforth Lane, Hasland ...	1	0	0
"Thankful" ...	2	0	0
Tart, H., 78, Park Road, Chesterfield ...	1	0	0
Wall, Rev. W. E., 24, Burnell Street, Brimington ...	3	3	0
Watts, Mrs., 288, Ashgate Road, Chesterfield ...	1	10	0
Wickens, J., 43, Ralph Road, Staveley ...	3	0	0
Wilde, J. G., 138, Old Hall Road, Chesterfield ...	1	0	0
	£982	5	11

COLLECTING BOXES.

LICENSED HOUSES.

CHESTERFIELD.

	£	s.	d.	£	s.	d.
Alma Inn, Brampton ...	1	5	5			
Blue Bell Inn, Holywell Cross ...	0	5	7			
Boythorpe Inn, Boythorpe Road ...	0	1	3			
Bricklayers' Arms, South Street ...	0	6	0			
Buck Inn, Holywell Street ...	1	6	0			
Cavendish Hotel, Gluman Gate ...	0	2	2			
Chesterfield Arms, Newbold Road ...	0	12	6			
Durham Ox, Brampton ...	0	9	9			
Furnace Inn, Furnace Hill ...	0	1	4			
Gardeners' Arms, Gluman Gate ...	1	0	0			
King and Miller Inn, Knifsmith Gate ...	0	2	2			
Market Hotel, New Square ...	0	1	4			
Masons' Arms, Chatsworth Road ...	0	11	7			
Old Angel, Packers' Row ...	0	1	7			
Old Britannia Inn, Old Hall Road ...	1	5	6			
Peacock Inn, Chatsworth Road ...	0	1	6			
Queen's Hotel, Hollis Lane ...	0	2	6			
Red Lion Inn, Brampton ...	3	10	2			
Royal Oak, Chatsworth Road ...	0	1	10			
Royal Oak Inn, The Shambles ...	0	1	4			
Square and Compass Hotel, Chatsworth Road ...	0	2	4			
Swan Inn, St. Mary's Gate ...	1	3	3			
Terminus Hotel, Brampton ...	0	1	8			
Three Horse Shoes Inn, High Street ...	1	17	0			
Victoria Inn, Holywell Street ...	0	0	8			
Victoria Inn, Victoria Street West ...	5	2	6			
Volunteer Inn, Holywell Cross ...	0	4	2			
Welbeck Inn, Soresby Street ...	0	2	9			
Wood, T. P. & Co. (Snack Bar) ...	0	4	7			
Yellow Lion Inn, Saltergate ...	0	1	5			
				20	9	10

						£	s.	d.	£	s.	d.
ARKWRIGHT TOWN :											
Station Hotel				1	0	0
BARROW HILL :											
Barrow Hill Hotel				17	10	0
BOLSOVER :											
Anchor Inn	3	11	0			
Cross Keys Hotel	2	3	6			
Carr Vale Hotel	14	6	0			
						<hr/>			20	0	6
CLAY CROSS :											
Victoria Hotel				0	16	0
CUTTHORPE :											
Cutthorpe Hotel	0	10	4			
Gate Inn	0	9	4			
						<hr/>			0	19	8
DUCKMANTON :											
Arkwright Arms	0	14	1			
Duckmanton Hotel	5	7	8			
						<hr/>			6	1	9
GRASSMOOR :											
Boot and Shoe Inn				0	2	6
HARDWICK :											
Hardwick Inn				0	7	9
HASLAND :											
Devonshire Hotel				1	17	3
HOLMEWOOD :											
Holmewood Hotel (1932)	31	5	6			
Holmewood Hotel (1933)	15	14	0			
						<hr/>			46	19	6
HOLYMOORSIDE :											
Star Inn				0	7	0
MARSDEN MOOR :											
Gate Inn				0	7	0
MILLTOWN :											
Greyhound Inn				0	5	0
STAVELEY :											
Devonshire Arms	0	3	6			
Nag's Head Hotel	0	12	6			
Poolsbrook Hotel	3	2	3			
						<hr/>			3	18	3
WOOLLEY MOOR :											
White Horse Inn				0	11	4
						<hr/>			121	13	4

CLUBS, ETC.:

	£	s.	d.	£	s.	d.
Arkwright Town Miners' Welfare Club ...	1	7	6			
Birdholme Working Men's Club ...	0	10	0			
Bolsover (Welbeck Rd.) Working Men's Club	1	11	0			
Calow Working Men's Club and Institute ...	1	3	11			
Carr Vale Working Men's Institute ...	6	13	1			
Glapwell Colliery Institute, Doe Lea ...	1	16	0			
Grassmoor Working Men's Club and Institute	1	15	1			
Hasland L.M. & S. Railway Institute ...	5	0	0			
Hasland Working Men's Club and Institute ...	2	0	0			
Markham Colliery Sports Club ...	6	15	1			
Markham Welfare Club, Staveley ...	0	19	9			
Morton Social Club	1	10	0			
North Wingfield Workmen's Club ...	1	1	0			
Oxcroft Colliery Workmen's Institute ...	1	8	0			
Ringwood Club, Brimington	1	10	5			
Shuttlewood and Stanfree Ex-Servicemen's Club	2	16	2			
Stonebroom Workmen's Social Club ...	1	0	0			
Tibshelf (Brook Street) Social Club ...	1	0	0			
Tibshelf Colliery Institute	2	19	5			
Tibshelf (High Street) Social Club ...	0	11	6			
Unstone Miners' Welfare Club	0	9	5			
Westhouses Workmen's Social Club and Institute	0	17	0			
Wingerworth Social Club	0	9	2			
				45	3	6

OTHER COLLECTING BOXES:

Bradley, Mrs., 1, Devonshire Drive, Langwith	1	7	6			
Britannic Assurance Co., Saltergate, Chester- field	0	0	4			
Calow Congregational Church, Women's Guild, per Mrs. G. Davison, Calow ...	0	9	9			
Chesterfield Picture House Café	0	6	4			
Cooper, E., Holywell Street, Chesterfield ...	0	5	0			
Elliott, J. H., Chesterfield Road, Staveley ...	0	10	0			
Hoyle, Misses, West Bars, Chesterfield ...	0	5	0			
Hunt, James, 1, Warwick Street, Chesterfield	0	5	8			
Moore, W., Saltergate, Chesterfield	0	0	10			
Potter, Miss G., 187, St. John's Road, Newbold Moor	0	3	11			
Shelton, Mrs., 36, Lime Avenue, Staveley ...	1	0	0			
Staveley Company's Motor Ambulance ...	12	10	7			
Staveley Company's Swimming Club, Ring- wood Baths, Staveley Works	2	11	0			
Wycherley, F. H., Market Place, Bolsover ...	1	5	9			
				21	1	8
				£187	18	6

FRIENDLY SOCIETIES AND HOSPITAL COMMITTEES.

	£	s.	d.
Alfreton Hospitals' Aid Committee	0	5	0
Arkwright Town	6	0	0
Ashover	33	12	0
Ault Hucknall	3	3	8
Barlow	15	10	6
Barrow Hill	6	10	0
Barrow Hill Memorial Club	100	0	0
Bolsover	85	0	0
Bolsover (New)	10	0	0
Bolsover Penny in the Pound	10	0	0
Brampton (Old) Whist Drive and Dance Committee ...	8	8	1
Brimington	100	0	0
Calow and Duckmanton	20	10	0
Chesterfield Royal Hospital Voluntary Workers' Association, £800 (see page 16).			
Clay Cross and District	170	0	0
Clowne	7	7	0
Creswell	11	0	0
Dronfield	10	0	0
Dronfield Fancy Dress and Cycle Parade	20	0	0
Grassmoor	18	0	0
Handley	7	15	0
Hasland	17	0	0
Hillstown Miners' Welfare	7	0	0
Hollingwood	20	0	0
Holmewood	15	0	0
Holymoorside	11	10	8
Killamarsh	7	10	0
Manchester Unity Order of Oddfellows:—	£	s.	d.
King William IV. Lodge, Chesterfield ...	2	0	0
Marquis of Hartington Lodge, Chesterfield	3	0	0
	5	0	0
New Whittington	100	0	0
(Including the following contributions: New Whittington Miners' Welfare Institute (R. Diggle), £13/13/0; New Whittington Social Club (E. Bickerton), £6/11/3½; E. D. Swanwick, £1/1/0; W. Baines, £1/1/0; P. Parker, £1; C. Hill, 15/-; W. Letthall, 15/6; Mrs. B. Sheppard, 10/-; E. Dunlop, 5/-; Crown Hotel, 17/-; Royal Hotel, 9/9; Angel Hotel, 1/-; Forge Hotel, 1/-; J. Parkes, 16/9; W. Eaton, £1).			
Old Whittington and Sheepbridge	30	0	0
(Including the following contributions: Sheepbridge Works Institute, Box, £6/11/0; Cock and Magpie Inn, Box, 3/-).			
Royal Antedeluvian Order of Buffaloes, G.L.E.:—			
	£	s.	d.
Mompesson Lodge, Eyam, Nr. Sheffield ...	1	10	0
Pride of the Dale Lodge, Great Longstone	1	1	0
	2	11	0

	£	s.	d.
Scarcliffe	5	0	0
Shirebrook	40	0	0
South Normanton	10	0	0
Sutton Springwood	12	12	0
Tibshelf British Legion	2	10	0
Welbeck and District Hospital Scheme	5	0	0
Whittington Moor	100	0	0
Whitwell	47	0	0
	<hr/> £1080 14 11 <hr/>		

DAY SCHOOLS.

	£	s.	d.
Arkwright Town (Council)	0	7	6
Ashover (Council)	1	2	0
Ashover Upper End (Council)	0	8	9
Barrow Hill (Council)	0	6	0
Blackwell (C. of E.)	0	14	0
Blackwell and Berrister (Council)	0	17	0
Bolsover Colliery	0	18	0
Bolsover (New) Infants (Council)	0	6	0
Bolsover, Welbeck Road (Council)	0	16	9
Calow (C. of E.)	0	5	0
Chesterfield :—			
Brampton Girls' Modern	3	8	4
Brampton Junior Mixed	0	17	6
Brampton Infants'	1	1	8½
Caretakers	0	7	11
Cavendish Junior Girls'	0	17	3
Cavendish Infants'	0	6	3
Central Boys' Modern	0	9	10
Central Girls' Modern	3	3	0
Christ Church Infants' and Junior	0	9	6½
Derby Road Girls' Modern	0	8	6
Derby Road Infants'	0	17	0
Derby Road Junior Mixed	1	7	4
Education Office	0	12	4
"Gilbert Heathcote" Junior Boys'	0	17	0
Girls' High School	4	4	0
Grammar School	10	10	0
Hasland (Eyre Street) Infants'	1	6	8½
Hasland (C. of E.) Junior Mixed	0	8	0
Hasland Hall Mixed Modern	0	17	3½
Highfield Hall Infants' and Junior	0	13	7½
Hipper Street Junior Mixed	1	3	10
Hipper Street Infants'	0	9	0½
"Mary Swanwick" Mixed Modern	0	13	4
"Mary Swanwick" Primary	1	12	1
Newbold (C. of E.) Infants' and Junior	0	13	10½

	£	s.	d.
New Whittington Mixed Modern	2	4	1
New Whittington Infants' and Junior	3	15	0
Old Road Infants' and Junior	1	14	11½
Old Road Mixed Modern	0	13	7
Old Whittington (Brushes) Infants' and Junior ...	0	11	2
"Peter Webster" Boys' Modern	1	4	0½
St. Helen's Junior Mixed and Infants	1	18	3½
St. Mary's (R.C.) Senior	0	10	8½
St. Mary's (R.C.) Junior	0	7	10½
Spital Infants'	0	6	3½
Tapton House Selective Central	1	6	9½
"Violet Markham" Girls' Modern	1	1	7½
Whittington Moor Infants'	1	4	1½
"William Rhodes" Junior	0	9	4
"William Rhodes" Boys' Modern	1	4	2½
"William Rhodes" Junior Mixed	1	2	0
"William Rhodes" Infants'	0	19	7½
Clay Cross (Council)	3	6	9
Clowne (Council)	2	3	6
Cutthorpe (Council)	0	10	3
Danesmoor (Council)	0	3	9
Doe Lea (Council)	0	5	0
Duckmanton (Central Council)	0	8	8
Grassmoor (Council)	0	8	0
Handley (C. of E.) Staveley	0	5	0
Handley (C. of E.) Stretton	0	10	0
Heath (Council)	0	11	0
Hardstoft (C. of E.)	0	5	0
Hollingwood Infants' (Council)	0	5	6
Hollingwood (Junior)	0	7	0
Holymoorside (Council)	0	15	0
Langwith (Bassett)	0	8	3
Mastin Moor (C. of E.)	0	5	0
Newton (Council)	0	12	6
North Wingfield (Council)	0	19	3
Paltrerton Infants' (Council)	0	2	6
Park House (Council)	0	13	1
Pilsley (Council)	0	13	1
Poolsbrook (Council)	0	5	0
Rowthorne (Council)	0	2	6
Shuttlewood Junior and Infants' (Council) ...	0	13	6
Shuttlewood Senior Mixed (Council)	0	8	0
Spinkhill (R.C.)	0	12	7
Stainsby (Council)	0	5	0
Stanfree Infants' (Council)	0	2	9
Staveley, Church Street (C. of E.)	0	7	0
Staveley, Middlecroft (Boys')	0	15	0
Staveley, Middlecroft (Girls')	0	14	0
Staveley (R.C.)	0	10	0
Staveley, Speedwell (C. of E.)	0	10	0
Temple Normanton (C. of E.)	0	3	6
Tibshelf (Alfreton Road) Junior	0	6	3
Tibshelf (Alfreton Road) Infants'	0	3	4
Tibshelf (Staffa Street) Junior and Senior ...	0	18	3
Tupton (Council)	1	4	7
Unstone St. Mary's and Apperknowle Schools ...	0	12	0

	£	s.	d.
Walton (Council)	0	2	6
Westhouses (Council)	1	7	6
Wigley (Council)	0	5	7
Woodthorpe (C. of E.)	0	5	0
	£89	1	11

WOMEN'S MEDICAL WARD FUND.

Collections for the Year ending December 31st, 1933.

	£	s.	d.
ARKWRIGHT TOWN—			
Mrs. Fretwell	4	0	0
ASHOVER—			
Miss E. A. Bradley, Miss H. Bradley, £3/3/-; Miss Barber, £1/10/9; Miss G. Bemrose, 10/7; Mrs. W. Bennett, £2/16/-; Mrs. J. Garner, £2; Miss M. Holmes, 17/-; Mrs. W. Holmes, 19/-; Mrs. Kitchen, Mrs. A. Mellor, 10/-; Mrs. T. W. Scott, 12/-; Mrs. D. Spencer, 8/-; Mrs. T. Spencer, 13/6; Mrs. A. Towndrow, £2/10/9; Mrs. Whitworth, 11/9; Whist Drive, £3/13/9½; Competitions, £2/7/5½ ...	23	3	7
BARLBOROUGH—			
Mrs. Greaves	5	5	6
BARLOW—			
Mrs. C. Margereson, £4/9/10; Mrs. J. Beach, £2/3/-; Miss E. M. Margereson, £3/3/9; Mrs. H. Morgan, £2/2/-; Mrs. F. Morgan, £1/2/6	13	1	1
BLACKWELL, NEWTON AND WESTHOUSES—			
Mrs. Wallis, Mrs. C. Hall, £1/3/-; Mrs. England, £1/6/2; Mrs. Rockley and Mrs. Molyneux, £4/15/2½; Mrs. Smith and Mrs. G. H. Wilson, £2/14/8½; Mrs. Spencer and Mrs. Riley, £3/12/6½; Mrs. S. E. Ward and Mrs. Edwards, £2; Mrs. Millward and Mrs. Ward, £3/8/6½; Whist Drive, £7/6/6	26	6	8
BOLSOVER, HILLSTOWN AND PALTERTON—			
Lady Houfton, £2/2/-; New Bolsover Hospital Fund, £5/5/-; Mrs. Reast, £1/15/-; Mrs. Crosby and Mrs. Bilton, £1/1/2; Mrs. Eyre and Mrs. A. R. Smith, £2/7/3; Mrs. W. Derry and Mrs. W. Machin, £2/6/1; Mrs. T. Turner, £1/10/-; Mrs. Critchlow and Mrs. Heaton, £3	19	6	6

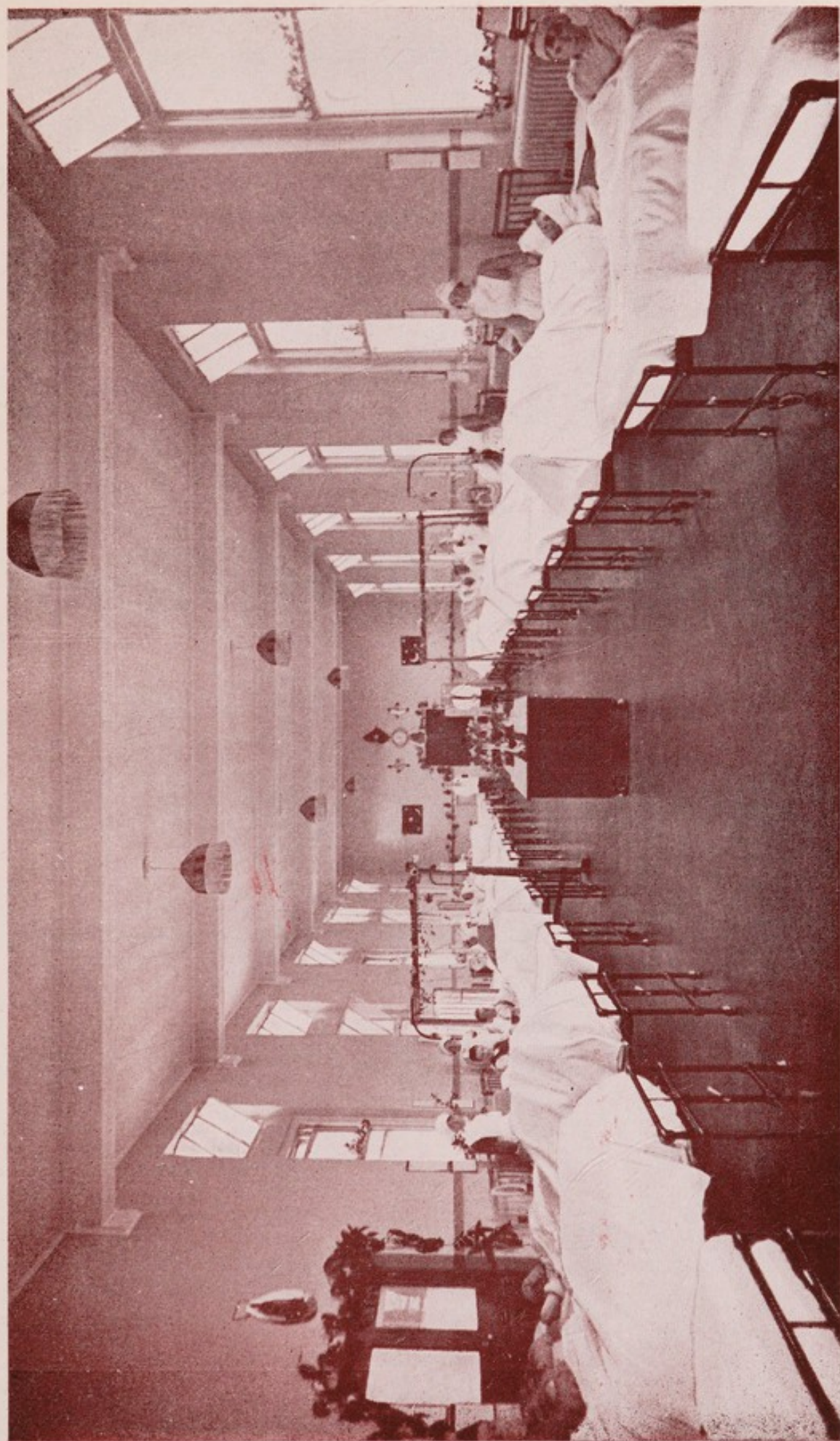


Photo by]

MURPHY WARD.

[H. J. Morgan, Chesterfield.



BOYTHORPE—

Mrs. Bridges, Mrs. C. E. Aldam, 11/9; Mrs. D. Bradley, £1/17/4; Mrs. Farnsworth, Mrs. E. A. Fletcher, £6/18/2; Mrs. Graham, £1/10/6; Mrs. B. Mason, £1/13/-; Mrs. Sylvester (Walton Road), £2/17/6 ... 15 8 3

BRAMPTON—

Mrs. Dearsley, £7/14/9; Mrs. M. Allen, 9/6; Mrs. Buxton, £2/4/-; Mrs. Chambers, 10/-; Mrs. G. Creswell, £1/18/-; Mrs. Dronfield, £2/2/6; Mrs. R. E. Fleming, £1/1/-; Mrs. Goodwin, £1/9/2; Miss M. E. Howard, 16/-; Mrs. Kee, £1/13/-; Miss E. Knowles, £2/12/3; Mrs. Lavender, £1/7/-; Mrs. J. Lewis, £1/5/1; Miss F. Marshall, 14/-; Miss H. Martin, 13/11; Mrs. Partington, 12/-; Mrs. Pashley, £1/18/6; Mrs. Ruddock, £1/6/9; Mrs. E. Smith, 14/-; Mrs. A. Turner, 17/-; Miss E. Thompson, £1; Mrs. Webster, 13/4 ... 33 11 9

ROBINSON & SONS, LTD.—

WHEATBRIDGE WORKS—

Miss P. Lowde, 4/-; Miss L. Millar, 4/-; Mrs. Dumelow, 13/3; Miss Mary Teather, 8/6; Miss May Jacques, 17/6; Miss M. Asquith, 7/8; Miss P. Fogg, 9/1; Miss F. Eyre, 19/4 ... 4 3 4

ROUND BOX DEPARTMENT—

Mrs. Marsh, £1/14/-; Miss A. Kerwin, £2/6/1; Mr. Fred Smith, 5/4; Mr. R. Drayton, 4/9 ... 4 10 2

WALTON WORKS—

Mrs. Hall, £1/16/-; Miss H. Robinson, £1/15/7; Miss J. Dale, £1/14/1; Miss C. Ruck, £4/10/-; Miss H. Carr, 13/9; Miss C. Briggs, £1/6/6; Mr. C. W. Smith, 15/3; Mr. V. Neale, 4/3 ... 12 15 5

HOLME BROOK WORKS—

Miss H. E. Stone ... 2 4 8

PORTLAND WORKS—

Mrs. Rudge, 9/6; Miss M. Attwood, 12/8; Miss D. Marples, 13/5 ... 1 15 7

STAFF—

Miss V. Bryan, 11/1; Miss M. Allen, 2/-; Miss L. Smith, 4/3; Miss A. S. Miller, 4/- ... 1 1 4

BRAMPTON, OLD—

Miss Hays ... 3 3 6

BRIMINGTON AND TAPTON—

Mrs. J. J. Brelsford, £4/15/0½; Mrs. A. S. Allsop, £2/8/6; Miss V. Belfitt, £2/6/5; Miss E. Berresford, £1/18/6; Mrs. L. Brelsford, £1/12/9; Miss Buckley, £2/12/-; Miss M. Frost, 15/7½; Miss M. Widdowson, £1/9/4; Anon, 1/10 ... 18 0 0

CALOW—

Mrs. O'Farrall, £1; Misses Clarkson and Ind, £2/5/- 3 5 0

CHESTERFIELD—

Mrs. M. Ashmore, £1/3/-; Mrs. W. H. Atrill, £3/11/8; Mrs. P. Austin and Miss Ludlam, 12/9; Mrs. Buxton, £1/12/9; Mrs. Cowley, £1/5/4; Miss A. Charlesworth, £1/12/-; Mrs. Elliott, £1/3/3; Mrs. Greatorex, £3/18/6; Miss Hays, 13/1½; Mrs. R. Holmes, £1/2/-; Mrs. Jacobs, 11/6; Mrs. T. R. Madin, £7/0/6; Mrs. A. Marshall, 13/-; Miss N. Metcalf, £1/13/-; Mrs. Miller, 19/6; Mrs. G. Perrin, £1/16/7; Mrs. Phillips, £2/8/8; Mrs. J. Poole, £1/6/3; Mrs. Proctor, £1/0/3; Mrs. Rushton, £1/8/6; Miss Ryde, 10/6; Mrs. A. B. Short and Mrs. S. Barlow, £3/15/4; Mrs. W. R. Short, £1/18/-; Mrs. R. Smithson, £1/15/-; Miss E. Tennant, £1/1/-; Mrs. C. Whiting, £1/15/5; Mrs. S. Phipps, 12/7; Miss Watkinson, 8/- ... 47 7 11½

CLOWNE—

Mrs. Arthur, £1/3/3; Mrs. Ashley, £2/5/6; Mrs. Davis, £1/18/7; Mrs. E. Smith, £1/15/10; Mrs. Rodgers, £1/13/3; Miss D. Wigg, 18/2 ... 9 14 7

CLAY CROSS—

Mrs. S. Smith, Mrs. J. Cutts and Mrs. A. Gregory, £2/14/6½; Miss Gregory, £1/4/2; Mrs. M. A. Marsh and Mrs. F. Marsh, £2/13/6; Mrs. Mitchell and Mrs. Walker, £1/18/9; Miss Knott, £2/6/-; Mrs. R. Mills and Miss N. Green, £4/3/-; Mrs. Lanckham and Mrs. Bradder, £4/13/- ... 19 12 11½

CUTTHORPE—

Miss H. Crookes, Miss I. Crookes, Miss I. Margereson, Mrs. F. Wood, Miss A. Tomlinson and Miss S. A. Warcup ... 10 1 3

DANESMOOR—

Mrs. G. E. Parsons and Miss Parsons ... 4 12 3½

DERBY ROAD—

Mrs. Woodman, £2/8/8½; Mrs. Barker, 18/-; Mrs. Bedford and Mrs. Fell, £1/13/3½; Mrs. Bollans, £1/10/7½; Mrs. Heathcote, 17/-; Mrs. S. Hedley, 13/-; Mrs. J. Inch, 10/10; Mrs. S. Lowe and Mrs. Chambers, £1/8/1; Miss McDowell, 7/10; Mrs. Renshaw, 4/9; Mrs. E. E. Wilde, £1/7/6 ... 11 19 7½

GRASSMOOR—

Mrs. E. Browett and Mrs. B. Farnsworth, £1/3/5; Mrs. Higginbottom, 14/4; Mrs. F. M. Neale, £1/9/3; Mrs. J. Robinson and Mrs. J. T. Robinson, 18/-; Mrs. E. Smith, 17/4; Mrs. H. Tunnicliffe, 6/5; Mrs. Wilmott and Mrs. Hartshorne, £1/11/- ... 6 19 9

HARDWICK, HEATH, ROWTHORNE, AULT

HUCKNALL, STAINSBY AND DOE LEA—

Mrs. Dick, Miss E. Littlewood, £2/7/6; Miss E. Clayton, £1/1/6; Ault Hucknall Parish Church Mothers' Union, per Mrs. Gleave, £6/5/9 ... 9 14 9

HASLAND—

Mrs. W. V. Davies, Mrs. Arnold, £2; Miss E. Bradley, £1/0/5; Mrs. Brothers, 10/-; Mrs. Campion, £3/2/-; Mrs. Cooper, 8/2; Mrs. Marks, 13/-; Mrs. C. Melton, £1/1/7; Mrs. Moulds, £1/5/9; Mrs. A. Wheatcroft, 11/-; Mrs. Wright, £1/6/3; Mrs. Hale, £1/14/2; Mrs. Rowe, £4/5/1 17 17 5

HOLLINGWOOD AND BARROW HILL—

Mrs. W. Priest and Mrs. F. Goulding, £5/1/7; Miss D. Knighton, £2/1/1½; Mrs. F. Pearson (Ringwood Club), £1/2/3; Mrs. R. Reddish, £3/11/6; Mrs. G. Walters, £2/10/- (Hollingwood, £10/14/11½; Barrow Hill, £3/11/6) 14 6 5½

HOLMEWOOD—

Nurse Moakes 1 0 0

HOLYMOORSIDE—

Mrs. E. Shemwell, Miss M. Shemwell and Miss C. Taylor 11 15 7

LANGWITH—

Mrs. J. A. Tankard, £1/9/9; Mrs. F. E. Gasson, Mrs. J. Kay and Mrs. R. Ayres, £5/17/5; Mrs. E. Lee, 14/-; Mrs. Wallace Cooper, £1/1/6; Mrs. T. Newey, £1/13/10; Mrs. W. Pickering, 13/0½; Mrs. Pitchford, 14/8; Mrs. W. Reaney, 12/8; Mrs. T. Renshaw £1/10/7½; Mrs. Whitehead, 17/5 15 4 11

MASTIN MOOR—

Mrs. J. Howells and Mrs. F. Webster 3 16 8

NEWBOLD AND DUNSTON—

The Misses Taylor, £3/0/6; Mrs. Ashley, £2/4/10½; Mrs. F. Bennett, £1/14/-; Miss F. Charles and Miss D. Webb, 13/4; Mrs. Coupe, £1/0/3; Miss M. Jackson, £4/18/-; Mrs. E. Durham, £3/6/-; Miss Everard, £1/10/-; Miss Inchley, 15/3; Mrs. M. Kay, £1/15/8½; Miss A. Tagg, £1/17/1; Mrs. R. Tomlinson, £1/18/5; Mrs. F. Watkinson, £1/1/-; Mrs. P. Watson, 18/-; Mrs. T. Webb, £2/2/1; Mrs. J. and Miss Wilkinson, £1/4/-; Mrs. Wainwright, £3/7/9; Miss Wilson, £4/7/5 37 13 8

NORTH WINGFIELD, HEPTHORNE LANE
AND ANKERBOLD—

Mrs. Mosley and Mrs. S. Hoult, £2/7/4; Mrs. Rignall, £3/11/5; Mrs. Rose, £2/7/-; Mrs. W. A. Taylor, 18/9 9 4 6

PILSLEY—

Per Mrs. King, £1/5/-; Ladies of Pilsley Wesleyan Bright Hour, 10/-; Ladies of Pilsley P.M. Bright Hour, 10/-; St. Mary's Church Women's Meeting, 10/-; Whist Drive and Dance, £6/17/-; per Miss J. Keeton, 14/3 10 6 3

	£	s.	d.
POOLSBROOK AND LOWGATES—			
Miss C. Buxton, Mrs. Evans and Miss Wright ...	7	1	0
SHIREBROOK—			
Mrs. J. Gilbert	2	3	9
SHIRLAND, HIGHAM AND HALLFIELD GATE—			
Miss Bradley, £3/16/10; Mrs. Hadfield, £3/1/- ...	6	17	10
SHUTTLEWOOD, OXCROFT AND BENTINCK—			
Miss E. Hodson	5	19	0
SPITAL AND HADY HILL—			
Mrs. A. W. Swale, Mrs. A. Elliott, £2/18/4; Mrs. H. Henson, £1/8/2½; Mrs. M. E. Lowe, £1/13/-; Miss B. Lowe, 4/2	6	3	8½
STAVELEY—			
Mrs. B. Howells and Mrs. F. Addy, £5; Mrs. Reddish, £3/15/7½	8	15	7½
STONEGRAVELS—			
Mrs. A. B. Short, Mrs. H. Collis, £4/0/6; Mrs. Edwards, Mrs. Hursthouse, 13/-; Mrs. J. Leary, £2/1/2; Mrs. T. J. Mitchell and Mrs. E. Miller, £1/19/1½; Mrs. Tonkin, £3/10/-	12	3	9½
STRETTON—			
Mrs. C. R. Fox	5	3	0
SUTTON-CUM-DUCKMANTON—			
Mrs. Ottewell and Mrs. Hole	0	5	0
TIBSHELF—			
Mrs. Ainsworth, £1/2/-; Mrs. Greenwood, 17/10; Mrs. Boot, 18/3; Mrs. Chattle, 8/-; Mrs. E. Coupe, £1/5/4; Mrs. Gardner, 10/-; Mrs. G. Goodall, £2/16/-; Mrs. Inch, £1/3/6; Mrs. G. Lowe, 18/8; Mrs. Marshall, £1; Mrs. C. Smith, 8/8; Mrs. W. Goodall and Mrs. Bingham, £2/6/6; Mrs. Wood, £1/13/7; Proceeds of Pie Supper, £4/11/2; Sale of Dust Caps and Iron Holders, per Mrs. W. Goodall, 18/-	20	17	6
UNSTONE, APPERKNOWLE AND HUNDALL—			
Miss Pinder	3	5	0
WADSHELF—			
Mrs. E. Hill	4	5	8
WALTON—			
Miss J. Thorpe	7	7	3
WHITTINGTON AND SHEEPBRIDGE—			
OLD WHITTINGTON—			
Mrs. E. Redfern, Miss Derbyshire, £2/17/6; Miss Doe and Mrs. Hall, £1/14/-; Mrs. Dodd, £1/9/2; Mrs. Goodwin, £2/8/-; Mrs. Peach, £2/2/4; Mrs. Moxon and Mrs. Eric Moxon, 16/8; Mrs. Ward, 9/9; Anon, 2/4	11	19	9

NEW WHITTINGTON—

Miss O. Ackroyd, £2/19/11; Miss Adams, 15/-; Mrs. Cowley and Miss Johnson, £2/18/6; Mrs. Emms and Mrs. Johnson, £1/5/-; Mrs. Tacon and Mrs. Smithurst, £3/7/8; Mrs. Hicks, £2/5/- ... 13 11 1

THE BRUSHES—

The Misses Higginbottom ... 1 8 7

WHITTINGTON MOOR—

Miss Galer, 13/3; Miss Freeman, £1/4/7; Mrs. S. E. Hill, £2/6/9 ... 4 4 7

WINGERWORTH—

Mrs. Burton, Miss Handbury and Committee: Collection, £5/2/8; Whist Drive, £9/0/9 ... 14 3 5

WOODTHORPE AND NORBRIGGS—

Mrs. J. E. Smith ... 3 3 0

WOOLLEY AND HANDLEY—

Miss Crofts, Woolley Moor, Stretton, £3/15/-; Miss Bradley, Handley Cross, £2/10/- ... 6 5 0

£577 14 6

COLLECTIONS IN PLACES OF DIVINE WORSHIP

for the year ending December 31st, 1933.

	£	s.	d.
Apperknowle Methodist Church ...	1	15	0
Arkwright Town Methodist Church ...	0	10	0
Ashover, The Butts Methodist Church ...	0	11	6
Ault Hucknall Church ...	2	0	0
Barlow Methodist Church ...	1	5	0
Barrow Hill, St. Andrew's Church ...	2	1	9
Barrow Hill Ebenezer Methodist Church ...	1	0	0
Bolsover Church ...	6	0	0
Bolsover Congregational Church ...	2	2	0
Bolsover Town End Methodist Church ...	2	18	9
Brackenfield (Trinity) Church ...	3	0	0
Brampton Congregational Church ...	7	16	5
Brampton Congregational Church Sunday School (Primary Department) ...	0	10	0
Brampton Glad Tidings Hall ...	1	0	0
Brampton Gospel Mission Hall ...	2	17	0
Brampton (Old) Church ...	7	6	2
Brampton (Old) Hollins Methodist Church ...	0	5	0
Brampton St. Mark's Church ...	1	0	0
Brampton St. Thomas' Church ...	8	10	10
Brampton (Victoria Street) Methodist Church ...	1	4	0
Brimington (Bethel) Methodist Church ...	1	0	0

	£	s.	d.
Brimington Christadelphians, per R. Wharton, "Rose-mount," Station Road, Brimington	1	0	0
Brimington (Common) Ebenezer Methodist Church	0	12	0
Brimington Congregational Church	2	0	0
Brimington (New) Methodist Church	0	15	0
Brimington Parish Church	8	7	0
Brimington Methodist Church (Mount Zion)	1	0	0
Calow Church	1	16	6
Calow Congregational Church—for 1932, £2; for 1933, £2	4	0	0
Chesterfield Baptist Church	3	3	0
Chesterfield Christ Church, Stonegravels	3	13	8
Chesterfield Congregational Church	5	11	1
Chesterfield Congregational Church Sunday School (Soresby Street)	3	8	7
Chesterfield Holy Trinity Church	9	0	8
Chesterfield Men's Adult School	0	10	0
Chesterfield Parish Church	11	11	7
Chesterfield Methodist Church (Holywell Cross)	4	0	0
Chesterfield Methodist Church (Sheffield Road)	0	10	0
Chesterfield Ragged School	2	10	0
Chesterfield Roman Catholic Church	6	4	9
Chesterfield, Saltergate Methodist Circuit:—	£	s.	d.
Methodist Church, Saltergate, Chesterfield	10	0	0
Wesley Hall, Hollis Lane, Chesterfield ...	0	12	7
Methodist Church, Old Hall Road, Chesterfield	1	1	3
Methodist Church, Storrs' Road, Chesterfield	2	5	0
Methodist Church, Bolsover	2	5	0
Methodist Church, Brimington	1	10	0
Methodist Church, Derby Road, Chesterfield	0	16	2
Methodist Church, Dronfield	0	5	3
Methodist Church, Dronfield Woodhouse	1	0	0
Methodist Church, Eckington	2	7	0
Methodist Church, Handley	0	12	0
Methodist Church, Hasland	1	3	0
Methodist Church, Hillstown	0	11	0
Methodist Church, Holmewood	0	15	0
Methodist Church, Inkersall	0	5	0
Methodist Church, Littlemoor, Newbold ...	0	17	6
Methodist Church, Marsh Lane	1	2	6
Methodist Church, Mosborough	2	16	6
Methodist Church, New Bolsover	1	1	0
Methodist Church, New Whittington	1	5	0
Methodist Church, Old Whittington	1	1	0
Methodist Church, Poolsbrook	0	17	0
Methodist Church, Staveley	4	0	0
Methodist Church, Unstone	0	14	4
Methodist Church, Wadshelf	0	12	0
Methodist Church, Whittington Moor	1	9	6
	41	4	7
Chesterfield Spiritualist Society, No. 1	1	0	0
Chesterfield St. Augustine's Church	3	0	0
Chesterfield St. Leonard's Church, Spital	2	10	0
Chesterfield Unitarian Church	2	2	0

	£	s.	d.
Chesterfield Methodist Church, Marsden Street ...	6	6	0
Chesterfield Methodist Sisterhood, Marsden Street ...	2	2	0
Chesterfield Women's Adult School ...	0	5	0
Clay Cross Church ...	2	12	8
Clowne Methodist Church ...	2	0	0
Coal Aston Wesleyan Reform Church ...	0	10	0
Creswell Household of Faith (per J. T. Fretwell) ...	3	0	0
Creswell Methodist Church (Mansfield Road) ...	0	10	0
Creswell St. Mary Magdalene Church ...	3	4	0
Cutthorpe Methodist Church ...	1	0	0
Danesmoor St. Barnabas' Church ...	1	0	0
Doe Lea Mission Church ...	1	10	0
Dronfield Congregational Church ...	0	13	6
Dronfield Methodist Iron Church ...	1	10	0
Dronfield Women's Adult School ...	1	5	0
Grassmoor Church ...	1	5	0
Grassmoor Methodist Church ...	0	10	0
Handley (Clay Cross) St. Mark's Mission Church ...	1	15	0
Hardstoft Mission Church ...	0	5	0
Hasland Church ...	3	0	0
Heath Church ...	4	11	0
Higham Methodist Church ...	1	0	0
Holmesfield Wesleyan Reform Church ...	0	7	8
Hollingwood, St. Francis' Church ...	1	15	6
Holymoorside Church ...	1	0	0
Holymoorside Congregational Church ...	0	15	0
Holymoorside Methodist Church ...	1	0	0
Marsden Moor Methodist Church ...	1	0	0
Marsden Moor Mission Church ...	1	1	6
Milltown Methodist Church ...	2	0	0
Morton Church ...	2	8	1
Mosborough Glyn Vivian Mission ...	2	0	0
Newbold Church ...	5	8	6
Newbold (Highfield) Methodist Church ...	1	0	0
New Whittington Baptist Church ...	0	15	0
New Whittington Church ...	3	4	2
New Whittington Men's Adult School ...	0	10	0
New Whittington Sunday School Union ...	4	3	0
New Whittington Women's Adult School ...	0	10	0
Palterton Methodist Church ...	0	8	2
Scarcliffe Church ...	2	2	0
Sheepbridge Ebenezer Church ...	1	5	0
Shirland St. Leonard's Church ...	2	2	0
South Wingfield (Birches Lane) Baptist Church ...	0	16	0
Spinkhill Roman Catholic Church ...	1	5	6
Stanfree Methodist Church ...	0	5	6
Staveley Methodist Free Church (Lowgates) ...	6	2	6
Staveley Parish Church and Mission Churches ...	5	0	0
Staveley St. Joseph's Roman Catholic Church ...	1	5	6
Stonebroom Church ...	4	4	0
Stonebroom Free Church Council—Good Friday Collection	1	0	0
Stretton St. James' Mission Church ...	0	10	0
Sutton-cum-Duckmanton Churches ...	1	3	11
Temple Normanton Church ...	1	0	0
Temple Normanton Church Sunday School ...	0	10	0
Tibshelf Church ...	3	4	9

	£	s.	d.
Tibshelf Methodist Church Women's Guild	2	2	0
Tibshelf Salvation Army	0	4	0
Tibshelf St. Thomas' Mission Church	0	17	6
Tibshelf Methodist Church	1	6	0
Troway Methodist Church	1	7	0
Tupton (Old) Methodist Church	0	11	2
Wadshelf Mission Church	1	0	0
Walton Church	0	10	0
Wessington Church	2	2	0
West Handley Wesleyan Church	0	12	6
Westhouses Church	1	1	0
Whittington Church	3	18	8
Whittington Moor Congregational Church and Sunday School	0	10	6
Whittington Moor and District Sunday School Union	0	5	0
Whittington Moor Ebenezer Methodist Church	1	8	0
Whittington (Old) Mount Tabor Methodist Church	0	10	0
Wingerworth Church	2	15	0
Wingerworth Methodist Church	1	0	0
Winning, B., Methodist Church	0	7	6
Woodthorpe St. Peter's Mission Church	0	18	3
	<u>£298</u>	<u>7</u>	<u>4</u>

WORKING MEN'S SUBSCRIPTIONS

For the year ending December 31st, 1933.

1.—Chesterfield District.

	£	s.	d.
Allen & Orr, Saltergate, Chesterfield	20	0	0
Backhouse, H., Cross Street West, Chesterfield	1	0	1
Baker, L. H., 30, Spencer Street, Chesterfield	2	9	0
Bales & Wilde, Gluman Gate, Chesterfield	1	16	0
Barker Pottery, Brampton	20	0	0
Barkers, Low Pavement, Chesterfield	0	10	0
Barlow New Farm Colliery, per Wm. Needham (and firm)	3	10	0
Bennett Brothers, Brookside Nurseries, Chesterfield ...	1	16	0
Berrisford, H. E., Saltergate, Chesterfield	5	6	4
Blackburn Philanthropic Assurance Co., Ltd., Beetwell Street, Chesterfield	1	8	3
Blackshaw's Café, High Street, Chesterfield	5	4	0
Blair Brothers, Hunloke Arms Colliery, Wingerworth ...	1	5	0
Boden, J. & Co., Falcon Café, Low Pavement, Chesterfield	1	9	6
Bovis, Ltd., 35, High Street, Marylebone, London, W.1 ...	9	6	6
Bower, C., Felkin Street, Chesterfield	0	10	0
Brady, E., 1, Lordsmill Street, Chesterfield	0	8	3
Braim & Cooper, Ltd., 11, Higher Albert Street, Chesterfield	1	10	0
Brampton Brewery Company, Limited	24	12	3
Brayshaw & Bateman, Cavendish Street, Chesterfield ...	2	9	11

	£	s.	d.
Britannic Assurance Company, Saltergate, Chesterfield ...	9	2	0
British & Argentine Meat Co., Ltd., Burlington Street, Chesterfield	0	10	0
British & Argentine Meat Co., Ltd., Ltd., Market Hall, Chesterfield	0	13	4
British Foundry Units, Ltd., Sheffield Road, Chesterfield	3	18	0
British Thomson-Houston Company, Limited ...	48	18	1
Broomhead Bros., Limited, Packers' Row, Chesterfield ...	5	15	0
Burkitt, W. & S., Saltergate, Chesterfield ...	0	16	2
Cabinet Supply Co., 38a, St. Mary's Gate, Chesterfield ...	2	15	8
Caledonian Biscuit Co., Ltd., Market Hall, Chesterfield ...	0	2	7
Cavendish Motors, Limited, Chesterfield ...	8	18	8
Central Leather Stores, Lordsmill Street, Chesterfield ...	1	17	1
Chesterfield Borough Police	15	1	1
Chesterfield Brewery Company, Limited ...	11	1	1
Chesterfield Cold Stores and Ice Works ...	1	12	1
Chesterfield Co-operative Society, Limited, West Bars ...	107	0	0
Chesterfield Corporation:—	£	s.	d.
Borough Treasurer's Department ...	31	12	5
Cleansing Department	40	10	10
Electricity Department	27	9	9
Gas Department	52	11	11½
Gas Department (Whittington)	2	2	8
Highways Department	50	19	2
Highways Department (Whittington) ...	23	9	0
Markets and Stephenson Hall	11	10	3
New Sewage Works	9	9	3
Transport Department	84	6	0
Chesterfield and Bolsover Water Board:—			
Water Department	34	5	2½
Water Department (Linacre)	9	19	10
	378	6	4
Chesterfield County Court, per J. Kee	4	4	8
Chesterfield and District Window Cleaning Society, Gluman Gate, Chesterfield	2	6	7
Chesterfield Division, Derbyshire County Constabulary ...	14	14	0
Chesterfield Employment Exchange	7	5	7
Chesterfield Hide & Skin Co.	0	18	5
Chesterfield Mines Rescue Station	6	0	0
Chesterfield Post Office (Engineer's Department) ...	5	11	7
Chesterfield Post Office Benevolent Fund	20	0	0
Chesterfield Royal Hospital (non-resident Staff) ...	21	12	0
Chesterfield Steam Laundry	18	0	0
Chesterfield Tube Company, Limited	284	19	0
Clayton, J. & Sons, Clayton Street, Chesterfield ...	14	0	0
Clayton, J. J., Limited, Whittington Moor	1	14	6
Cleveland Bridge & Engineering Co., Darlington ...	7	19	11
Colledge & Sons, Beetwell Street, Chesterfield ...	1	0	0
Collis, J. & Sons, Ltd., Saltergate	9	0	0
Corporation Theatre, Chesterfield	1	16	2
Cropper, H., Packers' Row, Chesterfield	0	0	5
Crow, A. M. & Sons, Union Walk, Chesterfield (and firm)	4	0	0
Cumming, W. & Company, Limited, Blacking Mills, Whittington	13	10	3
Davy, A. & Sons, Ltd., Chesterfield	1	1	10
Derbyshire, A., Ltd., Whittington Moor	3	11	8

	£	s.	d.
Derbyshire Carriage & Wagon Co., Ltd., New Whittington	27	17	1
Derbyshire Sanatorium, Walton (Male Staff) ...	2	0	0
Derbyshire Sanatorium, Walton (Nursing Staff) ...	3	5	0
Donkin, Bryan, Company, Limited ...	243	17	0
East Midland Motor Services, Ltd., Chesterfield ...	65	2	7
Eastwood, E., Wagon Works, Chesterfield ...	48	1	7
Edmunds, Wilfred, Limited ...	13	12	0
Elliott, S., Steeple Works, Chesterfield ...	12	5	7
Eyre & Sons, Ltd. :—	£	s.	d.
Cabinet Department ...	10	0	0
Painting Department ...	1	12	0
Shop Employees ...	18	0	0
	29	12	0
Fisher, S. A., 79, Newbold Road, Chesterfield ...	1	0	0
Fletcher, Charles, Scarsdale Colliery, Sutton Scarsdale ...	15	0	3
Fletcher, W. & R., Ltd., Packers' Row, Chesterfield ...	1	6	0
Fox, T., 86, Chatsworth Road, Chesterfield ...	1	19	4
Frisby's, Limited, Chesterfield ...	3	18	6
Gaunt, C. E., West Bars, Chesterfield ...	18	4	2
Gray & Lewis, Limited, Spital ...	14	10	3
Green, A., Limited, Whittington ...	3	0	0
Greville & Stuart, Ltd., Burlington Street, Chesterfield ...	1	0	0
Hardware (Chesterfield) Ltd. ...	5	2	6
Haslam, Frank, Ltd., Doncaster ...	6	13	9
Hattersley, B., Chatsworth Road, Chesterfield ...	1	8	7
Hearnshaw, A., 31, Queen Street, Chesterfield ...	2	19	0
Heath, Arthur, Old Road, Brampton ...	7	14	7
Heywoods, Ltd., Packers' Row, Chesterfield ...	0	11	0
Hippodrome, Chesterfield ...	2	14	6
Hodges, George & Son, Horninglow Street, Burton-on-Trent ...	1	13	2
Hollis & Brummell, Park Road, Chesterfield ...	3	11	0
Hunters, Ltd., Low Pavement, Chesterfield ...	2	16	0
Hyde, Robert & Sons, Ltd., Clarendon Works, Chesterfield ...	9	13	2
Hygienic Bakeries, Ltd., Holywell Cross, Chesterfield ...	0	19	0
Jay's Furnishing Stores, Corporation Street, Chesterfield...	0	1	4
Johnson, S. & Son, Chatsworth Road, Chesterfield ...	2	0	0
Kenning, George (Chesterfield), Limited, Vicar Lane, Chesterfield ...	5	13	8
Kirk, G. F., Ltd., Chatsworth Road, Chesterfield ...	21	0	0
Lamp Caps, Ltd., Sheffield Road, Chesterfield ...	48	19	9
Leewood Colliery Co., Ltd., 14, Wharfe Street, Sheffield (and firm) ...	22	11	10
Lighton, T. & Sons, Ashgate (and firm) ...	2	2	0
Lipton, Ltd., Low Pavement, Chesterfield ...	0	2	1
Liverpool Victoria Friendly Society, Chesterfield ...	3	3	0
London, Midland & Scottish Railway (see Eckington District No. 3, page 53).			
London & North Eastern Railway Company :—	£	s.	d.
Arkwright Town ...	4	0	0
Bolsover ...	7	14	4
Chesterfield ...	29	1	8
Chesterfield Market Place (Traffic Dept.)	7	14	6
Grassmoor and Heath ...	11	8	8
Langwith ...	80	0	0
Sheepbridge ...	1	19	2

	£	s.	d.	£	s.	d.
Staveley Town	120	0	0			
Staveley Town (Engineer's Department)	6	2	7			
Tibshelf and Pilsley	4	0	0			
				272	0	11
Markham & Company, Limited				205	0	0
Marks & Spencer, High Street, Chesterfield				0	17	6
Mason, A. W., Saltergate, Chesterfield				0	5	7
Mason, H. & Son, Chatsworth Road, Brampton (and firm)				2	12	0
Maypole Dairy Company, Limited, Low Pavement				0	19	3
McNab, A. J., Peveril Road, Whittington Moor (and firm)				1	10	0
Mee, T., Chatsworth Road, Chesterfield				2	3	4
Melias, Limited, High Street, Chesterfield				0	3	5
Morgan, Crossley & Company, Goyt Side, Brampton				4	12	8
Park Foundry Company, Park Road, Chesterfield				1	0	0
Pashley, F. V., Gluman Gate, Chesterfield				2	9	0
Patent Electric Shot Firing Company, Peveril Road, Chesterfield				22	6	0
Pearl Assurance Co., Ltd., Low Pavement, Chesterfield				9	9	9
Pearson, James, Ltd., The Pottery, Brampton				12	0	0
Playfairs, Ltd., Low Pavement, Chesterfield				0	10	0
Plowright Bros., Ltd., Brampton				135	0	0
Proctor, R. W. & Sons, Ashgate Road, Chesterfield				4	5	6
Prudential Assurance Co., Ltd., Chesterfield				14	11	9
Public Benefit Boot Co., Stephenson Place, Chesterfield				2	1	2
Randall, W., Mansfield Road, Hasland				4	14	0
Redfern, S. E., Ltd., High Street, Chesterfield				0	7	9
Refuge Assurance Company, Cavendish Street, Chesterfield				5	5	0
Rhodes, William, Chatsworth Road, Chesterfield				4	10	0
Ripley Branch, Amalgamated Co-operative Society Union				3	0	0
Robinson & Sons, Ltd., Wheatbridge Mills				629	8	1
Robinson, J. T. & Sons, Limited, New Whittington				3	2	0
Robinson, W. J., Gluman Gate, Chesterfield				1	3	11
Robson, Messrs. F., 120, Harcourt Road, Sheffield				3	10	0
Rodgers, S. T., Victoria Cabinet Works, Whittington Moor				4	5	0
Rowell & Son, South Street, Chesterfield				3	16	10
Ryland Works, Ltd., Newbold Road, Chesterfield				16	5	0
Salt & Short, Ltd., Chatsworth Road, Chesterfield				2	2	8
Scarsdale Brewery Company, Ltd., St. Mary's Gate, Chesterfield				10	0	0
Scottish Legal Assurance Society, Knivesmith Gate, Chesterfield				2	4	0
Shell Mex & British Petroleum, Ltd., Wharfe Lane, Chesterfield				0	5	0
Shentall, A., Ltd., Gluman Gate, Chesterfield				5	14	4
Shentall, John, Limited, Whittington Moor				42	5	0
Shentall, Sir Ernest, St. Mary's Gate, Chesterfield				15	0	0
Short, J. J., High Street, Chesterfield				1	12	6
Short, S. E. & Co., Gluman Gate, Chesterfield				2	13	6
Siddons, Geo. C., Studfield Ganister Works, Loxley, Sheffield (Holymoorside Branch, and firm)				2	2	0
Standing, R., Springwood Colliery, Sutton Scarsdale				12	8	2
Stanton Brothers, West Bars, Chesterfield				0	13	1
Station Hotel, Chesterfield				6	14	11
Steel-Breaking & Dismantling Company, Sheffield Road				1	16	0
Swale, Arthur, Vicar Lane				5	14	2
Swale, S. & Sons, Limited, Sheffield Road				7	5	1

	£	s.	d.
Swallow, J. K. & Sons, Burlington Street	9	15	9
Tar-Mac, Ltd., Derby Road, Birdholme	13	6	2
Taylor Bros., High Street	1	11	0
Taylor's Drug Co., Ltd., Stephenson Place, Chesterfield	0	7	5
Taylor, W. F. & Sons, Limited, Stephenson Place ...	9	19	3
Thompson, J. W., Old Whittington	3	4	1
Thompson, Robt., Ltd., Holywell Street, Chesterfield	4	16	6
Topham, Arthur, 15, Hollis Lane, Chesterfield ...	3	9	4
Townrow & Sons, Limited, Hipper Corn Mills ...	3	9	3
Turner, John, Ltd., Packers' Row, Chesterfield ...	16	14	5
Unwin, B., Market Hall, Chesterfield	1	3	9
Verney, F., Ltd., Brampton Wharf	4	10	0
Wagon Repairs, Ltd., Chatsworth Wagon Works ...	50	18	6
Walters & Westby, Ltd., 54, Marshall Road, Woodseats, Sheffield	7	2	6
Walton Pottery, Brampton	3	7	6
Warner, Peter, High Street, Chesterfield	4	17	8
Watertight Fittings, Limited (and firm)	5	2	4
White, J. B. & Sons, Limited, High Street, Chesterfield	2	14	8
Whitecotes Colliery, Boythorpe	6	13	6
White's (Furniture), Ltd., Corporation Street, Chesterfield	10	19	7
Wholey, H., 13, Albion Road, West Park, Chesterfield (and firm)	3	10	0
Wood, T. P. & Company, High Street, Chesterfield ...	10	0	0
Woodhead & Sons, Limited, High Street, Chesterfield	10	0	0
Wragg, R. & Sons, Markham Road, Chesterfield ...	2	8	2
Wright, E. & Co., Wheatbridge Potteries, Chesterfield	7	1	6
Wright, W. & Sons, Knivesmith Gate, Chesterfield ...	0	8	9
Yates, F., Holywell Street, Chesterfield	0	8	0
Yeomans, W., Beetwell Street	8	5	6
Yorkshire Billposting Co., 1, Eyre Street, Chesterfield	1	9	10
	£3500	16	10

2.—Sheepbridge District.

	£	s.	d.	£	s.	d.
Sheepbridge Coal & Iron Co., Ltd.—						
Forge	61	13	10			
Furnaces	47	8	0			
Mechanics	148	13	7			
Old Foundry and Pipe Shop	72	5	3			
Foundry Engineers' Department	31	15	5			
				361	16	1
Glapwell Colliery—						
Underground	500	0	0			
Surface	100	0	0			
				600	0	0
Langwith Colliery				240	0	0
Sheepbridge Stokes Centrifugal Castings Company				108	8	0
Pearson & Company (Chesterfield), Ltd.—						
Bottom Pottery	77	7	9			
Brickyard	8	10	0			
Round Kilns	8	0	0			
Newbold Farm	1	2	3			

	£	s.	d.	£	s.	d.
Tunnel Kilns	26	0	0			
Nesfield Pit	1	6	7			
Newbold Pit	7	13	5			
	<hr/>			130	0	0
Beighton, Thos., Brimington (and firm)	20	0	0			
Bradfield, A., 550, Sheffield Road, Whittington Moor (and firm)	1	10	0			
Bradshaw, J. & Son, The Potteries, Whittington Moor (and firm)	5	12	6			
Cobnor Wood Colliery, Barlow (and firm)	5	10	0			
Davis, W. H. & Sons, Langwith	17	17	0			
Gosforth Foundry Company, Limited, Dronfield	4	11	10			
Heywoods, Ltd., Whittington Moor	0	10	0			
Hicks, R. & Sons, 52—4, Duke Street, Whittington Moor	6	12	2			
King, John & Son, Ltd., Whittington Moor	20	1	4			
Lockers Wagons (Chesterfield) Ltd., Chesterfield Wagon Works, Old Whittington	2	2	0			
Maypole Dairy Co., Ltd., Whittington	0	5	0			
Midland Fruit Preserving Company, Whittington Moor ...	27	3	0			
Osborne & Company (Dronfield), Ltd., Dronfield	7	11	0			
Pass, J. & Son, Mill Sidings, Old Whittington	4	16	4			
Prestwich, Wm. & Sons, Ltd., Dronfield—Sheepbridge Tar-Mac Works	41	11	1			
Shirebrook Colliery	110	0	0			
Whitham, E. W., 379, Sheffield Road, Whittington Moor	3	9	4			
	<hr/>			£1719	6	8

3.—Eckington District.

	£	s.	d.	£	s.	d.
Bolsover Colliery Company, Limited—						
Underground	599	3	3			
Surface	174	8	4			
Office Staff	27	6	3			
	<hr/>			800	17	10
Bolsover Home Grown Fruit Preserving Co., Ltd.	7	7	2			
Bolsover Urban District Council	15	0	0			
Co-operative Wholesale Society, Hosiery Factory, Huthwaite	3	3	0			
Creswell Colliery	377	1	0			
Doe Lea Colliery Co., Ltd., Doe Lea	10	0	0			
London, Midland & Scottish Railway Co., General Hospital Fund (for Chesterfield and District)	700	0	0			
National Union Railwaymen, Creswell Branch	2	0	0			
New Byron Brick Co., Palterton	10	8	0			
Oxcroft Colliery Co., Ltd.—	£	s.	d.			
Oxcroft—Underground and Surface	327	1	3			
Barlborough—Oxcroft No. 3	150	0	0			
	<hr/>			477	1	3
Oxcroft and District Co-operative Society	3	9	4			
Pleasley and Pleasley Hill Co-operative Society	6	6	0			
Renishaw Iron Company, Limited—	£	s.	d.			
Renishaw Iron Company, Limited	8	14	4			
Appleby & Company	6	0	5			
	<hr/>			14	14	9

	£	s.	d.
Welbeck Colliery	10	0	0
Wells, J. & G., Eckington Collieries	112	10	0
	<u>£2549</u>	<u>18</u>	<u>4</u>

4.—Staveley District.

	£	s.	d.	£	s.	d.
Staveley Coal & Iron Company, Limited—						
Ironworks (New Foundry), Ironworks						
(Old Foundry), Ironworks, Mechanics						
and Enginewrights, and Devonshire						
Works	1657	0	0			
Ireland Colliery	300	0	0			
Markham Colliery	550	0	0			
Warsop Main Colliery	100	0	0			
Bonds Main Brickyard	0	15	0			
				<u>2607</u>	<u>15</u>	<u>0</u>
Britannic Assurance Co., Ltd., Staveley				2	12	0
Hardy & Martin, Staveley (and firm)				5	0	0
Memmory, Wm. & Sons, Ltd., Park Cottage, Swallownest				12	0	5
Pearl Assurance Co., Ltd., Staveley				3	0	0
Royal London Assurance Co., Staveley				5	15	0
Staveley Co-operative Society				15	0	0
Staveley Parish Council Sanitary Department				8	5	0
Stone, S. & Sons, Staveley				4	3	0
				<u>£2663</u>	<u>10</u>	<u>5</u>

5.—Grassmoor District.

	£	s.	d.
Grassmoor Company, Limited—			
Nos. 1 and 2 Pits Underground, Nos. 3 and 4 Pits			
Underground, Surface and Coke Ovens	832	13	7
Simon Carves. Ltd. (Contract at Grassmoor Colliery)	7	7	6
Hardwick Colliery Company, Limited—			
Nos. 1, 2 and 3 Pits Underground, Surface, Brick			
Yard and Coke Ovens	1427	12	0
	<u>£2267</u>	<u>13</u>	<u>1</u>

6.—Clay Cross, Pilsley and Tibshelf District.

	£	s.	d.
Babbington Coal Company—Tibshelf Collieries	100	0	0
Bailey, T. F., Stock Yard, Flaxpiece Road, Clay Cross	1	0	6
Blackwell Colliery Company, Limited	78	15	0
Britannic Assurance Co., Ltd., Clay Cross	6	10	0
Clay Cross Company—	£	s.	d.
Underground, Surface, Coke Ovens,			
Brickyard, Furnaces and Foundry	1091	14	10
Bonds Main Colliery	125	10	0
	<u>1217</u>	<u>4</u>	<u>10</u>

	£	s.	d.
Clay Cross Urban District Council	8	0	0
Doncaster Wagon Company, Clay Cross Station, Old Tupton	4	3	10
Employment Exchange, Clay Cross	2	2	0
Kennings, Ltd., The Motor Depot, Clay Cross	22	2	4
Flavell, Isaac, Market Street, Clay Cross	2	6	0
Pearl Assurance Company, Ltd., Clay Cross	2	0	0
Pilsley Colliery Company, Limited—			
Nos. 1, 2 and 3 Pits Underground, Nos. 1, 2 and 3 Pits Surface	350	0	0
Reeve & Kenning, Limited, Pilsley (and firm)	20	0	0
Refuge Assurance Company, Ltd., Clay Cross	3	9	4
Tibshelf Equitable Co-operative Society, Ltd., Tibshelf	1	0	0
Wharmby, Arthur, 29, Church Lane, North Wingfield (and firm)	2	10	0
	<u>£1821</u>	<u>3</u>	<u>10</u>

DISTRICTS.

	1928.			1929.			1930.			1931.			1932.			1933.		
	£	s.	d.	£	s.	d.	£	s.	d.	£	s.	d.	£	s.	d.	£	s.	d.
Chesterfield	2957	10	11	2984	11	7	3419	10	11	3298	1	3	3288	3	0	3500	16	10
Sheepbridge	1626	9	11	1611	13	4	1895	8	6	1867	8	8	1833	8	0	1719	6	8
Eckington	2390	5	8	2192	14	6	2321	11	6	2273	2	7	2409	14	6	2549	18	4
Staveley	2513	0	0	2487	19	2	2903	13	10	2464	8	6	3144	2	3	2663	10	5
Grassmoor	2141	9	3	2326	15	9	2367	12	3	2237	11	6	2369	8	5	2267	13	1
Clay Cross, Pilsley and Tibshelf	2280	3	3	2346	9	5	2342	4	1	2079	3	8	2051	3	8	1821	3	10
£	13908	19	0	13950	3	9	15250	1	1	14219	16	2	15095	19	10	14522	9	2

CONTRIBUTIONS FROM APPROVED SOCIETIES.

	£	s.	d.
Co-operative Insurance Society	4	5	0
National Amalgamated Approved Society	211	17	6
National Amalgamated Union of Shop Assistants	2	2	0
Prudential Approved Society	342	0	0
Rational Association Friendly Society	6	3	0
Sheffield Equalised Independent Druids	199	3	6
	<hr/>		
	£765	11	0
	<hr/>		

CONTRIBUTIONS RE MOTOR ACCIDENTS.

	£	s.	d.
Car and General Insurance Corporation	10	11	9
General Accident, Fire and Life Assurance Corporation, Ltd.	21	16	6
Phoenix Assurance Company	25	0	0
Prudential Assurance Company	6	3	1
Road Transport and General Insurance Co.	5	10	1
Per Messrs. B. Mather & Co., Chesterfield	45	15	0
Per Messrs. Shipton Hallowell & Co., Chesterfield	8	1	11
	<hr/>		
	£122	18	4
	<hr/>		

GIFTS IN KIND.

Egg Collection, organised by the Chesterfield and District Agricultural Discussion Society. President—Mr. J. L. Middleton; Chairman—Mr. F. W. Allen (Wingerworth); Hon. Secretary—Mr. E. Heath (Eastmoor).

The following ladies and gentlemen acted as collectors:—

Apperknowle and Unstone—Mr. H. Mitchell, Summerley Farm, Unstone.

Ashgate and Old Brampton—Mrs. S. Shemwell, Ashgate House Farm, and Miss Dakin, Yew Tree Cottage.

Ashover and Stanedge—Miss E. A. Bradley and Miss H. Bradley (Ivy Cottage), Miss Barber, Mrs. W. Bennett, Miss Berresford, Miss V. Hind, Miss Holmes, Mrs. Mellor, Mrs. T. Spencer, Miss H. Robinson, Miss Marriott, Miss D. Hopkinson, Mrs. Smith, Mrs. H. Shaw, Miss Wood, Miss Marriott, Miss Bown and Mrs. A. Towndrow.

Barlow—Mr. H. Needham, High Lightly Farm; Mr. J. W. Needham, New Farm.

Barrow Hill—Mr. P. Fern.

Brackenfield—Mr. James Ashby, Church Farm

Bolsover—Mr. C. Marsh, 47, Oxcroft Lane.

Brimington—Mr. W. F. Austin, Fairfield.

Brimington Common—Mr. P. Yeomans.

Calow—Mr. G. W. Graves, Cote House Farm, Tapton.

Calow Green and Sutton Springs—Mr. S. Inglis, Sutton Wood.

Clay Cross—Miss Joan Jackson, Clay Cross Hall.

Clowne—Mrs. H. Widdowson, Manor Farm.

Creswell—Mr. J. W. Fielding, Elmton Lodge.

Cutthorpe—Mr. T. Booker, Overholme Farm.

Dronfield and Dronfield Woodhouse—Mr. T. Vickers, Poole Farm, Dronfield Woodhouse.

Duckmanton—Mr. J. H. Clark, Long Course Farm.

Dunston—Messrs. Mason, Dunston House, Newbold.

Eastmoor—Mr. E. Heath, Wardlow Wells Farm.

Elmton—Mr. J. W. Fielding, Elmton Lodge.

Glapwell, Doe Lea and Bramley Vale—Mrs. G. Bunting, Netherton House, Glapwell.

Grassmoor—Mr. Geo. Robinson, Mill Lane.

Hady—Mr. Wm. Heathcote, Green House Farm, Hasland, and Mr. W. H. Stevens, Calow House Farm, Hasland.

Handley (Clay Cross)—Miss Bradley, Handley Hill.

Hardstoft—Mrs. E. Pugh, Locks Lane Farm.

Hasland—Mr. Wm. Heathcote, Green House Farm, and Mr. W. H. Stevens, Calow House Farm.

Heath and Holmewood—Miss A. Hardwick.

Holymoorside—Mr. P. Hoskin, "Rose Neath," Mr. B. Swain, Grove Farm, Upper Loads, and Mrs. C. Ellis, Loads Farm.

Langwith—Mr. W. N. Wood, Church Farm, Upper Langwith.

Morton—Mr. Thomas Mosley, Haver Hill Farm.

North Wingfield—Mr. P. Holmes, The Elms.

Palterton—Mr. A. Turner.

Pilsley, Lower—Mrs. E. Pugh, Locks Lane Farm.

Pilsley—Mr. H. Savage, Manor Farm.

Press (Tupton)—Miss E. A. Bradley, Ivy Cottage, Ashover.

Rowthorne—Miss White.

Scarcliffe—Mr. Z. Wharton.
 Sheepbridge—Messrs. Mason, Dunston House, Newbold.
 Shirland, Higham and Hallfield Gate—Mrs. C. Hitchcock, Higham;
 Miss Askew, Higham Dairy; Miss Cutts, Manor Farm, Shirland.
 Shuttlewood—Mr. Z. Breedon, junr., Woodside Cottage.
 Spital—Mr. Wm. Heathcote, Green House Farm, Hasland, and Mr.
 W. H. Stevens, Calow House Farm, Hasland.
 Stainsby—Mr. R. Fletcher, School House.
 Staveley—Mr. Lee Arthur, Woodthorpe, Norbriggs.
 Stretton—Miss M. Winson.
 Sutton Scarsdale—Mr. F. W. Glazebrook, Oak Tree Farm.
 Tapton—Mr. W. G. Graves, Cote House Farm.
 Temple Normanton—Mr. J. Wright.
 Tibshelf—Miss Barber, The Hurst.
 Tupton—Mr. E. Smith, Woodthorpe Grange.
 Wadshelf—Mr. W. Kirkham, Wadshelf Green.
 Walton—Mrs. F. Clayton, Allison House, and Mr. W. Eydes, Walton
 Lodge Farm.
 Whittington—Mrs. W. E. Fletcher, 13, Church Street, Old
 Whittington, and Mrs. C. Booker, 9, Prospect Road, Old
 Whittington.
 Whitwell—Mr. F. Fielding, Claylands Farm, Bakestone Moor, and
 Mr. Morris, South Walls Farm, Whitwell.
 Wigley and Hare Edge—Miss I. Turner, The Birches, Old Brampton.
 Wingerworth—Mrs. Hinchley, Bole Hill, and Messrs. F. W. and
 G. F. Allen, Lydgate Farm.
 Woodthorpe (Clay Cross)—Mrs. Astell.
 Woodthorpe (Staveley)—Mr. Z. Breedon, junr., Woodside Cottage,
 Shuttlewood.
 Woolley Moor—Miss Bradley, Handley Hill.
The Elementary Schools in the District also co-operated.

Contributions of Eggs, Fruit, Flowers, etc., from Churches, Chapels and Schools in 1933.

Anonymous.	Highfield Mission Church.
Ashover Church.	Hollins Methodist Church.
Ault Hucknall Parish Church and	New Whittington Church.
Sunday School.	North Wingfield Church and
Barrow Hill Girls' School.	Sunday School.
Bolsover Parish Church.	Old Brampton Church.
Brampton St. Thomas' Infant	Shirland Church and Sunday
Sunday School.	School.
Chesterfield Hipper Street Infants'	Shuttlewood Methodist Church
School.	Sunday School.
Chesterfield Holywell Cross	Sutton-cum-Duckmanton Sunday
Sunday School.	School.
Chesterfield Unitarian Church.	Temple Normanton Church and
Cordwell Valley Mission Church.	Sunday School.
Duckmanton Church and Sunday	Tibshelf Parish Church and
School.	Sunday School.
Hasland Church and Sunday	Tibshelf Free Church.
School.	Unstone Church.
Heath Church.	Wingerworth Church.

The following have sent Presents during 1933.

Anonymous.	Mr. C. Henry.
Mrs. E. Barker.	Mrs. Hewitt.
Messrs. J. Bibby & Sons, Liverpool.	Mrs. Hewitt.
Mr. Bloor.	Mr. C. G. Hill, Bruton.
Mr. T. Boat, Tibshelf.	Mrs. Hopkinson, Tansley.
Mrs. Bradshaw, Brampton.	Miss Hoskin.
2nd Brimington Rover Crew.	Mrs. Houfton.
Mr. M. S. Brodhurst.	Mrs. W. C. Macartney.
Mr. H. Brown, Staveley.	Macfadden Magazines, Ltd.
Dr. O. H. Bulloch.	Mrs. Manifold, Sheffield.
Chesterfield Chamber of Trade	Mr. W. H. Margereson.
Bazaar Committee.	Mrs. Naylor, Renishaw.
Chesterfield Girls' High School.	"Nig Nogs," per "Sheffield
Clay Cross Secondary School	Independent."
(Florence Nightingale House).	Mrs. R. Plowright.
Mrs. A. Clements.	Mr. Pope, Tibshelf.
Mrs. James Clark, Bolsover.	Mrs. Potter, Newbold Moor.
Mr. Cotton, Boythorpe.	Mrs. Pugh, Cutthorpe.
Creswell Colliery Institute.	Mrs. Reeves, Dronfield.
Derby Lane Girls' Modern School,	Mrs. Rossington.
Chesterfield.	Mrs. Savage.
"The Derbyshire Times."	Rev. H. W. Schofield, Pilsley.
Rev. H. Dibben.	"Sheffield Independent"
Master Ian Duthie.	Children's Ring.
Misses Mary, Margaret and	Mr. A. Shentall.
Jane Edmunds.	Mrs. S. E. Short.
Mr. Gilbert, Shirebrook.	Staveley Co-operative Society.
"Gloops Club," per "Aunt Edith."	Mr. J. Swift, Staveley Town.
Mr. Glossop.	Mrs. C. Turner, Clay Cross.
Mrs. Graham, Holmewood.	Mr. and Mrs. Peter Warner.
Mr. H. Guy, Pilsley.	Mrs. E. R. Woodhead.
Mr. James Jones, Birdholme.	Mrs. Worne, Holymoorside.
Mrs. Hancock, Newbold.	Mr. W. E. Wright.
Mrs. Harrison, Bolsover.	

Christmas Gifts, 1933.

Anonymous.	Chesterfield Girls' High School.
Anonymous, per Miss Harvey.	Mr. G. Clark, J.P.
Mr. T. E. Baker (proceeds of	Clay Cross Works Sick and
competition).	Accident Club.
Mr. E. C. Barnes, C.B.E.	Dr. A. C. S. Courts.
Mr. S. Berresford.	Dr. J. P. Davie.
Brampton Brewery Co.	The Duke of Devonshire (Xmas
Employees.	Trees and Evergreens).
Mr. M. S. Brodhurst.	Dr. A. M. Duthie.
Mrs. Butler.	Mr. W. Dyson (Old Whittington).
Mr. W. Chapman (Pilsley).	Miss Eastwood, J.P.
Chesterfield Borough Treasurer's	Mr. G. A. Eastwood, J.P.
Department.	Eckington Collieries Workmen's
Chesterfield High School Old	Field Club.
Girls' Guild.	Mr. G. J. Edmunds, J.P.

- Mr. W. H. Edmunds, O.B.E., J.P.
 Mr. F. Edmunds, M.R.C.S.
 Mr. T. R. Evans, M.D.
 Messrs. Eyre & Sons.
 Mr. J. Eyre.
 Mr. C. A. Furness, L.D.S.
 Dr. F. W. Furniss.
 Glapwell Colliery Employees Underground and Surface Clubs.
 Mrs. Alfred Glossop.
 Mr. A. Gratton and Friends, Devonshire Works.
 Mr. T. E. Grayson, Sheffield.
 Dr. J. L. Grout.
 Mr. T. Hardy (Pilsley).
 Mr. E. T. Hargraves.
 Mr. T. E. Haslam, J.P.
 Mr. C. J. Howson, J.P.
 Mr. F. Jackson.
 Brig.-Gen. G. M. Jackson.
 Major H. H. Jackson.
 Mr. W. B. M. Jackson.
 Mrs. C. C. Johnstone.
 Langwith Colliery Workmen's Hospital Fund.
 Mr. Chas. Lawson.
 Mrs. Lenthall.
 Mr. and Mrs. Walter C. Macartney.
 Mrs. M. H. Markham.
 Mayor of Chesterfield (Coun. Dr. R. A. McCrea).
 Mr. E. Miller.
 Mr. F. J. Milward, F.R.C.S.
 New Bolsover Hospital Committee.
 Messrs. Pearson & Co. (Chesterfield), Ltd., Employees.
 Mr. Theo. Pearson.
 Mr. F. Pilley (loan of Crockery).
 Pilsley Colliery Employees.
 Mr. R. Plowright.
 Dr. H. E. Pooler.
 Dr. N. R. Pooler.
 Mrs. J. Robinson.
 Major V. Robinson.
 Mrs. W. B. Robinson.
 Scarsdale Brewery Company, Limited.
 Mr. A. Shentall.
 Dr. R. B. N. Smartt.
 Staveley Works Sick and Accident Club.
 Mr. L. E. Sutcliffe, M.B.
 Mr. F. K. Swallow.
 Mr. E. D. Swanwick, M.A.
 Miss Taylor (proceeds of competition).
 Messrs. W. F. Taylor & Sons, Limited.
 The West End Bakeries.
 Mr. J. W. Thompson.
 Mr. R. Thompson.
 Toc H. League of Women Helpers.
 Mrs. A. A. Townrow.
 Miss D. G. Townrow.
 Messrs. John Turner, Limited.
 Mr. P. Warner.
 Warsop Main Colliery Workmen's Hospital Fund.
 Whitwell Hospital Committee.
 Rev. Father Wilson.
 Messrs. E. Woodhead & Sons.
 Yorkshire Telegraph & Star.

Christmas Decorations.

Messrs. Eyre & Sons, Limited.

FUTURE EXTENSIONS FUND.

Donations.

	£	s.	d.
Barfoot, J. R. D., West Bars, Chesterfield ...	2	2	0
Checkley, S., 54, New Bridge Street, Old Whittington ...	0	10	0
Lomas, Mrs. E., 32, Holywell Street, Chesterfield ...	0	5	0
Derbyshire Miners' Welfare Committee—Grant ...	300	0	0
Bank Interest ...	1	11	1
	£304	8	1

LIFE GOVERNORS.

December 31st, 1933.

						£	s.	d.	
Abbott, W. H.	200	0	0	1930
†Alderson, Miss	—			1919
Allsop, T., J.P.	20	0	0	1920
Atkinson, T. D.	20	0	0	1900
*Barker, E. A.	—			1918
Barnes, E. C., C.B.E., D.L., J.P.	125	0	0	1908
Do.	200	0	0	1910
Do.	500	0	0	1920
Do.	500	0	0	1921
Do.	100	0	0	1923
Barrow, Mrs.	20	0	0	1904
Bassett, John	105	0	0	1920
Berresford, S.	20	0	0	1920
Do.	250	0	0	1931
Bird, Sir W. B. M.	20	0	0	1907
Bower, T. W., J.P.	500	0	0	1917
Bransom, William	20	0	0	1921
Brodhurst, M. S.	21	0	0	1907
Do.	25	0	0	1921
Carruthers, Mrs.	200	0	0	1907
Do.	50	0	0	1910
Do.	150	0	0	1915
Do.	100	0	0	1920
Chambers, F.	100	0	0	1920
Clarke, George	25	0	0	1925
Close, J. S.	20	0	0	1913
Deacon, M., J.P.	25	0	0	1907
Do.	25	0	0	1911
Devonshire, Duke of	250	0	0	1909
Do.	300	0	0	1910
Do.	50	0	0	1911
Do.	250	0	0	1922
Do.	250	0	0	1923
Eastwood, Edgar Telford	20	0	0	1891
Eastwood, Geo. A., J.P.	20	0	0	1891
Do.	100	0	0	1901
Do.	100	0	0	1907
Do.	100	0	0	1910
Do.	500	0	0	1921
Eastwood, Miss S. B., J.P.	20	0	0	1919
Eastwood, Tom	20	0	0	1891
Hall, Harry	25	0	0	1924
Hargraves, E. T.	21	0	0	1903
Do. Mrs.	21	0	0	1904
*Harrison, S. H.	—			1918
Hartington, Marquis of	20	0	0	1920
Holford, Miss B.	50	0	0	1918
Hollindale, J. T.	20	0	0	1913
Hopkinson, J.	20	0	0	1904
Howson, C. J., J.P.	20	0	0	1905

	£	s.	d.	
Humble-Burkitt, Col. B. M., C.M.G., D.S.O.	25	0	0	... 1924
Do. ...	21	0	0	... 1925
Hunloke, Sir Philip, J.P.	50	0	0	... 1907
Do. ...	50	0	0	... 1908
Jackson, W. B. M., J.P. ...	50	0	0	... 1930
Langford, W. R. G. ...	20	0	0	... 1917
Locke, A. C. ...	21	0	0	... 1908
Lucas, B. C. ...	20	0	0	... 1873
Do. ...	100	0	0	... 1904
Do. ...	105	0	0	... 1920
Do. ...	500	0	0	... 1924
Do. ...	250	0	0	... 1926
Markham, Mrs. Margaret H., J.P.	50	0	0	... 1907
Do. ...	50	0	0	... 1916
Mason, Mrs. E. ...	20	0	0	... 1901
Millard, John ...	20	0	0	... 1922
Nicholls, Wm. John ...	20	0	0	... 1920
Portland, Duke of ...	250	0	0	... 1907
Do. ...	100	0	0	... 1910
Do. ...	100	0	0	... 1914
*Preskey, G. ...	—			... 1918
Quarton, F. ...	20	0	0	... 1910
Quarton, Mrs. Fred ...	100	0	0	... 1920
Robinson, C. W. ...	20	0	0	... 1914
Do. ...	50	0	0	... 1920
Robinson, Major V. O., M.C.	25	0	0	... 1921
Do. ...	50	0	0	... 1931
Robinson, Mrs. W. B. ...	50	0	0	... 1928
Rutland, Duke of ...	30	0	0	... 1907
Sharman, Walter ...	20	0	0	... 1928
Shea, Mrs. J. Goodwin ...	100	0	0	... 1924
Shentall, Sir Ernest ...	100	0	0	... 1921
*Swale, A. ...	—			... 1918
Swallow, Frederick K. ...	20	0	0	... 1920
Swanwick, E. D. ...	25	0	0	... 1920
Syddall, S. A. ...	20	0	0	... 1918
Taylor, W. H. ...	20	0	0	... 1919
Taylor, Mrs. H. ...	50	0	0	... 1902
Do. ...	25	0	0	... 1908
Tomlinson, Mrs. A. ...	50	0	0	... 1918
Turner, Harold H. ...	20	0	0	... 1907
Do. ...	20	0	0	... 1926
Tylden-Wright, Lt.Col. H., J.P.	100	0	0	... 1918
Wakerley, W. E. ...	26	5	0	... 1920
Webster, James ...	25	0	0	... 1925
Woodhead, E. R. ...	100	0	0	... 1923

*—For services in connection with the Chesterfield and District Traders' Effort of 1917-1918.

†—For services in connection with the Women's Medical Ward Fund.

NOTE.—A donation of at least £40 is now necessary to constitute the Donor a Life Governor.

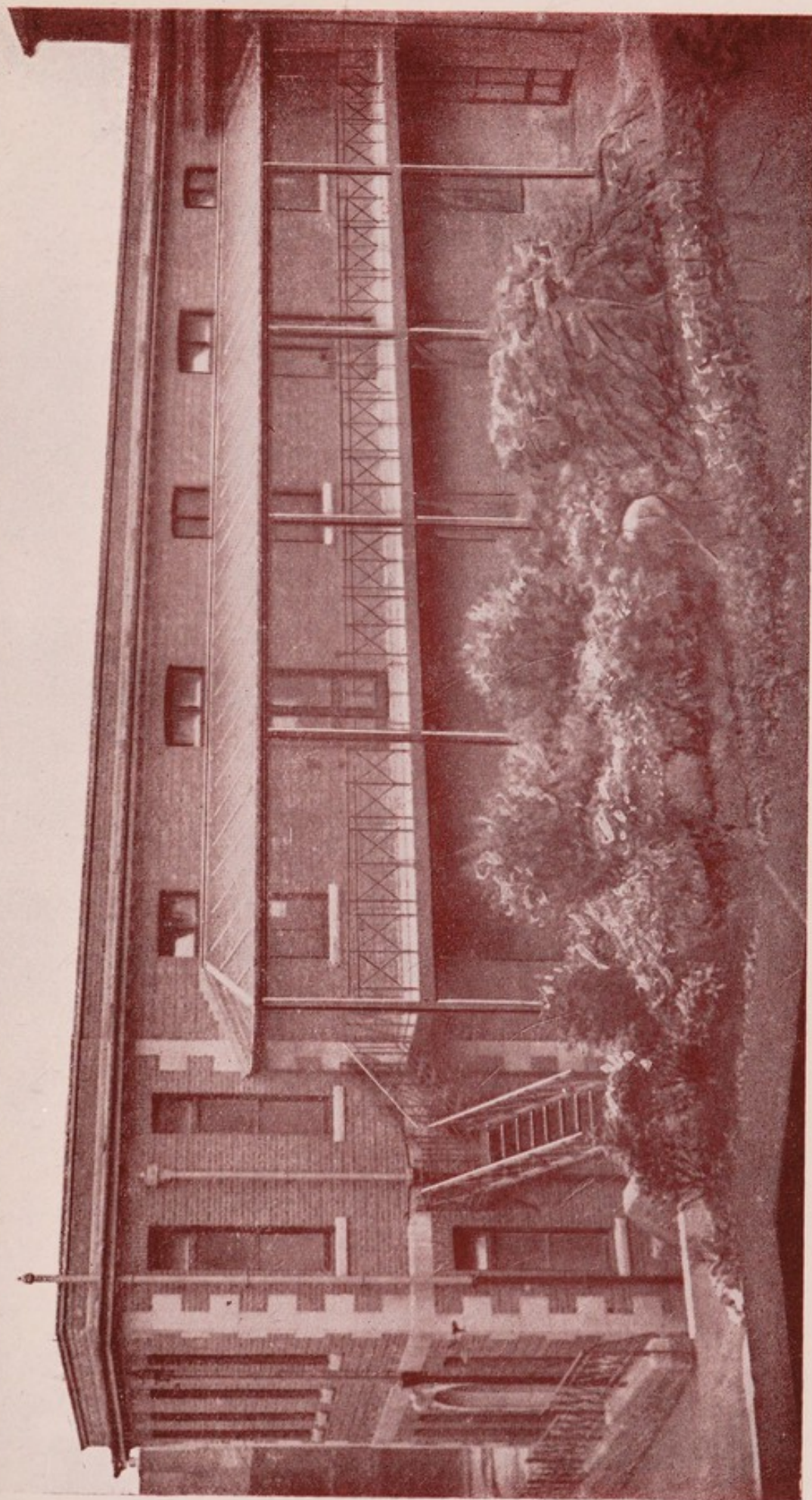


Photo by]

MURPHY WARD AND OPHTHALMIC OUT-PATIENT DEPARTMENT.

[Tom Evans, Chesterfield.



ENDOWMENT OF BEDS OR COTS.

1917—T. W. Bower, Esq., J.P.—Cot	£500
1924—The Dennis Bayley Fund Bed	£1500
1926—Anonymous—Bed	£1000
1927—Anonymous—Three Beds	£3000
1928—Anonymous—Bed	£1000
1929—The John and Mary Hatton Cot	£900

Beds Maintained by Annual Payment.

1929—The "Gloops" Cot	£30
1932—"Sheffield Independent" Children's Ring "Nignog"	£30
Cot	£30

Beds Named in Consideration of a Payment to the Capital Account.

1926—The Elizabeth Lowe Bed	£1034
-----------------------------	-----	-----	-----	-----	-------

GIFTS OR BEQUESTS.

The Board of Management wish to draw the attention of the benevolent public to the fact that a bed may be named in perpetuity upon receipt of £1,000, or of a legacy of the same amount (free of duty) specially bequeathed for this purpose, and that a cot may be named under the same conditions upon payment of £500.

A tablet with an inscription recording the names of the benefactors, or that of relatives or friends whom it is desired to commemorate, would be affixed to the bed so appropriated.

Recovery of Income Tax on Annual Subscription.

By filling up a Form similar to the one opposite you add value to your present subscription and you will benefit the Hospital to the extent of another

7/- on each Annual Subscription of One Guinea.

YOU still pay the same amount—but by executing a DEED OF GIFT you enable the Hospital to claim Income Tax thereon.

Subscribers to a Hospital who give a written agreement that they will pay their subscriptions for a period of seven years or during their lifetime, whichever shall be the shorter, will enable that Hospital to recover the Income Tax paid by the subscriber; and, further, the subscriber, if a super tax payer, may deduct the gross amount of his annual subscription from the amount of income which he returns as assessable for super tax.

With Income Tax at 5/- in the £1, the following example is given in respect of an annual subscription of £1 1s. 0d. (the figures applicable to larger subscriptions are in proportion):—

For every £1 1s. 0d. of annual subscriptions the Hospital will recover 7/-, and the subscriber who now gives £1 1s. 0d. annually will have the satisfaction of knowing that this £1 1s. 0d. will be worth £1 8s. 0d. to the Hospital, without any additional expense to the subscriber and without any trouble, as the Hospital will recover the amount from the Income Tax authorities.

In view of the large additional income which may accrue to the Hospital in this way, without any trouble or expense to subscribers, it is hoped that all subscribers will fill in the attached form.

It will not be necessary for subscribers who have given Bankers' orders to alter that order in any way.

The Secretary of the Hospital will gladly give further information and will prepare a Deed upon request.

If all our subscribers were to use forms as opposite our income from subscriptions would be considerably increased.

AGREEMENT TO CONTRIBUTE TO
THE CHESTERFIELD AND NORTH DERBYSHIRE
ROYAL HOSPITAL.

I,

of

in the County of.....

HEREBY COVENANT WITH The Chesterfield and North
Derbyshire Royal Hospital that for seven years from the

.....day of.....193..., or during my
lifetime, whichever period shall be the shorter, I will pay annually
to the said Hospital such a sum as will leave, after deduction of
Income Tax at the rate for the time being in force, the sum of
£ : : such sum to be paid from my General Fund of
Taxed Income, so that I shall not receive any personal or private
benefit in any of the said years from the said sum or any part
thereof.

The payment for each year to be deemed for the period of
the current tax year.

In witness whereof I
have hereunto set my
hand and seal this



.....day of
.....193 .

Signature

Signed, Sealed and
delivered by the said

Signature

.....
in the presence of

Address

Occupation

The above form, when completed, should be sent to the
Secretary, Royal Hospital, Chesterfield.

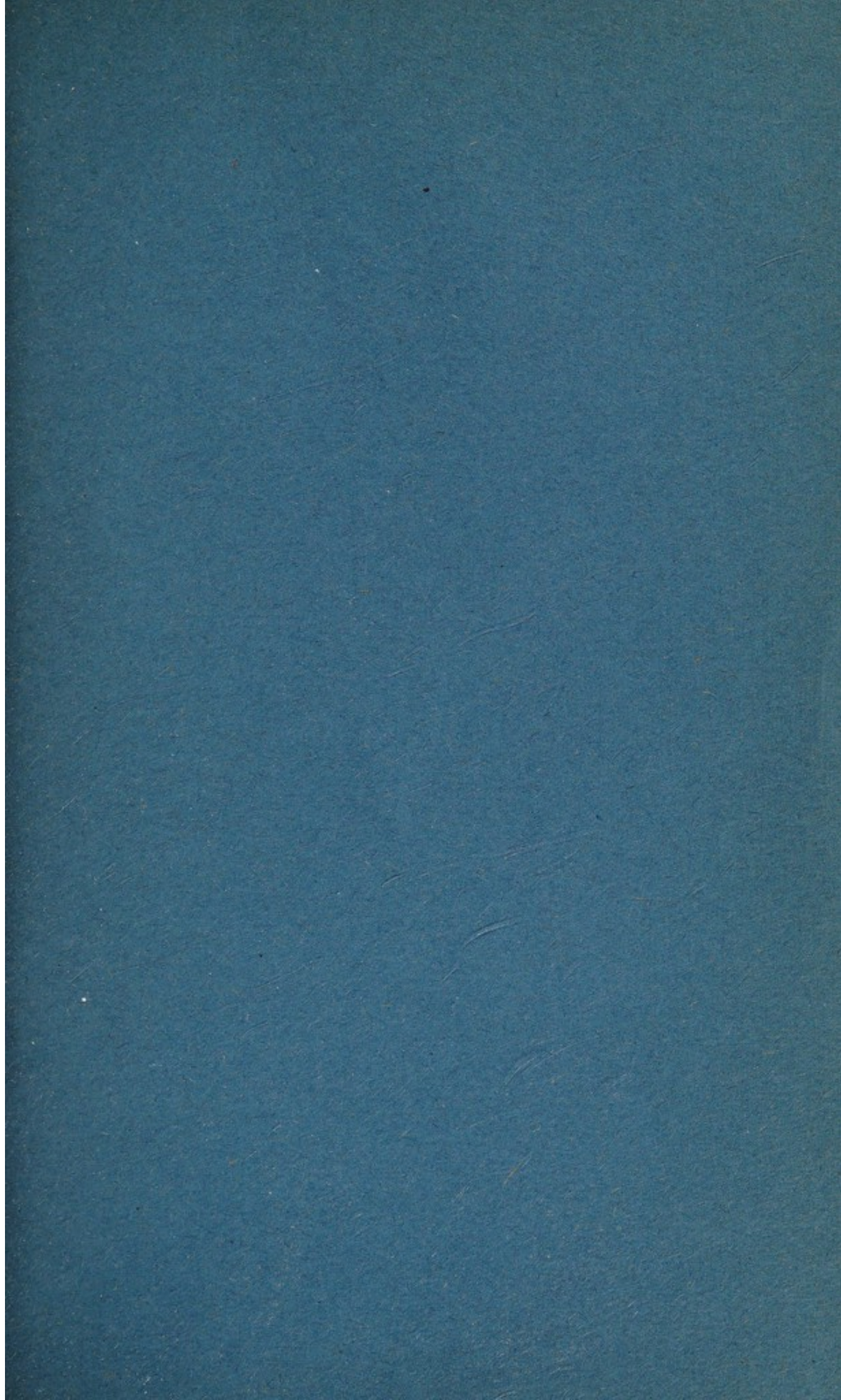
GOVERNMENT TO CONTRIBUTE TO
ROYAL HOSPITAL
ANNUAL SUBSCRIPTION

By Order of the Committee

It is the duty of the Committee to report to the House of Commons the progress of the subscription for the Royal Hospital, and to recommend the amount to be contributed by the Government for the year ending 31st March 1881. The Committee have the honor to acknowledge the receipt of the sum of £10,000 from the Government for the year ending 31st March 1880, and to report that the same has been applied to the purchase of land and the erection of buildings for the purpose of the subscription. The Committee have also the honor to acknowledge the receipt of the sum of £5,000 from the Government for the year ending 31st March 1881, and to report that the same has been applied to the purchase of land and the erection of buildings for the purpose of the subscription. The Committee have also the honor to acknowledge the receipt of the sum of £5,000 from the Government for the year ending 31st March 1881, and to report that the same has been applied to the purchase of land and the erection of buildings for the purpose of the subscription.

The Committee have also the honor to acknowledge the receipt of the sum of £5,000 from the Government for the year ending 31st March 1881, and to report that the same has been applied to the purchase of land and the erection of buildings for the purpose of the subscription. The Committee have also the honor to acknowledge the receipt of the sum of £5,000 from the Government for the year ending 31st March 1881, and to report that the same has been applied to the purchase of land and the erection of buildings for the purpose of the subscription. The Committee have also the honor to acknowledge the receipt of the sum of £5,000 from the Government for the year ending 31st March 1881, and to report that the same has been applied to the purchase of land and the erection of buildings for the purpose of the subscription. The Committee have also the honor to acknowledge the receipt of the sum of £5,000 from the Government for the year ending 31st March 1881, and to report that the same has been applied to the purchase of land and the erection of buildings for the purpose of the subscription.

The Committee have also the honor to acknowledge the receipt of the sum of £5,000 from the Government for the year ending 31st March 1881, and to report that the same has been applied to the purchase of land and the erection of buildings for the purpose of the subscription. The Committee have also the honor to acknowledge the receipt of the sum of £5,000 from the Government for the year ending 31st March 1881, and to report that the same has been applied to the purchase of land and the erection of buildings for the purpose of the subscription. The Committee have also the honor to acknowledge the receipt of the sum of £5,000 from the Government for the year ending 31st March 1881, and to report that the same has been applied to the purchase of land and the erection of buildings for the purpose of the subscription.



**CHESTERFIELD AND NORTH DERBYSHIRE
ROYAL HOSPITAL.**

BEDS FOR PATIENTS ... 220.

PATIENTS TREATED, 1933.

In-Patients	-	-	-	-	2,921
Out-Patients	-	-	-	-	8,033
Accidents and Emergencies					
(excluding Admissions)	-				4,482

EXPENDITURE, £27,419

Additional Support Urgently Needed.

*To the Chairman of the Chesterfield and North Derbyshire
Royal Hospital.*

Enclosed is £ : : towards the
maintenance of the Hospital.

Name

Address

.....

Date.....

Cheques should be made payable to "The Chesterfield and North
Derbyshire Royal Hospital."