

Report : 1946 / Bristol Homeopathic Hospital.

Contributors

Bristol Homeopathic Hospital.

Publication/Creation

[Bristol] : [Bristol Homeopathic Hospital?] 1946

Persistent URL

<https://wellcomecollection.org/works/chtr3ah4>

License and attribution

This work has been identified as being free of known restrictions under copyright law, including all related and neighbouring rights and is being made available under the Creative Commons, Public Domain Mark.

You can copy, modify, distribute and perform the work, even for commercial purposes, without asking permission.



Wellcome Collection
183 Euston Road
London NW1 2BE UK
T +44 (0)20 7611 8722
E library@wellcomecollection.org
<https://wellcomecollection.org>

Library



BRISTOL HOMŒOPATHIC HOSPITAL



REPORT
for the year
1946


LIBRARY
Ann. Rep
WB28
.B65
B86 B86
1946

CONTENTS

	<i>Page</i>
View of the Hospital—Frontispiece	
Officers	1-3
In-Patients—Accommodation	4
Admission to Hospital	5
Visiting Days and Hours... ..	5
Balance Sheet	6-7
Income and Expenditure Account	8-9
Out-Patient Department	10
Report	11
In-Patients... ..	21
Out-Patients	21
Dental Department	22
X-Ray Medical Electrical Massage Departments	22
List of Subscribers, 1945... ..	23-25
Donations, 1946	26
Donations, 1946—" In Memoriam "	27
Box Collections	28
Employees Benevolent and Medical Charity Funds—1946	29
How to help Hospital without further cost to Subscriber	30-31
Form for Subscribers	33
Form of Bequest	35
Bankers' Order Form	35

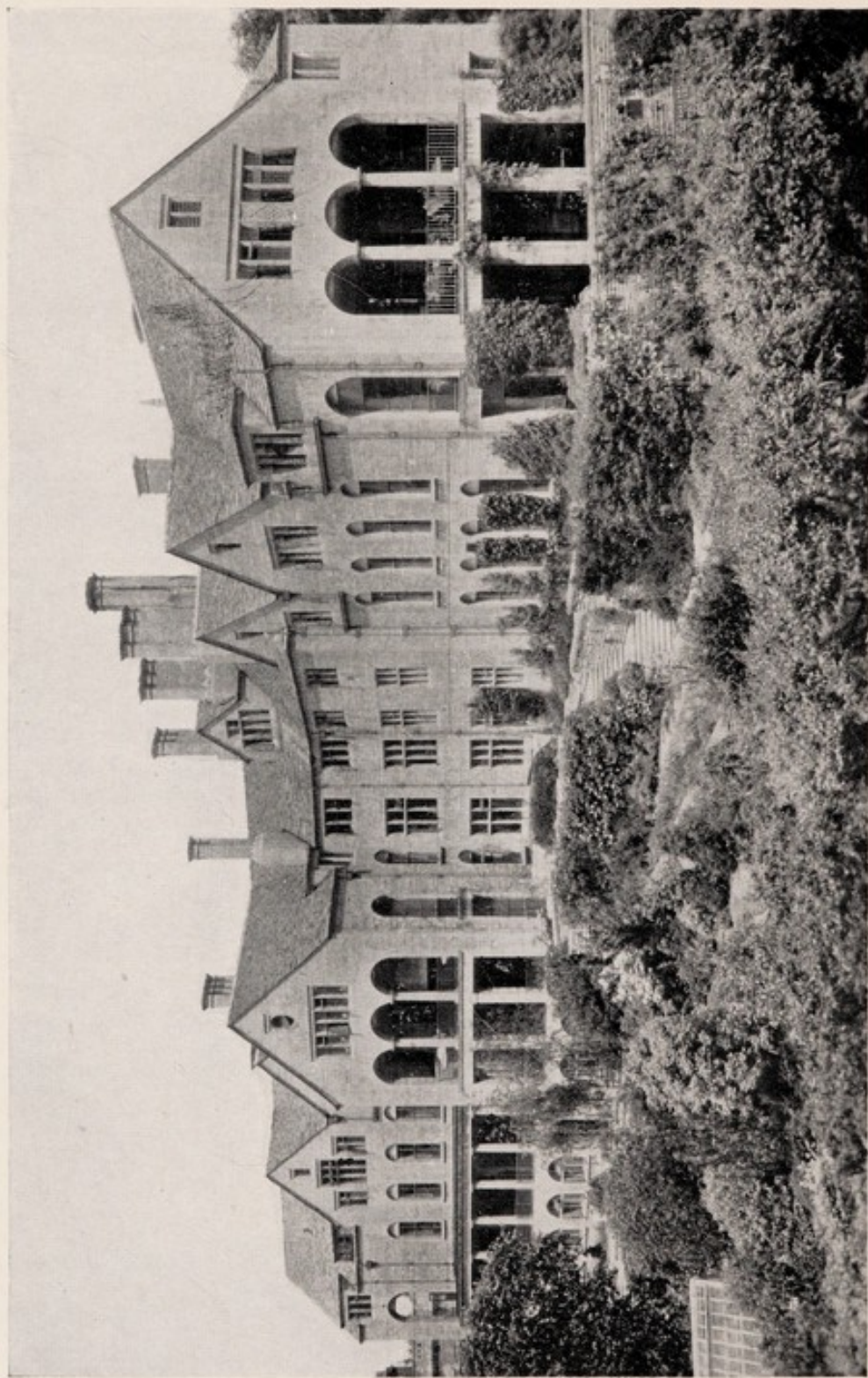


22501677183



Digitized by the Internet Archive
in 2019 with funding from
Wellcome Library

<https://archive.org/details/b31682601>



VIEW OF THE HOSPITAL FROM THE MEMORIAL GARDENS

1946

Bristol Homœopathic Hospital

(BRUCE MELVILLE WILLS MEMORIAL)

Patrons

HER HIGHNESS PRINCESS HELENA VICTORIA
THE DUCHESS OF BEAUFORT
THE COUNTESS DOWAGER OF GAINSBOROUGH
LORD METHUEN

President

CAPT. DOUGLAS M. WILLS.

Trustees

Capt. DOUGLAS M. WILLS	Major M. CECIL M. WILLS
Mrs. BRUCE M. WILLS	H. G. TANNER, Esq., J.P.

Board of Management

Chairman : J. L. MILLIGAN

Vice-Chairman : Councillor H. CROOK

F. M. ARKLE	H. M. C. HOSEGOOD
KENNETH H. BAIN	G. F. IGGLESDEN
*H. BAYLEY	F. G. JENNISON
C. O. BODMAN, F.R.C.S.E.	Canon LONG
FRANK BODMAN, M.D.	*F. J. NEATH, B.E.M.
*S. E. CARNELL	*F. J. PETERS
W. L. COSSHAM, M.B., Ch.B.	C. H. PRITCHARD
Mrs. R. M. COURTNEY	*F. J. SUMMERS
Miss M. L. COWLIN	*J. WEEKS
A. H. DIXON	Mrs. BRUCE M. WILLS
*B. E. GANE	

* Members in a representative capacity.

Honorary Consulting Physicians

Sir JOHN WEIR, G.C.V.O., M.B., Ch.B.,
Physician to the London Homœopathic Hospital
Physician-in-Ordinary to His Majesty The King.

J. A. PARKES, M.B. Ch.B.

Honorary Consulting Surgeons

JAMES EADIE, M.B., Ch.B., F.R.C.S.,
Surgeon to the London Homœopathic Hospital
C. OSMOND BODMAN, M.D., B.S., F.R.C.S.E., M.R.C.S., L.R.C.P.

Honorary Consulting Anæsthetists

LEONARD A. MOORE, M.B., Ch.B., M.R.C.S., L.R.C.P.
STUART Y. STOCK, M.B. (Lond.), B.S. (Lond.) M.B., Ch.B.,
L.R.C.P., F.R.C.S. (Eng.)

Honorary Consulting Gynæcologist

H. J. DREW SMYTHE, M.C., M.S., M.D., M.M.S.A., F.R.C.S.

Honorary Physicians

FRANK BODMAN, M.D., Ch.B., M.R.C.S., L.R.C.P.
W. L. COSSHAM, M.B., Ch.B.

Honorary Surgeon

ROBERT V. COOKE, M.B., Ch.M., F.R.C.S. (Eng.), L.R.C.P.

Honorary Neurological Surgeon

Miss D. J. KINLOCH BECK, M.B., B.S., (Lond.), F.R.C.S., (Eng.),
M.R.C.S.

Honorary Orthopædic Surgeon

A. L. EYRE-BROOK, M.B., M.S., F.R.C.S.

Honorary Dermatologist

Dr. CATHERINE, J. MACLAREN, M.B., Ch.B., D.P.H.

Honorary Consulting Surgeon to the Ear, Nose and Throat Dept.

C. OSMOND BODMAN, M.D., B.S., F.R.C.S.E., M.R.C.S., L.R.C.P.

Honorary Surgeon Ear, Nose, and Throat Department

GORDON R. SCARFF, M.B., Ch.B., F.R.C.S. (Edin.)

Honorary Gynæcological Surgeon

F. J. HECTOR, M.D., F.R.C.S., (Eng.)

Radiologist

H. J. JOHNSON, M.Sc., A.R.I.C., M.B., B.S., D.M.R.

Honorary Ophthalmic Surgeon

R. RAMSAY GARDEN, M.A., M.B., Ch.B., D.P.H., D.O.M.S.

Honorary Anæsthetists

E. G. BRADBEER, M.R.C.S. (Eng.), L.R.C.P. (Lond.)
A. P. GORHAM, M.B., Ch.B., M.R.C.S., L.R.C.P.

Honorary Assistant Physicians

A. PAUL BODMAN, M.B., Ch.B.
C. D. LEFLAIVE, M.B., Ch.B.
D. M. CAMERON, M.B., Ch.B.
W. J. S. CAMERON, M.B., Ch.B.
P. W. J. PARKES, M.R.C.S., L.R.C.P.
Miss C. M. ROOKE, M.B., B.S. (Lond.)

Honorary Dental Surgeon

F. R. HOGGIN, L.D.S.

Acting Registrar

ELIZABETH BRYANT, M.B., Ch.B.

Resident Medical Officer

ELIZABETH BRYANT, M.B., Ch.B.

Honorary Treasurer

C. H. PRITCHARD

Honorary Solicitors

LLOYD, BURCH, DIXON & GRIFFITHS

Auditors

WATLING & PARTNERS.

Secretary

Lt.-Col. H. HUNTER

Matron

Miss C. R. SETH-SMITH, S.R.N., S.C.M.,
Dipl. in Nurs. (London Univ.)

Chaplain

Rev. Dr. W. J. CRATCHLEY

Almoner

Miss V. A. M. HILL

X-Ray and Physiotherapy Department

Miss J. M. DAVIS
Miss M. L. RIGHTON
Mrs. D. A. J. WATTS

Dispensers

Miss G. G. CLEMENT, M.P.S.
Mrs. O. PARFITT, Cert. Apoth. Hall.

Telephone Number—(Two lines) BRISTOL 33068/9

Bristol Homœopathic Hospital

BRISTOL 6

TELEPHONE NO. BRISTOL 33068/9

IN-PATIENTS

Accommodation for In-Patients is provided as follows:

GENERAL WARDS

With increasing expenditure, the average cost per patient for 1946 is higher. Patients or their dependants are asked to contribute as much as they can afford towards this cost.

SEMI-PRIVATE WARDS

Wards are available at the Hospital for the reception of patients of moderate means at a charge of Six Guineas per week, and Half-a-Guinea for the use of the Theatre, Pathological, X-Ray, Massage and Medical Electrical Therapy extra. The Medical Officers have agreed to reduce their fees to patients in these Wards.

PRIVATE WARDS

Accommodation is provided at the Hospital in Private Wards overlooking the Gardens, in which Medical and Surgical patients are received at inclusive fees for board and nursing at from Eight Guineas per week (theatre, medicine, dressings, stimulants and personal laundry extra).

Arrangements may be made for patients to be attended in these Wards by their own Surgeon or Medical Practitioner.

OPEN-AIR CHALÊTS

There are revolving Open-Air Chalêts provided in the grounds for the reception of suitable cases. Terms for these can be had on application to the Secretary.

ADMISSION TO HOSPITAL

GENERAL WARDS

Except in cases of sudden illness or accident, patients attend at the Out-Patient Department and must take a note or letter from their usual Medical Attendant giving the history of the case. (*See page 10*)

SEMI-PRIVATE WARDS

Patients in these Wards can only be attended by Medical Officers on the Staff of the Hospital, and therefore those seeking admission are referred by their Medical advisers to the Specialists on the Staff.

PRIVATE WARDS

Admission is arranged through a Medical adviser, and full details as to charges, etc., can be obtained on application to the Secretary.

VISITING DAYS AND HOURS

GENERAL WARDS

Wednesdays and Saturdays from 2.30 p.m. to 3.30 p.m.

Sundays from 3 p.m. to 4 p.m.

Thursdays from 6.30 p.m. to 7.30 p.m.

CHILDREN'S WARD

Sundays from 3 to 4 p.m.

Thursdays from 5.30 to 6 p.m.

(Visitors are not allowed to mid-weekly patients.)

SEMI-PRIVATE WARDS

Daily, except Tuesdays and Thursdays, from 2.30 to 4 p.m.

Thursdays from 6.30 to 7.30 p.m.

PRIVATE WARDS

Visitors are allowed to see patients between 10 a.m. and 12 noon, and between 3 and 7.30 p.m., subject to the discretion of the Medical Officer in charge.

BALANCE SHEET As

CAPITAL ACCOUNT

Donations from W. Melville Wills, Esq.

	£	s.	d.	£	s.	d.
Site at Cotham Hill, "Cotham House," etc. ..	10,000	0	0			
New Hospital (Captain Bruce Melville Wills Memorial) to 31st December, 1928 ..	123,093	0	1			
New Hospital Equipment, to 31st December, 1927 ..	12,154	4	7			
New Hospital Laundry Equipment, to 31st December, 1927 ..	1,076	2	4			
Cotham House Alterations to Buildings to provide a Nurses' Home, etc. ..	3,750	0	0			
Nurses' Home, Furnishing, etc. ..	1,453	15	1			
Children's Ward, Alterations, etc. ..	1,935	0	10			
„ Equipment ..	998	10	9			
				154,460	13	8
General Fund, as per last Account ..	6,319	14	4			
Capital Expenditure Account ...	1,318	16	11			

7,638 11 3

162,099 4 11

Endowment Fund as at 31st December, 1945 ..

Received in 1946, Legacies and Donations ..

125,966	5	5
2,940	12	11

128,906 18 4

RESERVE FOR REPAIRS TO BUILDINGS AND

CONTINGENCIES, Etc., as at 31st December, 1945

Add Interest on Investments ...

3,547	15	7
96	16	7

3,644 12 2

Less Transferred to Current Account ...

500 0 0

3,144 12 2

INCOME AND EXPENDITURE ACCOUNT

Balance at 31st December, 1945 ..

Add Excess of Income over Expenditure for 1946

5,548	16	10
417	5	0

5,966 1 10

We have examined the above Balance Sheet and the foregoing Income and Expenditure Account with the Books and Vouchers relating thereto, and certify the same to be in accordance therewith.

WATLING & PARTNERS,

BRISTOL; April 10th, 1947.

Chartered Accountants.

TOTAL

£300,116 17 3

LAND, BUILDINGS, AND EQUIPMENT

	£	s.	d.	£	s.	d.
16, Hampton Road, purchase of property and Freehold with Alterations	527	12	0			
15 and 17 Cave Street—Purchase of Property and Freehold, Alterations and Additional Equipment ..	5,792	2	4			
Site at Cotham Hill, "Parklands," "The Grange," New Hospital and Cotham House	10,000	0	0			
New Hospital, Equipment, and Children's Ward ..	144,460	13	8			
Capital Expenditure Account per Bank and Post Office Savings Accounts	1,318	16	11			
				162,099	4	11

ENDOWMENT INVESTMENTS, at cost

£8,928 16.8d.	3%	Treasury Stock	8,127	16	11
5,500	2½%	Consolidated Stock	3,661	0	6
10,250	4%	"	8,976	15	0
7,100	3%	Conversion Stock	6,922	10	0
1,466 9s. 2d.	3½%	" (1961)	1,142	19	6
4,197	4%	Funding Stock (1960-90)	4,791	5	11
6,600	3½%	War Stock (1952)	6,617	5	11
2,000	3%	Savings Bonds (1955-65)	2,000	0	0
500	"	" (1960-70)	512	10	0
2,000	"	" (1965-75)	2,000	0	0
2,500	3%	Local Loans	2,140	16	6
300	3%	Defence Bonds, 1st issue	301	2	5
500	"	" 2nd "	503	2	6
5,000	Bristol Corporation 3%	Stock (1958-63)	4,975	0	0
20,000	" " 5%	Stock (1950-60)	20,000	0	0
2,500	" " 3½%	Stock (1961-66)	2,665	18	6
3,000	Great Western Railway Co. 4%	Deb. Stk.	3,073	14	6
2,000	L. C. 3%	Consol Stock (1956-61)	2,010	4	0
5,000	London Assurance Co. 4%	Pref. Stock	5,406	5	0
100	North Vancouver 5%	Deb. Stk. (1962)	89	10	0
4,000	Buenos Ayres Gt. S. Rly. 5½%	Rd. Deb. Stk.	3,800	0	0
312	Do. 4%	Deb. Stk.	246	10	0
10,000	Central Argentine Rly. Ltd., 5%	Deb. Stk. (1967-87)	9,450	0	0
341	Central Uruguay Rly. Co. of Monte Video	5% 2nd Deb. Stock	339	14	0
160	Do. Ord. Stock			
108	Do. 4½%	1st Deb. Stk.			
1,500	Gas, Light & Coke Co., 3½%	Deb. Stk.	1,500	0	0
1,000	N. Som. Electric Supply Co. 5½%	C. P. Sh.	1,025	0	0
5,264	Imperial Tobacco Co. 10%	Non-Cum. "C" Pref. Stock	13,698	3	0
5,000	Powell Duffryn Assoc. Collieries 4½%	Cum. Pref. Stock	5,250	0	0
900	E. S. & A. Robinson Ltd. 10%	Non. Cum. Pref. Shares	2,045	16	6
1,250	Salmon & Gluckstein Ltd., 10%	Cum. Pref. Shares	3,247	16	0
	Post War Credit Certificates	18	1	9
					126,538	18	5
	Cash at Bank	2,367	19	11
					128,906	18	4

Funds Invested on Deferred Repairs and Contingencies Account, etc., at cost:—

500	War Savings Certificates....	..	375	0	0
£1,025	3% Savings Bonds 1960-70	..	1,025	0	0
£1,000	3% Defence Bonds	..	1,000	0	0
	Post Office Savings Bank	..	744	12	2
			3,144	12	2

CURRENT ACCOUNT

£3,500	3% Savings Bonds (1965-75) at cost	...	3,500	0	0
	Cash at Bank and in hand (adjusted by late Receipts and Expenditure)	...	2,466	1	10
			5,966	1	10
	TOTAL		£300,116	17	3

Dr.

INCOME AND EXPENDITURE ACCOUNT

					INCOME			£ s. d.			£ s. d.		
ORDINARY													
I. VOLUNTARY GIFTS													
Subscriptions	588	12	0						
Donations	763	15	9						
Collecting Boxes	236	1	9						
Congregational Collections	8	13	0						
Pound Day	134	16	2						
New Year's Eve Hospital Ball	60	0	0						
Lord Mayor's Hospital Fund	170	0	0						
United Banks Hospital Fund	326	8	9						
Workpeople's Collections and Employers'													
Donations	1322	19	8				3611	7 1	
II. RECEIPTS ON ACCOUNT OF SERVICES RENDERED													
In-Patients	7908	1	8						
Do. per Ministry of Health	38	12	1						
Out-Patients	206	18	9						
Medical Charities	6880	3	9						
X-Ray and Electrical Depts.	513	15	7						
Massage Dept.	11	12	6				15559	4 4	
III. OTHER RECEIPTS													
Telephone Receipts	51	18	5						
Pathological Investigations	74	10	2						
British Hospitals Association—													
Nursing Salaries Grant	1009	0	0						
War Damage	611	5	3						
Ministry of Health	73	15	0						
Sundries	303	9	8						
Transfer from Deferred Repairs and													
Contingencies Account	500	0	0				2623	18 6	
IV. INVESTED PROPERTY													
Cochran Bed Endowment	30	14	0						
Interest and Dividends	3728	11	7						
Rents	322	12	11						
Income Tax Repayment	2201	4	6				6283	3 0	
TOTAL ORDINARY INCOME										£28077 12 11			
EXTRAORDINARY													
1. Endowment Donations	4	0	0						
2. Legacies	2936	12	11				2940	12 11	
TOTAL INCOME										£31018 5 10			

EXPENDITURE				£	s.	d.	£	s.	d.
ORDINARY									
I.	PROVISIONS	3729	16	0
II.	SURGERY AND DISPENSARY								
1.	Drugs, Chemicals, etc.	1296	4 11			
2.	Dressings, Bandages, etc.	478	17 8			
3.	Instruments and Appliances	987	11 10			
4.	Salaries of Dispensing Staff	411	13 2			
5.	Pathological Examinations	256	3 0			
							3430	10	7
III.	DOMESTIC								
1.	Renewal and Repair of Furniture, Bedding, Crockery, etc.	407	2 10			
2.	Laundry	163	17 10			
3.	Cleaning and Chandlery	227	16 7			
4.	Water	251	8 8			
5.	Fuel and Lighting	2545	13 2			
6.	Uniforms	90	13 8			
							3686	12	9
IV.	SALARIES AND WAGES								
1.	Medical	476	5 7			
2.	Nursing	6391	17 6			
3.	Other Officers and Employees	3372	7 5			
4.	Domestic Staff and Cleaners	2024	2 11			
							12264	13	5
V.	MISCELLANEOUS								
1.	Printing, Stationery and Postages,	170	16 4			
2.	Advertisements	58	13 5			
3.	Insurance of Buildings, etc.	280	13 4			
							510	3	1
VI.	ADMINISTRATION								
1.	Salaries	1150	0 0			
2.	Superannuation Scheme	568	18 6			
3.	Printing, Stationery, Postages, Telephone, etc.	499	13 7			
4.	Advertisements	2	15 9			
5.	Auditors' Fee	26	5 0			
6.	Sundries	16	13 6			
							2264	6	4
VII.	ESTABLISHMENT								
1.	Renewals and Repairs to Buildings and Plant	928	0 4			
2.	Air Raid Precautions	73	15 0			
3.	War Damage	582	5 9			
							1584	1	1
VIII.	FINANCE								
1.	Rent, Rates and Taxes			190	4	8
	TOTAL ORDINARY EXPENDITURE						£27660	7	11
EXTRAORDINARY									
	Endowment Fund, <i>per contra</i>			2940	12	11
	TOTAL EXPENDITURE						£30601	0	10
BALANCE, being excess of Ordinary Income over Ordinary Expenditure				417	5	0
							£31018	5	10

OUT-PATIENT DEPARTMENT

15-17, CAVE STREET, PORTLAND SQUARE

TELEPHONE No. 22628

<i>Dispenser</i>	Miss G. G. CLEMENT.
<i>Sister</i>	Miss M. V. LOCKYER.
<i>Almoner</i>	Miss V. A. M. HILL.
<i>Assist. Almoner</i>	Miss M. E. LOCKYER.
<i>Physiotherapist</i>	Miss N. E. POPE.

HOURS OF ATTENDANCE

Monday	12.30 p.m.
Tuesday	12.30 p.m.
Wednesday	12.30 p.m.
Friday	12.30 p.m.

Note.—NEW PATIENTS SHOULD ATTEND AT 12 noon

SPECIAL DEPARTMENTS

For Diseases of the Eye	Mon.	9.15 a.m.
For Surgical Cases	Tues.	11. 0 a.m.
For Diseases of Women	Tues.	1.30 p.m.
For Diseases of Ear, Nose and Throat	Thurs.	10.45 a.m.

Patients are seen in the special departments on the recommendation of a Medical Officer only.

MASSAGE AND MEDICAL ELECTRICAL DEPARTMENT

Patients' attendances are arranged by instructions of a Medical Officer.

Attention is drawn to the fact that the benefits of the Out-Patient Department are intended **ONLY FOR PATIENTS UNABLE TO PAY A DOCTOR'S FEE.** The Services of the Honorary Medical Staff are given gratuitously. The charge of One Shilling is to cover the cost of medicines, &c.

Bristol Homœopathic Hospital

Annual Report

1946

WITH the constant support and devotion to duty of the entire Staff, a most difficult year has been satisfactorily completed.

Board of Management—A serious loss was sustained by the Hospital with the death of Mrs. Walter Bryant, who for many years was a Member of the Board of Management and House Committee.

Mrs. R. M. Courtney was appointed to the Board and the House Committee, and Mr. S. E. Carnell (representing the Kingswood & West of England People's Voluntary Hospitals Guild) was appointed to the Board and Finance Committee.

Honorary Medical Staff.—The Board again record their appreciation of and thanks to the Honorary Staff for their valuable services.

During the year, Dr. F. Gower Bergin retired from the appointment of Honorary Radiologist. The Board placed on record their appreciation of twenty one years' devoted service. Temporary arrangements had to be made to secure a Radiologist to fill the vacancy, and at the close of the year Dr. H. J. Johnson was appointed.

The following appointments were made during the year :—

Dr. W. L. Cossham, *Hon. Physician.*

Miss D. J. Kinloch Beck, *Hon. Neurological Surgeon.*

Mr. A. L. Eyre-Brook, *Hon. Orthopaedic Surgeon.*

Miss Catherine J. MacLaren, *Hon. Dermatologist.*

Dr. Peter W. J. Parkes, *Hon. Assistant Physician.*

Miss Christine M. Rooke, *Hon. Assistant Physician.*

The Medical Committee have made a recommendation for the consideration of the Governors that Dr. J. A. Parkes should be appointed Honorary Consulting Physician and Mr. Stuart V. Stock appointed Honorary Consulting Anaesthetist.

During the year the demand on the services of the Honorary Anaesthetists have been heavy, and the Board tender sincere thanks to Dr. Monica L. Hawkins for her assistance.

National Health Service and Voluntary Hospitals.—The National Health Service Bill received the Royal Assent and was placed on the Statute Book on Wednesday, November 6th, 1946, as the National Health Service Act, 1946. The Minister of Health reiterated that the contemplated date for the "appointed day" is April 1st, 1948. There is therefore about a year in which to translate the skeleton that is the Act into the flesh and blood of a universal service.

The following privileges, none of which were included under the Bill, are now accorded to Voluntary Hospitals by the Act :—

Firstly, it is to be the duty of the new Management Committees to control and manage particular Hospitals or Groups.

Secondly, Management Committees are to have corporate legal entity, the right to sue and the liability to be sued.

Thirdly, they are to be free to undertake medical research.

Fourthly, they will have freedom, after the National Health Service starts, to receive gifts and legacies and to apply them for the purpose for which they are given ; and they will be able to retain for use of their Hospital, or the Group within which their Hospital may be comprised, certain gifts and legacies received by their Hospital between November 6th, 1946, when the Act became law, and that date in 1948 when the National Health Service begins.

They will prepare an annual budget of the moneys that they will require from the State, and when the budget has been agreed, they will have control of the expenditure of the lump sum thus provided for the purpose.

The Minister has also given an assurance that although the Act does not so specify, regulations will provide that the Management Committees of non-teaching Hospitals will be able

to appoint their Staffs, except senior Medical Staff. These will be appointed by a Sub-Committee of Representatives of the Regional Hospital Board and of the Management Committee of the Hospital concerned.

The Act also provides that in the case of any past Endowments, regard will be had, so far as possible, to the wishes of the donor including in particular observance of conditions intended to preserve the memory of any person or class of persons, as for instance in the case of War Memorials.

It is hoped that gifts which may have been cancelled since the publication of the Bill will now find their way to the Hospitals for whose benefit they were originally intended.

Lord Mayor's Hospital Fund and Hospital Extension Fund.—The Board tender thanks for the sum of £170 received from the Lord Mayor's Hospital Fund. It is regretted that the appeals for this Fund fell far short of expectations, and receipts for the year were far less than the receipts for 1945.

During the War years, the generosity of the American Army, which was so much in evidence, was reflected in the total receipts of this Fund, but with the termination of hostilities the receipts have gradually dropped. The serious illness of the Secretary, Mr. J. H. Scott Morgan, was a further handicap, with the result that the receipts from the Alexandra Rose Day Appeal showed a great loss on the previous year.

The sum of £6 11s. 11d. was received from the Lord Mayor's Hospital Extension Fund through the Bristol Hospitals Fund.

Contributory Schemes, Employees' Medical Charities and Benevolent Funds.—The Board acknowledge with thanks the continued support given to this Institution by these organisations.

The Representatives of Contributory Schemes and Medical Charities and Benevolent Funds elected to the Board of Management are :—

Mr. H. Bayley	...	Mardon, Son & Hall, Ltd.
Mr. S. E. Carnell	...	Kingswood & West of England People's Voluntary Hospitals Guild.
Mr. B. E. Gane	...	Bristol Tramways & Carriage Co., Ltd.
Mr. F. J. Neath, B.E.M.		Bristol Hospitals Fund and Bristol Aeroplane Co., Ltd.

Mr. F. J. Peters	...	Bristol Friendly Societies.
Mr. F. J. Summers	...	Bristol Medical Institutions Contributory Scheme and Bristol Hospitals Contribu- tors' League.
Mr. J. Weeks	...	W. D. & H. O. Wills.

Income.—The Ordinary Income for the year totals £28,077 12s. 11d. compared with £26,040 10s. 11d. for the previous year, an increase of £2,037 2s. 0d.

There is an increase of £23 18s. 7d. in Subscriptions, and £186 9s. 7d. in donations received during the year. Donations received from Employees' Medical Charities and Works Funds show an increase of £299 15s. 8d.

In the items coming under the heading "Receipts on account of Services Rendered," the total received from In-Patients, including payments made by various Contributory Schemes and Medical Charities, shows an increase of £951 2s. 9d.

The Board decided to appropriate to Income £500 from the Deferred Repairs Account to help in meeting the need of accumulated maintenance work which has become so much in arrear due to six years of War, and the problem of dealing with maintenance and repairs has become increasingly difficult.

Under the heading "Invested Property" there is an increase of £390 1s. 5d. on Interest and Dividends from the various investments.

Extraordinary Income.—Under this heading there is a total sum of £2,940 12s. 11d. credited to the Endowment Account. With the exception of £4 received in donations, this sum is made up of £300 from legacies received from the Estates of the late Miss M. E. Butlin and Mr. H. M. Salmon, and investments to the value of £2,636 12s. 11d. from the Estate of the late Miss E. J. A. Sutton.

Expenditure.—The Ordinary Expenditure totals £27,660 7s. 11d., an increase of £4,270 11s. 9d. on the previous year. This large increase is mainly due to £83 8s. 8d. additional expenditure on Provisions, £749 7s. 2d. on Surgery and Dispensary items, and the largest increase being £2,363 13s. 10d. on items coming under the heading "Salaries and Wages."

With the operation of the Rushcliffe Report and revised scales which have come into force during the past year, and latterly the increases in salaries and wages brought about by the recommendations of the Joint Industrial Council and the Joint Negotiating Committee dealing with the professional Associations of Occupational Therapists, Pharmacists and others, additional expenditure will occur in this direction, to ensure the efficient staffing of the Hospital.

Pound Day.—This annual appeal was made on June 29th, the result being as follows :—

Cash received ... £134 16s. 2d.

Goods to the value of £35 0s. 0d.

This is a little less than receipts for the previous year, due no doubt to the many appeals at the conclusion of the War.

The Board would like to thank all those who assisted in the appeal, and congratulate them on the success attained.

Bristol United Banks Hospital Fund.—The Board again tender thanks to the Committee and Members of this Fund for their continued support, and take this opportunity of expressing appreciation of the Thanksgiving gift of £100 for the purchase of a Steam Sterilizer Set for the Men's Ward.

Entertainments.—The New Year's Eve Ball was held after a lapse of seven years. This was most popular and well supported. On this occasion the Ball was looked upon more as a reunion event than a financial effort and thanks to the organizing ability of Col. Hunter, a happy evening was enjoyed by all.

The sum of £60 was handed to the Hospital, mainly due to the efforts of the young ladies who sold Heather to guests, which realised £22 10s. 0d. and the efforts made by Mrs. Hunter and Mrs. A. Mass, who organised the Guessing Competition which produced £16 10s. 0d.

General Nursing Council for England and Wales.—In July 1943, the following requirements were agreed upon in relation to future Hospitals approved as Training Schools—"that the minimum daily average of occupied beds should be 100."

This decision was left in abeyance for the time being, but further notice has now been given that this decision will be implemented in 1947.

It should be explained that all Voluntary Hospitals, at present complete Training Schools, were originally inspected and approved as such by the Council for the training of Nurses, and this Hospital, like many others, has been training Nurses for service all over the world.

The implementing of this decision will mean that a very large number of Voluntary Hospitals throughout the Country will have either to cease training Nurses, or become approved Affiliated Schools with larger Institutions.

Many young girls prefer to undergo their training in a small Hospital where they receive more personal consideration and training. Many have successfully trained in the smaller Hospitals and become valued Members of the Nursing profession. But for the smaller Hospitals, they would not have been available to the profession, as they would not enter the larger Institutions.

This Hospital has trained Nurses for the past twenty years under the approval of the Council, and is in the proud position of always having a waiting list of candidates for training.

Protests against this decision have been sent in by all Hospitals affected and in addition through the British Hospitals Association and the Association of Hospital Matrons, but without avail.

The Ministry of Health agree that to put such an Order into operation at the present time will interfere in the training of Nurses when they are so much in demand, but the Ministry do not appear to be able to intervene.

With the present state of the Country, the turmoil in the building trade, the Licences and Permits and the impossibility of proceeding with enlarging Hospitals or Nurses' Homes to provide the additional beds and Nurses, the decision of the General Nursing Council is a calamity for Hospital patients and sick people generally.

It would seem that the only way for this Hospital to continue to train Nurses is to make some conjoint arrangement with some other Institution, if only as a temporary arrangement until such a time as altered conditions will allow the necessary building to provide additional beds and accomodation needed. To enable a Hospital to secure the average occupied beds of 100 means having approximately 140 available beds.



NEW YEAR'S EVE BALL, 1946

Needlework Guild.—At the conclusion of the year, the Balance Sheet shows that the efforts of the Guild have met with success and that the annual “ Bring & Buy ” Sale, held on June 12th, produced the very gratifying amount of £158 0s. 3d.

With higher costs, expenditure on materials, etc., is increasing.

Cash at the Bank at the end of the financial year (September 30th) was £476 2s. 0d.

The Executive Committee of the Guild appeal for new Members. This is an opportunity for those not able to become Subscribers to help the Hospital in a small but practical way and should find a ready response from all those who have received benefit at the Hospital or the Out-Patient Department.

Nursing Staff.—The Board of Management congratulate the following Nurses on having passed their State Examinations :—

Passes in the Preliminary State Examinations—

Nurse H. G. Judson	
„ S. G. Sparey	
„ M. P. P. Jeffrey	
„ M. D. Armstead	
„ R. J. Rook	
„ M. C. Long	
„ U. M. Ward	
„ N. A. Ayres	
„ J. D. M. Dillon	
„ J. N. Highmore	<i>Part 2</i> }
„ E. D. Seleman	<i>Part 2</i> }
	<i>Part one obtained</i>
„ M. J. Welsh	<i>before entry</i>
„ B. M. Boone	
„ P. G. Clee	
„ R. E. Hall	

Passes in the Final State Examination—

Nurse W. M. Stadward
„ A. C. M. Williams
„ J. Sullivan
„ M. M. Cole
„ M. B. Edwards
„ J. M. Oliver
„ J. Moore
„ G. C. Kavanagh
„ J. G. Powell

President's Prize—for efficiency and good conduct—
Nurse J. E. Merchant

Chairman's Prize—for best Second-Year Nurse—
Nurse N. A. Ayres

Matron's Prize—for consistent good work and progress—
Nurse C. E. D. Wade

The working hours of the Nursing Staff have been reduced to 96 per fortnight as recommended in the Rushcliffe Report. The Preliminary Training School period has been lengthened to five weeks, with a further period of three weeks after three months' experience in the Wards, which is proving very satisfactory.

The health of the Staff has been exceptionally good in spite of the severe weather.

During the year presentations were made to Sister Johns and Sister Wallis in recognition of their wonderful work. The resignation of Sister Johns, after 21 years' service, is a matter of the greatest regret to everyone.

Samaritan Fund.—The "Sale of Work" and "Silver Tree" Collection, which has taken place for so many years, was held again in November, the receipts totalling in all £120 2s. 6d.

Calls on this Fund have increased considerably, due largely to the increased cost of living and the number of elderly people with very limited means, and demands have been made on the Fund to provide extra nourishment and household necessities. Assistance has been given to patients during convalescence.

Almoner's Department.—Admissions to the Hospital during the year total 1,555, of which 775 were Members or Dependants of Contributory Schemes or Works Medical Charity Funds, 1096 Members or Dependants of Contributory Schemes or Works Medical Charity Funds attended as Out-Patients at Cave Street or the Hospital Casualty Department or for X-Ray or Physiotherapy.

The Board of Management thank the following Institutions and Organisations for their continued co-operation and

assistance with In-Patients upon being discharged from the Hospital :—

Belmont Convalescent Home, Clevedon.
Bristol Crippled Children's Society.
British American Bellows Society.
Hospital Car Service.
Jan Smuts Home, Burnham-on-Sea.
Oldland Rest Home Fund.
Rowcroft Convalescent Home, Torquay.
Royal West of England Sanatorium, Weston-s.-Mare.
St. Luke's Convalescent Home, Exmouth.
Soldiers, Sailors & Airmen's Families Association.
Soldiers, Sailors & Airmen's Help Society.
Victoria Convalescent Home, Clevedon.

Rehabilitation and Occupational Therapy—Unfortunately this work has not developed as anticipated. The undertaking entered into with the Bristol Council for the Disabled (Adults) has not matured, due to their difficulties in securing adequate staff. It is hoped that additional Staff will be secured so that regular visits can be made by the Occupational Therapist and the aftercare work of patients in their own homes, after being discharged, will be increased and bear good results.

The Staff of the Physiotherapy Department at the Hospital gave 4407 Electrical treatments and 2756 treatments for Massage and Swedish Remedial Exercises.

The work at the Out-Patient Department was curtailed due to the illness of the Staff, but 913 Electrical treatments were given and 648 treatments for Massage and Swedish Remedial Exercises.

Hospital Staff.—The Board of Management take this opportunity of expressing their appreciation of the continued loyal and efficient services rendered to the Institution throughout the year by the Secretary, the Matron, the Sisters, the Nurses, and all Members of the Staff, fully recognising how greatly the success of the Hospital is due to their efforts.

IN-PATIENTS

	1946
1. Total number of beds available on 31st December (including four Open-Air Chalêts and Balcony beds)	103
2. Average number of available beds during the year	103
3. Average number of patients resident daily throughout the year	72.9
4. Number of In-Patients in the Hospital at the beginning of the year	70
5. Number of In-Patients admitted during the year	1555
6. Number of In-Patients in Hospital at the end of the year	72
7. Average number of days each Patient was resident	16.3
8. Number of Patients' days	26,628
9. Number of major and minor operations performed during the year	1209
10. Number of Patients admitted and discharged during the year who were resident for :—	
(a) only one day	55
(b) two and three days	285

OUT-PATIENTS

1. Total number of new Out-Patients	909
2. Total number of Out-Patients' attendances	7333
3. Additional attendances for dressings only ...	1002
4. Cash receipts	£206 18s. 9d.
5. Casualties and Emergencies dealt with in Casualty Department at Hospital	1692
6. Attendances at Hospital Casualty Department for dressings, etc.	2435

DENTAL DEPARTMENT

				1946
Number of patients attending	19
Number of attendances	55

Treatment—

Extractions	85
General Anaesthetics	9

X-RAY AND PHYSIOTHERAPY DEPARTMENT

The Hospital						1946
X-Ray Examinations	1143
X-Ray Treatments	16
Ultra-Violet Light and Vapour Bath Treatments						1272
Electrical Treatments	4407
Massage Treatments and Swedish Remedial Exercises	2756

Out-Patient Department, Cave Street.

Number of new Patients	86
Medical Electrical Treatments	913
Ultra-Violet Light Treatments	222
Massage Treatments and Swedish Remedial Exercises	648

Unfortunately owing to shortage of Staff and illness, this Department had to be closed for a few weeks during the year.

LIST OF SUBSCRIBERS,

Honorary Life Governor :

Mr. W. G. VEALE, Elected the year 1929

* Subscribers have executed the Covenant for a period of seven years, which enables the Hospital to recover the Income Tax in addition to the Subscription.

	£	s.	d.		£	s.	d.
Aldridge & Co ...	1	1	0	*Buchan, Mr. E. A. ...	1	1	0
Ancient Order of Foresters ...	2	2	0	Budgett, H. H. & S. & Co., Ltd. ...	1	1	0
Anderson's Rubber Co., Ltd. ...	2	2	0	Burch, Mr. R. J. ...	3	0	0
Anglo-American Oil Co., Ltd. ...	1	1	0	Burgess, Mrs. ...	1	1	0
Anonymous (G. B.) ...	2	2	0	Burgess, Lt. Col.D., V.C.	2	0	0
Babbage, G. G. & Sons	1	1	0	Burris, F., Ltd. ...	5	0	
Baileys (Bristol), Ltd.	2	2	0	Cabell, Miss E. S. ...	10	0	
Baker, Baker & Co., Ltd	5	5	0	Cadena Cafes, Ltd. ...	1	1	0
Baker, Mr. & Mrs. H.	2	2	0	Cann, Mr. Walter ...	1	1	0
*Bank of England ..	10	10	0	Canning, Mr. G. O. ...	10	6	
Bates, Mr. H. J. ...	2	2	0	Carwardine, Stephen & Co., Ltd. ...	1	1	0
*Batten, Miss B. A. ..	1	1	0	Case, Mr. C. A. ...	1	1	0
Beale, Mr. W. H. ...	2	2	0	Cattybrook Brick Co., Ltd. ...	1	1	0
Beavis, Mr. C. E. ...	1	1	0	Central Oil Co., (Bristol), Ltd. ...	10	6	
Beesley, Miss A. E. ...	1	1	0	Clark & Wheeler ...	1	1	0
Bell & Nicholson, Ltd.	1	1	0	Cleaves, Mr. Bertram	2	2	0
Bennett Bros., Ltd. ...	4	4	0	Clinker, Miss H. F. ...	10	6	
Bethell Gwyn & Co. ...	1	1	0	Cole, Mrs. ...	1	1	0
Bibbing, Mr. E. H. ...	2	2	0	*Colston, Mr. Cecil ...	1	1	0
Bigwoods, Ltd. ...	1	1	0	Colston Electrical Co., Ltd. ...	10	6	
Bodman, Miss A. ...	4	4	0	Cooke, Mr. & Mrs. R. V.	1	1	0
Bodman, Dr. A. Paul	1	1	0	Cooper, Mrs. J. ...	10	6	
Bodman, Mr. & Mrs. C. O.	1	1	0	Corner, Mrs. C. R. ...	1	1	0
Bodman, Mr. H. ...	2	2	0	Cotterell, Mr. B. H. ...	2	2	0
Bodman, Mrs. K. ...	1	1	0	Cotterell, Mr. H. F. ...	3	3	0
Boots Cash Chemists, Ltd.	3	13	6	*Cowlin, Miss M. L. ...	3	3	0
Bostock, Miss H. L.	2	2	0	Cowlin, William & Son, Ltd. ...	1	1	0
Boucher, Mrs. J. M.	1	1	0	Cox, Thos. & Sons, of Bristol, Ltd. ...	10	6	
Brecknell Willis & Co., Ltd. ...	1	1	0	*Craely, Mrs. B. H. ...	1	1	0
Brights of Bristol, Ltd.	1	1	0	Craven, Mr. Campbell J.	1	1	0
Bristol Co-operative Soc. Ltd. ...	6	6	0	Crocker, Bros., Ltd.	1	1	0
Bristol Gas Co. ...	11	0	4	*Crook, Councillor H.	5	5	0
Bristol Municipal Charities ...	15	0	0	Cross, Miss E. I. ...	1	1	0
Bristol Sand & Gravel Co., Ltd. ...	5	0		Curry & Paxton, Ltd.	1	1	0
Bristol Schoolmasters' Association ...	1	1	0	Dainton, A. & Sons ...	2	2	0
*Brooksbank, Mrs. M.	1	1	0	Davie, Mr. George ...	1	1	0
Brown & Sons (Seeds), Ltd. ...	1	1	0	Densham, Miss J. G.	1	1	0
Brown, Mrs. G. H. ...	1	1	0	Densham, Miss M. ...	1	1	0
Brown, Mr. H. Pritchett	1	0	0	Distillers Co., Ltd. ...	2	2	0
				Dixon, Mr. & Mrs. A. H.	3	3	0
				Dove Bros. (Bristol), Ltd.	5	0	

	£	s.	d.		£	s.	d.
Drewett, Miss A. M. ...	1	1	0	Independent Order of			
Duncalf, Mr. W. J. ...	1	1	0	Oddfellows ...	5	5	0
Edgar, Mr. & Mrs. D. B.	10	0		Inskip, The Honourable			
Edwards, Ringer & Bigg,				Lady ...	2	0	0
Ltd. ...	2	2	0	Jackson, Mrs. M. ...	2	0	0
Egelstaff, Mrs. M. A. ...	2	2	0	Jefferies, Son & Co. ...	1	1	0
Elliott, Mrs. B. B. ...	1	1	0	Jennings, Mr. F. J. C. ...	1	1	0
England, Mr. J. E. ...	1	1	0	Jennings, Miss M. ...	1	1	0
Evans, Gadd & Co., Ltd.	1	1	0	Jennison, Mr. F. G. ...	2	2	0
Evans, Mr. G. A. V. ...	1	0	0	Jolly & Son, Ltd. ...	1	1	0
Eyles, W. H. & Co., Ltd.	1	1	0	Jones, Miss D. G. ...	10	0	
Ferris & Co., Ltd. ...	1	1	0	Jones, Mrs. B. J. ...	1	1	0
Field, Mr. G. C. ...	1	1	0	Jones, Mr. L. L. Mc-			
Finch, Mr. A. E. ...	1	1	0	Lennan ...	1	1	0
*Flook, Mr. G. E. ...	1	0	0	Kempster, Mrs. I. D. ...	1	1	0
Ford, Miss B. ...	1	1	0	Kethro, Mr. A. E. ...	1	1	0
Foweraker, Mr. T. S. ...	2	2	0	King, Mrs. A. E. ...	5	5	0
Franklyn Davey & Co.,				King, C. J. & Sons, Ltd.	1	1	0
Ltd. ...	2	2	0	King, Mr. H. E. ...	1	1	0
Fuller, Miss E. E. M.	10	6		*Kleen-e-ze Brush Co.,			
Gane, P. E., Ltd. ...	1	1	0	Ltd. ...	5	5	0
Gardiner, Sons & Co.,				Knapp, Mr. N. H. ...	1	1	0
Ltd. ...	2	2	0	Knight, Mrs. L. ...	1	1	0
Garnett, Mr. William	2	2	0	Knott, Mr. & Mrs. A. J.	1	1	0
*Gilpin, Mrs. C. H. ...	1	1	0	Lane, Miss M. L. ...	1	1	0
Gotsell, Mr. C. E. ...	1	1	0	*Lewin, Mrs. E. ...	1	1	0
*Gray, Mr. C. W. ...	3	3	0	Maggs, B. & Co. ...	2	2	0
Griffiths, Mrs. E. D. ...	1	1	0	Mann, Mr. L. ...	1	1	0
*Grubb, Mrs. E. ...	1	1	0	Mardon, Col. A. C. ...	1	1	0
*Gunn, Mrs. M. W. ...	1	1	0	Mardon, Son & Hall, Ltd.	50	0	0
Habgood, Mr. S. ...	1	1	0	Marsh, T. C. & Son, Ltd.	1	1	0
Hale, Miss O. M. ...	10	6		Mass, Mr. Abel ...	2	2	0
Hall, J. & Sons, Ltd. ...	4	4	0	Matthews, Miss F. L.	1	1	0
Hardidge, Mr. L. ...	1	1	0	Mawdsley, Mr. R.			
Harvey, Capt. J. St.C.	1	1	0	Hargreaves ...	10	6	
*Harvey, Mrs. M. V.	1	1	0	Melhuish, Mr. H. ...	2	2	0
Haskins, Mrs. E. ...	1	1	0	Merchant Venturers, The			
Hector, Mr. F. J. ...	2	2	0	Society of ...	10	10	0
Hill, H. H. & W. H., Ltd.	2	2	0	Miles, Mr. & Mrs. A. H.	2	2	0
Hill, Leigh & Co., Ltd.	1	1	0	Miles, E. & Co. ...	1	1	0
Hill, Mrs. R. A. ...	2	2	0	Miles, Thomas & Co.	2	2	0
Hillman, Miss L. G. ...	10	6		*Milligan, Mr. J. L. ...	5	5	0
Hind, Mr. J. ...	2	2	0	Milner, Mr. R. E. ...	1	1	0
*Histed, Mr. G. T. ...	1	1	0	Mintern, Mrs. G. J. ...	1	1	0
Hogbin & Trussell, Messrs.	1	1	0	Mitchell, H. (Bristol), Ltd.	1	1	0
Hornby's Dairies, Ltd.	1	1	0	*Moir, Mr. James A.	2	15	0
Howard, Mrs. W. ...	1	1	0	Monk, Mr. R. W. ...	2	0	0
Howell, Mr. F. W. ...	1	1	0	Morgan, Mr. G. A. ...	1	1	0
Hulbert, The Rev. N.	1	1	0	Morgan, W. (Bristol),			
Hunter, Lt. Col. H. ...	1	1	0	Ltd. ...	1	1	0
Hurst, Mr. L. ...	2	2	0	Morgan, Mr. & Mrs. W.G.	10	6	
*Iggesden, Mr. G. F.	2	2	0	Morris, Mr. W. S. ...	1	1	0
Imperial Chemical In-				Mundy & Co., Ltd. ...	1	0	6
dustries, Ltd. ...	2	2	0				

DONATIONS

	£	s.	d.		£	s.	d.
Anonymous ...	1	0	0	National Provincial Bank,			
Anonymous ...	1	1	0	Ltd. ...	10	10	0
Anonymous ...	5	0	0	Oakshott, Mrs. F. ...	5	0	0
Begbie, Mr. R. T. ...	1	0	0	Osborne, Miss L. ...	1	0	0
Begbie, Mr. E. W. ...	1	0	0	Owen, Mrs. R. M. ...	1	0	0
Bodman, Mrs. G. ...	5	5	0	Parker, Miss E. L. ...	1	0	0
Bollom, Mr. I. B. ...	10	0	0	Parker's Bakeries, Ltd.	40	0	0
Boxall, Mrs. F. L. ...	1	1	0	Peters, Mrs. R. ...	2	0	0
Bristol Private Fire Bri-				Priddle, Mr. J. C. ...	5	5	0
gades Association ...	5	0	0	Pring, Mr. F. W. ...	2	10	0
Bristol Rovers Football				Public Health Dept. ...	4	4	0
Club ...	200	0	0	Richards, Mr. L. J. ...	2	2	0
Bristol Secondary Com-				Ridgeway, Mrs. E. E. ...	1	0	0
mercial School ...	5	0	0	Roden, Rev. H. C. B. ...	1	1	0
Bristol Sportsmen's				Rossiter, Mr. A. J. ...	2	2	0
Hospital Fund ...	108	16	7	Rowe, Mr. H. B. ...	10	10	0
British Home Stores, Ltd.	1	1	0	Savory, E. & W. Ltd.	10	6	
Burr, Mrs. Lucy ...	10	0		Smith, Mr. R. H. ...	8	0	
Capel, Mr. H. E. ...	1	1	0	St. Annes Board Mill Co.	2	2	0
Clegg, Mr. Norman ...	1	1	0	Taylor, Mr. M. F. ...	10	6	
Cotton, Mrs. F. ...	2	0	0	Way, Mrs. ...	10	0	
Cross, Miss E. I. ...	1	0	0	West, Lt. Col. S. H.			
Deady, Miss D. ...	2	0	0	Middleton ...	6	6	0
Dunbar, The Late Mr.				White, Mr. G. W. ...	2	2	0
John ...	10	0	0	Whitson Lodge ...	1	1	0
Emery, Mr. F. ...	2	0	0	Wills, W. D. & H. O.—			
Eve, Miss ...	1	1	0	Staff Medical Charities			
Gale, Mrs. C. M. ...	1	0	0	Fund ...	20	0	0
Gallaher, Ltd.—Staff Fund	5	5	0	Fire Guard Re-union Dance :—			
Gibbon, Mr. A. D. ...	5	0	0	per Mr. S. Siddons—			
Gray, Mrs. ...	2	2	0	Wilson ...	26	10	0
Grimmer, Mr. A. B. ...	3	15	6	per Mr. I. Spencer ...	3	10	0
Hamilton, Mr. & Mrs. H.							
W. ...	1	1	0		£571	9	1
Hunt, Mr. E. J. ...	1	1	0	Bristol Hospitals Fund :—			
Imperial Tobacco Co.	6	6	0	Grants from unear-			
Jackman, Mr. W. A. ...	5	5	0	marked Donations	121	16	8
James, Mr. C. J. ...	2	2	0	In Memoriam (separate			
James, Miss G. E. ...	1	1	0	list) ...	70	10	0
Jefferies, Mr. G. P. ...	11	0					
Jenkins, Mr. J. W. ...	5	0	0				
Johns, Mr. J. ...	5	0	0				
Lord, Mr. E. ...	2	12	6				
Morgan, Mr. G. A. ...	10	6					
Morris, Mr. S. ...	5	5	0		£763	15	9

IN MEMORIAM

*Donor has executed the Covenant for a period of seven years, which enables the Hospital to recover the Income Tax in addition to the Donation.

In memory of the late Mr. C. Crocker (Mrs. G. E. Crocker) ...	2	2	0
In memory of the late Dr. J. Broom Douglas (Mrs. J. Broom Douglas) ...	5	0	0
In memory of the late Mrs. E. Drewett (Miss A. M. Drewett)	1	1	0
In memory of the late Mrs. M. J. Ellicott (Miss B. A. Ellicott and The Misses B. & E. Hicks) ...	10	0	
(Mr. H. E. Gane) ...	10	0	
(Mrs. G. K. Howell) ...	5	0	
(Mrs. E. M. Rogers) ...	10	0	
(Messrs. J. P. Sturge & Sons) ...	2	2	0
In memory of Evelyn (Mrs. M. Brooksbank) ...	13	0	0
In memory of the late Mrs. Flook (Messrs. R. & F. Walton) ...	1	0	0
(from friends per Mr. B. Flook) ...	15	17	0
In memory of the late Mrs. Hitchman (Miss E. Hitchman) ...	1	0	0
In memory of the late Mr. H. W. Jenkins (Mrs. B. M. Robbins and Mrs. O'Connell) ...	2	2	0
In memory of Joseph (Mr. & Mrs. D. Crook) ...	1	1	0
In memory of Olive (Mrs. F. M. Wilkinson) ...	1	10	0
In memory of the late Mrs. Palmer (Mr. J. W. Palmer) ...	2	2	0
In memory of the late Mrs. L. F. Rowsell (Staff of Engineering Dept., Messrs. W. D. & H. O. Wills) ...	2	5	0
In memory of the late Mrs. Scull (Mr. E. J. Scull) ...	1	1	0
In memory of the late Mrs. M. Sherman (from friends per Mr. A. W. Sherman) ...	5	10	0
*In memory of the late Mr. H. E. Tyrrell (Mr. & Mrs. G. N. Tyrrell) ...	2	2	0
In memory of the late Mrs. Williams (Mr. F. Williams) ...	5	0	0
In memory of the late Mrs. W. Melville Wills (Mrs. J. Broom Douglas) ...	5	0	0
	<hr/> <hr/>		
	£70	10	0

COLLECTING BOXES, etc.

[illegible]

CONTRIBUTORY SCHEMES
AND
EMPLOYEES' BENEVOLENT AND MEDICAL
CHARITY FUNDS

	£	s.	d.
Albion Dockyard	50	0	0
Amalgamated Society of Woodworkers	8	8	0
Ashton Containers, Ltd.	14	11	0
Bennett Bros., Ltd.	10	10	0
Bristol Aeroplane Co., Ltd.—Directors	187	15	2
Bristol Constabulary	10	0	0
Bristol Gas Company	9	12	0
Bristol Medical Institutions Contributory Scheme	490	0	0
Bristol Tramways & Carriage Co., Ltd.	91	17	6
Bristol Waterworks Co.		16	0
Carsons, Ltd.	6	0	0
Fry, J. S. & Son, Ltd.	60	0	0
Georges Bristol Brewery	7	0	0
Hospital Saving Association	30	0	0
Jefferies & Sons, Ltd.	6	10	0
Kingswood & West of England People's Voluntary Hospitals Guild	30	0	0
Mardon, Son & Hall, Ltd.	35	0	0
Metal Agencies Co., Ltd.	20	0	0
National Smelting Co., Ltd.	26	0	0
Packer, H. J. & Co., Ltd.	12	0	0
Pountney & Co., Ltd.	5	5	0
Robinson, E. S. & A., Ltd.	129	0	0
St. Anne's Board Mill Co., Ltd.	5	5	0
Strachan & Henshaw, Ltd.	20	0	0
Thomas, Christopher, & Bros., Ltd.	3	10	0
Todd & Co., Ltd.	4	0	0
Wills, W. D. & H. O.	50	0	0
	<u>£1,322</u>	<u>19</u>	<u>8</u>

HOW SUBSCRIBERS CAN STILL FURTHER HELP BRISTOL HOMŒOPATHIC HOSPITAL WITHOUT ANY ADDITIONAL EXPENSE TO THEMSELVES

RECOVERY OF INCOME TAX ON SUBSCRIPTIONS

Subscribers will be interested to know that **without any extra cost to themselves**, every £1 1s.0d. they contribute may be increased to £1 18s.2d., while the Income Tax remains at 9s. in the £.

Charities are entitled to recover Income Tax on subscriptions received, and all that is required is that the donor should agree to spread his contribution over a period of seven years. It should be pointed out that **no extra trouble to the subscriber is involved by this method**.

A copy of the Covenant will be found overleaf.

The sum named in the agreement can, of course, be for any amount according to the wishes of the donor, and the following table illustrates the great benefit to the Hospital of this Scheme.

EXAMPLE.

I.		II.		III.	
Amount of Subscription to be paid by Subscriber.		Amount recovered by Hospital from Inland Revenue.		Amount credited to Subscriber	
£	s. d.	£	s. d.	£	s. d.
1	1 0	0	17 2	1	18 2
3	3 0	2	11 7	5	14 7
5	5 0	4	5 11	9	10 11

Any amount paid under this scheme can be deducted in the Donor's Surtax returns.

I,

of

HEREBY COVENANT with the Bristol Homœopathic
Hospital, that for a period of seven years from the
.....day of....., 194....,

or during my life (whichever shall be the shorter) I will
pay annually to the said Hospital from my General
Fund of Taxed Income such sum as after deducting
Income Tax therefrom at the rate then current will
leave the nett sum of

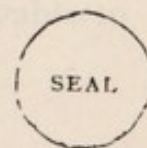
£ :), so that I shall receive no personal or
private benefit during either of the said periods from the
said sum of.....
or any part thereof.

IN WITNESS whereof I have hereunto set my hand and seal
this.....day of....., 194....

SIGNED, SEALED and DELIVERED

by the above-named

in the presence of



Bristol Homœopathic Hospital

Please enter my name as an Annual Subscriber of

£ : :

Address.....

Date.....

To
THE SECRETARY,
Bristol Homœopathic Hospital,

Bristol 6.

Cheques should be crossed and made payable to
Bristol Homœopathic Hospital.

FORM OF BEQUEST

I give to the Treasurer for the time being of
THE BRISTOL HOMŒOPATHIC HOSPITAL the
sum of

to be paid out of such part of my personal estate as by
law I may or can charge with the payment of the same
within months of
my decease, upon trust to be applied to the use of the said
BRISTOL HOMŒOPATHIC HOSPITAL, in such way
as its Board of Management may direct.

BANKER'S ORDER

To the.....Bank (Ltd.)

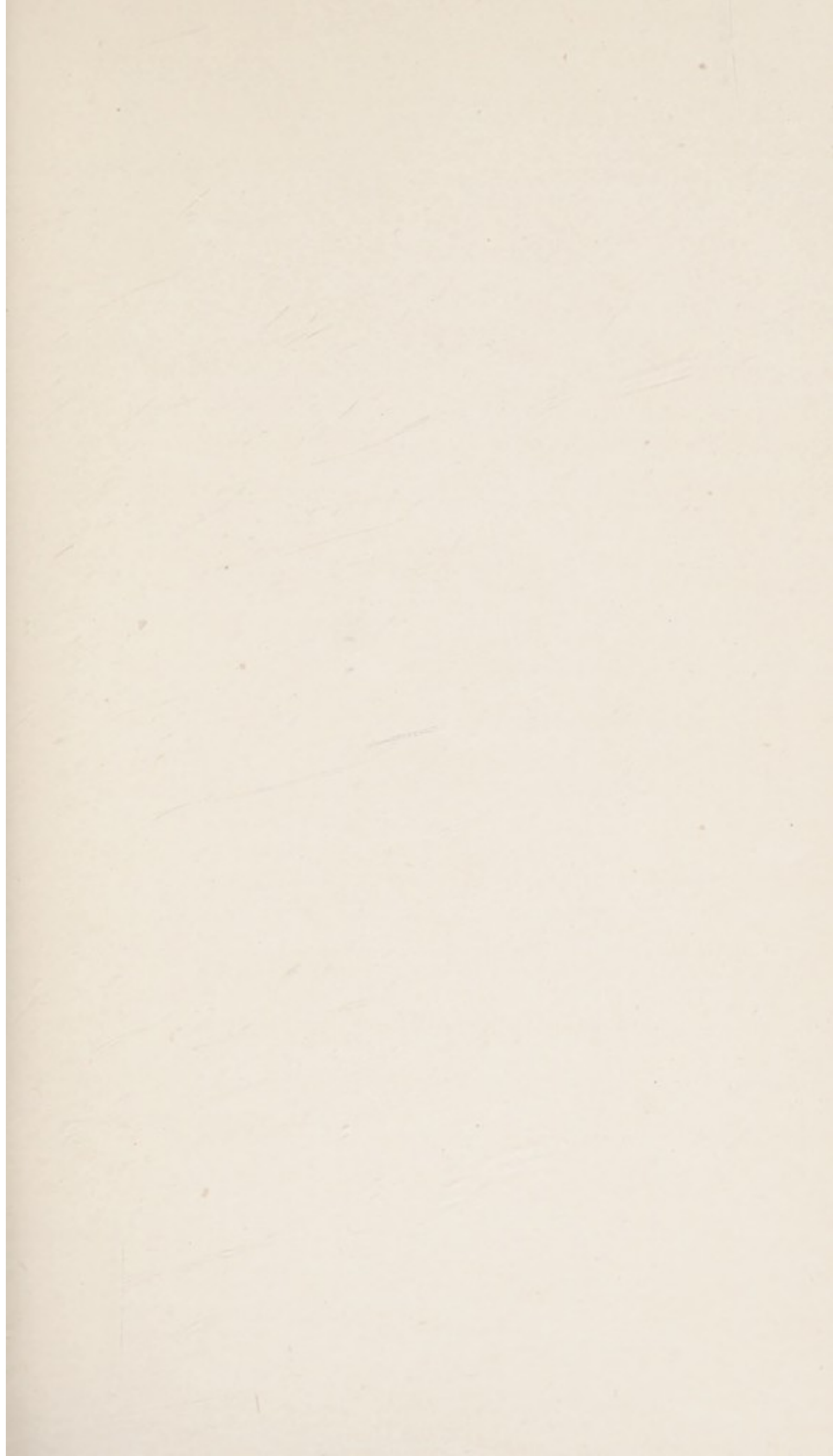
.....Branch.

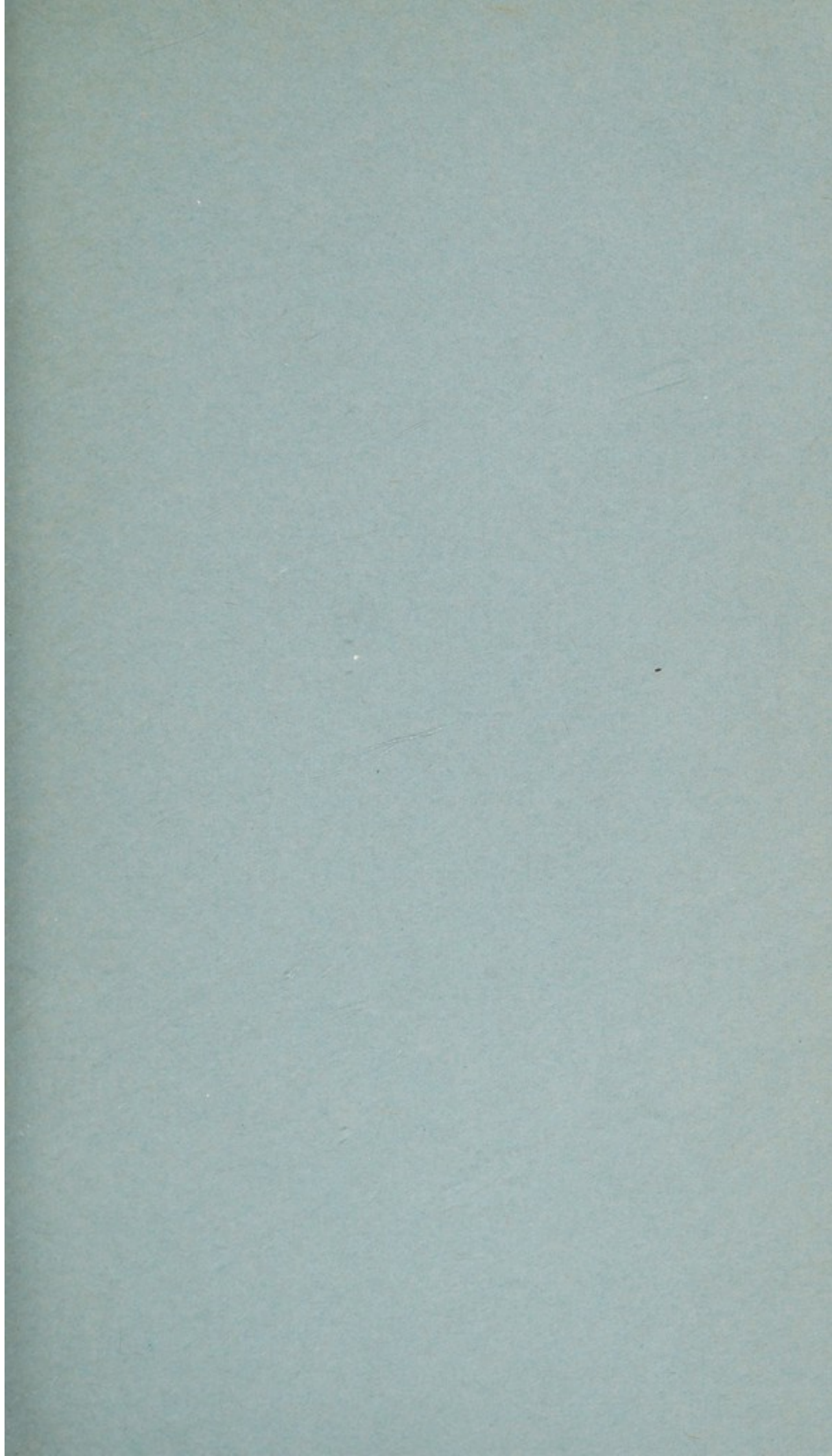
Please pay to the Secretary of the BRISTOL
HOMŒOPATHIC HOSPITAL, at National Provincial
Bank, Ltd., the sum of £ : :
and continue to pay the same on ^{*Jan. 1st}
July 1st of each year
until countermanded.

Signed.....

Date.....

* Strike out one or other date.





THE BOARD OF MANAGEMENT ASK FOR
YOUR CO-OPERATION IN SECURING

ADDITIONAL
SUBSCRIBERS
or DONORS

to augment the regular income. YOU can assist by forwarding to the Secretary the names and addresses of any friends who may be interested, when every effort will be made to enlist their sympathy. VISITORS ARE INVITED. PARTIES will be shown over the Institution and Gardens on appointment with the Secretary.

Telephone Bristol 33068/9