

Report : 1945 / Bristol Homeopathic Hospital.

Contributors

Bristol Homeopathic Hospital.

Publication/Creation

[Bristol] : [Bristol Homeopathic Hospital?] 1945

Persistent URL

<https://wellcomecollection.org/works/kj33ntmv>

License and attribution

This work has been identified as being free of known restrictions under copyright law, including all related and neighbouring rights and is being made available under the Creative Commons, Public Domain Mark.

You can copy, modify, distribute and perform the work, even for commercial purposes, without asking permission.



Wellcome Collection
183 Euston Road
London NW1 2BE UK
T +44 (0)20 7611 8722
E library@wellcomecollection.org
<https://wellcomecollection.org>

BRISTOL
HOMŒOPATHIC
HOSPITAL

REPORT

for the year

1945

CONTENTS

	<i>Page</i>
View of the Hospital—Frontispiece	
Officers	1-3
In-Patients—Accommodation	4
Admission to Hospital	5
Visiting Days and Hours	5
Income and Expenditure Account	6-7
Balance Sheet	8-9
Out-Patient Department	10
Report	11
In-Patients... ..	17
Out-Patients	17
Dental Department	18
X-Ray Medical Electrical Massage Departments	18
List of Subscribers, 1945... ..	19-21
Donations, 1945	22
Donations, 1945—" In Memoriam "	24
Box Collections	25
Employees Benevolent and Medical Charity Funds—1945	26
How to help Hospital without further cost to Subscriber	27-28
Form for Subscribers	28
Form of Bequest	31
Bankers' Order Form	31



22501677147

WELLS
LIBRARY

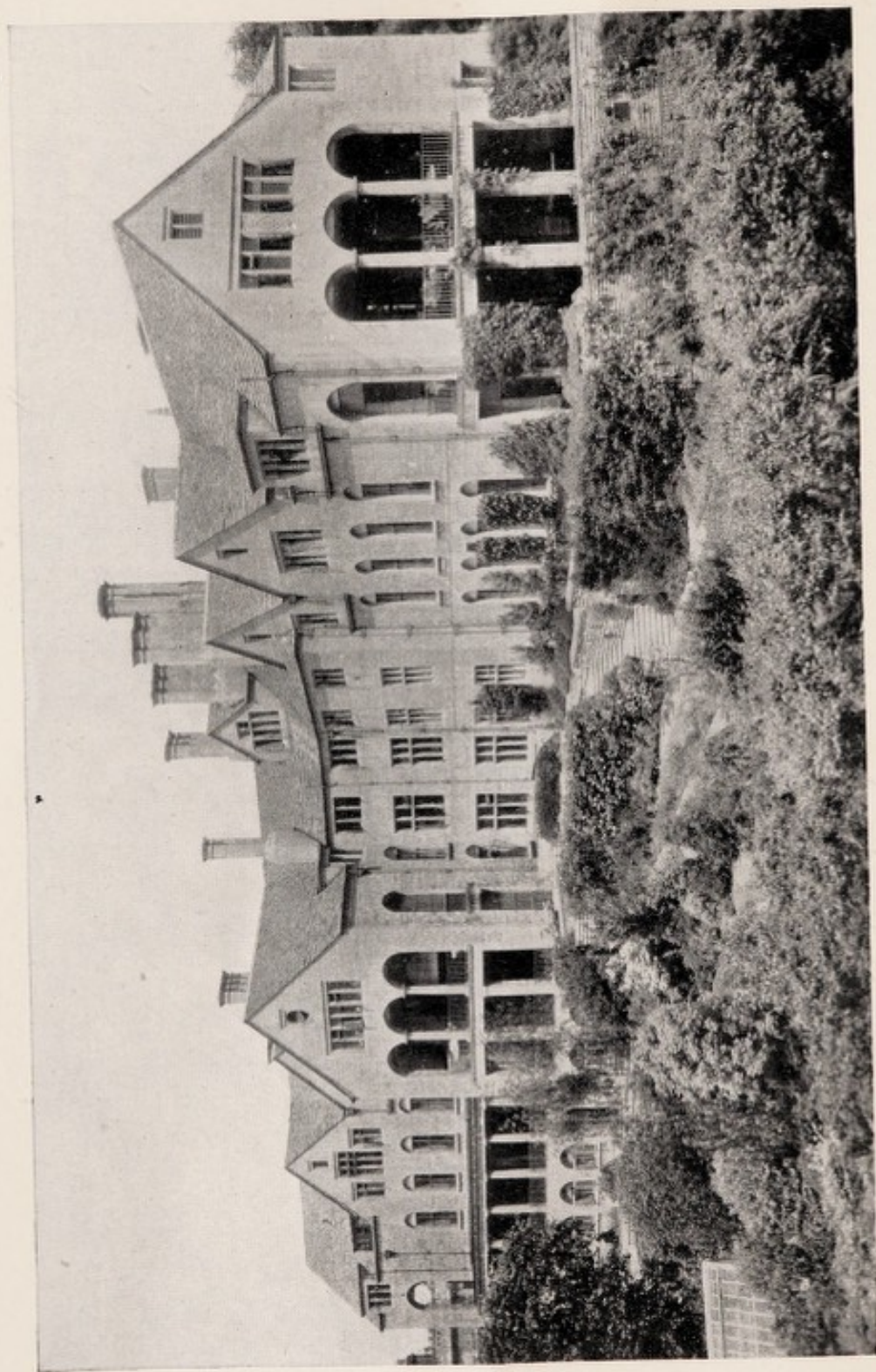
Ann Rep

WB28

.B65

B86B86

1945



VIEW OF THE HOSPITAL FROM THE MEMORIAL GARDENS

1945

Bristol Homœopathic Hospital

(BRUCE MELVILLE WILLS MEMORIAL)

Patrons

HER HIGHNESS PRINCESS HELENA VICTORIA
THE DUCHESS OF BEAUFORT
THE COUNTESS DOWAGER OF GAINSBOROUGH
LORD METHUEN

President

CAPT. DOUGLAS M. WILLS.

Trustees

Capt. DOUGLAS M. WILLS	Major M. CECIL M. WILLS
Mrs. BRUCE M. WILLS	H. G. TANNER, Esq., J.P.

Board of Management

Chairman : J. L. MILLIGAN

Vice-Chairman · THE SHERIFF OF BRISTOL
(Councillor H. CROOK)

F. M. ARKLE	G. F. IGGLESDEN
*H. BAYLEY	F. G. JENNISON
C. O. BODMAN, F.R.C.S.E.	Canon LONG
FRANK BODMAN, M.D.	*F. J. NEATH
Mrs. WALTER BRYANT	*F. J. PETERS
W. L. COSSHAM, M.B., Ch.B.	C. H. PRITCHARD
Miss M. L. COWLIN	*F. J. SUMMERS
A. H. DIXON	*J. WEEKS
*B. E. GANE	Mrs. BRUCE M. WILLS
H. M. C. HOSEGOOD	

* Members in a representative capacity.

Honorary Consulting Physician

Sir JOHN WEIR, G.C.V.O., M.B., Ch.B.,
Physician to the London Homœopathic Hospital
Physician-in-Ordinary to His Majesty The King.

Honorary Consulting Surgeons

JAMES EADIE, M.B., Ch.B., F.R.C.S.,
 Surgeon to the London Homœopathic Hospital
 C. OSMOND BODMAN, M.D., B.S., F.R.C.S.E., M.R.C.S., L.R.C.P.

Honorary Consulting Anæsthetist

LEONARD A. MOORE, M.B., Ch.B., M.R.C.S., L.R.C.P.

Honorary Consulting Gynæcologist

H. J. DREW SMYTHE, M.C., M.S., M.D., M.M.S.A., F.R.C.S.

Honorary Physicians

J. A. PARKES, M.B., Ch.B.
 FRANK BODMAN, M.D., Ch.B., M.R.C.S., L.R.C.P.

Honorary Surgeon

ROBERT V. COOKE, M.B., Ch.M., F.R.C.S. (Eng.), L.R.C.P.

Honorary Consulting Surgeon to the Ear, Nose and Throat Dept.

C. OSMOND BODMAN, M.D., B.S., F.R.C.S.E., M.R.C.S., L.R.C.P.

Honorary Surgeon Ear, Nose, and Throat Department

GORDON R. SCARFF, M.B., Ch.B., F.R.C.S. (Edin.)

Honorary Gynæcological Surgeon

F. J. HECTOR, M.D., F.R.C.S., Eng.

Honorary Radiologist in Charge of the Electrical Department

F. GOWER BERGIN, M.R.C.S. Eng., L.R.C.P.

Honorary Ophthalmic Surgeon

R. RAMSAY GARDEN, M.A., M.B., Ch.B., D.P.H., D.O.M.S.

Honorary Anæsthetists

E. G. BRADBEER, M.R.C.S. (Eng.), L.R.C.P. (Lond.)
 A. P. GORHAM, M.B., Ch.B., M.R.C.S., L.R.C.P.

Honorary Assistant Physicians

W. L. COSSHAM, M.B., Ch.B.
 A. PAUL BODMAN, M.B., Ch.B.
 C. D. LEFLAIVE, M.B., Ch.B.
 D. M. CAMERON, M.B., Ch.B.
 W. J. S. CAMERON, M.B., Ch.B.

Honorary Clinical Assistants:

P. W. J. PARKES, M.R.C.S., L.R.C.P.
 Miss C. M. ROOKE, M.B., B.S. (Lond.)

Honorary Dental Surgeon

F. R. HOGBIN, L.D.S.

Acting Registrar

GEORGE H. SEALE, B.A., M.B., B.Ch.

Resident Medical Officer

GEORGE H. SEALE, B.A., M.B., B.Ch.

Honorary Treasurer

C. H. PRITCHARD

Honorary Solicitors

LLOYD, BURCH, DIXON & GRIFFITHS

Auditors

WATLING & PARTNERS.

Secretary

Lt.-Col. H. HUNTER

Matron

Miss C. R. SETH-SMITH, S.R.N., S.C.M.,
 Dipl. in Nurs. (London Univ.)

Chaplain

Rev. L. W. PENFOLD, A.K.C.

Almoner

Miss M. F. HABGOOD

X-Ray and Medical Electrical Department

Miss J. M. DAVIS
 Miss M. L. RIGHTON
 Mrs. D. A. J. WATTS

Dispensers

Miss G. G. CLEMENT, M.P.S.
 Mrs. O. PARFITT, Cert. Apoth. Hall.

Telephone Number—(Two lines) BRISTOL 33068/9

Bristol Homœopathic Hospital

BRISTOL 6

TELEPHONE NO. BRISTOL 33068/9

IN-PATIENTS

Accommodation for In-Patients is provided as follows:

GENERAL WARDS

With increasing expenditure, the average cost per patient for 1945 remains high. Patients or their dependants are asked to contribute as much as they can afford towards this cost.

SEMI-PRIVATE WARDS

Wards are available at the Hospital for the reception of patients of moderate means at a charge of Five Guineas per week, and Half-a-Guinea for the use of the Theatre, Pathological, X-Ray, Massage and Medical Electrical Therapy extra. The Medical Officers have agreed to reduce their fees to patients in these Wards.

PRIVATE WARDS

Accommodation is provided at the Hospital in Private Wards overlooking the Gardens, in which Medical and Surgical patients are received at inclusive fees for board and nursing at from Eight Guineas per week (theatre, medicine, dressings, stimulants and personal laundry extra).

Arrangements may be made for patients to be attended in these Wards by their own Surgeon or Medical Practitioner.

OPEN-AIR CHALÊTS

There are revolving Open-Air Chalêts provided in the grounds for the reception of suitable cases. Terms for these can be had on application to the Secretary.

ADMISSION TO HOSPITAL

GENERAL WARDS

Except in cases of sudden illness or accident, patients attend at the Out-Patient Department and must take a note or letter from their usual Medical Attendant giving the history of the case.

SEMI-PRIVATE WARDS

Patients in these Wards can only be attended by Medical Officers on the Staff of the Hospital, and therefore those seeking admission are referred by their Medical advisers to the Specialists on the Staff.

PRIVATE WARDS

Admission is arranged through a Medical adviser, and full details as to charges, etc., can be obtained on application to the Secretary.

VISITING DAYS AND HOURS

GENERAL WARDS

Wednesdays and Saturdays from 2.30 p.m. to 3.30 p.m.
Sundays from 3 p.m. to 4 p.m.
Thursdays from 6.30 p.m. to 7.30 p.m.

CHILDREN'S WARD

Sundays from 3 to 4 p.m.
Thursdays from 6 to 7 p.m.

(Visitors are not allowed to mid-weekly patients.)

SEMI-PRIVATE WARDS

Daily, except Tuesdays and Thursdays, from 2.30 to 4 p.m.
Thursdays from 6.30 to 7.30 p.m.

PRIVATE WARDS

Visitors are allowed to see patients between 10 a.m. and 12 noon, and between 3 and 7.30 p.m., subject to the discretion of the Medical Officer in charge.

Dr.

INCOME AND EXPENDITURE ACCOUNT

INCOME					£	s.	d.	£	s.	d.
ORDINARY										
I. VOLUNTARY GIFTS										
Subscriptions	564	13	5			
Donations	577	6	2			
Collecting Boxes	341	9	1			
Congregational Collections	7	17	6			
Pound Day	132	2	3			
Lord Mayor's Hospital Fund	225	5	0			
United Banks Hospital Fund	260	3	9			
Workpeople's Collections	1023	4	0			
								3132	1	2
II. RECEIPTS ON ACCOUNT OF SERVICES RENDERED										
In-Patients	7848	12	9			
Do. per Ministry of Health	1536	2	9			
Out-Patients	232	2	3			
Medical Charities	5988	9	11			
X-Ray and Electrical Depts.	323	5	6			
Massage Dept.	13	0	6			
								15941	13	8
III. OTHER RECEIPTS										
Telephone Receipts	53	4	9			
Pathological Investigations	70	17	6			
British Hospitals Association—										
Nursing Salaries Grant	661	0	0			
War Damage	384	1	0			
Sundries	232	19	0			
								1402	2	3
IV. INVESTED PROPERTY										
Cochran Bed Endowment	31	0	11			
Interest and Dividends	3338	10	2			
Rents	328	7	2			
Income Tax Repayment	1866	15	7			
								5564	13	10
TOTAL ORDINARY INCOME								£26040	10	11
EXTRAORDINARY										
1. Endowment Donations	1249	9	2			
2. Legacies	630	19	7			
								1830	8	9
TOTAL INCOME								£27920	19	8

EXPENDITURE				£	s.	d.	£	s.	d.
ORDINARY									
I.	PROVISIONS			3646	7	4
II.	SURGERY AND DISPENSARY								
	1. Drugs, Chemicals, etc.	1040	19	2		
	2. Dressings, Bandages, etc.	390	4	4		
	3. Instruments and Appliances	631	8	11		
	4. Salaries of Dispensing Staff	366	0	0		
	5. Pathological Examinations	252	11	0		
							2681	3	5
III.	DOMESTIC								
	1. Renewal and Repair of Furniture, Bedding, Crockery, etc.	446	1	5		
	2. Laundry	140	4	9		
	3. Cleaning and Chandlery	204	5	0		
	4. Water	213	18	2		
	5. Fuel and Lighting	2206	3	3		
	6. Uniforms	129	1	6		
							3339	14	1
IV.	SALARIES AND WAGES								
	1. Medical	428	0	5		
	2. Nursing	5063	11	7		
	3. Other Officers and Employees	2891	0	4		
	4. Domestic Staff and Cleaners	1518	7	3		
							9900	19	7
V.	MISCELLANEOUS								
	1. Printing, Stationery and Postages	128	15	5		
	2. Advertisements	69	16	5		
	3. Insurance of Buildings, etc.	285	17	3		
	4. Insurance—War Damage Act	22	16	6		
							507	5	7
VI.	ADMINISTRATION								
	1. Salaries	806	6	11		
	2. Superannuation Scheme	487	18	11		
	3. Printing, Stationery, Postages, Telephone, etc.	451	2	1		
	4. Advertisements	1	16	0		
	5. Fire Guards—Subsistence Allowances	2	3	0		
	6. Sundries	55	1	0		
							1804	7	11
VII.	ESTABLISHMENT								
	1. Renewals and Repairs to Buildings and Plant	551	17	10		
	2. Air Raid Precautions	420	5	11		
	3. War Damage	356	5	0		
							1328	8	9
VIII.	FINANCE								
	1. Interest and Bank Charges	2	17	0		
	2. Rent, Rates and Taxes	178	12	6		
							181	9	6
TOTAL ORDINARY EXPENDITURE							23389	16	2
EXTRAORDINARY									
	Endowment Fund, <i>per contra</i>			1880	8	9
TOTAL EXPENDITURE							25270	4	11
BALANCE, being excess of Ordinary Income over Ordinary Expenditure							2650	14	9
							£27920	19	8

BALANCE SHEET AS

CAPITAL ACCOUNT

Donations from W. Melville Wills, Esq.

	£	s.	d.	£	s.	d.
Site at Cotham Hill, "Cotham House," etc. ..	10,000	0	0			
New Hospital (Captain Bruce Melville Wills Memorial) to 31st December, 1928 ..	123,093	0	1			
New Hospital Equipment, to 31st December, 1927 ..	12,154	4	7			
New Hospital Laundry Equipment, to 31st December, 1927 ..	1,076	2	4			
Cotham House Alterations to Buildings to provide a Nurses' Home, etc. ..	3,750	0	0			
Nurses' Home, Furnishing, etc. ..	1,453	15	1			
Children's Ward, Alterations, etc. ..	1,935	0	10			
.. Equipment ..	998	10	9			
				154,460	13	
General Fund, as per last Account ..	6,319	14	4			
Capital Expenditure Account	1,285	16	6			
				7,605	10	1
Endowment Fund as at 31st December, 1944 ..	124,085	16	8			
Received in 1945, Legacies and Donations ..	1,880	8	9			
				125,966	5	
RESERVE FOR REPAIRS TO BUILDINGS AND CONTINGENCIES, Etc.				3,547	15	

INCOME AND EXPENDITURE ACCOUNT

Excess of Income over Expenditure for 1945 ..	2,650	14	9			
Less Debit Balance at 31/12/44 ..	476	10	4			
	2,174	4	5			
Add Receipts from Ministry of Health relating to periods prior to 1945 in respect of						
In-Patients	2,432	6	11			
Do. Do. A.R.P. and E.M.S. Protective Measures	403	5	6			
Receipts from British Hospitals Association relating to period prior to 1945 in respect of Nursing Salaries Grant	539	0	0			
				5,548	16	1

We have examined the above Balance Sheet and the foregoing Income and Expenditure Account with the Books and Vouchers relating thereto, and certify the same to be in accordance therewith.

We have verified Bank Balances and we have received a letter from the Bank certifying they hold, for safe custody, all the Investments shown in the Account.

WATLING & PARTNERS,

Chartered Accountants.

BRISTOL; 19th April, 1946.

TOTAL £297,129 2

LAND, BUILDINGS, AND EQUIPMENT

	£	s.	d.	£	s.	d.
16, Hampton Road, purchase of property and Freehold with Alterations	527	12	0			
15 and 17 Cave Street—Purchase of Property and Freehold, Alterations and Additional Equipment ..	5,792	2	4			
Site at Cotham Hill, "Parklands," "The Grange," New Hospital and Cotham House	10,000	0	0			
New Hospital, Equipment, and Children's Ward ..	144,460	13	8			
Capital Expenditure Account per Bank and Post Office Savings Accounts	1,285	16	6			
				162,066	4	6

ENDOWMENT INVESTMENTS, at cost

£2,232 4s. 2d.	Bank of England Stock	8,127	16	11		
5,500	2½% Consolidated Stock	3,661	0	6		
10,000	4% " (1957)	8,700	10	0		
7,100	3% Conversion Loan (1948-53)	6,922	10	0		
1,466 9s. 2d.	3½% " (1961)	1,142	19	6		
4,197	4% Funding Loan (1960-90)	4,791	5	11		
5,700	3½% War Loan (1952)	5,673	8	5		
2,000	3% Savings Bonds (1955-65)	2,000	0	0		
2,000	" (1965-75)	2,000	0	0		
2,500	3% Local Loans	2,140	16	6		
5,000	Bristol Corporation 3% Stock (1958-63) ..	4,975	0	0		
20,000	" " 5% Stock (1950-60)	20,000	0	0		
2,500	" " 3½% Stock (1961-66)	2,665	18	6		
3,000	Great Western Railway Co. 4% Deb. Stk. ..	3,073	14	6		
2,000	London County Council 3% Stock (1956-61)	2,010	4	0		
5,000	London Assurance Co. 4% Pref. Stock ..	5,406	5	0		
100	North Vancouver 5% Deb. Stk. (1962) ..	89	10	0		
4,000	Buenos Ayres Gt. Southern Rly. 5½% Red. Stk. (1966 or before)	3,800	0	0		
312	Do. 4% Deb. Stk.	246	10	0		
10,000	Central Argentine Rly. Ltd., 5% Deb. Stk. (1967-87)	9,450	0	0		
341	Central Uruguay Rly. Co. of Monte Video 5% 2nd Deb. Stock	339	14	0		
160	Do. Ordry. Stock					
108	Do. 4½% 1st Deb. Stk.					
1,500	Gas, Light & Coke Co., 3½% Deb. Stk. (1956)	1,500	0	0		
1,000	North Somerset Electric Supply Co. 5½% Cum. Pref. Shares	1,025	0	0		
5,264	Imperial Tobacco Co. 10% Non-Cum. "C" Pref. Stock	13,698	3	0		
5,000	Powell Duffryn Assoc. Collieries 4½% Cum. Pref. Stock	5,250	0	0		
900	E. S. & A. Robinson Ltd. 10% Non. Cum. Pref. Shares	2,045	16	6		
1,250	Salmon & Gluckstein Ltd., 10% Cum. Pref. Shares	3,247	16	0		
	Cash at Bank	1,982	6	2		
					125,966	5 5

Funds Invested on Deferred Repairs and Contingencies

Account, etc., at cost:—

500	War Savings Certificates....	375	0	0		
£1,025	3% Savings Bonds 1960-70 ..	1,025	0	0		
£1,000	3% Defence Bonds	1,000	0	0		
	Post Office Savings Bank	1,147	15	7		
					3,547	15 7

CURRENT ACCOUNT

£3,500	3% Savings Bonds (1965-75)	3,570	0	0		
	Cash at Bank (adjusted by late Receipts and Expenditure)	2,048	16	10		
					5,548	16 10
	TOTAL	£297,129	2	4		

OUT-PATIENT DEPARTMENT

15-17, CAVE STREET, PORTLAND SQUARE

TELEPHONE No. 22628

<i>Dispenser</i>	Miss G. G. CLEMENT.
<i>Sister</i>	Miss M. V. LOCKYER.
<i>Almoner</i>	Miss M. F. HABGOOD.
<i>Assist. Almoner</i>	Miss M. E. LOCKYER.
<i>Physiotherapist</i>	Miss N. E. POPE.

HOURS OF ATTENDANCE

Monday	12.30 p.m.
Tuesday	12.30 p.m.
Wednesday	12.30 p.m.
Friday	12.30 p.m.

Note.—NEW PATIENTS SHOULD ATTEND AT 12 noon

SPECIAL DEPARTMENTS

For Diseases of the Eye	Mon.	9.15 a.m.
For Surgical Cases	Tues.	11. 0 a.m.
For Diseases of Women	Tues.	1.30 p.m.
For Diseases of Ear, Nose and Throat	Thurs.	10.45 a.m.

Patients are seen in the special departments on the recommendation of a Medical Officer only.

MASSAGE AND MEDICAL ELECTRICAL DEPARTMENT

Patients' attendances are arranged by instructions of a Medical Officer.

Attention is drawn to the fact that the benefits of the Out-Patient Department are intended **ONLY FOR PATIENTS UNABLE TO PAY A DOCTOR'S FEE.** The Services of the Honorary Medical Staff are given gratuitously. The charge of One Shilling is to cover the cost of medicines, &c.

Bristol Homœopathic Hospital

Annual Report

1945

A review of the work accomplished during the year, both at the Hospital and the Out-Patient Department, shows that the services of the Institution have been utilised almost to capacity.

The In-Patients admitted to the Hospital have increased by 115 over the number admitted in 1944. The average number of occupied beds has again increased, and the average number of days each patient was resident was 16.3, a little higher than in the previous year. (See table on page 17.)

The end of the war in Europe came in May, and the World War terminated in August, which brought to a conclusion the necessity for keeping the reserve E.M.S. beds in the Hospital. The evacuated patients from the London Hospital who had been accommodated in the former Children's Ward were removed in September.

The surgical work carried out at the Hospital increased last year by 131 cases.

National Health Service and Voluntary Hospitals.—The year 1945 closed with voluntary hospitals still in doubt as to their future. Everyone accepts the view that the voluntary hospitals must play a very important part in the proposed National Health Service, but brief hints in the Press and that dangerous source of information, "rumour," leaves the Management and Governors of Hospitals in a state of perplexity.

It is essential that each individual hospital should preserve its own entity. Its Management must be free to manage, *i.e.*, to appoint staff, to maintain discipline and efficiency; to have a sense of real responsibility and loyalty in service to the patient—not loyalties divided between Government Departments, Regional Boards and District Auditors. Hospitals cannot be moulded to a pattern as can branches of the Post Office. The essence of an efficient hospital is the teamwork of its whole staff; but teams need inspiration and leadership, usually derived from the personalities of a few; they need also the healthful stimulant of criticism arising from their present system of working, which is open to the public view.

Unless the Hospital System is planned so that the public can, and without difficulty, remain directly associated with the activity of the individual hospital, it will lack vitality, humanity and the incentive to constant endeavour towards improvement.

Under any future Health Scheme some solution must be found that will maintain the spirit and tradition of Voluntary Service.

It is to be hoped that the Ministry will reconsider the whole question of Management, and allow the present system to continue under the National Health Service Scheme, with some form of co-operation with the Ministry of Health.

The existing Boards of Management have voluntarily carried on for many years, and throughout the war under Government control, and it is difficult to see why some solution of co-operation on the lines indicated cannot be produced.

Honorary Medical Staff.—The Board again place on record their appreciation of, and thanks to, the Honorary Staff for their valuable services.

At the close of the year, Dr. J. A. Parkes retired, after having been Honorary Physician at the Hospital for over thirty years.

Mr. Stuart V. Stock, Anæsthetist, who has been such a staunch friend of the Institution for the past few years, and especially so during the period of the war, retired also.

The Board place on record their appreciation of the services rendered by these two valuable members of the Staff.

Lord Mayor's Hospital Fund and Hospital Extension Fund.—

The Board tender thanks for the sum of £225 5s. received from the Lord Mayor's Hospital Fund. Unfortunately this Fund has suffered during the war years owing to so many appeals to the public, but with the termination of hostilities it is to be hoped that this annual appeal made by the Lord Mayor will receive much greater support.

The sum of £26 4s. 6d. was received from the Bristol Hospitals Fund, this being the allocation from the Lord Mayor's Hospital Extension Fund.

Contributory Schemes, Employees' Medical Charities and Benevolent Funds.—The Board acknowledge with thanks the continued support given to this Institution by these organisations.

The Representatives of Contributory Schemes and Medical Charities and Benevolent Funds elected to the Board of Management are :—

Mr. J. Weeks	...	W. D. & H. O. Wills.
Mr. F. J. Peters	...	Bristol Friendly Societies.
Mr. A. J. Packer	...	Mardon, Son & Hall, Ltd.
Mr. F. J. Neath	...	Bristol Hospitals Fund and Bristol Aeroplane Co., Ltd.
Mr. F. J. Summers		Bristol Medical Institutions Con- tributory Scheme and Bristol Hospitals Contributors' League.

At the close of the year the Board decided to increase the number of Members serving in a representative capacity, and have invited the nomination of Representatives from The Kingswood & West of England People's Voluntary Hospital Guild and The Bristol Tramways & Carriage Company, Ltd., who have been supporters of the Institution for many years past.

Needlework Guild.—The Report for the year is again encouraging, and the number of Subscribers and the articles forwarded as gifts have increased.

The Executive Committee held three Meetings during the year, and were responsible for the arrangements made for the Annual Tea and Sale. The "Bring and Buy" Sale, held on June 13th, proved a success and realised £179 16s. 8d., and the Guild extend thanks to all those Members, Associates and friends who helped to make the effort such a success.

The Accounts show a balance of £445 16s. 10d. at the Bank at the close of the financial year.

It has been decided to hold a "Bring and Buy" Sale again on Wednesday, June 12th, 1946.

Nursing Staff.—The Board of Management congratulate the following Nurses on having passed their State Examinations :

Passes in the Preliminary State Examinations—

Nurse J. Sullivan

- „ M. B. Edwards
- „ G. C. Kavanagh
- „ J. G. Powell
- „ E. F. Fitzgerald
- „ J. Pagington
- „ A. Watson
- „ D. M. Landrey
- „ C. E. D. Wade
- „ J. E. Merchant
- „ P. E. White
- „ D. L. Lane
- „ K. M. Walter

Passes in the Final State Examination—

Nurse M. I. Gill

- „ J. L. B. Edwards
- „ A. E. Sharpe
- „ V. E. Cavell
- „ I. J. Baker (*née* Davey)
- „ L. J. Gummer
- „ M. A. Waterhouse
- „ A. F. M. Wintle
- „ M. H. R. Hancock
- „ B. P. Warburton
- „ B. J. Mills
- „ F. M. Fisher
- „ D. J. Taphouse

President's Prize—for efficiency and good conduct—

Nurse E. W. Bryant

Chairman's Prize—for best Second-year Nurse—

Nurse J. R. Merchant

Matron's Prize—for consistent good work and progress—

Nurse J. L. B. Edwards

The number of applicants for training continues to be satisfactory.

The Nurses' Council has continued its useful work.

A Nurses' League is to be formed by Nurses trained in the Hospital. The Inaugural Meeting is to be held on May 25th, 1946, when it is hoped to have a Meeting of many trainees and those who have nursed at the Hospital.

Samaritan Fund.—The Sale of Work and Silver Tree Collection were again held in November, the proceeds totalling £157, a little more than the effort in the previous year.

The Fund is utilised to help those in poor circumstances to obtain extra nourishment, to provide coal and to assist patients during convalescence.

Almoner's Department.—The number of Out-Patient attendances totalled 7,606, a little less than the previous year, the number of new Out-Patients attending being 1,037. The number of In-Patients admitted who are Members of a Contributory or Hospital Charity Fund has increased considerably during the past few years. The figure for this year shows that approximately 50% of the patients admitted to the Hospital were Members of these Funds.

The Board of Management thank the following Institutions and Organisations for their co-operation and support in assisting patients upon being discharged from the Hospital :—

Belmont Convalescent Home, Clevedon.

Bristol Crippled Children's Society.

British American Bellows Society.

Hospital Car Service.

Oldland Rest Home Fund.

Osborne House Convalescent and Rest Home, Clevedon.

Rowcroft Convalescent Home, Torquay.

Soldiers, Sailors and Airmen's Families Association.

Soldiers, Sailors and Airmen's Help Society.

Victoria Convalescent Home, Clevedon.

Rehabilitation and Occupational Therapy.—With a view to assisting in the rehabilitation work as prescribed by the Ministry of Health, an arrangement has been entered into with the Bristol Council for the Disabled (Adults), whereby a qualified Occupational Therapist visits the Hospital as occasion requires, and carries out after-care work by visiting patients in their own homes after being discharged from Hospital. Thanks are due to Miss Harris and her Staff for these efficient services.

Hospital Staff.—The Board of Management take this opportunity of expressing their appreciation of the continued loyal and efficient services rendered to the Institution during the year by the Secretary, the Matron, the Sisters, the Nurses, and all Members of the Staff, fully recognising how greatly the success of the Hospital is due to their efforts.

IN-PATIENTS

1945

1.	Total number of beds available on 31st December	97
2.	Average number of available Beds during year (including emergency beds)	105
3.	Average number of patients resident daily throughout the year	73.8
4.	Number of In-Patients in the Hospital at the beginning of the year	69
5.	Number of In-Patients admitted during the year	1581
6.	Number of In-Patients in Hospital at the end of the year	70
7.	Average number of days each Patient was resident	16.3
8.	Number of Patients' days	26,942
9.	Number of major and minor operations performed during the year	1,252
10.	Number of Patients admitted and discharged during the year who were resident for :—	
	(a) only one day	62
	(b) two and three days	250

OUT-PATIENTS

1.	Total number of new Out-Patients ...	1,037
2.	Total number of Out-Patients' Attendances	7,606
3.	Cash Receipts	£232 2s.3d.
4.	Casualties and Emergencies dealt with in Casualty Department at Hospital ...	1,512
5.	Attendances at Casualty Department for dressings, etc.	2,527

DENTAL DEPARTMENT

	1944	1945
Number of patients attending ...	25	19
Number of attendances ...	64	69
Treatment—		
Extractions ...	52	47
General Anæsthetics ...	12	5

X-RAY MEDICAL ELECTRICAL
MASSAGE DEPARTMENT

The Hospital	1944	1945
X-Ray Examinations ...	896	964
X-Ray Treatments ...	41	—
Ultra-Violet Light and Vapour		
Bath Treatments ...	1,550	1,428
Electrical Treatments ...	4,112	4,556

Massage Department

Massage Treatments and Swedish		
Remedial Exercises ...	2,071	3,379

Out-Patient Department, Cave Street. An active year has again been spent at this Department.

The figures for 1944 and 1945 are as follows :—

	1944	1945
Number of new patients ...	80	86
Medical Electrical Treatments ...	784	809
Ultra-Violet Light Treatments ...	284	154
Massage Treatments and Swedish		
Remedial Exercises ...	497	700

Out-Patient Department, Cave Street, Portland Square :

	1944	1945
New Patients ...	1,091	1,037
Total number of attendances ...	8,353	7,606
Additional attendances for Dressings		
only ...	992	903

LIST OF SUBSCRIBERS, 1945

Honorary Life Governor :

Mr. W. G. VEALE, Elected the year 1929

* These Subscribers have executed the Covenant for a period of seven years, which enables the Hospital to recover the Income Tax in addition to the Subscription.

	£	s.	d.		£	s.	d.
Aldridge & Co....	1	1	0	*Brooksbank, Mrs. M....	1	1	0
Ancient Order of Foresters ...	2	2	0	Brown & Sons (Seeds), Ltd. ...	1	1	0
Anderson's Rubber Co., Ltd. ...	2	2	0	Brown, Mrs. G. H. ...	1	1	0
Anglo-American Oil Co., Ltd. ...	1	1	0	Bryant, Mrs. Walter ...	10	6	
Babbage, G. G. & Sons	1	1	0	*Buchan, Mr. E. A. ...	1	1	0
Baileys (Bristol), Ltd....	1	1	0	Budgett, H. H. & S. & Co., Ltd. ...	1	1	0
Baker, Baker & Co., Ltd.	5	5	0	Burch, Mr. R. J. ...	3	0	0
Baker, Mr. & Mrs. H. ...	2	2	0	Burgess, Mrs. ...	1	1	0
*Bank of England ...	10	10	0	Burges, Lt.-Col. D., V.C.	2	0	0
Bateman, Mr. A. P. ...	1	1	0	Burris, F., Ltd. ...	5	0	
Bates, Mr. H. J. ...	2	2	0	Cabell, The Misses ...	10	0	
*Batten, Miss B. A. ...	1	1	0	Cadena Cafes, Ltd. ...	1	1	0
Beale, Mr. W. H. ...	2	2	0	Cann, Mr. Walter ...	1	1	0
Beavis, Mr. C. E. ...	1	1	0	Canning, Mr. G. O. ...	1	1	0
Beesley, Miss A. E. ...	1	1	0	Carwardine, Stephen & Co., Ltd. ...	1	1	0
Bell & Nicolson, Ltd. ...	1	1	0	Case, Mr. C. A. ...	1	1	0
Bennett Bros., Ltd. ...	4	4	0	Cattybrook Brick Co., Ltd.	1	1	0
Bethell Gwyn & Co. ...	1	1	0	Central Oil Co. (Bristol), Ltd. ...	10	6	
Bibbing, Mr. E. H. ...	2	2	0	Clark & Wheeler ...	1	1	0
Bigwoods, Ltd. ...	1	1	0	Cleaves, Mr. Bertram ...	2	2	0
*Blandy, Mrs. L. ...	3	8	9	Clinker, Miss H. F. ...	10	6	
Bodman, Miss A. ...	4	4	0	Cole, Mrs. ...	1	1	0
Bodman, Dr. A. Paul ...	1	1	0	Colston, Mr. Cecil ...	1	1	0
Bodman, Mr. & Mrs. C. O.	1	1	0	Colston Electrical Co., Ltd.	10	6	
Bodman, Mr. & Mrs. Eustace ...	1	1	0	Cooper, Mrs. J. ...	10	6	
Bodman, Mr. H. ...	2	2	0	Corner, Mrs. C. R. ...	1	1	0
Bodman, Mrs. K. ...	1	1	0	Cotterell, Mr. B. H. ...	2	2	0
Booth, Mr. W. R. ...	5	0		Cotterell, Mr. H. F. ...	3	3	0
Boots The Chemists ...	3	13	6	*Cowlin, Miss M. L. ...	3	3	0
Bostock, Miss H. L. ...	2	2	0	Cowlin, William & Son, Ltd. ...	1	1	0
Breckneil Willis & Co., Ltd. ...	1	1	0	Cox, Thos. & Sons, of Bristol, Ltd. ...	1	1	0
Brights of Bristol ...	1	1	0	*Craely, Mrs. B. H. ...	1	1	0
Bristol Co-operative Soc. Ltd. ...	6	6	0	Craven, Mr. Campbell J.	1	1	0
Bristol Gas Co....	5	5	0	Crocker Bros., Ltd. ...	1	1	0
Bristol Municipal Charities ...	12	0	0	*Crook, Counc. H. ...	5	5	0
Bristol Sand & Gravel Co., Ltd. ...	5	0		Cross, Miss E. I. ...	1	1	0
Bristol Schoolmasters' Association ...	1	1	0	Curry & Paxton, Ltd....	1	1	0
				Dainton, A. & Sons ...	2	2	0
				Darbyshire, Mrs. P. H.	1	0	0

	£	s.	d.		£	s.	d.
Davie, Mr. George ...	1	1	0	*Igglesden, Mr. G. F. ...	2	2	0
Densham, Miss J. G. ...	1	1	0	Imperial Chemical In-			
Densham, Miss M. ...	1	1	0	dustries, Ltd. ...	2	2	0
Distillers Co., Ltd. ...	2	2	0	Independent Order of			
Dixon, Mr. & Mrs. A. H.	3	3	0	Oddfellows ...	5	5	0
Douglas, Mrs. J. Broom	5	5	0	Inskip, the Honourable			
Dove Bros. (Bristol), Ltd.		5	0	Lady ...	2	0	0
Drewett, Miss A. M. ...	1	1	0	Jackson, Mrs. M. ...	2	0	0
Duncalf, Mr. W. J. ...	1	1	0	James, Mr. & Mrs. Walter	1	0	6
Edgar, Mr. & Mrs. D. B.		10	0	Jefferies, Son & Co. ...	1	1	0
Edwards, Ringer & Bigg,				Jennings, Mr. F. J. C....	1	1	0
Ltd. ...	2	2	0	Jennings, Miss M. ...	1	1	0
Egelstaff, Mrs. T. A. ...	2	2	0	Jennison, Mr. F. G. ...	2	2	0
Elliott, Mrs. B. B. ...	1	1	0	Jolly & Son, Ltd. ...	1	1	0
England, Mr. J. E. ...	1	1	0	Jones, Miss D. G. ...		10	0
Evans, Gadd & Co., Ltd.	1	1	0	Jones, Mrs. W. D. ...	1	1	0
Evans, Mr. G. A. V. ...	1	0	0	Jones, Mr. L. L. McLen-			
Eyles, W. H. & Co., Ltd.	1	1	0	nan ...	1	1	0
Ferris & Co., Ltd. ...	1	1	0	Kempster, Eng.-Com. &			
Field, Mr. G. C. ...	1	1	0	Mrs. A. D. ...	1	1	0
Finch, Mr. A. E. ...	1	1	0	Kethro, Mr. A. E. ...	1	1	0
*Flook, Mr. G. E. ...	1	0	0	King, Mrs. A. E. ...	3	3	0
Ford, Miss B. ...	1	1	0	King, C. J. & Sons, Ltd.	1	1	0
Foweraker, Mr. T. S. ...	2	2	0	King, Mr. H. E. ...	1	1	0
Franklyn Davey & Co.,				*Kleen-e-Ze Brush Co.,			
Ltd. ...	2	2	0	Ltd. ...	5	5	0
Fuller, Miss E. E. M. ...		10	6	Knapp, Mr. N. H. ...	1	1	0
Gane, P. E., Ltd. ...	1	1	0	Knight, Mrs. L. ...	1	1	0
Gardiner, Mrs. C. Hall...	1	1	0	Knott, Mr. A. J. ...	1	1	0
Gardiner, Sons & Co., Ltd.	4	4	0	Lane, Miss M. L. ...	1	1	0
Garnett, Mr. William ...	2	2	0	*Lewin, Mrs. E. ...	1	1	0
*Gilpin, Mrs. C. H. ...	1	1	0	Maclaran, Miss S. M. ...	1	0	0
*Gray, Mr. C. W. ...	6	6	0	Maggs, B. & Co. ...	2	2	0
Griffiths, Mrs. E. D. ...	1	1	0	Mann, Mr. L. ...	1	1	0
*Grubb, Mrs. E. ...	1	1	0	Mardon, Col. A. C. ...	1	1	0
*Gunn, Mrs. M. W. ...	1	1	0	Mardon, Son & Hall, Ltd.	50	0	0
Habgood, Mr. S. ...	1	1	0	Marsh, T. C. & Son, Ltd.	1	1	0
Hale, Miss O. M. ...		10	6	Martin, Mrs. G. Palliser	1	1	0
Hardidge, Mr. L. ...	1	1	0	Mass, Mr. Abel... ...	2	2	0
Harvey, Capt. J. St. C.	1	1	0	Matthews, Miss F. L. ...	1	1	0
*Harvey, Mrs. M. V. ...	1	1	0	Mawdsley, Mr. R. Har-			
Haskins, Mrs. E. ...	1	1	0	greaves ...		10	6
Hector, Mr. F. J. ...	2	2	0	Melhuish, Mr. H. ...	2	2	0
Hill, H. H. & W. H., Ltd.	2	2	0	Merchant Venturers, The			
Hill, Leigh & Co., Ltd....	1	1	0	Society of ...	10	10	0
Hill, Mrs. R. A. ...	2	2	0	Miles, Mr. & Mrs. A. H.	2	2	0
Hillman, Miss L. G. ...		10	6	Miles, E. & Co....	1	1	0
Hind, Mr. J. ...	2	2	0	Miles, Thomas & Co. ...	2	2	0
*Histed, Mr. G. T. ...	1	1	0	*Milligan, Mr. J. L. ...	5	5	0
Hogbin & Trussell, Messrs.	1	1	0	Milner, Mr. R. E. ...	1	1	0
Hornby's Dairies, Ltd.	1	1	0	Minter, Mrs. G. J. ...	1	1	0
Howard, Mrs. W. ...	1	1	0	Mitchell, H. (Bristol), Ltd.	1	1	0
Howell, Mr. F. W. ...	1	1	0	*Moir, Mr. James A. ...	2	10	0
Hulbert, the Rev. N. ...	1	1	0	Monk, Mr. R. W. ...	2	0	0
Hunter, Lt.-Col. H. ...	1	1	0	Morgan, Mr. G. A. ...	1	1	0
Hurst, Mr. L. ...	1	1	0	Morgan, W. (Bristol), Ltd.	1	1	0

	£	s.	d.		£	s.	d.
Morgan, Mr. & Mrs. W. G.	10	6		Taylor, Mr. H. L.	3	3	0
Morris, Mr. W. S.	1	1	0	Taylor, H. & W., Ltd.	1	1	0
Mullis, F. G. & Sons	1	1	0	Taylor, J. F. & Son, Ltd.	1	1	0
Mundy & Co., Ltd.	10	6		Taylor, Miss L. D.	1	1	0
Newbery & Spindler, Ltd.	1	1	0	Thomas, Mrs. M. R.	1	0	0
Northern Assurance Co., Ltd.	1	1	0	Tincknell, Mr. W. H.	10	0	
Nurse, Mr. A. S.	1	1	0	Trevail, Mr. W. C.	2	0	0
Oatley, Sir George	1	1	0	United Yeast Co., Ltd.	1	1	0
Oliver, Miss A. L.	1	1	0	Victoria Flour Co., Ltd.	1	1	0
*Oliver, Mr. F. J.	2	2	0	Walker & Hall, Ltd.	1	1	0
Otter, Miss E.	2	2	0	Walker, Lt. Col. P. L. E.	2	0	0
Page, Mrs. F. R.	1	1	0	Wansbrough, Robinson, Tayler & Taylor	1	1	0
Parsons, Mrs. A. E.	1	1	0	Ward, Mr. & Mrs. A. F.	1	1	0
Parsons, The Jewellers, Ltd.	1	1	0	Waterworks, The Bristol	5	5	0
Parsons, Mrs. T. P.	1	1	0	Way, Mr. W. L.	1	1	0
Paul, Miss	10	6		Webb, Mrs. E. H.	2	2	0
Pearl Assurance Co., Ltd.	4	4	0	Webb, Mr. F. H.	1	1	0
Phelps, Miss E. H.	2	2	0	Western Dental Mfg. Co. Ltd.	3	3	0
Pinchin, Johnson & Co., Ltd.	1	1	0	Welco Hardware and Lamps, Ltd.	1	1	0
Pitchford, Mrs. E. R.	2	2	0	Whitley, Mr. J. Newton	2	2	0
Poole, Mr. Alan	1	1	0	Whitwill Cole & Co., Ltd.	1	1	0
*Price, Mrs. E.	1	1	0	Wickham & Norris, Ltd.	1	1	0
*Pritchard, Mr. C. H.	2	2	0	Willett, Mr. L.	2	2	0
Prudential Assurance Co., Ltd. (towards the maintenance of a cot)	20	0	0	*Williams, Mr. A. E.	2	0	0
Reeve, Mr. E. J.	1	1	0	Williams, Mrs. Hubert	1	1	0
Refreshments, W.T.L., Ltd.	2	2	0	Williams, Miss H. M.	10	0	
Reynolds, Miss A. M.	1	1	0	Williams, J. & Sons	1	1	0
Ridd, R. F. & Sons	1	1	0	Williams, Josiah & Co., Ltd.	1	1	0
Robinson, E. S. & A., Ltd.	6	6	0	*Williams, Mr. W. J.	5	0	0
Robinson, Lt. Commr. Vivian J.	6	15	0	Wills, Mrs. Bruce M.	5	5	0
Rowe, H. B. & Co., Ltd.	1	1	0	*Wills, Frank W. & Sons	1	1	0
Rudman, Jas., Ltd.	1	1	0	Wills, Mr. F. O.	2	2	0
Russell, Mr. S. W.	1	1	0	Wills, Grahame H. & Co.	2	2	0
*Sheldon, Mr. C. F.	1	1	0	Wills, Miss Hilda	10	0	0
Shell-Mex & "B.P." Ltd.	1	1	0	Wills, Miss Muriel	2	2	0
Shepherd, B. C., Ltd.	5	0		*Wills, Major & Mrs. M. Cecil M.	1	8	11
Simmons, Mr. F. H.	1	1	0	Wills, Mr. Norman	2	2	0
Smith, Mr. A. G.	10	6		*Wills, Lady N. Jean	1	1	0
Smith, A. J., Ltd.	1	1	0	Wills, Mrs. S. D.	2	2	0
Smith, Mr. & Mrs. F. Hudson	10	6		Wills, W. D. & H. O.	21	0	0
Southby, Mr. W. H.	1	1	0	Wills, Capt. W. Douglas M.	10	10	0
Spear Bros. & Clark, Ltd.	1	1	0	Wood, Mr. F. H.	1	1	0
Spiller, E. A., & Co.	1	1	0	Woolley, Mr. A. E.	1	1	0
Steer & Geary	10	6		Woolworth, F. W. & Co., Ltd.	10	0	
Symonds, Mr. H. M.	1	1	0	Wright, Mr. H. V.	1	1	0
Tanner, Miss A. E.	1	1	0	Young, Miss L. E.	1	0	0
Tanner, Mr. H. G.	11	11	3				
					£564	13	5

DONATIONS, 1945

	£	s.	d.		£	s.	d.
Anonymous	2	0	0	James, Miss G....	1	1	0
Anonymous	10	0	0	Jenkins, Mr. J. W.	5	0	0
Anonymous	10	0	0	Junior Commercial School	5	0	0
Baker, Lt. Comm. W. M.	2	2	0	Kildare Club, The	5	0	0
Batt, Mr.	10	0	0	Latchams & Montague,			
Beake, Mr. H.	10	0	0	Messrs.	10	0	0
Begbie, Mr. & Mrs. E. W.	2	0	0	Leigh, Mr. E. W.	1	0	0
Bird, Mr. D.	1	0	0	McInnes, Mr. (for <i>Toronto</i>			
Birkman, Mr. H. ...	1	10	0	<i>Evening Telegraph</i>) ...	2	0	0
Bray, Mrs.	3	0	0	Messer, Mrs. H. ...	2	0	0
British Home Stores, Ltd.	1	1	0	Miller, Miss	1	1	0
Brooksbank, Mrs. M. ...	1	1	0	Morgan, Mr. G. A. ...	1	0	0
Brown, Mr. & Mrs. E....	2	2	0	Mullett, Mr. W. ...	10	0	0
Brown, Mr. G. W. ...	1	0	0				
Capel, Mr.	1	0	0	National Provincial Bank,			
Chidsey, Mrs. F. M. ...	1	1	0	Ltd.	10	10	0
Coomes, Miss B. M. ...	5	5	0	Newstead, Mr. Trevor...	1	0	0
Cotton, Mrs. F. R. ...	2	0	0	Nursing Staff (Victory			
Cox, Miss C.	5	0	0	Donations)	9	18	10
Crew, Mr. A.	1	0	0	Oliphant, Mrs. J. E. ...	1	10	0
Crocker, Mr. A. J. ...	1	1	0	Osborne, Miss L. ...	1	0	0
Dancy, Mrs. A.	10	0	0	Owen, Mrs. R. M. ...	1	0	0
Dimery, Mr. & Mrs. E. L.	2	2	0	Parker, Miss E.	1	1	0
Dyke, Mr. A.	2	10	0	Parker's Bakeries, Ltd.	25	0	0
Edwards, Mr. J.	10	0	0	Perry, Mrs. R.	5	0	0
Ellams Duplicator Co....	5	0	0	Phillis, Mr. J. G. ...	1	1	0
Elworthy, Mrs. M. B. ...	2	0	0	Porter, Mr. H. J. ...	1	10	0
Emery, Mr. F.	15	0	0	Ponting, Mr. F. S. S. ...	10	0	0
Emery, Mr. H. C.	5	0	0	Prince's Hotel	10	0	0
Filton Food Home Pro-				Pring, Mr. F. W. ...	3	0	0
duction Society	2	10	0	Pugsley, Jas. & Son ...	10	0	0
Football Association, per				Pulling, Mr. C....	2	0	0
Mr. S. F. Rous	83	6	8	Radford, Miss D. ...	2	0	0
Fox, Mr. & Mrs. A. H....	2	2	0	Rayens, Mr. E. W. ...	10	0	0
Freke, Mrs. G.	1	0	0	Reed, Miss R. E. ...	1	0	0
German, Mrs. D. A. ...	4	4	0	Ridgeway, Mrs. E. ...	1	0	0
Goldstone, Mrs.	10	0	0	Roden, Rev. H. C. B....	1	1	0
Gough, Mr.	1	1	0	Rossiter, Mr. A. J. ...	2	0	0
Gray, Mrs.	2	2	0	Rowlands, Mr. G. ...	1	0	0
Hamilton, Mr. & Mrs.				Savage, Mrs.	10	0	0
H. W.	3	3	0	Savory, Messrs. E. & W.,			
Hardwick, Mr. J. J. ...	10	0	0	Ltd.	10	6	0
Haswell, Mr.	1	0	0	Shankland, Mrs. E. A....	3	0	0
Heywood, Mr. J.	1	0	0	Shaw, Mrs.	8	0	0
Hill, Mrs. M.	8	0	0	Shearn, Mrs. E.	2	0	0
Hodders, Ltd., Messrs.	3	10	0	Shields, Mrs.	10	0	0
Hurst, Mr. E. J.	1	1	0	Smith, Mr. A. E.	2	0	0
Hutchens, Mr. T.	2	2	0	St. Annes Board Mill Co.	2	2	0
Imperial Tobacco Co. ...	6	6	0	Tapson, Mr. & Mrs. E. J.	3	3	0

	£	s.	d.		£	s.	d.
Taylor, Mr. H. F. ...	10	0		Narrow Wine Street			
Taylor, Mr. M. F. ...	10	6		Traders <i>per</i> Mr. B.			
Thomas, Mr. A. J. ...	1	0	0	Riego ...	5	0	0
Trotman, Mr. J. ...	1	0	0	Tyndalls Park Road			
Trump, Mrs. J. ...	5	0	0	First Aid Post <i>per</i>			
Turner, Miss ...	10	0		Mr. H. Willway ...	1	16	0
Tyrrell, Mrs. B. S. ...	1	1	0	No. 3 (Redland Division) <i>per</i> Mr. S.			
Wagland, Miss E. B. ...	2	0	0	Siddons-Wilson ...	19	16	6
Webb, Miss L. M. ...	5	0		Ormerod Rd. <i>per</i> Mr.			
West, Lt. Col. S. H.				S. Siddons-Wilson	4	13	6
Middleton ...	6	6	0	Rosling Rd. <i>per</i> Mr. S.			
Whitson Lodge ...	1	1	0	Siddons-Wilson ...	7	9	4
Wide, Mr. ...	2	0	0	St. Oswald's Rd. <i>per</i>			
Wills, Miss Susan ...	1	0	0	Mr. S. Siddons-Wil-			
Woolley, Mr. A. E. ...	1	0	0	son ...	5	11	6
Fire Guard Parties :—					<hr/>	<hr/>	<hr/>
Arlington Rd., <i>per</i> Mr.				Bristol Hospitals Fund	376	4	2
C. Fey ...	5	5	10	—Grants from unear-			
Cotham Rd. <i>per</i> Mr.				marked Donations ...	175	0	6
H. V. Gay ...	2	10	0				
Cotham Rd. South <i>per</i>				In Memoriam (separate			
Mr. E. J. Watts ...	5	0	0	list) ...	26	1	6
Gordon Estate <i>per</i> Mr.					<hr/>	<hr/>	<hr/>
R. S. Haydon ...	5	0	0		£577	6	2
J.1 Post Central <i>per</i> Mr.							
F. T. Curtis ...	5	0	0				

IN MEMORIAM 1945

	£	s.	d.
In memory of the late Dr. J. Broom Douglas (Mrs. J. Broom Douglas)	5	0	0
In memory of the late Mrs. E. Drewett (Miss A. M. Drewett)	1	1	0
In memory of the late Mr. L. C. James (Miss E. D. Wilkins)	10	0	
In memory of the late Mr. H. W. Jenkins (Mrs. B. M. Robbins)	2	2	0
In memory of Joseph (Mr. and Mrs. D. Crook)	1	1	0
In memory of the late Mr. W. G. Mills (Central Brotherhood)	1	1	0
In memory of the late Mr. W. G. Mills (Ladies' Committee)	10	6	
In memory of the late Mr. A. Musselwhite (Mrs. M. E. Musselwhite)	2	0	0
In memory of Olive (Mr. and Mrs. E. Wilkinson)	1	10	0
In memory of the late Mrs. Palmer (Mr. J. W. Palmer) ...	2	2	0
In memory of Mrs. Scull (Mr. E. J. Scull)	1	1	0
In memory of the late Mr. H. E. Tyrrell (Mr. G. N. Tyrrell)	3	3	0
In memory of the late Mrs. W. Melville Wills (Mrs. J. Broom Douglas)	5	0	0
	<u>£26</u>	<u>1</u>	<u>6</u>

COLLECTING BOXES, etc., 1945

	£	s.	d.		£	s.	d.
Begbie, Mr. E. W. ...	14	0		Rogers, Miss ...	19	8	
Bristol Medical Institutions Contributory Sch. 70	0	0		Sherring, Mrs. E. D. ...	1	3	9
Bryant, Mrs. E. K. ...	19	2		Shortman, Miss M. ...	16	6	
Carpenter & Allbright, The Misses ...	3	16	6	Tremlett, Mr. C. ...	1	17	2
Civil & Military Stores... 6	5			Wakefield, Mrs. B. ...	1	10	4
Emery, Mr. F. ...	1	10	0	Watts, Mrs. ...	1	2	3
Greenwood, Mr. H. ...	2	4	1	Yapp, Mr. & Mrs. F. E. 4	1	0	
Higgins, Miss D. L. ...	15	10		Hospital Boxes :—			
James, Mr. H. J. ...	1	10	6	Casualty Dept. ...	41	15	10
King, Mr. A. H. ...	5	8	7	Clock Box ...	7	12	3
Langton, Mrs. S. ...	2	1	10	Dispensary ...	2	11	2
Lobb, Miss ...	5	7		Father Christmas ...	7	9	4
Maggs, Mrs. ...	1	6	7	Hall Box ...	8	0	6
Martin, Mrs. ...	2	11	6	Massage Dept. ...	35	3	7
Needs, Mrs. K....	68	0	3	X-ray Dept. ...	29	16	3
Osborne, Mrs. ...	1	0	11	Wireless Box, Ward 1 1	17	11	
Powell, Mrs. J....	6	10	5	Out-Patient Dept. :—			
Roberts, Mr. F. A. ...	17	2	5	Massage Dept., Cave			
Robbins, Mrs. ...	1	16	10	Street ...	5	7	0
Rowe, Mr. E. J. ...	2	3	2				
					£341	9	1

CONTRIBUTORY SCHEMES
AND
EMPLOYEES' BENEVOLENT AND MEDICAL
CHARITY FUNDS 1945

	£	s.	d.
Albion Dockyard	35	0	0
Amalgamated Society of Woodworkers	4	4	0
Ashton Containers, Ltd.	6	6	0
Bennett Bros., Ltd.	12	12	0
Bristol Aeroplane Co., Ltd.—Directors	286	12	10
Bristol Constabulary	10	0	0
Bristol Co-operative Society, Ltd.	25	0	0
Bristol Gas Company	19	0	0
Bristol Hospitals Fund... ..	20	1	2
Bristol Tramways & Carriage Co., Ltd.	88	13	0
Bristol Waterworks	15	0	0
Carsons, Ltd.	4	0	0
Corporation of Bristol, Electricity Department	15	0	0
Fry, J. S. & Son, Ltd.	95	10	0
Gardiner, Sons & Co., Ltd.	5	5	0
Georges Bristol Brewery	7	0	0
Jefferies, J. & Sons, Ltd.	6	10	0
Mardon, Son & Hall, Ltd.	50	0	0
Metal Agencies Co., Ltd.	20	0	0
National Smelting Co.	77	8	0
Packer, H. J. & Co., Ltd.	23	0	0
Pountney & Co., Ltd.	10	10	0
Public Health Department	4	4	0
Robinson, E. S. & A., Ltd.	96	0	0
St. Annes Board Mill Co., Ltd.	5	5	0
Strachan & Henshaw, Ltd.	6	6	0
Thomas, Christopher, & Bros., Ltd.	1	7	0
Todd & Co., Ltd.	3	10	0
Wills, W. D. & H. O., Ltd.	70	0	0
	<u>£1,023</u>	<u>4</u>	<u>0</u>

HOW SUBSCRIBERS CAN STILL FURTHER HELP BRISTOL HOMŒOPATHIC HOSPITAL WITHOUT ANY ADDITIONAL EXPENSE TO THEMSELVES

RECOVERY OF INCOME TAX ON SUBSCRIPTIONS

Subscribers will be interested to know that **without any extra cost to themselves**, every £1 1s.0d. they contribute may be increased to £1 18s.2d., while the Income Tax remains at 9s. in the £.

Charities are entitled to recover Income Tax on subscriptions received, and all that is required is that the donor should agree to spread his contribution over a period of seven years. It should be pointed out that **no extra trouble to the subscriber is involved by this method**.

A copy of the Covenant will be found overleaf.

The sum named in the agreement can, of course, be for any amount according to the wishes of the donor, and the following table illustrates the great benefit to the Hospital of this Scheme.

EXAMPLE.

I.		II.		III.	
Amount of Subscription to be paid by Subscriber.		Amount recovered by Hospital from Inland Revenue.		Amount credited to Subscriber	
£	s. d.	£	s. d.	£	s. d.
1	1 0	0	17 2	1	18 2
3	3 0	2	11 7	5	14 7
5	5 0	4	5 11	9	10 11

Any amount paid under this scheme can be deducted in the Donor's Surtax returns.

I,

of

HEREBY COVENANT with the Bristol Homœopathic
Hospital, that for a period of seven years from the
.....day of....., 194....,

or during my life (whichever shall be the shorter) I will
pay annually to the said Hospital from my General
Fund of Taxed Income such sum as after deducting
Income Tax therefrom at the rate then current will
leave the nett sum of

£ :), so that I shall receive no personal or
private benefit during either of the said periods from the
said sum of.....
or any part thereof.

IN WITNESS whereof I have hereunto set my hand and seal
this.....day of....., 194....

SIGNED, SEALED and DELIVERED

by the above-named

in the presence of.....



Bristol Homœopathic Hospital

Please enter my name as an Annual Subscriber of

£ : :

Address.....

Date.....

To
THE SECRETARY,
Bristol Homœopathic Hospital,
Bristol 6.

Cheques should be crossed and made payable to
Bristol Homœopathic Hospital.

FORM OF BEQUEST

I give to the Treasurer for the time being of
THE BRISTOL HOMŒOPATHIC HOSPITAL the
sum of

to be paid out of such part of my personal estate as by
law I may or can charge with the payment of the same
within months of
my decease, upon trust to be applied to the use of the said
BRISTOL HOMŒOPATHIC HOSPITAL, in such way
as its Board of Management may direct.

BANKER'S ORDER

To the.....Bank (Ltd.)

.....Branch.

Please pay to the Secretary of the BRISTOL
HOMŒOPATHIC HOSPITAL, at National Provincial
Bank, Ltd., the sum of £ : :
and continue to pay the same on ^{*Jan. 1st}
July 1st of each year
until countermanded.

Signed.....

Date.....

* Strike out one or other date.



THE BOARD OF MANAGEMENT ASK FOR
YOUR CO-OPERATION IN SECURING

ADDITIONAL
SUBSCRIBERS
or DONORS

to augment the regular income. YOU can assist
by forwarding to the Secretary the names and
addresses of any friends who may be interested,
when every effort will be made to enlist their
sympathy. VISITORS ARE INVITED.
PARTIES will be shown over the Institution and
Gardens on appointment with the Secretary.

Telephone Bristol 33068/9