

Sales catalogue: Sotheby's

Publication/Creation

July 1925

Persistent URL

<https://wellcomecollection.org/works/fcjd64k6>

License and attribution

This work has been identified as being free of known restrictions under copyright law, including all related and neighbouring rights and is being made available under the Creative Commons, Public Domain Mark.

You can copy, modify, distribute and perform the work, even for commercial purposes, without asking permission.



Wellcome Collection
183 Euston Road
London NW1 2BE UK
T +44 (0)20 7611 8722
E library@wellcomecollection.org
<https://wellcomecollection.org>

34 & 35 NEW BOND STREET, LONDON, W. (1)

OF

OF

The Property of the late Dr. G. P. Crofts,
of Tientsin, North China

ALSO OF

The Property of the late General Sir J. A. R. Raines.

FIRST DAY	Wednesday, 15th July	Lots 1 to 124
SECOND DAY	Thursday, 16th July	Lots 125 to 285

1925.

TERMS OF SUBSCRIPTION FOR MESSRS. SOTHEBY'S CATALOGUES. FOR ONE SEASON.

PLAIN CATALOGUES.

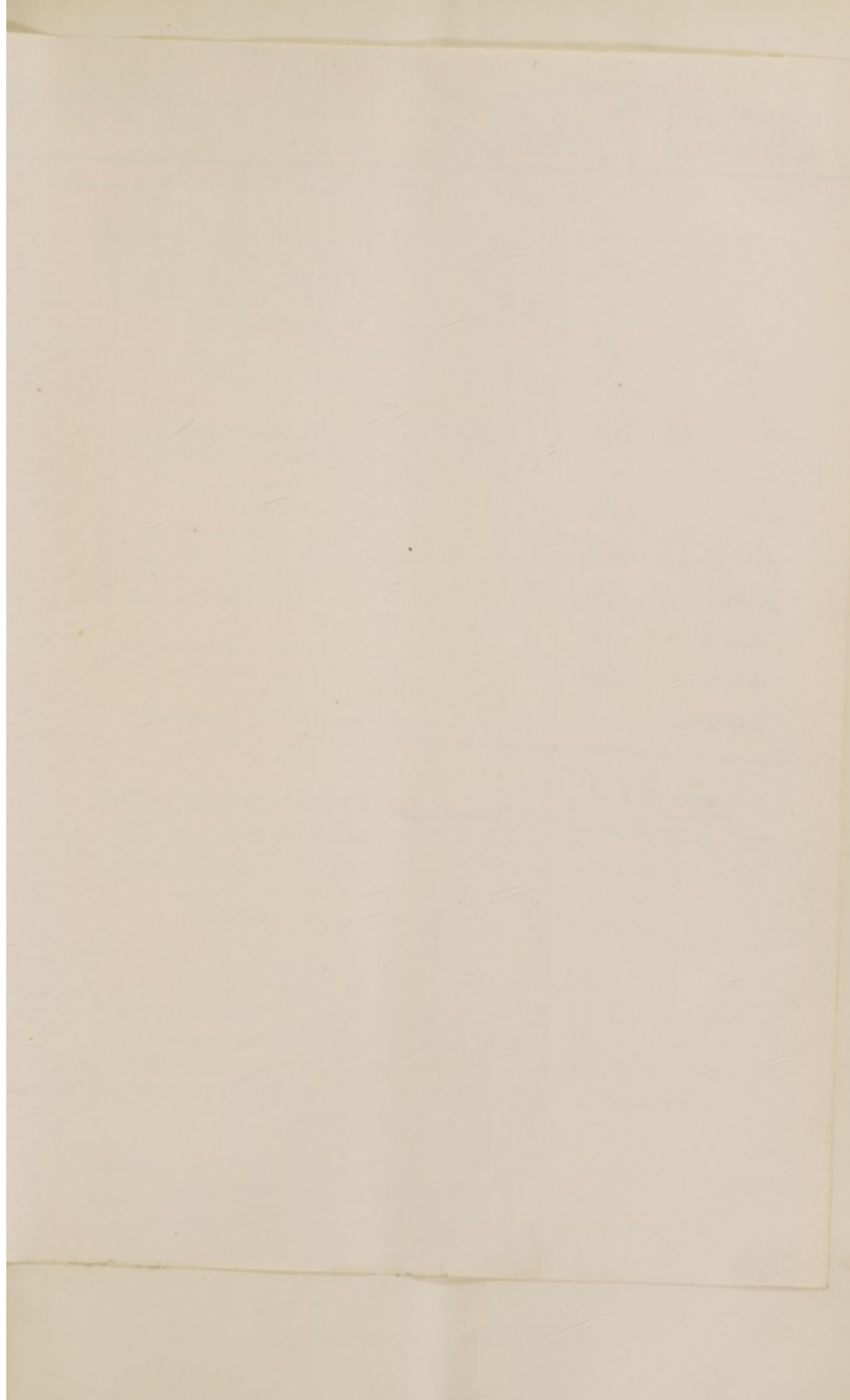
(To include postage).

	£	s.	d.
Antiquities (Primitive, Egyptian, Greek, etc.)... ..	0	1	6
Autograph Letters	0	2	0
Books and Manuscripts	0	5	0
Coins and Medals	0	2	6
Engravings, Etchings, Drawings and Pictures	0	4	0
Japanese Colour Prints and Works of Art	0	1	0
Persian Drawings and Works of Art	0	1	0
Works of Art (including Armour, China, Furniture, Glass, Jewellery, Miniatures, Silver, Textiles, etc.)	0	4	0
	£1	1	0

ILLUSTRATED CATALOGUES.

(To include postage, and also plain copies where no Illustrated Catalogues are issued.)

	£	s.	d.
Antiquities (Primitive, Egyptian, Greek, etc.)... ..	0	5	0
Autograph Letters	0	5	0
Books and Manuscripts	2	0	0
Coins and Medals	0	10	0
Engravings, Etchings, Drawings and Pictures	1	0	0
Japanese Colour Prints and Works of Art	0	2	6
Persian Drawings and Works of Art	0	2	6
Works of Art (including Armour, China, Furniture, Glass, Jewellery, Miniatures, Silver, Textiles, etc.)	1	0	0
	£5	5	0



BUYER

W. How

Date

15/16 July 25

AUCTIONEERS

Sechelys

Lot	Amount			Lot	Amount		
	£	s.	d.		£	s.	d.
<i>1</i>	<i>7</i>	<i>.</i>	<i>.</i>				
<i>3</i>	<i>10</i>	<i>10</i>	<i>.</i>				
<i>46</i>	<i>18</i>	<i>.</i>	<i>.</i>				
<i>82</i>	<i>15</i>	<i>10</i>	<i>.</i>				
<i>203</i>	<i>14</i>	<i>.</i>	<i>.</i>				
<i>204</i>	<i>21</i>	<i>.</i>	<i>.</i>				
<i>208</i>	<i>42</i>	<i>.</i>	<i>.</i>				
<i>209</i>	<i>40</i>	<i>.</i>	<i>.</i>				
<i>216</i>	<i>13</i>	<i>.</i>	<i>.</i>				
<i>226</i>	<i>12</i>	<i>.</i>	<i>.</i>				
<i>229</i>	<i>14</i>	<i>.</i>	<i>.</i>				
<i>244</i>	<i>8</i>	<i>.</i>	<i>.</i>				
<hr/>							
	<i>£ 215</i>	<i>.</i>	<i>.</i>				
<hr/>							

CATALOGUE
OF
A VERY IMPORTANT & COMPREHENSIVE COLLECTION
OF
FINE EARLY CHINESE POTTERY.
METAL-WORK & SCULPTURE.

The Property of the late Dr. G. P. Crofts,
of Tientsin, North China,

(SOLD BY ORDER OF HIS LONDON EXECUTOR),

COMPRISING

A FINE SERIES OF EARLY FIGURES, FUNERARY URNS, GRANARY JARS
AND VASES WITH GREEN IRIDESCENT GLAZE, AND A RARE POTTERY TOWER,
of the Han Dynasty;

A RARE BRIDAL CARRIAGE, *of the Sui Dynasty;*

A VERY FINE AND LARGE COLLECTION OF TOMB FIGURES, CAMELS AND
HORSES WITH BRILLIANT GLAZES, ALSO UNGLAZED FIGURES OF BEAUTIFUL
MODELLING, A COMPLETE TOMB SET IN THREE COLOUR GLAZES, A PAIR
OF SUPERB FIGURES OF LARGE HORSES, AND A FINE MODEL OF A TOMB,
of the Tang Dynasty;

A SERIES OF FINE TEMMOKU AND TZUCHOW WARE VASES AND BASINS;
EARLY CELADONS AND TWO VERY FINE PEI TING BOWLS AND SMALL
FIGURES OF PORCELLANOUS STONEWARE;

FINE EARLY METAL CAST HEADS AND IMPORTANT SCULPTURES,
of the Tang, Sung, Yuan and Ming Dynasties;

ALSO

A COLLECTION OF IVORY MASKS & ORIENTAL OBJECTS OF ART,

The Property of the late General Sir J. A. R. Raines.

AND A SMALL COLLECTION OF CHINESE PORCELAIN.

WHICH WILL BE SOLD BY AUCTION

BY MESSRS.

SOTHEBY AND Co.

The Rt. Hon. Sir MONTAGUE BARLOW, Bt., K.B.E., G. D. HOESON, M.V.O. F. W. WARRE, O.B.E., M.C.
C. G. DES GRAZ, B.A. MISS E. BARLOW.

Auctioneers of Literary Property & Works illustrative of the Fine Arts.

AT THEIR LARGE GALLERIES, 34 & 35, NEW BOND STREET, W. (1)

On WEDNESDAY, the 15th of JULY, 1925, and following Day,

AT ONE O'CLOCK PRECISELY.

May be Viewed Two Days prior.

Catalogues may be had.

Illustrated Catalogues (8 Plates), Price 2s. 6d.

Printed by J. Davy & Sons, Ltd., 8-9, Frith-street, London, W., England.

CONDITIONS OF SALE

- I. The highest bidder to be the buyer. If any dispute arise the Auctioneer shall have absolute discretion to settle it; and to put any disputed lot up again immediately.
- II. No person to advance less than 1s.; above five pounds 5s., and so on in proportion.
- III. All lots are sold subject to the right of the seller or his agent to bid or to impose a reserve.
- IV. The purchasers to give in their names and places of abode, and to pay down 10s. in the pound or more, if required, in part payment of the purchase-money; in default of which the lot or lots purchased may be immediately put up again and re-sold
- V. All lots are sold as shown and with all faults, imperfections and errors of description. Messrs. SOTHEBY & Co. act as agents; they have full discretion to refuse any bidding or to withdraw any lot or lots from the sale without in either case giving any reason; they are not responsible for errors of description or for genuineness or authenticity of any lot or for any fault or defect in it, and make no warranty whatever.
- VI. The lots to be taken away at the buyer's risk and expense, immediately after the conclusion of the sale; in default of which Messrs. SOTHEBY & Co. will not hold themselves responsible if the same are lost, stolen, damaged or otherwise destroyed, but they will be left at the sole risk of the purchaser, and subject to a charge for warehousing. If, at the expiration of Two Days after the conclusion of the sale, the lots are not cleared or paid for, they may then be sold immediately, either publicly or by private treaty, without any notice being given to the defaulter.
- VII. Upon failure of the buyer to comply with any of the above conditions, the money deposited in part-payment shall be forfeited; and the defaulter at this sale shall make good to Messrs. SOTHEBY & Co. any loss arising from the re-sale, together with their charges and expenses in respect of both sales.

To prevent confusion no purchases can be claimed or removed during the sale.

Messrs. SOTHEBY & Co. are prepared to advice intending purchasers, as far as possible, and will execute bids on their behalf free of charge. Lots will be procured as cheaply as is permitted by other bids or reserves, if any.

34 & 35, *New Bond Street, London, W.* (1)

Telegraphic Address:
"Abinitio, Wesdo, London."

Telephone: (2 lines)
Mayfair 1784, 1785.

In sending Commissions this Catalogue may be referred to as "CACUS."

COMMISSIONS SENT BY TELEPHONE ARE ACCEPTED ONLY AT THE SENDER'S RISK, AND MUST BE CONFIRMED BY LETTER OR TELEGRAM

Record of all prices required

CATALOGUE
OF
A VERY IMPORTANT AND COMPREHENSIVE COLLECTION
OF
FINE EARLY CHINESE POTTERY,
METAL-WORK AND SCULPTURE,

THE PROPERTY OF
THE LATE DR. G. P. CROFTS,
of Tientsin, North China.
(SOLD BY ORDER OF HIS LONDON EXECUTOR).

FIRST DAY'S SALE.

Wednesday, July 15th, 1925.

EARLY CHINESE POTTERY
OF THE HAN AND PRE-T'ANG DYNASTIES.

- 7/1- 8. LOT 1 An early unglazed Jar, 6 in. high, of grey clay with cross hatch lines and three studs on the shoulder, in the form of an early bronze; and a Bowl, of similar type, 4 in. high
wood stands, possibly Chow Dynasty, B.C. 1122-255
- 2 A Funerary Jar and Cover, of unusual type, the body of black-grey clay without decoration, excepting circles and two tiger head reliefs with rings, supported by bears
wood stand, possibly Chow Dynasty, 7 in. high, 8 in. diam.
- 10/8 10. 3 A good pottery Stove, of rectangular shape with dark greenish brown glaze and raised trellis and utensil decoration
wood stand, Han Dynasty, 11½ in. long, 6 in. high

- 6' 4] Another, smaller, of horse-shoe shape, with green glaze, and decorated with cooking utensils in relief
wood stand, *Han Dynasty*, 8 in. long, 3 in. high 8/107-
- X 7' 5] AN UNUSUAL POTTERY BOWL OR COVER, with brilliant green iridescent glaze and decorated with various animals in high relief, possibly meaning to represent the Chinese Zodiac
wood stand and cover, *Han Dynasty*, 6 in. high, 9½ in. diam. 19/-/-
- 6 A small porcellaneous Jar, of oviform shape, originally with green glaze but now covered with iridescence
wood stand, *Han Dynasty*, 6 in. high 15/-/-
- 7 A pottery Model of a Lotus Flower, with green glaze and brilliant silver iridescence
wood stand, *Han Dynasty*, 11 in. high 23/-/-
- *.* An unusual specimen and possibly a wall ornament over the entrance door to a tomb.
- 8 A rare Ladle, 3 in. high, 7½ in. by 6 in. at lip, of deep kidney shape, with straight handle covered with green glaze
wood stand, *Han Dynasty*, 3 in. high, 6 in. wide 57/-/-
- 9 ANOTHER Ladle, of uncommon shape and with rare dragon head handle
wood stand, *Han Dynasty*, 4 in. high, 7 in. wide 5/107-
- 10 A small Ladle, with short handle and green iridescent glaze
wood stand, *Han Dynasty*, 3½ in. high 3/107-
- X 6-11 A rare little pottery Model of a Wheat Crusher, with bluish green glaze and iridescence
wood stand, *Han Dynasty* 11/107-
- 12 Two Portions of Roof Tiles, of curious design, with dragons in high relief and green glaze with brilliant silver iridescence
wood stands, *Han or Tang Dynasty* 4/-/-
- 13 A good porcellaneous Jar, of plain oviform shape, covered with a dark green glaze and finely potted
wood stand, *Han Dynasty*, 11 in. high 52/-/-
- 6' 14 A cylindrical Granary Urn, with three ribbed bands round the body and moulded top, the three feet in the form of bears
wood stand, *Han Dynasty*, 15½ in. high 9/-/-
- 15 ANOTHER FINE GRANARY URN, with brilliant olive green glaze and raised wave bands, probably representing hills and mountains, on a rare type of foot similar to those attached to heavy bronze urns
wood stand and cover, *Han Dynasty*, 16½ in. high 25/-/-

- 16 A FINE HILL JAR and Cover, of brilliant green glaze, with a band of animals in relief, the feet in the form of three bears
wood stand, *Han Dynasty*, 10 in. high, 8 in. diam. 257-1-

- 17 ANOTHER GOOD HILL JAR and Cover, with green glaze and various animals in relief in a band round the body and on the cover 307-1-

wood stand, *Han Dynasty*, 10 in. high, 8 in. diam. Johnston

- 18 A rare Funerary Urn with spiral Cover, of green and brown glaze with some silver iridescence, the feet in the form of three big bears M 7/107-

wood stand, *Han Dynasty*, 7 in. high, 8½ in. diam

- 657- 19 A large Well Jar, of square shape with a pitcher resting on the side, green glaze 9/107-

wood stand, *Han Dynasty*, 15 in. high, 9 in. wide

- 20 Another Well Jar, of circular shape with water jar resting on the side and pigeons perched on the handle 11/1-

wood stand, *Han Dynasty*, 11 in. high, 6½ in. diam. Johnston

- 21 AN IMPORTANT POTTERY TOWER, in two sections, the tower rests on uprights in a dish representing a lake in which fish swim in and out of the lower structure; a female figure is leaning from the window in the first storey, and above in the upper storey a man is looking out with evident surprise and pleasure at the view; with slight silver iridescent glaze 807-1-

Han Dynasty, 34 in. high Johnston

* * * A "Fowling Tower" of similar construction in the Freer collection is illustrated in "Chinese Pottery and Porcelain," by R. L. Hobson, plate 4.

[See ILLUSTRATION.]

- 22 A LARGE AND FINE VASE, of pear shape with flaring mouth and two unusual bands of stamped vandyke design 207-1-

wood stand, *Han Dynasty*, 18 in. high

* * * This and the five following lots were found in the same tomb at a village near Loyang Hsien, Honanfu, and all have a fine green iridescent glaze.

- 23 ANOTHER FINE VASE, the companion to the above

wood stand, *Han Dynasty*, 18 in. high 207-1-

Blunt

- 24 A VERY FINE VASE, of unusual type, with round body, octagonal shaped base and flaring mouth covered with green iridescent glaze, the body with two tiger head handles similar to those on bronze vases, and decorated with wave lines
wood stand, *Han Dynasty*, 16 in. high 32/-
Blunt
- 25 ANOTHER VERY FINE VASE, the companion to the preceding lot
wood stand, *Han Dynasty*, 16 in. high 27/-
Blunt
- 26 A Granary Urn, of cylindrical shape, with green iridescent glaze, the feet in the form of standing bears with the urn resting on their shoulders
wood stand, *Han Dynasty*, 14½ in. high 14/-
Blunt
- 50/- 27 Another Granary Urn, of similar type but smaller, with iridescent glaze
wood stand, *Han Dynasty*, 13 in. high 7/-
Blunt
- 28 A LARGE VASE, of fine quality, with globular body, tapering neck, and flaring lip, on an octagon-shaped foot, decorated with lion's mask handles, brilliant green glaze
Han Dynasty, 16 in. high 24/-
Blunt
- 29 A quaint grey pottery Figure of an Archer or Spear-thrower, the clothes modelled in slight relief
wood stand, *Han or Wei Dynasty*, 19 in. high 5/-
Blunt
- 30 Another, smaller, but similar to the preceding lot
wood stand, *Han or Wei Dynasty*, 10 in. high 3/10/-
Wilkinson
- X 60/- 31 A curious Figure of a Horse without legs, with loose head, of grey clay with ochre colouring
wood stand, *Han or Wei Dynasty*, 15 in. high, 16 in. long 4/10/-
Blunt
- 5 70/- 32 A similar but smaller Figure of a Horse without legs, and loose head; and two other Heads of Horses
wood stands, *Han or Wei Dynasty*, 11½ in. high, 13 in. long 4/10/-
Blunt
- 33 An early Vase, with a body of black clay, with incised designs of mountains, sea, fish and dragons, and monster head handles
wood stand, *Han or Wei Dynasty*, 18 in. high 18/10/-
Van
- 85/- 34 A PAIR OF RARE VASES, of unusual shape, the body of heavy black clay, with designs in pigments only
wood stands, *Han or Wei Dynasty*, 15 in. high 6/10/-
Blunt

- 35 A PAIR OF LARGE VASES, unglazed, with globular bodies and flaring mouths, decorated in red and white pigment with various designs, and tiger head handles
wood stands, *Han or Wei Dynasty*, 17 in. high

12/-/-

- 36 Two cylindrical Granary Urns, of hard grey clay, with designs in red and white pigment
wood stands and covers, *Han or Wei Dynasty*, 10 in. high

9/10/-

Williams

- 37 Two unglazed Jars, of oviform shape, with slight floral decoration in black pigment
Han or Wei Dynasty, 11½ in. high

9/10/-

Blunt

- 757- 38 Two Female Figures, with curious head-dresses, red pottery with pigment colouring
wood stands, *Wei Dynasty*, A. D. 220-264, 15 in. high

10/-/-

Blunt

- 6 39 A fine Figure of a Lady, unglazed, in hard grey clay, the face full of dignity and repose, with high coiffure, 11 in. high; and another rare Figure of a Dancer
wood stands, *Wei Dynasty*

13/-/-

- 40 A pair of unglazed Figures of Guardians of the Tomb, in armour, each figure having a shield with a monster head in the centre, an unusual type
wood stand, *Wei Dynasty*, 18 in. high

8/-/-

- 41 A pair of early grey clay Figures of Soldiers, in armour
wood stands, *Wei Dynasty*, 15 in. high

11/10/-

Blunt

- 42 A pair of Figures of Tomb Guardians, with long swords, one in tiger striped coat and the other with red pigment
wood stands, *Wei Dynasty*, 13 in. high

11/-/-

Blunt

- 8 43 Four rare Figures of Soldiers, with shields, in grey clay; and four others, of various types
wood stands, *Wei Dynasty*, 9 in. and 7 in. high

13/10/-

Blunt

- 44 Four good Figures of Mourners, in grey clay; and six others, smaller
Wei Dynasty, 7 in. to 11 in. high

7/10/-

- 45 Five Figures of Civil Mourners, unglazed, two with curious cloaks and head-dresses
wood stands, *Wei Dynasty*, 7 in. high

9/10/-

Williams

5.

46

A COMPLETE SET of pottery figures with animal heads, representing the Chinese Zodiac, as follows:

4X

No.	1. Tzu	Rat	Aries
"	2. Ch'ou	Ox	Taurus
"	3. Yin	Tiger	Gemini
"	4. Mao	Hare	Cancer
"	5. Ch'en	Dragon	Leo
"	6. Ssi	Serpent	Virgo
"	7. Wu	Horse	Libra
"	8. Wei	Sheep	Scorpio
"	9. Shen	Monkey	Sagittarius
"	10. Yu	Cock	Capricornus
"	11. Hsu	Dog	Aquarius
"	12. Hai	Boar	Pisces

wood stands, *Wei or Sui Dynasty*, A.D. 220-617, 8 in. high

7. 47

Four pottery Figures of Ladies, in red clay, the faces unglazed, the dresses in reddish-brown glaze, two figures with the trains of the dresses held in the right hand, one figure holding a single ornament from an altar set, and another figure with hands crossed within tight-fitting sleeves

wood stands, *Sui Dynasty*, A.D. 589-618, 10 in. high

* * * From Loyang-Hsien-Honen.

15.

48

A RARE AND IMPORTANT MODEL OF A POTTERY CART, WITH BUFFALO AND TWO STANDING FIGURES, covered with green-brown glaze over a red clay, the buffalo is glazed to the rump and harnessed with ornamental trappings, the back of the cart is covered with a long curtain or blind, which has some fancy decoration and a row of tassels, and the front also closed; possibly a cart prepared for the marriage ceremony, hence the closed blinds in front and back wood stands, *Sui Dynasty*, A.D. 589-618

* * * This extremely fine bridal carriage came from Mongsham (Big Snake Mountain), Mah Po Loyang-Hsien-Honan.

[See ILLUSTRATION.]

T'ANG DYNASTY.

49

Three fine Heads of Lokapalas and Imperial Grave Warriors, unglazed wood stands, *T'ang Dynasty*

6. 50

Two small pottery Heads, unglazed, *Wei Dynasty*; and two rare Figures of Dogs, seated, *T'ang Dynasty* wood stands

- 75/- 51 A rare unglazed Figure of a Lady, with wide skirt and large turned-up shoes wood stand, *T'ang Dynasty*, 14½ in. high 15/10/- Blunt
- 50/- 52 A seated Figure of a Chinese Lady, unglazed, the dress with pigment lines; and three other interesting Figures, in hard grey clay wood stands, *Wei and T'ang Dynasties* 15/- Blunt
- 53 Ten small pottery Animals: two Cocks, two smaller Cocks, two Ducks, two Rams and two Dogs wood stands, *T'ang Dynasty* 16/10/- Williams
- 54 A rare model of a Buffalo-drawn Chariot, unglazed wood stand, *T'ang Dynasty* 18/- Blunt
- 10- 55 ANOTHER of an Ox-drawn Chariot, unglazed, the ox finely modelled and glazed wood stand, *T'ang Dynasty* 29/- Sparks
- 56 A PAIR OF GOOD FIGURES OF TOMB GUARDS, unglazed and clad in armour, both in the same attitude wood stands, *T'ang Dynasty*, 32 in. high 23/- Blunt
- 57 Three large and fine pottery Figures of Ladies, with yellowish crackle glaze and high head-dress wood stands, *T'ang Dynasty*, 17 in. high 6/-
- 58 Three Figures of Ladies, covered in yellow glaze, excepting the hair, which is in grey crackle glaze and curiously dressed wood stands, *T'ang Dynasty*, 12 in. high 57/- Frank
- 59 Three well-modelled Figures of Ladies, with yellow crackle glaze wood stands, *T'ang Dynasty*, 10 in. high 4/-
- 60 Three smaller Figures of Ladies, with cream and yellow glaze, and curiously moulded arms wood stands, *T'ang Dynasty*, 8 in. high 57/-
- 61 Three tall Figures of Ladies, unglazed, of rather attractive type wood stands, *T'ang Dynasty*, 15 in. high 57/- Frank
- 62 Three Figures of Ladies of the Household, unglazed, with slight pigment wood stands, *T'ang Dynasty*, 10 in. high 9/10/- Blunt
- 63 A FINE FIGURE of a *Lokapala*, with splashed three colour glaze, posed on a reclining bull wood stand, *T'ang Dynasty*, 33 in. high 6/10/-
- 64 ANOTHER, similar, but in slightly different attitude, on a reclining bull wood stand, *T'ang Dynasty*, 32 in. high 7/7/- Blunt

- 65 ANOTHER of an Archer, in three colour splashed glaze
wood stand, *T'ang Dynasty*, 31 in. high *11/107- Sparks*
- 66 ANOTHER Figure, similar, with horned shoulder ornaments
wood stand, *T'ang Dynasty* *9/1-1-*
- 67 A good pottery Figure of a Censor, finely glazed body and robes, and well-modelled head
wood stand, *T'ang Dynasty*, 32 in. high *6/107-*
- 68 Another Figure of a Censor, similar to the preceding lot
wood stand, *T'ang Dynasty*, 31 in. high *57-1-*
- 69 A finely glazed Figure of a Sphinx, with animal head and wings and splashed decoration
wood stand, *T'ang Dynasty*, 27 in. high *7/107- Ruist*
- 70 ANOTHER, with human head, large ears and spiral hair, the face unglazed and the body and wings with three colour glaze
wood stand, *T'ang Dynasty*, 27 in. high *6/107-*
- 71 A pair of good Figures of Tomb Guards in armour, covered with a greenish glaze, modelled with animal head shoulders, and knees with curious leggings
wood stands, *T'ang Dynasty*, 23 in. high *7/1-1-*
- 72 A PAIR OF ARMOUR CLAD FIGURES OF TOMB GUARDS, unglazed, with long graceful costumes falling to the feet, and tiger head shoulders and heads encased in metal helmets, both finely modelled
wood stands, *T'ang Dynasty*, 28 in. high *33/1-*
- 73 A rare Figure of a Horse, very finely modelled, unglazed, in the act of licking its fore leg
wood stand, *T'ang Dynasty*, 7 in. high, 10 in. long *68/1-1- Spink*
- 657- 74 A Model of a House or Stable, of hard white ware, unglazed, $5\frac{1}{2}$ in. high, $6\frac{1}{2}$ in. long; and a pottery Stove, 4 in. high, with ornamental front
wood stands, *T'ang Dynasty* *4/1-1-*
- 75 A finely glazed Figure of a Horse Attendant, with green and ivory skirted coat
wood stand, *T'ang Dynasty*, 23 in. high *4/1-1-*
- 76 Another Figure, similar, with an orange skirted coat
wood stand, *T'ang Dynasty*, 23 in. high *57-1-1- Spink*
- 77 A large glazed Figure of a Horse, well modelled, in cream and yellow colours, *restored*
wood stand, *T'ang Dynasty*, 25 in. high *157-1-1- Spink*

- 78 A well-modelled Figure of a Horse, with cream glaze and yellow nose wood stand, *T'ang Dynasty*, 21 in. high 13/-/- Yam
- 79 A good Figure of a Horse, with brilliant yellow glaze, the saddle and saddle-cloth, unglazed wood stand, *T'ang Dynasty*, 24 in. high 17/-/- Yam
- 80 A strongly modelled Figure of a Horse, covered in cream glaze, with a few dark splashes wood stand, *T'ang Dynasty*, 21 in. high 11/10/-
- # 15- 81 A Figure of a Laden Camel, unglazed, with a cover of sphinx heads decorated with pigment colours wood stand, *T'ang Dynasty*, 19 in. high 21/-/- Sparks
- 157/107- 15- 82 Another Figure of a Camel with a load, similar to the preceding lot wood stand, *T'ang Dynasty*, 21 in. high
- 83 A good Figure of a Pawing Horse, unglazed, with saddle and saddle-cloth touched with red pigment; and a Figure of a Horse Attendant, unglazed wood stands, *T'ang Dynasty*, 25 in. high 34/-/- Blunt
- 84 A FINE FIGURE OF A PAWING HORSE, unglazed, with flowing mane, the saddle covered with a double saddle-cloth *T'ang Dynasty*, 17 in. high 1357/-/- Sparks
- 85 ANOTHER WELL-MODELLED FIGURE OF A PAWING HORSE, unglazed, the saddle with flowing and knotted saddle-cloth, and the harness with trappings wood stand, *T'ang Dynasty*, 17 in. high
- 86 A rare Figure of a Horse, with long tail, greenish brown glaze and unglazed saddle, the bridle and saddle harness with trappings wood stand, possibly *Sui Dynasty*, 589-618 A.D., 18 in. high 12/-/-
- 87 A Figure of a Horse, with unglazed saddle, the remainder covered in cream and yellow glaze wood stand, *T'ang Dynasty*, 13 in. high 16/107/- Blunt
- 88 A glazed Figure of a well-modelled Horse, saddle unglazed, the remainder with cream and orange glaze wood stand, *T'ang Dynasty*, 12 in. high 17/107/-
- 89 A very fine Figure of a Horse, with decorated tail and long flowing saddle cloth, the whole covered in cream glaze, rare wood stand, *T'ang Dynasty*, 13½ in. high 12/-/-

- 90 A PAIR OF FINELY MODELLED HORSES, of small size with long tails, saddles and saddle-cloths covered in cream glaze; and two fine Figures of Horse Attendants
31/-/-
T'ang Dynasty, 12 in. high
- 91 A pair of good equestrian Figures a Man and a Woman, finely modelled with cream glaze
20/-/-
wood stands, *T'ang Dynasty, 13 in. high*
- 7 92 A small Figure of a Laden Camel, with curious neck and head, and cream glaze all over
11/10/-
wood stand, *T'ang Dynasty, 12 in. high*
- 5 93 A VERY FINE AND COMPLETE TOMB SET, of small size, with cream, orange and mottled glazes, comprising two Horses, two Camels, two Censors, two Guardians of the Tomb, and a Sphinx
2 X V
45/-/-
wood stands, *T'ang Dynasty*
* * This fine set, which is in good condition, came from a Frank Tomb in Loyang-Honan.
- 94 A LARGE FIGURE of a Horse, unglazed, finely modelled and covered with a faint red pigment
48/-/- Blue
With a figure of a horse attendant
wood stand, *T'ang Dynasty, 29 in. high*
- 95 ANOTHER large Figure of a Horse, unglazed, finely modelled, with saddle and saddle cloth and detachable tail
46/-/- Yarn
With a figure of a horse attendant
wood stand, *T'ang Dynasty, 29 in. high*
- 96 A FINE FIGURE of a Horse, with brilliant yellow and cream glazes splashed with green, the saddle unglazed, and the bridle and saddle harness with floral medallions
25/-/-
wood stand, *T'ang Dynasty, 25 in. high*
- 97 ANOTHER Figure of a Horse, with cream and yellow glaze, the saddle unglazed, strongly modelled
25/-/-
wood stand, *T'ang Dynasty, 25 in. high*
- 98 A SPENDIDLY MODELLED FIGURE OF A PAWING HORSE, unglazed, with saddle and long saddle cloth, the bridle and saddle harness with trappings, the latter originally overlaid with gold
310/-/-
fine wood stand, *T'ang Dynasty, 15 in. high*
[See ILLUSTRATION.]
- 99 THE COMPANION FIGURE TO THE PRECEDING LOT
fine wood stand, *T'ang Dynasty, 15 in. high*
* * Two rare and fine examples of spirited T'ang modelling.
[See ILLUSTRATION.]

- 100 A FINE FIGURE OF A HORSE, unglazed, pawing, with head turned, the saddle with short saddle cloth, stirrups and accoutrements wood stand, *T'ang Dynasty*, 17 in. high

90/-

15. 101 A VERY FINE FIGURE OF A LARGE CAMEL of Bactrian type, with wool covered hump and neck, orange and green glazes With a figure of a camel coolie wood stand, *T'ang Dynasty*, 31 in. high

32/-

Frank

30. 102 AN EXTREMELY FINE FIGURE OF A LARGE CAMEL, strongly modelled, with dark wool covered humps, shoulders, head and neck, the saddle cloth with fine green mottled glaze, and the remainder with orange and cream glaze With a figure of a camel coolie wood stand, *T'ang Dynasty*, 31 in. high

40/-

Frank

[See ILLUSTRATION.]

15. 103 A STRONGLY MODELLED FIGURE OF A LARGE CAMEL, with splashed cream and orange glaze, and a Turki figure seated between the humps on the camel wood stand, *T'ang Dynasty*, 30 in. high

34/-

Frank

15. 104 ANOTHER LARGE CAMEL, with yellow and cream glaze and a full load, covered with a sphinx head on either side in green splashed glaze With a figure of a camel coolie

21/-

T'ang Dynasty, 32 in. high

5. 105 A VERY IMPORTANT MODEL OF A POTTERY TOMB WITH COVER, in good condition, with yellow glazed structure and cover and green glazed base. The tomb with dragons in relief on either side in yellow and green, and in front an entrance door studded and locked, the moveable cover with six tiger heads in high relief. From the nature of the decoration it probably represents the tomb of an Empress

2x

X

74/-

wood stand, *T'ang Dynasty*

* * * This fine piece was found in an Imperial Tomb near Loyang Hsien Honan.

- 106 A SUPERB FIGURE OF A LARGE HORSE, beautifully modelled and in perfect condition, covered with brilliant golden glaze, cream face and mane, and golden and cream

260/-

Taylor

Lot 106—*continued*.

saddle and saddle cloth, splashed with green. The breast strap to which cream coloured trappings are attached, represents bundles of coloured or white hair often attached to Chinese horses as decoration. Detachable cream tail

With a figure of a horse attendant

wood stand, *T'ang Dynasty*, 29 in. high

* * * This magnificent horse and the companion horse in the following lot, are two of the finest examples of *T'ang* animal modelling and ceramic technique ever offered for sale.

[See ILLUSTRATION.]

- 107 ANOTHER SUPERB FIGURE OF A LARGE HORSE, in perfect condition, the companion to the preceding lot, with fine glaze of a darker tone, the saddle covered with a fur rug in colours, and harness of ornamental nature. Detachable cream tail

With a figure of a horse attendant

wood stand, *T'ang Dynasty*, 31 in. high

[See ILLUSTRATION.]

- 108 A fine Jar and Cover, of oviform shape, with cream crackle glaze, *in perfect condition*

wood stand, *T'ang Dynasty*, 9 in. high

- 109 Another fine Jar and Cover, with white glaze, knopped handle, *perfect*

wood stand, *T'ang Dynasty*, 11 in. high

- 110 Another Jar and Cover, very similar to the preceding lot, but smaller and with cream glaze

wood stand, *T'ang Dynasty*, 8½ in. high

- 111 Two small Vases, with flange lips, and a small Jar and Cover, with grey crackle glaze

wood stands, *T'ang Dynasty*, 6 in. high

- 112 A small Jar and Cover, of oviform shape, with fine orange glaze; and a Jar, without cover, of bowl shape, with rare golden and rust glaze

wood stands, *T'ang Dynasty*

- 113 A small Sepulchral Amphora, of fine quality and clear cream crackle glaze, with dragon handles and two floral medallions in relief on the shoulder

wood stand, *T'ang Dynasty*, 10 in. high

- 114/ A fine Sepulchral Amphora, of porcellanous ware, with cream crackle glaze, dragon handles and three applied funereal leaves in relief on the shoulder
wood stand, End T'ang Dynasty, 17½ in. high 9/1- Vermey
- 115 ANOTHER, similar, but without reliefs on the shoulder, grey crackle glaze wood stand, T'ang Dynasty, 16½ in. high 7/107- Benoit
- 116 Another Amphora, smaller, with grey glaze and a rubbed-off blister on side wood stand, End T'ang Dynasty, 14 in. high 6/107-
- 117 Two smaller Amphorae, with cream and grey crackle glaze, of rather attractive size
wood stands, End T'ang Dynasty, 10½ in. high 9/1- Williams
- 118 A good Ewer, with quaint spout and leaf and stem decoration, covered in grey glaze
wood stand, End T'ang Dynasty, 10½ in. high 13/1- Williams
- 119 A fine Ewer, of vase shape, with ivory glaze, long spout and melon shaped body
wood stand, End T'ang Dynasty, 11 in. high 15/107- Frank
- 120 ANOTHER plain Ewer, with green glaze and floral incised decoration on the shoulder
wood stand, T'ang Dynasty, 9 in. high 107-1-
- 121 A small Ewer, of rare shape, with cream crackle glaze and three loops on the shoulder
wood stand, T'ang Dynasty, 7 in. high 7/107-
- 122 An Ewer, with dark green glaze and slight incised floral decoration, T'ang Dynasty, 10 in. high; and another Phoenix Ewer, of unusual form wood stands 22/1-1-
- 123 A Flower Vase, with five stem holders for flowers, covered with brown glaze T'ang Dynasty, 8 in. high 25/-
- X 124 NINE RARE AND FINE SMALL AGATE PLAQUES, of square shape, part of a belt worn by a deceased person in a tomb, with Turki figures in high relief, eight of the figures with musical instruments, the ninth plaque with a dancing figure and two musicians T'ang Dynasty, 2 in. square 307-1-
* * A unique set, from a tomb at Loyang-Honan.

SECOND DAY'S SALE.

Thursday, July 16th, 1925.

SUNG, YUAN AND MING DYNASTIES.

LOT

- 125 A fine Tzu Chow ware Jar, of oviform shape, covered with cream glaze and decorated with a dragon and phoenix and floral bands *25/- Blunt*
wood stand and cover, *Sung Dynasty*, 11 in. high
- 126 A good Tzu Chow ware Jar, painted with panels of mounted warriors on dull putty colour ground *16/- do*
wood stand and cover, *Sung Dynasty*, 9½ in. high
- 127 A small Tzu Chow ware Jar, of rare shape, with cream glaze and seaweed decoration *5/-*
wood stand, *Sung Dynasty*, 4 in. high *William*
- 128 A Tzu Chow ware Jar, of inverted pear shape, with bottle neck, decorated with floral sprays and a bird *6/-*
wood stand, *Sung Dynasty* *Barnes*
- 129 A Tzu Chow ware bottle shaped Vase, with small neck and cream coloured glaze, decorated with floral sprays *8/-*
wood stand, *Sung Dynasty*, 9 in. high *Blunt*
- 130 A LARGE TZU CHOW WARE JAR, with brilliant black glaze and peony decoration in relief on a biscuit ground, with the stem and leaves travelling over the sides and back of the jar *30/-*
wood stand and cover, *Yuan Dynasty*, 15½ in. high *Solomon*
- 131 A FINE TZU CHOW WARE JAR, with dark brown treacle glaze and lotus and leaf decoration in relief on a biscuit ground in two wide bands *16/-*
wood stand and cover, *Yuan Dynasty*, 12½ in. high *Sedar*
- 132 ANOTHER TZU CHOW WARE JAR, of similar type and decoration *17/-*
wood stand and cover, *Yuan Dynasty*, 11½ in. high

- 133 A TALL TZU CHOW WARE JAR, with unusual decoration of a peony in full bloom on its own stem, on one side of the jar only wood stand and cover, *Yuan Dynasty*, 13 in. high 11/-
- 134 A Tzu Chow ware Jar, with two loop handles, covered with black glaze and incised floral decoration wood stand and cover, *Yuan Dynasty*, 11 in. high 10/80
- 135 A FINE BOTTLE, of vase shape, with narrow small neck and brownish glaze with black painted decoration representing a flying bat wood stand, *Sung Dynasty*, 14 in. high 10/80 Amor
- 136 A Tzu Chow ware Vase, of oviform shape, with bottle neck and dark brown glaze decorated with reddish-brown flying bats wood stand, *Sung Dynasty*, 7 in. high 3/10/- Sellar
- 137 A Tzu Chow ware Vase, with bottle neck, covered in black glaze with reddish-brown splashes wood stand, *Sung Dynasty*, 8½ in. high 10/-
- 138 A FINE TZU CHOW WARE VASE, of pear shape, with trumpet lip, covered in brownish glaze with bands of painted flowers, the lower part of the body and base unglazed wood stand, *Sung Dynasty*, 12 in. high 8/- Frank
- 139 A Honan Tzu Chow ware Vase, with narrow neck, trumpet lip and brilliant black and golden-brown glaze wood stand, 10 in. high 43/- YAM
- 140 A rare Bowl and Cover, and an open Bowl, with white glaze and black floral decoration, the outer part of the open bowl unglazed wood stands, *Early Sung Dynasty* 4/-
- 141 A large Dish or Wash Bowl, covered with white glaze and with bamboo decoration in black, *repaired* wood stand, *Sung Dynasty*, 16 in. diam. 60/- Williams
- 142 Two Temmoku small Jars and Covers, with dark brownish glaze and golden-brown splashes wood stands, *Sung Dynasty*, 5 in. high 7/10/- Blunt
- 143 A Temmoku bottle shaped Vase, of purple colour splashed with golden-brown, *the lip restored* wood stand, *Sung Dynasty*, 9 in. high 8/- Sellar
- * * * From Kulu Hsien Chihli.

- 144 A Temmoku Bottle, of vase shape, with wide table shoulder, covered with tea-leaf green and brown glaze
wood stand, *Sung Dynasty*, $8\frac{1}{2}$ in. high 45/- Sellen
- 145 A Temmoku stoneware Vase, with long neck and yellow crackle glaze
wood stand, ? *T'ang Dynasty*, 10 in. high 345/- Blunt
- 146 A Bowl, on small foot, with bluish-green glaze and peculiar small splash
wood stand, *Sung or Yuan Dynasty*, $3\frac{1}{2}$ in. high, $8\frac{1}{2}$ in. diam. 6/- Sellen
- 147 Another, of similar type and colouring
wood stand, *Sung or Yuan Dynasty*, $8\frac{1}{2}$ in. diam. 60/- Sellen
- 148 Another, similar
wood stand, *Sung or Yuan Dynasty*, $8\frac{1}{2}$ in. diam. 4/10/-
- 149 A small Bowl, with fine clair-de-lune glaze
wood stand and cover, *Yuan Dynasty*, 3 in. high 6/- Sellen
- 150 A fine Bowl, with clair-de-lune glaze splashed with purple
wood stand, *Yuan Dynasty*, 3 in. high, 8 in. diam. 8/- Blunt
- 151 Another, more heavily potted, with blue and grey crackle glaze
wood stand, *Yuan Dynasty*, $3\frac{1}{2}$ in. high, $7\frac{1}{2}$ in. diam. 6/- Blunt
- 152 A rare Temmoku Bowl, with brilliant black glaze and golden-brown markings in brush points
wood stand, *Sung Dynasty*, 4 in. high, $7\frac{1}{2}$ in. diam. 8/10/- Sellen
- 153 Another Temmoku bowl, with brilliant purple-black glaze and five big splashes of colour, 3 in. high, 6 in. diam.; and another smaller Basin, of hare's fur type, 2 in. high, $4\frac{1}{2}$ in. diam.
wood stands, *Sung Dynasty* 9/10/- Sellen
- 154 A fine porcellanous stoneware Figure of a General, covered with white glaze; and another of a Mourner, with beard and loose coat
wood stands, *T'ang or Sung Dynasty*, 10 in. high 14/10/- Blunt
10. 155 A COMPLETE SET OF TOMB FIGURES, of small size and porcellanous character, covered with cream and ivory glaze, comprising two Generals, four Military Officers, two Censors, two Mourners, four Lady Mourners, with various utensils, and two seated Figures of members of the household
wood stands and glass cases, *T'ang or Sung Dynasty*, about 10 in. high 3xv 237/- Sellen

* * * This fine set was found in a tomb at Loyang Hsien, Honan

156 A pair of porcellanous Figures of Military Men, with hooded
headdress covered in cream glaze
wood stands, *T'ang or Sung Dynasty*, 8 in. high

11/107-
Bleett

157 Three Figures of Ladies, with cream glaze, wearing wraps tied
with girdles
wood stands, *T'ang or Sung Dynasty*, 9 in. high

9/1-
Frank

7. 158 A Figure of a Lady, in cream glaze, with uncommon dress bound
with a girdle wood stand, *T'ang or Sung Dynasty*, 7 in. high

9/1-
Frank

8. 159 An Incense Burner, of rare type with tazza base, white porcel-
lanous glaze over a hard bisquit body; and a smaller pair of
Incense Burners, of similar form
wood stands, *Early Sung Dynasty*, 5 in. high

12/1-
Bleett

160 Two good Vases, of inverted pear shape, covered with ivory
glaze, *cracked* wood stands, *Sung Dynasty*, 10 in. high

13/1-

161 A finely potted Vase, with porcellanous glaze and incised floral
decoration wood stand, 12 in. high

11/107-
Frank

6. 162 Six Basins (one large and five small), with white and cream
glaze, *earth stained*; from *Ku Lu Hsien, Chihli*
wood stands, *Sung Dynasty*

12/1-

163 Three small Basins, of cup shape, made of a white porcellanous
ware with cream crackle glaze; from *Ku Lu Hsien, Chihli*
wood stands, *Early Sung Dynasty*, 4 in. high, 5 in. diam.

36/1-
VAM

164 Four others, similar but smaller
wood stands, *Early Sung Dynasty*, 3 in. high, 3½ in. diam.

35/1-
Bleett

165 A rare Teapot and Cover, of melon shape, covered with putty
coloured glaze
wood stand, *Sung Dynasty*, 4 in. high, 4½ in. diam.

25/1-
Williams

166 A FINE PEI TING WARE PORCELAIN BOWL, decorated on a cream
ground with a lotus flower in slight relief on the inside of
the bowl
wood stand, *Sung Dynasty*, 2½ in. high, 8½ in. diam.

27/1-

167 A FINE PEI TING WARE BOWL, covered with cream glaze and
similar in decoration to the previous lot
wood stand, *Sung Dynasty*, 2¾ in. high, 8½ in. diam.

17/107-

5. 168 Ten small pottery Figures of Members of the Household, with red, cream, black and white glaze, *unusual*
Sung Dynasty, 4 in. to 6 in. high

29/1-
YAM

- 169 A pair of celadon Basins, on small feet
wood stands, *T'ang or Sung Dynasty*, 3½ in. high, 8 in. diam.
* * From Kulu Hsien, Chihli.

5/107-

- 170 SIX SMALL CELADON BOWLS, of fine colour and brilliant glaze
wood stands, *Sung Dynasty*, 3 in. high, 5½ in. diam.
* * This and two following lots from Kulu Hsien, Chihli.

1080

Blunt

- 171 Three Lungchuan shallow celadon Bowls, with lotus and peony
decoration in relief under the glaze
wood stands, *Sung Dynasty*, 2½ in. high, 7 in. diam.

~~12/107-~~

14/107-

- 172 Three small celadon Bowls, with brilliant glaze and lotus leaf
designs on the outside of two bowls, one plain
wood stands, *Sung Dynasty*, 2 in. high, 4½ in. diam.

44-1-

Sellon

- 173 A good celadon Dish, with radiating design
wood stand, *Ming Dynasty*, 11½ in. diam.

9/1-

Blunt

- 174 Two fine celadon Plates, decorated with lotus flowers and
sprays wood stands, *Ming Dynasty*, 9½ in. diam.

107-1-

Shanks

- 175 A rare little celadon Plate, of light colour, with chrysanthemum
and petal design
wood stand, *possibly Sung Dynasty*, 8 in. diam.

144-1-

- 176 A small Lung Chun Yao celadon set of Cup on stem, 6 in. high,
a Plate, 6 in. diam., 2 in. high, and a small Bowl with
Cover wood stands, *Ming Dynasty*

6/107-

Sellon

- 177 A fine celadon Flower Pot, of cylindrical shape, with floral
decoration, on three legs
wood stand, *Ming Dynasty*, 7 in. high

5/107-

Frank

- 178 A shallow celadon Bowl, on three legs with studs, an old bronze
form wood stand, 4 in. high, 12 in. diam.

8/1-

Shanks

- 179 A fine celadon Jar, of uncommon type, with a lotus flower and
leaf in high relief and lotus base
wood stand and cover, *Ming Dynasty*, 9 in. high, 12 in. diam.

22/1-

Shanks

- 180 A large celadon Jar, with lotus, peach, peony, chrysanthemum and aster flowers in relief under the glaze, and lotus petals on the base
wood stand and cover, *Ming Dynasty*, 9½ in. high, 13 in. diam. 18/-
Blunt
- 181 Another fine celadon Jar, with ribbed body
wood stand and cover, *Ming Dynasty*, 10 in. high, 14 in. diam. 31/-
Sparks
- 182 A large celadon Flower Stand, of good colour, with pierced body decorated with rocks, palm leaves, kyilins and lotus plants
wood stand, *Early Ming Dynasty*, 17 in. high, 11 in. diam. 6/-
Garatad
- 183 A Lung Chuan Yao Plate, of pale celadon, with thick glaze and floral decoration
wood stand, *Early Ming Dynasty*, 3 in. high, 14 in. diam. 10/8
- 184 A small pottery Screen, in yellow and peacock blue glaze, with the eight Immortals in high relief
wood stand, *Ming Dynasty*, 8 in. high, 6½ in. wide 10/8
Sparks
- 185 A LARGE SEATED FIGURE OF KWAN YIN, in brilliant cream, yellow and green glaze, holding the ball of immortality, the crown with a figure of Amitabha Buddha in high relief
wood stand, *Ming Dynasty*, 28 in. high 31/-
Kenny
- 186 ANOTHER FIGURE OF KWAN YIN, similarly glazed, holding the Emblem of Happy Augury
wood stand, *Ming Dynasty*, 28 in. high 24/-
Kenny
- 187 A white porcelain Basin, on a small foot
wood stand, 3¼ in. high, 9 in. diam. 60/-
Kenny
- 188 Three Tibetan Scrolls, painted with flowers, scrolls, and Buddha in various seated attitudes 8/-
- 189 Ten interesting old Tibetan Scrolls, of Buddha Mandala Carbadhatu
Ming Dynasty 10/8
Williams
- 190 A DARK BLUE VELVET THRONE CARPET, with fret borders and peony and floral designs 9 ft. by 6 ft. 2 in. 13/-
Ardis
- 191 ANOTHER, similar, of fine quality 8 ft. 9 in. by 6 ft. 2 in. 14/-
Ardis
- 192 A GREEN VELVET THRONE CARPET, with a design of peonies and flowers 9 ft. 3 in. by 6 ft. 2 in. 12/-
Ardis

EARLY CHINESE WOOD CARVINGS, BRONZE, METAL WORK AND SCULPTURE.

7. 193 A fine carved wood Figure of an Attendant to the Goddess Kwan Yin, *probably Ming*, 29 in. high; and a wooden Bust of a Priest, *T'ang Dynasty*, 15 in. high 12/-
Blunt
- 194 A carved wood Figure of Buddha, seated with a mountain background, the pedestal with a dragon in relief, *Sung Dynasty*, 16 in. high; and a small Shrine, 9 in. high, 6 in. wide, 3 in. deep, in a lacquer and painted case, with a pottery figure of a Lohan 7/-
Frank
16. 195 A finely carved wooden Head of Buddha, with massive features covered in lacquered linen, *rare* wood stand, *possibly Ming Dynasty*, 24 in. high 21/-
Blunt
- 196 A white metal Mirror, *faulty*, *T'ang Dynasty*, 8½ in. diam.; and a bronze Mirror, with decoration in relief and malachite encrustation, *Tsin Dynasty*, A.D. 264-420 woodstands 40/-
Graham
- 197 Two white metal Mirrors, in a fine state of preservation, with Græco-Bactrian decoration in high relief wood stands, *T'ang Dynasty*, 4 in. 5/10/-
VAM
- * * * From a T'ang Dynasty Tomb at Loyang-Honan.
- 198 A rare set of ~~six~~⁸ interesting small bronze Buddha Figures, in various attitudes, mostly gilt all with wood stands, *Six Dynasties*, A.D. 265-617, 2 in. to 4 in. high (8) 18/-
VAM
5. 199 A LAMA PRIEST'S SKULL, IN A FINE METAL CASE, with silver sheet lining, and bronze floral cover with silver and gold inlay, surmounted by a crown, on a metal stand, with skulls in high relief 10/-
wood stand, *Sung Dynasty*, A.D. 959-1273
- * * * An interesting and unique piece from a Temple in Chinese Turkestan.
- X. 200 An iron Head of Buddha, well cast and with good features wood stand, *probably Early Ming*, 12 in. high 5/-
Frank

~~757~~ 201 A small and interesting metal Head of Buddha, with remains of dress finely engraved *607 Sellar*
wood stand, *Early Ming*, 5 in. high

~~757~~ 202 A small iron Head of Buddha, 5 in. high; and another, smaller, 3½ in. high *580*
wood stands, *Early Ming*

~~41-1~~ 16. 203 A large iron seated Figure of a Lohan, with eyebrows, moustache and beard in low relief, holding a string of prayer beads in his left hand, neck and top of crown repaired
Ming Dynasty, 39 in. high

~~41-1~~ 25. 204 Another iron Figure of a Lohan, seated and holding a kylin, with Chinese characters in relief, reading "Cheng Te I Nien," i.e. A.D. 1506 of Period Cheng Te 1506-1521
Ming Dynasty, 33 in. high

25. 205 A FINE IRON HEAD OF BUDDHA, with good features, the moustache and beard in slight relief, and Urna on the forehead, ears missing *307-1*
wood stand, *probably Early Ming*, 23 in. high *Taylor*

206 ANOTHER FINE IRON HEAD OF BUDDHA, with full face and pensive expression *241-1*
wood stand, *probably Early Ming*, 25 in. high

~~4~~ 207 A VERY FINE IRON HEAD OF A BODHISATTVA, of colossal size, broken off from the figure at the neck, the face covered with thin dry paint, good features *781-1*
wood stand, *T'ang Dynasty*, 36 in. high *Blaiss*

* * This and the following lot came from the same temple at Luan Fu-Chang Chihli Hsien-Shansi.

~~42-1~~ 10. 208 ANOTHER VERY FINE HEAD OF A BODHISATTVA, similar to the previous lot, but smaller *5X*
wood stand, *T'ang Dynasty*, 33 in. high

* * From Luan Fu-Chang Chihli Hsien-Shansi.

~~40-1~~ 3. 209 AN EXCEPTIONALLY FINE AND LARGE IRON HEAD OF BUDDHA, broken off at the neck, with perfect features, at one time heavily gilded *4X*
wood stand, *probably Early Ming*, 28 in. high

* * This fine casting came from Yen Shih Hsien-Honan.

7. 210 A stone Head of Buddha, with high crown and jewelled band, the face is good but has a new nose and the cheek is repaired wood stand, *T'ang Dynasty*, 13 in. high

* * * From Lung Men Grottos, Honan.

- 211 A small stone Head of Buddha with diadem, the face covered with gold lacquer wood stand, *T'ang Dynasty*, 6 in. high

20. 212 A FINELY SCULPTURED STONE HEAD, with a pleasing expression and perfect features, originally with a coating of lacquer wood stand, *T'ang Dynasty*, 19 in. high

* * * From Tung Kwanting, Honan Province.

7. 213 ANOTHER IMPORTANT STONE HEAD, with extra high crown and heavy features, the crown with Buddhistic emblems in high relief

wood stand, *Sui Dynasty*, 589-618 A.D., 20 in. high

* * * This exceptionally fine head came from Yutzehsien-Shansi.

- 214 A stone Stele, with a figure of Amitabha Buddha in ironstone, the figure is very fine and perfect, with Chinese characters on the back, reading: "Wu Ting—First year, 4 months, 8 day—Mr. Kao Kuei Yen erected this statue in memory of his parents"

wood stand, *Wei Dynasty*, 220-264 A.D., 16 in. by 6 in. by 4½ in.

- 215 A SEATED FIGURE OF BUDDHA GAUTAMA under a canopy, with characters incised on the stand reading: "Erected the first year of Tien-pao (Imperial title) of Great Chi dynasty of Nan Pei Ch'ao," the pedestal with four figures as pillars

wood stand, *Tsi Dynasty*, 479-501 A.D., 16 in. high

* * * From Loyang-Honan.

13. 216 A FINE STONE SCULPTURE OF AMITABHA BUDDHA, seated, with attendant bodhisats in high relief and coloured, and a Chinese inscription reading:

"Shih P'an Sheng, the worshipper—as well as his grandson Shan Ch'ung, serves Buddha with all his heart for life everlasting. A Mother also for the sake of her dead husband. The worshipper Shan Tsung on the first of the 4th moon of the (1st year of Lin Yeh of Koa Tsung, 664 A.D.) offered worship to the Buddha for the sake of his dead wife—Sun; His dead Son Hsiao Tsai; His daughters

LOT 216—*continued*.

Miao Sheng and Yao Sheng: and his daughter-in-law Lien Ti erh: thereby erected this one pedestal of Buddha. Hsiao Tsai the son for the sake of his parents worships Buddha with all his heart."

wood stand, *T'ang Dynasty*, 16 in. high

- 217 AN EXTREMELY IMPORTANT MARBLE SCULPTURE OF BUDDHA (Ti-Tsang Pusa), seated on a lotus carved base in divine attitude, the face full of dignity and expression

wood stand, *T'ang Dynasty*, 36 in. high

* * This exceptionally fine figure came from a temple in Honan Province.

[See ILLUSTRATION.]

- 218 AN EXTREMELY FINE STONE SCULPTURE of a seated Buddha (Avalokita), on a lotus carved stand, with a refined face full of expression and repose, and uncommon and full dress, *one hand broken off and missing*

wood stand, *T'ang Dynasty*, 29 in. high

* * This attractive figure came from a cemetery at Kwan Yin T'ang, Honan.

[See ILLUSTRATION.]

- 219 A good marble Figure of a Bodhisattva standing on a lotus flower, well modelled, *one hand missing*

wood stand, 24 in. high

- 220 A FINE ALABASTER (or soft marble) FIGURE of Avalokites vara, in two sections, the costume painted in colours, and with plain face, *the hands broken off and missing*

wood stand, *T'ang Dynasty*, 17½ in. high

* * From a tomb at Loyang-Honan.

- 221 A good stone head of Kwan Yin, having a high crown, with Amitabha Buddha seated on a lotus

wood stand, *T'ang Dynasty*, 11½ in. high

* * This and the following lot came from Lung Men Grottos, Honan.

- 222 ANOTHER, similar, with a finely sculptured face, but rather weather-worn wood stand, *T'ang Dynasty*, 12 in. high

265-YAM

537-1-

Blunt

137-1-

Frank

457-1-

Solomon

197-1-

Blunt

237-1-

Sparks

A COLLECTION OF IVORY MASKS

OF

CHARACTERS IN THE GI GAKU, NŌ GAKU AND OTHER
LYRICAL DRAMAS OF THE JAPANESE.

THE

Property of the late General Sir J. A. R. Raines.

223 A very fine pair of Jo and Uba, the Spirits of the Pine Trees of Takasago and Sumiyoshi, types of a happy old age, *signed* MICHITSURA; with silk tassels, in silk brocade bags; in polished wood box, gold lacquered and inscribed Takasago (5) 13/-

224 A large Mask of Obechimi, a demon, with gold lacquered eyes; and another of a Musume or Young Girl, both finely carved and *signed* NOBUYUKI; with silk tassels, in silk brocade bags (4) 16/- YAM

225 A large Mask of Tsurimanako; and another of an Old Man with upturned beard, *both signed* NOBUAKI; with silk tassels, in silk brocade bags (4) 6/- YAM

12/- 20. 226 A large Mask of Mambri, a young woman, *signed* IIKYŌ; and another of Okina, one of the male Nō characters, *unsigned*; with silk tassels, in silk brocade bags (4)

20. 227 A Mask of Masu, a woman, *signed* ISHIKAWA MITSUAKI; and a fine laughing Face of a Man, *signed* HOETSU; with silk tassels, in silk brocade bags (4) 25/- YAM

228 A large Mask of a Shōjō, *signed* MITSUAKI; and another of a Man with a head-wrap of brocade pattern, *unsigned*; with silk tassels, in silk brocade bags (4) 10/- YAM

14/- 20. 229 A large Mask of Shiwajō, a smiling old man, *unsigned*, but with KAKIHAN; and another of a Man with blackened teeth, *unsigned*; with silk tassels, in silk brocade bags (4)

230 A Mask of Emma-Ō, King of Hell, *signed* MITSUYUKI; another of Ghemijō, an old man; and another of a demon with inlaid eyes; one with silk tassels, and all in silk brocade bags (6) 13/-

- 231 A Mask of Shiwajō, with hair knotted at top, *signed* TOMOTOSHI; another of Shishi, a demon, with four tusk teeth; and another of Ghemijō, with twisted beard, *the two last unsigned*; one with silk tassels, and all with silk brocade bags (6) 10/1-see
- 232 A Mask of the Empress Jingo no Kogo, *signed* MINTOKU; another of a wrinkled old man; and another of a laughing man with curling tongue; the first with silk tassels, all in silk bags (6) 8/10/1-
- 233 A Mask of Fukami, a woman, *signed* KISHIMURI CARVED IT AT THE REQUEST OF TOMOTOSHI and dated Tempo 2nd year=1831; another of Okina, *signed* KIYŪ; and another of a Rakan with long eyebrows, eyes inlaid, *signed* SŌMIN; two with silk tassels, and all in silk brocade bags (6) 9/1-1-
- 234 A Mask of a Man, with a brocade head-dress, *signed* MINTOKU; another of an old man, *signed* TOKOSAI; and another very fine natural face of a man, *signed* TOYO; two with tassels, and all in silk brocade bags (6) 13/1-1-
- 235 A Mask of Uzume, a woman, *signed* MITSUYOSHI; another of a wrinkled old man; and another of a man with lolling tongue; the first with silk tassels, and all in silk brocade bags (6) 7/1-YAM
- 236 A Mask of Jisungami, a woman, *signed* AKINORI; another of a demon, with under-lip in his mouth; and a third of a vinegar taster, with pursed up lips; the first with silk tassels, and all in silk brocade bags (6) 9/1-
- 237 A Mask of Okame, *signed* TAMATOSHI; another of Ariwara no Narihira, *signed* DEME; another of Mitsune Niūdō, the three-eyed goblin, *signed* YAMAJI NAOHARU; and a natural old man's face, *signed* TOYO; two with silk bags (6) 7/1-
- 238 A Hannya Mask, *signed* TAMAKAZU; another of a man with brocade headdress, *signed* DEME; and six others, *unsigned*; all with brocade bags (16) 7/1-YAM
- 239 Twelve Masks, various, *unsigned*, contained in a two-tiered box with gold lacquer inscription OHN MEN Kō, "Hon-ourable Mask Box" (13) 7/1-YAM

- 240 Twelve Masks, various, including those of Yorimasa, Okame, Okina and others, *unsigned*, in two wood boxes (14) 9/1-1
YAM
- 241 Twelve fine Masks, various, *all but two signed*, contained in a two-tiered polished wood box, the lid with a pheasant, butterfly and liliun in ivory and mother-o'-pearl (13) 12/1-1
- 242 Eighteen Masks, various, in a wood box (19) 11/1-1
- 243 Nineteen Masks, various (19) 6/1-1
- 8/1-1 8. 244 Twelve tiny Masks, all different; and an ivory Elephant, in wood box; and a red Sake Cup, *signed* RYŪSENSAI (15)
- 245 A set of six Masks, in gold and silver lacquer, all named; in a partitioned polished wood box, *very fine* (7) 13/1-1
- 246 A large ivory Mask of a Faun, *Italian Work*, 13 in. high (11) 11/1-1

VARIOUS ORIENTAL OBJECTS OF ART.

- 247 A carved wood Figure of a Geisha, in the attitude of dancing, with ivory head, hands, and foot, 31 in. high; on an octagonal carved red lacquer stand, 12 in. high; with a box for the detachable head (3) 11/1-1
- 248 A pair of ivory Tusks, carved with hunting scenes in relief, 20 in. long (2) 6/1-1
Lee
- 249 A Japanese TACHI or long Sword, slung from the shoulders, in carved ivory sheath, with panels of historical and mythological subjects in relief (2) 5/10/1-1
- 250 A very fine Rhinoceros Horn, of extraordinary size, carved with lotus flowers and stalks, 31 in. high; in carved black wood stand (2) 21/1-1
- 251 A pair of ebony Elephants with riders, on carved bases, 18 in. high, bases 22½ in. by 13½ in. (2) 6/1-1
- 252 A Chinese Screen, a circular slab of coloured stone carved with figures attending the God of Longevity, set in a carved and pierced wood frame with stone and ivory inlays, 33 in. high by 22 in. wide (2) 9/10/1-1
Lee
- 253 A Chinese Screen, white silk embroidered with trees and exotic birds, set in a carved and pierced frame, on a stand with animal feet, 34 in. high by 21 in. wide (4) 4/1-1

- 254 A carved Cinnabar Lac Box, compressed spherical with dragon design in red on a brown ground, $8\frac{1}{2}$ in. high, $11\frac{1}{4}$ in. diam. 157-1-
- 255 A Chinese bronze Bell, with panels of raised spirals, 10 in. high, hung on a carved and pierced wood frame, 31 in. high by 12 in. wide; with beater (3) 607-
- 256 A Chinese bronze Incense Burner, oval, with two handles, $5\frac{1}{2}$ in. high, on carved and pierced wood stand, with similar cover having an ivory lion handle (3) 407-
- 257 Three old Chinese Panels of carved wood, with half-length figures of Yama, King of Hell, and two of his assessors, 42 in. high by 31 in. (3) 607-
- 258 Three others, with various figure subects, two 34 in. by 24 in., and one 32 in. by 24 in. (3) 607-
- 259 A pair of Chinese black wood Stands, square, on four feet, double tier, the upper part of the legs shaped as elephant's heads with ivory tusks, shaped tops with marble centres, $48\frac{1}{2}$ in. high (2) 71-1-
- 260 Another pair, square, triple tier, with marble tops, $47\frac{1}{2}$ in. high (2) 8107-
- 261 Four others, with marble tops, two oval and two hexagonal, $18\frac{1}{2}$ in. high (4) 1080
- 262 A Japanese black lacquer Travelling Box, oblong, with Tokugawa MON in gold on the sides, engraved bronze mounts, 14 in. high by 23 in. by 16 in. —
- 263 A large Pekin porcelain Vase, with two handles shaped as Chinese women, the sides with panels of figures moulded in relief, and birds and flowers between in bright colours, on wood stand, 56 in. high; with pierced wood cover (3) 71-1-
- 264 A PAIR OF IMPERIAL JADE SEALS, formerly the property of the Dowager Empress of China, each are oblong blocks of pale green jade surmounted by dragon handles, 4 in. high by $3\frac{3}{4}$ in. by $2\frac{5}{8}$ in. 224-1-

The inscription on one translated, reads: "Imperial approval from the Assisting Feminine Palace of Yü Kun" (i.e., the Dowager Empress.) This was used for the

Lot 264—continued.

sealing of visiting cards which bore the Empress' autograph

The inscription on the other translated, reads: "Imperial approval from the graceful and beautiful Pavilion." This was used for sealing drawings executed by the Empress

Each seal has attached a yellow silk cord and tassels, and is wrapped in yellow silk embroidered with gold dragons outlined in black, with a tasselled cord for tying, and the pair are further wrapped in an Imperial yellow silk Book Cover; and enclosed in a Japanese lacquer box with a tray (6)

The Property of a Gentleman.

- 265 A pair of Chinese porcelain Bowls, $6\frac{1}{2}$ in., decorated in blue with convolvulus, *K'ang-hsi*, with wood stands (4) 407-
- 266 A pair of Chinese porcelain bell-shaped Bowls, $7\frac{3}{4}$ in., decorated in blue with dragons and ho-ho birds, *K'ang-hsi*, with wood stands (4) 57107-
60000
- 267 Another pair, decorated with panels of characters and of peaches on a ground of continuous diaper, both cracked, with wood stands (4) 307-
dr
- 268 A set of six Plates, $8\frac{1}{2}$ in., decorated with a medallion of conventional lotus on a ground of solid blue, *K'ang-hsi* (6) 580
- 269 A globular Jar, 8 in., decorated in blue with panels of utensils on a ground of "prunus on cracked ice," *K'ang-hsi*, with wood cover (2) 3/157-
Bell-shaped
- 270 Another, 9 in., decorated with pheasants, peony bushes and rocks, with wood cover and stand (3) 407-
- 271 A "sang-de-bœuf" large onion shaped Bottle, $17\frac{1}{2}$ in., of good colour, the mouth flecked with milky blue, with wood stand (2) 657-
- 272 A Vase, with elephant head handles and wide mouth, $14\frac{3}{4}$ in., the body streaked with "sang-de-bœuf" glaze on a crackled olive ground, with wood stand (2) 4/107-

- 273 A globular turquoise glaze Bottle, finely crackled, $13\frac{3}{4}$ in., with wood stand (2) *3/10/57- 30/-*
- 274 A pair of Ming Kylins, $6\frac{1}{4}$ in.; and a pair of pottery Vases, $4\frac{3}{4}$ in., all with turquoise glaze (4) *2 4/57-*
- 275 An oviform Vase, with wide bell neck, streaked with violet over turquoise, 12 in., with wood stand (2) *30/-*
- 276 A good Celadon Bowl, $9\frac{1}{2}$ in. diam., moulded with a band of key pattern; and a flattened double gourd shaped Celadon Vase, $10\frac{1}{2}$ in., with wood stand (2) *25/- Maurice*
- 277 A Celadon shallow Bowl, 8 in., with carved wood stand; a Plate, $10\frac{1}{4}$ in., moulded as a peony; and a small Beaker (2) *580 Maurice*
- 278 A double gourd shaped Vase, mottled with "peach bloom" and moulded with a bat, the head outlined in blue, 13 in., on wood stand (2) *25/- Whistler*
- 279 An inverted pear shaped Vase, $8\frac{1}{4}$ in., decorated with a figure of Si Wang Mu with a kylin; and another, cylindrical, with a long neck, $8\frac{1}{2}$ in., with a landscape, both in under-glaze "fleur-de-peche," with wood stands (4) *25/- Bell & Co.*
- 280 A saucer shaped Plate, 14 in., with "famille verte" decoration of utensils, vases and a scroll of landscape (2) *35/-*
- 281 A large Plate, $20\frac{1}{4}$ in., decorated with "famille verte" figures round a summer house in a mountainous landscape (2) *25/-*
- 282 A Bell, with yellow glaze, green band and dragon handle in aubergine, $5\frac{3}{4}$ in., hung from a carved wood stand by a ring and panel of jade (2) *35/-*
- 283 Two Ming Figures of Kwan-yin, seated, in green, orange and aubergine, 7 in. and $7\frac{1}{2}$ in.; and another, on a lotus throne, with two attendants, 9 in. (5) *8/10/-*
- 284 A "famille verte" Figure of Kwan-yin, seated, on lotus throne, with two attendants at the sides, $8\frac{1}{2}$ in. (3) *8/-/-*
- 285 Three Chinese well carved large jade Buckles; and another, in porcelain (4) *25/- Bell & Co.*

END OF SALE.

102. A single specimen of the ...
 103. A single specimen of the ...

104. A single specimen of the ...
 105. A single specimen of the ...

106. A single specimen of the ...
 107. A single specimen of the ...

108. A single specimen of the ...
 109. A single specimen of the ...

110. A single specimen of the ...
 111. A single specimen of the ...

112. A single specimen of the ...
 113. A single specimen of the ...

114. A single specimen of the ...
 115. A single specimen of the ...

116. A single specimen of the ...
 117. A single specimen of the ...

118. A single specimen of the ...
 119. A single specimen of the ...

120. A single specimen of the ...
 121. A single specimen of the ...

122. A single specimen of the ...
 123. A single specimen of the ...

124. A single specimen of the ...
 125. A single specimen of the ...

126. A single specimen of the ...
 127. A single specimen of the ...

128. A single specimen of the ...
 129. A single specimen of the ...

130. A single specimen of the ...
 131. A single specimen of the ...

132. A single specimen of the ...
 133. A single specimen of the ...

134. A single specimen of the ...
 135. A single specimen of the ...

VALUATIONS.

Messrs. SOTHEY & Co. make Valuations for Probate, Insurance, &c., at 1 per cent. with a minimum fee

In London	£5	5	0
In the Country	£10	10	0

Together with Travelling Expenses.

INSPECTIONS.

Properties are inspected and Owners advised with view to a Sale by Auction, at a fee

In London	£2	2	0
In the Country	£3	3	0

Together with Travelling Expenses.

NOTICES OF SALES.

NOTICES OF ALL SALES APPEAR IN THE FOLLOWING PAPERS :

<i>Mondays</i>	Daily Telegraph; Morning Post.
<i>Tuesdays</i>	Times.

NOTICES OF SPECIAL SALES APPEAR IN THE FOLLOWING PAPERS :

A. ENGLISH.

<i>Thursdays</i>	...	Times Literary Supplement; Scotsman, and Glasgow Herald.
<i>Saturdays</i>	...	Country Life; Sphere; Illustrated London News; Field; Publishers Circular; Clique;

and *Monthly* in the Burlington Magazine; Connoisseur; London Mercury; and Bookman's Journal.

B. FOREIGN.

Journal des Arts (Paris).	Philadelphia North American.
Gazette de l'Hôtel Drouot (Paris).	New York Times.
American Art News.	New York Evening Post.
Chicago Daily News.	Boston Evening Transcript.
and International Studio.	

BAKER, LEIGH & SOTHEBY.

THE FIRM COMMENCING WITH SAMUEL BAKER IN

1744.

SOTHEBY AND CO.

1925.