

## **Sales catalogue: Robinson Fisher and Co**

### **Publication/Creation**

26th September 1934

### **Persistent URL**

<https://wellcomecollection.org/works/fb4fak53>

### **License and attribution**

This work has been identified as being free of known restrictions under copyright law, including all related and neighbouring rights and is being made available under the Creative Commons, Public Domain Mark.

You can copy, modify, distribute and perform the work, even for commercial purposes, without asking permission.



Wellcome Collection  
183 Euston Road  
London NW1 2BE UK  
T +44 (0)20 7611 8722  
E [library@wellcomecollection.org](mailto:library@wellcomecollection.org)  
<https://wellcomecollection.org>

*The Show - 26<sup>th</sup> September 1934*

*Show Original*

*W.A.A.M.M./C.M./S.A./18/629*

Telephone—WHITEHALL 4725 (2 lines)

Sale No. 7075

**WILLIS**

KING STREET

**Decorative**

A FINE

BRONZE

AND PICTURES

R.F.	DATE	INITIALS
SALE	26. 10. 34	Shs
PURCHASE		
CHECKED	2 x 34	Kn.
COLLECTED	8. 11. 34	MR
RECEIVED	8 <sup>th</sup> Nov 34	PLX
ACCESSED		
PASSED		

*By Order of the Legatees of the late SIR RICHARD GARTON. Removed from Lythe Hill, Haslemere, Surrey. The Property of COLONEL C. W. McLEAN. Removed from 44, Kensington Square, W.2.; also Removed from The Pantechnicon, S.W. and elsewhere.*

Which will be sold by Auction by Messrs.

**ROBINSON, FISHER & HARDING**

L. C. ROBINSON

R. H. HURLBATT

AT THEIR ROOMS, AS ABOVE ON

**Wednesday, September 26th, 1934,**

At ONE o'clock precisely.

May be viewed two days prior, and Catalogues had of the Auctioneers at their Offices.

WILLIS'S ROOMS, KING STREET, ST. JAMES'S SQUARE, LONDON, S.W. 1.

BARNARD & CRANNIS, LTD., Printers, 11, Baldwin's Place, Holborn, E.C.1.

*cleared*

*4 m m 196 f 35. 14. 0*

17 OCT 1934

## CONDITIONS OF SALE.

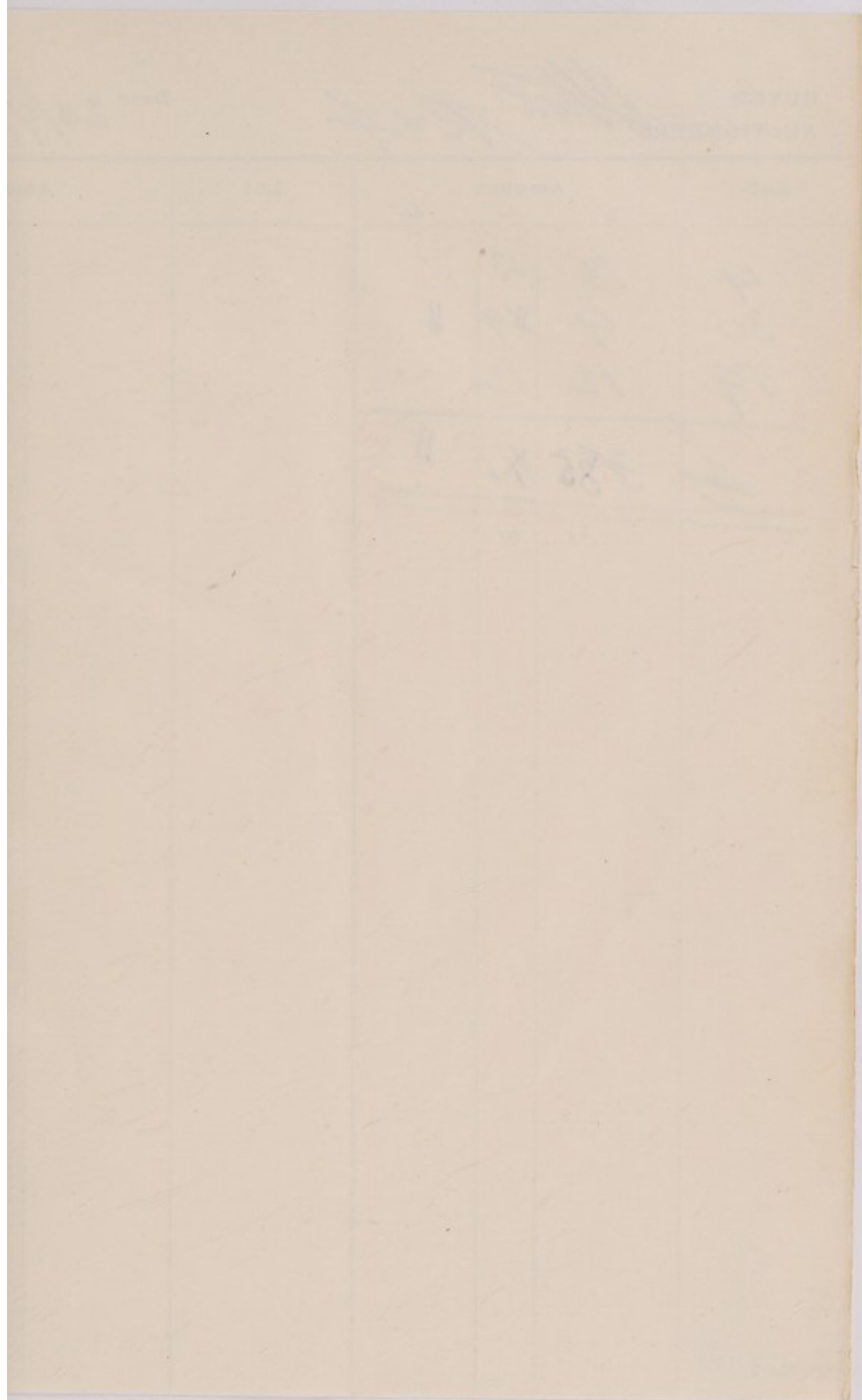
---

- I.—The highest bidder to be the Buyer; and if any dispute arise between two or more bidders, the Lot so in dispute shall be immediately put up again and resold, subject to the discretion of the Auctioneer.
- II.—No person to advance less than 1s.; above Five Pounds, 5s.; and so on in proportion.
- III.—In the case of Lots upon which there is a reserve, the Auctioneer shall have the right to bid on behalf of the Seller, and right is reserved on behalf of all Vendors to bid by themselves or their Agents.
- IV.—The purchasers to give in their Names and Places of Abode, and to pay down 5s. in the Pound, or more, in part of payment, or the whole of the Purchase-Money, *if required*; in default of which the Lot or Lots so purchased to be immediately put up again and resold.
- V. **The Lots to be taken away and paid for, whether genuine and authentic or not, with all faults and errors of description, at the Buyer's expense and risk, the day after the Sale; neither Messrs. Robinson Fisher & Harding nor the Sellers being responsible for the correct description, genuineness, or authenticity of, or any fault or defect in any Lot, and making no warranty whatever.**
- VI.—To prevent inaccuracy in delivery, and inconvenience in the settlement of the Purchases, no Lot can on any account be removed during the time of Sale; and the remainder of the Purchase - Money must absolutely be paid on the delivery.
- VII.—Upon failure of complying with the above Conditions, the Money deposited in part of payment shall be forfeited; all Lots uncleared within the time aforesaid shall be re-sold by public or private Sale, and the deficiency (if any) attending such re-sale shall be made good by the defaulter at this Sale.

---

*NOTE.—MESSRS. ROBINSON, FISHER & HARDING will not be responsible for any Lot that may be left either by Vendors or Purchasers more than two days from the day of Sale, and any Lot left after that time will be subject to a charge for warehouse room of 1s. per Lot per day.*





BUYER

AUCTIONEERS

Date

26/9/34

Lot	Amount			Lot	Amount		
	£	s.	d.		£	s.	d.
4	13	13	-				
30	9	11	11				
59	12	12	-				
<hr/>							
<del>1</del>	<del>35</del>	<del>14</del>	<del>11</del>				
<hr/>							
	35	14					

**N.B.—ALL BUYERS SHOULD READ CONDITION V.**

## CATALOGUE

WEDNESDAY, SEPTEMBER 26th, 1934,

At ONE o'clock precisely.

*By Order of the Legatees of the late  
Sir RICHARD GARTON.*

*Removed from Lythe Hill, Haslemere, Surrey.*

### DECORATIVE FURNITURE, BRONZES AND PORCELAIN.

Lot

- 1 A RICHLY CARVED MAHOGANY BREAKFRONT BOOKCASE of Chinese Chippendale design, with triple pagoda surmounts, enclosed by 6 glazed lattice doors, on 12 legs, with galleried platforms, 11ft. 3in. long
- 2 A mahogany circular table, of Louis XVI design, fitted 2 drawers, marble top, metal mounts and gallery on fluted tapered legs, 27in. diam.
- 3 Twenty-eight pieces of Worcester blue and white tea ware
- 4 An 18th cent. Irish circular reeded peat tub with 4 brass handles and bands, 48in. high, 30in. diam.
- 5 An 18th cent. English mahogany circular table with brass gallery, on pillar and claw, 26in. diam.
- 6 A pair of Chinese cloisonne enamel vases with beaker necks, blue ground, decorated birds and flowers, 32in. high
- 7 A pair of Chinese barrel shaped carved hardwood stands, with inset rouge marble plaques
- 8 An oak Glastonbury chair, carved with inscription and foliage
- 9 A set of 4 Stuart chairs with richly carved backs and turned pillars, the stuffed seats in marone velvet
- 10 A set of 4 Jacobean chairs with entwined C scrolls and turned pillars, with carved backs and stuffed seats in velvet
- 11 A similar chair, of different design, with arched footrail, and a Stuart chair, the back carved with eagles and scrolls, stuffed seats in velvet—2
- 12 A carved and fretted mahogany china cabinet, of Chippendale design, enclosed by 4 oval glazed doors with pierced surrounds, on square tapered legs, openwork gallery with finials, 6ft. 6in. long

1380

12.

1680

880

2/10/-

780

9 1/2 80

4/-

1080



## Lot

- 13 Thirty-one Worcester blue and white cups, 30 ditto saucers and a ditto cream jug. *Crescent and other marks* 4/10/-
- 14 A Nankin blue and white jar, painted with phoenix and arabesques, and a similar jar with cover, painted fish and waves in panels 50/-
- 15 Two 18th cent. Arabian 3-handled glass vases with conventional decorations, with chains and hooks to form hanging lamps 12/-
- 16 A set of 6 mahogany chairs, of Hepplewhite design, the shield shaped backs carved with Prince of Wales' feathers and drapery festoons, stuffed seats in tapestry, on tapered legs 18/80
- 17 A set of 6 chairs, to match 18/80
- 18 A Louis XVI ormolu clock, formed as a Bacchante riding a Chariot drawn by leopards, on marble base with ormolu festoons and baskets of flowers, on 8 partly reeded feet (pendulum and key) 18/80
- 19 A pair of Japanese bronze figures of Warriors supporting jardiniere, chased and partly gilt, on carved wood stands 10/80
- 20 A bronze group of a Youth spearing a Merman, by E. W. WYON, after FLAXMAN, 21in. high 2/10/-
- 21 Another, Venus, Cupid and Butterfly, by W. F. WOODINGTON, after WESTMACOTT, 16in. high 4/-
- 22 A BOUDOIR GRAND PIANOFORTE, 7 $\frac{1}{4}$  octave, iron frame and overstrung, in rosewood case with Empire ormolu mounts, on 3 pairs of fluted legs with shaped stretcher, by SCHIEDMAYER, Stuttgart 28/80
- 23 A Georgian mahogany tall bookcase with carved surmount, enclosed by 2 glazed lattice doors with cupboard under, 4ft. 6in. wide 8/10/-
- 24 The companion bookcase 8/10/-
- 25 A French square table with parqueterie top and sides, fitted drawer and platform under, ormolu mounts and mouldings 16in. wide 57/-
- 26 A winged settee, of Queen Anne design, covered in floral silk tapestry, with loose squab, on carved walnut cabriole legs and claw and ball feet 14/2/80
- 27 A decorated satinwood circular front china cabinet, fitted 2 plate glass shelves, enclosed by a glazed door and sides, with cupboard under and oval panels, painted figures and trophies, 4ft. 6in. wide 9/2/80
- 28 A similar half-circular card table, lined green baize, on square tapered legs, 3ft. wide 37/-

## Lot

- 29 A Hepplewhite mahogany open arm settee with 4-division shield shaped back, carved splats and stuffed seat, on 10 tapered legs, 6ft. long 44/-
- 98/12 30 A large bronze group, An African saving a Mother and Child from a Lion, signed J. J. JACQUET, 33in. high
- 31 A bronze Bacchanalian group of 4 figures, after CLODION, on rouge marble base, 22in. high 51/0/-
- 32 A pair of Empire ormolu candlesticks with female figures and a pair of ditto 2-light candelabra on festooned marble pedestals 44/5/-
- 33 A satinwood breakfront cabinet, fitted shelves, enclosed by 3 glazed doors, with cupboards under, the panels inlaid with baskets of flowers and vases, 5ft. 8in. wide 680
- 34 A kingwood and marqueterie table, of William and Mary design, fitted drawer, on tapered legs and shaped stretcher, 3ft. 10in. wide } 2680
- 35 The companion table
- 36 A walnut parqueterie writing table of Louis XV design, fitted 9 drawers and shelf, chased ormolu mounts and mouldings, 3ft. 3in. wide 1780
- 37 A mahogany and satinwood dwarf cupboard, enclosed by 2 panelled doors, and drawer in frieze, 2ft. 7in. wide 7 1/2 80
- 38 A French shaped commode of 2 drawers, inlaid with ruins and trophies, chased ormolu mounts and moulding, 2ft. 6in. wide 11 1/2 80
- 39 A decorated satinwood bureau bookcase, enclosed by 2 glazed doors and 5 drawers under, with painted oval panel and festoons, 3ft. 8in. wide 1580
- 40 A ditto circular front cabinet, fitted plate glass shelf, enclosed by glazed door and sides, on splayed legs 3ft. 3in. wide 880
- 41 A LARGE PERSIAN CARPET, of fine quality, yellow ground, with all over design and 7 figured borders, 25ft. 4in. x 26ft. 3in. 6080
- 42 A French rosewood and marqueterie cabinet, fitted plate glass shelf, with glazed doors and sides and gilt metal mounts, 30in. wide 1280
- 43 A mahogany cabinet, of Louis XVI design, with cupboards and shelves, Vernis Martin panel and chased ormolu mounts and gallery, 3ft. wide 1280
- 44 A set of 4 and 2 elbow satinwood chairs with shield shaped backs and caned seats and squabs, on tapered legs
- 45 A 3-fold inlaid ditto screen with glazed silk tapestry panels 14 1/2 80



## Lot

- 46 An amboyna wood oval work table with rising top and platform under, gilt metal mounts, 21½in. wide 4/15/
- 47 A French rosewood and inlaid table, fitted drawer, on cabriole legs, ormolu mounts and mouldings, 26in. wide 880
- 48 A French rosewood secretaire, the fall front with Vernis Martin panel, gilt metal mounts and gallery with marble top, 22in. wide 880
- 49 A ditto 2-tier tea table on cabriole legs, with gilt metal mounts, 31in. wide 4/15/
- 50 An inlaid satinwood shaped top side table, on carved circular tapered legs and shaped stretchers, 4ft. long 5/15/
- 51 A French walnut and maple bureau, fitted 3 drawers and 2 wells, on cabriole legs, gilt metal mounts, 27in. wide 17½/80
- 52 A French walnut and rosewood parqueterie bureau, fitted 3 small drawers and drawer in frieze, gilt metal mounts and gallery, 27in. wide 1080
- 53 A mahogany cabinet, fitted cupboard, drawer and platform under, gilt metal mounts, 3ft. wide 6½/80
- 54 A bevelled mirror in buhl frame with shaped surmount and gilt metal mounts, 52in. high 7½/80
- 55 A mahogany hexagonal wine cooler and cover with chased ormolu frieze, rams' heads, wreath handles and hoof feet 780
- 56 A Louis XVI design ormolu clock with eagle surmounts and 2 bronze female figures of The Arts, on white marble base with chased ormolu plaques, by RAINGO FRERES, a Paris 1380
- 57 A pair of French vases and covers, dark blue and gold, painted in pastoral subjects 880
- 58 A pair of French bronze female figures, Comedy and Tragedy, on marble bases, 20in. high 780
- 59 A large bronze figure of Milo rending the Oak, 33in. high 1280 12.
- 60 A pair of large bronze Marli horses with attendants
- 61 A bronze statuette, La Baigneuse, after ALLEGRAIN (Musée du Louvre) 34in. high
- 62 A pair of large French bronze groups of 2 female figures, each representing Air and Water, signed PEIFFER, on openwork gilt metal bases, and the fluted pedestals for same
- 63 A pair of Bow figures of Girl with Birdcage and Man with Nest
- 64 A pair of Crown Derby male and female figures with Dog and Lamb

**Lot**

- 65 A pair of Chelsea figures of Boy and Girl, Autumn and Winter
- 66 A Chelsea figure, Neptune and Dolphin with marine foliage and shells, and a Bow figure of Flora
- 67 A pair of bronze and ormolu 6-light candelabra with female figure supports, on white marble bases with ormolu mounts (fitted for electric light)
- 68 A Chelsea figure of Mars, another, Man playing Flageolet, and a pair of Bow figures of Boys with Baskets
- 69 A Genoese silver filigree 2-handled cup with cover and stand

*WATER COLOUR DRAWINGS.*

<i>By or attributed to</i>	<i>Lot</i>	<i>Subject</i>
HEYWOOD HARDY ...	70	The Reapers and A River Scene, D. LAW—2
T. L. ROWBOTHAM	71	The Bay of Spezzia
ENGLISH SCHOOL ...	72	Landscapes and River Scenes—4
C. FERRARI .....	73	A Lady Seated, holding Fan, and Stirring Times, JENNY MOORE—2

*PICTURES.*

A. REIDEL .....	74	A Draped Female Figure, with Star
H. BRIGHT .....	75	The Water Mill with Farmhouse and Cattle
G. CHESTER .....	76	A Cove with Trees and Figure and A Landscape, River Scene and Figures, R. GALLON—2
NORWICH SCHOOL ...	77	A Landscape and River Scene with Figure Fishing
F. GOODALL, R.A....	78	A Desert Scene
F. GOODALL, R.A....	79	A Bedouin Encampment
VAN ELVEN .....	80	A View in Rome
TURNER .....	81	A View of Lucerne
T. BERNARD .....	82	Lovers, <i>a pair</i>
VICAT COLE .....	83	Off St. Ives and Blackdown and Sussex Weald—2
ENGLISH SCHOOL ...	84	River Scenes with Boats and Figures, <i>a pair</i>
VAN STRY .....	85	Cattle and Figures on the Banks of a River and A Moonlight Scene—2
DUTCH SCHOOL .....	86	The Itinerant Musicians and An Interior and Figures, <i>on panels</i> —2



*By or attributed to*      **Lot**                      *Subject*

*The Property of a Lady.*

ENGLISH SCHOOL ... 87 A Portrait of a Lady in White Low-necked Dress with Pink Shawl and Turban, and of A Gentleman in Black Coat with White Cravat, and open book on his lap, a pair 24in. x 20in.

*Removed from The Pantechnicon, Belgravia, S.W.1.*

**Lot**

- 88 A 3ft. 2in. Georgian mahogany tray top bow front table, fitted 3 drawers, and a ditto toilet mirror, plate 16in. x 12in.
- 89 A pair of 3ft. 6in. carved mahogany bedsteads with panelled ends, 2 wire spring mattresses and 2 Heals' hair overlays
- 90 A pair of mahogany tray top circular tables on pillar and tripod, 15in. diam.
- 91 A 3ft. mahogany rail end bedstead, the wire spring mattress and a hair overlay
- 92 An Oriental carpet, red ground, all over design, with blue border. 16ft. 6in. x 12ft. 6in.
- 93 A Persian rug, red ground, with star shaped designs and 4 borders, 8ft. x 5ft. 6in.
- 94 A set of 8 Chippendale mahogany chairs with open splats and loose seats in leather
- 95 A 4ft. Adam mahogany side table, fitted drawer with festoon and paterœ, on fluted tapered legs
- 96 A Georgian mahogany 3-division canterbury, fitted drawer
- 97 A 3ft. ditto 2-flap table, fitted drawer, on square tapered legs
- 98 A ditto torchere with carved spiral pillar and tripod, and a 13in. ditto oblong table on pillar and tripod
- 99 A 12in. ditto urn table with glass top and slide, and a walnut low tea table on cabriole legs
- 100 An inlaid miniature grandfather clock, a papier-mache tea caddy, a ditto card tray, a ditto hand screen, a green and red lacquered tea caddy, a red lacquer box, a rosewood and pearl table desk and a ditto child's chair
- 101 A 28in. carved oak bureau with fall front and 2 drawers under
- 102 A 29in. ditto table on turned legs and X stretcher and a 17in. ditto miniature gate leg table



## Lot

- 103 A 26in. ditto triangular table with 3 flaps
- 104 A Chinese blue glazed pottery garden seat with openwork panels, and a large glass vase and stopper, 32in. *high*
- 105 Four American coloured prints, by CURRIER & IVES, Flora Temple, Mill Boy and Blondie, etc., and a Portrait of George Washington and his Wife—6
- 106 A 30in. French kingwood and marqueterie dressing table with rising mirror centre and lockers, 2 drawers and slide
- 107 A French clock in gilt metal and painted china case, and a pair of Dutch japanned vases with lion masks
- 108 A 2ft. 10in. carved burr-walnut serpentine card table, lined green cloth, on cabriole legs
- 109 A Rockingham dessert service, light blue borders, the centres painted with flowers, consisting of a centre stand, 6 shaped dishes and 12 plates—19 pieces
- 110 AN AUBUSSON TAPESTRY CARPET with floral wreath centre and corners on marone and light ground, 13ft. x 8ft. 6in.
- 111 A 3ft. Chippendale mahogany serpentine table on canted legs
- 112 A pair of Adam ormolu and cut glass wall brackets with Wedgwood medallions
- 113 A 2ft. 6in. mahogany table on carved cabriole legs
- 114 A walnut pole firescreen with portrait banner and 2 mahogany coffee tables
- 115 A Worcester fluted tea and coffee service with dark blue and gilt decorations, consisting of a teapot and cover, a basin and stand, 16 cups and 11 saucers—31 pieces
- 116 A 29in. satinwood circular front table on square tapered legs
- 117 A 2ft. 10in. inlaid mahogany circular front table on turned legs
- 118 A collection of 26 eighteenth and early nineteenth cent. needlework pictures in various figure subjects, flowers, etc., and a set of 4 Chinese small embroidered panels
- 119 A 3ft. mahogany and banded writing table, fitted 2 drawers on tapered legs
- 120 A Chippendale stand for a cabinet with carved guilloché frieze and canted legs, 27½in. *wide*
- 121 Two pairs of Georgian cut glass decanters and stoppers
- 122 A ditto oval stand and cover, a ditto preserve jar and cover a set of 3 ditto oval bottles and stoppers and a Waterford ditto

## Lot

- 123 Four cut glass decanters and stoppers, a barrel shaped ditto, a pair of glass tazze and a ditto claret jug and stopper
- 124 Four tall tapering glasses, 7 others, an engraved goblet, 2 mounted and cut cruet bottles, 3 lustre balls, a Bohemian glass vase and 10 scent bottles
- 125 A Chinese carved sacrificial cup, a tortoiseshell casket with 2 bottles, an engraved horn tankard with coach, 6 Continental and other figures, a red lacquer decanter stand, and an early Egyptian curio and an Oriental pottery bowl
- 126 A 4ft. 6in. carved oak buffet, fitted 2 drawers and cupboard
- 127 A set of ditto chairs of Stuart design, with boys and crowns and stuffed seats and backs
- 128 A 2ft. 10in. ditto 2-flap table, fitted drawer, on tapered legs
- 129 An old English barometer in inlaid mahogany wheel pattern case, and a carved gilt mirror frame
- 130 A Georgian mahogany 2-flap dining table on 8 turned legs, 5ft. 9in. x 4ft. 4in.
- 131 A 2ft. 6in. mahogany octagonal top table on cluster legs, with platform under
- 132 Two pairs of mauve corduroy velvet window curtains, lined sateen
- 133 T. A. Strange's English Furniture Decoration, Ricci's Louis XVI Furniture and 2 others—4
- 134 An old English mahogany bergere chair with cane back and loose morocco seat, and a pair of large printed linen curtains
- 135 A set of 3 and 1 elbow Hepplewhite mahogany chairs with rail backs and stuffed seats in green silk damask. *From the Collection of the late FitzHenry*
- 136 A 4ft. 6in. Georgian rosewood sofa table, fitted 2 drawers, on carved end supports with paw feet
- 137 A rosewood centre table on pillar and plinth with carved feet

*The Property of a Lady.*

- 138 A collection of Indian gold embroidered Viceregal Regalia, consisting of 8 chains of office and presentation ladies' bag, in 4 glazed cases
- 138A A lead figure of a seated youth, 21in. high
- 138B A lead statuette of Venus, 4ft. high



## Lot

*The Property of Colonel C. W. McLEAN.  
Removed from 44, Kensington Square, W.2.*

- 139 Two and 1 elbow Hepplewhite mahogany chairs with arched splat backs, with loose seats on tapered legs
- 140 A set of 4 Georgian carved mahogany chairs with caned seats and loose squabs in marone silk, on concave legs.
- 141 A Georgian mahogany 2-part dining table on pillar supports with reeded claws and brass paw feet, and the extra leaf 8ft. x 3ft. 6in. (no clips)
- 142 A pair of Brittany fruitwood chairs with spindle backs and rush seats, on turned legs and rails
- 143 A set of 3 ditto elbow chairs with ladder backs and rush seats, on baluster legs and curved stretchers
- 144 A pair of ditto elbow chairs with ladder backs, rosette, bead and foliage carving, rush seats
- 145 An early Georgian mahogany powder table, fitted 1 drawer, on club foot tripod
- 146 A 3ft. ditto 2-flap cottage dining table, on club feet
- 147 A brass helmet shaped scuttle, a pair of steel fire dogs, a pair of iron ditto and an oak folding library steps
- 148 A Sheraton oval mirror with serpentine plateau, fitted 3 drawers, and a 2-fold mahogany towel ailer
- 149 A pollard oak centre table, banded with rosewood and inlaid star centre, on pillar support, 4ft. diam.
- 150 A 4ft. 6in. Adam pierced steel serpentine fender, and a set of 3 ditto implements
- 151 A 2ft. 9in. Georgian dwarf chest of 4 drawers with slide and brass drop handles, on bracket feet
- 152 A 3ft. ditto side table, fitted 1 drawer, on canted legs
- 153 A William and Mary small iron grate with fireback, in subject, The Fox and the Stork, dated 1691
- 154 A 6ft. 6in. settee with carved mahogany frame, squab in green silk damask, and loose cover
- 155 An easy chair, to match, with seat and back cushions and loose cover
- 156 A 4ft. 3in. early Flemish oak table, on square baluster legs and rails
- 157 A stuffed over lounge easy chair, covered in cretonne, and the loose pink cover
- 158 A smaller square easy chair, to match, and the loose pink cover



## Lot

- 159 Two old brass lanterns, fitted for electric light, and an old Venetian gilt metal gondola lamp
- 160 A pair of Venetian carved gilt torcheres with female heads and foliage, on scroll supports and tripods, 5ft. 2in. high
- 161 A plain brass helmet shaped coal scuttle, 3 pig sticking spears, a —ft. pierced steel curb fender and a steel scroll shaped fender
- 162 A 4ft. 6in. carved mahogany pedestal writing table, fitted 12 drawers and 2 cupboards with carved borders, quivers of arrows, ribbon ties, etc.
- 163 A 21in. Hepplewhite mahogany tray top bedside cupboard with 2 doors and commode
- 164 A 4ft. 3in. Italian bedstead with low end, on cabriole legs, carved and painted with flowers on black ground (4 parts) the box spring mattress and the wool and hair overlay
- 165 A 3ft. 6in. shaped bedstead, covered in rose silk velvet (iron sides) and the box spring mattress
- 166 A 3ft. 6in. yellow lacquered bedstead with shaped head and low foot, with Chinese raised decorations (4 parts), the box spring mattress and a patent spring overlay
- 167 A 3ft. satin brass rail end bedstead, the wire spring mattress and a hair mattress and platform
- 168 An overmantel painting, Classical Italian Landscape, in green painted floral frame, and a 3-fold screen, painted in pastoral figures
- 169 A 29in. cream painted hanging wardrobe enclosed by a panelled door
- 170 A pair of 2ft. 6in. cream painted chests of 5 drawers, each with glass knob handles
- 171 A 3ft. 9in. mahogany dwarf wardrobe with 2 doors and brass gallery, fitted shelves
- 172 A 7ft. mahogany breakfront wardrobe, fitted 5 trays and 4 drawers in centre, the sides fitted for hanging
- 173 An 8ft. red and gold lacquered wardrobe, fitted 3 trays and 4 drawers in centre, the sides fitted for hanging, the whole with Chinese raised decorations
- 174 A 4ft. mahogany dining table with inlaid border, on claw and ball feet
- 175 A large black ground Axminster carpet, ft. x ft., and the underfelt for same
- 176 A small ditto, ft. x ft., and the underfelt
- 177 Four rolls of ditto stair carpet 27in. wide, — yards

## Lot

- 178 Three rolls of Wilton stair carpet, 27in. wide, a ditto landing carpet and a small piece of ditto

*Other Properties.*

- 179 A 2ft. 8in. Georgian mahogany bow front chest of 4 drawers  
 180 A 4-fold antique leather screen with embossed panels  
 181 A 4-fold screen with Chinese (Ming) drawings on both sides in military subjects, key pattern borders  
 182 A pair of 16th cent. oak carvings, male and female busts, mounted as book ends  
 183 A Sheraton inlaid shaped front mahogany sideboard, fitted with drawers and cellarette, on square tapered legs  
 184 A set of 6 ditto and 2 elbow chairs, to match, with stuffed seats in crimson silk tapestry  
 185 A small Sheraton table, fitted with drawers, on tapering legs  
 186 Three Georgian mahogany chairs with stuffed seats, on turned legs  
 187 A 4ft. mahogany wardrobe, enclosed by 2 doors fitted secretaire with compartments and 2 drawers under  
 188 A 3ft. Sheraton mahogany card table, on turned legs, lined baize  
 189 A pair of horn goblets, engraved in sporting subjects, and an ivory ditto engraved with Nelson's Flagship, "The Victory"  
 190 A set of 3 walnut coffee tables on turned spindle legs and stretcher  
 191 An Adam mahogany elbow chair with carved rail back  
 192 Two Georgian mahogany hall chairs with carved backs  
 193 An Adam gilt frame oval mirror, carved and beaded, 32in. x 24in.  
 194 A walnut Wellington nest of 7 drawers  
 195 A mahogany 3-part dining table on pedestal supports, with 2 extra leaves, ft. x ft.  
 196 A mahogany serpentine sideboard, fitted 3 drawers and cupboard  
 197 A nest of 3 carved coffee tables on carved bracket supports  
 198 An old mahogany work table on 4 tapered legs and a ditto paper rack  
 199 A small light cut glass chandelier and a brass double ink stand  
 200 An old 3-division gilt mirror and a pair of gilt wall brackets



## Lot

- 201 Four 2-light Dutch brass wall brackets and an old bracket clock
- 202 A large rose ground and blue bordered Axminster carpet, 25ft. 6in. x 16ft. 3in.
- 203 A smaller ditto, 13ft. 3in. x 11ft.
- 204 A brown figured and bordered ditto, 16ft. x 12ft. 6in.
- 205 A walnut 2-part pillar dining table, with amboyna wood border and 1 extra leaf, ft. x ft.
- 206 A set of 4 carved walnut chairs of Queen Anne design, on cabriole legs, with loose seats in silk tapestry, and a pair of elbow chairs, to match
- 207 An inlaid walnut folding top card table, lined tapestry
- 208 An oak rug chest
- 209 A walnut bureau, fitted with pigeon holes and drawers, fall front and drawers under
- 210 A carved mahogany table on pillar and tripod
- 211 An old English walnut easy chair on turned frame, covered in woolwork tapestry
- 212 An oak buffet, fitted cupboards, drawers and shelves
- 213 A winged easy chair, upholstered in brown figured silk
- 214 A set of 4 carved mahogany chairs, seats upholstered in pink silk
- 215 Three pairs of grey and yellow striped curtains, lined
- 216 An antique walnut escritoire, fitted with drawers, pigeon holes and cupboard, enclosed by a fall front, on stand with shaped stretchers
- 217 A set of 6 carved walnut frame chairs with cane seats and backs, on shaped legs and stretchers, and a pair of elbow chairs, to match
- 218 Two walnut frame stools on shaped legs
- 219 A set of 4 parqueterie coffee tables
- 220 A mahogany pedestal writing table, fitted drawers and cupboards, brass drop handles and leather lined top
- 221 A mahogany sofa table, fitted 2 drawers
- 222 A Georgian oval silk needlework picture, Shepherdess and Sheep
- 223 A Canton enamel octagonal shaped tray, floral centre
- 224 A set of 6 and 2 elbow Georgian mahogany chairs, fitted loose seats, on turned legs
- 225 A set of 6 and 2 elbow walnut Queen Anne pattern chairs with loose seats covered in green rep, on cabriole legs and club feet



## Lot

- 226 A 2ft. mahogany bookcase cabinet, fitted cupboard under, the top part enclosed by a lattice glazed door, dental cornice
- 229 An old English mahogany hanging corner cupboard, enclosed by a glazed lattice door
- 230 An oblong red lacquered tray with gilt decorations, 30in. x 21in.
- 231 A 28in. old English mahogany dwarf bookcase, enclosed by 2 panelled doors with fluted angles
- 232 A Nankin blue and white octagonal jardiniere with river scenes and flowers in panels, 15in. diam.
- 233 An old English bracket clock, in mahogany case, by R. WINCH
- 234 A French marble clock on a red porphyry and ormolu stand
- 235 A silver mounted mahogany inkstand
- 236 An old English mahogany tripod table with moulded top, 22in. diam.
- 237 An antique mahogany enclosed washstand with basin, tap and water container above
- 238 A set of 6 carved mahogany Chippendale style chairs, with loose seats in leather
- 239 A set of 4 decorated and gilt porcelain compotiers
- 240 Two pairs of glass candlesticks, a ditto inkwell and a pair of china figures
- 241 A Bokhara rug with numerous medallions of conventional designs, 6ft. 9in. x 3ft. 4in.
- 242 A Shiraz rug, dark ground, with 3 diamond shaped panels and small medallions, 4 borders, 7ft. 11in. x 4ft.
- 243 A small walnut bow front tallboy chest of drawers, fitted with brush slide
- 244 A small walnut chest of 4 drawers with fold-over top
- 245 An Empire rosewood and inlaid brass dwarf cabinet, fitted with shelves and 2 mirror panelled doors
- 246 A pair of Florentine serpentine shaped console tables with inlaid marble tops, on tapered legs
- 247 An old English gun in leather case, by DAW, London
- 248 A 6ft. shaped sideboard, fitted 3 drawers and cupboard and tambour centre
- 249 A walnut serpentine chest of 4 drawers with slide
- 250 A 4ft. 6in. old English writing table of 9 drawers, leather lined top
- 251 A set of 13 coloured prints, The Cries of London

## Lot

- 252 Three pairs of flowered crimson silk curtains, lined, and the valances and holders
- 253 A lacquer cabinet, fitted drawers and shelves, enclosed by glazed doors
- 254 A ditto centre table with carved cupids and gilt decorations on carved cabriole legs
- 255 A ditto table on pillar and tripod
- 256 A lacquer elbow chair and a pair of ditto standard chairs with loose cushion seats
- 257 A decorated electric floor lamp with shade
- 258 A walnut serpentine chest of drawers fitted with brush slide
- 259 A walnut oval tea table with carved border, on cabriole legs
- 260 An old brocade table centre with velvet ends and gilt fringe and a red velvet ditto
- 261 A large panel of fine wool embroidery on silk velvet, depicting Charles II hiding in the oak tree, 17th cent.
- 262 A panel of silk floral applique needlework, Flowers and Ribbon Ties, on green damask with gilt braid
- 263 A pair of wool needlework curtains of Jacobean design
- 264 A 29in. Jacobean oak side table, fitted drawers, on turned ball legs and rails
- 265 A set of 6 chairs with spindle backs and rush seats
- 266 A yew wood Windsor elbow chair with wheel back
- 267 A Chippendale mahogany stool on square legs (no seat) and a Sheraton mahogany stool on square tapered legs
- 268 Fifty volumes of novels, various
- 269 A gilt metal and cut glass 3-light candelabrum and a pair of Venetian decanters, a pair of French candlesticks, a set of 3 ditto vases and a chased metal casket, fitted ink pots, etc.
- 270 The Costumes of Turkey, Russia and Austria, with coloured plates, London 1802 and 1804—3
- 271 Thackeray's Orphans of Pimlico, with illustrations, 1876, and another, autographed by D. H. Lawrence
- 272 Lindley's The Ferns of Great Britain and Ireland, coloured plates, Hamilton's Volcanoes of Sicily, with facsimile drawings, and 4 others—6
- 273 Norman Douglas' What About Europe, Symond's Greek Ethics and others—42
- 274 Books, various—65, and a folio of prints
- 275 A Chinese tea caddy, a ditto jade glass figure and a figure of a dog

FINIS.