

Sales catalogue: Robinson Fisher and Co

Publication/Creation

15th January 1920

Persistent URL

<https://wellcomecollection.org/works/t8658jgk>

License and attribution

This work has been identified as being free of known restrictions under copyright law, including all related and neighbouring rights and is being made available under the Creative Commons, Public Domain Mark.

You can copy, modify, distribute and perform the work, even for commercial purposes, without asking permission.



Wellcome Collection
183 Euston Road
London NW1 2BE UK
T +44 (0)20 7611 8722
E library@wellcomecollection.org
<https://wellcomecollection.org>

Original
TELEPHONE—MAYFAIR 6704.

WATSON'S SALE 18/508
4H
SALE No. 5,731.

60 & 61, NEW BOND STREET, W. 1.

*Temporary Premises during the reinstatement of
WILLIS'S ROOMS.*

A CATALOGUE OF
A Collection of
Pictures and Drawings
ENGRAVINGS & PRINTS.

*The Property of Mrs. Rodwell, of Aricochar, Gerrard's Cross, Bucks;
of J. Broads, Esq., of Prince Edward Mansions, Bayswater, W.;
of a Gentleman — Removed from a Yorkshire Mansion; and from
various other Sources.*

Which will be Sold by Auction by Messrs.

ROBINSON, FISHER & HARDING

AT THEIR GALLERIES, AS ABOVE,

On Thursday, January 15th, 1920,

AT ONE O'CLOCK PRECISELY.

May be viewed three days prior, and Catalogues had of the
Auctioneers, at their Offices,

60 & 61, NEW BOND STREET, W. 1.

15089 Doherty & Co., 6, Great Newport Street, W.C. 2. Telephone 3639 Gerrard.

CONDITIONS OF SALE.

- I. The highest bidder to be the Buyer; and if any dispute arise between two or more bidders, the Lot so in dispute shall be immediately put up again and re-sold, subject to the discretion of the Auctioneer.
- II. No person to advance less than 1s.; above Five Pounds, 5s. and so on in proportion.
- III. In the case of Lots upon which there is a reserve, the Auctioneer shall have the right to bid on behalf of the Seller, and right is reserved on behalf of all Vendors to bid by themselves or their Agents.
- IV. The Purchasers to give in their Names and Places of Abode, and to pay down 5s. in the Pound, or more, in part of payment, or the whole of the Purchase-Money, *if required*; in default of which, the Lot or Lots so purchased to be immediately put up again and re-sold.
- V. The Lots to be taken away and paid for, whether genuine and authentic or not, with all faults and errors of description, at the Buyer's expense and risk, the day after the Sale; neither Messrs. ROBINSON, FISHER & HARDING or the Sellers being responsible for the correct description, genuineness, or authenticity of, or any fault or defect in, any Lot, and making no warranty whatever.
- VI. To prevent inaccuracy in delivery, and inconvenience in the settlement of the Purchases, no Lot can on any account be removed during the time of Sale; and the remainder of the Purchase-Money must absolutely be paid on the delivery.
- VII. Upon failure of complying with the above Conditions, the Money deposited in part of payment shall be forfeited; all Lots uncleared within the time aforesaid shall be re-sold by public or private Sale, and the deficiency (if any) attending such re-sale shall be made good by the defaulter at this Sale.

NOTE.—MESSRS. ROBINSON, FISHER & HARDING will not be responsible for any Lot that may be left either by Vendors or Purchasers more than two days from the day of Sale, and any Lot left after that time will be subject to a charge for warehouse room of 1s. per Lot per day.

F. A. HARDING. }
L. C. ROBINSON. } ROBINSON, FISHER & HARDING.

CATALOGUE.

On THURSDAY, JAN. 15th, 1920,

At ONE o'clock precisely.

ENGRAVINGS AND PRINTS.

LOT

- 1 Forty unframed French Prints
- 2 The Shepherds, by WARD, after MORLAND, mezzotint.
- 3 A set of 4 coloured Sporting Prints
- 4 A coloured Print, A Kingfisher on the Banks of the Thames
- 5 Le Marchand d'Orviétan, by GUYOT, after WATTEAU, in colours
- 6 Bonaparte, by S. W. REYNOLDS, after J. NORTHCOTE, R.A., mezzotint
- 7 Four old aquatints, in colours, by F. JUKES, after T. WALMSLEY
- 8 The Return from Shooting, by BARTOLOZZI, after WHEATLEY, and The Return from Coursing, by A. CARDON, after W. HAMILTON, a pair
- 9 St. Cecilia, by W. BOND, after J. RUSSELL, R.A., stipple in colours
- 10 Louisa, by BOILLOT, after W. WARD, and 2 unframed prints, Marianne, by W. RYLAND, in red, and Marie Anne, Comtesse Marcolini, by RASP, after J. H. SCHMIDT, 3
- 11 A Scene from "Tom Jones," by P. SIMON, after J. DOWNMAN, stipple, in colours
- 12 The Mower, by E. BELL, after G. MORLAND, mezzotint, in colours
- 13 Four Prints and a Picture, 5
- 14 The St. James's Beauty and The St. Giles's Beauty, by BARTOLOZZI, after BENWELL, stipple, in colours, a pair

PICTURES AND WATER COLOUR DRAWINGS.

<i>By or attributed to</i>	<i>LOT</i>	<i>Subject.</i>
DUTCH SCHOOL . . .	15	A Landscape, with White Horse and Figures, on copper, unframed
KOEKKOEK . . .	16	A Landscape
THORS . . .	17	A Seascape
A DE BREANSKI . . .	18	A Mountainous Landscape and Cattle
NETSCHER . . .	19	A Figure Subject
COSWAY . . .	20	Portrait of a Lady
LIOTARD . . .	21	Portrait of a Lady, pastel, and Head of a Boy, 2
FRENCH SCHOOL . . .	22	Portrait of a Lady, oval
F. BOL . . .	23	Portrait of a Man
RUSSIAN SCHOOL . . .	24	Going to Market, a pair
UNKNOWN . . .	25	Hempstead Park
TROOST . . .	26	Merrymaking outside an Inn
ENGLISH SCHOOL . . .	27	Portrait of a Boy
E. DALBONO . . .	28	Fishing Boats
G. POUSSIN . . .	29	A Landscape
SHAYER . . .	30	A Gipsy Encampment
E. S. HODGSON . . .	31	October and Near Poole Harbour, 2
E. S. HODGSON . . .	32	On the Broads
WYNNE APPERLY . . .	33	Autumn
FRENCH SCHOOL . . .	34	Classical Subjects, a pair
R. ANSDELL . . .	35	A Dog in a Landscape
KNELLER . . .	36	Portrait of a Lady, oval
ENGLISH SCHOOL . . .	37	Portrait of David Garrick in character
SIR J REYNOLDS. . .	38	Portrait of the Honble. Colonel E. Montague
T. GIRTIN . . .	39	A Landscape and Figures, water-colour
G. F. ROBSON. . .	40	An Italian Landscape and Buildings, ditto
C. PEARSON . . .	41	Three Landscapes, ditto
CLAUDE HAYES, R.I. . .	42	A River Scene, ditto
D. BATES . . .	43	Woodland Spoils, North Wales, ditto

<i>By or attributed to</i>	<i>LOT</i>	<i>Subject.</i>
C. J. ALLBON . . .	44	On the Normandy Coast, ditto
UNKNOWN . . .	45	Street Scenes, a pair, ditto
ROWBOTHAM . . .	46	A View at Bracknell, Berks., ditto
N. HILLIARD . . .	47	Portrait of William, Lord Sherrard in pink Doublet and lace Collar
SCHOOL OF VAN DYCK	48	Portrait of a Lady in black Dress
N. MAES . . .	49	"Grace before Meat"
BELOTTO . . .	50	The Rialto, Venice
J. WARD . . .	51	A Landscape and Cattle
G. BARRATT . . .	52	Landscapes and Cattle, a pair
STUART LLOYD . . .	53	Hemmingford Grey. <i>Exhibited at the Royal Academy, 1892</i>
CIPRIANI . . .	54	Cupids in a Landscape
UNKNOWN . . .	55	A Town on Fire and companion
R. W. WRIGHT . . .	56	An Interior of a Cottage and Figures
T. COLLIER . . .	57	A Moorland Scene
ENGLISH SCHOOL . . .	58	Portrait of Sir Nicholas Blount and Portrait of a Child with a Dog, 2
PALAMEDES . . .	59	Figures Dancing at an Inn
STUBBS . . .	60	The Maidenhead Coach
FRENCH SCHOOL . . .	61	Portrait of a Trooper
BEN HERRING . . .	62	"Full Cry"
H. DAWSON . . .	63	Skelwith Bridge, Westmoreland
DUTCH SCHOOL . . .	64	An Interior of a Studio
POELENBURG . . .	65	A Landscape, with Nymphs Bathing
E. W. COOKE . . .	66	A Marine View, with old Hulk and Shipping
P. MANZONI . . .	67	A Wooded Landscape and Figure
R. KEMM . . .	68	Going to the Market at Grenada
CONSTABLE (after) . . .	69	A Lock on the Stour
SCHULTZ . . .	70	Vessels Becalmed
RANVIER . . .	70A	A Nude Female Subject, a panel

**The Property of J. BROADS, Esq., of Prince
Edward Mansions, Bayswater, W.**

<i>By or attributed to</i>	LOT	<i>Subject,</i>
A. CORELLI . . .	71	The Brigand
STARK	72	A Landscape and Tobit and the Angel, by <small>POUSSIN</small> , 2
R. P. BONINGTON . .	73	The Wreckers
PANINI	74	Ruins
BABTISTE	75	Flowers in a Basket
CAMPIDOGLIO . . .	76	Still Life on a Marble Slab
G. MORLAND	77	Figures outside an Inn

**The Property of a Lady—Removed from Sloane
Gardens, S.W.**

SANDERSON WELLS .	78	"A Trusty Guard"
SANDERSON WELLS .	29	"Plotting"
LIONEL P. SMYTHE, R.A.	80	A Girl driving Ducks
G. S. WALTERS . .	81	Rough Weather in the Channel, water-colour
HENRY H. PARKER	82	"Nature's Mirror," near Culham- on-Thames
HENRY H. PARKER	83	On the Banks of the Thames near Streatley, Berks.

Various Properties.

BERNARD EVANS . .	83A	From Cannes to the Estrelle, water- colour
CIPRIANI	84	A Bird's Nest
R. WILSON	85	A Landscape
P. WOOD	86	A Landscape, water-colour
P. WOOD	87	A River Scene, ditto
DE WITTE	88	Three Cupids, representing "Sculp- ture," en grisaille
GREUZE	89	Head of a Young Girl
VAN DYCK	90	Portrait of the Artist

<i>By or attributed to</i>	LOT	<i>Subject.</i>
SIR J. REYNOLDS . . .	91	Portrait of Dr. Johnson
W. VAN DER VELDE . .	92	Shipping
WATERHOUSE	93	A View of Capri
WATERHOUSE	94	Ilfracombe
LAMBERT	95	A View of Dover Castle
J. S. COPLEY	96	The Attack on Quebec
DAVID	97	Napoleon at the Siege of Toulon and The Taking of Alexandria, a pair
SIEBRECHTS	98	A Landscape, with Figures in a Cart crossing a Stream
VAN DYCK	99	Portrait of Mrs. Mary Howard
ENGLISH SCHOOL . .	100	Mr. Barling's Kentish Harriers
DUTCH SCHOOL . . .	101	Flowers
DUTCH SCHOOL. . . .	102	Figures on Horseback, water-colour
CHARLES CONDER . .	103	Portrait of a Lady, ditto
J. C. BUCKLEY . . .	104	A View of Hulme Hall, Lancashire, ditto
UNKNOWN	105	Molière reading his Plays at the Court of Louis XIV., ditto
DUTCH SCHOOL . . .	106	Head of an Old Woman
JAN STEEN	107	The Pedlar
TERBURG	108	The Drawing Lesson
A. D. M'CORMICK . .	109	A Song of Triumph. A Gallery work
R. W. FRAZER . . .	110	A View at Willesden, water-colour
J. W. OAKES, 1865 . .	111	Bambro' Castle, Evening, ditto
DUTCH SCHOOL. . . .	112	An Interior of a Kitchen
FERG.	113	Horsemen and A Landscape, 2
SIR T. LAWRENCE . .	114	Portrait of The Right Honble. George Canning
SIR W. BEECHEY . .	115	Portrait of The Honble. Caroline Nevill
ITALIAN SCHOOL . .	116	Cupid
680 6. DUTCH SCHOOL . .	117	A Figure Subject
SCH'L OF CANALETTO .	118	A View on the Grand Canal, with numerous Gondolas and Figures
GEORGES BRILLOUIN .	119	The Children's Repast
T. STOTHARD, R. A. .	120	Mythological Subjects, ovals, a pair

**The Property of a Lady—Removed from
a Depository.**

PICTURES.

<i>By or attributed to</i>	<i>LOT</i>	<i>Subject.</i>
SCHOOL OF LUINI . . .	121	The Madonna and Child, with St. John, panel
CLAUDE	122	A Landscape, with Ruins and Figures
POUSSIN	123	A Landscape, with Buildings and Figures
ENGLISH SCHOOL . . .	124	Portrait of a Boy
BOTTICELLI	125	The Madonna of the Magnificat, circular, panel
SUSTERMANS	126	Portrait of a Lady in black Dress, deep lace Collar and Cuffs, pearl Necklace and Ornament, holding a Fan
WATERLOO	127	A Landscape and River Scene
R. DA TIVOLI	128	Landscapes, Figures and Cattle, a pair
RUBENS	129	The Adoration of the Shepherds, panel
UNKNOWN	130	The Virgin and Child and Portrait of a Man, 2
ITALIAN SCHOOL	131	Cupids and The Holy Family, 2
SPANISH SCHOOL	132	Head of a Boy
ZUCCARELLI	133	A Landscape and Figures and another, 2
DUTCH SCHOOL	134	A Shepherd and Shepherdess, panel
A CECCHINI	135	A Venetian Scene, and An Interior and Figures, CASSINELLI, 2
ITALIAN SCHOOL	136	Heads of Women, 3
ITALIAN SCHOOL	137	The Holy Family and 3 others, 4
CANALETTO	138	The Entrance to the Grand Canal, Venice, with the Church of Santa Maria della Salute, Buildings, Gondolas, and numerous Figures

<i>By or attributed to</i>	<i>LOT</i>	<i>Subject.</i>
DUTCH SCHOOL	139	The Smoker
SNYDERS	140	Dogs and Dead Game in a Landscape, a Town in the distance. A Gallery work
JAN WEENIX	141	A Garden Scene, with Buildings, Fountain, and numerous Figures and Animals. A ditto.
UNKNOWN	141A	Portrait of a Man, unframed, and a large picture frame
UNKNOWN	141B	Portrait of a Man, oval

WATER-COLOUR DRAWINGS.

J. D.	142	A Landscape and Figures and 4 others, 5
J. D.	143	A Coast Scene and 4 others, 5
UNKNOWN	144	Landscapes, 3, Rouen, and Head of a Man, crayon, 5
COSTA	145	A View in Italy
146		Fourteen Prints and Photographs, various

The Property of a Gentleman—Removed from a Yorkshire Mansion.

DUTCH SCHOOL	147	A Village Merrymaking
PANTOJA DE LA CRUZ	148	Portrait of a Lady, on panel
T. B. HARDY	149	Oystermouth Bay, South Wales, water-colour
WRIGHT, of Derby	150	Portraits of the Daughters of the Rev. J. Simpson, of Stoke Hall, Derby
ENGLISH SCHOOL	151	Portrait of a Divine
SIR W. BEECHEY	152	Portrait of William Pitt
SIR P. LELY	153	Portrait of a Lady in white Dress, standing in a Landscape, full length
HONDECOETER	154	Heron and Ducks in a Landscape
J. VERNET	155	A Bay Scene, with Figures

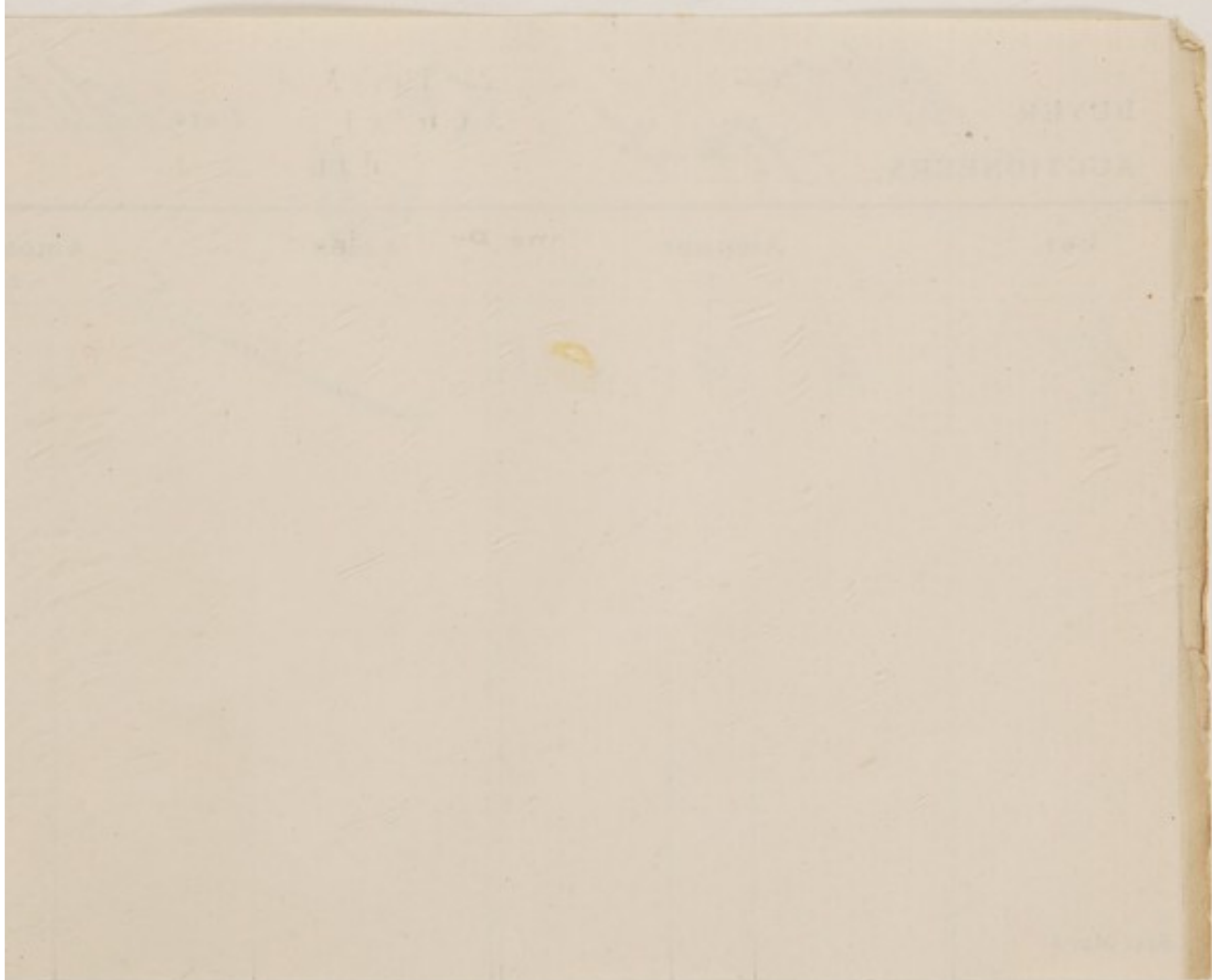
7th
 Senko work a
 letter marked under
 10
 20th under

**The Property of Mrs. RODWELL, of Arrochar,
 Gerrard's Cross.**

<i>By or attributed to</i>	<i>LOT</i>	<i>Subject</i>
H. VAN AVERCAMP .	156	A Frozen River Scene, with Boats alongside a Quay, Buildings and Figures, panel. <i>Dated 1646</i>
DUTCH SCHOOL .	157	A Village Scene and Figures, Moonlight
ENGLISH SCHOOL .	158	Portrait of David Salaman, Esq. In blue Coat, gold embroidered Waistcoat, white Tie, powdered Hair
DUTCH SCHOOL .	159	The Alchemist, panel
GREUZE . . .	160	Head of a Boy
DUTCH SCHOOL .	161	A Landscape, with Buildings, Goats and Figure, panel
RAVESTEYN . .	162	Portrait of a Nobleman in Armour and Ruff, ditto
OLD FRANCKS . .	163	Solomon and the Queen of Sheba, ditto
ITALIAN SCHOOL .	164	The Three Maries at the Tomb of Our Saviour
ENGLISH SCHOOL .	165	Two Miniatures of Ladies, on ivory

Various Properties.

HARLOW . . .	166	Portrait of Mrs. Siddons
J. VERNET . . .	167	A Coast Scene, with Figures
ISABEY . . .	168	Portrait of the Baroness de Fenchères
ISABEY . . .	169	Portrait of the Marquise de Chetaines le Place, Niece of the Baroness de Fenchères
SEGHERS . . .	170	A Garland of Flowers
E. HAYES . . .	171	Four Sketches in one frame
H. JOHNSON . .	172	A Mountainous Landscape, water- colour
UNKNOWN . . .	173	Florence Nightingale among the Wounded in Hospital, panel



BUYER

Alton R & F

SK

Date

15/1/20

AUCTIONEERS

cl

Lot	Amount			Lot	Amount		
	£	s.	d.		£	s.	d.
<i>117</i>	<i>6</i>	<i>6</i>	<i>.</i> ✓				

✓

<i>By or attributed to</i>	<i>LOT</i>	<i>Subject.</i>
BACKHUYSEN . . .	174	Shipping in a Rough Sea
DUTCH SCHOOL . . .	175	An Interior and Figures
WEENIX . . .	176	Still Life
LARGILLIERE . . .	177	Portrait of the Comtesse Simone Louise Ferret, in grey satin Bodice and fur-trimmed blue Cloak, Pearl Necklace and Orna- ment
G. HARLOW . . .	178	Portrait of Madame Vestris
DIETRICH . . .	179	The Travelling Musician
REYNOLDS . . .	180	Portrait of a Girl in a Landscape
F. DICKSEE . . .	181	Macbeth and the Witch of Endor
JULES GODET . . .	182	Battersea Reach and A Moorland Scene, water-colours, 2
D. H. MCKEWAN . . .	183	A Woodland Scene and Figures, and A Landscape, RUPERT STEVENS, ditto, 2
ONGAINIA . . .	184	Venetian Scenes, ditto, 3
W. ROELOFS . . .	185	A Farmyard Scene, and A Figure Subject, MELIG, ditto, 2
VAN STRY . . .	186	Herdsman and Cattle, panel, signed
DUTCH SCHOOL . . .	187	"The Meet"
CUYP . . .	188	A River Scene and Cattle
J. C. H., 1790 . . .	189	A Coast Scene, panel
DUTCH SCHOOL . . .	190	Still Life
A. NASMYTH . . .	191	Glencoe, Scotland
SIR T. LAWRENCE . . .	192	Portrait of a Lady
ROMNEY . . .	193	Portrait of Lady Hamilton, sketch
GREUZE . . .	194	Portrait of a Young Girl in low- neck Dress
SIR J. REYNOLDS . . .	195	Portrait of Mrs. Robinson
A. VAN DE VELDE . . .	196	A Landscape, with Figures
CARTWRIGHT . . .	197	The Wreck
BODENMULLER . . .	198	The Farewell
TIEPOLO . . .	199	The Vision of a Saint
W. BROUGH . . .	200	A River Scene, and Cornfield, E. M. W., water-colours, 2
W. H. BARRIBAL . . .	201	Figure Subjects, ditto, 2

<i>By or attributed to</i>	LOT	<i>Subject.</i>
OLD FRANCKS . . .	202	The Triumph of Bacchus, on copper, signed
DUTCH SCHOOL . . .	203	Woman and Child at a Fireside
204		A Chinese Picture, on glass
205		A Carved Frame

**The Property of a Lady—Removed from Rosslyn
Hill, Hampstead, N.W.**

PICTURES.

UNKNOWN	206	Figures in a Landscape and A Coast Scene and Figures, 2
H. FOLEY	207	Continental Scenes, a pair
DUTCH SCHOOL	208	Shipping off the Dutch Coast, panel
UNKNOWN	209	Landscapes, 2, Seapieces, a pair, and another, 5

WATER-COLOUR DRAWINGS.

H. GEORGE	210	A Landscape, The Wreck, E. B., and Shipping, 3
J. S. S.	211	A Sepia Drawing and an Etching, 2

FINIS.