

Sales catalogue: Sotheby's

Publication/Creation

June 1920

Persistent URL

<https://wellcomecollection.org/works/ac4naksn>

License and attribution

This work has been identified as being free of known restrictions under copyright law, including all related and neighbouring rights and is being made available under the Creative Commons, Public Domain Mark.

You can copy, modify, distribute and perform the work, even for commercial purposes, without asking permission.



Wellcome Collection
183 Euston Road
London NW1 2BE UK
T +44 (0)20 7611 8722
E library@wellcomecollection.org
<https://wellcomecollection.org>

WA/Amvcm/Sal/20/467
C.D. 44

Hooper, Made

General

SOTHEBY, WILKINSON & HODGE.

34 & 35, NEW BOND STREET, W. 1.

27

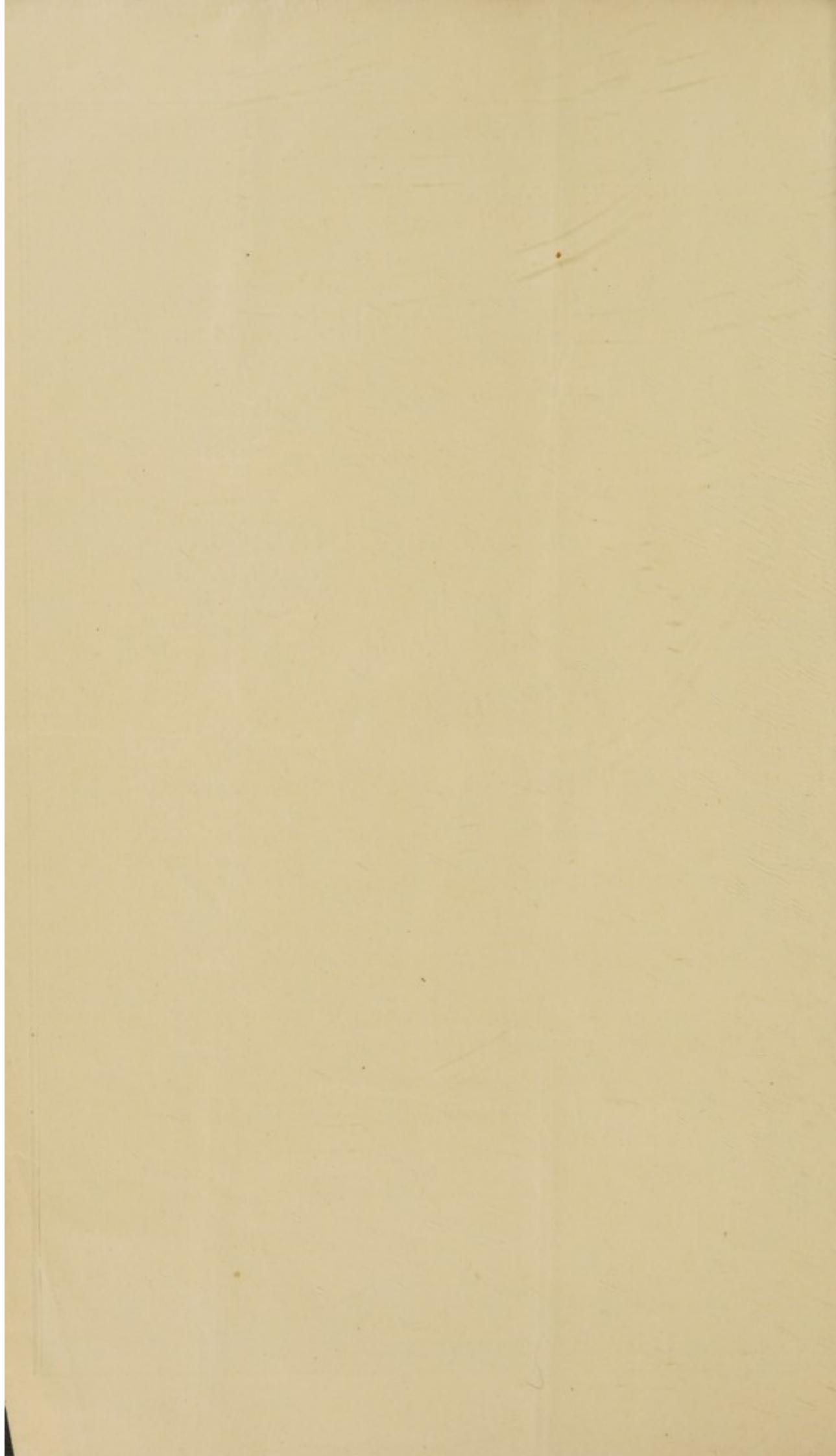
CATALOGUE
OF
JEWELLERY, MINIATURES,
WORKS OF ART,
POTTERY, PORCELAIN,
ETC.

*Mon
Tuesday*

Days of Sale.

FIRST DAY	Thursday, June 3	Lots	1 to 193.
SECOND DAY	Friday, June 4	Lots	194 to 364.

1920.



CATALOGUE
OF
JEWELLERY, MINIATURES,
WORKS OF ART,
POTTERY, PORCELAIN,
ETC.

FIRST DAY'S SALE.

TRINKETS and JEWELLERY, the property of Mrs. CHARCOT HENDRY;
MINIATURES, IVORY CARVINGS and JEWELLERY, including a
DIAMOND NECKLACE, the property of LADY GARROD THOMAS;
and a RING (said to have belonged to the Princess Elizabeth,
daughter of Charles I); SNUFF BOXES, IVORY CARVINGS, etc., the
property of the late W. K. D'ARCY, Esq., of Stanmore Hall,
Stanmore (sold by order of the Trustees).

SECOND DAY'S SALE.

ENGLISH POTTERY from the WHITELEY TOLSON COLLECTION,
including Plain and Enamelled SALT GLAZE; WHEILDON, LEEDS
and LIVERPOOL WARES; RALPH WOOD GROUPS; STAFFORDSHIRE
FIGURES, etc. Also a few pieces of CONTINENTAL AND ORIENTAL
PORCELAIN; a PERSIAN MOSQUE LAMP, etc., and an interesting
collection of LOWESTOFT SOFT PASTE PORCELAIN and FIGURES,
with blue and white or coloured decoration.

WHICH WILL BE SOLD BY AUCTION

BY MESSRS.

SOTHEBY, WILKINSON & HODGE

(SIR MONTAGUE BARLOW, K.B.E., LL.D., M.P., G. D. HOBSON, M.A., AND
MAJOR F. W. WARRE, O.B.E., M.C.),

Auctioneers of Literary Property and Works illustrative of the Fine Arts,

AT THEIR LARGE GALLERIES, 34 & 35 NEW BOND STREET, W. (1),

On THURSDAY, JUNE 3, 1920, and following day.

AT ONE O'CLOCK PRECISELY.

May be Viewed Two Days prior.

Catalogues may be had.

RIDDLE, SMITH & DUFFUS, Windsor House, Kingsway, W.C. 2, and Forest Hill S.E. 23.

CONDITIONS OF SALE

- I. The highest bidder to be the buyer ; and if any dispute arise, between bidders, the lot so disputed shall be immediately put up again, provided the auctioneer cannot decide the said dispute.
- II. No person to advance less than 1s. ; above five pounds, 2s. 6d., and so on in proportion.
- III. In the case of lots upon which there is a reserve, the auctioneer shall have the right to bid on behalf of the seller.
- IV. The purchasers to give in their names and places of abode, and to pay down 10s. in the pound, if required, in part payment of the purchase-money ; in default of which the lot or lots purchased will be immediately put up again and re-sold.
- V. The sale of any lot is not to be set aside on account of any error in the enumeration of the numbers stated, or errors of description.
- VI. The lots to be taken away, at the buyer's expense immediately after the conclusion of the sale ; in default of which Messrs. SOTHEY, WILKINSON & HODGE will not hold themselves responsible if lost, stolen, damaged, or otherwise destroyed, but they will be left at the sole risk of the purchaser. If, at the expiration of Two Days after the conclusion of the sale, the lots are not cleared or paid for, they will then be catalogued for immediate sale, and the expense, the same as if re-sold, will be added to the amount at which they were bought. Messrs. SOTHEY, WILKINSON & HODGE will have the option of re-selling the lots uncleared either by public or private sale without any notice being given to the defaulter.
- VII. Upon failure of complying with the above conditions, the money required and deposited in part of payment shall be forfeited ; and *if any loss is sustained in the re-selling of such lots as are not cleared, or paid for, all charges on such re-sale shall be made good by the defaulters at this sale.*

Gentlemen who cannot attend this Sale may have their Commissions faithfully executed by their humble servants,

SOTHEY, WILKINSON & HODGE,

34 & 35, New Bond Street, London, W. (1).

Telegraphic Address :

"Abinitio, Phone, London."

Telephone : Two lines, Mayfair 1784
1785

In sending Commissions this Catalogue may be referred to as "SHOT."

COMMISSIONS SENT BY TELEPHONE ARE ACCEPTED ONLY AT THE SENDER'S RISK AND MUST BE CONFIRMED BY LETTER OR TELEGRAM.

CATALOGUE
OF
Jewellery, Miniatures, Clocks of
Art, Pottery, Porcelain, etc.

FIRST DAY'S SALE.

THE PROPERTY OF

Mrs. Charcot-Hendry,

late of 2 Holland Park, W.

Lot

- 1 A Louis XV circular Box in tortoise-shell, the top with a medallion of the king in frame of gold and blonde tortoise-shell; 3in.
- 2 A Louis XVI oblong Box in malachite with chased gold mounts; *faulty*
- 857- 3 An Empire Box in ivory with miniature of a female artist on the lid; a Dutch Snuff Box painted with the scene of a chiropodist; and a small wooden Salve Box with gold lining 3
- 4 An Empire circular Box in tortoise-shell, the top finely painted on glass with a camp scene, gilt metal rims
- 5 A Louis XVI circular Box, the top painted on ivory with a classical panel and festoons; and another in tortoise-shell, gold inlaid, the top with a medallion of an altar and doves 2

5.15.0

Wm.

- 6 Three Continental enamel Boxes, one painted with skating scenes, and another with a female head 3
- 7 A Russian Casket in iron, finely damascened, with domed top ; $6\frac{1}{2}$ in. long
- 8 A Persian Mirror Case, lacquered, finely painted with flowers and birds
- 9 A finely carved Japanese Group in ivory of a warrior and his wife ; $3\frac{3}{4}$ in.
- 10 A Japanese Carving in ivory of monkeys playing draughts ; another of a monkey, and a Netsuké of a grotesque figure with frog on his shoulder 3
- 11 An old Japanese ivory Netsuké of a draped figure ; another of man with child and dog ; and another of a fat man with a child 3
- 12 Five old Japanese ivory Netsukés, two of figures and three of monkeys 5
- 13 Five old Japanese Netsukés in wood, of a kylin, a toad, two snakes and a mask, and a fine carving of mice 6
- 14 Five Japanese bronze Tortoises, a pair, and three others 5
- 15 A Louis XVI Knife with gold-mounted mother-of-pearl handle ; two small Knives with silver filigree handles in shagreen case ; a Turkish pair of Scissors, damascened ; another in the form of a bird ; a Toledo Paper Knife ; and Turkish Knife, in filigree sheath mounted with turquoises 11
- 16 A small Russian Ikon, and two religious Pendants ; and two carved ivory Panels 5
- 17 A Dutch silver model of a Windmill, 6 in. ; a Punch Strainer made from German silver coins, gilt ; and a Watch Stand 3
- 18 A collection of thirty-two enamel Buttons, painted with heads, classical and religious 32
- 19 A Bronze Pin from the Lake Dwellings in Lake Bourget ; an Egyptian Scarab ; and another mounted in a gold bracelet 3

- 20 A Set in silver of Chocolate Pot, Sucrier and Cream Jug, with Tray, 9in.; all with the arms of Stanislaus, the last king of Poland; *German* 6
- 21 Two French Table Seals, one as a boy figure and the other as an owl; an oval frame mounted with pastes; and a small Hand Mirror with silver frame 4
- 22 A lady's Handbag in green brocade, and another with beadwork, both with steel mounts, a third with silver mounts, a fourth with steel beadwork; and a Moroccan Pouch worked with spangles and bullion work 5
- 23 A set of six Italian Spoons, the bowls in rock crystal, and the handles enamelled with figures and masks, in case 7
- 75- 24 A crystal Scent Bottle, mounted with cherubs and scroll-work in silver, parcel gilt; 4 $\frac{1}{4}$ in. 5-150
- 25 A Rosary, two Necklaces, a Snake Bracelet, and a small Brooch, all in coral 5 Anderson
- 26 A silver Chatelaine with vinaigrette, pincushion and powder case; a Chatelaine Hook in steel, and a purse in similar work 3
- 27 A Seventeenth Century Pendant in silver gilt with plaque of the Crucifixion; another in filigree silver, and a finely pierced plated buckle 3
- 50- 28 Milanese Peasant silver Hair Ornaments of fourteen pins and two rollers; and a Portuguese silver Necklace with pendant 17
- 60- 29 A pair of Turkish silver bracelets, another Bracelet, a Necklace, and a Breast Ornament; all set with pastes 5 W
- 30- 47- 30 Three Algerian torque Brooches in silver, a Clasp, Bracelet and two Necklaces 8 W
- 31 A Hungarian silver Necklace with large clasp set with pastes; two Turkish paste Pendants; three pieces of Russian enamel; a Brooch and two Buckles 9
- 32 An old Dutch silver Chatelaine Hook; a Buckle, a Book Clasp, Seal, Whistle and Needle Case; and a Spanish Rosary 7

- 33 Two Swedish silver Brooches with pendants ; a Dutch Bracelet, with balls ; twenty-five various Buttons ; and five Head-dress Pins, all in filigree work 33
- 34 A French Hair Ornament with pendant chains in filigree work, and a Necklace of cast links with acorn pendants on chains ; both silver gilt 2
- 35 An Italian spray Brooch, enamelled with pearls and pastes ; an enamel Brooch ; a basket Brooch set with garnets ; a Pendant, and a Hook set with pastes 5
- 36 A French paste bracelet, and three pieces of Spanish paste 4
- 37 An old Spanish Necklace and pair of Earrings in filigree silver gilt ; pair of Flemish Earrings with enamel drops ; and a Necklace with filigree panels united by garnets 7
- 38 A Bohemian ruby Necklace, and a Dog Collar Necklace in silver gilt with chains of small stones 2
- 39 Two old marcasite Bracelets, one with a design of a harp and shamrocks, and the other with a harp and oval medallions 2
- 40 A gold Bracelet with fine stone cameo of the head of Christ ; and an unmounted stone cameo 2
- 41 A gold snake Bracelet, and a pierced initial Brooch ; and a silver pin Brooch with pig set with pearls 3
- 42 A Hat Pin Head set with small brilliants and rubies ; and a Pin as a basket of flowers of similar work 2
- 43 A gold Bracelet with amethyst balls, and another with seed pearls and garnets 2
- 44 A gold Bracelet of eighteen small medallions set with various stones, and a curb Bracelet with pink topaz and diamond clasp 2
- 45 A Brittany diamond cross, with fifteen stones
- 46 A Normandy peasant Ornament ; a Cross, and a Brooch in gold ; and four other pieces in silver 7
- 47 A Turkish Hair Comb with top set with rose diamonds, and three pins set with rough stones 4

- 48 A Cambodian gold Bracelet, finely worked with figures, and a Ring to match 2
- 49 A Siamese gold Bangle set with rubies ; a gold Algerian Amulet ; and a pair of Nautch Bracelets in silver gilt 4
- 50 A Persian Necklace and a Pendant with plaques of turquoise matrix engraved with characters ; two gold Brooches engraved with figures, and three odd pieces 7
- 51 A Chinese Brooch and three smaller Brooches, finely carved with figures in toucan beak 4

Other Properties.

- 52 An oval enamel Miniature of William III in armour ; $3\frac{3}{4}$ in.
- 53 A Miniature of a Lady in early Seventeenth Century costume, mounted as a locket, $1\frac{1}{2}$ in. ; and another of a man, c. 1650 2
- 54 A finely painted Miniature of a Lady, half-length, signed H. (?) 1796, in oval gold frame, the back with hair and enamel ; $2\frac{3}{4}$ in.
- 55 A Miniature of Warren Hastings, in oval frame ; $2\frac{3}{8}$ in.
- 56 A Miniature on ivory of James Patterson, by J. S. Copley ; $2\frac{1}{8}$ in., in case 2
- 57 A finely painted Miniature on ivory of Sir Joshua Reynolds, oval ; 3 in., in square frame
- 58 A Louis XV Tortoise-shell Box of semi-octagonal shape, the top with a finely pierced and engraved silver plate of figures
- 59 A Louis XV oval Box in tortoise-shell with silver rims and top inlaid with figures ; and another with silver sides, the top piqué with gold, 3 in. 2
- 60 A Louis XVI blonde tortoise-shell Box, square with domed top, gold piqué ; $2\frac{1}{2}$ in.
- 61 A Snuff Box, oblong, of oval section, inlaid with silver, inscribed " Virtue thrives under oppression " ; $3\frac{1}{4}$ in.

- 62 A pair of small Etuis, in tortoise-shell, inlaid with silver ;
2½ in. 2
- 63 A tortoise-shell Box, flat, with silver hinges and feet ; and
another, cylindrical with silver gilt mounts 2
- 64 Three ivory Toothpick Cases, piqué with gold 3
- 65 A Toothpick Case in tortoise-shell with gold mounts ; and
another oval, the top with an enamel cameo, mounted
in silver, with scraper 3
- 66 A Battersea enamel small oval Box, and an oval mother-o'-
pearl Box with silver sides 2
- 67 An oval gold Pendant with a miniature either side of a man
in late Eighteenth Century dress, one surrounded by
panels of hair, both finely painted
- 68 Two Miniatures of ladies and another of a boy, c. 1780 3
- 69 A finely painted oval Miniature of a Girl, half-length,
signed T.H. 04, in gold frame with enamel back and
panel of hair ; 3 in.
- 70 An oval Miniature of a Lady, and another of a Gentleman,
2¾ in., the backs with hair and initials on a medallion
surrounded by seed pearls 2
- 71 A well-painted oval Miniature of a lady on ivory, in the
style of Cosway. 3 in. ; and another on paper, in black
frames 2
- 72 An oval Miniature of a Naval Officer, by *I. Myddelton*,
Calcutta, 1806, 2¾ in., framed ; and another of a Man, by
Armand, 4¾ in., unframed 2
- 73 Nine Lace Bobbins, including a " beetle " bobbin, a " rattle "
bobbin, and three others, inscribed 9
- 74 Twenty-two bone and two wooden Lace Bobbins, all with
Christian names on them 24
- 75 Fifteen bone and nine wooden Lace Bobbins, all variously
decorated 24
- 76 Fourteen bone, five of them coloured, and nine wooden
Bobbins 23

- 77 Fifty-four Lace Bobbins of various patterns, mostly in wood 54
- 78 Another similar lot 54
- 757-79 A Fifteenth Century iron Casket, wood lined, oblong with slightly domed top, with pierced panels of open-work, fine hasp to lock with chiselled pillars ; $6\frac{3}{4}$ in. long., $4\frac{1}{2}$ in. wide, $3\frac{3}{4}$ in. high W
- 80 An Altar Crucifix in wood, with finely carved ivory figure; 19in. 15.0.0
- 81 A small Mortar in bronze, with rough decoration wood
- 82 An oval Miniature in oils of a man in falling lace collar, c. 1650, $2\frac{3}{4}$ in.; and another, on copper, of a man, c. 1680, $2\frac{7}{8}$ in. 2
- 83 A Stuart Miniature in oils on copper of lady in white dress and green wrap, wearing a spray of jessamine ; $4\frac{7}{8}$ in. by 4in., framed
- 84 An oblong Miniature on ivory of three children, c. 1800 ; and another, oval, of a child with blue sash 2
- 84A A pair of French Miniatures of the Revolutionary period, half length, a lady facing to left and a gentleman facing to right with a portrait of the lady in his hands, in gold rim frames with tortoise-shell backs ; the miniatures signed *Ronard* ; in gold tooled leather case, marked L and U beneath crowns, surrounded by detached hearts
- 85 A circular Miniature of Francis II of Germany, 1794, $2\frac{3}{4}$ in., in gilt frame ; and another of a Lady in ermine robe, oval, $2\frac{3}{4}$ in. 2
- 86 Two oval Miniatures of Ladies, and a circular one of a Boy with a toy horse ; all early Nineteenth Century 3
- 87 A square Miniature of a Gentleman, c. 1820, in case ; another of a lady, c. 1850 ; and another mounted in a locket 3
- 88 An oval Miniature of a Lady in Directoire costume, in case ; and another, c. 1820, of a Lady in a garden, framed 2
- 89 A circular Miniature of Cleopatra, on ivory, $2\frac{3}{4}$ in.; and another in gouache of a classical subject 2

- 90 An oval Miniature of a Lady on paper, probably after Peters ; $3\frac{1}{2}$ in., framed
- 91 A Miniature of (?) Kemble ; $3\frac{3}{8}$ in. by $2\frac{3}{4}$ in., in gilt frame
- 92 An oval Miniature of a Girl, after Sir Joshua Reynolds, by W. F. Engleheart, May 27, 1800, 3in. by $2\frac{3}{8}$ in., in black frame
- 93 Three small Eighteenth Century Miniatures, mounted for bracelets 3
- 94 An Esquire's Coat-of-Arms, emblazoned in colours, in gilt frame ; 9in. by 7in.
- 95 A large collection of Venetian glass pastes, imitating various stones, in three trays and a case, a large lot
- 96 An old Continental enamel Box, circular with gilt rim, painted with small figures in landscapes ; 3in. diameter
- 97 A Stuart double Purse in knitted silk, ornamented with beads and steel mount ; and a knitted Bag Purse in silk and silver thread 2
- 98 A tortoise-shell Snuff Box, circular, with gold centre and rims on a ground of blue " Vernis Martin " ; 3in.
- 99 A Louis XV Needle Case in tortoise-shell, inlaid with scroll foliage in gold ; $5\frac{1}{2}$ in. 2
- 100 A Tooth Pick Case in tortoise-shell, the top set with memorial hair and initials ; and an oval Snuff Box, with gilt metal mounts
- 101 A Dresden china Box in the form of shells, with gilt metal lid ; and a small Scent Bottle with cameo medallion 2
- 102 A Continental enamel Box, oval, painted with fruits ; and an enamel oval Plaque of Christ on the Cross 2
- 103 A steel Chatelaine Hook, with medallions blued and inlaid ; a tortoise-shell Etui, and a Seal with carved wood handle 3
- 104 A Snuff Box in pressed horn, the top finely painted with the Three Graces ; another in wood with a glass picture of a Dutch tavern scene, and a third with miniature of a female head 3

- 105 A Dutch oval Tobacco Box, carved wood with silver sides ;
and another in carved ivory 2
- 106 Four various Lorgnette Glasses, in ormolu, ormolu and
tortoise-shell, ivory, and ivory and tortoise-shell ; the
last in sharkskin case 5
- 107 An Eighteenth Century Pocket Sundial in wood case ; an
old silver cased ball chased with figures, with chain ; and
a folding Fork, with damascened iron handle 4
- 108 An Italian Bronze Medal of Pope Sextus V, 1588, $4\frac{1}{8}$ in. ; and
another of Leo d'Este by *Pisano*, $3\frac{1}{4}$ in.
- 109 A gold Bracelet with blue enamel top set with five brilliants
- 110 A gold Bracelet set with nine pearls and band of brilliants
(one pearl loose)
- 111 A star-shaped Pendant with two large drop pearls
- 112 Oval diamond Pendant, 3 brilliant drops
- 113 A single-stone diamond Ring, gold setting
- 114 A single-stone diamond Ring, gold setting
- 114A A sapphire and diamond cluster Ring, gold shank
- 115 An emerald and pearl cluster Brooch, and pair single-stone
diamond Earrings
- 116 AN EARLY SEVENTEENTH CENTURY RING, said to have
belonged to the Princess Elizabeth, daughter of Charles I,
and to have been dug up, many years ago, under the
window of the room in which she was imprisoned at
Carisbrooke Castle. The ring is of gold with a bezel in
the form of a crowned heart charged with a padlock, the
heart in crimson enamel, the padlock with a diamond,
the crown with three diamonds, and one either side
on the shoulders, the back of the bezel is enamelled
with the motto "fidele"
- * * * This ring has been exhibited at Paris, and also at the
Stuart Exhibition in London, in both of which it was
shown as "the Princess Elizabeth Ring."
- 117 A gold Ring with antique sard setting, an intaglio head of
Hercules
- 117A A gold Snake Ring, set with large drop shape diamond

- 117B A gold band Ring, set with five brilliants
- 117C A trefoil Ring, set with three fancy pearls
- 117D An important ruby and diamond cluster Ring; and Repeating Watch, in enamelled case
- 117E Oval enamelled and gold Locket, set with diamonds
- 117F A similar Locket, set diamonds both sides
- 117G A gold Bracelet, set with fine quality pink topaz and border of brilliants
- 117H Enamel and gold Bracelet, set with emeralds, and diamond enamel snap
- 118 A gold Ring set with two brilliants
- 119 A Persian engraved Gem, a large Cornelian, ovoid, plano-convex, engraved round the border with the *Surat'el Bakarah*, 2nd Chap. "Chapter of the Cow," verses 256 and 257, and in the centre The Hundred Beautiful Names of God in shaped panels
- 120 A pair of Persian engraved Gems, very rich coloured sard, engraved double borders and shaped centre panels with passages from the Koran, set in silver as a belt buckle
- 121 A Persian engraved Gem, fine sard, cone-shaped, engraved with double borders and centre with passages from the Koran, set in silver as an ornamental amulet for a turban
- 122 A gold and turquoise Scarf Pin, set with a large fine coloured stone

The Property of Lady Garrod Thomas.

- 122A A DIAMOND NECKLACE of seventeen oval links composed entirely of brilliants

The Property of a Gentleman.

- 123 A gold Ring of antique design set with a scarab of Thothmes III, in good green glaze
- 124 A gold Ring set with an antique oval sard intaglio, Hercules slaying the Nemean lion, the reverse engraved with the zodiacal sign of Leo

- 125 A gold Ring set with an oval nicolo, a man with a palm branch and a small Victory, on the shank in relief, FATO PRVDENTIA MAJOR with bucrania on the shoulders
- 126 A gold Ring set with an oval sard intaglio, a man standing by a pillar holding a spear, and a dog looking up at him
- 127 Two gold Rings of antique form, one set with an oval tallow topped sard intaglio, a man and a cupid, the other with a striated agate intaglio, a bull and a *lituus* 2
- 128 Three gold Rings, one set with a sard cut *en cabochon*, an intaglio dove and *œnochoe*; one, an oval tallow topped sard intaglio Venus, and one an oval opaline paste cupid and Psyche 3
- 129 A gold Ring set with an onyx cameo, oblong, omphale carrying the club of Hercules, in white on a pinkish ground
- 130 A gold Ring set with an onyx cameo of three strata, Hercules with lion skin head-dress, deep red, white face, grey ground
- 131 A gold Ring set with an onyx cameo of three strata, a laureated bust of a man, laurel dark, bush white, on a mottled ground
- 132 A gold Fob Seal shaped as twisted snakes holding a swivel on which is an antique scaraboid seal, engraved CHOPIN and with the zodiacal sign of Leo; four others; and one of silver 6
- 133 An amber Necklace of 106 graduated round beads, bright yellow, with a Brooch and a pair of Earrings 4
- 134 An amber Necklace of 37 oval beads, brownish yellow, with a Brooch and a pair of long drop Earrings 4
- 135 A string of twenty faceted and graduated amber Beads, dark colour
- 136 A Necklace of seventy-seven graduated Cornelian Beads, clear red currant coloured stones
- 137 An amber Necklace of fifty-five faceted and graduated Beads of honey colour, with a pendant chain of nine large faceted agate beads terminating in a crystal cruciform reliquary set in filigree

- 138 A Belt Pendant of eleven faceted crystal beads, three others shaped, forming a cross, and a crystal cruciform reliquary attached by metal chain work to a ring
- 139 A Belt Pendant of twenty agate and jasper beads, fluted or faceted or oval, terminating in an amber heart, attached by metal chainwork to a ring

The Property of the late W. H. D'Arcy, Esq.,
of Stanmore Hall, Stanmore.

(Sold by order of the Trustees).

- 140 A Normandy peasant Necklace and Buckle in gold, set with diamonds 3
- 141 A Tiger's Claw set as a dolphin in filigree gold; and a gold Pencil Case with a pearl and rose diamonds 2
- 142 A Pendant and Chain in gold, set with pearls, small emeralds, sapphires, rubies and a rose diamond
- 143 A Necklace in silver, the links set with rose diamonds, with enamel medallions
- 144 A lady's gold Watch, by *Autran, Paris*, in case, enamelled in red and green and chased with birds, and a Chatelaine Hook to match, c. 1780 2
- 145 A gold Watch in the shape of a lyre, with enamelled case and hook
- 146 A gold Watch, by *Hessen, Paris*, with enamelled back finely painted with classical figures
- 147 A Watch in locket case, enamelled with figures; and two Bracelet Clasps, set with old paste
6. 148 An enamelled gold Pendant in the form of a bud, enclosing a small bottle, in case 2
- 149 A gold Box, circular, chased and enamelled
- 150 A Louis XV gold Etui, finely chased with figures, containing eight implements 9

7.150

- 151 An oval gold Snuff Box, chased and enamelled, the top set with a portrait of Miss Mellon, afterwards Duchess of St. Albans ; $3\frac{3}{8}$ in.
- 152 A gold Snuff Box, square, closely chased with flowers ; $2\frac{3}{4}$ in.
- 153 An ivory Box, circular, the top set with a porcelain plaque of a girl with a dove, 3in. ; and two mosaic Panels, of fine quality, of cupids, $2\frac{1}{4}$ in.
- 154 A chased silver Snuff Box, oval ; *London* 1813 ; $3\frac{3}{8}$ in.
- 155 An oval silver Snuff Box, the lid embossed with figures ; a small Dutch silver Box ; and a filigree silver Scent Pendant 3
- 156 An ivory Tobacco Rape, carved with dolphins ; and a flat ivory Box carved with a coat-of-arms, $3\frac{3}{4}$ in., *riveted* 2
- 657 157 A Louis XV Purse, the sides with plaques of finely pierced metal work ; and four panels of similar work, *faulty* ; a German Eighteenth Century Pocket Tablet with brass covers with silver perpetual calendar dials, and six Parthian silver coins 13
- 158 A FINE QUALITY MINIATURE on enamel of a man in early Eighteenth Century costume, in sharkskin case
- 159 Two early Nineteenth Century Miniatures, on ivory, apparently of a mother and daughter ; $3\frac{3}{8}$ in. by $2\frac{3}{4}$ in. 2
- 160 An oval Miniature on ivory of an officer of the Waterloo period in uniform, framed ; and another of a young man with frilled shirt ; 3in. by $2\frac{1}{2}$ in. 2

CARVINGS IN IVORY.

- 161 A Triptych, carved with scenes of armed Swiss peasants setting out from their village ; *size, open*, $9\frac{1}{4}$ in. by $6\frac{1}{4}$ in.
- 162 A carving of a nude female Figure reclining on a couch ; 6in.
- 163 A FINELY CARVED STATUETTE of Hercules, with lion's skin and club upon his shoulder ; 7in.

- 164 A PANEL, with a finely designed group of satyrs and children playing with a panther ; $7\frac{3}{4}$ in. by 4in., in massive ormolu frame and stand
- 165 A SIXTEENTH CENTURY SWORD HANDLE, carved with a group of struggling children, the quillons with two other child figures ; 5in.
- 166 A PAIR OF VASES, oviform with loop handles, finely carved with swags of flowers, on ebony and ivory bases ; $14\frac{3}{4}$ in. 4
- 167 AN IVORY BELT FOR A TANKARD, finely carved with a Bacchanalian scene, having at the front a shield with the arms of the Mecklenburg-Schweritz family, signed M.L. (M. Lucchese), $7\frac{1}{4}$ in., with wooden stand and glass shade 3
- 168 A Japanese ivory Tusk, deeply carved with figures and dragons, with cover, on stand ; $9\frac{1}{2}$ in. 2
- 169 An ivory Box, flat oval, inlaid with tortoise-shell and piqué with gold ; $4\frac{1}{4}$ in.
- 170 A pair of Empire Candlesticks in bronze and ormolu, the columns formed of three female figures, on marble bases ; $12\frac{1}{2}$ in., fitted for electric light 2
- 171 A Tazza supporting a small cup, both in onyx, with heavy ormolu mounts, the base supported by three winged goats ; $8\frac{1}{2}$ in. high, diam. $9\frac{1}{2}$ in.
- 172 A pair of Paterae in onyx and agate, 6in., one faulty, with ormolu mounts on marble bases ; $9\frac{1}{2}$ in. high 3
- 173 A Continental enamel Tea Caddy and Cover, $4\frac{1}{2}$ in. ; and a Cornucopia, painted with figures, with gilt mounts, $7\frac{3}{4}$ in. 2
- 174 A Dresden porcelain Cane Handle, crutch shaped, with lion's head ; another, crook-shaped, and a small enamel Box 3

Another Property.

- 175 A carved ivory Plaque of Adam and Eve after the Fall, two kneeling figures at the foot of the Tree of Knowledge ; $8\frac{1}{2}$ in. by $6\frac{1}{2}$ in., in black frame

- 176 A pair of sleeping Greyhounds, in ivory, on ebony and ivory pedestals ; $6\frac{1}{2}$ in. 2
- 177 A carved ivory Casket, the lid with six panels of dancing figures, and the sides with tilting, hunting and other scenes ; $7\frac{1}{4}$ in. by $5\frac{3}{4}$ in.
- 178 An ivory PLAQUE in high relief, finely carved with Venus, Vulcan and Cupids ; $10\frac{1}{4}$ in. by $5\frac{3}{4}$ in.
- 179 An ivory Plaque, finely carved with a scene of the youthful Bacchus being drawn by a bear, with companions ; $13\frac{1}{2}$ in. by $3\frac{1}{2}$ in., framed
- 180 An ivory Plaque of a man with his left hand tied to a branch of a tree, 5in. by $3\frac{1}{4}$ in.
- 181 An ivory Stick Handle carved as two satyrs ; an antique Panel of a couchant stag ; and a Nut carved with a head 3
- 182 A finely carved ivory Diptych in four compartments, representing the Crucifixion, Christ washing the disciples' feet, and two scenes from the life of the Virgin ; open $5\frac{1}{4}$ in. by 4in.
- 183 An ivory Comb, finely carved with scenes from the Nativity and the Crucifixion ; $6\frac{1}{4}$ in. square
- 184 A Head of Inigo Jones on square panel, $3\frac{1}{4}$ in. by $2\frac{1}{4}$ in. ; and a small Plaque of the Virgin and Child with St. Joseph 2
- 185 A large ivory Dish, oval, carved with panels of mythological scenes ; 21in. by 16in.
- 186 An ivory Figure of a Chinese priest, with fan and bamboo staff, on stand ; $9\frac{1}{4}$ in. 2
- 187 A finely carved Chinese Card Case in ivory, with figures and buildings in high relief ; $4\frac{3}{4}$ in. by 3in.

957

- 188 An Ikon pendant, in carved ivory, with filigree silver frame ; and a small brass Triptych, enamelled 2

- 189 Three Ikons of the Virgin and Child, on wood panels 3

690

work

- 190 A Half Door of a Shrine, in brass gilt and engraved with the Annunciation and figures of a Bishop, St. Peter, and another Saint, with slight enamelling; 13in. by 2 $\frac{1}{2}$ in., Fifteenth Century
- 191 An Ikon in brass, with the Crucifixion and scenes from the life of Christ, the background enamelled; 10in. by 5 $\frac{3}{4}$ in.
- 192 A Limoges enamel Plaque of the Annunciation, in colours, signed at the back "*Laudin au fauxbourgs De Manigne a Limoges*"; 5in. by 4 $\frac{1}{2}$ in.
- 193 A Dresden china Box, with Watteau subjects; 3 $\frac{3}{4}$ in. by 2 $\frac{1}{2}$ in.

BUYER

J. Blooper-Kende

Date

3/6/20

AUCTIONEERS

G. Healy

Lot	Amount			Lot	Amount		
	£	s.	d.		£	s.	d.
29.	2	10	..	OK CR			
30	1	10	.				
256	2	4	.				
	3	5	.				
	7	5	.				

SECOND DAY'S SALE.

ENGLISH POTTERY.

FROM THE WHITELEY TOLSON COLLECTION.

PLAIN SALT GLAZED WARE.

LOT

- 194 A Fruit Plate, with basket edge partly pierced, the centre embossed with fruit, $9\frac{1}{2}$ in.; and a Wall Cornucopia, with figure of Plenty, *faulty* 2
- 195 A Tray, leaf-shaped, on three feet, the edge of moulded leaves; $7\frac{1}{2}$ in.
- 196 A heart-shaped Sweetmeat Tray, decorated with scrolls; $4\frac{1}{4}$ in.
- 197 A Cream Jug, on three feet, moulded with shells and masks, $3\frac{1}{2}$ in.; and another, oval, without feet, $4\frac{1}{2}$ in. long 2
- 198 A TEA CADDY of square shape, the sides moulded with tea plants, inscribed "CIA or TE herb" and *Herb Teng*
* * A similar Caddy is illustrated in English Earthenware by A. H. Church.
- 199 A BOTTLE with slightly bulbous neck and bell mouth, decorated with applied birds and flowers; $8\frac{3}{4}$ in., the mouth chipped
- 200 A Teapot, without cover, formed as a kneeling camel with figures; and another, with cover, octagonal, with panels of animals; *both faulty* 3
- 201 A Teapot and Cover, diamond shaped, the spout formed as an arm holding a snake; $5\frac{1}{2}$ in., *faulty* 2
- 202 A Teapot and Cover in the form of a house; $4\frac{3}{4}$ in. 2
- 203 A Teapot and Cover, heart shaped, decorated with vines; 5in. 2

- 204 A Teapot and Cover with lion knob, quatrefoil shaped, decorated with shells and oak foliage, on three feet ; 6in. spout chipped 2
- 205 A Teapot and Cover with knob, of similar shape to last, decorated with shells, foliage and birds ; 5½in. 2

DECORATED WITH BLUE.

- 206 A cylindrical Mug, with scratched blue decoration of flowers ; 5in., slightly cracked
- 207 A small globular Teapot and Cover, moulded with shells and foliage, the former of which and two of the bands are in blue ; 4½in. high 2
- 208 A Cream Jug with scalloped rim, on three feet, moulded with vines and cupids, and slightly spotted with blue ; 6½in. long

ENAMELLED IN COLOURS.

- 209 A BOWL, finely enamelled with a Chinese pattern of a fence, peonies and hawthorn, the inside with a peony, and the rim with a diaper border ; 5in.
- 210 A Teapot, globular, with rustic handle and spout, enamelled with a pierrot and a reaper, the rim and lid with flowers and diaper panels ; 4½in. high 2
- 211 A small globular Teapot and Cover with rustic handle and spout finely enamelled with flowers ; 3¾in. high 2
- 212 A Teapot and Cover, globular, finely enamelled with a lady with a churn between flowering plants, and on the other side with a bird and flowers ; 4in. high 2
- 213 A JUG, enamelled with flowers in reserve panels, on a chocolate brown ground ; 6½in.
- * * * Formerly in the Holland Blades Collection.
- 214 A Teapot, with plated cover, enamelled with reserve panels of flowers on a crimson ground ; 5½in. 2

- 215 A Teapot, with metal cover, globular with rustic handle and spout, decorated with a panel of Frederick III of Prussia ; and another of his arms with inscriptions, both with a turquoise background, on a ground of ermine spots ; $4\frac{1}{2}$ in. 2
- 216 A Teapot, without cover, globular, $3\frac{1}{4}$ in. ; and a small Cream Jug, 3in. ; both enamelled with flowers, and slightly chipped 2
- 217 A pair of Tea Cups and Saucers, enamelled with flowers ; a Milk Jug, pear shaped, enamelled with a lady and a house, $4\frac{1}{2}$ in., and a Cream Jug, 3in., with flowers, both faulty 6

WHEILDON AND EARLY WARES.

- 218 An Elers ware Coffee Pot and Cover, decorated with applied Chinese figures and scroll ornaments ; $8\frac{3}{4}$ in. 2
- 219 A Jackfield Sauce-boat with scalloped edge and hound handle, decorated in gilt, on three lion mask feet ; 8in.
- 220 A Wheildon pineapple Teapot and Cover, with fine glazes in orange and green ; $4\frac{1}{2}$ in. 2
- * * * Illustrated in Burton's " English Earthenware."
- 221 A Wheildon Teapot, without cover, with mottled glaze ; a tortoise-shell Cream Jug on three feet, *chipped* ; and a small Cream Jug, splashed with tortoise-shell 3
- 222 A Wheildon Teapot and Cover, globular, olive-brown ground with an applied floral pattern ; *chipped* 2
- 223 A Wheildon ware Cup, formed as a head of Lord Rodney ; $4\frac{3}{4}$ in.
- 224 A Wheildon Tea Caddy, with raised fruit ; and a Wheildon Cream ware Wall Vase, with female mask, *faulty* 2
- 225 A pair of Wheildon small figures of sheep ; another of a Cock ; two Boxes in the shape of a horse's and a bull's head, and a small heart-shaped Scent Bottle 6
- 226 A Wheildon cream ware Teapot and Cover, painted in transverse bands of colour ; 5in. 2
- 227 An agate ware Teapot and Cover, with rustic spout and handle, on three feet, bird knob ; $5\frac{3}{4}$ in., *chipped* 2

LEEDS WARE.

- 228 Two Dishes with moulded edges, 18in. and 16½in., and a deep dish, 13in., all marked LEEDS POTTERY; and a shallow Dish, 18in., unmarked; the two last with feathered edges 4
- 229 A Teapot and Cover, globular, painted with festoons of flowers; 4½in. 2
- 230 A cylindrical Mug printed with a "willow pattern" scene, marked LEEDS POTTERY, 5in.; and a black printed globular Teapot and Cover, and a small Plate 4
- 231 A Group of a bull butting at a dog, in cream ware, on oblong rock base; 5in. high, the tail restored
- 232 A Tea Caddy, decorated in blue, marked LEEDS POTTERY; and an oval Teapot and Cover, with surface marbling 3
- 233 A Milk Jug, two Plates, 6¾in., and another, 9½in. all decorated in blue 4
- 234 A two-handled Loving Cup printed in green, 6in.
- 235 A Jug with moulded and coloured portraits of Nelson and Berry; and a Cup and Saucer, blue, printed with mermaids and emblems of TRAFALGAR 3

LIVERPOOL WARE.

- 236 A Jug, printed in black, on the one side with "Susan's Farewell," and on the other with a frigate in full sail; 9½in.
- 237 A Bowl, printed in black, on the outside with "Jemmy's Farewell" and "Return," and on the inside with "Susan's Farewell"; 11½in., rivetted
- 238 A Coffee Pot and Cover, printed in black, on the one side with a garden, and on the other with a pastoral scene; 9¾in. 2
- 239 A cylindrical Mug, printed in black with "The Tythe Pig"; 6¾in.

VARIOUS WARES.

- 240 A Staffordshire Mug in blue and white ; a Lane End globular Teapot, printed with figures and moral maxims, silver-mounted, and Ironstone Mug, marked FENTON STONE WORKS ; and a copper lustre Jug with portrait of Queen Caroline 5
- 241 A Castleford Teapot and Cover, in white semi-porcelain, outlined in blue ; a black basalt Cream Jug, marked D.D. & CO., CASTLEFORD POTTERY ; and a black basalt Teapot, without cover, incised "*John and Jane Lockett, Lane End, near Newcastle, Staffordshire, March 16, 1796*" 4
- 242 A Rockingham Coffee Pot and Cover in brown with gilt decoration, and a Cream Jug, both marked ; and a blue printed Plate, marked BRAMELD 4
- 243 A Rockingham Teapot to hold a gallon, in brown with raised birds and flowers in colours, *damaged*
- 244 A (?) Swinton Pottery Goblet with two handles, printed with hunting scenes coloured ; $5\frac{1}{4}$ in.
- 245 A Staffordshire Wall Cornucopia, with raised figure of a cupid in blue, $9\frac{1}{2}$ in. ; and a Don Pottery Cup and Saucer, printed in blue, marked 3
- 246 A very unusual Salt Kit in cream slip on a red body, scratched with a design of rose, thistle, and a bird on a tree in brown and blue, with cipher W.S.P. ; 8in., *faulty*
- 247 A Staffordshire Jug with half length embossed figures of Wellington and Hill, coloured
- 248 A Wedgwood cream ware Mug and Caddy printed in black ; an enamelled Cup and Saucer ; a printed Plate ; a small Flower Vase ; and a small blue and white Sweetmeat Dish 8
- 249 A Wedgwood Plate in white jasper, with decoration of acanthus, floral festoons and medallions in blue and yellow ; $8\frac{1}{2}$ in., marked
- 250 A Wedgwood Jug in black basalt, enamelled with flowers, $5\frac{1}{2}$ in. ; a cane ware Vase with ivy leaves in red ; and a Turner Cream Jug and Cover, in blue and white jasper, all marked 4

- 251 A pair of Delft large bottle-shaped Vases, decorated with flowers ; $19\frac{1}{2}$ in. 2

RALPH WOOD GROUPS.

- 252 A FINE GROUP OF "THE VICAR AND MOSES," the parson asleep in the pulpit with the clerk in his desk below, brilliant glazings ; $9\frac{3}{4}$ in.
- 253 A PAIR OF GROUPS, in white, of "Shepherd and Shepherdess," with dog, goat, and lamb, and of "The Bird-cage," of a man and girl near a brook with a bird and a lamb, both marked Ra. Wood, Burslem, with the mould numbers 88 and 89 respectively ; 10in. 2
- 254 A "FAIR HEBE" JUG, by *Voyez*, having on the one side a man offering a bird's-nest to a girl, with "FAIR HEBE" on scroll above, and on the other, a man with cap in hand, dog jumping up at him, and a bottle impressed R.G. below, "A BUMPER" twice repeated on scroll above, all against a tree trunk ; $8\frac{3}{4}$ in., lip cracked

STAFFORDSHIRE FIGURES.

- 255 A Wheildon Figure of a boy with blue coat and yellow breeches, 5in. ; and another of a lady with fan, in yellow and manganese, $5\frac{1}{4}$ in. 2
- 3.5.0 60/ 256 A Pepper Pot in the form of a seated monkey smoking a pipe, 5in. ; and a Group of Goat and Kid on rustic base, 3in. 2
- 257 A Wood and Caldwell Figure of an Eagle, on black base, 8in. ; and another of a recumbent Lion, on base, $4\frac{3}{4}$ in. long 2
- 258 A Staffordshire Group of Hercules overcoming the Cretan bull, in strong colourings, on oval base ; $5\frac{3}{4}$ in. long
- 259 A set of four Figures of the Seasons by *Neale & Co.*, of graceful child figures, harmoniously coloured, each marked with the season under the base ; $5\frac{1}{2}$ in. 4
- 260 A Staffordshire Figure of Liston in the character of "The Landlord," by *Wood*, inscribed on the base, incised number 22 underneath ; $6\frac{1}{2}$ in.

- 261 A Staffordshire Figure of a man seated, playing the flute, impressed 20 underneath ; $5\frac{1}{2}$ in.
- 262 A Staffordshire Figure of a youth with cup and grapes, $7\frac{3}{4}$ in. ; and another of a Lady Archer, with bow, arrow, and target ; 7in. 2
- 263 A FINE QUALITY FIGURE OF FLORA, by *Neale & Co.*, with lamb, on square base, with acanthus foliage in green, inscribed "Floro" ; $13\frac{1}{2}$ in.
- 264 A fine quality Figure of Ariadne, holding a two-handled bowl which rests on a pedestal, on square marbled base, inscribed ARIADNE ; 13in.
- 265 A Staffordshire Figure of the London Cry, "Buy a Broom," in brilliant colourings ; $6\frac{1}{4}$ in.
- 266 AN IMPORTANT STAFFORDSHIRE GROUP of Mother and Child, the mother seated looking down upon the child on her knee, who holds out its arms to her, in harmonious colourings, on square marbled base ; 13in.
- * * * Exhibited in the Frank Falkner Collection in the Victoria and Albert Museum.
- 267 A pair of Staffordshire Figures of Peace and Justice, the former extinguishing a torch and the latter with closed eyes ; *the sword and scales missing* ; 8in. 2

LEEDS POTTERY FIGURES.

- 268 A Figure of Venus, in white, standing holding doves to her breast, holding Cupid with her right hand and on her left a dolphin, marked ; $7\frac{1}{2}$ in.
- 269 A Figure of Amphitre, in colours, standing with right hand on dolphin and Cupid at her side ; $8\frac{3}{4}$ in.
- 270 A pair of Figures of a Boy playing the tambourine and a girl the hurdy-gurdy, in rich colourings ; $7\frac{1}{2}$ in., both marked
- 271 A Group of Charity, with three children ; $7\frac{1}{2}$ in.
- 272 A Figure of a Girl with fruit in her apron, $5\frac{1}{2}$ in. ; and of a Boy, similar, $5\frac{1}{8}$ in. 2

- 273 A Figure of a Boy Skating, holding his cloak round him ;
7½in.
- 274 A Figure of Liston as Paul Pry ; 6in.
- 275 A Group of two Boys struggling for grapes, on circular base ;
5in.

Other Properties.

- 276 An old French faience Desk with gilt hinges, two compartments, one fitted with inkwells, sloping front, decorated with panels of views in lake, and the inside with floral bouquets ; 14¼in. by 11¾in.
- 277 AN OLD DRESDEN PLATE, 14¼in., the centre finely painted with four groups of Chinese figures, and the rim with four panels of shipping and skating scenes, on a gold diaper and scroll ground
- 278 A SÈVRES BUST OF MARIE ANTOINETTE on pedestal, with turquoise glaze and gilt ; 14½in.
- 279 A pair of Sèvres Vases and Covers, decorated with a frieze of Bacchanal scenes in gold on a gros bleu ground, with goat handles and mounts in ormolu ; 17in.
- 280 Three pairs of Cupids, all with baskets of flowers ; 6in.,
4½in., and 4in. 6
- 281 A Chinese porcelain Bottle, decorated with kyilins in underglaze blue, and brown-red ; 9½in.
- 282 A Chinese porcelain small Bowl, green on orange ; another, black on green ; and a third, in underglaze blue, *cracked* 3
- 283 A pair of old Imari ware Plates with moulded edges, 13½in. ;
and a deep Plate decorated with lotus, 15¼in. 3
- 284 A Chinese porcelain large Vase and Cover with mazarine blue glaze ; 25in., *the cover faulty* 2
- 285 A Chinese porcelain male Figure, with cap in one hand and lotus flower in the other, in bright yellow robe enamelled with flowers ; 8in.
- 286 A Chinese porcelain Figure of Kwan-yin, coloured in blue, green and purple ; 8¼in.

- 288 A Wedgwood blue and white printed Dinner Service, decorated with flowers: of Salad Bowl; three small Sauce Tureens, Covers and Stands; four larger Tureens with Stands and two Covers; two oval Vegetable Dishes and Covers, one with liner; three square Dishes and Covers; four Pie Dishes; eighteen oval Meat Dishes, 10in. to 20in., and a Strainer; eighteen Soup Plates; fifty-five large and twenty-three small Plates, and three others; *five pieces faulty* 153
- 289 An old Wedgwood blue and white jasper Vase, with silver gilt cover with the London mark of 1796, oviform body decorated with a frieze of "Blind Man's Buff"; 10½in. 2
- 290 A set of three Wedgwood Spill Vases and Covers in cream ware, with reeded horizontal bands in blue; 10in. and 4¾in. (2) 6
- 291 A Wedgwood bust of Sir Isaac Newton, 9¼in.; and plaques of Fenelon and Marie Antoinette, all in black basalt; and blue and white jasper Medallions of Madame de Seuderi and Sir Isaac Newton, both framed 5
- 292 A (?) LEEDS POTTERY BUST OF JOVE, coloured, with thunderbolt in his right hand, and eagle beside him, on pedestal, the sides of which are painted with views; 16½in.
- 293 A Staffordshire Figure of a Hawk, in bright colourings, on square base; 6½in.

The Property of a Gentleman.

A COLLECTION OF

LOWESTOFT SOFT PASTE CHINA AND FIGURES.

BLUE AND WHITE.

- 294 A set of four small leaf-shaped Cream Boats, with Chinese scenes; 2⅞in. 4
- 295 A helmet-shaped Cream Boat; another moulded leaf-pattern, and three others various 5
- 296 Three leaf-shaped Sweetmeat Dishes, decorated with vine pattern 3

- 297 Two leaf-shaped Sweetmeat Dishes, with solid blue ground,
and two others ; and a small Feeder 5
- 298 Three various Butter Shells, decorated with flowers 3
- 299 A Sauce-boat with moulded panels, $8\frac{1}{4}$ in. ; and another,
7in., both with Chinese Scenes 2
- 300 A Sauce-boat, moulded, 8in. ; and another, 7in., both
with flowers ; and a third, without foot, painted inside
with Chinese scene, 7in. 3
- 301 A pair of Mustard Pots without covers, decorated with
flowering bushes 2
- 302 A Coffee Pot and a Tea Caddy, both without covers, of
similar pattern 2
- 303 A Coffee Pot and Cover, $7\frac{1}{2}$ in. ; a moulded leaf Jug, 8in. ;
and a printed cylindrical Mug, 5in. ; *all faulty* 4
- 304 A Coffee Pot and Cover, fluted pear-shape, decorated with
spray foliage, crossed swords mark ; $11\frac{1}{2}$ in. 2
- 305 A Jug, moulded leaf shape with mask lip, decorated with
flowers ; $9\frac{1}{2}$ in.
- 306 A pair of Jugs with globular bodies, moulded with flowers,
decorated with Chinese scenes ; 8in. 2
- 307 A cylindrical Mug, printed with butterflies and flowers ;
6in.
- 308 A cylindrical Mug, with Chinese scenes ; $5\frac{7}{8}$ in.
- 309 A circular Basket with pierced sides, decorated with flowers ;
 $8\frac{3}{4}$ in.
- 310 A PAIR OF OVAL BASKETS, with pierced sides with raised
flowers and twisted handles, the inside printed with a
spray ; $9\frac{1}{4}$ in. 2

- 311 A pair of circular shallow Baskets with pierced sides, painted with flower sprays ; $9\frac{1}{8}$ in. 2
- 312 A small globular Teapot and Cover ; a cream Jug and a Cup and Saucer, with Chinese flowers 5
- 313 A Cream Jug and Cover, and a Saucer decorated with hawthorn ; *the latter chipped* 3
- 314 A Milk Jug and a Sugar Basin and Cover, printed with Chinese flowers and fence, crescent mark 3
- 315 Four small Cups and Saucers, printed with flowers and butterflies, crescent mark 8
- 316 A pair of Cups and Saucers ; another, decorated with flowers ; and a Cup and Saucer, with willow pattern 8
- 317 Two Cups and Saucers, with Chinese scene ; and another, moulded, with views in panels 6
- 318 A Cup and Saucer, not matching ; a large Cup ; and a small Bowl with flowers in bright blue 4
- 319 A Milk Jug, with Chinese pagodas ; and a Cream Jug with flowering plants 2
- 320 Two Cream Jugs ; $3\frac{1}{2}$ in. and 3in. 2
- 321 An oval Butter Dish, with moulded panels, 5in. ; and a Tea Poy without cover 2
- 322 A Sugar Basin and Cover, not matching ; and a Bowl, 7in., *cracked* 3
- 323 A Bowl, $6\frac{1}{4}$ in. ; and another, $5\frac{3}{4}$ in., of similar pattern, decorated with flowers 2
- 324 A Bowl, of similar pattern to last ; and another, with flowers and fence ; *both* $5\frac{3}{4}$ in. 2
- 325 A Bowl, printed with flowers and butterflies ; $7\frac{1}{2}$ in. 2
- 326 A Bowl, decorated with peonies and birds ; 10in., *rivetted*
- 327 A Bowl, finely moulded with flowers and scroll panels enclosing Chinese scenes ; $6\frac{1}{2}$ in., *cracked*
- 328 An oval Dish with scalloped edge, painted with a Chinese water scene ; 9in.

- 329 A pair of oval Dishes, with crinkled and scalloped edges, moulded in panels and decorated with flowers in bright blue ; $7\frac{1}{2}$ in. 2
- 330 A large Saucer with scalloped edge ; another with Chinese figures ; and a small deep Saucer 3
- 331 A powder blue Dish, octagonal, with reserve panels of Chinese scenes and flowers, imitation Chinese characters mark ; $10\frac{1}{4}$ in., *chipped*
- 332 A Knife and Fork, with Lowestoft china handles, decorated in blue 2
-

- 333 A globular Teapot and Cover, with Chinese scenes pencilled in black and gilt ; $5\frac{1}{2}$ in. 2

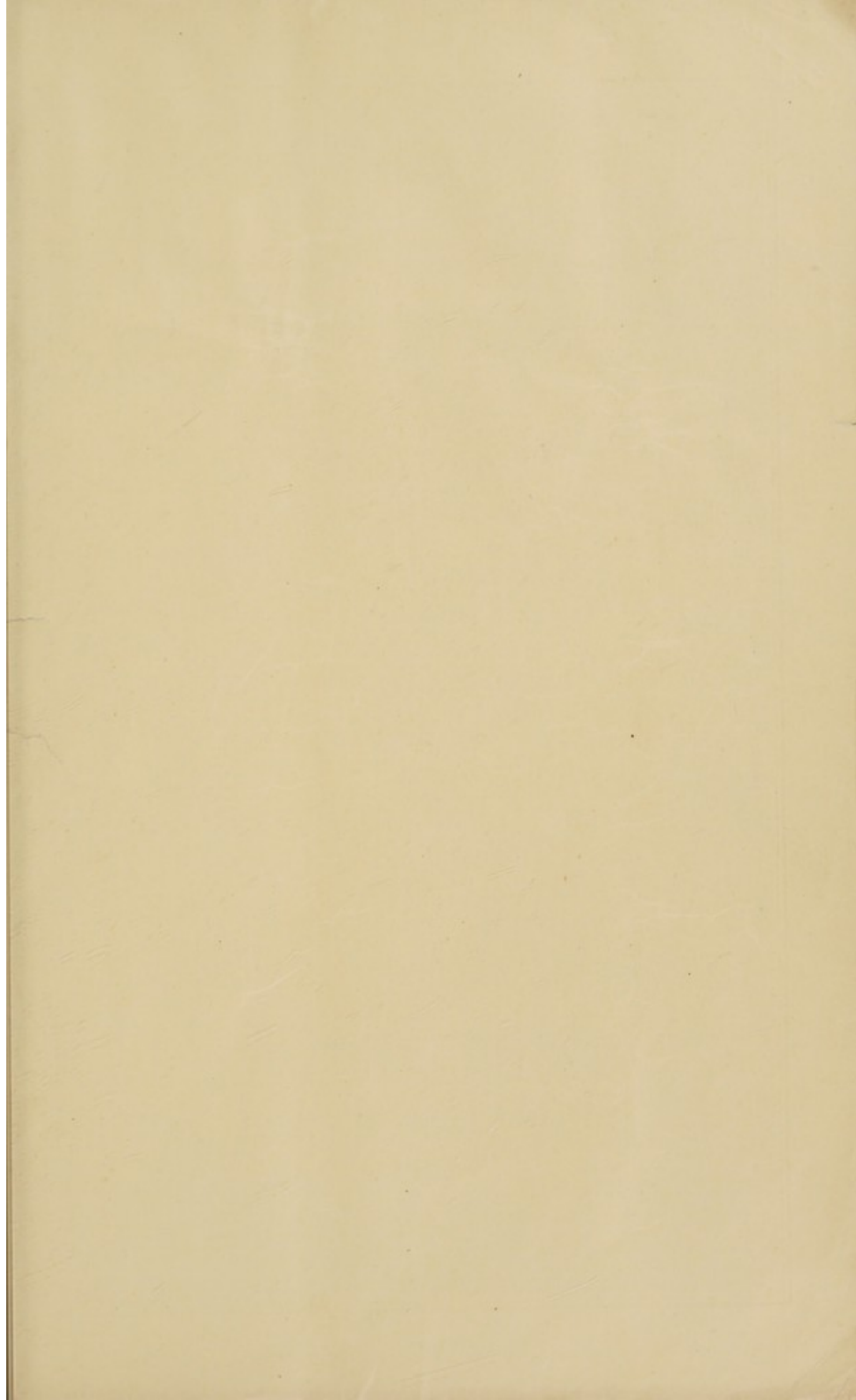
WITH DECORATION IN COLOURS.

- 334 A helmet-shaped Cream Boat, and another without foot, both moulded and decorated with flowers 2
- 335 Two small Cream Jugs, decorated with Chinese flowers ; and another imitating Worcester flowers ; *the last cracked* 3
- 336 Another similar lot ; *one faulty* 3
- 337 A small Cream Jug, decorated with mandarin figures and two others, with flowers 3
- 338 A Cream Jug of bulbous form, decorated with flowers in Chelsea style ; *the lip slightly chipped*
- 339 A Bowl, 6in., decorated with Chinese scenes in red and blue, slightly gilt
- 340 Another Bowl, of similar size and pattern
- 341 Part of a Tea Set of Bowl, Cream Jug, two large Cups and a Saucer, and five smaller Cups and two Saucers, decorated with a Chinese pattern of a peony, trees and a fence 12
- 342 A globular Teapot and Cover, and a Bowl, 6in., finely decorated with mandarin figures 3
- 343 An oviform Teapot and Cover ; a Bowl and a Tea Cup, decorated with a Chinese pattern of ducks and plants in red and blue, with slight gilding 4

- 344 A Bowl, 6in., Cream Jug, three Cups and two Saucers, *one faulty*, decorated with a Chinese "willow pattern," in similar colourings to last 7
- 345 A Bowl, 5 $\frac{7}{8}$ in.; and a Cup and Saucer, decorated with a Chinese pattern of a bird and a tree with gnarled trunk 3
- 346 A Cream Jug and a Cup and Saucer, decorated with mandarin figures 3
- 347 A pair of small Bowls, 4 $\frac{1}{4}$ in., with mandarin figures; and another, 4 $\frac{3}{4}$ in., with flowers .
- 348 A Bowl, 5 $\frac{3}{4}$ in.; and a Cup and Saucer, with similar mandarin figures, but differing in the borders 3
- 349 A globular Teapot and Cover with plain knob, decorated with "famille rose" flowers; 5 $\frac{3}{4}$ in. 2
- 350 Another of similar style; 5 $\frac{3}{4}$ in. 2
- 351 A Cup and Saucer with mandarin figures; another with deer; and a third with flowers 6
- 352 Two Cups, *one cracked*, and a Saucer with flowers in red and blue; a Cup and Saucer with "famille rose" flowers; and another with conventional European design 7
- 353 A bulbous Mug, 5 $\frac{1}{2}$ in., decorated in brilliant colours with birds in a landscape, imitation Plymouth mark
- 354 An oviform Teapot and Cover with plain knob, decorated with coloured flowers and panels of coral red ground in Worcester style; 6in. 2
- 355 A globular Teapot and Cover with floral knob, finely painted with Chinese figures 2
- 356 A small Teapot, of depressed globular shape, finely enamelled with "famille rose" flowers and insects; *faulty* 2
- 357 A Coffee Pot and Cover decorated with flowers in puce, with slight gilding; 9in. 2
- 358 A set of three small Vases, only one with a cover, of narrow pear shape, decorated with panels of Chinese figures and flowers on a ground of blue whorls; 6 $\frac{1}{4}$ in. and 5 $\frac{1}{2}$ in. (2) 4

FIGURES.

- 359 A Figure of Neptune, draped and crowned with his foot on a dolphin ; $8\frac{3}{4}$ in.
- 360 A Figure of Venus, holding a flaming heart, with right hand on dolphin and Cupid at her side ; $8\frac{1}{4}$ in.
- 361 A Figure of a Boy, playing a pipe, with dog seated at his feet, on circular base, in bright colours and gilt, imitating Chelsea ; $6\frac{1}{2}$ in.
- 362 A small Figure of a Girl, with flowers in her apron ; $5\frac{3}{8}$ in.
- 363 A small Figure of Autumn, a man with sheaf of corn ; $4\frac{7}{8}$ in.
- 364 A small Figure of a man with a duck over his shoulder ; $5\frac{1}{2}$ in.
-



2. pm

BAKER, LEIGH & SOTHEBY

THE FIRM COMMENCING WITH SAMUEL BAKER IN

1744.

SOTHEBY, WILKINSON & HODGE.

1920.