

Sales catalogue: Sotheby's

Publication/Creation

18 July 1919

Persistent URL

<https://wellcomecollection.org/works/sv5vvtva>

License and attribution

This work has been identified as being free of known restrictions under copyright law, including all related and neighbouring rights and is being made available under the Creative Commons, Public Domain Mark.

You can copy, modify, distribute and perform the work, even for commercial purposes, without asking permission.



Wellcome Collection
183 Euston Road
London NW1 2BE UK
T +44 (0)20 7611 8722
E library@wellcomecollection.org
<https://wellcomecollection.org>

W.A. 11mm/cm 15a/20/41371
OK Ego.

CATALOGUE
OF
Greek, Roman, Egyptian
AND OTHER
Antiquities

FROM VARIOUS SOURCES,

INCLUDING

GREEK AND ROMAN GLASS, TANAGRA AND OTHER FIGURES,
A FINE ETRUSCAN MIRROR, EGYPTIAN ORNAMENTS, A
GRÆCO-ROMAN SWORD WITH GOLD MOUNTINGS,

ALSO AN EXTREMELY RARE

GREEK SILVER SITULA (BUCKET),

The property of G. H. Trench, of Tyes, Staplefield, Sussex,

A COLLECTION COMPRISING

AN EARLY ENAMELLED BRONZE FIGURE OF CHRIST, A
BRONZE GROUP—DIANA WITH DOG,

The Property of Richard Morton, Esq., formerly Director of the
American School for Classical Studies in Rome,

AND OTHER PROPERTIES.

WHICH WILL BE SOLD BY AUCTION

BY MESSRS.

SOTHEBY, WILKINSON & HODGE

(SIR MONTAGUE BARLOW, K.B.E., LL.D., M.P., G. D. HOESON, M.A., & MAJOR F. W. WARRE, O.B.E., M.C.).

Auctioneers of Literary Property & Works illustrative of the Fine Arts,

AT THEIR LARGE GALLERIES, 34 & 35 NEW BOND STREET, W. 1.

On FRIDAY, JULY 18th, 1919,

AT ONE O'CLOCK PRECISELY.

May be Viewed Two Days Prior.

Catalogues may be had.

Spottiswoode, Ballantyne & Co. Ltd., Printers, London, Colchester and Eton.

CONDITIONS OF SALE.

- I. The highest bidder to be the buyer; and if any dispute arise between bidders, the lot so disputed shall be immediately put up again, provided the auctioneer cannot decide the said dispute.
- II. No person to advance less than 1s.; above five pounds 2s. 6d., and so on in proportion.
- III. In the case of lots upon which there is a reserve, the auctioneer shall have the right to bid on behalf of the seller.
- IV. The purchasers to give in their names and places of abode, and to pay down 10s. in the pound, if required, in part payment of the purchase-money; in default of which the lot or lots purchased will be immediately put up again and re-sold.
- V. The sale of any lot is not to be set aside on account of any error in the enumeration of the numbers stated, or errors of description.
- VI. The lots to be taken away, at the buyer's expense, immediately after the conclusion of the sale; in default of which Messrs. SOTHEY, WILKINSON & HODGE will not hold themselves responsible if lost, stolen, damaged, or otherwise destroyed, but they will be left at the sole risk of the purchaser. If, at the expiration of Two Days after the conclusion of the sale, the lots are not cleared or paid for, they will then be catalogued for immediate sale, and the expense, the same as if re-sold, will be added to the amount at which they were bought. Messrs. SOTHEY, WILKINSON & HODGE will have the option of re-selling the lots uncleared, either by public or private sale, without any notice being given to the defaulter.
- VII. Upon failure of complying with the above conditions, the money required and deposited in part of payment shall be forfeited, and if any loss is sustained in the re-selling of such lots as are not cleared or paid for, all charges on such re-sale shall be made good by the defaulters at this sale.

Gentlemen who cannot attend this Sale may have their Commissions faithfully executed by their humble servants,

SOTHEY, WILKINSON & HODGE,

34 & 35, New Bond Street, London, W. (1).

Telegraphic Address: "Abinitio, Phone, London." Telephone: Mayfair 4689

In sending Commissions please refer to this Catalogue as "BIRCHWOOD."

COMMISSIONS SENT BY TELEPHONE ARE ACCEPTED ONLY AT THE SENDERS RISK, AND MUST BE CONFIRMED BY LETTER OR TELEGRAM.

A COLLECTION OF EARLY GREEK GLASS AND CYPRIOTE TERRA COTTA.

From the Laurence Cesnola Collection.

300—200 B.C. CYPRUS.

14/-	60/-	1	A 7-in. bottle; ditto 4½ in.; ditto 3½ in.	3
14/-	15/-	2	Two 5½-in. Ampullæ	2
	50/-	3	Two 5-in. Ampullæ; and two 2¼-in. bowls	4
17/-	60/-	4	A 7-in. Lachrymatory; two 6-in. Ampullæ; and a 2¾-in. bowl	4
21/-	70/-	5	A 4-in. two-handled Lachrymatory; 3½-in. ditto; 2½-in. bowl; and odd damaged pieces	3
	21/-	6	A 7½-in. Ampulla, 5-in. ditto; and a 5-in. Lachrymatory	3
10/-	87/-	7	A 3-in. bowl; and a 2½-in. ditto (1 cracked)	2
18/-	25/-	8	A 5½-in. Ampulla; and 2 Lachrymatories, 6 in. and 4 in.	3
		9	Two 5-in. Ampullæ	2
16/-	30/-	10	A 7-in. Lachrymatory; 5-in. ditto; and a 6-in. Ampulla	3
18/-	15/-	11	A 6-in. Ampulla; and two 3½-in. Lachrymatories	3
	50/-	12	Two Unguentaria, 8 in. and 7 in.	2
24/-	30/-	13	Three ditto, 7 in., 5 in., and 3½ in.	3
9/-	50/-	14	A 6-in. Lachrymatory; and two 5-in. ditto	3
13/-	20/-	15	A 6-in. Ampulla; and two Lachrymatories, 5¾ in. and 4 in.	3
40/-	25/-	16	An 8-in. Unguentarium; and two ditto, 3 in. and 2½ in.	3
	30/-	17	Two 5-in. Ampullæ; and a 6-in. Lachrymatory	3
14/-	20/-	18	Three 5-in. Unguentaria (1 damaged); and a 3-in. Lachrymatory	4
18/-	60/-	19	A 5-in. globular Ampulla; and two Lachrymatories, 4 in. and 3½ in.	3
16/-	90/-	20	A 3½-in. bowl; and a 3-in. ditto	2
10/-	40/-	21	A 7-in. Ampulla; and a 3-in. globular bottle	2
22/-	25/-	22	A 5½-in. Ampulla; a 3½-in. pear-shaped bottle; and a 3½-in. Lachrymatory	3

25/-	25/-	23	Two long-neck bottles, 8 in. and 7 in.; and a 4-in. Lachry-matory	3
15/-	15/-	24	A 6½-in. long-neck bottle; a 6-in. Ampulla; and two 2½-in. Lachrymatories	4
34/-	74/-	25	Four 6-in. Ampullæ; and 2 bottles, 7 in. and 5½ in.	6
32/-	6/-	26	A 6-in. double bottle with handles; and 12 various	13
11/-	40/-	27	A 9-in. Lachrymatory; a 4-in. Ampulla; and a shaped ditto	3
25/-	25/-	28	23 bottles; and a quantity of fragments	23
		29	Eight terra-cotta and other lamps; and a bird	9
16/-	60/-	30	Twenty-one terra-cotta masks; one marble ditto; and a foot	23
		31	Eleven terra-cotta bottles various; and three black ointment pots	14
20/-	50/-	32	Three Greek Cups; Cover; Seal; two-handled bowl; nine black jugs, vases, etc.	15
10/-	70/-	33	A 7½-in. terra-cotta Kylix: two figures; two animals; and three odd pieces	8
		34	4½-in. Fowls, ornamented with incised work; a dog; a boy seated; figure of a Goddess; a child; duck; leg; and grotesque figures, some on olivewood stands	8
8/-	90/-	35	14 clay moulds for casting coins; 13 glass bottles; and fragments	27
60/-	6/-	36	The original illustrated Album of the Cesnole Collection	

ANCIENT GREEK AND ROMAN GLASS FROM PALESTINE.

28/-	90/-	37	Four ampullæ, or perfume bottles, with wide bases, long necks, and wide lips, uncleaned but with good iridescence, 7 in. to 8 in. high	4
40/-	80/-	38	Four similar	4
32/-	75/-	39	Four ampullæ with globular bases, 7 in. to 8 in.	4
24/-	60/-	40	Four of similar form, 6½ in.	4
32/-	50/-	41	An ampulla with cone-like base, 7¼ in.; one with a fine iridescence, 7 in.; and 2 others	4
25/-	90/-	42	Four ampullæ with globular bases, 6 in. to 8 in.	4
22/-	60/-	43	Two ampullæ with flat bases and slender necks; and 2 others	4

- 20/- 60/- 44 Three bottles; a vase; and a globular bottle (imperfect) 5
- 20/- 30/- 45 Two double stibium bottles; and a standing bottle with trailed-decoration and two loops on the lip, $5\frac{1}{2}$ in. 3
- 36/- 87/- 46 A stibium bottle; a globular vase with handles and dark-green trailed decoration; and two bottles with loops of Arab date 4
- 26/- 60/- 47 A bottle with handle and spout of brownish glass, 5 in. (Arab period); and a small globular bottle of reddish-brown glass 2
- 40/- 58/- 48 A double stibium bottle of green glass; a bottle with spirally-trailed lines and decorative loops; and a fine iridescent ampulla 3
- 49 A jug of red ware with upright lines on the neck, 12 in.; 2 jugs of Cypriote style; 12 lamps; 4 small jugs of black ware; piece of a Roman mortarium; and 12 other early pieces 32
- 46/- 87/- 50 Eleven terra-cotta lamps; 22 pieces of early pottery; 2 Roman bronze keys; some bronze fragments; a lion head in bronze; and 2 grotesque lead masks of Roman period; fragments of glazed tiles, etc.; and 3 Arab pipe-bowls
- 110/- 6/- 51 A predynastic Egyptian vase of globular form, with slight side loops in black and white granite, 4 in. high, 5 in. diam.; and an Egyptian alabaster vase, $4\frac{1}{2}$ in. 2

TANAGRA AND OTHER TERRA COTTAS, &c.

- 18/- 10/- 52 Figure of a female seated on a rocky base, her dress looped on her right shoulder, and in her left hand an apple 1
- 58/- 97/- 53 A standing female figure on an oval base, 10 in. high; and another $7\frac{1}{2}$ in. 2
- 54 A standing figure of a lady wearing a hood, $7\frac{1}{2}$ in.; and another somewhat smaller 2
- 55 Two draped female statuettes 2
- 56 A draped female holding a rabbit in her right arm, 9 in.; and a small statuette of a female walking 2
- 93/- 90/- 57 A figure of a boy seated on a cippus, wearing sun hat and cloak; and a figure of a girl seated, with a small figure on her left shoulder 2
- 90/- 7/- 58 A small figure of a child completely draped; a tragic mask; and a figure of a woman seated, nursing an infant 3

- 59 A head and bust of a woman; a mask of a satyr; and three early figures of women (two holding cytheræ) from Cyprus, *from the Laurence Cesnola Collection* 5
- 60 A VERY FINE GROUP OF HERCULES, THE CRETAN BULL, AND IOLAUS: Hercules, at left end of the group, with club raised, is grasping the animal's horn, and on the other end Iolaus is actively pressing forward, on oblong base 14 in. long 1
- 61 A statuette of a seated female, with her dress fastened on each shoulder and folded across her knee, the hair bound with a small ornament in the centre; a specimen of finest quality, provided with an oak stand and glazed case 1
- 62 A statuette of a dancing nymph, about 11 in. high, in a glazed case 1
- 63 A set of four canopic vases in alabaster, varying from 12 to 15 in. high, the covers representing the heads of the four gods of the underworld, Hapi, Mestha, Antef, and Kebsnef 1
- 64 A Ushabti figure in black palmwood, with clearly-cut inscription of nine lines, 12 in. 1
- 65 A green faience group of Isis and Horus, with fine detail, 3-in. high, mounted on yellow marble base; and a figure of Bast, lion-headed, seated on an open-work throne 2
- 66 A figure of Bast, inscribed; an ægis of Bast; a group of Nefer-Tum, and Bast; a Tet; a head of Ptah; and small figures of Bes, Anubis, and Kebsnef 8
- 67 An Etruscan bronze mirror, with fine smooth patination, engraved with a group of four figures of the Kabiri, 5 in. in diameter, with the handle, 11 in., on an ebonised stand; *from the Hoffman and Trist collections* 1
- 68 Another Etruscan bronze mirror, with a similar group of the Kabiri, the handle more ornate and terminating with an animal head; *from the Hoffman and Trist collections* 1
- 69 A VERY FINE ETRUSCAN MIRROR, 8-in. diam., most of handle missing, engraved with figures of Hercules, Dionysos, Ariadne, and Eros; beside each figure is the name in Etruscan characters, *Erkle, Phuphlans, Vesuna, and Svultaph*, and below, at the top of the handle, is a smaller figure of Eros with a wreath; found at Fattoraccio in 1880; published in the Appendix to Fabretti's *Corp. Inscip. Ital.*, with ebonised stand; *from the Bucciosanti and Castellani collections* 1

- 70 A glass balsamary of bombylious shape in blue, with yellow, blue, and green lines and chevrons; and another of darker glass and alabastron form, with yellow and white markings, the neck repaired, 6 in.; and 2 bronze stands; *from the Trist collection* 4
- 71 Two balsamaries of amphoriskos shape of blue glass, with yellow and green markings; and 2 stands; *from the Trist collection* 4
- 72 A glass amphoriskos with almost straight sides, marked in lines of chevrons yellow and blue, $4\frac{1}{2}$ in.; and another with white lines and curves on blue, $4\frac{1}{2}$ in.; 2 stands; *from the Trist collection* 4
- 73 A balsamary of amphoriskos form in black glass with white lines; and four small globular bottles of fine green, blue, and red colours; and 2 metal stands 7

Another Property.

- 74 Eleven terra-cotta Roman lamps, each with figures in relief, including Diana, warriors, Cupid with a rabbit, etc. 11
- 75 A large bow-shaped bronze fibula; eight others of various types of pre-Roman date; and a bronze spear-head 10
- 76 A wood figure of Anpu, wearing the red crown of Lower Egypt, holding an ankh in each hand, on wood base, XI. dynasty; a figure of a man walking, on original wood base, 11 in.; and a painted wood Ushabti, XII. dynasty, $8\frac{1}{2}$ in., *from Thebes* 3
- 77 A wood figure of Anubis holding a sceptre, $7\frac{1}{2}$ in.; a well-modelled figure of a man walking, $14\frac{1}{2}$ in. (Sakkara); and a figure of a seated man (Sakkara) 3
- 78 Two limestone figures of Osiris; a limestone figure of a lion; a terra-cotta bust of a woman wearing calathos and chiton, early Greek, and a terra-cotta mask *from the Fayoum* 5
- 79 A bronze figure of Osiris, with plumed crown and loops on the shoulders (Ptolemaic period); and another bronze figure of Osiris, on a white marble base 2
- 80 The lower half of a basalt statue of Sekhet, 8 in. high, on a rectangular base, three sides of which are inscribed; the figure holds an Ankh in the right hand; *found at Tel-el-Bugliah* 1

- 81 An important bronze figure of a hawk, the body finely engraved to indicate feathers, 10 in. high, on a rectangular base $8\frac{1}{2}$ in. long 1

- 82 A figure of Sekhet seated on a pierced throne; three figures of Ptah; a figure of Tehuti; and three small figures of Horus with side locks 8

- 83 A fine head of Ptah; 2 small cats (one of bronze); two green figures; nine amulets, including a heart amulet, a Tet, and a Sam; and a mother-of-pearl carving of later date of a cupid at an altar 15

- 84 A bronze polytheistic figure, a combination of Amen-Ra with Ptah-Seker-Asar, ram-headed; a bronze figure of Horus, hawk-headed; and a figure of a priest kneeling 3

- 85 A bronze figure of Ptah, 3 in.; a figure of Bast, 5 in. high, feet missing, cat-headed, holding ægis of lion in left hand; and a torso of a seated female deity, the surface finely engraved to indicate details of the dress 3

- 86 A bronze figure of Harpocrates seated; and two standing figures 3

- 87 Two small heads of Ptah-Seker-Asar; four heads of Mestha; one of I-Em-Hotep; one of Hat-Hor; one of Bast; and a curious grotesque, all on wood mounts 10

- 88 Five green-and-blue draught pieces of early periods; and two dice of Roman period 7

- 89 A remarkable wood group representing the slaughter of an ox for the occupant of a tomb. The ox is pinioned in the centre of the group, which comprises seven figures—namely, the slaughterer and two assistants, and in the four corners of the wood enclosure a scribe with a register under his arm, a man with his hands in a tub, a seated bailiff with a palette on his knees, and a priest 1

- 90 A small glass balsamary of amphora form, the body blue, decorated with lines and chevrons of yellow and green 1

- 91 A pair of ancient Greek gold earrings, the drops composed of a bust and a circle with rosette of fine work, separated by a cornelian bead; *from Athens* 2

- 92 Three scarabs inscribed in hard stone, with spirals and lotus flower; four others in stone with plain bases; and four others of more detailed beetle form 11

- 93 Ten steatite scarabs, all inscribed 10
- 94 A pendant or reliquary of oval form, in silver gilt and enamelled, enclosing a group representing the Flight into Egypt 1
- 95 A silver eucharistic spoon, with raised design of crucifix on the handle, $6\frac{1}{2}$ in., seventeenth century: *Italian* 1
- 96 Two pieces of Irish gold ring money, twisted into the form of miniature torques, 130 grains 2
- 109 97 An ancient Roman plaque of white marble, 14 in. high, 12 in. wide, with a figure in bold relief of Hercules standing with lion skin and club, and facing him Pluto, who stands with one foot raised and elbow on knee; the plaque is fixed in an old frame with inlaid edges; and an oblong plaque of variegated marble, 19 in. by 5 in., with a dedicatory inscription in Greek characters 2
- 98 AN ANCIENT GRÆCO-ROMAN SWORD, with the gold mountings of the handle and sheath; the grip is composed of plates of gold covered with a lattice design; on the outward side there is a head in relief and three carbuncles *en cabochon*; near the pommel a series of spirals, and above that an inscription in Greek characters; the lower part of the handle, which broadens out, has a mask on one side with two carbuncles, and on the other an anthemion; the chape and three broad bands of the scabbard are connected by lateral bands and set with carbuncles surrounded by a beaded ornament; the pommel is of chalcedony of a circular flattened form; length 21 in.; from Asia Minor 1
- 99 A GOLD TIARA with a rope-like border, enclosing an elaborate design, the principal feature being a meander pattern between the loops of which are a series of double anthemion ornaments and curving horns of Ammon; near the border, enclosing the meander, and projecting in triangular arrangements, are 264 circular beads, each encrusted on the surface by spirals and clusters of minute gold work; the centre about 3 in. in breadth; weight 5 oz. 7 dwt. 8 grains; in green morocco case 1
- 100 100 A bronze bowl shaped as the upper part of a human skull, with ornamental designs in relief, the edge set round with masks, the lid of the bowl also with raised designs and with Thibetan mystical vocables, variants on the characters in and on the Thibetan prayer wheels, *Om, Mani, Padme, Houm* 1

- 101 An ancient Indian bronze vase, originally turned in a plain semi-globular form. To this has been added a serpentine handle and a projection resembling a spout, in which is seated a four-armed figure of Siva; and a libation spoon of similar workmanship and provenance 2
- 102 A bronze Thibetan "dorge," or demon-exorcising dagger. On the lower part of the grip is the head of an elephantine monster, from which proceeds a three-pointed blade. The upper part has a knob of three masks of Fam Din 1
- 69 7. 103 A bronze Nepaulese vase or bowl shaped as a monstrous mask with a flaming border, the wide-open mouth set round with skulls in relief, and encrusted with turquoises 1
- 531 30. 104 An ancient Indian carving in black stone, 42 in. high, 20 in. wide, with a pointed top, the centre occupied by a figure of Lakshmi and two supporting figures in high relief; the goddess has a tall pointed head-dress, and holds a lotus in each hand; above in the clouds are angelic beings (Apsares), and below is a frieze of small figures; an interesting illustration of the transition from Brahminism to Buddhism 1

The Property of Richard Norton, Esq.,

Formerly Director of the American School for Classical Studies in Rome.

- 105 A THIRTEENTH TO FOURTEENTH CENTURY ENAMELLED BRONZE FIGURE OF CHRIST, 10 in. high; the enamelled portions are the loin-cloth and the eyes; the figure is in fine condition, and seems to have originally belonged to a chasse or a book-cover 1
- 106 A BRONZE GROUP, DIANA WITH DOG; the goddess is nude, and her attitude expresses alarm, probably at the approach of Actæon; seventeenth century; mounted in carved wood frame 1
- 107 "Head of Athena (without helmet) of the style of Phidias, an admirably preserved copy of a bronze original" (Bædeker's *Bologna*; Museo Civ.); re-cast in bronze for Mr. Norton, probably the only bronze copy; 17¾ in. high 1
- 108 A Faun with wine-skin; bronze statuette, 21½ in. high; a copy of the famous Roman statue 1

- 109 An Egyptian alabastron in opaque blue glass, with sinuate decoration in white striations, $3\frac{3}{4}$ in. high; also a glass armilla; the alabastron slightly chipped at the lip 2

49 12. 110 Five Roman glass bowls of various shapes, two being of rare type, from $3\frac{1}{4}$ in. to $4\frac{1}{2}$ in. diam. 5

- 111 Thirteen miscellaneous Roman glass vessels, comprising a double ampulla with handle, three kohl vases, unguent vessels, and two long-necked vessels of the "tear-bottle" type 13

- 112 Collection of fragments of ancient glass, including some very rare examples of the early Christian type, also some finely iridescent specimens, beads, heads, etc. a lot

37. 65. 113 Sixteen ancient Greek terra-cottas, comprising some complete statuettes of early types, animal forms, and fragments of draperies 16

- 114 Twenty-two others, chiefly heads, comprising an extremely early Medusa mask, a term of unusual form with horse's head, some Tanagra heads, and others 22

48. 72. 115 A cast of a head of Aphrodite, also a number of casts of ancient gems and coins, sealing-wax impressions of similar objects, and other casts; a quantity of fragments of ancient pottery, stone remains, etc. a lot

- 116 A glazed pottery fragment with Greek inscriptions, and a quantity of fragments of "Samian" and other pottery, with figures, designs, potters' marks, etc.; also some plummets in unglazed earthenware, etc. a lot

- 117 Twenty miscellaneous Greek and Roman pottery vessels, comprising aski, lamps, an amphora, &c. 20

109s 12. 118 Fragment of an alto-relievo in Parian marble, Greek, on the one side a bearded head, on the other, in lower relief, a satyr's head with curled beard. Also a marble head of a lioness, Græco-Roman, and the draped torso of a woman with a duck 3

109s 12. 119 A flint spear-head with serrated edge, 7 in. long, fine; three stone chisels, a bronze ditto, nine stone whorls and amulets, and other prehistoric pieces. Also several pieces of shaped amber, perhaps connected with some ancient process of spinning or weaving a lot

- 120 A ROMAN BRONZE WEIGHT INLAID WITH SILVER, circular $2\frac{3}{8}$ in. diam., inscribed in raised silver letters II. on surface, and TEMPL· OPIS AVG. on the curved sides, *rare*. Also an Etruscan bronze handle with lion terminals, *fine*; a ram's head terminal, and a seated figure of a bearded man—perhaps Herakles meditating after his exploits 4
- 121 A Roman bronze Mercury, caduceus in left hand, purse in right, 4 in. high; another, 3 in. high, well patinated; a bronze figure of Fortuna, with cornucopia and plough, Romano-Egyptian; a bronze standing figure of the jackal-headed Anubis crowned with solar and lunar emblems representing Eternity and with Caduceus of Mercury in left hand, Gnostic; and one other 5
- 122 Seven miscellaneous Roman bronzes, comprising an Apis Bull, $2\frac{1}{2}$ in. long; another $1\frac{3}{4}$ in. long, and two bull-headed supports of a tripod, *fine*; a cock, a lion, and one other 7
- 123 Seven Roman bronze Fibulae of various forms, 6 finger rings, a Roman hairpin and tweezers, a flat-topped hairpin, an ivory tessera, or Roman admission ticket to the theatre, inscribed with gladiator's name, Cornelius, and other details; three silver objects, Roman, a bronze goat, and two others 23
- 124 A blue Heart Scarab of fine colour, eight Amulets and Scarabs, ancient Egyptian, an alabaster unguent pot, a bronze Jackal, and some specimens of XVIII. Dynasty bead work a lot
- 125 Ancient Egyptian Limestone Head in relief, probably a Queen of the eighteenth dynasty, the head-dress beautifully defined in red line, *fine*. Also a dark green stone head of a cynocephalous ape, Egyptian 2
- 126 Five Persian and other glazed Tiles, decorated with conventional designs in red, blue, green, and purple, on white ground, rectangular, 11 in. by 11 in. and $9\frac{1}{2}$ in. by $9\frac{3}{4}$ in.; a small Rhodian dish and some blue glazed fragments a lot
- 127 A Persian lustre Bowl, with green decoration on blue ground, inscribed; a Persian Crackle Vase, with blue figure motive on buff ground, $5\frac{1}{2}$ in. high; and two trefoil candlesticks in glazed pottery, 15th century Persian, iridescent 4
- 128 Early Cloisonné Enamel Plate, $7\frac{3}{4}$ in. diam.; a pair of Cloisonné Vases, $6\frac{1}{4}$ in. high, also early; and a blue porcelain double Vase, $4\frac{3}{4}$ in. high, Chinese 4

(3/5/)

6.

(90/)

6.

60049-80
60117

- 129 Fine Cloisonné two-handled Vase, with circular flat body decorated with dragon on orange ground and fishes on blue ground, 10 in. high 1
- 130 Cloisonné Bowl, decorated with rings of conventional ornament on green ground; in the centre a chrysanthemum, 12 in. diam. 1
- (6/10/-) 7. (131) An Illuminated Parchment Scroll, Persian; a small Buddhist Shrine in black lacquer; an Oriental double flute and Pan pipes in reed; a crackle-glaze sweetmeat dish; some plaster casts of bronze plaques, by V. D. Brenner; nine cigarette tubes; and sundry other objects *a lot*
- 132 A string of oval amber-beads, good colour; two strings of Oriental beads; and a well-carved ivory figure of a sleeping child 4

Another Property.

- (45/-) 40/- (133) A Persian glazed Tile, blue and green decoration, and four divisions of a tile, making conventional floral design with star in centre 5
- 134 A glazed Rhodian Tile, length 10 in., width $7\frac{1}{2}$ in., with tulip decoration in red, blue, and green, on white ground, a very fine piece 1
- (110/-) 10. (135) An old Venetian Tile in glass mosaic, $8\frac{1}{2}$ in. long, $7\frac{3}{4}$ in. wide; and another $7\frac{1}{4}$ in. by 7 in., both early and very interesting pieces 2
- (45/-) 85/- (136) Two Persian glazed Tiles, $8\frac{1}{2}$ in. by $8\frac{1}{2}$ in. and $8\frac{1}{2}$ in. by $6\frac{1}{4}$ in. respectively, blue and green decoration on white ground 2
- 137 Two Rhodian Tiles with tulip decoration, green and blue colouring on white ground 2
- (50/-) 85/- (138) Glazed square Tile, floral decoration in blue and green, hole in centre; also a Persian Tile, $10\frac{1}{2}$ in. long, width 5 in.; and a Rhodian Tile, with tulip decoration in blue and green on white ground 3
- (12/-) 20/- (139) Three pieces of Egyptian rope in wood cases from the Rustafjael collection 3
- (21/-) 90/- (140) Coptic Pillow in wood case and two pieces of Egyptian rope in wood cases, all from the Rustafjael collection 3
- (12/-) 20/- (141) Two ancient Egyptian mural fragments with inscriptions; also a small wood carved Hawk 3

The Property of G. H. Trench, Esq.,

of Tyes, Staplefield, Sussex.

- 142 A GREEK SILVER SITULA (bucket): height 9 in., not including the handles: *weight* 56 oz. The vase was bought by the present owner in Corfu, and is said to have been found, about 1900, at Paramythia in Epirus, a site which has yielded a number of fine Greek bronzes now in the British Museum. The spout of the vase is in the form of a lion's head, with volute-like projections above it, through holes in which the ends of the handles pass. The other ends of the handles pass through similar holes in the mask of Pan which is fastened to the opposite side of the vase. Two other masks of the same type are attached to the upper part of the vase halfway along the sides. The lion's head and the three masks were cast and soldered on. The foot is set off from the body of the vase, and the lower side of it is engraved with concentric circles. There are also engraved lines round the mouth. The handles are quadrilateral and terminate in bobbins.

The number of ancient silver buckets still extant is very small. The British Museum possesses two silver buckets, both found in France, one at Chaourse and the other near Vienne; these are of Roman Imperial date, and the shape is quite distinct from that of the present example. A silver bucket of somewhat similar form to this, but with a different type of foot and a different scheme of decoration, was discovered at Herculaneum and is published by Waldstein in his *Herculaneum*, plate 44: the reliefs with which it is decorated show it to be of early Imperial date. Closer analogies are furnished by buckets of bronze and of painted clay. The clay situlae belong to the later fourth and the third centuries B.C.: examples are to be found in the British Museum (F. 307, Apulian; G. 30 and G. 31, from Vulci in Etruria). The bronze situlae cannot be dated with the same ease, but the examples seem to range from the fourth to the second centuries B.C. Bronze situlae of types like the present have been found at Paestum (*Museo Borbonico*, 6, pl. 31, 4), at Herculaneum (Waldstein, pl. 42), in Etruria (*Museo Gregoriano*, 1, pl. 8, 3A and 4, from Bomarzo or Vulci), and at Waldalgesheim in Germany (Willers, *Hemmoor*, p. 118, fig. 47: Greek import). An



No. 142.



example from Chianciano, near Chiusi, is assigned by Evans to the second century B.C., by reason of the objects discovered in the same grave (*Archæologia*, 52, p. 376).

It seems likely, on the evidence provided by the bronze and clay buckets, that this example was made some time between the fourth and the second centuries B.C. A date in the third or second century would suit the bold modelling of the masks and the vigorously executed yet conventional lion's head.

Some of the extant bronze situlae were no doubt intended for ordinary outdoor use, but the finer of them, as well as the clay situlae, can hardly have been meant for heavy work. This silver situla must have been a piece of table silver, and as such is of great rarity. The end of one handle is bent back, but otherwise the vase is in excellent condition.

[SEE ILLUSTRATION.]

Other Properties.

143 The head and bust of a female of Sphynx-like aspect in white marble of the Ptolemaic period; the face of Greek type, the head-dress terminated by a Uraeus, the bust 16 in. high, upon a base of variegated marble, 6 in. high.

144 An ancient Egyptian mummy case about 6 ft. in length, the surface of which is brilliantly painted. The portrait of the personage is in high relief, exhibiting the head-dress with long pendants, the breast is covered with a series of semi-circular lines and chevron ornament fringed with the lotus, and below that are two pairs of figures of the goddess Maat seated back to back; the case is enclosed in a plate-glass case, 6 ft. 11 in. high, 1 ft. 9 in. deep, and 2 ft. wide.

10. 145 A pair of Genii of the Amenti: Mestha and Tuamauteuf, human and jackal-headed, in mummy form, carved wood, the breast of each covered by a deep collar of ornamental design in fine colouring, and an inscription down the front, 10½ in. high, in square glass cases with stands

- 146 A prehistoric mace-head of circular outline with flat base and cone section perforated from the apex, in black and white granite, and two others of similar form in variegated black and white stone 3
- 147 A mace-head of striated alabaster; and two others of black and white stone 3
- 49/- 8. 148 Three other mace-heads of similar form and period 3
- 70/- 99. 149 A mace-head of granite of somewhat oblong form, 6 in. by $4\frac{1}{2}$ in., with flat under and top surfaces and two sides incurved; and a mace-head of disc form 2
- 150 A grey stone palette of predynastic date, shaped as a fish with a head at both ends, $11\frac{1}{2}$ in.; two others of rounded fish form; and one of double triangular form 4
- 22/- 7. 151 Two fish-shaped palettes with holes for suspension; and two double triangular specimens 4
- 152 A palette, almost circular, representing a turtle, with hole for suspension and red-ringed eyes; three oval and one triangular palettes 5
- 153 A prehistoric vase of black diorite almost cylindrical in form with a slightly outward curving rim and small perforated side loops, $8\frac{1}{2}$ in. high; and another of similar form and period, $7\frac{1}{4}$ in. high 2
- 90/- 6. 154 A predynastic black-stone vase of elongated globular form, very neatly turned, with a small raised foot and two side loops $6\frac{3}{4}$ in.; and another, $5\frac{1}{2}$ in. 2
- 155 Two predynastic vases of ovoid form in grey and brown stone and with small side loops, 4 in. and $4\frac{1}{2}$ in. high
- 156 An ovoid vase of red and white conglomerate, $6\frac{1}{2}$ in. high, predynastic; and a small black vase of similar period
- 157 A circular bowl of dark speckled granite with incurving lip, 7 in. diam., predynastic; and an oblong slab, $5\frac{1}{2}$ in., with hollowed space and channel for preparing colours 2
- 60/- 7. 158 A predynastic vase of alabaster, 4 in.; a small vase or mortar of alabaster, with two side projections; and a conical vase or cup 3
- 13/10/- 10. 159 A remarkable bronze axe or halberd, the blade being of unusual length, 19 in., with a bow-shaped cutting edge and twenty-seven perforations on the back, which is inserted in a wooden shaft with ferules at each end, total length 27 in.

- 150/- 12. (160) A bronze figure of a hawk, emblem of Horus, crowned, with gold eyes and a slight fillet and point of gold on the head; and another bronze hawk, apparently the top of a sceptre or standard 2
- 161 A bronze figure of a priest sitting on his heels, $3\frac{1}{4}$ in., a fine model; and the figure of a hawk on a small columnar stand 2
- 50/- 7. (162) A bronze forepart of a horse, late period; a sistrum with a handle bearing an ægis on each side and terminated by a figure of Bes; a pair of bronze bracelets; and two pairs of small castanets 8
- 163 A bronze horse-bit with two lateral pieces inlaid (Roman period); a pair of silver bracelets engraved and terminating in animal heads (Byzantine); and a small Coptic bronze bowl inscribed on the outside 4
- 164 A marble table for offerings, $13\frac{1}{2}$ in. in diam., on a low foot; a white marble head-rest; a small slab with disc in relief; and a white fluted column 4
- 5/- 6. (165) A vase or pot for kohl composed of a cylinder of ebony, $10\frac{1}{2}$ in., the upper and lower ends set round with dots of ivory; an ivory tooth carved with a pointed mask; a small stone grinder; and eleven boys' marbles of various dates 14
- 45/- 40/- (166) A painted wooden figure of a hawk, with solar disc, an emblem of Horus; and a painted figure of human-headed bird, Ba, an emblem of the soul 2
- 167 A finely inscribed Ushabti figure of Zankebu, High Admiral of the Fleet in the time of Psammetichus, 26 dynasty, 18 in.; and another Ushabti of similar style, $7\frac{1}{2}$ in. 2
- 168 A wooden Ushabti with long plainly carved inscription, 9 in.; a painted terra-cotta Ushabti; a Ushabti in black serpentine of the scribe Ken-Amon; and two green faience Ushabti 5
- 169 Five Ushabti in brilliant blue, inscribed in black 5

From the collection of the late Wm. Charlton, Esq.

- 170 An Assyrian cylinder seal of hæmatite representing a priest leading the owner of the seal into the presence of the Moon-god who is seated on a throne, c. 2000 B.C.; another hæmatite seal engraved with two figures, and a long inscription, circa 1000 B.C.; and a conoid Sassanian seal *from the Forman collection* 3
- 171 Three terra-cotta tablets of which one is a receipt for grain, one a list of amounts of grain, and one a list of numbers of sheep, found at Tell Lo, the site of the ancient city of Lagash, period B.C. 2400; a large scarab in black stone, uninscribed; a scarab in cornelian; and eight others 13

Other Properties.

10. 172 A Tanagra figure of a Greek girl, in the attitude of running, peplum thrown over head, $7\frac{1}{4}$ in. high; another, of later type, 10 in. high 2
- 173 Four white marble fragments of a circular fountain, found in the Hauran, Roman, first century A.D. The carving represents a frieze of animals 4
- 174 Four Persian Tiles, from the exterior decoration of a mosque, sixteenth century 4
- 175 A large stone hammer or battle-axe of a close-grained metamorphic rock, $10\frac{1}{2}$ in. in length, with large perforation in the upper broad end; and another of similar type, $8\frac{1}{2}$ in., *Yorkshire* 2
- 176 A battle-axe or hammer, perforated, of basaltic rock, 6 in.; two basaltic axe-heads of a thick rounded North of England type; and three others with weathered surfaces 6
- 177 A GRÆCO-INDIAN SCULPTURE, REPRESENTING BUDDHA standing in an attitude of blessing with four attendants, of whom one is kneeling on the left of the principal figure and the others are standing on the right. The figures, which are well preserved, are deeply cut into a slab of talcose schist in a semi-circular recess, the half apparently of a larger composition. The work was obtained in the Swat Valley.

MARCH (3rd Month), 1915.

1 MONDAY. St. David's Day. ○ Full Moon 6h. 33m. p.m.

Printing Indian hegs
Kite work

2 TUESDAY.

3 WEDNESDAY.

4 THURSDAY.

Sunday. 3rd in Lent.

ATURDAY.

RIDAY.

N.W. Frontier, during the Chitral campaign of 1895: and is of the Gandhara School of the period first and third century A.D., $9\frac{1}{2}$ in. high, $7\frac{1}{2}$ in. wide.

- 178 A MARBLE GARDEN ORNAMENT, shaped as an ovoid Urn and Cover, carved with classical figures making an offering to Janus on one side and at an altar on the other; on the cover female figures and amorini, $19\frac{1}{2}$ in. high; on a wood stand 3
- 179 A MARBLE STATUE OF HEBE, standing, holding an oinochoë of nectar and a cup, 32 in. high, on a marble socle, and a wooden stand 3
- 180 CEREMONIAL AXE HEAD of Jadeite, a fine thin polished specimen from Woodlark Island, New Guinea, $6\frac{7}{8}$ in. by $5\frac{7}{8}$ in. 1

1871. A. J. ...
and ...
century and ...

1872. A. J. ...
Government ...
the ...
the ...
the ...
the ...
the ...

1873. A. J. ...
the ...
the ...
the ...
the ...
the ...
the ...

1874. A. J. ...
the ...
the ...
the ...
the ...
the ...
the ...

13 H.C. 73 W. 41mm/m/15/1/20/4/13/2
OK \$21

CATALOGUE
OF
Greek, Roman, Egyptian
AND OTHER
Antiquities

FROM VARIOUS SOURCES,

INCLUDING

GREEK AND ROMAN GLASS, TANAGRA AND OTHER FIGURES,
A FINE ETRUSCAN MIRROR, EGYPTIAN ORNAMENTS, A
GRÆCO-ROMAN SWORD WITH GOLD MOUNTINGS,

ALSO AN EXTREMELY RARE

GREEK SILVER SITULA (BUCKET),

The property of G. H. Trench, of Tyes, Staplefield, Sussex,

A COLLECTION COMPRISING

AN EARLY ENAMELLED BRONZE FIGURE OF CHRIST, A
BRONZE GROUP—DIANA WITH DOG,

The Property of Richard Horton, Esq., formerly Director of the
American School for Classical Studies in Rome,

AND OTHER PROPERTIES.

WHICH WILL BE SOLD BY AUCTION

BY MESSRS.

SOTHEBY, WILKINSON & HODGE

(SIR MONTAGUE BARLOW, K.B.E., LL.D., M.P., G. D. HOBSON, M.A., & MAJOR F. W. WARRE, O.B.E., M.C.),

Auctioneers of Literary Property & Works illustrative of the Fine Arts,

AT THEIR LARGE GALLERIES, 34 & 35 NEW BOND STREET, W. 1.

On FRIDAY, JULY 18th, 1919,

AT ONE O'CLOCK PRECISELY.

May be Viewed Two Days Prior.

Catalogues may be had.

Spottiswoode, Ballantyne & Co. Ltd., Printers, London, Colchester and Eton.

59.7.6
210.
264

Goods checked 11/18

(B)

CONDITIONS OF SALE.

- I. The highest bidder to be the buyer; and if any dispute arise between bidders, the lot so disputed shall be immediately put up again, provided the auctioneer cannot decide the said dispute.
- II. No person to advance less than 1s.; above five pounds 2s. 6d., and so on in proportion.
- III. In the case of lots upon which there is a reserve, the auctioneer shall have the right to bid on behalf of the seller.
- IV. The purchasers to give in their names and places of abode, and to pay down 10s. in the pound, if required, in part payment of the purchase-money; in default of which the lot or lots purchased will be immediately put up again and re-sold.
- V. The sale of any lot is not to be set aside on account of any error in the enumeration of the numbers stated, or errors of description.
- VI. The lots to be taken away, at the buyer's expense, immediately after the conclusion of the sale; in default of which Messrs. SOTHEY, WILKINSON & HODGE will not hold themselves responsible if lost, stolen, damaged, or otherwise destroyed, but they will be left at the sole risk of the purchaser. If, at the expiration of Two Days after the conclusion of the sale, the lots are not cleared or paid for, they will then be catalogued for immediate sale, and the expense, the same as if re-sold, will be added to the amount at which they were bought. Messrs. SOTHEY, WILKINSON & HODGE will have the option of re-selling the lots uncleared, either by public or private sale, without any notice being given to the defaulter.
- VII. Upon failure of complying with the above conditions, the money required and deposited in part of payment shall be forfeited, and if any loss is sustained in the re-selling of such lots as are not cleared or paid for, all charges on such re-sale shall be made good by the defaulters at this sale.

Gentlemen who cannot attend this Sale may have their Commissions faithfully executed by their humble servants,

SOTHEY, WILKINSON & HODGE,

34 & 35, New Bond Street, London, W. (1).

Telegraphic Address: "Abinitio, Phone, London." Telephone: Mayfair 4689

In sending Commissions please refer to this Catalogue as "BIRCHWOOD."

COMMISSIONS SENT BY TELEPHONE ARE ACCEPTED ONLY AT THE
SENDERS RISK, AND MUST BE CONFIRMED BY LETTER OR TELEGRAM.

A COLLECTION OF EARLY GREEK GLASS AND CYPRIOTE TERRA COTTA.

From the Laurence Cesnola Collection.

300—200 B.C. CYPRUS.

	1	A 7-in. bottle; ditto $4\frac{1}{2}$ in.; ditto $3\frac{1}{2}$ in.	3	14/ S
	2	Two $5\frac{1}{4}$ -in. Ampullæ	2	12/ S
(14) 40/-	3	Two 5-in. Ampullæ; and two $2\frac{1}{4}$ -in. bowls	4	9/
(14) 60/-	4	A 7-in. Lachrymatory; two 6-in. Ampullæ; and a $2\frac{3}{4}$ -in. bowl	4	8/
(21) 20/-	5	A 4-in. two-handled Lachrymatory; $3\frac{1}{2}$ -in. ditto; $2\frac{1}{2}$ -in. bowl; and odd damaged pieces	3	9/
	6	A $7\frac{1}{2}$ -in. Ampulla, 5-in. ditto; and a 5-in. Lachrymatory	3	21/ S
(10) 25/-	7	A 3-in. bowl; and a $2\frac{1}{2}$ -in. ditto (1 cracked) 10/-	2	10/
(14) 25/-	8	A $5\frac{1}{2}$ -in. Ampulla; and 2 Lachrymatories, 6 in. and 4 in.	3	8/
	9	Two 5-in. Ampullæ	2	16/ Pucator
	10	A 7-in. Lachrymatory; 5-in. ditto; and a 6-in. Ampulla	3	14/ S
	11	A 6-in. Ampulla; and two $3\frac{1}{2}$ -in. Lachrymatories	3	18/ S
	12	Two Unguentaria, 8 in. and 7 in.	2	18/ S
(21) 30/-	13	Three ditto, 7 in., 5 in., and $3\frac{1}{2}$ in.	3	9/
	14	A 6-in. Lachrymatory; and two 5-in. ditto	3	9/ S
	15	A 6-in. Ampulla; and two Lachrymatories, $5\frac{3}{4}$ in. and 4 in.	3	13/ S
	16	An 8-in. Unguentarium; and two ditto, 3 in. and $2\frac{1}{2}$ in.	3	11/ S
40/ 30/-	17	Two 5-in. Ampullæ; and a 6-in. Lachrymatory	3	9/
(14) 20/-	18	Three 5-in. Unguentaria (1 damaged); and a 3-in. Lachrymatory	4	8/
	19	A 5-in. globular Ampulla; and two Lachrymatories, 4 in. and $3\frac{1}{2}$ in.	3	15/ S
(16) 40/-	20	A $3\frac{1}{4}$ -in. bowl; and a 3-in. ditto	2	8/
(10) 40/-	21	A 7-in. Ampulla; and a 3-in. globular bottle	2	8/
(22) 25/-	22	A $5\frac{1}{2}$ -in. Ampulla; a $3\frac{1}{2}$ -in. pear-shaped bottle; and a $3\frac{1}{2}$ -in. Lachrymatory	3	8/

- 23 Two long-neck bottles, 8 in. and 7 in.; and a 4-in. Lachry- $\frac{7}{8}$
matory 3
- 24 A $6\frac{1}{2}$ -in. long-neck bottle; a 6-in. Ampulla; and two $2\frac{1}{2}$ -in. $\frac{15}{8}$
Lachrymatories 4
- (34) 70/- 25 Four 6-in. Ampullæ; and 2 bottles, 7 in. and $5\frac{1}{2}$ in. 6 $\frac{8}{8}$
- (32) 6. 26 A 6-in. double bottle with handles; and 12 various 13 $\frac{8}{8}$
- (11) 40/- 27 A 9-in. Lachrymatory; a 4-in. Ampulla; and a shaped ditto 3 $\frac{8}{8}$
- 28 23 bottles; and a quantity of fragments 23
- 29 Eight terra-cotta and other lamps; and a bird 9 $\frac{10}{8}$
- 30 Twenty-one terra-cotta masks; one marble ditto; and a foot 23 $\frac{16}{8}$
- 31 Eleven terra-cotta bottles various; and three black ointment $\frac{10}{8}$ of glass
pots 14
- 32 Three Greek Cups; Cover; Seal; two-handled bowl; nine black $\frac{20}{8}$ of glass
jugs, vases, etc. 15
- (10) 70/- 33 A $7\frac{1}{2}$ -in. terra-cotta Kylix: two figures; two animals; and three $\frac{8}{8}$
odd pieces 8
- 34 $4\frac{1}{2}$ -in. Fowls, ornamented with incised work; a dog; a boy $\frac{19}{8}$
seated; figure of a Goddess; a child; duck; leg; and
grotesque figures, some on olivewood stands 8
- 35 14 clay moulds for casting coins; 13 glass bottles; and frag- $\frac{27}{8}$ of glass
ments 27
- 36 The original illustrated Album of the Cesnole Collection $\frac{60}{8}$ of glass

ANCIENT GREEK AND ROMAN GLASS FROM PALESTINE.

- 37 Four ampullæ, or perfume bottles, with wide bases, long necks, $\frac{42}{8}$ of glass
and wide lips, uncleaned but with good iridescence, 7 in.
to 8 in. high 4
- (46) 80/- 38 Four similar 4 $\frac{8}{8}$
- 39 Four ampullæ with globular bases, 7 in. to 8 in. 4 $\frac{32}{8}$ of glass
- 40 Four of similar form, $6\frac{1}{2}$ in. 4 $\frac{24}{8}$ of glass
- (32) 50/- 41 An ampulla with cone-like base, $7\frac{1}{4}$ in.; one with a fine irides- $\frac{7}{8}$
cence, 7 in.; and 2 others 4
- 42 Four ampullæ with globular bases, 6 in. to 8 in. 4 $\frac{24}{8}$ of glass
- 43 Two ampullæ with flat bases and slender necks; and 2 others 4 $\frac{22}{8}$ of glass

- 44 Three bottles; a vase; and a globular bottle (imperfect) 5 20/ 3
- 45 Two double stibium bottles; and a standing bottle with trailed-decoration and two loops on the lip, $5\frac{1}{2}$ in. 3 20/ 3
- 36/ 25 - 46 A stibium bottle; a globular vase with handles and dark-green trailed decoration; and two bottles with loops of Arab date 4 8
- 36/ 60 - 47 A bottle with handle and spout of brownish glass, 5 in. (Arab period); and a small globular bottle of reddish-brown glass 2 8
- 40/ 50 - 48 A double stibium bottle of green glass; a bottle with spirally-trailed lines and decorative loops; and a fine iridescent ampulla 3 7
- 49 A jug of red ware with upright lines on the neck, 12 in.; 2 jugs of Cypriote style; 12 lamps; 4 small jugs of black ware; piece of a Roman mortarium; and 12 other early pieces 32 14/ Clement
- 50 Eleven terra-cotta lamps; 22 pieces of early pottery; 2 Roman bronze keys; some bronze fragments; a lion head in bronze; and 2 grotesque lead masks of Roman period; fragments of glazed tiles, etc.; and 3 Arab pipe-bowls 46/ 3
- 110/ 6 - 51 A predynastic Egyptian vase of globular form, with slight side loops in black and white granite, 4 in. high, 5 in. diam.; and an Egyptian alabaster vase, $4\frac{1}{2}$ in. 2 8

TANAGRA AND OTHER TERRA COTTAS, &c.

- 1/ 10 - 52 Figure of a female seated on a rocky base, her dress looped on her right shoulder, and in her left hand an apple 1 8
- 62/ 95 - 53 A standing female figure on an oval base, 10 in. high; and another $7\frac{1}{2}$ in. 2 8
- 4/ 15/ 25 - 54 A standing figure of a lady wearing a hood, $7\frac{1}{2}$ in.; and another somewhat smaller 2 10/ McKean
- 48/ 70 - 55 Two draped female statuettes 2
- 95/ 90 - 56 A draped female holding a rabbit in her right arm, 9 in.; and a small statuette of a female walking 2
- 95/ 90 - 57 A figure of a boy seated on a cippus, wearing sun hat and cloak; and a figure of a girl seated, with a small figure on her left shoulder 2 8
- 90/ 7 - 58 A small figure of a child completely draped; a tragic mask; and a figure of a woman seated, nursing an infant 3 8

- 59 A head and bust of a woman; a mask of a satyr; and three early figures of women (two holding cytheræ) from Cyprus, *from the Laurence Cesnola Collection* 5 *5/9 S*
- 60 A VERY FINE GROUP OF HERCULES, THE CRETAN BULL, AND IOLAUS: Hercules, at left end of the group, with club raised, is grasping the animal's horn, and on the other end Iolaus is actively pressing forward, on oblong base 14 in. long 1 *£29 Fenton*
- 61 A statuette of a seated female, with her dress fastened on each shoulder and folded across her knee, the hair bound with a small ornament in the centre; a specimen of finest quality, provided with an oak stand and glazed case 1 *15/10/- Fenton*
- 62 A statuette of a dancing nymph, about 11 in. high, in a glazed case 1 *£15 "*
- 63 A set of four canopic vases in alabaster, varying from 12 to 15 in. high, the covers representing the heads of the four gods of the underworld, Hapi, Mestha, Antef, and Kebsnef 1 *£36 S*
- 64 A Ushabti figure in black palmwood, with clearly-cut inscription of nine lines, 12 in. 1 *8/15/- Georgeson 95/*
- 65 A green faience group of Isis and Horus, with fine detail, 3-in. high, mounted on yellow marble base; and a figure of Bast, lion-headed, seated on an open-work throne 2 *10. (65/)*
- 66 A figure of Bast, inscribed; an ægis of Bast; a group of Nefer-Tum, and Bast; a Tet; a head of Ptah; and small figures of Bes, Anubis, and Kebsnef 8 *30. (65/)*
- 67 An Etruscan bronze mirror, with fine smooth patination, engraved with a group of four figures of the Kabiri, 5 in. in diameter, with the handle, 11 in., on an ebonised stand; *from the Hoffman and Trist collections* 1 *31/ Spink*
- 68 Another Etruscan bronze mirror, with a similar group of the Kabiri, the handle more ornate and terminating with an animal head; *from the Hoffman and Trist collections* 1 *1/5/- Seton*
- 69 A VERY FINE ETRUSCAN MIRROR, 8-in. diam., most of handle missing, engraved with figures of Hercules, Dionysos, Ariadne, and Eros; beside each figure is the name in Etruscan characters, *Erkle, Phuphlans, Vesuna, and Svultaph*, and below, at the top of the handle, is a smaller figure of Eros with a wreath; found at Fattoraccio in 1880; published in the Appendix to Fabretti's *Corp. Inscript. Ital.*, with ebonised stand; *from the Bucciosanti and Castellani collections* 1 *£35- 10. Potter*

- 70 A glass balsamary of bombylious shape in blue, with yellow, blue, and green lines and chevrons; and another of darker glass and alabastron form, with yellow and white markings, the neck repaired, 6 in.; and 2 bronze stands; *from the Trist collection* 4

4101
Lincoln

- 71 Two balsamaries of amphoriskos shape of blue glass, with yellow and green markings; and 2 stands; *from the Trist collection* 4

- 72 A glass amphoriskos with almost straight sides, marked in lines of chevrons yellow and blue, $4\frac{1}{2}$ in.; and another with white lines and curves on blue, $4\frac{1}{2}$ in.; 2 stands; *from the Trist collection* 4

49
Lentons

- 73 A balsamary of amphoriskos form in black glass with white lines; and four small globular bottles of fine green, blue, and red colours; and 2 metal stands 7

Another Property.

- 74 Eleven terra-cotta Roman lamps, each with figures in relief, including Diana, warriors, Cupid with a rabbit, etc. 11

387
Harold

- 75 A large bow-shaped bronze fibula; eight others of various types of pre-Roman date; and a bronze spear-head 10

4157
Socpudg

- 76 A wood figure of Anpu, wearing the red crown of Lower Egypt, holding an ankh in each hand, on wood base, XI. dynasty; a figure of a man walking, on original wood base, 11 in.; and a painted wood Ushabti, XII. dynasty, $8\frac{1}{2}$ in., *from Thebes* 3

901
Roso

- 77 A wood figure of Anubis holding a sceptre, $7\frac{1}{2}$ in.; a well-modelled figure of a man walking, $14\frac{1}{2}$ in. (Sakkara); and a figure of a seated man (Sakkara) 3

- 78 Two limestone figures of Osiris; a limestone figure of a lion; a terra-cotta bust of a woman wearing calathos and chiton, early Greek, and a terra-cotta mask *from the Fayoum* 5

227
S

- 79 A bronze figure of Osiris, with plumed crown and loops on the shoulders (Ptolemaic period); and another bronze figure of Osiris, on a white marble base 2

- 80 The lower half of a basalt statue of Sekhet, 8 in. high, on a rectangular base, three sides of which are inscribed; the figure holds an Ankh in the right hand; *found at Tel-el-Bugliah* 1

207
Bettel

- 81 An important bronze figure of a hawk, the body finely engraved to indicate feathers, 10 in. high, on a rectangular base 8½ in. long 1 ⁴²
- 82 A figure of Sekhet seated on a pierced throne; three figures of Ptah; a figure of Tehuti; and three small figures of Horus with side locks 8 ^{45/5}
- 83 A fine head of Ptah; 2 small cats (one of bronze); two green figures; nine amulets, including a heart amulet, a Tet, and a Sam; and a mother-of-pearl carving of later date of a cupid at an altar 15 ^{45/5}
- 84 A bronze polytheistic figure, a combination of Amen-Ra with Ptah-Seker-Asar, ram-headed; a bronze figure of Horus, hawk-headed; and a figure of a priest kneeling 3 ^{60/5}
- 85 A bronze figure of Ptah, 3 in.; a figure of Bast, 5 in. high, feet missing, cat-headed, holding ægis of lion in left hand; and a torso of a seated female deity, the surface finely engraved to indicate details of the dress 3 ^{60/5}
- 86 A bronze figure of Harpocrates seated; and two standing figures 3 ^{21/5}
- 87 Two small heads of Ptah-Seker-Asar; four heads of Mestha; one of I-Em-Hotep; one of Hat-Hor; one of Bast; and a curious grotesque, all on wood mounts 10 ^{12/5}
- 88 Five green-and-blue draught pieces of early periods; and two dice of Roman period 7 ^{42/5}
- 89 A remarkable wood group representing the slaughter of an ox for the occupant of a tomb. The ox is pinioned in the centre of the group, which comprises seven figures—namely, the slaughterer and two assistants, and in the four corners of the wood enclosure a scribe with a register under his arm, a man with his hands in a tub, a seated bailiff with a palette on his knees, and a priest 1 ^{4/10/5}
- 90 A small glass balsamary of amphora form, the body blue, decorated with lines and chevrons of yellow and green 1 ^{32/5}
- 91 A pair of ancient Greek gold earrings, the drops composed of a bust and a circle with rosette of fine work, separated by a cornelian bead; from Athens 2 ^{8/10/5}
- 92 Three scarabs inscribed in hard stone, with spirals and lotus flower; four others in stone with plain bases; and four others of more detailed beetle form 11 ^{4/5}

- 93 Ten steatite scarabs, all inscribed 10 *100/ Harold*
 94 A pendant or reliquary of oval form, in silver gilt and enamelled,
 enclosing a group representing the Flight into Egypt 1
 95 A silver eucharistic spoon, with raised design of crucifix on the
 handle, 6½ in., seventeenth century: *Italian* 1 *20/ Lendon*
 96 Two pieces of Irish gold ring money, twisted into the form of
 miniature torques, 130 grains 2 *42/ Clements*
 97 An ancient Roman plaque of white marble, 14 in. high, 12 in.
 wide, with a figure in bold relief of Hercules standing
 with lion skin and club, and facing him Pluto, who stands
 with one foot raised and elbow on knee; the plaque is fixed
 in an old frame with inlaid edges; and an oblong plaque
 of variegated marble, 19 in. by 5 in., with a dedicatory
 inscription in Greek characters 2 *3x*
 98 AN ANCIENT GRÆCO-ROMAN SWORD, with the gold mountings of
 the handle and sheath; the grip is composed of plates of gold
 covered with a lattice design; on the outward side there is
 a head in relief and three carbuncles *en cabochon*; near the
 pommel a series of spirals, and above that an inscription
 in Greek characters; the lower part of the handle, which
 broadens out, has a mask on one side with two carbuncles,
 and on the other an anthemion; the chape and three
 broad bands of the scabbard are connected by lateral bands
 and set with carbuncles surrounded by a beaded ornament;
 the pommel is of chalcedony of a circular flattened form;
 length 21 in.; *from Asia Minor* 1 *£60 Lendon*
 99 A GOLD TIARA with a rope-like border, enclosing an elaborate
 design, the principal feature being a meander pattern
 between the loops of which are a series of double anthemion
 ornaments and curving horns of Ammon; near the border,
 enclosing the meander, and projecting in triangular arrange-
 ments, are 264 circular beads, each encrusted on the sur-
 face by spirals and clusters of minute gold work; the centre
 about 3 in. in breadth; *weight 5 oz. 7 dwt. 8 grains*; in
 green morocco case 1 *£60 Andrade*
 100 A bronze bowl shaped as the upper part of a human skull,
 with ornamental designs in relief, the edge set round with
 masks, the lid of the bowl also with raised designs and
 with Thibetan mystical vocables, variants on the charac-
 ters in and on the Thibetan prayer wheels, *Om, Mani,*
Padme, Houm 1 *3x*

101 An ancient Indian bronze vase, originally turned in a plain semi-globular form. To this has been added a serpentine handle and a projection resembling a spout, in which is seated a four-armed figure of Siva; and a libation spoon of similar workmanship and provenance 2

59
Harold

102 A bronze Thibetan "dorge," or demon-exorcising dagger. On the lower part of the grip is the head of an elephantine monster, from which proceeds a three-pointed blade. The upper part has a knob of three masks of Fam Din 1

5710
Harold

103 A bronze Nepaulese vase or bowl shaped as a monstrous mask with a flaming border, the wide-open mouth set round with skulls in relief, and encrusted with turquoises 1

D.

104 An ancient Indian carving in black stone, 42 in. high, 20 in. wide, with a pointed top, the centre occupied by a figure of Lakshmi and two supporting figures in high relief; the goddess has a tall pointed head-dress, and holds a lotus in each hand; above in the clouds are angelic beings (Apsares), and below is a frieze of small figures; an interesting illustration of the transition from Brahminism to Buddhism 1

10
D.

The Property of Richard Norton, Esq.,

Formerly Director of the American School for Classical Studies in Rome.

105 A THIRTEENTH TO FOURTEENTH CENTURY ENAMELLED BRONZE FIGURE OF CHRIST, 10 in. high; the enamelled portions are the loin-cloth and the eyes; the figure is in fine condition, and seems to have originally belonged to a chasse or a book-cover 1

296
Maynard

106 A BRONZE GROUP, DIANA WITH DOG; the goddess is nude, and her attitude expresses alarm, probably at the approach of Actæon; seventeenth century; mounted in carved wood frame 1

10
Preston

107 "Head of Athena (without helmet) of the style of Phidias, an admirably preserved copy of a bronze original" (Bædeker's *Bologna*; Museo Civ.); re-cast in bronze for Mr. Norton, probably the only bronze copy; 17¾ in. high 1

59
Preston

108 A Faun with wine-skin; bronze statuette, 21½ in. high; a copy of the famous Roman statue 1

- 109 An Egyptian alabastron in opaque blue glass, with sinuate decoration in white striations, $3\frac{3}{4}$ in. high; also a glass armilla; the alabastron slightly chipped at the lip 2

12. 110 Five Roman glass bowls of various shapes, two being of rare type, from $3\frac{1}{4}$ in. to $4\frac{1}{2}$ in. diam. 5

- 90% 75/- 111 Thirteen miscellaneous Roman glass vessels, comprising a double ampulla with handle, three kohl vases, unguent vessels, and two long-necked vessels of the "tear-bottle" type 13

- 112 Collection of fragments of ancient glass, including some very rare examples of the early Christian type, also some finely iridescent specimens, beads, heads, etc. a lot

- 113 Sixteen ancient Greek terra-cottas, comprising some complete statuettes of early types, animal forms, and fragments of draperies 16

- 114 Twenty-two others, chiefly heads, comprising an extremely early Medusa mask, a term of unusual form with horse's head, some Tanagra heads, and others 22

- 115 A cast of a head of Aphrodite, also a number of casts of ancient gems and coins, sealing-wax impressions of similar objects, and other casts; a quantity of fragments of ancient pottery, stone remains, etc. a lot

- 100% 85/- 116 A glazed pottery fragment with Greek inscriptions, and a quantity of fragments of "Samian" and other pottery, with figures, designs, potters' marks, etc.; also some plummets in unglazed earthenware, etc. a lot

- 117 Twenty miscellaneous Greek and Roman pottery vessels, comprising aski, lamps, an amphora, &c. 20

- 90% 90/- 118 Fragment of an alto-relievo in Parian marble, Greek, on the one side a bearded head, on the other, in lower relief, a satyr's head with curled beard. Also a marble head of a lioness, Græco-Roman, and the draped torso of a woman with a duck 3

12. 10% 119 A flint spear-head with serrated edge, 7 in. long, fine; three stone chisels, a bronze ditto, nine stone whorls and amulets, and other prehistoric pieces. Also several pieces of shaped amber, perhaps connected with some ancient process of spinning or weaving a lot

5/15/-
Clay

D

22/- 100%

35/- S

110/-

45/- S

60/- Lincoln

D

18847 to
18880

- 120 A ROMAN BRONZE WEIGHT INLAID WITH SILVER, circular 2 $\frac{3}{4}$ in. diam., inscribed in raised silver letters II. on surface, and TEMPL·OPIS·AVG. on the curved sides, *rare*. Also an Etruscan bronze handle with lion terminals, *fine*; a ram's head terminal, and a seated figure of a bearded man—perhaps Herakles meditating after his exploits 4 *£18 Spink*
- 121 A Roman bronze Mercury, caduceus in left hand, purse in right, 4 in. high; another, 3 in. high, well patinated; a bronze figure of Fortuna, with cornucopia and plough, Romano-Egyptian; a bronze standing figure of the jackal-headed Anubis crowned with solar and lunar emblems representing Eternity and with Caduceus of Mercury in left hand, Gnostic; and one other 5 *65/-*
- 122 Seven miscellaneous Roman bronzes, comprising an Apis Bull, 2 $\frac{1}{2}$ in. long; another 1 $\frac{3}{4}$ in. long, and two bull-headed supports of a tripod, *fine*; a cock, a lion, and one other 7 *85/- Andrae*
- 123 Seven Roman bronze Fibulae of various forms, 6 finger rings, a Roman hairpin and tweezers, a flat-topped hairpin, an ivory tessera, or Roman admission ticket to the theatre, inscribed with gladiator's name, Cornelius, and other details; three silver objects, Roman, a bronze goat, and two others 23 *18856 18860 D*
- 124 A blue Heart Scarab of fine colour, eight Amulets and Scarabs, ancient Egyptian, an alabaster unguent pot, a bronze Jackal, and some specimens of XVIII. Dynasty bead work a lot *53/- 10/- 15/-*
- 125 Ancient Egyptian Limestone Head in relief, probably a Queen of the eighteenth dynasty, the head-dress beautifully defined in red line, *fine*. Also a dark green stone head of a cynocephalous ape, Egyptian 2 *£22*
- 126 Five Persian and other glazed Tiles, decorated with conventional designs in red, blue, green, and purple, on white ground, rectangular, 11 in. by 11 in. and 9 $\frac{1}{2}$ in. by 9 $\frac{1}{4}$ in.; a small Rhodian dish and some blue glazed fragments a lot *85/- Aspin*
- 127 A Persian lustre Bowl, with green decoration on blue ground, inscribed; a Persian Crackle Vase, with blue figure motive on buff ground, 5 $\frac{1}{2}$ in. high; and two trefoil candlesticks in glazed pottery, 15th century Persian, iridescent 4 *6/15/-*
- 128 Early Cloisonné Enamel Plate, 7 $\frac{3}{4}$ in. diam.; a pair of Cloisonné Vases, 6 $\frac{1}{4}$ in. high, also early; and a blue porcelain double Vase, 4 $\frac{3}{4}$ in. high, Chinese 4 *68/-*

- 129 Fine Cloisonné two-handled Vase, with circular flat body decorated with dragon on orange ground and fishes on blue ground, 10 in. high 1 *4/10/- Arthur*
- 130 Cloisonné Bowl, decorated with rings of conventional ornament on green ground; in the centre a chrysanthemum, 12 in. diam. 1 *6/5/- Rustafjael*
- 131 An Illuminated Parchment Scroll, Persian; a small Buddhist Shrine in black lacquer; an Oriental double flute and Pan pipes in reed; a crackle-glaze sweetmeat dish; some plaster casts of bronze plaques, by V. D. Brenner; nine cigarette tubes; and sundry other objects a lot *1886/1 to 1887/2*
- 132 A string of oval amber-beads, good colour; two strings of Oriental beads; and a well-carved ivory figure of a sleeping child 4 *20/- Rustafjael*

Another Property.

- 133 A Persian glazed Tile, blue and green decoration, and four divisions of a tile, making conventional floral design with star in centre 5 *4/5/- 40/-*
- 134 A glazed Rhodian Tile, length 10 in., width 7½ in., with tulip decoration in red, blue, and green, on white ground, a very fine piece 1 *6/0/- 50/- Rustafjael*
- 135 An old Venetian Tile in glass mosaic, 8½ in. long, 7¾ in. wide; and another 7¼ in. by 7 in., both early and very interesting pieces 2 *11/0/- S*
- 136 Two Persian glazed Tiles, 8½ in. by 8½ in. and 8½ in. by 6¼ in. respectively, blue and green decoration on white ground 2 *4/5/- S*
- 137 Two Rhodian Tiles with tulip decoration, green and blue colouring on white ground 2 *3/5/- Rustafjael*
- 138 Glazed square Tile, floral decoration in blue and green, hole in centre; also a Persian Tile, 10½ in. long, width 5 in.; and a Rhodian Tile, with tulip decoration in blue and green on white ground 3 *5/0/- S*
- 139 Three pieces of Egyptian rope in wood cases from the Rustafjael collection 3 *9/1887/3*
- 140 Coptic Pillow in wood case and two pieces of Egyptian rope in wood cases, all from the Rustafjael collection 3 *9/1887/3 1887/4*
- 141 Two ancient Egyptian mural fragments with inscriptions; also a small wood carved Hawk 3 *1887/5 1887/6*

The Property of G. H. Trench, Esq.,

of Tyes, Staplefield, Sussex.

- 142 A GREEK SILVER SITULA (bucket): height 9 in., not including the handles: *weight* 56 oz. The vase was bought by the present owner in Corfu, and is said to have been found, about 1900, at Paramythia in Epirus, a site which has yielded a number of fine Greek bronzes now in the British Museum. The spout of the vase is in the form of a lion's head, with volute-like projections above it, through holes in which the ends of the handles pass. The other ends of the handles pass through similar holes in the mask of Pan which is fastened to the opposite side of the vase. Two other masks of the same type are attached to the upper part of the vase halfway along the sides. The lion's head and the three masks were cast and soldered on. The foot is set off from the body of the vase, and the lower side of it is engraved with concentric circles. There are also engraved lines round the mouth. The handles are quadrilateral and terminate in bobbins.

The number of ancient silver buckets still extant is very small. The British Museum possesses two silver buckets, both found in France, one at Chaourse and the other near Vienne; these are of Roman Imperial date, and the shape is quite distinct from that of the present example. A silver bucket of somewhat similar form to this, but with a different type of foot and a different scheme of decoration, was discovered at Herculaneum and is published by Waldstein in his *Herculaneum*, plate 44: the reliefs with which it is decorated show it to be of early Imperial date. Closer analogies are furnished by buckets of bronze and of painted clay. The clay situlae belong to the later fourth and the third centuries B.C.: examples are to be found in the British Museum (F. 307, Apulian; G. 30 and G. 31, from Vulci in Etruria). The bronze situlae cannot be dated with the same ease, but the examples seem to range from the fourth to the second centuries B.C. Bronze situlae of types like the present have been found at Paestum (*Museo Borbonico*, 6, pl. 31, 4), at Herculaneum (Waldstein, pl. 42), in Etruria (*Museo Gregoriano*, 1, pl. 8, 3A and 4, from Bomarzo or Vulci), and at Waldalgesheim in Germany (Willers, *Hemmöör*, p. 118, fig. 47: Greek import). An

F 1450

Taylor

example from Chianciano, near Chiusi, is assigned by Evans to the second century B.C., by reason of the objects discovered in the same grave (*Archæologia*, 52, p. 376).

It seems likely, on the evidence provided by the bronze and clay buckets, that this example was made some time between the fourth and the second centuries B.C. A date in the third or second century would suit the bold modelling of the masks and the vigorously executed yet conventional lion's head.

Some of the extant bronze situlæ were no doubt intended for ordinary outdoor use, but the finer of them, as well as the clay situlæ, can hardly have been meant for heavy work. This silver situla must have been a piece of table silver, and as such is of great rarity. The end of one handle is bent back, but otherwise the vase is in excellent condition.

[SEE ILLUSTRATION.]

Other Properties.

143 The head and bust of a female of Sphynx-like aspect in white marble of the Ptolemaic period; the face of Greek type, the head-dress terminated by a Uraeus, the bust 16 in. high, upon a base of variegated marble, 6 in. high.

144 An ancient Egyptian mummy case about 6 ft. in length, the surface of which is brilliantly painted. The portrait of the personage is in high relief, exhibiting the head-dress with long pendants, the breast is covered with a series of semi-circular lines and chevron ornament fringed with the lotus, and below that are two pairs of figures of the goddess Maat seated back to back; the case is enclosed in a plate-glass case, 6 ft. 11 in. high, 1 ft. 9 in. deep, and 2 ft. wide.

145 A pair of Genii of the Amenti: Mestha and Tuamaufef, human and jackal-headed, in mummy form, carved wood, the breast of each covered by a deep collar of ornamental design in fine colouring, and an inscription down the front, 10½ in. high, in square glass cases with stands

L55
Young

P
ass

L26

3X
9

- 146 A prehistoric mace-head of circular outline with flat base and cone section perforated from the apex, in black and white granite, and two others of similar form in variegated black and white stone 3
- 147 A mace-head of striated alabaster; and two others of black and white stone 3
- 148 Three other mace-heads of similar form and period 1888/1 3
- 149 A mace-head of granite of somewhat oblong form, 6 in. by $4\frac{1}{2}$ in., with flat under and top surfaces and two sides incurved; and a mace-head of disc form 2
- 150 A grey stone palette of predynastic date, shaped as a fish with a head at both ends, $11\frac{1}{2}$ in.; two others of rounded fish form; and one of double triangular form 4
- 151 Two fish-shaped palettes with holes for suspension; and two double triangular specimens 4
- 152 A palette, almost circular, representing a turtle, with hole for suspension and red-ringed eyes; three oval and one triangular palettes 5
- 153 A prehistoric vase of black diorite almost cylindrical in form with a slightly outward curving rim and small perforated side loops, $8\frac{1}{2}$ in. high; and another of similar form and period, $7\frac{1}{4}$ in. high 2
- 154 A predynastic black-stone vase of elongated globular form, very neatly turned, with a small raised foot and two side loops $6\frac{3}{4}$ in.; and another, $5\frac{1}{2}$ in. 2
- 155 Two predynastic vases of ovoid form in grey and brown stone and with small side loops, 4 in. and $4\frac{1}{2}$ in. high 2
- 156 An ovoid vase of red and white conglomerate, $6\frac{1}{2}$ in. high, predynastic; and a small black vase of similar period 2
- 157 A circular bowl of dark speckled granite with incurving lip, 7 in. diam., predynastic; and an oblong slab, $5\frac{1}{2}$ in., with hollowed space and channel for preparing colours 2
- 158 A predynastic vase of alabaster, 4 in.; a small vase or mortar of alabaster, with two side projections; and a conical vase or cup 3
- 159 A remarkable bronze axe or halberd, the blade being of unusual length, 19 in., with a bow-shaped cutting edge and twenty-seven perforations on the back, which is inserted in a wooden shaft with ferules at each end, total length 27 in. 3

9/10/1
Spent 2
60/10/1

18882
18883

20/1
22/5

9/10/1
Day
90/5

60/5

3x

- 160 A bronze figure of a hawk, emblem of Horus, crowned, with gold eyes and a slight fillet and point of gold on the head; and another bronze hawk, apparently the top of a sceptre or standard 2
- 161 A bronze figure of a priest sitting on his heels, $3\frac{1}{4}$ in., a fine model; and the figure of a hawk on a small columnar stand 2
- 162 A bronze forepart of a horse, late period; a sistrum with a handle bearing an ægis on each side and terminated by a figure of Bes; a pair of bronze bracelets; and two pairs of small castanets 8
- 163 A bronze horse-bit with two lateral pieces inlaid (Roman period); a pair of silver bracelets engraved and terminating in animal heads (Byzantine); and a small Coptic bronze bowl inscribed on the outside 4
- 164 A marble table for offerings, $13\frac{1}{2}$ in. in diam., on a low foot; a white marble head-rest; a small slab with disc in relief; and a white fluted column 4
- 165 A vase or pot for kohl composed of a cylinder of ebony, $10\frac{1}{2}$ in., the upper and lower ends set round with dots of ivory; an ivory tooth carved with a pointed mask; a small stone grinder; and eleven boys' marbles of various dates 14
- 166 A painted wooden figure of a hawk, with solar disc, an emblem of Horus; and a painted figure of human-headed bird, Ba, an emblem of the soul 2
- 167 A finely inscribed Ushabti figure of Zankebu, High Admiral of the Fleet in the time of Psammetichus, 26 dynasty, 18 in.; and another Ushabti of similar style, $7\frac{1}{2}$ in. 2
- 168 A wooden Ushabti with long plainly carved inscription, 9 in.; a painted terra-cotta Ushabti; a Ushabti in black serpentine of the scribe Ken-Amon; and two green faience Ushabti 5
- 169 Five Ushabti in brilliant blue, inscribed in black 5

4/10/ - S

5/15/ - Day

S

12/10/ Lawrence

1/15/ - London

S

Unfinished
4 figures
of heads

8/5/ - Day

5/10/ - 15/10/ - London

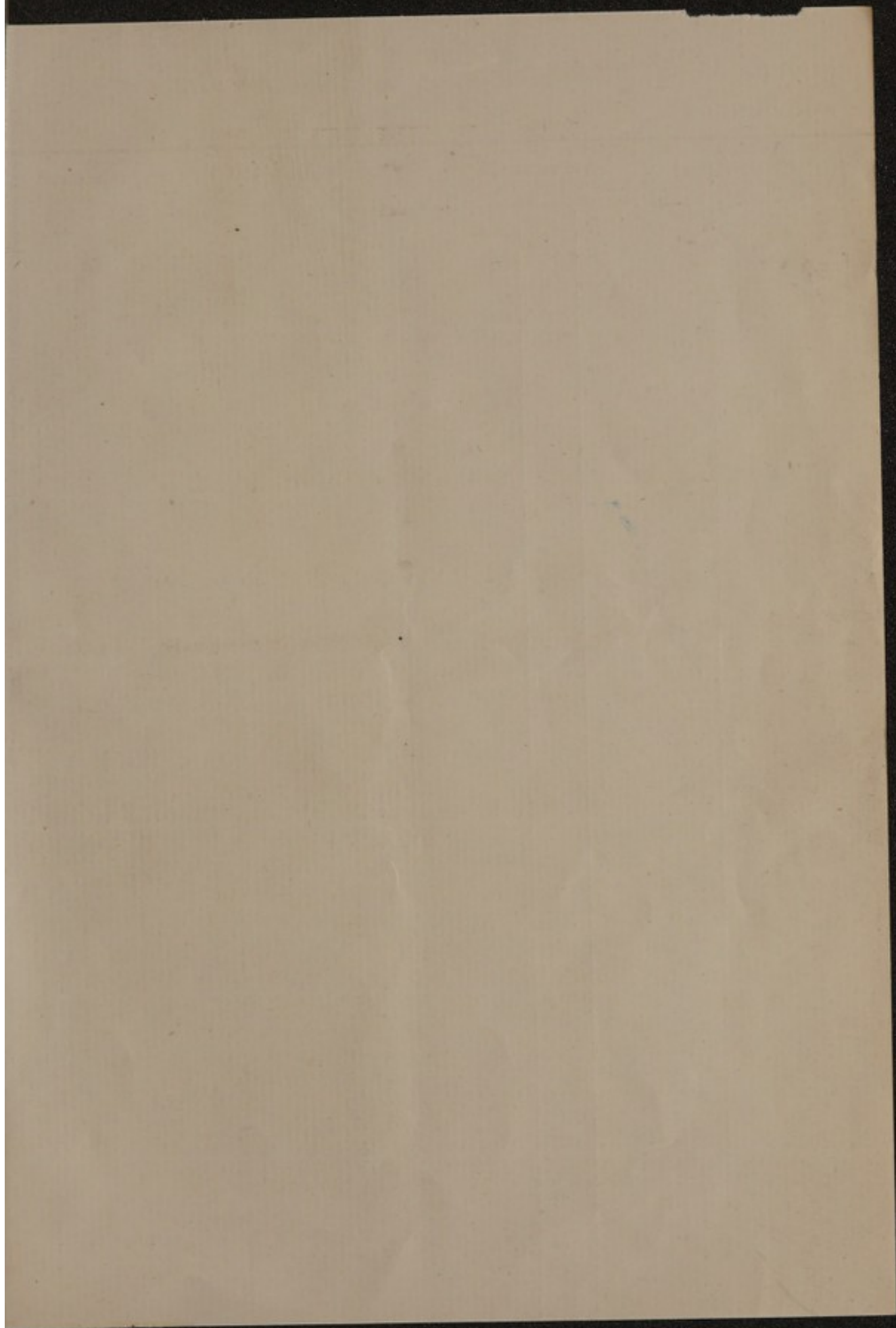
IC T
personally
got price
for this

**From the collection of the late
Wm. Charlton, Esq.**

- 5710f
951
Voy-ee
- 170 An Assyrian cylinder seal of hæmatite representing a priest leading the owner of the seal into the presence of the Moon-god who is seated on a throne, c. 2000 B.C.; another hæmatite seal engraved with two figures, and a long inscription, circa 1000 B.C.; and a conoid Sassanian seal *from the Forman collection* 3
- 171 Three terra-cotta tablets of which one is a receipt for grain, one a list of amounts of grain, and one a list of numbers of sheep, found at Tell Lo, the site of the ancient city of Lagash, period B.C. 2400; a large scarab in black stone, uninscribed; a scarab in cornelian; and eight others 13
- 50f

Other Properties.

- 110f
10.
- 172 A Tanagra figure of a Greek girl, in the attitude of running, peplum thrown over head, $7\frac{1}{4}$ in. high; another, of later type, 10 in. high 2
- 173 Four white marble fragments of a circular fountain, found in the Hauran, Roman, first century A.D. The carving represents a frieze of animals 4
- 174 Four Persian Tiles, from the exterior decoration of a mosque, sixteenth century 4
- 175 A large stone hammer or battle-axe of a close-grained metamorphic rock, $10\frac{1}{2}$ in. in length, with large perforation in the upper broad end; and another of similar type, $8\frac{1}{2}$ in., *Yorkshire* 2
- 176 A battle-axe or hammer, perforated, of basaltic rock, 6 in.; two basaltic axe-heads of a thick rounded North of England type; and three others with weathered surfaces 6
- 177 A GRÆCO-INDIAN SCULPTURE, REPRESENTING BUDDHA standing in an attitude of blessing with four attendants, of whom one is kneeling on the left of the principal figure and the others are standing on the right. The figures, which are well preserved, are deeply cut into a slab of talcose schist in a semi-circular recess, the half apparently of a larger composition. The work was obtained in the Swat Valley.



Date _____

[illegible]

2.	100.	200
1	50	50
1	10	10
1	5	5
2	1	2

267.46

WAAMM/CM/5a/20/4/3/3

Widder

CATALOGUE
OF
Greek, Roman, Egyptian
AND OTHER
Antiquities

FROM VARIOUS SOURCES,

INCLUDING

GREEK AND ROMAN GLASS, TANAGRA AND OTHER FIGURES,
A FINE ETRUSCAN MIRROR, EGYPTIAN ORNAMENTS, A
GRÆCO-ROMAN SWORD WITH GOLD MOUNTINGS,

ALSO AN EXTREMELY RARE

GREEK SILVER SITULA (BUCKET),

The property of G. H. Trench, of Tyes, Staplefield, Sussex,

A COLLECTION COMPRISING

AN EARLY ENAMELLED BRONZE FIGURE OF CHRIST, A
BRONZE GROUP—DIANA WITH DOG,

The Property of Richard Horton, Esq., formerly Director of the
American School for Classical Studies in Rome,

AND OTHER PROPERTIES.

WHICH WILL BE SOLD BY AUCTION

BY MESSRS.

SOTHEBY, WILKINSON & HODGE

(SIR MONTAGUE BARLOW, K.B.E., LL.D., M.P., G. D. HOBSON, M.A., & MAJOR F. W. WARRE, O.B.E., M.C.),

Auctioneers of Literary Property & Works illustrative of the Fine Arts,

AT THEIR LARGE GALLERIES, 34 & 35 NEW BOND STREET, W. 1.

On FRIDAY, JULY 18th, 1919,

AT ONE O'CLOCK PRECISELY.

May be Viewed Two Days Prior.

Catalogues may be had.

Spottiswoode, Ballantyne & Co. Ltd., Printers, London, Colchester and Eton.

CONDITIONS OF SALE.

- I. The highest bidder to be the buyer; and if any dispute arise between bidders, the lot so disputed shall be immediately put up again, provided the auctioneer cannot decide the said dispute.
- II. No person to advance less than 1s.; above five pounds 2s. 6d., and so on in proportion.
- III. In the case of lots upon which there is a reserve, the auctioneer shall have the right to bid on behalf of the seller.
- IV. The purchasers to give in their names and places of abode, and to pay down 10s. in the pound, if required, in part payment of the purchase-money; in default of which the lot or lots purchased will be immediately put up again and re-sold.
- V. The sale of any lot is not to be set aside on account of any error in the enumeration of the numbers stated, or errors of description.
- VI. The lots to be taken away, at the buyer's expense, immediately after the conclusion of the sale; in default of which Messrs. SOTHEY, WILKINSON & HODGE will not hold themselves responsible if lost, stolen, damaged, or otherwise destroyed, but they will be left at the sole risk of the purchaser. If, at the expiration of Two Days after the conclusion of the sale, the lots are not cleared or paid for, they will then be catalogued for immediate sale, and the expense, the same as if re-sold, will be added to the amount at which they were bought. Messrs. SOTHEY, WILKINSON & HODGE will have the option of re-selling the lots uncleared, either by public or private sale, without any notice being given to the defaulter.
- VII. Upon failure of complying with the above conditions, the money required and deposited in part of payment shall be forfeited, and if any loss is sustained in the re-selling of such lots as are not cleared or paid for, all charges on such re-sale shall be made good by the defaulters at this sale.

Gentlemen who cannot attend this Sale may have their Commissions faithfully executed by their humble servants,

SOTHEY, WILKINSON & HODGE,

34 & 35, New Bond Street, London, W. (1).

Telegraphic Address: "Abinitio, Phone, London." Telephone: Mayfair 4689

In sending Commissions please refer to this Catalogue as "BIRCHWOOD."

COMMISSIONS SENT BY TELEPHONE ARE ACCEPTED ONLY AT THE SENDERS RISK, AND MUST BE CONFIRMED BY LETTER OR TELEGRAM.

A COLLECTION OF EARLY GREEK GLASS AND CYPRIOTE TERRA COTTA.

From the Laurence Cesnola Collection.

300—200 B.C. CYPRUS.

14/-	60/-	(1)	A 7-in. bottle; ditto 4½ in.; ditto 3½ in.	3	
12/-	15/-	(2)	Two 5¼-in. Ampullæ	2	
		3	Two 5-in. Ampullæ; and two 2¼-in. bowls	4	14/- B.
		4	A 7-in. Lachrymatory; two 6-in. Ampullæ; and a 2¾-in. bowl	4	17/- B.
		5	A 4-in. two-handled Lachrymatory; 3½-in. ditto; 2½-in. bowl; and odd damaged pieces	3	21/- B.
21/-	25/-	(6)	A 7½-in. Ampulla, 5-in. ditto; and a 5-in. Lachrymatory	3	
		7	A 3-in. bowl; and a 2½-in. ditto (1 cracked)	2	10/- B.
		8	A 5½-in. Ampulla; and 2 Lachrymatories, 6 in. and 4 in.	3	18/- B.
16/-	10/-	9	Two 5-in. Ampullæ	2	Preston
16/-	30/-	10	A 7-in. Lachrymatory; 5-in. ditto; and a 6-in. Ampulla	3	
18/-	15/-	11	A 6-in. Ampulla; and two 3½-in. Lachrymatories	3	
18/-	50/-	12	Two Unguentaria, 8 in. and 7 in.	2	
		13	Three ditto, 7 in., 5 in., and 3½ in.	3	21/- B.
9/-	40/-	14	A 6-in. Lachrymatory; and two 5-in. ditto	3	
3/-	20/-	15	A 6-in. Ampulla; and two Lachrymatories, 5¾ in. and 4 in.	3	
11/-	25/-	16	An 8-in. Unguentarium; and two ditto, 3 in. and 2½ in.	3	
		17	Two 5-in. Ampullæ; and a 6-in. Lachrymatory	3	40/- Elements
		18	Three 5-in. Unguentaria (1 damaged); and a 3-in. Lachrymatory	4	14/- B.
18/-	60/-	19	A 5-in. globular Ampulla; and two Lachrymatories, 4 in. and 3½ in.	3	
		20	A 3½-in. bowl; and a 3-in. ditto	2	16/- B.
		21	A 7-in. Ampulla; and a 3-in. globular bottle	2	10/- B.
		22	A 5½-in. Ampulla; a 3½-in. pear-shaped bottle; and a 3½-in. Lachrymatory	3	24/- B.

- 7/- 25/- (23) Two long-neck bottles, 8 in. and 7 in.; and a 4-in. Lachry-
 matory 3
 15/- 15/- (24) A 6½-in. long-neck bottle; a 6-in. Ampulla; and two 2½-in.
 Lachrymatories 4
 25 Four 6-in. Ampullæ; and 2 bottles, 7 in. and 5½ in. 6 B 34/-
 26 A 6-in. double bottle with handles; and 12 various 13 B 32/-
 27 A 9-in. Lachrymatory; a 4-in. Ampulla; and a shaped ditto 3 30/-
 28 23 bottles; and a quantity of fragments 23
 29 Eight terra-cotta and other lamps; and a bird 9
 16/- 60/- (30) Twenty-one terra-cotta masks; one marble ditto; and a foot 23
 31 Eleven terra-cotta bottles various; and three black ointment
 pots 14
 20/- 50/- (32) Three Greek Cups; Cover; Seal; two-handled bowl; nine black
 jugs, vases, etc. 15
 33 A 7½-in. terra-cotta Kylix: two figures; two animals; and three
 odd pieces 8
 34 4½-in. Fowls, ornamented with incised work; a dog; a boy
 seated; figure of a Goddess; a child; duck; leg; and
 grotesque figures, some on olivewood stands 8
 8/- 90/- (35) 14 clay moulds for casting coins; 13 glass bottles; and frag-
 ments 27
 60/- 6. (36) The original illustrated Album of the Cesnole Collection

ANCIENT GREEK AND ROMAN GLASS FROM PALESTINE.

- 30 90/- (37) Four ampullæ, or perfume bottles, with wide bases, long necks,
 and wide lips, uncleaned but with good iridescence, 7 in.
 to 8 in. high 4
 38 Four similar 46/- B 4
 32/- 70/- (39) Four ampullæ with globular bases, 7 in. to 8 in. 4
 24/- 60/- (40) Four of similar form, 6½ in. 4
 41 An ampulla with cone-like base, 7½ in.; one with a fine irides-
 cence, 7 in.; and 2 others 32/- B 4
 24/- 90/- (42) Four ampullæ with globular bases, 6 in. to 8 in. 4
 22/- 60/- (43) Two ampullæ with flat bases and slender necks; and 2 others 4

indicate no's
 of items of Cesnole
 collection in our

- 60/- 44 Three bottles; a vase; and a globular bottle (imperfect) 5
- 50/- 45 Two double stibium bottles; and a standing bottle with trailed-decoration and two loops on the lip, $5\frac{1}{2}$ in. 3
- 46 A stibium bottle; a globular vase with handles and dark-green trailed decoration; and two bottles with loops of Arab date 4 36/- B
- 47 A bottle with handle and spout of brownish glass, 5 in. (Arab period); and a small globular bottle of reddish-brown glass 2 26/- B
- 48 A double stibium bottle of green glass; a bottle with spirally-trailed lines and decorative loops; and a fine iridescent ampulla 3 40/- B
- 49 A jug of red ware with upright lines on the neck, 12 in.; 2 jugs of Cypriote style; 12 lamps; 4 small jugs of black ware; piece of a Roman mortarium; and 12 other early pieces 32 14/-
- 85/- 50 Eleven terra-cotta lamps; 22 pieces of early pottery; 2 Roman bronze keys; some bronze fragments; a lion head in bronze; and 2 grotesque lead masks of Roman period; fragments of glazed tiles, etc.; and 3 Arab pipe-bowls 26475-6 26492
- 46/- 51 A predynastic Egyptian vase of globular form, with slight side loops in black and white granite, 4 in. high, 5 in. diam.; and an Egyptian alabaster vase, $4\frac{1}{2}$ in. 2 5/10/- B

TANAGRA AND OTHER TERRA COTTAS, &c.

- 52 Figure of a female seated on a rocky base, her dress looped on her right shoulder, and in her left hand an apple 1 8/- B
- 53 A standing female figure on an oval base, 10 in. high; and another $7\frac{1}{2}$ in. 2 5/8/- B
- 50/- 54 A standing figure of a lady wearing a hood, $7\frac{1}{2}$ in.; and another somewhat smaller 2 3/10/-
- 55 Two draped female statuettes 2 4/13/- Fenton
- 56 A draped female holding a rabbit in her right arm, 9 in.; and a small statuette of a female walking 2 4/8/- Lincoln
- 57 A figure of a boy seated on a cippus, wearing sun hat and cloak; and a figure of a girl seated, with a small figure on her left shoulder 2 4/13/- B
- 58 A small figure of a child completely draped; a tragic mask; and a figure of a woman seated, nursing an infant 3 4/10/- B

580 35/- 59 A head and bust of a woman; a mask of a satyr; and three early figures of women (two holding cytheræ) from Cyprus, from the Laurence Cesnola Collection 5

60 A VERY FINE GROUP OF HERCULES, THE CRETAN BULL, AND IOLAUS: Hercules, at left end of the group, with club raised, is grasping the animal's horn, and on the other end Iolaus is actively pressing forward, on oblong base 14 in. long 1

15/10/- 6. 61 A statuette of a seated female, with her dress fastened on each shoulder and folded across her knee, the hair bound with a small ornament in the centre; a specimen of finest quality, provided with an oak stand and glazed case 1

62 A statuette of a dancing nymph, about 11 in. high, in a glazed case 1

36/- 50. 63 A set of four canopic vases in alabaster, varying from 12 to 15 in. high, the covers representing the heads of the four gods of the underworld, Hapi, Mestha, Antef, and Kebsnef 1

64 A Ushabti figure in black palmwood, with clearly-cut inscription of nine lines, 12 in. 1

8/5/- 65 A green faience group of Isis and Horus, with fine detail, 3-in. high, mounted on yellow marble base; and a figure of Bast, lion-headed, seated on an open-work throne 2

66 A figure of Bast, inscribed; an ægis of Bast; a group of Nefer-Tum, and Bast; a Tet; a head of Ptah; and small figures of Bes, Anubis, and Kebsnef 8

31/- 6. 67 An Etruscan bronze mirror, with fine smooth patination, engraved with a group of four figures of the Kabiri, 5 in. in diameter, with the handle, 11 in., on an ebonised stand; from the Hoffman and Trist collections 1

7/5/- 6. 68 Another Etruscan bronze mirror, with a similar group of the Kabiri, the handle more ornate and terminating with an animal head; from the Hoffman and Trist collections 1

36/- 69 A VERY FINE ETRUSCAN MIRROR, 8-in. diam., most of handle missing, engraved with figures of Hercules, Dionysos, Ariadne, and Eros; beside each figure is the name in Etruscan characters, Erkle, Phuphlans, Vesuna, and Svultaph, and below, at the top of the handle, is a smaller figure of Eros with a wreath; found at Fattoraccio in 1880; published in the Appendix to Fabretti's Corp. Inscip. Ital., with ebonised stand; from the Bucciosanti and Castellani collections 1

- 70 A glass balsamary of bombylious shape in blue, with yellow, blue, and green lines and chevrons; and another of darker glass and alabastron form, with yellow and white markings, the neck repaired, 6 in.; and 2 bronze stands; *from the Trist collection* 4 *6/107- Lincoln*
- 71 Two balsamaries of amphoriskos shape of blue glass, with yellow and green markings; and 2 stands; *from the Trist collection* 4 *11/107- Spunk*
- 72 A glass amphoriskos with almost straight sides, marked in lines of chevrons yellow and blue, $4\frac{1}{2}$ in.; and another with white lines and curves on blue, $4\frac{1}{2}$ in.; 2 stands; *from the Trist collection* 4 *484- Linton*
- 73 A balsamary of amphoriskos form in black glass with white lines; and four small globular bottles of fine green, blue, and red colours; and 2 metal stands 7 *3/57- Lawrence*

Another Property.

- 74 Eleven terra-cotta Roman lamps, each with figures in relief, including Diana, warriors, Cupid with a rabbit, etc. 11 *38/-*
- 4/57- 95/-* 75 A large bow-shaped bronze fibula; eight others of various types of pre-Roman date; and a bronze spear-head 10 *Seltman*
- 4/57- 55/-* 76 A wood figure of Anpu, wearing the red crown of Lower Egypt, holding an ankh in each hand, on wood base, XI. dynasty; a figure of a man walking, on original wood base, 11 in.; and a painted wood Ushabti, XII. dynasty, $8\frac{1}{2}$ in.; *from Thebes* 3 *Baro*
- 77 A wood figure of Anubis holding a sceptre, $7\frac{1}{2}$ in.; a well-modelled figure of a man walking, $14\frac{1}{2}$ in. (Sakkara); and a figure of a seated man (Sakkara) 3 *57/107-*
- 22/- 75/-* 78 Two limestone figures of Osiris; a limestone figure of a lion; a terra-cotta bust of a woman wearing calathos and chiton, early Greek, and a terra-cotta mask *from the Fayoum* 5 *Barold*
- 79 A bronze figure of Osiris, with plumed crown and loops on the shoulders (Ptolemaic period); and another bronze figure of Osiris, on a white marble base 2 *8/107-*
- 80 The lower half of a basalt statue of Sekhet, 8 in. high, on a rectangular base, three sides of which are inscribed; the figure holds an Ankh in the right hand; *found at Tel-el-Bughiah* 1 *20/- Bethel*

- 42/- 6. 81 An important bronze figure of a hawk, the body finely engraved to indicate feathers, 10 in. high, on a rectangular base 8½ in. long 1
- 3/57- 7. 82 A figure of Sekhet seated on a pierced throne; three figures of Ptah; a figure of Tehuti; and three small figures of Horus with side locks 8
- 83 A fine head of Ptah; 2 small cats (one of bronze); two green figures; nine amulets, including a heart amulet, a Tet, and a Sam; and a mother-of-pearl carving of later date of a cupid at an altar 15
- 64/- 50/- 84 A bronze polytheistic figure, a combination of Amen-Ra with Ptah-Seker-Asar, ram-headed; a bronze figure of Horus, hawk-headed; and a figure of a priest kneeling 3
- 85 A bronze figure of Ptah, 3 in.; a figure of Bast, 5 in. high, feet missing, cat-headed, holding ægis of lion in left hand; and a torso of a seated female deity, the surface finely engraved to indicate details of the dress 3
- 86 A bronze figure of Harpocrates seated; and two standing figures 3
- 87 Two small heads of Ptah-Seker-Asar; four heads of Mestha; one of I-Em-Hotep; one of Hat-Hor; one of Bast; and a curious grotesque, all on wood mounts 10
- 280/- 80/- 88 Five green-and-blue draught pieces of early periods; and two dice of Roman period 7
- 110/- 6. 89 A remarkable wood group representing the slaughter of an ox for the occupant of a tomb. The ox is pinioned in the centre of the group, which comprises seven figures—namely, the slaughterer and two assistants, and in the four corners of the wood enclosure a scribe with a register under his arm, a man with his hands in a tub, a seated bailiff with a palette on his knees, and a priest 1
- 90 A small glass balsamary of amphora form, the body blue, decorated with lines and chevrons of yellow and green 1
- 8/9/- 9. 91 A pair of ancient Greek gold earrings, the drops composed of a bust and a circle with rosette of fine work, separated by a cornelian bead; from Athens 2
- 92 Three scarabs inscribed in hard stone, with spirals and lotus flower; four others in stone with plain bases; and four others of more detailed beetle form 11

7/- Harold

- 93 Ten steatite scarabs, all inscribed 57-1 10 Harold
- 94 A pendant or reliquary of oval form, in silver gilt and enamelled, enclosing a group representing the Flight into Egypt 1 81-1-
- 95 A silver eucharistic spoon, with raised design of crucifix on the handle, $6\frac{1}{2}$ in., seventeenth century: Italian 1 207-Fenton
- 96 Two pieces of Irish gold ring money, twisted into the form of miniature torques, 130 grains 2 280
- 97 An ancient Roman plaque of white marble, 14 in. high, 12 in. wide, with a figure in bold relief of Hercules standing with lion skin and club, and facing him Pluto, who stands with one foot raised and elbow on knee; the plaque is fixed in an old frame with inlaid edges; and an oblong plaque of variegated marble, 19 in. by 5 in., with a dedicatory inscription in Greek characters 2 1080 B.
20. 98 AN ANCIENT GRÆCO-ROMAN SWORD, with the gold mountings of the handle and sheath; the grip is composed of plates of gold covered with a lattice design; on the outward side there is a head in relief and three carbuncles *en cabochon*; near the pommel a series of spirals, and above that an inscription in Greek characters; the lower part of the handle, which broadens out, has a mask on one side with two carbuncles, and on the other an anthemion; the chape and three broad bands of the scabbard are connected by lateral bands and set with carbuncles surrounded by a beaded ornament; the pommel is of chalcedony of a circular flattened form; length 21 in.; from Asia Minor 1 5X
- 99 A GOLD TIARA with a rope-like border, enclosing an elaborate design, the principal feature being a meander pattern between the loops of which are a series of double anthemion ornaments and curving horns of Ammon; near the border, enclosing the meander, and projecting in triangular arrangements, are 264 circular beads, each encrusted on the surface by spirals and clusters of minute gold work; the centre about 3 in. in breadth; weight 5 oz. 7 dwt. 8 grains; in green morocco case 1 607-1-
- 100 A bronze bowl shaped as the upper part of a human skull, with ornamental designs in relief, the edge set round with masks, the lid of the bowl also with raised designs and with Thibetan mystical vocables, variants on the characters in and on the Thibetan prayer wheels, *Om, Mani, Padme, Houm* 1 580 B

- 58 85/- 101 An ancient Indian bronze vase, originally turned in a plain semi-globular form. To this has been added a serpentine handle and a projection resembling a spout, in which is seated a four-armed figure of Siva; and a libation spoon of similar workmanship and provenance 2
- 5107 85/- 102 A bronze Thibetan "dorge," or demon-exorcising dagger. On the lower part of the grip is the head of an elephantine monster, from which proceeds a three-pointed blade. The upper part has a knob of three masks of Fam Din 1
- 103 A bronze Nepaulese vase or bowl shaped as a monstrous mask with a flaming border, the wide-open mouth set round with skulls in relief, and encrusted with turquoises 1
- 104 An ancient Indian carving in black stone, 42 in. high, 20 in. wide, with a pointed top, the centre occupied by a figure of Lakshmi and two supporting figures in high relief; the goddess has a tall pointed head-dress, and holds a lotus in each hand; above in the clouds are angelic beings (Apsares), and below is a frieze of small figures; an interesting illustration of the transition from Brahminism to Buddhism 1

The Property of Richard Norton, Esq.,

Formerly Director of the American School for Classical Studies in Rome.

- 105 A THIRTEENTH TO FOURTEENTH CENTURY ENAMELLED BRONZE FIGURE OF CHRIST, 10 in. high; the enamelled portions are the loin-cloth and the eyes; the figure is in fine condition, and seems to have originally belonged to a chasse or a book-cover 1
- 106 A BRONZE GROUP, DIANA WITH DOG; the goddess is nude, and her attitude expresses alarm, probably at the approach of Actæon; seventeenth century; mounted in carved wood frame 1
- 107 "Head of Athena (without helmet) of the style of Phidias, an admirably preserved copy of a bronze original" (Bædeker's *Bologna*; Museo Civ.); re-cast in bronze for Mr. Norton, probably the only bronze copy; 17½ in. high 1
- 108 A Faun with wine-skin; bronze statuette, 21½ in. high; a copy of the famous Roman statue 1

- 109 An Egyptian alabastron in opaque blue glass, with sinuate decoration in white striations, $3\frac{3}{4}$ in. high; also a glass armilla; the alabastron slightly chipped at the lip 2
- 110 Five Roman glass bowls of various shapes, two being of rare type, from $3\frac{1}{4}$ in. to $4\frac{1}{2}$ in. diam. 5
- 111 Thirteen miscellaneous Roman glass vessels, comprising a double ampulla with handle, three kohl vases, unguent vessels, and two long-necked vessels of the "tear-bottle" type 13
- 112 Collection of fragments of ancient glass, including some very rare examples of the early Christian type, also some finely iridescent specimens, beads, heads, etc. *a lot*
- 113 Sixteen ancient Greek terra-cottas, comprising some complete statuettes of early types, animal forms, and fragments of draperies 16
- 114 Twenty-two others, chiefly heads, comprising an extremely early Medusa mask, a term of unusual form with horse's head, some Tanagra heads, and others 22
- 115 A cast of a head of Aphrodite, also a number of casts of ancient gems and coins, sealing-wax impressions of similar objects, and other casts; a quantity of fragments of ancient pottery, stone remains, etc. *a lot*
- 116 A glazed pottery fragment with Greek inscriptions, and a quantity of fragments of "Samian" and other pottery, with figures, designs, potters' marks, etc.; also some plummets in unglazed earthenware, etc. *a lot*
- 117 Twenty miscellaneous Greek and Roman pottery vessels, comprising aski, lamps, an amphora, &c. 20
- 118 Fragment of an alto-relievo in Parian marble, Greek, on the one side a bearded head, on the other, in lower relief, a satyr's head with curled beard. Also a marble head of a lioness, Græco-Roman, and the draped torso of a woman with a duck 3
- 119 A flint spear-head with serrated edge, 7 in. long, *fine*; three stone chisels, a bronze ditto, nine stone whorls and amulets, and other prehistoric pieces. Also several pieces of shaped amber, perhaps connected with some ancient process of spinning or weaving *a lot*

57/157
Dary
9/1-

9/1- B
44-
Lawum

~~Lawum~~

57/1-
Spunk
69-

69- B

1080 B

- 18/- 15. 120 A ROMAN BRONZE WEIGHT INLAID WITH SILVER, circular 2 $\frac{3}{4}$ in. diam., inscribed in raised silver letters II. on surface, and TEMPL·OPIS AVG. on the curved sides, *rare*. Also an Etruscan bronze handle with lion terminals, *fine*; a ram's head terminal, and a seated figure of a bearded man—perhaps Herakles meditating after his exploits 4
6. 121 A Roman bronze Mercury, caduceus in left hand, purse in right, 4 in. high; another, 3 in. high, well patinated; a bronze figure of Fortuna, with cornucopia and plough, Romano-Egyptian; a bronze standing figure of the jackal-headed Anubis crowned with solar and lunar emblems representing Eternity and with Caduceus of Mercury in left hand, Gnostic; and one other 5
- 44/- 75/- 122 Seven miscellaneous Roman bronzes, comprising an Apis Bull, 2 $\frac{1}{2}$ in. long; another 1 $\frac{3}{4}$ in. long, and two bull-headed supports of a tripod, *fine*; a cock, a lion, and one other 7
- 123 Seven Roman bronze Fibulae of various forms, 6 finger rings, a Roman hairpin and tweezers, a flat-topped hairpin, an ivory tessera, or Roman admission ticket to the theatre, inscribed with gladiator's name, Cornelius, and other details; three silver objects, Roman, a bronze goat, and two others 23
- 124 A blue Heart Scarab of fine colour, eight Amulets and Scarabs, ancient Egyptian, an alabaster unguent pot, a bronze Jackal, and some specimens of XVIII. Dynasty bead work a lot
- 22/- 195/- 125 Ancient Egyptian Limestone Head in relief, probably a Queen of the eighteenth dynasty, the head-dress beautifully defined in red line, *fine*. Also a dark green stone head of a cynocephalous ape, Egyptian 2
- 126 Five Persian and other glazed Tiles, decorated with conventional designs in red, blue, green, and purple, on white ground, rectangular, 11 in. by 11 in. and 9 $\frac{1}{2}$ in. by 9 $\frac{3}{4}$ in.; a small Rhodian dish and some blue glazed fragments a lot
- 25/- 6/15/- 127 A Persian lustre Bowl, with green decoration on blue ground, inscribed; a Persian Crackle Vase, with blue figure motive on buff ground, 5 $\frac{1}{2}$ in. high; and two trefoil candlesticks in glazed pottery, 15th century Persian, iridescent 4
- 128 Early Cloisonné Enamel Plate, 7 $\frac{3}{4}$ in. diam.; a pair of Cloisonné Vases, 6 $\frac{1}{4}$ in. high, also early; and a blue porcelain double Vase, 4 $\frac{3}{4}$ in. high, Chinese 4

C.T. should
personally
see the
gold

Spink

3/5/-

44/- 75/-
Andral

4/10/-
B

2/15/-
Guro.

4/5/-

3/8/-

- 129 Fine Cloisonné two-handled Vase, with circular flat body decorated with dragon on orange ground and fishes on blue ground, 10 in. high 1 *6/10- art. 1000*
- 130 Cloisonné Bowl, decorated with rings of conventional ornament on green ground; in the centre a chrysanthemum, 12 in. diam. 1 *3/5- Persian*
- 131 An Illuminated Parchment Scroll, Persian; a small Buddhist Shrine in black lacquer; an Oriental double flute and Pan pipes in reed; a crackle-glaze sweetmeat dish; some plaster casts of bronze plaques, by V. D. Brenner; nine cigarette tubes; and sundry other objects *a lot* *6/9- B*
- 132 A string of oval amber-beads, good colour; two strings of Oriental beads; and a well-carved ivory figure of a sleeping child 4 *4/10- Persian*

Another Property.

- 133 A Persian glazed Tile, blue and green decoration, and four divisions of a tile, making conventional floral design with star in centre 5 *457- B*
- 134 A glazed Rhodian Tile, length 10 in., width $7\frac{1}{2}$ in., with tulip decoration in red, blue, and green, on white ground, a very fine piece 1 *607- Persian*
- 5/107- 10.* 135 An old Venetian Tile in glass mosaic, $8\frac{1}{2}$ in. long, $7\frac{3}{4}$ in. wide; and another $7\frac{1}{4}$ in. by 7 in., both early and very interesting pieces 2
- 457- 85-* 136 Two Persian glazed Tiles, $8\frac{1}{2}$ in. by $8\frac{1}{2}$ in. and $8\frac{1}{2}$ in. by $6\frac{1}{4}$ in. respectively, blue and green decoration on white ground 2
- 137 Two Rhodian Tiles with tulip decoration, green and blue colouring on white ground 2 *357- Persian*
- 2/107- 85-* 138 Glazed square Tile, floral decoration in blue and green, hole in centre; also a Persian Tile, $10\frac{1}{2}$ in. long, width 5 in.; and a Rhodian Tile, with tulip decoration in blue and green on white ground 3
- 139 Three pieces of Egyptian rope in wood cases from the Rustafjael collection 3 *124- B.*
- 140 Coptic Pillow in wood case and two pieces of Egyptian rope in wood cases, all from the Rustafjael collection 3 *21/- B.*
- 141 Two ancient Egyptian mural fragments with inscriptions; also a small wood carved Hawk 3 *12/- B.*

The Property of G. H. Trench, Esq.,

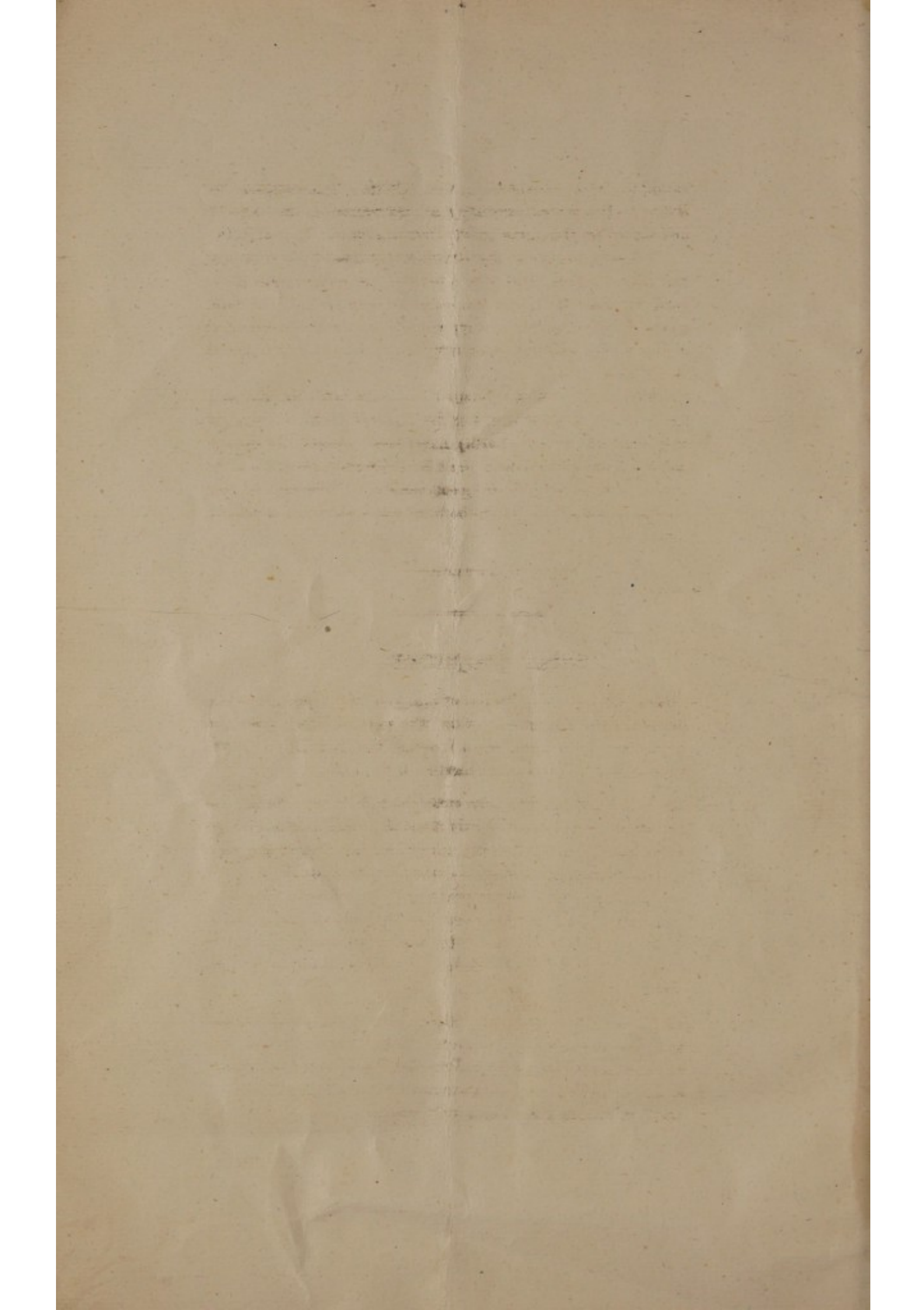
of Tyes, Staplefield, Sussex.

- 142 A GREEK SILVER SITULA (bucket): height 9 in., not including the handles: *weight* 56 oz. The vase was bought by the present owner in Corfu, and is said to have been found, about 1900, at Paramythia in Epirus, a site which has yielded a number of fine Greek bronzes now in the British Museum. The spout of the vase is in the form of a lion's head, with volute-like projections above it, through holes in which the ends of the handles pass. The other ends of the handles pass through similar holes in the mask of Pan which is fastened to the opposite side of the vase. Two other masks of the same type are attached to the upper part of the vase halfway along the sides. The lion's head and the three masks were cast and soldered on. The foot is set off from the body of the vase, and the lower side of it is engraved with concentric circles. There are also engraved lines round the mouth. The handles are quadrilateral and terminate in bobbins.

The number of ancient silver buckets still extant is very small. The British Museum possesses two silver buckets, both found in France, one at Chaourse and the other near Vienne; these are of Roman Imperial date, and the shape is quite distinct from that of the present example. A silver bucket of somewhat similar form to this, but with a different type of foot and a different scheme of decoration, was discovered at Herculaneum and is published by Waldstein in his *Herculaneum*, plate 44: the reliefs with which it is decorated show it to be of early Imperial date. Closer analogies are furnished by buckets of bronze and of painted clay. The clay situlae belong to the later fourth and the third centuries B.C.: examples are to be found in the British Museum (F. 307, Apulian; G. 30 and G. 31, from Vulci in Etruria). The bronze situlae cannot be dated with the same ease, but the examples seem to range from the fourth to the second centuries B.C. Bronze situlae of types like the present have been found at Paestum (*Museo Borbonico*, 6, pl. 31, 4), at Herculaneum (Waldstein, pl. 42), in Etruria (*Museo Gregoriano*, 1, pl. 8, 3A and 4, from Bomarzo or Vulci), and at Waldalgesheim in Germany (Willers, *Hemmoor*, p. 118, fig. 47: Greek import). An

£1450
Sargent





example from Chianciano, near Chiusi, is assigned by Evans to the second century B.C., by reason of the objects discovered in the same grave (*Archæologia*, 52, p. 376).

It seems likely, on the evidence provided by the bronze and clay buckets, that this example was made some time between the fourth and the second centuries B.C. A date in the third or second century would suit the bold modelling of the masks and the vigorously executed yet conventional lion's head.

Some of the extant bronze situlae were no doubt intended for ordinary outdoor use, but the finer of them, as well as the clay situlae, can hardly have been meant for heavy work. This silver situla must have been a piece of table silver, and as such is of great rarity. The end of one handle is bent back, but otherwise the vase is in excellent condition.

[SEE ILLUSTRATION.]

Other Properties.

10. 143 The head and bust of a female of Sphynx-like aspect in white marble of the Ptolemaic period; the face of Greek type, the head-dress terminated by a Uraeus, the bust 16 in. high, upon a base of variegated marble, 6 in. high.

- 144 An ancient Egyptian mummy case about 6 ft. in length, the surface of which is brilliantly painted. The portrait of the personage is in high relief, exhibiting the head-dress with long pendants, the breast is covered with a series of semi-circular lines and chevron ornament fringed with the lotus, and below that are two pairs of figures of the goddess Maat seated back to back; the case is enclosed in a plate-glass case, 6 ft. 11 in. high, 1 ft. 9 in. deep, and 2 ft. wide.

- 145 A pair of Genii of the Amenti: Mestha and Tuamauteuf, human and jackal-headed, in mummy form, carved wood, the breast of each covered by a deep collar of ornamental design in fine colouring, and an inscription down the front, 10½ in. high, in square glass cases with stands

- 44-1-
9/107-
X
8. 146 A prehistoric mace-head of circular outline with flat base and cone section perforated from the apex, in black and white granite, and two others of similar form in variegated black and white stone 3
- 147 A mace-head of striated alabaster; and two others of black and white stone 3 607-
- 148 Three other mace-heads of similar form and period 3 407-B
- 149 A mace-head of granite of somewhat oblong form, 6 in. by $4\frac{1}{2}$ in., with flat under and top surfaces and two sides incurved; and a mace-head of disc form 2 3/107-B
- 150 A grey stone palette of predynastic date, shaped as a fish with a head at both ends, $11\frac{1}{2}$ in.; two others of rounded fish form; and one of double triangular form 4 407-
Linton
- 151 Two fish-shaped palettes with holes for suspension; and two double triangular specimens 4 207-
- 22- 7. 152 A palette, almost circular, representing a turtle, with hole for suspension and red-ringed eyes; three oval and one triangular palettes 5
- 153 A prehistoric vase of black diorite almost cylindrical in form with a slightly outward curving rim and small perforated side loops, $8\frac{1}{2}$ in. high; and another of similar form and period, $7\frac{1}{4}$ in. high 2 13/107-
Day
- 9/107- 8. 154 A predynastic black-stone vase of elongated globular form, very neatly turned, with a small raised foot and two side loops $6\frac{3}{4}$ in.; and another, $5\frac{1}{2}$ in. 2
- 4/107- 6. 155 Two predynastic vases of ovoid form in grey and brown stone and with small side loops, 4 in. and $4\frac{1}{2}$ in. high
- 156 An ovoid vase of red and white conglomerate, $6\frac{1}{2}$ in. high, predynastic; and a small black vase of similar period 5/152
Day
- 157 A circular bowl of dark speckled granite with incurving lip, 7 in. diam., predynastic; and an oblong slab, $5\frac{1}{2}$ in., with hollowed space and channel for preparing colours 2 107-1
Day
- 60- 7. 158 A predynastic vase of alabaster, 4 in.; a small vase or mortar of alabaster, with two side projections; and a conical vase or cup 3
- 159 A remarkable bronze axe or halberd, the blade being of unusual length, 19 in., with a bow-shaped cutting edge and twenty-seven perforations on the back, which is inserted in a wooden shaft with ferules at each end, total length 27 in. 13/1-
B.

12. 160 A bronze figure of a hawk, emblem of Horus, crowned, with gold eyes and a slight fillet and point of gold on the head; and another bronze hawk, apparently the top of a sceptre or standard 2

90- 161 A bronze figure of a priest sitting on his heels, $3\frac{1}{4}$ in., a fine model; and the figure of a hawk on a small columnar stand 2

5/107- 162 A bronze forepart of a horse, late period; a sistrum with a handle bearing an ægis on each side and terminated by a figure of Bes; a pair of bronze bracelets; and two pairs of small castanets 8

10. 163 A bronze horse-bit with two lateral pieces inlaid (Roman period); a pair of silver bracelets engraved and terminating in animal heads (Byzantine); and a small Coptic bronze bowl inscribed on the outside 4

12/107- 164 A marble table for offerings, $13\frac{1}{2}$ in. in diam., on a low foot; a white marble head-rest; a small slab with disc in relief; and a white fluted column 4

165 A vase or pot for kohl composed of a cylinder of ebony, $10\frac{1}{2}$ in., the upper and lower ends set round with dots of ivory; an ivory tooth carved with a pointed mask; a small stone grinder; and eleven boys' marbles of various dates 14

166 A painted wooden figure of a hawk, with solar disc, an emblem of Horus; and a painted figure of human-headed bird, Ba, an emblem of the soul 2

167 A finely inscribed Ushabti figure of Zankebu, High Admiral of the Fleet in the time of Psammetichus, 26 dynasty, 18 in.; and another Ushabti of similar style, $7\frac{1}{2}$ in. 2

5/6. 168 A wooden Ushabti with long plainly carved inscription, 9 in.; a painted terra-cotta Ushabti; a Ushabti in black serpentine of the scribe Ken-Amon; and two green faience Ushabti 5

169 Five Ushabti in brilliant blue, inscribed in black 5

**From the collection of the late
Wm. Charlton, Esq.**

- 170 An Assyrian cylinder seal of hæmatite representing a priest leading the owner of the seal into the presence of the Moon-god who is seated on a throne, c. 2000 B.C.; another hæmatite seal engraved with two figures, and a long inscription, circa 1000 B.C.; and a conoid Sassanian seal *from the Forman collection* 3.

- 2/107 8. 171 Three terra-cotta tablets of which one is a receipt for grain, one a list of amounts of grain, and one a list of numbers of sheep, found at Tell Lo, the site of the ancient city of Lagash, period B.C. 2400; a large scarab in black stone, uninscribed; a scarab in cornelian; and eight others 13.

Other Properties.

- 172 A Tanagra figure of a Greek girl, in the attitude of running, peplum thrown over head, $7\frac{1}{4}$ in. high; another, of later type, 10 in. high 2.

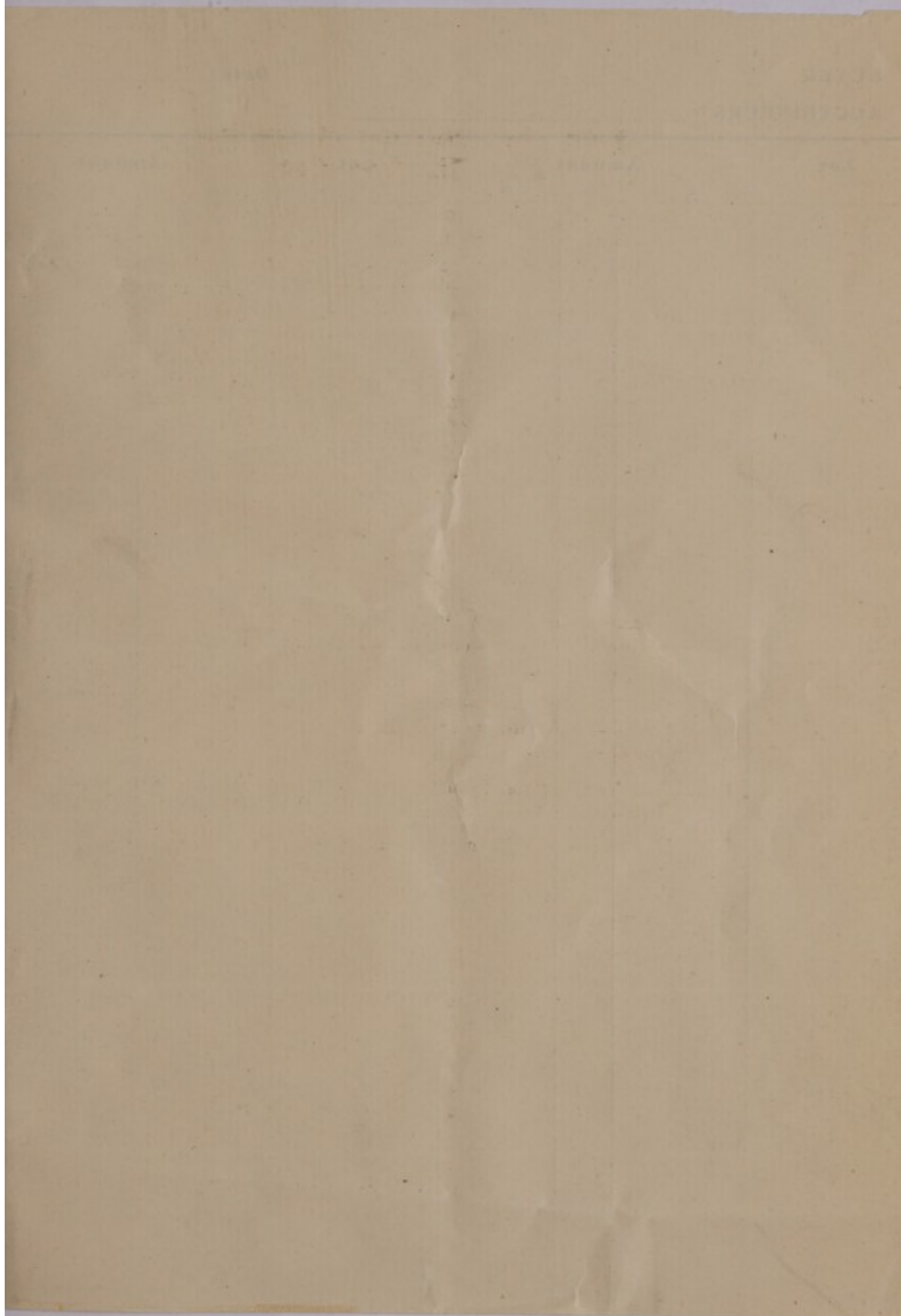
- 173 Four white marble fragments of a circular fountain, found in the Hauran, Roman, first century A.D. The carving represents a frieze of animals 4

- 174 Four Persian Tiles, from the exterior decoration of a mosque, sixteenth century 4

- 30/ 85 175 A large stone hammer or battle-axe of a close-grained metamorphic rock, $10\frac{1}{2}$ in. in length, with large perforation in the upper broad end; and another of similar type, $8\frac{1}{2}$ in., Yorkshire 2.

- 18/ 75 176 A battle-axe or hammer, perforated, of basaltic rock, 6 in.; two basaltic axe-heads of a thick rounded North of England type; and three others with weathered surfaces 6.

- 19/1- 99 177 A GRÆCO-INDIAN SCULPTURE, REPRESENTING BUDDHA standing in an attitude of blessing with four attendants, of whom one is kneeling on the left of the principal figure and the others are standing on the right. The figures, which are well preserved, are deeply cut into a slab of talcose schist in a semi-circular recess, the half apparently of a larger composition. The work was obtained in the Swat Valley.



Date _____

[illegible]

N.W. Frontier, during the Chitral campaign of 1895: and is of the Gandhara School of the period first and third century A.D., 9½ in. high, 7½ in. wide.

- 178 A MARBLE GARDEN ORNAMENT, shaped as an ovoid Urn and Cover, carved with classical figures making an offering to Janus on one side and at an altar on the other; on the cover female figures and amorini, 19½ in. high; on a wood stand 3

- 179 A MARBLE STATUE OF HEBE, standing, holding an oinochoë of nectar and a cup, 32 in. high, on a marble socle, and a wooden stand 3

6. 180 CEREMONIAL AXE HEAD of Jadeite, a fine thin polished specimen from Woodlark Island, New Guinea, 6½ in. by 5½ in. 1

Mr. H. W. Smith

Lot 1	14. 0	Lot 44	1. 0. 0
2	12. 0	45	1. 0. 0
6	1. 1. 0	50	2. 6. 0
10	16. 0	59	5. 5. 0
11	18. 0	63	36. 0. 0
12	18. 0	78	1. 2. 0
14	9. 0	82	3. 5. 0
15	13. 0	84	3. 0. 0
16	11. 0	88	2. 2. 0
19	18. 0	91	8. 10. 0
23	7. 0	113	1. 15. 0
24	15. 0	115	2. 5. 0
30	16. 0	121	3. 5. 0
32	1. 0. 0	135	5. 10. 0
35	8. 0	136	2. 5. 0
36	3. 0. 0	138	2. 10. 0
37	2. 2. 0	152	1. 2. 0
39	1. 12. 0	157	4. 10. 0
40	1. 4. 0	158	3. 0. 0
42	1. 4. 0	160	7. 10. 0
43	1. 2. 0	171	2. 10. 0
		175	1. 10. 0
		176	18. 0

Total of Sale. £ 123. 0. 0

4 6 10 15 20 25 30 35 40 45 50 55 60 65 70 75 80 85 90 95 100
 30 6 10 15 20 25 30 35 40 45 50 55 60 65 70 75 80 85 90 95 100
 38 6 10 15 20 25 30 35 40 45 50 55 60 65 70 75 80 85 90 95 100
 38 6 10 15 20 25 30 35 40 45 50 55 60 65 70 75 80 85 90 95 100