

**Sales catalogue: Sotheby's**

**Publication/Creation**

20 February 1931

**Persistent URL**

<https://wellcomecollection.org/works/ukpvuhe3>

**License and attribution**

This work has been identified as being free of known restrictions under copyright law, including all related and neighbouring rights and is being made available under the Creative Commons, Public Domain Mark.

You can copy, modify, distribute and perform the work, even for commercial purposes, without asking permission.



Wellcome Collection  
183 Euston Road  
London NW1 2BE UK  
T +44 (0)20 7611 8722  
E [library@wellcomecollection.org](mailto:library@wellcomecollection.org)  
<https://wellcomecollection.org>

*Wilkins 20<sup>th</sup> February 1931*

*Whieldon*  
*Original*

EN  
PORC  
WHIELDON  
ENGLISH  
OLD

S.BY	DATE	INITIALS
18.11.0.		
SALE	20.11.31	WILKINS
PURCHASE		
CHECKED	24.11.31	Ch
COLLECTED	6/12/31	<i>[Signature]</i>
RECEIVED	6/3/31	<i>[Signature]</i>
ACCESSED		
PASSED		<i>[Signature]</i>



QUEEN ANNE AND GEORGIAN MIRRORS,  
GEORGIAN AND CHIPPENDALE ARM-CHAIRS, &C.  
INCLUDING

*W44mm/cm/sal/20/900*

The Property of the late Francis James Fry, J.P., D.L.  
AND  
The Property of Colonel D. F. Chapman.

WHICH WILL BE SOLD BY AUCTION,  
BY MESSRS.

**SOTHEBY & Co.**

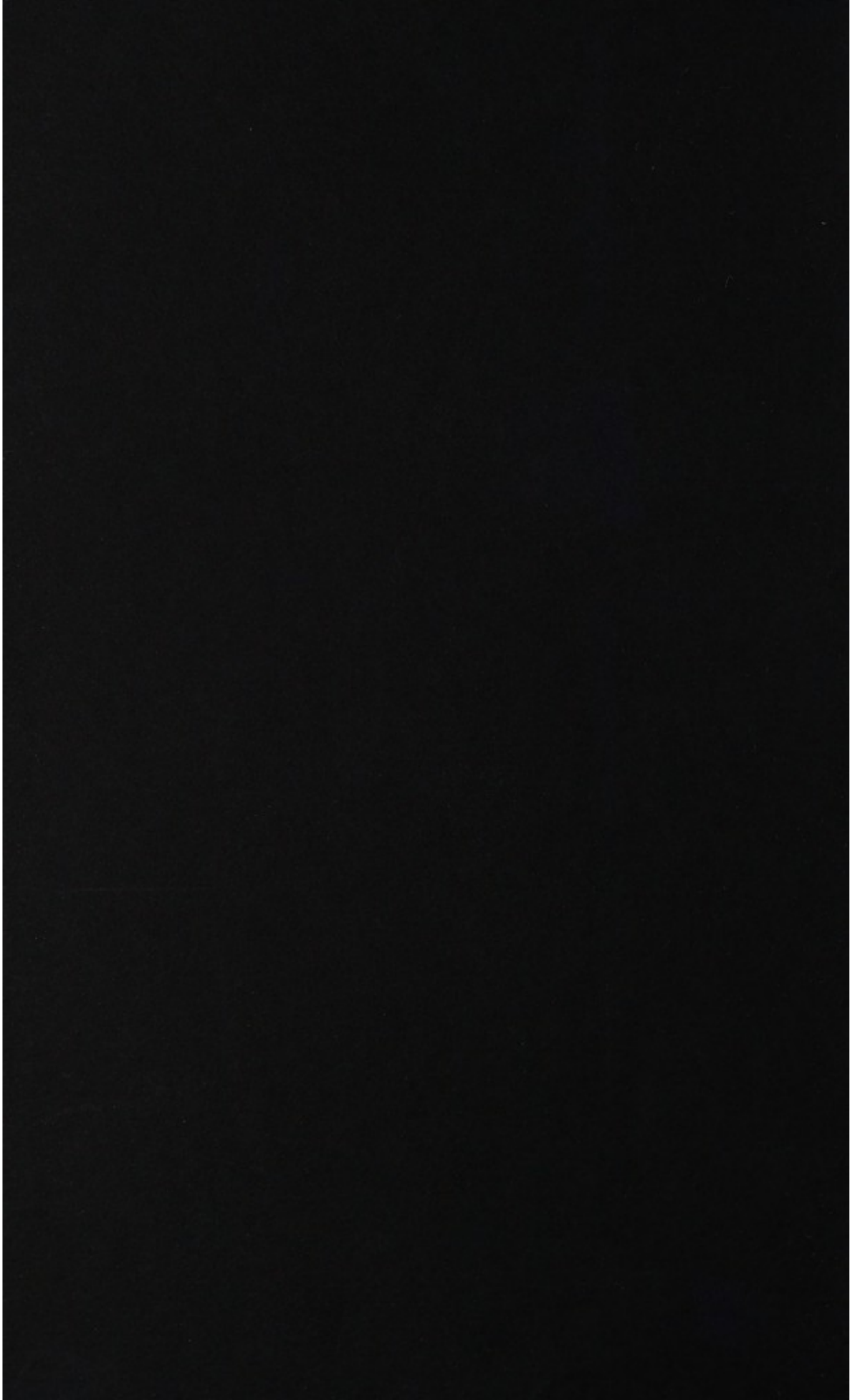
G. D. HOBSON, M.V.O. F. W. WARRE, O.B.E., M.C. C. G. DES GRAZ.  
MISS E. BARLOW. C. V. PILKINGTON, B.A.

Auctioneers of Literary Property & Works illustrative of the Fine Arts.  
AT THEIR LARGE GALLERIES, 34 & 35, NEW BOND STREET, W. 1

On FRIDAY, the 20th of FEBRUARY, 1931,  
AT ONE O'CLOCK PRECISELY.

On View Four Days previous. Catalogues may be had.

PRINTED BY J. DAVY & SONS, LTD., 8-9, PRITH-STRUT, 4010-SQUARE, LONDON, W., ENGLAND.





*Whitcomb*  
*Original*

# ENGLISH AND EUROPEAN PORCELAIN AND POTTERY.

INCLUDING

WHIELDON TOBY JUGS, CHELSEA FIGURES AND CONTINENTAL FAIENCE

ENGLISH PORCELAIN DINNER AND DESSERT SERVICES,

GLASS PICTURES,

MARBLE BUSTS AND BRONZES.

## OLD ENGLISH FURNITURE. &c.

COMPRISING

QUEEN ANNE AND GEORGIAN MIRRORS,

GEORGIAN AND CHIPPENDALE ARM-CHAIRS, &c.

INCLUDING

*W.A.H.M.M. / cm / Sal / 20 / 900*  
The Property of the late Francis James Fry, J.P., D.L.

AND

The Property of Colonel D. F. Chapman.

WHICH WILL BE SOLD BY AUCTION,

BY MESSRS.

### SOTHEY & Co.

G. D. HOBSON, M.V.O.      F. W. WARRE, O.B.E., M.C.      C. G. DES GRAZ.  
MISS E. BARLOW.      C. V. PILKINGTON, B.A.

Auctioneers of Literary Property & Works illustrative of the Fine Arts.

AT THEIR LARGE GALLERIES, 34 & 35, NEW BOND STREET, W. 1

On FRIDAY, the 20th of FEBRUARY, 1931,

AT ONE O'CLOCK PRECISELY.

On View Four Days previous.

Catalogues may be had.

PRINTED BY J. DAVY & SONS, LTD., 8-9, FRITH-STREET, ROYAL-SQUARE, LONDON, W., ENGLAND.

# CONDITIONS OF SALE.

- I. The highest bidder to be the buyer. If any dispute arise the Auctioneer shall have absolute discretion to settle it; and to put any disputed lot up again
- II. No person to advance less than 1s.; above five pounds 5s., and so on in proportion.
- III. ... to the right of the seller or his agent

IV

Date Feb 20/31

V

V

to  
be  
cl

BUYER W. Williams  
AUCTIONEERS Pottery

Lot	Amount		Lot	Amount	
	£	s. d.		£	s. d.
			43	11	11 -
			47	7	11 -
				18	11.0

STY. Mu. 3

COMMISSIONS SENT BY TELEPHONE ARE ACCEPTED AT THE SENDER'S RISK,  
AND MUST BE CONFIRMED BY LETTER OR TELEGRAM.



CATALOGUE  
OF  
ENGLISH AND EUROPEAN  
PORCELAIN AND POTTERY,  
BRONZES AND STATUARY.  
OLD ENGLISH FURNITURE. &c.

---

DAY OF SALE.  
Friday, February 20th, 1931.

---

CONTINENTAL PORCELAIN AND POTTERY.

The Property of Colonel D. F. Chapman,  
*The Manor House, Ham, Surrey.*

---

LOT

- 1 A set of six Tournai Plates, painted in puce with coast scenes within escallop borders, 8 in. diam.; and a set of five Plates, probably provincial French, painted with bouquets in colours, 9 in., *two faulty* 11
- 2 A DELFT DISH, finely painted in imitation of Imari ware, in colours and with fluted borders in the manner of Pynacker, 14 in. diam.
- 3 A fine small Delft Plate, painted in blue with a figure subject within an inscription and formal borders, 10 in. diam.; and a French faience-shaped Dish, painted in the Oriental taste in colours, 9½ in. 2

I  
II  
III  
IV

the lot or lots purchased may be immediately put up again and re-sold.

- V. All lots are sold as shown and with all faults, imperfections and errors of description. Messrs. Sotheby & Co. act as agents; they have full discretion to refuse any bidding or to withdraw any lot or lots from the sale without in either case giving any reason; they are not responsible for errors of description or for genuineness or authenticity of any lot or for any fault or defect in it, and make no warranty whatever.
- VI. The lots to be taken away at the buyer's risk and expense, immediately after the conclusion of the sale; in default of which Messrs. Sotheby & Co. will not hold themselves responsible if the same are lost, stolen, damaged or otherwise destroyed, but they will be left at the sole risk of the purchaser, and subject to a charge for warehousing. If, at the expiration of Two Days after the conclusion of the sale, the lots are not cleared or paid for, they may then be sold immediately, either publicly or by private treaty, without any notice being given to the defaulter.
- VII. Upon failure of the buyer to comply with any of the above conditions, the money deposited in part-payment shall be forfeited; and the defaulter at this sale shall make good any loss arising from the re-sale, together with the charges and expenses in respect of both sales.

To prevent confusion no purchases can be claimed or removed during the sale.

---

*Messrs. SOTHEBY & CO. are prepared to execute bids, and in addition to advise intending purchasers as far as possible, if requested by them to do so, without making any charge for either service. Lots will be procured as cheaply as is permitted by other bids or reserves, if any.*

34 and 35, New Bond Street, London, W.(1).

Telegraphic Address:

"Abinitio, Wesdo, London."

A.B.C. Code, 5th Edition.

Telephone: (3 lines)

Mayfair 6682, 6683, 6684.

---

In sending Commissions this Catalogue may be referred to as "MAAT."

---

COMMISSIONS SENT BY TELEPHONE ARE ACCEPTED AT THE SENDER'S RISK,  
AND MUST BE CONFIRMED BY LETTER OR TELEGRAM.





- 4 A Marseilles faience Dish, painted in colours with Oriental flowers and bird, etc.,  $14\frac{1}{2}$  in. diam.; a German faience Dish with a view of a town in puce,  $16\frac{1}{2}$  in.; and another Dish with Chinese designs, 13 in. 3
- 5 A Delft Garniture in blue and white, mounted with ormolu, comprising a pair of Vases forming candelabra, and a Centre Vase, mounted as a clock,  $18\frac{1}{2}$  in. high 3
- 6 A DERUTA MAJOLICA DISH, painted in blue, yellow and green, with a formal floral radiating design, 15 in. diam.; a majolica Drug Bottle with an inscription,  $11\frac{1}{2}$  in.; and another Drug Jar, 8 in. high 3
- 7 A pair of Sèvres Vases and Covers, painted in colours on a turquoise ground and mounted with ormolu, 12 in. high 4

---

### Various Properties.

---

- 8 A GERMAN FAIENCE ROUNDEL, in yellow, blue, green and aubergine, moulded with a scene of The Last Supper within a border of inscription and the date MCCCCXXX,  $12\frac{3}{8}$  in.; probably Nuremburg
- 9 A fine Doccia porcelain Coffee Pot and Cover, painted with the arms of a cardinal, 11 in.; a Continental cylindrical Mug, painted with flowers, 5 in.; and a German faience Tankard, with flowers in polychrome, 8 in. 3
- 10 A Figure of Juno, in colours, probably *Buen Retiro*, 13 in.; and an old Japanese porcelain Figure of a Lady, 14 in. 2

## ENGLISH POTTERY AND PORCELAIN.

- 11 A fine Ralph Wood Group, in blue, white and manganese, of  
"The Vicar and Moses,"  $9\frac{3}{8}$  in.
- 12 A WHIELDON TOBY JUG, of a seated man holding a foaming  
jug on his left knee with both hands, in brown coat,  
orange vest and blue breeches,  $9\frac{1}{2}$  in.
- 13 ANOTHER, in mottled coat of blue, green, yellow and brown,  
blue vest and green breeches, the face spotted with black,  
 $9\frac{1}{4}$  in.
- 14 A FINE RALPH WOOD TOBY JUG, of a seated man holding an  
empty jug on his left knee with both hands, in drab  
coat, green vest and straw coloured breeches, a pipe at  
the side of the seat,  $9\frac{3}{4}$  in.
- 15 ANOTHER, of a man holding up a cup in his right hand and  
holding a full jug on his left knee, in blue coat and  
yellow vest, the flesh, jug and breeches in flesh colour,  
a pipe beside the seat,  $10\frac{1}{4}$  in.
- 16 A pair of Rockingham white biscuit Figures of a Boy and a  
Girl (no. 28), *impressed griffin mark*, 5 in. 2
- 17 A Worcester porcelain "King of Prussia" Mug, of bulbous  
shape,  $3\frac{3}{8}$  in., transfer printed in black, and signed "R. H.  
Worcester," with anchor and date, 1757
- 18 A Worcester porcelain quart Cider Mug, *Dr. Wall period*,  
plain cylindrical shape, painted with a vase in puce within  
a floral wreath and with bouquets, royal blue and gold  
borders, *crescent mark*,  $5\frac{1}{2}$  in.
- 19 An early Derby porcelain Mug, bulbous,  $4\frac{5}{8}$  in., painted with  
exotic birds in colours
- 20 A Chelsea Derby group, of "the Tithe Pig," in colours, 6 in.
- 21 A pair of Derby Figures, of the taylor and his wife, from the  
Meissen model, No. 62,  $5\frac{5}{8}$  in. 2



- 22 A Derby Figure, of Dr. Syntax, 4 in.; and another, of "African Sal,"  $3\frac{3}{4}$  in. 2
- 23 A pair of Chelsea Derby Figures, of a boy with a horn and a girl with a guitar,  $4\frac{1}{2}$  in.; and a pair of Candlesticks, with boy and girl figures,  $5\frac{1}{2}$  in. 4
- 24 A Derby Figure, of a girl as Autumn, No. 20,  $4\frac{1}{2}$  in.; and a pair of small Figures, of children as Orientals, No. 3.  $2\frac{7}{8}$  in. 3
- 25 An old Derby porcelain Figure of a Cardinal,  $6\frac{1}{4}$  in.; and a pair of small Figures of Children as harlequins,  $4\frac{1}{2}$  in. 3
- 26 A CHELSEA FIGURE, of fine quality, of a sportswoman, seated, with game bag and bird, a dog at her side,  $8\frac{1}{2}$  in., *gold anchor mark*
- 27 A PAIR OF CHELSEA FIGURES, of an Eastern woman, seated, and holding out a large shell, in colours,  $5\frac{3}{4}$  in., *red anchor period* 2

#### PORCELAIN SERVICES, &c.

- 28 A French porcelain Dinner Service, decorated with flowers and butterflies, comprising: six Meat Dishes, Vegetable Dish and Cover, Soup Tureen and Cover, Salad Bowl, Sauce Boat, thirty-six Meat Plates, twelve Soup Plates, eighteen Pudding Plates, four Fruit Stands and two Fruit Dishes, one plate repaired and five slightly chipped 84
- 29 A New Stone Dinner Service, painted in the centre with sprays of flowers within dark floral borders, comprising: thirteen Meat Dishes, twenty-six Plates, twelve Soup Plates, thirty Pudding Plates, one Soup Tureen, Cover and Stand, five Vegetable Dishes and Covers, three Sauce Tureens, and one Cover, *several pieces faulty* 98



- 30 An Old English Dessert Service, painted with sprays of flowers within an apple-green border, comprising : twelve Plates, four Dishes and two tall Dishes 18
- 31 An Old English porcelain Dessert Service, decorated with panels of bouquets, in colours, on a pink diaper ground, of Centrepiece, five shaped Dishes, two Tureens, Covers and Stands and eighteen Plates 30
- 32 A Derby Dinner Service, decorated with pink and gold borders, comprising : fourteen Meat Dishes, seventy-nine Meat Plates, twenty-three Soup Plates, twenty-seven Pudding Plates, sixteen Salad Dishes, six Vegetable Dishes and Covers, one Soup Tureen and Cover, three Sauce Tureens, Covers and Stands, one Fruit Bowl, and a spare Cover and Stand 185
- 34 A SET OF EIGHTEEN CHELSEA PORCELAIN PLATES, with scalloped edges, painted in the centre with bouquets and sprays, and on the rim with four panels of exotic birds,  $8\frac{3}{4}$  in., red anchor mark
- 35 A Crown Derby Tea Service, decorated in red, blue and gold, of Basin, three Cake Plates, six Tea and five Coffee Cups and twelve Saucers 27
- 36 A Ridgeway Dinner Service, decorated in royal blue and gold, with formal floral borders, comprising sixty-two Dinner Plates, twelve Soup Plates, twelve various Meat Dishes, four Vegetable Dishes and Covers, a Salad Bowl, and a Soup Tureen, Cover and Stand 98
- 37 An English porcelain Tea Service, painted with flowers in sepia within gilt borders, comprising, Sugar Basin and Cover, Bread-and-Butter Plate, ten Tea Cups, Ten Coffee Cups, and fifteen Saucers, *two chipped* 38
- 37A A Majolica Dish, painted in orange, manganese and blue, with an equestrienne figure, within a stylised green floret border, heavy gilt frame

## GLASS PICTURES, STATUARY, BRONZES, &amp;c.

38 Stained Glass, eleven panels, forming seven windows, approximately 5 ft. 3 in. (2) and 7 ft. 2 in. high (2) 2 ft. 2 in. wide, the latter pair with figures of music and sculpture, 4 ft. 5 in. by 1 ft. 11 in. (2), and 7 ft. 7 in. by 3 ft. 5 in., the last with coat-of-arms, twelve heads, quatrefoils, spandrils, etc., and four pieces of borders, *two pieces faulty* 27

39 A Glass Picture of "Summer," by T. Burford, a female figure in feigned oval, 9 in. by 11½ in., framed

40 A FINE GLASS PICTURE, by Simon after Pater, "The Kiss Accepted," horizontal oblong, 14 in. by 10 in., in old frame

41 ANOTHER, "The Strolling Musicians," upright oblong, 10¼ in. by 14¼ in., in old frame

42 A FINE GLASS PICTURE, of Miss Kitty Fisher, after Reynolds, published by Robert Sayer, 10 in. by 14¼ in., in old frame

43 A pair of Derbyshire Spa Vases, oviform, 10½ in., with ormolu mounts and tops, and black marble bases 2

10. 44 A Figure, in green marble, of a cymbal player, from the antique, 23½ in., on circular green marble dwarf pedestal 2 15/10/-  
Clark

11/11/- 20. 45 A marble Group, of two wrestlers, from the antique, on octagonal base, 18 in. long, and oblong pedestal 2

46 A FINE MARBLE BUST, of the Laocoon, of heroic size, on dwarf socle, 24 in., and with fluted marble pedestal, 4 ft. high

7/-/- 10. 47 A MARBLE BUST, of a lady wearing a tiara, her hair bound with a scarf passing under her chin, on socle, 26 in., late 18th Century, ~~on similar pedestal to the last lot~~

48 A pair of Empire bronze Candelabra, formed as figures of Cupids holding cornucopia, on basalt and ormolu bases, 19 in. high 2

+ Pedestal taken out



- 49 An Empire bronze Group of three boys carrying musical instruments; and another Group, "The Sacrifice to Hymen," 10 in. high 2
- 50 A 17th Century carved wood Figure of a dramatic character, well carved, *probably German*, 9 in. high, on short stand

## OLD ENGLISH FURNITURE, &c.

The Property of Francis James Fry, J.P., D.L. (*decd.*)

- 51 A Sheraton mahogany Card-Table with semi-circular folding top, banded and inlaid with scrolls in coloured woods, on square tapering legs, 3 ft. wide
- 52 A semi-circular satinwood Side-Table of 18th Century design, the top decorated with radiating mahogany panels within finely inlaid borders, a drawer in the frieze, on square tapering legs, 5 ft. 2 in. wide
- 53 A satinwood Pedestal Writing-Table with leather-lined top and three drawers in the shaped frieze, supported on two pedestals each containing three drawers, dwarf tapering legs, 4 ft. wide
- 54 A PAIR OF MAHOGANY ARM-CHAIRS, of Chippendale design with shaped top rails carved with foliage, and the back fitted with a pierced radiating design, on square moulded legs 2
- 55 A mahogany Fire Screen of Chippendale design with an 18th Century Italian silk panel worked with floral designs in coloured silks and silver thread, enclosed on a rococo carved frame and scrolled feet, 4 ft. 3 in. high
- 56 An oak Coffin with rising top, the front panels carved with leaves and arcading and the stiles with chequer designs, 4 ft. 3 in. wide



- 57 An oak Buffet of 16th Century design, with splay front inlaid with chequer designs in marquetry, the supports carved in the form of female figures, cupboards below enclosed by carved panel doors, 4 ft. 3 in. wide
- 58 A mahogany Arm-Chair of Chippendale design with pierced ladder back carved with honeysuckle, on square moulded legs; and another Arm-Chair with pierced vase-shaped back, on square legs 2
- 59 An oak Chest of four long drawers with differently moulded front, the stiles decorated with turned split balusters, 3 ft. 1 in. wide
- 60 FOUR WALNUT ARM-CHAIRS of Stuart design, with tall carved backs and upholstered seats supported on finely carved early Georgian mahogany cabriole legs, carved on the knees with leafage, and carved club feet 4
- 61 A CHIPPENDALE MAHOGANY GENTLEMAN'S WARDROBE, the upper part with sliding trays enclosed by panelled doors, one long and two short drawers below, on bracket feet, 4 ft. 3 in. wide, 5 ft. 11 in. high
- 62 A WILLIAM AND MARY WALNUT TALL-CASE CLOCK, with brass and silvered dial contained in a walnut case inlaid with shaped panels of floral marquetry in coloured woods, 6 ft. 6 in. high
- 63 A pair of painted Tea Cannisters of cylindrical shape, decorated with Chinese figures in transfer, 14½ in. high; and another painted green with similar decoration, 12 in. high 3
- 64 A set of five Tea Cannisters of hexagonal shape, lacquered with pavilions, figures and landscapes in the Chinese taste, 17 in. high 5
- 65 An 18th Century lacquer Lace Box, decorated with scenes in the Chinese taste, on square tapering legs, 1 ft. 9 in. wide
-

### Other Properties.

---

- 66 A Sheraton mahogany Barometer, by *S. Lime & Co., Holborn*, with circular silver dial contained in a "banjo" shaped case, 3 ft. 2 in. high; and a Sheraton mahogany Tripod Table with octagonal top, on turned stem, 1 ft. 5 in. wide  
2
- 67 An early Georgian mahogany Side-Table with a small drawer in the frieze, on cabriole legs, carved on the knees with shells, and club feet, 2 ft. 5 in. wide
- 68 A large Louis XV Clock, with circular brass and enamelled dial, contained in green painted case ornamented with chased ormolu mounts, 3 ft. high; and a bracket 2
- 69 A Queen Anne walnut Mirror, the silvered plate contained within a rectangular ovolo moulded frame veneered with "oyster" pieces, 1 ft. 8 in. by 1 ft. 10 in.
- 70 A VERY FINE EARLY GEORGIAN GILT CONVEX MIRROR, of exceptional size, with circular moulded frame, surmounted by a vigorously carved dragon with outstretched wings and the head of Medusa, decorated at the sides and base with "C" scrolls and acanthus foliage, executed by a master hand, 6 ft. 6 in. high, 4 ft. 6 in. wide
- 71 An unusually small 18th Century padouk Bureau with fall front enclosing fitted interior, mounted on a stand with cabriole legs and club feet, 1 ft. 7 in. wide
- 72 A mahogany Display Cabinet with tiered shelves enclosed by two sliding glass panel doors, 2 ft. 9 in. high, 6 ft. 1 in. wide
- 73 A mahogany Showcase, with glass sides, the glass shelves enclosed by a door with a fall front below, on turned legs, 2 ft. 2 in. wide, 4 ft. 10 in. high



- 74 A FINE WALNUT MARQUETRY DESK of William and Mary design with rising top enclosing fitted and pull-out interior with fall front, supported on two pedestals each containing three drawers, on carved tapering legs with stretchers, 3 ft. 4 in. wide
- 75 A Chippendale mahogany Chest of four long drawers, with a pull-out slide in the frieze, on bracket feet, 2 ft. 7 in. wide
- 76 A pair of walnut Table Candlesticks with pierced spiral stems and circular bases, 14 in. high 2
- 77 A Carolean Arm-Chair, with tall cane back and spiral uprights supporting an "S" scrolled cresting
- 78 A Queen Anne walnut Chest of very small size, with one long and five small drawers with cross-banded fronts, on club feet, 2 ft. 6 in. wide
- 79 A PEDESTAL KNEE-HOLE TABLE in burr-wood, with three drawers in the frieze supported on two pedestals each containing three drawers and a recessed cupboard in the centre, enclosed by a door, on bracket feet, 3 ft. 4 in. wide
- 80 A SET OF FOUR CHIPPENDALE MAHOGANY SIDE-CHAIRS, with shaped top rails supported by finely pierced vase-shaped splats, on square legs and stretchers 4
- 81 A Sheraton mahogany Arm-Chair, with turned and fluted uprights to the back, the seat covered in moiré silk on similarly fluted legs
- 82 A Hepplewhite mahogany Arm-chair, with square back supported by fluted splats with fan covering at the top, on square tapering legs
- 83 A Sheraton mahogany Tripod Table with a square top, on turned stem, 1 ft. 3 in. wide.; and a Sheraton mahogany Barometer by P. Porter & Co., Newcastle, with silver register plate, contained in a mahogany case, 3 ft. 1 in. high 2



- 84 An 18th Century mahogany Wine Cooler, of oval shape, bound with brass bands, on square tapering legs, 2 ft. wide
- 85 A Sheraton mahogany four-fold Fire Screen, each fold fitted with rising panels on square supports, *each fold* 1 ft. 7 wide, 3 ft. 8 high
- 86 A 19th Century mahogany Bracket Clock, *by Ask, Barnsley*, with circular white dial contained in an inlaid brass case with lancet shape top, 1 ft. 7 high
- 87 A Sheraton mahogany Pembroke Table with serpentine shape flaps banded with satinwood and inlaid with flowers in coloured woods, a drawer in the frieze, on tapering legs, 2 ft. 9 wide
- 88 An 18th Century walnut Treasure Casket with rising top and fall front bound with brass bands in fleur-de-lys designs, 1 ft. 3 in. wide; and a Tripod Table of Boulle design, with circular top and octagonal stem, inlaid with brass designs on a tortoiseshell ground, and a glass top, 1 ft. 9 diam.
- 3
- 89 An 18th Century French walnut Table, the top and frieze inlaid with parqueterie, on cabriole legs, 2 ft. wide
- 90 A Louis XV gilt wood Console Table, with shaped brown marble top, supported "C" scrolled legs united by a rococo carved frieze and stretcher, 3 ft. 9 in. wide 2
- 91 A Queen Anne walnut Chest, of two short and three long drawers with banded fronts, mounted on a stand with three drawers in the shaped frieze, on cabriole legs
- 92 AN EARLY GEORGIAN MAHOGANY WING ARM-CHAIR, with upholstered seat and back supported on carved cabriole legs and club feet
- 93 A shield-shaped mahogany Toilet Mirror, supported on a serpentine box, with three drawers in the frieze, on shaped bracket feet, 1 ft. 9 wide
- 94 A Sheraton mahogany Chest, with four long drawers in the bow front, on splay bracket feet, 3 ft. 7 wide

- 95 A SHERATON MAHOGANY DRESSING TABLE, of good colour, with one long and two short drawers in the bow front, on square tapering legs, 3 ft. wide
- 96 A Sheraton mahogany Toilet Mirror with an an oval plate, supported on a box frame, with three drawers in the serpentine front, on bracket feet, 1 ft. 8 in. wide
- 97 A pair of Italian Arm-Chairs of 17th Century design, with tall upholstered backs and seats, supported on carved and turned legs, united by carved stretchers 2
- 98 A French kingwood Cupboard with marble top and shaped gallery, a drawer below, on cabriole legs, 1 ft. 4 in. wide
- 99 A mahogany Bookcase of Chippendale design, with adjustable shelves, enclosed by a pair of old glazed trellis doors, a pair of panelled doors enclosing cupboard below, 3 ft. 5 in wide, 6 ft. 8 in. high
- 100 An early Georgian mahogany Cupboard, enclosed by a pair of panelled doors, flanked on either side with reeded pilasters, 7 ft. 4 in. wide, 5 ft. 10 in. high
- 101 A HEPPLEWHITE MAHOGANY SECRETAIRE BOOKCASE with pear-drop cornice and glazed trellis doors, enclosing shelves, a secretaire drawer with fall front enclosing fitted interior, and three long drawers below, on splay bracket feet, 3 ft. 9 in. wide, 7 ft. 6 in. high
- 102 An 18th Century mahogany Cheese Tray, of semi-circular shape with division, on casters, 15½ in. wide
- 103 A pair of Adam Hall Chairs with shield shape backs painted in the centres with a crest, on square tapering legs 2
- 104 A Sheraton mahogany Bedside Cupboard enclosed by two doors, the top one inlaid with satinwood and the lower with an oval panel, on splay bracket feet, 2 ft. 2 in. wide
- 105 A Sheraton mahogany Corner Washstand with folding top forming a splash back, a drawer in the plateau below, on square legs, 2 ft. 3 in. wide



- 106 A WALNUT CUPBOARD of Queen Anne design, the interior with shelves, enclosed by a finely figured panel door, on bracket feet, 2 ft. 5 in. wide, 6 ft. 1 in. high
- 107 A CHIPPENDALE MAHOGANY ARM-CHAIR with a shaped top rail supported by a pierced and interlaced vase-shaped back, carved with the "C" scroll motifs, the loose seat covered in needlework with a vase containing flowers in "gros" and "petit point" stitching, on square legs

---

### The Property of a Lady.

- 108 A walnut Games Table, the folding top inlaid with an amatory trophy, the drawer in the frieze fitted with a flap and inkwells, on turned legs, 2 ft. 6 in. wide; and a Needlework Picture, worked with a woman carrying a pitcher, in coloured wools, in a gilt frame, 2 ft. 8 in. wide, 3 ft. 2 in. high 2
- 109 A set of three 18th Century mahogany Chairs, with plain splat backs and the seats covered in tapestry, supported on square legs 3
- 110 A Hipplewhite mahogany Arm-Chair, with hooped back and pierced vase-shaped splats, on square legs
- 111 A CHIPPENDALE MAHOGANY EAR ARM-CHAIR, with upholstered seat and back, covered in damask, on square legs
- 112 A mahogany Cabinet of 18th Century design, with pierced and carved swan-neck cornice, adjustable shelves below enclosed by a pair of glazed trellis doors, two drawers in the carved frieze, supported on square tapering legs united by scrolled stretchers, 4 ft. 6 in. wide, 8 ft. high



- 113 An early Georgian mahogany Arm-Chair, with vase-shaped back and scrolled arms, supported on cabriole legs and club feet
- 114 A PAIR OF CHIPPENDALE MAHOGANY LOUNGE ARM-CHAIRS, with upholstered seats and backs, and shaped open arms, supported on square moulded legs, united by stretcher rails 2

---

### The Property of a Lady.

---

- 115 A George I gilt gesso Mirror, the old bevelled plate contained in a rectangular frame with broken pediment, carved with floral designs in low relief, 1 ft. 5 in. wide, 3 ft. high
- 116 AN 18TH CENTURY MAHOGANY CHEST, with a brushing slide and four long drawers in the serpentine front, on bracket feet, 2 ft. 8 in. wide
- 117 A QUEEN ANNE WALNUT TOILET MIRROR, the old silvered plate contained in a moulded frame with a thin gesso moulding, mounted on a box frame with three drawers in the frieze, on bracket feet, 1 ft. 9 in. wide
- 118 A FINE OAK COURT CUPBOARD, of large size, with overhanging cornice, above cupboards enclosed by three panelled doors carved with guilloche design, and supported by carved balusters, two cupboards below enclosed by a pair of doors with arched panels, 7 ft. 9 in. wide

\*\* From Madingley Hall.

---

### The Property of Colonel D. F. Chapman.

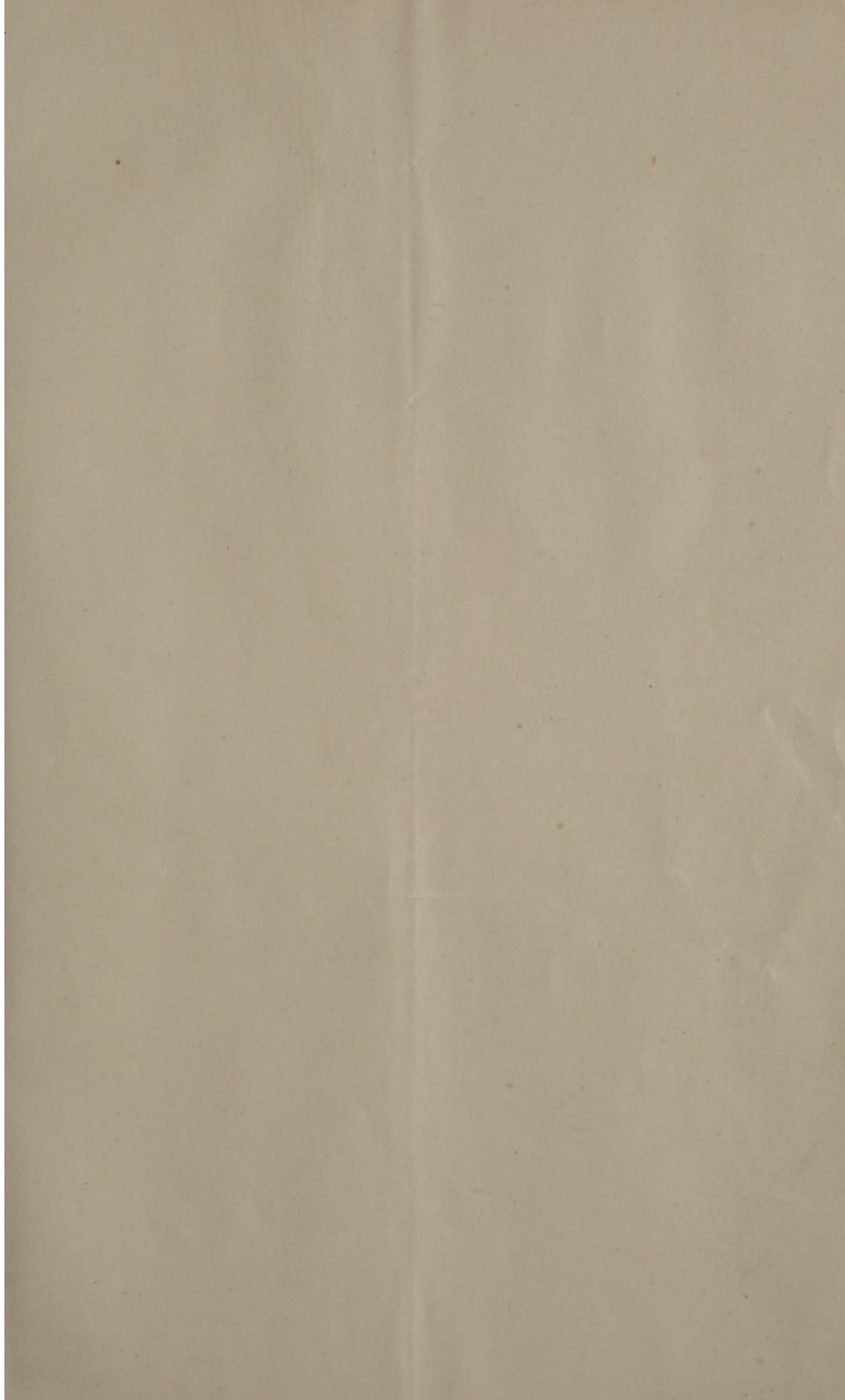
---

- 119 A set of three 18th Century elm Chairs, with pierced vase-shaped splats, on square legs and stretchers; and a Chippendale elm Armchair, with pierced and interlaced back, on square legs 4
- 120 An oak six-fold Screen, the panels painted in the Adam style, in form of classical plaques and foliated scrolls, *each panel 1 ft. 4 in. wide, 6 ft. 3 in. high*
- 121 A pair of gilt Mirrors, the rectangular bevelled plates enclosed in moulded frames surmounted with the urn motif, and festoons of flowers and leaves, *1 ft. 10 in. wide, 3 ft. 6 in. high* 2
- 122 A large three-fold oak Screen, the stiles carved with split baluster ornaments framing old Spanish leather panels painted with flowers, fruit and scrolls, *each fold 6 ft. 9 in. high, 3 ft. wide*
- 123 A gilt Mirror, the rectangular frame bordered on the outside with carved "C" scrolls and flowers, *2 ft. 1 in. wide, 3 ft. high*; and an Italian Mirror in a rectangular carved black and gold frame, *2 ft. 5 in. wide, 4 ft. 3 in. high*
- 124 A four-fold leather Screen, the panels painted with hunting scenes and foliage in colours, *each fold 2 ft. wide, 7 ft. high*
- 125 A SET OF EIGHT SHIELD-BACK MAHOGANY CHAIRS of Hepplewhite design, comprising, six side Chairs, and two Arm-Chairs, the pierced backs carved with wheat ears, acanthus leafage, and pateræ, on square moulded legs 8
- 126 A Chippendale mahogany Wine Cooler, of octagonal shape, with brass bandings and brass handles, on a stand with square leg, *1 ft. 11 ins. wide*



- 127 An 18th Century gilt Mirror, the silvered plate contained within a frame, carved with rococo designs and flowers, 2 ft. 6 in. wide, 4 ft. high
- 128 A marquetry Table of 17th Century design, the rectangular top inlaid with birds, flowers and scrolls in mother-o'-pearl and coloured woods, on a central stem and plateau base, 3 ft. 9 in. wide
- 129 A FINE ROSEWOOD BUREAU TABLE of Louis XV design, with leather lined top bordered with ormolu knurling, three drawers in the shaped frieze, on cabriole legs, with female mask mounts, 5 ft. 7 in. wide
- 130 AN UNUSUAL CHIPPENDALE SEWING PEDESTAL with folding flap top, supported on a pedestal containing two cupboards and a deep drawer, with moulded fronts, 3 ft. wide, open
- 131 A LARGE MAHOGANY BOOKCASE of early Georgian design, with broken pediment and cornice carved with egg and tongue mouldings, four glazed trellis doors below with carved astrigals and cupboards under, enclosed by four shaped panel doors, 8 ft. wide, 10 ft. high
- 132 A Sheraton mahogany enclosed Dressing Table, the two flaps enclosing an interior fitted with mirror, boxes, etc., three drawers below, and a pull-out slide, on square legs, 2 ft. wide
- 133 AN EARLY 17TH CENTURY ITALIAN WALNUT CASSONE, the panelled front carved in the centre with a stem flanked by diamond-shaped panels containing pateræ flanked by female masks at the corners, on boldly carved paw feet, 5 ft. 9 in. wide
- 134 A FINE SHERATON MAHOGANY PEDESTAL DINING-TABLE, with oval ends and two flaps, supported on three pedestals with quadrupeds and brass castors, 8 ft. 8 in. long, 5 ft. wide

END OF SALE.





171