

## **Sales catalogue: Puttick and Simpson**

### **Publication/Creation**

21st June 1920

### **Persistent URL**

<https://wellcomecollection.org/works/jjhj6cpm>

### **License and attribution**

This work has been identified as being free of known restrictions under copyright law, including all related and neighbouring rights and is being made available under the Creative Commons, Public Domain Mark.

You can copy, modify, distribute and perform the work, even for commercial purposes, without asking permission.



Wellcome Collection  
183 Euston Road  
London NW1 2BE UK  
T +44 (0)20 7611 8722  
E [library@wellcomecollection.org](mailto:library@wellcomecollection.org)  
<https://wellcomecollection.org>

WAA/m/m/sa/18/153

*pe 10*  
*original*  
*only*  
*OK*

# Old English Pewter

*(Gloucester sale)*

---

MONDAY, JUNE 21st, 1920

*32*

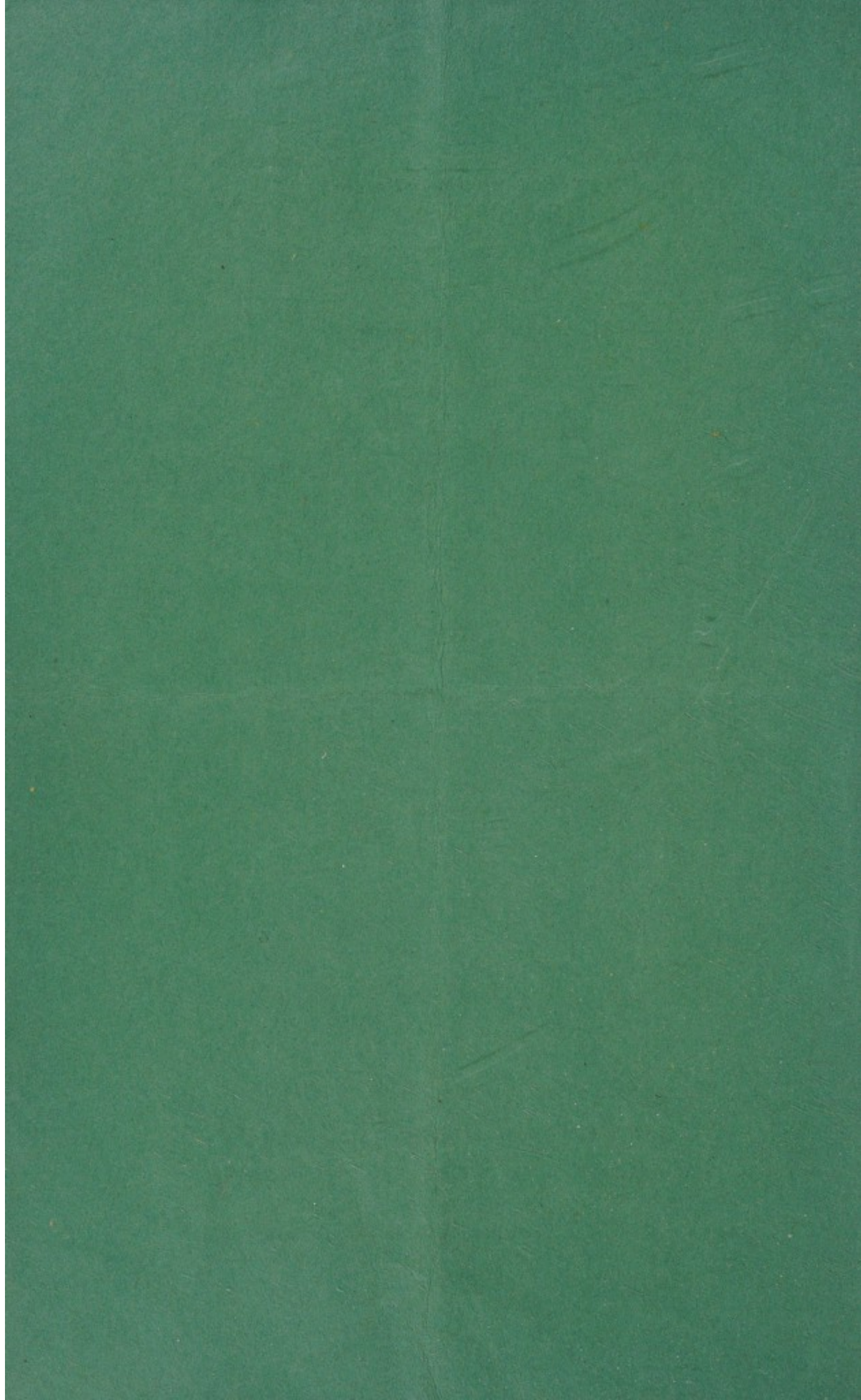


**PUTTICK & SIMPSON**  
**LONDON**

*CP*

Illustrated Catalogue  
Price - One Shilling





Telephone : Gerrard 1561

Established 1794

Telegrams : "Puttickdom, Westrand, London"

CATALOGUE  
OF  
**Old English Pewter**

The property of the late A. L. G. DISTIN, Esq.,  
of 11 Melrose Terrace, W.

The property of a Gentleman, &c.

---

Which will be Sold by Auction

BY

**Messrs. PUTTICK & SIMPSON**

W. WILSON

W. G. HORSMAN

A. W. WILSON

N. H. ARCHER

At 47 LEICESTER SQUARE, LONDON, W.C.2

On **MONDAY, JUNE 21st, 1920**

**AT TEN MINUTES PAST ONE O'CLOCK PRECISELY**

---

May be viewed the Friday prior from 10 a.m. until 5 p.m.,  
and the Saturday prior from 10 a.m. until 1 p.m.



## CONDITIONS OF SALE.

---

I. The highest Bidder to be the Buyer; and if any dispute arise between two or more Bidders, the Lot so in dispute shall be immediately put up again and re-sold.

II. The Auctioneer shall regulate the bidding as he may think advisable.

III. In the case of Lots upon which there is a reserve, the Auctioneer shall have the right to bid on behalf of the Seller.

IV. The Purchasers to give in their Names and Places of Abode, and to pay down 5s. in the Pound, or more, in part of payment, or the whole of the purchase money, *if required*; in default of which, the Lot or Lots so purchased to be immediately put up again and re-sold.

V. The Lots to be taken away and paid for, whether genuine and authentic or not, with all faults and errors of description, at the Buyer's expense and risk, within Two DAYS from the Sale; Messrs. PUTTICK & SIMPSON not being responsible for the correct description, genuineness, or authenticity of, or any fault or defect in, any Lot, and making no warranty whatever.

VI. To prevent inaccuracy in delivery, and inconvenience in the settlement of the Purchases, no Lot can on any account be removed during the time of Sale; and the remainder of the Purchase-Money must absolutely be paid on the delivery.

VII. Upon failure of complying with the above Conditions, the Money deposited in part of payment shall be forfeited; all Lots uncleared within the time aforesaid shall be re-sold by public or private Sale, and the deficiency (if any) attending such re-sale shall be made good by the defaulter at this Sale.

*Buyers who cannot attend the Sale, may have their Commissions faithfully executed by their obedient Servants,*

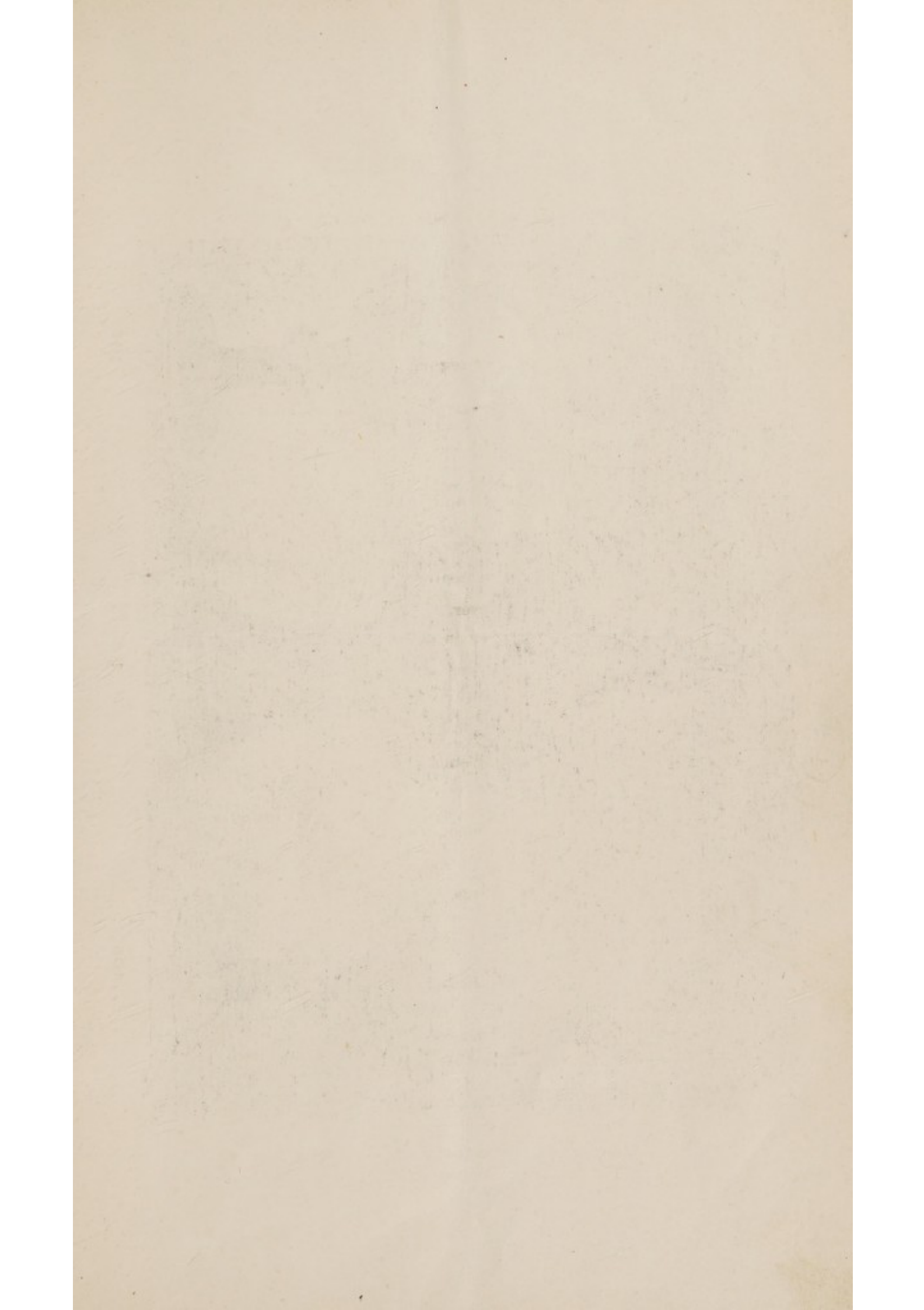
PUTTICK & SIMPSON.

Auction Rooms for the Sale of  
All Fine Art Property,  
LEICESTER SQUARE, LONDON, W.C.

---

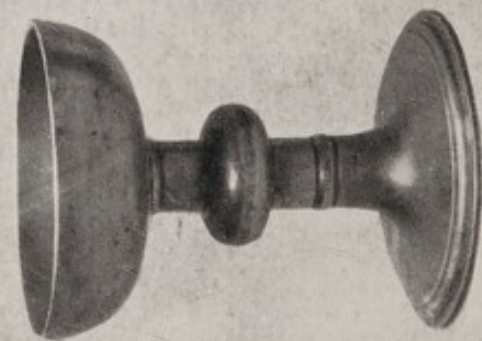
Collections Catalogued, Arranged and Valued for the Probate  
and Legacy Duty or for Public or Private Sale.

ESTABLISHED 1794.

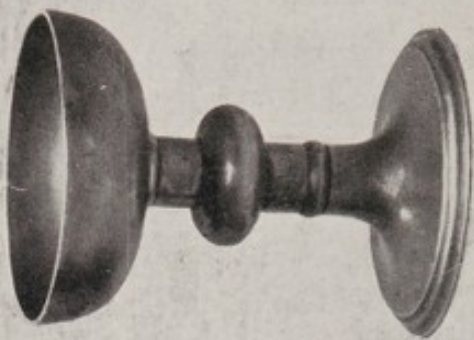




105



106



106



MONDAY, JUNE 21<sup>st</sup>, 1920.

AT TEN MINUTES PAST ONE O'CLOCK PRECISELY.

THE PROPERTY OF THE LATE A. L. G. DISTIN, Esq.,  
OF 11 MELROSE TERRACE, W.

- 1 Two circular dishes, 15in. diam. 45/-
- 2 Two others, engraved with armorials, 12in. diam. 95/-
- 3 Four others, by THOMAS ALDERSON, 9½in. diam. 85/-
- 4 Four others. 75/-
- 5 Two soup plates, the borders engraved with armorials, 63/-  
by NICHOLSON, 9½in. diam.
- 6 Four plates, by S. DUNCUMBE, 9in. diam. 94/6
- 7 Three others, by the same maker. 52/6
- 8 Four others, by S. SMITH, etc., 9in. diam. 74/-
- 9 Six plates, by SPACKMAN, 9½in. diam. 63/6
- 10 Five others, by the same maker. 5½/6
- 11 Four plates, London mark, 8½in. and 9in. diam. 4½/6
- 12 Two others, the centres engraved with the Bristol and 9/6  
Liverpool Arms, 9in. diam.
- 13 A plate, the shaped border engraved with armorials, by 73/6  
THOS. CHAMBERLAIN, 9in. wide, and a small deep plate;  
6in. diam.
- 14 A pair of plates, the borders engraved with armorials, by 73/6  
ROBERT DUNCAN, 9½in. diam.
- 15 Another pair, engraved with initials A. and D., by 42/-  
COMPTON, London, 9¾in. diam.
6. 16 An unusual set of six plates, 6in. diam. 8/6
- 17 A pair of oval shaped dishes, 14½in. wide. 13/6
- 18 A pair of French dishes, with shaped borders, 13½in. 84/- Lee  
wide.
- 19 An oval shaped dish, 13½in. wide, and two circular 62/-  
dishes, 11in. and 10½in. diam.
- 20 A plate, with shaped border, 9½in. diam., and two others. 105/-
- 21 A large meat dish, with gallery, with ebony handles and 31/6  
feet, by COCKS, London.
- 22 An oval hot-water dish, by TOWNSEND, London, 13in. 25/-  
wide.



- 23 A pair of hot-water plates, engraved with initial N., by *30/-*  
WATSON BARTON, *London.*
- 24 Three hot-water plates,  $9\frac{1}{2}$ in. diam. *25/-*
- 25 Four others. *30/-*
- 26 A deep circular dish, with perforated liner. *45/-*
- 27 A jardinière, with two handles, marked with cross keys *42/-*  
and trees.
- 28 A tureen and cover, with glass handles and feet, 12in. *25/-*  
wide.
- 29 A large soup tureen and cover, on claw and ball feet, 13in. *25/-*  
wide.
- 30 Two deep washing bowls, 13in. diam. *90/-*
- 31 A deep bowl,  $11\frac{1}{2}$ in. diam., and another, 9in. diam. *70/-*
- 32 A vegetable strainer,  $10\frac{1}{2}$ in. wide, and a bowl, with two *30/-*  
handles.
- 33 Two bowls, 6in. diam., and another, on stand, 5in. diam. *65/-*
- 34 An oval bowl, with lip, 8in. wide, a ditto cake mould, *40/-*  
12in. diam., and two jardinières.
- 35 A plain bleeding cup, marked COMPTON, *London*, and *27/-*  
another, with pierced handle.
- 36 A set of three bleeding cups, with openwork handles, and *4 1/2/-*  
heart-shaped decoration,  $3\frac{1}{2}$ ,  $4\frac{1}{2}$  and 5in. diam.
- 37 Another, with openwork handle, the interior engraved *8/- Lee*  
with measuring lines,  $5\frac{1}{4}$ in. diam., and a pap boat.
- 38 A tazza, on circular base,  $7\frac{1}{2}$ in. diam., and a semi-circular *5/-*  
hanging wall box.
- 39 An oblong box, the cover engraved with Chinese figures, *42/-*  
 $9\frac{1}{2}$ in. long, and two hanging wall vases.
- 40 Two hot-water bottles, a circular spittoon, and a ditto *12/-*  
bedpan.
- 41 An engraved oval shaped biscuit box and cover, with two *50/-*  
handles, a shaped tea caddy, with two compartments,  
and two cream ewers.
- 42 A tankard, with flat cover, scroll billet and handle, *26/-*  
X *XVIIth century*, 5in. high.
- 43 Another, with dome cover and scroll handle, engraved *23/-*  
X *E. I. G., XVIIIth century*, 5in. high.
- 44 A Scotch "Tappit Hen," with scroll handle,  $14\frac{1}{2}$ in. high. *15/-*
- 45 A Scotch tankard, with flat cover, scroll billet and *20/-*  
handle, and with initials H. L. M. M., 10in. high.
- 46 Another, with flat cover, acorn billets and scroll handle, *5 1/2/- Lee*  
*London mark*,  $8\frac{1}{2}$ in. high.
- 47 A set of four measures, with flat covers, scroll billets and *9/-*  
handles, *XVIIIth century*,  $4\frac{3}{4}$ in. to 6in. high.
- 48 Two globular shaped tankards, with dome covers, early *5/-*  
*XVIIIth century*, 6in. and 7in. high.

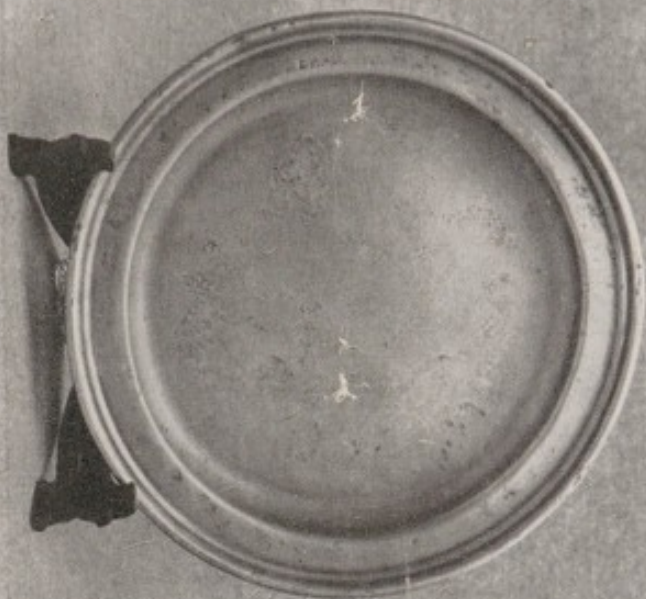


- 49 A cylindrical tankard, with scroll handle, and another,  $6\frac{3}{4}$  -  
with dome cover,  $7\frac{1}{2}$  in. high.
- 50 A hot-water jug, with dome cover, 7 in. high, a mustard  $5\frac{1}{2}$  - Lee  
pot, with dome top, 4 in. high, and two tankards.
- 51 A pair of Communion cups, on plain stems and circular  $12$  - "  
dome feet, 8 in. high, late XVIIIth century.
- 52 A goblet, on dome foot, 5 in. high, a tankard, with cover  $2$  - "  
and scroll handle, and two others.
- 53 A tankard, with scroll handle, two half-pint measures,  $6$  - "  
and two smaller ditto.  $2\frac{1}{2}$  - "
- 54 A quart measure, two smaller ditto, and two goblets.
- 55 A vase, of baluster shape, a goblet, and four mugs.  $6\frac{1}{4}$  - Lee
- 56 A pint measure, with brass rim, four small bowls, and  $1$  - "  
two small measures.  $9\frac{1}{2}$  - "
- 57 An oblong inkstand,  $8\frac{1}{2}$  in. wide, and a pair of taper  $3\frac{1}{2}$  - Lee  
sticks, 4 in. high.
- 58 An oblong inkstand, with double folding cover, and  $4\frac{1}{2}$  -  
another, with three divisions.
- 59 A small square shaped inkstand, with sand box, and two  $7\frac{3}{8}$  -  
circular ditto.
- 60 A pair of candlesticks, on square bases, 4 in. high, two  $7\frac{1}{4}$  - Lee  
chamber candlesticks, and a snuffers tray.
- 61 A benetier, engraved with the Crucifixion, another,  $2\frac{1}{4}$  - Lee  
a wall vase, and a bowl, with two handles.
- 62 A tea-pot, a coffee-pot, a sauce boat, and two tea caddies.  $3\frac{1}{2}$  - "
- 63 A jardinière, 5 in. diam., two tobacco jars, and eight egg-  $5\frac{1}{2}$  - Lee  
cups.
- 64 Five pewter funnels, and a candle mould.  $9\frac{1}{2}$  - "
- 65 Four pewter pepper-pots.
- 66 Four others.
- 67 Four others.
- 68 Five others.
- 69 A salt cellar, on circular base, XVIIIth century, 4 in.  
diam.
- 70 Six salt cellars, on bases.
- 71 Two mustard pots, and three measures, with screw covers.
- 72 Six antique spoons, with circular bowls, marked with a  
rose and crown.
- ~~73~~ Five others.
- 74 Five others, and a ditto, with goat's foot end.  $2\frac{1}{2}$  - Lee
- 75 Two large gravy spoons, and two ladles.  $2\frac{1}{2}$  - "
- ~~76~~ Two circular boxes, with screw covers, nine snuff boxes,  
and a pipe.
- 77 A steel footman, XVIIIth century.  $3\frac{1}{2}$  - "
- 78 Another, perforated XVIIIth century.  $2\frac{1}{2}$  - "

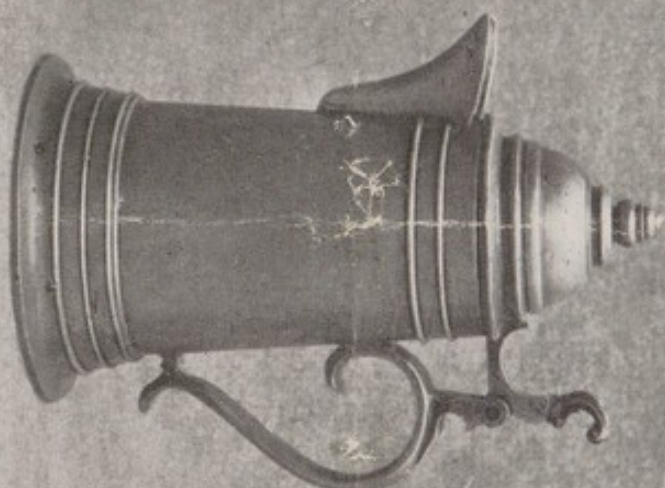


## THE PROPERTY OF A GENTLEMAN.

- 79 A circular dish, the grooved edge with initials L. D. *English, XVIIth century.*  $4\frac{1}{2} \text{ £}$
- 80 Two others, *English, XVIIth century*, 20in. diam.  $6 \text{ £}$
- 81 A circular dish, with grooved border, *maker's mark M. R.*,  $5 \text{ £}$   
19 $\frac{1}{2}$ in. diam.
- 82 Three others, one dated 1716, 18in. to 20in. diam.  $3\frac{1}{2} \text{ £}$
- 83 A circular dish, with grooved border, *marked on the rim*,  $4 \text{ £}$   
18in. diam.
- 84 Three others, with English marks, 18in. diam.  $6 \text{ £}$
- 85 Two circular dishes, with grooved borders, *one with marks on the rim*, 17in. diam.  $6\frac{1}{2} \text{ £}$
- 86 Two shallow circular dishes, with flat rims, 16 $\frac{1}{2}$ in. diam.  $4 \text{ -}$
- 87 Two others, 16 $\frac{1}{2}$ in. diam.  $5 \text{ £}$
- 88 Two others, 16 $\frac{1}{2}$ in. diam.  $4 \text{ £}$
- 89 Two others, in fine condition, 16 $\frac{1}{2}$ in. diam.  $4\frac{1}{2} \text{ £}$  *London*
- 90 A circular dish, the border engraved with initial D., and  $3 \text{ £}$   
another, with rope pattern border, 16 $\frac{1}{2}$ in. diam.
- 91 Two others, the borders with initials R. S. H., 15in.  $4\frac{1}{2} \text{ £}$   
diam.
- 92 Two others, marked THOMAS WAUGH, 15in. diam.  $4\frac{1}{2} \text{ £}$
- 93 Two others, 15in. diam.  $4\frac{1}{2} \text{ £}$
- 94 Three deep circular dishes, marked W. SCOTT, Griffin,  $7\frac{1}{2} \text{ £}$   
and LEONARD TERRY, 13in. to 14 $\frac{1}{2}$ in. diam.
- 95 Two circular dishes, 13in. diam.  $3 \text{ £}$
- 96 A circular dish, 12in. diam., and another, with grooved  $2\frac{1}{2} \text{ £}$   
border, French marks, dated 1687, 11in. diam.
- 97 Two plates, the borders engraved with initials N. L. W.  $2\frac{1}{2} \text{ £}$   
by JOHN LANGFORD, 9 $\frac{1}{2}$ in. diam.
- 98 Four plates, with mark of a hind's foot and coronet,  $3\frac{1}{2} \text{ £}$   
*London*, 9 $\frac{1}{2}$ in. diam., and another, 9 $\frac{1}{2}$ in. diam.
- 99 Two SMALL ALMS DISHES, the reverse engraved with a  $8 \text{ £}$   
star shaped design, and inscribed I.H.S., in fine  
condition, *French, XVIIth century*, 8in. diam.  
*See illustration.*
- 100 A CHURCH TANKARD, with dome cover, and with moulded  $7 \text{ £}$   
borders, engraved I. C. H. S., *XVIIth century*,  
*London mark*, 8 $\frac{1}{2}$ in. high.  
*See illustration.*
- 101 Two tankards, with flat covers, and acorn billets,  $6\frac{1}{2} \text{ £}$   
*XVIIth century*, 8 $\frac{1}{2}$ in. by 10 $\frac{1}{2}$ in. high.
- 102 Two others, similar, *XVIIth century*. 10 $\frac{1}{2}$ in. high.  $4\frac{1}{2} \text{ £}$



99

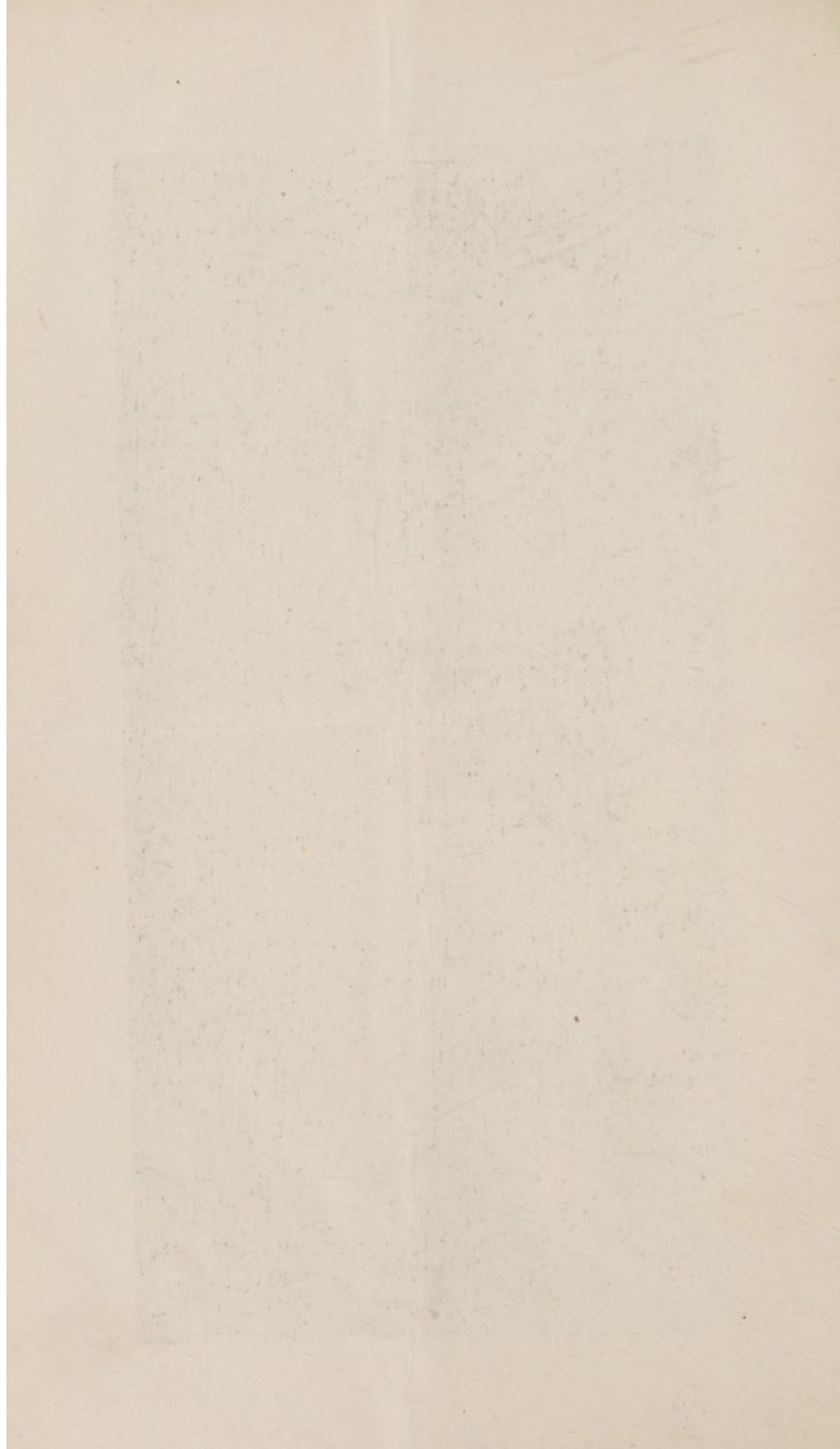


100



99











110

109

111

- 103 A tankard, of cylindrical form, engraved with armorials and inscription, *German, XVIIIth century*, 10½ in. high. *2 1/2 £*
- 104 A cylindrical tankard, with dome cover, 10½ in. high, and another, of globular form, 8½ in. high. *6 "*
- 105 A CIBORIUM, AND COVER, the bowl chased with foliage and beading, the cover surmounted by a cross, on plain stem and circular base, *French, XVIIth century*, 11 in. high. *14 " Kent*
- See illustration.*
- 106 Two CHALICES, with single knopped stems, *XVIIIth century*, 3½ in. high. *15 "*
- See illustration.*
- 107 A set of three measures, with shell billets, *English, XVIIIth century*, 4½ in. to 6½ in. high. *6 "*
- 108 A set of seven measures ranging from litre to centilitre, *French*, 2½ in. to 8½ in. high. *7 1/2 "*
- 109 A CIBORIUM, the dome cover surmounted by a cross, on baluster stem and circular foot, *XVIIIth century*, 12 in. high. *9 1/2 "*
- See illustration.*
- 110 A CHALICE, with reeded bands, on baluster stem, and with original paten, *XVIIIth century*, 7½ in. high, the paten 4½ in. diam. *6 1/2 £ Lee*
- See illustration.*
- 111 ANOTHER, on plain stem, and with original paten, *XVIIIth century*, 7 in. high, the paten 4½ in. diam. *6 £*
- See illustration.*
- 5-112 Six patens, *XVIIIth century*, 4½ in. diam. *6 £ 10 sh*
- 113 A circular dish, the centre chased with a bust of the Madonna and inscription, the border with leaves, 9 in. diam., and a plate, 9½ in. diam. *30/-*
- 114 A chalice, with ball knopped stem, *XVIIIth century*, 8 in. high. *10/-*
- 115 Four goblets, *XVIIIth century*, 4½ in. high. *8 1/2 - 52/6*
- 116 Two Communion jugs, 4½ in. high, and a measure, 3 in. high, *XVIIIth century*. *31/6*
- 117 A jug, of globular form *French*, a tobacco jar, and screw cover, with handle over, and a tankard. *20/-*
- 118 Two oblong inkstands, one with sand box. *40/-*
- 119 An oblong hot-water dish, 19½ in. wide, two hot-water plates, and a two-division spice box. *5 1/2 £ Lee*
- 120 A set of four bleeding cups, with engraved centres, and pierced scroll handles. *5 £ 10 sh*
- 121 Three others, of different design. *5 £ 10 sh*
- 122 Ten spoons, with circular bowls, *Dutch, XVIIIth century*. *70/-*
- 123 A chamber candlestick, a funnel, two egg cups, and a box.



## VARIOUS PROPERTIES.

- 124 A measure of cylindrical form, *French*, XVIIIth century, 11in. high.
- 125 A measure, with flat cover, decorated with a *fleur de lys*, 8in. high, *English*, XVIIIth century.
- 126 A "Tappit Hen," without cover, 6in. high.
- 127 A measure, with flat cover and acorn billet, marked with a coat of arms, XVIIIth century, 8½in. high.
- 128 A tankard, with dome cover, and glass base, 8in. high, and a tankard, engraved with a monogram H. W., 6¾in. high.
- 129 A tobacco jar and cover, two spoons, and a caddy, with Chinese inscription.
- 130 A "kaiser teller," embossed with an equestrian figure, the border with armorials, 10½in. diam.
- 131 Two circular dishes, with grooved and shaped borders, *French*, XVIIIth century, 14in. diam.
- 132 Two others, similar, 12in. diam.
- 133 Five others, similar, 10in. diam.
- 134 An oval dish, similar, 10½in. wide, and three plates 9in. diam. *60/-*
- 135 A large boar's head dish, 30in. by 20½in., and a hot-water dish, 19in. by 14in. *73/6*
- 136 A circular dish, with wide rim, marked, 22in. diam. *11/-*
- 137 Another, with flat rim, by JOHN HORNE, London, 18in. diam. *3½/-*
- 138 Another, similar, 18in. diam. *3/-*
- 139 A circular dish, with maker's mark on the border, 16½in. diam. *3¼/-*
- 140 Two ditto, with reeded borders, marked, 16½in. diam. *53/-*
- 141 A circular dish, with wide border, and with initials B. C. E., 16¼in. diam., and a deep circular dish, 16¼in. diam. *10/-*
- 142 Another, 16¼in. diam., and a dish, with initials I. B., 15in. diam. *4/-*
- 143 A circular dish, the broad rim with initials A. H., marked. *8½/-*
- 144 Two others, 13in. diam. *4/-*
- 145 Four plates, by BINFORD AND GREEN, London, the borders engraved with a crest, 9½in. diam. *5/-*
- 146 Four others, London marks, 9½in. diam. *53/- Russell*
- 147 Two circular dishes, with flat rims, London marks, 18in. diam. *4½/-*
- 148 Three others, similar, 16½in. diam. *4/-*
- 149 Two others, similar, 16½in. diam. *3/-*

- 150 Two others, similar,  $16\frac{1}{2}$ in. diam., and a ditto, 13in. diam. *2 1/2 Gs*
- 151 Two circular dishes, with beaded borders, *London marks*, 15in. diam. *3 7*
- 152 Two others, by ROBERT TUPE, *London*, 15in. diam. *3 1/2*
- 153 Two others, 14in. diam. *3 Gs*
- 154 A deep circular dish, 14in. diam., and two shallow dishes, 13in. diam. *5*
- 155 Three circular dishes, 12in. diam. *3 1/2*
- 156 Three others, 12in. diam. *3*
- 157 A pair of wine coolers, with scroll handles, on reeded bases,  $14\frac{1}{2}$ in. high. *4 Gs*
- 158 An oval hot-water dish, with gallery in well, 21in. wide, marked COOKSON, *London*, and a square shaped tea caddy and cover, 6in. high. *30/-*
- 159 A set of eight French litre measures, ranging in size from a double litre to centilitre. *7 1/2 Gs* *Maskie*
- 160 A set of five Chinese vases, forming an altar set, comprising a centre vase on stand, a pair of square shaped vases, and a pair of candlesticks, 8in. high. *30/-*
- 161 A Scotch "Tappit Hen," with cover, 11in. high. *9 Gs*
- 162 A chalice, on baluster stem, and with chased circular base,  $8\frac{1}{4}$ in. high, *XVIIIth century*. *3*
- 163 A tankard and cover, on ball feet, the cover containing a medallion head, engraved on the body with leaves and flowers, *German*, *XVIIIth century*,  $7\frac{3}{4}$ in. high. *3*
- 164 Two coffee-pots and covers, embossed with fluting, and two hot-water jugs, *French*, *XVIIIth century*. *2 1/2*
- ~~165~~ A pair of circular dishes, with beaded rims, 17in. diam. *Pass*
- 166 A pair of ditto, with flat edges, 13in. diam. *2 1/-*
- ~~167~~ A dish, with shaped edges, 12in. diam., and a litre measure, chased and engraved with the Arms of France, 8in. high. *Pass*
- 168 A pair of oval dishes, inscribed "Elephants Head,"  $21\frac{3}{4}$ in. wide, and a venison dish, with scroll handles, 26in. wide. *3 Gs*
- ~~169~~ An oval dish, engraved with a sportsman, with hound and deer,  $10\frac{1}{4}$ in. wide, two tankards,  $4\frac{1}{2}$ in. and 6in. high, and a circular hot-water plate,  $9\frac{1}{2}$ in. diam. *4 Pass*
- ~~170~~ A pair of chalices, on baluster stems marked J. TYLER, *Sheffield*,  $7\frac{1}{2}$ in. high. *Pass*
- 171 A salt cellar, with chased base, two others, and a wine strainer. *30/-*
- 172 A pair of two handled coffee urns, and covers with wood knobs, on scroll feet, *Dutch*, *XVIIIth century*, 20in. high. *65/-*
- 173 Two quart measures, and a goblet. *3 1/6* *11 Gs*
- 174 A Scotch "Tappit Hen,"  $11\frac{1}{2}$ in. high. *11 Gs*
- 175 A set of three Scotch pewter measures, pint, half-pint, and gill,  $6\frac{1}{2}$ in.,  $5\frac{1}{4}$ in., and 4in. high. *3 Gs*



176 Two tankards, with lids,  $6\frac{1}{4}$ in. and  $3\frac{1}{4}$ in. high, XVIIth century, and two others, smaller. 7 2 5

177 A circular shaving dish, with broad rim, with initials T. W. on the edge, 10in. diam. 7 2 5

178 A tankard, of globular form, with cover, *Flemish*, 12in. high, and another, *German*, engraved, 11in. high. 5 2 5

179 A COLLECTION OF INSIGNIA OF FRIENDLY SOCIETIES, being processional staffs:—

6. (a) A pair of staffs, surmounted by doves, 32in. high.

10. (b) Another pair, surmounted by an outstretched hand holding a heart, 34in. high.

10. (c) Another pair, the tops formed as medallion heads enclosed by the crescent moon, 45in. high.

10. (d) Another pair, the sun in splendour, 45in. high.

12. (e) Another pair, with crook tops and pendants in the form of crossed pens, 41in. high.

8. (f) Another pair, with double crossed tops, 34in. high.

6. (g) Another pair, with globular tops, 47in. high.

6. (h) Another pair, the urn shaped tops with acorn centres, surmounted by four caryatid figures of dolphins, 48in. high. X

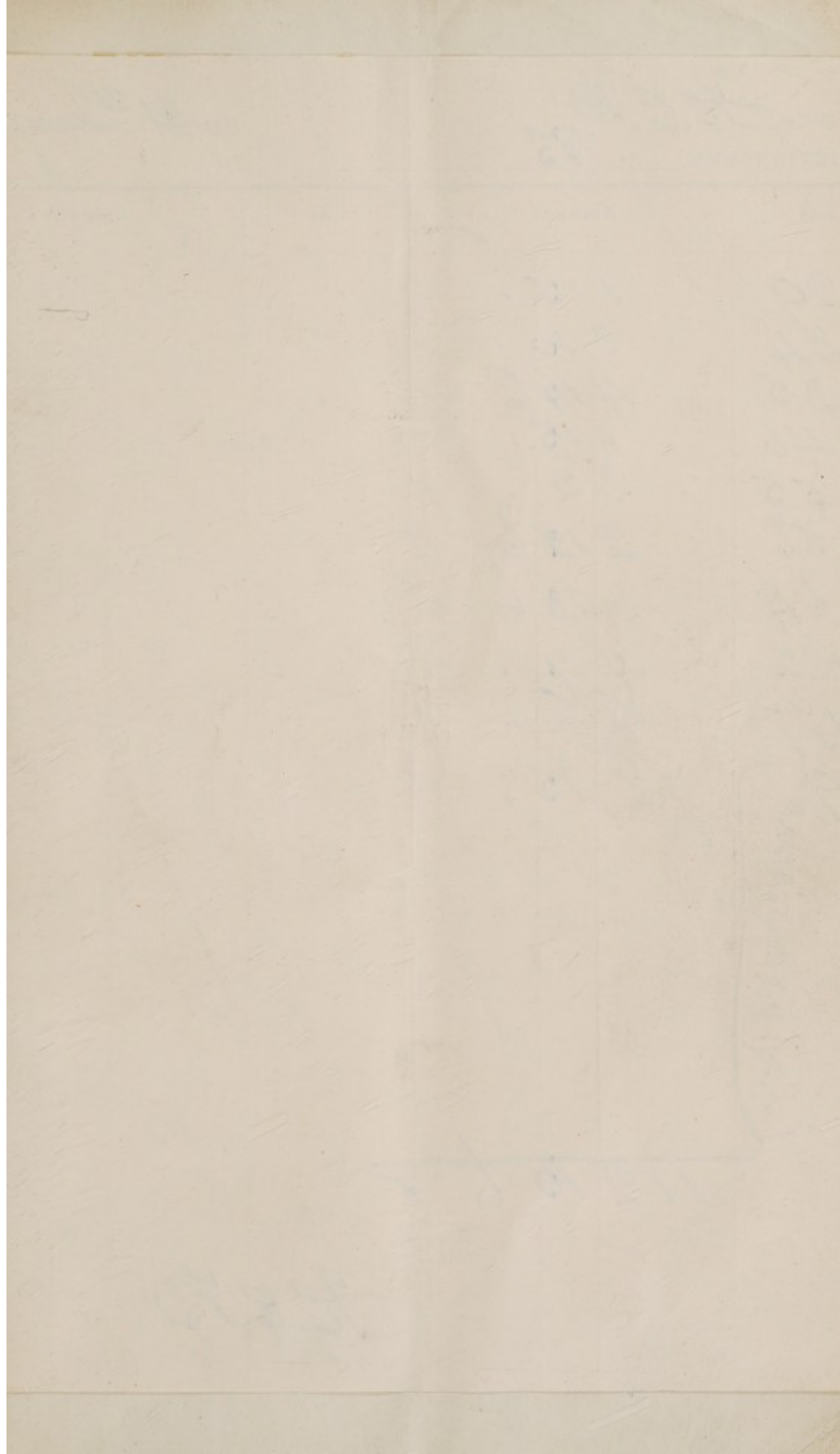
7. (i) Another pair, of similar design, 50in. high.

7. (j) Another pair, with urn shaped tops and covers, 45in. high. X

5. (k) Another pair, surmounted by groups of seven stars, 47in. high.

1. (l) Another pair, with globular tops and knobs, 49in. high. X

(m) And a pendant, formed as crossed keys, the shafts of baluster form in sections, unscrewing in the centres, marked JAMES DIXON & SONS. X





BUYER

H.C. 73  
PS

Date

21 June 20

AUCTIONEERS

Lot	Amount			Lot	Amount		
	£	s.	d.		£	s.	d.
29	1	15	.				
34	3	10	.				
35	4	14	6				
40	1	15	.				
55	3	3	.				
56	2	12	6				
64	3	13	6				
122	4	4	.				
177	8	8	.				
179	48	15	.				
112 10 6							

OK.

H.C. 73

15. 3. 15"



## NOTICES.

---

### MESSRS. PUTTICK & SIMPSON'S FORTHCOMING SALES.

PORCELAIN, OBJECTS OF ART AND ANTIQUE FURNITURE,  
every Friday throughout the Season.

OLD ENGLISH SILVER AND JEWELLERY, June 24th.

COINS AND MEDALS, June 24th.

MUSICAL INSTRUMENTS, June 24th.

THE DOWAGER VISCOUNTESS WOLSELEY COLLECTION  
(Fourth Portion), Queen Anne Furniture and Stuart  
Needlework, June 25th.

BAXTER COLOUR PRINTS, July 1st.

ENGRAVINGS, July 2nd.

BOOKS, July 7th and 8th.

PICTURES, July 14th.





