

## **Sales catalogue: Puttick and Simpson**

### **Publication/Creation**

16th July 1931

### **Persistent URL**

<https://wellcomecollection.org/works/n2d4aemk>

### **License and attribution**

This work has been identified as being free of known restrictions under copyright law, including all related and neighbouring rights and is being made available under the Creative Commons, Public Domain Mark.

You can copy, modify, distribute and perform the work, even for commercial purposes, without asking permission.



Wellcome Collection  
183 Euston Road  
London NW1 2BE UK  
T +44 (0)20 7611 8722  
E [library@wellcomecollection.org](mailto:library@wellcomecollection.org)  
<https://wellcomecollection.org>

~~S. W.~~ *Hubb 16<sup>th</sup> July 1931*

*F. Webb*

**P**

P. v. S.	DATE	INITIALS
645.4.6 SALE	16. VII. 31	WE1313
PURCHASE	.....	.....
CHECKED	18. VII. 31	<i>W</i>
COLLECTED	6. VIII. 31	<i>W</i>
RECEIVED	6/8/31	<i>W</i>
ACCESSED	.....	.....
PASSED	.....	.....

1931

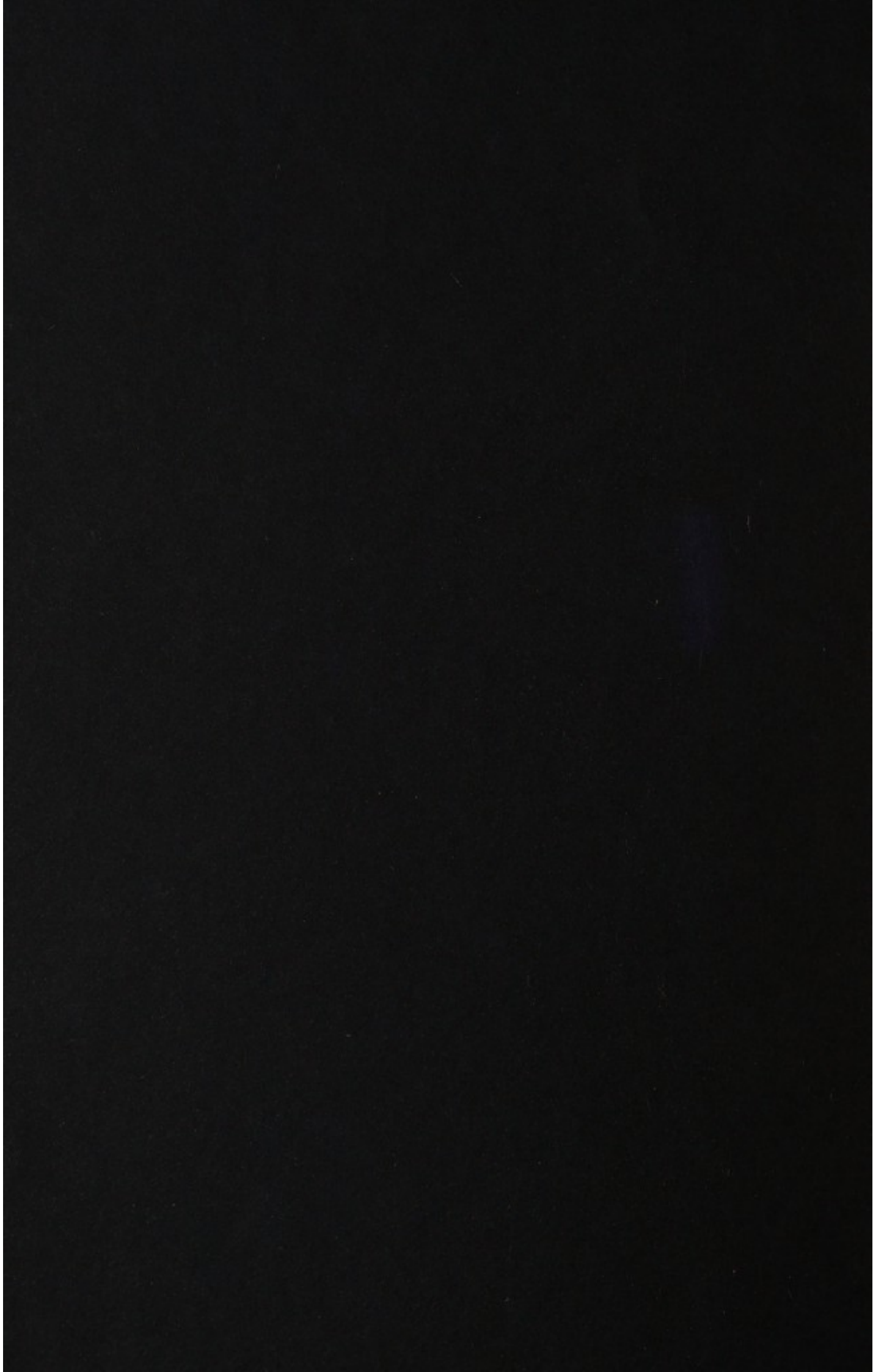
*WA/Hmm/cm/Na/116/247*



**PUTTICK & SIMPSON**

LONDON

*Wm. 252 of 645.4.6*

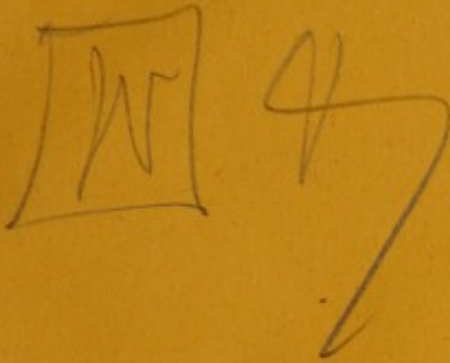




WV  
F. Webb

July 16th 1931  
5-2

# Peruvian Antiquities



---

THURSDAY, JULY 16th,

1931

WA/Hmm/cm/5a/116/247

PUTTICK & SIMPSON

LONDON

Wm. 252 £ 645.4.6









Telephone :  
Gerrard 3716 (two lines)

ESTABLISHED 1794

Telegrams :  
"Puttickdom, Westrand, London"

Catalogue  
OF  
A FINE COLLECTION  
OF  
PERUVIAN ANTIQUITIES  
COMPRISING  
NAZCA & TRUXILLO POTTERY  
OBJECTS OF ART  
AND  
TEXTILES

(Chiefly of the Chimu Period).

THE PROPERTY OF A GENTLEMAN.

---

Which will be Sold by Auction by

**MESSRS. PUTTICK & SIMPSON**

W. G. HORSMAN N. H. ARCHER

R. F. WESTHORPE

At their Reynolds Galleries, 47 Leicester Square, London, W.C.2

On Thursday, July 16th, 1931

At half past One o'clock precisely

---

MAY BE VIEWED THE TWO DAYS PRIOR FROM 10 A.M. UNTIL 5.30 P.M.



## CONDITIONS OF SALE.

---

I. The highest Bidder to be the Buyer; and if any dispute arise between two or more Bidders, the Lot so in dispute shall be immediately put up again and resold.

II. The Auctioneer shall regulate the bidding, and reserves the right to refuse a bidding, as he may think advisable.

III. In the case of Lots upon which there is a reserve, the Auctioneer shall have the right to bid on behalf of the Seller.

IV. The Purchasers to give in their Names and Places of Abode, and, if required, to pay down 1s. in the Pound, or more, in part of payment, or the whole of the Purchase Money, in default of which the Lot or Lots so purchased to be immediately put up again and resold.

V. The Lots to be taken away and paid for, whether genuine and authentic or not, with all faults and errors of description, at the Buyer's expense and risk within Two Days from the Sale; Messrs. PUTTICK & SIMPSON NOT BEING RESPONSIBLE FOR THE CORRECT DESCRIPTION, GENUINENESS, OR AUTHENTICITY OF, OR ANY FAULT OR DEFECT IN, ANY LOT, AND MAKING NO WARRANTY WHATEVER.

VI. To prevent inaccuracy in delivery, and inconvenience in the settlement of the Purchases, no Lot can on any account be removed during the time of Sale; and the remainder of the Purchase Money must absolutely be paid on the delivery.

VII. Upon failure of complying with the above Conditions, the Money deposited in part payment shall be forfeited; and all Lots left uncleared, in conformity with these Conditions, may be resold by public or private Sale without further notice; and the deficiency (if any) arising from such re-sale shall be made good by the defaulters at this Sale, together with all charges attending the same. This Condition is without prejudice to the right of the Auctioneers to enforce the contract made at this Sale without such re-sale, if they think fit, and to any other rights and remedies vested in them by law or otherwise.

*Buyers who are unable to attend the Sale may have their Commissions faithfully executed by their obedient servants,*

PUTTICK & SIMPSON.

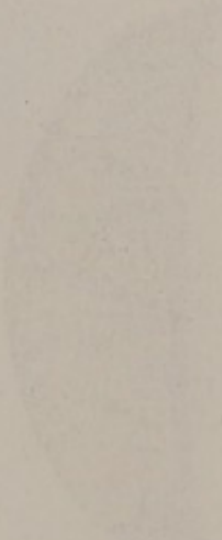
Auction Rooms for the Sale of  
All Fine Art Property,  
LEICESTER SQUARE, LONDON, W.C.

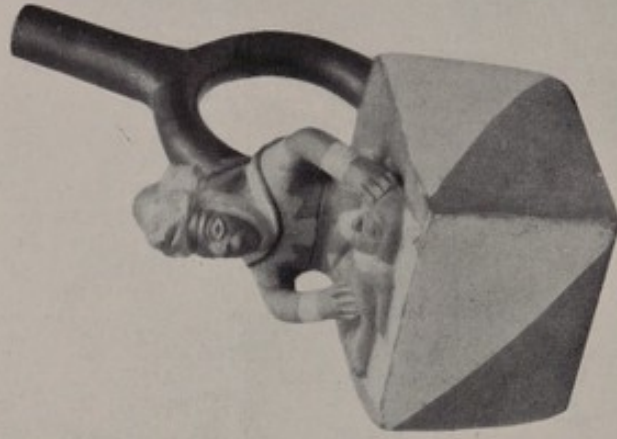
---

Collections Catalogued, Arranged and Valued for the Probate and Legacy Duty or for Public or Private Sale.

---

ESTABLISHED 1794.





129



62



59



THURSDAY, JULY 16th, 1931.

AT HALF PAST ONE O'CLOCK PRECISELY.

### NAZCA POLYCHROME WARE.

- 1 A bowl, with spreading rim, painted with demon figures,  $5\frac{1}{2}$ in. diam.
- 2 Another, of similar form, painted with demon figures and attendants,  $5\frac{1}{2}$ in. diam.
- 3 A water bottle of kettle shape, painted with monsters and human figures, masks, etc., and with double spout,  $5\frac{1}{2}$ in. high.
- 4 A small beaker, painted with double headed monsters grasping staves,  $3\frac{1}{4}$ in. high.
- 5 A water bottle, painted with linked masks, and a border of conventional ornament, the double spout modelled with a head, 6in. high. *4 g spunk*
- 6 A shaped bowl, painted with winged figures, and a border of insects,  $6\frac{1}{2}$ in. diam. *5 1/2 g spunk*
- 7 Another, painted with an inverted winged figure, with double head,  $5\frac{1}{2}$ in. diam. *2 1/2 g or*
- 8 A shaped beaker, painted and partly modelled as a head of a man, wearing turban head-dress, 6in. high. *2 g hiddle*
- 2 1/2 g* 7. 9 A vessel, painted with grotesque figures, and with narrow neck and spout,  $4\frac{1}{2}$ in. high.
- 5 g* 7. 10 A water bottle of globular form, painted with a fabulous winged figure, with many heads, and with double spout,  $6\frac{1}{2}$ in. high.
- 6 g* 6. 11 A circular water vessel, painted on either side with birds, and with narrow neck and rudimentary handles,  $5\frac{1}{2}$ in. high.
- 3 1/2 g* 5. 12 A beaker, painted with masks, wearing head-dresses and with fish,  $4\frac{1}{4}$ in. high.
- 13 A small shaped beaker, painted with borders of insects,  $3\frac{1}{4}$ in. high, and a bowl, painted with a serpent, 4in. diam. *1 1/2 g spunk.*
- 6 14 A RECLINING FIGURE OF A LEOPARD, with whistle, 7in. wide. *9 g hiddle*
- 15 A small water bottle, painted with a winged figure, and with double spout, 5in. high. *4 g spunk.*



- 16 A small water vessel, painted and modelled as a head, with narrow neck and spout, 4in. wide. *2 go spink.*
- 17 A WATER BOTTLE of kettle shaep, painted with many-headed figures, borders of masks and chequer pattern, and with double spout, 7¼in. high. *6 go spink.*
- 18 A small bowl, painted with a demon figure, with feather decoration and masks, 4in. diam., and a beaker, with similar designs, 2¾in. high. *3 go spink.*
- 19 A FIGURE OF A PARROT, painted with fish, and with handle and spout, 9½in. wide. *7 go.*
- 20 A shaped water bottle, formed as a human figure, with modelled head and spout, 5in. high. *5 go*
- 21 A shaped bowl, painted with figures wearing masks and holding staves, and with feather decoration, 5in. diam. *foyer.*
- 22 A water vessel, with triple neck, painted with grotesque warriors holding weapons, death masks and serpents, 7in. high. *2 go.*
- 23 A bowl, with tapering sides, painted with figures, grasping implements, and with a border of masks, 6¾in. diam. *4 go spink.*
- 24 A circular water bottle, painted with a winged monster, grasping a head, and with masks, etc., double spout, 6¾in. high. *5 go Wilkins.*
- 25 Two shaped beakers, painted with skeleton figures and monsters grasping staves, 4in. high. *2 ½ foyer*
- 26 A circular shaped water bottle, painted with monsters holding weapons, and a border of female masks, 7¾in. high. *5 go spink.*
- 27 A circular water bottle, flat shape, painted with masks, serpents, etc., and with double spout, 6½in. high. *2 ½ go Barnard.*
- 28 Another, of globular form, painted with a border of conjoined masks, 5in. high. *1 ½ do*
- 29 Another, with modelled head and spout, 6¼in. high.
- 9/9/10. 30 A water bottle, of globular form, painted with a monster holding a head and weapon, and with serpent decoration and double spout, 7¾in. high.
- 4/4/10. 6. 31 A shaped beaker, painted with conventionalised winged animals, 5in. high. *1 go spink.*
- 13/13/10. 10. 32 A bowl, painted with a border of fish, 7¾in. diam.
- 13/13/10. 10. 33 A CIRCULAR WATER BOTTLE, of buoy shape, painted with human figures, wearing ceremonial dress and a border of conventional masks, and with double spout, 7½in. high.



- 34 A bowl, with tapering rim, painted with mask-like figures,  
6¼ in. diam. 4 ½ qrs Spink.
- 35 A circular water bottle, flat shape, painted with monsters  
with foliage decoration and birds, and with double spout,  
6¼ in. high. 5 qrs Joyce.
- 36 Another, of similar shape, painted with many-headed  
figures and a border of masks, slightly modelled, and  
with double spout, 6½ in. high. 4 qrs Spink.
- 37 A bowl, with tapering rim, painted with linked mask-like  
figures, 6½ in. diam. 5 qrs Spink.
- 38 A circular shaped water bottle, painted with frogs, fish,  
etc., and with double spout, 7¼ in. high. 4 ½ qrs Watkins.
- 39 A shallow bowl, painted with double-headed monsters,  
grasping staves, and with insects, 8½ in. diam. 3 qrs Joyce.
- 40 A circular water bottle, painted with linked masks, and  
with double spout, 6 in. high. 3 ½ qrs Spink.
- 41 Another, gourd shape, painted with a bird and a monster,  
and with double spout, 6½ in. high. 4 ½ qrs Spink.
- 42 A circular water vessel, painted with animals and leafage,  
in black, 5 in. high. 1 ½ qrs Spink.
- 43 Another, smaller, painted with masks, in black, and with  
tapering rim and spout, 4 in. high.
- 44 A circular water vessel, painted with two fish-like monsters,  
and with a handle, 5½ in. high. 4 qrs
- 9/19/6 15- (45) A circular water bottle, flat shape, painted and modelled  
as a head, wearing helmet head-dress, and with double  
spout, 7½ in. wide.
- 14/14/1 12 (46) A tall beaker, painted with two human figures, holding  
ceremonial staves, 6¼ in. high.
- 47 A small shaped bowl, painted with a monster, holding a  
head and weapon, 5 in. diam. 6 ½ qrs Watkins
- 48 Another, painted with fabulous winged monsters, 5½ in.  
diam. 6 qrs Spink.
- 49 A circular water bottle, flat shape, painted with linked  
death masks, and a border of heads, and with double  
spout, 5¾ in. high. 2 ½ qrs  
Bainard-
- 50 A bowl, of tapering form, painted with human figures,  
grasping implements, and with a border of heads, 6½ in.  
diam. 5 qrs Spink.
- 51 A beaker, painted with triple-headed figures, 3½ in. high,  
and another, with fish, 4¼ in. high. 2 ½ qrs Spink.



- 52 A bowl, with spreading rim, painted with demon figures,  
6 $\frac{3}{4}$ in. diam. *3 go Spink*
- 7/7/1 7 53 A tall beaker, partly modelled and painted with a female  
figure, and with circular devices, 7 $\frac{1}{4}$ in. high.
- 7/7/1 7 54 A shaped beaker, painted with a border of crouching *10 go Spink*  
figures wearing masks and leafage, 4 $\frac{1}{4}$ in. high.
- 7/7/1 5? 55 Another, painted and modelled as a head, wearing helmet  
head-dress, 5 $\frac{3}{4}$ in. high.
- 7/7/1 12 56 A WATER BOTTLE, painted as a figure of a warrior, with  
modelled head wearing animal head-dress, and with  
handle and spout, 8in. high.
- 57 A shaped beaker, painted with human figures holding  
weapons, and with insects, etc., 3 $\frac{3}{4}$ in. high. *7 go Spink*
- 58 Another, painted with warriors holding weapons, and with  
serpent and linear decoration, 4 $\frac{1}{4}$ in. high. *5 go Spink*
- 59 A WATER BOTTLE, formed as a bird standing on a fruit,  
painted with masks, chequer pattern, etc., and with  
handle and spout, 9 $\frac{1}{2}$ in. high. *10 go Hiddle*
- \*\* See illustration.*
- 60 ANOTHER, buoy shape, painted with two fabulous monsters,  
and with double spout, 7in. high. *10 go Spink*
- 61 A musical instrument, in the form of pitch pipes, 19 $\frac{1}{2}$ in. *12 go*  
wide. *A. F. Wilkins*
- 16 62 A LARGE WATER BOTTLE, of globular form, painted with  
grotesque winged monsters holding heads, and with  
double spout, 12 $\frac{1}{4}$ in. high. *34 go Joyce*
- \*\* See illustration.*
- 63 A deep bowl with spreading rim, painted with birds, 6in,  
diam. *2 go Spink*
- 64 A water bottle, of buoy shape, painted with mask-like  
figures, 7 $\frac{1}{2}$ in. high. *2 $\frac{1}{2}$  go Thorpe*
- 5/5/1 4 65 A water bottle, of globular shape, painted with two  
grotesque animals, and with double spout, 6 $\frac{3}{4}$ in. high.
- 66 A beaker, painted with a border of birds, 5in. high. *10/6 Spink*
- 15/15/1 16 67 A shaped beaker with spreading rim, painted with human  
figures and a border of masks, 4 $\frac{1}{4}$ in. high.
- 68 A water bottle, painted with linked masks, the double spout  
modelled with a head, 6 $\frac{1}{2}$ in. high. *3 $\frac{1}{2}$  go Wilkins*
- 69 A circular water vessel, painted with an animal, and with  
sunk top and narrow spout, 4 $\frac{1}{2}$ in. high. *3 $\frac{1}{2}$  go Wilkins*



- 70 A bowl, with spreading rim, painted with conventional ornament,  $7\frac{1}{4}$  in. diam., and a small bowl, painted with death masks,  $3\frac{1}{2}$  in. diam. *1 1/2 yo Joyce.*
- 71 A tall beaker, painted with death masks and a border of conventionalised heads, 8 in. high. *2 yo*
- 72 A bowl, painted with a border of linked double-headed serpents, 6 in. diam., and a beaker, painted with death masks, fish, etc., 6 in. high. *4 horns.*
- 73 A small water bottle, painted with fabulous birds on either side, and with double spout, 5 in. high. *2 yo Spinks.*
- 74 A bowl, with spreading rim, painted with animals, 7 in. diam. *5 yo Joyce.*
- 75 A circular bottle, painted with a procession of skeleton animals, and with tapering spout and rudimentary handle,  $9\frac{1}{2}$  in. high. *10 yo Wilkins*
- 76 A circular water bottle, painted with two grotesque monsters grasping weapons, and a border of masks, and with double spout,  $7\frac{3}{4}$  in. high. *5 yo Spinks.*
- 77 A bowl, with spreading rim, painted with animals and serpents,  $6\frac{1}{2}$  in. diam. *3 yo - do.*
- 78 A vase, modelled as a squatting figure of a man, with protruding tongue and wearing head-dress,  $7\frac{1}{4}$  in. high. *5 1/2 yo Barnard*
- 79 A water bottle, of globular shape, painted with two winged monsters grasping implements, and with double spout, 7 in. high. *6 yo Spinks.*
- 80 A spherical water vessel, painted with two borders of heads, and with spreading rim, 6 in. high. *4 1/2 yo Wilkins*
- 81 Two small bowls, painted with conventional ornament,  $3\frac{1}{2}$  in. and 4 in. diam., and another, oblong, 4 in. wide. *1 1/2 yo Joyce.*
- 4/14/6 4 82 A water bottle, painted with a sprawling figure of a man holding a net, with modelled head,  $5\frac{3}{4}$  in. wide.
- 4/4/ 4 83 A small water bottle, painted with animals, and with double spout,  $4\frac{1}{2}$  in. high, and another,  $4\frac{3}{4}$  in. high.
- 4/4/ 6 84 A beaker, painted with a grotesque animal, with double head, and holding implements, 7 in. high.
- 85 A globular water bottle, painted with enlarged insects, and with double spout, 7 in. high.
- 86 A water bottle, formed as four joined fruits, painted with linear decoration, and with double spout, 7 in. high.
- 2090 16 87 Another, formed as a seated figure of an Indian, suffering from frostbite, and with handle and spout,  $7\frac{1}{2}$  in. high.



- 88 A shaped beaker, painted with running figures holding spears, etc., and with borders of masks,  $6\frac{1}{2}$ in. high, and a bowl, painted with masks,  $5\frac{1}{4}$ in. diam. *590 Joyce*
- 89 A circular water bottle, painted with linked death masks, and with double spout,  $5\frac{1}{4}$ in. high.
- 90 A small vessel, formed as a fruit,  $4\frac{1}{4}$ in. high, and a beaker painted with a monster,  $3\frac{1}{2}$ in. high. *720 Joyce*
- 91 A circular water vessel, painted with masks, and with narrow neck and spout,  $5\frac{1}{4}$ in. high. *190 Joyce*

690 8. 92 A shallow bowl, painted with conventionalised figures,  $8\frac{3}{4}$ in. diam., and another, painted with a border of monsters, 9in. diam.

1090 10. 93 A water bottle, painted as male and female figures, with modelled heads and double spout,  $5\frac{3}{4}$ in. high.

94 A circular water bottle, flat shape, painted and partly modelled as a head, wearing helmet head-dress, and with spout, 7in. wide. *220*

95 A shaped beaker, painted with different masks, 7in. high. X

9191- 8. 96 Another, painted and modelled as the head of a man wearing turban head-dress, 7in. high.

97 A water vessel, shaped as a bird, painted with masks, and with modelled head and spreading rim,  $9\frac{1}{2}$ in. wide. *290*

98 A water bottle, of globular form, painted with winged monsters, and with double spout, 7in. high. *Barnard 420 Wilkins*

99 A LARGE BEAKER, painted with a procession of humorous figures holding staves, and with a border of symbolic ornament,  $8\frac{3}{4}$ in. high. *1590 Sprink*

\* See illustration.

100 A SHAPED WATER BOTTLE, painted as two figures of warriors holding weapons, and with modelled heads and double spout, 9in. high. *890 Wilkins* AE

5/51- 4 97 101 A circular water bottle, painted with monsters and a border of masks, and with double spout,  $7\frac{1}{4}$ in. high. AE

7/17/6 6 102 A water bottle, formed as a human figure holding implements and leading two animals, and with modelled head and spout,  $7\frac{1}{2}$ in. high.

8/81- 8 103 A vase, formed as a figure of a man, with turban head-dress, 11in. high. FAKE

104 A water bottle, painted and partly modelled as a head, with helmet head-dress, and with double spout,  $6\frac{3}{4}$ in. high. *220 Barnard*

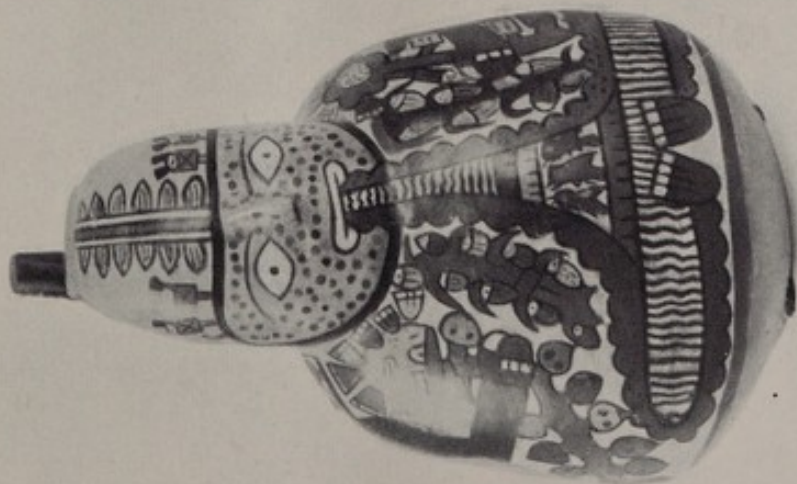




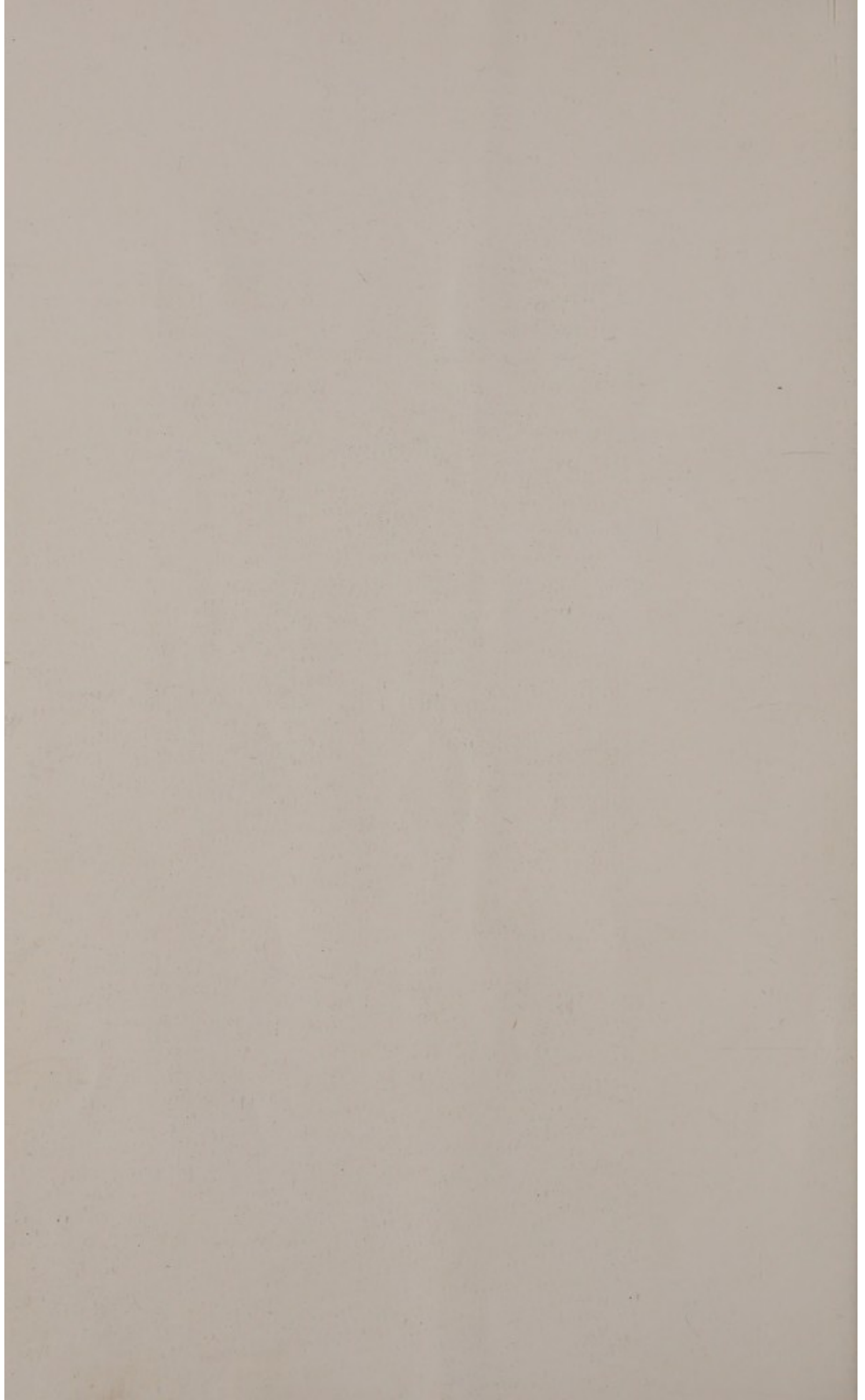
111



99



110





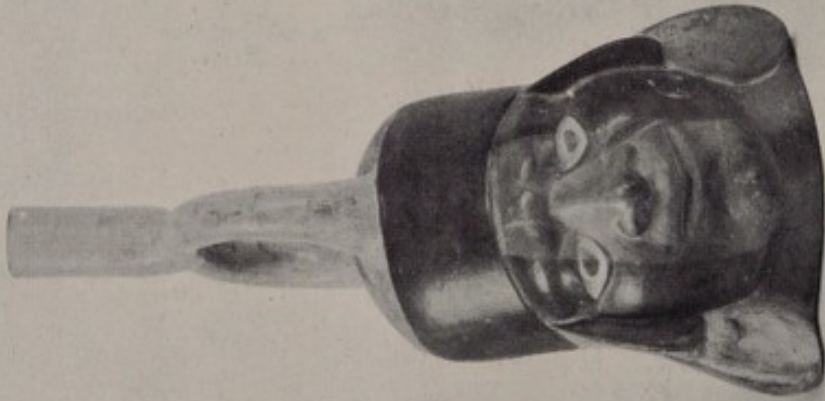




113



112



117



124

- 105 A CIRCULAR WATER BOTTLE, painted with many-headed monsters, and a border of masks, with double spout,  $7\frac{1}{4}$ in. high. *10 gp Spink.*
- 106 Another, formed as a human figure, painted with masks, the double spout with modelled head, 6in. high. *8 1/2 gp do*
- 107 A circular shaped vase, painted with winged animals and borders of symbolic ornament and key pattern,  $7\frac{1}{4}$ in. high. *7 gp Wilkins.*
- 108 A water bottle, formed as a robed figure, painted with conventionalised masks, the double spout with modelled head,  $6\frac{1}{2}$ in. high. *7 gp Spink.*
- 10 | 10 | - 12. 109 ANOTHER, of similar form, larger, painted with triple headed figures, the double spout with modelled head,  $7\frac{3}{4}$ in. high.
- 15 | 15 | - 18. 110 A LARGE WATER BOTTLE, formed as a robed figure wearing head-dress, and painted with numerous devices, and with modelled head and shaped spout,  $12\frac{1}{2}$ in. high.  
\* See illustration.
- 15 | 15 | - 12. 111 A LARGE VASE, modelled and painted as a seated figure of a man, with decorated face and wearing turban head-dress,  $13\frac{1}{2}$ in. high.  
\* See illustration.
10. 112 A FIGURE OF A MAN, wearing bird dress, painted with serpent decoration, and with modelled head, legs and tail,  $10\frac{1}{4}$ in. high. *15 gp Barnard.*  
\* See illustration.
- 113 A SEATED FIGURE OF A MAN, blowing pitch pipes, with an ear trumpet, and a drum at his knee,  $6\frac{3}{4}$ in. high. *14 gp Barnard.*  
\* See illustration.
- 114 A small water bottle, of gourd shape, painted with a border of birds, and with double spout, 5in. high. *5 gp Spink.*
- 115 A FIGURE OF A WARRIOR, wearing head-dress, with pierced outstretched arms, and painted with conventional designs, on square shaped base with rim, 9in. high,  $10\frac{1}{2}$ in. wide. *20 gp Wilkins.*

## TRUXILLO POTTERY, &amp;c.

- 8 | 8 | - 8. 116 A RED AND CREAM WATER BOTTLE, modelled as a frog, with handle and spout, 9in. high.  
\* See illustration.
- 117 A RED, BROWN AND CREAM WATER BOTTLE, finely modelled as a head of a warrior, wearing helmet head-dress, and with handle and spout,  $12\frac{3}{4}$ in. high. *24 gp Spink.*  
\* See illustration.



- 118 A whistling bottle, of dark red and cream, modelled with a head of a monkey, blowing a musical instrument, and with handle and spout,  $9\frac{1}{2}$ in. high. *7<sup>yo</sup> Wilkins*
- 119 A water bottle, of red and cream, formed as a seated figure of a white Indian, wearing head-dress, and with handle and spout, 8in. high. *4<sup>yo</sup> Barnard.*
- 120 Another, with similar colouring, formed as a seated figure of a monkey holding a vase, and with handle and spout,  $9\frac{1}{4}$ in. high. *2<sup>yo</sup> Barnard.*
- 121 A WATER BOTTLE, of red, cream and black, modelled as a figure of a man with an owl mask, wings and tail, and with handle and spout, 9in. high. *9<sup>yo</sup> Wilkins*

*\*\* See illustration.*

- 8<sup>yo</sup>* 8. 122 Another, of red, brown and cream, formed as a seated Indian, wearing head-dress and with folded arms, handle and spout, 10in. high.
- 8<sup>yo</sup>* 8. 123 Another, with similar colouring, modelled with a sprawling figure, and with narrow spout, 7in. wide.
- 10<sup>yo</sup>* 10. 124 A VASE, of red and cream, modelled as a seated figure of a man holding a whistling instrument,  $7\frac{1}{2}$ in. high.

*\*\* See illustration.*

- 8.* 125 ANOTHER, with similar colouring, modelled as a demon head, with protruding ears, and with long neck,  $9\frac{3}{4}$ in. high.

*\*\* See illustration.*

*11<sup>yo</sup> Barnard.*

- 126 A red and cream whistling water bottle, of double form, with modelled head, wearing bird head-dress, and with pierced eyes and mouth, handle and spout,  $7\frac{1}{2}$ in. high. *6<sup>yo</sup> Little*
- 127 A VASE, of red, brown and cream, modelled as a head of a man, the head-dress with an animal mask, 8in. high.

*\*\* See illustration.*

*12<sup>yo</sup> Wilkins*

- 128 A CIRCULAR WATER BOTTLE, of brown, cream and black, surmounted by a sprawling figure of a hunter, wearing lizard head-dress and holding a weapon, and with handle and spout,  $8\frac{1}{4}$ in. high. *9<sup>yo</sup> Little*

- 21<sup>yo</sup>* 25. 129 A SQUARE WATER BOTTLE, of red, brown and cream, surmounted by figures of a medicine man, wearing animal head-dress, and a child, and with handle and spout,  $8\frac{3}{4}$ in. high.

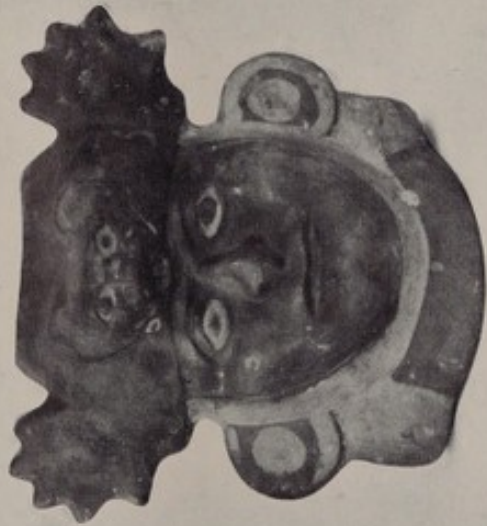
*\*\* See illustration.*

- 130 A water bottle, of red, cream and black, formed as a bird, with human body and legs, and with handle and spout,  $8\frac{1}{2}$ in. high. *3<sup>yo</sup> Barnard.*





116



127



125



121



- 131 A WATER BOTTLE, of brown, cream and black, formed as a kneeling figure of a hunchback, with handle and spout,  $9\frac{1}{2}$ in. high. *10 go Wilkins.*
- 132 ANOTHER, of brown, cream and black, formed as figure of a man displaying textiles, with handle and spout, 8in. high. *6 1/2 go hiddle.*
- 133 Another, of red and cream, formed as the head of a puma, with tapering spout,  $6\frac{1}{2}$ in. high. *6 go Wilkins.*
- 134 Another, of red and cream, formed as a crouching figure of a man with lupus, wearing a hood and with handle and spout,  $7\frac{3}{4}$ in. high. *16 go Spink.*
- 26 go*  
20. 135 A SQUARE WATER BOTTLE, of red, brown and cream, mounted with figures, and with handle and spout, 7in. high.
- 14/14/15* 136 AN OVAL SHAPE WATER BOTTLE, of red, brown and cream, surmounted by a sprawling figure holding a drum, modelled with figures of men, animals and birds in relief, and with handle and spout,  $9\frac{3}{4}$ in. high.
- 21/1* 20. 137 THE GOD OF FERTILITY, a figure of brown and cream,  $10\frac{3}{4}$ in. high.
- 8/8/1* 10. 138 A WHISTLING WATER BOTTLE, of red, brown, cream and black, formed as a figure of an ape, wearing head-dress and with pierced eyes, handle and spout, 9in. high.
- 139 A circular shaped water bottle, with painted decoration, the narrow neck modelled with the head of a man, and with masks, animals, etc., in relief, rudimentary handles,  $9\frac{3}{4}$ in. high. *8 go Wilkins*
- 140 A coiled figure of a dragon, in plain pottery, 9in. wide. *6 go - do -*
- 10/10/18* 141 A standing figure of an Indian, wearing head-dress, with painted decoration and pierced mouth,  $12\frac{1}{2}$ in. high.
6. 142 A miniature water bottle, of red, brown and cream, modelled as the head of a blind man, wearing helmet head-dress, and with handle and spout, 4in. high. *9/9/2 Spink*
- 12/12/1*  
10. 143 A WATER BOTTLE, of red and cream, modelled as a figure in the form of an owl, with an Indian leaning over one wing, and with handle and spout, 9in. high.
- 10/10/1*  
15. 144 A figure of a monkey, supporting a vessel, in plain pottery with painted decoration,  $7\frac{3}{4}$ in. high,  $7\frac{1}{2}$ in. wide.
- 145 A figure of a woman, wearing head-dress and necklace, in plain pottery,  $5\frac{1}{4}$ in. high. *2 1/2 go hiddle*
- 146 Another, 5in. high. *4 1/2 go hiddle*



- 147 A water bottle, of red and cream, modelled with a sprawling demon figure, wearing animal head-dress, and with handle and spout,  $10\frac{1}{4}$ in. high. 1090 Wilkins
- 148 Another, of red and cream, surmounted by a seated human figure wearing a hood, with an axe and cat, and with handle and spout,  $8\frac{1}{2}$ in. high. 7 $\frac{1}{2}$ 90 Barnard.

## BLACK WARE.

4. 149 A WHISTLING WATER BOTTLE, of circular form, the double spout modelled with a figure of a man holding a bone flute,  $9\frac{3}{4}$ in. high. 5 $\frac{1}{2}$ 90 Hiddlee
- 10/10/7 16. 150 A WATER BOTTLE, of double form, the front modelled with a figure of a man holding a beaker and seated on a throne, the other part circular, with scroll ornament,  $8\frac{3}{4}$ in. high.
- 151 A whistling water bottle, of double form, modelled with a head, and with designs in relief,  $9\frac{3}{4}$ in. wide. 2 $\frac{1}{2}$ 90 Hiddlee
- 152 Another, nearly similar, smaller, 7in. wide. 2 $\frac{1}{2}$ 90 do
- 153 A pair of whistling water bottles, of similar form, the double spouts modelled with heads of jaguars, 8in. wide. 2 $\frac{1}{2}$ 90 do
- 59 7. 154 A whistling water bottle, of double form, with narrow necks, one side modelled with a figure of a potter at work,  $8\frac{3}{4}$ in. wide.
- 155 A circular shaped water vessel, designed on either side with fish and birds in relief, and with a figure of an animal supporting the narrow spout,  $8\frac{1}{4}$ in. high. 3 $\frac{1}{2}$ 90 Barnard.
- 156 A water bottle, of circular form, with handle and spout supported by a minute figure of a monkey,  $9\frac{3}{4}$ in. high. 1 $\frac{1}{2}$ 90 Barnard.
- 157 Another, in the form of an animal, with handle and spout,  $5\frac{3}{4}$ in. wide. 2 $\frac{1}{2}$ 90 do
- 158 Another, circular, the handle modelled with two ducks, 4 $\frac{1}{2}$ 90 the spout with a minute figure of a monkey, 8in. high. Hiddlee
- 159 A water bottle, of semi-circular form, designed with a figure holding two birds, in relief, the reverse of shell shape, terminating at the top in masks, and with handle and spout,  $8\frac{1}{4}$ in. high. 3 $\frac{1}{2}$ 90 Hiddlee
- 160 A SQUARE SHAPE WATER BOTTLE, surmounted by a squatting figure playing a bone flute, with handle and spout supported by a minute figure of a monkey, 8in. high. 890 Wilkins
- 161 A figure, wearing head-dress, and with pierced ears,  $7\frac{1}{2}$ in. high. 490 do
- 162 A water bottle, formed as a grotesque kneeling figure, with enlarged mouth, and with handle and spout,  $7\frac{1}{4}$ in. high. 690 do



## OBJECTS OF ART, &amp;c.

5? 163 A necklace, of coloured stones and gold, carved with birds and symbolic ornament, and with a carved and painted wood figure, and another. *7 1/2 Hiddle*

8/8/1 15? 164 A carved ivory miniature figure, the eyes and head-dress of mother-o'-pearl, 2 1/4 in. high. *Brought away*

165 Two others, similar, smaller, and a seated figure. *3 1/2 ygs*

7 166 A carved group of a woman, seated and holding a child, 9 1/2 in. high, inlaid with coloured stones, 2 3/4 in. high. *Hiddle*

167 A wooden ladle, with handle, 7 in. wide, and a small tool, with carved wood handle. *3 1/2 ygs Wilkins*

168 Two slings, with embroidered cords, 4 ygs *Wilkins*

169 Three others, with embroidered designs, and tassel ends. *5 1/2 ygs Wilkins*

## TEXTILES.

6/16/6 12 170 Sixteen fragments, woven with animals, birds and conventional devices, in colours.

1 1/2 ygs 10 171 Eight others, with embroidered decoration.

2/2/1 8 172 Three panels, woven with borders of conventional ornament.

19/19/1 20 173 Three fragments of a panel, woven with grotesque figures in buff, on crimson ground, and with devices in red on a border of blue.

174 A bag, woven with conventional patterns in different colours, on crimson ground, and eleven small pouches. *9/9/- Wilkins*

175 Four shaped pendants, for head-dress decoration, padded and woven with conventional ornament. *14/14/-*

176 A panel, woven with masks and other devices on crimson ground, *Tiahuanaco*, 9 in. by 20 in. *Joyce - 14/14/- Wilkins*

15/15/1 16 177 Three small panels, similar, *Tiahuanaco*, and two narrow borders, woven with conventional ornament.

15/15/1 16 178 A border, woven with symbolic ornament in shades of red, in oblong panels of shades of brown, outlined with white, 80 in. wide.

5/5/1 16 179 A portion of a robe of coloured feathers.

180 Six fragments, various. *4/4/- Wilkins*

181 A number of spindle whorls, etc., some with painted decoration, two needle cases, with needles, four combs, a bag of cotton, and four small wicker baskets. *10/10/- Wilkins*



- (4/4)- 8. 182 A skin bag, with tassels woven with conventional pattern.
- (3/3)- 5. 183 A panel, woven with conventional designs outlined in black, on dark brown ground, 39in. by 41in.
- (10/10)- 12. 184 Two fragments, woven with devices in red, in shaped panels of brown, on golden yellow ground, the border with birds, etc., and with fringe.
- 185 A bolero jacket, the border embroidered with birds, in colours, and with red fringe, and a panel, with embroidered border.
- 186 A fragment of a border, woven with two figures, and designs in red on brown ground, and with fringe, and another piece, similar, *Tiahuanaco*.  $3\frac{1}{2}$  go Wilkins
- 187 A panel, designed with animals in different colours, appliqué on blue ground, *Paracas*, 12in. by 14in. 5 go Wilkins
- 50- 188 A panel, woven with bands of conventionalised heads, in different colours, *Nazca*, 13in. by 15½in.  $3\frac{1}{2}$  go Hiddle
- (3/3)- 5. 189 Another, woven with figures of animals and birds, *Tiahuanaco*, 16in. by 18in.
- (5-15/6) 25. 190 A panel, designed with heads, wearing various ornaments, in colours, appliqué on black ground, *Paracas*, 15½in. by 17in.
- 191 A fragment of a border, woven with star designs and bands of different colours, *Nazca*. 3 go Wilkins
- 192 Another, woven with designs in brown and cream, *Nazca*. 3 go Wilkins
- 193 A panel, woven with key designs in different colours, *Nazca*, 13in. by 16½in.  $2\frac{1}{2}$  go Barnard.
- 194 A bag, woven with grotesque animals in colours, on gold ground, with fringe, *Tiahuanaco*, and another, *Nazca*. 5 go Wilkins
- 195 A panel, woven with bird heads, in diamond panels of red, on brown ground, *Paramonga*, and a fragment, with conventional patterns in red and yellow, *Tiahuanaco*.  $3\frac{1}{2}$  go Joyce.
- (4 go) 4. 196 A panel, woven with trellis pattern, and a border of double-headed birds, in brown, *Paramonga*, 22in. by 17in.
- (5-5/-) 8. 197 A border, woven with mask-like designs in different colours, on brown ground, outlined with yellow, *Paramonga*, 17in. by 23½in.
- (13/13)- 13. 198 A fragment of a panel, woven with octagonal panels of different colours, and with hands and eyes, on cream ground, *Tiahuanaco*.
- (8/8)- 25. 199 A skin bag, with woven tassels, *Tiahuanaco*.
- (3/3)- 7. 200 A border, woven with circular devices in interlaced panels of different colours, *Nazca*, 8in. by 29in.



- (2/2)- 40/- 201 A narrow border, woven with devices in small oblong panels of different colours, on red ground, *Nazca*,  $3\frac{3}{4}$ in. by 38in.
- (8/18/6) 8. 202 Two narrow borders of stump work, woven with designs in numerous colours, and with fringes, *Paracas*, 33in. and 36in. wide.
- (10/10)- 18. 203 An upright panel, woven with human figures wearing head-dresses and holding weapons and staves, in colours, on crimson ground, *Paracas*,  $27\frac{1}{2}$ in. by 6in.
- 204 Eight narrow fragments, woven with birds and different designs, *Tiahuanaco*. 10 y Wilkins.
- 205 A border, woven with conventional designs in bands of different colours, 24in. wide, and another, 23in. wide, *Nazca*. 4 y Wilkins.
- 206 Two fragments, woven with conventionalised animals, etc., in sloping borders, *Nazca*. 4 1/4 y Wilkins.
- 207 A collar, embroidered with trellis pattern, on crimson ground, *Nazca*, and a border, designed with birds, in black, *Paramonga*,  $23\frac{1}{2}$ in. wide. 3 y do
- (4/4)- 4. 208 A fragment, woven with narrow bands of conventional ornament, in different colours, and another, with designs in crimson, *Nazca*.
- 
- 40/- 209 A panel, woven with borders of bird heads in cream, on dark brown ground, *Paramonga*, 11in. by 19in. 2 1/2 y Bruce
- 25/- 210 A narrow border, woven with conventionalised serpents, in different colours on red ground, *Tiahuanaco*, 3in. by 18in. 2 y Bruce
- 
- 40/- 211 A fragment of velvet, worked with masks, etc., *Tiahuanaco*,  $3\frac{1}{4}$ in. by 17in. 2 1/2 y Bruce
- 
- 212 A small panel, woven with masks, birds and other designs on crimson ground, *Tiahuanaco*, 19in. by 4in. 3 y Wilkins
- 213 A panel, woven with oblong designs on crimson ground, *Tiahuanaco*,  $8\frac{1}{2}$ in. by 12in., and a fragment, with similar pattern on black ground, *Paramonga*. 4 y do
- 214 A border, woven with bands of masks and conventional ornament on crimson ground outlined with yellow, *Tiahuanaco*,  $26\frac{1}{2}$ in. by 12in. 7 1/2 y Bannard.
- 215 Two small bags, with embroidered designs and fringes, *Nazca*, and another, woven with Swastika pattern, and with tassels, *Tiahuanaco*. 4 1/2 y Joyce.



- 216 A long girdle, woven with designs in shades of brown and crimson, *Nazca*, 157in. long by 2¼in. 490 Wilkins
- 217 Another, woven with different designs in green, red, blue, buff and yellow, *Tiahuanaco*, 206in. long by 1½in. 490 Wilkins
- 218 A narrow girdle, woven with conventionalised birds and other ornament, on brown ground, *Nazca*, 214in. long. 590 do
- 219 A waist band, woven with narrow borders of conventional ornament, on crimson ground, and with tassel end, *Nazca*, 100in. long by 5in. 2½90 5-
- 220 A girdle, woven with diamond pattern, on dark blue ground, *Nazca*, 78in. long. 2½90 50-
- 221 Two others, of black and white, 61in. and 74in. long. 1½90 hiddle
- 222 A narrow girdle, woven with birds, etc., on yellow ground, *Nazca*, 105in. long. 4/4/ 5-
- 223 A narrow border, woven with conventional designs on crimson ground, 33in. long, and another, 27in. long, *Nazca*. 2/12/6 4-
- 224 A girdle, woven with designs in shades of yellow and brown on crimson ground, 111in. long, and three fragments, with square devices in red and yellow, on dark brown ground, *Tiahuanaco*. 590 Wilkins
- 225 Three small borders, woven with panels of red, cream and yellow, and a narrow girdle, 152in. long, *Tiahuanaco*. 590 Wilkins
- 226 A PANEL, woven with human figures, wearing head-dresses and small devices in yellow, brown, black and white, on crimson ground, *Paracas*, 19½in. by 15in. 16/16/ 20-
- 227 A fragment, woven with S designs in colours on black ground, and a small bag, with designs in brown, *Paracas*. 3/3/ 5-
- 228 A waist band, woven with human figures on crimson ground, birds and stripes of different colours, and with tassel ends, *Paracas*, 100in. long by 3¼in. 6/6/ 10-
- 229 Three fragments of stumpwork, designed with flowers, birds and figures, *Tiahuanaco*. 590
- 230 An oblong panel, woven with shaped triangular devices, on crimson ground, *Tiahuanaco*, 22in. by 12in. 10/10/ Wilkins
- 231 A portion of a border, woven with conventional patterns, on red ground, two others, with similar ornament and fringes, and three fragments. 3½90 Bruce
- 232 A plume of feathers. 4/14/6 4-
- 233 A PRIEST'S FEATHER DRESS, designed with alternate bands of orange and yellow, and with borders of turquoise blue. 2490 35-

NOTICES

MESSRS. PUTTICK & SIMMONS FORTHCOasting  
SALES BY AUCTION at their RETAILERS GALLERIES  
45, Abchurch Lane, London, E.C. 4.

Old English Furniture, including a large  
quantity of that of the 17th and 18th Centuries,  
on the 10th.

Books and Manuscripts, including the  
16th and 17th Centuries, on the 10th and 11th.

Old English Furniture, including a large  
quantity of that of the 17th and 18th Centuries,  
on the 10th and 11th.

Books and Manuscripts, including the  
16th and 17th Centuries, on the 10th and 11th.

Old English Furniture, including a large  
quantity of that of the 17th and 18th Centuries,  
on the 10th and 11th.

Books and Manuscripts, including the  
16th and 17th Centuries, on the 10th and 11th.

Old English Furniture, including a large  
quantity of that of the 17th and 18th Centuries,  
on the 10th and 11th.



## NOTICES.

---

MESSRS. PUTTICK & SIMPSON'S FORTHCOMING  
SALES BY AUCTION AT THEIR REYNOLDS GALLERIES,  
47, LEICESTER SQUARE, LONDON, W.C.2.

---

OLD ENGLISH FURNITURE, PORCELAIN, POTTERY, GLASS, AND  
OBJECTS OF ART, PERSIAN RUGS, ETC., every Friday through-  
out the Season.

BOOKS AND MANUSCRIPTS, June 10th and 11th, July 8th and 9th.

OLD ENGRAVINGS AND COLOUR PRINTS, ETCHINGS AND DRAWINGS,  
June 12th and 26th, and July 10th and 31st.

POSTAGE STAMPS, June 16th, 17th and 30th, July 1st, 14th, 15th,  
28th and 29th.

BAXTER COLOUR PRINTS, ETC., July 17th.

PICTURES BY OLD MASTERS, MODERN PICTURES AND DRAWINGS,  
June 17th and July 15th.

OLD ITALIAN VIOLINS AND OTHER MUSICAL INSTRUMENTS, June 18th,  
July 9th and 23rd.

OLD ENGLISH SILVER, SHEFFIELD PLATE AND JEWELLERY, June 25th  
and July 23rd.

COINS AND MEDALS, June 25th and July 23rd.





