

Sales catalogue: Puttick and Simpson

Publication/Creation

24th July 1931

Persistent URL

<https://wellcomecollection.org/works/xdp9sw9h>

License and attribution

This work has been identified as being free of known restrictions under copyright law, including all related and neighbouring rights and is being made available under the Creative Commons, Public Domain Mark.

You can copy, modify, distribute and perform the work, even for commercial purposes, without asking permission.



Wellcome Collection
183 Euston Road
London NW1 2BE UK
T +44 (0)20 7611 8722
E library@wellcomecollection.org
<https://wellcomecollection.org>

Gerrard 3716 (two lines)

Puttickdom, Westrand, London

W
Catalogue
OF
OLD ENGLISH FURNITURE
PORCELAIN & POTTERY

OBJECTS OF ART
NATIVE WORK FROM THE HUDSON'S BAY TERRITORY

Collected by the late MR. GEORGE ROBERTS,
of the Hudson's Bay Co.

ALSO

WATMM/CM/5a/16/249

OLD ENGLISH SILVER

AND

SHEFFIELD PLATE

From Various Sources.

Which will be Sold by Auction by

MESSRS. PUTTICK & SIMPSON

W. G. HORSMAN N. H. ARCHER

R. F. WESTHORPE

At their Reynolds Galleries, 47 Leicester Square, London, W.C.2

On Friday, July 24th, 1931

At half past One o'clock precisely

MAY BE VIEWED THE THREE DAYS PRIOR FROM 10 A.M. UNTIL 5.30 P.M.

Amn 281 £11— 6

CONDITIONS OF SALE.

I. The highest Bidder to be the Buyer; and if any dispute arise between two or more Bidders, the Lot so in dispute shall be immediately put up again and resold.

II. The Auctioneer shall regulate the bidding, and reserves the right to refuse a bidding, as he may think advisable.

III. In the case of Lots upon which there is a reserve, the Auctioneer shall have the right to bid on behalf of the Seller.

IV. The Purchasers to give in their Names and Places of Abode, and, if required, to pay down 1s. in the Pound, or more, in part of payment, or the whole of the Purchase Money, in default of which the Lot or Lots so purchased to be immediately put up again and resold.

V. The Lots to be taken away and paid for, whether genuine and authentic or not, with all faults and errors of description, at the Buyer's expense and risk within Two DAYS from the Sale; Messrs. PUTTICK & SIMPSON NOT BEING RESPONSIBLE FOR THE CORRECT DESCRIPTION, GENUINENESS, OR AUTHENTICITY OF, OR ANY FAULT OR DEFECT IN, ANY LOT, AND MAKING NO WARRANTY WHATEVER.

VI. To prevent inaccuracy in delivery, and inconvenience in the settlement of the Purchases, no Lot can on any account be removed during the time of Sale; and the remainder of the Purchase Money must absolutely be paid on the delivery.

VII. Upon failure of complying with the above Conditions, the Money deposited in part payment shall be forfeited; and all Lots left uncleared, in conformity with these Conditions, may be resold by public or private Sale without further notice; and the deficiency (if any) arising from such re-sale shall be made good by the defaulters at this Sale, together with all charges attending the same. This Condition is without prejudice to the right of the Auctioneers to enforce the contract made at this Sale without such re-sale, if they think fit, and to any other rights and remedies vested in them by law or otherwise.

Buyers who are unable to attend the Sale may have their Commissions faithfully executed by their obedient servants,

PUTTICK & SIMPSON.

Auction Rooms for the Sale of
All Fine Art Property,
LEICESTER SQUARE, LONDON, W.C.

Collections Catalogued, Arranged and Valued for the Probate and
Legacy Duty or for Public or Private Sale.

ESTABLISHED 1794.

250

RECEIVED BY THE
AUCTIONEER'S
Office of the
City of New York

Lot	Amount	Lot	Amount
12	11	10	10
13	11	11	10
14	11	12	10
15	11	13	10
16	11	14	10
17	11	15	10
18	11	16	10
19	11	17	10
20	11	18	10
21	11	19	10
22	11	20	10
23	11	21	10
24	11	22	10
25	11	23	10
26	11	24	10
27	11	25	10
28	11	26	10
29	11	27	10
30	11	28	10
31	11	29	10
32	11	30	10
33	11	31	10
34	11	32	10
35	11	33	10
36	11	34	10
37	11	35	10
38	11	36	10
39	11	37	10
40	11	38	10
41	11	39	10
42	11	40	10
43	11	41	10
44	11	42	10
45	11	43	10
46	11	44	10
47	11	45	10
48	11	46	10
49	11	47	10
50	11	48	10
51	11	49	10
52	11	50	10
53	11	51	10
54	11	52	10
55	11	53	10
56	11	54	10
57	11	55	10
58	11	56	10
59	11	57	10
60	11	58	10
61	11	59	10
62	11	60	10
63	11	61	10
64	11	62	10
65	11	63	10
66	11	64	10
67	11	65	10
68	11	66	10
69	11	67	10
70	11	68	10
71	11	69	10
72	11	70	10
73	11	71	10
74	11	72	10
75	11	73	10
76	11	74	10
77	11	75	10
78	11	76	10
79	11	77	10
80	11	78	10
81	11	79	10
82	11	80	10
83	11	81	10
84	11	82	10
85	11	83	10
86	11	84	10
87	11	85	10
88	11	86	10
89	11	87	10
90	11	88	10
91	11	89	10
92	11	90	10
93	11	91	10
94	11	92	10
95	11	93	10
96	11	94	10
97	11	95	10
98	11	96	10
99	11	97	10
100	11	98	10
101	11	99	10
102	11	100	10

BUYER

Davis

Date

24/7/31

AUCTIONEERS

Butcher & Simpson

Lot	Amount			Lot	Amount		
	£	s.	d.		£	s.	d.
<i>45</i>	<i>1</i>	<i>11</i>	<i>6</i>				
<i>46</i>	<i>1</i>	<i>11</i>	<i>6</i>				
<i>47</i>	<i>2</i>	<i>12</i>	<i>6</i>				
<i>48</i>	<i>1</i>	<i>11</i>	<i>6</i>				
<i>49</i>	<i>1</i>	<i>11</i>	<i>6</i>				
<i>61</i>	<i>2</i>	<i>2</i>	<i>-</i>				
	<i>11</i>	<i>0</i>	<i>6</i>				

FRIDAY, JULY 24th, 1931.

AT HALF PAST ONE O'CLOCK PRECISELY.

PLATED.

- 1 A boat shape soup tureen and cover of Adam design, partly fluted and chased with foliage, 16½in. wide.
- 2 A tea kettle with stand and lamp, engraved with birds and flowers, 16in. high.
- 3 An oval revolving breakfast dish, 13½in. wide.
- 4 A candelabrum for four lights, chased with caryatid figures, flowers, etc., on circular base, 25¾in. high.
- 5 A milk jug and cover, chased with masks and festoons, a vase with pierced border, and three vases and covers, with chased and engraved borders, on three feet.
- 6 An oval dish, chased with figures, a fish slice, a wine taster, and thirteen other pieces.

45/-
Freemans
45/-
Freemans
30/-
50/-
45/-
4/15/-

OLD SHEFFIELD PLATE.

- 7 A pair of decanter stands, chased with vine branches.
- 8 An oval cruet frame, with three Waterford cut glass vases and covers and six bottles, with Georgian silver mounts.
- 9 An oval salver, with beaded border, 12¼in. wide.
- 10 A circular salver, with beaded border, 13in. diam., and a pair of small stands, with gadroon and chased borders.
- 11 A TEA AND COFFEE SERVICE, melon shape, on chased feet, comprising a tea pot, a coffee pot, a sugar basin and a milk jug.
- 12 A pair of table candlesticks, with gadroon borders, and with baluster columns and circular bases, 10in. high.
- 13 A fluted tea kettle, with stand and lamp, chased with foliage scrolls, 15in. high.

Boxed.
10/-
35/-
45/-
Smith
7/10/-
20/-
Smith
8/10/-

MODERN SILVER.

(At per ounce.)

	ozs.	dwt.	
14 Six soup plates, with shaped gadroon borders	112	6	2/6 <i>oz</i>
15 A rose bowl, fluted and chased with flowers	14	3	2/3 <i>oz</i>
16 A pair of table candlesticks, with fluted columns and chased capitals, on square bases, Victorian, 10½ in. high			
		all at	35/-
17 An oblong inkstand, with shaped and moulded borders, and with a taper stick and two glass ink bottles, Victorian	21	3	8/- <i>oz</i>
18 A milk jug, chased with flowers, on three feet, Victorian	8	15	2/1
19 A pair of candlesticks with fluted columns and chased domed bases, Victorian		all at	32/-
20 A leather dressing case with silver-gilt fittings, engine-turned, by FINNIGANS.			8/10/-

OLD SILVER.

(At per ounce.)

21 A fiddle pattern part table service, comprising six table spoons, twelve table forks, twelve dessert spoons, eleven dessert forks, a soup ladle and two sauce ladles, Georgian and Victorian	82	13	2/3 <i>oz</i>
22 A George III. gravy spoon with feather edges, two sugar sifters, a pair of sugar tongs, a tea spoon, two salt spoons, two serving spoons, a vinaigrette, a pair of modern salad servers, and a blow-pipe	17	13	2/6 <i>oz</i>
23 A George II. taper stick, chased with shells, and with baluster column and square shaped base, by JNO. GOULD, 1754	4	16	18/- <i>oz</i>
24 Three George III. meat skewers	8	16	12/- <i>oz</i>
25 Nine George III. dessert forks, with silver pistol handles		all at	115/-
26 A George III. pierced fish slice, 1794, and a pair of circular salt cellars, on three feet		all at	35/-
27 A George II. chased cream jug, on three feet, 1754	3	5	7/- <i>oz</i>

28	A George III. circular sugar basket, pierced and engraved, and with beaded borders and blue glass liner, 1777	7	13	16/6 <i>oz</i>
29	A George III. coffee pot, chased with flowers and scrolls, 1812, 1oz. <i>allowed for ivory handle</i>	30	6	4/3 <i>oz</i>
30	A George II. plain loving cup, with scroll handles, inscribed by JOHN SWIFT, 1745	9	7	11 <i>oz</i>
31	A fluted oval teapot and stand, with engraved borders, 1oz. <i>allowed for wood handle and knob</i>	14	13	5/6 <i>oz</i>
32	Seven George III. plain table forks, 1806 and 1808, and five others, engraved, 1807	25	10	8 <i>dwts</i> 2/6 <i>oz</i>
33	Twelve George III. dessert knives and forks, with mother-o'-pearl handles, 1810, in case	all at		18/7
34	Two Waterford mustard pots, and two cruet bottles, with silver mounts, and a spoon	all at		45/-
35	A William IV. circular teapot, fluted and chased with flowers and husks, 1834, 1oz. <i>allowed for wood handle</i>	17	9	3/6 <i>oz</i>
36	A George III. cream jug, with engraved borders, and another, <i>modern</i>	7	5	2/9 <i>oz</i>

LACE AND TEXTILES.

37	A Honiton lace handkerchief, designed with the National Emblems.	1/2 <i>grs</i>	
38	A panel of old reticella work, a narrow length of the same, and a braid point flounce, 4 yards.	1 1/2 <i>grs</i>	
39	A Honiton appliqué wedding veil, designed with flower branches and sprays.	8/8/-	
40	A Manila muslin scarf, embroidered with flower branches, and with panels of drawn thread work.	24/-	
41	A Cashmere wool shawl, of conventional design with cream centre.	1 1/2 <i>grs</i>	
42	An Indian shawl, worked with cone pattern and flowers in white on grey net.	4 1/2 <i>grs</i>	
43	Twenty small panels, worked with designs for wool work, <i>Victorian</i>	11 1/2 <i>grs</i>	
44	A Mandarin's coat of red silk, worked with dragons, flames and waves in colours and gold thread.	4 1/2 <i>grs</i>	
45	An Arab coat, woven with borders of conventional designs in gold thread and colours on black ground.		

1 1/2 *grs*

4

THE PROPERTY OF A LADY.

NATIVE WORK OF THE INDIANS OF HUDSON'S BAY
TERRITORY, CHIEFLY VANCOUVER ISLAND.COLLECTED BY THE LATE
MR. GEORGE ROBERTS,
of Hudson's Bay Co.

- 1 1/2 gms
 2 1/2 gms
 1 1/2 gms
 1 1/2 gms
- 46 A slate pipe, pierced and carved with three figures, 7 1/2 in. long.
 47 A slate circular dish, finely carved with grotesque figures, 1 3/4 in. diam.
 48 A figure of a man, carved in slate, 4 1/2 in. high, and a pipe, the bowl carved with a mask.
 49 Seven bark baskets, with borders of coloured straw.
 50 A wood mask, with movable eyes, and painted with conventional devices.
 51 Another, painted with designs.
 52 A wood mask of a female of Queen Charlotte's Island, the lower lip distorted by the insertion of a plaque, partly in colours.
- Holman 15 gms
 Holman 6 7/2 gms
 Holman 11 gms

VARIOUS PROPERTIES.

OBJECTS OF ART.

- 53 A miniature portrait of a lady wearing black dress, and white cap, shawl and fichu, *English, early XIXth century*, and another of a lady wearing white dress and blue sash, *English, XVIIIth century*, in oval gold locket frames.
 54 A miniature portrait of a lady wearing blue dress, white fichu and pearls, *English, XVIIIth century*, and another of a man wearing blue coat and white cravat, *early XIXth century*, in oval gold locket frames.
 55 A moss agate intaglio, carved with Hercules and Minerva, the reverse with a lake scene, 2 in. by 1 1/2 in.
 56 A Battersea enamel bodkin case, painted with pastoral scenes, buildings and figures, in panels on lavender and white trellis ground, 5 1/4 in. long.
 57 A Louis XIV. fan, painted with the Worship of the Golden Calf, the tortoiseshell sticks inlaid with busts, vases and foliage scrolls in gold piqué, 11 1/2 in.
- 42/-
 42/-
 42/-
 42/-
 5 gms

- 58 A watch in 18 carat gold case, chased with a bird and scrolls, by CHAS. VAUGHAN. 11/2 grs
- 59 An old Russian niello silver snuff box, engraved with buildings and figures, and another, engraved with flowers. 57/2 grs
- 60 Mary Queen of Scots and the Dauphin, a pair of portrait plaquettes of Limoges enamel, signed P. at the back, XVIIth century, 3½ in. by 3¼ in. 15 grs
Described in "The Stuarts," by J. J. Foster, vol. II., page 147, "Limoges Enamel Head and Bust wearing wide collar; small cross at bosom. The mauve tint was only used for seven years, and that during the time of Mary's marriage to the Dauphin."
Exhibited at the Tercentenary Mary Queen of Scot's Exhibition, Peterborough, 1887.
- (2 grs) 55 61 An old papier mâché snuff box, painted with a Cossack, another, two old Dutch silver boxes, and another, jewelled.
- 62 An old English papier mâché tea tray, painted and gilt with flowers, 31 in. wide.
- 63 An old English papier mâché tea tray, painted with Chinese buildings, and inlaid with mother-o'-pearl, 30½ in. wide, and another, painted with flowers, 31 in. wide.
- 64 An old English papier mâché tea tray, painted with a landscape and figures, 30 in. wide, and another with a hunting scene, 31 in. wide.
- 65 An old English papier mâché tea tray, inlaid with a Chinese building and trees in mother-o'-pearl and gilt, 31½ in. wide, and another, inlaid with flowers, 31 in. wide.
- 66 A pair of old English sand pictures, sheep on a river bank, and cattle by a barn, after MORLAND, 11 in. by 14 in., in gilt frames.
- 67 THREE OLD ENGLISH GLASS PICTURES, Summer, Autumn and Winter, by SIMON, after Rosalba, 14 in. by 10 in., in moulded frames.
- 68 An Italian mosaic plaque, birds drinking from a bowl, 9 in. by 8½ in., in gilt frame.
- 69 A wood triptych of Gothic type, painted with the Madonna and Child enthroned, with saints on either side, gilt background, 14¼ in. high.
- 70 An Empire mantel clock, formed as a bronze female figure leaning on a pedestal of ormolu, chased with a lyre, foliage, etc., on oblong base, by L. MALLET, *Horloger de M.D. d'Orleans*, 26 in. high.

- 71 A Cromwellian bright steel breast plate.
- 72 A set of three old Persian brass vases and covers, pierced and engraved with figures and flowers, 21in. and 20in. high, a pair of circular dishes, 18in. diam., a pair of vases and a battle axe.
- 73 A pair of Chinese ivory table screens, carved with garden scenes, summer-houses and figures, partly in colours, the borders and stands pierced with diaper work, *Ch'ien-lung*, 10½in. high.
- 74 A Japanese ivory table screen, with two folds, inlaid with poultry and flowers in tinted mother-o'-pearl, ivory, etc., the borders carved with vines, 8¾in. high.
- 75 A set of Chinese red and white ivory chessmen, the bases carved with flowers and scrolls.
- 76 A pair of Chinese hardwood stands, carved with bamboo, and with marble tops, 11in. square.
- 77 A Waterford glass confiture and cover, cut with diamond pattern and fluting, on square base, 11½in. high, and a Cork boat shape basket, cut with hobnail pattern, 9½in. high.
- 78 Four Waterford cut custard glasses, two salt cellars, a mustard pot and cover, a cruet bottle and stopper, and a blue and white ink bottle.
- 79 A pair of old English ale glasses, with bucket shape bowls and air twist stems, 8in. high, and three others, with opaque white twist stems, 7½in. to 8in. high.
- 80 A glass oblong dish, fluted and cut with hobnail pattern, 9in. wide, two oval dishes, 9¾in. and 10in. wide, and six green hock glasses, the stems with moulded ornament, 5in. high.

OLD ENGLISH POTTERY, &c.

- 81 A Newcastle jug, painted with a building, etc., in copper lustre, and inscribed "John and Mary Wiley, Ballast Hills, Newcastle, 1824," 8½in. high, another, *The Sailor's Farewell*, etc., 9½in. high, and one with a view of Sunderland Bridge, 6¾in. high.
- 82 A Sunderland mug, printed with a view of the Bridge in colours, by DIXON & Co., 1813, 5in. high, another, and two frog mugs, with views of the Bridge, etc.
- 83 A Bristol bowl, painted with a Chinese garden scene, 6in. diam., a Staffordshire teapot and cover, with flower sprays, 5½in. high, and a Leeds milk jug, painted with a landscape, 5½in. high.

- 84 A Leeds cream ware teapot and cover, painted with Chinese garden scenes and figures, 6in. high, a bowl and a milk jug, painted with shepherds and dogs.
- 85 A Leeds cream ware bowl, painted with figures outside a cottage, 6¼in. diam., another, Wedgwood, printed with Watteau figures, a tea poy, similar, and a teapot and cover, painted with flowers.
- 86 A Mason's Ironstone plate, painted with a view, 8½in. diam., a jug, painted with flowers in the Imari taste, another, a bowl, blue and white, and a silver lustre tea cup and saucer.
- 87 A Leeds cream ware small plate, painted with portraits of the Prince and Princess of Orange, 6½in. diam., a tea poy, similar, another, painted with buildings, etc., and one, printed with "Let Wisdom unite us."
- 88 A Sunderland cylindrical mug, printed with a view of the Bridge in colours, by DIXON & CO., 1813, 5in. high, two others, with a ship, a compass, etc., by DAWSON & CO., *Low Ford*, and one, printed with fish wives quarelling.
- 89 A Wedgwood jug, printed with figures, birds, etc., inscribed "Beer," 5½in. high, a small mug, printed with ships and figures, by DAWSON & CO., *Low Ford*, and another, with a girl and dog.
- 90 A Jackfield milk jug, modelled with vines, on three feet, 5¾in. high, a Lambeth Delft bottle, with designs in blue, and a brown glaze inkstand, modelled with a dog, 6½in. wide.
- 91 A pair of Delft plates, painted with figures and flowers, another, an Italian majolica dish, and three old Chinese plates.
- 92 A Sunderland cottage money box, modelled with figures, inscribed "Mary Tomlison, 1816," 6¾in. high.
- 93 A Sunderland jug, modelled with sportsmen and dogs in colours, by DIXON, AUSTIN & CO., 5¼in. high, another, with dogs and vines, 5in. high, and one modelled with portraits of Wellington and Hill, 6½in. high.
- 94 A Staffordshire jug, printed with soldiers and a verse, inscribed "Leek Loyal Volunteers, 1804," 6½in. high, and another, modelled with a hunting scene, by T. & G. HOLLINS, 6¾in. high.
- 95 A Turner cylindrical mug, modelled with huntsmen, and with turquoise and gilt border, 5½in. high, a small jug, with a hunting scene, 4¼in. high, a salt glaze sauce boat, modelled as a cauliflower, and a mug, with a portrait of George III., etc., 4in. high.

- 96 A Leeds cream ware jug, printed with "Jemmy's Courtship," etc., $6\frac{3}{4}$ in. high, and a coffee pot and cover, printed with rustic scenes and figures in colours, $10\frac{1}{2}$ in. high.
- 97 A Staffordshire jug, printed with Chinese figures in panels on *rouge de fer* ground, $4\frac{1}{2}$ in. high, a Sunderland jug, printed with the "Gardener's Arms," $5\frac{3}{4}$ in. high, and a seated figure of a cat, with splashed glazes, $10\frac{3}{4}$ in. high.
- 98 A Pratt jug, modelled with pheasants in panels, 5in. high, a Turner small jug, modelled with figures, and two jugs, by Wood & Caldwell, modelled with children and animals.
- 99 A Staffordshire satyr's mask mug, in colours, $3\frac{1}{2}$ in. high, a Nottingham stoneware mug, dated 1736, $7\frac{1}{2}$ in. high, and two Fulham stoneware mugs, inscribed G.R., $4\frac{3}{4}$ in. and 6in. high.
- 100 An old Delft oblong tea caddy, painted with landscapes and figures in the Chinese taste, $5\frac{1}{2}$ in. high.
- 101 A set of three old Delft vases and covers and a pair of beakers, painted with landscapes, figures and buildings in blue, 15in. and 10in. high.
- 102 A Whieldon milk jug and cover, modelled as a pineapple, $5\frac{3}{4}$ in. high, from the Harland Collection, a Whieldon solid agate ware flask, formed as a shell, a Leeds cream ware milk jug, painted with flowers, and a Staffordshire agate ware mug and cover.
- 103 A Staffordshire jug, printed with agricultural implements, a sheaf of wheat and vines, inscribed "J. Fenner, 1800," $8\frac{1}{2}$ in. high.
- 104 Another, painted with similar implements, inscribed "God Speed the Plow, Elizth. Ledbury and Jonathan Ikin, 1786," 8in. high.
- 105 A Staffordshire jug, printed with The Farmer's Arms, etc., 6in. high, another, printed with figures on buff ground, dated 1809, $6\frac{1}{2}$ in. high, and a brown glaze jug, printed with a view, 4in. high.
- 106 A Sunderland jug, printed with a view of the Bridge, etc., and with copper lustre borders, $5\frac{3}{4}$ in. high, a mug, with similar decoration, by DAWSON & CO., *Low Ford Pottery*, a small jug, a frog mug, printed with a verse and flowers, and a Turner mug, modelled with sportsmen.
- 107 A Sussex ware mug, with two handles, inlaid with a verse, inscribed "Solomon Killick, 1808," in yellow, 5in. high, a salt glaze tea pot and cover, painted with flowers, 4in. high, a Leeds cream ware tea pot and cover, painted with buildings, etc., $4\frac{1}{4}$ in. high, a small bowl, with portraits of the Prince and Princess of Orange, and a copper lustre pepper pot.

- 108 A pair of Staffordshire figures of a man and woman, Spring and Winter, on square pedestals, 10in. *high*, and a figure, Spring, 9¼in. *high*.
- 109 A pair of Sunderland female figures, Spring and Winter, on square pedestals of copper lustre, 9¾in. and 10½in. *high*.
- 110 A Staffordshire sauce boat, formed as a dolphin, in colours, 4½in. *high*, a Bristol bowl, painted with Chinese figures, 6in. *diam.*, a Whieldon octagonal soup plate, and two plates with mottled colouring.
- 111 A Staffordshire figure of Neptune, 9in. *high*, a group, Venus and Cupid, 8½in. *high*, another, Charity, a figure of Hope, and a Continental figure of Minerva, 9in. *high*.
- 112 A Rhodian circular dish, painted with tulips and carnations, 11½in. *diam.*
- 113 An old Persian jug, painted with scrolls in black on iridescent turquoise ground, 7in. *high*, another with various designs, 10½in. *high*, and a bowl, with iridescent turquoise glaze, 8in. *diam.*
- 114 A Persian jug, painted with flowers on turquoise ground, the neck modelled as a bird's head, 9¼in. *high*, a turquoise oil jar, 7¼in. *high*, and another, blue and white, 8in. *high*.
- 115 A Spode Stone China dinner service, printed with peacocks and hens, flowering plants and rocks in the Chinese taste, in colours, comprising a soup tureen, cover and stand, three vegetable dishes and covers, nine octagonal dishes in sizes, a deep dish, a strainer, two sauce tureens and stands and one cover, fifteen soup plates, forty-two meat plates, twelve pudding plates, and eleven cheese plates, 105 *pieces*.

OLD ENGLISH PORCELAIN, &c.

- 116 A set of three Rockingham spill vases, painted with birds in panels on apple-green ground, and encrusted with borders of flowers, 3½in. and 4¼in. *high*, a Rockingham lavender cottage perfume burner, 4½in. *high*, a Staffordshire milk jug, and a Lambeth stoneware mug, modelled with The Death.
- 117 A pair of old Crown Derby pastille burners and covers, painted with flowers in the Imari taste, and modelled and gilt with masks, 5½in. *high*.
- 118 Seven Bloor Derby plates, the borders painted with flowers, landscapes, insects, etc., on different coloured grounds.

- 119 A pair of old Worcester tea cups and saucers, painted with flowers in the Chinese taste, a coffee cup and saucer, painted and gilt with flowers, a plate, transfer printed with classical ruins, $8\frac{3}{4}$ in. diam., and another, with turquoise and gilt border, $8\frac{1}{2}$ in. diam.
- 120 An old Worcester tea cup and saucer, with turquoise and gilt borders, a pair of tea cups and saucers, painted with flowers in blue and gilt, a coffee cup, *marked Flight and crescent*, and a pair of modelled leaf dishes, painted with flowers, branch handles, $8\frac{3}{4}$ in. wide.
- 121 Three old Worcester plates, Coventry pattern, painted with flowers and modelled with rose branches, $7\frac{1}{2}$ in. diam.
- 122 An old Worcester modelled leaf dish, painted with flowers and strawberries, $10\frac{1}{4}$ in. wide, and a Chelsea bowl, modelled as leaves, 8in. diam.
- 123 Five old Worcester tea cups and four saucers, painted with wheel pattern and gilt, *square marks*.
- 124 A Spode coffee cup and saucer, painted with vases of flowers and birds in the Hizen taste, and gilt, *marked Spode 1495 in red*, and a tea cup, coffee cup and saucer, painted with sprays, the lavender borders modelled with flowers, *marked Spode 1978 in red, yellow and black*.
- 125 A Bow standing figure of a girl playing a triangle, on scroll base, *marked A in blue*, $8\frac{1}{4}$ in. high, and a standing figure of a monk, in white, $6\frac{3}{4}$ in. high.
- 126 The Pedlars, a pair of Chelsea figures of a man and woman, the former carrying a basket of flasks, the latter a box of trinkets and a bunch of ribbons, on shaped bases encrusted with flowers, *Dresden models*, $7\frac{1}{2}$ in. high.
- 127 A Swansea part tea and coffee service, fluted and with gilt borders, comprising a sugar basin and cover, a milk jug, a bowl, two saucer dishes, twelve tea cups, six coffee cups and thirteen saucers, *marked Swansea in red*, 37 pieces.
- 128 A Bloor Derby vase, gilt with Chinese landscapes on dark blue ground, 9in. high, and a Worcester vase, by GRAINGER LEE & CO., painted with a view of Wick, near Bath, on maroon ground, $4\frac{3}{4}$ in. high.
- 129 A Staffordshire figure of Mrs. Nickleby, $8\frac{3}{4}$ in. high, a small cup and saucer, striped orange and gilt, and a Chamberlain's jug, painted with flowers in the Japanese taste, 6in. high.

- 130 A Lowestoft saucer dish, painted with a river scene in the Imari taste, $7\frac{3}{4}$ in. diam., a bowl, with birds, flowers and rocks, $6\frac{1}{4}$ in. diam., and three Chamberlain's Worcester plates, painted with flowers in the Imari taste and gilt, $8\frac{3}{4}$ in. diam.
- 131 A Lowestoft cream jug, painted with flowers in the manner of Chinese *famille rose*, and three others, with flowers in the Imari taste.
- 132 A Lowestoft cream jug, painted with Chinese figures, another, with flowers, a Bristol coffee cup, Walpole pattern, cross mark No. 1 in blue, and a Chelsea Derby coffee cup, gold mark.
- 133 Five small cream jugs, Bristol, Bow, etc., painted with flowers.
- 134 A pair of Chelsea dishes, modelled as vine leaves, in colours, $9\frac{1}{2}$ in. wide.
- 135 A Höchst tea cup and saucer, painted with river scenes in lake, two others, Dresden and Hague, two trembleuse cups and saucers, Vienna and St. Cloud, and a Capo di Monte cream jug.
- 136 A Coalport part tea and coffee service, painted with vines in grey and red, comprising a sugar basin and cover, a bowl, a milk jug, a square dish, six plates, six tea cups, two coffee cups and six saucers, 25 pieces.
- 137 Two old Derby figures of Falstaff, on scroll bases, 7in. and 9in. high.
- 138 An old Worcester plaque, painted with a view of Malvern, $6\frac{1}{2}$ in. by $8\frac{1}{4}$ in., and three others, East Barnett, Hever Castle, etc.
- 139 An old Worcester cylindrical mug, painted with Chinese figures, $5\frac{3}{4}$ in. high, and another, with flowers in the Imari taste, and bands of blue and gilt, square mark, $5\frac{3}{4}$ in. high.
- 140 A pair of old Worcester cylindrical mugs, painted with flowers and festoons in dark blue and gilt, open crescent marks, 5in. high, and a bowl, with wheel pattern and gilt, square mark, 6in. diam.
- 141 A Bow sauce boat, painted with Chinese landscapes and figures in panels, 4in. high, and another, Lowestoft, with flowers in panels, 4in. high.
- 142 A Chelsea modelled leaf sauce boat, painted with flowers, $5\frac{1}{4}$ in. high, and another, Bow, with flowers and insects, marked, 5in. high.
- 143 An old Worcester bowl, painted with flowers, 6in. diam., another, with sprays, $4\frac{1}{4}$ in. diam., three plates, painted with exotic birds, figures and flowers, and one, transfer printed with ruins.

- 144 A Chelsea soup plate, painted with vegetables, flowers, etc., *red anchor mark*, $9\frac{1}{4}$ in. diam., and an old Worcester modelled leaf dish, painted with exotic birds, etc., on scale blue ground, *square mark*, 10in. wide.
- 145 A pair of Chelsea crocus vases, painted with river scenes, figures and buildings, scroll handles, *one with gold anchor mark*, $5\frac{3}{4}$ in. high.
- 146 A pair of Minton's flat shape vases, modelled with nymphs, trees and flowers by SOLON, in white on olive green ground, 9in. high.
- 147 A Swansea sugar basin and cover, painted with groups of flowers, and modelled and gilt with wreaths and scrolls, 5in. diam.
- 148 A Chelsea vase, modelled with mayflowers in white on turquoise ground, $6\frac{1}{4}$ in. high, an old Worcester circular pierced mayflower basket, $6\frac{3}{4}$ in. high, and a Continental jug and cover, painted with flowers, 9in. high.
- 149 A Chelsea shell sweetmeat stand, modelled with small shells and seaweed, $10\frac{3}{4}$ in. high.
- 150 A Rockingham part tea and coffee service, with apple green and gilt borders, comprising a milk jug, a bowl, a square dish, five tea cups, six coffee cups and six saucers, 20 pieces.
- 151 A Mandarin teapot and cover, enamelled with figures on blue ground, $5\frac{3}{4}$ in. high, a pair of fluted tea cups and saucers, a vase, enamelled with figures, a Mandarin bowl, another, *Ch'ien-lung*, and a small vase, enamelled with a lady and child, *famille rose*, $5\frac{1}{4}$ in. high.

OLD ENGLISH FURNITURE, &c.

- 152 An old English bracket clock in mahogany case, with inlaid brass ornament and enamel dial, by HAWKINS, *Southampton*, $16\frac{1}{2}$ in. high.
- 153 An old Dutch walnut miniature bureau, with inlaid borders and shaped front, a drawer under, $18\frac{1}{2}$ in. wide.
- 154 A pair of mahogany knife boxes of Sheraton design, with inlaid borders of satinwood and shaped fronts, $16\frac{1}{2}$ in. wide.
- 155 A Sheraton mahogany Pembroke table, with inlaid ornament and a drawer, on tapered legs, $39\frac{1}{2}$ in. wide.

- 156 A mahogany sideboard of Sheraton design, banded with satinwood, the bow front with a drawer, cellarettes and tambour slide, 61in. *wide*.
- 157 An old English bracket clock in mahogany case with pierced brass panels and dome top, 15½in. *high*.
- 158 Another, of similar form, in mahogany case with carved side panels, by SAMUEL TOOKE, *Lynn*, 15¾in. *high*.
- 159 A Sheraton mahogany table, with two drawers, on tapered legs, 33in. *wide*, and a Georgian table, on turned column and tripod, 34½in. *diam*.
- 160 An old English oak small coffer, carved with diamond pattern, 34in. *wide*.
- 161 An old English walnut hanging bookcase, enclosed by a pair of folding glass doors, 27in. *wide*.
- 162 An old English hall clock, in oak case with inlaid borders and enamel dial, 84in. *high*.
- 163 A Charles II. walnut chair, the high back and pierced stretcher carved with birds and foliage scrolls, on spiral baluster legs, cane panels.
- 164 A pair of walnut chairs of Stuart design, the high backs carved with scrolls, on spiral legs and stretchers.
- 165 An old Dutch walnut stool, with shaped border, on cabriole legs carved with foliage and scrolls, 20½in. *wide*.
- 166 A Sheraton mahogany oval Pembroke table, with inlaid lines and a drawer, on square tapered legs, 37in. *wide*.
- 167 A Sheraton mahogany octagonal teapoy, with inlaid borders and folding top enclosing boxes, on shaped legs, 15½in. *wide*.
- 168 A mahogany card table of Chippendale design, with serpentine folding top, on moulded legs, 34in. *wide*.
- 169 A mahogany elbow chair of Chippendale design, the square shaped back with pierced centre, on cabriole legs and club feet.
- 170 A set of eight Georgian mahogany chairs, the reeded square backs with X splats, on turned legs.
- 171 A pair of Sheraton mahogany card tables, inlaid with classical vases, husk festoons and medallions, and with semi-circular folding tops, on square tapered legs, 36in. *wide*.
- 172 A Sheraton mahogany dressing chest, with inlaid oval panels and borders of satinwood, and with five drawers, on tapered legs, 28in. *wide*.

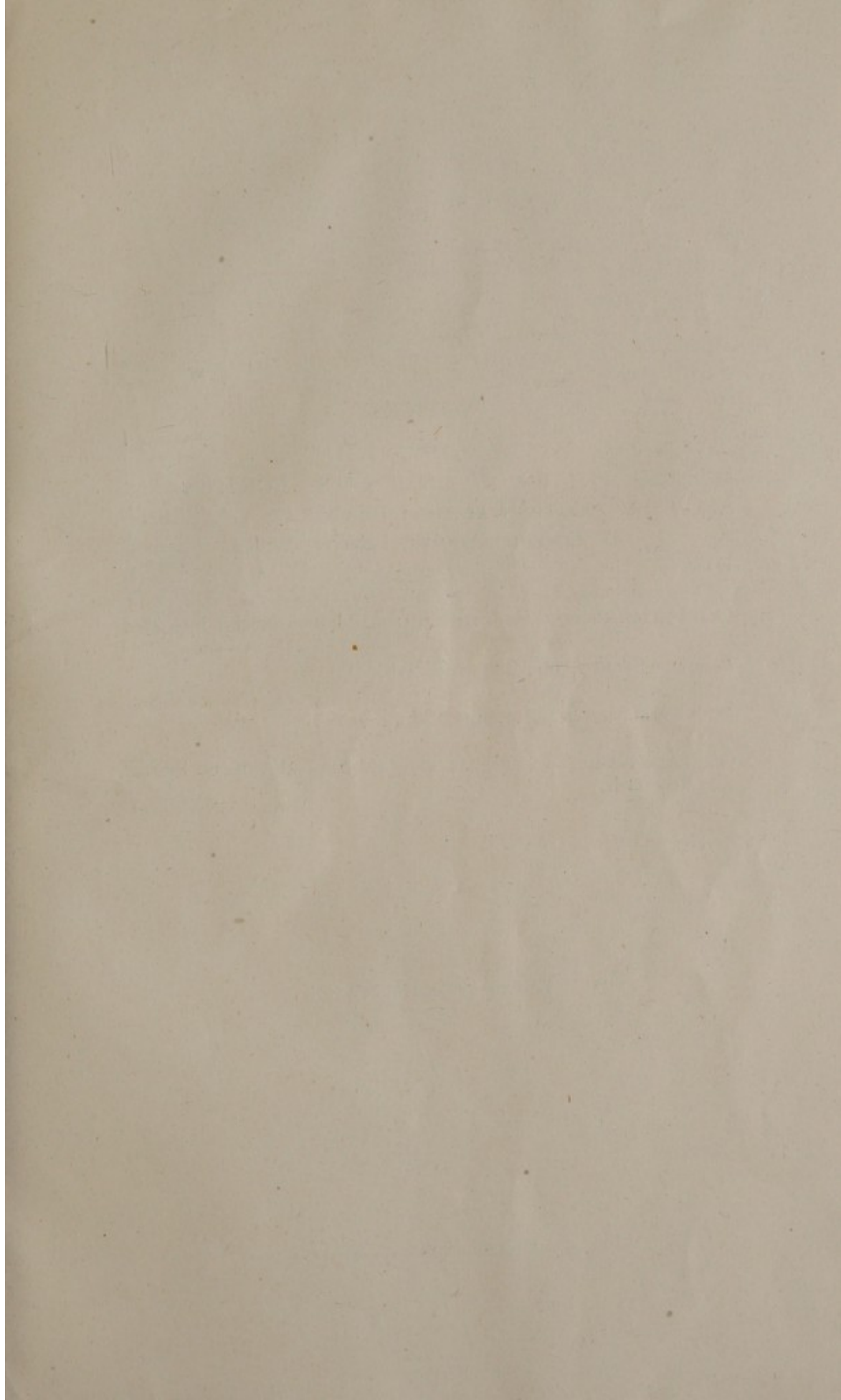
13/13/-
6 1/2 gns
5 gns
6 gns
7 gns.
14 gns
22 gns
19 gns
9 1/2 gns

- 173 A satinwood small stand of Sheraton design, with three divisions and a drawer, and with gilt metal borders, 18in. wide. 6 gms.
- 174 A shaped gilt wood fire screen, with three folds, mounted with panels of brocade, designed with flowers and foliage, 58½in. high. Passed.
- 175 An oak side table of Jacobean design, with moulded panels, the raised back with divisions, etc., two drawers under, 50½in. wide. 3 gms.
- 176 A Georgian rosewood sofa table, inlaid with brass ornament, on turned columns and shaped feet, 60½in. wide. 6 ½ gms.
- 177 A harewood marqueterie oval table of Louis XVI. design, with a drawer, on striped and tapered legs, white marble top and ormolu gallery, 23½in. wide. Passed.
- 178 An oak small oval folding table, of Jacobean design, with a drawer, on turned gate legs and stretchers, 31½in. wide, and a mahogany toilet mirror of Sheraton design, 22in. wide. Ward. 1 ½ gms.
- 179 An Empire mahogany escritoire, with fall down front enclosing divisions, etc., a drawer above and cupboard below, chased ormolu mounts, marble top, 38in. wide. 5 gms.
- 180 A Georgian mahogany arm chair, on square legs and stretchers. 9 gms.
- 70/- 181 A pair of old English celestial and terrestrial globes, on Sheraton mahogany stands, with turned legs and stretchers mounted with compasses, by NEWTON & SON, London, 40in. high. Ward 7 gms.
- 182 A mahogany small sideboard of Sheraton design, inlaid with satinwood lines, and with bow front, a drawer and cellarettes, on square tapered legs, 44in. wide.
- 183 A mahogany table of Chippendale design, with tray top, on cabriole legs carved with shells, and shaped feet, 32½in. wide.
- 184 A Hepplewhite mahogany elbow chair, the square shaped back with pierced and carved splats, on moulded legs with husk ornament.
- 185 A Sheraton mahogany wardrobe, inlaid with butterflies and enclosed by a pair of oval panelled doors, four drawers below, 51in. wide.
- 186 A Sheraton mahogany writing chair, with slight foliage carving, on turned legs and stretchers, the shaped back and seat covered with old red leather.
- 187 A SHERATON SATINWOOD SMALL WRITING TABLE, with tambour folding top enclosing small drawers and divisions, and with two drawers, on square tapered legs, 31in. wide.

- 188 A Chippendale mahogany arm chair, the shaped elbows with carved rosettes, on square moulded legs and stretchers.
- 189 A Sheraton mahogany chest of a secretaire and three other drawers, inlaid with satinwood, 42in. wide.
- 190 A Hepplewhite mahogany elbow chair, the square shaped back with pierced splat, carved with plumes, on tapered legs.
- 191 A Georgian mahogany bookstand, with three shelves and two drawers, 25in. wide.
- 192 A mahogany oval breakfast table of Sheraton design, banded with satinwood, on turned column and quadruple support, 63½in. wide.
- 193 A Queen Anne walnut dressing table, with inlaid borders and a drawer, on turned legs and X stretchers, 30in. wide.
- 194 A mahogany arm chair of Chippendale design, with shaped elbows, on square moulded legs.
- 195 An old Dutch walnut elbow chair, carved with rams' masks, husks and acanthus, on X shaped legs and hoof feet.
- 196 An old Dutch walnut small bureau bookcase, with inlaid borders, enclosed by a folding door, and with shaped cornice, fall down front and three drawers under, 23½in. wide.
- 197 A mahogany bedside cupboard of Georgian design, with tray top, on cabriole legs, 25½in. wide.
- 198 A Hepplewhite arm chair, with moulded frame, on cabriole legs, stuffed seat and back.
- 199 A Queen Anne walnut dressing table, with inlaid borders and pierced ornament, and with three drawers, on cabriole legs, 31in. wide.
- 200 A Queen Anne walnut arm chair, with shaped elbows, on cabriole legs carved with foliage scrolls and club feet, stuffed seat and back.
- 201 A Georgian rosewood sofa table, inlaid with brass lines, and with two drawers, on end standards with paw feet, 60in. wide.
- 202 A Georgian winged easy chair, on mahogany square tapered legs and stretchers.
- 203 A satinwood chest of three drawers of Sheraton design, with inlaid ebony lines and bow front, 38in. wide.
- 204 A Queen Anne walnut dressing table, with a drawer, on club legs.

- 205 A mahogany dining table of Georgian design, on three turned columns, two tripod and one quadruple support with reeded legs, and two extra leaves, 44in. by 122in.
- 205A A pair of Sheraton mahogany knife boxes, with rope pattern borders and shaped fronts, 14in. high.
- 206 A Jacobean oak table, with oval folding top, on turned double gate legs and stretchers, 61½in. wide.
- 207 A Queen Anne walnut dressing table, with inlaid lines and three drawers, on cabriole legs and club feet, 32½in. wide.
- 208 A Sheraton mahogany corner bedside cupboard, with inlaid lines and tray top, 22½in. wide.
- 209 A Stuart walnut chair, the back carved with foliage scrolls, on spiral baluster legs and stretchers.
- 210 An oak small table of Jacobean design, with oval folding top, on turned gate legs and stretchers, 35in. wide.
- 211 A mahogany bookcase of Chippendale design, with break front, enclosed by two pairs of glass doors, and with pierced scroll cornice, cupboards below enclosed by panelled doors, 60in. wide.
- 212 An old Italian walnut elbow chair, carved with acanthus scrolls, on baluster legs and stretchers.
- 213 An old Dutch oak bedside cupboard, with tray top and a drawer, on cabriole legs, 18½in. wide.
- 214 An old Dutch walnut chest of two drawers, on carved cabriole legs, 44½in. wide.

FINIS.



NOTICES.

MESSRS. PUTTICK & SIMPSON'S FORTHCOMING
SALES BY AUCTION AT THEIR REYNOLDS GALLERIES,
47, LEICESTER SQUARE, LONDON, W.C.2.

OLD ITALIAN VIOLINS AND OTHER MUSICAL INSTRUMENTS, July 23rd.

POSTAGE STAMPS, July 28th and 29th.

BOOKS AND MANUSCRIPTS, July 30th.

OLD ENGRAVINGS, MODERN ETCHINGS AND BAXTER COLOUR PRINTS,
July 30th.

TO CONCLUDE THE SEASON.