

Sales catalogue: Puttick and Simpson

Publication/Creation

4th December 1919

Persistent URL

<https://wellcomecollection.org/works/rgukxaf7>

License and attribution

This work has been identified as being free of known restrictions under copyright law, including all related and neighbouring rights and is being made available under the Creative Commons, Public Domain Mark.

You can copy, modify, distribute and perform the work, even for commercial purposes, without asking permission.



Wellcome Collection
183 Euston Road
London NW1 2BE UK
T +44 (0)20 7611 8722
E library@wellcomecollection.org
<https://wellcomecollection.org>

Telephone: Gerrard 1561

Telegrams: "Puttickdom, Westrand, London"

Established 1794

CATALOGUE

OF

A COLLECTION OF

JAPANESE WORKS OF ART

(WITHOUT RESERVE)

ALSO

THE PROPERTY OF A GENTLEMAN

From the Collection of the late
Sir TREVOR LAWRENCE, Bart.

Which will be Sold by Auction by

Messrs. PUTTICK & SIMPSON

At 47 LEICESTER SQUARE, LONDON, W.C.2

On THURSDAY, DECEMBER 4th, 1919

AT TEN MINUTES PAST ONE O'CLOCK PRECISELY

May be viewed the two days prior from 10 a.m. until 5 p.m.

CONDITIONS OF SALE.

I. The highest Bidder to be the Buyer; and if any dispute arise between two or more Bidders, the Lot so in dispute shall be immediately put up again and re-sold.

II. The Auctioneer shall regulate the bidding as he may think advisable.

III. In the case of Lots upon which there is a reserve, the Auctioneer shall have the right to bid on behalf of the Seller.

IV. The Purchasers to give in their Names and Places of Abode, and to pay down 5s. in the Pound, or more, in part of payment, or the whole of the purchase money, *if required*; in default of which, the Lot or Lots so purchased to be immediately put up again and re-sold.

V. The Lots to be taken away and paid for, whether genuine and authentic or not, with all faults and errors of description, at the Buyer's expense and risk, within Two Days from the Sale; Messrs. PUTTICK & SIMPSON not being responsible for the correct description, genuineness, or authenticity of, or any fault or defect in, any Lot, and making no warranty whatever.

VI. To prevent inaccuracy in delivery, and inconvenience in the settlement of the Purchases, no Lot can on any account be removed during the time of Sale; and the remainder of the Purchase-Money must absolutely be paid on the delivery.

VII. Upon failure of complying with the above Conditions, the Money deposited in part of payment shall be forfeited; all Lots uncleared within the time aforesaid shall be re-sold by public or private Sale, and the deficiency (if any) attending such re-sale shall be made good by the defaulter at this Sale.

Buyers who cannot attend the Sale, may have their Commissions faithfully executed by their obedient Servants,

PUTTICK & SIMPSON.

Auction Rooms for the Sale of
All Fine Art Property,
LEICESTER SQUARE, LONDON, W.C.

Collections Catalogued, Arranged and Valued for the Probate
and Legacy Duty or for Public or Private Sale.

ESTABLISHED 1794.

THURSDAY, DECEMBER 4th, 1919.

AT TEN MINUTES PAST ONE O'CLOCK PRECISELY.

JAPANESE METAL WORK.

- 1 Copper tsuba, sage reading a scroll by the stream, by Soso, iron tsuba, juro and crane, and stag beetle, in shibuichi metal (3)
- 2 An iron crab, and an iron tortoise, signed SEIMIN (2)
- 3 Five bronze vases, of various shapes (5)
- 4 Four bronze candlesticks (4)
- 5 Tortoises on the rock, signed by SEIMIN.
- 6 Two antique bronze mirrors, and a bronze vase, with greenish patina (2)
- 7 A bronze lamp, and a bronze vase, with wide top (2)
- 8 Five bronze jardinières of various sizes and shapes (5)
- 9 Thirty-seven bronze candlesticks, okimono and other bric-à-brac (37)
- 10 Thirteen pieces of bric-à-brac, comprising bronze flower holders, gong, vase, etc. (13)
- 11 Two pairs of armour sleeves (4)

SILVER.

- 12 Eighty-nine ojimes, in various metal (89)
- 13 Ten buckles, in silver, carved with chrysanthemums and dragons (10)
- 14 Three silver and enamel belts, of floral design, a silver bracelet, and a silver and enamel buckle, Fujiyama design (5)
- 15 Twelve silver salt-cellars, mustard pots, and pepper castors, in various shapes, and an ivory dagger (13)
- 16 A silver hand incense burner, lotus shape.
- 17 A silver hand incense burner, lotus shape.
- 18 A silver vase, hydrangea and butterfly in cloisonné, height $6\frac{1}{2}$ in.
- 19 A silver vase, globular body, reticulated, and with jewelled design in cloisonné, height 8 in.
- 20 A silver cigarette box, enraged dragon in high relief, 5 in. by $3\frac{1}{4}$ in.
- 21 A silver cakestand, in the shape of a lotus.
- 22 A silver cake dish, with reticulated edge, peony design in centre in cloisonné, and chrysanthemum and peony in cloisonné on edge, $9\frac{1}{2}$ in. diam.

- 23 A silver koro, with companion cover and tripod, in shape of kylin heads, cocks and hens sporting in chrysanthemum bush, treated in shakudo and shibuichi metals, the cover is chiselled with chrysanthemums, the knob in shape of a cock, *7in. high.*
- 24 A silver powder box, dragon around the body and on the lid, and a hammered silver tray in shape of a lotus (2)
- 25 A silver coffee set, comprising coffee-pot, tea-pot, sugar basin, with cover and tongs, and milk jug, lotus design (6)
- 26 A silver coffee set, comprising coffee-pot, tea-pot, milk jug, and sugar basin, with cover, cherry blossom design (6)
- 27 A pair of silver-gilt bronze candlesticks, in the shape of lotus, *10in. high* (2)
- 28 Shibuichi koro, howo bird, inlaid in gold, silver and copper in the body, the lid is surmounted by a gilt silver kylin, *4in. high.*
- 29 A silver tea-pot, with ivory handle, young pine tree chiselled on the body.
- 30 A silver tea-pot, of conventional carved design.
- 31 A silver tea-pot, minutely hammered.

OLD JAPANESE LACQUER.

- 32 Three tea caddies, bamboo, and on Tamenuri lacquer ground, faggots, on black lacquer ground, and peewits and reeds, on brown lacquer ground (3)
- 33 Three tea caddies, chestnuts on dark brown lacquer ground, pine-needles and basket, on dark brown lacquer ground, and hydrangea, on dark brown lacquer ground (3)
- 34 Three tea caddies, conventional Japanese character *nō* on gold lacquer ground, camellia, on dark brown lacquer ground, and fans in the stream, on gold lacquer ground (3)
- 35 Three Japanese tea caddies, "Kikyo" flowers in Korin style, the exterior in gold lacquer, the interior with design of autumn grass and chrysanthemums, on dark brown lacquer ground, and pine tree and plum tree, on natural wood ground (3)
- 36 Three Japanese tea caddies, pine bamboo and plum, with flying storks, on dark brown lacquer ground, conventional chrysanthemums, on gold lacquer ground, and flying cranes over a stream, on natural wood ground (3)
- 37 Three Japanese kogo, the exterior lotus leaves floating on a pond, the cover decorated with similar design: oblong shape, the moon and autumn grass in Togidashi lacquer; square shape, and Tokugawa crests and plum blossoms in gold lacquer, the interior of cover decorated with plum trees (3)
- 38 Three round Japanese kogo, Imperial crests and autumn grass conventionalised, Daruma sitting on the rock, and Tatebinas on Jidai lacquer ground (3)

- 39 Three Japanese tea caddies, conventional waves in gold lacquer, the mountain pass and deer in gold on dark brown lacquer ground, and orange shape, in gold lacquer (3)
- 40 Three Japanese tea caddies, chrysanthemums in gold on brown lacquer ground; birds perched in trees by the river bank in gold lacquer; and singing insects among autumn grass on black lacquer ground (3)
- 41 Three Japanese kogo, square shape, chrysanthemums in mother o' pearl inlay on gold lacquer; fans on Nashiji, lacquer ground, and chrysanthemums on brown lacquer ground (3)
- 42 Two tea caddies, and one kogo; Imperial crests on black lacquer ground; Imperial crests on brown Nashiji lacquer ground; square shape kogo, and two cranes among reeds, in gold on black lacquer ground (3)
- 43 Two tea caddies, and one kogo; Tatebina dolls and chrysanthemums, on brown lacquer ground; howo bird, on papier maché ground, and another, with elephant in the centre in gold lacquer (3)
- 44 Three Japanese kogo, grasshopper in a bush, the interior of cover decorated with the moon and pine in Jidai lacquer; quatrefoil shape, on the lid grasshopper, and around the edge conventional flower chain in mother o' pearl on Tamenuri lacquer; and gourds on Tamenuri Jidai lacquer ground (3)
- 45 Three Japanese kogo, crab and reed in mother o' pearl on Jidai lacquer ground, wheels in the stream on black lacquer ground; dew on autumn grass, in gold lacquer outside, the inside of the cover decorated with maple leaf clad mountain (3)
- 46 Three Japanese kogo, conventional crests and pine leaves inside and outside the cover, partly in mother o' pearl and partly in gold lacquer; flying peewits in ivory, etc., on wood grain ground; and Thunder God, on lacquered wood ground (3)
- 47 Three Japanese kogo, threaded ball design and shape in gold lacquer; rabbit in pewter on black lacquer ground, made by Koyetsu; and a boatman nearing a bridge, in Jidai lacquer (3)
- 48 Three Japanese kogo, oblong shape, Japanese characters; Furo, meaning perpetual youth, in mother o' pearl and chrysanthemums, and cranes, the interior with flying cranes; ducks and peaches, carved in relief on black lacquer ground, gourds on the cover, and camellia on the sides in Jidai lacquer (3)
- 49 Three Japanese kogo, in the shape of two books placed side by side, begonia and rockery, and dragon design in Togidashi lacquer; parts of ceremonial dress and "Noshi" knot on nashiji ground; rabbits and autumn grass and pine trees as fan decoration in mother o' pearl and gold lacquer (3)
- 50 Three Japanese kogo, cotton reels on bobbin, in pewter and gold, after Koyetsu style, chrysanthemums in red lacquer; and books open and closed, variety in red lacquer (3)

- 51 Four Japanese kogo and one saké cup, ivy in gold and pewter, on papier maché; daisy and chrysanthemums carved on wood; coiling dragon in gold nashiji; kikyo flowers in Jidai lacquer, and a saké cup, decorated with warriors on a terrace, in gold on red lacquer ground (5)
- 52 A lacquer stand, a tobacco pouch, a kogo, and a saké bottle. Stand: Camellia and pine tree in gold on nashiji ground. Kogo: Chinese equestrian over a bridge in mother o' pearl, peach shape. Tobacco pouch: seaweed in gold on wood grain ground. Saké bottle: The crescent in pewter and rush in gold lacquer on black lacquer ground (4)
- 53 Four Japanese kogo, ivy leaves and key pattern in gold lacquer; cuckoo and crescent on wood grain ground; autumn grass and conventional pattern in gold lacquer; prawns and net in mother o' pearl on Tawenuri lacquer ground (4)
- 54 Three Japanese kogo, circular shape; daruma on reed on nashiji ground; badger beating its abdomen, in lacquered wood; Daikoker with his infallible mallet, in lacquered wood (3)
- 55 Five Chinese lacquer trays, three square and two circular shape, landscape figures and flowers in mother o' pearl and colour painting (5)

LACQUER INROS.

- 56 Four inros, fans on Jidai brown lacquer, chariots in mother o' pearl on Jidai brown lacquer, gate and pilgrim's hat and stick in gold lacquer on black ground; Imperial chariot and courtier seen through creptomeria trees in pearl and pewter, after Korin style (4)
- 57 Four inros, lion on the precipice trying the strength of its young, on black lacquer ground; warrior in armour seated, gazing at a distant castle, in Jidai lacquer; flower basket and stand in Jidai lacquer; shrine in the mountain, in Jidai lacquer (4)
- 58 Large inro, and tobacco pouch. Inro: conventional pattern of fans and crests, in Jidai lacquer. Tobacco pouch: Tartar headgear and banner, with red lacquer, netsuké attached (2)
- 59 Four inros, chryptomeria and howo bird, in Jidai lacquer; Tanabata fête offerings in Togidashi lacquer, *signed Toyo*; ferns in pearl and gold Jidai lacquer; faggots and rope curtain, in Jidai lacquer (4)
- 60 Four inros. Lions sporting among peony bush, in Jidai lacquer; chrysanthemum in stream, in mottled reddish-brown Jidai lacquer; dragon amid the storm clouds, in Jidai lacquer; Japanese garden view, in Jidai lacquer (4)

- 61 Four inros, Chinese sage and attendant admiring the view, in Jidai lacquer; waterfall and pine tree, in Jidai lacquer; dragons, in Jidai lacquer; and animals of Zodiac, in metal, on Jidai lacquer (4)
- 62 Four inros, geese and kingfisher near a pond; cock and plumtree, on shark-skin pattern; dragons and tiger, conventional crests; all in Jidai lacquer (4)
- 63 Four inros, fisherman's hut on a stream; flying ravens over a roof; Japanese kimono on rock, with peach-rod lacquer netsuké attached; interview of two warriors near a castle; all in Jidai lacquer (4)
- 64 Four inros, gourd in mother o' pearl; chryptomeria crests in gold; Nasuno Yoichi's remarkable archery witnessed by opposing army forces; flower basket hat blind, etc.; all in Jidai lacquer (4)
- 65 Four inros, Chinese boys playing with snowballs; rushing torrent and pine tree; singing insects and wheels among autumn grasses, in mother o' pearl; and two men towing a boat; all in Jidai lacquer (4)
- 66 Four inros, sago palm and water cistern, in gold and mother o' pearl on black lacquer ground; "Biwa" musical instrument, and saké cup, with maple leaves on shark skin lacquer ground; trees bearing red berries, on Jidai lacquer ground; hedge in gold lacquer (4)
- 67 Two inros, and one pipe case, Japanese landscape by a lake, in gold lacquer; flying crows in Togidashi lacquer, signed (*Toshihide, 70 years of age.*) Pipe case: Dragonfly attached to a pole, in shakudo metal (3)
- 68 A large Jidai lacquer natsumé, iris pond and rustic bridges, in gold lacquer.

SUZURIBAKO.

- 69 A lacquer writing case, court musician on an Imperial barge with phoenix prow gliding over a wave depicted on the cover, the edge being treated with waves, the interior conventional leaves decorated in matt gold lacquer, *XVIIth century.*
- 70 A lacquer writing case, in the centre of the lid a spray of iris encircled by a sphere, the reverse as well as the edge being treated with floral scroll motif in mother o' pearl on gold lacquer, the interior lid decorated with sprinkled silver, Indian stone ink slab and water container attached, *XVIIIth century.*
- 71 A lacquer writing case, on the lid a spherical and rectangular Indian ink pattern decoration, with dragon and tiger in raised work, the reverse and the edge ornamented with interlocked key pattern in mother o' pearl work, *XVIIth century*, probably by Ritsuo.
- 72 A lacquer writing case, plum tree in full bloom on a jutting rock overhanging a stream, with the full moon above, in Takamakiyé, on nashiji lacquer ground, *XVIIIth century.*

- 73 Two writing cases, majestic cock in pewter on nashiji ground is the sole decoration on the lid, the inside of which is ornamented with court dignitaries assembled before a reed blind, ink stone slab and water container attached, *XVIIth century*; Daruma in soliloquy, with poem on the outside of the lid, the reverse side of which is decorated with "Horaisan" design, ink stone slab and water container attached, *XVIIth century* (2)
- 74 Two writing cases, Chinese landscape in subdued gold on lid, the reverse decorated with camellia on wood grain ground, *XVIth century*; five conventionalised decorations of rabbits under peony bush, treated in mother o' pearl, red lacquer, and other materials, on crackled black lacquer ground, the ink stone slab in the shape of Japanese characters in gold lacquer "Tsuki," and water container in shape of Ritsuo seal attached, *XVIIth century* (2)
- 75 Two writing cases, battledore shape, Japanese courtier and his consort with attendant in matt gold lacquer, ink stone slab and water container attached, *XVIIth century*; narrow oblong shape, vine tendrils and grapes in pewter and mother o' pearl on black lacquer ground, on the lid, the reverse side of which is decorated with a man being harassed by a swarm of mosquitoes, his cottage is seen in the distance in gold lacquer, *XVIIIth century* (2)
- 76 A writing case, a despatch box, and a square box. Writing case: Cock and hen near a house in the foreground, with overhanging rock above, form the subject on the lid, the reverse of which is decorated with two monks, one of whom is holding aloft a cat in one hand, and with the other a stiletto in gold lacquer on nashiji ground, ink stone slab and water container attached, *XVIIIth century*. Dispatch box: Bamboo in gold lacquer, on wood grain ground. Square box: "Tokugawa" crests, in gold lacquer on black lacquer ground (3)
- 77 Two writing cases, plum tree in pewter and mother o' pearl, after Korin style, *XVIIIth century*; sea-bream in a tub and conch-shell in mother o' pearl and variegated colour lacquer, on wood grain ground, *XVIIIth century* (2)
- 78 A writing case and despatch box, chrysanthemums in conventional forms, and the reverse filled with flakes in pearl, *XVIIIth century*. Dispatch box: Floral scrolls in pearl, on dark brown ground (2)

LACQUER BOXES.

- 79 A chabako box, Japanese landscape on the lid, and the body in gold lacquer of subdued tone, *XVIIIth century*.
- 80 A chabako box, conventionalised plum blossoms, in gold lacquer on black ground. Dispatch box: Fir tree in pearl and chrysanthemums, crests on the side (2)

- 81 Two chaboko boxes, three men towing a faggot laden boat propelled by another, in gold on nashiji ground; five dragonflies in gold lacquer and pewter, on black lacquer ground, Koyetsu style (2)
- 82 A chabako box, Chinese Tartar on horseback in mother o' pearl, on the lid, and Chinese characters "Shou" on the side in pearl on black lacquer; fox *nō* mask, in lacquer box, with young pines on gold decoration (2)
- 83 A large despatch box, lions sporting among peony bush, in pearl and pewter on the lid, the reverse of which is decorated with the rising sun and pine grove, in gold and red lacquer, pewter edge, *XVIIIth century*.
- 84 Large lacquer manuscript box with inner tray, sparrows and bamboo, in raised ivory work on dark brown lacquer ground, *XVIIIth century*, lacquer fan, Tokugawa crests in gold lacquer, *XVIIIth century* (2)
- 85 Three lacquer trays, and one wooden panel; claws in gold lacquer and porcelain appliqué work, on black lacquer ground, circular shape; Chinese coolie leading a dog, while a Chinese lady is looking on, in pearl work; oblong shape, pumpkins and tendrils, on black lacquer ground; wood panel in fan shape, "Otsuyé" stories, in colours (4)
- 86 Lacquer picnic set, comprising ten trays, two red lacquer saké cups, luncheon box in red lacquer, in three sections, and two pewter saké bottles, with another luncheon box in three sections. All these accessories are encased in a black lacquer outer case, decorated with pine tree and cranes.
- 87 Lacquer medicine chest, with one inner drawer, orange peel lacquer ground, with silver fittings and handle.
- 88 Large despatch box, kikyo flowers and leaves in gold, Togidashi lacquer on black lacquer ground.
- 89 A large lacquer chest of drawers, the outer doors and exterior decorated with designs of "Koawase" game in gold lacquer on black lacquer ground, the interior contains two sliding doors, six drawers, one cupboard, and a shelf, all highly decorated with cherry blossom floating in the stream, in gold lacquer, the fly-doors are decorated with "Fuji" high peaks, pine trees, waterfall and torrents in gold lacquer, the front doors and corners fitted with silver mountings, *XVIIIth century, height, 19in., length, 20in., depth, 11½in.*
- 90 Lacquered wood house shrine, Amida standing in the middle, with Mouju Bosasva and Fugen on the sides, all minutely carved, gilt and coloured, encased in folding case, *XVIIIth century, 21in. high.*
- 91 Gold nashiji lacquer shrine outer case, with chiselled silver fittings, the inside of the doors decorated with rice and hempstalks in green, the interior of the case is in gold lacquer, *19½in. high*, and lacquer folding panel, with various Buddhistic figures in colours (2)
- 92 Twenty-four drawings of various views in Kyoto, on silk with black lacquer frames. *14½in. by 11in.* (24)

467-
357-

30

IVORIES AND JADES.

- 93 Two geese, stained black, red and yellow, and a performing elephant, stained yellow (3)
- 94 Hen feeding five young chicks, and a goose stained black and red (2)
- 95 Five ivory stands, and two ivory boxes (7)
- 96 Four ivory framed, and one gold lacquer framed fans (5)
- 97 Three large paper cutters, flowers, butterflies and dragons carved (3)
- 98 Two large paper cutters, gold fish in a stream; cock and chicks in chrysanthemum bush; both in shibayama work (2)
- 99 Five carved ivory and two damascened hat pins, Chinese jade and bric-à-brac (7)
- 100 Three Fei Tsui green jade triple rings (3)
- 101 A similar lot (3)
- 102 Fei Tsui green jade triple rings pendant, with a drop, and gold chain, Fei Tsui twin green jade charm (2)
- 103 Three Fei Tsui green jade charms, lizard on leaf, lucky bean, cucumber, carved (3)
- 104 Five Fei Tsui green jade charms, gold fish, lucky bean, lotus, cucumber, carved (5)
- 105 Two scarf pins, one brooch and one cuff-links, green jade cabochon mounted in 20-carat gold as scarf pin, Chinese character "Fu," meaning good luck, mounted in 15-carat gold as scarf pin, Chinese Fei Tsui green jade cabochon, mounted in 16-carat gold as a brooch, cuff-links, in the shape of Chinese characters, "Fu-show" in circles, meaning "Good luck and longevity," in 15-carat gold (4)
- 106 Three Fei Tsui green jade rings, mounted in gold as pendants one pair pink tourmaline ear-rings (unmounted), green jade charm, in shape of gold fish (6)
- 107 Eight Fei Tsui green jade ring charms, two agate ring charms (10)
- 108 Pink tourmaline pendant peaches and bat, carved with Fei Tsui green jade knob.
- 109 Three snuff bottles, in plain blue glass, chalcedony in shape of peach, and Canton enamel, with vases, etc., in colours (3)
- 110 Twenty-five pieces of bric-à-brac, comprising jade, agate, metal, etc. (25)
- 111 Six seed necklaces, one metal ojuiné rosary, one agate and amethyst rosary, one pottery rosary one white jade and turquoise necklet (10)
- 112 Nine green jade top hat pins, one silver buckle (10)

WOOD CARVINGS.

- 113 Wood netsuké rice bale carrier, with folding arms.
- 20/ 114 Wood netsuké, long armed man being carried on the shoulder of an islander standing on a huge tortoise.
- 115 Two wood netsukés, warrior with a sword treading with his right foot his enemy, *signed by Masakata*; a rat gnawing at a nut, with young on its back (2)
- 35/ 40/ 116 Twenty assorted netsukés in wood, ivory and lacquer (20)
- 117 A pair of gilt carved wood cake stands, in shape of lotus, four wood panels, with Buddhist subjects in colours, and a mulberry wood glazed lantern (7)
- 118 Seated figure of Regent Kamatari, in white lacquered wood, with wood stand, standing statuette of Bodhisattva, *XVth century* (2)
- 119 A wooden mask of Nio, a white lacquered wood elephant, by RITSUO, two ebony drinking cups, lizards carved on the sides, a wooden okimono, of crab on lotus leaf, two wooden okimono, squirrels in vineyard, carved (7)
- 120 A large teakwood stand, circular top, five legs, elaborately carved, $32\frac{1}{2}$ in. high, diameter, 21in.
- 121 Mulberry wood stand, square top, and four legs, inlaid with mother o' pearl work, highly carved, 26in. high, diameter, $14\frac{1}{2}$ in.
- 122 Another, similar.
- 123 Mulberry wood stand, square top, and four legs, dragon and chrysanthemum, massively carved, 29in. high, diameter, 19in.
- 124 Teakwood table, elliptical shape, with four legs, delicately carved, 30in. high, the top 25in. by 20in.
- 125 Another, similar, 30in. high, the top 33in. by 24in.
- 126 Two satinwood tea tables, lotus carved on sides, rectangular top, 29in. and $28\frac{1}{2}$ in. high, the tops 26in. by $15\frac{1}{2}$ in. and 22in. by 14in.
- 127 Two mulberry wood tea tables, floral scrolls carved on sides, rectangular shape, $29\frac{1}{2}$ in. by 27in. high, the top 26in. by 16in. and $22\frac{1}{2}$ in. by $14\frac{1}{2}$ in.
- 128 Two mulberry wood tea tables, similar, 29in. and 28in. high, the tops 26in. by 16in. and 24in. by 15in.
- 129 Rectangular low table, with Tokugawa crests on black lacquer ground, 11in. high, the top, 48in. by 24in.
- 130 Rustic oak chair, lotus carved on the back, 44in. high.
- 131 Rustic oak chair, with Dutch back piece upholstered with Dutch stamped gold leather, howo bird carved, 44in. high.
- 132 Rustic oak chair, lions sporting among peony bush, profusely carved on the back, 35in. high.
- 133 Rustic cryptomeria easy chair, upholstered with stamped Dutch gold leather back, iris carved and coloured on side pieces, 40in. high, and a print stand (2)

4.0.0

Frank

6.6.0

Parkinson

- 134 A three fold lacquered wood screen, peony and chrysanthemum elaborately carved and coloured on each leaf, 69in. high, width panels, 23in.
- 135 Three carved wood ramma, bamboo and sparrow, chrysanthemum in the stream, chrysanthemums, carved and coloured à jour, black lacquer frame, 66in. by 16½in., and 59in. by 16in. (3)
- 136 A pair of carved wood ramma, chrysanthemums, carved and coloured à jour, black lacquer frames, 81in. by 16in. (2)
- 137 Lacquer panel, the moon rising behind a precipice, in black lacquer, by Zeshin, 23in. by 26in., lacquer panel, peony and butterfly, in gold and Togidashi lacquer on black lacquer ground, 25in. by 16½in., pair cryptomeria sliding doors, old mirror pattern, in lacquer appliqué, by HARITSU, 22in. by 19in.
- 138 A two fold fire screen, slender perpendicular divisions, and with pinks carved in colours, 33½in. high, width 31½in., oblong upright wood panel, monkey on pine tree, in lacquer and pottery appliqué work, 33in. by 10in., rectangular massive carved wood hanging panel, plum tree in high relief, 30in. by 17in., large rectangular cryptomeria wood hanging panel, chrysanthemums in gaufrage lacquer and in white and yellow colour, 43in. by 24in. (4)
- 139 Rectangular upright cryptomeria hanging panel, chrysanthemums in white and salmon pink raised lacquer work, black lacquer frame, 27½in. by 8½in., rectangular upright hanging wood panel, poppies and sparrow, carved and painted, 20in. by 10in., rectangular carved wood panel, kingfisher on lotus leaf, in high relief, 23in. by 15in., rectangular upright hanging wood panel, falcon on a perch in pottery appliqué work, 30in. by 15in., large rectangular carved wood tray, with attenuated edge, lions sporting among peony bush, 30in. by 21in., large rectangular carved wood panel camellia, massively carved on the obverse, the reverse carved with lilies, 41in. by 23in. (7)

JAPANESE POTTERY.

- 140 Six modern Satsuma vases, and a ditto pitcher, profusely decorated with landscapes, figures, flowers and birds in gold, signed YABU MEIZAN (7)
- 141 Nine modern Satsuma vases, of various shapes and sizes, Japanese figures decorated in gold, signed YABU MEIZAN (9)
- 142 Nine Japanese pottery tea bowls, of various kilns (9)
- 143 Eight old Japanese pottery tea bowls, of various kilns (8)
- 144 Eight old Japanese pottery tea bowls, of various kilns (8)
- 145 Eight old Japanese pottery tea bowls, of various kilns (8)
- 146 Eight old Japanese pottery tea bowls, of various kilns (8)
- 147 Eight old Japanese pottery tea bowls, of various kilns (8)

CHINESE POTTERY.

- 148 Vase, with bulbous body, with two ring handles moulded on sides, slight iridescence, whole body being covered with dark green greyish glaze, *Han period*, 16in. high.
- 149 A collection of fourteen Tang, Sung, Yuan pottery vases, pots and pitchers (14)
- 150 A collection of sixteen Tang, Sung, Yuan pottery vases, pitchers and pots (16)
- 151 A collection of nine pottery vases, and two pottery figures, of Tang, Sung, Yuan periods (11)
- 152 A collection of five Corean pottery bowls and cup stand, and two Japanese pottery vases and okimono in shape of a helmet (7)

CHINESE PORCELAIN.

- 153 A blue and white beaker, Chinese mountain scenery, with stags and flying storks in brilliant blue glaze, *K'ang-hsi period*, 18in. high.
- 154 Three globular pots, with covers, pink glaze, ornamented with peonies in colours, floral scrolls intricately incised, *Ch'ien-lung* (3)
- 155 A pair of turquoise blue vases, in shape of daikoku with bags, gallipot, with floral scrolls, in red, green and yellow, a small vase, with globular body, conventional chrysanthemums in black on green glaze ground, *clair-de lune* vase, with tubular handles, *all Ch'ien-lung period* (5)
- 156 A *famille verte* pitong, Chinese sage and attendants and bats, *Ch'ien-lung period*, 4½in. high, old Imari bowl, in the shape of chrysanthemums, profusely decorated in gold and various colours, chrysanthemum and plum tree decoration, *diameter*, 9½in.
- 157 A Japanese carpet, cotton pile, floral scrolls, in dark blue on yellow ground, with key pattern border in dark blue, 7ft. 4in. by 8ft.
- 70/- 158 A collection of sixteen Japanese and Chinese kakemonos, various subjects painted by old masters (16)

5-10-0

glaz

JAPANESE AND CHINESE TEXTILES.

- 159 Thirty Chinese embroidered mats (30)
- 160 Forty-nine small Japanese silk brocade strips and squares (49)
- 161 Twenty-four Japanese silk brocade strips and squares, pasted on paper boards (24)
- 162 Six Japanese silk embroidered fukusa squares, gorgeous patterns richly embroidered by native artisans (6)
- 163 Seven large Japanese silk brocade strips and squares (7)
- 164 Four Japanese silk brocade sashes (4)
- 165 Eight Chinese velvet and silk embroidered squares and strips (8)
- 166 Nine Japanese silk scarves, of various colours (9)

CHINESE AND JAPANESE PAINTINGS.

- 167 Chinese drawing on silk, poppies and Indian corn, glazed and framed, *XVIIIth century*, 16in. by 13in., Japanese drawing on silk, high abbot seated on a chair, glazed and framed, *XVIIth century*, 15in. by 10in., Japanese painting on paper, interior of a drawing room revealing two men playing "Go" game, while two others are looking on, *framed, XVIIIth century*, 32in. by 19in., Japanese painting on paper, swordsmiths at work, *framed, XVIIIth century*, 28in. by 17½in. (4)
- 168 Japanese painting on paper, Musumé playing Sanbaso dance to the accompaniment of a flute player, *XVIIIth century, framed*, 44in. by 11in., Japanese painting on paper, Lady of Geuroku period, *framed, signed TORU KIYOTADA*, 43in. by 17½in., *XVIIIth century*, pair of Japanese paintings on paper, Scene of Yoshiwara "Green Houses" in Geuroku period, *XVIIIth century*, 44in. by 22in. (4)
- 169 Thibetan painting on silk, Kongara Doji, in dark red, *framed, XVIIIth century*, 65in. by 24in., Japanese painting on paper, thirteen seated Buddhas, in gold and colour on blue ground, *framed, XVIIIth century*, 55in. by 22½in., Japanese painting on paper, seated Amida with five Buddhas above, *framed, XVIth century*, 55in. by 24in. (3)

- 170 Japanese painting on silk, Empress Jingu having a last look at her child before departing on her adventure in Corea, *framed, signed GYOSHO, XVIIth century, 51in. by 34½in.*, Japanese painting on paper, two Chinese courtiers in conversation in a garden, *XVIIIth century, framed, 40in. by 21in.*, Japanese painting on paper, Chinese Shih Wan Mu with basket by SANRAKU, *framed, XVIIth century, 37in. by 18½in.*, Japanese painting on paper, Chinese landscapes in black and white, by GEIAMI, *framed, XVIth century, 35½in. by 16½in.* (4)
- 171 Thibetan painting, on silk Buddha, seated in centre surrounded by various disciples, *framed, XVIth century, 38½in. by 24½in.*, Thibetan painting on silk, subject similar to the foregoing, *framed, XVIIth century, 46in. by 30in.*, Japanese painting on silk twelve Buddhas, framed by KOSE KOREHISA, *XVIth century, 39in. by 24in.* (3)
- 172 Chinese silk cuttings, pasted on paper, *framed, three Buddhas and five disciples, XVIIIth century, 69½in. by 37½in.*, Chinese brocade picture, *framed, God of Longevity, and various Sennius, framed, XVIIIth century, 64in. by 44in.*, Chinese embroidery picture, meeting of various Sennius in a mountain, *framed, XVIIIth century, 55½in. by 39½in.*

JAPANESE SCREENS.

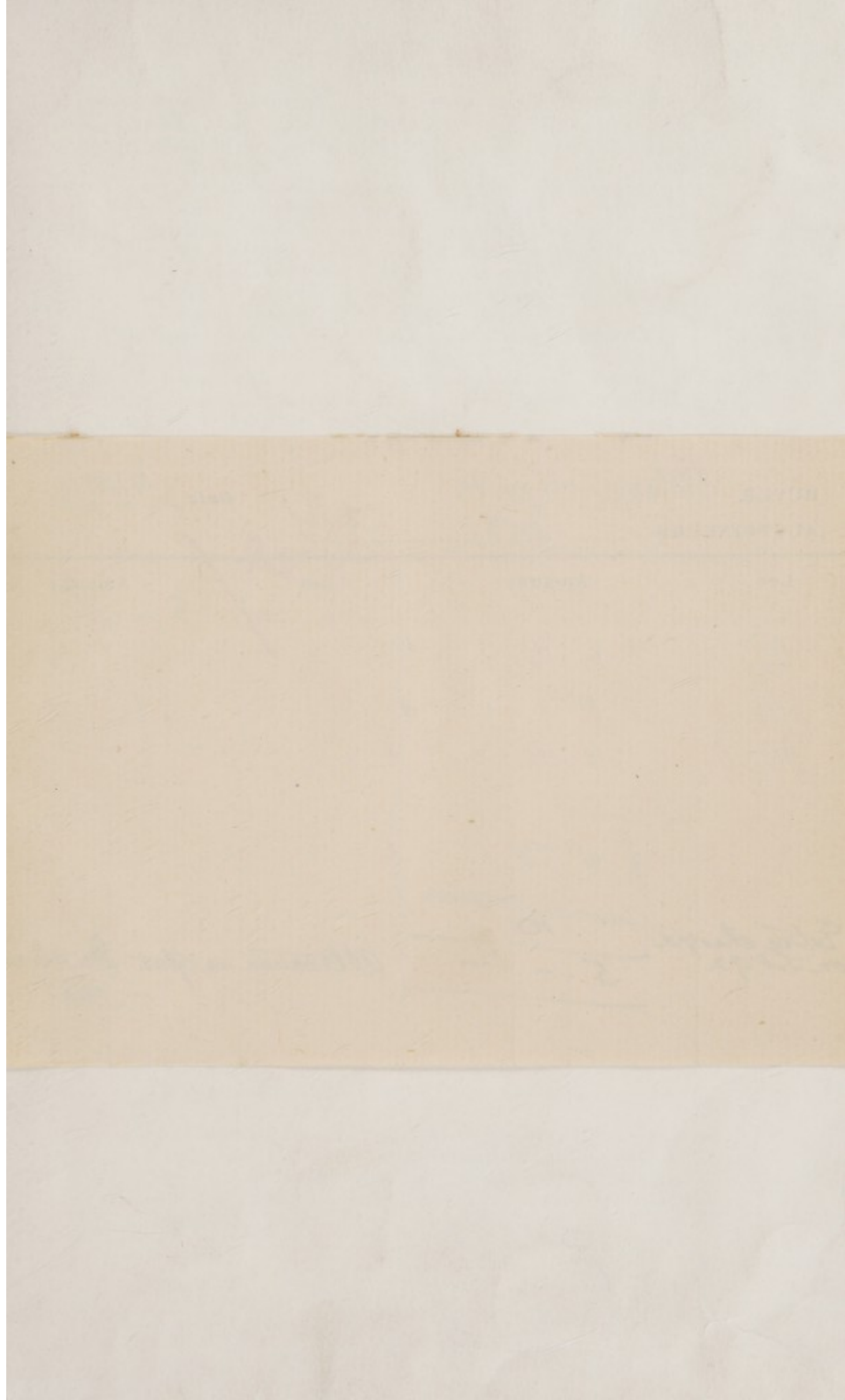
- 173 Two folds, painting on paper, cherry blossom and peonies in baskets, with reed blinds, by KANO SHOYEI, *XVIIth century, 64½in. high, width of each panel, 36in.*
- 174 Two folds, painting on paper, two "No" dancers in a garden, pine trees broken by misty effect in gold, in the foreground ceremonial curtains appear to enclose a garden, by HOKYO GYOKUYEI, *early XIXth century, 71in. high, width of each panel, 37in.*
- 175 Four folds, plain gold paper, *63in. high, width of each panel, 23½in.*

THE PROPERTY OF A GENTLEMAN.

FROM THE COLLECTION OF THE LATE
SIR TREVOR LAWRENCE, BART.

INROS, Etc.

- 176 A gold lacquer inro, decorated with a mountainous landscape and buildings in toyidashi, *signed* KAJIKAWA, sealed.
- 177 Another, decorated with mi-parti chevrons and vertical cloth pattern, and with the story of the Minogame and the two cranes.
- 178 Another, kiuji, decorated with sages in a bamboo grove, takamakiye, *signed* KIYOKAWA, and with box netsuké, a sage in iroye.
- 179 A small inro, decorated with leaves and twigs in lead and aogai on kingi, another, of wood, inlaid with rabbits in pearl and coral, and a ditto, takamakiye, carved with children at play.
- 180 An inro, decorated with a fly-whisk, bouquet of chrysanthemums, lamp blind, etc., in togioashi, with inlay of pearl, shell and crystal, *signed* HUSHUJAI.
- 181 Another, decorated with five horses, two saddled, in rogin, kingi, etc., in relief on black ground, and a ditto, with a dragonfly and lotus in lacquer and pewter, in relief.
- 182 An inro, decorated with dragons and flames in black and gold, on red ground, incised with waves.
- 183 Another, decorated with oxen in takamakiye on red ground, and with netsuké and ojime.
- 184 Another, decorated with a peach branch, in hiramakiye and coloured inlays, and a ditto of wood, decorated with a tea jar, gong, etc., in relief.
- 185 An inro, decorated with a crab, reeds etc., in pottery and takamakiye, the bottom engraved to read Hanzan, and with box, manju and ojime.
- 186 Another, decorated with views of Omi in slightly raised gold lacquer and mother o' pearl.
- 187 Another, kokutau, carved with a dragon and tiger, partly lacquered, and with pressed horn manju, and a ditto, of wood, carved with peonies on gilt ground.
- 188 A pouch shaped inro, rogin, with gold-fish in coloured lacquer in relief, and another, of green lacquer, decorated with dragonflies, *signed* SHIOMI MASANARI.
- 189 Another, of wood, decorated with crabs, in coral and mother o' pearl, and a ditto, with grasshoppers and herbs, in low takamakiye, *Kwan-shosai*.



BUYER

J. Blooper-Read.

AUCTIONEERS

J. S.

Date

4/17/15

OK. CP

Lot

Amount

£

s.

d.

92

1 15

✓

114

1

✓

117

1 15

✓

£ 4 10

✓

Extra charge
on Lot 92

10

5

-

-

Allotment as per Duplicate
H.P.

- 190 An inrō, decorated with sparrows and holly in snow, gold and rogin togidashi, and another, coloured togidashi, decorated with the six poets, and with grasshopper netsuké.
- 191 An inrō, decorated with a battle against the Mongols, in takamakiye, with mother o' pearl inlay.
- 192 Another, decorated with the lijigaun episode, in takamakiye and kajikawa, and a ditto, with two shojo dancers, takamakiye, *signed* JOKWASIN.
- 193 Another, decorated with landscapes in panels, hisamakiye, surrounded by yasuriko.
- 194 Another, sumije on gold, decorated with a lake scene, kajikawa.
- 195 A kogo, with black ground, decorated with flowers of autumn, kiku-kari-karakusa, in gold, pewter edge, and another, with pinks and grasses behind a pewter fence.
- 196 A wood kogo, decorated with sparrows in mother o' pearl, etc., sealed, and another, with pomegranates in toyidashi.
- ~~197~~ 197 A gold lacquer kogo, shaped as a chatsubo.
- 198 Another, shippo shape, decorated with Hotei and children, in panel, on diaper ground, lined siobuhirame.
- 199 Another, oblong, decorated with ducks in a pond, and with cherry blossoms, on deep red ground, a square box with fir and fruit trees, and a tall oblong box, decorated with deer, flowering plants, etc., in takamakiye and aogai on nashiji.
- 200 An oblong box (Fubako), decorated with thirteen playing cards (European models), on black ground, 13in. wide.
- 201 A box and cover, Fugi shape, decorated with nihonbashi, and a fish market, the sides with landscapes in panels on diaper ground, 8in. wide.
- 202 A box and cover, decorated with peony plants in haramakiye, and with crests, the interior with a tray and six incense boxes, with genji monogatari designs.
- 203 A miniature cabinet, nashiji and rogin, decorated with gourd creepers in gold and black, and with tray top and three drawers under, lined silver lacquer.
- 204 A large box and cover, bunko nashigi, decorated with two horses in takamakiye, the interior with tray, 15½in. wide.
-
- 205 A gold lacquer small cabinet, decorated with river scenes, birds and branches, in sunk panels with diaper borders, and with six small drawers, enclosed by folding doors, and drawer under, engraved metal mounts, 17½in. wide.
- 206 A Japanese cabinet, of red lacquer, entirely carved with flowers and foliage, with open shelves and cupboards, the doors decorated with poultry and flowers in tinted mother o' pearl on gold ground, on carved hardwood stand, 41in. wide.

NOTICES.

MESSRS. PUTTICK & SIMPSON'S FORTHCOMING SALES.

PORCELAIN, OBJECTS OF ART, AND ANTIQUE FURNITURE,
every Friday throughout the Season.

POSTAGE STAMPS, December 1st and 2nd, and 15th and
16th.

ENGRAVINGS, December 5th.

PICTURES, December 10th.

MUSICAL INSTRUMENTS, December 11th.

BAXTER PRINTS, December 12th.

SILVER, December 17th.