

## **Sales catalogue: Puttick and Simpson**

### **Publication/Creation**

15th December 1932

### **Persistent URL**

<https://wellcomecollection.org/works/hnp256gu>

### **License and attribution**

This work has been identified as being free of known restrictions under copyright law, including all related and neighbouring rights and is being made available under the Creative Commons, Public Domain Mark.

You can copy, modify, distribute and perform the work, even for commercial purposes, without asking permission.



Wellcome Collection  
183 Euston Road  
London NW1 2BE UK  
T +44 (0)20 7611 8722  
E [library@wellcomecollection.org](mailto:library@wellcomecollection.org)  
<https://wellcomecollection.org>

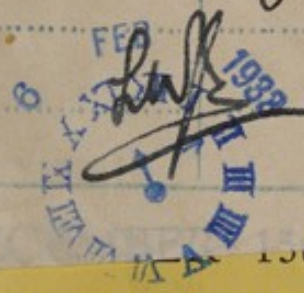
*How  
Original*

*Mr. Shaw. 15<sup>th</sup> Dec 1932*

*WA/mm/cm/sal/16/262*

C

P. or S.	DATE	INITIALS
199.17.0 SALE	15. 7 11 32	Shaw
PURCHASE		
CHECKED	28. 7 11 32	Ch
COLLECTED	30. 12 32	[Signature]
RECEIVED	30. X 11 32	[Signature]
ACCESSED		
PASSED		



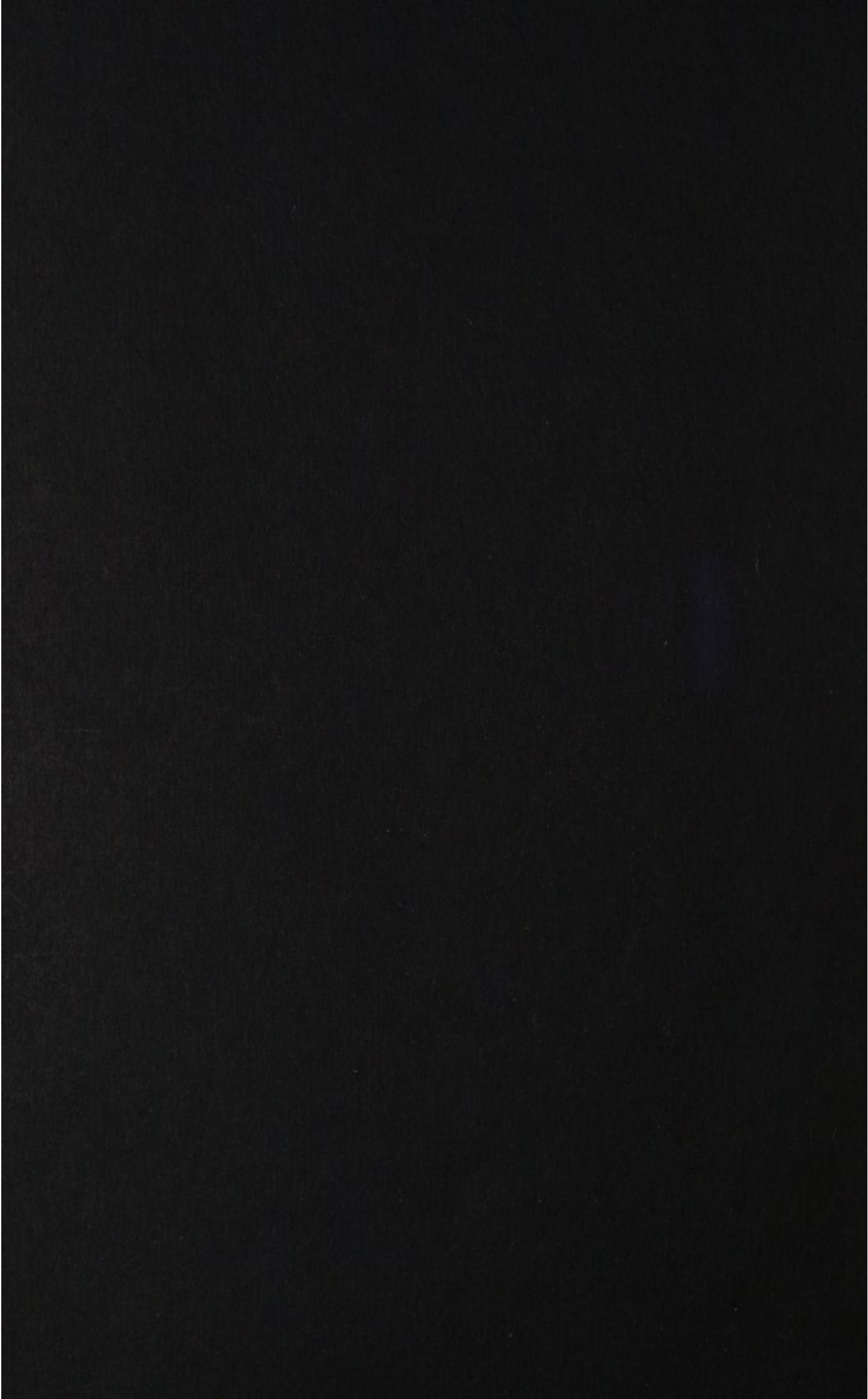
TH

1932

PUTTICK & SIMPSON  
LONDON

ILLUSTRATED CATALOGUE

*Nm m 189 / 199. 17. 0*



*Show in Show*  
*Original*

RECEIVED  
30 XII 32  
CORRECTED  
30 XII 32  
CHECKED  
30 XII 32  
REMARKS

2

# Costa Rica and Peru

---

THURSDAY, DECEMBER 15th,  
1932

---

PUTTICK & SIMPSON  
LONDON

ILLUSTRATED CATALOGUE

*Museum 189 / 199. 17. 0*

*[Faint handwritten text at the top of the page, possibly a title or header.]*

13/9	2		142	17
14/9	3		145	17
15/9	2		147	17
16/9	2		149	17
17/9	2		151	17
18/9	2		153	17
19/9	10	10	155	17
20/9	5	5	157	17
21/9	5	5	159	17
22/9	5	5	161	17
23/9	10	10	163	17
24/9	22	2	165	17
25/9	2		167	17
26/9	24		169	17
27/9	20	15	171	17
28/9	1	5	173	17
29/9	2		175	17
30/9	1		177	17
1/10	2		179	17
2/10	1		181	17
3/10	1		183	17
4/10	1		185	17
5/10	1		187	17
6/10	1		189	17
7/10	1		191	17
8/10	1		193	17
9/10	1		195	17
10/10	1		197	17
11/10	1		199	17
12/10	1		201	17
13/10	1		203	17
14/10	1		205	17
15/10	1		207	17
16/10	1		209	17
17/10	1		211	17
18/10	1		213	17
19/10	1		215	17
20/10	1		217	17
21/10	1		219	17
22/10	1		221	17
23/10	1		223	17
24/10	1		225	17
25/10	1		227	17
26/10	1		229	17
27/10	1		231	17
28/10	1		233	17
29/10	1		235	17
30/10	1		237	17
31/10	1		239	17
1/11	1		241	17
2/11	1		243	17
3/11	1		245	17
4/11	1		247	17
5/11	1		249	17
6/11	1		251	17
7/11	1		253	17
8/11	1		255	17
9/11	1		257	17
10/11	1		259	17
11/11	1		261	17
12/11	1		263	17
13/11	1		265	17
14/11	1		267	17
15/11	1		269	17
16/11	1		271	17
17/11	1		273	17
18/11	1		275	17
19/11	1		277	17
20/11	1		279	17
21/11	1		281	17
22/11	1		283	17
23/11	1		285	17
24/11	1		287	17
25/11	1		289	17
26/11	1		291	17
27/11	1		293	17
28/11	1		295	17
29/11	1		297	17
30/11	1		299	17
1/12	1		301	17
2/12	1		303	17
3/12	1		305	17
4/12	1		307	17
5/12	1		309	17
6/12	1		311	17
7/12	1		313	17
8/12	1		315	17
9/12	1		317	17
10/12	1		319	17
11/12	1		321	17
12/12	1		323	17
13/12	1		325	17
14/12	1		327	17
15/12	1		329	17
16/12	1		331	17
17/12	1		333	17
18/12	1		335	17
19/12	1		337	17
20/12	1		339	17
21/12	1		341	17
22/12	1		343	17
23/12	1		345	17
24/12	1		347	17
25/12	1		349	17
26/12	1		351	17
27/12	1		353	17
28/12	1		355	17
29/12	1		357	17
30/12	1		359	17
1/1	1		361	17
2/1	1		363	17
3/1	1		365	17
4/1	1		367	17
5/1	1		369	17
6/1	1		371	17
7/1	1		373	17
8/1	1		375	17
9/1	1		377	17
10/1	1		379	17
11/1	1		381	17
12/1	1		383	17
13/1	1		385	17
14/1	1		387	17
15/1	1		389	17
16/1	1		391	17
17/1	1		393	17
18/1	1		395	17
19/1	1		397	17
20/1	1		399	17
21/1	1		401	17
22/1	1		403	17
23/1	1		405	17
24/1	1		407	17
25/1	1		409	17
26/1	1		411	17
27/1	1		413	17
28/1	1		415	17
29/1	1		417	17
30/1	1		419	17
1/2	1		421	17
2/2	1		423	17
3/2	1		425	17
4/2	1		427	17
5/2	1		429	17
6/2	1		431	17
7/2	1		433	17
8/2	1		435	17
9/2	1		437	17
10/2	1		439	17
11/2	1		441	17
12/2	1		443	17
13/2	1		445	17
14/2	1		447	17
15/2	1		449	17
16/2	1		451	17
17/2	1		453	17
18/2	1		455	17
19/2	1		457	17
20/2	1		459	17
21/2	1		461	17
22/2	1		463	17
23/2	1		465	17
24/2	1		467	17
25/2	1		469	17
26/2	1		471	17
27/2	1		473	17
28/2	1		475	17
29/2	1		477	17
30/2	1		479	17
1/3	1		481	17
2/3	1		483	17
3/3	1		485	17
4/3	1		487	17
5/3	1		489	17
6/3	1		491	17
7/3	1		493	17
8/3	1		495	17
9/3	1		497	17
10/3	1		499	17
11/3	1		501	17
12/3	1		503	17
13/3	1		505	17
14/3	1		507	17
15/3	1		509	17
16/3	1		511	17
17/3	1		513	17
18/3	1		515	17
19/3	1		517	17
20/3	1		519	17
21/3	1		521	17
22/3	1		523	17
23/3	1		525	17
24/3	1		527	17
25/3	1		529	17
26/3	1		531	17
27/3	1		533	17
28/3	1		535	17
29/3	1		537	17
30/3	1		539	17
1/4	1		541	17
2/4	1		543	17
3/4	1		545	17
4/4	1		547	17
5/4	1		549	17
6/4	1		551	17
7/4	1		553	17
8/4	1		555	17
9/4	1		557	17
10/4	1		559	17
11/4	1		561	17
12/4	1		563	17
13/4	1		565	17
14/4	1		567	17
15/4	1		569	17
16/4	1		571	17
17/4	1		573	17
18/4	1		575	17
19/4	1		577	17
20/4	1		579	17
21/4	1		581	17
22/4	1		583	17
23/4	1		585	17
24/4	1		587	17
25/4	1		589	17
26/4	1		591	17
27/4	1		593	17
28/4	1		595	17
29/4	1		597	17
30/4	1		599	17
1/5	1		601	17
2/5	1		603	17
3/5	1		605	17
4/5	1		607	17
5/5	1		609	17
6/5	1		611	17
7/5	1		613	17
8/5	1		615	17
9/5	1		617	17
10/5	1		619	17
11/5	1		621	17
12/5	1		623	17
13/5	1		625	17
14/5	1		627	17
15/5	1		629	17
16/5	1		631	17
17/5	1		633	17
18/5	1		635	17
19/5	1		637	17
20/5	1		639	17
21/5	1		641	17
22/5	1		643	17
23/5	1		645	17
24/5	1		647	17
25/5	1		649	17
26/5	1		651	17
27/5	1		653	17
28/5	1		655	17
29/5	1		657	17
30/5	1		659	17
1/6	1		661	17
2/6	1		663	17
3/6	1		665	17
4/6	1		667	17
5/6	1		669	17
6/6	1		671	17
7/6	1		673	17
8/6	1		675	17
9/6	1		677	17
10/6	1		679	17
11/6	1		681	17
12/6	1		683	17
13/6	1		685	17
14/6	1		687	17
15/6	1		689	17
16/6	1		691	17
17/6	1		693	17
18/6	1		695	17
19/6	1		697	17
20/6	1		699	17
21/6	1		701	17
22/6	1		703	17
23/6	1		705	17
24/6	1		707	17
25/6	1		709	17
26/6	1		711	17
27/6	1		713	17
28/6	1		715	17
29/6	1		717	17
30/6	1		719	17
1/7	1		721	17
2/7	1		723	17
3/7	1		725	17
4/7	1		727	17
5/7	1		729	17
6/7	1		731	17
7/7	1		733	17
8/7	1		735	17
9/7	1		737	17
10/7	1		739	17
11/7	1		741	17
12/7	1		743	17
13/7	1		745	17
14/7	1		747	17
15/7	1		749	17
16/7	1		751	17
17/7	1		753	17
18/7	1		755	17
19/7	1		757	17
20/7	1		759	17
21/7	1		761	17
22/7	1		763	17
23/7	1		765	17
24/7	1		767	17
25/7	1		769	17
26/7	1			





ESTABLISHED 1794

Telephone :  
Whitehall 3716 (two lines)

Telegrams :  
"Puttickdom, Lesquare, London"

Catalogue  
OF  
PERUVIAN ANTIQUITIES  
COMPOSED CHIEFLY OF  
NAZCA & TRUXILLO POTTERY  
AND  
TEXTILES

The property of DR. FREDERICK BARNARDO,  
of 21 Lancaster Gate Terrace, W.1,  
and

THE PROPERTY OF A GENTLEMAN.

ALSO

ANTIQUITIES FROM COSTA RICA  
JADEITES, GOLD AND STONE CARVINGS  
THE PROPERTY OF A GENTLEMAN.

---

Which will be Sold by Auction by

MESSRS. PUTTICK & SIMPSON

W. G. HORSMAN. N. H. ARCHER

R. F. WESTHORPE

At their Reynolds Galleries, 47 Leicester Square, London, W.C.2

On Thursday, December 15th, 1932

At half past One o'clock precisely

---

MAY BE VIEWED THE TWO DAYS PRIOR FROM 10 A.M. UNTIL 5.30 P.M.



## CONDITIONS OF SALE.

---

I. The highest Bidder to be the Buyer; and if any dispute arise between two or more Bidders, the Lot so in dispute shall be immediately put up again and resold.

II. The Auctioneer shall regulate the bidding, and reserves the right to refuse a bidding, as he may think advisable.

III. In the case of Lots upon which there is a reserve, the Auctioneer shall have the right to bid on behalf of the Seller.

IV. The Purchasers to give in their Names and Places of Abode, and, if required, to pay down 1s. in the Pound, or more, in part of payment, or the whole of the Purchase Money, in default of which the Lot or Lots so purchased to be immediately put up again and resold.

V. The Lots to be taken away and paid for, whether genuine and authentic or not, with all faults and errors of description, at the Buyer's expense and risk within Two Days from the Sale; Messrs. PUTTICK & SIMPSON NOT BEING RESPONSIBLE FOR THE CORRECT DESCRIPTION, GENUINENESS, OR AUTHENTICITY OF, OR ANY FAULT OR DEFECT IN, ANY LOT, AND MAKING NO WARRANTY WHATEVER.

VI. To prevent inaccuracy in delivery, and inconvenience in the settlement of the Purchases, no Lot can on any account be removed during the time of Sale; and the remainder of the Purchase Money must absolutely be paid on the delivery.

VII. Upon failure of complying with the above Conditions, the Money deposited in part payment shall be forfeited; and all Lots left uncleared, in conformity with these Conditions, may be resold by public or private Sale without further notice; and the deficiency (if any) arising from such re-sale shall be made good by the defaulters at this Sale, together with all charges attending the same. This Condition is without prejudice to the right of the Auctioneers to enforce the contract made at this Sale without such re-sale, if they think fit, and to any other rights and remedies vested in them by law or otherwise.

*Buyers who are unable to attend the Sale may have their Commissions faithfully executed by their obedient servants,*

PUTTICK & SIMPSON.

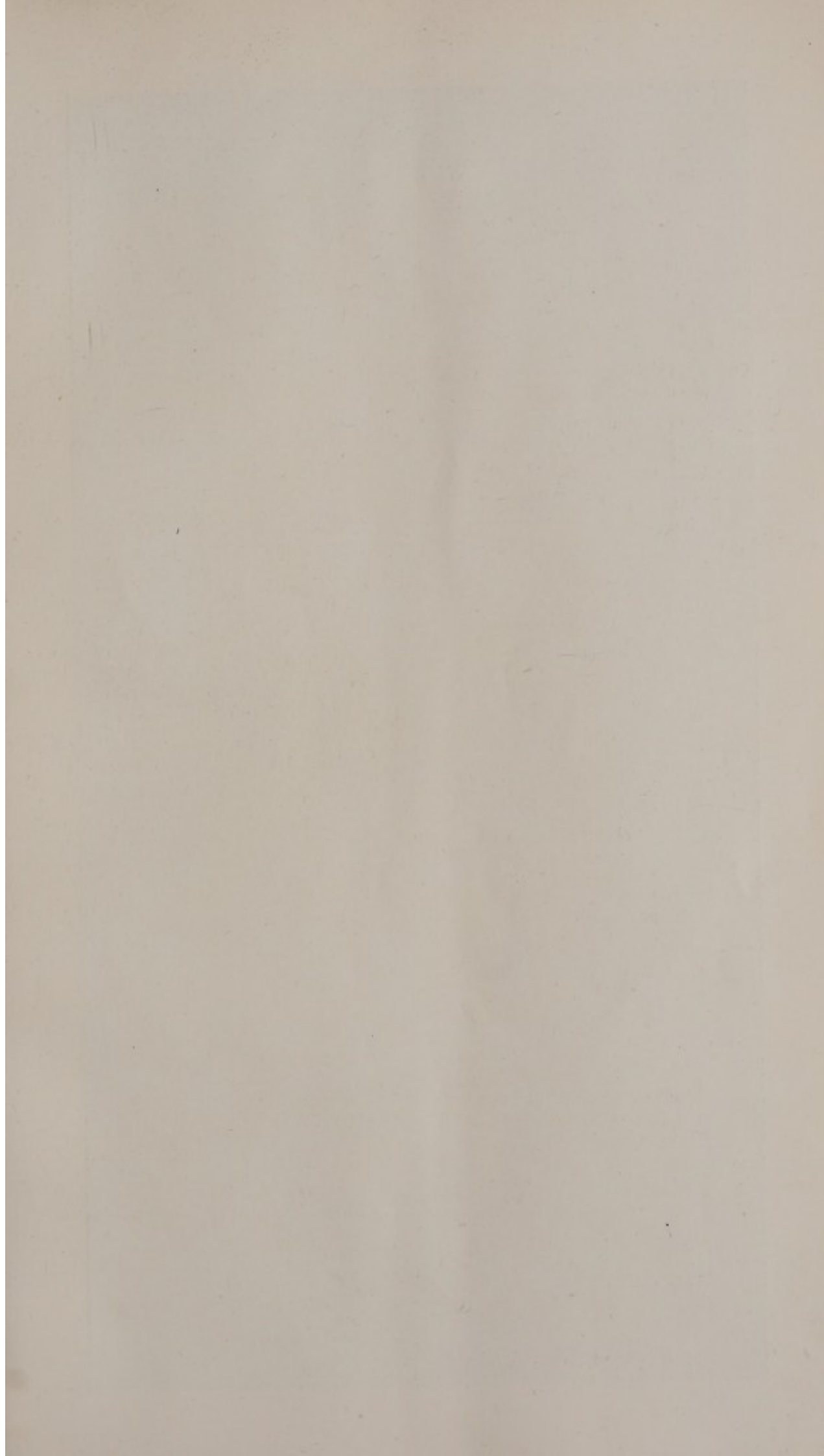
Auction Rooms for the Sale of  
All Fine Art Property,  
LEICESTER SQUARE, LONDON, W.C.

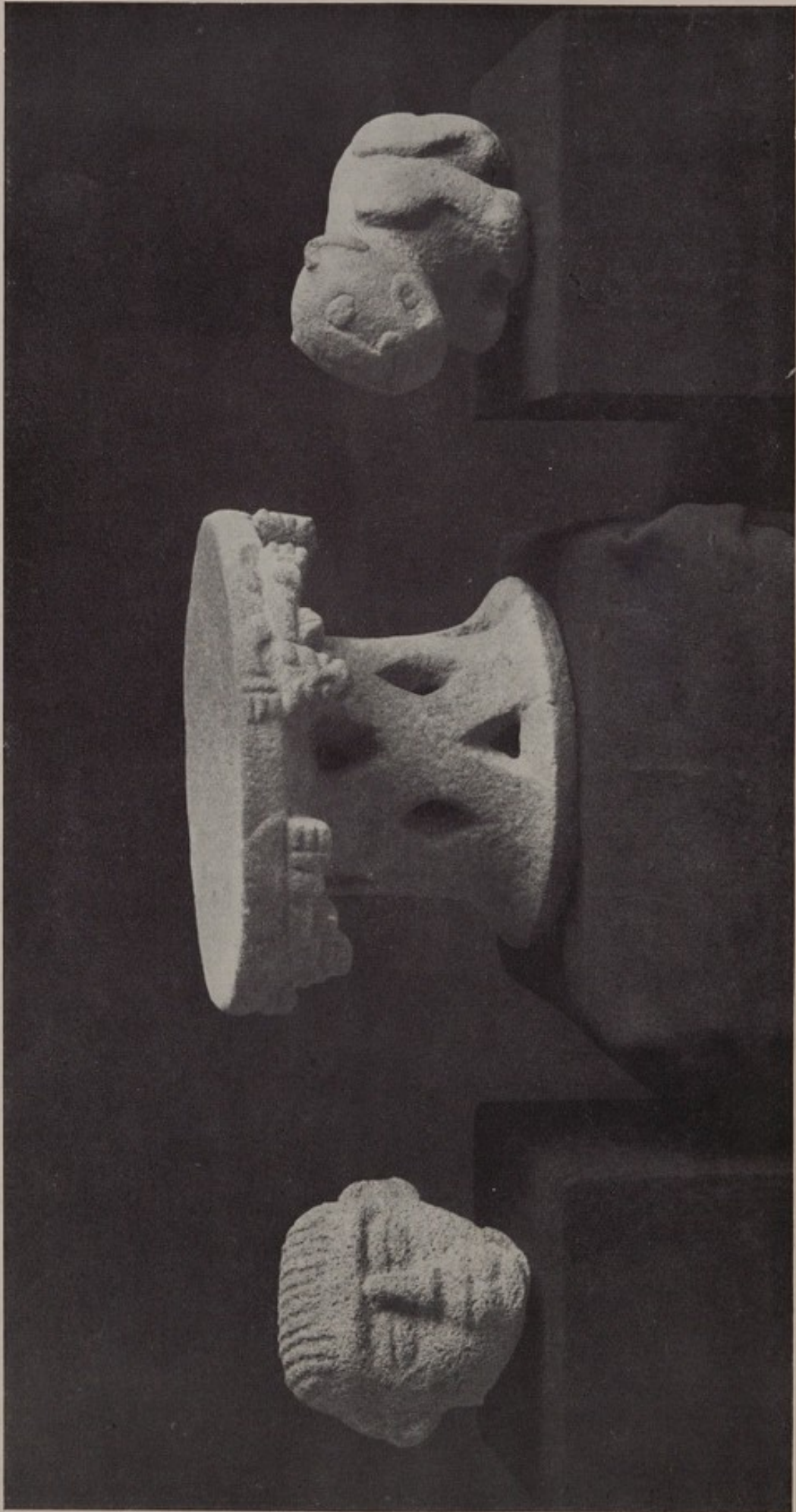
---

Collections Catalogued, Arranged and Valued for the Probate and  
Legacy Duty or for Public or Private Sale.

---

ESTABLISHED 1794.





163

161

156

THURSDAY, DECEMBER 15th, 1932.

AT HALF PAST ONE O'CLOCK PRECISELY.

## PERUVIAN ANTIQUITIES.

THE PROPERTY OF A GENTLEMAN.

### TEXTILES.

- 1 Ten fragments, woven with designs in blue, yellow and black, on crimson ground, some with fringes.
- 2 Two fragments of a border, woven with birds and animals, in panels of different colours, and two others, with conventional designs.
- 3 A panel, woven with birds and animals in square divisions of red, brown, light and dark blue,  $15\frac{1}{2}$ in. by 14in.
- 4 An oblong panel, woven with bands of conventional ornament in red, cream and yellow, on grounds of light and dark brown,  $20\frac{1}{2}$ in. by 63in.
- 5 A panel, one corner woven with birds in square panels, on buff ground, another corner with designs in different colours, on dark brown ground, 51in. square.
- 6 Another, woven with trellis ornament in black, the borders with similar ornament, in crimson, and with narrow bands of coloured designs, 37in. by 32in.
- 7 A fragment of a panel, woven with conventional ornament in diagonal bands of red, black and yellow, 47in. wide.
- 8 A poncho, woven with star ornament and other designs, in numerous colours.
- 9 A panel, woven with birds, in shaped bands of dark blue and red, on cream ground,  $40\frac{1}{2}$ in. by 20in.
- 10 Two fragments, with designs in dark brown.
- 11 A panel, woven with two large figures of monsters, birds and other ornament in brown, crimson and yellow, 62in. by 43in.
- 12 Another, the corners with designs in red and black, 51in. square.
- 13 A border, woven with conventionalised human figures, in narrow bands of red, blue, brown and white, 21in. by 76in.
- 14 Two oblong panels, woven with conventional designs, in different colours.

1 1/2 80

6 80

1 1/2 80  
Baker

2 1/2 80  
Baker

5 80  
Walt

1 1/2 80  
Baker

2 1/2 80

5 80  
Walt

2 1/2 80

1 80  
Baker

15 A panel, woven with bands of conventional ornament, on crimson ground, 35in. by 60in.

16 Another, woven with conventional devices in horizontal rows, the groundwork of diagonal squares of blue, green, red and cream, 50in. by 36in.

757-17 A narrow girdle, woven with conventionalised birds and other ornament, in brilliant colours, 161in. long.

18 Three fragments of a panel, woven with bird ornament, in diagonal bands.

601-19 A border, woven with conventionalised figures, masks, etc., in red, black, green and brown, and with fringe, 7in. by 50in.

7-20 An oblong panel, woven with diagonal bands of conventionalised birds' heads, 16½in. by 57in.

6-21 Another, woven with designs, in oblong panels of buff, red and brown, 8in. by 98in.

4-22 A fragment, woven with four human figures in shades of brown, etc., 4in. by 14½in., and a band, with birds, on red ground, 28in. long.

23 A border, woven with human figures and monsters, in oblong panels, on crimson ground, 6in. by 63in.

24 Four fragments, woven with human figures, etc., on crimson ground.

25 Sixteen fragments, various.

26 Two slings, woven with birds and other designs.

27 A long girdle, woven with interlaced ornament, another, with panels of different colours.

28 A panel, of light and dark brown, one corner woven with birds in different colours, another corner embroidered with designs in red, 41in. square.

601-29 An oblong panel, woven with bands of ornament, on crimson ground, 29in. by 12in., and another, with similar design, on brown ground, 43in. by 11in.

5-30 A panel, embroidered with a human figure, in blue and red, 14½in. square, and a fragment, woven with conventionalised figures, in panels.

501-31 A panel, with painted decoration in oblong compartments, 24in. by 49in., and three other pieces.

501-757-321 Two bone musical instruments, in the form of flutes, 4¾in. and 6½in. wide, and a bone needle, carved with a bird, 4½in. long.

401-757-33 Two necklaces, composed of small beads of different stones.

401-401-34 Four others.

401-757-35 Three others, and four bracelets and other bead ornaments.

401-12-36 A circular vessel, with narrow neck, modelled with two human figures, 9¼in. high.

1080-71-37 A whistling water bottle, formed as an animal, 7½in. high.

280

572/5 NS

7/7 NS

7/7 NS

601 Webb

3/157

4/7 Webb

2/157 Webb

4/157 Carey

401

7/7

601

501

401

401

401

1080

580

THE PROPERTY OF  
DR. FREDERICK BARNARDO,  
of 21, Lancaster Gate Terrace, W.1.

NAZCA POLYCHROME POTTERY.

- 38 A circular water bottle, painted with mask-like figures and a border of heads, 7in. high. *457 Yarabod.*
- 39 Another, painted with three winged monsters, 6¼in. high. *207 Shink*
- 40 A shaped beaker, with designs in black, 4¼in. high, and a bowl, painted with conventionalised heads, 6¼in. diam. *207 Yarabod*
- 41 A bowl, with spreading rim, painted with conventional ornament, in panels, 8in. diam. *5/157 Yarabod*
- 42 A water bottle of globular form, painted with a warrior, with feather head-dress, and with a border of fruit, 8in. high. *2/107 do*
- 43 Another, of similar form, painted with demon figures, 8in. high, and one smaller, with grotesque birds, 7in. high. *257*
- 44 A tall beaker, painted with diamond pattern, and borders of symbolic ornament and masks, 9in. high. *607 Welt*
- 45 A circular water bottle, painted with a demon figure grasping a head and weapons, 7½in. high. *407*
- 46 Another, larger, painted with a serpent-like monster, with two heads, 8½in. high. *357 Yarabod*
- 47 Three small bowls, painted with different designs, 4¼in. to 5¼in. diam. *2/137*
- 48 A circular water bottle, dome shape, painted with fruits, 8in. high, and another, with linked death masks, 6½in. high. *3/107 Welt*
- 49 A beaker, partly modelled with a human head, 6½in. high, and another, painted with mask ornament, 6½in. high. *507 do*
- 50 A circular water bottle, the top painted with conventionalised masks, 5¾in. high. *2/107 do*
- 51 Another, smaller, painted with animals, 6¼in. high, and one modelled with a head, 6½in. high. *357*
- 52 A water bottle of globular form, painted with a warrior holding human heads, 7¼in. high, and another with designs in red, 8½in. high. *2/157 Yarabod*
- 53 A small bowl, painted with a monster, 4½in. diam., another with conventional ornament, in square panels, 6½in. diam., and a beaker with similar ornament, 5in. high. *2/157 Yarabod*
- 54 Two water bottles of globular form, painted with monsters, 6¾in. high, and another, with animal-like figures, 6in. high.

- 55 A water bottle, of buoy shape, painted with two winged monsters, 7in. high.
- 56 A water bottle, dome shaped, painted with a frog and a lizard, and with rudimentary handles, 7in. wide. *257*
- 57 Another, of globular form, painted on either side with a bird and spider, 7in. high. *3/157 - Prints*
- 58 Another, bell shape, painted with bands of conventional ornament,  $9\frac{3}{4}$ in. high, and one, formed as conjoined fruits,  $7\frac{1}{2}$ in. high. *257 - Garry*
- 6/11* 8. (59) Another, modelled with a head of a man with pierced ears and conicle top, painted with conventional ornament, 9in. high.
- 60/1* 4. (60) A circular water vessel, painted with mask ornament in red and black, and with narrow neck,  $5\frac{1}{2}$ in. high.
- 108* 12. (61) A large water vessel of cylindrical form, modelled with a human head and painted with different devices, the head and fore paws of an animal at the top, on four feet, and with handles at the sides,  $17\frac{3}{4}$ in. high.
- 228* 25. (62) A large vase, painted and partly modelled with a human figure and monsters, the narrow spout, with the head of a blind man, and with handle, 18in. high.

## TRUXILLO POTTERY.

- 63 A vase, of plain pottery, surmounted by a standing figure, wearing head-dress, 12in. high. *60 Webb*
- 64 Another, modelled with a head of a man, wearing animal head-dress,  $9\frac{1}{2}$ in. high. *3/137 do*
- 65 A water bottle, modelled as a skull, 10in. high. *5/137 do*
- 66 A vase, modelled as a standing figure of a man,  $8\frac{1}{2}$ in. high. *257*
- 67 A square water bottle, surmounted by a sprawling human figure, with toad head,  $8\frac{1}{4}$ in. high.
- 68 A water bottle, modelled as a coiled serpent,  $7\frac{1}{4}$ in. high.
- 69 A vessel, modelled with four fruits, 8in. high.
- 70 A water bottle, of grey colouring, modelled with an octopus,  $9\frac{1}{2}$ in. high.
- 40/1* 6. (71) A vessel, modelled with mealie cobs,  $6\frac{1}{2}$ in. high.
- 72 A water bottle, modelled with the head of an Inca, wearing head-dress,  $10\frac{1}{4}$ in. high.
- 73 Another, of plain pottery, modelled with a similar head, the head-dress modelled with the Sun, 10in. high. *257*
4. 74 | Another, modelled as a seated female figure,  $8\frac{1}{2}$ in. high. *4/137 H6*

75 A water bottle, modelled with figures and animals in relief and mounted with a warrior flying on a bird,  $9\frac{3}{4}$ in. high.

8. 76 Another, modelled as a shrowded figure, wearing owl mask,  $9\frac{1}{4}$ in. high. *10/11 NS*

*4/10* 6. 77 A water bottle of globular form, surmounted by a seated figure of a noble, wearing head-dress and ear discs,  $9\frac{3}{4}$ in. high.

8. 78 Another, modelled as a head, with lupus, and with head-dress and ear discs,  $10\frac{1}{4}$ in. high. *8/15 NS*

79 Another, modelled as a head, wearing head-dress, and with painted decoration,  $8\frac{1}{2}$ in. high. *307*

*4/15* 4. 80 Another, circular, with modelled conventional head,  $6\frac{1}{2}$ in. high. *307*

81 A vessel, with narrow spout modelled as a demon head and a small animal, and with painted decoration, 7in. high. *257*

82 A water vessel, of double form, the front modelled with a head of a man, with lupus, and wearing bird head-dress,  $9\frac{1}{2}$ in. high. *307*

83 A whistling water bottle, of double form, the front modelled as a seated human figure, with animal head,  $9\frac{1}{4}$ in. high. *457*

84 Another, circular, surmounted by a bird-like monster, with human head, arms and legs, and with a fish, in relief, 9in. high. *207*

85 Another, circular, with raised ornament, brown and white,  $9\frac{1}{4}$ in. high.

86 A figure of a man, wearing robes, and with painted decoration,  $17\frac{1}{2}$ in. *2080 NS*

87 Another, wearing ear discs and holding a shield and animal, forming a vase, 15in. high. *780 Well*

### BLACK POTTERY, &c.

*257* 88 A circular water bottle, with conical spout, modelled with conventionalised heads, 8in. high, and another, larger, with similar ornament and double spout,  $8\frac{1}{2}$ in. high.

4. 89 A shaped water bottle, modelled with a figure of a warrior, holding shield and spear and standing on a rock,  $8\frac{1}{2}$ in. high.

*407* 90 Another, modelled as a grotesque figure,  $8\frac{1}{4}$ in. high.

*70/1* 91 A water vessel, modelled as a head, wearing head-dress with engraved ornament, and with narrow neck,  $6\frac{1}{2}$ in. high.

*207* 70/ 92 A water bottle, modelled as a head, with head-dress, 9in. high.



8. 93 A shaped beaker of carved wood, painted with figures and other ornament,  $5\frac{1}{2}$ in. high. 1080 NS.

22/1-16. 94 A CARVED WOOD HEAD, forming a beaker, painted with human figures, animals and other ornament, 8in. high.

### TEXTILES.

95 Six fragments, woven with birds, and other ornament. 20/-

96 Four others, woven with human figures, conventionalised birds, etc. 20/-

97 A fragment, woven with birds and animals, another, and a border of stump work. 45/- 6ans

98 Two panels, woven with linked mask ornament, in red, black, yellow and white, 14in. by 17in., and two girdles. 60/- do

99 Five fragments, woven with human figures, birds and masks. 25/- do

100 Four others, woven with conventional ornament. 25/- do

101 Four others, woven with similar ornament. 40/- do

102 A narrow band, woven with panels of conventional ornament, 4in. by  $38\frac{1}{2}$ in., two fragments, with human figures, and three others, with birds, etc. 40/- do

103 A panel, woven with bands of birds, in diamond and hexagonal panels, in brilliant colours, 12in. by  $14\frac{1}{2}$ in., and a narrow band. 40/-

104 Two fragments of a panel, woven with conventionalised figures, in square panels, and two small borders. 25/-

105 Nine narrow bands, woven with birds, serpents and other ornament. 40/-

106 A fragment of a border, woven with monsters and figures, on crimson ground, and two others. 25/-

107 Five small bags, woven with striped ornament. 35/-

108 A border, woven with a design of birds on dark brown ground,  $5\frac{1}{2}$ in. by 26in., and another, with minute designs, in bands of different colours,  $4\frac{1}{4}$ in. by 20in. 25/-

109 Seven fragments, woven with different ornament. 25/-

110 Two head-dress ornaments, with designs in colours, another, buff and brown, and two fragments. 30/- with

111 A bag, woven with stripes of different colours, the handle with other designs, and a sling. 40/- do

112 Another, of crimson, worked with highly conventionalised figures. 30/-

113 A bag, woven with linked mask ornament in black and crimson, another, striped and two fragments. 30/-

- 30/1
- 12/11
- 50/114 A head-dress ornament, woven with a mask, with long fringe, and a cord bag.
- 16/115 A bag and four caps of wool, designed with figures, animals, etc., in colours and beads, and a mask head-dress, 17th and 18th centuries.
- 12/116 A HEAD-DRESS, of white feathers, with a border of red, and two sprays of green and other feathers. 16ft base
- 16/117 A camisa of coloured feathers, designed with human figures in red and green and a border of animals, on brown ground. 21ft dw
- 12/118 A small apron of woven material, ornament with fish in carved bone, red and white. 15ft 16
- 119 A child's camisa, similar, and with a border of bead ornament. 4ft Well
- 120 A small apron and a camisa, of woven material, ornamented with fish, in metal foil. 3ft dw
- 121 A dress ornament, designed with llamas in yellow, on red ground, and with long fringe. 4ft dw
- 122 A panel, woven with bands of animals and other ornament in black and cream, on red ground, 14½in. by 19½in., and a fragment, with shaped panels of different colours. 3/13/ cotton
- 4/10/ 8/123 A woven panel of cream colour, embroidered with four human figures, in light brown and yellow, 27in. by 21in.
- 12/124 A PANEL, woven with two large human figures in shades of brown and yellow, the groundwork with a minute design of birds, on crimson, 19in. by 27in. 16ft 16
- 125 A panel, woven with conventionalised animals and other ornament, in bands of different colours, 23in. by 43in., and another, with designs in light brown and cream, 27in. square. 35ft Paper
- 126 A camisa, woven with stripes of conventional ornament in colours and silver thread, and a panel, with ornament in blue, yellow and white, on red ground, 12½in. by 24in. 2/15/ base
- 6/127 A camisa, woven with openwork ornament, in blue, cream and brown.
- 12/128 A PANAL, of brown, the centre and border finely woven with demon figures and animals, with serpent decoration, in colours, on dark blue ground, and with fringe, 25½in. by 20in. 22ft base
- 129 A panel, woven with triangular devices, in brown, yellow and white, on crimson ground, 18½in. by 24½in. 4/15/ Paper
- 16/130 A LARGE PANEL, woven with conventionalised birds, in cream and brown, 108in. by 62in.
- 13/1 131 A fragment of woven material, embroidered with birds in blue and brown, and a border, designed with conventional ornament on crimson ground, and with fringe ends. 107-

10/1/1  
16. (132) A panel of dark brown, woven with human figures and conventionalised serpents, in red, yellow and white, 25in. by 41in.

133 A fragment, woven with bands of highly conventionalised animals and other ornament. 25/ Baker

134 A portion of a mat, designed with diamond pattern, etc., in red, blue and cream, and with border. 3/10/

135 A border, of woven black material, designed with conventionalised human figures, in green, yellow and blue, on narrow bands of red, 32in. by 95in. 2/10/

136 Another, of woven dark brown, embroidered with conventionalised human figures in oblong panels, 29in. by 66in. 45/

100. (137) A PANEL, finely woven with twenty-four ritual figures wearing masks, holding weapons and other implements, and with serpent decoration, in brilliant colours, on crimson ground, two corners with the figures reversed, on pale blue ground, 36in. by 29½in. MS

See illustration.

THE PROPERTY OF A GENTLEMAN.

## ANTIQUITIES FROM COSTA RICA.

### JADEITES, &c.

138 Two ear plugs, of light and dark green. 20/

139 A small human figure, of grey, 1½in. high. 60/ Webb

140 Another, of light and dark green, 1in. high. 4/

141 A mask, of green and grey, 1½in. high. 7/10/ Webb

142 A PLAQUE, of light and dark green, carved as a squatting bird, 2½in. by 2¼in. 2/10/ de

143 Another, of brown, carved with a conventionalised human mask, 1in. high. 25/

144 A small human figure, of dark green, ¾in. high.

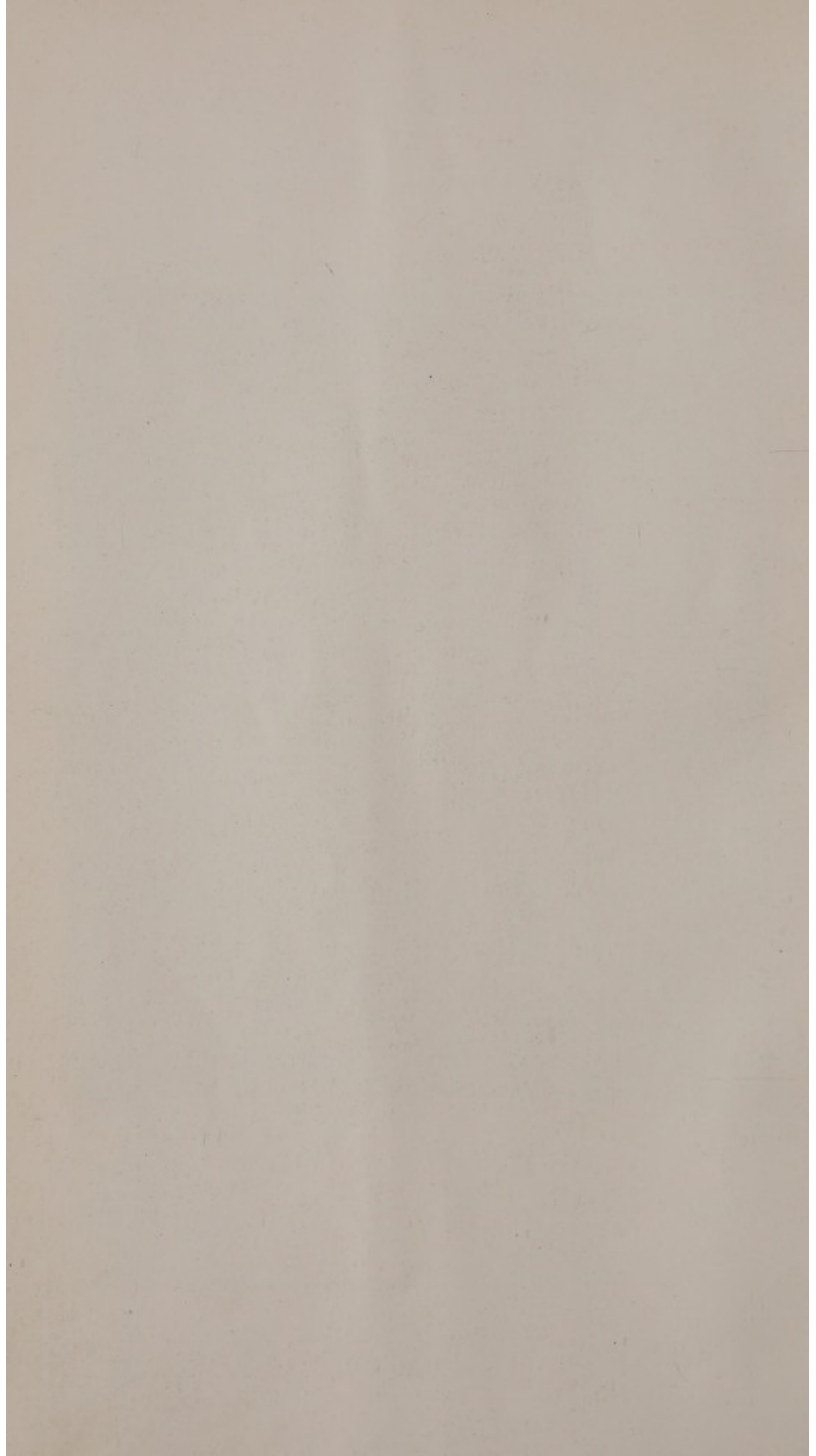
145 A plaque, of green and brown, carved with a human head in profile, 1½in. high.

146 Another, of green and brown, carved as an animal's head, 1in. wide. 20/

7/10/ 8. (147) An oblong plaque, of light green, carved with a conventionalised human head at the top, 2in. by 1½in.

8/1/ 8. (148) A NECKLACE, composed of forty-five beads of different colours and sizes, some with carved decoration.









165

158

## GOLD AND BRONZE ORNAMENTS.

6. 149] A small gold pendant, formed as a human figure, wearing head-dress, with ear ornament,  $1\frac{1}{2}$ in. high. *8/107 Fuller*
- 150 A GOLD PENDANT, cruciform, the top modelled as a demon deity with rhinoceros head, wearing head-dress with dragon ornament,  $2\frac{3}{8}$ in. high. *13/114 de*
- 151 A COPPER PENDANT, modelled as a demon deity, having a human body and animal head,  $3\frac{1}{4}$ in. high. *4/107*

## STONE CARVINGS.

- 152 A metate, oblong shape, in the form of a jaguar, carved with borders of key pattern, 14in. wide. *14-Beasley*
- 4/57 153 A small figure,  $5\frac{1}{4}$ in. high. *257 Fuller*
5. 154] A small metate, circular, in the form of a jaguar, carved with trellis ornament,  $10\frac{1}{4}$ in. wide.
- 11/11 155] A CIRCULAR SEAT, the border with pendant ornament carved with ten jaguar heads, and with pierced stand,  $8\frac{1}{4}$ in. high,  $10\frac{3}{4}$ in. diam.
4. 156] A figure of a jaguar cub,  $5\frac{1}{2}$ in. high,  $7\frac{1}{4}$ in. wide. *5/107 Beasley*  
See illustration.
- 157 A METATE, oval shape, in the form of a jaguar, with a border of small heads and carved with diaper pattern, 23in. wide. *18/11- Epstein*
7. 158] ANOTHER, of similar form, finely carved with diamond and trellis pattern, one leg with a circular device,  $20\frac{1}{4}$ in. wide. *10/80 Beasley*  
See illustration.
8. 159] A sculptured head,  $7\frac{3}{4}$ in. high.
- 160 A small metate, circular, carved with four jaguar heads, on eight legs, and with a border of trellis ornament,  $5\frac{1}{4}$ in. diam. *5/11- Weiner*
4. 161] A CIRCULAR SEAT, the border with five pendant figures of jaguars, and with pierced stand, 8in. high,  $11\frac{1}{2}$ in. diam. *4/107 Beasley*  
See illustration.
- 162 A metate, oval shape, in the form of a jaguar, carved with trellis ornament,  $16\frac{3}{4}$ in. wide. *10/11- Epstein*
4. 163] A SCULPTURED HEAD, with head-dress,  $5\frac{1}{4}$ in. high. *10/11- Epstein*  
See illustration.
5. 164] A circular seat, the border with thirteen pendant jaguar heads, the stand pierced, 7in. high,  $10\frac{1}{4}$ in. diam. *8/80 Beasley*
- 165 A METATE, oblong shape, in the form of a jaguar, the border with carved ornament,  $26\frac{1}{2}$ in. wide.  
See illustration.

FINIS.



## NOTICES.

---

MESSRS. PUTTICK & SIMPSON'S FORTHCOMING  
SALES BY AUCTION AT THEIR REYNOLDS GALLERIES,  
47, LEICESTER SQUARE, LONDON, W.C.2.

---

OLD ENGLISH SILVER, SHEFFIELD PLATE AND JEWELLERY, the property of a Gentleman, etc., December 1st.

COINS AND MEDALS, December 1st.

OLD ITALIAN VIOLINS AND OTHER MUSICAL INSTRUMENTS, December 1st and 15th.

OLD ENGLISH FURNITURE, PORCELAIN AND POTTERY, PEWTER AND EARLY SWORDS, the property of CAPT. R. A. COATES, F.S.A., of Springhaven, Berkhamstead, of the late FREDERICK ANDREWS, ESQ., of Lincoln (to be sold by order of his Trustees), etc., December 2nd.

POSTAGE STAMPS, the property of MAJOR W. DE LACY, etc., December 6th and 7th.

BOOKS AND MANUSCRIPTS, the property of a Gentleman, December 7th.

OLD ENGRAVINGS AND COLOUR PRINTS, DRAWINGS, etc., December 9th.

BAXTER AND LE BLOND COLOUR PRINTS, December 9th.

OLD ENGLISH FURNITURE, PORCELAIN AND POTTERY, OBJECTS OF ART AND PERSIAN RUGS, December 9th and 16th.

PICTURES BY OLD MASTERS, MODERN PICTURES AND DRAWINGS, the property of a Lady, etc., December 15th.

POSTAGE STAMPS, the property of the late A. HOPEWELL SMITH, ESQ., of Park Street, Grosvenor Square, W., etc., December 20th and 21st.



