

Sales catalogue: Puttick and Simpson

Publication/Creation

24th October 1930

Persistent URL

<https://wellcomecollection.org/works/zr27eqb2>

License and attribution

This work has been identified as being free of known restrictions under copyright law, including all related and neighbouring rights and is being made available under the Creative Commons, Public Domain Mark.

You can copy, modify, distribute and perform the work, even for commercial purposes, without asking permission.



Wellcome Collection
183 Euston Road
London NW1 2BE UK
T +44 (0)20 7611 8722
E library@wellcomecollection.org
<https://wellcomecollection.org>

Wm
Gerr:
Miss
Gerr:

Catalogue
OF
OLD ENGLISH FURNITURE
PORCELAIN
POTTERY
OBJECTS OF ART

Native Work from Hudson's Bay Territory
AND

PERSIAN CARPETS AND RUGS

W/Hmm/cm/sal/16/216

The property of the late J. SQUIERS, Esq.,
of Hartopp Grange, Four Oaks, Birmingham.

THE PROPERTY OF A LADY, &c.

Which will be Sold by Auction, by order of the Executors, &c., by

MESSRS. PUTTICK & SIMPSON

(W. G. HORSMAN AND N. H. ARCHER)

At their Reynolds Galleries, 47 Leicester Square, London, W.C.2

On Friday, October 24th, 1930

At half past One o'clock precisely

MAY BE VIEWED THE THREE DAYS PRIOR FROM 10 A.M. UNTIL 5.30 P.M.

Wm. 207. £64-1-0

CONDITIONS OF SALE.

I. The highest Bidder to be the Buyer; and if any dispute arise between two or more Bidders, the Lot so in dispute shall be immediately put up again and resold.

II. The Auctioneer shall regulate the bidding, and reserves the right to refuse a bidding, as he may think advisable.

III. In the case of Lots upon which there is a reserve, the Auctioneer shall have the right to bid on behalf of the Seller.

IV. The Purchasers to give in their Names and Places of Abode, and, if required, to pay down 1s. in the Pound, or more, in part of payment, or the whole of the Purchase Money, in default of which the Lot or Lots so purchased to be immediately put up again and resold.

V. The Lots to be taken away and paid for, whether genuine and authentic or not, with all faults and errors of description, at the Buyer's expense and risk within Two DAYS from the Sale; Messrs. PUTTICK & SIMPSON NOT BEING RESPONSIBLE FOR THE CORRECT DESCRIPTION, GENUINENESS, OR AUTHENTICITY OF, OR ANY FAULT OR DEFECT IN, ANY LOT, AND MAKING NO WARRANTY WHATEVER.

VI. To prevent inaccuracy in delivery, and inconvenience in the settlement of the Purchases, no Lot can on any account be removed during the time of Sale; and the remainder of the Purchase Money must absolutely be paid on the delivery.

VII. Upon failure of complying with the above Conditions, the Money deposited in part payment shall be forfeited; and all Lots left uncleared, in conformity with these Conditions, may be resold by public or private Sale without further notice; and the deficiency (if any) arising from such re-sale shall be made good by the defaulters at this Sale, together with all charges attending the same. This Condition is without prejudice to the right of the Auctioneers to enforce the contract made at this Sale without such re-sale, if they think fit, and to any other rights and remedies vested in them by law or otherwise.

Buyers who are unable to attend the Sale may have their Commissions faithfully executed by their obedient servants,

PUTTICK & SIMPSON.

Auction Rooms for the Sale of
All Fine Art Property,
LEICESTER SQUARE, LONDON, W.C.

Collections Catalogued, Arranged and Valued for the Probate and
Legacy Duty or for Public or Private Sale.

ESTABLISHED 1794.

BOYD

AUGUST 1911

Wm. Boyd

Lot	Amount	Lot	Amount
1	100.00	1	100.00
2	100.00	2	100.00
3	100.00	3	100.00
4	100.00	4	100.00
5	100.00	5	100.00
6	100.00	6	100.00
7	100.00	7	100.00
8	100.00	8	100.00
9	100.00	9	100.00
10	100.00	10	100.00
11	100.00	11	100.00
12	100.00	12	100.00
13	100.00	13	100.00
14	100.00	14	100.00
15	100.00	15	100.00
16	100.00	16	100.00
17	100.00	17	100.00
18	100.00	18	100.00
19	100.00	19	100.00
20	100.00	20	100.00
21	100.00	21	100.00
22	100.00	22	100.00
23	100.00	23	100.00
24	100.00	24	100.00
25	100.00	25	100.00
26	100.00	26	100.00
27	100.00	27	100.00
28	100.00	28	100.00
29	100.00	29	100.00
30	100.00	30	100.00
31	100.00	31	100.00
32	100.00	32	100.00
33	100.00	33	100.00
34	100.00	34	100.00
35	100.00	35	100.00
36	100.00	36	100.00
37	100.00	37	100.00
38	100.00	38	100.00
39	100.00	39	100.00
40	100.00	40	100.00
41	100.00	41	100.00
42	100.00	42	100.00
43	100.00	43	100.00
44	100.00	44	100.00
45	100.00	45	100.00
46	100.00	46	100.00
47	100.00	47	100.00
48	100.00	48	100.00
49	100.00	49	100.00
50	100.00	50	100.00
51	100.00	51	100.00
52	100.00	52	100.00
53	100.00	53	100.00
54	100.00	54	100.00
55	100.00	55	100.00
56	100.00	56	100.00
57	100.00	57	100.00
58	100.00	58	100.00
59	100.00	59	100.00
60	100.00	60	100.00
61	100.00	61	100.00
62	100.00	62	100.00
63	100.00	63	100.00
64	100.00	64	100.00
65	100.00	65	100.00
66	100.00	66	100.00
67	100.00	67	100.00
68	100.00	68	100.00
69	100.00	69	100.00
70	100.00	70	100.00
71	100.00	71	100.00
72	100.00	72	100.00
73	100.00	73	100.00
74	100.00	74	100.00
75	100.00	75	100.00
76	100.00	76	100.00
77	100.00	77	100.00
78	100.00	78	100.00
79	100.00	79	100.00
80	100.00	80	100.00
81	100.00	81	100.00
82	100.00	82	100.00
83	100.00	83	100.00
84	100.00	84	100.00
85	100.00	85	100.00
86	100.00	86	100.00
87	100.00	87	100.00
88	100.00	88	100.00
89	100.00	89	100.00
90	100.00	90	100.00
91	100.00	91	100.00
92	100.00	92	100.00
93	100.00	93	100.00
94	100.00	94	100.00
95	100.00	95	100.00
96	100.00	96	100.00
97	100.00	97	100.00
98	100.00	98	100.00
99	100.00	99	100.00
100	100.00	100	100.00

BUYER

AUCTIONEERS

Date

24/10/30

Lot

Amount

£

s.

d.

Lot

Amount

£

s.

d.

1	9	19	6				
3	4	4	.				
4	3	3	.				
5	11	11	.				
6	3	13	6				
7	4	14	6				
8	21	.	.				
75	5	15	6				

£ 64	1	.	
-----------------	---	---	--

FRIDAY, OCTOBER 24th, 1930.

AT HALF PAST ONE O'CLOCK PRECISELY.

THE PROPERTY OF A LADY.

NATIVE WORK OF THE INDIANS
OF HUDSON'S BAY TERRITORY.

COLLECTED BY THE LATE
MR. GEORGE ROBERTS,
of Hudson's Bay Co.,

from whom the present owner is descended.

- (9 1/2 in) 15. ① A North American shale pipe, pierced and carved with figures and animals, 18 1/2 in. long.
6. ② A North American medicine man's rattle, decorated in colours, representing birds and figures. *bone 10 in*
- (4 1/2 in) 6. ③ Another, formed of double masks, decorated in colours.
- (3 1/2 in) 6. ④ A North American boat shape bowl, formed as a bird, decorated in colours.
- (1 1/2 in) 10. ⑤ Five oblong wood bowls, with designs in colours. *size*
- (3 1/2 in) 6. ⑥ Two North American carved wood figures of natives.
- (4 1/2 in) 6. ⑦ A horn spoon, the handle carved as a figure, four others, and two tusks.
- (20 in) 15. ⑧ A case, containing bone models of an Esquimaux Kayak, figures of reindeer, birds and fish, a pair of embroidered gloves, two embroidered belts formed of quills, a basket work pouch, a pair of miniature snow shoes, and a slate pipe.

OLD PEWTER AND NEEDLEWORK.

THE PROPERTY OF A LADY.

- 9 Six old English pewter plates, *two with London marks*, $9\frac{1}{4}$ in. diam.
- 10 Two old English pewter circular dishes with moulded rims, $13\frac{1}{2}$ in. diam., and another with flat rim, $14\frac{3}{4}$ in. diam.
- 11 Two old English pewter circular dishes, with flat rims, $14\frac{3}{4}$ in. and $16\frac{1}{4}$ in. diam., and another, with moulded rim, 15in. diam., *one with London mark*.
- 12 Three old English pewter circular dishes with moulded rims, $16\frac{1}{2}$ in. diam.
- 13 An old English pewter circular dish, by RAWLEY, $16\frac{1}{2}$ in. diam., another, with moulded rim, $16\frac{1}{2}$ in. diam., and one with flat rim, $16\frac{1}{4}$ in. diam.
- 14 Three old English pewter circular dishes, with moulded rims, $16\frac{1}{2}$ in. diam.
- 15 An old English woolwork picture, a sportsman with gun and dog, *oval*, $12\frac{1}{2}$ in. by $9\frac{3}{4}$ in., a map of England and Wales, by Jane Richardson, 1796, 16in. by $11\frac{3}{4}$ in., and a sampler, by the same, 1795, $12\frac{3}{4}$ in. by $11\frac{3}{4}$ in., in gilt frames.
- 16 Two silk needlework pictures, bouquets of flowers, *English, XVIIIth century*, 13in. by $12\frac{3}{4}$ in., in gilt frames.
- 17 A small panel of silk needlework, a bird, insect and flowers, in colours and gold thread, *English, XVIIIth century*, $4\frac{3}{4}$ in. square, and two small needlework pictures, flowers on black ground, *XVIIIth century*, in gilt frames.

VARIOUS PROPERTIES.

OBJECTS OF ART.

- 18 A set of three old English wax plaquettes, portraits of George III., the Duke of York and the Duke of Clarence, in oval gilt frames.

- 19 An old miniature painting, a man driving goats, $9\frac{1}{4}$ in. by $6\frac{3}{4}$ in., in papier mâché frame, and an inlaid mahogany tea caddy, $5\frac{1}{2}$ in. wide.
- 20 A Stuart beadwork picture, Jacob and Rachel at the Well, $8\frac{3}{4}$ in. by $12\frac{1}{4}$ in., in gilt frame.
- 21 An old English woolwork picture, a group of fruit, 23in. by $17\frac{3}{4}$ in., in gilt frame.
- 22 An old English glass picture, Mars, Venus and Cupid, $12\frac{1}{2}$ in. by 10in., and two others, Spring and Summer, 10in. by $13\frac{1}{2}$ in., framed.
- 23 A pair of old carved wood figures, Charity and S. Martin, 28in. high.
- 24 A lantern clock, in brass case, the top pierced with shields and foliage, 16in. high.
- 25 A Sheraton mahogany bird cage, with inlaid borders, 21in. high, and a small toilet mirror, $14\frac{1}{2}$ in. wide.
- 26 An old English oblong casket, painted with a charioteer, 9in. wide, another, two inlaid letter racks, an hour glass, four needlework bell pulls, and seven brass mounts.
- 27 An old English papier-mâché tea tray, painted with flowers on red ground, $20\frac{1}{2}$ in. wide, a tea caddy, gilt with Chinese landscapes, 10in. wide, an oblong box, and a tray.
- 28 A Tonbridge straw-work casket, designed with a figure and flowers, the interior with a landscape, a man climbing a cocoanut palm, etc., and with trophies of the arts, 11in. wide.
- 29 An old English papier-mâché snuff box, printed with the Thames Tunnel, $3\frac{3}{4}$ in. diam., an agate tie-pin, carved with a bust, and a Chinese tortoiseshell snuff box, carved with figures, $3\frac{1}{4}$ in. diam.
- 30 A pair of old Flemish copper altar candlesticks, repoussé with fruit and flowers, on spirally fluted columns and octagonal bases, 18in. high.
- 31 A pair of old English brass candlesticks, with chased borders, on square bases, $8\frac{1}{2}$ in. high, another pair, plain, $9\frac{1}{2}$ in. high, and a pair of French candlesticks, with engraved and chased borders, $9\frac{3}{4}$ in. high.

- 32 A quantity of tooled leather, painted and gilt with foliage scrolls, flowers, etc., *Spanish, XVIIIth century.*
- 33 A latten ware alms dish, repoussé with a radiating design, and with inscription, $15\frac{1}{2}$ in. *diam.*
- 34 Another, with a radiating design, $11\frac{3}{4}$ in. *diam.*, and an octagonal deep dish, repoussé with fruit, etc., $12\frac{1}{2}$ in. *wide.*
- 35 A bracket clock of Louis XIV. design, in boule and tortoise-shell case, inlaid with foliage scrolls, and with chased ormolu mounts, the gilt dial with enamel numerals, by GAUDRON, à Paris, 21in. *high*, and bracket.
- 36 An old English needlework hand screen, with ivory handle, four beadwork mats, a bell pull, a needlework band, three lacquered trays, and another, of inlaid wood.
- 37 An Italian bronze group, Diana and a stag, 12in. *high*, and a figure of Apollo, 12in. *high.*
- 38 A pair of Italian gilt bronze classical figures, $7\frac{1}{2}$ in. *high.*
- 39 An Italian bronze figure of Mercury, on *pêche* marble pedestal and square base, 29in. *high.*
- 40 An Italian ebonised casket, mounted with ivory plaquettes, carved with figures, animals, etc., and with tortoiseshell borders, 14in. *wide.*

OLD POTTERY.

- 41 A Staffordshire group, Charity, $7\frac{1}{4}$ in. *high*, and a figure, Grief, $9\frac{1}{4}$ in. *high.*
- 42 A Staffordshire group, The Flight into Egypt, $10\frac{3}{4}$ in. *high*, another, The Widow, 11in. *high*, and a figure, Moses, Saturday Night, 8in. *high.*
- 43 A Sunderland bowl, printed with a portait of Sir Robert Peel, the Manchester Order of Oddfellows, etc., on copper lustre ground, 9in. *diam.*
- 44 A Sunderland jug, printed with a ship, "The Star of Tasmania," a view of Sunderland Bridge, etc., and with copper lustre borders, $7\frac{3}{4}$ in. *high.*

- 45 A Bristol Delft posset pot, painted with birds and flowers, in the Chinese taste, in colours, 5in. high. 3/280
- 46 An old Italian majolica plaque, The Madonna and Child, 16½in. by 13in., in ebonised frame.
- 47 Another, The Madonna, 12½in. by 10in., in ebonised frame. 380
- 48 A pair of Persian plaques, modelled with equestrian figures, birds and buildings, 12in. by 10¼in., in ebonised and gilt frames. 4/280
- 49 A Stone China dessert service, printed with pagodas and flowers in the Imari taste, comprising a centre dish, four shaped dishes, and twelve plates, 17 pieces.
- 50 A Strasbourg group, The Cobbler, 9in. high.

OLD ENGLISH PORCELAIN.

- 51 A pair of Coalport seaux, painted with groups of flowers and fruit, 5½in. high.
- 52 A pair of Chamberlain's Worcester ice pails, covers and liners, the borders painted with flowers in blue and gilt, 10½in. high.
- 53 A set of three Chamberlain's Worcester vases, painted with groups of flowers in panels on scale blue and gilt ground, 6in. and 8¼in. high.
- 54 A pair of old Derby biscuit groups, The Shoeblack and The Hairdresser, on circular bases, 7in. high, and a figure of a youth playing musical instruments, 7½in. high.
- 55 An old Derby group, Mars and Venus at the Shrine of Diana, 12½in. high, and a Bow figure, Asia, 11¼in. high.
- 56 Two old Crown Derby tea cups and saucers, painted with playing cards on black ground. 480
- 57 A pair of Chamberlain's Worcester vases and pierced covers, painted with exotic birds on river banks, in panels on salmon and gilt ground, 6¾in. high. 2/280
- 58 A Chamberlain's Worcester cylindrical mug, painted with a band of flowers, and gilt, 5in. high. 3/280

- 59 A Bow white vase, formed as a pomegranate, $4\frac{3}{4}$ in. high, a Leeds cream ware jug and cover, $8\frac{1}{2}$ in. high, and an oval dish, with pierced border, 10in. wide. 280
- 60 An old Worcester saucer dish, two tea cups, a coffee cup and three saucers, painted with views in panels, and with flowers and insects, the borders dark blue, turquoise and gilt, some with crescent mark. 580
- 61 An old Worcester tea cup and saucer, gilt with flower festoons on striped ruby and turquoise ground, square mark, and two tea cups, painted with exotic birds, etc., in panels on dark blue ground, one with W. mark. 280 Bell
- 62 A Chelsea figure of Diana with a hound, on scroll base, $8\frac{1}{2}$ in. high, and a Bow figure of a girl, anchor and dagger mark in red, $7\frac{1}{4}$ in. high. 480
- 63 A Swansea part tea and coffee service, painted with pink roses and gilt with foliage, comprising a milk jug, a bowl, two plates, five tea cups, eight coffee cups and twelve saucers, 29 pieces. 7 1/2 80 Rose
- 64 A Chamberlain's Worcester part tea and coffee service, the dark blue borders gilt with foliage, comprising a sugar basin and cover, a milk jug, a bowl, a teapot stand, two saucer dishes, eleven tea cups, eight coffee cups and ten saucers, 34 pieces. 980 Gillman
- 65 A Pinxton dessert service, painted with flowers, the borders modelled with scrolls in green, comprising six shaped dishes and twelve plates, 18 pieces. 980 David
- 66 Five old Worcester tea cups and saucers, painted with flowering plants in the Chinese taste in blue, crescent marks, four leaf dishes, a small vase and a bowl. 2 1/2 80
- 67 A Coalport dessert service, printed with flower festoons, and with buff and gilt borders, comprising a centre dish, seven compotiers and sixteen plates, 24 pieces. 9 1/2 80
- 68 An old Derby large vase and cover, painted with a view, and modelled and gilt with boys, masks and foliage scrolls, on diamond shape base, $26\frac{1}{2}$ in. high. 7 1/2 80 Falkland
- 69 A Russian biscuit group, The Fisherman, on chased ormolu base, $9\frac{1}{4}$ in. high. 1 1/2 80

CHINESE OBJECTS OF ART.

- 70 A pair of figures of elephants, of lavender grey jade, with splashes of green, $3\frac{1}{2}$ in. high, and wood stands. 2680
- 71 A pair of models of flowering trees, of jade, coral, etc., in Canton enamel quatrefoil jardinières, painted with flowers on blue ground, 19in. high. 580
- 72 A pair of Canton enamel vases, painted with emblems and formal flower branches on dark blue ground, on chased gilt metal bases, $14\frac{1}{4}$ in. high. Young 580
- 73 A carved wood standing figure of Kwan-yin holding a joey and a basket of flowers, lacquered and gilt, 39in. high. 41/280
- 74 An old Chinese mirror picture, immortals and attendants, 19in. by $13\frac{1}{4}$ in., in carved hardwood frame. 21/280
- 51/280 6. 75 A pair of Eastern wood plaques, carved and painted with masks and snakes, 29in. high. 21/280

THE PROPERTY OF THE LATE

J. SQUIERS, ESQ.,

of Hartopp Grange, Four Oaks, Birmingham.

(To be sold by order of the Executors.)

OBJECTS OF ART.

- 76 An Italian bronze head of a weeping child, by S. GATTO, on marble oblong base, 9in. high.
- 77 An Italian bronze figure of Silenus holding a wine cup, by CODINA, on marble square base, $15\frac{3}{4}$ in. high.
- 78 A bronze figure of a horse, by S. WILLIS GOOD, $11\frac{1}{2}$ in. high.
- 79 A bronze figure of an African snake charmer, on circular base, by E. DROUOT, $31\frac{1}{4}$ in. high. N. S. Special

- 80 A pair of bronze figures of Don Quixote and Mephistofeles, by J. GAUTIER, 29in. high.
- 81 A Japanese carved ivory figure of an artist at work, 3in. high, another of a man painting a figure, 3in. high, and a group of four wrestlers, 2½in. high.
- 82 A Japanese carved ivory figure of an old man yawning and stretching, 8½in. high.
- 83 A Japanese carved ivory group of a man and boy feeding chickens, 6½in. high.
- 84 Another of a man and boy, with chickens and a basket of fruit, 5¼in. high.
- 85 Another of a fisherman and boy seated on a bamboo frame, a basket of fish at their side, 7¾in. high.
- 86 A figure of a woodcutter, of carved ivory and wood, 7in. high, and a carved wood group of a warrior and dragon, 10½in. high.
- 87 A Japanese dagger, with ivory handle and sheath, carved with figures, 16½in. long.
- 88 A Japanese vase of gold lacquer and silver, decorated with a procession of figures in ivory, tinted mother-o'-pearl, etc., the neck encircled by a dragon, and with enamelled borders, 15¾in. high, in case.
- 89 A Chinese ceremonial sword of green jade, the hilt of white jade, inlaid with flowers in coloured stones, and with jewelled gilt metal guard, 20in. long.
- 90 A Canton enamel circular dish, painted with formal flower branches on pink ground, *Ch'ien-lung*, 16in. diam.
- 90A A bottle shape vase of yellow glass, 6½in. high, and a circular koro of brown glass, on three feet, 3¼in. high.
- 91 A Chinese shawl of red silk, embroidered with a peacock, other birds and flowers, in colours.
- 92 A Japanese bronze figure of a gardener filling his pipe, 12½in. high, another of a warrior, 12in. high, and an Indian bronze figure of a deity, 12in. high.
- 93 A Japanese bronze figure of an elephant, 8¾in. high, and wood stand.
- 94 A Japanese bronze kneeling figure of a demon, 16in. high, and wood stand.

- 95 A Japanese bronze figure of a man carrying a child, who supports a large basket, their robes with gilt decoration, 20 $\frac{3}{4}$ in. high, and lacquered wood stand.
- 96 A Japanese bronze figure of a girl carrying a basket of oysters, on rock base, 25 $\frac{1}{2}$ in. high, and wood stand.
- 97 A Japanese bronze figure of a tiger, 19in. high, and wood stand.
- 98 A pair of Japanese bronze figures of ostriches, 30 $\frac{1}{2}$ in. high, and wood stands.

OLD SPODE PORCELAIN, &c.

- 99 A toy watering can, painted with groups of flowers on stippled white and gold ground, *marked Spode 2009 in red*, 3 $\frac{3}{4}$ in. high, and a small oblong basket, painted and gilt with flowers, *marked Spode 3979 in red*, 4in. wide.
- 100 A vase, painted with a bouquet of flowers, and with a pink rose in a medallion, on dark blue and gilt scale ground, *marked 3811 in gold*, 4 $\frac{1}{2}$ in. high.
- 101 A scent bottle, painted with groups of flowers in panels, modelled with a bird and vase of flowers in white, and gilt with shells and foliage on dark blue ground, *marked Spode 1709 in red*, 3 $\frac{3}{4}$ in. high.
- 102 A PAIR OF SCENT BOTTLES AND STOPPERS, painted with groups of flowers, gilt with crests and modelled with birds and vases in white, on dark blue and gilt scale ground, *marked Spode 1166 in red*, 4 $\frac{1}{8}$ in. high.
- 103 An oblong inkstand, painted and gilt with flowers and fencing in the Imari taste, and with two ink vases and a pounce box, on gilt paw feet, *marked Spode 967 in red*, 8in. wide.
- 104 A small vase and cover, painted with groups of flowers, and gilt with crests on dark blue and gilt scale ground, *marked Spode 1166 in red*, 2in. high.
- 105 A pair of oval shape vases, painted with views of Rochester and Southampton in panels on dark blue ground, gilt with scrolls, *one vase marked Spode in red*, 4 $\frac{1}{2}$ in. high.

- 106 A LARGE VASE, painted with bouquets and sprays of flowers, and gilt with crests, on dark blue and gilt scale ground, the gilt handles terminating with masks, and with beaded borders, *marked Spode 1166 in red, 12in. high.*
- 107 A set of three vases and covers, painted with flowers in the Chinese taste, the borders with emblems in panels on *rouge de fer* diaper ground, and with gilt handles and borders, *marked Spode 868 in red, 11½in. and 14¾in. high.*
- 107A An oblong inkstand, painted with groups of flowers on dark blue and gilt scale pattern ground, *Chamberlain's Worcester in the manner of Spode, 11¾in. wide.*
- 108 Three old Worcester tea cups and saucers, painted with flower festoons and sprays in fan and circular panels on powder blue ground.
- 109 A Palissy oval dish, modelled with fish, insects, foliage, etc., on mottled ground, *14¼in. wide.*
- 110 A Chinese hardwood stand, with two shelves, and inlaid with marble, *32in. wide.*
- 111 A black lacquer show table, painted and gilt with figures, buildings and birds, and with rising glass top, on square tapered legs, *40in. wide.*
- 112 A mahogany show cabinet of Adam design, the cornice with carved border, and with glass panels and door, on turned legs, *57in. wide.*

VARIOUS PROPERTIES.

CHINESE PORCELAIN.

- 113 A cylindrical shape vase, enamelled with river scenes, figures in boats, emblems, etc., in panels on stippled green ground, and with diaper borders, *famille verte, 24½in. high.*
- 114 A vase with mirror black glaze, *Ch'ien-lung, 18in. high.*
- 115 A vase with beaker neck, painted and enamelled with formal peony branches, *famille verte, 16in. high.*

- 116 A celadon vase, modelled and painted with deer, cranes and fir trees in blue, *K'ang-hsi*, 9½in. high, wood cover and stand.
- 117 A vase, enamelled with pheasants, flowering trees and rocks, *famille verte*, 16¼in. high, and wood stand.
- 118 A pair of circular dishes, enamelled with flowers and bamboo, *Yung-chêng*, 9½in. diam., and wood stands, and a bottle shape vase, with a garden scene and figures, *famille rose*, 10¾in. high.
- 119 A pair of bottle shape vases, enamelled with river scenes and flowers in panels on powder blue ground, and with chased ormolu mounts, *famille verte*, *K'ang-hsi*, 8in. high.
- 120 A pair of bowls, enamelled with peony plants and rocks, *famille verte*, *K'ang-hsi*, 6in. diam.
- 121 A pair of Nankin vases, painted with river scenes and emblems in alternate panels, the lambrequin borders with formal flowers, *K'ang-hsi*, 9¼in. high.
- 122 Two Nankin vases, painted with garden scenes and langesen mask handles, *K'ang-hsi*, 10in. and 11in. high.
- 123 A bottle shape vase, painted with emblems and clouds in blue on yellow ground, *Ch'ien-lung*, 17in. high.
- 124 A teapot and cover, enamelled with a garden scene and figures, *famille rose*, *Ch'ien-lung*, 5in. high, and two tea cups and saucers, with baskets of flowers, *famille verte*, *K'ang-hsi*.
- 125 A Mandarin vase and cover, enamelled with garden scenes and figures in panels, and modelled with butterflies and flowers, *Ch'ien-lung*, 12½in. high.
- 126 A vase of celadon crackle, incised with formal flowers under the glaze, *Ming*, 9½in. high.
- 127 A vase of splashed celadon and *sang de bœuf*, 5¾in. high, another with yellow glaze, modelled as fruit, 8½in. high, and a standing figure of an immortal, 9½in. high.
- 128 A cylindrical wine vessel and cover, painted and enamelled with kylins in gardens in panels on *ruge de fer* scale ground, *famille verte*, *Ming*, 7½in. high.
- 129 A circular dish, enamelled with a vase of flowers and other emblems, *famille verte*, *K'ang-hsi*, 13¾in. diam.

- 130 A bottle shape vase, modelled and enamelled with emblems and trees in panels formed as characters, and with inscriptions on yellow ground, silver mounts, *famille verte*, K'ang-hsi, $8\frac{1}{4}$ in. high.
- 131 A pair of bottle shape vases of *sang de bœuf*, $8\frac{1}{4}$ in. high.
- 132 A bottle shape vase of apple green crackle, 7in. high, and another, coral colour, $9\frac{3}{4}$ in. high, and wood stands.
- 133 A saucer dish with yellow glaze, 8in. diam., and another, coral colour, 8in. diam., Yung-chêng.
- 134 A wine vessel, enamelled with shell fish and waves, *famille verte*, K'ang-hsi, $5\frac{1}{2}$ in. high.
- 135 A vase of liver colour, splashed with green, Yung-chêng, $5\frac{3}{4}$ in. high.
- 136 A pair of Nankin bottle shape vases, fluted and painted with figures and diaper pattern, $7\frac{1}{4}$ in. high.
- 137 A pair of hookah bottles, painted with horses and flowers in blue, in panels, Ming, $7\frac{3}{4}$ in. high.
- 138 A circular dish, enamelled with chrysanthemums, the border with birds, flowers and trees in panels, *famille verte*, K'ang-hsi, $10\frac{3}{4}$ in. diam.
- 139 A fluted tea cup and saucer, enamelled with flowers in panels on pink diaper ground, $4\frac{1}{4}$ in. high, and a tea cup and saucer, enamelled with seaport scenes in the European manner, on apple green ground, *famille rose*, Ch'ien-lung.
- 140 A teapot, cover and stand, enamelled with flowers in leaf panels on *rouge de fer* diaper ground, *famille rose*, Ch'ien-lung.
- 141 Four tea cups and two saucers of the same service, *famille rose*, Ch'ien-lung.
- 142 A pair of seated figures of cats, white and aubergine, $2\frac{3}{4}$ in. high, and a pair of white figures of cocks, on rock bases, $5\frac{3}{4}$ in. high.
- 143 A pair of square shape vases, enamelled with garden scenes and figures, *famille rose*, $11\frac{3}{4}$ in. high, and wood stands.
- 144 A figure of a lion, aubergine and green, 3in. high, a water vessel formed as a lotus leaf, 5in. wide, and an aubergine figure of a crab, forming a box and cover, 7in. wide.

- 145 A large jug and cover, enamelled with a gentleman and attendants in a garden, beside a pool, the border with birds and flowers on gold ground, *famille rose*, Ch'ien-lung, 16in. high.
- 146 A circular dish, enamelled with butterflies, the border with flowers and diaper pattern, *famille verte*, K'ang-hsi, 8in. diam.
- 147 A pair of plates, enamelled with interiors, with ladies and children, 9in. diam., and another, with a bird, flowers and diaper pattern, 9in. diam., *famille rose*, Ch'ien-lung.
- 148 A bowl, enamelled with a river scene and buildings, Ch'ien-lung, 9¼in. diam., and a saucer dish, painted and enamelled with a dragon and fish, *famille verte*, 6¼in. diam.
- 149 A pair of large vases, enamelled with warriors in combat, *famille rose*, 29in. high.

OLD ENGLISH FURNITURE.

- 150 An old English bracket clock, in ebonised case, with inlaid gilt metal borders and enamelled dial, by GRAHAM, London, 20in. high.
- 151 Another, in mahogany case, with similar inlay, and with carved border and enamelled dial, by WATTS, London, 18in. high.
- 152 Another, in mahogany case of Empire design, with gilt metal sphinx and moulded top, enamelled dial, by F. JENKINS, London, 21in. high.
- 153 A Sheraton mahogany toilet mirror, with inlaid borders and oval plate, 15in. wide, and two Dutch oak chairs, with shaped backs, on cabriole legs.
- 154 Four late Georgian mahogany footstools, with moulded borders and cabriole legs, 14in. wide.
- 155 A Sheraton mahogany toilet mirror, with reeded sides and two drawers, 18½in. wide.
- 156 A Georgian mirror, in gilt wood frame, 53in. by 17½in., and a mahogany prie-dieu chair.

- 157 A Sheraton mahogany music canterbury, on turned legs, 16in. wide, two music stands, and a stool, with needle-work seat.
- 158 Two Georgian mahogany small chests, with rising tops, 19½in. wide, and another, with marquetry panels.
- 159 A Georgian mahogany corner cabinet, enclosed by a pair of glass trellis doors, a drawer in the centre, panelled doors below, 39in. wide.
- 160 An old English bracket clock, in rosewood case, with inlaid brass ornament and enamelled dial, by JOSIAH EMERY, London, 18in. high.
- 161 Another, in mahogany case, with inlaid lines and enamelled dial, by J. THOMPSON, London, 17in. high.
- 162 Another, in mahogany case, with dome top and fluted corners, enamelled dial, by BOWEN, London, 18in. high.
- 163 A mahogany serpentine side table of Chippendale design, on square tapered and moulded legs, 59½in. wide.
- 164 A walnut chest of six drawers of Queen Anne design, with inlaid borders and fluted corners, on stand with three drawers, cabriole legs and claw and ball feet, 48in. wide.
- 165 A Georgian mahogany hanging corner cupboard, with inlaid lines, the architrave cornice with dental border, 33in. wide.
- 166 A set of four old English papier-mâché coffee tables, painted and gilt with fans, foliage, birds, etc., on baluster legs, 16in. to 22in. wide.
- 167 An old English hall clock, in mahogany case, with inlaid border, the hood with fluted columns and architrave top, the enamelled dial showing phases of the moon, by C. BAIRD, Carlisle, 87in. high.
- 168 A Georgian mahogany square chest of four drawers, 48½in. wide.
- 169 A mahogany table of Chippendale design, with tray top, on turned column and carved tripod, with claw and ball feet, 26½in. diam.
- 170 Another, larger, with tray top and carved tripod, 35½in. diam.
- 171 A mirror of Chippendale design, in gilt wood frame, pierced and carved with foliage scrolls, and surmounted by a bird, 52in. by 26in.

- 172 A Georgian mahogany book rack, with four shelves, $31\frac{1}{2}$ in. wide, and two others, smaller.
- 173 A Hepplewhite mahogany fire screen, with two folds, $42\frac{1}{2}$ in. high, a mahogany torchère, 47in. high, and a hanging bookcase, with glass door, $29\frac{1}{2}$ in. wide.
- 174 A Georgian mahogany small what-not, with three tiers, $14\frac{1}{2}$ in. wide, a mahogany coffee table with octagonal top, $15\frac{1}{2}$ in. wide, and another.
- 175 An old English oak small bureau, the fall-down front enclosing partitions, etc., four drawers below, 30in. wide.
- 176 An old English hall clock, in Chippendale mahogany case, the hood with arcaded top and fluted columns, the engraved and silvered dial showing phases of the moon, by DOLLY ROLLISON, Holton, 93in. high.
- 177 A Georgian mahogany semi-circular side table, with tambour folding front, on square tapered and fluted legs, $34\frac{1}{2}$ in. wide.
- 178 A QUEEN ANNE WALNUT KNEEHOLE WRITING TABLE, with inlaid feather pattern borders, and with six drawers and a cupboard in the recess, 30in. wide.
- 179 A Sheraton mahogany Pembroke table, with banded satinwood border, oval shaped top and a drawer, on square tapered legs, 38in. wide.
- 180 A Chippendale mahogany winged easy chair, on square legs and stretchers.
- 181 A Chippendale mahogany arm chair, with moulded sides, on square legs and stretchers.
- 182 A Sheraton mahogany elbow chair of Glastonbury form, with reeded frame and cane panels.
- 183 A Georgian mahogany Pembroke table, with a drawer, on square legs, $34\frac{1}{2}$ in. wide.
- 184 An old English oak cupboard, enclosed by a panelled door, $28\frac{1}{2}$ in. wide, and a mahogany small table, 24in. wide.
- 185 A Georgian mahogany bedside cupboard, with tray top and inlaid lines, on square tapered legs, 20in. wide.
- 186 A Georgian mahogany breakfast table, with oval folding top, on club legs, 45in. wide.

- 187 A SHERATON MAHOGANY SMALL WRITING TABLE, the tambour folding front enclosing a writing slide, small drawers and partitions, and with two drawers under and slides at the sides, on square tapered legs, 30½in. wide.
- 188 A JACOBEOAN WALNUT REFECTORY TABLE, carved with borders of conventional ornament and engraved with diamond pattern at the corners, on turned legs and stretchers, 31½in. by 92½in.
- 189 Two Georgian pierced brass fenders, 36in. and 44in. wide, a set of three engraved steel fire implements, and another set, of brass.
- 190 An old English circular convex mirror in gilt wood frame, carved with foliage and surmounted by an eagle, and with ball ornament and candle branches, 51in. by 43in.
- 191 A pair of Stuart walnut chairs, with shaped high backs, on baluster legs and stretchers, cane panels.
- 192 A Stuart walnut elbow chair, the high back carved with scrolls, on shaped legs and stretchers.
- 193 A Georgian mahogany square chest of five drawers, 44in. wide.
- 194 An old English winged easy chair, on walnut cabriole legs and stretchers.
- 195 A chiming hall clock, in inlaid mahogany case, with fluted columns, the silvered dial with gilt metal corner mounts and numerals, and showing phases of the moon, 103in. high.
- 196 An old English hall clock, in walnut case of Queen Anne design, and with silvered dial and gilt metal mounts, by MARTIN ELLWOOD, London, 82in. high.

THE PROPERTY OF A LADY.

- 197 A Sheraton mahogany small toilet mirror, with inlaid border and oval plate, 15in. wide.
- 198 A Sheraton mahogany toilet mirror, with bow front, 22in. wide, and a rosewood work cabinet, with pearl inlay, and with rising top and small drawers, 12in. wide.

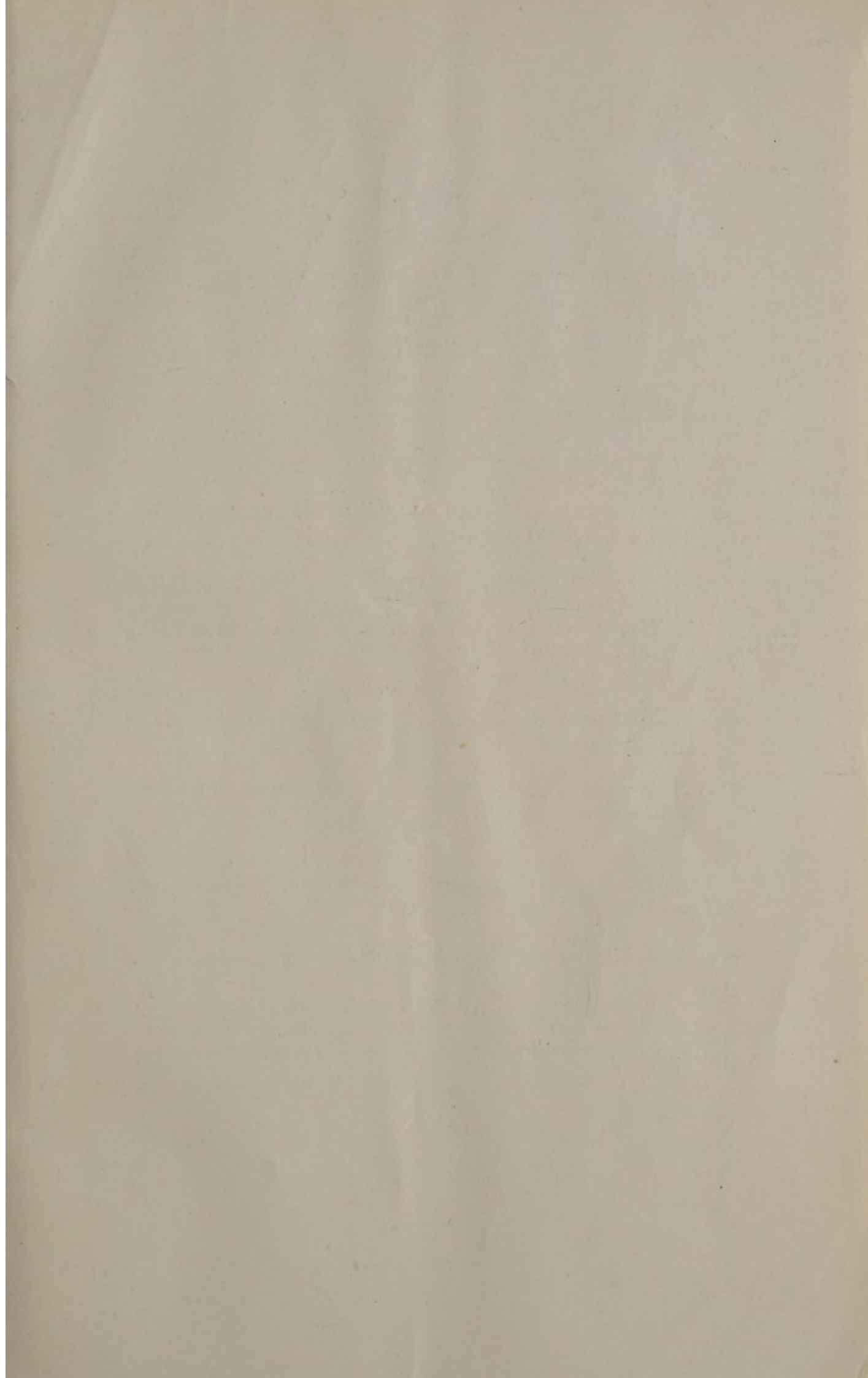
- 199 A pair of mahogany torchères of Chippendale design, with reeded and tapered columns, on carved tripod, with claw and ball feet, 52in. high.
 - 200 A Georgian mahogany chest of five drawers, with bow front, 42in. wide.
 - 201 A Georgian mahogany side table, semi-circular, 36½in. wide, and a Chippendale mahogany chair.
 - 202 A walnut dressing table of Queen Anne design, with three drawers, on cabriole legs and club feet, 30in. wide.
 - 203 A Georgian mahogany sofa table, with two drawers, on end standards and shaped and reeded legs, 59in. wide.
 - 204 A mahogany dining table of Sheraton design, with banded borders and rounded ends, on two turned columns and tripods, with reeded legs, and an extra leaf, 45in. by 76in.
-

PERSIAN CARPETS AND RUGS.

- 205 A rug, designed with conventional flowers and diamond panels on dark blue ground, the border with medallions and scrolls on red ground, 10ft. 2in. by 4ft. 9in.
- 206 Another, with a similar design on dark blue ground, and with red border, 11ft. 6in. by 5ft. 6in.
- 207 Another, designed with formal flowers and diamond panels on dark blue ground, the border with medallions, etc., on white ground, outlined with red, 11ft. 2in. by 5ft. 3in.
- 208 Another, with a similar design on dark blue ground, the border with branches on white ground, outlined with red, 12ft. 10in. by 4ft. 6in.
- 209 A rug, designed with conventional flower branches on dark blue ground, the border with flowers on white, blue and red grounds, 10ft. 9in. by 5ft. 5in.
- 210 A carpet, designed with flower branches and diamond panels on blue ground, the border with flowers, etc., on white, red and blue grounds, 15ft. 9in. by 7ft.

- 211 A rug, designed with flower branches, etc., in a red panel on blue and brown ground, the border with designs on white ground, 10ft. 3in. by 4ft. 10in.
- 212 Another, designed with conventional flowers in a red panel on blue ground, the border with medallions on cream ground, 10ft. 4in. by 4ft. 7in.
- 213 A small carpet, designed with conventional flowers and diamond medallions in a white panel on red ground, the border with branches on white and red grounds, 15ft. 3in. by 8ft. 6in.
- 214 Two Bokhara saddle cloths, designed with medallions and trellis pattern on red ground.
- 215 Two others, designed with diamond shape panels on red ground.
- 216 Two Bokhara small rugs, designed with medallions on red ground, and with blue borders.
- 217 Two others, designed with shaped medallions on red ground.
- 218 Two small rugs, designed with diamond panels of white on red ground.

FINIS.



NOTICES.

MESSRS. PUTTICK & SIMPSON'S FORTHCOMING
SALES BY AUCTION AT THEIR REYNOLDS GALLERIES,
47, LEICESTER SQUARE, LONDON, W.C.2.

OLD ENGLISH SILVER, SHEFFIELD PLATE AND JEWELLERY, the property of MRS. HARRISON, of Crofton Cottage, Stevenage, Herts., of the late J. PILLISCHER, ESQ., etc., October 23rd.

OLD ENGRAVINGS AND COLOUR PRINTS, MODERN ETCHINGS, DRAWINGS, ETC., October 24th.

FINE OLD ITALIAN VIOLINS, VIOLAS AND VIOLONCELLOS, the property of LADY KNAPP-FISHER, of Dean's Yard, Westminster, of the late TIVADAR NACHEZ, ESQ., of Wyndham Place, S.W., of R. E. WORSLEY, ESQ., of Old Forge, Horney Common, Uckfield, etc., October 30th.

COINS AND MEDALS, the property of MAJOR J. D. SHERWOOD, of 15, Park Lane, W., etc., October 31st.

OLD ENGLISH FURNITURE, PORCELAIN AND OBJECTS OF ART, October 31st.

POSTAGE STAMPS, the collection of Leeward Islands formed by G. H. ISITT, ESQ., Christ College, Brecon, November 4th and 5th.

BOOKS AND MANUSCRIPTS, November 5th and 6th.

OLD ENGLISH FURNITURE, CHINESE PORCELAIN, LOTTERY AND OBJECTS OF ART, the property of MRS. FRANK SARTORIS, of 51, South Street, Park Lane, W., etc., November 7th.