

## **Sales catalogue: Sotheby's**

### **Publication/Creation**

1 February 1935

### **Persistent URL**

<https://wellcomecollection.org/works/uzzptecr>

### **License and attribution**

This work has been identified as being free of known restrictions under copyright law, including all related and neighbouring rights and is being made available under the Creative Commons, Public Domain Mark.

You can copy, modify, distribute and perform the work, even for commercial purposes, without asking permission.



Wellcome Collection  
183 Euston Road  
London NW1 2BE UK  
T +44 (0)20 7611 8722  
E [library@wellcomecollection.org](mailto:library@wellcomecollection.org)  
<https://wellcomecollection.org>

WA/Hmm/cm/sal/20/1094

SOTHEBY & CO.

34 & 35, NEW BOND STREET, LONDON, W. (1).

CATALOGUE

OF

THE WELL-KNOWN COLLECTIONS

OF

OLD ENGLISH PORCELAIN

FURNITURE, ETC.

*formed by*

the Rev. Francis Sabage (*decd.*).

*of Eastry, Kent.*

[SOLD BY ORDER OF THE EXECUTORS]

Day of Sale

FRIDAY, the 1st of FEBRUARY,

1935

Illustrated Catalogue (4 plates) Price 1/6

TERMS OF SUBSCRIPTION FOR MESSRS. SOTHEBY'S  
CATALOGUES AND PRICE LISTS FOR ONE SEASON.

The Season opens in October and closes at the end of July.

(All Subscriptions include postage.)

PLAIN CATALOGUES.

	£	s.	d.
Antiquities .. .. .	0	1	6
Books, MSS. and Autograph Letters .. .. .	0	5	0
Coins and Medals .. .. .	0	1	6
Drawings and Pictures .. .. .	0	2	0
Engravings (Old) .. .. .	0	2	0
Etchings (Modern) .. .. .	0	2	0
Oriental MSS. and Miniatures .. .. .	0	1	0
Works of Art (including Armour, China, Furniture, Glass, Japanese Colour Prints and Works of Art, Jewellery, Miniatures, Silver, Textiles, etc.) .. .. .	0	5	0
	<hr/>		
	£1	0	0
	<hr/>		

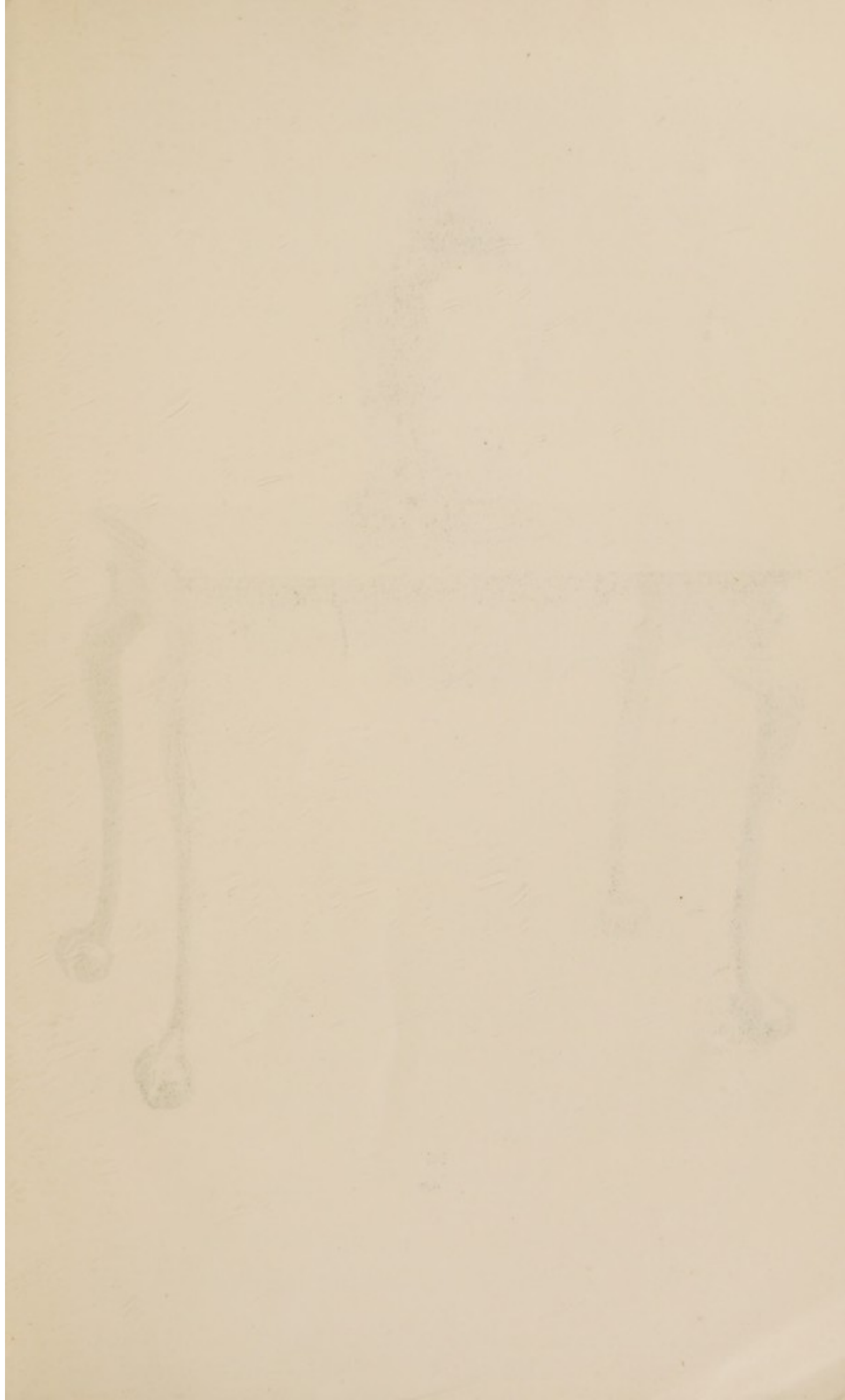
ILLUSTRATED CATALOGUES.

(To include Plain Copies where no Illustrated Catalogues are issued.)

	£	s.	d.
Antiquities .. .. .	0	5	0
Books, MSS. and Autograph Letters .. .. .	2	0	0
Coins and Medals .. .. .	0	5	0
Drawings and Pictures .. .. .	0	15	0
Engravings (Old) .. .. .	0	7	6
Etchings (Modern) .. .. .	0	2	6
Oriental MSS. and Miniatures .. .. .	0	5	0
Works of Art (including Armour, China, Furniture, Glass, Japanese Colour Prints and Works of Art, Jewellery, Miniatures, Silver, Textiles, etc.) .. .. .	1	0	0
	<hr/>		
	£5	0	0
	<hr/>		

PRINTED LISTS OF PRICES AND BUYERS' NAMES.

	£	s.	d.
Antiquities .. .. .	0	10	0
Books, MSS. and Autograph Letters .. .. .	5	5	0
Coins and Medals .. .. .	0	10	0
Drawings and Pictures .. .. .	1	15	0
Engravings (Old) .. .. .	1	15	0
Etchings (Modern) .. .. .	0	15	0
Oriental MSS. and Miniatures .. .. .	0	10	0
Works of Art (including Armour, China, Furniture, Glass, Japanese Colour Prints and Works of Art, Jewellery, Miniatures, Silver, Textiles, etc.) .. .. .	4	0	0
	<hr/>		
	£15	0	0
	<hr/>		





85

148

CATALOGUE  
OF  
THE WELL-KNOWN COLLECTIONS OF  
OLD ENGLISH PORCELAIN,  
FURNITURE, ETC.

*formed by*  
**The Rev. Francis Savage** (*decd.*)  
*of Eastry, Kent*

[SOLD BY ORDER OF THE EXECUTORS]

COMPRISING

BOW FIGURES OF HARLEQUIN AND COLUMBINE ;  
THE DRUMMER AND FIFER ; and THE COOKS ;  
AN UNKNOWN CHELSEA GROUP, TWICE MARKED WITH  
THE RED ANCHOR ;  
FINE CHIPPENDALE MAHOGANY TABLES, CHAIRS,  
A SETTEE, ETC. ;  
STUART OAK AND MARQUETRY FURNITURE ;  
SHERATON AND HEPPLEWHITE PIECES, ETC.

---

WHICH WILL BE SOLD BY AUCTION

BY MESSRS.

**SOTHEBY & CO.**

G. D. HOBSON, M.V.O.      F. W. WARRE, O.B.E., M.C.      C. G. DES GRAZ.  
C. V. PILKINGTON.

Auctioneers of Literary Property & Works illustrative of the Fine Arts.

AT THEIR LARGE GALLERIES, 34 & 35, NEW BOND STREET, W.1

On FRIDAY, the 1st of FEBRUARY, 1935

AT ONE O'CLOCK PRECISELY.

On view at least Two Days previous.

Catalogues may be had.

Illustrated Catalogues (4 Plates)—Price 1/6

## CONDITIONS OF SALE

---

- I. The highest bidder to be the buyer. If any dispute arise the Auctioneer shall have absolute discretion to settle it ; and to put any disputed lot up again.
- II. No person to advance less than 1s. ; above five pounds 5s., and so on in proportion.
- III. All lots are put up for sale subject (a) to any reserve price imposed by the seller and (b) to the right of the seller to bid either personally or else by any one person who may be the Auctioneer.
- IV. The purchasers to give in their names and places of abode, and if required, to pay down 10s. in the pound or more, in part payment of the purchase money ; in default of which the lot or lots purchased may be immediately put up again and re-sold.
- V. All lots are sold as shown with all faults, imperfections, and errors of description. Messrs. Sotheby & Co. act as agents ; they have full discretion to refuse any bidding or to withdraw any lot or lots from the sale without in either case giving any reason ; they are not responsible for errors of description or for genuineness or authenticity of any lot or for any fault or defect in it, and make no warranty whatever.
- VI. The lots to be taken away at the buyer's risk and expense, immediately after the conclusion of the sale ; in default of which Messrs. Sotheby & Co. will not hold themselves responsible if the same are lost, stolen, damaged or otherwise destroyed, but they will be left at the sole risk of the purchaser, and subject to a charge for warehousing. If, at the expiration of Two Days after the conclusion of the sale, the lots are not cleared or paid for, they may then be sold immediately, either publicly or by private treaty, without any notice being given to the defaulter.
- VII. Upon failure of the buyer to comply with any of the above conditions, the money deposited in part-payment shall be forfeited ; and the defaulter at this sale shall make good any loss arising from the re-sale, together with the charges and expenses in respect of both sales.

To prevent confusion no purchases can be claimed or removed during the sale.

---

### Messrs. SOTHEBY & Co.

are prepared to execute bids, and in addition to advise intending purchasers as far as possible, if requested by them to do so, without making any charge for either service. Lots will be procured as cheaply as is permitted by other bids or reserves, if any.

---

34 and 35, New Bond Street, London, W.1.

Telegraphic Address :  
"Abinitio, Wesdo, London."  
A.B.C. Code, 5th Edition.

Telephone : (3 lines)  
Mayfair 6682, 6683, 6684.

---

In sending Commissions this Catalogue may be referred to as "SHRUB."

---

COMMISSIONS SENT BY TELEPHONE ARE ACCEPTED AT THE SENDER'S RISK AND MUST BE CONFIRMED BY LETTER OR TELEGRAM.

CATALOGUE  
OF  
THE WELL-KNOWN COLLECTIONS OF  
OLD ENGLISH PORCELAIN,  
FURNITURE, ETC.

*formed by the*

REV. FRANCIS SAVAGE (DECD.) OF EASTRY, KENT

[SOLD BY ORDER OF THE EXECUTORS]

---

DAY OF SALE:

Friday, February 1st, 1935

---

OLD ENGLISH CUT GLASS

- 1 AN ENGRAVED GOBLET with straight-sided bowl, decorated with two hands holding a heart within an escutcheon, inscribed below, "*Corda fidelia*", on an inverted Silesian stem, star studded and terminating in a folded foot,  $8\frac{3}{8}$ in.
- 2 A Wine Glass with bell bowl on an incised twist stem,  $6\frac{1}{4}$ in.; a Cordial Glass, with drawn trumpet bowl and plain stem,  $6\frac{1}{2}$ in.; four other Wine Glasses with plain stems; and eight others 14
- 3 A WINE GLASS with engraved ogee bowl, on a swelling knob air-twist stem,  $5\frac{7}{8}$ in.; and four Wine Glasses with opaque stems 5
- 4 AN INSCRIBED AND DATED CORDIAL GLASS with small ogee bowl, on a fine ribbon opaque twist stem and conical foot, the bowl engraved with grapes and vine leaves, and inscribed "SAMPSON AUSTIN, 1759", 6in.; *an interesting glass in fine state*
- 5 A CELERY GLASS, cut with printies and strawberry diamonds,  $8\frac{1}{2}$ in.; a circular Dish with fan-cut rim,  $9\frac{1}{2}$ in.; a pair of oval Dishes,  $9\frac{1}{2}$ in.; and two pairs of small cut Salts 8
- 6 A PAIR OF CUT CANDELABRA, each with two branches, hung with large faceted and oblong-cut drops, on vase-shaped stems,  $17\frac{1}{2}$ in.; and a pair of cut Vases,  $9\frac{1}{2}$ in. 4



- 7 AN ADAM TABLE LUSTRE with square blue and gilt ormolu base, with curved branches, spike finial and festoons of drops, 26in.

### ENGLISH POTTERY

- 8 A pair of Wedgwood agate Vases with bacchic masks and gilt festoons, 9in. ; an interesting Staffordshire blue and white and green leaf moulded Urn, 16in. ; a Wedgwood Bowl ; a pair of lustre Goblets ; a Leeds Teapot ; and an oval Basket and Dish  
10
- 9 A Staffordshire Group of the Vicar and Moses, returning from a carouse, 9in. ; a Figure of a hurdy-gurdy Player ; a Tythe Pig Group, 8in. ; and another Group, 8in. 4
- \*\* For first-named cf. " Staffordshire Pottery Figures ", by Herbert Read, plate 38.
- 10 A pair of Staffordshire pottery Figures of the Welch Tailor and his Wife riding on goats, on green bases, after the Meissen model of Count Bruhl's tailor, 6½in. ; a pair of small Figures of Deer, 6in. ; another pair of Sheep ; a circular Wedgwood blue Plaque ; and a small Vase and Cover 9
- 11 MASON'S IRONSTONE. A decorative blue and gold Set, comprising :—two large Pot-pourri Bowls and Covers, a set of three Vases, a pair of Jars with perforated Covers, a Castor, and a pair of hexagonal Pastille Bowls 10

### ENGLISH PORCELAIN

#### CAUGHLEY AND WORCESTER PORCELAIN WITH BLUE AND WHITE DECORATION

- 12 A Worcester Cabbage Jug with mask moulded spout, painted with sprays of flowers, 8¾in. ; a pair of Leaf Dishes, 10in. ; and another larger, 12¾in., *crescent marks* 4
- 13 A set of three Worcester Leaf Dishes ; a pear-shaped Jug with mask spout ; a Vase, similarly decorated ; and an oval Dish with roses, within a moulded basket-work panel, 12in., *crescent marks* 6

- 14 A Caughley Coffee Pot, printed with cormorant fishing,  $8\frac{5}{8}$ in.; a small moulded Cabbage Jug, with the same subject,  $5\frac{1}{2}$ in.; a Teapot Stand; two Cups and Saucers; and a pair of Knife Rests, *mark S* 10
- 15 A good Caughley cylindrical Mug, printed with Chinese lady and child and fishing scene, 4in., *S mark*; a small Jug, 5in.; a Teapoy, 4in.; two Bowls and two Cups and Saucers, with pheasant pattern; a Coffee Can; a Teapot Stand; and a Cream Jug 13
- 16 A pair of Worcester Sauceboats with simple sprays of flowers and fluted body; a Cabbage-leaf Jug,  $7\frac{3}{4}$ in.; five Cups and Saucers; and a Milk Jug and Cover 15
- 17 A Worcester Toy Teapot, painted with flowers,  $3\frac{3}{4}$ in., *script W mark*; seven Toy Tea-cups; five small Pickle Dishes; a Soap Dish; a Mustard Pot; and a Cream Boat 18
- 18 A Worcester oval Butter Cooler and Stand, with rustic handles; a Milk Jug painted with flowers and butterfly, with mask spout,  $5\frac{1}{2}$ in.; a moulded Teapot; and a Colander 7
- 18A A Worcester Coffee Pot and Cover with lambrequin borders, 7in.; a circular Butter Cooler, Cover and Stand, 6in.; a Junket Dish; and a Bowl with feather moulding,  $7\frac{1}{2}$ in. 7
- 19 A Worcester Tureen, Cover and Stand, painted with flowers within gadroon borders, and with shell handles, 11in.; a Cabbage Jug with mask spout, printed with a parrot pecking at fruit, 8in.; and a deep oval Dish with fruit and flowers, *script W mark* 5
- 20 A Teapot and Cover with Chinese figures,  $5\frac{1}{2}$ in.; a Teapot Stand; nine Cups; a Cream Jug, Sugar Basin and Cover; a small Bowl; and a large pear-shaped Ewer,  $8\frac{1}{4}$ in., *script W mark* 17
- 21 A pair of Worcester Cornucopiae, decorated with flowering prunus trees, 12in., *cross swords mark*; a "Boughpot",  $8\frac{1}{2}$ in.; and a good cylindrical Mug, painted with flowers and butterflies,  $5\frac{3}{4}$ in., *crescent mark* 4
- 22 A Worcester part Service, of fluted Coffee Pot and Cover, Teapot and Cover, Bowl, Sugar Basin, and two Cups and Saucers, *crescent and workman's marks*; an oval Basket Dish; and a Ewer with Chinese figures and river scenes,  $9\frac{1}{2}$ in., *crescent mark* 12

- 23 A Worcester bell-shaped Mug with a parrot pecking at grapes on the front and butterflies at the sides,  $4\frac{1}{2}$ in. ; an oval Dish ; a pair of small Plates with peacock feather pattern, 6in. and  $11\frac{1}{2}$ in. ; and a Dish with rare Chinese triple *fang sheng* mark 4
- 24 A PAIR OF WORCESTER OVAL BASKETS ; a pair of circular Baskets, 9in. ; and another larger, 7in., all with perforated borders, painted with bunches of fruit ; and four pairs of Plates, similarly decorated, *crescent mark* 13
- 25 A PAIR OF WORCESTER BASKETS, COVERS AND STANDS, painted with flowers and fruit, the covers perforated and with rustic handles,  $10\frac{1}{2}$ in., *crescent mark* 6
- 26 A PAIR OF WORCESTER VASES of large hexagonal form, painted with vertical panels of flowering plants and exotic birds, the covers and shoulders with reserved vignettes on floral ground, repaired, 16in., *TF mark* ; wood stands 6

## WORCESTER PORCELAIN

### DECORATED IN COLOURS

- 27 A WORCESTER CREAM JUG of early silver pattern, enamelled with Chinese figures and exotic birds, 3in. ; a Teapoy with claret and gold borders and bunches of fruit,  $4\frac{3}{4}$ in. ; a Cream Jug with flowers,  $3\frac{1}{4}$ in. ; a Chinese Teapot, decorated in England, 5in. ; and another later Worcester Teapot,  $4\frac{1}{2}$ in. 7
- 28 A WORCESTER TEAPOY with scale blue ground and exotic birds and chrysanthemums, 7in. ; a Tea-cup and Saucer with chrysanthemum pattern ; and another with flowers and radiating panels in blue, decorated with red "mons", *seal marks* 5
- 29 A WORCESTER TUREEN of lobate oval form, with rustic handle and scale blue ground, decorated with exotic birds within blue panels, cover repaired,  $6\frac{1}{4}$ in. ; a Tea-cup, Coffee Cup and Saucer of similar pattern ; and an extra Coffee Cup, similar, *seal marks* 6
- 30 A WORCESTER BOWL AND COVER, with scale blue ground and reserved panels of old English flowers within gilt borders, flower knop and double handles, 5in. ; and three Cups and Saucers with Japan and floral patterns, *crescent and seal marks* 8

- 31 A PAIR OF WORCESTER PLATES of fine quality, decorated with reserved panels of old English flowers within gilt rococo panels,  $8\frac{3}{4}$ in., seal marks 2
- 32 ANOTHER PAIR OF PLATES, similar but slightly smaller,  $8\frac{1}{2}$ in., seal marks 2
- 33 A WORCESTER BASKET with yellow ground exterior, perforated, encrusted with flowers, moulded with rustic handles and painted in the interior with a reserved panel of old English flowers on a scale blue ground, 7in., seal mark; and a pair of Leaf Dishes, somewhat similarly decorated,  $7\frac{1}{2}$ in., script W mark 3

#### LOWESTOFT, LIVERPOOL, BRISTOL AND DERBY

- 34 A pair of Lowestoft blue and white Plates, with a man fishing from a terrace garden, another watching him, 9in.; a small Lowestoft Teapot with Worcester Cover,  $4\frac{1}{4}$ in.; a Cream Boat; a Liverpool Coffee Cup; a Liverpool Toy Cup; and a Leeds Cream Jug, painter's numeral 6 8
- 35 A PAIR OF LOWESTOFT PLATES of small size, with a Chinese lady holding an umbrella, in a fenced garden, diaper borders,  $7\frac{3}{4}$ in.; and another pair with a fisherman crossing a bridge, rare,  $7\frac{1}{2}$ in., painter's numerals 8 and 16 4
- 36 A Lowestoft Jug with floral and dentate moulding round shoulders and base, reserved panels round the neck, painted with flowers and butterflies in blue, strong loop handle, painter's numeral 5
- 37 A Bristol Plate painted with festoons in green; a Cream Jug; a small Cup and Saucer painted with flowers; a Lowestoft Cream Boat; a Lowestoft Cream Jug; and two other pieces 8
- 38 A Derby perforated Beaker, moulded with fruit and masks, and painted with butterflies, 10in.; a pair of Flower Vases with perforated tops,  $4\frac{1}{4}$ in.; a campana-shaped Vase with reserved panels of baskets of flowers on a blue ground,  $7\frac{1}{2}$ in.; and a circular Tureen, Cover and Stand with Japan pattern 10
- 39 An early Derby blue and white Plate, with Chinese landscape and lappet border, pitted glaze, moony paste,  $8\frac{1}{2}$ in.; a pair of small Sauceboats painted with flowers, brown edge; a small Mug with gilt decoration,  $3\frac{1}{4}$ in.; and two Cups and Saucers 8

- 40 A Derby Figure of a Girl with a basket of grapes, 6in. ; a Cupid Candlestick Base, 5½in. ; a Pug Dog ; a pair of Lambs ; and a pair of Sheep 7
- 41 A Derby Figure of Neptune with dolphin, on shell-encrusted base, 9¾in. ; and a Figure of Minerva in flowered robes, helmet, with shield and owl at her side, 10¼in. 2
- 42 A pair of decorative late Derby Figures of a Lady and Gallant with an apron full of flowers and a basket of fruit, in rich costumes, 7½in. ; and a Figure of a Boy holding a cock, 7in. 3
- 43 A pair of Derby Candlesticks with flowered tree trunks and figures of Mars, Venus and Cupid, standing on flowered bases with rococo scrolls, 10½in. 2
- 44 A Derby Figure of Diana in puce flowered robes, a red girdle round her waist, a quiver of arrows at her back and a hound at her feet, on a large flowered base, 10¾in.
- 45 A Chelsea-Derby Figure of Britannia in plumed helmet, gilt cuirass and blue cloak, a lion with trophies of war at her feet, 10½in.

## BOW AND CHELSEA

- 46 A pair of Bow octagonal powder-blue Plates with Chinese river scenes in reserved panels, 7½in. ; a small blue and white oblong octagonal Meat Dish, 9½in. ; and a white Tea-cup, Coffee Cup and Saucer with prunus decoration in relief 6
- 47 Two good quality Chelsea Plates, painted with roses, butterflies, parsnips, mushrooms and currants, within brown edge borders, 9½in., red anchor marks 2
- 48 A pair of fine Chelsea Plates with knurled gilt and blue borders, superbly decorated with aquatic and exotic birds and butterflies in colours, 8½in., gold anchor marks 2
- 49 A Chelsea Vase of lobed form with gilt double handles, painted with large exotic birds and fruiting branches, in colours within gilt borders, 13in., gold anchor period 2
- 50 A PAIR OF BOW FIGURES of small Birds, preening themselves on tree trunks, in various colours, 3½in. ; and a pair of small Cats, faulty, 2½in. 4

- 51 A PAIR OF CHELSEA FIGURES, of a Lady and Gallant seated, emblematic of spring and autumn, with a bunch of flowers, and a basket of grapes,  $5\frac{1}{2}$ in., *gold anchor marks*; and a Bow Figure of a Shepherdess,  $6\frac{1}{2}$ in., *anchor and dagger mark in red* 3
- 52 A CHELSEA FIGURE OF A SHEPHERD, standing against a bosage background fitted for a candlestick, in richly flowered coat, white vest, blue breeches, playing a clarionette, a dog at his feet,  $8\frac{1}{2}$ in., *gold anchor period*
- 53 A BOW CANDLESTICK in the form of a Boy, one of the "New Dancers," against a flowering may bush background, on blue and gold scroll-work base, 11in.; and another of a seated Turkish Lady, holding a shell dish at her side, after the Meissen model by Kandler,  $8\frac{1}{4}$ in. 2
- \*\* For first see Hurlbutt, pl. 45, for second see Schreiber Cat., vol. 1, pl. 1, fig. 50.
- 54 A BOW FIGURE OF A NUN, seated, with blue bound open book, black puce-lined hood, drab dress, on rococo base,  $7\frac{1}{2}$ in.; and another Figure of Minerva, in plumed helmet and brightly coloured costume,  $8\frac{1}{2}$ in., *mark anchor and dagger in red* 2
- 55 A FINE BOW FIGURE OF APOLLO, lightly draped in yellow flowered cloak, playing a lyre, a torch at his feet,  $7\frac{3}{4}$ in.; and another of Mercury with caduceus wand in similar flowered cloak, both on raised scroll-work bases,  $7\frac{3}{4}$ in. 2
- 56 A PAIR OF BOW FIGURES OF HARLEQUIN AND COLUMBINE, in typical brightly coloured costumes, copied and adapted from the Meissen model by Kandler, on perforated blue and gilt scroll-work bases, 7in., *mark anchor and dagger in red*
- \*\* John Bowcocke in his memorandum book refers to "harliquin" and "columbine".
- 57 A FINE CHELSEA GROUP of two Figures, seated, the lady with a basket of grapes at her side, holding up a bunch at which she is looking, the man's left arm extended and his hand resting on her shoulder, the right holding a goblet, on his back a flask, the whole in pleasant soft colours on a rococo gilt, blue and flowered base, 8in., *twice marked with small and large red anchor*

\*\* No other example of this rare group appears to be recorded.

[See ILLUSTRATION]

58 A PAIR OF IMPORTANT BOW FIGURES OF THE DRUMMER AND FIFER, both in puce coats and plumed hats, flowered waistcoats, the former in blue flowered breeches, stockings and shoes, through which his toes are peeping, the fifer in striped breeches and white gaiters, both on slightly rococo bases, 10½in.

\*\* A similar figure of the drummer in the collection of Mrs. Radford is illustrated by William King in "English Porcelain Figures," p. 14. See also Schreiber, pl. 4, No. 84, and Church, figs. 20 and 21.

[See ILLUSTRATION]

59 A PAIR OF VERY FINE BOW FIGURES OF THE COOKS, the man in turban-like head-dress, puce flowered coat, lined with turquoise, white apron and yellow breeches, the lady in long blue lined puce cloak, mauve and yellow bodice, pink and yellow flowered and striped skirt, both holding dishes with poultry and a leg of mutton, flat bases, 6¾in., rare

\*\* A similar pair of figures in the collection of Mrs. Radford is illustrated by William King in "English Porcelain Figures", pl. 7. Bowccke in the memorandum cited above, refers to figures of cooks in 1756.

[See ILLUSTRATION]

#### CONTINENTAL PORCELAIN AND FAIENCE

60 A MEISSEN COFFEE POT, painted with flowers, 9½in. ; two Meissen Cups and Saucers, with Chinoiserie after Herold, in colours, within elaborate borders ; a pair of Loosdrecht Cups and Saucers with ribbon ties ; a Venice Cup and Saucer ; and a small Figure 13

61 A PAIR OF MEISSEN FIGURES of seated Ladies, with black head-dresses, in flowered bodices, one with blue and yellow striped skirt, the other with green and pink skirt and yellow apron, holding oval baskets on their knees, 7¾in. 2

62 A Hispano-Moresque lustred small Vase with double handles, 7¼in. ; a Doccia Coffee Pot and Cover, with a landscape in pink camaieu, 8½in. ; a Palissy-ware Bottle with masks, lizards and frogs in relief on a mottled ground, 9½in. ; and a Bellarmine Jug 4



58



59



57



59



58





- 63 A Nevers Jardinière with rope twisted handles, in Chinese taste, 8in. ; a Portuguese faience Dish with floral designs, 14 $\frac{3}{4}$ in. ; a Moorish covered Bowl and a Dish ; and four other pieces 8
- 64 A pair of Delft Vases and Covers ; a pair of Beakers, decorated with landscapes in blue, 13in. ; and three other Vases with Covers 12
- 65 Four Delft Vases and Covers, decorated with figure subjects, birds and river scenes, 15in. ; and a Vase and Cover of oviform shape, 11in. 10
- 66 A Delft Bowl with flowers in polychrome ; another in blue and white, 10in. ; a Dutch Delft Dish with close floral pattern, 12in. ; a Castor ; and four Vases 9
- 67 An octagonal Delft Jar with vertical panels of mimosa sprays and baskets of flowers, 10 $\frac{3}{4}$ in. ; another of oviform shape, brilliantly painted with flowers and birds, 11 $\frac{1}{2}$ in. ; three blue and white Vases ; and a " clobbered " Vase 6
- 68 RHODIAN. A Turkish faience Dish, enamelled with flowers, within black amonite scroll borders, 12in. ; and two others, 10in., 16/17th Century 3

## ORIENTAL PORCELAIN

## WITH BLUE AND WHITE DECORATION

- 69 A Chinese porcelain blue and white Dish of lobe form, with a medallion of figures in the centre, 13 $\frac{1}{2}$ in. ; a pair of octagonal Plates, 8 $\frac{1}{2}$ in. ; and sixteen other Plates ; *K'ang Hsi* 19
- 70 A pair of quadrangular Bottles painted with vases of flowers and birds on flowering boughs, 7 $\frac{3}{4}$ in. ; another with vertical panels of flowers, symbolic of the four seasons, 7 $\frac{3}{4}$ in. ; a pair of Plates, 8 $\frac{1}{2}$ in. ; and five others ; *K'ang Hsi* 10
- 71 A pair of oviform fluted Jars, decorated with medallions of flowers, 7 $\frac{3}{4}$ in., *Ai Yeh* mark, wood stands and covers ; and a large beaker-shaped Vase, decorated with shan shui pattern, 18in., *fang sheng* ; *K'ang Hsi* 7
- 72 A blue and white Ewer with loop handle and oviform body, decorated with *shan shui* subjects, 9in. ; a small Vase and Cover, 8in. ; a leaf Tureen and Cover ; two *hua shih* soft paste Vases, decorated with phoenix and landscape ; and a pair of double gourd powder-blue Vases, 7 $\frac{1}{2}$ in. ; 18th Century

- 73 A pair of good quality Vases of pear shape with garlic mouths, decorated with an archaic leaf design,  $8\frac{1}{2}$ in. ; and a Garniture of two Vases and two Beakers, closely decorated with flowering peonies, 10in. ; *K'ang Hsi* 8
- 74 A PAIR OF BOTTLES of brilliant quality, the pear-shaped bodies and tubular necks decorated with utensils, jui-shaped lappets and stiff leaves, 10in. ; and another fine quality Bottle with "clobbered" decoration, 9in., *hua mark* ; *K'ang Hsi* 3

## ENAMEL DECORATION

- 75 A pair of "famille rose" Vases with tobacco leaf pattern, 7in. ; a pair of oval Salts of the same pattern,  $3\frac{1}{2}$ in. ; and five other pieces ; *Ch'ien Lung* 9
- 76 A "famille rose" Bowl, decorated with mandarin figures on red and black diaper ground, 10in. ; two other Bowls of similar size ; two others, smaller ; four Plates ; and a small Dish ; *Ch'ien Lung* 10
- 77 A Canton enamel covered Cup and Saucer ; a porcelain Bowl with ormolu mounts ; two mother-o'-pearl Snuffboxes ; and a bronze Bowl with dragons and fret ornament, 6in., *Hsuan Te mark* 6
- 78 A "famille rose" Figure of Kwan Yin in harlequin robes, on a lotus base, 9in. ; a "blanc-de-chine" Figure of the same Goddess, 9in. ; two Fukien Cups ; a pair of "famille rose" flower Holders ; an oviform Jar ; and two other pieces 9
- 79 A pair of large "famille rose" Vases, decorated with figure subjects, 17in. ; another with landscapes and figures, 18in. ; a "clobbered" Vase and Cover, 16in. ; and a Wan Li Vase and Cover, 15in. ; wood stands 10
- 80 A blue glazed Vase with gilt decoration and figures and flowering trees, 15in. ; and a pair of powder-blue Vases with reserved panels of figures, 13in. ; wood stands 7
- 81 A pair of Kylins with green and orange glazes on oblong bases, 8in. ; a "famille verte" Bowl,  $6\frac{3}{4}$ in. ; a seated Figure of a Deity, 10in. ; two Plates ; a Teapot ; and a "famille rose" egg-shell Cup and Saucer 9

- 82 Two decorative "famille verte" Dishes, with flowers and birds, 15in., *K'ang Hsi*; ten fine Soup Plates, 9in., *Ch'ien Lung*; three Imari Dishes; and a covered Bowl 17
- 83 A fine "famille rose" Teapot and Cover with moulded twig and leaf decoration, painted with exotic birds, 4in.; a Mug, enamelled with fish, 5in., *Ch'ien Lung*; a "famille verte" Brush Pot, 5½in., *K'ang Hsi*; and a decorative Bowl with blue and white interior and "famille rose" exterior, 6¾in.; *Kuang Hsu* 5
- 84 A "FAMILLE VERTE" DISH of saucer shape, painted with a fish bowl and a bird in a cage, at which a cat is looking, within diaper borders, 10¾in.; and another "famille verte" Saucer Dish with "rouge-de-fer" decoration, 10½in.; *K'ang Hsi* 2
- 85 A PAIR OF VASES and Covers of large size, decorated with reserved panels of figure subjects and flowers, on a blue ground, gilt with cracked-ice and prunus decoration, the covers surmounted by kyilins, 25in.; *Ch'ien Lung*; wood stands 6

[See FRONTISPIECE]

#### METAL WORK, CLOCKS, ETC.

- 86 A Dutch 18th Century brass Tobacco Box, with a figure of an angel and a bust on the reverse; another, dated 1744, with emblems of the Crucifixion; an enamel Snuffbox; a papier maché Snuffbox; and an English horn and inlaid ivory Snuffbox, dated I.B. 1687 5
- 87 A Nuremburg brass Alms Dish with repoussé centre, 16½in.; a brass Jardinière, 9¼in.; four Eastern brass Dishes; and five other pieces 11
- 88 A fine Empire Musical Work Box, with fitted interior, in the form of a piano, with letter, 11¾in.; a tortoiseshell Tea Caddy inlaid with ivory, and silver mounted; and an Empire Caddy 3
- 89 A French Mantel Clock, by *Lenoir à Paris*, with a recumbent ormolu figure of Cupid and surmounted by a globe, 11½in.; and another French Clock, 19in. 2
- 90 An inlaid mahogany Bracket Clock with fluted columns, and pagoda top, on brass ball feet, 15½in.; and a Lantern Clock of usual type, with pierced gallery, 14½in. 2

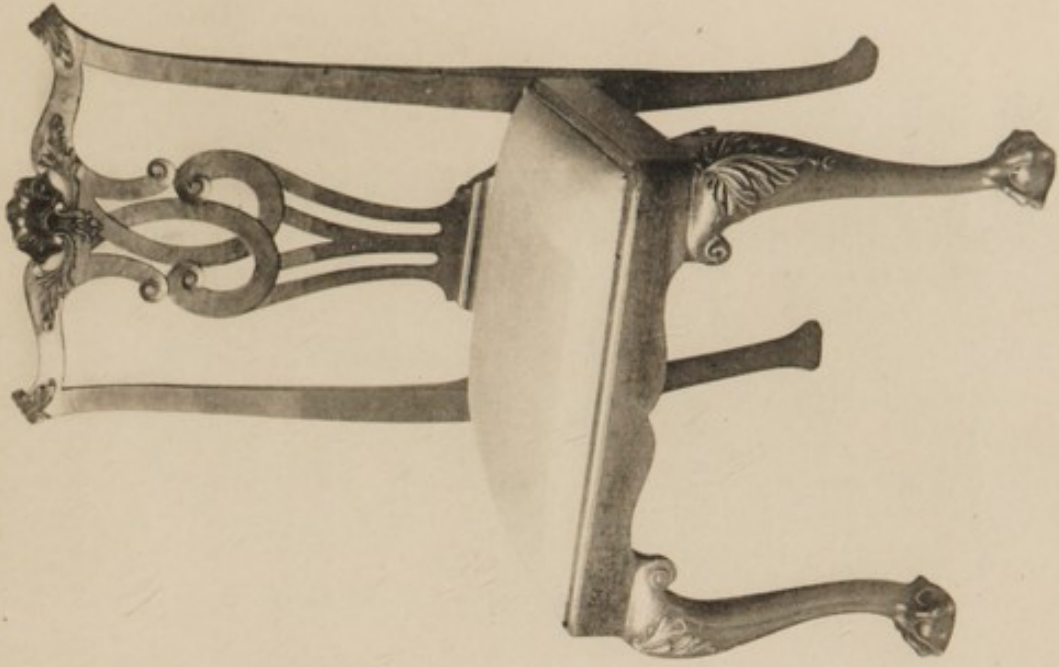
- 91 A Georgian Bracket Clock, by *James Chater, London*, in mahogany case, the silver dial within chased spandrels, strike and silent dial and calendar aperture, 18in.
- 92 Two late 18th Century embroidered Needlework Pictures, worked in coloured silks with sprays of natural flowers on a silk ground, in oval gilt frames, 1ft. 3in. high 2

## FURNITURE

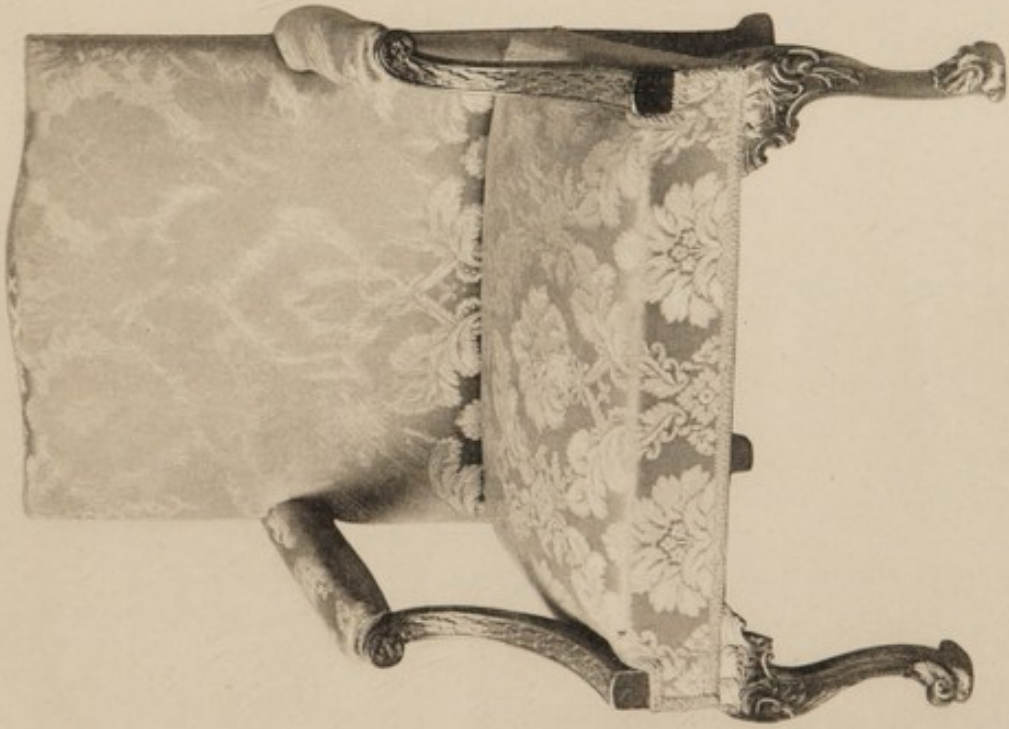
- 93 A PAIR OF SHERATON MAHOGANY CARD TABLES, with hexagonal folding tops, banded with satinwood, supported on square tapering legs and toes, inlaid with satinwood stringing, 2ft. 11in. wide 2
- 94 A Hepplewhite mahogany Armchair, with an oval upholstered back and seat, the frame carved with fluting, and supported on circular reeded and fluted legs
- 95 A Hepplewhite mahogany Chair, with a shield-shaped back and pierced vase-shaped splat, carved at the top with a spray of wheat-ears, the upholstered seat supported on square tapering legs ; and a mahogany Urn Table, with a wavy gallery top, and a pierced fret frieze, on chamfered legs and toes, with pierced stretcher rails, 12in. square 2
- 96 A 17th Century oak joint Stool, with a rectangular top, on turned baluster legs, with stretcher rails
- 97 An 18th Century oak kneehole Table, the top inlaid with a star device and inlaid round the border with dog-tooth inlay, two narrow and two deep drawers in the shaped frieze, on club legs, 2ft. 8in. wide
- 98 A pair of Chinese hardwood Stands, the shaped tops inset with veined marble, supported on carved cabriole legs, united by a pierced carved frieze, 1ft. 6in. wide 2
- 99 An 18th Century mahogany Cabinet, the upper part enclosed by a pair of panelled doors, inlaid with ebony stringing, mounted on a stand, two drawers in the frieze, on square tapering legs and toes, 3ft. wide

- 100 A George I gilt gesso Wall Mirror, with a rectangular silvered plate contained in a moulded frame, carved with flowers and geometrical designs in gilt gesso, beneath a carved swan-neck pediment enclosing a cartouche similarly carved, with a repeating design of foliage scrolls in gesso, *3ft. 2in. high*
- 101 AN EARLY 17TH CENTURY AUSTRIAN OAK COFFER, the rising lid inlaid with panels containing repeating foliage motifs, and the front inlaid with two arcaded panels with emblematic figures beneath, flanked on either side by typical Renaissance designs beneath a double-headed eagle, *4ft. 11in. long*
- 102 THE VIRGIN AND CHILD. A late 16th Century French walnut carved Figure of The Virgin, in graceful flowing robes, holding the Figure of the Child Christ in her arms, with His right hand raised in the act of Benediction, *3ft. 5in. high*
- 103 A Georgian walnut Side Table, with a Brescia marble top, supported on cabriole legs, carved on the knees with shells, painted in gold, and club feet, united by plain frieze, carved in the centre with a concave gilt shell motif, *4ft. 1in. wide*
- 104 A Hepplewhite mahogany Armchair with a shield-shaped back, a pierced vase-shaped splat, carved with a spray of wheat-ears, and drapery festoons, the upholstered seat supported on tapering, fluted and reeded legs
- 105 A Sheraton mahogany Tray of oval shape, inlaid in the centre with a shell motif in satinwood, enclosed by a gallery, with brass handles at the sides, *2ft. 5in. wide*; and a Sheraton mahogany Knife Box with a sloping lid, inlaid with a shell motif, the shaped front also inlaid and fitted with silver mounts, *1ft. 3in. high* 2
- 106 A CHIPPENDALE MAHOGANY EAR ARMCHAIR with a tall upholstered back and loose cushion seat covered with crimson figured brocattelle, supported on cabriole legs, carved on the knees with acanthus leaves, terminating in claw and ball feet
- 107 A decorative Dutch brass Chandelier with twelve scrolled candle branches, ranged in two tiers, issuing from a central turned stem with a large brass ball beneath, *2ft. 4in. high*
- 108 A Georgian mahogany Tripod Table, with circular top carved with a "pie-crust" edge, on a circular fluted stem, and tripod feet, carved with a claw and ball motif, *2ft. diam.*

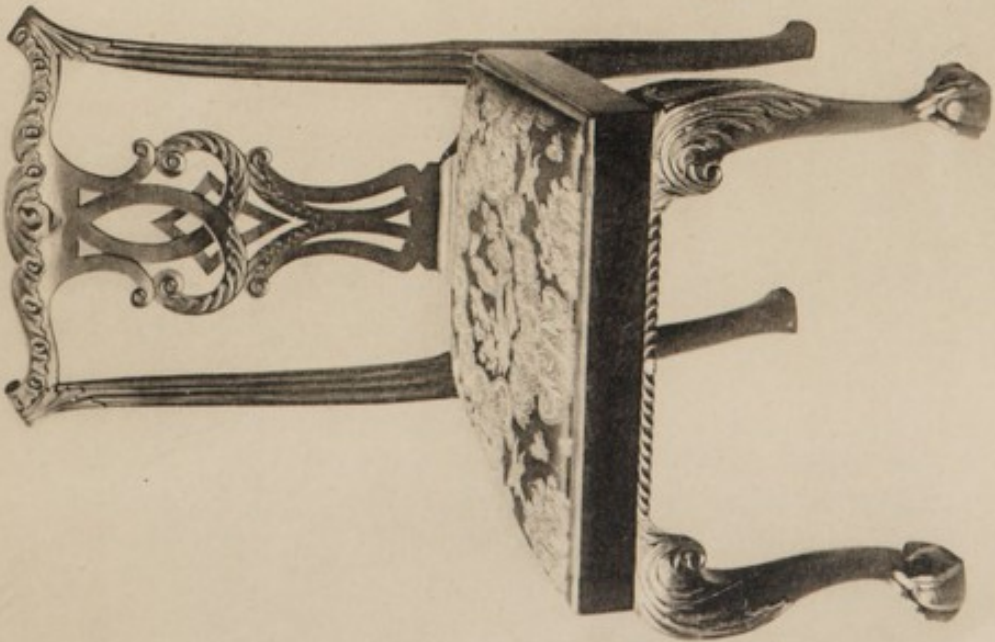
- 109 AN IRISH MAHOGANY CENTRE TABLE, with a rectangular tray top and shaped apron frieze, which continues on all four sides, carved with a repeating design of foliage motifs, with eagle-head terminals, centring on shell motifs, supported on carved cabriole legs and paw feet, *2ft. 6in. wide*
- 110 A FINE PAIR OF CHIPPENDALE WALNUT CHAIRS, with pierced and interlaced vase-shaped splats, supporting undulating top rails, carved with acanthus leafage, and a shell motif in the centre, the loose seats supported on cabriole legs, carved on the knees with leaves, and terminating in claw and ball feet 2
- [See ILLUSTRATION]
- 111 An 18th Century mahogany Tripod Table, with an octagonal tray top and wavy gallery border, supported on a turned central stem and tripod feet, *1ft. 6in. diam.*
- 112 A Queen Anne walnut Side Table, with a figured top, and the corners carved with querks, three drawers in the kneehole frieze, on cabriole legs and club feet, *2ft. 6in. wide*
- 113 A Chippendale mahogany Corner Cabinet of bow-fronted form, enclosed by a pair of doors, with reeded and fluted pilasters at the side supporting an applied fret frieze, three small drawers below, supported on a stand, of similar shape, with square tapering legs and toes, *2ft. 6in. wide, 6ft. 7in. high*
- 114 A 17th Century walnut marquetry Table, the top inlaid with a vase of flowers in shaded woods, and a drawer in the frieze, supported on turned inverted vase-shaped legs, united by "X" frame stretcher, *2ft. 1in. wide*
- 115 A Georgian mahogany Pedestal with a circular top, the stem fluted and carved with vertical bay leaves, supported on a square plateau base, *3ft. 9in. high*; and a mahogany marquetry Tripod Table, the top inlaid with flowers, birds and scrolls, in shaded woods, on a central stem, and reeded tripod, *2ft. 9in. diam.* 2
- 116 An 18th Century mahogany Corner Armchair, with a shaped back and pierced vase-shaped splats, the loose seat supported on square legs; and a mahogany Firescreen, with a circular gilt frame, enframing a Bartolozzi print, on a turned stem and reeded tripod, *4ft. 9in. high* 2



110

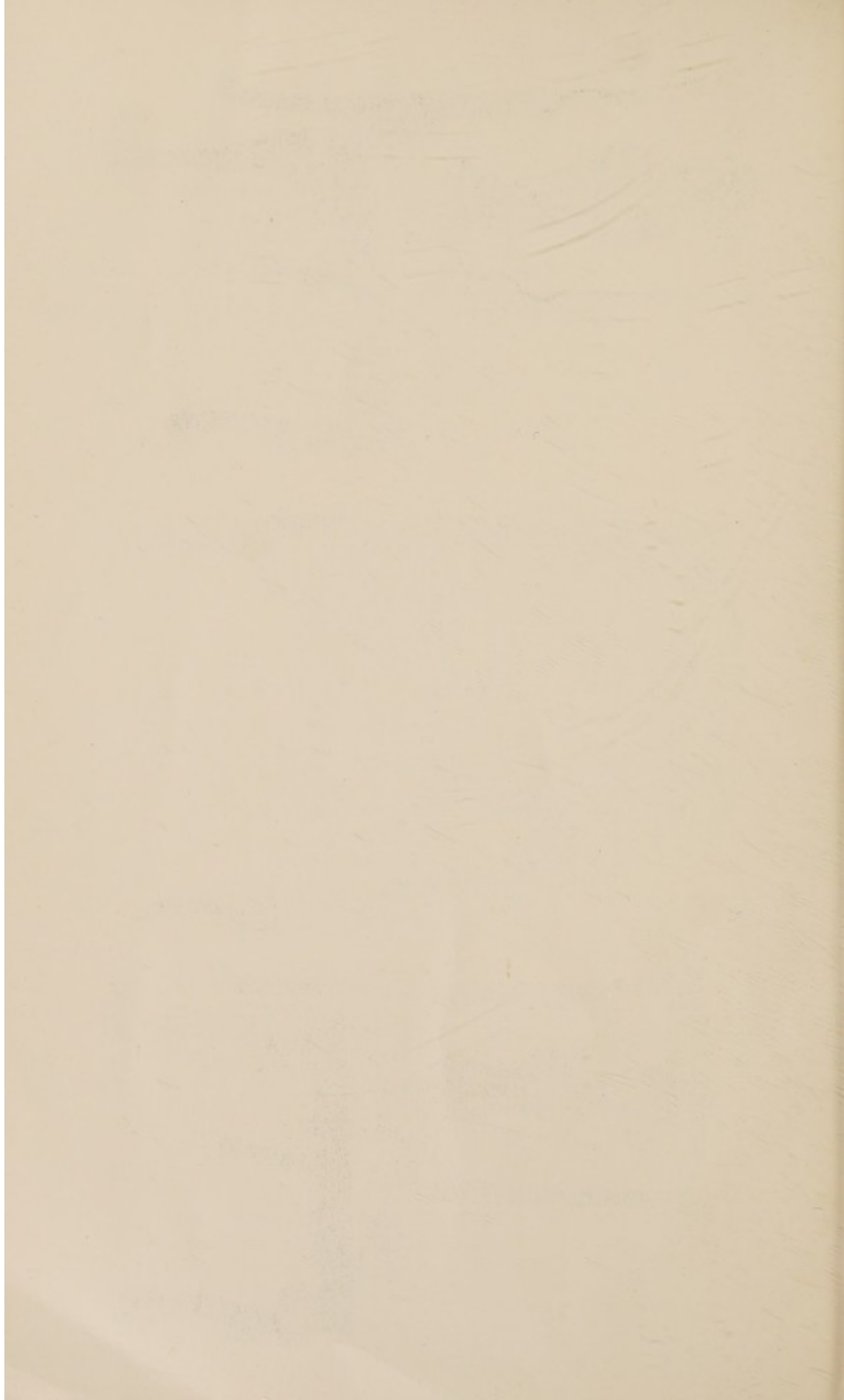


146



139





- 117 A William and Mary walnut Mirror, with a rectangular bevelled plate, contained in an ovolo moulded frame, veneered with oyster pieces of laburnum, 1ft. 9in. high
- 118 A DECORATIVE 17TH CENTURY FRENCH EBONISED CABINET, the interior fitted with numerous drawers of different sizes, enclosed by a pair of doors, the whole inlaid with a repeating design of scrolling flowers, and figures, in etched brass and mother-o'-pearl, on a ground of tortoiseshell, the stiles carved, and the whole supported on an ebonised stand with tapering legs, 2ft. 9in. wide, 5ft. 5in. high
- 119 A SET OF FOUR HEPPLEWHITE MAHOGANY CHAIRS, with shield-shaped backs and pierced vase-shaped splats, carved with vase motifs, drapery pendants, and a spray of wheat-ears, the upholstered seats supported on tapering and fluted legs 4
- 120 A WILLIAM AND MARY MARQUETRY TALL-CASE CLOCK, with a brass and silver dial containing a day of the week recorder, and pierced brass spandrels at the corners, contained in a walnut case, inlaid with shaped panels, containing birds, flowers and scrolls, 6ft. 9in. high
- 121 A FINE STUART WALNUT MARQUETRY CHEST, the top inlaid with an oval panel containing amusing female caryatid figures, the sides with repeating foliage scrolls, two short and three long drawers below, inlaid with exotic birds, with flower sprays in their beaks, 3ft. 3½in. wide
- 122 An 18th Century gilt Wall Mirror, the shaped plate contained in a pierced frame, carved with foliage scrolls, and rococo motifs, the sides bordered with pendants of flowers, 4ft. 2in. high
- 123 A SHERATON MAHOGANY SIDEBOARD, the serpentine frieze fitted in the centre with a drawer, flanked on either side by a drawer and a deep cellarette drawer below, on square tapering legs and toes, inlaid with pendant husks, and a low back of later date, 5ft. 6in. wide
- 124 A FINE SHERATON MAHOGANY GENTLEMAN'S WARDROBE, with an inlaid fluted frieze, and the upper part with sliding trays enclosed by a pair of finely figured oval panel doors, two short and two long drawers, on splayed bracket feet, 4ft. wide, 6ft. 9in. high

- 125 A Chippendale gilt Wall Mirror with a shaped silver plate, contained in a pierced frame, carved with rococo motifs, and on the outside with "C" scrolls and acanthus leafage, 1ft. 10in. wide, 3ft. 6in. high
- 126 A CHARLES II WALNUT CHEST, fitted with four long drawers, the lower drawers with raised fronts and geometric moulded panels, on bun feet, 3ft. 4in. wide
- 127 A 17th Century oak Chest, the panelled front converted to a fall front, finely carved with a design of leaves springing from a vase, supported on square legs with carved foliage borders, 4ft. 4in. wide
- 128 A CHARLES II OAK CABINET, the upper part fitted with two long drawers, with raised and moulded fronts, two long drawers below, enclosed by a pair of moulded panel doors, with raised fronts, 3ft. 10in. wide
- 129 A Hepplewhite mahogany Chair, with a shield-shaped back, the pierced vase-shaped splat carved with festoons of drapery and oval paterae, the upholstered seat supported on square tapering legs; and an 18th Century mahogany Urn Table with a wavy gallery top, and a cup slide in the frieze, on square tapering legs and toes, 10in. square 2
- 130 A 17th Century walnut Chair, with a tall back, and arcaded cresting, carved with scrolls and foliage, the upholstered seat supported on "S" scrolled legs, united by a pierced and carved stretcher
- 131 An 18th Century mahogany Wall Mirror with a rectangular plate, contained within a thin gesso border and moulded frame, the upper and lower portions with flat scrolling, and a carved figure of an eagle displayed, 3ft. 1in. high
- 132 A Chippendale gilt Wall Bracket, the support deeply carved with foliage scrolls, pendants of flowers, enclosing a bird in flight, 1ft. 5½in. high; and a pair of gilt Wall Brackets, the shaped tops supported by figures of phoenix displayed, with curving scrolls and waterfall motifs, 1ft. 2½in. high 3
- 133 A Chippendale mahogany Armchair with a pierced and interlaced vase-shaped splat, carved in the centre with trefoil motifs, the loose seat supported on square chamfered legs; and a set of mahogany hanging Wall Shelves, the back pierced with fret designs, and the two shelves with pierced fret sides, 2ft. 7in. wide 2

- 134 A DECORATIVE GILT WALL MIRROR with a rectangular silvered plate, contained in a moulded frame, pierced and carved on the outside with a design of scrolls, foliage and pendants of flowers, supporting an architectural pediment, carved in the centre with a phoenix displayed, 2ft. 6in. wide, 3ft. 5in. high
- 135 A decorative mahogany Wall Bracket, with two shelves, with pierced galleries, surmounted by a finely carved pagoda motif with water motifs at the corners, the support carved with "C" scrolls and foliage, 2ft. wide
- 136 A decorative small Dutch brass Chandelier, with eight scrolling candle branches, springing from a central turned motif, and similar flower branches at the top, 1ft. 9in. high
- 137 A WILLIAM AND MARY WALNUT MARQUETRY CHEST, fitted with two short and three long drawers, the top and fronts inlaid with arabesques and scrolling leaf motifs in shaped panels, on a light ground, on bracket feet, 3ft. 3in. wide
- 138 An 18th Century walnut Wall Mirror, with a moulded frame and gesso border, surmounted by a swan-neck pediment, the sides bordered with pendants of flowers, 2ft. wide, 3ft. 7in. high
- 139 A SET OF FOUR CHIPPENDALE MAHOGANY CHAIRS, with pierced and interlaced vase-shaped splats, carved with acanthus leafage, the top rails carved with rococo designs, terminating with scrolls, the loose seats supported on cabriole legs and claw and ball feet

4

[See ILLUSTRATION opposite LOT 110]

- 140 A FINE MAHOGANY SUITE, comprising :—a Settee, with an upholstered back and loose cushion seat, the frame with applied festoons of berried leaves and floral paterae, in box, supported on square tapering legs with fluted seat rails, 4ft. wide ; and a pair of Armchairs with shield-shaped backs and pierced splats, the frames similarly decorated
- 141 A WILLIAM AND MARY WALNUT MARQUETRY CABINET, with two drawers in the shaped frieze, and the interior fitted with numerous drawers and a central cupboard, veneered with oyster pieces of laburnum, enclosed by a pair of doors, inlaid on the outside with vases of flowers, in stained and shaded woods, supported on a stand with drawers in the frieze, on spiral turned supports and shaped stretcher rails, 4ft. wide, 5ft. 5in. high

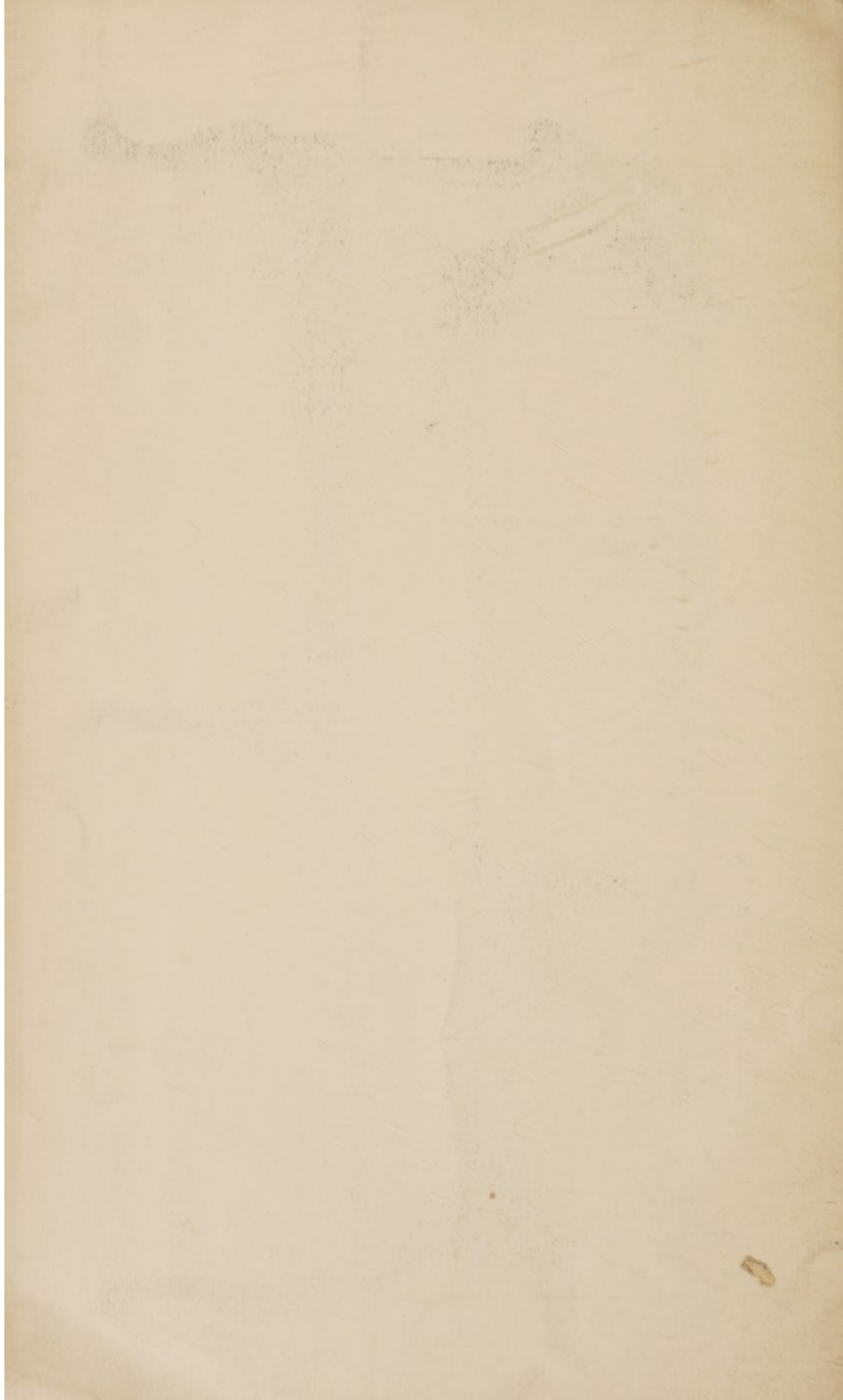
3

- 142 A pair of Chippendale mahogany Chairs, with pierced and interlaced vase-shaped splats, the top rails carved with scrolls and foliage motifs, on carved cabriole legs and claw and ball feet 2
- 143 A Chippendale mahogany Chair, with a pierced vase-shaped splat, the top rail carved with acanthus leafage, and the loose seat supported on carved cabriole legs and claw and ball feet; and another, the back pierced and carved with a ribbon motif, the upholstered seat supported on carved cabriole legs and claw and ball feet 2
- 144 An early Georgian mahogany Table, with a rectangular top and canted corners, supported on cabriole legs and club feet, 1ft. 10in. wide
- 145 A CHARLES II OAK CUPBOARD, with a long drawer in the frieze, three smaller cupboards below, and a large cupboard beneath, each enclosed by doors, inlaid with designs in ivory and mother-o'-pearl and enclosed within raised moulding and geometric panels, the stiles with typical Stuart bosses and split baluster motifs, 4ft. 6in. wide, 4ft. 5in. high
- 146 A FINE CHIPPENDALE MAHOGANY LOUNGE ARMCHAIR, with an upholstered seat and back covered in crimson damask, the open arms carved with leafage, and the upholstered seat supported on cabriole legs carved on the knees with scrolls and long leaves of acanthus, the toes crisply carved with shells and rococo motifs
- [See ILLUSTRATION opposite LOT 110]
- 147 A FINE CHIPPENDALE MAHOGANY SETTEE, with an upholstered back and seat, supported on cabriole legs, crisply carved on the knees with acanthus leaves and "C" scrollings, the toes carved in an unusual manner, 6ft. long
- [See ILLUSTRATION]
- 148 A FINE CHIPPENDALE MAHOGANY SIDE TABLE, with a rectangular top and shaped apron frieze, carved round the border with a repeating design of leafage and scrolls, supported on cabriole legs crisply carved on the knees with long leaves of acanthus, bordered by "C" scrollings, terminating in boldly carved claw and ball feet, 3ft. 9in. wide

[See FRONTISPIECE]

END OF SALE





# SOTHEBY & CO.

34 & 35, NEW BOND STREET, W. I

*are pleased to perform the following Services*

## FREE OF CHARGE

To advise intending SELLERS regarding the disposal of LITERARY  
and ARTISTIC PROPERTY

To give advice to intending BUYERS at their sales  
TO EXAMINE PROPERTY submitted to them with a view to Sale  
To execute BIDS at their Sales — To forward Illustrated Monthly  
Lists of Forthcoming Sales

---

At a charge of 7½ per cent (for all Lots over £100)

## TO SELL BY AUCTION

PICTURES, SILVER, JEWELLERY, CHINA  
FURNITURE AND WORKS OF ART, ETC.

At a charge of 12½ per cent.

BOOKS, COINS, ANTIQUITIES AND PRINTS

(N.B.—These rates cover all normal Expenses of Sales)

At a charge of 5 per cent, and expenses

TO CONDUCT SALES AT PRIVATE HOUSES

---

At a charge of 1 per cent. (subject to a small minimum fee)

TO VALUE FOR PROBATE, INSURANCE, AND  
FAMILY DIVISION

---

*Visits of inspection made at moderate charges  
Individual catalogues free on application*

THE MOST CAREFUL ATTENTION IS GIVEN TO ALL PROPERTIES  
WHETHER SMALL OR LARGE

All properties are placed ON VIEW FOR SEVERAL DAYS before the Sale  
and displayed to the best advantage

---

## NOTICES OF SALES

Notices of all sales appear in the following papers :

*Mondays* : " Daily Telegraph," " Morning Post."

*Tuesdays* : " Times."

NOTICES OF SPECIAL SALES

Appear in suitable papers from time to time.

*Telephone :*  
MAYFAIR 6682-3-4.  
(three lines)

*Telegraphic Address :*  
ABINITIO, WESDO, LONDON



BAKER, LEIGH & SOTHEBY

THE FIRM COMMENCING WITH SAMUEL BAKER IN

1744

SOTHEBY, WILKINSON & HODGE

1861-1924

SOTHEBY & CO.

1924-1935