

Sales catalogue: Sotheby's

Publication/Creation

February 1916

Persistent URL

<https://wellcomecollection.org/works/dn28gj77>

License and attribution

This work has been identified as being free of known restrictions under copyright law, including all related and neighbouring rights and is being made available under the Creative Commons, Public Domain Mark.

You can copy, modify, distribute and perform the work, even for commercial purposes, without asking permission.



Wellcome Collection
183 Euston Road
London NW1 2BE UK
T +44 (0)20 7611 8722
E library@wellcomecollection.org
<https://wellcomecollection.org>

29
du 2 WA/4mm/cm/sal/20/349 B

SOOTHEY, WILKINSON & HODGE,
WELLINGTON STREET, STRAND.

CATALOGUE

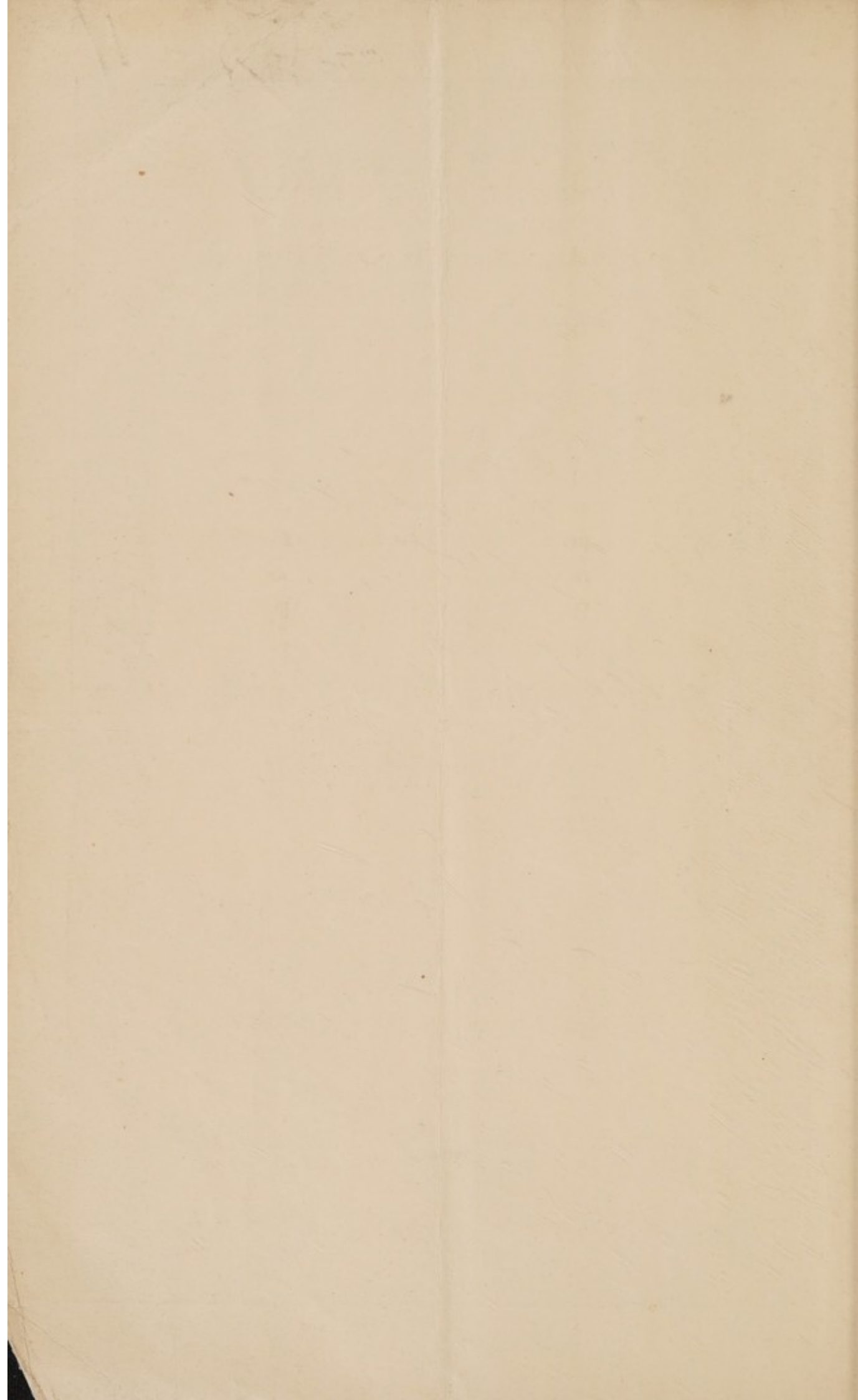
OF

Silber, Porcelain, Glass, Miniatures
and Furniture.

Days of Sale.

FIRST DAY Wednesday, 2nd February Lots 1 to 171
SECOND DAY Thursday, 3rd February Lots 172 to 346

1916.



L.C. 13 1 day
W. Luck 2 "

CATALOGUE
OF
Works of Art and Antiquities
COMPRISING
OLD ENGLISH SILVER,
PORCELAIN, GLASS, AND A BUHL CABINET,
The Property of the late Capt. H. J. Dockrell, R.N.
of Iveldene, Shefford, Beds.;
A COLLECTION OF GOLD RINGS WITH GEM SETTINGS;
FRAMED CHINESE PAINTINGS ON GLASS;
A SERIES OF MINIATURES
of Members of the Kennedy Family, of Cork, chiefly by Adam Buck,
The Property of Mrs. Gale & Miss Maxwell,
TOGETHER WITH OTHER MINIATURES ON IVORY AND ENAMEL;
A XVIITH CENTURY BEADWORK JEWEL BOX;
A CURIOUS SPANISH LEATHER BASKET;
ENAMEL ETUIS, WATCHES AND PORCELAIN,
The Property of Mrs. Richard, of 1, Westminster Mansions, S.W.;
OLD ENGLISH & IRISH GLASS; TRANSFER WORCESTER PORCELAIN,
AND
FURNITURE,
IN OAK, WALNUT, MARQUETRY, MAHOGANY AND LACQUER.

WHICH WILL BE SOLD BY AUCTION,
BY MESSRS.
SOTHEBY, WILKINSON & HODGE,
Auctioneers of Literary Property & Works illustrative of the Fine Arts,
AT THEIR HOUSE, No. 13, WELLINGTON STREET, STRAND, W.C.
On WEDNESDAY, 2nd of FEBRUARY, 1916, and following Day,
AT ONE O'CLOCK PRECISELY.

May be Viewed Two Days prior.

Catalogues may be had.

DRYDEN PRESS: J. DAVY & SONS, 8-9, FRITH STREET, SOHO SQUARE, W.

CONDITIONS OF SALE.

- I. The highest bidder to be the buyer; and if any dispute arise between bidders, the lot so disputed shall be immediately put up again, provided the auctioneer cannot decide the said dispute.
- II. No person to advance less than 1s.; above five pounds 2s. 6d., and so on in proportion.
- III. In the case of lots upon which there is a reserve, the auctioneer shall have the right to bid on behalf of the seller.
- IV. The purchasers to give in their names and places of abode, and to pay down 10s. in the pound, if required, in part payment of the purchase-money; in default of which the lot or lots purchased will be immediately put up again and re-sold.
- V. The sale of any lot is not to be set aside on account of any error in the enumeration of the numbers stated, or errors of description.
- VI. The lots to be taken away, at the buyer's expense, immediately after the conclusion of the sale; in default of which Messrs. SOTHEY, WILKINSON & HODGE will not hold themselves responsible if lost, stolen, damaged, or otherwise destroyed, but they will be left at the sole risk of the purchaser. If, at the expiration of Two Days after the conclusion of the sale, the lots are not cleared or paid for, they will then be catalogued for immediate sale, and the expense, the same as if re-sold, will be added to the amount at which they were bought. Messrs. SOTHEY, WILKINSON & HODGE will have the option of re-selling the lots uncleared, either by public or private sale, without any notice being given to the defaulter.
- VII. Upon failure of complying with the above conditions, the money required and deposited in part of payment shall be forfeited, *and if any loss is sustained in the re-selling of such lots as are not cleared or paid for, all charges on such re-sale shall be made good by the defaulters at this sale.*

Gentlemen who cannot attend this Sale may have their Commissions faithfully executed by their humble Servants,

SOTHEY, WILKINSON & HODGE,

13, Wellington Street, Strand, London.

Telegraphic Address: "Abinitio, Rand, London." Telephone: 3852 Gerrard.

In sending Commissions please refer to this Catalogue as "FLORA."

COMMISSIONS CANNOT UNDER ANY CIRCUMSTANCES BE ACCEPTED BY
TELEPHONE.

State 63.6.6

CATALOGUE
OF
Silver, Miniatures, Works of Art, Porcelain,
Pottery and Furniture.

FIRST DAY'S SALE.

SILVER.—AT PER OZ.

- | LOT | | |
|-----|---|--------------------|
| 1 | A cylindrical Mustard Pot with reeded rims, London, 1805 ; wt. 2 ozs. 12 dwts. | 25/6 Devan |
| 2 | A Georgian Cream Jug, with punched rims and embossed flowers on the sides, London, 1775 ; wt. 2 ozs. 6 dwts. | 18/ Purpoer |
| 3 | A pair of oval boat-shaped Salt Cellars, with reeded rims and pierced sides, London, 1791 ; wt. 2 ozs. 13 dwts., with blue glass liners | 2/4 Clerk |
| 4 | A Georgian Muffineer, date uncertain, maker's mark of Samuel Welles, c. 1742 ; wt. 2 ozs. 4 dwts. | 2/4 |
| 5 | Two waistcoat pocket Snuff Boxes, London, 1789 and 1790 ; wt. 3 ozs. 6 dwts. | 12/ Dace |
| 6 | A Sauce Ladle, London, 1785, and a Gravy Spoon, London, 1786, both plain ; wt. 5 ozs. | 2/4 Goldman |
| 7 | A pierced Fish Slice, London, 1811 ; wt. 4 ozs. 14 dwts. | 2/2 |
| 8 | A silver-gilt Sucrier and Cover, with pierced and chased sides, scrolled handles and square base ; and Spoon, with twisted stem and scrolled handle, London, 1904 ; wt. 12 ozs. 10 dwts., with glass liner, in leather case <i>all at</i> | 4/6 H. S. S. S. S. |
| 9 | A set of four Scotch Knife Rests, Edinburgh, 1899 ; 14 ozs. 7 dwts. | 2/6 3 |

The Property of a Clergyman.

10 An ovoid Urn, Cover and Stand, with two scrolled handles, the circular base and shoulders fluted, London, 1770, makers' mark of Francis Butty and Nicks. Dumeé; wt. 100 ozs. 9 dwts. 3

11 A Coffee Pot, with raised scrolls and chased flowers on the sides, and beaded rims, London, 1775, maker's mark of William Grundy; wt. 28 ozs. 6-8 Harris

12 A two-handled Cup on circular foot, Newcastle, 1799, maker's mark of John Langlands, jr.; wt. 15 ozs. 10 dwts. 13/6 8 Davenport

13 A Charles II Porringer, with repoussé flowers on the sides, and female therm handles, York, maker's mark I. P.; wt. 9 ozs. 2/1-5 Goldman

14 A Queen Anne fluted Porringer, London, 1702, maker's mark of William Keatt; wt. 4 ozs. 14 dwts. 4

15 A pair of circular Salt Cellars with roped rims, and three feet joined to shields on the sides, Newcastle, 1749, maker's mark of William Beilby; wt. 11 ozs. 13 dwts. 22/3 Victor

16 A Queen Anne Salver with beaded rim, London, 1702; wt. 13 ozs. 19 dwts. 24/3 8 Goldman

17 A George II Cream Jug with shaped rim, London, 1756; wt. 2 ozs. 16 dwts. 24/3 8 Davenport

18 A small Mug, London, 1808, makers' mark of Sam. Godbehere, Edwin Wigan and James Bult; wt. 5 ozs. 1 dwt. 4/3 8 Davenport

19 A Sauce Boat, Newcastle, 1748, maker's mark of Isaac Cookson; wt. 8 ozs. 8 dwts. 23/3 8 Wilkes

20 A pair of circular Salt Cellars on three pad feet, London, 1763; wt. 2 ozs. 9 dwts. 12/3 8 Wilkes

21 A pierced oval Mustard Pot, London, 1799; wt. 2 ozs. 14 dwts., with blue glass liner 2 Pass

22 A small engraved Beaker, Sheffield, 1807, makers' mark of Geo Ashforth & Co.; wt. 2 ozs. 11 dwts., in leather case 2 9/6 Goldman

23 An Elizabethan seal-top Spoon, London, 1570; all at 11. Davis

24 A child's Rattle, London, 1793, makers' mark of Peter and Ann Bateman, with coral horn; all at

3/10-05
Kerrick

@ 30/- 03

2/7-

Marcus

15/-

- 25 Six Sheffield Knives and Forks with silver handles, Sheffield, 1780, makers' mark W. B. & Co.; all at 12 *Diabol*
- 26 A silver-gilt Verge Watch, by Con. Dunlop, London, 1745, in gilt copper outer case; all at *2/4*
- 27 A pair of Sheffield plated Wine Coolers with liners 4 *2/6 Goldman*

The Property of the late Capt. H. J. Dockrell, R.N.

of Iceldene, Shefford, Beds.

- 28 A set of seven pierced Dessert Dishes, London, 1896; wt. 67 ozs. 12 dwts. 7 *4/2³ Davis*
- 29 A Coffee Pot, Tea Pot, Cream Jug and Sucrier, octagonal, with engraved scroll and floral designs, London, 1845; wt. 73 ozs. 12 dwts. 4 *3/1 Goldman*
- 30 A small Salver, with scroll and shell rims, London, 1767; wt. 7 ozs. 5 dwts. *15/6³ Davis*
- 31 A seven-hole Cruet, London, 1832, with two pierced Pepper Stoppers, and a hinged cover to the mustard pot; and a Spoon, London, 1829; wt. without the mustard pot mounts, 28 ozs. 8 dwts.; with seven cut-glass Cruets 11 *4/1⁴ all at Maur*
- 32 A set of six boat-shaped Salt Cellars, with pierced sides and reeded rims, Chester, 1728; wt. 10 ozs. 4 dwts, with blue glass liners *Modern Bism* 12 *5/4³ Lerry*
- 33 A small two-handled Bowl, Birmingham, 1904; wt. 1 oz. 12 dwts. *4/1⁴ Lady*
- 34 Two plain Gravy Spoons, London, 1807; wt. 7 ozs. 7 dwts. 2 *2/3 Hunt*
- 35 Two Table Spoons with engraved stems, London, 1788 and 1798; wt. 3 ozs. 5 dwts. 2 *2/5*
- 36 A Spoon, with gilt bowl embossed with fruit, and engraved stem and handle, London, 1749 (?); wt. 1 oz. 19 dwts. *3/4*
- 37 Eight plain Table Spoons, London, 1806; wt. 18 ozs. 3 dwts. 8 *2/3³ 1²*
- 38 Ten plain Dessert Spoons, London, 1837; wt. 13 ozs. 11 dwts. 10 *2/3 Goldman*
- 39 Six plain Dessert Spoons, London, 1810; two others, London, 1807; and two others, London, 1846; wt. 11 ozs. 5 dwts. 10 *2/5 Goldman*
- 40 Four rat-tail Spoons with chased stems, London, 1872; 9 ozs. 5 dwts. 4 *3/8 Purport*

- 41 Twelve Table Spoons with reeded stems, London, 1792; wt. 26 ozs. 3 dwts. 12 *25/- Denurem*
- 42 Two plain Sauce Ladles, London, 1808; wt. 3 ozs. 2 dwts. 2 *48/-*
- 43 Twelve Dinner Forks, London, 1825; wt. 28 ozs. 8 dwts. 12 *2/6 3/4 Adm*
- 44 Twelve Dinner Forks, London, 1837; wt. 30 ozs. 2 dwts. 12 *2/6 1/2 Lany*
- 45 Twelve Dessert Forks, London, 1820; wt. 14 ozs. 16 dwts. 12 *9/10 9/10 Adm*
- 46 Six Salt Spoons, London, 1811; wt. 2 ozs. 16 dwts. 6 *5/4 3/4 Lany*
- 47 Six plain Tea Spoons, London, 1845; wt. 4 ozs. 1 dwt. 6 *2/4 1/4 Adm*
- 48 A Pickle Fork, Birmingham, 1829; and a Cheese Scoop, both with ivory handles; all at 2 *5/- 1/2 H. M.*
- 49 A set of six Flower Vases, with tapering stems embossed in floral pattern; and two others larger, London, 1900, loaded bases; all at 8 *2/4 1/4 Dario*
- 50 A Statuette of Admiral Lord Nelson, on circular plinth, London, 1905; all at 8 *9/11 1/2 Gains*
- 51 A Cream Jug, Sugar Sifter, and a Caddy Spoon, all foreign silver; all at 3 *25/- 1/2 W.*

Tutle & Co
Antiques & Jewellery

Other Properties.

IMPORTANT COLLECTION OF RINGS AND ANTIQUE GEMS.

- 52 An Ancient Egyptian bronze Seal Ring, reading Ra-Ptah-neteru-
(?) en; an Etruscan Scarab, in burnt sard, set as ring; and a
Scaraboid, in solid gold setting 3 *2/11/- Ruben*
- 53 Three antique bronze Rings; and one other, later, with finely
executed head of Christ *2/2/- 15/- Horrey*
- 54 Three antique Intaglii, in modern gold ring settings: viz. onyx
engraved with scorpion; red sard with satyr, and dark stone
with goat 3 *2/6 1/2 Hince*
- 55 Four others, similarly mounted, one with Greek characters, per-
haps a signature *3/1/- 11/13/6 Hince*
- 56 Three others, more heavily mounted than the above, one in nicolo
with figure of Hermes, one in orange carnelian with crouching
boar, and the third with Greek archer 3 *2/- 5/-*

12135

12136

57 Three others, all in the original antique gold settings: subjects, various, one of Aphrodite 3

58 Two others, both in the original antique gold settings, one a pyramidal-shaped emerald, the other carnelian 2

59 Three others, in modern gold settings, one in amethyst, representing a warrior driving through the open gateway of a town in his chariot; on the town wall are seen houses, small huts, and a tree, *a most unusual gem* 3

60 Three others, all solidly mounted in gold, one engraved with a human foot, and the letters above CER; another, with a portrait head, probably of the Flavian period 3

61 Three others, all in the original antique gold settings, one with box-type bezel working on swivel 3

62 Three others, in solid gold settings, one of a man with ass; another, a vase painter decorating a Greek krater, and the third a running greyhound with the inscription FAIFF.T.E. *all interesting for subject* 3

63 Two others, both gold mounted as rings, bezels working on swivels, one of the subjects a seated (?) philosopher, and letters above CI MI; the other engraved on both sides 2

64 A gold Ring, set with onyx intaglio of a mouse; another, set with amethyst intaglio; and a bronze Ring, set with red sard intaglio of Eros driving a chariot drawn by two cocks, the last-named is an early gem, and well engraved 3

65 Three gold Rings, set with intaglii in carnelian, green stone and paste, the first-named with head of Socrates 3

66 Three 18th century gold Rings, one set with large oval intaglio in white cornelian—Youthful Herakles with the dog Cerberus, the two others with camei, the smaller of which is of much earlier period, the shank, back and bezel of the other showing remains of the original enamel 3

67 Three old gold Rings, set with various intaglii: viz. an oval carnelian with bearded head of man with ram's horns; an onyx agate with head of Jupiter-Serapis; and a yellow jasper with lion killing an (?) oryx 3

68 An antique yellow jasper Intaglio, Vestals offering to Apis in later gold ring setting; carnelian head of an Assyrian mounted as ring; and a gold Ring, with steel bezel engraved with Cufic characters 3



Also 2

lot Nos
12139
12140

4/12/1

First Day

8

5. 69 An 18th century gold Ring, set with an octagonal cameo of a much earlier date, representing rows of gods, etc., and carved out of a meteorite, *unique and very curious* W Sh
- 70 Three solid-gold Rings, set with carnelian intaglii, one of a Roman Empress, *antique* 3 5/51 Green
- 71 Four Rings (various): one with plaited shank in solid gold, and bezel bordered with diamonds; another, gold shank, set with octagonal Wedgwood plaque; a silver betrothal Ring, with clasped hands surmounted by coronet; and a German Ring, with high relief head on bezel 4 2/41 Jones
- 72 Three intaglio Rings, one set with fine antique oval jasper, engraved with figure of Mercury; another, red sard, with inscription IPONIMOY; the third, red sard, engraved with heads of Septimus Severus and Caracalla; *Rome collection, all interesting, the last-named very important* 3 2/21 Sparrow
- 73 Two gold and enamel Memorial Rings, one with enamel and gold inscription MARY. ANN. JONES. OB: 6. AUG. ÆT: 46.; the other engraved on the back of bezel, "Charlotte Baldwin, obt. 1st April, 1788, æt. 26" 2 351 Green
- 74 Three gold Rings, set with intaglii of heads, *two antique, one 18th century* 3 351 Dasher
- 75 Three gold Rings, set with carnelian intaglii, two being well-executed 18th century portrait heads, the other a poet crowned with bays 3 3.
- 76 A small gold Ring, set with engraved ruby: subject of the intaglio, a coroneted shield with anchor, five plumes above the crown 1/41 Green
- 77 A gold Ring, set with chrysoprase intaglio of Bacchus head; also a gold and enamel Memorial Ring of DAVID GARRICK, reading: DAVID GARRICK. ARM. OB. 20. JAN. 1779. ÆT. 63. 2 4/61 Dasher
- 78 Three old gold Wedding Rings, one engraved "God above increase our love"; also an 18th century gem Ring 4 3/41 Dasher
- 79 A fine crystal Cameo of an old man's head, gold-mounted as pendant: a beautifully cut carnelian Intaglio of a female head, signed ΠΡΑΞΙΑΑΑ and swivel-mounted as pendant; also a fancy Ring, set with amethyst intaglio 3 4/51 Green
- 80 Two well-cut oval carnelian Intaglii, gold-mounted as scarf-pins, both of female heads 2 321 Dasher
- 81 A finely executed antique Cameo head of a faun, gold-mounted as scarf-pin; also an agate Intaglio, similarly mounted 2 331 Dasher

FRAMED CHINESE PICTURES, PAINTED ON GLASS.

The sizes given are for the glass only.

82 A pair of interior Scenes—A Gentleman and Lady playing go; and a Lady playing the harp, with a gentleman and lady looking on; 19 in. by 13½ in. 2

83 An ornamental upright Panel of a Fan, with a poem and a flower and bird subject, with floral ornament around; and another of TUNG FANG SO, with the peach of Longevity and the Emperor WU TI; 18¼ in. by 12½ in. 2

84 A pair of Groups in interior scenes—Two Officials drinking and a lady waiting on them; and an aged Man talking to a lady while another man looks in through a window; 19 in. by 13¼ in. 2

85 A Group on mirror glass—A Young Noble kneeling before an aged man with a female fan bearer behind him and two male officials; 14¾ in. by 11 in.

86 A Young Girl on a garden terrace pulling down a bough of ripe pomegranates, and a boy by the steps of a house holding a sceptre; 18 in. by 25¾ in.

87 The Emperor WU TI standing on a garden terrace attended by two female fan bearers and an official, and TUNG FANG SO holding the peach of Longevity; 19 in. by 13¼ in.

88 SUNG KWANG, one of the 108 Chinese heroes on a visit to one of his mistresses, the wife of one of his officers, who is seated by an open window tiring her hair; 19¾ in. by 14 in.

89 The Sage HWANG SHE KUNG riding a white mule accompanied by CHU KO LIANG carrying a branch of plum blossom, about to cross a bridge over a stream in a hilly landscape; 16 in. by 23 in.

90 Two Jugglers—A Boy and a Girl giving a performance beside a summer pavilion on the shore of a lake; 19 in. by 13 in.

91 A half-length Portrait of a Male Official with a long black beard, holding up a libation cup; above in Chinese characters, the wish: "May you be a peaceful official of this rank"; 23 in. by 15½ in.

82 Outside a Sage's House in the mountains, the old man reading, two boy attendants and a third sweeping the garden; $13\frac{1}{2}$ in. by $19\frac{1}{2}$ in.

8. 93 The Emperor Wu Ti with attendants and TUNG FANG SO with the peach; and a Youth holding up an inscribed tablet before an old noble seated; $18\frac{3}{4}$ in. by 13 in.

5. 94 A pair—Ladies in gauzy summer costumes reclining, one holding a rose, the other a fan, their skirts hanging in the background; $16\frac{1}{4}$ in. by $22\frac{3}{4}$ in.

44. 95 A pair—Portraits of Ladies, full-length, seated, one holding a book, the other arranging a hair-pin; 19 in. by $13\frac{1}{2}$ in.

6. 96 Tung Fang So presenting a peach of longevity to the infant son of the Emperor Wu Ti; and another of the same subject, with a youth in the centre holding a tablet inscribed: "Happiness, Rank and Longevity, all complete"; $18\frac{1}{2}$ in. by $12\frac{3}{4}$ in. and 19 in. by 13 in.

9. 97 The Emperor Wu Ti with attendants and Tung Fang So; and an aged Official seated in front of a Government House receiving congratulations on his birthday; $19\frac{1}{4}$ in. by $13\frac{1}{2}$ in. and $18\frac{1}{2}$ in. by 13 in.

4. 98 A half-length Portrait of a Lady, in an oval; and a full-length Figure of a Lady in summer costume reclining; $19\frac{1}{2}$ in. by $13\frac{1}{2}$ in. and $13\frac{1}{2}$ in. by 19 in.

99 A pair of half-length Portraits of Ladies; $15\frac{1}{4}$ in. by $11\frac{1}{2}$ in.

100 A pair of half-length Portraits of Ladies, in oval panels, with flowers above and inscriptions at the sides; 19 in. by $13\frac{1}{4}$ in.

101 A Gentleman seated in a house reading a scroll and a lady beside him; and Wu Ti with two boy attendants; 20 in. by 14 in. and $14\frac{1}{2}$ in. by $10\frac{1}{2}$ in.

102 A half-length Portrait of a Lady seated holding an opium pipe; and a Juggler with two children; $15\frac{1}{4}$ in. by $11\frac{3}{4}$ in. and $14\frac{1}{2}$ in. by $10\frac{1}{2}$ in.

103 Two small Groups of Wu Ti and Tung Fang So; $12\frac{1}{2}$ in. by $8\frac{1}{4}$ in. and 12 in. by $7\frac{3}{4}$ in.

10/15/10
H. Green

cc
2009

cc
2010

21/10/10
H. Green

cc
2013

cc
2008

cc
2011

21/10/11
H. Green

4/10/11
H. Green

2/10/11
H. Green

2/10/11
H. Green

18/10/11
H. Green

The Property of Mrs. Gale and Miss Marwell,
grand-daughters of the late Rev. ALEXANDER KENNEDY.

A SERIES OF MINIATURES ON IVORY OF MEMBERS
 OF THE KENNEDY FAMILY OF CORK,
 RELATED TO THE MARQUIS OF AILSA.

104 JUDGE THOMAS KENNEDY, oval, bust slightly turned to the right, head facing, in a brown coat with lace stock and front, a full frizzled wig reaching to the shoulders and tied up into a tassel on each side; in copper-gilt frame as a brooch pendant c. 1745

105 REV. ALEXANDER KENNEDY of Christ Church, Cork, son of the former, oval, half-length, turned to the right, head three-quarters facing, in black coat with white cravat, surrounded by plaited hair; in square papier-maché frame; *by Adam Buck*

106 MRS. ESTHER O'CALLAGHAN, mother-in-law of the Rev. Alexander, oval, half-length, three-quarters facing, in mob cap with blue ribbons, with a spotted shawl over her shoulders, on a blue ground; in gold rim frame with hair on the back and initials E. C.

4/16/- 107 DR. RICHARD KENNEDY, R.N., eldest son of the Rev. Alexander, square, half-length, turned to the right, head three-quarters facing, in naval uniform; in square papier-maché frame; *by Adam Buck*

108 CAPT. THOS. KENNEDY of the 24th Light Foot, second son of the Rev. Alexander, oval, half-length, turned to the right, head three-quarters facing, in military uniform with a black stock; in square papier-maché frame; *by Adam Buck*

4/15/- 109 ARCHIBALD KENNEDY of the Bengal Native Infantry, third son of the Rev. Alexander, oval, half-length, turned to the right, head three-quarters facing, in civilian dress, black coat with high collar and cravat; in square papier-maché frame; *by Adam Buck*

Other Properties.

MINIATURES AND WORKS OF ART.

- 110 Lady Tollemache, miniature on ivory, oval, bust portrait, slightly turned to the right, head facing, in white dress, with white bandana; *by William Ward*; in gold rim frame with plaited hair at the back 16/- *Lepton*
- 111 A Miniature of a Gentleman on ivory, oval, bust turned to the right, head three-quarters facing, in late 18th century coat with white stock and cravat; glazed but not framed 10/- *Lepton*
- 112 A Miniature of a Lady on enamel, oval, bust slightly turned to the right, hair à la Pompadour with lace cap on top and spray of flowers; in gold rim frame with plaited hair round front and in centre of a blue enamel back 5/- *Darby*
- 113 A Miniature of an elderly Gentleman on ivory, oval, profile bust facing to the left, in 18th century costume, wearing a peruke, on a black ground; *signed DI and dated 1793*; in gold backed frame 21/- *?* *Darby*
- 114 A Miniature of an elderly Lady on ivory, oval, in same style as the foregoing, wearing a white shawl and a mob cap with blue striped ribbon; *signed DI and dated 1793*; glazed but not framed 21/- *?* *"*
- 115 A Miniature of a Gentleman on ivory, oval, half-length, slightly turned to the right in black velvet coat with white stock and bow, natural curled hair, on a dark grey ground; in gold pendant frame 16/- *Cash*
- 116 A Miniature of a Gentleman on ivory, oval, bust half turned to the right, in scarlet coat with blue collar, stock and frilled shirt front, hair brushed back into a queue; in copper-gilt rim 10/-
- 117 A Miniature of a Gentleman on ivory, oval, bust turned to the right, in blue coat with cravat and frilled shirt front, wearing a curled wig; in gold brooch frame 34/- *Wick*
- 118 A Miniature of JOHN BRADNEY, died 1809, on ivory, oval bust three-quarters facing, in violet coat with white stock, wearing a wig tied in a queue; in gold pendant frame 21/- *Darby*

- 119 A Miniature of a Lady, on ivory, round, bust slightly turned to the left in low-neck dress with necklace of pearls, coiffure in the style of James II period; in silver-gilt frame as a pendant *16/- Spencer*
- 120 A Miniature of LADY GORDON CUMMING of Altyre near Forres, on ivory, oval, bust slightly turned to the left in low-neck dress, with a bandana twisted round the head; in gold rim frame without a back *14/-*
- 121 A Miniature of a Youth on ivory, oval, bust slightly turned to the right, in blue coat and lace collar; in gold frame *9/- Cash*
- 122 A Miniature of a Gentleman on ivory, oval, bust turned to the right, head three-quarters facing, in blue coat of Hessian style, hair brushed back and tied in a queue; in gold rim frame without back *10/- Wilson*
- 123 Two Miniatures of Ladies on ivory, oval, busts, one in a gold snap frame outlined with garnets, the other in a silver snap frame outlined with seed pearls 2 *5 1/2/- Taylor*
- 124 Four small Miniatures: a Gentleman in a long wig, and three Ladies; all in gold frames 4 *4 1/2/-*
- 125 A Miniature of Shakespeare, oval, in a gold frame set with garnets; and another of a Shepherdess, in a gold filigree frame set with pearls 2 *2 1/2/- Haslam*
- 126 A Miniature of a Lady on ivory, oval, bust, in silver-gilt frame; and another (smaller), in silver-gilt frame 2 *14/- Haslam*
- 127 Two Miniatures on enamel: a Lady and a Gentleman; both in metal-gilt frames, one set round with pearls 2 *2 1/2/-*
- 128 A Miniature in oils of a Cavalier in armour, with oval glass; and another on ivory of a Lady, glazed but without frame 2 *11/- Cash*
- 129 Four Miniatures on ivory: Ladies; *unframed* 4 *21/- Wilson*
- 130 A clear tortoiseshell circular Box, with a miniature of a lady set in the lid *3 1/2/- Haslam*
- 131 A gold Scarf Pin, with a miniature of a lady in enamel; and an onyx cameo Male Head, set in a small square gold brooch frame 2 *2/- Haslam*
- 132 Twenty-four Enamels: Fancy Portraits, Scripture Subjects, etc.; and a painted Box Lid 25 *12 1/2/- Haslam 15/-*

12/10/-
133 A Miniature of an English Divine of the 18th century, bust in wig and gown, oval forming the bezel of a gold ring, with open shoulders

15. 134 A Portrait of a Child, standing, holding an open circular box, dated 1624; on a wood panel; framed

*** From Moyles Court, near Ringwood, the residence of Dame Alice Lisle, who was beheaded in 1685 for sheltering Monmouth's supporters.

135 A carved and painted wood group of St. Ann, habited as a nun, seated, holding on her lap the Virgin and Child; 2 ft. 3 in. high

136 A Persian nielloed Bell, decorated with panels of flowers in foliage borders; wood handle; 14 in. high

137 The Corn Bin, after G. Morland; and another, after Lavreince; both reprints, in colours

139 An ivory Tea-caddy, decagon shape with sloping lid, the angles divided by ebony

140 A tortoiseshell Tea-caddy, oblong, with bowed sides and terraced lid, lock and key

141 A tortoiseshell and ivory Tea-caddy, octagonal, inlaid mother-o'-pearl

142 A collection of ninety-two lace Bobbins, of very varied designs in ivory, bone and wood, with bead and other ornaments attached

143 A set of carved ivory Chessmen, Chinese, the pawns shaped as equestrian figures; all on upright pedestals, the ball centres being cut and pierced with three or four balls, one within another

31/-
144 Three ivory Netsuke: Hotei reclining against his sack, signed *Ranshi*; a woman mixing *Miso*, signed *Tomochika*; Jurojin holding an open scroll for a tortoise of long life to crawl up; and a bronze and ivory Mask and Robe for a lion dancer

145 Six ivory Netsuke: a Dog on a straw mat, signed *Masatomo*; two Oni fishing on a nelumbian leaf, and pulling at a fish through a hole; a Tiger; a Monkey on a piece of wood; Hotei; and a Rat (*broken*)

146 A Midshipman's Dirk, with ivory grip in gilt scabbard; and a set of Chinese Knife and Chopsticks, in case

12/10/-
Dartus
Lake
Res 24/11

3/5/-
Dartus

6/- ?

30/-
2
Dartus

3/10/-
Dartus

32/-
Dartus

5/5/-
Dartus

30/- ?

2.
Dartus

32

4

6

2

31/-
20/-
PC Rogers

- 147 A pewter Dish, 18 *in. diam.*; another, 14 $\frac{3}{4}$ *in. diam.*; and three others, 13 *in. diam.*; all London marks 5
- 148 Seven pewter Plates, and an early pewter Jug, with hinged cover; all London marks 8
- 149 A 17th century Beadwork Jewel Box, 9 *in. in length*, with rising lid and fall down front, the inside fitted with small drawers and compartments, the top and sides covered with coloured beads, forming designs of flowers, etc., including a bird and a rabbit; on the back, included in the beadwork - F · B · : · 1654 · : · ET · -, a very uncommon specimen of English work
- 150 A brass-hilted Sword; a Cannon Ball, found in Perry Wood, the site of the Battle of Worcester; and a Horn Cup 3
- 151 An old Spanish embossed leather Basket, with flowers and fruits on the curving rims, and two panels of figures; in the centre, on a looking-glass base, and under glass, figures representing the disarming of Cupid by Venus; signed *Molnavi Fecit*
- 152 A needlework picture of "Labour and Health," after Gainsborough

The Property of Mrs. Richard,

1, Westminster Mansions, S.W.

- 153 A Limoges enamel Plaque, with a pastoral scene painted en grisaille on a dark blue ground
- 154 An enamel Etui, without fittings, rose du Barri ground with landscapes, and a pastoral subject in gilt scrolled panels
- 155 An enamel Etui, without fittings, bleu du roi ground, with landscapes and flowers in gilt scrolled panels
- 156 An enamel Bodkin Case, white ground painted with landscapes, and blue scale pattern borders
- 157 An enamel Bonbonnière, egg-shaped, bleu du roi ground, with clusters of flowers in gilt scrolled panels, and white diaper designs between

- 158 A verge Watch, by *Delisle & frères, Mericaud*, in gilt metal outer case, the face surrounded by pastes, and the back bearing an enamel portrait of a lady
- 159 A Watch, by *Jn. Louis Ligier*, in gilt metal case, the face and hands outlined with pastes, the back with relief design of vases of flowers, birds and a dog, with pastes set in
- 160 A pair of Dresden Scent Bottles, with chained stalk-shaped stoppers, one shaped as an apple, and the other as an egg-plant fruit
- 161 A Dresden handle for a crutch Stick, terminating at one end in a woman's head with a net domino, and painted with flowers
- 162 A Chelsea figure of Diana, with a leaping hound beside her (*right arm repaired*)
- 163 A Chelsea figure of an Ethiopian, holding a butterfly in his fingers, on scrolled base
- 164 A pair of Chelsea Derby figures of Pug Dogs 2
- 165 A Chelsea figure of a Child, with a basket of flowers; and a Crown Derby figure of a Girl carrying a hand-bag (*the last repaired*) 2
- 166 Eight Grainger's Worcester Dessert Plates, painted with exotic birds and butterflies 8
- 167 A pair of Minton two-handled Vases with stoppers, with white figures in low relief on a dark blue ground; signed *L. Solon* 4
- 168 Two Minton Vases, with white figures in relief on a dark blue ground; both signed *L. Solon* 2
- 169 A Sèvres Plateau, dark blue ground decorated with gilding, and centre-piece of flowers and birds
- 170 A Sèvres oval Dish, Bowl and Cover, dark blue ground, with panels of flowers and gilding (*bowl slightly damaged*) 3
- 171 A Dresden Vase and Cover, with gilt scrolled panels, enclosing landscape and pastoral subject in rose lake 2
-

SECOND DAY'S SALE.

The Property of the late Capt. H. J. Dockrell, R.N.

PORCELAIN AND POTTERY.

X	15. 172	A Pompeian Breakfast Service, with key pattern borders and classical figures, consisting of 12 cups, 13 saucers, 6 plates, 2 cake dishes, 2 basins, and 3 jugs (6 pieces faulty)	? worth 100
			38
	3 guineas 173	A set of three Bloor Derby campagna-shaped Vases, blue ground, with named views in compartments (<i>handles of the two smaller ones faulty</i>)	3
X <i>fairly</i>	35/- 174	A large oblong Wedgwood Plaque in blue jasper with figures in white, showing two scenes in the story of Orestes; on the left, Orestes and Pylades receiving the answer of the Oracle, and on the right, Iphigenia, the sister of Orestes, recognising him when he is about to be sacrificed to Artemis (<i>cracked</i>); 7½ in. by 22½ in., framed	? <i>badly broken</i>
38/-	35/- 175	An oblong Wedgwood Plaque in blue jasper with figures in white, two classical subjects from the Capitol sarcophagus; 8½ in. by 14¼ in., framed	<i>badly broken</i>
<i>Plend</i>	24/- 176	Two Wedgwood Plaques in blue jasper with figures in white: The Marriage of Cupid and Psyche, and Cupid sacrificing a goat; each 5¼ in. by 8¼ in., in 1 frame	2
<i>Stewart</i>	25/- 177	Two Wedgwood Plaques in blue jasper with figures in white: Cupid performing a dirge at the apotheosis of Adonis, and a group of Cupids as Bacchanals; each 5¼ in. by 8¼ in., both framed	2
	9/- 178	A Staffordshire salt glazed Dish of pierced design	
<i>Refined 5-17-6</i>	179	A pair of flint-lock Pistols, by Tatham, of London, with inlaid silver stocks and butts, hall-marked Birmingham, 1825, and Oriental inscriptions	2
<i>17-15-6</i>	180	A Scotch Dirk in silver-mounted sheath, with two small Knives, silver-mounted	
	52/- 181	A Chinese lacquered Chess-board, with alternate squares of gilt figure subjects and plain pearl; a small lacquer Box; and fifty-four engraved mother-o'-pearl Card Counters	56

GLASS.

- £12-6 182 A pair of cut-glass lustre Candlesticks for two lights each, *fine bold cutting* 2
- 36/- 183 A pair of cut-glass Decanters and Stoppers, in horizontal, hob-nail, circular and diagonal bands, star cut bases and stoppers 4
- 10/6 183A A set of four drop-shaped cut-glass Decanters with faceted Stoppers, engraved with a crest (*one stopper does not match*) 8
- £5 184 A set of fifteen cut-glass Monteiths, with engraved bands of pine cones below the rims, upright cutting on the sides and star cut bases 15
- 21/- 185 Four cut-glass Goblets, on square domed bases, similar design to the foregoing 4
- 8/- 186 Eleven Wine Glasses of similar design, but round bases 11
- 16/- 187 Two pairs of Dessert Dishes, tazza-shape with hob-nail design, faceted stems and star-cut bases 4
- 16/- 188 A cut-glass Jug, and six Spirit Glasses 7
- 30/- 189 A cut-glass Jug, and two Mugs, hob-nail pattern 3
- £10-12-6 190 An amber glass Jug; Bowl and Vase, with outcurved rim, all cut in diamond pattern 3

- £1 191 A Buhl Cabinet with folding doors enclosing a cupboard with two shelves, and two drawers below, with arched top and brass gallery, on a bombe fronted table stand with drawer, cabriole legs, chased ormolu rims, mounts and escutcheons, with lock and key; 4 ft. 8 high, 29½ in. wide, 20 in. deep

* * Before its purchase by the late Capt. Dockrell, R.N., this cabinet belonged to the Hon. Mrs. Johnstone, to whom it descended from her ancestor, the second Earl of Massereene; he married on August 10, 1789, a daughter of M. Barcier, Governor of the Châtelet Prison, and it is believed that the cabinet came into the family through her.—See letters accompanying the lot.

Other Properties.

- 26/- 192 A Bristol glass Mug with handle, straight sided, painted with a portrait, enclosed in scroll-work and sprays of flowers
- Dawson 52/- 193 A Bristol glass 8 in. Bowl, painted in continuous flowers and birds; and a Tea Pot and Cover, with the same decoration 3
- 4-18-0 194 An Old English cut-glass Bowl, on stem and circular foot; and a cut-glass Water Jug 2
- 72/- 195 A fine Waterford Candlestick, on square base, 10 in., with separate nozzle 2
- 34/- 196 A pair of 13 in. Old English glass Candlesticks, with spiral cut stems and circular feet 2
- 38/- 197 A set of four finely cut Liqueur Bottles and Stoppers, in a mahogany case 9
- 50/- 198 A pair of oval and a pair of round ~~Waterford~~ Salt Cellars; and a cut-glass Pap Boat 5
- 4 guineas 199 Four other Salt Cellars on feet; three Waterford Flower Holders, finely cut; and a pair of small Dishes 9
- 10/- 200 A pair of Christening Goblets, with "J. E. M. Aug. 21st, 1834" in a scroll 2
- 18/- 201 A Sunderland glass Tankard, engraved with the bridge and a ship underneath it
- 3-10-0 202 A tall Old English Wine Glass, with baluster stem; a pair of Firing Glasses, with opaque twist stems; and a pair of trumpet-shaped Glasses, with air twists 5
- 4/- 203 A pair of Wine Glasses, with faceted stems; a pair with plain stems; and a pair with opaque twists 6
- 2-17-0 204 A set of eight Wine Glasses, with opaque twists 8

TRANSFER WORCESTER.

- 23-10-0 205 A Tea Cup, Coffee Cup and Saucer, decorated in transfer with pastoral scenes, Milkmaid pattern, marked *R. H. Worcester* 3
- 13-3-0 206 A Tea Cup and Saucer, Courtship pattern, marked *R. H. Worcester* 2
- 13 207 A Saucer Dish, Milkmaid pattern, marked *R. H. Worcester*

- £4-5-0
 14-5-0
 138/-
 £3-5-0
- 208 A Spoon Tray, and a small Mug, Courtship pattern, *marked R. H. Worcester* 2
 209 A Cream Jug, Milkmaid pattern
 210 A toy Spode Kettle and Cover, with blue ground and panels of flowers; a toy Cup and Saucer; a pair of toy Chelsea Lambs; and a small blue and white Worcester Mug 7

The Property of a Clergyman.

- Potter
 5-15-0
- 24/-
 £3-15-0
 Howe £3
 32/-
 Potter 38/-
 Potter 35/-
 Potter 24/-
 £3
 54/-
 £3-3
 Sheldon 26/-
 Bee 10/-
 Collier £16
5. 211 A Lambeth Delft Pill Slab, painted in blue with the arms, supporters and motto of the Apothecaries Company
 212 A Staffordshire pottery Copy of the Bristol Figure of Winter, a man skating; *from a set of "The Seasons"*
 213 A Whieldon Tea Pot and Cover, with mottled glaze, interlaced double handle 2
 214 A Whieldon Cauliflower Tea Pot and Cover; *lid rim chipped* 2
 215 An Astbury Tea Pot and Cover, with rustic handle and spout, bird handle to cover; *wing broken, otherwise chipped* 2
 216 A Whieldon Cow and Calf Milk Jug; and a small Statuette of a nude Woman chained 2
 217 An old earthenware Jug, with deep brown glaze and slip decoration in front, with date 1782
 218 A red earthenware Jug of large dimensions, brown glazed, with a raised band of ornament round the shoulders, figures, crowns and Royal Arms in relief on the sides, and incised W. M.
 219 A Toby Jug, with foaming jug on the left knee
 220 A Toby Jug, with foaming jug on the left knee
 221 A Toby Jug, with empty jug on the left knee, man holding a pipe (*pipe broken*)
 222 An Elers ware Coffee Pot and Cover, with small raised ornaments on the sides 2
 223 A Jackfield Tea Pot and Cover, and a Cream Jug, both on three feet (*both faulty*) 3
 224 A COLOURED SALT GLAZE FARMYARD TEA POT AND COVER, with a lamb on the lid for handle 2

- 225 A white salt glaze Tea Pot and Cover, with relief decoration of leafy stalks, squirrels and butterflies, a squirrel on the lid for a handle 31/-
- 226 A Plymouth Sweetmeat Dish, blue and white, with three shell-shaped trays on a base of shells and rock-work, and a central cup (*repaired*) 21/-
- 227 Three Leeds Tea Pots and Covers, with coloured decoration (*all slightly damaged*) 6
- 228 A pair of Longton Hall Vases, with naturally modelled flowers, the fronts painted with exotic birds (*both faulty*) 54/- 2
- 229 Two Rockingham Cups and Saucers; Cream Jug, and Sugar Bowl and Cover 30/- 7
- 230 A Worcester Cup and Saucer, painted with floral design in lake and gold, crossed swords mark and number 9 pencilled in blue 38/- 2
- 231 A Worcester Cream Jug, painted with alternate insects and conventional flowers, in spirally marked divisions 40/-
- 232 A small Chelsea Cream Jug, with decoration somewhat in the Lowestoft style 14/-
- 233 A Worcester Basin, painted with garden and figures in Chinese style 12/-
- 234 A pair of Derby Biscuit Groups—Amorini Fishing, and Amorini Birds'-nesting; *under glass shades* 4-17-6 4
- 235 A Chelsea Plate, with raised feathered rims, painted with a landscape; *red anchor mark* 32/-
- 236 A Copeland "Felspar Porcelain" Plate, and two other Copeland Plates, all painted in flowers 13/- 3
- 237 A Rockingham Dish, with ribbon knot handles, gilt pattern on an apple green ground, with central view of a ruined abbey 22/-
- 238 A Ralph Wood Figure of a Man (*base broken*), and another Figure of a Dog 11/- 2
- 239 A Dresden Sucrier and Cover; Cream Jug, and three Cups and Saucers, decorated in lake 19/- 9
- 240 A Paris Cup and Saucer, with bands of flowers 10/- 2
- 241 A pair of Blanc de Chine Figures of Kwan-Yin, and two Libation Cups 42/- 4
- 242 A pair of cut-glass Candlesticks, with glass nozzles (*both the nozzles faulty*) 11-15-0 4

Porters 15/-	5/-	243	A pair of cut-glass Decanters and Stoppers	4
	1/-	244	A cut-glass Butter Dish and Cover; Celery Vase, and Sugar Basin	4
	7/-	245	A Japanese iron Kettle with bronze Cover; <i>signed Ryūbundō</i>	2
Waiters 30/-	30/-	246	An old coaching Blunderbuss, with brass barrel, used on the London to Hull coach	

Other Properties.

CHINA.

- 247 A CROWN DERBY DINNER SERVICE, decorated in gros bleu, red and gold, in the Japanese style, consisting of Soup Tureen and Cover, four Sauce Tureens, Covers and Stands, ten large Dishes, six Vegetable Dishes and five Covers, Salad Bowl, twelve Salad Plates, twenty-four Soup Plates, seventy-two Meat Plates, forty-seven Pudding Plates; *in all 191 pieces, a few chipped* 191
- 248 A Chelsea Coffee Pot and Cover, painted with clusters of flowers and sprigs 2
- 249 A Chelsea Jug, painted with clusters of flowers and sprigs
- 250 An English Pottery Vase (? Pratt ware), on a fountain pedestal, supported by two children
- 250A A Lowestoft powder-blue Plate, with landscapes and flowers in compartments left white, and imitation Chinese marks; and a Cup of the same pattern 2
- 251 A pair of toy apple-green Cottages; a pair of toy Candlesticks, with blue ground and panels of flowers, and a toy Swansea Jug 5
- 252 A Worcester Bottle and Stopper, with blue ground and panels of flowers; another, with crimson ground; a pair of toy Jugs; a toy Inkpot, and a Candlestick, with sprays of flowers 8
- 253 A small Derby figure of a Boy; a figure of a Girl; a pair of toy Derby Vases, and a Sauceboat 5
- 254 A Chelsea small Jug, formed as a tulip; a toy china Tray, with handle; a toy Candlestick, with red ground; a toy biscuit Basket of Flowers, and a toy Jug 5

- 52/- 255 A Worcester 6 in. Bowl, enamelled with Chinese ladies and boys
- 22/- 256 A two-handled Longton Hall Vase and Cover, bottle-shaped, encrusted with flowers on blue ground 2
- 257 A Swansea Cup and Saucer, painted with flowers in a vase on crimson ground, and a Nantgarw Cup, with exotic bird and foliage in a panel 3
- Penny 29/- 258 A pair of Wedgwood blue jasper ware Vases and Covers, with classical subjects in relief 4
- Penny 32/- 259 A pair of Wedgwood blue jasper ware Vases and Covers—Dancing Hours 4
- 26/- 260 A Spode hexagonal Plate, with exotic birds and foliage, and birds' feathers on the border
- 24/- 261 A porcelain oblong Plaque, painted with a basket of flowers on a stand; *framed*
- 8-15/- 262 A pair of Chelsea figures of Lady and Gentleman, with arbour background, 10 in. 2
- 29/- 263 A silk Needlework Picture—An oval panel of flowers; *framed*
- 48/- 264 A Sampler, 18 in. by 15 in., with figures, animals, birds, trees, etc., and dated 1785; and a small Needlework Picture—Children fondling a dog 2
- 18/- 265 A pair of Delft 13 in. blue and white circular Dishes, painted with flowers, and another, with vases 3
- 48/- 266 A famille verte circular Dish, 11 in., with birds, butterflies, vases, etc., *K'ang Hsi*
- 32/- 267 A Stafford Jug, painted with farming implements, by Absolon, and inscribed "J. Fenner, 1800"
- 18/- 268 A 15 in. silver lustre figure of Venus, and two others, smaller 3
- 18/- 269 An Oriental Vase, with short broad neck and fluted sides, decorated with pine, bamboo and plum, and a border round the shoulders, on carved and pierced wood stand, and carved wood lotus-leaf cover 3
- 46/- 270 A Ginger Jar, painted with landscape of mountainous country, waterfall, man fishing, etc., with carved and pierced wood cover and stand 3
- 52/- 271 A Bowl, with faceted sides decorated with alternate landscapes and conventional floral designs outside, and border, floral sprigs and centre-piece inside, on carved and pierced wood stand; *K'ang Hsi period* 2

- 21/- 272 A deep Dish, with flat rims, bearing two large lang lysen figures and a plant between them in arched panels, the intervening spaces filled with diaper design, in the centre two similar figures standing looking at a vase of flowers; $13\frac{1}{2}$ in. diam.; repaired and rivetted; K'ang Hsi period
- Reed 13/- 273 A Dish, painted with eight panels of flowering plants on the gently sloping sides and a floral panel in the centre; 15 in. diam.
- 18/- 274 A pair of Dishes, with full design of conventional peonies and scrolls; $14\frac{1}{2}$ diam.; one repaired 2
- Green 24 275 A pair of saucer-shaped Dishes, with finger citrons and meandering branches of leaves covering the insides; 13 in. diam. 2
- 32/- 276 A Dish, with floral sprigs on the rims and ladies under a willow in the centre, $10\frac{1}{2}$ in. diam., repaired; another, with broad sloping rims, decorated with flowers, vases and books, floral centre, $8\frac{1}{2}$ in. diam., and a Plate, with Sages playing Go, $6\frac{1}{2}$ in. diam., marked Chia Ching 3
- 23-3-0 277 A pair of Oriental vases, with peonies and chrysanthemums round the necks and figure subjects of warriors, etc., round the bodies in enamel colours; 13 in. high; one repaired 2
- 46/- 278 A pair of Chinese porcelain Vases, covered with pink glaze, on carved and pierced wood stands 4

FURNITURE, &c.

- 65/- 279 A square lacquer Burgauté Cabinet, fitted with eight cedar-wood trays one above the other, with sliding lid, 1 ft. 5 square; on black wood stand; total height 3 ft.
- 77/- 280 A Queen Anne high-back Arm Chair, with fluted moulding and scrolled top, on bowed legs with stretchers, cane seat and back
- £5 281 A mahogany folding Card Table, with shaped top, carved bow legs and claw and ball feet; when closed 2 ft. 10 wide by 1 ft. 5 deep, 2 ft. 5 high
- Slake 24-15-0 282 A black lacquer Bureau, with raised design in Chinese style, fitted with two half-width and three full-width drawers, with brass drop handles and escutcheons; 3 ft. high by 3 ft. 3 wide by 1 ft. 10 deep

283 A Chinese Mirror and stand of carved wood, lacquered red ;
28 in. high

284 A Chinese Picnic Box in three tiers, and a hexagonal Box ;
both red lacquer 2

285 A japanned wood Inkstand ; two papier-maché Stationery
Stands, and an octagonal Box in pseudo-Chinese style 4

286 A folding Writing Desk in an oblong box, with lacquer decora-
tion in imitation of buhl

287 A folding Writing Desk in a box, with rounded lid, covered in
shark-skin

288 A Writing Desk in square box with marquetry lid

289 Two straw Work Boxes 2

290 A Toilette Box with swing front, in carved wood, brass-bound,
and a Medicine Cabinet, covered in shark-skin 2

291 A lacquered Box in Chinese style, fitted with various compart-
ments in cedar-wood with bone knobs to the lids, and a
square Box with sloping lid, covered in shark-skin 2

292 A lady's sarcophagus-shaped Work Box, with lock and key, and
an oblong wood Box with tortoiseshell outside 2

293 A Tea Caddy with two Chinese pewter tea jars, and another,
both in Chinese style, and another in rose-wood 3

294 A book-shaped straw Work Box, with a water-colour drawing
of Beaufort Castle in the lid and fitted with a mirror ; and
another with straw-work panels of buildings inside 2

295 A Persian lacquer Cabinet, with fall-down front, enclosing
drawers, and a cream-lacquered Box in Chinese style, with
raised figures on the lid 2

296 An old gold-tooled leather Box, brass-bound corners, and a
blind-tooled leather Box, with rounded lid 2

297 A mahogany Box, with marquetry design on front and lid, and
an inlaid wood Box 2

298 Three lacquered Boxes, in Chinese style 3

299 An octagonal Chinese Box, inlaid with nacreous shell in land-
scape and floral designs, and another (smaller), with land-
scape and temples in red and gold relief 2

300 A Chinese lacquered Box, with five boxes inside, and four other
lacquered Boxes 5

061053-4

061055-6

11/- 301 An old iron-bound and studded Box, covered with pricked brass work, and a plain wood Box shaped as a book, with sliding lid 2

12/- 302 Two lacquered folding Chess Boards, and a pair of double-bottle boat-shaped lacquered Coasters 4

22/- 40/- 303 Three pairs of lacquered papier-maché Decanter Stands 6

10/- 50/- 304 Two pairs of lacquered papier-maché Decanter Stands, and three odd ones 7

5/- 305 Seven lacquered papier-maché Decanter Stands 7

10/- 40/- 306 A New Zealand Club 23016

5/- 40/- 307 A Kakemono: a Tartar looking out of a tent at a snowy solitude and a llama tethered close by, in colours on silk; unsigned

More 24/- 308 Three unmounted Kakemono: viz. a Tea-house Waitress, unsigned; a Geisha playing the koto, signed *Kosen*; and an Eagle on the bough of a tree, signed *Chikuson*; all in colours on silk 3

11/- 309 Two Persian lacquer Trays, with Vandyck edges to the rims, decorated in gold and colours, different patterns; one 22 in. diam., the other 16 in. diam. 2

More 19/- 310 An oval mahogany Tray; 24 in. by 17½ in.

Long 15/- 311 An oblong lacquered Tray, with shaped rim bearing a foliated design, the centre decorated with a Chinese landscape and figures; 21½ in. by 27 in.

5/- 312 An embroidered leather Box, Belt and Pouch, and leather Bag; a Hand Screen; a circular wood Box; a Mourning Bracelet, and a Pocket Book containing a mirror 7

Long 9/- 313 A circular Mirror in carved wood frame, gilt, 19 in. diam.

More £2 314 A pair of Queen Anne high-back Chairs, with central splat, cabriole legs and stretchers, stuffed seats 2

More 5-5-0 315 A pair of carved wood high-back Chairs, with red damask backs and seats 2

42/- 316 A lac Burgauté octagonal Chest, damask lined, on a shaped walnut stand with spirally turned legs and shaped stretchers; 36½ in. high 2

More £1 317 A small Chinese bronze lacquer Chest, with black floral decoration, on stand of similar character with fret pattern corners and crossed stretchers; 3 ft. 6 high 2

10/- 318 A small Chinese bronze lacquer Chest, similar to the foregoing,
on black and gold stand; 3 ft. 11 high 2

Vander £6. 319 An early Georgian upright Mirror, bevelled glass, in shaped
mahogany frame with carved and gilt beading and floral
ornament; 47 in. high by 25½ in. wide

mis 8-15-0 320 A Grandfather Arm Chair, carved cabriole legs, ball and claw
feet and stretchers, upholstered in silk tapestry

Vander £6-10-0 321 A pair of Hepplewhite mahogany Chairs, shield-shaped backs
with wheatear carving, tapered legs and stretcher, tapestry
seats with loose covers 4

£9-15-0 322 A mahogany Bracket Clock, by Le Grave of London

323 AN ENGLISH WALNUT AND MARQUETRY WRITING CABINET,
with ovolo frieze and fall-down front, on stand with four
turned legs and curved all-round stretcher; 5 ft. 5 high by
3 ft. 8 wide at frieze, by 1 ft. 7¼ deep

* * * A fine example of the William and Mary period, c. 1690.
The outside of the fall-down front decorated with an oval
panel and four corner pieces of flowers and birds in various
coloured woods, jasmine flowers in ivory and green leaves in
stained bone, on an ebony ground, the dividing bands being
in walnut oyster work; two similar panels ornament the
frieze. The inside is fitted with eight pigeon-holes at the
top, a central door decorated with marqueterie conceals a
recess containing three drawers, and on either hand and
below eleven other drawers have fronts in walnut oyster
work with line inlaid borders. Brass floral shaped plates and
drop handles to the drawers and pierced brass escutcheons to
the locks, the front lock being a restoration of Georgian
period.

4. 324 A pair of old lead Garden Vases, with two monster-headed
handles, and classical figures on the sides in relief; 19 in.
high 2

Hein 2/- 325 A Japanese carved wood Group of Rock-work, with nineteen
baboons climbing about it to get at a hornet's nest; signed
Itsumin; 20 in. high

£9-5-0 326 A marble Bust of Princess de Lamballe, on red marble circular
foot, on white marble socle; 28½ in. high

2/- 327 A marble Bust of Milton; 12 in. high

327A A Chinese bronze lacquer Chest, with figures in black on lid and front, and floral decoration on the sides; on stand, with crossed stretchers; 3 ft. 4 high 2

327B A lac Burgauté octagonal Chest, with floral sprig decoration, on black and gold stand, 3 ft. 11 high

328 A mahogany Bookcase and Escriptoire, the upper part enclosed by two panelled folding doors, surmounted by a frieze of fret design in low relief; the lower part with sloping fall-down front forming a writing desk and enclosing eight pigeon-holes, six drawers and a central cupboard with carved door; the panelled doors and sloping front inlaid with vases in oval panels of satin-wood, and corner pieces of fan pattern, and the fronts of the drawers with a narrow bordering, brass handles and escutcheons; 7 ft. high by 3 ft. 11½ wide by 2 ft. deep

329 A mahogany Bookcase, enclosed by two glazed folding doors with pointed beading, and fitted with one full-width drawer below, brass handles and escutcheons; 7 ft. 5 high, by 3 ft. 10 wide by 1 ft. 1 deep

330 A Chippendale mahogany folding Card Table, with bowed front and curved sides, carved cabriole legs and ball and claw feet; 34 in. wide by 17¾ in. deep when closed

330A An inlaid mahogany Spinnet Case; 5 ft. 4 wide by 3 ft. deep, with stand 2

330B A lac Burgauté octagonal Chest, with floral decoration, on black stand, with key-pattern feet, 3 ft. 2½ high 2

331 A small Indo-Portuguese Cabinet, with inlaid pattern of alternate ivory and wood triangles in diaper form, both inside and outside, fitted with six drawers, enclosed by folding doors, on plain wood stand, with a low shelf; 3 ft. 1 high 2

332 A Stuart Lace Box, in walnut, with oyster pattern on the lid, on stand, with spirally fluted legs and shaped stretchers, on ball feet; 2 ft. 3 high

333 A William and Mary walnut Escriptoire and Bookcase, fall-down sloping front, the upper with oak panelled folding doors, enclosing three shelves, the writing table with two slides for candlesticks in front, fitted with six drawers, two secret drawers and ten pigeon-holes, underneath two half-width and two full-width drawers, brass drop handles and escutcheons; 6 ft. 11 high by 3 ft. 4 wide by 1 ft. 11 deep

Moore 21/-

Burgess £4-4-0

Green £24

£15

Stokes £9-9-0

Moore 51/-

21/-

50/-

Moore 58/-

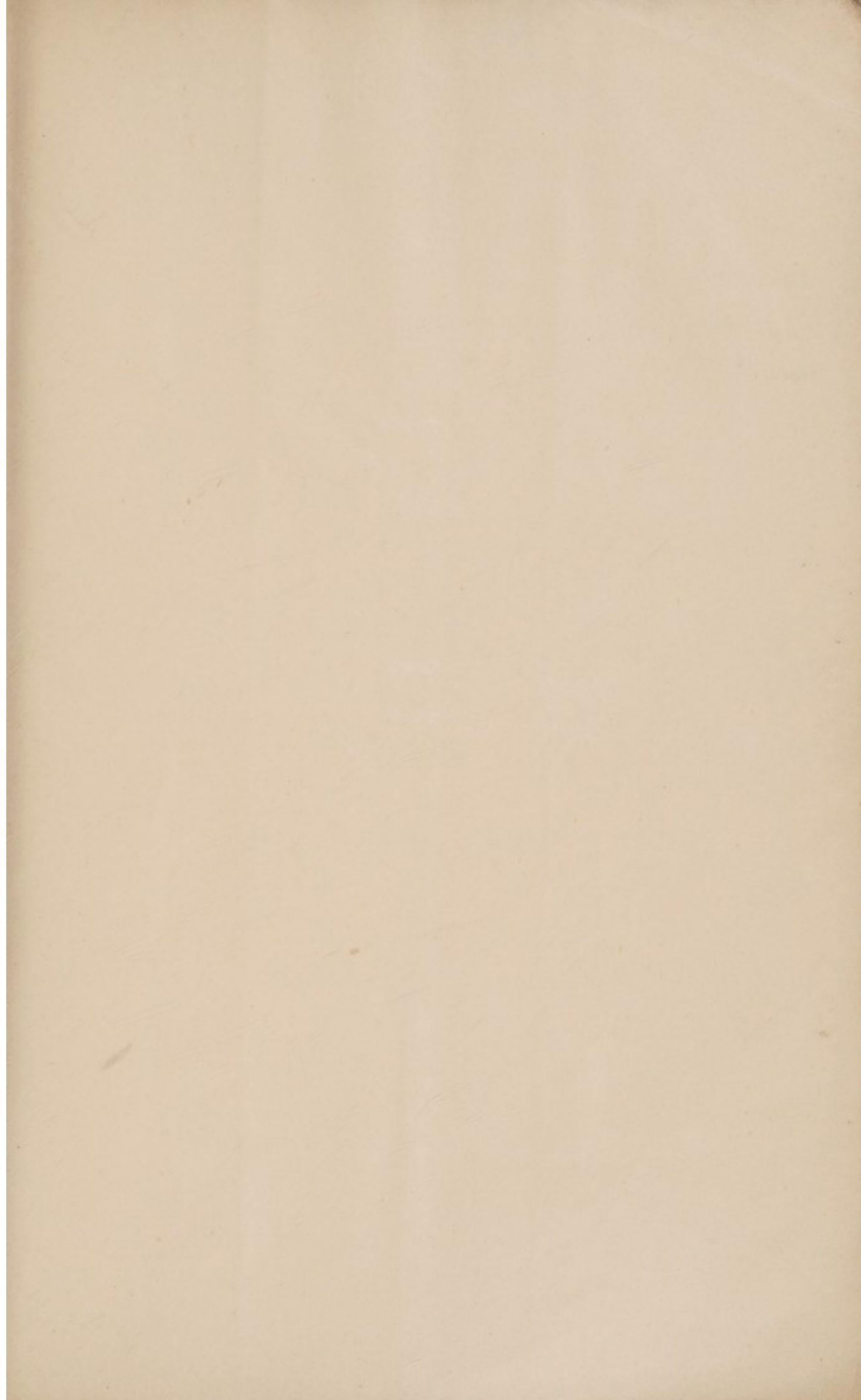
Green £3

Moore £13

- 334 A William and Mary walnut china Cabinet, with folding glazed doors and glazed sides, enclosing three shaped shelves, above these two drawers surmounted by a curved frieze, the lower part projecting and containing a long drawer, on cabriole legs, with pad feet, brass drop handles and escutcheons, *6 ft. 6 high by 3 ft. wide by 1 ft. 9 deep at greatest part*
- 335 A Queen Anne lacquered Bureau, with two half-width and four full-width drawers, on a stand, containing another full-width drawer, decorated with small landscapes and figure subjects in gilt, brass drop handles and pierced brass escutcheons; *3 ft. 7 high, 3 ft. 4 wide, and 2 ft. deep at the base*
- 336 A round-topped mahogany Table, on a turned and spirally fluted shaft, with three feet; *2 ft. 4 high by 1 ft. 9 diam.*
- 337 A Georgian plain oak Linen Chest, with two half-width drawers in the lower part, on arched stand; *2 ft. 5 high by 3 ft. 5½ wide by 2 ft. 1 deep*
- 338 A Queen Anne walnut oblong Table, containing three drawers, brass swing handles and escutcheons; *2 ft. 4 high by 2 ft. 8 wide by 1 ft. 8 deep*
- 339 A William and Mary short walnut Bureau, with inlaid top and front, containing two half-width and three full-width drawers, brass drop handles and escutcheons; *2 ft. 7 high by 3 ft. wide by 1 ft. 9½ deep*
- 340 A Stuart oak Cabinet, with four drawers, alternately panelled with oblong and octagonal carved beading, brass drop handles and escutcheons, on a similar stand, containing another drawer, with five spirally fluted legs and waved stretchers; *4 ft. 6 high by 2 ft. 10 wide by 1 ft. 10 deep*
- 341 A painted corner Cupboard, with rounded folding doors, enclosing three shelves, the doors painted with a historical subject in colours, brass pierced hinges; *2 ft. 8 high, angle of 15 in., 17th cent.*
- 342 A Queen Anne lacquered corner Cupboard, with in and out curved folding doors, decorated with Chinese figures, trees, etc., in raised red and gold lacquer on a black ground, brass hinges and escutcheons; *2 ft. 7 high, angle of 1 ft. 10*

- Moore 21/- 343 A Stuart oak Cabinet, with three drawers, alternately panelled with oblong and shaped carved beading, brass drop handles and escutcheons, on similar stand, with turned legs and straight stretchers; 4 ft. 1 high by 2 ft. 8 wide by 1 ft. 9 deep
- Moore 21/- 344 An oblong folding solid mahogany Card Table, with a long drawer, brass drop handle
- Adell 20/- 345 Another, solid mahogany, without drawer
- Moore 18/- 346 Another, solid mahogany, without drawer

END OF SALE.



110685
BAKER, LEIGH & SOTHEBY.

THE FIRM COMMENCING WITH SAMUEL BAKER IN

1744.

SOTHEBY, WILKINSON & HODGE.

1916.