

Sales catalogue: Sotheby's

Publication/Creation

June 1934

Persistent URL

<https://wellcomecollection.org/works/ma83hkwj>

License and attribution

This work has been identified as being free of known restrictions under copyright law, including all related and neighbouring rights and is being made available under the Creative Commons, Public Domain Mark.

You can copy, modify, distribute and perform the work, even for commercial purposes, without asking permission.



Wellcome Collection
183 Euston Road
London NW1 2BE UK
T +44 (0)20 7611 8722
E library@wellcomecollection.org
<https://wellcomecollection.org>

How original

H

SBY	DATE	INITIALS
SALE	25/21 v 34	Str
PURCHASE		
CHECKED	22 v 34	ku
COLLECTED	22 8 34	ku
RECEIVED	22 Aug 34	R. W. K.
ADCESSED		
NOTED		



WELL

and *James P. Saugter, Esq. Ryan*
of Hintlesham Hall, Suffolk

COMPRISING

ARMS AND ARMOUR

ALSO

WORKS OF ART AND BYGONES.

WAHmm/cm/sal/20/1072

Days of Sale.

FIRST DAY Wednesday, 20th June Lots 1 to 148
 SECOND DAY Thursday, 21st June Lots 149 to 346

1934

Kmm 88. £10.

TERMS OF SUBSCRIPTION FOR MESSRS. SOTHEBY'S
CATALOGUES AND PRICE LISTS FOR ONE SEASON.

The Season opens in October and closes at the end of July.

(All Subscriptions include postage.)

PLAIN CATALOGUES.

	£	s.	d.
Antiquities	0	1	6
Books, MSS. and Autograph Letters	0	5	0
Coins and Medals	0	1	6
Drawings and Pictures	0	2	0
Engravings (Old)	0	2	0
Etchings (Modern)	0	2	0
Oriental MSS. and Miniatures	0	1	0
Works of Art (including Armour, China, Furniture, Glass, Japanese Colour Prints and Works of Art, Jewellery, Miniatures, Silver, Textiles, etc.)	0	5	0
	<u>£1</u>	<u>0</u>	<u>0</u>

ILLUSTRATED CATALOGUES.

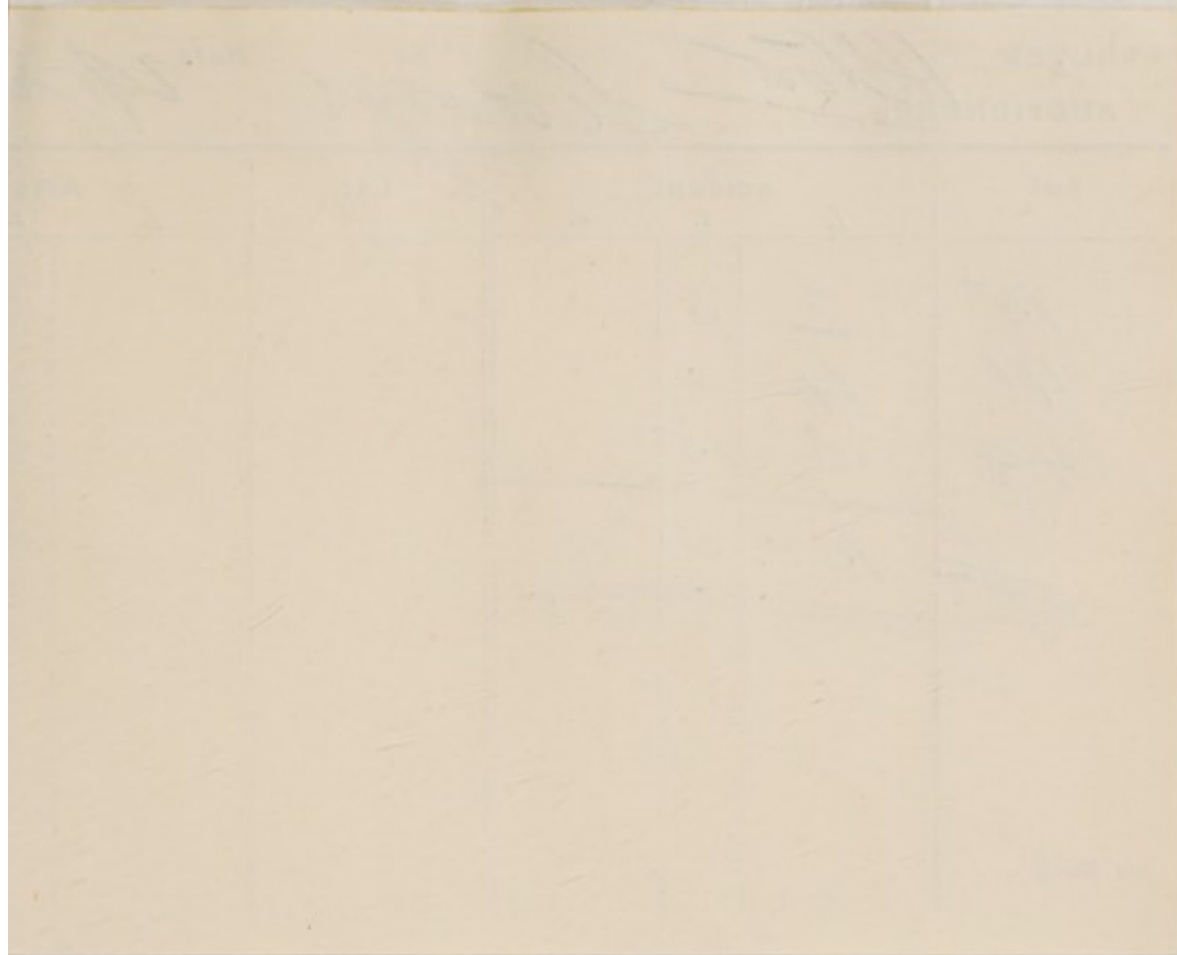
(To include Plain Copies where no Illustrated Catalogues are issued.)

	£	s.	d.
Antiquities	0	5	0
Books, MSS. and Autograph Letters	2	0	0
Coins and Medals	0	5	0
Drawings and Pictures	0	15	0
Engravings (Old)	0	7	6
Etchings (Modern)	0	2	6
Oriental MSS. and Miniatures	0	5	0
Works of Art (including Armour, China, Furniture, Glass, Japanese Colour Prints and Works of Art, Jewellery Miniatures, Silver, Textiles, etc.)	1	0	0
	<u>£5</u>	<u>0</u>	<u>0</u>

PRINTED LISTS OF PRICES AND BUYER'S NAMES.

	£	s.	d.
Antiquities	0	10	0
Books, MSS. and Autograph Letters	5	5	0
Coins and Medals	0	10	0
Drawings and Pictures	1	15	0
Engravings (Old)	1	15	0
Etchings (Modern)	1	15	0
Oriental MSS. and Miniatures	0	10	0
Works of Art (including Armour, China, Furniture, Glass, Japanese Colour Prints and Works of Art, Jewellery, Miniatures, Silver, Textiles, etc.)	3	0	0
	<u>£15</u>	<u>0</u>	<u>0</u>

N.B.—The Terms of Subscription for Price-Lists have been substantially
reduced recently.



AUCTIONEERS

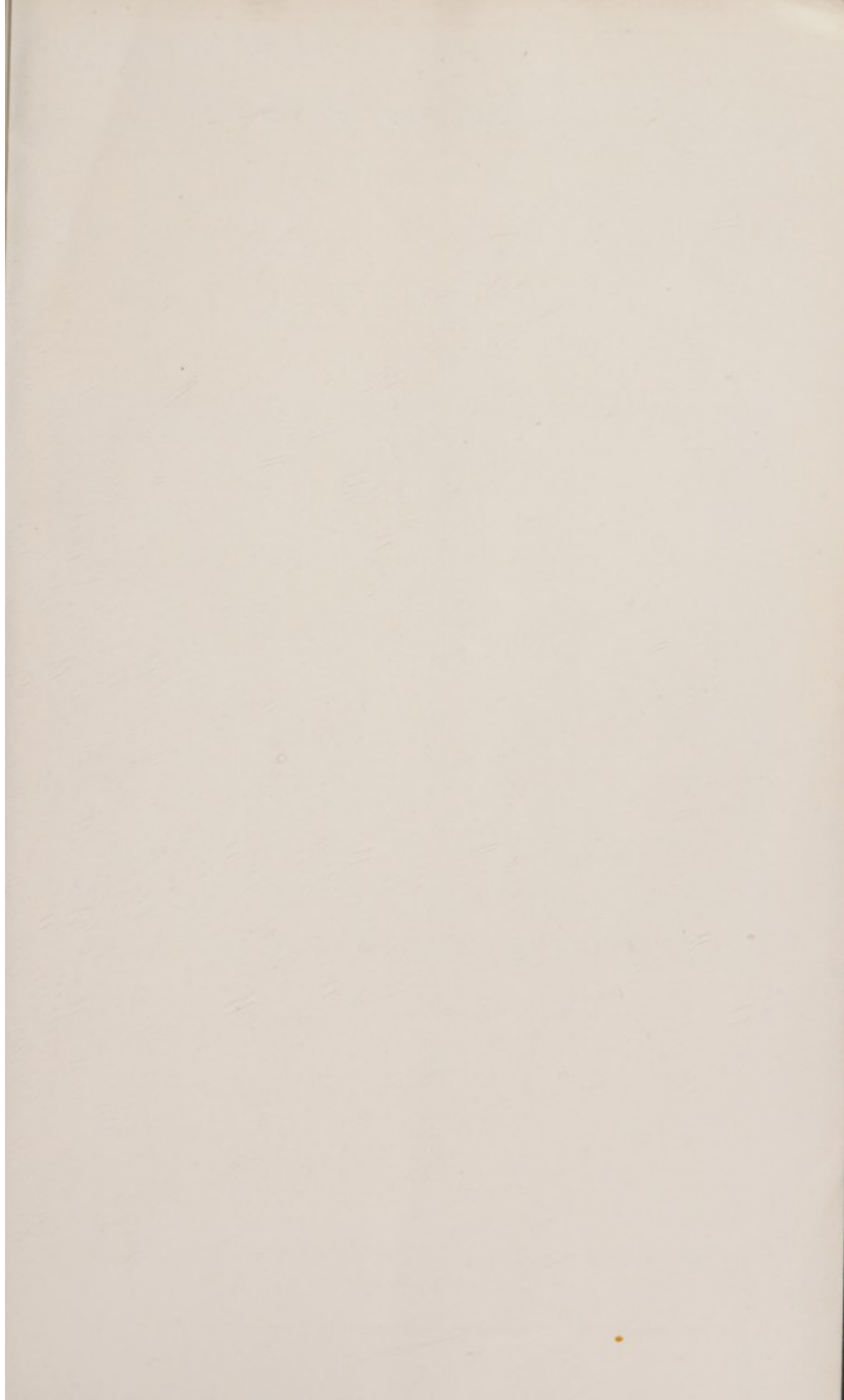
Date _____

201 June 34

Lot	Amount		
	£	s.	d.
15-	2	5	-
41	4	-	-
49	3	15	-
	10.	0	

Srv. Mu. 3

STY. MU. 3



W. B. REDFERN, J.P., D.L.

By Vivian D. Ryan.



Reprinted by kind permission from "The Connoisseur," August, 1923.

The Redfern Collections.

CATALOGUE

OF THE

WELL-KNOWN & EXTENSIVE COLLECTIONS

FORMED BY THE LATE

W. B. REDFERN, Esq., J.P., D.L.

of Milton Hall, Cambridge,

AND SOLD BY ORDER OF HIS STEP-DAUGHTER LADY RYAN.

FIRST DAY'S SALE.

THE ARMOUR AND WEAPONS

COMPRISING

SPURS AND STIRRUPS,

SWORDS, DAGGERS, RAPIERS AND HUNTING SWORDS,

POWDER FLASKS AND PRIMERS,

FIREARMS AND ACCESSORIES,

HAFTED WEAPONS AND HELMETS

AND

THE DYMOKE ARMOUR

WORN BY THE KING'S CHAMPIONS.

SECOND DAY'S SALE.

THE WORKS OF ART AND BYGONES

COMPRISING

STONEWARE AND FAIENCE,

LEATHER BLACK JACKS, COSTRELS AND BOTTELS,

BYGONES IN WOOD, IVORY AND METAL,

KNIVES, FORKS AND SPOONS,

BOXES IN HORN, STEEL AND BRASS,

STUART RELICS, BADGES AND MEDALS,

SHOES, CLOGS AND HISTORIC GLOVES,

KEYS AND LOCKS FROM ROMAN TIMES TO THE XVIII CENTURY.

*Many items in the Catalogue have been noted and illustrated in standard works,
periodicals and publications of learned societies.*

WHICH WILL BE SOLD BY AUCTION

BY MESSRS.

SOTHEBY AND Co.

G. D. HOBSON, M.V.O.

F. W. WARRER, O.B.E., M.C.

C. G. DES GRAZ.

C. V. PILKINGTON.

Auctioneers of Literary Property & Works illustrative of the Fine Arts.

AT THEIR LARGE GALLERIES, 34 & 35, NEW BOND STREET, W. 1

On WEDNESDAY, the 20th of JUNE, 1934, and following Day.

AT ONE O'CLOCK PRECISELY.

On View Three Days previous.

Catalogues may be had.

Illustrated Catalogue (8 Plates), Price 3s.

Printed by J. Davy & Sons, Ltd., 8-9, Frith-street, Soho-square, London, England.

CONDITIONS OF SALE.

- I. The highest bidder to be the buyer. If any dispute arise the Auctioneer shall have absolute discretion to settle it; and to put any disputed lot up again.
- II. No person to advance less than 1s.; above five pounds 5s., and so on in proportion.
- III. All Lots are put up for sale subject (a) to any reserve price imposed by the Seller and (b) to the right of the Seller either to bid personally or else by any one person who may be the Auctioneer.
- IV. The purchasers to give in their names and places of abode, and if required, to pay down 10s. in the pound or more, in part payment of the purchase money; in default of which the lot or lots purchased may be immediately put up again and re-sold.
- V. All lots are sold as shown with all faults, imperfections, and errors of description. Messrs. Sotheby & Co. act as agents; they have full discretion to refuse any bidding or to withdraw any lot or lots from the sale without in either case giving any reason; they are not responsible for errors of description or for genuineness or authenticity of any lot or for any default or defect in it, and make no warranty whatever.
- VI. The lots to be taken away at the buyer's risk and expense. immediately after the conclusion of the sale; in default of which Messrs. Sotheby & Co. will not hold themselves responsible if the same are lost, stolen, damaged or otherwise destroyed, but they will be left at the sole risk of the purchaser, and subject to a charge for warehousing. If, at the expiration of Two Days after the conclusion of the sale, the lots are not cleared or paid for, they may then be sold immediately, either publicly or by private treaty, without any notice being given to the defaulter.
- VII. Upon failure of the buyer to comply with any of the above conditions, the money deposited in part-payment shall be forfeited; and the defaulter at this sale shall make good any loss arising from the re-sale together with the charges and expenses in respect of both sales.

To prevent confusion no purchases can be claimed or removed during the sale.

Messrs. SOTHEBY & Co. are prepared to execute bids, and in addition to advise intending purchasers as far as possible, if requested by them to do so, without making any charge for either service. Lots will be procured as cheaply as is permitted by other bids or reserves, if any.

34 and 35, New Bond Street, London, W.1.

Telegraphic Address:

"Abinitio, Wesdo, London."

A.B.C. Code, 5th Edition.

Telephone: (3 lines)

Mayfair 6682, 6683, 6684.

In sending Commissions this Catalogue may be referred to as "AMAM."

COMMISSIONS SENT BY TELEPHONE ARE ACCEPTED AT THE SENDER'S RISK, AND MUST BE CONFIRMED BY LETTER OR TELEGRAM. [4]

The Redfern Collections.

PREFACE.

W. B. REDFERN, J.P., D.L., was born 7th December, 1840; he was trained as an artist under J. F. Herring, the younger, but his passion for the antique soon made itself felt; and by 1871 he was settled in Cambridge, where (in addition to his duties as owner and manager of the New Theatre, Cambridge) he pursued his antiquarian researches with unfailing enthusiasm and with the eye of an artist.

Articles flowed from his scholarly pen on many subjects—arms and armour, bellarmine and costrels, locks and keys, gloves, shoes and spurs, Stuart relics and bygones of all kinds—which were printed in the Cambridge papers and magazines and later attained a much wider circulation in the pages of such papers as the “*Connoisseur*,” to which he was a regular contributor for many years.

His painter’s eye stood him in good stead, for wherever he went—to museums, excavations, auction rooms—he would make careful, brilliantly-drawn sketches of all he saw to interest him.

He might be described as the “father” of all collectors of bygones, and his fame induced anyone who had discovered some curious antique of which the use was unknown or doubtful to bring it to him for examination; and in this way he was able to purchase many of these bygones from the original discoverers. The provenance of everything he could trace was carefully noted down, generally with a drawing of the object in his note books; and in these days when accurate provenances are so much desired, collectors have the opportunity of buying from a collection which is unusually well documented.

The collection catalogued below is a tribute to his wide knowledge and discrimination. His taste in arms and armour is exemplified by the “Dymoke” suit from an English workshop; the rare locking gauntlet and the wide range of swords, rapiers, maingauches, battleaxes and couteaux de chasse. Not content with the arms of the period when the use of gunpowder was limited, he continued his collection with early Scottish and Brescian pistols, rare linstocks, an almost unique bandolier; and a particularly interesting series of powder-primers. His collection of spurs is well-known, but the metalwork interest is carried through into a large collection of early locks and keys, rare early key-rings, tinderlighters, a scold’s bridle and suchlike curiosities.

In his time he was the recognised authority on gloves and shoes, and the fine collection of these should arouse much interest. His book on the subject, "Royal and Historic Gloves and Shoes," is a standard work. The early knives and forks, pressed horn boxes, and such by-gones as a complete set of wig-curlers, bombards, leather bottles, bellarmine and costrels, form a highly interesting and unusual section, which is completed by the remarkable collection of Stuart relics shown at the Stuart Exhibition of 1911.

The outstanding item in this is the Boscobel cup, a fine silver-mounted cup of cocoa-nut, on which are depicted scenes from the escape of Charles II after the battle of Worcester. This is not unworthily followed by a series of Stuart boxes in tortoiseshell surmounted by silver bust portraits of King Charles I and a collection of Stuart coins and medals.

This collection has descended to Redfern's step-daughter, Lady Ryan, who has decided that a sale by public auction will do more to further the best interests that her step-father had at heart, and arouse more interest in his memory and pioneer research work than could the mere exhibition of the collection in a provincial house or museum. Redfern would have been glad to know that when his own life of collecting was finished, other younger collectors should have the interest of adding to their own collections from what he had brought together and prizing afresh those objects which had been of such absorbing interest to him in his lifetime.

May, 1934.

SOTHEBY & CO.

The Redfern Collections.

CATALOGUE

OF THE

WELL-KNOWN & EXTENSIVE COLLECTIONS

FORMED OVER A LONG PERIOD OF YEARS BY THE LATE

W. B. REDFERN, Esq., J.P., D.L.

*Formerly exhibited at Milton Hall, Cambridge, and at
Hintlesham Hall, Ipswich.*

SOLD BY ORDER OF HIS STEP-DAUGHTER LADY RYAN.

FIRST DAY'S SALE.

Wednesday, June 20th, 1934.

THE ARMS AND ARMOUR.

The following Spurs and Stirrups have been on loan at the Fitzwilliam Museum, Cambridge, and some are illustrated and described in Sir William Ridgeway's book on Horse Origin and in The History of the Spur, by Charles de Lacy Lacy.

LOT

- 1 A collection of twenty-five pryck and rowel Spurs of the Roman, Norman and Gothic periods, mounted upon boards each with description, including examples found in London and Cambridge
- 2 Another collection of twenty rowel Spurs, 16th and 17th Century, including several found in London, Cambridge and in Ireland
- 2A Fifteen iron and bronze Spurs, including 14th, 15th, 16th and 17th Century excavated specimens found in Norfolk, Suffolk, etc. 15

107
Williams
25
407
Babington
20
25

- 3 A PAIR OF FINE SPURS of chiselled steel with engraved rowels of five points, original brass buckles of elaborate construction, *early 17th Century* 2 *3/10/- Brown*
- ** From the collection of Count de Salis.
- 4 A 17th Century iron Spur of curious form, having three rowels; a bronze Gothic Spur with maker's stamp; and two 17th Century Spurs inlaid with silver 4 *3/10/- Brown*
- 5 A pair of late 17th Century silver-plated Spurs chased with masks and clasped hands, *from the Marchesa Rossi collection, Naples*; and a pair of 17th Century Spanish Spurs inlaid with silver 4 *30/-*
- 6 A pair of 17th Century gun-metal Spurs with jingles; a pair of 18th Century silver Spurs; and two 17th Century Spanish Spurs inlaid with brass 6 *20/-*
- 7 A pair of Mexican Spurs of iron inlaid with silver, complete with buckles and straps; an elaborate Spur of embossed silver; a Spur with very large rowel; and a pair of iron Spurs 6 *2/-*
- 8 A pair of 17th Century engraved brass jingle Spurs; two 17th Century bronze Spurs; and ten various Spurs, *all of the 17th Century* 14 *25/- Baby*
- 9 A pair of 17th Century Spurs of engraved and silvered brass; two iron Spurs of similar period, encrusted with silver; and sixteen various Spurs of the 17th and 18th Centuries 20 *30/-*
- 10 A pair of 17th Century iron Spurs encrusted with silver; a pair of chiselled Spurs with traces of gilding; a Gothic Spur found in London; a Norman Spur; a Gothic Spur embedded in a tree root; and five various 17th Century Spurs 12 *30/- Brown*
- 11 A collection of thirty-six Spurs and two detached Rowels from the 15th to the 19th Century, including specimens in bronze and chiselled iron; and an Example from the field of Waterloo 38 *25/-*

The following Stirrups are described and illustrated in the 'Connoisseur,' February, 1920.

- 12 A pair of 17th Century embossed bronze gilt Stirrups; a single Stirrup found at Cambridge; and a 17th Century rowel Spur with traces of gilding 4 *20/- Brown*

- 13 A pair of 17th Century iron basket Stirrups; a pair of brass Stirrups; a jack-boot Stirrup; a bronze Stirrup; and an iron Stirrup, *probably of the 9th Century* 7 25/-
- 14 A pair and five single Stirrups of pierced iron, *Spanish, 17th Century workmanship* 7 10/-
- 15 Two bronze Stirrups; four iron Stirrups; another of brass; a pair of horn Stirrups from Bagdad; and a steel Bit 10

DAGGERS.

- 16 A rondel Dagger; and a kidney Dagger, *both in 15th Century style* 2 10/- Brown
- 17 A 17th Century Dagger with basket guard, the blade inscribed JOHAN and the running wolf; two 17th Century Daggers with drooping quillons; and an excavated Dagger found at Barnwell Abbey, Cambridge 4 15/- Brown

The following six Daggers described and illustrated in the 'Connoisseur', April, 1922.

- 18 A Dagger, the quillon terminals chiselled *en suite* with the pommel, single ring guard, the iron grip bears traces of overlay of latten, tapering, grooved blade, 16 in. long; *Italian, mid. 16th Century*
- 19 A Dagger, the pommel chiselled with figures and centaurs, the quillons formed as angry lions, the ricasso chiselled in high relief with Roman horsemen, the blade deeply ridged and pierced, 17 in. long; *Italian, late 16th Century* 60/- Brown
- 20 A Main Gauche, the shell guard of pierced brass, spiral quillons, single-edged blade, 20 in. long 22/- do
- 21 Another Main Gauche, the shell guard of plain bright steel, straight quillons, the blade partly back-edged, has a flat ricasso with depression for the thumb, 22 in. long; *Spanish, 17th Century* 60/- Brown
- 22 A curious Dagger with engraved and pierced guard; and a pair of massive "Sword-Breakers," the blade inscribed ANTONIO PICINIO ANNO 1613, also GEORGIUS SCHUECHTER 45/-

- 23 A Dagger of bold design with basket guard, the blade with high central ridge, 19 in. long; *English, 17th Century*

** From the Morgan Williams collection.

- 24 A Dagger of strange design, the quillons chiselled in the form of a winged monster, pierced flaming blade; and two 17th Century Stilettos

- 25 A Scottish Dirk, flat brass pommel, carved incised grip, the blade partly back-edged, 16 in. long

** Stated to have been used at Culloden, 1746, described and illustrated in the 'Connoisseur,' November, 1915.

Exhibited at the Stuart Exhibition, Cambridge, 1911.

- 26 A Dagger of bold form, contained in a scabbard dated 1617; and a Stiletto with sheath of chiselled and pierced steel

** Exhibited at the Stuart Exhibition, Cambridge, 1911.

- 27 A 17th Century Stiletto with horn grip; and four similar Stilettos

- 28 A Dagger with reversed curved quillons and ring-guard, the hilt bearing traces of gilding, the blade deeply grooved and pierced, 14 in. long, *German, early 17th Century*; and a Stiletto of composite construction

- 29 A plug Bayonet in scabbard, the grip of ivory inlaid with silver, embossed brass quillons and pommel, *late 17th Century*; and three similar Bayonets of plain type

- 30 Two plug Bayonets with brass and ivory hilts; and five Spanish knives with inlaid grips

- 31 A midshipman's Dirk in scabbard, *late 18th Century*; a Dirk with ebony grip and silver mounts; five various Knives and Daggers; and two Scabbards

The following collection of Hunting Swords were mostly described and illustrated in the 'Connoisseur,' July, 1920.

- 32 Two Hunting Swords with stained ivory grips and silver quillons; two similar Swords with brass hilts and escallop guards; and two youths' Hunting Swords with partly engraved blades, all of the 18th Century

- 33 A Hunting Sword of "hangar" type, the pierced blade bearing a maker's stamp, silver hilt with staghorn grip; a similar Sword with chiselled and pierced steel guard; another, the blade marked with the "running wolf"; and two others with escallop guards, *all of the late 17th Century* 5 *45/-*
- 34 A group of seven Hunting Swords, having horn or shagreen grips and escallop or embossed guards, *17th and 18th Century* 7 *40/-*
Brown
- 35 A Hunting Sword, the guard embossed with a hunting scene, the knuckle-bow embossed with the figure of Diana, the blade partly engraved and gilt; another Sword, the blade inscribed VIVE LE ROY; and three other Swords of similar character, *17th and 18th Century* 5 *50/-* *do*
- 36 An English Hunting Sword contained in original scabbard with maker's name BIBB, NEWPORT STREET, silver mount with hall mark for 1756; three similar Swords with stained horn or ivory grips; another, with gilt bronze hilt, the pommel formed as a hoof; also a Sword, the guard embossed with a boar hunt, *17th and 18th Century* 6 *50/-* *do*
- 37 A fine Hunting Sword, the grip of stained horn inlaid with animals in silver, the guard embossed with a hunting scene, the blade engraved with hounds, etc.; another Sword of good quality, with ivory grip and embossed brass hilt; also a Sword, the blade dated 1748 and inscribed VIVAT ORANGE, the hilt embossed with Romanesque figures, *all of the 18th Century* 3 *11/6/-*
Brown
- 38 A combined Hunting Sword and flint-lock Pistol contained in a scabbard, embossed brass mounts, buck horn grip; and a similar Sword, entirely of steel, *probably German, late 18th Century* 2 *40/-*
- 39 A Sword of "hangar" type, the blade inscribed ANDRIA FERARA; another, the blade with the "King's Head" mark, *late 17th Century*; and three 18th Century Swords, the hilts partly of silver 5

Most of the following Powder Flasks and Primers were described and illustrated in the 'Connoisseur,' 1916.

- 40 A Powder Flask of horn with iron mounts engraved with a costume figure; and a circular Powder Primer of wood, inlaid with a procession of figures in bone, *German, late 16th Century* 2 *60/-*
Brown

- 41 A rare Primer with bullet-bag attachment, of wood covered with leather and having black iron mounts, *German, late 16th Century*; and a carved ivory Primer, embellished with the Arms of France and portrait of Francis II 2

** The former from the Zschille collection and the latter fully described and illustrated in the 'Connoisseur,' June, 1915.

- 42 A 16th Century horn Flask, engraved with Leda and the Swan; and another of wood inlaid with buckhorn, the main panel depicts a stag hunt, the feed of gilt metal, *both German, late 16th Century* 2

** The latter from the Spiller collection.

- 43 A tortoiseshell Primer with silver mounts; a Russian Primer with niello mounts; another of silver, from Persia; and an Arab Primer of brass 4

- 44 Two 16th Century German Flasks of carved staghorn; and two Scandinavian Flasks, one of carved wood, the other of horn, the latter dated 1770 4

- 45 Three large Flasks of flattened engraved horn with belt-hooks; and another, engraved with a mythical hunting scene 4

- 46 A circular Flask of wood inlaid with concentric designs in copper and bone; and a Primer of similar character, *South German, late 16th Century* 2

** The latter from the Gurney and Shandon collections.

- 47 A mid 18th Century Dutch Flask of horn, engraved with a stag and boar hunt; two 17th Century Flasks of carved horn; and three 16th Century Flasks, engraved with costume figures, (*imperfect*) 6

- 48 A Flask of staghorn, carved with figures in costume; and a similar Flask, carved with the Crucifixion 2

** The former from the Earl of Craven's collection.

- 49 A 17th Century arquebusier's Powder Flask of wood with iron iron mounts; a Primer of similar form; fourteen various Flasks and Primers; and three steel Bullet Boxes 19

- 50 A Powder Horn with engraved brass mounts; three circular Primers, entirely of brass; and three small Primers with spring feed-covers, *all of Eastern origin* 7 *Russell*

- 51 A Powder Horn, entirely encased in engraved and pierced brass; another of polished horn with pierced mounts; another with brass mounts; and three gourd-shaped Primers, *from the Near East* 6 *15/-*

- 6 52 A VERY RARE ENGLISH MUSKETEER'S BANDOLIER or Cartridge Baldrick, consisting of a buff leather belt to which are attached twelve charge cases of wood covered with leather, each stamped with the crowned head of King Charles I within an oval frame. There is also a broad leather flap intended to protect the charges from rain. A similar specimen is illustrated by Meyrick, who states:—"The noise they made, agitated by the wind, but more especially the danger of all taking fire from the match-cord, occasioned their disuse, as Sir James Turner tells us, about the year 1640." 21/- *Jesk*

** This interesting relic was discovered in October, 1876, when pulling down an ancient house in Trinity Street, Cambridge, and was secured upon the spot by Mr. W. B. Redfern.

Described and illustrated in the 'Connoisseur,' September, 1908.

Exhibited at the Stuart Exhibition, Cambridge, 1911.

[See ILLUSTRATION. Plate II.]

FIREARMS AND ACCESSORIES.

- 53 A wheel-lock Pistol with steel mounts, 18 in. long, *Italian, mid 17th Century*; a Pistol with snaphaunce lock; and a pair of flint-lock Pistols with carved stock and chiselled steel mounts, inscribed F. SABAT, 10½ in. long, *Italian, mid 18th Century* 4 *12/10/-*

- 54 A pair of wheel-lock Pistols with ball butts, the stocks inlaid with designs in staghorn, 21 in. long, *in German 16th Century style* 2 *2/15/- Russell*

- 55 A pair of flint-lock pistols for the left hand, by PICKFATT, London, these have silver grotesque masked butts and the stocks inlaid with silver wire (*one hammer broken*), 12 in. long, *mid 18th Century*; and a Pistol for the right hand, of similar character, by W. EMMS, 12¼ in. long 3 *4/10/- Russell*

56 A RARE PAIR OF DOUBLE-BARREL POCKET PISTOLS, constructed entirely of steel, inscribed SEGLAS, LONDON *4/107 2*

57 An English "under and over" Pocket Pistol with brass barrels, $6\frac{1}{4}$ in. long; a Pistol with silver masked butt; a Pocket Pistol, by OAKES, London; and a French Pocket Pistol *307 4*

58 A rare Scottish flint-lock Pistol, entirely of metal, constructed of engraved brass and steel, it is equipped with a belt-hook, $11\frac{1}{2}$ in. long, 18th Century *4/107 -*

59 Another Scottish Pistol, entirely of engraved steel, rams-horn butt and belt-hook, signed IA MICHIE, $11\frac{1}{4}$ in. long *16/107 Brown*

60 An English 18th Century Pistol, signed GREEN, 16 in. long; a Pistol with brass mounts; two French Pistols, one bearing signature PIERRE PEYRET. and an English Service Pistol, marked LONDON *407 5*

61 A Sea-Service Pistol, the lock inscribed VERNON, 1759, 19 in. long; a Dutch Pistol, inscribed JEANE KRANS MASTRICH; and a pair of Holster Pistols with carved stocks and steel mounts *457 4*

62 A long pair of flint-lock Pistols with elaborate mounts, 23 in. long; and three other Pistols, all from Turkey or the Near East *307 - 5*

63 A percussion Military Pistol, inscribed I. N. JOHNSON, U.S., 1855 (stated to have been used at the battle of Bull Run); a pair of Albanian snaphaunce Pistols, entirely of metal; and a Pistol with spring bayonet *307 4*

64 An Indian flint-lock Pistol with embossed silver mounts; a Circassian Pistol with leather-covered stock and ball pommel; and six Persian and Turkish Pistols *307 8*

65 A detached Wheel-Lock, the surface engraved with trophies and inscribed CARLSON, DRESDEN, early 17th Century; and three combined wheel-lock Keys and Screw Drivers *307 4*

66 An English Eprouvette or Gunpowder Tester, inscribed BEDDON; a French Eprouvette; two others (one defective); and a brass Bullet-Mould *307 5*

67 Two toy Petronels of bronze; and a Portion of another, 6 in. and $6\frac{1}{2}$ in. long, English, c. 1600 *3*

** Many of these have been found in the City of London. There are nine examples similar to above in the Guildhall Museum. *457 4*

- 68 A match-lock Arquebus, smooth bore barrel, octagonal at the breech, the stock carved at the butt, *probably French, early 17th Century, 5 ft. 3 in. long* 9-1-
Portico

*** Exhibited at the Stuart Exhibition, Cambridge, 1911.

- 69 A flint-lock Gun with brass barrel, by KOLBE, *London, early 18th Century*; and a "Brown Bess" Musket, by H. NOCK, with bayonet, *late 18th Century* 6/5/- 2

- 70 A flint-lock Sporting Gun with elaborate embossed brass mounts, the damascus barrel inlaid with silver; a Spanish Rifle, the barrel signed PIETRO MORETTA, and the lock inscribed RAMPONE; also a double-barrel French Sporting Gun 60/- Pearson 3

- 71 A Queen Anne Blunderbuss, by T. JONES, *London*, with brass barrel; and a similar piece marked W. SANTEY, LONDON 60/- do 2

- 72 A Spanish Carbine of rare type, with brass barrel and mounts, it is equipped with a saddle-hook, *24 in. long, late 17th Century*; and a Greek Musketo, the barrel inlaid with silver 35/- 2

- 73 An Indian match-lock Gun, the stock partly inlaid with ivory plaques; a similar Gun, the barrel damascened with silver; and a French Trade Musket with flint-lock action 12/- Russell 3

- 74 A Moorish Rifle with elaborate snaphaunce lock; a Kurdish Gun with barrel of octagonal section; a Japanese match-lock Carbine; and an Indian Rifle entirely of metal 32/- Batty 4

SWORDS AND RAPIERS.

- 75 A late 17th Century Scottish Broadsword in scabbard, the double-edged blade inscribed CLEMENS TESCHE ME FECIT SOLINGEN, *39½ in. long*; and a similar Sword in scabbard, with back-edged blade 3/5/- 2

- 76 An 18th Century Scottish Broadsword with bronze basket hilt, the double-edged blade trebly grooved and signed on each side ANDRIA FARARA, *38½ in. long*; and another with iron basket guard, *34 in. long* 25/- 2

- 77 A rare Broadsword, the blackened guard bearing traces of original gilding, fish-skin grip, the double-edged blade inscribed ANDRIA FARARA four times repeated, contained in a leather scabbard with iron mounts, $36\frac{1}{2}$ in. long; *Scottish, late 17th Century*

** From Rushbrooke Hall, Bury St. Edmunds.

- 78 A late 17th Century Broadsword with blackened hilt, the blade inscribed JASPAR BONGEN ME FECIT SOLINGEN, and bearing a maker's stamp, 32 in. long; and an 18th Century Broadsword with basket guard, the blade signed J. J. RUNKEL, SOLINGEN, $35\frac{1}{2}$ in. long

- 79 A mid 17th Century basket-hilt Broadsword, the guard bearing a portrait medallion of soldier with morion, back-edged blade, 40 in. long; and an 18th Century Broadsword, the blade stamped ANDREA FERARA, 40 in. long

- 80 A Scottish basket-hilt Broadsword, the iron guard of unusual design, fish-skin grip, the double-edged grooved blade marked ANDRIA FERARA, 39 in. long; and a 17th Century Broadsword with back-edged blade, $42\frac{1}{2}$ in. long

- 81 An English Sword with half basket guard and tall pommel, back-edged grooved blade, 39 in. long, *temp. James I*; and a Broadsword with hilt of English fashion, the blade by PETER BRAS VON MEISEN SOLINGEN, 41 in. long, *mid 17th Century*

- 82 A "Mortuary" Sword, the guard pierced and chiselled with medallion portraits, the back-edged blade inscribed ANDRIA FERARA, $41\frac{1}{2}$ in. long, *English, mid 17th Century*; and a similar Sword with chiselled hilt, the blade being of an earlier epoch with high central ridge, 40 in. long

** The former sword illustrated in the 'Connoisseur,' March, 1923.

- 83 A Broadsword of "mortuary" type, the guard perforated and chiselled, the back-edged blade bears the "running wolf" mark and maker's stamp, 40 in. long; and two similar Swords, the hilts chiselled with masks, *mid 17th Century, probably English*

- 84 A "Mortuary" Broadsword, the double-edged blade inscribed INRI, 39 in. long; another, with the tang of blade exposed; and one other with wide tapering blade

- 85 A Hangar, the blade, wide towards the point, has a saw back-edge, 33 in. long; a "Mortuary" Sword, the blade inscribed ANDREA FERARA; and another, the basket hilt fitted with a Georgian blade, all of English origin, mid 17th Century 4/5/- 3

- 86 An English 17th Century Rapier, the guard and pommel chiselled with masks and foliage, the quillons curving towards the guard, the slender blade inscribed JANIES WIRSBERG, 42 in. long 4/5/-

** Stated to have been dug up on the battlefield of Edge Hill, described and illustrated in the 'Connoisseur,' November, 1915. Exhibited at the Stuart Exhibition, 1911.

- 87 A Hangar, the blade inscribed HOUNSLOE, 32 in. long; and another, the hilt decorated with a pattern in silver, both English, mid. 17th Century 30/- 2

- 88 An English Rapier with chiselled hilt, the blade inscribed LONDON, 38 in. long, temp. Charles I

** A rare example, only one other blade so inscribed appears to have been recorded. 40/- Baby

- 89 THE NASEBY RAPIER, a fine Cavalier rapier, the shell-guard finely chiselled with dolphins, masks and foliage, the pommel, knuckle-bow, ring-guard and quillons also chiselled, the grip bound with fine copper wire. The slightly tapering blade of diamond section is inscribed CLEMENS POELER, SOLINGEN, 44½ in. long; English, 17th Century 12/- 1

** Described and illustrated in the 'Connoisseur,' November, 1915. Stated to have been carried by a Cavalier on the day of "fatal" Naseby, June 14th, 1645, when the army of King Charles I suffered defeat. The owner of the rapier, a wounded Cavalier, escaped from the field of Broadmoor and found refuge in the house of a farmer in the neighbourhood, where he was sheltered and cared for till he was sufficiently recovered to take his departure in safety, leaving his rapier with his host, with whose descendents the weapon was always treasured until it passed into the possession of Mr. Redfern in 1912. Exhibited at the Northampton Museum.

[See ILLUSTRATION. Plate II.]

- 90 A Rapier, the guard chiselled with masks and foliage, double ring guards and short curving quillons, grip of oak, inscribed blade, 44 in. long; English, first half of 17th Century 2/15/-

- 91 Another English Rapier, the guard pierced and chiselled, the pommel decorated *en suite*, 41 in. long, mid. 17th Century; and a Broadsword, the blade marked with the "running wolf," 38½ in. long, English, 17th Century 2

- 92 A Hangar, the guard chiselled and pierced, the back-edged blade perforated with circles, 28½ in. long; and a Broadsword, with escallop guard and double-edged blade, 40 in. long; both English, 17th Century 2

- 93 A Schiavona, with elaborate steel basket guard and double-edged blade, 44 in. long, Venetian, 17th Century; and another Sword of Schiavona type with curious pommel of wood, 37 in. long, 17th Century 2

** The former Sword illustrated and described in the 'Connoisseur,' March, 1923.

- 94 A 17th Century Spanish cup-hilt Rapier with pierced guard, 40 in. long; and three Spanish Cavalry Swords 4

- 95 A 17th Century Rapier with large circular pierced guard, the blade inscribed SEBASTIAN HERNANDEZ, 46 in. long; and a Broadsword with swept hilt, 40 in. long, early 17th Century 2

- 96 A cup-hilt Rapier, the guard chiselled with a scroll design, wide straight quillons and flat circular pommel, back-edged blade with single groove, 47 in. long; and a similar Rapier, 45 in. long; both Spanish, mid. 17th Century 2

** The former Rapier described and illustrated in the 'Connoisseur,' March, 1923.

- 97 A Schiavona with shield-shaped pommel, the double-edged blade of hexagonal section, 40 in. long; and a similar Schiavona with back-edged blade, 39 in. long; both Italian, mid. 17th Century 2

- 98 A Falchion with lozenge-shaped pommel and thumb ring, 38 in. long; a Broadsword with staghorn grip; and a Rapier with Toledo blade, all 17th Century 3

- 99 A Walloon Sword with double pierced shell guards, the quillons with fish-tail terminals, Solingen blade, 45 in. long, mid. 17th Century; and a ring-hilt Rapier, 53 in. long, Spanish, 17th Century 2

- 100 A 17th Century Rapier with pierced circular guard, the blade inscribed JOHANNI, 43 in. long; and a Rapier of similar character, with chiselled hilt, 44 in. long; both probably of English origin

607
Russell

- 101 A FINE RAPIER, the almost flat guard pierced and chiselled with foliage, spirally twisted pear-shaped pommel, chiselled knuckle-guard, the single quillon terminating in a dragon's head, the four-sided blade inscribed JESUS, 44 in. long; temp. Charles I

** From the collection of Sir Samuel Meyrick, Goodrich Court.

Illustrated "Meyrick," vol. I, no. 13, plate LXV.

Exhibited at the Stuart Exhibition, Cambridge, 1911.

157107-

[See ILLUSTRATION. Plate II.]

- 102 A swept-hilt Rapier with ring-guard, large fluted pommel, blade with stout ricasso, 17 in. long, Spanish, early 17th Century; and a Broadsword, the hilt of elaborate description, the blade bears the orb and cross and the king's-head mark six times repeated, 38 in. long, German, 17th Century

3/57
Brown

** The latter Sword illustrated and described in the 'Connoisseur,' March, 1923.

- 103 A FINE RAPIER, the swept hilt encrusted with an intricate pattern showing foliage in gold, also a series of medallions with Roman heads in silver, the blade bears the maker's name ISAAC GLOE. The pommel and grip are alien to other parts of hilt, 41½ in. long; Italian, late 16th Century

** Illustrated in the 'Connoisseur,' March, 1923.

12/11 Brown

[See ILLUSTRATION. Plate II.]

- 104 A swept-hilt Rapier, tall pommel, reversed curved quillons, ring-guard and counter guards, double-edged blade with stout ricasso, the hilt engraved with a wave pattern, 48 in. long, German, early 17th Century; and a swept-hilt Rapier, the ricasso marked FEDRICO PICININO, 44 in. long, 17th Century

257

- 105 A 17th Century swept-hilt Rapier with inscribed blade, 44 in. long; a swept-hilt Rapier with pierced guard; and three 17th Century Swords

607
5
Batty

- 106 An Italian Rapier (one of a "case"), 42 in. long, early 17th Century; a Broadsword, the stout blade inscribed SAHAGUM; a cup-hilt Rapier; and a Sword 4

2/6/- Russell

- 107 A FINE EARLY ENGLISH BASTARD SWORD. The pommel is kite-shaped with faceting at apex. The quillons are of rectangular section, the tang of blade deeply impressed with a bladesmith's mark, the blade inlaid with the mark of a sword in latten. In splendid state of preservation with fine bronze-like patina, 42 in. long, c. 1420

** Found in the bed of the river Cam at Ely in 1845.

Illustrated and described in 'A Record of European Armour and Arms,' by Sir Guy Laking, vol. II, page 255.

[See ILLUSTRATION. Plate III.]

passed

to be given to Fitzwilliam Cambridge

- 108 A fine two-handed Sword, drooping quillons with spiral terminals and double ring guards, two sharp lugs on each side of leather-covered ricasso; the blade bears the maker's device, German, 5 ft. 8 in. long

** Lord Dillon, sometime curator of the Tower Armouries, wrote of this Sword, "It is a good specimen of the mighty Whiffler in the prologue to Act 5, Henry V."

Mr. Seymour Lucas, R.A. (a famous expert) said, "The sword is indeed a beautiful specimen."

8/5/-

- 109 A group of three Swords of rare type; an early 16th Century Venetian Sword with quillon forming knuckle bow, the grip without metal pommel; another Venetian Sword with large globular pommel, early 16th Century; and a German Sword of Landskecht type 3

** The above three Swords described and illustrated in the 'Connoisseur,' March, 1923.

18/-

- 110 An English 17th Century Broadsword, the hilt (*much damaged*) encrusted with silver; a Rapier, the hilt chiselled with medalion portraits; and three early Fencing Foils 5

25/-

- 111 A 17th Century small Sword, the hilt encrusted with silver, the blade inscribed ANTHONIO PICHINIO; an 18th Century Small Sword with pierced and chiselled hilt; and four other Dress Swords 6

25/-

- 112 An 18th Century English small Sword with embossed silver hilt, a similar Sword with inscribed blade; and two boys' Swords with silver hilts 4 *60/-*
- 113 A fine French 18th Century small Sword, the hilt chiselled with trophies upon a gilt granulated ground, vellum-covered sheath; and a similar Sword with blade of Colishmarde type 2 *6/10/- Pearson*
- 114 A small Sword with chiselled steel hilt; three similar Swords with embossed brass hilts; and two Fencing Foils 6 *40/- Babbly*
- 115 A small Sword, the hilt of chiselled and pierced steel; a 17th Century small Sword with pierced blade; another with brass hilt; and two similar Swords with blackened hilts 5 *40/-*
- 116 A small Sword, the hilt of silver gilt contained in original vellum covered scabbard; a Court Sword with embossed silver hilt; another with embossed gilt metal hilt; and a similar Sword, the hilt of burnished steel cut in facets 4 *3/15/- Babbly*
- 118 A Scottish basket-hilt Sword; seven various Swords; a detached Blade and Pommel; and eleven Georgian and Victorian Naval and Military Swords (20) *5/10/- do*
- 119 A Rapier, the quillon terminals and knuckle-bow of scroll form, escallop guard and pear-shaped pommel, the blade of diamond section grooved at ricasso, 17th Century *45/-*

ARMOUR.

- 120 A "Mortuary" Helmet, the skull of good form hammered from a single plate, deep boat-shaped ventail and tall crest sproket. It is painted black with gilt lines. (A genuine English mid. 16th Century Field Helmet adapted for church purposes) *5/- Leather*
- 121 A close Helmet with bold heavy roped skull, the vizor formed of a series of stout bars, *Italian, late 16th Century* *4/-*
- ** This helmet has been altered to its present form during the 17th Century, for use in the tilting games known as "Giocchi de' Ponti." The G.P. stamped at base of skull indicate the Galleria Premi where the armour for the games was stored.
- 122 A Salade in 15th Century style; a long Solleret of Gothic form; and a pair of Mitten Gauntlets 4 *25/- Waller*

- 123 A 17th Century "black and white" Morion; a similar Morion of bright steel; and a "lobster-tail" Helmet with sliding nasal guard 3
3/5/17 Waller
- 124 A Lanskecht Breast-Plate of peasepod form with face of two plates; the blackened surface relieved with bright radiating bands; a Burgonet Helmet with hinged cheek plates of similar character, *German, late 16th Century*; and a Gorget in 16th Century style 3
6/10/17
- 125 An English 17th Century trooper's heavy Breast and Back Plates, inscribed MARSTON MOOR, JULY 2ND, 1644; and a "lobster-tail" Helmet of the same period with lifting triple-barred umbril 3
5/10/17
- 126 An English close Helmet of cavalier type, adapted as a funeral or mortuary helmet, it bears a crest sproket, c. 1640 3
3/10/17 Fenton
- 127 A pikeman's open Helmet with wide brim and plume-holder, the surface blackened, *English, early 17th Century*; and a "lobster-tail" Helmet with adjustable nasal bar, 17th Century 2
6/10/17
- 128 A Morion of fine form of one piece, it retains its original russet surface, *Italian (Milanese), late 16th Century*; also a Spanish Cabassett of plain bright steel with armourer's stamp on brim, 16th Century 2
4/5/17
- 129 A close Helmet, the vizor with rivetted umbril is pierced and slotted, deep gorget plates, *early 17th Century*; and a "lobster-tail" Helmet with sliding nasal bar, 17th Century 2
6/10/17 Fenton
- 130 Another close Helmet, the ventail pierced with a series of circles, it is equipped with a plume holder and vizor-rest, 17th Century; also a fingered Gauntlet with roped gad-plate and bell-shaped cuff, 17th Century 2
5/8/17
- 131 A "Maximilian" Back-Plate, embossed with a series of radiating flutes, *German, c. 1530*; and two Breast-Plates and a Back-Plate of "Waterloo" period 4
2/15/17

- 6, 132 A Demi-Suite of Pikeman's Armour, comprising: an open "pot" Helmet with wide drooping brim, a Breast-Plate with hinged wide skirted tassets with simulated lames, a Gorget of two plates, and a Back-Plate, *English, early 17th Century*

** Exhibited at the Stuart Exhibition, Cambridge, 1911.

11/10/17 Desk

- 133 A curious locking Gauntlet, constructed of fourteen stout plates, the cuff roped at edge, the seven outer plates are doubly grooved

280
 ** This Gauntlet was the subject of an illustrated article in the 'Connoisseur,' September, 1924, by Dr. Charles Beard, F.S.A., and the writer expresses his belief that it is of English (Greenwich) origin, of the middle third of the 16th Century.

- 134 A Demi-Suit of Armour, consisting of a close Helmet with movable umbril, heavy Breast-Plate, Back-Plate, Gorget and a pair of complete Arm Defences, *early 17th Century*

- 135 THE DYMOKE ARMOUR. A complete Suit of Armour of plain bright steel entirely homogenous and unrestored. It consists of a CLOSE HELMET, the ventail pierced with a large number of circles and stamped MR under a crown, deep gorget plates and plume-holder. The skull and gorget plates retain their original buff leather linings and the former is padded with quilted silk. GORGET of two plates retaining lining. BREAST and BACK PLATES both lined and fastened by means of hinges and pierced shoulder-straps. The arm defences comprise deep lined PAULDRONS, RERE BRACES, ELBOW-COPS and VAM BRACES. Fingering GAUNTLETS with long cuffs, both lined. Long TASSETS to the knees. The suit completed by a pair of JAMBS terminating in laminated SOLLERETS. The original fringes, cut crimson cloth, are present on the gauntlet cuffs, pauldrons and gorget, *English, c. 1640*

1507-1
 95
 Bengat
 on behalf of
 Nat-
 ant
 collection
 London
 ** This armour has an interesting history and was fully described and illustrated in the 'Connoisseur,' May, 1925. Mr. Redfern obtained the suit in 1877 at the dispersal of the Armoury of the Dymokes of Scrivelsby, Lincolnshire, the Hereditary King's Champions. The sale included the magnificent armour of Sir Christopher Hatton, now at Windsor. Dr. Charles Beard, F.S.A., the author of the 'Connoisseur' article, states that there can be no reasonable doubt that this armour is one of the last built in the Royal workshops at Greenwich. Major Charles ffoulkes, curator of the Armouries, Tower of London, writes:—"I should be inclined to label this armour English and possibly made in the Royal Armouries."

Exhibited at New Gallery, 1901-2 (Monarchs of Great Britain), No. 667.

Exhibited at the Stuart Exhibition, Cambridge, 1911.

[See Plate I, opposite page 5.]

- 136 A complete Suit of Armour of composite construction, comprising :
a Close Helmet with sharply ridged vizor, a 16th Century
Gorget and Breast-Plate, a Back-Plate and a pair of Tassets.
The Arm Defences have pauldrons with neck guards, single
Gauntlet only. The Leg Defences have cuisses, jambs and
sollerets

9/10/-

HAFTED WEAPONS, ETC.

- 137 A 17th Century Halberd with pierced head; a small Halbert, the
head formed as birds; and a Spontoon

30/-

3

- 138 A 17th Century Linstock with double "match" holders; and two
Halberds with small heads, *late 16th Century*

3/15/-

3

- 139 Two 17th Century Halberds; three Partizans; and two Tridents

3/10/-

6

- 140 A War-Hammer of Lucerne type; and three 17th Century
Partizans

5/-

4

6. 140A A RARE POLE-AXE of fine form. The axe-blade and hammer-head
of one piece surmounted by a quadrangular spike upon a stout
neck. These parts are secured together and to the shaft by
two strong pyramidal headed bolts *probably French, c. 1470*

** This knightly weapon was the subject of an article in the
Connoisseur, October, 1924.

[See ILLUSTRATION. Plate III.]

29/-
60/-

- 141 A Partizan with long blade and stout central ridge with lugs at
base; and a similar Partizan, *Italian, mid. 16th Century*

2

- 142 A 17th Century Horseman's Axe; a similar Axe; and an iron
Mace

3

- 143 Two 18th Century Cross-Bows; and a percussion Rifle

3

- 144 An Indian Katah, the hilt pierced and chiselled with animals;
an early Katah with embossed guard; another, with spring
blade; and four similar Weapons

7

- 145 A Burmese Sword with silver-mounted scabbard; a Chinese Sword with tortoiseshell scabbard; a Soudanese Sword; a Turkish Sword with ivory hilt; an Indian Tulwar with silver-mounted hilt; and two other Tulwars 7
- 146 A fine Cingalese Dagger, the hilt and scabbard mounted with silver; a Malay Kriss, the hilt carved with a figure; a Circassian Dagger; and an Indian Dagger with ivory hilt in silver-mounted scabbard 4
- 147 A Malay Kriss in sheath; two others; and nine various Knives and Daggers 12
- 148 A fine Indian Gauntlet Sword, the hilt chiselled with scale pattern; four Tulwars with extension grips; a Persian Mace; two native Clubs; an Axe; two Shields; and a Helmet 12
-

The Redfern Collections.

SECOND DAY'S SALE.

Thursday, June 21st, 1934.

WORKS OF ART AND BYGONES.

CONTINENTAL AND ENGLISH STONEWARE AND POTTERY.

LOT

- 149 A large Westerwald Jug, decorated in relief with the arms of Amsterdam and coloured in blue "*Civitas Amsterd P.R.* 1638," $10\frac{1}{2}$ in.; a Tankard; and two Jugs of the same ware, $5\frac{3}{4}$ in. 4
** The first three exhibited at the Fitzwilliam Museum, Cambridge, May, 1902.
- 150 A Westerwald Jug, with ribbed cylindrical neck, the oviform body decorated in relief with a coat-of-arms, initials "G.R." in blue and sprays, $11\frac{3}{4}$ in.; three others, smaller, with manganese necks, $9\frac{3}{4}$ in., a type attributed to Fulham; and a large Westerwald Jug with pewter mount and chequered ornament, 15 in. 5
** The first named exhibited at the Cambridge Exhibition, 1902.
- 151 A Siegburg Schnelle moulded in relief with figures, inscriptions and date 1577, $7\frac{3}{4}$ in.; a Cologne small brown ware Jug, dated 1589, moulded in relief with three coats-of-arms, 8 in.; a cylindrical Tankard, with loop handle and pewter lid, 6 in.; and a "Bartmann" of squat shape and good colour, $7\frac{1}{2}$ in. 4
** Exhibited at the Cambridge Exhibition, 1902; The last named illustrated in the "Cambridge Graphic," 5th May, 1900, p. 4, fig. 4c.
- 152 A Cologne-Frechen Jug, moulded in relief with a female figure in Elizabethan costume and inscribed "SABIDA," 10 in.; another, Bartmann, taller, with a merchant's mark and dated 1688, $10\frac{1}{2}$ in.; another, smaller, found on the banks of the Cam, 8 in.; and three others 6
** The first two illustrated in the "Cambridge Graphic," 5th May, 1900, p. 4, with enlargements of medallions.

- 153 A Cologne "Bartmann" of squat shape, moulded in relief with the arms of Clevesburg, *c.* 1616, 7 in.; another, with the arms of the City of Amsterdam, 7½ in.; and two other Bellarmine, one of rich "tiger-ware" decoration, 8½ in. 4

** Exhibited at the Cambridge Exhibition, 1902. Illustrated in the "Cambridge Graphic, 5th May, 1900, p. 5, nos. 7 and 8.

- 154 A 17th Century Schnelle, moulded in relief round the neck with armorials and on the tapering front with full length figures of Venus, dated 1652, 11 in.; a large Bellarmine Jug, 12 in.; and two other Jugs, 8½ in. 4

** The first exhibited at the Cambridge Exhibition, 1902. The last illustrated in the "Cambridge Graphic," 5th May, 1900, p. 4, no. 10.

- 155 A fine Cologne small Jug, crisply moulded with medallion portraits round the body, bearing on the base *an impressed mark in monogram "H.S."* 5½ in.; and two other good Bartmanns," 8¼ in. and 5½ in. 3

Illustrated in the "Cambridge Graphic," 5th May, 1900, p. 4, no. 9 and no. 3. Exhibited at the Cambridge Exhibition, 1902.

- 156 A Frankfort Delft Jug, decorated with two cranes in polychrome enamel, the pewter mount *dated* 1767, 9½ in.; two others, with portraits of a Prince of Orange and a figure of the Virgin and Child, 9 in.; another, in blue and white, 8 in.; and a French Faience Pilgrim Bottle, with splashed glazes, bearing the fleur-de-lys and the sacred monogram in relief, 7 in. 5

** Exhibited at the Cambridge Exhibition, 1902.

- 157 MONEY BOXES. An interesting collection of six old English Pottery Money Boxes from the fifteenth to the nineteenth centuries, including one with green glaze and sealed up aperture; two small Lambeth Delft Ointment Pots; and two other pieces 10

** Some of the pieces in this and the following lot were exhibited at the Guildhall, Cambridge, May, 1911.

- 158 A 15th Century English Jug of massive ovoid form, with flared cylindrical neck and heavy rope handle, covered with a dark green glaze, 9¼ in.; two Costrels, with splashed glazes; and two other pieces, 15th-16th Centuries 5

** See "The Collector," Aug., 1930, where early English wares of this nature are described in an article by Bernard Rackham.

- 159 A Cologne stoneware Jug, with squat body, cylindrical neck and loop handle, covered with a brown "tiger-ware" type of glaze, decorated on the neck with three lions masks and in front with the Royal Arms and inscription "ELIZABETH REGINA 1600," $4\frac{3}{4}$ in.; two other Stoneware Jugs; a Tankard; and a 15th Century Costrel, $11\frac{1}{2}$ in. 5

** The Costrel from the Boynton Collection found in Moorfields, the first named found near Norwich.

- 160 DATED WINE BOTTLES. An Old English glass Bottle of the late seventeenth century, with globular body and tall tapering neck, $9\frac{1}{4}$ in.; another small rare Wine Bottle with a Cambridge Seal dated 1684, $5\frac{1}{4}$ in.; six others, with seals bearing the dates 1708, 1770, 1785 and 1790; and other pieces, an unusually interesting lot 10

** See Francis Buckley, "Glass," Aug., 1931, fig. 1, p. 322, "Connoisseur," W. A. Thorpe, April, 1929.

LEATHER BOTTELS AND BLACK JACKS.

- 161 A Black Jack of usual type and small size, with a silver mounted rim, $7\frac{3}{4}$ in.; a leather Bottel with the initials R. S. painted on each end, $7\frac{1}{4}$ in.; and a small Costrel, $6\frac{7}{8}$ in. 3

** All three types are illustrated in "Black Jacks and Leather Bottells," pl. 2, p. 16, and the first and third in the "Connoisseur," Aug. 1922, pl. 4, p. 219.

- 162 A small leather Bottel of usual type, with thong; two others with pieces cut out, recalling the song of the leather Bottell

*"Out of the side you may make a clout
To mend your shoes when they're worn out
Or take and hang it up on a pin
Twill serve to put hinges and odd things in.*

and two other pieces 5

** The first named illustrated in the "Connoisseur," Aug. 1922, pl. 4, No. 6.

- 163 A small leather Drinking Stoup, with loop handle; an old leather Bottel with the initials R. A.; another with the initials H. H. and the date 1614; and the neck of a Costrel 4

** The Stoup exhibited at the Exhibition of "Stuart & Cromwellian Relics," Cat. p. 59, No. 400, Cambridge, 1911.

- 164 A Black Jack with pewter rim, painted with cross keys in red and inscribed JOHN GATES AT LEWES 1617; a large leather Bottel with one end missing; a double handle Cup; and a smaller leather Bottel, 6 in. 4

** The last named type illustrated in the "Connoisseur" by Oliver Baker, June 1910, p. 111. The Black Jack exhibited at the Exhibition of Stuart and Cromwellian Relics, Cat. p. 59, No. 399, Cambridge, 1911.

- 165 A FINE LEATHER BOTTEL impressed with the fleur-de-lys, on one side and the initials T. A. and date 1705 on the other, on the base the number 70, 8 in.; and a small leather Bottel with the initials G. S. of rare type, 5½ in. 2

** The first named illustrated in the "Connoisseur," Aug. 1922, pl. 3, p. 215, and exhibited at the Exhibition of Stuart and Cromwellian Relics, Cat. p. 59, No. 403, Cambridge, 1911.

- 166 SHAKESPEARE. A large and interesting leather Bottel bought by the late Mr. Redfern from Anne Hathaway's Cottage in October 1875 it was sold to him by Mary Baker a descendant of the Hathaways, her signature appears inside the Bottel, one end has been cut out, 9 in.; and another fine Bottel from Oliver Cromell's Brewery at Huntingdon, 8½ in. 2

** Both illustrated in the "Connoisseur," Aug. 1922, pl. 4, Nos. 5 and 2, and mentioned by Oliver Baker in "Black Jacks and Leather Bottells," p. 55. An interesting article by Jewitt on Leather Bottells and Jacks appeared in the "Reliquary," October, 1884.

BYGONES IN WOOD AND IVORY.

- 167 A carved seventeenth century Cribbage Board with ivory pegs in box underneath, 14½ in.; two other smaller Cribbage Boards, inset with bone and ivory, 9 in.; and two shoe Snuff Boxes 5

- 168 A finely carved French Tobacco Rap, decorated with conventional floral ornament and enriched with ivory inlay, 8 in.; an old Squirrel Screw Nutcracker; a modern French Owl Nutcracker; two Horn Snuff Mulls; and a Box 6

** Articles on Tobacco Raps appeared in the "Connoisseur," 1909 and 1920.

- 169 Thirteen good Lace Bobbins, in ivory, mostly inlaid and with the following names, Sally, John, Lydia, George Wooding 1859, and one inscribed "DEAR MOTHER"; an Ivory Shuttle; and six Fans of various types 20
- 170 An old English Harvest Flask of barrel shape with brass bands, 7 in.; a Cane Barrel engraved with a tree, crown, birds and inscribed "LOVE A FRIEND," 7 in.; a Balance in Case; and an old Bellows with tortoiseshell top 4
- 171 Two Hour Glasses of the usual type, with turned columns, 7 in.; a wooden Rolling Pin for impressing cakes or biscuits, 14½ in.; a Snuff Box in the form of a double barrel Pistol with dog's head butt, 7 in.; and an Irish Shillelagh, 20 in. 5
- ** In the "Connoisseur," March, 1933, an interesting article appeared on the hour glass by W. C. Harford.
- 172 A pair of eighteenth century turned wood Candlesticks, with spiral and fluted columns, and brass nozzles, 14¾ in.; a Crucifix; and two Hour Glasses, *one from Goose Green Church, Sussex* 5
- 173 A large Nutcracker, decorated with box wood and with acorn ends to handles, 9¾ in.; two small eighteenth century Screw Nutcrackers of circular form; a Jester Nutcracker; and two others. 6
- ** One of the circular Nutcrackers is illustrated in the "Antiquary," March, 1911, p. 96.
- 174 A seventeenth century wooden Nutcracker in the form of a merman; another of angel type; a Yew tree Scottish Quaich; and two amusing French wooden Nutcrackers, one inscribed "TETE NOIRE" 5
- 175 WALKING STICKS. An early eighteenth century tall Walking Stick with knotted staff, the handle with metal finial containing an aperture for a dagger, 4 ft. 3 in. long; an engraved Stick, with portraits of Prince Albert, Queen Victoria, Napoleon, Wellington, Soldiers and Sailors; three other Sticks; and an old English Corn Flail 6
- ** See the "Connoisseur," July, 1925, an article on Walking Sticks, by Charles A. Eding.
- 176 A well carved Knitting Needle Sheath, decorated with grapes, flowers, masks and spiral columns, 11 in.; two other Sheaths; an Apple Scoop; a small Hour Glass; and two Nutcrackers 7

- 177 An interesting pair of French early 17th Century Nippers, perhaps for sweetmeats, imperfect; a Knitting Needle Sheath; two other pieces; Two Nutcrackers; a Book Box; and an African Snuff Bottle 8
- 178 An 18th Century English carved wood Figure of a Man in green coat, red knee breeches and white stockings, holding a dog under his arm, $6\frac{3}{4}$ in.; a fine Irish Snuff Box, carved on the lid with the arms of Ireland; two finely carved turned wood Needle Cases; part of a 16th Century wooden Comb; and two shoe Snuff Boxes 7
- ** The Irish snuff box exhibited at the Exhibition of Stuart and Cromwellian Relics, Guildhall, Cambridge, 1911, cat. no. 451.
- 179 An 18th Century Stay Busk, surmounted by a human head; and another, carved with two figures, trees and flowers, and the initials E. F. and A. I., 15 in. and 12 in.; a Victorian Tipstave; a French hand Nutcracker; a wood Carving of an angel holding an escutcheon; and a carved wood Book Box 6
- ** See French Stay Busks, by the late Maurice Alaret, "Connoisseur," April, 1924, also the same magazine, October 1912 and 1919, and the "Reliquary," 1903.
- 180 A Flemish 16th Century wood Carving of the Virgin and Child, $7\frac{1}{2}$ in.; another, Figure of Christ, *possibly Nuremburg*; a massive carved wood Box, with three carousing figures; another, *dated 1785*, and with the initial J.H.K., the lid inset with a mother-o'-pearl plaque, $5\frac{3}{4}$ in.; a 17th Century Nutcracker; and three other pieces 8
- 181 A Nuremberg carved wood Cake or Ginger Bread Mould of rectangular form, 10 in.; a spirally carved and silver-mounted Knitting Needle Sheath, $8\frac{1}{4}$ in.; a finely carved French Tobacco Rap, inscribed and dated 1741, $6\frac{1}{2}$ in.; two wooden Snuff Boxes, one made from the roof timbers of the Trinity College, Cambridge, and the other from Milton's Mulberry Tree, containing complete description; a small Box made out of the pear tree planted by Oliver Cromwell in Sidney College, Cambridge; and an advertisement of the "Cambridge Diligence," *dated 1791* 6
- 182 An amusing Nutcracker in the form of a figure of a man, with revolving head, the breeches and legs forming the screw, $8\frac{3}{4}$ in.; two other Pieces; a Rattle; an ivory Needle Sheath; and two finely carved German Knife Handles, with figures and inscriptions, *early 17th Century*

- 183 A good Louis XVI French Marriage Coffe, of Cassette, in tulip wood, banded with brass "fleur-de-lys" mounts, lock plate and handles, 16 in. by 11½ in.

** Illustrated in "Bye-Paths in Curio Collecting," by Arthur Hayden, p. 57.

- 184 A Norwegian Linen Board, with scale ornament, *dated* 1748; three well carved Dutch Linen Boards, one with an inscription, which roughly translated reads "WALK IN THE PATH OF THE LORD AND ALL WILL BE WELL WITH YOU AND TRUST IN HIM . . ." 1768; and another, perhaps a Tally Board, with the arms of the City of Amsterdam, those of the Lucy Family and a variety of birds, 34 in. 5

** Illustrated in the Reliquary," July, 1879, vol. 20, pl. 5.

- 185 WIG CURLERS. An interesting collection of pipe clay Roulettes or Pipes used for curling Wigs, comprising: sixty specimens from about 1680 to the latter half of the 18th Century; a turned wood Wig Powdering Box, with perforated neck; and a framed Receipt for a guinea for the tax on Hair Powder, *dated* 1797

** The greater number of these Wig Curlers were found on the site of the old Greyhound Inn opposite the Spinning House, Cambridge. See the Cambridge Antiquarian Society's Communications, vol. XVI, Oct. 1909.

- 186 A bone Dominoes Box, engraved and coloured and containing a set of dominoes made by French prisoners of war, 7 in.; four Nailsea or Stourbridge glass Leech Bottles; a mother-o'-pearl Crucifix; a Toothpick in bottle-shaped case, 2½ in.; and a Pipe Stopper in wood 8

** The last two were the property of the famous actor Charles Kean, and were procured by Mr. Redfern in 1869 from a retired actor named Martin.

- 187 Three early 17th Century clay Tobacco Pipes; two Pipe Bowls from Jesus College, Cambridge; two nearly perfect Pipes; seven other Pipe Bowls; and three ivory Pipe Stoppers, one containing steel pick, the other two in the form of a leg and an arm respectively, 18th Century 17

- 188 A rare English Hawk's Hood, with strap and tassel knop; an ink Horn Case and Pounce Pot, with numerous screw compartments, 4 *in.*; a Highland Quaich; a small ivory Diptych; a French ivory Tobacco Rap; and a Dutch Rap, with a figure, and shell and mask ends, 7 *in.* 6

- 189 TOBACCO RAPS. An interesting collection of seven ivory and bone Tobacco Raps of the 17th and 18th Centuries, carved with figures of Lovers, Divines, Musicians and amatory trophies, *English, German and French* 7

** Similar types occur in the Wallace collection, where reference is made in the catalogue to the above. See also the fine collection in the Victoria and Albert Museum.

[See ILLUSTRATION. Plate V.]

- 190 AMERICANA. A finely engraved Buffalo Horn Powder Flask, with the Royal Arms, Montreal, Lake Ontario, Niagara, numerous Forts and Creeks, and a view of the City of New York, shooting scenes, and inscribed within a panel "*A Map of America*," metal mounts, 14½ *in.*

** Illustrated in the "*Connoisseur*," August, 1920, p. 225.

[See ILLUSTRATION. Plate IV.]

- 191 ANOTHER HORN, somewhat similar but smaller, with ships, a fort, and a figure of a man holding two swords in Red Indian costume, inscribed "*W. SMITH*," 12 *in.*

- 192 A carved oak Cabinet, with panel door enclosing four drawers, 2 ft. 7 *in.* high, 2 ft. 4 *in.* wide; two flat Show Cases; and four smaller Show Cases 7

- 193 A mahogany Show Case with glazed top and sides, baize lined interior, and two glazed doors at the back, 52 *in.* long, 27 *in.* wide, 19 *in.* high

- 194 A long mahogany flat Show Case, with gadroon moulded borders and short fluted corner pieces carved with paterae, glazed top and sides, 108 *in.* long, 27 *in.* wide; and two others 3

- 195 A kingwood bow-front flat Show Case, with lifting top, 45 *in.* long, 20 *in.* wide; an oblong Show Case, 72 *in.* long, 20 *in.* wide; and a small glazed Show Case, fitted with two drawers, in an ebonised frame, 20 *in.* by 18 *in.* 3

BYGONES IN METAL.

- 196 An interesting Scottish Crusie or Lamp from Kildrummie, Aberdeenshire, in iron with hook and ratchet stem; three oil Lamps in bronze of Roman type; a Roman bronze Lamp Stand, the spirally ribbed column supported on three human legs and surmounted by a climbing figure, 16½ in.; and an early brass Chamber Candlestick with circular pan below 6
- 197 An old English iron adjustable Toasting Stand, on tripod feet, 25½ in.; a Candle Stand and rest of similar type, 33 in.; a revolving Trivet Stand in steel, 8½ in.; and two seventeenth century Light Holders 5
- *** The adjustable Toasting Stand is illustrated in the *Antiquary*, Sept., 1911, fig. 14, cf. "English Bygones in the Geffrye Museum," by Ernest Hawking, "Connoisseur," Jan., 1930, pl. 1.
- 198 Two old English spring spiral Candle Holders, one with a wooden base the other on tripod metal base, 11 in.; a triangular Trivet Stand; a Toasting Stand; and a Soldering Iron and Stand 5
- *** The Toasting Stand is illustrated in the *Antiquary*, Sept. 1911, fig. 13.
- 199 Two old English Candle Holders with swing arms of usual type; a Wick Cutter on stand; a toasting Rack on tripod base; a Girdle Hook; a pair of Goffering Irons; and a pair of Dividers 7
- 200 A good example of a Flintlock Pistol Tinder Lighter, with brass sconce for candle, inscribed "HULL"; another steel Tinder Lighter; two Thibetan Flint and Steel Strikers; a small brass Taper Stick and an old English Door Knocker from *Burwell, Cambs.* 6
- *** The first named and the Thibetan "Strike-a-Light" are both illustrated by Arthur Hayden in "Bye-Paths in Curio Collecting," p. 93. See also an interesting article on Tinder Boxes, by Miller Christy in the *Burlington Magazine*, Dec. 1903.
- 201 A medium size Steelyard, with hooks, in steel; two spiral Candle Holders of spring type; a Wick Cutter; a bronze Tinder Box; and another 5

- 202 Two Flintlock Tinder Lighters of early 18th Century pattern with candle sconces and wooden butts; another with brass butt; a Steelyard and Weight; and two old Forks 6
- 203 An Old English Sugar Cutter, with spring handle (*type see "Connoisseur," Jan. 1930, pl. 3*); a fine small Steelyard and Weight, 7 in.; a miniature Flintlock Tinder Lighter; a pair of small Hand Snuffers; and a Steel Beetle-Nut Cutter with ivory handle 5
- 204 A good Tinder Box of the usual circular box type complete with flint, steel striker, sulphur tip matches, damper and lid with socket for candle; a Flintlock Tinder Lighter with sconce for candle; a pair of steel Ember Tongs, 14½ in.; and a pair of small Snuffers with scissors action, 4 in. 4
- ** The first-named illustrated in "Bye-Paths in Curio Collecting," by Arthur Hayden, p. 89.
- 205 A pair of good steel Ember Tongs with spring action, the perforated grip surmounted by a brass figure of Napoleon, 20 in.; another pair, 13½ in.; a pair of steel Snuffers; and a Tinder Box with flints, striker, damper and sulphur matches 4
- 206 A brass Tinder Box with flint, striker, damper, sulphur matches and lid with candle sconce, and a perforated handle; a pair of brass Ember Tongs; a brass Snuffer; a finely chased steel Snuffer; and a pair of steel Lazy Tongs for hot coals 5
- 207 A rare 16th Century Scottish Tirling Pin with rope-twisted ring running on a projecting twisted iron staple used instead of a knocker, 11½ in.; a Candle within a cylindrical Net Guard with loop handle, 12 in.; a pair of steel Snuffers of scissors action type; a 17th Century Pike Head, *found at Newbury*; and two bronze Rings 6

6. 208 An interesting and rare Scold's Bridle or Brank of usual type and helmet form complete with lock and key, 9¼ in.

** A similar specimen in the Castle Museum, Norwich, may be seen among the fine and well-shown collection of Byegones in that Museum. Cat. no. 1294, by F. Leney.

[See ILLUSTRATION. Plate IV.]

211-1
J. R. Bussett

- 209 A Sanctuary Ring, of Spanish type, from an Essex Church Door with trefoil pierced circular boss, the ring with two rosettes and crescent shape base, mounted on an oak plaque, 10 in. by 7½ in.

** Examples of these Rings may be seen on the Church Doors at Leckhampton, Adel, near Leeds, and other places.

- 210 HINGES. An interesting collection of Hinges, Hasps, Padlocks and Escutcheons in iron and base metal, mostly 16th and 17th Centurys, English and Continental 18

- 211 A German 17th Century steel and iron Casket with double handles, the massive pierced lock, decorated with a melusine, 14½ in.; and a smaller German Coffier of similar type and early construction, 7 in. 2

- 212 A 17th Century Lantern Clock, by John Maynard, Long Melford, with circular silver dial, pierced dolphin fret gallery and carved wood bracket

- 213 An Old English pewter Church Flagon of the first half of the 18th Century, with usual thumb piece, "broken" handle, dome cover and spreading base, 12½ in., from Lakenheath

- 214 Another, similar, but slightly smaller Flagon, c. 1740, from Lincoln, in the beginning of the 17th Century the twentieth canon enacted as follows "Wine we require to be brought to the Communion Table in a clean and Sweet Standing Pot or Stoup of pewter if not of purer metal," 12 in.; a Tankard, 5 in.; and a small Measure, 3 in. 3

- 215 A pewter Barber's Basin with the initial "L" in the centre within a scallop border, 9½ in.; a pewter Plate, by Elizabeth Royden, 1696, engraved with a bird in "wriggled work," 8¼ in.; and a small Nuremburg brass Alms Dish, engraved with a quasi heraldic rose, 7 in. 3

- 216 A set of five pewter Plates, engraved with birds and tulips in "wriggled work" within a dentate border, dated 1718, by Nicholas Jackman, London; and a Charger, 16½ in. 6

- 217 A rare early 18th Century Knitting Needle Sheath in silver, used by stocking knitters in Cumberland and Border Counties, hooked on to the waistband; two other good Sheaths; two pairs of Scissors; Needles in fish-skin case; a Knife; a pair of Persian silver Bracelets; and two other pieces 9

- 218 Two interesting Irish Horse Bells for use on narrow roads, the bases with gadroon ornament and stamped with the maker's initials "R.W." (*Robert Wells*); eight small Harness Bells; an old Cambridge Volunteer Kettledrum, and Sticks 11

** These large Horse Bells, sometimes called Crotal Bells, from the Gaelic word meaning a husk or pod, are from the collection of the Rev. W. C. Neligan, Rector of S. Mary, Shandon, Cork. See Cambridge Antiquarian Society's Report 39, pl. 1, 1879.

- 219 A German steel Tobacco Rap, the cover decorated in niello style with classic figures, $6\frac{3}{4}$ in.; three oblong Pounce Boxes, one with a sportsman, gun and dog, the other inscribed "*John Chapman, 1752*"; a pair of massive steel Nutcrackers, $9\frac{1}{2}$ in.; and a rare old bronze small Table Bell in the form of a female figure, found at Aylesham, Norfolk 6

- 220 A brass screw Nutcracker, the handle pierced, the stem spirally grooved; another of typical female leg form; and two others of different types; also a Japanese Scribe's Pencase and Ink-pot, $6\frac{3}{4}$ in.; and an old English "Goblock" 6

- 221 An interesting Nelson Tobacco Stopper in bronze; another 18th century Stopper with human bust handle; a screw Nutcracker; a pair of steel Pincers of good quality; a small brass Balance; and a Lock 6

- 222 A pair of fine 17th century steel Scales the bar beautifully pierced, the brass cups engraved with Tudor Roses; a desirable specimen in fine state of preservation; length of bar, $8\frac{1}{4}$ in. 2

- 223 A fine 18th century Cotton Reel in ivory, mounted on a silver swivel and chatelaine; a Flemish steel Tobacco Rap, the cover engraved with a tulip and running fox, inscribed "*Fin*," $7\frac{1}{2}$ in.; a screw and seal Nutcracker in brass; a brass Pipe Stopper; and another Nutcracker 5

- 224 An oval brass Dutch Tobacco Box, dated 1691, with a figure of a man and a woman, with inscription translated reading "*O my Beautiful Mistress*," $4\frac{3}{4}$ in.; and three other brass oblong Tobacco Boxes 4

** The first named illustrated in "Bye-Paths in Curio Collecting," by Arthur Hayden, p. 97.

- 225 An English steel Tobacco Box, engraved with pipes, jugs and glasses and inscribed "H. HAWKSWORTH," 1794, 4 in.; another, inscribed "ROBERT LADELL," dated 1774; another, dated 1717; and two others 5

** The Box inscribed "Robert Ladell" also bears the address Rackheath, Norfolk, the name still occurs in that part of Norfolk. The Norwich Museum have lately acquired a Lowestoft china Jug inscribed "William Ladell."

- 226 A Dutch brass Tobacco Box of oval shape, engraved with lovers, amatory trophies and inscriptions, 4½ in.; another with an inscription roughly translated "*She had her little Basket full of Fish,*" 5¼ in.; and two others of oblong shape, one of them with ten scenes from the Crucifixion, 6 in. 4

** The last named illustrated in "Bye-Paths in Curio Collecting," by Arthur Hayden, p. 97.

- 227 A pair of early 16th century Domestic Shears with scissors blades and spring action, of the type still used on modern garden shears, 4 in.; another smaller pair, 3¼ in.; an early circular screw Nutcracker; and two 15th century bronze Chapes or metal guards for scabbard ends, 2¼ in. 5

- 228 Battles of Naseby and Edge Hill. A small Catholic Locket found on the battlefield of Edge Hill (Oct. 1642), 1¼ in.; a small stone Cannon Ball found at the same place; two Bullets from Naseby field; a lead Pipe Stopper in the form of a hand found on Broadmoor, Naseby, 1¾ in.; and a pair of Domestic Shears, 5½ in., 16th Century 6

- 229 A brass Tobacco Stopper in the form of an amusing bust of a man wearing a small hat, 18th century, 2¼ in.; a brass Nutcracker; a Chinese Charm; a pair of small Domestic Shears; an object like a balance; *from the Fleet Ditch, London*; and two Roman bronze Tweezers; mounted on card 6

- 230 A Dutch brass Tobacco Box of oval shape, with the Baptism of St. John on one side and Christ and the Woman of Samaria on the other, 4½ in.; two other good brass Tobacco Boxes of oval shape; another in brass and copper of oblong shape, with the subject of Abraham and Isaac, 6¾ in.; and a very amusing

Lot 230—*continued*.

Tobacco Stopper with double reversible heads and Latin inscription "Stulti aliquando Sapientes" (*The Foolish are sometimes Wise*) 5

** The last named exhibited at the Exhibition of Stuart and Cromwellian Relics, Guildhall, Cambridge, 1911, p. 69, No. 454.

- 231 A Dutch book Tobacco Box, engraved with a horse and cart with passengers on one side and figures on the other, with inscription roughly translated, "*A Waggon and Horses is precious on earth*," 4½ in.; and three other oval Boxes with biblical and other scenes 4

** The first named illustrated in "*Bye-Paths in Curio Collecting*," by Arthur Hayden, p. 97.

- 232 An early 18th Century English Tobacco Box of oval shape in brass, with armorials and inscription "*John Story, 1706*," 4¼ in.; three good Dutch Tobacco Boxes of oblong shape; and an English combined Pipe, Tobacco and Match Box with a Figure of a Beadle, inscribed "*J. Barlow, Stoke*," 5 in. 5

- 233 FIVE TOBACCO STOPPERS, all of good quality and rare types, one with the figures of a man in long coat; another in the form of a Harlequin; another of a human figure holding a staff in his left hand; another in brass in the form of a hand holding a pipe and a rare ring stopper surmounted by the figure of a dog, 17/18th Century 5

** Illustrated in "*Bye-Paths in Curio Collecting*," by Arthur Hayden, p. 97.

The subject of Tobacco-Stoppers is fully dealt with in an interesting article by Crowther Beynon in the "*Antiquary*," July, 1915.

OBJECTS OF VERTU AND KNIVES AND FORKS.

- 234 Two 18th Century gilt Etuis with figures and musical trophies in relief; another inscribed "*S. Williams*," 1776, 4 in.; a circular Box, 2¼ in.; and a Set of Geometric Instruments in case 5

- 235 An 18th Century Lady's Satchel in leather with tooled borders and a pair of plaques with Stodhard designs of the Sensitive Plant, $7\frac{1}{4}$ in.; another 18th Century Handbag in red leather and tortoiseshell; two 18th Century leather bound Almanacks, 4 in.; and a 16th Century Book Cover with finely pierced gilt mounts, on red velvet, $9\frac{1}{4}$ in. 5
- 236 A mother-o'-pearl and silver Snuff Box with engraved lid, $4\frac{1}{2}$ in.; a bone Patch Box; a wooden Snuff Box with a memorial to Queen Caroline, $3\frac{1}{4}$ in.; and two other pieces in tortoiseshell 5
- 237 An Empire tortoiseshell and piqué Snuff Box, $3\frac{1}{2}$ in.; a tortoiseshell Magnifying Glass; a bone Snuff Box with an equestrian figure and name and date "PUGH" 1750; and two other tortoiseshell and silver shell shaped Snuff Boxes 5
- 238 A horn Snuff Box, *by Obrisset*, with a bust portrait of Queen Anne in profile to dexter; another with the Conversion of St. Paul, *signed Obrisset*; and a tortoiseshell Snuff Box 3
- ** The Queen Anne Box Exhibited at the Exhibition of¹ Stuart and Cromwellian Relics, Cambridge, 1911, Cat. No. 449. See John Obrisset, by P. A. S. Phillips, p. 62, 70, 71.
- 239 A small oval Snuff Box in tortoiseshell and silver with a bust portrait of Queen Anne in profile to dexter, $2\frac{1}{2}$ in.; a pressed horn Box with a rare subject of an equestrian portrait of Prince Eugenie; a circular Box with a bust portrait of George I; and two others (*cf. Phillips p. 62, 65.*) 5
- 240 AN IVORY HORN very finely carved with the subject of St. Eustace (or St. Hubert) *after Albert Durer*, the same incident occurs in the legends of both saints, but St. Eustace was venerated in Germany, St. Hubert rather in the Netherlands and in France. This Hunting Horn terminates in a hound head and monogram, the base with finely carved borders, 25 in.
- 241 A FRENCH CHATELAINE-ETUI comprising : case for holding scissors, knives, spoon and other implements, flanked by two thimble cases, pinchbeck, beautifully chased and engraved with figures, arabesques and foliage, contained in the original fish-skin case, 18th Century

[See ILLUSTRATION. Plate V.]

- 242 A TORTOISESHELL SNUFF BOX, mounted with silver, of large oval shape, the centre with a silver plaque bearing the initials "J.S." in monogram, 4 in.
- 243 A 17th Century Knife and Fork, with bone handle; a Knife with lattice carved bone handle; another with black wood carved handle; and six other Knives and Forks, all with bone and ivory handles 10
- 244 A 17th Century Knife, found on the site of the battlefield of Edge Hill, the brass handle with figures; a two-prong 17th Century Fork; a small two-prong Fork with ivory handle, from Edge Hill; two interesting folding Forks; and four other pieces 9
- 245 A pair of English 18th Century Knives and Forks, with agate handles in original cuir bouilli case; another Knife in similar case; a small ivory handled Knife and double prong Fork, the handle decorated with coloured floral ornament; and two other Knives 9
- ** For agate handles see "Knives and Forks," by Major C. T. P. Bailey, pl. 69.
- 246 A Flemish Knife, the handle carved with a figure of the Abbot St. Anthony walking on flames, a pig at his side; a 17th Century German Fork inlaid with mother-o'-pearl; an inlaid Knife Handle; a silver gilt English Spoon, c. 1680; and an Apostle Spoon 5
- 247 A 17th Century small Folding Knife and Fork, the handles with small bosses depicting eagles, in original cuir bouilli case, mounted on card 3
- 248 A Queen Anne horn Penknife, with double blades and awl, decorated with meandering floral ornament, the base with a steel seal of Queen Anne, 5 in.; a 16th Century bronze Knife Handle; and an ivory handled Penknife in original fish-skin case 3
- 249 A Dutch 17th Century ivory handled Knife, 10 in.; a Fork, 7½ in.; both with figures of the Virtues and the arms of Amsterdam; two other Forks with ivory handles carved with figures of a King and Queen; and an Italian Knife, the handle carved with putti, 17th Century 5

- 250 Three rare and interesting Knife Handles in the form of kings and queens; and another of a female saint holding a flower, 14/15th Century; and a fine Dutch Knife and Fork, with ivory handles and chased steel blades, in original cuir bouilli case, 17th Century 5

** Types in this and preceding lot are illustrated by Bailey in "Knives and Forks," pls. 34, 35, 36 and 42.

[See ILLUSTRATION. Plate V.]

- 251 A fine German 18th Century folding Set of Knife, Fork, Spoon and three other pieces, in original cuir bouilli case, the handles chased with hunting scenes and arabesques on a stippled ground

** From the Hailstone Collection. A similar folding Set in the Sanders Fiske Collection is illustrated in an article by Charles R. Beard in the "Connoisseur," June 1933, p. 386.

LADIES' SHOES, CLOGS AND GLOVES.

- 252 A pair of tall Turkish Chopines, or Clogs, worn by Turkish women, inlaid with geometric designs in mother-of-pearl and silver wire, the tops with woven bands of puce cloth richly embroidered with gold thread, 8 in. high 2

** Illustrated in "Royal and Historic Gloves and Shoes," by W. B. Redfern, pl. 28, fig. 3 and 4. See also Dutton, pl. 20, nos. 87 and 88, and Redfern "Cambridge Antiquarian Society," 1906.

- 253 A pair of African Sandals in leather, ornately decorated with rosettes and dentate ornament, a feature being the ring receptacle for the big toe, 11 in.; *Niger district* 2

** Illustrated in "Royal and Historic Gloves and Shoes," by W. B. Redfern, pl. 30, fig. 1.

- 254 A leather Sole of a Shoe of the 15th Century, the point destroyed, 11½ in.; a 15th Century Shoe with slashed upper; and a Boot with leather thong ties, 9 in. 3

** The first named illustrated in "Royal and Historic Gloves and Shoes," by W. B. Redfern, pl. 3, fig. 1.

- 255 A 15th Century Clog for the left foot, composed of several thicknesses of leather, 10 in.; part of a 16th Century Shoe, dug up in *Tabernacle Walk, London*, with slashed upper; another Shoe; and a Sole of a 15th Century Shoe, found at Silver Street, Cambridge 4

** The Clog illustrated in "Royal and Historic Gloves and Shoes," pl. 3, fig. 3.

- 256 A 16th Century slashed Shoe, *imperfect, dug up in London*; another with square toe and slashed upper with fringed cutting, *in fair state of preservation, 9 in., early 16th Century* 2

- 257 A Tudor broad Shoe with slashed top, *dug up in Hill Street, Finsbury, E.C.*; and an early 16th Century Shoe with a square toe, *in fair state of preservation, 9 in.* 2

** The first named illustrated in the work cited above, pl. 3, fig. 2.

- 258 A pair of French 17th Century Slippers, lined with white kid and embroidered in silver and silks of various colours, 8 in.; and three Clogs of the Queen Anne period 5

** The first named illustrated by Redfern, pl. 25, figs. 1 and 3.

- 259 A Queen Anne Shoe, with its original clog, in red and white striped silk and cotton material, lined with buff canvas, the heel of wood, $2\frac{1}{2}$ in., is covered with red leather and is *en suite* with the clog; and a 17th Century Lady's Shoe, stoutly constructed 3

** The first named illustrated by Redfern, pl. 25, figs. 7 and 8.

- 260 A pair of crimson morocco leather Shoes, with pointed toes turned upwards in Eastern style, *probably 18th Century*; a Shoe of white kid leather, covered with spotted white satin embroidered with flowers, the letters "E.H." stamped on the linings; and a pointed Slipper in black 3

** Illustrated by Redfern, pl. 25, fig. 2, 4 and 6.

- 261 A pair of early 18th Century yellow kid leather Shoes, embroidered with silver thread, formerly the property of the grandmother of J. F. Herring, the painter, $9\frac{1}{2}$ in.; and a pair of fine Queen Anne Clogs, with green and bullion work straps, $7\frac{1}{2}$ in.

** Illustrated by Redfern, pl. 27.

- 262 A pair of early 18th Century Shoes and Clogs, made of yellow worsted brocade, the latches fastened by buckles, the clogs with flat leather soles, $7\frac{1}{2}$ in. 4

** Illustrated by Redfern, pl. 18, fig. 3. These Shoes were once the property of a well-known Chesterton family, near Cambridge.

[See ILLUSTRATION. Plate VI.]

- 263 A pair of Queen Anne blue silk Shoes, the latches with ormolu buckles, *in fair state of preservation*, $8\frac{1}{2}$ in.; and another elegant pair, richly embroidered with silvered buckles, 9 in. 4

- 264 A pair of early 18th Century Shoes with a pleasing floral pattern in shades of blue, with a pair of buckles; and another pair with a silver thread design on a cream ground 6

** The first-named illustrated by Redfern, pl. 18, fig. 2.

- 265 A pair of fine 18th Century Lady's Shoes in bright yellow brocade embroidered with floral designs, the toes rounded; and another pair with a green floral pattern; also a pair of fine 18th Century Shoe Buckles 6

** The first-named illustrated by Redfern, pl. 23, fig. 1.

GLOVES AND MITTENS.

- 266 A pair of English 16th Century leather Mittens, of thick brown leather with cuffs of crimson morocco, probably used by a falconer, $8\frac{1}{2}$ in.; and a pair of Lady's Mittens, c. 1745, 13 in., *both framed* 4

** The pair of falconer's gloves illustrated in "Royal and Historic Gloves and Shoes," by Redfern, pl. 45, fig. 2.

- 267 A pair of Charles II linen Baby's Gloves with muslin cuffs embroidered with lace; a pair of miniature models of Shakespeare's Gloves in the Memorial Museum, Stratford-on-Avon, $5\frac{3}{4}$ in.; a pretty Purse embroidered with rosettes in gold threads; and a blue sequin decorated Ring Purse 6

- 268 A pair of 17th Century leather Gloves of pale brown colouring with heavy metal thread and silk fringe, 12 in., *from an old Hall, near Stowmarket, Suffolk.* 2

- 269 A pair of early 17th Century white Gloves, of light buff leather, the cuffs beautifully embroidered with formal flowers, scrolling foliage and fleur-de-lys motifs, and with pink silk linings extending about 3 in. inside the cuff, 12½ in. 2

[See ILLUSTRATION. Plate VI.]

- 270 A pair of 17th Century Gloves in light buff leather, with yellow silk lining, the hands, fingers and cuffs perforated for ventilation and decorated with crimson and gold thread, with a dentate pattern divided by panels of geometric strapwork, 11 in. 2

** Redfern illustrates on page 35 a Glove with similar perforations through the leather.

- 271 A pair of late 16th Century Lady's Gloves of elaborate and rich character in pale warm coloured buff, embroidered in green silk, the gauntlets of dark claret coloured silk richly embroidered with Prince of Wales feathers and foliage in gold and silver gimp and gold cord, 13 in. 2

** Illustrated by Redfern in the work cited above, pl. 33.

- 272 A pair of early 17th Century light buff Gloves, the cuffs beautifully embroidered with roses and floral ornament in blue, green and pink gimp, outlined with fine silver thread, enclosing in the centre a figure of a bird in pink and yellow silk; the cuffs lined to the depth of about 3 in. with pink silk, 13 in. 2

** Illustrated in the work cited above by Redfern, pl. 34.

[See ILLUSTRATION. Plate VI.]

- 273 A pair of 17th Century brown leather Gloves, plainly stitched at the seam of the thumb and fingers, the cuffs richly ornamented with a formal floral design in gold and silver thread enriched with spangling, a silver fringe round the edge of the cuff is attached to a red silk border, the lining is of the same material, 12½ in., c. 1600 2

** Illustrated in the work cited above by Redfern, pl. 37.

- 274 A pair of 17th Century dark grey leather Gloves, with short gauntlets, composed entirely of a single band of embroidered gold lace enriched with spangles and edged at the top and bottom with a fringe of gold, buff silk linings, 12 in. 2

** Illustrated in the work cited above by Redfern, pl. 43.

- 275 COLONEL DUCKETT'S GLOVES, a pair of 18th Century large dark brown leather gloves with gauntlets formed of a broad piece of gold lace with medallion and lozenge design, the backs of the gloves slightly embroidered with a floral design in gold wire thread; and another pair of Gloves with a bullion work design of archaic tree and leaf ornament surmounted by star motifs 4

** The Gloves belonging to Col. Wm. Duckett who served in the Queen Anne's Army under the great Duke of Marlborough, were exhibited at the South Kensington Museum.
Illustrated by Redfern on pl. 45, fig. 1.

- 276 A PAIR OF 17TH CENTURY SCALE LEATHER GLOVES, the leather overlapping scales knotted at the edges as are also the tabs by which the four leather buttons confine the openings of the outer side of the gauntlets, 18 in., *brilliant condition*, c. 1645-60.

** Illustrated in "Gloves and Shoes," by Redfern, pl. 5.
A similar pair of Gloves in the Whitehall Museum presented by the late Captain Hatton of the King's Dragoon Guards are described as being of buffalo leather and worn by a Cavalier during the Great Rebellion.
Another specimen in the Tower Armoury is figured by Redfern on pl. 3.

- 277 THE NASEBY GLOVES. A pair of elegant Lady's Gloves made of thin light coloured buff leather which is pure white inside, the gauntlets of maroon silk are cut with three panels at the front and three panels at the back and delicately embroidered with a conventional floral and tree design in gold threads, edged with gold lace and with blue silk lining, 12 in., *brilliant condition*

** These Gloves are believed to have belonged to a Royalist Lady who was at Naseby with the Cavalier Army when the King was defeated on June 14th, 1645, and that in the hurried flight which ensued, these gloves, together with many other belongings of the Royalists, were left behind. Till a few years ago they were treasured by a lady named Clarence, who was a native of Naseby.

Illustrated in "Gloves and Shoes," by Redfern, pl. 25.

Exhibited at the Exhibition of Stuart and Cromwellian Relics, Guildhall, Cambridge, 1911, cat. no. 501.

[See ILLUSTRATION. Plate VI.]

- 278 A PAIR OF GLOVES OF KING CHARLES I, of buff leather lined with white kid, the gauntlets embroidered in a simple manner with gold braid and having a rather deep edging of spangled gold lace, the confining loops of the openings being of royal purple silk, and the lining of the same colour

** These have been in the possession of the Millward's of Eton, Dovedale, near Uttoxeter, Derbyshire, till they were acquired from a representative of the family by the present owner. King Charles was a frequent visitor to the mansion of Sir Thomas Milward (whom His Majesty knighted during a visit), and these gloves were left by him on one of these occasions.

Illustrated by Redfern in the work cited above, pl. 21.

Exhibited at the Exhibition of Stuart and Cromwellian Relics at the Guildhall, Cambridge, 1911. Cat. no. 500.

[See ILLUSTRATION. Plate VI.]

- 279 A PAIR OF OLIVER CROMWELL'S GLOVES, made of stout darkish grey leather, with plain stitching at the finger seams and on the back of the hand; the gauntlets are wide and have a heavy thick fringe of brown silk about 5 in. long. They are in a good state of preservation, probably owing to the fact that until within comparatively recent times they have been treasured by some member of the Cromwell family, 17 in.

** About 90 years ago, these Gloves, which were preserved in the Cromwell family, were given to an old gentleman named Charles Martin, who died at Fordham, Cambridge, at the age of 92. They were a gift from his aged Mother, who had received them from a relative who had been in the service of either Henry Cromwell (son of Oliver) of Spinney Abbey, Wicken, Cambs., or in that of William Russell, of Fordham, who was son-in-law of Henry Cromwell.

STUART AND CROMWELLIAN RELICS.

- 280 A Bust Portrait, in plaster, of Prince Charles Edward, in profile to dexter, wearing the Riband and Star of the Garter, hair en queue, *oval*, 4½ in.; another, circular, of Charles II; and a Miniature, in oils, of the Old Pretender, 2¾ in. 3

- 281 An oval horn Box, with a profile portrait of Charles I, *by Obrisset*; a Tobacco Stopper, or Seal, with a bust portrait of Charles II; another of him, in silver; and a Pair of Spectacles, in steel case, *found at Naseby* 5

** The first named exhibited at the Exhibition of Stuart and Cromwellian Relics, Guildhall, Cambridge, 1911. Cat. p. 67, no. 448.

- 282 A small Watch-Key, finely chased and engraved with floral ornament; a horn Box, with profile portrait of Charles I, *by Obrisset*; and a Charles II medallion Die, *circular*, $2\frac{1}{2}$ in. 3

** A watch with a key closely resembling the above, and of the same size, was given by Charles I to Sir Edward Worsley, see p. 54, Allan Fea's "Memoirs of the Martyr King."

- 283 A Charles II Snuff Box, stated to have been made from the Boscobel Oak, which sheltered King Charles after the Battle of Worcester, the lid with the obverse half of the Royalist Medal, surrounded by a wreath, and with an added silver plate bearing the initials B.G.S. and I.W. and the date 1664, 4 in.; and a Leaf Spray from an off-shoot of the Boscobel Oak $4\frac{1}{2}$ in. 2

** Exhibited at the Exhibition of Stuart and Cromwellian Relics, Guildhall, Cambridge, 1911. Cat. p. 6, no. 447

[See ILLUSTRATION. Plate V.]

- 284 A good horn oval Snuff Box of plain form, the lid with a silver bust portrait of Prince Charles, 4 in., containing a piece of braid from a velvet Shoe, which belonged to the Martyr King; also a Royalist Tobacco Stopper, in brass, $2\frac{1}{2}$ in. 3

- 285 A Charles I oblong tortoiseshell Snuff Box, with a silver crowned head of King Charles I surrounded by a wreath on which is a crown and this inscription: CAROLUS. D.G. MAG . . . AN. FRAN. HIB. REX. FL. D ☒. (probably the obverse side of a Royalist Badge by Rawlins), $2\frac{3}{4}$ in.

** Exhibited at the Exhibition of Stuart and Cromwellian Relics, Guildhall, Cambridge, 1911. Cat. p. 67, no. 446.

- 286 Oliver Cromwell's Spectacles, of green tinted glass in the original fish-skin case, these had been preserved by the Desborough family from Cromwell's time until they were presented by a representative of the Desboroughs to Mr. Redfern, $5\frac{1}{4}$ in., with letters, etc.

** Exhibited at the Exhibition of Stuart and Cromwellian Relics, Guildhall, Cambridge, 1911. Cat. p. 59, no. 398. Illustrated in "The Connoisseur," November, 1917, p. 165.

- 287 Oliver Cromwell's Snuff Box, of brass, inlaid with mother-of-pearl and tortoiseshell, $2\frac{1}{4}$ in.; and a Pair of Spectacles from an old house at St. Ives, at one time occupied by Oliver Cromwell 2

** The Snuff Box is stated to have been given by Oliver Cromwell when revisiting his old College, Sidney Sussex, to his old

Lot 287—*continued*.

laundress, (or bedmaker as they are now called). Mr. Redfern bought it of the great great grand-daughter of that laundress when she was an aged woman.

Exhibited at the Exhibition of Stuart and Cromwellian Relics, Guildhall, Cambridge, 1911, cat. p. 68, no. 450.

Illustrated in "The Connoisseur," November, 1917, p. 165.

- 288 Charles I Document, 1 p. folio, Oct. 17, 1637, to the Attorney General, *framed and glazed*; and a Book in cipher of the Stuart period, found at Cambridge, *in box with glazed lid* 2

- 289 Charles I tortoiseshell Snuff Box, with a crowned profile portrait of the King, *by Rawlins*, in silver, within a wreath surmounted by a large crown, *oval*, $3\frac{1}{2}$ in.

** This Box is stated to have been given by Charles I on the morning of his execution to Captain Morrell. Letters and documents accompany the Lot.

Illustrated in the "Connoisseur," August, 1923, p. 223.

- 290 The Duke of Cumberland. An interesting Dutch brass Tobacco Box, of oval form, engraved on the top with the Cumberland Stone and a Landscape, and inscribed "*Culloden Moor, 1746*," where the forces of Prince Charles Edward were finally overwhelmed by the Duke of Cumberland, $5\frac{1}{4}$ in.; and a silver Medallion of Charles I, 2 in. 2

- 291 FIVE ROYALIST TOBACCO STOPPERS, in brass and copper, a pair with Charles I and Henrietta Maria, two others of Charles I, another of Charles II (the reverse with the Boscobel Oak and three crowns in the branches, the head of the King above), $2\frac{1}{4}$ in. to 3 in. 5

** Illustrated in "Bye-Paths in Curio Collecting," by Arthur Hayden, p. 97.

Exhibited at the Exhibition of Stuart and Cromwellian Relics, Guildhall, Cambridge, 1911, pp. 69-70.

- 292 A CHARLES I SNUFF BOX, of tortoiseshell, mounted with silver, the cover with a bust portrait in profile of the King, the inside of the silver rim inscribed "*Charles Wigan, Charing Cross*,"

LOT 292—*continued*.

probably an ancestor of the well-known 18th Century silver-smith, $4\frac{1}{8}$ in.

- ** Exhibited at the Exhibition of Stuart and Cromwellian Relics, Guildhall, Cambridge, 1911, cat. p. 67, no. 445, where it is termed a Comfit Box.

[See ILLUSTRATION. Plate V.]

- 293 PRINCE CHARLES EDWARD, the Young Pretender. A well painted Miniature on panel of the young Pretender, in profile to sinister, wearing a red coat and Riband of the Garter, without a hat, hair en-queue, *gilt frame*, $7\frac{1}{4}$ in. by $6\frac{1}{4}$ in.

- ** On the back of the Miniature is the following inscription :
 "This Portrait of Charles Stuart, Pretender, I bought at the sale of Mr. Broadris's effects. Mr. Kerrick had seen him (the Prince) at Rome and thought it very like him. (Signed) E. D. Clarke."

E. D. Clarke was the celebrated traveller and mineralogist, and Mr. (Thomas) Kerrick was the Cambridge Librarian from 1748 to 1828, he therefore probably saw the Prince when on a visit to Rome soon after the first-named date.

Exhibited at the Exhibition of Stuart and Cromwellian Relics, Guildhall, Cambridge, 1911, cat. p. 69, no. 452.

Illustrated in the "Connoisseur," October, 1908, p. 123.

Exhibited at the Prince Charles Exhibition, 1925, West Highland Museum, Fort William. Cat. no. 25, p. 20.

Exhibited at the Fine Art Society's Exhibition of Miniatures in Oils, June, 1928. Cat. p. 84, 6A.

[See ILLUSTRATION. Plate V.]

- 294 A CHARLES II SILVER-MOUNTED CARVED COCOANUT CUP, the lip, band, stem and foot are of silver, the latter engraved with a conventional pattern, on the ornamented band below the lip and between two engraved sprays of leaves are the incised initials G.S.I. followed by the date 1662—the time of the Restoration. The Cup is divided by narrow bands of silver into three carved panels, illustrating incidents in the flight of King Charles after the battle of Worcester.

(1) Represents the King on horseback with Mrs. James Lane, who assisted his escape, seated behind him.

(2) The King dressed as a servant riding the horse into a pond or river near a castellated house, while a man urges the horse with a whip.

LOT 294—*continued*.

(3) The King's head and that of Col. Carlos looking out from the foliage of the Boscobel Oak, while below two Cromwellian troopers are riding past, a ribbon stretches across the trunk of the tree bearing the picture of three crowns, and the inscription "1000 PUND F.D.K." A maker's mark appears on the silver lip and foot, *I over W between mullets*, $7\frac{3}{4}$ in.

** Exhibited at the Exhibition of Stuart and Cromwellian Relics, Guildhall, Cambridge, 1911, cat. p. 61, no. 412.

Illustrated in the "Connoisseur," January, 1908, p. 271; see "After Worcester Flight," by Alan Fea, p. 184 and XXII.

The initials "G.I.S." may well stand for Giles John Strangway, who assisted the King in his escape. The Cup is possibly by the same maker as a cup with granulated bowl at Queens (Cambridge), see Jackson, p. 120.

[See ILLUSTRATION. Plate VII.]

- 295 A gold Ring, the besel set with the hair of Prince Charles Edward round the initials *C.P.*, and with border of small rubies, inscribed on the back "*Hair of Chas. Edw. at the age of 17*"

** Exhibited at the West Highland Museum, Fort William, 1925, at the Prince Charles Edward Exhibition. Cat. no. 111, p. 26.

- 296 A locket containing hair, inscribed "*Hair of King JAMES III from Hengrave Hall*"

- 297 A Binding Stamp, with the Arms of Charles I. within the Garter, the corners filled with scrollwork, in brass with remains of original silver plating, lozenge-shaped, 2.55 in. by 1.7 in., *very rare*

** This item was found in June, 1910, during excavations in Whitehall Place or Gardens.

STUART AND JACOBITE MEDALS AND BADGES.

Exhibited by the late owner at the Stuart Exhibition, at Cambridge, 1911 (items 417-444).

- 298 Charles I, Newark Shilling, 1645, *fine but pierced*; a Medallet of Charles I and Henrietta Maria, in the style of Passe; and a copper Prunt (or Dish Centre) with the arms of James I with remains of original enamelling, *rare*.

** The last item was found at Thetford, Norfolk.

- 299 Charles I, Badge, with border (*Med. Illus.* $\frac{3}{2}\frac{6}{3}\frac{9}{2}$), *scarce and very fine*
- 300 Charles I and Henrietta Maria, Badge, without border (*Med. Illus.* $\frac{3}{2}\frac{5}{1}\frac{5}{6}$), *very fine*
- 301 Charles I and Henrietta Maria, Badge without border (*Med. Illus.* $\frac{3}{2}\frac{5}{1}\frac{4}{5}$), *gilt, very fine and scarce*
- 302 Charles I and Henrietta Maria, small Badge, *rare*; and Charles I, small Badge of Charles I (*Med. Illus.* $\frac{3}{2}\frac{5}{2}\frac{7}{3}$ and $\frac{3}{2}\frac{6}{3}\frac{1}{5}$), *both fine* 2
- 303 Charles I small Badge, as the second of last lot, *gilt*; and another with the arms in relief without inscription 2
- 304 Charles II small Badge, *rev. phoenix* (*Med. Illus.* $\frac{4}{1}\frac{4}{2}\frac{3}{3}$), *rare*; Restoration, 1660 ($\frac{4}{3}\frac{5}{8}\frac{3}{3}$); and Coronation Medal, *both fine* 3
- 305 James III, Touch Piece, in *silver*; and a Medal in *brass* (*Med. Illus.* $\frac{3}{1}\frac{1}{3}\frac{3}{4}$), *both fine*; and two others, one in *silver*, on the birth of Prince Charles Edward, *the last cast* 4
- 306 Prince Charles Edward, "Amor et Spes" (2), 1745, and "Revires-cat," 1750 (2); Princess Clementina, Escape from Innsbruck, 1719; Prince Charles and Louisa, *all in bronze and fine* 6
- 307 Charles I, Entry into London, 1733; four Medalllets in the style of Passe; and two others, all in *silver*; *bronze* Medals (4), *rev. VIRTUT EX ME*, etc., one *gilt* 11
- 308 Duke of Cumberland, 1745, *rev. IVSTITIA TRIVMPHANS*, in *silver*, *very fine*; three others in *brass*; and a George III "Northumberland" Shilling, 1763 5
- 309 Various hammered and milled *silver* Coins and Medals, *wt. 15 ozs.*
- 310 Various *copper*, *bronze* and *white metal* Coins and Medals
a parcel
- 311 Various Papal Medals, one in *silver*, *mostly fine and some early*

THE COLLECTION OF KEYS AND LOCKS
FROM ROMAN TIMES TO THE EIGHTEENTH CENTURY.

Exhibited on loan at the Fitzwilliam Museum, Cambridge.

- 312 A Roman Key, of iron, part of the stem corroded, the remainder with green patination; a fine bow of a Roman Key, pierced with trefoil ornament; two other Roman Keys; and two Ring Keys 6

** All the above six Keys illustrated in the "Connoisseur," December, 1924, in an article by Charles R. Beard, Pl. 1, Nos. 3, 6, 9, 8, 7 and 13.

- 313 A Roman bronze Key, with ring bow and lattice decorated boucle and ward; an iron Greek Key, dug up at Paestum (Pompeii); a small Roman Finger Key; a Greco-Roman Key from Asia Minor; and two other Roman Keys (6)

** The last three illustrated in the "Connoisseur," by Charles R. Beard, Pl. 1.

- 314 A fine Roman Key in bronze with short cylindrical stem arched bow and finely perforated right angle ward, $3\frac{1}{2}$ in.; another good Roman bronze Key and six English 15th Century Keys of various types 8

** The first mentioned from the Forman Collection, the second from the Baths of Constantine, Treves, both illustrated in the "Connoisseur," by Charles R. Beard, pl. 1, fig. 10 and 11.

- 315 A fine Romano-British Key, with trefoil bow, chevron decorated boucle, short cylindrical stem and long ward, 4 in.; a small Romano-British Ring Key, $1\frac{1}{4}$ in.; and six other Romano-British bronze Keys, mostly small 8

** The first and second illustrated in the "Connoisseur," Dec., 1924, pl. 1, fig. 1 and 12.

- 316 A good Roman bronze Ecclesiastical Key from the Forman Collection, the bow of lozenge section, surmounted by a ring, the ward pierced and hooked, $3\frac{5}{8}$ in.; two 14th Century bronze Keys; and seven others, 14th-15th Centuries 10

** The first mentioned illustrated in the "Connoisseur," pl. 1, fig. 14. This Key which is possibly of the seventh or eighth Century resembles the Clavis Confessionis S. Petri sent to St. Hubert, first Bishop of Liège, and, to a lesser extent, the earlier key of St. Servais at Maestricht.

- 317 A large bronze 14th Century Key, with perforated lozenge shape bow; another, smaller; two others, also in bronze; and six other iron 14th Century Keys of various types 10

** The first four mentioned illustrated in the "Connoisseur," Dec., 1924, pl. 2, figs. 15, 16, 17 and 18.

- 318 A 14th Century bronze Key, with lozenge shape bow and piped stem made for a five warded lock; three other mediaeval bronze Keys, the bows pierced with quatrefoil ornament; another with eared bow also in bronze; and six other iron Keys, all English, 15th/16th Centuries 11

** The first three illustrated in the "Connoisseur," pl. 2, figs. 19, 20 and 21.

- 319 A Romano-British large iron Key for a Tumbler Lock, $7\frac{3}{4}$ in.; a large mediaeval Key made from a single sheet of metal; another Romano-British iron Key; and thirteen other English Keys, mostly 14th to the 16th Centuries 16

- 320 A French 15th Century Key with trefoil pierced poignée, surmounted by a bar; four other bronze Keys, 14th to the 16th Centuries; and ten iron Keys, *English, 14th/15th Centuries* 15

** The first five mentioned illustrated in the "Connoisseur," Dec., 1924, pl. 2, figs. 24, 25, 26, 27 and 28.

- 321 Two large mid 16th Century iron Keys, with well pierced wards, 10 in. and 9 in.; and ten large Keys, mostly in iron, 16th/17th Centuries 12

- 322 A rare 14th Century bronze Double Key with two identical wards facing each other; three 14th Century Keys with intricate comb wards; a 14th Century iron Latch Key with rectangular ward and crescent bow; and eight other Keys of various types, 15th Century (13)

** The first four illustrated in the "Connoisseur," December, 1924, by Charles R. Beard, pl. 2, figs. 31, 32 and 33.

- 323 An early 16th Century large iron Key, with lyre-shaped bow, the bar missing, the ward perforated like a pheon, 7 in.; a rare 15th Century Key with elaborate comb ward; another with heart shape bow; and eighteen other Keys, from 15th-17th Centuries 20

** The first three illustrated in the "Connoisseur," Dec., 1924, pl. 2, figs. 34, 35 and 36.

- 324 A bronze 16th Century Double Key, with plain cylindrical stem and two wards, $4\frac{1}{4}$ in.; two Cabinet Keys of the 17th Century; six other good 17th Century Keys; and three small brass and silver Keys of the same period, 2 in. 12
- 325 A COLLECTION OF TWENTY KEYS, all of various types, *mostly 16th and 17th Centuries* 20
- ** See Sotheby's Harland Collection, Cat. 12th February, 1931, where here most of these types are to be found.
- 326 An 18th Century Key Ring (Gipciere) with hook, 6 in.; and seven good 17th Century Keys, mostly in burnished steel 8
- ** The first-named illustrated in the "Connoisseur," December, 1924, pl. 4, fig. 58.
- 327 An 18th Century Key Ring or Gipciere of usual chatelaine type; an interesting Venetian 17th Century Key, with triple pipe and "S" scroll ward, $4\frac{1}{2}$ in.; a double Key with two wards and cylindrical pipe stem; and eleven other 17th Century Keys in steel and iron, of various patterns 14
- 328 An Italian 15th Century bronze Key, with perforated lozenge poignée and a dentate parmeton, $3\frac{3}{8}$ in.; a chatelaine Key Ring; a double Key with different wards; a small iron Latch Key with rectangular double ward; two bronze Keys; and eight other Keys, *mostly of the 17th and 18th Centuries* 14
- 329 An early 18th Century Hinged Key with sliding collar and "S" shaped ward, 5 in.; another, of somewhat similar design, 7 in.; a chatelaine Key Ring; a small bronze Latch Key; and six good 17th Century steel and iron Keys, all of different design 10
- 330 A fine late 18th Century large Key with intricate interlaced bow, a cylindrical pipe stem and perforated ward, $6\frac{1}{4}$ in.; two good Keys with fluted stems, the bows with fine tracery of the type known as "travail d'outre mer"; and another, smaller but similar, surmounted by a crown 4
- ** All four illustrated in the "Connoisseur," December, 1924, pl. 3, figs. 38, 44, 49 and 51.
- 331 A Stuart Key with the stem inscribed with the letters "C.R.2"; another interesting Stuart Key, the oval bow showing the method of designing and cutting the pattern; and six other 17th Century Keys, *an interesting lot* 8

- 332 A good quality George I Double Key, engraved with a crown and initials "G.R." and inscribed "Mr. Greening"; a Louis XV silver Key, the poignée with caryatid figures enclosing the royal monogram, the boucle with a mask and the parmeton plain with cruciform incisions; seven small Cabinet Keys, many with ormolu bows; and two others 11

- 333 A FLORENTINE KEY of the 16th Century with nearly circular bow, finely perforated with a radiating design, $4\frac{1}{2}$ in.; five other good Italian Keys, *mostly 16th Century*; a French Key with the cipher of Louis XV in the poignée; and a large bronze Key, *a good reproduction of a scarce type* 8

- 334 A small French Key with finely perforated poignée surmounted by a crown, the boucle with a triple collar, $2\frac{3}{4}$ in.; a Stuart Key with finely perforated bow, 4 in.; a Key with rare type of bow, an unusual pattern, $5\frac{1}{2}$ in.; an Italian Key; and two good 16th Century Keys of massive type 6

** The first illustrated in "Bye-Paths in Curio Collecting," by Hayden, p. 419.

- 335 A fine Stuart Key with plain bow, the stem beautifully engraved, the pierced ward with stippled arabesque ornament, 5 in.; another, with interlaced floral bow, $4\frac{3}{4}$ in.; a massive 16th Century Key with elaborate ward, $4\frac{1}{2}$ in.; and three other Keys, *16th and 17th Centuries* 6

** The first-named illustrated in the "Connoisseur," December, 1924, pl. III, no. 55.

[See ILLUSTRATION. Plate VIII.]

- 336 A rare 17th Century folding or shut-up Key, with a sliding collar at the joint, the bright steel ward folding into the oblong perforated handle; a good late 16th Century Key, the pipe stem of triangular section; a silver-gilt Chamberlain's Key surmounted by a crown and with the initials "J.N." in monogram (Joseph Napoleon) flanked by a lion and a castle, possibly meant for Castile-Leon, 5 in. 3

** The first mentioned a good example of the ferronnier's art.

[See ILLUSTRATION. Plate VIII.]

- 337 AN ITALIAN KEY with a circular bow perforated with a radiating cell design, *16th Century*, 5 in.; another, with very finely

Lot 337—*continued*.

pierced dolphin bow and dentate stem, with good patina,
4½ in.; and two other good 17th Century Keys 4

** Illustrated in the "Connoisseur," December, 1924, in the article cited above, pl. 3, figs. 42 and 43.

Illustrated in "Bye-Paths in Curio Collecting," by Hayden, p. 429.

[See ILLUSTRATION. Plate VIII.]

- 338 A Charles II Key with fluted stem, finely decorated bow and pierced ward, the stem at the lower end with the initials "C.R. 2" with a crown between, 5½ in.; another, with studded stem, the bow beautifully chased with interlaced foliage, 6 in.; and a double Key with sliding bow for use at either end, the pipe stem with wards well pierced, 17th Century, 6 in. 3

** Illustrated in the "Connoisseur," December, 1924, pl. 3, figs. 39 and 45. Illustrated in "Bye-Paths in Curio Collecting," by Hayden, p. 429.

[See ILLUSTRATION. Plate VIII.]

- 339 A fine Italian Gipcieri, with screw swivel, the hook decorated with two caryatid busts and with traces of gilding over the steel, 7 in., *French or Italian, late 16th Century*; and curious dated Key, the stem surmounted by a figure of Eros with the date 1617 below, 6¼ in. 2

** Illustrated in the "Connoisseur," December, 1924, pl. 4, fig. 56, and pl. 3, fig. 40.

[See ILLUSTRATION. Plate VIII.]

- 340 A SET OF 17TH CENTURY PICK-LOCK KEYS, probably a locksmith's outfit, the five picks fold over the top Key, which is on a cannon barrel stem, 7 in.; a rare Stuart ecclesiastical Key, the bow with the Sacred Monogram, 6 in.; a fine Italian Key, the bow formed of two chimeras, back to back, standing upon a Corinthian capital with a full-length figure dividing them, 5¾ in. 3

** Illustrated in the "Connoisseur," December, 1924, pl. 4, fig. 57, and pl. 3, 47 and 41.

Illustrated in "Bye-Paths in Curio Collecting," by Hayden, p. 429.

[See ILLUSTRATION. Plate VIII.]

- 341 An old 16th Century Door Latch and Catch from a pew door in Madingly Church, Cambridge, 10 in.; and two other old Locks 3
- 342 AN EARLY 17TH CENTURY CLOCK, with Key and sliding Keyhole Cover, the corners with punched perforations, 8 in.; a French Lock with rococo ormolu decorations, 9½ in.; and another fine Lock 3
- 343 A NUREMBERG LOCK of bright steel and snap lock type, decorated with gilt rosettes, 8 in., 16th Century; and another circular Lock with massive key and finely perforated ward 2
- 344 A SPANISH LOCK from a standing Vargueno Cabinet, with key, and shell devices significant of St. James of Compostella, 16th Century, 16 in.; and four Book Mounts, German, 17th Century 5
- 345 A GERMAN GOTHIC LOCK PLATE, with key, decorated with foliage tracery, shaped borders terminating in hounds' heads; a very desirable piece in fair state of preservation, 13½ in., 15th Century
- ** A somewhat similar Lock Plate in the South Kensington Museum is illustrated by Starkie Gardner "South Kensington Ironwork, No. 1046."
- 346 A MASSIVE NUREMBERG CATHEDRAL LOCK of very elaborate design, the plate with interlaced foliage and figures of boys among branches, engraved and interlaced strapwork; *generally in fine state of preservation, mounted on a board*, 18½ in., 16th Century

[See ILLUSTRATION. Plate IV.]

END OF SALE.

SOTHEBY & CO.

34-35, New Bond Street, W.1.

are pleased to perform the following Services

FREE OF CHARGE

To advise intending SELLERS regarding the disposal of LITERARY and ARTISTIC PROPERTY

To give advice to intending BUYERS at their sales

TO EXAMINE PROPERTY submitted to them with a view to Sale.

To execute BIDS at their Sales — To forward Illustrated Monthly Lists of Forthcoming Sales

At a charge of $7\frac{1}{2}$ per cent (for all Lots over £100)

TO SELL BY AUCTION

PICTURES, SILVER, JEWELLERY, CHINA, FURNITURE
and WORKS OF ART, etc.

At a charge of $12\frac{1}{2}$ per cent.

BOOKS, COINS, ANTIQUITIES and PRINTS

(N.B.—These rates cover all normal Expenses of Sales)

At a charge of 5 per cent. and expenses.

TO CONDUCT SALES AT PRIVATE HOUSES IN LONDON

At a charge of 6 per cent. and expenses.

TO CONDUCT SALES AT PRIVATE HOUSES IN THE
COUNTRY

in conjunction with local Auctioneers.

At a charge of 1 per cent. (subject to a small minimum fee)

TO VALUE for PROBATE, INSURANCE,
and FAMILY DIVISION.

Visits of inspection made at moderate charges.

Individual catalogues free on application

THE MOST CAREFUL ATTENTION IS GIVEN TO ALL PROPERTIES WHETHER
SMALL OR LARGE

All properties are placed ON VIEW FOR SEVERAL DAYS before the Sale and
displayed to the best advantage

NOTICES OF SALES

Notices of all sales appear in the following papers:

Mondays: "Daily Telegraph," "Morning Post."

Tuesdays: "Times."

NOTICES OF SPECIAL SALES

Appear in suitable papers from time to time

Telephone:
MAYFAIR 6682-3-4
(three lines).

Telegraphic Address:
ABINITIO, WESDO, LONDON.

BAKER, LEIGH & SOTHEBY

THE FIRM COMMENCING WITH SAMUEL BAKER IN

1744

SOTHEBY, WILKINSON & HODGE

1861-1924

SOTHEBY & CO.

1924-1934