

**Sales catalogue: Sotheby's**

**Publication/Creation**

December 1907

**Persistent URL**

<https://wellcomecollection.org/works/qermejhc>

**License and attribution**

This work has been identified as being free of known restrictions under copyright law, including all related and neighbouring rights and is being made available under the Creative Commons, Public Domain Mark.

You can copy, modify, distribute and perform the work, even for commercial purposes, without asking permission.



Wellcome Collection  
183 Euston Road  
London NW1 2BE UK  
T +44 (0)20 7611 8722  
E [library@wellcomecollection.org](mailto:library@wellcomecollection.org)  
<https://wellcomecollection.org>

WA/4mm/om/sal/20/239/1 S

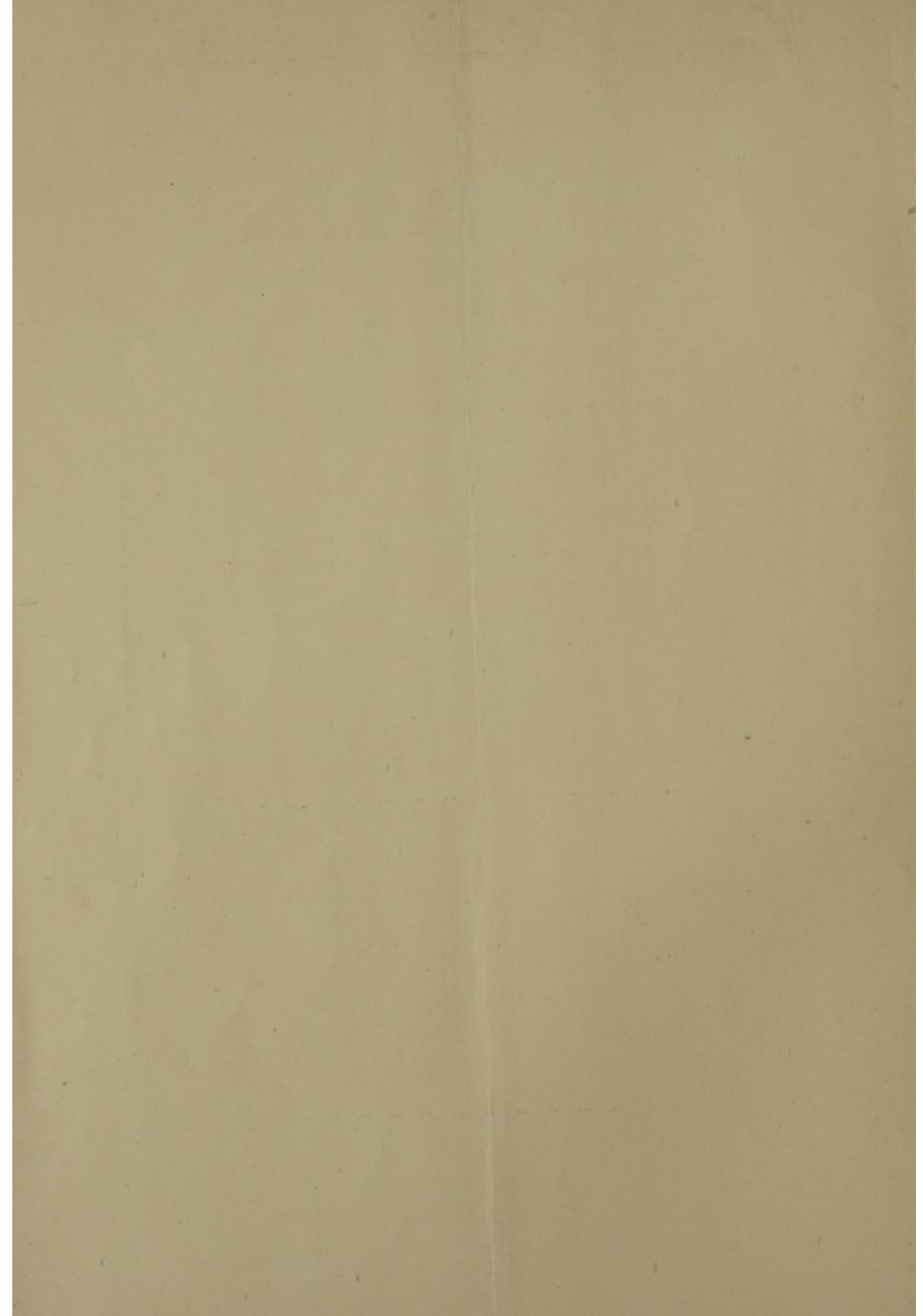
SOTHEBY, WILKINSON & HODGE,  
WELLINGTON STREET, STRAND, LONDON.

CATALOGUE  
OF A  
**Collection of Antiquities**  
*FROM EGYPT,*  
BEING  
THE SECOND PORTION OF THE COLLECTION OF  
ROBERT DE RUSTAFJAE LL, ESQ. F.R.G.S.

**Days of Sale.**

FIRST DAY..... Monday, 9th December ... Lots 1 to 116  
SECOND DAY .. Tuesday, 10th December . Lots 117 to 245

1907.





CATALOGUE  
OF A  
**Collection of Antiquities**  
*FROM EGYPT,*

COMPRISING

PALÆOLITHIC AND NEOLITHIC IMPLEMENTS,  
SOME VERY REMARKABLE AND UNIQUE WATER RECEPTACLES  
OF THE PALÆOLITHIC PERIOD,  
POTTERY OF PRE-DYNASTIC AND LATER DATE,  
TERRA-COTTA TABLES OF OFFERINGS, MOULDS, USHABTI FIGURES, &c.  
FIGURES, HEADS AND VARIOUS OBJECTS IN STONE,  
SOME OF PRE-DYNASTIC DATE AND INCLUDING SEVERAL STELE OF EGYPTIAN AND  
COPTIC DATE,  
BRONZES, FIGURES AND OTHER OBJECTS IN CARVED WOOD,  
FRESCO PAINTINGS, CARTONNAGE MUMMY CASINGS,  
AN INTERESTING SERIES OF COPTIC EMBROIDERIES,  
A LARGE NUMBER OF OSTRACA,  
ETC.

*BEING*

THE SECOND PORTION OF THE COLLECTION OF  
ROBERT DE RUSTAFJAE LL, ESQ. F.R.G.S.

---

WHICH WILL BE SOLD BY AUCTION,

BY MESSRS.

**SOTHEBY. WILKINSON & HODGE.**

*Auctioneers of Literary Property & Works illustrative of the Fine Arts.*

AT THEIR HOUSE, No. 13, WELLINGTON STREET, STRAND, W.C.

On MONDAY, the 9th of DECEMBER, 1907, and following Day,

AT ONE O'CLOCK PRECISELY.

---

MAY BE VIEWED TWO DAYS PRIOR. CATALOGUES MAY BE HAD.

---

Dryden Press : J. Davy & Sons, 8-9, Frith-street, Soho-square, W.



## CONDITIONS OF SALE.

- I. The highest bidder to be the buyer ; and if any dispute arise between bidders, the lot so disputed shall be immediately put up again, provided the auctioneer cannot decide the said dispute.
- II. No person to advance less than 1s. ; above five pounds 2s 6d., and so on in proportion.
- III. In the case of lots upon which there is a reserve, the auctioneer shall have the right to bid on behalf of the seller.
- IV. The purchasers to give in their names and places of abode, and to pay down 10s. in the pound, if required, in part payment of the purchase-money ; in default of which the lot or lots purchased to be immediately put up again and re-sold.
- V. The sale of any lot is not to be set aside on account of any error in the enumeration of the numbers stated, or errors of description.
- VI. The lots to be taken away, at the buyer's expense, immediately after the conclusion of the sale ; in default of which Messrs. SOTHEBY, WILKINSON & HODGE will not hold themselves responsible if lost, stolen, damaged, or otherwise destroyed, but they will be left at the sole risk of the purchaser. If, at the expiration of Two Days after the conclusion of the sale, the lots are not cleared or paid for, they will then be catalogued for immediate sale, and the expense, the same as if re-sold, will be added to the amount at which they were bought. Messrs. SOTHEBY, WILKINSON & HODGE will have the option of re-selling the lots uncleared, either by public or private sale, without any notice being given to the defaulter.
- VII. Upon failure of complying with the above conditions, the money required and deposited in part of payment shall be forfeited, *and if any loss is sustained in the re-selling of such lots as are not cleared or paid for, all charges on such re-sale shall be made good by the defaulters at this sale.*

---

*Gentlemen, who cannot attend this Sale, may have their Commissions faithfully executed by their humble Servants,*

SOTHEBY, WILKINSON & HODGE,

13, Wellington Street, Strand, London.

Lots £ 30. 19. 0  
 Porters 1 0  
 Carman 6  
 Fare 2

£ 31 . 0 . 8

# CATALOGUE

OF

## ANTIQUITIES FROM EGYPT.

### THE SECOND PORTION

OF THE COLLECTION OF

ROBERT DE RUSTAFJELL, ESQ. F.R.G.S.

### FIRST DAY'S SALE.

#### ANCIENT POTTERY OF PRE-DYNASTIC PERIOD.

(A). RED POTTERY, Hand Made: the surfaces burnished, the top rims blackened in the firing.

LOT

- |      |  |   |
|------|--|---|
| 20/- | 1 Two large ovoid Vases, about 14 in. high; of red pottery, with blackened tops; Nagada                | 2 |
| 22/- | 2 Three others; of similar pottery, slightly smaller; Nagada   | 3 |
| 60/- | 3 Another lot; varied in shape, but of the same pottery; Nagada  | 3 |
| 22/- | 4 Four tall Vases, with belled mouths and narrow bases, 9 in. to 11 in. high; Nagada                   | 4 |
| 28/- | 5 Four others; of similar form but somewhat smaller size; Nagada                                       | 4 |
| 25/- | 6 A similar lot; varied; Nagada  | 5 |
| 34/- | 7 A large Vase, with long body and narrow base; and three others; all of red and black pottery; Nagada | 4 |
| 38/- | 8 Five Vases, with wide mouths and narrow bases, 4 in. to 6 in. high; Nagada                           | 5 |
| 30/- | 9 Five others, all of varied form; Nagada  | 5 |
| 65/- | 10 Five others; one with pointed base; another, round bottomed; Nagada                                 | 5 |

Reddie 25/-  
 Schwab 34/-

34/-

32/-



- (L3) 65/- ~~X~~ Six small Vases of similar pottery; of varied size and form; one with a well-defined lip; *Nagada* 6 ~~X~~  
 34/- 12 Seven others; *Nagada* 7  
 36/- 13 A similar lot; *Nagada* 7  
 Reddie 307- 14 A large Vase, of similar pottery, with wide mouth and sides narrowing off towards the base; the surface painted with markings simulating the marbling of stone; *Nagada* [Plate I] 1  
 2/2/- 40/- 15 Two squat Vases, of similar pottery, with very wide mouths, straight sides and narrow bases; the surfaces painted in similar fashion to Vase in preceding lot; *Nagada* [Plate I] 2 ~~X~~  
 2/8/- 40/- 16 Two long narrow-bodied Vases, painted with similar markings; on the larger Vase the markings are arranged in bands; being of a more regular size and varied in form, they at first sight seem to be intended as an inscription; *both very interesting and rare specimens* [Plate I] 2  
 Reddie

(B). RED AND DRAB POTTERY FROM NAGADA, GEBELEN, &c.

- L3. 19 An unusually large, wide-mouthed Vessel of dark red pottery, with pointed base; 17 in. high, 15 in. diam. at top; in perfect condition [Plate VII] 1  
 38/- 20 Four Vases, with bowed sides and narrow bases; all of dark red pottery; 10 in. to 12 in. high 4  
 32/- 21 Five Vases of similar pottery; varied shapes 5  
 2/2/- 70/- 22 Ten small Vases of varied shape; all of dark red pottery and with the surfaces hand-polished 10 ~~X~~  
 2/2/- 23 Three tall Cylindrical Vases of coarse dull-red pottery; four others of varied shape 7  
 Schwart 14/- 24 Five Bowls of dull-red pottery; one with a finger-printed ornament in white 5  
 2/8/- 40/- 25 ~~Three~~ <sup>Six</sup> small Vases of black-ware (the shapes copied from stone models); three Bowls of red pottery, the inner sides blackened and polished 3  
 Reddie 6/- 26 Two large Bowls of dull-red pottery, 10½ in. by 9½ in. diameter 2  
 Schwart 11/- 27 Ten smaller Bowls of dull-red pottery; some of very coarse ware and of primitive style 10  
 Laber 24/- 28 A number of Vases of varied shape and date; *all of red pottery* a lot  
 Schwart 30/- 29 A similar lot, including three very unusual groups of animals, &c. in curious grotesque style [Plate I] a lot



## (C). EARLY POTTERY WITH PRIMITIVE DECORATION.

- Schworbs 447- 30 Three small vases of reddish pottery, the forms copied from stone models; all decorated with upright bands of waved lines [*two shown on Plate I*] 3  
 14/- 31 Two spherical bodied vases; painted with bands of waved lines or large close-sprung spirals 2  
 Reddie 34/- 32 Three others, smaller; two painted with spirals; *all well preserved* [*Plate I*] 3  
 4/4/- 45/- 33 A small ovoid Vase with narrow mouth and base, and two pierced ears (or handles); on one side is roughly painted a galley with two sails and a long bank of oars; *a rare and very unusual design* [*Plate I*] 1  
 Wickins 28/- 34 Six Vases with painted designs; varied shape [*one shown on Plate I*] 6  
 Lawrence 30/- 35 Two Bowls of dark red pottery; one painted in white with a design of crocodiles and triangular panels of feather ornament; the other with upright lines and bands of dots 2  
 32/- 36 Two similar Bowls; one with checkers of crossing lines and feather ornaments; the other with figures of animals and a huntsman(?) 2  
 26/- 37 A Bowl with curved rim and decoration in white; a Stand in red pottery, with design (in white) of a crocodile and panels of reticulate and feather ornament around the edge. And a small Prochous with a band of Mycenaean-like ornament in black 3  
 S. Fenton

## (D). POTTERY OF VARIOUS PERIODS.

- Schworbs 11/- 38 Two tall Vases with narrow mouths and bases; of dull red pottery; 15 and 16 in. high; *XIIth Dynasty; from Beni Hassan* 2  
 Lawrence 19/- 39 A large spherical bodied Vase; and three others with pointed bases; *all of yellowish drab pottery* 4  
 Schworbs 16/- 40 Seven others of varied form; *similar pottery* 7  
 Reddie 13/- 41 A costrel-shaped Vase, of fine yellow pottery, and a Bowl of similar pottery with incurved rim [*the first shown on Plate I*]; *both good specimens* 2  
 Schworbs 6/- 42 A fragmentary Canopic Jar and a Vase with broad handle; the former, covered with a coating of bitumen, has remains of an inscription in yellow; the latter appears to have been coated with a resinous glazing and to have had a crude decoration; *both interesting specimens* 2



Lawrence Schwartz	5/-	43	A large shallow Dish, with an impressed design in the centre; two others, plain; <i>all of red pottery</i>	3
	9/-	44	A Bowl, two squat narrow-mouthed Jars, and a barrel-shaped Costrel; <i>all of red pottery</i>	4
	12/-	45	Two Coptic Water Jars, each with spout and handle and painted with designs (one with a Greek cross and other ornamentation)	2
	10/-	46	Two pottery Stands, one with painted design; a Vase (Coptic?); a Bowl of red ware; a large green-glazed Arab Jar; and another, <i>modern</i>	6

## VARIOUS OBJECTS IN POTTERY.

Schwartz	21/-	47	A Primitive Table of Offerings of ovoid form; on the top a hut and various offerings in relief; <i>coarse red pottery, 15 by 11 in.</i> [Plate II]	1
	20/-	48	Another, dish-shaped and circular; on one side a table, or shelf, with cakes; the interior covered with a lime-wash; <i>a very unusual specimen</i> [Plate II]	1
Beddie	18/-	49	Two others, one circular, the other <del>oval</del>	2
	16/-	50	Two others, similar	2
Taylor	6/-	51	Four Masks of red pottery; all from sarcophagus covers	4
	14/-	52	Eighteen cone-shaped Stamps of coarse pottery; the inscriptions placed on the bases	18
Lawrence	7/-	53	Four others of irregular form, all with stampings; an oblong Brick, stamped with a double cartouche; and three small Bricks of recent make	8
	2/-	54	Six terra-cotta Moulds for making Ushabti figures, three with cartouche of Men-Kheper-Ra; another with name of a Scribe, and one with name of User-mat-Ra. Similar moulds for figures of Thoueris, Ptah and Sekhet, and the Cynocephalic Ape	10
Schwartz	14/-	55	Eleven similar Moulds for Ushabti figures (6), triad of Isis, Horus and Nephtys, Bes, and the Cynocephalic Ape (3)	11
	22/-	56	Twelve similar Moulds for Ushabti figures (6), Thoueris, Sekhet and Ptah, and Cynocephalic Ape; two of the latter (back and front pieces), <i>shown on Plate I</i>	12
Beddie	22/-	57	Small pottery Moulds for figures of Bes (3), the Uraeus (3), Scarab's Wing and Beetle. Seven similar Moulds of stone, and three others	18
	5/-			

2/4/-



# OBJECTS IN STONE: OF PRE-DYNASTIC AND LATER DATE.

2/10/-	60	A large Vase of mottled red and white stone; pre-dynastic period, of depressed spherical form, the ears unfinished, 7 in. high [Plate I]	1	
3/3/-	61	Another of similar stone; the ears pierced for a cord, 6 in. high	1	
20/-	62	Two others of light coloured stone; one fashioned in two pieces	3	
30/-	63	Two others of black and white stone or granite [Plate I]	2	
3/3/-	64	A circular Vase; the sides narrowing off to a pointed base; cut in a dark green serpentine; a rare specimen [Plate I]	1	
2/5/-	65	A cylindrical Vase or Jar of alabaster, 7 in. high (the bottom added). Two others, of varied form, and the upper half of a stone Vase	4	
10/-	66	A large circular Dish, of dark green schist, 11 in. diam.	1	
5/-	67	A shallow Dish, of fine grained light-coloured stone, 14 in. diam.	1	
8/-	68	An early Sepulchral Figure of a Man seated; on the sides an hieroglyphic inscription and two figures; black granite, 13½ in. high, a fine and very perfect specimen [Plate IV]	1	
4/8/-	69	Seven Heads from similar figures; all of granite [Plate II]	7	
5/-	70	A large well-modelled Head of a Prince, from a statue; limestone, 11 in. high [Plate II]	1	
2/12/-	71	A large Mask from a sarcophagus. Head of a Prince, from a statue. Upper parts of two Statues and a Head of a Ram; all of limestone [four shown on Plate II]	5	
21/-	72	A number of fragments from Statues, Ushabti figures, etc.; in granite, limestone, alabaster, steatite, etc.	a lot	
25/-	73	A large Head-rest, 10 in. high [Plate II]; and a small Altar, with the sacred Asp or Uraeus; both of dark granite	2	
30/-	74	A portable Altar, the top carved with a table of offerings between two large libatory vases; another, smaller, the top with a vase between four roundels; both of limestone, 17 in. and 8 in. high [Plates IV and VII]	2	
85/-	75	Three Stelae of sandstone or limestone; one with two cartouches [Plate IV]; another, unfinished; 15, 14 and 11 in. high	3	
14/-	76	Five others, one of large size	5	
21/-	77	Two others; one with lightly incised designs; the other well designed and with the hieroglyphics clearly cut; 15½ and 12 in. high	2	
11/-	78	A large Sculptural Slab with a procession of gods; another with inscriptions, and two with figures of gods and inscriptions; limestone and sandstone	4	



- (L2) 73/- ~~79~~ A pyramidal Support of limestone, finely incised with bands of hieroglyphics [Plate VII]. A fragment of a limestone Base, with finely incised inscriptions [Plate IV] 2 ✓  
 Lawrence 20/- 80 Six large fragments of Sculptural Slabs and a number of fragments in limestone, sandstone, granite, etc. a lot  
 Fenton 14 81 A limestone Stele with remains of a painted design; a large Slab, painted with a long inscription in red; and a number of Fragments of painted Stone a lot  
 57/10/- 82 A limestone Slab with figure in relief of the Apis Bull (*restored*), [Plate IV]; Another, of red sandstone, with bull's head; a long Fragment with a row of fourteen Male heads [Plate IV]; part of a Table of Offerings with libatory vases; Figure of a Duck; and other pieces (3) 7  
 Fenton 10/- 83 Fragment of a limestone Slab, carved, *in relief*, with a Male head wearing a wig and coloured, 11 in. high 1  
 Schwartz 7/- 84 Two similar Fragments of coloured reliefs; one with the bust of a Man holding a feather, 8 in. high 2  
 Fenton 57/- 85 Fragment of a limestone Slab with the upper part of a Man with raised hands; Another, in sandstone; the designs on both pieces coloured; and a number of Fragments of similar reliefs, etc. a lot

## COPTIC STELE.

- 39/- 86 Part of a large Coptic Stele; with ornamental borders around a central panel carved with a doorway; over the arch are traces of an inscription; 23 in. high; Four others of smaller size and with varied designs; and a long Slab with cruciform design; all carved in low relief [*three shown on Plate V*] 6  
 21/- 87 Another, with design of a bird within a wreath and name + **ΕΛΙΑC**; Another, with cross in wreath and (unfinished?) inscription commencing **ΕΙCΘΕ**; Another, with façade of a building and inscription + **ΕΙCΘCOCOBOHΘΩ - ICXCΔΙOC** in two lines; Another, with a wreath enclosing a cross, and traces of lettering on two arms of the cross [*three shown on Plate V*] 4  
 Lawrence 16/- 88 Another, with façade of building; on doorway, **ΕΙCΘΕO - COBOH - ΘΩN - AMMO - NIOC**. in five lines; Another, with an archway and cross and **ΕΙCΘΕOCOBOHΘΩN = ΔΙOC**; Another, with cross and wreath, and above, **ΕΙCΘΕΙOCOBO - HΩNΘEKTAMOHATN** (?) [Plate V] 3  
 Lawrence 10/- 89 Another; archway with Greek cross between **A. Ω**; **ΔΘΩ** on lintel; Another, cross in wreath and, below, part of an inscription; Another, cross-shaped (*broken and the surface decayed*), with eight lines of inscription [*one shown on Plate V*] 3



- labor 16/-
- 90 A set of four Canopic Jars in soft limestone; the covers painted in colours 4
- 16/-
- 91 Three mock Canopic Jars, each solid and carved from a single piece of stone; one with a human head, the others with heads of the ape and jackal; a small Canopic Jar of terra-cotta; four Covers from canopic jars in stone and terra-cotta; and a Cover in fine stone with upper part of a mummy (*from a model sarcophagus*) 9
- Schwartz

## STONE COLOUR-GRINDING PLATES OF PRE-DYNASTIC DATE.

- 21/-
- 92 Six Colour-grinding Plates or Palettes; each made from a long thin slab of dark-coloured schist; all of elongated diamond shape; five others of varied form; *Nagada* 11
- Laurence
- 45/-
- 93 Six others; two heart-shaped; two in form of fish; *another* shaped as a duck; *another* as a tortoise 6
- 94 Eight others; in form of the tortoise, various animals, a flying bird, and a fish 8
- 37-52/-
- 95 Six others; scorpion, tortoise, animal, fish, etc.; and a very large heart-shaped specimen 7
- Laurence
- 32/-
- 96 Two curious Votive (?) objects of stone, shaped as knives; one in the form of a fore-arm holding a blade; the other with the handle shaped as a lion's head; and a similar object shaped as a funereal boat [*all shewn on Plate I*] 3
- 32-16/-
- 97 A large and very fine Colour-grinding Dish of hard stone; *oblong form*, 11 in. by 6 in., *XVIII Dynasty* [*Plate III*] 1
- 36/-
- 98 Three others; similar but of smaller size; *another*, boat-shaped; and two Grinders of hard stone 6
- Riddle
- 28/-
- 99 Another, shaped as an antelope, the legs tied together ready for sacrifice 1
- 2/10/-
- 100 A small circular Bowl; a Drinking Cup; two small Vases; a Pipe; two Vase Covers; a curious Vessel with papyrus flowers in outline on the sides; *all of stone* 8
- 28/-
- 101 A flat Dish of blue coloured stone; two stone Lamps, one of stellate form, the other heater-shaped; Stone Figures of Osiris (2), and Thoueris; Figure of a toad, and various fragments; *all of stone* 12
- 26/-
- 102 A "Cippus of Horus" in stone; three Figures of Men, crouching or seated on oblong bases; a Figure of a Lion; and a Figure of a Nymph dancing; *all in stone or alabaster* 6
- 14/-



## OBJECTS IN BRONZE, &amp;c.

- 106 A fine bronze Simpulum; the long handle terminating in a duck's head; 20 in. long [Plate IV] 1
- 107 Small bronze Figures of Osiris (2), Khem (2), Bes, Isis, Horus, Amon Ra, Khnum, and Sekhet; and a large bronze Figure of the Sacred Hawk, 6½ in. high [shown on Plate IV] 11
- 108 Small seated Figure of Harpocrates; Arm from a Figure; two Figures of the Apis Bull; an Antefix in form of the Uraeus; three Situlæ (two of Coptic date); a small Model of a Vase, the body formed as a human head; a bronze Lion; and a Group of three Figures in zinc 11
- 109 Three bronze Lamps; one with long spout and mask-shaped cover in centre; Another, on foot; the third, of Coptic date, shaped as a bird [Plate IV] 3
- 110 A bronze Mirror, set in a wooden handle; parts of two circular Mirrors of the Greek period 3
- 111 Three massive bronze Celts, two with curious dotted design; a bronze Chisel; three other pieces of varied form; five Arrow Heads; and a doubtful Dagger Blade 13
- 112 Six Bowls of varied shapes; two Bells; a number of bronze Fragments a lot
- 113 A very remarkable Hanging Lamp of bronze, the cover with well designed borders of openwork enclosing panels of cruciform design; of Coptic date [Plate V] 1
- 114 A small Coptic Situla, with arched handle, standing on three short feet; around the body a frieze of floral design in slight relief; a Water Bottle [Plate IV] of beaten copper, set with plaques of Champlevée enamel; XVIth century 2
- 115 An unusually large bronze Figure of Osiris, 18 in. high; the hands crossed upon the breast and holding the crook and flail; on the head, the crown of Lower Egypt with the uraeus in front [Plate IV]; and a bronze Figure of Horus, standing on an oblong base 2
- 116 A large Plaque of lead of oblong form; a semi-circular piece cut out from the top edge; each side is covered with rows of hieroglyphs 1

J. Henton 17/-

(32/-)

73/-

22/-

Schwartz

17/-

Schwartz

16/-

30/-

Lawrence

107/-

2/2/-

Lawrence

21/-

(26/-)

4.

10/-

## SECOND DAY'S SALE.

---

### OBJECTS IN WOOD.

LOT		
117	A fine Ptah-Sekher-Uasar Figure with well-preserved colouring; a band of hieroglyphics running down the front and back of the mummiform figure, <i>total height 2 ft. 6 in.</i> [ <i>Plate VIII</i> ]	1
118	Another of similar size, the base shorter [ <i>Plate VIII</i> ]	1
537- 119	Another	1
120	Another	1
121	Two others, slightly smaller; one on an unusually long base with inscription running around the edge	2
122	Two others	2
123	Three others	3
124	Three others; somewhat smaller	3
125	Two others; the larger without the feather head-dress, the smaller has the figure of a Hawk placed on the base before the mummy	2
6.) 126	A Model of a Boat; a lotus stem at either end; a canopy in the centre. On the deck are figures of seven men, and, beneath the canopy, three seated figures and an attendant; <i>3 ft. long</i> [ <i>Plate III</i> ]	1
127	Another; at the prow an Ibis head; at the stern a hawk perched on a lotus bud; beneath the canopy a seated mummiform divinity; ( <i>restored</i> ) [ <i>Plate III</i> ]	1
128	Another, <i>16 in. long</i> : with three figures only on the deck	1
129	A Figure of a nude Woman standing on an oblong base; the body painted a dark red; <i>22 in. high</i>	1
4. 130	Another of plain wood; the left arm crossing the breast; the eyes inlaid; <i>22 in. high</i>	1
131	Another of early date (XIIth dynasty) wearing a white tunic; another of a Woman wearing a heavy wig and with her hands raised in adoration. And a small Figure of a seated Man [ <i>two pieces shown on Plate III</i> ]	3



- 132 A large Figure of a Woman making bread ; and a plain wood Figure of a Man [*Plate VIII*] 2
- 133 A large Ushabti Box, with the figure of a hawk on the cover ; 21 in. high ; the sides painted with figures of the Amenti and various symbols ; a fine example [*Plate VII*] 1
- 134 Another, small, 8 in. high ; another shaped as a mummy, with remarkable colouring [*Plate VII*] 2
- 135 Nine Masks from wooden sarcophagi ; some of large size [*one shown on Plate III*] and with well-preserved colouring 9
- 136 Eight wooden Figures of Men from sepulchral models ; some coloured 8
- 137 A similar lot 8
- 138 Seventeen smaller Figures of similar character, some fragmentary. And a large number of Hands, Arms, etc. from small figures, etc. a lot
- 139 Upper part of a large Figure, the colouring well preserved. Eight Ushabti figures in wood. And a small Ptah-Sekher Uasar Figure 11
- 140 Ten Figures of Hawks, one with a human head ; another of a Vulture. Parts of two Covers of model Sarcophagi ; a large Figure of a Duck [*Plate III*] ; Cover of a Canopic Jar, and two pairs of Models of Sandals ; the last pieces interesting and rare [*one of the hawks shown on Plate III*] 20
- 141 Four Head Rests, of wood 4
- 142 Four others [*see Plate III*] 4
6. 143 Three Mason's Mallets [*Plate III*] ; and two broken Knives with wooden handles 5
- 537- 144 Two Painter's Pallets, one cartouche shaped, the other with four small styli (?) of wood [*shown on Plate III*]. A large Colour-Pot with two divisions (fragmentary). Another with a rudely cut figure holding the colour-bowl 8
- 145 Two large pieces of a Sarcophagus Cover ; and a number of smaller fragments of wooden Sarcophagi ; all with painted designs [*one shown on Plate VIII*] 23
- 146 A large lot of Wooden Fragments : Fragments of Sarcophagi, Head-dresses, Hands, Models, etc. a lot
- 147 The End Piece of an oblong Sarcophagus, 3 ft. 7 in. high by 3 in. wide, painted with a figure of a seated goddess, and rows of hieroglyphic inscription [*Plate VIII*] 1
- 148 Ten long Pieces of Wood from Mummies ; mostly with painted inscriptions 10

- 149 Thirty wooden Tablets and Labels from Mummies, etc. ; mostly of Coptic date ; the names incised or painted 30
- 607- 150 Twelve wooden Arrows, with small pieces of flint attached to the heads 12
- 151 Two bow-shaped Carrying Sticks [*Plate VII*], and a roughly made Boomerang 3
- 307- 152 A long piece of Hard Wood, of circular section, boldly carved with panels and scrolls of floral design ; *probably of Coptic date* ; the piece seems to have served as part of a framing, and has a rabbet running down the whole length ; *Cairo* [*Plate VII*] 1

### FRESCO PAINTINGS.

- 156 A large fragment with the Head of a Woman wearing a large black wig and a necklace ; the flesh painted red ; *finely preserved* 1
- 157 Another ; painted with the upper half of the Figure of a Woman ; the hands raised [*Plate IV*] 1
- 158 Another ; a Funereal Boat with two figures of Anubis beneath a canopy 1
- 159 Two fragments, each with the upper part of a Figure ; one holding a papyrus branch [*Plate IV*] 2
- 160 Two others ; one with the Figure of a Man holding a Table of Offerings ; the second with a Man raising his left hand in obeisance 2
- 161 Three others (in two frames) ; all with figures (one the god Amen-Ra) 2
- 162 Two others ; one with a seated figure of Anubis, the other with a figure of a Man 2
- 163 Two others ; one with two crouching figures, the other with an inscription 2
- 164 Three pieces of rush Basket Work, and remains of two Bags made of papyrus reed. And a large number of Slippers and Shoes of leather, *of Coptic date* a lot
- 165 A large and well modelled Jackal's Head [*Plate IV*] ; and two Masks from mummies ; *all of painted cartonnage* 3
- 166 A large lot of fragments of Mummy-casings of decorated cartonnage ; *some masks* [*one shown on Plate VIII*] *included* a lot



- 167 A Hypocephalus of cartonnage [*Plate VIII*]; the designs in white on a dark ground; *a rare specimen*. And a long strip of Cartonnage made of very fine linen and covered with gesso incised with designs and inscription; *originally gilt* 2
- 168 A large lot of Mummied Animals, Birds and Fish [*one of the pieces, a mummied cat, shown on Plate VIII*] *a lot*
- 169 Mummy of a Crocodile in a wooden case (*broken*). A wooden Case for a mummy of the ichneumon; and a Mummy in a small and perfectly preserved cartonnage case [*the last piece shown on Plate IV*] 3
- 170 A square GLASS BOTTLE with broad handle, 7 in. high [*Plate IV*]; and a number of fragments *a lot*

### USHABTI FIGURES.

- 171 Twenty small Ushabti Figures of rough terra-cotta; mostly covered with drab, green or blue wash and bearing inscriptions in black paint 20
- 172 A similar lot 28
- 173 A similar lot 28
- 174 A similar lot 31
- 175 Three large Ushabti Figures of terra-cotta, with remains of coloured decoration. Two others of limestone. Three others of finer style and with good blue enamelling. And a small Ushabti with white glazing and purple decoration; *some repaired* 9
- 176 Five Ushabti of dark *Dehr-el-Bahari* blue ware; thirteen others of smaller size, and including two or three of very late date 18
- 177 Ten small well-modelled Ushabti Figures of fine blue-glazed ware 10
- 178 A similar lot 10
- 179 A similar lot 10
- 180 A large lot of Ushabti Figures in coarse glazed ware 36
- 257- 181 A similar lot 36
- 182 A very large lot of coarsely made Ushabti Figures; *mostly of very small size; some imperfect* *about* 80
- 183 A Drinking Bowl of blue glazed ware with traces of decoration in black. And a Jug of similar ware but of later (Ptolemaic) date; *repaired* [*Plate I*] 2

- 184 A similar Drinking Bowl, the exterior painted with a calyx-like design, the interior with fish and papyrus plants [*Plate III*]. Two small Bottles of glazed ware (one with modern design), and two fragments, one with name of Neb-ka-Ra; *some repaired* 5
- 185 Two "New Year" Vases, of depressed gourd shape, fitted with narrow papyrus flower necks; two cynocephalic apes seated at the bottom of the necks, and a broad border of inscriptions around the edge [*one shown on Plate I*] 2
- 186 A small Vase of glazed pottery; another, boat-shaped [*Plate I*]; various fragments of Vases, Figures, etc., in glazed ware and pottery; two Pom-pom Shell Cases, picked up in the Desert; various pieces of metal Chain with tokens, etc. attached, etc. *a lot*

## TEXTILES OF LATE ROMAN AND OF COPTIC DATE.

- 187 Three large Cards mounted with pieces of Coptic linen and embroidery; one of the pieces with drawn thread and coloured fillings [*one card shown on Plate VI*] 3
- 188 A similar lot of three Cards 3
- 189 A similar lot 3
- 190 Another, some small caps included 3
- 191 Another 3
- 192 Another 3
- 193 Another 3
- 194 Four others 4
- 195 A large lot of pieces of Coptic Linen and Embroideries *a lot*
- 196 Two Rolls with seven skins of parchment, all with early Hebrew writing [*Plate VIII*] 2
- 197 Four smaller Rolls of Hebrew MS. 4

## OSTRACA.

- 198 OSTRACA, a large lot (162) on flakes of limestone of varied size; the writings of varied style and date 162
- 199 OSTRACA: A very large lot (*about 700*) of similar Ostraca, written on sherds of pottery *a lot*
- 201 A Box containing a number of fragmentary vases, &c. in pottery and stone *a lot*



## PRE-HISTORIC SECTION.

(A). WATER RECEPTACLES IN LIMESTONE AND FLINT,  
used in the fabrication of Flint Implements in the  
palaeolithic period. [Plate II].

\* \* \* *A description of these very interesting vessels, and an account of their discovery on a plateau of the Desert, W. of Thebes, has been recently published by Mr. Rt. de Rustafjaell, "Palaeolithic Vessels of Egypt: The earliest handiwork of Man" (Macmillan & Co.). The evidence of the use of such vessels in the manufacture of flint instruments is shown by the wall paintings (of a very much later period) discovered at Beni Hassan. The receptacles seem to have been selected from stones having a natural hollow on one surface: they were then roughly fashioned into shape and the hollow artificially enlarged. Unfortunately most of the distinct evidence of this artificial enlargement has disappeared, partly by the accidental abrasion arising from long-continued use, and mostly by the weathering to which the objects have been subjected since the very remote period of their production.*

202	A large Block of Limestone with a deep hollow or basin on the upper side ; Another, of smaller size ; and three large Nodules of Flint with similar receptacles for water on the upper side	6
203	Six similar Water Receptacles; three in limestone, and three in flint	6
204	A similar lot	6
205	Seven others ; three of limestone and four of flint	7
206	A similar lot	7
207	Eight others ; three of limestone and five of flint	8
208	A similar lot	8

(B). PALAEOLITHIC FLINT IMPLEMENTS (from Upper Egypt,  
near to Nagada).

210	A large Card mounted with twenty-one Flint Implements of varied form ; one specimen, 8 in. long, is interesting from the sun-burning having affected the point of the implement only ; the end has been embedded in the sand and has thus escaped the burning [Plate VI]	1
211	Two Cards with similar implements (39) ; some Nodules, Cores and Flakes included	2
212	Two Cards with 34 varied implements, Nodules, Cores, &c.	2
213	Two others with 42 pieces	2

214	Two Cards with 49 varied implements, Nodules and Cores	2
215	Two others with 52 pieces	2
216	Two others with 45 pieces	2
217	A similar Card with 27 pieces	1

(C). NEOLITHIC IMPLEMENTS in Siliceous Stone.

218	Two Cards with roughly made implements of varied form, Flakes, &c. (32), all in siliceous stone ; <i>found in the Arabian Desert</i>	2
219	Three Cards with 37 pieces, similar to last	3
220	Three others with 42 pieces [ <i>one shown on Plate VI</i> ]	3
221	Three others of 47 pieces	3
222	Three others of 48 pieces	3
223	Three others of 43 pieces	3
224	Three others of 44 pieces	3
225	Two others with 31 pieces	2
226	A Box containing a large number of rough Palaeolithic Flints ; <i>from the same localities as the preceding lots</i>	<i>a lot</i>

FLINT NODULES, all Sun-burned [*See 227 Plate VI*].

227	Five Cards containing a large number of Nodules of flint ; <i>found in the Arabian Desert, in company with worked implements, and very interesting as shewing the effects of long periods of sun-burning, often shewn on one side only</i>	5
-----	--	---

(D). NEOLITHIC IMPLEMENTS.

228	Three Cards containing 87 specimens of Neolithic Implements ; Pounders, Scrapers, Knives, Flakes, &c. ; <i>Lower Egypt [Plate VI]</i>	3
229	A similar lot of 89 Neolithic Flints	3
230	Another (79 pieces)	3
231	Another (89 pieces)	3

GEOLOGICAL SPECIMENS, FOSSILS, &c.

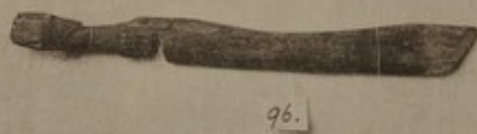
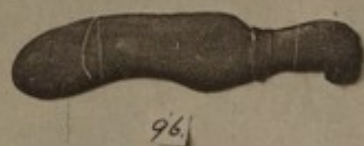
232	Three Cards with a number of pieces of Petrified Wood, <i>from the Arabian Desert (District of Suez) ; several show traces of having been completely decayed and water worn before silicification</i>	3
233	A similar lot	3
234	A similar lot	3
235	A similar lot	3
236	A similar lot	3
237	A similar lot	3



- 238 An unusually large and fine specimen of a silicified Tree, *about 4 ft. 6 long and with a girth (at centre) of about 2 ft. 6* [Plate VII] 1
- 239 Another piece (*about 16 in. long*) 1
- 240 Twelve smaller pieces 12
- 241 Twelve smaller pieces 12
- 242 Twelve smaller pieces 12
- 243 Two Cards with a number of semi-fossilized Oyster Shells; *found in natural banks in the Arabian Desert (Suez District)*; a Bag of Sand in which they are found included [Plate VI] 3
- 244 Three Cards mounted with similar shells; a Bag of Sand included 4
- 245 A large lot of onyx Nodules or Pebbles, Fossils, and various Mineralogical specimens, *from Egypt* a lot

## END OF SALE.

Plate I





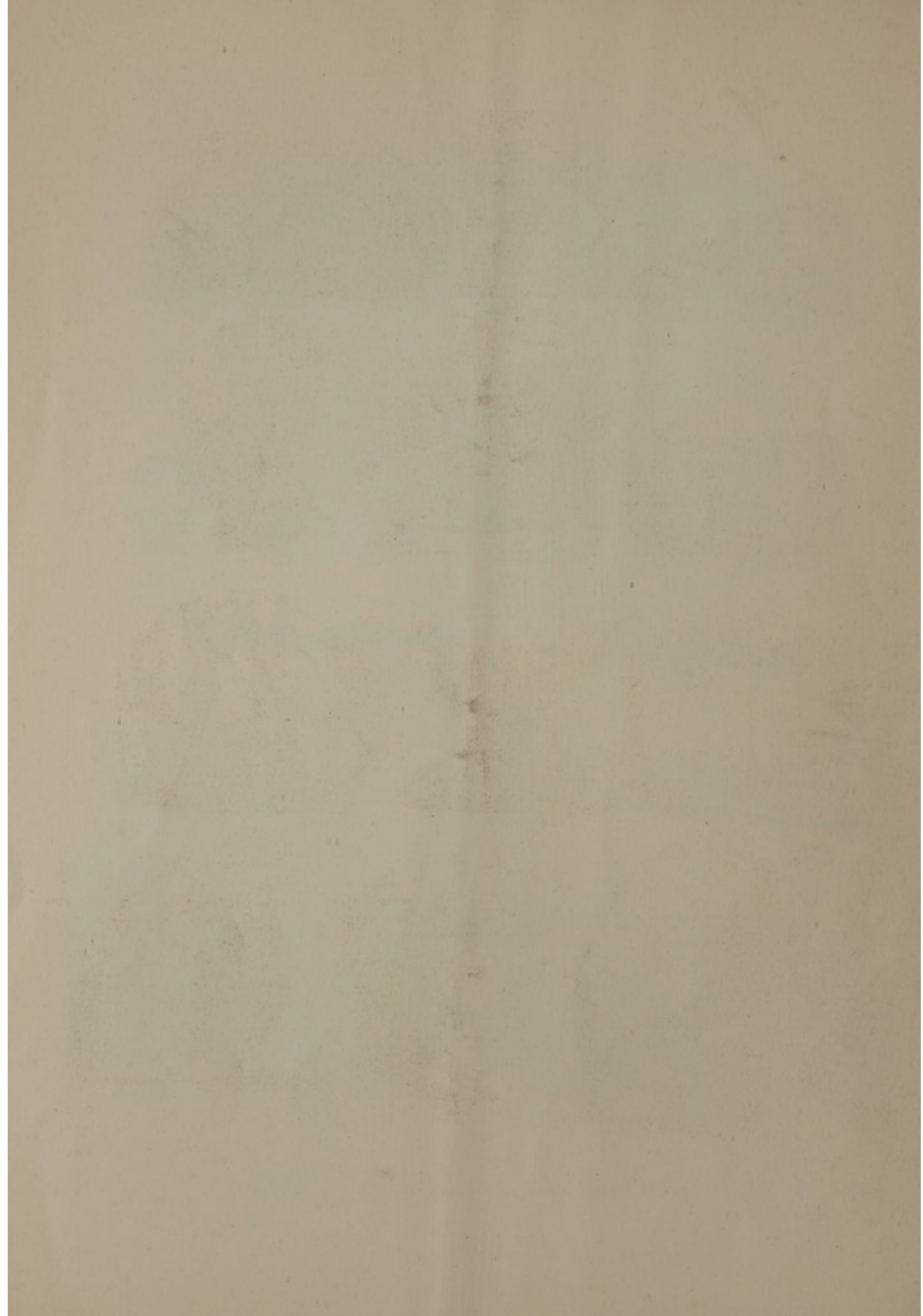
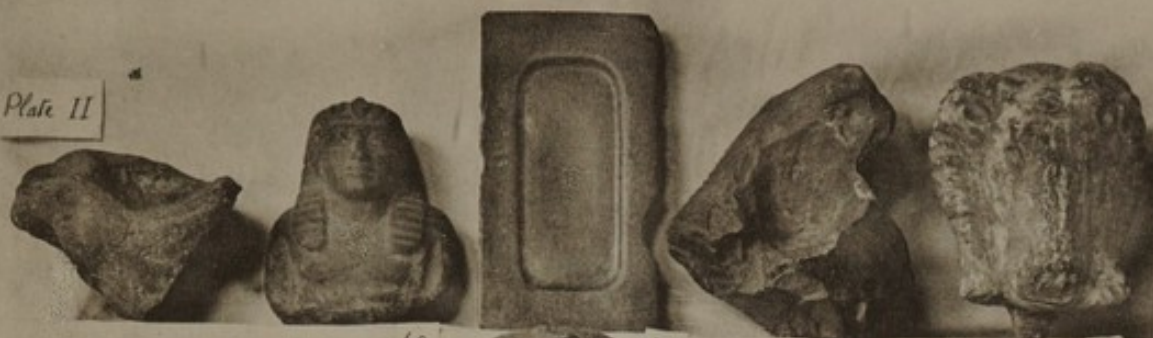


Plate II



69.

72.

71.



71.



71.



71.



48.



73.



47.



70.





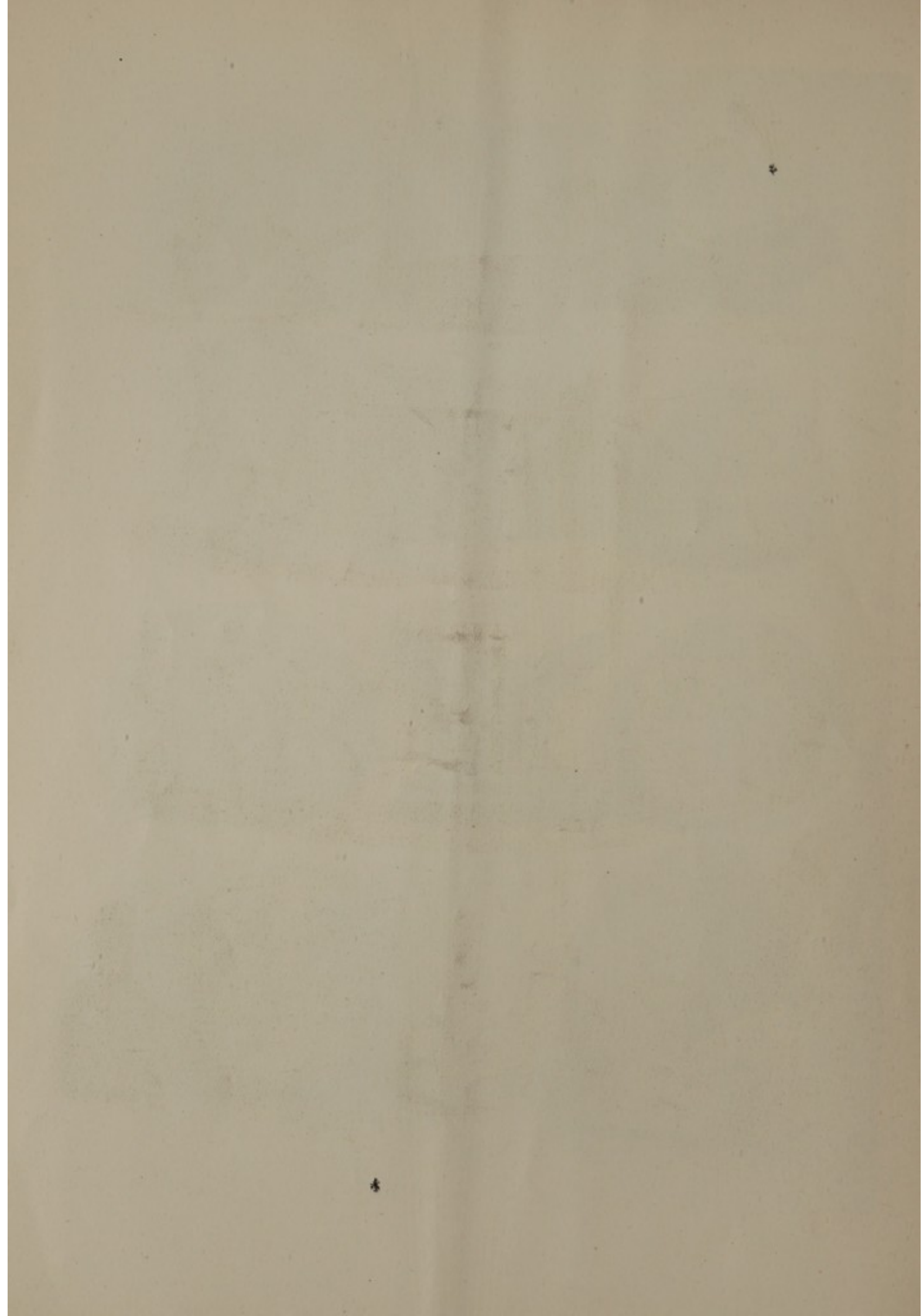


Plate III





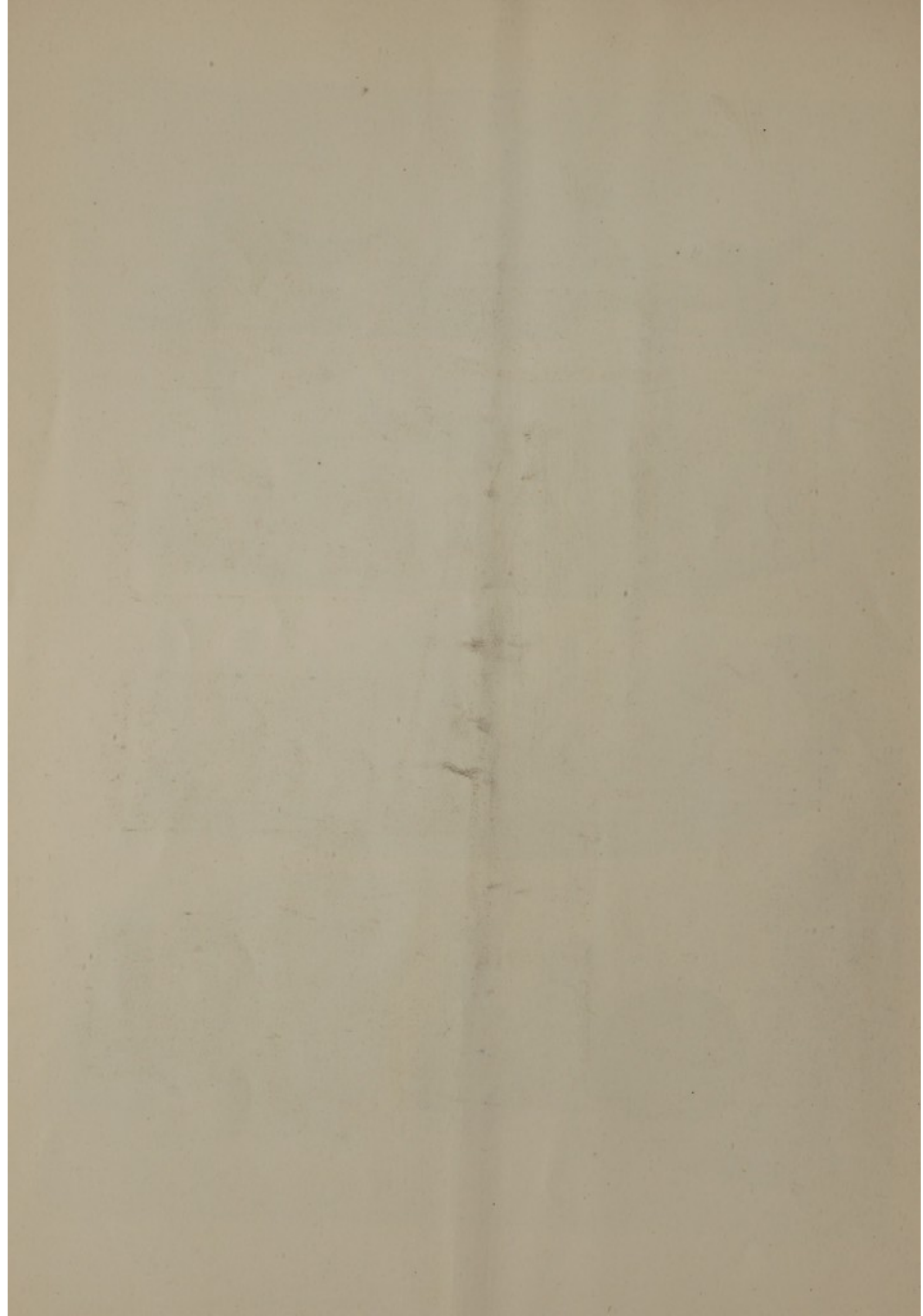


Plate IV





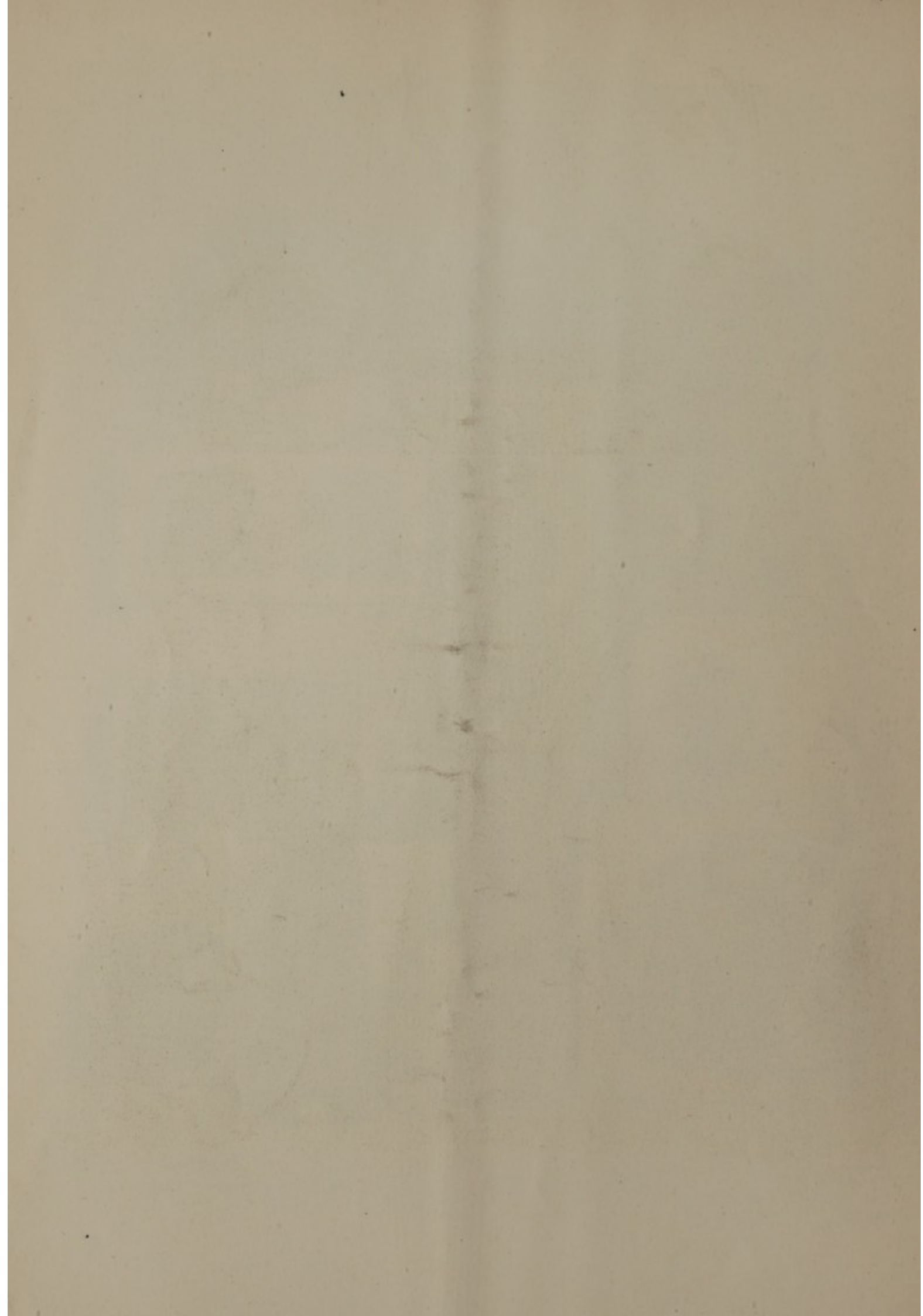


Plate V



88



86



87



87



87



113



88



86



88

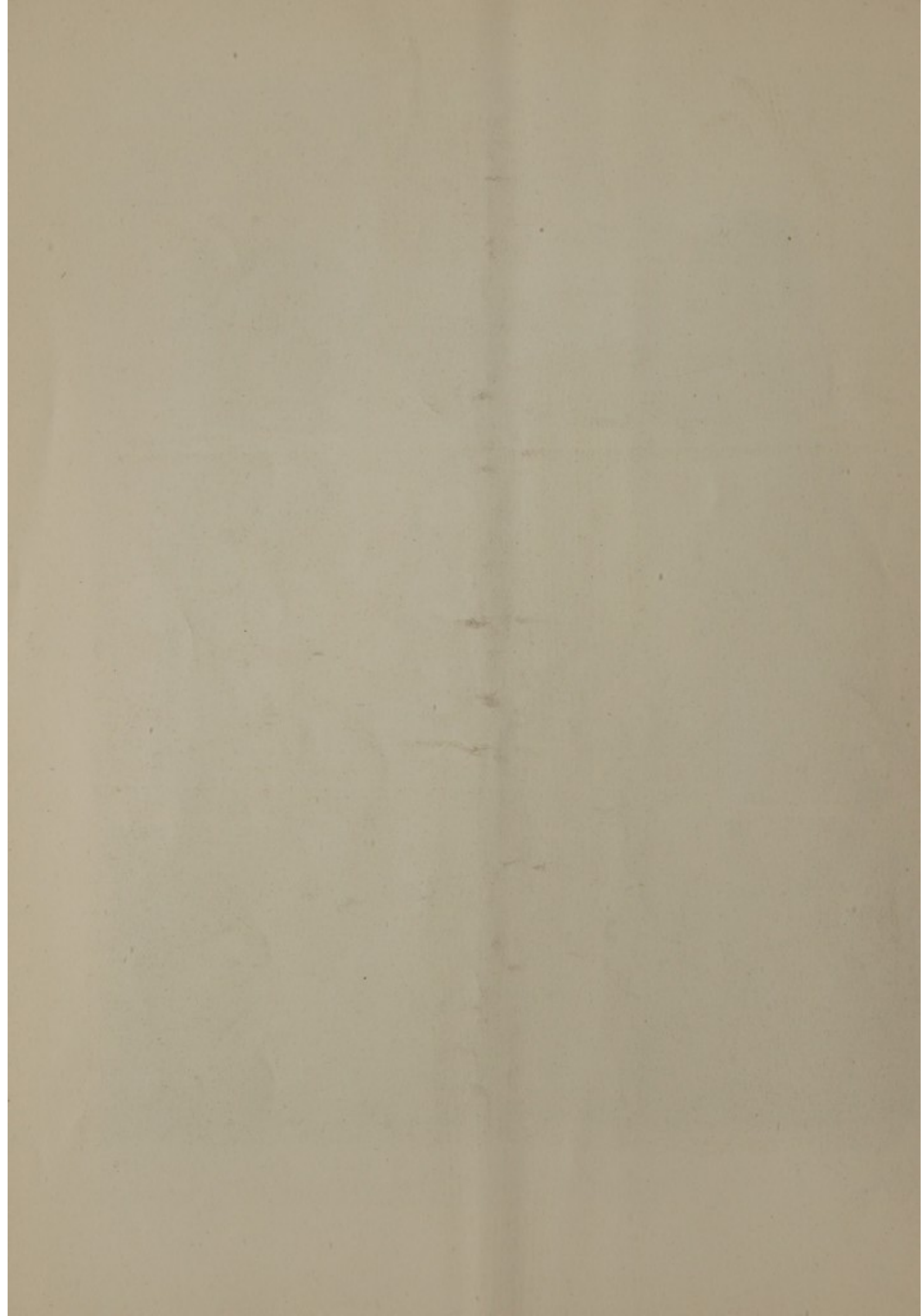


86



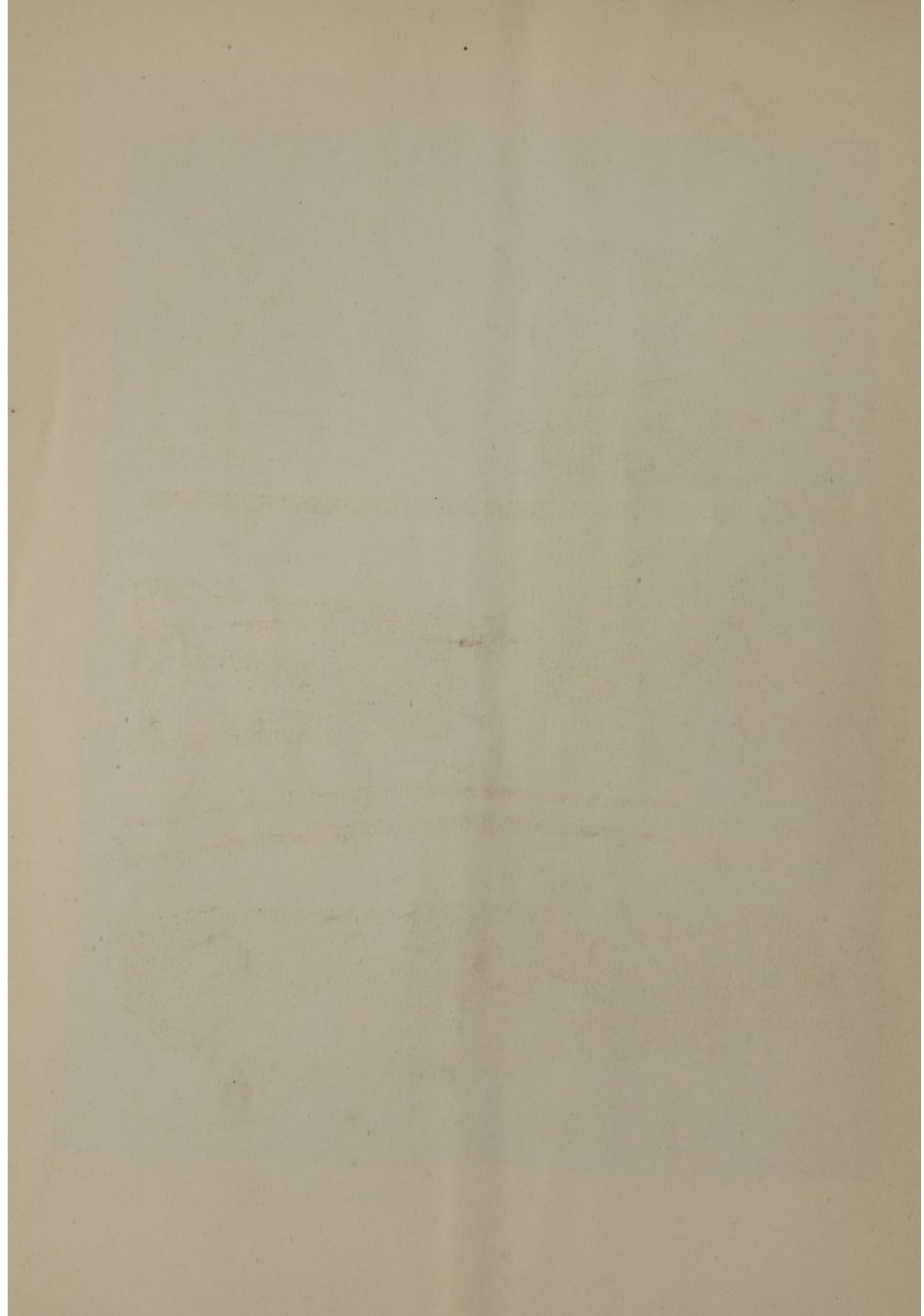
89

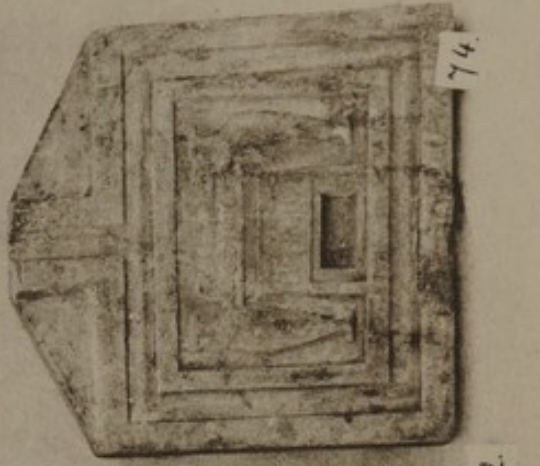
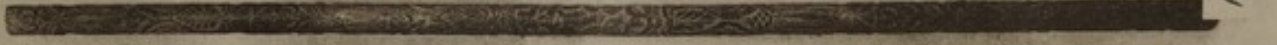
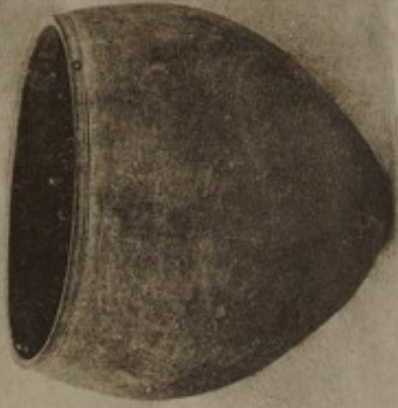
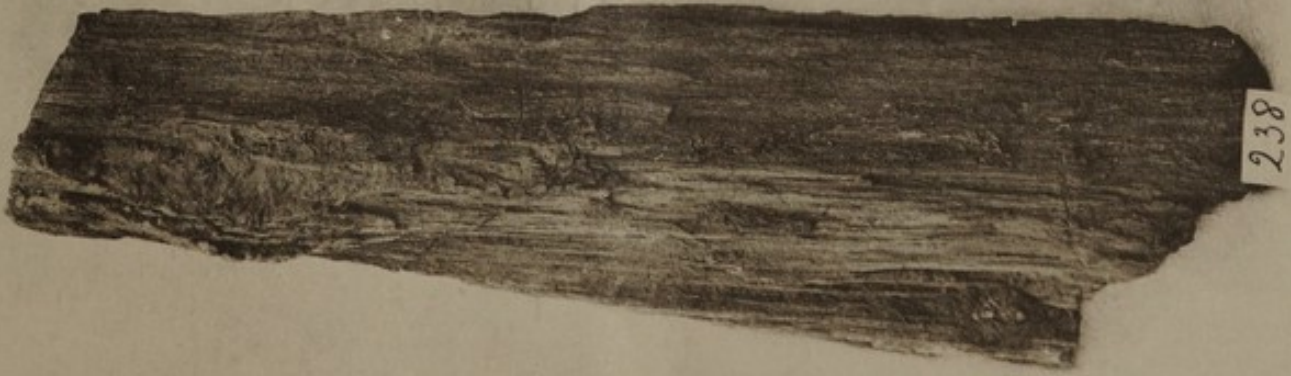














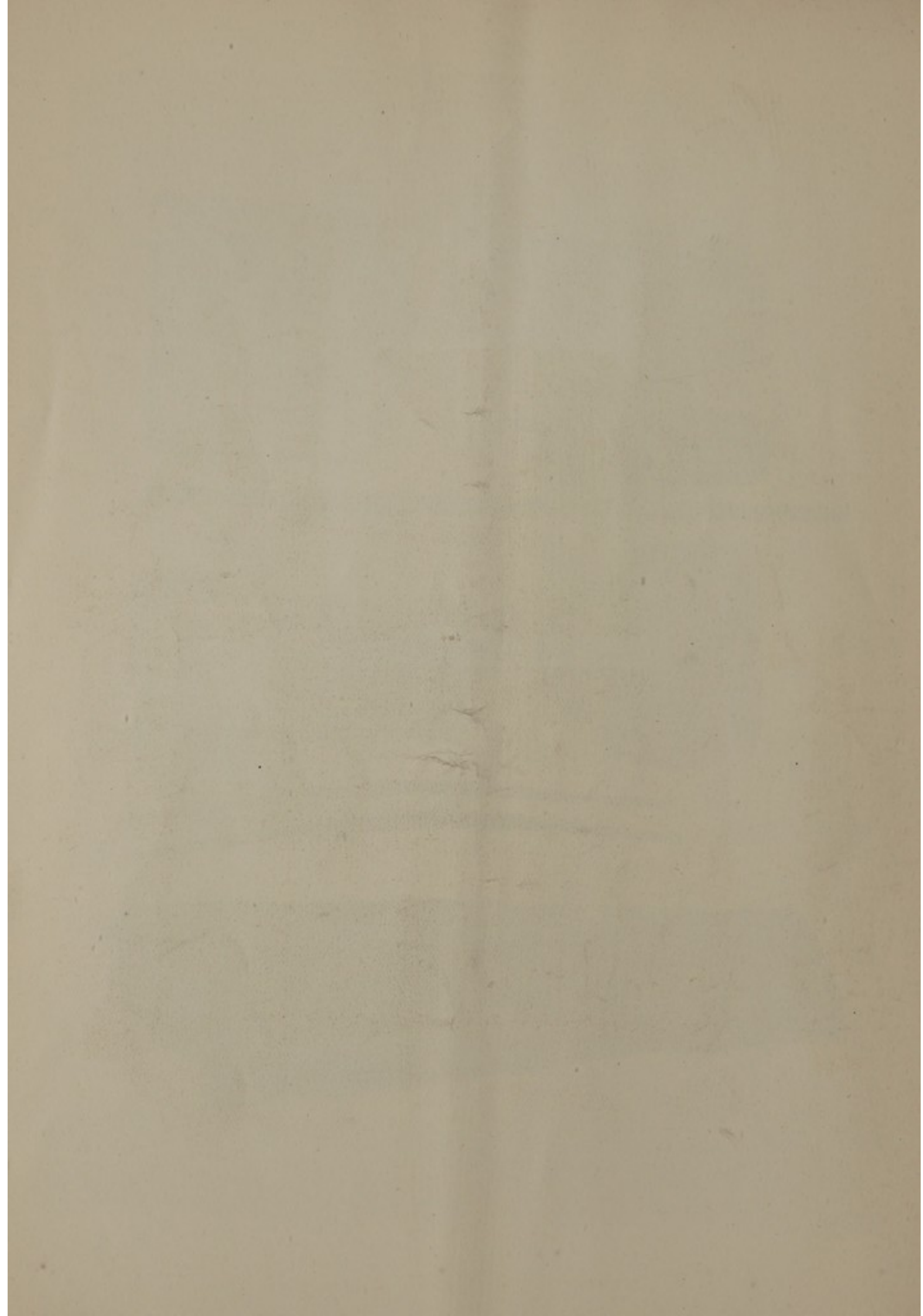
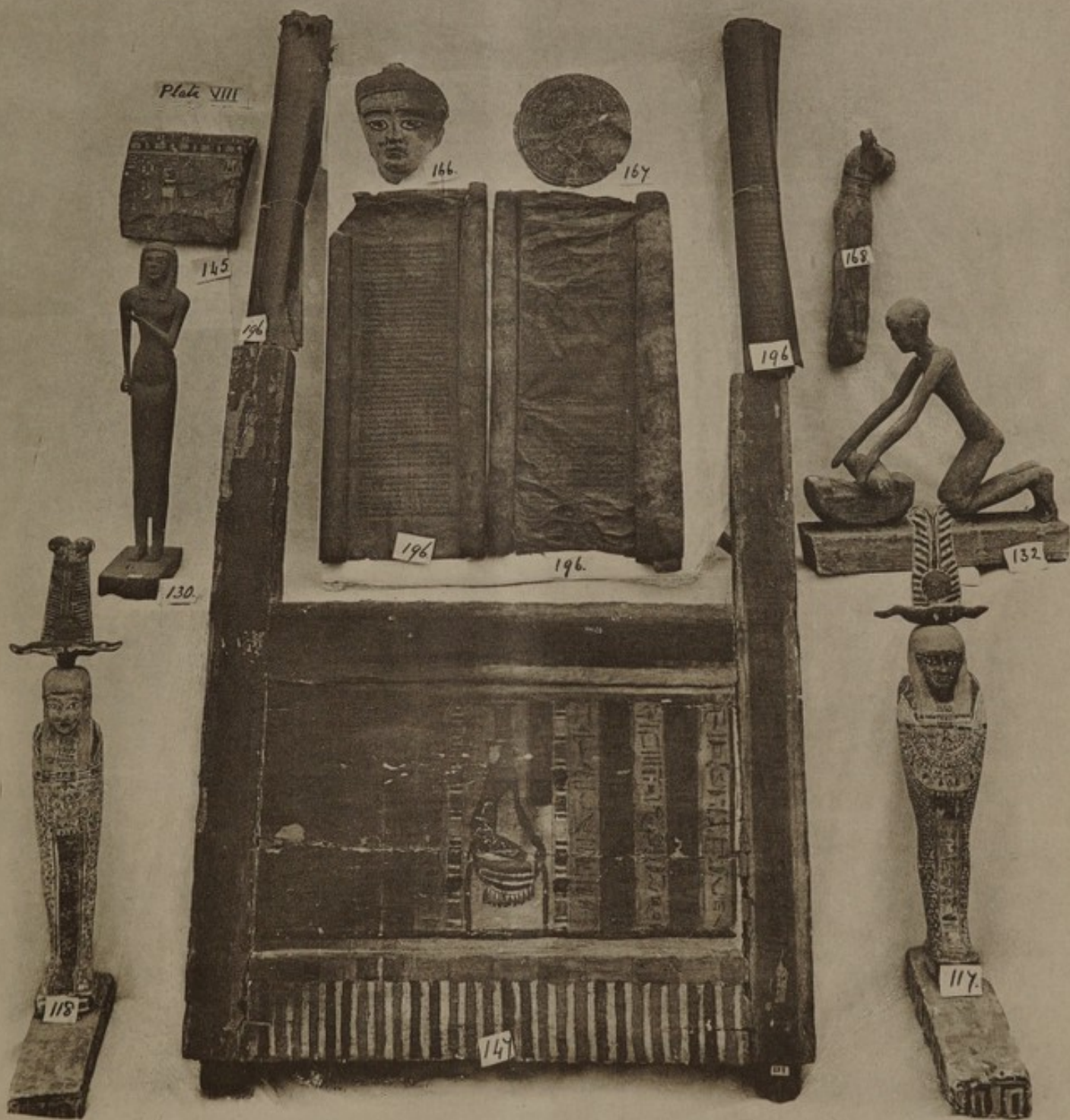
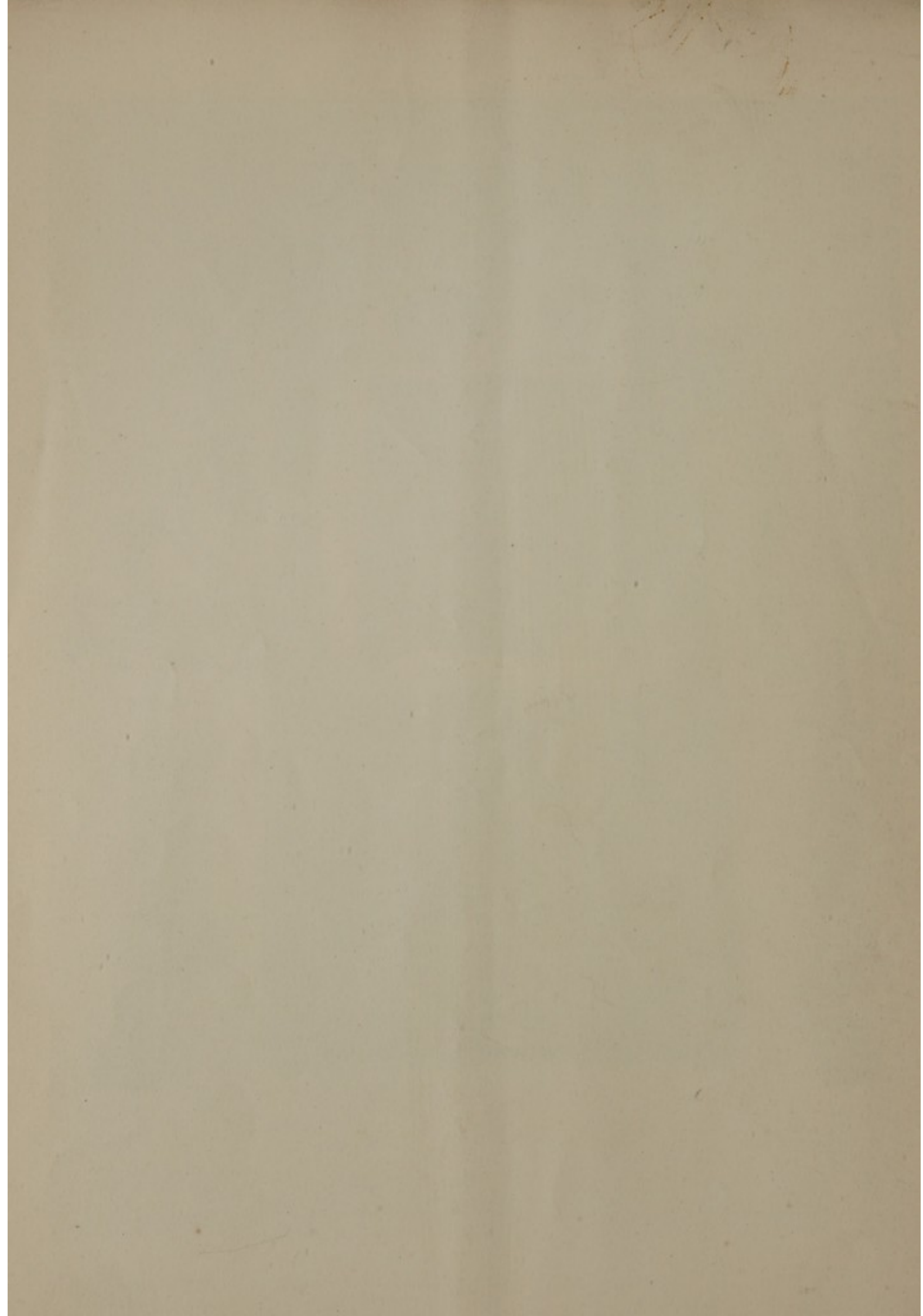
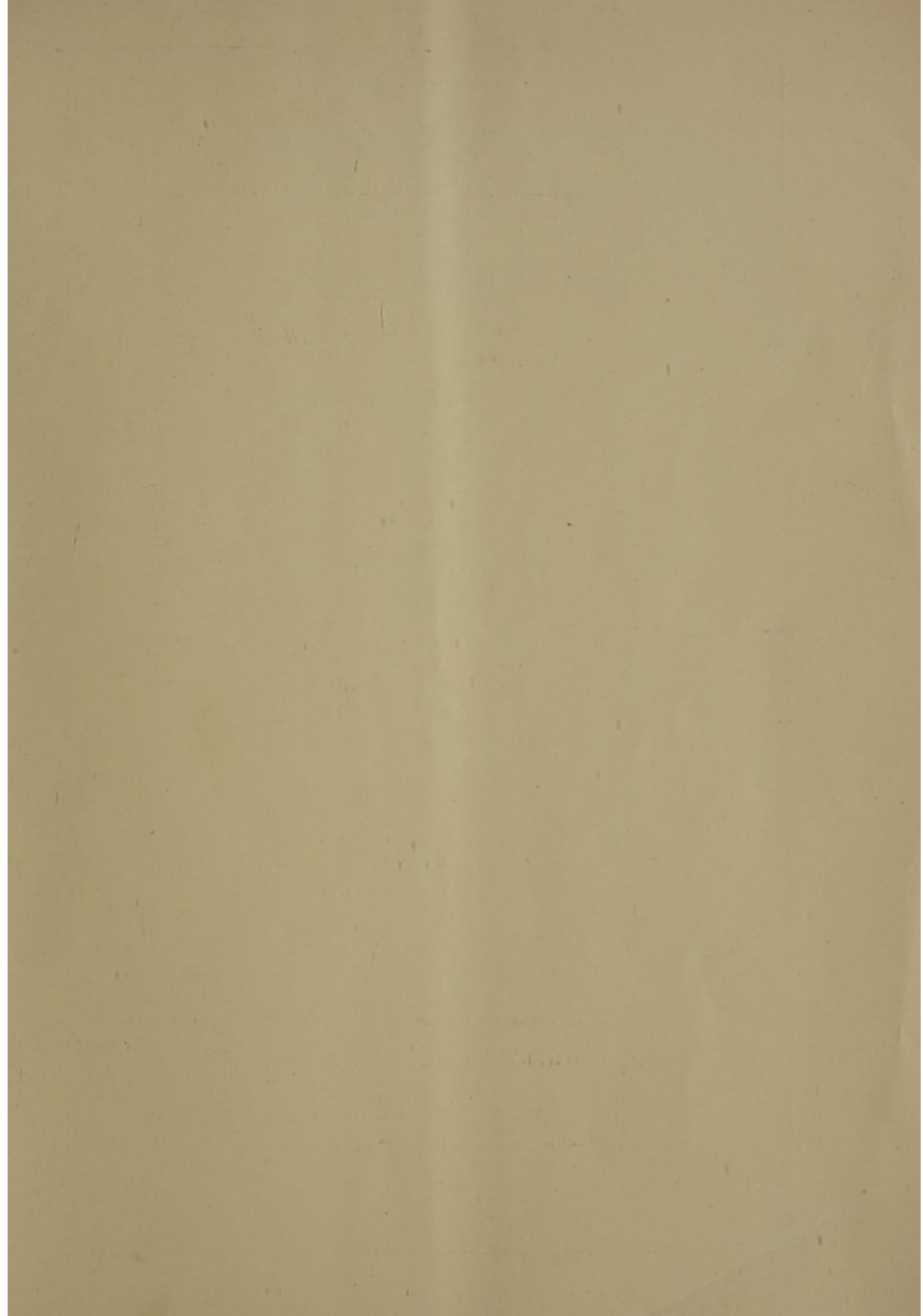


Plate VIII











BAKER, LEIGH & SOTHEBY.

THE FIRM COMMENCING WITH SAMUEL BAKER IN

1744.

SOTHEBY, WILKINSON & HODGE.

1907.



WA 11mm/cm/sal/20/239/2

SOTHEBY, WILKINSON & HODGE,  
WELLINGTON STREET, STRAND, LONDON.

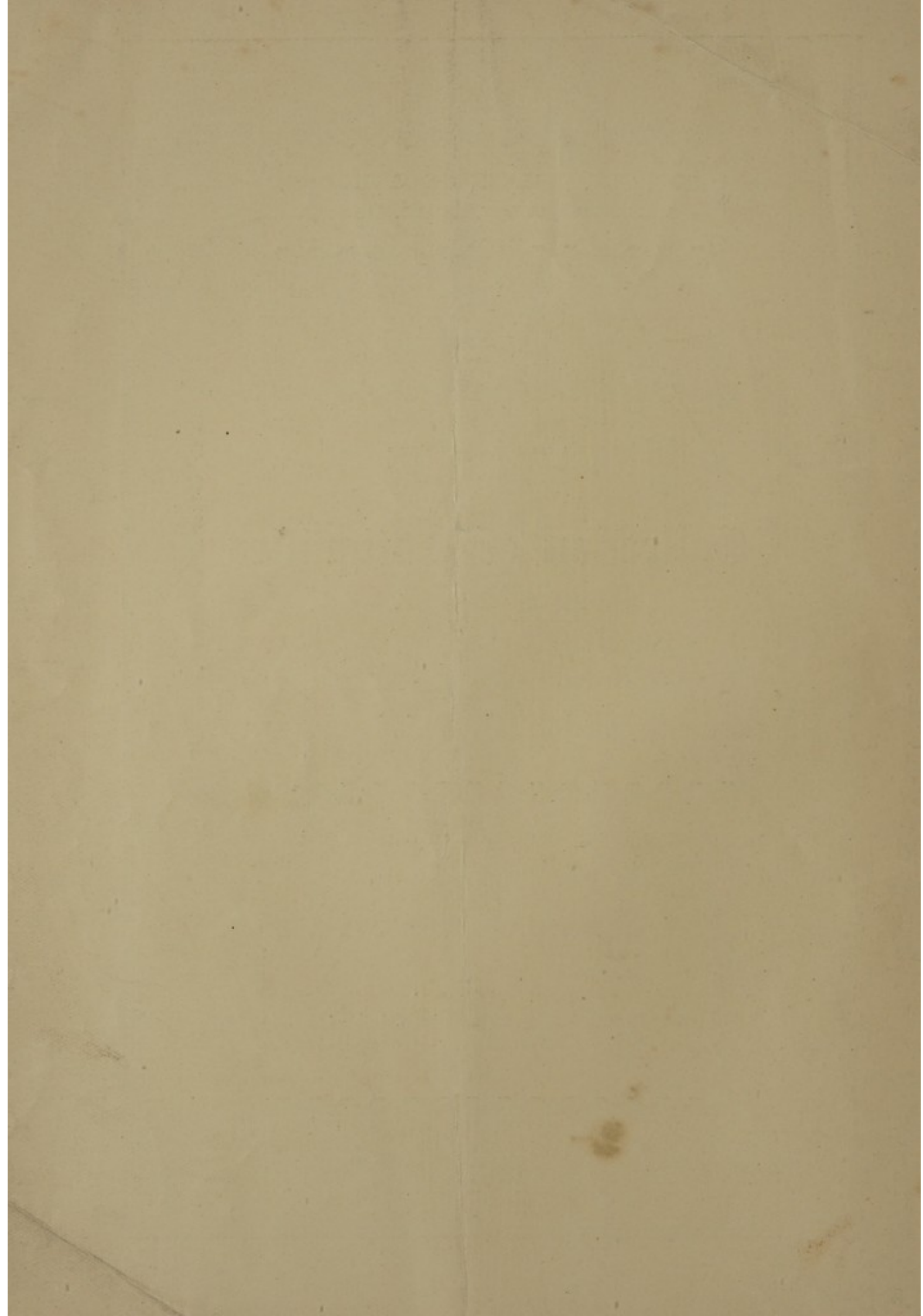
CATALOGUE  
OF A  
**Collection of Antiquities**  
*FROM EGYPT,*  
BEING  
THE SECOND PORTION OF THE COLLECTION OF  
ROBERT DE RUSTAFJAE LL, ESQ. F.R.G.S.

**Days of Sale.**

FIRST DAY..... Monday, 9th December ... Lots 1 to 116  
SECOND DAY .. Tuesday, 10th December. Lots 117 to 245

1907.





(C). EARLY POTT

- 30 Three small vases of models; all de  
*shown on Plate*
- 31 Two spherical bodied close-sprung spi
- 32 Three others, small  
[*Plate I*]
- 33 A small ovoid Vase (or handles); c  
sails and a lon  
[*Plate I*]
- 34 Six Vases with paint
- 35 Two Bowls of dark crocodiles and  
with upright li
- 36 Two similar Bowls ornaments; th
- 37 A Bowl with curved rim pottery, with design (in wa  
reticulate and feather ornament around  
Prochous with a band of Mycenaean-like orna

(D). POTTERY OF VARIOUS PERIO

- 38 Two tall Vases with narrow mouths and bases; o  
15 and 16 in. high; *XIIth Dynasty; from B*
- 39 A large spherical bodied Vase; and three others w  
*all of yellowish drab pottery*
- 40 Seven others of varied form; *similar pottery*
- 41 A costrel-shaped Vase, of fine yellow pottery, and  
pottery with incurved rim [*the first shown on specimens*]
- 42 A fragmentary Canopic Jar and a Vase with bro  
covered with a coating of bitumen, has re  
in yellow; the latter appears to have been  
glazing and to have had a crude deco  
*specimens*



design in the centre ; two	3
d a barrel-shaped Costrel ;	4
l handle and painted with er ornamentation)	2
ign ; a Vase (Coptic ?) ; a Arab Jar ; and another,	6

## POTTERY.

m ; on the top a hut and <i>d pottery, 15 by 11 in.</i>	1
ide a table, or shelf, with ie-wash ; <i>a very unusual</i>	1
	2
	2
arcophagus covers	4
of coarse pottery ; the inscriptions placed	18
irregular form, all with stampings ; an oblong Brick, ith a double cartouche ; and three small Bricks of e	8
Moulds for making Ushabti figures, three with cartouche eper-Ra ; another with name of a Scribe, and one with User-mat-Ra. Similar moulds for figures of Thoueris, Sekhet, and the Cynocephalic Ape	10
Moulds for Ushabti figures (6), triad of Isis, Horus and Bes, and the Cynocephalic Ape (3)	11
Moulds for Ushabti figures (6), Thoueris, Sekhet and Cynocephalic Ape ; two of the latter (back and front <i>on Plate I</i>	12
moulds for figures of Bes (3), the Uraeus (3), Scarab's Beetle. Seven similar Moulds of stone, and three	18

## OBJECTS IN STONE:

## OF PRE-DYNASTIC AND LATER DATE.

- 60 A large Vase of mottled red and white stone ; pre-dynastic period, of depressed spherical form, the ears unfinished, 7 in. high [Plate I] 1
- 61 Another of similar stone ; the ears pierced for a cord, 6 in. high 1
- 62 Two others of light coloured stone ; one fashioned in two pieces 3
- 63 Two others of black and white stone or granite [Plate I] 2
- 64 A circular Vase ; the sides narrowing off to a pointed base ; cut in a dark green serpentine ; a rare specimen [Plate I] 1
- 65 A cylindrical Vase or Jar of alabaster, 7 in. high (the bottom added). Two others, of varied form, and the upper half of a stone Vase 4
- 66 A large circular Dish, of dark green schist, 11 in. diam. 1
- 67 A shallow Dish, of fine grained light-coloured stone, 14 in. diam. 1
- 68 An early Sepulchral Figure of a Man seated ; on the sides an hieroglyphic inscription and two figures ; black granite, 13½ in. high, a fine and very perfect specimen [Plate IV] 1
- 69 Seven Heads from similar figures ; all of granite [Plate II] 7
- 70 A large well-modelled Head of a Prince, from a statue ; limestone, 11 in. high [Plate II] 1
- 71 A large Mask from a sarcophagus. Head of a Prince, from a statue. Upper parts of two Statues and a Head of a Ram ; all of limestone [four shown on Plate II] 5
- 72 A number of fragments from Statues, Ushabti figures, etc. ; in granite, limestone, alabaster, steatite, etc. a lot
- 73 A large Head-rest, 10 in. high [Plate II] ; and a small Altar, with the sacred Asp or Uraeus ; both of dark granite 2
- 74 A portable Altar, the top carved with a table of offerings between two large libatory vases ; another, smaller, the top with a vase between four roundels ; both of limestone, 17 in. and 8 in. high [Plates IV and VII] 2
- 75 Three Stelae of sandstone or limestone ; one with two cartouches [Plate IV] ; another, unfinished ; 15, 14 and 11 in. high 3
- 76 Five others, one of large size 5
- 77 Two others ; one with lightly incised designs ; the other well designed and with the hieroglyphics clearly cut ; 15½ and 12 in. high 2
- 78 A large Sculptural Slab with a procession of gods ; another with inscriptions, and two with figures of gods and inscriptions ; limestone and sandstone 4



- 79 A pyramidal Support of limestone, finely incised with bands of hieroglyphics [*Plate VII*]. A fragment of a limestone Base, with finely incised inscriptions [*Plate IV*] 2
- 80 Six large fragments of Sculptural Slabs and a number of fragments in limestone, sandstone, granite, etc. a lot
- 81 A limestone Stele with remains of a painted design; a large Slab, painted with a long inscription in red; and a number of Fragments of painted Stone a lot
- 82 A limestone Slab with figure in relief of the Apis Bull (*restored*), [*Plate IV*]; Another, of red sandstone, with bull's head; a long Fragment with a row of fourteen Male heads [*Plate IV*]; part of a Table of Offerings with libatory vases; Figure of a Duck; and other pieces (3) 7
- 83 Fragment of a limestone Slab, carved, *in relief*, with a Male head wearing a wig and coloured, 11 in. high 1
- 84 Two similar Fragments of coloured reliefs; one with the bust of a Man holding a feather, 8 in. high 2
- 85 Fragment of a limestone Slab with the upper part of a Man with raised hands; *Another*, in sandstone; the designs on both pieces coloured; and a number of Fragments of similar reliefs, etc. a lot

## COPTIC STELE.

- 86 Part of a large Coptic Stele; with ornamental borders around a central panel carved with a doorway; over the arch are traces of an inscription; 23 in. high; Four others of smaller size and with varied designs; and a long Slab with cruciform design; all carved in low relief [*three shown on Plate V*] 6
- 87 *Another*, with design of a bird within a wreath and name + **ΕΛΙΑC**; *Another*, with cross in wreath and (unfinished?) inscription commencing **ΕΙCΘΕ**; *Another*, with façade of a building and inscription + **ΕΙCΘCOCOCOBOHΘW** - **ICXCΔIOC** in two lines; *Another*, with a wreath enclosing a cross, and traces of lettering on two arms of the cross [*three shown on Plate V*] 4
- 88 *Another*, with façade of building; on doorway, **ΕΙCΘEO** - **COBOH** - **ΘWN** - **AMMO** - **NIOC**. in five lines; *Another*, with an archway and cross and **ΕΙCΘEOCOCOBOΘWN** = **ΔIOC**; *Another*, with cross and wreath, and above, **ΕΙCΘΕΙOCOBOHΘWNΘEKTAMOHATN** (?) [*Plate V*] 3
- 89 *Another*; archway with Greek cross between **A. ω**; **ΔΘω** on lintel; *Another*, cross in wreath and, below, part of an inscription; *Another*, cross-shaped (*broken and the surface decayed*), with eight lines of inscription [*one shown on Plate V*] 3



- 90 A set of four Canopic Jars in soft limestone ; the covers painted in colours 4
- 91 Three mock Canopic Jars, each solid and carved from a single piece of stone ; one with a human head, the others with heads of the ape and jackal ; a small Canopic Jar of terra-cotta ; four Covers from canopic jars in stone and terra-cotta ; and a Cover in fine stone with upper part of a mummy (*from a model sarcophagus*) 9

## STONE COLOUR-GRINDING PLATES OF PRE-DYNASTIC DATE.

- 92 Six Colour-grinding Plates or Palettes ; each made from a long thin slab of dark-coloured schist ; all of elongated diamond shape ; five others of varied form ; *Nagada* 11
- 93 Six others ; two heart-shaped ; two in form of fish ; *another* shaped as a duck ; *another* as a tortoise 6
- 94 Eight others ; in form of the tortoise, various animals, a flying bird, and a fish 8
- 95 Six others ; scorpion, tortoise, animal, fish, etc. ; and a very large heart-shaped specimen 7
- 96 Two curious Votive (?) objects of stone, shaped as knives ; one in the form of a fore-arm holding a blade ; the other with the handle shaped as a lion's head ; and a similar object shaped as a funereal boat [*all shewn on Plate I*] 3
- 97 A large and very fine Colour-grinding Dish of hard stone ; *oblong form, 11 in. by 6 in., XVIII Dynasty [Plate III]* 1
- 98 Three others ; similar but of smaller size ; *another*, boat-shaped ; and two Grinders of hard stone 6
- 99 Another, shaped as an antelope, the legs tied together ready for sacrifice 1
- 100 A small circular Bowl ; a Drinking Cup ; two small Vases ; a Pipe ; two Vase Covers ; a curious Vessel with papyrus flowers in outline on the sides ; *all of stone* 8
- 101 A flat Dish of blue coloured stone ; two stone Lamps, one of stellate form, the other heater-shaped ; Stone Figures of Osiris (2), and Thoueris ; Figure of a toad, and various fragments ; *all of stone* 12
- 102 A "Cippus of Horus" in stone ; three Figures of Men, crouching or seated on oblong bases ; a Figure of a Lion ; and a Figure of a Nymph dancing ; *all in stone or alabaster* 6



## OBJECTS IN BRONZE, &amp;c.

- 106 A fine bronze Simpulum; the long handle terminating in a duck's head; 20 *in. long* [*Plate IV*] 1
- 107 Small bronze Figures of Osiris (2), Khem (2), Bes, Isis, Horus, Amon Ra, Khnum, and Sekhet; and a large bronze Figure of the Sacred Hawk, 6½ *in. high* [*shown on Plate IV*] 11
- 108 Small seated Figure of Harpocrates; Arm from a Figure; two Figures of the Apis Bull; an Antefix in form of the Uraeus; three Situlæ (*two of Coptic date*); a small Model of a Vase, the body formed as a human head; a bronze Lion; and a Group of three Figures in zinc 11
- 109 Three bronze Lamps; one with long spout and mask-shaped cover in centre; *Another*, on foot; the third, *of Coptic date*, shaped as a bird [*Plate IV*] 3
- 110 A bronze Mirror, set in a wooden handle; parts of two circular Mirrors of the Greek period 3
- 111 Three massive bronze Celts, two with curious dotted design; a bronze Chisel; three other pieces of varied form; five Arrow Heads; and a doubtful Dagger Blade 13
- 112 Six Bowls of varied shapes; two Bells; a number of bronze Fragments *a lot*
- 113 A very remarkable Hanging Lamp of bronze, the cover with well designed borders of openwork enclosing panels of cruciform design; *of Coptic date* [*Plate V*] 1
- 114 A small Coptic Situla, with arched handle, standing on three short feet; around the body a frieze of floral design in slight relief; a Water Bottle [*Plate IV*] of beaten copper, set with plaques of *Champlevé* enamel; *XVIth century* 2
- 115 An unusually large bronze Figure of Osiris, 18 *in. high*; the hands crossed upon the breast and holding the crook and flail; on the head, the crown of Lower Egypt with the uraeus in front [*Plate IV*]; and a bronze Figure of Horus, standing on an oblong base 2
- 116 A large Plaque of lead of oblong form; a semi-circular piece cut out from the top edge; each side is covered with rows of hieroglyphs 1
-

## SECOND DAY'S SALE.

### OBJECTS IN WOOD.

LOT

- |     |   |   |                           |
|-----|---|---|---------------------------|
| 117 | A fine Ptah-Sekher-Uasar Figure with well-preserved colouring; a band of hieroglyphics running down the front and back of the mummiform figure, <i>total height 2 ft. 6 in.</i> [Plate VIII]                            | 1 | <del>4-0-0</del><br>23.14 |
| 118 | Another of similar size, the base shorter [Plate VIII]  | 1 | 2.2                       |
| 119 | Another   | 1 | 2-1.10                    |
| 120 | Another   | 1 | P.18                      |
| 121 | Two others, slightly smaller; one on an unusually long base with inscription running around the edge  | 2 | 1.12                      |
| 122 | Two others  | 2 | 1-10                      |
| 123 | Three others  | 3 | 1-12                      |
| 124 | Three others; somewhat smaller  | 3 | 1-12                      |
| 125 | Two others; the larger without the feather head-dress, the smaller has the figure of a Hawk placed on the base before the mummy   | 2 | 1.2                       |
| 126 | A Model of a Boat; a lotus stem at either end; a canopy in the centre. On the deck are figures of seven men, and, beneath the canopy, three seated figures and an attendant; <i>3 ft. long</i> [Plate III]              | 1 | 8.10<br><del>10-0-0</del> |
| 127 | Another; at the prow an Ibis head; at the stern a hawk perched on a lotus bud; beneath the canopy a seated mummiform divinity; ( <i>restored</i> ) [Plate III]  | 1 | 6-15<br>7.0.22<br>2.10    |
| 128 | Another, <i>16 in. long</i> : with three figures only on the deck   | 1 | 1-2                       |
| 129 | A Figure of a nude Woman standing on an oblong base; the body painted a dark red; <i>22 in. high</i>  | 1 | 1.2                       |
| 130 | Another of plain wood; the left arm crossing the breast; the eyes inlaid; <i>22 in. high</i>  | 1 | 3-5                       |
| 131 | Another of early date (XIIth dynasty) wearing a white tunic; another of a Woman wearing a heavy wig and with her hands raised in adoration. And a small Figure of a seated Man [ <i>two pieces shown on Plate III</i> ] | 3 | 1.6                       |



- 132 A large Figure of a Woman making bread ; and a plain wood Figure of a Man [*Plate VIII*] 2
- 133 A large Ushabti Box, with the figure of a hawk on the cover ; 21 in. high ; the sides painted with figures of the Amenti and various symbols ; *a fine example* [*Plate VII*] 1
- 134 Another, small, 8 in. high ; another shaped as a mummy, with remarkable colouring [*Plate VII*] 2
- 135 Nine Masks from wooden sarcophagi ; some of large size [*one shown on Plate III*] and with well-preserved colouring 9
- 136 Eight wooden Figures of Men from sepulchral models ; some coloured 8
- 137 A similar lot 8
- 138 Seventeen smaller Figures of similar character, some fragmentary. And a large number of Hands, Arms, etc. from small figures, etc. *a lot*
- 139 Upper part of a large Figure, the colouring well preserved. Eight Ushabti figures in wood. And a small Ptah-Sekher Uasar Figure 11
- 140 Ten Figures of Hawks, one with a human head ; another of a Vulture. Parts of two Covers of model Sarcophagi ; a large Figure of a Duck [*Plate III*] ; Cover of a Canopic Jar, and two pairs of Models of Sandals ; *the last pieces interesting and rare* [*one of the hawks shown on Plate III*] 20
- 141 Four Head Rests, of wood 4
- 142 Four others [*see Plate III*] 4
- 143 Three Mason's Mallets [*Plate III*] ; and two broken Knives with wooden handles 5
- 144 Two Painter's Pallets, one cartouche shaped, the other with four small styli (?) of wood [*shown on Plate III*]. A large Colour-Pot with two divisions (fragmentary). Another with a rudely cut figure holding the colour-bowl 8
- 145 Two large pieces of a Sarcophagus Cover ; and a number of smaller fragments of wooden Sarcophagi ; *all with painted designs* [*one shown on Plate VIII*] 23
- 146 A large lot of Wooden Fragments : Fragments of Sarcophagi, Head-dresses, Hands, Models, etc. *a lot*
- 147 The End Piece of an oblong Sarcophagus, 3 ft. 7 in. high by 3 in. wide, painted with a figure of a seated goddess, and rows of hieroglyphic inscription [*Plate VIII*] 1
- 148 Ten long Pieces of Wood from Mummies ; mostly with painted inscriptions 10

2.5-0 X

2.7-6 X

1.14-0

14/-

10/- X

X

X

2/10/100

29/-

2.4-00

- 149 Thirty wooden Tablets and Labels from Mummies, etc. ; mostly of Coptic date ; the names incised or painted 30 *we have none of them*
- 150 Twelve wooden Arrows, with small pieces of flint attached to the heads 12
- 151 Two bow-shaped Carrying Sticks [*Plate VII*], and a roughly made Boomerang 3
- 152 A long piece of Hard Wood, of circular section, boldly carved with panels and scrolls of floral design ; *probably of Coptic date* ; the piece seems to have served as part of a framing, and has a rabette running down the whole length ; *Cairo* [*Plate VII*] 1

### FRESCO PAINTINGS.

- 156 A large fragment with the Head of a Woman wearing a large black wig and a necklace ; the flesh painted red ; *finely preserved* 1
- 157 Another ; painted with the upper half of the Figure of a Woman ; the hands raised [*Plate IV*] 1
- 158 Another ; a Funereal Boat with two figures of Anubis beneath a canopy 1
- 159 Two fragments, each with the upper part of a Figure ; one holding a papyrus branch [*Plate IV*] 2
- 160 Two others ; one with the Figure of a Man holding a Table of Offerings ; the second with a Man raising his left hand in obeisance 2
- 161 Three others (in two frames) ; all with figures (one the god Amen-Ra) 2
- 162 Two others ; one with a seated figure of Anubis, the other with a figure of a Man 2
- 163 Two others ; one with two crouching figures, the other with an inscription 2
- 164 Three pieces of rush Basket Work, and remains of two Bags made of papyrus reed. And a large number of Slippers and Shoes of leather, *of Coptic date* a lot
- 165 A large and well modelled Jackal's Head [*Plate IV*] ; and two Masks from mummies ; *all of painted cartonnage* 3
- 166 A large lot of fragments of Mummy-casings of decorated cartonnage ; *some masks* [*one shown on Plate VIII*] *included* a lot



- 167 A Hypocephalus of cartonnage [*Plate VIII*]; the designs in white on a dark ground; *a rare specimen*. And a long strip of Cartonnage made of very fine linen and covered with gesso incised with designs and inscription; *originally gilt* 2
- 168 A large lot of Mummied Animals, Birds and Fish [*one of the pieces, a mummied cat, shown on Plate VIII*] *a lot*
- 169 Mummy of a Crocodile in a wooden case (*broken*). A wooden Case for a mummy of the ichneumon; and a Mummy in a small and perfectly preserved cartonnage case [*the last piece shown on Plate IV*] 3
- 170 A square GLASS BOTTLE with broad handle, 7 in. high [*Plate IV*]; and a number of fragments *a lot*

### USHABTI FIGURES.

- 171 Twenty small Ushabti Figures of rough terra-cotta; mostly covered with drab, green or blue wash and bearing inscriptions in black paint 20
- 172 A similar lot 28
- 173 A similar lot 28
- 8/- 174 A similar lot 31
- 175 Three large Ushabti Figures of terra-cotta, with remains of coloured decoration. Two others of limestone. Three others of finer style and with good blue enamelling. And a small Ushabti with white glazing and purple decoration; *some repaired* 9
- 176 Five Ushabti of dark *Dehr-el-Bahari* blue ware; thirteen others of smaller size, and including two or three of very late date 18
- 15/- 177 Ten small well-modelled Ushabti Figures of fine blue-glazed ware 10
- 8/- 178 A similar lot 10
- 8/- 179 A similar lot 10
- 10/- 180 A large lot of Ushabti Figures in coarse glazed ware 36
- 11/- 181 A similar lot 36
- 71/- 182 A very large lot of coarsely made Ushabti Figures; *mostly of very small size; some imperfect* *about 80*
- 91/- 183 A Drinking Bowl of blue glazed ware with traces of decoration in black. And a Jug of similar ware but of later (Ptolemaic) date; *repaired* [*Plate I*] 2

- 184 A similar Drinking Bowl, the exterior painted with a calyx-like design, the interior with fish and papyrus plants [*Plate III*]. Two small Bottles of glazed ware (one with modern design), and two fragments, one with name of Neb-ka-Ra; *some repaired* 5
- 185 Two "New Year" Vases, of depressed gourd shape, fitted with narrow papyrus flower necks; two cynocephalic apes seated at the bottom of the necks, and a broad border of inscriptions around the edge [*one shown on Plate I*] 2
- 186 A small Vase of glazed pottery; another, boat-shaped [*Plate I*]; various fragments of Vases, Figures, etc., in glazed ware and pottery; two Pom-pom Shell Cases, picked up in the Desert; various pieces of metal Chain with tokens, etc. attached, etc. *a lot*

### TEXTILES OF LATE ROMAN AND OF COPTIC DATE.

- 187 Three large Cards mounted with pieces of Coptic linen and embroidery; one of the pieces with drawn thread and coloured fillings [*one card shown on Plate VI*] 3
- 188 A similar lot of three Cards 3
- 189 A similar lot 3
- 190 Another, some small caps included 3
- 191 Another 3
- 192 Another 3
- 193 Another 3
- 194 Four others 4
- 195 A large lot of pieces of Coptic Linen and Embroideries *a lot*
- 196 Two Rolls with seven skins of parchment, all with early Hebrew writing [*Plate VIII*] 2
- 197 Four smaller Rolls of Hebrew MS. 4

### OSTRACA.

- 198 OSTRACA, a large lot (162) on flakes of limestone of varied size; the writings of varied style and date 162
- 199 OSTRACA: A very large lot (*about 700*) of similar Ostraca, written on sherds of pottery *a lot*
- 201 A Box containing a number of fragmentary vases, &c. in pottery and stone *a lot*



## PRE-HISTORIC SECTION.

(A). WATER RECEPTACLES IN LIMESTONE AND FLINT,  
used in the fabrication of Flint Implements in the  
palaeolithic period. [Plate II].

\* \* \* *A description of these very interesting vessels, and an account of their discovery on a plateau of the Desert, W. of Thebes, has been recently published by Mr. Rt. de Rustafjaell, "Palaeolithic Vessels of Egypt: The earliest handiwork of Man" (Macmillan & Co.). The evidence of the use of such vessels in the manufacture of flint instruments is shown by the wall paintings (of a very much later period) discovered at Beni Hassan. The receptacles seem to have been selected from stones having a natural hollow on one surface: they were then roughly fashioned into shape and the hollow artificially enlarged. Unfortunately most of the distinct evidence of this artificial enlargement has disappeared, partly by the accidental abrasion arising from long-continued use, and mostly by the weathering to which the objects have been subjected since the very remote period of their production.*

- 57- 202 A large Block of Limestone with a deep hollow or basin on the upper side; Another, of smaller size; and three large Nodules of Flint with similar receptacles for water on the upper side 6
- 21- 203 Six similar Water Receptacles; three in limestone, and three in flint 6
- 204 A similar lot 6
- 205 Seven others; three of limestone and four of flint 7
- 206 A similar lot 7
- 207 Eight others; three of limestone and five of flint 8
- 208 A similar lot 8
- One lot of flint*

(B). PALAEOLITHIC FLINT IMPLEMENTS (from Upper Egypt,  
near to Nagada).

- 210 A large Card mounted with twenty-one Flint Implements of varied form; one specimen, 8 in. long, is interesting from the sun-burning having affected the point of the implement only; the end has been embedded in the sand and has thus escaped the burning [Plate VI] 1
- 211 Two Cards with similar implements (39); some Nodules, Cores and Flakes included 2
- 212 Two Cards with 34 varied implements, Nodules, Cores, &c. 2
- 213 Two others with 42 pieces 2

214	Two Cards with 49 varied implements, Nodules and Cores	2
215	Two others with 52 pieces	2
216	Two others with 45 pieces	2
217	A similar Card with 27 pieces	1

(C). NEOLITHIC IMPLEMENTS in Siliceous Stone.

218	Two Cards with roughly made implements of varied form, Flakes, &c. (32), all in siliceous stone ; <i>found in the Arabian Desert</i>	2
219	Three Cards with 37 pieces, similar to last	3
220	Three others with 42 pieces [ <i>one shown on Plate VI</i> ]	3
221	Three others of 47 pieces	3
222	Three others of 48 pieces	3
223	Three others of 43 pieces	3
224	Three others of 44 pieces	3
225	Two others with 31 pieces	2
226	A Box containing a large number of rough Palaeolithic Flints ; <i>from the same localities as the preceding lots</i>	<i>a lot</i>

FLINT NODULES, all Sun-burned [*See 227 Plate VI*].

227	Five Cards containing a large number of Nodules of flint ; <i>found in the Arabian Desert, in company with worked implements, and very interesting as shewing the effects of long periods of sun-burning, often shewn on one side only</i>	5
-----	--	---

(D). NEOLITHIC IMPLEMENTS.

228	Three Cards containing 87 specimens of Neolithic Implements ; Pounders, Scrapers, Knives, Flakes, &c. ; <i>Lower Egypt [Plate VI]</i>	3
229	A similar lot of 89 Neolithic Flints	3
230	Another (79 pieces)	3
231	Another (89 pieces)	3

GEOLOGICAL SPECIMENS, FOSSILS, &c.

232	Three Cards with a number of pieces of Petrified Wood, <i>from the Arabian Desert (District of Suez) ; several show traces of having been completely decayed and water worn before silicification</i>	3
233	A similar lot	3
234	A similar lot	3
235	A similar lot	3
236	A similar lot	3
237	A similar lot	3



238	An unusually large and fine specimen of a silicified Tree, <i>about 4 ft. 6 long and with a girth (at centre) of about 2 ft. 6</i> [Plate VII]	1
239	Another piece ( <i>about 16 in. long</i> )	1
240	Twelve smaller pieces	12
241	Twelve smaller pieces	12
242	Twelve smaller pieces	12
243	Two Cards with a number of semi-fossilized Oyster Shells; <i>found in natural banks in the Arabian Desert (Suez District)</i> ; a Bag of Sand in which they are found included [Plate VI]	3
244	Three Cards mounted with similar shells; a Bag of Sand included	4
245	A large lot of onyx Nodules or Pebbles, Fossils, and various Mineralogical specimens, <i>from Egypt</i>	a lot

END OF SALE.

Plate I

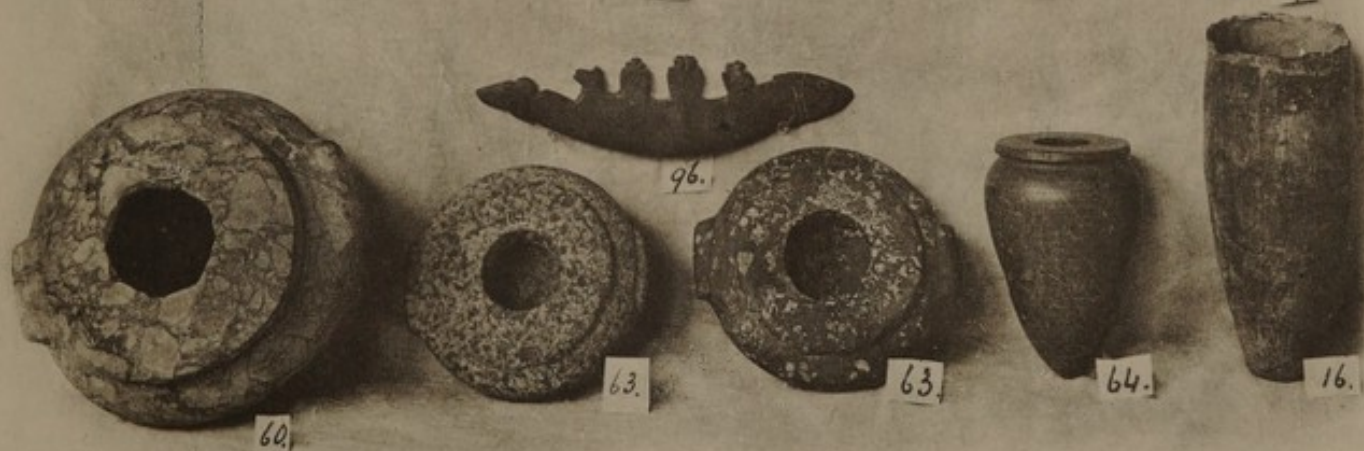
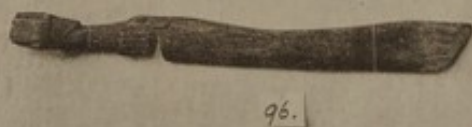
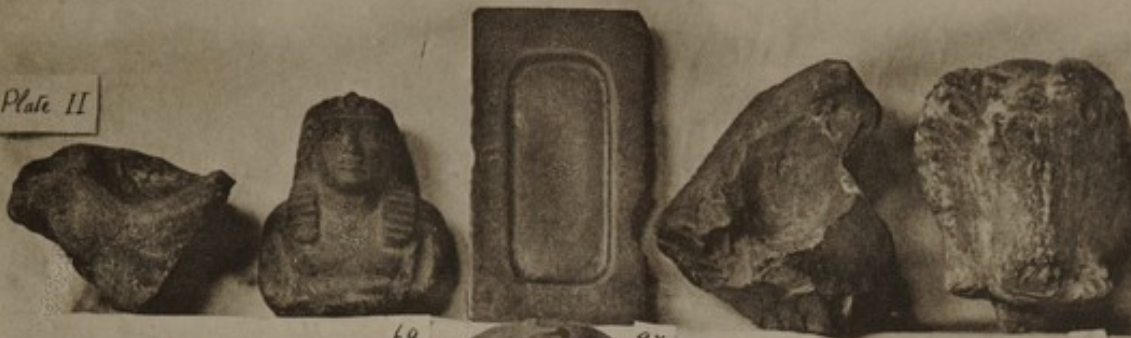






Plate II



69.

72.

71.



71.



71.



71.



48.



73.



47.



70.







Plate III







Plate IV



170



82



165



75



115



109



159



107



164



106



82



157



79



68



74





Plate V







Plat VI

227

187

228

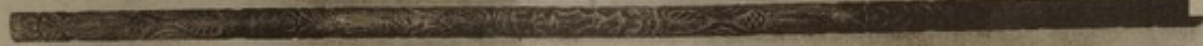
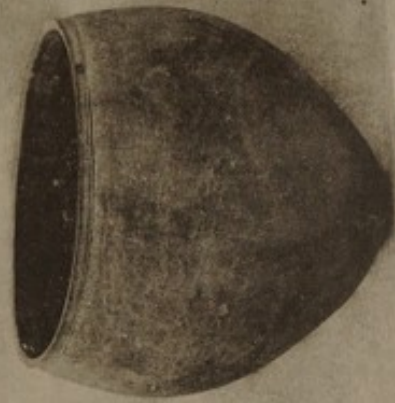
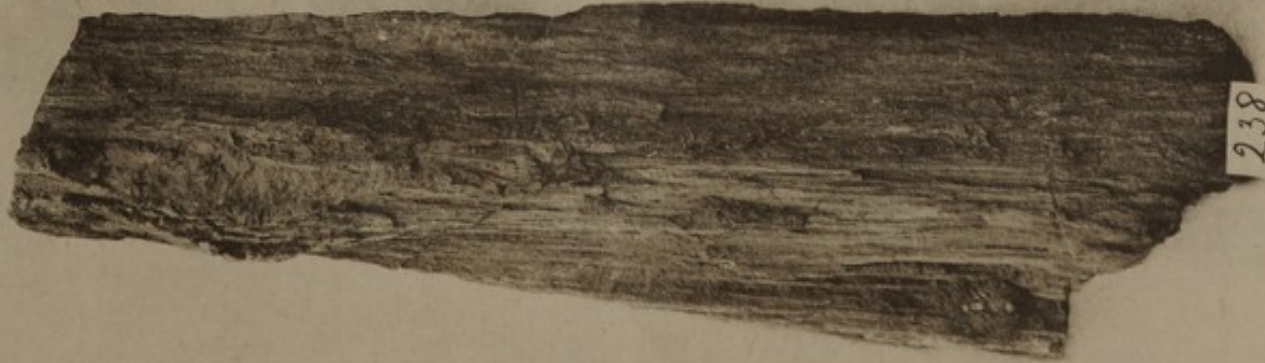
243

220

210





















*Bottle Sticks Past.  
Box 2 Labels  
Tracing Paper & some foolscap  
Paper & just a little paper  
Bottle*

BAKER, LEIGH & SOTHEBY.

THE FIRM COMMENCING WITH SAMUEL BAKER IN

1744.

SOTHEBY, WILKINSON & HODGE.

1907.