

## **Sales catalogue: Phillips, Son and Neale**

### **Publication/Creation**

2nd October 1919

### **Persistent URL**

<https://wellcomecollection.org/works/sh8524ct>

### **License and attribution**

This work has been identified as being free of known restrictions under copyright law, including all related and neighbouring rights and is being made available under the Creative Commons, Public Domain Mark.

You can copy, modify, distribute and perform the work, even for commercial purposes, without asking permission.



Wellcome Collection  
183 Euston Road  
London NW1 2BE UK  
T +44 (0)20 7611 8722  
E [library@wellcomecollection.org](mailto:library@wellcomecollection.org)  
<https://wellcomecollection.org>

Telephone Gerrard 3670,  
.. Mayfair 170.

WATKINS/CM/Sa 115/145  
WATKINS  
Sale No. 10,371.

For **CONDITIONS OF SALE** see **Wednesday's Catalogue.**

MESSRS.

**PHILLIPS, SON & NEALE'S**  
**SECOND DAY'S SALE,**

*At their Great Rooms, 73, New Bond Street, W.1.*

On **THURSDAY**, the 2nd **OCTOBER**, 1919,

AT ONE O'CLOCK PRECISELY.

Messrs. **PHILLIPS, SON & NEALE**, will not be responsible for any Goods left, either by Buyer or Seller, more than one day from the date of Sale, and any lot so left will become liable to warehouse charges of One-Shilling per lot per day.

*Removed from Gerrard's Cross.*

LOT

- 250 A circular birch pedestal cupboard with sunk marble top, 8 pieces of toilet ware, japanned ewer, wire and brass nursery fender, wicker linen barrel, and sundry strips of matting pattern linoleum
- 251 Two birch skeleton screens with cretonne panels, a Japanese four-fold ditto, 3 brass hangers, and 3 gipsy tables
- 252 A 3 ft. brass and iron bedstead with pine frame and spring, 2 hair overlays, bolster and pillow
- 253 A 3 ft. 6 mahogany dressing chest of 4 drawers, swing mirror and 2 jewel drawers over, a 3 ft. ditto washstand with marble top and tiled back, and 2 cane-seated chairs
- 253A A 4 ft. white painted hanging wardrobe with 2 folding doors
- 254 An ash chest of 5 drawers
- 255 A brown painted ditto of 6 drawers
- 256 A 3 ft. brass French bedstead with pine frame, wire spring, hair overlay, feather bed, bolster and pillow
- 257 Another, similar, with wire spring, 2 hair overlays, bolster and pillow
- 258 A 3 ft. 6 walnut-wood dressing chest of 4 drawers with swing mirror and 2 jewel drawers over, a 3 ft. ditto washstand with marble top and tiled back, a ditto pedestal cupboard, 2 cane-seated chairs, and a towel airer



- 259 A walnut tray-top oblong bootstand, fitted 2 drawers, cane-work easy chair, wire and brass mounted nursery fender, blue enamelled slop pail, and 7 pieces of toilet ware
- 260 A burr-walnut-wood Wellington nest of 7 drawers
- 261 A 3 ft. brass and iron French bedstead with pine frame, wire spring, hair overlay, wool ditto, bolster, pillow and 2 extra square pillows
- 262 A circular birch portable washstand with plug basin, 7 pieces of toilet ware, green painted jug, painted towel rail, 2 rush-seated chairs, linen painted toilet glass, 2 mahogany wall brackets, iron fender, trivet, and 2 brass wire fire guards
- 263 A 3 ft. brass and iron bedstead with wool overlay, 3 bolsters, 5 pillows, 3 blankets, and 3 coloured ditto
- 264 An Old English mahogany cheval robing mirror
- 265 A mahogany lavatory mirror with marble slab, japanned foot bath, enamelled slop pail, and 5 zinc water jacks
- 266 A 3 ft. 4 ebonized extending dining table, with patent screw and winder
- 267 A 3 ft. 4 ditto 3-tier dinner waggon
- 268 An ebonized purdonium and scoop, iron kerb fender with set of fire-irons, stop, a pair of nippers, spark guard, steel and brass sliding trivet, and a butler's mahogany tray and stand
- 269 A 3 ft. 6 carved walnut-wood writing table, fitted 2 drawers, top lined leather, raised back with 4 side drawers and reflecting centre panel
- 270 An oak stationery rack, small Japanese cabinet, walnut hanging medicine cupboard with 2 doors, deck chair, lady's wicker work basket, birch caddy, lined opaque glass, and a 3-tier wicker cake stand
- 271 A bamboo open bookstand with 5 lacquer tiers, 3 pairs of red chenille curtains, and a pair of grey cloth ditto
- 272 An oval china plaque in plush frame, 2 china parrots on swing perches, carved Indian wood Koran stand, boat-shaped pottery jardiniere, 3 corner brackets, painted Japanese fan with silver filigree sticks, lac box, and a lac crumb brush and tray
- 273 A 4 ft. ebonized dwarf china cabinet, the centre enclosed with 2 painted panelled doors, mirror panelled back and canted sides
- 274 A mahogany high-back cane-seated chair, large square of china matting, constable's rattle, beaded Zulu necklace, lace trimmed linen blind, enamelled saddle holder, 3 gas consumers, plush table cover, 2 brass rods with pulleys, and 8 glass piano rests

Try to get  
Trines

not included  
in lot  
Taken out

Try to buy

Koran stand

cheap  
from furniture

bought by dad  
won't be  
with lot



- 275 A brown fur rug mounted on red cloth
- 276 A 21 in. circular Japanese lac table, on pillar and tripod, bamboo and lac newspaper rack, wicker log basket, 2 plush top circular footstools, and a child's chair with cane work seat
- 277 Two red painted wicker easy chairs, fitted with cushions, another with 2 cushion seats, and a ditto garden couch
- 278 Nine ebonized rush-seated chairs
- 279 A burr-walnut-wood davenport
- 280 A square ebonized 2-tier occasional table, another, in stamped velvet, a 2-tier painted wicker ditto, 2 velvet covered oval-shaped ornament brackets, and 2 ebonized corner brackets
- 281 The black ground and figured 22 in. Brussels stair carpet, in yds., the underfelt and 17 brass rods for same
- 282 An ebonized and gilt decorated overmantel with bevelled mirror and shelves, a ditto wall étagère with mirror back, mantel board with plush and tapestry fall, and a portière to match, with brass rod
- 283 An iron and brass rail fender, brass folding fire screen, 3 brass fire implements, a pair of nippers, hearth brush, steel poker, embossed brass coal pail and scoop, and an ash pan
- 284 A wheel barometer, in carved oak case, fitted with timepiece
- 285 An oak stick rack, skull and antlers on wood shield, 4 small horns on shield, small Oriental rug, 4 mats, mahogany wall bracket, walnut half-circular ditto, 3 whips, 2 alpenstocks, hunting crop, and a horse-tail fly whisk
- 286 Two deal top tables, a Windsor chair, a ditto arm chair, 2 towel horses, folding ditto, kitchen fender, japanned plate warmer, coal pail, and a set of scales and weights
- 287 A mahogany hat and umbrella hall stand with metal liner
- 288 ~~Four~~ Four sets of steel fire implements, 4 odd steel pokers, 7 trays (various), copper omelette pan, 4 painted water cans and a mahogany enclosed washstand with plug basin, 4 other pieces of toilet ware, water bottle, and a japanned overflow bowl
- 289 A dial in metal case, 2 ~~housemaid's~~ boxes, 3 oil stoves, a ~~portable lamp~~, 2 japanned candle boxes, small wall mirror, and a foot bath
- 290 SIX MAHOGANY SHIELD-BACK SHERATON DINING-ROOM CHAIRS, with stuffed seats in old-gold velvet, finished brass studs, and a ditto carving chair
- 291 Four linen hampers, 3 japanned baths, 2 watering cans, a brass hanging lamp, and a red and buff striped Kidderminster carpet



- 2/10/19 54- 292 A copper tray, a set of brass letter scales and weights, 5 bog-wood ornaments, corner bracket with Indian embroidery fall, 3 Indian caps, a pair of ditto shoes, sundry native ornaments, 2 embossed brass plaques, with porcelain centres painted in medallion portraits, 3 brass pillar candlesticks, 2 hand bells, 6 other brass pieces, an oak truck-pattern inkstand, hand mirror, easel ditto, and a brass chamber candlestick - *See nos 31-23489*
- 293 A croquet set, in deal case, box refrigerator, and a stone ware filter
- 294 A blue ground bordered Persian rug
- 295 A blue, red, yellow and buff bordered ditto
- 296 A yellow bordered ditto mat, 2 Indian ditto, and 7 Oriental rugs
- 297 A 24 in. Sheraton pattern bureau, with fall front and 3 drawers under
- 298 A 50-gallon American japanned oil tank with patent pump, a Ransome's mowing machine, zinc wheel barrow, and a galvanized dust bin

## CHINA &amp; GLASS.

- 2/10/19 8. 299 A Davenport dinner service, in 37 pieces, a gilt edged dessert service, painted with flowers, in 18 pieces, 6 pieces of white ditto with pierced border, a blue festoon border dinner service, in 48 pieces, a willow-pattern cheese stand, a black china water bottle, stand and cover, a white Wedgwood soup tureen, cover and stand, and 17 other pieces to match
- 2/10/19 8. 300 A white and gilt bordered Davenport dinner service, in 118 pieces, 9 ditto cheese plates, nearly similar, 5 basket-pattern fruit dishes, 12 salad plates (6 and 6), and odd tea and breakfast and odd crockery, in about 88 pieces - *6 Coffee cups + saucers to W 22/10/19*
- 301 Glass. Two flower troughs, 5 toddy glasses, 4 engraved champagnes, 11 plain ditto, and sherries, clarets, tumblers, finger bowls, etc., in about 70 pieces
- 302 A willow-pattern coffee set, of 18 pieces and tray, a breakfast set of 8 pieces and tray, 2 glass swans, 13 figure ornaments, 5 terra-cotta ornaments, on plush mounts, 2 wall lamps, a Canton tea pot, 2 baskets with raised flowers, a large Worcester cup and saucer, 2 Dresden cups and saucers, and sundry ornaments, in pieces
- 303 Twelve glass easel photo frames, 2 mirror sconces, a triple mirror in leather, a jardinière with china flowers, Canton china tazza with brass mount, coffee pot, cover and stand, and 11 straw table mats



- 304 *Brass Objects.* Two pairs of dragon candlesticks, a monk's-head holy water bracket, an Indian bell with figure handle, a Benares bowl, frog match box, pillar candlestick, a paper knife with fowl-leg handle, and 5 other small pieces

### PLATED WARE.

- 305 A biscuit box and stand, a tea kettle (no stand), pewter tankard, a glass sugar bowl, on plated stand, tennis racket-pattern toast rack, and a nautilus spoon warmer
- 306 A spirit stand, with 3 bottles and stoppers, and a 12 in. circular salver
- 307 A 6-bottle table cruet, a 4-bottle ditto, and a 4-hole sauce basket
- 308 A pair of Sheffield pillar candlesticks, and a ditto snuffer and tray
- 309 Four engraved fruit spoons, in case, a fish slice and fork with ivory handles, in case, and 12 fish knives and forks with ivory handles, in mahogany case
- 310 *Thread Pattern.* Nine asparagus servers, soup ladle, gravy spoon, 8 table spoons, 12 dessert spoons, 12 small forks, 10 table forks, 2 sauce ladles, and 4 tea spoons (in wicker plate basket)
- 311 Two spirit labels, 6 egg spoons, 2 skewers, a pair of knife rests, 2 chutney spoons, 2 pickle forks, a pair of sardine servers, and 2 steel and wicker knife baskets containing 22 pieces of white-handled kitchen cutlery, 7 pieces of black-handled ditto, 3 cork-screws, 8 odd spoons and 5 forks
- 312 *Silver.* A lady's silver card case, in leather case, a lady's silver-mounted ivory card case, with painted panel, 4 salts with 3 spoons, 2 antique pepperettes, and 6 antique tea spoons

### LINEN.

- 313 A white counterpane, and 7 variously coloured ditto
- 314 Two red check dust sheets, and 2 cotton mattress covers
- 315 Six linen sheets
- 316 Six ditto
- 317 Four others, larger
- 318 Twelve cotton sheets
- 319 Seven round towels, and 22 huckaback face towels (4 patterns)
- 320 Three damask table cloths

- 321 Nineteen serviettes, \*2 tray cloths, 4 sideboard cloths, 4 toilet covers, 3 duchesse toilet sets, and 10 doyleys
- 322 Four bolster cases, 11 pillow cases, 8 rubbers, 12 grey ditto, and 9 tea cloths
- 323 Five blankets
- 324 Five ditto
- 325 Six ditto
- 326 Six ditto

*Other Properties.*

- 327 A 3 ft. grained wardrobe, enclosed by panelled doors
- 328 A grained refrigerator, deal bench, a ditto stool, painted garden seat, canvas dress trunk, deal gipsy table, bundle of blinds, bundle of brass stair rods, 2 wicker flower baskets and a canvas dress basket
- 329 A 5 ft. walnut-wood and ash wardrobe, fitted with drawers and sliding trays, enclosed by panelled and silvered glass doors
- 330 A mahogany commode chair, grained pedestal cupboard, a 4-fold Japanese screen, folding chair, 2 floor polishers, roll of linoleum, grained towel airer, painted cane-seat chair, and a set of drawing instruments, in case
- 331 A couch, covered in green tapestry and loose cushion, and a mahogany 3-fold screen, with tapestry and glazed panels
- 332 A metal egg stand (A. F.), a ditto pitcher (A. F.), plated 2-division cruet with 2 bottles, a ditto 2-handled sugar bowl and cover, biscuit box and cover, 2 brass 2-light candelabra, sheet of silvered plate-glass, and a brass 6-light electrolier
- 333 An Indian carpet,      ft. by      ft.
- 334 A walnut-wood and inlaid washstand with marble top, towel airer, 3 cane-seat chairs, and a swing-frame toilet glass
- 335 A 6 ft. 6 mahogany shaped-front wardrobe, fitted trays and drawers, enclosed by silvered and 2 panelled doors
- 336 A 3 ft. 6 ditto tray-top dressing table, fitted 2 drawers with robing mirror over, a ditto washstand with marble top, and a pedestal cupboard
- 337 A pair of 2 ft. 6 twin green and brass French bedsteads, wire spring mattress, hair overlays, 2 bolsters and 2 pillows
- 338 A 4 ft. burr walnut shaped-top occasional table, on turned supports
- 339 A carved oak overmantel, fitted mirror
- 340 An 8 ft. mahogany wardrobe, with cupboards at sides and 6 drawers in centre



- 341 A 4 ft. 3 mahogany pedestal dressing table, fitted with 11 drawers and cupboard under and marble top, and a 4 ft. 3 ditto washstand, fitted with cupboards at sides, 3 drawers over and marble top
- 342 A ditto pedestal cupboard, fitted with drawer, a 28 in. ditto toilet glass, fitted with drawer, and 2 ditto chairs, with seats covered in tapestry
- 343 A 3 ft. brass bedstead, with wire spring and wool and hair overlay
- 344 A mahogany bureau with shaped front and pull-out slide, on cabriole legs, 3 ft. 10 wide
- 345 A 24 in. oak bureau with fall-down flap, and a 24 in. ditto table
- 346 A 4 ft. panelled oak chest
- 347 A 3 ft. mahogany military chest of 4 drawers
- 348 A 27 in. oak umbrella stand, a 21 in. ditto bookshelf, and a ditto table, fitted with cupboard
- 349 An oblong oak table, fitted with drawer, carved oak chair, and 2 ebonized ditto with rush seats
- 350 An octagonal oak table, on shaped legs and stretcher, 4 ft. wide
- 351 A mahogany arm chair with seat in green brocade, and a rail-back ditto, upholstered in pink brocade
- 352 A Rouch's 7 in. by 5 in. light field camera, with view finder and 8 by 5 symmetrical lens, roll holder, 5 mahogany double slides, and Ashford's folding stand
- 353 A 3 ft. 6 mahogany pedestal writing table, fitted with 9 drawers and leather-lined top
- 354 A mahogany revolving library chair, with back upholstered in morocco leather
- 355 A mahogany sideboard, with mirror back and drawers and cupboards under, 6 ft. 3 wide
- 356 A 3 ft. mahogany chest of 4 drawers
- 357 A scroll-end couch, covered in flowered tapestry
- 358 A brass standard lamp, fitted for electric light, and shade
- 359 A 5 ft. club fender, with morocco top
- 360 An oak 3-drawer filing cabinet
- 361 A 4 ft. walnut pedestal desk, fitted 11 drawers and stationery cupboard
- 362 A mahogany cupboard, fitted 4 sliding trays
- 363 A 5 ft. oak roll-top desk
- 364 A 5 ft. oak roll-top desk, fitted numerous drawers and pigeon-holes
- 365 A dictaphone and cover (wood)



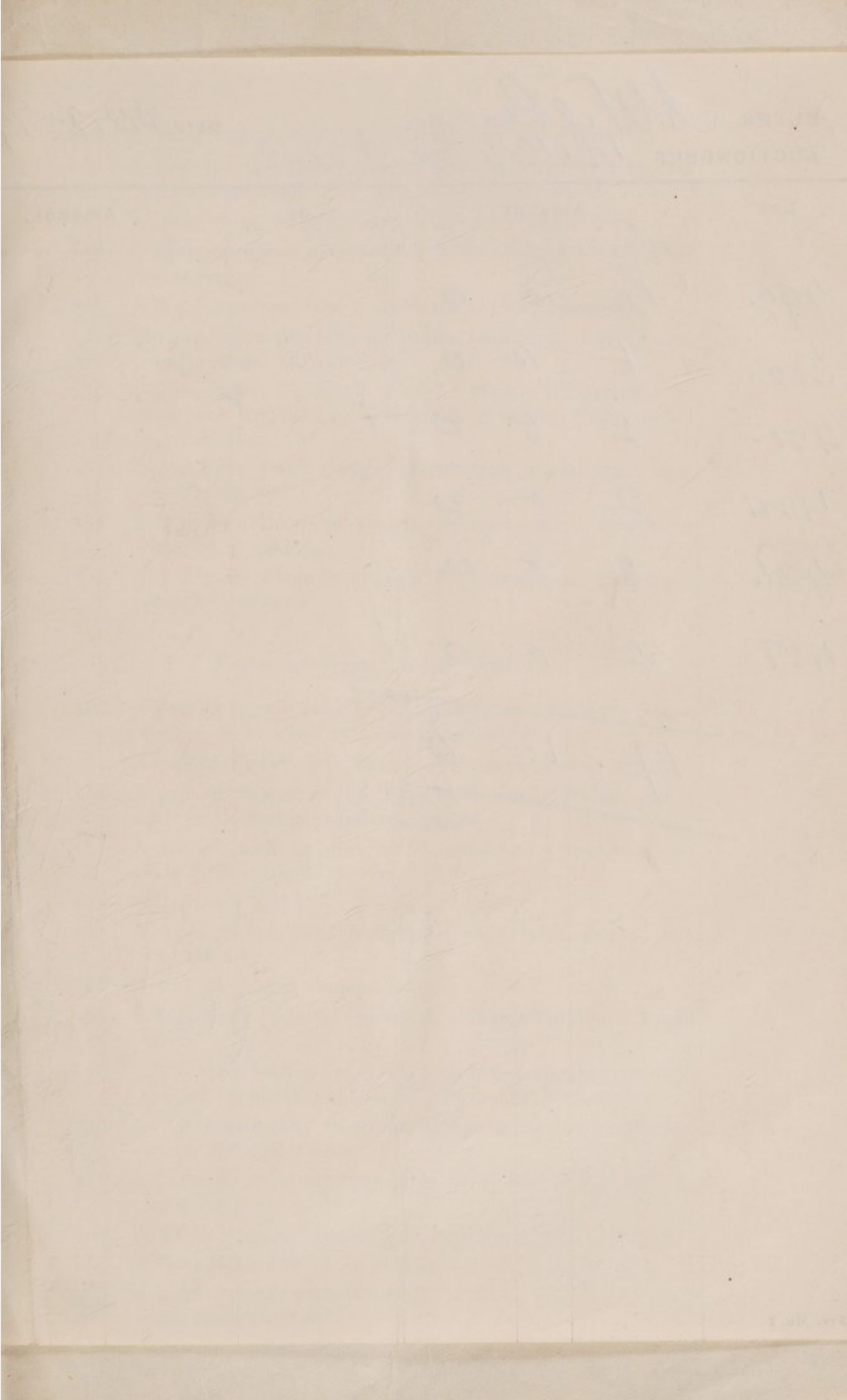
- 366 A dictaphone, with holland cover
- 367 A brass umbrella stand
- 368 A mahogany settee, covered in pegamoid
- 369 A mahogany stand, fitted with lamp
- 370 A mahogany wool winder
- 371 A Dutch marquetry china cabinet, fitted 4 drawers
- 372 An onyx clock set
- 373 A rose-wood and inlaid overmantel, fitted 10 bevelled plates
- 374 A mahogany night commode
- 375 Six eiderdown quilts
- 376 A rose-wood and inlaid overmantel, fitted 12 bevelled plates
- 377 A mahogany envelope card table
- 378 A 6-fold Japanese screen
- 379 A double chest of 6 long and 2 short drawers
- 380 A rose-wood and inlaid overmantel, fitted 4 bevelled plates
- 381 A walnut inlaid china cabinet, with cupboard in centre and glazed doors at sides, 6 ft. wide
- 382 A 5 ft. writing table with leather-lined top, fitted with 3 drawers
- 383 A 4 ft. 6 ditto, fitted with 2 drawers
- 384 A carved oak hall stand with bevelled mirror back, fitted with drawer, 3 ft. wide
- 385 A carved oak arm chair, with seat and back covered in tapestry
- 386 A carved dark oak bureau, with fall-down front and drawers and shelf under, 31 in. wide
- 387 A set of 4 Sheraton quartette tables
- 388 A kidney-shape Sheraton show table
- 389 A brass coal scuttle, a ditto ewer, a pair of ditto candlesticks, a copper kettle, a ditto milk can, and a ditto hot-water can
- 390 A green Minton china dessert service painted with flowers and butterflies, consisting of 2 compotiers, 4 dishes and 9 plates
- 391 Six table knives with ivory handles, by *Mappin & Webb*, 6 ditto dessert knives, and 2 pairs of carvers and forks
- 392 A *Chippendale mahogany secretaire bookcase*, fitted with 10 drawers and cupboard under, enclosed by 4 trellis glazed doors over, 8 ft. 6 wide
- 393 A 3 ft. 6 mahogany bookcase, enclosed by 2 panelled and 2 glazed doors
- 394 A 4 ft. mahogany pedestal writing table, fitted with 9 drawers and leather-lined top

- 395 A walnut-wood and gilt folding-top card table, and an oval ditto
- 396 A 16-stop American organ, by *Mason & Hamlin*, in walnut-wood case and seat
- 397 A carved oak frame easy chair, covered in leather, and 4 walnut-wood and gilt chairs with brown rep seats
- 398 A mirror, in gilt frame, 50 in. by 45 in., and another, 39 in. by 29 in.
- 399 A mirror, in gilt frame, 72 in. by 24 in., and another, 56 in. by 44 in.
- 400 A 4 ft. walnut-wood wardrobe, fitted with drawer under, and enclosed by silvered glass door
- 401 A 4 ft. ditto chest of 5 drawers
- 402 A 3 ft. 6 ditto of 5 drawers
- 403 A walnut-wood pedestal cupboard, 3 ditto cane seat chairs, and a walnut-wood washstand, fitted with basin and plug and mirror over
- 404 A 3 ft. 6 mahogany bow-front chest of 5 drawers
- 405 Another, of 5 drawers
- 406 A 4 ft. brass bedstead with brass wings for curtains, with 2 palliasses and overlay, and a 3 ft. 6 overlay
- 407 A 14-day clock, and a clock with striking action in marble case
- 408 A stereoscope and 4 boxes of slides, a walnut-wood coal purdonium and liner, and a mahogany hall chair
- 409 A mahogany umbrella stand, and a nest of 9 letter racks
- 410 A Brussels carpet, 14 ft. by 11 ft., and 6 rolls of ditto stair carpet
- 411 A Turkey carpet, 10 ft. by 6 ft. 6
- 412 A rose-wood and inlaid overmantel, fitted 10 bevelled plates
- 413 A pair of French china turquoise blue vases and covers
- 414 A Davenport dessert service of 14 pieces
- 415 Three brass rail fenders, and 2 brass rail nursery guards
- 416 Three down beds, and a down cushion
- 417 A water-colour drawing—Shipping Scene, by A. POL-LENTINE
- 418 An oil painting—Forest Scene; a ditto—Sheep, and a ditto—Landscape
- 419 A water-colour drawing—Lady with Swans; a ditto—Oriental Scene; a ditto—Rock Scene; a ditto, by POPHAM, and an old coloured print—The Midshipman's Berth
- 420 Five signed proof engravings, in black and gold frames, and a crayon portrait—Flora Leon



Water only  
To [W] 20/10/19

- 2/51- 40/- 421 A 3-leg hot-milk jug, and a Chippendale waiter  
422 A Louis XV gilt clock, with stand  
423 A 3 ft. white enamelled and brass bedstead  
40/- 45/- 424 A tonane, and 6 other Indian pieces  
425 A Doulton ware jardinière and liner, 4 small ditto, 2 Burslem bowls, a ditto jug, and 2 pottery jardinières  
426 Books. Mommsen's History of Rome, 4; German Works, 23; a case containing 4 plated flower holders and glass liners, a mahogany plate case, and 2 leather ditto  
427 A drum-shaped mantel clock, with strolling players, in bronzed case, figures at side, and a pair of clown and harlequin side ornaments  
428 A galvanized dust bin and shovel  
429 A copper boiler with cover  
430 A dozen green Venetian wine glasses, and a dozen champagne ditto  
431 An engraving—Lady Betty, after Morland, an aneroid barometer, and sundries, 8 pieces  
432 A large blue and white Chinese vase, on carved wood stand, a Chinese dish in colours, a ditto bowl, and 2 red Chinese plates  
433 A set of Indian embroidery, in 6 pieces  
434 A damask table cover, 18 serviettes and 3 sheets  
435 A Sheffield knife tray, gadroon edge  
48/- 75/- 436 A Staffordshire group—Uncle Tom, a ditto sailor, 2 other figures, and a pair of brown camels  
437 A brass floor lamp, with silk shade, and 22 stair rods  
438 A large Corinthian lamp with glass oil container  
439 A bacon dish and cover, on stand  
440 A Sheffield spirit frame with 3 bottles  
441 Seventeen coloured wine glasses, 12 ditto tumblers, 14 engraved finger bowls, 14 ice plates, decorated china biscuit box and cover, a 4-division cruet with 4 bottles, and 50 plates (various)  
442 Eleven finely cut-glass tumblers, a ditto candlestick, a ditto sugar bowl and cover, 33 engraved wine glasses, 23 plain ditto, 2 scent bottles, celery bowl, 4 jugs, spirit decanter, and 4 water bottles and glasses  
443 A part willow-pattern blue and white dinner service, in 40 pieces, and odd china, in pieces  
444 A 7-octave UPRIGHT GRAND PIANOFORTE, in walnut-wood case, by Rowland & Warner  
445 A gilt clock, surmounted by 2 cupids, inlet with pink china plaques, and a pair of side vases, under glass shades and stands





BUYER

AUCTIONEERS

*A. W. Rees*  
*Phillip S. T. Reale*

Date

*Oct. 2<sup>nd</sup> 19-*

Lot	Amount			Lot	Amount		
	£	s.	d.		£	s.	d.
292.	2	10	0				
300.	6	10	0				
421-	2	5	0				
424	2	0	0				
436.	2	8	0				
457.	2	0	0				
<hr/>							
17. 13 0							
<hr/>							

*by*

*cheque 12/16/6*  
*17 4. 16. 6*  
*17 13*

- 446 A 3-tier walnut whatnot, with silvered glass back
- 447 A Dresden candelabra for 3 lights, supported by 2 figures, a painting—Still Life, and a black marble clock
- 448 A brass clock, inlet mosaic, and a pair of ditto vases
- 449 A silver-mounted decanter, Venetian ditto, and 2 cut-glass decanters
- 450 A black lac chess board, and a set of ivory chessmen
- 451 Ten miniature paintings of Indian buildings, on ivory, and sundry pieces of oddments
- 452 Oliver Twist, 3; Little Dorrit; Martin Chuzzlewit, 3; Sketches by Boz, 2; Dombey & Son; Copperfield; various, 40 51
- 453 A 7-OCTAVE BABY GRAND PIANOFORTE, in mahogany case, by *Werner*
- 454 A 7-OCTAVE BOUDOIR GRAND PIANOFORTE, in rose-wood case, by *C. Bechstein*
- 455 A 7-OCTAVE UPRIGHT GRAND PIANOFORTE, in rose-wood case, by *Lange*

*Removed from Oxted, Surrey.*

- 456 A pair of terra-cotta classical groups, on oval bases, and a timepiece, in wood case and glass front
- 457 A pair of Nankin jars, decorated with equestrian figures
- 458 A pair of lavender-blue ditto, with white foliage, and a pair of Canton gourd-shaped vases
- 459 A mantel clock, in black marble case, and a pair of tazza side ornaments, to match
- 460 A light-oak hall table
- 461 A burr-walnut-wood folding-top card table, and a ditto bed table
- 462 A walnut shaped centre table
- 463 A mahogany pedestal cupboard, a ditto bidet, and 2 towel airers
- 464 A 5 ft. brass Italian bedstead, with box spring, hair overlay, draped backboard, bolster, 2 pillows and 3 blankets
- 465 A 7 ft. 6 mahogany wardrobe, with hanging compartments, and 6 centre drawers
- 466 An oak pedestal writing table, fitted with 9 drawers, top lined leather
- 467 A letter press, on mahogany stand, fitted with 2 drawers
- 468 A Grandfather clock, in antique mahogany case
- 469 A mantel clock, with striking action, in metal-gilt rococo case, on gilt stand



- 470 A gentleman's mahogany wardrobe, fitted with sliding trays, enclosed by 2 folding doors, and 4 drawers under
- 471 A mahogany frame easy chair, in blue rep, and a ditto table revolving bookstand
- 472 A plain crimson pile carpet, ft. by ft., and another piece to match
- 473 A crimson figured pile carpet, ft. by ft., and the underfelt
- 474 A similar carpet, ft. by ft., and the underfelt
- 475 A similar carpet, ft. by ft., and the underfelt
- 476 A similar carpet, ft. by ft., and the underfelt
- 477 Three crimson cloth curtains, chenille ditto, a pair of figured plush curtains, a pair of green tapestry ditto, and a pair of green rep ditto and drapery

## FINIS.