

Sales catalogue: Sotheby's

Publication/Creation

24 November 1913

Persistent URL

<https://wellcomecollection.org/works/abbajbnt>

License and attribution

This work has been identified as being free of known restrictions under copyright law, including all related and neighbouring rights and is being made available under the Creative Commons, Public Domain Mark.

You can copy, modify, distribute and perform the work, even for commercial purposes, without asking permission.



Wellcome Collection
183 Euston Road
London NW1 2BE UK
T +44 (0)20 7611 8722
E library@wellcomecollection.org
<https://wellcomecollection.org>

W. Allen/Nov 20/32
H ✓
SOTHEBY, WILKINSON & HODGE,
WELLINGTON STREET, STRAND, LONDON.

CATALOGUE
OF
Ancient Greek, Roman and
Egyptian Objects
AND OF
A COLLECTION OF ANCIENT KEYS.

Day of Sale.
MONDAY, THE 24TH OF NOVEMBER.

1913.



Sale

9.18.0

H.C.B.

CATALOGUE

OF

**Ancient Greek, Roman
and Egyptian Objects**

AND OF

A COLLECTION OF ANCIENT KEYS.

WHICH WILL BE SOLD BY AUCTION

BY MESSRS.

SOTHEBY, WILKINSON & HODGE,

Auctioneers of Literary Property & Works illustrative of the Fine Arts.

AT THEIR HOUSE, No. 13, WELLINGTON STREET, STRAND, W.C.

On MONDAY, the 24th of NOVEMBER, 1913,

AT ONE O'CLOCK PRECISELY.

May be Viewed Two Days prior.

Catalogues may be had.

Dryden Press: J. Davy & Sons, 8-9, Frith-street, Soho-square, W.

CONDITIONS OF SALE.

- I. The highest bidder to be the buyer; and if any dispute arise between bidders, the lot so disputed shall be immediately put up again, provided the auctioneer cannot decide the said dispute.
- II. No person to advance less than 1s.; above five pounds 2s. 6d., and so on in proportion.
- III. In the case of lots upon which there is a reserve, the auctioneer shall have the right to bid on behalf of the seller.
- IV. The purchasers to give in their names and places of abode, and to pay down 10s. in the pound, if required, in part payment of the purchase-money; in default of which the lot or lots purchased will be immediately put up again and re-sold.
- V. The sale of any lot is not to be set aside on account of any error in the enumeration of the numbers stated, or errors of description.
- VI. The lots to be taken away, at the buyer's expense, immediately after the conclusion of the sale; in default of which Messrs. SOTHEBY, WILKINSON & HODGE will not hold themselves responsible if lost, stolen, damaged, or otherwise destroyed, but they will be left at the sole risk of the purchaser. If, at the expiration of Two Days after the conclusion of the sale, the lots are not cleared or paid for, they will then be catalogued for immediate sale, and the expense, the same as if re-sold, will be added to the amount at which they were bought. Messrs. SOTHEBY, WILKINSON & HODGE will have the option of re-selling the lots uncleared, either by public or private sale, without any notice being given to the defaulter.
- VII. Upon failure of complying with the above conditions, the money required and deposited in part of payment shall be forfeited, *and if any loss is sustained in the re-selling of such lots as are not cleared or paid for, all charges on such re-sale shall be made good by the defaulters at this sale.*

Gentlemen, who cannot attend this Sale, may have their Commissions faithfully executed by their humble Servants,

SOTHEBY, WILKINSON & HODGE,

13, Wellington Street, Strand, London.

Telegraphic Address: "Abinitio, Rand, London."

Telephone: . . . 3852 Gerrard.

COMMISSIONS CANNOT UNDER ANY CIRCUMSTANCES BE ACCEPTED BY TELEPHONE.

CATALOGUE

OF

A COLLECTION OF

Greek, Roman & Egyptian Objects.

LOT

- 1 Roman bronze Altar Shovel, *found in Syria at Nablús*, the shovel is rectangular, with channelled edges and spoon-like prolongations to take the overflow of oil, the handle a cylindrical column with chapiter (*cf.* lot 28) 5
- 2 Five bronzes, comprising a large Lamp, with cover and crescent handle; another, of plainer form; a Bowl; and two Bath Strigils 5 2.
- 3 An ancient Arabian bronze Bowl, with incised work decoration; an Arabian bronze Vase, with pear-shaped body, decorated; an old iron Lamp-holder; and an ancient Roman bronze Head of an Ape 4 10/
- 4 A large bronze Lamp, pear-shaped body, with bifurcating handle terminating in a peltate ornament, 10 *in.* long; a bronze Simpulum, with twist handle prolonged at each end as flattened discs, with incised work ornament; a bronze Sistrum-handle, with head of Hathor; and a Romano-Egyptian bronze Head 4 2/8/1910
- 5 A bronze Votive Arm, supporting a figure of Harpocrates, *Romano-Egyptian*; a bronze Handle of Roman vase, of plaited design, terminating as a human face; a long narrow spiral Spring, well patinated, *found at Pompei*; a Byzantine bronze Stamp, cruciform, with Greek characters in high relief; and an Arabian bronze Talisman 5 29/

- 6 A bronze Trua, or perforated ladle (the "*trulla vinaria*" of Varro), a species of colander used as a wine-strainer, and also for putting bees into a hive [Pl. I] *28/- Spink*
- * * * This specimen is similar to the ladle found in the kitchen of the "house of Pansa" at Pompei.
- 7 A large bronze two-nozzle Lamp, of handsome form, $6\frac{1}{2}$ in. long, Roman; a smaller bronze Lamp, with crescent handle; a rectangular bronze Weight, or stamp, with Greek letters in high relief; a bronze Roman Weight in the form of an acorn; and a flat semi-circular bronze Plaque, pierced with three holes, Egyptian *2.* 5
- 8 A large four-coil spiral Fibula, arranged in a cruciform manner, well patinated, *very fine*, 5 in. long *30/- Preston*
- 9 Seven Fibulae, comprising a Bow, boat-shaped, $1\frac{1}{2}$ in.; a Bow, kite-shaped, with three moulded knobs and sheath foot ending in moulded knob, $1\frac{3}{4}$ in.; a cross-bow type, bow sharply curved, sheath foot, $2\frac{3}{4}$ in.; and four others, *various* *20/- Spink* 7
- 10 A large silver bow-shaped Fibula, with annular ornament along the whole length, 5 in. long, *Forman collection, very rare* *12/-*
- 11 Six Fibulae, all bow-shaped and in good condition, *two of rare type, from 2 in. to 3 in. in length* *26/- Lawrence* 6
- 12 Five others, one with loop ornament swinging free from spring of pin (*a very rare type*), another with bronze pellets and other ornament along the arch of bow; *all fine specimens, from 2 in. to $2\frac{1}{2}$ in. in length* *25/-* 5
- 13 A silver bow-shaped Fibula, with thin spatulate and semi-circular expansions, $3\frac{1}{2}$ in. long, *very rare*; also two other Fibulae, one nicely patinated *16/- Clement* 3
- 14 A curious and very early bronze Spoon, of graceful form, with a somewhat flattened oval bowl and swallow-tail handle, $10\frac{3}{4}$ in. long, *beautifully patinated*; another, with straight handle terminating in a flattened expansion; and two bronze Cochlears, *from Walbrook; Matthew's collection* *21/-* 4
- 15 The Cover of a Greek bronze Mirror Case, female head to left, probably that of a goddess, $4\frac{1}{4}$ in. diam., *good style* [Pl. I] *24/- Preston*
- 16 The Cover of a Greek bronze Mirror Case, a three-figure group, possibly Mercury, Eros and Terpsichore, the case is furnished with a loose ring *2/14/- Pearson*
- 17 A Roman silvered bronze Mirror, the disc pierced at the margin with circular holes *32/-*

- 18 A Roman Balsamarium, in the form of a female head, finely patinated, $4\frac{1}{4}$ in. high [Pl. I] 10. 10/10/10
- 19 A Greek bronze Bull, forming the terminal of chair or throne, $5\frac{1}{2}$ in. long, from Asia Minor, rare [Pl. I] 5/5/10. Ruben
- 20 A Greek bronze Kylix, with incurved handles, $7\frac{1}{2}$ in. to extremities of handles, Rome collection 2/15/10. Spink
- 21 A Roman bronze Aphrodite with dolphin, $4\frac{1}{2}$ in. high; also a bronze Figure of priest offering (?); both on marble mounts 2 32/
- 22 A Roman bronze Vase, with incurved lip, decorated; also a Gaulish bronze Figure of a Priest wearing toga carrying patera in right hand 2 34/
- 23 A Roman bronze Figure of Atalanta with apple in right hand, finely patinated, $5\frac{3}{4}$ in. high, on plinth 3/4/10. Ruston
- 24 AN IMPORTANT GALLO-ROMAN BRONZE OF AN ATHLETE, in good preservation and fine patina, 8 in. high, marble step plinth, found near Rome [Pl. I] 18. Quarry
- 25 A bronze Hercules of the Græco-Roman period, well patinated, $3\frac{3}{4}$ in. high, on marble step plinth, found at Thebes [Pl. I] 2/12/-
- 26 A Roman bronze Figure of Cupid carrying fruit on left arm and a weapon (?) in right hand, $3\frac{3}{8}$ in. high, on columnar marble plinth 3/3/-
- 27 A fine bronze Simpulum, the handle terminating as swan's head, in perfect condition, about 21 in. long; another, the hook of handle missing, $8\frac{1}{2}$ in. long 2 24. Ruston
- 28 A bronze Altar Shovel, found on the site of Herod's Temple at Jerusalem, and believed to have been used in the temple service, the handle is in the form of a Corinthian column, with foliate decoration at the base, 12 in. long 36/
- 29 A bronze Figure of Mars, Roman, $3\frac{1}{2}$ in. high 36. Lawrence
- 30 A Roman bronze Bust of a Goddess (?), nicely patinated, 3 in. high, on shaped plinth; also small Roman bronze Eros seated, on marble step plinth 2 2. Ruston
- 31 A Roman bronze Figure of Esculapius, 3 in. high, in good style, nice patination; also spirited bronze Eros, on column, $3\frac{1}{4}$ in. high, Roman 22. L.S.W. 2
- 32 A heavy bronze Sceptre, Roman, terminating as oval ornament, the handle end pointed, an uncommon piece, length about 20 in. [Pl. I] 2/3/- Spink
- 33 A Roman bronze Standing Figure of Helios, 6 in. high, on marble plinth [Pl. I] 4/15/-

- 34 A Roman bronze Standing Figure of Mercury, *right hand missing, good style, 4½ in. high, on black marble plinth*; also a Roman bronze Figure of Zeus (?), 3¼ in. high 2
- 35 A bronze Crest of fine Greek Helmet, *finely patinated, 7 in. long, an important piece, found at Orvieto* 6/10/1
- 36 A Roman bronze Figure of Apollo, *nicely patinated, 3¼ in. high, on marble plinth, Chaffers' collection* 2/10/1
- 37 A quaint little bronze Figure of a Seller of fruit, *Roman, 2¾ in. high, on marble plinth*; also a bronze Figure of an Athlete, or runner, fainting at the goal, 2¾ in. high [Pl. I] 2
- 38 A BRONZE VOTIVE FIGURE FROM THE EMPEROR CALIGULA'S PLEASURE GALLEY, in the form of a crowned and draped Woman bearing in one hand a pyxis and in the other a phial, 8½ in. high, *beautifully patinated* [Pl. I] 112. Pedley
- *.* This very important bronze was dredged up from Lake Nemi, near Rome, where the galley was sunk in first century, A.D.
- 39 The Top of a Chariot Pole, consisting of a pierced and hollow spherical bronze ball, studded with bosses arranged in groups of five, and containing a loose pebble [Pl. I] 6/10/1 Spink
- *.* This remarkable piece, which is beautifully patinated, belongs to the first or second century A.D., and was found on a site known as the "Camp of Caractacus," in Shropshire.
- 40 A ROMAN BRONZE CANDELABRUM, on three clawed feet, with fluted shaft, the sconce decorated with tongue-and-dart ornament, *about 42 in. high, a remarkably fine specimen, found at Orvieto* 31. ?
- 41 A GREEK BRONZE BOWL, with radiating embossed pattern, the design based upon an open lotus flower; *a beautiful specimen of the best period of Greek art (5th Century, B.C.); found in a cemetery at Deve Huyuk (Hill of the Camel's Hump), in the Sajur Valley, about 40 miles N.E. of Aleppo; 6¼ in. diameter* [Pl. I] 5/15/1
- 42 Another, of different form, the ornament running in concentric rings, same provenance as the above, 5½ in. diameter 30/ Coller
- 43 A small bronze Roman Candelabrum, tripod base, consisting of three dogs, which are flying at a cat or leopard, the latter climbing the shaft after a bird; *a very perfect specimen, the shaft elaborately chased, 16¼ in. high* 4/10/1 Brown
- 44 A Roman bronze one-handled Vase, spherical body, flat lip; *height to top of handle, 8 in.; found in Sussex; Elliot collection* 21/ 19/10/1

ROMAN AND PHœNICIAN GLASS.

Chiefly excavated in Syria and Egypt.

- 45 A tumbler-shaped Vessel, with incised rings, 4 in. high; a green glass Vase, with depressed globular body and wide lip, $2\frac{3}{4}$ in. high; and five others, some iridescent 7 *20/*
- 46 Seven others, including a tumbler-shaped vessel, with foot and raised band, two small vases, with globular bodies, and four others, miscellaneous [Pl. II] 7 *20/*
- 47 Ten others, including a Bowl (*Rome collection*), a curious Vessel, with pointed process, *probably for medical use*, an Arabian cut-glass Unguent Bottle, etc.; some iridescent 10 *3. 20/*
- 48 Five others, including Vase with handle, a nicely iridescent Bowl, and three other Vessels 5 *17/ Cumming*
- 49 Seven others, including an exceptionally long Tube for Kohl, a double Tear Bottle, and a green glass Unguent Vessel, etc. 7 *18/*
- 50 Seven others, including iridescent Bowl, double Tear Bottle, and two green Vases, etc. 7 *24/*
- 51 Six others, including a tall tumbler-shaped Vessel, a one-handled Vase, with glass wire spiral ornament, a two-handled Unguent Vessel, with dark green spiral ornament, etc., some iridescent 6 *29/*
- 52 Five others, including one with dark blue handle and spiral wire ornament, the body decorated with small depressions regularly arranged, etc. 5 *22/*
- 53 Six others, including a flat-bottomed circular Vessel, a double Tear Bottle *from the Forman collection*, a single Tear Bottle, a rare yellow glass Vase, etc. 6 *20/*
- 54 Five others, various forms, chiefly green glass and iridescent 5 *26/*
- 55 Five others, including green Stibium Vessel, with tube, double Tear Bottle, etc., some iridescent 5 *32/*
- 56 Three others, including ribbed Bowl, *Ford collection*; a two-handled Unguent Vessel, and a wide-necked Vase, with fine silvery iridescence 3 *30/ Cum*
- 57 Seven others, some early Arabian, four of heavy green and blue glass 7 *18/*
- 58 A circular Toilet or Confection Pot, with lid, a fine perfect specimen, $4\frac{3}{4}$ in. diam. at base; *Sir Theodore Fry collection* [Pl. II] *3. 20/*

- 59 A blue glass Alabastron, with herring-bone pattern in white, rudimentary handles; *Phœnician*, 7 in. high [Pl. II] 23/
- 60 A yellow glass Alabastron, with sinuous decoration in white and yellow; *Egyptian*, 7 in. high [Pl. II] 38/
- 61 A straw-coloured glass Alabastron, plaited straw pattern; *extremely rare*, 6 in. high [Pl. II] 50/-
- 62 A small Phœnician Alabastron, white ground with serrated blue lines, $4\frac{3}{4}$ in. high [Pl. II] 19/ Spunk
- 63 A pair of blue glass Vases, rudimentary handles, sinuous pattern, yellow lips, about $3\frac{1}{2}$ in. high [Pl. II] 3. 2
- 64 A Phœnician blue glass Amphora, decorated with white sinuous and other lines; *found in Greece* [Pl. II] 18/
- 65 A Phœnician glass Balsamary, blue ground with yellow and green decoration, 3 in. high [Pl. II] 2/10/
- 66 An Amphora, in yellow glass, with blue handle and blue ring at base, trefoil lip, $4\frac{1}{2}$ in. high; *rare* [Pl. II] 20/ A Smith
- 67 An Amphora, in yellow glass, with yellow twist handle, trefoil lip, the body of vase delicately ribbed, $5\frac{1}{4}$ in. high; *rare* [Pl. II] 26/
- 68 A pale blue Roman Vase, hexagonal body, each panel a raised design, no two alike, the handle of twisted strands carried round the neck of the vessel, $6\frac{1}{2}$ in. high; *rare*; *Rome collection* [Pl. II] 32/
- 69 A Roman Balsamarium, the body in the form of a double mask, $3\frac{3}{4}$ in. high; *rare* [Pl. II] 2/12/
- 70 A one-handled Roman Vase, "pineapple" body and ringed ornamentation, $4\frac{1}{4}$ in. high; *rare* [Pl. II] 30/
- 71 A Roman Vase, "Pineapple" body, finely iridescent in places, 3 in. high; also small Roman Vessel, with irregular string decoration, $2\frac{1}{2}$ in. high [Pl. II]; 2 26/
- 72 A delicately formed Vase, in blue glass, with spiral incised decoration picked out in white; also a goblet-shaped Vase, in pale green glass, $4\frac{1}{2}$ in. high; *the first rare* [Pl. II] 2 30/ Spunk
- 73 A Phœnician Alabastron, delicate cream colour, with characteristic decoration in pale brown, $3\frac{1}{2}$ in. high [Pl. II] 36/ A Smith
- 74 Two Phœnician Alabastrons, in blue glass, with sinuous decoration in white, heights 4 in. and $3\frac{3}{4}$ in. [Pl. II] 2 38/ Spunk
- 75 A large one-handled Jar, with moulded lip and broad concentric lines round body of vessel, $8\frac{3}{4}$ high, $6\frac{1}{2}$ in. diam. at base 2/18/

- 76 A Phiale, of fine Greek form, with raised ribbed ornament, $6\frac{3}{4}$ in. diam.; also a long-necked Vase, curiously widening towards the lip, and with stringed concentric ornament, $5\frac{1}{2}$ in. high 2
- 77 Four miscellaneous Vessels, including a tall cylindrical vessel, nicely iridescent, $8\frac{3}{4}$ in. high, a small bowl, and two others 4
- 78 A Roman Phiale, with central boss, $7\frac{3}{4}$ in. diam.; also two long-necked Vases, with slightly spherical bodies, $5\frac{1}{2}$ and $6\frac{3}{4}$ in. diam. 3
- 79 A large deep Bowl; in perfect condition, 7 in. diam., $3\frac{1}{4}$ in. high 2

GREEK AND ROMAN POTTERY.

- 80 A circular Rhodian Dish, on stand, circa 900 B.C.; slightly imperfect, but extremely rare type, decoration in black and red, on pale buff ground 38
- 81 A Lekythos, white ground, with foliate and geometric decoration in the Dipylon style, handle restored, 14 in. high; circa 700 B.C. 36
- 82 An Archaic Oinochoe, with straight lip and flattened body, decorated on the shoulders with swan in one panel and chequer ornament in others, neck also decorated; a rare piece, in perfect condition, from Ialysos 4/5
- 83 A large circular Dish, with well, turned over at the edge to form a flattened rim, $16\frac{1}{2}$ in. high, dish decorated with cuttlefish and other animals [Pl. IV] 2
- 84 A Greek Amphora, with red on black figure decoration, touched in with white; circa 600-500 B.C., 20 in. high 3
- 85 An early Ionic Oinochoë, with trefoil lip, decorated with running animals and other ornament, imperfect, about 13 in. high 2
- 86 A Greek Amphora, flat lip, red pottery, decorated with concentric black lines; from Ialysos 30
- 87 A pair of black glaze Greek Kanthari, of fine form, in pristine condition, $8\frac{1}{4}$ in. high to tops of handles 2
- 88 A Greek Oinochoë, with figure panel, red on black, touched in with white, a woman seated on stool holding mirror, and standing male figure, trefoil lip, slightly chipped; also a small Amphora, decorated with two heads, heights respectively $9\frac{1}{4}$ and $8\frac{1}{4}$ in. 2

- 89 A Greek Amphora, with polychromatic panels, each with winged female figure, decorated in white, purple and black, on red ground, *fine condition*
- 90 A Greek Vase, black figure decoration on buff ground, dancing satyr and goats, $7\frac{3}{4}$ in. *high, perfect condition*
- 91 A Greek Oinochoë, with trefoil lip, black figure panel on red ground, woman with cithara and bearded male figure, 10 in. *high to top of handle*
- 92 A Greek Pelike, with red figure scenes on black ground (*damaged*), $8\frac{1}{2}$ in. *high*; also large Skyphos, with red figures on black ground, *fine condition*, $6\frac{3}{4}$ in. *high*; and another 3
- 93 A Greek Oinochoë, black figure panel on red ground, faun with nymph, the latter holding cithara, design picked out with white
- 94 A very early Greek Patera with stem; Mycenaean (?), *exceptionally perfect example of this pre-historic type*, $9\frac{1}{2}$ in. *diam.* [PI. III]
- 95 A Greek Lekane, with cover, *a fine specimen*, with carefully pencilled figures on black ground, 10 in. *high* [PI. III]
- 96 A Mycenaean Aryballos, with animal decoration, cock, swan, etc., semé with leaves and stars, *broken at lip*; another, smaller, with swans and cuttlefish, Rhodian type; and another, still smaller, same type, *respective heights* $6\frac{1}{2}$ in., 6 in. and $3\frac{1}{4}$ in. 3
- 97 A fine Etruscan Mask of Woman or Goddess in painted terra cotta, $7\frac{1}{2}$ in. *high* [PI. III]
- 98 A Greek Lekythos, black figures on red ground, touched in with white, charioteer with attendant figures, 9 in. *high*; also a fine Greek Bowl, with cover, conventional decoration, $6\frac{1}{2}$ in. *diam.* 2
- 99 A FINE GREEK MARBLE TORSO OF THE GODDESS DIANA, 14 in. *high, on marble socle* [PI. III]
- 100 A Roman marble Figure of an Athlete, *arms and right leg missing*, $18\frac{1}{2}$ in. *high*
- 101 A small Statuette of Aphrodite, partly draped; also an old Roman Brick, with bas relief on front of a warrior on horseback, *rare, Elliot collection*; also a late Roman Head of Aphrodite in marble, on marble plinth 3
- 102 A SEATED CALCAREOUS STONE FIGURE OF THE KING'S ALTAR SCRIBE UTHU (*old Empire*), B.C. 4700-2000, 15 in. *high, fully inscribed; from the Mortuary Chapel, Thebes, described in Weigall* [PI. IV]

- 103 An important and very early (*Old Empire*) Limestone Palette, with inscription relating to "Atta, Superintendent of the Scribes and Priests of Maat," with one circular and three rectangular wells for colour, 14 in. by 10½ in. [Pl. III] 5.
- 104 A large marble hanging Vase (*Egyptian*), 11 in. high, slightly mended at the neck, a very uncommon piece of fine form 3.
- 105 A painted wood Ushabti Case, with carved hawk on lid. Three of the sides bear representations of Taumaufef (the jackal-headed), Qebhsennuf (the hawk-headed), and Hapi (the dog-headed) gods of the underworld, in red, black and blue-grey, 19 in. high 46/ Bryan
- 106 A carved wood Head of an Egyptian, fine style, on ebonized wood plinth; also a carved wood Hawk; a wooden Ushabti Figure, *inscribed*; and a curious wooden Seal 4 32/ Preslo
- 107 Two bronze Egyptian Bowls, found in a cemetery at Deve Huyuk in the Sajur Valley, about forty miles N.E. of Aleppo (part of the same find as lot 41), 5¾ in. diam. 2 10/ 8/5/
- 108 A steatite kneeling Figure of a Priest holding a shrine of Ptah, 26th dynasty, a fine conditioned piece, 4¾ in. high 30/
- 109 A FINE EGYPTIAN MASK FROM A MUMMY CASE, PTOLEMAIC, a beautiful female portrait with the eyes and hair picked out in black, and a wreath in pale pink 1. 3/5/
- 110 A Bust from a statue of a Priest or Scribe in hard stone, 19th dynasty 30/
- 111 A bronze Naos, with figure of the goddess Bast holding sistrum, ægis, etc. 32/
- 112 A limestone Ushabti Figure, with beautifully cut inscription, 18th dynasty, 7 in. high 4/15/
- 113 A lion hunt Scarab, recording the slaying of 102 lions by Amen-Hetep III (B.C. 1450), *inscription partly lost*, in glass case 6. 9/10/
- 114 An ancient Egyptian Toilet Case, with sliding domed lid inlaid with bone, rare, 5¼ in. long, 4½ in. high [Pl. I] 6.
- 115 A carved wood painted Hawk, sacred to Horus; also two painted wood Figures from an ancient funerary boat; and a painted wood Phoenix, sacred to the god Bennu, *all mounted* 4
- 116 An Egyptian bronze Situla or Votive Bucket, ornamented with figures of gods, etc., 6 in. high, on stand; another, smaller, on alabaster stand 2

- 117 A bronze Figure of Ptah, creator of gods and men, $5\frac{1}{2}$ in. high ;
a seated Figure of Heru-Pa-Khart, $4\frac{1}{2}$ in. high ; and a bronze
Figure of Sekhet with four cartouches, $4\frac{1}{4}$ in. high 3
- 118 An important bronze Group, Isis and Horus, the eyes of the
goddess in silver, the head crowned with solar disk and
horns, $7\frac{1}{4}$ in. high, mounted on alabaster throne-plinth [Pl. I]
- 119 A seated bronze Harpocrates with crown, on alabaster throne-
plinth ; also two bronze Osirian Figures, mounted, heights
respectively $4\frac{1}{4}$ in., $4\frac{3}{4}$ in. and $5\frac{1}{4}$ in. 3
- 120 A standing bronze Harpocrates, crowned with crowns of Upper
and Lower Egypt, $5\frac{1}{8}$ in. high, on alabaster plinth ; also two
bronze Osirian Figures, $7\frac{1}{2}$ in. and $5\frac{1}{4}$ in. high, both mounted 3
- 121 A bronze Isis and Horus, on ebonized step plinth, $6\frac{1}{2}$ in. high ;
also a seated bronze Harpocrates, on alabaster throne-plinth,
5 in. high 2
- 122 A bronze ægis of Bast, 3 in. high ; and two bronze Osirian
Figures, 4 in. and $4\frac{3}{4}$ in. high, all mounted 3
- 123 A stone Osirian Figure, $6\frac{1}{2}$ in. high, on alabaster plinth ; and
two bronze Osirian Figures, each $5\frac{1}{4}$ in. high, mounted 3
- 124 A bronze standing Figure of Amen-Ra, king of the gods, with
traces of original gilding, $4\frac{1}{2}$ in. high, alabaster plinth ; also a
bronze Cat, sacred to Bast, similarly mounted 2
- 125 A bronze Ibis, sacred to Thoth, on alabaster plinth, $4\frac{1}{4}$ in. long ;
a bronze Figure of Ptah, creator of gods and men, $3\frac{1}{2}$ in.
high ; and a bronze Osirian Figure, $4\frac{3}{4}$ in. high 3
- 126 A bronze Isis and Horus, nice quality and patina, $3\frac{3}{4}$ in. high,
on alabaster throne-plinth
- 127 A fine bronze Ibis Head, on stone plinth ; a steatite Figure of
Nefer-Atum, 30th dynasty, 4 in. high ; and a large symbolic
Eye of Horus in green faience, 26th dynasty 3
- 128 A stone Hawk, sacred to Horus, $3\frac{1}{2}$ in. high (the stone is a species
of arragonite) ; also a bronze Osirian Figure, $8\frac{1}{4}$ in. high 2
- 129 A bronze Figure of a Priestess, holding musical instruments
(Egyptian) ; also portion of a steatite Figure of Isis, 26th
dynasty ; and a bronze Osirian Figure, 5 in. high 3
- 130 A carved wood symbolic Figure, the Ba (representing the soul),
 $3\frac{1}{2}$ in. high, rare ; also a Stone (?) altar, excavated in the
Euphrates district, with incised lines, $2\frac{7}{8}$ in. high [Pl. I] 2

- 131 A stone Hawk, sacred to Horus, $4\frac{1}{4}$ in. high; a coloured plaster copy of an ancient pierced Plaque with two apes; and an ancient Egyptian sepulchral Figure, $6\frac{1}{2}$ in. high 3
- 132 A bronze Figure of Amen-Ra, king of the gods, with traces of original gilding, $7\frac{1}{4}$ in. high [Pl. I]
- 133 A bronze Osirian Figure, *finely finished*, 7 in. high; also a bronze Ape, with traces of inscription; and a seated bronze Harpocrates 3
- 134 A fine alabaster Head of Mestha, the man-headed god of the canopic jars; also a heavy stone Vase (*early Egyptian*), 5 in. high 2
- 135 Two flat-bottomed ancient Egyptian Alabastrons, 7 in. and $5\frac{1}{2}$ in. high, *early types* 2
- 136 An ancient Egyptian glazed pottery Vase, $7\frac{1}{2}$ in. high, with rudimentary handles and traces of inscription; also two Plummets from old Greek plumb-lines, with impressed name on each 3
- 137 A top of an ancient Egyptian Mace-head in hard stone, ovoid shape, *about* $2\frac{1}{2}$ in. high; also a cup-shaped Alabastron, *broken at lip*, 4 in. high; and a squat vase-shaped Alabastron, $2\frac{1}{2}$ in. high, *probably used for kohl; the first rare, the last named from Abydos* 3
- 138 A prehistoric Egyptian Vase, showing manganese staining, ovoid form, $5\frac{1}{2}$ in. high; also a flat-bottomed Alabastron with lid; and a portion of an alabaster Vase; *the former* $2\frac{1}{2}$ in. high, *the latter* 7 in. long 3
- 139 Six terra-cotta Objects, chiefly Romano-Egyptian, including a Naos surmounted by figure of Helios-Harpocrates; a second Naos with Harpocrates; a Roman Head with conical cap; two Figures; and a Lamp 6
-

ANOTHER COLLECTION, CHIEFLY EGYPTIAN
OBJECTS.

The Property of a Gentleman.

- 140 Five pieces of Ancient Egyptian (demotic) Writing on Linen from the hand of a mummy, *framed*
- 141 Five other pieces, four demotic and one with figures of Egyptian deities, *framed*
- 142 An Ancient Egyptian marble Bowl, of very early period, plain, with rudimentary handle below, 8 in. diam., *rare*
- 143 A 2-handled alabaster Vase, with flat rim and rudimentary handles on the same plane as rim, $3\frac{1}{2}$ in. high; also a small unguent Vessel in alabaster, $1\frac{5}{8}$ in. high 2
- 144 Two Alabastrons (*one with broken neck*), about 6 in. high; also a flat-rimmed mortar-shaped Vessel, in the same stone, 2 in. high; and an alabaster cylindrical Vessel, $4\frac{3}{4}$ in. high 4
- 145 An alabaster cup-shaped pouring Vessel, $3\frac{1}{4}$ in. high; two Alabastrons, 5 in. and 4 in. high respectively; a tall cylindrical Vase, $6\frac{1}{4}$ in. high; and one other 5
- 146 A BLACK BASALT STELE, 10 in. high by $5\frac{3}{4}$ in. wide, with bas relief figure of AMENOPHIS III, and cartouche of the king, *an important piece in fine preservation*
- 147 A LIMESTONE PAINTED STELE, a king and queen seated, a nude woman, pouring a libation of oil upon offerings, below three figures with lotus flowers, and one other and two columns of hieroglyphs, all the figures in low relief, $18\frac{1}{2}$ in. by 12 in.
- 148 A LIMESTONE TABLE OF OFFERINGS, $19\frac{1}{2}$ in. by 21 in., the offerings sculptured in relief, the border surrounded on three sides by hieroglyphs, the fourth side missing, *fine period*
- 149 A LARGE BRONZE PATINA, Greek or Græco-Roman, with flat beaded border, *found at Orvieto*, $11\frac{1}{4}$ in. diam., 14 in. to extremity of handle, *a fine and rare specimen, patinated* [Pl. I]
- 150 A ROMAN BRONZE TRIPOD, with claw feet, the circular border ornamented with flutings and incised work, *diameter of rim* $11\frac{1}{4}$ in., *found at Orvieto*

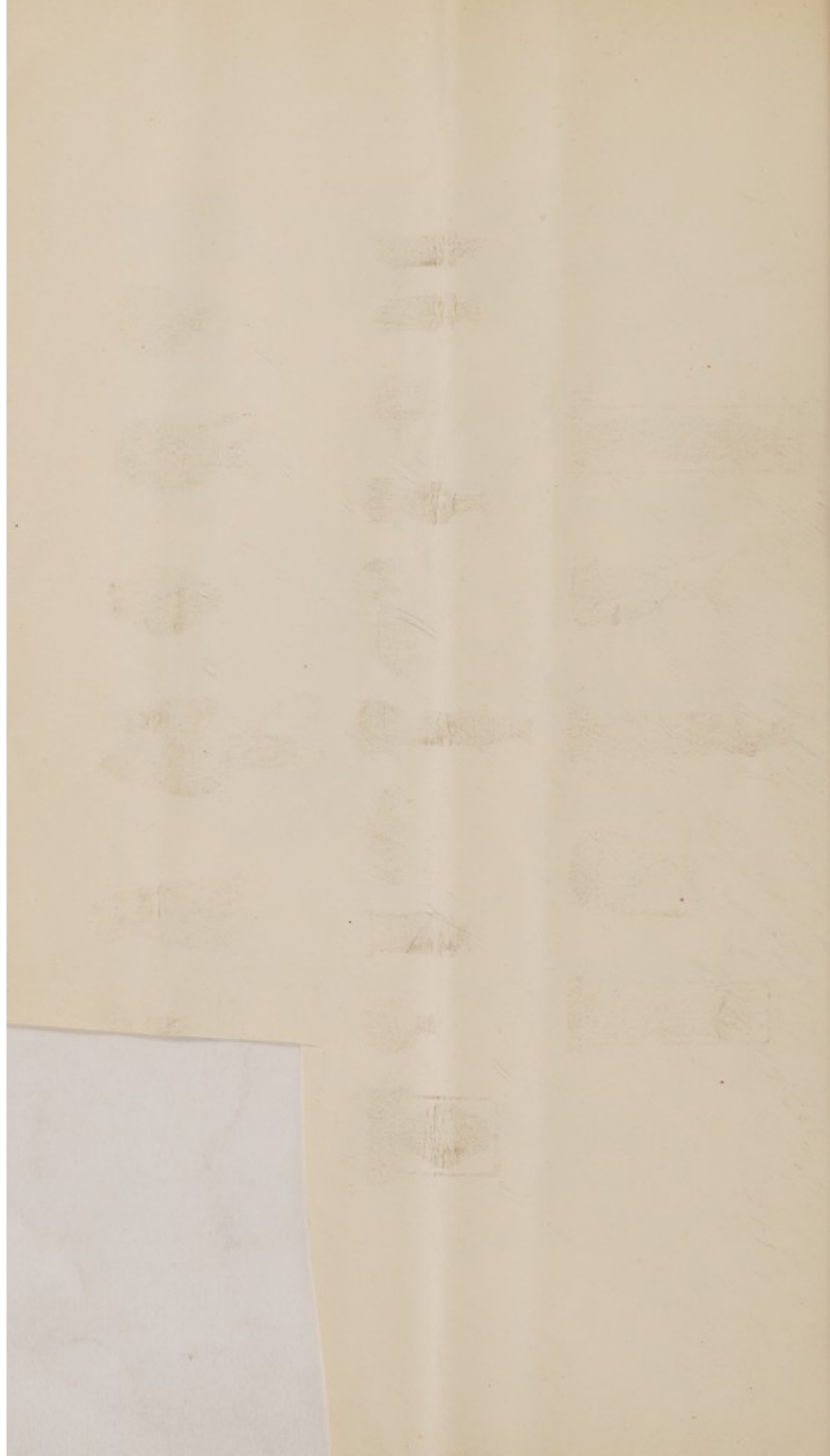
- 151 Four Roman bronze Keys (*one found at Lyons*) 4
- 152 Three bronze Roman finger Ring Keys (*rare*); and two others,
found at Lyons 5
- 153 Two iron Roman ball Padlocks, *one found at Toddington Manor*;
one Roman Chest Handle, *found at Framlingham Castle*,
Suffolk; and three other Roman bronze Keys (*one found at*
Castleacre Abbey, Norfolk) 6
- 154 A collection of 14th, 15th and 16th Century iron Keys, *some found*
near Belvoir Castle, Leicester, others dug up in London,
1819 20
- 155 Eight early mediæval 15th Century bronze Keys, *from Castleacre*
Abbey, Norfolk, two others found at Framlingham Castle,
Suffolk; and five others (*15th Century*) 15
- 156 Three very quaint early iron Padlocks, with makers' marks
in brass let in, *found at Toddington Manor*; also four Rings
and small Key attached, *found at Richborough Castle* 8
- 157 A large iron Padlock with Key, *found at Toddington Manor*
- 158 Four early brass Keys (*Romano-British*), *found at Swaffham*,
Norfolk 4
- 159 A set of four skeleton Keys, *found near St. Peter's Church, Corn-*
hill; and three large abbey Keys 7
- 160 A Charles II 16th Century Royal Court Gate Key, *stamped*
with crown on back between C. R., rare, fine condition
- 161 Three old Keys, the handles formed of interlacing C's, one
crowned 3
- 162 A brass Key (William and Mary), portrait on either side, handle
surmounted by crown; two others of finely chased steel,
surmounted by coronet but without stems; and two other
larger Keys, *pierced, but of somewhat later date* 5
- 163 A magnificent old gilt Lock, complete with two Bolts; and two
Handles to match 6
- 164 An old steel spring Lock, *engraved*; also a fine folding Key;
and another royal Key, *pierced with G. R.* 3
- 165 Twelve old Keys, *one found at Toddington Manor*; and one
Lock, *also found at Toddington Manor* 13
- 166 A large and early ecclesiastical Key, with pierced box ward, and
elaborate wrought-iron handle, *16 $\frac{3}{4}$ in. long*

- 167 A fine blue Ushabti Figure of the grand priest Pinotem, 18th dynasty, circa B.C. 1500, from the royal tombs near Dehrel-Bahari [Pl. I]
- 168 A fine copper Mirror, *Ancient Egyptian*, $9\frac{1}{4}$ in. long, polished to show the reflecting power of the mirror
- 169 A globular-shaped Roman glass Vase, with two small handles, about $2\frac{1}{2}$ in. high, delicately iridescent; also two small glass unguent Bottles, about $3\frac{1}{2}$ in. long, probably early Arabian 3
- 170 A small blue glass Vase, of graceful form and nicely iridescent, 3 in. high; also two miniature glass Vases; and a Tube (glass) for Kohl 4
- 171 An Alabastron with ovoid body, about 3 in. high; a double tear Bottle, with rare form of handle; a painted wood Ushabti Figure, $7\frac{1}{4}$ in. high; and a bronze Osiris, $4\frac{5}{8}$ in. long 4
- 172 An Ancient Egyptian Necklace, red porcelain beads, interspersed with long blue and red porcelain drops; also a blue Sepulchral winged Scarab from Thebes, 5 in. from wing to wing 2
- 173 An Ancient Egyptian bronze Sistrum, rare; also a bronze mummy Box 2

END OF SALE.



PLATE I.



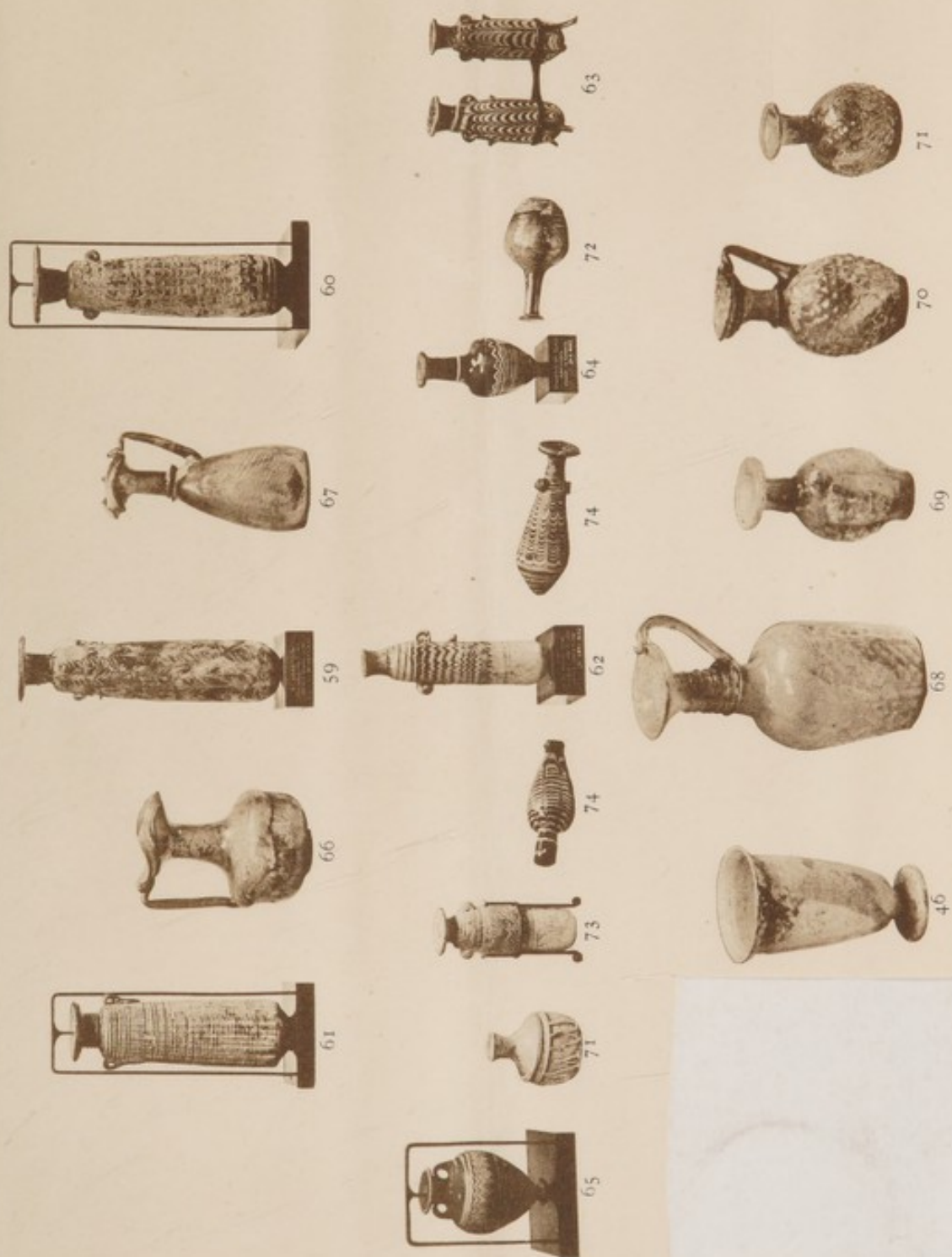
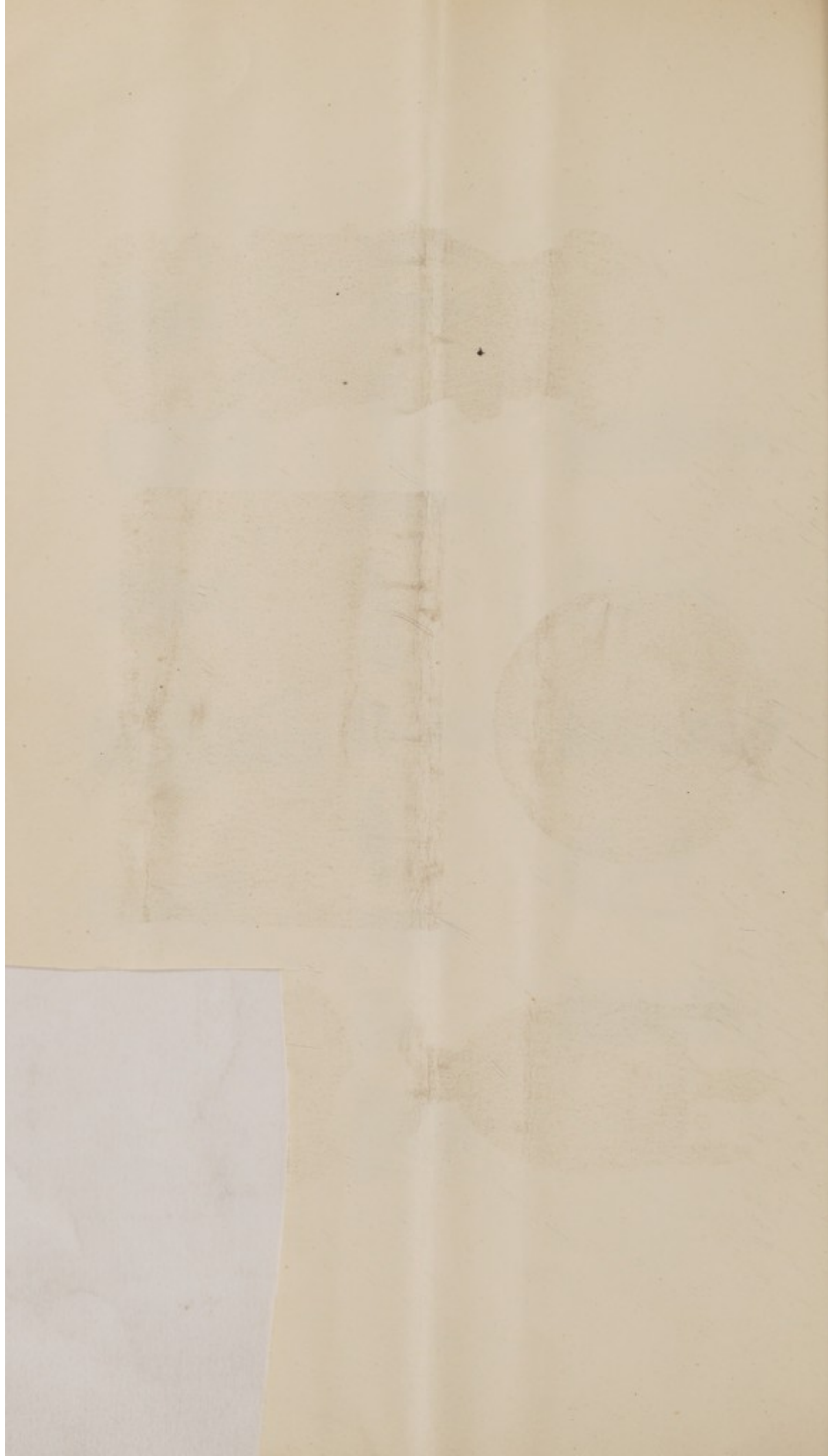


PLATE II.





99



103



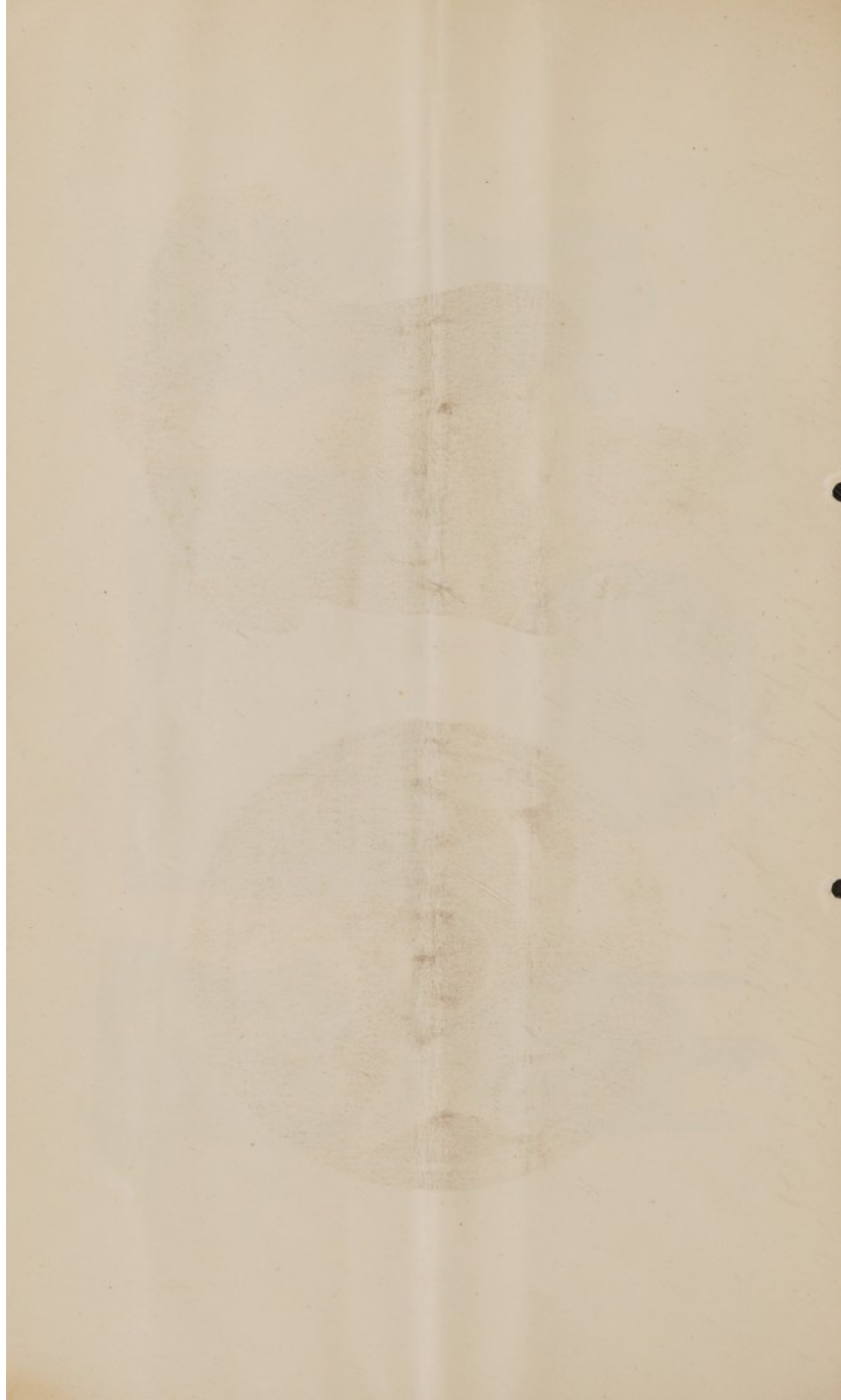
94



95



97



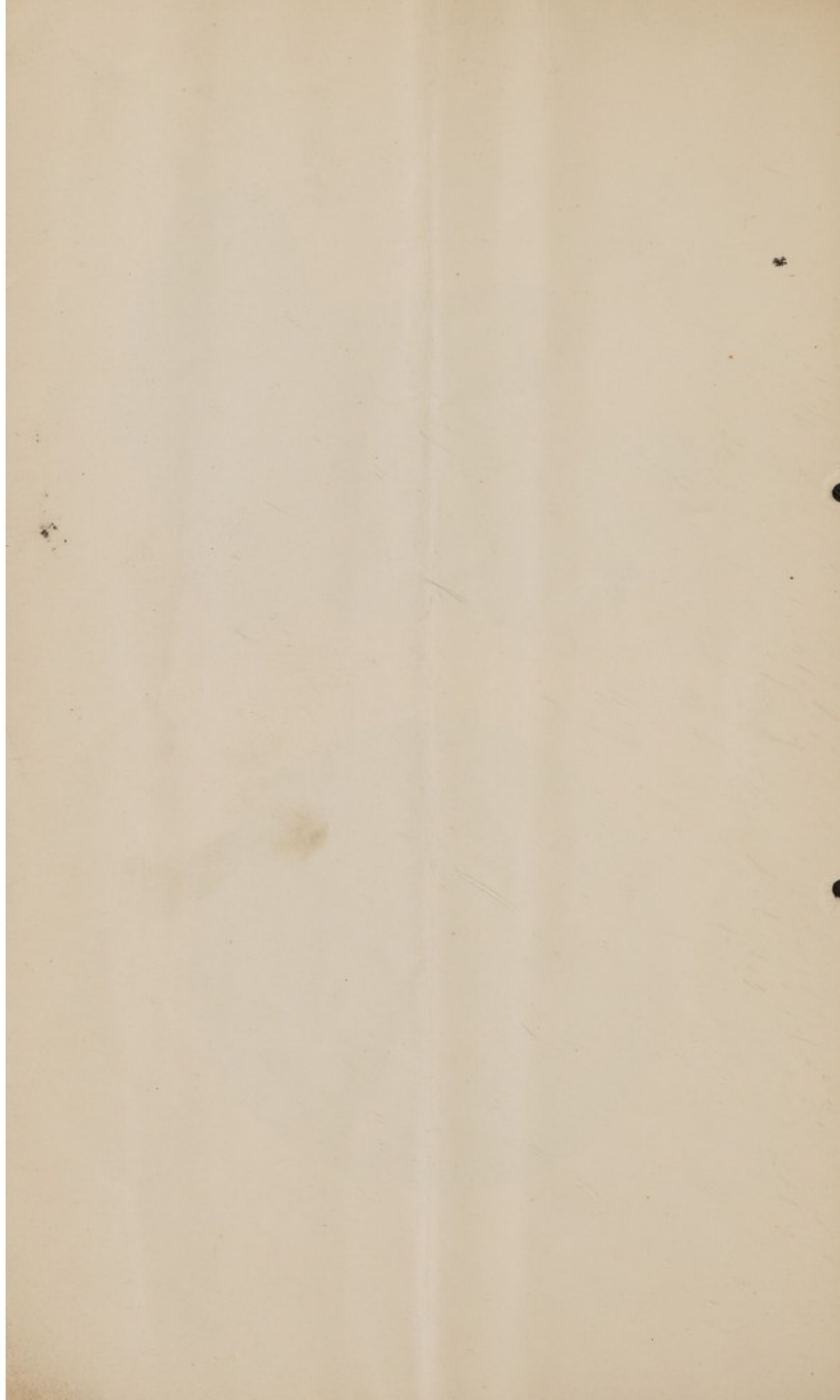


102

PLATE IV.



83



2. 12.0
2. 2.0
2. 14.0
2. 10.0 } 9/15/-

BAKER, LEIGH & SOTHEBY.

THE FIRM COMMENCING WITH SAMUEL BAKER IN

1744.

SOTHEBY, WILKINSON & HODGE.

1913.