

Sales catalogue: Sotheby's

Publication/Creation

June-July 1916

Persistent URL

<https://wellcomecollection.org/works/xb4xyx2y>

License and attribution

This work has been identified as being free of known restrictions under copyright law, including all related and neighbouring rights and is being made available under the Creative Commons, Public Domain Mark.

You can copy, modify, distribute and perform the work, even for commercial purposes, without asking permission.



Wellcome Collection
183 Euston Road
London NW1 2BE UK
T +44 (0)20 7611 8722
E library@wellcomecollection.org
<https://wellcomecollection.org>

WA/HMM/MCM 341/20/357
view this copy
H

SOTHEBY, WILKINSON & HODGE,
WELLINGTON STREET, STRAND.

1/5, 460, H/5

CATALOGUE

OF THE VALUABLE

Collections of Old Silver and
Works of Art,

THE PROPERTY OF THE LATE

ROBERT DRANE, ESQ.

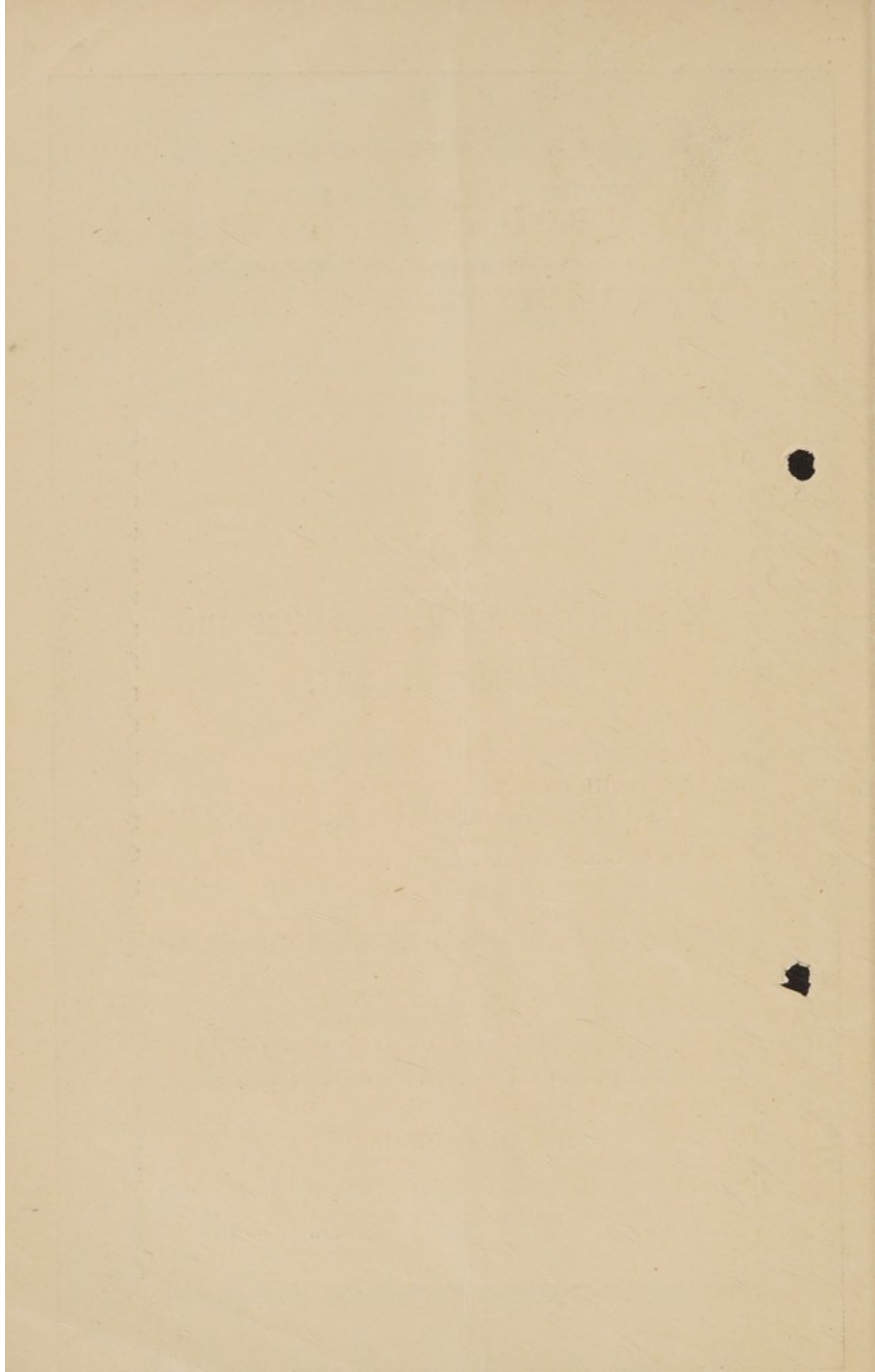
of Queen Street, Cardiff.

Days of Sale.

FIRST DAY	Thursday, 29th June	Lots 1 to 176
SECOND DAY	Friday, 30th June	Lots 177 to 347
THIRD DAY	Monday, 3rd July	Lots 348 to 485

1916.

ILLUSTRATED COPY.—PRICE ONE SHILLING.



CATALOGUE
OF A VERY VALUABLE COLLECTION OF
Silver and Works of Art

FORMED BY THE LATE

ROBERT DRANE, Esq.,

of Queen Street, Cardiff,

ILLUSTRATIVE OF DOMESTIC ARTICLES CHIEFLY FOR TABLE USE,

COMPRISING

SILVER CREAM JUGS,

ANTIQUÉ SILVER SPOONS & OTHERS IN BASE METAL, ETC.,

INCLUDING

AN ECCLESIASTICAL SPOON OF THE FIFTH CENTURY;

DRINKING VESSELS,

INCLUDING

ELIZABETHAN CUPS AND FLAGONS, SILVER MOUNTED,

LEATHERN JACKS, HORN CUPS,

TREEN WARE, LAMBETH DELFT, ETC.;

WOODEN TRENCHERS AND ROUNDELS;

KNIVES AND FORKS;

LAMBSWOOL AND PUNCH LADLES;

TOBACCO RASPS OF THE EIGHTEENTH CENTURY;

ANTIQUÉ IVORY AND WOOD CARVINGS;

GLASS DRINKING VESSELS,

INCLUDING

SEVERAL JACOBÉAN RELICS, AND OTHER FINELY ENGRAVED GLASSES;

STUART EMBROIDERIES;

SCOTTISH STONE ANTIQUITIES;

AND MANY MISCELLANEOUS ITEMS OF GREAT INTEREST.

WHICH WILL BE SOLD BY AUCTION,

BY MESSRS.

SOTHEBY, WILKINSON & HODGE,

Auctioneers of Literary Property and Works illustrative of the Fine Arts,

AT THEIR HOUSE, No. 13, WELLINGTON STREET, STRAND, W.C.

On THURSDAY, the 29th of JUNE, the following day, and on

MONDAY, the 3rd of JULY, 1916,

AT ONE O'CLOCK PRECISELY.

May be Viewed Two Days prior.

Catalogues may be had.

LONDON: PRINTED BY WILLIAM CLOWES AND SONS, LTD., DUKE STREET, STAMFORD STREET, S.E.

CONDITIONS OF SALE.

- I. The highest bidder to be the buyer; and if any dispute arise between bidders, the lot so disputed shall be immediately put up again, provided the auctioneer cannot decide the said dispute.
- II. No person to advance less than 1s.; above five pounds 2s. 6d., and so on in proportion.
- III. In the case of lots upon which there is a reserve, the auctioneer shall have the right to bid on behalf of the seller.
- IV. The purchasers to give in their names and places of abode, and to pay down 10s. in the pound, if required, in part payment of the purchase-money; in default of which the lot or lots purchased will be immediately put up again and re-sold.
- V. The sale of any lot is not to be set aside on account of any error in the enumeration of the numbers stated, or errors of description.
- VI. The lots to be taken away, at the buyer's expense, immediately after the conclusion of the sale; in default of which Messrs. SOTHEBY, WILKINSON & HODGE will not hold themselves responsible if lost, stolen, damaged, or otherwise destroyed, but they will be left at the sole risk of the purchaser. If, at the expiration of Two Days after the conclusion of the sale, the lots are not cleared or paid for, they will then be catalogued for immediate sale, and the expense, the same as if re-sold, will be added to the amount at which they were bought. Messrs. SOTHEBY, WILKINSON & HODGE will have the option of re-selling the lots uncleared, either by public or private sale, without any notice being given to the defaulter.
- VII. Upon failure of complying with the above conditions, the money required and deposited in part of payment shall be forfeited, *and if any loss is sustained in the re-selling of such lots as are not cleared or paid for, all charges on such re-sale shall be made good by the defaulters at this sale.*

Gentlemen who cannot attend this Sale may have their Commissions faithfully executed by their humble Servants,

SOTHEBY, WILKINSON & HODGE,

13, Wellington Street, Strand, London.

Telegraphic Address: "Abinitio, Rand, London."

Telephone: 3852 Gerrard.

In sending Commissions please refer to this Catalogue as "MARS."

COMMISSIONS CANNOT UNDER ANY CIRCUMSTANCES BE ACCEPTED BY TELEPHONE.

CATALOGUE

OF THE VALUABLE

Silver and Works of Art

THE PROPERTY OF

The late Robert Drane, Esq.,

Of Queen Street, Cardiff.

FIRST DAY'S SALE.

SILVER—AT PER OZ.

CREAM JUGS.

LOT

- 1 A plain Jug, the V-shaped lip terminating with two pellets on the bulging front, plain scroll handle, on circular foot, *London*, 1727 ; *wt.* 2 ozs. 12 dwts.
- 2 A plain Jug, ovate body, broad lip, shaped rims, scroll handle with cut card work of foliated design, on three pad feet, *London*, 1738 ; *wt.* 5 ozs. 4 dwts.
- 3 A Jug, ovate body alternately fluted and ribbed vertically, broad lip, scrolled rims, scroll handle with cut card work of foliated design, on three pad feet, *undated c.* 1738 ; *wt.* 5 ozs. 10 dwts.
- 4 A Jug, ovate body, fluted and chased with foliated scrolls and shields, broad lip, shaped rims, bow shaped handle, on three pad feet, *London*, 1740 ; *wt.* 4 ozs. 8 dwts.
- 5 A Jug, plain bulbous body, broad lip, shaped rim, scroll handle chased on top, on three pad feet, *London*, 1740 ; *wt.* 3 ozs. 4 dwts.
- 6 A Jug, bulbous body chased with flowers in scrolls, broad lip, scrolled rims, scroll handle with foliated ornament on top, on circular foot, *London*, 1740 ; *wt.* 5 ozs. 1 dwt.

- 7 A Jug, ovate body, chased with floral and scroll design, a swan on one side and squirrel on the other, and an open circular space in the centre, broad lip, shaped rim, scrolled handle, on three pad feet, *London, 1740 ; wt. 3 ozs. 16 dwts.*
- 8 A Jug, bulbous body chased with flowers and a scrolled shield, broad lip, shaped rims, scrolled handle, on three pad feet, *London, 1743 ; wt. 4 ozs. 13 dwts.*
- 9 A Jug, helmet shaped body, chased with swan on water on one side and crude landscape on the other, broad lip, shaped rims, scroll handle with a female head knob, on irregularly shaped scrolled foot, *London, 1749 ; wt. 5 ozs. 14 dwts.*
- 10 A Jug, bulbous body, chased, a pheasant on one side and two birds with a flower between on the other, broad lip, shaped rims, scroll handle, on three pad feet, *London, 1749 ; wt. 2 ozs. 19 dwts.*
- 11 Another very similar, a hare on one side and dog by a cottage on the other, *London, 1749 ; wt. 2 ozs. 9 dwts.*
- 12 A Jug, bulbous body with a hemispherical projection below, fluted and chased sides, broad lip, shaped rims, scroll handle, on three pad feet, *London, 1752 ; wt. 3 ozs. 1 dwt.*
- 13 Another, very similar, chased and spirally fluted, a snake-like monster coiled round the handle, on three fan-shaped feet, *London, 1761 ; wt. 4 ozs. 19 dwts.*
- 14 A Jug, helmet shaped, one side fluted and chased with flowers, the other side with a bird hovering over flowers, oval shield in centre, broad lip, shaped rims, C-shaped and scroll handle, on domed circular foot, *London, 1763 ; wt. 2 ozs. 6 dwts.*
- 15 A Jug, helmet shaped with repoussé flutes and wavings, broad lip, gadroon edging on rims, roped loop handle, on domed foot, *London, 1763 ; wt. 3 ozs. 16 dwts.*
- 16 A Jug, Greek shape with alternate spiral flutes and sprays of flowers, shield in centre, medium lip, roped rims, scroll handle, on domed circular foot, *London, 1763 ; wt. 5 ozs. 7 dwts.*
- 17 A Jug, helmet shaped, engraved with ovals and festoons of flowers, broad lip, roped rims, C-shaped and scroll handle, on three fan-shaped feet, *London, 1764 ; wt. 4 ozs. 10 dwts.*
- 18 A Jug, plain bulbous body, broad lip, shaped rims, scroll handle on domed circular foot, *London, 1765 ; wt. 2 ozs. 15 dwts.*
- 19 A Jug, bulbous body with alternate spiral flutes and sprays of flowers, oval shield in centre, broad lip, shaped rims, on three trifoliated feet, *London, 1765 ; wt. 3 ozs. 8 dwts.*
- 20 A Jug, helmet shaped with alternate spiral flutes and sprays of flowers, Chippendale shield in the centre, C-shaped and scroll handle, on domed circular foot, *London, 1766 ; wt. 2 ozs. 12 dwts.*
- 21 A Jug, helmet shaped, spirally fluted body and base with embossed flowers, broad lip, beaded rims, loop handle with graduated beading, domed circular foot, *London, 1767 ; wt. 4 ozs. 6 dwts.*

- 22 A Jug, bulbous body with spiral flutes and chased flowers, Chippendale shield in centre, broad lip, shaped rims, scroll handle, on three trifoliated feet, *London*, 1767 ; *wt.* 2 *ozs.* 4 *dwt.*
- 23 A Jug, helmet shaped with chased and embossed helianthus flower on each side, scrolled shield in centre, broad lip, shaped rims, scroll handle on scalloped circular foot, *London*, 1767 ; *wt.* 2 *ozs.* 7 *dwt.*
- 24 A Jug, helmet shaped, chased and embossed with flowering plants, Chippendale shield in centre, broad lip, punched dotted rims, scroll handle, domed circular foot with dotted border, *London*, 1769 ; *wt.* 2 *ozs.* 6 *dwt.*
- 25 A Jug, helmet shaped, spiral flutes and embossed flowers between on sides, Chippendale shield in centre, medium lip, punched dotted rims, scroll handle, on domed circular foot, *London*, 1769 ; *wt.* 2 *ozs.* 6 *dwt.*
- 26 A Jug, helmet shaped plain, with oval engraved shield in front, medium lip, roped rims, scroll handle, on domed circular foot, *London*, 1773 ; *wt.* 2 *ozs.* 19 *dwt.*
- 27 A Jug, helmet shaped, spirally fluted, broad lip, punched dotted rims, scroll handle, domed circular foot with dotted border, *London*, 1774 ; *wt.* 2 *ozs.* 12 *dwt.*
- 28 A Jug, helmet shaped, embossed with flowers and birds on branches, scrolled shield in the centre, medium lip, scalloped rims, scroll handle, on domed circular foot, *London*, 1774 ; *wt.* 2 *ozs.* 6 *dwt.*
- 29 A Jug, Greek shape with alternate spiral flutes and embossed sprays of flowers, foliated shield in centre, medium lip, shaped rims, scroll handle, on domed circular foot, *London*, 1774 ; *wt.* 2 *ozs.* 12 *dwt.*
- 30 A Jug, plain helmet shape, medium lip, shaped rims, scroll handle, on domed circular foot, *London*, 1775 ; *wt.* 2 *ozs.* 11 *dwt.*
- 31 A plain Jug, the V-shaped lip terminating with graduated flutes on the bulging front, scroll handle, on circular foot, *London*, 1775 ; *wt.* 3 *ozs.* 2 *dwt.*
- 32 A Jug, helmet shaped, embossed with flowers, scrolled shield in the centre, broad lip, roped rims, reeded loop handle, on domed circular foot, *London*, 1775 ; *wt.* 6 *ozs.* 14 *dwt.*
- 33 A Jug, helmet shaped, chased, with an ox on one side and a bird on a fence on the other, oval shield in centre, medium lip, punched dotted rims, on domed circular foot, *London*, 1779 ; *wt.* 2 *ozs.* 7 *dwt.*
- 34 A Jug, helmet shaped, embossed with flowers and birds, medium lip, punched dotted rims, scroll handle, on domed circular foot, *London*, 1782 ; *wt.* 3 *ozs.* 1 *dwt.*
- 35 A Jug, long helmet shape, engraved festoons of catkins and oval shield with true lovers' knot, medium lip, punched dotted rims, scroll handle, on domed circular foot, *London*, 1786 ; *wt.* 2 *ozs.* 19 *dwt.*

- 36 A Jug, oval helmet shape, engraved with floral festoons and oval shield, medium lip, punched dotted rims, plain loop handle, domed circular foot on square base, *London*, 1788 ; *wt.* 3 *ozs.*
- 37 A Jug, sauce-boat shape, plain, broad lip, reeded rims and loop handle, oval domed foot, *London*, 1789 ; *wt.* 5 *ozs.* 14 *dwt.*
- 38 Another, same pattern, *London*, 1789 ; *wt.* 5 *ozs.* 18 *dwt.*
- 39 A Jug, bell-shaped body, chased floral design with shield in centre of one side, V-shaped lip, moulded loop handle, on domed circular foot, *London*, 1790 ; *wt.* 3 *ozs.* 15 *dwt.*
- 40 A Jug, Greek œnochoë shape, plain, reeded shoulders, gadroon rims, scroll handle with graduated raised dots, on circular foot on square base, *London*, 1794 ; *wt.* 5 *ozs.* 9 *dwt.*
- 41 A Jug, long helmet shape, engraved foliated sprays and shield suspended from a true lovers' knot, medium lip, scalloped rims, moulded loop handle, inside gilt, on circular foot on square base, *London*, 1796 ; *wt.* 3 *ozs.* 12 *dwt.*
- 42 A Jug, oval shape, engraved borders and laurel leaf shield, medium lip, folded rims, reeded loop handle, on its own base, *London*, 1801 ; *wt.* 3 *ozs.* 3 *dwt.*
- 43 A Jug, oval shape, engraved borders and shield, broad lip, reeded rims and loop handle, on its own base, *London*, 1803 ; *wt.* 3 *ozs.* 1 *dwt.*
- 44 A Jug, oval shape, engraved centre band, borders and laurel leaf shield, reeded rims and square-topped loop handle, on its own base, *London*, 1803 ; *wt.* 2 *ozs.* 12 *dwt.*
- 45 A Jug, oval shape, engraved border under rim and circular shield, narrow lip, reeded rims and moulded square-topped loop handle, on its own base, *London*, 1804 ; *wt.* 3 *ozs.* 18 *dwt.*
- 46 A Jug, oval shape, horizontally fluted and engraved with border and wreaths, broad lip, reeded rims, moulded square-angled loop handle, on its own base, *London*, 1805 ; *wt.* 4 *ozs.* 12 *dwt.*
- 47 A Jug, long helmet shape with spiral flutes and punched dotted work, large curved lip, plain rims, moulded scroll handle on domed circular foot, *London*, 1805 ; *wt.* 4 *ozs.* 16 *dwt.*
- 48 A gilt Jug, bulbous body without any neck, engraved with foliated scrolls, an exotic bird on one side and a savage blowing a trumpet on the other, V-shaped lip fluted and terminating in a pellet, fluted rims, plain loop handle, on circular foot, *London*, 1808 ; *wt.* 5 *ozs.*
- 49 A Jug, long helmet shape, plain, large curved lip, beaded rims, reeded loop handle, on circular foot on square base, *London*, 1809 ; *wt.* 3 *ozs.* 18 *dwt.*
- 50 A Jug, long helmet shape, with spiral flutes and embossed and chased flowers between, oval shield in centre, medium lip, punched dotted rims, scroll handle, on domed circular foot, *London*, 1899 ; *wt.* 3 *ozs.* 13 *dwt.*

CANDLESTICKS.

- 51 A pair of Table Candlesticks, baluster stems with square nozzles and plinths decorated at the corners with conventional honeysuckle ornament in relief, *London*, 1765; *wt.* 36 *ozs.* 19 *dwt.* 2
- 52 A pair of Table Candlesticks, vase-shaped stems, inverted bell-shaped nozzles and domed circular plinths with pinnate leaf decoration in relief upon fluting, *Sheffield*, 1794 —all at 2
- 53 Two pairs of Table Candlesticks, Corinthian columns with spiral festoons of the catkins of *Garrya elliptica* in relief, on pyramidal square plinths, *Sheffield*, 1776; —all at 4

SILVER—ALL AT.

ANTIQUE SPOONS.

- 54 A hexagonal or diamond-top Spoon, *no marks*, *c.* 1350
- 55 A slip-top Spoon, *no marks*, *c.* 1375
- 56 A hexagonal or diamond-top Spoon, *no marks*, *c.* 1400
- 57 A monk's-head Spoon, *circular mark undecipherable at the end of the stem*, *c.* 1500–1520—*See illustration, Plate I*
- 58 A hexagonal seal-top Spoon, *uncertain mark at the end of the stem*, *c.* 1530
- 59 An Evangelist Spoon, figure of St. Mark, *London*, 1559—*See illustration, Plate I*
- 60 A lion sejant Spoon, *London*, 1560
- 61 A very fine baluster-top Spoon, gilt, *London*, 1560—*See illustration, Plate I*
- 62 A seal-top Spoon, *London*, 1562
- 63 "The Master" Apostle Spoon, the nimbus with radiating lines in relief, *London*, 1569; *maker's mark F enclosing T in a monogram*—*See illustration, Plate I*
- 64 A Maidenhead Spoon, parcel gilt, *London*, 1575
- 65 An Apostle Spoon, with figure of St. Peter, gilt, *London*, 1576
- 66 A seal-top Spoon, gilt, *London*, 1570
- 67 An Apostle Spoon with figure of St. Matthew (?) with a very large plain nimbus, *London*, 1580
- 68 A hexagonal or diamond-top Spoon, *London*, 1586
- 69 A seal-top Spoon, gilt, *London*, *c.* 1590
- 70 A seal-top Spoon with pierced bowl, *London*, 1594—*See illustration, Plate I*
- 71 A seal-top Spoon, *London*, 1598; *maker's mark a crescent enclosing w*

- 72 A slip-top Spoon, *London*, c. 1598 ; *maker's mark a crescent enclosing w*
- 73 A slip-top Spoon, *uncertain mark at the end of the stem*, c. 1598
- 74 A raspberry-top Spoon, *foreign*, c. 1600—*See illustration, Plate I*
- 75 A Maidenhead Spoon, *London*, 1603
- 76 A lion sejant Spoon, *parcel gilt, London*, 1609
- 77 A Dutch Spoon with twisted stem surmounted by a figure of Cupid, c. 1610
- 78 A seal-top Spoon, *London*, 1612 ; *maker's mark a crescent enclosing w*
- 79 A seal-top Spoon, *London*, 1619 ; *maker's mark a crescent enclosing a mullet*
- 80 A seal-top Spoon, *London*, 1619 ; *maker's mark D enclosing c*
- 81 A seal-top Spoon, *gilt, London*, 1622 ; *maker's mark D enclosing c*
- 82 A Dutch Spoon, triangular stem surmounted by a figure of a musketeer, *Amsterdam marks, and inscribed Rowland Bowles de Burcomb, Wilts*, 1623
- 83 A Dutch wedding Spoon, engraved stem, and on the back of the bowl *S. B. S. K. & K. P. D. B.* 1631, with *N. C. S. E.* on one side and *K. R. D. B.* on the other
- 84 An Apostle Spoon with figure of St. James-the-Less (?), *London*, 1633 ; *maker's mark R. C. with three pellets above and a rosette between two pellets below*
- 85 A slip-top Spoon, *London*, 1639 ; *maker's mark D enclosing c*
- 86 A seal-top Spoon, *London*, 1639 ; *maker's mark w. c. three pellets above and a rosette between two pellets below*
- 87 A seal-top Spoon, *London*, 1639
- 88 A German raspberry-top Spoon, *gilt, Augsburg*, c. 1648
- 89 A German raspberry-top Spoon with a cherub head at the end of the stem, *Augsburg*, inscribed ^{NMS}_{MID} 1648
- 90 A square-end Spoon, *London*, 1648 ; *maker's mark I·I and a pellet below*
- 91 A square-end Spoon, *mark of a heart in relief in a circle in the bowl*, c. 1650
- 92 A pair of Commonwealth Spoons, flat handles tapering towards the bowl and ending round, engraved with foliated scrolls, and dated at the back 1656 ; *London marks in the bowls—See illustration, Plate I* 2
- 93 A seal-top Spoon, probably *Newcastle*, c. 1657 ; *maker's mark in the bowl and thrice repeated on the stem, W. R. conjoined*
- 94 A Maidenhead Spoon, *London*, 1657 ; *maker's mark w. c. three pellets above, and a rosette between two pellets below*
- 95 A square-end Spoon, *London*, 1663 ; *maker's mark I·I and a pellet below*
- 96 An Apostle Spoon, with figure of St. Peter, *pricked inscription on the back of the bowl* *E. B.* 1664

- 97 A foreign Spoon, engraved on both sides of stem and bowl, c. 1670;
and another with trifid end, c. 1671 2
- 98 A seal-top Spoon, *London*, 1665; *maker's mark s. v with a pellet below*
- 99 A square-end Spoon, *London*, 1672
- 100 A rat-tail Spoon with trifid end, *London*, 1673; *maker's mark I. K with a rosette between two pellets below*
- 101 A foreign Spoon, with trifid end, engraved with a coat-of-arms;
and another with square end, engraved floral pattern, c. 1675 2
- 102 A rat-tail Spoon, flat stem, trifid end, with relief scroll design
on the handle, *London*, 1682; *maker's mark T.T. with crown above and a pellet below*
- 103 Another similar, gilt bowl engraved on both sides, *London*, 1683;
and another, bowl chased at the back, *London*, 1684; *maker's mark G.W with a crescent below* 2
- 104 A pair of plain rat-tail Spoons, flat stems, trifid ends, *London*,
1684; *maker's mark I.K with a pyramid of pellets between two pellets below* 2
- 105 A German Christening Spoon, twisted stem, surmounted by a
figure of a girl, gilt, the back of the bowl engraved with a
crown above a pair of compasses and a square, and inscription:
Schelte Edgers is Geboren den 29 Desember 1684
- 106 A gilt rat-tail Spoon, flat stem, trifid end, engraved on both sides
of stem and under the bowl, *London*, 1688; and a Spoon,
flat stem, very broad trifid end, *Exeter*, c. 1690 2
- 107 A gilt rat-tail Spoon, flat stem, trifid end with relief scrolls on
the handle and at the back of the bowl, *London*, 1689, *maker's mark s. conjoined on w and three mullets*; and a rat-tail
Spoon, flat stem, trifid end, fully engraved on both sides of
the stem and under the bowl, *London*, 1689, *maker's mark Y.Z, crown above and mullet below* 2
- 108 A rat-tail Spoon, flat stem, trifid end with raised floral design on
the handle and scrolls on the back of the bowl, English,
c. 1690, *maker's mark, an anchor between the letters R.S, pricked date 1700*; and a plain rat-tail Spoon, flat stem,
waved end, *Amsterdam*, c. 1690. (Rosenberg gives the date
letter as 1608) 2
- 109 Two rat-tail Spoons, flat stems, trifid ends, one with scrolls in
relief on the back of the bowl; one engraved with a coat-of-
arms, crest and mantling under the initials H.L.M, and the
other with H.L.M. only; probably Scotch, c. 1692; *maker's mark on both E.W.* 2
- 110 A rat-tail Spoon, gilt flat stem, trifid end, engraved with coat-of-
arms, crest and mantling, *London*, 1692, *maker's mark W.M crowned*; and another, *London*, 1692, *maker's mark of William Scarlett* 2

- 111 A rat-tail Spoon, flat stem, trifid end, with raised scroll edging and scrolls on the back of the bowl, *London*, 1693, *maker's mark W.M crowned*; and another plain, engraved coat-of-arms on the handle, *London*, 1694, *maker's mark of Lawrence Jones* 2
- 112 A Irish rat-tail Spoon, flat stem, trifid end, engraved with floral scrolls, the back of the bowl engraved with a large leaf, *Cork*, c. 1694; *maker's mark of Robert Goble. On the back of the handle is the inscription: A gift to Alice Poole from her aunt Goble 1701*
- 2/12/-
113 A rat-tail Spoon, plain flat stem, trifid end, *London*, 1695, *maker's mark of Thomas Allen*; and another, plain, *Amsterdam*, c. 1694-1700 2
- 7/9/-
114 A rat-tail Spoon, gilt, flat stem, trifid end, engraved on both sides, *London*, 1696, *maker's mark I.L and a mullet below*; and another with raised scrolls on the handle and back of the bowl, *London*, 1697, *maker's mark of Fras. Archbold* 2
- 2/5/-
115 A Spoon, flat stem, trifid end, the back of the bowl engraved with an acanthus leaf and A.E.D 1697; *probably Irish maker's mark F.M*; and another, marks uncertain, probably foreign, c. 1697 2
- 12/4/-
Ledger
116 A rat-tail Spoon, flat stem, waved end, finely engraved with arabesques on the front, *London*, 1698, *maker's mark of Jno. Chartier*; and another with trifid end, *London*, 1698, *maker's mark of Jno. Ladyman, pricked date 1699 and H.W on the handle* 2
- 8/1/-
117 A beaded rat-tail Spoon, flat stem, trifid end, *London*, 1699, *maker's mark of Lawrence Coles*; and a plain rat-tail Spoon, flat stem, waved end, *London*, 1699, *maker's mark of Jos. Smith* 2
- passed
118 Three Apostle Spoons, one with figure of St. Paul, *London*, 1742; one with figure of St. John, *London*, 1749; and one with figure of St. James-the-Greater, *London*, 1780; all with the Holy Spirit on the nimbus in relief 3
- 3/4/6
Leer
119 A rat-tail Spoon, gilt, moulded stem with relief ornament and a female mask, and terminating in a shell, *Augsburg*, c. 1710, *maker's mark of one of the Jäger family, probably Jacob*; and a rat-tail Spoon, gilt, moulded stem, waved end, very finely engraved with arabesques on both sides and scrolls on the back of the bowl, on the front of the handle a Bacchanal blowing a trumpet, *London*, 1712 2
- 23/-
120 A Hanoverian rat-tail Spoon, *marks of a double-headed eagle, a roman E and L.B, probably Perth*, c. 1725; and a Spoon, with flat stem, and triangular device terminating in a fleur-de-lys in relief on the handle, given as a prize for a sleighing contest, with engraved representation of a sleighing party and inscription: *Aukjen Sleeswijk heeft dese Lepel Gehaalt met paar slee over de See van Enkhuisen de Stee den 20 Jan- nuar 1763*; Enkhuisen marks 2

- 121 A small Spoon with a two-pronged fork handle, c. 1680; another with three-pronged fork handle, c. 1690; and two others with two-pronged fork handle, *London*, 1730 and 1732, the latter three with engraved flat stems. *For the first of these see illustration, Plate I*
- 122 A German christening Spoon, twisted stem, surmounted by a figure of Hope, gilt, the back of the bowl engraved with a crown above a pair of compasses and a square, and inscription: *Edger Scheltes is geboren den 1 Maay 1723, Strassburg* mark; and another, with figure of a woman holding a key, gilt, engraved on the back of the bowl with a figure of St. Crispin and inscription: *Anne Ages 1762*

SILVER—AT PER OZ.

EIGHTEENTH CENTURY TABLE SPOONS.

- 123 Ten rat-tail Spoons, with trifid or waved ends, *London*, 1700 to 1705; *wt.* 18 ozs. 10 dwt. 10
- 124 Seven rat-tail Spoons, waved ends, and Hanoverian, *London*, 1706 to 1712; two Irish Spoons, *Dublin*, 1705; and one, *Exeter*, 1711; *wt.* 21 ozs. 6 dwt. 10
- 125 Ten rat-tail Spoons, mostly Hanoverian type, two with a very high centre ridge, *London*, 1712 to 1715; *wt.* 16 ozs. 4 dwt. 10
- 126 Eight rat-tail Spoons, Hanoverian, *London*, 1715 to 1720; one with waved end, *Exeter*, 1717; and one waved end, *London*, 1720; *wt.* 18 ozs. 5 dwt. 10
- 127 Nine rat-tail Spoons, one waved end, the rest Hanoverian, *London*, 1720 to 1725; and one with short tongue, *London*, 1724; *wt.* 17 ozs. 5 dwt. 10
- 128 Six rat-tail Spoons, Hanoverian, *London*, 1725 to 1729; and four others with short tongues, 1728 and 1729; *wt.* 17 ozs. 9 dwt. 10
- 129 Ten Hanoverian Spoons, one with shell on the bottom of the bowl, and the rest with short tongues, *London*, 1729 to 1733; *wt.* 19 ozs. 10
- 130 Four rat-tail Spoons, Hanoverian, *London*, 1730, 1734 and 1735; one Irish rat-tail, *Dublin*, 1733; and five Hanoverian, with short tongues, *London*, 1734 to 1736; *wt.* 21 ozs. 8 dwt. 10
- 131 Ten Hanoverian Spoons with short tongues, one with a ship in full sail chased on the back of the bowl; and four others with raised ornament, *London*, 1737 to 1743; *wt.* 18 ozs. 13 dwt. 10
- 132 Ten Hanoverian Spoons with short tongues, one *Dublin*, 1743, and nine *London*, 1743 to 1747, six with raised shells on the backs of the bowls; *wt.* 20 ozs. 2 dwt. 10

- 3/- 133 Ten Spoons, Hanoverian and Old English patterns, two with ornament on the backs of the bowls, *London*, 1748 to 1753 ;
wt. 20 ozs. 5 dwt. 10
- 5/3. 134 Ten Spoons, Hanoverian and Old English patterns, four with ornament on the backs of the bowls, *London*, 1753 to 1757 ;
wt. 18 ozs. 19 dwt. 10
- 3/9. 135 Ten Spoons, Hanoverian and Old English patterns, four with ornament on the backs of the bowls, *London*, 1757 to 1760 ;
wt. 18 ozs. 16 dwt. 10
- 5/6 136 Ten Spoons, Hanoverian pattern, one rat-tail and seven with ornament on the backs of the bowls, *London*, 1760 to 1763 ;
wt. 18 ozs. 16 dwt. 10
- 6/- 137 Ten Spoons, Hanoverian and Old English patterns, four with ornament on the backs of the bowls, *London*, 1763 to 1766 ;
wt. 19 ozs. 5 dwt. 10
- 4/- 138 Ten Spoons, similar to the foregoing, *London*, 1766 to 1768 ;
wt. 18 ozs. 15 dwt. 10
- 4/8 139 Ten Spoons, similar, *London*, one 1730 and the others 1769 to 1771 (one without date mark) ; wt. 17 ozs. 12 dwt. 10
- 4/- 140 Ten Spoons, similar, *London*, 1772 to 1775 ; wt. 19 ozs. 11 dwt. 10
- 4/- 141 Ten Spoons, similar, *London*, 1775 to 1779 ; wt. 18 ozs. 10 dwt. 10
- 4/- 142 Ten Spoons, Old English pattern, feather-edged stems, *London*, 1764 to 1781 ; wt. 21 ozs. 6 dwt. 10
- 3/3 143 Ten Spoons, Old English pattern, engraved stems, *London*, 1782 to 1789 ; wt. 18 ozs. 16 dwt. 10
- 3/3. 144 Ten Spoons, Hanoverian and Old English patterns, two with ornament on the backs of the bowls, *London*, 1779 to 1782 ;
wt. 20 ozs. 3 dwt. 10
- 4/- 145 An early Fiddle pattern Spoon, *London*, 1782, and nine others, Old English pattern, all plain, *London*, 1784 to 1788 ; wt. 20 ozs. 9 dwt. 10
- 3/- 146 Ten Spoons, Old English pattern, plain, *London*, 1787 to 1794 ;
wt. 21 ozs. 16 dwt. 10
- 2/9. 147 Ten Spoons, Old English pattern, plain, one *Dublin*, 1795, and the others, *London*, 1795 to 1797 ; wt. 20 ozs. 15 dwt. 10
- 4/- 148 Ten Spoons, Old English pattern, engraved stems, one *London*, 1778 ; one *Dublin*, 1786 ; the others, *London*, 1790 to 1792 ;
wt. 18 ozs. 3 dwt. 10
- 3/- 149 Ten Spoons, Old English pattern, plain, and two others, Fiddle pattern, *London*, 1798 to 1836 ; wt. 25 ozs. 1 dwt. 12
- 3/9. 150 Ten Spoons, Old English pattern, engraved stems, eight, *London*, 1795 to 1804, and two, *Exeter*, 1800 ; wt. 16 ozs. 19 dwt. 10
- 2/9. 151 Ten Spoons, Old English pattern, eight with feather-edge stems, and two with reeded stems, *London*, 1749 to 1800 ; wt. 20 ozs. 13 dwt. 10

- 3/3. 152 Ten Spoons, six Old English with beaded stems; two others with reeded stems, one pierced; and two King's pattern, *London*, 1778 to 1820; *wt.* 23 ozs. 12 dwts. 10
- 1/6. 153 Five foreign Spoons, trifold end, *Paris*, 1710; trifold end, *Amsterdam*, 1700; one *Rotterdam*, c. 1730; one waved end, *Enkhuisen*, c. 1710, and an Oriental Spoon with pointed stem; *wt.* 8 oz. 6 dwts. 5

MISCELLANEOUS SILVER—AT PER OZ.

- 154 Three Onslow Spoons with plain bowls, *London*, 1748, 1753 and 1789; *wt.* 5 ozs. 19 dwts. 3
- 9/6. 155 Four Marrow Scoops and Spoons conjoined, *London*, 1709, 1754, 1763, and 1809; one Marrow Scoop, *London*, 1722; and one Table and Tea Spoon conjoined, *London*, 1751, inscribed: *Hannah Witherly in Mortlake, Surry*, 1751; *wt.* 9 ozs. 12 dwts. 6
- 9/- 156 Four pierced Spoons, Hanoverian pattern, *Amsterdam*, c. 1720, *London*, 1746 and 1755, and *Stuttgart*, c. 1760; *wt.* 8 ozs. 16 dwts. 4
- 2/10/- 157 Ten Tea-sifter Spoons or Olive Spoons, all but one pierced bowls, all with pointed stems, c. 1704 to 1781; and two small Spoons and two-pronged Forks conjoined, flat engraved stems, *London*, 1804; *wt.* 5 ozs. 6 dwts. 12
- 3/- 158 A Soup Ladle with engraved stem, *Dublin*, 1773; and another with reeded stem, *London*, 1798; *wt.* 10 ozs. 4 dwts. 2
- 3/6. 159 A Gravy Spoon, *London*, 1781; two others, *London*, 1807; and a Salad Spoon and Fork, *London*, 1823; all plain; *wt.* 15 ozs. 13 dwts. 5
- 15/- 160 A set of six small Spoons, *London*, 1776; five others, *London*, c. 1750; two others, c. 1770, all with scrolls in relief on the backs of the bowls; three Sugar Shovels, one waved end Spoon, and three tiny Snuff Spoons, the latest dated *London*, 1812; *wt.* 6 ozs. 7 dwts. 20
- 17/- 161 A set of six Tumbler Stands, circular with gadroon rims, gilt inside, *London*, 1803; *wt.* 20 ozs. 9 dwts. 6
- 14/6 162 A Candle Snuffers with pierced handles, *London*, 1795, and Engraved Tray, *London*, 1801; *wt.* 6 ozs. 19 dwts. 2
- 31/- 163 A plain Muffineer on circular foot, *London*, 1736; *maker's mark of Sam. Wood*; *wt.* 6 ozs. 15 dwts.
- 29/- 164 A chased and fluted Muffineer on scrolled and pierced circular foot, *London*, 1764; *maker's mark of William Day*; *wt.* 7 ozs.
- 35/- 165 A Sugar Basin, vase shaped with domed Cover, spirally fluted on scrolled circular foot, *London*, 1758; *maker's mark of Samuel Taylor*; *wt.* 14 ozs. 16 dwts. 2

- 2/10/-
1/15/-
4-5-
- 31/5/-
- 166 A Sixteenth Century Tankard with hinged cover, parcel gilt, on the sides within strap-work panels chased repoussé scenes in the story of Susannah and the Elders, the Garden Scene, the Accusation, the Trial, and the Punishment; on the cover, strap-work and masks surmounted by a Bacchanal holding a cup, and a man's head billet; on the handle a female term and spiral strap-work; Villengen mark, an Eagle displayed; *maker's mark*, an anchor with rope coiled into a "B"; and a fruit (?); *wt.* 23 ozs. 10 dwt.

* * A very fine and important piece.

- 4/5/- 3
- 2/15/-
- 167 A miniature shallow Bowl with scroll wire handles, the centre embossed with a conventional flower, the sides with a formal foliated design and punched dotted border, inscribed I * B nat Feb 10 * 1680; *wt.* 1 oz. 17 dwt.

- 168 A miniature plain Porringer with scroll wire handles, on the side *W. E. c.* 1690; *wt.* 1 oz. 6 dwt.

- 40/-
- 169 A miniature two-handled Cup, scroll wire handles, the sides divided into compartments engraved with strap-work design on a matt ground by vertical flutes; a coin of William III, 1697, in the base; and an inscription in relief on the rim partly obliterated, *c.* 1700; *wt.* 1 oz. 3 dwt.

- 23/-
- 170 A miniature Cup with two flat ? shaped handles, the upper half moulded in eight lobes of plain hammered silver; *maker's mark of James Seabrook, c.* 1720; *wt.* 1 oz. 19 dwt.

- 40/-
- 171 A miniature Mazer, on circular foot, plain, London, 1735; *maker's mark of William Garrard*; *wt.* 1 oz. 16 dwt.

- 10/-
- 172 An Egg Cup, fluted bowl, English gadroon edging on the foot, London, 1769; *maker's mark of Charles Aldridge and Henry Green*; *wt.* 18 dwt.

- 2/4/-
- 173 A small shallow Cup with one handle embossed and fluted, and inscribed JACQUES GIBERT; a hexafoil Cup with embossed birds and flowers, two scroll handles with birds on top; and a small cylindrical Beaker on three lion feet with engraved sides; all foreign of uncertain place, 18th century; *wt.* 4 ozs. 19 dwt. 3

- 2/16/-
- 174 A cylindrical Nutmeg Grater, engraved, *c.* 1680-90; another, heart-shaped, *c.* 1700, *maker's mark* M I crowned; another, oval, *c.* 1746, *maker's mark of Samuel Meriton*; and another, oval, gilt, chased without marks; *wt.* 2 ozs. 15 dwt. 4

- 2/10/- 5. 175 A Perfume Sphere, containing two smaller spheres, all pierced, the middle one marked, London, 1737, *maker's mark of Thomas Wynne*; and a small circular Box, Birmingham, 1823; *wt.* 1 oz. 14 dwt. 4

- all at 4/5/-
- 176 A Spoon with a fluted knop end, *c.* 1500-1550, bowl doubtful; and a rat-tail Spoon, Hanoverian pattern, with mended stem; *wt.* 2 ozs. 10 dwt.

END OF FIRST DAY'S SALE.

2988

2989

SECOND DAY'S SALE.

The Property of the late Robert Drane, Esq.

—continued.

SILVER—ALL AT.

LOT

- 177 An Elizabethan Cup or Bowl of pale green hone-stone, mounted in silver, the rim with pointed engraved ornament joined to the foot by three vertical bands with lion mask bosses in the centres, circular domed foot with upper border of pointed ornament and lower border of tongue-shaped ornament, c. 1600
- 178 A Charles II. octagonal Salt-cellar, crystal glass body mounted in silver gilt, with engraved scrolls on the rim of the bowl and edging of engraved leaf pattern
 * * * This has most probably formed part of a Monstrance of the fifteenth or early sixteenth century, and been converted into a salt-cellar
- 179 A verge Watch by F. Miller, *London*, 1765, enamel dial with shipping scene on the Thames, the outer case engraved with the Baptism of Jesus and the Holy Spirit descending
- 180 A verge Watch by Edwd. Prior, *London*, 1826, enamel dial with figures for the Oriental market, in outer case, *London*, 1827, and another outer case of silver and tortoiseshell
- 181 Two pairs of Shoe Buckles, one pair *maker's mark of Thomas Folkingham*, c. 1720; the other, *maker's mark C.H.*, c. 1775 4
- 182 Two pairs of Shoe Buckles, one pair, *maker's mark of William Sheen*, c. 1775; the other, *maker's mark of Thos. Wallis*, c. 1795 4
- 183 Two pairs of Shoe Buckles, one pair *Birmingham*, 1778; the other, *Birmingham*, 1786 4
- 184 Two pairs of Shoe Buckles, one pair, *maker's mark of Jos. Preedy*, c. 1785; the other, "Eley's Patent" Spring Clips, *London*, 1797 4
- 185 Two pairs of Shoe Buckles, one pair *London*, 1792; the other, *Birmingham*, 1791 4
- 186 Three pairs of Shoe Buckles, one pair *London*, 1802; another pair, *London*, 1808; and another, *London*, 1846, with a pair of Knee Buckles to match 8

- 187 A Peruke Buckle, *maker's mark of Chas. Aldridge, c. 1790*; and five pairs of Knee Buckles, 1794 to 1837 11
- 188 A pair of Paste Shoe Buckles, and two other pairs—all base metal 6

LAMBSWOOL AND PUNCH LADLES.

- 189 A cocoanut Lambswool Ladle, silver mounted trifid stem, walrus handle, silver tipped, c. 1700
- 190 A Punch Ladle, plain bowl, *London, 1726*; *maker's mark of Benjamin Pyne*; turned wood handle
- 191 A Punch Ladle, the bowl shaped as a shell, *London, 1741*, turned wood handle
- 192 A Punch Ladle, ovate bowl, single lip, plain, *London, 1733*; *maker's mark of Richard Bayley*, turned wood handle
- 193 A Punch Ladle, elliptical bowl, double lip, plain, *London, 1737*; *maker's mark of John Pollock*, turned wood handle
- 194 A Punch Ladle, elliptical bowl, no lips, plain, *London, 1739*; *maker's mark of John Gamon*, turned wood handle
- 195 A Punch Ladle, ovate bowl, single lip, *London, 1746*; *maker's mark of Richard Kersill*, turned wood handle
- 196 A Punch Ladle, the bowl shaped as a shell embossed and chased with a figure of Bacchus astride a barrel, *London, c. 1752*; *maker's mark of Phillips Garden*, turned wood handle
- 197 A Punch Ladle, hexafoil bowl, fluted, double lip, *London, 1759*; *maker's mark of Henry Corry (?)*, turned wood handle
- 198 A Punch Ladle, compressed hemispherical bowl with outcurved rim, embossed and chased floral pattern, *no marks, after 1761*, twisted whalebone handle, silver tipped
- 199 A Punch Ladle, elliptical bowl, two lips, plain, *London, 1763*; *maker's mark 1.w beneath a star and over a rosette*, turned wood handle
- 200 A Punch Ladle, hemispherical bowl, fluted and embossed, concave base with coin of Queen Anne for 1707, c. 1768, twisted whalebone handle, silver tipped
- 201 A Punch Ladle, ovate bowl, one lip, fluted and embossed with birds, etc., *London, 1774*; *maker's mark of Thos. Smith*, turned wood handle
- 202 A Punch Ladle, ovate bowl, one lip, fluted, *no marks, c. 1775*, twisted whalebone handle, silver tipped
- 203 A Punch Ladle, elliptical bowl, fluted and embossed in compartments, with a swan, a fox, and flowers, *London, 1747*; *maker's mark imperfect*, turned wood handle
- 204 A Punch Ladle, elliptical bowl, fluted, embossed and chased in floral pattern, two lips, *London, 1776*; *maker's mark C H*, twisted whalebone handle, silver tipped

- 205 A Punch Ladle, hemispherical bowl with outcurved rim, plain, with coin of Queen Anne for 1702 in the base, c. 1750 to 1760, *twisted whalebone handle, silver tipped*
- 206 A Punch Ladle, ovate bowl, single lip, punched dotted work on the rim, feather-edged stem, *London, 1786; maker's mark of Thos. Mallison, twisted whalebone handle, silver tipped*
- 207 A Punch Ladle, elliptical bowl with outcurved rim, plain, *London, 1806; maker's mark of John Sanders, twisted whalebone handle, silver tipped*
- 208 A Punch Ladle, solid silver, hemispherical bowl, engraved inside, flat stem rounded at the top, with a stop-ridge at the back, engraved on both sides, *London, 1815; maker's mark* $\frac{1}{6}P$

LAMBSWOOL AND PUNCH LADLES, NOT SILVER.

- 209 One all Wood, carved and pierced stem, with the bust of a man at the end; two all Wood, with turned handles; and one all Wood, with a stop-ridge on the stem 4
- 210 One Horn, hemispherical bowl, fluted outside and a silver star inside, affixed to a strip of flat silver, joined on to a horn handle; one Horn bowl with twisted whalebone handle; and one Horn oval bowl, with turned horn handle terminating in a whistle 3

KNIVES, FORKS, AND CASES.

- 211 A Boxwood Knife Case, carved with Biblical scenes in compartments: Adam and Eve tempted; The Expulsion from Eden; The Two Marys; David playing the Harp; Lot and his Daughters; The Averted Sacrifice of Isaac; The Agony in the Garden; and Samson with the Gates of Gaza. Along the sides the inscription in relief: SAMSOM WAS EEN STERCK MANN OCK IS HI DIE STERCKER DIE SÛN TONGE BED WINGEN KAN, "Samson was a strong man, but he is a stronger who can restrain his own tongue." *Low German, c. 1585*
- 212 A small Knife, with ivory handle, fitting into an ivory sheath, both carved to represent Jonah coming out of the mouth of the great fish. A German Lady's Travelling Knife, sixteenth century 2
See Labarte's "Arts of the Middle Ages," page 36, Fig. 12
- 212A An Italian Knife, brass handle terminating in a lion's head, the handle chased, and parts of the design filled with champlevé enamel *Sixteenth century*
- 213 A set of two Knives and a long skewer-like two-pronged Fork in silver handles, the handle of the knife with female figures in relief, that of the Fork engraved with Jesus teaching from a boat and Peter walking on the sea, both surmounted by a

Lot 213—*continued*.

- lion or dog, the handle of the Fork engraved, in leather case, diced and stamped with stars; *one knife bears the Dutch silver marks, c. 1680* 4
- 214 A Dutch Knife and two-pronged Fork, with tapering gilt metal handles, engraved, in a gold tooled leather box case, *c. 1690* 3
- 215 An Old English Sowket Fork, gilt metal, three prongs, flat stem, trifid end, engraved on both sides *c. 1690*
- * * Before forks were in general use in England these sowkit or sokett forks were used for serving conserves
- 216 An Old English Sowket Fork, silver, two prongs, with twisted stem, in tapering octagonal fire-amber handle, terminating in an ivory woman's face with amber hair, *Charles II. period, c. 1690*
- 217 A Knife with octagonal tapering silvered metal handle engraved, and another with circular tapering silvered metal handle diced, *c. 1690* 2
- 218 Three sets of Knives and two-pronged Forks of small size with tapering octagonal agate handles and silvered metal ferrules, *c. 1700* 6
- 219 A small Knife and two-pronged Fork with octagonal tapering agate handles, in stamped leather case; and another Knife and two-pronged Fork in tapering circular tortoiseshell handles with silvered metal ferrules and butts, *c. 1700* 5
- 220 A small Knife and two-pronged Fork, another Knife, and two two-pronged Forks, all with tapering octagonal agate handles and silvered metal ferrules, *c. 1700* 5
- 221 A set of a Knife, two-pronged Fork and silver-gilt Spoon, the latter with twisted stem and rat-tail, all with ivory handles carved with infant Bacchanals holding clusters of fruit, *c. 1700* 3
- 222 A long narrow Knife with agate handle in a stamped leather sheath; a Knife and two-pronged Fork in tapering circular silvered metal handles; and two other two-pronged Forks, *c. 1710* 6
- 223 A silver Knife and two-pronged Fork, parcel gilt, the handles with engraved mother-o'-pearl side pieces, *c. 1710* 2
- 223A A Knife and two-pronged Fork in tapering octagonal agate handles and engraved silvered metal ferrules, in stamped leather case; and a pair of two-pronged Forks in tapering octagonal avanturine glass handles, *c. 1715* 5
- 223B A travelling set of Knife, three-pronged Fork, Table Spoon, with three screw pistol-shaped handles, and another small Spoon with narrow scoop handle, cylindrical Pepper Box and Drinking Cup, all in silvered metal, fitting into a shark-skin case; *Irish, c. 1710 to 1715* 10

- 224 A Knife and two-pronged Fork in circular tapering Böttcher ware handles, c. 1720 2
- 225 A curious folding clasp Knife and two-pronged Fork, the handle of each in green-stained bone or ivory terminating in a leg and foot with high-heeled shoes; the Fork in green shark-skin case, c. 1720 3
- 226 A gilt metal two-pronged Fork, in a handle partly of hexagonal agate with two knops of fluted gilt metal, faceted red stone, and agate end piece; another two-pronged Fork in silvered metal handle with foliated borders in relief; and a long narrow Knife in agate handle, c. 1730 3
- 227 A Knife and two-pronged Fork in tapering circular ivory handles with silvered metal ferrules and butts with sloping ends, c. 1740 2
- 228 A French Knife with fluted horn handle and relief metal ornament; a Dutch Knife, agate handle, in shark-skin case; another French Knife with fluted agate handle; a Swiss silver Knife with engraved handle marked "Vevey"; and a foreign Knife in tapering octagonal agate handle, c. 1740 6
- 229 A Knife and two-pronged Fork, probably Dutch, with tapering fluted silver handles chased with floral sprays, in gold tooled leather box case made to also contain a spoon, c. 1740 3
- 230 A Knife with tapering octagonal silvered metal handle engraved with figures of women; and a Knife and two-pronged Fork in pistol-shaped silvered metal handles with scrolled butts; the latter c. 1720 to 1740 3
- 231 An English Knife and two-pronged Fork, Carvers with faceted scorched horn handles, silvered metal ferrules and butts with fluted scrolls; and two two-pronged Forks with silvered metal handles, marked STERLING, in shark-skin case, c. 1740 5
- 232 A French Hunting Knife, fluted wood handle of tapering quatrefoil section, inlaid with engraved silvered metal, and similarly mounted ferrule and butt; and a Carving Knife and two-pronged Fork with pistol-shaped agate handles, mounted with silvered metal, c. 1740 3
- 233 A Knife and three-pronged Fork in silvered metal pistol-shaped handles with relief ornament; a Knife in pistol-shaped marbled ware handles; and a two-pronged Fork in pistol-shaped agate ware handle, c. 1750 4
- 234 Two pairs of Knives and two-pronged Forks in agate handles, one pair tapering octagonal, the other pair pistol-shaped with silvered metal ferrules, c. 1750 4
- 235 An English Knife in a foreign silvered metal handle, identical with a Knife in No. 213, but without the lion on top; a foreign Knife in silvered metal handle with pricked date 1756; a small Knife and two-pronged Fork with tapering seal-topped silvered metal handles; a tiny Dutch four-pronged Fork, engraved handle; and a two-pronged Fork with stone handle, c. 1750 6

- 236 A French Knife, two-pronged Fork, and silver rat-tail Spoon with carved ivory handles of cable pattern ; *Paris mark*, c. 1757 3
- 237 A German Huntsman's Knife and two-pronged Fork, wood handles with strips and studs of silvered metal, engraved and with inscription I. M. I. 1760, the butts slightly curved on one side ; in stamped leather case with socket for a skewer 3
- 238 A German Huntsman's Knife, two-pronged Fork and Skewer, the first two in horn handles mounted and bound with silvered metal engraved ; the Skewer with silvered metal handle ; in stamped leather case, c. 1760 4
- 239 A French Knife and two-pronged Fork, wood handles bound and studded with brass, the sides engraved ; another two-pronged Fork similar, the arch ornamented, engraved silvered metal on the handle with initials I. W. ; and an English Knife with silvered metal pistol-shaped handle, scrolled butt, c. 1760 4
- 240 A small foreign Knife and three-pronged Fork with octagonal tapering agate handles, in green leather case ; and a three-pronged and a two-pronged Fork in agate handles, c. 1760 5
- 241 An English Knife and three-pronged Fork in pistol-shaped white Bow (?) handles with relief floral patterns, each different, c. 1760 2
- 242 A small Knife and three-pronged Fork with tapering octagonal agate handles, silvered metal ferrules, in shark-skin case ; and a Knife and three-pronged Fork with silver seal-top handles, imitating shark-skin, in shark-skin case, c. 1760 6
- 243 A Knife and three-pronged Fork with Venetian mille-fiori glass handles ; and a Knife and two-pronged Fork in blue and white china pistol-shaped handles, c. 1760 4
- 244 A foreign Knife and four-pronged Fork with tapering octagonal cloudy quartz handles and silvered metal ferrules, in shark-skin case, metal mounted, c. 1770 3
- 245 A Knife and three-pronged Fork, both flat and fitting the one into the other's green-stained ivory handle ; a four-pronged silvered metal Fork with tapering diagonal agate handle ; and a Knife with metal pistol-shaped handle, c. 1775 4
- 246 An English Carving Knife and two-pronged Fork, in green-stained ivory handles of oval section, the blades and handles joining in a Z-shaped angle, the fork having a curved hand-guard ; *late eighteenth century* 2
- 247 Two pairs of Knives and Forks, English, one fork with two and the other with three prongs, all with bamboo handles 4
- 248 A folding Fork, brass handle ; a four-pronged metal Fork with Onslow form of end, probably Palermo mark ; a two-pronged metal Fork with five-pointed end ; a folding Knife and two-pronged Fork in gilt metal clasp form ; and a folding Knife in tortoiseshell pique clasp form 6

ANTIQUE SPOONS IN BASE METAL, ETC.

- 249 A Greek Ecclesiastical Spoon of the fifth century, elongated pear-shaped bowl, slightly tapering stem of round section, and rounded at the end, the part nearest the bowl hexagonal and engraved with Greek letters $\Delta \Upsilon \div \Delta \Delta$; the handle raised above the bowl by a convex disc joining the two—*See illustration, Plate I*
- 250 A Spoon with stem of diamond section, slip top, c. 1325; another, stem of triangular section, ball top, c. 1350; another two, with stems of diamond section, acorn top and five-pointed top, c. 1350; two with stems of circular section with busts of women in double-horned head-dresses at the ends, c. 1410; and a French pointed top Spoon, c. 1350 7
- 17/- 251 Ten Spoons, hexagonal top, acorn top, pointed, etc., c. 1400 to 1450 10
- 16/- 252 Ten Spoons, Apostle, monk top, acorn top, baluster top, etc., c. 1450 to 1500 10
- 17/10/- 253 Ten Spoons, Maidenhead, seal-top, baluster top, ball top, etc., c. 1500 to 1575 10
- 14/10/- 254 Ten Spoons, seal top, Apostle, fluted top with a loose ring, slip top, including a Pastry Spoon with a wheel top, c. 1580 to 1620 10
- 7/- 255 Ten Spoons, Apostle, Virgin and Child, Cupid, seal top, slip top, diamond top and raspberry top, c. 1620 to 1625 10
- 4/10/- 256 Ten Spoons, Apostle, seal top, slip top, hind-foot, etc., c. 1625 to 1660 10
- 9/10/- 257 Ten Spoons, seal top, slip top, square top and trifold, c. 1660 to 1675 10
- 5/5/- 258 Ten Spoons, trifold, and square tops, two engraved, c. 1675 to 1690 10
- 6/- 259 Two brass Latten Spoons for cooking, with open loop handles for hanging, c. 1650 and 1690; and a pewter Anointing Spoon, probably a copy of some celebrated Spoon
- 8/- 260 Fifteen Spoons, pewter, mostly trifold ended, including one Folding Spoon, c. 1690 to 1710 15
- 3/5/- 261 Fifteen Spoons, trifold ended, transitional Hanoverian, etc., c. 1720 to 1795 15
- 6/- 262 Two electro-plated Gravy Spoons and a Soup Ladle, King's pattern 3
- 263 A carved wood Spoon with a hand holding the bowl; a horn Spoon with whistle at the end; a white horn Spoon with foliated handle; a black horn Spoon from Madagascar; a Vancouver horn Spoon and two mother-o'-pearl Spoons 7
- 264 Sixteen Spoons in horn, wood, and china from various countries; two have whistles at the end, and one is engraved with a figure of St. Simon 16

TREEN WARE, *i.e.* WOODEN VESSELS.

- 265 A lignum vitæ Wine Cup, ribbed as a Mazer and carved on the lower part of the sides and on the base; silver dog tooth rims, engraved, fastened to the sides by three vertical strips of silver, and silver scroll handle; the rim initialled W.O.C., c. 1680
- 266 A cocoanut Wine Cup, hemispherical bowl, on a turned wood stem with circular foot, silver rims to bowl and foot with engraved scalloped edging, c. 1670
- 267 A lignum vitæ Wine Cup, ribbed as a Mazer and carved on the lower part of the sides and on the base; silver rim with engraved scalloped edging, and inscribed K.L.M. 1687
- 268 A lignum vitæ Wine Cup with a slender turned rib, silver rim with engraved scallop and dog's tooth edging; *silversmith's mark* I.H. between pellets, c. 1632
- 269 A lignum vitæ Wine Cup, silver gilt liner, plain sides, on slight circular foot, silver rims on bowl and foot with engraved dog's tooth edging, and a silver lion rampant in a circle set in the base, c. 1680
- 270 A cocoanut Wassail Cup, hemispherical, with plain silver lip, c. 1680
- 271 A lignum vitæ Ale Cup for "Cock Ale," barrel shaped, with two horizontal bands of turned reeding and slightly spread circular foot, silver lip with shaped and waved edging; *silversmith's mark* T.H., c. 1650
- 272 A beechwood Drinking Cup, for a man and wife using the same cup, ovate bowl on turned stem and circular domed foot, the sides cut with a fictitious coat-of-arms, a lion crowned, a unicorn, etc., and an inscription round the upper and lower parts of the bowl and on the foot: IF · YOV · BE · A · GOODE · HVSSI · AND · YOVSE · A · GOODE · MEANES · YOV · MVSTE · SEEKE · TO · KEEPE · YOVRE · DRINCKE · AND · YOVRE · CVPE · CLEANE · 1645 · LVKE · KNEE; $6\frac{5}{8}$ in. high.—See illustration, Plate II
- 273 A very early Wassail Bowl, lignum vitæ, with turned ribs, rounded base like the Mazer, no foot, rims a little chipped; $6\frac{5}{8}$ in. high, *sixteenth century*
- 274 A Wassail Bowl, lignum vitæ, shaped sides with turned ribs, flat base with the beginnings of a foot, engraved silver band outside the rims; $6\frac{1}{2}$ in. high, c. 1600
- 275 A Wassail Bowl, lignum vitæ, with turned ribs round the sides, on broad circular foot but very short stem, rims a bit broken; $6\frac{5}{8}$ in. high, c. 1630
- 276 A Wassail Bowl, lignum vitæ, shaped sides with turned ribs, on broad circular foot and short stem, a good specimen; $6\frac{1}{2}$ in. high, c. 1650
- 277 A Lambswool Bowl, lignum vitæ, straight sides with turned ribs, on broad domed foot and taller turned stem, silver lipped

Lot 277—continued.

with a double roped band and shaped engraved edging, and eight silver apple boughs attached round the bowl, alternately inscribed: *Apples—nut megge—hony—Spices*, the ingredients of "Lambswool," from La Mas Ubal "the day of the Apple Fruit." On the rim: *Tho. Lee Amphill neare Bedford*, and on the other side M.W.; $8\frac{3}{4}$ in. high, c. 1670—See illustration, Plate II

Amore 7/-
278 A Wassail Bowl, lignum vitæ, straight sides with one turned rib, on broad terraced circular foot, and short turned stem, without cover; $11\frac{1}{2}$ in. high, part of the foot repaired, c. 1675

Webster 17/10/-
279 A Wassail Bowl, beechwood, sides slightly tapering downwards, with three turned ribs, on broad fluted circular foot, and short turned stem, without cover; $9\frac{1}{2}$ in. high, c. 1675

Webster 22/-
280 A Wassail Bowl, lignum vitæ, shaped sides with slightly outcurved lip, horizontally fluted and ribbed, on broad fluted circular foot, and short turned stem, with fluted cover and urn-shaped handle; $12\frac{1}{2}$ in. high without cover, c. 1675 2

Webster 22/-
281 A Wassail Bowl, lignum vitæ, slightly tapering downwards to the ribbing and fluting at the lower part of the bowl, broad fluted circular foot and short turned stem, with spirally fluted cover and pineapple handle, cover repaired; $13\frac{1}{2}$ in. high without cover. Also a cocoanut Ladle with turned wood handle, c. 1675 3

Webster 17/-
282 A Wassail Bowl, lignum vitæ, straight plain sides, the tall stem, broad circular foot, and centre under the foot elaborately carved in a pattern suggestive of engine-turning, with fluted turned cover minus the handle; $10\frac{3}{8}$ in. without cover, c. 1680 2

Willian 10/-
283 A Wassail Bowl, elmwood, slightly tapering downwards, the bowl, stem, broad circular foot and under the foot all carved in a pattern suggestive of engine-turning, no cover; $7\frac{7}{8}$ in. high, cracked, c. 1685 2

Webster 8/-
284 A Wassail Bowl, lignum vitæ, straight sides with one turned rib in the centre, on broad domed circular foot with short very rudimentary stem, and domed cover with ovate handle, inside lacquered red, outside lacquered black and pencilled in gold with deer, cranes, and plants in Chinese style, probably added in the early eighteenth century; 8 in. high without cover 2

Webster 16/-
285 A Wassail Bowl, lignum vitæ, of early form, slightly incurved sides with turned flutes and ribs, silvered metal liner and rim with shaped edging, no stem or foot, but mounted on a pair of ram's horns, probably at some later date, and with a name plate bearing in monogram G.R.G., with turned wood cover; $7\frac{7}{8}$ in. high without cover 2

Amore 4/13/-
286 A Double Drinking Cup, the upper part inverted bell-shaped, with four carved bands of ornament round the sides, on a fluted knop stem, on a vertically fluted smaller bell-shaped base forming a second cup; $7\frac{1}{4}$ in. high, c. 1680

8/107- 287 A Drinking Cup, lignum vitæ, goblet shape on turned stem and flat circular foot, quite plain; $7\frac{3}{4}$ in. high, c. 1700

13/-/- 288 A combination Service of Wood. The circular base, tapering upwards, forms the box to hold ten plain wood Trenchers, $5\frac{1}{8}$ in. diam.; covering these is another circular block tapering upwards still more, with a sunk receptacle for holding a lemon, while inverted, it formed a stand for the stoneware pot in which posset was made hot by placing it on the fire. Above this is a double Drinking Cup, the small lower one fitting into a socket around the Spice Box, the larger upper one furnished with a domed lid projecting beyond the sides of the cup and hollowed out for spice. The surmounting handle formed the lid of the Spice Box and holder for nutmeg. The whole carved in horizontal bands of ornament in *cavo relievo*; $17\frac{1}{2}$ in. high, base 8 in. diam., c. 1710. For the Posset Pot, see Lot 366

4/57- 289 A tall Drinking Cup, mahogany, straight sides with slightly out-curved lip and a raised flat band round the centre, plain turned stem and domed circular foot; 11 in. high, c. 1740

42/-/- 290 A tall Cup and Cover, ovate bowl, on high turned stem and domed foot, covered with engraved subjects and a pious inscription round the bowl and base, beginning: "The Pure in heart Do find true Drinke indeede, they have a great Delight God's Word to heare," etc., and dated 1620

* * * The late owner has marked upon this vessel, "Made in 1907. —R. D." 2

DRINKING VESSELS IN OTHER MATERIALS.

607/-/- 291 An Elizabethan Wine Bowl, shaped as a Mazer, formed of sections of iridescent shell (the *Turbo olearius*), with silver gilt foot and lip with engraved dog's tooth edging, inscribed: MEMORIE . CHRISTIANITATIS . ELIZABETHÆ . KIGHLEY . CONSANGUINÆ . GVILIELMUS . WHELER . HERVEVS . TESTIS . INDIGNVS . CONSECRAVIT . DITTONIEE . IN . COMITATV . SVRRIE . SEPTEMBR 1625; $2\frac{5}{8}$ in. high

* * * This is a bowl for ceremonial use, and was offered to its recipient supported in a stand called a "Presentoir," into which the round base fitted, as a candle in a socket. Although bearing date 1625, it is of Elizabeth's reign, being made fully twenty-five years earlier—See illustration, Plate II

26/107- 292 A Charles I. Wine Cup, formed of sections of iridescent shell, silver lip with scalloped edging, and silver baluster stem and circular foot; $3\frac{1}{4}$ in. high, c. 1627—See illustration, Plate II

17/-/- 293 A sixteenth century Water Bottle and circular Dish Stand, formed of sections of iridescent shell, joined together with metal pins and strengthened by metal bands, Italian work; bottle $7\frac{1}{2}$ in. high, stand $7\frac{3}{8}$ in. diam., c. 1580 2

- 294 A sixteenth century circular Dish, similar in construction to the foregoing; $8\frac{1}{8}$ in. diam., c. 1580

* * * Formerly in the Trapnell Collection

- 294A A Bowl on circular foot of similar work; $3\frac{1}{2}$ in. high, $5\frac{3}{4}$ in. diam., c. 1620

- 295 An Assaye or Cup for detecting poison in drink, supposed to be of unicorn's horn, but really of rhinoceros horn, a small tapering vessel with turned fluted sides, and a broad silver lip engraved with a band of scrolls and azured foliated ornament, a bishop's mitre and initials T. T; c. 1570

2990.

"Credence and tastyng is fised for drede of poysenyng to alle officers ysworne and grete othe by charyngye."

ca 1460 J. Russell
'Book of Nurture' 1199

See illustration, Plate II

- 296 An Assaye of later form, shaped as an early wassail bowl, unpolished, c. 1650; and a Cup, goblet shape, with tapering sides on circular foot, polished, c. 1700, both of rhinoceros horn

2991

2992

- 297 A copper Beaker, with incurved sides inscribed HERES TO PRINCE CHARLIE, and on the base A.S; $4\frac{1}{2}$ in. high; c. 1745

- 298 A small copper Cup or Bowl, punched with a grain-like sharkskin, gilt inside, and with a gilt band round the rim inscribed: *Peto cupri laurum fui seccum me cotit aurum virtutem spero criminis ultor ero*; and a small copper Mug, with handle

2

LEATHER.

- 299 A Black Jack of the usual shape and a fine specimen holding about a gallon; 13 in. high; c. 1625

- 300 A Jack made of the foot of a small elephant, $7\frac{1}{4}$ in. high, with an elephant caparisoned above a shield in relief on one side

- 301 A half pint leather Mug, cylindrical, with silvered metal rim and engraved scalloped edging, inscribed: *Bought by m^r Gabril Bonner at Ice Fare y^e 28th Jan^r 1683*; $3\frac{1}{2}$ in. high

- 302 A leather Bottel, in which field labourers carried their beer, with incised date 1697; 9 in. high; a fine perfect specimen

- 303 Another, smaller, with a hole cut in the side as a receptacle for stable trifles; $6\frac{1}{2}$ in. high

Seventeenth century

- 304 A cuir bouilli Wine Flask, globular, with style drawn design of conventional floral form repeated, loop handle, bone screw nozzle, for carrying at the girdle

Sixteenth century

- 305 A cuir bouilli Knife Sheath, with stamped design of fleurs-de-lys with lozenge-shaped compartments and human heads within circles on one side, and on the other, birds within lozenge-shaped compartments, etc.; $11\frac{1}{4}$ in. long

Sixteenth century

* * * Found in the mud of Cardiff Castle moat, on which the north side of Sutra Street now stands

- 306 A leather Flask, with upright spout on one side and handle on the other, with a strap between for carrying; $9\frac{1}{2}$ in. high
- 307 A leather Sandal from Ashantee, and a pair of leather Sandals, African 3
- 308 A Ewer, the body of pewter, covered with leather, silver-mounted lip and foot with beaded rims. On the front is painted the head of an ox in an oval formed of the ornament found on eighteenth century furniture, shaped as the catkins of *Garrya eliptica*, with a band of Pompeian scrolls round the centre; and on the rim is inscribed: *The Hide of this Ox we to Leather will turn, Of that Leather make Jacks and make Cups of the Horn.* 13 in. high; c. 1780—See illustration, Plate II

HORN.

- 309 A cylindrical Horn Case and domed Cover, with a set of six Drinking Cups nested, one with cover; two of the cups have been replaced at a late date, c. 1780 9
- 310 A small Cup, engraved with half circles, silvered metal rim; another inscribed THO^s MORETON. 21. Mes. TREMENDOUS. MAY 25. 1796; a black horn Ale Cup, with annular ornament; and a white horn Cup, engraved with three bands of ships, a suspension bridge, and wharves, and at top Wilson's Bridge over the Wear at Sunderland, opened 1796 4
- 311 A Cup engraved with the animals entering the Ark and Noah and his family watching the procession; another engraved with the entrance to the Thames Tunnel, opened in 1843; another with huntsmen and dogs chasing a fox; and another with the death of the fox 4
- 311A A Drinking Horn and Stopper, a bull's horn, engraved with figures of men in uniform, women, a mermaid, a house, a fort, sun, moon, and stars, an Irish harp crowned, and many other figures; 15 in. long; *Late eighteenth century* 2
- 312 A Horn on Wheels for passing Bragawd, a mixture of ale, honey, spices, etc., round a table at convivial meetings. It is mounted in silver and set in a four-wheel carriage also of horn, and the pointed end forms a whistle for calling for further supplies, involving the obligation of "paying for your whistle"; $9\frac{1}{4}$ in. high; carriage, 10 in. long *Late eighteenth century*
- 313 A covered Cup of pale horn, goblet shape, on turned stem and circular foot; $8\frac{3}{4}$ in. high *Early nineteenth century*
- 314 Three Elizabethan Shoe-horns, elaborately fire engraved and inscribed: THIS IS WYLYAM ROWNYNS SHOEIN HORNE MADE BY THE HANDES OF ROBERT MINDVM ANNO DOMINE 1594; the others similarly inscribed by the same maker for other owners, and dated respectively 1595 and 1597 3

- 315 Two Elizabethan Shoe-horns, similarly engraved and inscribed by the same maker, and dated respectively 1597 and 1598; another by Robart Mindum, dated 1612; and another of different style, fire engraved, with interlaced strap-work and a coat-of-arms 4

TRENCHERS OR ROUNDELS.

- 316 A plain wood Box engraved on the lid with four birds, divided by lines and zigzag ornament, dated at the base 1554; $5\frac{5}{8}$ in. diam., containing five plain wooden Trenchers, $5\frac{1}{8}$ in. diam. 6
- * * Found in a house at Storrington, in Sussex, and from the Willett Collection
- 317 A painted wood Box, the blazoning of the coat-of-arms on the lid much defaced, but sufficient remaining to attribute it to the Royal Arms of Elizabeth, surmounted by an arched crown resting on the Garter with supporters Dexter, lion rampant, and Sinister, a dragon rampant, and white label with the motto DIEV·ET·MON·DROYT, $6\frac{1}{2}$ in. diam.; containing twelve illuminated Roundels bearing outer and inner borders of ornament, a circular inscription and a horizontal inscription with an emblem or ornament above. The inscriptions are all of a moral character, as: *Sett an order in y^r house for y^e shalte die & not liue—Deathe is better y^e a wretched lyfe or sicknesse—Stad faste in the waie of the lorde—Feare God honor y^e Kinge*, etc.; $5\frac{1}{4}$ in. diam., c. 1565 13
- 318 A plain wood Box with turned fluting and punched annular ornament on the lid, and F. S branded in the base, $5\frac{5}{8}$ in. diam., containing eight painted Roundels bearing borders of interlaced strap-work of various patterns interspersed with conventional floral devices, and horizontal inscriptions in the centre, with an ornament above. The inscriptions are passages of Scripture and other moral texts: *Loue God all thy lyfe longe—Ye most enter into the Kyngdome of heauen thorow muche trobell and aflycione*, etc.; $4\frac{7}{8}$ in. diam., c. 1580 9
- 318A A painted wood Box with conventional ornament in green, red and black, and the arms of James I. on the lid, $6\frac{5}{8}$ in. diam., containing nine painted Roundels bearing illustrations of Fables in rhyme set round the outside, and a gilt edging beyond. The inscriptions are of this character:—

False theeues wth bread y^e doggs assay
 Their Masters houshold to betray;
 This warneth us from bribes to fly
 Least y^e we hurt our frends therby.

OR,

The ape would haue half Reanolds tayle
 To hide his bum make as his nayle
 The meaning is, such as haue store
 Should be more liberall to y^e poore, etc.

$5\frac{1}{4}$ in. diam., c. 1603-7

10

- 319 A plain wood Box, $6\frac{3}{4}$ in. diam., containing ten painted Roundels bearing representations of various fruits in circles surrounded by inscriptions, sometimes a little coarse, in praise of the fruit, as :—

Alas sweete sowle y^a are not mery
Is it because y^a feele it kick ?
Cheare up your hearte wth the goosebery
W^h never growes withoute a prick.

or,

Of medlers I present the tipe
which rott as faste as they doe ripe
Those medlers are mvch like to me
which meddle to mvch whiles young they be.

on the outer edge a gilt border ; $5\frac{1}{4}$ in. diam., c. 1665 11

- 320 A plain wood Box, $6\frac{7}{8}$ in. diam., containing twelve Roundels decorated with coloured copper-plate engravings of the Sibyls surrounded by written verses, as :—

The Delphica sibyll did assure
That Chryst shoulde come of virgin pure
Sinners to saue and death to quell
with all the damned crue of hell.

or,

The dayes shall come the Lybicke sings
All soules shall joy at King of Kings
who comes to rectify mans fall
Most just, but mercifull with all.

on the outer edge a black border ; $5\frac{3}{8}$ in. diam., c. 1670 13

* * From the Wills Collection

- 321 A square wood Trencher with a hollow at one corner for salt, $7\frac{3}{4}$ in. square, c. 1665 ; and two circular Trenchers with rims, $8\frac{1}{4}$ in. diam. and $8\frac{1}{2}$ in. diam. 3
- 322 A set of small circular wood Trenchers of plate form, with silver rims, and on the flat of the rims an engraved silver marquis's coronet, and at the opposite side a monogram c. c., direct and reversed, 6 in. diam. 6

TOBACCO RASPS OF THE EIGHTEENTH CENTURY.

- 323 Ivory, Cupid carrying a basket of fruit to Venus seated in a marble hall with looped-up curtains, and a man looking in from behind a pillar ; below a basket of fruit ; complete with rasp, and a box at the end ; 9 in. long Italian
- 324 Ivory, Jupiter standing on clouds, an eagle beside him ; in separate compartments, above is a mask, and below a basket of fruit ; complete with rasp ; 8 in. long Dutch

- 325 Ivory, Poseidon holding over Amphitrite a wreath of flowers, the two seated on a conduit with water flowing out, within an oval panel; above, a shield of arms with Cupid supporters, and below, amorini on foliated scrolls; no rasp, but a shaped box at the end, the lid carved with Venus and cup, with silver hinges and rims; 9 in. long *French*
- 326 Ivory, a pair of Lovers seated on a canopied alcove bed, she with fruit in her lap; above, two flaming hearts, and below, doves billing and cooing; no rasp and no lid to the box at the end; $8\frac{3}{4}$ in. long *French*
- 327 Ivory, carved as the full-length figure of a Rabbi with flowing beard, in a conical broad-brimmed hat, with hands folded under a long robe with dog's-tooth edging, nozzle at end, no rasp; $7\frac{1}{2}$ in. long *Dutch*
- 327A Ivory, a pair of Lovers standing beside a tree, and a mask and shell below, no rasp; $6\frac{1}{2}$ in. long *Dutch*
- 328 Wood, carved in relief on a diced panel three fleurs-de-lys crowned within a wreath, and below, a saint with a hammer before an anvil, and S^T ELOI—1739, a wide hole at the end, no rasp; $8\frac{3}{4}$ in. long *French*
- 329 Wood, with revolving lid, both sides carved in relief on a matt ground, on the lid three fleurs-de-lys crowned and floral ornament; on the underside below a shell a heart pierced by two arrows amid floral ornament, a bellows, hammer between two horseshoes, two pincers between two hammers, and an anvil between two nails, nozzle at the end, no rasp; $8\frac{3}{8}$ in. long *French*
- 330 Wood, with revolving lid, in shape of a scent flacon, the nozzle formed as a human head, very finely carved in cavo relievo on both sides; on the lid below the head leafy scrolls, in an oval two flaming hearts, and LAMOVR NOVS VNIT, and below the Sun, Moon, Cock on a cross, and implements of the Passion; on the under side, JE SVIS A CLAVDE DE CABAZA PRESTRE the owner, his arms below, and underneath Christ rising from the tomb; signed at the bottom FAITE PAR P. GASTELL; complete with rasp; $8\frac{1}{4}$ in. long *French*
- * * Exceptionally fine
- 331 Wood, the top side flat with sliding rasp, the borders, carved, a mask at the end of the rasp, and the end terminating with a crown, the under side rounded and carved with Gothic flamboyant scrolls in high relief on a matt ground, complete; 7 in. long *French*
- 332 Wood, only the back part, crudely carved in relief, a rayed sun with human face at the top, a double cross below, and ornament between, round the sides A JACQVE—LE LJEVRE MOI and dated 1732; no rasp; $7\frac{1}{2}$ in. long *Flemish*
- 333 Wood of unusual form U-shaped on four side wheels, inlaid with ivory, and with ivory twisted bars up the sides, sliding lid carved in cavo relievo with a crown, a stag running, a

Lot 333—*continued*.

trefoil within a shield, and foliated scrolls; similar foliated scrolls on the under side and a brass corded inlay, complete with rasp; $7\frac{7}{8}$ in. long *German*

- 334 Two, wood, both inlaid with mother-o'-pearl and brass wire, one curved to fit in the pocket, with a flat design, the other with a sinuous stalk of flowers in relief, the latter dated 1757; both complete with rasps; $7\frac{7}{8}$ in. long and $5\frac{7}{8}$ in. long; 2
Italian

- 335 Two, one wood with sliding lid punched on both sides with small crosses and clusters of circles, and with brass ribs in sunk grooves up the sides, with rasp; $4\frac{1}{2}$ in. long, c. 1690; the other of horn, with rasp folding in as a clasp knife, $3\frac{1}{4}$ in. long; 2
English

- 335A Wood, large size, carved at one end of the rasp, and on the rounded back in the style of the Dutch boards for smoothing linen, and with a wide mouth at the narrow end; part of rasp broken off, dated 1742; $18\frac{1}{4}$ in. long *Dutch*

- 336 Steel, with folding lid, shaped as a fish, the mouth forming the nozzle; complete with rasp; $7\frac{5}{8}$ in. long. *Very rare*

* * * From the Hilton Price Collection

- 337 Iron, the same model as most of the ivory rasps, and probably cast from an ivory rasp, the central subject Venus holding the bow and arrow of Cupid, a shell and crossed batons above, and two cornucopiæ below, revolving lid plain, complete with rasp; $7\frac{5}{8}$ in. long

- 338 Iron, shaped as the sole of a sandal truncated at the toe, folding lids for rasp and box, quite plain, but with a stud and bolt fastening, no rasp; $4\frac{7}{8}$ in. long *English*

* * * From the Bidwell Collection

- 339 Two, Steel, each with sliding cases, both engraved with ornamental frames enclosing the names of past owners: "John Oats, Sheffield 1742" and "Humphrey Potter 1769"; 2
English

- 340 Six Casts of Snuff Rasps 6

CARVINGS.

- 341 Right-hand Leaf of a Diptych, ivory, with representation of our Lord crucified between the two Marys overcome by grief, under a crocketed canopy of three arches; $3\frac{1}{2}$ in. high by $2\frac{1}{2}$ in. *French, 14th century*

- 342 Left-hand Leaf of a Diptych, ivory, with two horizontal scenes, our Lord crucified between the B. V. M. and St. John at the top, and below the adoration of the three Wise Men; the cross bars carved with a row of rosettes in relief; $5\frac{1}{2}$ in. high by $2\frac{5}{8}$ in. *French, 14th century*

- 343 Right-hand Leaf of a Diptych, ivory, with two horizontal scenes, The Entombment of our Lord at the top, and The Flagellation below, the cross bars carved with a row of rosettes in relief; $4\frac{5}{8}$ in. by $2\frac{3}{4}$ in.; also two pieces, full length, of the opposite leaf, the upper half having been The Crucifixion and the lower half The Resurrection; *French, 14th century* 3
- 344 An antique Russian Crucifix, carved wood, coloured, the main portion with the scene of the Crucifixion, above, The Annunciation, below it, The Baptism of our Lord, and at the base our Lord appearing to His disciples, the figures standing out over a mica ground; $7\frac{5}{8}$ in. high
- 345 A shaped Box Panel of carved oak with border of laurel leaves, in the centre full-length figures of the Child Jesus between St. Joseph and the B. V. M., and holding their hands, and the Holy Spirit as a Dove above; $15\frac{1}{4}$ in. high by $11\frac{1}{4}$ in.
- 346 A pair of carved oak Panels, upright, with full-length figures of St. Mark writing on a book and with foot upon a lion, and St. John holding an open book, and an eagle beside him holding his inkhorn, both standing on ornamental brackets; $13\frac{1}{2}$ in. high by $7\frac{1}{2}$ in. 2
- 347 A carved oak Panel, a female saint at prayer in architectonic scrolls, $7\frac{1}{2}$ in. by 7 in.; another, a woman seated with two children between scrolled plant forms, with rectangular frame, all in relief, $7\frac{5}{8}$ in. by $8\frac{1}{2}$ in.; and a Gothic Finial from a stall or pew, fleur-de-lys form, on one side a man holding a black jack, and on the other a man and woman, kneeling, in embrace; $11\frac{1}{2}$ in. high 3

THIRD DAY'S SALE.

The Property of the late Robert Drane, Esq.

—continued.

STONEWARE, EARTHENWARE, AND CHINA.

LOT

- 20/-
Jenkins
- 348 An Elizabethan mottled stoneware Jug, globular body, long neck, mounted in silver on neck and foot and with silver hinged cover, the cover repoussé with lions' heads within scrolled compartments and fruit between, with a rayed button on top surmounted by a baluster handle; a similar band surrounds the neck, and a foliated scroll and floral band with leafy edging girts the foot; $12\frac{1}{2}$ in. high, c. 1565—See illustration, Plate III
- 25/-
Richards
- 349 An Elizabethan brown stoneware Jug, capacity about half a pint, ovate body, long neck, mounted in silver gilt rim and hinged cover, the cover with repoussé floral scrolls, a rayed button on top and a pointed handle, winged figure billet, the band around the neck with human head masks in compartments formed by intertwined snakes, and foliated scrolls between; $7\frac{1}{2}$ in. high, c. 1575—See illustration, Plate III
- 5/-
Ryan
- 350 A Dieburg pipeclay Kannette, bearing an impressed French Royal coat-of-arms of the period before 1420, with seven fleurs-de-lys; and at the sides two English Royal coats-of-arms of the period after 1420, with the date 1573; pewter hinged cover; $11\frac{3}{4}$ in. high
- 30/-
Amore
- 351 A brown stoneware Bellarmine or Greybeard; $7\frac{1}{2}$ in. high, c. 1600
- Neale 20/-
- 352 A German pipeclay Jug with impressed pattern similar to that on English carved wassail bowls and cups, and a band of masks and two headed eagles round the neck, with silver lip embossed in ovals and other ornament; $6\frac{1}{2}$ in. high, c. 1630
- 5/-
Amore
- 353 A Savona Posset Pot and Cover, blue and white, with conventional floral pattern, in the centre on each side two hands clasped in front of a heart pierced by arrows and the date 1640; $6\frac{1}{2}$ in. high
- 19/-
Hards
- 354 A Lambeth Delft Sack Bottle, white, with blue inscription WHIT 1644; $6\frac{1}{4}$ in. high—See illustration, Plate III
- 4/-
- 355 A Lambeth Delft Fuddling Cup, four cups joined together, white, plain, $3\frac{3}{8}$ in. high, c. 1645—See illustration, Plate III

5/10/- 356 A Lambeth Delft Sack Bottle, white, with blue inscription SACK, 1648; $6\frac{1}{2}$ in. high

22/-/- Stoner 357 A Lambeth Delft Claret Bottle, white, with blue inscription CLARET, 1651; $5\frac{3}{4}$ in. high

2/10/- ditto 358 A Lambeth Delft Mug, cylindrical, white, plain, with nine vertical bands of nodes on the sides, and twisted handle; $8\frac{1}{4}$ in. high, c. 1650

24/-/- ditto 359 A Lambeth Delft Mug, globular, white, with blue inscription in an ornamented horizontal band: RICHARD : WRIGHT : & : ELIZABETH : 1650; $4\frac{1}{4}$ in. high

22/-/- ditto 360 A Lambeth Delft Cat-shaped Jug, white touched with blue, and dated 1657; $6\frac{3}{4}$ in. high

6/-/- Law 361 A Lambeth Delft Drug Jar, white, with a blue winged head over an inscription, initials R : W and date 1672; $3\frac{1}{4}$ in. high

3/7/6. 362 A Nottingham stoneware Mug, globular body, broad neck, the body with impressed pattern similar to that on wassail cups; silvered metal lip, 5 in. high, c. 1720; and a Nottingham stoneware Mug following closely on the lines of the small Jack No. 301, silvered metal lip; $4\frac{1}{4}$ in. high, c. 1730 2

15/-/- Amore. 363 A Fulham stoneware Mug, cylindrical, with raised figures of a man on foot with dogs hunting a stag amongst trees with rosettes interspersed, an oval medallion bust of Queen Anne, and incised inscription: *Drink all out and Doe not Doubt but you shall see my cony But if you Doe you may be sure that it will cost you mony. W^m Hopkins Danⁿ & Elenor Ho e* (a tree has been stuck over the missing letter) 1724; $7\frac{3}{4}$ in. high

24/-/- Amore 364 A Fulham stoneware Mug, cylindrical, with raised figures of a man on foot with dogs hunting a stag under trees, bust medallions of Queen Anne and George II, and incised inscription: *To the pious Memmorry of Queen Ann Drink it out and Fill it again. Thomas Sheffield* 1729; silver lip engraved John Setchfield; 8 in. high

8/-/- Amore 365 A Fulham stoneware Mug, cylindrical, with raised figures of huntsmen on horse and on foot with dogs hunting a stag under trees, and in the centre on an applied plaque, Hogarth's "Midnight Conversation," with all the implements for a carouse; Sheffield plate lip, so that it must be after 1742 when Sheffield plate was invented, c. 1760; $8\frac{5}{8}$ in. high

8/10/- Amore 366 A Fulham stoneware Jug which has been used for standing in a fire to make Posset hot, such a jug as is spoken of in the Combination Service, Lot 288; it has an incised inscription: *Tho^s Tipp*, 1746; $6\frac{1}{2}$ in. high

6/-/- 367 A Nottingham stoneware Bear and Cub, with the head fixed to the body, the coat formed by fine potsherds, parts brown glazed, c. 1760; $9\frac{3}{4}$ in. high

7/-/- Amore 368 A Fulham stoneware Jug with raised figures of a lady and a gentleman on horseback with dogs hunting a stag, trees, a man with a staff, two classically draped female figures, and

Lot 368—continued.

in the centre of an applied plaque the heads of George III and Queen Charlotte, with a Cupids' procession in between, Sheffield plate lip, c. 1761 or 2; $9\frac{1}{4}$ in. high

207-
Sedgwick
369 A Fulham stoneware Mug, tapering sides with raised figures of a huntsman on horseback blowing a horn, dogs hunting a fox round the lower part, and a group of flowers round the neck, c. 1760; $5\frac{1}{4}$ in. high

passed
370 A German (?) stoneware Tea Jar, cylindrical, with four representations of a huntsman with a gun standing and holding up a dead hare, with sunflowers between each, and a band of vine leaves and grapes round the shoulders and base, pewter screw lid, c. 1760; $8\frac{1}{4}$ in. high

257-
Stonew
371 A Gres de Flandres Mug, globular body, partly brown glazed, with incised floral ornament touched in blue, and a pressed coat-of-arms in the centre, dated 1690; $8\frac{1}{4}$ in. high

7/10-
Stonew
372 A Whieldon two-handled Mug with vertical mottling in zaffre manganese and copper, green handles with raised ornament in yellow, incised on the bottom, Samuel Keeling, September 23, 1769; $5\frac{3}{8}$ in. high

13/10-
373 A small Whieldon Toby Jug, the man holding a horn cup in his right hand and a globular jug in his left hand, c. 1769; $6\frac{1}{2}$ in. high

8/1-
Law
374 A Staffordshire Female Toby Jug, a seated woman holding a globular jug in her right hand and a horn cup in her left hand, c. 1770; $10\frac{1}{4}$ in. high—See illustration, Plate III

17/10-
Folkhard
375 A large Cobridge Jug, modelled as a Bacchus seated on a barrel holding across his right shoulder a monster-headed vessel, and another monster on his other shoulder forming a handle for the jug, on the other side Pan is supporting the vessel on his shoulder and pushing it up with a wine cup, as he holds his pipes in his left hand, on a circular foot pencilled WINE in red, by J. Voyez of Cobridge, 1788; $12\frac{1}{2}$ in. high—See illustration, Plate III

ditto 24/-
376 Two Staffordshire Mask Mugs with fauns' heads wreathed with grape leaves and fruit; $4\frac{1}{2}$ in. high and $3\frac{3}{4}$ in. high, the latter chipped 2

4 cent 30/-
377 A small Staffordshire Toby Jug, and a Staffordshire blue printed Toad Mug with an Eastern scene; $4\frac{3}{4}$ in. high and $3\frac{1}{4}$ in. high 2

12/1-
Patterson
378 Three Worcester Mugs, one painted with a cocked hat and a crossed sword and spear, inscribed *Success to the L.W.V., i.e., the Loyal Worcester Volunteers, In defence of our King and Country, and To Protect our Families & Property*; $3\frac{1}{4}$ in. high; one with a view of Worcester inscribed *Success to Physic* and initialled E.H., $3\frac{1}{8}$ in. high; and the third with two fanciful devices, and inscription: "A New Puzzle of PORTRAITS, Striking Likeness" of the King & Queen of England and the

Lot 378—*continued.*

late King & Queen of France." The portraits are those of George III and Queen Charlotte, and Louis XVI and Marie Antoinette, c. 1793 or 4; $3\frac{5}{8}$ in. high 3

18/- 379 A Hollins ware Jug with fox hunting scene in relief around the centre of the body, c. 1780-90; $5\frac{1}{4}$ in. high

34/- 380 A Pesaro Drug Pot and Cover, 4 in. high; and a curious white glazed pottery figure of a Woman and Child, $8\frac{1}{2}$ in. high 3

6/- 4. 381 A Delft barber's Dish, blue and white, with barber's tools painted in the bowl; $10\frac{1}{2}$ in. diam.

Dr Major 10/- 382 A polished slate Mug, $5\frac{1}{4}$ in. high; a Doulton Mug made in imitation of leather, $5\frac{5}{8}$ in. high; and an Algerian red earthenware Vase, $7\frac{1}{2}$ in. high 3

passed 383 Four Allerdale pottery Bowls, one with upright handle, with incised inscriptions 4

DRINKING GLASSES.

384 A yard Flute, on circular domed foot; the flute itself is exactly 37 in. long, with foot $39\frac{1}{2}$ in., c. 1700

385 A yard trick Flute, with globular bulb at the end of the stem; $33\frac{1}{2}$ in. long, rim repaired, c. 1700

386 A half-yard trick Flute, with a small bulb at the end of the stem; 18 in. long, on circular foot, total height $18\frac{3}{4}$ in.

Early 18th century

387 A foot Flute, $11\frac{1}{2}$ in. long, on circular foot and ribbed stem, total height, $13\frac{3}{8}$ in.

Early 18th century

388 A Goblet, straight tapering sides, short ribbed stem on circular foot, the bowl engraved with three houses, a field, a horse, sheep, and birds; $6\frac{1}{2}$ in. high c. 1700

389 A tall Goblet with raised ornament round the base of the bowl, on double bulbed stem and folded foot, with a threepenny silver piece of Queen Anne, 1713, in the bulb; $11\frac{1}{4}$ in. high

390 A tall straight-sided Goblet with bulb in the stem and folded foot, with a Coronation medal of George II, 1727, in the bulb; $10\frac{5}{8}$ in. high

391 A drawn Glass with bell-shaped bowl and a tear with a long thread in the knopped stem, on folded foot, $5\frac{5}{8}$ in. high, c. 1700; and a tall Wine Glass with waisted bowl, on baluster stem and folded foot, engraved border round the rims, $6\frac{7}{8}$ in. high, c. 1720 2

392 A tall Wine Glass with straight sides, neck and collar, on double knopped twisted stem, and plain domed foot, the bowl engraved with the bust of (?) in the branches of a tree and three crowns amongst the foliage; $6\frac{1}{8}$ in. high, probably of the period of James II—See illustration, Plate IV

- 393 A plain drawn tall Wine Glass with a bead in the stem, on domed foot, finely engraved, on one side a crowned cipher formed of the letters I R, direct and reversed, and two verses of the Jacobite paraphrase of "God save Great James our King":

*God Save the King I pray God Bless the King I pray
God Save the King
Send him Victorious Happy and Glorious
Long to Reign Over Us.
God Save the King. AMEN*

On the opposite side:

*God Bless the PRINCE of WALES
The True-born PRINCE of WALES
Sent us by THEE
Grant us one Favour more
The King for to Restore
As Thou hast done before
The FAMILIE.*

The verses are surrounded by interlaced scrolled ornament;
7 $\frac{3}{4}$ in. high c. 1725

* * The Glass was in memory of the Old Pretender's rebellion in 1715, and of the birth of the Prince of Wales in December, 1721—See illustration, Plate IV

- 394 A drawn Glass, with air-twisted stem on a domed foot, the bowl engraved with the Stuart rose of seven petals between a natural rose and bud with leaves, and a star; 7 $\frac{3}{8}$ in. high; c. 1740—See illustration, Plate IV
- 395 A tall Wine Glass, with straight sides, air-twisted and double-knopped stem, and domed foot, engraved with a half-length portrait of the Young Pretender in an ornamented circular frame, AUDENTIOR IBO inscribed above, and on the other side a rose with six petals between a thistle and a natural rosebud with leaves; 6 $\frac{1}{8}$ in. high; c. 1745—See illustration, Plate IV
- 396 A drawn Glass, with air-twisted stem and folded foot, engraved on the bowl *David Anderson* 1756; 6 $\frac{1}{2}$ in. high; and an ogee Glass, with air-twisted stem and domed foot, the bowl engraved with equestrian fox hunters, one with a horn, and the other the whipper-in; 6 $\frac{7}{8}$ in. high; c. 1760 2
- 397 A tall Wine Glass, with straight sides, on tall stem with two air-twisted knops and a bulb, and domed foot, the bowl engraved with a half-length portrait of Frederick the Great of Prussia within a crowned shield surrounded by flags and trophies; on the opposite side in a ribbon: FREDERIK DEN DERDEN KONING VAN PRUISSEN KEURVORST VAN BRANDENBURG, ENZ. ENZ. ENZ.; on the foot: Simon Iacob Sang, inv. et fec. Amsterdam, 1759; 8 $\frac{3}{4}$ in. high—See illustration, Plate IV
- 398 A drawn Glass, with air-twisted stem on a domed foot, the bowl engraved with a figure of a man hanging on a gibbet, the initials A B (Admiral Byng), and inscription THE COWARD REWARDED; 6 $\frac{1}{8}$ in. high—See illustration, Plate IV

- 399 A drawn Glass, with white threaded stem and domed foot, the bowl engraved with a natural rose, bud, leaves, a spray of forget-me-not, a star, and the word *Fiat*; $6\frac{3}{8}$ in. high; c. 1760
- 400 A glass Punch Bowl, holding eleven pints, on baluster stem and domed foot; $14\frac{1}{2}$ in. high; c. 1760
- 401 A Tumbler for "Cock Ale," engraved with a cock on ferns between a rose and a pink, a bird flying, and *E. A.* 1762
- 402 A Pint Mug, with incurved sides, engraved with hops and barley and "Joseph Seager, 1763"; 5 in. high
- 403 A cut-glass Punch Server, with drop-shaped bulb, Waterford glass; and another with globular bulb, English glass; both $7\frac{1}{4}$ in. high; c. 1770 2
- 404 Two cut-glass Punch Servers; and another, respectively $6\frac{5}{8}$, 5, and $5\frac{3}{4}$ in. high 3
- 405 A Boot Glass, made in derision of Lord Bute, whose emblem the boot was burnt by the mobs of the day; $4\frac{7}{8}$ in. high; c. 1765
- 406 A Rummer of the Adam period, engraved with festoons round the rims; $5\frac{3}{4}$ in. high; c. 1770—*See illustration, Plate IV*
- 407 A Cordial Glass, with threaded stem and domed foot, engraved with a pretty rustic scene of cottage and water-wheel and WILL ADAMS 1774; $5\frac{5}{8}$ in. high
- 408 A cut-glass Tankard and Cover, finely engraved with rococo scrolls, enclosing small views and two larger scenes, one of a sportsman with dogs, and a sportswoman with a gun, and in the centre a foreign coat-of-arms; fire gilt borders; 9 in. high; *German, 18th century* 2
- 409 Two Coaching Glasses, one with faceted sides and knopped short stem; and the other with faceted sides and a slight ridge on the stem; 5 in. high and $3\frac{7}{8}$ in. high; late 18th century. *Very rare* 2
- 410 A Sillabub Glass, curiously wrought, round the rim an engraved border of scrolls and helianthus-shaped flowers, all of which but three, are pierced through the centre, leaving just barely room to drink without spilling; $3\frac{1}{4}$ in. high; 18th century
- 411 A bell-shaped Glass, on knopped and air-twisted stem and domed foot, engraved with two cherries and stalks of barley on one side and a curious cluster of fruit hung up on the other; 8 in. high; a Glass, with double-knopped and air-twisted stem, engraved with leaves and berries, $7\frac{1}{2}$ in. high; and a drawn Glass, with air-twisted stem, engraved with a tasselled border; 7 in. high; 18th century 3
- 412 A Nailsea Glass Flask, $6\frac{1}{2}$ in. high; and a glass "Snap Dragon," a bottle formed as an animal with a curly tail, $6\frac{1}{2}$ in. long; c. 1790 2
- 413 A Glass, with white twisted stem on domed foot, engraved with a frigate under sail and *Success to the EAGLE FRIGATE JOHN KNILL COMMANDER*; $6\frac{1}{8}$ in. high; c. 1790—*See illustration, Plate IV*

- 414 A Tumbler, engraved with masonic emblems, a wreath and monogram *R.I.* 1798; $4\frac{1}{2}$ in. high
- 415 A straight-sided Glass, faceted stem and folded foot with engraved band under the rim pierced through seven of the flowers, leaving three unpierced, similar to No. 410; $5\frac{3}{4}$ in. high; a straight-sided Glass, with faceted knopped stem on a folded foot, finely engraved, $6\frac{1}{2}$ in. high; and an ogee Glass, with faceted knopped stem on a domed foot, with engraved vine leaves and cut grapes, $5\frac{1}{2}$ in. high; 18th century 3
- 416 An eight-sided Wine Glass, with white twisted stem and domed foot, engraved on alternate faces with vine and grapes, $4\frac{3}{4}$ in. high; two other engraved Wine Glasses, with white twisted stems, $5\frac{3}{4}$ and $5\frac{1}{4}$ in.; and two October Ale Glasses, $5\frac{3}{4}$ and 5 in. high; c. 1800 5
- 417 Two plain drawn Glasses with tears in the stems, on folded feet, $7\frac{1}{2}$ and $6\frac{3}{4}$ in. high; and three Rummors, $5\frac{3}{4}$, $5\frac{1}{4}$, and $4\frac{1}{2}$ in. high; c. 1800 5
- 418 Five Cordial Water Glasses, with white twisted stems and domed feet, two forming a pair, the others varied; all about $5\frac{3}{4}$ in. high; c. 1800 5
- 419 Four heavily-made Cordial Water Glasses, on baluster stems; $4\frac{1}{8}$ and $3\frac{3}{4}$ in. high; various dates 4
- 420 A Violet Glass, for setting inside a lady's pincushion, with cup-like rim and vertically ribbed sides, $4\frac{1}{4}$ in. high; and three Wine Glasses, one with folded foot; c. 1800 4
- 421 A pair of Glass Beakers, with coloured representations of Dr. Syntax being entertained by a lady with a lute, and Dr. Syntax painting a portrait of a stout lady; $5\frac{3}{8}$ in. high; c. 1830 2
- 422 A Goblet, on baluster stem and flat foot, engraved with bust portraits of two pugilistic celebrities YOUNG DUTCH SAM and THE STREATHAM YOUTH, with hops and barley on the opposite side; $5\frac{1}{8}$ in. high; c. 1831—See illustration, Plate IV
- 423 A Goblet, with a bulb in the stem, on flat foot, engraved *B. & E.W.* and a bird flying wreathed in a floral design; in the bulb is one of the first fourpenny pieces coined for currency, dated 1836; $5\frac{1}{2}$ in. high
- 424 A plain large Goblet, with bulb in the stem containing a three-penny piece dated 1843, $8\frac{1}{4}$ in. high; and a fine cut-glass Monteith, $5\frac{1}{4}$ in. diam. 2
- 425 Three Wine Glasses, with red twisted stems, one engraved; and a tall deep Glass on faceted stem, engraved with rose, shamrock, and thistle; 19th century 4
- 426 A Tumbler, engraved with a coat-of-arms and ornament, $3\frac{1}{2}$ in. high; and three Wine Glasses for port, sherry, and champagne, engraved with a coat-of-arms, a viscount's coronet, and cipher *P.* direct and reversed; 19th century 4

- 427 Two tall Champagne Glasses, with faceted tapering bowls ; and
two tall Wine Glasses, with air-twisted stems 4

NEEDLEWORK.

- 428 An oval panel of Stuart Embroidery with a flying bird in each corner, the two Angels meeting Lot before the city of Sodom ; $10\frac{1}{2}$ in. by 8 in., in gilt frame, $14\frac{1}{4}$ in. by 12 in. c. 1640
- 429 A Stuart Lace Sampler with fifteen rows of work in various patterns, $24\frac{1}{4}$ in. by $8\frac{1}{4}$ in., framed c. 1650
- 430 A Stuart Needlework Pin Cushion, oblong, with four pointed and tufted corners, attached to a flat band for suspension from a lady's kirtle, the band inscribed GOD BLESS P.C. AND, on the two sides of the cushion, DOWN WITH THE RUMP ; length of tape and cushion $13\frac{1}{2}$ in. c. 1650 to 1653
- 431 A Stuart Sampler with needlework patterns in various stitches and openwork, and two alphabets ; 20 in. by $7\frac{7}{8}$ in., framed, c. 1660
- 432 A Stuart Sampler with eleven rows of various patterns, in one of which outline children are holding flowers, and one alphabet ; $26\frac{1}{2}$ in. by 7 in., framed Dated 1671
- 433 A Stuart Sampler with twelve rows of various patterns, half in colours and half in white, and two alphabets ; $31\frac{1}{2}$ in. by $7\frac{3}{4}$ in., framed Dated 1684
- 434 A Queen Anne Sampler with an assortment of needlework patterns, alphabets, etc., signed ELIZABE THOMAS 1706 ; 38 in. by 9 in., framed
- 435 A George II Sampler with eight rows of border patterns, alphabet, figures, a long inscription, and signature REBEKAH BARROW 1735 ; $16\frac{3}{4}$ in. by 8 in., framed
- 436 A George III Sampler with a border, six rows of work and verse, "Immortal made what Should We Mind So Much As Immortality," etc., and "Robert Henderson. Jean Henderson. Criston Henderson Year 1762 " ; $11\frac{7}{8}$ in. by $9\frac{1}{2}$ in., framed
- 437 A George III Sampler with nine rows of patterns, two alphabets, and signature "Mary Fry Swanton Jan^{ry} 1771 " ; 7 in. by 8 in., framed
- 438 A wool Tapestry Exercise, the work showing a Teapot and Stand in the centre, six cups and saucers (no handles), a Teapoy and a covered cup and saucer arranged around, and four spoons with trifid ends in between, the china in blue and white Chinese style, on a red ground ; $11\frac{1}{2}$ in. by $15\frac{1}{4}$ in., framed, c. 1700
- 439 A wool Tapestry Exercise, The Flight into Egypt, with a child Angel holding a leafy branch pointing the way by pyramids of reeds of cotton, ; in a reserved space below the "11, Chap. of, St, Matthew, 18 Vrs " is quoted on the left and right,

Lot 439—*continued*.

and between is "This Done By Joice Shepherded In The year of Our Lord 1808." ; 15 in. by 11 in., *framed*

- 440 A George III Sampler, within a border of meandering scrolls with roses and leafy sprays, a cottage, farmer and sheep at top, birds and detached ornament at the sides, two lots of dogs hunting stags at the bottom ; in the centre an oval border and two verses of praise to God for spring delights ; in another oval "Ann Jarvis February th28 1818" ; 16½ in. by 12¾ in., *framed*

CHINESE PORCELAIN.

- 441 A Fu Chien Figure of Kuan Yin, the Chinese Goddess of Mercy (Skt. Avalokitesvara, "The All Pitying Lord") standing on a rock, holding the *Ju-i*, a sceptre of good-will, her coiffure in three high lobes on top of the head, and a coiled knot at the back ; 17¾ in. *high*
- 442 A Fu Chien Figure of Kuan Yin of similar character to the preceding, but with a *Fung* bird beside her, and holding a flute in her left hand ; another one of her thirty-three forms ; head repaired, and loose ; 17¼ in. *high*
- 443 A Fu Chien Figure of Kuan Yin, standing on a rock and the sea swirling over it, wearing the crown and ornaments of a Bodhisatva, her coiffure in the high knot *Tsugtor* covered by a veil falling over her shoulders, hands open, joined one above another ; 14½ in. *high*
- 197- 444 A Fu Chien Figure of Kuan Yin as The Giver of Children, standing above a demon's head holding a child on her right hand (child's head broken off), her coiffure that of the curly tufts of hair of a Buddha, continued on her long hair to her shoulders ; 15¾ in. *high*
- 32/- 445 A Fu Chien Figure of Kuan Yin as The Helper of Child-birth, seated on a rock above the sea and a dragon swirling round ; she holds the child *Zensai* on her right knee tucked up in Bodhisat pose, on her right is the vase of healing and on her left a box of willow twigs to dip into the vase ; below *Long-nu* on her right holds a precious pearl (head broken, and the figure on the right broken off) ; her coiffure is hair drawn back into two plaits resting on her shoulders ; 14¼ in. *high*
- 26/- 446 Another Kuan Yin, similar, 8½ in. *high*
- 407- 447 Two smaller figures of Kuan Yin on a lotus and another on one knee 3
- 147- 448 The Peach of Longevity stolen by Tung Fang So from the dish of fruit brought by Hsi Wang Mu for the Chinese Emperor Wu Ti ; coloured ; 17 in. *diam.*

MISCELLANEOUS.

- 449 An Elizabethan Powder Horn, built up of sections of mother-o'-pearl and terminating with the spiral of *Turbo olearius*; gilt bronze nozzle formed as a bird's head and neck; $8\frac{3}{4}$ in. long c. 1590

450 A silver-hilted Rapier, inscribed on the blade *L'amour et le monde sont deux Canailles L'un trouble le Cœur et L'autre les enbaille* (sic), pierced heart-shaped guard, curved quillons, spiral chain work grip and pierced ball pommel; 39 in. long

451 A Presentaire, broad blade expanding from the hilt, brass hilt inlaid with ivory and ebony in small chequered designs on each side in four sunk compartments, terminating in a fluted butt end supported on five pillars; 20 in. long, early 16th century

452 A Steel Battle Mace, the head furnished with ten triangular blades, the shaft chiselled at the end in floral design; $22\frac{1}{2}$ in. long

453 A Chinese Cloisonné Enamel *Ju-i*, a sceptre of amity and goodwill; 16 in. long

454 A pair of Queen Anne high-heeled Shoes in gold brocade with gilt buckles 2

455 A Pouncet Box, wood, globular, carved or engraved in circles, each containing a line of inscription. The one on the bottom has:

"With a pure heart Delight his word to heare."

In the four circles around the sides:

"O man Consider Whither thou must goe
When that this Short and Brittle Life Do end
To Euerlasting Ioy or Payne and Woe
Passe well the time Which God to thee do lend."

Silver scalloped rim and silver lid engraved with a tulip; for a man's use; $8\frac{1}{4}$ in. circumference c. 1680

"He was perfumed like a milliner, and 'twixt his finger and his thumb he held a pouncet box, which ever and anon he gave his nose and took away again."—*Henry IV.* Act 1, Scene 3.

456 An Armillary Sun Dial, brass; 6 in. diam. c. 1690

457 A Poke Dial or Journey Ring, brass; $1\frac{1}{2}$ in. diam. c. 1600

458 A copper-gilt Dish, hexafoil, with scroll handle, engraved and repoussé floral design; on the underside: DIE ANKVFT MEIN WAR EISENHART, IN BERGWERKE MUST ICH GRABEN STARK, DER MAN MICH NIMER BRAVCHEN KVNT, WARF MAN MICH DEN DAS WASSER ZV KVPFER MICH, BIN WORDEN EIN SCHAIN, ZIENENT GRVNT TEMBIRIRT MIT GOLT GEZIRT; $5\frac{3}{4}$ in. by $4\frac{1}{4}$ in. 16th century

13/-
459 A steel Scissors Case, chiselled all over in floral design, on the cover on one side a lady, and on the other side a crown within a ribbon inscribed NOV SOMME INSEPARABLE; scissors inside; $3\frac{1}{2}$ in. long; c. 1620; an Eye Glass, in engine-turned folding case 2

580 10. 460 A cylindrical shark-skin Box, silver-mounted, and with a silver coin of Elizabeth set in the lid, $3\frac{1}{4}$ in. high; and a Load Stone, mounted in silvered metal, in shark-skin case, $2\frac{1}{2}$ in. high 13 2993 2994

James. 2/5/-
461 An oval tortoiseshell Pouncet Box, silver piqué, $1\frac{3}{4}$ by $1\frac{1}{2}$ in., late 18th century; a tortoiseshell and piqué Vinaigrette, with a glass bottle and stopper inside, 2 in. high; a mother-o'-pearl folding Magnifying Glass, with two lenses, $1\frac{3}{4}$ in. diam.; and a carved wood Netsuke, Daikoku and his sack 4

24/- 462 An Italian Charm against the Evil Eye, a black hand with index and small finger forming the horns of the crescent moon, a ring with turquoise setting on the index finger, and a gilt copper Bracelet, turquoise set, on the wrist, 17th century; and ten Pins made before 1678 11

Heir 2/1/-
463 A cameo glass Scent Bottle; an enamel Scent Bottle, with portraits of a lady and of a gentleman; and a wooden Scent Bottle, all silver mounted 3

38/- 464 Five Nutmeg Cases, in Enamel, Bone, Japanned Tin, and two in Wood 5

26/- 465 A curious Wooden Almanack of hexagonal section, each angle ridge notched for the days of two months of the year (Old Style before 1582) and the faces between engraved with half-length and bust figures representative of the Saints' Days; $8\frac{3}{4}$ in. long, $1\frac{3}{8}$ in. diam. Webster.

16/- 466 A wooden Mortar and Pestle; a beechwood Tub, with a handle at one side; and a carved wood Pipe Case, dated 23 FE. ANNO 1748 4

30/- 467 A carved Cocoon Drinking Flask, with two rings for suspension; and two Watchman's Rattles 18th century 3

28/- 468 Three large circular Snuff Boxes for Tavern Counters, one finely carved on the lid with a winged chimera, gryphon or dragon (?); one with a metal fox head and inscription, G. DANIEL DIXON 1845; and one plain 3

469 An iron Mould for a rat-tail spoon, with trifid end and scrolled back of bowl, with pewter spoon; another Mould for a rat-tail spoon with pewter spoon; and a third Mould for a rat-tail spoon 17th century 5

470 A steel Chatelaine, heart shaped, with ten pendant chains and accessories

471 A mahogany Model of the portcullis of a castle, $19\frac{3}{4}$ in. high

472 A silver Locket and Chain, a Fob Chain, a Peasant Ring, a copper Perpetual Almanack, a Knife Blade and Tweezers 7

- 473 A pewter Dish, $12\frac{1}{4}$ in. diam., dated 1694; three pewter Plates; a Pewter Cream Jug; and two electro-plated College Drinking Cups 7
- 474 A North German Brass Dish, with raised boss in the centre, 15 in. diam.; and an oval Indo-Persian Tray, $18\frac{1}{2}$ in. by 14 in. 2
- 475 A Burmese Zodiac, carved in two pieces of black shale; and a Hindu gilt bronze figure of the bull Nandi adoring the Lingam in the Yoni 3
- 476 A modern lustred ware Vase, $9\frac{3}{4}$ in. high

STONE ANTIQUITIES.

- 477 A prehistoric Stone Ball, with six circular domed faces on a cube, separated by worked channels, probably intended for fastening thongs; from Turriff, Aberdeenshire, Scotland; 9 in. circumference
- 478 A prehistoric Stone Ball of similar construction, but the cube not so defined; from Tar Caride, Scotland; 10 in. circumference
- 479 A prehistoric Stone Ball of granite, of similar construction; found in Cruden, Aberdeenshire; $11\frac{1}{4}$ in. circumference
- 480 A prehistoric Stone Ball of granite, of similar construction; found at Kintore, Aberdeenshire; $9\frac{3}{4}$ in. circumference
- 481 A prehistoric Stone Ball of granite, of similar construction; found near Inverury, Aberdeenshire; $8\frac{7}{8}$ in. circumference
- 482 A prehistoric Stone Ball, with four circular faces and four small circular projecting knobs between, much weather-worn; found at Kintore, Aberdeenshire; $8\frac{7}{8}$ in. circumference
- 483 A prehistoric Stone Ball, with twelve circular faces separated by worked channels; 10 in. circumference
- 484 Four plain Stone Balls of various sizes, all from Scotland 4
- 485 Six Casts of prehistoric Stone Balls 6

END OF SALE.

1. The first part of the report is a general statement of the purpose and scope of the study.

2. The second part is a description of the methods used in the study.

3. The third part is a description of the results of the study.

4. The fourth part is a discussion of the results and their implications.

5. The fifth part is a conclusion and a list of references.

6. The sixth part is a list of appendices.

7. The seventh part is a list of figures and tables.

8. The eighth part is a list of footnotes.

9. The ninth part is a list of abbreviations.

10. The tenth part is a list of symbols.

11. The eleventh part is a list of units.

12. The twelfth part is a list of definitions.

13. The thirteenth part is a list of acknowledgments.

14. The fourteenth part is a list of references.

15. The fifteenth part is a list of appendices.

16. The sixteenth part is a list of figures and tables.

17. The seventeenth part is a list of footnotes.

18. The eighteenth part is a list of abbreviations.

19. The nineteenth part is a list of symbols.

20. The twentieth part is a list of units.



70



92



57



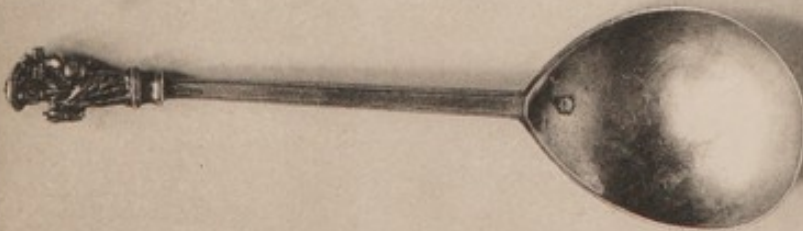
61



59



121



63



249



74



7
2

h

g
d
h



277

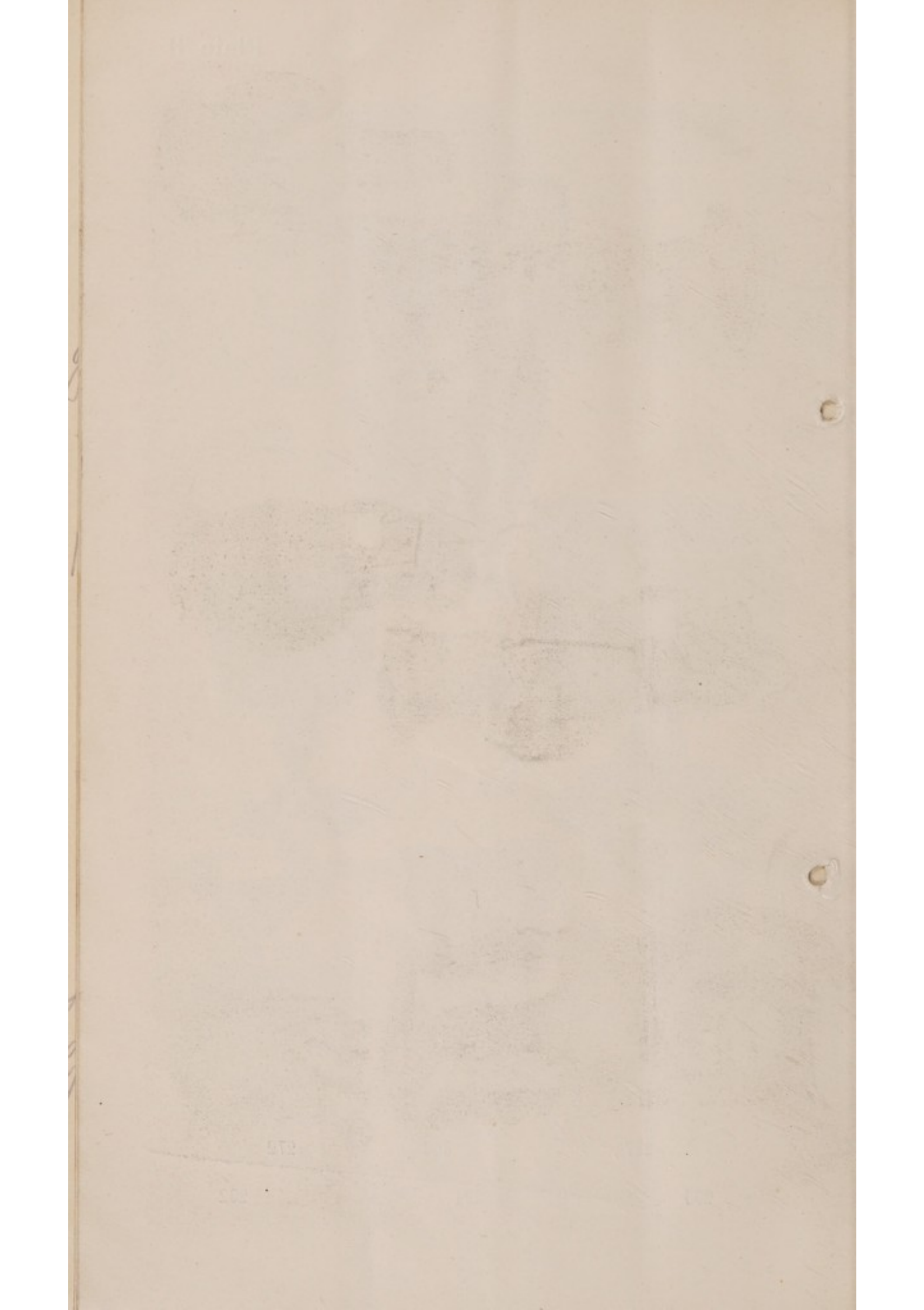
308

272

295

291

292

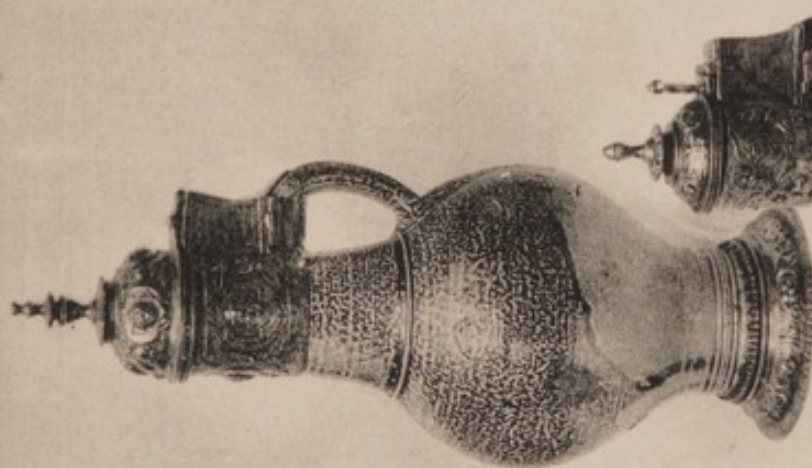




355 375



355



348



349



374



354

0 0
0 0
0 0
0 0
2 0

0/20/2

0/20/2

0/20/2

0/20/2

0/20/2

0/20/2

0/20/2

0/20/2

0/20/2

0/20/2

0/20/2

0/20/2

0/20/2

0/20/2

0/20/2

0/20/2

0/20/2

0/20/2

0/20/2

0/20/2

0/20/2

0/20/2



406

398

393

395

397

392

394

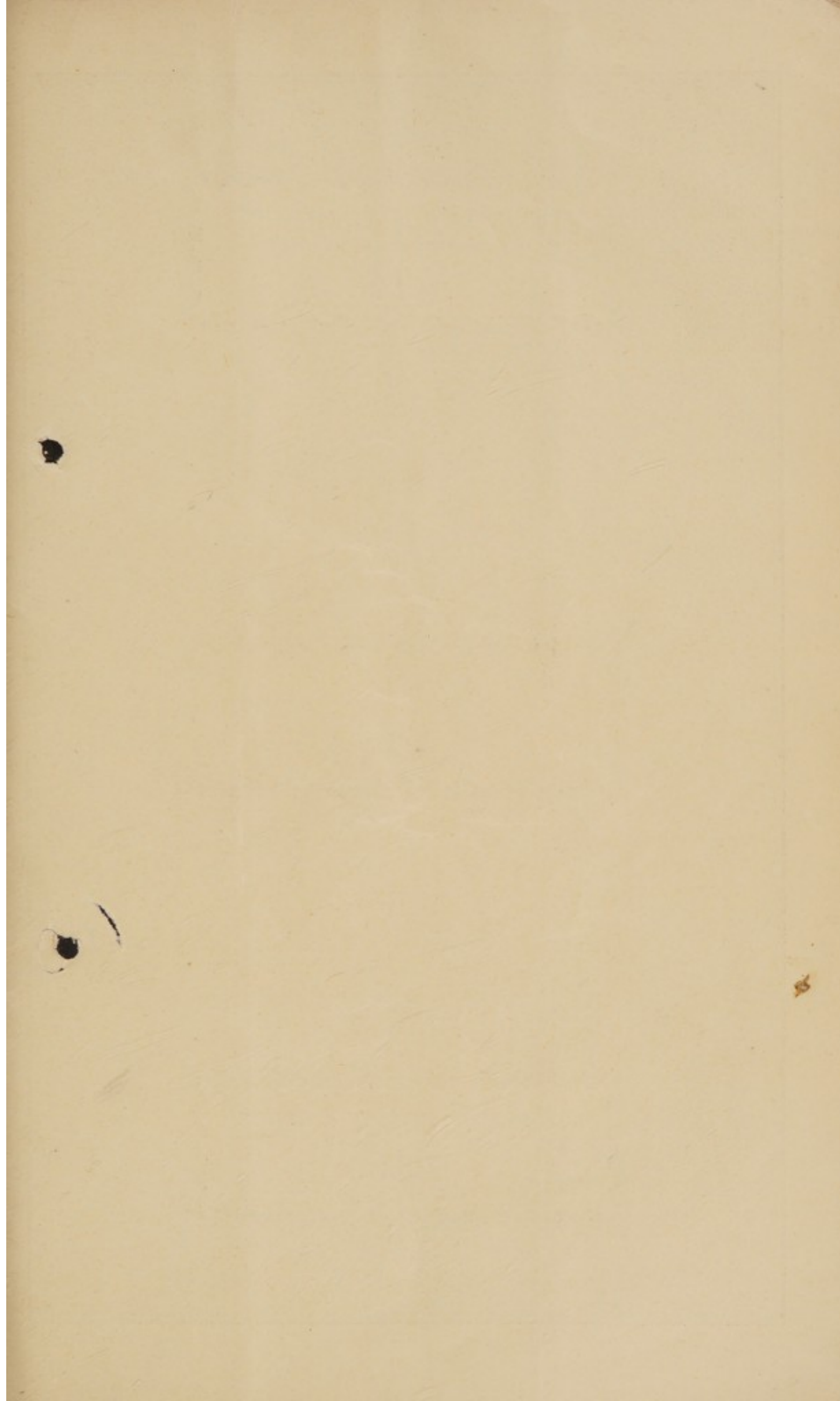
413

422

$$\begin{array}{r}
 4 \quad 5 \quad 0 \\
 15 \quad 0 \quad 0 \\
 4 \quad 0 \quad 0 \\
 5 \quad 5 \quad 0 \\
 1 \quad 12 \quad 0 \\
 \hline
 30 \quad 2 \quad 0 \\
 \hline
 \hline
 \end{array}$$

25

$$\begin{array}{r}
 2 \quad 0 \\
 14 \\
 \hline
 15 \quad 0
 \end{array}$$



BAKER, LEIGH & SOTHEBY.

THE FIRM COMMENCING WITH SAMUEL BAKER IN

1744.

SOTHEBY, WILKINSON & HODGE.

1916.