

Sales catalogue: Sotheby's

Publication/Creation

12 May 1920

Persistent URL

<https://wellcomecollection.org/works/vnrd6dss>

License and attribution

This work has been identified as being free of known restrictions under copyright law, including all related and neighbouring rights and is being made available under the Creative Commons, Public Domain Mark.

You can copy, modify, distribute and perform the work, even for commercial purposes, without asking permission.



Wellcome Collection
183 Euston Road
London NW1 2BE UK
T +44 (0)20 7611 8722
E library@wellcomecollection.org
<https://wellcomecollection.org>

Original

OK

CATALOGUE
OF
CHINESE AND JAPANESE
WORKS OF ART.

COMPRISING
JAPANESE BRONZES,
the Property of a Gentleman,
JAPANESE BRASS ALTAR PIECES, &c.
the Property of the Right Hon. Sir Conyngham Greene, K.C.B.
(lately H.M. Ambassador at Tōkyō, Japan),
LACQUER, NETSUKÉ, KOZUKA, TSUBA & OTHER METAL WORK,
the Property of a Lady,
JADES AND CRYSTALS,
the Property of the late Dr. W. Moir Bryce, LL.D. of Edinburgh;
AND OTHER PROPERTIES of
CHINESE DRAWINGS,
INCLUDING SOME FINE EARLY WORK;
CHINESE AND OTHER RELIGIOUS FIGURES;
LACQUER, TEXTILES AND CABINETS;
AND
JAPANESE KAKEMONOS,
the Property of Miss Mary Buchanan Kiddell.

WHICH WILL BE SOLD BY AUCTION,
BY MESSRS.

SOTHEBY, WILKINSON & HODGE

(SIR MONTAGUE BARLOW, K.B.E., LL.D., M.P. G. D. HOBSON, M.A. & MAJOR F. W. WARRE, O.B.E., M.C.)

Auctioneers of Literary Property & Works illustrative of the Fine Arts.

AT THEIR LARGE GALLERIES, 34 & 35, NEW BOND STREET, W. (1)

On WEDNESDAY, the 12th of MAY, 1920,

AT ONE O'CLOCK PRECISELY.

May be Viewed Two Days prior.

Catalogues may be had.

CONDITIONS OF SALE.

- I. The highest bidder to be the buyer ; and if any dispute arise between bidders, the lot so disputed shall be immediately put up again, provided the auctioneer cannot decide the said dispute.
- II. No person to advance less than 1s. ; above five pounds 2s. 6d., and so on in proportion.
- III. In the case of lots upon which there is a reserve, the auctioneer shall have the right to bid on behalf of the seller.
- IV. The purchasers to give in their names and places of abode, and to pay down 10s. in the pound, if required, in part payment of the purchase-money ; in default of which the lot or lots purchased will be immediately put up again and re-sold.
- V. Every lot will be sold with all faults and errors of description, and will on no account be returnable.
- VI. The lots to be taken away, at the buyer's expense, immediately after the conclusion of the sale ; in default of which Messrs. SOTHEY, WILKINSON & HODGE will not hold themselves responsible if lost, stolen, damaged, or otherwise destroyed, but they will be left at the sole risk of the purchaser. If, at the expiration of Two Days after the conclusion of the sale, the lots are not cleared or paid for, they will then be catalogued for immediate sale, and the expense, the same as if re-sold, will be added to the amount at which they were bought. Messrs. SOTHEY, WILKINSON & HODGE will have the option of re-selling the lots uncleared, either by public or private sale, without any notice being given to the defaulter.
- VII. Upon failure of complying with the above conditions, the money required and deposited in part of payment shall be forfeited, *and if any loss is sustained in the re-selling of such lots as are not cleared or paid for, all charges on such re-sale shall be made good by the defaulters at this sale.*

Gentlemen, who cannot attend this Sale, may have their Commissions faithfully executed by their humble Servants,
SOTHEY, WILKINSON & HODGE,
34 & 35, New Bond Street, London, W. (1)

Telegraphic Address: " Abinitio, Phone, London."
Telephone: (2 lines) Mayfair 1784, 1785.

In sending Commissions please refer to this Catalogue as " VARUS."

COMMISSIONS SENT BY TELEPHONE ARE ACCEPTED ONLY AT THE
SENDER'S RISK, AND MUST BE CONFIRMED BY LETTER OR TELEGRAM.

CATALOGUE

OF

CHINESE AND JAPANESE WORKS OF ART.

The Property of a Gentleman.

JAPANESE BRONZES.

LOT

- 1 An Eagle standing on one foot on a rocky mound holding in its talons a fluttering bird; $14\frac{3}{4}$ in. high, base 9 in. by 9 in. (2)
- 2 A crested Bird standing on an arched branch above a nest with eggs in it, and his mate below with a young bird; $10\frac{1}{4}$ in. high (2)
- 3 An Owl on the branch of a tree and a small bird on a lower branch forming the foot; $9\frac{1}{2}$ in. high
- 4 A Vase, compressed globular, with bands of archaic fret ornament and KWEI heads in Chinese style; $8\frac{1}{4}$ in. high, $10\frac{3}{4}$ in. diam.
- 5 A gold splashed Vase, bulbous body, broad neck with raised bat-like ornaments round the shoulders, five projecting loops round the body and raised impressions of Chinese coins between; $10\frac{1}{2}$ in. high
- 6 Two Vases, one with two handles and a band of archaic fret-work, and one with a dragon twined round the neck and shoulders; $11\frac{1}{4}$ in. and $9\frac{1}{4}$ in. high (2)
- 7 Two Vases, one with two handles and loose rings, and bands of Chinese ornament in low relief; the other hexagonal with KWEI headed handles; 10 in. and $7\frac{1}{2}$ in. high (2)
- 8 Two Vases with broad trumpet mouths, one with upright figures on the shoulders, Kyoyo washing his ear at the waterfall and Sōfu leading his ox away from the water; and one with nelumbian leaf handles; $6\frac{3}{4}$ in. and $6\frac{1}{2}$ in. high (2)
- 9 A Vase, shaped as a peach, inlaid all over with antimony scrolls in fine lines; and an Incense Burner, shaped as the base of a tree trunk with a MINOGAME on the sides (2)

Frank

Frank

Harper

- 32/- 10 A Vase, shaped as a hollow piece of a tree with leaves; a tripod Incense Burner with two handles; and an Incense Burner with cover (4)
- 15/- 11 An Incense Burner, oblong, with raised dragons on a scale ground on the sides, *signed* KEISAI; and an iron KAMA with trees in relief on one side and water plants on the other; no cover (2)
- 21/- 12 A Candlestick with fittings for electric light; and two Figures of Chinese SENNIN; *all faulty* (3)
- 6/10/- 13 A Suit of Japanese Armour with helmet and mask, mounted on a stand; with a Spear in a sheath

A COLLECTION OF
JAPANESE BRASS ALTAR PIECES, ETC.

THE PROPERTY OF

The Right Hon. Sir Conyngham Greene, K.C.B.

(*lately H.M. Ambassador at Tōkyō, Japan*).

- 2/2/- 14 A Domestic Altar Set of a small Incense Burner and Cover, two tazza-shaped Dishes for offerings, these engraved lotus design, a pair of Flower Vases with Stoppers pierced and engraved with the Wheel of the Law, and a pair of fluted Candlesticks (10) *Harper*
- 6/5/- 15 An Altar Set of tripod Incense Burner and Cover, pierced with eight trigrams, a pair of Flower Vases, and a pair of tall pricket Candlesticks, each with Snuffers and Ash Box (10) *Harper*
- 3/10/- 16 A pair of tall Altar Candlesticks on plain shafts, with circular tray bases, each with Snuffers; 24 in. high (4) "
- 3/5/- 17 Another pair, with four curved legs on square bases, pierced domes and ribbed shafts, pricket tops; 21 in. high (2)
- 4/- 18 A large Incense Burner of three tiers, and Cover, the base engraved with lotus design, the cover pierced with BONJI characters for the five Dhyani Buddhas, and surmounted by a lotus spire; 18½ in. high, 9 in. diam. (4)
- 2/- 19 Another of similar character, of two tiers, the cover pierced with BONJI; 11¼ in. high, 5¾ in. diam. (3)
- 3/15/- 20 A pair of brass Lanterns, ovate bodies pierced with clouds, domed bases, shaped tops, ring handles; 13½ in. high (2)

- 21 **Two Lanterns**, globular bodies pierced with a lattice design, shaped bases and tops pierced with "boar's eye" openings, ring handles; $13\frac{1}{4}$ in. and $11\frac{3}{4}$ in. high (2)
- 22 **Two Lanterns**, one globular with pierced lattice design, shaped and engraved base and top, $14\frac{1}{2}$ in. high; and one hexagonal with pierced lattice design, scalloped base and top, $12\frac{1}{4}$ in. high; both with ring handles (2)
- 23 **A pair of Standard Lanterns** with ribbed shafts, pierced lattice work bodies and overhanging tops with suspended imitation bells, $10\frac{3}{4}$ in.; and another, similar but without hangings, $13\frac{1}{2}$ in. high (3) *Harper*
- 24 **A Temple Flower Vase**, beaker shape, with projecting ribs vertically equidistant, engraved panels of flowers between, and SHISHI in high relief; 11 in. high, 9 in. diam. at top
- 25 **A pair of Flower Vases**, $10\frac{1}{2}$ in. high; and another pair with engraved fan-shaped stoppers, $12\frac{3}{4}$ in. high (6)
- 26 **A pair of Flower Vases** with cup-shaped covers, surmounted by pierced Wheels of the Law, $13\frac{1}{4}$ in. high; and a pair of tripod Vases on circular bases, cylindrical bodies with raised trade mark of Dansendō, and probably presented to a temple by the publishing house of Ibaya Sensaburo, 8 in. high (6)
- 27 **An Incense Burner**, oblong quadrangular, engraved with fern scrolls; another, hexagonal, with floral handles and lion on the cover; and another, globular; all with covers (6)
- 28 **Three Incense Burners and Covers**, compressed globular, on three feet (6) *Harper*
- 29 **A tripod Incense Burner**, with inscription on one side; and two others, each with two upright handles, and Covers surmounted by lions (6) *Harper*
- 30 **Four Incense Burners**, without covers, oblong rectangular, two of them bearing in relief the MON of noble families; all on four feet
- 31 **Four small Incense Burners**, compressed globular, two with upright handles, and all with pierced covers; and three small Jars and Covers (14)
- ~~32~~ 32 **A Hibachi** for warming the fingers, cylindrical, with domed cover; and another, square, with engraved flat cover and swing handle (4) *3/17/6*
- 33 **A Lamp** with two fittings on an upright ratchet in a broad tray; and a floor Candlestick (4)
- 3/12/6* 34 **Three Wine Heaters**, oval, oblong and square, with fittings (11)

- 3/17/6 35 A pair of Flower Vases; a Candlestick, shaped as a crane on the back of a tortoise of long life; and two folding Candlesticks (5)
- 2/8/- 36 A pair of Candlesticks; and four other odd Candlesticks; all with pricket tops (6)
- 3/15/- 37 A Sambō for the offerings to the Temple KAMI; 9½ in. high
- 2/10/- 50/ 38 Another Sambō, 6½ in. high; and an oblong Offerings Box with raised inscription on the side, KYŌ-BASHI, one of the districts of Yedo, 4½ in. high (2)
- 38/- 39 Five brass Yatate of different forms (5)
- 25/- 40 A Soothsayer's Incense Burner, square, with domed cover, fitting on a wood stand with two drawers, containing a wooden pronged implement and a pierced wood block (7)
- 21/- 41 A Jittei or Policeman's Staff for the arrest of swashbucklers, with a hook for breaking a sword or disarming an offender, and a pointed beak at the end; *inscribed* YOSHIASA
- 2/15/- 42 A Chinese Curry Stand, red lacquer, decorated in black and gold, square, on four feet, the inside fitted with five blue and white porcelain dishes; 8¾ in. high by 13¼ in. sq. (7)
- 4/10/- 43 A pair of Table Screens, six fold, painted TOSA style, with scenes of the various Seasons; 14 in. high (2) *Frank*
- 6/15/- 44 A pair of Table Screens, six fold, painted in TOSA style, with court scenes; 24 in. high (2)
- 4/10/- 45 A pair of Ramma, carved SHITAN wood in colours, cranes flying between branches of pine trees; 10¾ in. high by 4 ft. 4 in. (2)
- 2/2/- 46 A pair of Ramma, carved SHITAN wood uncoloured, rolling and curling waves; 17¼ in. high by 3 ft. 11 (2)

Other Properties.

- 3/15/- 47 A Chinese Kwan Yin, bronze, seated figure; 10 in. high; on a wood pedestal; and an antique bronze Vase and Stand (4)
- 4/10/- 48 A Chinese Emperor, seated, carved wood in coloured lacquer; 10¼ in. high; and a carved wood Hindu figure of Devaki with the infant Krishna and an attendant; 10 in. high (2) *Levin*
- 3/10/- 49 A Burmese Gautama, bronze lacquered and gilded, seated in the witness pose on a three-tiered thalamus; 13½ in. high (2) *Ward*

- 2/15/- 50 **Sakya-muni**, Chinese bronze lacquered and gilded, seated in the witness pose on a lotus thalamus; $11\frac{1}{4}$ in. high
- 5/10/- 51 **A Chinese figure of Poutai**, seated, holding a ball in his left hand, bronze, inlaid with fine silver foliated scroll devices, on carved and pierced wood stand; 8 in. high (2)
- 2/5/- 45/ 52 **Noh Chii lo** (Sct. Nakula), one of the sixteen LOHAN, seated holding a rosary and a book, a Chinese carved wood figure; $10\frac{1}{4}$ in. high
- 38/- 15/ 53 **Poh-li-to-shō** (Sct. Bharadvaja) seated under a pine tree holding a rolled MS. and with his Buddhist gong on a pile of books beside him; a Chinese carved wood figure; $6\frac{1}{2}$ in. high
- 11/- 54 **An Ivory Articulated Dragon**, 33 in. long, in a mahogany curved top glazed show case, 3 ft. $1\frac{1}{2}$ in. by $8\frac{1}{2}$ in. (2)
- 2/- 55 **A Rhinoceros Horn Cup**, carved as a nelumbian leaf, on a wood stand of lotus design, 4 in. high (2) Edwards
- 26/- 56 **Carved Wood Figures of a Woman and Child**, the woman holding an umbrella; signed CHIKUSEN
- 6/ 57 **An Inrō**, three cases shaped as a tortoise with bronze OJIME and horn NETSUKE shaped as a tortoise; a wood NETSUKE, coiled dragon, signed SARI; and a deer horn NETSUKE (5) 7/-
- 1/15/- 58 **A Jade Buckle**, white, carved with plum blossom in low relief, on a carved wood stand; a Soapstone Ornament; and two soapstone Seals (5)
- 4/- 59 **Amber Beads**, eleven, oval, of graduated size, as a Chinese wristlet; An Indian Necklace, of turquoise matrix beads; and a Wristlet of agate beads (3)
- 28/- 60 **A Lacquer Box**, a Fuchi-Kashira, a Tsuba, a Setting of turquoise matrix; and a Persian Enamel (6)
- 26/- 61 **Two Metal Boxes**, and a Match Box, made from a Fuchi-Kashira and shark-skin

The Property of a Lady.

- 2/15/- 62 **A Chadai**, red lacquer veined, ornamented in gold and silver relief with dolls, fans, sprays of flowers, etc. (2)
- 3/15/- 63 **Inrō**, four cases, broad size, TAKAMAKIYE, on one side a Mandarin holding an audience, and on the reverse a Chinese landscape with a boating party in KIRIKANE HIRAME, red lacquer and inlaid mother-o'-pearl on a NASHIJI ground; Kajikawa School Kato

- 4/1/- 64 Inrō, five cases, HIRAMAKIYE, Sago palms beside a balustrade in gold over red on KIRIKANE HIRAME ground; *signed KAJIKAWA, with the red seal of the first Kajikawa* Kato
- 3/15/- 65 Inrō, four cases, TOGIDASHI, SUSUKI grass, bush clover and KIKYO flowers, a spider's web, and dragon flies, inlaid AOGAI on a KINFUNDAME ground "
- 4/15/- 66 Inrō, four cases, silver TOGIDASHI with two birds after Watanabe Seitai, in silver, gold and black on the obverse, and a tree trunk on the reverse
- 2/10/- 67 Inrō, four cases, quatrefoil shape, silver HIRAMAKIYE, on the obverse Ebisu and Daikoku compounding MOCHI, and on the reverse Daikoku's rat carrying a sack and two fish; *in coloured gold, brown and black*
- 5/1/- 68 Zushi, black TOGIDASHI, folding doors, gilt bronze engraved mounts, enclosing a standing figure of Hojo Nyorai; $6\frac{1}{4}$ in. *high*; and another, smaller, enclosing a figure of Kwannon standing; $3\frac{1}{4}$ in. *high* (2) Lewin
- 5/10/- 69 A Tsuishu Netsuke, Kiyohime changed to a demon, holding a magic staff; *signed HŌKEI; very fine*
- 6/15/- 70 Ivory Netsuke, A SHŌJŌ asleep, resting his head on his hand, the long hair lacquered red; *signed GYOKUSEKI; very fine*
- 8/15/- 71 Ivory Netsuke, A SHISHI and TAMA; *signed TOMOTADA; very fine*
- 3/15/- 72 Ivory Netsuke, FUKUROKUJIU standing holding a fan and a rugged staff; *signed KOKURA*; and an Elephant, caparisoned and inlaid; *signed KŌZAN* (2)
- 6/5/- 73 Ivory Netsuke, A Landscape with a feudal castle and other buildings, a temple and people passing through the grounds, all on the hill side, and on the base, view of a small port in low relief; *signed KAGETOSHI*
- 3/10/- 6 74 Ivory Netsuke, carved and pierced in a contracted form of the character JIU, "Long Life"; and an Ivory Okimono, an ONI and young one seated (2)
- 5/15/- 75 Wood Netsuke: THE BADGER TEA-KETTLE running across the broom of a temple servant, and the servant trying to hold it; *signed MINKOKU*; An ONI massaging Shōki; *signed MINKOKU*; The ROK'KASAN, cavo-relievo in various-shaped panels on a MANJŪ, inlaid mother-o'-pearl (3)
- 4/15/- 76 Shōtoku-taishi: A small wood figure with ivory face and hands, clothed in brocade; $3\frac{3}{4}$ in. *high*; A Bronze Netsuke, a Helmet, and a Crystal Reliquary (3)
- 32/- 77 Three Mizu-ire, one vase shaped of silver metal inlaid with coral; one bronze, shaped as a helmet; and one bronze, shaped as the foot of a tree trunk with a frog coming out

7/15/- 78 **A Kanamono**, for a Pouch, oblong panel of SHIBUICHI engraved on the back with toys, on the front a gold child at play with a horse and other toys, and a coral DARUMA; *signed* WASHIRO KIKUGAWA *Spink*

35/- 79 **Two Kanamono**, bronze, Narihira viewing Fuji; *signed* ICHIGA; and a SAMURAI and servant, both inlaid.—**A pair of Menuki**, Pheasants; *signed* MITSUTSUGU.—**An ivory Pouch Ornament**, Dragons with pearl TAMA; *signed* TSUNEMITSU; and an **Ivory Ojime**, a coiled Dragon (6) *Spink*

3/- 80 **A Kozuka**, Kōgai and a pair of **Menuki**, SHAKUDŌ, dragons in relief on a NANAOKO ground; *signed* GOTO MITSUHIKA.—**A Kozuka Blade**, engraved with a sword, in wood case; and a miniature KATANA in metal scabbard (8)

28/- 81 **Three Pairs of Fuchi-Kashira**: SHIBUICHI, A Dragon alighting on the Emperor Hwang Ti's carriage, *signed* SEIJOKEN MOTOTAKA.—SHIBUICHI, on the Kashira a helmet, mask, sword, etc., on the Fuchi, Yodo Castle, *signed* HOSONO.—SHAKUDŌ, Birds flying and grasses, inlaid Cloisonné, Hirata School (6)

2/8/- 82 **Four Pairs of Fuchi-Kashira**: SENTOKU, A Landscape.—SENTOKU, Kwan Yu and the Envoy.—SHAKUDŌ, A helmet and SAIHAI, bow and arrows, on a NANAOKO ground, Goto School.—SHAKUDŌ, Celebrated Horses, on a NANAOKO ground, *signed* SEIJOKEN MOTOYUKI, Nara School (8)

35/- 83 **Four Kozuka**: One ivory, with a boating scene in relief; one wood, with plum blossom lacquered and inlaid; one iron, Chinnan evoking the word RYŪ "dragon" from a bowl, and another Semmin reading a book, the bodies lacquered in red; and one iron, Fuji and clouds, inlaid, *signed, lacquered by* JOKA, *designed by* GOTO ICHIRO (4)

5/10/- 84 **Four Kozuka**, Hirata School: One SHAKUDŌ, ISHIME ground, Egg plants in Cloisonné, *signed* TOMOYASU; one SHAKUDŌ, ISHIME ground, Scrolled devices in Cloisonné; one iron, CHIDORI and waves, the birds in Cloisonné; and one silver, Lotus flower and butterfly in Cloisonné, *signed* HIRATA HARUYOSHI (4)

95/85/ 5/- 85 **Five Kozuka**: Three NIGUROME, a hand saw cutting a piece of charcoal, *signed* YUSHITA SHŌZUI; Charcoal, rings for a kettle, and a feather brush for the Tea Ceremony, *signed* NOMURA MASAMUTSU; A KOZUKA on a rough ground, *signed* YASUCHIKA, and dated 1746 "FIRST WORK OF THE YEAR"; two bronze, A case of arrows, inlaid gold; and three Gods of Good Fortune looking at Fukurokujū's scroll, inlaid gold and silver, *signed* HAMANO YASUMITSU (5)

- 3/10/-
- 86 **Six Kozuka** : SHIBUICHI, Ichirai Hōshi on the broken bridge at Ujigawa ; A Tiger, *signed* HIROYOSHI ; Chorio hanging on to a tree trying to recover Kosekiko's boot, *signed* SEKI-JOKEN TAIZAN MOTOTAKA, Nara School ; Tekkai exhaling his spirit, *signed* HAMANO HŌZUI NYŪDŌ YŪSHIN ; Manzai Dancers, engraved, *signed* EIJUSAI YASUYOSHI ; The Foxes' Wedding, *signed* GOTO HŌKYŌ ICHIJŌ (6) *Kato*
- 35/-
- 87 **Tsuba** : One iron, round, Hirata School, Fishes, shells and seaweed beneath waves, in Cloisonné ; and one SENTOKU, oval, pierced, with Chōhi defending Chōhan bridge (2)
- 25/-
- 88 **Tsuba** : One iron, MOKKO, with raised rim, three types of arrows on the obverse and one on the reverse ; one iron, round, war-fan helmet and swords in flat relief on the obverse and engraved pines on the reverse ; one iron, round, YOSHIRO inlay of floral design
- 28/-
- 89 **Tsuba** : Four iron, one oval, dragon and waves in the round ; one round, pierced with a crab and leaves ITO-SUKASHI ; one round, pierced, Chorio handing up the shoe, *signed* TAMAGAWA YOSHIHISA ; and one pierced, a sword and cords in the round, *signed* MASANAGA OF BUSHŪ (4) *Edward*
- 1/-
- 90 **A Piece of Kusazuri** of the 14th century, from a temple at Sendai, the seat of the Date family ; in box (2)
- 3/10/-
- 91 **A Netsuke Cabinet**, wood, with the soft grain rubbed out, lacquered with morning glories in colours, containing three drawers
- 28/-
- 91A **A Japanese Reliquary** in bronze *W. Fenton*

THE
Property of the late Dr. W. Moir Bryce, LL.D.
of Edinburgh.

- 54/-
- 92 **A Jade Ju-i** of pale sea-green stone, the head inscribed with a poem and surmounted by a dragon looking over the top, its body coiled round the stem, the stem engraved with bats of long life and clouds, and the engraving gilt within the lines ; $17\frac{3}{4}$ in. long *Kay*
- 47/-
- 93 **A Jade P'an** or Sacrificial Bowl, pale celadon, on four rim feet with two pierced KWEI head handles with rings attached, the sides carved with a band of archaic fretwork ornament in low relief ; $2\frac{5}{8}$ in. high, diam. $6\frac{3}{4}$ in., without the projecting handles *Kay*
- 20/-
- 94 **A Jade Bowl**, dark spinach green with lighter mottling, the sides tapering, the rims flat, on three rim feet ; 2 in. high, $6\frac{3}{8}$ in. diam. *Kay*

- 82/-
20/-
10/10/-
9/10/-
5/-
3/-
4/-
10/10/-
21/-
21/-
18/-
18/-
2/15/-
2/2/-
24/-
- 95 **A Jade Ting** or Sacrificial Vessel for meat offerings, with Cover, very pale jade with the only iron mark low down on the side and base; the sides and cover are eight lobed, the rim flat with raised butterflies and scrolled ornament; the cover has an engraved flat centre handle with four JU-I shaped supports, to each of which is attached a loose ring; $4\frac{3}{4}$ in. high, $6\frac{1}{2}$ in. diam. (2) *Kang*
- 96 **A Jade Cover for a Peach-shaped Bowl**, dark green jade, pierced with a fine diaper design, over which in relief are the PA AN HSIEN or eight attributes of the immortal genii; $6\frac{3}{8}$ in. by $5\frac{7}{8}$ in.; on a polished wood shaped stand (2) "
- 97 **A Jade Jar**, with convex sides, of the variety HUA HSUEH TAI TSAO, "moss entangled in frozen snow," with emerald and other green markings; $3\frac{3}{8}$ in. high, $4\frac{1}{8}$ in. diam. *Spink*
- 98 **A Jade Jar**, straight sided, with moss markings in dark green and an iron splash on one side; 3 in. high, 4 in. diam. "
- 99 **A Jade Ornament**, shaped as a branch of the Buddha's-hand Citron (*citrus decumana*), pale sea-green stone; $3\frac{1}{2}$ in. high *Howe*
- 100 **A Jade Ornament**, oval base, pierced and carved with lotus flowers and intertwining stems, a FUNG bird in the centre, and a smaller FUNG and a crane below; 2 in. high
- 101 **A Jade Handle for a Dagger**, pale green, vertically fluted, the curving butt carved with floral design; $4\frac{3}{4}$ in. long *W. Fenton*
- 102 **A Rock Crystal Vase and Cover**, compressed spherical, on three feet, the sides with sprigs of plum blossom in low relief, two KWEI headed handles supporting loose attached rings, the cover with four-fold crown of nelumbian leaves and two birds above with beaks joined; $2\frac{1}{2}$ in. high (2) *Matsukai*
- 103 **A Rock Crystal Brush Rest**, shaped as rocky peaks with a tiger snarling at a dragon, and swirling water below, one corner forming a receptacle for ink; 6 in. high, base $8\frac{1}{4}$ in. by 3 in. "
- 104 **A Rock Crystal Kuan Yin**, standing on a rock with sea rolling up at the base; 8 in. high "
- 105 **A Rock Crystal Buddha**, seated in the meditative attitude, the foot marked with the swastika and double circle; $5\frac{1}{4}$ in. high
- 106 **A Crocidolite Bowl**, oval, the long diameter of the oval cut in the direction of the filaments showing a golden yellow on brown; 3 in. by 2 in. *Harper*
- 107 **A Persian Peshkabz**, double-edged curved blade, with smoky agate hilt; $15\frac{1}{4}$ in. long *W. Fenton*
- 108 **A Rock Crystal Gazing Ball**; $1\frac{1}{2}$ in. diam. *Edwards*
- 109 **Two Brown-stone Chinese Carvings** of rocky landscapes (2)

Other Properties.

- 3/1/- 110 **Chinese Drawings**: Six in body colours on paper, representing the stages in the cultivation and preparation of tea; $14\frac{1}{2}$ in. by $18\frac{1}{2}$ in.; *unsigned* (6)
- 3/3/- 111 **Chinese Drawings**: Six others from the same set (6)
- 3/3/- 112 **Chinese Drawings**: Six others (6)
- 3/3/- 113 **Chinese Drawings**: Six others (6)
- 2/2/- 114 **A Chinese Drawing** of a Moonlight Scene on a river, a covered boat drawn up under a tree in which is a woman and a baby, a boy playing the flute, and a man reclining; in colours on silk; *signed* TANNEN (*Japanese reading*)
- 2/2/- 115 **A Chinese Drawing** en suite with the foregoing, a Chinese literary man walking beneath a tree smelling a flower, and preceding him two boys carrying a basket of flowers and grasses between them on sticks; in colours on silk; *signed* TANNEN (*Japanese reading*)
- 13/1/- 116 **A Chinese Kakemono**: A Landscape of mountainous country with a pavilion in the mid-distance, and in the lower part a man seated under a tree, and others crossing a bridge; in colours on silk; *signed* TZU-ANG, the literary name of CHAO MENG-FU, a celebrated painter of horses of the YUAN dynasty, born 1254; on one side is a poem of appreciation, *dated Chia Ching, in the beginning of 10th month = 1522; in hard-wood box*
YUAN dynasty, 1277-1368. (2)
- 10/1/- 117 **A Chinese Kakemono**: An impressionist Landscape, with a man asleep in a boat, waiting for his master, who is round the corner of a cliff in conversation with another man; in colours on silk; *signed* TIENYUNG CHAO-YUNG
YUAN dynasty
- 4/1/- 118 **A Chinese Kakemono**: A branch of Peaches; in colours on silk; *signed* BIN MUN CH'UN and *dated* Yung Lo, tiger year = 1411; in hard-wood box Early MING dynasty
- 9/10/- 118A **A Chinese Drawing**: A Group of fourteen SIEN NUNG riding on leaves, mats, fans, etc., on clouds over the sea; in colours on silk; *framed; early Ming dynasty* Rodi
- 9/10/- 118B **A Chinese Drawing**: The Genie of Longevity with two attendants, in company with five SIEN NUNG in clouds above a pine tree, and Lao-tsze on an ox with two others on chimerae on the ground below; in colours on silk; *framed; early Ming dynasty*

- 16/10/- 118c **A Chinese Drawing** in four sections with groups of Immortals on various chimerae in clouds, descending towards the earth and sea; in colours on silk; *in two frames; early Ming dynasty*
- 3/10/- 118d **An Album of Chinese Drawings.** Ten in colours on silk; depicting Confucius and the Water-buckets, and various nobles and literary men engaged in various pursuits in interiors and garden scenes; *signed CH'IU YING, and dated CH'UNG CHEU, Cock year = 1633; late Ming dynasty*
- 10/- 119 **A pair of Chinese Pictures,** built up of painted paper, plaster, chips of mother-o'-pearl, brocades, etc., representing a man watching a young lady at her devotions, and a young man making a present to a lady, the figures robed in textiles; *in Chinese lacquered frames, 21 in. high by 15 $\frac{3}{4}$ in.*

LACQUER.

- 22/- 120 **Jū-kōgo**, pyramidal with rounded tied-over top, cherry TOGIDASHI, decorated with converging sprays of leaves in gold and colours; and another, square, with diaper designs on the sides and butterflies in NASHIJI on top (8)
- 2/- 121 **Te-bako**, cylindrical, HIRAMAKIYE, fern scrolls, peonies and chrysanthemoid ornament on a KINFUNDAME ground; red inside (2)
- 36/- 122 **An oval Box**, gold lacquer with a black TOGIDASHI panel on the cover bearing a landscape, *signed* GYOKUTANI; inside NASHIJI; and **An oblong Box**, black TOGIDASHI, with a similar landscape, *signed* GYOKUTANI; inside NASHIJI (4) Kato
- 2/2/- 123 **Suzuri-bako**, HIRAMAKIYE, a bean-shaped panel with landscape, and a fan-shaped panel with flowers, on a rich NASHIJI ground; inside, geese on the ground and flying in KINJI beside autumn grasses and flowers under a moon in mist on a polished black ground; without fittings (2) Kato
- 6/- 124 **Te-bako**, a box for toilet articles, two tiers, HIRAMAKIYE, with repeated Tokugawa MON, flying cranes in landscapes and streaked with mist; containing a tray and three various sized boxes all in the same style; clouded NASHIJI insides; in outer black lacquer case (11) Kato
- 5/- 125 **Fu-bako**, a box for despatching letters, large size, TAKAMAKIYE, with wild roses and great stems of bamboo in high relief gold lacquer, KIRIKANE HIRAME, and KINJI on NASHIJI ground; inside clouded NASHIJI; in black lac outer box (4)
- 32/- 126 **Fu-bako**, HIRAMAKIYE, gold fern scrolls and repeated MON of the Inagaki family of Shinano on a NASHIJI ground; inside faintly sprinkled on black (2)

- 31/- 127 **Fu-bako**, TAKAMAKIYE, conventionalised leaves and flowers of AJISAI (*Hydrangea hortensis*) and rocks, in KIRIKANE HIRAME and coloured gold on NASHIJI; inside NASHIJI; in black outer box (4) Kato
- 41/- 128 **Chadai**, TAKAMAKIYE, a mountainous landscape, in KINJI, gold and KIRIKANE HIRAME on NASHIJI; **Sambo**, same design (2)
- 215/- 129 **Bon**, oblong, curved corners, on four feet, HIRAMAKIYE, groups of MON on a NASHIJI ground; $18\frac{1}{2}$ in. by $10\frac{7}{8}$ in.
- 212/- 130 **Bon**, oblong, rounded corners; TAKAMAKIYE, a carp in high relief among water-weeds in bronzed gold on a black ground; gilt rims; $22\frac{3}{4}$ in. by $16\frac{3}{8}$ in.
- 32/- 131 **Tsuishu Libation Cup**, carved with birds and flowers on a diapered ground, KWEI headed handle; and a small **Box**, formed of two hemispheres, carved in Chinese symbols (3)
- 11/- 132 **Wakasa Lacquer**, a small Cabinet with two drawers, $3\frac{1}{2}$ in. by $4\frac{1}{2}$ in. by $3\frac{1}{4}$ in.; and a **Chop Stick Case**, with drawer, and a pair of Chop Sticks, $10\frac{7}{8}$ in. by $2\frac{1}{8}$ in. (7)
- 22/- 133 **Wakasa Lacquer**, two Boxes, one compressed spherical, $4\frac{1}{4}$ in. diam., and one cylindrical, 3 in. diam.; black insides (4)
- 22/- 134 **Wakasa Lacquer**, Pipe Case, with bamboo and metal pipe; and a **Chop Stick Box**, black TOGIDASHI with landscape; inside NASHIJI (4)
- 32/- 135 **Sakazuki**. A set of three large size, red, with children at play, in gold and colours: on the largest, six boys playing KOTORO-KOTORO; medium size, two boys at gymnastics on a pole; small size, three boys at KOMA ASOBI (3)
- 32/- 136 **Sakazuki**. A set of three, red, with landscapes: large size. Shooting the rapids of the Katsura river; medium size, A SHINTO Temple Festival; small size, The San-no Festival Procession; on the rims at the back other scenes (3) Kato
- 16/- 137 **Sakazuki**. A pair, red, with pines and plum blossom; and two others, pink (4)

VARIOUS.

- 310/- 138 A bronze Dōhachi, or bowl-shaped Gong; signed KINRYŪSHI; $12\frac{1}{2}$ in. high, $15\frac{1}{2}$ in. diam.; with beater, on a cable rim (3)
- 315/- 139 A Chinese ivory Hand Mirror Frame, the oval back carved with a Chinese lady and four children dancing; in glass-topped case (2)
- 26/- 140 A pair of Vases, bronze, each in two parts, with bayonet-jointed dragon handles, with figure subjects in relief, and inlaid silver; $8\frac{3}{4}$ in. high (8)

140 A. An arrow

12/-

- 21/- 141 A pair of Vases, bronze, octagonal bodies and bases, long cylindrical necks, two-handled, inlaid silver floral and grain designs; $8\frac{1}{2}$ in. high (2) Kato
- 215/- 142 Three bronze Vases, one inlaid silver; one in two parts (4)
- 38/- 143 Three bronze Bells, two with DORJE handles and one with lotus handle; a single-pointed DORJE and a five-pointed DORJE (5)
- 36/- 144 Four bronze Bells, DORJE handled, and a five-pointed DORJE (5)
- 32/- 145 A Fukusa, black silk, embroidered with two egrets among water-lilies and two other birds flying overhead, in coloured silks; $25\frac{1}{2}$ in. by 28 in.
- 28/- 146 A Fukusa, pale blue silk, embroidered with two crested birds among Nanten, Suisen and other flowers in coloured silks; $21\frac{1}{2}$ in. by $22\frac{1}{2}$ in.; edged with lace
- 31/- 147 An oblong Square, black silk, embroidered with a peacock and hen, poultry, parrot, cranes and other birds and insects amid flowers in coloured silks; $18\frac{1}{4}$ in. by $14\frac{3}{4}$ in.; edged with lace
- 21/- 148 A large piece of Brocade, white silk, embroidered with a trellis-work of gold, and flowers in coloured silks; 50 in. by 66 in.
- 81/- 149 A Chinese Wall Hanging, blue silk embroidered with gilt and coloured threads with figures of Nan-Kieu-lao-zin the Genie of Long Life, appearing to the Emperor Cheu Tsung on a dragon, and another Chinese standing beside a tiger; 7 ft. 4 in. by 4 ft. 10 in. Melland
- 5/5/- 149A A Chinese Wall Hanging, pale lavender silk, similarly embroidered, and with the same subject but reversed figures; 7 ft. 4 in. by 4 ft. 10 in. Ward
- 5/15/- 149B A Chinese Wall Hanging, blue silk, embroidered with gilt thread, a hawk swooping down on to a group of cranes amid aquatic plants; 5 ft. 7 in. by 4 ft.
- 5/5/- 149C A Mandarin's Robe, brown silk, embroidered with dragons and clouds, and a deep border round the skirt of wave design in coloured silks and gilt thread
- 6/10/- 149D A Japanese Temple Hanging, A SHISHI on rocks, having hurled its cub over a precipice on to rocks below, is looking over to see the result, cream peonies growing among the rocks, and a waterfall at the base, embroidered in coloured silks and gold; stretched on wood; 5 ft. 7 in. high, 3 ft. $9\frac{1}{2}$ in. wide; with engraved and gilt ringed KANAMONO for hanging

- 2/15/- 150 **A Thibetan Altar Picture** of the Ten Chief Disciples of Buddha grouped amongst lotus flowers and clouds, each with a small disciple or attendant; near the top a small figure of the Saint MILA-RA-PA within a circular halo, and at the base one of the Demon Defenders of the Faith; painted in body colours and gold on silk; with veil
- 15/- 151 **A Thibetan Altar Picture** of S'AKYA-T'UB-PA in the witness attitude, with Sariputra on his right and Maudgalyayana on his left, and ten other deities around; painted in body colours and gold on silk
- 36/- 152 **A Japanese Corner Cabinet**, with rounded front, on four feet, polished wood with red lacquer corners and borders, the uprights surmounted with carved ivory figures, fitted with four shelves and two drawers, the sliding doors to the shelves in gold lacquer with SHIBAYAMA work of birds and flowers; 4 ft. 6 in. high, by 33 in. wide at the lower part
- 20/- 153 **A Japanese Cabinet** for the display and storage of works of art, the front divided with irregularly shaped sections by cross and upright bars decorated with gold lacquer ornament, fitted with three sliding-door cupboards, two lock-up cupboards and five drawers, the fronts of all of which are inlaid and encrusted with SHIBAYAMA work in ivory and mother-o'-pearl, and decorated with lacquer; 6 ft. 5 in. high, by 4 ft. 7 in. wide, by 1 ft. 6½ in. deep

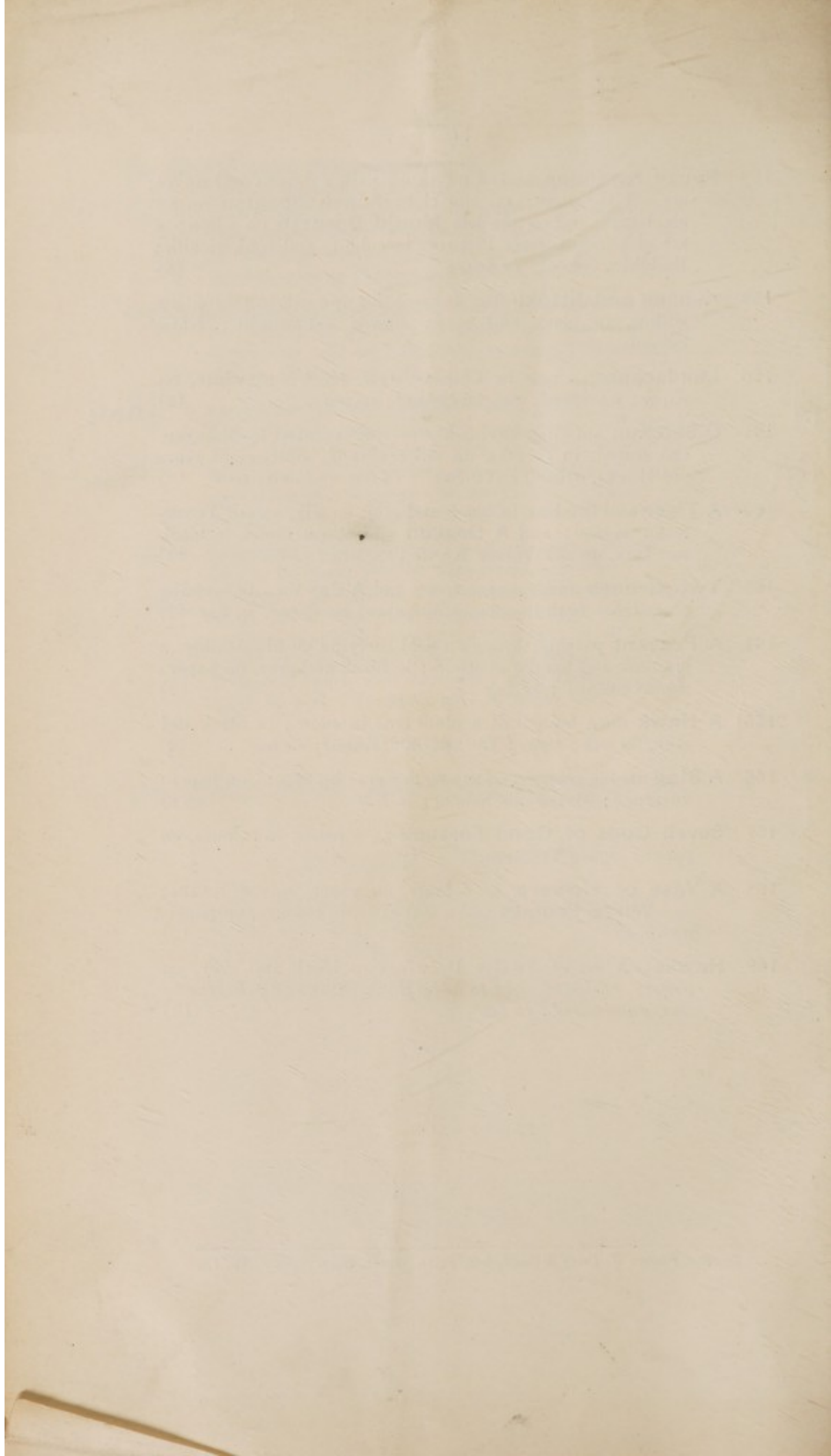
The Property of Miss Mary Buchanan Riddell.

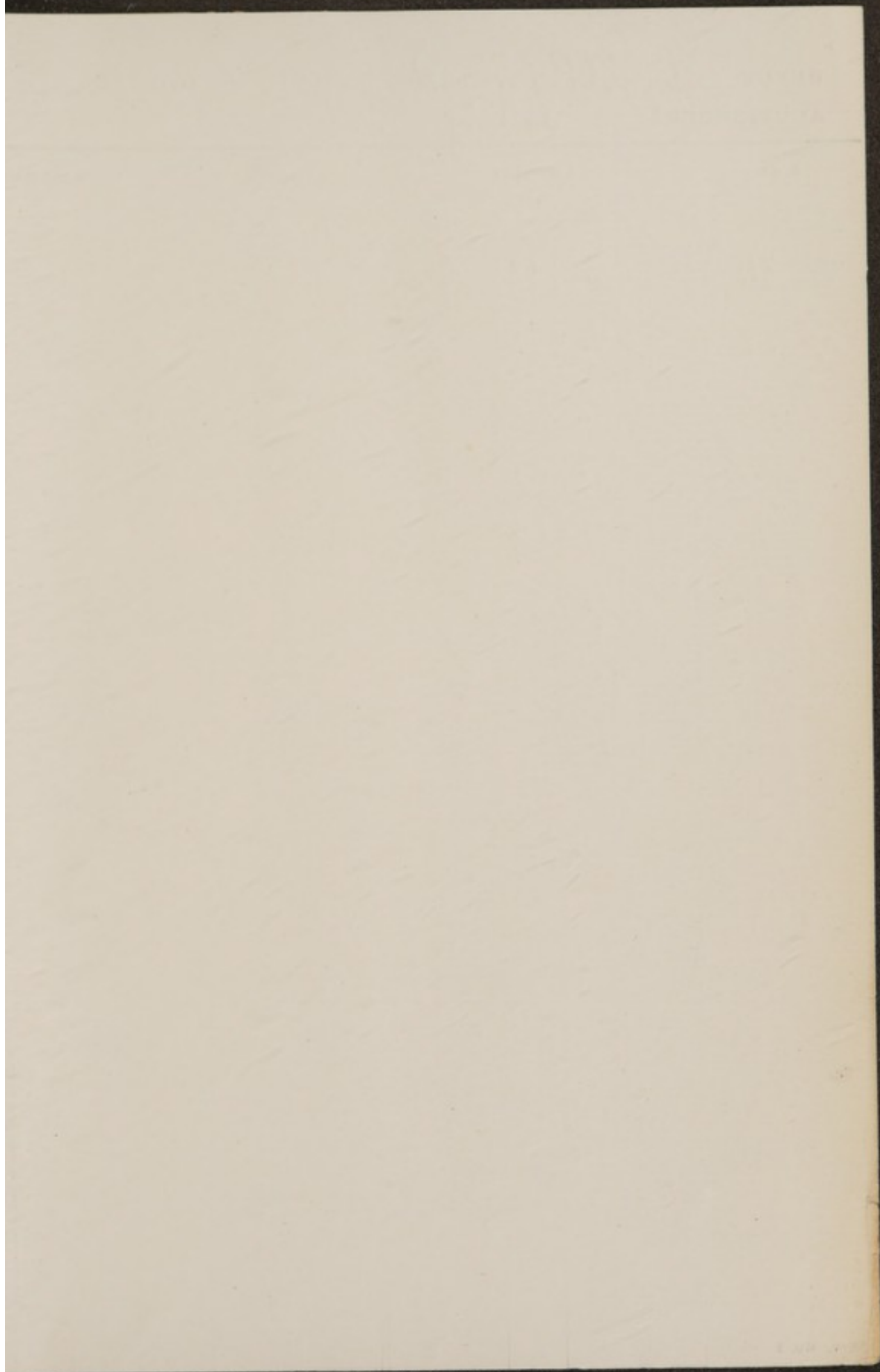
JAPANESE KAKEMONO.

- 3/10/- 154 **Monju Bosatsu** seated on a lion, and **Fugen Bosatsu** seated on an elephant, in colours on a black ground, on silk; signed HÔGEN EITOKU; a pair, in box (3) Kato
- 3/5/- 155 **Jurojin**, standing beside a white deer under a blossoming plum tree, holding a rugged staff, in colours, on silk, and a pair of Landscapes, in black and grey, a set of three; signed TANYŪ SEI; in box (4) Kato
- 3/5/- 156 **Sentaro** seated on a rock beside a crane under a blossoming plum tree, in black and grey, on paper, and a pair of Landscapes, forming a set of three; sealed SHINSÔ, Sôami School; in box (4) Kato
- 3/3/- 157 **Snow, Moon, and Flowers**, a set of three showing the pleasures of a DAIMYÔ's family, in colours, on silk; Tosa School; signed TOSA SAKON FUJIWARA NO MITSUSADA; in box (4)

- 5/15/- 158 **Ryūzu Kwannon** seated on a rock with a dragon and waves around the base; on the right **Fugen Bosatsu** on an elephant; and on the left **Monju Bosatsu** on a lion; a set of three Temple Pictures in colours and gold, on silk; Buddhist School; *in boxes* (6)
- 3/4 159 **Kanzan and Jittoku** standing pointing upwards to a sprouting willow, in black and grey; *signed* TSUNENOBU; Kanō School
- 3/5/- 160 **Landscapes**, a pair in Chinese style, black and white, on paper; *unsigned*; Sesshū School; *in box* (3) Kato
- 3/5/- 161 **Ō-Shō-Kun** standing having her portrait painted by Mao-yen-shō seated, in colours, on silk; *signed* "Sixty-eight years old HOEKI, after TANYŪ SEI"; *in box and outer case* (3) Kato
- 2/- 162 **A Tiger** and bamboo, in black and grey, on silk, *signed* YOSHINOBU (Kanō); and **A Dragon** and storm cloud, in black and grey, on silk, *signed* KANŌ TANSIN; *in box* (3)
- 2/- 163 **Two Cranes** under a pine tree; and **A Jay** on a blossoming plum tree; both in colours, on paper; *unsigned*; *in box* (3)
- 25/- 164 **A Peasant** passing through a field carrying on his shoulder a mattock and bundle of sticks; in black and grey, on paper; *signed* SESSHŪ; *in box* (2)
- 38/- 165 **A Hawk** on a branch of a plum tree in snow; in black and grey, on silk; *signed* TSUNENOBU (Kanō); *in box* (2)
- 45/- 166 **A Stag** among grasses and KIKYO flowers; in colours, on paper; *unsigned*; Maruyama School; *in box* (2)
- 25/- 167 **Seven Gods of Good Fortune** at a feast; in colours, on paper; *signed* TSUNENOBU
- 38/- 168 **A Vase of Flowers**, in colours, on paper, *signed* KATEI; and **White Peonies** and a Butterfly, in colours, on paper, *unsigned* (2)
- 9/1/- 169 **Hawks**: A set of Twelve Drawings in black and grey, on paper; *unsigned*, *said to be by* SOGA SHOKAKU; *kakemono size, unmounted*; *in box* (13)

END OF SALE.





BUYER

Cyril C Barnard
Sotheby

Date

12 May 1920

AUCTIONEERS

Lot	Amount				Lot	Amount			
	£	s.	d.			£	s.	d.	
34	3	12	6	✓					
38	2	10		✓					
52	2	5		✓					
53	1	18		✓					
74	3	10		✓					
85	5			✓					
	£ 18	15	6	✓					

OK
A