

Sales catalogue: Sotheby's

Publication/Creation

February-March 1920

Persistent URL

<https://wellcomecollection.org/works/ubpjmjfp>

License and attribution

This work has been identified as being free of known restrictions under copyright law, including all related and neighbouring rights and is being made available under the Creative Commons, Public Domain Mark.

You can copy, modify, distribute and perform the work, even for commercial purposes, without asking permission.



Wellcome Collection
183 Euston Road
London NW1 2BE UK
T +44 (0)20 7611 8722
E library@wellcomecollection.org
<https://wellcomecollection.org>

WAAMM/cm/sa/20/443

SOTHEBY, WILKINSON & HODGE.

34 & 35, NEW BOND STREET, W. 1.

CATALOGUE
OF
VALUABLE SILVER

Sold by Order of
Sir EVERARD P. DUNCOMBE, Bart.,
AND TRUSTEES,

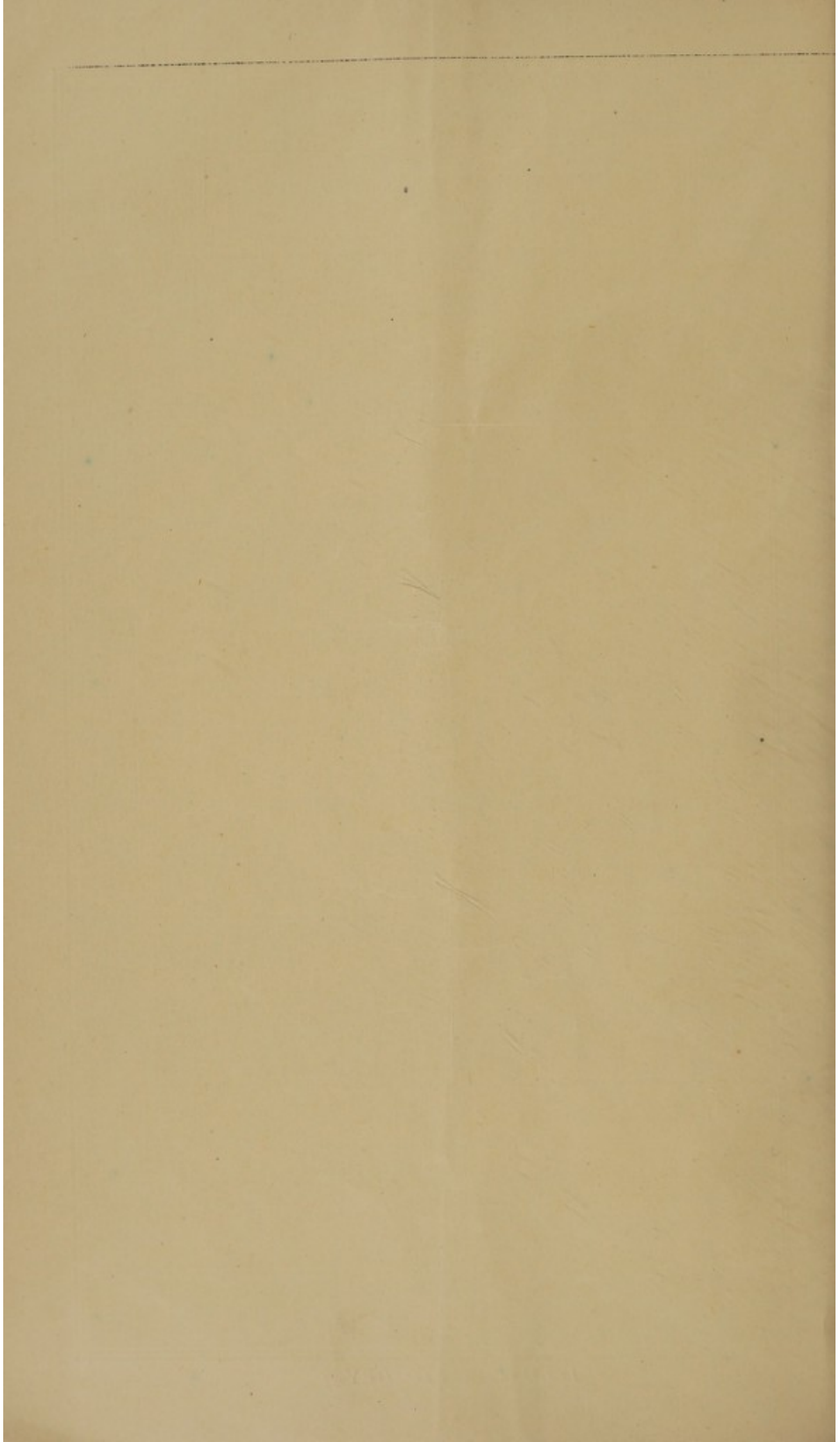
WITH
JEWELLERY AND SILVER
from other sources.

Days of Sale.

FIRST DAY	Friday, February 27	Lots 1 to 127.
SECOND DAY	Monday, March 1	Lots 128 to 286.

1920.

ILLUSTRATED COPY.



CATALOGUE
OF
VALUABLE OLD SILVER
AND
JEWELLERY.

FIRST DAY'S SALE.

VALUABLE OLD SILVER.

Sold by order of Sir EVERARD P. DUNCOMBE, Bart., and Trustees, and including a COMMONWEALTH TAZZA, 1655; a set of four Gilt WARWICK VASES by *Paul Storr*, 1811 (formerly the property of the Duke of York); a very fine pair of WILLIAM III CANDLESTICKS, 1696; an Eighteenth Century DISH-RING, by *John Hamilton*, of Dublin; and other fine GEORGIAN SILVER.

SECOND DAY'S SALE.

OLD SILVER.

including a very fine CHARLES II CUP and COVER, 1682, engraved with a Chinese design, the Property of F. F. URQUHART, Esq., M.A., Balliol College, Oxford; GEORGIAN and other SILVER, comprising the Property of A. O. PUGHE, Esq., M.A., late Master of the Army Side, Radley College; the Property of R. A. CLARKE, Esq., of Goudhurst, Stanley Road, Teddington; and including an Octagonal TRENCHER SALT, Inverness, c. 1680, etc. :

WORKS OF ART & JEWELLERY.

including a SILVER PENDULUM WATCH, by *Daniel Quare*; a few Miniatures and Brooches, Diamond Ornaments; also an

IMPORTANT PEARL NECKLACE.

the Property of Miss L. B. WALKER, 42, Chester Terrace, S.W. 1.

WHICH WILL BE SOLD BY AUCTION

BY MESSRS.

SOTHEBY, WILKINSON & HODGE

(SIR MONTAGUE BARLOW, K.B.E., LL.D., M.P., G. D. HOBSON, M.A., AND
MAJOR F. W. WARRE, O.B.E., M.C.),

Auctioneers of Literary Property & Works illustrative of the Fine Arts.

AT THEIR LARGE GALLERIES, 34 & 35 NEW BOND STREET, W. (1)

On FRIDAY, FEBRUARY 27, and MONDAY, MARCH 1, 1920.

AT ONE O'CLOCK PRECISELY.

May be Viewed Two Days prior.

Catalogues may be had.

RIDDLE, SMITH & DUFFUS, Windsor House, Kingsway, W.C. 2, and Forest Hill, S.E. 23.

CONDITIONS OF SALE.

- I. The highest bidder to be the buyer ; and if any dispute arise, between bidders, the lot so disputed shall be immediately put up again, provided the auctioneer cannot decide the said dispute.
- II. No person to advance less than 1s. ; above five pounds, 2s. 6d., and so on in proportion.
- III. In the case of lots upon which there is a reserve, the auctioneer shall have the right to bid on behalf of the seller.
- IV. The purchasers to give in their names and places of abode, and to pay down 10s. in the pound, if required, in part payment of the purchase-money ; in default of which the lot or lots purchased will be immediately put up again and re-sold.
- V. The sale of any lot is not to be set aside on account of any error in the enumeration of the numbers stated, or errors of description.
- VI. The lots to be taken away, at the buyer's expense immediately after the conclusion of the sale ; in default of which Messrs. SOTHEBY, WILKINSON & HODGE will not hold themselves responsible if lost, stolen, damaged, or otherwise destroyed, but they will be left at the sole risk of the purchaser. If, at the expiration of Two Days after the conclusion of the sale, the lots are not cleared or paid for, they will then be catalogued for immediate sale, and the expense, the same as if re-sold, will be added to the amount at which they were bought. Messrs. SOTHEBY, WILKINSON & HODGE will have the option of re-selling the lots uncleared either by public or private sale without any notice being given to the defaulter.
- VII. Upon failure of complying with the above conditions, the money required and deposited in part of payment shall be forfeited ; and *if any loss is sustained in the re-selling of such lots as are not cleared, or paid for, all charges on such re-sale shall be made good by the defaulters at this sale.*

Gentlemen who cannot attend this Sale may have their Commissions faithfully executed by their humble servants,

SOTHEBY, WILKINSON & HODGE.

34 & 35, New Bond Street, London, W. (1).

Telegraphic Address : " Abinitio, Phone, London." Telephone : Mayfair 4689.

In sending Commissions this Catalogue may be referred to as "RACKET."

COMMISSIONS SENT BY TELEPHONE ARE ACCEPTED ONLY AT THE SENDER'S RISK AND MUST BE CONFIRMED BY LETTER OR TELEGRAM.

CATALOGUE
OF
Valuable Old Silver & Jewellery.

FIRST DAY'S SALE.

SOLD UNDER INSTRUCTIONS FROM
Sir Everard P. Duncombe, Bt., and Trustees.

ELECTRO-PLATED ARTICLES, ETC.

LOT.

- | | | |
|---|--|----|
| 1 | A pair of Revolving Dishes, 10in., plain, on four legs ; <i>one faulty</i> | 8 |
| 2 | A Vegetable Dish, 11in., round, plain with gadroon border, domed cover and division | 4 |
| 3 | Four Dessert Stands with cast leaves and fruit, on tree stem bases, without glasses | 5 |
| 4 | A Dessert Stand, cast vines and grapes on tree stem base, and a frosted glass Bowl with plated rim ; and Sugar Tongs | 3 |
| 5 | A Kettle and Stand, chased with flowers, on loose base. | 2 |
| 6 | An Entrée Dish Warmer, 11in., plain on four legs | 2 |
| 7 | A Biscuit Box, and twelve Ramequin Pans, the latter gilt inside | 13 |
| 8 | Three Candlesticks, 10in., with round bases and gadroon mounts ; <i>one sconce missing</i> | 5 |

- 9 A Chamber Candlestick; a three-bottle Breakfast Cruet (*salt-cellar missing*); two Fish Servers, Toast Rack, Bottle Holder, and brass Nut Crackers 11
- 10 Four ormolu Candlesticks, 10½in., with rococco scrolls, c. 1750; and two Snuffer Trays, *one faulty*, and Snuffers 12

SHEFFIELD PLATE.

- 11 A Sheffield Plate Tea-tray, oblong, with shaped shell and scroll border, and engraved centre; 24in. 5
- 12 A pair of Waiters, engraved centre with floral scroll borders; 8in. 2
- 13 A Tea-urn, plain vase-shaped, on circular foot; 17in. 5
- 14 A Tea-urn with semi-globular body with honeysuckle and shell band, and gadroon edge, on square base; 17in. 3
- 15 A Tea-urn with vase-shaped body fluted, on four legs with lion feet, lion's mask ring handles, fluted domed cover; 17in. 3
- 16 Two Cream Ewers and two Sugar Basins; *both the latter with one handle missing* 4
- 17 A covered Jug, engraved, on four legs with floral knob, 10in.; a plain tapered Hot-water Jug, and a plain Shaving Pot 3
- 18 A pair of Butter Shells; an oval Mustard Pot; and three seven-wire Toast Racks, *one faulty* 6
- 19 A toasted Cheese Dish, oblong with reeded border; and a pair of Sauce-boats and Covers, with two handles, *one faulty* 7
- 20 A pair of Wine Coolers, 9in., vase-shaped with fluted bodies and lion's mask ring handles 6
- 21 Four Wine Coasters, the bodies embossed with vines, foliage, rims 4
- 22 Four Wine Coasters with plain ogee bodies and floral borders, silver plates for crests; *one missing* 4
- 23 A pair of Wine Coasters, plain moulded bodies, with gadroon borders 2
- 24 A table Inkstand with boat-shaped tray with two bottles, box and taper centre 4

- 25 An Egg Warmer, plain with wicker handles ; and two Egg Frames, each with four cups 12
- 26 A Soufflet Dish on four lion's feet, $7\frac{1}{2}$ in. ; and another, 7in. 4
- 27 A set of four oval Meat Dishes with shell and leaf borders ; 21in., 19in. and 17in. (2) 4
- 28 A set of Meat Dishes with gadroon rims, one 24in., one 20in., one 19in., two 17in., and four 12in. ; and a Fish Strainer 10
- 29 A Venison Dish, oval with gadroon borders and scroll handles ; 22in.
- 30 An Entrée Dish, oblong with gadroon borders, on Warmer with ball feet, lion ring handles ; 12in. 3
- 31 A set of four Entrée Dishes, 12in., with heavy gadroon and shell borders 12
- 32 A set of four Entrée Dishes and Warmers, oval, plain with domed covers, 11in. ; *several knobs and handles missing* 16
- 33 A Dish and Cover, $10\frac{1}{2}$ in. ; with hot-water compartment and two handles ; *the knob missing*
- 34 A set of four oval Dish Covers, fluted with gadroon borders, 20in. to $13\frac{1}{2}$ in., *two handles missing* 4
- 35 Four Candlesticks, 6in., round columns and bases with reeded borders 4
- 36 A large Candlestick, $13\frac{1}{2}$ in., on circular base, with shell and floral borders 2
- 37 A set of Candelabrum with three single light branches, *one faulty*, 30in. ; and six Candlesticks, 13in., with tapering column stems on circular bases, fluted borders 15
- 38 Two Snuffer Trays and five pairs of Snuffers ; and four Extinguisher Trays, each with two extinguishers 19
- 39 An Inkstand in the form of a model of an early locomotive engine ; *slightly faulty*, on wood stand 6
- 40 A plain Beaker, 5in. ; a pint Mug, with taper sides ; and a Plate with beaded rim, $7\frac{1}{2}$ in. 3
- 41 A circular Plateau with chased wheat border on four shell feet, 13in. ; and a Centrepiece Stand (without dish) with scroll brackets, *faulty* 4

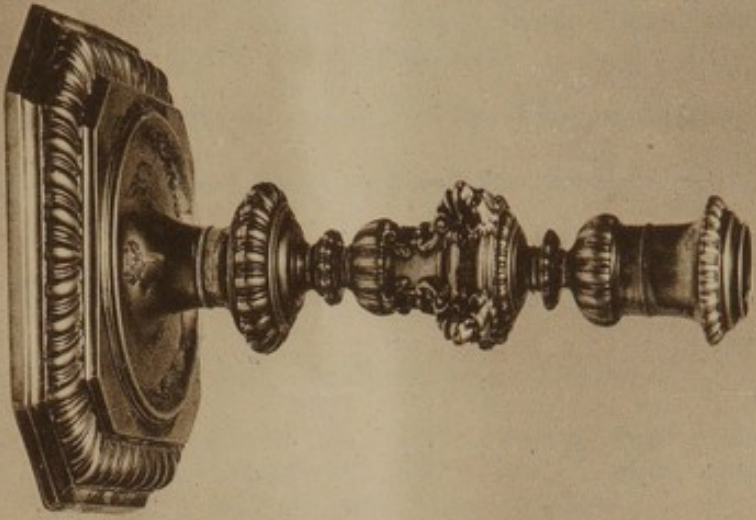
- 42 A Cheese Dish with trays, *one pan missing* ; a Wine Funnel, Skewer, and Soup Ladle, and six various plated articles 17

SILVER, ALL AT.

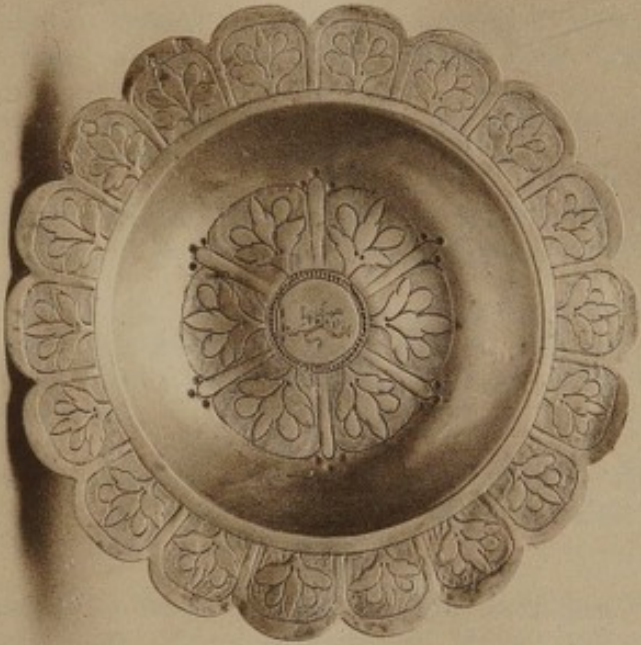
- 43 An Augsburg, Seventeenth Century, small covered Tankard, gilt, embossed with fruit and scrollwork, the top with a lion sejant holding escutcheon ; $6\frac{1}{4}$ in. 2
- 44 A pair of fluted Bowls and Covers and Stands, 7in., gilt, the covers with demi lion rampant knobs, all with engraved vine border ; cream Ladle and Sugar Sifter ; London, 1798 ; weight 84oz. 7dwts., in oak case 10
- 45 A pair of Muffineers, gilt, $3\frac{1}{2}$ in., cylindrical body on round foot, cast and chased ; London, 1806 ; maker John Emes ; weight 10oz. 6dwts. 2
- 46 Eighteen Teaspoons, four Mustard Spoons, two pairs of Tongs, two Ice Spades, Cream Ladle, four Sugar Sifters, and Jam Spoon, 1787-1807, all gilt, plain pattern ; weight 38oz. 17dwts. 32
- 47 Fifty-two Georgian Table and twelve Cheese Knives, seven Carving Knives and four Forks, and eight two-prong Table Forks, all with silver pistol handles ; *some faulty, in case* 84
- 48 A Soy Frame, with five cut-glass bottles and central handle ; London, 1738 ; maker Joseph Sanders
- 49 A Teapot and Stand, oval shaped with straight sides, closely engraved ; London, 1789 and 1790 2
- 50 A large Kettle with tap, on separate four-legged Stand with lamp, the kettle engraved with bands and draped medallions ; London, 1792, maker John Edward 4
- 51 A plain circular Dish and Cover with gadroon rims and two handles, $9\frac{3}{4}$ in. ; London, 1765 ; makers John Parker and Edw. Wakelin 2
- 52 A COMMONWEALTH LOW TAZZA, with broad scalloped rim, which with the centre is divided into panels chased with conventional foliage on a ground of matting, on circular foot ; London, 1655 ; maker's mark G S divided by a bolt in pale ; weight 7oz. 1dwt.

[See ILLUSTRATION.]

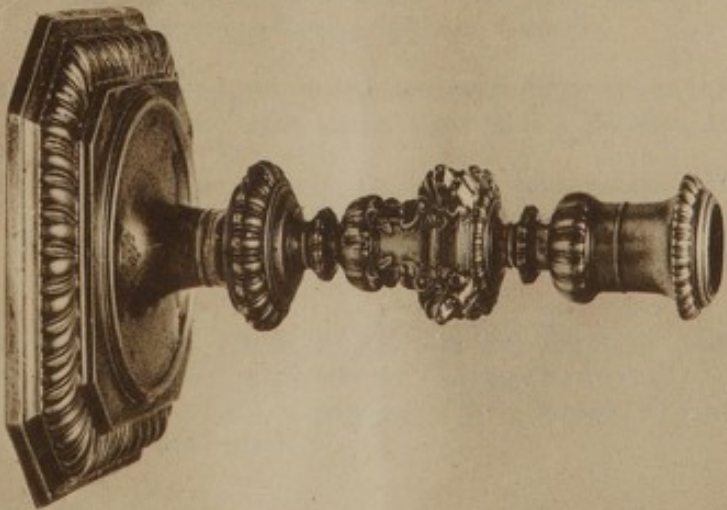
- 53 Eleven Georgian circular Wine Labels, four others oblong, Victorian, and six initials ; *one faulty*, all with chains 21



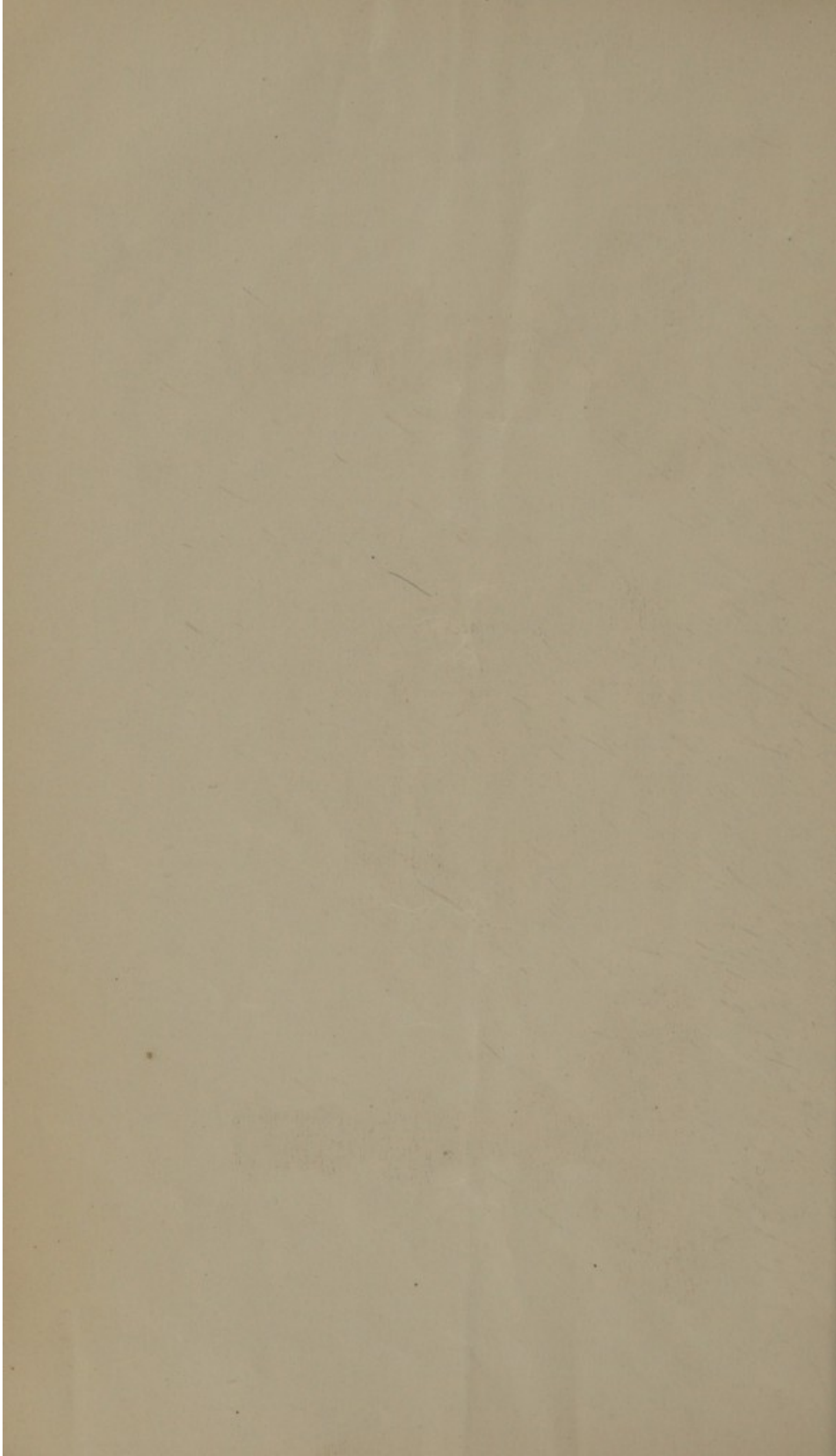
LOT 105.



LOT 52.



LOT 105.



- 54 Set of four Candlesticks with sconces, $11\frac{1}{2}$ in., round bases and tapered column stems, bead edges engraved; *Sheffield*, 1780; *two slightly faulty* 10
- 55 Three Butter Shells; *London*, 1730, 1744 and 1774 3
- 56 A Lemon Strainer, $4\frac{1}{2}$ in., with long-shaped handles; *London*, 1755
- 57 Another, with shaped scroll and leaf handles; 4in., *George III*
- 58 A pair of small plain Tumbler Cups; *George II* 2
- 59 A Muffineer, chased, on foot, *London*, 1831; another, vase-shaped, *Sheffield*, 1836; and a plain cylindrical Taper Box, maker's mark only, c. 1750 5
- 60 A globular Teapot, on collet foot, with flowers and panels in high relief; *London*, 1816, maker *John Angell*
- 61 A small Brandy Saucepan, with straight sides, on turned foot; *London*, 1705, maker *Job. Hanks*
- 62 A Brandy Saucepan, bell-shaped, plain with collet foot; *London*, 1766; makers *Thos. Whipham and Chas. Wright*
- 63 A Punch Ladle, plain bowl and wooden handle, *London*, 1731; Another, with shaped bowl with two lips, 1743; and a third with oval engraved bowl, 1786, with whale-bone handle 3
- 64 A pair of Corinthian column Candlesticks, with sconces, $14\frac{1}{2}$ in., on step bases with gadroon edges; *London*, 1785; maker *John Schofield* 4
- 65 A pair of Candlesticks with two-light branches with beaded ornament, *one slightly faulty*, $18\frac{1}{2}$ in., the candlesticks of Corinthian column shape with step bases; *London*, 1772; maker (probably) *Edward Capper* 11
- 66 An Inkstand, shaped, with engraved edge, glass ink-bottle, and two boxes with antler tops 12in.; *London*, 1849 7
- 67 A shallow circular Fruit Dish, gilt, the centre with a repoussé Tudor rose, and the sides with panels of flowers, $9\frac{1}{2}$ in.; *London*, 1811; maker *William Pitts*; weight 23oz. 10dwts.
- 68 FOUR FRUIT DISHES, gilt, in the shape of double vine leaves, chased, the bottoms having the royal crest within the Garter, 14in.; *London*, 1811; maker *William Pitts*; weight 95oz: 18dwts. 4

- 69 FOUR BOTTLE HOLDERS, gilt, with finely cast and chased pierced sides of vine and laurel pattern, the centres engraved with the crest of the Duke of Roxburghe; *London*, 1804; *stamped* RUNDELL BRIDGE & RUNDELL 4
- 70 A SET OF FOUR WARWICK VASES, gilt, with Bacchanalian heads in high relief, twisted handles, with liners for use of ice-pails, engraved with the royal crest within the Garter; *London*, 1811; *maker Paul Storr, stamped* RUNDELL BRIDGE ET RUNDELL; *weight* 790oz., in oak case 12
- *.* Formerly the property of the Duke of York.
- 71 Four Victorian Goblets; 6, 6½, and 7½in., all chased 4
- 72 Two Georgian Wine Funnels, *both faulty*; two Victorian three-bottle Cruet Frames, *one faulty* (with four bottles only); two Mustard Spoons and a Salt Spoon, and four Wine Corks 18
- 73 Three pairs of Georgian Sugar Tongs 3
- 73A A Wine Cooler, plain oval with scalloped edge and shell handles, 11in; *Vienna*, 1775, *weight* 53oz.

SILVER, PER OZ.

- 74 A Soup Tureen and Cover, plain, oval, with two handles and gadroon borders, on four leaf and claw feet; *London*, 1808; *maker William Stevenson*; *weight* 127oz. 15dwts., in oak case 3
- 75 A Georgian Dish Cross with lamp, adjustable legs; 14oz. 3dwts.
- 76 A Tea-urn with two handles, chased with foliage, flowers and birds, on octagonal-shaped base, shell feet; *London*, 1824; *weight* 185oz. 6dwt., in oak case 7
- 77 A Table Inkstand, 10in., oblong with gadroon borders, pierced gallery to compartments for three wells, *one missing*, on claw feet; *London*, 1763; *weight* 24oz. 19dwts. 7
- 78 A plain Tumbler, tapered, on ring foot; *London*, 1786; *weight* 5oz. 14dwts.
- 79 A large Candelabrum with four branches, with deeply chased acanthus foliage, on octagonal shaped base with shell feet; *London*, 1820; *maker Paul Storr*; *weight* 185oz. 10dwts., in oak case, *the latter faulty* 7

- 80 A Bowl and Cover on Plate with flowers and scrolls in high relief, floral borders and eagle knob ; *London*, 1818 ; weight 44oz. 14dwts. 3
- 81 A Sugar Basket, of plain vase-shape, with swing handle ; *London*, 1797 ; maker *Robert Hennell* ; weight 7oz. 14dwts.
- 82 A Mustard Pot, round with cast and chased leaves ; *London*, 1837 ; weight 4oz. 19dwts., with glass liner 2
- 83 A Bowl, 5 $\frac{3}{4}$ in., embossed with scrolls and flowers, on circular foot ; *London*, 1730 ; maker *Edward Cornock* ; weight 9oz. 5dwts.
- 84 A Warwick Cruet, with three silver castors, and two cut-glass bottles ; *London*, 1751 ; maker *Samuel Wood* ; weight 48oz. 11dwts. 8
- 85 A Cake Basket, round, basket-work pattern with swing handle ; unmarked, c. 1760 ; weight 69oz. 2dwts.
- 86 A seven-wire Toast Rack on gadroon and shell frame with scroll feet ; *London*, 1819 ; weight 23oz. 13dwts.
- 87 A pair of Dinner Plates, 10 $\frac{1}{2}$ in., with shaped gadroon and leaf rims ; *London*, 1808 ; weight 42oz. 8dwts. 2
- 88 Four oval Fish Dishes, 13 $\frac{1}{2}$ in., with shaped gadroon border ; three of *London*, 1785, and one of 1800 ; weight 103oz. 15dwts. 4
- 89 A Meat Dish, 18 $\frac{1}{2}$ in., with shaped gadroon border ; *London*, 1770 ; weight 52oz. 4dwts.
- 90 Another, 18in., similar ; *London*, 1768 ; weight 42oz. 4dwts.
- 91 A pair of oval Meat Dishes, 18in., with shaped gadroon borders ; *London*, 1808 ; weight 111oz. 5dwts. 2
- 92 A pair of oval Meat Dishes, 16in., with shaped gadroon borders ; *London*, 1813 ; weight 89oz. 19dwts. 2
- 93 A pair of oval Meat Dishes, 14in., with shaped gadroon borders ; foreign ; weight 60oz. 5dwts.
- 94 An oval Meat Dish, 23in., with shaped gadroon border ; *London*, 1808 ; weight 100oz. 14dwts.
- 95 Two oval Meat Dishes, 12in., with shaped gadroon rims ; *London*, 1705 and 1718 ; weight 46oz. 7dwts. 2

- 96 A circular Salver, 22in., plain centre, with cast chased and pierced border of vines and masks ; *weight* 166oz.
- 97 A CIRCULAR SALVER, 22in., with heavy scroll and shell rim, chased border and centre, on scroll feet ; *London*, 1746 ; *maker William Hunter* ; *weight* 154oz. 16dwts.
- 98 A Knife Tray, 16in., gadroon rim, chased with flowers and foliage and fine matting ; *London*, 1828 ; *weight* 48oz. 4dwts.
- 99 A pair of Meat Skewers, with shell heads, *London*, 1770 ; and Another, with ring end, 1768 ; *weight* 13oz. 15dwts. 3
- 100 A DISH OR POTATO RING, pierced with a design of scrolls, shells and medallions, and the edge of foot chased ; 7½in. ; *maker's mark of John Hamilton of Dublin (vide Jackson, p. 563)* ; *weight* 14oz. 12dwts.
- 101 A pair of Sauce Tureens and Covers, plain boat-shape with beaded rims, on oval feet ; *London*, 1782 (*the covers not marked*) ; *maker Hester Bateman* ; *weight* 33oz. 10dwts. 4
- 102 A pair of Cream Ewers, pear-shaped, chased, on pierced feet ; *one London*, 1827, *the other earlier, but date mark effaced* ; *weight* 16oz. 6dwts. 2
- 103 A large Sauce-boat, with flowers and scrolls in high relief, on three feet ; *London*, 1817 ; *weight* 25oz. 7dwts.
- 105 A VERY FINE PAIR OF WILLIAM III CANDLESTICKS, 7½in., cast, on octagonal bases with fluted edge, the stems circular with fluted rims and knob with four lions' heads supported by scrolls ; *London*, 1696 ; *maker's mark D W (mon.) within a heart-shaped shield, crowned* ; *weight* 51oz. 13dwts. 2
[See ILLUSTRATION.]
- 106 A pair of Candlesticks with sconces, 7¼in., on shaped square bases, circular stems, fluted ; *London*, 1743 ; *maker Phillips Garden* ; *weight* 35oz. 19dwts. 4
- 107 A set of six circular Salt-cellars, with scrolls and flowers in high relief, on three scroll feet, with spoons ; *London*, 1813 ; *weight* 58oz. 19dwts. 12
- 108 Two other Salt-cellars and Spoons, similar ; *London*, 1828 ; *weight* 15oz. 1dwt. 4
- 109 Four other Salt-cellars and Spoons, similar ; *London*, 1854 ; *weight* 35oz. 15dwts. 8

- 110 A Cream Ewer, engraved, quadrangular with flat bottom ;
London, 1796 ; weight 4oz. 9dwts.
- 111 A pair of oblong Snuffer Trays with shell and leaf borders ;
London, 1808 ; weight 17oz. 6dwts. 2
- 112 An oval Cake Basket with flat reeded wirework sides, swing
handle ; *London, 1765 ; maker Francis Crump ; weight*
42oz. 9dwts.
- 113 A pair of square Waiters, with chased centres and shell and
moulded borders ; *London, 1736 ; maker Geo. Weekes ;*
weight 21oz. 17dwts. 2
- 114 A circular Salver with Chippendale border, plain centre
engraved with shield of arms ; 14in. ; *London, 1735 ;*
maker Jos. Sanders ; weight 52oz. 3dwts.
- 115 A circular Salver, with gadroon rim, plain centre engraved
with coat-of-arms ; 13in. ; *London ; makers John*
Parker and Edw. Wakelin ; weight 38oz. 15dwts.
- 116 A pair of Chamber Candlesticks, circular, with gadroon
edges, and one Extinguisher ; *London, 1768 ; makers*
John Parker and Edward Wakelin ; weight 20oz. 19dwts.
5
- 117 A set of six Chamber Candlesticks, with scroll borders in
high relief, with Extinguishers ; *Sheffield, 1814 ; weight*
86oz. 9dwts. 12
- 118 A Toasted Cheese Dish and Cover, plain with beaded rim,
two handles ; *London, 1783 ; maker Burrage Davenport ;*
weight 18oz. 7dwts. 2
- 119 A pair of Beakers, with repoussé flowers and scrolls, on
collet feet ; *London, 1827 ; weight 23oz. 4dwts.* 2
- 120 A Cup and Cover, plain vase-shaped with scroll handles,
gadroon edges ; 15in. ; *London, 1759 ; maker's mark*
CH ; weight 51oz. 2dwts. 2
- 121 A circular Bowl with flowers and scrolls in high relief, on
collet foot ; 9½in. ; *Edinburgh, 1809 ; maker John*
McDonald ; weight 28oz. 19dwts.
- 122 A plain Entrée Dish with gadroon rim, *London, 1774 ; and*
modern Cover ; weight 44oz. 16dwts. 2

- 123 A Sauce-boat, with snake handle, on three feet, the body chased with festoons; *London, 1749; weight 6oz. 8dwts.*
- 124 A small Sauce-boat, plain with scalloped edge, scroll handle; *London, 1766; weight 2oz. 18dwts.*
- 3.5.0 95/- 125 A large oak Plate Chest, with iron bands and corners, top 37in. by 24in., 21in. high; and Another, 32in. by 18in., 21in. high 2
- 2.5.0 95/- 126 Three others similar, 30in. by 20in., 21in. high; 24in. by 18in., 19in. high; and 22in. by 15in., 15in. high 3
- 21/- 80/- 127 A large deal Chest, 41in. by 22in., 22in. high; and three others, one triangular 4
-

SECOND DAY'S SALE.

Other Properties.

SHEFFIELD PLATE.

LOT		
128	A set of eight Sheffield plate plain oval Dish Covers, with foliage handles ; 20in., 18in., 16in., 14in. (2), 12in. (2), and 11in.	16
129	Another similar lot	16
130	A pair of Sheffield plate oblong entrée Dishes and Covers, with gadroon borders	6
131	A pair of Sheffield plate Wine Coasters, with plain moulded sides and gadroon rims	2
132	A pair of Sheffield plate oval Meat Dishes and Covers, with shell and leaf borders ; 17in.	4
133	A Sheffield plate Meat Dish, with well and hot-water compartment, 18in. ; and another, similar, 16in., both with covers	4
134	Two Sheffield plate moulded Dish Covers ; 16½in.	2
135	A Sheffield plate Cream Jug, with fluted sides and foliage borders, on four feet	
136	A pair of Sheffield plate Wine Coasters with plain moulded sides and gadroon rims	2
137	A set of four Sheffield plate Salt-cellars, tub-shaped with reeded bands	4
138	A Fish Dish, with Cover and Strainer, rope-pattern edge ; 22½in. by 17in.	3
138A	A Sheffield plate Epergne on four lion's feet, with four branches, having one large (<i>broken</i>) and four small cut-glass dishes ; height 10½in.	13

The Property of R. A. Clarke, Esq.,

Goudhurst, Stanley Road, Teddington.

SILVER, ALL AT.

- 139 An early Georgian Brandy Saucepan and Cover, with wooden handle 2
- 140 A plain Teapot with straight sides and spout, wooden handle, London, 1795
- 141 A small Teapot with straight sides, chased with bands and festoons; *London, 1779; maker, Robert Hennell*
- 142 Two pairs of Georgian Sugar Tongs, chased; six Mustard and four Salt Spoons 12
- 143 Fifteen various Wine Labels; a Cheese Scoop with ivory handle, 1796; a Butter Knife and Pickle Fork 18
- 144 A five-bottle Cruet with pierced circular frame, with Mustard Spoon and three Labels; *London, 1845* 14
- 145 A pair of Fish Servers; *London, 1851, in case* 3
- 146 Six gilt and chased Dessert Spoons, in case 6
- 147 Four small circular Salt-cellars and Spoons; *London, 1862, in case* 9

SILVER, PER OZ.

- 148 Six plain circular Salt-cellars with beaded rims, on moulded feet; *London, 1783 (5) and 1793; weight 14oz. 2dwts.* 6
- 149 A seven-wire Toast Rack, with centre handle, on shell feet; *Exeter, 1842; weight 8oz. 15dwts.*
- 150 A small Cream Jug, chased with flowers, on three scroll-feet; *London, 1760; maker, John Moore; weight 2oz. 8dwts.*
- 151 A Cream Jug with flat bottom, chased with bands and festoons, *London, 1796*; and a Sweetmeat Dish with gadroon rim and raised centre chased with scrolls, 1800; *weight 5oz.* 2
- 152 A circular Mustard Pot on foot, chased with flowers; *Sheffield, 1828; weight 3oz. 9dwts.*

- 153 Twelve rat-tail Dessert Spoons, plain ; *London*, 1759-66 ;
weight 12oz. 9dwts. 12
- 154 Six plain Tablespoons ; *London*, 1761-5 ; weight 12oz.
6dwts. 6
- 155 A plain Georgian Soup Ladle, two Sauce Ladles, and
four Gravy Spoons ; weight 19oz. 14dwts. 7
- 156 Eleven plain Georgian Tablespoons, two others, and
three Teaspoons ; weight 29oz. 3dwts. 20
- 157 Six Victorian plain Tablespoons, and six Teaspoons ;
weight 16oz. 13dwts. 12

Other Properties.

SILVER, ALL AT

- 157A A set of Wine Coasters, pierced rims, with laurel wreaths ;
Sheffield, 1776 3
- 157B A small covered Hot-water Jug, with plain body ; *London*,
1752 ; maker, *John Wirgman* 1
- 157C A Coffee Pot with plain tapering sides, gadroon rims,
scroll base to spout and wooden handle ; *London*,
1747 ; maker, *Eliza Godfrey* ; height 10in.
- 157D A Teapot with straight sides, shaped and chased with
bands and flower sprays, wooden handle and knob ;
London, 1788 ; maker's mark F.P.
- 157E A Fish Slice with pierced blade and chased handle ; *Dublin*,
1773 ; maker, *Darby Kehoe*
- 158 A Teapot with plain body and floral knob, on four shell
feet, wooden handle ; *London*, 1835
- 159 An old German Spoon, *Cassel*, c. 1680 ; and another with
date pricked, 1684 2
- 160 A Punch Ladle with shaped bowl with spout and wooden
handle ; *London*, 1760
- 161 A set of six large Fruit Spoons, parcel gilt, with chased
handles and scalloped bowls ; *London*, 1877, in case 7
- 162 A circular Salver, 12½in., parcel gilt, chased with birds and
foliage, on lion's feet ; *London*, 1878, in case 2

- 163 Six Tablespoons and twelve large Forks, plain pattern ;
old French, Paris, 1784-7 18
- 164 A small oblong Snuff Box, with chased band ; *Birmingham,*
1799
- 165 A fluted Coffee Pot with tapering sides, and straight spout,
on moulded base, wooden handle ; *London, 1757*
- 166 A pair of Fish Servers in case, and another pair, *the*
prongs of fork plated ; all Victorian 5
- 167 A pair of Candlesticks with square fluted column stems and
beaded edges, on square shaped bases ; $11\frac{1}{2}$ in. ; *Sheffield,*
1787 2
- 168 AN OCTAGONAL TRENCHER SALT on moulded base, c. 1680 ;
maker's mark M R conjoined, probably Inverness (vide
Jackson, p. 505)
- 169 A CHOCOLATE POT with tapering sides, chased with a
diaper floral pattern, with domed cover and ivory
handle, on moulded base ; $6\frac{1}{2}$ in. ; *London, either 1724*
or 1734
- 170 Two pairs of Sugar Tongs, Georgian, with chased and
pierced sides 2
- 171 A Snuff Box, engine turned, *Birmingham, 1832* ; a Georgian
Vinaigrette ; and a small circular Box with pebble top 3
- 172 A Teapot with shaped straight sides, chased with bands
and festoons, wooden knob and handle ; *London, 1784*
- 173 A KETTLE with scroll handle and pineapple knob, the body
pear-shaped, the upper part chased with scrolls and
flowers, on stand with four legs on shell feet, with
festoons between ; *London, 1742 ; maker, Gabriel Sleath ;*
weight 56oz. 7dwts.
- 174 Twelve silver-gilt Dessert Knives, with shell pattern
handles ; *London, 1807-10 (11), and 1823* 12
- 175 A Cream Jug on circular foot, embossed with a farmyard
scene, with punched rim ; *London, 1779*
- 176 A pair of Wine Coasters, with plain sides, and gadroon
rims ; *London, 1789* 2
- 177 A bedside Chalice and Paten ; *London, 1842* 2

- 178 A five-bottle Cruet with circular frame with three es-
cutcheons and central handle, on three feet, *London*,
1741; *maker John Robinson*; with two silver Casters,
1725 and 1748; a Mustard Pot, 1725; two silver-
mounted Soy Bottles, and Olive Spoon 9
- 179 A cylindrical Nutmeg Grater with iron grater and silver
mounts and handle; *London*, 1812
- 180 A six-bottle Soy Stand, with silver-mounted bottles with
labels, boat-shaped stand with scroll ends; *c.* 1790;
one bottle faulty 18
- 181 Three Georgian Punch Ladles, with whalebone handles;
a Wine Funnel, *London*, 1808; and the spout of
another 6
- 182 A chased Sugar Sifter, *London*, 1808; twelve Teaspoons,
1836; and a pair of plain Sugar Tongs 14
- 183 A Georgian Vinaigrette and a small Box; another Vinai-
grette, Victorian; three Wine Labels; and a Cigar
Case; *the latter modern* 7
- 184 Two Fruit Spoons; a Knife, Fork and Spoon; a Bread
Fork, and a double glass Scent Bottle, all in cases; and
a steel Dagger with plated sheath 12
- 185 A Muffineer and a small Vase; a Taper Stick; eight Tea
and eight various Spoons, and two other pieces 23

The Property of A. O. Pughe, Esq., M.A.,

late Master of the Army side, Radley College.

SILVER, ALL AT.

- 186 An oval vase-shaped Coffee Pot, chased with a key-border,
wooden handle; *London*, 1804
- 187 Six George II Teaspoons, six others of 1796, and six of 1799,
the two latter lots with chased handles 18
- 188 A Wine Funnel, *London*, 1798; two pairs of Sugar Tongs
and a pair of Nippers; a small chased Snuff Box; and
two Caddy Spoons 8
- 189 Three Georgian Butter Knives; two Olive Spoons; eight
Salt and four various Spoons; and a Pickle Fork 18
- 190 An Indian Neck Chain with cobra head clasp; Indian
embossed small Bowl and three covered Pots; and an
electro plate Salver 9

SILVER, PER OZ.

- 191 A plain Teapot, oblong shape with gadroon rim, on four ball feet, *London*, 1814 ; and a Sugar Basin to match, 1811 ; *weight* 25oz. 4dwts. 2
- 192 A Cream Jug with reeded body, and gadroon rim, on four ball feet ; *London*, 1825 ; *weight* 3oz. 16dwts.
- 193 A plain Cream Jug, on circular foot ; *London*, 1779 ; *weight* 2oz. 10dwts.
- 194 A Cream Jug, chased with flowers and scrolls, on three feet ; *London*, 1739 ; *maker* *Geo. Smith* ; *weight* 4oz. 1dwt.
- 195 Another Cream Jug, very similar ; *London*, 1747 ; *weight* 2oz. 15dwts.
- 196 Four Salt-cellars chased with flowers, on three hoof feet ; *London*, 1767 (2) and 1777 (2), with spoons ; *weight* 6oz. 12dwts., with glass liners 12
- 197 A pair of plain Muffineers with reeded bands ; *London*, 1750 and 1752 ; *weight* 3oz. 16dwts. 2
- 198 A plain oval Mustard Pot, *London*, 1784 ; and another of similar shape, 1796, with two spoons ; *weight* 9oz. 10dwts., with liners 6
- 199 A pair of Mustard Pots, *Sheffield*, 1792 ; and another, modern, with liners and spoons ; two Muffineers and a Sweet Dish, modern ; *weight* 18oz. 1dwt. 11
- 200 Six George II Fruit Spoons with shell bowls and chased handles ; *weight* 8oz. 17dwts. 6
- 201 A pair of Fruit Spoons, 1784 ; and three Dessert Spoons, 1799 (2) and 1804, with shell bowls and chased handles ; *weight* 6oz. 4dwts. 5
- 202 A pair of plain Sauce Ladles, *London*, 1741 ; another pair with shell bowls, c. 1750 ; and a Sugar Sifter, *Newcastle*, c. 1780, *makers* *Langlands and Robertson* ; *weight* 7oz. 4dwts. 5
- 203 Seventeen various plain Georgian Tablespoons ; *weight* 31oz. 9dwts. 17
- 204 A Georgian Gravy Spoon, two Dessert Spoons, twenty Teaspoons, and two large and two small Forks, all plain pattern ; *weight* 25oz. 9dwts. 27

Other Properties.

SILVER, PER OZ.

- 205 A Tea and Coffee Service of Teapot, Coffee Pot, Cream Ewer and Sugar Basin, with plain moulded sides and floral knobs ; *London*, 1813 ; *weight* 82oz. 12dwts. 4
- 206 A plain half-pint Tankard on moulded foot ; *London*, 1778 ; *weight* 9oz. 15dwts.
- 207 A Cup on circular foot, the lower part of bowl fluted ; *London*, 1820 ; *weight* 7oz. 4dwts.
- 208 A globular Teapot with fruit knob, the body slightly chased ; *London*, 1840 ; *weight* 15oz. 9dwts.
- 209 A Milk Jug with scroll handle, embossed with scrolls, on moulded foot ; *London*, 1763 ; *weight* 8oz. 11dwts.
- 210 An octagonal Waiter with shaped moulded rim, the centre chased with scrolls, on four feet ; 6in. ; *London*, 1731 ; *weight* 7oz. 17dwts.
- 211 A pair of octagonal Entrée Dishes with reeded borders, the Covers fluted and with floral basket knobs ; 12½in. ; *London*, 1799 ; *maker* John Edward ; *weight* 86oz. 14dwts 6
- 212 Another pair, similar ; *London*, 1800 ; *maker*, John Edward ; *weight* 82oz. 3dwts. 6
- 213 A Soup Ladle with chased handle, and shell bowl ; *Dublin*, 1779 ; *maker's* mark M S ; *weight* 8oz. 5dwts.
- 214 A circular Salver with scroll and shell border, the centre engraved with flowers, on three feet ; 13in. ; *London*, 1794 ; *weight* 40oz. 13dwts.
- 214A A SOUP TUREEN AND COVER, boat-shaped, with side handles and beaded rims, the lower part of body and the dome of cover fluted, on oval foot ; *London*, 1784 ; *maker*, John Lamb ; *weight* 97oz. 9dwts., in oak case 3
- 215 Four plain boat-shaped Salt-cellars, on oval feet ; *London*, 1912 ; *weight* 13oz. 1dwt. 4
- 216 An oval Box, the flat lid embossed with a marriage subject, the sides with landscapes, foreign ; *London*, 1888 ; *weight* 10oz. 12dwts.
- 217 A plain Mug with bulbous sides on collet foot, scroll handle ; *Chester*, 1736 ; *maker* Richd. Richardson ; *weight* 8oz. 1dwt.

- 218 A plain Caster ; *London*, 1772 ; and a Wine Funnel, 1785 ;
weight 6oz. 5dwt. 4
- 219 Six Dessert Spoons with chased handles, *London*, 1784 ;
two plain Sauce Ladles, 1788 ; and a small plain Cream
Jug ; *weight* 10oz. 1dwt. 9
- 220 A circular Salver with fine shell and scroll border, the centre
chased ; 14in. ; *London*, 1784 (*without King's head*) ;
maker's mark T H ; *weight* 41oz. 13dwt.
- 221 Twelve thread pattern Dessert Spoons, *London*, 1851 ; and
six small Forks, 1855 ; a Soup Ladle, 1841 ; a Gravy
Spoon, 1808 ; and a pair of Sugar Tongs ; *weight* 45oz.
3dwt. 21
- 222 A melon-shaped Teapot, chased with scrolls, on four feet ;
London, 1837 ; *weight* 23oz. 18dwt.
- 223 A boat-shaped plain Sugar Bowl with reeded handles ;
Chester, 1901 ; *weight* 11oz. 7dwt.
- 224 A plain Cup on tall stem and circular foot ; *Sheffield*, 1878 ;
weight 6oz. 19dwt.
- 225 A Georgian Teapot with fluted body on four ball feet ;
weight 19oz. 3dwt.
- 225A A plain oblong Cake Basket with gadroon border and
swing handle ; *London* 1822 ; *weight* 25oz. 14dwt.
- 226 A small Cup on collet foot, the body with fluted band,
London, 1818 ; a Cream Ewer, 1823 ; and an earlier
Pepper Caster ; *weight* 15oz. 5dwt. 3
- 227 A Hot Water Jug, embossed with festoons ; *London*, 1910 ;
weight 26oz. 8dwt.
- 228 A Victorian Cream Jug on three feet ; a half-pint Mug and
a smaller one, all embossed with flowers ; a plain
Caster ; and a Dish with pierced border ; *weight* 27oz.
3dwt. 5
- 229 A Cake Basket, circular, with moulded and repoussé panels
and swing handle ; *London*, 1831 ; *weight* 34oz. 4dwt.
- 230 A FINE OVAL WINE COOLER, wide rim, with gadroon and
shell edge, acanthus scroll handles, on four feet, fluted
bowl ; *London*, 1835 ; *weight* 148oz. 15dwt.
- 231 A pair of gilt Cups, thistle-shaped, finely embossed with
band of vines, and the lower part of bowl with sun-
flowers ; *London*, 1823 ; *makers* Rebecca Eames and
Edw. Barnard ; *weight* 27oz. 13dwt.

- 232 AN OVAL CAKE BASKET with pierced sides with mask and shell rim, the bottom chased with scrolls and flowers and coat-of-arms within a scrolled cartouche, swing handle ; *London*, 1740 ; *maker Thos. Farren* ; *weight 52oz. 11dwts.*
- 233 A Claret Jug, oviform with dragon handle, the body chased with scrolls ; *London*, 1859 ; *weight 33oz. 15dwts.*
- 234 A Set of four Salt-cellars, boat-shaped with plain moulded sides, on oval reeded feet, *London*, 1800 ; and four Spoons, 1802 and 1809 (3) ; *weight 10oz. 16dwts.* 8
- 235 A Wine Strainer, *London*, 1811 ; and a seven-wire Toast Rack, 1817 ; *weight 11oz. 14dwts.* 2
- 236 A small plain Jug ; *London*, 1863 ; *weight 7oz. 6dwts.*
- 237 Seventeen plain Georgian Teaspoons ; *weight 8oz. 10dwts.* 17

The Property of J. F. Urquhart, Esq., M.A.,

Balliol College, Oxford.

SILVER, PER OZ.

- 238 A VERY FINE CHARLES II CUP AND COVER with side scroll handles, on moulded circular foot, the sides of plain pattern engraved with a Chinese design of a tower, a figure, birds, foliage and fruit, and with an esquire's coat-of-arms within a wreath ; the cover slightly domed, engraved with a similar pattern and surmounted by an open foliage knob ; *height 8½in., diam. 6½in.* ; *London*, 1682 ; *weight 38oz. ; 3dwts.* ; on wood stand, in oak case 4

Other Properties.

WORKS OF ART, WATCHES, JEWELLERY, &c.

- 239 An ivory Tea Caddy, oblong octagonal, flat lid, the angles inlaid ebony, silvered swivel handle, and shield in front, the lid and front inlaid with mother-o'-pearl
- 240 Four ivory Card Cases, decorated with pricket work, or inlaid mother-o'-pearl, one with an engraved portrait of a lady 4

- 241 A tortoise-shell Razor and Shaving Case, inlaid mother-o'-pearl, with two ivory fittings; a tortoise-shell Card Case, and a Spectacle Case; an Etui without fittings, and other pieces 7
- 242 A Verge Watch, by *J. Anderson, of London*, in silver case, hall-marked, London, 1775, outer case with repoussé classical figure subject, and outside case of tortoise-shell
- 243 A Verge Watch, by *Geo. Charles, of London*, in plain silver case and outside case, both hall-marked, London, 1782, in a third tortoise-shell case, and a fourth outside case of silver
- 244 A Verge Watch, by *Ralph Gout, of London*, the dial figured for Oriental market, in plain silver case and outer case, both hall-marked, London, 1848, a third case of tortoise-shell, and outside case of wood covered with leather
- 245 A tortoise-shell Tea Caddy with slightly bowed front on four brass feet, the inside with two divisions
- 246 A tortoise-shell Tea Caddy, with shaped front and two divisions, on ball feet
- 247 An early Eighteenth Century carved wood Box, the lid pierced and carved with a boy figure, the bottom with a lady playing on a harp
- 248 A Straw-work Box in the form of a book, with division and looking-glass inside
- 249 A Straw-work Pocket Case, worked with the Spanish arms; and another with two small swing boxes 2
- 250 A lady's Hand Bag, in leather, with tortoise-shell sides inlaid with mother-o'-pearl
- 251 A tortoise-shell Snuff Box, plain circular, with gilt medallion of Henry IV of France in lid, $3\frac{1}{4}$ in.; and another in olive wood, with medallion of Charles X, $2\frac{7}{8}$ in. 2
- 252 A small hardstone Chatelaine Scent Bottle of flattened circular shape, with gold mounts and chain
- 253 An Eighteenth Century oval covered basket in ivory, 6in., the sides and covers finely pierced; *handle faulty*
- 253A A Louis XV lady's Gold Watch, by *L'Epine, Paris*, the face and miniature at back set with pastes
- 65 253B A finely painted oval Silhouette on glass, by *Mrs. Beetham*, of a gentleman in late Eighteenth Century costume with tie wig, in square metal frame, with the artist's ticket on the back

6-10-0

- 254 A SILVER PENDULUM WATCH, by *Quare, London*, in plain case, with silver dial, and having at the back an enamel in colours of a lady holding a cup, showing through a glazed opening in the case
- 255 An oval folding Reading Glass in tortoise-shell case, with silver rim and mounts
- 256 An oval Miniature of Miss Bover, in mob cap and late Eighteenth Century costume, framed
- 257 An oval Miniature of Santa Galla Placidia, framed
- 258 A square Miniature on ivory of St. Catharine Ricci, kneeling at a table with skull and crucifix
* * * Purchased at the sale of the private effects of Pope Pius IX, at the Vatican, 1879.
- 259 Ten oval Miniatures on ivory of Indian temples and buildings, finely painted and mounted on oval mount
- 260 A Louis XVI Needlecase in mother-o'-pearl and gold, in the shape of a quiver of arrows
- 261 A Brooch with a shell cameo of Hebe ; another with one of Aurora and Night, and a Pendant with cameo of Neptune 3
- 262 A Shell Cameo of Queen Victoria, in case ; and six others various, two mounted 8
- 263 An onyx Cameo of a Bacchante ; a jasper Cameo of a Philosopher ; and a paste Cameo of two classical figures 3
- 264 A Necklace of clouded amber, of 110 small beads
- 265 A square tortoise-shell Snuff Box with gold mounts ; and an oval Battersea Enamel Patch Box with printed design on lid 2
- 266 Two well-painted Miniatures on ivory, of battle scenes ; $3\frac{1}{2}$ in. by $2\frac{1}{2}$ in., in gilt frames 2
- 267 Bronze portrait Plaques, circular, by *A. Legros*, of Alfred Tennyson, $4\frac{3}{4}$ in., signed in full ; Charles Darwin, 1881, $4\frac{1}{2}$ in., signed A. L. and John Stuart Mill, 4in. 3
- 268 Others of Orlando Martorelli, 1881, $4\frac{7}{8}$ in. ; Pierre Gregoire, $4\frac{1}{8}$ in. ; and Maria Valvona, 1881, $3\frac{3}{4}$ in. 3
- 269 Others of Don Juan Heredia, 4in. ; Gil de Mesa and Antonio Escovedo, both $3\frac{1}{2}$ in. ; and another, $3\frac{3}{4}$ in., signed A. L. 4

- 270 A pair antique paste Shoe Buckles 2
- 271 A pearl and diamond Cluster Ring, and a sapphire and diamond three-stone ditto 2
- 272 A single-stone diamond Ring, with gold shank
- 273 A circular Pendant set with brilliants
- 274 AN IMPORTANT STOMACHER BROOCH, with cluster centre and fringe set large and small brilliants

The Property of a Lady.

- 275 AN ALL-DIAMOND TIARA, large brilliant centre
- 276 Fancy stone and diamond Bracelet, with sapphire centre, flexible
- 277 An oblong cameo Scarf Pin ; a 5-stone pearl Ring ; and a Chrysoprase pearl and diamond Bracelet 3
- 278 A gold centre seconds Watch, and a gold and enamel lady's Watch 2
- 279 A gold Guard Chain and Locket
- 280 A pearl and diamond scroll pattern Pendant
- 281 Two cornelian cameo and pearl Locket Pendants, and a Lava cameo ditto 3
- 282 A flexible gold Bracelet set with turquoises and pearls
- 283 A gold curb Bracelet, and a turquoise and gold Brooch 2
- 284 A turquoise, pearl and gold Miniature pendant
- 285 A pearl half-hoop Ring

The Property of Miss L. B. Walker,

42 Chester Terrace, S.W. 1.

- 286 A NECKLACE OF 62 FINE ORIENT PEARLS with diamond cluster snap

[See ILLUSTRATION.]

* * * These pearls are a portion of a string presented by the Gaekwar of Baroda to his guardian, General Walker, of Bowland, Midlothian, on the latter's marriage in 1810.

BUYER
AUCTIONEER

Lot

200

BUYER

J. Hooper-Read

Date

27/2/20

AUCTIONEERS

Lottery

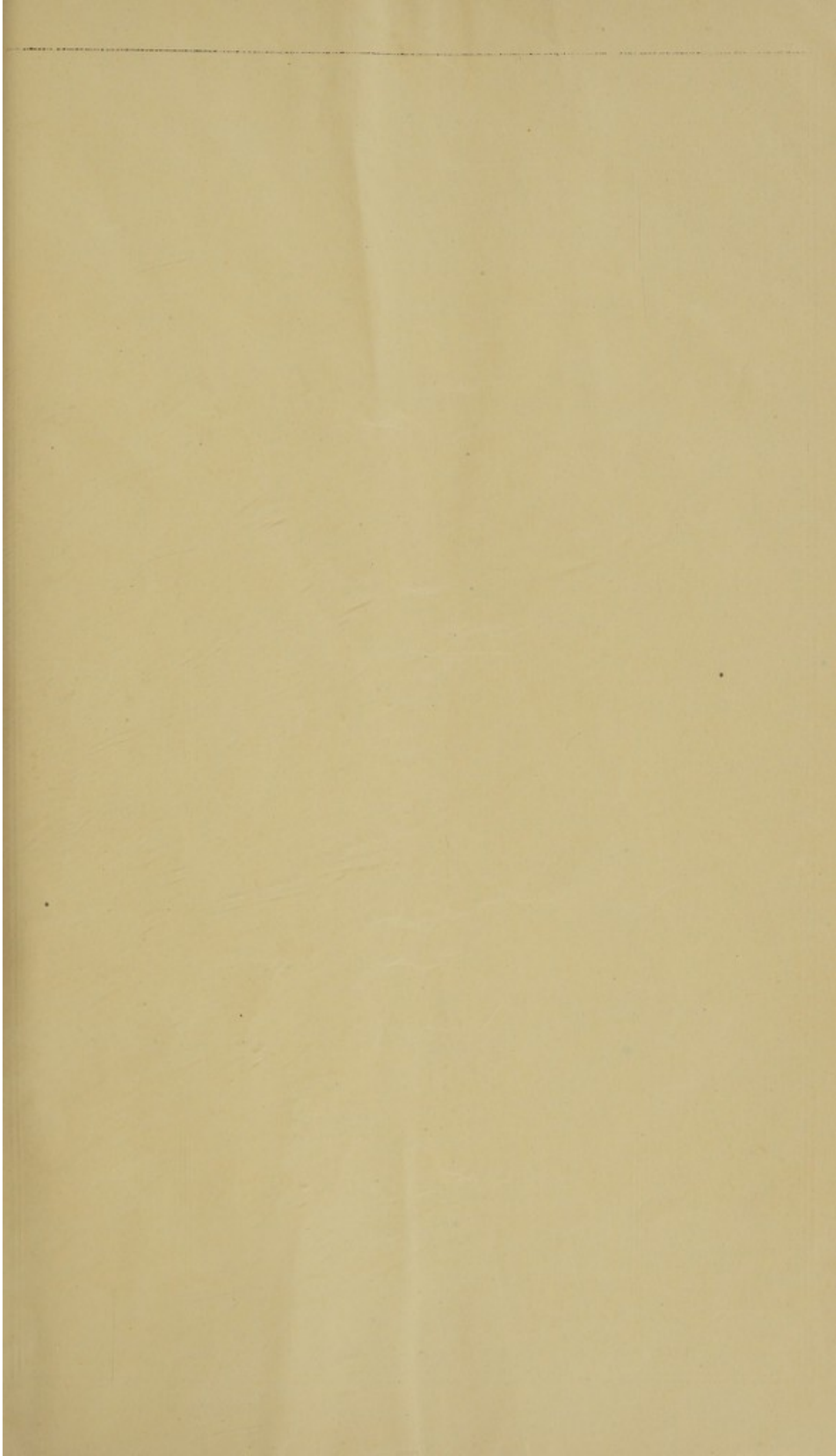
Lot	Amount			Lot	Amount		
	£	s.	d.		£	s.	d.
<i>125</i>	<i>3</i>	<i>5</i>	<i>.</i>	<i>✓</i>			
<i>126</i>	<i>2</i>	<i>5</i>	<i>.</i>	<i>✓</i>			
<i>127</i>	<i>1</i>	<i>1</i>	<i>.</i>	<i>✓</i>			
	<hr/>						
	<i>6</i>	<i>11</i>	<i>.</i>	<i>✓</i>			
	<hr/>						

OK
QR



LOT 286.





BAKER, LEIGH & SOTHEBY

THE FIRM COMMENCING WITH SAMUEL BAKER IN

1744.

SOTHEBY, WILKINSON & HODGE.

1920.