

Sales catalogue: Sotheby's

Publication/Creation

July 1914

Persistent URL

<https://wellcomecollection.org/works/bz37qeiy>

License and attribution

This work has been identified as being free of known restrictions under copyright law, including all related and neighbouring rights and is being made available under the Creative Commons, Public Domain Mark.

You can copy, modify, distribute and perform the work, even for commercial purposes, without asking permission.



Wellcome Collection
183 Euston Road
London NW1 2BE UK
T +44 (0)20 7611 8722
E library@wellcomecollection.org
<https://wellcomecollection.org>

110 WA/4mm/cm Dal/20/339 4

SOTHEBY, WILKINSON & HODGE,
WELLINGTON STREET, STRAND.

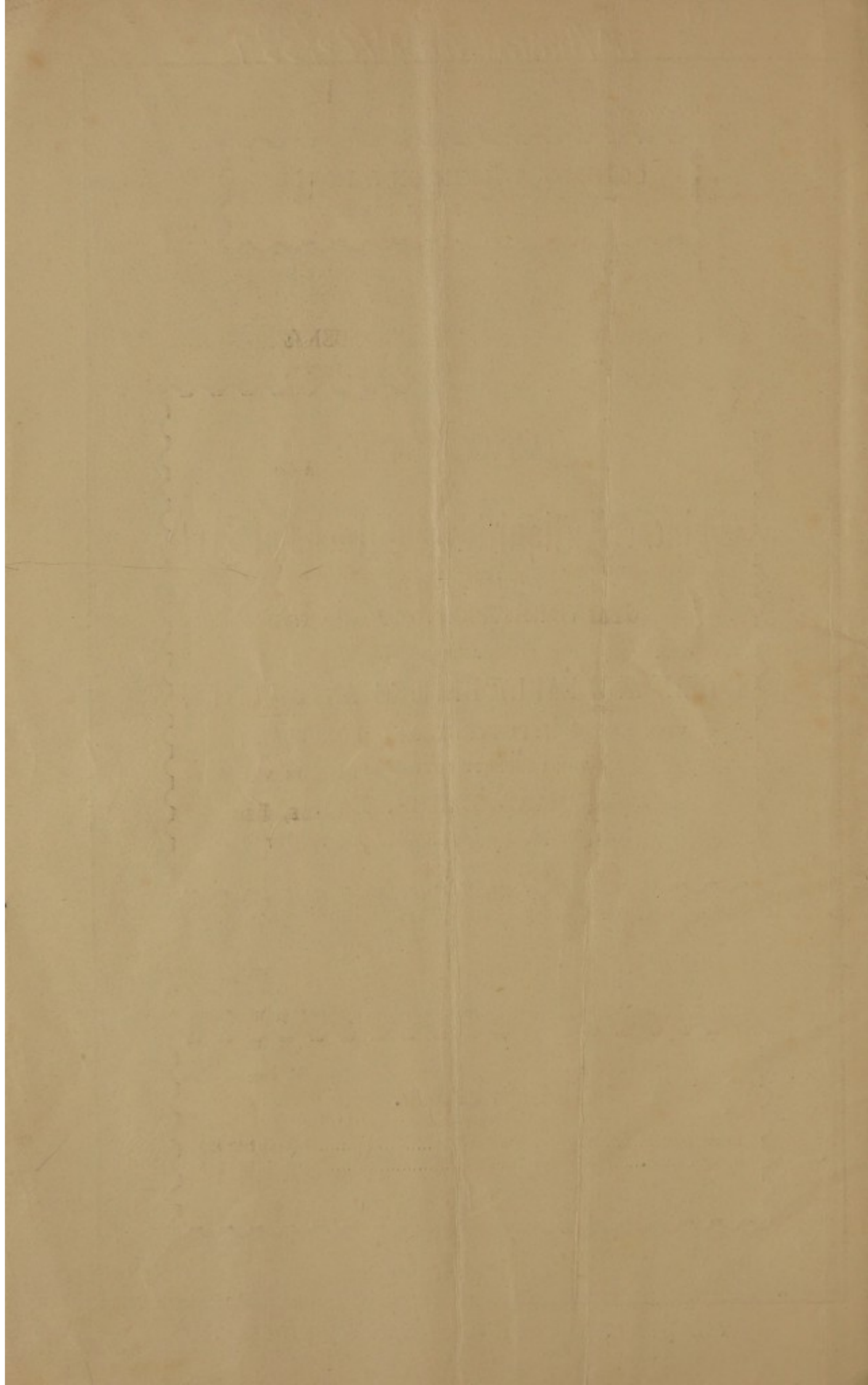
CATALOGUE
OF
Chinese Antiquities & Works of Art
COLLECTED BY
DR. VORETZSCH, *of Hamburg;*
AND
ROMAN AND EARLY BRITISH ANTIQUITIES,
WITH ENGLISH POTTERY AND PORCELAIN,
THE PROPERTY OF THE LATE
THOMAS BLISS, Esq.
of Coningsburgh, Montpelier Road, Ealing, W.

Days of Sale.

FIRST DAY Monday, 6th July Lots 1 to 180
SECOND DAY Tuesday, 7th July Lots 181 to 345

1914.

ILLUSTRATED COPY.—PRICE ONE SHILLING.



CATALOGUE
OF
Antiquities and Works of Art

COMPRISING

POTTERY VESSELS, GRAVE GIFTS, AND OTHER EARLY
CHINESE WARES,

BRONZE SACRIFICIAL VESSELS, VASES, INCENSE BURNERS, &c.
from 1000 B.C. down to the 18th Century,

AND

CHINESE DRAWINGS

of various periods, from 1000 A.D. to the 18th Century,

COLLECTED BY

Dr. Horetzsch, *of Hamburg,*

and Exhibited at the Kunst und Gewerbe Museum, Hamburg ;

WITH OTHER CHINESE DRAWINGS,

the Property of a Lady ;

ROMAN AND EARLY BRITISH POTTERY AND OTHER REMAINS
found in London,

ENGLISH POTTERY & PORCELAIN OF THE EIGHTEENTH CENTURY,

the Property of the late Thomas Bliss, Esq.

of Coningsburgh, Montpelier Road, Ealing, W.

WHICH WILL BE SOLD BY AUCTION

BY MESSRS.

SOTHEY, WILKINSON & HODGE,

Auctioneers of Literary Property & Works illustrative of the Fine Arts,

AT THEIR HOUSE, No. 13, WELLINGTON STREET, STRAND, W.C.

On MONDAY, the 6th of JULY, 1914, and following Day,

AT ONE O'CLOCK PRECISELY.

May be Viewed Two Days prior.

Catalogues may be had.

DRYDEN PRESS : J. DAVY & SONS, 8-9, FRITH-STREET, SOHO-SQUARE, W.

CONDITIONS OF SALE.

- I. The highest bidder to be the buyer; and if any dispute arise between bidders, the lot so disputed shall be immediately put up again, provided the auctioneer cannot decide the said dispute.
- II. No person to advance less than 1s. ; above five pounds 2s. 6d., and so on in proportion.
- III. In the case of lots upon which there is a reserve, the auctioneer shall have the right to bid on behalf of the seller.
- IV. The purchasers to give in their names and places of abode, and to pay down 10s. in the pound, if required, in part payment of the purchase-money ; in default of which the lot or lots purchased will be immediately put up again and re-sold.
- V. The sale of any lot is not to be set aside on account of any error in the enumeration of the numbers stated, or errors of description.
- VI. The lots to be taken away, at the buyer's expense, immediately after the conclusion of the sale ; in default of which Messrs. SOTHEBY, WILKINSON & HODGE will not hold themselves responsible if lost, stolen, damaged, or otherwise destroyed, but they will be left at the sole risk of the purchaser. If, at the expiration of Two Days after the conclusion of the sale, the lots are not cleared or paid for, they will then be catalogued for immediate sale, and the expense, the same as if re-sold, will be added to the amount at which they were bought. Messrs. SOTHEBY, WILKINSON & HODGE will have the option of re-selling the lots uncleared, either by public or private sale, without any notice being given to the defaulter.
- VII. Upon failure of complying with the above conditions, the money required and deposited in part of payment shall be forfeited, *and if any loss is sustained in the re-selling of such lots as are not cleared or paid for, all charges on such re-sale shall be made good by the defaulters at this sale.*

Gentlemen who cannot attend this Sale may have their Commissions faithfully executed by their humble Servants,

SOTHEBY, WILKINSON & HODGE,

13, Wellington Street, Strand, London.

Telegraphic Address: "Abinitio, Rand, London." Telephone: 3852 Gerrard.

In sending Commissions please refer to this Catalogue as "YERRES."

COMMISSIONS CANNOT UNDER ANY CIRCUMSTANCES BE ACCEPTED BY
TELEPHONE.

CATALOGUE
OF
Antiquities and Works of Art.

FIRST DAY'S SALE.

ANTIQUITIES FROM THE FAR EAST,

COLLECTED BY

Dr. VORETZSCH, of Hamburg.

CHINESE POTTERY.

LOT

- 1 A tall Vase of hard clay, slightly glazed, tapering upwards, with five horizontal divisions round the body, used as a measure for the rice ration of soldiers; HAN *Dynasty*, c. 200 B.C.; with carved wood Stand 2
- 2 Three early Grave Gifts, one in the form of a Pig, coloured; another as a Fowl, *unglazed*; and the third a small oval Dish, with flat rims on two sides; HAN *Dynasty*, 206 B.C. to 220 A.D. 3
- 3 A small Millet Jar and Cover, light red pottery, with a dark green and somewhat iridescent glaze, *a grave gift from a tomb of the HAN Dynasty*; carved and pierced wood Stand 3
- 4 A Vase for wine, hard clay covered with a yellowish glaze, around the shoulders a band of figures in relief, a pig, monkey, snake, and others, probably the signs of the Zodiac; *a grave gift from a tomb of the HAN Dynasty*; with carved wood Stand 2

16/11 Smith

8/11 Penker


3/11 Fenton

2/5/11 Swede

5 A Millet Jar of red clay, covered with flambé yellow and green glaze; *a grave gift from a tomb of the TANG Dynasty 618-907 A.D.* 3. *Succa*

6 A small Bowl of yellowish hard clay, covered with a pale amber glaze and a second glaze of thick opaque white, leaving the lower part of the outside uncovered; and another Bowl, similar, with two glazes and crackled; *grave gifts from a tomb of the Northern SUNG Dynasty, c. 1000*; both with carved wood Stands 4 *2/10/11 Frank*

7 A Corean Plate, with celadon glaze, c. 1200 A.D.; and a Cup or Bowl of yellowish clay, with white glaze slightly stained; *of the Southern SUNG Dynasty, c. 1200*; one with carved wood Stand 3 *3/4/11 Cuthbert*

8 A bulbous-shaped Vase for medicinal herbs, with four single loop handles on the shoulders, reddish clay, partly covered with a thin brown glaze and an over-glaze of drab colour; *end of the TANG Dynasty, c. 900 A.D.* *4.*  3 *2/10/11 Frank*

9 A Bowl of hard greenish grey clay, covered, except at the base, with a thin Celadon glaze; impressed character for "Happiness" inside and lotus-leaf design on the outside in slight relief; *the paste is one of the earliest forms of LUNG-CH'UAN YAO*; c. 900 *2/10/11*

10 A square Vase for divining rods, in the form of a symbol of the Goddess of Earth, hard paste with white crackled glaze; *SUNG Dynasty, c. 1250*; with carved wood Stand 2 *10/10/11 Frank*

See Illustration. Plate II.

11 A Bowl of yellowish hard clay, covered inside and the upper part of the outside with a thick brown glaze; *a grave gift from a tomb of the YUAN Dynasty, c. 1300* *3/4/11 Cuthbert*

12 A Celadon Plate of heavy hard red paste, with thick glaze; c. 1300 *3/4/11*

13 A Vase of KO YAO, "Ware of the Elder Brother," hard paste, with a floral design in slight relief on the sides, and line ornament round the neck and lower part, covered with a Celadon glaze crackled; *SUNG Dynasty, c. 1200*; carved wood Stand 2 *11. Garrow*

See Illustration. Plate I.

14 A Plate of hard grey paste, covered with thick red glaze, *an early form of sang-de-bœuf, YUAN Dynasty, c. 1300* *15/10/11 Frank*

- 15 Figure of a LOHAN, standing with folded arms, in grey hard clay, covered with a bluish white glaze crackled, the head, breast and hands left unglazed; YUAN *Dynasty*, c. 1300, but the glaze of the style of the late SUNG *Dynasty*; 14½ in. high, on carved wood Stand, in wood Box 3

- 16 A tripod Incense Burner of flat circular form, with nail borders at rim and base, stone ware covered with iron-rust glaze; MING *Dynasty*, c. 1500; carved and pierced wood Stand 2

See Illustration. Plate I.

- 17 An octagonal Bowl for a miniature garden, grey hard paste, covered on the outside with a yellow, blue and brown flambé glaze; SHAKWAN *ware*, c. 1500

- 18 A small Plate, SHAKWAN *ware*, with yellowish green, blue and brown flambé glaze; c. 1500

- 19 A Water Dish, shaped as a lotus-leaf, the crinkled edges of which served to shape and point the writer's brush, stone ware, covered with brown and blue flambé glaze; c. 1500; and carved wood Stand 2

- 20 A Vase, SHAKWAN pottery, ribbed as a melon, grey stone ware, covered with blue and brown flambé glaze; c. 1500

- 21 A cylindrical Vase of SHAKWAN pottery, in form of a piece of bamboo, stone ware, covered with brown glaze with darker splashes; c. 1500; with wood Stand 2

- 22 A small Jar for medicinal herbs, stone ware, with iron-rust glaze speckled; c. 1500; carved and pierced wood Stand 2

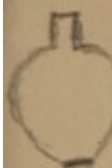
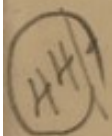
- 23 A Plate of stone ware, with design of a lotus flower in the centre, covered with Celadon glaze; crackled; c. 1500

- 24 A shallow Grass Bowl, on three feet, stone ware, with design in slight relief round the outside, covered in Celadon glaze; a part of the bottom on the inside, left unglazed, bears a leafy design with Chinese characters in low relief; c. 1500; with carved wood Stand 2

* * * Grass was grown in these bowls, to be put on the writing tables of the litterati, as a relief for their eyes.

- 25 A tripod Incense Burner, stone ware, of lozenge design on the outside, covered with Celadon glaze, crackled; c. 1600

- 26 A circular Dish, stone ware, with a conventional foliated design inside, covered with Celadon glaze; c. 1600



35/9. Same
2. 12mm
30/1
4/10/12. Paok
2/2/12. Lenet
2/12/12. 26mm
20/12. Lenet
H.

- 27 A Water Dish, shaped as a lotus leaf, the crinkled edges to shape the writer's brush, stone ware, with yellow and brown flambé glaze ; c. 1600 ; with carved wood stand 2
- 28 A Vase, with two knob handles, SHAKWAN ware, covered with a green, blue and pink flambé glaze ; c. 1600
- 29 A Joss Stick Vase in form of a square tower, with pierced base, with Taoist figures repeated on the sides in relief ; stone ware, covered with Celadon glaze ; c. 1700
- 30 A Vase of SHAKWAN ware, with sides tapering downwards, covered with a flambé glaze leaving a spot "blooded" ; c. 1700 ; carved and pierced wood Stand 2
- 31 A Vase of SHAKWAN ware, covered with a thick dark and light blue flambé glaze ; c. 1700 ; with carved wood Stand 2
- 32 A drop-shaped Vase of SHAKWAN ware, with elephant-head handles supporting rings attached to the sides, covered with blue and brown flambé glaze ; 19½ in. high ; c. 1700

See Illustration. Plate I.

- 33 A square Vase, with long neck, SHAKWAN ware, handles with rings in the form of the HAN bronze vases ; stoneware, covered with a creamy glaze heavily splashed with blue and brown ; c. 1700 ; with carved wood Stand 2
- 34 A small quatrefoil Dish, on four feet, SHAKWAN ware, of similar style to the foregoing, used for strong smelling sacrificial flowers ; c. 1700
- 35 A shallow tripod Incense Burner, with two loop handles on the rims, red clay, covered with a brown and blue flambé glaze ; c. 1700 ; with carved wood Stand 2

See Illustration. Plate I.

- 36 A bulbous Vase, porcelain, with mirror black glaze ; MING Dynasty, c. 1600 ; carved and pierced wood Stand 2

See Illustration. Plate I.

- 37 An Incense Burner, in the form of the begging bowl of the Buddhist priests, on three feet, the outside in turquoise blue glaze, very finely crackled ; KASHAN kiln ; c. 1700
- 38 A circular Dish, with shaped rim and scratched foliated design in the hollow, stone ware, covered with Celadon glaze ; c. 1700
- 39 A Brush-holder, the top pierced with five holes, stone ware, with a lightly scratched design, covered with Celadon glaze, slightly crackled ; c. 1800 ; with carved wood Stand 2

- 40 A tripod Incense Burner, with hexafoil rim, on three feet, with plum-blossom in relief above each foot, stoneware covered with a greenish glaze crackled, and tinted with peach bloom ;
c. 1800
- 41 A Duck sitting, modern Shakwan pottery, covered with a rich flambé glaze

BRONZES.

- 42 TING. A Sacrificial Vessel for meat offerings, oblong rectangular form, on four feet, TAO-TIEH (ogre) and dragon design in relief on the sides, the legs engraved, of rare white silver bronze which develops little patina ; the handles repaired with copper bronze ; inside is an archaic seal ; c. 1000 B.C. ; with carved wood Stand and a Cover with pierced jade handle 3
- 43 Ten TAO or Knife Cash of a period between the 3rd and 7th Century, B.C. 10
- 44 A Bronze Weapon, somewhat in the form of a bill-hook, with two piercings in the haft for lacing it to a stock, c. 200 B.C.
- 45 A bulbous Vase, of typical HAN shape, animal head and ring handles, finely patinated ; c. 200 A.D. ; on carved and gilt wood Stand 2
- 46 A Vase, with ovate body and short broad neck, monster head and ring handles on the shoulders, and an archaic inscription round the foot rim ; sulphur blotched and finely patinated ; c. 200 A.D.

See Illustration. Plate II.

- 47 A Sacrificial Dish for fruit offerings ; on the sides TAO-TIEH pattern in relief, and above the feet TAO-TIEH heads ; handles rivetted on to the sides, not cast in the same piece ; in the bowl an archaic inscription ; c. 200 B.C. ; with carved and pierced wood Stand 2
- 48 Three Corean Table Spoons, with bifurcated handles ; and two pairs of Sticks for handling the coal in charcoal brasiers ; c. 400 A.D. 7
- 49 A Corean Bowl, on a plain ring base, finely patinated ; c. 400 ; on carved and pierced wood Stand 2
- 50 Another Corean Bowl, with sloping rim showing an old repair ; fine green patina ; c. 400
- 51 A Mirror, with FUNG birds surrounded by a band of floral ornament in relief ; fine green patina ; c. 700

- 52 A Mirror, with Græco-Bactrian design of animated scrolls, grapes with scrolled branches and fruit and various animals; green patina; c. 900; on carved wood Stand 2
- 53 Another Mirror, with Græco-Bactrian design, similar to the foregoing, but larger; c. 900; on carved wood Stand 2
- 54 Another, similar; c. 900
- 55 A quadrangular Vase, with bands of TAO-TIEH ornament in relief round the body and handles of similar pattern; c. 900
- 56 TING. A Sacrificial Vase for meat offerings, with deeply cut scrolls on the rounded corners and TAO-TIEH ornament between; monster-head handles with key pattern; c. 900; with pierced and carved Stand and Cover with jade handle 3
- 57 A tripod Incense Burner, of globular form, magnet-shaped handles; fine dark patina; c. 900
- 58 A pair of hexagonal Sacrificial Dishes, with raised symmetrical designs and inscriptions on the backs; c. 1000 2
- 59 Another pair; c. 1000 2
- 60 Another one; and a small gold bronze Plate for offerings of flowers; c. 1400; on carved wood Stand 3
- 61 The left hand and fore-arm of a Buddhist Figure; c. 1000
- 62 A Vase, with globular body roped around with cordage, loop and ring handles; fine gold bronze oxydized brown; c. 1400; on carved wood Stand 2

See Illustration. Plate II.

- 63 A Vase for flowers, with a long neck, TAO-TIEH head and ring handles; fine gold bronze oxydized brown; c. 1400; on carved wood Stand 2
- 64 A Charcoal Brazier, pierced with holes in the sides for draught; one in form of a demon's open mouth; three panels of chasing on the sides; two swing handles; on three feet with demon masks; c. 1400; on carved and pierced wood Stand 2
- 65 A pair of Temple Guardians, each on one knee, holding up a right and a left hand respectively; c. 1400 2
- 66 A tall cylindrical Vase, with wide neck, and chiselled bands of conventional design round neck and body; dark bronze, with the HAN mark, but more probably made about 1500; with carved wood Cover and Stand 3

See Illustration. Plate II.

- 67 A Brush-rest, in form of two dragons fighting ; on wood Stand ; and a Paper-weight, formed as a tortoise, the shell inlaid silver ; *both* c. 1500 3
- 68 A small Vase, of oval section, with animal heads in relief as handles, inlaid bands of ornament round neck and base, and inlaid mark on the base ; heavy gold bronze, old Soochow work ; c. 1600 ; with carved wood Stand 2
- 69 An Incense Burner, in form of the hare of the moon ; fine gold bronze, inlaid with silver, the example for similar but much later Japanese work ; c. 1600 ; with carved wood Cover and Stand 3
- 70 A Paper-weight, a pair of hares side by side ; fine gold bronze, inlaid with silver ; old Soochow work ; c. 1600
See Illustration. Plate II.
- 71 A circular Incense Box for storing incense, used in a Mohamedan Temple in China ; gold bronze, with an inscription on the cover ; c. 1500
- 72 Sakyamuni in the attitude of taking witness of the earth that he had resisted the temptation of Mara ; with inscription of the donor on the back ; c. 1300
- 73 Kwan Yin seated on a rock overhanging the sea ; her vase on a rock on her right, and a pheasant and lotus on a rock on her left ; the Goddess of Mercy to whom mariners pray ; the figure and emblems mercury gilt ; c. 1700
- 74 Amitayus, the Buddha of Boundless Life of Lamaism, gilt bronze figure seated on a throne, the vase of Ambrosia replaced by a bead in his hands ; *dated* CH' IEN LUNG, *Tiger year* = 1769
- 75 A Cochin China bronze Figure of Sakyamuni in witness-taking attitude, holding a fan in his left hand ; seated on a lotus thalamus ; c. 1600
- 76 An Indian Jain Saint seated in Buddha fashion, solid casting ; c. 1700
- 77 Another, slightly smaller, same style and date
- 78 A YOGI teaching, seated with legs crossed, solid casting ; c. 1500
- 79 A Hindu brass Incense Box, with engraved designs ; and a black pottery Water Vessel, inlaid with a Chinese landscape in silver 2

- 80 Twenty-five brass Seals, used at Indian Temples for stamping with holy red paint the fore-arms of pilgrims 25
- 81 Another twenty-five, similar 25
- 82 Two Hindu brass Lustral Spoons; a Charm Box; a Pilgrim's Badge for fastening to the arm; nine Charms in bronze; and nine Pilgrim's Seals 22
- 83 A Siamese gilt bronze Head of a Buddha; and another, smaller; c. 1300 2
- 84 A Burmese gilt bronze Head of a Buddha, with lacquered lips; and another, smaller; c. 1400 2
- 85 An iron Shield, with four bosses, the whole surface lacquered and painted with Persian figures, surrounded by a border of animal subjects; c. 1600
- See Illustration. Plate III.*
- 86 A pair of Chinese carved wood Lions, partly gilt 2

CHINESE DRAWINGS.

- 87 TU FONG CHU otherwise TU FEN: Lao Tsze on an ox in the Hanku Pass, before his departure to the West meets the officer of the Pass, the philosopher Kuan Ti, to whom he gives the Manuscript of his famous work the *Tao te King*; in colours, on silk, after *Wu Tao Tsze, an artist of the TANG Dynasty*

* * * This hanging wall picture with the next three items formed the panels of a four-fold screen of the *K'ang Hsi* period, 1662-1673

See Illustration. Plate IV.

- 88 TU FONG CHU: The *Sien Nung Hsiao She* riding on a dragon in clouds, playing the flute, accompanied by his wife *Lao Yu* riding on a *Fung* bird, playing the *sho*; in colours, on silk, after *Li Lung Mien, a Sung artist*
- 89 TU FONG CHU: *Hsi Wang Mu* coming down from the Ch'ien Lung Mountains with a dish of Longevity Peaches accompanied by two attendants and a stag, a white monkey holding a peach, two other female attendants with peaches and a vase, the *Fung* bird messenger and a crane, all on clouds, and four ladies on the balcony of a house below; in colours, on silk

- 90 TU FONG CHU : A Group of *Sien Nung*, one riding a white mule, five in the hollowed trunk of a tree as a boat on waves, and a man and a boy in clouds ; in colours, on silk
- 91 SU SHIH, known also as SU TUNG PO: Bamboos ; in black and white, on paper ; *Sung Dynasty*, c. 1050
- 92 SU SHIH : Another Drawing of Bamboos ; in black and white, on paper ; *dated Yuan Fung, 4th year, 9th month, 22nd day = 1071*
- 93 SU SHIH : another *dated Yuan Fung, 4th year, 9th month, 28th day = 1071*
- 94 HUANG YU CHIN : Bamboos in Sunshine ; in black and white, on paper ; *Sung Dynasty*, c. 1100
- 95 CHIN YING : A Recluse in a House on the shore of a lake, with mountainous scenery rising out of mist in the distance ; *Ming Dynasty*, c. 1500
- 96 CHIN YING : A Group of Five Chinese Children playing in a garden, one boy drawing a little cart full of flowers, another boy climbing a tree and two struggling round a third who is holding up an ornament with a figure of *Kwei Sing* on the top ; in colours, on silk ; c. 1500
- 97 CHIN YING : A Group of Five Children at play in a garden by a blossoming peach tree, one riding a hobby horse, one with a drum, and another with a *sho*, another with a windmill toy, and the fifth with a lotus flower ornament ; in colours, on silk ; c. 1500
- 98 WONG WU : *Hsi Wang Mu* holding a Peony, her attendant with a gourd and the Polyporus Fungus of Longevity on her back, and a stag with peaches of Longevity and flowers ; in colours, on paper, *after CHIN YING*
- 99 CHAO MÊNG FU : A Group of Five Horses, one lying down and rolling over, and two men with halters, in a fine landscape with a stream ; in colours, on silk. *Chao Mêng Fu, an artist of the Sung and Yuan Dynasties, was born in 1254*
- 100 CHAO MÊNG FU : People in a Small Pavilion by a lotus pond on a summer evening ; hilly landscape and waterfall in the distance ; in colours, on silk ; *dated Tai-te, 9th year = 1303*
- 101 WA TSZE YUK : A Priest following a Stag and below a Monk mending his clothes, and a monkey at play before him ; in colours, on figured silk, *after Chao Mêng Fu ; dated Chia Ch'ing, monkey year = 1800*

- 102 TANG YIN: Illustration of a Story. A Mandarin surrounded by six male figures looking at a boy standing facing a mother and child; in colours, on silk; *dated Chéng Te, Hare year* = 1507
- 103 SHEN CHOU, otherwise CHANG CHU: "The Fertile Country," a Landscape of richly wooded land, a river across the mid distance and hills beyond; in colours, on silk; *dated Chia Ch'ing, Monkey year in the Spring* = 1524
- 104 SHEN CHOU "Evening Bells in the Valley." A Party of Three Men standing on a high bluff overlooking a valley, two others seated near by, and another sauntering under trees, a cloud of mist rolling up between the hills, and a lake in the distance; in colours, on silk; *c.* 1500
- 105 WANG KIEN or TAI CHOU or LIEN CHOU: View of a Block of Buildings on a high thickly-wooded hill near to a waterfall, and a winding path and steps through the trees; in colours, on silk. *Wang Kien, 1598-1677, was the second of the four great Wang: Shi Min, Kien, Hui and Yüan Ki*
- 106 KU KIEN LUNG, otherwise YÜN CHOU: A Lady seated under a pine tree playing a harp, and an older woman standing beside her; in colours, on silk. *Ku Kien Lung's period was 1606-1684*
- 107 SHOU PING: Butterflies and Peonies; in colours, on silk. *Shou Ping, known also as Yün Shou Ping, Yün Ko, Cheng Su, Pai Yün, Nan Tien, and Tung Yüan Ko, lived 1633-1690*
- 108 SHOU PING: Birds on and fluttering about a willow tree; in black and white, on paper; *c.* 1670
- 109 UNSIGNED: A Crane on the branch of a pine tree, and another flying overhead; in colours, on silk; *17th Century*
- 110 CHÊN CHI-JU: Chrysanthemum Blossoms in a vase; in colours, on silk; *17th Century*
- 111 CHÊN CHI-JU: Peony Blooms in a Vase; in colours, on silk; *17th Century*
- 112 UNSIGNED: *Kwan Yin*, the Patron of Mariners, walking on the sea, the *Tien ye* or celestial scarf floating in scrolls in the wind; in colours, on silk, enriched with gilding; *attributed to Yu Wa Tzin Ngok*

- 113 SHANG KUAN CHOU, otherwise CHU-CHUANG : The First Snow and Philosophers looking at budding plum-trees ; black and white, on paper. *Shang Kuan Chou was born in Fukien, in 1664*
- 114 SHANG KUAN CHOU : A Landscape under snow with men in a boat on a river in the foreground ; black and white, on paper
- 115 CHÊN JEN YEN : The Lute Player's Morning Walk, a man passing a bamboo patch with a boy following carrying his instrument ; black and white, on paper ; *late 17th Century*
- 116 YÜN PING : Peony Blooms in a Vase ; in colours, on silk. *Yün Ping was a female artist, the daughter of Yün Shou Ping ; c. 1700*
- 117 MA TSÜAN : A Variety of Flowers in Two Vases and Fruit in a third ; in colours, on silk. *Ma Tsüan was the younger sister of Yün Ping, and all the family were noted for flower painting*
See Illustration. Plate IV.
- 118 WU LI : A Mountainous Landscape in summer ; black and white, on silk. *Wu Li, 1632-1718, painted in the style of the Sung and Tang masters*
- 119 YI KO WEN TUNG : Plum Blossom ; in black and white, on silk ; *early 18th Century*
- 120 UNSIGNED : A Young Mother carrying a child over her shoulder walking through woods ; in colours, on silk
- 121 CHÊN FUNG CHAN : Three White Herons by a lotus pond with tall flowers ; in colours, on paper, *after Pao Shan*
- 122 SU LIN PUNG : The Three Wine Drinkers, and the effects of drinking, "drawn with the finger" in black and white (*according to the inscription at the top*) on paper ; *early 18th Century*
- 123 YI WEN WEI : A Recluse playing the harp, seated under a little thatched hut, in a gorge by high rocks ; in black and white, on paper, *after Mu Muk Shan Yen*
- 124 UNSIGNED : A Group of Seven Crabs and Grasses ; in black and white, on paper
- 125 CHIN HUNG SHU, otherwise CHANG HOU LAO JEN : The Blessing of Children. A Young Mother decorating with flowers the head of *Nan-Kien-laó-dzin*, who is seated fondling her little

LOT 125—*continued*.

boy, and an older boy holding the staff of the god decorated with chrysanthemum blooms ; in colours, enriched with gold, on paper

- 126 CHANG CHIEN CHONG : A Lady picking a spray of plum blossom in snow with a poem above :—

“ Brilliant red appear the blossoms,
White with snow the branches glisten ;
From her red pavilion tripping
In her morning dress comes *Hsiao*,
Plucks herself a spray of blossom
From the flower unfolding plum tree ;
Then towards a bridge she wanders.
Would I knew where she was going ! ”

in colours, on paper ; *early 18th Century*

- 127 PAN SHAN LUK CHI : A pair of Quail and Millet, in colours, on silk
- 128 PUNG TAI CHEONG : A Chinese Landscape with a cascade, and a man seated in a house beside the stream ; in colours, on silk
- 129 PUNG TAI CHEONG : A Mountainous Landscape with a bridge in the foreground, a sage crossing on a mule and two youths following ; in colours, on silk ; from a four-fold screen
- 130 CHIU YI KWAI : A Crane standing beside a group of four fowls and chickens struggling over a worm, and birds in a tree above ; in colours, on silk. *Chiu Yi Kwai* was Minister of Education under the Emperor *Yung Chéng*, 1723-1736
- 131 LUK YA : A Bird on a rock and its mate flying above, peonies and other flowers growing around ; in colours, on paper
- 132 PUNG TAI TCHEONG : A Landscape with the upper waters of the Yangtze River, and boats on it, in the distance high peaks rising out of mist ; in colours, on silk ; from a four-fold screen
- 133 CHAO TSZE TONG : A Storm in the Mountains, black and white, on paper
- 134 PAN CHIAO : The upper branches of a blossoming plum tree ; black and white, on paper
- 135 MA SHU CHIN otherwise SIANG LAN : Butterflies fluttering round growing chrysanthemums ; in colours, on paper
- 136 CHEONG TING T'SIT : An Eagle on the branch of a tree above a mountain stream ; in slight tints and black, on silk

- 137 CHÊNG MU NIEN, otherwise CHUK KIUNG : Three Children on a garden terrace, one holding up a basket of flowers towards a boy up a nut tree who is dropping nuts into the basket, one holding up a string of Chinese crackers, and the third with a match about to fire them ; in colours, on silk
- 138 WONG SHUI FUI : Illustration of a Story ; A Woman on horseback and a man on horseback waiting for her while she is parting with her two children held by men ; in colours, on paper
- 139 UNSIGNED : A Group of five crabs and grain stalks ; black and white, on paper
- 140 KIU CHON CHIE MEN : Rice-birds sheltering among bamboo ; the birds coloured, the rest black and white, on silk
- 141 CHOU CHIH NIEN : A pair of Ducks, in colours, on silk
- 142 WONG YŪN PIN : *Pu Hien* and his elephant in a wood, the God of Wisdom dismounted with two priests adoring him, and a group of saints and others round the elephant ; in gold and colours on a blue ground, on silk
- 143 LI SIU SU : A Landscape with a house facing a waterfall ; in black and white, on silk ; *Chüan* form
- 144 PUNG YŪO LING : Plum-blossom ; black and white on paper
- 145 PAO SHAN TSZE LUK SHIH : A pair of *Fung* Birds on the branch of a tree ; in colours, on paper
- 146 LIANG KIN YI : Carp in water ; black and white, on paper
- 147 LIU LI KUNG : Three White Egrets ; on silk
- 148 CHONG SHAO WU : Four Panels from a screen burlesquing the wondrous feats of certain *Sien Nung* ; *Ch'en Nan* hat sailing away ; inscription, "The tipsy man sees how his hat blows off." *Hō Sien Wēng* blowing bees from his mouth ; inscription : "how to blow bees from a rice bowl by blowing." *Wu Nin Lan* changing his staff into a dragon. *Sü She* invited by the crane to take a ride ; in black and white tinted, on paper (4)
- 149 A CHÜAN, unsigned : Twelve Young Ladies on a garden terrace variously employed ; in colours, on silk
- 150 PUNG TAI TCHEONG : A Cascade in the mountains, and a philosopher with his attendant seated admiring the scene ; in colours, on silk

- 151 TANG YIN: The Man who loves nature, seated alone contemplating its beauties; in colours, on silk
- 152 CHOU SHANG KWAN: *Chang Kwok* the Taoist Rishi looking into his gourd for his magic horse; black and white tinted, on paper
- 153 KO LING: The Trunk of a Tree with clusters of pink fruit growing on the branches, otherwise in black and white; on paper
- 154 LU CHI: A Cock beside a rock with flowering plants; in colours, on silk
- 155 THE EMPEROR HUI TSUNG: A White Falcon on a perch; in colours, on silk; *dated Hsüan Ho, 2nd year = 1120*
- 156 A CHÜAN, unsigned: Four Literary Men seated at a table on a garden terrace enjoying themselves, and three attendants, two of whom are passing the bottle; in colours, on silk
- 157 MI FEI: Four Drawings in black and white, on silk: The Infinite, Evening, Ghostly Fog in the mountains, and Morning; four sections from a book 4
- * * * *Mie Fei* lived 1051-1107, and is considered to have been one of the greatest of the Sung Painters.

See Illustration. Plate V.

- 158 TU SHAN SHAN JEN. Four Drawings on paper: Spring, Summer, Autumn, and Winter; black and white, tinted 4
- 159 FOUR FAN LEAVES: Bamboo, in black and white; Landscape with stag and birds, in colours, on a gold sprinkled ground, by *Sit Pui Lao*; Butterflies, in black and white, by *Chen Ming Chien*; *Li Tai Peh* the bibulous Chinese Poet, by *Kung Sit*, in colours 4
- 160 FOUR DRAWINGS, on paper: Two Monks seated on grass mats, by *Ting Yüng Pêng*; Floral Subject, *signature not decipherable*; A Fisherman in a boat, *unsigned*; Two Lohan, by *Ting Yüng Pêng*, after *Li Lung Mien*; all in black and white 4
- 161 TWO DRAWINGS, on paper: A Priest, by *Chiu Chung San Wu Shu Tao Jen*; A Man wearing a mask returning from a party with his harp, by *Shin Lo Shan Jen*; both in colours 2
- 162 THREE DRAWINGS, on silk: Floral Subject, on a black ground, by *Chu Tsze Kai*; Fishermen on a covered boat, by *Su Liu Pung*; a Literary Man riding a mule, by the same artist; all in colours; circular form (3)

- 163 THREE DRAWINGS, on silk : A Landscape with houses over a river, by *Shan Fan Shou* ; A Hermitage in the hills, by *Chu Chuang*, after a *Yuan* painter ; Landscape with waterfall, signature indistinct ; in colours, circular form 3
- 164 TWO DRAWINGS, on silk : A pair of Fowls and young chickens ; and a Monkey offering a peach to a *yogi* seated on a leaf mat in a bamboo grove ; both by *Sung Yao Hung* ; in colours 2
- 165 THREE DRAWINGS, on paper : The first Rain-drop, a party picnicing in the country ; and The Fisherman, in a covered boat ; both black and white, tinted, by *Aū Shiū* ; A Landscape with morning mist ; black and white, by *Shi Nien* 3
- 166 FOUR DRAWINGS, on silk : A Goatherd, by *Luk Pao Shan* ; The Poet ; The Priest ; and The Journey, each by *Luk Pung* ; all considerably worn 4

ORIENTAL ANTIQUITIES, The Property of a Gentleman.

- 167 A Chinese red clay Well Bucket, with arched handle, green glazed ; *Han Dynasty*, 25-221 A.D.
- 168 A small stone-ware Bowl, with loop handles on the shoulders, blue-grey glaze ; *Sung Dynasty*, 960-1280 A.D.
- 169 Another, similar, flambé glaze ; *Sung Dynasty*
- 170 A Chinese stone-ware Tea Bowl, with brown and green flambé glaze ; *Sung Dynasty*
- 171 A small Chinese Tea Jar, dark blue glaze, and wood Cover, *Sung Dynasty* ; and a Chinese clair-de-lune Incense Burner, Celadon glaze crackled, *Yuan Dynasty*, 1280-1368 3
- 172 A Korean black stone Wine Pot, with spelter Cover 2
- 173 A Japanese *Raku* ware *Chawan*, covered with a yellow-brown glaze ; a *Seto* ware *Chawan*, with indented sides, *impressed mark* ; and a *Raku* shallow Bowl, black glaze 3
-

FRAMED CHINESE DRAWINGS,
The Property of a Lady.

- 174 Full-length figure of a Chinese Lady ; in colours, on silk ; *unsigned*
- 175 Full-length figure of a Chinese Lady holding a basket of flowers ; in colours, on silk ; *unsigned*
- 176 *Hsi Wang Mu* standing beside a white stag, and her attendant on her left holding up a branch of the Peaches of Longevity ; in colours, on silk ; *sealed*
- 177 *Hoh Yiu* coming from Shokuchū riding a goat, and two other people accompanying him, towards Mount Tai, a region where he taught them magic ; in colours, on silk ; *signed*
GU-SAN SEN-KOKU (*Japanese reading*)
- 178 Two *Fung* Birds on the branch of a tree ; in colours, on silk ; *signed* JO-HEI RYO-RAN (*Japanese reading*)
- 179 A pair of Deer beside a waterfall, and two blue-crested birds on the branch of a tree over-head ; in colours, on silk ; *signed*
- 180 Two small Drawings : A Lotus and insect, and Peony Flowers and insect ; in colours, on silk ; *both unsigned* 2
-

SECOND DAY'S SALE.

The Property of Thomas Bliss, Esq.

deceased, of Coningsburgh, Montpelier Road, Ealing, W.

ANTIQUITIES MOSTLY FOUND IN LONDON.

LOT

- 181 Six pieces of Roman tessellated Pavement, each enclosed in a wooden case (*sizes from about 7 in. to 10 in. square*); and two Pieces of Wall Paintings, in glazed oak boxes, *from excavations in London* 8
- 182 A large Amphora, of globular form, in nearly perfect condition, the mouth with overhanging lip is detached but capable of restoration; *about 23 in. diam. and 30 in. high*, on iron tripod, *found in Montagu Street, Whitechapel, 1887*
- 183 A Roman Millstone, made of lava from the Eifel district, *14 in. diam., about 3 in. thick*, a raised circle enclosing the centre outside of which are the remains of four iron clamps (*London*)
- 184 A Roman Wine Vessel, with pointed base, *12 in.*, *found in Backchurch Lane, Whitechapel*; and another, *from Rochester Buildings, Leadenhall Street* 2
- 185 A Roman Vase, with two handles, of light coloured pottery, *9 in.*, *found in Lime Street, City*; and a Vase, of globular form, with one handle, *from Queen Victoria Street* 2
- 186 A bottle-shaped Vase, *King's Head Yard*; a Pot, *from Cree Church, Leadenhall Street*; and three others 5
- 187 A Patera, with finely turned lip, in red ware (*Samian*); and another of plainer character, *found at South Corner, Lombard Street and Gracechurch Street, 1864*, and a Vase, of black ware, *Cree Church, Leadenhall Street* 3
- 188 A Cinerary Urn, of dark Upchurch ware, *found with burnt bones during railway works at Backchurch Lane, Whitechapel, May, 1883 (see Roach Smith, p. 18)*

- 189 A globular Pot, of fine fabrique, ornamented with bosses arranged in groups of seven and the surface with a metallic lustre, *found in Bell Alley, City, in 1875*
- 190 A Vase, of black Upchurch ware, *from the Avenue, Carpenters' Hall*; a Crucible; a black Bowl; three small Vases, light colour, of bottle form, with wide lips, *from St. Helen's, Bishopsgate, Leadenhall Market and Tower Street*; and a very small Vase, of black ware, *from Fenchurch Street* 7
- 191 Four Roman Lamps, *two of them inscribed, from Leadenhall Market and Queen Victoria Street*; and seven other Lamps, of Roman date 11
- 192 A Roman Vase, of light ware, with two handles; and a small black Vase, *both from Barnwell, Cambridge* 2
- 193 A Roman cinerary Vase, of green glass, with two handles, 10 in. high; and another, 7½ in. high (*from the Bateman collection, lot 116*) 2
- 194 An Etruscan Vase, with two handles, 9 in., painted with figures of warriors and women in black; an *Ænochoë*, painted with a female, having a bird on her wrist; and a bottle-shaped Vase 3
- 195 Three Cups, with handles; a small double-handled Vase; and a *Patera*, in black 5
- 196 Two early *Ænochoë*, decorated with concentric circles, *from Cyprus (Lawrence-Cesnola collection)*
- 197 A Vase, decorated with circles, an *Ænochoë* of early type, and a small Jug, both decorated with the swastika symbol, and two globular Bottles, with basket-work decoration and long spouts, *from Cyprus* 5
- 198 A Jug, with twisted handle; a Bottle, with spout and loop for suspension; two small Jugs; a double-handled Vase; a *Kylix*, with brown decoration; two Bottles (*Cyprus*); and two *Aryballoi* (*Greek*) 10
- 199 A Roman bronze Hair Pin, 8 in., *from London Wall*; nine iron *Styli* for writing; eleven bronze Hair Pins and Ear-picks combined; ten long Pins, with globular heads; and two others, pointed at each end; *all found in the City of London* 33
- 200 Ten bronze Needles; nine Bodkins, perforated, in bone and ivory; eleven bone and ivory Pins; and eleven bronze Pins, *all of Roman date, from the City of London* 41

- 201 Nine iron Styli ; four large iron Nails, *from Tokenhouse Yard* ;
four bronze Armillæ, *from Barge Yard and Lime Street* ;
and eleven bone and bronze Pins, etc., *from City excavations*
28
- 202 Nine Roman iron Keys ; three pairs of Scissors ; Nine bone Pins,
some with turned and decorated heads ; and seven Styli,
from the City of London
28
- 203 Six bronze Fibulæ, of bow-shaped types, *some possibly of late*
Celtic date ; and six circular Fibulæ or buckles, *from named*
localities in the City of London
12
- 204 A Fibula, of boat-shaped type ; another, with a large semi-
circular bowl ; and another, *of an early Italian type, but*
said to have been found in Gracechurch Street
3
- 205 Eight bronze Roman Keys ; nine Spindle Whorls, in bone and
pottery ; a bronze Needle, 11 in. (*near Mansion House*) ;
five other bronze Needles ; a bronze Scale Beam, 7½ in.
(*Throgmorton St.*) ; two Ligulæ ; a Spoon ; and a Spatula
(*Carpenters' Hall*)
28
- 206 Two bronze Buckles (*Barge Yard and Leadenhall Market*) ;
five Draughtsmen, in bone, ornamented with circles ; and
ten Beads ; *all from City localities*
17
- 207 A Bronze Figure of Hercules, 4 in. high, finely patinated, *found*
in Gracechurch Street, 1864 ; and a Card, with coiled bronze
ornament, a ring, and five other objects, *from named places*
in the City
8
- 208 A bone Pin, with unusual trefoil head ; two bone Instruments
of triangular section ; two bone Needles ; five Pins ; four
Apple Scoops ; four Tools, in bone and horn ; two small
Spear-heads ; and a Knife ; *from various named City sites*
21
- 209 A Bronze Chain of rectangular links, terminating with a small
medallion (*Bloomfield Street*) ; a Roman Spoon ; the Cover of
a Lock, mediæval engraved with a heraldic animal (*Basing-*
hall Street) ; a Roman bronze Lock (*Leadenhall Street*) ; a
Hinge ; a bronze Implement with a hinge ; and two Beads
8
- 210 Four Knives ; a Cook's Knife in bronze ; iron Scissors ; a Key ;
a small bronze Cross (*St. Mary Axe*) ; a lead Marker ; a
small bronze Ring Sundial ; and eight Pins
18
- 211 Three terra-cotta Tablets, *of the time of Darius*, recording (1)
the payment of 1 manch of iron, (2) the sale of a slave, and
(3) the amount of fruit in the store-houses
3

- 212 A mediæval Spoon of base metal, with a spheroidal top, *rare, found at Bishopsgate*, and three others, with slip ends, *from Southwark, Steel Yard and Golden Lane* 4
- 213 Four mediæval Spoons, with slip ends, *from London Wall, Windmill Street and Golden Lane* 4
- 214 A Seal-top Spoon, marked with a fleur-de-lys, *found in Queen Street, Cheapside*; a Spoon, with a long bent handle (*Carpenters' Hall*); a Spoon, with slip end (*Norton Folgate*); a bone Spoon, with channelled handle (*London Wall*); and a bronze Spoon, *imperfect* 5
- 215 A mediæval Watering Pot, with brown glaze, $13\frac{1}{2}$ in. high, unusually perfect; and a Jug, with greenish glaze, 9 in., *dug up at Lynn* 2
- 216 A large Bellarmine, 17 in. high, with mask on the neck; and a plain stone-ware Bottle, tiger ware, *found in Fore Street* 2
- 217 A spherical stone-ware Bottle, decorated with masks and bosses, *found in Telegraph Street*; and a Bottle, of bellarmine form, with a circle enclosing device of a chequer and the letters I. R. M. (*Dowgate Hill*) 2
- 218 A Bellarmine (*Telegraph St.*); and another, *found near Fenchurch Railway Station* 2

POTTERY AND PORCELAIN.

- 219 Two stone-ware Puzzle Jugs, decorated with raised figures 2
- 220 A stone-ware Bottle, in the form of a man's head; and a Jug, with Romans and Britons in relief, *published by Meigh, Hanley, 1839* 2
- 221 A large stone-ware Jug, 14 in., with double handles and double lip, decorated in relief with fox-hunting scenes, groups, masks, festoons, etc., and inscribed *Christmass Jug, Be Merry & Wise, W. Vincent, White Lion, Vauxhall, 1817*
- 222 An oval Dish, $25\frac{1}{2}$ in., in the style of Palissy, with fishes, reptiles, insects, shells, etc., in relief
- 223 A German grey stone-ware Figure of a Man holding a globular vase; a Jug, decorated with stamped floral designs; and a Teapot and Cover of similar ware 4
- 224 A Nottingham stone-ware two-handled Cup, inscribed *Hannah Martin, 13 December, 1821*; a two-handled Vase of French faience; an agate Vase, with handle over of cream ware; and an agate Cup 4

- 225 A Mug and two Goblets of purple lustre 3
- 226 Two Goblets, two Cups and two Salt Cellars, of copper lustre, with coloured flowers 6
- 227 A pair of Jugs, in copper lustre and raised decoration in white; a mottled Jug; and a Cup and Saucer, painted with strawberries, on copper lustre ground 5
- 228 A Bacchus mask Jug, the body covered with silver resist lustre; and a Jug, with floral decoration in copper lustre 2
- 229 A Coffee Pot and Lid in silver lustre, the sides ribbed, and a Cream Jug and Sugar Basin to match 3
- 230 A pair of double-handled Goblets, in silver lustre
- 231 A Pint Mug; a Cream Jug; a Sugar Basin, on raised foot; and a plain Cream Jug, in silver lustre 4
- 232 A Jug, of high quality silver-resist lustre, the under decoration being in blue, of sportsmen, dogs, etc.
- 233 A Jug, of silver resist lustre, enclosing medallions, with landscapes in pink; and another Jug, of silver resist, with fluted design 2
- 234 A Leeds Coffee Pot and Cover, with decoration in horizontal bands of brown, blue and white; and a Leeds Jug, with marbled and green decoration 3
- 235 An early Leeds Mug, of orange colour, with portrait medallion in relief; and two other Leeds Mugs, with marbled decoration 3
- 236 A Leeds Beaker, marbled in brown and with festoons in relief; another Mug; and a barrel-shaped Mug, with marbled decoration
- 237 A Staffordshire Jug of uncommon decoration, consisting of coloured ovals, with four bands going round the body
- 238 A Jug, with resist silver lustre on the neck, and the body decorated with pink transfer of children and verses; and two Mugs, with silver lines on rims and base, and pink transfers of children and dogs 3
- 239 A fine Liverpool Jug, 9 *in. high*, with transfer ovals printed in black on one side of a Harvest Home Merrymaking, and on the other with two figures and a dog, *The Mower*
- 240 A Liverpool Jug, 7½ *in. high*, in cream ware, printed with a ship in full sail, a group of children, and *The Coopers' Arms*

- 241 A Liverpool Jug, $8\frac{1}{2}$ in. high, printed each side with *The Hatter's Arms — We assist each other in time of need*, and under the spout inscribed, *Mr. W^m. Strong, Hat Finisher, London, 1798*
- 242 Two Liverpool Mugs, $6\frac{1}{4}$ in. and $5\frac{1}{4}$ in., each printed with a group of lovers seated in a landscape, and inscribed *Mr. Thos. Purton Brooke*
- 243 A Liverpool Bowl, $10\frac{1}{2}$ in. diam., printed on the exterior with convivial scene, pair of lovers, Venus and Neptune, and inscribed inside *Jurry Parker en Elisabeth Parker egte Luyden binnen de Stad Rotterdam, 1779*
- 244 A large globular Jug, 11 in. high, painted each side with scenes, in the style of Gillray, of Russian and French soldiers, and inscriptions *Europe Preserved*, etc., and under the spout with the burning of Moscow
- 245 An English cream ware Bowl, with transfer decoration, made for Holland, and inscription *Voor Dryheid en Vaterland*; a small English blue printed Bowl, inscribed *King and Constitution*; and a Wedgwood Dish 3
- 246 A Wedgwood oval Dish of cream ware, $19\frac{1}{2}$ in. in length, painted with ivy leaves, and in the centre a coat-of-arms; and a shaped Dish with Cover of the same service, made for J. Redhall, Esq. of Dallington Hall, Northampton; *from the Bateman collection* 3
- 247 Two Leeds cream ware oval open-work Baskets and Stands 4
- 248 A Leeds cream ware Candlestick, with open-work on base and stem; and a Lakin & Poole Tea Pot and Cover 3
- 249 A Wedgwood blue and white jasper Vase and Cover of oviform design, with double handles, 8 in. 2
- 250 An Adams Pedestal, drum form, of blue and white jasper; and a Turner ware Tea Pot and Lid in white 2
- 251 A two-handled Vase and Cover, decorated in Oriental style, and with the unusual mark ^{CHAMBERLIN}_{READING}; and an oviform Ewer, with marbled body, marked *Wedgwood & Bentley* 2
- 252 A set of three Old English Vases of Oriental design in dark blue, gilt, and with medallions of flowers, etc., and Covers, surmounted by kylins, $11\frac{1}{2}$ in. 6
- 253 A Liverpool Plate, with transfers of birds; and two saucer-shaped Dishes, decorated with gold and copper lustre 3

- 254 A Jug, painted with flowers, and inscribed in gold *In Compliment to Mr. William Jones, From the Potteries for making the Best Paper in the Kingdom*
- 255 A round bodied Mug of Dwight's, or perhaps of Place's stone-ware, streaked with brown lines, the rim fitted with a silver band of contemporary age, $3\frac{1}{2}$ in., *very rare*
- 256 An Elers ware red Tea Pot and Lid, with a design in relief of a squirrel; and a Whieldon Coffee Pot, with rosettes, etc. in relief
- 257 An Astbury Tea Pot and Lid of globular form, with crabstock handle and spout, on three feet, the body of dark orange colour and raised vine tendrils in cream colour
- 258 A Tea Pot and Cover of solid agate, of globular form on three feet and kylin on the lid, which has been fitted with a silver rim and hinge
- 259 *A very fine Tea Pot and Cover of pine-apple design*
- 260 A shell-shaped Tea Pot and Cover of agate ware
- 261 A Whieldon Tea Pot and Cover of mottled colours, with double handle
- 262 A fine agate ware Tea Pot; and a Whieldon Tea Pot of vine-leaf and mottled decoration, both on three feet and with covers missing
- 263 A cauliflower Milk Jug, $5\frac{1}{2}$ in.; and a pine-apple Milk Jug, the latter with handle deficient
- 264 A solid agate Milk Jug, on three feet
- 265 A cauliflower Caddy; and a Whieldon Caddy of creamy colour, with flowers in relief
- 266 A Whieldon Caddy; and another, with Maccaroni figures
- 267 A Whieldon Caddy, with brilliant green and brown colours and raised designs; and a Caddy, with Maccaroni figures
- 268 A Whieldon Cream Jug, in brilliant tortoiseshell colours
- 269 Two Knives and two Forks, with handles of solid agate ware
- 270 A salt glaze Sauce Boat on three feet, with raised designs of small Bacchus figure among vines
- 271 A salt glaze Sauce Boat; and an oval Bowl, with raised trellis designs
- 272 A salt glaze Sauce Boat of double-lip design, with raised decoration

- 273 A Cream Jug and Cover, $4\frac{3}{4}$ in. high, with raised designs in upright panels, separated by green lines, the figures showing white upon a pink background, *a rare specimen of salt glaze*
- 274 A white salt glaze Basket, with pierced sides; a circular Dish, $12\frac{1}{2}$ in.; and a Tazza of uncommon form 3
- 275 A white salt glaze octagonal Cup, with raised designs on each side; a plain round Cup; and a leaf-shaped Tray 3
- 276 A salt glaze Cream Jug, enamelled with coloured flowers in Oriental style
- 277 A pair of salt glaze Dishes, with shaped and pierced borders, raised decoration, and painted with flowers
- 278 A salt glaze Dish, 11 in., with raised decorated and pierced border; another similar, 10 in.; and a Plate, 7 in., with raised decoration on border 3
- 279 A pair of Whieldon tortoiseshell Plates, with gadrooned edges
- 280 Two similar Plates
- 281 A Whieldon tortoiseshell Plate; another in brown tortoiseshell; and another, with shaped border, decorated with raised fruit, etc., on basket-work ground 3
- 282 An English Delft Dish, brilliantly painted with tulips and "blue dash" border, 13 in.
- 283 A circular Plaque, $9\frac{1}{4}$ in., of Whieldon style, with a design in relief of a dragoon charging artillery; and a Plaque, oval, with bust of female in relief 2
- 284 A Nottingham stoneware Mug, the lower part globular with a double body perforated, c. 1710; and an early black ware Loving Cup 2
- 285 A black basalt oval Medallion, 4 in., of Lord Camden, marked *Wedgwood & Bentley*; and a black Medallion of Josiah Wedgwood 2
- 286 A pair of black Medallions of Vespasian and Tiberius, in 18th century silver fittings; and a black Medallion of Dalember, marked *Wedgwood & Bentley* 3
- 287 A blue and white Wedgwood oval Medallion, $5\frac{1}{2}$ in., of Sir Isaac Newton; and another, $3\frac{3}{4}$ in., of George III 2
- 288 A pair of blue and white Medallions, 4 in., of Mr. and Mrs. Wedgwood
- 289 Two blue and white Medallions of Nelson and Captain Cook

- 290 Two blue and white Medallions of Wellington and Keppel
- 291 Two similar Medallions of Johnson and Franklin
- 292 Two similar Medallions of Linnæus and Sir Joseph Banks
- 293 Two similar Medallions of Sir Isaac Newton and Mr. Garrick
- 294 Two similar Medallions of Mr. Stuart and Louis XIV
- 295 A Jug of rare "granite ware"; a Tea Pot and Cover, *Adams & Co.*; a Wedgwood oval Plaque of Medusa; and a porcelain Plaque—The Marriage of Psyche; and a Spoon 6
- 296 A Toby Jug, with black coat, marked NEALE & CO.
- 297 A fine stoneware Toby Jug, 11 *in.* high
- 298 A Toby Jug of a rare type, the figure in white seated in a corner chair and with a brown jug
- 299 A Group of sleeping Parson and Clerk
- 300 A fine Staffordshire Bust of Shakespeare, and another of John Wesley 2
- 301 A pair of Figures of Elijah and Widow, on rounded bases
- 302 A Staffordshire Group of bull and dog
- 303 A pair of Staffordshire Groups, on oblong bases, *Ale Bench* and *Tee-Total*
- 304 A pair of Figures—Turk and Lady
- 305 A pair of Figures of Lions, on brown plinths, 12½ *in.*
- 306 A Derby Mug, in the form of a female bacchante head
- 307 A Crown Derby two-handled Cup, with borders, handles and feet richly gilt and surrounded with a band of finely painted flowers, and a Stand to correspond, both marked 2
- 308 A *Swansea straight-sided Cup*, exquisitely painted with roses and other flowers, the overhanging lip, handle and feet gilt, and a circular Stand to match, both of remarkable quality and perfect condition 2
- 309 A Swansea Cup and Stand of similar form to the preceding, painted with roses, tulips, etc.
- 310 A Plate, 8½ *in.*, decorated with transfers of shells, marked SWANSEA, and a pair of Worcester Plates, with salmon coloured and gilt borders, and the centre with transfer of cattle and sheep 3

- 311 A *Nantgarw Plate*, the border painted with roses within raised decorations, the edge gilt and in the centre a finely painted scene of a storm with Snowden in the distance, marked
- 312 A *Nantgarw plate*, the border with raised design and gilt butterflies, the centre painted with scene of a ruined castle
- 313 A pair of *Crown Derby Plates*, the borders very finely painted in ten irregularly shaped panels alternately with landscapes and flowers, the centres also with flowers, marked
- 314 A pair of *Bowls and Covers*, with double handles, encrusted flowers and also painted with flowers and gilt, marked
English Porcelain
- 315 A *Derby Figure of Milton*, 7 in., marked
- 316 A *Chelsea Derby Figure of Neptune*, 8 in., on a shell-formed base
- 317 A pair of *Chelsea Figures of a Lady and Gentleman in arbours*, with musical instruments
- 318 A pair of *Chelsea Groups of Lady with sheep and Gentleman with dog*, and with flower and tree backgrounds, 9½ in.
- 319 A pair of very fine *Chelsea Groups of a Lady with birdcage and sheep and Gentleman with bird and dog*, seated on boldly scrolled benches and with may-tree backgrounds, 11 in.
- 320 A *Chelsea Figure of Minerva*, on scrolled base, 12 in. high
- 321 A *Chelsea Group of a Lady seated in an arbour playing a mandolin*, a lamb by her side and candle nozzle, 10 in.
- 322 *Bow. An important set of four Figures representing the Elements: Earth, Air, Fire and Water*, on high scrolled bases, 11½ in.
- 323 A *Bristol Tea Pot and Lid*, painted with flowers in the Oriental style
- 324 A *Bowl*, with transfer decoration of children; two *Egg Cups*, painted with landscapes in sepia; and five white *Bow Knife handles* 8
- 325 A *Basket and Stand of openwork*, painted with flowers; and two *Baskets and one Stand of Wedgwood's cream ware* 5
- 326 A *Wedgwood oval Dish of cream ware*, painted with exotic birds; a *Stand*, with openwork border, marked *Neale & Co.*; three *Baskets of cream ware*; and two odd *Covers* 7
- 327 A large circular *Dish*, 19 in., of Italian faience, with fluted border and raised centre; and a *Dish*, 17 in., of copper lustre 2

- 328 A Strasburg oval Basket and Stand, with openwork borders, painted with flowers, marked ; and a Vienna circular Dish, painted with flowers 3
- 329 An old Dresden white Group, 16 *in. high*, of five Figures, the upper one of a man on a rocky pedestal playing a flute, and on the base four figures holding garlands
- 330 A Sèvres Coffee Cup and Saucer, painted with bouquets, the saucer painted with the date mark RR. for the year 1795 2
- 331 A Sèvres Bowl, with raised and richly gilt decoration, and with the mark in gold of Vincent (2000), dated 1761
- 332 A Sèvres dish, 8 *in.*, the border richly gilt and painted with blue flowers by *Dutanda*, marked
- 333 A Cup and Saucer, gilt and painted with medallions and with the mark of the Port-aux-Choux factory ; a Berlin Cup and Saucer, richly gilt ; and a Coffee Mug, gilt and painted with a girl and goats in a landscape, marked *Dilh & Guerhard* 5
- 334 Four old Spanish tiles, forming a design of circles and semi-circles, 11½ *in. sq.* ; and four old Dutch tiles, framed, painted with a dog and cat in brown 8
- 335 A circular Oriental Dish, 15 *in.*, painted with flowers, famille rose and sheep ; and another Dish, famille verte, with a richly decorated inner ring 2
- 336 An old Imari Dish, 13 *in.* ; an Imari Shaving Dish ; and a Bowl of fruit form, the cover decorated with pomegranates 4
- 337 A pair of famille verte Plates, 9 *in.* ; and a pair of Plates, with dark powder blue ground and gilt decoration of bamboos, etc. 4
- 338 A Ginger Jar and Cover, decorated in dark blue floral designs ; and a white Figure of Kwan-lyn, 17 *in. high* 3

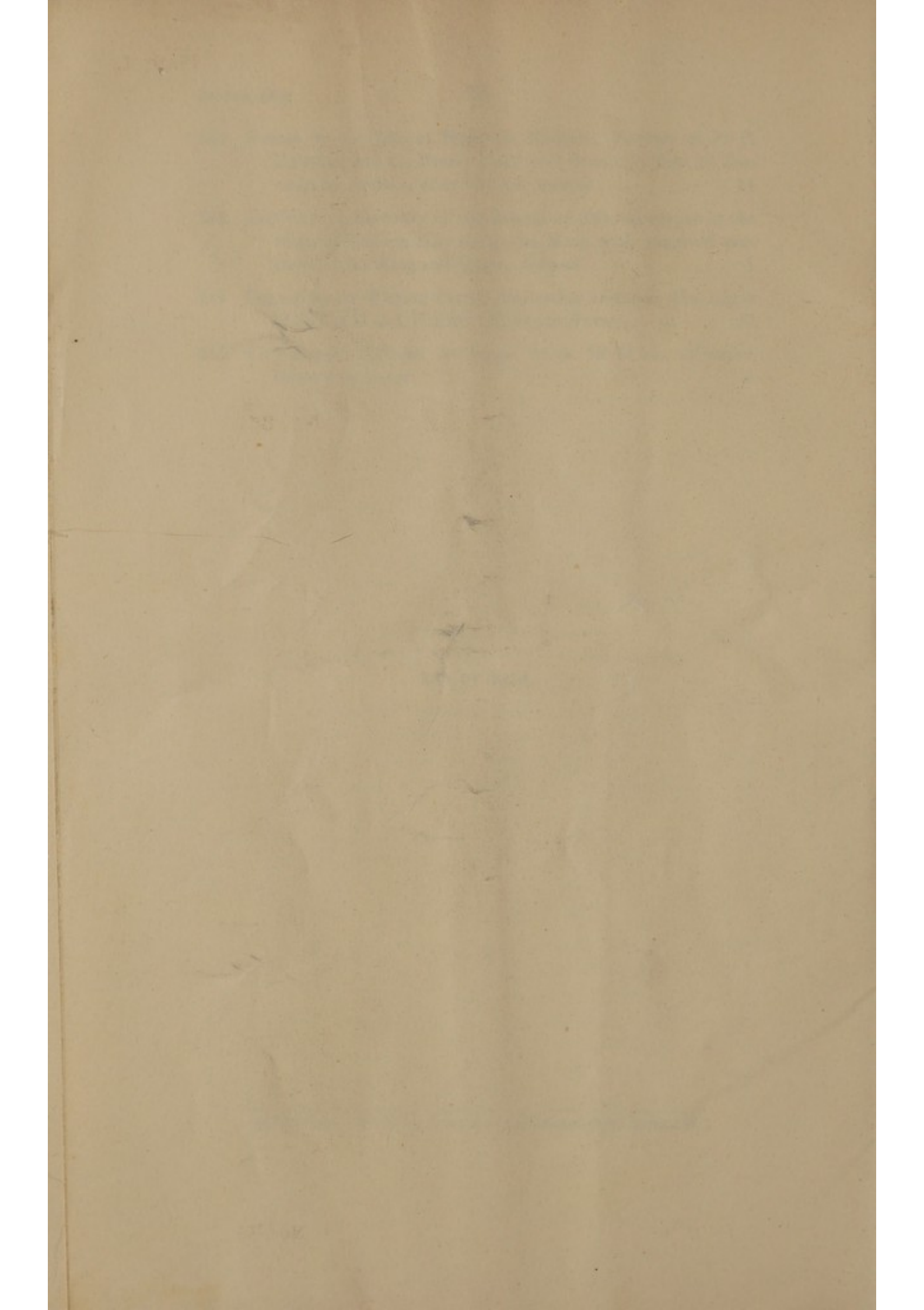
MISCELLANEOUS.

- 339 A large iron Fireback, with shaped dolphin top, the design beneath representing the Nativity, in a border of festoons and fruits, 36 *in. high*, 26 *in. wide*
- 340 A Fireback of similar form, the design being Venus and Cupids, dated below 1663, 33 *in. high*
- 341 A fine Sussex Fireback, with partly arched top and boldly raised design of the arms of Charles I, with the crown between C.R., 24½ *in. high*, 22½ *in. wide*

- 342 Events in the Life of Marie de Medicis; Portrait of P. P. Rubens; and the Grand Duke and Grand Duchess of Tuscany, by Audran, after Rubens, *framed* 11
- 343 Deed for the Recovery of the Estates of John Mowbray in the reign of William III and Queen Mary, with engraved portraits of the King and Queen, *framed* 1
- 344 Contemporary Playing Cards, illustrating events in the reigns of James II and William III, *in one frame* 47
- 345 Five framed Chinese Drawings, 11 *in.* by 17 *in.*, in water-colours, on paper 5

END OF SALE.







No. 16.



No. 35.



No. 32.



No. 13.



No. 36.

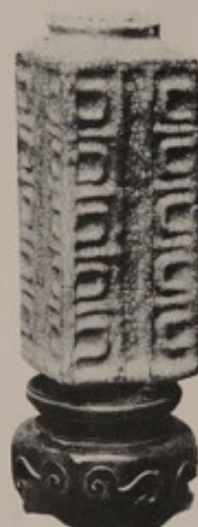
1000

1000

1000



No. 70.



No. 10.



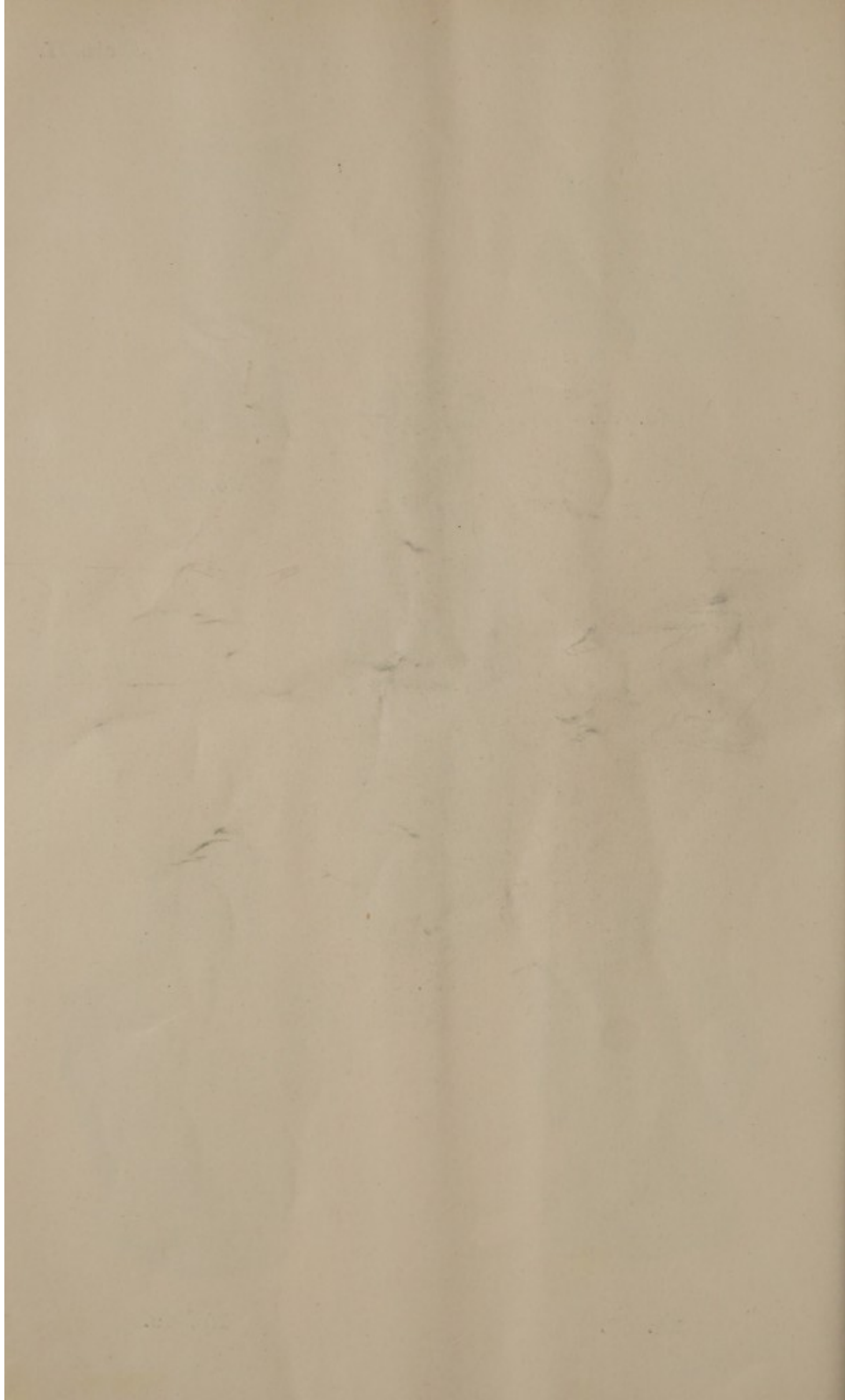
No. 66.



No. 62.



No. 46.





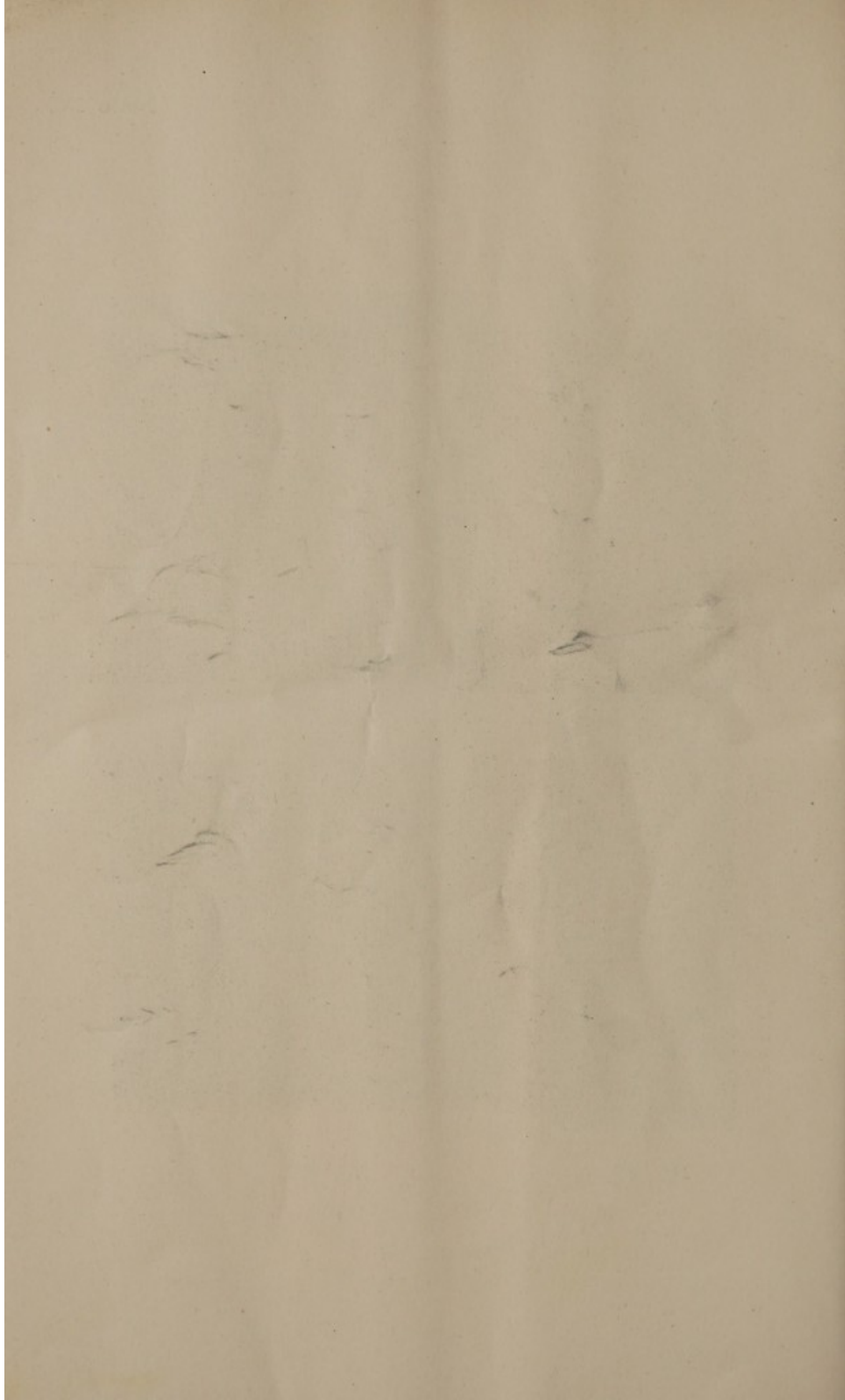
No. 85.



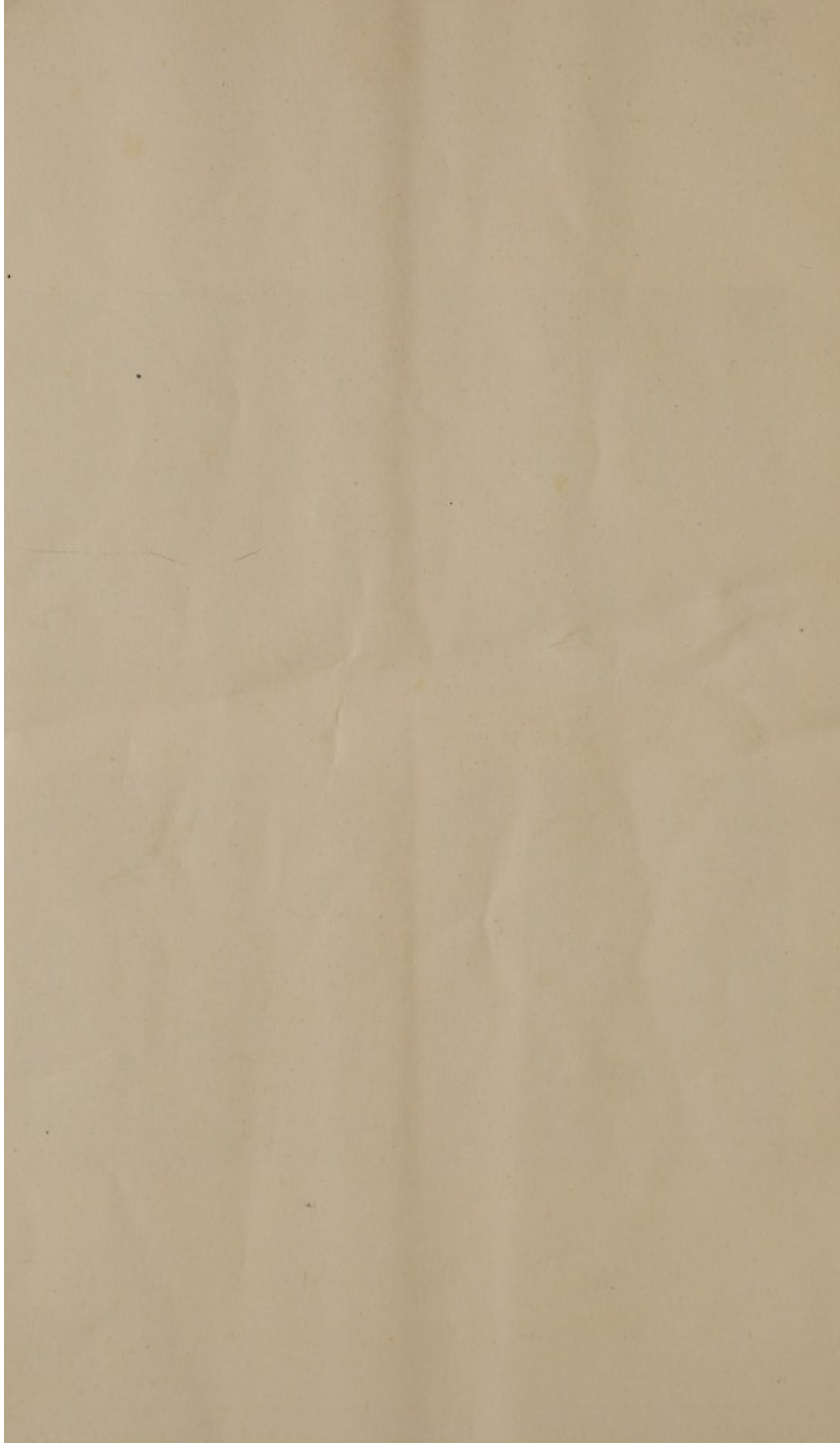
No. 87.

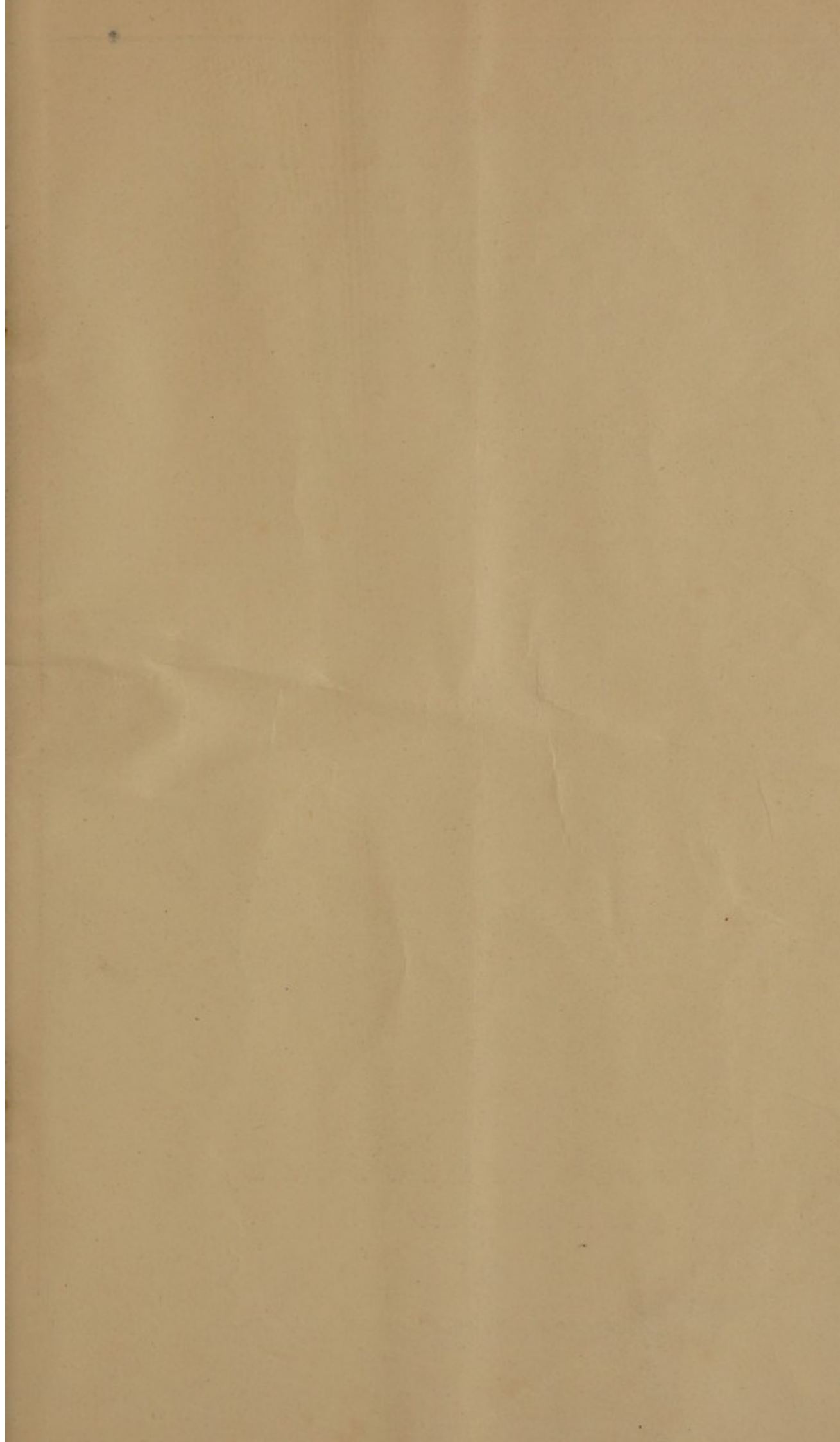


No. 117.









BAKER, LEIGH & SOTHEBY.

THE FIRM COMMENCING WITH SAMUEL BAKER IN

1744.

SOTHEBY, WILKINSON & HODGE.

1914.