

Sales catalogue: Sotheby's

Publication/Creation

30 April 1930

Persistent URL

<https://wellcomecollection.org/works/qn35ajvv>

License and attribution

This work has been identified as being free of known restrictions under copyright law, including all related and neighbouring rights and is being made available under the Creative Commons, Public Domain Mark.

You can copy, modify, distribute and perform the work, even for commercial purposes, without asking permission.



Wellcome Collection
183 Euston Road
London NW1 2BE UK
T +44 (0)20 7611 8722
E library@wellcomecollection.org
<https://wellcomecollection.org>

Mr Dean 30th April 1930

al Dean

	DATE	INITIALS
SALE SBY	30. IV. 30.	ALD.
PURCHASE	—	—
CHECKED	1. V. 30.	Ch.
COLLECTED	6. V. 30.	and.
RECEIVED	4. V. 30.	<i>[Signature]</i>
ACCESSED	—	—
PASSED	7. V. 30.	<i>[Signature]</i>

LOTARIO, AFRICAN & AMERICAN ART

COMPRISING

FINE SERIES OF PAPUASIAN, MELANESIAN & POLYNESIAN OBJECTS ;

CARVINGS, from Zululand, Bissagos Islands and the Ivory Coast ;

PERUVIAN POTTERY AND MEXICAN CARVINGS ;

AND OTHER PROPERTIES,

INCLUDING A FINE TUSK, from Benin,

The Property of Miss F. W. B. Ringer.

cleared
5 MAY 1930

WA/Amn/am/sal/20/845

Day of Sale.

WEDNESDAY, THE 30TH OF APRIL.

1930.

ILLUSTRATED COPY—PRICE TWO SHILLINGS & SIXPENCE.

SOTHEBY AND CO.
34 & 35 NEW BOND STREET, LONDON, W. (1)

CATALOGUE
OF
AN IMPORTANT COLLECTION OF
OCEANIC, AFRICAN & AMERICAN ART
COMPRISING
FINE SERIES OF PAPUASIAN, MELANESIAN & POLYNESIAN OBJECTS;
CARVINGS, *from Zululand, Bissagos Islands and the Ivory Coast*;
PERUVIAN POTTERY AND MEXICAN CARVINGS;
AND OTHER PROPERTIES,
INCLUDING A FINE TUSK, *from Benin*,
The Property of Miss F. V. B. Ringer.

W44mm/am/Sal/20/845

Day of Sale.

WEDNESDAY, THE 30TH OF APRIL.

1930.

cleared
5 MAY 1931

TERMS OF SUBSCRIPTION FOR MESSRS. SOTHEBY'S CATALOGUES AND PRICE LISTS FOR ONE SEASON.

The Season opens in October and closes at the end of July.

(All Subscriptions include postage.)

PLAIN CATALOGUES.

	£	s.	d.
Antiquities (Primitive, Egyptian, Greek, etc.)	0	1	0
Autograph Letters	0	1	6
Books and Manuscripts	0	5	0
Coins and Medals	0	1	6
Engravings and Etchings	0	2	6
Drawings and Pictures	0	2	6
Persian Drawings and Works of Art	0	1	0
Works of Art (including Armour, China, Furniture, Glass, Japanese Colour Prints and Works of Art, Jewellery, Miniatures, Silver, Textiles, etc.)	0	5	0
	<u>£1</u>	<u>0</u>	<u>0</u>

ILLUSTRATED CATALOGUES.

(To include Plain Copies where no Illustrated Catalogues are issued.)

	£	s.	d.
Antiquities (as above)	0	5	0
Autograph Letters	0	5	0
Books and Manuscripts	2	0	0
Coins and Medals	0	5	0
Engravings and Etchings	10	6	
Drawings and Pictures	10	6	
Persian Drawings and Works of Art	0	3	0
Works of Art (as above)	1	1	0
	<u>£5</u>	<u>0</u>	<u>0</u>

PRINTED LISTS OF PRICES AND BUYERS' NAMES.

	£	s.	d.
Antiquities (as above)	1	0	0
Autograph Letters	1	0	0
Books and Manuscripts	6	0	0
Coins and Medals	1	0	0
Engravings (Old)	2	0	0
Etchings (Modern)	2	0	0
Pictures and Drawings	2	0	0
Works of Art (as above)	5	0	0
	<u>£20</u>	<u>0</u>	<u>0</u>

Auctioneer's		Buyer		Date	
Lot		Amount		Date	
1		100		1880	
2		100		1880	
3		100		1880	
4		100		1880	
5		100		1880	
6		100		1880	
7		100		1880	
8		100		1880	
9		100		1880	
10		100		1880	
11		100		1880	
12		100		1880	
13		100		1880	
14		100		1880	
15		100		1880	
16		100		1880	
17		100		1880	
18		100		1880	
19		100		1880	
20		100		1880	
21		100		1880	
22		100		1880	
23		100		1880	
24		100		1880	
25		100		1880	
26		100		1880	
27		100		1880	
28		100		1880	
29		100		1880	
30		100		1880	
31		100		1880	
32		100		1880	
33		100		1880	
34		100		1880	
35		100		1880	
36		100		1880	
37		100		1880	
38		100		1880	
39		100		1880	
40		100		1880	
41		100		1880	
42		100		1880	
43		100		1880	
44		100		1880	
45		100		1880	
46		100		1880	
47		100		1880	
48		100		1880	
49		100		1880	
50		100		1880	
51		100		1880	
52		100		1880	
53		100		1880	
54		100		1880	
55		100		1880	
56		100		1880	
57		100		1880	
58		100		1880	
59		100		1880	
60		100		1880	
61		100		1880	
62		100		1880	
63		100		1880	
64		100		1880	
65		100		1880	
66		100		1880	
67		100		1880	
68		100		1880	
69		100		1880	
70		100		1880	
71		100		1880	
72		100		1880	
73		100		1880	
74		100		1880	
75		100		1880	
76		100		1880	
77		100		1880	
78		100		1880	
79		100		1880	
80		100		1880	
81		100		1880	
82		100		1880	
83		100		1880	
84		100		1880	
85		100		1880	
86		100		1880	
87		100		1880	
88		100		1880	
89		100		1880	
90		100		1880	
91		100		1880	
92		100		1880	
93		100		1880	
94		100		1880	
95		100		1880	
96		100		1880	
97		100		1880	
98		100		1880	
99		100		1880	
100		100		1880	

BUYER

a. L. Dean

Date

30/4/30

AUCTIONEERS

Sotheby

Lot	Amount			Lot	Amount		
	£	s.	d.		£	s.	d.
<i>6</i>	<i>6</i>	<i>-</i>	<i>-</i>	<i>126</i>	<i>105</i>	<i>10</i>	<i>-</i>
<i>15</i>	<i>2</i>	<i>15</i>	<i>-</i>	<i>133</i>	<i>5</i>	<i>10</i>	<i>-</i>
<i>41</i>	<i>10</i>	<i>-</i>	<i>-</i>	<i>134</i>	<i>29</i>	<i>-</i>	<i>-</i>
<i>62</i>	<i>24</i>	<i>-</i>	<i>-</i>		<i>10</i>	<i>10</i>	<i>-</i>
<i>66</i>	<i>14</i>	<i>-</i>	<i>-</i>		<i>£150</i>	<i>10</i>	<i>-</i>
<i>72</i>	<i>25</i>	<i>-</i>	<i>-</i>				
<i>85</i>	<i>9</i>	<i>10</i>	<i>-</i>				
<i>96</i>	<i>4</i>	<i>-</i>	<i>-</i>				
<i>119</i>	<i>4</i>	<i>-</i>	<i>-</i>				
<i>123</i>	<i>3</i>	<i>5</i>	<i>-</i>				
	<i>105</i>	<i>10</i>	<i>-</i>				

STV. MU. 3

CATALOGUE OF AN IMPORTANT COLLECTION OF OCEANIC, AFRICAN & AMERICAN ART

COMPRISING OCEANEA,

A FINE SERIES OF PAPUASIAN, MELANESIAN AND POLYNESIAN OBJECTS, FIGURES, CEREMONIAL MASKS AND HELMETS, BETEL-NUT BOXES AND IMPLEMENTS, BOWLS, HEAD-RESTS AND PILLOWS, SKULL HOOKS, AND A FINE FIGURE OF A CROCODILE;
from New Guinea;

CARVINGS, *from Easter Island, Bougainville, and the Admiralty Islands;* A FINE CEREMONIAL MASK AND CARVED DOOR POSTS, *from New Caledonia;* A RARE TEMPLE FIGURE, *from New Ireland;* AND A TORTOISESHELL DANCING MASK, *from the Torres Straits.*

AFRICA,

GROTESQUE CARVED MASKS, FIGURES, BOWLS AND STOOLS decorated with beaded figures, *from the Cameroons;* TWO FINE CHIEFTAIN'S CEREMONIAL STAVES, IVORY AND BONE FETISHES, AND FIGURES, *from the Belgian Congo.*

ALSO CARVINGS *from Zululand, Bali, Bissagos Islands, Ivory Coast and Gabun.*

PERU, MEXICO & NORTH AMERICA,

POTTERY AND STONE CARVINGS; TWO PERUVIAN PONCHOS, decorated with figures; MEXICAN JADE CARVINGS; AND A RARE SERIES OF NORTH AMERICAN CARVED HORN SPOONS;

AND OTHER PROPERTIES,

COMPRISING

A FINE BLACKWOOD CLUB, *from the Marquesas Islands,* & A NEW ZEALAND JADE TIKI.

ALSO

A FINE BENIN IVORY TUSK, taken from an altar for human sacrifices,

The Property of Miss F. V. W. Ringer.

WHICH WILL BE SOLD BY AUCTION
BY MESSRS.

SOTHEBY AND Co.

G. D. HOBSON, M.V.O. F. W. WARRE, O.B.E., M.C.
C. G. DES GRAZ. MISS E. BARLOW. C. V. PILKINGTON, B.A.

Auctioneers of Literary Property & Works illustrative of the Fine Arts.

AT THEIR LARGE GALLERIES, 34 & 35, NEW BOND STREET, W.(1)

On WEDNESDAY, the 30th of APRIL, 1930,

AT ONE O'CLOCK PRECISELY.

ON VIEW AT TWO DAYS PRIOR. CATALOGUES MAY BE HAD.

Illustrated Catalogues (6 Plates), Price 2s. 6d.

PRINTED BY J. DAVY AND SONS, LTD., 8-9, FRITH-STREET, LONDON, W., ENGLAND.

CONDITIONS OF SALE.

- I. The highest bidder to be the buyer. If any dispute arise the Auctioneer shall have absolute discretion to settle it; and to put any disputed lot up again immediately.
- II. No person to advance less than 1s.; above five pounds 5s., and so on in proportion.
- III. All lots are sold subject to the right of the seller or his agent to bid or else to impose a reserve.
- IV. The purchasers to give in their names and places of abode, and to pay down 10s. in the pound or more, if required, in part payment of the purchase money; in default of which the lot or lots purchased may be immediately put up again and re-sold.
- V. All lots are sold as shown and with all faults, imperfections and errors of description. Messrs. Sotheby & Co. act as agents; they have full discretion to refuse any bidding or to withdraw any lot or lots from the sale without in either case giving any reason; they are not responsible for errors of description or for genuineness or authenticity of any lot or for any fault or defect in it, and make no warranty whatever.
- VI. The lots to be taken away at the buyer's risk and expense, immediately after the conclusion of the sale; in default of which Messrs. Sotheby & Co. will not hold themselves responsible if the same are lost, stolen, damaged or otherwise destroyed, but they will be left at the sole risk of the purchaser, and subject to a charge for warehousing. If, at the expiration of Two Days after the conclusion of the sale, the lots are not cleared or paid for, they may then be sold immediately, either publicly or by private treaty, without any notice being given to the defaulter.
- VII. Upon failure of the buyer to comply with any of the above conditions, the money deposited in part-payment shall be forfeited; and the defaulter at this sale shall make good any loss arising from the re-sale, together with the charges and expenses in respect of both sales.

To prevent confusion no purchases can be claimed or removed during the sale.

Messrs. SOTHEY & CO. are prepared to execute bids, and in addition to advise intending purchasers as far as possible, if requested by them to do so, without making any charge for either service. Lots will be procured as cheaply as is permitted by other bids or reserves, if any.

34 and 35, New Bond Street, London, W.(1).

Telegraphic Address:

"Abinitio, Wesdo, London."

A.B.C. Code, 5th Edition.

Telephone: (3 lines)

Mayfair 6682, 6683, 6684.

In sending Commissions this Catalogue may be referred to as "BES."

COMMISSIONS SENT BY TELEPHONE ARE ACCEPTED AT THE SENDER'S RISK,
AND MUST BE CONFIRMED BY LETTER OR TELEGRAM.

PREFACE.

The Collector of all but the last three lots included in this catalogue of sale expresses a strong opinion that such specimens should not be placed in the category of Savage monstrosities to be regarded only as of ethnographical interest, but that they should be accepted as Works of Art. The old question of what is or what is not a work of art is immediately raised. To those whose eyes were strictly schooled in the appreciation of classical art and to those who looked in art for the faithful representation of natural objects, archaic forms were displeasing. It is, however, safe to say that for some time past a much wider interest has been taken in the work of primitive peoples, whether found in excavations of ancient sites many thousand years old, or in so-called Savage objects of our own time, the origin of which may be based on the very remote past.

At present, indeed, there is a strong leaning towards the archaic and primitive in art and thus the claim of this collection to be styled "Asiatic, Oceanic and American Art" may not be unjustified.

SOTHEBY & Co.

CATALOGUE

OF

AN IMPORTANT COLLECTION OF

OCEANIC, AFRICAN & AMERICAN ART.

DAY OF SALE.

Wednesday, April 30th, 1930.

OCEANIA.

LOT

- 1 A New Guinea carved wood Cosmetic Bowl in the form of a bird, the back decorated with formal feathers, $11\frac{1}{2}$ in.; and another, smaller, in the form of a tortoise, $6\frac{1}{2}$ in.; both from the Sepik River 2
- 2 A New Guinea carved wood Cosmetic Bowl in the form of a tortoise, decorated with scale ornament on the back, and with chevron designs near the end of tail and head, $13\frac{1}{2}$ in.; from the Sepik River
- 3 A Tami Island carved wood Head Rest supported by a curious squatting human figure, on an oval base, 6 in.
- 4 A New Guinea carved and pierced Head Rest in the form of a crocodile, $20\frac{1}{2}$ in., fine work; from the Sepik River
- 5 A Tami Island carved wood Head Rest supported by a squatting human figure and a double-headed bird, on an oval base, showing traces of red, black and white pigment, 6 in. high
- 6 A New Guinea carved wood Ancestral Figure of ferocious aspect, with mother-o'-pearl eyes and small tusks, painted in red, white and black pigments, 22 in.; from the Sepik River

30/-
No name given

1/10/-
No name

2/-/-
Luther's Muffat

2/10/-
No name

2/10/-
Lifton

6/-/-15

- 7 A New Guinea red clay Roof Ornament in the form of a human figure surmounted by a duck, the whole is picked out in white clay slip, 15 in. high; from the Sepik River
- 8 A New Guinea carved wood Cosmetic Bowl with human headed handle, $9\frac{1}{2}$ in.; and another in the form of a crocodile, $11\frac{1}{2}$ in.; both from the Sepik River 2
- 9 A New Guinea Head Rest in wood, pierced and carved with birds and wild boars' heads enriched with beads and red and yellow pigment, $13\frac{1}{4}$ in.; from the Sepik River
- 10 A New Guinea large wooden Head Rest, carved at one end with a human head and at the other with a cosmetic bowl, $25\frac{1}{2}$ in.; from the Ramu River
- 11 A New Guinea Cover of a betel-nut Box surmounted by a carved wood and pierced figure of an exotic bird, supported by a smaller figure of a crocodile, in terra-cotta and white, 23 in.; from the Sepik River
- 12 A New Guinea small carved wood Head Rest of boat shape, supported by four human figures with elongated and pointed faces, 6 in.
- 13 A New Guinea Head Rest in carved wood, with two animal heads supported by trestle-shaped legs lightly carved, $5\frac{1}{2}$ in.; from the Sepik River
- 14 A New Guinea Magic Staff, carved with various magic signs and terminating in two grotesque human heads, 12 in.; and a carved wood Cosmetic Bowl with crocodile and parrot's head handles, 14 in., both from the Sepik River 2
- 2/15- 6. 15 A New Guinea Dagger made of marabou bone, carved and inset with mother-o'-pearl and cowry shells, $14\frac{1}{2}$ in.; and a small plaited Mask for use as a necklet, the latter from the Ramu River 2
- 16 A New Guinea large boat-shaped Cosmetic Bowl, carved with oval panels painted with orange pigment, with two handles, one in the form of a boar's head, and the other of a crocodile's tail, $18\frac{1}{2}$ in.

1/-/-
Blank2/15/-
Garry4/-/-
Bonelli1/10/-
Fuller1/15/-
Clifton5/5/-
Clifton16/-/-
Clifton3/-/-
Garry2/-/-
Laurie Muffal

- 17 A New Guinea betel-nut Box surmounted by three basket-work rings and two carved wooden masks of elongated form, terminating in a dried grass tassel, $13\frac{1}{2}$ in., wood stand 1/15/- Joyce.
- 18 A New Guinea large wooden Bowl with carved back and two handles in the form of squatting human figures wearing top-knot head dresses, $22\frac{1}{2}$ in. long; from the Ramu River 5/10/- Burney.
- 19 A New Guinea Head Rest carved with crocodile head handles, the under side carved with a small oval cosmetic bowl with grotesque human head handle, $20\frac{1}{2}$ in.; from the Ramu River 5/-/- Goldstein.
- 20 A New Guinea Ancestral Figure with a human head of baboon type, and a bird's body, mounted on a wooden stand, 10 in.; from the Sepik River 4/10/- Lewis Maffat.
- 21 A New Guinea carved wood Dancing Mask of bird-like form, with powerful beak nose, touched with black, white and red pigments, 21 in.; from the Ramu River 4/10/- Lewis Maffat.
- 22 A fine New Guinea Dancing Mask of oval shape, with a long hanging nose, small mouth and beard, bordered with dentate ornament, and painted throughout with a red pigment over a black ground colour, 21 in.; from the Ramu River 10/10/- Goldstein.
- 23 A New Guinea carved wood Head Rest of two-tier form, supported on a double mask and a single mask at one end, 15 in.; from the Ramu River 2/5/- Clifton.
- 24 An Admiralty Island deep oval wooden Bowl decorated with strap-work borders and double handles in the form of seated human figures, 16 in.; a typical specimen 8/-/- Major Cowie.
- 25 A fine New Guinea carved wood Ancestral bearded Figure, with chest and shoulders richly tattooed, grass ear tassels and wearing an apron, $18\frac{1}{2}$ in.; an interesting specimen, from the Sepik River 12/-/- Goldstein.
- 26 Another Ancestral Figure in carved wood with curious elongated face and tall spiked head-dress, 25 in., wood stand 4/-/- Burney.

- 27 A New Guinea carved wood Pounder, or Pestle, surmounted by a human figure with hands clasped, 22 in.; and a small wooden Dancing Mask, 8½ in.; both from the Ramu River 2 1/-/- Kelly.
- 28 A New Guinea carved wood Spatula for lime, used in chewing betel nut, the handle carved with seated human figures, 14½ in.; and a carved wood Knife Handle ornately decorated with a human figure and bound with plaited bamboo, 10 in. 2 1/10/- Evans
- 29 A New Guinea squatting female Figure made of some pithy wood, painted in red and white, 10½ in.; and the Cover of a betel-nut Box in the form of a human figure, 12½ in.; both from the Sepik River 2 3/15/- Barry
- 30 A New Guinea carved wood Dancing Mask with fringed and dentate beard and hooked beak, painted all in red on a black ground, 21 in.; from the Ramu River 8/-/- Pearcy
- 31 An Admiralty Island oval wooden Bowl in the form of a bird with flat head and pierced tail supported on four small cylindrical feet, 17½ in.; and a small carved wooden Dancing Mask, the eyes inset with cowry shells, the whole touched with red pigment, 8½ in., from Sepik River, New Guinea 2 15/-/- Goldstein
- 32 A New Caledonia Lance Head carved in wood with masks on both sides terminating in a spear head; and another, similar, 15 in. 2 15/-/- Williams
- 33 A New Guinea carved wood Ancestral Figure of quaint form, decorated with tatoo marks, 13 in., from the Sepik River; wood stand 3/15/- Munro
- 34 A Bougainville Canoe Paddle, the handle terminating in a double-headed human figure surmounted by a winged head-dress, and painted in red, black and white, 44 in. Pass
- 35 An Admiralty Island narrow Spatula terminating in a carved human figure, 15 in.; and a Batak Horn finely carved with a double figure of a Bodhisatt and "kuei fret" ornament, 7 in. 2 3/-/- Joyce
- 36 A New Guinea carved wood Ancestral Figure, the face with a beard and traces of painting, on a wooden stand, 22½ in.; from the Sepik River 5/10/- Borelli

- 37 A New Guinea carved wood Head surmounted by a bird's head, on a long oval-shaped board, probably for ancestor worship, traces of red and white pigment, 56 in.; *from the Sepik River*

4/-/-
Beasley

- 38 Two New Guinea carved wood Spatulae for lime, used in betel-nut chewing, the handles finely carved with figure subjects, 8 in. and 10 in.

1/10/-
Kelly

- 39 An Admiralty Island large oval wooden Bowl in the form of a bird, with carved wings and pierced tail, supported on four cylindrical feet, 20½ in. long

22/-/-
Goldstein

- 40 A NEW GUINEA GROTESQUE MASK in the form of a boar's head, in basket-work decorated with boar's tusks and cowry shells, painted in various colours, 22 in.; *from the Sepik River*

6/-/-
Beasley

- 10/-/- 10. 41 A NEW GUINEA CANNIBAL SKULL HOOK in carved wood, in the form of a sitting woman with six radiating branches painted with alternate bands in red and white, 20½ in.; *a rare specimen, from the Sepik River*

- 42 A New Guinea carved wood Dancing Mask of solid construction, realistically carved and brightly coloured, 10½ in.; *from the Sepik River*

9/-/-
Goldstein

10. 43 A RARE NEW GUINEA DANCING MASK boldly carved and decorated with a horn-shaped ornament connecting the chin and nose, the ears pierced and hung with ornaments, fine original painting, 16 in., *from the Sepik River*; wood stand

14/-/-
Goldstein

[See ILLUSTRATION. Plate II.]

6. 44 A NEW GUINEA CARVED WOOD DANCING MASK with small apertures for eyes and mouth, and a semi-circle of dentate ornament under the chin for a beard, the nose short and very much ringed through the nostrils, coloured in red paint, 16½ in.; *a fine specimen, from the Ramu River*

8/10/-
Bipps

10. 45 An Easter Island Figure of a Man carved in hard wood, his hands by his side, the face very expressive with high cheek-bones and bone-rimmed eyes, 17 in.; *the nose unlike the usual Rapa Nui type*

14/-/-
Goldstein

- 46 A New Guinea betel-nut Box, carved with two elongated masks, bordered with basket-work, $32\frac{1}{2}$ in.; and another, smaller, 16 in.; both from the Ramu River 2

5/10/-
Bumey

- 47 A NEW GUINEA BETEL-NUT BOX, ornamented with basket-work and surmounted by a phoenix-like figure of a bird standing on a crocodile head, $24\frac{1}{2}$ in.; a fine specimen, from the Sepik River; wood stand

12/-/-
Goldstein

[See ILLUSTRATION. Plate I.]

- 48 A NEW GUINEA CARVED WOOD HEAD REST of unusual length, carved at the ends with human heads, and underneath with similar masks, 27 in. long; from the Ramu River

4/-/-
W. Williams

[See ILLUSTRATION. Plate I.]

- 49 A New Guinea carved wood Dancing Mask, with small spike nose and four protuberances on the forehead and cheeks, 19 in.; and another, of unusual type, with sharply-pointed long nose, $18\frac{1}{2}$ in.; both from the Ramu River 2

19/-/-
Epstein

6. 50 A TORRES STRAITS CEREMONIAL DANCING MASK made of tortoise-shell decorated with human hair and beard, $13\frac{1}{2}$ in.; a rare and unusual specimen

9/10/0
Sulloc.

[See ILLUSTRATION. Plate II.]

6. 51 A NEW GUINEA DANCING MASK of unusually large size, in carved wood, with curved and pointed nose, the face decorated with chevron ornament, and touched with red pigment, 21 in.; an interesting specimen, from the Ramu River

12/10/-
Boselli.

[See ILLUSTRATION. Plate II.]

- 52 A NEW GUINEA carved wood betel-nut Box Lid in the form of a stork-like bird with hooked beak boldly carved and coloured, 30 in., from the Sepik River; wood stand

9/10/-
Epstein

- 53 A New Guinea carved wood Ancestral Figure of a Man, the shoulders richly carved to represent tattooing, 25 in., from the Sepik River; wood stand

10/-/-
Bensley

- 54 A New Guinea Dancing Mask with sharply pointed long nose and bamboo-woven beard, $17\frac{1}{2}$ in.; and another, smaller, of expressive form, 17 in.; both from the Ramu River 2

17/10/0
Epstein

- 55 An unusual New Guinea carved wood Ancestral Mask of narrow form with tongue hanging out, showing traces of painting, the eyes inset with cowry shells, 17 in., *from the Sepik River*; wood stand

13/-/-
Epstein

10. 56 A RARE NEW GUINEA HELMET made of basket-work, surmounted by a Toucan-like bird with basket-work wings, the front of the helmet with a human mask of the same material, 16 in. high, 25 in. wide, *an interesting and unusual specimen; from the Sepik River*

15/-/-
Joyce

[See ILLUSTRATION. Plate II.]

10. 57 A New Guinea carved wood Ancestral Figure of unusual type, with open mouth and long nose reaching to the ground, the arms, thighs and legs incised and painted with chevron ornament, 30 in.; wood stand

15/-/-
Epstein

- 58 A New Guinea carved wood Ancestral Figure with thick lips, the shoulders carved to represent tattooing, the eyes and forehead decorated with cowry shells and fruit seeds, the figure stands on a skull hook which shows traces of pigment, 25 in., *a rare specimen; from the Sepik River*

6/-/-
Barry

30. 59 A NEW GUINEA PREPARED HUMAN SKULL inlaid with cowry and other shells and decorated with mother-o'-pearl and human hair, the whole brightly painted in terra-cotta and white, *from the Sepik River*; mounted on wood stand

40/-/-
Barker

** Cf. Handbook to the Ethnographical Collections in the British Museum, fig. 121.

[See ILLUSTRATION. Plate II.]

- 60 NEW GUINEA. A LARGE AND FINELY CARVED FIGURE OF A CROCODILE in wood, decorated with clay and colours, 4 ft. 6 in., *a realistic piece of work; from the Sepik River*

15/-/-
Epstein

[See ILLUSTRATION. Plate I.]

- 61 A NEW GUINEA BETEL-NUT BOX with basket-work top, surmounted by a figure of a phoenix-like bird standing on the head of a crocodile, 30½ in.; *from the Sepik River*

4/-/-
Joyce

[See ILLUSTRATION. Plate I.]

- 24/-/- 30. (62) A FINE NEW GUINEA CARVED WOOD ANCESTRAL FIGURE standing on a boar's head, holding a bird in both hands which are also supporting the chin, traces of pigment, 28 in., *a rare and interesting figure, from the Sepik River*; mounted on a wood stand

[See ILLUSTRATION. Plate I.]

- 63 A NEW GUINEA BETEL-NUT BOX decorated with etched work and surmounted with a basket-work top and finely carved crocodile finial, 26½ in., *a fine specimen, from the Sepik River*; wood stand

5/10/-
Clifton

[See ILLUSTRATION. Plate I.]

- 64 A NEW GUINEA ANCESTRAL FIGURE in carved wood with a beard of human hair, decorated with fruit seeds and shells and pierced at the nostrils with ornaments, the whole with brightly coloured red, white and black striped decoration, 28½ in., *from the Sepik River*; wood stand

11/-/-
10/10/-
Barry

[See ILLUSTRATION. Plate I.]

- 65 An Indonesian (Nais) carved wood Ancestral Figure wearing high winged head-dress, long beard and necklace, 23 in., wood stand

2/10/-
Bender

- 14/-/- 30. (66) A NEW IRELAND CARVED WOOD CEREMONIAL FIGURE of large size, with perforated body, high head-dress, and cock's head, holding in the right hand a stork by the beak, 4 ft. 5 in.; *a fine and rare specimen from a temple*

** A similar specimen is illustrated in the Handbook to the Ethnographical Collections in the British Museum, fig. 128.

[See ILLUSTRATION. Plate III.]

- 67 A New Guinea small carved wood Ancestral Figure, the head in the form of a bird, carved to represent tattooing, wood stand, 6 in.; *from the Ramu River*

2/10/-
Wilkinson

- 68 A NEW GUINEA LARGE WOODEN DRUM with waisted body, carved with masks and scrollwork; in relief on one side a creeping lizard, and on the other a bird, 34 in.; *from the Sepik River*

14/-/-
Goldstein

[See ILLUSTRATION. Plate II.]

- 69 A NEW GUINEA CARVED WOOD SHIELD boldly incised with a human mask, the tongue hanging out, painted in red, black and white, 53 in.; *from the Sepik River*

[See ILLUSTRATION. Plate III.]

- 70 ANOTHER FINE SHIELD of slightly convex form, the upper part carved and brightly painted with a human mask in red, black and white, the lower part with scrollwork, masks and castellated ornament, 62 in.; *from the Sepik River*

- 71 A New Caledonia carved wood Dancing Mask with bulbous nose and perforated mouth, the borders of the face bored for a beard, 20 in.; wood stand

- 25-1-30. 72 A LARGE NEW GUINEA CARVED WOOD FIGURE with very expressive head and face, surmounted by a figure of a bird, the skeleton-like frame painted to represent tattooing, 68 in., *fine condition; from the Sepik River*

[See ILLUSTRATION. Plate III.]

30. 73 AN IMPORTANT NEW CALEDONIA CARVED WOOD CEREMONIAL MASK used for ceremonial dances, the bold and finely carved mask surmounted by a high woven head-dress made of tow and human hair, and a long beard of the same material, with a feather cloak below, 65 in., *a very rare and complete specimen of this type; wood stand*

** A similar Mask is illustrated in the Handbook to the Ethnographical Collections in the British Museum, fig. 129.

[See ILLUSTRATION. Plate III.]

- 74 A NEW CALEDONIA DOOR POST, the top carved with a human mask wearing head ornament, the lower part deeply carved with chevron and star ornament, painted in red, 70 in.; *a fine specimen*

- 75 THE COMPANION DOOR POST of similar size and design, 70 in.

** A New Caledonia Door Post of this type is illustrated in the "Handbook to the Ethnographical Collections" in the British Museum, plate VIII, p. 144.

14/-/-
Guldstein

10/-/-
Brunner

14/-/-
Wicks

40/-/-
Guldstein

10/-/-
Clark

9/10/-
Bensley

AFRICA.

6. 76 | A Belgian Congo Fetish in the form of a small ivory figure of a woman with her hands clasped to her breast; and another, very similar, $3\frac{1}{2}$ in. 13/10/-
Eppstein

[See ILLUSTRATION. Plate VI.]

6. 77 | A Belgian Congo Fetish in the form of a woman, carved in bone, 5 in.; and another, smaller, vigorously carved with a woman's head on a lion's fang, $2\frac{1}{2}$ in. 8/-/-
Eppstein

[See ILLUSTRATION. Plate VI.]

3. 78 | A Belgian Congo flat Fetish, carved to represent a bearded man, his hands clasped in front, 3 in.; wood stand 5/-/-
Eppstein

[See ILLUSTRATION. Plate VI.]

3. 79 | A Belgian Congo Fetish, representing a man with bended knees an hands clasped in front, 3 in.; wood stand 6/10/-
Eppstein

[See ILLUSTRATION. Plate VI.]

- 80 | A Belgian Congo ivory Hunting Horn of plain form, fine colouring and remarkably good tone, 25 in. Passed

- 81 | A CAMEROON CARVED WOOD FIGURE of a man sitting on a stool, wearing curious winged head-dress and holding on his knees a large bowl decorated with fluted ornament, 14 in.; a fine specimen 15/-/-
Barry

- 82 | A good South Cameroon standing Figure of a man wearing curious grooved head-dress and holding a tablet, 22 in.; from Pahouin 15/-/-
Anderson

- 83 | An Ivory Coast carved wood War Mask of ferocious aspect, the teeth formed of beads, and a metal disc inset in the forehead, 14 in.; wood stand 15/-/-
Eppstein

- 84 | A Cameroon large carved wood Bowl, decorated with a variety of geometrical ornament, hatching, fluting, etc., with an elephant's head handle, 23 in. long; a fine specimen 19/-/-
Eppstein

9/10/0 30. 85

6.

- 85 | A DANCING MASK used for the Circumcision Ceremony, with curious upturned nose, surmounted by two birds, and with spiked top, profusely hung with dried grass; *from the Bajaccas*; wood stand
- 86 | ANOTHER, smaller, with circular mask and star-spiked top; *from the Bajaccas*; wood stand
- 87 | A Sudanese Stringed Musical Instrument with gourd bowl and carved handle terminating in a fine human mask and the head of an ibex, 35 in.
- 88 | A CAMEROON GROTESQUE MASK in carved wood, the eyes deeply inset; surmounted by the figure of an animal, 15 in.; wood stand
- 89 | A Cameroon carved wood Figure of a man with hands folded on the chest in the attitude of singing, 29 in.; wood stand
- 90 | A Joruba carved wood Female Figure, wearing a high head-dress carved with stiff leaf ornament, 10 in.; and a Dancing Mask with tow beard and feather eyebrows attached, painted in red, 7½ in.; *from Maconda* 2
- 91 | An Ivory Coast carved wood Dancing Mask representing an animal with trunk and tusks in ebonised wood, carved with chevron ornament and painted in white, 16 in.
- 92 | A BAKOTA, GABUN ANCESTRAL FIGURE in carved wood, covered with plates of brass and copper, the oval face and winged head-dress decorated with chevron ornament, 22½ in.
- ** A very similar specimen is illustrated in the "Handbook to the Ethnographical Collections in the British Museum," fig. 227.
- 93 | A Belgian Congo carved wood Ceremonial Mask brilliantly coloured in red, with a bass beard and hair of plaited bass, 15 in.
- 94 | A Cameroon carved wood Bowl supported by a massive squatting figure of a monkey, 12 in.; and a grey earthenware Vase with human headed spout and applied loop handle, 9¼ in. 2
- 95 | A Cameroon carved wood Bowl decorated round the border with figures and symbolic ornament and supported on the back of a chameleon-like animal with flattened human head, 13 in.

8/10/-
Tonnias5/-/-
Goldstein30/-/-
Goldstein5/-/-
Underwood18/-/-
Goldstein15/-/-
Clifton14/-/-
Goldstein12/-/-
Goldstein15/10/-
Lumina Maffel12/10/- 16/-/-
Clifton

- 4/-/- 3. 96 A Bali Tobacco Pipe, apparently of stoneware, decorated with a human figure and profusely ornamented with prunts and grooving, and tribal ornament, 10 in.

- 97 A Zululand double Head Rest carved with narrow bands of zig-zag ornament, supported on two massive rings similarly decorated, 17 in. long 1/-/- Clifton

- 98 A Luango Fetish in the form of a carved wood figure of a man wearing a hat trimmed with feathers and fur, 10 in.; and a Zulu Chieftain's Staff terminating in a human head, 40½ in. 2 5/10/- Goldstein

- 99 A Cameroon carved wood Ceremonial Mask surmounted by two horns, the mouth open and the teeth bared in a ferocious aspect, showing traces of painting, 18 in., a rare specimen; from Bafu 19/-/- Epstein

- 100 A CAMEROON LARGE STOOL carved round the rim with fluted and studded ornament, supported on the shoulders of four squatting human figures, traces of painting, 20 in. 30/-/- Goldstein

[See ILLUSTRATION. Plate IV.]

- 101 A BISSAGOS ISLANDS BOWL supported by four female figures on two poles and surmounted by a lid carved with a figure of a dog, 19½ in. long; an interesting and unusual specimen 19/-/- Underwood

- 102 A BELGIAN CONGO CHIEFTAIN'S CEREMONIAL STAFF with iron point, carved in black wood with hatched and basket ornament, bound with brass and surmounted by a female figure, 61 in. 25/-/- Epstein

30. 103 A CAMEROON LARGE DANCING MASK with hooked nose, pendulous cheeks and bulbous forehead, carved at the back with lizards and surmounted by a high-domed pierced-work top, 35 in. 40/-/- No name given

[See ILLUSTRATION. Plate IV.]

6. 104 A BELGIAN CONGO CHIEFTAIN'S CEREMONIAL STAFF with iron point, carved in black wood with basket pattern and bound by a copper band, the top surmounted by two finely carved female figures wearing beaded necklaces, 53 in.; a remarkably fine specimen 26/-/- Burney

[See ILLUSTRATION. Plate IV.]

- 105 A CAMEROON FIGURE OF A MAN crudely carved and holding on his knees a large bowl decorated with bands of chevron and fluted ornament, 15 in.

20/-/-
Barry

[See ILLUSTRATION. Plate V.]

- 106 A CAMEROON CARVED CEREMONIAL MASK covered with animal skin, with open mouth, squat nose and helmet head-dress, 19 in.; *an important specimen in good state of preservation*

42/-/-
Epstein

[See ILLUSTRATION. Plate V.]

- 107 A Cameroon Ceremonial Mask in the form of a human head with protruding mouth and feet, covered entirely with human or animal skin, 10 in.; *rare*

6/-/-
Epstein

10. 108 A RARE BELGIAN CONGO FIGURE OF A MAN in carved wood, with the face ornamented with copper bands and cowry shells, the fuzzy hair formed of small iron plates, 11 in.; *an unusually fine and scarce Bassongo specimen*

18/-/-
Epstein

[See ILLUSTRATION. Plate V.]

- 109 A CAMEROON HEAD-DRESS in the form of a large bird carved in wood, with traces of dark pigment on the head and neck, 27 in.; *rare*

25/-/-
Epstein

6. 110 A CAMEROON CARVED HEAD OF A MAN with thick negro lips and small nose, the head covered with a loose wig of natural hair, 12 in.

15/-/-
Epstein

[See ILLUSTRATION. Plate V.]

10. 111 A CAMEROON CEREMONIAL MASK of carved wood, covered with human or animal skin, the head covered with human hair and surmounted by three horns; the face tattooed and painted, 16 in.; *a fine specimen, in good state of preservation*

15/-/-
Epstein

[See ILLUSTRATION. Plate V.]

10. 112 A CAMEROON CARVED WOOD CEREMONIAL MASK covered with human or animal skin, with typical negroid features, the eyes inset with metal and the head covered with plaited basket-work, 10½ in.; *a pleasing and fine specimen*

16/-/-
Epstein

[See ILLUSTRATION. Plate V.]

- 113 A Cameroon carved wood Mask with squat nose and open mouth, the hair and beard of tow and human hair, 18 in.; *boldly carved Bafun type*

10/-/-
Goldstein

- 114 A FINE CAMEROON WOODEN STOOL of circular shape, supported by two carved wood human figures, and surmounted by a couple of large human figures covered almost entirely with bead-work in red, blue and white, 31 in.; *total height 53 in.*

55/-/-
Goldstein

[See ILLUSTRATION. Plate IV.]

AMERICA.

6. 115 A Mexican red clay Figure of a man, with curious tall head-dress and wearing a necklet, 7½ in.; *from Colima*

Pared

6. 116 A Peruvian carved wood Figure of a woman with hands clasped to her breast, the oval face with pronounced hook nose, 8½ in.; and a fine South American carved wood Mask with scored cheeks, painted in yellow, red and black, 7 in.

9/10/-
Goldstein

6. 117 A Mexican small Mask, carved in grey-green jade, 2 in.; and a small Ornament of a sitting figure in pale green jade, finely carved, 2 in.

9/10/-
Curtis Muffat

6. 118 A Mexican Figure, in pale green moss jade, of a man seated with his hands folded on his lap, 3½ in.; and a small dark green jade Ornament in the form of a human mask, 1½ in.

9/-/-
Curtis Muffat

6. 119 A Mexican stone Figure of a man sitting on his haunches and clasping some object, 6½ in.

- 120 A Peruvian pottery Vase of plain dome shape, surmounted by the figure of a bird, 9 in.; and another, with double handles merging into one, painted round the sides with bands of grotesque figures, dragons, and mythological objects, 12 in.

4/-/-
Bozzelli

- 121 A Peruvian pottery Vase in the form of a Toucan-like bird, a small monkey grasping the neck, 9 in.; and another, of globular shape, with double handles merging into a single spout, painted in red with fabulous monsters, 11¾ in.

3/-/-
Bozzelli

H/-/-

- 122 A Peruvian feather Poncho, the colourings red, gold and turquoise, on a coarse woven surface, in a glazed case, 3 ft. 2 in. sq.

26/-/-
Boxell.

- 3/5/- 6. 123 A Peruvian pottery Cup in the form of a human head, the features sharply outlined, and the whole covered in green glaze, 4½ in. (cf. "Kunstgeschichte des Alten Peru," by Walter Lehmann, pl. 17)

- 124 A Peruvian pottery Tumbler with waisted sides, painted with masks and geometrical designs in a variety of colours, 4 in., Nazca; and a small Bowl in the shape of a bird's head, 4 in. long, 2½ in. high 2

6/-/-
Beasley

- 125 A Peruvian large grey clay Bottle, moulded in the form of a sitting human figure holding a beaker, with small loop handle at the back, 16 in.

1/-/-
Beasley

- 5/10/- 10. 126 A Peruvian pottery Vessel in the form of a women seated, holding a baby in her right hand and wearing striped robes, 8 in.; and another, in plain white, with two snails, 7 in. 2

- 127 A Peruvian pottery Whistling Vessel in light coloured clay, in the form of a seated woman, the face, handle and feet in red clay, 9½ in.

8/10/-
Beasley

- 128 A Peruvian pottery Bowl with waisted sides and flared rim, painted with masks and grotesque animals in colours on a red ground, 6 in. diam., Nazca; and a small globular Vase with tall neck and loop handle painted with bands of archaic leaf ornament and birds, 6 in., Ica 2

6/-/-
Beasley

- 129 A FINE PERUVIAN FEATHER PONCHO with parallel bands of red and turquoise feathers surmounted by a broad yellow band, on a coarsely woven ground, in a glazed frame, 40 in. by 34 in.

29/-/-
Boxell.

- 130 A MEXICAN WATER VESSEL in red pottery, finely modelled in the form of a dog, 13 in., Colima

5/-/-
Epstein

- 131 AN AMAZON POTTERY BOWL of depressed globular form incised with geometrical pattern and painted in black and red with similar designs on a cream-grey ground, 9½ in. diam.; perhaps used for Cassaba beer, ? Iquitos

7/-/-
Burney

- 132 A Peruvian pottery Beaker of cylindrical form with waisted sides, painted in red and black with bands of parrot-like birds, between a single band of geometrical ornament, $6\frac{3}{4}$ in., Nazca

7/-/-
Bensley

30.

- 133 A Mexican grey stone Figure of the Goddess of Maize in a seated attitude wearing a large embattled head-dress, 12 in.

15.

- 134 A Costa Rica Handle of a Sacrificial Stone in the form of a snake's head, 10 in.; wood stand

- 135 Two North-West American carved horn Spoons with plain bowls, the handles decorated with a succession of figures, $10\frac{1}{2}$ in.; rare

9/-/-
2 Goldstein

- 136 Another, similarly carved with two squatting figures, $10\frac{1}{2}$ in.

4/10/-
Wilkes

- 137 A rare Mexican pottery Bowl with waisted sides, painted with archaic dragon ornament in dark brown on a red ground, the bowl supported on three jaguar heads, 5 in.

9/-/-
Goldstein

- 138 A Mexican Vase in the shape of a sitting human figure, wearing a jewelled ornament suspended from his neck, his hands outstretched on his knees, in grey-black pottery, 12 in., Zapotec

5/-/-
Goldstein

30.

- 139 A RARE MEXICAN GREEN JADE HEAD of the God of Death, of conventional skull form, 2 in.; in velvet-lined leather case

50/-/-
Goldstein

[See ILLUSTRATION. Plate VI.]

- 140 A fine North-West American carved horn Spoon decorated with flat cutting and inlaid with ivory and mother-o'-pearl, the handle carved with figures, having mother-o'-pearl eyes and ivory teeth, 10 in.

12/-/-
Goldstein

- 141 ANOTHER, similar with plain bowl and finely carved handle, $10\frac{1}{2}$ in.

12/10/-
Goldstein

- 142 A Peruvian black pottery Vase, the side moulded in the form of a human face, $8\frac{1}{2}$ in.; another, moulded on the top of the bottle with the figure of a man in the attitude of swimming, $7\frac{1}{2}$ in.

2/5/-
2 D.R. Ditty

- 143 A Mexican red clay Vase in the form of a human seated figure, bejewelled, wearing an elaborate head-dress and holding in front of him a cup, 12 in.; *Zapotec*

9/10/-
Goldstein

6. 144 A Mexican Vase in the shape of a seated figure with hands outstretched in front, wearing a jewelled necklace and elaborate head-dress, 11 $\frac{3}{4}$ in.; *Zapotec*

9/-/-
Goldstein

** For type cf. "Altmexikanische Kunstgeschichte," by Walter Lehmann, pl. 34.

- 145 Another, very similar to the preceding lot but slightly smaller, 11 in.

9/-/-
Goldstein

- 146 A North West American carved horn Spoon, the handle decorated with figures and a reversed mask, the eyes inlaid with mother-o'-pearl, 10 $\frac{1}{2}$ in.

11/-/-
Goldstein

[See ILLUSTRATION. Plate VI.]

10. 147 A fine Mexican gold Pendant in the form of a grotesque human figure with hands outstretched and holding what appear to be whiskers, 2 in.

26/-/-
Hulman

6. 148 A North West American carved horn Spoon with a curved handle, decorated with masks and inlaid with mother-o'-pearl, the back of the spoon finely carved with a grotesque human figure, eyes and masks inlaid with bone and mother-o'-pearl, 10 in.

12/-/-
Goldstein

[See ILLUSTRATION. Plate VI.]

30. 149 A RARE MEXICAN GREEN JADE HUMAN MASK with finely carved features and in a good state of preservation, 3 $\frac{1}{2}$ in.; in velvet-lined leather box

49/-/-
Goldstein

[See ILLUSTRATION. Plate VI.]

Another Property.

- 150 A FINE MARQUESAN CLUB of bright polished black wood carved with masks and bands, the end covered with sinnet and hair, $52\frac{1}{2}$ in. long
- ** A very similarly decorated club is illustrated in "The Handbook to the Ethnographical Collections of the British Museum," fig. 156.
- 151 A NEW ZEALAND JADE TIKI finely carved in dark green jade, head turned to left, $4\frac{1}{2}$ in.
-

The Property of Miss J. V. B. Ringer,

8, Green Bank, Falmouth.

- 152 A BENIN IVORY TUSK, from the altar at which human sacrifices were made, carved with figures of chiefs, executioners and warriors, 69 in. long, on the curve; 16th Cent.
- ** This tusk has on it a brass tablet inscribed: "Taken from a sacrificial shrine at Benin, West Africa, by Capt. C. H. Ringer, East Lancs. Reg., Feby. 1898."
-

END OF SALE.

[Faint, illegible text block]

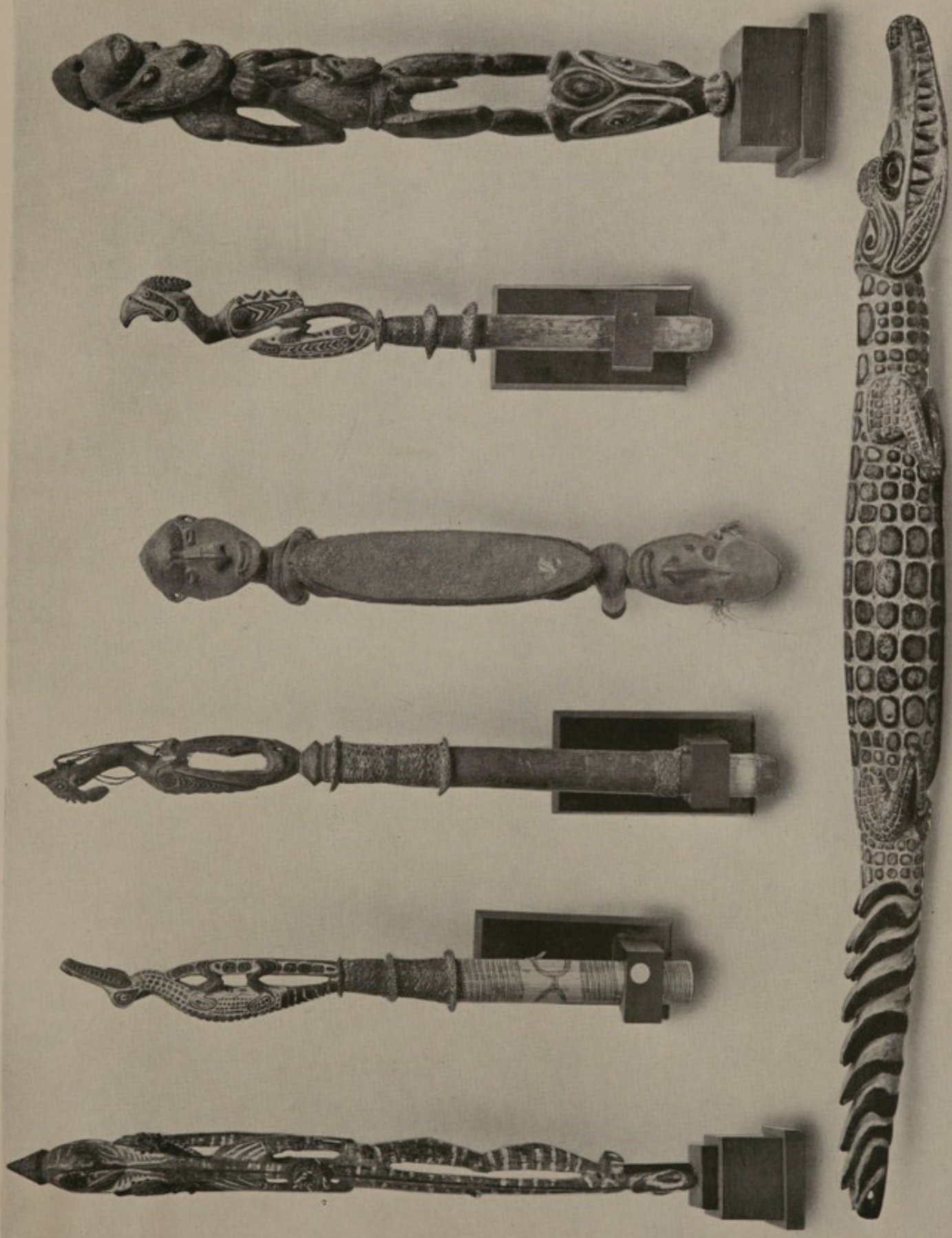
[Faint, illegible text block]

[Faint, illegible text block]

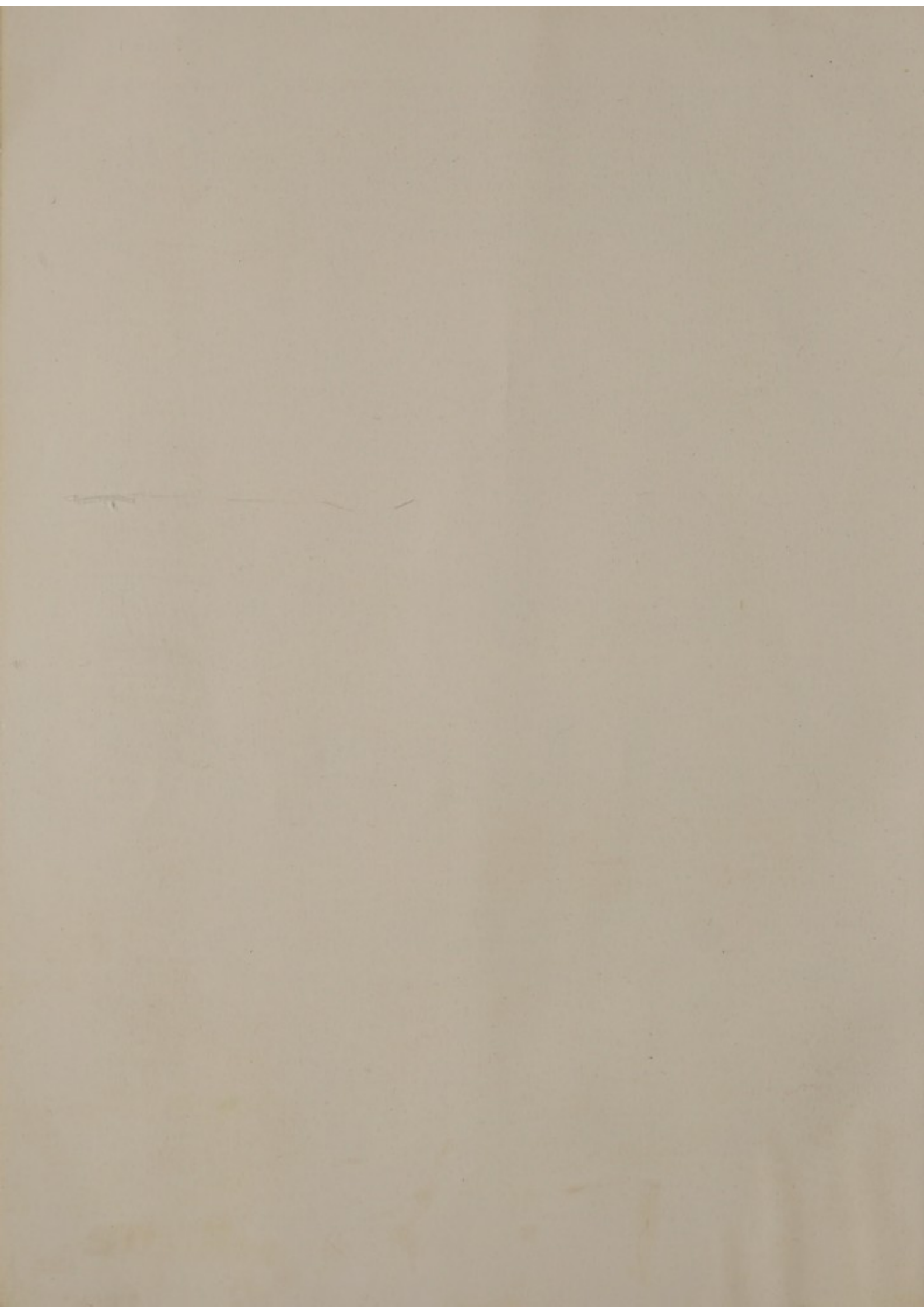
[Faint, illegible text block]

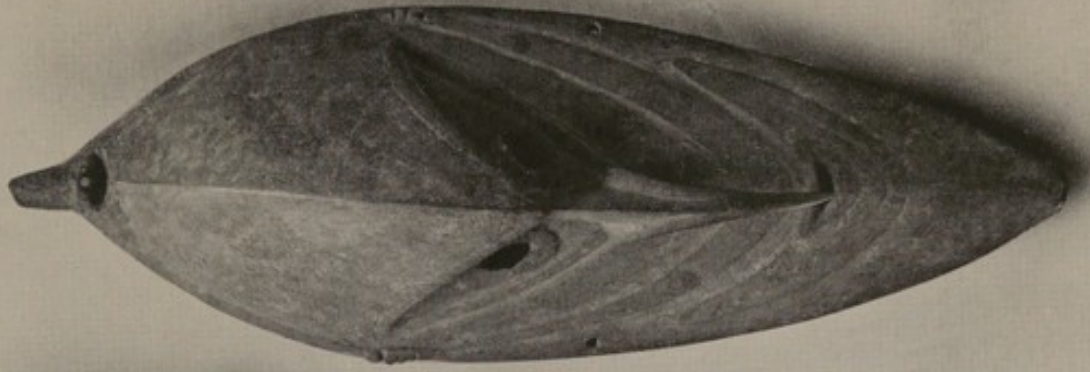
[Faint, illegible text block]

[Faint, illegible text block]

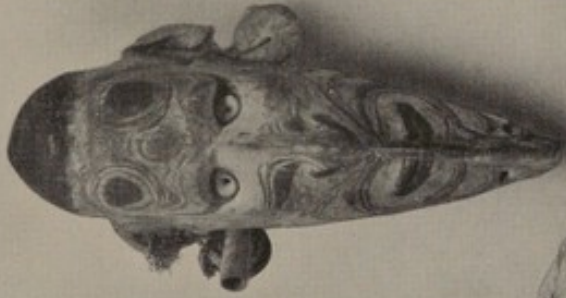


62 47 48 60 61 63 64





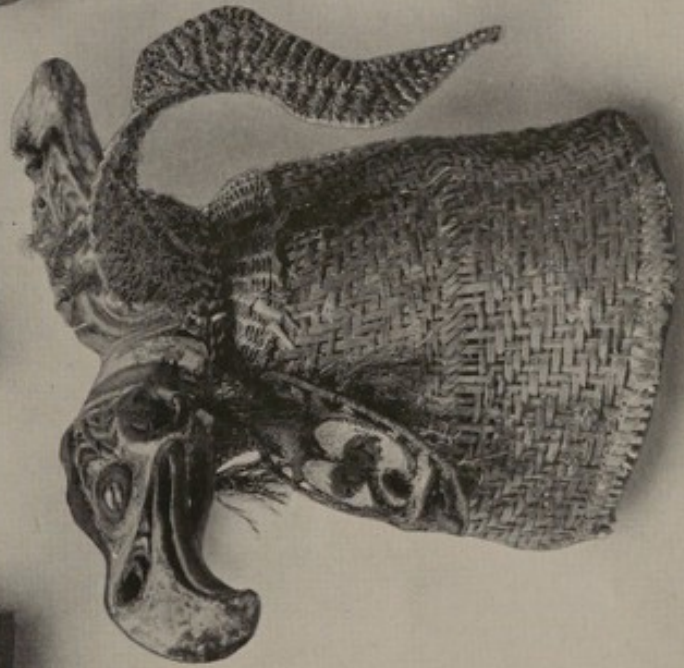
51



43



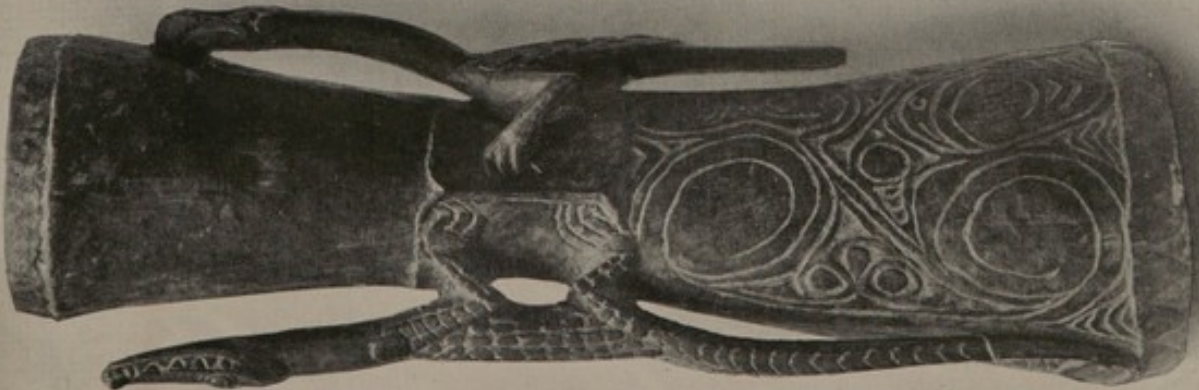
50



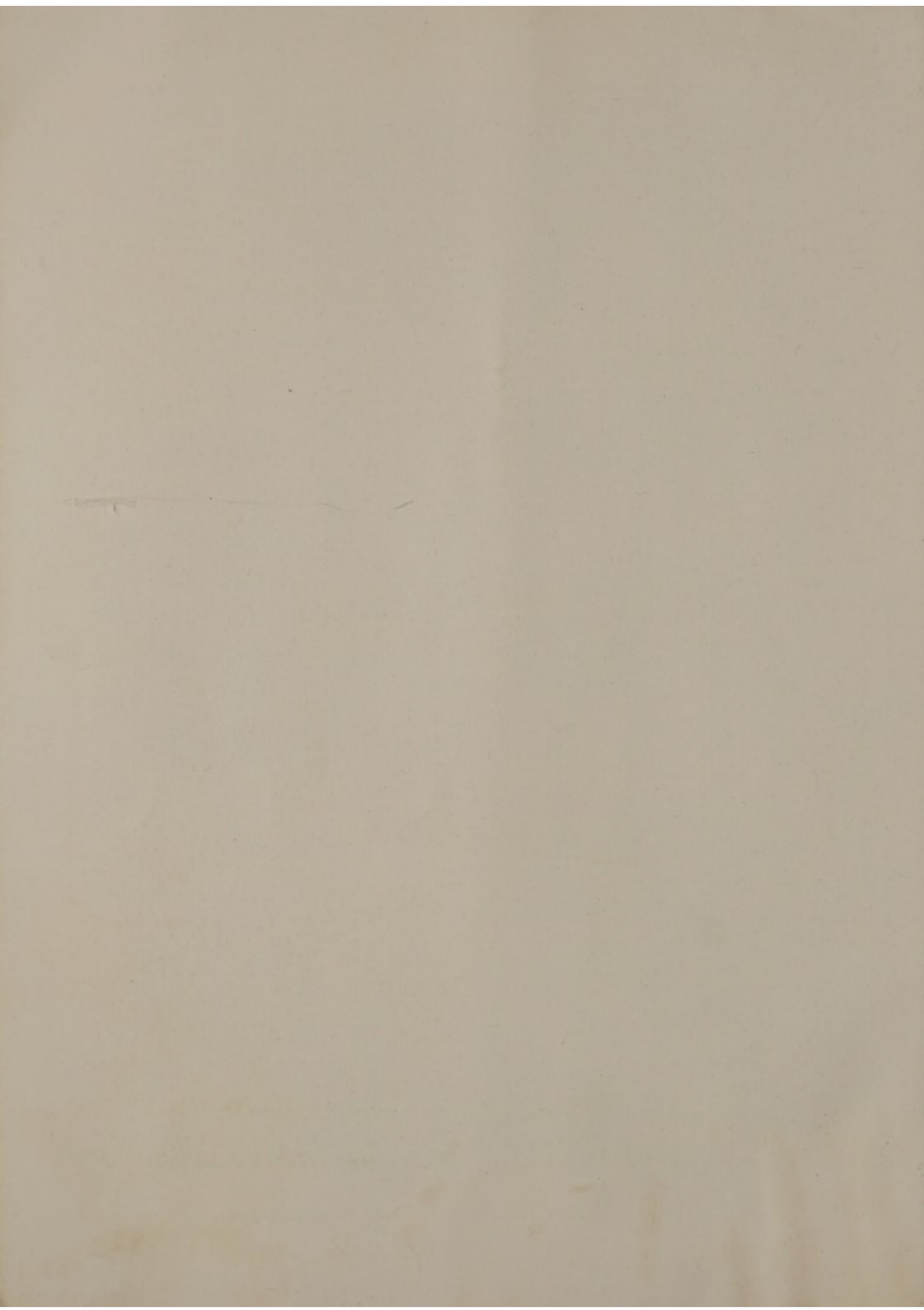
56



59



68





73



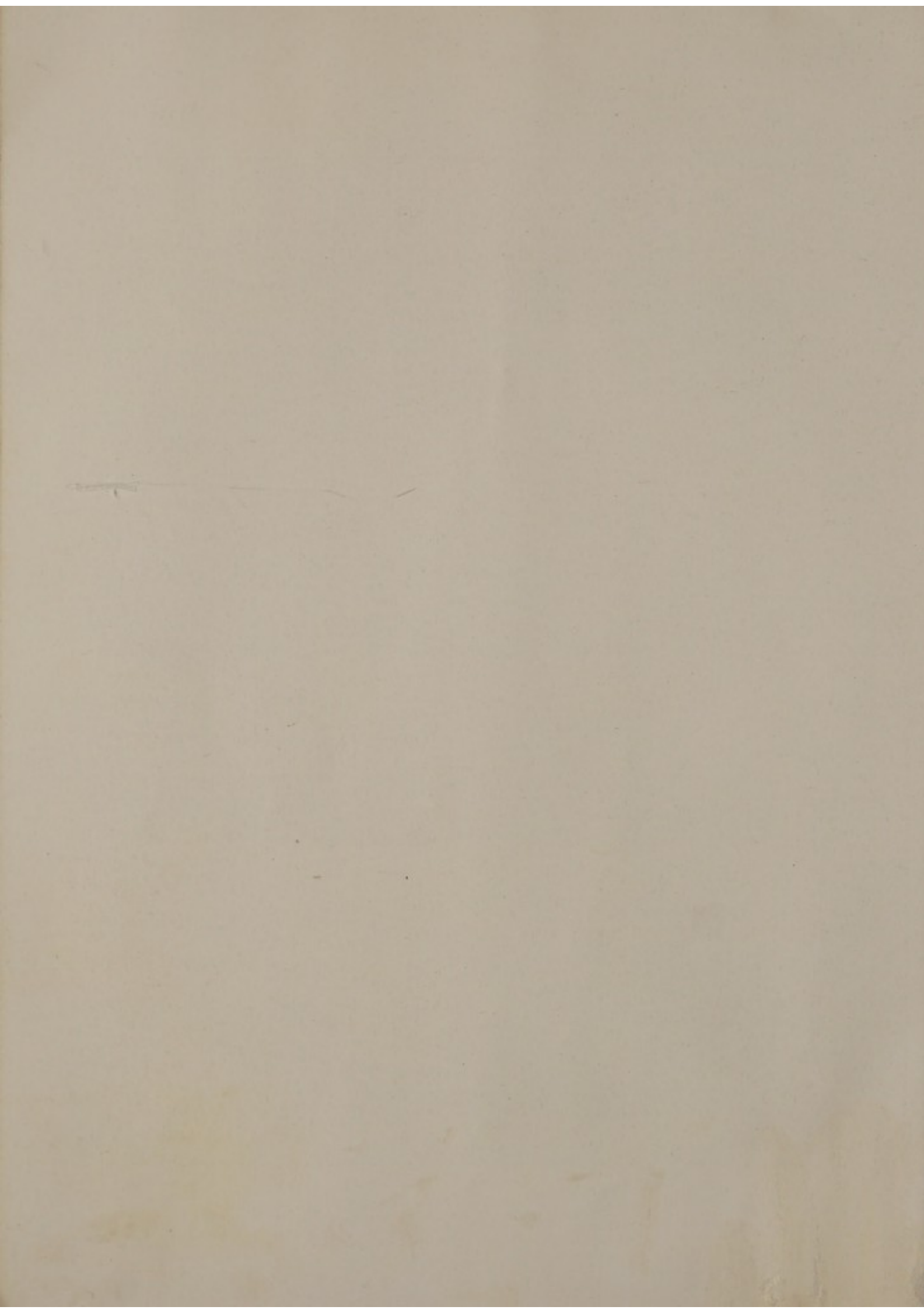
72



66



69



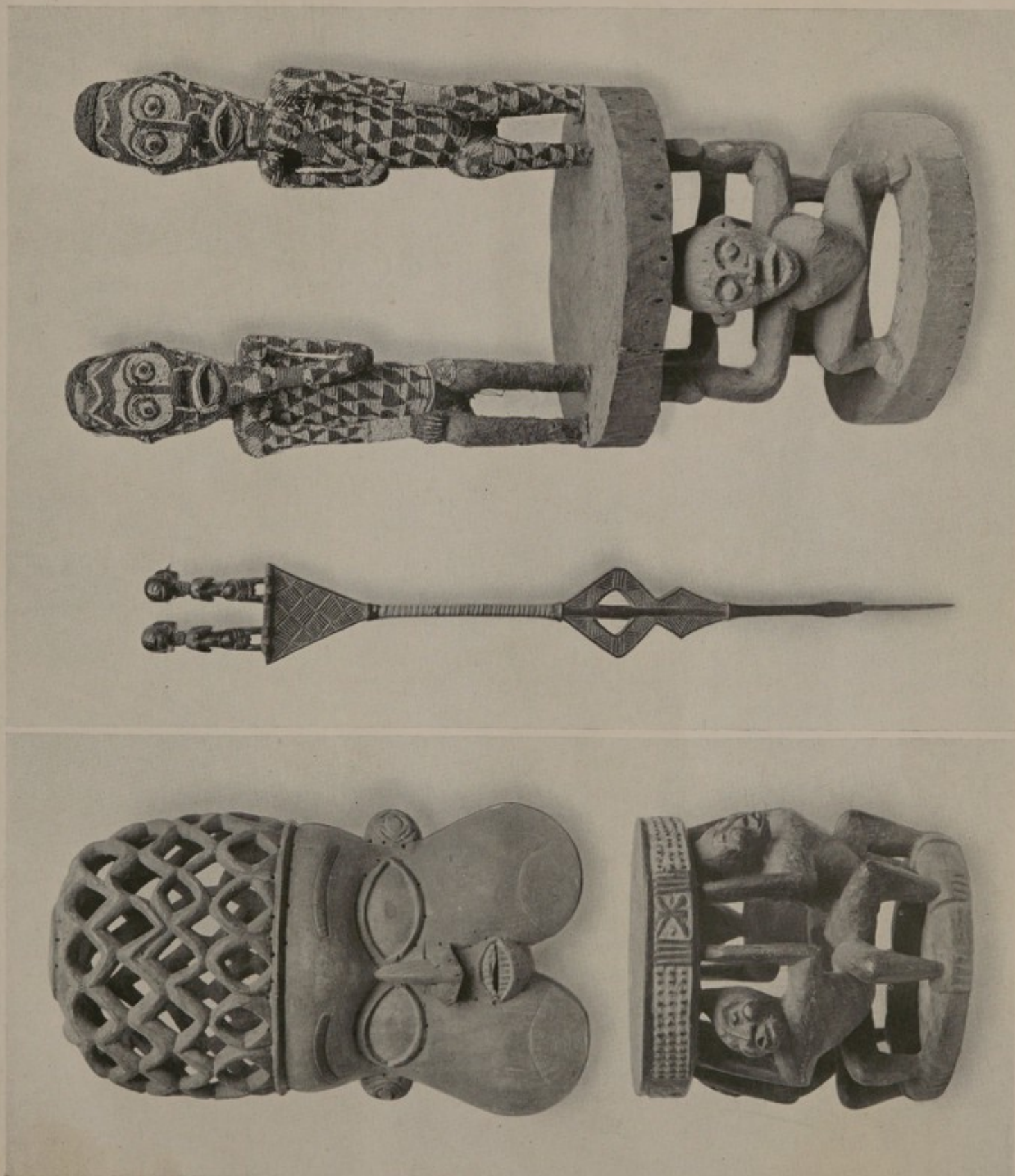


Plate V



110



105



108



112



111





139
149



148



146



76
79



77
77



76
78



VALUATIONS.

Messrs. SOTHEY & Co. make Valuations for Probate, Insurance, etc., at 1 per cent. with a minimum fee

In London	£5	5	0
In the Country	£10	10	0
Together with Travelling Expenses.							

INSPECTIONS.

Properties are inspected and Owners advised with view to a Sale by Auction, at a fee

In London	£2	2	0
In the Country	£3	3	0
Together with Travelling Expenses.							

NOTICES OF SALES.

NOTICES OF ALL SALES APPEAR IN THE FOLLOWING PAPERS :

<i>Mondays</i>	Daily Telegraph; Morning Post.
<i>Tuesdays</i>	Times.

NOTICES OF SPECIAL SALES APPEAR IN THE FOLLOWING PAPERS :

A. ENGLISH.

<i>Mondays</i>	...	The Bazaar.
<i>Thursdays</i>	...	Times Literary Supplement; Scotsman; Glasgow Herald; and Western Mail.
<i>Saturdays</i>	...	Country Life; Sphere; Graphic; Illustrated London News; Field; Publishers' Circular; Clique;
and <i>Monthly</i> in the Burlington Magazine; Connoisseur; Apollo; London Mercury; and Old Furniture.		

B. FOREIGN.

Journal des Arts (Paris).	New York Times.
Gazette de l'Hotel Drouot (Paris).	New York Evening Post.
American Art News.	New York Herald.
Chicago Daily News.	International Studio.
Boston Evening Transcript.	Pantheon (Munich).

BAKER, LEIGH & SOTHEBY.

THE FIRM COMMENCING WITH SAMUEL BAKER IN

1744.

SOTHEBY AND CO.

1930.