

Sales catalogue: Phillips, Son and Neale

Publication/Creation

6th September 1932

Persistent URL

<https://wellcomecollection.org/works/aztdrvsy>

License and attribution

This work has been identified as being free of known restrictions under copyright law, including all related and neighbouring rights and is being made available under the Creative Commons, Public Domain Mark.

You can copy, modify, distribute and perform the work, even for commercial purposes, without asking permission.



Wellcome Collection
183 Euston Road
London NW1 2BE UK
T +44 (0)20 7611 8722
E library@wellcomecollection.org
<https://wellcomecollection.org>

Mr Commins 6th September 1932

*Commins
original*

P.S.~N	DATE	INITIALS
14.19.0		
SALE	6.1x.32	COMINS
PURCHASE		
CHECKED	8.1x.32	10L
COLLECTED	6.X.32	J.P.B.
RECEIVED	12/x/32	hij
ACCESSED		
PASSED		

OCT 24 1932

Mall Deposit, Balby Road, W.; from Warwick Avenue, Maida Vale, also other properties.

WAT/imm/cm/15/1/15/444

WHICH WILL BE SOLD BY AUCTION

BY MESSRS

PHILLIPS, SON & NEALE
LIMITED

BERTIE P. NEALE.

G. RUSSELL-HAY

At their

GREAT ROOMS, 72, NEW BOND STREET, W.1

on Tuesday, September 6th, 1932

AT ONE O'CLOCK

May be viewed on the Saturday morning and Monday preceding the Sale.

Wm 9. 13. 7. 0
Wp 7. 1. 12. 0
14.19.



*Comis
original*

1932

TELEPHONE :

MAYFAIR 2425.



SALE NO.

12,129.

PHILLIPS, 1796

A CATALOGUE OF
**OLD ENGLISH & MODERN
FURNITURE**

the property of a Lady, removed from The Pall
Mall Deposit, Balby Road, W.; from Warwick
Avenue, Maida Vale, also other properties.

W.A. Himm/cm/son/15/444

WHICH WILL BE SOLD BY AUCTION

BY MESSRS

PHILLIPS, SON & NEALE
LIMITED

BERTIE P. NEALE.

G. RUSSELL-HAY

At their

GREAT ROOMS, 72, NEW BOND STREET, W.1

on Tuesday, September 6th, 1932

AT ONE O'CLOCK

May be viewed on the Saturday morning and Monday
preceding the Sale.

Nmm 9. 13. 7. 0
WP 7. 1. 12. 0
14. 19.

Messrs. PHILLIPS SON & NEALE, LIMITED, beg to announce that their LARGE AUCTION ROOMS and WAREHOUSES are open from 10 till 6 daily (by arrangement) for the reception of every class of property for sale by auction. Plate, Jewellery and Valuables are deposited in the Fire-proof Room. Large Vaults for Wine.

Sales conducted at Residences in Town or Country.

Valuations made for Probate or any other purpose.

All communications to be addressed :

PHILLIPS, SON & NEALE, LIMITED, Auctioneers, 72 New Bond St., W.1.

Telephones : *Mayfair* 2425/8.

CONDITIONS OF SALE.

FIRST—The highest bidder to be the buyer ; and if any dispute arise between two or more bidders, the lot so in dispute shall be immediately put up again and re-sold.

SECOND—No person to advance less than 1s. ; above five pounds, 5s. ; and so on in proportion.

THIRD—In the case of lots upon which there is a reserve, the Auctioneer shall have the right to bid on behalf of the seller.

FOURTH—The purchasers to give in their names and places of abode and pay down 5s. in the pound, or more, in part of payment, or the whole of the purchase-money, *if required*, in default of which, the lot or lots so purchased to be immediately put up again and re-sold.

FIFTH—The lots to be taken away and paid for, whether genuine and authentic or not, with all faults and errors of description, at the buyer's expense and risk, within *one day of the sale* ; Messrs. PHILLIPS, SON & NEALE, LIMITED, not being responsible for the correct description, genuineness ; or authenticity of, or any default or defect in, any lot ; and making no warranty whatever.

SIXTH—To prevent inaccuracy in delivery, and inconvenience in the settlement of the purchases, no lot can on any account be removed during the time of sale ; and the remainder of the purchase-money must absolutely be paid on the delivery.

SEVENTH—Upon failure of complying with the above conditions, the money deposited in part of payment shall be forfeited ; all lots uncleared within the time aforesaid shall be re-sold by public or private sale, and the deficiency (if any), and expenses attending such re-sale, shall be made good by the defaulter at this sale.

BUYER *Comins.*Date *Sept 6th 1932.*AUCTIONEERS *P. S. + N.*

Lot	Amount			Lot	Amount		
	£	s.	d.		£	s.	d.
35	3	.	.				
36	3	15	.				
41	1	12	.				
100	4	4	.				
154	2	8	.				
	<u>£ 14</u>	<u>19</u>	<u>.</u>				

Messrs. PHILLIPS, SON & NEALE, Limited, will be happy to make arrangements for the removal or delivery of purchases. Please leave instructions with the Clerk of the Sale or in the Office.

Messrs. PHILLIPS, SON & NEALE, LIMITED, will not be responsible for any goods left, either by Buyer or Seller, more than one day from the date of Sale.

CATALOGUE

TUESDAY, 6th SEPTEMBER, 1932

AT ONE O'CLOCK

- 1 A 5ft. 3in. old English mahogany pedestal writing table, *4/16/-*
fitted 8 drawers with baize-lined top
- 2 A 6ft. antique oak dresser, fitted 2 drawers, 2 cupboards and
recess under, shelves over *6 1/2 gns. W. J. Allen.*
- 3 A 34in. Chippendale mahogany chest with serpentine front,
fitted with brush slide and 4 drawers, brass drop handles *11 gns. Albert.*
- 4 A 36in. mahogany oval 2-flap table on club legs *2/15/- White.*
- 5 A nest of 4 satinwood and banded coffee tables *£5.*
- 6 A mahogany corner chair with padded seat in stamped velvet,
a miniature mahogany stool with loose seat, and 9 carved
wood Chinese lanterns with painted glass panels *30/- White.*
- 7 A well-made mahogany and inlaid bedroom suite by Maple
and Co., comprising :— a 6ft. 6in. wardrobe, enclosed by
2 bevelled mirror doors, drawers and cupboards under,
a dressing table, fitted 10 drawers and swing mirror over,
a washstand with marble top and tiled back, 3 chairs,
and a towel airer *16 gns.*

16. 8 | A set of 4 and 2 carved mahogany dining chairs of Hepplewhite design with stuffed seats in sage-green Utrecht velvet *21/6m*
- 9 A Boulle torchere in ebony, inlaid with brass, ormolu mounted, an antique French walnut occasional chair, a lacquer ditto, and a pair of red plush curtains *5/10/-*
- 10 A 28in. Sheraton mahogany and inlaid oval 2-flap table, fitted drawer *5/10/-*
Wilson
- 11 A 36in. mahogany bookstand *£2 Jackson.*
- 12 A carved mahogany Chippendale elbow chair with loose leather seat, and an old lacquer corner cabinet *7/10/-*
- 13 A mahogany bedroom suite, comprising:— a 6ft. 6in. wardrobe enclosed by 2 mirror doors, a 4ft. dressing table, fitted 3 drawers, a washstand with drawers and white marble top, a bedside cupboard, a towel airer, and 2 chairs *13/6m*
Bentley
- 14 A 30in. mahogany bureau bookcase, fitted fall flap, 2 glazed doors over, 3 drawers under *4/10/-*
- 15 A barometer, timepiece and thermometer, in mahogany and inlaid case, and an oval mirror in carved and gilt foliated frame *25/-*
- 16 An antique bevelled mirror in Georgian gilt upright frame, and an overmantel with numerous divisions in Adam design gilt frame *30/-*
- 17 Two oblong mirrors in gilt and decorated frames *£2. Bentley*
- 18 A 4ft. mahogany and inlaid bedroom suite, comprising:— a wardrobe with mirror door, a dressing table, fitted drawers and mirror over, a washstand with marble top, and 2 chairs
- 19 A 4ft. mahogany and inlaid washstand with white marble top and back, surmounted by bevelled swing mirror, and a ditto 2-fold towel airer *£6.*

- 20 A 3ft. 4in. mahogany boot cupboard enclosed by 2 panel doors, and a mahogany bow front dressing table with 2 drawers *£6*
- 21 Four rolls of 27in. plain turquoise blue Wilton pile stair carpet, in — yards (with stair pads for same) *22/-*
- 22 A plain crimson Axminster carpet, ft. × ft., and a ditto runner (with underfelts) *7 1/2 yds.,*
- 23 A light-ground figured and bordered Indian carpet, × ft., and underfelt ft. *2/9/-*
- 24 A green mottled Wilton pile carpet, ft. × ft., and underfelt *2/6/-
Baker,*
- 25 A large Turkey hearthrug *2/5/-*
- 26 A 3ft. 4in. old English mahogany Pembroke table, fitted drawer, on tapered legs *£5-*
- 27 A 3ft. 6in. well-made mahogany writing table, fitted with 3 drawers, beaded mouldings and tooled leather top *Passed.*
- 28 An old English mahogany reeded frame elbow chair with cane-seat and back, and 2 brown velvet squabs *40/-*
- 29 A pair of rose silk damask curtains, 9ft. × 6ft. 6in., lined and interlined, and a pair of somewhat similar curtains *Passed.*
- 30 Four pairs of printed linen curtains *40/-*
- 31 A set of 4 French coloured prints after J. B. Huet—Mythological Subjects, a pair of similar prints, a colour print—Coucou, and 3 others, all in gilt frames (10) *3/10/-*
- 32 A bracket clock with striking action in mahogany case *£2*
- 33 A French cartel clock by Vian à Paris with striking action, in chased ormolu case *3/10/-
Bentley*

- 34 Three decorated vases, fitted for electric light, a pottery 7-handled bowl, a pair of 7in. cloisonné 2-handled vases, a Doulton souvenir dish—Hastings, a green pottery ewer and basin, and an 11in. crackleware vase

2/4/-
Bentley

- (3) 5- (35) *Blue and White, etc.*—Five Willow-pattern Oriental dishes, various, 1 ditto plate, a tureen, cover and ladle, a sauce boat, a pair of Delft vases and covers, 2 blanc de chine figures, a ditto vase, and 5 other pieces

[W]
Bed
Urinal

- (3/15/-) 5- (36) A bronze Bacchanalian figure with a snake supporting an electric lamp, an ormolu figure of Cupid on rocky base, and a small ormolu figure of a child reading a book, on verde antique marble base

Announcement

PURCHASERS ARE RESPECTFULLY INFORMED THAT, FAILING THE CLEARANCE OF THEIR LOTS WITHIN ONE DAY OF THE SALE, MESSRS PHILLIPS, SON AND NEALE LIMITED, HAVE NO ALTERNATIVE BUT TO SEND THEM TO A WAREHOUSE AT PURCHASER'S RISK AND EXPENSE

- 37 A French spherical clock with striking action supported by 3 ormolu cherubs, on cylindrical white marble base

3/10/-

- 38 A French timepiece in gilt metal case with musician mount, and a carriage clock in outer leather case

3/1/-

- 39 *Books*—The Encyclopedia Britannica, 11th edition, with coloured plates, calf bound, 28 vols. and index

4/5/-

- 40 Thackeray's Works, half red morocco—13, The Children's Encyclopedia—8, and Harmsworth's Atlas and Gazetteer

4/15/-
King

- (32/-) 4- (41) Told through the Ages—7, Racine's Works—3, and 19 other volumes, Biographical Works, etc.

[W] Personal 6.9.11
at
Dover

- 42 A Chesterfield settee covered in grey figured rep, and a pair of easy chairs to match

- 43 A Chesterfield settee covered in blue damask

- 44 A winged easy chair to match
- 45 A square-back easy chair to match
- 46 A Sheraton mahogany breakfast table
- 47 A two-tier mahogany dumb waiter
- 48 A carved mahogany torchère, 54in. high
- 49 A mahogany smoker's table
- 50 A mahogany dressing stool
- 51 A pair of mahogany hanging bookshelves
- 52 Dutch School, Still Life—Flowers
- 53 A pair of Empire card tables in rosewood inlaid with brass,
on quadruple column supports
- 54 A carved mahogany corner cupboard enclosed by glazed
door, on stand
- 55 A mahogany corner cupboard enclosed by 2 panel doors, on
stand, fitted shelves
- 56 A carved oak Stuart elbow chair with rush seat and cane back,
and a similar standard chair
- 57 A Louis XV carved and gilt fauteuil, and 2 ditto occasional
chairs
- 58 An antique mahogany corner washstand, a circular engraving
in gilt frame, and a metal-frame armchair
- 59 A settee covered in green silk rep with loose cushions, and a
pair of ditto easy chairs, en suite
- 61 A dwarf walnut "pie-crust" table on cabriole legs
- 62 A mahogany 2-flap spider-leg table on club feet

- 63 A convex mirror in gilt circular frame with eagle surmount
- 64 Three large tinted silhouettes—Nelson, Napoleon, and—
The Golfer
- 65 An oilpainting—Tulips, etc., in deep carved gilt frame
- 66 A 15in. walnut cabinet, fitted cupboard, book recess, and
writing slide, on cabriole legs
- 67 A walnut Queen Anne design chest of 4 drawers with brush
slide, on bracket feet
- 68 A ball-frame easy chair with 2 loose green velvet cushions

CARVED IVORIES

with carved blackwood stands

- 69 A 3½in. figure of a Chinaman with basket, and another seated
- 70 A 6in. Chinese fisherman
- 71 An 8¼in. female figure with draped dress, holding fan
- 72 An 8in. female figure in draped dress
- 73 A 3½in. group of 2 Chinese figures—Child on back with Basket
of Fruit
- 74 A 4½in. group of 2 figures
- 75 A 4½in. group of figure with children and goat
- 76 A 4¼in. Hotei figure
- 77 A 4¾in. Chinese fisherman with basket
- 78 An 8¾in. figure of a Japanese lady in draped dress, holding
umbrella

- 79 A 9½in. Mandarin figure
- 80 A 9¾in. group—The Game Hunter with Monkey and Dog
- 81 A set of 8 miniature figures
- 82 A 5in. Chinese fisherman with basket and cover
- 83 A 7¾in. ditto
- 84 A 5½in. Chinese fisherman carrying basket and holding fishing net
- 85 A 6in. ditto female figure, holding fan and manuscript
- 86 A 5¾in. ditto male figure holding basket with pipe in mouth
- 87 A pair of lounge easy chairs covered in green figured plush
- 88 A tapestry picture worked in a 17th century interior scene—
Cromwell's last Interview with his Favourite Daughter, gilt frame 38/-
- 89 A red and blue Turkey carpet, 17ft. × 11ft. 3in. 5/-
- 90 A plain crimson Wilton carpet, 15ft. × 12ft. 2/- Mrs Morgan-
- 91 A blue-bordered ditto, 10ft. 7in. × 9ft. Passed.
- 92 A plum-colour and blue-bordered ditto, 15ft. 6in. × 12ft. 6in. 4/15/-
- 93 Three blue-figured velvet curtains 32/-
- 94 A pair of brown plush curtains with holders 2/- Mrs Jackson-
- 95 A pair of crimson poplin curtains, a tapestry portiere, a chenille tablecloth, and a panel of embroidery 34/-
- 99 A set of 4 and 1 carved mahogany dining chairs of Hepplewhite design with loose seats in leather 15/- Mrs

Ques
12/1/75

75/- 100

A 17in. white Minton classical draped figure at a tree stump and 3 decorated plates

101 A 3-division plated vegetable dish and cover with ivory handle 3/6/-

102 A pair of easy chairs covered in blue damask 20/-

103 A blue, red and gold Turkey carpet, ft. × ft. 12,

104 A floral design tea service in 39 pieces 32/- Milton

105 A 3ft. mahogany bow front chest of drawers 32/6

106 Four mahogany Georgian and other chairs (1 with arms) 29/10

107 A 4ft. 6in. mahogany secretaire bookcase, enclosed by glazed doors over 2/4/-

108 A wall mirror in walnut frame 38/-

109 An antique Persian rug, rose ground, triple border, 3 centre medallions, 8ft. × 4ft. 3in.

110 A 6ft. mahogany fitted wardrobe, enclosed by 3 panelled doors 92/100,

111 A 32in. upright cabinet, painted and decorated in the Adam style, 2 glazed doors over, panel door under 3/15/-

112 An overmantel mirror in painted and decorated heraldic frame and a mahogany coffee table on tripod support 2/10/-

113 A 2ft. 3in. walnut wood bureau bookcase, enclosed by 2 glazed doors over, drawers under 12/-

114 A mahogany frame grandfather winged easy chair upholstered in grey rep 15/-

115 A 3ft. 9in. mahogany chest of 4 long drawers

116 An antique mahogany folding top card table

- 117 A 5ft. oak sideboard fitted with drawers, cellarette and mirror back *2 9/10 Bentley,*
- 118 A 3ft. 6in. oak bureau bookcase, fitted drawers under *3 9/10,*
- 119 A 3ft. 6in. oak draw-leaf table *3/6/- Poole.*
- 120 A Wilton pile carpet, ft. × ft. *3/10/-*
- 121 Three French carved walnut and gilt occasional chairs with cane panels *2/15/-*
- 122 A 21in. French circular occasional table in Kingwood and marqueterie, fitted leather lined slide and 1 drawer
- 123 A settee upholstered in moquette and an easy chair to match
- 124 An antique oak gate-leg table *2/15/- Walker*
- 125 A mahogany and glass fire screen, and a duet stool with stuffed top (faulty) *28/-*
- 126 A 29in. antique oak side table on turned legs *42-*
- 127 An antique mahogany side table, fitted 1 drawer, on club feet *2/4/-*
- 128 A green upholstered chair *26/- Jackson.*
- 129 A mahogany cheval fire screen with sliding panels in pink damask, and a mahogany and inlaid towel airer *Passed*
- 130 A 3ft. 9in. mahogany chest of 2 short and 4 long drawers *26/-*
- 131 A pair of cut glass lustre vases *18/-*
- 132 A 16in. mahogany miniature bureau, fitted fall front, drawer under *22/-*
- 133 A mahogany Georgian bow-fronted wardrobe enclosed by 2 sunk panelled doors, 3ft. 6in. wide *8 1/2/100*

- 134 A mahogany old English sofa table, fitted two drawers on end standards with rail between, 5ft. \times 2ft. *9/3*
- 135 A mahogany inlaid Sheraton 3-pedestal dining table on turned pillars and reeded legs with 2 extra leaves, 9ft. \times 3ft. 6in. *13/6m Blunton*
- 136 A mahogany Georgian 3ft. 3in. hanging wardrobe enclosed by 2 panelled doors with moulded cornice and bracket feet *6/6m*
- 137 A walnut-wood old English "tall-boy" chest of 8 drawers on shaped feet *10 1/2/6m*
- 138 A mahogany 2ft. 3in. hall cupboard enclosed by one door with moulded cornice *3/9/- Welker*
- 139 A tapestry picture—Exterior of an Inn with figures merry-making, 76in. \times 56in. *4/-*
- 140 A Sheffield 2-handled tea tray with embossed border *2/8/- Bentley*
- 141 An oilpainting on panel by Jan Stern—An Interior with 3 Figures, an oval, Siolo—Flowers, and a pair of oil-paintings—Coast Scenes with Boats *18/- do*
- 142 A pair of 3-light brass candelabra supported by bronze cherubs, fitted for electric light *18/-*
- 143 A pair of Dresden Mayflower vases and covers with bird surmounts *28/-*
- 144 A bronzed figure—Pensée, a large green glass vase, fitted as an electric table lamp with shade, and a pair of glass 2-handled vases and covers, decorated with flowers *22/-*
- 145 A 3ft. oak and inlaid bureau with fall-flap and 3 drawers under *32/- Jackson*
- 146 An oak elbow chair with stuffed seat in watered silk, and a mahogany pedestal on tripod support, claw and ball feet *1/6m*
- 147 An oak oval and gate-leg table *26/-*

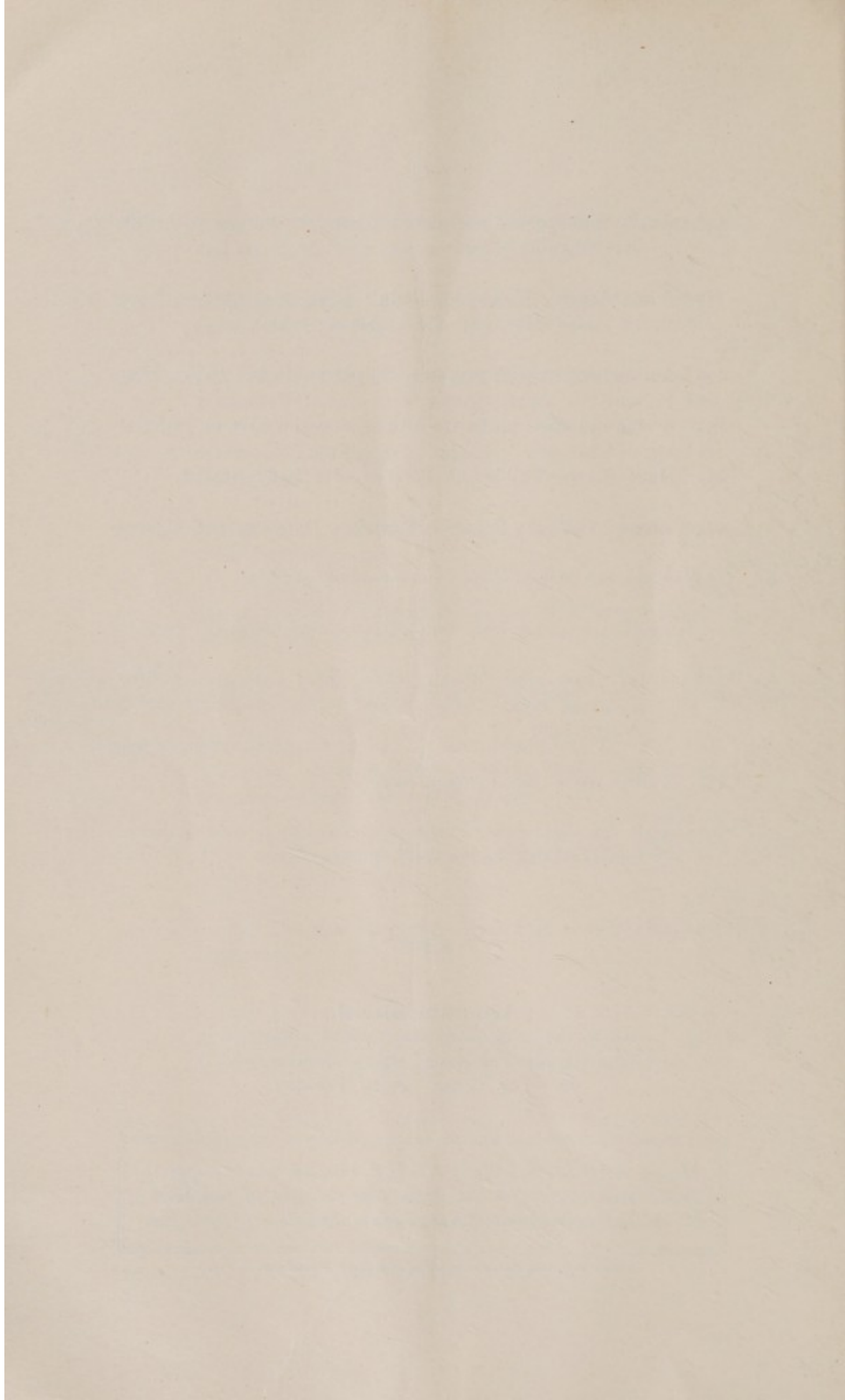
- 148 A 3ft. walnut-wood and inlaid marquetry bureau with fall-flap, on cabriole legs 4/900
- 149 A mahogany and inlaid pedestal specimen cabinet enclosed by glazed door, and a gilt gate-leg table 28/-
- 150 A 2-fold screen with tapestry and plush panels 14/- Bailey
- 151 A blue and white jardiniere with decorated panels, on pedestal 25/-
- 152 Hugo Elken—Full-length Portrait of a Lady, seated
- 153 Tager—A Wintry Scene with Horses, Buildings and Figures
- 2/8/- 6. 154 A marble bust of a lady on revolving pedestal
- 155 An Italian mirror with bevelled plates and metal gilt mounts
4. 156 A gilt "knee-hole" dressing table, fitted 4 drawers, a ditto revolving music stool, a pair of ditto pedestals, fitted electric light 5/10/- Walker
- 157 A ditto triple cheval robing mirror
- 158 A 3ft. 6in. ditto dwarf wardrobe enclosed by 2 panelled doors, drawer under, and a ditto chimney glass

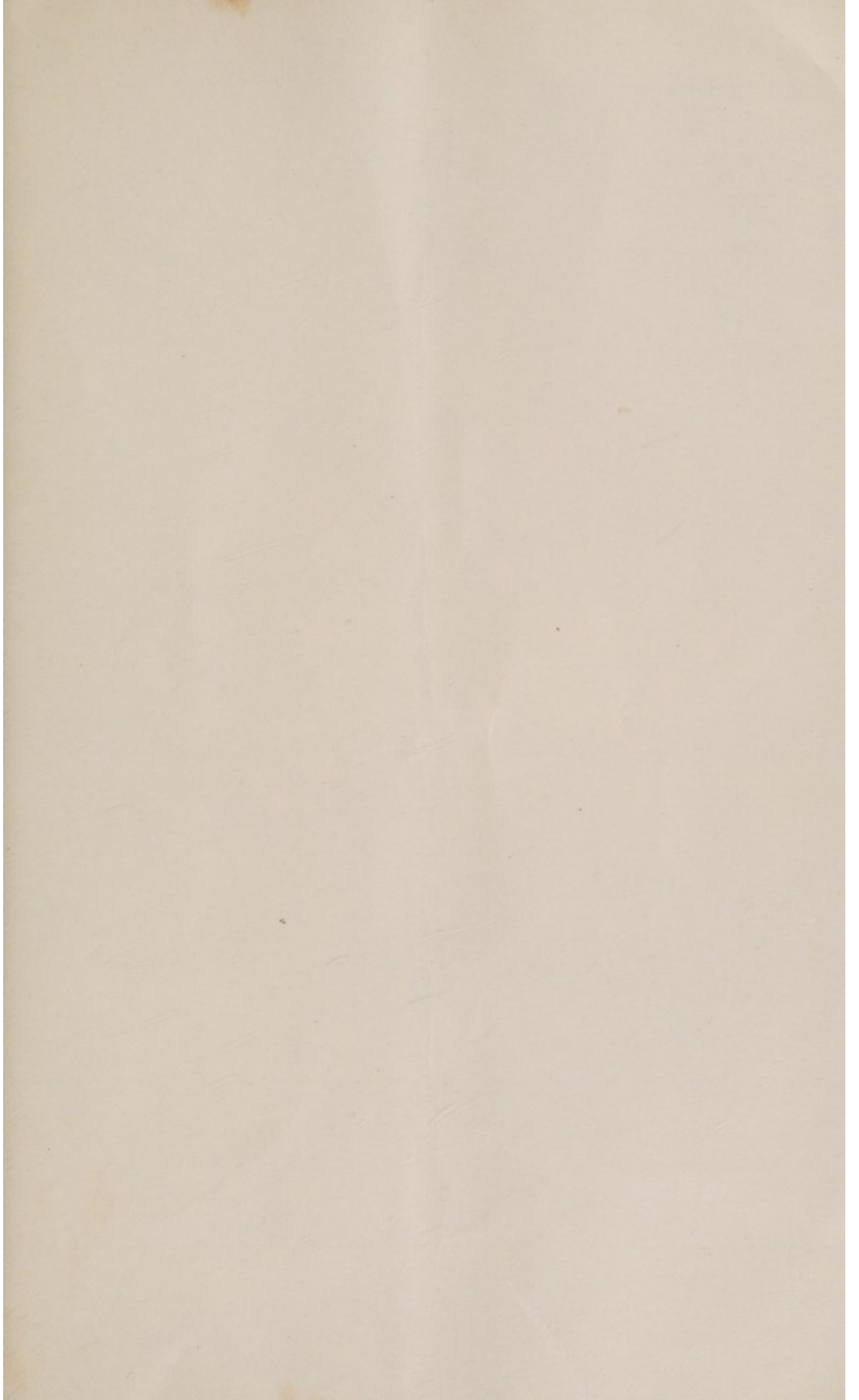
FINIS

Announcements

of forthcoming Sales by Auction appear in
the "Daily Telegraph" every Monday, and
in "The Times" every Tuesday.

*Messrs. PHILLIPS, SON & NEALE, Limited, will be happy to
 make arrangements for the removal or delivery of purchases.
 Please leave instructions with the Clerk of the Sale or in the Office.*





26