

Sales catalogue: Sotheby's

Publication/Creation

February 1929

Persistent URL

<https://wellcomecollection.org/works/e5dth9bs>

License and attribution

This work has been identified as being free of known restrictions under copyright law, including all related and neighbouring rights and is being made available under the Creative Commons, Public Domain Mark.

You can copy, modify, distribute and perform the work, even for commercial purposes, without asking permission.



Wellcome Collection
183 Euston Road
London NW1 2BE UK
T +44 (0)20 7611 8722
E library@wellcomecollection.org
<https://wellcomecollection.org>

Thurs 20/21 Feb 1929

Nm m. 427.

£ 425. 15. 0

1050
SOTHEBY AND CO.

34 & 35, NEW BOND STREET, W. (1)

WA/Hmm/10m/Sal/20/784/1

CATALOGUE

OF

THE VARIED AND EXTENSIVE COLLECTIONS

OF

WORKS OF ART, *changed*

MAINLY MEDIAEVAL,

THE PROPERTY OF

the late J. A. Harman Oates, M.V.O., F.S.A.,

*formerly Keeper of the King's Armoury
and Late Keeper of the London Museum.*

[SOLD BY ORDER OF MRS. OATES].

APR 21 1929

Days of Sale.

FIRST DAY Wednesday, 20th February Lots 1 to 170
SECOND DAY Thursday, 21st February Lots 171 to 330

1929.

ILLUSTRATED COPY—PRICE ONE SHILLING.

TERMS OF SUBSCRIPTION FOR MESSRS. SOTHEYBY'S
CATALOGUES AND PRICE LISTS FOR ONE SEASON.

(All Subscriptions include postage.)

PLAIN CATALOGUES.

	£	s.	d.
Antiquities (Primitive, Egyptian, Greek, etc.) ...	0	1	0
Autograph Letters ...	0	1	6
Books and Manuscripts ...	0	5	0
Coins and Medals ...	0	1	6
Engravings and Etchings ...	0	2	6
Drawings and Pictures ...	0	2	6
Persian Drawings and Works of Art ...	0	1	0
Works of Art (including Armour, China, Furniture, Glass, Japanese Colour Prints and Works of Art, Jewellery, Miniatures, Silver, Textiles, etc.) ...	0	5	0
	£1	0	0

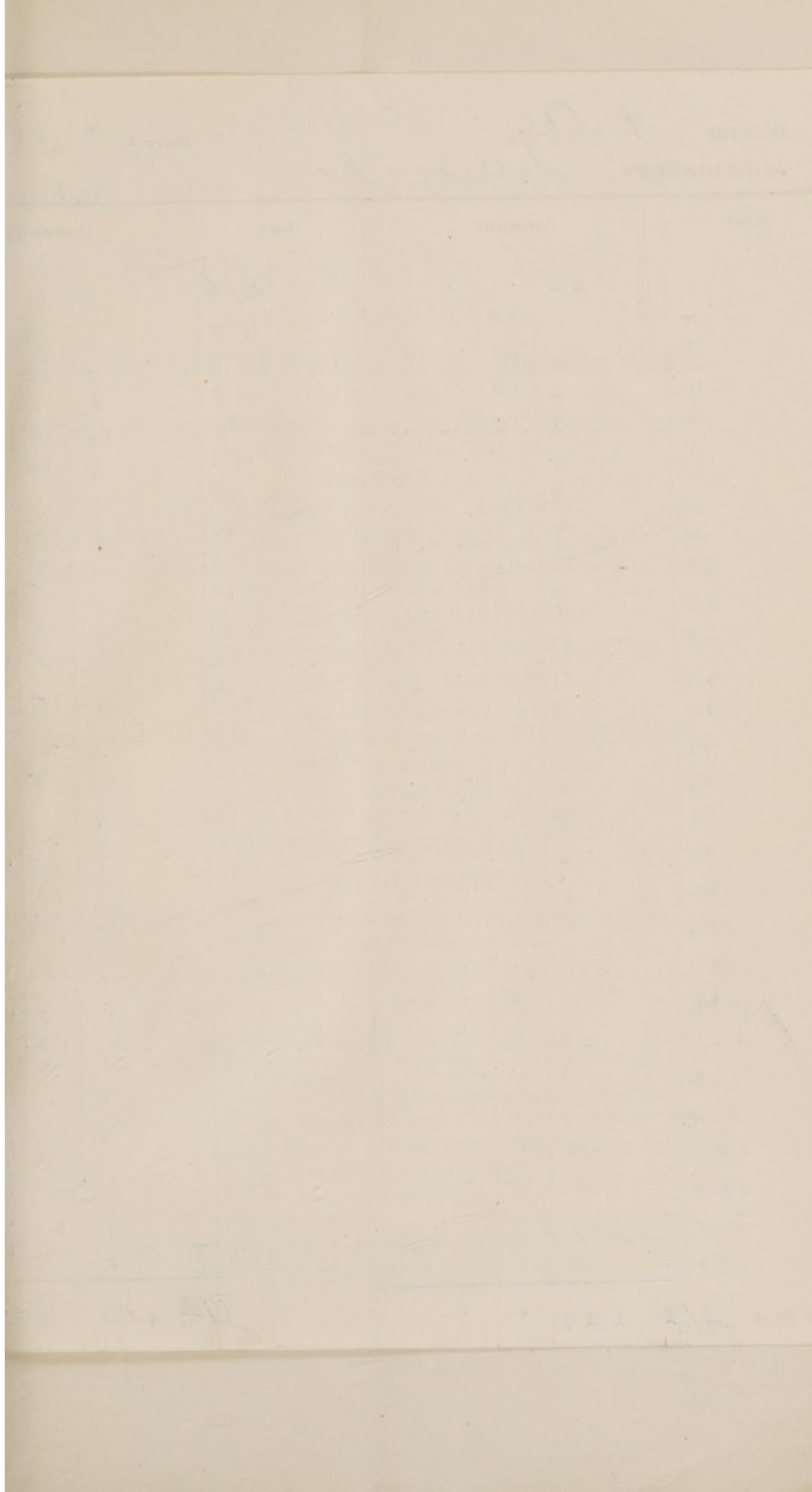
ILLUSTRATED CATALOGUES.

(To include Plain Copies where no Illustrated Catalogues are issued.)

	£	s.	d.
Antiquities (as above) ...	0	5	0
Autograph Letters ...	0	5	0
Books and Manuscripts ...	2	0	0
Coins and Medals ...	0	5	0
Engravings and Etchings ...	0	10	6
Drawings and Pictures ...	0	10	6
Persian Drawings and Works of Art ...	0	3	0
Works of Art (as above) ...	1	1	0
	£5	0	0

PRINTED LISTS OF PRICES AND BUYERS' NAMES.

	£	s.	d.
Antiquities (as above) ...	1	0	0
Autograph Letters ...	1	0	0
Books and Manuscripts ...	6	0	0
Coins and Medals ...	1	0	0
Engravings (Old) ...	2	0	0
Etchings (Modern) ...	2	0	0
Pictures and Drawings ...	2	0	0
Works of Art (as above) ...	5	0	0
	£20	0	0



AUCTIONEERS

Sathey + Co

1929

Lot	Amount			Lot	Amount		
	£	s.	d.		£	s.	d.
3	22	.	.	B/4	229	.	.
4	3	15	.	157	4	10	.
7	4	10	.	159	5	10	.
11	4	15	.	164	8	.	.
12	3	15	.	165	5	5	.
15	5	10	.	167	4	10	.
33	7	.	.	168	9	.	.
40	4	5	.	169	5	10	.
42	2	5	.	170	4	10	.
43	4	.	.	173	2	5	.
44	7	.	.	177	4	15	.
48	13	.	.	180	4	15	.
60	11	.	.	187	3	15	.
70	5	10	.	189	2	.	.
77	26	.	.	192	2	15	.
79	2	5	.	197	14	.	.
82	8	.	.	199	3	.	.
93	4	10	.	200	3	15	.
94	6	.	.	207	12	10	.
104	5	10	.	211	5	.	.
110	11	.	.	217	9	10	.
114	3	5	.	225	17	10	.
120	22	.	.	231	11	10	.
122	7	.	.	233	5	5	.
124	3	5	.	235	8	.	.
148	11	.	.	255	4	15	.
152	8	.	.	256	4	5	.
155	10	.	.	257	3	15	.
156	3	.	.	259	3	15	.
				266	7	15	.
6/4	229	.	.	6/4	410	5	.

CATALOGUE
OF
THE VARIED AND EXTENSIVE COLLECTIONS
OF
WORKS OF ART,
MAINLY MÆDIEVAL,
The Property of the late F. A. Harman Oates,
M.V.O., F.S.A.,
formerly Keeper of the King's Armoury and late Keeper of the London Museum
(SOLD BY ORDER OF MRS. OATES),
COMPRISING
ROMAN, BYZANTINE AND MÆDIEVAL
RINGS AND SEALS,
Including Examples associated with Michael III of Byzantium, Joan of Arc,
and Warwick the King-Maker,
CARVINGS, RELICS AND MINIATURES,
EGYPTIAN, ROMAN AND BYZANTINE ANTIQUITIES,
ECCLESIASTICAL OBJECTS,
MAINLY OF METALWORK,
Including Fine Monstrances, Chalices, etc. of the XIV—XVI Centuries,
GEORGIAN SILVER,
STAINED GLASS AND GLASS PICTURES,
EARLY ENGLISH AND CONTINENTAL POTTERY,
CHINESE PORCELAIN,
EARLY WOOD CARVINGS,
TEXTILES AND NEEDLEWORK OF THE XVII AND XVIII CENTURIES.

WHICH WILL BE SOLD BY AUCTION,

BY MESSRS.

SOTHEY & Co.

G. D. HOBSON, M.V.O. F. W. WARR, O.B.E., M.C. C. G. DES GRAZ, B.A.
MISS E. BARLOW. C. V. PILKINGTON, B.A.

Auctioneers of Literary Property & Works illustrative of the Fine Arts.

AT THEIR LARGE GALLERIES, 34 & 35, NEW BOND STREET, W. 1

On WEDNESDAY, the 20th of FEBRUARY, 1929, and following Day,
AT ONE O'CLOCK PRECISELY.

On View at least Two Days prior.

Catalogues may be had.

Illustrated Catalogue (3 Plates), price One Shilling.

Printed by J. Davy & Sons, Ltd., 8-9, Frith-street, Soho-square, London, W. 1, England.

CONDITIONS OF SALE.

- I. The highest bidder to be the buyer. If any dispute arise the Auctioneer shall have absolute discretion to settle it; and to put any disputed lot up again immediately.
- II. No person to advance less than 1s.; above five pounds 5s., and so on in proportion.
- III. All lots are sold subject to the right of the seller or his agent to bid, or else to impose a reserve.
- IV. The purchasers to give in their names and places of abode, and to pay down 10s. in the pound or more, if required, in part payment of the purchase-money; in default of which the lot or lots purchased may be immediately put up again and re-sold.
- V. All lots are sold as shown and with all faults, imperfections and errors of description. Messrs. Sotheby & Co. act as agents; they have full discretion to refuse any bidding or to withdraw any lot or lots from the sale without in either case giving any reason; they are not responsible for errors of description or for genuineness or authenticity of any lot or for any fault or defect in it, and make no warranty whatever.
- VI. The lots to be taken away at the buyer's risk and expense, immediately after the conclusion of the sale; in default of which Messrs. Sotheby & Co. will not hold themselves responsible if the same are lost, stolen, damaged, or otherwise destroyed, but they will be left at the sole risk of the purchaser, and subject to a charge for warehousing. If, at the expiration of Two Days after the conclusion of the sale, the lots are not cleared or paid for, they may then be sold immediately, either publicly or by private treaty, without any notice being given to the defaulter.
- VII. Upon failure of the buyer to comply with any of the above conditions, the money deposited in part-payment shall be forfeited; and the defaulter at this sale shall make good any loss arising from the re-sale, together with the charges and expenses in respect of both sales.

To prevent confusion no purchases can be claimed or removed during the sale.

Messrs. SOTHEBY & CO. are prepared to execute bids, and in addition to advise intending purchasers, as far as possible, if requested by them to do so, without making any charge for either service. Lots will be procured as cheaply as is permitted by other bids or reserves, if any.

34 & 35, New Bond Street, London, W. (1)

Telegraphic Address:

"Abinitio, Wesdo, London."
A.B.C. Code, 5th Edition.

Telephone: (3 lines)

Mayfair 6682, 6683, 6684.

In sending Commissions this Catalogue may be referred to as "ANIT."

COMMISSIONS SENT BY TELEPHONE ARE ACCEPTED ONLY AT THE SENDER'S RISK,
AND MUST BE CONFIRMED BY LETTER OR TELEGRAM.

The Harman Oates Collections.

CATALOGUE OF THE VARIED AND EXTENSIVE COLLECTION OF WORKS OF ART,

THE PROPERTY OF THE LATE

F. A. HARMAN OATES, M.V.O., F.S.A.
(formerly Keeper of the King's Armoury, and late Keeper of the
London Museum):

[SOLD BY ORDER OF MRS. OATES.]

FIRST DAY'S SALE.

Wednesday, February 20th, 1929.

RINGS.

LOT

- 1 A Scarab mounted in a gold frame, in original hoop; a
Cornelian Ring decorated with hieroglyphs; another in
faience; and a Stamp in similar material; *all Ancient* 2/10/- Lawrence
Egyptian 4
- 2 A gold Ring in the form of two hoops joined together, *Crete*;
and a silver Ring set with an intaglio, *Thames at Windsor*;
both Roman 20/- do 2
- 3 A very fine massive gold Ring representing two coiled snakes;
and another of similar style; *both Roman, from the*
Whitehead collection 2

[See ILLUSTRATION.]

3/15/-

6.

- 4 Another in the form of two coiled snakes; and a Ring with curious openwork centre, and a clip for expansion; *both of gold and of the Roman period* 2

- 5 A gold Ring (*wt. 2 oz.*), the shoulders decorated with acanthus leaves in high relief; *Roman, 3rd Century, found in Italy, very fine* 14/10/- Benson

[See ILLUSTRATION.]

12.

- 6 A heavy gold Key Ring; and another representing a coiled snake; *both fine and of the Roman period* 17/-/- Benson

4/10/-

15.

- 7 A silver snake Ring, *Icklingham*; two bronze Key Rings; and eight others; *all of the Roman period* 11

- 8 A gold Ring set with a cabochon carbuncle, *found with an interment at Constantinople*; and another with an intaglio in carnelian; *both of the Roman period* 8/10/- maggs

- 9 A heavy gold Ring set with cornelian intaglio; and another, similar; *both of the Roman period* 4/5/- Sutton

- 10 A silver Ring with a well engraved gem of the bust of an Oriental; another with cabochon amethyst, *4th Century, A.D., found in the Thames at Windsor*; and a bronze Ring, stone missing; *all of the Roman period* 35/-

4/15/-

15.

- 11 An early Christian gold Ring incised with a palm branch; a Greek amber Ring (*faulty*); and an Egyptian faience Ring with an Aegis of Horus on the shank 3

3/15/-

8.

- 12 A Roman gold Ring set with a carbuncle; and a gold Ring with oval bezel, *of the Ptolemaic period* 2

10.

- 13 A massive silver Ring with pearled decoration and high circular bezel, *said to be of the 8-9th Century, found at Rathgar, Ireland, given to Sir Francis Laking by Lord Londesborough*; and a Byzantine gold Ring inset with a cabochon carbuncle, the bezel decorated with delicate tracery in relief, *circa 900 A.D., found at Constantinople* 43/-/- Hemo

- 14 A massive gold Ring inlaid with silver, the bezel decorated with a mixed inscription of Greek and Latin, on each shoulder is a monogram, the inscription reads "O Lord" 290/-

Lot 14—*continued.*

help thy servant, Michael the Emperor ordered me to be made," and on the shoulders, "May the Mother of God help me"; *this ring was made for Michael III (Balbus), A.D. 1024; found at Constantinople in 1911*

[See ILLUSTRATION.]

5/10/-

- 15 A massive silver Ring set with an onyx, 11th Century, found at Sudbury; and another with pearled decoration, probably of the Roman period 2

- 16 A stirrup Ring, gold, set with a cabochon sapphire, circa 6/5/- 1300; found at Ardleigh, Essex *Brett.*

- 17 Another of similar style, inset with a "writing" diamond, inscribed "Guaspar, Baldasar, Melchior"; 14th Century, rare 22/-/-

- 18 Another, plain, set with a sapphire, circa 1300 4/-/- *Lawrence.*

- 19 A fine gold Ring of an ecclesiastic, the bezel with four claws forming a cross holds a cabochon sapphire, at the four corners are cup-like boxes, each holding a ruby; English circa 1400, found at Epsom 50/-/-

[See ILLUSTRATION.]

10.

- 20 An amulet Ring of silver with traces of enamel and gilding, inscribed "+ Jaspas Melchior Baldasar," found at Woodbridge; and another, similar, inscribed IHC. ATTA. MARIA, found on the site of the Grey Friars Monastery, Cardiff; both 15th Century 15/-/- *Barnett.*

17.

- 21 An iconographic Ring, silver-gilt, with ridged bezel, engraved IHS and MARIA, and on the shoulders I and M respectively; French, early 15th Century (this is believed to have belonged to Joan of Arc, and came through Cardinal Beaufort to Henry VII); from Augustus John's collection 34/-/- *Luann.*

12.

- 22 Another of similar type, with traces of enamel and gilding, on the panels are figures of Saint Sebastian and Saint Barbara, 15th Century, found at St. Albans; and another, gilt and enamelled with figure of a Saint, roses and lilies, 15th Century, found at Coventry 23/-/- *Spink.*

10. 23 [Another of massive form, silver-gilt, inscribed INRI, "Rob." (a heart), "Gib." and below IHC, *this is believed to have belonged to Robert Gib (1488-1514) who saved the life of King James IV of Scotland*

[See ILLUSTRATION.]

20/-/- Lawrence

6. 24 [A Ring with double bezels, silver-gilt, one bezel has a heart within a tressure of arches, the other clasped hands, on the shoulder is inscribed I.H.C.; 15th Century, found in Kent

9/-/- Golder.

- 25 A fine silver Ring, the high bezel bearing a chalice and wafer and F.O., on the shoulders a tau and a double rose, inside is inscribed a cross patonce and "Atta. Maria"; late 15th Century, found at Stonham Aspal, Suffolk

17/-/-

Golder.

[See ILLUSTRATION.]

- 26 An extremely fine gold iconographic Ring with triple bezel, decorated with the Trinity, Virgin and Christ, and St. John the Baptist, inside is inscribed "Ioie Sans Fin," part of the decoration is inlaid with enamel; 15th Century, found at Faversham

30/-/-

Juann.

- 27 Another of similar type, gold, decorated with sprays of flowers, Saint George and Saint Barbara, inscribed "En Bon An," with traces of enamel; 15th Century, found at Lewes

22/-/-

Spink

- 28 Another of similar style, in gold, the double bezel decorated with figures of saints, and T. T. on either side; 15th Century

17/-/-

Spink

- 29 Another, similar, in gold, decorated with conventional ornament

19/-/-

Spink

6. 30 [A signet Ring in silver, the bezel decorated with a crowned W; 15th Century

10/-/- Moffett.

- 31 A Ring in latten with applied bezel set with an amethyst, the band inscribed "par grant amour," 15th Century, found at Cardiff; and a merchant's Ring in silver, with a merchant's mark on bezel, late 15th Century, found at Mansfield, from the Laking collection

8/-/-

2
booper

- 32 A silver Ring with sacred monogram on a heart-shaped bezel; and another of simple band form, with inscription within the band 2 *4/10/- Barnett*

- 7/1/-* 33 A massive finger Ring in gilt bronze, the rectangular bezel engraved with B.B.; and another in similar material, with Adam and Eve and the serpent on the bezel; *both late 15th Century, found at Nottingham, and from the Laking collection* 2

- 34 A bronze Ring with crowned I on the bezel; and another, gilt, with I. E. crowned on the bezel; *both circa 1500* 2

- 35 A silver signet Ring with cabled hoop, decorated shoulders, circular bezel, with a crowned I on the front; *15th Century, fine* *19/-/- Quann*

[See ILLUSTRATION.]

- 6.* 36 Another, of silver, similar, with a crowned W on the bezel; *15th Century, fine* *8/10/- Lawrence*

- 37 Another, with ridged hoop, and symbols and inscription on the bezel; *late 15th Century, fine* *6/15/- Spink.*

- 38 Another, with cabled hoop, and a pelican in its piety and inscription on the bezel; *15th Century* *10/-/- do*

- 5.* 39 Another, in bronze, with decorated shoulders, inset with an antique intaglio in plasma; a latten Ring with a crowned W on the bezel, *both 15th Century*; and another with a Greek inscription 3 *7/10/- booke*

- 4.* 40 Two bronze Rings with crowned initials on the bezels; and three others of plain type 5

- 4.* 41 A signet Ring in latten with a fleur-de-lis on the bezel, *circa 1500*; another with a merchant's mark, *found at Windsor, in fine condition*; a posy Ring; and two others with decorated bezels; *all of the 16th Century* *5/10/- Lawrence*

- 2/5/-* *5.* 42 A Ring in bronze with inscription on outside of hoop; another with IHS on the bezel, *found at Derby*; a silver "fede" Ring; and one other; *all of the 15th Century* 4

- 41/- 16. 43 A decade Ring, of lead, with IHS on the bezel, 16th Century, found at Portchester; a signet Ring, bronze, with kufic inscription on the bezel, 15th Century; and an amulet Ring, of silver, set with a carnelian and turquoises, 17th Century 3

- 7/- 17. 44 Seven signet Rings in latten, some with armorial devices on the bezel; early 17th Century 7

- 45 THE WARWICK RING : A massive gold signet, the bezel bearing a bear and ragged staff above which is the legend : "Soulement une," on the hoop, which is cabled, is engraved : "be godis (faire) foot"; 15th Century, a very fine specimen in excellent condition £ 35-0 Quann

** This ring, which is considered to have belonged to Earl Warwick, "the king maker," was given by King George IV to Miss Craven, and later was in the collection of Sir John Evans, F.R.S. ?

[See ILLUSTRATION.]

- 46 A silver signet Ring with cabled shoulders and a crowned M between feathers; 15th Century, fine 7/10/- Shink

** This ring may have been commemorative of Queen Margaret of Anjou.

- 47 Another, silver-gilt, with a device and I. P. on the bezel, and fluted shoulders; 15th Century 9/-/- Moffett.

[See ILLUSTRATION.]

- 13/- 12. 48 Another of silver, with fluted sides and traces of an inscription, 15th Century; a silver puzzle Ring with embossed lions on the outer surface, probably Venetian; and another, with an armorial device, both 17th Century 3

- 49 A silver Ring with coat-of-arms on the bezel, 17th Century; a bronze Ring set with an amethyst, 14th Century; and an Egyptian Scarab, mounted as a ring 2/15/- Fuller 3

- 50 A lady's Ring, gold, set with a table-cut sapphire; middle 16th Century, fine 19/10/- Cooke

- 51 A lady's Ring, gold, with enamelled hoop, the bezel set with a cluster of emeralds (two missing); and another, similar, set with garnets, both 16th Century 4/-/- Cooke 2

- 52 A silver band Ring, once gilt, inscribed: "+ Jeseus Nasaren
Rex Iudeorum"; 15th Century 3/10/-
Lawrence
- 53 An iconographic Ring, silver-gilt, the fluted bezel engraved 5/10/-
with figures of two saints; 15th Century Spink.
- 54 An enamelled gold Ring, set with a table emerald; 16th 21/-/-
Century P. J. J. J.
- 55 A Cameo in heliotrope, with a very finely carved portrait of
Christ on one side, IHS and three nails on the other; 14/-/-
16th Century, set in a modern gold mount as a ring Quenn
- 56 A lady's Ring in gold, from the front projects a tiny helmeted 6/10/-
head, on the shoulders are acanthus-leaves; early 16th B. J. J. J.
Century, rare
-
6. 57 A gold signet Ring with decorated shoulders and circular bezel,
set with a swivel, on the one side is a skull in white enamel, and on the other a merchant's mark, on the mount
is inscribed: "Nosse te ipsum"; circa 1550, found at 20/-/-
Guildford
-
- 58 A gold Ring, with traces of enamel, set with a table-cut white 13/-/-
sapphire; 16th Century booke
-
7. 59 A gold Ring with square bezel; and another of gold, with a 28/-/-
skull and "Memento Mori" engraved upon it; both 2
16th Century Moffett.
-
11. 16. 60 A gold Ring set with a loadstone, circa 1600; and a silver
Ring, engraved with an ox-head, a cleaver, and M.A.; late 2
17th Century
- 61 A very fine gold Ring with a star-shaped bezel, the back 21/-/-
decorated with niello, and set with five-pointed diamonds;
circa 1600
- 62 A gold signet Ring with the arms of Janson on the bezel; 36/-/-
English, circa 1580, found at Guildford Sutton
- ** Exhibited at the Burlington Fine Arts Club in 1916.

- 63 A massive gold Ring with decorated hoop and shoulders, in the latter are set two sapphires, in the circular bezel are ten rubies with a white sapphire in the centre; *Venetian, 16th Century, fine*

[See ILLUSTRATION.]

7/10/- Webster

- 64 A massive gold signet Ring with a swivelled plaque, having a coat-of-arms on either side, one of the See of Exeter, and inscribed inside: "Ex dono Valen Carey, Exon. Epi"; *circa 1600, extremely fine*

[See ILLUSTRATION.]

62/-/-

- 65 Another, gold, with a coat-of-arms, bearing a merchant's mark on the shield; *16th Century*

25/-/- Spink

- 66 Another of gold, with a crest on the bezel; *circa 1600*

19/-/- Fowler

- 67 Another of massive proportions, with a coat-of-arms on the bezel; *early 17th Century*

25/-/- Spink

5. 68 Another in gold, bearing a rebus, a cock in a tree, and a monogram on the inside and a date, 1592; *fine*

40/-/- Benson

- 69 Another of gold, with H.I. connected by a knot on the bezel; *16th Century*

[See ILLUSTRATION.]

32/-/- Moffatt

5/10/-

70

- 70 A silver "fede" Ring; a silver posy Ring with a bossed outer surface, *both 17th Century*; and another with clasped hands, surmounted by a crown

3

- 71 A gold signet Ring with a coat-of-arms on an octagonal bezel; *circa 1600*

25/-/- Spink

- 72 A fine gold Ring with circular bezel, in the centre of which is an antique intaglio of a victory, surrounded by an inscription; AVE MARIA, etc.; *late 14th Century*

44/-/-

- 73 A fine enamelled gold band Ring, set with an emerald; *circa 1600*

54/-/- Spink

- (16, 74) A shepherd's dial Ring in silver, *early 17th Century, found at Ipswich*; a bowman's Ring; and six others, varied

8

29/-/- Lawrence

- 75 An enamelled gold Ring, set with three large diamonds, and bearing on one shoulder in blue enamel the date 1659, and on the other the word "Jehovah" in Hebrew; *a rare example of a commonwealth ring*

5-0/-/-
Spink

- 10, 76 A gold and enamelled Ring, set with small brilliants, the bezel in the form of an applied skull and cross bones; and another, in gold, with a skull and "memento mori" in enamel; *both English, 17th Century*

16/-/-
Spink

- 26/-/- 25, 77 A gold Ring, the shoulders enamelled and set with a small diamond, the bezel is a box, the lid of which is formed of an antique cameo, and contains a sponge beneath a second pierced lid; *circa 1665*

** This may have been used as a preventive against the plague. Formerly the property of Sir Francis Laking, Bart.

- 78 A gold Ring, once enamelled, the shoulders set with a rose diamond, the oval bezel of faceted rock crystal is set with hair and a monogram in gold wire; and another in similar style; *both late 17th Century*

7/-/-
Roberts

- 25/-/- 4, 79 A silver-gilt Ring, once enamelled, set with a garnet and pastes, *late 17th Century*; another somewhat similar in style and date; and a peasant's silver Ring, *circa 1700*

- 80 A gold Ring with an openwork band, set with a miniature of a lady, *circa 1670, from the Laking collection*; and a 17th Century silver Ring

19/10/-
Spink

- 8, 81 A gold memorial Ring, enamelled, set with a rock crystal, under which, in enamel, are two skeletons holding a crown above J.R. in gold wire, beneath which is a lock of hair

20/-/-
boope

** A memorial ring of King James II.

- 81/-/- 7, 82 A gold posy Ring; a mourning Ring dated (16)90; and two others

4

- 7, 83 A gold memorial Ring with a portrait of Charles I, the hoop and bezel are enamelled, and the back of the bezel has a skull with C.R.; *circa 1648, found at Cambridge*

13/10/- Spink

7. 84 | A gold mourning Ring with a skeleton on the shoulders, 17th Century; and a gold posy Ring with enamelled flowers in relief, also of the 17th Century; rare 10/-/- Moffett 2
- 85 A gold mourning Ring with enamelled shoulders and crystal bezel, beneath which is C.P.R. in gold wire; late 17th Century; *probably mourning ring Charles Edward Stuart* 30/-/- Moffett 3
- 86 Enamelled gold mourning Rings (3), dated 1743, 1767, and 1780 5/20 do 3
- 87 Three others, dated 1721, 1740, and 1765 34/15/- do
- 88 Another dated 1768; a "fede" Ring; and another in brass 34/-/-
8. 89 | A gold Ring with concealed cavity; and three enamelled French mourning Rings; all of the 18th Century 11/-/- Moffett 4
- 90 Two 18th Century intaglio Rings; a gold "fede" Ring; and another inlaid with mother-o'-pearl 12/10/- Sutton
- 91 A massive gold ring, with coat-of-arms, and figures in relief, inset with diamond sparks; and a Roman gold ring set with an intaglio 29/-/- 2 Moffett
- 92 An 18th Century intaglio Ring; a gold Ring set with an emerald ?; and five others 7
- 93 A gold Ring set with a cabochon stone; a silver Ring. both of the 18th Century; and four others 6
- 94 A Roman silver Ring with male and female busts projecting from the hoop; and another in bronze, with carnelian intaglio 2
- 95 Six silver Rings; and six others, varied 12

SEALS.

- 96 A bronze Seal, inscribed: "Crodge Nicolai," 14th Century; and another, of John, the tanner of Berkeley, 15th Century 2
- 97 A Priest's Seal of Eweney, Gloucester, in bronze, 14th Century; and another of Johan di Riccardoli, early 15th Century 2

- 98 A silver Seal of "Secretum" type, with screw-out centre, inscribed: "S. Henrici Capelani" (Henry the Chaplain), and a device of the Virgin and Child, and a votary kneeling; 14th Century, rare

** From the collection of Sir John Evans, F.R.S. (described "Antiquaries' Journal," vol. IV, p. 255).

- 99 Another, in bronze, of the same type, of Christian Sprotforth, the busts of a man and woman facing, a lily between; see same article in "Antiquaries' Journal"

- 100 A silver Seal of "Andro' Changethone"; 15th Century (Evans collection)

[See ILLUSTRATION.]

- 101 Another, in silver, of Ricard di Meopham, set with an antique gem; 12th Century (Evans collection)

[See ILLUSTRATION.]

- 102 Another, in silver, set with an antique gem, inscribed: "Verba Salutis Ave"; 14th Century (Evans collection)

[See ILLUSTRATION.]

- 103 Another, in bronze, bearing the arms of Aberbury; 15th Century, found at Bury St. Edmunds (Evans collection)

[See ILLUSTRATION.]

- 104 Another in bronze, inscribed: "SOHOV. SOHOV," with device of a rabbit, found at Needham Market (Evans collection); and another, inscribed: "Capud Servi Dei"; both 15th Century 2

- 105 Another in bronze, of Bernard Van Doop, with merchant's mark, early 15th Century; a Seal Impression, 13th Century; an 18th Century silver Seal; and another, dated 1862 4

- 106 Another, in silver, inscribed: "S. Johannis du Bos," set with an antique gem; 12th Century (from the Manning and Evans collections)

[See ILLUSTRATION.]

- 107 An unusually fine Seal of the 15th Century, in silver, the Virgin Mary holding lily in right, and the Infant Saviour in left hand, standing under a tree, on the other side of which a small figure kneels in adoration, on a scroll around him are the words : " Mat Dei miser'e mei " (see "*Proc. Soc. Antiquaries*," vol. IX, p. 245) (*Evans collection*)

[See ILLUSTRATION.]

- 108 Another, in bronze, of the Dean of Bicester, inscribed : " Sigillu' decani decanatus de Burcestre," under a canopy the representation of the Holy Trinity, beneath, in a niche, an ecclesiastic, half-length, full-faced, in adoration; 15th Century (see same volume, p. 244) (*Evans collection*), also very fine

[See ILLUSTRATION.]

- 109 A bronze Seal of Saint Audri, Honington, 14th Century (*Evans collection*); and another of the Vernicle, from the *Rosenheim collection* 2

- 110 Another, bronze, with two heads facing in the centre, inscribed : " Frange, Lege, Tege " (i.e. " Break the Seal, Read the letter, say nothing about it "); 14th Century, found at Winchester (*Evans collection*), fine

[See ILLUSTRATION.]

- 111 Another in bronze, sexagonal, inscribed : " Oremus. pro. invidem," etc., 14th Century, found near Farnham, Surrey (*Evans collection*); and another in bronze, of " Petri Hill," 15th Century, from the *Rosenheim collection* 2

- 112 A bronze priory Seal of East Bergholt, 14th Century; and another in bronze, inscribed : " Man Cravet," 12th Century, found at Bury St. Edmunds (both *Evans collection*) 2

- 113 Another in bronze, with merchant's mark and inscription, 15th Century (*bent*); and another, inscribed : " Jesu Sale Preve," 14th Century (both *Evans collection*) 2

- 114 Another, a disc, bearing a merchant's mark, 16th Century, set in a modern mount; and two Oriental Seals in silver 3

- 115 Another, bronze, of Vesica form, inscribed : " Scripta. Lege. Tegenda. Telga " ; 14th Century, found at Dunstable
- 116 Another, inscribed : " Je Vois a Bois," 14th Century, found at Witham (Evans collection) ; another of John Von Gert, 15th Century ; and another with device of a gateway, early 17th Century 3
- 117 Another, bronze, inscribed : " Crow me down," 14th Century, found at Bury St. Edmunds (Evans collection) ; another, with initials, circa 1600 2
- 118 Another in bronze, with the Agnus Dei, 13th Century, found at Ixworth (Evans collection) ; another of the 17th Century ; a pipe stopper Seal, 17th Century ; and another, in brass 4
- 119 A Seal, in silver, a chalice between a small crescent and a mullet of six points, above the Divine Hand in benediction and a star, inscribed : " S. Ric. D. Terring Capl " (perhaps Tarring in Sussex) ; early 14th Century (Evans collection), fine
- 120 A Seal in chiselled steel, bearing the arms of the Medici, 17th Century ; and a large bronze Seal in 14th Century style 2
- 121 An amethyst Intaglio of a Monk, set in silver, 17th Century (?) ; a Pipe Stopper in brass, bearing a bust of Fairfax on one side of the handle, his arms on the other ; and a Seal in glass paste 3
- 122 A brass Seal ; another in steel ; a 17th Century Pipe Stopper ; and early Bookbinder's Stamp ; three other Seals ; a Pipe Stopper in brass ; and sundries, in box a lot
- 123 A Seal Die in brass, inscribed : " James Stewart. Sandwich," in 17th Century style
- 124 An inscribed silver Brooch of circular form, 12th Century (see " Arch. Journal," vol. LXXIII, p. 299) ; another, of later form ; and another in bronze, with inscription 3
- 125 Three small glass Cases ; and five Trays 8

SMALL ARTICLES.

- 126 A Watch Clock, *by* F. C. SAVORY, *à Paris*, with alarum hand, in chased brass case; and a Watch, *by* BERTHOUD, in horn box
- 127 A Table Watch, *by* N. HEILIG, *London*, in square gilt brass case, on four winged lion feet, $3\frac{1}{4}$ in. square
- 128 A circular Box, *by* OBRISSET, in dark horn, the top impressed with a medallion of Charles I in profile to left, *after Roettier*, $3\frac{3}{4}$ in.
- 129 Another, similar, in pale horn
- 130 Another, with oval medallion of the same head, $4\frac{1}{8}$ in.
- 131 Another, in pale horn, with an equestrian figure of Charles I, his titles in script, the royal arms and "*o B Londini fecit*" below, 4 in.
- 132 A curious Pack of Cards, "*Kaloprosopion*," 1828; three small Boxes; and a horn Matrix of a medal of Clement XII 5
- 133 A small Carving in bone of Christ, inscribed and seated on a rainbow, oval, $1\frac{1}{8}$ in., 12th Century, *dug up at Leckhamstead, near Buckingham, circa 1830*; and a Piece of Ribbon from Charles I shirt worn at his execution, and a Fragment of silk Brocade worn by James I at his death, in one frame 2
- [See ILLUSTRATION (of the first item).]
- 134 A bone Amulet carved with Christ on the Cross, the Virgin kneeling to the right, a winged sun to the left, circular, $2\frac{1}{4}$ in.; *English, 14th Century*
- ** From a coffin at Bergholt, near Colchester.
- 135 A PAINTED GLASS MEDALLION, of Prince Charles Edward (the Young Pretender), head and shoulders, three-quarters right, in bonnet with white cockade and blue ribbon, circular, $2\frac{3}{4}$ in.

- 136 A japanned metal Box, *circular*, $2\frac{7}{8}$ in., the top painted with a miniature of Prince Charles Edward, half-length, three-quarters left, in tartan, bonnet and white cockade, wearing the riband and star of the Garter
- 137 PRINCE CHARLES EDWARD (The Young Pretender), an enamelled miniature, head and shoulders, three-quarters right, the eyes facing, in cuirass and wearing a blue riband and crimson mantle, *oval*, $3\frac{3}{4}$ in., *probably painted in Paris after 1745*
- 138 Cardinal York (*soi disant* Henry IX of England), brother of Charles Edward, a miniature by *E. Stagni*, head and shoulders, three-quarters right, in cardinal's robes, *oval*, $2\frac{7}{8}$ in.; a silver Medal of the same personage, 1783; and an oil Miniature, said to be of the Old Pretender as Prince of Wales 3
- 139 The Duke of Monmouth, an oval miniature, 5 in., in armour; and two others 3
- 140 Cupid and Psyche, a fine miniature, *oval*, $3\frac{3}{4}$ in., inscribed on the back: "Painted by Shelley, by order of George, Prince of Wales," *unframed*
- 141 A FINE MINIATURE, in oils on copper, of a lady, *early 17th Century*, in décolleté blue dress embroidered with gold and white cap, her hair tied with ribbons, a crimson curtain at the back, *octagonal*, $3\frac{7}{8}$ in., in silver frame
- 142 Adoration of the Infant Christ, in oils on copper, gold background, $4\frac{3}{4}$ in. by $6\frac{3}{4}$ in., *framed*
- 143 A bronze Medal of Philip II of Spain; two others; and a silver Pass for the Duke's Bagnio, Long Acre 4
- 144 A very fine Cameo in onyx of three strata, on the front are portraits of Henry VIII, Edward VI, Queen Mary and Queen Elizabeth, at either end of the cameo are well executed heads of children, set in a gold clasp; *English work, late 16th Century*

[See ILLUSTRATION.]

- 145 A Pomander of silver, the fronts of the petals when open are engraved with the names of various perfumes, the base of the object is decorated with a rose, *English 16th Century, fine*; a Scent Bottle in silver, *early 17th Century*; and another of later style, also in silver 3
- 146 A very fine contemporary stone Cameo portrait of Monmouth, in a silver frame
[See ILLUSTRATION.]
- 147 A silver-gilt Scent Bottle in the form of a pear; a small silver-gilt Lamp, *both 17th Century*; and a Nutmeg Grater of cylindrical form (*hall-mark, 1784*) 3
- 148 A Reliquary, in gold and enamel, containing fragments of cloth, in case; and a heart-shaped silver Pendant with portrait of Charles II; *both 17th Century* 2
- 149 A Miniature of Charles I; and another of Charles II, mounted in gold frames set with garnets, with gold chains attached to serve as bracelets 2
- 150 An enamelled Box in the form of a watch, inlaid with garnets, *17th Century*, in case; an ivory Handle decorated with the Crucifixion, *17th Century*; and a gold and enamelled Chatelaine with pinchbeck hook, *late 18th Century* 4
- 151 A Knife, *temp. James I*; a carved wood Pipe Stopper, *17th Century*; an ivory Carving; a steel Die, four Oriental Amulets in hardstone; and three other pieces 11
- 152 A Piece of Hair of Edward IV; a Strip from a Mattress on which Prince Charles slept on the night before Culloden; a white Cockade; an Oates Playing Card; and a wooden Plaque, in frame 5
- 153 The Garter, with gold buckle and inscription in silver lace
- 154 A Chalice in crystal, with ball knop and shallow bowl, with coat-of-arms engraved on the side; *17th Century*
- 155 A vessel in crystal, with fluted bowl, stem and base, and silver-gilt mounts, *3 in. high, 16th Century*; in old tooled leather case 2

ANTIQUITIES.

- 156 A Mummy Mask in cartonnage with gilt face; a fine Ushabti, 24th dynasty; and a Human Skull 3
- 157 A bronze Bull; a well-modelled faience figure of Isis, of the Roman period; a double hawk Amulet; a Triad of Nepthys, Isis and Horus; a pectoral Scarab; and a button Seal; all from Egypt 6
- 158 A Roman glass stibium Bottle with arched handle; and a deep Roman glass Bowl 2
- 159 A collection of Household Utensils in pewter and earthenware, ranging from A.D. 1500 to 1800 11
- 160 A pair of carved marble Brackets decorated with figures of lions holding shields; Italian, 17th Century 2
- 161 A Roman bronze Patella; and a Strainer with swan head termination to the handle; both from the Cook collection 2
- 162 A bronze Lamp with handle, decorated with a cross in open-work, early Byzantine; a Coptic Vase with a band of inscription on the sides; Part of an inscribed Saracenic Vase; and three other pieces 6
- 163 A Saint Maenas Costrel of unusual size; two Coptic Wafer Stamps; and eight early Crosses in varied materials; all found in Egypt 11
- 164 A bronze reliquary Cross; parts of two others; and a Cross, all early Byzantine; an engraved Cross with double cross bar; and a small reliquary Cross 6
- 165 An early Byzantine Plaque with figure of Christ in relief; two Reliquaries of pressed horn; another in bronze; a carved boxwood Plaque; two bronze Plaques, all decorated with figures of saints; part of a Hanging Lamp with Cross; and a Crucifix 9
- 166 Seventeen Pilgrim Signs of lead, principally of the 14th Century on two tablets; and another of Saint Thomas, found in the Medway 3

found at

Bury St Edmunds.

Limon of Sudbury

- 167 A Viking Brooch, *found in Gottland*; four Saxon Brooches;
and three Spindle Whorls 8
- 168 Two Roman silver Armlets; a Fibula; a miniature Axe, and
eight other pieces 12
- 169 Three leaden Mortuary Crosses, *14th Century, found in
Smithfield*; an Apostle Spoon, *16th Century*; the Bowl
of another; two ivory rosary Beads with face of Christ
on one side and a skull on the other; and four glass
Phials 11
- 170 A Coptic bronze Cross; two Coptic amulets; a pierced bronze
Plaque; a Knife Handle, *both 17th Century*; a Fragment
of Chain Mail; an Arrow Head, *15th Century*; four Coin
Clippings; and three other pieces 14
-

SECOND DAY'S SALE.

Thursday, February 21st, 1929.

ECCLESIASTICAL OBJECTS, ETC.

7. 171 A fine Russian Triptych in a silver-gilt frame, the panels covered by pierced and engraved silver-gilt plaques; *Wax* 10/-/-
probably early 17th Century

4. 172 Another with well painted panels, enclosed in a cloisonné case; and a Benetier of bronze-gilt, with lapis and agate panels, 17th Century *Saltman* 5/10/-
2

2/5/- 6. 173 Two Russian Triptychs; a Diptych; two Icons; and on odd Plaque; *some of the 17th Century* 6

174 A figure of Christ from a crucifix, of silver-gilt, 16th Century; and another in bronze, 14th Century *Beldon* 3/10/-
2

175 A finely carved figure of Christ in ivory (*arms missing*), probably 16th Century; and a 17th Century bronze Plaque, the descent from the cross *Lawrence* 20/-
2

10. 176 A very fine figure of Christ in copper, with champlevé enamel details, on ebonised stand; *circa*, 12th Century, *Hispano-Mauresque*, from Burgos *Bawing* 37/-/-

4/15/- 8. 177 A bronze-gilt Plaque, St. Joseph of Padua, *circa* 1540; a pocket Shrine; a 17th Century silver-gilt Plaque; and another of a woman, 17th Century 4

7. 178 Part of a champlevé enamel Plaque; a gilt Mount, both 13th Century; a silver-gilt Plaque, dated 1718; and three others *Bawing* 10/-/-
6

8. 179 An engraved silver Reliquary Set with a painted miniature of the Crucifixion, 16th Century, containing ~~a Byzantine silver plaque~~; a heart-shaped Reliquary with Crucifix and inscription engraved on the back; a silver Pendant containing the Virgin and Child, both 17th Century; an early silver Amulet; and two others *Spero* 11/-/-
7

4/15/-

12.

- (180) An early Russian Icon with pierced silver plaque in carved wood frame; and an Agnus Dei in frame, dated 1750

- 181 A pewter Chalice, *circa* 1700, from the Bateman collection; 10/10/- and another of the 15th Century, found with a burial at Detling 2 *Yates*

- 182 A fine bronze Figure of the Virgin and Child, 6½ in. high, 5/-/- German, late 15th Century, on ebonised base *Lawrence*

- 183 A Censer in latten, with tall conical lid, 17th Century; and an Incense Boat in latten 2 2½/-

- 184 A Censer in bronze, with tall lid having oblong openings, 15th Century 2 2/5/-

7.

- (185) An alabaster Figure of Saint John, with gilt decoration, 30/-/- 9 in. high; and another of a figure holding a reliquary, with original colouring, 11 in. high, both 16th Century 2

8.

- (186) An alabaster Group of the Entombment; and another of the Virgin and Child; both 16th Century 2 11/10/- *Saltman Bruno*

3/15/-

20.

- (187) A portable Altar in slate, with an incised cross at each corner, and one in the centre (*one corner restored*), in oak frame; early Mediaeval, extremely rare

4.

- (188) A well carved ivory Figure of the Virgin and Child, 5¼ in. high; and a carved bone Handle, decorated with figures within arcades 2 6/-/- *Bruno*

2/1/-

6.

- (189) An early Russian Panel, with figures of a saint in gold and colours, 9½ in. by 7¼ in.

6.

- (190) A Benitier in brass; a copper-gilt Pyx, 15th Century; and an 18th Century Wafer Box, with needlework cover 3 8/5/- *Spero*

12.

- (191) A Chasse or Reliquary in latten, with conventional inscription and floral decoration, 6 in. long; 12th Century, rare 2 3/1/- *Buckley*

2/15/-

7.

- (192) A Triptych of painted wood, with scenes from the Nativity and Passion, 17th Century; and two Fragments of 14th Century stained glass, from Lincoln's Inn Chapel 3

- 193 A very fine Pax decorated with painted enamel plaques, set in a chased gilt copper frame, *Italian, 16th Century* *Withdrawn*
[See ILLUSTRATION.]
- 194 Another of copper, with the subject chiselled in high relief, *Italian, 16th Century* *18/10/-*
Hexmire
- 195 Another in copper gilt, *17th Century*; and a small specimen in bronze, *15th Century* *7/10/-*
2
- 196 Another in copper, *Italian, 16th Century*; and the openwork plate from a small specimen *7/-*
2

METAL WORK (ECCLESIASTICAL).

14/- *15/-* 197 A 17th Century Monstrance in silver-gilt, the holder surrounded by cherub heads and rays and surmounted by a cross, on baluster stem and square base, *18½ in.*

198 Another, in gilt bronze, with heart-shaped centre surrounded by rays overlaid with figures of the Father and saints and set with pastes, *23½ in.* *5/10/-*
Bailey

3/- *65/-* 199 A small silver Monstrance with horizontal cylinder, on baluster stem and circular base, *8½ in.*

3/5/- *7/-* 200 Another, in bronze, the frame having a border of cherub heads, *21 in.*

201 A Processional Cross, the reverse with full-length figure of the Virgin and Child, the stem with knop with six bosses, *20 in.; 16th Century* *5/10/-*
Spero

202 Another, the reverse with bust of the Virgin, globular knop, *18½ in.; 16th Century* *6/-*
Spero

203 Another, of large size, the arms terminating in fleurs-de-lis and with large pomegranate knop, *31 in.; 16th Century* *7/-*
Spero

204 A Ciborium, in gilt bronze, of chalice shape, plain, on hexagonal stem and domed and lobed base, *13¼ in.* *2/5/-*
Funnel

205 Another, in gilt bronze, the cover and knop embossed with cherub heads, and the base with the instruments of the Passion, *11¾ in.* *2/5/-*
Spero

12. 206 A RELIQUARY MONSTRANCE, in gilt bronze, with pear-shaped head, inset with crystals and having the original glass, on thin stem with fluted knop and circular base, 13 in.; English, 14th Century 34/-/- Wall

** From the Hillingford collection.

- (12/10/-) 16. (207) A MONSTRANCE, in silver, circular body with four Corinthian columns, on barbed sexfoil base, 16 in.; Venetian, c. 1580

15. 208 ANOTHER, in gilt bronze, the body formed as an hexagonal building with Corinthian columns, on stem with large knop and barbed sexfoil base, 14 in.; Venetian, c. 1550 22/-/- Bruno

7. 209 A MONSTRANCE, of square lantern form with steeple top, on thin hexagonal stem with similar knop and foot, in bronze gilt, 13½ in.; 15th Century 11/-/- Hermann

10. 210 ANOTHER, with cylindrical glass body, held by four Gothic buttresses and with steeple top, on thin circular stem with knop ornamented with lozenges and hexagonal foot, in bronze gilt, 16¾ in.; 15th Century 15/-/- Hermine

- (5/-/-) 8. (211) A MONSTRANCE, in silver and gilt bronze, of triangular shape, with relic in triangular container beneath a canopy supported by three columns and surmounted by a Crucifix with figures of the Virgin and St. John, 12½ in.; German, 16th Century

- 212 A Chalice in gilt bronze, the basement embossed with figures of saints, and inscribed under base: ECCLESIA SANCTI HILARI MARNATI, 1604, 9¾ in. 9/-/-

- 213 Another, of the same period as the last, but with silver bowl, embossed with the instruments of the Passion, 8 in. 7/-/-

- 214 A Chalice, with silver bowl and large knop with six bosses holding niello medallions of Christ, the Virgin and saints, barbed hexagonal base, 8¼ in.; late 16th Century 7/-/- Spino

- 215 Another, with silver bowl, hexagonal knop with six niello medallions of saints, and foot with others with emblems of St. Mark, St. Luke and St. John, 8 in.; 16th Century 15/-/-

- 216 A 16th Century Chalice in gilt bronze, circular knop set with six pastes and foot with three niello medallions, 7¼ in. 9/-/-

217 A CHALICE, c. 1500, in gilt bronze, $6\frac{1}{4}$ in., with hexagonal stem and knop, engraved with Gothic lettering, on sexfoil foot

218 A silver Paten, dated 1730, *probably North German*; and two others, gilt

219 A silver Censer with steeple top, $9\frac{3}{8}$ in.; 18th Century

220 A PEWTER CHALICE AND PATEN, the former with bucket-shaped bowl engraved with a band of leaves, on thick broadening stem with collar at top, flat double rim to base, engraved with a small toothed pattern; the rims of the paten are similarly engraved, $8\frac{1}{2}$ in.; c. 1600

METAL WORK (SECULAR).

221 A very fine copper Aquamanile with dragon-head spout and conical lid, the cylindrical neck has a notched band below, and the handle is spirally fluted, $9\frac{1}{2}$ in. high; French, 14th Century (one foot restored), from the Fitz Henry collection

222 A latten Vessel, the spout terminating in a dragon's head, the lid surmounted by a bird, $8\frac{1}{2}$ in. high; 14th Century, rare

223 A fine bronze Vessel, the spout in the form of a heraldic lion, 10 in. high; 15th Century

224 Another of rich colour, the globular body decorated with incised lines, on three feet; 14th Century, fine

225 Another in latten, with long tubular spout bridged to the body above, on three feet, 9 in. high; late 15th Century

226 An Alms Dish in latten with the Virgin and Child in the centre, surrounded by a band of inscription, 17 in. diam.; and another, deeper, with floral centre, surrounded by traces of an inscription; both early 17th Century

227 An Alms Dish, decorated with figures of Adam and Eve and an inscription, 17 in. diam.; and another with floral device and inscription, $14\frac{1}{2}$ in. diam., same period

- 228 A fine Alms Dish with conventional crown of thorns within the bowl, *bearing marker's mark on the rim*, 14½ in. diam.; 17th Century, unusual 9/10/-
- 229 A deep bowl in latten, with the Annunciation in relief within the bowl, 11 in. diam., 16th Century; and a small Dish, decorated with the sacred monogram, 17th Century 13/-/-
- 230 Another, decorated with conventional flowers, circa 1600; and a small specimen with floral and other decoration, 17th Century 6/10/- 2
- 11/10/- 10. 231 A quadruple Hour-Glass in openwork latten frame; 17th Century, rare
- 232 A fine Handbell of tooled bronze, with figures of kings and shields of arms in relief on the body; circa 1600 4/10/-
- 5/5/- 16. 233 A steelyard Weight with the arms of the Duke of Cornwall in relief, 12th-13th Century; a Horsebell, 17th Century; and a Figure from a Smoke Jack 3
6. 234 Two iron Candlestands; a leather black Jack, both 17th Century; and two 16th Century Locks 8/10/- 5
- 8/-/- 8. 235 A brass automatic Money Box; an Articulated Fish; and a Lid of a Warming Pan, inscribed and dated 1632 3
8. 236 A fine Brazier or Chafing Dish with perforated sides; and another with projections on the rim; both 17th Century, rare 16/10/- 2
- 237 A fine pair of latten Altar Candlesticks with iron prickets, 14½ in. high; circa 1600 14/10/- 2
- 238 Another pair, with baluster shafts and tripod feet; 17th Century, also fine 11/-/- 2
- 239 Another pair on triangular bases; 17th Century, also fine 10/10/- 2
- 240 A smaller pair with winged cupids' heads on the base in relief; and a two-light Candlestick; all 17th Century 3
- 241 Three 17th Century latten Candlesticks; and two others, early 18th Century 9/-/- 5
- 242 A similar lot 5/10/- 5

- 243 An eight-light Chandelier in brass, surmounted by a man riding upon an eagle; 17th Century 10/- highwieg
- 244 A pair of old gilt bronze Vases, 8 in., oviform, with wide lip, on foot 2 10/- Lawrence
- 41 245 A 16th Century French iron Finial of a fleur-de-lis springing from two lion heads, with a cartouche of arms either side, painted and gilt, 7 in.; and another, 5 $\frac{3}{8}$ in., of a plain fleur-de-lis 15/- 2 Spence
- ** From the Fitz Henry collection.
- 246 A 17th Century iron Candle and Taper Stand, with foot and circular shelf in elmwood, 46 in. high 6 10/-
- 247 A japanned iron Tray, painted with Chinese figures, oblong, 30 in. 2 10/- Webster

SILVER.

ALL AT.

- 247A A COLLECTION of six small castors of baluster form, one with chased ornamentation, various dates, 18th Century, two with odd covers, one modern, wt. (all in) 17 ozs. 50/- 6
6. 247B A plain boat-shaped Inkstand with reeded edges and three cut-glass bottles, London marks of 1818, wt. 16 ozs. 11 dwts.; and a Monteith, modern, 10 in. diam.; total wt. 52 ozs. 31/- 5 Devereil
6. 247C A chased oval Mustard Pot, London, 1800, with spoon and blue glass liner; two Olive Spoons; a Punch Ladle; a Toddy Ladle; a Marrow Scoop; also a plated Snuffers and Tray, and a plated Cruet with four cut-glass bottles 8 10/- 15 Devereil
- 247D A pair of George II circular Salt Cellars, on three feet, London probably 1743; and two other single Salt Cellars, chased, 1763 and 1764; wt. 8 ozs. 5 dwts. 8/- 4 Wood
- 247E A RARE MILK JUG formed as the figure of a cow; London, 1760, wt. 4 ozs. 11 dwts. 52/- 6 Baker.

STAINED GLASS AND GLASS PICTURES.

248 A German 16th Century stained glass Panel, in grisaille and stain, of an emperor in his chariot, 8 in. by 9½ in. 4/-/-

249 A 16th Century stained glass Roundel, 9 in., in grisaille and yellow stain, of a seated female saint 6/-/-
Spur

50/- 250 A stained glass Oval of the Mater Dolorosa before the Cross, 9¼ in.; another, circular, 9½ in.; and an Oval of a coat-of-arms, dated 1662 4/-/- Lanton 3

251 A fine glass Picture of Lord Buckhurst and his sister, after Kneller, 9½ in. by 13½ in.; in old frame 17/10/-

252 Another of Charles Napier, after J. Somner, 9½ in. by 12½ in.; in old frame 8/10/- hughburg

253 A pair of small glass Pictures of Charles I and Henrietta Maria, oval, 4 in.; in old walnut frames 5/10/- 2

254 A glass Picture of a cottage fireside scene; and two others; Italian, the latter painted on glass 3/-/- Lawrence 3

POTTERY, Etc.

(4/15/-) 5. (255) A green glazed Pitcher; two other Jugs; and a Costrel; all 15th Century, found in London 4

(4/5/-) 8. (256) Four Costrels with green glaze; and another with red-brown marbled glaze; all 16th Century, found in London 5

(3/15/-) 6. (257) Three ale Jugs; a Money Box; and a Salt Cellar, rare; all 16th Century, London 5

40/- 258 A tiger ware Jug with a loose 16th Century silver mount attached (the mount has a later date (1750) added) 3/15/- Spur

(3/15/-) 10. (259) Two Jugs, 13th Century; another, 14th Century; a stone-ware Jug, 16th Century; and three others, 17th Century 8

260 A majolica Plaque with coat-of-arms, 16th Century; two armorial Tiles, and two others, 14th Century; two others of delft, 16th Century; and one other 30/- 8

- 261 A fine set of Siegburg stoneware Table Ornaments, consisting of five objects in the form of male and female figures holding salt cellars and candle sconces; *early 18th Century, rare* 5 *20/- Stall*
- 262 Two Palissy ware oval Dishes with panelled rims, one, $10\frac{3}{4}$ in., moulded with The Baptism of Christ, and the other, $8\frac{1}{4}$ in., with a figure of Justice 2 *7/- Stall*
- 263 A FINE PALISSY WARE DISH, oval, 12 in., moulded with a scene of Henri IV of France and his family 7/- *highburg*
- 264 ANOTHER, $11\frac{3}{4}$ in., moulded with Bacchic figures 4/15/- *do*
- 265 An Italian majolica Panel with a scene of the Crucifixion in high relief, coloured, signed on the back "M. 1764," $14\frac{1}{2}$ in. by 17 in. 4/15/- *Hugo*
- 7/15/-*
12. 266 A pair of Persian Tiles with a hawking figure on horseback, 7 in.; a Chinese blue and white Plate; three trencher Salt Cellars; and two others 8

CHINESE PORCELAIN.

- 267 An old celadon Dish with fluted sides, $13\frac{1}{2}$ in.; and another, plain, with flat rim, $16\frac{1}{4}$ in. 5/- *collin*
- 268 A Ming Figure of a Kylin, in green and orange, 7 in.; and a lotus Stand with two figures in green, orange and aubergine, $4\frac{1}{2}$ in. 2 *5/15/- Spero.*
- 269 A Figure of Kwan-yin with child on her knee, in green and aubergine, *K'ang-hsi*, $7\frac{1}{4}$ in., with hexagonal lotus Stand, 4 in. 2 *2/5/-*
- 270 A pair of "famille verte" Figures of a Child holding a pot of lotus, $10\frac{3}{4}$ in., *K'ang-hsi* 2 *22/-/- Spero*

BLANC DE CHINE FIGURES.

- 271 A Figure of a seated Cock, 9 in., *faulty*; a seated Kylin with paw on a ball, $7\frac{1}{2}$ in.; and another, standing in an attitude of defiance, $10\frac{1}{4}$ in. long 3 *6/-/- Wane*
- 272 A pair of small Figures of Kwan-yin, seated, 5 in.; and another, seated on a kylin, 8 in. 3 *5/-/-*

- 273 A seated Figure of Kwan-yin, 8 in., with wood stand; and another, holding a child, Sung-tse type, 8 in. 2/-
3
Lawrence
- 274 Two others, of Sung-tse type, one with remains of lacquer gilding, 8½ in. and 9½ in. 30/- 2 do
- 275 Two others, nearly matching, holding Chen Tsai, wave bases, 13¾ in. and 14 in. 25/- 2 do
- 276 A Ko ware seated Figure of Kwan-yin, 5½ in., 17th Century; and another, with brown crackle, holding Chen Tsai, with attendants below, 9 in. 30/- 2 do
- 277 Two others, of unusual standing type, wave bases, one with brown crackle, 17½ in. 2/- 2
Parker
- 278 Two others, 14 in. and 15¾ in., one without veil and with lotus on base 25/- 2 do
- 279 Two others, both with Chen Tsai, one without veil, 14¾ in., and the other with curious short skirt, 17 in. 25/-
- 280 A Figure of Kwan-yin, of Sung-Tse type, with acolytes at base, 15 in.; and another, of Tantra form, 10¼ in., faulty 3/10/-
- 281 Another, of Sung-tse type, in creamy paste, 10¼ in.; 17th Century 35/- Webster
- 282 Two others, Dyani Mudra, 9¾ in., and the other with dove at side, 9½ in., the acolytes missing; 17th Century 2
30/- 2
Hollin

CASKETS AND BOXES.

- 283 A Chinese lacquer Cabinet enclosing various drawers, inlaid with mother-o'-pearl, 20½ in. wide 3/-
- 284 An Italian 16th Century Casket with domed top and gilt-bronze mounts, covered in crimson velvet, 9½ in.; and a late Stuart Trunk covered with tooled leather, 18 in. 20/-
- 285 A 16th Century Casket in alabaster and ebonised wood, of architectural design with round headed arches and baluster columns, 13 in. 3/15/-

- 286 A 16th Century Casket in wood, domed lid with slanting sides, gilt-bronze mounts, $10\frac{1}{2}$ in.; and an interesting 17th Century iron Money Box, of upright shape, $4\frac{1}{2}$ in. high 2 *7/10/-*
- 287 Two 16th Century Caskets, one with semi-circular and the other with semi-octagonal top, both with iron mounts and covered with cuir bouilli, $7\frac{1}{4}$ in. 2 *12/-/-*
Tess
- 288 Two plain steel Caskets with domed top, $4\frac{7}{8}$ in. and $6\frac{3}{8}$ in.; 16th Century 2 *10/-/-*
Robinson
- 289 Two small square steel Caskets, with radiating locks in the lids, the one engraved with figures and the other with bird arabesques, $4\frac{3}{8}$ in. and $4\frac{7}{8}$ in.; 16th Century *7/-/-* *do*
- 290 A steel Casket with domed top, engraved with panels of arabesques within floral borders, 6 in.; 16th Century *10/-/-* *highbury*
- 291 Another, square, with curved top, the side engraved with the arms of a cardinal, 6 in.; 17th Century *9/15/-*
Lawrence
- 292 A Casket with domed top, covered in cuir bouilli, incised with an inscription on a ribbon, the ends studded with iron nails, $9\frac{1}{2}$ in.; 16th Century *7/-/-*
highbury
- 293 Two others, with fluted tops and a secret recess in the lids, covered with cuir bouilli, incised with conventional patterns, $6\frac{1}{2}$ in. and 7 in.; early 16th Century 2 *7/10/-*
Tredgar
- 294 A fine steel Casket with panels of diaper-work, fine Gothic lock and hasp, 6 in.; French, 15th Century *16/-/-*
Lawrence
- 295 Another, with curved top, of very similar character to the last, $5\frac{1}{2}$ in. *16/10/-* *do*

MISCELLANEOUS WORKS OF ART.

- 296 A Walking Stick with ivory head, decorated with silver piqué, and initials I. H. (16)98; fine *8/10/-*
- 297 Another, similar in style, with conventional decoration; temp. Charles II *4/-/-*
highbury
- 298 Another with pear-shaped head in ivory, with figure decoration, late 17th Century; and another with ivory head, 18th Century 2 *5/10/-*

16. 299 A fine Chinese cloisonné Ewer, 11 in. high; and a rosewater Vase in chased copper, 17th Century 22/- Lawrence 2
- 300 An Oriental Chalcedony Bowl, decorated with plum sprays, on stand; a carved Bird in similar material, on stand; and a small Dish 2/10/- Lawrence 5
6. 301 A case of Surgical Instruments; a shagreen Case; a box of 17th Century Coin Weights; two armorial Shields; and a Reproduction of a Limoges enamel Candlestick 8/10/- Haskin 6
- (2/5/-) 8. 302 A Persian Bowl, 15th Century; and two Delft Bowls 3
- 303 An old lacquer Shrine, 24 in. high 30/- Williams
- 304 A Buddha in wood, lacquered and gilt, 16 in. high; and a Box, inlaid with mother-o'-pearl 36/- Lawson 2
- 305 A well modelled Chinese bronze Figure of a Priest, 12 in. high; probably of the Ming period 3/10/-
- 306 A Chinese brass Temple Vase with kylin handles, 7 in. high; and a bronze Bowl 36/- Lawson 2
- 307 An old copper gilt Figure of a seated Buddha, 7½ in. high; and a fine Indian copper gilt Figure, 4 in. high 7/10/- 2 Breaker
- (3/5/-) 25. 308 A marble Statuette of a Female Figure in 15th Century dress, modern, 25 in.

WOOD CARVINGS.

- 309 Two well carved Cherub Heads in oak, 16 in. wide, late 17th Century; and another, smaller, made into a bracket 3/10/- Mitchell 3
- 310 A carved wood Figure of the Virgin and Child, with traces of gilding, 17 in. high; 15th Century, from the Radford collection 5/10/- Breaker
- 311 A similar group, on pedestal base, 21 in. high; 16th Century 4/5/- Tudor 2
- 312 A Figure of a Saint, 11½ in. high, 15th Century; and another of the Virgin and Child (restored), probably 14th Century; on oak bases 2/- Williams 2

- 313 A Figure of a Monk, $14\frac{1}{2}$ in. high; and another of a Man holding the figure of the Virgin and Child in his arms; both 15th Century $5/10/-$
2 *Trudegar*
- 314 A Figure of St. Christopher in 14th Century costume, 15 in. high; and a modern Figure of the Virgin, $16\frac{3}{4}$ in. high 2 $4/-$
- 315 A well carved oak Panel of a Saint; and another, probably a cooper's sign, 17th Century 2 $3/5/-$
- 316 A well carved Figure of the Virgin and Child, 9 in. high; on ebonised stand; French, early 16th Century $7/10/-$
1 *aylor*
- 317 An oak Carving of a Female Saint holding the Virgin and Child and a book in her arms, $11\frac{3}{4}$ in. high, on base, 16th Century; and another of the Virgin and Child, 17th Century 2 $5/15/-$
8. 318 A well carved Figure of a Saint holding the Virgin and Child and a book, with original gilding and colour, in fine condition, late 16th Century; and a Figure of a Monk 2 $14/10/-$
Hayling
- 319 A large carved wood Figure of the Virgin and Child with original colouring, 28 in. high; early Mediaeval, from the Radford collection 9 $1/-$
Sallman
- 320 Another of a Female Saint with traces of gilding on the robe, 22 in. high; 15th Century, Radford collection 7 $1/5/-$
Richardson
- 321 A well carved Figure of a Monk in boxwood, 8 in. high, 17th Century; and another of the Virgin and Child, 16th Century, also of good work 3 $1/5/-$
2 *Lawrence*
- 5/15/- 12. 322 A Figure of the Virgin and Child, 17th Century; a wooden bracket, from Colchester, 17th Century; a Figure of a Woman; and two Obelisks containing relics 5
- 4/5/- 20. 323 A Carving in oak of Adam and Eve; another of two Cupids on a bracket, both 17th Century; and a well carved Head of a Woman, one side of the face showing the skull 3
- 324 A Benetier with well carved frame; and a Tabernacle in gilt-wood, $15\frac{1}{2}$ in. high; both 17th Century 2
- 325 A large wood Figure of Buddha, lacquered and gilt, 26 in. high

TEXTILES AND NEEDLEWORK.

- 326 A CHARLES I NEEDLEWORK PANEL, in flat and moss stitch on satin, worked with incidents in the history of Jacob on a ground of houses, a fountain, trees, animals, birds and flowers, 17 in. by 13 in., framed
- 327 A SAMPLER, very finely worked by "*Sarah Harvey, in the 12th Year of her age, July the 3, 1729,*" with the tables of the Commandants flanked by figures of Moses and Aaron within a floral border, 17 in. by 12½ in., in old frame
- 328 A 17TH CENTURY HANGING of red silk, worked in chain stitch in white and yellow with an arabesque pattern, 9 ft. by 6 ft. 6 in.
- 329 A Panel of gold brocade on grey ground, 20 in. square, framed; and a 17th Century Sword Belt in faded crimson velvet 2
- 330 A fine old Italian Pillar Hanging of appliqué work on crimson satin with floral scrollwork and medallions of a cardinal's arms, gold braid edges, 11 in. wide, 104 in. long

END OF SALE.



14



35



25



45



3



47



64



23



19



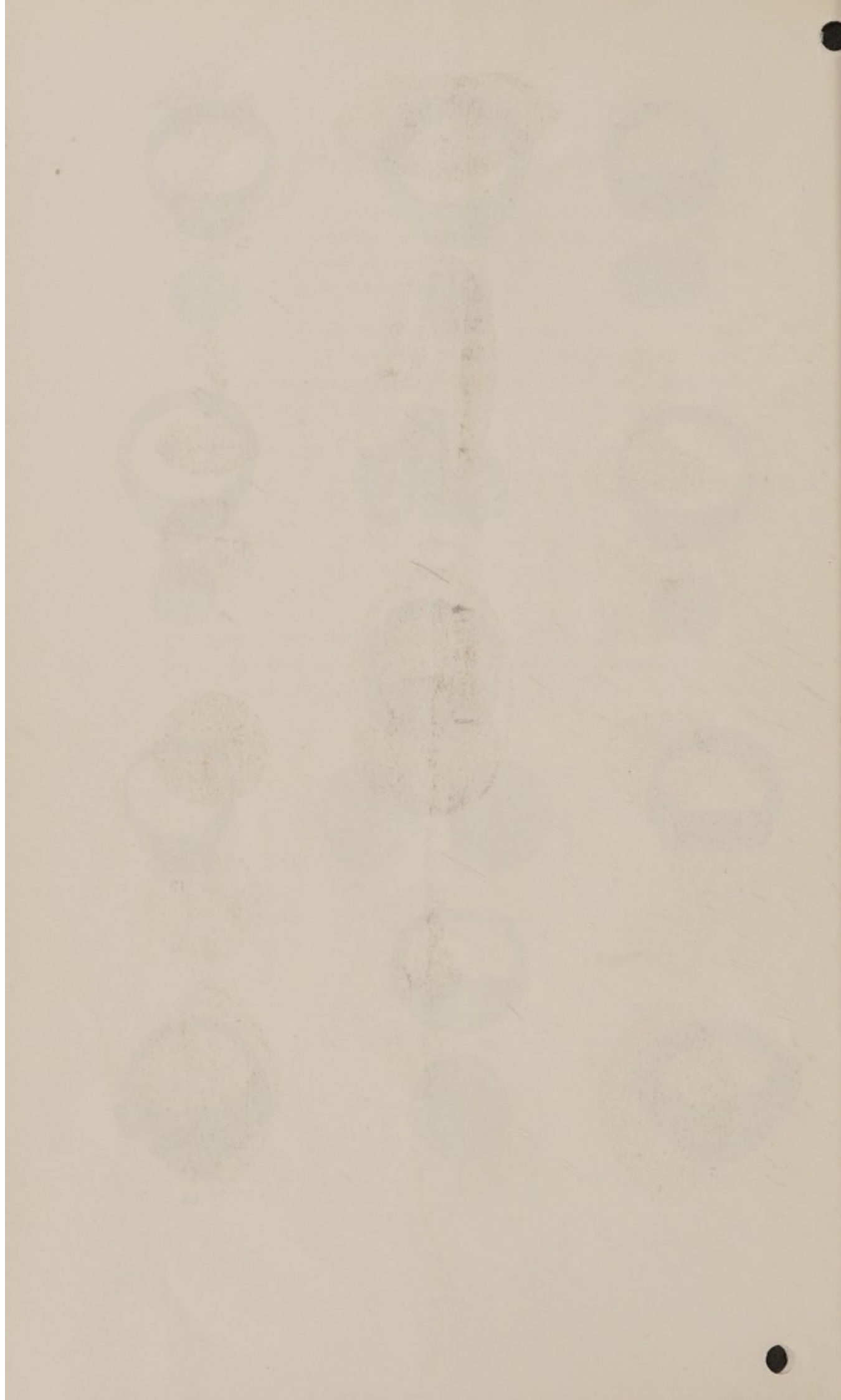
69



5



63





106



144



101



107



133



100



102



146



110



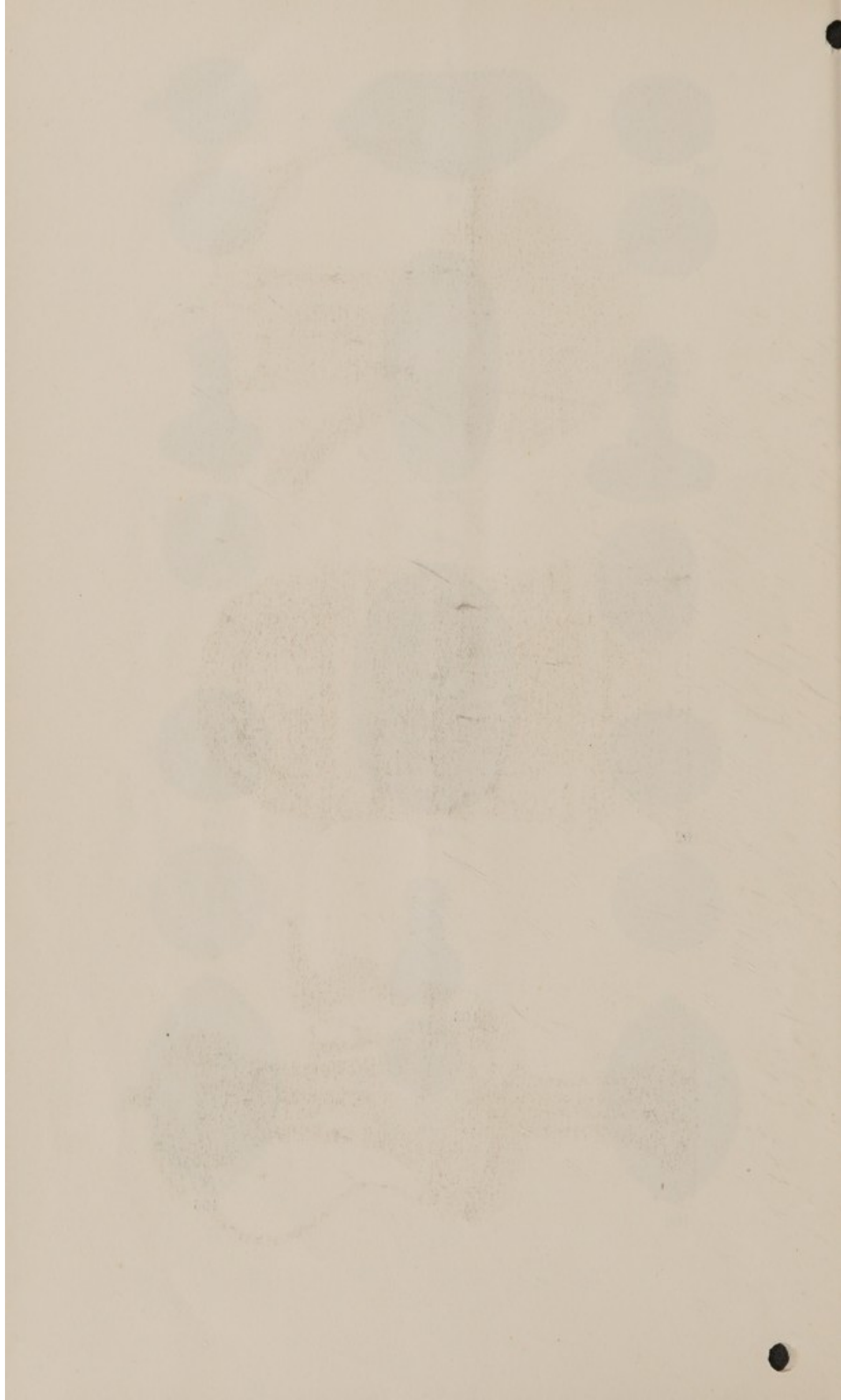
108

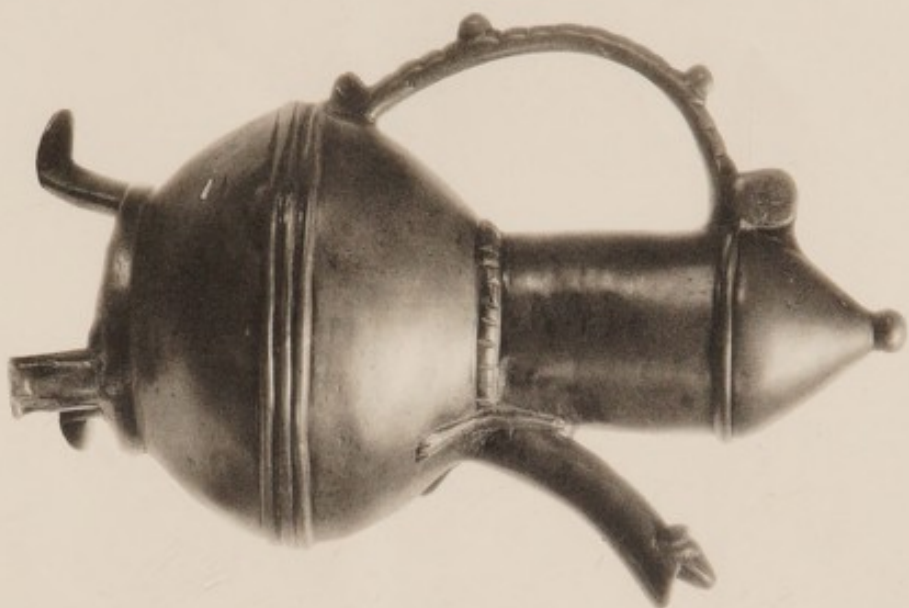


103



108

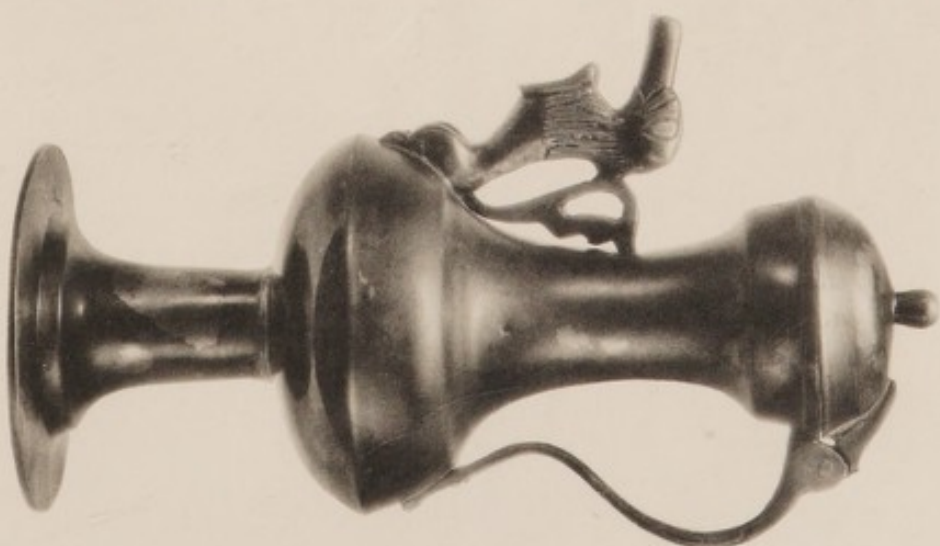




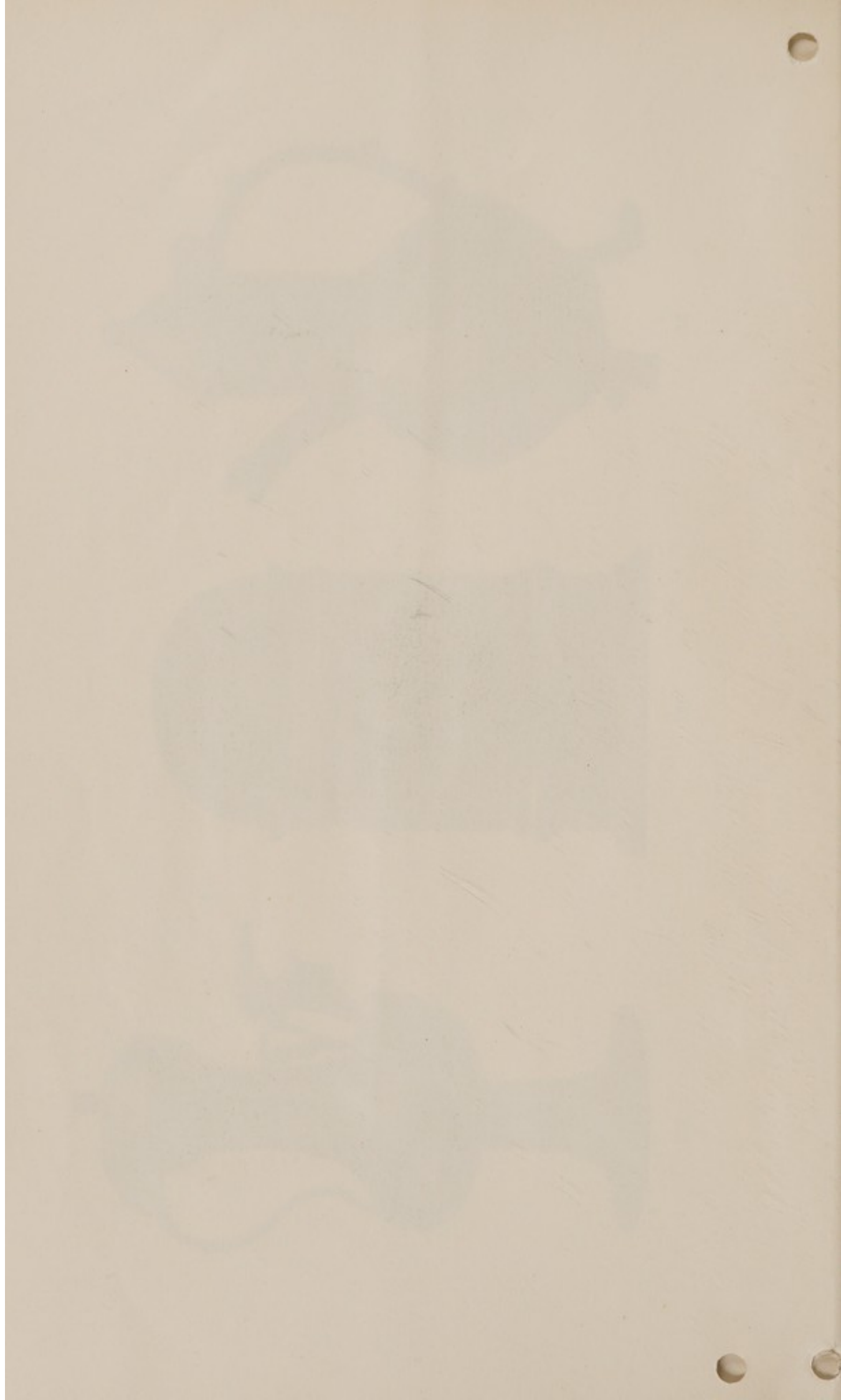
221



193



223



Printed by J. Davy & Sons Limited



8-9, Frith-street, London, W., England

THE UNIVERSITY OF CHICAGO



THE UNIVERSITY OF CHICAGO

VALUATIONS.

Messrs. SOTHEY & Co. make Valuations for Probate, Insurance, etc., at 1 per cent. with a minimum fee

In London	£5	5	0
In the Country	£10	10	0
Together with Travelling Expenses.						

INSPECTIONS.

Properties are inspected and Owners advised with view to a Sale by Auction, at a fee

In London	£2	2	0
In the Country	£3	3	0
Together with Travelling Expenses.						

NOTICES OF SALES.

NOTICES OF ALL SALES APPEAR IN THE FOLLOWING PAPERS :

<i>Mondays</i>	Daily Telegraph; Morning Post.
<i>Tuesdays</i>	Times.

NOTICES OF SPECIAL SALES APPEAR IN THE FOLLOWING PAPERS :

A. ENGLISH.

<i>Thursdays</i>	...	Times Literary Supplement; Scotsman; Glasgow Herald; and Western Mail.
<i>Saturdays</i>	...	Country Life; Sphere; Graphic; Illustrated London News; Field; Publishers' Circular; Clique;
and <i>Monthly</i> in the Burlington Magazine; Connoisseur; Apollo; London Mercury; and Pantheon.		

B. FOREIGN.

Journal des Arts (Paris).	New York Times.
Gazette de l'Hotel Drouot (Paris).	New York Evening Post.
Renaissance de l'Art Français.	Boston Evening Transcript.
American Art News.	International Studio.
Chicago Daily News.	

BAKER, LEIGH & SOTHEBY.

THE FIRM COMMENCING WITH SAMUEL BAKER IN

1744.

SOTHEBY AND CO.

1929.

WA/Hmm/am/sa/120/784/2

SOTHEBY AND CO.

34 & 35, NEW BOND STREET, W. (1)

CATALOGUE
OF
THE VARIED AND EXTENSIVE COLLECTIONS
OF
WORKS OF ART,

MAINLY MEDÆVAL,

THE PROPERTY OF

the late F. A. Harman Oates, M.V.O., F.S.A.,

*formerly Keeper of the King's Armoury
and Late Keeper of the London Museum.*

[SOLD BY ORDER OF MRS. OATES].

Days of Sale.

FIRST DAY	Wednesday, 20th February	Lots 1 to 170
SECOND DAY	Thursday, 21st February	Lots 171 to 330

1929.

TERMS OF SUBSCRIPTION FOR MESSRS. SOTHEYBY'S
CATALOGUES AND PRICE LISTS FOR ONE SEASON.

(All Subscriptions include postage.)

PLAIN CATALOGUES.

	£	s.	d.
Antiquities (Primitive, Egyptian, Greek, etc.) ...	0	1	0
Autograph Letters ...	0	1	6
Books and Manuscripts ...	0	5	0
Coins and Medals ...	0	1	6
Engravings and Etchings ...	0	2	6
Drawings and Pictures ...	0	2	6
Persian Drawings and Works of Art ...	0	1	0
Works of Art (including Armour, China, Furniture, Glass, Japanese Colour Prints and Works of Art, Jewellery, Miniatures, Silver, Textiles, etc.) ...	0	5	0
	£1	0	0

ILLUSTRATED CATALOGUES.

(To include Plain Copies where no Illustrated Catalogues are issued.)

	£	s.	d.
Antiquities (as above) ...	0	5	0
Autograph Letters ...	0	5	0
Books and Manuscripts ...	2	0	0
Coins and Medals ...	0	5	0
Engravings and Etchings ...	0	10	6
Drawings and Pictures ...	0	10	6
Persian Drawings and Works of Art ...	0	3	0
Works of Art (as above) ...	1	1	0
	£5	0	0

PRINTED LISTS OF PRICES AND BUYERS' NAMES.

	£	s.	d.
Antiquities (as above) ...	1	0	0
Autograph Letters ...	1	0	0
Books and Manuscripts ...	6	0	0
Coins and Medals ...	1	0	0
Engravings (Old) ...	2	0	0
Etchings (Modern) ...	2	0	0
Pictures and Drawings ...	2	0	0
Works of Art (as above) ...	5	0	0
	£20	0	0

CATALOGUE
OF
THE VARIED AND EXTENSIVE COLLECTIONS
OF
WORKS OF ART,
MAINLY MEDIÆVAL,
The Property of the late J. A. Harman Oates,
M.V.O., F.S.A.,
formerly Keeper of the King's Armoury and late Keeper of the London Museum
(SOLD BY ORDER OF MRS. OATES),
COMPRISING
ROMAN, BYZANTINE AND MEDIÆVAL
RINGS AND SEALS,
Including Examples associated with Michael III of Byzantium, Joan of Arc,
and Warwick the King-Maker,
CARVINGS, RELICS AND MINIATURES,
EGYPTIAN, ROMAN AND BYZANTINE ANTIQUITIES,
ECCLESIASTICAL OBJECTS,
MAINLY OF METALWORK,
Including Fine Monstrances, Chalices, etc. of the XIV—XVI Centuries,
GEORGIAN SILVER,
STAINED GLASS AND GLASS PICTURES,
EARLY ENGLISH AND CONTINENTAL POTTERY,
CHINESE PORCELAIN,
EARLY WOOD CARVINGS,
TEXTILES AND NEEDLEWORK OF THE XVII AND XVIII CENTURIES.

WHICH WILL BE SOLD BY AUCTION,
BY MESSRS.

SOTHEY & Co.

G. D. HOBSON, M.V.O. F. W. WARRE, O.B.E., M.C. C. G. DES GRAZ, B.A.
MISS E. BARLOW. C. V. PILKINGTON, B.A.

Auctioneers of Literary Property & Works illustrative of the Fine Arts,
AT THEIR LARGE GALLERIES, 34 & 35, NEW BOND STREET, W. 1
On WEDNESDAY, the 20th of FEBRUARY, 1929, and following Day,
AT ONE O'CLOCK PRECISELY.

On View at least Two Days prior.

Catalogues may be had.

Illustrated Catalogue (3 Plates), price One Shilling.

Printed by J. Davy & Sons, Ltd., 8-9, Frith-street, Soho-square, London, W. 1, England.

CONDITIONS OF SALE.

- I. The highest bidder to be the buyer. If any dispute arise the Auctioneer shall have absolute discretion to settle it; and to put any disputed lot up again immediately.
- II. No person to advance less than 1s.; above five pounds 5s., and so on in proportion.
- III. All lots are sold subject to the right of the seller or his agent to bid, or else to impose a reserve.
- IV. The purchasers to give in their names and places of abode, and to pay down 10s. in the pound or more, if required, in part payment of the purchase-money; in default of which the lot or lots purchased may be immediately put up again and re-sold.
- V. All lots are sold as shown and with all faults, imperfections and errors of description. Messrs. Sotheby & Co. act as agents; they have full discretion to refuse any bidding or to withdraw any lot or lots from the sale without in either case giving any reason; they are not responsible for errors of description or for genuineness or authenticity of any lot or for any fault or defect in it, and make no warranty whatever.
- VI. The lots to be taken away at the buyer's risk and expense, immediately after the conclusion of the sale; in default of which Messrs. Sotheby & Co. will not hold themselves responsible if the same are lost, stolen, damaged, or otherwise destroyed, but they will be left at the sole risk of the purchaser, and subject to a charge for warehousing. If, at the expiration of Two Days after the conclusion of the sale, the lots are not cleared or paid for, they may then be sold immediately, either publicly or by private treaty, without any notice being given to the defaulter.
- VII. Upon failure of the buyer to comply with any of the above conditions, the money deposited in part-payment shall be forfeited; and the defaulter at this sale shall make good any loss arising from the re-sale, together with the charges and expenses in respect of both sales.

To prevent confusion no purchases can be claimed or removed during the sale.

Messrs. SOTHEBY & CO. are prepared to execute bids, and in addition to advise intending purchasers, as far as possible, if requested by them to do so, without making any charge for either service. Lots will be procured as cheaply as is permitted by other bids or reserves, if any.

34 & 35, New Bond Street, London, W. (1)

Telegraphic Address:

"Abinitio, Wesdo, London."

A.B.C. Code, 5th Edition.

Telephone: (3 lines)

Mayfair 6682, 6683, 6684.

In sending Commissions this Catalogue may be referred to as "ANIT."

COMMISSIONS SENT BY TELEPHONE ARE ACCEPTED ONLY AT THE SENDER'S RISK, AND MUST BE CONFIRMED BY LETTER OR TELEGRAM.

The Harman Oates Collections.

CATALOGUE OF THE VARIED AND EXTENSIVE COLLECTION OF WORKS OF ART,

THE PROPERTY OF THE LATE

F. A. HARMAN OATES, M.V.O., F.S.A.

(formerly Keeper of the King's Armoury, and late Keeper of the
London Museum).

[SOLD BY ORDER OF MRS. OATES.]

FIRST DAY'S SALE.

Wednesday, February 20th, 1929.

RINGS.

LOT

- 1 A Scarab mounted in a gold frame, in original hoop; a
Cornelian Ring decorated with hieroglyphs; another in
faience; and a Stamp in similar material; *all Ancient
Egyptian* 4
- 2 A gold Ring in the form of two hoops joined together, *Crete*;
and a silver Ring set with an intaglio, *Thames at Windsor*;
both Roman 2
- 3 A very fine massive gold Ring representing two coiled snakes;
and another of similar style; *both Roman, from the
Whitehead collection* 2

[See ILLUSTRATION.]

- 4 Another in the form of two coiled snakes; and a Ring with curious openwork centre, and a clip for expansion; *both of gold and of the Roman period* 2
- 5 A gold Ring (*wt. 2 oz.*), the shoulders decorated with acanthus leaves in high relief; *Roman, 3rd Century, found in Italy, very fine*
- [See ILLUSTRATION.]
- 6 A heavy gold Key Ring; and another representing a coiled snake; *both fine and of the Roman period* 2
- 7 A silver snake Ring, *Icklingham*; two bronze Key Rings; and eight others; *all of the Roman period* 11
- 8 A gold Ring set with a cabochon carbuncle, *found with an interment at Constantinople*; and another with an intaglio in carnelian; *both of the Roman period* 2
- 9 A heavy gold Ring set with cornelian intaglio; and another, similar; *both of the Roman period* 2
- 10 A silver Ring with a well engraved gem of the bust of an Oriental; another with cabochon amethyst, *4th Century, A.D., found in the Thames at Windsor*; and a bronze Ring, stone missing; *all of the Roman period* 3
- 11 An early Christian gold Ring incised with a palm branch; a Greek amber Ring (*faulty*); and an Egyptian faience Ring with an Aegis of Horus on the shank 3
- 12 A Roman gold Ring set with a carbuncle; and a gold Ring with oval bezel, *of the Ptolemaic period* 2
- 13 A massive silver Ring with pearled decoration and high circular bezel, *said to be of the 8-9th Century, found at Rathgar, Ireland, given to Sir Francis Laking by Lord Londesborough*; and a Byzantine gold Ring inset with a cabochon carbuncle, the bezel decorated with delicate tracery in relief, *circa 900 A.D., found at Constantinople* 2
- 14 A massive gold Ring inlaid with silver, the bezel decorated with a mixed inscription of Greek and Latin, on each shoulder is a monogram, the inscription reads "O Lord

Lor 14—*continued.*

help thy servant, Mechael the Emperor ordered me to be made," and on the shoulders, "May the Mother of God help me"; *this ring was made for Michael III (Balbus), A.D. 1024; found at Constantinople in 1911*

[See ILLUSTRATION.]

15 A massive silver Ring set with an onyx, 11th Century, found at Sudbury; and another with pearled decoration, probably of the Roman period 2

16 A stirrup Ring, gold, set with a cabochon sapphire, circa 1300; found at Ardleigh, Essex

17 Another of similar style, inset with a "writing" diamond, inscribed "Guaspar, Baldasar, Melchior"; 14th Century, rare

18 Another, plain, set with a sapphire, circa 1300

19 A fine gold Ring of an ecclesiastic, the bezel with four claws forming a cross holds a cabochon sapphire, at the four corners are cup-like boxes, each holding a ruby; English circa 1400, found at Epsom

[See ILLUSTRATION.]

20 An amulet Ring of silver with traces of enamel and gilding, inscribed "+ Jaspar Melchior Baldasar," found at Woodbridge; and another, similar, inscribed IHC. ATTA. MARIA, found on the site of the Grey Friars Monastery, Cardiff; both 15th Century 2

21 An iconographic Ring, silver-gilt, with ridged bezel, engraved IHS and MARIA, and on the shoulders I and M respectively; French, early 15th Century (this is believed to have belonged to Joan of Arc, and came through Cardinal Beaufort to Henry VII); from Augustus John's collection

22 Another of similar type, with traces of enamel and gilding, on the panels are figures of Saint Sebastian and Saint Barbara, 15th Century, found at St. Albans; and another, gilt and enamelled with figure of a Saint, roses and lilies, 15th Century, found at Coventry 2

- 23 Another of massive form, silver-gilt, inscribed INRI, "Rob." (a heart), "Gib." and below IHC, *this is believed to have belonged to Robert Gib (1488-1514) who saved the life of King James IV of Scotland*
[See ILLUSTRATION.]
- 24 A Ring with double bezels, silver-gilt, one bezel has a heart within a tressure of arches, the other clasped hands, on the shoulder is inscribed I.H.C.; *15th Century, found in Kent*
- 25 A fine silver Ring, the high bezel bearing a chalice and wafer and F.O., on the shoulders a tau and a double rose, inside is inscribed a cross patonce and "Atta. Maria"; *late 15th Century, found at Stonham Aspal, Suffolk*
[See ILLUSTRATION.]
- 26 An extremely fine gold iconographic Ring with triple bezel, decorated with the Trinity, Virgin and Christ, and St. John the Baptist, inside is inscribed "Ioie Sans Fin," part of the decoration is inlaid with enamel; *15th Century, found at Faversham*
- 27 Another of similar type, gold, decorated with sprays of flowers, Saint George and Saint Barbara, inscribed "En Bon An," with traces of enamel; *15th Century, found at Lewes*
- 28 Another of similar style, in gold, the double bezel decorated with figures of saints, and T. T. on either side; *15th Century*
- 29 Another, similar, in gold, decorated with conventional ornament
- 30 A signet Ring in silver, the bezel decorated with a crowned W; *15th Century*
- 31 A Ring in latten with applied bezel set with an amethyst, the band inscribed "par grant amour," *15th Century, found at Cardiff*; and a merchant's Ring in silver, with a merchant's mark on bezel, *late 15th Century, found at Mansfield, from the Laking collection* 2

- 32 A silver Ring with sacred monogram on a heart-shaped bezel; and another of simple band form, with inscription within the band 2
- 33 A massive finger Ring in gilt bronze, the rectangular bezel engraved with B.B.; and another in similar material, with Adam and Eve and the serpent on the bezel; *both late 15th Century, found at Nottingham, and from the Laking collection* 2
- 34 A bronze Ring with crowned I on the bezel; and another, gilt, with I. E. crowned on the bezel; *both circa 1500* 2
- 35 A silver signet Ring with cabled hoop, decorated shoulders, circular bezel, with a crowned I on the front; *15th Century, fine*
- [See ILLUSTRATION.]
- 36 Another, of silver, similar, with a crowned W on the bezel; *15th Century, fine*
- 37 Another, with ridged hoop, and symbols and inscription on the bezel; *late 15th Century, fine*
- 38 Another, with cabled hoop, and a pelican in its piety and inscription on the bezel; *15th Century*
- 39 Another, in bronze, with decorated shoulders, inset with an antique intaglio in plasma; a latten Ring with a crowned W on the bezel, *both 15th Century*; and another with a Greek inscription 3
- 40 Two bronze Rings with crowned initials on the bezels; and three others of plain type 5
- 41 A signet Ring in latten with a fleur-de-lis on the bezel, *circa 1500*; another with a merchant's mark, *found at Windsor, in fine condition*; a posy Ring; and two others with decorated bezels; *all of the 16th Century* 5
- 42 A Ring in bronze with inscription on outside of hoop; another with IHS on the bezel, *found at Derby*; a silver "fede" Ring; and one other; *all of the 15th Century* 4

- 43 A decade Ring, of lead, with IHS on the bezel, 16th Century, found at Portchester; a signet Ring, bronze, with kufic inscription on the bezel, 15th Century; and an amulet Ring, of silver, set with a carnelian and turquoises, 17th Century 3
- 44 Seven signet Rings in latten, some with armorial devices on the bezel; early 17th Century 7
- 45 THE WARWICK RING : A massive gold signet, the bezel bearing a bear and ragged staff above which is the legend : "Soulement une," on the hoop, which is cabled, is engraved : "be godis (faire) foot"; 15th Century, a very fine specimen in excellent condition
 ** This ring, which is considered to have belonged to Earl Warwick, "the king maker," was given by King George IV to Miss Craven, and later was in the collection of Sir John Evans, F.R.S.
 [See ILLUSTRATION.]
- 46 A silver signet Ring with cabled shoulders and a crowned M between feathers; 15th Century, fine
 ** This ring may have been commemorative of Queen Margaret of Anjou.
- 47 Another, silver-gilt, with a device and I.P. on the bezel, and fluted shoulders; 15th Century
 [See ILLUSTRATION.]
- 48 Another of silver, with fluted sides and traces of an inscription, 15th Century; a silver puzzle Ring with embossed lions on the outer surface, probably Venetian; and another, with an armorial device, both 17th Century 3
- 49 A silver Ring with coat-of-arms on the bezel, 17th Century; a bronze Ring set with an amethyst, 14th Century; and an Egyptian Scarab, mounted as a ring 3
- 50 A lady's Ring, gold, set with a table-cut sapphire; middle 16th Century, fine
- 51 A lady's Ring, gold, with enamelled hoop, the bezel set with a cluster of emeralds (two missing); and another, similar, set with garnets, both 16th Century 2

- 52 A silver band Ring, once gilt, inscribed : " + Jeseus Nasaren
Rex Iudeorum " ; 15th Century
- 53 An iconographic Ring, silver-gilt, the fluted bezel engraved
with figures of two saints ; 15th Century
- 54 An enamelled gold Ring, set with a table emerald ; 16th
Century
- 55 A Cameo in heliotrope, with a very finely carved portrait of
Christ on one side, I H S and three nails on the other ;
16th Century, set in a modern gold mount as a ring
- 56 A lady's Ring in gold, from the front projects a tiny helmeted
head, on the shoulders are acanthus-leaves ; early 16th
Century, rare
- 57 A gold signet Ring with decorated shoulders and circular bezel,
set with a swivel, on the one side is a skull in white
enamel, and on the other a merchant's mark, on the mount
is inscribed : " Nosse te ipsum " ; circa 1550, found at
Guildford
- 58 A gold Ring, with traces of enamel, set with a table-cut white
sapphire ; 16th Century
- 59 A gold Ring with square bezel ; and another of gold, with a
skull and " Memento Mori " engraved upon it ; both
16th Century 2
- 60 A gold Ring set with a loadstone, circa 1600 ; and a silver
Ring, engraved with an ox-head, a cleaver, and M.A. ; late
17th Century 2
- 61 A very fine gold Ring with a star-shaped bezel, the back
decorated with niello, and set with five-pointed diamonds ;
circa 1600
- 62 A gold signet Ring with the arms of Janson on the bezel ;
English, circa 1580, found at Guildford
- ** Exhibited at the Burlington Fine Arts Club in 1916.

- 63 A massive gold Ring with decorated hoop and shoulders, in the latter are set two sapphires, in the circular bezel are ten rubies with a white sapphire in the centre; *Venetian, 16th Century, fine*

[See ILLUSTRATION.]

- 64 A massive gold signet Ring with a swivelled plaque, having a coat-of-arms on either side, one of the See of Exeter, and inscribed inside: "Ex dono Valen Carey, Exon. Epi"; *circa 1600, extremely fine*

[See ILLUSTRATION.]

- 65 Another, gold, with a coat-of-arms, bearing a merchant's mark on the shield; *16th Century*

- 66 Another of gold, with a crest on the bezel; *circa 1600*

- 67 Another of massive proportions, with a coat-of-arms on the bezel; *early 17th Century*

- 68 Another in gold, bearing a rebus, a cock in a tree, and a monogram on the inside and a date, 1592; *fine*

- 69 Another of gold, with H.I. connected by a knot on the bezel; *16th Century*

[See ILLUSTRATION.]

- 70 A silver "fede" Ring; a silver posy Ring with a bossed outer surface, *both 17th Century*; and another with clasped hands, surmounted by a crown 3

- 71 A gold signet Ring with a coat-of-arms on an octagonal bezel; *circa 1600*

- 72 A fine gold Ring with circular bezel, in the centre of which is an antique intaglio of a victory, surrounded by an inscription; AVE MARIA, etc.; *late 14th Century*

- 73 A fine enamelled gold band Ring, set with an emerald; *circa 1600*

- 74 A shepherd's dial Ring in silver, *early 17th Century, found at Ipswich*; a bowman's Ring; and six others, varied 8

- 75 An enamelled gold Ring, set with three large diamonds, and bearing on one shoulder in blue enamel the date 1659, and on the other the word "Jehovah" in Hebrew; *a rare example of a commonwealth ring*
- 76 A gold and enamelled Ring, set with small brilliants, the bezel in the form of an applied skull and cross bones; and another, in gold, with a skull and "memento mori" in enamel; *both English, 17th Century* 2
- 77 A gold Ring, the shoulders enamelled and set with a small diamond, the bezel is a box, the lid of which is formed of an antique cameo, and contains a sponge beneath a second pierced lid; *circa 1665*
- ** This may have been used as a preventive against the plague. Formerly the property of Sir Francis Laking, Bart.
- 78 A gold Ring, once enamelled, the shoulders set with a rose diamond, the oval bezel of faceted rock crystal is set with hair and a monogram in gold wire; and another in similar style; *both late 17th Century* 2
- 79 A silver-gilt Ring, once enamelled, set with a garnet and pastes, *late 17th Century*; another somewhat similar in style and date; and a peasant's silver Ring, *circa 1700* 3
- 80 A gold Ring with an openwork band, set with a miniature of a lady, *circa 1670, from the Laking collection*; and a 17th Century silver Ring 2
- 81 A gold memorial Ring, enamelled, set with a rock crystal, under which, in enamel, are two skeletons holding a crown above J.R. in gold wire, beneath which is a lock of hair
- ** A memorial ring of King James II.
- 82 A gold posy Ring; a mourning Ring dated (16)90; and two others 4
- 83 A gold memorial Ring with a portrait of Charles I, the hoop and bezel are enamelled, and the back of the bezel has a skull with c. r.; *circa 1648, found at Cambridge*

- | | | |
|----|--|---|
| 84 | A gold mourning Ring with a skeleton on the shoulders, <i>17th Century</i> ; and a gold posy Ring with enamelled flowers in relief, <i>also of the 17th Century</i> , rare | 2 |
| 85 | A gold mourning Ring with enamelled shoulders and crystal bezel, beneath which is c. p. r. in gold wire; <i>late 17th Century</i> | |
| 86 | Enamelled gold mourning Rings (3), dated 1743, 1767, and 1780 | 3 |
| 87 | Three others, dated 1721, 1740, and 1765 | 3 |
| 88 | Another dated 1768; a "fede" Ring; and another in brass | 3 |
| 89 | A gold Ring with concealed cavity; and three enamelled French mourning Rings; <i>all of the 18th Century</i> | 4 |
| 90 | Two 18th Century intaglio Rings; a gold "fede" Ring; and another inlaid with mother-o'-pearl | 4 |
| 91 | A massive gold ring, with coat-of-arms, and figures in relief, inset with diamond sparks; and a Roman gold ring set with an intaglio | 2 |
| 92 | An 18th Century intaglio Ring; a gold Ring set with an emerald ?; and five others | 7 |
| 93 | A gold Ring set with a cabochon stone; a silver Ring. <i>both of the 18th Century</i> ; and four others | 6 |
| 94 | A Roman silver Ring with male and female busts projecting from the hoop; and another in bronze, with carnelian intaglio | 2 |

SEALS.

- 96 A bronze Seal, inscribed: "Crodge Nicolai," 14th Century; 4/5/-
and another, of John, the tanner of Berkeley, 15th
Century 2 *spinach*
- 97 A Priest's Seal of Eweney, Gloucester, in bronze, 14th Century; 6/-/-
and another of Johan di Riccardoli, early 15th Century 2 *Lee*
- 95A Silver ring with monogram 15th cent 10/- *Spink*
- 95B " " " plaque inscribed, 17th cent 2/15/-
- a small Roman ring.
- 95C a gold memorial ring 13/-/- *booke*

- 98 A silver Seal of "Secretum" type, with screw-out centre, inscribed: "S. Henrici Capelani" (Henry the Chaplain), and a device of the Virgin and Child, and a votary kneeling; 14th Century, rare

21/-/-

** From the collection of Sir John Evans, F.R.S. (described "Antiquaries' Journal," vol. IV, p. 255).

- 99 Another, in bronze, of the same type, of Christian Sprotforth, the busts of a man and woman facing, a lily between; see same article in "Antiquaries' Journal"

10/-/-
Lawrence

- 100 A silver Seal of "Andro' Changethone"; 15th Century (Evans collection)

15/-/-
Shink

[See ILLUSTRATION.]

- 101 Another, in silver, of Ricard di Meopham, set with an antique gem; 12th Century (Evans collection)

16/-/- do

[See ILLUSTRATION.]

- 102 Another, in silver, set with an antique gem, inscribed: "Verba Salutis Ave"; 14th Century (Evans collection)

25/-/- do

[See ILLUSTRATION.]

- 103 Another, in bronze, bearing the arms of Aberbury; 15th Century, found at Bury St. Edmunds (Evans collection)

3/-/- do

[See ILLUSTRATION.]

- 5/10/-
H. (104) Another in bronze, inscribed: "SOHOV. SOHOV," with device of a rabbit, found at Needham Market (Evans collection); and another, inscribed: "Capud Servi Dei"; both 15th Century

2

- 105 Another in bronze, of Bernard Van Doop, with merchant's mark, early 15th Century; a Seal Impression, 13th Century; an 18th Century silver Seal; and another, dated 1862

4

- 106 Another, in silver, inscribed: "S. Johannis du Bos," set with an antique gem; 12th Century (from the Manning and Evans collections)

16/-/-
Shink

[See ILLUSTRATION.]

- 107 An unusually fine Seal of the 15th Century, in silver, the Virgin Mary holding lily in right, and the Infant Saviour in left hand, standing under a tree, on the other side of which a small figure kneels in adoration, on a scroll around him are the words: "Mat Dei miser'e mei" (see "*Proc. Soc. Antiquaries*," vol. IX, p. 245) (Evans collection)

[See ILLUSTRATION.]

53/-/-
Lawrence

- 108 Another, in bronze, of the Dean of Bicester, inscribed: "Sigillu' decani decanatus de Burcestre," under a canopy the representation of the Holy Trinity, beneath, in a niche, an ecclesiastic, half-length, full-faced, in adoration; 15th Century (see same volume, p. 244) (Evans collection), also very fine

[See ILLUSTRATION.]

22/-/-

- 109 A bronze Seal of Saint Audri, Honington, 14th Century (Evans collection); and another of the Vernicle, from the Rosenheim collection

4/5/-/-
Shink

11/-/-
12

- 110 Another, bronze, with two heads facing in the centre, inscribed: "Frange, Lege, Tege" (i.e. "Break the Seal, Read the letter, say nothing about it"); 14th Century, found at Winchester (Evans collection), fine

[See ILLUSTRATION.]

- 111 Another in bronze, sexagonal, inscribed: "Oremus. pro. invidem," etc., 14th Century, found near Farnham, Surrey (Evans collection); and another in bronze, of "Petri Hill," 15th Century, from the Rosenheim collection

11/-/-
Dolac

- 112 A bronze priory Seal of East Bergholt, 14th Century; and another in bronze, inscribed: "Man Cravet," 12th Century, found at Bury St. Edmunds (both Evans collection)

6/-/-
Lawrence

- 113 Another in bronze, with merchant's mark and inscription, 15th Century (bent); and another, inscribed: "Jesu Sale Preve," 14th Century (both Evans collection)

2/10/-/-
Shink

3/5/-/-
7

- 114 Another, a disc, bearing a merchant's mark, 16th Century, set in a modern mount; and two Oriental Seals in silver

- 115 Another, bronze, of Vesica form, inscribed: "Scripta. Lege. Tegenda. Telga"; 14th Century, found at Dunstable 2/2/- Spink
- 116 Another, inscribed: "Je Vois a Bois," 14th Century, found at Witham (Evans collection); another of John Von Gert, 15th Century; and another with device of a gateway, early 17th Century 5/10/- Gardner 3
- 117 Another, bronze, inscribed: "Crow me down," 14th Century, found at Bury St. Edmunds (Evans collection); another, with initials, circa 1600 3/6/- Spink 2
- 118 Another in bronze, with the Agnus Dei, 13th Century, found at Ixworth (Evans collection); another of the 17th Century; a pipe stopper Seal, 17th Century; and another, in brass 2/5/- Lawrence 4
- 119 A Seal, in silver, a chalice between a small crescent and a mullet of six points, above the Divine Hand in benediction and a star, inscribed: "S. Ric. D. Terring Capl" (perhaps Tarring in Sussex); early 14th Century (Evans collection), fine 18/10/- Coope
- 22/1/-
15/-
- 120 A Seal in chiselled steel, bearing the arms of the Medici, 17th Century; and a large bronze Seal in 14th Century style 2
- 121 An amethyst Intaglio of a Monk, set in silver, 17th Century (?); a Pipe Stopper in brass, bearing a bust of Fairfax on one side of the handle, his arms on the other; and a Seal in glass paste 2/5/- 3
- 7/1/- 7.
- 122 A brass Seal; another in steel; a 17th Century Pipe Stopper; and early Bookbinder's Stamp; three other Seals; a Pipe Stopper in brass; and sundries, in box a lot
- 123 A Seal Die in brass, inscribed: "James Stewart. Sandwich," in 17th Century style 25/- Lyde
- 60/- 124 An inscribed silver Brooch of circular form, 12th Century (see "Arch. Journal," vol. LXXIII, p. 299); another, of later form; and another in bronze, with inscription 22/1/- Coope 3
- 125 Three small glass Cases; and five Trays 8 35/-

SMALL ARTICLES.

- 126 A Watch Clock, *by* F. C. SAVORY, à Paris, with alarum hand, in chased brass case; and a Watch, *by* BERTHOUD, in horn box 3/-/-
- 127 A Table Watch, *by* N. HEILIG, London, in square gilt brass case, on four winged lion feet, $3\frac{1}{4}$ in. square 4/-/- Webster
- 128 A circular Box, *by* OBRISSET, in dark horn, the top impressed with a medallion of Charles I in profile to left, after Roettier, $3\frac{3}{4}$ in. 22/-/-
- 129 Another, similar, in pale horn 6/-/- Webster
- 130 Another, with oval medallion of the same head, $4\frac{1}{8}$ in. 11/-/-
- 131 Another, in pale horn, with an equestrian figure of Charles I, his titles in script, the royal arms and "O B Londini fecit" below, 4 in. 30/-/- Lawrence
- 132 A curious Pack of Cards, "Kaloprosopion," 1828; three small Boxes; and a horn Matrix of a medal of Clement XII 5 29/-/- Spink
-
25. 133 A small Carving in bone of Christ, inscribed and seated on a rainbow, oval, $1\frac{3}{8}$ in., 12th Century, dug up at Leckhamstead, near Buckingham, circa 1830; and a Piece of Ribbon from Charles I shirt worn at his execution, and a Fragment of silk Brocade worn by James I at his death, in one frame 5-0/-/- Wingus
- [See ILLUSTRATION (of the first item).]
35. 134 A bone Amulet carved with Christ on the Cross, the Virgin kneeling to the right, a winged sun to the left, circular, $2\frac{1}{4}$ in.; English, 14th Century
- ** From a coffin at Bergholt, near Colchester.
- 135 A PAINTED GLASS MEDALLION, of Prince Charles Edward (the Young Pretender), head and shoulders, three-quarters right, in bonnet with white cockade and blue ribbon, circular, $2\frac{3}{4}$ in. 13/-/-

- 136 A japanned metal Box, *circular*, $2\frac{3}{8}$ in., the top painted with a miniature of Prince Charles Edward, half-length, three-quarters left, in tartan, bonnet and white cockade, wearing the riband and star of the Garter 10/-/-
- 137 PRINCE CHARLES EDWARD (The Young Pretender), an enamelled miniature, head and shoulders, three-quarters right, the eyes facing, in cuirass and wearing a blue riband and crimson mantle, *oval*, $3\frac{3}{4}$ in., *probably painted in Paris after 1745* 18/-/- Wright
- 138 Cardinal York (*soi disant* Henry IX of England), brother of Charles Edward, a miniature by *E. Stagni*, head and shoulders, three-quarters right, in cardinal's robes, *oval*, $2\frac{7}{8}$ in.; a silver Medal of the same personage, 1783; and an oil Miniature, said to be of the Old Pretender as Prince of Wales 3 10/10/-
- 139 The Duke of Monmouth, an oval miniature, 5 in., in armour; and two others 3 590 Rollos.
- 140 Cupid and Psyche, a fine miniature, *oval*, $3\frac{3}{4}$ in., inscribed on the back: "Painted by Shelley, by order of George, Prince of Wales," *unframed* 16/-/- Lawrence
- 141 A FINE MINIATURE, in oils on copper, of a lady, *early 17th Century*, in décolleté blue dress embroidered with gold and white cap, her hair tied with ribbons, a crimson curtain at the back, *octagonal*, $3\frac{3}{8}$ in., in silver frame 12/-/-
- 142 Adoration of the Infant Christ, in oils on copper, gold background, $4\frac{3}{4}$ in. by $6\frac{3}{4}$ in., *framed* 3/5/- Lawrence
- 143 A bronze Medal of Philip II of Spain; two others; and a silver Pass for the Duke's Bagnio, Long Acre 4 2/10/- Spink
- 144 A very fine Cameo in onyx of three strata, on the front are portraits of Henry VIII, Edward VI, Queen Mary and Queen Elizabeth, at either end of the cameo are well executed heads of children, set in a gold clasp; *English work, late 16th Century* 105/-/- Quann

[See ILLUSTRATION.]

15.

- 145 A Pomander of silver, the fronts of the petals when open are engraved with the names of various perfumes, the base of the object is decorated with a rose, *English 16th Century, fine*; a Scent Bottle in silver, *early 17th Century*; and another of later style, also in silver 3

40/-/-

Lawrence

- 146 A very fine contemporary stone Cameo portrait of Monmouth, in a silver frame 16/-/-

Rolls

[See ILLUSTRATION.]

5.

- 147 A silver-gilt Scent Bottle in the form of a pear; a small silver-gilt Lamp, *both 17th Century*; and a Nutmeg Grater of cylindrical form (*hall-mark, 1784*) 10/-/-

10/-/-

(11/-/-)

8.

- (148) A Reliquary, in gold and enamel, containing fragments of cloth, in case; and a heart-shaped silver Pendant with portrait of Charles II; *both 17th Century* 2

- 149 A Miniature of Charles I; and another of Charles II, mounted in gold frames set with garnets, with gold chains attached to serve as bracelets 12/-/-

2 Shew

- 150 An enamelled Box in the form of a watch, inlaid with garnets, *17th Century*, in case; an ivory Handle decorated with the Crucifixion, *17th Century*; and a gold and enamelled Chatelaine with pinchbeck hook, *late 18th Century* 4

10/-/-

Shew

7.

- 151 A Knife, *temp. James I*; a carved wood Pipe Stopper, *17th Century*; an ivory Carving; a steel Die, four Oriental Amulets in hardstone; and three other pieces 11

10/10/-

? private

(8/-/-)

40.

- (152) A Piece of Hair of Edward IV; a Strip from a Mattress on which Prince Charles slept on the night before Culloden; a white Cockade; an Oates Playing Card; and a wooden Plaque, in frame 5

- 153 The Garter, with gold buckle and inscription in silver lace 2/10/-

Stem

- 154 A Chalice in crystal, with ball knob and shallow bowl, with coat-of-arms engraved on the side; *17th Century* 8/10/-

8/10/-

(10/-/-)

8.

- (155) A vessel in crystal, with fluted bowl, stem and base, and silver-gilt mounts, 3 in. high, *16th Century*; in old tooled leather case 2

2

ANTIQUITIES.

- (3/-) 8. (156) A Mummy Mask in cartonnage with gilt face; a fine Ushabti, 24th dynasty; and a Human Skull *of limestone of Sudbury, found at Bury St. Edmunds.*
- (4/10/-) 5. (157) A bronze Bull; a well-modelled faience figure of Isis, of the Roman period; a double hawk Amulet; a Triad of Nephtys, Isis and Horus; a pectoral Scarab; and a button Seal; all from Egypt 6
- (5/10/-) 20. (158) A Roman glass stibium Bottle with arched handle; and a deep Roman glass Bowl 3/6/- Lawrence 2
- (159) A collection of Household Utensils in pewter and earthenware, ranging from A.D. 1500 to 1800 11
- 160 A pair of carved marble Brackets decorated with figures of lions holding shields; Italian, 17th Century 24/-/- 2
- 161 A Roman bronze Patella; and a Strainer with swan head termination to the handle; both from the Cook collection 4/-/- Lawrence 2
- 162 A bronze Lamp with handle, decorated with a cross in openwork, early Byzantine; a Coptic Vase with a band of inscription on the sides; Part of an inscribed Saracenic Vase; and three other pieces 3/-/- Huntley 6
- 163 A Saint Maenas Costrel of unusual size; two Coptic Wafer Stamps; and eight early Crosses in varied materials; all found in Egypt 30/- Lawrence 11
- (8/-) 15. (164) A bronze reliquary Cross; parts of two others; and a Cross, all early Byzantine; an engraved Cross with double cross bar; and a small reliquary Cross 6
- (5/5/-) 12. (165) An early Byzantine Plaque with figure of Christ in relief; two Reliquaries of pressed horn; another in bronze; a carved boxwood Plaque; two bronze Plaques, all decorated with figures of saints; part of a Hanging Lamp with Cross; and a Crucifix 9
20. 166 (Seventeen Pilgrim Signs of lead, principally of the 14th Century on two tablets; and another of Saint Thomas, found in the Medway) Wings 3

(4/10/76)

- 167 A Viking Brooch, found in *Gottland*; four Saxon Brooches; and three Spindle Whorls 8

(9/1/-20)

- 168 Two Roman silver Armlets; a Fibula; a miniature Axe, and eight other pieces 12

(5/10/-25)

- 169 Three leaden Mortuary Crosses, 14th Century, found in *Smithfield*; an Apostle Spoon, 16th Century; the Bowl of another; two ivory rosary Beads with face of Christ on one side and a skull on the other; and four glass Phials 11

(4/10/-16)

- 170 A Coptic bronze Cross; two Coptic amulets; a pierced bronze Plaque; a Knife Handle, both 17th Century; a Fragment of Chain Mail; an Arrow Head, 15th Century; four Coin Clippings; and three other pieces 14

SECOND DAY'S SALE.

Thursday, February 21st, 1929.

ECCLESIASTICAL OBJECTS, ETC.

- 171 A fine Russian Triptych in a silver-gilt frame, the panels covered by pierced and engraved silver-gilt plaques; *probably early 17th Century*
- 172 Another with well painted panels, enclosed in a cloisonné case; and a Benetier of bronze-gilt, with lapis and agate panels, *17th Century* 2
- 173 Two Russian Triptychs; a Diptych; two Icons; and an odd Plaque; *some of the 17th Century* 6
- 174 A figure of Christ from a crucifix, of silver-gilt, *16th Century*; and another in bronze, *14th Century* 2
- 175 A finely carved figure of Christ in ivory (*arms missing*), *probably 16th Century*; and a 17th Century bronze Plaque, the descent from the cross 2
- 176 A very fine figure of Christ in copper, with champlevé enamel details, on ebonised stand; *circa, 12th Century, Hispano-Mauresque, from Burgos*
- 177 A bronze-gilt Plaque, St. Joseph of Padua, *circa 1540*; a pocket Shrine; a 17th Century silver-gilt Plaque; and another of a woman, *17th Century* 4
- 178 Part of a champlevé enamel Plaque; a gilt Mount, *both 13th Century*; a silver-gilt Plaque, *dated 1718*; and three others 6
- 179 An engraved silver Reliquary Set with a painted miniature of the Crucifixion, *16th Century*, containing a Byzantine silver plaque; a heart-shaped Reliquary with Crucifix and inscription engraved on the back; a silver Pendant containing the Virgin and Child, *both 17th Century*; an early silver Amulet; and two others 7

- 180 An early Russian Icon with pierced silver plaque in carved wood frame; and an Agnus Dei in frame, *dated 1750*
- 181 A pewter Chalice, *circa 1700, from the Bateman collection*; and another of the 15th Century, *found with a burial at Detling* 2
- 182 A fine bronze Figure of the Virgin and Child, $6\frac{1}{2}$ in. high, *German, late 15th Century*, on ebonised base
- 183 A Censer in latten, with tall conical lid, *17th Century*; and an Incense Boat in latten 2
- 184 A Censer in bronze, with tall lid having oblong openings, *15th Century*
- 185 An alabaster Figure of Saint John, with gilt decoration, *9 in. high*; and another of a figure holding a reliquary, with original colouring, *11 in. high, both 16th Century* 2
- 186 An alabaster Group of the Entombment; and another of the Virgin and Child; *both 16th Century* 2
- 187 A portable Altar in slate, with an incised cross at each corner, and one in the centre (*one corner restored*), in oak frame; *early Mediaeval, extremely rare*
- 188 A well carved ivory Figure of the Virgin and Child, $5\frac{3}{4}$ in. high; and a carved bone Handle, decorated with figures within arcades 2
- 189 An early Russian Panel, with figures of a saint in gold and colours, $9\frac{1}{2}$ in. by $7\frac{1}{4}$ in.
- 190 A Benitier in brass; a copper-gilt Pyx, *15th Century*; and an 18th Century Wafer Box, with needlework cover 3
- 191 A Chasse or Reliquary in latten, with conventional inscription and floral decoration, *6 in. long; 12th Century, rare*
- 192 A Triptych of painted wood, with scenes from the Nativity and Passion, *17th Century*; and two Fragments of 14th Century stained glass, *from Lincoln's Inn Chapel* 3

- 193 A very fine Pax decorated with painted enamel plaques, set in a chased gilt copper frame, *Italian, 16th Century*
[See ILLUSTRATION.]
- 194 Another of copper, with the subject chiselled in high relief, *Italian, 16th Century*
- 195 Another in copper gilt, *17th Century*; and a small specimen in bronze, *15th Century* 2
- 196 Another in copper, *Italian, 16th Century*; and the openwork plate from a small specimen 2

METAL WORK (ECCLESIASTICAL).

- 197 A 17th Century Monstrance in silver-gilt, the holder surrounded by cherub heads and rays and surmounted by a cross, on baluster stem and square base, $18\frac{1}{2}$ in.
- 198 Another, in gilt bronze, with heart-shaped centre surrounded by rays overlaid with figures of the Father and saints and set with pastes, $23\frac{1}{2}$ in.
- 199 A small silver Monstrance with horizontal cylinder, on baluster stem and circular base, $8\frac{1}{2}$ in.
- 200 Another, in bronze, the frame having a border of cherub heads, 21 in.
- 201 A Processional Cross, the reverse with full-length figure of the Virgin and Child, the stem with knop with six bosses, 20 in.; *16th Century*
- 202 Another, the reverse with bust of the Virgin, globular knop, $18\frac{1}{2}$ in.; *16th Century*
- 203 Another, of large size, the arms terminating in fleurs-de-lis and with large pomegranate knop, 31 in.; *16th Century*
- 204 A Ciborium, in gilt bronze, of chalice shape, plain, on hexagonal stem and domed and lobed base, $13\frac{1}{4}$ in.
- 205 Another, in gilt bronze, the cover and knop embossed with cherub heads, and the base with the instruments of the Passion, $11\frac{3}{4}$ in.

- 206 A RELIQUARY MONSTRANCE, in gilt bronze, with pear-shaped head, inset with crystals and having the original glass, on thin stem with fluted knop and circular base, 13 in.; *English, 14th Century*
** From the Hillingford collection.
- 207 A MONSTRANCE, in silver, circular body with four Corinthian columns, on barbed sexfoil base, 16 in.; *Venetian, c. 1580*
- 208 ANOTHER, in gilt bronze, the body formed as an hexagonal building with Corinthian columns, on stem with large knop and barbed sexfoil base, 14 in.; *Venetian, c. 1550*
- 209 A MONSTRANCE, of square lantern form with steeple top, on thin hexagonal stem with similar knop and foot, in bronze gilt, 13½ in.; *15th Century*
- 210 ANOTHER, with cylindrical glass body, held by four Gothic buttresses and with steeple top, on thin circular stem with knop ornamented with lozenges and hexagonal foot, in bronze gilt, 16¾ in.; *15th Century*
- 211 A MONSTRANCE, in silver and gilt bronze, of triangular shape, with relic in triangular container beneath a canopy supported by three columns and surmounted by a Crucifix with figures of the Virgin and St. John, 12½ in.; *German, 16th Century*
- 212 A Chalice in gilt bronze, the basement embossed with figures of saints, and inscribed under base: ECCLESIA SANCTI HILARI MARNATI, 1604, 9¾ in.
- 213 Another, of the same period as the last, but with silver bowl, embossed with the instruments of the Passion, 8 in.
- 214 A Chalice, with silver bowl and large knop with six bosses holding niello medallions of Christ, the Virgin and saints, barbed hexagonal base, 8½ in.; *late 16th Century*
- 215 Another, with silver bowl, hexagonal knop with six niello medallions of saints, and foot with others with emblems of St. Mark, St. Luke and St. John, 8 in.; *16th Century*
- 216 A 16th Century Chalice in gilt bronze, circular knop set with six pastes and foot with three niello medallions, 7½ in.

- 217 A CHALICE, c. 1500, in gilt bronze, $6\frac{1}{4}$ in., with hexagonal stem and knop, engraved with Gothic lettering, on sexfoil foot
- 218 A silver Paten, dated 1730, *probably North German*; and two others, gilt 3
- 219 A silver Censer with steeple top, $9\frac{3}{8}$ in.; 18th Century
- 220 A PEWTER CHALICE AND PATEN, the former with bucket-shaped bowl engraved with a band of leaves, on thick broadening stem with collar at top, flat double rim to base, engraved with a small toothed pattern; the rims of the paten are similarly engraved, $8\frac{1}{2}$ in.; c. 1600 2

METAL WORK (SECULAR).

- 221 A very fine copper Aquamanile with dragon-head spout and conical lid, the cylindrical neck has a notched band below, and the handle is spirally fluted, $9\frac{1}{2}$ in. high; *French, 14th Century (one foot restored), from the Fitz Henry collection*
- 222 A latten Vessel, the spout terminating in a dragon's head, the lid surmounted by a bird, $8\frac{1}{2}$ in. high; 14th Century, rare
- 223 A fine bronze Vessel, the spout in the form of a heraldic lion, 10 in. high; 15th Century
- 224 Another of rich colour, the globular body decorated with incised lines, on three feet; 14th Century, fine
- 225 Another in latten, with long tubular spout bridged to the body above, on three feet, 9 in. high; late 15th Century
- 226 An Alms Dish in latten with the Virgin and Child in the centre, surrounded by a band of inscription, 17 in. diam.; and another, deeper, with floral centre, surrounded by traces of an inscription; both early 17th Century 2
- 227 An Alms Dish, decorated with figures of Adam and Eve and an inscription, 17 in. diam.; and another with floral device and inscription, $14\frac{1}{2}$ in. diam., same period 2

- 228 A fine Alms Dish with conventional crown of thorns within the bowl, *bearing marker's mark on the rim*, 14½ in. diam.; 17th Century, *unusual*
- 229 A deep bowl in latten, with the Annunciation in relief within the bowl, 11 in. diam., 16th Century; and a small Dish, decorated with the sacred monogram, 17th Century 2
- 230 Another, decorated with conventional flowers, *circa* 1600; and a small specimen with floral and other decoration, 17th Century 2
- 231 A quadruple Hour-Glass in openwork latten frame; 17th Century, *rare*
- 232 A fine Handbell of tooled bronze, with figures of kings and shields of arms in relief on the body; *circa* 1600
- 233 A steelyard Weight with the arms of the Duke of Cornwall in relief, 12th-13th Century; a Horsebell, 17th Century; and a Figure from a Smoke Jack 3
- 234 Two iron Candlestands; a leather black Jack, *both* 17th Century; and two 16th Century Locks 5
- 235 A brass automatic Money Box; an Articulated Fish; and a Lid of a Warming Pan, inscribed and dated 1632 3
- 236 A fine Brazier or Chafing Dish with perforated sides; and another with projections on the rim; *both* 17th Century, *rare* 2
- 237 A fine pair of latten Altar Candlesticks with iron prickets, 14½ in. high; *circa* 1600 2
- 238 Another pair, with baluster shafts and tripod feet; 17th Century, *also fine* 2
- 239 Another pair on triangular bases; 17th Century, *also fine* 2
- 240 A smaller pair with winged cupids' heads on the base in relief; and a two-light Candlestick; *all* 17th Century 3
- 241 Three 17th Century latten Candlesticks; and two others, *early* 18th Century 5
- 242 A similar lot 5

- 243 An eight-light Chandelier in brass, surmounted by a man riding upon an eagle; *17th Century*
- 244 A pair of old gilt bronze Vases, 8 in., oviform, with wide lip, on foot 2
- 245 A 16th Century French iron Finial of a fleur-de-lis springing from two lion heads, with a cartouche of arms either side, painted and gilt, 7 in.; and another, 5 $\frac{3}{4}$ in., of a plain fleur-de-lis 2
- ** From the Fitz Henry collection.
- 246 A 17th Century iron Candle and Taper Stand, with foot and circular shelf in elmwood, 46 in. high
- 247 A japanned iron Tray, painted with Chinese figures, *oblong*, 30 in.

SILVER.

ALL AT.

- 247A A COLLECTION of six small castors of baluster form, one with chased ornamentation, *various dates, 18th Century*, two with odd covers, one modern, *wt. (all in) 17 ozs.* 6
- 247B A plain boat-shaped Inkstand with reeded edges and three cut-glass bottles, *London marks of 1818, wt. 16 ozs. 11 dwts.*; and a Monteith, *modern, 10 in. diam.*; *total wt. 52 ozs.* 5
- 247C A chased oval Mustard Pot, *London, 1800*, with spoon and blue glass liner; two Olive Spoons; a Punch Ladle; a Toddy Ladle; a Marrow Scoop; also a plated Snuffers and Tray, and a plated Cruet with four cut-glass bottles 15
- 247D A pair of George II circular Salt Cellars, on three feet, *London probably 1743*; and two other single Salt Cellars, *chased, 1763 and 1764; wt. 8 ozs. 5 dwts.* 4
- 247E A RARE MILK JUG formed as the figure of a cow; *London, 1760, wt. 4 ozs. 11 dwts.*

STAINED GLASS AND GLASS PICTURES.

- 248 A German 16th Century stained glass Panel, in grisaille and stain, of an emperor in his chariot, 8 in. by 9½ in.
- 249 A 16th Century stained glass Roundel, 9 in., in grisaille and yellow stain, of a seated female saint
- 250 A stained glass Oval of the Mater Dolorosa before the Cross, 9¼ in.; another, *circular*, 9½ in.; and an Oval of a coat-of-arms, dated 1662 3
- 251 A fine glass Picture of Lord Buckhurst and his sister, *after Kneller*, 9½ in. by 13½ in.; in old frame
- 252 Another of Charles Napier, *after J. Sommer*, 9½ in. by 12½ in.; in old frame
- 253 A pair of small glass Pictures of Charles I and Henrietta Maria, *oval*, 4 in.; in old walnut frames 2
- 254 A glass Picture of a cottage fireside scene; and two others; *Italian*, the latter painted on glass 3

POTTERY, ETC.

- 255 A green glazed Pitcher; two other Jugs; and a Costrel; *all 15th Century, found in London* 4
- 256 Four Costrels with green glaze; and another with red-brown marbled glaze; *all 16th Century, found in London* 5
- 257 Three ale Jugs; a Money Box; and a Salt Cellar, *rare; all 16th Century, London* 5
- 258 A tiger ware Jug with a loose 16th Century silver mount attached (the mount has a later date (1750) added)
- 259 Two Jugs, *13th Century*; another, *14th Century*; a stone-ware Jug, *16th Century*; and three others, *17th Century* 8
- 260 A majolica Plaque with coat-of-arms, *16th Century*; two armorial Tiles, and two others, *14th Century*; two others of delft, *16th Century*; and one other 8

- 261 A fine set of Siegburg stoneware Table Ornaments, consisting of five objects in the form of male and female figures holding salt cellars and candle sconces; *early 18th Century, rare* 5
- 262 Two Palissy ware oval Dishes with panelled rims, one, $10\frac{3}{4}$ in., moulded with The Baptism of Christ, and the other, $8\frac{1}{4}$ in., with a figure of Justice 2
- 263 A FINE PALISSY WARE DISH, *oval*, 12 in., moulded with a scene of Henri IV of France and his family
- 264 ANOTHER, $11\frac{3}{4}$ in., moulded with Bacchic figures
- 265 An Italian majolica Panel with a scene of the Crucifixion in high relief, coloured, signed on the back "M. 1764." $14\frac{1}{2}$ in. by 17 in.
- 266 A pair of Persian Tiles with a hawking figure on horseback, 7 in.; a Chinese blue and white Plate; three trencher Salt Cellars; and two others 8

CHINESE PORCELAIN.

- 267 An old celadon Dish with fluted sides, $13\frac{1}{2}$ in.; and another, plain, with flat rim, $16\frac{1}{4}$ in.
- 268 A Ming Figure of a Kylin, in green and orange, 7 in.; and a lotus Stand with two figures in green, orange and aubergine, $4\frac{1}{2}$ in. 2
- 269 A Figure of Kwan-yin with child on her knee, in green and aubergine, *K'ang-hsi*, $7\frac{1}{4}$ in., with hexagonal lotus Stand, 4 in. 2
- 270 A pair of "famille verte" Figures of a Child holding a pot of lotus, $10\frac{3}{4}$ in., *K'ang-hsi* 2

BLANC DE CHINE FIGURES.

- 271 A Figure of a seated Cock, 9 in., *faulty*; a seated Kylin with paw on a ball, $7\frac{1}{2}$ in.; and another, standing in an attitude of defiance, $10\frac{1}{4}$ in. long 3
- 272 A pair of small Figures of Kwan-yin, seated, 5 in.; and another, seated on a kylin, 8 in. 3

- 273 A seated Figure of Kwan-yin, 8 in., with wood stand; and another, holding a child, Sung-tse type, 8 in. 3
- 274 Two others, of Sung-tse type, one with remains of lacquer gilding, 8 $\frac{3}{4}$ in. and 9 $\frac{3}{4}$ in. 2
- 275 Two others, nearly matching, holding Chen Tsai, wave bases, 13 $\frac{3}{4}$ in. and 14 in. 2
- 276 A Ko ware seated Figure of Kwan-yin, 5 $\frac{1}{2}$ in., 17th Century; and another, with brown crackle, holding Chen Tsai, with attendants below, 9 in. 2
- 277 Two others, of unusual standing type, wave bases, one with brown crackle, 17 $\frac{1}{2}$ in. 2
- 278 Two others, 14 in. and 15 $\frac{3}{4}$ in., one without veil and with lotus on base 2
- 279 Two others, both with Chen Tsai, one without veil, 14 $\frac{3}{4}$ in., and the other with curious short skirt, 17 in.
- 280 A Figure of Kwan-yin, of Sung-Tse type, with acolytes at base, 15 in.; and another, of Tantra form, 10 $\frac{1}{4}$ in., faulty
- 281 Another, of Sung-tse type, in creamy paste, 10 $\frac{1}{4}$ in.; 17th Century
- 282 Two others, Dyani Mudra, 9 $\frac{3}{4}$ in., and the other with dove at side, 9 $\frac{1}{2}$ in., the acolytes missing; 17th Century 2

CASKETS AND BOXES.

- 283 A Chinese lacquer Cabinet enclosing various drawers, inlaid with mother-o'-pearl, 20 $\frac{1}{2}$ in. wide
- 284 An Italian 16th Century Casket with domed top and gilt-bronze mounts, covered in crimson velvet, 9 $\frac{1}{2}$ in.; and a late Stuart Trunk covered with tooled leather, 18 in. 2
- 285 A 16th Century Casket in alabaster and ebonised wood, of architectural design with round headed arches and baluster columns, 13 in.

- 286 A 16th Century Casket in wood, domed lid with slanting sides, gilt-bronze mounts, $10\frac{1}{2}$ in.; and an interesting 17th Century iron Money Box, of upright shape, $4\frac{1}{2}$ in. high 2
- 287 Two 16th Century Caskets, one with semi-circular and the other with semi-octagonal top, both with iron mounts and covered with cuir bouilli, $7\frac{1}{4}$ in. 2
- 288 Two plain steel Caskets with domed top, $4\frac{1}{8}$ in. and $6\frac{3}{8}$ in.; 16th Century 2
- 289 Two small square steel Caskets, with radiating locks in the lids, the one engraved with figures and the other with bird arabesques, $4\frac{3}{8}$ in. and $4\frac{7}{8}$ in.; 16th Century
- 290 A steel Casket with domed top, engraved with panels of arabesques within floral borders, 6 in.; 16th Century
- 291 Another, square, with curved top, the side engraved with the arms of a cardinal, 6 in.; 17th Century
- 292 A Casket with domed top, covered in cuir bouilli, incised with an inscription on a ribbon, the ends studded with iron nails, $9\frac{1}{2}$ in.; 16th Century
- 293 Two others, with fluted tops and a secret recess in the lids, covered with cuir bouilli, incised with conventional patterns, $6\frac{1}{2}$ in. and 7 in.; early 16th Century 2
- 294 A fine steel Casket with panels of diaper-work, fine Gothic lock and hasp, 6 in.; French, 15th Century
- 295 Another, with curved top, of very similar character to the last, $5\frac{1}{2}$ in.

MISCELLANEOUS WORKS OF ART.

- 296 A Walking Stick with ivory head, decorated with silver piqué, and initials I. H. (16)98; fine
- 297 Another, similar in style, with conventional decoration; temp. Charles II
- 298 Another with pear-shaped head in ivory, with figure decoration, late 17th Century; and another with ivory head, 18th Century 2

- 299 A fine Chinese cloisonné Ewer, 11 in. high; and a rosewater Vase in chased copper, 17th Century 2
- 300 An Oriental Chalcedony Bowl, decorated with plum sprays, on stand; a carved Bird in similar material, on stand; and a small Dish 5
- 301 A case of Surgical Instruments; a shagreen Case; a box of 17th Century Coin Weights; two armorial Shields; and a Reproduction of a Limoges enamel Candlestick 6
- 302 A Persian Bowl, 15th Century; and two Delft Bowls 3
- 303 An old lacquer Shrine, 24 in. high
- 304 A Buddha in wood, lacquered and gilt, 16 in. high; and a Box, inlaid with mother-o'-pearl 2
- 305 A well modelled Chinese bronze Figure of a Priest, 12 in. high; probably of the Ming period
- 306 A Chinese brass Temple Vase with kylin handles, 7 in. high; and a bronze Bowl 2
- 307 An old copper gilt Figure of a seated Buddha, 7½ in. high; and a fine Indian copper gilt Figure, 4 in. high 2
- 308 A marble Statuette of a Female Figure in 15th Century dress, modern, 25 in.

WOOD CARVINGS.

- 309 Two well carved Cherub Heads in oak, 16 in. wide, late 17th Century; and another, smaller, made into a bracket 3
- 310 A carved wood Figure of the Virgin and Child, with traces of gilding, 17 in. high; 15th Century, from the Radford collection
- 311 A similar group, on pedestal base, 21 in. high; 16th Century
- 312 A Figure of a Saint, 11½ in. high, 15th Century; and another of the Virgin and Child (restored), probably 14th Century; on oak bases 2

- 313 A Figure of a Monk, $14\frac{1}{2}$ in. high; and another of a Man holding the figure of the Virgin and Child in his arms; both 15th Century 2
- 314 A Figure of St. Christopher in 14th Century costume, 15 in. high; and a modern Figure of the Virgin, $16\frac{3}{4}$ in. high 2
- 315 A well carved oak Panel of a Saint; and another, probably a cooper's sign, 17th Century 2
- 316 A well carved Figure of the Virgin and Child, 9 in. high; on ebonised stand; French, early 16th Century
- 317 An oak Carving of a Female Saint holding the Virgin and Child and a book in her arms, $11\frac{3}{4}$ in. high, on base, 16th Century; and another of the Virgin and Child, 17th Century 2
- 318 A well carved Figure of a Saint holding the Virgin and Child and a book, with original gilding and colour, in fine condition, late 16th Century; and a Figure of a Monk 2
- 319 A large carved wood Figure of the Virgin and Child with original colouring, 28 in. high; early Mediaeval, from the Radford collection
- 320 Another of a Female Saint with traces of gilding on the robe, 22 in. high; 15th Century, Radford collection
- 321 A well carved Figure of a Monk in boxwood, 8 in. high, 17th Century; and another of the Virgin and Child, 16th Century, also of good work 2
- 322 A Figure of the Virgin and Child, 17th Century; a wooden bracket, from Colchester, 17th Century; a Figure of a Woman; and two Obelisks containing relics 5
- 323 A Carving in oak of Adam and Eve; another of two Cupids on a bracket, both 17th Century; and a well carved Head of a Woman, one side of the face showing the skull 3
- 324 A Benetier with well carved frame; and a Tabernacle in gilt-wood, $15\frac{1}{2}$ in. high; both 17th Century 2
- 325 A large wood Figure of Buddha, lacquered and gilt, 26 in. high

TEXTILES AND NEEDLEWORK.

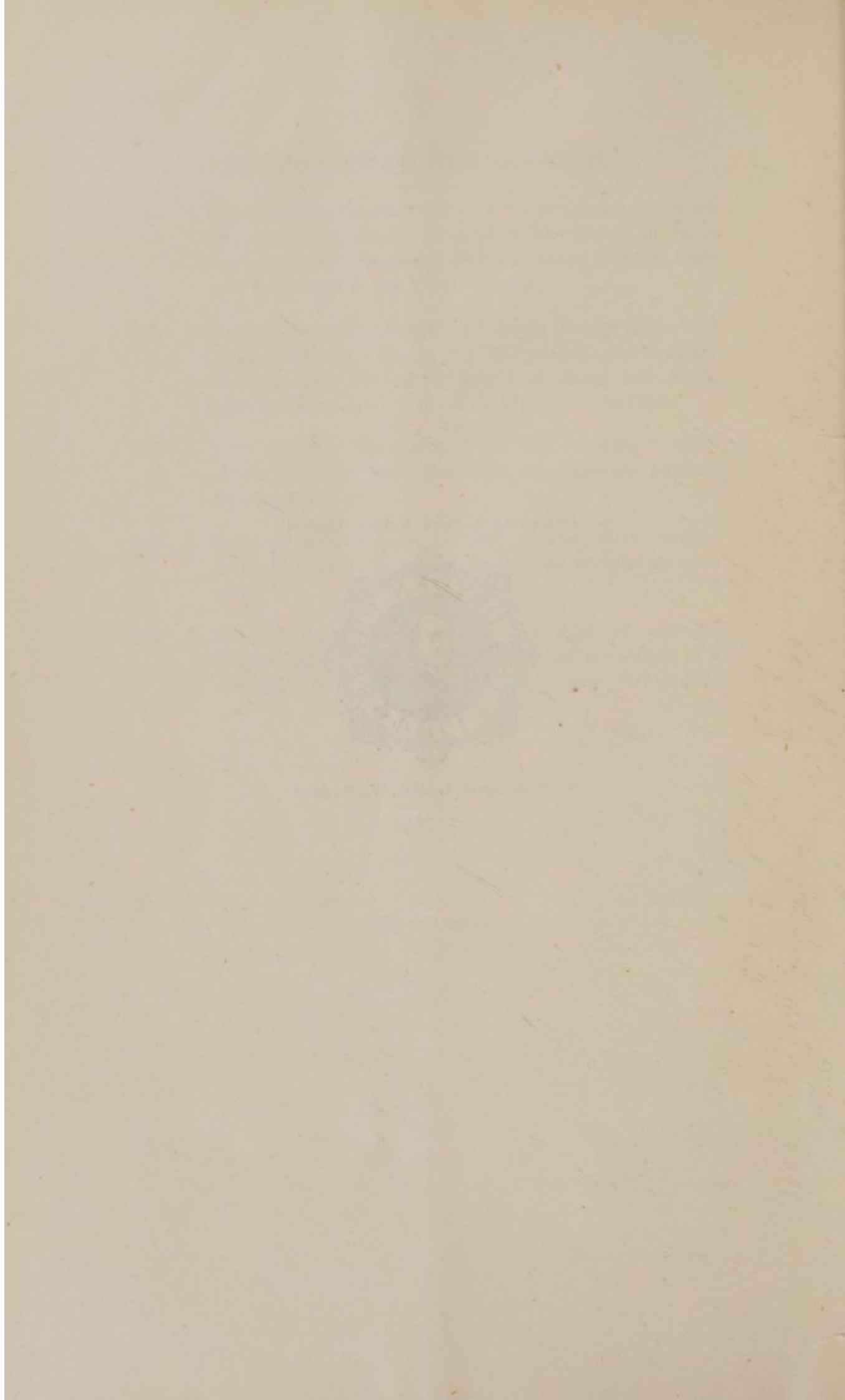
- 326 A CHARLES I NEEDLEWORK PANEL, in flat and moss stitch on satin, worked with incidents in the history of Jacob on a ground of houses, a fountain, trees, animals, birds and flowers, 17 in. by 13 in., framed
- 327 A SAMPLER, very finely worked by "*Sarah Harvey, in the 12th Year of her age, July the 3, 1729,*" with the tables of the Commandants flanked by figures of Moses and Aaron within a floral border, 17 in. by 12½ in., in old frame
- 328 A 17TH CENTURY HANGING of red silk, worked in chain stitch in white and yellow with an arabesque pattern, 9 ft. by 6 ft. 6 in.
- 329 A Panel of gold brocade on grey ground, 20 in. square, framed; and a 17th Century Sword Belt in faded crimson velvet 2
- 330 A fine old Italian Pillar Hanging of appliqué work on crimson satin with floral scrollwork and medallions of a cardinal's arms, gold braid edges, 11 in. wide, 104 in. long

END OF SALE.

Printed by J. Davy & Sons Limited



8-9, Frith-street, London, W., England



VALUATIONS.

Messrs. SOTHEY & Co. make Valuations for Probate, Insurance, etc., at 1 per cent. with a minimum fee

In London	£5	5	0
In the Country	£10	10	0
Together with Travelling Expenses.							

INSPECTIONS.

Properties are inspected and Owners advised with view to a Sale by Auction, at a fee

In London	£2	2	0
In the Country	£3	3	0
Together with Travelling Expenses.							

NOTICES OF SALES.

NOTICES OF ALL SALES APPEAR IN THE FOLLOWING PAPERS :

<i>Mondays</i>	Daily Telegraph; Morning Post.
<i>Tuesdays</i>	Times.

NOTICES OF SPECIAL SALES APPEAR IN THE FOLLOWING PAPERS :

A. ENGLISH.

<i>Thursdays</i>	...	Times Literary Supplement; Scotsman; Glasgow Herald; and Western Mail.
<i>Saturdays</i>	...	Country Life; Sphere; Graphic; Illustrated London News; Field; Publishers' Circular; Clique;
and <i>Monthly</i> in the Burlington Magazine; Connoisseur; Apollo; London Mercury; and Pantheon.		

B. FOREIGN.

Journal des Arts (Paris).	New York Times.
Gazette de l'Hotel Drouot (Paris).	New York Evening Post.
Renaissance de l'Art Français.	Boston Evening Transcript.
American Art News.	International Studio.
Chicago Daily News.	

BAKER, LEIGH & SOTHEBY.

THE FIRM COMMENCING WITH SAMUEL BAKER IN

1744.

SOTHEBY AND CO.

1929.