

**Sales catalogue: Sotheby's**

**Publication/Creation**

11 December 1911

**Persistent URL**

<https://wellcomecollection.org/works/svwqcj2u>

**License and attribution**

This work has been identified as being free of known restrictions under copyright law, including all related and neighbouring rights and is being made available under the Creative Commons, Public Domain Mark.

You can copy, modify, distribute and perform the work, even for commercial purposes, without asking permission.



Wellcome Collection  
183 Euston Road  
London NW1 2BE UK  
T +44 (0)20 7611 8722  
E [library@wellcomecollection.org](mailto:library@wellcomecollection.org)  
<https://wellcomecollection.org>

WA/Hmm/cm/sal/20/295

44

SOTHEBY, WILKINSON & HODGE,  
WELLINGTON STREET, STRAND, LONDON.

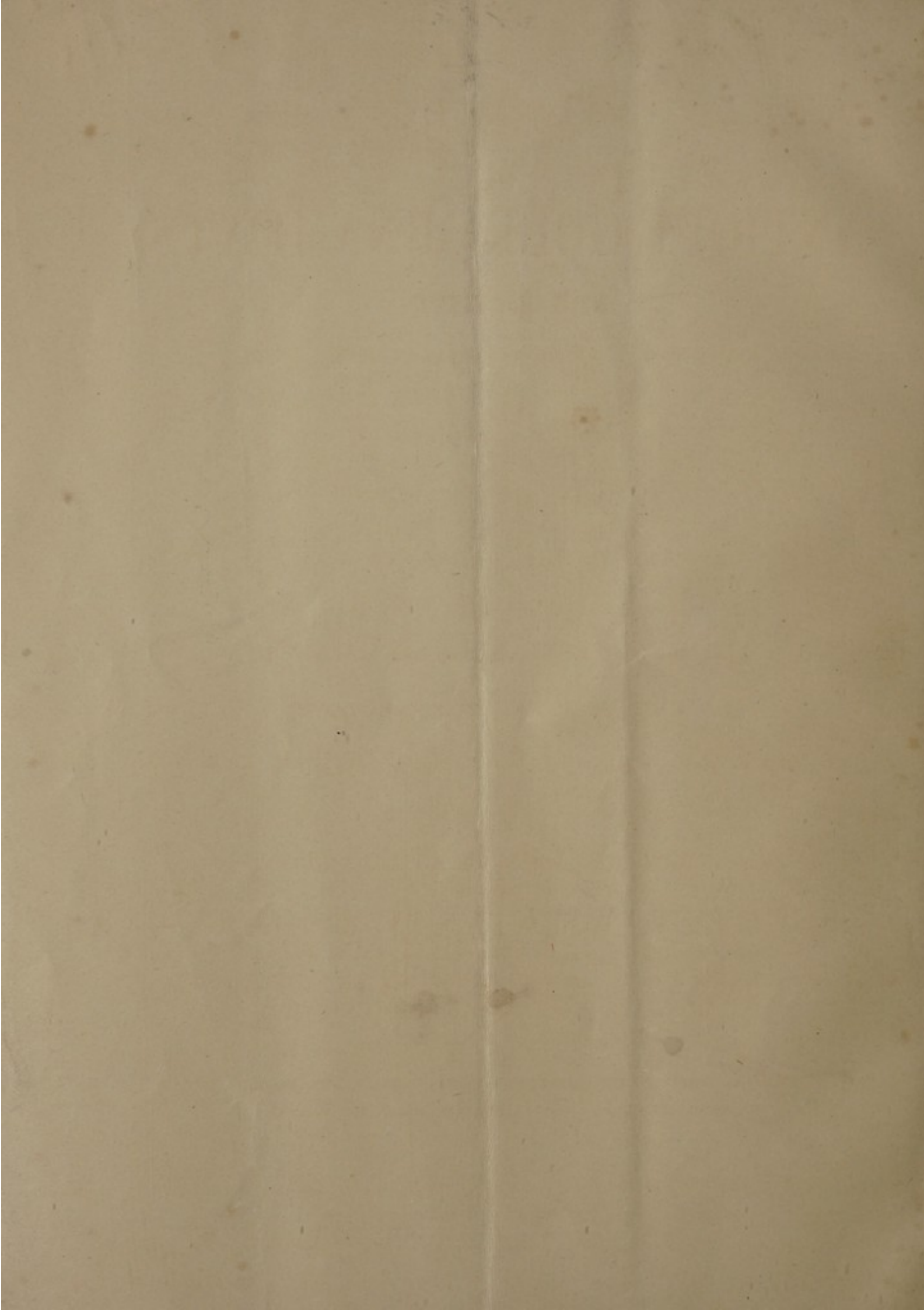
CATALOGUE  
OF  
ANCIENT  
**Indian Gold Ornaments**  
AND POTTERY  
*DISCOVERED IN SOUTH AMERICA.*

Day of Sale.  
MONDAY, THE 11TH OF DECEMBER.

1911.

ILLUSTRATED COPY.





*Sale*  
*Lanes 292*  
*Porter 4*  
CATALOGUE

OF

4.0.0  
4  
4  
4.0.8

# ANTIQUÉ GOLD ORNAMENTS

## and Pottery

RECOVERED FROM LAKE GUATAVITA, IN THE REPUBLIC OF  
COLOMBIA, SOUTH AMERICA,

DURING THE OPERATIONS OF

"CONTRACTORS LTD." OF 65, LONDON WALL, E.C.

AND OTHER PROPERTIES

INCLUDING

A PAIR OF EGYPTIAN GOLD BRACELETS,

*AN ANTIQUE MARBLE BUST OF SENECA,*

ANTIQUÉ GOLD RINGS AND ROMANO-SYRIAN GLASS.

---

WHICH WILL BE SOLD BY AUCTION,

BY MESSRS.

SOTHEBY, WILKINSON & HODGE

*Auctioneers of Literary Property & Works illustrative of the Fine Arts.*

AT THEIR HOUSE, No. 13, WELLINGTON STREET, STRAND, W.C.

On MONDAY, the 11th of DECEMBER, 1911,

AT ONE O'CLOCK PRECISELY.

---

MAY BE VIEWED TWO DAYS PRIOR. CATALOGUES MAY BE HAD.

DRYDEN PRESS: J. DAVY AND SONS, 8-9, FRITH-STREET, SOHO-SQUARE, W.



## CONDITIONS OF SALE.

- I. The highest bidder to be the buyer; and if any dispute arise between bidders, the lot so disputed shall be immediately put up again, provided the auctioneer cannot decide the said dispute.
- II. No person to advance less than 1s.; above five pounds 2s. 6d., and so on in proportion.
- III. In the case of lots upon which there is a reserve, the auctioneer shall have the right to bid on behalf of the seller.
- IV. The purchasers to give in their names and places of abode, and to pay down 10s. in the pound, if required, in part payment of the purchase-money; in default of which the lot or lots purchased will be immediately put up again and re-sold.
- V. The sale of any lot is not to be set aside on account of any error in the enumeration of the numbers stated, or errors of description.
- VI. The lots to be taken away, at the buyer's expense, immediately after the conclusion of the sale; in default of which Messrs. SOTHEY, WILKINSON & HODGE will not hold themselves responsible if lost, stolen, damaged, or otherwise destroyed, but they will be left at the sole risk of the purchaser. If, at the expiration of Two Days after the conclusion of the sale, the lots are not cleared or paid for, they will then be catalogued for immediate sale, and the expense, the same as if re-sold, will be added to the amount at which they were bought. Messrs. SOTHEY, WILKINSON & HODGE will have the option of re-selling the lots uncleared, either by public or private sale, without any notice being given to the defaulter.
- VII. Upon failure of complying with the above conditions, the money required and deposited in part of payment shall be forfeited, *and if any loss is sustained in the re-selling of such lots as are not cleared or paid for, all charges on such re-sale shall be made good by the defaulters at this sale.*

---

*Gentlemen, who cannot attend this Sale, may have their Commissions faithfully executed by their humble Servants,*

SOTHEY, WILKINSON & HODGE,

13, Wellington Street, Strand, London.

Telegraphic Address: "Abinitio London." Telephone: 3852 Gerrard.

---

COMMISSIONS CANNOT UNDER ANY CIRCUMSTANCES BE ACCEPTED BY TELEPHONE.

## INTRODUCTION.

---

LAKE GUATAVITA, the largest and most important of the five sacred lakes of the Chibcha Kingdom, is situated on the high plateau of the Colombian Andes, and the scene, in prehistoric times, of many religious ceremonies which took place about twice a year, when the chiefs with their high priests threw rich offerings of gold and precious stones into the lake, and the people congregated round its banks threw in their smaller contributions of the same kind, backward, over their shoulders, to propitiate the divinities inhabiting its waters. Many attempts have been made to recover some of the treasure hidden at the bottom, but with little success, until at last an English company has succeeded in draining the lake, and is now at work removing the mud of centuries which covers the true bottom, into which the treasure was thrown, and during this work, the articles included in the present sale catalogue have been found imbedded in the mud pressing in from the sides towards the centre, forming the first indications of the hoard below.

All the gold ornaments, and the great mass of the pottery are of the true Chibcha type, and extremely interesting as examples of the arts and crafts of the people before the arrival of the Spaniards.

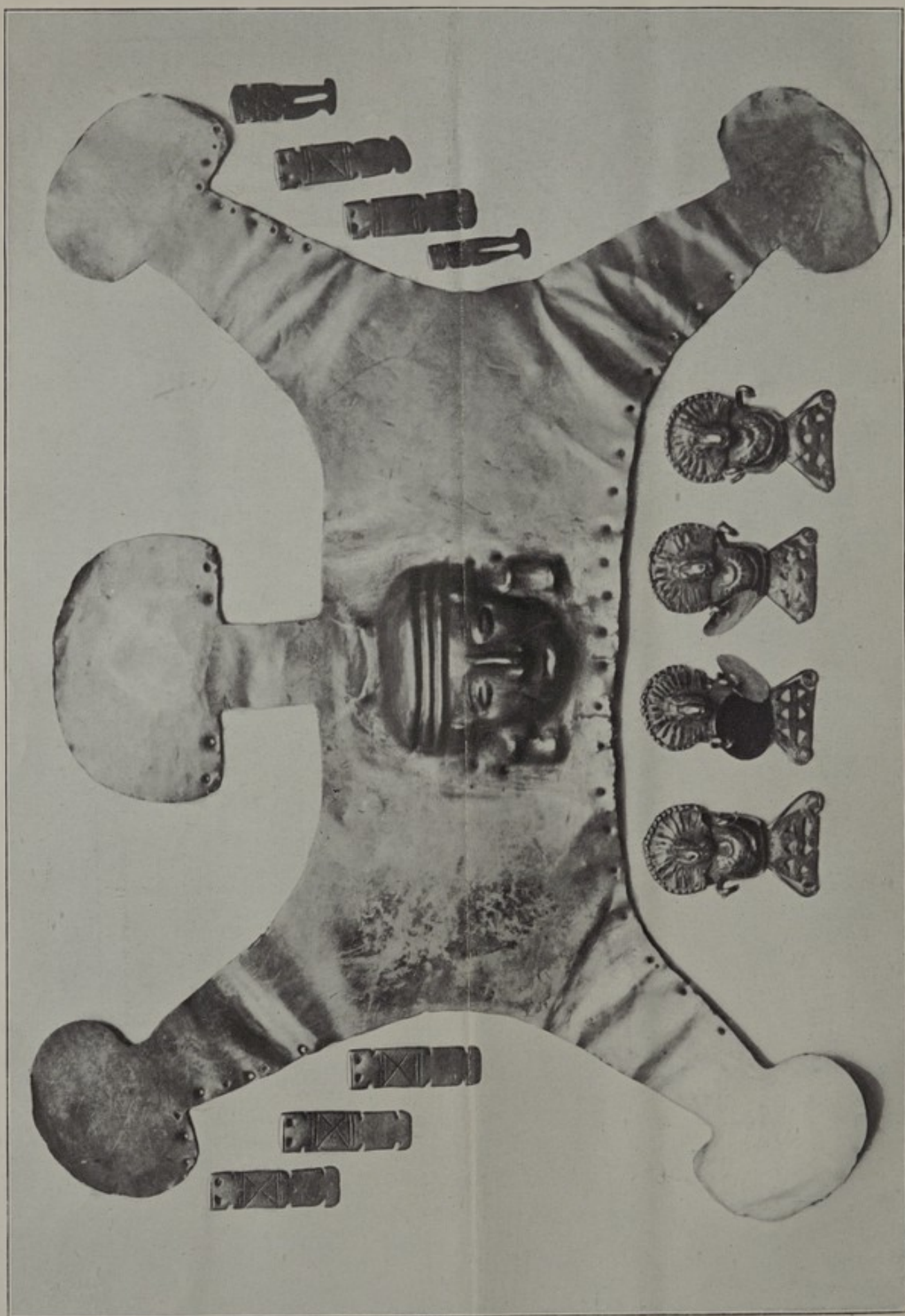
---













CATALOGUE  
OF  
CHIBCHA GOLD ORNAMENTS  
AND OTHER ARTICLES,  
RECOVERED FROM  
THE SACRED LAKE GUATAVITA,  
*in the Republic of Colombia, South America.*

LOT 1.



1 BREASTPLATE of pure beaten gold, in the form of a dried animal's hide, with an upright piece in the centre lengthwise for its support, and with a repoussé mask of a warrior's head in high relief; around parts of the outer edges are perforations for attaching it to some material; *wt. 8 ozs. 10 dwts. 9 grs.*

*See Illustration. Plate I.*

- 2 A small bean-shaped Breastplate of beaten gold, with repoussé ornament of two series of circles with centric bosses, the circles joined in the centre, and flowing into lines following the shape of the plate; *wt. 1 oz. 2 dwts. 6 grs.*

*See Illustration. Plate II.*

- 3 A Neck Ornament in gold, beaten out from a small casting which forms the upright pierced centre piece for suspension, and which is flanked by two small volutes, the pattern being in relief on both front and back; *wt. 1 oz. 10 dwts. 15 grs.*

*See Illustration. Plate II.*

60.  
Pearman

5. ?

10  
Pearman



- 4 A gold Snake, cast in three coiled tapering flat rings, untrimmed after casting, with the head welded on, standing erect with tongue protruding. A very rare and fine piece of workmanship, showing how the double twisted wires following the outlines of the body were laid in the mould previous to casting, portions of which have been fused, and some even absorbed in the casting; at intervals round the body there are seven upright loops, and others at the sides of the head; *wt.* 1 oz. 12 dwts. 16 grs.

*See Illustration. Plate II.*

15. 5 Figure of a Chibcha Goddess in fine gold, probably Bachué (Furachogue) the mother of her race, the "good woman" who taught her descendants order, obedience to the laws, and good manners. She is here represented with a child emerging from her navel (fecundity), holding in her right hand a sceptre crowned by two pelicans (birds inhabiting the lake) indicative of peace and goodwill, and supporting with her left hand a vase hanging from her shoulder; she wears a radiated headdress, to which certain pendants are attached, including two hands, denoting power. All the outlines of the body, its features and ornaments are in raised wire, which laid in the mould have become attached in the casting; *wt.* 1 oz. 14 dwts. 15 grs.

\* \* In Chibcha mythology, she is supposed to have risen from a small lake near Iguague with a man child, populated the district, and disappeared again into the lake, both turning into serpents.

*See Illustration. Plate II.*

- 6 The Head of a Sceptre, probably carried by the Guatavita, or Head Priest of the Chibchas, cast in fine gold, the upper part perforated in a double row of lozenge design, set round with double twisted wires in relief, laid in the mould before casting; loops at the corners, two with loose ornaments attached, and surmounted by two pelicans welded on, and a projecting upright piece, the top of which has been broken off; *wt.* 1 oz. 5 dwts. 15 grs.

*See Illustration. Plate II.*

- 7 A Staff or Sceptre, cast in fine gold, with eleven loops attached to four ribs on the shaft, and small square perforated pendants attached to the loops. In the casting most of the pendants are fixed, having become fused at some point to either the shaft or the loops, and not been cut away, but some are loose, a very curious and interesting piece; *wt.* 1 oz. 2 dwts. 5 grs.

*See Illustration. Plate II.*

45.  
Perman

31.  
Meddowland

X

18.  
Cannonhead

7.  
Med Cannon









- 8 A gold Pin surmounted by a bird worked in gold wire ; and a Piece of gold Wire in form of a hairpin ; *wt.* 7 dwts. 11 grs. (2)

*See Illustrations. Plate II.*

- 9 A rough Casting in fine gold, probably a volute ear ornament for the high priest, similar to those found on divinities, in which the wires laid in the mould have fused in with the metal background for the design ; *wt.* 1 oz. 1 dwt. 11 grs.

*See Illustration. Plate II.*

- 10 A Warrior's or Cacique's hemispherical Headpiece, a sort of skull cap in thin beaten gold, pierced with holes in the front on which to hang the forehead totem ; *wt.* 5 ozs. 17 dwts. 5 grs.

- 11 A small solid gold Pendant, the figure of a man in the sitting posture of the tomb, with hands drawn over his breast, probably representing Death ; the sides may have represented a skeleton, but are worn very smooth ; *wt.* 1 oz. 1 dwt. 6 dwts.

*See Illustration. Plate II.*

- 12 Four gold Pendants from a neck ornament, each shaped as a tortoise-headed figure with radiated head dress, two hooks in lieu of arms, and a spread out perforated tail piece which may be intended for a bird's tail ; one of the figures is complete with two gold flat discs attached to the hook like arms ; another has one such disc, the other two are minus the discs ; *wt.* 2 ozs. 5 dwts. 22 grs. (4)

*See Illustration. Plate I.*

- 13 Seven gold Charm Pendants, similar to others being worn round the necks of gold and pottery figures, two shaped as human figures, and five with human faces (much worn) at the top of narrow bands of gold with crossed line ornamentation ; a gold Hand Pendant ; a gold Bead ; and a Fragment ; *wt.* 19 dwts. (10)

*See Illustrations of Pendants. Plate I.*

- 13A Three gold Charm Pendants, one as a human figure, and the other two with human faces, one much worn on one side as having been used for scraping the skin ; *wt.* 10 dwts. 20 grs. (3)

- 14 A gold Nose Ring, of somewhat elaborate design, with radiating bars terminating in tiny balls ; *wt.* 7 dwts. 20 grs.

*See Illustration. Plate II.*

3. 9.

4. *hammered*

7. *Severus*

7. *Med Banks*

18. *Perman*

4/10/7 *Perman*

3/15/7 *Perman*



- 15 Three hollow gold Nose Rings, various sizes; *wt.* 13 *dwt.* 15 *grs.* (3)

*See Illustrations. Plate II.*

- 15A Three hollow gold Nose Rings, and a small Nose Ring shaped as a half oval, in flat beaten gold; *wt.* 18 *dwt.* 6 *grs.* (4)

- 16 A Bowl or Drinking Cup of hammered fine gold; *wt.* 2 *ozs.* 17 *dwt.* 10 *grs.*

*See Illustration. Plate III.*

- 17 Two gold Bowls, similar to the foregoing, but smaller; *wt.* 3 *ozs.* 1 *dwt.* 11 *grs.* (2)

- 18 A Headband of plain beaten gold, the sign of a married man; *wt.* 1 *oz.* 14 *dwt.* 14 *grs.*

*See Illustration. Plate III.*

- 19 Another Headband, of similar construction; *wt.* 1 *oz.* 17 *dwt.* 7 *grs.*

- 20 A writhing Snake with a human head bearing two triple horns, the body cast in two pieces and welded together, the head also welded on; the back ornamented with a faint scrolled device; gold and copper alloy; *wt.* 1 *oz.* 3 *dwt.* 14 *grs.*

*See Illustration. Plate III.*

- 21 Another Snake, of similar style, with somewhat human formed head, protruding tongue, a long central horn and shorter ones at each side; the body engraved with long lines and short dents; gold and copper alloy; *wt.* 11 *dwt.* 3 *grs.*

*See Illustration. Plate III.*

- 21A Another small Snake, in fine gold, cast in one piece; *wt.* 2 *dwt.* 15 *grs.*

- 22 A number of gold fragments of Breastplates, similar in design to No. 2; *wt.* 3 *ozs.*

- 23 A Copper Pin, the head of the stem with design of a human head on one side, surmounted by two birds facing each other

*See Illustration. Plate II.*

- 24 A Tortoise, carved in red jasper; a Bird, in amber, both drilled for wear as Totems; an Idol, and a Mask, both carved in soapstone (4)

*See Illustrations at the corners of Plate II.*

3. Med Bank  
3/10/18  
18. perman

20.  
4/10 - Sepman

3/10 -

12 -

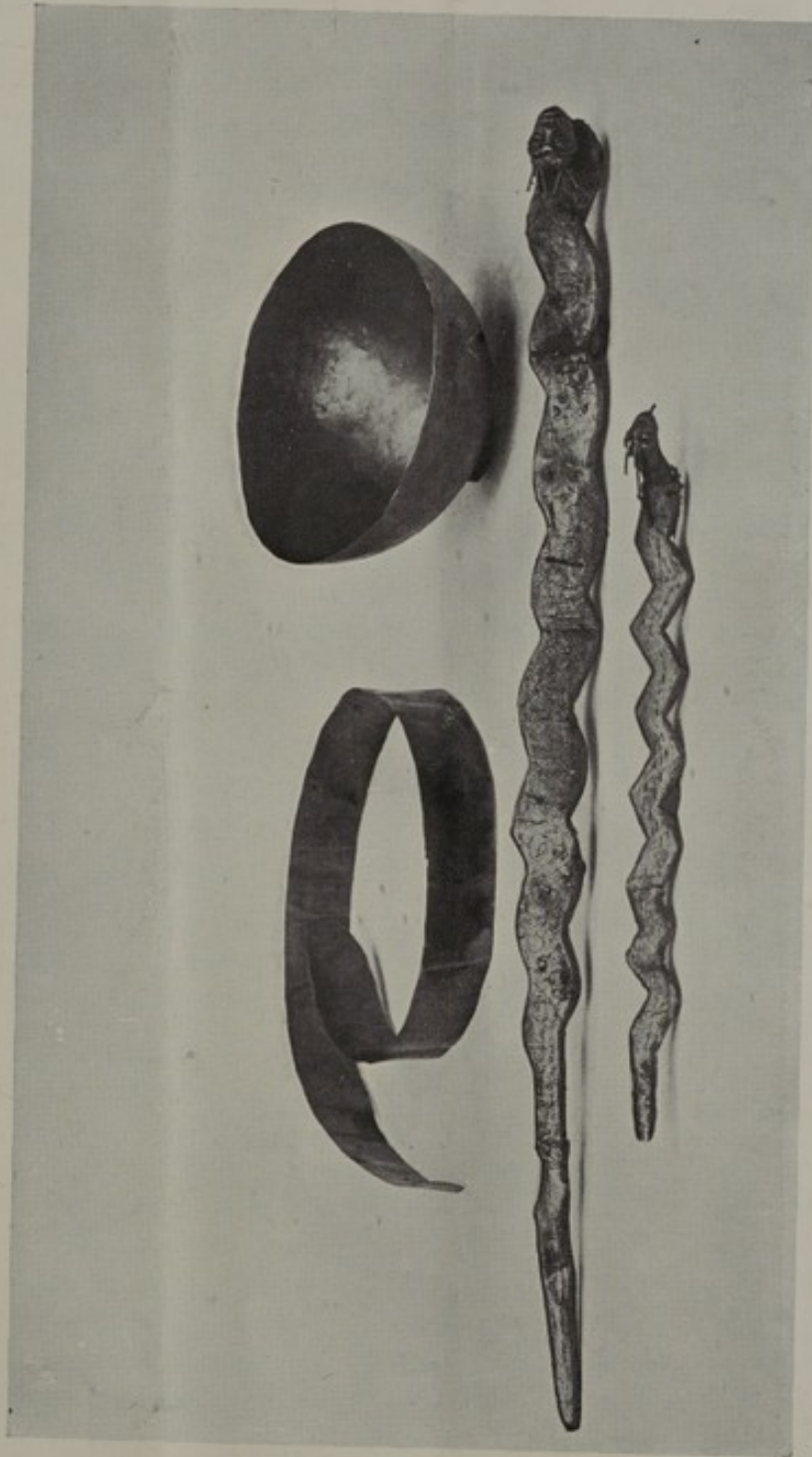
6 -

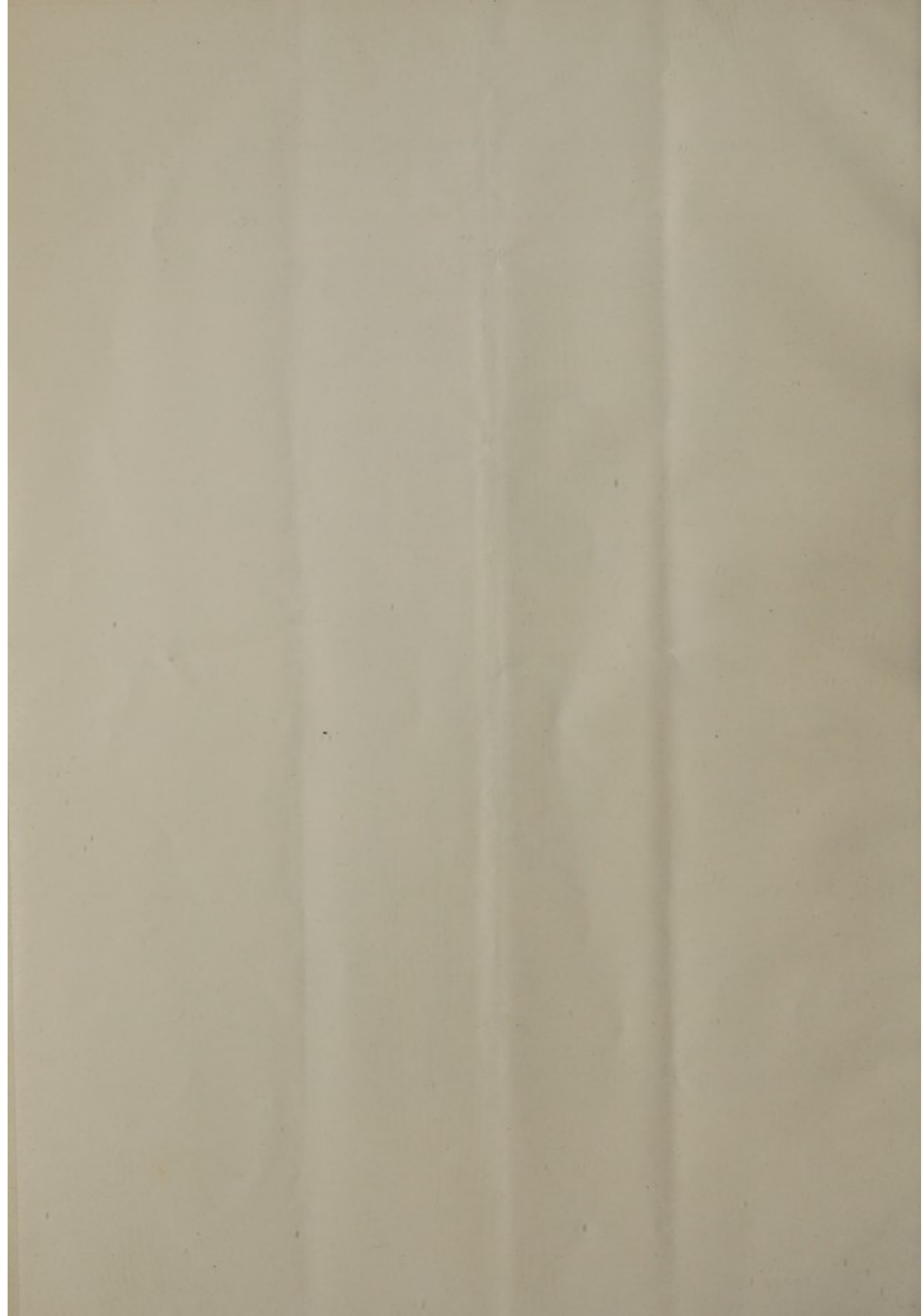
2. 1/2 3 -

4/10 - Med Bank

40/ Magp

3/5 -







- 25 A Totemistic Bird, in steatite; three Ornaments, in cornelian; two Beads, also in cornelian; a large Bead, curiously carved; a curious Bead, in emerald; three other uncommon Beads, and two other pieces (14) X
- 26 Eleven Beads, in emerald matrix, and an unknown Implement (12)
- 27 Two Necklaces of finely graded cornelian beads, and two Wristlets, in all 107 beads (4)
- 28 A Necklace and three Wristlets, etc., of cornelian beads, in all 98 beads (6)
- 29 One hundred and twenty-eight large and small Beads, in amber, or some other similar resinous substance (128)
- 30 Six strings of hard Stone Beads, of compressed spherical form (5)
- 31 A large quantity of large Stone Beads, chiefly cloritic slate and steatite
- 32 Three curious Shuttles, one in steatite, one shell, and the third in pottery, *imperfect* (3)
- 33 Two stone Axe-heads of the common Tobago type, but found in the Lake of Guatavita (2) X

## POTTERY.

*The following items are specimens of a class of pottery peculiar to the Sacred Lake of Guatavita, having been made almost exclusively for the reception of the gold dust, nuggets, ornaments and precious stones which were thrown into the lake as offerings, and are quite distinct in character from the vases and other objects found in the burial places of the surrounding country. There appear to be no specimens of this class in our public museums at present.*

- 34 The upper part of a globular Vessel, on which is a representation of the Guatavita, or High Priest, on his raft, stripped of his clothing, with an attendant behind him, preparing to throw the offerings into the lake; the broken stumps were probably crude figures of attendants before him, as on the gold figures found at Lake Siecha, and Pasca X

*See Illustration. Plate IV.*

- 35 A hollow Vessel, formed as a nude man lying on his back on a curved seat with four feet, his arms under his head; *fine and rare, perfect but for one foot missing*

*See Illustration. Plate V.*

- 36 Another hollow Vessel, of very similar type, but the man holding a trumpet to his mouth with both hands

- 37 A hollow Vessel, formed as the body of a man holding a mace, or sceptre, and wearing an elaborate head-dress and a collar of pierced discs

*See Illustration. Plate IV.*

- 38 A cylindrical Vessel, shaped as a man holding a sceptre, and wearing a head-dress very much like the Egyptian Uræus; one arm missing

- 39 Another cylindrical Vessel, shaped as the half-length of a warrior, with his elbows resting on two supports, the body crossed by lines of pendants

- 40 Another cylindrical Vessel, a fine head of a chief with lofty winged head-dress decorated with the annular ornament known as cup marks, and wearing an elaborate nose-ring covering the mouth, showing the discretion of silence

- 41 Another, shaped as a man's head with head-dress incised in horizontal lines

- 42 Another, half-length figure of a man with high winged head-dress; and two small Heads from similar vessels (3)

- 43 A large jar-shaped Vessel, in the form of a chief's torso (the head missing) holding a sceptre, the body crossed by strings of pendants, supported on four busts of human figures

- 44 A curious globular Vessel, on a hemispherical base, with the head of a pelican and two pierced handles appearing like the stumps of the cut-off wings

\* \* \* Very rare in form.

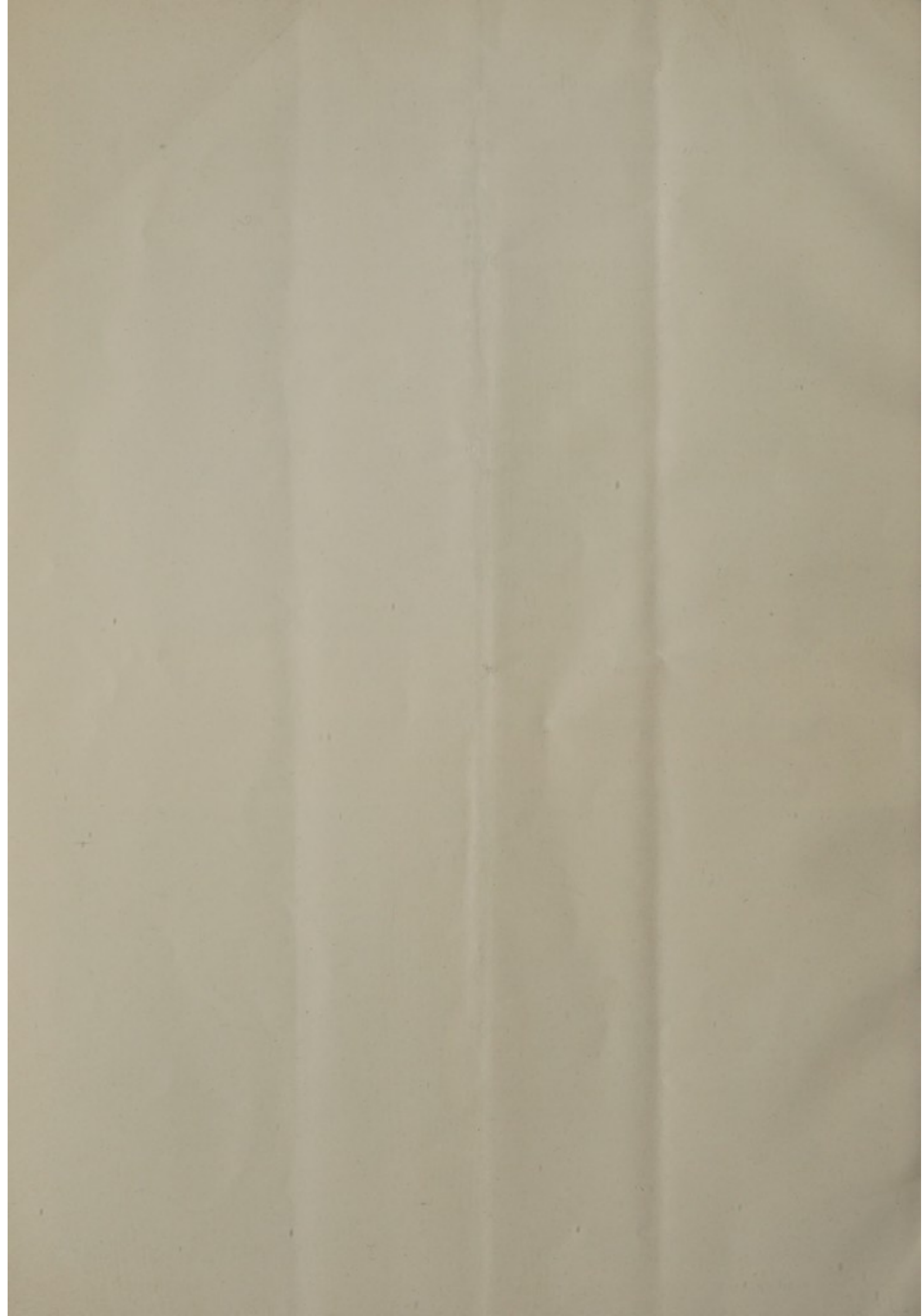
- 45 A small cylindrical Vessel, shaped as a man squatting with arms folded resting on his knees

*See Illustration. Plate V.*









- 46 A Crucible, as used for melting the gold for castings; and a tapering Jar, as used by the people of poorer rank for pushing their offerings into the soft banks of the lake under the sedge (2)

*For the Crucible see Illustration. Plate IV.*

- 47 Three Parts of Vessels, in Totemistic forms—a frog, an owl, and a stag (3)

- 48 A Vessel, in animal form with human face and high head-dress; and two others, *imperfect* (3)

*See Illustration. Plate IV.*

- 9 A Vessel, shaped as a very crude figure of a man with arms akimbo, the face being probably intended for a mask; and another, of similar form, but holding a bowl in front (2)

*See Illustration. Plate IV.*

- 50 A small Vessel, in form of a mask with closed eyes, out of which a large emerald was taken; and another, with lips open showing the teeth across the mouth (2)

*See Illustrations. Plate V.*

- 52 A large Mask, three-quarters of a broken globular vessel, with mouth open showing the teeth; and a small Mask-top of a jar (2)

- 53 A small cup-shaped Vessel, formed as a squatting man with his arms folded on his knees; and a bottle-shaped Vessel, of similar pattern (2)

*See Illustration. Plate V.*

- 54 A Vessel, in form of a very crude human figure with a monster head, horns broken off; and another, similar (2)

- 55 The Top of a large Vessel, with an altar in the centre and human figures standing with their backs to it, and two upright pillars between them; also a large Human Head, the top of another vessel (2)

- 56 A Human Head, wearing a close-fitting skull cap, ornamented, the top of a vessel (*see Illustration, Plate IV*); and two other Heads (3)

- 57 A Head, with high head-dress and wearing a large nose-ring; and three other Heads, parts of vessels for offerings (4)

- 58 A Head, with a high-combed helmet ; and three other Heads, all parts of vessels for offerings (4)
- 59 Three Vessels, in the form of animals with human faces (3)  
*See Illustration. Plate V.*
- 60 Two others, similar, a third, on only three legs, and another (4)
- 61 Six small Vessels, in the forms of animal totems (6)
- 62 A Hemispherical Vase, with half-length figure of a man forming the neck, and handle at his back ; and four other Pieces of Pottery ; all Chibcha work found in the lake, but not intended for the reception of offerings (5)

---

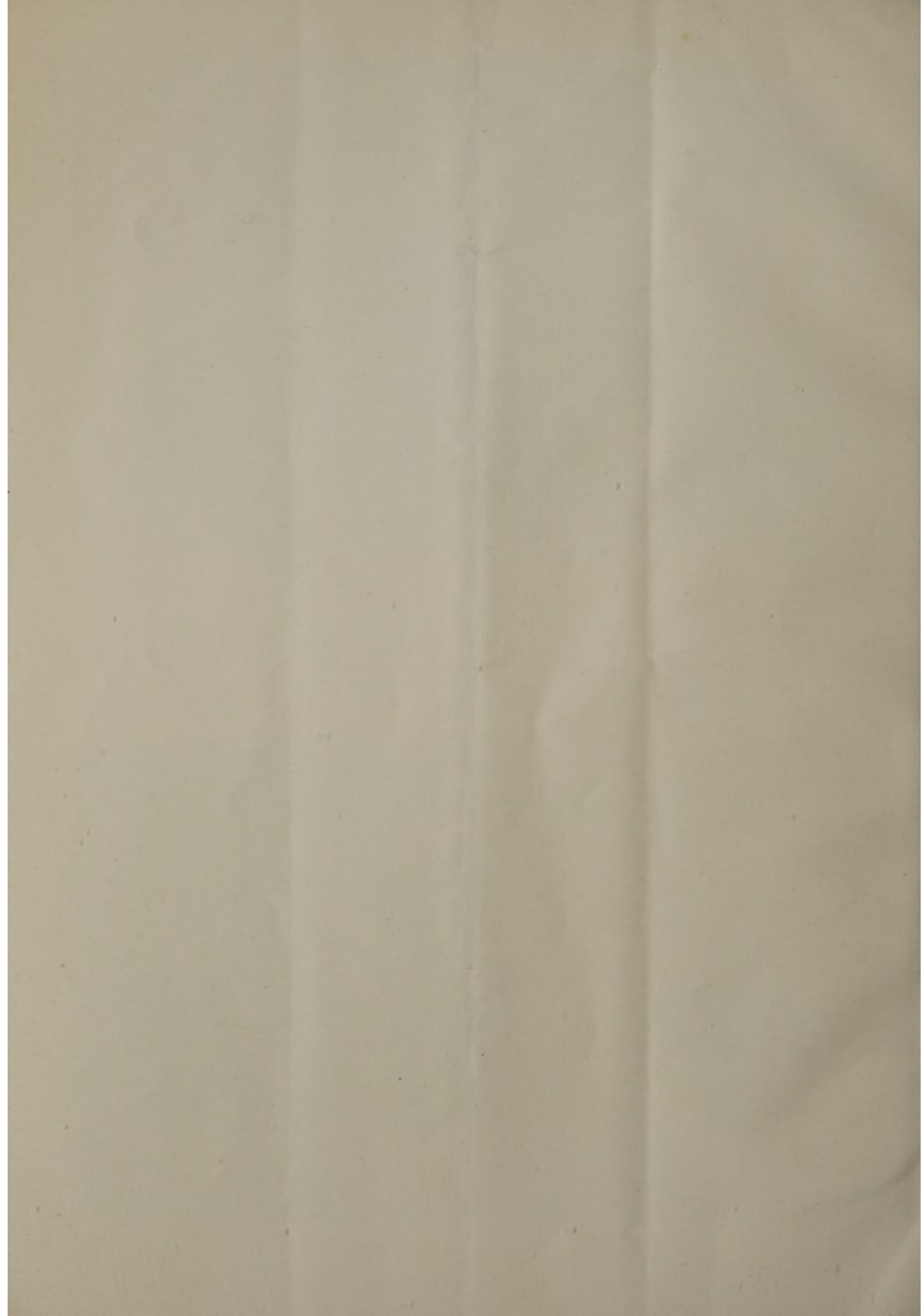
### Other Properties.

---

- 63 A pair of Egyptian gold Bracelets and an Earring, from the mummy of Queen Hatshepsu, daughter of Thothmes I, the sister and wife of Thothmes II ; 18th dynasty
- \* \* \* The bracelets are of fine beaten gold, forming flat tapering bands with centre ridges, and each is hung with fourteen pearls threaded on gold wires. The earring is a circlet surrounded by small loops hanging from a central ribbed shaft, surmounted by three upright wires, each with a pearl threaded on to it. They were obtained by the owner, in company with Col. D. D. Cunningham, F.R.S. from an Arab at Luxor in 1882, the man being well-known as having been engaged in ransacking Royal tombs. *See paper accompanying the lot.*
- 64 A carved wood Egyptian Dagger Handle, bearing the cartouche of Rameses XII and the head of Hathor above it, with a spurious bronze blade
- 65 An Egyptian bronze Cat ; *found at Bubastis*
- 66 Three glazed pottery Pendants—Khensu, a cat, and a cynocephalus ape ; a small Figure of Isis ; and a glazed pottery Ring, bearing the ægis of Isis (5)
- 66A An antique marble Bust of Seneca, *slightly damaged round the neck and the nose restored ; from the collection of Count Tiscievicz*
- \* \* \* This fine bust, which was found at Cumae, is probably a copy of a lost bronze original. Several replicas are known, including one in bronze at the Museum of Herculaneum, which is undoubtedly the finest, though this is certainly superior to any of the other copies in marble.









- 67 P'YAG-NA RDORJE or Tehakdor, a beneficent form of Vajrapani, the Bodhisat reflex of the Jina Akshobhya: a Thibetan Divinity, the body carved in lapis lazuli, fitted into a mercury gilt-brass framework forming the crown, vestments and celestial scarf, standing on a metal base, the whole inlaid with rubies and turquoises  
\* \* A very fine and rare piece of Thibetan monastery work.
- 68 A Fifteenth Century Italian Gold Pendant, oval, in the centre a small gesso representation of a woman, surrounded by ruby and white pastes set in a filigrane bordering
- 69 An antique intaglio Ring in niccolo, gold mounted as ring, with figure of Priam, 17th century mount (1)
- 70 A gold Ring, set with carnelian intaglio—"Merman and Mermaid," well cut, 18th century (1)
- 71 A gold Ring, set with fine old intaglio—Head of an Empress; also another, set with cameo head of a Roman emperor (2)
- 72 A gold Ring, set with diamonds, with small enamel portrait, *the early Georgian period*; also a gold Ring, with portrait bust of George III (2)
- 73 A gold Ring, set with fine cameo portrait in onyx—A Greek Philosopher; another—Portrait of Omphales, the wife of Hercules (2)
- 74 An antique Roman Ring, set with a sard (?) Asabyl, gold shank; and another, set with onyx (2)
- 75 A Græco-Roman Ring, flat gold shank, set with carnelian intaglio; and another, set with onyx intaglio; *both child's size* (2)
- 76 An antique gold Ring, Etruscan, set in old paste; also a gold Ring, set with an intaglio—"A Faun surprising a nymph"
- 77 A gold Ring, set with old intaglio female head cut in two strata onyx; also fine old cameo Ring—Head of Louis XIV (2)
- 78 An antique carnelian Intaglio in gold setting—Head of Apollo, shank engraved at shouldering, stone well cut (1)

## ROMANO-SYRIAN GLASS.

- 79 Three Unguentaria, *from Mount Carmel*, one with loop handle and fluted sides, the others with spiral threads wound round the bodies (3)
- 80 Two double Stibium Tubes, one with double loop handle and both with bronze extractors; on wood stands; *from Mount Carmel* (4)
- 81 An Unguentarium, stethoscope shape, iridized, *from Nazareth*; another, with broken lip, *from Hebron*; and a tall-necked Bottle, with a bulbous base, *from Hebron* (3)
- 82 A large Bottle of compressed form, with ribbed neck and glass threads wound round; *from Hebron*
- 83 Another, of bulbous form, with cup-like rim to the neck, nicely iridized; *from Mount Carmel*
- 84 Another, with globular body, and cup-like rim to the neck, iridized; *from Mount Carmel*
- 85 An ovoid Jar of pale green glass, the body wound round with spiral glass threads and a chevron around the rim; *a fine perfect example; from Hebron*
- 86 A compressed globular Bottle of green glass, with two handles from the broad flat rim to the shoulders; *from Jerusalem*
- 87 A Drinking Cup, with tapering sides, *from Mount Carmel*; and another, with outcurved lip and engraved lines on the sides, *from Nazareth* (2)
- 88 A Vase of amber glass, with a projecting ridge below the rim; and another of similar form in green glass, with two handles; *both from Mount Carmel* (2)
- 89 A compressed globular Vase, with a projecting ridge below the rim in pale amber coloured glass with two blobs of green glass repeated four times round the sides; *from Mount Carmel*
- 90 An ovate Jar in pale green glass, with chevron round the rim, *from Mount Carmel*; and a small Bowl on a circular foot, *from Nazareth* (2)



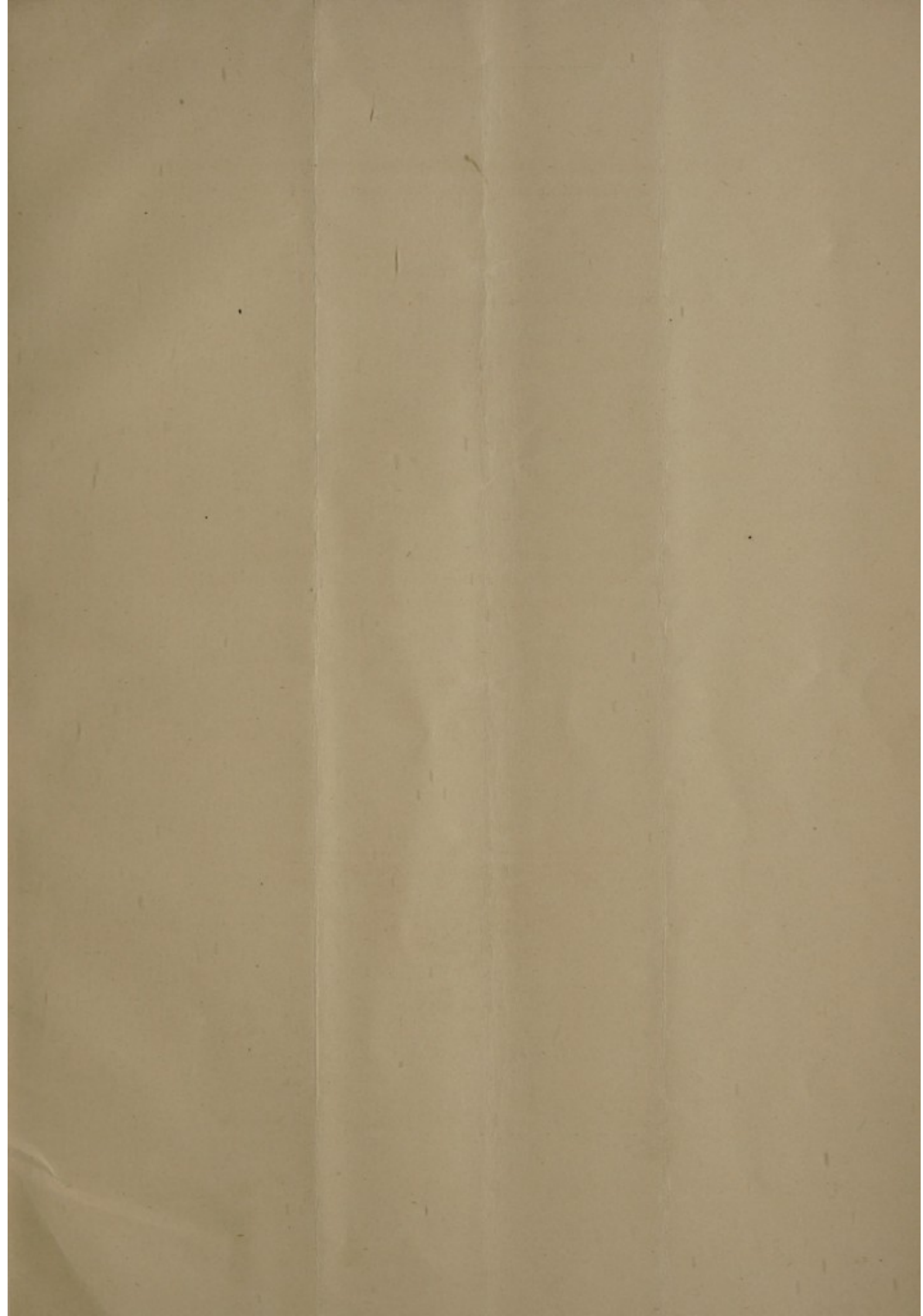
- 91 A tall Jug, with spirally-fluted sides and broad flat handle, *from the Mount of Olives*; and a small Aryballos, *from Hebron* (2)
- 92 A large glass Patera on a circular foot, *from Jerusalem*
- 93 Another, smaller, *from Mount Carmel*, iridized; and a small Bowl, with curious handles on the rim, *from Hebron* (2)
- 94 A Bottle of curious flattened form with two handles; and a Vase of Arab type, with spiral threads round the neck; *both from Mount Carmel* (2)
- 95 Two Drinking Cups, with square pinched-in sides, Arab type, *from El Arush*; and a graceful Vase, iridized, *from Mount Carmel* (3)
- 96 Two Ampullæ, one with trifoliated rim to neck, and the other with cup-like rim; both with single handles; *both from Hebron* (2)
- 97 An Unguentarium, with tapering sides, narrow base, and broad cup-like rim, iridized; and a bell-shaped Drinking Cup on circular base; *both from Hebron* (2)
- 98 A Jar with outcurved lip, iridized, *from Mount Carmel*; another, *from Nazareth*; and a Drinking Cup on circular foot, *from Hebron* (3)
- 99 A Drinking Cup, with outcurved rim, *from El Arush*; another, with glass threads round the sides, *from Nazareth*; and a Bowl on a circular foot, *from Hebron* (3)
- 100 A globular Jar in amber glass, with ridge under the rim, *from Mount Carmel*; and a similar Jar in pale green, iridized, *from Hebron* (2)
- 101 Three two-handled jar-shaped Vessels, *the largest from Jerusalem*; *the one with green handles from Mount Carmel*, and *the third Hebron* (3)
- 102 A Roman square Ampulla, with broad flat handle, iridized; and two Unguentaria; *all from Mount Carmel* (3)
- 103 A bulbous-shaped Vase, with broad tapering neck and three engraved lines round the body, curiously iridized, *from Mount Carmel*; another, *from Mount Carmel*; and another, more slender form, *from Nazareth* (3)
- 104 Two Bowls, both iridized, *from Nazareth*; and two others, *from Hebron* (4)

- 105 A Roman Jar, with two handles and a raised chevron round the body ;  
a small two-handled globular Vase ; and a double Stibium Tube,  
*from Mount Carmel* (3)
- 106 A long-neck Bottle, *of the 4th century, from Hebron* ; a fluted bulbous  
Vase, with tapering neck, *from Nazareth* ; and a Vase, with blue  
glass spirals round the neck ; *from Mount Carmel*
- 107 A Vase, with vertically fluted sides ; a small Vase ; *both from Hebron* ;  
and a yellow-tinted Vase, with cup-like rim, *from the Mount of  
Olives* (3)
- 108 Four small jar-shaped Vases ; *from various sites* (4)
- 109 Four others, *various* (4)
- 110 Five small Vases, *various* (5)
- 111 The Bezel of a glass ring ; two Rings ; three tiny Ornaments ; three  
Beads ; nine miscellaneous Pieces ; and a finely iridized Spout  
from a Venetian cruet, *found in New Broad Street, London* (19)

END OF SALE.









BAKER, LEIGH & SOTHEBY.

THE FIRM COMMENCING WITH SAMUEL BAKER IN

1744.

SOTHEBY, WILKINSON & HODGE.

1911.