

Sales catalogue: Sotheby's

Publication/Creation

12 December 1932

Persistent URL

<https://wellcomecollection.org/works/j8evk2w9>

License and attribution

This work has been identified as being free of known restrictions under copyright law, including all related and neighbouring rights and is being made available under the Creative Commons, Public Domain Mark.

You can copy, modify, distribute and perform the work, even for commercial purposes, without asking permission.



Wellcome Collection
183 Euston Road
London NW1 2BE UK
T +44 (0)20 7611 8722
E library@wellcomecollection.org
<https://wellcomecollection.org>

Mr & Mrs. 12th December 1932
Short Original

SBY	DATE	INITIALS
194.1.0 SALE	12.11.32	<i>Shw.</i>
PURCHASE		
CHECKED	20.11.32	<i>Sh</i>
COLLECTED	25.11.32	
RECEIVED	23.1.33	<i>Sh</i>
ACCESSED		
PASSED		

W
16
Shw.

PRE
EGYPTI

ANTIQUITIES, ETC.

Also COLLECTIONS OF

NATIVE ART,

INCLUDING

The Property of T. H. POWELL, *decd.* ;

The Property of Monsieur NOÉ DE PADILLA ;

The Property of the late Admiral Sir FREDERICK BEDFORD, G.C.M.G.

[SOLD BY ORDER OF THE EXECUTORS];

AND OTHER PROPERTIES.

WA/Hmm/m/5a/1/20/1008/1

Day of Sale.

MONDAY, THE 12TH OF DECEMBER.

1932

Km m 185 = 194.1.0



34 & 35 NEW BOND STREET, LONDON. W. (1)

WA7
CATALOGUE
OF
PREHISTORIC IMPLEMENTS,
EGYPTIAN, GREEK, ROMAN, LURISTAN & INDIAN
ANTIQUITIES, ETC.

ALSO COLLECTIONS OF

NATIVE ART,

INCLUDING

The Property of T. H. POWELL, *decd.*;

The Property of Monsieur NOÉ DE PADILLA;

The Property of the late Admiral Sir FREDERICK BEDFORD, G.C.M.G.

[SOLD BY ORDER OF THE EXECUTORS];

AND OTHER PROPERTIES.

WA/Hmm/m/5a1/20/1008/1

Day of Sale.

MONDAY, THE 12TH OF DECEMBER.

1932

Km m 185 = 194. 1. 0

TERMS OF SUBSCRIPTION FOR MESSRS. SOTHEYBY'S
CATALOGUES AND PRICE LISTS FOR ONE SEASON.

The Season opens in October and closes at the end of July.

(All Subscriptions include postage.)

PLAIN CATALOGUES.

	£	s.	d.
Antiquities	0	1	6
Books, MSS. and Autograph Letters	0	5	0
Coins and Medals	0	1	6
Drawings and Pictures	0	2	0
Engravings (Old)	0	2	0
Etchings (Modern)	0	2	0
Oriental MSS. and Miniatures	0	1	0
Works of Art (including Armour, China, Furniture, Glass, Japanese Colour Prints and Works of Art, Jewellery, Miniatures, Silver, Textiles, etc.)	0	5	0
	£1	0	0

ILLUSTRATED CATALOGUES.

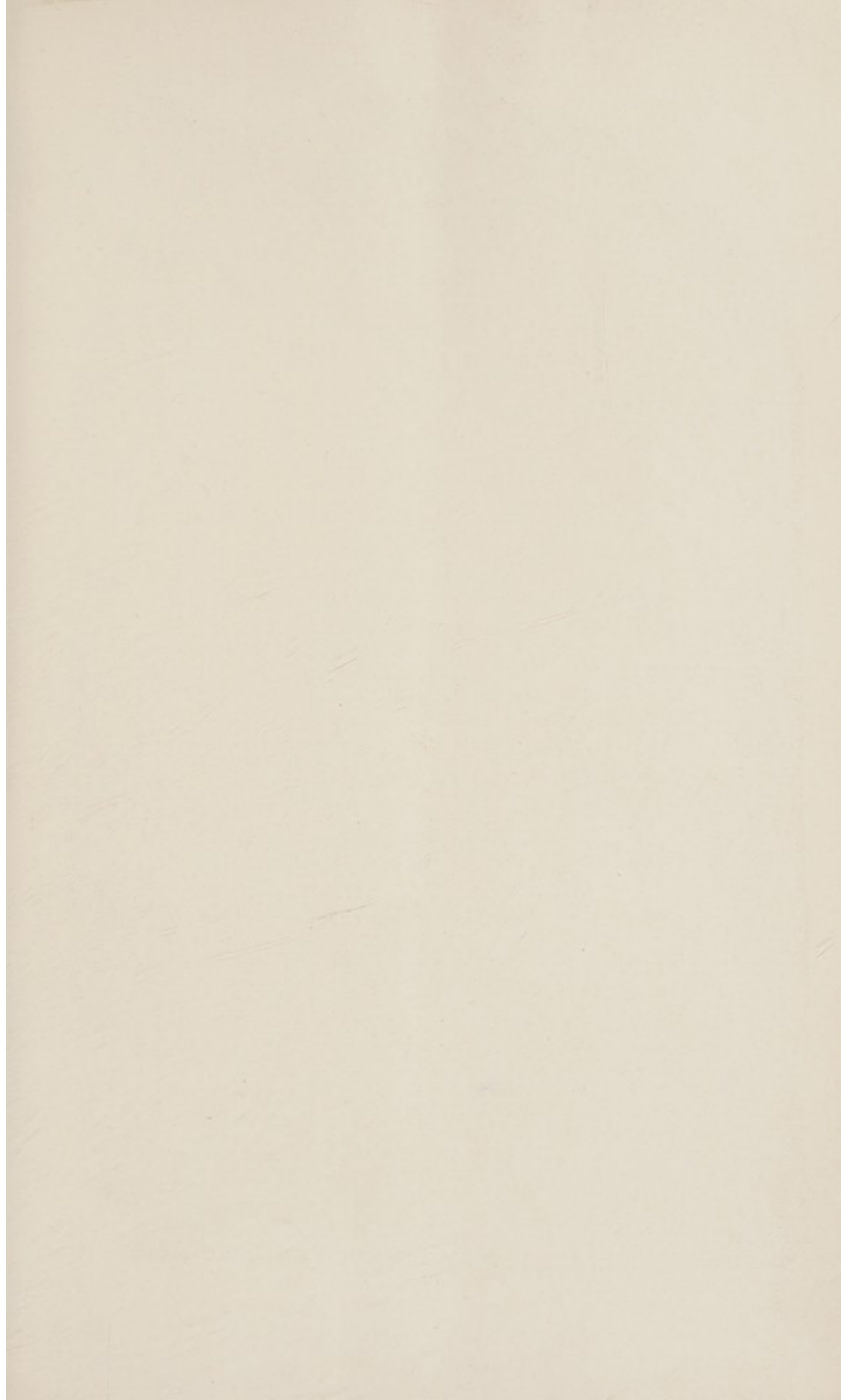
(To include Plain Copies where no Illustrated Catalogues are issued.)

	£	s.	d.
Antiquities	0	5	0
Books, MSS. and Autograph Letters	2	0	0
Coins and Medals	0	5	0
Drawings and Pictures	0	15	0
Engravings (Old)	0	7	6
Etchings (Modern)	0	2	6
Oriental MSS. and Miniatures	0	5	0
Works of Art (including Armour, China, Furniture, Glass, Japanese Colour Prints and Works of Art, Jewellery Miniatures, Silver, Textiles, etc.)	1	0	0
	£5	0	0

PRINTED LISTS OF PRICES AND BUYER'S NAMES.

	£	s.	d.
Antiquities	0	10	0
Books, MSS. and Autograph Letters	5	5	0
Coins and Medals	0	10	0
Drawings and Pictures	1	15	0
Engravings (Old)	1	15	0
Etchings (Modern)	1	15	0
Oriental MSS. and Miniatures	0	10	0
Works of Art (including Armour, China, Furniture, Glass, Japanese Colour Prints and Works of Art, Jewellery, Miniatures, Silver, Textiles, etc.)	3	0	0
	£15	0	0

N.B.—The Terms of Subscription for Price-Lists have been substantially
reduced recently.





1 2 3 4 5 6 7 8 9 10 11 12 13 14 15 16 17 18 19 20 21 22 23 24 25 26 27 28 29 30 31 32 33 34 35 36 37 38 39 40 41 42 43 44 45 46 47 48 49 50 51 52 53 54 55 56 57 58 59 60 61 62 63 64 65 66 67 68 69 70 71 72 73 74 75 76 77 78 79 80 81 82 83 84 85 86 87 88 89 90 91 92 93 94 95 96 97 98 99 100

The End

1 2 3 4 5 6 7 8 9 10 11 12 13 14 15 16 17 18 19 20 21 22 23 24 25 26 27 28 29 30 31 32 33 34 35 36 37 38 39 40 41 42 43 44 45 46 47 48 49 50 51 52 53 54 55 56 57 58 59 60 61 62 63 64 65 66 67 68 69 70 71 72 73 74 75 76 77 78 79 80 81 82 83 84 85 86 87 88 89 90 91 92 93 94 95 96 97 98 99 100

1 2 3 4 5 6 7 8 9 10 11 12 13 14 15 16 17 18 19 20 21 22 23 24 25 26 27 28 29 30 31 32 33 34 35 36 37 38 39 40 41 42 43 44 45 46 47 48 49 50 51 52 53 54 55 56 57 58 59 60 61 62 63 64 65 66 67 68 69 70 71 72 73 74 75 76 77 78 79 80 81 82 83 84 85 86 87 88 89 90 91 92 93 94 95 96 97 98 99 100

1 2 3 4 5 6 7 8 9 10 11 12 13 14 15 16 17 18 19 20 21 22 23 24 25 26 27 28 29 30 31 32 33 34 35 36 37 38 39 40 41 42 43 44 45 46 47 48 49 50 51 52 53 54 55 56 57 58 59 60 61 62 63 64 65 66 67 68 69 70 71 72 73 74 75 76 77 78 79 80 81 82 83 84 85 86 87 88 89 90 91 92 93 94 95 96 97 98 99 100

1 2 3 4 5 6 7 8 9 10 11 12 13 14 15 16 17 18 19 20 21 22 23 24 25 26 27 28 29 30 31 32 33 34 35 36 37 38 39 40 41 42 43 44 45 46 47 48 49 50 51 52 53 54 55 56 57 58 59 60 61 62 63 64 65 66 67 68 69 70 71 72 73 74 75 76 77 78 79 80 81 82 83 84 85 86 87 88 89 90 91 92 93 94 95 96 97 98 99 100

BUYER

AUCTIONEERS

Date

12/12/32

Lot	Amount			Lot	Amount		
	£	s.	d.		£	s.	d.
5-	2	.	.	B14	93	15	.
6	2	10	.	123	5-	.	.
7	1	12	.	124	6	.	.
11	2	10	.	125-	6	.	.
12	3	10	.	126	5-	.	.
13	3	15	.	134	5-	.	.
14	2	.	.	141	6	5-	.
18	3	5-	.	143	2	.	.
19	1	12	.	148	3	.	.
20	2	.	.	150	4	.	.
25-	2	2	.	151	4	.	.
27	2	.	.	152	7	.	.
28	2	8	.	153	10	.	.
33		18	.	158	3	.	.
34		18	.	160	3	.	.
36	1	.	.	*-164	1	1	.
44	2	.	.	165-	6	10	.
54	4	.	.	166	7	10	.
55-	2	.	.	168	8	.	.
67	3	15	.	170	3	.	.
73	32	.	.	*{ 161	3	.	.
76	10	.	.	162	2	.	.
77		10	.				
79	5	10	.				
6/4	93	15	.				
Str. Mu/2							

£ 194 1

CATALOGUE
OF
PREHISTORIC IMPLEMENTS,
EGYPTIAN, GREEK, ROMAN, LURISTAN AND
INDIAN
ANTIQUITIES, etc.

ALSO
COLLECTIONS OF
NATIVE ART

INCLUDING

The Property of T. H. Powell, decd.;

The Property of Monsieur Noé de Padilla;

THE
Property of the late Admiral Sir Frederick Bedford, G.C.M.G.
[SOLD BY ORDER OF THE EXECUTORS],

AND OTHER PROPERTIES.

WHICH WILL BE SOLD BY AUCTION,
BY MESSRS.

SOTHEBY & Co.

G. D. HOBSON, M.V.O. F. W. WARRE, O.B.E., M.C. C. G. DES GRAZ.
MISS E. BARLOW. C. V. PILKINGTON, B.A.

Auctioneers of Literary Property & Works illustrative of the Fine Arts,
AT THEIR LARGE GALLERIES, 24 & 35, NEW BOND STREET, W. 1
On MONDAY, the 12TH of DECEMBER, 1932,
AT ONE O'CLOCK PRECISELY.

On View Three Days previous.

Catalogues may be had.

PRINTED BY J. DAVY & SONS, LTD., 8-9, FRITH-STREET, SOHO-SQUARE, LONDON, W., ENGLAND

CONDITIONS OF SALE.

- I. The highest bidder to be the buyer. If any dispute arise the Auctioneer shall have absolute discretion to settle it; and to put any disputed lot up again.
- II. No person to advance less than 1s.; above five pounds 5s., and so on in proportion.
- III. All lots are sold subject to the right of the seller or his agent to bid or else to impose a reserve.
- IV. The purchasers to give in their names and places of abode, and if required, to pay down 10s. in the pound or more, in part payment of the purchase money; in default of which the lot or lots purchased may be immediately put up again and re-sold.
- V. All lots are sold as shown with all faults, imperfections, and errors of description. Messrs. Sotheby & Co. act as agents; they have full discretion to refuse any bidding or to withdraw any lot or lots from the sale without in either case giving any reason; they are not responsible for errors of description or for genuineness or authenticity of any lot or for any default or defect in it, and make no warranty whatever.
- VI. The lots to be taken away at the buyer's risk and expense, immediately after the conclusion of the sale; in default of which Messrs. Sotheby & Co. will not hold themselves responsible if the same are lost, stolen, damaged or otherwise destroyed, but they will be left at the sole risk of the purchaser, and subject to a charge for warehousing. If, at the expiration of Two Days after the conclusion of the sale, the lots are not cleared or paid for, they may then be sold immediately, either publicly or by private treaty, without any notice being given to the defaulter.
- VII. Upon failure of the buyer to comply with any of the above conditions, the money deposited in part-payment shall be forfeited; and the defaulter at this sale shall make good any loss arising from the re-sale, together with the charges and expenses in respect of both sales.

To prevent confusion no purchases can be claimed or removed during the sale.

Messrs. SOTHEBY & Co. are prepared to execute bids, and in addition to advise intending purchasers as far as possible, if requested by them to do so, without making any charge for either service. Lots will be procured as cheaply as is permitted by other bids or reserves, if any.

34 and 35, New Bond Street, London, W.1.

Telegraphic Address:

"Abinitio, Wesdo, London."

A.B.C. Code, 5th Edition.

Telephone: (3 lines)

Mayfair 6682, 6683, 6684.

In sending Commissions this Catalogue may be referred to as "NEIT."

COMMISSIONS SENT BY TELEPHONE ARE ACCEPTED AT THE SENDER'S RISK, AND MUST BE CONFIRMED BY LETTER OR TELEGRAM. [1]

CATALOGUE

OF

ANTIQUITIES, etc.

DAY OF SALE.

Monday, 12th December, 1932.

The Property of a Gentleman.

PREHISTORIC STONE IMPLEMENTS.

LOT

- 1 *Palaeolithic*: A good pointed Acheulian Implement; nine others, varied; fourteen Flakes; and two others, *from various localities* 20/-
26 *Bourne*
- 2 Seven fine-pointed Implements; another of ovate form, *from various localities*; and an unusual Implement of sub-triangular form, *of the Moustier period from Hampton* 2/12/6
9 *Lawrence*
- 3 A discoidal Implement of massive form, *rare*; another, with an acute point; and fourteen others of various types, *all marked with localities* £ 280
16 *Bourne*
- 4 An ovate Implement, and Shells, *from Ingress Vale*; five Chert Implements; eleven others, varied; and an unusual Side-Scraper, *from Milton Street* 30/-
a lot *Lawrence*
- 5 *Neolithic*: A stone Object with two perforations, probably used with a "fire drill"; a polished stone Axe, *New York*; and four other Axes, *all good examples from the U.S.A.* 50/-
- 6 A partly polished Chert Adze, *from Tennessee, very fine*; a Gouge, with deeply grooved face; three stone Axes; a fine Side-Scraper; and a good chipped Axe, *all from the U.S.A.* 70/-
7
- 7 Arrow-Heads and Pottery Fragments, *from the McCloud river*; two Rubbers; a Core; and eighteen small Arrow-Heads, *from Bolivia* 60/-
a lot

8 Four fine Arrow-Heads of crystalline quartz; a large ovate Knife; five obsidian Arrow-Heads; and nine other Implements, a fine group, all from the U.S.A., in glass-topped box 19

9 A fine serrated leaf-shaped Knife; eight good Borers; and twelve others, all from the U.S.A., a good lot, in glass-topped box 21

10 A good series of twenty-two Arrow-Heads; and a fine Group of thirty others, in chalcedony and other materials, in glazed box, all from the U.S.A. 52

50/ 4 11 A fine Gorget in polished porphyry, from Shelley County; and a fine butterfly-shaped "Bannerstone," from Tennessee, very rare 2

3/10/ 4 12 Two stone Gorgets; four stone Discs; and sixteen varied Arrow-Heads, all from the U.S.A., in two glazed boxes 22

3/15/ 32 13 A serrated Lance-Head; and ten others, all very fine, from the U.S.A., in glazed box 11

40/ 4 14 Three Axes in haematite; a large curved Knife; a Disc with incised cross lines; and eighteen other Implements, same district 13

15 A fine ovate flint Knife; three others; a well-chipped Axe; and four others, varied, same district, a good lot 9

16 A good series of seventy Arrow-Heads and Knives, in varied materials, in two glazed boxes, all from the U.S.A. 20

17 A very fine Lance-Head with side notches, Tennessee; a "Fish Spear"; a fine ovate Lance-Head; and thirteen other Implements, all U.S.A., an unusually fine lot, in glazed case 16

3/5/ 4 18 An unusually large and fine leaf-shaped Implement, 8 in. long, from Fulton Co. Indiana; a fine-chipped Axe; and an ovate Knife, Tennessee (all of the "Mound builder" period), very rare; and two Arrow-Heads, Valparaiso, in glazed box 5

32/ 40/- 19 Six glass Arrow-Heads; and two Discs, from West Australia, in glazed box 8

40/ 50/ 20 Fifty Arrow-Heads and other stone Implements, from the Yorkshire Wolds; and a similar series of forty, from Suffolk, in two glazed boxes 90

- 21 A group of glazed Flints, *from the Knowle Gravels*, including an unusually small Implement; a Core and three Flakes, *Pressigny*; and a number of small Implements, *from various localities* 13/-
Lawrence
a lot
- 21A A leaf-shaped Lance Head and five Lunar Knives, some with glazed edge, *from Denmark* 6
28/- do
- 22 A strongly-curved flint Sickle; two Lunar Knives; three Daggers; and three others, *Denmark* 9
60/-
McClellan
- 23 Fifteen imperfect Daggers and Knives, *Denmark, some fine* 15
22/-
- 24 Two fine chipped flint Axes; and three others, with the faces partly polished, *Denmark* 5
280/-
Bally
- 25 A finely polished flint Axe, $8\frac{1}{2}$ in. long; another, $7\frac{1}{2}$ in. long; an Axe with curiously roughened cutting edge; and a perforated Pebble Hammer, *Denmark* 4
40/-
- 26 A well chipped Gouge; two narrow Chisels; five varied Axes; and a Scraper, *Denmark* 9
45/-
Lawrence
- 27 Two Carib Adzes of shell, *Barbados*; two Fish Hooks, *New Zealand*; a perforated stone Disc, *New Guinea*; an Adze, *New Zealand*; and a fine grooved Axe, *Missouri* 7
40/-
- 28 A fine Axe, 8 in. long, *New Guinea*; another, 6 in. long, *Ballymena*; another, *Jedburgh, rare*; five others, *varied*; and an interesting Axe, showing the action of frost 9
5-
48/-
- 29 Eight well-chipped flint Axes; and a number of other Implements and Pottery Fragments, *found at Cissbury Camp (a few were found in the pits)* 32/-
a lot
Bourne
- 30 A chipped flint Axe; and a Fabricator, *Seaford*; a long Flake; four Axes; a Chisel; and a series of smaller Implements, *from various Sussex localities* 18/-
a lot
Lawrence
- 31 An usually well-chipped Axe, *Horsham*; a flint Axe, *Isleham*; another in basalt, *Ireland*; and an Axe and perforated Hammer, said to have been found at *Pulborough* 5
45/-
McClellan
- 32 Four early dynastic flint Scrapers; a discoidal Implement; and twenty-nine smaller Implements and Flakes, *some from Egypt. in glazed case* 34
13/-

(18/-) 40/- (33) Two Obsidian Cores; five Flakes; four Arrow-Heads; and Part of an Axe, *Mexico*; a Core from *Melos*; and three Implements from the *Swiss Lakes* 16

(18/-) 35/- (34) Four small polished Axes, from various localities; and a Series of Axes and other Implements, principally from the *South Downs* a lot

35 Two fine Borers; and a series of Fabricators and other small Implements, principally from *Sussex* a lot 13/-

(20/-) 50/- (36) An Axe of Campigny type, from *Graffham*; six others; three Fabricators; a Hammer with natural perforation, *Seaford*; three other Hammer Stones; and a number of other Implements a lot Lawrence

37 A well-chipped flint Axe, *Chyngton*; a curiously patinated Core, *Sussex*; a Pigmy Implement, *Horsham*; ten others, *Vindhya Hills*; and a number of other Implements a lot 10/-

38 A number of Forgeries and other Implements; and some Archaeological Pamphlets a lot 18/- Lawrence

39 Four flint Arrow-Heads, *Italy*; ten others, and a Saw, *Egypt*; six others, *Antrim*; and three others 24/- 40/- Bonine

MISCELLANEOUS ANTIQUITIES.

40 A String of early agate Beads; a bronze Stamp; a heart-shaped Amulet of stone; three Spindle Whorls; and six Specimens of *Kimmeridge "Coal Money" (Roman period)* 12/- 32/- Bonine

41 A collection of variegated Roman glass Fragments, from the *Berens collection*, in glazed case 28/- Lawrence

43 A CARNELIAN INTAGLIO with two busts, and Pehlevi inscription, which probably reads "Fair Maiden Anahit" and "Magian making due adoration to the deity" (see accompanying letters), rare and of interest 45/-

(40/-) 50/- (44) A 16th Century silver Gimmel Ring; a Saxon Ornament, *Icklingham*; a small stone Axe, *Guatemala*; a 16th Century Thimble; and three others 7

45 Three Roman glass Bottles; three Medicine Phials; and a number of other glass Objects, in glazed case 21/- Whitaker

- 46 A Gnostic Gem in plasma, with a figure of Juno, inscribed "KAPΦIP.
KOPPA," *fine and rare* 40/-
Whittaker
- 47 A mahogany Cabinet of ten drawers, 34 in. high 20/-

The Property of T. B. Powell (decd.)

- 60/- 48 A Roman terra-cotta Lamp in the form of a sandalled foot; another,
bearing the Chi Rho monogram; fourteen others, varied; and
a number of Fragments 40/-
a lot Mr. Mellan
- 49 A Samian Patera (form 31) with potter's name; a Bowl (form 33);
another (form 36); and a number of decorated or signed
Samian Fragments, *found in London* 10/-
a lot Lawrence
- 50 A fine Roman Dagger Handle of ivory, the grip decorated with
figures of gladiators in slight relief, *rare* 25/-
1 Whittaker
- 51 A Greek Cup with radiate linear decoration; another, plain; and
eleven other early Vases of varied types 26/-
13 Whittaker
- 52 A terra-cotta Bottle with a human mask in relief on the body;
four small early Iron Age Vases; and two others, *all from* 20/- de-
Cyprus; an alabaster Vase, with inscription on the sides;
and a curious "marbled" Bowl 9
- 53 Two pairs of Greek gold Earrings; a Mediaeval Ring, from
Walbrook; and two Egyptian Rings 20/-
5 Lawrence
- 4 54 Two terra-cotta Dolls, with incised decoration, *Mycenaean Cyprus*,
rare 2
- 40/- 4 55 An early terra-cotta Figure of an Animal; a Bronze Age Doll (?)
curious; three Greek Heads from statuettes; and two Assyrian
cuneiform Tablets 8
- 56 Five Roman bronze Armlets; seven 15th Century Keys; a Horse
Bell; a Tudor Skate; and other antiquities, *found in London* 30/-
a lot Whittaker
- 60/- 57 A diorite Dish in the form of a fish; an Ankh, *rare*; four alabaster
Vases; and a number of decorated faience Fragments, *from* 58/-
the Palace of Amen Hetep at Thebes a lot Spink

Very fragile Bring away
in small box packed in cotton wool

- 58 A Scarab of Thothmes IV; and fourteen other Scarabs, varied 15 ^{35/-}
- 59 A large blue faience Bead; two Ushabtis; eighteen varied Amulets, *all from Egypt*; odd Greek Beads; and other antiquities, in a glazed box ^{30/-}
a lot
- 60 A well-modelled bronze Figure of Osiris; a bronze Situla; and four other objects ^{3/6} ⁶ *Spink*
- 61 Fifteen terra-cotta Heads; a curious Seal; and a Hand Amulet, *all from Peru*, in a glazed box ^{32/-} ¹⁷ *Brown*
- 62 A Sassanian conoid Seal; another, with gryphon device; a Clasp Knife, *17th Century*; a decorated glass Boss; and seven others ^{20/-} ¹¹ *W. H. H. H.*

EGYPTIAN ANTIQUITIES.

The Property of a Gentleman.

A COLLECTION FORMED ABOUT 1830 BY THE GRANDFATHER OF THE PRESENT OWNER.

- 63 A round-topped Stele, 9 in. by 8 in., in grey granite, incised with a man (Ra-meri) offering to the goddess Sati, *New Kingdom* ^{6/-} *Brown*
- 64 Another, 11 in. by 7½ in., in calcareous stone with part of a scene of offering to Hor-nofer and his wife Seh-nofer and the usual formula, *New Kingdom* ^{2/13} *Gold*
- 65 Another, 14 in. by 9 in., incised with a scene of offering to Nub-ses-Amun, son of Hathor, and his father; below are fourteen columns of hieroglyphics apparently commemorating other members of the family ^{2/13} *Gold*
- ^{60/-} 66 Another, 14 in. by 9 in., in limestone, representing a man, Horu, offering to Horakhti, *in cavo relievo* ^{4/-} *Brown*
- ^{3/13} 8. (67) Another, 15 in. by 14 in., in limestone, representing the presentation of the deceased by Anubis to Osiris, Isis and Anubis; below (in Greek) "Aiea daughter of Aemilius fare (well)!" *Roman*

68 Another, $11\frac{1}{2}$ in. by 8 in., in limestone, representing a woman, Uasnofer, worshipping Osiris, before whom are figures of the Genii of the Dead; below is a prayer for offerings, *late work, showing traces of colour* 2/51

69 Another, $10\frac{1}{2}$ in. by 8 in., in limestone, representing a woman, Ruda, worshipping Osiris, above is the winged sun, *in cavo relievo work, with remains of colour, XXII Dynasty or later*; and another, $9\frac{1}{2}$ in. by $5\frac{1}{2}$ in., in limestone, representing a man in the presence of a seated deity, below is a garbled inscription, *rough work of uncertain date* 4/1 Brown 2

28. 70 A ROUND-TOPPED STELE, $21\frac{1}{2}$ in. by $13\frac{1}{2}$ in., in limestone, above are two uchats, the signet and two vases, in the bottom corner is a kneeling figure of a military scribe, Antuf, in the field are three addresses to Amun-Ra, *good work of the XVIII Dynasty* 351/-

** A translation of the text accompanies the stele. Gardiner

[See FRONTISPIECE.]

71 A seated Male Figure, 18 in. high, in red granite, the hands, one closed, resting on the knees, *Middle Kingdom* 30 157 Gardiner

4 72 The Head and Shoulders of a Man, 11 in. high, in grey granite, inscribed in the back for the ka of a vizier, *New Kingdom*; a Head of a Princess or Goddess, 5 in. high, in black granite, *Saite period or later*; and a Canopic Head of Mesta, in aragonite 580 Brown 3

32/6 30 73 A Squatting Figure of a Man, 19 in. high, in red granite, holding a shrine of Ptah, on the shoulders are the cartouches of Rameses II, inscribed for Ptahii, *XIX Dynasty*

74 A Couchant Sphinx, 26 in. by 15 in., in limestone heavily pitted, *? Roman* 4/51 Baxendale

75 A Female Head, about 7 in. high; another, about 8 in. high; and a Head of a Youth, about 4 in. high, all in marble, *Graeco-Roman* 60f 3 Whittaker

107/1 16 76 A Bearded Head, about 12 in. high, in marble, *Roman, 1st Century, A.D.* (Aesop)

60/ 107. 77 A plaster Cast, 20 in. high, of the celebrated boundary stone known as the Caillou de Michaux, with figures of gryphons and a cuneiform inscription, the original, brought by M. Michaux to France in 1800, is now in the Louvre, *Kassite period, 1100-1200 B.C.*

- 5/10/18
6. (79) A Papyrus Fragment, 22 in. by 10 in., in cursive hieroglyphs, containing the greater part of Chapter XV of the Book of the Dead, with vignettes of the funeral service, tomb sacrifice, etc., neatly executed in outline, *framed in passe partout*

8. 81 A set of eight others, forming a large vignette in outline, about 18 in. by 12 in., of the Weighing of the Heart, the text in cursive hieroglyphics; about twelve others from the same papyrus, with funerary deities; and about twelve others from the same papyrus and that described under lot 79, *all framed in passe partout* 3

- 82 Another, 29 in. by 11 in., in hieratic, with vignettes of Chapter CXXVI of the Book of the Dead in outline touched with colour; and a piece of Mummy Cloth, 14 in. by about 6 in., completely inscribed in hieratic, *both framed in passe partout* 2

- 83 The Upper Part of a Muslim Gravestone, 15½ in. by 9½ in., with inscription in Arabic containing devotional texts, *the date is missing* 357
Bonne

- 84 Another, 14½ in. by 9 in., giving the date A.H. 460 (A.D. 1067-68) 257

Other Properties.

- 85 A round-topped limestone Stele, 9½ in. by 8 in., representing a Theban priestess offering to the deified Queen Aahmes Nefertari and King Neb-peh-Ra (Aahmes I.), *clearly cut, with traces of colour, XIX Dynasty or later* 1080 Spink

- 86 Four large Canopic Vases, 18 in. high, in aragonite, of tapering cylindrical form, all with the Head of Mesta, two inscribed with a funerary formula 6/57 Brown 4

- 87 Two inscribed Assyrian nail-shaped Cones 16/ Bonne

- 88 A Greek Olpe red figure on black ground, a winged figure in front of an altar, looking into a hand mirror, 6½ in. high; another, a youth standing, nude, his chlamys over his left arm with a bird on the hand, the right hand holding a staff, 6½ in. high 2
4/57

- 89 Gems. Cameos (3), a woman before a herm, the head of a bacchante, two birds; Garnets (2), a bird, an elephant, Sasanian; Lapis, a cow; Turquoise, with inscription; Carnelian, Oriental warrior; Chalcedony, a hero with spear and helmet, in modern ring; an ancient cast of a coin of Commodus; and a mould of a coin of Licinius 11

- 90 A Buckle Plate of rounded form, decorated with incised and dot and radiate lines; a Hook, decorated with a human mask; a Brooch, of lozenge form, with circular projections at the angles *rare*; a decorated Strap Mount; a bronze Button, *all Merovingian*; and two Carnelian Intaglios of recent date

PERUVIAN POTTERY,

- 91 A large onion-shaped Bowl from *Cuzco*, with three conventional animal heads in chocolate brown on a cream coloured ground, lighter key pattern on the shoulder, *lip slightly damaged*, 14 in. diam., 9 in. high

- 91A A small Bowl of similar shape, alternate black and red, conventional snake pattern on cream ground, the rim decorated inside with lozenge pattern in red, within hexagons, *slightly damaged*, 6 in. diam., 4 in. high; another, similar, with conventional key pattern, 5½ in. diam., 3½ in. high, both from *Madre de Dios River*

PERUVIAN TEXTILES.

- 92 A large Panel, decorated in bright colours with stamped geometric patterns of various shapes, *about 56 in. by 31 in., Nazca*

- 93 A small square Panel, woven with diagonal rows of bird-like motifs and zig-zag ornament in shades of brown, green and red on a buff ground, 12 in., *Paracas*

** Somewhat similar motifs are illustrated by Lehmann in "The Art of Old Peru," pl. 117, etc.

- 94 A large Needlework Panel, woven all-over with a small red lattice design containing formal flowers, *about 48 in. by 36 in., Paracas*

- 95 A long narrow Band, woven in red on a golden ground with a small geometric design enclosing in the centre brown and archaic animal motifs, 70 in. by 7¼ in., *Paracas*

- 96 A Chief's Poncho or Coat, woven all-over with large geometric medallions in red and black on a buff ground, *Tiahuanaco* 280
- 97 A large Kelim Panel of oblong shape, woven with stepped medallions in black on a terra-cotta ground, the top with a narrow coloured border in shades of red, black, ivory and orange, 70 in. by 18 in., *Paracas* 607-

ANCIENT LURISTAN BRONZES.

- 98 A pair of openwork Antefixes, each in the form of an ibex head with a large ring below, 2 in. long 35/- 2
- 99 ^{two} A pair of Penannular Bracelets, one ending in bird forms and the other in scrolls; a flat pear-shaped Pendant; a long Pin, with globular head; and a bronze openwork Bell 60/- 5/- 5
- 100 A large bronze Penannular Ring, with flat ends and decorated with triangular designs and rings of small bosses, the whole covered with a green patine, 6 in. wide 280
- 101 Another, very similar to above, 5½ in. wide
- ** These rings are said to have been a symbol employed by two chieftains in making a treaty of mutual help between their tribes. 280
- 102 A bronze Axe-Head with fine green patine and plain ribbed decoration, 3¾ in. wide 3/10/- Boume
- 103 Another, with long narrow blade, 5 in. wide 2/10/- Latham
- 104 Two small Staff-Heads, 6 in. and 3½ in. long; and a vase-shaped Ornament, with globular body and elliptical decoration, 4¼ in. long 65/- Gregory 3
- 105 A Staff-Head, modelled as a feline animal seizing an ibex, and with original stone Shaft (*the latter in two pieces*), total length, 9 in. 3/10/- David 2
- 106 A Staff-Head, the top modelled as two leopards, the base as a vase with long narrow tubular neck, total length, 11 in. 3/10/- Lawrence
- 107 Another, the head shaped as a man grasping two birds by the neck, and with other human and animal motifs below, and on long vase-shaped base, total length, 14 in. 3/10/- Gregory
- 108 Another, similar, but not so fine in detail, total length, 14 in. 3/10/-

- 109 A Collection of nine small objects, consisting of: an Archer's Thumb Ring, an Ox Skull Pendant and Chain, a Seal, two Double-headed Bird Forms, two Birds, one Animal, and a small Ornament 3/57
9
Gugory

- 110 A Dagger, with fine green patine and with flanges doubled over at base of hilt, 15 in. long 3/57 1
Laurence

- 111 Another, with fan-shaped ends to the hilt, 14½ in. long 607-

- 112 Another, with green patine and plain hilt, 14 in. long 607-

INDIAN ANTIQUITIES.

- 113 Gandhara Relief of a *Siddha* or winged human messenger on one knee, head bent downwards, hands on knees, and wings drooping; a Schist Carving, probably from the base of a *palmasana*, 7 in. high, 9¾ in. wide 180
2
Stirling

- 114 Gandhara Relief, Sakra visiting Gantama in the cave of Indrasaila, in horn blende schist, 5½ in. high by 6¾ in. wide 407-

- 115 Gandhara Relief, probably a Naga King grasping the wing of an enemy Garuda and attacking it, while his wife stands beside him, 5 in. by 3 in.; and another unidentified Fragment, 6½ in. high 357
2
Whittaker

- 116 A Bengali Relief of Vishnu, broken off at the waist, beneath an umbrella and overshadowed by *Apsaras*, the left hand holding the conch, three-quarter relief on a domical panel of black carboniferous shale, 15 in. high by 12½ in. wide 280

- 117 Vishnu standing, holding the conch, between two smaller figures of his *Sactis*, a sandstone relief, 8 in. high by 4 in., Rajputana 257
Wade

- 118 Head of an *Asura* or demon, in grey sandstone, three-quarter relief in the style of the carvings of the Rāmesvaram Temple, Madura, 9 in. high by 9 in. wide 574
Bourne

- 119 Head of Buddha, modelled in clay over a black sandy core, and baked, inlaid eyes, 4 in. high, Ceylon; and another Head, 7 in. high 207-
2

- 120 Buddha, seated in the Witness attitude, bronze, with inlaid eyes and Diadem, 10 in. high, Burmese 257-

- 121 A Six-Headed Deity, standing, hands in the attitude of adoration, a wood carving which has been lacquered and gilt, 16 in. high, probably Nepalese, on wood stand *35/- Locke 2*
- 122 A VERY FINE HEAD OF BUDDHA of Greek Apollo type, somewhat effeminate in appearance, very similar to one from Bōrō Budur in the Berlin Museum, a three-quarter relief in horn blende schist, 7½ in. high *60/- Gray*

ETHNOGRAPHICAL OBJECTS FROM COSTA RICA.

The Property of Monsieur Aoé de Padilla

of San José, Costa Rica.

- (5/-)* 10. 123 A Figure of a Female Deity of flat form in stone, with roughly modelled details, and having the hands on the breast, 12 in. high
- (6/-)* 15. 124 A similar Figure of larger size, and with more definite details, 16 in. high, in fine condition
- (6/-)* 16. ~~125~~ 125 A squatting Figure in volcanic tufa, 14 in. high, much weathered
- (5/-)* 15. 126 A smaller Figure, with hands on the breast, 11 in. high; and Another, with coverings over the arms, 10 in. high *2*
- 127 A stone Grain Rubber, with oblong opening above to form the handle; a chipped stone Axe, with square cutting edge, of good form, 6½ in. long; Another of similar type; a ground Specimen; and a Fragment of another *4/- Bourne 5*
- 128 A Tripod Vase, with openwork feet and animal decoration in relief, 7 in. high; and four other Vases of varied style *60/- do 5*
- 129 An interesting Vase, with openwork masks in the supports, and figures in relief on the body; a gourd-shaped Vase; and three others *35/- Whitaker 5*
- 130 A squatting Figure of a Woman in terra-cotta; a small Vase, with masks in relief; a Whistle in the form of an animal; and two small Vases *40/- Bourne 6*
- 131 A Twin Vase, with masks in relief; two others with similar decoration; a Bowl, with frogs in relief; and a Whistle in the form of a pig, an interesting lot *40/- Bourne 5*

A COLLECTION OF SAVAGE ART FROM AFRICA,
AMERICA, NEW ZEALAND AND INDONESIA.

The Property of a Gentleman.

AFRICA.

132 An interesting Cameroons carved wood Female Fetish Figure holding a vessel above her head, red pigmentation outlined in black, 16 in. 35/7
atkins

133 A Mendi Female Fetish Figure of slender form with bellows neck and winged head-dress, 15 in.; two short Staves with negroid head handles; and a rare carved steatite Figure, 6 in., *Sierra Leone* 3/5/7
4

6. 134 Two large and finely carved Mendi Female Fetish Figures, with elaborate head-dresses and bellows necks, decorated with tribal markings and wearing curious mosquito boots, black pigmentation, 26½ in. by 21½ in., *Sierra Leone* 2

135 A Nigerian grotesque Ceremonial Mask of unusual type with antelope horn head-dress, and movable lower jaw, black, red and white pigmentation, 12½ in., *Cross River District* 45/7
atkins

60. 136 A carved wood Female Fetish Figure, carrying a bowl on her head, 13¾ in., *Belgian Congo*; and four finely carved wood Negroid Heads, *Southern Nigeria* 44/5/7
NS
5

57. 137 A rare Benin carved wood Poison Bowl and Cover of boat shape, from the place of Slaughter; and an Executioner's Head Block in heavy brown wood, 8 in. high 44/5/7
NS
2

4. 138 A Benin carved wood Female Fetish Figure, wearing a comb head-dress, 22 in.; a Benin Rattle carved to represent a bamboo staff; and a small ivory War Horn with totemic designs 3/5/7
NS
3

139 A Benin Sword with brass head and leather sheath; a curious Staff in copper, iron and bronze; a small bronze Mask; and two small carved wood Fetish Figures 2/15/7
NS
6

140 A well decorated Benin hide Fan, 16 in. diam.; a War Axe with leather decorated haft; an ivory Armlet; and four cocoanut-shell Drinking Vessels of small size 3/15/7
7

6/5/1
257 (141) AN IMPORTANT CARRYING SEAT of dark wood with pommel and candle-shaped ends decorated with brass and iron, the seat covered with leopard skin, 70 in. long and 18 in. wide and 34½ in. high, Benin

142 A good Bundi Devil Mask with double face, in carved wood with dentate head-dress; an unusual and interesting specimen in good state of preservation, 16 in., Mendi, Sierra Leone; and four Nigerian Knob Kerries 5

380

OCEANIA.

40/1 8 (143) A large carved wood Male Fetish Figure supporting a bowl on its head, the eyes inlaid with haliotis shell and the nose with beads, 28 in., Solomon Islands

5- 144 Two carved wood Philippine Figures of a Man and a Women seated on stool, 10 in.; and a finely carved wood Bowl in the form of a Sting Ray fish, the eyes inlaid with shell, Trobriand Island 3

407 N.S.

145 Five interesting and decorative grass Dresses, from New Guinea and Society Islands; a length of Tappa Cloth; a Cook's Island Bead Apron; and two carved wood Clubs of spatula shape 9

407 Boume

146 A rare and unusual Rarotongan National God in heavy dark wood, carved in the form of a staff, 39 in.

** The Missionary, John Williams, is said to have destroyed most of these Idols when on the Island, they are consequently scarce.

107-1 Boume

147 A fine Cook's Island Fly Whisk with briar-like handle; four Banks Island Knives; and a carved wood Lime Spatula, Sepik River, New Guinea

407 Boume

60/1 70/1 (148) A Fiji Necklace of whale's teeth; seven mother-o'-pearl Fish Hooks, from the Solomon's Island; and a wood and nacre Fish Hook, from New Ireland 9

149 A good Tahiti Chieftain's Stool in dark brown wood, with dip seat, on four short carved legs, 18 in.

307 Actions N.S.

4/1 6 (150) A Cooks Island Ceremonial Adze bound with sinnet, the haft carved with concentric circles of perforated ornament, 28 in.; and two Cloth Beaters, 14 in. 3

4. (151) A rare New Ireland carved and pierced wood Figure, the eyes inlaid with shell, covered in red, white and black pigmentation holding a Frigate Bird, 25 in.; and a grotesque Ceremonial Mask of the usual type, 15 in. (cf. *B.M. Handbook*, figs. 128 and 37)
12. (152) A curious Suit of Protective Armour in sinnet and fibre, comprising: Breastplate, Backplate, a Head Guard, all in one, and Leg and Arm Guards of thick matted fibre, *Gilbert Islands*

NEW ZEALAND.

16. (153) A fine Chieftain's Adze with beautifully carved haft, surmounted by a grotesque mask, the eyes inlaid with haliotis, the fine jade blade bound with cane, haft 21 in., blade 7½ in.
- 154 A good Chieftain's Staff, finely carved with an ancestral figure and loop handle; and the Handle of a Tattooing Mallet, of darker wood, somewhat similarly carved 2 *38/-*
- 155 An old Kiwi leather Cloak, used by some chieftain, *an unusually interesting and rare specimen in good state of preservation, and well made* *5/13/- Blackett*

AMERICA AND INDONESIA.

- 156 A Red Indian doeskin Coat, decorated with scalping scenes; a pair of Mocassins; two Quill Pouches; and an old Flute 6 *6/- Boune*
- 157 An Indian Chieftain's Catlinite Peace Pipe, with red decorated stem and hide pipe case; a Tobacco Bag, decorated with beads; a British Guiana stone-bladed Axe, of dumbell shape and square section; and another Axe Handle, with engraved ornament 4 *280*
6. (158) A small Haida Shale Totemic Carving, 6 in.; a North-West American Pipe; a large pottery Pipe Bowl, *probably Nigerian*; and a New Zealand Ancestral Figure 4
- 159 A rare Kingfisher Malay Kris; two other Krises, with carved ivory hilts; two finely decorated Parangs; and a Cingalese Sword 6 *380*
12. (160) A Dervish Warrior's Surcoat, with red, white and blue decoration; and an interesting old Ring Armour Tunic, with short sleeves and skirts 2 *Enir*

Other Properties.

- 6 161 An interesting New Ireland Ceremonial Mask, in carved wood, coloured and decorated with plaster with tow comb and sinnet fringe, 17 in. (cf. *B.M. Handbook*, fig. 37); two New Zealand Hanis; and a Hervey Island Paddle 4
- 6 162 A walnut ivory Model of a Lapland Sleigh, containing a woman with a baby on her lap, drawn by three reindeer, the Eskimo driver on foot with two dogs, 12 in.

THE PROPERTY OF the late Admiral Sir Frederick Bedford, G.C.M.G.

[SOLD BY ORDER OF THE EXECUTORS.]

- 163 An Arab bronze Camel Bell, without clapper, and with plain horizontal decoration, 9½ in.; a collection of fifteen Ashanti gold Weights; two ladles; and Scales 19

- 21/ 6 164 A Swahili Anklet; a Uganda Split Ring; a Bracelet; and two Buckles from Albania, all with silver embossed decoration 5

- 6/10/ 5- 165 A Uganda ivory Bracelet with carved ornament; a Zanzibar amber Necklace; and a pair of Swahili Ear-Rings, set with pearls and fitted in a metal case 5

- 7/10/ 6 166 A large Ashanti carved wood Stool of concave form, supported on a leopard-like spotted animal, and plain oblong base carved at the ends, 24 in. long, 21 in. high

- 167 A Lamu Chieftain's Ceremonial Chair, with ebony frame and cane imitation back and seat made of string, the back inlaid with bone in Indo-Portuguese style, 49 in. high, East Africa

- 8/1/ 7 168 A fine example of a Narwhal ivory Tusk, of tapering spiral form and in good condition, 7 ft. high, weight 14 lbs. passed N.B.

- 169 Chief Serey's Ceremonial Staff, with globular engraved silver head and fine malacca stick, probably of a type used in the late 18th Century in England, 51 in., *taken by Admiral Bedford at Benin City in 1894*

- 170 A very good example of a New Zealand green stone Axe-Head, of unusually large size and plain form, 13½ in. long and 6 in. wide

Another Property.

- 171 A Persian Bowl, copper, the outside engraved with a band of running floral ornament on a pointille ground, a broad band of *Thuluth* inscription, and a lower band of trefoil pendants, 5½ in. high, 14½ in. diam.

- 172 A Persian Bowl, brass, the outside engraved with Cufic inscriptions in compartments alternating with figure subjects in circles, inlaid with silver, gilded, 14th Century, 5 in. high, 9 in. diam.

- 173 A Persepolitan Lamp Stand, tripod base, tall shaft surmounted by a bird-shaped lamp, the whole chased and pierced, 30 in. high, much corroded and in four parts

END OF SALE.

The first part of the paper is devoted to a general
discussion of the problem. It is shown that the
problem is of great importance in the theory of
the differential equations of the second order.

In the second part of the paper the author
presents a method for the solution of the
problem. The method is based on the use of the
method of the variation of parameters.

The third part of the paper is devoted to the
study of the properties of the solutions of the
problem. It is shown that the solutions are
continuous and differentiable.

In the fourth part of the paper the author
presents a method for the solution of the
problem. The method is based on the use of the
method of the variation of parameters.

The fifth part of the paper is devoted to the
study of the properties of the solutions of the
problem. It is shown that the solutions are
continuous and differentiable.

In the sixth part of the paper the author
presents a method for the solution of the
problem. The method is based on the use of the
method of the variation of parameters.

The seventh part of the paper is devoted to the
study of the properties of the solutions of the
problem. It is shown that the solutions are
continuous and differentiable.

In the eighth part of the paper the author
presents a method for the solution of the
problem. The method is based on the use of the
method of the variation of parameters.

The ninth part of the paper is devoted to the
study of the properties of the solutions of the
problem. It is shown that the solutions are
continuous and differentiable.

In the tenth part of the paper the author
presents a method for the solution of the
problem. The method is based on the use of the
method of the variation of parameters.

SOTHEBY & CO.

34-35, New Bond Street, W.1.

are pleased to perform the following Services

FREE OF CHARGE

To advise intending SELLERS regarding the disposal of LITERARY and ARTISTIC PROPERTY

To give advice to intending BUYERS at their sales

TO EXAMINE PROPERTY submitted to them with a view to Sale.

To execute BIDS at their Sales — To forward Illustrated Monthly Lists of Forthcoming Sales

At a charge of $7\frac{1}{2}$ per cent (for all Lots over £100)

TO SELL BY AUCTION

PICTURES, SILVER, CHINA, FURNITURE
and WORKS OF ART, etc.

And at a charge of $12\frac{1}{2}$ per cent.

BOOKS, COINS, ANTIQUITIES and PRINTS

(N.B.—These rates cover all normal Expenses of Sales)

At a charge of 1 per cent. (subject to a small minimum fee)

TO VALUE for PROBATE, INSURANCE,
and FAMILY DIVISION.

Visits of inspection made at moderate charges.

Individual catalogues free on application

*Subscription Terms at low rates for Catalogues and Price Lists
can be obtained*

THE MOST CAREFUL ATTENTION IS GIVEN TO ALL PROPERTIES WHETHER
SMALL OR LARGE

All properties are placed ON VIEW FOR SEVERAL DAYS before the Sale and
displayed to the best advantage

NOTICES OF SALES

Notices of all sales appear in the following papers:

Mondays: "Daily Telegraph," "Morning Post."

Tuesdays: "Times."

NOTICES OF SPECIAL SALES

Appear in suitable papers from time to time

Telephone:
MAYFAIR 6682-3-4
(three lines).

Telegraphic Address:
ABINITIO, WESDO, LONDON.

BAKER, LEIGH & SOTHEBY

THE FIRM COMMENCING WITH SAMUEL BAKER IN

1744

SOTHEBY, WILKINSON & HODGE

1861-1924

SOTHEBY & CO.

1924-1932

W. Bourne. 12th December 1932

SBY	DATE	INITIALS
69.15.0		
SALE	12.11.32	Bourne
PURCHASE		
CHECKED	28.11.32	Kh
COLLECTED	23/1/33	L.C. 72
RECEIVED	23/1/33	
ACCESSED		
PASSED		

FEB 19 1933
 10 11 12 13 14 15 16 17 18 19 20 21 22 23 24 25 26 27 28 29 30
Kh

ANTIQUITIES, ETC.

ALSO COLLECTIONS OF

NATIVE ART,

INCLUDING

The Property of T. H. POWELL, *decd.* ;

The Property of Monsieur NOÉ DE PADILLA ;

The Property of the late Admiral Sir FREDERICK BEDFORD, G.C.M.G.

[SOLD BY ORDER OF THE EXECUTORS];

AND OTHER PROPERTIES.

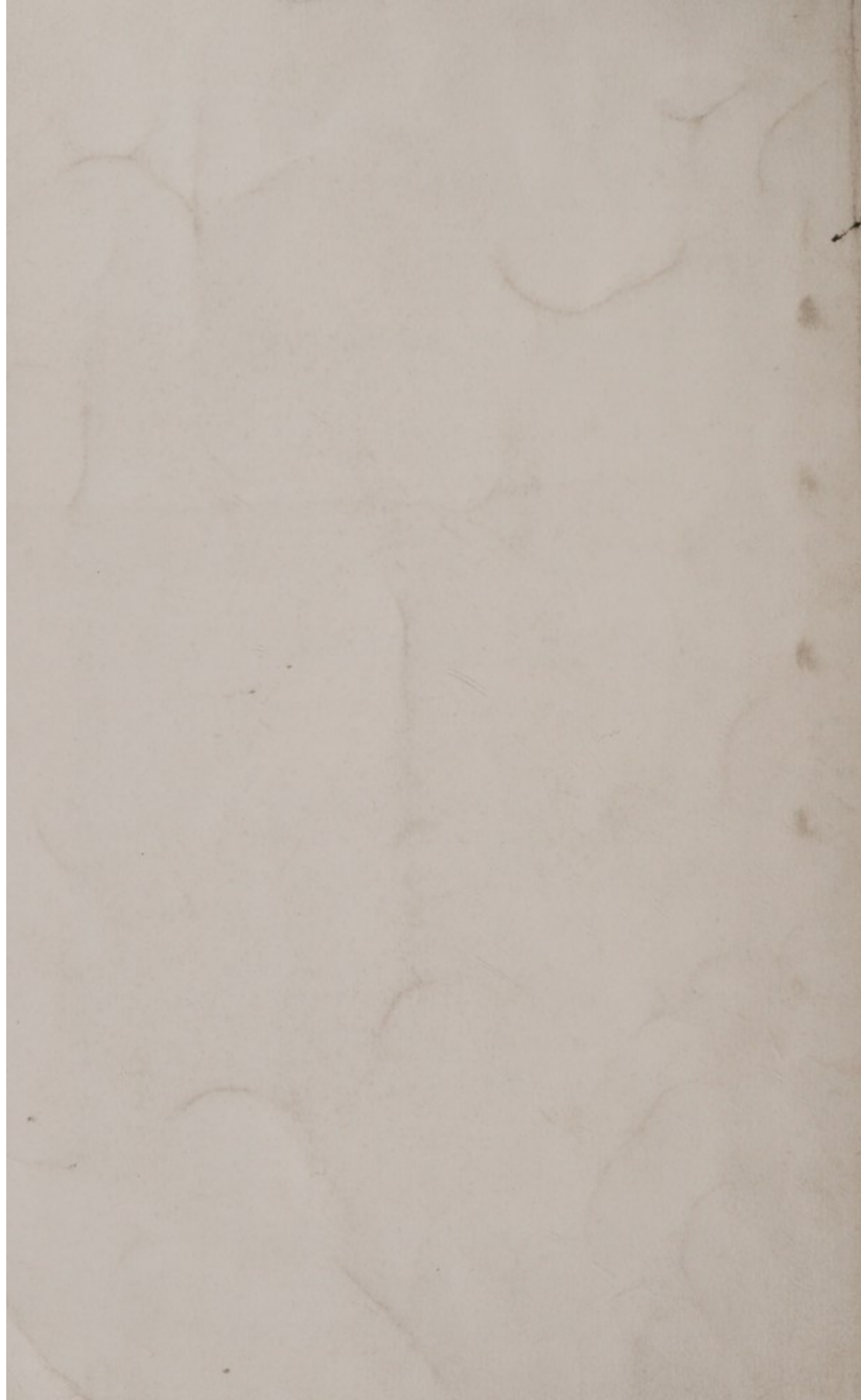
WA/4mm/cm/sa/120/1008/2

Day of Sale.

MONDAY, THE 12TH OF DECEMBER.

1932

Kh me. 185. £69.15.0



CATALOGUE
OF
PREHISTORIC IMPLEMENTS,
EGYPTIAN, GREEK, ROMAN, LURISTAN & INDIAN
ANTIQUITIES, ETC.

ALSO COLLECTIONS OF
NATIVE ART.

INCLUDING

The Property of T. H. POWELL, *decd.* ;
The Property of Monsieur NOÉ DE PADILLA ;
The Property of the late Admiral Sir FREDERICK BEDFORD, G.C.M.G.
[SOLD BY ORDER OF THE EXECUTORS] ;
AND OTHER PROPERTIES.

WA/Hmm/cmbal/20/1008/2

Day of Sale.

MONDAY, THE 12TH OF DECEMBER.

1932

km me. 185. £69. 15. 0

TERMS OF SUBSCRIPTION FOR MESSRS. SOTHEBY'S
CATALOGUES AND PRICE LISTS FOR ONE SEASON.

The Season opens in October and closes at the end of July.

(All Subscriptions include postage.)

PLAIN CATALOGUES.

	£	s.	d.
Antiquities	0	1	6
Books, MSS. and Autograph Letters	0	5	0
Coins and Medals	0	1	6
Drawings and Pictures	0	2	0
Engravings (Old)	0	2	0
Etchings (Modern)	0	2	0
Oriental MSS. and Miniatures	0	1	0
Works of Art (including Armour, China, Furniture, Glass, Japanese Colour Prints and Works of Art, Jewellery, Miniatures, Silver, Textiles, etc.)	0	5	0
	£1	0	0

ILLUSTRATED CATALOGUES.

(To include Plain Copies where no Illustrated Catalogues are issued.)

	£	s.	d.
Antiquities	0	5	0
Books, MSS. and Autograph Letters	2	0	0
Coins and Medals	0	5	0
Drawings and Pictures	0	15	0
Engravings (Old)	0	7	6
Etchings (Modern)	0	2	6
Oriental MSS. and Miniatures	0	5	0
Works of Art (including Armour, China, Furniture, Glass, Japanese Colour Prints and Works of Art, Jewellery Miniatures, Silver, Textiles, etc.)	1	0	0
	£5	0	0

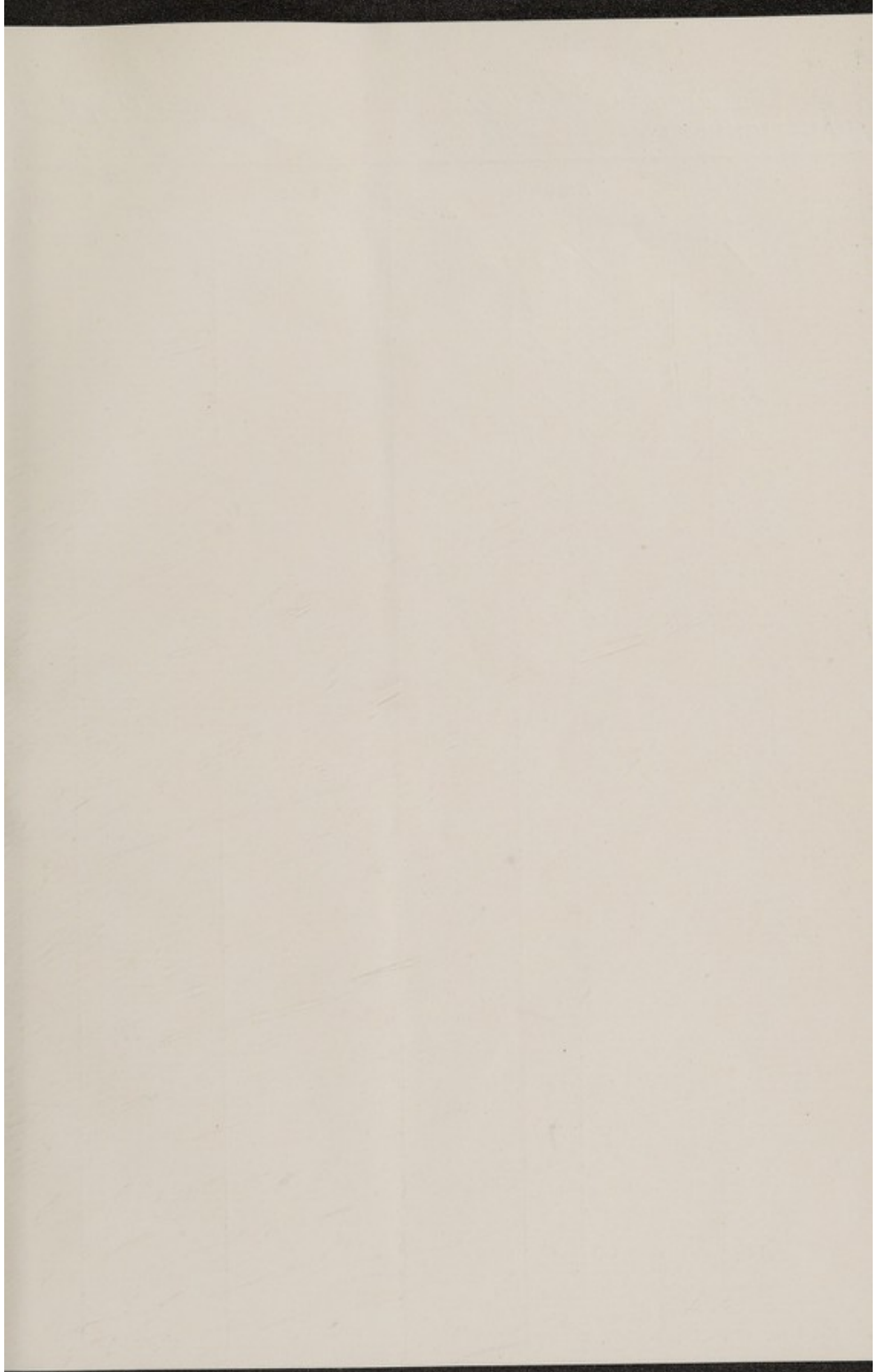
PRINTED LISTS OF PRICES AND BUYER'S NAMES.

	£	s.	d.
Antiquities	0	10	0
Books, MSS. and Autograph Letters	5	5	0
Coins and Medals	0	10	0
Drawings and Pictures	1	15	0
Engravings (Old)	1	15	0
Etchings (Modern)	1	15	0
Oriental MSS. and Miniatures	0	10	0
Works of Art (including Armour, China, Furniture, Glass, Japanese Colour Prints and Works of Art, Jewellery, Miniatures, Silver, Textiles, etc.)	3	0	0
	£15	0	0

N.B.—The Terms of Subscription for Price-Lists have been substantially
reduced recently.







BUYER
AUCTIONEERS

L. C. Pournelle
Sotherby

Date

12/12/32

Lot	Amount			Lot	Amount		
	£	s.	d.		£	s.	d.
<i>1</i>	<i>1</i>	<i>"</i>	<i>"</i> ✓				
<i>3</i>	<i>2</i>	<i>2</i>	<i>"</i> ✓				
<i>8</i>	<i>1</i>	<i>18</i>	<i>"</i> ✓				
<i>10</i>	<i>3</i>	<i>10</i>	<i>"</i> ✓				
<i>14</i>	<i>3</i>	<i>5</i>	<i>"</i> ✓				
<i>29</i>	<i>1</i>	<i>12</i>	<i>"</i> ✓				
<i>38</i>		<i>18</i>	<i>"</i> ✓				
<i>39</i>	<i>2</i>	<i>"</i>	<i>"</i> ✓				
<i>40</i>	<i>1</i>	<i>12</i>	<i>"</i> ✓				
<i>61</i>	<i>1</i>	<i>12</i>	<i>"</i> ✓				
<i>63</i>	<i>6</i>	<i>"</i>	<i>"</i> ✓				
<i>83</i>	<i>1</i>	<i>15</i>	<i>"</i> ✓				
<i>84</i>		<i>16</i>	<i>"</i> ✓				
<i>102</i>	<i>3</i>	<i>10</i>	<i>"</i> ✓				
<i>118</i>	<i>5</i>	<i>"</i>	<i>"</i> ✓				
<i>124</i>	<i>4</i>	<i>"</i>	<i>"</i> ✓				
<i>128</i>	<i>3</i>	<i>"</i>	<i>"</i> ✓				
<i>130</i>	<i>2</i>	<i>"</i>	<i>"</i> ✓				
<i>131</i>	<i>2</i>	<i>"</i>	<i>"</i> ✓				
<i>145</i>	<i>2</i>	<i>"</i>	<i>"</i> ✓				
<i>146</i>	<i>10</i>	<i>"</i>	<i>"</i> ✓				
<i>147</i>	<i>2</i>	<i>"</i>	<i>"</i> ✓				
<i>156</i>	<i>6</i>	<i>"</i>	<i>"</i> ✓				
<hr/>							
	<i>£ 67</i>	<i>10</i>	<i>"</i>				

CATALOGUE
OF
PREHISTORIC IMPLEMENTS,
EGYPTIAN, GREEK, ROMAN, LURISTAN AND
INDIAN
ANTIQUITIES, etc.

ALSO
COLLECTIONS OF
NATIVE ART

INCLUDING

The Property of T. H. Potwell, decd.;

The Property of Monsieur Noé de Padilla;

THE
Property of the late Admiral Sir Frederick Bedford, G.C.M.G.
[SOLD BY ORDER OF THE EXECUTORS],

AND OTHER PROPERTIES.

WHICH WILL BE SOLD BY AUCTION,
BY MESSRS.

SOTHEBY & Co.

G. D. HOBSON, M.V.O. F. W. WARRR, O.B.E., M.C. C. G. DES GRAZ.
MISS E. BARLOW. C. V. PILKINGTON, B.A.

Auctioneers of Literary Property & Works illustrative of the Fine Arts,
AT THEIR LARGE GALLERIES, 24 & 35, NEW BOND STREET, W. 1
On MONDAY, the 12TH of DECEMBER, 1932,
AT ONE O'CLOCK PRECISELY.

On View Three Days previous.

Catalogues may be had.

PRINTED BY J. DAVY & SONS, LTD., 8-9, FRITH-STREET, SOHO-SQUARE, LONDON, W., ENGLAND

CONDITIONS OF SALE.

- I. The highest bidder to be the buyer. If any dispute arise the Auctioneer shall have absolute discretion to settle it; and to put any disputed lot up again.
- II. No person to advance less than 1s.; above five pounds 5s., and so on in proportion.
- III. All lots are sold subject to the right of the seller or his agent to bid or else to impose a reserve.
- IV. The purchasers to give in their names and places of abode, and if required, to pay down 10s. in the pound or more, in part payment of the purchase money; in default of which the lot or lots purchased may be immediately put up again and re-sold.
- V. All lots are sold as shown with all faults, imperfections, and errors of description. Messrs. Sotheby & Co. act as agents; they have full discretion to refuse any bidding or to withdraw any lot or lots from the sale without in either case giving any reason; they are not responsible for errors of description or for genuineness or authenticity of any lot or for any default or defect in it, and make no warranty whatever.
- VI. The lots to be taken away at the buyer's risk and expense, immediately after the conclusion of the sale; in default of which Messrs. Sotheby & Co. will not hold themselves responsible if the same are lost, stolen, damaged or otherwise destroyed, but they will be left at the sole risk of the purchaser, and subject to a charge for warehousing. If, at the expiration of Two Days after the conclusion of the sale, the lots are not cleared or paid for, they may then be sold immediately, either publicly or by private treaty, without any notice being given to the defaulter.
- VII. Upon failure of the buyer to comply with any of the above conditions, the money deposited in part-payment shall be forfeited; and the defaulter at this sale shall make good any loss arising from the re-sale, together with the charges and expenses in respect of both sales.

To prevent confusion no purchases can be claimed or removed during the sale.

Messrs. SOTHEBY & Co. are prepared to execute bids, and in addition to advise intending purchasers as far as possible, if requested by them to do so, without making any charge for either service. Lots will be procured as cheaply as is permitted by other bids or reserves, if any.

34 and 35, New Bond Street, London, W.1.

Telegraphic Address:

"Abinitio, Wesdo, London."

A.B.C. Code, 5th Edition.

Telephone: (3 lines)

Mayfair 6682, 6683, 6684.

In sending Commissions this Catalogue may be referred to as "NEIT."

COMMISSIONS SENT BY TELEPHONE ARE ACCEPTED AT THE SENDER'S RISK, AND MUST BE CONFIRMED BY LETTER OR TELEGRAM. [1]

CATALOGUE
OF
ANTIQUITIES, etc.

DAY OF SALE.

Monday, 12th December, 1932.

The Property of a Gentleman.

PREHISTORIC STONE IMPLEMENTS.

20/- 49/- 1 LOT
Palaeolithic: A good pointed Acheulian Implement; nine others, varied; fourteen Flakes; and two others, *from various localities* 26

40/- 2 Seven fine-pointed Implements; another of ovate form, *from various localities*; and an unusual Implement of sub-triangular form, *of the Moustier period from Hampton* 9

42/- 37/- 3 A discoidal Implement of massive form, *rare*; another, with an acute point; and fourteen others of various types, *all marked with localities* 16

20/- 4 An ovate Implement, and Shells, *from Ingress Vale*; five Chert Implements; eleven others, varied; and an unusual Side-Scraper, *from Milton Street* a lot

5 Neolithic: A stone Object with two perforations, probably used with a "fire drill"; a polished stone Axe, *New York*; and four other Axes, *all good examples from the U.S.A.*

6 A partly polished Chert Adze, *from Tennessee, very fine*; a Gouge, with deeply grooved face; three stone Axes; a fine Side-Scraper; and a good chipped Axe, *all from the U.S.A.* 7

7 Arrow-Heads and Pottery Fragments, *from the McCloud river*; two Rubbers; a Core; and eighteen small Arrow-Heads, *from Bolivia* a lot

38/ 30/ 8 Four fine Arrow-Heads of crystalline quartz; a large ovate Knife; five obsidian Arrow-Heads; and nine other Implements, a fine group, all from the U.S.A., in glass-topped box 19

40/ 22/ 9 A fine serrated leaf-shaped Knife; eight good Borers; and twelve others, all from the U.S.A., a good lot, in glass-topped box 21

28/ 10 A good series of twenty-two Arrow-Heads; and a fine Group of thirty others, in chalcedony and other materials, in glazed box, all from the U.S.A. 52

11 A fine Gorget in polished porphyry, from Shelley County; and a fine butterfly-shaped "Bannerstone," from Tennessee, very rare 2

12 Two stone Gorgets; four stone Discs; and sixteen varied Arrow-Heads, all from the U.S.A., in two glazed boxes 22

13 A serrated Lance-Head; and ten others, all very fine, from the U.S.A., in glazed box 11

14 Three Axes in haematite; a large curved Knife; a Disc with incised cross lines; and eight other Implements, same district 13

35/ 15 A fine ovate flint Knife; three others; a well-chipped Axe; and four others, varied, same district, a good lot 9

40/ 16 A good series of seventy Arrow-Heads and Knives, in varied materials, in two glazed boxes, all from the U.S.A. 70

15/ 50/ 17 A very fine Lance-Head with side notches, Tennessee; a "Fish Spear"; a fine ovate Lance-Head; and thirteen other Implements, all U.S.A., an unusually fine lot, in glazed case 16

18 An unusually large and fine leaf-shaped Implement, 8 in. long, from Fulton Co. Indiana; a fine-chipped Axe; and an ovate Knife, Tennessee (all of the "Mound builder" period), very rare; and two Arrow-Heads, Valparaiso, in glazed box 5

19 Six glass Arrow-Heads; and two Discs, from West Australia, in glazed box 8

20 Fifty Arrow-Heads and other stone Implements, from the Yorkshire Wolds; and a similar series of forty, from Suffolk, in two glazed boxes 90

- 21 A group of glazed Flints, *from the Knowle Gravels*, including an unusually small Implement; a Core and three Flakes, *Pressigny*; and a number of small Implements, *from various localities* a lot
- 21A A leaf-shaped Lance Head and five Lunar Knives, some with glazed edge, *from Denmark* 6
- 22 A strongly-curved flint Sickle; two Lunar Knives; three Daggers; and three others, *Denmark* 9
- 23 Fifteen imperfect Daggers and Knives, *Denmark, some fine* 15
- 24 Two fine chipped flint Axes; and three others, with the faces partly polished, *Denmark* 5
- 25 A finely polished flint Axe, $8\frac{1}{2}$ in. long; another, $7\frac{1}{2}$ in. long; an Axe with curiously roughened cutting edge; and a perforated Pebble Hammer, *Denmark* 4
- 26 A well chipped Gouge; two narrow Chisels; five varied Axes; and a Scraper, *Denmark* 9
- 27 Two Carib Adzes of shell, *Barbados*; two Fish Hooks, *New Zealand*; a perforated stone Disc, *New Guinea*; an Adze, *New Zealand*; and a fine grooved Axe, *Missouri* 7
- 28 A fine Axe, 8 in. long, *New Guinea*; another, 6 in. long, *Ballymena*; another, *Jedburgh, rare*; five others, *varied*; and an interesting Axe, showing the action of frost 9
- 30/ 29 Eight well-chipped flint Axes; and a number of other Implements and Pottery Fragments, *found at Cissbury Camp (a few were found in the pits)* a lot
- 30 A chipped flint Axe; and a Fabricator, *Seaford*; a long Flake; four Axes; a Chisel; and a series of smaller Implements, *from various Sussex localities* a lot
- 30/ 31 An usually well-chipped Axe, *Horsham*; a flint Axe, *Isleham*; another in basalt, *Ireland*; and an Axe and perforated Hammer, said to have been found at *Pulborough* 5
- 32 Four early dynastic flint Scrapers; a discoidal Implement; and twenty-nine smaller Implements and Flakes, *some from Egypt, in glazed case* 34

- 33 Two Obsidian Cores; five Flakes; four Arrow-Heads; and Part of an Axe, *Mexico*; a Core from *Melos*; and three Implements from the *Swiss Lakes* 16
- 34 Four small polished Axes, from various localities; and a Series of Axes and other Implements, principally from the *South Downs* a lot
- 35 Two fine Borers; and a series of Fabricators and other small Implements, principally from *Sussex* a lot
- 36 An Axe of Campigny type, from *Graffham*; six others; three Fabricators; a Hammer with natural perforation, *Seaford*; three other Hammer Stones; and a number of other Implements a lot
- 37 A well-chipped flint Axe, *Chyngton*; a curiously patinated Core, *Sussex*; a Pigmy Implement, *Horsham*; ten others, *Vindhya Hills*; and a number of other Implements a lot
- 40/- 38 A number of Forgeries and other Implements; and some Archaeological Pamphlets a lot
- 40/- 30/- 39 Four flint Arrow-Heads, *Italy*; ten others, and a Saw, *Egypt*; six others, *Antrim*; and three others 24

MISCELLANEOUS ANTIQUITIES.

- 30/- 5- 40 A String of early agate Beads; a bronze Stamp; a heart-shaped Amulet of stone; three Spindle Whorls; and six Specimens of Kimmeridge "Coal Money" (*Roman period*) 12
- 41 A collection of varigated Roman glass Fragments, from the *Berens collection*, in glazed case
- 43 A CARNELIAN INTAGLIO with two busts, and Pehlevi inscription, which probably reads "Fair Maiden Anahit" and "Magian making due adoration to the deity" (*see accompanying letters*), rare and of interest
- 44 A 16th Century silver Gimmel Ring; a Saxon Ornament, *Icklingham*; a small stone Axe, *Guatemala*; a 16th Century Thimble; and three others 7
- 45 Three Roman glass Bottles; three Medicine Phials; and a number of other glass Objects, in glazed case

- 46 A Gnostic Gem in plasma, with a figure of Juno, inscribed "ΚΑΡΦΙΡ. 40/1
KOPPA," *fine and rare* 1 *W. H. Mulliken*

- 47 A mahogany Cabinet of ten drawers, 34 in. *high* 20/ *f*

The Property of T. B. Powell (*decd.*)

- 48 A Roman terra-cotta Lamp in the form of a sandalled foot; another, 80/ *the Mulliken*
bearing the Chi Rho monogram; fourteen others, varied; and
a number of Fragments *a lot*

- 49 A Samian Patera (form 31) with potter's name; a Bowl (form 33); 10/ *Lawrence*
another (form 36); and a number of decorated or signed
Samian Fragments, *found in London* *a lot*

- 50 A fine Roman Dagger Handle of ivory, the grip decorated with 10/5 *W. H. Mulliken*
figures of gladiators in slight relief. *rare* 1

- 51 A Greek Cup with radiate linear decoration; another, plain; and 20/ *f*
eleven other early Vases of varied types 13

- 52 A terra-cotta Bottle with a human mask in relief on the body; 20/ *f*
four small early Iron Age Vases; and two others, *all from*
Cyprus; an alabaster Vase, with inscription on the sides;
and a curious "marbled" Bowl 9

- 53 Two pairs of Greek gold Earrings; a Mediaeval Ring, *from* 20/ *f*
Walbrook; and two Egyptian Rings 5

- 54 Two terra-cotta Dolls, with incised decoration, *Mycenaean Cyprus*, 80/ *Slow*
rare 2

- 55 An early terra-cotta Figure of an Animal; a Bronze Age Doll (?) 40/ *f*
curious; three Greek Heads from statuettes; and two Assyrian
cuneiform Tablets 8

- 56 Five Roman bronze Armlets; seven 15th Century Keys; a Horse 20/ *the Mulliken*
Bell; a Tudor Skate; and other antiquities, *found in London*
a lot

- 57 A diorite Dish in the form of a fish; an Ankh, *rare*; four alabaster 5/5 *f*
Vases; and a number of decorated faience Fragments, *from*
the Palace of Amen Hetep at Thebes *a lot*

- 58 A Scarab of Thothmes IV; and fourteen other Scarabs, varied 15
- 59 A large blue faience Bead; two Ushabtis; eighteen varied Amulets,
all from Egypt; odd Greek Beads; and other antiquities, in a
glazed box a lot
- 60 A well-modelled bronze Figure of Osiris; a bronze Situla; and four
other objects 6
- 61 Fifteen terra-cotta Heads; a curious Seal; and a Hand Amulet,
all from Peru, in a glazed box 17
- 62 A Sassanian conoid Seal; another, with gryphon device; a Clasp
Knife, 17th Century; a decorated glass Boss; and seven others 11

EGYPTIAN ANTIQUITIES.

The Property of a Gentleman.

A COLLECTION FORMED ABOUT 1830 BY THE GRANDFATHER OF THE PRESENT
OWNER.

- 63 A round-topped Stele, 9 in. by 8 in., in grey granite, incised with
a man (Ra-meri) offering to the goddess Sati, *New Kingdom*
- 64 Another, 11 in. by 7½ in., in calcareous stone with part of a scene
of offering to Hor-nofer and his wife Seh-nofer and the usual
formula, *New Kingdom*
- 65 Another, 14 in. by 9 in., incised with a scene of offering to Nub-ses-
Amun, son of Hathor, and his father; below are fourteen
columns of hieroglyphics apparently commemorating other
members of the family
- 66 Another, 14 in. by 9 in., in limestone, representing a man, Horu,
offering to Horakhti, *in cavo relievo*
- 67 Another, 15 in. by 14 in., in limestone, representing the presentation
of the deceased by Anubis to Osiris, Isis and Anubis; below (in
Greek) "Aiea daughter of Aemilius fare (well)!" *Roman*

- 68 Another, $11\frac{1}{2}$ in. by 8 in., in limestone, representing a woman, Uasnofer, worshipping Osiris, before whom are figures of the Genii of the Dead; below is a prayer for offerings, *late work, showing traces of colour*
- 69 Another, $10\frac{1}{2}$ in. by 8 in., in limestone, representing a woman, Ruda, worshipping Osiris, above is the winged sun, *in cavo relievo work, with remains of colour, XXII Dynasty or later*; and another, $9\frac{1}{2}$ in. by $5\frac{1}{2}$ in., in limestone, representing a man in the presence of a seated deity, below is a garbled inscription, *rough work of uncertain date* 2
- 70 A ROUND-TOPPED STELE, $21\frac{1}{2}$ in. by $13\frac{1}{2}$ in., in limestone, above are two uchats, the signet and two vases, in the bottom corner is a kneeling figure of a military scribe, Antuf, in the field are three addresses to Amun-Ra, *good work of the XVIII Dynasty*
 ** A translation of the text accompanies the stele.
- [See FRONTISPIECE.]
- 71 A seated Male Figure, 18 in. high, in red granite, the hands, one closed, resting on the knees, *Middle Kingdom*
- 72 The Head and Shoulders of a Man, 11 in. high, in grey granite, inscribed in the back for the ka of a vizier, *New Kingdom*; a Head of a Princess or Goddess, 5 in. high, in black granite, *Saite period or later*; and a Canopic Head of Mesta, in aragonite 3
- 73 A Squatting Figure of a Man, 19 in. high, in red granite, holding a shrine of Ptah, on the shoulders are the cartouches of Rameses II, inscribed for Ptahii, *XIX Dynasty*
- 74 A Couchant Sphinx, 26 in. by 15 in., in limestone heavily pitted, ? *Roman*
- 75 A Female Head, about 7 in. high; another, about 8 in. high; and a Head of a Youth, about 4 in. high, all in marble, *Graeco-Roman* 3
- 76 A Bearded Head, about 12 in. high, in marble, *Roman, 1st Century, A.D.*
- 77 A plaster Cast, 20 in. high, of the celebrated boundary stone known as the Caillou de Michaux, with figures of gryphons and a cuneiform inscription, the original, brought by M. Michaux to France in 1800, is now in the Louvre, *Kassite period, 1100-1200 B.C.*

79 A Papyrus Fragment, 22 in. by 10 in., in cursive hieroglyphs, containing the greater part of Chapter XV of the Book of the Dead, with vignettes of the funeral service, tomb sacrifice, etc., neatly executed in outline, *framed in passe partout*

81 A set of eight others, forming a large vignette in outline, about 18 in. by 12 in., of the Weighing of the Heart, the text in cursive hieroglyphics; about twelve others from the same papyrus, with funerary deities; and about twelve others from the same papyrus and that described under lot 79, *all framed in passe partout*

82 Another, 29 in. by 11 in., in hieratic, with vignettes of Chapter CXXVI of the Book of the Dead in outline touched with colour; and a piece of Mummy Cloth, 14 in. by about 6 in., completely inscribed in hieratic, *both framed in passe partout*

757-83 The Upper Part of a Muslim Gravestone, 15½ in. by 9½ in., with inscription in Arabic containing devotional texts, *the date is missing*

84 Another, 14½ in. by 9 in., giving the date A.H. 460 (A.D. 1067-68)

Other Properties.

5-85 A round-topped limestone Stele, 9½ in. by 8 in., representing a Theban priestess offering to the deified Queen Aahmes Nefertari and King Neb-peh-Ra (Aahmes I.), *clearly cut, with traces of colour, XIX Dynasty or later*

86 Four large Canopic Vases, 18 in. high, in aragonite, of tapering cylindrical form, all with the Head of Mesta, two inscribed with a funerary formula

30-87 Two inscribed Assyrian nail-shaped Cones

88 A Greek Olpe red figure on black ground, a winged figure in front of an altar, looking into a hand mirror, 6½ in. high; another, a youth standing, nude, his chlamys over his left arm with a bird on the hand, the right hand holding a staff, 6½ in. high

- 89 Gems. Cameos (3), a woman before a herm, the head of a bacchante, two birds; Garnets (2), a bird, an elephant, Sasanian; Lapis, a cow; Turquoise, with inscription; Carnelian, Oriental warrior; Chalcedony, a hero with spear and helmet, in modern ring; an ancient cast of a coin of Commodus; and a mould of a coin of Licinius 11
- 90 A Buckle Plate of rounded form, decorated with incised and dot and radiate lines; a Hook, decorated with a human mask; a Brooch, of lozenge form, with circular projections at the angles *rare*; a decorated Strap Mount; a bronze Button, *all Merovingian*; and two Carnelian Intaglios of recent date 7

PERUVIAN POTTERY,

- 91 A large onion-shaped Bowl from *Cuzco*, with three conventional animal heads in chocolate brown on a cream coloured ground, lighter key pattern on the shoulder, *lip slightly damaged*, 14 in. diam., 9 in. high
- 91A A small Bowl of similar shape, alternate black and red, conventional snake pattern on cream ground, the rim decorated inside with lozenge pattern in red, within hexagons, *slightly damaged*, 6 in. diam., 4 in. high; another, similar, with conventional key pattern, 5½ in. diam., 3½ in. high, both from *Madre de Dios River* 2

PERUVIAN TEXTILES.

- 92 A large Panel, decorated in bright colours with stamped geometric patterns of various shapes, *about 56 in. by 31 in., Nazca*
- 93 A small square Panel, woven with diagonal rows of bird-like motifs and zig-zag ornament in shades of brown, green and red on a buff ground, 12 in., *Paracas*
 ** Somewhat similar motifs are illustrated by Lehmann in "The Art of Old Peru," pl. 117, etc.
- 94 A large Needlework Panel, woven all-over with a small red lattice design containing formal flowers, *about 48 in. by 36 in., Paracas*
- 95 A long narrow Band, woven in red on a golden ground with a small geometric design enclosing in the centre brown and archaic animal motifs, 70 in. by 7¼ in., *Paracas*

- 96 A Chief's Poncho or Coat, woven all-over with large geometric medallions in red and black on a buff ground, *Tiahuanaco*
- 97 A large Kelim Panel of oblong shape, woven with stepped medallions in black on a terra-cotta ground, the top with a narrow coloured border in shades of red, black, ivory and orange, 70 in. by 18 in., *Paracas*

ANCIENT LURISTAN BRONZES.

- 98 A pair of openwork Antefixes, each in the form of an ibex head with a large ring below, 2 in. long 2
- 99 A pair of Penannular Bracelets, one ending in bird forms and the other in scrolls; a flat pear-shaped Pendant; a long Pin, with globular head; and a bronze openwork Bell 5
- 100 A large bronze Penannular Ring, with flat ends and decorated with triangular designs and rings of small bosses, the whole covered with a green patine, 6 in. wide
- 101 Another, very similar to above, 5½ in. wide
- ** These rings are said to have been a symbol employed by two chieftains in making a treaty of mutual help between their tribes.
- 4 102 A bronze Axe-Head with fine green patine and plain ribbed decoration, 3¾ in. wide
- 40/ 103 Another, with long narrow blade, 5 in. wide
- 104 Two small Staff-Heads, 6 in. and 3½ in. long; and a vase-shaped Ornament, with globular body and elliptical decoration, 4¼ in. long 3
- 105 A Staff-Head, modelled as a feline animal seizing an ibex, and with original stone Shaft (*the latter in two pieces*), total length, 9 in. 2
- 106 A Staff-Head, the top modelled as two leopards, the base as a vase with long narrow tubular neck, total length, 11 in.
- 107 Another, the head shaped as a man grasping two birds by the neck, and with other human and animal motifs below, and on long vase-shaped base, total length, 14 in.
- 108 Another, similar, but not so fine in detail, total length, 14 in.

- 109 A Collection of nine small objects, consisting of: an Archer's Thumb Ring, an Ox Skull Pendant and Chain, a Seal, two Double-headed Bird Forms, two Birds, one Animal, and a small Ornament 9
- 110 A Dagger, with fine green patine and with flanges doubled over at base of hilt, 15 in. long 1
- 111 Another, with fan-shaped ends to the hilt, 14 $\frac{3}{4}$ in. long
- 112 Another, with green patine and plain hilt, 14 in. long

INDIAN ANTIQUITIES.

- 113 Gandhara Relief of a *Siddha* or winged human messenger on one knee, head bent downwards, hands on knees, and wings drooping; a Schist Carving, probably from the base of a *palmasana*, 7 in. high, 9 $\frac{3}{4}$ in. wide 2
- 114 Gandhara Relief, Sakra visiting Gantama in the cave of Indrasaila, in horn blende schist, 5 $\frac{1}{2}$ in. high by 6 $\frac{3}{4}$ in. wide
- 115 Gandhara Relief, probably a Naga King grasping the wing of an enemy Garuda and attacking it, while his wife stands beside him, 5 in. by 3 in.; and another unidentified Fragment, 6 $\frac{1}{2}$ in. high 2
- 116 A Bengali Relief of Vishnu, broken off at the waist, beneath an umbrella and overshadowed by *Apsaras*, the left hand holding the conch, three-quarter relief on a domical panel of black carboniferous shale, 15 in. high by 12 $\frac{1}{2}$ in. wide
- 117 Vishnu standing, holding the conch, between two smaller figures of his *Sactis*, a sandstone relief, 8 in. high by 4 in., Rajputana
- 4 118 Head of an *Asura* or demon, in grey sandstone, three-quarter relief in the style of the carvings of the Rāmesvaram Temple, Madura, 9 in. high by 9 in. wide
- 119 Head of Buddha, modelled in clay over a black sandy core, and baked, inlaid eyes, 4 in. high, Ceylon; and another Head, 7 in. high 2
- 120 Buddha, seated in the Witness attitude, bronze, with inlaid eyes and Diadem, 10 in. high, Burmese

- 121 A Six-Headed Deity, standing, hands in the attitude of adoration, a wood carving which has been lacquered and gilt, 16 in. high, probably Nepalese, on wood stand 2
- 122 A VERY FINE HEAD OF BUDDHA of Greek Apollo type, somewhat effeminate in appearance, very similar to one from Bōrō Budur in the Berlin Museum, a three-quarter relief in horn blende schist, 7½ in. high

ETHNOGRAPHICAL OBJECTS FROM COSTA RICA.

The Property of Monsieur Moé de Padilla

of San José, Costa Rica.

- 123 A Figure of a Female Deity of flat form in stone, with roughly modelled details, and having the hands on the breast, 12 in. high
- 124 A similar Figure of larger size, and with more definite details, 16 in. high, in fine condition
- 125 A squatting Figure in volcanic tufa, 14 in. high, much weathered
- 126 A smaller Figure, with hands on the breast, 11 in. high; and Another, with coverings over the arms, 10 in. high 2
4. 127 A stone Grain Rubber, with oblong opening above to form the handle; a chipped stone Axe, with square cutting edge, of good form, 6½ in. long; Another of similar type; a ground Specimen; and a Fragment of another 5
- 60/- 128 A Tripod Vase, with openwork feet and animal decoration in relief, 7 in. high; and four other Vases of varied style 5
- 40/- 129 An interesting Vase, with openwork masks in the supports, and figures in relief on the body; a gourd-shaped Vase; and three others 5
- 4 130 A squatting Figure of a Woman in terra-cotta; a small Vase, with masks in relief; a Whistle in the form of an animal; and two small Vases 6
- 40/- 30/- 131 A Twin Vase, with masks in relief; two others with similar decoration; a Bowl, with frogs in relief; and a Whistle in the form of a pig, an interesting lot 5

A COLLECTION OF SAVAGE ART FROM AFRICA,
AMERICA, NEW ZEALAND AND INDONESIA.

The Property of a Gentleman.

AFRICA.

- 132 An interesting Cameroons carved wood Female Fetish Figure holding a vessel above her head, red pigmentation outlined in black, 16 in. 35/ Camero
- 133 A Mendi Female Fetish Figure of slender form with bellows neck and winged head-dress, 15 in.; two short Staves with negroid head handles; and a rare carved steatite Figure, 6 in., *Sierra Leone* 15/ Cawl
- 134 Two large and finely carved Mendi Female Fetish Figures, with elaborate head-dresses and bellows necks, decorated with tribal markings and wearing curious mosquito boots, black pigmentation, 26½ in. by 21½ in., *Sierra Leone* 45/ Show
- 135 A Nigerian grotesque Ceremonial Mask of unusual type with antelope horn head-dress, and movable lower jaw, black, red and white pigmentation, 12½ in., *Cross River District* 45/ Appano
- 136 A carved wood Female Fetish Figure, carrying a bowl on her head, 13¾ in., *Belgian Congo*; and four finely carved wood Negroid Heads, *Southern Nigeria* 45/ 2.
- 137 A rare Benin carved wood Poison Bowl and Cover of boat shape, from the place of Slaughter; and an Executioner's Head Block in heavy brown wood, 8 in. high 45/ 2.
- 138 A Benin carved wood Female Fetish Figure, wearing a comb head-dress, 22 in.; a Benin Rattle carved to represent a bamboo staff; and a small ivory War Horn with totemic designs 65/ 2.
- 139 A Benin Sword with brass head and leather sheath; a curious Staff in copper, iron and bronze; a small bronze Mask; and two small carved wood Fetish Figures 15/ Deblite
- 60/140 A well decorated Benin hide Fan, 16 in. diam.; a War Axe with leather decorated haft; an ivory Armlet; and four cocoanut-shell Drinking Vessels of small size 45/ 1/ Not Sola

- 141 AN IMPORTANT CARRYING SEAT of dark wood with pommel and candle-shaped ends decorated with brass and iron, the seat covered with leopard skin, 70 in. long and 18 in. wide and 34½ in. high, *Benin* 60/- 1/2 slow
- 142 A good Bundi Devil Mask with double face, in carved wood with dentate head-dress; an unusual and interesting specimen in good state of preservation, 16 in., *Mendi, Sierra Leone*; and four Nigerian Knob Kerries 5 10/- 1/2 slow

OCEANIA.

- 143 A large carved wood Male Fetish Figure supporting a bowl on its head, the eyes inlaid with haliotis shell and the nose with beads, 28 in., *Solomon Islands* 10/- 1/2 slow
- 144 Two carved wood Philippine Figures of a Man and a Women seated on stool, 10 in.; and a finely carved wood Bowl in the form of a Sting Ray fish, the eyes inlaid with shell, *Trobriand Island* 3 10/- 1/2 slow

- 145 Five interesting and decorative grass Dresses, from *New Guinea and Society Islands*; a length of Tappa Cloth; a Cook's Island Bead Apron; and two carved wood Clubs of spatula shape 9 5/- 1/2

- 146 A rare and unusual Rarotongan National God in heavy dark wood, carved in the form of a staff, 39 in. 7 10/- 1/2

** The Missionary, John Williams, is said to have destroyed most of these Idols when on the Island, they are consequently scarce.

- 147 A fine Cook's Island Fly Whisk with briar-like handle; four Banks Island Knives; and a carved wood Lime Spatula, *Sepik River, New Guinea* 60/- 1/2

- 148 A Fiji Necklace of whale's teeth; seven mother-o'-pearl Fish Hooks, from the *Solomon's Island*; and a wood and nacre Fish Hook, from *New Ireland* 9 10/- 1/2 slow

- 149 A good Tahiti Chieftain's Stool in dark brown wood, with dip seat, on four short carved legs, 18 in. 30/- 1/2 slow

- 150 A Cooks Island Ceremonial Adze bound with sinnet, the haft carved with concentric circles of perforated ornament, 28 in.; and two Cloth Beaters, 14 in. 3 10/- 1/2 slow

- 151 A rare New Ireland carved and pierced wood Figure, the eyes inlaid with shell, covered in red, white and black pigmentation holding a Frigate Bird, 25 in.; and a grotesque Ceremonial Mask of the usual type, 15 in. (cf. *B.M. Handbook*, figs. 128 and 37)
- 152 A curious Suit of Protective Armour in sinnet and fibre, comprising: Breastplate, Backplate, a Head Guard, all in one, and Leg and Arm Guards of thick matted fibre, *Gilbert Islands*

NEW ZEALAND.

- 153 A fine Chieftain's Adze with beautifully carved haft, surmounted by a grotesque mask, the eyes inlaid with haliotis, the fine jade blade bound with cane, haft 21 in., blade 7½ in.
- 154 A good Chieftain's Staff, finely carved with an ancestral figure and loop handle; and the Handle of a Tattooing Mallet, of darker wood, somewhat similarly carved
4. 155 An old Kiwi leather Cloak, used by some chieftain, *an unusually interesting and rare specimen in good state of preservation, and well made*

AMERICA AND INDONESIA.

- 156 A Red Indian doeskin Coat, decorated with scalping scenes; a pair of Mocassins; two Quill Pouches; and an old Flute
- 157 An Indian Chieftain's Catlinite Peace Pipe, with red decorated stem and hide pipe case; a Tobacco Bag, decorated with beads; a British Guiana stone-bladed Axe, of dumbell shape and square section; and another Axe Handle, with engraved ornament
- 158 A small Haida Shale Totemic Carving, 6 in.; a North-West American Pipe; a large pottery Pipe Bowl, *probably Nigerian*; and a New Zealand Ancestral Figure
- 159 A rare Kingfisher Malay Kris; two other Krises, with carved ivory hilts; two finely decorated Parangs; and a Cingalese Sword
- 160 A Dervish Warrior's Surcoat, with red, white and blue decoration; and an interesting old Ring Armour Tunic, with short sleeves and skirts

Other Properties.

- 161 An interesting New Ireland Ceremonial Mask, in carved wood, coloured and decorated with plaster with tow comb and sinnet fringe, 17 in. (*cf. B.M. Handbook, fig. 37*); two New Zealand Hanis; and a Hervey Island Paddle 4
- 162 A walnut ivory Model of a Lapland Sleigh, containing a woman with a baby on her lap, drawn by three reindeer, the Eskimo driver on foot with two dogs, 12 in.
-

THE PROPERTY OF the late Admiral Sir Frederick Bedford, G.C.M.G.

[SOLD BY ORDER OF THE EXECUTORS.]

- 163 An Arab bronze Camel Bell, without clapper, and with plain horizontal decoration, 9½ in.; a collection of fifteen Ashanti gold Weights; two ladles; and Scales 19
- 164 A Swahili Anklet; a Uganda Split Ring; a Bracelet; and two Buckles from Albania, all with silver embossed decoration 5
- 165 A Uganda ivory Bracelet with carved ornament; a Zanzibar amber Necklace; and a pair of Swahili Ear-Rings, set with pearls and fitted in a metal case 5
- 166 A large Ashanti carved wood Stool of concave form, supported on a leopard-like spotted animal, and plain oblong base carved at the ends, 24 in. long, 21 in. high
- 167 A Lamu Chieftain's Ceremonial Chair, with ebony frame and cane imitation back and seat made of string, the back inlaid with bone in Indo-Portuguese style, 49 in. high, *East Africa*
- 168 A fine example of a Narwhal ivory Tusk, of tapering spiral form and in good condition, 7 ft. high, weight 14 lbs.

- 169 Chief Serey's Ceremonial Staff, with globular engraved silver head and fine malacca stick, probably of a type used in the late 18th Century in England, 51 in., *taken by Admiral Bedford at Benin City in 1894*
- 170 A very good example of a New Zealand green stone Axe-Head, of unusually large size and plain form, 13½ in. long and 6 in. wide

Another Property.

- 171 A Persian Bowl, copper, the outside engraved with a band of running floral ornament on a pointille ground, a broad band of *Thuluth* inscription, and a lower band of trefoil pendants, 5½ in. high, 14½ in. diam.
- 172 A Persian Bowl, brass, the outside engraved with Cufic inscriptions in compartments alternating with figure subjects in circles, inlaid with silver, gilded, 14th Century, 5 in. high, 9 in. diam.
- 173 A Persepolitan Lamp Stand, tripod base, tall shaft surmounted by a bird-shaped lamp, the whole chased and pierced, 30 in. high, much corroded and in four parts 4

END OF SALE.

SOTHEBY & CO.

34-35, New Bond Street, W.1.

are pleased to perform the following Services

FREE OF CHARGE

To advise intending SELLERS regarding the disposal of LITERARY and ARTISTIC PROPERTY

To give advice to intending BUYERS at their sales

TO EXAMINE PROPERTY submitted to them with a view to Sale.

To execute BIDS at their Sales — To forward Illustrated Monthly Lists of Forthcoming Sales

At a charge of $7\frac{1}{2}$ per cent (for all Lots over £100)

TO SELL BY AUCTION

PICTURES, SILVER, CHINA, FURNITURE
and WORKS OF ART, etc.

And at a charge of $12\frac{1}{2}$ per cent.

BOOKS, COINS, ANTIQUITIES and PRINTS

(N.B.—These rates cover all normal Expenses of Sales)

At a charge of 1 per cent. (subject to a small minimum fee)

TO VALUE for PROBATE, INSURANCE,
and FAMILY DIVISION.

Visits of inspection made at moderate charges.

Individual catalogues free on application

*Subscription Terms at low rates for Catalogues and Price Lists
can be obtained*

THE MOST CAREFUL ATTENTION IS GIVEN TO ALL PROPERTIES WHETHER
SMALL OR LARGE

All properties are placed ON VIEW FOR SEVERAL DAYS before the Sale and
displayed to the best advantage

NOTICES OF SALES

Notices of all sales appear in the following papers:

Mondays: "Daily Telegraph," "Morning Post."

Tuesdays: "Times."

NOTICES OF SPECIAL SALES

Appear in suitable papers from time to time

Telephone:
MAYFAIR 6682-3-4
(three lines).

Telegraphic Address:
ABINITIO, WESDO, LONDON.

BAKER, LEIGH & SOTHEBY

THE FIRM COMMENCING WITH SAMUEL BAKER IN

1744

SOTHEBY, WILKINSON & HODGE

1861-1924

SOTHEBY & CO.

1924-1932