

Sales catalogue 613: Maggs Bros

Publication/Creation

1935

Persistent URL

<https://wellcomecollection.org/works/nhdsza25>

License and attribution

This work has been identified as being free of known restrictions under copyright law, including all related and neighbouring rights and is being made available under the Creative Commons, Public Domain Mark.

You can copy, modify, distribute and perform the work, even for commercial purposes, without asking permission.



Wellcome Collection
183 Euston Road
London NW1 2BE UK
T +44 (0)20 7611 8722
E library@wellcomecollection.org
<https://wellcomecollection.org>

No 613

1935

OLD PRINTS

ENGRAVED PORTRAITS

VIEWS

SPORTING SUBJECTS



MAGGS BROS. Ltd.

*Booksellers by Appointment to His Majesty King George V
and H.R.H. the Prince of Wales*

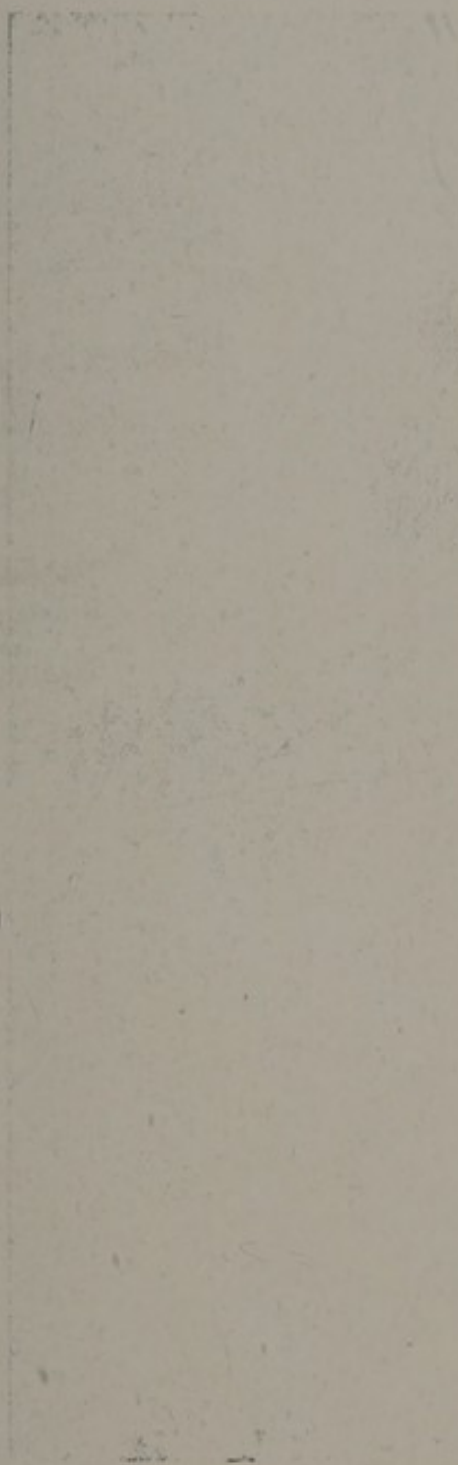
34 & 35 CONDUIT STREET, LONDON, W.1.

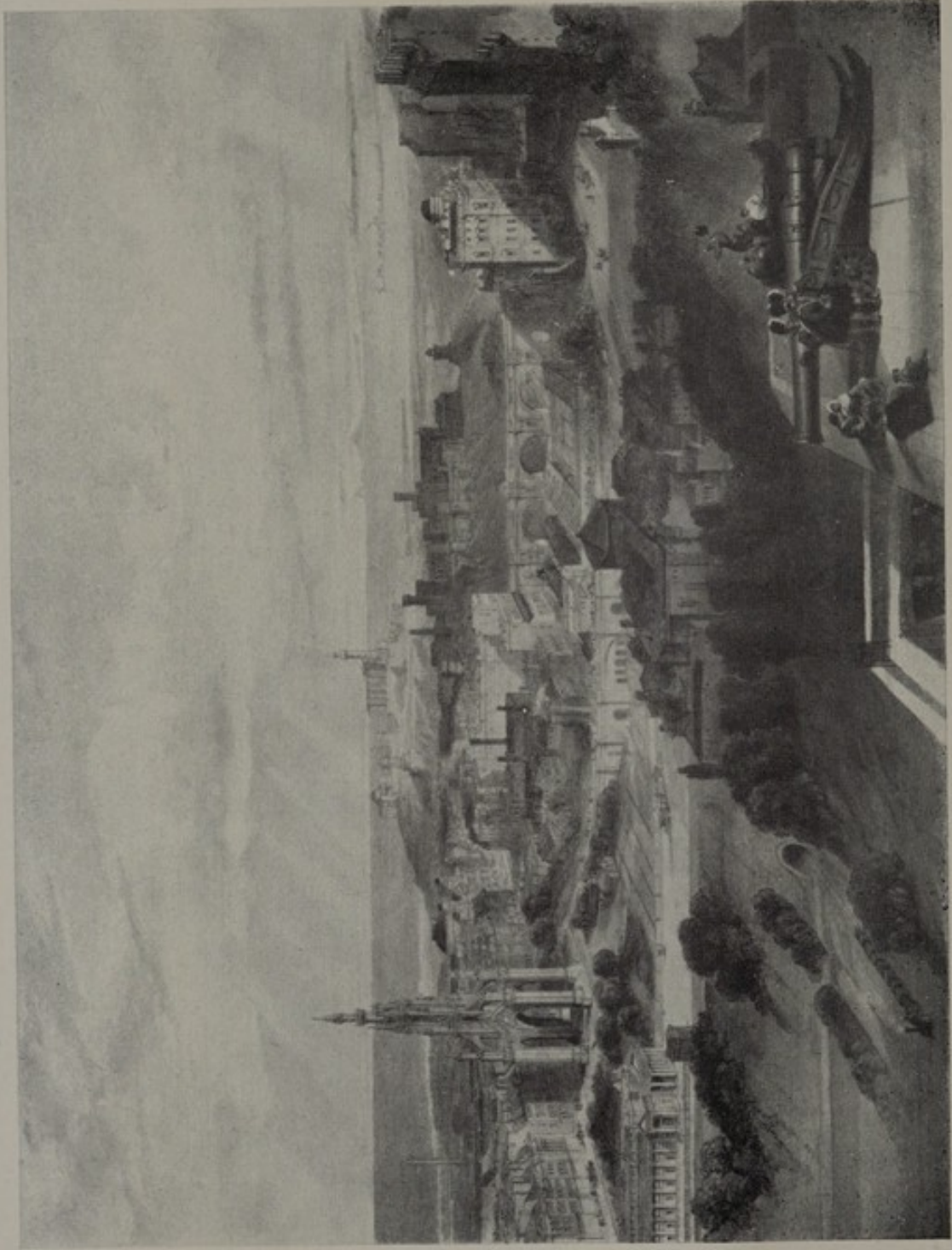
TELEGRAPHIC & CABLE ADDRESS: "BIBLIOLITE, LONDON." TEL: REGENT 1337

AT PARIS: MAGGS BROS., 93 & 95, RUE LA BOETIE, PARIS (8)

INDEX TO CONTENTS.

	Nos.
Views in the British Isles - - - -	1-177
Flower Pictures - - - - -	178-203
Decorative and Sporting - - - -	204-278
Legal Portraits - - - - -	279-304
Naval Portraits and Ships - - - -	305-354
Military Portraits - - - - -	355-379





View of Edinburgh from the Castle.
(See No. 83.)

VIEWS IN THE BRITISH ISLES

- 1 **BUCKINGHAMSHIRE. Eton College.**
Line engraving by W. Radclyffe after J. M. W. Turner. Size $6\frac{1}{2}$ by $9\frac{7}{8}$ inches, with margins. C. 1820. £2 2s
- 2 **CORNWALL. Fowey.**
Line engraving by W. B. Cooke after J. M. W. Turner. Size $6\frac{1}{4}$ by $6\frac{1}{2}$ inches, with margins. 1820. 6s
- 3 ——— **S.W. Prospect of St. Michael's Mount in Cornwall.**
Line engraving by Buck. Size 12 by $31\frac{1}{2}$ inches, with margins. 1739. 15s
- 4 ——— **Ditto. S.E. Prospect.** 15s
- 5 **CUMBERLAND. Carlisle, North-East View of.**
Line engraving by T. Medland after J. Farington. Size $13\frac{3}{4}$ by $9\frac{1}{4}$ inches, with margins. 1790. 10s 6d
- 6 **ESSEX. View from Chigwell Row.**
Aquatint in colours from a drawing by P. I. de Louthembourg, R.A. Size $15\frac{1}{4}$ by $12\frac{1}{4}$ inches, with margins. 1808. £3 3s
- 7 ——— **Colchester.**
Actual Survey of the Town and Borough, by Thomas Sparrow, with inset views of the Castle, St. John's Church, and Abbey Gate, etc. Size $27\frac{1}{2}$ by 20 inches. 1767. 15s
- 8 ——— **Colchester (the South-East Prospect of).**
Line engraving by Saml. and Nathl. Buck. Size $12\frac{1}{4}$ by 32 inches, with margins. 1741. 15s
- 9 ——— **Debden.**
Aquatint by H. I. Parkyns after J. C. Barrow. Size $11\frac{1}{2}$ by $14\frac{1}{2}$ inches, with margins. 1791. 10s 6d
- 10 **HAMPSHIRE. Portsmouth.**
The encampment of the English Forces near Portsmouth, together with a view of the English and French Fleets at the commencement of the action between them on the XIXth of July, MDXLV. Line engraving by James Basire. Size $19\frac{1}{4}$ ins. by 5 ft. 11 ins., with margins. 1778. £1 10s
- 11 ——— **A View of the Town and Harbour of Portsmouth, with his Majesty's Fleet under Sail.**
Line engraving by Scotin after Menageot. Size $11\frac{7}{8}$ by $17\frac{7}{8}$ inches, with margins. 1755. 12s 6d
- 12 ——— **A South-East View of Portsmouth.**
Line engraving after Jno. Waters. Size $10\frac{1}{4}$ by $17\frac{1}{4}$ inches, with margins. 1765. 9s

VIEWS IN THE BRITISH ISLES.

- 13 **HAMPSHIRE. S.E. View of Netley Abbey, near Southampton.**
Line engraving, published by R. H. Laurie. Size $10\frac{1}{2}$ by $16\frac{1}{2}$ inches,
with margins. 1827. 5s
- 14 ——— **View of Winchester College.**
Aquatint by I. Baily after J. Buckler. Size $14\frac{3}{4}$ by 20 inches, with
margins. 1811. 10s 6d
- 15 **HERTFORDSHIRE. Cassiobury, the Seat of the Earl of Essex.**
Aquatint printed in colours by Robt. Havell and Son after J. M. W.
Turner. Size $14\frac{3}{4}$ by $11\frac{1}{4}$ inches, with margins. £5 5s
"To Sarah Countess of Essex."
- 16 **ISLE OF WIGHT. A View of Carisbrooke Castle in the Isle of
Wight.**
Line engraving by I. Hulett after A. Menageot. Size $11\frac{3}{4}$ by $17\frac{5}{8}$
inches, with margins. 1755. 5s
- 17 ——— **A View of the Entrance into Carisbrooke Castle.
A View of Carisbrooke Castle.**
A pair of line engravings by I. Hulett after A. Menageot. Size
 $11\frac{3}{4}$ by $17\frac{5}{8}$ inches, with margins. 1755. The pair, 7s 6d
- 18 **KENT. South Prospect of Dover.**
Line engraving by S. and N. Buck. Size $12\frac{1}{4}$ by 30 inches, with
margins. 1739. £1 1s
- 19 ——— **Dover. The Castle and part of the Town seen from the
North Pier Head.**
Aquatint in colours by E. Orme after J. T. Serres. Size $15\frac{1}{4}$ by $23\frac{1}{4}$
inches, with margins. 1803. £3 3s
- 20 ——— **Launching a Dover Cutter and A Dover Pilot Boat.**
Pair of aquatints in colours by J. H. Atkinson. Size $8\frac{1}{2}$ by 13 inches,
with margins. 1807. £3 3s
- 21 ——— **Gravesend.**
A view of the town seen from the harbour; to left is the paddle
steamer "Hawk" with rowing boats taking off passengers; to right
a sailing vessel and small boat with cattle on board. Aquatint in
colours by E. Duncan after W. A. Knell. Size 15 by $22\frac{1}{4}$ inches,
with margins. 1828. Fine impression. £37 10s
- 22 ——— **Lee. View of the Church.**
Aquatint in black by G. I. Parkyns after I. C. Barrow, F.S.A. Size
 $11\frac{1}{2}$ by $14\frac{1}{2}$ inches, with margins. 1790. 10s 6d
- 23 ——— **Lewisham. View of the Church.**
Aquatint in black by G. I. Parkyns after I. C. Barrow. Size $11\frac{1}{2}$
by 14 inches, with margins. 1790. 10s 6d
- 24 ——— **Lewisham. Place House.**
Aquatint in black by G. I. Parkyns after I. C. Barrow. Size $11\frac{1}{2}$
by $14\frac{1}{4}$ inches, with margins. 1791. 10s 6d

VIEWS IN THE BRITISH ISLES.

- 25 **KENT. Margate, with the Venus Steam Packet entering the Harbour.**
Aquatint in colours by T. Sutherland after W. J. Huggins. Size 14 by 20 inches, with margins. 1823. £14 14s
- 26 ——— **A View of Margate, with the Bathing Place.**
Aquatint in colours by J. Wells after T. Smith. Published by R. Pollard, 1786. Size 10 $\frac{3}{4}$ by 18 inches. £10 10s
- 27 ——— **Margate Pier.**
Aquatint by Geo. Hunt after H. Jones. Size 6 $\frac{1}{2}$ by 10 $\frac{1}{2}$ inches, with margins. 1824. £2 2s
- 28 ——— **View of Ramsgate, with vessels in a strong gale, making for the Harbour.**
Aquatint in colours by E. Duncan after W. J. Huggins. Size 14 $\frac{1}{2}$ by 22 $\frac{1}{4}$ inches, with margins. 1826. £18 18s
- 29 ——— **View of Ramsgate Harbour.**
Mezzotint by Thomas Lupton after J. M. W. Turner. Size 6 $\frac{1}{2}$ by 9 $\frac{1}{4}$ inches, with margins. 1827. £1 1s
- 30 **LANCASHIRE. North-East View of Lancaster.**
Aquatint in colours after Freebairn. London, published by J. Deeley, Soho. Size 13 $\frac{3}{4}$ by 11 inches, with margins. £1 5s
- 31 ——— **A South View of the Gateway Tower of Lancaster Castle.**
Aquatint in colours by Wells after Freebairn. Size 18 by 23 $\frac{3}{4}$ inches, with margins. 1802. £3 3s
- 32 ——— **View of the Port of Liverpool.**
In foreground, several large sailing vessels at anchor during a gale; the town with Cathedral in background. Very fine aquatint printed in colours by R. G. Reeve after Samuel Walters. Size 24 $\frac{3}{8}$ by 17 $\frac{1}{8}$ inches, with inscription margin and $\frac{1}{4}$ inch margins top and sides. £16 16s
- 33 ——— **View of Castle Street, Liverpool, from the end of High Street.**
Aquatint by F. Malton after G. Perry. Size 20 $\frac{1}{4}$ by 16 $\frac{1}{4}$ inches, with margins. 1792. £3 3s
- 34 ——— **The South-West Prospect of Liverpool.**
Line engraving by S. and N. Buck. Size 10 by 28 $\frac{1}{4}$ inches, with margins. 1784. 15s
- 35 ——— **Manchester. The Attack by the Manchester and Cheshire Yeomanry Cavalry on the Female Reformers of Manchester and the adjacent Towns, at the meeting assembled on St. Peter's Field, Manchester, 16th of August, 1819.**
Scene depicting men, women and children being cut down by soldiers, a platform in background with men and a woman holding banner, "Manchester Female Reform League," etc. Aquatint in colours by Gillray, published by Richard Carlisle. Size 13 by 18 $\frac{3}{4}$ inches. 1819. £4 4s
- 36 **LEICESTERSHIRE. Donington.**
Very fine view showing the house in the midst of a beautiful park. Aquatint in colours. Size 13 $\frac{3}{4}$ by 18 $\frac{1}{2}$ inches, with margins. C. 1880. £3 3s

VIEWS OF LONDON.

37 **THE GUILDHALL, LONDON.**

Original drawing by Benjamin West, R.A., in crayon, with inscription in his writing:—

"In the winter of 1784, while sitting in the room of the Magistrates, Guildhall, to be called before the Committee on the Fine Arts, this scene of human wretchedness appeared; some for stealing rotten cabig, Turnips and Carrots as food, and others as Paupers without a home. Benj West."

Size 11½ by 23 inches. 1784. £25

The scene represents a group of prisoners, men, women and children, assembled behind a rail, the magistrate, and two men, one his clerk, sitting at a table.

38 ——— **Holborn. St. Andrew, Holborn.**

Aquatint by F. C. Lewis after J. Buckler. Size 14¼ by 20 inches, with margins. 1804. 15s

39 ——— **Vue de la Ville de Londres.**

Very picturesque view from Blackfriar's Bridge, over which coaches, soldiers, and countrymen driving sheep and cattle are passing. St. Paul's is seen in background, and the buildings of the city. Very fine aquatint in colours by J. Schutz after Runk. Size 18½ by 29½ inches, with margins. c. 1798. £25

40 ——— **A View of Blackfriars Bridge and St. Pauls.**

Aquatint in colours by Robt. Havell and Son. Size 10¾ by 14¼ inches, with margins. 1820. £2 10s

41 ——— **Vue of the Old and New London Bridges. Previous to the demolition of the Old Structure in 1832.**

Very fine aquatint in colours. "From a drawing by Wm. Knight, Resident Engineer to the New Work." Size 10 by 14¾ inches, with margins. 1832. £4 4s

42 ——— **Old London Bridge during its demolition in 1831-32.**

A Series of four coloured lithographs by C. Hullmandel after T. Lindsay. Size 6⅞ by 9⅝ inches, with margins. Circa 1832.

The four plates, £4 4s

43 ——— **A View of the Custom House, with part of the Tower, taken from Ye River Thames, London.**

Line engraving by T. Bowles after Maurer. Size 10¼ by 16 inches, with margins. 1753. 9s

44 ——— **The Admiralty Office, the New Buildings for the Horse Guards, Whitehall, etc.**

Line engraving by J. Maurer. Size 10 by 16¾ inches, with margins. C. 1790. 9s

45 ——— **A View of the Mansion House.**

Coloured line engraving by and after T. Bowles. Size 10¼ by 15¾ inches, with margins. C. 1790. 10s

46 ——— **Newgate Street. The Blue Coat School. (Christ's Hospital).**

Lithograph by T. R. Way. Size 8 by 6 inches, with margins. Signed by the Artist. 1897. 10s 6d

VIEWS OF LONDON.

- 47 **LONDON. The Blue Coat School. Another View.**
Lithograph by T. R. Way. Size 5½ by 7 inches. With margins.
Signed by the Artist. 1897. 10s 6d
- 48 ——— **The Royal Academy, Strand.**
When the Exhibition was held in Somerset House in the Strand.
Aquatint in brown by T. Malton. Size 13 by 18¾ inches, with
margins. 1781. £2 10s
- 49 ——— **A Prospect of St. James's Park.**
Line engraving by S. Torres after I. Rigaud. Size 10⅞ by 16¾ inches,
with margins. C. 1790. 9s
- 50 ——— **St. John's, Southwark.**
Aquatint in brown by J. W. Edy after J. Buckler. Size 17 by 14½
inches, with margins. 1799. 14s
- 51 ——— **Vauxhall Bridge, View of.**
Aquatint in colours by Robt. Havell and Son. Size 10¾ by 14¾
inches, with margins. 1821. £2 10s
- 52 ——— **Vue de Palais Royal Somerset du côté de la Tamise.**
Coloured line engraving. Size 9¾ by 16½ inches, with margins.
C. 1790. 7s 6d
- 53 ——— **N.W. View of St. Paul's Cathedral.**
Aquatint by G. Lewis after J. Buckler. Size 18 by 24¾ inches, with
margins. 1814. £2 2s
- 54 ——— **Waterloo Bridge.**
Aquatint in colours by R. G. Reeve after W. Westall. Size 7 by 10½
inches, with margins. 1828. £1 15s
- 55 ——— **New Palace Yard, Westminster.**
Aquatint in brown by T. Malton. Size 13 by 18¾ inches, with
margins. 1782. £2 10s
- 56 ——— **View of Westminster Abbey and St. Margaret's Church.**
Aquatint in colours by Robt. Havell and Son. Size 8¾ by 12⅞ inches,
with margins. C. 1820. £2 2s
- 57 ——— **Old Westminster Rat Pit.**
Billy, the celebrated Rat Killing Dog, performing his wonderful
feat, killing 100 rats in five minutes and a half on the 22nd April,
1823, being his 9th match. Aquatint in colours, published in 1823
by Wrights, Cornhill. Size 16 by 20¾ inches, with margins. £7 7s
With the pedigree of the dog under and list of the matches he won.
- 58 ——— **Chiswick. A Prospect of Lord Burlington's Orange Tree
Garden.**
Coloured line engraving printed for Robt. Sayer. Size 10¾ by 18
inches, with margins. c. 1790. 10s
- 59 ——— **Chiswick. Vue d'une des Maison de Plaisance et d'une
partie du Parc du Comte de Burlington du côté de la Tamise.**
Coloured line engraving. Size 11 by 17 inches, with margins.
Paris, c. 1790. 10s

VIEWS OF LONDON.

60 Deptford Dockyard.

A fine early proof engraved in line by Wm. Woollett. Size 18 by 25½ inches, with margins. c. 1770. £3 3s

61 Ranelagh Gardens. The inside View of the Rotunda in Ranelagh Gardens with the company at breakfast.

Coloured line engraving by Bowles. Size 11¾ by 16 inches, with margins. c. 1790. 10s

62 Hanworth.

Aquatint by G. I. Parkyns after I. C. Barrow. Size 11¾ by 14½ inches, with margins. 1790. 10s 6d

LONDON VIEWS DEPICTING THE FASHIONS.

63 View near the new entrance in St. James's Park.

Engraving in colours. Size 21¼ by 15 inches, with margins. c. 1840. £2 2s

64 Madame Tussaud's Exhibition. Coronation Group. View in honour of the Coronation, Bazaar, Baker Street, Portman Square.

Group showing Queen Victoria being crowned, surrounded by peers and peeresses and important personages of the day; gentleman to right in foreground holding placard, lettered "Tussaud's Grand Exhibition—Coronation Group, Queen and Duchess of Kent, etc." Engraving in colours. Size 22½ by 16¼ inches. 1839. £2 10s

65 View near the Palace in Kensington Gardens, London.

Engraving in colours. Size 22 by 15½ inches, with margins. c. 1839. £2 2s

Slightly damaged.

66 View near Grosvenor Gate, Hyde Park, London.

Engraving in colours. Size 22 by 15½ inches, with margins. c. 1839. £2 2s

Slightly damaged.

67 View in the Green Park, London.

Engraving in colours. Size 21½ by 15 inches, with narrow margins. c. 1839. £2 2s

68 NORTHAMPTONSHIRE. A Plan of the Town of Northampton, surveyed in 1746 by Messrs. Noble and Butlin, with inset view of Northampton from Hunsborough Hill, 1747.—Sheet of 8 engravings of Northampton Views (to accompany the Plan), including the Guildhall, County Hall, Cotton Mill on the River Nen, County Gaol, Church of St. Sepulchre, etc.

Both double folio sheets. 1747. £1

69 NOTTINGHAM. A Plan of the Great Oke in the Lane near Welbeck in Nottinghamshire.

Set of five plates. Size 14¼ by 8½ inches, with margins. 1727.

The set, 18s

70 ——— A View in Newstead Park, belonging to the Rt. Honble. the Lord Byron.

Line engraving by I. Mason after T. Smith. Size 14¼ by 20⅞ inches, with margins. 1749. £1 10s

VIEWS IN THE BRITISH ISLES.

- 71 **OXFORD.** **An East Prospect of the City of Oxford.**
A West Prospect of the City of Oxford.
 Pair of line engravings by Jno. Boydell. Size $9\frac{3}{4}$ by $16\frac{3}{4}$ inches,
 with margins. 1751. The pair, £1 1s
- 72 **OXFORD.** **N.E. View of New College, Oxford.**
 Aquatint by F. C. Lewis after J. Buckler. Size $15\frac{1}{4}$ by 22 inches,
 with margins. 1806. 10s 6d
- 73 ——— **S.E. View of Queen's College.**
 Aquatint in colours by R. Reeve after J. Buckler. Size $15\frac{3}{4}$ by $23\frac{1}{4}$
 inches, with margins. 1807. 17s 6d
- 74 ——— **The Libraries and Schools, from Exeter College Gardens.**
The Cathedral at Christ Church, from the Dean's Garden.
A View of St. Giles's, with part of St. John's College.
Corpus Christi College, from the Fields.
 Set of four line engravings by M. A. Rooker. Size $15\frac{1}{2}$ by 18
 inches, with margins. Circa 1770. The four plates, £3 3s
- 75 **SOMERSET.** **The North Parade at Bath.**
 Aquatint in brown by T. Gandon after T. Malton. Size 13 by $18\frac{3}{4}$
 inches, with margins. 1779. £2 10s
- 76 ——— **BATH.** **An Actual Survey of the City of Bath in the**
County of Somerset, and of 5 Miles round. Wherein are laid down
 all the Villages, Gentlemen's Seats, Farm Houses, Roads, High-
 Ways, Water-Courses, and all things worthy of Observation.
 Surveyed by Tho. Thorpe in the year 1742. Line engraving. £1 10s
- 77 ——— **The New Bridge at Bath.**
 Aquatint in brown by T. Gandon after T. Malton. Size 13 by $18\frac{3}{4}$
 inches, with margins. 1779. £2 10s
- 78 **SUSSEX.** **The Chain Pier at Brighton, during the late Tempest.**
 (Nov. 23rd, 1824).
 Aquatint in colours, drawn, engraved, and published by J. Bruce,
 Brighton. Size $16\frac{3}{4}$ by 12 inches, with margins. £5 5s
 Dedicated to Capt. S. Brown, R.N., by J. Bruce.
- 79 ——— **Brighthelmstone. Fishermen Returning.**
 Aquatint in colours by Stadler after de Louthembourg. Size $13\frac{1}{2}$ by
 $19\frac{7}{8}$ inches. 1801. £2 2s
- 80 ——— **Brighton Chain Pier. In a Storm.**
 Aquatint in colours by Geo. Hunt after S. J. E. Jones. Size $7\frac{7}{8}$ by
 16 inches, with margins. Circa 1790. £3 3s
- 81 ——— **Kemptown. Brighton.**
 Aquatint in colours. Size 5 by $9\frac{3}{4}$ inches. 10s 6d

VIEWS IN SCOTLAND.

A Series of Views in exquisite colours, after J. M. W. Turner, Sir W. Allan, Clarkson Stanfield, Geo. Cattermole, David Roberts, etc., etc. Executed in lithography (by J. D. Harding, Carrick, Gauci, Needham, etc.).

Mounted as water colour drawings.
Average size 11½ by 15¼ inches. 1854.

MIDLOTHIAN. EDINBURGH.

82	Edinburgh Castle, from the Grassmarket	-	-	-	£2 2s
83	View of Edinburgh from the Castle. (See Frontispiece).				£3 3s
84	Holyrood Palace	-	-	-	£2 10s
85	Holyrood, Queen Mary's Bed-Chamber. Scene depicting the murder of Rizzio	-	-	-	10s 6d
86	Edinburgh, from St. Anthony's Chapel	-	-	-	£3 3s
87	——— Assembly Hall, Castle Hill	-	-	-	£2 2s
88	——— West Bow	-	-	-	£1 1s
89	——— Foot of the West Bow	-	-	-	£2 2s
90	——— High Street, from Head of West Bow, Lawnmarket.				£2 2s
91	——— Dowie's Tavern, Liberton's Wynd, Lawnmarket.				£1 1s
92	——— Fleshmarket Close	-	-	-	£1 1s
93	——— Trinity College Church, Low Carlton	-	-	-	£1 10s
94	——— Greyfriars' Church. Scene depicting the signing of the Covenant	-	-	-	£1 10s
95	——— Moray House, Canongate	-	-	-	£2 2s
96	——— From Cragleith Quarry	-	-	-	£2 10s
97	——— From the Mound	-	-	-	£3 3s
98	——— St. Bernard's Well	-	-	-	£1 1s
99	——— National Monument, Calton Hill	-	-	-	£3 3s
100	——— From the Calton Hill	-	-	-	10s 6d
101	——— The Back of Old Leith Pier	-	-	-	£2 2s
102	——— From the Firth of Forth	-	-	-	£2 2s

EDINBURGH COUNTY OR MIDLOTHIAN.

103	Craigmillar Castle	-	-	-	£2 2s
104	Pinkie House	-	-	-	£1 1s
105	Roslin Castle	-	-	-	15s
106	Entrance to Roslin Chapel	-	-	-	10s 6d
107	"Prentice Pillar," Roslin Chapel	-	-	-	10s 6d

VIEWS IN SCOTLAND.

A series of views in exquisite colours.

EDINBURGH COUNTY.

108 Crichton Castle	- - - - -	£2 2s
109 Borthwick Castle	- - - - -	£1 1s

LINLITHGOWSHIRE OR WEST-LOTHIAN.

110 Linlithgow Palace	- - - - -	10s 6d
111 Old Linlithgow (Assassination of Regent Moray)	-	£1 1s
112 Barnbogle Castle	- - - - -	£1 1s

EAST-LOTHIAN OR HADDINGTONSHIRE.

113 The Field of Prestonpans (Death of Colonel Gardiner)	-	£1 1s
114 Tantallon Castle	- - - - -	£1 1s
115 The Bass Rock	- - - - -	15s
116 Dunbar	- - - - -	15s

BERWICKSHIRE OR THE MERSE.

117 Fast Castle	- - - - -	£1 1s
118 Dryburgh Abbey	- - - - -	£1 1s

ROXBURGHSHIRE OR TEVIOTDALE.

119 Melrose Abbey, from the West	- - - - -	£1 1s
120 ——— From the South	- - - - -	£2 10s
121 ——— From the East	- - - - -	15s
122 Kelso Abbey	- - - - -	£1 1s

SELKIRKSHIRE OR THE FOREST.

123 Newark Castle, on the Yarrow	- - - - -	£1 1s
----------------------------------	-----------	-------

DUMFRIESSHIRE.

124 Scenery on the River Nith	- - - - -	£2 2s
125 Caerlaverock Castle	- - - - -	15s
126 Gilnockie Tower	- - - - -	£1 1s

STEWARTRY OF KIRKCUDBRIGHT.

127 Lincluden Abbey	- - - - -	15s
---------------------	-----------	-----

AYRSHIRE.

128 Culzean Castle	- - - - -	£1 10s
129 Dunure Castle, Coast of Ayrshire	- - - - -	10s 6d
130 Ailsa Craig	- - - - -	£1 10s

BUTESHIRE.

131 Glen Sannox	- - - - -	15s
132 Rothesay Castle, Island of Bute	- - - - -	10s 6d

VIEWS IN SCOTLAND.

A series of views in exquisite colours.

PERTHSHIRE.

158 Glen Falloch - - - - -	£1 1s
159 Benmore - - - - -	£1 1s
160 Fall of the Tummel - - - - -	£2 2s
161 The Tummel Bridge - - - - -	15s
162 Loch Katrine - - - - -	£1 10s
163 Loch Achray - - - - -	£1 10s
164 The Doune - - - - -	£1 10s

ABERDEENSHIRE.

165 Balmoral - - - - -	£3 3s
------------------------	-------

FORFARSHIRE.

167 Glammis Castle - - - - -	£3 3s
168 Dundee Old Tower - - - - -	£2 10s

RENFREWSHIRE.

169 View of the Clyde, from above Erskine Ferry - - -	£3 3s
---	-------

VIEWS IN IRELAND.

- 171 **Dublin. View of the Post Office in Sackville Street.**
 Aquatint in colours by Robt. Havell and Son. Size 17½ by 21½ inches, with margins. 1824. Lettered proof impression. **£17 17s**
- 172 **Castle of Dublin.**
New Post Office, Sackville Street, Dublin.
 Pair of very fine aquatints in colours by R. Havell and Son after T. S. Roberts. Size 16¾ by 23¾ inches, with margins. 1816.
The pair, **£40**
- 173 **Carrick-a-Rede, County Antrim.**
 Lithograph in colours. Lithographed and published by Newman and Co., 48, Watling Street, London. Size 8½ by 12½ inches. **10s 6d**
- 174 **College Green, Bank and Trinity College, Dublin.**
 Lithograph in colours. Lithographed and published by Newman and Co., 48, Watling Street, London. Size 8½ by 12½ inches. **£1 5s**
- 175 **The Dargle, County Wicklow.**
 Lithograph in colours. Lithographed and published by Newman and Co., 48, Watling Street, London. Size 9 by 12¾ inches. **10s 6d**
- 176 **View in the Dargle.**
 Aquatint in colours. Published by Laurie and Whittle. Size 11½ by 14½ inches, with margins. 1799. **17s 6d**
- 177 **Killiney Bay from near the Obelisk, on Killiney Hill.**
 Lithographed in colours and published by Newman and Co., 48, Watling Street, London. Size 9 by 13¾ inches. **17s 6d**

FLOWER PICTURES.

A Series of decorative engravings in colours of flowers, by and after Reinagle, Stadler, Dunkarton, Earlom, Pether, etc. With artistic backgrounds.

Average size of each plate $20\frac{3}{4}$ by 16 inches, with margins.
Circa 1798-1806.

178	The Narrow-leaved Kalmia	-	-	-	-	-	-	-	-	£3 3s
179	The China Limodoron	-	-	-	-	-	-	-	-	£2 10s
180	Group of Carnations	-	-	-	-	-	-	-	-	£3 3s
181	Hyacinths	-	-	-	-	-	-	-	-	£3 10s
182	The American Cowslip	-	-	-	-	-	-	-	-	£3 3s
183	The White Lily, with Variegated Leaves	-	-	-	-	-	-	-	-	£4 4s
184	The Oblique-Leaved Begonia	-	-	-	-	-	-	-	-	£4 4s
185	A Group of Auriculas	-	-	-	-	-	-	-	-	£3 3s
186	The Persian Cyclamen	-	-	-	-	-	-	-	-	£3 3s
187	Large Flowering Sensitive Plant	-	-	-	-	-	-	-	-	£2 2s
188	The Superb Lily	-	-	-	-	-	-	-	-	£3 10s
189	The Blue Passion Flower	-	-	-	-	-	-	-	-	£3 3s
190	The Nodding Renealmia	-	-	-	-	-	-	-	-	£3 10s
191	The Aloe	-	-	-	-	-	-	-	-	£2 10s
192	The Sacred Egyptian Bean	-	-	-	-	-	-	-	-	£3 3s
193	Pitcher Plant	-	-	-	-	-	-	-	-	£2 2s
194	The Queen Plant. Imported from Cape of Good Hope	-	-	-	-	-	-	-	-	£2 10s
195	The Dragon Arum	-	-	-	-	-	-	-	-	£2 10s
196	The Night Blowing Cereus	-	-	-	-	-	-	-	-	£3 10s
197	The Maggot-Bearing Stapelia	-	-	-	-	-	-	-	-	£3 10s
198	The Winger Passion-Flower	-	-	-	-	-	-	-	-	£3 3s
199	The Quadrangular Passion-Flower	-	-	-	-	-	-	-	-	£3 3s
200	The Blue Egyptian Water-Lily	-	-	-	-	-	-	-	-	£1 1s
201	American Bog-Plants	-	-	-	-	-	-	-	-	£3 10s
202	Indian Reed	-	-	-	-	-	-	-	-	£2 10s
203	Tulips	-	-	-	-	-	-	-	-	£6 6s

DECORATIVE SUBJECTS.

- 204 **BARTOLOZZI** (Francesco). **The Shepherdess of the Alps.**
Oval stipple, printed in colours, depicting a peasant girl and youth tending sheep. By Bartolozzi after Kauffman. Size 14¼ by 10¾ inches. C. 1791. £30
- 205 **BONNET** (Louis Marin). **L'Amant Ecouté.**
L'Eventail Casse.
Interior, a lady and a gallant seated, the lady holding up broken fan. Engraved by L. M. Bonnet after J. B. Huet. Size 10¾ by 8½ inches, with margins. C. 1790. In perfect condition and brilliantly printed in colours. A superb pair. £150
- 206 **BUCK** (Adam, 1770-1883). **My Tambourine.**
Child seated holding up a tambourine in left hand. Stipple printed in colours by S. Freeman after A. Buck. Size 10¾ by 9 inches, with margins. 1811. Very choice condition. £31 10s
- 207 ——— **What's That, Mother?**
A child standing in open landscape, pointing with right hand. Stipple engraving printed in colours by Agar and Bluck after A. Buck. Size 11½ by 9½ inches. 1868. £18 18s
- 208 **BUNBURY** (H. W.). **The Market Girl.**
Girl sitting on a stile with basket, dog by her side. Oval stipple printed in colours by Chas. Knight after Bunbury. Size 12¾ by 10½ inches. c. 1790. £7 7s
- 209 **EARLOM** (Richard). **Lady with a Watteau Hat.**
Half length holding rose. Stipple, with flesh tints in red. By Earlom after G. B. Cipriani. Size 10½ by 7½ inches, with margins. 1787. £6 6s
- 210 **GREVEDON** (H.). **Les Quatre Elements. Portraits de Femmes Dessines et Lithographies D'Apres Nature par H. Grevedon.**
La Terre. L'Eau. Le Feu. L'Air.
A Series of four very decorative portraits of ladies. Le Terre representing a figure with corn and grapes in her hair and holding a basket of fruit and flowers. L'Eau, a figure half length standing in a stream. Le Feu, a bride seated by a vase containing flames and fire. L'Air, a figure partly nude holding flowing draperies. The set in original wrappers, folio. 1833. £7 7s
- 211 **HOGARTH** (William). **Marriage á la Mode.**
Set of six Mezzotints by R. Earlom after Wm. Hogarth. Size 18½ by 23½ inches, with margins. 1795-1800. Fine early impressions of these rare plates, with untrimmed margins. The Set, £25
- 212 **McARDELL** (James). **Boy Playing Violin.**
A young boy, velvet cap, with feathers, playing violin. Mezzotint by Jas. McArdell after Franz Hals. Size 17½ by 12½ inches, with margins. Brilliant proof impression before all letters. Extremely scarce in this state. Circa 1750. £18 18s
- 213 **MORLAND** (George). **The Sportsmen's Return.**
Exterior of Bell Inn. Sportsman entering doorway holding up hare to a man seated in little hut at side of door, with placard, "Shoes Neatly Mended," two sporting dogs. A countryman fastens saddled horse to tree. Mezzotint by W. Ward after Morland. Size 18 by 23¾ inches, with margins. 1792. Most brilliant impression purely printed in colours. Exceeding rare in this choice state. £250

DECORATIVE SUBJECTS.

215 MORLAND (George). **Sailors' Conversation.**

Exterior of an old inn with lattice window, a young woman leans on wall listening to conversation of three sailors seated at table, another sailor with pipe in mouth seated on ground, small barrel between his knees, to left in background a lake. Mezzotint engraved by Ward after Morland.

Selling Fish.

Scene on sea-shore; on right, woman standing with basket of fish bargaining with man on white horse, dog by side looking at fish on ground, cliffs at back, rocks; boat partly drawn up on beach, fishing-smacks on sea. Mezzotint engraved by J. R. Smith after Morland. Size $17\frac{1}{4}$ by $21\frac{3}{4}$ inches, with margins. 1802. Both fine impressions, printed in colours (the title of "Selling Fish" has been carefully repaired). The pair, £175

216 ——— **Nurse and Children in the Fields.**

Very fine and decorative mezzotint by G. Keating after George Morland. Size $20\frac{1}{2}$ by $15\frac{3}{4}$ inches, with margins. 1791. Brilliant impressions, printed in colours. £175

217 ——— **The History of Laetitia.**

Set of six charming and decorative stipples in brown by J. R. Smith after Morland. The earliest issue before the plates were reduced and before the alteration of the costume of Laetitia.

The Six Plates, £42 10s

- Plate I. Domestic Happiness. Laetitia with her parents.
" II. The Elopement. Laetitia seduced from her friends under a promise of marriage.
" III. The Virtuous Parent. Laetitia endeavours in vain by presents to reconcile her parents.
" IV. Dressing for the Masquerade. Laetitia flies from reflection to public entertainments.
" V. The Tavern Door. Laetitia deserted by her seducer is thrown on the town.
" VI. The Fair Penitent. Laetitia in penitence finds relief and protection from her parents.

PRINTED IN COLOURS.

218 ——— **Rest from Labour.**

A countryman with his dog seated under a tree. Stipple by T. Burke after G. Morland. Size $17\frac{3}{4}$ by 14 inches, with margins. 1808. Printed in colours. £28

219 ——— **The Turnpike Gate.**

A tollhouse, with man, asleep inside, a countryman on horseback is passing through gateway about to pay toll to another man, bulldog at horse's heels. Mezzotint by Wm. Ward after G. Morland. Size 18 by $23\frac{1}{2}$ inches, with margins. 1806. Fine impression. £27 10s

220 SMITH (John Raphael, 1752-1812). **A Snake in the Grass.**

A girl partly nude reclining on bank under a tree, screening her face with right arm, snake in grass on right; verses under. Stipple by J. R. Smith after Sir Joshua Reynolds. Size 10 by 8 inches, with margins. 1787. Brilliant impression of this charming plate, printed in colours. £40

DECORATIVE SUBJECTS.

- 221 **SMITH** (John Raphael). **Contemplating the Picture.**
Whole length, in oval, lady seated, holding miniature.
Society in Solitude.
Whole length, in oval, lady seated, back to tree. large hat with feathers, book in right hand. Pair of fine stipple engravings by J. R. Smith. Size $9\frac{3}{4}$ by $8\frac{1}{2}$ inches, with margins, showing artist's name only. (1785). The pair, £10 10s
- 222 **TOMKINS** (Pietro William). **He Sleeps.**
Three-quarter length, a lady holding a sleeping child. Stipple printed in colours by and after P. W. Tomkins. Size $8\frac{3}{8}$ by $6\frac{3}{8}$ inches, thread margins. Circa 1790. £15 15s
- 223 **VAN DYCK** (Sir Anthony). **The Man with the Glove.**
Three-quarter length, standing, dark cloak, lace cravat, glove on left hand. Mezzotint by T. Blackmore after A. Van Dyck. Size $15\frac{1}{4}$ by $12\frac{1}{2}$ inches, with margins. Fine proof impression with the artists' names in scratched letters, and before the margin was cleaned. £5 10s
- 224 **WALKER** (Jas.). **The Spell.**
A young girl kneeling before milk-pail, watching a snail on block to right, a dog sits with his forepaws on pail, landscape with cow. Mezzotint by Jas. Walker after Jas. Northcote. First state, with Artists' names and line of publication in scratched letters. Size $19\frac{3}{4}$ by $13\frac{3}{4}$ inches, with margins. 1783. £6 6s
- 225 **WARD** (William). **Hesitation.**
Half length, young girl seated about to write a letter. Oval stipple printed in colours by and after Wm. Ward. Size $7\frac{1}{4}$ by 7 inches, with margins. Four lines of verse under (no line of publication). 1786. £31 10s
- 226 ——— **The Choice.**
Three-quarter length, a young girl, seated, dark curls, large hat, holding a letter. Size 10 by 8 inches, with margins. 1787. Verse under: "In the Choice of a Husband I'll Tell you my Plan," etc. Brilliant impression in first state, with the word Published spelt "Puldish'd." £21
- 227 ——— **The Cowshed.**
Interior of shed. Cowherd seated on stool milking cow, looking at a milkmaid, who sits facing him; to left three cows stalled; to right calf looks out of pen. Mezzotint by and after Jas. Ward. Size $23\frac{1}{2}$ by $18\frac{3}{4}$ inches, with margins. 1793. £15 15s
- 228 **WESTALL** (Richard, R.A.). **The Little Domestic.**
Interior of a cottage, young girl kneeling holding bellows.
Girl and Pigs.
A farmyard, young girl feeding pigs. Pair by Ogbourne and Gaugain after Westall. Size $9\frac{1}{2}$ by $12\frac{1}{2}$ inches. C. 1790. The pair, £12 12s
- 229 **WILKIN** (Charles, 1750-1814). **Master Hoare, 1785-1836.**
Stipple by Chas. Wilkin after Sir J. Reynolds. Size $9\frac{3}{4}$ by $7\frac{1}{2}$ inches, with margins. 1789. Choice impression, printed in colours. £37 10s
Henry, only son of Sir Richard Colt Hoare, Bart., F.R.S., the historian of Wiltshire, by Hester, eldest daughter of William, 1st Lord Lyttleton.

COLOURED CARICATURES DEPICTING
EATING AND DRINKING SCENES.

230 The King's Dwarf plays Gulliver a Trick.

Napoleon as a dwarf standing in a marrowbone on a plate before a king. 1803. 12s 6d

231 King Jerry treating his Jewish Subjects with Westphalia Venison!

A Party of Jews seated at a table, eating venison. By Woodward. 1807. 12s 6d

232 National Contrasts or Bulky and Boney.

John Bull sitting at a table on which is beef, beer and punch, smoking, Napoleon looking on. C. 1800. 12s 6d

233 Resolutions in Case of an Invasion.

Caricatures showing the effects on various people, one a publican holding up pot of beer in which is figure of Napoleon, saying "I'll cool his courage in a pot of Brown Stout," another an Epicure holding up Napoleon about to put him in his mouth, saying "I'll eat him," etc., etc. By W. Holland, 1803. 10s 6d

234 A Toast for New France.

Two French sailors seated at a table, drinking wine, saying, "May the names of Howe, St. Vincent, Duncan, Nelson and Warren be eternally erased from our recollection." By Woodward, 1803. 12s 6d

235 Boney in time for Lord Mayor's Feast.

Lord Mayor and aldermen sitting round a table feasting. English sailors bringing in Napoleon. 1803. 12s 6d

236 Design for a Monument to be erected in Guildhall in gratitude to Alderman Biscuit for killing Buonaparte.

Showing the alderman standing under a tortoise, swallowing Napoleon. 1809. 7s 6d

237 Billingsgate at Bayonne or the Imperial Dinner!

French family sitting round a table, Napoleon standing on a chair saying, "I'll tell you what, if you make such a Riot at my table—I'll be d——d if I don't send you all to the Round House." Published by R. Ackermann. 1808. 10s 6d

238 Nap and his Friends in their Glory.

Figures of Death, the Devil and Napoleon drinking wine together. Published by R. Ackerman, 1808. 12s 6d

239 Funcking the Corsican.

Group of Dutchmen smoking and drinking surrounding Napoleon who stands on a barrel of Real Hollands Geneva, barrels of dutch herrings, dutch cheeses, etc. By Rowlandson, 1813. 14s

CARICATURES DEPICTING EATING AND DRINKING.

240 **An Attempt to Swallow the World!!**

Napoleon endeavouring to swallow a large globe of the world.
Published by W. Holland, 1803. 12s 6d

241 **The Great Swallow All!!! or French Bullie too hot for the Bear's stomach.**

Napoleon disgorging troops, etc., General standing my him, "Why General this French Ragout does not agree with your Stomach," etc.
1799. 12s 6d

242 **John Bull taking a Luncheon, or British Cooks cramming Old Grumble-Gizzard with Bonne Chère.**

John Bull feasting from a table laden with dishes "Fracando a la Howe, Fricassée a la Nelson, Soup and Bouilli," etc., which English admirals are handing to him. By James Gillray. C. 1800. 7s 6d

243 **Polish Diet, with French Desert.**

Napoleon on a spit before large kitchen range, various vessels containing French Capers, Russian Sauce, Ice Cream, etc. 1812. 12s 6d

244 **Un Petit Souper, a la Parisienne, or a Family of Sans-Culotts refreshing after the fatigues of the day.**

A family of French Revolutionists feasting on human remains.
1792. 12s 6d

245 **Boney's Journey to London, or the Reason why he is so Long in comeing, i.e., Because he travels like a Snail with his house at his back.**

A small house on wheels, cook holding large knife, looking out of kitchen window, lettered "Cuisine for roast de English Beef ma Foi." C. 1800. 10s 6d

246 **MARKETS. The Game Market and The Poultry Market.**

Pair of decorative mezzotints by Earlom after Franz Snyders. Size 14 $\frac{3}{4}$ by 22 $\frac{3}{4}$ inches, with margins. Brilliant proof impressions, 1782.
The pair, £8 8s

247 **EARLOM (Richard). A Fruit Piece (two).**

Two decorative mezzotints by Boydell and Earlom after M. Angelo Campidoglio. Size 10 $\frac{1}{2}$ by 14 inches, with inscription margin, 1776-9. The pair, £1 10s

SPORTS AND PASTIMES.

FOX HUNTING.

248 **Leicestershire Covers: Going out, "Look how she Pants." Full Cry, "Now, my braw Youths." The Death, "Distressed, he flies." Refreshment, "And if to Crown my Joys."**

Set of four aquatints by Sutherland after Dean Wolstenholme. Size 8 $\frac{1}{2}$ by 26 $\frac{3}{4}$ inches, with margins. Very fine impressions printed in colours. The early issue of the plates published by Burkitt and Hudson, 1817. The Set, £175

249 **Meeting at Cover. Full Cry. Breaking Cover. The Death.**

Set of four aquatints printed in colours by T. Sutherland after H. Alken. Published by T. McLean. Very fine impressions, with margins. Size 5 $\frac{3}{8}$ by 23 $\frac{3}{8}$ inches. 1824. The Set of Four, £175

SPORTS AND PASTIMES.

- 250 Throwing Off. Gone Away. In Full Cry. The Death.**
Set of four aquatints by R. G. Reeve after H. Alken. (1828). Fine impressions brilliantly printed in colours. Size $12\frac{5}{8}$ by $8\frac{3}{4}$ inches, with margins. The Set, £175
- 251 Morning. Noon. Afternoon. Night.**
Set of four very fine aquatints by Jeakes (Jukes) and Clarke after D. Wolstenholme. Size 11 by 15 inches, with margins. (1811). Brilliant impressions of this very decorative set, printed in colours. The Set of Four, £125
- 252 Surrey Views: The Chase. The Death.**
Pair of very decorative aquatints in colours showing the Chase taking place on the Old Brighton Road at Merstham, and the "Death" in a Wheelwright's Yard. Painted and engraved by D. Wolstenholme. Fine impressions printed in colours. Size 14 by $18\frac{3}{4}$ inches, with margins. 1835. The pair, £52 10s
- 253 Fox Hounds: The Raby Pack.**
Interior of large kennels, nine hounds in various attitudes, drinking from water troughs, etc., in foreground to right a terrier, dog-feeder, top hat, waistcoat, knee breeches, half stoops, looking up and across slightly to left, fork with food held in both hands, to right open door, huntsman, top hat, coat, whip in hand, looking to right, beyond can be seen clouds, top of trees. Mezzotint printed in colours by W. Ward after H. B. Chalon. Size $18\frac{3}{4}$ by $23\frac{3}{4}$ inches, with margins. 1814. £31 10s
- 254 Hark Forward, Away! Whoo-Hoop!**
The death, a huntsman holding up fox, another huntsman offering brush to a lady on horseback. Aquatint in colours by Thos. Fairland after F. C. Turner. Size $14\frac{3}{4}$ by $17\frac{1}{2}$ inches, with margins. 1840. £8 8s
- 255 Full Cry.** The hunt in full cry, huntsman jumping a brook, open country.
Aquatint in colours drawn and engraved by Chas. Hunt. Lettered proof impression. Size 16 by $19\frac{3}{4}$ inches, with margins. 1838. £10 10s
- 256 The Leap.** Two huntsmen leaping a fence, hound in foreground, open country.
Aquatint in colours by C. Bentley after H. Alken. Size $13\frac{1}{4}$ by $18\frac{1}{4}$ inches, with margins. 1828. £10 10s
- 257 HARE HUNTING.** Plate I: **So Ho!**
Huntsmen with horses and hounds searching for hares on the side of a hill, open country with village and stream in background to left.
Plate II: **War Turnips.**
Huntsmen and hounds in full cry over a field of turnips, to left a farmyard with cattle and pigs and thatched barn, the farmer holding flail, raising his hand in alarm. Pair of very fine aquatints in colours by R. G. Reeve after W. P. Hodges, Esq. T. McLean Derexet. (Coloured by F. Rosenburg). Size $13\frac{1}{4}$ by $20\frac{1}{4}$ inches, with margins. 1836. The pair, £42

RACING.

- 258 Race for One Thousand Pounds!!**
"Lord Darlington's Memnon beating Lord Exeter's Enamel at Newmarket, A.F. May 14, 1827." Aquatint in colours, drawn and engraved by Pollard. Published June, 1827, by Pollard, London. Size $7\frac{1}{4}$ by 17 inches, with margins. £12 12s

SPORTS AND PASTIMES.

259 Race for the Claret Stakes, Newmarket.

Aquatint printed in colours, with names of horses running below, i.e., 1st Moses, 2nd Morisco, 3rd Swape, etc. Published May 20th, 1823, by R. Pollard and Sons, Holloway, near London. Size 7 by 17 inches, with margins. £12 12s

260 The Race for the St. Leger Stakes of 1812, on Doncaster Course.

Aquatint in colours by Pollard and Dubourg after Clifton Thomson. Size 3½ by 24½ inches, with margins. 1816. £7 7s

261 Preparing to Start.

Racing.

Pair by Thos. Rowlandson. Size 9¼ by 13½ inches, with margins. c. 1790. The pair, £1 10s

RACEHORSES.

262 Moses.

"Bred by His Royal Highness the Duke of York in 1819, got by Whalebone, his dam by Gohanna, grandam Grey Skim by Woodpecker, great grandam by Herod out of Young Flag by Skim." Aquatint printed in colours by and after James Pollard. Size 14¾ by 18½ inches, with margins. Published by R. Pollard and Sons, Holloway, London, June 22, 1822. £15 15s

263 Tiresias.

"Was bred by His Grace the Duke of Portland in 1816, was Got by Soothsayer out of Pledge by Waxey—Prunella by Highflyer—Promise by Snap—Julia by Blank. In the Craven Meeting he won a Sweepstakes of 200 gs., beating Vanguard. In the first Spring meeting he won the Newmarket Stakes of 50 gs., beating 10 others." Etc. Aquatint in colours drawn and engraved by James Pollard. Published July 6, 1819, by R. Pollard and Son, Holloway, London. Size 12¼ by 17½ inches, with margins. £14 14s

264 Sultan.

Winner of the Newmarket Whip in 1823, by Selin out of Bacchante by Williamson's Ditto. Aquatint in colours by E. Duncan after J. Ferneley. Size 12¼ by 16½ inches, with margins. 1832. £10 10s

265 Theodore.

"The Winner of the Great St. Leger at Doncaster, 1822. By Woful, out of Blacklock's Dam by Coriander." Very fine aquatint printed in colours by Sutherland after Herring. Size 12¼ by 16½ inches, with margins. £8 8s

266 Habibe.

"Thorough-bred Arabian bay horse, 16 hands high, 9 years old, bred by the Baron Fechtig, got by El Bedavi, out of Habibe." Coloured lithograph by Hofbaner. Size 14½ by 17½ inches. c. 1840. £1 10s

267 SHOOTING. Evening of the First of September.

Interior of an inn, young sportsman standing before an open fire, two other sportsmen with guns seated on either side of him, dogs at their feet. Young boy pouring out wine near doorway to right. Very decorative aquatint printed in colours by J. Pollard (drawn by a gentleman sportsman). Size 14 by 17¾ inches, with margins. 1822. £10 10s

SPORTS AND PASTIMES.

COACHING AND DRIVING.

268 **ADAM** (Victor). **Suite de Voitures Modernes et de Chevaux Harnachés.**

Series of uncoloured lithographes depicting coaches, omnibus, gigs, etc., and various methods of harnessing horses. By Victor Adam. Paris, c. 1840. £2 2s

CRICKET.

Series of tinted lithographic portraits of famous cricketers, depicting them in cricketing costume. Average size, 13½ by 8 inches. c. 1840. Price, £1 1s. each.

269 **Thomas Beagley**, 1789-1858. Celebrated Hampshire Cricketer.

270 **Alfred Diver**, born 1824. Played for Cambridge, the Marylebone Club, etc. He succeeded John Lillywhite at Rugby as professional tutor to the boys.

271 **James Dean**, born 1816. Born at Duncton, Sussex.

272 **William Hillyer**. Often termed "the best of all bowlers."

273 **William Lillywhite**, 1792-1854. As he appeared at Lord's Ground, July 25, 1853. Known as the "Nonpariel Bowler."

274 **John Wisden**. Sussex Cricketer, born at Brighton.

275 **Fuller Pilch. Thomas Box. William Lillywhite. Jas. Cobbett.**

Four full-length Portraits of Celebrated Cricketers, on one sheet. Lithograph in colours by C. Hunt. Fine impression. Size 16½ by 14¼ inches, with margins. 1841. £3 3s

276 **FALCONRY. The Young Falconer.**

Mezzotint by T. Hodgetts after A. Geddes. Size 10 by 8½ inches, with margins. Lettered proof. 1818. £1 15s

278 **GOLF. Callender** (Henry).

Whole length, in uniform of Blackheath Golf Club; landscape. Mezzotint engraving by Wm. Ward after L. F. Abbott. Size 23½ by 16¾ inches, with margins. 1812. £18 18s

With inscription under:—

"Henry Callender, Esqre. To the Society of Goffers at Blackheath."

LEGAL PORTRAITS.

279 **ASHBURTON** (John Dunning, Lord, 1731-1783). Famous lawyer-Attorney-General.

Three-quarter length, seated, wig, robes. Very fine stipple engraving by Bartolozzi after Sir J. Reynolds. Size $19\frac{1}{2}$ by $14\frac{3}{8}$ inches, with margins. 1790. Brilliant open letter proof impression. £7 7s

280 **BAYLEY** (Sir John, 1763-1841). Judge of King's Bench, 1808. Judge of Exchequer Court, 1830-4.

Full three-quarter length, seated, wig, robes. Mezzotint by W. Say after Russell. Size 20 by $14\frac{1}{4}$ inches, with narrow margins. Line of publication missing. 1823. £3 3s

281 **BLAIR** (Robert, of Avontoun, 1741-1811). Judge; advocate depute and solicitor-general for Scotland, 1789-1806; President of College, 1808.

Three-quarter length, standing, table to left with mace and papers. Line engraving by Jas. Heath after Henry Raeburn. Open letter proof impression. Size $21\frac{1}{4}$ by $15\frac{3}{8}$ inches, with margins. £9 9s

282 **CAMDEN** (Charles Pratt, Earl of, 1714-1794). Celebrated Judge and Statesman, Lord Chancellor.

Full length, seated, wig, robes. Large and fine mezzotint by Haid after Sir J. Reynolds. Size $19\frac{7}{8}$ by 14 inches. 1766. £2 10s

283 ——— Another Portrait.

Full length, standing, in robes, left hand on large book. Line engraving by Ravenet after Sir J. Reynolds. c. 1780. £2 10s

284 **COKE** (Sir Edward, 1552-1634). Lord Chief Justice of England.

Bust to right, in skull-cap, ruff and gown, engraved oval frame inscribed "Prudens qui patiens. Anno 1629." Line engraving by J. Payne. Size 6 by $5\frac{1}{8}$ inches, with margins. £3 3s

285 **DUNDAS** (The Rt. Hon. Robert, 1713-1787). President of the Court of Session, Scotland.

Nearly whole length, seated, wig and robe. Line engraving by W. Sharp after H. Raeburn. Size $16\frac{3}{8}$ by $13\frac{1}{2}$ inches, with margins. c. 1772. Fine open letter proof impression. £4 4s

286 **ERSKINE** (Charles, 1680-1763). Lord justice clerk, regent of Edinburgh University, 1700-7, M.P. Dumfriesshire, 1722-1727, solicitor-general for Scotland 1725, raised to the bench as Lord Tinwald 1744.

Bust in oval, long hair, chain round neck. Mezzotint by McArdell after Thos. Hudson. Size 13 by 9 inches. c. 1740. First State. £1 10s

287 **GRANT** (Sir William, 1755-1832). Eminent Scotch Lawyer, Solicitor-General and Master of the Rolls.

Full length, seated, in robes, etc., paper in right hand. Mezzotint engraving by McInnes after Sir T. Lawrence. Size 16 by 11 inches, with margins. 1842. Proof before letters. £2 10s

LEGAL PORTRAITS.

- 288 **HARCOURT** (Simon, Lord, 1660-1727). Called to the Bar 1683; Solicitor-General and Knighted 1702; created Baron Harcourt 1711, Lord Chancellor 1713, up to the Accession of George I, he was a friend of Bolingbroke, Pope and Gay.
In ornamental oval, half length, wig, cravat, gown, and mace, purse, in centre shield with Arms and motto. Mezzotint by J. Simon after G. Kneller. Size 16 by 11 $\frac{3}{8}$ ins., with narrow margins. c. 1700. £4 4s
- 289 **HOPE** (Rt. Hon. Charles, Lord Granton, 1763-1851). Lord Justice General of Scotland.
When lord advocate; nearly whole length, in private dress, seated in armchair, holding spectacles. Mezzotint by H. Dawe after Sir H. Raeburn. Size 19 $\frac{3}{4}$ by 13 $\frac{3}{4}$ inches, narrow margin top and sides, and full inscription, 1804. £9 9s
- 290 **KENYON** (Sir Lloyd, Lord, 1732-1802). Judge, Counsel for Lord Gordon, 1780; Chief Justice of the King's Bench.
Three-quarter length, seated, wig, robes, Arms under. Large and fine line engraving by J. Fittler after J. Opie, R.A. Size 19 $\frac{3}{4}$ by 14 $\frac{3}{8}$ inches, with margins. 1789. £4 4s
- 291 **LAUDERDALE** (Richard Maitland, 4th Earl of, 1652-1695). Lord Justice of Scotland; outlawed for his adherence to James II, Jacobite.
Half length, long wig, lace cravat. Line engraving. Second state, the head altered to represent the picture by Kneller, and the name of Michelin replaced by that of Kneller. Size 15 $\frac{1}{2}$ by 11 $\frac{1}{2}$ inches. 1683. £3 10s
- 292 **LEFROY** (Thomas Langlois, 1776-1869). Irish Judge; Lord Chief Justice of the Queen's Bench, 1852-66.
Nearly full length, seated, wig, robes. Mezzotint by Geo. Zobel after Catterson Smith. Size 17 by 13 inches, with margins. 1855. £2 17s 6d
- 293 **LOUGHBOROUGH** (Alexander, Lord, 1733-1805). Created Earl of Rosslyn, Lord Chancellor; attained a great reputation as a lawyer. Nearly whole length, sitting, robes, collar, wig, papers in left hand. Mezzotint by H. Hudson after M. Brown. Size 17 by 13 $\frac{1}{4}$ inches, with margins. 1791. £3 10s
- 294 **MINGAY** (James, c. 1811). Bencher of Middle Temple; Recorder of Aldborough; Chairman of Quarter Sessions of Norfolk and Suffolk.
Three-quarter length, seated, wig, lace bands, gown, right arm on chair, left hand on table to right, on which are papers, etc. Large mezzotint by C. H. Hodges after G. Romney. Size 19 $\frac{7}{8}$ by 13 $\frac{7}{8}$ inches, with margins. 1791. £3 10s
- 295 **NEWTON** (Lord, Charles Hay, 1740-1811). Called to the Bar 1768; became Lord of Sessions 1806.
Half length, seated, wig, cravat, dark robe. Mezzotint by Chas. Turner after Sir H. Raeburn. Size 17 by 14 $\frac{3}{8}$ inches, with margins. 1814. £18 18s

LEGAL PORTRAITS.

- 296 **NICOLL** (Sir John, 1759-1838). Judge, Dean of the Arches and Judge of the Prerogative Court of Canterbury, etc., etc.
Nearly whole length, seated, wig, robes. Mezzotint by H. Meyer after Wm. Owen. Size $17\frac{1}{2}$ by 14 inches, with margins. 1819. Open Letter Proof Impression. £2 10s
- 297 **SHARPE** (Joshua, c. 1786). Conveyancer.
Three-quarter length, seated by table. Mezzotint by C. H. Hodges after J. Reynolds. Size $19\frac{3}{4}$ by $13\frac{3}{4}$ inches, with margins top and sides. 1786. £2 2s
- 298 **STEPHEN** (James, 1794-1879). Lawyer and author, formed plan for "Agency Committee of Anti Slavery Society"; Knighted 1837; barrister, Grey's Inn, 1849.
Three-quarter length, seated, dark coat, spectacles in right hand, bill on "Anti Slavery" in left. Mezzotint by and after J. Linnell. Size $19\frac{1}{2}$ by 15 inches, with large margins. 1834. £3 10s
- 299 **THURLOW** (Edward, Lord, 1736-1806). Distinguished lawyer; Lord High Chancellor of Great Britain; presided at the Trial of Warren Hastings, 1788.
Nearly full length, seated, wig and robes, mace, etc., on table to right, Arms under. Stipple engraving by R. Bartolozzi after Sir Joshua Reynolds. Size 20 by $14\frac{1}{2}$ inches, with margins. 1782. £3 3s
- 300 **TINDAL** (Rt. Hon. Sir Nicholas Conyngham, 1776-1846). Chief Justice of the Common Pleas.
Nearly whole length, seated, in robes. Mezzotint by and after J. Lucas. Size 16 by $12\frac{7}{8}$ inches, with margins. 1835. £5 5s
- 301 ——— Another Portrait.
Nearly full length, sitting, robes and chain. Mezzotint by H. Cousins after T. Phillips, R.A. Size 17 by $13\frac{3}{4}$ inches, with margins. 1842. Autograph proof on India Paper. £2 10s
- 302 **VANSITTART** (Nicholas, 1766-1851). Called to the Bar at Lincoln's Inn, 1791; Chief Secretary of Ireland, 1805; created Baron Bexley, 1823; Chancellor to the Duchy of Lancaster, 1823-8; and Cabinet Minister.
Nearly full length, seated, robes, right hand on case on table, to left. Mezzotint by Wm. Ward after W. Owen. Size 18 by $13\frac{3}{4}$ inches. Open Letter Proof. Brilliant Impression. £4 4s
- 303 **WILLES** (Edward, Judge, d. 1787). Nearly full length, seated in armchair, robes, book in left hand. Stipple engraving by J. Heath after Gainsborough. Size $16\frac{1}{2}$ by $13\frac{1}{4}$ inches, with margins. c. 1786. Proof before inscription. Artist's name, etc., in etched letters. £4 4s
- 304 ——— Another Impression. £2 10s

NAVAL PORTRAITS & SHIPS.

- 305 **BLAKE** (Robert, 1599-1657). Famous British Admiral.
In oval, half length, uniform, lace cravat. Sea and ships. Mezzotint by Thos. Preston. Size $14\frac{1}{4}$ by $9\frac{1}{2}$ inches, with margins. 1740. £6 6s
- 306 **BYNG** (John, 1704-1757). Admiral. Sentenced by Court-Martial to death for neglect of duty; shot at Portsmouth.
Three-quarter length, seated, uniform, right hand holding telescope on knee, ships in distance. Mezzotint by R. Houston after T. Hudson. Size $13\frac{3}{4}$ by 11 inches, with margins. c. 1760. £5 10s
- 307 **CURTIS** (Sir Roger, 1746-1816). Admiral. Commander of Lord Howe's Flagship, destroyed batteries at Gibraltar.
Half length, standing, in uniform, right hand resting on sword, battle scene in distance. Line engraving by Caldwell after Hamilton. Size $15\frac{3}{4}$ by $11\frac{1}{4}$ inches, with margins. 1783. Brilliant open letter proof impression. £2 10s
- 308 **DUNCAN** (Admiral, Lord, 1731-1804). He was with Rodney at the relief of Gibraltar, and had a prominent share in the action off St. Vincent. He won a great victory over the Dutch, when in command of the Venerable, in 1797.
Full length, standing, in naval uniform, directed and facing front, sash and medal, telescope in right hand, ships firing in background. Mezzotint by Jas. Ward after J. Hoppner. Size $25\frac{3}{4}$ by 17 inches, with margins. 1798. £27 10s
- 309 **EDGE CUMBE** (George, Lord, 1721-1795). Admiral. Vice-Treasurer of Ireland, 1771-3 and 1784-95.
Half length, in naval uniform. Mezzotint by E. Fisher after Sir Joshua Reynolds. Size $13\frac{1}{2}$ by 11 inches, with margins. 1761. Fine impression in early state before the address of Sayers. £3 10s
- 310 **EXMOUTH** (Edward Pellew, First Viscount, 1757-1833). Distinguished Admiral.
Full length, standing on deck of his ship, uniform. Large and very fine mezzotint by Chas. Turner after Sir Wm. Beechey. Size $26\frac{1}{4}$ by $16\frac{1}{2}$ inches, with margins. 1818. Brilliant impression in first state. £7 7s
- 311 **HARVEY** (Capt. John, 1740-1794). Took part in defence of Gibraltar 1779-82.
Half length, powdered hair, uniform, sea and ships behind. Mezzotint by J. Murphy after I. G. Wood. Size $19\frac{3}{4}$ by 14 inches, with margins. 1795. Fine impression. £12 12s
- 312 **HAWKE** (Sir Edward, 1705-1781). Admiral; co-operated with Sir John Mordaunt in the Rochefort expedition, 1757; succeeded to delay but failed to destroy French convoy to America, 1758.
Half length to right in oval, with ribbon and star. Mezzotint by McArdell after G. Knapton. Size $10\frac{3}{4}$ by 9 inches. £3 10s

NAVAL PORTRAITS.

- 313 **HOOD** (Samuel Lord, 1724-1816). For his services against De Grasse in the West Indies raised to the Irish Peerage in 1782; Commander-in-Chief in the Mediterranean, 1793-4; Governor of Greenwich Hospital.

Whole length, standing, naval uniform, right hand leaning on sword, harbour and town in background, ships to left. Mezzotint by Val. Green after L. F. Abbott. Size $23\frac{1}{4}$ by $15\frac{3}{4}$ inches, with inscription margin only. 1795. Fine impression. £35

- 314 **JENNINGS** (Admiral Sir John, Kt., 1664-1744). Commander-in-Chief of the Mediterranean from 1711 to 1713; Commissioner of the Admiralty, 1714; appointed Governor of Greenwich Hospital, 1720.

Three-quarter length, standing, ship and cannon to right. Mezzotint by John Faber after Sir G. Kneller. Size $12\frac{1}{4}$ by 10 inches, with inscription margin. 1722. £1 10s

- 315 **MEDLEY** (Vice-Admiral Henry, died 1747). Commander-in-Chief in the Mediterranean.

Three-quarter length, standing. Mezzotint by J. Faber after J. Ellys. Size $12\frac{1}{4}$ by $9\frac{7}{8}$ inches, with inscription margin. 1745. £1 1s

- 316 **NELSON** (Viscount, Duke of Bronte, 1758-1805).

Full length, standing on sea shore, sword in left hand, sailing ship behind. Mezzotint by J. Young after John Rising. Size 24 by 18 inches, with inscription margin. 1801. £9 9s

- 317 ——— Another portrait.

Full length, standing on deck of ship in uniform, left hand on sword, cannon to left, partly covered with flag. Mezzotint by E. Bell after Sir Wm. Beechey. Size $24\frac{3}{4}$ by $16\frac{3}{4}$ inches, with full inscription margin. 1806. £8 8s

- 318 ——— Another portrait.

Full length, standing, in naval uniform, stars, and orders, left hand resting on rocks, right sleeve pinned across chest. Large and fine line engraving by Bowyer after Bromley. Size $26\frac{3}{4}$ by $17\frac{1}{4}$ inches. Brilliant proof impression. £6 6s

- 319 **PEARSON** (Sir Richard, 1731-1806). Captain. Captured by John Paul Jones while commanding the Serapis.

Three-quarter length, in uniform, hat and cane in left hand. Mezzotint by Jas. Watson after Chas. Grignion. Size $15\frac{1}{2}$ by 11 inches, with margins. 1780. £6 6s

- 320 **RALEGH** (Sir Walter, 1552?-1618). Naval Commander, explorer and author.

Half length, oval, with emblematic figure. Line by J. Houbraken. Size 15 by 9 inches, with margins. 1739. £2 2s

- 321 **ROOKE** (Rt. Hon. Sir George, 1650-1709). Admiral. Defeated and destroyed French and Spanish fleet at Vigo.

Half length, wig, white cravat. Mezzotint after M. Dahll. Size 12 by $8\frac{1}{2}$ inches. £1 5s

NAVAL PORTRAITS AND SHIPS.

- 322 **SHOVELL** (Sir Cloudisley, 1650-1707). Admiral and Commander-in-Chief of the Fleet; took part with Rooke in capture of Gibraltar. Three-quarter length, standing by a globe. Mezzotint by J. Smith after W. de Rijck. Size $12\frac{1}{4}$ by $9\frac{3}{4}$ ins., inscription margin. 1808. £4 4s
- 323 **VERNON** (Sir Edward, 1723-1794). Admiral; Commander-in-Chief in the East Indies, 1776-81; hero of Porto Bello.
Three-quarter length, standing in cuirass, right hand on an abutment; naval engagement in background. Mezzotint. Engraver unknown. Size $11\frac{3}{4}$ by 9 inches, with inscription and thread margins top and sides. £3 10s
- 324 **WATSON** (Charles, 1714-1757). Rear-Admiral; Commander-in-Chief; Co-operated with Robert Clive in reducing Gheriah, Feb., 1756, recovering Calcutta, December, 1756; his name, by Clive's contrivance, fraudulently attached to a fictitious treaty to deceive Omichund; died in Bengal.
Three-quarter length, standing, in uniform, holding stick in right hand, left hand on hilt of sword. Mezzotint by E. Fisher after T. Hudson. Size $13\frac{3}{4}$ by 11 inches, with margins. £2 10s

SHIPS.

- 325 **The Royal Mail Steam Ship "Asia,"** 2,800 tons, 800 horse power. Tinted lithograph by T. G. Dutton after S. Walters. Size 16 by $23\frac{3}{4}$ inches, with margins. 1851. £15 15s
- 326 **S.S. "The British Queen."** "Being the largest and finest steamship ever built, her length exceeding by 35 feet that of any ship in the British Navy."
Aquatint printed in colours by E. Duncan after W. J. Huggins. Size $15\frac{3}{4}$ by $24\frac{1}{2}$ inches, with margins. Fine impression. £31 10s
- 327 **H.M.S. "Duke of Wellington,"** 131 Guns.
Tinted lithograph by T. G. Dutton. Size 16 by $23\frac{7}{8}$ inches, with margins. 1853. £2 10s
Dedicated to Commodore H. B. Martin, C.B., and the Officers of the Ship.
- 328 **Elk, Stag and Lynx.** Messrs. Burns, Glasgow and Belfast. Royal Mail Steam Packets.
Tinted lithograph by T. G. Dutton after Wm. Clark. Size $13\frac{3}{4}$ by $21\frac{3}{4}$ inches, with margins. 1857. £6 6s
- 329 **Clipper Ship "The Goolwa,"** 717 Tons. Adam Johnston Commander.
Very fine tinted lithograph by T. G. Dutton. Size 16 by $23\frac{1}{2}$ inches, with margins. 1866. £8 8s
"To Messrs. Anderson, Thomson and Co., Owners, and Messrs. A. Hall and Son, Builders, Aberdeen." Dedication on plate.
- 330 **H.M. Twin-screw Armour-clad Turret-ship "Hecate."**
Lithograph in colours by T. G. Dutton. Size $14\frac{1}{2}$ by $23\frac{3}{4}$ inches, with margins. 1872. £3 3s
Built by Messrs. J. and W. Dudgeon, Shipbuilders and Engineers, London, From the Designs of the Council of Construction of The Admiralty.
With names of the Manufacturers of the Guns, Armour Plates, Engines, etc., under.

SHIPS.

- 331 "**Hindustan**" and "**China.**" Passenger steamers built by Messrs. J. Wigham Richardson and Co., of Newcastle-on-Tyne.
Tinted lithograph by T. G. Dutton. Size $14\frac{1}{2}$ by $23\frac{3}{4}$ inches, with margins. 1869. **£5 5s**
- 332 The "**Isabel**" Schooner off Gibraltar.
Aquatint by C. Rosenberg after W. J. Huggins. c. 1820. Size $11\frac{3}{4}$ by $16\frac{3}{4}$ ins., with margins. Fine impression, printed in colours. **£7 7s**
- 333 Her Majesty's Iron Cased Screw Steam Frigate "**Minotaur.**"
Lithograph in colours by T. G. Dutton. Size 16 by $24\frac{3}{4}$ inches, with margins. 1867. **£3 3s**
"Built by The Thames Iron Works Ship Building Engineering and Dry Dock Company, Blackwall. Rigged with A. I. Hutchings and Compy. Patent Improved Formed Wire Rope.
Armament 26 Guns. Length between perpendiculars 400 ft. Breadth extreme 59 ft. $3\frac{1}{2}$ in. Depth in hold 41 ft. $6\frac{3}{4}$ in. Tonnage 6,620. Horse-power 1,350."
Inscription on plate.
- 334 Clipper Ship "**Orient,**" 1,032 Tons.
Lithograph in colours by and after T. G. Dutton. Size $15\frac{3}{4}$ by $24\frac{1}{2}$ inches, with margins. c. 1850. **£18 18s**
Messrs. James Thomson and Co., Owners, Thomas Bilbe and Co., Builders.
- 335 H.M. Iron Screw Ship "**Sultan.**" Capt. Edward H. Vansittart, R.N.C.B.
Built in H.M. Dockyard, Chatham, from the Designs of E. J. Reed, Esq., Late Chief Constructor of the Navy, by P. Thornton, Esq., Master Shipwright. Very fine lithograph in colours by T. G. Dutton. Size 15 by 25 inches, with margins. 1871. **£3 3s**
- 336 H.M. War Steam Frigate "**The Terrible,**" of 1,847 Tons and 800 Horse Power.
Aquatint in colours by H. Papprell after W. Knell. Size $15\frac{1}{2}$ by $23\frac{1}{2}$ inches, with margins. 1856. **£3 3s**
"Designed and built by Oliver Lang, Esqr., having a heavy Armament on two decks." Etc. Inscription on plate.
- 337 H.C.S. "**Thomas Coutts,**" entering Bombay Harbour, 2nd June, 1826.
Aquatint in colours by E. Duncan after W. J. Huggins. Size $14\frac{1}{2}$ by 22 inches, with margins. 1827. **£47 10s**
A brilliant and choice impression of this very fine aquatint engraving, showing the Ship in full sail and flying the Union Jack, the coastline with Bombay Harbour seen in distance to right.
Inscription on plate:—" (After a passage of 82 Days, from England.) Sailed from Bombay, for China; on the 2nd Augt., arrived at Singapore, on the 26th and sailed from thence, on the 28th arrived at Mocoa, on the 11th Septr. sailed from China, on the 23rd Novr. passed Java Head, on the 10th Decr. and arrived at St. Helena, on the 22nd Jany. 1827. Sailed from thence, on the 24th and arrived in the Downs, on the 2nd March. Having made the Quickest Voyage, out and home, on record; ten Days within a Year."
- 338 The Steam Ship "**Wilberforce,**" in three Positions. With a View of the Port and Town of Hull.
Aquatint in colours by R. G. Reeve after J. Ward. Size 18 by 27 inches, with margins. 1838. Brilliant impression and in perfect condition. **£31 10s**

SHIPS.

- 339 **The Hon. East India Company's ship "Lord Lowther,"** commanded by Chas. Stewart, Esq., leaving the Harbour of Prince of Wales' Island.
Aquatint by E. Duncan after W. J. Huggins. Size 14½ by 22 inches, with margins. 1828. Brilliant impression, printed in colours. £21
- 340 **"The Old School, 1755. Eight Months to India." "The New School, 1855. Sixty Days to Australia."**
Pair of large and very fine decorative Chromo lithographs, by R. Carrick after G. H. Andrews. Size 16½ by 24 inches, with margins. 1855. The pair, £31 10s
A scarce and extremely interesting pair showing as they do the vast difference between the celebrated "Clipper" type and the vessels of the previous century.
The Clipper Ship 1855 "Shomberg" was reckoned to be the fastest boat of her period, and was commanded by the famous "Bully Forbes." Unfortunately she was lost off Cape Otway, Australia, on her first voyage out.
- 341 **The Cutter Yacht "Avalon,"** 40 Tons R.H.Y.C. Winner of the Great Eastern Railway Company's Prize, Lowestoft Regatta, 1866.
Tinted lithograph by T. G. Dutton. Size 12 by 18½ inches, with margins. £4 4s
"Winner at Harwich, Dover, Antwerp, Gt. Grimsby, and of H.R.H. Prince Albert's Gold Vase, in the Humber." Inscription on plate.
- 342 **Cutter Yacht "Christabel,"** 48 Tons. In the Start for the Royal Thames Yacht Club 1st Class Match, May 23rd, 1862. Winner of 1st Prize, value £100.
Lithographed in colours by Vincent Brooks after Josiah Taylor. Size 14 by 23½ inches, with margins. 1863. £8 8s
Winner of £50 Prize in R.T.Y.C. Match, June 3. Boulogne Regatta, £20 Prize, July 23. Royal Yacht Squadron Prize, £100, Aug. 9. Weymouth Regatta, £50 Prize, August 19, 1861. Built by Mr. Edwin Aldous, of Brightlingsea, Essex.
- 343 **Cutter Yacht "Cygnet."** With H.M. Brig Columbine and the Xarifa Yacht in background to left.
Tinted lithograph by O. W. Brierly. Size 12½ by 18½ inches, with margins. c. 1850. £2 15s
- 344 **The Cutter Yacht "Cynthia,"** 50 Tons. Winning the £50 Purse at Torbay, August 24th, 1849. Built April, 1849, by Messrs. Wanhill, of Poole.
Lithograph by T. G. Dutton after N. M. Condy. Size 12½ by 18 inches, with margins. 1850. £2 2s
- 345 **Schooner Yacht "Dolphin."** Winning the Queen's Plate at Cowes, August 17th, 1839. The Earl of Yarborough's "Kestrel," and Mr. R. Boyd's "Wanderer" in the background to right.
Tinted lithograph by O. W. Brierly. Size 11½ by 18½ inches, with margins. £3 3s
- 346 **"Gertrude,"** 135 Tons, R.Y.S.
Tinted lithograph by T. G. Dutton. Size 14½ by 23½ inches, with margins. 1868. £3 15s

SHIPS.

- 347 "**Kestrel**," R.Y.S. Commodore the Earl of Yarborough.
Lithograph in colours by H. J. Vernon. Size 12½ by 18 inches, with
margins. c. 1830. £6 6s
- 348 **The Iron Cutter Yacht "Mosquito,"** 50 Tons, R.T.Y.C.
Lithograph in colours by Day and Son, after T. G. Dutton. Size
12½ by 18 inches, with margins. 1852. £4 4s
Dedicated to the Rt. Hon. Lord Londesborough. List of prizes under.
- 349 ——— Another impression. Proof before letters. £5 5s
- 350 **The Lugger Yacht "New Moon,"** 220 Tons.
Lithograph in colours by T. G. Dutton. Size 12½ by 18¾ inches,
with margins. £3 3s
"To the Rt. Honble. Lord Willoughby de Eresby this print is most respect-
fully dedicated." Inscription on plate.
- 351 **Schooner Yacht "Peri."** Winner of the Gold Cups for the Years
1840 and 1841.
Lithograph in colours by G. Hawkins after H. Fry. Size 14 by 20¾
inches, with margins. £6 6s
- 352 **Cutter Yacht "Vindex,"** 45 Tons. Winning the 100 Sovereigns
Prize given by the Royal Cork Yacht Club at Queenstown, 23rd
July, 1863.
Lithograph in colours by T. G. Dutton. Size 14½ by 23¾ inches,
with margins. 1864. £8 8s
Built at the Millwall Iron Works, London. Sails by Messrs. Laphorne and
Son, Gosport.
- 353 **The Cutter Yacht "Volante,"** 48 Tons, R.T.Y.C. Winning the
Grand Challenge Cup, value 200 guineas, May 14th, 1852.
Tinted lithograph by E. T. Dolby after T. S. Robins. Published June
8th, 1852, by Messrs. Fores. Size 12½ by 17¾ inches, with margins.
£2 10s
List of prizes under. Built May, 1851, by Harvey and Son, of Ipswich and
Wivenhoe, Sailmaker, Laphorn, of Gosport.
- 354 **Royal Thames Yacht Club.** Ocean Match from Nore to Dover,
for the Queen's Cup, June 25, 1874.
Two tinted lithographs by Maclure and Macdonald after C. R.
Rickett, showing the Start and Finish of the race. The Yachts
taking part were the Cetonia, Gwendolin, Arrow, Kriemhilda,
Egeria, and Florinda. Size 15 by 27 inches, with margins. 1874.
The pair, £12 12s

MILITARY PORTRAITS.

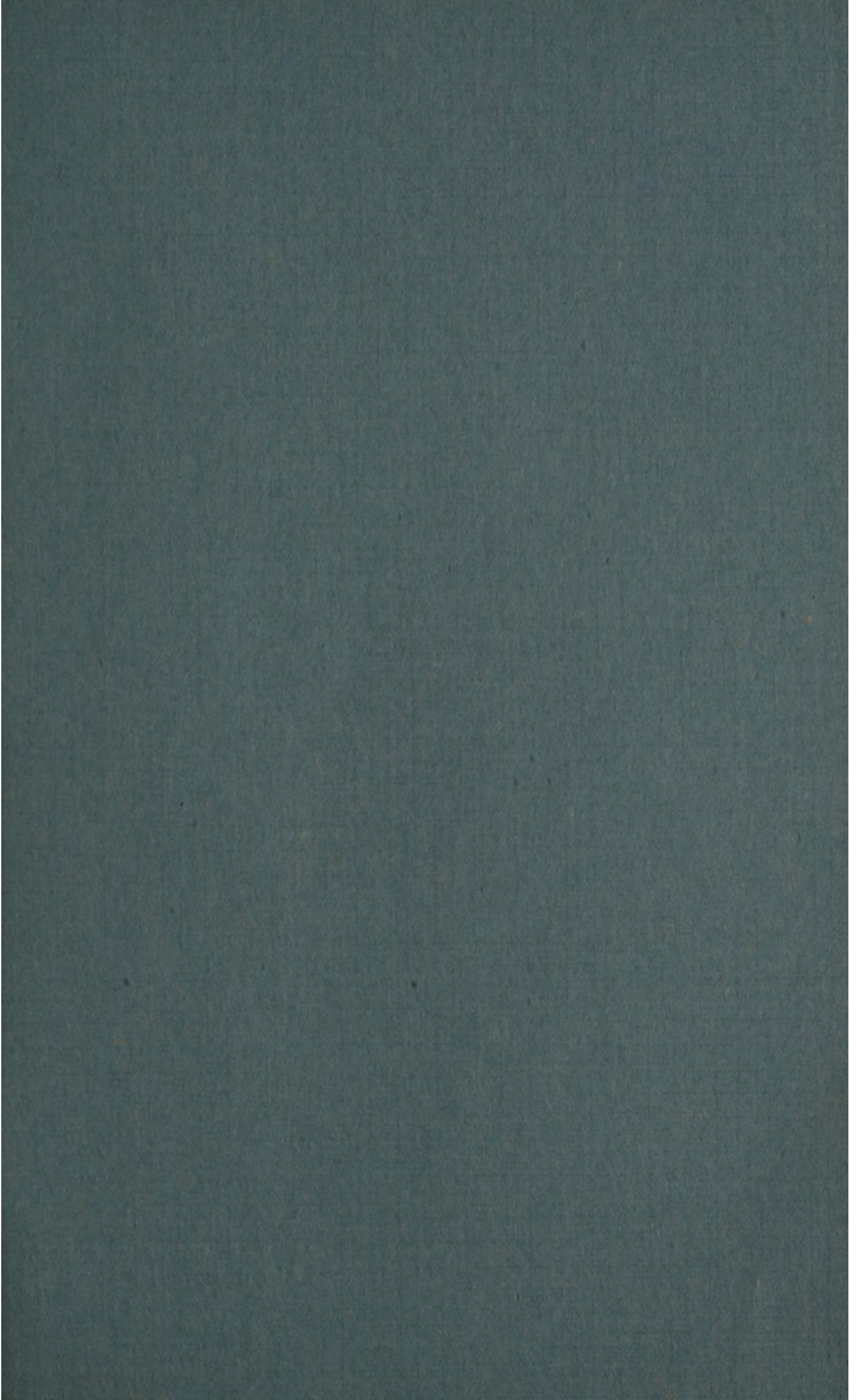
- 355 **ALBEMARLE** (Arnold Joost Van Keppel, 1st Earl of, K.G., 1669-1718). Accompanied William of Orange to England, and rose to great favour with the King. Colonel of Guards, 1699.
Three-quarter length, standing, in wig and armour, holding truncheon, battle in background to right. Mezzotint by J. Smith after G. Kneller. Size $12\frac{1}{2}$ by $9\frac{3}{4}$ ins., with inscription margin. £5 5s
- 356 **ARDEN** (Chas. George Percival, 1756-1840). Registrar of the Court of Admiralty.
Nearly whole length, in peer's robes. Mezzotint by T. Lupton after H. P. Briggs. Size $15\frac{7}{8}$ by $12\frac{3}{4}$ inches, with margins. £1 10s
- 357 **BAIRD** (Sir David, 1757-1829). General. Commanded Sepoy brigade against Tippoo; took Pondicherry, 1793; Major-General in second war against Tippoo, 1798. Stormed Seringapatam, 1799. Second in command under Moore in Spain, 1808.
Whole length, standing by his horse, in uniform. bareheaded. Mezzotint by T. Hodgetts after H. Raeburn. Size $24\frac{1}{2}$ by $15\frac{1}{4}$ inches, with margins. Fine open letter proof impression. £21
- 358 **BECKWITH** (Sir George, 1753-1823). Lieut.-General; Ensign 37th Hampshire Regiment, 1771; took prominent part in American War, 1776-82. Governor and Commandant of Bermuda, Governor of St. Vincent and Barbadoes, completed conquest of Martinique and Guadaloupe, commanded forces in Ireland.
Whole length, standing, uniform, star, landscape, with burning building. Very fine mezzotint by S. W. Reynolds after J. Eckstein. Size $26\frac{3}{4}$ by 17 inches, with full margin. Brilliant impression. £4 4s
- 359 **DENHAM** (Lieut.-Col., 1786-1828). Lieut.-Governor of Sierra Leone.
Half length to right, in military cloak. Mezzotint by J. Bromley after T. Phillips. Size $8\frac{1}{4}$ by $6\frac{7}{8}$ inches, with margins. 1831. £1 1s
- 360 **FIFE** (James Duff, 4th Earl of, 1776-1857). Spanish General, fought at Talavera. M.P. for Banff.
Full length, standing, in Highland costume, right hand holding gun, landscape in background. Mezzotint by G. R. Ward after Sir Francis Grant, P.R.A. Size $20\frac{1}{4}$ by $14\frac{1}{4}$ inches, with margins. 1840. Engraver's proof before any letters. £3 10s
- 361 **GORDON** (George, 5th Duke of, 1770-1836). "The Cock of the North." General. As Marquis of Huntly served with Guards in Flanders, 1793-4; raised regiment now known as Gordon Highlanders; General, 1819; commanded division in Walcheron Expedition, 1809.
Nearly full length, standing, in Highland costume, right hand holding horn, mountain scenery behind. Mezzotint by J. Lucas after G. Sanders. Size $21\frac{3}{4}$ by $15\frac{3}{4}$ inches, with margins. 1836. Brilliant proof impression before the title with artist's name and line of publication in etched letters. £18 18s

MILITARY PORTRAITS.

- 362 **HUTCHINSON** (Lord, afterwards 2nd Earl Donoughmore, 1757-1832). General; commanded under Abercromby in Egypt; captured Cairo and Alexandria.
Half length in uniform. Mezzotint by Goss. Size 12 by 9 $\frac{3}{4}$ inches, with inscription margin. 1802. £3 3s
- 363 **KINGSLEY** (William, d. 1768). Major-General and Colonel of Kingsley's Foot; Governor of Fort William, N.B.
In oval, half length, in uniform, with a breastplate. Mezzotint by R. Houston after Sir J. Reynolds. Size 13 by 9 $\frac{3}{4}$ inches, with margins. 1760. £3 10s
- 364 **LYNEDOCH** (Thomas, Lord, 1748-1843). General; Sir John Moore's Aide de Camp in Coruna campaign; commanded brigade in Walcheren exhibition, 1809; won victory of Barossa, 1811.
Full length, standing, right arm outstretched holding hat; soldiers and encampment in background. Aquatint in colours by W. Fry. Size 18 by 12 $\frac{3}{4}$ inches, with margins. 1815. £4 10s
- 365 **MARLBOROUGH** (John Churchill, 1st Duke of, K.G., 1650-1722). Famous Military Commander; Colonel of the Grenadier Guards, of the 1st Dragoons, and of the Horse Guards; won the Battles of Blenheim, Oudenarde, Malplaquet, etc.
Half length, in armour and collar of the Garter, oval. Mezzotint by John Smith after G. Kneller. Size 11 $\frac{7}{8}$ by 9 $\frac{1}{2}$ inches, with inscription margin. Fine impression. £10 10s
- 366 ——— Ditto. Another portrait.
Three-quarter length, standing, armour, cloak, baton in right hand, battle in distance. Line by P. van Gunst after A. Van der Werf. Size 20 by 15 $\frac{1}{4}$ inches, full inscription margin. £9 9s
- 367 **MAXWELL** (Thomas). Major-General; second husband of Jane Bickerton, Duchess of Norfolk.
Three-quarter length, standing, in armour, holding a truncheon in right hand, helmet on pedestal beside him. Mezzotint by J. Smith after J. Closterman. Size 12 $\frac{3}{4}$ by 9 $\frac{3}{4}$ inches, with inscription margin. £2 10s
- 368 **MOIRA** (Francis Rawdon, Earl of, 1754-1825). Governor-General of Bengal, 1813-22; Governor of Malta, 1824; highly distinguished in American War.
Full length, uniform, sword. Large and fine mezzotint by G. Clint after M. A. Shee. Size 27 $\frac{3}{4}$ by 18 inches, with narrow margins. 1813. £6 6s
- 369 **NAPIER** (Sir Charles, died 1743). Son of Sir R. Napier, of Pucknoll, succeeded as 2nd Bart.
Three-quarter length, standing, armour. Mezzotint by John Smith after J. Sommer. Size 13 $\frac{3}{4}$ by 10 inches, with margins. 1700. £2 2s
- 370 **ORMONDE** (James Butler, 1665-1745). General; fought at the Boyne, fought at Steinkirk, 1692. Lord-Lieutenant of Ireland.
Three-quarter length, standing, armour, battle in background. Mezzotint by J. Smith after G. Kneller. Size 12 $\frac{3}{4}$ by 9 $\frac{7}{8}$ inches, with margins. £2 2s

MILITARY PORTRAITS.

- 371 **PEMBROKE** (Henry, 10th Earl of, 1734-1794). General; commanded Cavalry Brigade in Germany, 1760-1; Governor of Portsmouth, 1782; Colonel of the 1st Royal Regiment of Dragoons.
Three-quarter length, in military costume, battle in distance. Fine mezzotint by J. Dixon after Sir Joshua Reynolds. Size 18 by 13 inches, with inscription margin. 1769. £3 3s
- 372 **PIERSON** (Major). Killed at the Defence of St. Heliers, Jersey, against the French, Jan. 6th, 1781.
Miniature stipple engraving by Marcuard, fine impression in red. Size 6 by 5 inches, large uncut margin. 1781. £3 3s
- 373 **RAGLAN** (Lord Fitzroy James Henry Somerset, 1st Baron, 1788-1855). Col. 53rd Foot (Shropshire Light Infantry), 1834; Col. of the Royal Horse Guards; Commander-in-Chief in the Crimea; fought Alma, 1854; showed rash bravery at Inkermann.
Full length, standing, belt and sword. Mezzotint by Chant after Sir F. Grant. Size 29 by 18½ inches, large margin. 1859. India proof before letters. £1 10s
- 374 **SALE** (Major-General Sir Robert Henry, 1782-1845). Indian Officer; defender of Jalalabad; killed at Mudki.
Three-quarter length, standing, in uniform, holding sword; fortress and hill to left. Mezzotint by T. L. Atkinson after Henry Moseley. Size 17 by 13¼ inches, with margins. 1845. £2 10s
- 375 **SURMAN** (Captain). Adjutant Royal Gloucestershire Hussar Yeomanry from 1831 to 1858; formerly Adjutant and Riding Master 10th Royal Hussars.
In uniform, on horseback, other officers on horseback behind. Lithograph in colours after Robert Scanlan. Size 17 by 20½ inches, with margins. Circa 1860. £2 2s
- 376 **THORNTON** (William, 1763-1841). General: M.P. for Woodstock.
Three-quarter length, standing, uniform, pointing to copy of his Speech. Mezzotint by C. Turner after Madame Varillat. Sizes 17½ by 14 inches, with margins. 1818. Fine impression. £4 10s
- 377 **TOWNSHEND** (Lieut.-Col. Henry, 1737-1762). Died of wounds which he received in the Battle fought at Welhelmstahl, between the allied armies under the Command of H.S.H. Prince Ferdinand of Brunswick and the French Army, commanded by the Marshalls d'Estrees and de Soubise.
Half length, in uniform, standing by a bust on pedestal. Mezzotint by McArdell. Size 15½ by 11 inches, with full inscription margin. £3 10s
- 378 **WELLINGTON** (Arthur Wellesley, 1st Duke of, 1769-1852).
Full length, standing, in uniform, decorations, Artillery in background. Coloured engraving. Published by J. Jenkins after W. Heath. Size 15½ by 12¾ inches, with margins. 1814. £4 12s 6d
- 379 ——— Another portrait.
Full length, standing, in uniform, hands resting on sword, rocky background. Line engraving by F. Forster after F. Gérard. Size 22 by 14¾ inches, with margins. 1818. Open letter proof. £2 10s



PRINTED IN GREAT BRITAIN
BY THE COURIER PRESS,
LEAMINGTON AND LONDON.