

Annual report on the ophthalmic section.

Contributors

Egypt. Maṣlaḥat al-Ṣiḥḥah al-'Umūmīyah. Ophthalmic Section.

Publication/Creation

Cairo : Govt. Press, [1931]

Persistent URL

<https://wellcomecollection.org/works/ckv5fu8t>

License and attribution

This work has been identified as being free of known restrictions under copyright law, including all related and neighbouring rights and is being made available under the Creative Commons, Public Domain Mark.

You can copy, modify, distribute and perform the work, even for commercial purposes, without asking permission.



Wellcome Collection
183 Euston Road
London NW1 2BE UK
T +44 (0)20 7611 8722
E library@wellcomecollection.org
<https://wellcomecollection.org>

MINISTRY OF THE INTERIOR, EGYPT.

Department of Public Health.

Ophthalmic Section.

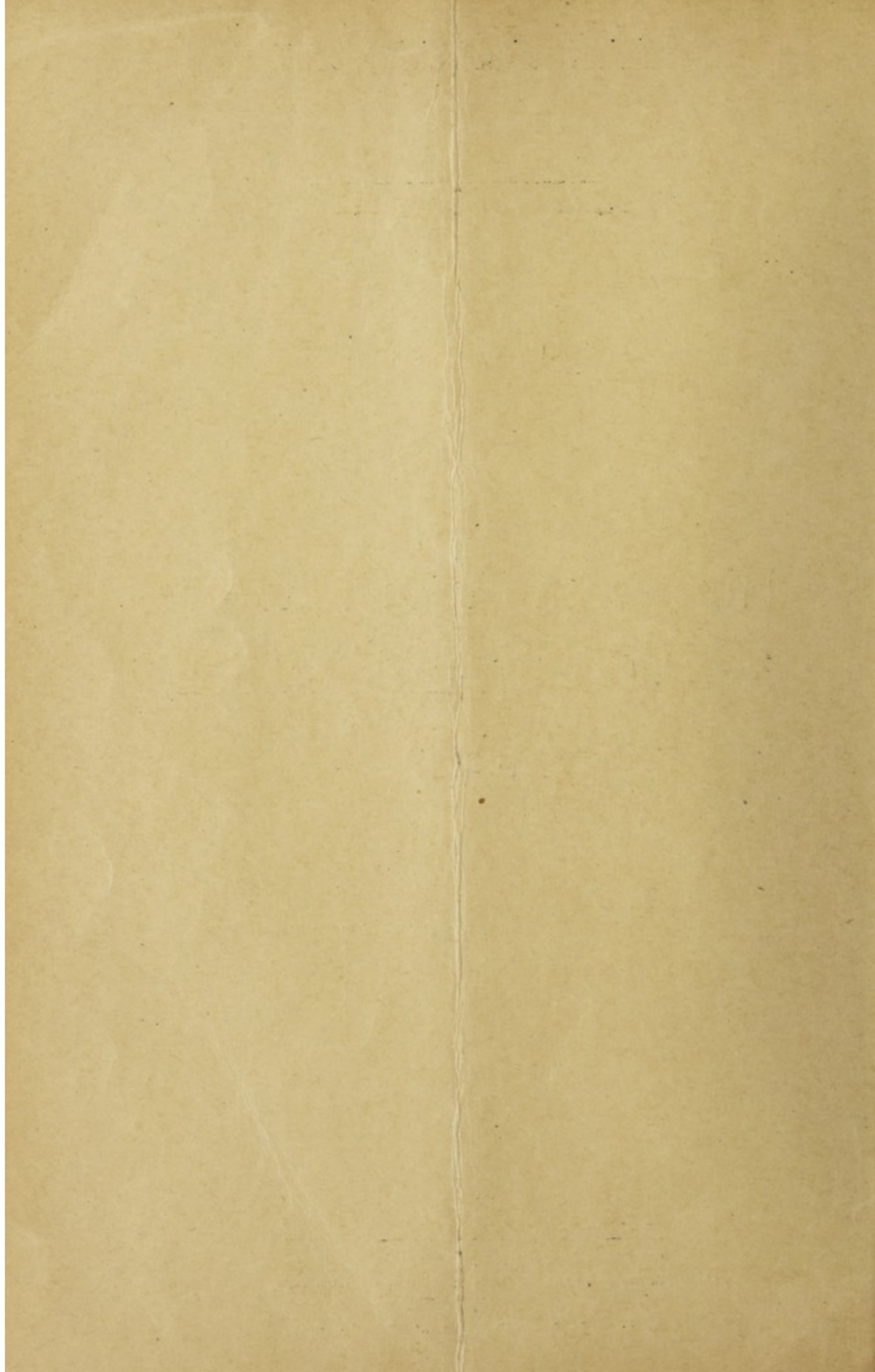


**Nineteenth Annual Report
for the Ophthalmic Section,
1931.**

Government Press, Cairo, 1933.

GOVERNMENT PUBLICATIONS are on sale at the "Sale Room,"
Ministry of Finance. Correspondence relating to these Publi-
cations should be addressed to the "PUBLICATIONS OFFICE,"
Government Press, Bôlâq, Cairo.

Price - - - - - P.T. 10.



MINISTRY OF THE INTERIOR, EGYPT.

Department of Public Health.

Ophthalmic Section.



Nineteenth Annual Report for the Ophthalmic Section, 1931.

Government Press, Cairo, 1933.

GOVERNMENT PUBLICATIONS are on sale at the "Sale Room,"
Ministry of Finance. Correspondence relating to these Publi-
cations should be addressed to the "PUBLICATIONS OFFICE,"
Government Press, Bôlâq, Cairo.

Price - - - - - P.T. 10.

1911

1911

1911

The following are the photos, of some Ophthalmic Units
(Permanent and Travelling), which were possible to obtain locally
with dates of their opening below each.


The following are the names of the persons who have been
admitted to the membership of the Association since the
last meeting of the Association.



No. 1 TRAVELLING OPHTHALMIC HOSPITAL
(1904).



TANTA OPHTHALMIC HOSPITAL
(1905).



Digitized by the Internet Archive
in 2019 with funding from
Wellcome Library

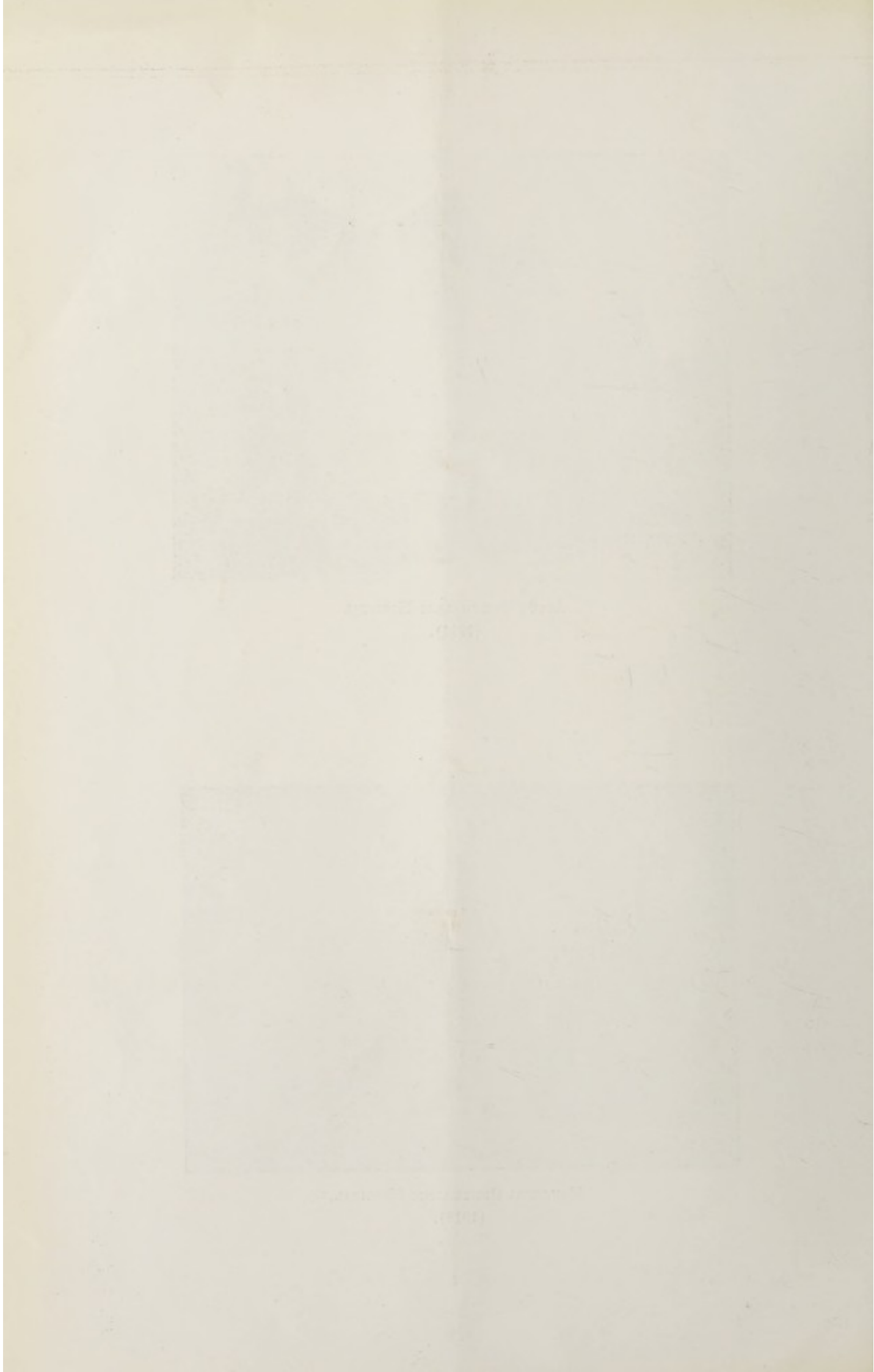
<https://archive.org/details/b31497792>



ASYÛT OPHTHALMIC HOSPITAL
(1911).



MANOSURA OPHTHALMIC HOSPITAL
(1912).





BENI SUEF OPHTHALMIC HOSPITAL
(1912).



ZAGAZIG OPHTHALMIC HOSPITAL
(1913).



MEHALLA EL KUBRA OPHTHALMIC HOSPITAL
(1913).

(11)



DAQAHLIYA TRAVELLING OPHTHALMIC HOSPITAL
(1913).



DAMANHOUR OPHTHALMIC HOSPITAL
(1914).

REPUBLICAN PARTY OF THE STATE OF TEXAS
(1912)



SHEBIN EL KOM OPHTHALMIC HOSPITAL
(1914).



SOHAG OPHTHALMIC HOSPITAL
(1914).



Faint, illegible text centered below the upper rectangular area.



Faint, illegible text centered below the lower rectangular area.



MINIA OPHTHALMIC HOSPITAL
(1915).



SANTA OPHTHALMIC HOSPITAL
(1915).



1880



1880



FAYOUM OPHTHALMIC HOSPITAL
(1916).



BENHA OPHTHALMIC HOSPITAL
(1920).

THE UNIVERSITY OF CHICAGO
LIBRARY

5

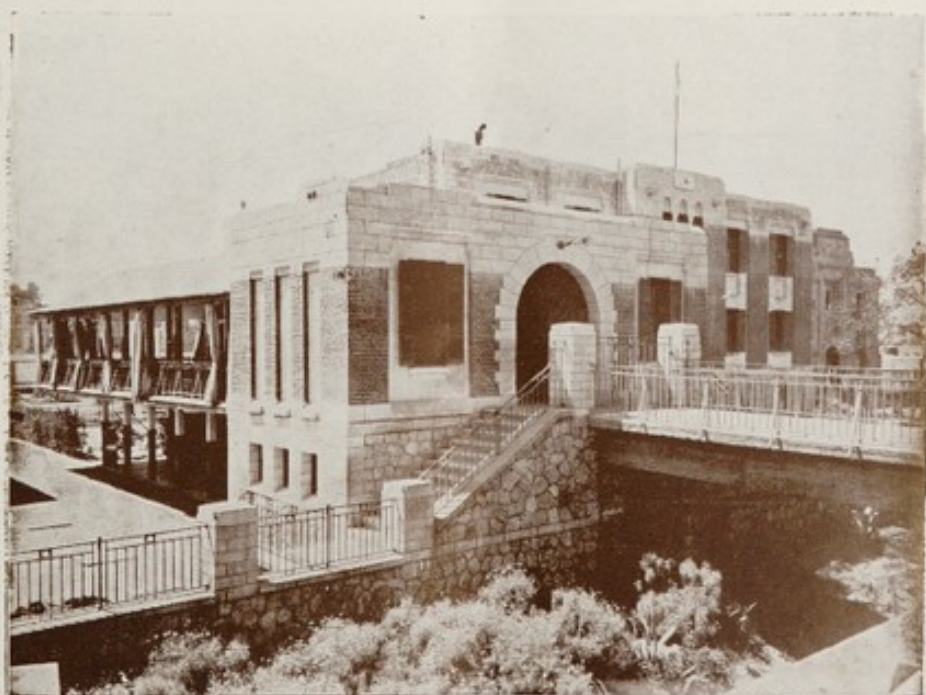
THE UNIVERSITY OF CHICAGO
LIBRARY



PORT SAID OPHTHALMIC HOSPITAL
(1921).



QENA OPHTHALMIC HOSPITAL
(1923).



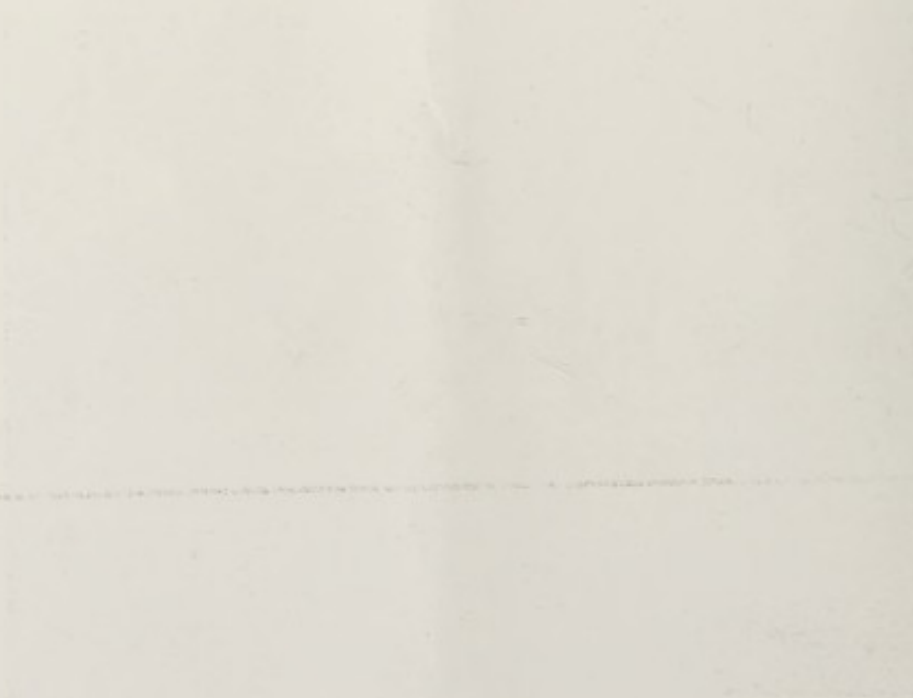
FOUAD I OPHTHALMIC HOSPITAL, GIZA
(1924).



THE UNIVERSITY OF CHICAGO
(1931)



THE UNIVERSITY OF CHICAGO
(1931)



THE UNIVERSITY OF CHICAGO
(1931)



SUEZ OPHTHALMIC HOSPITAL
(1924).



No. 4 TRAVELLING OPHTHALMIC HOSPITAL
(1925).

THE UNIVERSITY OF CHICAGO
1957

()



THE UNIVERSITY OF CHICAGO
1957



No. 5 TRAVELLING OPHTHALMIC HOSPITAL
(1925).



MEMORIAL OPHTHALMIC LABORATORY, GIZA
(1925).

THE UNIVERSITY OF CHICAGO
(1931)

THE UNIVERSITY OF CHICAGO
(1931)



NO. 6 TRAVELLING OPHTHALMIC HOSPITAL
(1927).

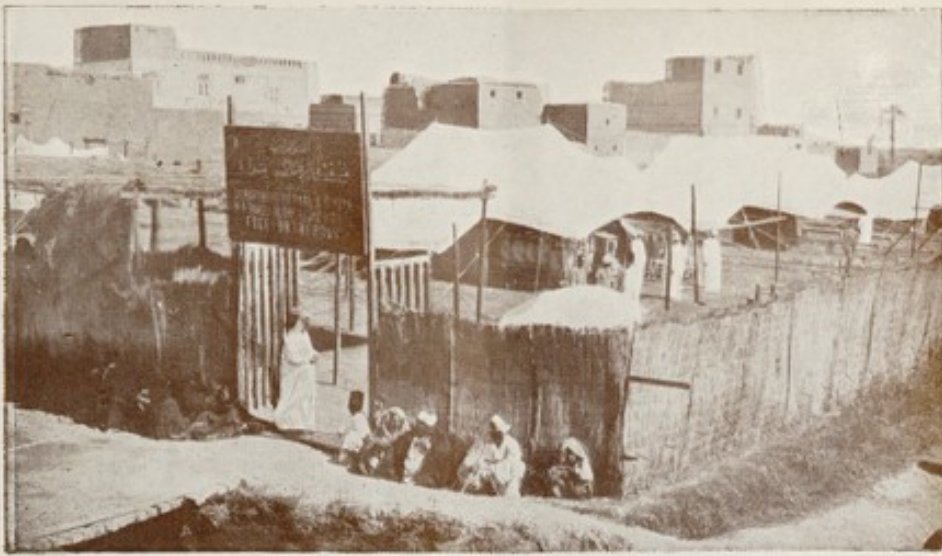


GHARBÎYA TRAVELLING OPHTHALMIC HOSPITAL
(1927).



MAGHAGHA OPHTHALMIC HOSPITAL
(1927).





No. 8 TRAVELLING OPHTHALMIC HOSPITAL
(1928).



No. 9 TRAVELLING OPHTHALMIC HOSPITAL
(1928).



No. 10 TRAVELLING OPHTHALMIC HOSPITAL
(1928).





ASWAN OPHTHALMIC HOSPITAL
(1929).



PRINCESS FAWKIA OPHTHALMIC HOSPITAL, ROD EL FARAG, CAIRO
(1929).



PLATE I
(1891)



PLATE II
(1891)



TAIEBA OPHTHALMIC BRANCH
(1929)



ESNA OPHTHALMIC BRANCH
(1929)



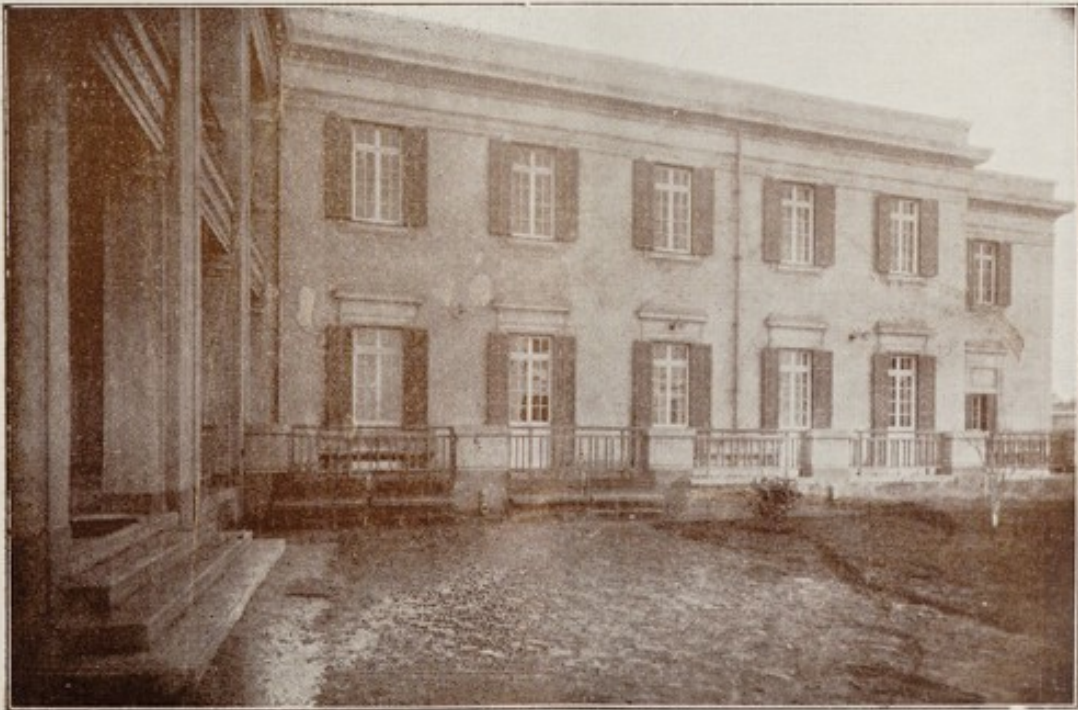
Figure 1. (Caption text, mirrored)



Figure 2. (Caption text, mirrored)



DISSOUK OPHTHALMIC BRANCH
(1930)



DEMERDASH OPHTHALMIC BRANCH
(1931)



THE UNIVERSITY OF CHICAGO
(1951)



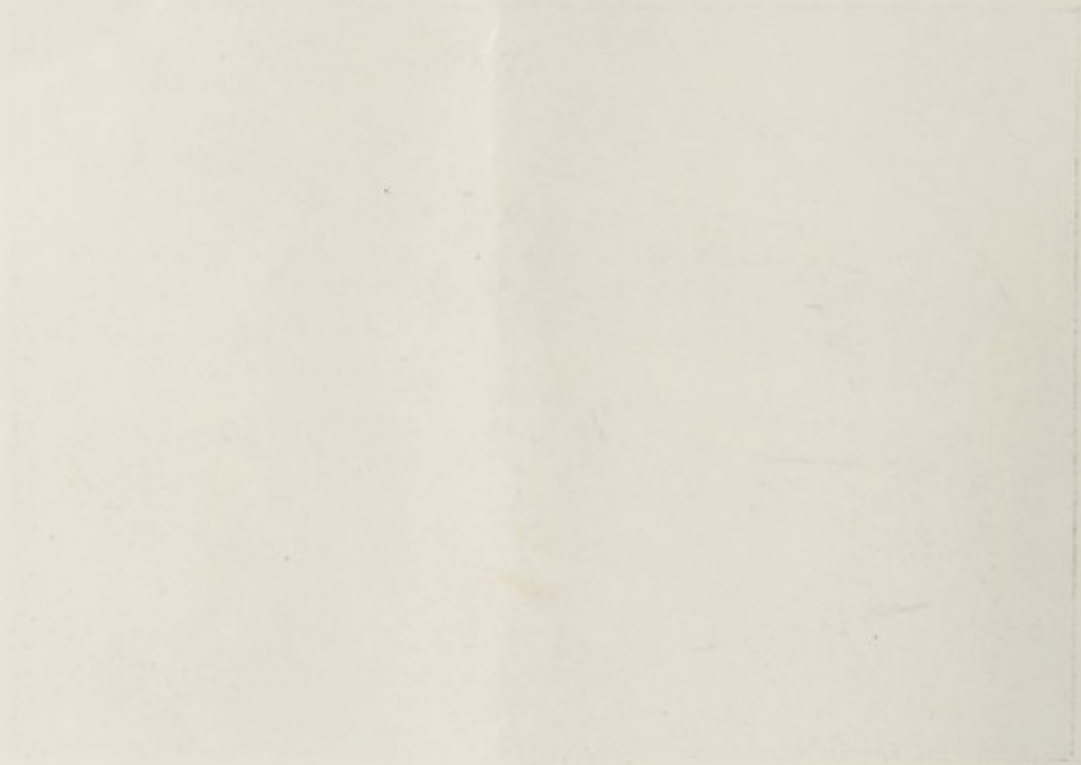
THE UNIVERSITY OF CHICAGO
(1951)



LUXOR OPHTHALMIC BRANCH
(1931)



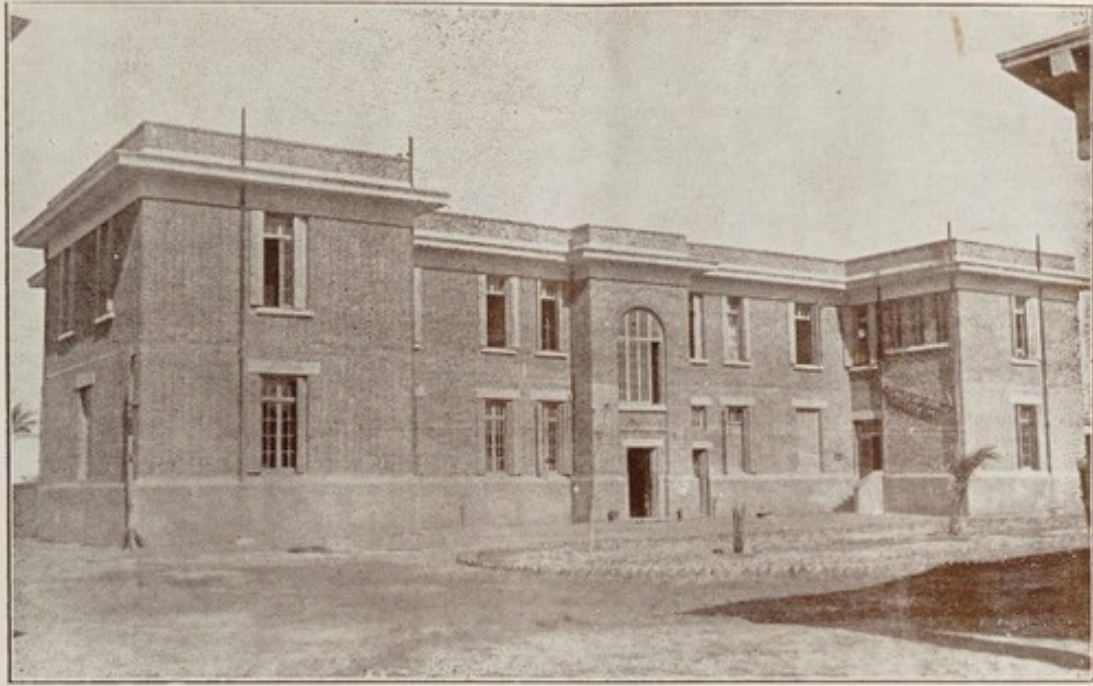
MATARIA OPHTHALMIC HOSPITAL
(1931)



THE UNIVERSITY OF CHICAGO
1900



THE UNIVERSITY OF CHICAGO
1900



ROSSETTA OPHTHALMIC BRANCH
(1932)



FAKOUS OPHTHALMIC BRANCH
(1932)



THE UNIVERSITY OF CHICAGO



THE UNIVERSITY OF CHICAGO



GERGA OPHTHALMIC BRANCH
(1932)



ГОСУДАРСТВЕННЫЙ УНИВЕРСИТЕТ
(1933)

1933

ГОСУДАРСТВЕННЫЙ УНИВЕРСИТЕТ
(1933)

Index of Ophthalmic Report for the Year 1931

FOREWORD

	PAGE
New Units	1
Ophthalmic Projects decided	1
Clinical Work	1
Blindness	1
Ages of Patients	2
School Clinics	2
Finance	2
Accommodation	2
Post-graduate Course of Ophthalmology	2
Providing the Ophthalmic Hospitals with up-to-date Appliances	2
The Ophthalmological Society of Egypt	3
Interesting Cases in 1931	4

HOSPITAL STATISTICS.

Map showing Ophthalmic Units in Egypt	—
I.—Work done at all Ophthalmic Hospitals... ..	7
II.—List of Diseases	8
III.—Causes of Optic Atrophy	12
IV.—List of Operations	13
V.—Number of New Patients treated and Operations performed at all Ophthalmic Hospitals during 1931	15
VI.—Average Number of Operations per Month at all Ophthalmic Hospitals during 1931	16
VII.—New Patients treated according to the Age at which they sought Treatment ...	17
VIII.—New Patients treated per Month	18
IX.—Temperature and Number of New Patients Treated	Diagram.
X.—Average Temperature	19
XI.—Synopsis of Work of all Ophthalmic Hospitals since 1928... ..	19
XII.—Causes of Blindness	20
XIII.—Total Percentage of Blindness in one or both Eyes	21
XIV.—Blindness among Out-Patients since 1909	23
XV.—Yearly percentage of Blindness among Ophthalmic Hospital Patients since 1909	23
XVI.—Primary Glaucoma	23
XVII.—Pathological Report	24
XVIII.—Wassermann Test	25
XIX.—Result of Examination for Diphtheria Specimens	25
XX.—Number of Beds at all Ophthalmic Hospitals	26
XXI.—Cost of Uniform Diets for the In-Patients of the Ophthalmic Hospitals during 1931, excluding Cost of Rations for Employés	27
XXII.—Sources of Provision of Ophthalmic Hospitals	28
XXIII.—Actual Expenditure 1931, A.—Central Administration	29
XXIV.—Actual Expenditure 1931, B.—Government Ophthalmic Hospitals	29
XXV.—Actual Expenditure 1931, Government Ophthalmic Hospitals (per Unit)	30
XXVI.—Actual Expenditure 1931, Provincial Council Ophthalmic Hospitals (per Unit) ...	30
XXVII.—Comparison of the Cost of Maintenance of a Permanent Ophthalmic Hospital in 1914 and 1931	31

	PAGE.
I.—(a) Condition of Conjunctiva (Beginning of the Year)	34
(b) Condition of Conjunctiva (End of the Year)	35
II.—(a) Effect of Treatment on Serious Stages of Trachoma	36
(b) Stages of Trachoma at Beginning and End of School Year	36
III.—(a) Trachoma and its Relation to School Years (Beginning of the Year)	37
(b) Comparison of Serious Stages of Trachoma I and II (Beginning of the Year)	38
IV.—Vision of All Pupils without Spectacles	38
V.—Spectacles ordered	39
VI.—Number of Pupils ordered Spectacles not greater in Strength than ± 6 Dioptries and by their use got Good or Fair Vision	40
VII.—Condition of Cornea before Treatment	40
VIII.—Comparison of Corneal Opacity among Pupils of Tanta Primary School in the Years 1914-1915 and 1931-1932	40

Report of the Ophthalmic Section, 1931.

Foreword.

NEW UNITS.

During this year an Ophthalmic Hospital at Matariya (Daqahliya) and two Ophthalmic Branches one at Demerdash General Hospital (Abbasiya, Cairo) and the other at Luxor General Hospital were opened; thereby the number of Ophthalmic Units reached 49 (of which 35 are permanent and 14 travelling). This number shows an increase of 3 Ophthalmic Units over that of 1930. They are shown in detail in Table XXII, page 28.

OPHTHALMIC PROJECTS DECIDED.

1.—*An Ophthalmic Hospital at Samalout at the expense of Minya Provincial Council.*

The Provincial Council has handed over the required site of this proposed hospital, one feddan in area, to the Public Health Department and the latter will hand it over to the State Buildings Department to start building. The Provincial Council as well has paid the sum of L.E. 5,447 to the Public Health Department, being the cost of building and equipping this hospital, which will be of the same type as that of Maghagha Ophthalmic Hospital containing an accommodation for ten in-patients. It is expected that this scheme will be put into force shortly.

2.—*Enlarging the in-patients section at Bani Suef Ophthalmic Hospital.*

This has actually been commenced and is expected to be completed about the end of this year.

3.—*Three Ophthalmic Branches at General Hospitals.*

The Government has granted the required credits for three new branches at General Hospitals in the Budget of 1932-1933.

CLINICAL WORK.

The following table shows the clinical work done in 1931 as compared with that of 1930:—

	1930	1931	Increase in 1931 Per cent.
New Patients	526,406	634,088	20
In-patients	20,136	22,188	10
Operations	209,662	220,823	5
Out-patients attendances	4,350,062	5,023,175	15

BLINDNESS.

The number of patients who were found blind in one or both eyes, excluding cataract cases causing blindness, was 44,851 or 6.9 per cent of all patients examined at the Ophthalmic Hospitals. By adding the cataract cases causing blindness, the percentage becomes 7.3 per cent.

The pathological causes of blindness are detailed in Table XII where it is shown that acute ophthalmias form 80 per cent of all causes. The gonococcus is still the predominant factor of infection with acute ophthalmias—its percentage to total of microbes being 45 per cent.

AGES OF PATIENTS.

Out of 634,088 new patients treated, 39,600 or 6.24 per cent were under the age of one year, 208,941 or 32.95 per cent from one to fifteen years of age and 371,177 or 58.54 per cent from one to thirty years of age. This fact shows that the mass of people recognise the importance of seeking ophthalmic treatment for infants, children and youths.

SCHOOL CLINICS.

Ophthalmic examination, inspection and treatment are, at present, carried out at 32 primary Government schools. Details of ophthalmic work in schools are given in a special section at the end of this report.

11,178 pupils were examined, of whom 96 per cent were found to be suffering from trachoma in its various stages. About 43 per cent of these were in the serious stages of the disease (trachoma I and II). As a result of ophthalmic treatment, the latter percentage fell to 16 per cent.

The higher percentage of this year compared to that of previous years is due to examining the conjunctiva of pupils by the magnifier (Zeiss Type). By this means the examining surgeon could see very fine trachoma follicles which could not easily be seen by the naked eye.

In this connection, it may be noticed that through the Government schools, an accurate percentage, showing to what extent trachoma is prevalent among school pupils, can be obtained. This is due to the fact that the examination and treatment are carried out in a special regular and permanent way on pupils who are always under observation of treating doctors.

Pupils of other 30 primary schools and Kuttabs belonging to the Provincial Councils in Markazes (Districts), where permanent or travelling ophthalmic hospitals exist, received ophthalmic treatment at hospitals.

FINANCE.

The annual cost of maintenance during the year 1931 including the cost of administration and expense of ophthalmic clinics in primary schools, amounted to L.E. 88,200 as shown in the detailed tables appended to this report which are significant of proper economical management. The expense per day for the out-patient was 13.43 mills. The in-patient costs in addition about 28 mills daily for food. The sources of provision of all Ophthalmic Units are shown in Table XXII.

ACCOMMODATION.

The number of beds reached 1,162, *i.e.* there is an increase of 64 beds than last year; they are all in the new units. See Table XX.

POST-GRADUATE COURSE OF OPHTHALMOLOGY.

During April 1931 the number of Medical Officers who underwent post-graduate teaching in Ophthalmology was 21, of these 13 were inspected in the preliminary clinical course and 8 of them passed; 5 were inspected in the final clinical and 3 of them passed

During October their number was 19 of whom 5 were inspected in the preliminary clinical course and 4 of them passed; 10 were inspected in the final clinical and 4 of them passed. Those who failed for the first time were given another chance but those who failed for the second time were transferred to other branches of the Department.

PROVIDING THE OPHTHALMIC HOSPITALS WITH UP-TO-DATE APPLIANCES.

A gas heating sterilization plant has been provided at the Ophthalmic Hospitals of Giza and Rod el Farag, Cairo. An X-ray apparatus has also been established at Giza Ophthalmic Hospital.

A slit lamp and corneal microscope has also been supplied to the Ophthalmic Units at Minya, Mit Ghamr, Giza, Citadel (Cairo), Rod el Farag (Cairo), Port Said, Asyût and Alexandria.

THE OPHTHALMOLOGICAL SOCIETY OF EGYPT.

The annual meeting of this Society was held on Friday, March 25, 1932 at Giza Memorial Ophthalmic Laboratory. 110 members attended and most of these were of the Medical Officers of the Ophthalmic Hospitals. The following are the titles of the important communications delivered in the meeting:—

1. Some practical reflexions upon tattooing of the cornea with platinum chloride.
2. Treatment of corneal staphylomas by galvanociliarotomy.
3. "Quelques mots sur le traitement chirurgical du décollement de la rétine par la méthode de Gonin et la méthode de Sourdille."
4. The true nature of post-trachomatous degeneration with microscopical preparations.
5. Spring catarrh.
6. Spring catarrh in Egypt.
7. Trachoma clinical observations.
8. A short slit lamp study on the corneal vessels in trachoma with discussion on their diagnostic value in doubtful cases.
9. Spring catarrh of the cornea. A case of double spring catarrh of the cornea with histological preparations.
10. A case of mild type of epithelial dystrophy of the cornea.
11. Atrophy of the iris in an early stage of chronic glaucoma.
12. A case of detachment of retina with tubular cysts resembling parasites.
13. A case of thrombosis of the central vein, followed by glaucoma, in a girl of 22 years.
14. An analysis of a few cases of pituitary tumours and others in relation to the Sella Turcica.
15. About a case of homonymous hemianopsia.
16. Poliosis of the cilia with query parasitic origin.
17. Poliosis, vitiligo and alopecia.
18. Contribution to knowledge of acute dacryoadenitis.
19. A case of exophthalmos due to mixed sarcoma.
20. A report of two interesting cases:
Case A.—A pulsating exophthalmos getting bilateral.
Case B.—Paralysis of 6th, 7th and 8th nerves following a car accident 9 years ago. The patient is still having diplopia but without giddiness.
21. Preservation of an eye with retention of sight, after a severe injury causing grave penetrating wound of cornea, sclera, loss of vitreous and collapse of the eye.
22. Two cases of trauma of the vitreous.
23. A comment on the treatment of trachoma by daily intramuscular injections of an oily solution of ether-benzyl cinnamique.
24. Intravenous injections of copper salts with a discussion of their value in the treatment of trachoma.
25. Microscopical specimens.
26. Apparent anophthalmus, lower lids blown with contents of rudimentary globes.
27. A short note on the good effect of radium on vascular naevus with demonstration of the case.

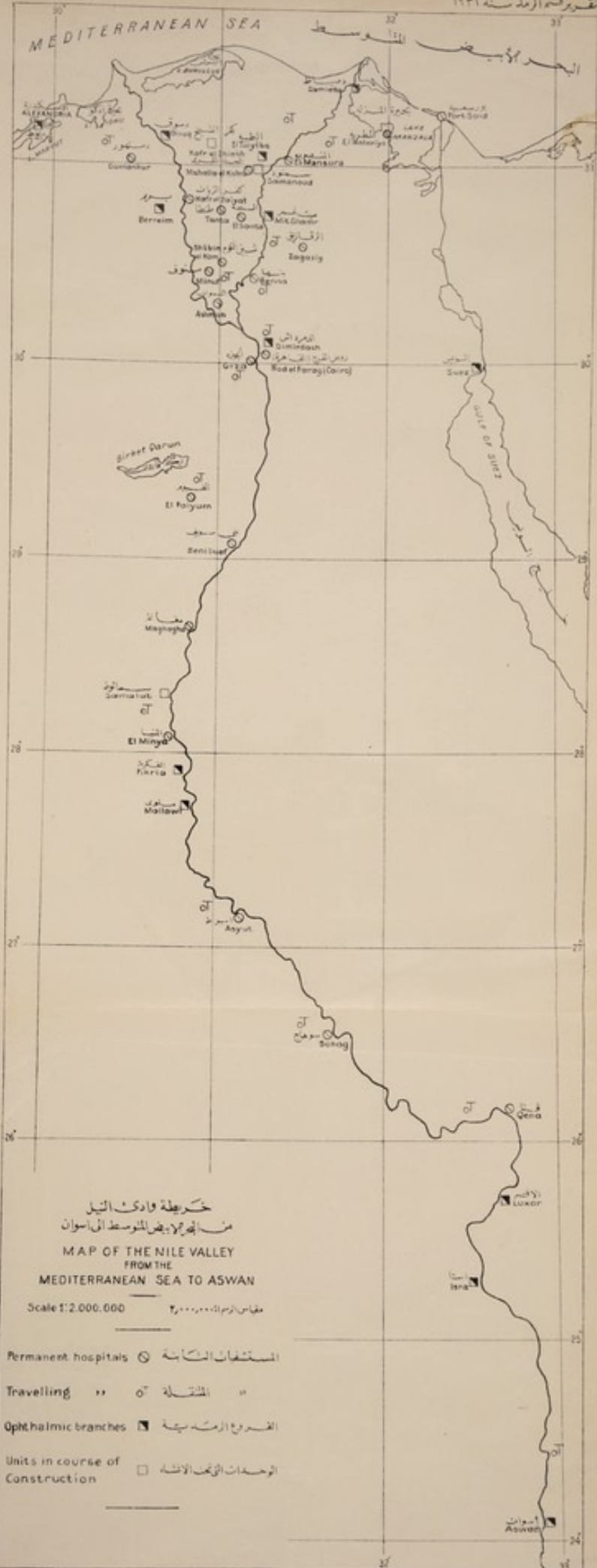
INTERESTING CASES IN 1931

A monthly list of interesting cases seen at the various units of the Section is drawn up. About 665 cases have been recorded as interesting during 1931. The following list shows some such cases that are not frequently seen in every day's work in Egypt:—

1. Herpes fibrilis.
2. Albinism.
3. Dermoid cyst of limbus.
4. Anthrax pustule in upper lid.
5. Bilateral micro-cornea, coloboma of iris, persistent pupillary membrane, blue sclerotic (congenital).
6. Hydrocephalus with choked discs.
7. Tuberculosis of the conjunctiva.
8. Glaucoma capsularis.
9. Traumatic paresis of ext. rectus.
10. Coloboma of optic discs, bilateral.
11. Snake bite ulceration of lid.
12. Primary optic atrophy due to encephalitis after influenza one year previously.
13. Heterochromia iridis (congenital).
14. Orbital periostitis.
15. Ophthalmia neonatorum.
16. Paresis of both external recti (syphilitic).
17. Fuchs' epithelial dystrophy.
18. Intrauterine iritis with juvenile glaucoma.
19. Chancre of R. lower lid.
20. Proptosis through ethmoidal mucocele.
21. Albuminuric retinitis.
22. Chronic cyclitis (cause pyelitis).
23. Heterochromic cyclitis (has opaque antrum and frontal sinuses).
24. Thrombosis of central vein of the retina.
25. Acute dacryocystitis.
26. Congenital dislocation of lens up & coloboma of lenses down.
27. Lymphoma of lacrimal gland.
28. Sympathetic ophthalmia.
29. Episcleritis.
30. Monocular myopia.
31. Tabetic optic atrophy.
32. Congenital coloboma of iris and choroid.
33. Congenital ptosis with blepharophimosis.
34. Ophthalmoplegia totalis with crossed hemiplegia.
35. Retinal arteriosclerosis.
36. Papilloedema, due to cerebello pontine angle tumour.
37. Traumatic cataract (cause, intralental F. B.)
38. Xanthelasma of lid.
39. Embolism of central artery.
40. Total alopecia areata of hair and eye-lashes.
41. Post-neuritic optic atrophy after cerebrospinal fever.
42. Symmetrical congenital pyramidal cataract.
43. Right third and fourth cranial nerve paralysis and left retinitis diabetic.

44. Fibrous tissue on disc and semiopaque nerve fibres.
45. Inflammatory total ankyloblepharon.
46. Interstitial keratitis.
47. Stationary concussion cataract in a boy of 11 years.
48. Temporary blindness after ophthalmia in an infant of one year.
49. Erysipelas of face.
50. Thrombosis of the central retinal artery with consecutive optic atrophy.
51. Traumatic mydriasis with hole at macula.
52. Melanoma of limbus.
53. Fibroma of conjunctiva.
54. Lymphoma of lachrymal gland.
55. Primary optic atrophy (cause diss. sclerosis).
56. Spontaneous luxation of lens in A. C.
57. Paralysis of levator palpebrae, traumatic.
58. Membranous conjunctivitis positive for D. B. from nose.
59. Gummatous periostitis of orbital walls è fistula.
60. Pseudoglioma in a child (after fever).
61. Unilateral acute retrobulbar neuritis (maxillary sinus opaque).
62. Toxic amblyopia (alcohol and nicotine).
63. Central senile choroiditis.
64. Central choroidal atrophy (syphilitic).
65. L. iridocyclitis R. papilloedema (after an attack of cerebrospinal meningitis).
66. Atrophy of the inner layers of choroid (arterio-sclerosis).
67. Post-neuritic optic atrophy (after meningitis).
68. Lamellar cataract with persistent pupillary membrane.
69. Paralysis of 2nd, 3rd, 4th, and 6th cranial nerves (cause basal meningitis, syphilitic).
70. Persistent hyaloid artery.
71. Opaque nerve fibres è heterochromia irides.
72. Epithelial cyst in A. C. after extraction.
73. Ext. rectus paralysis (specific).
74. Ext. paralysis of 3rd and 6th (traumatic).
75. Arterio-sclerotic fundus and haemorrhage in macula.
76. Paralysis of both external recti; no other muscles affected (specific).
77. Papilloma of limbus è central ulcers.
78. Spring catarrh (bulbar and palpebral).
79. Large coal black spot at macula in a high myope.
80. Corectopia pupillae congenital.
81. Sclerosing keratitis.
82. Episcleritis (syphilitic).
83. Albuminuric neuro-retinitis.
84. Congenital ptosis.
85. Rodent ulcer of canthal region.
86. Central senile choroidal atrophy.
87. Buphthalmos with soft tension in a syphilitic patient.
88. Gumma of orbit.
89. Primary optic atrophy, due to fracture.
90. Plexiform angioma of R. eyelid.
91. Successful couching operation by a quack.

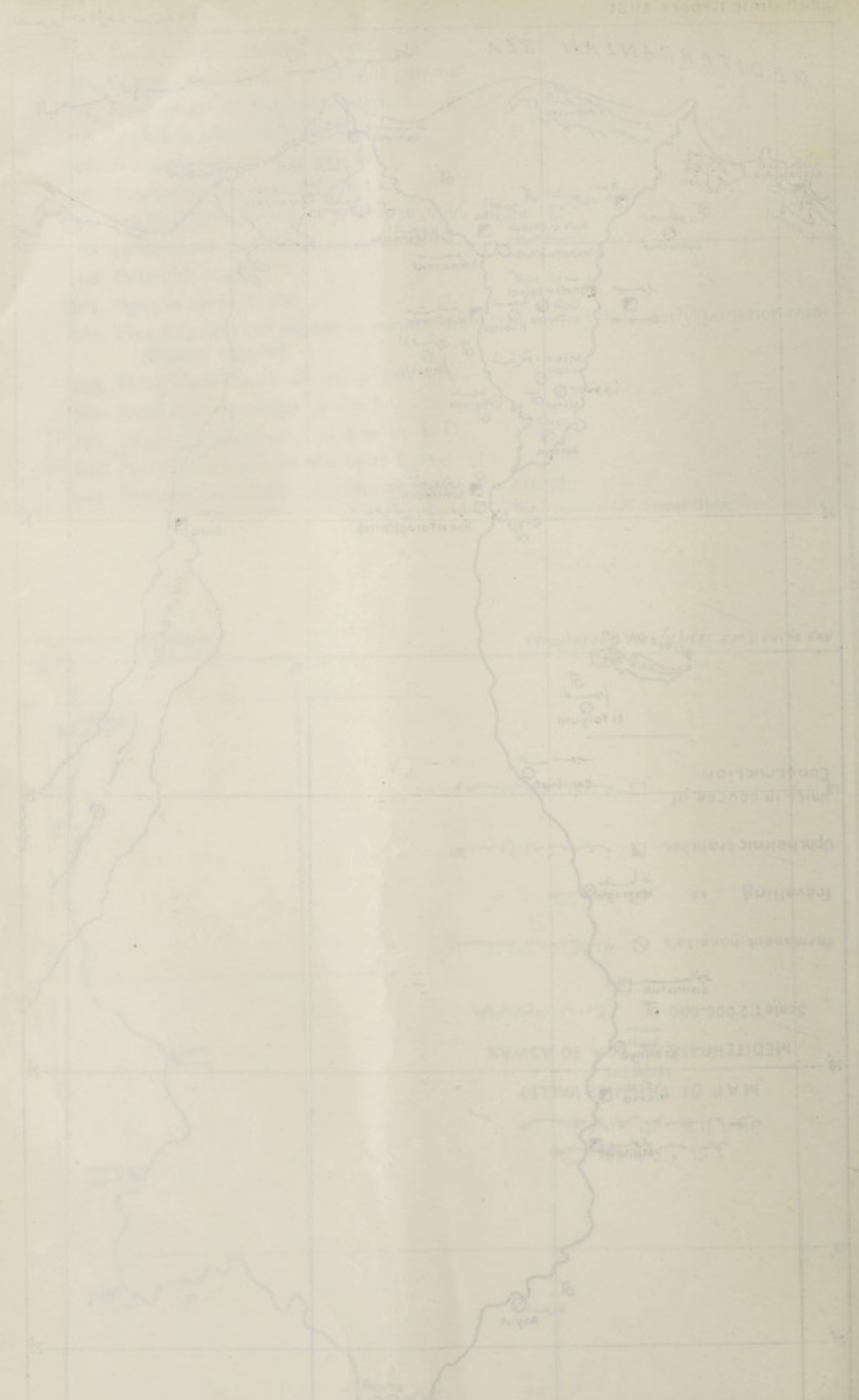
92. Macular degeneration, myopic.
93. Severe exophth. due to orbital gumma
94. Streptothrix of the conjunctiva.
95. Syphilitic ulcer of lower lid.
96. Sclerosing keratitis (syphilitic).
97. Tenonitis after frontal sinusitis.
98. Bilateral detachment of retina, myopic.
99. Detachment of retina, traumatic.
100. Dendritic ulcer.
101. Opaque nerve fibres.
102. Five fragments of copper in cornea, traumatic iridocyclitis, early posterior complicated cataract.
103. Total detachment of retina (myopic).
104. Papilloma of margin of the lid.
105. Traumatic dislocation of lens in A. C.
106. Partial coloboma of the optic nerve.
107. Retinitis pigmentosa with consecutive optic atrophy.
108. Calcareous degeneration of the conjunctiva in upper and lower lids.
109. Epithelioma of lid.
110. Ophthalmoplegia totalis with optic neuritis (after basal meningitis).
111. Rodent ulcer.
112. Spindle cell sarcoma of lid in an infant of one year.
113. Choroido-retinitis, specific.
114. Coloboma of iris disc and choroid.
115. Dermoid tumour of limbus (diagnosed clinically).
116. Neuro-retinitis, syphilitic.
117. Interstitial keratitis.
118. Myopic choroidal atrophy.
119. Membranous conjunctivitis (positive for D. B. from nose).
120. Spontaneous poliosis, viteligo, alopecia.
121. Pigmented naevus of the conjunctiva.
122. Cystic pigmented naevus of limbus.
123. Double microphthalmos, with coloboma of iris and choroid.
124. Large central coloboma of O. D.
125. Fly-blown orbit.



خريطة وادي النيل
من البحر المتوسط إلى أسوان
MAP OF THE NILE VALLEY
FROM THE
MEDITERRANEAN SEA TO ASWAN

Scale 1:2,000,000 مقياس الرسم 1:2,000,000

- المستشفيات الدائمة (O) Permanent hospitals
- المستشفيات المتنقلة (O with dot) Travelling
- الفرع العيادية (■) Ophthalmic branches
- الوحدات التي تحت الإنشاء (□) Units in course of Construction



MEDITERRANEAN SEA

MAP OF THE MEDITERRANEAN SEA

Scale 1:250,000

Legend

Permanent harbors

Travelling ports

Open-air harbors

Construction

Islands

Coastal fortifications

TABLE I.—WORK DONE AT ALL OPHTHALMIC HOSPITALS DURING 1931.

1.—IN-PATIENTS : TOTAL NUMBER	22,188
(Number of available beds 1,162)	
Number of diets issued	371,860
2.— OPERATIONS :—	
I. Major :—	
(a) Senile cataract	1,616
(b) Soft cataract	349
(c) Trichiasis or entropion	73,285
(d) Other operations	17,625
TOTAL	92,875
II. Minor (including mechanical treatment of trachoma)... ..	127,948
GRAND TOTAL, major and minor operations	220,823
3.—OUT-PATIENTS :—	
I.—Incurable	3,734
II.—Postponed	14,516
III.—Tickets issued, <i>i.e.</i> new cases	634,088
IV.—Old cases	4,370,837
V.—Visits made by patients to hospital for treatment (equal I+II+III+IV)	5,023,175
VI.—Average number of visits made to hospital by each patient under regular treatment (old cases + tickets issued) ÷ tickets issued. The factor of incurable cases is neglected	7.89
VII.—Discharges :—	
(a) Cured	181,578
(b) Relieved	54,428
(c) Incurable	1,606
(d) Spontaneously ceased to attend after having attended only once	94,083
(e) " " " " " more than once	169,574
VIII.—Trichiasis cases seen among new out-patients :—	
(a) No previous operation having been performed	62,662
(b) Previous operation performed unsuccessfully (not at an Ophthalmic Hospital, but probably by some charlatan)	6,274
IX.—Spectacles ordered	2,072
X.—Constant wash cases (number of days' treatment)	949,537
XI.—Ages of patients examined :—	
Under one year	39,600
From 1 to 5 years	82,433
" 6 " 10 "	68,554
" 11 " 15 "	57,954
" 16 " 20 "	56,355
" 21 " 25 "	50,600
" 26 " 30 "	55,281
" 31 " 35 "	49,508
" 36 " 40 "	39,057
" 41 " 45 "	39,676
" 46 " 50 "	29,938
" 51 " 55 "	21,135
" 56 " 60 "	17,670
" 61 " 65 "	12,404
" 66 " 70 "	7,810
Over 70 years	6,113
TOTAL	634,088

N.B. -3. I. Incurable cases do not receive tickets, but are recognized as soon as seen by the surgeon as both incurable and devoid of surgical interest.

VII. (e) Incurable cases include those which are recognized as soon as seen by the surgeon as incurable but are given tickets for statistical or other purposes.

TABLE I.—WORK DONE AT ALL OPHTHALMIC HOSPITALS DURING 1931 (*continued*).

3.—OUT-PATIENTS (<i>contd.</i>):—		
XII.—Origin of patients:—		
Patients from:—		
(a) Town in which hospital is situated	270,037	
(b) Markaz in which hospital is situated	218,422	
(c) Other Markazes of same Mudiriya	91,610	
(d) Other Mudiriyas or Governorates	54,019	
TOTAL		634,088

TABLE II.—LIST OF DISEASES.

<i>Ametropia</i> :—		
Hypermetropia	918	
Myopia	1,807	
Astigmatism	1,285	
Presbyopia	260	
Anisometropia	1	
<i>Conjunctiva</i> :—		
Conjunctivitis, gonococcal	25,880	
" Morax-Axenfeld	2,913	
" Koch-Weeks	11,831	
" pneumococcal	1,590	
" diphtheritic	5	
" membranous	79	
Other organisms or negative and unclassified	15,115	
Trachoma I	52,901	
" IIa	84,580	
" IIb'	7,877	
" IIb''	214	
" IIc	1,373	
" III including post-trachomatous degeneration	400,673	
" IV	33,759	
Phlyctenule	22,387	
Pterygium	6,647	
Pinguecula	1,277	
Xerosis	1,525	
Symblepharon	369	
Dermoid	53	
Tuberculosis of conjunctiva	1	
Other conditions :—		
Argyrosis	887	
Colloid and hyaline degeneration	134	
Hypertrophied caruncle	299	
Injuries (foreign bodies, burn, etc.)	353	
Cyst	152	
Fibroma	1	
Other tumours	6	
<i>Eyelids</i> :—		
Pediculus ciliaris	1,600	
Trichiasis and entropion	73,401	
Distichiasis	159	

TABLE II.—LIST OF DISEASES (*continued*).

<i>Eyelids (contd.) :—</i>	
Ectropion	1,191
Lagophthalmos	1,427
Blepharitis	41,168
Hordeolum	2,111
Wart	455
Chalazion	2,655
Eczema	691
Rodent ulcer	49
Dermoid	85
Ptosis	442
Erysipelas	6
Herpes	98
Chancre	34
Epithelioma	14
Other tumours	34
Leucoderma	89
Injuries and abscesses	243
 <i>Lacrimal Apparatus :—</i>	
Lacrimal fistula	294
Stenosis of the duct	453
Dacryocystitis, acute	189
" chronic	4,425
Cyst of lacrimal gland	14
 <i>Cornea :—</i>	
Ulceration, simple	29,614
" hypopyon	1,462
" perforation	7,257
" special forms	435
Paunus	71,349
Keratitis, interstitial	15
" trachomatous	3,246
Nebula or leucoma	191,963
Adherent leucoma	27,826
Totally opaque cornea	14,653
Staphyloma	5,840
Xerosis of cornea	1,073
Abscess of cornea	59
Conical cornea (congenital)	13
Keratictasia	965
Injuries (burn, foreign bodies, etc.)	1,924
 <i>Limbus :—</i>	
Tumours	25
Dermoid	5
Epithelioma	5
 <i>Iris :—</i>	
Anterior synechia	4,042
Posterior "	2,373
Inflammation	988
Iris bombé	50
Irido-dialysis	130
Congenital coloboma	48
Aniridia	6
Persistent pupillary membrane	35
Iridodonesis	496
Various	75

TABLE II.—LIST OF DISEASES (*continued*).

<i>Sclerotic :—</i>	
Ciliary staphyloma	2,140
Episcleritis	46
Injuries	77
<i>Choroid :—</i>	
Coloboma	12
Rupture	10
Disseminated choroiditis	10
Choroido-retinitis	22
Atrophy of choroid	101
Tumours	1
Albinismus	14
<i>Retina :—</i>	
Retinitis, albuminuric and diabetic	18
" syphilitic	15
" pigmentosa	32
Detachment of retina	109
Embolism and thrombosis of retinal vessels	7
Glioma	12
Other conditions	10
Night blindness (in which retinitis pigmentosa is absent)	83
<i>Optic Nerve :—</i>	
Neuritis	33
Atrophy (<i>See Table III</i>)	166
Opaque nerve fibres	13
Other conditions	4
<i>Lens :—</i>	
Cataract, senile	4,635
" soft	410
" traumatic	100
" lamellar	16
" anterior polar	2,159
" posterior "	74
" dislocated, traumatic	207
" " operative	47
" " congenital	6
Aphakia	1,600
Secondary cataract	468
Ectopia lentis	20
<i>Vitreous :—</i>	
Opacities	325
Foreign bodies	11
Persistent hyaloid artery	1
<i>Muscles :—</i>	
Strabismus, alternating	1,340
" convergent	10,911
" divergent	11,823
Heterophoria	37
Nystagmus	1,689
Paralysis	35

TABLE II.—LIST OF DISEASES (*continued*).

<i>Glaucoma</i> :—		
Primary, acute	} Including absolute glaucoma caused by acute, sub-acute or chronic glaucoma.	82
" sub-acute		183
" chronic		5,552
Secondary		8,118
<i>Globe</i> :—		
Shrunken globe		16,476
Buphthalmos		39
Exophthalmic goitre		3
Panophthalmitis		361
Microphthalmos... ..		28
Anophthalmos		1
Injury		121
Cryptophthalmos		1
<i>Orbit</i> :—		
Tumours		21
Cellulitis		26
Tenonitis		2
Periostitis		11
Injuries		11
Cyst, frontal		2
" ethmoidal		5
Contracted socket		92
Fly-blown		12
<i>Blind</i> :—		
In one eye... ..		38,433
In both eyes*		9,489

* Patients are accounted blind who cannot count fingers at one metre.

TABLE III.—CAUSES OF OPTIC ATROPHY.

<i>Optic Atrophy</i> :—	
A. (1) Primary :—	
The spinal diseases causing the condition are :—	
G.P.I.	2
Tabes	8
Disseminated sclerosis	2
Lateral sclerosis	—
Spastic paraplegia	—
Lebers hereditary optic atrophy	—
Congenital optic atrophy	—
Unknown	3
It may also be caused by :—	
Arterio-sclerosis	1
Embolism of central artery	1
(2) Compression of the optic chiasma or of the optic nerve by a tumour or injury by a projectile or bony fracture may produce optic atrophy of a primary type	1
(3) Retro-bulbar neuritis :—	
The acute form causes atrophy of the optic nerve, primary in type, not infrequently.	
The chronic form more rarely.	
Acute retro-bulbar neuritis. The causes are :—	
(a) Sepsis (dental, periostitis, middle ear, accessory sinuses)	5
(b) Acute fevers (including syphilis and rheumatism)	20
(c) Intoxications (alcohol, lead)	1
(d) Nervous diseases (disseminated sclerosis, acute myelitis)	—
Chronic retro-bulbar neuritis may be caused by tobacco, alcohol, diabetes, iodoform, opium, etc.	1
B. Post-neuritic :—	
The causes of optic neuritis, all of which may be followed by post-neuritic atrophy, are as follows :—	
(a) Sepsis (dental, periostitis, middle ear, accessory sinuses)	13
(b) Acute fevers (including syphilis and rheumatism)	95
(c) Intoxications (kidney disease and diabetes, alcohol, felixmas)	2
(d) Nervous diseases : Diss. sclerosis, G.P.I., epilepsy	2
(e) Anæmia	3
(f) Unknown	6
TOTAL (equal Optic Atrophy, Table II) ...	166

TABLE IV.—LIST OF OPERATIONS.

<i>Eyelids :—</i>		
For trichiasis and entropion :—		
Snellen's		62,258
Anagnostakis		64
Snellen-Anagnostakis		214
Canthoplasty		2,747
Grafting mucous membrane		7,516
Electrolysis (minor)		4,466
Excision of lash (minor)		1,066
Other operations		486
For ectropion :—		
Plastic		40
MacCallan's		4
Kenneth Scott's		—
Kuhnt's		10
Other operations		94
For ptosis		25
For symblepharon		107
For hordeolum and chalazion (minor)		3,769
Cyst removed		123
Wart excised (minor)		240
Restitching wounds (minor)		66
Opening abscesses (minor)		997
Various		49
<i>Conjunctiva :—</i>		
For trachoma :—		
Expression or mechanical treatment (minor)		65,718
Combined excision of Heisrath		420
Post-trachomatous degeneration (minor)		48,308
Other operations } (minor)		403
Other operations } (major)		430
Pterygium		3,500
<i>Cornea :—</i>		
Foreign body removed (minor)		1,480
Sæmisch's section		146
Cautery		172
Various		63
<i>Iris :—</i>		
Iridectomy for adherent leucoma		4,807
„ visual		553
„ for glaucoma		1,030
„ preliminary for cataract		136
Cystoid cicatrix		15
Division of anterior synechia		21
Various		197
<i>Lacrimal Sac :—</i>		
Excision		2,601
Various (minor)		1,435
TOTAL, carried forward		215,776

TABLE IV.—LIST OF OPERATIONS (*continued*).

		TOTAL, brought forward	215,776
<i>Lens</i> :—			
For senile cataract :—			
Extraction with iridectomy			1,458
" after previous iridectomy... ..			158
For membrane after extraction: Discission			706
For soft cataract :—			
Extraction			8
Discission			48
Curette evacuation			288
Paracentesis			5
For membrane after evacuation :—			
Discission			66
Capsulotomy			6
<i>Globe</i> :—			
Trephining of cornea-sclera with iridectomy			1,093
Trephining			26
Excision			448
Evisceration			321
Paracentesis			159
<i>Orbit</i> :—			
Exenteration			2
For tumour			17
" dermoid			18
" cellulitis			14
" cyst, frontal			—
" " ethmoidal... ..			1
Tenotomy and advancement			17
Other major operations			179
Trial with magnet :—			
Positive			1
Negative			8
		TOTAL	220,823

TABLE V.—NUMBER OF NEW PATIENTS TREATED AND OPERATIONS PERFORMED AT ALL OPHTHALMIC HOSPITALS DURING 1931.

HOSPITALS.	NUMBER OF PATIENTS.	HOSPITALS.	NUMBER OF OPERATIONS.
Rod el Farag	51,083	Rod el Farag	16,676
No. 1, T.O.H.	43,575	Giza	11,417
Giza	41,909	Tanta	10,139
Tanta	23,705	No. 5, T.O.H.	7,861
Asyût	20,388	Banha	7,836
Demerdash	20,147	Asyût	7,612
Bani Suef	18,350	No. 1, T.O.H.	7,410
Faiyûm	17,917	Demerdash	7,314
Alexandria	17,139	Bani Suef	6,480
Port Said	17,027	Shibin el Kôm	5,998
Banha	15,638	Sohâg	5,867
Shibin el Kôm	15,043	Alexandria	5,237
No. 5, T.O.H.	14,768	Maghagha	5,199
Zagazig	14,424	Faiyûm	4,985
Sohâg	14,333	No. 8, T.O.H.	4,932
Minya	14,263	Ashmûn	4,816
Fikriya	14,087	Zagazig	4,788
No. 11, T.O.H.	14,043	No. 6, T.O.H.	4,760
Damanhûr	12,028	No. 4, T.O.H.	4,580
Mallawi	12,014	Mansûra	4,383
Maghagha	11,597	No. 7, T.O.H.	4,335
No. 8, T.O.H.	11,254	Port Said	4,096
Mansûra	10,418	Minya	3,941
Ashmûn	9,647	No. 10, T.O.H.	3,805
No. 9, T.O.H.	9,307	No. 11, T.O.H.	3,771
No. 10, T.O.H.	9,181	El Fikriya	3,669
No. 4, T.O.H.	9,135	No. 9, T.O.H.	3,610
Mahalla el Kubra	9,103	No. 2, T.O.H.	3,477
No. 6, T.O.H.	9,077	Mallawi	3,399
Qena	8,659	Qena	3,352
Santa	8,444	Asyût, P.C., T.O.H.	3,231
Suez	8,192	Kafr el Zaiyât	3,128
Disûk	8,058	Mahalla el Kubra	3,100
Damietta	7,966	Damanhûr	3,095
Mit Ghamr	7,792	No. 3, T.O.H.	3,015
Gharbiya, P.C., T.O.H.	7,491	Gharbiya P.C., T.O.H.	2,925
No. 7, T.O.H.	7,462	Mit Ghamr	2,636
Asyût, P.C., T.O.H.	7,273	Daqahliya, P.C., T.O.H.	2,429
Asswân	6,860	Minûf	2,423
Minûf	6,845	Matariya	2,369
Kafr el Zaiyât	6,733	Esna	2,285
Taieba	6,679	Santa	2,242
Daqahliya, P.C., T.O.H.	6,151	Suez	2,145
No. 3, T.O.H.	5,951	Disûk	2,127
Esna	5,797	Damietta	2,016
Matariya	5,694	Barrim	1,953
No. 2, T.O.H.	5,110	Asswân	1,866
Barrim	4,832	Taieba	1,480
Luxor	1,499	Luxor	593

Number of working months :—

	Months.	Days
Luxor (opened on November 7, 1931)	1	24
Matariya (opened on August 4, 1931)... ..	4	18
Demerdash (opened on May 5, 1931)... ..	7	27
Asyût P.C., T.O.H.	10	29
No. 3, T.O.H.	11	5
„ 2, T.O.H.	11	10
Daqahliya P.C., T.O.H.	11	12
No. 4, T.O.H.	11	13
„ 9, T.O.H.	11	14
„ 7, T.O.H.	11	15
„ 11, T.O.H.	11	15
„ 8, T.O.H.	11	17
„ 10, T.O.H.	11	17
„ 6, T.O.H.	11	18
„ 5, T.O.H.	11	19
Gharbiya P.C., T.O.H.	11	22
Other Ophthalmic Hospitals... ..	12	—

TABLE VI.—AVERAGE NUMBER OF OPERATIONS PER MONTH AT ALL
OPHTHALMIC HOSPITALS DURING 1931.

MAJOR OPERATIONS.		MINOR OPERATIONS.	
HOSPITALS.	No.	HOSPITALS.	No.
Rod el Farag	612	Rod el Farag	778
Giza	400	Demerdash	581
Demerdash	345	Giza	551
Tanta	316	Tanta	529
No. 5, T.O.H.	310	Banba	417
Asyût	309	No. 1, T.O.H.	365
Sohâg	278	No. 5, T.O.H.	363
No. 1, T.O.H.	252	Matariya	356
Banba	236	Bani Suef	348
No. 11, T.O.H.	209	Asyût	325
Faiyûm	208	Shibin el Kôm	303
Zagazig	202	Maghagha	303
Shibin el Kôm	197	Ashmûn	285
Mansûra	193	No. 6, T.O.H.	282
Bani Suef	192	Alexandria	281
Fikriya	165	No. 8, T.O.H.	275
No. 4, T.O.H.	161	No. 7, T.O.H.	246
Matariya	159	No. 4, T.O.H.	237
No. 10, T.O.H.	155	Port Said	234
Alexandria	155	Luxor	224
No. 8, T.O.H.	150	Minya	212
Daqahliya, P.C., T.O.H.	141	Sohâg	211
Asyût P.C., T.O.H.	139	Faiyûm	207
Mallawi	138	Zagazig	197
No. 3, T.O.H.	133	No. 9, T.O.H.	189
No. 7, T.O.H.	131	No. 2, T.O.H.	187
Maghagha	131	Daqahliya P.C., T.O.H.	187
No. 6, T.O.H.	129	No. 10, T.O.H.	173
Qena	127	Mansûra	172
No. 9, T.O.H.	125	Asyût P.C., T.O.H.	155
No. 2, T.O.H.	119	Kafr el Zaiyât	154
Ashmûn	117	Qena	152
Minya	116	Damanhûr	150
Mahalla el Kubra	113	Mahalla el Kubra	146
Damanhûr	108	Mallawi	145
Port Said	107	Fikriya	143
Mit Ghamr	107	No. 3, T.O.H.	137
Kafr el Zaiyât	107	Suez	133
Luxor	105	No. 11, T.O.H.	119
Esna	102	Mit Ghamr	112
Minûf	93	Gharbiya P.C., T.O.H.	110
Gharbiya P.C., T.O.H.	86	Minûf	109
Santa	84	Damietta	108
Disûk	76	Santa	103
Barrim	75	Disûk	101
Taieba	70	Asswân	92
Asswân	64	Barrim	88
Damietta	60	Esna	88
Suez	45	Taieba	53

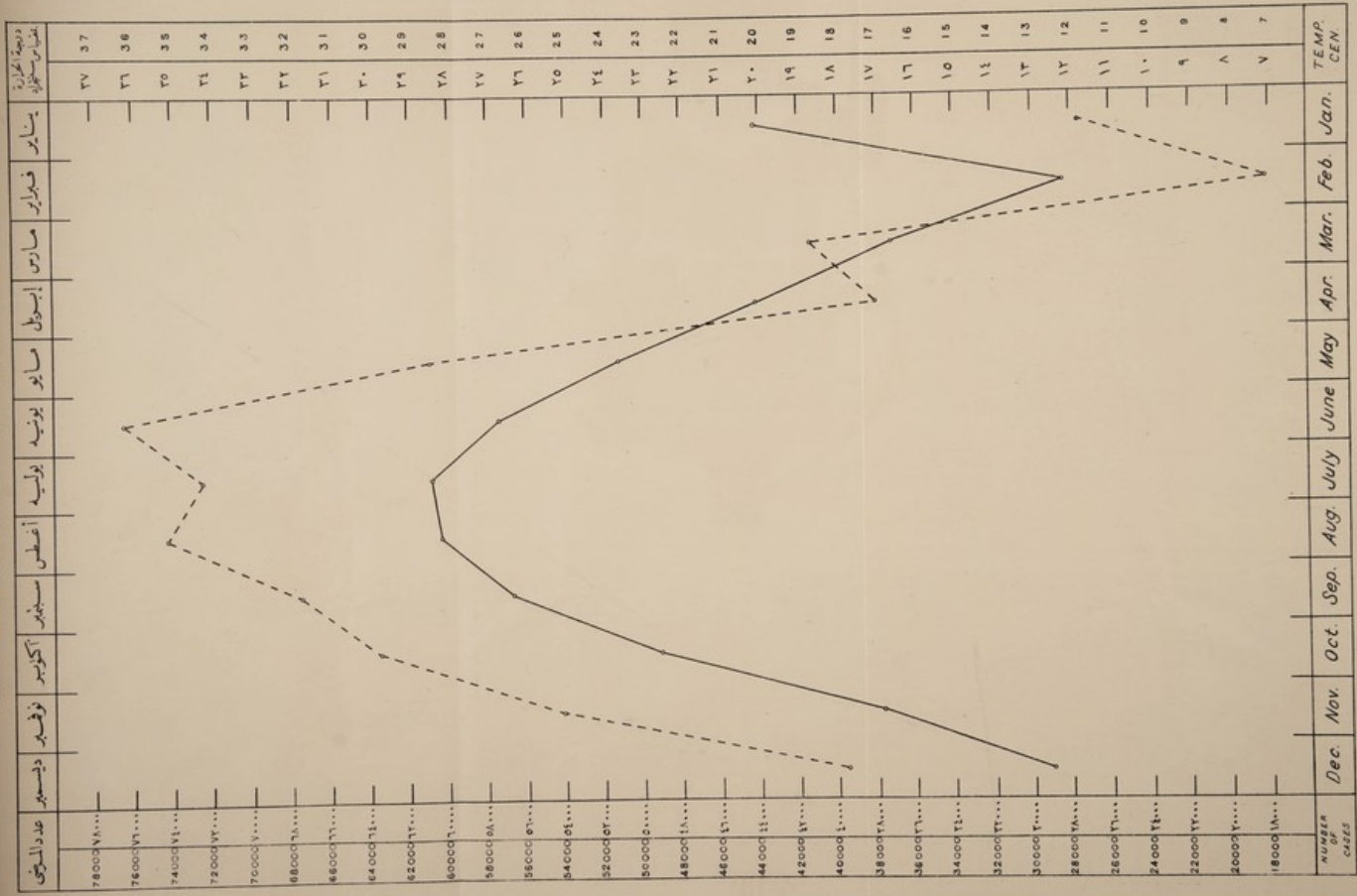
TABLE VII.—NEW PATIENTS TREATED ACCORDING TO THE AGE
AT WHICH THEY SOUGHT TREATMENT.

AGE.	NO. OF PATIENTS.
Under one year	39,600
From 1 to 5 years	82,433
„ 6 to 10 „	68,554
„ 11 to 15 „	57,954
„ 16 to 20 „	56,355
„ 21 to 25 „	50,600
„ 26 to 30 „	55,281
„ 31 to 35 „	49,508
„ 36 to 40 „	39,057
„ 41 to 45 „	39,676
„ 46 to 50 „	29,938
„ 51 to 55 „	21,135
„ 56 to 60 „	17,670
„ 61 to 65 „	12,404
„ 66 to 70 „	7,810
Over 70 years	6,113
TOTAL	634,088

TABLE VIII.—NEW PATIENTS TREATED PER MONTH.

MONTHS.	No. of PATIENTS.
January	27,662
February	18,238
March	41,366
April	37,886
May	60,976
June	76,387
July	72,499
August	74,299
September	67,590
October	63,674
November	54,111
December	39,400
TOTAL	634,088

TEMPERATURE & NUMBER OF NEW PATIENTS TREATED

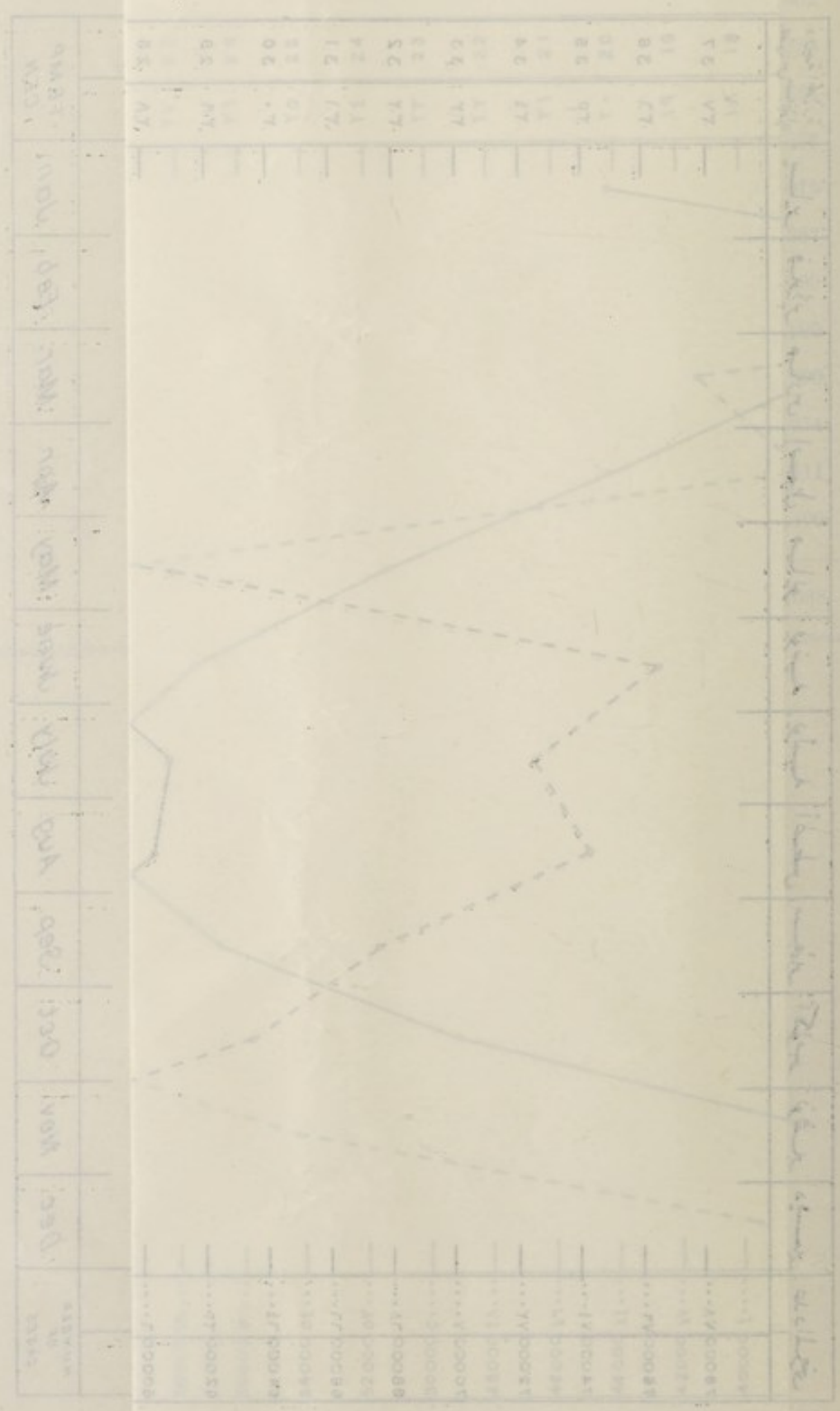


— Average Temperature in Degrees Centigrade
 - - - - New Patients Treated per Month

دوحية الحرارة في درجات مئوية
 المرضى الجدد الذين عولجوا شهرياً

1952 (1951/1952)

— 7 мая 1952 года введена в действие
 — средние температуры в течение года



ТЕМПЕРАТУРА И КОЛИЧЕСТВО ОПАДАЮЩИХ ВОДОСЛОВ

TABLE X.—AVERAGE TEMPERATURE.

The average temperature was arrived at by taking one place in Lower Egypt (Gemeiza), one place in Cairo (Giza), and one place in Upper Egypt (Asyût) and obtaining an average figure from the mean temperature at each place on each month. This is shown in appended table, the reading being in degrees centigrade.

MONTH.	GEMEIZA.	GIZA.	ASYÛT.	AVERAGE.
January	11·8	12·0	12·3	12·0
February	11·6	12·2	12·8	12·2
March	15·3	16·5	17·8	16·5
April... ..	18·0	19·8	22·2	20·0
May	21·6	23·1	26·0	23·6
June	25·4	26·0	28·6	26·7
July	27·2	27·9	30·0	28·4
August	26·8	27·9	30·0	28·2
September	25·5	25·6	27·7	26·3
October	21·5	22·1	23·8	22·5
November	16·1	16·6	17·6	16·8
December... ..	12·0	12·4	13·2	12·5

TABLE XI.—SYNOPSIS OF WORK AT ALL OPHTHALMIC HOSPITALS SINCE 1928.

	1928	1929	1930	1931
<i>Hospitals in existence :—</i>				
Travelling	14	14	14	14
Permanent	27	31	32	35
New patients treated	381,790	461,481	526,406	634,088
Total attendances of out-patients	3,434,425	4,242,241	4,350,062	5,023,175
Operations performed... ..	171,487	195,942	209,662	220,823
In-patients	12,967	16,890	20,136	22,188
<i>Details :—</i>				
Patients examined	401,530	479,932	539,318	652,338
Patients regularly treated	381,790	461,481	526,406	634,088
Incurable cases	5,224	5,715	5,124	5,340
Blind in one eye	28,816	31,893	36,021	38,433
„ both eyes	8,592	8,697	9,513	9,489
Trichiasis cases examined	56,028	65,756	64,534	68,936
„ eyes operated on and cured	62,255	68,105	73,290	73,285

TABLE XII.—CAUSES OF BLINDNESS.

A.—Congenital	5
B.—Acquired :—	
I.—Conjunctivitis resulting in :—	
(a) Total corneal opacity	14,446
(b) Shrunken globe	16,586
(c) Secondary glaucoma	7,456
(d) Other conditions	1,853
II.—Fundus :—	
(a) Optic atrophy	142
(b) Optic neuritis... ..	10
(c) Retinitis pigmentosa	20
(d) Detachment of retina	99
(e) Other diseases of fundus	182
III.—Glaucoma, primary :—	
(a) Monocular (including absolute No. 1907)	2,572
(b) Binocular („ „ „ 1573)	2,092
IV.—Injury	282
V.—Operation	73
VI.—Infectious diseases	29
VII.—Iritis endogenous	554
VIII.—Various	827
Total excluding cataract cases	47,228
Cataract Cases	3,071
TOTAL	50,299

TABLE XIII.—TOTAL PERCENTAGE OF BLINDNESS IN ONE OR BOTH EYES.

	1928	1929	1930	1931
	Per Cent.	Per Cent.	Per Cent.	Per Cent.
<i>Permanent Ophthalmic Hospitals:—</i>				
Tanta	7·50	5·93	5·79	4·56
Asyût	9·28	9·66	7·71	7·72
Mansûra	14·66	10·52	11·45	11·16
Bani Suef	11·30	12·21	11·74	11·42
Zagazig	4·49	9·47	9·27	7·60
Damanhûr	7·16	7·49	6·86	6·72
Shibîn el Kôm	8·20	4·99	4·40	6·01
Sohâg	17·50	16·27	15·86	13·63
Minya	21·03	17·90	17·23	13·57
Faiyûm	11·00	10·39	10·09	9·90
Banha	6·51	5·51	9·19	7·63
Alexandria	4·99	5·07	4·52	4·85
Port Said	3·64	4·23	3·43	4·63
Qena... ..	14·10	15·93	14·96	7·18
Damietta	4·66	4·65	3·75	3·42
Giza	8·10	6·66	6·73	5·52
Suez	4·04	4·23	4·72	4·97
Barrim... ..	7·35	7·58	5·61	8·33
Mallawi	9·68	3·17	3·53	3·19
Mit Ghamr... ..	9·46	6·33	5·38	8·38
Maghagha	12·04	8·40	7·84	7·92
Fikriya	9·60	9·29	6·27	5·02
Asswân	—	9·99	7·07	6·41
Rod el Farag	—	8·20	8·14	4·97
Taieba	—	5·45	5·40	3·94
Esna	—	11·56	14·63	10·14
Disûk	—	—	12·69	10·51
Mahalla el Kubra	8·37	7·42	7·13	6·56
Kafr el Zaiyât	5·95	5·45	5·08	5·17
Santa	8·98	4·27	4·54	3·93
Minûf	5·54	7·35	6·97	4·48
Ashmûn	8·40	6·94	8·11	7·87
Demerdash... ..	—	—	—	3·86
Matarîya	—	—	—	4·50
Luxor... ..	—	—	—	3·46
<i>Travelling Ophthalmic Hospitals:—</i>				
No. 1, Travelling:—				
Abbassia	10·72	10·66	10·57	—
Citadel	—	—	10·72	10·50
No. 2, Travelling:—				
Itay el Barûd	5·44	8·00	—	—
Abu Hommos	4·17	14·26	—	—
Kafr el Dawâr	—	—	6·54	—
Delingat	—	—	—	11·26
Abul Matamîr	—	—	—	16·80
No. 3, Travelling:—				
Asswân	13·02	—	—	—
Idfû	7·24	14·18	13·22	11·63
Kom Ombo... ..	9·32	11·77	14·02	7·44
No. 4, Travelling:—				
Kafr Sakr	12·23	—	—	—
Minya el Kamh	7·36	10·20	—	—
Hibia	—	9·14	—	—
Abu Kebir	—	14·90	10·40	—
Fakous	—	—	10·08	8·03
Ismailia	—	—	—	8·27

TABLE XIII (contd).—TOTAL PERCENTAGE OF BLINDNESS IN ONE OR BOTH EYES.

	1928	1929	1930	1931
	Per Cent.	Per Cent.	Per Cent.	Per Cent.
No. 5. Travelling:—				
Girga	—	7·88	10·81	—
Tahia	14·10	—	13·05	13·82
Baliana... ..	11·53	—	—	11·19.
Akhmim	7·80	10·00	—	—
No. 6. Travelling:—				
Quesna	9·90	—	9·88	7·29
Tala	13·80	8·94	—	9·05
Berket el Sab'	—	—	7·89	—
No. 7. Travelling:—				
Biba	6·78	—	6·49	7·42
Sinnouris	5·02	13·73	—	6·12
El Wasta	—	6·13	—	—
Abu Ksah	—	6·82	7·96	—
No. 8. Travelling:—				
Samallut	12·90	—	8·99	8·84
El Fashn	11·78	10·86	—	—
Matay	—	10·31	10·17	—
Bani Mazar	—	—	—	8·63
No. 9. Travelling:—				
Embaba	12·30	9·22	—	—
Ayat	—	5·28	6·50	7·49
El Saff	—	—	6·57	5·35
El Hawamdiya	—	—	—	2·93
No. 10. Travelling:—				
Nag' Hammadi... ..	9·00	10·84	—	11·03
Kous	—	16·30	—	—
Dishna	—	11·71	16·11	—
Luxor	—	—	13·60	17·65
No. 11. Travelling:—				
Shebin el Qanater	11·96	9·01	—	—
Toukh	—	8·48	7·50	4·22
El Kanater el Khairiya	—	—	—	5·10
Asyût Provincial Council:—				
Manfalût	—	11·16	10·17	6·44
Dairût	—	—	9·50	—
Abnûb	—	10·80	—	9·88
Abu Tig	—	13·04	—	9·07
Badâri	11·90	—	11·66	—
Deir Moas	13·16	—	10·07	9·40
Daqahlîya Provincial Council:—				
Fâriskûr	7·90	—	—	—
Aga	11·85	—	6·82	6·79
Simbillâwein	12·50	8·40	—	7·17
Manzala	—	7·70	—	—
Diarb Nigm	—	7·75	7·63	—
Dikirnis	—	—	—	7·43
Gharbiya Provincial Council:—				
Zifta	9·69	—	—	—
Shirbin	10·00	—	—	—
Fowa	—	6·10	—	—
Basioun	—	6·25	5·90	—
Belkas	—	—	5·77	—
Kallin	—	—	5·81	6·09
Kafr el Sheikh	—	—	—	5·74

N.B.—It is noticed in this table that the percentage of blindness varies in one hospital in different years. This is most probably due to several reasons, the important of which are: that the same blind patient might have visited the same hospital several times, that the patient might have visited several hospitals, that the surgeons of the same hospital are changed and also due to the amount of care exercised in booking these cases.

TABLE XIV.—BLINDNESS AMONG OUT-PATIENTS SINCE 1909.

YEAR.	TOTAL NUMBER OF PATIENTS EXAMINED.	ONE EYE.		BOTH EYES.		ONE EYE AND BOTH EYES INCLUDING CATARACT CASES.		ONE EYE AND BOTH EYES EXCLUDING CATARACT CASES.	
		Number.	Per Cent.	Number.	Per Cent.	Number.	Per Cent.	Number.	Per cent.
1909	22,373	2,116	9.4	1,385	6.1	3,501	15.6	—	—
1910	25,506	2,483	9.5	2,010	7.8	4,448	17.4	—	—
1911	31,274	3,196	10.2	2,811	8.9	6,007	19.2	—	—
1912	43,668	4,115	9.4	2,824	6.4	6,939	15.2	—	—
1913	62,233	5,360	8.6	3,878	6.2	9,238	14.8	—	—
1914	75,398	6,425	8.5	3,591	4.7	10,016	13.2	—	—
1915	71,930	5,637	7.8	2,992	4.2	8,629	12.0	—	—
1916	94,447	7,042	7.4	3,504	3.7	10,546	11.2	—	—
1917	100,410	9,385	9.3	4,611	4.6	13,996	13.9	—	—
1918	90,668	8,969	9.9	4,261	4.7	13,230	14.6	—	—
1919	83,577	8,537	10.2	4,278	5.1	12,815	15.3	—	—
1920	108,113	9,833	9.1	5,154	4.7	14,987	13.8	—	—
1921	127,223	10,566	8.3	5,053	3.9	15,619	12.2	—	—
1922	147,492	12,524	8.5	4,850	3.3	17,374	11.8	—	—
1923	174,004	14,394	8.3	5,146	2.9	19,540	11.2	—	—
1924	206,342	16,535	8.0	5,716	2.8	22,251	10.8	—	—
1925	246,771	19,422	7.9	6,137	2.5	25,569	10.4	—	—
1926	283,602	21,979	7.7	6,702	2.6	28,681	10.1	—	—
1927	361,577	26,591	7.4	8,689	2.4	35,280	9.8	—	—
1928	401,530	28,816	7.2	8,592	2.1	37,408	9.3	—	—
1929	479,932	31,893	6.6	8,697	1.8	40,590	8.4	—	—
1930	539,318	36,021	6.6	9,513	1.7	45,534	8.4	—	—
1931	652,338	38,433	5.9	9,489	1.4	47,922	7.3	44,851	6.9
TOTAL	4,429,726	330,227	7.4	119,883	2.7	450,110	10.1	—	—

N.B.—The definition of blindness adopted here is that proposed by Trousseau, that is to say, inability to count fingers held up at a distance of one metre.

TABLE XV.—YEARLY PERCENTAGE OF BLINDNESS AMONG OPTHALMIC HOSPITAL PATIENTS SINCE 1909.

YEAR.	Per Cent of Blindness in one or both Eyes including cataract cases.	Per cent excluding Blindness from cataract cases.	YEAR.	Per Cent of Blindness in one or both Eyes including cataract cases.	Per cent excluding Blindness from cataract cases.
1909	15.6	—	1921	12.2	—
1910	17.4	—	1922	11.8	—
1911	19.2	—	1923	11.2	—
1912	15.2	—	1924	10.8	—
1913	14.8	—	1925	10.4	—
1914	13.2	—	1926	10.1	—
1915	12.0	—	1927	9.8	—
1916	11.2	—	1928	9.3	—
1917	13.9	—	1929	8.4	—
1918	14.6	—	1930	8.4	—
1919	15.3	—	1931	7.3	6.9
1920	13.8	—			

N.B.—The definition of blindness adopted here is that proposed by Trousseau, that is to say, inability to count fingers held up at a distance of one metre.

TABLE XVI.—PRIMARY GLAUCOMA.

Acute	82)
Sub-acute	183)*
Chronic	5,552)
TOTAL	5,817
Total number of patients examined	652,338
Per cent of glaucoma cases	0.89
Per cent of absolute glaucoma cases	0.53
Operations:—	
Iridectomy	1,030
Trepphine with iridectomy	1,093

* Including 3,480 absolute monocular and binocular.

TABLE XVII.—PATHOLOGICAL REPORT.

(Kindly supplied by the Director of the Memorial Ophthalmic Laboratory, Giza).
Tissues hardened, Sections cut and examined Microscopically during 1931.

<i>Lids :—</i>		
Inflammation	9
<i>Tumours :—</i>		
Benign including cysts	53
Malignant	44
<i>Conjunctiva :—</i>		
Inflammation	49
Degeneration	32
<i>Tumours :—</i>		
Benign including cysts	42
Malignant	3
<i>Limbus :—</i>		
<i>Tumours :—</i>		
Benign including cysts	15
Malignant	17
<i>Cornea :—</i>		
Wounds	11
Inflammation including ulceration	4
Tumours (Benign)	8
<i>Sclerotic :—</i>		
Wounds	5
<i>Iris and Ciliary Body :—</i>		
Inflammation	4
Degeneration	2
Tumours (Benign including cysts)	3
<i>Lens :—</i>		
Cataract	1
<i>Ohoroid :—</i>		
Degeneration including ossification	6
<i>Retina :—</i>		
Tumours (Malignant)	5
<i>Orbit :—</i>		
<i>Tumours :—</i>		
Inflammation	1
Benign including cysts	10
<i>Lacrimal Glands :—</i>		
<i>Tumours :—</i>		
Inflammation	1
Benign including cysts	2
TOTAL, carried forward		327

TABLE XVII.—PATHOLOGICAL REPORT (*continued*).

	TOTAL, brought forward...	327
<i>Lacrimal Sac</i> :—		
Inflammation		3
<i>Glaucoma</i> :—		
Primary		4
Secondary :—		
Anterior synechia or adherent leucoma		92
Luxation of lens		2
Inflammation (Irido-cyclitis, etc.)... .. .		5
<i>Panophthalmitis</i> :—		
Exogenous		7
<i>Sympathetic Ophthalmia</i>		1
<i>Phthisis Bulbi</i> :—		
Cause undetermined		1
Inflammation		13
Post-operative		1
<i>Fly-Blown Orbit</i>		5
<i>Unclassified</i>		13
<i>Undetermined</i>		7
<i>Examination of Cells</i> :—		
Eosinophilia :—		
Positive		124
Negative		58
<i>Other Animals</i> :—		
(Horses, mules and donkeys) :—		
Diseased		1
	GRAND TOTAL...	664

TABLE XVIII.—WASSERMANN TEST.

Positive	226
Doubtful	14
Negative	901
Unfit	80
Anticomplementary	8
	TOTAL... .. .
	1229

TABLE XIX.—RESULT OF EXAMINATION FOR DIPHTHERIA SPECIMENS.

Positive	23
Negative	85
Overgrown... .. .	1
Sterile... .. .	5
	TOTAL... .. .
	114

TABLE XX.—NUMBER OF BEDS AT THE OPHTHALMIC HOSPITALS.

HOSPITAL.	FIRST.	SECOND.	THIRD.
No. 1 Travelling	—	—	30
" 2 "	—	—	20
" 3 "	—	—	20
" 4 "	—	—	20
" 5 "	—	—	20
" 6 "	—	—	20
" 7 "	—	—	20
" 8 "	—	—	20
" 9 "	—	—	20
" 10 "	—	—	20
" 11 "	—	—	20
Tanta	—	—	43
Asyût	1	—	55
Mansûra	—	—	78
Bani Suef	—	—	25
Zagazig	—	—	36
Damanhûr	—	—	31
Shibîn el Kôm	—	—	27
Sohâg	—	—	23
Minya	—	—	25
Faiyûm	—	—	10
Banha	—	—	24
Alexandria	—	—	31
Port Said	2	4	42
Qena	—	—	31
Damietta	—	—	35
Giza	—	—	77
Suez	—	—	25
Mallawi	—	—	9
Mit Ghamr	—	—	10
Maghagha	—	—	10
Fikriya	—	—	13
Asswân	—	—	23
Rod el Farag	2	4	100
Taieba	—	—	8
Esna	—	—	24
Disûk	—	—	8
Demerdash	—	—	16
Matariya	—	—	23
Santa	—	—	10
Gharbiya Provincial Council Travelling Ophthalmic Hospital	—	—	10
Daqahliya Provincial Council Travelling Ophthalmic Hospital	—	—	12
Luxor	—	—	25
TOTAL	5	8	1,149

TABLE XXI.—COST OF UNIFORM DIETS FOR THE IN-PATIENTS OF THE OPHTHALMIC HOSPITALS DURING 1931, EXCLUDING COST OF RATIONS FOR EMPLOYÉS.

HOSPITALS. (1)	Number of Diets issued.	Total Cost. (2)	
		L.E.	Cost per Head per Day. Mills.
Matariya	3,378	73	21·60
Tanta	15,670	367	23·50
No. 1 T.O.H.—Citadel	10,035	239	23·83
Zagazig	12,951	328	25·31
Maghagha	4,161	106	25·38
Rod el Farag	36,701	934	25·45
Bani Suef	8,390	218	25·97
Mansûra	26,212	696	26·55
Giza	26,562	707	26·63
Shibin el Kôm	9,115	243	26·67
Port Said	14,873	399	26·82
Banha	8,323	226	27·18
Damanhûr	10,298	281	27·28
Qena	9,313	258	27·74
No. 3 T.O.H.—Edfû and Kom Ombo	4,628	129	27·80
Minya	8,632	243	28·14
No. 6 T.O.H.—Quesna and Tala	6,066	171	28·15
Sohâg	7,865	225	28·66
No. 11 T.O.H.—Toukh and Barrage	5,706	165	28·89
Asyût	19,002	551	29·01
No. 5 T.O.H.—Tahta and Baliana	6,456	191	29·59
Faiyûm	3,321	100	30·07
Daqahliya Travelling—Aga, Dikirnis and Simbillawein (3)... ..	2,142	66	30·89
Santa	3,422	108	31·48
No. 2 T.O.H.—Delingat and Abul Matamir	6,110	197	32·18
No. 8 T.O.H.—Samallout and Bani Mazar	6,022	204	33·88
No. 9 T.O.H.—Saff, Ayat and Hawamdiya	6,197	213	34·31
No. 4 T.O.H.—Fakous and Ismailiya	7,105	247	34·82
No. 10 T.O.H.—Luxor and Naga Hammadi	6,237	222	35·61
Gharbiya Travelling—Kallin and Kafr el Sheikh	2,833	101	35·65
No. 7 T.O.H.—Beba and Sannouris	7,001	287	41·01
TOTAL...	304,667	8,495	27·88

(1) Excluding Ophthalmic Branches at General Hospitals.

(2) Fuel excluded.

(3) Diets were bought locally.

Scale of Full Diet as given to all In-patients at all Ophthalmic Hospitals.

	Grammes.
Bread	600
Beef	150
Vegetables	150
Lentils... ..	75
Rice	75
Milk	200
Native butter (<i>Samna Baladi</i>)	15
Sugar	30
Salt	20

TABLE XXII.—SOURCES OF PROVISION OF OPHTHALMIC HOSPITALS.

HOSPITALS.	Date at which opened.	Government Grant.	Public Subscription or Private Donation.	Provincial Councils or Municipalities.
		L.E.	L.E.	L.E.
No. 1 Travelling (retained at Cairo for provision of clinical facilities for teaching)	1904	—	1,000	—
No. 2 Travelling	1905	—	1,000	—
Tanta	1908	8,463	—	—
Asyût	1911	8,817 and site	5,004	—
Mansûra	1912	—	5,000	—
Bani Suef		—	4,000	—
Asyût Travelling		—	—	720
Zagazig		—	—	4,288
Mahalla el Kubra... ..		—	—	2,400
Kafr el Zaiyât	1913	—	—	2,200
Daqahliya Travelling		—	—	720
Damanhûr	1914	—	—	5,000
Shibin el Kôm		—	5,422	—
Sohâg		960	4,000	—
Minya		—	—	5,500
Santa	1915	—	—	2,600
Faiyûm		Site	—	4,000
No. 3 Travelling	1918	—	—	1,500
Banha	1920	—	14,000	—
Alexandria (Oph. Branch) ...		Annexed to General Hospital.	—	—
Port Said... ..	1921	18,620	—	1,000
Qena... ..	1923	—	12,400	2,800
Damietta (Oph. Branch) ...		1,000	240	—
“Fouad I” Oph. H., Giza ...	1924	Annexed to General Hospital.	8,668	600
Suez (Oph. Branch)		3,000 and site	—	—
No. 4 Travelling	1925	2,000	—	—
No. 5 “ ”		2,000	—	—
Menûf		—	—	950
Ashmûn		—	—	950
Memorial Ophthalmic Laboratory, Giza		2,000	6,600	—
Barrim (Oph. Branch)... ..	1926	Annexed to General Hospitals.	—	—
Mallawi (“ ”)		—	—	—
No. 6 Travelling	1927	2,280	—	—
No. 7 “ ”		2,280	—	—
Mit Ghamr (Oph. Branch)...		Annexed to General Hospital.	—	1,500
Gharbiya Travelling		—	—	—
Maghagha		—	1,000	5,000
No. 8 Travelling	1928	2,500	—	—
No. 9 “ ”		2,500	—	—
No. 10 “ ”		2,500	—	—
Fikriya (Oph. Branch)... ..		Annexed to General Hospital.	—	—
No. 11 Travelling		2,500	—	—
Asswân (Oph. Branch)	1929	6,450 Annexed to General Hospital.	—	—
“Princess Fawkiya” (Oph. Hosp.) Rod el Farag... ..		25,000	—	—
Taieba (Oph. Branch)		—	—	—
Esna (Oph. Branch)	1930	Annexed to General Hospital.	—	—
Disûk (Oph. Branch)		Annexed to General Hospital.	—	—
Demerdash (Oph. Branch) ...		—	—	—
Luxor (Oph. Branch)		Annexed to General Hospital.	—	—
Matariya		11,000	—	Site
TOTAL		103,870	68,334	41,726

TABLE XXIII.—ACTUAL EXPENDITURE 1931.—(A) CENTRAL ADMINISTRATION.

CHAPTER.	Expenditure.
	L.E.
Pensionable Staff	5,337
Hors Cadre Staff	409
Transport, Transfer and Travelling Allowance	343
Telephones	—
Telegraphs	—
TOTAL	6,089

* Included in the general expenditure of the various units of the whole Department.

TABLE XXIV.—ACTUAL EXPENDITURE 1931.—(B) GOVERNMENT OPHTHALMIC HOSPITALS.

CHAPTER.	Total Actual Expenditure.
	L.E.
Pensionable Staff	26,230
Hors Cadre Staff	18,830
Transport, Transfer and Travelling Allowance	2,416
Food	11,410
Forage	63
Water	937
Light	526
Disposal of Sewage	115
Heating	362
Rent	153
Telegrams and Telephones	168
<i>Stores :—</i>	
General Equipment	7,153
Surgical „	530
„ Instruments	2,762
Drugs	2,809
Dressings	857
Transport of Stores	453
Petty Expenses... ..	380
TOTAL	76,154 *

* Excluding repairs, being omitted as the credit is at the disposal of the Public Works Ministry.

TABLE XXV.— ACTUAL EXPENDITURE 1931, GOVERNMENT OPHTHALMIC HOSPITALS (per Unit).

	L.E.
No. 1 T.O.H.	2,755
" 2 "	1,689
" 3 "	1,946
" 4 "	2,029
" 5 "	2,029
" 6 "	1,647
" 7 "	1,893
" 8 "	1,787
" 9 "	1,650
" 10 "	1,712
" 11 "	1,510
Tanta	2,940
Asyût	2,945
Mansûra	3,133
Bani Suef	2,060
Zagazig	2,380
Damanhûr	1,907
Shibin el Kôm	2,115
Sohâg	2,363
Minya	2,068
Faiyûm	2,080
Banha	2,088
Alexandria Branch and Schools	732
Port Said	2,333
Qena	1,869
Damietta Branch	662
Giza	7,685
Suez Branch	665
Barrim Branch	448
Mallawi Branch	619
Mit Ghamr Branch	858
Maghagha	1,458
Fikriya Branch	696
Asswân Branch	759
Rod el Farag	6,010
Taieba Branch	589
Esna Branch	405
Disûk Branch	368
Demerdash Branch	152
Luxor Branch	1,023
Matariya	864
Cairo Schools	1,233
TOTAL	<u>76,154</u>

N.B.—Expenditures of Ophthalmic Branches do not include Furniture General which forms part of General Hospitals Supply.

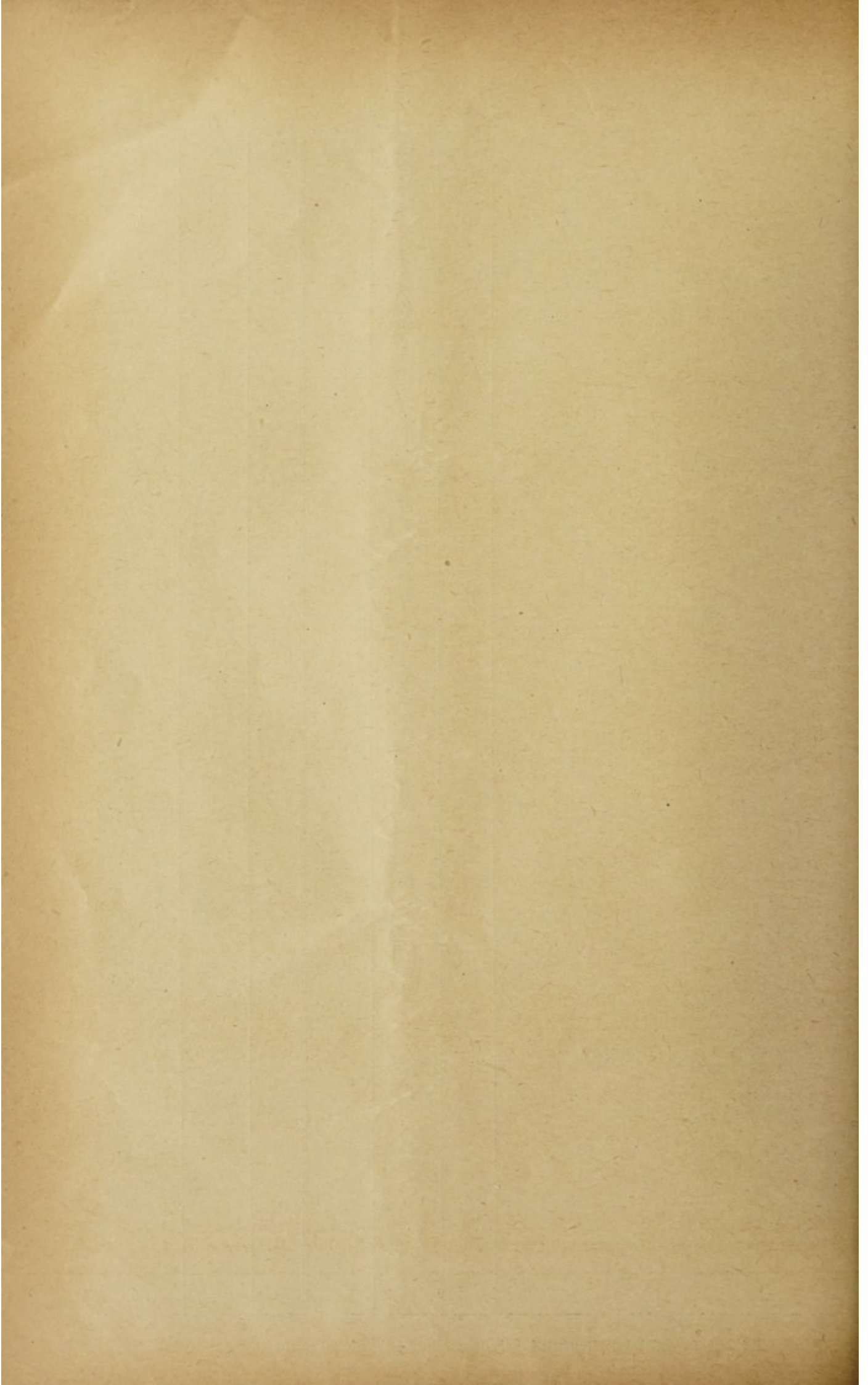
TABLE XXVI—ACTUAL EXPENDITURE 1931, PROVINCIAL COUNCIL OPHTHALMIC HOSPITALS (per Unit).

<i>Gharbiya Provincial Council :—</i>		L.E.
Mahalla el Kubra		917
Kafr el Zaiyât		672
Santa		893
Travelling Hospital		840
<i>Asyût Provincial Council :—</i>		
Travelling Hospital		563
<i>Daqahliya Provincial Council :—</i>		
Travelling Hospital		839
<i>Menûfiya Provincial Council :—</i>		
Menûf		551
Ashmûn		682

**TABLE XXVII.—COMPARISON OF THE COST OF MAINTENANCE OF A PERMANENT
OPHTHALMIC HOSPITAL IN 1914 AND 1931.**

	Number.	1914	TOTAL.	Number.	1931	TOTAL.
		L.E.	L.E.		L.E.	L.E.
ART. 1.—Salaries, Wages, and Allowances :—						
A.—Pensionable Staff :—						
Medical Officer	2	336		2	288	
Clerk	1	60		1	90	
	3		396	3		378
B.—Hors Cadre Staff :—						
Moawin	1	48		1	60	
Chief attendant	1	36		2	72	
Attendants (male)	2	42		2	48	
" (female)	2	36		2	36	
Cook	1	24		1	36	
Sai	1	18		1	24	
Gardener	—	—		1	24	
Boab	1	18		1	24	
Sundry subordinate staff	3	54		2	48	
	12		276	13		372
C.—Allowances... ..						
		72	72		—	—
ART. 2.—Transport, Transfer and Travelling Allowance :—						
Transport		} 50	50		} 40	
Transfer						
Travelling allowance... ..						
						40
ART. 3.—Food						
			139			318
ART. 5.—Rent, Water, Lighting, etc. :—						
Water		30			50	
Lighting		40			30	
Heating		20		*	—	
Sewage		12		*	—	
			102			80
ART. 6.—Books and Periodicals						
			1			* —
ART. 7.—Telegrams and Telephones :—						
Telegrams		} 9	9		9	
Telephones						
						9
ART. 8.—Petty Expenses						
			12			15
ART. 11.—Stores						
			300			400
TOTAL			1,357			1,612

* No special Grant for Ophthalmic Hospitals but the Grants are for the whole Department.



Statistics of Ophthalmic Treatment in Schools, 1931-1932.

Ophthalmic treatment has been carried out at the primary Government schools of Tanta, Asyût, Mansûra, Bani Suef, Zagazig, Damanhûr, Shibîn el Kôm, Suhâg, Minya, Faiyûm, Gîza, Banha, Moharram Bey and Râs el Tin at Alexandria, Abbâssiya, Mohammad Aly, Munîra, Mohammadiya, Gamaliya, Abbas, Bab el Shaariya, Shubra, Abdîn, Kerabiya, Nasriya and Nahhassîn at Cairo, Qena, Port Said, Damietta, Suez, Asswân and Esna.

TABLE Ia.—CONDITION OF CONJUNCTIVA (Beginning of the Year).

SCHOOLS.	No Trachoma.	TRACHOMA.				TOTAL.
		I.	II.	III.	IV.	
Tanta	61	55	49	145	189	499
Per cent	12·22	11·02	9·82	29·06	37·87	
Asyût	18	142	140	73	89	462
Per cent	3·90	30·73	30·30	15·80	19·29	
Mansûra	16	102	34	67	388	607
Per cent	2·64	16·80	5·60	11·04	63·92	
Bani Suef	68	34	66	208	79	455
Per cent	14·94	7·47	14·51	45·71	17·36	
Zagazig	14	23	26	161	223	447
Per cent	3·11	5·15	5·81	36·03	49·89	
Damanhûr	25	29	30	177	66	327
Per cent	7·64	8·87	9·17	54·13	20·18	
Shibin el Kôm	12	5	23	21	60	121
Per cent	9·92	4·13	19·01	17·36	49·59	
Sohâg	3	14	44	103	76	240
Per cent	1·25	5·83	18·33	42·92	31·67	
Minya	27	12	57	55	84	235
Per cent	11·49	5·11	24·26	23·40	35·74	
Faiyûm	5	17	77	72	70	241
Per cent	2·07	7·05	31·95	29·88	29·05	
Giza	1	100	40	122	96	359
Per cent	0·28	27·85	11·14	33·98	26·74	
Banha	20	23	62	30	79	214
Per cent	9·35	10·75	28·97	14·02	36·92	
Moharram Bey	18	75	22	15	54	184
Per cent	9·78	40·76	11·96	8·15	29·35	
Abbâssiya	3	215	91	74	125	508
Per cent	0·59	42·32	17·91	14·57	24·61	
Mohammad Aly	10	171	56	207	82	526
Per cent	1·90	32·51	10·65	39·36	15·59	
Râs el Tin	21	259	43	34	182	539
Per cent	3·89	48·05	7·98	6·31	33·77	
Qena	18	74	32	51	36	211
Per cent	8·53	35·07	15·16	24·17	17·06	
Munira	10	343	39	80	31	503
Per cent	1·99	68·19	7·75	15·92	6·16	
Mohammadiya	34	99	27	169	229	558
Per cent	6·09	17·74	4·84	30·29	41·04	
Gamaliya	5	73	26	41	49	194
Per cent	2·58	37·63	13·40	21·13	25·26	
Abbâs	4	195	74	82	135	490
Per cent	0·82	39·79	15·10	16·73	27·55	
Bab el Shaariya	10	89	47	63	59	268
Per cent	3·73	33·21	17·54	23·51	22·01	
Shubra	8	161	87	154	320	730
Per cent	1·09	22·05	11·92	21·09	43·83	
Abdin	7	71	37	94	174	383
Per cent	1·83	18·54	9·66	24·54	45·43	
Qerabiya	11	218	40	92	38	399
Per cent	2·76	54·64	10·02	23·06	9·52	
Nasriya	3	80	17	21	34	155
Per cent	1·93	51·61	10·97	13·55	21·93	
Nahhassin	3	125	39	50	9	226
Per cent	1·33	55·31	17·26	22·12	3·98	
Port Said	25	126	20	41	85	297
Per cent	8·42	42·42	6·73	13·80	28·62	
Damietta	6	76	9	31	132	254
Per cent	2·36	29·92	3·54	12·20	51·97	
Suez	3	11	49	95	74	332
Per cent	1·29	4·74	21·12	40·95	31·90	
Asswân	—	53	34	44	24	155
Per cent	—	34·19	21·93	28·39	16·49	
Esna	2	32	37	79	9	159
Per cent	1·26	20·12	23·27	49·68	5·66	
TOTAL	471	3,102	1,474	2,751	3,380	11,178
Per cent	4·21	27·75	13·19	24·61	30·24	

TABLE 16.—CONDITION OF CONJUNCTIVA (End of the Year).

SCHOOL.	No Trachoma.	TRACHOMA.				TOTAL.
		I.	II.	III.	IV.	
Tanta	63	30	7	172	202	474
Per cent	13·29	6·33	1·48	36·29	42·61	
Asyût	12	77	10	204	144	447
Per cent	2·68	17·22	2·24	45·64	32·31	
Mansûra	1	94	—	66	406	567
Per cent	0·18	16·58	—	11·64	71·60	
Bani Suef	61	34	—	228	79	402
Per cent	15·17	8·46	—	56·72	19·65	
Zagazig	14	6	—	116	283	419
Per cent	3·34	1·43	—	27·68	67·54	
Damanhûr	22	11	—	181	87	301
Per cent	7·31	3·65	—	60·13	28·90	
Shibin el Kôm	9	1	—	39	63	112
Per cent	8·03	0·89	—	34·82	56·25	
Sohâg	3	10	25	113	79	230
Per cent	1·30	4·35	10·87	49·13	34·35	
Minya	27	2	—	72	125	226
Per cent	11·95	0·88	—	31·86	55·31	
Faiyûm	5	4	3	128	79	219
Per cent	2·28	1·83	1·37	58·45	36·07	
Giza	—	74	3	146	138	361
Per cent	—	20·50	0·83	40·44	38·23	
Banha	17	—	—	50	128	195
Per cent	8·72	—	—	25·64	65·64	
Moharram Bey	18	3	4	25	120	170
Per cent	10·59	1·77	2·35	14·70	70·59	
Abbâssiya	3	25	16	211	227	482
Per cent	0·62	5·19	3·32	43·77	47·09	
Mohammad Aly	9	119	12	282	107	529
Per cent	1·70	22·49	2·27	53·31	20·23	
Râs el Tin	20	4	6	64	426	520
Per cent	3·85	0·77	1·15	12·31	81·92	
Qena	18	26	—	88	73	205
Per cent	8·78	12·68	—	42·93	35·61	
Munira	10	289	9	72	99	479
Per cent	2·09	60·33	1·88	15·03	20·67	
Mohammadiya	34	59	1	164	276	534
Per cent	6·37	11·05	0·19	30·71	51·68	
Gamaliya	3	73	4	43	64	187
Per cent	1·60	39·04	2·14	22·99	34·22	
Abbâs	4	16	9	232	226	487
Per cent	0·82	3·28	1·85	47·64	46·41	
Bab el Shaariya	9	44	5	111	81	250
Per cent	3·60	17·60	2·00	44·40	32·40	
Shubra	9	101	5	261	280	656
Per cent	1·37	15·40	0·76	39·79	42·68	
Abdin	7	—	—	143	203	353
Per cent	1·98	—	—	40·51	57·51	
Qerabiya	14	185	15	90	49	353
Per cent	3·97	52·41	4·25	25·49	13·88	
Nasriya	8	3	—	61	69	141
Per cent	5·67	2·13	—	43·26	48·94	
Nahhassin	3	116	11	57	25	212
Per cent	1·41	54·72	5·19	26·89	11·79	
Port Said	11	74	7	79	126	297
Per cent	3·70	24·91	2·36	26·60	42·42	
Damietta	6	24	1	80	142	253
Per cent	2·37	9·49	0·39	31·62	56·13	
Suez	1	—	—	152	74	227
Per cent	0·44	—	—	66·96	32·60	
Asswân	—	37	4	65	36	142
Per cent	—	26·06	2·82	45·77	25·35	
Esna	2	29	23	84	16	154
Per cent	1·30	18·83	14·93	54·54	10·39	
TOTAL	423	1,570	180	3,879	4,532	10,584
Per cent	4·00	14·83	1·70	36·65	42·82	

TABLE II a.—EFFECT OF TREATMENT ON SERIOUS STAGES OF TRACHOMA.

YEAR.	BEGINNING OF THE YEAR.			END OF THE YEAR.	
	Pupils with any Stage of Trachoma.	Pupils with serious Stages of Trachoma I and II.		Pupils with serious Stages of Trachoma I and II.	
		No.	No.	Per Cent.	No.
1907-1908	464	289	62.3	—	—
1914-1915	1,553	342	22.0	61	4.0
1916-1917	1,528	327	21.4	48	3.0
1917-1918	1,699	282	16.6	71	4.2
1919-1920	2,454	410	16.7	201	8.2
1920-1921	3,363	643	19.1	290	8.6
1921-1922	5,036	1,369	27.2	580	11.5
1922-1923	6,140	1,982	32.3	892	14.5
1923-1924	6,820	2,115	31.0	835	12.2
1924-1925	7,107	2,442	34.4	722	10.2
1925-1926	7,337	1,865	25.4	374	5.1
1926-1927	9,053	2,160	23.9	582	6.4
1927-1928	12,057	2,819	23.4	830	6.9
1928-1929	11,319	2,624	23.2	722	6.4
1929-1930	11,223	2,397	30.2	919	8.4
1930-1931	10,793	2,893	26.8	877	8.1
1931-1932	10,707	4,576	42.7	1,750	16.3

TABLE II b.—STAGES OF TRACHOMA AT BEGINNING AND END OF SCHOOL YEAR.

STAGES OF TRACHOMA.		BEGINNING OF THE YEAR.		END OF THE YEAR.	
		No.	Per Cent.	No.	Per Cent.
Trachoma	I	3,102	29.0	1,570	15.4
"	II	1,474	13.8	180	1.8
"	III	2,751	25.7	3,879	38.2
"	IV	3,380	31.5	4,532	44.6

TABLE III a.—TRACHOMA AND ITS RELATION TO SCHOOL YEARS (Beginning of the Year).

SCHOOLS.	1ST YEAR.				2ND YEAR.				3RD YEAR.				4TH YEAR.				
	Trachoma.				Trachoma.				Trachoma.				Trachoma.				
	I.	II.	III.	IV.	I.	II.	III.	IV.	I.	II.	III.	IV.	I.	II.	III.	IV.	
Tanta ...	22	15	20	8	12	16	22	45	16	15	6	53	67	9	1	37	69
Asyût ...	2	45	35	1	7	40	48	24	5	35	33	18	24	22	24	43	40
Mansûra ...	4	38	12	73	7	30	11	99	—	18	4	22	110	5	7	19	106
Bani Suef ...	31	20	25	9	10	9	22	69	12	5	12	52	28	—	7	67	28
Zagazig ...	3	18	8	22	5	2	9	47	5	—	5	40	60	3	4	52	92
Damanhûr ...	4	16	18	15	7	6	4	54	7	6	4	59	23	1	4	49	17
Shibîn el Kôm ...	5	5	7	10	3	—	5	7	2	—	7	10	18	—	4	2	26
Sohâg ...	2	10	24	14	1	1	7	34	—	2	5	25	30	1	8	20	12
Minya ...	8	7	18	5	7	16	11	31	8	2	13	21	16	3	10	18	25
Faiyûm ...	2	6	31	7	2	22	15	11	1	3	13	21	25	3	11	29	18
Giza ...	1	44	9	22	—	17	10	37	—	27	15	42	23	12	6	27	17
Banha ...	5	8	13	8	8	3	16	18	2	4	14	5	26	5	19	17	27
Moharram Bey ...	4	26	3	14	7	32	5	9	6	12	6	7	12	1	5	8	19
Abbâsiya ...	—	61	28	6	1	53	14	11	2	52	28	20	46	—	21	37	39
Mohammad Aly ...	2	64	24	23	4	35	13	28	1	35	9	67	12	3	10	63	26
Râs el Tin ...	6	77	11	5	4	77	12	6	9	71	15	10	40	2	34	13	51
Qena ...	4	22	9	5	6	21	8	11	5	17	10	17	12	3	14	18	12
Munîra ...	—	107	15	15	2	87	9	17	5	95	7	24	8	3	54	24	9
Mohammadîya ...	10	21	17	42	12	33	4	47	10	34	4	51	77	2	11	2	48
Gamâliya ...	1	18	14	2	2	29	8	18	2	13	1	10	17	—	3	11	15
Abbâs ...	2	51	18	14	1	52	23	10	1	64	16	26	37	28	17	32	38
Bab el Shaariya ...	1	24	21	5	3	35	17	11	1	10	5	20	23	14	4	27	10
Shubra ...	—	77	36	31	4	41	24	47	3	30	16	46	132	1	13	30	92
Abdîn ...	1	47	17	14	1	11	12	18	5	7	7	31	50	—	6	23	37
Qerabiya ...	5	61	19	4	3	59	12	20	3	41	3	22	12	—	57	36	10
Nasriya ...	—	16	3	1	1	27	5	7	—	23	5	2	7	2	14	9	15
Nahhassîn ...	3	36	15	9	—	35	9	14	—	31	11	18	3	—	23	9	5
Port Saïd ...	13	43	7	2	9	26	4	5	2	34	8	13	24	1	23	21	29
Damietta ...	1	40	5	30	2	15	1	10	2	16	3	8	44	1	5	7	28
Suez ...	1	9	18	13	8	1	14	37	—	1	12	32	25	—	—	13	12
Asswân ...	—	16	13	2	—	16	8	7	—	9	7	20	6	—	6	15	8
Ezna ...	—	8	7	15	—	10	16	23	1	8	8	24	5	6	6	17	4
TOTAL	143	1056	520	385	133	824	410	714	116	726	312	836	1044	79	496	816	984

TABLE III *b*.—COMPARISON OF SERIOUS STAGES OF TRACHOMA I and II (Beginning of the Year).

CLASS.	Total Number of Pupils.	Total Number of serious Stages of Trachoma I and II.	Per Cent.
First Year	2,628	1,576	59.97
Second Year	2,909	1,234	42.42
Third Year... ..	3,034	1,038	34.21
Fourth Year	2,607	728	27.92

TABLE IV.—VISION OF ALL PUPILS WITHOUT SPECTACLES.

	TOTAL	GRAND TOTAL.	Per Cent.
<i>Good Vision :—</i>			
(a) Normal vision in each eye 6/6 and 6/6	2,229		
(b) Vision 6/6 and 6/9, or 6/9 and 6/9,	3,566	5,795	51.84
<i>Fair Vision :—</i>			
(a) Vision 6/6 and 6/12, or 6/9 and 6/12, or 6/12 and 6/12	2,270		
(b) Vision 6/6 and 6/18	280	2,550	22.81
<i>Bad Vision :—</i>			
Fails to attain any of the above standards	2,833	2,833	25.34
TOTAL	11,178	11,178	

TABLE VI.—NUMBER OF PUPILS ORDERED SPECTACLES NOT GREATER IN STRENGTH THAN ± 6 DIOPTRIS AND BY THEIR USE GOT GOOD OR FAIR VISION.

	TOTAL.	GRAND TOTAL.	Per Cent.*
<i>Good Vision:—</i>			
(a) Normal vision in each eye 6/6 and 6/6	40	138	22.85
(b) Vision 6/6 and 6/9, or 6/9 and 6/9	98		
<i>Fair Vision:—</i>			
(a) Vision 6/6 and 6/12, or 6/9 and 6/12, or 6/12 and 6/12... ..	149	166	27.48
(b) Vision 6/6 and 6/18... ..	17		

* The percentage is taken in relation to the number of all pupils ordered spectacles (i.e. 604). See Table V.

TABLE VII.—CONDITION OF CORNEA BEFORE TREATMENT.

SCHOOLS.	Both Corneas clear.	One Cornea clear the other showing Opacity.	Opacity of both Corneas.
Tanta	449	29	21
Asyût	416	33	13
Mansûra	575	21	11
Bani Suef	442	10	3
Zagazig	430	13	4
Damanhûr	320	7	—
Shibin el Kôm	110	8	3
Sohâg	216	15	9
Minya	213	18	4
Faiyûm	219	7	15
Giza	324	28	7
Banha	185	20	9
Moharram Bey	181	1	2
Abbassiya	471	20	17
Mohammad Aly	466	36	24
Râs el Tin... ..	528	10	1
Qena	197	18	6
Munira	482	12	9
Mohammadiya	547	11	—
Gamâliya	175	14	5
Abbâs... ..	421	36	33
Bab el Shaaria	221	27	20
Shubra	701	17	12
Abdîn	353	17	13
Qerabiya	333	50	16
Nasriya	146	6	3
Nabhassîn	206	13	7
Port Said	288	6	3
Damietta	239	10	5
Suez	222	7	3
Asswân	144	6	5
Esna	138	14	7
TOTAL	10,348	540	290
Per cent	92.57	4.63	2.59

TABLE VIII.—COMPARISON OF CORNEAL OPACITY AMONG PUPILS OF TANTA PRIMARY SCHOOL IN THE YEARS 1914-1915 AND 1931-1932.

YEAR.	Both Corneas Clear.	One Cornea Clear, the other showing Opacity	Opacity of both Corneas.
1914-1915	173	54	33
1931-1932	449	29	21

Government Press.
6006-1932-1324 ex.

